

STATE OF WASHINGTON  
DEPARTMENT OF CORRECTIONS  
INSTITUTIONS AND WORK TRAINING RELEASE

CLIENT CHARACTERISTICS AND POPULATION MOVEMENT REPORT  
FOR FISCAL YEAR 1995

156504

U.S. Department of Justice  
National Institute of Justice

This document has been reproduced exactly as received from the person or organization originating it. Points of view or opinions stated in this document are those of the authors and do not necessarily represent the official position or policies of the National Institute of Justice.

Permission to reproduce this copyrighted material has been granted by  
Washington State Department  
of Corrections

to the National Criminal Justice Reference Service (NCJRS).

Further reproduction outside of the NCJRS system requires permission of the copyright owner.

ACQUISITIONS

SEP 27 1995

NCJRS

DEPARTMENT OF CORRECTIONS  
DIVISION OF MANAGEMENT & BUDGET  
PLANNING & RESEARCH SECTION

156504

## TABLE OF CONTENTS

Glossary and Abbreviations .....	ii
 <b>Population of Adult Corrections Institutions and Work Release</b>	
Average Daily Population and Rated Capacity by Month .....	Table 1A
Female Average Daily Inmate Population and Rated Capacity by Month .....	Table 1B
Racial and Hispanic Origin Distribution of Resident Inmates .....	Table 2A
Distribution of Offenses .....	Table 2B
Distribution of Violent Crime Convictions .....	Table 2C
Age Distribution and Average Age .....	Table 2D
Distribution of Sentencing Authority .....	Table 2E
Racial and Hispanic Origin Distribution of Resident Female Inmates .....	Table 2F
 <b>Admissions to Prison</b>	
Admissions by Month and Type of Admission .....	Table 3A
Admissions by Type and County of Conviction .....	Table 3B
Admissions by Age at Admission: Race and Sex .....	Table 3C
Admissions by Age at Admission: Hispanic Origin and Sex .....	Table 3C-2
Admissions by County and Race .....	Table 3D
Admissions by County and Hispanic Origin .....	Table 3D-2
Admissions by Type and Sentencing Authority .....	Table 3E
Admissions by Offense and Type of Admission .....	Table 3F
Admissions by Month by Sex .....	Table 3G
 <b>Releases from Prison</b>	
Releases by Type of Release and Month .....	Table 4A
Releases by Race and Hispanic Origin and Type of Release .....	Table 4B
Length of Stay by Category of Admission .....	Table 4C
Length of Stay by Offense .....	Table 4D
Length of Stay by Offense for WEC Graduates .....	Table 4E
Length of Stay by Offense for CCI/WEC Violators .....	Table 4F
Releases by Sentencing Authority .....	Table 4G
Releases by Month and Sex .....	Table 4H

## GLOSSARY AND ABBREVIATIONS

### ADMISSIONS

First Admission: a felon convicted in Washington State Superior Court and entering prison for the first time in this state.

New Conviction From Parole: a felon sentenced for a new crime and whose parole for one or more previous crimes has been revoked.

Parole Revocations: a felony offender whose parole for a previous crime has been revoked for violating conditions of parole.

CCI Return: a community custody inmate who has been returned to prison or work/pre-release to serve violation time or whose community custody has been terminated for violating the conditions of placement.

Readmission: a felony offender with a previous history of incarceration in Washington State, whose parole has not been revoked or whose parole has expired, who is re-entering prison.

### AGENCY

The term "agency" includes all Department of Corrections prisons, pre-release facilities, and work release facilities. Work release facilities accommodate inmates, parolees, probationers, and SRA offenders.

Agency abbreviations used in this report are: WCC RECEPTION—Washington Corrections Center-Reception, Shelton; WCC INSTITUTION—Washington Corrections Center-Training Center, Shelton; WCC WOMEN—Washington Corrections Center for Women, Gig Harbor; WASH PENITENTIARY—Washington State Penitentiary, Walla Walla; WASH REFORMATORY—Washington State Reformatory, Monroe; MCNEIL ISLAND—McNeil Island Corrections Center, Steilacoom; MICC WEC—Work Ethic Camp at McNeil Island Corrections Center; SPECIAL OFFENDERS—Special Offender Center, Monroe; TWIN RIVERS—Twin Rivers Corrections Center, Monroe; CLALLAM BAY—Clallam Bay Corrections Center, Clallam Bay; LARCH—Larch Corrections Center, Yacolt; INDIAN RIDGE—Indian Ridge Corrections Center, Arlington; CEDAR CREEK—Cedar Creek Corrections Center, Litterock; OLYMPIC—Olympic Corrections Center, Forks; COYOTE RIDGE—Coyote Ridge Corrections Center, Connell; AIRWAY HEIGHTS—Airway Heights Corrections Center, Spokane; PRERELEASE—Pre-Release facilities; WORK RELEASE—Work Release facilities, several sites.

#### COMMUNITY CUSTODY INMATE (CCI)

Person serving a portion of their prison sentence in the community after release from a Work Ethic camp or in lieu of early release time, where controls are placed on their movements and activities by the Department of Corrections.

#### CCI VIOLATOR

Community Custody Inmate who does not comply with terms of community sentence and receives a violation resulting in a return to department confinement.

#### COUNTY OF CONVICTION

The county of conviction/admission is the county from which a felon is sentenced. In the case of multiple crimes, the county of the most serious crime is given.

#### OFFENSE TYPE

The offense type is the crime for which a felon is incarcerated. In cases of multiple convictions, the most serious crime is presented. The offenses, as presented, are divided into two main categories: violent crimes and nonviolent crimes as defined in RCW 9.94A.

#### RATED CAPACITY

The rated capacity is the bed capacity of a facility. It is based on desirable standards of square feet per bed, at the end of the reporting month.

#### RELEASE

The parole, discharge, community placement, or death of felons formerly held in custody by the Department of Corrections.

#### VIOLENT OFFENDER

A felon found guilty of a violent crime as defined in the Sentencing Reform Act (Chapter 9.94A RCW). Included are all Class A felonies and some Class B felonies, such as manslaughter 1 and 2, indecent liberties with forcible compulsion, rape 2 (committed before July 1, 1990), child

molestation 1 (committed before July 1, 1990), kidnapping 2, arson 2, assault 2, robbery 2, extortion 1, vehicular homicide, vehicular assault, and certain drug dealing crimes.

#### PRE-RELEASE

Total confinement in a community setting. Pre-release programs provide job application and survival skills training.

#### WORK ETHIC CAMP

A camp with a work ethic focus where offenders, after judicial recommendation, are continually engaged in meaningful activities and where unstructured time is kept to a minimum.

#### WORK RELEASE

A supervisory program imposed on an offender who has been conditionally released from total confinement in an institution or is imposed on a parolee or probationer in need of increased supervision. Certain felons convicted after implementation of the Sentencing Reform Act may serve their term of partial confinement in a Department of Corrections work release facility. The program allows residents to work or attend educational programs during the day and be confined in the work release facility at night.

#### COMMUNITY PLACEMENT

Includes persons serving a portion of their prison sentence in the community in lieu of early release time (Community Custody Inmates), where controls are placed on their movements and activities by the Department of Corrections, and persons serving Post Release Supervision, where violations of sentence conditions are reported to the sentencing court.

DIVISION OF MANAGEMENT AND BUDGET  
 PLANNING AND RESEARCH SECTION  
 DEPARTMENT OF CORRECTIONS

TABLE 1 A  
 AVERAGE DAILY POPULATION\* AND RATED CAPACITY\*\*  
 BY MONTH FOR FISCAL YEAR 1995

FACILITY	JUL		AUG		SEP		OCT		NOV		DEC	
	ADP	CAP	ADP	CAP	ADP	CAP	ADP	CAP	ADP	CAP	ADP	CAP
WCC--Reception	1,133	480	1,104	480	1,013	480	1,014	480	1,069	480	937	480
WCC--Institution	721	422	724	422	731	422	728	422	725	422	700	422
Wash Corr Center/Women	546	442	545	474 1/	525	474	531	474	524	474	521	474
Wash State Pen	2,267	1,434	2,219	1,434	2,244	1,434	2,262	1,434	2,264	1,434	2,270	1,408 1/
Wash State Reformatory	713	672 1/	713	672	724	672	717	672	713	672	716	692 1/
McNeil Island Corr Center	1,062	604	1,017	604	1,040	604	1,119	604	1,158	668 1/	1,228	806 1/
Spocial Offender Center	104	108	105	108	105	108	108	108	103	108	105	108
Twin Rivers Corr Center	782	487	786	487	791	487	786	487	792	487	791	487
Clallam Bay Corr Center	851	658	849	658	854	658	853	658	860	658	866	658
Airway Heights Medium	300	256	481	256	507	256	495	256	492	256	547	384 1/
<b>MAJOR INSTITUTION TOTAL</b>	<b>8,480</b>	<b>5,583 1/</b>	<b>8,543</b>	<b>5,595 1/</b>	<b>8,542</b>	<b>5,595</b>	<b>8,813</b>	<b>5,595</b>	<b>8,701</b>	<b>5,659 1/</b>	<b>8,680</b>	<b>5,919 1/</b>
Larch Corrections Center	151	104	158	104	154	104	157	104	159	104	162	104
Indian Ridge Corr Center	79	57	82	49 1/	83	49	67	49	10	0 2/	0	0
Cedar Creek Corr Center	241	124	249	161 1/	255	161	250	161	247	161	262	161
Olympic Corr Center	340	254	343	254	340	254	341	254	342	254	345	254
Coyote Ridge Corr Center	364	400	375	400	359	400	367	400	395	400	393	400
<b>MINOR INSTITUTION TOTAL</b>	<b>1,175</b>	<b>939</b>	<b>1,207</b>	<b>968 1/</b>	<b>1,190</b>	<b>968</b>	<b>1,182</b>	<b>968</b>	<b>1,154</b>	<b>919 1/</b>	<b>1,162</b>	<b>919</b>
McNeil Island Work Ethic Camp	89	125	98	125	101	125	99	125	97	125	105	129 1/
<b>DIVISION OF PRISONS TOTAL</b>	<b>9,744</b>	<b>6,627 1/</b>	<b>9,849</b>	<b>6,688 1/</b>	<b>9,834</b>	<b>6,688</b>	<b>9,994</b>	<b>6,688</b>	<b>9,952</b>	<b>6,703 1/</b>	<b>9,947</b>	<b>6,967 1/</b>
Pre-release, Inmates	455	-	426	-	413	-	410	-	411	-	409	-
Work Release, Inmates	435	-	410	-	451	-	459	-	462	-	454	-
Work Release, CCI	39	-	43	-	33	-	38	-	34	-	36	-
Work Release, SRA	41	-	46	-	45	-	40	-	44	-	38	-
Work Release, Proba/Parolees	21	-	17	-	18	-	17	-	20	-	29	-
<b>WORK RELEASE TOTAL</b>	<b>990</b>	<b>1,102</b>	<b>942</b>	<b>1,102</b>	<b>960</b>	<b>1,102</b>	<b>964</b>	<b>1,102</b>	<b>971</b>	<b>1,102</b>	<b>966</b>	<b>1,102</b>
<b>GRAND TOTAL</b>	<b>10,735</b>	<b>7,729 1/</b>	<b>10,791</b>	<b>7,790 1/</b>	<b>10,794</b>	<b>7,790</b>	<b>10,859</b>	<b>7,790</b>	<b>10,922</b>	<b>7,805 1/</b>	<b>10,913</b>	<b>8,069 1/</b>

\*NOTE: The ADP for prisons is calculated by summing the number of inmate days on statuses IR (In-Residence), EL (Escorted Leave), CO (Court Order), and CJ (County Jail), then dividing by the number of days in the month. ADP subtotals may not add due to rounding.

\*\*NOTE: Rated capacity as of the last day of the month.

1/ Change in rated capacity from the previous month.

2/ Indian Ridge Corrections Center closed November 17, 1994.

DIVISION OF MANAGEMENT AND BUDGET  
 PLANNING AND RESEARCH SECTION  
 DEPARTMENT OF CORRECTIONS

TABLE 1 A  
 AVERAGE DAILY POPULATION\* AND RATED CAPACITY\*\*  
 BY MONTH FOR FISCAL YEAR 1995

FACILITY	JAN		FEB		MAR		APR		MAY		JUNE	
	ADP	CAP	ADP	CAP	ADP	CAP	ADP	CAP	ADP	CAP	ADP	CAP
WCC--Reception	795	480	880	480	1,006	480	1,048	480	1,033	480	957	480
WCC--Institution	708	422	725	422	739	422	743	422	747	422	744	422
Wash Corr Center/Women	518	474	520	474	524	474	538	474	537	474	543	474
Wash State Pen	2,242	1,408	2,202	1,408	2,203	1,408	2,194	1,408	2,218	1,408	2,204	1,408
Wash State Reformatory	722	692	717	692	717	692	714	692	722	692	716	692
McNeil Island Corr Center	1,229	806	1,220	806	1,190	806	1,208	806	1,262	806	1,333	806
Special Offender Center	107	108	106	108	106	108	107	108	105	108	105	108
Twin Rivers Corr Center	787	487	793	487	792	487	789	487	824	487	831	487
Clallam Bay Corr Center	847	658	857	658	837	658	846	658	851	658	848	658
Airway Heights Medium	690	384	759	384	766	384	765	384	721	384	678	384
<b>MAJOR INSTITUTION TOTAL</b>	<b>8,644</b>	<b>5,919</b>	<b>8,778</b>	<b>5,919</b>	<b>8,879</b>	<b>5,919</b>	<b>8,953</b>	<b>5,919</b>	<b>9,019</b>	<b>5,919</b>	<b>8,969</b>	<b>5,919</b>
Larch Corrections Center	159	104	154	104	149	104	157	104	162	104	163	104
Cedar Creek Corr Center	255	161	256	161	259	161	265	161	266	161	267	161
Olympic Corr Center	342	254	344	254	356	254	354	254	355	254	343	254
Coyote Ridge Corr Center	392	400	389	400	392	400	389	400	390	400	397	400
Airway Heights Minimum	0	0	0	0	0	0	0	0	47	210 1/	189	200 1/
<b>MINOR INSTITUTION TOTAL</b>	<b>1,147</b>	<b>919</b>	<b>1,144</b>	<b>919</b>	<b>1,155</b>	<b>919</b>	<b>1,166</b>	<b>919</b>	<b>1,221</b>	<b>1,129 1/</b>	<b>1,369</b>	<b>1,119 1/</b>
McNeil Island Work Ethic Camp	99	129	89	129	90	129	94	129	90	129	97	129
<b>DIVISION OF PRISONS TOTAL</b>	<b>9,890</b>	<b>6,967</b>	<b>10,011</b>	<b>6,967</b>	<b>10,124</b>	<b>6,967</b>	<b>10,214</b>	<b>6,967</b>	<b>10,330</b>	<b>7,177 1/</b>	<b>10,416</b>	<b>7,167 1/</b>
Pre-release, Inmates	444	-	450	-	450	-	458	-	466	-	462	-
Work Release, Inmates	467	-	479	-	497	-	508	-	500	-	515	-
Work Release, CCI	45	-	46	-	37	-	34	-	38	-	40	-
Work Release, SRA	46	-	50	-	43	-	40	-	55	-	52	-
Work Release, Proba/Parolees	30	-	25	-	27	-	28	-	22	-	22	-
<b>WORK RELEASE TOTAL</b>	<b>1,032</b>	<b>1,102</b>	<b>1,060</b>	<b>1,102</b>	<b>1,064</b>	<b>1,102</b>	<b>1,069</b>	<b>1,102</b>	<b>1,080</b>	<b>1,102</b>	<b>1,092</b>	<b>1,102</b>
<b>GRAND TOTAL</b>	<b>10,922</b>	<b>8,069</b>	<b>11,061</b>	<b>8,069</b>	<b>11,178</b>	<b>8,069</b>	<b>11,282</b>	<b>8,069</b>	<b>11,411</b>	<b>8,279 1/</b>	<b>11,508</b>	<b>8,269 1/</b>

\*NOTE: The ADP for prisons is calculated by summing the number of inmate days on statuses IR (In-Residence), EL (Escorted Leave), CO (Court Order), and CJ (County Jail), then dividing by the number of days in the month. ADP subtotals may not add due to rounding.

\*\*NOTE: Rated capacity as of the last day of the month.

1/ Change in rated capacity from the previous month.

DIVISION OF MANAGEMENT AND BUDGET  
 PLANNING AND RESEARCH SECTION  
 DEPARTMENT OF CORRECTIONS

TABLE 1B  
 FEMALE INMATE AVERAGE DAILY POPULATION\* AND RATED CAPACITY\*\*\*  
 BY MONTH FOR FISCAL YEAR 1995

FACILITY	JUL		AUG		SEP		OCT		NOV		DEC	
	ADP	CAP	ADP	CAP	ADP	CAP	ADP	CAP	ADP	CAP	ADP	CAP
WCC--Reception	0	0	0	0	0	0	0	0	0	0	0	0
WCC--Institution	0	0	0	0	0	0	0	0	0	0	0	0
Wash Corr Center/Women	298	170	299	202	289	202	286	202	295	202	296	202
Washington State Pen	0	0	0	0	0	0	0	0	0	0	0	0
Washington State Reformatory	0	0	0	0	0	0	0	0	0	0	0	0
McNeil Island Corr Center	0	0	0	0	0	0	0	0	0	0	0	0
Special Offender Center	0	0	0	0	0	0	0	0	0	0	0	0
Twin Rivers Corr Center	0	0	0	0	0	0	0	0	0	0	0	0
Clallam Bay Corr Center	0	0	0	0	0	0	0	0	0	0	0	0
Airway Heights Medium	0	0	0	0	0	0	0	0	0	0	0	0
<b>MAJOR INSTITUTIONS TOTAL</b>	<b>298</b>	<b>170</b>	<b>299</b>	<b>202</b>	<b>289</b>	<b>202</b>	<b>286</b>	<b>202</b>	<b>295</b>	<b>202</b>	<b>296</b>	<b>202</b>
Larch Corrections Center	0	0	0	0	0	0	0	0	0	0	0	0
Indian Ridge Corr Center	0	8 1/	0	0 1/	0	0	0	0	0	0	0	0
Cedar Creek Corr Center	0	0	0	0	0	0	0	0	0	0	0	0
Olympic Corrections Center	0	0	0	0	0	0	0	0	0	0	0	0
Coyote Ridge Corr Center	0	0	0	0	0	0	0	0	0	0	0	0
Wash Corr Center/Women Minimum	248	272 1/	246	272	236	272	245	272	230	272	225	272
<b>MINOR INSTITUTIONS TOTAL</b>	<b>248</b>	<b>280 1/</b>	<b>246</b>	<b>272 1/</b>	<b>236</b>	<b>272</b>	<b>245</b>	<b>272</b>	<b>230</b>	<b>272</b>	<b>225</b>	<b>272</b>
MCNEIL ISLAND WORK ETHIC CAMP	15	25	19	25	21	25	18	25	17	25	18	35 1/
<b>DIVISION OF PRISONS TOTAL</b>	<b>561</b>	<b>475 1/</b>	<b>564</b>	<b>499 1/</b>	<b>546</b>	<b>499</b>	<b>549</b>	<b>499</b>	<b>541</b>	<b>499</b>	<b>539</b>	<b>509 1/</b>
Pre/Work Release, inmates	153	-	147	-	155	-	153	-	155	-	156	-
Work Release, CCI	8	-	6	-	4	-	7	-	6	-	5	-
<b>WORK RELEASE TOTAL</b>	<b>161</b>	<b>185</b>	<b>153</b>	<b>185</b>	<b>159</b>	<b>185</b>	<b>160</b>	<b>185</b>	<b>161</b>	<b>185</b>	<b>161</b>	<b>187 1/</b>
<b>GRAND TOTAL</b>	<b>721</b>	<b>660 1/</b>	<b>717</b>	<b>684 1/</b>	<b>705</b>	<b>684</b>	<b>709</b>	<b>684</b>	<b>702</b>	<b>684</b>	<b>700</b>	<b>696 1/</b>

\*NOTE: The ADP for prisons is calculated by summing the number of inmate days on statuses IR (In-Residence), EL (Escorted Leave), CO (Court Order), and CJ (County Jail), then dividing by the number of days in the month. ADP subtotals may not add due to rounding.

\*\*NOTE: Rated capacity as of the last day of the month.

1/ Change in rated capacity from the previous month.



DIVISION MANAGEMENT AND BUDGET  
 PLANNING AND RESEARCH SECTION  
 DEPARTMENT OF CORRECTIONS

TABLE 1B  
 FEMALE INMATE AVERAGE DAILY POPULATION\* AND RATED CAPACITY\*\*\*  
 BY MONTH FOR FISCAL YEAR 1995

FACILITY	JAN		FEB		MAR		APR		MAY		JUNE	
	ADP	CAP	ADP	CAP	ADP	CAP	ADP	CAP	ADP	CAP	ADP	CAP
WCC--Reception	0	0	0	0	0	0	0	0	0	0	0	0
WCC--Institution	0	0	0	0	0	0	0	0	0	0	0	0
Wash Corr Center/Women	301	202	306	202	305	202	321	202	307	202	316	202
Washington State Pen	0	0	0	0	0	0	0	0	0	0	0	0
Washington State Reformatory	0	0	0	0	0	0	0	0	0	0	0	0
McNeil Island Corr Center	0	0	0	0	0	0	0	0	0	0	0	0
Special Offender Center	0	0	0	0	0	0	0	0	0	0	0	0
Twin Rivers Corr Center	0	0	0	0	0	0	0	0	0	0	0	0
Clallam Bay Corr Center	0	0	0	0	0	0	0	0	0	0	0	0
Arway Heights Medium	0	0	0	0	0	0	0	0	0	0	0	0
<b>MAJOR INSTITUTIONS TOTAL</b>	<b>301</b>	<b>202</b>	<b>306</b>	<b>202</b>	<b>305</b>	<b>202</b>	<b>321</b>	<b>202</b>	<b>307</b>	<b>202</b>	<b>316</b>	<b>202</b>
Larch Corrections Center	0	0	0	0	0	0	0	0	0	0	0	0
Cedar Creek Corr Center	0	0	0	0	0	0	0	0	0	0	0	0
Olympic Corrections Center	0	0	0	0	0	0	0	0	0	0	0	0
Coyote Ridge Corr Center	0	0	0	0	0	0	0	0	0	0	0	0
Wash Corr Center/Women Minimum	217	272	215	272	219	272	218	272	230	272	227	272
Arway Heights Minimum	0	0	0	0	0	0	0	0	0	0	0	0
<b>MINOR INSTITUTIONS TOTAL</b>	<b>217</b>	<b>272</b>	<b>215</b>	<b>272</b>	<b>219</b>	<b>272</b>	<b>218</b>	<b>272</b>	<b>230</b>	<b>272</b>	<b>227</b>	<b>272</b>
MCNEIL ISLAND WORK ETHIC CAMP	16	35	18	35	18	35	16	35	15	35	11	35
<b>DIVISION OF PRISONS TOTAL</b>	<b>634</b>	<b>609</b>	<b>638</b>	<b>609</b>	<b>642</b>	<b>609</b>	<b>655</b>	<b>609</b>	<b>652</b>	<b>609</b>	<b>654</b>	<b>609</b>
Pre/Work Release, Inmates	152	-	156	-	163	-	165	-	171	-	175	-
Work Release, CCI	6	-	5	-	5	-	5	-	5	-	5	-
<b>WORK RELEASE TOTAL</b>	<b>159</b>	<b>187</b>	<b>162</b>	<b>187</b>	<b>168</b>	<b>187</b>	<b>170</b>	<b>187</b>	<b>176</b>	<b>187</b>	<b>180</b>	<b>187</b>
<b>GRAND TOTAL</b>	<b>693</b>	<b>696</b>	<b>700</b>	<b>696</b>	<b>709</b>	<b>696</b>	<b>725</b>	<b>696</b>	<b>728</b>	<b>696</b>	<b>734</b>	<b>696</b>

\*NOTE: The ADP for prisons is calculated by summing the number of inmate days on statuses IR (In-Residence), EL (Escorted Leave), CO (Court Order), and CJ (County Jail), then dividing by the number of days in the month. ADP subtotals may not add due to rounding.

\*\*NOTE: Rated capacity as of the last day of the month.

# INMATE ADP BY LOCATION

FISCAL YEAR 1995

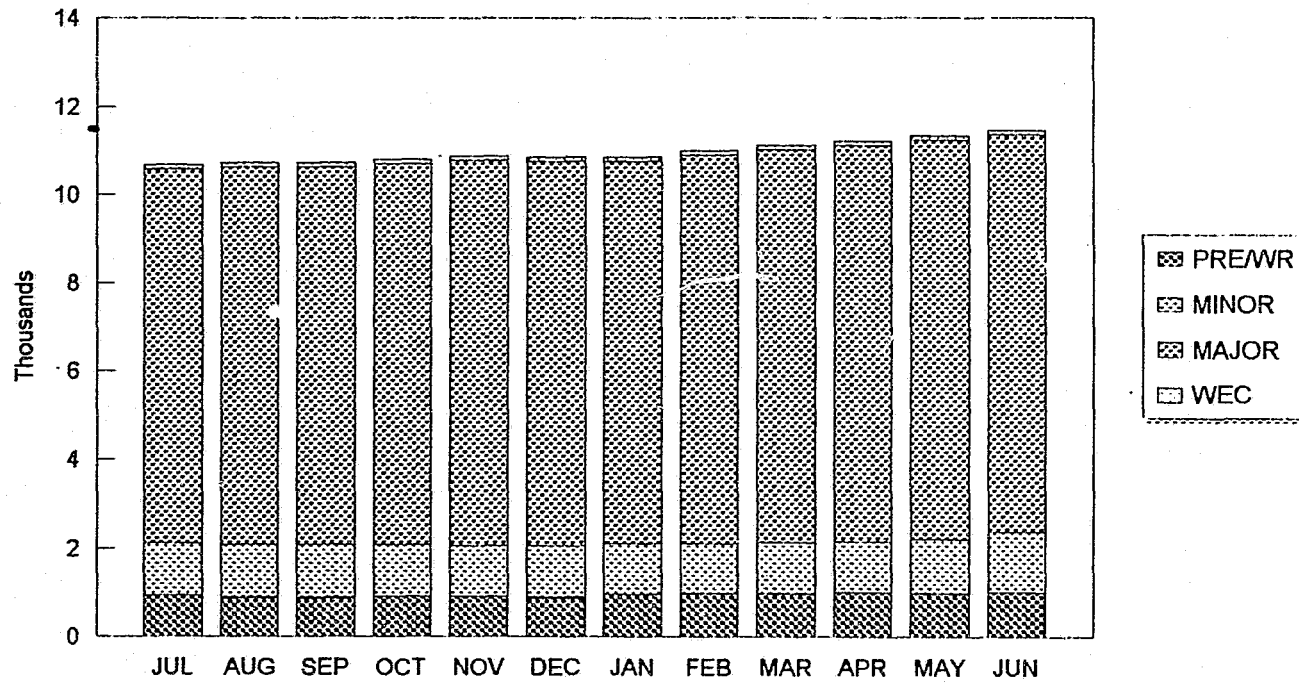


TABLE 2A  
DEPARTMENT OF CORRECTIONS  
DISTRIBUTION OF RESIDENT INMATES  
BY RACE AND HISPANIC ORIGIN  
WITHIN INSTITUTIONS AND INMATE WORK RELEASE  
AS OF JUNE 30, 1995

PRISON	TOTAL	RACE									HISPANIC ORIGIN		
		WHITE	BLACK	N.A. INDIAN	ASIAN/P.I.	ESKIMO	ALEUTIAN	OTHER	UNKNOWN	HISPANIC	NON-HISPANIC	UNKNOWN	
		%	%	%	%	%	%	%	%	%	%	%	
TOTAL	11443	8189 71.6	2579 22.5	326 2.8	255 2.2	2 0.0	2 0.0	86 0.8	4 0.0	1779 15.5	9491 82.9	173 1.5	
MCC RECEPTION	952	677 71.1	223 23.4	22 2.3	24 2.5	1 0.1	.	4 0.4	1 0.1	192 20.2	734 77.1	26 2.7	
MCC INSTIT.	741	589 79.5	125 16.9	14 1.9	12 1.6	.	.	1 0.1	.	87 11.7	640 86.4	14 1.9	
MCC WOMEN	549	359 65.4	124 22.6	28 5.1	9 1.6	.	.	29 5.3	.	49 8.9	485 88.3	15 2.7	
WASH. PENIT.	2179	1568 72.0	454 20.8	82 3.8	63 2.9	.	1 0.0	11 0.5	.	393 18.0	1777 81.6	9 0.4	
WASH. REFORM.	798	511 72.2	156 22.0	27 3.8	13 1.8	.	.	1 0.1	.	56 7.9	648 91.5	4 0.6	
MCNEIL ISLAND	1338	891 66.6	367 27.4	36 2.7	36 2.7	.	.	7 0.5	1 0.1	208 15.5	1103 82.4	27 2.0	
SPEC. OFFNDRS	106	71 67.0	30 28.3	3 2.8	2 1.9	.	.	.	.	11 10.4	93 87.7	2 1.9	
TWIN RIVERS	833	698 83.8	109 13.1	16 1.9	7 0.8	.	.	3 0.4	.	60 7.2	758 91.0	15 1.8	
CLALLAM BAY	834	516 61.9	259 31.1	24 2.9	31 3.7	.	.	4 0.5	.	99 11.9	726 87.1	9 1.1	
AIRWAY HEIGHTS	953	708 74.3	191 20.0	25 2.6	21 2.2	.	.	8 0.8	.	228 23.9	723 75.9	2 0.2	
LARCH	163	140 85.9	15 9.2	1 0.6	5 3.1	.	1 0.6	.	1 0.6	45 27.6	117 71.8	1 0.6	
CEDAR CREEK	263	190 72.2	61 23.2	6 2.3	5 1.9	.	.	1 0.4	.	54 20.5	203 77.2	6 2.3	
OLYMPIC	325	237 72.9	72 22.2	4 1.2	6 1.8	.	.	6 1.8	.	81 24.9	235 72.3	9 2.8	
COYOTE RIDGE	391	298 76.2	82 21.0	4 1.0	7 1.8	.	.	.	.	123 31.5	267 68.3	1 0.3	
PRE RELEASE	454	317 69.8	103 22.7	20 4.4	6 1.3	1 0.2	.	7 1.5	.	33 7.3	408 89.9	13 2.9	
WORK RELEASE	558	352 63.1	181 32.4	13 2.3	8 1.4	.	.	4 0.7	.	34 6.1	505 90.5	19 3.4	
MCC WEC	96	67 69.8	27 28.1	1 1.0	.	.	.	.	1 1.0	26 27.1	69 71.9	1 1.0	

THE DEPARTMENT IS ALSO LEGALLY RESPONSIBLE FOR INMATES  
HOUSED OUT OF STATE. THE TOTAL NUMBER OF INMATES  
FOR WHOM THE DEPARTMENT IS RESPONSIBLE IS 11,519.  
OF THESE, 41 ARE COUNTY BOARDERS.

TABLE 2B  
DEPARTMENT OF CORRECTIONS  
OFFENSE DISTRIBUTION OF RESIDENT INMATES  
WITHIN INSTITUTIONS AND INMATE WORK RELEASE  
AS OF JUNE 30, 1995

OFFENSE	TOTAL	PRISON																	2 OF TOTAL
		MCC RE- CEPTION	MCC INST- TUTION	MCC WOMEN	WASH. PEN TENTIARY	WASH. REFORM.	MCC NEIL ISLAND	SPECIAL OFFENDERS	TWIN RIVERS	CLALLAM BAY	AIRWAYS HEIGHTS	LARCH	CEDAR CREEK	OLYMPIC	COYOTE RIDGE	PRE RELEASE	WORK RELEASE	MCC WEC	
TOTAL	11443	952	741	549	2179	708	1338	186	833	854	953	163	263	325	391	454	558	96	100.0
MURDER 1	915	28	35	58	412	173	41	13	7	138	4	1	0	0	1	18	2	0	8.0
MURDER 2	539	14	25	34	166	47	42	4	23	84	45	1	1	1	9	13	3	0	4.7
MANSLAUGHTER 1 & 2	115	8	18	8	24	9	15	1	3	13	4	0	1	4	3	2	2	0	1.0
VEH HOMICIDE	99	7	4	5	4	3	17	1	2	7	7	4	4	5	1	12	12	6	8.9
RAPE 1	431	17	15	2	134	42	35	4	68	42	41	8	0	1	4	4	0	0	3.8
RAPE 2	244	11	19	1	39	21	37	2	31	22	37	3	1	2	9	4	3	0	2.1
RAPE OTHER	63	7	7	0	9	5	7	1	14	2	4	0	1	2	0	3	0	0	0.6
RAPE OF CHILD	987	33	117	17	154	74	98	8	179	38	146	4	3	12	11	18	3	0	7.9
IND SEX, CHILD	628	24	89	4	68	44	65	7	189	21	88	2	0	7	7	10	3	0	5.5
IND LIBERTIES	177	18	14	4	13	8	23	1	53	5	24	1	3	2	3	8	3	0	1.5
INV SEX, CHILD	386	27	24	6	22	14	31	5	72	8	28	8	7	14	13	19	8	0	2.7
OTHER SEX CRIME	56	4	2	8	18	6	4	1	18	2	8	0	2	1	2	1	1	0	0.5
ROBBERY 1	1812	85	53	27	259	59	125	7	33	128	81	22	26	23	24	36	32	0	8.8
ROBBERY 2	214	24	15	18	54	18	27	4	5	22	4	5	4	5	4	8	9	0	1.9
EXTORTION 1	7	1	1	0	3	8	8	0	8	1	0	0	1	0	8	8	8	0	0.1
EXTORTION 2	2	0	0	0	1	0	0	0	0	0	0	0	0	0	1	0	0	0	0.0
ASSAULT 1	278	12	15	14	181	14	21	7	4	43	28	1	1	1	1	3	2	0	2.4
ASSAULT 2	454	64	48	19	188	17	75	9	7	34	8	4	11	5	18	19	16	0	4.0
VEHICULAR ASSAULT	22	4	2	1	5	0	3	0	1	1	2	0	0	0	0	1	1	0	0.2
ASSAULT OTHER	318	44	14	15	54	13	49	3	4	21	12	9	3	12	18	15	24	4	2.7
KIDNAP 1	41	5	1	3	12	3	1	0	2	4	4	0	3	1	1	1	0	0	0.4
KIDNAP 2	12	3	2	1	2	0	1	0	0	0	1	0	2	0	0	0	0	0	0.1
ARCSON 1 & 2	62	5	6	4	13	2	9	3	0	7	1	0	0	0	4	6	0	0	0.5
BURGLARY 1	157	11	16	5	27	6	38	0	4	28	7	5	1	4	4	5	10	0	1.4
BURGLARY 2	845	74	46	24	123	31	128	6	25	55	59	15	35	43	49	44	82	4	7.4
THEFT	282	31	29	37	28	5	46	1	4	8	13	7	6	18	11	19	35	1	2.5
AUTO THEFT	52	7	4	3	5	2	5	0	0	6	3	1	2	1	0	3	16	0	0.5
FORGERY	118	18	8	22	13	4	18	0	1	2	1	3	2	5	9	4	28	2	1.0
WELFARE FRAUD	1	8	8	1	8	0	8	0	0	0	0	0	0	0	0	0	0	0	0.0
OTHER PROPERTY	154	22	13	6	27	4	16	0	4	3	7	4	3	5	5	7	27	1	1.3
DRUG CRIME	2834	385	184	218	282	87	367	14	64	188	254	63	126	157	193	184	233	83	24.8
OTHER FELONY	54	18	6	3	5	1	8	0	0	3	0	0	1	2	1	5	8	1	0.5
UNKNOWN	66	37	2	3	8	0	0	0	24	8	8	0	0	0	0	0	0	0	0.6

THE DEPARTMENT IS ALSO LEGALLY RESPONSIBLE FOR INMATES  
HOUSED OUT OF STATE. THE TOTAL NUMBER OF INMATES  
FOR WHOM THE DEPARTMENT IS RESPONSIBLE IS 11,519.  
OF THESE, 41 ARE COUNTY BOARDERS.

TABLE 2C  
DEPARTMENT OF CORRECTIONS

DISTRIBUTION OF VIOLENT CRIME CONVICTIONS  
AMONG WASHINGTON STATE INMATES  
WITHIN INSTITUTIONS AND INMATE WORK RELEASE  
AS OF JUNE 30, 1995

PRISON	TOTAL	VIOLENT			
		NONVIOLENT		VIOLENT	
			%		%
TOTAL	11346	3796	33.5	7550	66.5
WCC RECEPTION	952	466	48.9	486	51.1
WCC INSTIT.	739	210	28.4	529	71.6
WCC WOMEN	544	239	43.9	305	56.1
WASH. PENIT.	2155	408	18.9	1747	81.1
WASH. REFORM.	698	127	18.2	571	81.8
MCNEIL ISLAND	1334	453	34.0	881	66.0
SPEC. OFFNDRS	106	20	18.9	86	81.1
TWIN RIVERS	790	195	24.7	595	75.3
CLALLAM BAY	825	159	19.3	666	80.7
AIRWAY HEIGHTS	953	272	28.5	681	71.5
LARCH	163	81	49.7	82	50.3
CEDAR CREEK	263	114	43.3	149	56.7
OLYMPIC	325	174	53.5	151	46.5
COYOTE RIDGE	391	208	53.2	183	46.8
PRE RELEASE	454	242	53.3	212	46.7
WORK RELEASE	558	352	63.1	206	36.9
MICC WEC	96	76	79.2	20	20.8

THE DEPARTMENT IS ALSO LEGALLY RESPONSIBLE FOR INMATES  
HOUSED OUT OF STATE. THE TOTAL NUMBER OF WASHINGTON  
INMATES FOR WHOM THE DEPARTMENT IS RESPONSIBLE IS 11,424

TABLE 2D  
DEPARTMENT OF CORRECTIONS

AGE DISTRIBUTION AND AVERAGE AGE OF RESIDENT INMATES  
WITHIN INSTITUTIONS AND INMATE WORK RELEASE  
AS OF JUNE 30, 1995

PRISON	TOTAL	AGEGROUP									AVERAGE AGE
		UNDER 18	18 TO 20	21 TO 24	25 TO 29	30 TO 34	35 TO 39	40 TO 44	45 TO 49	50 AND OVER	
TOTAL	11443	75	720	1753	2168	2089	1078	1263	715	782	33.7
WCC RECEPTION	952	13	112	184	191	161	146	72	47	26	30.8
WCC INSTIT.	741	18	80	124	102	119	113	55	47	83	34.1
WCC WOMEN	549	5	29	65	99	118	111	62	28	32	33.9
WASH. PENIT.	2179	12	122	348	471	367	300	240	149	170	33.8
WASH. REFORM.	708	4	28	81	97	117	133	110	57	81	36.9
MCNEIL ISLAND	1338	4	72	194	232	293	231	147	92	73	33.7
SPEC. OFFNDRS	106	2	3	13	29	14	19	13	8	5	33.9
TWIN RIVERS	833	2	32	75	119	173	167	101	60	104	37.0
CLALLAM BAY	834	11	96	240	207	107	79	45	29	20	28.9
AIRWAY HEIGHTS	953	1	23	96	161	173	158	146	87	108	37.0
LARCH	163	.	10	37	34	33	26	12	9	2	31.0
CEDAR CREEK	263	.	10	38	59	55	55	30	11	5	32.7
OLYMPIC	325	.	21	47	64	77	61	34	13	8	32.5
COYOTE RIDGE	391	2	20	52	69	71	85	49	20	23	33.9
PRE RELEASE	454	1	21	46	100	90	91	60	21	24	34.1
WORK RELEASE	558	.	18	77	97	121	103	87	37	18	34.1
MICC WEC	96	.	23	36	37	.	.	.	.	.	23.8

THE DEPARTMENT IS ALSO LEGALLY RESPONSIBLE FOR INMATES  
HOUSED OUT OF STATE. THE TOTAL NUMBER OF INMATES  
FOR WHOM THE DEPARTMENT IS RESPONSIBLE IS 11,519.  
OF THESE, 41 ARE COUNTY BOARDERS.

TABLE 2E  
DEPARTMENT OF CORRECTIONS

DISTRIBUTION OF SENTENCING AUTHORITY  
WITHIN INSTITUTIONS AND INMATE WORK RELEASE  
AS OF JUNE 30, 1995

PRISON	TOTAL	PAROLE BOARD		SRA		BOTH		OTHER		UNKNOWN	
			%		%		%		%		%
TOTAL	11443	771	6.7	10203	89.2	330	2.9	97	0.8	42	0.4
MCC RECEPTION	952	32	3.4	864	90.8	19	2.0	.	.	37	3.9
MCC INSTIT.	741	44	5.9	673	90.8	21	2.8	2	0.3	1	0.1
MCC WOMEN	549	16	2.9	523	95.3	2	0.4	5	0.9	3	0.5
WASH. PENIT.	2179	181	8.3	1883	86.4	91	4.2	24	1.1	.	.
WASH. REFORM.	708	159	22.5	505	71.3	34	4.8	10	1.4	.	.
MCNEIL ISLAND	1338	73	5.5	1231	92.0	30	2.2	4	0.3	.	.
SPEC. OFFNDRS	106	20	18.9	83	78.3	3	2.8	.	.	.	.
TWIN RIVERS	833	101	12.1	647	77.7	42	5.0	43	5.2	.	.
CLALLAM BAY	834	39	4.7	760	91.1	26	3.1	9	1.1	.	.
AIRWAY HEIGHTS	953	69	7.2	850	89.2	34	3.6	.	.	.	.
LARCH	163	1	0.6	157	96.3	5	3.1	.	.	.	.
CEDAR CREEK	263	1	0.4	260	98.9	2	0.8	.	.	.	.
OLYMPIC	325	.	.	323	99.4	2	0.6	.	.	.	.
COYOTE RIDGE	391	6	1.5	381	97.4	4	1.0	.	.	.	.
PRE RELEASE	454	25	5.5	419	92.3	10	2.2	.	.	.	.
WORK RELEASE	558	4	0.7	548	98.2	5	0.9	.	.	1	0.2
MICC MEC	96	.	.	96	100	.	.	.	.	.	.

THE DEPARTMENT IS ALSO LEGALLY RESPONSIBLE FOR INMATES  
HOUSED OUT OF STATE. THE TOTAL NUMBER OF INMATES  
FOR WHOM THE DEPARTMENT IS RESPONSIBLE IS 11,519.  
OF THESE, 41 ARE COUNTY BOARDERS.

TABLE 2  
DEPARTMENT OF CORRECTIONS

DISTRIBUTION OF RESIDENT FEMALE INMATES  
BY RACE AND HISPANIC ORIGIN  
WITHIN INSTITUTIONS AND INMATE WORK RELEASE  
AS OF JUNE 30, 1995

FEMALE

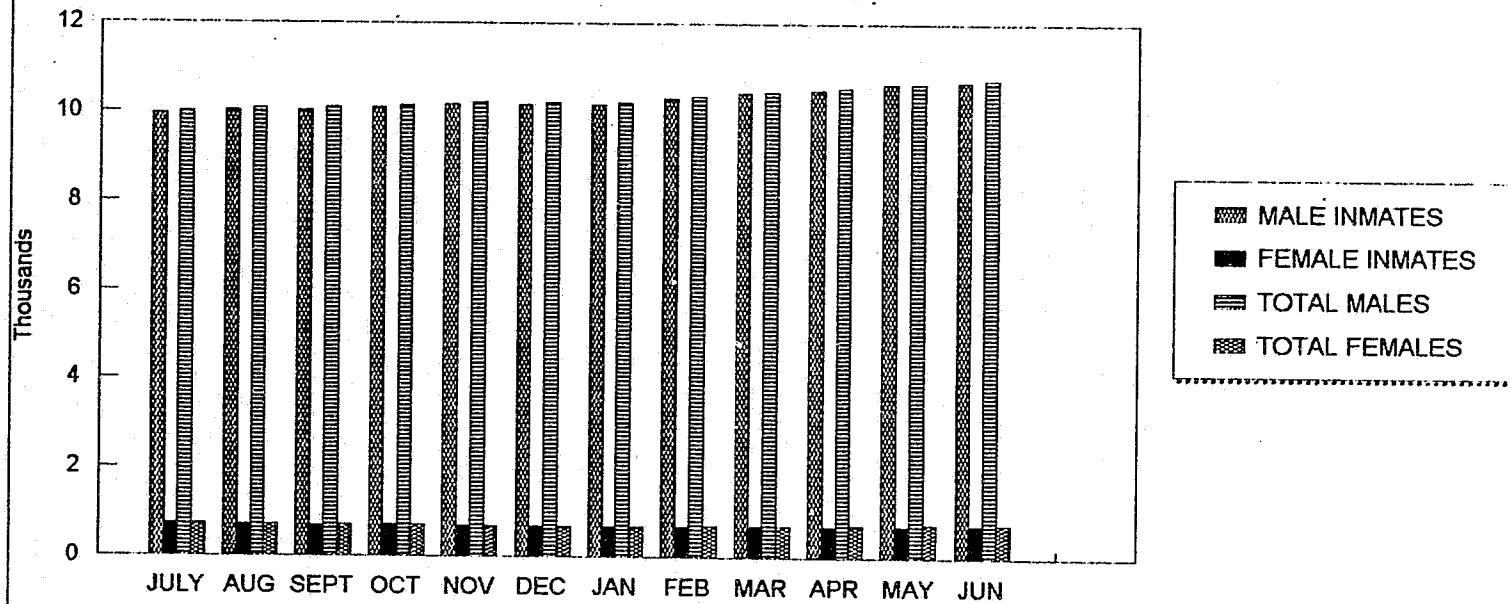
PRISON	TOTAL	RACE					HISPANIC ORIGIN		
		WHITE	BLACK	N.A. INDIAN	ASIAN/P.I.	OTHER	HISPANIC	NON-HISPANIC	UNKNOWN
		%	%	%	%	%	%	%	%
TOTAL	740	474 64.1	181 24.5	38 5.1	10 1.4	37 5.0	60 8.1	659 89.1	21 2.8
WCC WOMEN	549	359 65.4	124 22.6	28 5.1	9 1.6	29 5.3	49 8.9	485 88.3	15 2.7
PRE RELEASE	82	53 64.6	18 22.0	5 6.1	1 1.2	5 6.1	4 4.9	74 90.2	4 4.9
WORK RELEASE	99	56 56.6	35 35.4	5 5.1	. .	3 3.0	7 7.1	91 91.9	1 1.0
MICC WEC	10	6 60.0	4 40.0	. .	. .	. .	. .	9 90.0	1 10.0

THE DEPARTMENT IS ALSO LEGALLY RESPONSIBLE FOR INMATES  
HOUSED OUT OF STATE. THE TOTAL NUMBER OF INMATES  
FOR WHOM THE DEPARTMENT IS RESPONSIBLE IS 11,519.  
OF THESE, 41 ARE COUNTY BOARDERS.



# POPULATION BY GENDER

ADP BY MONTH - FISCAL YEAR 1995



# COMPARISON OF ADMISSIONS & RELEASES

FISCAL YEAR 1995

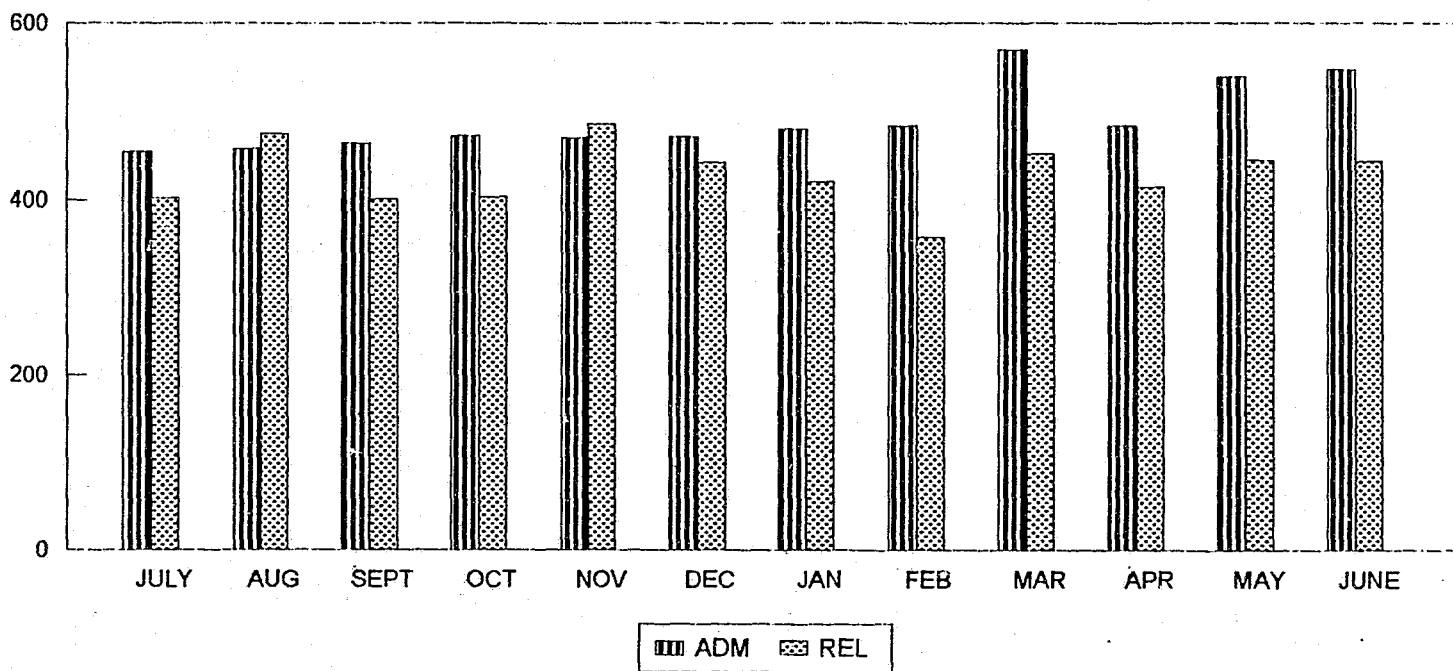


TABLE 3A  
DEPARTMENT OF CORRECTIONS

ADMISSIONS BY MONTH AND TYPE OF ADMISSION  
FOR FISCAL YEAR 1995

MONTH	TOTAL	TYPE OF ADMISSION				
		NEW ADMISSION	READMISSION	CCI VIOLATION	PAROLE VIOLATION	FROM OTHER STATE
TOTAL	5933	3706	1505	660	54	8
JULY	455	289	110	51	4	1
AUGUST	459	267	126	64	2	.
SEPTEMBER	470	300	105	56	7	2
OCTOBER	473	290	123	57	2	1
NOVEMBER	471	306	121	44	.	.
DECEMBER	480	298	120	58	3	1
JANUARY	484	308	112	61	3	.
FEBRUARY	487	306	118	59	4	.
MARCH	581	362	152	60	7	.
APRIL	484	296	137	48	1	2
MAY	540	322	155	53	10	.
JUNE	549	362	126	49	11	1

THERE WERE ALSO 97 COUNTY BOARDER ADMISSIONS (ALL MALE) IN FISCAL YEAR 1995.

TABLE 3B  
DEPARTMENT OF CORRECTIONS

ADMISSIONS BY TYPE AND COUNTY OF CONVICTION  
FOR FISCAL YEAR 1995

COUNTY OF CONVICTION	TYPE OF ADMISSION					
	TOTAL	NEW ADMISSION	READMISSION	CCI VIOLATION	PAROLE VIOLATION	FROM OTHER STATE
TOTAL	5933	3706	1505	660	54	8
INTERSTATE	11	3	.	.	.	8
ADAMS	9	6	2	1	.	.
ASOTIN	12	8	4	.	.	.
BENTON	67	42	19	5	1	.
CHELAM	113	85	23	5	.	.
CLALLAM	50	35	5	10	.	.
CLARK	346	257	66	21	2	.
COLUMBIA	2	2	.	.	.	.
COWLITZ	174	110	44	20	.	.
DOUGLAS	30	23	7	.	.	.
FERRY	6	3	3	.	.	.
FRANKLIN	125	78	27	18	2	.
GARFIELD	3	3	.	.	.	.
GRANT	88	69	16	3	.	.
GRAYS HARBOR	108	66	31	10	1	.
ISLAND	18	17	1	.	.	.
JEFFERSON	10	6	1	3	.	.
KING	1963	1076	554	303	30	.
KITSAP	211	146	35	28	2	.
KITTITAS	28	17	9	2	.	.
KLICKITAT	10	9	.	1	.	.
LEWIS	79	61	12	6	.	.

(CONTINUED)

TABLE 3B  
DEPARTMENT OF CORRECTIONS

ADMISSIONS BY TYPE AND COUNTY OF CONVICTION  
FOR FISCAL YEAR 1995

COUNTY OF CONVICTION	TOTAL	TYPE OF ADMISSION				
		NEW ADMISSION	READMISSION	CCI VIOLATION	PAROLE VIOLATION	FROM OTHER STATE
LINCOLN	5	5	.	.	.	.
MASON	50	34	13	3	.	.
OKANOGAN	19	14	4	1	.	.
PACIFIC	22	10	9	3	.	.
PEND OREILLE	7	5	1	1	.	.
PIERCE	991	629	267	87	8	.
SAN JUAN	5	4	1	.	.	.
SKAGIT	88	59	23	5	1	.
SKAMANIA	4	4	.	.	.	.
SNOHOMISH	331	209	92	28	2	.
SPOKANE	285	170	70	41	4	.
STEVENS	19	14	5	.	.	.
THURSTON	162	102	51	9	.	.
WAIKIAKUM	3	2	.	1	.	.
WALLA WALLA	24	18	5	1	.	.
WHATCOM	114	77	27	10	.	.
WHITMAN	11	7	4	.	.	.
YAKIMA	287	179	73	34	1	.
JUVENILE	3	3	.	.	.	.
UNKNOWN	40	39	1	.	.	.

THERE WERE ALSO 97 COUNTY BOARDER ADMISSIONS (ALL MALE) IN FISCAL YEAR 1995.

TABLE 3C  
DEPARTMENT OF CORRECTIONS

ADMISSIONS BY AGE AT ADMISSION  
RACE AND SEX  
FOR FISCAL YEAR 1995

MALE

RACE	TOTAL	AGE AT ADMISSION									AVERAGE AGE
		UNDER 18	18 TO 20	21 TO 24	25 TO 29	30 TO 34	35 TO 39	40 TO 44	45 TO 49	50 AND OVER	
TOTAL	5411	105	658	1032	1121	913	763	423	209	187	30.6
WHITE	3722	68	446	701	789	629	523	270	148	148	30.7
BLACK	1424	20	167	271	278	246	216	137	56	33	30.8
N.A. INDIAN	121	1	12	26	30	21	13	11	4	3	30.3
ASIAN/P.I.	121	15	32	30	16	10	10	4	1	3	25.3
ALEUTIAN	1	.	.	.	.	1	.	.	.	.	33.0
OTHER	17	.	1	3	7	4	1	1	.	.	29.2
UNKNOWN	5	1	.	1	1	2	.	.	.	.	25.9

FEMALE

RACE	TOTAL	AGE AT ADMISSION									AVERAGE AGE
		UNDER 18	18 TO 20	21 TO 24	25 TO 29	30 TO 34	35 TO 39	40 TO 44	45 TO 49	50 AND OVER	
TOTAL	522	5	24	69	120	110	108	45	26	15	32.6
WHITE	316	3	11	40	74	67	63	29	19	10	33.0
BLACK	150	2	11	21	31	31	32	13	5	4	31.9
N.A. INDIAN	27	.	2	3	6	8	7	.	.	1	31.9
ASIAN/P.I.	7	.	.	1	4	.	2	.	.	.	29.6
OTHER	21	.	.	4	5	3	4	3	2	.	33.9
UNKNOWN	1	.	.	.	.	1	.	.	.	.	30.9

THERE WERE ALSO 97 COUNTY BOARDER ADMISSIONS (ALL MALE) IN FISCAL YEAR 1995.

TABLE 3C-2  
DEPARTMENT OF CORRECTIONS

ADMISSIONS BY AGE AT ADMISSION  
HISPANIC ORIGIN AND SEX  
FOR FISCAL YEAR 1995

MALE

HISPANIC ORIGIN	TOTAL	AGE AT ADMISSION									AVERAGE AGE
		UNDER 18	18 TO 20	21 TO 24	25 TO 29	30 TO 34	35 TO 39	40 TO 44	45 TO 49	50 AND OVER	
TOTAL	5411	105	658	1032	1121	913	763	423	209	187	30.6
HISPANIC	1010	20	145	219	279	146	103	50	28	20	28.6
NON-HISPANIC	4256	83	499	797	814	736	635	362	173	157	31.0
UNKNOWN	145	2	14	16	28	31	25	11	8	10	32.9

FEMALE

HISPANIC ORIGIN	TOTAL	AGE AT ADMISSION									AVERAGE AGE
		UNDER 18	18 TO 20	21 TO 24	25 TO 29	30 TO 34	35 TO 39	40 TO 44	45 TO 49	50 AND OVER	
TOTAL	522	5	24	69	120	110	108	45	26	15	32.6
HISPANIC	38	1	.	7	10	8	6	4	2	.	31.6
NON-HISPANIC	461	4	23	62	105	97	94	40	22	14	32.6
UNKNOWN	23	.	1	.	5	5	8	1	2	1	34.9

THERE WERE ALSO 97 COUNTY BOARDER ADMISSIONS (ALL MALE) IN FISCAL YEAR 1995.

TABLE 3D  
DEPARTMENT OF CORRECTIONS  
ADMISSIONS BY COUNTY AND RACE  
FOR FISCAL YEAR 1995

COUNTY OF CONVICTION	TOTAL	RACE							
		WHITE	BLACK	N.A.	INDIAN	ASIAN/P.I.	ALEUTIAN	OTHER	UNKNOWN
		%	%	%	%	%	%	%	%
TOTAL	5933	4038 68.1	1574 26.5	148 2.5	128 2.2	1 0.0	38 0.6	6 0.1	
INTERSTATE	11	8 72.7	2 18.2	. .	. .	. .	1 9.1	. .	
ADAMS	9	9 100	. .	. .	. .	. .	. .	. .	
ASOTIN	12	11 91.7	1 8.3	. .	. .	. .	. .	. .	
BENTON	67	57 85.1	7 10.4	2 3.0	. .	. .	1 1.5	. .	
CHELAN	113	110 97.3	. .	3 2.7	. .	. .	. .	. .	
CLALLAM	50	45 90.0	1 2.0	3 6.0	1 2.0	. .	. .	. .	
CLARK	346	306 88.4	22 6.4	5 1.4	13 3.8	. .	. .	. .	
COLUMBIA	2	2 100	. .	. .	. .	. .	. .	. .	
COWLITZ	174	160 92.0	8 4.6	3 1.7	. .	. .	. .	3 1.7	
DOUGLAS	30	28 93.3	1 3.3	1 3.3	. .	. .	. .	. .	
FERRY	6	4 66.7	. .	2 33.3	. .	. .	. .	. .	
FRANKLIN	125	102 81.6	19 15.2	1 0.8	2 1.6	. .	1 0.8	. .	
GARFIELD	3	3 100	. .	. .	. .	. .	. .	. .	
GRANT	88	75 85.2	12 13.6	. .	. .	. .	1 1.1	. .	
GRAYS HARBOR	108	104 96.3	1 0.9	3 2.8	. .	. .	. .	. .	
ISLAND	18	18 100	. .	. .	. .	. .	. .	. .	
JEFFERSON	10	9 90.0	1 10.0	. .	. .	. .	. .	. .	
KING	1963	859 43.8	982 50.0	40 2.0	68 3.5	1 0.1	10 0.5	3 0.2	
KITSAP	211	154 73.0	40 19.0	5 2.4	10 4.7	. .	2 0.9	. .	
KITTITAS	28	27 96.4	. .	1 3.6	. .	. .	. .	. .	
KLICKITAT	10	10 100	. .	. .	. .	. .	. .	. .	
LEWIS	79	75 94.9	2 2.5	2 2.5	. .	. .	. .	. .	

(CONTINUED)



TABLE 3D  
DEPARTMENT OF CORRECTIONS  
ADMISSIONS BY COUNTY AND RACE  
FOR FISCAL YEAR 1995

COUNTY OF CONVICTION	RACE									
	TOTAL	WHITE	BLACK	N.A.	INDIAN	ASIAN/P.I.	ALEUTIAN	OTHER	UNKNOWN	
		%	%	%	%	%	%	%	%	%
LINCOLN	5	5   100	.   .	.   .	.   .	.   .	.   .	.   .	.   .	.   .
MASON	50	46   92.0	.   .	4   8.0	.   .	.   .	.   .	.   .	.   .	.   .
OKANOGAN	19	15   78.9	2   10.5	2   10.5	.   .	.   .	.   .	.   .	.   .	.   .
PACIFIC	22	20   90.9	2   9.1	.   .	.   .	.   .	.   .	.   .	.   .	.   .
PEND OREILLE	7	7   100	.   .	.   .	.   .	.   .	.   .	.   .	.   .	.   .
PIERCE	991	632   63.8	305   30.8	20   2.0	20   2.0	.   .	.   .	14   1.4	.   .	.   .
SAN JUAN	5	5   100	.   .	.   .	.   .	.   .	.   .	.   .	.   .	.   .
SKAGIT	88	86   97.7	1   1.1	.   .	.   .	1   1.1	.   .	.   .	.   .	.   .
SKAMANIA	4	4   100	.   .	.   .	.   .	.   .	.   .	.   .	.   .	.   .
SNOHOMISH	331	281   84.9	39   11.8	5   1.5	5   1.5	.   .	.   .	1   0.3	.   .	.   .
SPOKANE	285	199   69.8	69   24.2	14   4.9	3   1.1	.   .	.   .	.   .	.   .	.   .
STEVENS	19	17   89.5	1   5.3	1   5.3	.   .	.   .	.   .	.   .	.   .	.   .
THURSTON	162	135   83.3	19   11.7	5   3.1	2   1.2	.   .	.   .	1   0.6	.   .	.   .
WAHIAKUM	3	3   100	.   .	.   .	.   .	.   .	.   .	.   .	.   .	.   .
WALLA WALLA	24	23   95.8	1   4.2	.   .	.   .	.   .	.   .	.   .	.   .	.   .
WHATCOM	114	94   82.5	9   7.9	9   7.9	2   1.8	.   .	.   .	.   .	.   .	.   .
WHITMAN	11	11   100	.   .	.   .	.   .	.   .	.   .	.   .	.   .	.   .
YAKIMA	287	244   85.0	22   7.7	16   5.6	1   0.3	.   .	.   .	4   1.4	.   .	.   .
JUVENILE	3	3   100	.   .	.   .	.   .	.   .	.   .	.   .	.   .	.   .
UNKNOWN	40	32   80.0	5   12.5	1   2.5	.   .	.   .	.   .	2   5.0	.   .	.   .

THERE WERE ALSO 97 COUNTY BOARDER ADMISSIONS (ALL MALE) IN FISCAL YEAR 1995.

TABLE 3D-2  
DEPARTMENT OF CORRECTIONS  
ADMISSIONS BY COUNTY AND HISPANIC ORIGIN  
FOR FISCAL YEAR 1995

COUNTY OF CONVICTION	HISPANIC ORIGIN						
	TOTAL	HISPANIC		NON-HISPANIC		UNKNOWN	
				%		%	
TOTAL	5933	1048	17.7	4717	79.5	168	2.8
INTERSTATE	11	2	18.2	9	81.8	.	.
ADAMS	9	6	66.7	2	22.2	1	11.1
ASOTIN	12	.	.	12	100.0	.	.
BENTON	67	12	17.9	55	82.1	.	.
CHELAN	113	38	33.6	73	64.6	2	1.8
CLALLAM	50	7	14.0	43	86.0	.	.
CLARK	346	15	4.3	313	90.5	18	5.2
COLUMBIA	2	.	.	2	100.0	.	.
COWLITZ	174	42	24.1	128	73.6	4	2.3
DOUGLAS	30	10	33.3	20	66.7	.	.
FERRY	6	.	.	6	100.0	.	.
FRANKLIN	125	69	55.2	55	44.0	1	0.8
GARFIELD	3	.	.	2	66.7	1	33.3
GRANT	88	45	51.1	42	47.7	1	1.1
GRAYS HARBOR	108	11	10.2	88	81.5	9	8.3
ISLAND	18	3	16.7	15	83.3	.	.
JEFFERSON	10	1	10.0	8	80.0	1	10.0
KING	1963	258	13.1	1659	84.5	46	2.3
KITSAP	211	9	4.3	191	90.5	11	5.2
KITTITAS	28	4	14.3	24	85.7	.	.
KLICKITAT	10	2	20.0	8	80.0	.	.
LEWIS	79	4	5.1	74	93.7	1	1.3

(CONTINUED)

TABLE 3D-2  
DEPARTMENT OF CORRECTIONS  
ADMISSIONS BY COUNTY AND HISPANIC ORIGIN  
FOR FISCAL YEAR 1995

COUNTY OF CONVICTION	HISPANIC ORIGIN					
	TOTAL	HISPANIC		NON-HISPANIC		UNKNOWN
			%		%	%
LINCOLN	5	.   .	5   100.0	.   .		
MASON	50	13   26.0	35   70.0	2   4.0		
OKANOGAN	19	2   10.5	17   89.5	.   .		
PACIFIC	22	1   4.5	21   95.5	.   .		
PEND OREILLE	7	.   .	7   100.0	.   .		
PIERCE	991	248   25.0	724   73.1	19   1.9		
SAN JUAN	5	.   .	5   100.0	.   .		
SKAGIT	88	27   30.7	61   69.3	.   .		
SKAMANIA	4	.   .	4   100.0	.   .		
SNOHOMISH	331	21   6.3	305   92.1	5   1.5		
SPOKANE	285	10   3.5	257   90.2	18   6.3		
STEVENS	19	.   .	15   78.9	4   21.1		
THURSTON	162	10   6.2	149   92.0	3   1.9		
WAHKIAKUM	3	.   .	3   100.0	.   .		
WALLA WALLA	24	9   37.5	15   62.5	.   .		
WHATCOM	114	15   13.2	96   84.2	3   2.6		
WHITHAN	11	.   .	11   100.0	.   .		
YAKIMA	287	144   50.2	135   47.0	8   2.8		
JUVENILE	3	1   33.3	2   66.7	.   .		
UNKNOWN	40	9   22.5	21   52.5	10   25.0		

THERE WERE ALSO 97 COUNTY BOARDER ADMISSIONS (ALL MALE) IN FISCAL YEAR 1995.

TABLE 3E  
DEPARTMENT OF CORRECTIONS

ADMISSIONS BY TYPE AND SENTENCING AUTHORITY  
FOR FISCAL YEAR 1995

ADMISSION TYPE	TOTAL	PAROLE BOARD		SRA		BOTH		OTHER		UNKNOWN	
			%		%		%		%		%
TOTAL	5933	51	0.9	5802	97.8	39	0.7	1	0.0	40	0.7
NEW ADMISSION	3706	8	0.2	3658	98.7	1	0.0	.	.	39	1.1
READMISSION	1505	3	0.2	1495	99.3	6	0.4	.	.	1	0.1
CCI VIOLATION	660	.	.	649	98.3	11	1.7	.	.	.	.
PAROLE VIOLATION	54	33	61.1	.	.	21	38.9	.	.	.	.
FROM OTHER STATE	8	7	87.5	.	.	.	.	1	12.5	.	.

THERE WERE ALSO 97 COUNTY BOARDER ADMISSIONS (ALL MALE) IN FISCAL YEAR 1995.

TABLE 3F  
DEPARTMENT OF CORRECTIONS

ADMISSIONS BY OFFENSE AND TYPE OF ADMISSION  
FOR FISCAL YEAR 1995

OFFENSE TYPE	TOTAL	NEW ADMISSION		READMISSION		CCI VIOLATION		PAROLE VIOLATION		FROM OTHER STATE	
			%	%	%	%	%	%			
TOTAL	5933	3706	62.5	1505	25.4	660	11.1	54	0.9	8	0.1
MURDER 1	84	68	81.0	11	13.1	.	.	4	4.8	1	1.2
MURDER 2	92	78	84.8	4	4.3	1	1.1	8	8.7	1	1.1
MANSLAUGHTER 1&2	56	52	92.9	4	7.1	.	.	.	.	.	.
VEH HOMICIDE	57	53	93.0	3	5.3	.	.	1	1.8	.	.
RAPE 1	47	26	55.3	11	23.4	3	6.4	5	10.6	2	4.3
RAPE 2	65	43	66.2	10	15.4	11	16.9	1	1.5	.	.
RAPE OTHER	38	27	98.0	1	3.3	2	6.7	.	.	.	.
RAPE OF CHILD	191	163	85.3	15	7.9	11	5.8	2	1.0	.	.
VIQ SEX, CHILD	192	162	84.4	16	8.3	13	6.8	1	0.5	.	.
IND LIBERTIES	63	52	82.5	2	3.2	5	7.9	4	6.3	.	.
INV SEX, CHILD	204	149	73.0	33	16.2	21	10.3	1	0.5	.	.
OTHER SEX CRIME	38	15	39.5	15	39.5	7	18.4	1	2.6	.	.
ROBBERY 1	316	204	64.6	66	20.9	27	8.5	18	5.7	1	0.3
ROBBERY 2	149	95	63.8	47	31.5	6	4.0	1	0.7	.	.
EXTORTION 1	5	5	100.0	.	.	.	.	.	.	.	.
EXTORTION 2	1	1	100.0	.	.	.	.	.	.	.	.
ASSAULT 1	76	59	77.6	11	14.5	6	7.9	.	.	.	.
ASSAULT 2	401	259	64.6	85	21.2	57	14.2	.	.	.	.
VEHICULR ASSAULT	20	16	80.0	3	15.0	1	5.0	.	.	.	.
ASSAULT OTHER	263	132	50.2	116	44.1	14	5.3	.	.	1	0.4
KIDNAP 1	12	8	66.7	2	16.7	1	8.3	1	8.3	.	.
KIDNAP 2	15	8	53.3	6	40.0	1	6.7	.	.	.	.
ARSON 1 & 2	36	27	75.0	5	13.9	1	2.8	3	8.3	.	.
BURGLARY 1	86	73	84.9	9	10.5	3	3.5	1	1.2	.	.
BURGLARY 2	508	272	54.4	211	42.2	15	3.0	2	0.4	.	.
THEFT	259	113	43.6	134	51.7	12	4.6	.	.	.	.
AUTO THEFT	52	15	28.8	29	55.8	8	15.4	.	.	.	.
FORGERY	111	58	52.3	48	43.2	5	4.5	.	.	.	.
WELFARE FRAUD	1	1	100.0	.	.	.	.	.	.	.	.
OTHER PROPERTY	146	51	34.5	91	61.5	6	4.1	.	.	.	.
DRUG CRIME	2259	1356	60.0	480	21.2	422	18.7	.	.	1	0.0
OTHER FELONY	63	26	41.3	36	57.1	1	1.6	.	.	.	.
UNKNOWN	41	39	95.1	1	2.4	.	.	.	.	1	2.4

THERE WERE ALSO 97 COUNTY BOARDER ADMISSIONS (ALL MALE) IN FISCAL YEAR 1995.

**TABLE 3G  
DEPARTMENT OF CORRECTIONS**

**ADMISSIONS BY MONTH AND SEX  
FOR FISCAL YEAR 1995**

MONTH	SEX		
	TOTAL	MALE	FEMALE
TOTAL	5933	5411	522
JULY	455	428	27
AUGUST	459	421	38
SEPTEMBER	470	428	42
OCTOBER	473	437	36
NOVEMBER	471	430	41
DECEMBER	480	437	43
JANUARY	484	436	48
FEBRUARY	487	441	46
MARCH	581	522	59
APRIL	484	440	44
MAY	540	490	50
JUNE	549	501	48

THERE WERE ALSO 97 COUNTY BOARDER ADMISSIONS (ALL MALE) IN FISCAL YEAR 1995.

TABLE 4A  
DEPARTMENT OF CORRECTIONS

RELEASES BY MONTH AND TYPE OF RELEASE  
FOR FISCAL YEAR 1995

MONTH	TYPE OF RELEASE							
	TOTAL	DISCHARGE	REL. TO CCI	REL. TO PRS	WEC GRADUATE	CCI/NEC VIOL. REL.	PAROLED	OTHER
TOTAL	5147	1705	2216	137	230	641	150	68
JULY	402	150	183	8	1	45	8	7
AUGUST	476	154	208	11	34	52	11	6
SEPTEMBER	400	130	184	9	2	53	16	6
OCTOBER	404	134	163	14	25	47	15	6
NOVEMBER	486	146	214	9	41	56	15	5
DECEMBER	443	143	210	11	1	59	11	8
JANUARY	421	131	173	13	45	37	18	4
FEBRUARY	358	123	154	13	1	55	9	3
MARCH	453	151	180	15	24	60	12	11
APRIL	415	141	173	8	21	61	8	3
MAY	445	149	189	17	19	56	8	7
JUNE	444	153	185	9	16	60	19	2

THERE WERE ALSO 56 COUNTY BOARDER RELEASES (ALL MALE) IN FISCAL YEAR 1995.

OTHER RELEASE INCLUDES PARDON, DEATH  
SENTENCE VACATE, AND OUT ON BOND

TABLE 4B  
DEPARTMENT OF CORRECTIONS  
RELEASES BY RACE AND TYPE OF RELEASE  
FOR FISCAL YEAR 1995

RELEASE TYPE	RACE										HISPANIC ORIGIN												
	WHITE	BLACK	N.A. INDIAN	ASIAM/P.I.	ESKIMO	ALEUTIAN	OTHER	UNKNOWN	HISPANIC	NON-HISPANIC	UNKNOWN												
	%	%	%	%	%	%	%	%	%	%	%												
TOTAL	5147	3418	66.4	1399	27.2	162	3.1	100	1.9	2	0.0	1	0.0	64	1.2	1	0.0	942	18.3	4127	80.2	78	1.5
DISCHARGE	1705	1238	72.6	357	20.9	73	4.3	30	1.8	1	0.1	.	.	6	0.4	.	.	101	5.9	1561	91.6	43	2.5
REL. TO CCI	2216	1479	66.7	589	26.6	50	2.3	55	2.5	.	.	.	.	42	1.9	1	0.0	681	30.7	1517	68.5	18	0.8
REL. TO PRS	137	105	76.6	23	16.8	7	5.1	1	0.7	1	0.7	.	.	.	.	.	.	14	10.2	123	89.8	.	.
MEC GRADUATE	238	147	63.9	73	31.7	3	1.3	4	1.7	.	.	.	.	3	1.3	.	.	65	28.3	155	67.4	10	4.3
CCI/MEC VIOL. REL.	641	295	46.0	318	48.4	28	3.1	7	1.1	.	.	.	.	9	1.4	.	.	64	10.0	570	88.9	7	1.1
PAROLED	150	109	72.7	27	18.0	9	6.0	2	1.3	.	.	1	0.7	2	1.3	.	.	9	6.0	141	94.0	.	.
OTHER	68	45	66.2	20	29.4	.	.	1	1.5	.	.	.	.	2	2.9	.	.	8	11.8	60	88.2	.	.

OTHER RELEASE INCLUDES PARDON, DEATH  
SENTENCE VACATE, AND OUT ON BOND

THERE WERE ALSO 56 COUNTY BOARDER RELEASES (ALL MALE) IN FISCAL YEAR 1995.



TABLE 4C  
DEPARTMENT OF CORRECTIONS

WASHINGTON INMATE RELEASES FOR FISCAL YEAR 1995  
LENGTH OF STAY BY CATEGORY OF ADMISSIONS

CATEGORY	AVERAGE LENGTH OF STAY IN MONTHS
TOTAL	24.8
COURT ADMISSION	23.5
REVOCATION	54.9

LENGTH OF STAY IS CALCULATED  
ONLY FOR THOSE WHO HAVE PAROLED  
OR WHOSE SENTENCES HAVE EXPIRED.

TABLE 4D  
DEPARTMENT OF CORRECTIONS  
WASHINGTON INMATE RELEASES FOR FISCAL YEAR 1995  
LENGTH OF STAY BY OFFENSE

OFFENSE	MONTHS														10 YRS. AND OVER	AVERAGE STAY
	TOTAL	0 TO 5	6 TO 11	12 TO 17	18 TO 23	24 TO 35	36 TO 47	48 TO 59	60 TO 71	72 TO 83	84 TO 95	96 TO 107				
TOTAL	4207	204	1267	887	479	617	322	162	64	43	26	33	103	24.8		
MURDER 1	14	1	.	.	.	.	.	1	.	.	.	.	12	182.8		
MURDER 2	53	.	4	1	.	.	1	2	2	7	7	13	16	95.9		
MANSLAUGHTER 1&2	46	3	6	7	8	9	5	1	1	3	.	1	2	35.0		
VEH HOMICIDE	70	1	6	29	15	9	6	2	.	1	1	.	.	23.1		
RAPE 1	33	1	.	.	.	.	2	7	3	5	2	3	10	93.6		
RAPE 2	37	1	1	1	2	6	14	7	2	.	.	.	3	49.1		
RAPE OTHER	22	3	9	3	1	1	2	2	.	.	.	.	1	26.6		
RAPE OF CHILD	83	.	3	.	5	9	28	28	5	4	.	.	1	47.1		
VIOL SEX, CHILD	58	.	.	8	8	19	12	5	6	.	.	.	.	34.8		
IND LIBERTIES	82	4	9	2	11	15	7	3	7	2	3	5	14	55.7		
MV SEX, CHILD	134	9	52	28	17	17	4	3	.	.	1	.	3	19.4		
OTHER SEX CRIME	29	2	12	4	4	1	5	.	.	.	1	.	.	20.6		
ROBBERY 1	281	5	16	23	39	68	45	29	13	13	5	8	17	44.4		
ROBBERY 2	156	16	65	13	10	21	5	8	5	3	2	1	7	27.7		
EXTORTION 1	1	.	.	1	.	.	.	.	.	.	.	.	.	12.7		
EXTORTION 2	1	.	.	.	.	.	.	.	.	.	.	.	1	134.9		
ASSAULT 1	25	1	.	.	.	.	3	9	7	.	.	.	5	73.4		
ASSAULT 2	298	17	134	67	25	26	13	6	4	1	1	1	3	18.0		
VEHICULAR ASSAULT	23	2	15	1	2	2	1	.	.	.	.	.	.	12.9		
ASSAULT OTHER	164	21	81	28	11	13	8	2	.	.	.	.	.	13.5		
KIDNAP 1	7	.	2	.	.	1	1	1	.	1	1	.	.	42.7		
KIDNAP 2	12	2	8	1	1	.	.	.	.	.	.	.	.	9.8		
ARSON 1 & 2	33	2	8	11	4	3	1	.	1	2	.	.	1	24.3		
BURGLARY 1	61	.	16	12	10	13	2	1	4	.	.	.	3	28.3		
BURGLARY 2	507	38	191	71	49	78	64	9	.	1	1	1	4	20.0		
THEFT	216	18	114	43	18	16	3	3	1	.	.	.	.	13.4		
AUTO THEFT	41	3	23	9	2	1	2	1	.	.	.	.	.	13.3		
FORGERY	99	9	49	29	4	6	2	.	.	.	.	.	.	12.3		
WELFARE FRAUD	1	.	1	.	.	.	.	.	.	.	.	.	.	11.1		
OTHER PROPERTY	109	8	65	19	8	5	3	1	.	.	.	.	.	12.5		
DRUG CRIME	1469	33	351	468	224	276	83	31	3	.	.	.	.	19.2		
OTHER FELONY	42	4	26	8	1	2	.	.	.	.	1	.	.	12.0		

LENGTH OF STAY IS CALCULATED  
ONLY FOR THOSE WHO HAVE PAROLED  
OR WHOSE SENTENCES HAVE EXPIRED.

TABLE 4E  
DEPARTMENT OF CORRECTIONS

WASHINGTON INMATE RELEASES FOR FISCAL YEAR 1995  
LENGTH OF STAY BY OFFENSE

TOTAL

OFFENSE	MONTHS					AVERAGE STAY
	TOTAL	0 TO 5	6 TO 11	12 TO 17	18 TO 23	
TOTAL	230	152	74	2	2	6.2
ASSAULT OTHER	4	1	1	1	1	12.8
BURGLARY 2	16	12	3	1	.	6.4
THEFT	3	1	2	.	.	6.4
FORGERY	3	1	2	.	.	8.4
OTHER PROPERTY	4	2	2	.	.	6.4
DRUG CRIME	280	135	64	.	1	6.1

LENGTH OF STAY IS CALCULATED  
FOR WEC GRADUATES ONLY.

TABLE 41  
DEPARTMENT OF CORRECTIONS

WASHINGTON INMATE RELEASES FOR FISCAL YEAR 1995  
LENGTH OF STAY BY OFFENSE

OFFENSE	MONTHS				AVERAGE STAY
	TOTAL	0 TO 5	6 TO 11	12 TO 17	
TOTAL	641	617	21	3	2.4
MURDER 2	1	1	.	.	2.2
RAPE 1	2	1	1	.	7.4
RAPE 2	7	6	1	.	2.4
RAPE OTHER	3	2	1	.	3.5
RAPE OF CHILD	7	5	1	1	4.8
VIO SEX, CHILD	12	11	1	.	3.0
IND LIBERTIES	7	7	.	.	3.3
INV SEX, CHILD	16	15	1	.	2.3
OTHER SEX CRIME	6	6	.	.	1.9
ROBBERY 1	22	22	.	.	2.5
ROBBERY 2	7	7	.	.	2.4
ASSAULT 1	4	4	.	.	1.8
ASSAULT 2	54	54	.	.	2.1
VEHICULR ASSAULT	1	1	.	.	8.8
ASSAULT OTHER	9	9	.	.	2.0
KIDNAP 2	1	1	.	.	1.4
ARSON 1 & 2	1	1	.	.	1.8
BURGLARY 1	2	2	.	.	2.9
BURGLARY 2	17	17	.	.	2.2
THEFT	10	9	1	.	2.6
AUTO THEFT	7	5	1	1	4.6
FORGERY	6	5	1	.	3.2
OTHER PROPERTY	5	5	.	.	2.7
DRUG CRIME	433	420	12	1	2.3
OTHER FELONY	1	1	.	.	5.3

LENGTH OF STAY IS CALCULATED  
FOR CCI/NEC VIOLATORS ONLY.

TABLE 46  
DEPARTMENT OF CORRECTIONS

RELEASES BY SENTENCING AUTHORITY  
FOR FISCAL YEAR 1995

RELTYPE	TOTAL	PAROLE BOARD		SRA		BOTH		OTHER		UNKNOWN	
			%		%		%		%		%
TOT/	5147	171	3.3	4839	94.0	132	2.6	1	0.0	4	0.1
DIS. L. RE	1705	53	3.1	1596	93.6	55	3.2	.	.	1	0.1
REL. TO CCI	2216	.	.	2195	99.1	21	0.9	.	.	.	.
REL. TO PRS	137	.	.	131	95.6	6	4.4	.	.	.	.
WEC GRADUATE	230	.	.	230	100	.	.	.	.	.	.
CCI/WEC VIOL. REL.	641	.	.	632	98.6	9	1.4	.	.	.	.
PAROLED	150	108	72.0	.	.	39	26.0	.	.	3	2.0
OTHER	68	10	14.7	55	80.9	2	2.9	1	1.5	.	.

THERE WERE ALSO 56 COUNTY BOARDER RELEASES (ALL MALE) IN FISCAL YEAR 1995.

OTHER RELEASE INCLUDES PARDON, DEATH  
SENTENCE VACATE, AND OUT ON BOND

TABLE 4H  
DEPARTMENT OF CORRECTIONS

RELEASES BY MONTH AND SEX  
FOR FISCAL YEAR 1995

MONTH	TOTAL	SEX	
		MALE	FEMALE
TOTAL	5147	4645	502
JULY	402	377	25
AUGUST	476	420	56
SEPTEMBER	400	364	36
OCTOBER	404	365	39
NOVEMBER	486	434	52
DECEMBER	443	407	36
JANUARY	421	362	59
FEBRUARY	358	326	32
MARCH	453	412	41
APRIL	415	371	44
MAY	445	404	41
JUNE	444	403	41

THERE WERE ALSO 56 COUNTY BOARDER RELEASES (ALL MALE) IN FISCAL YEAR 1995.