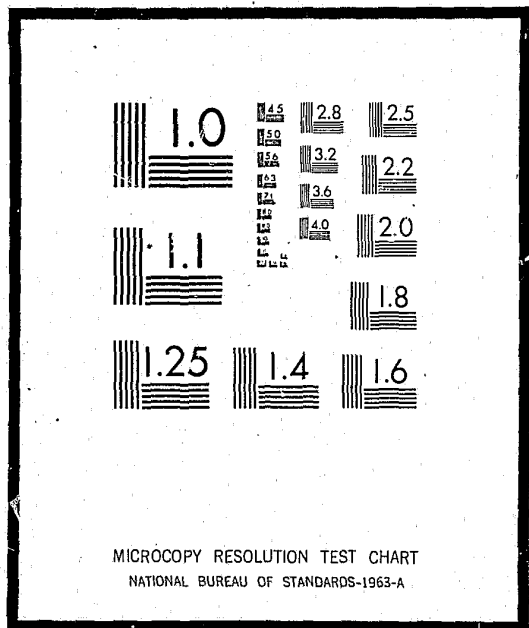


NCJRS

This microfiche was produced from documents received for inclusion in the NCJRS data base. Since NCJRS cannot exercise control over the physical condition of the documents submitted, the individual frame quality will vary. The resolution chart on this frame may be used to evaluate the document quality.



Microfilming procedures used to create this fiche comply with the standards set forth in 41CFR 101-11.504

Points of view or opinions stated in this document are those of the author(s) and do not represent the official position or policies of the U.S. Department of Justice.

U.S. DEPARTMENT OF JUSTICE
LAW ENFORCEMENT ASSISTANCE ADMINISTRATION
NATIONAL CRIMINAL JUSTICE REFERENCE SERVICE
WASHINGTON, D.C. 20531

Date filmed

9/19/75

15634

~~INTERIM EVALUATION REPORT~~
~~ATLANTA BUSINESS LEAGUE~~
~~WORK RELEASE PROJECT - INTERIM EVALUATION REPORT~~
~~SEPTEMBER 1, 1973 THROUGH~~
~~NOVEMBER 30, 1973~~

PREPARED
JANUARY 16, 1974

CRIMINAL JUSTICE PLANNING DIVISION
ATLANTA REGIONAL COMMISSION
100 PEACHTREE STREET, N. W.
ATLANTA, GEORGIA 30303
522-7577

I. Introduction

This purpose of this report is to provide information for assessing the degree to which interim goals and objectives are being met and for determining if project modifications or redirections are required. This document is based upon information contained in the grant application of December 8, 1972, the "second report for the Atlanta Business League" transmitted to ARC on December 13, 1973, by Carl Willis, Project Director, and the project summary and status report appearing in the "Atlanta Impact Program Status Report" of November 26, 1973.

The project is designed to provide part-time and full-time employment with Atlanta Business League member businesses for 30 to 60 juvenile delinquents between the ages of 15-18 who are referred by the Fulton County Juvenile Court. In addition, the project includes an intensive informational and educational program to acquaint target area businessmen and residents with methods of preventing these crimes. Improvement of the spirit of cooperation among community residents, the businessmen, and the juveniles who are committing the crimes is to be a side benefit of the project.

II. Results

Goal 1: Reduce the recidivism rate of project enrollees (60 enrollees, ages 13-17) to 13% per year.

Measure for Goal 1

Since none of the enrollees have recidivated, this goal is being met. It should be noted that even though the grant application refers to having 30 to 60 project enrollees, 60 enrollees are required in order to achieve a net reduction of one juvenile offender, given the project goal and current recidivism rates.

Goal 2: Reduce the number of robberies and burglaries committed against high crime areas businessmen by 15% (to include at least a 10% reduction in the first year of operation and the balance of the reduction in the second year of operation.*)

Measure for Goal 2

Since current data on the number of robberies and burglaries committed in the high crime census tracts was not reported, this goal cannot be measured. When Public Systems, Inc., completes its work for the Atlanta Police Department, current data will be

*This goal has been restated in order to reflect better the intent of the subgrantee.

available on a census tract basis. For informational purposes, the number of commercial robberies in the subject census tracts during 1972 was 89 and the number of commercial burglaries was 225. Therefore, a reduction of 9 commercial robberies and 23 commercial burglaries is required to meet this goal the first year. At the completion of the current grant period, the required reductions for the two years should be 13 commercial robberies and 34 commercial burglaries ($15\% \times 89 = 13$ and $15\% \times 225 = 34$).

Objective 1.1: Provide each enrollee with a job.

Measure for Objective 1.1

There are 15 current enrollees. Seven of these are employed at present. Of the eight remaining enrollees, two were employed for short periods of time, but are no longer employed. Two have been on the rolls approximately 6 weeks. Three others have been on the rolls approximately one week and one is a new enrollee.

Objective 1.2: 60% of project enrollees who have ever been employed since enrolling in the project will retain employment for at least six months.

Measure for Objective 1.2

This objective cannot be measured at this time since the project has not been operating six months.

Objective 2.1: Conduct workshops and seminars for high crime areas' businessmen and residents designed to inform them of methods of crime prevention which will result in:

2.1.a.

1. the average response being seven or more on a ten-point scale measuring the degree to which attendees believe the information provided was of value in preventing crimes.
2. 25% of the attendees making one or more of the recommended changes in behavior or practices within a time period to be specified according to the time requirements for the type of recommended changes.

2.1.b.

1. 5% of the residents between ages 20 and 59 surveyed on a random basis having attended at least one workshop or seminar.
2. 30% of the businessmen surveyed on a random basis will have attended at least one workshop or seminar.

Measure for Objective 2.1.a.1.

Seventeen persons attended the two workshops that have been conducted as of this date. The average score from participants was 9.3. The businessmen evaluated the seminars with an average score of 9. The residents evaluated the seminar with an average score of 9.75. Thus, objective 2.1.a.1, which requires an average score of 7, is being met.

Measure of Objective 2.1.a.2.

Three persons have been surveyed of which 2 have reportedly made a change in behavior or practice. Thus, 66.7% of those surveyed have made a change. Since only 7 persons attended the first workshop and the survey took place prior to the second workshop, at least 25% of the attendees met the specified conditions.

Measure for 2.1.b.1 and 2.1.b.2.

No surveys have been conducted at this point. Refer to comments section regarding recommendations.

Comments

A warning signal has already been sounded. The grantee reported that approximately 125 businessmen and residents (no breakdown) were sent written invitations to attend the first workshop on October 3, 1973. The attendance was 7 persons (4 businessmen and 3 residents). This indicates that the current process must be improved or a new approach taken in order to be more effective.

With regard to objective 2.1.a.2., ABL should furnish a list of potential changes, each with an expected time frame for accomplishment. If the content of all the workshops is not presently determined, such a list should be furnished to ARC prior to the workshop.

With regard to objective 2.1.b., the following procedure is suggested. Convert the objective of 5% of the residents between 20 and 59 in the subject tracts to absolute numbers. The total eligible population is 15,359 based upon 1970 census data (Refer to Exhibit 2). $5\% \text{ of } 15,359 = 768$. 768 attendees then becomes the goal. ABL should then set milestone quantities of attendance and attempt to meet these numbers. A chart similar to Exhibit 1 should be developed. Any cumulative deviation on the negative side should be investigated. The cause of such deviation would hopefully be found and corrected. The same procedure should be applied to objective 2.1.b.2.

It is recommended that ABL establish and furnish to the CAT a timetable specifying the number of enrollees with jobs anticipated at

different points in time. For example, this could take the form of a cumulative histogram as shown in Exhibit 2. Note in Exhibit 2 the reflection of actual enrollees with jobs through the third month. Note also the achievement of an enrollment of 30 with jobs at the end of the sixth month. Finally, note the attainment of 60 enrollees with jobs six months prior to the completion of the project.

A cost effectiveness study at this point which was related to output values - 7 enrollees placed in employment and 17 workshop or seminar attendees - would undoubtedly be embarrassing.

In summary, several areas need attention and it would appear project efforts must become more aggressive in order to obtain the desired result.

EXHIBIT 1

RESIDENTS BETWEEN THE AGES OF 20 - 59*

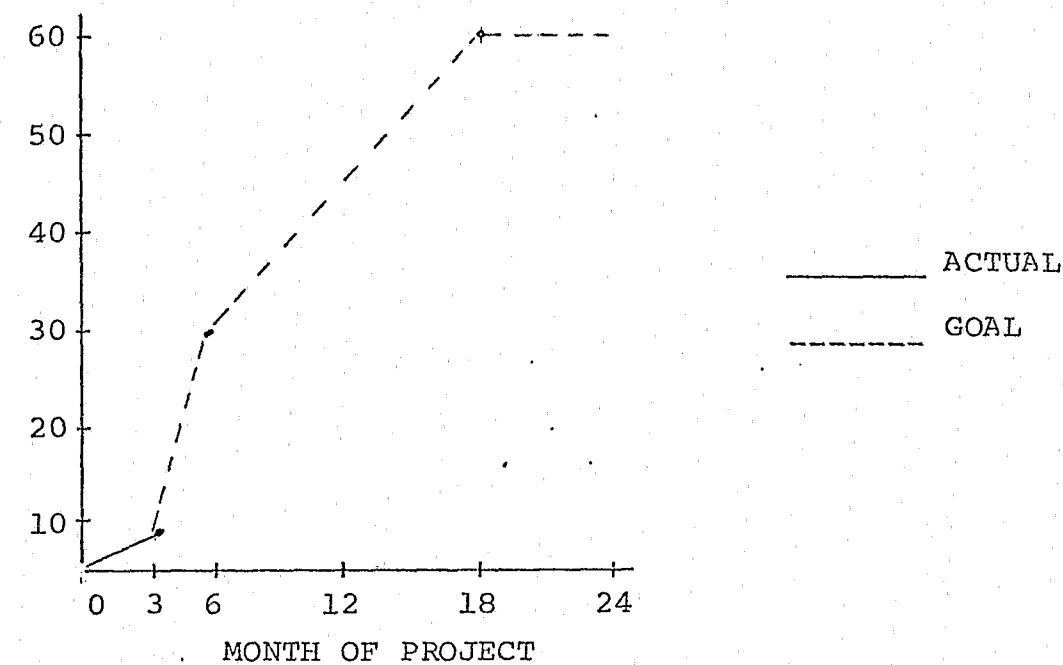
CENSUS TRACT	MALES	FEMALES	TOTAL
45	185	211	396
48	209	450	659
60	1,255	1,509	2,764
81.02	1,635	2,028	3,663
85	2,018	2,277	4,295
86.01	1,616	1,966	3,582
TOTAL	6,918	8,441	15,359

*SOURCE: 1970 Census of Population and Housing:
Census Tracts

EXHIBIT 2

EXAMPLE HISTOGRAM FOR ENROLLMENT GOAL

TOTAL
ENROLLEES
WITH
EMPLOYMENT
THROUGH
PROJECT
MONTH



END