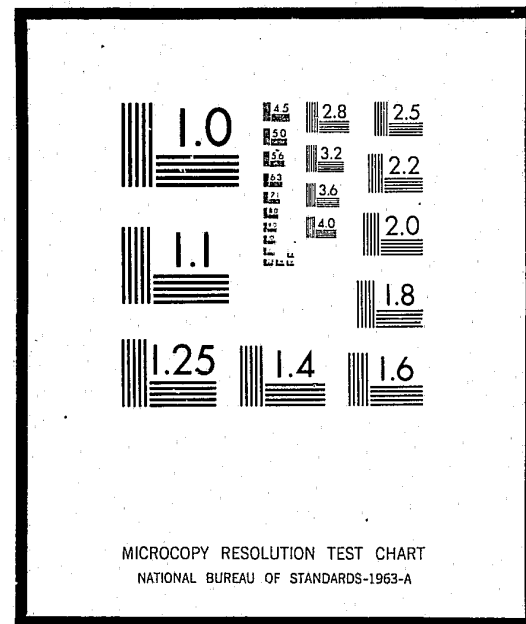


NCJRS

This microfiche was produced from documents received for inclusion in the NCJRS data base. Since NCJRS cannot exercise control over the physical condition of the documents submitted, the individual frame quality will vary. The resolution chart on this frame may be used to evaluate the document quality.



Microfilming procedures used to create this fiche comply with the standards set forth in 41CFR 101-11.504

Points of view or opinions stated in this document are those of the author(s) and do not represent the official position or policies of the U.S. Department of Justice.

U.S. DEPARTMENT OF JUSTICE
LAW ENFORCEMENT ASSISTANCE ADMINISTRATION
NATIONAL CRIMINAL JUSTICE REFERENCE SERVICE
WASHINGTON, D.C. 20531

Date filmed

9/19/75

RATE OF APPEAL
REPORT

ITEM V.B.

Jerry Goldman
Department of Political Science
The Johns Hopkins University

March 30, 1973

Pursuant to Federal Judicial Center
Letter-Contract of January 3, 1973

15492

8-117-79

TABLES

- I. Civil and Criminal rates of Appeal for FY 1969
- II. Rates of Appeal for All U.S. Cases & All Private Cases in
FY 1969
- III. Civil Rate of Appeal, by Jurisdiction in FY 1969
- IV. Civil and Criminal Rates of Appeal for FY 1970
- V. Rates of Appeal for All U.S. Cases & All Private Cases in
FY 1970
- VI. Civil Rate of Appeal, by Jurisdiction in FY 1970

1940
CIVIL & CRIMINAL

D.I.S. 47

RATES OF APPEAL

		ALL CIVIL	ALL CRIMINAL			ALL CIVIL	ALL CRIMINAL
TOTAL		.24	.60	6th Circuit		.22	.48
690	D. of C.	.19	.97	643	Kentucky, E.	.16	.38
Territories				644	W.	.39	.69
89 Districts		.25	.54	645	Michigan, E.	.16	.41
1st Circuit		.23	.55	646	W.	.28	.44
100	Maine	.16	0	647	Ohio, W.	.34	.66
101	Massachusetts	.29	.59	648	E.	.14	.71
102	New Hampshire	.21	1	649	Tennessee, E.	.16	.40
103	Rhode Island	.41	.33	650	W.	.30	.69
104	Puerto Rico	.12	.50	651	W.	.27	.34
2nd Circuit		.41	.74	7th Circuit		.23	.74
205	Connecticut	.30	.71	752	Illinois, E.	.26	.79
206	New York, N.	.16	.79	753	E.	.13	0
207	E.	.30	.74	754	E.	.30	.33
208	S.	.65	.78	755	Indiana, E.	.24	.72
209	W.	.15	.55	756	E.	.18	.82
210	Vermont	.29	.33	757	Wisconsin, E.	.21	.92
3rd Circuit		.20	.53	758	W.	.25	0
311	Delaware	.34	.22	8th Circuit		.21	.58
312	New Jersey	.24	.90	860	Arkansas, E.	.27	.17
313	Pa., E.	.24	.34	861	W.	.53	.83
314	N.	.07	.41	862	Iowa, E.	.17	3.5
315	W.	.16	.48	863	S.	.25	.30
391	Virgin Islands			864	Minnesota	.15	.81
4th Circuit		.32	.38	865	Missouri, E.	.27	.86
416	Maryland	.36	.49	866	W.	.12	.59
417	D. C., E.	.27	.26	867	Nebraska	.20	.33
418	N.	.25	.26	868	North Dakota	.44	.13
419	W.	.44	.36	869	South Dakota	.29	.25
420	S. C.	.18	.62	9th Circuit		.23	.52
422	Virginia, E.	.39	.38	97X	Alaska	.28	.67
423	W.	.32	.47	970	Arizona	.17	.66
424	West Va., N.	.30	.26	971	California, N.	.24	.40
425	S.	.24	.28	972	E.	.12	.38
5th Circuit		.21	.51	973	C.	.26	.54
526	Alabama, N.	.13	.62	974	S.	.14	.48
527	W.	.06	.37	975	Hawaii	.14	.50
528	E.	.26	.32	976	Idaho	.41	1.50
529	Florida, E.	.23	.44	977	Montana	.36	.60
53A	N.	.20	.65	978	Nevada	.19	.50
53B	E.	.21	.58	979	Oregon	.31	.39
53C	Georgia, E.	.14	.42	980	Washington, E.	.36	.77
53D	N.	.24	.40	981	W.	.21	.62
53E	S.	.18	.28	993	China		
53F	Louisiana, E.	.22	.38	10th Circuit		.27	.69
53G	N.			1082	Colorado	.27	.51
53H	W.	.37	2.5	1083	Kansas	.27	.89
537	Miss., N.	.20	.50	1084	New Mexico	.29	.57
538	N.	.53	.63	1085	Oklahoma, E.	.27	1.27
539	Texas, N.	.18	.70	1086	E.	.17	.75
540	E.	.25	1	1087	W.	.27	.95
541	S.	.22	.50	1088	Utah	.36	.23
542	N.	.19	.57	1089	Wyoming	.24	2
543	Canal Zone						

1969
 RATES OF APPEAL
 FOR TOTAL U.S. CASES & TOTAL PRIVATE CASES

		Total U.S.	Total Pvt.	INC. local juris			Total U.S.	Total Pvt.	INC. local juris
TOTAL		.22	.26	.23	6th Circuit		.19	.24	
660	D. of C.	.33	.51	.14	641	Kentucky, E.	.09	.30	
Territories		1.00		.07	644	W.	.45	.34	
89 Districts		.21	.26		643	Michigan, E.	.10	.20	
1st Circuit		.15	.29		646	W.	.40	.26	
100	Maine	.05	.22		647	Ohio, E.	.39	.33	
101	Massachusetts	.27	.30		648	W.	.08	.19	
102	New Hampshire	.18	.22		649	Tennessee, E.	.18	.15	
103	Rhode Island	.22	.47		650	W.	.34	.28	
104	Puerto Rico	.04	.25		651	W.	.32	.25	
2nd Circuit		.43	.40		7th Circuit		.24	.23	
205	Connecticut	.17	.45		752	Illinois, W.	.35	.24	
206	New York, N.	.45	.14		753	E.	.08	.17	
207	E.	.51	.25		754	E.	.19	.37	
208	S.	.61	.66		755	Indiana, E.	.33	.21	
209	W.	.27	.13		756	S.	.22	.16	
210	Vermont	.36	.27		757	Wisconsin, E.	.14	.23	
3rd Circuit		.19	.21		758	W.	.18	.27	
311	Delaware	.45	.18		8th Circuit		.19	.23	
312	New Jersey	.22	.30		860	Arkansas, E.	.15	.31	
313	Pa., E.	.23	.26		861	W.	.57	.61	
314	H.	.10	.24		862	Iowa, W.	.08	.20	
315	W.	.12	.17		863	H.	.33	.22	
391	Virgin Islands	0	0	.08	864	Minnesota	.14	.16	
4th Circuit		.19	.37		865	Missouri, E.	.13	.22	
416	Maryland	.18	.45		866	W.	.13	.10	
417	D. C., E.	.22	.28		867	Nebraska	.11	.23	
418	M.	.09	.32		868	North Dakota	.33	.64	
419	W.	.34	.50		869	South Dakota	.29	.29	
420	S. C.	.12	.23		9th Circuit		.26	.21	.21
422	Virginia, E.	.29	.41		97X	Alaska	.35	.21	
423	W.	.11	.44		970	Arizona	.16	.18	
424	West Va., W.	.67	.29		971	California, W.	.30	.22	
425	S.	.19	.28		972	E.	.17	.11	
5th Circuit		.17	.22	.21	973	C.	.36	.21	
526	Alabama, N.	.20	.12		974	S.	.15	.11	
527	M.	.08	.05		975	Hawaii	.14	.13	
528	S.	.30	.25		976	Idaho	.42	.39	
529	Florida, N.	.12	.28		977	Montana	.45	.25	
53A	M.	.19	.20		978	Nevada	.25	.17	
53B	S.	.16	.23		979	Oregon	.20	.37	
53K	Georgia, W.	.11	.20		980	Washington, E.	.44	.33	
530	M.	.30	.21		981	W.	.13	.30	
53J	S.	.16	.19		993	Guam			.39
53L	Louisiana, E.	.09	.25		10th Circuit		.25	.29	
53M	M.				1082	Colorado	.26	.27	
536	W.	.32	.40		1083	Kansas	.27	.27	
537	Miss., W.	.17	.22		1084	New Mexico	.22	.35	
538	S.	.50	.55		1085	Oklahoma, W.	.21	.31	
539	Texas, W.	.13	.22		1086	S.	.17	.18	
540	E.	.28	.23		1087	W.	.27	.28	
541	S.	.23	.22		1088	Utah	.24	.40	
542	W.	.16	.26		1089	Wyoming	.27	.22	
992	Canal Zone	0	0	.01					

Table IV

D.I.S. - 4/7

CIVIL & CRIMINAL RATES OF APPEAL

1970

		All Civil	All Criminal			All Civil	All Criminal
TOTAL				6th Circuit		.17	.41
610	D. of C.	.24	1.1	643	Kentucky, E.	.11	.36
Territories				644	W.	.28	.33
89 Districts		.24	.54	645	Michigan, E.	.08	.55
1st Circuit		.25	.83	646	W.	.10	.38
100	Maine	.25	.75	647	Ohio, N.	.22	.39
101	Massachusetts	.29	.89	648	E.	.19	.56
102	New Hampshire	.23	1.0	649	Tennessee, E.	.24	.51
103	Rhode Island	.33	.86	650	H.	.27	.57
104	Puerto Rico	.17	.43	651	W.	.28	1.10
2nd Circuit		.32	.97	7th Circuit		.23	.76
205	Connecticut	.14	1.33	752	Illinois, E.	.28	1.02
206	New York, N.	.32	1.17	753	E.	.11	.04
207	E.	.22	1.21	754	S.	.28	1.18
208	S.	.54	.90	755	Indiana, N.	.24	.48
209	W.	.15	.68	756	S.	.12	.44
210	Vermont	.18	.29	757	Wisconsin, E.	.21	.38
3rd Circuit		.28	.62	758	W.	.23	.25
311	Delaware	.43	1.23	8th Circuit		.20	.40
312	New Jersey	.54	.87	860	Arkansas, E.	.22	.11
313	Pa., E.	.21	.44	861	W.	.34	.50
314	H.	.13	.33	862	Iowa, N.	.06	1.14
315	W.	.23	.48	863	S.	.41	.33
391	Virgin Islands	.	.	864	Minnesota	.14	.20
4th Circuit		.32	.40	865	Missouri, E.	.31	.73
416	Maryland	.30	.54	866	W.	.12	.65
417	N. C., E.	.35	.32	867	Nebraska	.29	.69
418	H.	.40	.24	868	North Dakota	.63	.35
419	W.	.26	.64	869	South Dakota	.29	.08
420	S. C.	.21	.33	9th Circuit		.20	.46
422	Virginia, E.	.33	.35	97X	Alaska	.22	.35
423	W.	.36	.6	970	Arizona	.20	.60
424	West Va., N.	.36	1.67	971	California, N.	.22	.42
425	S.	.39	.77	972	E.	.08	.31
5th Circuit		.21	.58	973	C.	.20	.44
526	Alabama, N.	.16	1.16	974	S.	.12	.44
527	H.	.13	.53	975	Hawaii	.32	.55
528	S.	.23	.95	976	Idaho	.16	.33
529	Florida, N.	.12	.44	977	Montana	.21	.26
53A	N.	.19	.70	978	Nevada	.25	.80
53B	E.	.27	.87	979	Oregon	.31	.53
53K	Georgia, N.	.19	.53	980	Washington, E.	.20	.29
53G	H.	.32	.38	981	W.	.16	.51
53J	S.	.13	.14	993	Guam		
53L	Louisiana, E.	.26	.35	10th Circuit		.31	.42
53M	H.			1002	Colorado	.27	.56
536	W.	.26	.14	1003	Kansas	.38	.36
537	Miss., N.	.43	.26	1004	New Mexico	.31	.43
538	S.	.37	.4	1005	Oklahoma, W.	.25	.35
539	Texas, N.	.21	.68	1006	E.	.17	.7
540	E.	.27	.29	1007	W.	.22	.41
541	S.	.19	.43	1008	Utah	.28	.18
542	W. V.	.16	.79	1009	Wyoming	.23	.20
592	Canal Zone						

Rates of Appeal For
TOTAL U.S. CASES & TOTAL PRIVATE CASES

	Total U.S.	Total Pvt			Total U.S.	Total Pvt	
TOTAL	.20	.23			6th Circuit	.12	.21
100 D. of C.	.37	.18			643 Kentucky, E.	.11	.10
Territories	.50	.04			644 " W.	.22	.34
89 Districts	.19	.27			645 Michigan, E.	.04	.18
1st Circuit	.17	.30			646 " W.	.06	.10
100 Maine	.14	.27			647 Ohio, N.	.18	.24
101 Massachusetts	.19	.34			648 " S.	.13	.24
102 New Hampshire	.20	.24			649 Tennessee, E.	.28	.22
103 Rhode Island	.20	.40			650 " N.	.27	.26
104 Puerto Rico	.14	.20			651 " W.	.33	.25
2nd Circuit	.25	.35			7th Circuit	.23	.23
205 Connecticut	.08	.23			752 Illinois, N.	.30	.28
206 New York, N.	.26	.33			753 " E.	.15	.10
207 " E.	.20	.23			754 " S.	.36	.23
208 " G.	.47	.55			755 Indiana, N.	.29	.22
209 " W.	.24	.13			756 " S.	.10	.14
210 Vermont	.43	.15			757 Wisconsin, E.	.20	.22
3rd Circuit	.20	.31	.26		758 " W.	.21	.23
311 Delaware	.18	.54			8th Circuit	.18	.21
312 New Jersey	.30	.75			860 Arkansas, E.	.31	.19
313 Pa., E.	.16	.22			861 " W.	.16	.45
314 " N.	.12	.14			862 Iowa, N.	.09	.05
315 " W.	.19	.25			863 " S.	.52	.38
391 Virgin Islands	0	.04			864 Minnesota	.11	.16
4th Circuit	.23	.37			865 Missouri, E.	.29	.32
416 Maryland	.17	.36			866 " W.	.12	.14
417 N. C., E.	.27	.38			867 Nebraska	.33	.27
418 " N.	.36	.43			868 North Dakota	1.7	.18
419 " W.	.14	.37			869 South Dakota	.30	.31
420 S. C.	.19	.23			9th Circuit	.22	.18
422 Virginia, E.	.15	.40			97X Alaska	.20	.26
423 " W.	.16	.45			970 Arizona	.16	.24
424 West Va., N.	.18	.38			971 California, N.	.34	.19
425 " S.	.44	.34			972 " E.	.14	.06
5th Circuit	.15	.25	.24		973 " C.	.28	.16
526 Alabama, N.	.13	.17			974 " S.	.13	.10
527 " W.	.17	.12			975 Hawaii	.20	.44
528 " S.	.24	.22			976 Idaho	.15	.16
529 Florida, N.	.11	.12			277 Montana	.23	.20
53A " W.	.13	.22			570 Nevada	.35	.19
53C " S.	.20	.29			979 Oregon	.17	.44
53B Georgia, W.	.15	.23			980 Washington, E.	.39	.12
53D " N.	.30	.31			981 " W.	.14	.20
53J " S.	.08	.16			993 Guam	.09	.38
53L Louisiana, E.	.15	.31			10th Circuit	.30	.31
53M " W.	.09	.36			1082 Colorado	.26	.27
537 Miss., N.	.41	.43			1083 Kansas	.34	.42
538 " S.	.39	.36			1084 New Mexico	.28	.33
539 Texas, W.	.23	.20			1085 Oklahoma, N.	.27	.24
540 " E.	.15	.35			1086 " S.	.29	.15
541 " S.	.12	.25			1087 " W.	.30	.35
542 " N.	.11	.34			1088 Utah	.30	.27
542 Canal Zone	.50	.02			1089 Wyoming	.15	.26

CIVIL RATE OF APPEAL, BY JURISDICTION

Local		U.S. Plt.	U.S. Dft.	Fed. Ques.	Div. Cit.	Local		U.S. Plt.	U.S. Dft.	Fed. Ques.	Div. Cit.
TOTAL		.08	.28	.26	.30	6th Circuit 1		.02	.28	.21	.22
690	D. of C.	.17	.41	.83	.0	643	Kentucky, E.	0	.15	.09	.15
Territories						644	W.	.01	.45	.30	.45
89 Districts		.08	.27	.26	.30	645	Michigan, E.	.00	.27	.18	.16
1st Circuit		.07	.21	.29	.31	646	W.	0	.27	.24	.26
100	Maine	0	.14	.25	.40	647	Ohio, E.	.06	.27	.24	.26
101	Massachusetts	.08	.26	.33	.36	648	S.	.02	.33	.23	.20
102	New Hampshire	.40	.10	.29	.22	649	Tennessee, E.	.17	.33	.23	.20
103	Rhode Island	.33	.18	.25	.60	650	W.	.13	.33	.25	.31
104	Puerto Rico	0	.20	.18	.22	651	W.	.13	.45	.35	.13
2nd Circuit		.10	.36	.32	.52	7th Circuit		.10	.29	.22	.25
205	Connecticut	.02	.13	.22	.28	752	Illinois, E.	.11	.39	.27	.31
206	New York, E.	.22	.28	.32	.42	753	E.	0	.17	.06	.23
207	W.	.06	.47	.20	.53	754	S.	0	.43	.17	.27
208	S.	.45	.48	.52	.73	755	Indiana, E.	.06	.43	.26	.19
209	W.	.25	.23	.11	.56	756	S.	.04	.13	.17	.12
210	Vermont	0	.75	.14	.15	757	Wisconsin, E.	.14	.26	.20	.30
3rd Circuit		.03	.05	.31	.33	758	W.	.25	.20	.17	.71
311	Delaware	0	.27	.64	.41	8th Circuit		.23	.17	.21	.22
312	New Jersey	.06	.48	.95	.21	860	Arkansas, E.	.69	.77	.18	.23
313	Pa., E.	.02	.49	.18	.40	861	W.	0	.24	.86	.18
314	W.	.02	.11	.10	.34	862	Iowa, E.	0	.17	0	.07
315	S.	.14	.28	.24	.27	863	S.	.67	.48	.36	.39
391	Virgin Islands	0	0	1	0	864	Minnesota	.04	.15	.21	.12
4th Circuit		.07	.33	.40	.26	865	Missouri, E.	.26	.30	.34	.28
416	Maryland	.07	.28	.37	.30	866	W.	0	.13	.13	.20
417	N. C., E.	.13	.31	.36	.50	867	Nebraska	.75	.23	.29	.23
418	W.	.26	.46	.41	.43	868	North Dakota	6	1	0	.21
419	S.	.02	.34	.35	.45	869	South Dakota	.67	.23	.23	.32
420	S. C.	0	.22	.26	.18	9th Circuit		.38	.16	.25	.16
422	Virginia, E.	.04	.30	.43	.25	97X	Alaska	.14	.19	.30	.19
423	W.	.08	.20	.50	.23	970	Arizona	.06	.23	.19	.38
424	West Va., E.	0	.19	.41	.24	971	California, E.	.56	.31	.17	.52
425	S.	0	.46	.45	.22	972	W.	.17	.14	.06	.50
5th Circuit		.02	.22	.25	.27	973	C.	.36	.26	.15	.41
526	Alabama, E.	.04	.15	.40	.07	974	S.	0	.13	.09	.50
527	W.	.4	.08	.13	.11	975	Hawaii	0	.21	.80	.31
528	S.	.21	.25	.23	.21	976	Idaho	.17	.15	0	.29
529	Florida, E.	0	.14	.08	.50	277	Montana	.17	.25	.21	.17
53A	W.	.06	.25	.16	.51	578	Nevada	.95	.50	.18	.22
53C	S.	.07	.35	.24	.46	979	Oregon	.05	.35	.44	.44
53E	Georgia, E.	.18	.15	.23	.23	980	Washington, E.	.86	.24	.06	.67
530	W.	.17	.36	.38	.23	981	W.	.06	.21	.23	.14
53J	S.	.07	.08	.18	.13	993	Guam	.38	0	0	0
53L	Louisiana, E.	.05	.32	.28	.39	10th Circuit		.17	.34	.25	.45
53M	W.					1082	Colorado	.13	.32	.26	.36
536	W.	.08	.09	.39	.23	1081	Kansas	.63	.33	.16	1.27
537	Miss., E.	.47	.35	.45	.41	1084	New Mexico	.08	.41	.38	.28
538	S.	.70	.30	.57	.23	1085	Oklahoma, E.	.10	.38	.26	.21
539	Texas, E.	.06	.45	.17	.28	1086	W.	.80	.13	.10	.36
540	W.	.13	.16	.42	.28	1087	W.	.12	.36	.51	.26
541	S.	.06	.18	.25	.26	1088	Utah	.18	.46	.26	.38
542	W.	.03	.34	.35	.31	1089	Wyoming	0	.22	.42	.18
592	Canal Zone	.02	1	0	0						

END