

153540



# TEXAS JUVENILE PROBATION STATISTICAL REPORT

CALENDAR YEAR 1993

NCJRS

MAR 23 1995

ACQUISITIONS

TEXAS JUVENILE  
PROBATION COMMISSION

# TEXAS JUVENILE PROBATION STATISTICAL REPORT



## STATISTICAL AND OTHER DATA ON THE JUVENILE JUSTICE SYSTEM IN TEXAS FOR CALENDAR YEAR 1993

### TEXAS JUVENILE PROBATION COMMISSION

Bernard Licarione, Ph.D., Executive Director

P O Box 13547

Austin Texas 78711-3547

2015 South IH-35

512/443-2001 (voice), STS 820-1498 (voice), 1-800-RELAY TX, FAX (512) 440-7177

**PUBLISHED SEPTEMBER 1994**

The Texas Juvenile Probation Commission, an equal opportunity employer, does not discriminate on the basis of race, color, national origin, sex, religion, age or disability in employment or the provision of services, programs or activities. In compliance with the Americans with Disabilities Act, this document may be requested in alternative formats by contacting the Texas Juvenile Probation Commission at the above address.

## ACKNOWLEDGMENT

*The Texas Juvenile Probation Commission expresses its appreciation to the many chief juvenile probation officers, juvenile court judges and others whose prompt and continued submission of their statistical and other data have made this report possible.*

153540

**U.S. Department of Justice  
National Institute of Justice**

This document has been reproduced exactly as received from the person or organization originating it. Points of view or opinions stated in this document are those of the authors and do not necessarily represent the official position or policies of the National Institute of Justice.

Permission to reproduce this copyrighted material has been  
granted by  
Texas Juvenile Probation  
Commission

to the National Criminal Justice Reference Service (NCJRS).

Further reproduction outside of the NCJRS system requires permission of the copyright owner.

## TABLE OF CONTENTS

ACKNOWLEDGMENT .....	2
FOREWORD .....	4
TEXAS JUVENILE PROBATION SYSTEM - 1993	
Introduction .....	6
Juvenile Boards .....	7
Juvenile Probation Departments .....	7
STATEWIDE JUVENILE ACTIVITY - 1993	
Juvenile Referral Activity .....	13
Juvenile Detention Activity .....	17
Juvenile Disposition Activity .....	19
Supervision Workload Activity .....	21
Summary .....	23
APPENDIX (BY COUNTY) - 1993	
Juvenile Probation Referral Activity .....	26
Juvenile Probation Detention Activity .....	33
Juvenile Probation Disposition Activity .....	40
Juvenile Probation Supervision Workload Activity .....	47

## FOREWORD

The Texas Juvenile Probation Commission's (TJPC) thirteenth annual statistical report provides information regarding the magnitude and nature of juvenile criminal activity and the juvenile probation system's response. This information is offered to help assist the state's effort to improve the juvenile justice system and reduce juvenile crime in Texas.

During calendar year 1993, police agencies in Texas arrested 154,524 juveniles between the ages of 10 and 17. Of this number, 47,377 were warned and released, handled in justice and municipal courts or diverted, and 107,147 were referred to juvenile probation departments. In addition to police agency referrals, an additional 10,921 juveniles were referred by social agencies, parents, schools, the Texas Youth Commission (TYC), and others, for a total of 118,068. This is a 8,910 (8%) increase in referrals from the previous year. This increase resulted from a drastic increase in serious criminal activity of 6,820 delinquent conduct referrals (up 9%) and would have been even greater had there not been a change in the juvenile law which gave jurisdiction of most Class C Misdemeanors to justice and municipal courts.

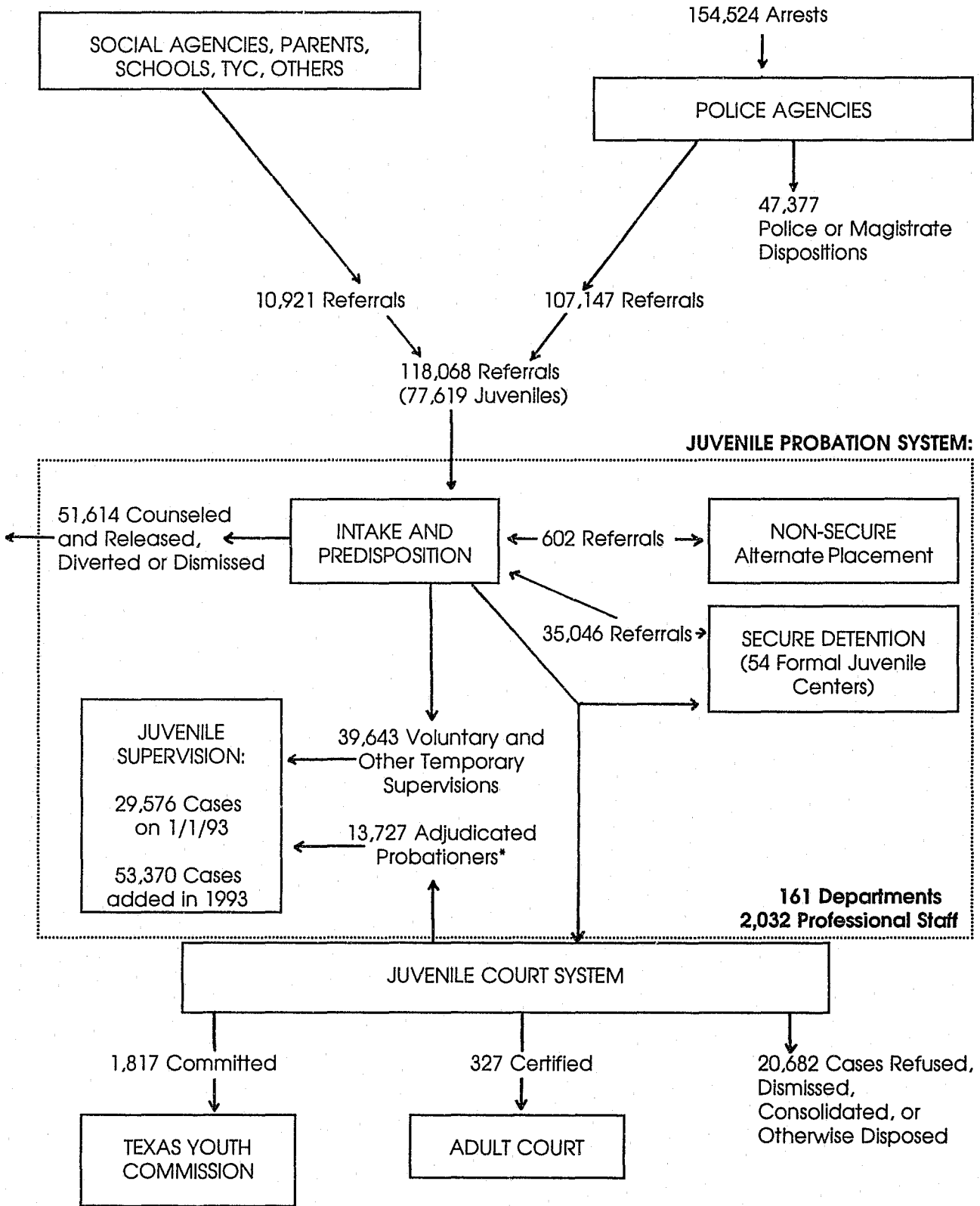
A total of 1,498 juvenile probation officers in 161 departments covered all of Texas' 254 counties. In addition, 534 certified and 796 part-time or on-call detention staff assisted by supervising juveniles held in the state's 54 secure juvenile detention facilities.

In 1993, 35,648 juveniles were detained prior to adjudication hearings. A total of 35,046 were held in secure juvenile detention centers and 602 juveniles were held in non-secure alternate placement facilities such as foster homes and emergency shelters. An additional 2,982 could have been held in non-secure facilities if such facilities had been available. Approximately 42% of all juveniles were released in less than one day.

Juvenile probation departments disposed of 51,614 referrals by counseling and releasing, diverting to other agencies for treatment, or dismissing the complaints, and initiated 39,643 voluntary or other temporary supervisions under guidelines of their juvenile boards.

Juvenile courts entered 13,727 probation orders, bringing to 53,370 the number of cases added to supervision. Juvenile courts also committed 1,817 juveniles to the Texas Youth Commission, certified 327 juveniles to stand trial as adults, and refused prosecution, dismissed, consolidated, or otherwise disposed of another 20,682 cases.

# MOVEMENT OF JUVENILES 1993



\* An additional 284 cases were not assigned to regular supervision in 1993.

# TEXAS JUVENILE PROBATION SYSTEM 1993

## INTRODUCTION

During calendar year 1993, TJPC collected statistical data regarding juveniles referred to the juvenile justice system from the 161 departments which cover all Texas counties. TJPC also surveyed the departments to obtain supplemental information. The statistical activity reports and the 1993 resource survey are the primary sources of this report.

Caution should be used in drawing general conclusions from juvenile probation statistics. The following data portray neither everything juvenile probation departments or courts do, nor how much time they spend on activities not represented by the statistics. There is no reliable way to ascertain the time spent by juvenile probation officers or juvenile judges in counseling, study, and research.

At least three factors are not represented in the juvenile probation activity statistics, and should be considered when evaluating them:

1. Juvenile probation officers in multi-county departments spend more time traveling than do officers in single-county jurisdictions;
2. A number of the juvenile probation officers serve both adult and juvenile capacities due to limited resources, and often operate under widely varying authorities and policies; and,
3. The juvenile justice system operates under the rules and authority of Title 3 of the Texas Family Code. Emphasis is placed on the rehabilitation of the juvenile through guidance, counseling, diversion, and treatment. Many of the cases statistically reported as being disposed as "counseled and released" or "dismissed or otherwise disposed," in fact occasion extensive rehabilitative efforts on the part of the juvenile probation system.

The following definitions of terms apply to the statistical activity reported.

1. **Referral** means any occasion when a child is brought to the department's attention for alleged delinquent conduct or conduct indicating a need for supervision (CINS) and some contact by visit or interview occurs between the department and the juvenile or parents.
2. **Child** means a person who is 10 years of age or older, and under 17 years of age; or 17 years of age and under 18 years of age who is alleged or found to have engaged in delinquent conduct or CINS as a result of acts committed before becoming 17 years of age.

3. **Delinquent Conduct** means violation of any law punishable by incarceration, except traffic laws, and violation of juvenile court orders entered under section 54.04 or 54.05 of the Family Code, except by truancy, running away, or fineable offenses.
4. **Conduct Indicating a Need for Supervision (CINS)** means driving while intoxicated (first and second offense), inhalant abuse, running away, truancy, and violation of certain laws punishable by fine.
5. **Status Offense** means offenses that are not criminal when committed by adults; e.g., running away or truancy.

The 72nd Legislature changed the definitions of conduct indicating a need for supervision (CINS) effective September 1, 1991. Under current law, original jurisdiction of fineable only offenses rests in the criminal courts, unless waived to juvenile court. The criminal court has the option to send this type of case to juvenile court on the first offense and is mandated to do so on the third offense referral.

### JUVENILE BOARDS

State law creates a juvenile board in every county. The board is responsible for designating juvenile judges, appointing the chief juvenile probation officer, and setting the policy and budget for the juvenile probation department. Texas has 198 juvenile boards (85 multi-county boards and 113 single county boards).

Juvenile boards met an average of 5.2 times during 1993. TJPC provides funding and technical assistance to juvenile boards.

### JUVENILE PROBATION DEPARTMENTS

**Structure and Staffing.** Juvenile probation departments carry out the policies of juvenile boards and deliver services to juveniles referred to juvenile courts. There are 113 single county departments and 48 multi-county departments. Multi-county departments range from two to six counties. Thirty-eight departments had only one professional staff member; 34 had no clerical support.

The workload of juvenile probation was managed by 2,916 salaried employees (2,032 probation and detention personnel and 884 clerical or other support staff). In addition, there were 796 hourly detention child care workers. Eighty-seven departments used 3,755 volunteers for a total of 153,134 hours served; and 23 departments used 93 case-aids for a total of 35,510 hours worked. Twenty-five departments served both adult and juvenile probationers, while 12 of these combined departments used separate juvenile probation officers.

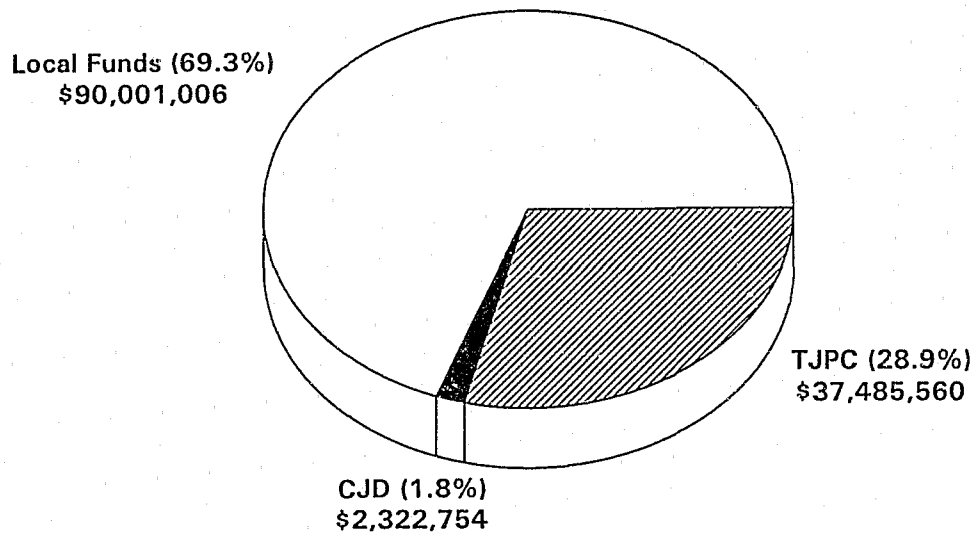
Juvenile probation salaries averaged \$24,048 annually for certified juvenile probation officers, \$37,817 for chief juvenile probation officers and \$18,920 for certified detention child care workers.



**Education, Training, and Certification.** By the end of 1993, TJPC had certified 2,932 juvenile probation officers and 1,084 detention child care workers. During 1993, 156 departments provided 95,221 hours of training to 2,844 staff for an average of 33 hours of training per staff member towards meeting TJPC standards. Fifty percent of the training was provided in-house and the remainder was provided outside. The Texas Juvenile Probation Commission, through 12 regional, 21 statewide, and 20 on-site training sessions, conducted 564 hours of training for 2,708 participants for a total of 15,273 contact hours. This comprised 32 percent of outside training provided.

**Funding.** Figure 1 shows funding available for juvenile probation services. Funding was increased approximately 18 percent from 1992. Funds for residential placement of juveniles on probation were available in 148 departments. One hundred thirty four departments used TJPC funds, 73 used federal funds administered by the Criminal Justice Division of the Governor's Office, and 88 used funds from the counties or other sources. Counties without residential placement funds must either find free placements in the private sector or commit to TYC juveniles who need to be removed from their homes.

**FIGURE 1**  
**Juvenile Probation Funding - 1993**  
**(Total Funds \$129,809,320)**



A total of 4,727 juveniles were placed in residential facilities, including foster homes and emergency shelters. This is an increase of 20 percent from 1992, due entirely to the implementation of state funded community corrections placements. Survey results detailing placements provided the statewide placement data shown in Figure 2. In 1993, 21 percent of probation funds were used to purchase placement services.

**FIGURE 2**  
**Juvenile Probation Placements, 1993**

<u>Type of Facility</u>	<u>Number of Placements</u>	<u>Percent Of Total</u>	<u>Avg. Days in Placement</u>	<u>Avg. Per Day Cost</u>
No Cost Private*	332	7.0	84	NA
No Cost State*	221	4.7	98	NA
County Operated				
Non-secure	1,112	23.5	77	\$69
Secure	1,042	22.1	93	\$68
Privately Operated Secure	223	4.7	97	\$74
Foster Homes	247	5.2	108	\$33
Other Residential Facility	<u>1,550</u>	<u>32.8</u>	<u>128</u>	<u>\$62</u>
<b>TOTAL</b>	4,727	100.0	101 (Avg)	\$57 (Avg)

\* Services provided by state facility, charities, insurance, etc.

**Federal Funding: Title IV-E.** State agencies were mandated by the 73rd Legislature to maximize the use of federal funds. Beginning in September 1992, TJPC has contracted with the Texas Department of Protective and Regulatory Services in order to access federal funds that can reimburse juvenile probation departments approximately 50 percent of the foster care and placement cost of adjudicated juveniles who are eligible to participate in the Title IV-E program. In 1993, five departments claimed \$146,508 of IV-E reimbursements.

**Services.** All departments provide at least basic services to some degree. Figure 3 shows the extent of services available.

**FIGURE 3**  
Probation Services

Services Provided	Depts. Reporting Service Available Within the Dept.	Depts. Reporting Service Available Outside the Dept.	Juveniles Served*
First Offender Program	42	20	6,100
Victim/Offender Mediation	19	26	3,361
Title 2 Services (dependent and neglected)	4	115	1,187
School Truancy Services	108	76	6,163
Financial Restitution (collected \$1,276,054*)	138	17	6,893
Community Service Restitution (181,642 hours performed*)	107	33	6,847
Parenting Classes	36	107	2,519
Teen Court	10	44	4,460
Services for Mentally Retarded Children	4	127	342
Services for Mentally Ill Children	10	124	667
Services for Emotionally Disturbed Children	18	124	2,308
Foster Home Program	21	NA	NA
Primary Delinquency Prevention Program	76	NA	NA

\* Not all departments were able to give a precise number of juveniles served or amount collected.

Probation departments also worked closely with independent school districts. In 1993, 725 of the 1,076 school districts had appointed the school liaison officers required by the Texas Education Code. Of 118,068 referrals in 1993, 32,610 were behind one or more levels in school.

In addition to working with local school districts, probation departments also work closely with state child protective services. In 1993, of the 118,068 referrals (77,619 juveniles), 5,069 showed symptoms of sexual abuse, 10,437 physical abuse, and 15,604 emotional abuse. Also, 26 departments reported that they were unable to provide services to 1,263 runaways.

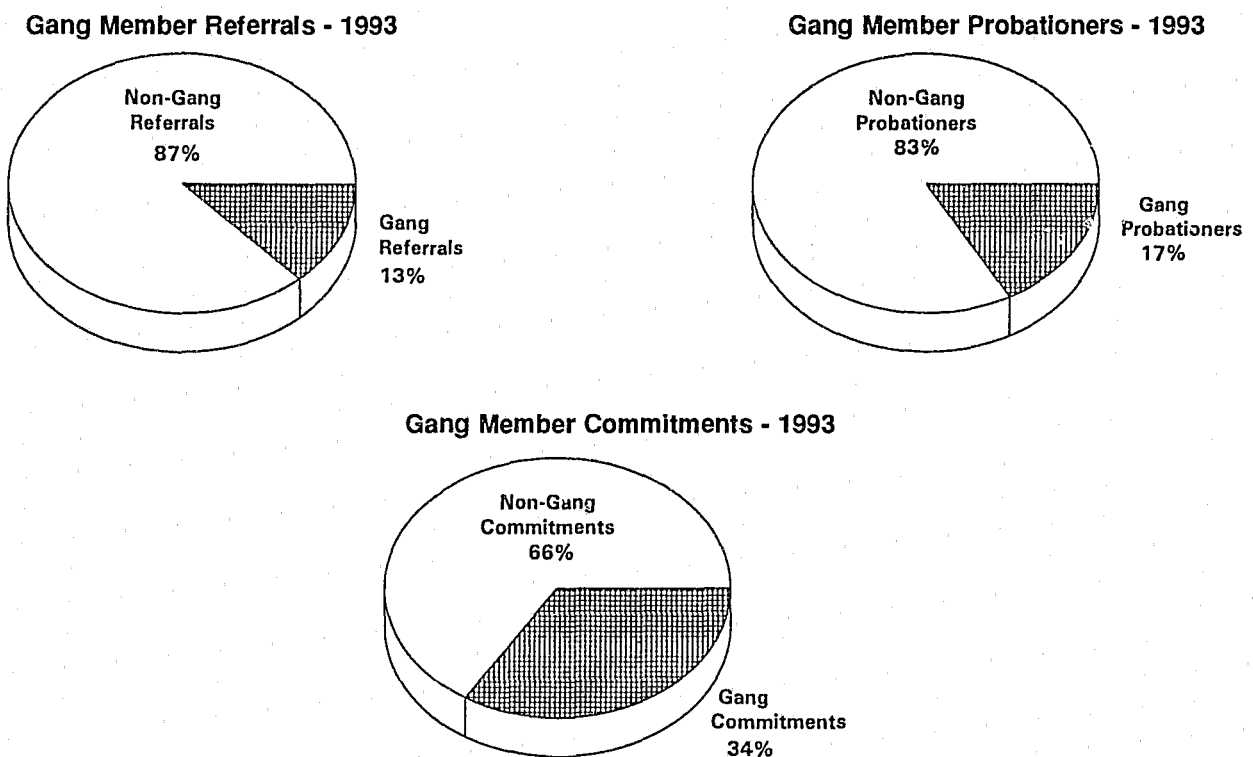
As required by the 70th Legislature, probation departments now assess court and probation fees against adjudicated juveniles. Probation fees are also permissible in informal adjustment cases. In 1993, departments collected \$307,059 in court fees in 6,991 cases; \$386,835 in probation fees in 7,344 cases; and \$167,577 in informal adjustment fees in 5,137 cases.

**Gangs.** Violent crime by Texas juveniles has risen dramatically over the last few years. Homicide has been the fastest growing category, up 210% since 1987. Preliminary analysis reported that this increase is directly related to two major factors: extensive growth in gang related crimes and increased involvement in substance abuse and its impact on both violent as well as property crimes. Both urban and rural counties are experiencing problems with gangs and substance abuse.

The 1993 statewide resource survey resulted in 57 percent of the departments being able to clearly identify a total of 1,930 juvenile gangs in their combined jurisdictions (up 45 percent from 1992). Seventy-four percent of the departments reported evidence of juvenile gangs in their jurisdictions (i.e., groups wearing the same colors, claiming allegiance, flashing signs, etc.), and 66 percent had evidence of illegal gang activity (i.e., graffiti, unusual number of assaults, drive-by shootings, etc.).

The impact of these gangs is evident (see Figure 4). Gang activity represents 13 percent of all referrals and 17 percent of all probationers. In addition, it represents 34 percent of all commitments to TYC. Gang members are not a large part of total activity, but their involvement is in the more serious felony crimes resulting in commitment to TYC. While 107 departments showed evidence of gang activity, only 22 departments had a specialized officer to supervise or work with gang members and 19 departments operated a gang program in their area.

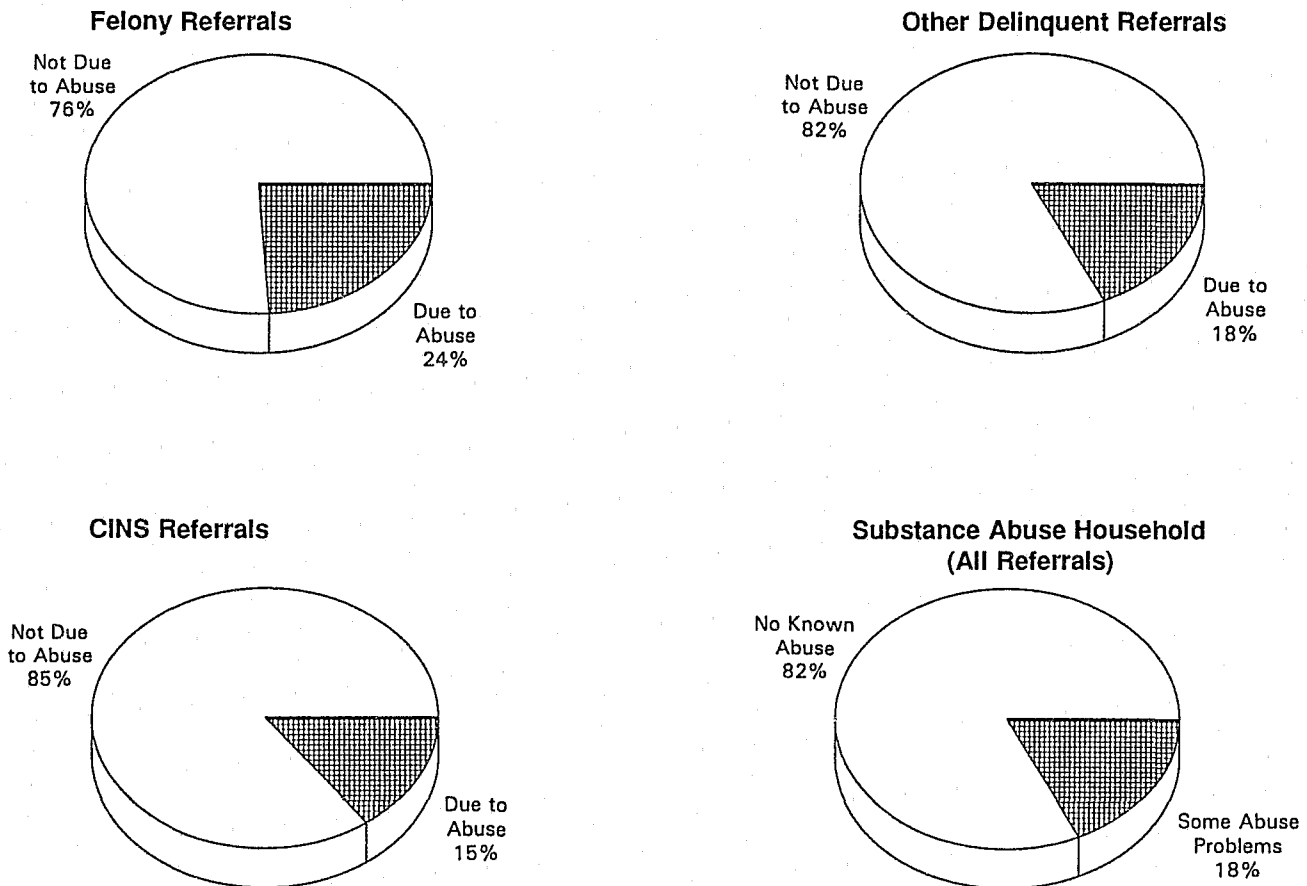
**FIGURE 4  
Juvenile Gang Involvement**



**Substance Abuse.** In 1993, of the 118,068 referrals (77,619 juveniles) local probation departments handled, 5,499 showed symptoms of inhalant abuse, 18,506 drug abuse and 20,506 alcohol abuse. Local probation departments provided services to 7,738 juveniles and spent \$5,873,984 treating substance abuse problems. There were 1,546 juveniles placed in 110 different residential substance abuse facilities, and 2,141 juveniles were placed in 65 different non-residential programs.

The true cost of juvenile involvement in substance abuse can be measured more completely by the number of referrals whose involvement in such abuse is the direct cause of their criminal behavior. In 1993, 18 percent of all referrals came from homes with some substance abuse problems, 24 percent of all felony referrals, 18 percent of all other delinquent conduct referrals and 15 percent of all CINS referrals were directly attributed to the juvenile being a substance abuser (See Figure 5).

**FIGURE 5**  
**Substance Abuse Dependent Crime - 1993**



# JUVENILE PROBATION REFERRAL ACTIVITY

## SUMMARY OF 1993 REPORTED ACTIVITY

### STATEWIDE TOTALS

Summary Information

Item 1. Total number of referrals: 118,068  
 Item 2. Number of children referred: 77,619

Juvenile Referrals

	Alleged Delinquent Behavior														Violtn Lawful Court Order	Total Delin.
	Felony Offenses									Class A & B Misdemeanors						
	Hom	Sex Assault	Robb	Agg Assault	Burg	Theft	HV Theft	Drug Offs	Other	Weapons Violtn	Assault	Theft	Drug Offs	Other		
No Prior Refs	134	1,073	1,038	1,688	6,720	1,348	2,841	1,068	2,967	1,492	4,451	8,736	1,758	8,395	127	43,836
Prior Refs	226	557	1,495	1,929	7,027	1,563	3,867	1,481	2,136	1,312	3,683	4,447	1,467	7,823	5,248	44,261
No Prior Adj.	255	1,464	1,906	2,856	11,653	2,418	5,330	1,926	4,438	2,343	7,090	12,151	2,741	13,925	978	71,474
Prior Adjud.	105	166	627	761	2,094	493	1,378	623	665	461	1,044	1,032	484	2,293	4,397	16,623
No Prior Comm	333	1,615	2,428	3,510	13,527	2,858	6,471	2,428	5,024	2,752	8,023	13,134	3,189	15,922	5,199	86,413
Prior Comm	27	15	105	107	220	53	237	121	79	52	111	49	36	296	176	1,684
Police Agency	355	1,581	2,473	3,510	13,327	2,827	6,456	2,486	4,814	2,668	7,660	12,812	3,017	15,286	3,160	82,432
School	0	11	10	16	53	9	12	11	87	53	276	81	105	339	117	1,180
Other	5	38	50	91	367	75	240	52	202	83	198	290	103	593	2,098	4,485
County Resid.	347	1,554	2,442	3,529	13,043	2,722	6,015	2,401	4,932	2,693	7,993	12,182	3,085	15,682	5,209	83,829
Out of County	11	61	65	65	473	159	532	94	146	95	126	699	114	402	139	3,181
Out of State	2	13	11	13	61	18	146	17	12	13	12	122	13	70	24	547
Out of U.S.A.	0	2	15	10	170	12	15	37	13	3	3	180	13	64	3	540
In School	264	1,521	2,031	2,989	12,145	2,520	5,483	1,888	4,502	2,320	7,383	12,080	2,798	14,327	4,327	76,578
Dropped Out	62	54	272	327	980	252	683	422	286	249	343	729	249	1,089	681	6,678
Susp/Expelled	34	55	230	301	622	139	542	239	315	235	408	374	178	802	367	4,841
10 years old	2	26	9	33	241	12	8	3	78	8	117	227	1	272	2	1,039
11 years old	1	71	24	62	448	27	32	9	173	24	273	565	28	475	26	2,238
12 years old	3	141	105	174	959	123	175	29	333	84	628	1,136	98	1,095	117	5,200
13 years old	15	258	225	378	1,853	310	608	132	712	239	1,241	2,066	322	2,252	459	11,070
14 years old	55	346	488	702	2,818	545	1,460	404	1,006	508	1,745	2,602	597	3,356	976	17,608
15 years old	96	343	704	1,002	3,371	847	2,084	731	1,291	742	2,048	3,074	901	4,039	1,527	22,800
16 years old	169	378	921	1,207	3,749	937	2,233	1,150	1,420	1,147	1,944	3,336	1,222	4,425	1,761	25,999
17 years old	19	67	57	59	308	110	108	91	90	52	138	177	56	304	507	2,143
White Male	39	711	307	691	4,847	702	1,471	244	1,707	641	1,989	2,888	863	4,828	1,248	23,176
White Female	10	35	43	129	412	166	431	98	281	42	662	1,458	191	1,027	323	5,308
Black Male	137	423	1,293	968	2,553	793	1,926	1,372	966	794	1,829	2,053	495	3,122	1,437	20,161
Black Female	11	7	93	247	121	145	197	140	203	83	595	1,261	46	574	218	3,941
Hispanic Male	154	427	709	1,393	5,172	889	2,248	567	1,666	1,162	2,200	3,185	1,389	5,511	1,776	28,448
Hisp. Female	3	13	46	148	317	177	326	77	217	55	800	1,928	203	948	311	5,569
Un/Allen Male	0	2	15	12	129	4	14	37	8	6	4	135	13	51	6	436
Un/Allen Fem.	0	0	0	0	0	2	0	1	0	0	1	31	0	3	0	38
Other Male	6	11	24	25	191	31	81	10	50	21	47	190	19	134	43	883
Other Female	0	1	3	4	5	2	14	3	5	0	7	54	6	20	13	137
Total Refs.	360	1,630	2,533	3,617	13,747	2,911	6,708	2,549	5,103	2,804	8,134	13,183	3,225	16,218	5,375	88,097

(continued)

	Alleged C.I.N.S. Behavior								Total CINS	Grand Total Delin. and CINS
	Status Only		Other than Status Offenses							
	Truancy	Runway	Theft	Disord Conduct	Inhalt	DWI / DUID	Liquor Laws	Other		
No Prior Refs	2,144	7,915	867	1,579	95	116	607	1,363	14,686	58,522
Prior Refs	2,584	8,140	518	1,363	394	60	582	1,644	15,285	59,546
No Prior Adj.	4,260	15,052	1,281	2,588	361	152	1,038	2,504	27,236	98,710
Prior Adjud.	468	1,003	104	354	128	24	151	503	2,735	19,358
No Prior Comm	4,713	16,019	1,579	2,914	463	176	1,167	2,932	29,763	116,176
Prior Comm	15	36	6	28	26	0	22	75	208	1,892
Police Agency	1,260	15,463	1,322	2,594	470	169	1,132	2,305	24,715	107,147
School	3,132	34	9	199	5	1	11	140	3,531	4,711
Other	336	558	54	149	14	6	46	562	1,725	6,210
County Resid.	4,701	14,622	1,278	2,865	484	158	1,068	2,797	27,973	111,802
Out of County	25	941	88	70	5	17	102	162	1,410	4,591
Out of State	0	471	14	5	0	1	8	41	540	1,087
Out of U.S.A.	2	21	5	2	0	0	11	7	48	588
In School	4,482	14,838	1,312	2,778	356	155	1,064	2,533	27,518	104,096
Dropped Out	85	827	37	72	90	19	101	278	1,509	8,187
Susp/Expelled	161	390	36	92	43	2	24	196	944	5,785
10 years old	30	62	41	50	0	0	2	30	215	1,254
11 years old	98	263	72	91	3	0	6	68	601	2,839
12 years old	282	991	154	199	26	0	13	152	1,817	7,017
13 years old	652	2,467	224	407	99	0	75	340	4,264	15,334
14 years old	1,045	3,912	290	659	103	2	160	584	6,755	24,363
15 years old	1,412	4,514	309	732	135	24	311	828	8,265	31,065
16 years old	1,125	3,668	277	766	117	138	581	880	7,552	33,551
17 years old	84	178	18	38	6	12	41	125	502	2,645
White Male	948	2,869	462	788	56	82	358	550	6,113	29,289
White Female	756	4,880	132	227	16	11	142	281	6,445	11,753
Black Male	335	882	238	477	6	2	73	600	2,613	22,774
Black Female	261	1,183	118	185	2	1	16	166	1,932	5,873
Hispanic Male	1,432	1,978	325	920	332	79	502	1,058	6,626	35,074
Hisp. Female	924	4,101	98	336	76	0	95	303	5,933	11,502
Un/Allen Male	6	8	2	1	0	1	4	23	459	
Un/Allen Fem.	4	13	0	0	0	0	0	17	55	
Other Male	31	81	10	6	1	0	2	37	168	
Other Female	31	60	0	2	0	0	8	101	238	
Total Refs.	4,728	16,055	1,385	2,942	489	176	1,189	3,007	29,971	118,068

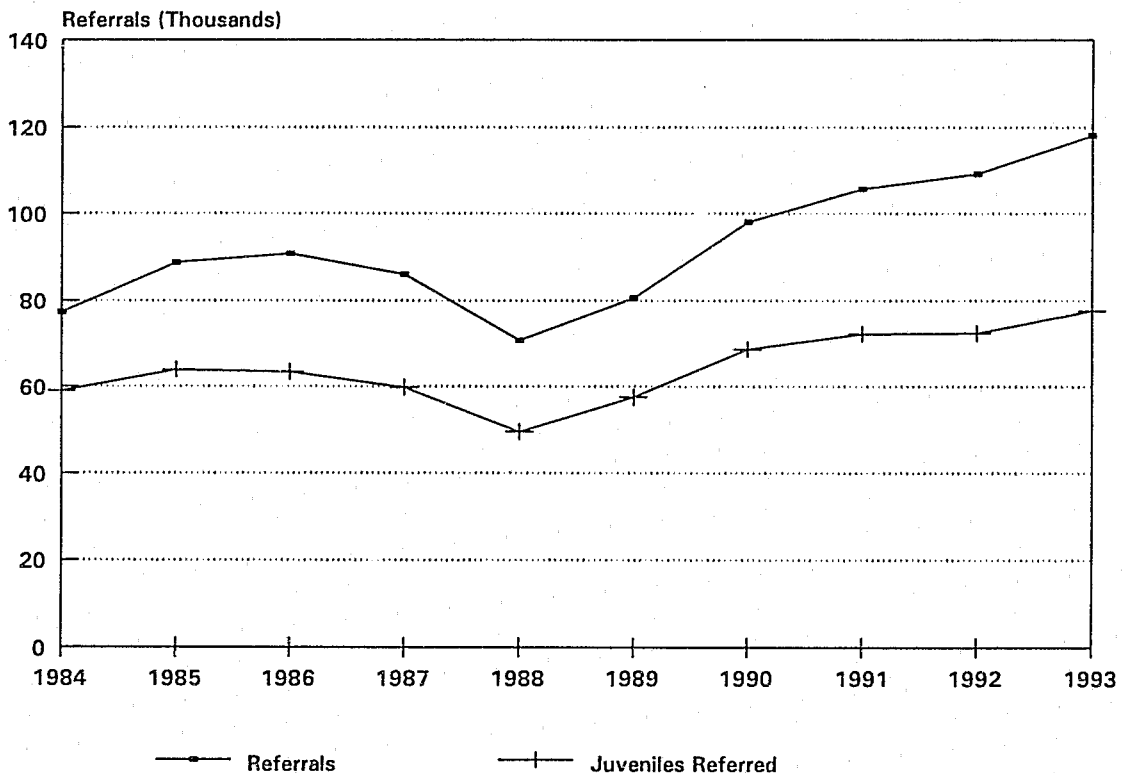
# STATEWIDE JUVENILE ACTIVITY 1993

Statewide data on referrals, detentions, dispositional activities, and supervision workloads are contained in the four subsections that follow. Prior year comparisons are provided where possible. An abbreviated county-by-county summary of each of the four parts is appended.

## JUVENILE REFERRAL ACTIVITY

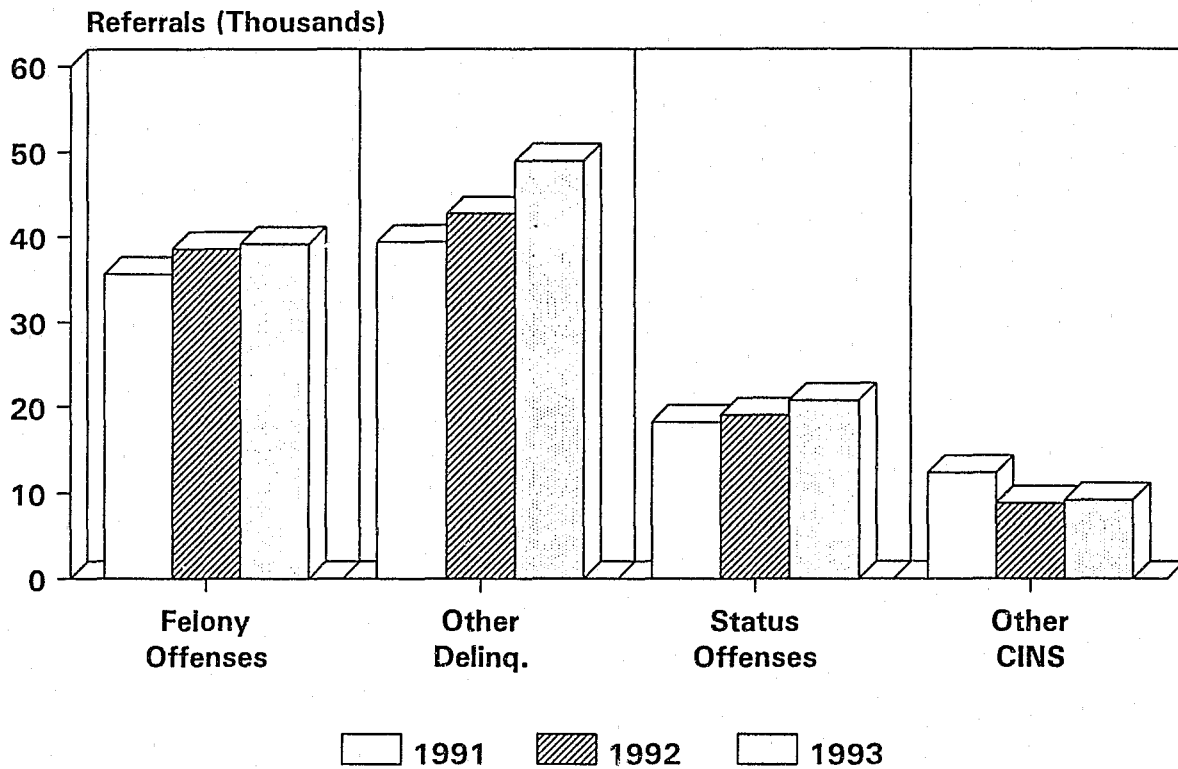
There were 118,068 referrals to juvenile probation authorities in Texas, an increase of more than 8 percent over 1992 (see Figure 6). The number of juveniles referred in 1993 increased to 77,619, compared to 72,383 juveniles in 1992. The percentage of referred juveniles with prior referrals was 50 percent, with 16% having been previously adjudicated by the courts. Most juveniles referred were in-county residents (95 percent), and in school (88 percent). The proportion of dropouts referred increased from six to seven percent. Police agencies made 9 out of 10 referrals. The number of referred juveniles who had previously been committed to TYC dropped significantly from 2.3% in 1992, to 1.6% in 1993.

**FIGURE 6  
Referrals vs. Juveniles Referred**



The increase in referrals in 1993 is primarily attributed to the increase in violent and "other" delinquent referrals (non-felony), which increased 13% and 15%, respectively, over 1992. The increase in total felony referrals was not as significant as recent years, increasing only 1.5% over 1992.

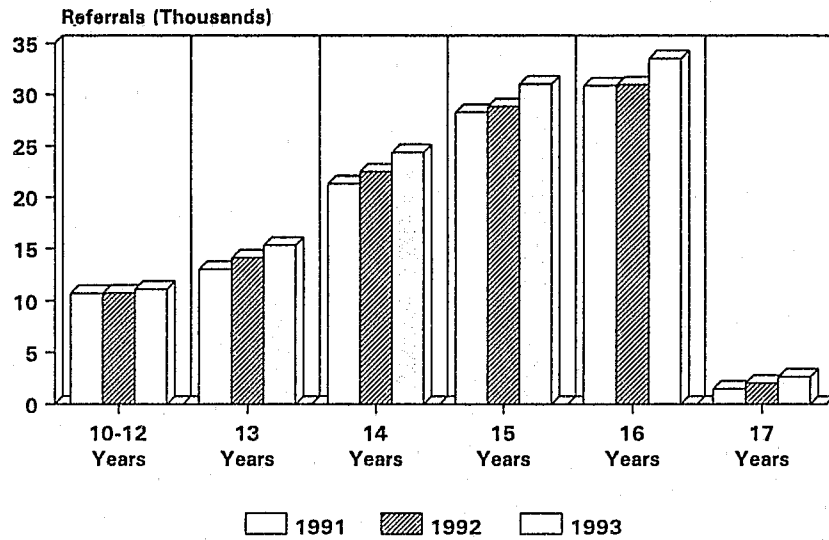
**FIGURE 7**  
**Offense Distribution of Referrals**



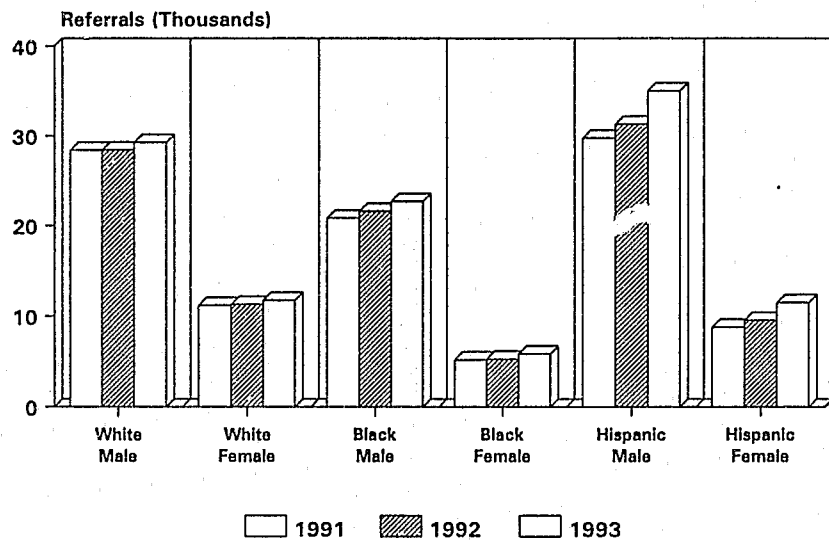


The distribution of referrals by age, sex, and race generally showed few changes in 1993. Each race and sex had at least a slight increase, while the most notable increase was the hispanic male category, with an increase of almost 12% over 1992.

**FIGURE 8**  
**Age Distribution of Referrals**



**FIGURE 9**  
**Sex and Race Distribution of Referrals**



# JUVENILE PROBATION DETENTION ACTIVITY

## SUMMARY OF 1993 REPORTED ACTIVITY

### STATEWIDE TOTALS

Juvenile Detention

	Alleged Delinquent Behavior																Violtn Lawful Court Order	Total Delin.
	Felony Offenses										Class A & B Misdemeanors							
	Hom	Sex Assalt	Robb	Agg Assalt	Burg	Theft	MV Theft	Drug Offs	Other	Weapons Violtn	Assalt	Theft	Drug Offs	Other				
Non-Secure	0	5	2	10	47	3	27	0	20	3	17	27	4	32	14	211		
Secure	303	629	1,723	2,297	4,790	1,011	3,276	1,526	1,958	1,365	2,293	2,052	782	3,987	4,127	32,119		
Offense/Behav	293	600	1,678	2,220	4,541	944	3,074	1,471	1,750	1,138	2,003	1,817	727	3,378	3,882	29,516		
No Alt Place	9	25	37	59	166	44	166	47	172	204	258	187	46	547	185	2,152		
Other	1	4	8	18	83	23	36	8	36	23	32	48	9	62	60	451		
< 24 hours	44	161	553	759	1,910	317	1,184	540	637	495	1,110	1,272	444	1,987	781	12,194		
24 hrs-10 day	52	263	545	831	2,022	514	1,390	625	774	601	932	607	258	1,418	2,126	12,958		
10 days or >	207	205	625	707	858	180	702	361	547	269	251	173	80	582	1,220	6,967		

(continued)

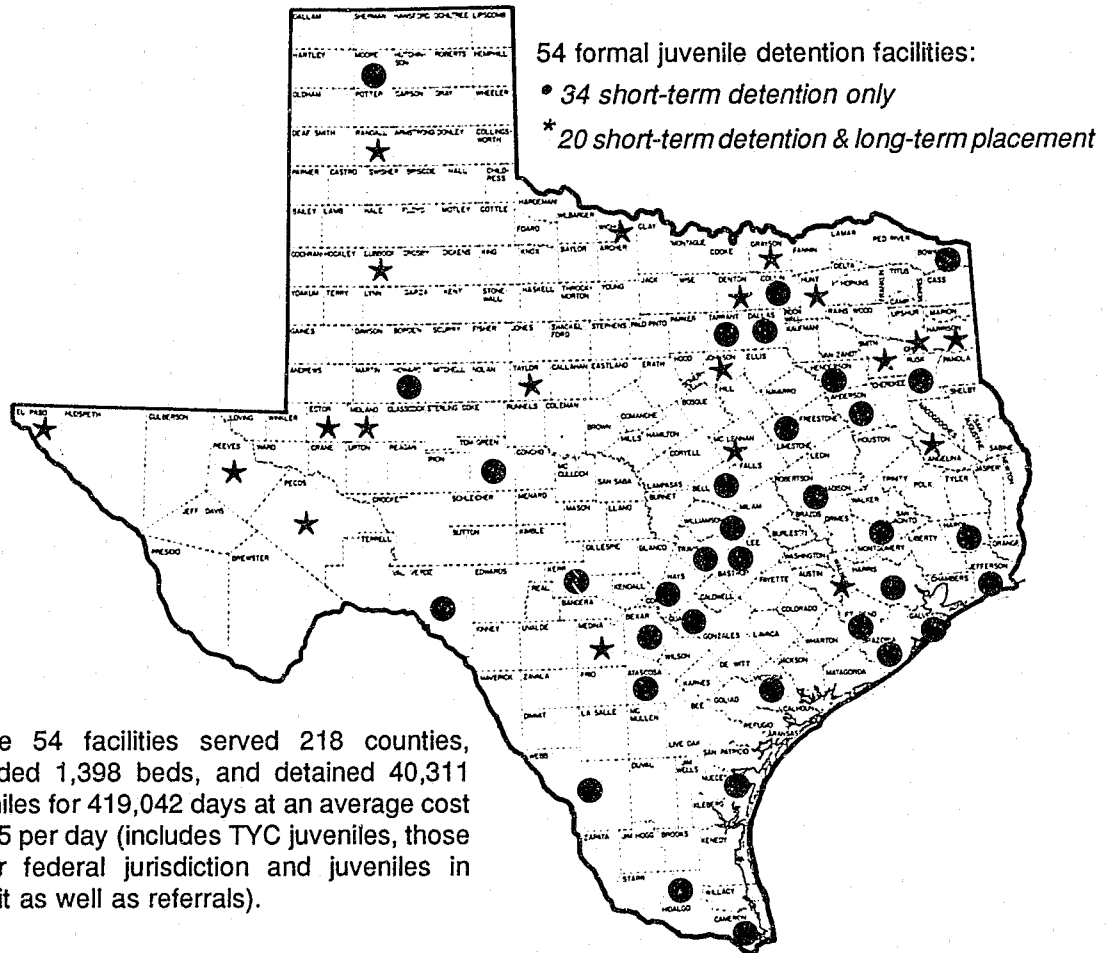
	Alleged C.I.N.S. Behavior									Total CINS	Grand Total Delin. and CINS
	Status Only		Other than Status Offenses								
	Truancy	Runway	Theft	Disord Conduct	Inhalt	DWI / DUID	Liquor Laws	Other			
Non-Secure	9	370	2	3	4	1	1	1	391	602	
Secure	136	1,937	49	254	160	28	149	214	2,927	35,046	
Offense/Behav	41	1,244	45	229	154	27	122	139	2,001	31,517	
No Alt Place	95	628	3	23	6	1	22	52	830	2,982	
Other	0	65	1	2	0	0	5	23	96	547	
< 24 hours	121	1,734	37	157	75	19	118	147	2,408	14,602	
24 hrs-10 day	12	166	12	85	71	6	29	54	435	13,393	
10 days or >	3	37	0	12	14	3	2	13	84	7,051	

## JUVENILE DETENTION ACTIVITY

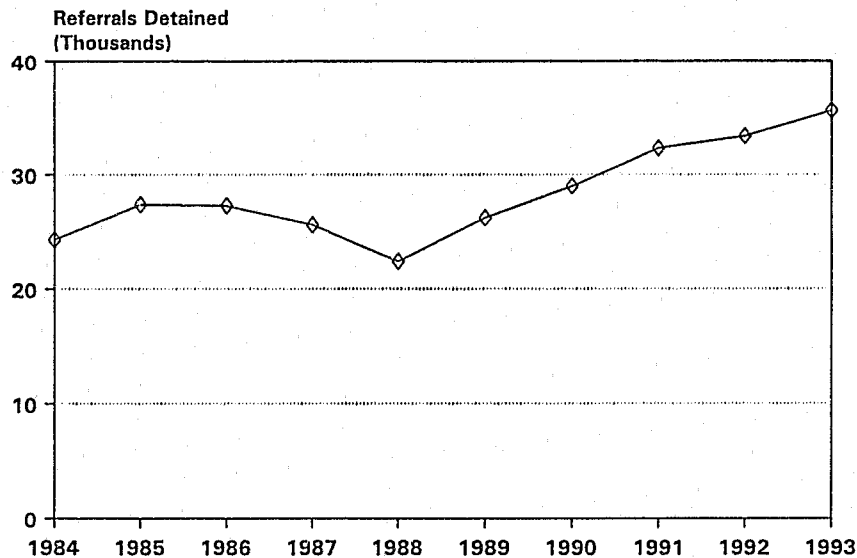
Of the 118,068 juveniles referred, 82,420 were immediately released to their parents or other responsible adults. The remaining 35,648 were detained: 35,046 were held in the 54 secure detention facilities, and 602 were placed in non-secure detention.

Referrals increased 8 percent from 1992, and the incidence of secure detention increased by 7 percent (see Figure 11). The use of non-secure alternatives declined 10% from the preceding year. Forty-two percent of all juveniles detained were released in less than one day, compared to 48 percent in 1992. Nine percent, or 2,982, of the juveniles securely detained could have been placed in alternative non-secure settings had they been available. Statewide, detention facilities operated at 82 percent average capacity for 1993, with 10 facilities operating at or near 100% capacity.

**FIGURE 10**  
**Juvenile Detention Centers**  
**1993**



**FIGURE 11**  
**Referrals in Juvenile Detention Centers**



# JUVENILE PROBATION DISPOSITION ACTIVITY

## SUMMARY OF 1993 REPORTED ACTIVITY

### STATEWIDE TOTALS

Juvenile Dispositions

	Alleged Delinquent Behavior															Violtn Lawful Court Order	Total Delin.
	Felony Offenses									Class A & B Misdemeanors							
	Hom	Sex Assalt	Robb	Agg Assalt	Burg	Theft	HV Theft	Drug Offs	Other	Weapons Violtn	Assalt	Theft	Drug Offs	Other			
Counsel/Rel Inform Adjust	8 0	216 156	259 181	596 306	2,557 2,792	467 728	1,653 659	426 253	999 1,023	698 517	3,046 1,838	6,448 3,709	1,271 688	8,040 3,098	2,769 23	29,453 15,971	
Pros. Refused Adjud/on Prob	46 27	524 456	623 581	933 746	3,260 3,517	764 436	1,813 1,309	595 703	1,390 1,236	665 712	1,753 1,016	1,394 758	390 347	2,559 1,384	1,589 245	18,298 13,473	
Commit to TYC Cert as Adult	76 110	78 24	233 66	234 52	292 24	48 1	176 5	129 11	114 34	47 *****	63 *****	31 *****	15 *****	94 *****	187 *****	1,817 327	
Vol Placement Crt Placement	1 9	18 73	9 174	36 200	97 645	13 100	44 294	11 169	26 172	15 79	39 196	40 151	10 59	74 283	38 442	471 3,046	

(continued)

	Alleged C.I.N.S. Behavior									Total CINS	Grand Total Delin. and CINS
	Status Only		Other than Status Offenses								
	Truancy	Runway	Theft	Disord Conduct	Inhalt	DWI / DUID	Liquor Laws	Other			
Counsel/Rel Inform Adjust	3,303 741	12,574 986	1,104 115	2,224 211	231 77	62 57	791 123	1,872 251	22,161 2,561	51,614 18,532	
Pros. Refused Adjud/on Prob	494 141	1,240 223	77 8	235 45	69 20	22 43	88 19	159 39	2,384 538	20,682 14,011	
Commit to TYC Cert as Adult	*****	*****	*****	*****	*****	*****	*****	*****	*****	1,817 327	
Vol Placement Crt Placement	5 25	149 80	1 0	6 7	10 12	0 1	3 12	4 11	178 148	649 3,194	

## JUVENILE DISPOSITION ACTIVITY

Dispositions were made in 106,983 juvenile cases (see Figure 12). Juvenile probation departments disposed of 70,146 of these cases, with 51,614 cases counseled and released, diverted, or dismissed and 18,532 cases placed on informal adjustment.

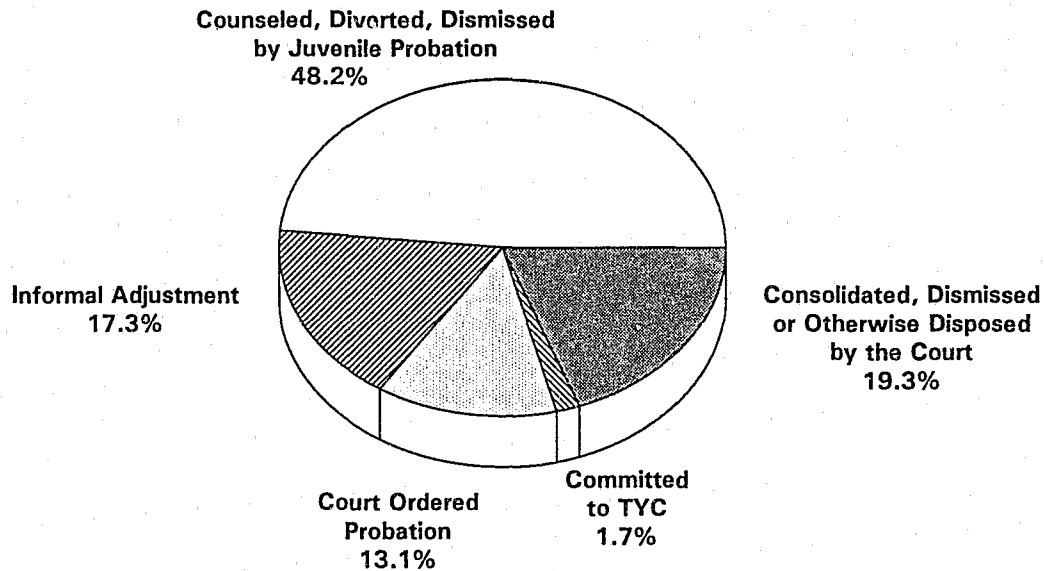
The remaining 36,837 cases were resolved by the juvenile court or prosecutor. Of these, the court adjudicated to probation 14,011 cases; certified and transferred to adult court 327 cases; refused, consolidated, dismissed or otherwise disposed 20,682 cases; and adjudicated and committed to TYC 1,817 cases.

Although the number of serious referrals increased, the actual rate at which juvenile courts committed juveniles to TYC declined. Several factors affect this.

- 536 juveniles were placed on probation in long-term, local secure detention facility programs;
- 1,483 juveniles were informally adjusted or placed on probation in available non-secure alternative placements;
- 3,109 juveniles were diverted using TJPC's expanded Intensive Supervision Program;

- 1,976 juveniles were placed on community-based probation using electronic monitoring devices;
- the Border Children Justice Projects, which serve juvenile Mexican citizens charged with criminal offenses in Texas, diverted 310 juveniles from commitment to TYC;
- 359 juveniles were served in specialized day treatment programs;
- an additional 260 juveniles were diverted from TYC through "other" programs or services (i.e. boot camps); and,
- in 1993, only 249 of the 1,817 commitments to TYC were due to lack of suitable alternative placement resources available at the time of disposition due largely to increased state provided community corrections funding.

**FIGURE 12**  
**Juvenile Dispositions - 1993**



**JUVENILE PROBATION SUPERVISION WORKLOAD ACTIVITY  
SUMMARY OF 1993 REPORTED ACTIVITY  
STATEWIDE TOTALS**

**SUPERVISION WORKLOAD**

**JUVENILES RECEIVING COURT ORDERED SUPERVISION**

<u>Beginning of Period</u>	<u>Added to Supervision</u>	<u>Left Supervision</u>	<u>End of Period</u>
14,927	13,727	12,827	15,827
		<u>Unsuccessful Terminations</u>	
		1,336	

**ALL OTHER SUPERVISIONS**

<u>Beginning of Period</u>	<u>Added to Supervision</u>	<u>Left Supervision</u>	<u>End of Period</u>
14,649	39,643	37,944	16,348

Notes:

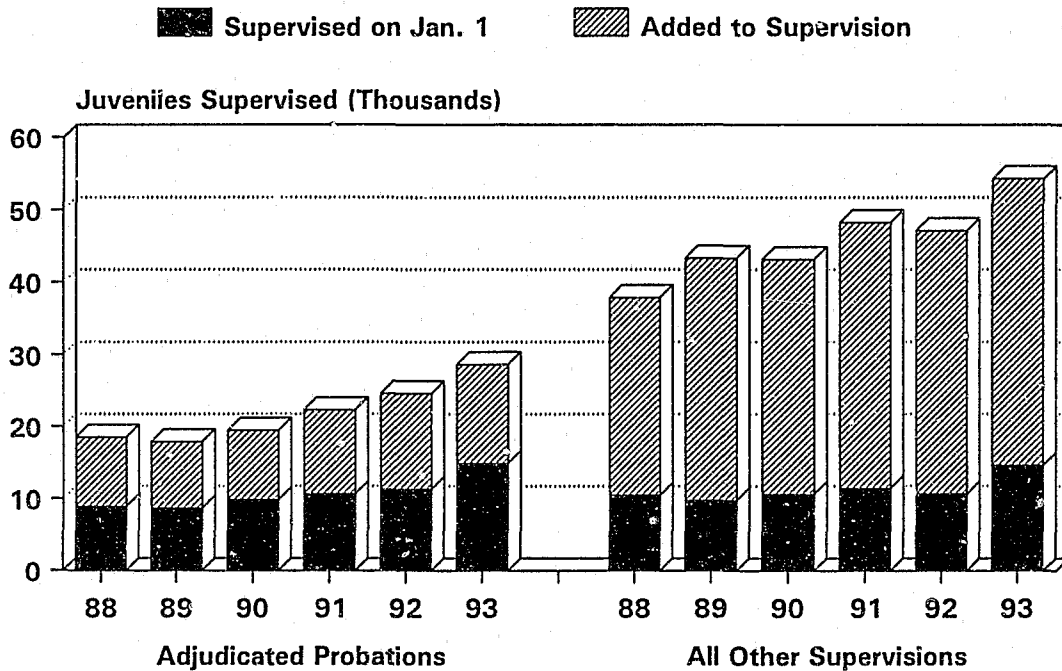
1. Cases shown as added to supervision include both cases originally filed in a jurisdiction and cases transferred from other jurisdictions in or outside Texas.
2. All other supervisions are informal adjustments, temporary supervisions of juveniles whose cases are pending dispositions but who require active supervision, and short term courtesy supervisions.
3. It is possible that a juvenile may be counted in more than one category.

## SUPERVISION WORKLOAD ACTIVITY

On January 1, 1993, 29,576 juveniles were receiving active supervision from juvenile probation departments. During the year, 13,727 court ordered probations and 39,643 informal adjustments and temporary supervisions were added for a total of 53,370 (see Figure 13).

During 1993, 1,336 (10.4%) of the 12,827 court ordered probations failed and resulted in either TYC commitment or adult criminal trial. On December 31, 1993, 32,175 juveniles were under active supervision. Juvenile probation departments accepted 118,068 referrals and supervised 82,946 juveniles.

**FIGURE 13**  
**Supervision Workload**



## SUMMARY

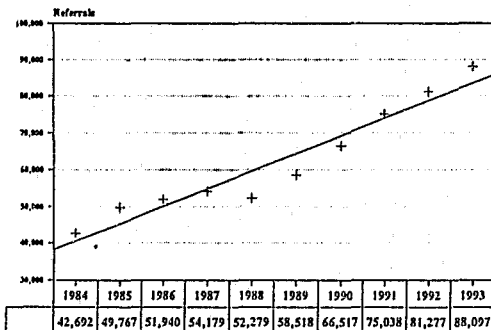
Examination of 1993 statistics, which included discussions with numerous juvenile justice personnel, indicates that juvenile involvement with drug and gang related activities continues to be the major cause of the increase in serious juvenile crime. This conclusion was also reported in 1989, 1990, 1991 and 1992.

In 1993, referrals for delinquent offenses rose just over 8%. This increase remained nearly the same as 1992; while referrals for violent felonies were up just under 13%, compared to a 1992 increase of over 17%. Most notable was the rate of increase in total felonies. *Total felonies increased only 1.5%*, compared to an 8.2% increase in 1992 and a 15.3% increase in 1991. One major reason for this downturn is to be found in the 17.5% increase in the average daily population of adjudicated probationers, most of whom were part of enhanced supervision and treatment programs operating in local communities statewide.

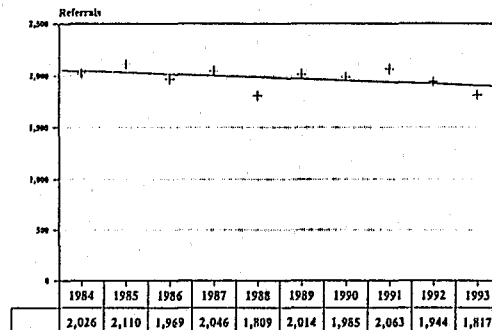
These favorable results are directly related to the Legislature's commitment to the support of locally developed and operated community based corrections and delinquency prevention programs. Beginning September 1, 1992 (fiscal year 1993), community corrections programs were available statewide due to increased funding by the Legislature.

These community corrections funds served as the major contributor to increased and enhanced community based program success. The implementation of these funds impacted both the rate of increase in felony activity and, just as significant, the sizable decrease in the number and rate of youth committed to TYC state facilities. These rates of success would have been even more notable had fiscal year 1994 funding maintained the same level of effort. However, increased funding for adult prisons and jails allowed only for "current dollars" and not "current services" enhancement.

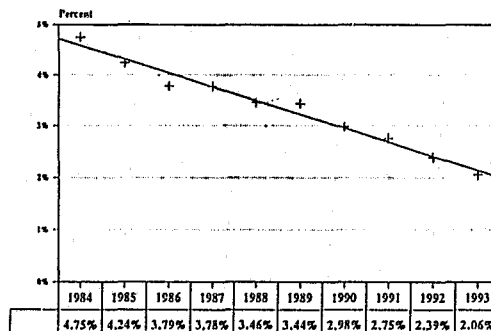
**Delinquent Referrals**  
1984-1993



**TYC Commitments**  
1984-1993



**TYC Commitments**  
as a percentage of delinquent referrals

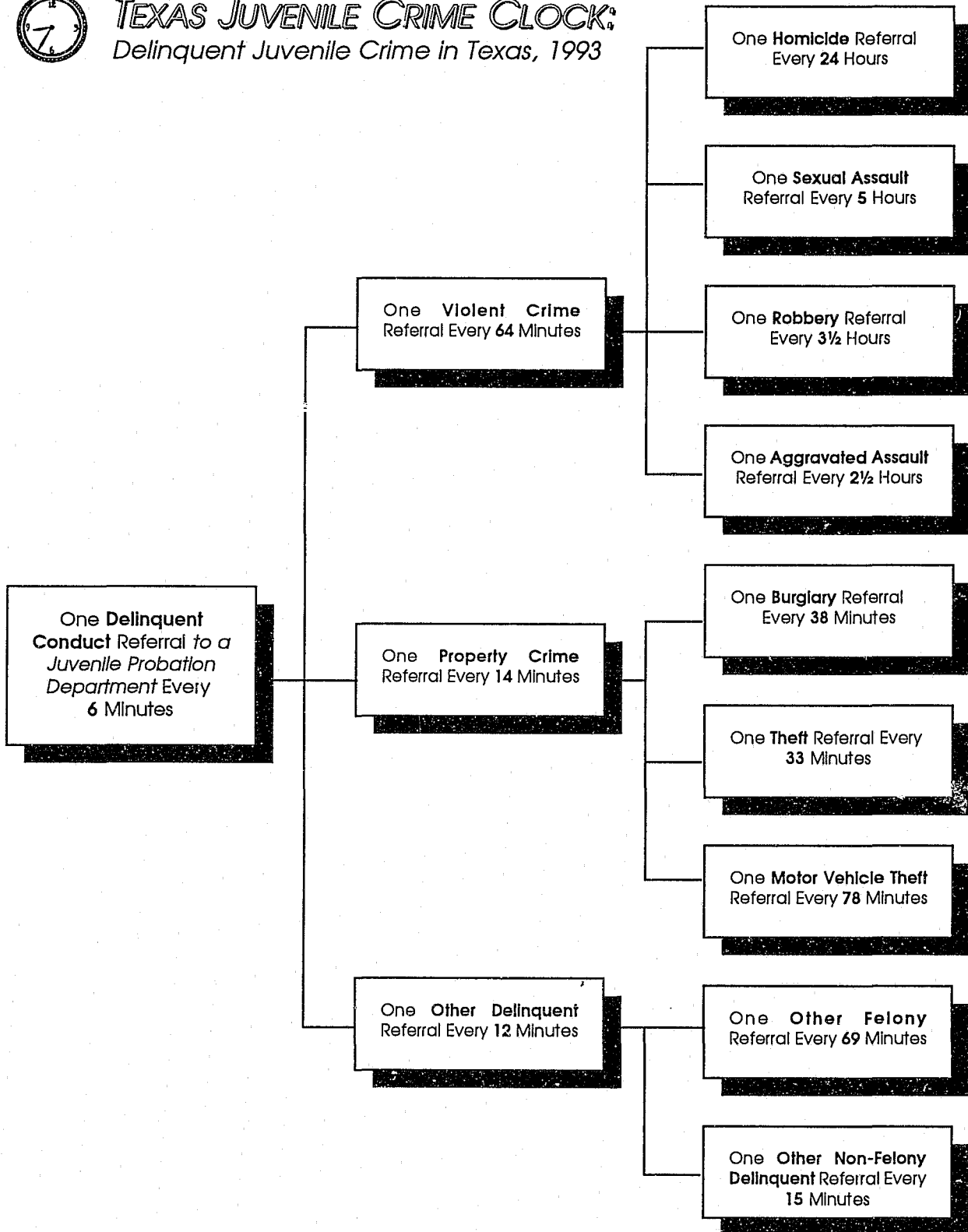




# TEXAS JUVENILE PROBATION COMMISSION



**TEXAS JUVENILE CRIME CLOCK:**  
*Delinquent Juvenile Crime in Texas, 1993*



# APPENDIX

**JUVENILE PROBATION REFERRAL ACTIVITY**  
**SUMMARY OF 1993 REPORTED ACTIVITY**  
**ALPHABETICAL BY COUNTY**

County	1990 Total Population	1990 Juv Population	Number of Referrals to Juv Depts for				Total Number Referrals	Referral Rate	No. of Children Referred
			Allgd Delin Felony	Allgd Delin Other	Allgd CINS Status	Allgd CINS Other			
ANDERSON	48,024	4,415	94	89	45	20	248	5.6%	179
ANDREWS	44,338	1,941	28	60	37	5	130	6.7%	104
ANGELINA	69,884	7,928	157	246	115	204	722	9.1%	470
ARANSAS	17,892	1,740	64	30	1	0	95	5.5%	69
ARCHER	7,973	912	2	2	1	1	6	0.7%	5
ARMSTRONG	2,021	222	3	1	1	0	5	2.3%	5
ATASCOSA	30,533	4,025	37	76	55	28	196	4.9%	137
AUSTIN	19,832	2,115	32	37	40	41	150	7.1%	105
BAILEY	7,064	886	3	9	12	19	43	4.9%	30
BANDERA	10,562	1,040	23	16	11	3	53	5.1%	47
BASTROP	38,263	4,162	62	46	16	5	129	3.1%	107
BAYLOR	4,385	361	6	8	3	15	32	8.9%	26
BEE	25,135	3,036	51	51	7	9	118	3.9%	89
BELL	191,088	18,238	430	640	101	2	1,173	6.4%	585
BEXAR	1,185,394	127,901	2,225	3,669	912	754	7,560	5.9%	5,894
BLANCO	5,972	577	12	4	1	3	20	3.5%	20
BORDEN	799	85	0	0	0	0	0	0.0%	0
BOSQUE	15,125	1,400	0	9	1	2	12	0.9%	12
BOWIE	81,665	8,979	239	388	59	181	867	9.7%	626
BRAZORIA	191,707	21,267	672	880	779	312	2,643	12.4%	1,326
BRAZOS	121,862	9,006	275	343	541	12	1,171	13.0%	739
BREWSTER	8,681	752	8	14	3	27	52	6.9%	49
BRISCOE	1,971	231	2	2	0	2	6	2.6%	6
BROOKS	8,204	1,008	30	23	8	10	71	7.0%	54
BROWN	34,371	3,769	48	60	47	17	172	4.6%	128
BURLESON	13,625	1,434	18	12	11	6	47	3.3%	40
BURNET	22,677	2,225	72	75	21	73	241	10.8%	193
CALDWELL	26,392	2,970	48	63	30	4	145	4.9%	108
CALHOUN	19,053	2,234	71	69	31	28	199	8.9%	132
CALLAHAN	11,859	1,305	32	13	8	5	58	4.4%	44
CAMERON	260,120	38,143	729	984	342	99	2,154	5.6%	1,498
CAMP	9,904	1,084	14	19	9	4	46	4.2%	40
CARSON	6,576	837	6	8	9	0	23	2.7%	23
CASS	29,982	3,386	49	51	34	15	149	4.4%	123
CASTRO	9,070	1,307	11	12	3	16	42	3.2%	42
CHAMBERS	20,088	2,528	35	22	0	1	58	2.3%	37
CHEROKEE	41,049	4,199	45	67	83	6	201	4.8%	167
CHILDRESS	5,953	658	8	11	7	1	27	4.1%	25
CLAY	10,024	1,054	20	6	1	1	28	2.7%	22
COCHRAN	4,377	560	7	13	4	5	29	5.2%	27

**JUVENILE PROBATION REFERRAL ACTIVITY**  
**SUMMARY OF 1993 REPORTED ACTIVITY**  
**ALPHABETICAL BY COUNTY (continued)**

County	1990 Total Population	1990 Juv Population	Number of Referrals to Juv Depts for				Total Number Referrals	Referral Rate	No. of Children Referred
			Allgd Delin Felony	Behavior Other	Allgd CINS Status	Behavior Other			
COKE	3,424	335	6	17	2	2	27	8.1%	22
COLEMAN	9,710	923	14	11	0	6	31	3.4%	26
COLLIN	264,036	28,101	322	397	160	40	919	3.3%	645
COLLINGSWORTH	3,573	364	4	10	0	0	14	3.8%	14
COLORADO	18,383	1,846	31	64	0	0	95	5.1%	64
COMAL	51,832	5,035	67	156	75	36	334	6.6%	266
COMANCHE	13,381	1,227	3	5	1	1	10	0.8%	10
CONCHO	3,044	285	2	3	0	1	6	2.1%	6
COOKE	30,777	3,386	55	28	2	6	91	2.7%	69
CORYELL	64,213	5,696	138	90	35	5	268	4.7%	198
COTTLE	2,247	243	3	0	0	4	7	2.9%	6
CRANE	4,652	621	6	23	1	15	45	7.2%	27
CROCKETT	4,078	486	14	6	14	21	55	11.3%	42
CROSBY	7,304	890	6	10	0	3	19	2.1%	18
CULBERSON	3,407	411	8	8	17	12	45	10.9%	42
DALLAM	5,461	630	13	27	20	20	80	12.7%	49
DALLAS	1,852,810	172,691	5,125	4,345	1,583	324	11,377	6.6%	8,049
DAWSON	14,349	1,812	32	54	17	36	139	7.7%	93
DEAF SMITH	19,153	2,620	71	116	61	36	284	10.8%	211
DELTA	4,857	463	1	7	5	8	21	4.5%	17
DENTON	273,525	25,286	452	607	374	23	1,456	5.8%	1,015
DEWITT	18,840	2,017	54	72	18	4	148	7.3%	92
DICKENS	2,571	273	2	2	5	2	11	4.0%	11
DIMIT	10,433	1,631	27	12	3	5	47	2.9%	31
DONLEY	3,696	343	4	3	0	0	7	2.0%	7
DUVAL	12,918	1,691	7	23	12	39	81	4.8%	73
EASTLAND	18,488	1,728	36	25	4	0	65	3.8%	63
ECTOR	118,934	13,602	232	361	52	22	667	4.9%	569
EDWARDS	2,266	306	21	6	0	12	39	12.7%	19
ELLIS	85,167	10,091	132	181	207	27	547	5.4%	434
EL PASO	591,610	74,474	903	1,621	0	66	2,590	3.5%	2,036
ERATH	27,991	2,450	62	63	36	30	191	7.8%	146
FALLS	17,712	1,711	26	35	3	2	66	3.9%	55
FANNIN	24,804	2,358	54	93	13	34	194	8.2%	124
FAYETTE	20,095	1,883	37	24	3	0	64	3.4%	60
FISHER	4,842	516	12	17	30	3	62	12.0%	39
FLOYD	8,497	1,005	20	31	16	15	82	8.2%	57
FOARD	1,794	163	2	1	2	0	5	3.1%	3
FORT BEND	225,421	27,413	570	738	265	97	1,670	6.1%	1,300
FRANKLIN	7,802	767	13	8	11	16	48	6.3%	33

**JUVENILE PROBATION REFERRAL ACTIVITY**  
**SUMMARY OF 1993 REPORTED ACTIVITY**  
**ALPHABETICAL BY COUNTY (continued)**

County	1990 Total Population	1990 Juv Population	Number of Referrals to Juv Depts for				Total Number Referrals	Referral Rate	No. of Children Referred
			Allgd Delin Felony	Behavior Other	Allgd CINS Status	Behavior Other			
FREESTONE	15,818	1,796	12	30	17	10	69	3.8%	33
FRIO	13,472	1,914	45	104	46	39	234	12.2%	143
GAINES	14,123	1,977	35	22	5	7	69	3.5%	68
GALVESTON	217,399	22,720	728	623	30	9	1,390	6.1%	800
GARZA	5,143	680	1	0	2	6	9	1.3%	8
GILLESPIE	17,204	1,525	28	42	14	6	90	5.9%	76
GLASSCOCK	1,447	171	0	0	0	0	0	0.0%	0
GOLIAD	5,980	623	20	25	25	1	71	11.4%	55
GONZALES	17,205	1,895	54	24	9	0	87	4.6%	68
GRAY	23,967	2,464	19	11	5	3	38	1.5%	31
GRAYSON	95,021	9,377	243	336	16	24	619	6.6%	410
GREGG	104,948	10,851	299	419	200	102	1,020	9.4%	523
GRIMES	18,828	1,898	40	33	25	24	122	6.4%	77
GUADALUPE	64,873	6,989	107	298	189	278	872	12.5%	567
HALE	34,671	4,124	107	217	63	65	452	11.0%	258
HALL	3,905	403	2	1	0	0	3	0.7%	3
HAMILTON	7,733	658	16	4	5	8	33	5.0%	22
HANSFORD	5,848	701	9	9	4	3	25	3.6%	19
HARDEMAN	5,283	549	7	7	2	1	17	3.1%	13
HARDIN	41,320	4,921	121	86	53	78	338	6.9%	254
HARRIS	2,818,199	289,513	6,452	6,363	1,738	1,488	16,041	5.5%	8,653
HARRISON	57,483	6,676	120	228	14	20	382	5.7%	246
HARTLEY	3,634	468	2	4	3	1	10	2.1%	7
HASKELL	6,820	669	7	6	1	3	17	2.5%	15
HAYS	65,614	6,076	116	245	40	3	404	6.6%	279
HEMPHILL	3,720	456	9	15	2	9	35	7.7%	29
HENDERSON	58,543	5,620	99	100	50	18	267	4.8%	206
HIDALGO	383,545	57,436	648	760	245	155	1,808	3.1%	1,154
HILL	27,146	2,687	69	117	61	122	369	13.7%	165
HOCKLEY	24,199	3,008	46	40	25	41	152	5.1%	104
HOOD	28,981	2,829	35	79	131	8	253	8.9%	170
HOPKINS	28,833	2,945	37	56	53	90	236	8.0%	145
HOUSTON	21,375	2,081	14	31	0	12	57	2.7%	49
HOWARD	32,343	3,245	85	101	92	61	339	10.4%	242
HUDSPETH	2,915	366	16	10	7	4	37	10.1%	34
HUNT	64,343	6,463	69	205	33	51	358	5.5%	220
HUTCHINSON	25,689	2,993	24	56	10	6	96	3.2%	72
IRION	1,629	171	1	0	0	0	1	0.6%	1
JACK	6,981	715	11	15	0	0	26	3.6%	26
JACKSON	13,039	1,406	20	11	4	5	40	2.8%	37

**JUVENILE PROBATION REFERRAL ACTIVITY**  
**SUMMARY OF 1993 REPORTED ACTIVITY**  
**ALPHABETICAL BY COUNTY (continued)**

County	1990 Total Population	1990 Juv Population	Number of Referrals to Juv Depts for				Total Number Referrals	Referral Rate	No. of Children Referred
			Allgd Delin Felony	Behavior Other	Allgd CINS Status	Behavior Other			
JASPER	31,102	3,576	63	66	14	11	154	4.3%	116
JEFF DAVIS	1,946	254	1	5	0	0	6	2.4%	6
JEFFERSON	239,397	24,593	905	913	153	39	2,010	8.2%	1,375
JIM HOGG	5,109	620	2	3	4	78	87	14.0%	66
JIM WELLS	37,679	4,794	110	195	69	31	405	8.4%	242
JOHNSON	97,165	11,082	216	278	228	107	829	7.5%	559
JONES	16,490	1,813	29	66	52	87	234	12.9%	141
KARNES	12,455	1,405	25	29	10	5	69	4.9%	44
KAUFMAN	52,220	5,983	110	80	29	15	234	3.9%	197
KENDALL	14,589	1,470	34	70	37	3	144	9.8%	79
KENEDY	460	56	6	0	0	0	6	10.7%	6
KENT	1,010	96	2	1	0	0	3	3.1%	3
KERR	36,304	3,225	54	121	76	5	256	7.9%	201
KIMBLE	4,122	420	18	13	0	2	33	7.9%	31
KING	354	46	0	0	0	0	0	0.0%	0
KINNEY	3,119	322	8	2	0	0	10	3.1%	7
KLEBERG	30,274	3,185	88	92	78	4	262	8.2%	169
KNOX	4,837	513	2	7	1	5	15	2.9%	15
LAMAR	43,949	4,370	74	73	72	89	308	7.0%	172
LAMB	15,072	1,747	18	39	10	8	75	4.3%	56
LAMPASAS	13,521	1,471	41	34	10	27	112	7.6%	97
LASALLE	5,254	689	8	16	7	4	35	5.1%	26
LAVACA	18,690	1,863	21	46	3	0	70	3.8%	55
LEE	12,854	1,558	34	32	2	5	73	4.7%	56
LEON	12,665	1,288	10	12	10	1	33	2.6%	32
LIBERTY	52,726	6,137	105	88	46	53	292	4.8%	242
LIMESTONE	20,946	2,142	39	41	23	4	107	5.0%	79
LIPSCOMB	3,143	368	5	1	0	0	6	1.6%	6
LIVE OAK	9,556	1,081	3	5	0	1	9	0.8%	8
LLANO	11,631	753	31	13	1	17	62	8.2%	50
LOVING	107	10	0	0	0	0	0	0.0%	0
LUBBOCK	222,636	21,627	558	1,026	1,573	20	3,177	14.7%	1,612
LYNN	6,758	772	7	18	6	25	56	7.3%	53
MCCULLOCH	8,778	981	28	20	1	3	52	5.3%	48
MCLENNAN	189,123	18,418	533	683	228	68	1,512	8.2%	1,041
MCMULLEN	817	62	0	0	0	0	0	0.0%	0
MADISON	10,931	889	10	13	18	41	82	9.2%	76
MARION	9,984	998	26	11	8	6	51	5.1%	42
MARTIN	4,956	667	2	9	1	2	14	2.1%	13
MASON	3,423	309	0	13	0	0	13	4.2%	13

**JUVENILE PROBATION REFERRAL ACTIVITY**  
**SUMMARY OF 1993 REPORTED ACTIVITY**  
**ALPHABETICAL BY COUNTY (continued)**

County	1990 Total Population	1990 Juv Population	Number of Referrals to Juv Depts for				Total Number Referrals	Referral Rate	No. of Children Referred
			Allgd Delin Felony	Behavior Other	Allgd CINS Status	Behavior Other			
MATAGORDA	36,928	4,416	53	102	16	62	233	5.3%	149
MAVERICK	36,378	5,722	57	85	50	68	260	4.5%	192
MEDINA	27,312	3,190	49	48	23	8	128	4.0%	114
MENARD	2,252	186	9	4	0	0	13	7.0%	11
MIDLAND	106,611	11,708	308	371	204	47	930	7.9%	590
MILAM	22,946	2,622	86	78	6	24	194	7.4%	131
MILLS	4,531	482	5	6	0	0	11	2.3%	10
MITCHELL	8,016	913	39	13	51	5	108	11.8%	70
MONTAGUE	17,274	1,643	22	26	1	9	58	3.5%	40
MONTGOMERY	182,201	20,969	337	422	97	7	863	4.1%	650
MOORE	17,865	2,204	30	117	108	119	374	17.0%	226
MORRIS	13,200	1,470	22	17	11	16	66	4.5%	50
MOTLEY	1,532	154	0	1	2	3	6	3.9%	5
NACOGDOCHES	54,753	4,800	122	133	96	106	457	9.5%	281
NAVARRO	39,926	4,078	62	72	28	9	171	4.2%	124
NEWTON	13,569	1,630	17	14	4	0	35	2.1%	26
NOLAN	16,594	1,819	73	60	110	7	250	13.7%	163
NUECES	291,145	34,055	866	1,678	2,438	170	5,152	15.1%	2,914
OCHILTREE	9,128	1,063	5	18	11	7	41	3.9%	33
OLDHAM	2,278	526	7	3	10	1	21	4.0%	21
ORANGE	80,509	9,266	155	190	74	14	433	4.7%	287
PALO PINTO	25,055	2,552	47	36	2	2	87	3.4%	67
PANOLA	22,035	2,521	21	29	31	16	97	3.8%	81
PARKER	64,785	7,104	95	135	95	32	357	5.0%	280
PARMER	9,863	1,230	8	17	2	16	43	3.5%	36
PECOS	14,675	2,024	38	57	49	22	166	8.2%	130
POLK	30,687	3,093	86	25	56	35	202	6.5%	153
POTTER	97,874	9,910	403	447	424	28	1,302	13.1%	682
PRESIDIO	6,637	889	11	7	0	6	24	2.7%	22
RAINS	6,715	705	4	9	6	13	32	4.5%	20
RANDALL	89,673	9,510	144	273	211	2	630	6.6%	389
REAGAN	4,514	667	5	13	0	4	22	3.3%	20
REAL	2,412	232	3	15	2	1	21	9.1%	19
RED RIVER	14,317	1,436	39	135	22	6	202	14.1%	110
REEVES	15,852	2,041	27	69	21	32	149	7.3%	106
REFUGIO	7,976	907	11	29	16	4	60	6.6%	36
ROBERTS	1,025	131	0	1	0	3	4	3.1%	4
ROBERTSON	15,511	1,703	96	57	0	5	158	9.3%	99
ROCKWALL	25,604	2,958	50	85	37	29	201	6.8%	151
RUNNELS	11,294	1,226	30	28	7	12	77	6.3%	57

**JUVENILE PROBATION REFERRAL ACTIVITY**  
**SUMMARY OF 1993 REPORTED ACTIVITY**  
**ALPHABETICAL BY COUNTY (continued)**

County	1990 Total Population	1990 Juv Population	Number of Referrals to Juv Depts for				Total Number Referrals	Referral Rate	No. of Children Referred
			Allgd Delin Felony	Behavior Other	Allgd CINS Status	Behavior Other			
RUSK	43,735	4,884	86	53	93	44	276	5.7%	206
SABINE	9,586	821	15	11	4	1	31	3.8%	23
SAN AUGUSTINE	7,999	762	2	1	1	0	4	0.5%	4
SAN JACINTO	16,372	1,723	57	38	9	16	120	7.0%	84
SAN PATRICIO	58,749	7,405	113	119	30	12	274	3.7%	214
SAN SABA	5,401	529	8	4	4	4	20	3.8%	18
SCHLEICHER	2,990	413	7	2	0	0	9	2.2%	8
SCURRY	18,634	2,051	40	73	36	16	165	8.0%	82
SHACKELFORD	3,316	351	8	3	7	3	21	6.0%	18
SHELBY	22,034	2,309	44	20	19	15	98	4.2%	49
SHERMAN	2,858	348	0	2	0	0	2	0.6%	2
SMITH	151,309	15,271	253	419	147	3	822	5.4%	500
SOMERVELL	5,360	704	8	2	16	63	89	12.6%	69
STARR	40,518	6,596	112	145	77	185	519	7.9%	394
STEPHENS	9,010	972	32	16	6	5	59	6.1%	50
STERLING	1,438	179	4	5	0	0	9	5.0%	8
STONEWALL	2,013	190	3	0	4	0	7	3.7%	7
SUTTON	4,135	515	0	4	6	2	12	2.3%	12
SWISHER	8,133	921	32	33	22	53	140	15.2%	106
TARRANT	1,170,103	109,509	2,550	3,099	743	63	6,455	5.9%	4,713
TAYLOR	119,655	11,562	286	747	568	89	1,690	14.6%	1,045
TERRELL	1,410	199	1	0	0	0	1	0.5%	1
TERRY	13,218	1,702	46	45	33	29	153	9.0%	115
THROCKMORTON	1,880	171	1	2	1	0	4	2.3%	3
TITUS	24,009	2,550	24	37	3	7	71	2.8%	59
TOM GREEN	98,458	9,596	264	652	392	98	1,406	14.7%	766
TRAVIS	576,407	46,930	2,248	3,223	791	414	6,676	14.2%	4,097
TRINITY	11,445	1,060	34	0	2	0	36	3.4%	36
TYLER	16,646	1,770	37	31	6	12	86	4.9%	81
UPSHUR	31,370	3,514	71	69	56	32	228	6.5%	178
UPTON	4,447	639	8	12	2	9	31	4.9%	26
UVALDE	23,340	2,962	67	113	88	42	310	10.5%	208
VAL VERDE	38,721	4,929	198	211	82	74	565	11.5%	238
VAN ZANDT	37,944	3,936	53	63	19	9	144	3.7%	134
VICTORIA	74,361	8,512	403	498	5	50	956	11.2%	527
WALKER	50,917	3,577	78	109	24	25	236	6.6%	169
WALLER	23,390	2,312	42	65	10	33	150	6.5%	93
WARD	13,115	1,785	23	40	14	60	137	7.7%	111
WASHINGTON	26,154	2,594	28	52	17	6	103	4.0%	77
WEBB	133,239	19,093	333	641	299	47	1,320	6.9%	888



**JUVENILE PROBATION REFERRAL ACTIVITY  
SUMMARY OF 1993 REPORTED ACTIVITY  
ALPHABETICAL BY COUNTY (continued)**

County	1990 Total Population	1990 Juv Population	Number of Referrals to Juv Depts for				Total Number Referrals	Referral Rate	No. of Children Referred
			Allgd Delin Felony	Behavior Other	Allgd CINS Status	Behavior Other			
WHARTON	39,955	4,585	90	56	0	3	149	3.2%	112
WHEELER	5,879	669	10	3	14	3	30	4.5%	28
WICHITA	122,378	11,502	163	340	168	22	693	6.0%	478
WILBARGER	15,121	1,525	33	28	4	6	71	4.7%	57
WILLACY	17,705	2,750	42	43	28	58	171	6.2%	146
WILLIAMSON	139,551	16,124	259	336	59	49	703	4.4%	566
WILSON	22,650	2,713	76	57	6	1	140	5.2%	71
WINKLER	8,626	1,161	13	33	6	10	62	5.3%	60
WISE	34,679	3,830	49	66	23	8	146	3.8%	120
WOOD	29,380	2,861	55	37	36	52	180	6.3%	145
YOAKUM	8,786	1,218	7	16	7	4	34	2.8%	33
YOUNG	18,126	1,835	28	27	30	34	119	6.5%	93
ZAPATA	9,279	1,302	1	2	6	22	31	2.4%	24
ZAVALA	12,162	1,750	17	16	14	9	56	3.2%	28
Totals	16,986,510	1,794,831	39,158	48,939	20,783	9,188	118,068	6.6%	77,619

**JUVENILE PROBATION DETENTION ACTIVITY**  
**SUMMARY OF 1993 REPORTED ACTIVITY**  
**ALPHABETICAL BY COUNTY**

County	Num Refs in Non-Secure Placement	Number of Referrals in Secure Detention				Total	% of Refs Detained	Number of Referrals in Secure Detention			
		Delin Behavior		CINS Behavior				Less than 24 hrs		24 hrs or more	
		Felony	Other	Status	Other		Status	Other	Status	Other	
ANDERSON	0	28	15	10	6	59	23.8%	7	28	3	21
ANDREWS	0	9	17	0	0	26	20.0%	0	2	0	24
ANGELINA	0	62	51	4	1	118	16.3%	1	26	3	88
ARANSAS	0	31	9	1	0	41	43.2%	1	6	0	34
ARCHER	0	0	0	0	0	0	0.0%	0	0	0	0
ARMSTRONG	0	2	1	0	0	3	60.0%	0	1	0	2
ATASCOSA	0	30	37	13	11	91	46.4%	4	12	9	66
AUSTIN	0	16	5	0	1	22	14.7%	0	21	0	1
BAILEY	0	0	0	0	0	0	0.0%	0	0	0	0
BANDERA	0	16	6	2	0	24	45.3%	2	8	0	14
BASTROP	0	22	13	0	0	35	27.1%	0	2	0	33
BAYLOR	0	1	0	2	0	3	9.4%	2	0	0	1
BEE	0	24	21	0	0	45	38.1%	0	6	0	39
BELL	58	152	150	22	0	324	27.6%	14	83	8	219
BEXAR	0	966	797	62	35	1,860	24.6%	8	160	54	1,638
BLANCO	0	0	0	0	0	0	0.0%	0	0	0	0
BORDEN	0	0	0	0	0	0	0.0%	0	0	0	0
BOSQUE	0	0	0	0	0	0	0.0%	0	0	0	0
BOWIE	0	147	112	6	30	295	34.0%	6	151	0	138
BRAZORIA	0	325	499	85	11	920	34.8%	80	378	5	457
BRAZOS	0	183	212	43	4	442	37.7%	40	118	3	281
BREWSTER	0	0	0	0	0	0	0.0%	0	0	0	0
BRISCOE	0	0	1	0	0	1	16.7%	0	1	0	0
BROOKS	0	0	0	0	0	0	0.0%	0	0	0	0
BROWN	0	5	3	1	2	11	6.4%	0	2	1	8
BURLESON	0	5	3	0	0	8	17.0%	0	1	0	7
BURNET	0	11	2	0	0	13	5.4%	0	5	0	8
CALDWELL	0	7	6	1	0	14	9.7%	1	6	0	7
CALHOUN	0	28	24	4	13	69	34.7%	2	23	2	42
CALLAHAN	0	16	7	7	0	30	51.7%	7	13	0	10
CAMERON	0	526	215	68	4	813	37.7%	67	338	1	407
CAMP	0	0	0	0	0	0	0.0%	0	0	0	0
CARSON	0	0	2	0	0	2	8.7%	0	1	0	1
CASS	0	6	6	3	1	16	10.7%	3	7	0	6
CASTRO	0	1	0	0	0	1	2.4%	0	0	0	1
CHAMBERS	0	4	1	0	0	5	8.6%	0	1	0	4
CHEROKEE	0	14	22	0	0	36	17.9%	0	16	0	20
CHILDRESS	0	3	0	0	0	3	11.1%	0	0	0	3
CLAY	0	2	0	0	0	2	7.1%	0	0	0	2
COCHRAN	0	3	1	0	0	4	13.8%	0	0	0	4

**JUVENILE PROBATION DETENTION ACTIVITY**  
**SUMMARY OF 1993 REPORTED ACTIVITY**  
**ALPHABETICAL BY COUNTY (continued)**

County	Num Refs in Non-Secure Placement	Number of Referrals in Secure Detention				Total	% of Refs Detained	Number of Referrals in Secure Detention			
		Delin Behavior		CINS Behavior				Less than 24 hrs		24 hrs or more	
		Felony	Other	Status	Other		Status	Other	Status	Other	
COKE	0	2	0	1	0	3	11.1%	1	0	0	2
COLEMAN	0	7	6	0	2	15	48.4%	0	6	0	9
COLLIN	0	151	135	67	14	367	39.9%	65	176	2	124
COLLINGSWORTH	0	0	0	0	0	0	0.0%	0	0	0	0
COLORADO	0	18	23	0	1	42	44.2%	0	14	0	28
COMAL	0	10	6	7	3	26	7.8%	7	10	0	9
COMANCHE	0	0	0	0	0	0	0.0%	0	0	0	0
CONCHO	0	0	0	0	0	0	0.0%	0	0	0	0
COOKE	0	17	10	0	0	27	29.7%	0	7	0	20
CORYELL	3	45	14	0	0	59	22.0%	0	7	0	52
COTTLE	0	0	0	0	0	0	0.0%	0	0	0	0
CRANE	0	2	2	0	0	4	8.9%	0	0	0	4
CROCKETT	0	2	0	3	0	5	9.1%	1	0	2	2
CROSBY	0	4	1	0	0	5	26.3%	0	0	0	5
CULBERSON	0	8	1	0	0	9	20.0%	0	0	0	9
DALLAM	0	6	5	0	0	11	13.8%	0	6	0	5
DALLAS	0	2,599	1,305	112	35	4,051	35.6%	99	959	13	2,980
DAWSON	0	2	3	0	0	5	3.6%	0	0	0	5
DEAF SMITH	0	20	13	0	0	33	11.6%	0	3	0	30
DELTA	0	0	0	0	1	1	4.8%	0	0	0	1
DENTON	110	145	214	2	15	376	25.8%	2	120	0	254
DEWITT	0	23	25	0	0	48	32.4%	0	34	0	14
DICKENS	0	1	0	0	0	1	9.1%	0	0	0	1
DIMMIT	0	6	4	0	1	11	23.4%	0	0	0	11
DONLEY	0	3	0	0	0	3	42.9%	0	3	0	0
DUVAL	0	5	5	0	0	10	12.3%	0	0	0	10
EASTLAND	0	15	3	0	1	19	29.2%	0	5	0	14
ECTOR	0	120	185	20	2	327	49.0%	20	133	0	174
EDWARDS	0	3	1	0	3	7	17.9%	0	3	0	4
ELLIS	0	36	36	1	1	74	13.5%	0	3	1	70
EL PASO	0	659	984	0	3	1,646	63.6%	0	1,021	0	625
ERATH	0	15	7	0	1	23	12.0%	0	2	0	21
FALLS	0	5	1	0	0	6	9.1%	0	0	0	6
FANNIN	0	9	4	0	0	13	6.7%	0	11	0	2
FAYETTE	0	14	1	0	0	15	23.4%	0	8	0	7
FISHER	0	1	1	0	0	2	3.2%	0	1	0	1
FLOYD	1	9	6	0	0	15	18.3%	0	0	0	15
FOARD	0	0	0	0	0	0	0.0%	0	0	0	0
FORT BEND	0	323	390	21	0	734	44.0%	10	71	11	642
FRANKLIN	0	3	2	1	0	6	12.5%	0	1	1	4

**JUVENILE PROBATION DETENTION ACTIVITY  
SUMMARY OF 1993 REPORTED ACTIVITY  
ALPHABETICAL BY COUNTY (continued)**

County	Num Refs in Non-Secure Placement	Number of Referrals in Secure Detention					Total	% of Refs Detained	Number of Referrals in Secure Detention			
		Delin Behavior		CINS Behavior		Less than 24 hrs			24 hrs or more			
		Felony	Other	Status	Other			Status	Other	Status	Other	
FREESTONE	0	2	4	6	0	12	17.4%	6	2	0	4	
FRIO	0	10	25	3	4	42	17.9%	3	15	0	24	
GAINES	0	5	3	0	0	8	11.6%	0	2	0	6	
GALVESTON	0	403	182	19	0	604	43.5%	19	134	0	451	
GARZA	0	0	0	0	0	0	0.0%	0	0	0	0	
GILLESPIE	0	5	7	2	0	14	15.6%	2	5	0	7	
GLASSCOCK	0	0	0	0	0	0	0.0%	0	0	0	0	
GOLIAD	0	3	2	0	0	5	7.0%	0	0	0	5	
GONZALES	0	21	6	1	0	28	32.2%	1	5	0	22	
GRAY	2	4	7	1	0	12	31.6%	0	0	1	11	
GRAYSON	2	74	57	4	3	138	22.3%	3	39	1	95	
GREGG	0	257	214	70	0	541	53.0%	70	234	0	237	
GRIMES	0	0	3	0	0	3	2.5%	0	0	0	3	
GUADALUPE	0	77	156	63	41	337	38.6%	63	102	0	172	
HALE	0	5	8	0	0	13	2.9%	0	3	0	10	
HALL	0	2	0	0	0	2	66.7%	0	0	0	2	
HAMILTON	0	2	1	0	1	4	12.1%	0	0	0	4	
HANSFORD	0	1	0	0	0	1	4.0%	0	0	0	1	
HARDEMAN	0	0	0	0	0	0	0.0%	0	0	0	0	
HARDIN	0	43	17	22	5	87	25.7%	22	23	0	42	
HARRIS	0	3,039	1,618	112	112	4,881	30.4%	101	3,497	11	1,272	
HARRISON	0	100	195	4	11	310	81.2%	4	85	0	221	
HARTLEY	0	1	1	0	0	2	20.0%	0	1	0	1	
HASKELL	0	2	1	0	0	3	17.6%	0	1	0	2	
HAYS	0	42	64	8	0	114	28.2%	8	32	0	74	
HEMPHILL	0	1	0	0	0	1	2.9%	0	0	0	1	
HENDERSON	0	38	31	18	7	94	35.2%	17	36	1	40	
HIDALGO	5	227	103	27	8	365	20.2%	26	58	1	280	
HILL	0	11	11	8	3	33	8.9%	5	5	3	20	
HOCKLEY	1	11	4	0	0	15	9.9%	0	2	0	13	
HOOD	4	6	8	6	0	20	7.9%	2	3	4	11	
HOPKINS	0	5	4	5	1	15	6.4%	5	4	0	6	
HOUSTON	0	1	1	0	0	2	3.5%	0	0	0	2	
HOWARD	0	34	28	6	4	72	21.2%	6	35	0	31	
HUDSPETH	0	11	3	0	0	14	37.8%	0	1	0	13	
HUNT	0	37	108	18	13	176	49.2%	16	77	2	81	
HUTCHINSON	0	7	11	0	0	18	18.8%	0	1	0	17	
IRION	0	0	0	0	0	0	0.0%	0	0	0	0	
JACK	0	0	1	0	0	1	3.8%	0	0	0	1	
JACKSON	28	5	4	0	3	12	30.0%	0	0	0	12	

**JUVENILE PROBATION DETENTION ACTIVITY**  
**SUMMARY OF 1993 REPORTED ACTIVITY**  
**ALPHABETICAL BY COUNTY (continued)**

County	Num Refs in Non-Secure Placement	Number of Referrals in Secure Detention					Total	% of Refs Detained	Number of Referrals in Secure Detention			
		Delin Behavior		CINS Behavior		Less than 24 hrs			24 hrs or more			
		Felony	Other	Status	Other			Status	Other	Status	Other	
JASPER	0	7	13	0	0	20	13.0%	0	3	0	17	
JEFF DAVIS	0	0	1	0	0	1	16.7%	0	0	0	1	
JEFFERSON	0	354	177	5	0	536	26.7%	5	146	0	385	
JIM HOGG	0	1	0	1	3	5	5.7%	1	2	0	2	
JIM WELLS	0	6	4	0	0	10	2.5%	0	3	0	7	
JOHNSON	0	104	120	119	36	379	45.7%	91	156	28	104	
JONES	0	6	2	2	3	13	5.6%	1	3	1	8	
KARNES	0	6	3	1	0	10	14.5%	1	2	0	7	
KAUFMAN	9	31	12	2	0	45	19.2%	2	5	0	38	
KENDALL	0	2	10	6	0	18	12.5%	6	2	0	10	
KENEDY	0	5	0	0	0	5	83.3%	0	5	0	0	
KENT	0	0	0	0	0	0	0.0%	0	0	0	0	
KERR	0	25	43	24	0	92	35.9%	24	28	0	40	
KIMBLE	25	8	0	0	0	8	24.2%	0	7	0	1	
KING	0	0	0	0	0	0	0.0%	0	0	0	0	
KINNEY	0	2	0	0	0	2	20.0%	0	0	0	2	
KLEBERG	0	24	3	0	0	27	10.3%	0	2	0	25	
KNOX	0	0	0	0	0	0	0.0%	0	0	0	0	
LAMAR	0	6	2	0	0	8	2.6%	0	0	0	8	
LAMB	0	4	5	0	0	9	12.0%	0	2	0	7	
LAMPASAS	0	5	0	1	0	6	5.4%	1	2	0	3	
LASALLE	0	6	6	0	0	12	34.3%	0	2	0	10	
LAVACA	0	8	8	0	0	16	22.9%	0	4	0	12	
LEE	0	8	5	0	0	13	17.8%	0	1	0	12	
LEON	0	0	0	0	0	0	0.0%	0	0	0	0	
LIBERTY	0	30	7	0	0	37	12.7%	0	2	0	35	
LIMESTONE	1	30	29	1	2	62	57.9%	1	30	0	31	
LIPSCOMB	0	1	0	0	0	1	16.7%	0	0	0	1	
LIVE OAK	0	0	0	0	0	0	0.0%	0	0	0	0	
LLANO	0	7	0	0	0	7	11.3%	0	4	0	3	
LOVING	0	0	0	0	0	0	0.0%	0	0	0	0	
LUBBOCK	37	234	246	0	2	482	15.2%	0	214	0	268	
LYNN	0	2	1	1	0	4	7.1%	0	0	1	3	
MCCULLOCH	48	3	1	0	0	4	7.7%	0	1	0	3	
MCLENNAN	172	364	419	60	54	897	59.3%	60	314	0	523	
MCMULLEN	0	0	0	0	0	0	0.0%	0	0	0	0	
MADISON	0	3	2	2	0	7	8.5%	2	0	0	5	
MARION	0	4	1	0	0	5	9.8%	0	2	0	3	
MARTIN	0	1	0	0	0	1	7.1%	0	0	0	1	
MASON	0	0	0	0	0	0	0.0%	0	0	0	0	

**JUVENILE PROBATION DETENTION ACTIVITY**  
**SUMMARY OF 1993 REPORTED ACTIVITY**  
**ALPHABETICAL BY COUNTY (continued)**

County	Num Refs in Non-Secure Placement	Number of Referrals in Secure Detention				Total	% of Refs Detained	Number of Referrals in Secure Detention			
		Delin Behavior Felony	Other	CINS Behavior Status	Other			Less than 24 hrs Status	Other	24 hrs or more Status	Other
MATAGORDA	1	1	1	0	0	2	0.9%	0	1	0	1
MAVERICK	0	10	4	1	0	15	5.8%	0	0	1	14
MEDINA	0	15	14	6	0	35	27.3%	6	10	0	19
MENARD	10	3	0	0	0	3	23.1%	0	2	0	1
MIDLAND	0	267	294	201	44	806	86.7%	199	461	2	144
MILAM	0	11	1	0	0	12	6.2%	0	0	0	12
MILLS	0	2	0	0	0	2	18.2%	0	0	0	2
MITCHELL	0	10	2	0	0	12	11.1%	0	2	0	10
MONTAGUE	0	2	1	0	1	4	6.9%	0	0	0	4
MONTGOMERY	0	71	126	3	0	200	23.2%	1	49	2	148
MOORE	0	6	21	0	1	28	7.5%	0	19	0	9
MORRIS	0	2	2	0	0	4	6.1%	0	0	0	4
MOTLEY	0	0	0	0	0	0	0.0%	0	0	0	0
NACOGDOCHES	0	45	20	0	0	65	14.2%	0	0	0	65
NAVARRO	0	15	8	1	0	24	14.0%	1	0	0	23
NEWTON	0	2	5	0	0	7	20.0%	0	4	0	3
NOLAN	0	19	4	0	0	23	9.2%	0	13	0	10
NUECES	0	533	592	32	94	1,251	24.3%	28	579	4	640
OCHILTREE	0	0	2	0	0	2	4.9%	0	0	0	2
OLDHAM	9	5	1	0	0	6	28.6%	0	4	0	2
ORANGE	0	52	35	0	0	87	20.1%	0	28	0	59
PALO PINTO	0	5	0	0	0	5	5.7%	0	2	0	3
PANOLA	0	9	3	0	2	14	14.4%	0	7	0	7
PARKER	0	23	22	5	0	50	14.0%	3	18	2	27
PARMER	0	0	0	0	0	0	0.0%	0	0	0	0
PECOS	0	26	21	13	4	64	38.6%	12	16	1	35
POLK	0	8	3	2	0	13	6.4%	2	0	0	11
POTTER	0	143	61	0	3	207	15.9%	0	46	0	161
PRESIDIO	0	1	0	0	1	2	8.3%	0	2	0	0
RAINS	0	1	0	0	0	1	3.1%	0	1	0	0
RANDALL	0	45	92	3	0	140	22.2%	1	23	2	114
REAGAN	0	0	0	0	0	0	0.0%	0	0	0	0
REAL	0	2	0	0	0	2	9.5%	0	0	0	2
RED RIVER	0	7	15	0	0	22	10.9%	0	0	0	22
REEVES	0	19	28	4	19	70	47.0%	3	34	1	32
REFUGIO	0	4	3	0	0	7	11.7%	0	2	0	5
ROBERTS	0	0	0	0	0	0	0.0%	0	0	0	0
ROBERTSON	0	15	3	0	0	18	11.4%	0	1	0	17
ROCKWALL	0	17	26	9	2	54	26.9%	5	22	4	23
RUNNELS	0	5	1	1	0	7	9.1%	1	1	0	5

**JUVENILE PROBATION DETENTION ACTIVITY**  
**SUMMARY OF 1993 REPORTED ACTIVITY**  
**ALPHABETICAL BY COUNTY (continued)**

County	Num Refs in Non-Secure Placement	Number of Referrals in Secure Detention				Total	% of Refs Detained	Number of Referrals in Secure Detention			
		Delin Behavior		CINS Behavior				Less than 24 hrs		24 hrs or more	
		Felony	Other	Status	Other		Status	Other	Status	Other	
RUSK	0	11	2	0	0	13	4.7%	0	6	0	7
SABINE	0	5	2	0	0	7	22.6%	0	2	0	5
SAN AUGUSTINE	0	0	0	0	0	0	0.0%	0	0	0	0
SAN JACINTO	0	2	1	1	0	4	3.3%	1	0	0	3
SAN PATRICIO	0	56	32	1	2	91	33.2%	1	18	0	72
SAN SABA	0	4	0	0	0	4	20.0%	0	1	0	3
SCHLEICHER	0	0	0	0	0	0	0.0%	0	0	0	0
SCURRY	0	11	9	0	1	21	12.7%	0	6	0	15
SHACKELFORD	0	6	0	0	0	6	28.6%	0	1	0	5
SHELBY	0	12	2	0	0	14	14.3%	0	0	0	14
SHERMAN	0	0	2	0	0	2	100.0%	0	1	0	1
SMITH	0	138	200	1	0	339	41.2%	1	68	0	270
SOMERVELL	0	1	0	0	0	1	1.1%	0	1	0	0
STARR	10	20	6	0	1	27	5.2%	0	2	0	25
STEPHENS	0	9	1	2	0	12	20.3%	0	1	2	9
STERLING	0	0	0	0	0	0	0.0%	0	0	0	0
STONEWALL	0	0	0	4	0	4	57.1%	0	0	4	0
SUTTON	0	0	0	0	0	0	0.0%	0	0	0	0
SWISHER	0	5	2	0	3	10	7.1%	0	0	0	10
TARRANT	0	1,092	904	66	6	2,068	32.0%	66	712	0	1,290
TAYLOR	0	175	422	244	9	850	50.3%	241	286	3	320
TERRELL	0	0	0	0	0	0	0.0%	0	0	0	0
TERRY	0	7	0	0	0	7	4.6%	0	5	0	2
THROCKMORTON	0	0	0	0	0	0	0.0%	0	0	0	0
TITUS	0	1	2	0	0	3	4.2%	0	0	0	3
TOM GREEN	0	112	88	14	5	219	15.6%	12	76	2	129
TRAVIS	0	780	834	0	19	1,633	24.5%	0	14	0	1,619
TRINITY	0	6	0	0	0	6	16.7%	0	0	0	6
TYLER	0	4	0	0	0	4	4.7%	0	3	0	1
UPSHUR	6	23	10	2	4	39	17.1%	1	19	1	18
UPTON	0	2	0	0	0	2	6.5%	0	0	0	2
UVALDE	0	29	12	1	1	43	13.9%	1	22	0	20
VAL VERDE	0	54	49	0	8	111	19.6%	0	27	0	84
VAN ZANDT	0	4	6	0	0	10	6.9%	0	1	0	9
VICTORIA	0	139	193	0	6	338	35.4%	0	94	0	244
WALKER	0	12	6	0	0	18	7.6%	0	1	0	17
WALLER	0	34	38	8	29	109	72.7%	8	52	0	49
WARD	0	11	5	0	3	19	13.9%	0	16	0	3
WASHINGTON	0	11	8	1	1	21	20.4%	1	3	0	17
WEBB	1	292	298	157	16	763	57.8%	153	197	4	409

**JUVENILE PROBATION DETENTION ACTIVITY  
SUMMARY OF 1993 REPORTED ACTIVITY  
ALPHABETICAL BY COUNTY (continued)**

County	Num Refs in Non-Secure Placement	Number of Referrals in Secure Detention					Total	% of Refs Detained	Number of Referrals in Secure Detention			
		Delin Behavior		CINS Behavior		Less than 24 hrs			24 hrs or more			
		Felony	Other	Status	Other			Status	Other	Status	Other	
WHARTON	0	11	4	0	0	15	10.1%	0	6	0	9	
WHEELER	0	3	0	0	0	3	10.0%	0	0	0	3	
WICHITA	1	124	180	80	8	392	56.6%	80	156	0	156	
WILBARGER	0	1	1	0	0	2	2.8%	0	0	0	2	
WILLACY	0	11	0	1	3	15	8.8%	1	4	0	10	
WILLIAMSON	58	119	189	0	37	345	49.1%	0	226	0	119	
WILSON	0	13	12	1	0	26	18.6%	1	5	0	20	
WINKLER	0	6	11	0	0	17	27.4%	0	2	0	15	
WISE	0	8	8	10	2	28	19.2%	0	1	10	17	
WOOD	0	13	10	0	0	23	12.8%	0	1	0	22	
YOAKUM	0	0	0	0	0	0	0.0%	0	0	0	0	
YOUNG	0	3	0	0	0	3	2.5%	0	0	0	3	
ZAPATA	0	0	0	1	0	1	3.2%	1	0	0	0	
ZAVALA	0	10	7	0	1	18	32.1%	0	0	0	18	
Totals	602	17,513	14,606	2,073	854	35,046	29.7%	1,855	12,747	218	20,226	



**JUVENILE PROBATION DISPOSITION ACTIVITY**  
**SUMMARY OF 1993 REPORTED ACTIVITY**  
**ALPHABETICAL BY COUNTY**

County	---- Prob Dept Disps ----		----- Prosecution or Court Dispositions -----				----- Placements -----	
	Counseled & Released	Informal Adjustment	Prosecution Refused/Dism	Adjud Prob	Adjud TYC	Certified as Adult	Voluntary	Crt Ordered
ANDERSON	1	22	2	22	3	0	3	5
ANDREWS	58	47	7	33	0	1	0	7
ANGELINA	381	81	199	70	7	1	20	25
ARANSAS	25	9	23	28	2	0	2	15
ARCHER	0	1	2	2	1	0	0	0
ARMSTRONG	4	0	0	1	0	0	0	1
ATASCOSA	39	13	52	18	0	0	0	6
AUSTIN	113	9	9	3	0	0	0	1
BAILEY	13	5	0	2	0	0	0	0
BANDERA	31	9	4	9	0	0	0	4
BASTROP	45	21	15	30	9	0	3	11
BAYLOR	29	0	1	2	0	0	0	0
BEE	21	33	38	28	8	0	2	20
BELL	439	364	45	172	36	4	16	29
BEXAR	1,293	1,772	1,230	1,234	125	42	169	71
BLANCO	10	10	0	0	0	0	0	1
BORDEN	0	0	0	0	0	0	0	0
BOSQUE	2	8	2	1	0	0	0	1
BOWIE	704	62	66	33	5	4	0	3
BRAZORIA	1,748	148	142	414	81	13	16	70
BRAZOS	761	105	121	88	6	4	1	27
BREWSTER	38	11	0	3	0	0	0	0
BRISCOE	4	2	0	0	0	0	0	0
BROOKS	20	22	23	6	0	0	1	0
BROWN	93	12	16	49	6	0	0	0
BURLESON	18	8	19	11	1	0	1	4
BURNET	176	50	6	3	2	0	14	3
CALDWELL	83	13	23	17	3	0	1	5
CALHOUN	142	15	20	5	0	0	6	8
CALLAHAN	20	22	0	1	0	0	0	1
CAMERON	1,370	162	288	240	36	5	2	76
CAMP	22	20	1	0	0	0	0	0
CARSON	18	5	0	0	0	0	0	0
CASS	71	33	7	29	2	0	0	0
CASTRO	29	9	1	2	0	1	0	0
CHAMBERS	4	5	3	17	3	0	2	0
CHEROKEE	64	94	12	26	0	0	6	6
CHILDRESS	10	9	0	6	1	0	0	1
CLAY	3	18	5	3	0	0	0	1
COCHRAN	12	5	0	12	0	0	0	0

**JUVENILE PROBATION DISPOSITION ACTIVITY  
SUMMARY OF 1993 REPORTED ACTIVITY  
ALPHABETICAL BY COUNTY (continued)**

County	---- Prob Dept Disps ----		----- Prosecution or Court Dispositions -----				----- Placements -----	
	Counseled & Released	Informal Adjustment	Prosecution Refused/Dism	Adjud Prob	Adjud TYC	Certified as Adult	Voluntary	Crt Ordered
COKE	16	9	7	1	0	0	0	2
COLEMAN	9	16	7	3	0	0	0	1
COLLIN	277	245	288	109	3	0	24	32
COLLINGSWORTH	3	10	0	1	0	0	0	0
COLORADO	57	21	11	4	3	0	0	7
COMAL	132	79	116	42	1	0	9	27
COMANCHE	2	5	2	2	0	0	0	0
CONCHO	6	1	1	0	0	0	0	0
COOKE	23	13	32	15	0	1	1	3
CORYELL	71	63	68	30	6	2	4	1
COTTLE	6	0	0	1	0	0	0	0
CRANE	34	0	1	9	0	0	1	0
CROCKETT	40	13	0	2	0	0	0	0
CROSBY	9	5	0	4	0	0	0	1
CULBERSON	42	3	0	0	0	0	0	0
DALLAM	41	14	14	4	0	0	0	3
DALLAS	3,654	3,062	2,725	1,356	269	33	37	521
DAWSON	32	29	39	9	6	0	0	6
DEAF SMITH	115	21	79	59	2	3	0	2
DELTA	14	5	0	1	0	0	0	0
DENTON	305	281	267	168	12	3	15	17
DEWITT	115	8	22	19	6	0	1	0
DICKENS	9	3	0	0	0	0	0	0
DIMITT	8	33	0	1	1	0	0	0
DONLEY	6	0	0	1	0	0	0	0
DUVAL	16	36	16	12	1	0	1	6
EASTLAND	26	38	0	0	1	0	0	0
ECTOR	390	71	117	81	6	2	0	112
EDWARDS	14	21	0	5	0	0	0	0
ELLIS	262	111	26	76	6	0	3	10
EL PASO	951	423	382	555	59	16	0	208
ERATH	99	37	29	16	2	0	7	4
FALLS	28	30	2	3	1	0	0	0
FANNIN	116	52	37	27	0	1	1	2
FAYETTE	23	21	18	5	0	0	0	2
FISHER	56	2	5	1	2	0	0	0
FLOYD	46	10	16	9	1	0	0	5
GARD	4	0	1	0	0	0	0	1
HART BEND	840	165	222	253	16	1	1	3
FRANKLIN	32	6	2	2	0	0	0	0

**JUVENILE PROBATION DISPOSITION ACTIVITY**  
**SUMMARY OF 1993 REPORTED ACTIVITY**  
**ALPHABETICAL BY COUNTY (continued)**

County	---- Prob Dept Disps ----		----- Prosecution or Court Dispositions -----				----- Placements -----	
	Counseled & Released	Informal Adjustment	Prosecution Refused/Dism	Adjud Prob	Adjud TYC	Certified as Adult	Voluntary	Crt Ordered
FREESTONE	39	19	2	5	0	0	1	0
FRIO	77	52	48	16	0	1	0	1
GAINES	27	20	3	17	0	0	0	1
GALVESTON	636	37	0	253	38	6	0	29
GARZA	6	2	0	1	0	0	0	0
GILLESPIE	53	31	2	5	1	0	7	3
GLASSCOCK	0	0	0	0	0	0	0	0
GOLIAD	37	10	9	5	0	0	1	5
GONZALES	28	26	8	23	4	0	1	4
GRAY	6	11	13	15	1	0	0	3
GRAYSON	222	116	192	60	9	0	3	10
GREGG	785	82	89	57	5	2	6	18
GRIMES	73	21	19	4	0	0	0	0
GUADALUPE	571	128	78	47	6	0	12	20
HALE	286	53	87	44	4	0	0	12
HALL	1	0	0	2	0	0	0	0
HAMILTON	11	13	0	5	0	0	0	0
HANSFORD	13	14	4	2	0	0	0	4
HARDEMAN	13	1	0	2	0	0	0	0
HARDIN	168	90	31	37	5	0	0	1
HARRIS	6,889	465	2,704	2,326	355	31	0	713
HARRISON	165	35	27	147	5	0	1	5
HARTLEY	2	2	4	4	0	0	0	2
HASKELL	7	4	2	6	0	0	0	0
HAYS	186	80	45	75	3	0	23	15
HEMPHILL	19	10	0	6	0	0	0	0
HENDERSON	130	62	18	43	1	0	1	6
HIDALGO	321	341	382	555	58	7	4	241
HILL	185	12	51	14	1	0	0	0
HOCKLEY	89	22	19	20	8	0	0	4
HOOD	138	58	19	18	4	0	8	1
HOPKINS	146	50	6	29	5	0	3	1
HOUSTON	21	17	0	2	0	0	0	0
HOWARD	209	32	59	45	5	0	0	8
HUDSPETH	31	6	0	0	0	0	0	0
HUNT	167	10	17	11	1	0	2	0
HUTCHINSON	32	35	0	24	0	0	0	2
IRION	0	1	1	1	0	0	0	0
JACK	14	8	0	4	0	0	0	0
JACKSON	9	11	0	19	0	0	1	0

**JUVENILE PROBATION DISPOSITION ACTIVITY**  
**SUMMARY OF 1993 REPORTED ACTIVITY**  
**ALPHABETICAL BY COUNTY (continued)**

County	---- Prob Dept Disps ----		----- Prosecution or Court Dispositions -----				----- Placements -----	
	Counseled & Released	Informal Adjustment	Prosecution Refused/Dism	Adjud Prob	Adjud TYC	Certified as Adult	Voluntary	Crt Ordered
JASPER	74	34	12	15	1	0	3	5
JEFF DAVIS	3	3	0	1	9	0	0	0
JEFFERSON	681	253	486	215	27	16	17	56
JIM HOGG	83	0	0	1	0	0	0	0
JIM WELLS	128	176	40	20	0	0	4	8
JOHNSON	273	100	73	136	6	0	8	8
JONES	93	48	34	5	0	0	1	1
KARNES	9	18	25	17	0	0	0	2
KAUFMAN	115	23	31	46	3	0	0	13
KENDALL	74	19	16	20	0	0	1	0
KENEDY	6	0	0	0	0	0	0	0
KENT	0	1	0	1	0	0	0	0
KERR	149	35	64	25	4	0	1	11
KIMBLE	7	5	16	5	0	0	0	0
KING	0	0	0	0	0	0	0	0
KINNEY	7	3	0	0	0	0	0	0
LEBERG	121	99	32	8	5	1	0	2
KNOX	10	3	0	2	0	0	0	0
LAMAR	239	46	0	17	7	0	2	0
LAMB	46	7	9	9	0	0	0	4
LAMPASAS	51	64	1	0	0	0	4	0
LASALLE	9	8	6	1	0	0	0	0
LAVACA	30	26	7	9	0	0	0	1
LEE	16	20	15	12	0	0	0	0
LEON	29	4	0	0	0	0	0	0
LIBERTY	113	92	32	27	5	0	0	0
LIMESTONE	71	5	21	15	1	1	1	2
LIPSCOMB	2	6	0	8	0	0	0	0
LIVE OAK	3	8	5	1	0	0	0	1
LLANO	41	13	3	6	0	0	9	2
LOVING	0	0	0	0	0	0	0	0
LUBBOCK	1,175	574	1,017	155	20	1	4	17
LYNN	40	13	2	0	0	1	0	0
MCCULLOCH	18	15	9	8	2	0	3	1
MCLENNAN	490	459	353	136	21	2	0	30
MCMULLEN	0	0	0	0	0	0	0	0
MADISON	58	16	0	6	0	0	0	0
MARION	26	1	6	11	0	2	0	0
MARTIN	8	3	2	3	0	0	0	2
MASON	6	0	0	0	0	0	0	0

**JUVENILE PROBATION DISPOSITION ACTIVITY**  
**SUMMARY OF 1993 REPORTED ACTIVITY**  
**ALPHABETICAL BY COUNTY (continued)**

County	---- Prob Dept Disps ----		----- Prosecution or Court Dispositions -----				----- Placements -----	
	Counseled & Released	Informal Adjustment	Prosecution Refused/Dism	Adjud Prob	Adjud TYC	Certified as Adult	Voluntary	Crt Ordered
MATAGORDA	61	21	1	20	0	0	0	2
MAVERICK	195	39	0	9	2	0	0	0
MEDINA	53	30	4	5	0	0	3	5
MENARD	4	6	1	2	0	0	0	0
MIDLAND	565	118	115	107	11	5	0	20
MILAM	79	68	4	23	1	3	5	16
MILLS	0	8	0	2	1	0	0	0
MITCHELL	80	4	16	16	0	0	0	0
MONTAGUE	14	21	13	13	1	0	0	0
MONTGOMERY	460	14	80	69	8	0	0	3
MOORE	264	14	78	21	0	0	0	9
MORRIS	44	11	8	5	0	0	0	0
MOTLEY	4	2	0	0	0	0	0	0
NACOGDOCHES	361	39	3	34	15	0	12	2
NAVARRO	59	39	32	29	1	2	0	4
NEWTON	25	3	0	2	1	0	1	1
NOLAN	170	10	34	24	1	0	0	0
NUECES	3,519	351	880	316	58	9	9	48
OCHILTREE	23	5	7	5	0	0	0	1
OLDHAM	14	1	0	7	0	0	3	1
ORANGE	277	20	129	96	11	1	0	5
PALO PINTO	8	19	17	15	2	0	4	0
PANOLA	56	27	2	11	0	0	0	0
PARKER	158	110	39	19	6	1	2	10
PARMER	11	6	0	1	0	0	0	0
PECOS	88	38	12	20	2	0	0	8
POLK	130	10	6	11	0	0	2	4
POTTER	203	119	771	106	14	3	1	26
PRESIDIO	12	9	0	0	0	0	0	0
RAINS	24	8	0	1	1	0	2	0
RANDALL	341	43	130	119	2	1	0	33
REAGAN	9	13	0	0	0	0	0	0
REAL	11	7	0	3	0	0	0	0
RED RIVER	172	8	0	17	1	1	1	5
REEVES	121	9	7	11	0	0	6	0
REFUGIO	36	10	6	4	0	0	0	0
ROBERTS	1	1	0	0	0	0	0	0
ROBERTSON	44	51	22	31	2	0	3	1
ROCKWALL	62	17	7	16	0	0	0	1
RUNNELS	54	14	3	1	0	0	0	1

**JUVENILE PROBATION DISPOSITION ACTIVITY**  
**SUMMARY OF 1993 REPORTED ACTIVITY**  
**ALPHABETICAL BY COUNTY (continued)**

County	---- Prob Dept Disps ----		----- Prosecution or Court Dispositions -----				----- Placements -----	
	Counseled & Released	Informal Adjustment	Prosecution Refused/Dism	Adjud Prob	Adjud TYC	Certified as Adult	Voluntary	Crt Ordered
RUSK	206	31	31	8	4	1	7	2
SABINE	16	5	0	2	0	0	2	2
SAN AUGUSTINE	3	0	0	0	0	0	0	0
SAN JACINTO	28	14	20	23	1	0	0	1
SAN PATRICIO	112	51	71	52	12	1	18	14
SAN SABA	9	9	0	2	0	0	4	2
SCHLEICHER	3	6	8	2	0	0	0	0
SCURRY	95	3	31	20	1	0	0	8
SHACKELFORD	13	3	0	0	0	0	0	0
SHELBY	70	11	3	6	1	0	0	0
SHERMAN	2	0	1	0	0	0	0	0
SMITH	136	158	352	124	11	12	0	20
SOMERVELL	74	14	0	1	0	0	0	0
STARR	390	72	26	41	1	0	3	9
STEPHENS	42	4	0	11	0	0	1	0
STERLING	2	5	1	0	0	0	0	0
STONEWALL	6	0	0	1	0	0	0	0
SUTTON	9	3	0	0	0	0	0	0
SWISHER	90	1	9	37	0	0	0	0
TARRANT	3,590	185	1,671	834	140	34	28	24
TAYLOR	738	645	159	46	7	1	6	52
TERRELL	0	1	0	0	0	0	0	0
TERRY	20	35	8	15	0	0	1	4
THROCKMORTON	1	0	0	1	0	0	0	1
TITUS	36	21	6	7	2	0	0	1
TOM GREEN	869	221	216	70	16	3	8	41
TRAVIS	1,316	2,073	1,685	550	65	17	0	42
TRINITY	6	3	1	23	0	0	1	2
TYLER	35	38	2	4	1	0	0	0
UPSHUR	100	77	27	29	1	0	0	1
UPTON	14	9	3	2	0	0	0	1
UVALDE	181	27	37	31	4	0	0	3
VAL VERDE	385	150	2	58	1	2	0	0
VAN ZANDT	94	32	2	1	1	0	0	0
VICTORIA	709	43	122	35	6	8	0	0
WALKER	108	35	78	16	3	1	0	2
WALLER	94	16	12	21	1	0	0	0
WARD	85	36	5	1	0	0	0	2
WASHINGTON	48	11	23	11	1	0	2	21
WEBB	847	281	104	109	6	8	2	3

**JUVENILE PROBATION DISPOSITION ACTIVITY**  
**SUMMARY OF 1993 REPORTED ACTIVITY**  
**ALPHABETICAL BY COUNTY (continued)**

County	---- Prob Dept Disps ----		----- Prosecution or Court Dispositions -----				----- Placements -----	
	Counseled & Released	Informal Adjustment	Prosecution Refused/Dism	Adjud Prob	Adjud TYC	Certified as Adult	Voluntary	Crt Ordered
WHARTON	0	0	0	0	0	0	0	0
WHEELER	23	5	1	1	0	0	0	0
WICHITA	291	187	122	79	6	4	4	40
WILBARGER	43	13	7	9	0	0	1	4
WILLACY	137	9	2	2	3	0	0	6
WILLIAMSON	430	104	79	59	6	0	3	12
WILSON	39	25	40	14	0	0	0	2
WINKLER	21	17	5	8	0	0	0	0
WISE	75	43	14	12	1	1	0	7
WOOD	63	24	66	32	10	0	0	3
YOAKUM	14	11	0	0	0	0	0	0
YOUNG	81	14	13	7	0	0	1	3
ZAPATA	20	10	0	1	0	0	0	0
ZAVALA	24	15	0	6	2	0	1	0
Totals	51,614	18,532	20,682	14,011	1,817	327	649	3,194

**JUVENILE PROBATION SUPERVISION WORKLOAD ACTIVITY**  
**SUMMARY OF 1993 REPORTED ACTIVITY**  
**ALPHABETICAL BY COUNTY**

County	Juv Rec'v	New Probationers		Probationers		Juv Rec'v	New Refs	Total Juv	Unsuccessful
	Prob Supv 01/01/93	Added to Supervision Crt Ordered	Other	Leaving Supervision Crt Ordered	Other	Prob Supv 12/31/93	Processed 01/01/93	Handled 01/01/93	Probation Terminations
ANDERSON	14	20	22	0	7	49	248	304	0
ANDREWS	49	22	45	26	41	49	130	246	0
ANGELINA	126	70	82	69	67	142	722	1,000	8
ARANSAS	10	27	56	1	44	48	95	188	1
ARCHER	4	2	1	3	1	3	6	13	2
ARMSTRONG	0	1	0	0	0	1	5	6	0
ATASCOSA	29	18	13	18	15	27	196	256	0
AUSTIN	13	3	9	10	9	6	150	175	0
BAILEY	6	2	5	1	3	9	43	56	0
BANDERA	13	9	12	5	16	13	53	87	0
BASTROP	40	30	37	27	20	60	129	236	8
BAYLOR	8	2	0	8	0	2	32	42	0
BEE	67	29	73	36	73	60	118	287	6
BELL	367	172	542	147	581	353	1,173	2,254	35
BEXAR	4,916	1,232	1,807	924	1,454	5,577	7,560	15,515	157
BLANCO	4	0	10	2	9	3	20	34	0
BORDEN	0	0	0	0	0	0	0	0	0
BOSQUE	4	2	8	2	9	3	12	26	0
BOWIE	54	33	60	30	59	58	867	1,014	3
BRAZORIA	295	242	136	239	129	305	2,643	3,316	28
BRAZOS	133	91	112	57	110	169	1,171	1,507	10
BREWSTER	4	3	11	2	10	6	52	70	0
BRISCOE	3	0	2	0	3	2	6	11	0
BROOKS	12	6	22	5	13	22	71	111	0
BROWN	64	48	13	56	15	54	172	297	4
BURLESON	16	10	20	5	25	16	47	93	0
BURNET	32	3	50	11	37	37	241	326	2
CALDWELL	34	16	14	19	22	23	145	209	1
CALHOUN	6	3	13	3	3	16	199	221	0
CALLAHAN	5	1	23	0	20	9	58	87	0
CAMERON	616	240	843	212	793	694	2,154	3,853	33
CAMP	11	0	21	5	14	13	46	78	0
CARSON	4	0	10	1	11	2	23	37	0
CASS	28	29	35	23	25	44	149	241	4
CASTRO	2	4	9	0	0	15	42	57	0
CHAMBERS	20	19	5	19	7	18	58	102	0
CHEROKEE	73	26	97	22	102	72	201	397	0
CHILDRESS	5	4	23	0	20	12	27	59	0
CLAY	5	3	18	1	12	13	28	54	0
COCHRAN	31	12	5	10	8	30	29	77	0



**JUVENILE PROBATION SUPERVISION WORKLOAD ACTIVITY**  
**SUMMARY OF 1993 REPORTED ACTIVITY**  
**ALPHABETICAL BY COUNTY (continued)**

County	Juv Rec'v	New Probationers		Probationers		Juv Rec'v	New Refs	Total Juv	Unsuccessful
	Prob Supv 01/01/93	Added to Supervision Crt Ordered	Other	Leaving Supervision Crt Ordered	Other	Prob Supv 12/31/93	Processed 01/01/93 12/31/93	Handled 01/01/93 12/31/93	Probation Terminations
COKE	4	2	9	2	6	7	27	42	0
COLEMAN	6	3	17	3	13	10	31	57	0
COLLIN	218	128	244	123	275	192	919	1,509	5
COLLINGSWORTH	2	1	12	0	8	7	14	29	0
COLORADO	19	5	22	13	19	14	95	141	3
COMAL	94	42	85	46	83	92	334	555	1
COMANCHE	16	3	5	4	9	5	10	28	0
CONCHO	2	0	1	0	2	1	6	9	0
COOKE	21	15	12	19	11	18	91	139	1
CORYELL	46	32	56	13	22	99	268	402	2
COTTLE	0	1	0	0	0	1	7	8	0
CRANE	5	9	0	0	0	14	45	59	0
CROCKETT	7	2	13	3	10	9	55	77	0
CROSBY	7	4	5	7	1	8	19	35	0
CULBERSON	1	0	3	0	4	0	45	49	0
DALLAM	11	4	15	8	14	8	80	110	0
DALLAS	3,003	1,381	3,365	1,373	3,117	3,259	11,377	19,126	180
DAWSON	52	9	28	17	20	52	139	228	6
DEAF SMITH	26	56	21	8	16	79	284	387	1
DELTA	0	1	4	0	0	5	21	26	0
DENTON	473	280	1,032	144	978	663	1,456	3,241	7
DEWITT	34	19	15	19	23	26	148	216	0
DICKENS	6	0	3	3	6	0	11	20	0
DIMITT	28	4	29	6	42	13	47	108	0
DONLEY	0	1	6	0	6	1	7	14	0
DUVAL	8	12	43	9	27	27	81	144	1
EASTLAND	16	0	38	1	41	12	65	119	0
ECTOR	166	83	86	95	83	157	667	1,002	3
EDWARDS	6	5	20	5	20	6	39	70	0
ELLIS	128	73	121	80	114	128	547	869	5
EL PASO	558	520	886	490	580	894	2,590	4,554	162
ERATH	44	17	35	25	36	35	191	287	0
FALLS	26	4	32	3	39	20	66	128	0
FANNIN	7	32	54	4	40	49	194	287	0
FAYETTE	6	5	22	4	16	13	64	97	0
FISHER	13	1	2	11	2	3	62	78	1
FLOYD	8	9	10	5	10	12	82	109	2
FOARD	1	0	0	1	0	0	5	6	0
FORT BEND	375	253	165	220	159	414	1,670	2,463	4
FRANKLIN	9	2	7	5	7	6	48	66	0

**JUVENILE PROBATION SUPERVISION WORKLOAD ACTIVITY**  
**SUMMARY OF 1993 REPORTED ACTIVITY**  
**ALPHABETICAL BY COUNTY (continued)**

County	Juv Rec'v	New Probationers		Probationers		Juv Rec'v	New Refs	Total Juv	Unsuccessful Probation Terminations
	Prob Supv 01/01/93	Added to Supervision	Other	Leaving Supervision	Other	Prob Supv 12/31/93	Processed 01/01/93 12/31/93	Handled 01/01/93 12/31/93	
FREESTONE	14	5	19	6	12	20	69	107	0
FRIO	25	16	54	5	43	47	234	329	0
GAINES	14	17	20	7	19	25	69	120	0
GALVESTON	673	249	36	75	2	881	1,390	2,348	0
GARZA	1	1	8	0	6	4	9	19	0
GILLESPIE	15	7	32	6	33	15	90	144	1
GLASSCOCK	0	0	0	0	0	0	0	0	0
GOLIAD	9	5	10	7	8	9	71	95	0
GONZALES	25	23	28	14	27	35	87	163	0
GRAY	39	15	15	29	11	29	38	107	0
GRAYSON	73	57	106	65	99	72	619	855	7
GREGG	166	57	82	42	155	108	1,020	1,325	5
GRIMES	11	4	17	0	20	12	122	154	0
GUADALUPE	110	51	137	54	116	128	872	1,170	4
HALE	45	48	53	39	45	62	452	598	6
HALL	1	2	0	0	0	3	3	6	0
HAMILTON	6	6	15	4	12	11	33	60	0
HANSFORD	4	2	14	2	9	9	25	45	0
HARDEMAN	1	2	0	1	0	2	17	20	0
HARDIN	77	37	91	24	96	85	338	543	5
HARRIS	5,765	2,326	15,135	2,834	15,057	5,335	16,041	39,267	129
HARRISON	113	146	37	140	19	137	382	678	0
HARTLEY	5	4	2	2	3	6	10	21	0
HASKELL	9	6	3	4	4	10	17	35	0
HAYS	114	73	91	78	97	103	404	682	1
HEMPHILL	8	6	11	0	10	15	35	60	0
HENDERSON	2	47	64	2	38	73	267	380	0
HIDALGO	498	538	349	424	278	683	1,808	3,193	87
HILL	18	13	18	8	17	24	369	418	1
HOCKLEY	37	19	23	25	25	29	152	231	4
HOOD	53	18	105	24	112	40	253	429	3
HOPKINS	28	29	50	23	33	51	236	343	4
HOUSTON	21	2	17	3	2	35	57	97	0
HOWARD	31	43	36	28	36	46	339	449	1
HUDSPETH	3	0	6	1	3	5	37	46	0
HUNT	36	2	8	24	1	21	358	404	2
HUTCHINSON	56	7	13	26	12	38	96	172	0
IRION	0	1	0	1	0	0	1	2	0
JACK	0	4	8	1	6	5	26	38	0
JACKSON	33	17	11	22	15	24	40	101	0

**JUVENILE PROBATION SUPERVISION WORKLOAD ACTIVITY**  
**SUMMARY OF 1993 REPORTED ACTIVITY**  
**ALPHABETICAL BY COUNTY (continued)**

County	Juv Rec'v	New Probationers		Probationers		Juv Rec'v	New Refs	Total Juv	Unsuccessful
	Prob Supv 01/01/93	Added to Supervision Crt Ordered	Other	Leaving Supervision Crt Ordered	Other	Prob Supv 12/31/93	Processed 01/01/93 12/31/93	Handled 01/01/93 12/31/93	Probation Terminations
JASPER	40	15	34	24	25	40	154	243	3
JEFF DAVIS	3	1	3	2	1	4	6	13	0
JEFFERSON	605	165	1,125	154	1,141	600	2,010	3,905	33
JIM HOGG	3	1	1	0	4	1	87	92	0
JIM WELLS	77	30	209	22	159	135	405	721	0
JOHNSON	167	123	104	62	88	244	829	1,223	7
JONES	22	5	56	5	35	43	234	317	0
KARNES	24	17	19	6	31	23	69	129	0
KAUFMAN	44	46	23	22	12	79	234	347	3
KENDALL	18	20	19	10	7	40	144	201	0
KENEDY	0	0	0	0	0	0	6	6	0
KENT	0	0	1	0	1	0	3	4	0
KERR	54	24	38	47	29	40	256	372	3
KIMBLE	11	5	5	3	11	7	33	54	0
KING	0	0	0	0	0	0	0	0	0
KINNEY	4	0	3	0	7	0	10	17	0
KLEBERG	19	12	99	8	83	39	262	392	2
KNOX	3	3	3	1	4	4	15	24	0
LAMAR	23	21	37	15	27	39	308	389	2
LAMB	23	6	19	2	20	26	75	123	0
LAMPASAS	33	0	58	3	74	14	112	203	0
LASALLE	9	1	10	1	12	7	35	55	0
LAVACA	11	10	29	3	23	24	70	120	0
LEE	12	12	32	5	24	27	73	129	0
LEON	1	0	4	0	1	4	33	38	0
LIBERTY	137	33	100	12	81	177	292	562	1
LIMESTONE	43	15	5	24	14	25	107	170	1
LIPSCOMB	2	7	6	0	4	11	6	21	0
LIVE OAK	4	1	11	1	12	3	9	25	0
LLANO	10	8	13	4	16	11	62	93	0
LOVING	0	0	0	0	0	0	0	0	0
LUBBOCK	425	159	576	125	528	507	3,177	4,337	10
LYNN	1	0	15	0	8	8	56	72	0
MCCULLOCH	16	8	15	10	14	15	52	91	2
MCLENNAN	362	150	444	163	461	332	1,512	2,468	6
MCMULLEN	0	0	0	0	0	0	0	0	0
MADISON	12	8	16	4	20	12	82	118	0
MARION	9	12	3	4	5	15	51	75	1
MARTIN	8	3	3	1	9	4	14	28	0
MASON	14	0	7	4	16	1	13	34	0

**JUVENILE PROBATION SUPERVISION WORKLOAD ACTIVITY**  
**SUMMARY OF 1993 REPORTED ACTIVITY**  
**ALPHABETICAL BY COUNTY (continued)**

County	Juv Rec'v	New Probationers		Probationers		Juv Rec'v	New Refs	Total Juv	Unsuccessful
	Prob Supv 01/01/93	Added to Supervision Crt Ordered	Other	Leaving Supervision Crt Ordered	Other	Prob Supv 12/31/93	Processed 01/01/93 12/31/93	Handled 01/01/93 12/31/93	Probation Terminations
MATAGORDA	6	22	20	1	8	39	233	281	0
MAVERICK	56	8	38	5	56	41	260	362	0
MEDINA	32	5	33	9	44	17	128	198	0
MENARD	1	2	6	1	0	8	13	22	0
MIDLAND	141	111	124	95	119	162	930	1,306	5
MILAM	38	22	70	19	62	49	194	324	5
MILLS	0	2	8	0	6	4	11	21	0
MITCHELL	12	16	4	7	5	20	108	140	0
MONTAGUE	17	13	23	10	20	23	58	111	2
MONTGOMERY	129	76	37	41	31	170	863	1,105	4
MOORE	26	21	15	12	14	36	374	436	0
MORRIS	19	5	11	8	16	11	66	101	0
MOTLEY	0	0	2	0	1	1	6	8	0
NACOGDOCHES	96	33	44	27	39	107	457	630	9
NAVARRO	38	30	39	19	38	50	171	278	2
NEWTON	8	2	3	3	5	5	35	48	2
NOLAN	23	24	12	21	5	33	250	309	1
NUECES	452	315	367	312	335	487	5,152	6,286	50
OCHILTREE	14	5	5	7	3	14	41	65	0
OLDHAM	0	6	1	0	0	7	21	28	0
ORANGE	87	96	25	85	30	93	433	641	7
PALO PINTO	21	10	19	10	29	11	87	137	2
PANOLA	21	11	27	11	23	25	97	156	0
PARKER	76	17	113	31	113	62	357	563	4
PARMER	16	5	9	13	5	12	43	73	0
PECOS	43	21	37	6	49	46	166	267	1
POLK	54	11	47	23	52	37	202	314	0
POTTER	280	113	638	79	637	315	1,302	2,333	10
PRESIDIO	4	0	9	0	9	4	24	37	0
RAINS	11	1	8	4	11	5	32	52	1
RANDALL	133	107	51	105	44	142	630	921	0
REAGAN	7	0	11	3	12	3	22	40	0
REAL	0	3	7	0	5	5	21	31	0
RED RIVER	23	17	8	13	9	26	202	250	0
REEVES	18	11	9	18	10	10	149	187	0
REFUGIO	16	4	11	7	16	8	60	91	0
ROBERTS	3	0	1	0	4	0	4	8	0
ROBERTSON	50	37	50	26	29	82	158	295	4
ROSWELL	27	16	13	7	9	40	201	257	1
RUNNELS	7	1	14	3	13	6	77	99	0

**JUVENILE PROBATION SUPERVISION WORKLOAD ACTIVITY**  
**SUMMARY OF 1993 REPORTED ACTIVITY**  
**ALPHABETICAL BY COUNTY (continued)**

County	Juv Rec'v	New Probationers		Probationers		Juv Rec'v	New Refs	Total Juv	Unsuccessful
	Prob Supv 01/01/93	Added to Supervision Crt Ordered	Other	Leaving Supervision Crt Ordered	Other	Prob Supv 12/31/93	Processed 01/01/93 12/31/93	Handled 01/01/93 12/31/93	Probation Terminations
RUSK	44	7	33	8	35	41	276	360	1
SABINE	8	4	5	6	2	9	31	48	0
SAN AUGUSTINE	0	0	0	0	0	0	4	4	0
SAN JACINTO	24	30	60	25	47	42	120	234	1
SAN PATRICIO	152	53	139	72	150	122	274	618	8
SAN SABA	15	2	9	4	15	7	20	46	0
SCHLEICHER	4	4	6	4	6	4	9	23	0
SCURRY	22	16	4	20	3	19	165	207	0
SHACKELFORD	3	0	3	0	4	2	21	27	0
SHELBY	23	5	13	0	30	11	98	139	0
SHERMAN	0	0	0	0	0	0	2	2	0
SMITH	177	133	202	76	203	233	822	1,334	9
SOMERVELL	0	2	19	2	9	10	89	110	0
STARR	79	48	68	32	79	84	519	714	1
STEPHENS	3	7	4	3	4	7	59	73	0
STERLING	0	1	4	0	3	2	9	14	0
STONEWALL	0	1	0	0	0	1	7	8	0
SUTTON	10	0	3	1	11	1	12	25	0
SWISHER	25	37	1	29	5	29	140	203	0
TARRANT	1,031	779	1,082	844	1,186	862	6,455	9,347	94
TAYLOR	331	44	649	57	664	303	1,690	2,714	4
TERRELL	1	0	1	1	0	1	1	3	0
TERRY	19	16	28	20	2	41	153	216	0
THROCKMORTON	4	1	0	4	0	1	4	9	0
TITUS	14	6	22	6	19	17	71	113	2
TOM GREEN	135	75	239	75	171	203	1,406	1,855	12
TRAVIS	1,328	396	3,030	366	2,887	1,501	6,676	11,430	47
TRINITY	14	18	7	17	3	19	36	75	0
TYLER	19	5	38	1	35	26	86	148	0
UPSHUR	65	28	75	17	82	69	228	396	3
UPTON	4	2	10	2	8	6	31	47	0
UVALDE	51	32	29	47	20	45	310	422	2
VAL VERDE	131	56	156	66	183	94	565	908	1
VAN ZANDT	19	1	30	9	18	23	144	194	0
VICTORIA	81	35	53	44	69	56	956	1,125	3
WALKER	28	15	42	3	51	31	236	321	2
WALLER	52	23	26	13	14	74	150	251	0
WARD	15	1	36	5	31	16	137	189	0
WASHINGTON	21	13	27	11	21	29	103	164	1
WEBB	169	109	290	103	258	207	1,320	1,888	0

**JUVENILE PROBATION SUPERVISION WORKLOAD ACTIVITY  
SUMMARY OF 1993 REPORTED ACTIVITY  
ALPHABETICAL BY COUNTY (continued)**

County	Juv Rec'v	New Probationers		Probationers		Juv Rec'v	New Refs	Total Juv	Unsuccessful
	Prob Supv 01/01/93	Added to Supervision Crt Ordered	Other	Leaving Supervision Crt Ordered	Other	Prob Supv 12/31/93	Processed 01/01/93 12/31/93	Handled 01/01/93 12/31/93	Probation Terminations
WHARTON	21	49	21	28	11	52	149	240	2
WHEELER	9	1	7	0	12	5	30	47	0
WICHITA	140	62	252	65	254	135	693	1,147	5
WILBARGER	12	9	14	7	13	15	71	106	0
WILLACY	46	2	9	1	25	31	171	228	0
WILLIAMSON	99	54	102	58	96	101	703	958	4
WILSON	12	14	33	4	31	24	140	199	0
WINKLER	6	8	18	3	11	18	62	94	0
WISE	49	12	47	14	26	68	146	254	2
WOOD	43	19	24	33	18	35	180	266	2
YOAKUM	5	0	10	3	10	2	34	49	0
YOUNG	16	7	17	8	18	14	119	159	0
ZAPATA	3	1	7	1	8	2	31	42	0
ZAVALA	32	7	14	3	33	17	56	109	0
<b>Totals</b>	<b>29,576</b>	<b>13,727</b>	<b>39,643</b>	<b>12,827</b>	<b>37,944</b>	<b>32,175</b>	<b>118,068</b>	<b>201,014</b>	<b>1,336</b>



TEXAS JUVENILE PROBATION COMMISSION

P.O. BOX 13547

AUSTIN, TEXAS 78711-3547

2015 SOUTH IH-35

BULK RATE  
U.S. POSTAGE PAID  
AUSTIN, TEXAS  
PERMIT NO. 985