

151188



151188

Nebraska

Department of Correctional Services

19th Annual Report
FY 1992/93

NCJRS

NOV 16 1994

151188

U.S. Department of Justice
National Institute of Justice

ACQUISITIONS

This document has been reproduced exactly as received from the person or organization originating it. Points of view or opinions stated in this document are those of the authors and do not necessarily represent the official position or policies of the National Institute of Justice.

Permission to reproduce this copyrighted material has been

granted by

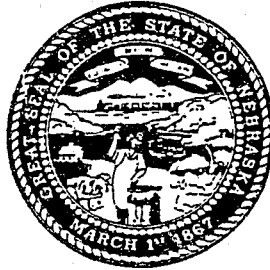
Nebraska Department of Correctional
Services

to the National Criminal Justice Reference Service (NCJRS).

Further reproduction outside of the NCJRS system requires permission of the copyright owner.

E. Benjamin Nelson
Governor

Nebraska
Department of Correctional Services



Harold W. Clarke
Director

Division of Administrative Services

Jack L. Falconer
Assistant Director

Division of Adult Institutions

Karen Shortridge
Assistant Director

Classification and Correctional Programming

Larry A. Tewes
Assistant Director

Division of Juvenile Services

Larry A. Tewes
Acting Assistant Director

Department of Correctional Services

P.O. Box 94661

Lincoln, Nebraska 68509-4661

Telephone: (402) 471-2654

FAX: (402) 479-5119



∞ TABLE OF CONTENTS ∞

| | |
|---|-----|
| DEPARTMENT DIVISION HEADS | i |
| TABLE of CONTENTS | iii |
| ROSTER of FACILITIES/PROGRAMS and FACILITY/PROGRAM HEADS | vii |
| LOCATION of FACILITIES/PROGRAMS | xi |
| | |
| DEPARTMENT of CORRECTIONAL SERVICES | 1 |
| Organizational Chart | 3 |
| Statutory Authority | 5 |
| Purpose | 5 |
| Goals | 5 |
| History | 6 |
| Accreditation | 6 |
| Recidivism | 7 |
| <i>Table: Recidivism Data</i> | 9 |
| <i>Chart: Incarcerated Population vs. Design Capacity</i> | 10 |
| <i>Chart: Total Incarcerated Population - Adults/Juveniles/Community Centers</i> | 11 |
| <i>Table: Average Monthly Population - Adults and Juveniles</i> | 12 |
| <i>Table: Total Population as of June 30, 1993</i> | 13 |
| | |
| DIVISION of ADMINISTRATIVE SERVICES | 15 |
| Organizational Chart | 17 |
| Program Statement | 19 |
| Budget | 19 |
| Fiscal Management | 19 |
| Purchasing, Inventory & Food Service | 20 |
| Engineering, Management Information & Records Management | 20 |
| Medical Services | 21 |
| Safety/Sanitation Program | 21 |
| Cornhusker State Industries & Federal Surplus Property | 21 |
| Legal Services | 23 |
| <i>Table: Inmate and Employee Actions</i> | 23 |
| Personnel Management & Staff Training | 23 |
| Planning, Research & Accreditation | 24 |
| Security Coordination | 24 |
| <i>Table: Per Capita Inmate/Student Costs - All Facilities and Programs, FY91, 92, 93</i> | 25 |
| <i>Table: Per Capita Statement by Facilities/Centers/Programs</i> | 26 |
| <i>Table: Per Capita Statement Adult Facilities and Programs</i> | 27 |
| <i>Table: Per Capita Statement by Juvenile Facilities and Programs</i> | 28 |
| <i>Table: Fiscal Statement of the Department, Federal Surplus Property, Cornhusker</i> | 28 |

| | |
|---|-----------|
| <i>State Industries, Construction, Grants & Central Office</i> | 29 |
| DIVISION OF ADULT INSTITUTIONS | 31 |
| Organizational Chart | 33 |
| Program Statement | 35 |
| Nebraska State Penitentiary | 35 |
| Hastings Correctional Center | 36 |
| Lincoln Correctional Center and Diagnostic & Evaluation Center | 36 |
| Omaha Correctional Center | 37 |
| OCC - Work Release Unit | 37 |
| Nebraska Center for Women | 38 |
| Community Corrections Center-Lincoln | 39 |
| Chart: <i>Areas of Commitment</i> | 41 |
| Chart: <i>Total Adult Male and Female Admissions - Safekeepers, Evaluators and Regular Admissions by Fiscal Year</i> | 42 |
| Chart: <i>Total Adult Male and Female Admissions - by Race, by Age & by Sex</i> | 43 |
| Chart: <i>Total Adult Population by Race</i> | 44 |
| Chart: <i>Total Adult Average Monthly Population by Fiscal Year</i> | 45 |
| Table: <i>Length of Stay - Minimum/Maximum Sentence for Most Severe Offense</i> | 46 |
| Table: <i>Length of Stay - Based Upon Incarcerated Males and Females as of the End of June in Each Fiscal Year (FY89, 90, 91, 92, 93)</i> | 48 |
| Table: <i>Total Adult Population Currented Confined - by Age, by Mean Age, & by Most Serious Offense</i> | 49 |
| Chart: <i>Total Adult Releases by Fiscal Year</i> | 51 |
| Chart: <i>Total Adult Releases by Age & by Sex and Type</i> | 52 |
| Table: <i>Institutional Releases - by Status, by Sex, by Race, & by Length of Stay</i> | 53 |
| Table: <i>Release Information - Maximum/Minimum Sentence</i> | 54 |
| Table: <i>Length of Stay - Based Upon Releases of Adult Males and Females as of the End of June in Each Fiscal Year (FY83 thru 93)</i> | 55 |
| Chart: <i>Community Corrections - Average Monthly Population</i> | 56 |
| Table: <i>Total Adult Admissions, Custody Levels, & Releases</i> | 57 |
| Chart: <i>Escapes</i> | 59 |
| | |
| CLASSIFICATION and CORRECTIONAL PROGRAMMING | 61 |
| Organizational Chart | 63 |
| Program Statement | 64 |
| Inmate Classification | 64 |
| Mental Health Services | 64 |
| Academic/Vocational Services | 65 |
| Interstate Corrections Compact | 65 |
| Volunteer Services | 66 |
| Inmate Programs | 66 |
| Adult Parole Administration | 66 |
| Chart: <i>Adult Parole Administration, Average Monthly Population by Fiscal Year</i> | 68 |
| Table: <i>Adult Parole Revocations, Discharges, & Monthly Count Under Supervision</i> | 69 |
| Table: <i>Releases to Parole - by Status, Sex, Race, & Length of Stay in the Institution</i> | 70 |
| Table: <i>Releases to Parole - Minimum/Maximum Sentence</i> | 71 |
| | |
| DIVISION of JUVENILE SERVICES | 73 |
| Organizational Chart | 75 |

| | |
|---|----|
| Program Statement | 77 |
| Youth Development Center-Kearney | 77 |
| Youth Development Center-Geneva | 78 |
| Juvenile Parole Administration | 79 |
| Chart: <i>Juvenile Population - Areas of Commitment</i> | 81 |
| Chart: <i>Juvenile Population - Average Monthly Committed Population</i> | 82 |
| Chart: <i>Juvenile Population - Commitments by Delinquency</i> | 83 |
| Chart: <i>Juvenile Commitments At Admission- by Age & by Race</i> | 84 |
| Chart: <i>Juvenile Evaluators - Number of Admissions</i> | 85 |
| Chart: <i>Juvenile Evaluators - by Age, by Gender, & by Race</i> | 86 |
| Table: <i>Summary of Admissions, Releases, & Length of Stay for Commitments</i> | 87 |
| Table: <i>Juvenile Parole - Paroled Cases by Race and Sex, Discharges by Race and Sex, & Revocations by Race and Sex</i> | 88 |
| Table: <i>Juvenile Parole - Length of Stay on Parole, Foster Care Program Placements, Interstate Compact Services Placements, & Movement of Juveniles</i> | 89 |

ROSTER OF FACILITIES and PROGRAMS

DEPARTMENT of CORRECTIONAL SERVICES

Harold W. Clarke, Director

P.O. Box 94661

Lincoln, NE 68509-4661

(402) 471-2654

FAX: (402) 479-5119

COMMUNITY CORRECTIONS CENTER

David S. Avery, Superintendent

2720 W. Van Dorn

P.O. Box 2200

Lincoln, NE 68542-2200

(402) 471-0740

FAX: (402) 471-6268

HASTINGS CORRECTIONAL CENTER

Gary Grammer, Superintendent

P.O. Box 2048

Hastings, NE 68902-2048

(402) 463-5600

FAX: (402) 463-7730

**LINCOLN CORRECTIONAL CENTER
DIAGNOSTIC & EVALUATION CENTER**

John Dahm, Warden

P.O. Box 22800, Station B

Lincoln, NE 68542-2800

(402) 471-2861

FAX: (402) 479-6100

NEBRASKA CENTER FOR WOMEN

Larry Wayne, Warden

Route #1, Box 33

York, NE 68467-9714

(402) 362-3317

FAX: (402) 362-3317

NEBRASKA STATE PENITENTIARY

Frank X. Hopkins, Warden

P.O. Box 2500, Station B

Lincoln, Nebraska 68542-2500

(402) 471-3161

FAX: (402) 471-4326

OMAHA CORRECTIONAL CENTER

Robert Houston, Warden

P.O. Box 11099

Omaha, NE 68111-0099

(402) 595-3964

FAX: (402) 595-2227

OCC - WORK RELEASE UNIT

2320 East Avenue J

Omaha, NE 68110-2766

(402) 595-2010

ADULT PAROLE ADMINISTRATION

Dennis Bakewell, Administrator

P.O. Box 94661

Lincoln, NE 68509-4661

(402) 471-2654

FAX: (402) 471-5119

JUVENILE PAROLE ADMINISTRATION

Arthur W. Pohlen, Administrator

P.O. Box 94661

Lincoln, NE 68509-4661

(402) 471-2654

FAX: (402) 479-5119

**YOUTH DEVELOPMENT CENTER-
GENEVA**

Allen Jensen, Superintendent

R.R. 1, Box 23A

Geneva, NE 68361-0273

(402) 759-3164

FAX: (402) 759-3164

**YOUTH DEVELOPMENT CENTER-
KEARNEY**

Al Kulhanek, Superintendent

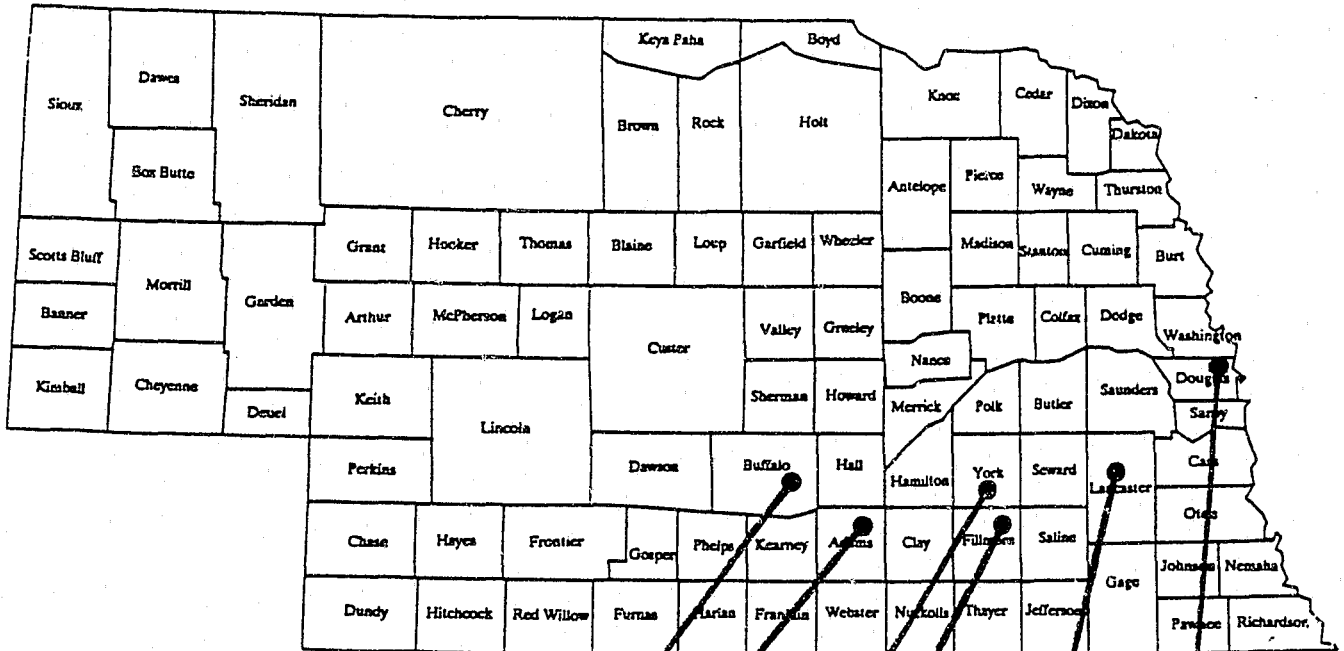
2802 30th Avenue

Kearney, NE 68847-9599

(308) 237-3181

FAX: (308) 234-8721

80 NEBRASKA CORRECTIONAL FACILITIES and PROGRAMS 88



Youth Development Center, KEARNEY

Hastings Correctional Center, HASTINGS

Nebraska Center for Women, YORK

Youth Development Center, GENEVA

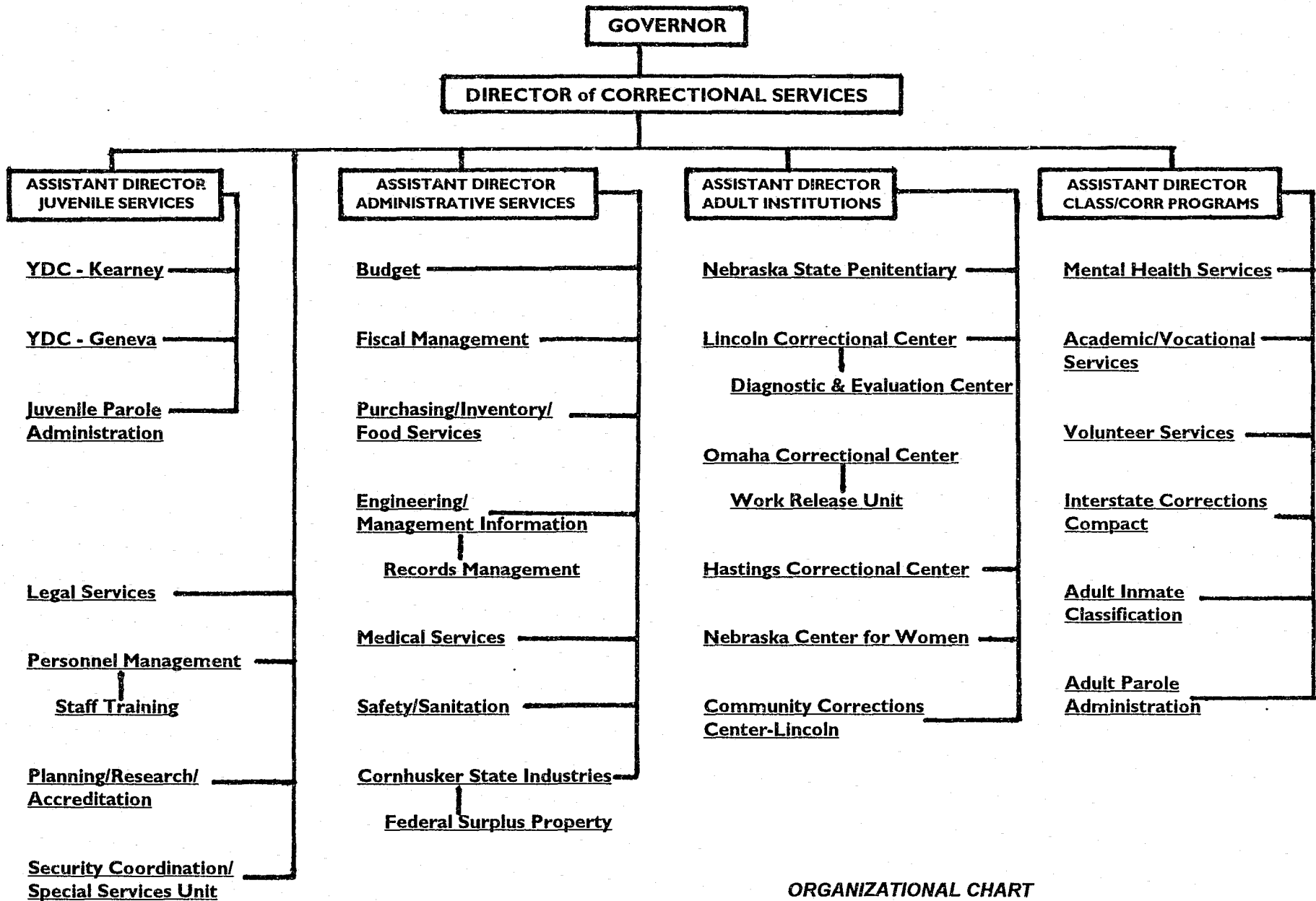
DCS Central Office Administration
 Nebraska State Penitentiary
 Lincoln Correctional Center
 Community Corrections Center
 Adult Parole Administration
 Juvenile Parole Administration

LINCOLN

Omaha Correctional Center
 OCC Work Release Unit

OMAHA

***Department
of
Correctional
Services***



ORGANIZATIONAL CHART
 NEBRASKA Department of Correctional Services

FY/93

DEPARTMENT of CORRECTIONAL SERVICES

Statutory Authority

In early 1967, the Division of Corrections was created within the Department of Public Institutions. Legislative action in 1974 established the Department of Correctional Services as a separate agency of state government. Nebraska Revised Statutes 83-171 and 83-901 (Reissue 1981) charges the department with the custody, control, study, correctional treatment, training and rehabilitation of persons committed to it so that they may be prepared for lawful and productive community living.

Agency Purpose and Mission

The department's statutory purpose is to provide for the custody, study, care, discipline, training, and treatment of persons in correctional institutions, and to supervise persons committed to the department on parole, as well as develop policies and programs for the correctional treatment and rehabilitation of those persons committed to it. Developed from this statutory directive, the mission of the Department of Correctional Services is to serve and protect the public by providing control, humane care and program opportunities for those individuals placed in its custody and supervision, thereby facilitating their return to society as responsible persons.

The Legislative Committee for the Development of the Statewide Correctional Improvement Plan of 1974 established the primary goal of corrections in Nebraska to be the successful reintegration of the inmate into the community, through functional and realistic programming, while providing for the protection of society. To fulfill the mission of the department, four major areas of operation oversee the various institutions and programs: the Division of Administrative Services; the Division of Adult Institutions; Classification & Correctional Programming; and, the Division of Juvenile Services. Within this organizational framework, the department seeks to refine its processes and policies and maintain the public's confidence and safety.

The philosophic framework for all actions planned by the department is found in the statutory requirements (Revised Statutes of Nebraska 83-171, 181, 182, 183, 901, 924, 927, 932, 936, 939, and 943).

Agency Goals

The goals of the Department of Correctional Services for the biennium budget period of 1991-1993 are outlined below. All institutions and major program areas have formulated objectives based on these goals.

1. To operate the department in a safe and secure manner;
2. To maintain an adequate quality of life;
3. To provide for and maintain inmate rights under the U.S. Constitution and federal and state law;
4. To place inmates in appropriate custody levels from intake through release;
5. To operate the department in an efficient and effective manner;
6. To provide meaningful work for inmates;
7. To provide adequate programming for inmates;
8. To achieve and maintain accreditation; and,
9. To improve training.

History

A barn-like structure erected on what were to become the Penitentiary grounds served Nebraska as its first territorial prison. The first commitment arrived on February 22, 1869. Prior to that time, prisoners were confined by the counties or in federal prisons. On March 4, 1870, the State Legislature approved the construction of the Nebraska State Penitentiary, to be located south of the city of Lincoln. Opened in 1896, the original structure was constructed of magnesia limestone and could house 375 inmates.

In 1879, the Legislature created the Nebraska State Reform School for Juvenile Offenders to be located in Kearney. The first offender was committed in July 1881. Ten years later, the Girls Industrial School was established by the Legislature. It opened in Geneva in 1892.

During the early 1920's, correctional services were expanded, raising the adult male and female inmate capacity to 750. Female prisoners were originally housed in separate quarters at the Nebraska State Penitentiary, however, on May 11, 1920, the newly authorized women's prison accepted its first inmate. Initially called the Reformatory for Women, the facility was a two-story frame house located on a farm at the outskirts of the community of York. Additional space for male inmates was created when the Men's Reformatory opened in 1921 at a site west of the city of Lincoln.

Nebraska's correctional needs have continued to grow and existing facilities have been enlarged and additional facilities opened. The department has been involved in well over a decade of rigorous prison reform and rebuilding. Beginning in 1975 and 1976, the initial Legislative authorizations were received. In FY93, the Department of Correctional Services provided care, custody, control and supervision for over 3800 individuals in five adult and two juvenile facilities, two community corrections centers, and the adult and juvenile parole programs.

Accreditation

In 1978, the American Correctional Association and the Commission on Accreditation for Corrections implemented a national accreditation program for all segments of adult and juvenile corrections. In 1979, the Nebraska Legislature mandated that the facilities and programs of the Department of Correctional Services attain accredited status. The accreditation process involves coming into compliance with a set of separate and distinct standards developed by nationally recognized correctional professionals for all operation and program areas.

With society's sentiment remaining in favor of removing the criminal from the community, the ACA standards provide the basis for the humane administration and direction of institutional and program care for the resulting increase inmate populations. This is the foundation upon which is built the preservation of individual rights and responsibilities and ultimately, the protection of society.

This voluntary process offers the opportunity to evaluate operations against national standards, remedy deficiencies, and upgrade the quality of correctional programs and services. It supports improved management practices through better organization, forces the development and continual review of policies and procedures and the ascertainment of staff compliance with them. Accreditation contributes to the increased accountability and enhanced public credibility for administrative and line staff. It provides for the establishment of measurable criteria for upgrading programs, personnel and physical plant operations on a continuing basis. It also offers a defense against lawsuits through documentation and the demonstration of a "good faith" effort to improve the conditions of confinement. Overall, accreditation benefits both personnel and inmates/students in ensuring a safer and more humane living and working environment.

The department is dedicated to continuing its success in accreditation and supports this process by an accreditation/system review directed at evaluating accreditation compliance and general facility/program operations, conditions and procedures. On a regularly scheduled basis, each facility/program areas is audited by a team of staff members drawn from throughout the department. The intent of the review is to identify problem areas proactively before they become major concerns of the facility/program and the department and to make an assessment of accreditation readiness.

Since the department's involvement with the accreditation process, all facilities/programs have been accredited and have continued to work toward maintenance of compliance levels throughout the three-year accreditation award period. The current accreditation status for each facility and program may be found in the section devoted to each department division.

Recidivism

Many individuals in prison have been there before and many will return at some point after their next release. The effectiveness of the criminal justice system is often measured by the extent to which inmates continue to engage in criminal activity after their release from prison. The rate at which released prisoners return to confinement is termed "recidivism." While the definition, criteria and method of defining recidivism varies from state to state, the department utilizes the following standardized definition:

"Recidivism is measured by criminal acts that result in conviction by a court when committed by inmates released from the Nebraska Prison System during a specified base time period who return to the Nebraska System within three years of their release date."

The recidivist rate is the number of convictions for new crimes divided by the number of releases. This rate represents the proportion of inmates who left the Nebraska Prison System during a specified time period who were reincarcerated because of convictions for committing a new offense. The numbers compiled for FY93 reflect a 23.6% overall recidivism rate for both males and females. (The specific recidivism data follows on the next page of this report.)

RECIDIVISM DATA by FISCAL YEAR

(Recidivism consists of new crime commitments only.)

| FISCAL YEAR | FEMALES | | | MALES | | | COMBINED | | |
|---------------------------|---------|------------------------|--------|---------|------------------------|--------|----------|------------------------|--------|
| | Paroles | Institution Discharges | Totals | Paroles | Institution Discharges | Totals | Paroles | Institution Discharges | Totals |
| Number Released | | | | | | | | | |
| 80/81 | 25 | 19 | 44 | 238 | 305 | 543 | 263 | 324 | 587 |
| 81/82 | 22 | 18 | 40 | 244 | 291 | 535 | 266 | 309 | 575 |
| 82/83 | 27 | 32 | 59 | 289 | 359 | 648 | 316 | 391 | 707 |
| 83/84 | 34 | 22 | 56 | 307 | 352 | 659 | 341 | 374 | 715 |
| 84/85 | 24 | 26 | 50 | 268 | 372 | 640 | 292 | 398 | 690 |
| 85/86 | 22 | 28 | 50 | 277 | 357 | 634 | 299 | 385 | 684 |
| 86/87 | 31 | 27 | 58 | 364 | 459 | 823 | 395 | 486 | 881 |
| 87/88 | 70 | 26 | 96 | 486 | 326 | 812 | 556 | 352 | 908 |
| 88/89 | 58 | 29 | 87 | 412 | 463 | 875 | 470 | 492 | 962 |
| 89/90 | 62 | 51 | 113 | 448 | 559 | 1007 | 510 | 610 | 1120 |
| Number Recidivist | | | | | | | | | |
| 80/81 | 2 | 2 | 4 | 23 | 65 | 88 | 25 | 68 | 93 |
| 81/82 | 2 | 2 | 4 | 24 | 75 | 99 | 26 | 77 | 103 |
| 82/83 | 2 | 4 | 6 | 25 | 60 | 85 | 27 | 64 | 91 |
| 83/84 | 4 | 5 | 9 | 52 | 82 | 134 | 56 | 87 | 143 |
| 84/85 | 5 | 5 | 10 | 61 | 92 | 153 | 66 | 97 | 163 |
| 85/86 | 1 | 7 | 8 | 59 | 90 | 149 | 60 | 97 | 157 |
| 86/87 | 7 | 9 | 16 | 85 | 106 | 191 | 92 | 115 | 207 |
| 87/88 | 11 | 3 | 14 | 105 | 80 | 185 | 116 | 83 | 199 |
| 88/89 | 5 | 3 | 8 | 80 | 108 | 188 | 85 | 111 | 196 |
| 89/90 | 2 | 9 | 11 | 97 | 156 | 253 | 99 | 165 | 264 |
| Percent Recidivist | | | | | | | | | |
| 80/81 | 8.0 | 10.5 | 9.1 | 9.7 | 21.3 | 16.2 | 9.5 | 21.0 | 15.8 |
| 81/82 | 9.1 | 11.1 | 10.0 | 9.8 | 25.7 | 18.5 | 9.8 | 24.9 | 17.9 |
| 82/83 | 7.4 | 12.5 | 10.2 | 8.7 | 16.7 | 13.1 | 8.5 | 16.4 | 12.9 |
| 83/84 | 11.8 | 22.7 | 16.1 | 16.9 | 23.3 | 20.3 | 16.4 | 23.3 | 20.0 |
| 84/85 | 20.8 | 19.2 | 20.0 | 22.8 | 24.7 | 23.9 | 22.6 | 24.4 | 23.6 |
| 85/86 | 4.5 | 25.0 | 16.0 | 21.3 | 25.2 | 23.5 | 20.1 | 25.2 | 23.0 |
| 86/87 | 22.6 | 33.3 | 27.6 | 23.4 | 23.1 | 23.2 | 23.3 | 23.7 | 23.5 |
| 87/88 | 15.7 | 11.5 | 14.4 | 21.6 | 24.5 | 22.8 | 20.9 | 23.6 | 21.9 |
| 88/89 | 8.6 | 10.3 | 9.2 | 19.4 | 23.3 | 21.5 | 18.1 | 22.6 | 20.4 |
| 89/90 | 3.2 | 17.6 | 9.7 | 21.7 | 27.9 | 25.1 | 19.4 | 27.0 | 23.6 |

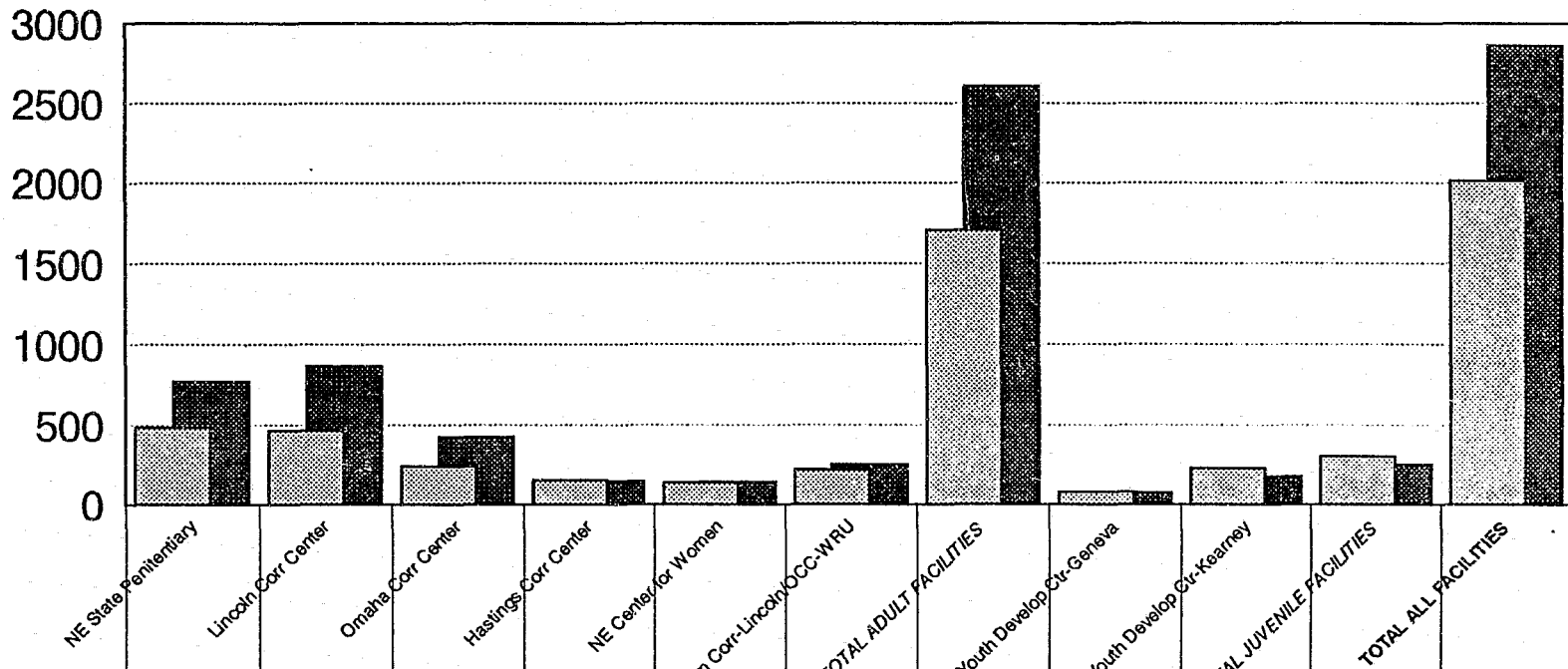
NOTE: Recidivism rates after FY83 also include parolees who were revoked for felonies.

DEFINITION: Recidivism is measured by criminal acts that result in conviction by a court when committed by inmates released from the Nebraska State Prison System during a specified base time period who return to the Nebraska System within three years of their release date.

Incarcerated Population vs. Design Capacity

FY1993 Average Monthly Population

Design Capacity Average Population

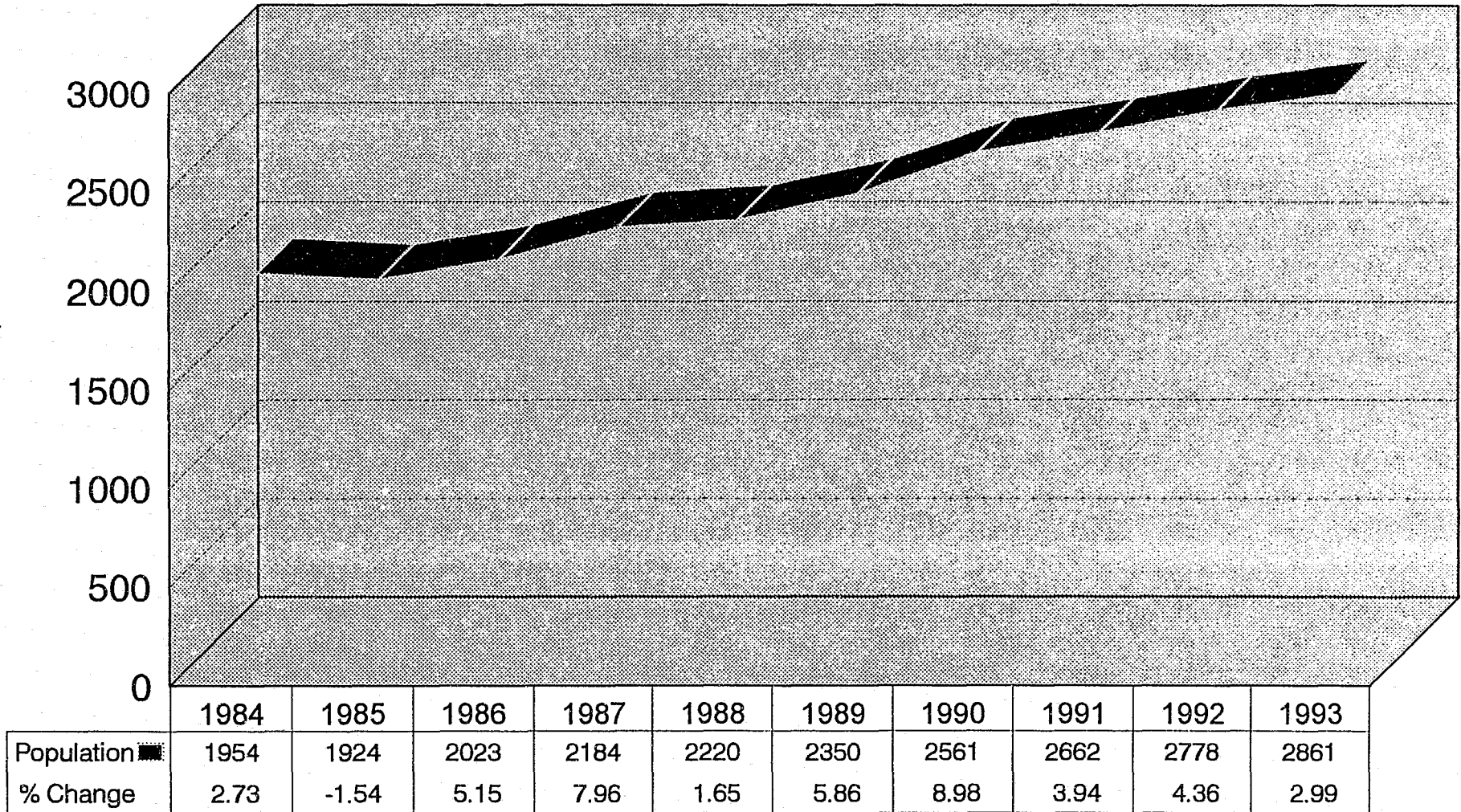


| | | | | | | | | | | | |
|--------------------|-------|-------|-------|------|-------|-------|-------|------|------|------|-------|
| Design Capacity | 488 | 468 | 240 | 152 | 139 | 219 | 1706 | 78 | 227 | 305 | 2011 |
| Average Population | 773 | 868 | 427 | 147 | 140 | 254 | 2609 | 74 | 179 | 253 | 2862 |
| % of Capacity | 158.4 | 185.5 | 177.9 | 96.7 | 100.1 | 115.9 | 152.9 | 94.9 | 78.9 | 82.9 | 142.3 |

Total Incarcerated Population by Fiscal Year

Average Monthly Population

11



Includes Adults, Juveniles and Community Centers; does not include Adult and Juvenile Parole. Chart represents an overall increase of 46.4% in the incarcerated population.

AVERAGE MONTHLY POPULATION

Summary of Inmates/Students in INSTITUTIONS

| <u>FACILITY / FISCAL YEAR</u> | <u>1984</u> | <u>1985</u> | <u>1986</u> | <u>1987</u> | <u>1988</u> | <u>1989</u> | <u>1990</u> | <u>1991</u> | <u>1992</u> | <u>1993</u> |
|--|-------------|-------------|-------------|-------------|-------------|-------------|-------------|-------------|-------------|-------------|
| Nebraska State Penitentiary | 830 | 704 | 662 | 674 | 646 | 653 | 710 | 743 | 768 | 773 |
| Lincoln Correctional Center | 382 | 323 | 375 | *667 | 676 | 696 | 758 | 791 | 828 | 868 |
| Diagnostic & Evaluation Center | 244 | 204 | 257 | *- | - | - | - | - | - | - |
| Omaha Correctional Center | 67 | 213 | 245 | 291 | 294 | 300 | 349 | 366 | 400 | 427 |
| Hastings Correctional Center | - | - | - | - | 59 | 137 | 147 | 145 | 150 | 147 |
| Nebraska Center for Women | 66 | 71 | 65 | 88 | 89 | 100 | 114 | 114 | 124 | 140 |
| Community Corrections (Community Corrections-Lincoln and OCC-Work Release Unit) | 168 | 198 | 207 | 240 | 231 | 226 | 244 | 268 | 268 | 254 |
| Youth Development Center-Geneva | 47 | 57 | 61 | 66 | 70 | 66 | 72 | 71 | 71 | 74 |
| Youth Development Center-Kearney | <u>150</u> | <u>154</u> | <u>151</u> | <u>158</u> | <u>155</u> | <u>172</u> | <u>167</u> | <u>164</u> | <u>169</u> | <u>179</u> |
| TOTALS: | 1954 | 1924 | 2023 | 2184 | 2220 | 2350 | 2561 | 2662 | 2778 | 2862 |
| % Change: | -1.5% | +5.1% | +8.0% | +1.6% | +5.9% | +9.0% | +3.9% | +4.4% | +3.0% | |

(NOTE: 46.5% Increase since FY84)

* These two facilities became one institution in FY87.

Summary of Inmates/Students on PAROLE

| | | | | | | | | | | |
|----------------------------|------------|------------|------------|------------|------------|------------|------------|------------|------------|------------|
| Adult Parole | 301 | 302 | 251 | 300 | 452 | 431 | 476 | 563 | 625 | 653 |
| Community Furlough Program | - | - | - | - | - | 44 | 37 | 4 | 10 | 12 |
| Juvenile Parole | <u>189</u> | <u>175</u> | <u>193</u> | <u>208</u> | <u>251</u> | <u>239</u> | <u>268</u> | <u>263</u> | <u>284</u> | <u>278</u> |
| TOTALS: | 490 | 477 | 444 | 508 | 703 | 714 | 781 | 830 | 919 | 943 |
| % Change: | -2.7% | -6.9% | +14.4% | +38.4% | +1.6% | +9.4% | +6.3% | +10.7% | +2.6% | |

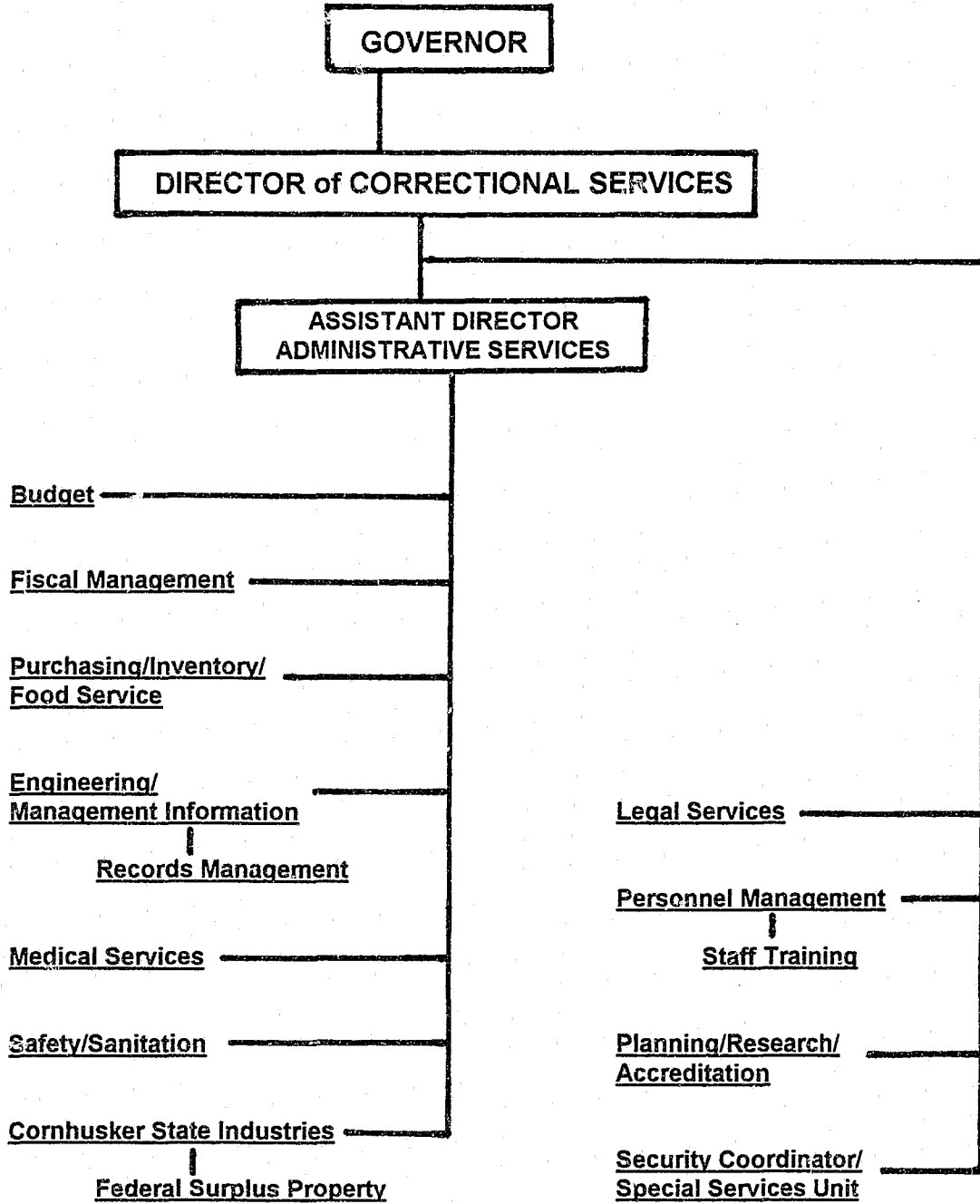
(NOTE: 92.4% Increase since FY84)

POPULATION as of JUNE 29, 1993
All Facilities and Programs

| ADULT | | | |
|--------------------------------------|--|--------------|----------------------|
| <u>Design Capacity</u> | | | <u>% of Capacity</u> |
| INSTITUTIONS | | | |
| 488 | Nebraska State Penitentiary (NSP) | 755 | 154.71% |
| 468 | Lincoln Correctional Center (LCC) | 867 | 185.26% |
| 240 | Omaha Correctional Center (OCC) | 439 | 182.92% |
| 152 | Hastings Correctional Center (HCC) | 159 | 104.61% |
| 139 | Nebraska Center for Women (NCW) | 132 | 94.96% |
| | INSTITUTIONAL TOTAL | 2352 | |
| COMMUNITY CORRECTIONS CENTERS | | | |
| 129 | Community Corrections Center-Lincoln (CCL) | 139 | 107.75% |
| 90 | OCC Work Release Unit (OCC-WRU) | 111 | 123.33% |
| | COMMUNITY CORRECTIONS TOTAL | 250 | |
| 1,706 | INCARCERATED TOTAL | 2,602 | 152.52% |
| COMMUNITY FURLOUGH PROGRAM | | | |
| | Omaha District | 3 | |
| | Lincoln District | 2 | |
| | Out State | 0 | |
| | COMMUNITY FURLOUGH TOTAL | 5 | |
| ADULT PAROLE ADMINISTRATION | | | |
| | Omaha District | 393 | |
| | Lincoln District | 320 | |
| | ADULT PAROLE TOTAL | 713 | |
| | ADULT FACILITY and PROGRAM TOTAL..... | 3,320 | |
| JUVENILE | | | |
| Youth Development Centers | | | |
| 78 | Geneva (YDC-G) | 80 | 97.5% |
| 227 | Kearney (YDC-K) | 183 | 80.6% |
| | INSTITUTION TOTAL | 263 | |
| | Juvenile Parole Administration (JPA) | 270 | |
| | COMMUNITY TOTAL | 270 | |
| | JUVENILE FACILITY and PROGRAM TOTAL..... | 533 | |
| | DEPARTMENTAL INSTITUTION AND PROGRAM TOTAL..... | 3,853 | |

***Division
of
Administrative
Services***

DIVISION of ADMINISTRATIVE SERVICES



80 DIVISION OF ADMINISTRATIVE SERVICES 83

Established in accordance with Nebraska Revised Statute Section 83-922 (Reissue 1987), the Division of Administrative Services provides assistance and support services to the department's facilities and programs. State Statute 83-943 (Reissue 1987) instructs that the Division shall:

- 1) Coordinate and supervise services available to all divisions of the Department of Correctional Services from a centralized location;
- 2) Provide technical assistance on budget preparation, accounting procedures, federal funding administration, procurement, and inventory.
- 3) Provide assistance in the total concept of human resource management involving staffing, recruiting, and evaluation, and establishing and maintaining in-service training programs for existing programs, as well as future programs;
- 4) Provide technical assistance in the planning and development of new capital construction projects and supervising maintenance functions for all facilities within the department;
- 5) Provide data collection and analysis from Nebraska and other states to assist the director in the formulation of current and future corrections policy and to justify budgetary needs to implement policy decisions, and developing standards for evaluation of correctional programs to better evaluate social worth and budgetary performance;
- 6) Design and implement a comprehensive data record system for the disposition of the criminal records of adult inmates in the state.

Further, the Division:

- 7) Administers and supervises the Federal Surplus Property Program for the state of Nebraska;
- 8) Administers and supervises the Nebraska Cornhusker State Industries program, and
- 9) Administers and supervises the adult medical services program.

Budget

The Budget Officer is responsible for planning, organizing, and monitoring the department's fiscal allocations and fiscal reporting systems. Fiscal and accounting data are compiled to use in budget evaluation and adjustment, cost analysis and budget projections.

Fiscal Management

Central accounting and inmate trust fund personnel are under the supervision of the Accounting and Finance Manager. Central accounting is responsible for the coordination of the agency's accounting functions, including payment submissions and investment of surplus funds through the Investment Council. The accounting section is the clearing center for all transfer appropriations, expenditure documents and grant award monitoring and reporting.

The inmate trust fund section is responsible for the receipt and disbursement of individual inmate funds, inmate payroll and assisting inmates with their saving accounts.

Purchasing/Inventory/Food Service

The department's Material Administrator is responsible for the review, coordination, approval and/or placement of all purchases. While seeking an economical cost, quality control is emphasized in the procurement of all products and services. Purchasing is also responsible for ensuring that supplies are received as ordered and delivered at the required time. When appropriate, volume buying is coordinated with other state agencies.

Inventory responsibilities include the formulation of standardized inventories for all supplies and equipment throughout the department. Appropriate monitoring and reporting is completed on all state-owned property. Inventory personnel are also responsible for assessing and coordinating the motor vehicle needs of central office and the adult and juvenile facilities and programs.

Purchase and inventory control of food items, food equipment and commodities are also responsibilities of this section. Technical expertise is provided on a contractual basis with licensed dietitians for consulting, menu planning and special diet recommendations. Food service managers meet monthly, or more often as necessary, to discuss methods of procurement and vendor evaluations/new products. Coupled with Purchasing's expertise, the result is the provision of good, nutritional food prepared with the best quality product at the best price.

Engineering, Management Information, and Records Management

These functional areas are under the supervision of the Facilities Engineering Manager.

Engineering

This section provides the department with technical and management assistance for construction projects of all sizes, from the preliminary planning stage to completion and readiness for occupancy. Guidance and assistance is also provided to assist the various facilities and programs with their maintenance programs.

Management Information

Management information assistance is provided department-wide regarding data management, technical expertise and information retrieval. This includes such applications as the Corrections Tracking System (CTS) and the Conversational Monitoring System (CMS), which includes Structured Query Language (SQL). This area also handles personal computer hardware and software requirements.

Records Management

This section serves as the records depository for all discharged adult inmate files. The office prepares records to be microfilmed pursuant to the department's Records Retention Schedule. Technical assistance in the form of intra-institution recordkeeping coordination and records retention is provided to the facility/program records offices. Interpretations of inmate Good Time laws and records statutes are provided to other state agencies, legislative entities and the courts.

Medical Services

The primary objective of this section is the provision of health care services throughout the department in order to ensure good health for all inmates and students. The program provides a wide range of medical services under the direction of a Health Care Administrator.

The department's adult and juvenile infirmaries and out-patient clinics are professionally staffed and licensed by the state. Medical services provided within these facilities include initial medical screening, comprehensive health care examinations, health care records, laboratory and radiology services, dental, optometry and pharmacy services, and sick call. Health education, including AIDS information, is provided to both staff and inmates/students.

Contractual arrangements with local hospitals and other specialized medical professionals are utilized to supplement institutional services.

Safety/Sanitation

The department's Safety Coordinator inspects all adult and juvenile facilities on a periodic basis in order to identify and assist in the correction of safety hazards and sanitation needs. Administrative regulations are developed and revised in order to comply with ACA standards or any of the numerous state and federal statutes, codes and regulations, including the Life Safety Code, OSHA regulations, the National Electrical Code and National Fire Prevention Administration standards.

The asbestos identification and control program continues in operation and involves complying with two components: 1) AHERA requirements involving the Youth Development Centers, and 2) OSHA, EPA and NESHAP requirements involving all but two of the department's other facilities. Designated maintenance personnel from the affected facilities have received the required EPA recertification training and Nebraska Department of Health certificates. Section employees have maintained certification as Asbestos Building Inspectors and Management Planners. Special equipment for minor asbestos removal and debris clean-up is in place and is replenished as required.

Cornhusker State Industries and Federal Surplus Property

Cornhusker State Industries

Cornhusker State Industries (CSI) engages in the manufacture and sale of a variety of products and services to Nebraska state agencies, county and local governments, and registered non-profit organizations. Cornhusker State Industries is a diversified organization which employs inmates to work in both traditional industries programs and Private Venture Projects.

Traditional programs include: License plates, wood and metal furniture, janitorial products, printing, and finished textile products. Other services provided by CSI include braille transcription, data entry, telemarketing, trucking, moving, and warehousing. The inmates working at traditional industries programs are paid from a revolving fund, not by the institution, which reduces the cost of their incarceration.

The Private Venture Projects are operated under the sponsorship of the Private Sector/Prison Industry Enhancement Certification Program of the U.S. Department of Justice. In this program, the inmates work for a private company, within the confines of the institution, while fulfilling a variety of requirements imposed by the Federal Government. The inmates working in

these jobs are paid with outside funds, a portion of which goes to the Nebraska Crime Victim's Compensation Fund, to family support, restitution, room and board, and state and federal taxes.

Federal Surplus Property

Established by legislative act in 1947, Surplus Property was originally the responsibility of the Department of Public Institutions. Placed under the jurisdiction of several different state agencies in the ensuing years, it became a sub-program of the Department of Correctional Services in 1982.

This self-supporting program is responsible for the equitable distribution of federal surplus property to eligible public and non-profit organizations within the state of Nebraska. The structured requirements of the operation include the nationwide screening of property, transfer of the property to Nebraska, administration of the property, and marketing and placement of the property within the state. It provides employment for inmates in the areas of warehousing and refurbishing property, as well as in the maintenance and improvement of the physical facility.

The following four operational areas report directly to the Director: Legal Services; Personnel Management and Staff Training; Planning, Research and Accreditation; and Security Coordination.

Legal Services

Under the supervision of the General Counsel, this section is involved in the promulgation of inmate rules and regulations, inmate grievances and disciplinary appeals, mental health hearings, legislation, real estate and contracts, representation of department interests in administrative proceedings, personnel issues and collective bargaining, and responses to inquiries from judges, attorneys, and the State Ombudsman.

Each facility and program has a designated employee to assist the Attorney General's Office in the discovery process following the commencement of new legal actions. Legal Services, which provides assistance to the facilities in such matters, handles its own litigation caseload and functions as the liaison between the department and the Attorney General's Office.

Inmate/Employee Actions

| <u>Category/Fiscal Year</u> | <u>FY87</u> | <u>FY88</u> | <u>FY89</u> | <u>FY90</u> | <u>FY91</u> | <u>FY92</u> | <u>FY93</u> |
|--|-------------|-------------|-------------|-------------|-------------|-------------|-------------|
| Inmate Grievances Appealed to the Director | 582 | *1215 | 1072 | +1172 | 949 | 1040 | 1204 |
| Inmate Disciplinary Actions Appealed | 666 | 672 | 670 | 684 | 599 | 878 | 983 |
| Inmate/Employee State Claims Board Filings | 80 | 167 | 133 | 126 | 151 | 111 | 209 |
| Employee State Personnel Grievances/Hearings | 16 | 30 | 1 | 42 | 34 | NA | NA |
| Employee NE Equal Opportunity/EEOC Actions | 0 | 14 | 0 | 5 | 10 | NA | NA |

NOTES: * Nearly 300 grievances filed between two inmates.
 + Some 125+ grievances filed by one inmate.
 NA Not available

**Personnel Management
and
Staff Training**

The Personnel Administrator is responsible for the management of the department's human resources.

Personnel

The Personnel Section is responsible for providing all aspects of human resource management to the Department. In FY93, this included 1,519 employees working in 204 position classifications. The work rules for employees are found in three separate documents. Union agreements are with the Nebraska Association of Public Employees, State Code Agency Teachers Association and the Nebraska Classified System Rules and Regulations. The Personnel Administrator works in the area of labor relations which includes union negotiations, contract administration, discipline and grievance processes.

The Personnel Manager handles the office of special projects, which include such areas as classification, management information systems, wellness programs, employee assistance programs and affirmative action/equal opportunity monitoring. Turnover statistics continue to decrease, with the department showing a turnover rate of 9.5%.

The Personnel Officer works full time in the employment area. Personnel Support Specialists handle all NEIS/payroll operations for employees, including all benefits activities.

Staff Training

The activities of the Staff Training Academy are the responsibility of the Training Administrator. All new employees receive 160 hours of orientation and training prior to job assignment. Additional training hours vary, depending upon the employee's job classification, years of service and level of contact with inmates/students. Classroom training to meet these requirements is delivered by the Staff Training Academy in Lincoln and/or at each facility. On-the-job training is conducted on site by each supervisor.

Planning/Research/Accreditation

The staff members in this work area are responsible for providing assistance to the department's central office administration, facilities and programs through research and information gathering, planning management, system/program evaluation and monitoring, and federal grants coordination and review.

The administrative regulation process and the adult and juvenile accreditation program are also coordinated by this staff. This section monitors these areas throughout the adult and juvenile facilities/programs and the department's central office administration.

Security Coordination

The Security Coordinator is responsible for the development and coordination of regulations, policies and procedures pertaining to security and custody operations throughout the department. The Security Coordinator investigates incidents involving staff and/or inmates, conducts security audits, coordinates information pertaining to criminal threat groups and supervises the Special Services Unit. The training of the department's Emergency Response Team (REACT) and Hostage Negotiation Team are also responsibilities of this office.

The Special Services Unit issues warrants for department escapees and parole absconders and makes arrangements for their return when apprehended. The Unit handles adult and juvenile inter-institution transportation and provides assistance with local/county government prisoner transport when appropriate. Special Services also handles Inter-/Intrastate Detainer Compact Agreements.

PER CAPITA INMATE/STUDENT COSTS - FACILITIES and PROGRAMS

Previous Three Fiscal Years
(FY 1990/91, 1991/92 and 1992/93)

| <u>FACILITY / PROGRAM</u> | <u>Average Daily Population</u> | | | <u>Per Capita Yearly Cost</u> | | | <u>Per Capita Daily Cost</u> | | |
|----------------------------------|---------------------------------|--------------|--------------|-------------------------------|--------------|--------------|------------------------------|--------------|--------------|
| | <u>90/91</u> | <u>91/92</u> | <u>92/93</u> | <u>90/91</u> | <u>91/92</u> | <u>92/93</u> | <u>90/91</u> | <u>91/92</u> | <u>92/93</u> |
| ADULT | | | | | | | | | |
| Nebraska State Penitentiary | 743 | 768 | 773 | \$20,803 | \$19,916 | \$21,335 | \$56.99 | \$54.42 | \$58.29 |
| Hastings Correctional Center | 146 | 150 | 147 | \$15,834 | \$16,500 | \$18,046 | \$43.38 | \$45.08 | \$49.31 |
| Lincoln Correctional Center | 791 | 828 | 868 | \$17,783 | \$17,459 | \$17,710 | \$48.72 | \$47.70 | \$48.39 |
| Omaha Correctional Center | 366 | 400 | 427 | \$16,983 | \$16,098 | \$17,311 | \$46.53 | \$43.98 | \$47.30 |
| OCC-Work Release Unit | 108 | 110 | 106 | \$ 7,839 | \$ 8,056 | \$8,696 | \$21.48 | \$22.01 | \$23.76 |
| Nebraska Center for Women | 114 | 124 | 140 | \$25,145 | \$24,031 | \$23,015 | \$68.89 | \$65.66 | \$62.88 |
| Community Corrections-Lincoln | 160 | 158 | 148 | \$10,924 | \$11,470 | \$12,450 | \$29.93 | \$31.34 | \$34.02 |
| Adult Parole Administration | 567 | 635 | 666 | \$ 1,829 | \$ 1,889 | \$2,022 | \$ 5.01 | \$ 5.16 | \$5.53 |
| JUVENILE | | | | | | | | | |
| Youth Development Center-Kearney | 164 | 169 | 179 | \$27,477 | \$27,609 | \$26,331 | \$75.28 | \$75.43 | \$71.94 |
| Youth Development Center-Geneva | 71 | 71 | 74 | \$34,276 | \$35,135 | \$35,640 | \$93.91 | \$96.00 | \$97.38 |
| Juvenile Parole Administration | 263 | 284 | 278 | \$ 2,826 | \$ 2,675 | \$2,872 | \$ 7.74 | \$ 7.31 | \$7.85 |

PER CAPITA STATEMENT by **FACILITIES/CENTERS/PROGRAMS** - FY1992/93

(Note: Figures have been rounded)

| CATEGORY | All Facilities/ Centers/ Programs (1) | All Adult/Juvenile Facilities/Community Centers (2) | All Adult Facilities/ Centers (3) | All Adult/ Juvenile Facilities (4) | All Adult Facilities (5) | All Juvenile Facilities (6) |
|---------------------------------|--|--|--|---|-------------------------------------|--|
| Personal Services | \$35,614,592 | \$34,100,866 | \$28,801,150 | \$32,616,814 | \$27,317,098 | \$ 5,299,716 |
| Operating Expenses | | | | | | |
| Administration | 884,795 | 739,106 | 611,901 | 612,689 | 485,484 | 127,205 |
| Utilities/Maintenance | 2,580,707 | 2,577,050 | 2,224,818 | 2,431,674 | 2,079,442 | 352,232 |
| Support | 238,850 | 220,893 | 184,466 | 219,752 | 183,325 | 36,427 |
| Per Diem | 4,342,277 | 4,340,325 | 3,982,885 | 3,998,696 | 3,641,256 | 357,440 |
| Medical | 0 | 0 | 0 | 0 | 0 | 0 |
| Education | 89,816 | 89,816 | 1,939 | 89,816 | 1,939 | 87,877 |
| Security | 180,784 | 167,433 | 164,718 | 152,798 | 150,083 | 2,715 |
| Other | 211,297 | 55,232 | 12,783 | 55,232 | 12,783 | 42,449 |
| <i>Total Operating</i> | <i>8,528,526</i> | <i>8,189,855</i> | <i>7,183,510</i> | <i>7,560,657</i> | <i>6,554,312</i> | <i>1,006,345</i> |
| Travel | 303,772 | 179,097 | 143,640 | 125,023 | 89,566 | 35,457 |
| Capital Outlay | 147,547 | 146,150 | 127,993 | 146,095 | 127,938 | 18,157 |
| Sub Totals | 44,594,437 | 42,615,968 | 36,256,293 | 40,448,589 | 34,088,914 | 6,359,675 |
| Allocation Expenses | | | | | | |
| Direct: | | | | | | |
| Equipment | 321,536 | 321,016 | 264,345 | 306,191 | 249,520 | 56,671 |
| Special Projects | 266,945 | 266,945 | 234,658 | 263,656 | 231,369 | 32,287 |
| Indirect: | | | | | | |
| Medical | 7,003,797 | 7,003,797 | 6,773,916 | 6,603,979 | 6,374,098 | 229,881 |
| Education | 887,907 | 887,907 | 887,351 | 887,349 | 886,793 | 556 |
| Grants | 167,104 | 167,104 | 132,994 | 154,170 | 120,060 | 34,110 |
| Central Office Administration | 4,115,842 | <u>3,950,642</u> | <u>3,333,670</u> | <u>3,788,813</u> | <u>3,171,841</u> | <u>616,972</u> |
| ADJUSTED TOTALS | 57,357,568 | 55,213,379 | 47,883,227 | 52,452,747 | 45,122,595 | 7,330,152 |
| ADJUSTED COST PER YEAR | \$15,077 | \$19,300 | \$18,357 | 20,110 | \$19,163 | \$29,042 |
| ADJUSTED COST PER DAY | \$41.19 | \$52.73 | \$50.16 | 54.97 | \$52.36 | \$79.35 |
| AVERAGE DAILY POPULATION | 3804 | 2861 | 2608 | 2607 | 2355 | 252 |
| AUTHORIZED FTE'S | 1225 | 1172 | 989 | 1124 | 941 | 183 |

- NOTES: (1) Does not include federal surplus, Cornhusker State Industries (CSI) or construction projects.
 (2) Does not include Juvenile or Adult Parole, federal surplus, CSI or construction projects.
 (3) Does not include juvenile facilities, Juvenile or Adult Parole, federal surplus, CSI or construction projects.
 (4) Does not include community centers, Juvenile or Adult Parole, federal surplus, CSI or construction projects.
 (5) Does not include community centers, juvenile facilities, Juvenile or Adult Parole, federal surplus, CSI or construction projects.
 (6) Does not include community centers, Juvenile or Adult Parole, federal surplus, CSI or construction projects.

PER CAPITA STATEMENT by **ADULT FACILITIES and PROGRAMS -- FY1992/93**

(Note: Figures have been rounded)

| <u>CATEGORY</u> | <u>Nebraska State Penitentiary</u> | <u>Hastings Correctional Center</u> | <u>Lincoln Correctional Center</u> | <u>Omaha Correctional Center</u> | <u>OCC Work Release Unit</u> | <u>Nebraska Center for Women</u> | <u>Community Corrections Ctr-Lincoln</u> | <u>Adult Parole Administration</u> |
|-------------------------------|------------------------------------|-------------------------------------|------------------------------------|----------------------------------|------------------------------|----------------------------------|--|------------------------------------|
| Personal Services | \$10,475,435 | \$ 1,462,214 | \$9,162,416 | \$ 4,104,482 | \$ 511,480 | \$ 2,112,521 | \$ 972,572 | \$1,042,870 |
| Operating Expenses | | | | | | | | |
| Administration | 124,487 | 40,105 | 151,628 | 117,151 | 14,306 | 52,113 | 112,111 | 96,257 |
| Utilities/Maintenance | 843,823 | 79,137 | 576,169 | 475,878 | 49,014 | 104,435 | 96,362 | 2,682 |
| Support | 54,748 | 7,632 | 94,437 | 21,893 | 134 | 4,615 | 1,007 | 7,325 |
| Per Diem | 1,149,023 | 318,158 | 1,326,489 | 647,562 | 143,163 | 200,024 | 198,466 | |
| Medical | | | | | | | | |
| Education | | | | | | 1,939 | | |
| Security | 50,404 | 9,197 | 63,613 | 21,601 | 2,542 | 5,268 | 12,093 | 13,351 |
| Other | 2,836 | 648 | 1,804 | 356 | | 7,139 | | |
| Total Operating | 2,225,321 | 454,877 | 2,214,140 | 1,284,441 | 209,159 | 375,533 | 420,039 | 119,615 |
| Travel | 22,398 | 22,110 | 16,695 | 13,179 | 25,635 | 15,184 | 28,439 | 65,133 |
| Capital Outlay | 24,401 | 8,146 | 21,082 | 70,186 | | 4,123 | 55 | 344 |
| Sub Totals | 12,747,555 | 1,947,377 | 11,414,333 | 5,472,288 | 746,274 | 2,507,361 | 1,421,105 | 1,227,962 |
| Allocation Expenses | | | | | | | | |
| Direct: | | | | | | | | |
| Equipment | 101,831 | 16,353 | 99,747 | 17,076 | 12,182 | 14,513 | 2,643 | 520 |
| Special Projects | 46,276 | 5,033 | 146,069 | 11,176 | 3,289 | 22,815 | | |
| Indirect: | | | | | | | | |
| Medical | 2,091,674 | 397,654 | 2,349,919 | 1,156,958 | 100,427 | 377,893 | 299,391 | |
| Education | 233,326 | 108,482 | 262,133 | 240,698 | 233 | 42,154 | 325 | |
| Grants | 39,398 | 7,490 | 44,262 | 21,792 | 5,403 | 7,118 | 7,531 | |
| Central Office Administration | 1,225,515 | 168,571 | 1,057,786 | 478,912 | 53,943 | 241,057 | 107,886 | 118,000 |
| ADJUSTED TOTALS | \$16,485,575 | \$2,650,960 | \$15,374,249 | \$7,398,900 | \$ 921,751 | \$3,212,911 | \$1,838,881 | \$1346,482 |
| ADJUSTED COST PER YEAR | \$21,335 | \$18,046 | \$17,710 | \$17,311 | \$8,696 | \$23,015 | \$12,450 | \$2,022 |
| ADJUSTED COST PER DAY | \$58.29 | \$49.31 | \$48.39 | \$47.30 | \$23.76 | \$62.88 | \$34.02 | \$5.53 |
| AVERAGE DAILY POPULATION | 773 | 147 | 868 | 427 | 106 | 140 | 148 | 666 |
| AUTHORIZED FTE's | 364 | 50 | 314 | 143 | 16 | 72 | 32 | 35 |

PER CAPITA STATEMENT by **JUVENILE FACILITIES and PROGRAMS - FY 1992/93**

(Note: Figures have been rounded)

| <u>CATEGORY</u> | Youth Development <u>Center - Kearney</u> | Youth Development <u>Center - Geneva</u> | Juvenile Parole <u>Administration</u> |
|-------------------------------|--|---|--|
| Personal Services | \$ 3,346,853 | \$ 1,952,863 | \$ 470,856 |
| Operating Expenses | | | |
| Administration | 75,423 | 51,782 | 49,432 |
| Utilities/Maintenance | 241,698 | 110,534 | 975 |
| Support | 32,859 | 3,568 | 10,632 |
| Per Diem | 261,948 | 95,492 | 1,952 |
| Medical | | | |
| Education | 75,957 | 11,920 | |
| Security | 1,270 | 1,445 | |
| Other | 30,018 | 12,431 | 156,065 |
| Total Operating | 719,173 | 287,172 | 219,056 |
| Travel | 24,566 | 10,891 | 59,542 |
| Capital Outlay | 10,430 | 7,727 | 1,053 |
| Sub Totals | 4,101,022 | 2,258,653 | 750,507 |
| Allocation Expenses | | | |
| Direct: | | | |
| Equipment | 30,375 | 26,296 | |
| Special Projects | 11,837 | 20,450 | |
| Indirect: | | | |
| Medical | 162,939 | 66,942 | |
| Education | 394 | 162 | |
| Grants | 16,519 | 17,591 | |
| Central Office Administration | 387,546 | 229,426 | 47,200 |
| ADJUSTED TOTALS | \$ 4,710,632 | \$ 2,619,520 | \$ 797,707 |
| ADJUSTED COST PER YEAR | \$26,331 | \$35,640 | \$2,872 |
| ADJUSTED COST PER DAY | \$71.94 | \$97.38 | \$7.85 |
| AVERAGE DAILY POPULATION | 179 | 74 | 278 |
| AUTHORIZED FTE's | 115 | 68 | 14 |

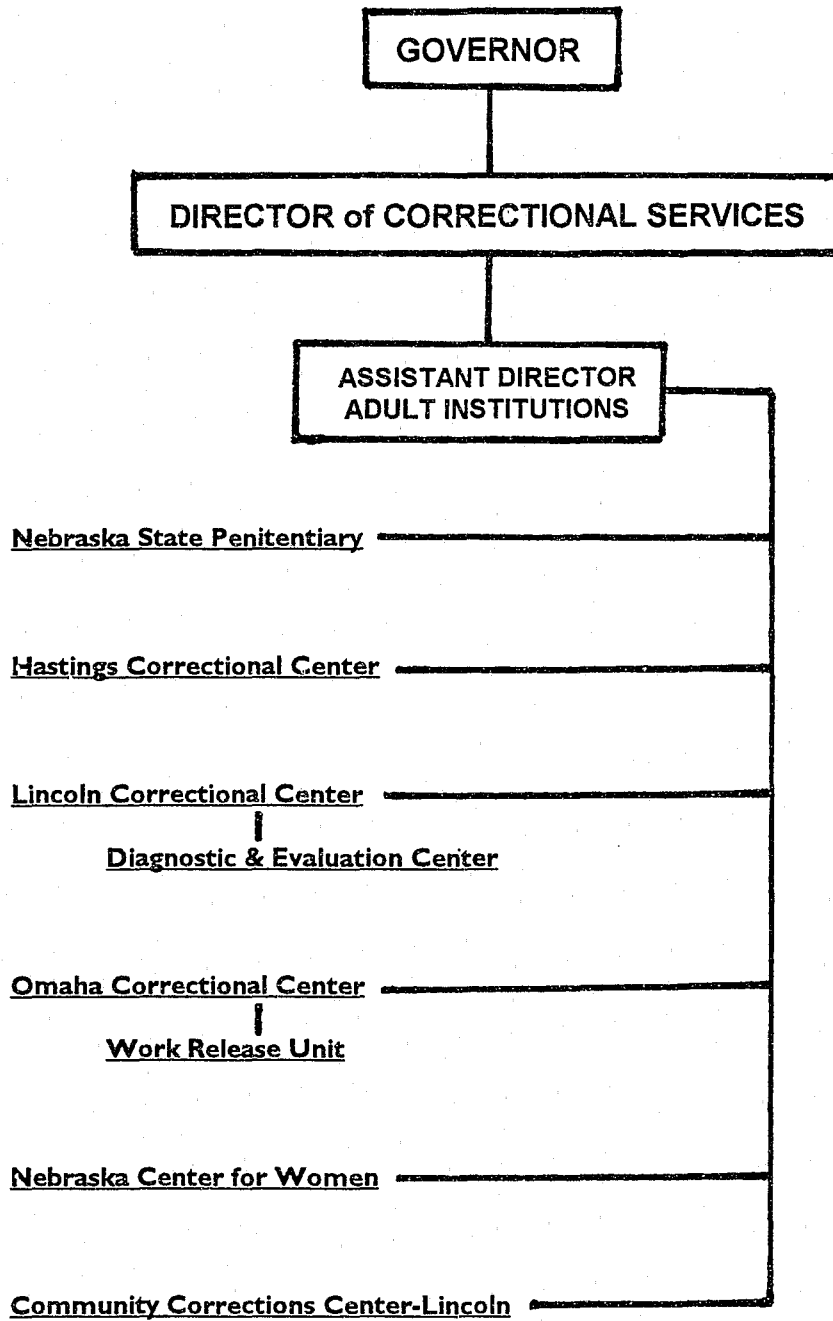
FISCAL STATEMENT OF THE DEPARTMENT for FY1992/93
plus
FEDERAL SURPLUS PROPERTY, CORNHUSKER STATE INDUSTRIES, CONSTRUCTION, GRANTS & CENTRAL OFFICE
(Note: Figures have been rounded)

| <u>CATEGORY</u> | <u>Federal Surplus Property</u> | <u>Cornhusker State Industries</u> | <u>Construction</u> | <u>Grants</u> | <u>Central Office Administration</u> | <u>TOTAL Department of Correctional Services</u> |
|-------------------------------|---------------------------------|------------------------------------|---------------------|---------------|--------------------------------------|--|
| Personal Services | \$ 124,686 | \$ 1,205,120 | | \$ 98,344 | \$ 6,298,575 | \$ 43,341,317 |
| Operating Expenses | | | | | | |
| Administration | 171,238 | 121,591 | | 54,736 | 675,394 | 1,907,754 |
| Utilities/Maintenance | | | | | 21,633 | 2,602,340 |
| Support | | | | 1,344 | 26,970 | 265,820 |
| Per Diem | | | | | 101,944 | 4,444,221 |
| Medical | | | | | 3,514,675 | 3,514,675 |
| Education | | | | | 887,907 | 977,723 |
| Security | | | | | | 180,784 |
| Other | 26,609 | 2,526,956 | 279,792 | | 430,287 | 3,474,941 |
| Total Operating | 197,847 | 2,648,547 | 279,792 | 54,736 | 5,658,810 | 17,368,258 |
| Travel | 9,916 | 38,853 | 1,479 | 726 | 69,670 | 424,416 |
| Capital Outlay | 263,551 | 184,324 | 7,621,888 | 657 | 745,128 | 8,963,095 |
| Sub Totals | 596,000 | 4,076,844 | 7,903,159 | 154,463 | 12,772,183 | 70,097,086 |
| Allocation Expenses | | | | | | |
| Direct: | | | | | | |
| Equipment | | | | | (321,536) | 0 |
| Special Projects | | | | | (266,945) | 0 |
| Indirect: | | | | | | |
| Medical | | | | | (7,003,797) | 0 |
| Education | | | | | (887,907) | 0 |
| Grants | | | | (167,104) | | 0 |
| Central Office Administration | 20,229 | 143,286 | 0 | 12,641 | (4,291,998) | 0 |
| ADJUSTED TOTALS | \$ 616,229 | \$ 4,220,130 | \$ 7,903,159 | 0 | 0 | \$ 70,097,086 |

| | | | | | | |
|---------------------------------|----------|-----------|----------|------------|--|-------------|
| AVERAGE DAILY POPULATION | | | | | | 3804 |
| AUTHORIZED FTE's | 6 | 43 | 4 | 185 | | 1458 |

***Division
of
Adult
Institutions***

DIVISION of ADULT INSTITUTIONS



80 DIVISION of ADULT INSTITUTIONS 82

Organized under Section 83-939, Nebraska Revised Statutes (Reissue 1976), the Division of Adult Institutions administers and supervises the state's adult correctional facilities. Nebraska State Statutes 83-171 through 83-173, and statutes 83-177, 83-901, 83-905 and 83-941 provide for certain aspects of the administration, organization and management of the adult correctional institutions.

The Nebraska Center for Women receives all adult female inmates. Following evaluation and classification, the women are placed in programs and/or work assignments at that facility or if eligible, at one of the community centers. All adult male inmates are received at the Lincoln Correctional Center's Evaluation Unit, where screening and evaluation are performed and a mental health unit is maintained for special adjustment cases. Upon completion of evaluation, inmates are assigned to an appropriate adult facility/center, and are placed in program and/or work assignments at the respective facilities.

Release from any of the secure adult institutions is via placement in a DCS community center on a work or educational release program or community detail assignment, placement on parole or by expiration of sentence.

Nebraska State Penitentiary
Frank X. Hopkins, Warden
P.O. Box 2500
Lincoln, Nebraska 68542-2500

Opened: 1869

Security Level: Maximum/Medium Custody Males

Authorized FTE's: 364

Design Capacity: 488

Average Yearly Cost: \$21,335

ACA Accredited: 1985

FY93 Average Daily Population: 773

Average Daily Cost: \$58.29

Reaccredited: 1988, 1991, Scheduled 1994

Located on the same site since 1869, the Nebraska State Penitentiary was the only adult facility until the Nebraska Center for Women opened in 1920 and the Men's Reformatory was established in 1921. The Penitentiary is for the care, custody, and program needs of older, multiple offender male inmates classified as maximum or medium level custody. Housing of medium custody inmates is divided between the maximum security housing units and the dormitory style Medium Security Unit.

New construction and renovation at the Penitentiary was completed during the fall of 1981. The physical plant includes four modular housing units, a central utility plant, and an administrative complex which houses the administrative offices, visiting area, inmate gymnasium, kitchen and hospital. Correctional industries, a chapel, an adjustment center (which +also houses death row inmates), a library and mental health counseling facilities are also within the walled/fenced complex. Southeast Community College contracts with the department to provide educational opportunities.

The operation of the Penitentiary is the responsibility of the Warden, who is assisted by a Deputy Warden and two Associate Wardens.

Hastings Correctional Center
Gary Grammer, Superintendent
P.O. Box 2048
Hastings, Nebraska 68902-2048

Opened: 1987

Security Level: Minimum Custody Males

Authorized FTE's: 50

Design Capacity: 152

Average Yearly Cost: \$18,046

ACA Accredited: 1990

FY93 Average Daily Population: 147

Average Daily Cost: \$49.31

Reaccredited: 1993

The Hastings Correctional Center is the department's newest adult facility, having received its first inmates in June 1987. Located in a remodeled building on the grounds of the Hastings Regional Center, the facility houses inmates who are close to the end of their sentence and who are often from that area of Nebraska. The inmate work programs include Cornhusker State Industries private venture employment and work details on the Regional Center campus, in the local community and in neighboring towns. Central Community College contracts with the department to provide educational programming for the inmates.

Responsibility for the management of the institution rests with the Superintendent, who is assisted by an Assistant Superintendent.

Lincoln Correctional Center
and
Diagnostic and Evaluation Center
John J. Dahm, Warden
P.O. Box 22800, Station B
Lincoln, Nebraska 68542-2800

Opened: 1921

Security Level: Maximum, Medium, Minimum Custody Males

Authorized FTE's: 314

Design Capacity: 468

Average Yearly Cost: \$17,710

ACA Accredited: 1984

FY93 Average Daily Population: 868

Average Daily Cost: \$48.39

Reaccredited: 1987, 1990

Originally known as the Men's Reformatory, the present institution was provided for by the 1975 Legislature. The Lincoln Correctional Center, a medium-minimum security institution, and the Diagnostic and Evaluation Center, a maximum security institution, opened in August 1979. Located on land west of the city of Lincoln, both facilities were constructed near the site of the original institution. In July 1986, the two facilities were administratively combined into a single institution known as the Lincoln Correctional Center. In June of fiscal year 1993, the two facilities were again separated into individual facilities.

The Diagnostic and Evaluation Center provides reception, diagnostic, evaluation, classification, and assignment services to all adult male felons received from the district courts. It also contains a protective custody unit which serves the adult male facilities. Service is provided to the district courts in their requests for evaluation assistance in felony cases prior to the determining of sentence.

The operation of the facility rests with the Superintendent, who is assisted by an Assistant Superintendent.

The Lincoln Correctional Center provides care, custody and programming services to younger, first-time male inmates in a variety of custody levels. In conjunction with the DEC, facility consists of housing units which contain maximum and medium custody inmates and also includes a number of special populations. One-half of one housing unit serves the socially and developmentally impaired inmates and also serves as the in-patient mental health unit. Another housing unit contains an in-patient program for sex offenders and for inmates with a history of substance abuse. The remaining housing units are for general population inmates who are mostly involved in academic and vocational training programs and institutional maintenance and work programs.

Responsibility for the management of the institution resides with the Warden, who is assisted by a Deputy Warden and an Associate Warden.

**Omaha Correctional Center
and
Work Release Unit
Robert Houston, Warden
P.O. Box 11099
Omaha, Nebraska 68111-0099**

Omaha Correctional Center

Opened: 1984

Security Level: Minimum Custody Males

Authorized FTE's: 142

Design Capacity: 240

Average Yearly Cost: \$17,311

ACA Accredited: 1986

FY93 Average Daily Population: 427

Average Daily Cost: \$47.30

Reaccredited: 1989, 1992

Located on a 37-acre site in east Omaha, the Omaha Correctional Center houses inmates who are close to the end of their sentence and who are often from Omaha or the Douglas and Sarpy County metropolitan area. Shorter and longer term nonviolent-violent males with minimum custody status are assigned to the facility.

A variety of self-improvement opportunities are provided at the facility, including but not limited to: mental health counseling, including substance abuse, alcoholics anonymous, library services/legal aid, self-betterment clubs, volunteer activities, pre-release preparation, survival skills training, social/leisure skills training, and self-interest classes.

The management team includes a Superintendent and three Assistant Superintendents, one of whom is officed at the Work Release Unit.

OCC-Work Release Unit

Program Established: 1971

Security Level: Community Custody Males & Females

Authorized FTE's: 16

Design Capacity: 90

Average Yearly Cost: \$8,696

ACA Accredited: 1981

FY93 Average Daily Population: 106

Average Daily Cost: \$23.76

Reaccredited: 1984, 1989, 1992

Since its establishment in 1971, community corrections programming had operated out of several Omaha locations until a new facility was constructed and occupied in July 1985. In

July 1987, the Omaha Correctional Center assumed management responsibility for the Community Corrections Center-Omaha. Located one block north of the OCC, the facility is a self-contained building, although it now shares some mutually utilized services with OCC. The facility is now identified as the OCC-Work Release Unit. It is in operation 24-hours a day, seven days a week.

The facility provides work and educational release opportunities for those inmates who have achieved community custody status. Inmates on work and educational release are responsible for paying all their own expenses, including clothing and personal items and room and board. Community detail assignment is available for other eligible inmates. Based on a classification/performance evaluation point total, increasing leave privileges in the form of passes and furloughs may be earned by the inmates to facilitate family involvement and community reintegration.

The WRU is under the direction of the OCC Superintendent, with an Assistant Superintendent officed at the Unit.

Nebraska Center for Women
Larry Wayne, Warden
Route 1, Box 33
York, Nebraska 68467

Opened: 1920

Security Level: All Custody Level Females

Authorized FTE's: 72

Design Capacity: 139

Average Yearly Cost: \$23,015

ACA Accredited: 1984

FY93 Average Daily Population: 140

Average Daily Cost: \$62.88

Reaccredited: 1987, 1990, Scheduled 1993

The Nebraska Center for Women receives all women committed to the department by the courts. Following initial orientation, evaluation, and classification, the women are assigned to the housing area, programming and work activities appropriate to their needs and requirements.

The academic needs of the women are met through the facility's state accredited school. Vocational skills are fostered by a variety of programs and employability is enhanced by the opportunities provided through the Cornhusker State Industries programs located on the grounds. The institution meets other needs of the inmates via individualized planning and goal setting. One of the more unique and innovative programs available is *Mother Offspring Life Development (MOLD)*, which allows eligible mothers to have their young children visit and stay for periodic overnight visits at the facility.

Located at the outskirts of York, Nebraska, the institution is under the direction of a Warden and an Associate Warden.

Community Corrections Center - Lincoln

David S. Avery, Superintendent
4621 N.W. 45th Street
Lincoln, Nebraska 68524-1724

Program Established: 1967

Security Level: Community Custody Males and Females

Authorized FTE's: 32

Design Capacity: 129

Average Yearly Cost: \$12,450

ACA Accredited: 1981, 1990

FY93 Average Daily Population: 148

Average Daily Cost: \$34.02

Reaccredited: 1984

This program, previously known as Post Care or the Work Release Program, was created by State Statute 83-184 (R.R.S. 1943). It allowed a select group of adult inmates to be employed in the community or attend an educational program not available within the confines of the institution. Initial participants were housed in the institution during non-working hours. In 1971, the program moved to a community residential facility in Lincoln. Eventually, additional facilities were opened in Omaha, Sidney, and Norfolk, with centers in Lincoln and Omaha remaining in operation. In 1974, female inmates were included in the program.

Work release, educational release, and community detail assignment opportunities are available to those inmates achieving community custody status who are nearing release by parole and/or discharge. Work release provides the opportunity to be employed in the community and receive competitive wages. Inmates on work release pay all applicable taxes on wages earned. Educational release provides an opportunity to attend various local vocational/technical schools, business and community colleges and other colleges and universities. Inmates assigned to community detail assignment provide services at the facility in the form of food service, maintenance, housekeeping, etc. or may be assigned to community service work such as maintaining state parks.

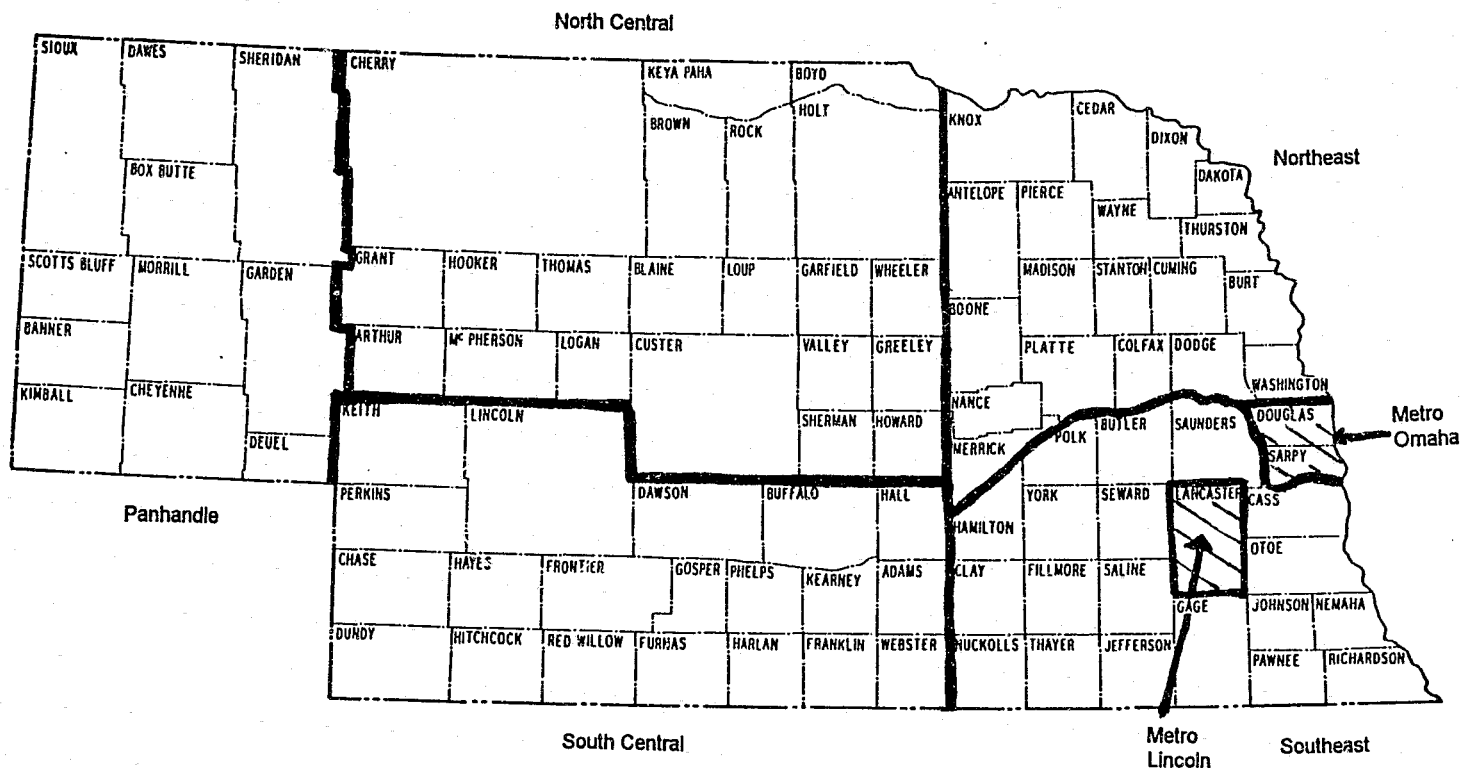
Participation in these programs is not a requirement for placement on parole or release from sentence, however, it may be included as a goal in the individual's correctional programming plan formulated at the time of incarceration or added as he/she progresses toward release. Increasing opportunities for inmate involvement with family and participation in community activities is available through community leave privileges which may be earned and taken in the form of passes and furloughs.

In the fall of 1992, ground was broken for the construction of a new 200-bed facility. Located in southwest Lincoln on state-owned property near the Lincoln Correctional Center and the Diagnostic & Evaluation Center, the facility will house 52 women and 148 men. Occupancy of the center is planned for July 1993.

A Superintendent and an Assistant Superintendent are responsible for the management of the facility.

TOTAL ADULT POPULATION
(Does not include Adult Parole)

AREAS OF COMMITMENT - Incarcerated as of June 1993



Males

| | |
|------|-------|
| 1198 | (50%) |
| 324 | (14%) |
| 196 | (8%) |
| 248 | (10%) |
| 119 | (5%) |
| 19 | (<1%) |
| 282 | (12%) |
| 20 | (<1%) |

2406

| |
|---------------|
| Metro Omaha |
| Metro Lincoln |
| Southeast |
| South Central |
| Panhandle |
| North Central |
| Northeast |
| Out of State |

VALID DATA
2590

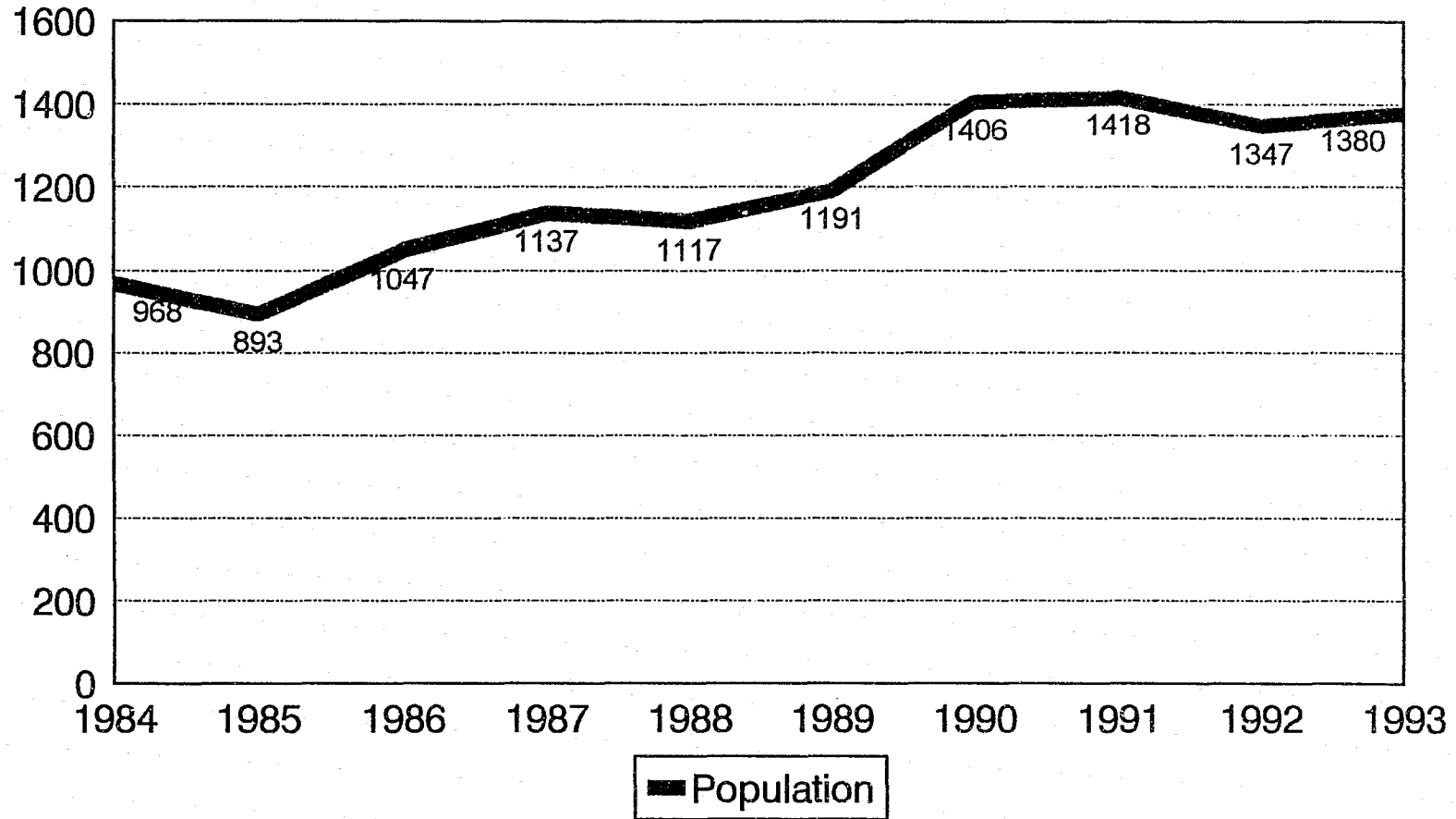
Females

| | |
|-----|-------|
| 103 | (56%) |
| 20 | (11%) |
| 16 | (9%) |
| 16 | (9%) |
| 10 | (5%) |
| 0 | (0%) |
| 18 | (10%) |
| 1 | (<1%) |

184

Total Adult Male and Female Admissions

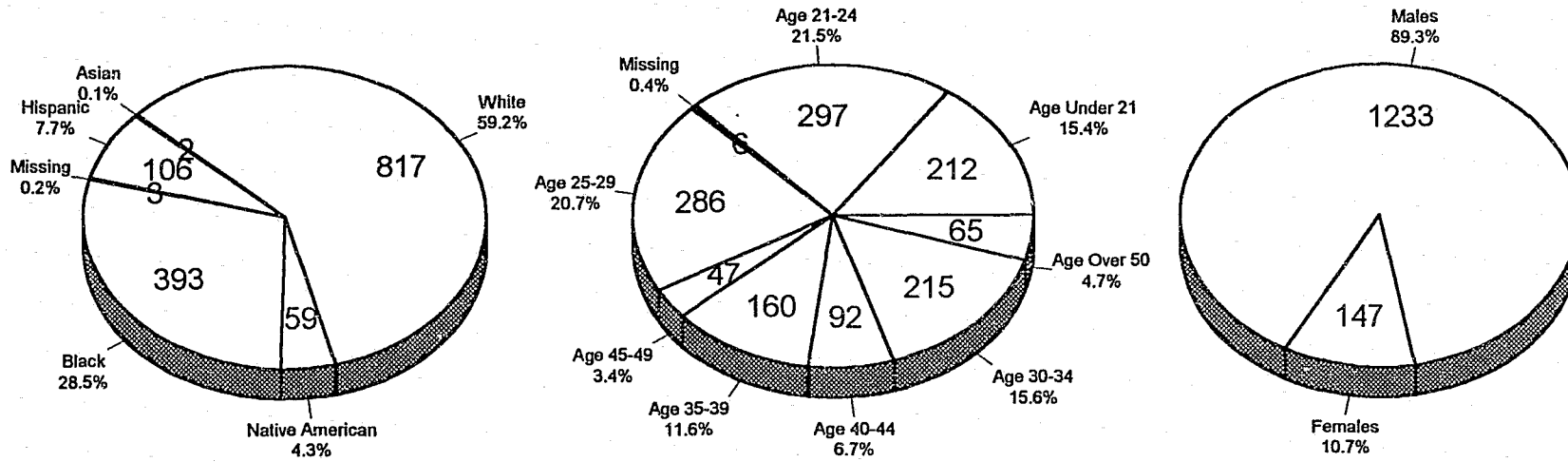
Safekeepers, Evaluators and Regular Admissions By Fiscal Year



Total Adult Male and Female Admissions

Safekeepers, Evaluators and Regular Admissions for FY1993
By Race, By Age and By Sex

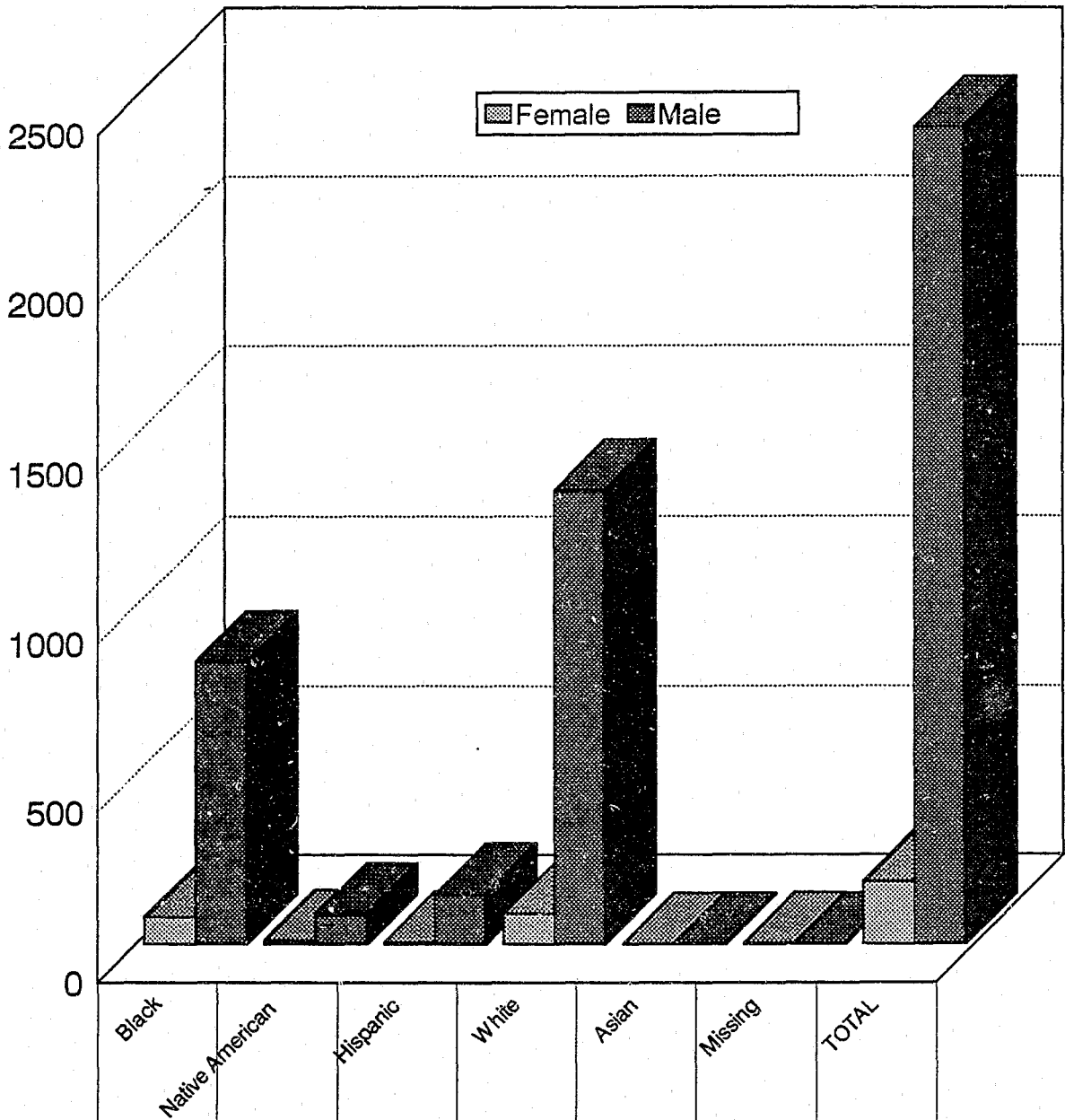
43



Total: 1380.....Females: 147 (9 Safekeeper/Evaluators, 138 Regular Admissions)
..... Males: 1233 (77 Safekeeper/Evaluators, 1156 Regular Admissions)

Total Adult Population By Race

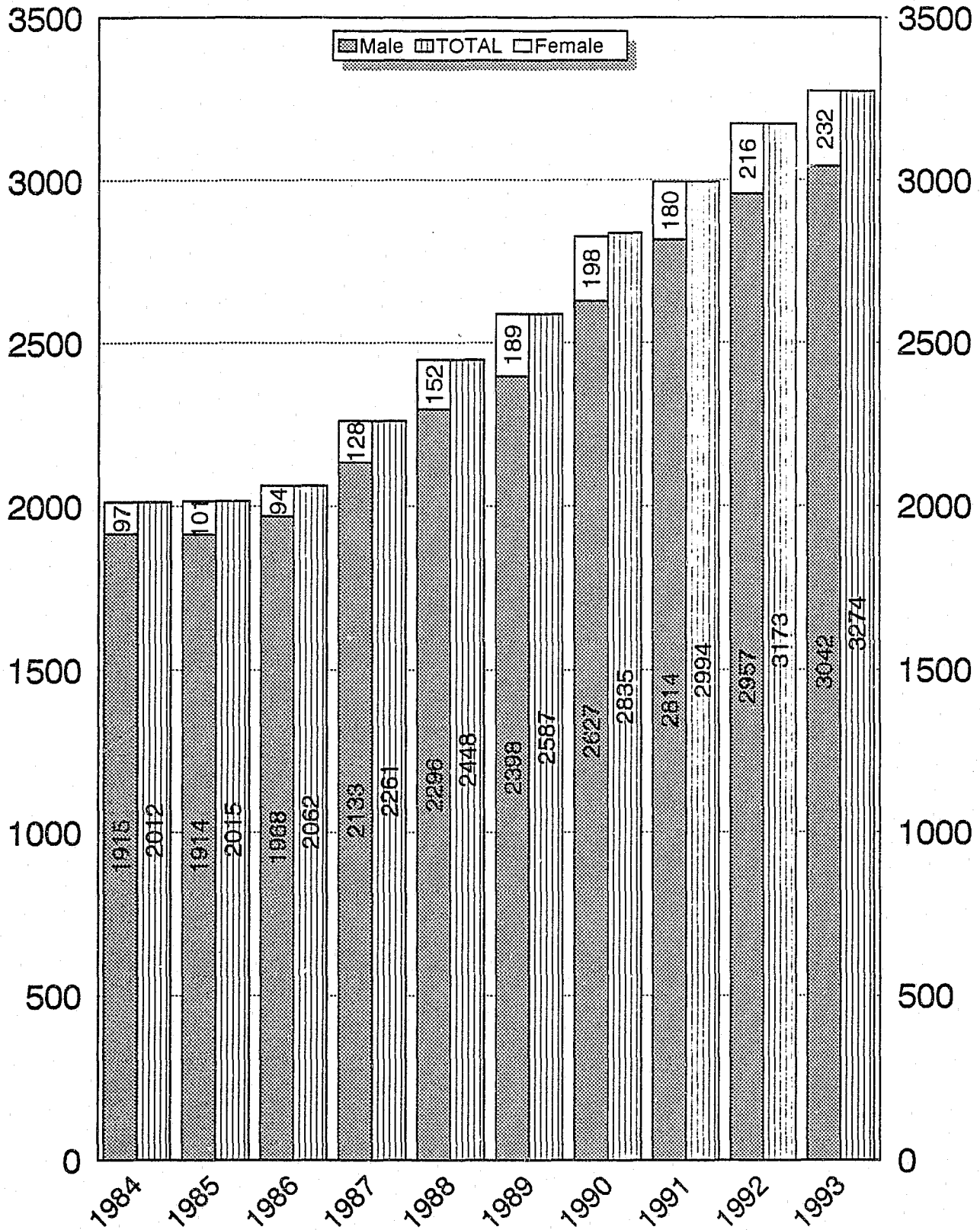
Current Incarcerations as of June 1993



| | | | | | | | |
|-----------------|------|-----|-----|------|------|-----|------|
| Female | 80 | 10 | 5 | 89 | 0 | 2 | 184 |
| % of Population | 43.5 | 5.4 | 2.7 | 47.3 | 0 | 1.1 | 7.1 |
| Male | 835 | 88 | 145 | 1337 | 1 | 0 | 2406 |
| % of Population | 34.7 | 3.7 | 6 | 55.6 | <1.0 | 0 | 92.9 |

Total Average Monthly Adult Population by Fiscal Year

All Facilities, Centers and Programs



AVERAGE MINIMUM/MAXIMUM/LENGTH OF STAY IN MONTHS
for
FY93 RELEASES based on MOST SEVERE OFFENSE
(Life and Death Sentences set to 50 years)

| <u>OFFENSES</u> | <u>Number</u> | <u>Minimum Sentence Mean</u> | <u>Maximum Sentence Mean</u> | <u>Length of Stay Mean</u> |
|---|---------------|------------------------------|------------------------------|----------------------------|
| Total Population | 1548 | 26.37 | 61.13 | 25.39 |
| Criminal Attempt | 2 | 108.00 | 216.00 | 44.50 |
| Conspiracy | 7 | 48.43 | 101.57 | 44.71 |
| Accessory to Felony | 5 | 16.40 | 40.80 | 11.40 |
| Aiding in a Felony | 11 | 9.36 | 28.36 | 12.73 |
| Aiding and Abetting | 10 | 11.20 | 26.40 | 8.40 |
| First Degree Murder | 6 | 362.00 | 690.00 | 182.33 |
| Second Degree Murder | 10 | 108.00 | 396.50 | 123.20 |
| Manslaughter | 11 | 52.73 | 126.55 | 48.82 |
| Motor Vehicle Homicide | 10 | 11.00 | 46.80 | 22.40 |
| 1st Degree Assault | 29 | 42.03 | 92.86 | 42.03 |
| 2nd Degree Assault | 31 | 18.26 | 46.45 | 20.16 |
| 3rd Degree Assault | 19 | 4.74 | 26.05 | 10.84 |
| Terroristic Threats | 16 | 12.63 | 47.19 | 17.63 |
| 1st Degree Sexual Assault | 61 | 58.02 | 112.61 | 51.21 |
| 2nd Degree Sexual Assault | 6 | 25.50 | 49.00 | 21.50 |
| 3rd Degree Sexual Assault | 4 | 0.00 | 21.00 | 13.00 |
| Sexual Assault on a Child | 50 | 19.04 | 50.24 | 23.26 |
| Kidnapping | 4 | 112.50 | 225.00 | 154.00 |
| 1st Degree False Imprisonment | 5 | 15.00 | 38.40 | 18.60 |
| Robbery | 87 | 65.24 | 138.83 | 54.68 |
| Dealing Drugs | 3 | 24.00 | 54.00 | 53.67 |
| Possession of a Controlled Substance | 109 | 14.23 | 35.95 | 15.08 |
| Possession of Marijuana over 1 lb. | 7 | 6.57 | 21.43 | 8.57 |
| Deliver Dangerous Substance | 257 | 23.86 | 47.81 | 19.25 |
| Acquire Controlled Substance by Fraud | 4 | 15.00 | 31.50 | 13.50 |
| 1st Degree Arson | 2 | 24.00 | 42.00 | 18.00 |
| 2nd Degree Arson | 8 | 22.63 | 46.88 | 19.88 |
| Burglary | 199 | 26.64 | 61.30 | 28.34 |
| Breaking and Entering | 5 | 15.60 | 25.60 | 10.80 |
| Receiving Stolen Property | 9 | 25.56 | 54.00 | 25.33 |
| Theft | 213 | 18.31 | 46.54 | 20.00 |
| Petty Larceny | 3 | 19.33 | 56.00 | 28.67 |
| Criminal Mischief | 19 | 10.68 | 30.16 | 11.89 |
| Criminal Trespass | 3 | 0.00 | 16.00 | 11.33 |
| 1st Degree Forgery | 2 | 16.00 | 36.00 | 20.50 |
| 2nd Degree Forgery | 67 | 19.70 | 49.84 | 21.30 |
| Forged Instrument \$300+ | 4 | 11.00 | 40.50 | 9.25 |
| Forged Instrument \$76-\$300 | 2 | 0.00 | 18.00 | 9.50 |
| Forged Instrument Under \$75 | 1 | 0.00 | 18.00 | 12.00 |
| Possession of Forged Devices | 1 | 18.00 | 36.00 | 8.00 |
| Violation of a Financial Transaction Device | 2 | 18.00 | 36.00 | 12.00 |
| Bad Check \$1000+ | 2 | 66.00 | 123.00 | 72.00 |
| Bad Check \$300-\$999 | 19 | 12.16 | 36.32 | 15.63 |
| Bad Check \$75-\$299 | 4 | 5.25 | 24.75 | 7.75 |
| No Account Check | 2 | 9.00 | 33.00 | 14.00 |

| <u>OFFENSES</u> | <u>Number</u> | <u>Minimum Sentence Mean</u> | <u>Maximum Sentence Mean</u> | <u>Length of Stay Mean</u> |
|---|---------------|------------------------------|------------------------------|----------------------------|
| Embezzlement | 1 | 164.00 | 288.00 | 253.00 |
| Bigamy | 1 | 0.00 | 12.00 | 5.00 |
| Incest | 2 | 27.00 | 72.00 | 40.50 |
| Criminal Non-Support | 6 | 12.00 | 39.50 | 11.50 |
| Child Abuse | 15 | 9.13 | 33.60 | 14.67 |
| Abuse of an Incompetent/Disabled Person | 4 | 8.00 | 28.50 | 15.75 |
| Contributing to Delinquency of a Minor | 3 | 4.00 | 12.00 | 6.67 |
| Pandering | 1 | 18.00 | 36.00 | 10.00 |
| Debauching Minor | 1 | 12.00 | 36.00 | 18.00 |
| Sell/Manufacture Pornography | 1 | 48.00 | 72.00 | 30.00 |
| Obstructing the Police | 1 | 1.00 | 12.00 | 6.00 |
| Resisting Arrest | 6 | 5.17 | 21.67 | 7.17 |
| Resisting Arrest with a Weapon | 2 | 12.00 | 24.00 | 13.50 |
| Operating a Motor Vehicle to Avoid Arrest | 5 | 27.80 | 68.40 | 19.00 |
| Motor Vehicle Violations | 6 | 25.50 | 78.00 | 38.50 |
| Escape | 23 | 19.30 | 41.22 | 19.35 |
| Failure to Appear | 3 | 52.00 | 78.00 | 39.67 |
| Perjury | 3 | 10.00 | 94.00 | 16.33 |
| Tampering | 1 | 12.00 | 36.00 | 21.00 |
| Tax Violation | 1 | 0.00 | 18.00 | 5.00 |
| 2nd Degree Assault on Parole Officer/DCS Employee | 2 | 6.00 | 15.00 | 6.50 |
| 3rd Degree Assault on Parole Officer/DCS Employee | 12 | 7.25 | 21.50 | 9.75 |
| Assaulting a Confined Person | 3 | 12.67 | 32.00 | 20.67 |
| Possession of a Concealed Weapon | 2 | 9.00 | 36.00 | 15.50 |
| Use of Firearm in a Felony | 6 | 46.33 | 119.33 | 32.67 |
| Possession of Firearm by Felon | 11 | 13.55 | 31.73 | 14.36 |
| Possession of a Defaced Firearm | 3 | 17.67 | 43.00 | 21.33 |
| Discharge Firearm | 2 | 6.00 | 36.00 | 11.00 |
| Driving Intoxicated - 3rd Offense | 1 | 3.00 | 12.00 | 5.00 |
| Driving Under Suspended License | 86 | 12.55 | 34.21 | 12.21 |
| Class II Misdemeanor | 1 | 0.00 | 18.00 | 9.00 |
| Class III Misdemeanor | 1 | 0.00 | 18.00 | 5.00 |
| Habitual Criminal | 1 | 120.00 | 120.00 | 65.00 |

LENGTH OF STAY
(Does not include Safekeepers/Evaluators)

Based Upon Incarcerated Adult Males and Females as of the End of June in each Fiscal Year

| Number/% of Total LENGTH OF STAY | MALES | | | | | FEMALES | | | | |
|-------------------------------------|--------------|---------------|---------------|---------------|--------------|-------------|--------------|-------------|--------------|--------------|
| | 88/89 | 89/90 | 90/91 | 91/92 | 92/93 | 88/89 | 89/90 | 90/91 | 91/92 | 92/93 |
| Zero - 1 year | 819 38.5% | 1017 45.3% | 1029 44.4% | 1040 42.3% | 967 40.2% | 88 59.5% | 112 67.1% | 98 63.2% | 111 62.0% | 107 58.2% |
| 1.01 - 2 years | 460 21.6% | 415 18.5% | 470 20.2% | 477 19.4% | 483 20.1% | 29 19.6% | 26 15.6% | 31 20.0% | 27 15.1% | 37 20.1% |
| 2.01 - 3 years | 270 12.7% | 240 10.7% | 232 10.0% | 282 11.5% | 280 11.6% | 13 8.8% | 12 7.2% | 9 5.8% | 20 11.2% | 14 7.6% |
| 3.01 - 4 years | 128 6.0% | 140 6.2% | 143 6.2% | 159 6.5% | 164 6.8% | 8 5.4% | 6 3.6% | 4 2.6% | 5 2.8% | 10 5.4% |
| 4.01 - 5 years | 86 4.0% | 89 4.0% | 102 4.4% | 107 4.4% | 106 4.4% | 2 1.4% | 2 1.2% | 3 1.9% | 5 2.8% | 4 2.2% |
| 5.01 - 6 years | 78 3.7% | 62 2.8 | 56 2.4% | 82 3.3% | 77 3.2% | 2 1.4% | 2 1.2% | 2 1.3% | 3 1.7% | 3 1.6% |
| 6.01 - 7 years | 46 2.2% | 52 2.3% | 45 1.9% | 48 2.0% | 67 2.8% | 1 0.7% | 2 1.2% | 2 1.3% | 2 1.1% | 3 1.6% |
| 7.01 - 8 years | 38 1.8% | 33 1.5% | 49 2.1% | 38 1.5% | 42 1.7% | 2 1.4% | 1 0.6% | 2 1.3% | 2 1.1% | 1 0.5% |
| 8.01 - 9 years | 57 2.7% | 30 1.3% | 26 1.1% | 38 1.5% | 29 1.2% | 0 - | 2 1.2% | 1 1.0% | 2 1.1% | 1 0.5% |
| 9.01 - 10 years | 26 1.2% | 50 2.2% | 27 1.2% | 24 1.0% | 28 1.2% | 1 0.7% | 0 - | 1 1.0% | 2 1.1% | 2 1.1% |
| Over 10.01 years | 121 5.7% | 118 5.3% | 141 6.1% | 164 6.7% | 163 6.8% | 2 1.4% | 2 1.2% | 2 1.3% | 0 - | 2 1.1% |
| TOTALS | 2129 | 2246 | 2320 | 2459 | 2406 | 148 | 167 | 155 | 179 | 184 |
| Mean (In Months) | 34.96 | 32.19 | 32.27 | 34.18 | 35.59 | 17.64 | 15.30 | 16.66 | 16.64 | 17.64 |

TOTAL ADULT POPULATION CURRENTLY CONFINED (June 1993)

By Age

| <u>CATEGORY</u> | <u>Males</u> | <u>Females</u> | <u>Total</u> | <u>% of Total</u> |
|-------------------|--------------|----------------|--------------|-------------------|
| Under 21 | 235 | 9 | 244 | 9.4% |
| 21-22 | 198 | 18 | 216 | 8.3% |
| 23-24 | 183 | 14 | 197 | 7.6% |
| 25-29 | 493 | 41 | 534 | 20.6% |
| 30-34 | 445 | 41 | 486 | 18.8% |
| 35-39 | 375 | 27 | 402 | 15.5% |
| 40-44 | 220 | 16 | 236 | 9.1% |
| 45-49 | 115 | 8 | 123 | 4.8% |
| 50-54 | 67 | 4 | 71 | 2.7% |
| 55-59 | 38 | 1 | 39 | 1.5% |
| 60 & Over 1.5% | | <u>37</u> | <u>3</u> | <u>40</u> |
| Totals | 2406 | 182 | 2588 | |
| Missing Values | 0 | 2 | 2 | |

By Mean Age at Facility/Center/Program

| | |
|---|------|
| Nebraska State Penitentiary..... | 35.3 |
| Lincoln Correctional Center..... | 29.8 |
| Diagnostic & Evaluation Center..... | 28.5 |
| Hastings Correctional Center..... | 31.2 |
| Omaha Correctional Center..... | 31.6 |
| Nebraska Center for Women..... | 31.6 |
| Community Corrections (Lincoln and Omaha) | |
| Males..... | 32.6 |
| Females..... | 32.5 |
| TOTAL Adult Male Population..... | 32.0 |
| TOTAL Adult Female Population..... | 31.8 |

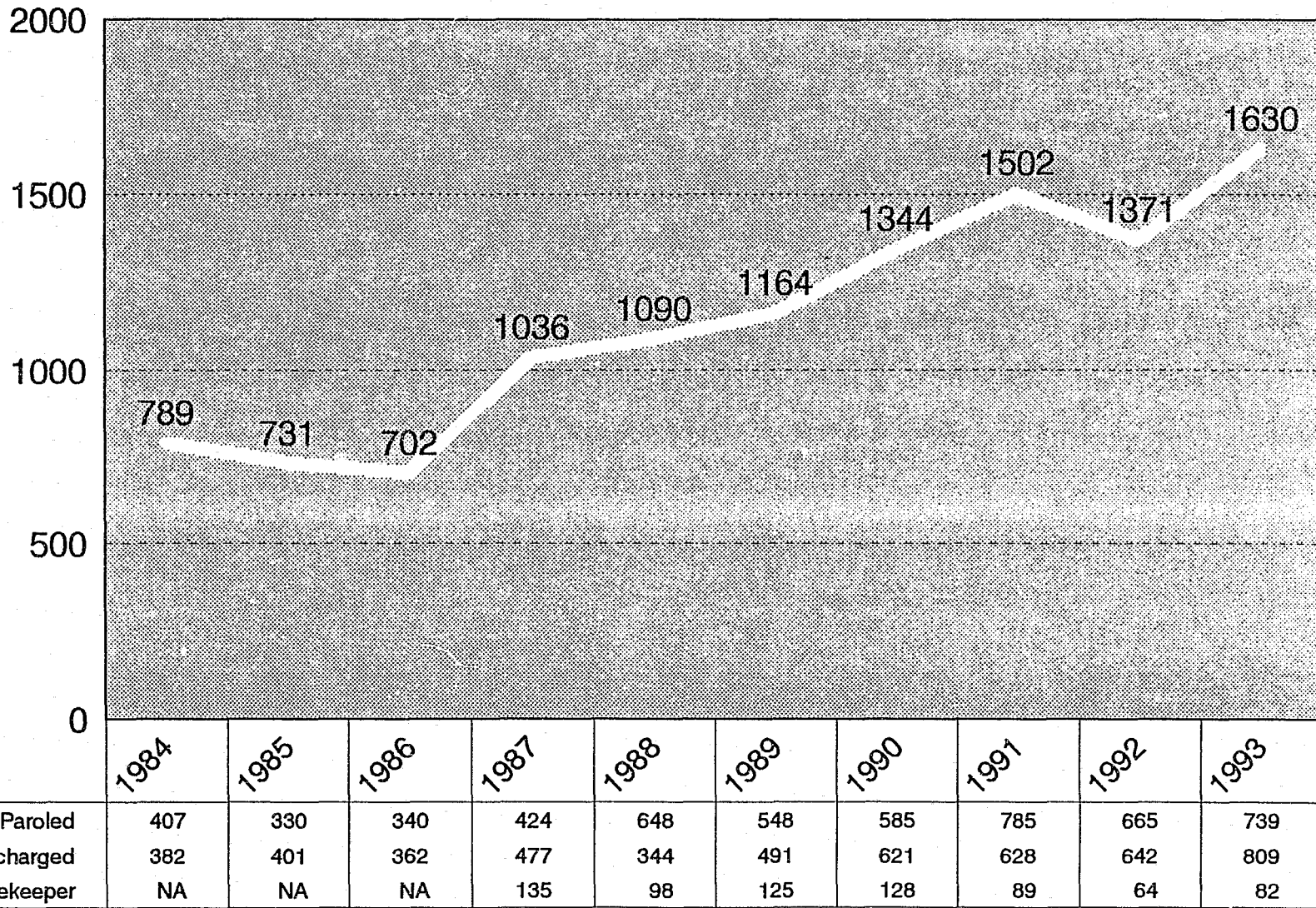
TOTAL ADULT POPULATION CURRENTLY CONFINED (June 1993)

By Most Serious Offense

| <u>CATEGORY</u> | <u>Males</u> | <u>Females</u> | <u>Total</u> | <u>% of Total</u> |
|-----------------|--------------|----------------|--------------|-------------------|
| Homicide | 299 | 23 | 322 | 12.3% |
| Robbery | 247 | 8 | 255 | 9.8% |
| Burglary | 280 | 4 | 284 | 11.0% |
| Assault | 192 | 17 | 209 | 8.1% |
| Theft | 194 | 25 | 229 | 8.5% |
| Sex Offenses | 387 | 3 | 390 | 15.1% |
| Restraint | 34 | 0 | 34 | 1.3% |
| Arson | 16 | 2 | 18 | 0.7% |
| Drugs | 444 | 54 | 498 | 19.2% |
| Fraud | 71 | 33 | 104 | 4.0% |
| Weapons | 40 | 1 | 41 | 1.6% |
| Morals | 14 | 1 | 14 | 0.6% |
| Motor Vehicle | 101 | 2 | 103 | 4.0% |
| Other | <u>87</u> | <u>10</u> | <u>97</u> | 3.7% |
| Totals | 2406 | 183 | 2589 | |
| Missing Values | 0 | 1 | 1 | |

Total Adult Releases by Fiscal Year

Includes Adult Male and Female Safekeeper, Evaluator and Regular Admissions

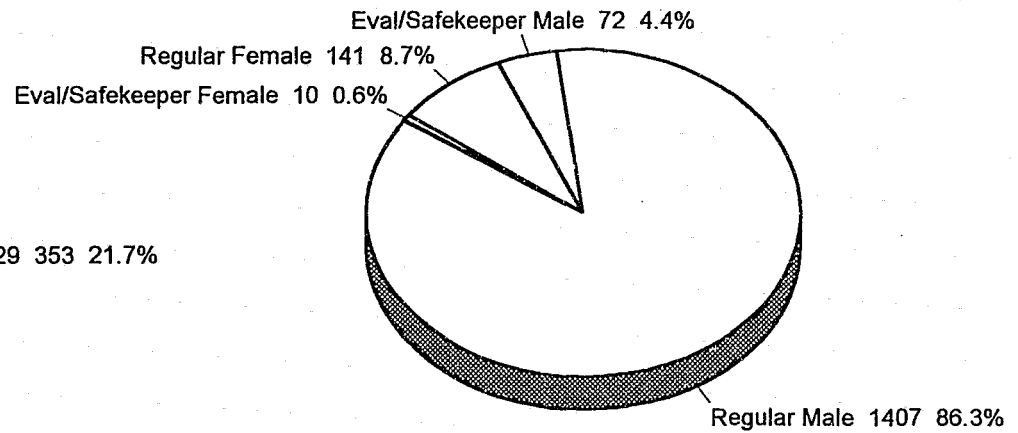
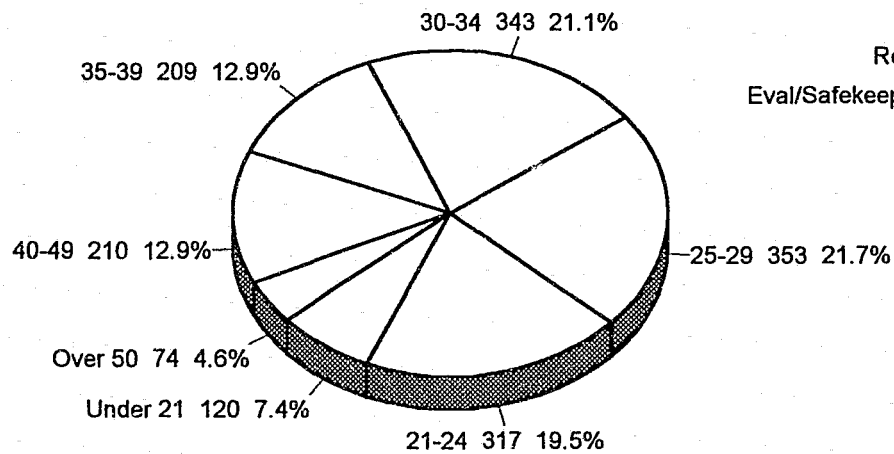


| | 1984 | 1985 | 1986 | 1987 | 1988 | 1989 | 1990 | 1991 | 1992 | 1993 |
|-------------------|------|------|------|------|------|------|------|------|------|------|
| # Paroled | 407 | 330 | 340 | 424 | 648 | 548 | 585 | 785 | 665 | 739 |
| # Discharged | 382 | 401 | 362 | 477 | 344 | 491 | 621 | 628 | 642 | 809 |
| # Eval/Safekeeper | NA | NA | NA | 135 | 98 | 125 | 128 | 89 | 64 | 82 |

Total Adult Releases For FY1993

Includes Adult Male and Female Safekeeper, Evaluator and Regular Admissions
By Age and By Sex & Release Type

52



NOTES: Total Adult Releases: 1630.

Mean Age at Release: 31.5 (Regular Releases)

29.8 (Safekeepers/Evaluators).

INSTITUTIONAL RELEASES

Adult Male and Female Population

| STATUS | FY 1991/92* | | FY 1992/93** | |
|---------------------|--------------------|----------------|---------------------|----------------|
| | <u>Number</u> | <u>Percent</u> | <u>Number</u> | <u>Percent</u> |
| First Time Offender | 872 | 64% | 1017 | 62% |
| Multiple Offender | 426 | 31% | 527 | 32% |
| Interstate Transfer | 7 | <1% | 5 | <1% |
| County Safekeeper | 27 | 2% | 28 | 2% |
| Evaluator | 37 | 3% | 53 | 3% |
| Total | 1369 | | 1630 | |
| Missing Values | 2 | | | |

| SEX | | | | |
|------------|------|-----|------|-----|
| Male | 1234 | 90% | 1479 | 91% |
| Female | 137 | 10% | 151 | 9% |
| Total | 1371 | | 1630 | |

| RACE | | | | |
|-----------------|------|-----|------|-----|
| Asian | 0 | - | 1 | 1% |
| Black | 375 | 27% | 471 | 29% |
| Hispanic | 90 | 7% | 113 | 7% |
| American Indian | 63 | 5% | 76 | 5% |
| Other | 4 | <1% | 4 | 2% |
| White | 837 | 61% | 934 | 57% |
| Total | 1369 | | 1629 | |
| Missing Values | 2 | | 1 | |

| LENGTH OF STAY IN INSTITUTION | | | | |
|--------------------------------------|------|-----|------|-----|
| Zero - 6 months | 225 | 16% | 366 | 22% |
| 7 - 12 months | 356 | 26% | 360 | 22% |
| 13 - 18 months | 233 | 17% | 223 | 14% |
| 19 - 24 months | 168 | 12% | 172 | 11% |
| 25 - 30 months | 115 | 8% | 128 | 9% |
| 31 - 36 months | 87 | 6% | 98 | 6% |
| 37 - 42 months | 29 | 2% | 67 | 4% |
| 43 - 48 months | 28 | 2% | 45 | 3% |
| 49 - 54 months | 22 | 2% | 15 | <1% |
| 55 - 60 months | 25 | 2% | 25 | 2% |
| Over 60 months | 83 | 6% | 131 | 8% |
| Total | 1371 | | 1630 | |

| Mean Length of Stay (In Months) | |
|--|-------|
| Safekeeper/Evaluators | 2.36 |
| Regular Releases | 23.73 |

NOTES: * Includes 64 Safekeeper/Evaluators.
 ** Includes 82 Safekeeper/Evaluators.

RELEASE INFORMATION - MINIMUM and MAXIMUM SENTENCE*

Adult Male and Female Population
(Totals Do Not Include Safekeeper/Evaluators)

| MINIMUM SENTENCE | | | | <u>Sentence</u> | MAXIMUM SENTENCE | | | |
|------------------|----------|-------------|----------|-------------------|------------------|----------|-------------|----------|
| FY91/92 | | FY92/93 | | | FY91/92 | | FY92/93 | |
| <u>No.</u> | <u>%</u> | <u>No.</u> | <u>%</u> | | <u>No.</u> | <u>%</u> | <u>No.</u> | <u>%</u> |
| 556 | 43% | 636 | 41% | 1.00 year or less | 203 | 16% | 233 | 15% |
| 481 | 37% | 533 | 34% | 1.01-2.00 years | 240 | 18% | 254 | 16% |
| 106 | 8% | 137 | 9% | 2.01-3.00 years | 271 | 21% | 350 | 23% |
| 54 | 4% | 64 | 4% | 3.01-4.00 years | 127 | 10% | 148 | 10% |
| 25 | 2% | 66 | 4% | 4.01-5.00 years | 205 | 16% | 230 | 15% |
| 21 | 2% | 24 | 2% | 5.01-6.00 years | 68 | 5% | 63 | 4% |
| 14 | 1% | 18 | 1% | 6.01-7.00 years | 19 | 2% | 42 | 3% |
| 9 | <1% | 14 | 1% | 7.01-8.00 years | 29 | 2% | 32 | 2% |
| 3 | <1% | 3 | <1% | 8.01-9.00 years | 10 | <1% | 12 | 1% |
| 21 | 2% | 21 | 1% | 9.01-10.00 years | 41 | 3% | 54 | 4% |
| 13 | 1% | 43 | 3% | 10.01-15.00 years | 38 | 3% | 56 | 4% |
| 2 | <1% | 3 | <1% | 15.01-20.00 years | 30 | 2% | 33 | 2% |
| 1 | <1% | 5 | <1% | Over 20 years | 20 | 2% | 32 | 2% |
| <u>1</u> | <1% | <u>2</u> | <1% | Life | <u>6</u> | <1% | <u>9</u> | 1% |
| 1307 | | 1548 | | | 1307 | | 1548 | |

LENGTH OF STAY
(Does not include Safekeeper/Evaluator releases)

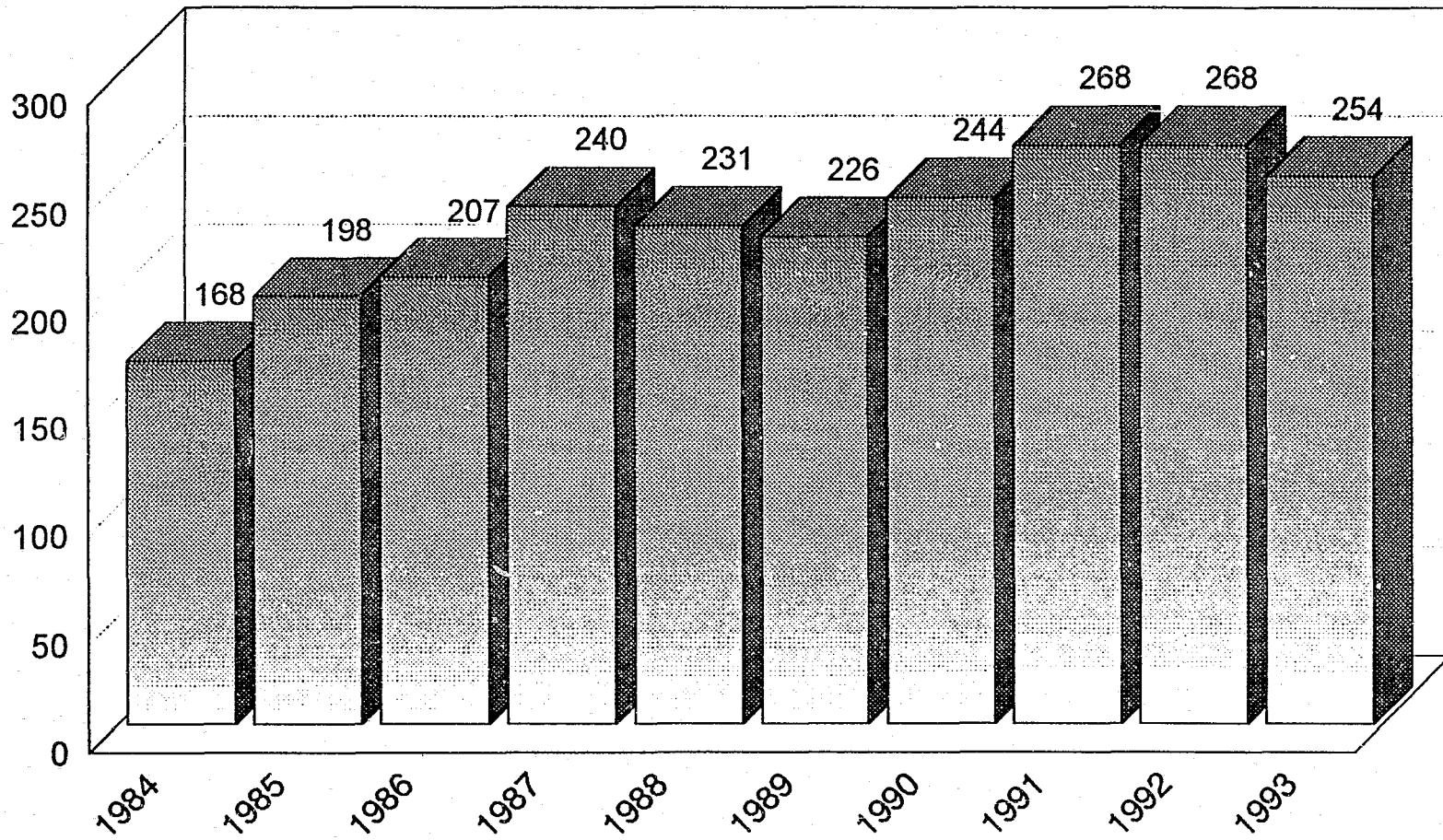
Based Upon Releases of Adult Males and Females as of the End of June in each Fiscal Year

| <u>Number/% of Total LENGTH OF STAY</u> | <u>83/84</u> | <u>84/85</u> | <u>85/86</u> | <u>86/87</u> | <u>87/88</u> | <u>88/89</u> | <u>89/90</u> | <u>90/91</u> | <u>91/92</u> | <u>92/93</u> |
|---|--------------|--------------|--------------|--------------|--------------|--------------|--------------|--------------|--------------|--------------|
| Zero - 1 year | 236 35.3% | 219 33.2% | 251 35.8% | 341 37.9% | 387 39.0% | 363 35.0% | 472 39.1% | 604 42.7% | 517 40.0% | 644 41.6% |
| 1.01 - 2 years | 178 26.6% | 153 23.2% | 178 25.4% | 214 23.8% | 260 26.2% | 261 25.1% | 330 27.4% | 362 25.6% | 401 30.7% | 395 25.5% |
| 2.01 - 3 years | 110 16.4% | 109 16.5% | 99 14.1% | 141 15.7% | 121 12.2% | 166 16.0% | 186 15.4% | 199 14.1% | 202 15.5% | 226 14.6% |
| 3.01 - 4 years | 60 9.0% | 70 10.6% | 65 9.3% | 70 7.8% | 63 6.4% | 82 7.9% | 73 6.0% | 79 5.6% | 57 4.4% | 112 7.2% |
| 4.01 - 5 years | 27 4.0% | 33 5.1% | 33 4.7% | 42 4.7% | 53 5.3% | 39 3.8% | 35 2.9% | 54 3.8% | 47 3.6% | 40 2.6% |
| 5.01 - 6 years | 22 3.3% | 13 2.0% | 28 4.0% | 27 3.0% | 36 3.6% | 32 3.1% | 24 2.0% | 32 2.3% | 21 1.6% | 46 3.0% |
| 6.01 - 7 years | 9 1.4% | 13 2.0% | 12 1.7% | 21 2.3% | 8 0.8% | 22 2.1% | 23 1.9% | 10 0.7% | 17 1.3% | 14 0.9% |
| 7.01 - 8 years | 8 1.2% | 8 1.2% | 10 1.4% | 8 0.9% | 12 1.2% | 20 1.9% | 11 0.9% | 11 0.7% | 12 0.9% | 12 0.8% |
| 8.01 - 9 years | 3 0.5% | 10 1.5% | 2 0.3% | 11 1.2% | 7 0.7% | 13 1.3% | 8 0.7% | 12 0.8% | 9 0.7% | 14 0.9% |
| 9.01 - 10 years | 6 0.9% | 9 1.4% | 8 1.1% | 7 0.8% | 7 0.7% | 6 0.6% | 13 1.1% | 6 0.4% | 2 0.2% | 10 0.6% |
| Over 10.01 years | 10 1.5% | 22 3.3% | 16 2.3% | 19 2.1% | 38 3.8% | 35 3.4% | 31 2.6% | 44 3.1% | 22 1.7% | 35 2.3% |
| TOTALS | 569 | 659 | 702 | 901 | 992 | 1039 | 1206 | 1413 | 1307 | 1548 |
| Mean (In Months) | 26.56 | 31.77 | 28.59 | 27.69 | 29.04 | 30.94 | 26.96 | 25.99 | 23.73 | 25.39 |

Community Corrections Center-Lincoln and Omaha Correctional Center Work Release Unit

Average Monthly Population

56



TOTAL ADULT ADMISSIONS
(Does not include Interstate Transfer Parolees)

| FISCAL YEAR | REGULAR COMMITMENTS | | | EVALUATOR/SAFEKEEPERS | | | TOTAL |
|----------------|---------------------|---------|-------|-----------------------|---------|-------|-------|
| | Males | Females | Total | Males | Females | Total | |
| 1978 | 566 | 38 | 604 | 0 | 0 | 0 | 604 |
| 1979 | 518 | 54 | 572 | 0 | 10 | 10 | 582 |
| 1980 | 592 | 46 | 638 | 91 | 17 | 108 | 746 |
| 1981 | 695 | 37 | 732 | 95 | 8 | 103 | 835 |
| 1982 | 793 | 55 | 848 | 143 | 13 | 156 | 1004 |
| 1983 | 654 | 65 | 719 | 117 | 9 | 126 | 845 |
| 1984 | 693 | 61 | 754 | 119 | 7 | 126 | 880 |
| 1985 | 641 | 41 | 682 | 127 | 8 | 135 | 817 |
| 1986 | 728 | 64 | 792 | 163 | 12 | 175 | 967 |
| 1987 | 885 | 89 | 974 | 149 | 14 | 163 | 1137 |
| 1988 | 885 | 109 | 994 | 116 | 7 | 123 | 1117 |
| 1989 | 956 | 104 | 1060 | 127 | 4 | 131 | 1191 |
| 1990 | 1163 | 135 | 1298 | 90 | 18 | 108 | 1406 |
| 1991 | 1211 | 123 | 1334 | 72 | 12 | 84 | 1418 |
| 1992 | 1151 | 127 | 1278 | 55 | 14 | 69 | 1347 |
| 1993 | 1156 | 138 | 1294 | 77 | 9 | 86 | 1380 |

TOTAL ADULT POPULATION - CUSTODY LEVELS

| FISCAL YEAR | MAXIMUM | | MEDIUM | | MINIMUM | | COMMUNITY | | TOTAL |
|----------------|---------|------|--------|---------|---------|---|-----------|------|-------|
| | No. | % | No. | % | No. | % | No. | % | |
| 1984 | 572 | 32.8 | 307 | 17.6385 | 22.1 | | 481 | 27.6 | 1745 |
| 1985 | 572 | 32.2 | 376 | 21.2517 | 29.2 | | 306 | 17.3 | 1771 |
| 1986 | 745 | 39.4 | 361 | 19.1538 | 28.4 | | 249 | 13.1 | 1893 |
| 1987 | 816 | 40.6 | 356 | 17.7521 | 26.9 | | 297 | 14.8 | 2010 |
| 1988 | 873 | 41.7 | 420 | 20.0446 | 21.3 | | 357 | 17.0 | 2096 |
| 1989 | 863 | 37.9 | 526 | 23.1561 | 24.6 | | 327 | 14.4 | 2277 |
| 1990 | 940 | 39.0 | 580 | 24.0583 | 24.2 | | 310 | 12.8 | 2413 |
| 1991 | 955 | 38.6 | 621 | 25.1595 | 24.0 | | 304 | 12.3 | 2475 |
| 1992 | 1040 | 39.4 | 651 | 24.6664 | 25.2 | | 283 | 10.8 | 2638 |
| 1993 | 1058 | 40.8 | 662 | 25.6586 | 22.6 | | 284 | 11.0 | 2590 |

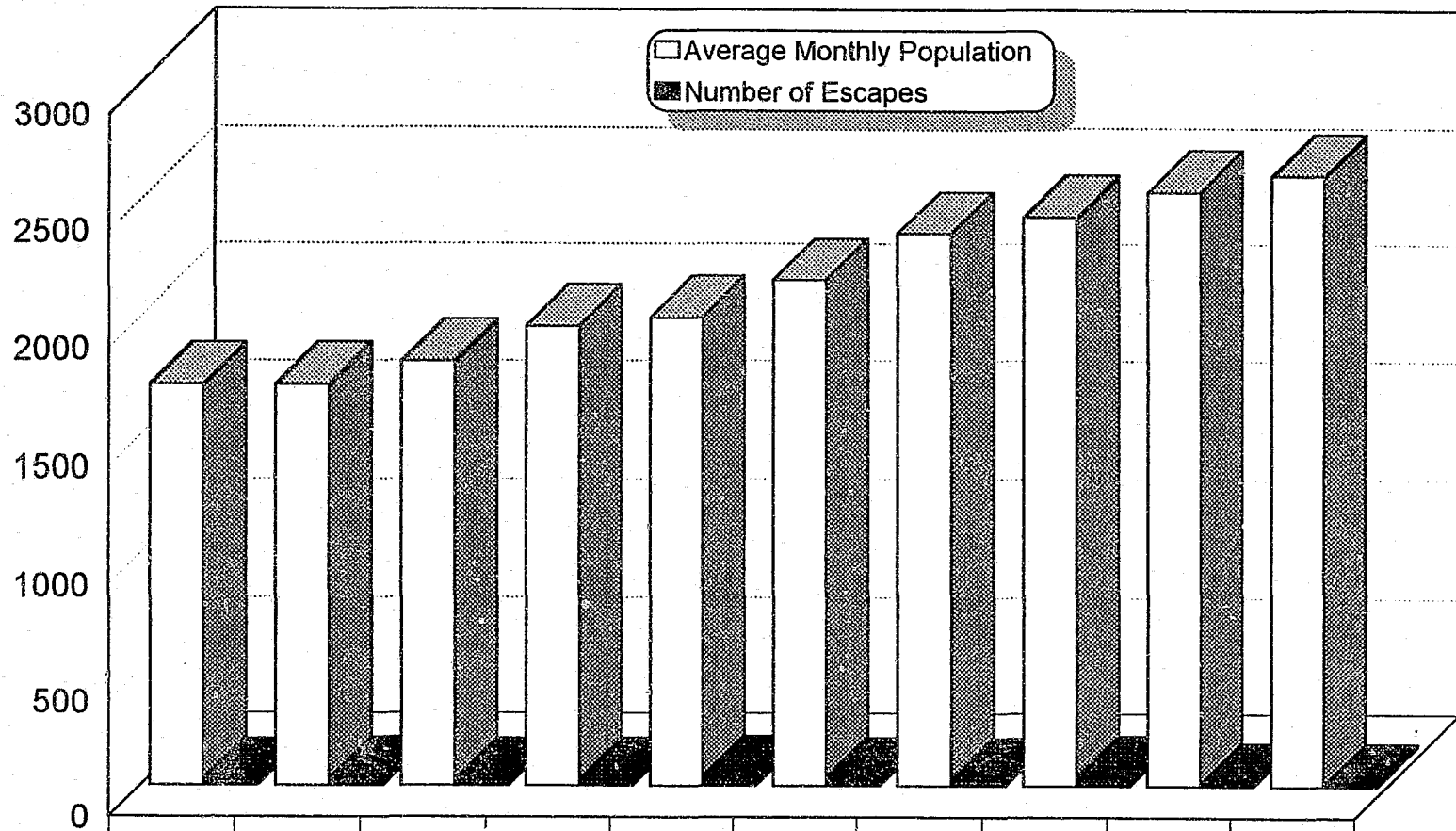
TOTAL ADULT RELEASES FROM INSTITUTIONS

| FISCAL YEAR | PAROLE | | | DISCHARGE | | | EVAL/SAFEKEEPER | | | TOTAL |
|----------------|--------|----|--------------|-----------|----|--------------|-----------------|----|--------------|-------|
| | M | F | <u>Total</u> | M | F | <u>Total</u> | M | F | <u>Total</u> | |
| 1978 | - | - | 418 | - | - | 324 | - | - | - | 742 |
| 1979 | - | - | 387 | - | - | 319 | - | - | - | 706 |
| 1980 | - | - | 376 | - | - | 275 | - | - | - | 651 |
| 1981 | - | - | 310 | - | - | 311 | - | - | - | 621 |
| 1982 | - | - | 322 | - | - | 311 | - | - | - | 633 |
| 1983 | - | - | 385 | - | - | 379 | - | - | - | 764 |
| 1984 | - | - | 407 | - | - | 382 | - | - | - | 789 |
| 1985 | - | - | 330 | - | - | 401 | - | - | - | 731 |
| 1986 | - | - | 340 | - | - | 362 | - | - | - | 702 |
| 1987 | 390 | 34 | 424 | 447 | 30 | 477 | 121 | 14 | 135 | 1036 |
| 1988 | 575 | 73 | 648 | 318 | 26 | 344 | 94 | 4 | 98 | 1090 |
| 1989 | 476 | 72 | 548 | 462 | 29 | 491 | 116 | 9 | 125 | 1164 |
| 1990 | 513 | 72 | 585 | 571 | 50 | 621 | 109 | 19 | 128 | 1334 |
| 1991 | 694 | 91 | 785 | 575 | 53 | 628 | 78 | 11 | 89 | 1502 |
| 1992 | 593 | 72 | 665 | 589 | 53 | 642 | 52 | 12 | 64 | 1371 |
| 1993 | 662 | 77 | 739 | 745 | 64 | 809 | 72 | 10 | 82 | 1630 |

Escapes from All Adult Facilities By Fiscal Year

(Does Not Include Adult Parole Absconds)

59

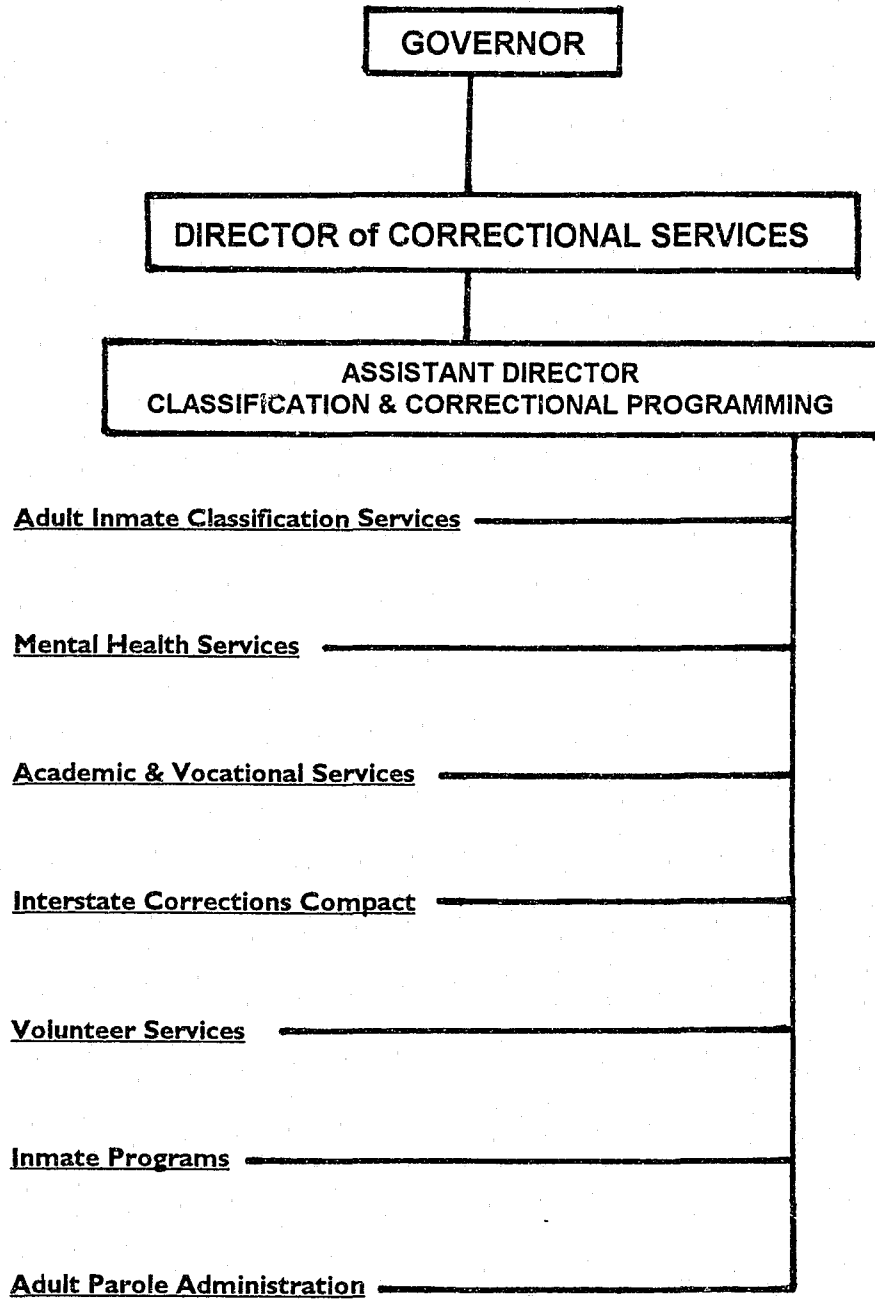


| | 1984 | 1985 | 1986 | 1987 | 1988 | 1989 | 1990 | 1991 | 1992 | 1993 |
|----------------------------|------|------|------|------|------|------|------|------|------|------|
| Average Monthly Population | 1711 | 1713 | 1811 | 1960 | 1995 | 2156 | 2359 | 2431 | 2538 | 2609 |
| Number of Escapes | 25 | 33 | 26 | 29 | 36 | 29 | 26 | 40 | 10 | 9 |
| % of Population | 1.46 | 1.93 | 1.44 | 1.48 | 1.8 | 1.34 | 1.1 | 1.65 | 0.39 | 0.34 |

Note: 1992 reflects a correction in Average Monthly Population (2548 in previous report).

***Classification
and
Correctional
Programming***

CLASSIFICATION & CORRECTIONAL PROGRAMMING



80 CLASSIFICATION and CORRECTIONAL PROGRAMMING 82

Established by the director, Classification and Correctional Programming supervises the adult inmate classification system and various support programs for both adult and juvenile divisions. The section is organized into six functional areas, with a seventh, the Adult Parole Administration, providing programming services to the department's adult parolees.

Inmate Classification

The department's mission of protecting the public and providing programs to return adult inmates and juvenile offenders to society as law-abiding citizens is realized via an accurate identification of the incarcerant's characteristics and needs. Once identified, they must be matched with appropriate physical security, supervision, and programming. Classification is a systematic process of coordinating assessment and assignment procedures with available resources. It is essential for appropriate management of the department's facilities and programs and is a basis for management decisions concerning facility planning and program development.

The DCS Adult Inmate Classification System is an adaptation of the Federal Bureau of Prison's Security Designation and Custody Classification System. It utilizes a mechanical scoring procedure in which specific factors are assigned point values. It is intended to identify those salient factors of the inmate's potential and level of functioning in determining his/her individual security and supervision needs by:

- A. Assigning each inmate to the least restrictive environment appropriate to maintain the public's confidence and safety;
- B. Facilitating the timely movement of inmates through the correctional system;
- C. Providing for the assignment, continuation and removal of inmates from administrative segregation status;
- D. Identifying inmate needs and recommending program involvement which will assist in meeting those needs; and,
- E. Assuring the most difficult classification decisions are made at the highest level of authority within the Department.

This classification process utilizes an objective rating instrument which permits the use of professional judgment and is not binding upon the classification authority. Although this process allows flexibility, it also provides a basis for consistent classification decisions.

Mental Health Services

Under the supervision of the Mental Health Director, who is a certified clinical psychologist, this program provides mental health services for adult inmates. The program includes intensive in-patient programming and comprehensive out-patient programming. It is also responsible for substance abuse counseling and intervention services. Headquartered at the Lincoln Correctional Center, the program oversees the provision of mental health services by the department, or by contract, including those made available to the adult females at the Nebraska Center for Women.

In-patient treatment is provided at the Lincoln Correctional Center for sex offenders, the socially and/or developmentally impaired, inmates in need of substance abuse treatment and other inmates who would have difficulty in general population because of their mental health problems. The majority of in-patient treatment centers around group activities and therapy.

Programming for the socially and developmentally impaired is highly structured and includes, but is not limited to, activities such as life planning, awareness and relaxation. Higher functioning inmates with mental health problems participate in groups for conflict resolution, anger reduction, personal skills and adjustment, and others. Sex offenders and inmates receiving in-patient substance abuse treatment address their specific behavior needs through open-ended group participation, emphasizing needed changes in inappropriate behavior.

The out-patient treatment provided by Mental Health Services is modeled after the community mental health concept. Services are provided through individual counseling/treatment, group interaction (i.e. anger reduction, relaxation therapy) and crisis intervention. Groups are arranged according to similarity of problem areas. Although the majority of out-patient treatment is provided in the group setting, individual treatment is also available to all inmates in general population and is oriented toward resolution of situational problems.

Psychiatric care is provided by contract with several community psychiatrists. Inmates found to be treatable, mentally disordered sex offenders are transferred to the Lincoln Regional Center for intense in-patient treatment. After evaluation and a due process hearing, severe mentally ill inmates are also transferred to that facility or to the Hastings Regional Center for treatment.

Academic/Vocational Services

The department's Education Coordinator is responsible for planning, development, and providing assistance in the operation of the academic and vocational education and pre-release programs within the department. The department operates its own state-approved schools in its two juvenile facilities and the adult female institution. Lincoln-based facilities and the Nebraska Center for Women receive educational services through contract agreement with the Corrections Division of Southeast Community College. The women at the York facility who desire additional education after high school may take advantage of correspondence courses. The institutions located in Omaha have contract arrangements with Metropolitan Technical Community College. Hastings inmates have access to educational opportunities through Central Community College.

The academic programs available for adults include ABE/GED studies and college transfer programs and for juveniles, high school, independent living courses and Chapter I (math and reading). Juveniles may choose to be involved in building trades, welding/metals, auto mechanics and auto body, word processing and computers.

Interstate Corrections Compact

The department has entered into contracts with several states in order to provide inmates the opportunity to request a transfer to another state. The Interstate Corrections Compact Administrator, under the supervision of the Assistant Director for Classification & Correctional Programming, coordinates and documents action undertaken via the Compact provisions. Inmates are given consideration for transfer if the transfer will:

- 1) Enable an inmate to be closer to and maintain family ties;
- 2) Allow an inmate to concurrently serve sentences;
- 3) Provide for greater immediate personal safety of an inmate;
- 4) Provide for greater institutional security, custody, and control; and/or,
- 5) Provide specialized programs for treatment/rehabilitation not otherwise available.

During FY93, an average of 22 Nebraska inmates were housed in other states, with 21 inmates from other states housed by Nebraska. Further, ten Nebraska inmates were transferred to out-of-state facilities and four were accepted from other states.

Volunteer Services

Each facility and program has a designated staff member who is responsible for recruiting, training, and the overall coordination of volunteer programs. The DCS Volunteer Services Coordinator has the overall departmental responsibility for the Volunteer Services Program. This person also chairs the Volunteer Services Committee, which is comprised of the facility and program coordinators, as well as volunteers. The committee works to ensure that appropriate policy and procedure are followed.

Volunteerism generates a variety of direct services for inmates/students through such areas as education, self-betterment groups, substance abuse treatment and mental health services, counseling, employment assistance, transportation and as community release sponsors. Staff receive direct and indirect help through the support and services volunteers provide. Over 1500 community individuals, and many organizations and groups have volunteered their time and energy at the adult and juvenile facilities during this past year, resulting in over 6000 volunteer contacts.

Inmate Programs

Direct supervision of various inmate programs is the responsibility of the individual institution's administration. Classification and Correctional Programming functions in a coordinating role in an effort to ensure consistent programming activities for the individuals in the facilities. Currently, programs include religious services, recreational services, self-betterment clubs, and cultural organizations.

Adult Parole Administration
Dennis Bakewell, Administrator
P.O. Box 94661
Lincoln, Nebraska 68509-4661

Established: 1893

Authorized FTE's: 35

FY93 Average Daily Population: 666 (Includes 12 on Community Furlough Program)

Average Yearly Cost: \$2,022

Average Daily Cost: \$5.53

ACA Accredited: 1981

Reaccredited: 1984, 1987, 1990, 1993

Established in Nebraska in 1893, the Governor originally held the sole power to parole. By Legislative action effective on August 23, 1969, the Parole Administration was established and was responsible for handling both juvenile and adult parole matters. In April 1979, the Parole Administration was divided into two separate programs: the Adult Parole Administration and the Juvenile Parole Administration, a program within the Division of Juvenile Services.

The Adult Parole Administration is responsible for providing statewide parole services in the community for all inmates paroled from Nebraska's adult correctional institutions. It is also responsible for those inmates from other states who have been transferred to Nebraska under the Interstate Compact.

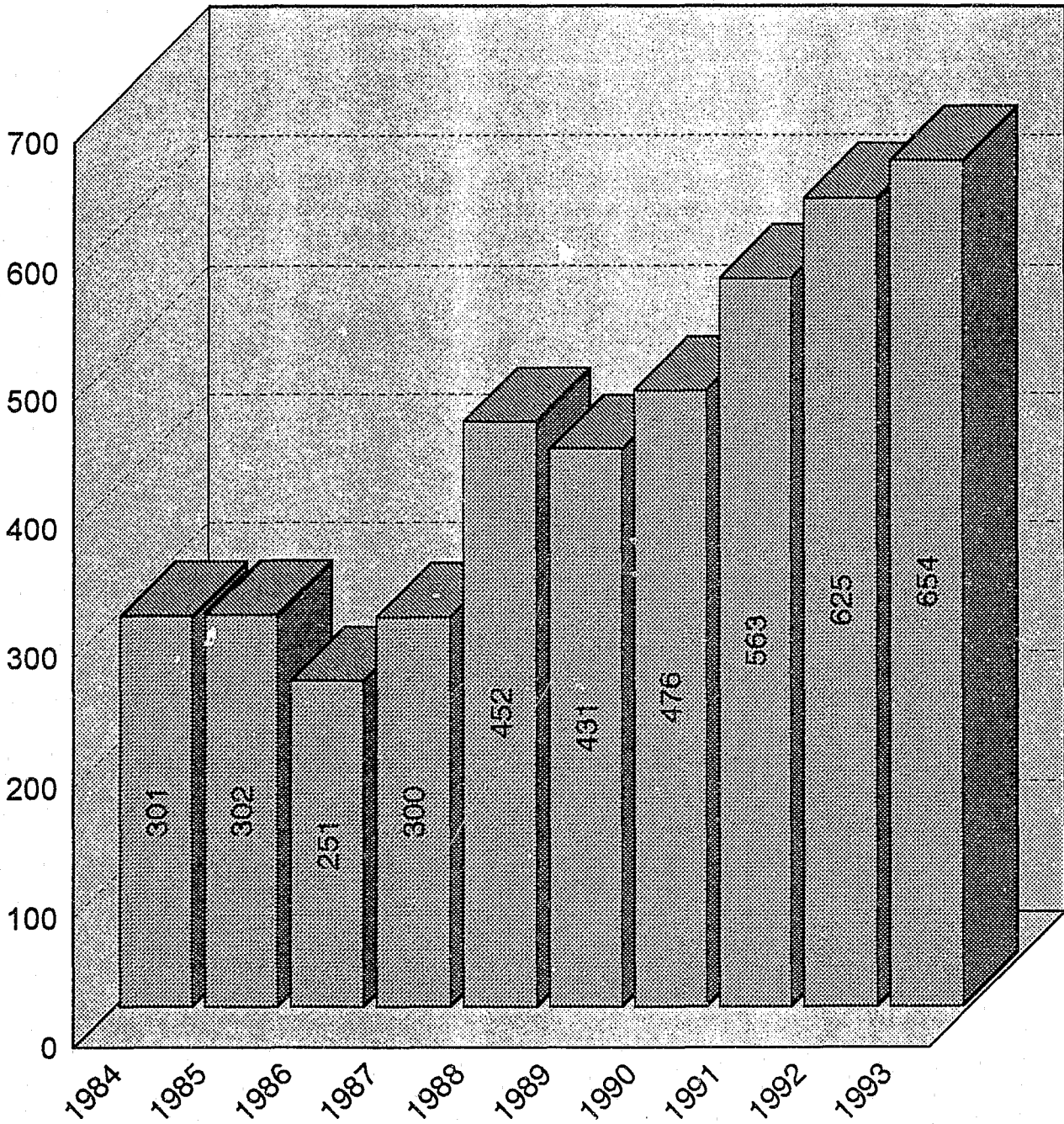
The mission of the Adult Parole Administration is to protect the public and provide supervision and assistance to enable the paroled inmate to become a productive and law-abiding citizen. In support of this mission, Adult Parole helps the paroled inmate live his/her own life within the limits set by the community. By providing supervision, guidance, and assistance, and by relying on community resources and community cooperation, parole services may help the individual resume a responsible place in the community.

In response to increasing institutional populations, the Extended Leave Program (ELP) was implemented in December 1986. This program was temporarily suspended in early 1990, however, it was revised and reinstated late in 1990 as the Community Furlough Program (CFP). It permits selected inmates to reside at an approved private residence prior to parole release or expiration of sentence. Inmates approved to participate in the community furlough program are granted a furlough for the period of time remaining on their sentence prior to their parole hearing date or discharge date. Inmates on the program remain under the legal custody of the department.

The Adult Parole Administrator oversees the operation which includes district offices located in Omaha and Lincoln, which are each under the immediate supervision of a District Supervisor. Individual regional offices are established where necessary.

Adult Parole Administration

Average Monthly Population By Fiscal Year



Note: Does not include inmates on the Community Furlough Program or interstate parolees in Nebraska.

ADULT PAROLE ADMINISTRATION
Fiscal Year 1992/93

NUMBER of PAROLE REVOCATIONS: 306

| | | |
|----------------------|-----|-------|
| Males: | 278 | (91%) |
| Females: | 28 | (9%) |
| Black: | 146 | (48%) |
| Hispanic: | 8 | (3%) |
| Native American: | 14 | (5%) |
| Other: | 0 | (-) |
| White: | 138 | (45%) |
| First Time Offender: | 172 | (56%) |
| Multiple Offender: | 134 | (44%) |
| Interstate Transfer: | 0 | (-) |
| Missing Value: | 0 | (-) |

| | |
|-------------------------|------|
| Mean Age at Parole: | 30.2 |
| Mean Age at Revocation: | 30.9 |

| | |
|---|------------|
| Mean Length of Stay on Parole Before Revocation: | 8.6 months |
|---|------------|

NUMBER of PAROLE DISCHARGES: 622

| | | |
|----------------------|-----|-------|
| Males: | 557 | (90%) |
| Females: | 65 | (10%) |
| Black: | 167 | (27%) |
| Hispanic: | 32 | (5%) |
| Native American: | 16 | (3%) |
| Other: | 2 | (<1%) |
| White: | 405 | (65%) |
| First Time Offender: | 361 | (58%) |
| Multiple Offender: | 144 | (23%) |
| Interstate Transfer: | 116 | (19%) |
| Missing Value: | 1 | (<1%) |

| | |
|----------------------|------|
| Mean Age at Parole: | 31.8 |
| Mean Age at Release: | 32.6 |

| | |
|--|------------|
| Mean Length of Stay on Parole Before Release: | 9.8 months |
|--|------------|

Mean Total Length of Stay in Institution and on Parole: 27.95 months

MONTHLY PAROLE COUNT UNDER SUPERVISION *
(As of the Last Day of Each Month)

| <u>MONTH</u> | <u>FISCAL YEAR</u> | | | | | | | |
|--------------|--------------------|--------------|--------------|--------------|--------------|--------------|--------------|--------------|
| | <u>85/86</u> | <u>86/87</u> | <u>87/88</u> | <u>88/89</u> | <u>89/90</u> | <u>90/91</u> | <u>91/92</u> | <u>92/93</u> |
| July | 343 | 361 | 469 | 587 | 590 | 600 | 827 | 854 |
| August | 323 | 373 | 506 | 584 | 598 | 647 | 838 | 865 |
| September | 332 | 379 | 549 | 567 | 590 | 668 | 837 | 836 |
| October | 337 | 376 | 563 | 574 | 581 | 687 | 828 | 833 |
| November | 324 | 365 | 550 | 567 | 582 | 713 | 845 | 828 |
| December | 344 | 379 | 550 | 548 | 600 | 753 | 839 | 860 |
| January | 346 | 384 | 560 | 548 | 620 | 762 | 827 | 876 |
| February | 326 | 371 | 579 | 531 | 609 | 737 | 830 | 878 |
| March | 329 | 391 | 574 | 548 | 622 | 770 | 828 | 886 |
| April | 333 | 391 | 591 | 554 | 592 | 808 | 799 | 890 |
| May | 333 | 434 | 584 | 540 | 573 | 827 | 812 | 893 |
| June | 357 | 456 | 588 | 564 | 599 | 834 | 830 | 894 |

*NOTE: Includes department inmates paroled in Nebraska, or to detainers or other states, and interstate parolees in Nebraska. Does not include inmates on the Community Furlough Program.

RELEASES TO PAROLE

Adult Male and Female Population

| <u>STATUS</u> | FY1991/92 | | FY1992/93 | |
|---------------------|---------------|----------------|---------------|----------------|
| | <u>Number</u> | <u>Percent</u> | <u>Number</u> | <u>Percent</u> |
| First Time Offender | 530 | 59% | 560 | 59% |
| Multiple Offender | 244 | 27% | 279 | 29% |
| Interstate Transfer | <u>128</u> | 14% | <u>118</u> | 12% |
| | 902 | | 957 | |
| Missing Value | 2 | | 0 | |

| <u>SEX</u> | | | | |
|------------|-----------|-----|------------|-----|
| Male | 811 | 90% | 854 | 89% |
| Female | <u>93</u> | 10% | <u>103</u> | 11% |
| | 904 | | 957 | |

| <u>RACE</u> | | | | |
|-----------------|------------|-----|------------|-----|
| Asian | 0 | - | 1 | <1% |
| Black | 290 | 31% | 321 | 34% |
| Hispanic | 45 | 5% | 47 | 5% |
| American Indian | 28 | 3% | 31 | 3% |
| Other | 1 | <1% | 4 | <1% |
| White | <u>540</u> | 60% | <u>553</u> | 58% |
| | 904 | | 957 | |

| <u>LENGTH OF STAY IN INSTITUTION</u> | | | | |
|--------------------------------------|-----------|-----|-----------|-----|
| Zero to 6 month | 194 | 24% | 225 | 25% |
| 7 - 12 months | 212 | 26% | 209 | 24% |
| 12 - 18 months | 144 | 18% | 168 | 19% |
| 19 - 24 months | 90 | 11% | 73 | 8% |
| 25 - 30 months | 58 | 7% | 60 | 7% |
| 31 - 36 months | 28 | 3% | 26 | 3% |
| 37 - 42 months | 13 | 2% | 29 | 3% |
| 43 - 48 months | 16 | 2% | 20 | 2% |
| 49 - 54 months | 12 | 2% | 8 | 1% |
| 55 - 60 months | 12 | 2% | 10 | 1% |
| Over 60 months | <u>36</u> | 4% | <u>61</u> | 7% |
| | 815 | | 889 | |
| Missing Values | 89 | | 68 | |

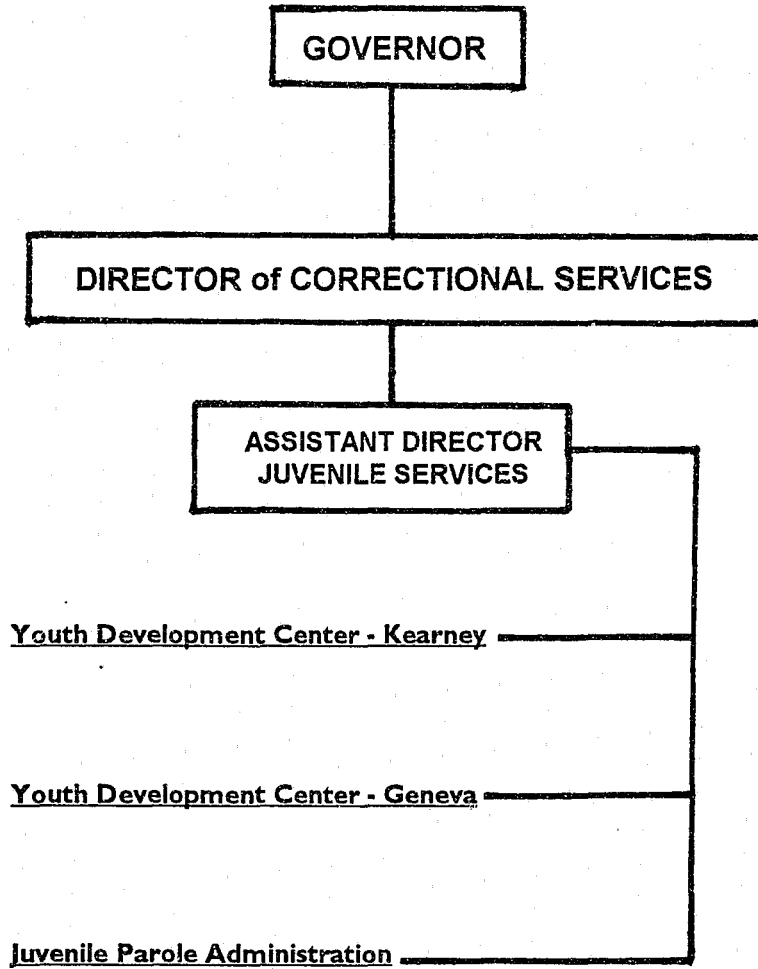
RELEASES TO PAROLE - MINIMUM and MAXIMUM SENTENCE

Adult Male and Female Population

| MINIMUM SENTENCE | | | | <u>Sentence</u> | MAXIMUM SENTENCE | | | |
|------------------|----------|----------------|----------|-------------------|------------------|----------|----------------|----------|
| <u>FY91/92</u> | | <u>FY92/93</u> | | | <u>FY91/92</u> | | <u>FY92/93</u> | |
| <u>No.</u> | <u>%</u> | <u>No.</u> | <u>%</u> | | <u>No.</u> | <u>%</u> | <u>No.</u> | <u>%</u> |
| 369 | 41% | 371 | 39% | 1.00 year or less | 48 | 5% | 36 | 4% |
| 322 | 36% | 332 | 35% | 1.01-2.00 years | 145 | 16% | 147 | 15% |
| 86 | 10% | 96 | 10% | 2.01-3.00 years | 192 | 21% | 244 | 26% |
| 45 | 5% | 35 | 4% | 3.01-4.00 years | 107 | 12% | 87 | 9% |
| 25 | 3% | 45 | 5% | 4.01-5.00 years | 167 | 19% | 186 | 19% |
| 14 | 1% | 22 | 2% | 5.01-6.00 years | 54 | 6% | 38 | 4% |
| 10 | 1% | 11 | 1% | 6.01-7.00 years | 19 | 2% | 30 | 3% |
| 4 | <1% | 13 | 1% | 7.01-8.00 years | 30 | 3% | 31 | 3% |
| 2 | <1% | 1 | <1% | 8.01-9.00 years | 6 | 1% | 8 | <1% |
| 10 | 1% | 10 | 1% | 9.01-10.00 years | 51 | 6% | 48 | 5% |
| 11 | 1% | 14 | 1% | 10.01-15.00 years | 33 | 4% | 45 | 5% |
| 2 | <1% | 2 | <1% | 15.01-20.00 years | 23 | 3% | 25 | 3% |
| 2 | <1% | 5 | <1% | Over 20 years | 21 | 2% | 25 | 3% |
| 0 | - | 0 | - | Life | 7 | 1% | 7 | <1% |
| 904 | | 957 | | | 904 | | 957 | |

***Division
of
Juvenile
Services***

DIVISION of JUVENILE SERVICES



☞ DIVISION of JUVENILE SERVICES ☜

The Legislature of 1879 passed a law establishing "The Nebraska State Reform School for Juvenile Offenders," which was to be located in Kearney, Nebraska. Both boys and girls were to be housed at the facility during the early years of operation. The first juvenile committed to the facility was a boy, who arrived on July 12, 1881. On March 4, 1891, the Legislature established the Girls' Industrial School to be built at Geneva, Nebraska. On March 14, 1892, a group of 57 girls were transferred from the school at Kearney to the new facility. Known by various names throughout the years, such as reform schools, industrial schools or training schools, the facilities are now identified as Youth Development Centers.

Nebraska State Statute 83-922 provided authority for the Department of Correctional Services to fulfill the functions of state government relating to the care, custody, discipline, training and treatment of persons in correctional and detention institutions. This statute also established the separate divisions within the department, of which the Division of Juvenile Services is one. Juvenile Services, organized under Sections 83-935 through 83-930 (Revised Statutes, Reissue 1976), is headed by an Assistant Director and exists to administer and supervise the State's juvenile correctional facilities and programs. The division includes the Youth Development Centers (YDC) in Geneva (for girls) and in Kearney (for boys) and the Juvenile Parole Administration.

The mission of the Division of Juvenile Services is to provide for the supervision, care, evaluation and treatment of juvenile offenders under the department's control enabling them to develop the skills necessary to return to the community as responsible, law-abiding individuals.

Youth Development Center - Kearney
Al Kulhanek, Superintendent
2802 30th Avenue
Kearney, Nebraska 68447-9599

Opened: 1881

Population: Adjudicated Boys

Authorized FTE's: 115

Design Capacity: 227

Average Yearly Cost: \$26,331

ACA Accredited: 1981, 1986

FY93 Average Daily Population: 179

Average Daily Cost: \$71.94

Reaccredited: 1989, 1992

Opened in July 1881, the Youth Development Center-Kearney, is located on a tract of land donated by the city of Kearney to the state of Nebraska. The mission of the facility is to provide attention to the individual needs of each student in the least restrictive environment possible. Student programming is provided in psychological services, problem-solving, education, pre-vocational exposure/training, social skills, drug/alcohol education/prevention, recreation and religion. The YDC-K students are committed for an indeterminate stay and must be released on or before their 19th birthday.

Staff complete a classification study for each student that includes evaluation, assessment and recommendation in: social history and placement, psychological and personality, chemical dependency, academic, vocational and medical. This assessment, in conjunction with current behavior analysis, leads to the development of an Individual Treatment Plan for each student. The primary treatment modality utilized at YDC-K is Positive Peer Culture (PPC) which is a peer group program that encourages and leads students in assisting each other to work together to solve mutual problems. The three PPC concepts are related to the

psychology of giving, the power of peers as change agents, and the student's role in helping others of similar backgrounds and experience. Students are assigned to treatment groups based on physical size, maturity, and sophistication level.

The Youth Development Center-Kearney operates an on-campus special purpose junior-senior high school that is accredited by the Nebraska Department of Education and the North Central Association of Schools and Colleges. The nineteen member school staff develops an Individual Education Plan that leads students toward either a high school or G.E.D. diploma. The basic education program is supported by special education, speech pathology, Chapter One, career education, family/life skills, art, pre-vocational training and media/technology area. The school operates year round and students are enrolled each day.

The Youth Development Center-Kearney is under the direction of a Superintendent and an Assistant Superintendent.

Youth Development Center - Geneva

Allen Jensen, Superintendent
R.R. 1, Box 23A
Geneva, Nebraska 68361-0273

Opened: 1892

Population: Adjudicated Girls and both Boy and Girl Evaluators/Detainees

Authorized FTE's: 68

Design Capacity: 78

Average Yearly Cost: \$35,640

Accredited: 1981, 1987, 1990

FY93 Average Daily Population: 74

Average Daily Cost: \$97.38

The Youth Development Center at Geneva receives girls to serve an indeterminate sentence. These girls have been adjudicated as delinquent by the various courts of the state. They must be under age 18 at the time of their adjudication and must be released on or before their 19th birthday. Nebraska State Statute precludes the commitment of status offenders. In addition to regular commitments, YDC-G also provides predisposition evaluations for both female and male adolescents for the courts in an effort to determine the causes of particular behaviors and to provide appropriate treatment recommendations. Immediate, short-term detention services for female safekeepers are also available for those counties which do not have the facilities for the proper detention of youth.

The Geneva program is designed to meet the needs of each student under a plan which includes: 1) an individual profile with psychological testing and evaluation; 2) testing and placements; and 3) a classification study to determine background history and current needs. The primary goal is to bring about a self-development program for each student that provides a satisfactory and productive life with no further delinquency involvement. Positive Peer Culture (PPC) is the treatment philosophy around which individual programming for each student is structured.

The YDC-G educational program, under the supervision of a principal, is accredited by the State Department of Education as a special purposes school, with G.E.D. and independent living programs also available. Pre-vocational training is offered in the areas of business and clerical skills and in word processing/computers.

The Youth Development Center-Geneva is under the direction of a Superintendent and an Assistant Superintendent.

Juvenile Parole Administration
Arthur W. Pohlen, Administrator
P.O. Box 94661
Lincoln, Nebraska 68509-4661

Established: 1969

Authorized FTE's: 14

FY93 Average Daily Population: 278

Average Yearly Cost: \$2,872

ACA Accredited: 1981

Average Daily Cost: \$7.85

Reaccredited: 1984, 1987, 1990, 1993

In April 1979, the Juvenile Parole Administration was established as a separate program of the Department of Correctional Services. Previously, the juvenile and adult parole responsibilities had been administered by a single Parole Administration. The separation of the two areas has enabled both to be more effective in serving and supervising the individuals in their care.

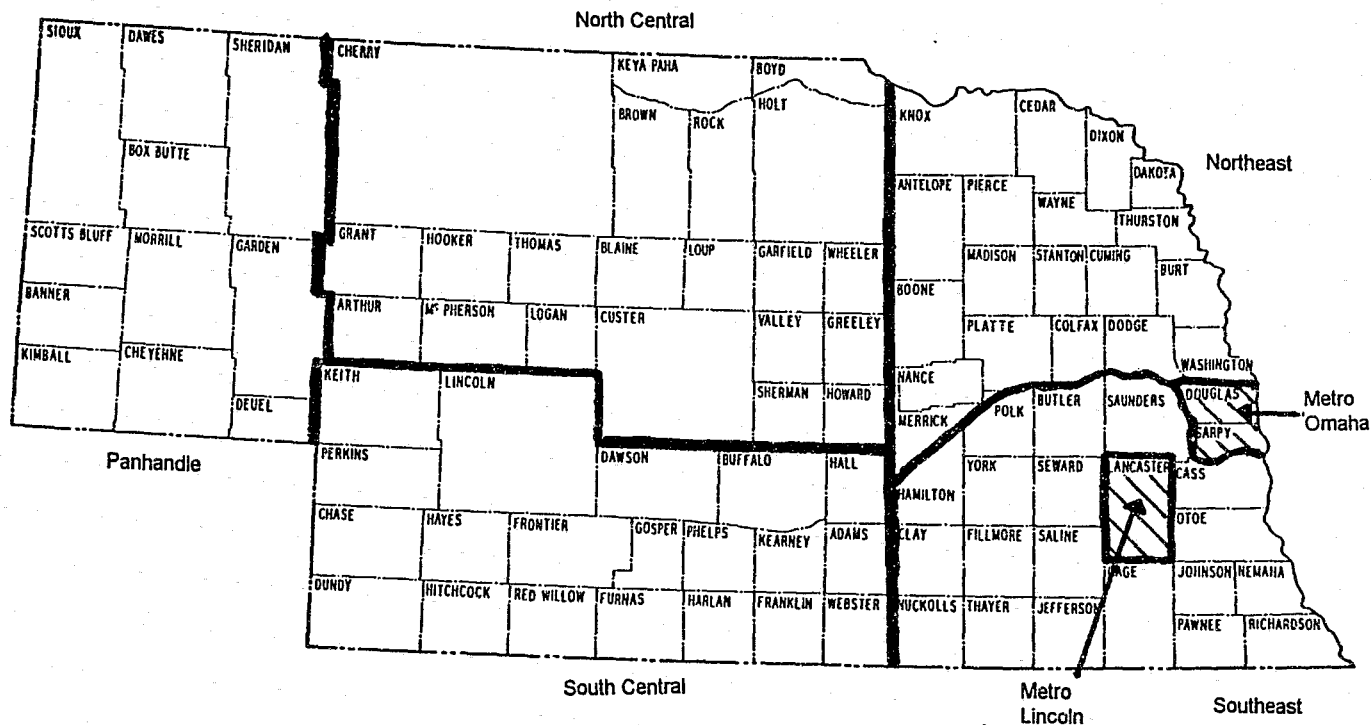
The Juvenile Parole Administration is responsible for the supervision and control of all juvenile persons paroled from Nebraska's juvenile institutions and those juvenile parolees who qualify for placement in Nebraska under the jurisdiction of the Interstate Compact on Juveniles. In addition, it is the responsibility of the Juvenile Parole Administration to supervise a limited number of juvenile probationers committed to the Department by order of the Nebraska Juvenile Courts.

During this fiscal year, 27 of the youth being released on parole were placed in foster care. Selected from successful foster care homes, a Mini-Group Home Program is also in operation. The families take up to three youths into their homes at any one time. This highly beneficial and successful program averages 15 active homes. Placement of juveniles via the Interstate Compact program for FY93 totaled seven youth placed in Nebraska from other states and 20 Nebraska youth placed in other states.

In addition to the administrative office, which is located in Lincoln, five satellite offices are maintained across the state, including a field office located at YDC-Kearney. Juvenile Parole is under the direction of an Administrator, who is assisted by a Deputy Parole Administrator.

JUVENILE POPULATION
(Does not include Juvenile Parole)

AREAS OF COMMITMENT - Total for FY 1993

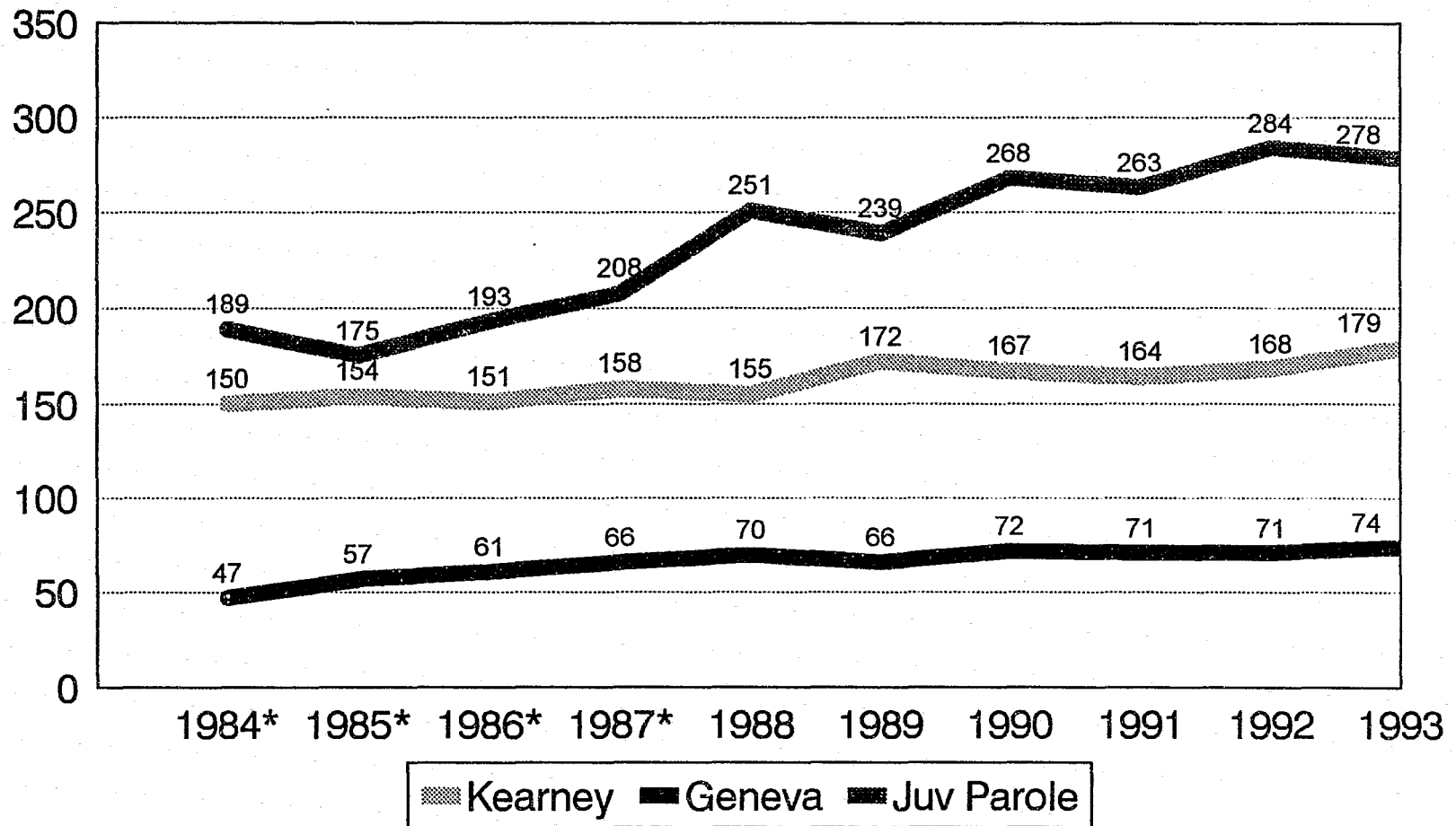


81

| COMMITMENTS | | | | EVALUATORS | |
|--------------------|-----|-------------------|----|----------------------|-----------|
| <u>YDC-Kearney</u> | | <u>YDC-Geneva</u> | | <u>Males/Females</u> | |
| (35%) | 147 | (31%) | 21 | Metro Omaha | (40%) 218 |
| (11%) | 46 | (6%) | 4 | Metro Lincoln | (12%) 66 |
| (9%) | 38 | (6%) | 4 | Southeast | (11%) 61 |
| (23%) | 97 | (31%) | 21 | South Central | (16%) 87 |
| (8%) | 35 | (18%) | 12 | Panhandle | (4%) 21 |
| (1%) | 5 | (0%) | 0 | North Central | (2%) 9 |
| (13%) | 56 | (8%) | 5 | Northeast | (15%) 79 |
| | 424 | | 67 | VALID DATA | 541 |
| | 491 | | | TOTAL | 541 |

Juvenile Population by Fiscal Year

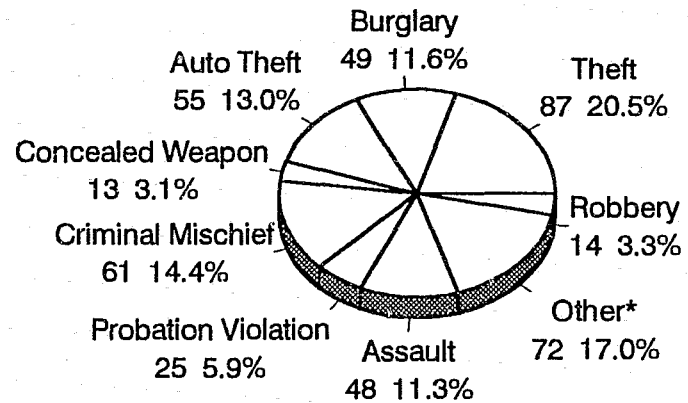
Average Monthly Committed Population



*Figures revised from previous reports

Juvenile Commitments by Delinquency

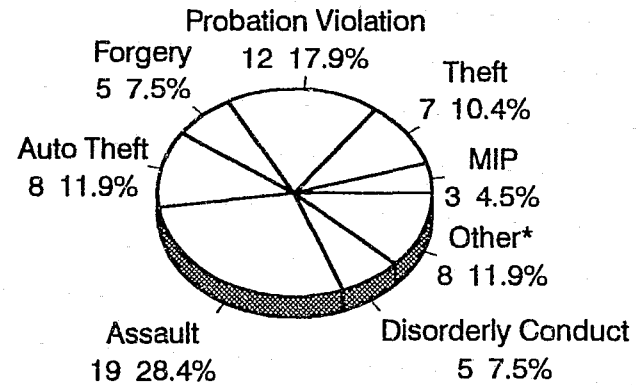
Youth Development Center-Kearney



*Includes Sexual Assault 12, Disorderly Conduct 12, MIP 9, Possess Drugs 7, Forgery 5, Arson 4, Distribute Drugs 4, DWI 4, Status Offense 4, Resisting Arrest 3, Driving w/o License 2, Escape 2, Shoplifting 2, Parole Violation 1, False Information 1.

TOTAL: 424

Youth Development Center-Geneva

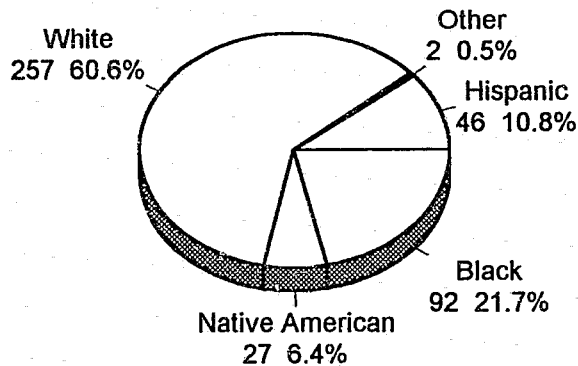
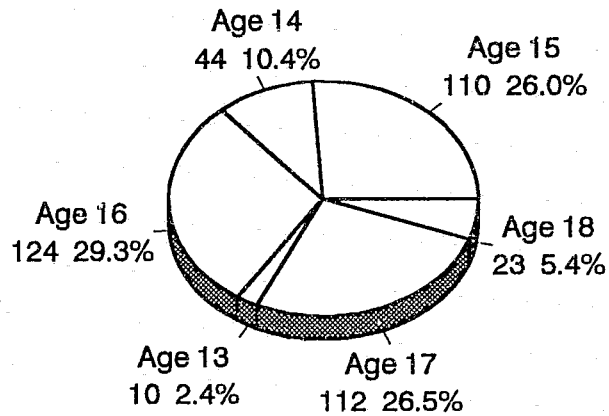


*Includes: Criminal Mischief 2, Status Offense 2, Burglary 1, Distribute Drugs 1, False Information 1, Sexual Assault 1.

TOTAL: 67

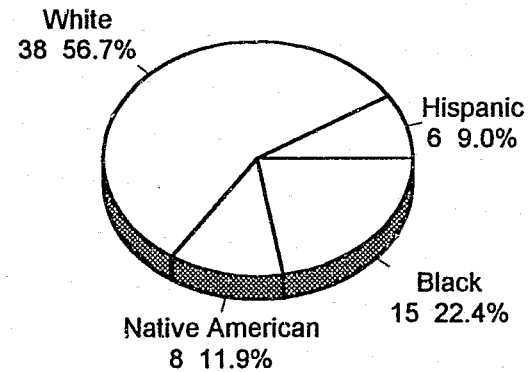
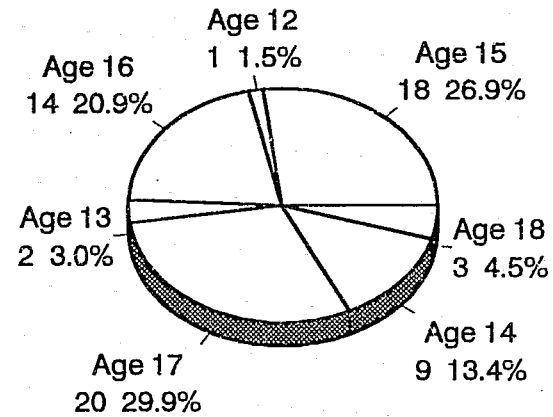
Juvenile Commitments at Admission by Age and by Race

Youth Development Center-Kearney



TOTAL: 424

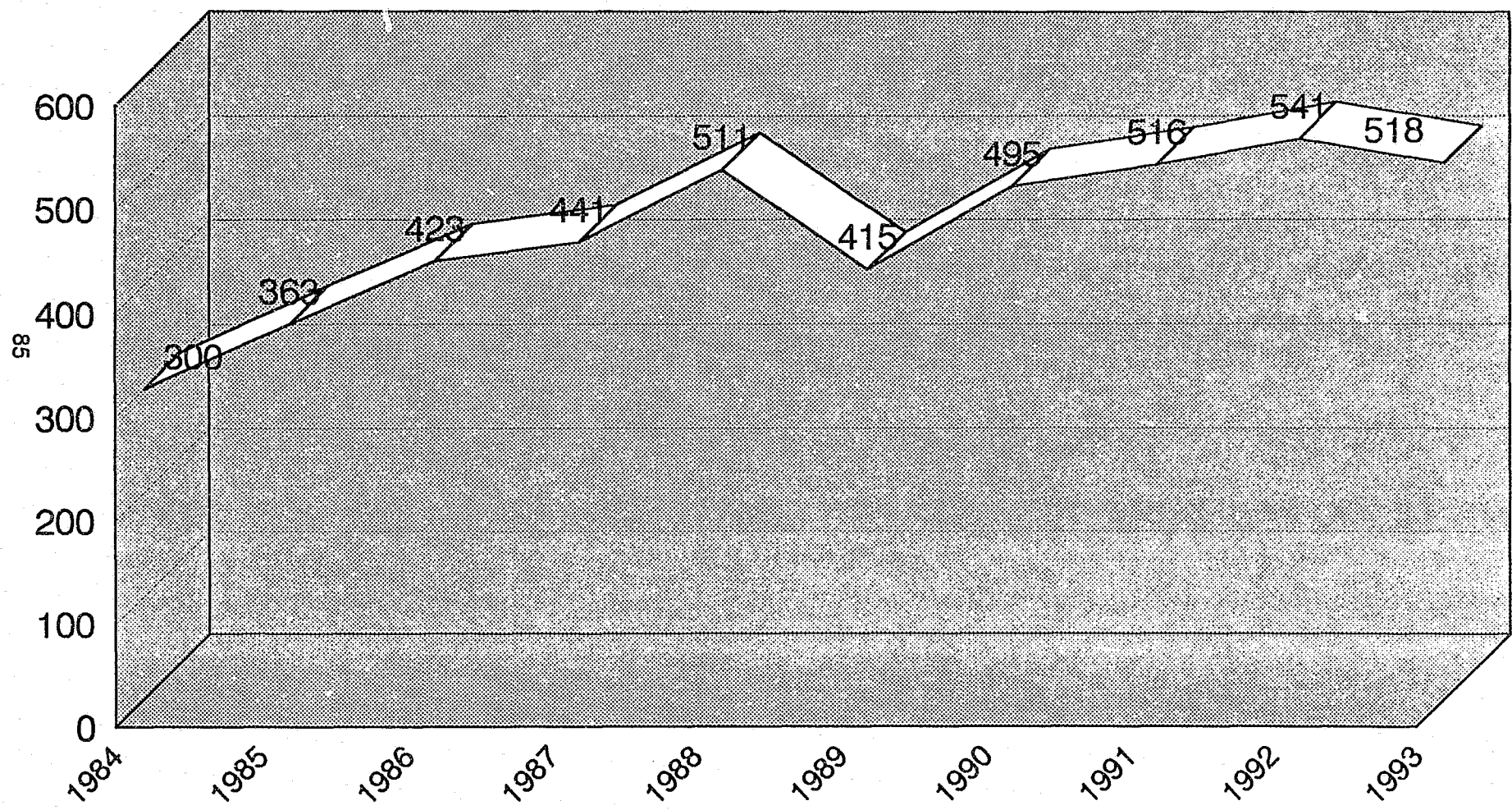
Youth Development Center-Geneva



TOTAL: 67

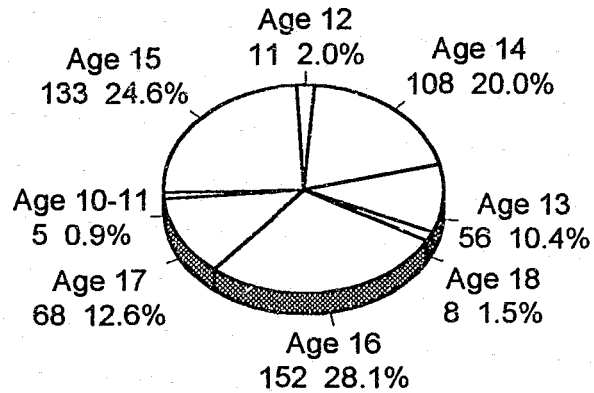
Juvenile Court Evaluators -- Number of Admissions

Housed and Evaluated at the Youth Development Center-Geneva

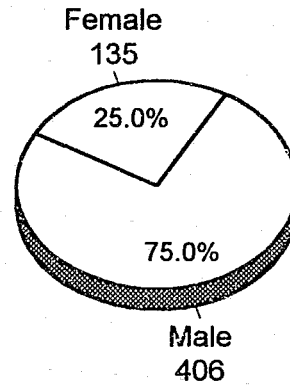


Juvenile Court Evaluator Admissions

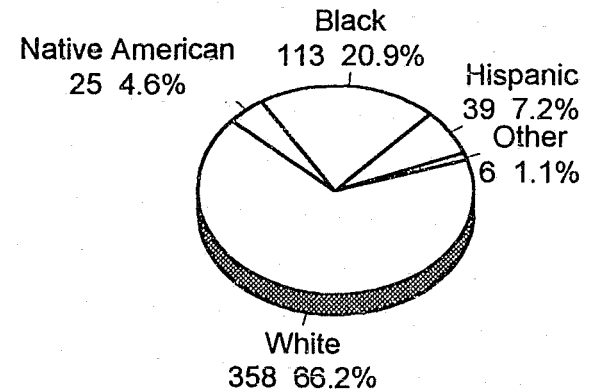
By Age



By Gender



By Race



TOTAL: 541 (Kearney 23, males only / Geneva 518, males and females)

SUMMARY of ADMISSION and RELEASE INFORMATION

Youth Development Center - Kearney and Geneva

FY1992/93

| <u>CATEGORY</u> | <u>YDC - KEARNEY</u> | | <u>YDC - GENEVA</u> | |
|--------------------|----------------------|----------------|---------------------|----------------|
| | <u>Number</u> | <u>Percent</u> | <u>Number</u> | <u>Percent</u> |
| ADMISSIONS | | | | |
| Commitments | 301 | 59% | 46 | 7% |
| Recommitments | 29 | 6% | 1 | <1% |
| Direct Commitments | 2 | <1% | 2 | <1% |
| Court Evaluators | 23 | 5% | 518 | 84% |
| Court Safekeepers | 26 | 5% | 10 | 2% |
| Parole Violators | 94 | 18% | 20 | 3% |
| Parole Safekeepers | <u>35</u> | 7% | <u>22</u> | 4% |
| Total | 510 | | 619 | |
| | | | 1129 | |

RELEASES

| | | | | |
|--------------------------------|----------|-----|----------|-----|
| Administrative Parole | 0 | - | 2 | <1% |
| Parole Discharge | 6 | 1% | 0 | - |
| Paroled | 349 | 67% | 67 | 11% |
| Reinstated to Parole | 29 | 6% | 21 | 3% |
| Institutional Discharge | 93 | 18% | 3 | <1% |
| Court Evaluators | 14 | 3% | 507 | 83% |
| Parole Safekeepers | 6 | 1% | 0 | - |
| Court Safekeepers | 17 | 3% | 10 | 2% |
| Parole Disch to Adult Sentence | 3 | <1% | 0 | - |
| Parole Violator | <u>8</u> | 2% | <u>0</u> | - |
| Total | 525 | | 610 | |
| | | | 1135 | |

LENGTH of STAY for COMMITMENTS

| <u>FISCAL YEAR</u> | <u>YDC - KEARNEY</u> | <u>YDC - GENEVA</u> |
|--------------------|----------------------|---------------------|
| 1984/85 | 7 months, 23 days | 9 months, 14 days |
| 1985/86 | 7 months, 4 days | 11 months, 15 days |
| 1986/87 | 6 months, 1 day | 11 months |
| 1987/88 | 5 months | 10 months |
| 1988/89 | 4 months, 28 days | 7 months, 18 days |
| 1989/90 | 5 months, 7 days | 6 months, 27 days |
| 1990/91 | 5 months, 9 days | 7 months, 21 days |
| 1991/92 | 5 months, 18 days | 6 months, 14 days |
| 1992/93 | 4 months, 24 days | 6 months, 28 days |

JUVENILE PAROLE

Fiscal Year 1992/93

PAROLE ADMISSIONS by RACE and SEX

| <u>RACE</u> | <u>TOTAL</u> | <u>Percent</u> | <u>Male</u> | <u>Percent</u> | <u>Female</u> | <u>Percent</u> |
|-----------------|--------------|----------------|-------------|----------------|---------------|----------------|
| White | 252 | 59% | 207 | 59% | 45 | 56% |
| Black | 91 | 21% | 68 | 19% | 23 | 29% |
| Native American | 46 | 11% | 37 | 11% | 9 | 11% |
| Hispanic | 38 | 9% | 35 | 10% | 3 | 4% |
| Other | <u>2</u> | <1% | <u>2</u> | <1% | <u>0</u> | - |
| Total | 429 | | 349 | 81% | 80 | 19% |

PAROLE DISCHARGES by RACE and SEX

| | | | | | | |
|-----------------|----------|-----|----------|-----|----------|-----|
| White | 163 | 64% | 134 | 64% | 29 | 64% |
| Black | 39 | 15% | 31 | 15% | 8 | 18% |
| Native American | 27 | 11% | 23 | 11% | 4 | 9% |
| Hispanic | 22 | 9% | 18 | 9% | 4 | 9% |
| Other | <u>3</u> | 1% | <u>3</u> | 1% | <u>0</u> | - |
| Total | 254 | | 209 | 82% | 45 | 18% |

REVOCATIONS by RACE and SEX

| | | | | | | |
|-----------------------|----------|-----|----------|-----|----------|-----|
| White | 63 | 55% | 55 | 59% | 7 | 35% |
| Black | 31 | 27% | 26 | 28% | 5 | 25% |
| Native American | 11 | 10% | 5 | 5% | 6 | 30% |
| Hispanic | 9 | 8% | 7 | 7% | 2 | 10% |
| Other | <u>1</u> | 1% | <u>1</u> | 1% | <u>0</u> | - |
| Missing frequency: 1) | | | | | | |
| Total | 115 | | 94 | 84% | 20 | 17% |

JUVENILE PAROLE

Fiscal Year 1992/93

LENGTH of STAY on PAROLE

| <u>MONTH</u> | <u>Number of Juveniles</u> | <u>Percent</u> |
|--------------------|--------------------------------|----------------|
| Less than 1 month | 3 | 1% |
| 1.0 - 1.9 months | 4 | 2% |
| 2.0 - 2.9 months | 6 | 2% |
| 3.0 - 3.9 months | 12 | 5% |
| 4.0 - 4.9 months | 14 | 5% |
| 5.0 - 5.9 months | 18 | 7% |
| 6.0 - 6.9 months | 14 | 17% |
| 7.0 - 7.9 months | 33 | 13% |
| 8.0 - 8.9 months | 19 | 8% |
| 9.0 - 9.9 months | 21 | 8% |
| 10.0 - 10.9 months | 9 | 4% |
| 11.0 - 11.9 months | 9 | 4% |
| 12 months and over | 62 | 24% |

FOSTER CARE PROGRAM PLACEMENTS

| <u>NUMBER</u> | <u>MALES</u> | <u>FEMALES</u> |
|---------------|--------------|----------------|
| 27 | 18 (67%) | 9 (33%) |

INTERSTATE COMPACT SERVICES PLACEMENTS

| | <u>MALES</u> | <u>FEMALES</u> |
|------------------------------|--------------|----------------|
| Placed In Nebraska: (7) | 6 | 1 |
| Placed Out of Nebraska: (20) | 14 | 6 |

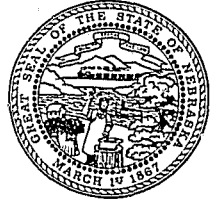
MOVEMENT of JUVENILES

| | |
|---|----|
| Runaways/Escapees/Absconders from other states returned: | 20 |
| Nebraska Runaways/Escapees/Absconders returned to Nebraska: | 20 |

STATE OF NEBRASKA

DEPARTMENT OF CORRECTIONAL SERVICES

Harold W. Clarke
Director



E. Benjamin Nelson
Governor

MEMORANDUM

To: Correctional Colleagues, Interested Agencies and Citizens

From: DCS Planning, Research & Accreditation

Subject: Annual Report

Enclosed is a copy of the NEBRASKA Department of Correctional Services' *19th Annual Report* covering fiscal year 1992/93. Information pertaining to the Department's adult and juvenile facilities and programs is included in chart, table, graph, and narrative form. We hope that you will find the data both useful and informative. Additional copies of this report are available upon request from the office of Planning, Research and Accreditation. For additional copies, please contact either Steve King, Manager or Beth Schubach, Administrative Assistant.

Also enclosed is a request and information form for future report distribution. If you wish to receive a copy of the Annual Report for fiscal year 1993/94, we are requesting that you complete this form and return it as soon as possible to:

Beth Schubach, Administrative Assistant
Planning, Research & Accreditation
Nebraska Department of Correctional Services
P.O. Box 94661
Lincoln, NE 68509-4661

Annual Reports will be distributed according to responses received.

Your questions and/or comments concerning the Annual Report will be welcomed and appreciated.

Enclosure

**NEBRASKA DEPARTMENT of CORRECTIONAL SERVICES
20th ANNUAL REPORT for FISCAL YEAR 1993/94**

Request for Distribution

Agency/Organization: _____

Address: _____

Contact Staff: _____

Title: _____

Telephone: _____

Number of Copies Requested: _____

Signature of Requesting Staff

Date

Please return this request to:
Beth Schubach, Administrative Assistant
Planning, Research & Accreditation
Nebraska Department of Correctional Services
P.O. Box 94661
Lincoln, NE 68509-4661