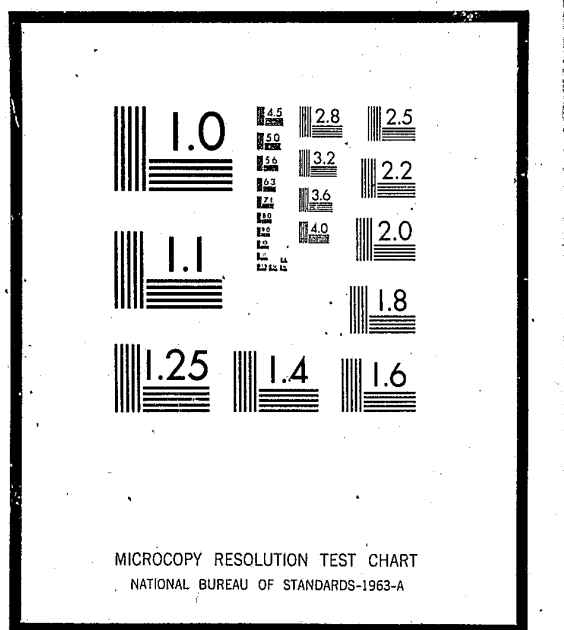


NCJRS

This microfiche was produced from documents received for inclusion in the NCJRS data base. Since NCJRS cannot exercise control over the physical condition of the documents submitted, the individual frame quality will vary. The resolution chart on this frame may be used to evaluate the document quality.



Microfilming procedures used to create this fiche comply with the standards set forth in 41CFR 101-11.504

Points of view or opinions stated in this document are those of the author(s) and do not represent the official position or policies of the U.S. Department of Justice.

U.S. DEPARTMENT OF JUSTICE
LAW ENFORCEMENT ASSISTANCE ADMINISTRATION
NATIONAL CRIMINAL JUSTICE REFERENCE SERVICE
WASHINGTON, D.C. 20531

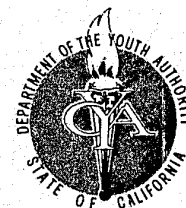
Date filmed

9/17/75

California - Department of the Youth Authority -

population movement summary

fiscal year 1973 - 74



DIVISION OF RESEARCH
Information Systems Section

State of California
DEPARTMENT OF THE YOUTH AUTHORITY

015056

State of California

RONALD REAGAN
Governor

Health and Welfare Agency

JAMES E. JENKINS
Secretary



POPULATION HIGHLIGHTS

As of June 30, 1974, the California Youth Authority had 13,916 wards under commitment. This was a decrease of 8.8 percent from the 15,267 wards under commitment on June 30, 1973. Wards in institutions showed a 10.8 percent increase which was offset by a 16.8 percent decrease in parole population.

Total institution population as of June 30, 1974 was 4,798, up from the 4,329 in institutions at the beginning of the fiscal year. Wards in Youth Authority institutions increased from 4,131 to 4,605 during the fiscal year. The number of Youth Authority wards in Department of Corrections institutions remained relatively constant, dropping from 54 to 53 over the year. Wards in Department of Health institutions decreased from 114 to 104 (8.8 percent).

First commitments to institutions totaled 2,946 in the fiscal year 1973-74 as compared to 2,764 in the prior fiscal year, an increase of 6.6 percent. Parole violator returns to institutions decreased 8.1 percent, from 1,825 to 1,678.

Mean length of stay in Youth Authority institutions increased from 11.3 months in 1972-73 to 12.0 months in 1973-74. For male wards, the mean length of stay in Youth Authority institutions increased from 11.3 to 12.0 months and from 10.6 to 11.5 months for female wards.

Releases to parole from institutions decreased 8.8 percent from 4,356 in fiscal year 1972-73 to 3,973 in fiscal year 1973-74. Wards received on parole from other states rose slightly from 196 to 202, an increase of 3.1 percent.

Mean length of stay on parole increased from 25.1 months in 1972-73 to 26.1 months in 1973-74. The mean length of stay for male wards increased from 24.2 to 25.0 months and for female wards from 31.9 to 34.3 months.

The number removed from parole during fiscal year 1973-74 was 6,092, a decrease of 7.0 percent from the 6,548 removed during 1972-73. The net result was a parole caseload as of June 30, 1974 of 9,011, a decrease of 16.8 percent from the 10,832 on parole at the beginning of the fiscal year.

**Department of the
Youth Authority**

KEITH S. GRIFFITHS
Chief of Research

GEORGE F. DAVIS
Supervisor, Information Systems

PEGGY L. PIKE
Assistant Social Research Analyst

HARMON L. ORSBORN
Assistant Statistician

LYNNE GUTTMANN
Assistant Social Research Analyst

LDA

ALLEN F. BREED,
DIRECTOR

GEORGE R. ROBERTS,
CHIEF DEPUTY DIRECTOR

JAMES C. BARNETT,
DEPUTY DIRECTOR

PLANNING, RESEARCH, EVALUATION
AND DEVELOPMENT BRANCH

YOUTH AUTHORITY BOARD

ALLEN F. BREED,
DIRECTOR AND CHAIRMAN

JULIO GONZALES,
VICE CHAIRMAN

ED BOWE
RICHARD W. CALVIN, JR.
PAUL A. MEANEY
WILLIAM L. RICHEY
JAMES E. STRATTEN

YOUTH AUTHORITY POPULATION MOVEMENT

FISCAL YEAR 1973-74

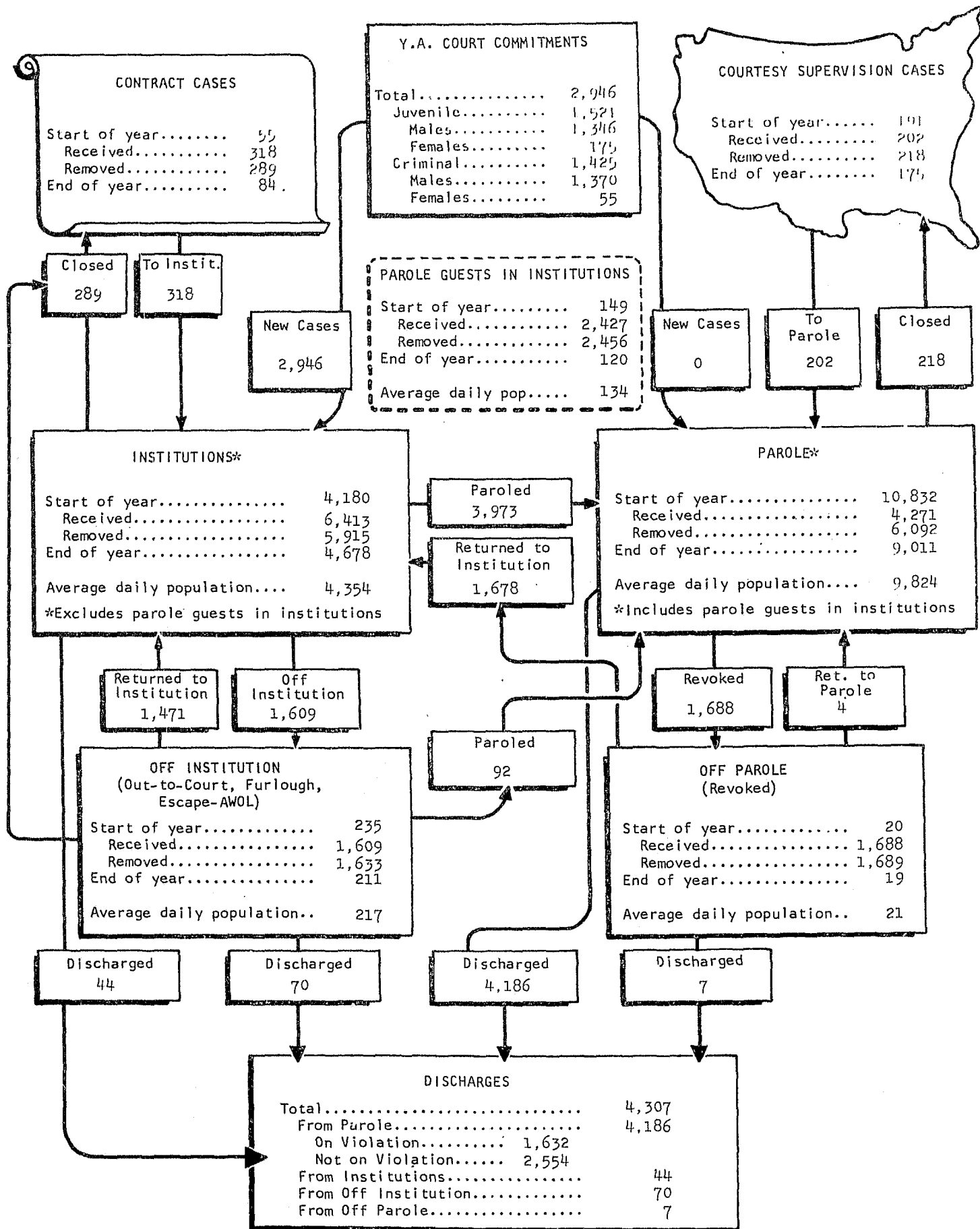


TABLE I
WARDS UNDER COMMITMENT TO THE CALIFORNIA YOUTH AUTHORITY
FISCAL YEAR 1973-74

| WARDS UNDER COMMITMENT | Total start of year | RECEIVED | | REMOVED | | Total end of year | Percent change |
|--|---------------------|------------|-----------|------------|-----------|-------------------|----------------|
| | | Admissions | Transfers | Departures | Transfers | | |
| GRAND TOTAL^a | 15,267 | 14,214 | 19,112 | 15,565 | 19,112 | 13,916 | -8.8 |
| In Institutions..... | 4,329 | 9,057 | 8,491 | 8,588 | 8,491 | 4,798 | +10.8 |
| Youth Authority..... | 4,131 | 8,882 | 8,044 | 8,410 | 8,042 | 4,605 | +11.5 |
| Department of Corrections.... | 54 | 17 | 134 | 47 | 105 | 53 | -1.9 |
| DOH and County Jail..... | 144 | 158 | 313 | 131 | 344 | 140 | -2.8 |
| Off Institution ^b | 235 | 1,625 | - | 1,652 | - | 208 | -11.5 |
| On Parole..... | 10,832 | 4,271 | 2,130 | 6,092 | 2,130 | 9,011 | -16.8 |
| Off Parole ^c | 20 | 1,688 | - | 1,689 | - | 19 | -5.0 |
| SPECIAL INSTITUTIONAL CASES^d | | | | | | | |
| County referral..... | 18 | 242 | - | 233 | - | 27 | +50.0 |
| Out-of-state and Federal cont.. | 37 | 76 | - | 56 | - | 57 | +54.1 |
| Parole detention..... | 149 | 2,427 | - | 2,456 | - | 120 | -19.5 |

^a Excludes parole detention in institutions
^b Furlough, escape, out-to-court
^c Revoked - awaiting delivery
^d Included in above institutional totals

TABLE II

COMPARATIVE POPULATION MOVEMENTS OF YOUTH AUTHORITY WARDS

FISCAL YEAR 1972-73 AND 1973-74

| REFERRALS ACCEPTED | 1972-73 | 1973-74 | PERCENT CHANGE |
|------------------------------|---------|---------|----------------|
| TOTAL..... | 3,721 | 3,747 | +0.7 |
| Males..... | 3,427 | 3,490 | +1.8 |
| Females..... | 294 | 257 | -12.6 |
| INITIAL..... | 2,814 | 2,790 | +5.5 |
| Juvenile court..... | 1,511 | 1,539 | +1.9 |
| Criminal court..... | 1,303 | 1,431 | +9.8 |
| ADDITIONAL..... | 907 | 777 | -14.3 |
| Juvenile court..... | 248 | 206 | -16.9 |
| Criminal court..... | 659 | 571 | -13.4 |
| INSTITUTION MOVEMENTS | | | |
| FIRST COMMITMENTS..... | 2,764 | 2,946 | +6.6 |
| Juvenile court..... | 1,469 | 1,521 | +3.5 |
| Males..... | 1,285 | 1,347 | +4.8 |
| Females..... | 184 | 174 | -5.4 |
| Criminal court..... | 1,295 | 1,475 | +10.0 |
| Males..... | 1,236 | 1,369 | +10.8 |
| Females..... | 59 | 56 | -5.1 |
| PAROLE VIOLATOR RETURNS..... | 1,825 | 1,678 | -8.1 |
| Males..... | 1,697 | 1,554 | -8.4 |
| Females..... | 128 | 124 | -3.1 |
| RELEASES TO PAROLE..... | 4,356 | 3,973 | -8.8 |
| Males..... | 3,974 | 3,638 | -8.5 |
| Females..... | 382 | 335 | -12.3 |

TABLE III
INSTITUTIONAL ADMISSIONS AND DEPARTURES OF YOUTH AUTHORITY WARDS
FISCAL YEAR 1973-74

| INSTITUTION | Pop. start of year | ADMISSIONS | | | | | | DEPARTURES | | | | | Pop. end of year | |
|--------------------------|--------------------|------------|------------------|---------|---------|-----------|--------|------------|--------------|------------|-----------|--------|------------------|--------|
| | | Total | First Admissions | RETURNS | | Transfers | Other* | Total | PAROLE | | Transfers | Escape | | Other* |
| | | | | Parole | Es-cape | | | | Calif. supv. | O.S. supv. | | | | |
| Total..... | 4,329 | 17,548 | 2,946 | 1,678 | 497 | 8,491 | 3,936 | 17,079 | 3,889 | 84 | 8,491 | 448 | 4,167 | 4,798 |
| Males..... | 4,037 | 16,486 | 2,716 | 1,554 | 468 | 8,181 | 3,567 | 16,020 | 3,561 | 77 | 8,181 | 436 | 3,765 | 4,503 |
| Females..... | 292 | 1,062 | 230 | 124 | 29 | 310 | 369 | 1,059 | 328 | 7 | 310 | 12 | 402 | 295 |
| C.Y.A. Institutions..... | 4,131 | 16,926 | 2,946 | 1,675 | 343 | 8,044 | 3,918 | 16,452 | 3,834 | 82 | 8,042 | 383 | 4,111 | 4,605 |
| Males..... | 3,841 | 15,878 | 2,716 | 1,551 | 322 | 7,740 | 3,549 | 15,403 | 3,507 | 75 | 7,738 | 372 | 3,711 | 4,316 |
| Females..... | 290 | 1,048 | 230 | 124 | 21 | 304 | 369 | 1,049 | 327 | 7 | 304 | 11 | 400 | 289 |
| Reception Centers..... | 550 | 8,645 | 2,946 | 1,506 | 159 | 1,155 | 2,879 | 8,516 | 462 | 12 | 5,027 | 60 | 2,955 | 679 |
| NRCC - Males..... | 193 | 3,127 | 1,052 | 501 | 52 | 485 | 1,037 | 3,104 | 72 | 3 | 1,940 | 20 | 1,069 | 216 |
| NRCC - Females..... | 39 | 292 | 100 | 39 | 13 | 7 | 133 | 292 | 53 | - | 79 | 4 | 156 | 39 |
| SRCC - Males..... | 276 | 4,713 | 1,609 | 875 | 92 | 623 | 1,514 | 4,635 | 286 | 8 | 2,768 | 46 | 1,537 | 359 |
| VRCC - Females..... | 42 | 404 | 130 | 84 | 2 | 18 | 170 | 405 | 49 | 1 | 182 | - | 173 | 41 |
| SRCC - Females..... | - | 9 | - | - | - | 6 | 3 | 9 | - | - | 6 | - | 3 | - |
| VRCC - Males..... | - | 100 | 55 | 7 | - | 16 | 22 | 71 | 2 | - | 52 | - | 17 | 29 |
| Schools & Camps - Males | 3,372 | 7,938 | - | 168 | 178 | 6,616 | 976 | 7,593 | 3,147 | 64 | 2,978 | 316 | 1,088 | 3,717 |
| Nelles..... | 384 | 613 | - | 15 | 9 | 499 | 90 | 610 | 337 | 5 | 159 | 9 | 100 | 387 |
| Close..... | 342 | 586 | - | 4 | 22 | 470 | 90 | 583 | 355 | 11 | 76 | 23 | 118 | 345 |
| Holton..... | 391 | 621 | - | 8 | 26 | 513 | 74 | 629 | 320 | 8 | 173 | 32 | 96 | 383 |
| Nelson..... | 335 | 1,474 | - | 31 | 44 | 1,329 | 70 | 1,400 | 204 | 4 | 1,053 | 56 | 83 | 409 |
| Paso Robles..... | - | 209 | - | - | 2 | 203 | 4 | 13 | - | - | 7 | 2 | 4 | 196 |
| Preston..... | 374 | 788 | - | 7 | 38 | 632 | 111 | 735 | 270 | 8 | 305 | 29 | 123 | 427 |
| Youth Training School | 1,047 | 1,632 | - | 83 | 15 | 1,277 | 257 | 1,734 | 701 | 15 | 740 | 11 | 267 | 945 |
| Ventura..... | 135 | 286 | - | 12 | 3 | 238 | 33 | 229 | 135 | 6 | 44 | 12 | 32 | 192 |
| So. Drug Center..... | 21 | 322 | - | - | 2 | 278 | 42 | 315 | 241 | - | 27 | 9 | 38 | 28 |
| SPACE..... | - | 138 | - | - | 1 | 59 | 78 | 118 | 19 | - | 18 | 5 | 76 | 20 |
| Ben Lomond..... | 70 | 256 | - | 2 | - | 230 | 24 | 255 | 117 | 1 | 62 | 43 | 32 | 71 |
| Mt. Bullion..... | 67 | 275 | - | - | 5 | 221 | 49 | 264 | 107 | 1 | 84 | 20 | 52 | 78 |
| Oak Glen..... | 72 | 237 | - | 6 | 6 | 203 | 22 | 229 | 123 | 2 | 63 | 18 | 23 | 80 |
| Pine Grove..... | 66 | 260 | - | - | 5 | 238 | 17 | 248 | 100 | 1 | 95 | 27 | 25 | 78 |
| Washington Ridge..... | 68 | 241 | - | - | - | 226 | 15 | 231 | 118 | 2 | 72 | 20 | 19 | 78 |
| Schools - Females..... | 209 | 343 | - | 1 | 6 | 273 | 63 | 343 | 225 | 6 | 37 | 7 | 68 | 209 |
| Ventura..... | 207 | 309 | - | 1 | 6 | 264 | 38 | 308 | 220 | 6 | 35 | 5 | 42 | 208 |
| So. Drug Center..... | 2 | 14 | - | - | - | 4 | 10 | 16 | 3 | - | 1 | 1 | 11 | - |
| SPACE..... | - | 20 | - | - | - | 5 | 15 | 19 | 2 | - | 1 | 1 | 15 | 1 |
| C.D.C. Institutions..... | 54 | 151 | - | 3 | - | 134 | 14 | 152 | 26 | - | 105 | - | 21 | 53 |
| Reception Centers..... | - | 20 | - | - | - | 20 | - | 20 | - | - | 19 | - | 1 | - |
| Facilities..... | 54 | 131 | - | 3 | - | 114 | 14 | 132 | 26 | - | 86 | - | 20 | 53 |
| Deuel Voc. Inst..... | 28 | 41 | - | - | - | 33 | 8 | 58 | 5 | - | 44 | - | 9 | 11 |
| Other CDC - Males..... | 26 | 84 | - | 3 | - | 75 | 6 | 72 | 20 | - | 41 | - | 11 | 38 |
| CDC - Females..... | - | 6 | - | - | - | 6 | - | 2 | 1 | - | 1 | - | - | 4 |
| Other Institutions..... | 144 | 471 | - | - | 154 | 313 | 4 | 475 | 29 | 2 | 344 | 65 | 35 | 140 |
| Dept. of Health..... | 114 | 219 | - | - | 16 | 201 | 2 | 229 | 22 | - | 140 | 58 | 9 | 104 |
| Males..... | 112 | 219 | - | - | 16 | 201 | 2 | 227 | 22 | - | 139 | 58 | 8 | 104 |
| Females..... | 2 | - | - | - | - | - | - | 2 | - | - | 1 | - | 1 | - |
| County Jail..... | 30 | 252 | - | - | 138 | 112 | 2 | 246 | 7 | 2 | 204 | 7 | 26 | 36 |
| Males..... | 30 | 244 | - | - | 130 | 112 | 2 | 240 | 7 | 2 | 200 | 6 | 25 | 34 |
| Females..... | - | 8 | - | - | 8 | - | - | 6 | - | - | 4 | 1 | 1 | 2 |

*Includes furlough, out-of-court, guest, and discharge at departure.

TABLE IV
SUMMARY OF PAROLE CASELOAD MOVEMENTS
FISCAL YEAR 1972-73 AND 1973-74

| | 1972-73 | 1973-74 | PERCENT CHANGE |
|---|---------|---------|----------------|
| I TOTAL PAROLES, beginning of year..... | 12,737 | 10,832 | -15.0 |
| Received on parole..... | 4,643 | 4,271 | -8.0 |
| Released from institutions..... | 4,356 | 3,973 | -8.8 |
| Received from other states..... | 196 | 202 | +3.1 |
| Reinstated and other ^a | 91 | 96 | +5.5 |
| Removed from parole..... | 6,548 | 6,092 | -7.0 |
| Revoked..... | 1,835 | 1,688 | -8.0 |
| Discharged and other..... | 4,713 | 4,404 | -6.6 |
| TOTAL PAROLES, end of year..... | 10,832 | 9,011 | -16.8 |
| II CALIFORNIA SUPERVISION, beginning of year..... | 12,347 | 10,517 | -14.8 |
| Received..... | 4,636 | 4,240 | -8.5 |
| New cases..... | 4,553 | 4,180 | -8.2 |
| Transferred to California supervision from out-of-state supervision..... | 83 | 60 | -27.7 |
| Removed..... | 6,466 | 6,022 | -6.9 |
| Revoked..... | 1,830 | 1,668 | -8.9 |
| Discharged and other..... | 4,470 | 4,227 | -5.4 |
| Transferred to out-of-state supervision..... | 166 | 127 | -23.5 |
| CALIFORNIA SUPERVISION, end of year..... | 10,517 | 8,735 | -16.9 |
| III OUT-OF-STATE SUPERVISION, beginning of year..... | 390 | 315 | -19.2 |
| Received..... | 256 | 218 | -14.8 |
| New cases..... | 90 | 91 | +1.1 |
| Transferred from California supervision to out-of-state supervision..... | 166 | 127 | -23.5 |
| Removed..... | 331 | 257 | -22.4 |
| Revoked..... | 5 | 20 | +300.0 |
| Discharged..... | 243 | 177 | -27.2 |
| Transferred to California supervision..... | 83 | 60 | -27.7 |
| OUT-OF-STATE SUPERVISION, end of year..... | 315 | 276 | -12.4 |

^a Includes releases to parole from furlough, out-to-court or escape status.

TABLE V
PAROLE CASELOAD MOVEMENT OF YOUTH AUTHORITY WARDS
FISCAL YEAR 1973-74

| SUPERVISION UNIT | Caseload start of year | CASES RECEIVED | | | CASES REMOVED | | | | | Caseload end of year |
|--------------------------|------------------------|----------------|-----------|----------|---------------|------------------|----------|-------------|-----------------|----------------------|
| | | Total | New cases | Transfer | Total | Ordered returned | Transfer | Discharged | | |
| | | | | | | | | Under viol. | Not under viol. | |
| GRAND TOTAL | 10,832 | 6,401 | 4,271 | 2,130 | 8,222 | 1,688 | 2,130 | 1,632 | 2,772 | 9,011 |
| Out-of-State Supervision | 315 | 218 | 91 | 127 | 257 | 20 | 60 | 53 | 124 | 276 |
| Males | 274 | 189 | 83 | 106 | 222 | 19 | 50 | 48 | 105 | 241 |
| Females | 41 | 29 | 8 | 21 | 35 | 1 | 10 | 5 | 19 | 35 |
| California Supervision | 10,517 | 6,183 | 4,180 | 2,003 | 7,965 | 1,668 | 2,070 | 1,579 | 2,648 | 8,735 |
| Males | 9,047 | 5,475 | 3,778 | 1,697 | 6,937 | 1,541 | 1,753 | 1,441 | 2,202 | 7,585 |
| Females | 1,470 | 708 | 402 | 306 | 1,028 | 127 | 317 | 138 | 446 | 1,150 |
| North | 4,112 | 2,287 | 1,581 | 706 | 2,877 | 584 | 739 | 600 | 954 | 3,522 |
| Region I | 2,526 | 1,295 | 848 | 447 | 1,764 | 344 | 444 | 393 | 583 | 2,057 |
| Region II | 1,586 | 992 | 733 | 259 | 1,113 | 240 | 295 | 207 | 371 | 1,465 |
| South | 6,405 | 3,896 | 2,599 | 1,297 | 5,088 | 1,084 | 1,331 | 979 | 1,694 | 5,213 |
| Region III | 3,530 | 2,336 | 1,430 | 906 | 3,084 | 567 | 943 | 576 | 998 | 2,782 |
| Region IV | 2,875 | 1,560 | 1,169 | 391 | 2,004 | 517 | 388 | 403 | 696 | 2,431 |

TABLE VI
SUMMARY OF PAROLE VIOLATIONS
FISCAL YEARS 1972-73 AND 1973-74

| | 1972-73 | 1973-74 | PERCENT CHANGE |
|--|---------|---------|----------------|
| Violations ordered..... | 7,203 | 8,016 | +11.3 |
| Removals from violation..... | 8,216 | 7,916 | -3.7 |
| a. Continued on parole..... | 4,772 | 4,596 | -3.7 |
| b. Revoked or recommitted..... | 1,835 | 1,688 | -8.0 |
| c. Discharged..... | 1,609 | 1,632 | +1.4 |
| Youth Authority wards under a parole violation order at end of year..... | 1,678 | 1,778 | +6.0 |

TABLE VII
DISPOSITION OF PAROLE VIOLATIONS BY TYPE OF VIOLATION.
FISCAL YEAR 1973-74

| TYPE OF VIOLATION | Total | | Continued on parole | | Revoked or recommitted | | Discharged | |
|--|--------|---------|---------------------|---------|------------------------|---------|------------|---------|
| | Number | Percent | Number | Percent | Number | Percent | Number | Percent |
| TOTAL..... | 7,916 | 100.0 | 4,596 | 58.1 | 1,688 | 21.3 | 1,632 | 20.6 |
| Technical violation (AWOL)..... | 684 | 100.0 | 277 | 40.5 | 42 | 6.1 | 365 | 53.4 |
| Technical violation (other)..... | 444 | 100.0 | 235 | 52.9 | 209 | 47.1 | - | - |
| Law violation: | | | | | | | | |
| No prosecution..... | 380 | 100.0 | 314 | 82.6 | 64 | 16.8 | 2 | 0.5 |
| Acquitted or dismissed..... | 673 | 100.0 | 631 | 93.8 | 42 | 6.2 | - | - |
| Pending trial..... | 388 | 100.0 | 52 | 13.4 | 11 | 2.8 | 325 | 83.8 |
| Law violation - convicted: | | | | | | | | |
| Fine, S/S, or prob. under 2 years..... | 1,695 | 100.0 | 1,330 | 78.5 | 315 | 18.6 | 50 | 2.9 |
| Probation of 2 years or more..... | 401 | 100.0 | 35 | 8.7 | 1 | 0.3 | 365 | 91.0 |
| Less than 30 days in jail..... | 743 | 100.0 | 621 | 83.6 | 122 | 16.4 | - | - |
| 30 but less than 90 days in jail.. | 492 | 100.0 | 403 | 81.9 | 87 | 17.7 | 2 | 0.4 |
| 90 days or more in jail..... | 962 | 100.0 | 698 | 72.6 | 209 | 21.7 | 55 | 5.7 |
| Prison, reformatory or C.Y.A..... | 1,054 | 100.0 | - | - | 586 | 55.6 | 468 | 44.4 |

TABLE VIII
MEAN LENGTH OF STAY IN INSTITUTIONS PRIOR TO RELEASE ON PAROLE
BY INSTITUTION OF RELEASE* (In months)

| INSTITUTION OF RELEASE | 1972-73 Fiscal Year | 1973-74 Fiscal Year | 1974 Calendar Year to Date (6 mos.) |
|------------------------------|---------------------|---------------------|-------------------------------------|
| Total**..... | 11.3 | 12.0 | 12.2 |
| Males..... | 11.3 | 12.1 | 12.3 |
| Females..... | 10.7 | 11.4 | 10.8 |
| CYA Institutions..... | 11.2 | 12.0 | 12.2 |
| Schools & Camps - Males..... | 11.3 | 12.0 | 12.3 |
| Nelles..... | 8.7 | 10.0 | 10.0 |
| Close..... | 9.9 | 10.9 | 11.5 |
| Holton..... | 11.3 | 12.0 | 12.3 |
| Nelson..... | 10.5 | 13.0 | 13.8 |
| Preston..... | 14.7 | 16.5 | 17.0 |
| Youth Training School..... | 13.9 | 14.7 | 14.6 |
| Ventura..... | 12.5 | 11.9 | 12.1 |
| Camps..... | 8.5 | 8.4 | 8.6 |
| Ventura - Females..... | 11.3 | 11.4 | 10.7 |
| CDC Institutions..... | 18.6 | 12.3 | 13.1 |

*Includes time in clinic.
**Includes all institutions operating during periods shown.

TABLE IX
MEAN LENGTH OF STAY ON PAROLE PRIOR TO REMOVAL FROM PAROLE
By Type of Removal and Sex
(In months)

| TYPE OF REMOVAL | 1972-73 Fiscal Year | | | 1973-74 Fiscal Year | | | 1974 Calendar Year to Date (6 mos.) | | |
|--------------------|---------------------|-------|---------|---------------------|-------|---------|-------------------------------------|-------|---------|
| | Total | Males | Females | Total | Males | Females | Total | Males | Females |
| Total..... | 25.1 | 24.2 | 31.9 | 26.1 | 25.0 | 34.3 | 25.9 | 24.9 | 34.2 |
| Non-violators..... | 29.9 | 29.0 | 34.6 | 30.9 | 29.7 | 37.4 | 31.2 | 30.0 | 37.3 |
| Violators..... | 21.0 | 20.5 | 27.3 | 22.4 | 21.7 | 29.8 | 22.1 | 21.6 | 28.9 |
| Revoked..... | 14.9 | 14.8 | 15.3 | 15.3 | 15.0 | 18.6 | 15.4 | 15.2 | 18.8 |
| Discharged..... | 28.1 | 27.1 | 38.4 | 29.6 | 28.7 | 39.8 | 29.3 | 28.5 | 39.1 |

TABLE X

FIRST COMMITMENTS TO THE CALIFORNIA YOUTH AUTHORITY
1963-64 THROUGH 1973-74 FISCAL YEARS

BY SEX, COMMITTING COURT, AND RATE PER 100,000 YOUTH POPULATION*

| Fiscal Year | Total | | Males | | | | | | All females | |
|-------------|-------|-------|-------|-------|----------------|-------|----------------|-------|-------------|------|
| | | | Total | | Juvenile court | | Criminal court | | | |
| | No. | Rate | No. | Rate | No. | Rate | No. | Rate | No. | Rate |
| 1963-64 | 5,593 | 170.5 | 4,735 | 290.8 | 3,414 | 260.0 | 1,321 | 419.4 | 858 | 51.9 |
| 1964-65 | 6,061 | 175.4 | 5,100 | 297.2 | 3,757 | 273.4 | 1,343 | 392.7 | 961 | 55.3 |
| 1965-66 | 5,831 | 161.2 | 4,956 | 275.5 | 3,566 | 252.2 | 1,390 | 361.0 | 875 | 48.1 |
| 1966-67 | 5,177 | 137.0 | 4,339 | 230.8 | 3,029 | 208.5 | 1,310 | 306.8 | 838 | 44.1 |
| 1967-68 | 4,713 | 120.8 | 3,997 | 205.9 | 2,607 | 174.7 | 1,390 | 309.6 | 716 | 36.5 |
| 1968-69 | 4,588 | 115.5 | 3,916 | 198.1 | 2,383 | 156.2 | 1,533 | 339.9 | 672 | 33.7 |
| 1969-70 | 4,201 | 104.1 | 3,641 | 181.1 | 2,095 | 134.9 | 1,546 | 338.3 | 560 | 27.7 |
| 1970-71 | 3,441 | 83.8 | 3,074 | 150.4 | 1,575 | 100.4 | 1,499 | 314.9 | 367 | 17.9 |
| 1971-72 | 2,925 | 70.1 | 2,644 | 127.1 | 1,322 | 83.7 | 1,322 | 263.9 | 281 | 13.4 |
| 1972-73 | 2,764 | 65.3 | 2,521 | 119.5 | 1,287 | 81.0 | 1,234 | 236.9 | 243 | 11.5 |
| 1973-74 | 2,946 | 69.0 | 2,716 | 127.5 | 1,346 | 84.4 | 1,370 | 256.1 | 230 | 10.8 |

*Rates based on 10-20 year age group for total; 10-17 for juvenile court males; 18-20 for criminal court males; 10-20 for all females.

END