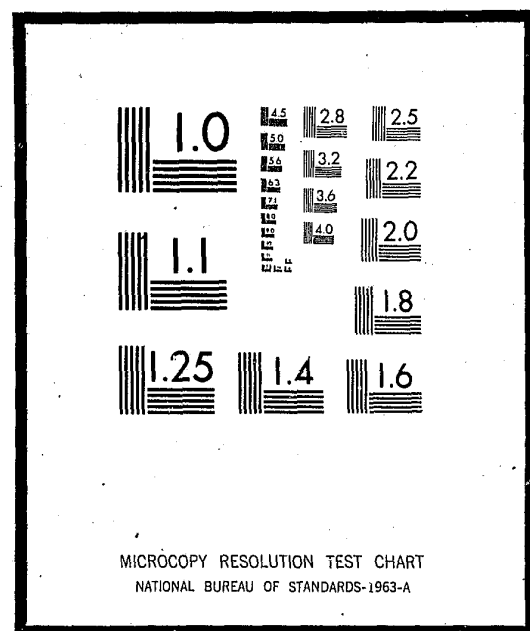


NCJRS

This microfiche was produced from documents received for inclusion in the NCJRS data base. Since NCJRS cannot exercise control over the physical condition of the documents submitted, the individual frame quality will vary. The resolution chart on this frame may be used to evaluate the document quality.



Microfilming procedures used to create this fiche comply with the standards set forth in 41CFR 101-11.504

Points of view or opinions stated in this document are those of the author(s) and do not represent the official position or policies of the U.S. Department of Justice.

U.S. DEPARTMENT OF JUSTICE
LAW ENFORCEMENT ASSISTANCE ADMINISTRATION
NATIONAL CRIMINAL JUSTICE REFERENCE SERVICE
WASHINGTON, D.C. 20531

AVERAGE TIME SERVED
FOR INMATES WITH A LIFE SENTENCE
WHO WERE RELEASED DURING FY 70-72

April 15, 1974

Date filmed

7/23/75

SUMMARY

This is a statistical summary of the average time served for all inmates with a life sentence who were released during FY 1970-72.

During the report period, 243 inmates serving life sentences were released by parole. The average time served prior to parole was 9.7 years. Analyzing the data in terms of race for all parolees, White males served 91 days less than Black males. White females served on the average 597 days or 1 year and 8 months less than Black females. Since the report recorded information for only 4 White and 7 Black females, generalizations about female parolees are not statistically appropriate.

Analyzing parolees in terms of sex, women served an average of 8.09 years contrasted to 9.75 years for men.

Among those being released by parole for the first time, White males served 8.94 years, whereas Black males served 8.44 years. For those being released on parole for a second time, Black males served an accumulation of 15.89 years to 15.10 years for White males.

A life sentence does not always result in parole. As of June 30, 1972, inmates serving a life sentence numbered 1,030 or 10.54% of the population in the custody of the Division of Corrections on that day. During the report period, also, three White males serving a life sentence died in prison after serving an average of 22 years.

FLORIDA DIVISION OF CORRECTIONS

INMATES RELEASED UNDER LIFE SENTENCES BETWEEN JULY 1, 1970 and JUNE 30, 1972.

- NUMBER AND AVERAGE TIME SERVED -
(Breakdown by Race and Sex)

[ALL DATA TAKEN FROM FLORIDA PRISONER STATISTICS MONTHLY REPORTS]

		LIFERS PAROLED								LIFERS OUT BY DEATH, COURT, MCR								TOTALS							
		WM		WF		NM		NF		WM		WF		NM		NF		WM		WF		NM		NF	
		ATS	N	ATS	N	ATS	N	ATS	N	ATS	N	ATS	N	ATS	N	ATS	N	ATS	N	ATS	N	ATS	N	ATS	N
TOTALS																									
Fiscal Year 1970 - 71	F	3473	40	2740	2	3192	60	3219	5	6206	1	473	1	2078	3			3540	41	1984	3	3139	63	3219	6
	V	2138	2			5645	12											2138	2			5645	12		
	T	3409	42	2740	2	3601	72	3219	6	6206	1	473	1	2078	3			3474	43	1984	3	3540	75	3219	6
Fiscal Year 1971 - 72	F	3073	44	2408	2	2953	52	2882	1	8906	2			2211	3			3327	46	2408	2	2913	55	2882	1
	V	6354	8			5934	14											6354	8			5934	14		
	T	3578	52	2408	2	3585	66	2882	1	8906	2			2211	3			3775	54	2408	2	3526	69	2882	1
GRAND TOTALS	F	3263	84	2574	4	3081	12	3171	7	8006	3	473	1	2145	6			3427	87	2154	5	3033	118	3171	7
	V	5511	10			5801	26											5511	10			5801	26		
	T	3502	94	2574	4	3593	38	3171	7	8006	3	473	1	2145	6			3642	97	2154	5	3533	144	3171	7

ATS - AVERAGE TIME SERVED
N - NUMBER OF INMATES

WM - White Male NM - Negro Male
WF - White Female NF - Negro Female

F - FIRST RELEASE
V - VIOLATOR RE-RELEASED
T - TOTAL OF FIRST AND VIOLATOR RELEASES

Prepared by: Kim Vandagriff, Stat. III

Division of Corrections
Research Section
Date March 2, 1973

Auth. Dr. G. Ray Worley

Year, 1970	Inmates with Life Sentences-Paroled								Inmates with Life Sentences - other releases								TOTALS								
	White Male		White Female		Negro Male		Negro Female		White Male		White Female		Negro Male		Negro Female		White Male		White Female		Negro Male		Negro Female		
	ATS	N	ATS	N	ATS	N	ATS	N	ATS	N	ATS	N	ATS	N	ATS	N	ATS	N	ATS	N	ATS	N	ATS	N	
July	F	3030	5	2229	1	2835	4	3294	1	6206	1	473	1					3559	6	1351	2	2835	4	3294	1
	V					5016	1														5016	1			
	T	3030	5	2229	1	3271	5	3294	1	6206	1	473	1					3559	6	1351	2	3271	5	3294	1
August	F	3492	2			3765	1	3321	1					151	1			3492	2			1958	2	3321	1
	V	1264	1			8033	1											1264	1			8033	1		
	T	2749	3			5899	2	3321	1					151	1			2749	3			3983	3	3321	1
September	F	3845	4	3251	1	2710	2							2550	1			3845	4	3251	1	2663	3		
	V					5505	2														5505	2			
	T	3845	4	3251	1	4112	4							2550	1			3845	4	3251	1	3800	5		
October	F	3000	5			3691	2	2623	1					3533	1			3000	5			3638	3	2623	1
	V	3012	1			2773	1											3012	1			2773	1		
	T	3002	6			3385	3	2623	1					3533	1			3002	6			3241	4	2623	1
November	F	3174	2			3011	7	3696	1									3174	2			3011	7	3696	1
	V																								
December	T	3174	2			3011	7	3696	1									3174	2			3011	7	3696	1
	F	2922	8			3010	8	3710	1									2922	8			3010	8	3710	1
	V					6473	2														6473	2			
TOTALS	T	2922	8			3703	10	3710	1									2922	8			3703	10	3710	1
	F	3163	26	2740	2	3046	24	3228	4	6206	1	473	1	2078	3			3276	27	1984	3	2938	27	3228	4
	V	2138	2			5683	7											2138	2	0	0	5683	7		0
T	3090	28	2740	2	3641	31	3228	4	6206	1	473	1	2078	3			3198	29	1984	3	3503	34	3228	4	

1971	Inmates with Life Sentences-Paroled								Inmates with Life Sentences - other releases								TOTALS							
	White Male		White Female		Negro Male		Negro Female		White Male		White Female		Negro Male		Negro Female		White Male		White Female		Negro Male		Negro Female	
	ATS	N	ATS	N	ATS	N	ATS	N	ATS	N	ATS	N	ATS	N	ATS	N	ATS	N	ATS	N	ATS	N	ATS	N
January	F					2616	4																	
	V					3903	1																	
	T					2873	5																	
February	F	2360	1			2767	6	3707	1															
	V					6970	2																	
	T	2360	1			3818	8	3707	1															
March	F	6394	2			2904	5																	
	V					3277	1																	
	T	6394	2			2969	6																	
April	F	2746	3			3615	6	2693	1															
	V																							
	T	2746	3			3615	6	2693	1															
May	F	3306	6			3683	7																	
	V																							
	T	3306	6			3683	7																	
June	F	3421	2			3233	8																	
	V					5152	1																	
	T	3421	2			3447	9																	
TOTALS	F	4048	14			3290	36	3200	2															
	V					5592	5																	
	T	4048	14			3571	41	3200	2															

Note 1: F=first release, V=violator, re-released, and T=Total of F & V Releases.

1971	Inmates with Life Sentences-Paroled								Inmates with Life Sentences - other releases								TOTALS								
	White Male		White Female		Negro Male		Negro Female		White Male		White Female		Negro Male		Negro Female		White Male		White Female		Negro Male		Negro Female		
	ATS	N	ATS	N	ATS	N	ATS	N	ATS	N	ATS	N	ATS	N	ATS	N	ATS	N	ATS	N	ATS	N	ATS	N	
July	F	3148	7	2044	1	2901	13			8906	2			1963	1			4428	9	2044	1	2834	14		
	V					4816	3														4816	3			
	T	3148	7	2044	1	3260	16			8906	2			1963	1			4428	9	2044	1	3184	17		
August	F	4164	3			3613	3							1266	1			4164	3			3026	4		
	V					5864	2														5864	2			
	T	4164	3			4513	5							1266	1			4164	3			3972	6		
September	F	2062	1			3557	3							3404	1			2062	1			3519	4		
	T	2062	1			3557	3							3404	1			2062	1			3519	4		
October	F	3049	2			2602	3											3049	2			2602	3		
	V	7768	2															7768	2						
	T	5409	4			2602	3											5409	4			2602	3		
November	F	3985	3			2976	5											3985	3			2976	5		
	V	4820	1			12544	1											4820	1			12544	1		
	T	4194	4			4572	6											4194	4			4572	6		
December	F	3254	3			2310	2											3254	3			2310	2		
	V	8209	1			5361	2											8209	1			5361	2		
	T	4492	4			3835	4											4492	4			3835	4		
TOTALS	F	3390	19	2044	1	2984	29			8906	2			2211	3			3915	21	2044	1	2912	32		
	V	7142	4			6180	8											7142	4			6180	8		
	T	4043	23	2044	1	3675	37			8906	2			2211	3			4432	25	2044	1	3566	40		

1972	Inmates with Life Sentences-Paroled								Inmates with Life Sentences - other releases								TOTALS							
	White Male		White Female		Negro Male		Negro Female		White Male		White Female		Negro Male		Negro Female		White Male		White Female		Negro Male		Negro Female	
	ATS	N	ATS	N	ATS	N	ATS	N	ATS	N	ATS	N	ATS	N	ATS	N	ATS	N	ATS	N	ATS	N	ATS	N
January	F	3069	7			3029	8	2882	1															
	V	6799	1			3220	1																	
	T	3536	8			3050	9	2882	1															
February	F	3069	3			3108	3																	
	T	3069	3			3108	3																	
March	F	2570	2	2771	1	2931	6																	
	V	2410	1			5403	2																	
	T	2516	3	2771	1	3549	8																	
April	F	2860	2			2750	1																	
	V					6047	2																	
	T	2860	2			4948	3																	
May	F	2502	6			2512	2																	
	V	6526	2																					
	T	3508	8			2512	2																	
June	F	2832	5			2702	3																	
	V					7517	1																	
	T	2832	5			3906	4																	
TOTALS	F	2832	25	2771	1	2914	23	2882	1															
	V	5565	4			5606	6																	
	T	3209	29	2771	1	3471	29	2882	1															

NOTE: F=first release, V=violation re-released, and T= total of F&V releases

END