

Crime In Nebraska 1992

146492

U.S. Department of Justice
National Institute of Justice

This document has been reproduced exactly as received from the person or organization originating it. Points of view or opinions stated in this document are those of the authors and do not necessarily represent the official position or policies of the National Institute of Justice.

Permission to reproduce this copyrighted material has been granted by

Nebraska Commission on Law
Enforcement & Criminal Justice

to the National Criminal Justice Reference Service (NCJRS).

Further reproduction outside of the NCJRS system requires permission of the copyright owner.

UNIFORM CRIME REPORTS

Nebraska Commission on Law Enforcement and Criminal Justice

E. Benjamin Nelson, Governor
Jean A. Lovell, Executive Director



146492

Crime in Nebraska - 1992

Issued by :

The Nebraska Commission on Law Enforcement and Criminal Justice
(Nebraska Crime Commission)
301 Centennial Mall South
P.O. Box 94946
Lincoln, Nebraska 68509
(402) 471-2194

E. Benjamin Nelson, Governor
Jean A. Lovell, Executive Director

Uniform Crime Reporting Section

Marilyn K. Keelan, Statistical Analyst
Cheri L. Walz, Statistical Clerk

Nebraska Publication Clearinghouse Number L2500S001-1992

In accordance with the Americans with Disabilities Act, the Commission would like to provide reasonable accommodations with respect to persons with disabilities. If you need a reasonable accommodation, please contact the Nebraska Crime Commission. Upon request, this publication may be available in alternate formats.

STATEWIDE CRIME SUMMARY

1992

- o A total of 45,340 index offenses were reported or known to law enforcement agencies in 1992.
- o 2,350 violent crimes were reported in 1992:

Murder, Manslaughter	35
Forcible Rape	295
Robbery	277
Felony Assault	1,743
- o 42,990 property crimes were reported in 1992:

Burglary	7,433
Larceny-theft	33,882
Motor Vehicle Theft	1,478
Arson	197
- o Larceny-theft accounted for 71 percent of the total crime index.
- o 11,396 index offenses were reported cleared in 1992, a clearance rate of 25.1 percent.
- o 82,151 arrests were reported in 1992, an increase of one percent over 1991.
- o Persons under age 18 accounted for 19.5 percent of the total arrests.
- o 211 assaults on law enforcement officers were reported in 1992, an increase of 10 percent from 1991.

CONTENTS

Uniform Crime Reporting Program	1
Crime Index Offenses - 1992	8
Murder, Manslaughter	11
Forcible Rape	14
Robbery	17
Felony Assault	20
Burglary	22
Larceny - Theft	25
Motor Vehicle Theft	27
Arson	29
Nebraska Arrest Data	31
Officers Killed and Assaulted	44
Law Enforcement Employee Data	46
Offense Data by County	52
Arrest Data by County	64

LIST OF TABLES

1	Index Offenses	9
2	Crimes of Violence and Crimes Against Property	10
2	Type and Value of Property Stolen and Recovered	10
4	Murder Victims by Age, Sex, and Race	12
5	Murder Perpetrators by Age, Sex, and Race	12
6	Murder, Manslaughter Circumstances	12
7	Murder, Manslaughter - Type of Weapon	13
8	Rape - Relationship of Victim to Offender	14
9	Rape - Place of Occurrence	15
10	Rape - Age Groups of Victims	15
11	Forcible Rape - Type of Property Stolen, Recovered	15
12	Robbery - Place of Occurrence	18
13	Robbery - Type of Property Stolen, Recovered	18
14	Burglary - Place and Time of Occurrence	23
15	Burglary - Type of Property Stolen and Recovered	23
16	Larceny - Theft	25
17	Larceny - Theft - Type of Property Stolen, Recovered	26
18	Motor Vehicle Theft - Type of Property Stolen, Recovered	28
19	Arson - Type of Property and Property Loss	30
20	Total Arrests	33
21	Comparison of Arrests, 1991 - 1992	34
22	Comparison of Adult and Juvenile Arrests	35
23	Total Arrests by Age	36
24	Juvenile and Adult Arrests, 1991 - 1992	38
25	Total Arrests by Sex	39
26	Total Arrests by Race	40
27	Total Arrests by Race, Under Age 18	41
28	Total Arrests by Race, Age 18 and Over	42
29	Drug Abuse Arrests by Sex and Race	43
30	Drug Abuse Arrests, 1991 - 1992	43
31	Officers Assaulted by Time, 1991 - 1992	44
32	Officers Assaulted - Type of Activity, 1991 - 1992	45
33	Officers Assaulted - Type of Weapon	45
34	Officers Assaulted - Type of Assignment	46
35	Law Enforcement Employee Data - County Sheriffs' Departments	47
36	Law Enforcement Employee Data - Cities Over 5,000 Population	49
37	Law Enforcement Employee Data - Cities Under 5,000 Population	50

LIST OF FIGURES

1	Murder, Manslaughter by Month	13
2	Relationship of Victim to Offender - Murder, Manslaughter	13
3	Forcible Rape by Month	16
4	Analysis of Forcible Rape by Type	16
5	Robbery by Month	19
6	Analysis of Robbery by Type of Weapon	19
7	Felony Assault by Month	21
8	Felony Assault by Type of Weapon	21
9	Burglary by Month	24
10	Larceny - Theft by Month	26
11	Motor Vehicle Theft by Month	28
12	Arson by Month	29

Nebraska Uniform Crime Reporting Program

INTRODUCTION

This annual report presents data on crime and arrests reported by law enforcement agencies through the Nebraska Uniform Crime Reporting (UCR) Program. During 1992, 165 law enforcement agencies were required to submit monthly UCR's to the Nebraska Commission on Law Enforcement and Criminal Justice, hereafter referred to as the Commission, which administers the Nebraska UCR Program. The Nebraska UCR Program submits the data to the National UCR Program which is administered by the Federal Bureau of Investigation.

The National UCR Program - Historical Background*

Recognizing a need for national crime statistics, the International Association of Chiefs of Police (IACP) formed the Committee on Uniform Crime Records in the 1920's to develop a system of uniform police statistics. Establishing offenses known to law enforcement as the appropriate measure, the Committee evaluated various crimes on the basis of their seriousness, frequency of occurrence, pervasiveness in all geographic areas of the country, and likelihood of being reported to law enforcement. After studying state criminal codes and making an evaluation of the recordkeeping practices in use, the Committee in 1929 completed a plan for crime reporting which became the foundation of the UCR Program.

Seven offenses were chosen to serve as an index for gauging fluctuations in the overall volume and rate of crime. Known collectively as the Crime Index, these offenses included the violent crimes of murder and nonnegligent manslaughter, forcible rape, robbery, aggravated assault and the property crimes of burglary, larceny-theft, and motor vehicle theft. By congressional mandate, arson was added as the eighth Index offense in 1979.

During the early planning of the program, it was recognized that the differences among criminal codes precluded a mere aggregation of state statistics to arrive at a national total. Further, because of the variances in punishment for the same offenses in different state codes, no distinction between felony and misdemeanor crimes was possible. To avoid these problems and provide nationwide uniformity in crime reporting, standardized offense definitions by which law enforcement agencies were to submit data, without regard for local statutes, were formulated.

*Crime in the U.S., 1989, FBI, Washington, D.C.

National Incident-Based Reporting System (NIBRS) - Redesigned UCR Program*

Throughout the years, the UCR Program has remained virtually unchanged in terms of data collected and disseminated. Recognizing the need for improved statistics, law enforcement called for a thorough evaluative study that would modernize the UCR Program. The FBI fully concurred with the need for an updated program and lent its complete support, formulating a comprehensive three-phase redesign effort. The first phase involved an examination of the historical evolution of the Program (1982). The second phase involved the examination of potential futures for UCR and concluded with a set of recommended changes set forth in the draft "Blueprint for the Future of the Uniform Crime Reporting Program" (1985). At the eighth National UCR Conference held in 1985, the phase two recommendations were presented and the overall concept for the revised Program was unanimously approved. One of the first steps taken by the FBI to implement the redesigned UCR was the development of new offense definitions and data elements. A pilot project was conducted during 1987 in South Carolina. In 1988, the FBI presented a draft of reporting guidelines to law enforcement executives at a national conference. At the conference, there was an endorsement that a new, incident-based reporting system be established. The National Incident-Based Reporting System (NIBRS) will collect data on each single incident and arrest within 22 crime categories. For each offense known to police within these categories, incident, victim, property, offender, and arrestee information will be gathered when available. The goal of the redesign is to modernize crime information by collecting data presently maintained in law enforcement records; the enhanced UCR Program is, therefore, a byproduct of current records systems. The FBI was able to accept NIBRS data as of January, 1989, and three states have now been accepted for submission of NIBRS data.

The Nebraska UCR Program

During the 1970's, the FBI actively assisted individual states in the development of state UCR Programs which would be compatible with the national program. The Nebraska UCR Program became operational on January 1, 1971. Commencing on that date, law enforcement agencies in Nebraska began submitting UCR's to one central agency in Nebraska, the Commission, and the reports are in turn forwarded to the National Program after review and correction. The State Patrol, all sheriffs' departments, and police departments of municipalities of 1,500 population and over are required to submit UCR's by the seventh day after the end of the month. In 1982, the Nebraska Program became an "incident-based" reporting system. That is, crimes were reported by individual incident. This change in reporting has laid the groundwork for conversion to the new Nebraska Incident-Based Reporting System (NIBRS), which will be compatible with the National Incident-Based Reporting System. Law enforcement agencies will convert to NIBRS as they acquire the computer resources to submit NIBRS data.

*Crime in the U.S., 1989, FBI, Washington, D.C.

DEFINITIONS OF OFFENSES

Uniformity of reporting depends upon the proper classification of offenses by the law enforcement agencies. It must be emphasized that the following definitions are not meant to be legal definitions as they are written in the Nebraska Penal Code. The purpose of these classifications is to establish a uniform national system for classifying similar offenses even though their legal definitions may vary considerably from state to state.

PART I OFFENSES

Criminal Homicide - Murder and Nonnegligent Manslaughter - the willful (nonnegligent) killing of one human being by another. **Death by Negligence** - the killing of another person through gross negligence.

Forcible Rape - the carnal knowledge of a female forcibly and against her will. Does not include statutory rape or sex attacks on males.

Robbery - the taking or attempting to take anything of value from the care, custody, or control of a person or persons by force or threat of force or violence and/or by putting the victim in fear.

Felony (Aggravated) Assault - an unlawful attack by one person upon another for the purpose of inflicting severe or aggravated bodily injury. This type of assault usually is accompanied by the use of a weapon or by means likely to produce death or great bodily harm.

Burglary - the unlawful entry of a structure to commit a felony or a theft.

Larceny-Theft - the unlawful taking, carrying, leading, or riding away of property from the possession or constructive possession on another.

Motor Vehicle Theft - the theft or attempted theft of a motor vehicle.

Arson - any willful or malicious burning or attempt to burn, with or without intent to defraud, a dwelling house, public building, motor vehicle or aircraft, personal property of another, etc.

PART II OFFENSES

Misdemeanor (Simple) Assault - any assault which does not involve the use of a firearm, knife, cutting instrument, or other dangerous weapon and in which there was no serious or aggravated injury to the victim.

Forgery and Counterfeiting - all offenses dealing with the making, altering, uttering or possessing with intent to defraud anything false in the semblance of that which is true.

Fraud - Fraudulent conversion and obtaining money or property by false pretense. Includes bad checks, confidence games, etc.

Embezzlement - the misappropriation or misapplication of money or property entrusted to one's care, custody or control.

Stolen Property - all offenses of buying, receiving, possessing or concealing stolen property as well as all attempts to commit any of these offenses.

Vandalism-Destruction of Property - all willful or malicious destruction, injury, disfigurement or defacement of any public or private property, real or personal, without the consent of the owner or person having custody or control by cutting, tearing, breaking, marking, painting, drawing, covering with filth or any other such means as may be specified by law or ordinance.

Weapons - includes violations of weapons laws such as manufacture, sale or possession of deadly weapons; carrying deadly weapons; furnishing deadly weapons to minors; aliens possessing deadly weapons, and all attempts to commit any of the above offenses.

Prostitution and Commercialized Vice - includes the sex offenses of a commercialized nature such as prostitution; keeping bawdy house, disorderly house or house of ill repute; pandering, procuring, transporting or detaining women for immoral purposes, etc. and all attempts to commit any of the above.

Sex Offenses - includes all sex offenses other than forcible rape, prostitution and commercialized vice. This encompasses offenses against chastity, common decency, morals and the like such as adultery and fornication, buggery, incest, indecent exposure, sodomy, carnal abuse (no force) and all attempts to commit any of the above.

Drug Abuse Violations - statistics for these arrests are requested on the basis of the narcotics used. This includes all arrests for the violation of state and local ordinances, specifically those relating to the unlawful possession, sale, use, growing, manufacturing and making of narcotic drugs. Four divisions of narcotic drugs are recognized.

These are:

- (a) Opium and cocaine and their derivatives (morphine, heroin, codeine),
- (b) Marijuana,
- (c) Synthetic narcotics which can cause true addiction (demerol, methadones) and
- (d) Other dangerous non-narcotic drugs, (barbituates, benzedrine).

Gambling - includes all charges relating to promoting, permitting or engaging in gambling. This classification is broken into three divisions:

- (a) bookmaking (horse and sport book),
- (b) numbers and lottery and
- (c) all other gambling.

Offenses Against Family and Children - includes all charges of nonsupport, neglect or abuse of family and children such as desertion, abandonment or nonsupport, neglect or abuse of child, or nonpayment of alimony.

Driving Under the Influence - limited to driving or operating any vehicle while drunk or under the influence of liquor or narcotic drugs.

Liquor Laws - with the exception of drunkenness and driving under the influence, all state or local liquor law violations are placed in this class. Federal violations are not included. Include manufacturing, selling, transporting, furnishing as in maintaining unlawful drinking places, bootlegging, operating a still, furnishing liquor to a minor and using vehicle for illegal transportation of liquor.

Drunkenness-Intoxication - (Not a criminal offense in Nebraska)

Disorderly Conduct-Disturbing the Peace - includes all disorderly persons who cannot be classified under offenses 1 through 23 or under offenses 25.

Vagrancy - includes arrests for failure of an individual to give a good account of himself, begging, loitering, etc.

All Other Offenses - includes all violations of state and local laws not otherwise classified.

Suspicion - limited to suspicion arrests when the persons arrested are released by the police.

Curfew and Loitering Law Violations - (Juveniles) all arrests made for violations of local curfew or loitering ordinances.

Runaways - (Juveniles) limited to juveniles taken into custody who have run away from the reporting jurisdiction.

CRIME INDEX

The extent, fluctuation and distribution of crime in the state is measured by the crime index. The crime index is composed of the following offenses: murder, manslaughter, forcible rape, robbery, felony assault, burglary, larceny-theft, motor vehicle theft and arson. Many categories of crime are not of sufficient importance to be included in the index; some serious crimes, such as kidnapping, do not occur with enough regularity to be meaningful in the index. With these considerations in mind, the above offenses were selected as a group to serve as a measure of crime.

CLEARANCES

For UCR purposes, an offense can be cleared by arrest or by exceptional means. An offense can be cleared by arrest when the offender is identified, there is enough evidence to charge him and he is actually taken into custody. The arrest of one person can clear several offenses and several persons may clear one offense. When some element beyond police control precludes formal charges against the offender, such as the victim's refusal to prosecute or death of the offender, an offense can be cleared by exceptional means. There is no distinction made between cleared by arrest and cleared by exceptional means in this publication. A distinction is made between total clearances and those involving only persons under 18 years of age (juveniles). A juvenile clearance is counted only when juveniles are exclusively involved in the clearance of an offense.

CRIME RATES

Crime rates relate the incidence of crime to population. Estimates of current permanent population are used in computing crime rates. Crime rates allow for comparisons between several areas with different populations over a period of time without the information being biased by population differences. To compute a crime rate, first divide the population of the area by 100,000 and then divide the crime index by that answer. Throughout this report a crime rate per 1,000 population is used to be more meaningful for the state.

CRIME FACTORS

Statistics gathered under the UCR Program are law enforcement statistics. The agencies report the offense and arrest data according to the standard offense classifications and not according to state statutes or local ordinances. Offenses are related to municipality and county in which they occur, rather than to the agency which may investigate, arrest or otherwise dispose of the case. The clearance is attributed to the municipality or county in which the offense occurred, even though the arresting agency may not be the department originally reporting the offense.

The factors which influence crime rates are dependent upon many characteristics of the community, and therefore, when attempting to interpret the crime statistics presented herein, one should be aware of the social structure and the factors that lead to or cause criminal behavior.

Awareness of the presence of certain crime factors, which may influence the resulting volume and type of statistics presented, is necessary if fair and equitable conclusions are to be drawn. These crime influencing factors are present, to some degree, in every community and their presence affects, in varying degrees, the crime experience of that community. Attempts at comparison of crime figures between communities should not be made without first considering the individual factors present in each community. Below are some of the conditions which will by type and volume affect the crime that occurs from place to place:

Density and size of the community population and the metropolitan area of which it is a part.

Composition of the population with reference particularly to age, sex and race.

Economic status of the population.

Relative stability of populations, include commuters, seasonal and other transient types.

Climate, including seasonal weather changes.

Educational, recreational and religious characteristics.

Standards governing appointments to the police force.

Policies of the prosecuting officials and the courts.

Attitude of the public toward law enforcement problems.

The administrative and investigative efficiency of the local law enforcement agency, including the degree of adherence to crime reporting standards.

Caution should always be used when using the crime statistics presented herein, however, it should also be kept in mind that the data presented is the most accurate currently available. The law enforcement personnel who provide the data are to be commended for their efforts to provide accurate data. Without their sincere cooperation, this publication would not be possible. Crime is a social problem and therefore, should be a concern of the entire community.

CRIME INDEX OFFENSES - 1992

During 1992, the Omaha Police Department was only able to provide data on the crime index offenses for January thru August. That data is not included in this section and the other sections on the index crimes. However, estimated totals are presented for the Omaha Police Department in the "Offense Data by County" section which begins on page 51.

Volume

A total of 45,340 index offenses were reported or known to law enforcement agencies in 1992. The violent crimes of murder, manslaughter, forcible rape, robbery and felony assault accounted for 5.2 percent of the total index offenses. The property crimes of burglary, larceny-theft, motor vehicle theft, and arson accounted for 94.8 percent of the total offenses.

Larceny-theft was the most frequently reported crime, accounting for 74.7 percent of the total crimes reported.

Crime Rates

Based on an estimated population figure of 1,264,247 the crime rate per 1,000 population was 35.7 in 1992. The crime rate for violent crimes was 1.9 per 1,000 population. There were 34.0 property crimes per 1,000 population.

Clearances

A total of 11,396 index offenses were reported cleared during 1992, a clearance rate of 25.1 percent. Murder, manslaughter had the highest clearance rate, 88.6 percent. Violent crimes had a clearance rate of 66.6 percent and crimes against property had a clearance rate of 22.9 percent.

**Table 1
Index Offenses, 1992**

Index Offenses	Number of Index Offenses ¹	Rate Per 1,000 Population ²	Percent Distribution	Percent Cleared
Murder, Manslaughter	35	.03	.1	88.6
Forcible Rape	295	.2	.7	48.5
Rape by Force	244			48.8
Attempt to Rape	51			47.1
Robbery	277	.2	.6	41.2
Firearm	91			42.9
Knife or Cutting Instrument	27			33.3
Other Dangerous Weapon	26			38.5
Strong Arm-No Weapon	133			42.1
Felony Assault	1,743	1.4	3.8	73.2
Firearm	189			77.8
Knife or Cutting Instrument	318			76.4
Other Dangerous Weapon	701			72.2
Hands, Fists, Feet, Etc.	535			71.0
Burglary	7,433	5.9	16.4	16.8
Forcible Entry	4,344			19.1
Unlawful Entry-No Force	2,219			14.7
Attempted Forcible Entry	870			10.9
Larceny-Theft	33,882	26.8	74.7	23.6
Motor Vehicle Theft	1,478	1.2	3.3	37.4
Autos	999			40.6
Trucks and Buses	310			34.2
Other Vehicles	169			24.3
Arson	197	.2	.4	21.8
Structural	109			21.1
Mobile	35			5.7
Other	53			34.0
Total	45,340	35.7	100.0	25.1

¹ Does not include the Omaha Police Department

² 1992 Estimate of Population - 1,264,247

Table 2
Crimes of Violence and Crimes Against Property, 1992

Index Offenses	Number of Offenses	Percent Distribution	Rate Per 1,000 Population
Crimes of Violence	2,350	5.2	1.9
Murder, Manslaughter	35	1.5	.03
Forcible Rape	295	12.6	.2
Robbery	277	11.8	.2
Felony Assault	1,743	74.2	1.4
Crimes Against Property	42,990	94.8	34.0
Burglary	7,433	17.3	5.9
Larceny-Theft	33,882	78.8	26.8
Motor Vehicle Theft	1,478	3.4	1.2
Arson	197	.5	.2
Total	45,340	100.0	35.7

Table 3
Type and Value of Property Stolen, Recovered*

Type of Property	Value Stolen	Value Recovered	Percent Recovered
Currency, Notes, Etc.	\$1,902,956	\$183,106	9.6
Jewelry and Precious Metals	1,269,519	140,438	11.1
Clothing and Furs	586,536	122,382	20.9
Motor Vehicles	6,300,154	5,099,175	80.9
Office Equipment	264,013	31,560	12.0
Televisions/Radios/Cameras	2,990,062	287,837	9.6
Firearms	430,012	98,228	22.8
Household Goods	521,222	102,561	19.7
Consumable Goods	760,109	233,868	30.8
Livestock	1,428,524	15,710	1.1
Miscellaneous	6,930,820	1,074,248	15.5
Total	\$23,383,553	7,389,113	31.6

*Does not include Douglas Co. S.O.

MURDER, MANSLAUGHTER

Murder and nonnegligent manslaughter are defined as the willful (nonnegligent) killing of one human by another. Not included in this definition are deaths caused by negligence, suicide, or accidental deaths. Attempts to commit murder are classified as felony assault.

Volume and Rate

During 1992, a total of 35* murder, manslaughters were reported by law enforcement agencies in Nebraska. Murder, manslaughter accounted for 1.5 percent of all violent crimes and one-tenth of one percent of all index offenses. In 1992, there were .03 murders per 1,000 population. 31 murder, manslaughters were cleared in 1992, a clearance rate of 88.6.

Murder, Manslaughter Analysis

In all cases of murder, manslaughter reported under the UCR Program, a supplementary report is submitted by the reporting agency. The supplementary report provides the age, sex and race of the victim, weapon used to commit the offense, relationship of the victim to the offender, and circumstances or motive leading to the crime.

In 1992, male victims accounted for 47 percent of the total murder victims, with 41 percent of those being in the age group of 30-39. Female victims accounted for 51 percent of the total murder victims. Victim analysis by race disclosed that 80 percent were White, 11 percent were Black, and 9 percent were Asian.

Of the known perpetrators, males accounted for 93 percent and 33 percent of those were in the age group of 18-24. Female perpetrators accounted for 7 percent. White perpetrators accounted for 80 percent and Blacks accounted for 15 percent.

Most murders, 82 percent, were committed by a relative or acquaintance of the victim. A further breakdown indicated that 29 percent were committed by a relative; 53 percent were committed by an acquaintance; 9 percent were committed by strangers and in 9 percent of the cases the relationship between the perpetrator(s) and victim(s) was unknown.

Handguns were used in 31.4 percent of the murders and knives were used in 17.1 percent of the incidents.

Law enforcement agencies reported no property stolen in connection with murder, manslaughter in 1992.

* Does not include the City of Omaha

Table 4
Murder Victims by Age, Sex, and Race

Age Group	Number	Percent Distribution	Sex		Race		
			Male	Female	White	Black	Asian
5 and Under	3	8.6	1	2	3	0	0
6-17	1	2.9	0	1	1	0	0
18-24	19	25.7	5	4	5	1	3
25-29	4	11.4	2	2	2	2	0
30-39	18	22.9	7	1	7	1	0
40-49	5	14.3	2	3	5	0	0
50-59	3	8.6	0	3	3	0	0
60-69	0	0	0	0	0	0	0
70 - Above	2	5.7	0	2	2	0	0
Total	35	100.0	17	18	28	4	3

Table 5
Known Murder Perpetrators by Age, Sex and Race

Age Group	Number	Percent Distribution	Sex		Race		
			Male	Female	White	Black	Asian
6-17	2	5.0	2	0	2	0	0
18-24	13	32.5	13	0	7	5	0
25-29	7	17.5	6	1	5	1	0
30-39	7	17.5	5	2	7	0	0
40-49	6	15.0	6	0	6	0	0
50-59	4	10.0	4	0	4	0	0
60-Above	1	2.5	1	0	1	0	0
Total	40	100.0	37	3	32	6	0

Table 6
Murder, Manslaughter Circumstances

Circumstance	Number	Percent Distribution
Family (Spouse/Spouse, Parent/Child)	8	22.9
Drug Related	0	0
Money/Property Argument	0	0
Drinking Argument	1	2.9
Boyfriend/Girlfriend	3	8.6
Other Quarrel	5	14.3
Killed by Felon	4	11.4
Other	6	17.1
Motive Unknown	8	22.9
Total	35	100.0

Table 7
Murder, Manslaughter - Type of Weapon

Type of Weapon	Number	Percent Distribution
Handgun	11	31.4
Shotgun	6	17.1
Rifle	3	8.6
Knife	3	8.6
Personal Weapon	1	2.9
Other	11	31.4
Total	35	100.0

Figure 1
Murder, Manslaughter by Month

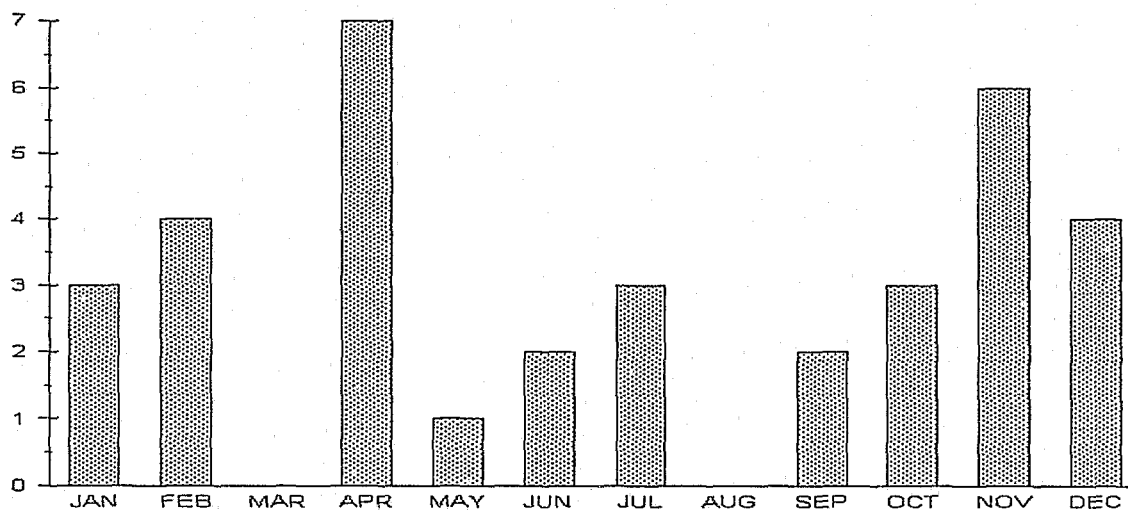
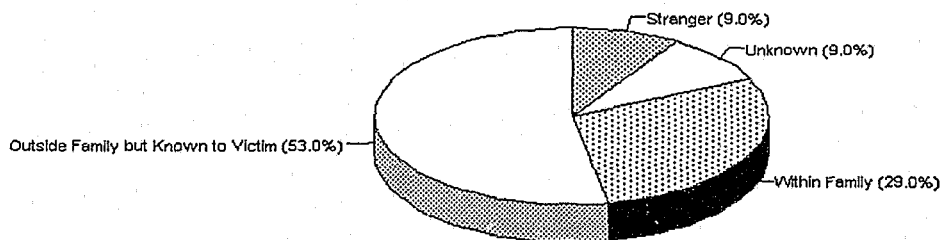


Figure 2
Relationship of Victim to Offender



FORCIBLE RAPE

Forcible rape is defined as the carnal knowledge of a female forcibly and against her will. All rapes and attempts to rape are counted. Carnal abuse, without force (statutory rape) and other sex offenses are not included.

Volume and Rate

During 1992, law enforcement agencies in Nebraska reported a total of 295* forcible rapes. Forcible rape accounted for 12.6 percent of all violent crimes and 0.7 percent of all index offenses. In 1992, there were 0.2 rapes per 1,000 population. A total of 143 forcible rapes, 48.5 percent, were cleared during 1992.

Analysis of Forcible Rape

Rape by force accounted for 82.7 percent of all forcible rapes and 17.3 percent were attempts to rape.

The age group of 25-29 accounted for the highest percentage of persons arrested for forcible rape, 18.2 percent. Juvenile arrests accounted for 15.7 percent of all persons arrested for forcible rape.

Rape Circumstances

Law enforcement agencies are asked to submit a supplementary report on the circumstances surrounding any rape by force and attempt to rape. Supplementary reports were received on 290 cases. Victims under the age of 25 accounted for 71 percent of the total victims. Of those victims under 25, 37 percent were in the age group of 18 thru 24 and 32 percent were in the age group of 11 thru 15. In 28.3 percent of the incidents, the victim was attacked in her own residence.

Law enforcement agencies reported a total value of \$650 stolen in rape offenses.

* Does not include the city of Omaha

Table 8
Rape - Relationship of Victim to Offender

Relationship	Number	Percent Distribution
Relative	28	9.7
Acquaintance/Known to Victim	148	51.0
Stranger	53	18.3
Not Stated	61	21.0
Total	290	100.0

Table 9
Rape - Place of Occurrence

Location	Number	Percent Distribution
Victim's Residence	82	28.3
Offender's Residence	36	12.4
Other Residence (Relative/Friend's)	40	13.8
Hotel, Motel	6	2.1
Public Area	18	6.2
Vehicle	25	8.6
Building-Office/Business/School	9	3.1
Other	4	1.4
Not Stated	70	24.1
Total	290	100.0

Table 10
Rape - Age Groups of Victims

Age Group	Number	Percent Distribution
10 and Under	15	6.8
11-15	50	22.7
16-17	34	15.5
18-24	58	26.4
25-29	19	8.6
30-39	36	16.4
40-49	5	2.3
50-59	1	0.5
60 - Above	2	0.9
Total	220	100.0

Table 11
Forcible Rape
Type of Property Stolen, Recovered*

Type of Property	Value Stolen	Value Recovered
Currency, Notes, Etc.	\$ 50	\$ 0
Jewelry and Precious Metals	0	0
Clothing and Furs	0	0
Motor Vehicles	200	0
Office Equipment	0	0
Televisions/Radios/Cameras	0	0
Firearms	0	0
Household Goods	0	0
Consumable Goods	5	0
Livestock	0	0
Miscellaneous	21	0
Total	\$ 650	\$ 0

*Does not include Douglas Co. S.O.

Figure 3
Forcible Rape by Month

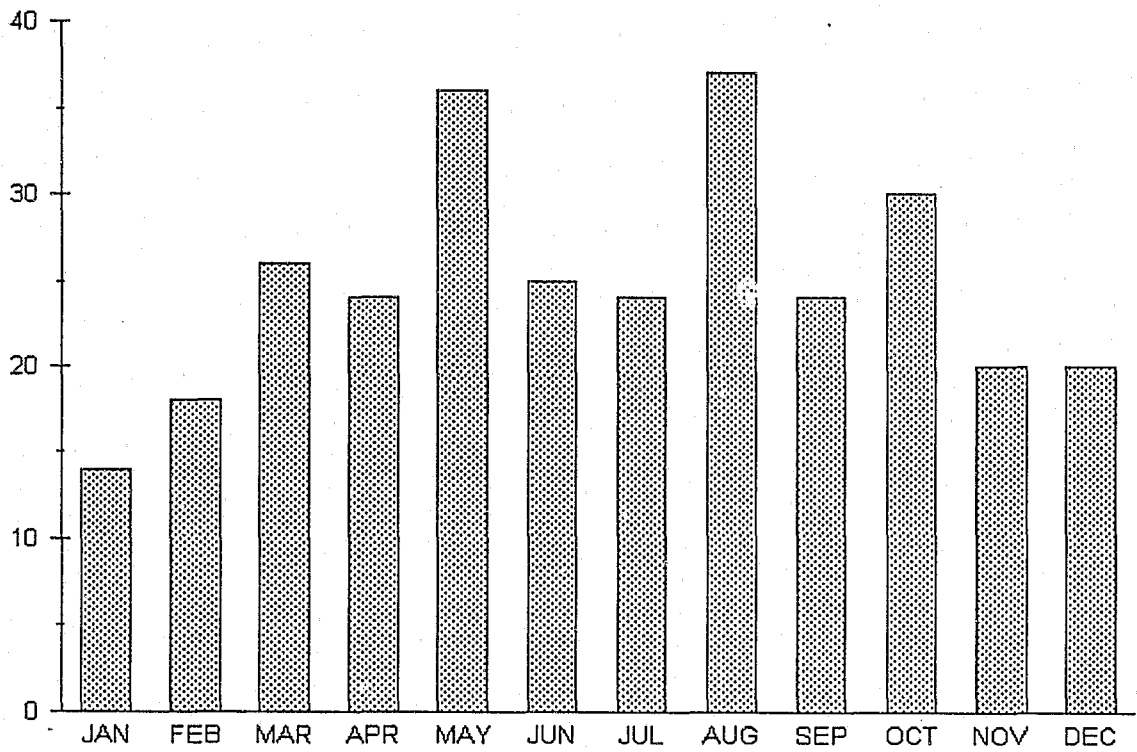
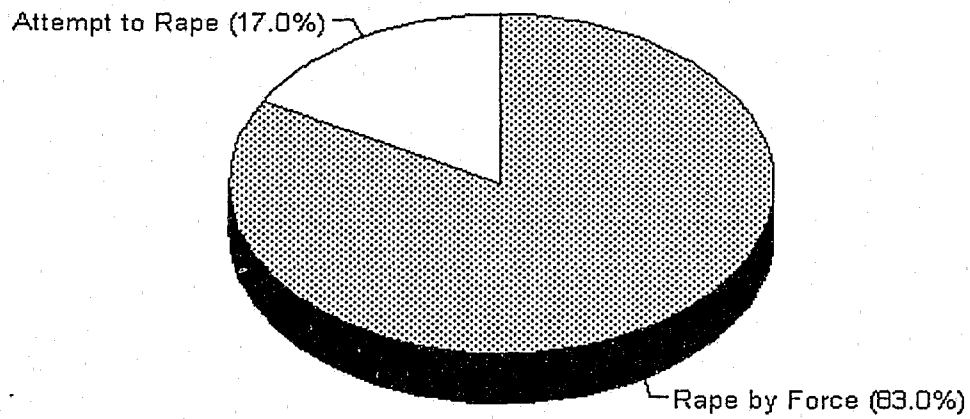


Figure 4
Analysis of Forcible Rape by Type



ROBBERY

Robbery is the taking or attempting to take anything of value from the care, custody, or control of a person or persons by force or threat of force or violence and/or by putting the victim in fear. Robbery takes place in the presence of the victim. The victim, who usually is the owner or person having custody of the property is directly confronted by the perpetrator and is threatened with force or fear that force will be used.

Volume and Rate

During 1992, a total of 277* robberies were reported by law enforcement agencies in Nebraska. Robbery accounted for 11.8 percent of all violent crimes and 0.6 percent of all index offenses. In 1992, there were 0.2 robberies per 1,000 population. A total of 114 robberies, 41.2 percent, were cleared in 1992.

Analysis of Robbery

A firearm was used in 33 percent of all robberies, a knife or other cutting instrument was used in 10 percent, other dangerous weapons were used in 9 percent and strong-arm tactics were used in 48 percent of all robberies.

Robberies occurring on streets, highways, alleys, etc., accounted for 35.4 percent of all robberies. Residential robberies accounted for 7.2 percent.

The age group of 25-34 accounted for the highest percentage of persons arrested for robbery, 23 percent. Juveniles accounted for 35 percent of all arrests for robbery.

Of persons arrested for robbery, 62.3 percent were White, 23.1 percent were Black, 13.8 percent were Indian, and 0.8 percent were Asian/Pacific Islander.

Law enforcement agencies reported a total value of \$89,474 stolen in robbery offenses.

* Does not include the City of Omaha

Table 12
Robbery - Place of Occurrence

Classification	Number of Offenses	Percent Distribution	Total Value	Average Value
Highway (Streets/Alleys)	98	35.4	\$28,167	\$287.42
Commerical House	46	16.6	19,703	428.33
Gas or Service Station	9	3.2	2,020	224.44
Convenience Store	37	13.4	12,075	326.35
Residence	20	7.2	5,220	261.00
Bank	5	1.8	6,639	1,327.80
Miscellaneous	62	22.4	17,414	280.87
Total	277	100.0	\$91,238	\$329.38

Table 13
Robbery
Type of Property Stolen, Recovered*

Type of Property	Value Stolen	Value Recovered
Currency, Notes, Etc.	\$53,767	\$ 2,696
Jewelry and Precious Metals	9,790	50
Clothing and Furs	3,368	712
Motor Vehicles	12,600	11,600
Office Equipment	330	0
Televisions/Radios/Cameras	1,241	100
Firearms	4,970	600
Household Goods	10	0
Consumable Goods	311	26
Livestock	5	0
Miscellaneous	3,082	862
Total	\$89,474	\$ 16,646

*Does not include Douglas Co. S.O.

Figure 5
Robbery by Month

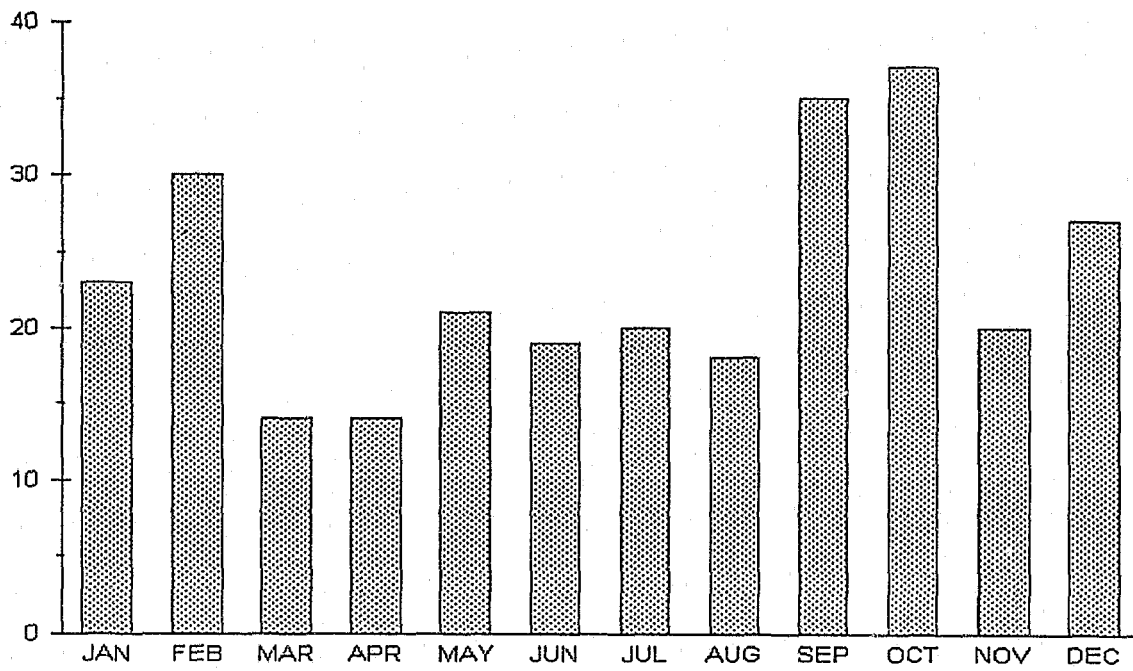
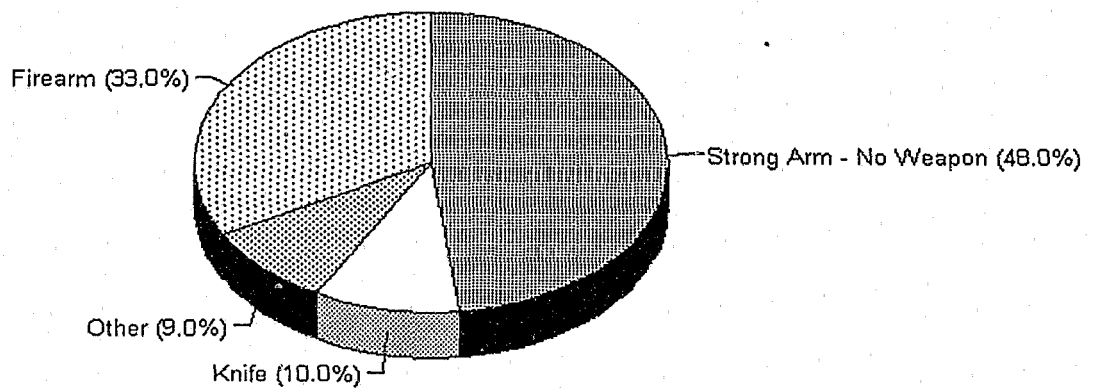


Figure 6
Analysis of Robbery by Type of Weapon



FELONY ASSAULT

Felony assault is an unlawful attack by one person upon another for the purpose of inflicting severe or aggravated bodily injury. Felony assault usually involves the use of a weapon or other means likely to produce death or great bodily injury.

Volume and Rate

During 1992, there were 1,743* felony assaults reported by law enforcement agencies in Nebraska. Felony assaults accounted for 74.2 percent of all violent crimes and 3.8 percent of all index offenses. In 1992, there were 1.4 felony assaults per 1,000 population. A total of 1,276 felony assaults, 73.2 percent, were cleared in 1992.

Analysis of Felony Assault

The use of other dangerous weapons was involved in 40 percent of all felony assaults. A firearm was used in 11 percent, a knife was used in 18 percent, and hands/fists/feet were used in 31 percent.

The age group of 25-29 accounted for the highest percentage of persons arrested for felony assaults, 19 percent. Juveniles accounted for 14.9 percent of all arrests for felony assault.

Of all arrests for felony assault, 76.5 percent were White, 14.0 percent were Black, 8.1 percent were Indian, and 1.4 were Asian/Pacific Islander.

* Does not include the City of Omaha

Figure 7
Felony Assault by Month

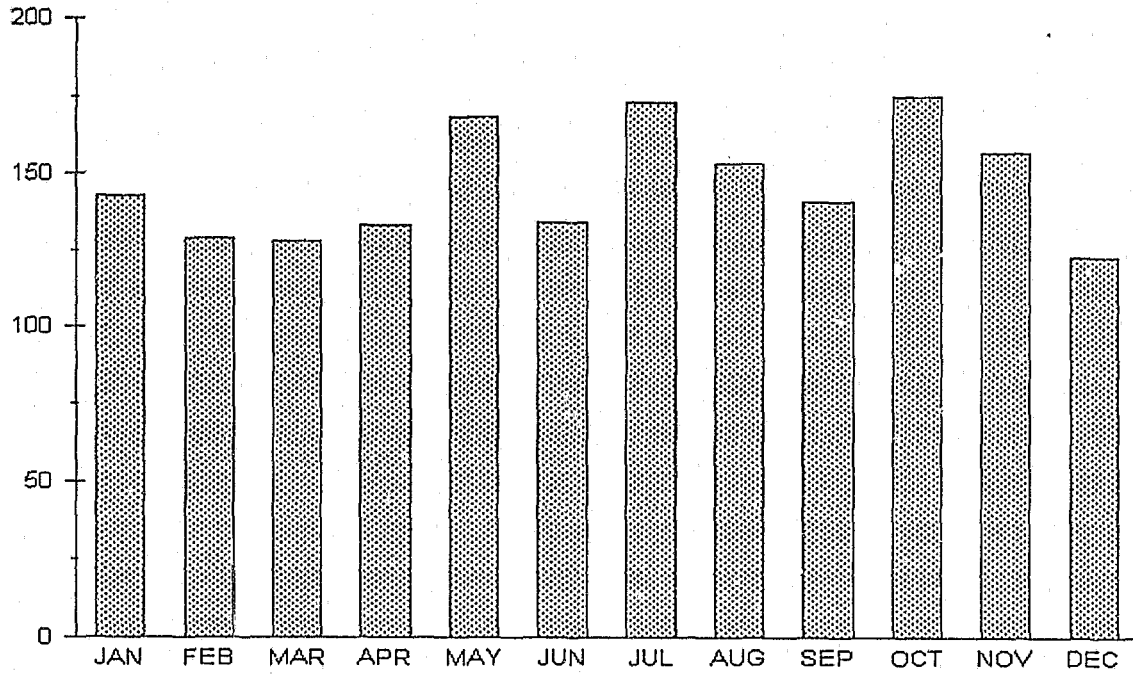
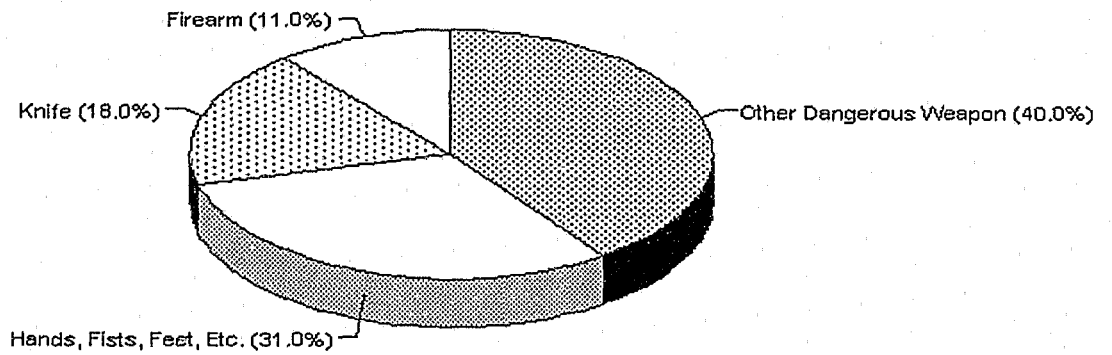


Figure 8
Felony Assault by Type of Weapon



BURGLARY

Burglary is defined as any unlawful entry or attempted forcible entry of any structure to commit a felony or theft. Burglary is divided into three categories: forcible entry, unlawful entry - no force, and attempted forcible entry.

Volume and Rate

During 1992, a total of 7,433* burglaries were reported by law enforcement agencies in Nebraska. Burglary accounted for 17.3 percent of all property crimes and 16.4 percent of all index crimes. In 1992, there were 5.9 burglaries per 1,000 population. A total of 1,249 burglaries, 16.4 percent, were cleared in 1992.

Analysis of Burglary

Of all burglaries reported, 56.6 percent involved residences and 43.4 percent involved non-residences. Of the residential burglaries, 25 percent occurred during the hours of 6:00 a.m. and 6:00 p.m., 32.6 percent occurred between 6:00 p.m. and 6:00 a.m. and in 42.4 percent the time of entry was unknown. Non-residential burglaries occurred most frequently during the night, 67.2 percent. Burglaries during the day accounted for 3.4 percent and in 29.4 percent the time of entry was unknown.

The age group of 13-14 accounted for the highest percentage of persons arrested for burglary, 11.3 percent. Juveniles accounted for 46.6 percent of all persons arrested for burglary.

Of persons arrested for burglary, 89.4 percent were White, 4.2 percent were Black, 6.2 percent were Indian, and 0.2 percent were Asian/Pacific Islander.

Law enforcement agencies reported a total value of \$5,178,420 stolen in burglary offenses.

* Does not include the City of Omaha

Table 14
Burglary - Place and Time of Occurrence

Classification	Number of Offenses	Percent Distribution	Total Value	Average Value
Residence	4,208	56.6	\$2,753,296	\$654.30
Night	1,372	32.6	813,412	592.87
Day	1,051	25.0	748,115	711.81
Unknown	1,785	42.4	1,191,769	667.66
Non-Residence	3,225	43.4	2,040,873	632.83
Night	2,167	67.2	1,459,129	673.34
Day	110	3.4	50,034	454.85
Unknown	948	29.4	531,710	560.88
Total	7,433	100.0	\$4,794,169	\$644.98

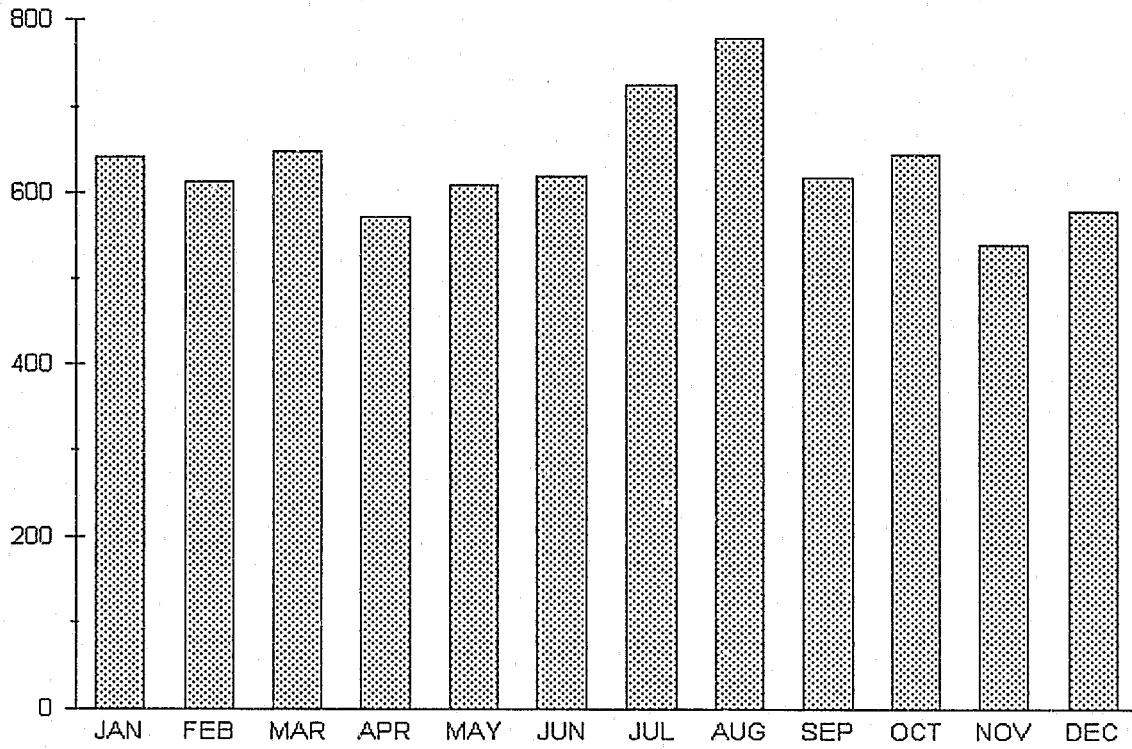
Table 15
Burglary
Type of Property Stolen, Recovered*

Type of Property	Value Stolen	Value Recovered
Currency, Notes, Etc.	\$ 731,634	\$ 55,451
Jewelry and Precious Metals	589,865	65,371
Clothing and Furs	160,292	22,623
Motor Vehicles	243,010	165,980
Office Equipment	179,309	12,935
Televisions/Radios/Cameras	938,326	105,551
Firearms	247,831	57,994
Household Goods	274,350	63,177
Consumable Goods	89,869	14,698
Livestock	0	0
Miscellaneous	1,723,934	240,020
Total	\$5,178,420	\$803,800

* Does not include Douglas Co. S.O.

Figure 9

Burglary by Month



LARCENY-THEFT

Larceny-theft is the unlawful taking of the property of another with the intent of depriving him of ownership. Larceny-theft as an index offense includes larcenies under \$50 in value.

Volume and Rate

During 1992, a total of 33,882* larceny-thefts were reported by law enforcement agencies in Nebraska. Larceny-theft accounted for 78.8 percent of the crimes against property and 74.7 percent of all index offenses. In 1992, there were 26.8 larceny-thefts per 1,000 population. A total of 7,987 larceny-thefts, 26.5 percent, were cleared.

Analysis of Larceny-Theft

Of the total larcenies reported, thefts from motor vehicles accounted for 19.8 percent, shoplifting accounted for 15.4 percent, and thefts of motor vehicle parts and accessories accounted for 15.7 percent.

The age group of 13-14 accounted for 14.2 percent of the total number of persons arrested for larceny-theft. Juveniles accounted for 47.6 percent of the total number arrested.

Of persons arrested for larceny-theft, 88.4 percent were White, 6.2 percent were Black, 4.7 percent were Indian, and 0.7 percent were AsianPacific Islander.

Law enforcement agencies reported a total value of \$10,955,423 stolen in larceny-theft offenses.

* Does not include the City of Omaha

Table 16
Larceny-Theft

Classification	Number of Offenses*	Percent Distribution	Total Value	Average Value
Pocket-Picking	26	.1	\$2,267	\$ 121.63
Purse Snatching	33	.1	2,714	265.46
Shoplifting	5,229	15.4	283,737	46.20
From Motor Vehicles	6,701	19.8	2,076,277	305.91
Motor Vehicle Parts,Access.	5,336	15.7	1,273,088	229.56
Bicycles	3,205	9.5	613,090	184.78
From Buildings	5,290	15.6	2,010,991	430.68
From Coin-Operated Machines	448	1.3	63,808	95.79
From Farmyard/Open Field	1,052	3.1	1,895,001	955.96
Other	6,562	19.4	2,734,450	328.93
Total	33,882	100.0	\$10,955,423	\$285.54

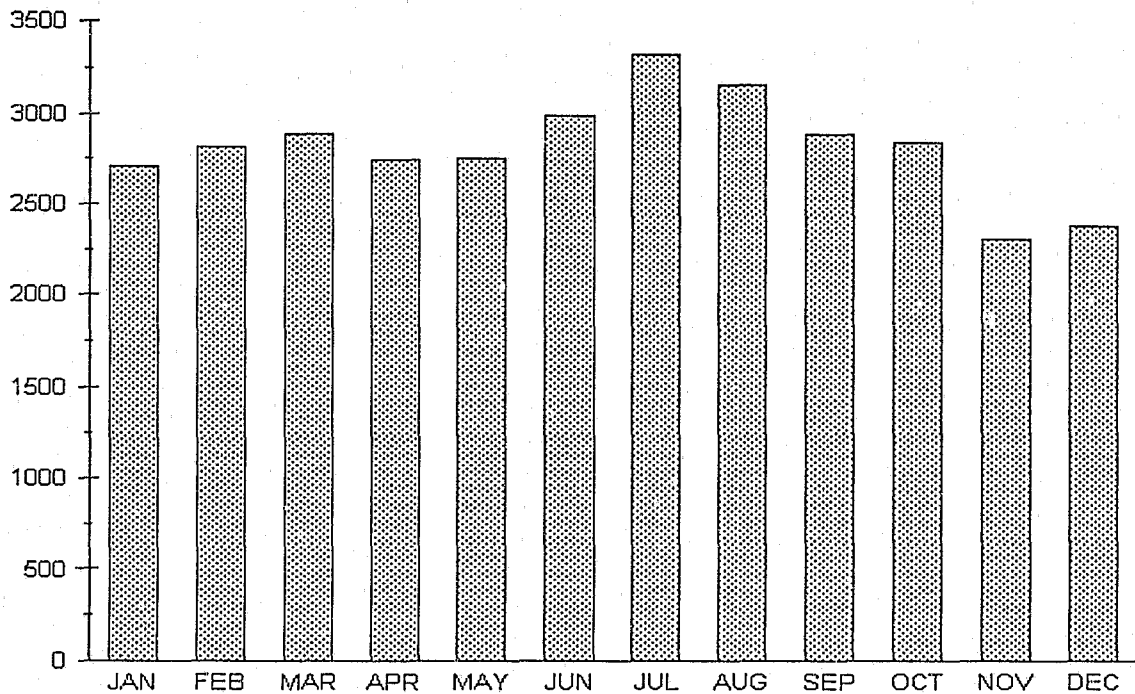
Table 17

Larceny-Theft
Type of Property Stolen, Recovered*

Type of Property	Value Stolen	Value Recovered
Currency, Notes, Etc.	\$1,110,414	\$120,788
Jewelry and Precious Metals	669,066	74,817
Clothing and Furs	415,754	93,040
Motor Vehicles	0	0
Office Equipment	84,364	18,625
Televisions/Radios/Cameras	2,040,866	180,397
Firearms	171,381	35,654
Household Goods	245,957	38,484
Consumable Goods	289,840	29,144
Livestock	1,428,519	15,710
Miscellaneous	5,168,693	818,973
Total	\$11,624,854	\$1,425,632

*Does not include Douglas Co. S.O.

Figure 10
Larceny - Theft by Month



MOTOR VEHICLE THEFT

Motor vehicle theft is defined as the theft or attempted theft of a motor vehicle. Thefts of farm equipment, bulldozers, airplanes, and construction equipment are not included in the definition of a motor vehicle. Motor vehicle theft is divided into the following categories: autos, trucks, buses, and other vehicles.

Volume and Rate

During 1992, there were 1,478* motor vehicle thefts reported by law enforcement agencies in Nebraska. Motor vehicle thefts accounted for 3.4 percent of all property crimes and 3.3 percent of all index offenses. In 1992, there were 1.2 motor vehicle thefts per 1,000 population. There were 553 motor vehicle thefts cleared in 1992, a clearance rate of 37.4 percent.

Analysis of Motor Vehicle Theft

During 1992, law enforcement agencies provided additional information regarding types of vehicles stolen. The agencies reported 999 autos, 310 trucks and buses, and 169 other vehicles stolen.

During 1992, there were 2,899 motor vehicles recovered; 83.6 percent were recovered within the same jurisdiction where they were stolen and 16.4 percent were recovered in another jurisdiction.

The age group of 13-14 accounted for the highest percentage of persons arrested for motor vehicle theft, accounting for 12.5 percent of the total. Juveniles accounted for 43.9 percent of all arrests for motor vehicle theft.

Of the persons arrested for motor vehicle theft, 82.3 percent were White, 9.0 percent were Black, 8.1 percent were Indian, and 0.6 were Asian/Pacific Islander.

Law enforcement agencies reported a total value of \$6,490,529 stolen in motor vehicle thefts.

* Does not include the City of Omaha

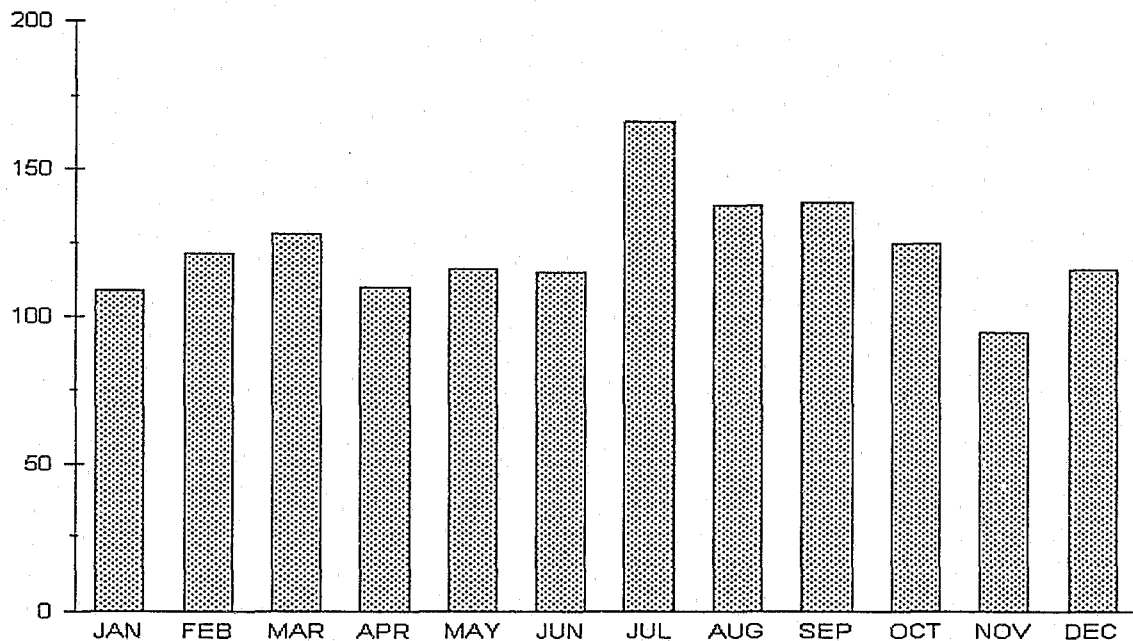
Table 18

Motor Vehicle Theft
Type of Property Stolen, Recovered*

Type of Property	Value Stolen	Value Recovered
Currency, Notes, Etc.	\$7,091	\$4,171
Jewelry and Precious Metals	798	200
Clothing and Furs	7,122	6,007
Motor Vehicles	6,043,944	4,921,595
Office Equipment	10	0
Televisions, Radios, Cameras	9,629	1,789
Firearms	5,830	3,980
Household Goods	905	900
Consumable Goods	380,089	190,000
Livestock	0	0
Miscellaneous	35,111	14,393
Total	\$6,490,529	\$5,143,035

*Does not include Douglas Co. S.O.

Figure 11
Motor Vehicle Theft by Month



ARSON

Arson is any willful or malicious burning or attempt to burn, with or without intent to defraud, a dwelling house, public building, motor vehicle or aircraft, personal property of another, etc. The State Fire Marshal's Office is the primary source of arson data.

Volume and Rate

During 1992, there were 197* offenses of arson reported. Arson accounted for 0.5 percent of the property crimes and 0.4 percent of all index offenses. There were 43 arsons cleared in 1992, a 21.8 percent clearance rate.

Analysis of Arson

The total estimated value of property damage due to arson amounted to \$1,038,220 in 1992. Property damage to 109 structures was \$936,515. The 35 mobile arsons (motor vehicles and mobile property - trailers, recreational vehicles, airplanes) resulted in \$71,745 worth of property damage. In 53 other types of arson, the property damage was \$29,960. The average value of property damage per arson incident was \$5,270.15.

* Does not include the City of Omaha

Figure 12
Arson by Month

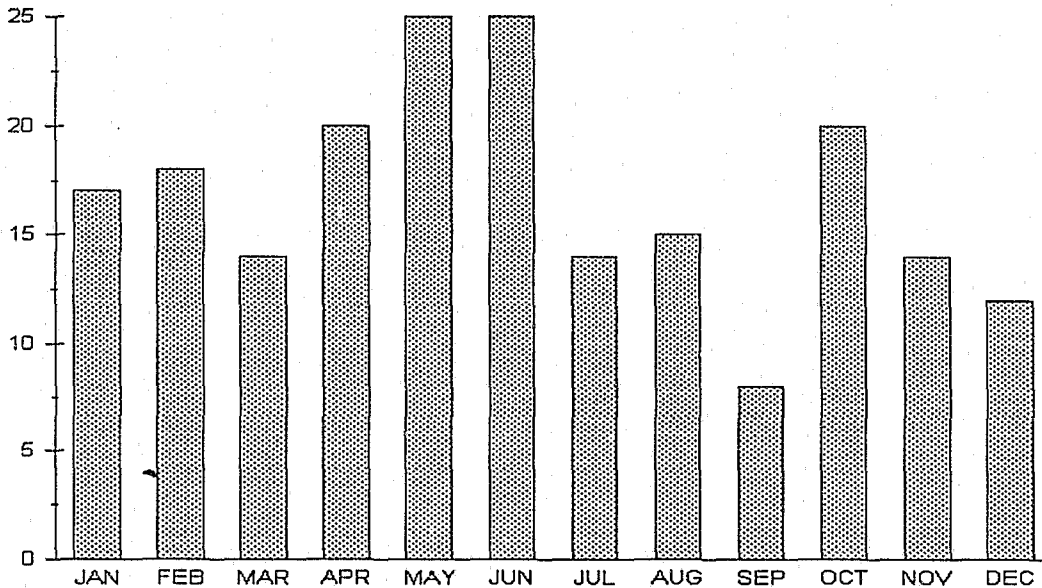


Table 19

Arson - Type of Property and Property Loss

Property Classification		Actual Offenses	Percent Distribution	Value of Property Damage	Average Loss
S T R U C T U R E S	Single Occupancy Residential: House/Townhouses/Duplexes/Etc.	49	24.9	\$435,475	\$8,887.24
	Other Residential: Apartments/Hotels/Motels/Dorms	13	6.6	202,150	15,550.00
	Storage: Barns/Garages/Warehouses/Etc.	16	8.1	68,200	4,262.50
	Industrial/Manufacturing:	4	2.0	22,500	5,625.00
	Other Commercial: Stores/Restaurants/Offices/Etc.	13	6.6	176,350	13,565.38
	Community/Public: Churches/Jails/Schools/Colleges/ Hospitals/Etc.	11	5.6	31,290	2,844.55
	All Other Structures: Out Buildings/Monuments/ Buildings Under Construction	3	1.5	550	183.33
M O B I L E	Motor Vehicles: Autos/Trucks/Buses/Motorcycles	35	17.8	71,745	2,049.86
	Other Mobile Property: Trailers/Recreational Vehicles/ Airplanes/Boats/Etc.	0	0	0	0
Other: Crops/Timber/Fences/Signs/Etc.		53	26.9	29,960	565.28
Total		197	100.0	\$1,038,220	\$5,270.15

ARREST DATA

Under the Uniform Crime Reporting Program, an arrest is counted each time a person is taken into custody, summoned, notified or cited. When a person under 18 years of age commits an offense and the circumstances are such that if the offender were an adult an arrest would be made, the offender is counted as an arrest by the reporting agency.

For reporting purposes, one arrest is counted each time a person is taken into custody, regardless of the number of charges placed against him. If an individual is arrested more than once during the year, an arrest is counted each time. When several persons are arrested in connection with the same offense, each is counted as an arrest.

Arrest data for the Omaha Police Department are included in this section.

Volume and Rate

Law enforcement agencies in Nebraska reported 82,151 arrests in 1992. This represents a one percent increase over 1991. There were 51.2 arrests per 1,000 population in 1992 as compared to 50.6 arrests per 1,000 population in 1991.

Arrests for Part I offenses accounted for 16.7 percent of the total arrests. Of the arrests for Part I offenses, larceny-theft accounted for the greatest portion, 73 percent. The greatest percentage of arrests for Part II offenses was for All Other Offenses, 24.9 percent.

During 1992, arrests for crimes of violence (murder, manslaughter, forcible rape, robbery and felony assault) accounted for 10.3 percent of all arrests for Part I offenses and 1.7 percent of the total arrests.

Arrests for crimes against property (burglary, larceny-theft, motor vehicle theft and arson) accounted for 89.6 percent of all arrests for Part I offenses and 15 percent of the total arrests.

Arrests for Part I offenses increased two percent over 1991. Arrests for Part II offenses increased one percent over 1991.

Arrests by Age

The number of persons under the age of 18 (juveniles) arrested during 1992 increased nine percent over 1991. The arrests of persons age 18 and over (adults) decreased 3 percent.

The arrest of persons under the age of 25 accounted for the following percentages of the total arrests for each index offense: murder, manslaughter (47.5); forcible rape (41.9); robbery (69.5); felony assault (51.0); burglary (80.9); larceny-theft (69.8); motor vehicle theft (78.8); and arson (81.2).

Of those persons under the age of 25 arrested for index offenses, persons under the age of 18 accounted for 61.3 percent.

Arrests by Sex

In 1992, males accounted for 78.6 percent of all arrests. Males accounted for 75.1 percent of arrests for Part I offenses and 79.3 percent of arrests for Part II offenses. Total male arrests increased 2 percent over 1991 and female arrests increased 0.4 percent.

Arrests by Race

An analysis of total arrests by race for 1992 indicated 79.2 percent were White, 16.8 percent were Black, 3.7 percent were American Indian/Alaskan Native, and 0.3 percent were Asian or Pacific Islander.

The arrest involvement by race for the Part I offenses revealed that 74.3 percent were White, 20.9 percent were Black, 4.2 percent were Indian/Alaskan native and 0.6 percent were Asian/Pacific Islander.

An analysis of arrests by race for crimes of violence (murder, manslaughter, forcible rape, robbery and felony assault) revealed that 59.6 percent were White, 32.4 percent were Black, 7.2 percent were American Indian/Alaskan Native, and 0.8 were Asian/Pacific Islander.

An analysis of arrests by race for crimes against property (burglary, larceny-theft, motor vehicle theft and arson) revealed that 76 percent were White, 19.6 percent were Black, 3.8 percent were Indian/Alaskan native and 0.6 percent were Asian/Pacific Islander.

An analysis of arrests by race for Part II offenses revealed that 80.1 percent were White, 16 percent were Black, 3.6 percent were Indian/Alaskan native and 0.3 percent were Asian/Pacific Islander.

Table 20

Total Arrests

Offense Classification	Number	Percent Distribution	Rate per 100,000 Population
Murder, Manslaughter	59	.07	3.7
Death by Negligence	15	.02	0.9
Forcible Rape	229	.28	14.3
Robbery	315	.38	19.6
Felony Assault	818	1.00	50.9
Burglary	1,540	1.87	95.9
Larceny-Theft	10,021	12.20	624.0
Motor Vehicle Theft	580	.71	36.1
Arson	165	.20	10.3
Total Part I Offenses	13,742	16.73	855.7
Misdemeanor Assault	7,073	8.61	440.4
Forgery and Counterfeiting	637	.78	39.7
Fraud - O.M.F.P.	2,394	2.91	149.1
Embezzlement	71	.09	4.4
Stolen Property	1,346	1.64	83.8
Vandalism-Destruction of Property	2,916	3.55	181.6
Weapons-Carrying/Possessing/Etc.	1,264	1.54	78.7
Prostitution and Commercialized Vice	214	.26	13.3
Sex Offenses	723	.88	45.0
Drug Abuse Violations	4,633	5.64	288.5
Gambling	55	.07	3.4
Offenses Against Family and Children	1,139	1.39	70.9
Driving Under the Influence	14,609	17.78	909.7
Liquor Laws	8,751	10.65	544.9
Disorderly Conduct-Disturbing the Peace	4,590	5.59	285.8
Vagrancy	19	0.02	0.8
All Other Offenses (Except Traffic)	17,056	20.76	1,062.0
Suspicion	0	0	0
Curfew and Loitering Law Violations	473	.58	29.5
Runaways	452	.55	28.1
Total Part II Offenses	68,409	83.28	4,259.6
Total	82,151	100.00	5,115.26

1992 Estimate of Population - 1,606,000

Table 21

Comparison of Arrests, 1991 - 1992

Offense Classification	1991	1992	Percent Change
Murder, Manslaughter	53	59	+11
Death by Negligence	19	15	- 21
Forcible Rape	226	229	+ 1
Robbery	270	315	+17
Felony Assault	754	818	+ 8
Burglary	1,426	1,540	+ 8
Larceny Theft	10,039	10,021	-0.2
Motor Vehicle Theft	607	580	- 4
Arson	140	165	+18
Total Part I Offenses	13,534	13,742	+ 2
Misdemeanor Assault	6,138	7,073	+15
Forgery and Counterfeiting	533	637	+20
Fraud - O.M.F.P.	2,475	2,394	- 3
Embezzlement	62	71	+15
Stolen Property	1,079	1,346	+25
Vandalism-Destruction of Property	2,955	2,916	- 1
Weapons-Carrying/Possessing	1,179	1,264	+ 7
Prostitution and Commercialized Vice	203	214	+ 5
Sex Offenses	700	723	+ 3
Drug Abuse Violations	4,263	4,633	+ 9
Gambling	108	55	-49
Offenses Against Family and Children	1,003	1,139	+14
Driving Under the Influence	14,234	14,609	+ 3
Liquor Laws	9,556	8,751	- 8
Disorderly Conduct-Disturbing the Peace	4,784	4,590	- 4
Vagrancy	10	13	+30
All Other Offenses (Except Traffic)	17,066	17,056	-0.1
Suspicion	0	0	-
Curfew and Loitering Law Violations	668	473	-29
Runaways	500	452	-10
Total Part II Offenses	67,516	68,409	+ 1
Total	81,050	82,151	+ 1

Table 22

Comparison of Adult and Juvenile Arrests

Offense Classification	Total Arrests	Adult	Juvenile	Percent Distribution	
				Adult	Juvenile
Murder, Manslaughter	59	53	6	89.8	10.2
Death by Negligence	15	15	0	100.0	0
Forcible Rape	229	195	34	85.2	14.8
Robbery	315	202	113	64.1	35.9
Felony Assault	818	694	124	84.8	15.2
Burglary	1,540	837	703	54.4	45.6
Larceny-Theft	10,021	5,521	4,500	55.1	44.9
Motor Vehicle Theft	580	294	286	50.7	49.3
Arson	165	54	111	32.7	67.3
Total Part I Offenses	13,742	7,865	5,877	57.2	42.8
Misdemeanor Assault	7,073	5,780	1,293	81.7	18.3
Forgery and Counterfeiting	637	558	79	87.6	12.4
Fraud - O.M.F.P.	2,394	2,310	84	96.5	3.5
Embezzlement	71	67	4	94.4	5.6
Stolen Property	1,346	807	539	60.0	40.0
Vandalism-Destruction of Property	2,916	1,573	1,343	53.9	46.1
Weapons-Carrying/Possessing	1,264	998	266	79.0	21.0
Prostitution/Commercialized Vice	214	210	4	98.1	1.9
Sex Offenses	723	592	131	81.9	18.1
Drug Abuse Violations	4,633	4,341	292	93.7	6.3
Gambling	55	54	1	98.2	1.8
Offenses Against Family/Children	1,139	1,131	8	99.3	0.7
Driving Under the Influence	14,609	14,386	223	98.5	1.5
Liquor Laws	8,751	6,479	2,272	74.0	26.0
Disorderly Conduct	4,590	4,006	584	87.3	12.7
Vagrancy	13	13	0	100.0	0
All Other Offenses	17,056	14,990	2,066	87.9	12.1
Suspicion	0	0	0	0	0
Curfew and Loitering Laws	473	--	473	--	100.0
Runaways	452	--	452	--	100.0
Total Part II Offenses	68,409	58,295	10,114	85.2	14.8
Total	82,151	66,160	15,991	80.5	19.5

Table 23

Total Arrests by Age

Offense Classification	Under 10	10- 12	13- 14	15	16	17	Total Under 18
Murder, Manslaughter	0	0	0	0	3	3	6
Death by Negligence	0	0	0	0	0	0	0
Forcible Rape	0	3	8	7	11	5	34
Robbery	5	8	38	22	20	20	113
Felony Assault	2	6	28	25	26	37	124
Burglary	27	78	181	140	146	131	703
Larceny-Theft	179	830	1,369	770	704	648	4,500
Motor Vehicle Theft	3	16	88	71	65	43	286
Arson	21	27	30	8	12	13	111
Total Part I Offenses	237	968	1,742	1,043	987	900	5,877
Misdemeanor Offenses	47	198	323	223	205	297	1,293
Forgery and Counterfeiting	0	3	13	14	16	33	79
Fraud - O.M.F.P.	0	5	13	15	17	34	84
Embezzlement	0	0	0	0	3	1	4
Stolen Property	5	26	149	102	124	133	539
Vandalism-Dest. of Property	107	241	374	172	206	243	1,343
Weapons-Carrying/Possession	1	8	66	48	68	75	266
Prostitution	0	0	0	0	1	3	4
Sex Offenses	6	17	50	25	20	13	131
Drug Abuse Violations	3	10	27	39	78	135	292
Gambling	0	0	0	1	0	0	1
Offenses Against Family	0	0	1	1	4	2	8
Driving Under the Influence	1	1	9	12	65	135	223
Liquor Laws	2	10	122	305	688	1,145	2,272
Disorderly Conduct	7	40	121	103	141	172	584
Vagrancy	0	0	0	0	0	0	0
All Other Offenses	25	93	292	277	597	782	2,066
Suspicion	0	0	0	0	0	0	0
Curfew/Loitering Law Violations	0	16	162	126	88	81	473
Runaways	2	24	174	107	88	57	452
Total Part II Offenses	206	692	1,896	1,570	2,409	3,341	10,114
Total	443	1,660	3,638	2,613	3,396	4,241	15,991

Total Arrests by Age - Continued

18	19	20	21	22	23	24	25-29	30-34	35-39	40-44	45-49	50-54	55-59	60-64	Over 65	Total 18 & Over
2	1	4	7	5	1	2	8	9	5	2	2	4	1	0	0	53
1	0	2	2	0	1	0	2	2	1	0	2	0	1	0	1	15
10	10	10	9	11	4	8	45	38	31	15	3	0	1	0	0	195
25	29	14	12	15	9	2	41	31	11	3	7	1	1	0	1	202
55	41	52	34	44	31	36	145	111	71	31	17	17	4	3	2	694
154	111	95	61	54	35	33	110	110	43	16	9	3	2	0	1	837
595	471	423	336	296	211	166	896	739	456	337	190	112	73	75	145	5521
52	30	31	14	14	18	12	54	32	21	6	8	0	1	0	1	294
9	3	3	2	1	4	1	7	9	6	3	3	2	0	0	1	54
903	696	634	477	440	314	260	1308	1081	645	413	241	139	84	78	152	7865
288	290	327	352	293	295	271	1211	1044	678	363	164	97	52	33	22	5780
48	60	36	36	31	20	44	121	80	42	19	8	9	3	1	0	558
82	102	148	153	142	128	132	488	342	273	140	96	37	24	16	7	2310
6	3	3	5	6	3	0	12	8	6	9	4	1	0	1	0	67
117	104	91	56	41	39	31	135	70	54	39	19	6	1	1	3	807
177	144	125	107	92	75	72	319	215	121	66	27	15	9	4	5	1573
86	83	54	61	62	42	41	188	161	101	51	38	13	7	5	5	998
2	9	6	8	5	6	11	58	62	19	15	3	3	2	0	1	210
21	22	27	22	23	16	28	101	90	84	49	38	22	17	12	20	592
222	236	303	254	241	239	236	965	851	453	210	77	24	17	6	7	4341
2	1	0	1	0	2	1	4	6	15	4	5	8	4	0	1	54
16	17	40	28	56	49	43	232	257	200	106	46	18	4	15	7	1131
324	468	531	768	746	659	603	3003	2646	1811	1175	675	382	266	161	165	14386
1524	1563	1271	331	202	138	111	362	310	241	178	113	76	30	17	12	6479
225	225	231	281	232	201	168	790	710	411	259	108	122	21	14	8	4006
0	0	1	0	0	0	1	1	4	1	1	0	4	0	0	0	13
1061	954	1100	965	850	771	670	2911	2376	1401	904	474	242	131	85	95	14990
0	0	0	0	0	0	0	0	0	0	0	0	0	0	0	0	0
4201	4281	4294	3428	3022	2683	2463	10901	9232	5911	3588	1895	1079	588	371	358	58295
5104	4977	4928	3905	3462	2997	2723	12209	10313	6556	4001	2136	1218	672	449	510	66160

Table 24

Juvenile and Adult Arrest, 1991 - 1992

Offense Classification	Juvenile			Adult		
	1991	1992	Percent Change	1991	1992	Percent Change
Murder, Manslaughter	8	6	-25	45	53	+18
Death by Negligence	2	0	-100	15	15	-12
Forcible Rape	24	34	+42	195	195	-3
Robbery	71	113	+59	202	202	+2
Felony Assault	123	124	+1	694	694	+10
Burglary	617	703	+14	837	837	+3
Larceny-Theft	4,193	4,500	+7	5,521	5,521	-6
Motor Vehicle Theft	291	286	-2	294	294	-7
Arson	74	111	+50	54	54	-18
Total Part I Offenses	5,403	5,877	+9	8,131	7,865	-3
Misdemeanor Assault	1,161	1,293	+11	4,977	5,780	+16
Forgery and Counterfeiting	59	79	+34	474	558	+18
Fraud - O.M.F.P.	94	84	-11	2,381	2,310	-3
Embezzlement	8	4	-50	54	67	+24
Stolen Property	335	539	+61	744	807	+8
Vandalism-Destruction of Property	1,291	1,343	+4	1,664	1,573	-5
Weapons-Carrying/Possessing	189	266	+41	990	998	+1
Prostitution and Commercialized Vice	3	4	+33	200	210	+5
Sex Offenses	132	131	-1	568	592	+4
Drug Abuse Violations	262	292	+11	4,001	4,341	+7
Gambling	5	1	-80	103	54	+8
Offenses Against Family and Children	16	8	-50	987	1,131	-48
Driving Under the Influence	256	223	-13	13,978	14,386	+14
Liquor Laws	2,364	2,272	-4	7,192	6,479	+3
Disorderly Conduct-Dist. the Peace	612	584	-5	4,172	4,006	-10
Vagrancy	6	0	-100	4	13	-4
All Other Offenses	2,157	2,066	-4	14,909	14,990	+225
Suspicion	0	0	--	0	0	+1
Curfew and Loitering Law Violations	668	473	-29	--	--	--
Runaways	500	452	-10	--	--	--
Total Part II Offenses	10,118	10,114	-.04	57,398	58,295	+2
Total	15,521	15,991	+3	65,529	66,160	+1

Table 25

Total Arrests by Sex

Offense Classification	Persons Arrested		Percent	
	Male	Female	Male	Female
Murder, Manslaughter	53	6	89.8	10.2
Death by Negligence	13	2	86.7	13.3
Forcible Rape	228	1	99.6	0.4
Robbery	286	29	90.8	9.2
Felony Assault	706	112	86.3	13.7
Burglary	1,431	109	92.9	7.1
Larceny-Theft	6,941	3,080	69.3	30.7
Motor Vehicle Theft	524	56	90.3	9.7
Arson	142	23	86.1	13.9
Total Part I Offenses	10,324	3,418	75.1	24.9
Misdemeanor Assault	5,675	1,398	80.2	19.8
Forgery and Counterfeiting	409	228	64.2	35.8
Fraud - O.M.F.P.	1,443	951	60.3	39.7
Embezzlement	26	45	36.6	63.4
Stolen Property	1,187	159	88.2	11.8
Vandalism-Destruction of Property	2,582	334	88.5	11.5
Weapons-Carrying/Possessing	1,156	108	91.5	8.5
Prostitution/Commercialized Vice	108	106	50.5	49.5
Sex Offenses	692	31	95.7	4.3
Drug Abuse Violations	3,831	802	82.7	17.3
Gambling	49	6	89.1	10.9
Offenses Against Family/Children	659	480	57.9	42.1
Driving Under the Influence	12,199	2,410	83.5	16.5
Liquor Laws	6,509	2,242	74.4	25.6
Disorderly Conduct/Dist. the Peace	3,834	756	82.5	16.5
Vagrancy	11	2	84.6	15.4
All Other Offenses	13,405	3,651	78.6	21.4
Suspicion	0	0	0	0
Curfew and Loitering Law Violations	325	148	68.7	31.3
Runaways	167	285	36.9	60.1
Total Part II Offenses	54,267	14,142	79.3	20.7
Total	64,591	17,560	78.6	21.4

Table 26

Total Arrests by Race

Offense Classification	Total Arrested	White	Black	American Indian or Alaskan Native	Asian or Pacific Islander
Murder, Manslaughter	59	36	20	1	2
Death by Negligence	15	12	3	0	0
Forcible Rape	229	146	68	15	0
Robbery	315	134	149	31	1
Felony Assault	818	531	223	55	9
Burglary	1,540	1,298	157	82	3
Larceny-Theft	10,021	7,553	2,052	351	65
Motor Vehicle Theft	580	353	187	37	3
Arson	165	145	18	1	1
Total Part I Offenses	13,742	10,208	2,877	573	84
Misdemeanor Assault	7,073	5,656	1,062	320	35
Forgery and Counterfeiting	637	497	131	7	2
Fraud - O.M.F.P.	2,394	1,988	356	46	4
Embezzlement	71	58	11	1	1
Stolen Property	1,346	719	576	45	6
Vandalism-Destruction of Property	2,916	2,412	370	124	10
Weapons-Carrying/Possessing	1,264	770	450	33	11
Prostitution/Commercialized Vice	214	112	96	2	4
Sex Offenses	723	616	91	15	1
Drug Abuse Violations	4,633	3,396	1,154	74	9
Gambling	55	32	23	0	0
Offenses Against Family/Children	1,139	904	176	55	4
Driving Under the Influence	14,609	13,199	1,042	335	33
Liquor Laws	8,751	7,798	449	485	19
Disorderly Conduct-Dist. the Peace	4,590	3,342	987	251	10
Vagrancy	13	6	4	3	0
All Other Offenses	17,056	12,425	3,959	637	35
Suspicion	0	0	0	0	0
Curfew/Loitering Law Violations	473	451	13	4	5
Runaways	452	431	10	9	2
Total Part II Offenses	68,409	54,812	10,960	2,446	191
Total	82,151	65,020	13,837	3,019	275

Table 27

Total Arrests by Race Under Age 18

Offense Classification	Total Arrested	White	Black	American Indian or Alaskan Native	Asian or Pacific Islander
Murder, Manslaughter	6	2	4	0	0
Death by Negligence	0	0	0	0	0
Forcible Rape	34	26	5	3	0
Robbery	113	43	57	12	1
Felony Assault	124	88	25	10	1
Burglary	703	590	53	58	2
Larceny-Theft	4,500	3,515	804	150	31
Motor Vehicle Theft	286	150	109	25	2
Arson	111	99	11	0	1
Total Part I Offenses	5,877	4,513	1,068	258	38
Misdemeanor Assault	1,293	1,034	184	68	7
Forgery and Counterfeiting	79	70	8	0	1
Fraud - O.M.F.P.	84	66	15	3	0
Embezzlement	4	4	0	0	0
Stolen Property	539	246	267	23	3
Vandalism-Destruction of Property	1,343	1,146	147	48	2
Weapons-Carrying/Possessing	266	190	62	11	3
Prostitution/Commercialized Vice	4	3	1	0	0
Sex Offenses	131	105	24	2	0
Drug Abuse Violations	292	187	87	18	0
Gambling	1	0	1	0	0
Offenses Against Family/Children	8	7	1	0	0
Driving Under the Influence	223	209	4	10	0
Liquor Laws	2,272	2,164	59	44	5
Disorderly Conduct-Dist. the Peace	584	409	154	21	0
Vagrancy	0	0	0	0	0
All Other Offenses	2,066	1,671	337	52	6
Suspicion	0	0	0	0	0
Curfew/Loitering Law Violations	473	451	13	4	5
Runaways	452	431	10	9	2
Total Part II Offenses	10,114	8,393	1,374	313	34
Total	15,991	12,906	2,442	571	72

Table 28

Total Arrests by Race, Age 18 and Over

Offense Classification	Total Arrested	White	Black	American Indian or Alaskan Native	Asian or Pacific Islander
Murder, Manslaughter	53	34	16	1	2
Death by Negligence	15	12	3	0	0
Forcible Rape	195	120	63	12	0
Robbery	202	91	92	19	0
Felony Assault	694	443	198	45	8
Burglary	837	708	104	24	1
Larceny-Theft	5,521	4,038	1,248	201	34
Motor Vehicle Theft	294	203	78	12	1
Arson	54	46	7	1	0
Total Part I Offenses	7,865	5,695	1,809	315	46
Misdemeanor Assault	5,780	4,622	878	252	28
Forgery and Counterfeiting	558	427	123	7	1
Fraud - O.M.F.P.	2,310	1,922	341	43	4
Embezzlement	67	54	11	1	1
Stolen Property	807	473	309	22	3
Vandalism-Dest. of Property	1,573	1,266	223	76	8
Weapons	998	580	388	22	8
Prostitution/Commercialized Vice	210	109	95	2	4
Sex Offenses	592	511	67	13	1
Drug Abuse Violations	4,341	3,209	1,067	56	9
Gambling	54	32	22	0	0
Offenses Against Family/Children	1,131	897	175	55	4
Driving Under the Influence	14,386	12,990	1,038	325	33
Liquor Laws	6,479	5,634	390	441	14
Disorderly Conduct-Dist. the Peace	4,006	2,933	833	230	10
Vagrancy	0	6	4	3	0
All Other Offenses	14,990	10,754	3,622	585	29
Suspicion	0	0	0	0	0
Curfew	--	--	--	--	--
Runaways	--	--	--	--	--
Total Part II Offenses	58,295	46,419	9,586	2,133	157
Total	66,160	52,114	11,395	2,448	203

Table 29

Drug Abuse Arrests by Sex and Race

Offense Classification	Total	Sex		Race			
		Male	Female	White	Black	Indian	Asian
Sale/Manufacturing	1,100	894	206	816	271	10	3
Opium/Cocaine/Derivatives	409	324	85	203	204	2	0
Marijuana	505	420	85	475	24	4	2
Synthetic Narcotics	91	66	25	86	0	4	1
Non-Narcotic Drugs	95	83	12	52	43	0	0
Possession	3,533	2,937	596	2,580	883	64	6
Opium/Cocaine/Derivatives	374	303	71	180	190	4	0
Marijuana	2,921	2,449	472	2,201	673	41	6
Synthetic Narcotics	47	30	17	42	5	0	0
Non-Narcotic Drugs	191	155	36	157	15	19	0
Total	4,633	3,831	802	3,396	1,154	74	9

Table 30

Drug Abuse Arrests, 1991 - 1992

Offense Classification	1991	1992	Percent Change	1992 Percent Distribution
Sale/Manufacturing	998	1,100	+ 10	23.7
Opium/Cocaine/Derivatives	356	409	+ 15	37.2
Marijuana	475	505	+ 6	45.9
Synthetic Narcotics	69	91	+ 32	8.3
Non-Narcotic Drugs	98	95	- 3	8.6
Possession	3,265	3,533	+ 8	76.3
Opium/Cocaine/Derivatives	443	374	- 16	10.6
Marijuana	2,590	2,921	+ 13	82.7
Synthetic Narcotics	49	47	- 4	1.3
Non-Narcotic Drugs	183	191	+ 4	5.4
Total	4,263	4,633	+ 9	100.0

OFFICERS KILLED / ASSAULTED

The killing or assaulting of a law enforcement officer is a serious problem faced by the law enforcement administrator and should be of the gravest concern to the public at large. Such acts directly affect the functioning of proper law enforcement operations and thus reduce the ability of our law enforcement agencies to combat crime and maintain law and order. The ambitious young person who today considers a career in law enforcement must also consider the risk of being killed or assaulted by a member of the society he is sworn to protect.

The Omaha Police Department did not provide any information regarding assaults on law enforcement officers.

Officers Assaulted

During 1992, there were 211 assaults on law enforcement officers. This represents a 10 percent increase from 1991. While every assault does not result in personal injury to the officer involved, many of them do result in physical harm to the officer and loss of duty time. During 1992, personal injury was involved in 25 percent of the assaults.

Most of the assaults occurred while responding to disturbance calls and most of these were inflicted with personal weapons such as hands, fists, or feet.

There were no law enforcement officers killed in the line of duty in 1992.

Table 31

Officers Assaulted by Time, 1991 - 1992

Time	1991		1992	
	Number of Assaults	Percent Distribution	Number of Assaults	Percent Distribution
12:00 midnight - 2:00 a.m.	54	28.1	48	22.7
2:00 a.m. - 4:00 a.m.	35	18.2	33	15.6
4:00 a.m. - 6:00 a.m.	7	3.6	6	2.8
6:00 a.m. - 8:00 a.m.	6	3.1	3	1.4
8:00 a.m. - 10:00 a.m.	5	2.6	1	0.5
10:00 a.m. - 12:00 noon	5	2.6	17	8.1
12:00 noon - 2:00 p.m.	10	5.2	3	1.4
2:00 p.m. - 4:00 p.m.	9	4.7	9	4.3
4:00 p.m. - 6:00 p.m.	8	4.2	16	7.6
6:00 p.m. - 8:00 p.m.	10	5.2	16	7.6
8:00 p.m. - 10:00 p.m.	15	7.8	26	12.3
10:00 p.m. - 12:00 midnight	28	14.6	33	15.6

Table 32

Officers Assaulted - Type of Activity, 1991 - 1992

Circumstances	Total Assaults in 1991	Total Assaults in 1992	Percent Change	Percent Distribution
Disturbance Calls	78	92	+ 17.9	43.6
Burglaries in Progress	0	3	---	1.4
Robberies in Progress	0	0	---	0
Attempting Other Arrests	21	24	+ 14.3	11.4
Civil Disorder	1	1	---	0.5
Prisoners in Custody	51	56	+ 9.8	26.5
Suspicious Persons/Circum.	7	9	+ 28.6	4.3
Ambush	1	1	---	0.5
Mentally Deranged	2	1	- 50	0.5
Traffic Pursuits	21	18	- 14	8.5
All Other	10	6	- 40	2.8
Total	192	211	+ 10	100.0

Table 33

Officers Assaulted - Type of Weapon

Circumstances	Firearm	Knife, Cutting Instrument	Other Weapon	Hands, Fists, Feet
Disturbance Calls	15	1	5	71
Burglaries in Progress	0	0	1	2
Robberies in Progress	0	0	0	0
Attempting Other Arrests	0	0	1	23
Civil Disorder	0	0	0	1
Prisoners in Custody	0	0	6	50
Suspicious Persons/Circum.	0	1	2	6
Ambush	0	0	0	1
Mentally Deranged	0	0	0	1
Traffic Pursuits	1	2	2	13
All Other	0	0	0	6
Total	16	4	17	174
Number with Personal Injury	1	2	3	47
Number without Personal Injury	15	2	14	127

Table 34

Officers Assaulted - Type of Assignment

Circumstances	Two-Man Vehicle	One-Man Vehicle		Detective/ Special Assignment		Other	
		Alone	Assisted	Alone	Assisted	Alone	Assisted
Disturbance Calls	7	18	45	0	12	4	6
Burglaries in Progress	1	1	0	0	1	0	0
Robberies in Progress	0	0	0	0	0	0	0
Attempting Other Arrests	2	6	13	0	1	0	2
Civil Disorder	0	0	0	0	0	0	1
Prisoners in Custody	2	10	36	0	0	0	8
Suspicious Persons/Circum.	3	2	2	0	0	2	0
Ambush	0	0	0	0	0	1	0
Mentally Deranged	0	0	1	0	0	0	0
Traffic Pursuits	1	11	6	0	0	0	0
All Other	0	3	2	1	0	0	0
Total	16	51	105	1	14	7	17

LAW ENFORCEMENT EMPLOYEE DATA

The Nebraska Uniform Crime Reporting Program surveys law enforcement agencies each year concerning employee data. As of October 31, 1992, there were 3,793 persons employed full-time in 160 law enforcement agencies.

Of the 3,793 employees, there were 2,763 sworn officers and 1,030 civilian employees. Based upon an estimated population of 1,606,000 there were 1.7 sworn officers per 1,000 persons in the State. The rate of law enforcement officers per 1,000 population for any given agency is influenced by many factors. The determination of law enforcement strength for a certain area is based on such factors as population density, size and character of the community, geographic location and other conditions which exist in the area.

Females accounted for 6.8 percent of the sworn personnel and 74.8 percent of the civilian personnel.

Table 35

**Law Enforcement Employee Data -
County Sheriffs' Departments**

Agency	Total Full-time Employees	Sworn Officers		Civilian		Sworn Personnel Per 1,000 Population	Number of Assaults on Sworn Personnel
		Male	Female	Male	Female		
Adams	18	16	0	0	2	2.3	0
Antelope	11	5	1	1	4	0.9	0
Arthur	1	1	0	0	0	2.1	0
Banner	1	1	0	0	0	1.2	0
Blaine	1	1	0	0	0	1.5	0
Boone	9	4	0	1	4	0.8	0
Box Butte	14	4	0	5	5	1.2	0
Boyd	1	1	0	0	0	0.3	0
Brown	7	2	1	0	4	0.8	1
Buffalo	43	15	0	9	19	1.1	2
Burt	8	5	0	1	2	0.7	0
Butler	9	4	0	0	5	0.6	0
Cass	27	17	2	0	8	1.3	0
Cedar	8	4	0	1	3	0.4	0
Chase	6	2	0	0	4	0.8	0
Cherry	10	4	0	1	5	1.1	0
Cheyenne	11	5	0	5	1	1.4	0
Clay	9	3	1	0	5	0.6	0
Colfax	12	4	0	2	6	0.8	0
Cuming	8	3	0	5	0	0.4	0
Custer	7	6	0	0	1	0.7	0
Dakota	23	8	0	6	9	1.1	0
Dawes	8	3	0	1	4	0.9	1
Dawson	19	16	0	0	3	2.5	1
Deuel	7	4	0	0	3	1.8	0
Dixon	6	4	0	0	2	0.6	0
Dodge	19	16	0	0	3	1.5	2
Douglas	158	101	9	24	24	1.5	0
Dundy	7	4	0	1	2	1.5	0
Fillmore	8	4	0	0	4	0.8	0
Franklin	7	3	0	0	4	0.7	0
Frontier	10	5	0	1	4	1.6	0
Furnas	13	8	0	0	5	1.4	0
Gage	16	9	0	1	6	1.0	0
Garden	10	5	0	1	4	0.4	2
Garfield	1	1	0	0	0	0.5	1
Gosper	5	4	0	0	1	2.0	0
Grant	1	1	0	0	0	1.3	0
Greeley	2	1	0	0	1	0.3	0
Hall	57	21	0	20	16	2.2	0
Hamilton	11	5	1	0	5	1.2	0
Harlan	8	4	0	0	4	1.0	0
Hayes	2	2	0	0	0	1.6	0
Hitchcock	7	4	0	0	3	1.0	0
Holt	10	4	0	2	4	0.4	0
Hooker	1	1	0	0	0	1.2	0
Howard		No Report					
Jefferson	9	5	0	0	4	1.1	0

Law Enforcement Employee Data-
County Sheriffs' Departments - Continued

Agency	Total Full-time Employees	Sworn Officers		Civilian		Sworn Personnel Per 1,000 Population	Number of Assaults on Sworn Personnel
		Male	Female	Male	Female		
Johnson	7	2	0	1	4	0.7	0
Kearney	11	5	1	2	3	1.5	0
Keith	16	9	0	2	5	2.5	0
Keya Paha	1	1	0	0	0	1.0	0
Kimball	7	2	1	0	4	1.9	0
Knox	13	6	0	0	7	0.6	1
Lancaster	75	54	3	4	14	2.6	5
Lincoln	42	22	0	8	12	2.2	1
Logan	3	2	1	0	0	3.4	0
Loup	1	1	0	0	0	1.4	0
McPherson	1	1	0	0	0	1.8	0
Madison	25	16	0	1	8	1.7	0
Merrick	8	4	0	0	4	0.8	0
Morrill	8	3	0	0	5	0.5	1
Nance	13	7	0	1	5	1.6	0
Nemaha	9	4	0	0	5	0.9	3
Nuckolls	7	4	0	0	3	1.2	0
Otoe	17	8	0	3	6	1.3	0
Pawnee	4	3	0	0	1	0.9	0
Perkins	8	4	0	0	4	1.2	0
Phelps	10	4	0	1	5	1.0	0
Pierce	9	4	0	0	5	0.8	0
Platte	22	15	6	0	1	2.0	1
Polk	11	6	0	0	5	1.2	0
Red Willow	6	5	0	0	1	1.4	0
Richardson	4	3	0	1	0	0.6	0
Rock	8	3	0	0	5	1.5	0
Saline	15	9	0	0	6	1.4	0
Sarpy		No Report					
Saunders	19	9	0	4	6	0.7	0
Scotts Bluff	18	14	0	0	4	1.1	0
Seward	15	8	0	4	3	1.0	0
Sheridan	5	4	0	0	1	0.8	0
Sherman	2	1	0	0	1	0.3	0
Sioux	2	2	0	0	0	1.3	0
Stanton	5	4	0	1	0	0.8	0
Thayer	10	7	0	0	3	1.0	0
Thomas	3	1	0	0	2	1.2	0
Thurston	8	3	0	0	5	0.4	0
Valley	6	2	0	0	4	0.7	0
Washington	19	10	0	2	7	1.0	0
Wayne	5	4	0	0	1	0.9	0
Webster	8	4	1	0	3	1.1	0
Wheeler	2	1	0	0	1	1.0	1
York	16	7	0	3	6	1.1	0

Table 36

Law Enforcement Employee Data-
Cities Over 5,000 Population

Agency	Total Full-time Employees	Sworn Officers		Civilian		Sworn Personnel Per 1,000 Population	Number of Assaults on Sworn Personnel
		Male	Female	Male	Female		
Alliance	25	18	2	0	5	2.0	5
Beatrice	25	17	2	1	5	1.5	0
Bellevue	62	46	2	1	13	1.5	4
Blair	12	10	0	0	2	1.4	0
Chadron	18	12	0	1	5	2.1	0
Columbus	36	24	1	2	9	1.3	0
Fremont	37	26	3	0	8	1.2	4
Gering	17	13	1	0	3	1.7	3
Grand Island	63	54	2	0	7	1.4	11
Hastings	54	34	3	1	16	1.6	4
Holdrege	13	8	1	1	3	1.6	0
Kearney	39	30	3	2	4	1.3	7
LaVista	20	15	2	1	2	1.7	1
Lexington	17	11	2	0	4	1.9	8
Lincoln	320	218	35	8	59	1.3	72
McCook	16	13	0	1	2	1.6	1
Nebraska City	13	12	0	0	1	1.8	0
Norfolk	50	33	4	1	12	1.7	4
North Platte	53	33	1	5	14	1.5	0
Ogallala	12	9	1	1	1	1.9	0
Omaha	750	531	70	41	108	1.8	0
Papillion	15	13	1	0	1	1.3	0
Plattsmouth	9	8	0	0	1	1.2	4
Ralston	11	10	0	0	1	1.6	2
Scottsbluff	33	28	1	0	4	2.1	9
Seward	12	7	1	1	3	1.4	0
Sidney	14	11	0	0	3	1.8	0
So. Sioux	17	16	1	0	0	1.7	4
Wayne	11	7	0	1	3	1.3	0
York	19	14	0	2	3	1.7	0

Table 37

**Law Enforcement Employee Data-
Cities Under 5,000 Population and State Agencies**

Agency	Total Full-time Employees	Sworn Officers		Civilian		Sworn Personnel Per 1,000 Population	Number of Assaults on Sworn Personnel
		Male	Female	Male	Female		
Albion	3	3	0	0	0	1.5	0
Ashland	5	4	0	1	0	1.8	1
Auburn	6	6	0	0	0	1.7	0
Aurora	7	6	0	0	1	1.5	0
Broken Bow	7	6	0	0	1	1.6	0
Central City	6	5	0	0	1	1.7	4
Cozad	10	6	0	0	4	1.5	1
Crete	14	9	0	1	4	1.8	0
David City	5	5	0	0	0	1.9	0
Elkhorn	5	5	0	0	0	3.5	0
Fairbury	7	6	0	0	1	1.4	0
Falls City	13	9	0	1	3	1.9	0
Geneva	3	3	0	0	0	1.3	0
Gordon	7	5	0	0	2	2.7	2
Gothenburg	6	6	0	0	0	1.8	0
Imperial	4	4	0	0	0	2.0	0
Kimball	7	5	0	1	1	1.9	1
Madison	4	4	0	0	0	1.8	0
Milford	5	5	0	0	0	2.6	2
Minden	5	4	0	0	1	1.4	0
Mitchell	5	5	0	0	0	2.8	0
Neligh	2	2	0	0	0	1.1	0
O'Neill	11	8	0	0	3	2.0	0
Ord	7	3	0	1	3	1.2	0
Pierce	3	3	0	0	0	1.8	0
Plainview	2	2	0	0	0	1.5	2
Schuyler	6	6	0	0	0	1.5	1
Stanton		No Report					0
Superior	6	6	0	0	0	2.5	1
Syracuse	3	3	0	0	0	1.8	0
Tecumseh	4	3	0	0	1	1.7	0
Tekamah	4	4	0	0	0	2.1	0
Valentine	4	4	0	0	0	1.4	0
Valley	3	3	0	0	0	1.7	0
Wahoo	6	6	0	0	0	1.6	0
West Point	6	6	0	0	0	1.8	2
Wilber	4	4	0	0	0	2.6	0
Wymore	3	3	0	0	0	1.8	1
State Agencies							
State Patrol	637	475	20	58	84	--	17
UNL		No Report					1
UNK	5	4	1	0	0	--	0

OFFENSE DATA BY COUNTY

Estimates are provided for those agencies who reported more than 3 months but less than 12 months. The State Fire Marshal is the primary source for Arson data.

	<i>Number of Months Reported</i>	<i>Population</i>	<i>Crime Rate Per 1,000 Population</i>	<i>Total Crime Index</i>	<i>Index Offenses Cleared</i>	<i>Murder, Manslaughter</i>	<i>Forcible Rape</i>	<i>Robbery</i>	<i>Felony Assault</i>	<i>Burglary</i>	<i>Larceny-Theft</i>	<i>Motor Vehicle Theft</i>	<i>Arson</i>
Adams County		30,141	35.9	1,081	216	1	6	7	15	182	819	46	5
Sheriff's Office	12	6,905	31.0	214	20	1	2	0	4	66	125	16	0
Hastings P.D.	12	23,236	37.2	864	196	0	2	7	10	116	694	30	5
State Patrol	12	--	--	3	0	0	2	0	1	0	0	0	0
Antelope County		8,103	8.3	67	7	0	0	0	0	27	38	2	0
Sheriff's Office	12	6,331	9.0	57	5	0	0	0	0	25	31	1	0
Neligh P.D.	12	1,772	4.5	8	2	0	0	0	0	1	7	0	0
State Patrol	12	--	--	2	0	0	0	0	0	1	0	1	0
Arthur County		469	4.3	2	0	0	0	0	0	0	1	1	0
Sheriff's Office	12	469	4.3	2	0	0	0	0	0	0	1	1	0
State Patrol	12	--	--	0	0	0	0	0	0	0	0	0	0
Banner County		866	17.3	15	1	0	0	0	0	3	12	0	0
Sheriff's Office	12	866	13.9	12	1	0	0	0	0	2	10	0	0
State Patrol	12	--	--	3	0	0	0	0	0	1	2	0	0
Blaine County		686	0.0	0	0	0	0	0	0	0	0	0	0
Sheriff's Office	12	686	0.0	0	0	0	0	0	0	0	0	0	0
State Patrol	12	--	--	0	0	0	0	0	0	0	0	0	0
Boone County		6,781	4.4	30	2	0	0	0	1	2	26	1	0
Sheriff's Office	12	4,833	4.6	22	0	0	0	0	0	1	20	1	0
Albion P.D.	12	1,948	4.1	8	2	0	0	0	1	1	6	0	0
State Patrol	12	--	--	0	0	0	0	0	0	0	0	0	0
Box Butte County		13,358	33.9	453	152	0	0	4	22	63	337	25	2
Sheriff's Office	12	3,423	16.4	56	10	0	0	0	5	8	41	2	0
Alliance P.D.	12	9,93E	39.8	395	142	0	0	4	16	55	295	23	2
State Patrol	12	--	--	2	0	0	0	0	1	0	1	0	0
Boyd County		2,884	10.4	30	4	0	0	0	0	19	11	0	0
Sheriff's Office	6	2,884	10.1	29	4	0	0	0	0	19	10	0	0
State Patrol	12	--	--	1	0	0	0	0	0	0	1	0	0
Brown County		3,720	20.7	77	11	0	0	0	4	18	54	1	0
Sheriff's Office	12	3,720	20.2	75	11	0	0	0	4	16	54	1	0
State Patrol	12	--	--	2	0	0	0	0	0	2	0	0	0
Buffalo County		38,099	42.9	1,635	372	2	11	2	36	291	1228	56	9
Sheriff's Office	12	13,278	17.4	231	43	0	2	0	5	40	173	11	0
Kearney P.D.	12	24,821	51.6	1,281	307	2	9	2	27	232	956	44	9
UNK - Campus Security	11	--	--	121	22	0	0	0	4	19	97	1	0
State Patrol	12	--	--	2	0	0	0	0	0	0	2	0	0

AGENCY	Number of Months Reported	Population	Crime Rate Per 1,000 Population	Total Crime Index	Index Offenses Cleared	Murder, Manslaughter	Forcible Rape	Robbery	Felony Assault	Burglary	Larceny-Theft	Motor Vehicle Theft	Arson
Burt County		8,004	13.4	107	14	0	1	0	1	10	89	6	0
Sheriff's Office	12	6,120	13.6	83	10	0	1	0	0	8	68	6	0
Tekamah P.D.	12	1,884	11.8	22	3	0	0	0	0	1	21	0	0
State Patrol	12	--	--	2	1	0	0	0	1	1	0	0	0
Butler County		8,750	17.0	149	23	0	1	0	0	35	106	5	2
Sheriff's Office	12	6,185	14.4	89	6	0	0	0	0	26	56	5	2
David City P.D.	12	2,565	22.6	58	16	0	0	0	0	8	50	0	0
State Patrol	12	--	--	2	1	0	1	0	0	1	0	0	0
Cass County		21,689	28.0	607	53	0	1	1	11	116	439	37	2
Sheriff's Office	12	15,166	20.4	310	10	0	0	1	7	67	208	25	2
Plattsmouth P.D.	12	6,523	44.3	289	43	0	1	0	3	45	230	10	0
State Patrol	12	--	--	8	0	0	0	0	1	4	1	2	0
Cedar County		10,307	7.0	72	5	1	0	0	3	16	47	5	0
Sheriff's Office	12	10,307	7.0	72	5	1	0	0	3	16	47	5	0
State Patrol	12	--	--	0	0	0	0	0	0	0	0	0	0
Chase County		4,455	12.3	55	16	0	0	0	3	14	33	5	0
Sheriff's Office	12	2,414	4.1	10	4	0	0	0	0	3	6	1	0
Imperial P.D.	12	2,041	22.0	45	12	0	0	0	3	11	27	4	0
State Patrol	12	--	--	0	0	0	0	0	0	0	0	0	0
Cherry County		6,416	10.6	68	13	1	1	0	10	16	36	3	1
Sheriff's Office	12	3,541	8.8	31	7	1	0	0	4	7	18	0	1
Valentine P.D.	12	2,875	12.9	37	6	0	1	0	6	9	18	3	0
State Patrol	12	--	--	0	0	0	0	0	0	0	0	0	0
Cheyenne County		9,659	27.8	269	59	0	0	2	13	37	212	4	1
Sheriff's Office	12	3,596	28.1	101	13	0	0	1	3	22	74	1	0
Sidney P.D.	12	6,063	27.4	166	45	0	0	0	9	15	138	3	1
State Patrol	12	--	--	2	1	0	0	1	1	0	0	0	0
Clay County		7,246	16.3	118	14	0	0	0	2	36	77	2	1
Sheriff's Office	10	7,246	16.1	117	14	0	0	0	2	36	76	2	1
State Patrol	12	--	--	1	0	0	0	0	0	0	1	0	0
Colfax County		9,297	25.7	239	82	0	0	1	8	37	181	12	0
Sheriff's Office	12	5,175	17.2	89	18	0	0	0	2	15	64	8	0
Schuyler P.D.	12	4,122	35.9	148	63	0	0	0	6	22	116	4	0
State Patrol	12	--	--	2	1	0	0	1	0	0	1	0	0

AGENCY	Number of Months Reported	Population	Crime Rate Per 1,000 Population	Total Crime Index	Index Offenses Cleared	Murder, Manslaughter	Forcible Rape	Robbery	Felony Assault	Burglary	Larceny-Theft	Motor Vehicle Theft	Arson
Cuming County		10,292	11.6	119	24	0	0	0	4	32	76	7	0
Sheriff's Office	12	6,986	8.0	56	4	0	0	0	0	24	31	1	0
West Point P.D.	12	3,306	18.8	62	20	0	0	0	4	8	45	5	0
State Patrol	12	--	--	1	0	0	0	0	0	0	0	1	0
Custer County		12,482	16.0	200	40	0	1	0	4	38	145	11	1
Sheriff's Office	12	8,639	9.8	85	14	0	0	0	3	17	56	8	1
Broken Bow P.D.	12	3,843	29.7	114	26	0	1	0	1	20	89	3	0
State Patrol	12	--	--	1	0	0	0	0	0	1	0	0	0
Dakota County		17,033	31.7	540	130	1	4	4	8	72	423	26	2
Sheriff's Office	12	7,188	14.6	105	13	0	2	1	3	12	80	5	2
So. Sioux City P.D.	12	9,845	43.9	432	114	1	1	3	4	60	342	21	0
State Patrol	12	--	--	3	3	0	1	0	1	0	1	0	0
Dawes County		9,177	44.1	405	113	0	9	1	13	31	331	17	3
Sheriff's Office	12	3,492	12.0	42	11	0	0	0	2	5	29	5	1
Chadron P.D.	12	5,685	62.6	356	98	0	6	1	10	26	301	10	2
State Patrol	12	--	--	7	4	0	3	0	1	0	1	2	0
Dawson County		20,285	55.9	1,133	254	1	8	5	34	185	852	45	3
Sheriff's Office	12	6,393	31.1	199	37	0	4	1	4	33	143	12	2
Cozad P.D.	12	3,889	51.2	199	36	1	0	0	10	37	149	2	0
Gothenburg P.D.	12	3,287	36.8	121	17	0	1	1	2	12	102	2	1
Lexington P.D.	12	6,716	90.4	607	159	0	3	2	18	103	452	29	0
State Patrol	12	--	--	7	5	0	0	1	0	0	6	0	0
Deuel County		2,275	8.8	20	8	0	0	0	3	5	10	2	0
Sheriff's Office	12	2,275	7.5	17	7	0	0	0	3	5	7	2	0
State Patrol	12	--	--	3	1	0	0	0	0	0	3	0	0
Dixon County		6,249	10.1	63	18	0	1	0	3	22	33	2	2
Sheriff's Office	12	6,249	9.9	62	18	0	1	0	3	22	32	2	2
State Patrol	12	--	--	1	0	0	0	0	0	0	1	0	0
Dodge County		35,103	35.8	1,255	145	0	1	5	13	282	897	46	11
Sheriff's Office	12	11,009	24.1	265	17	0	1	1	3	101	149	9	1
Fremont P.D.	12	24,094	41.0	987	127	0	0	4	10	180	746	37	10
State Patrol	12	--	--	3	1	0	0	0	0	1	2	0	0

AGENCY	Number of Months Reported	Population	Crime Rate Per 1,000 Population	Total Crime Index	Index Offenses Cleared	Murder, Manslaughter	Forcible Rape	Robbery	Felony Assault	Burglary	Larceny-Theft	Motor Vehicle Theft	Arson
Douglas County		423,808	63.6	26,954	9,044	19	260	619	2,514	4,264	16,302	2,766	210
Sheriff's Office	12	72,485	20.5	1,483	404	2	10	19	60	228	1,090	66	8
Omaha P.D.	8	341,753	73.8	25,226	8,609	16	249	600	2,445	3,996	15,038	2,681	201
Elkhorn P.D.	12	1,421	16.9	24	1	0	1	0	0	1	20	1	1
Ralston P.D.	12	6,344	24.4	155	12	1	0	0	5	33	102	14	0
Valley P.D.	12	1,805	32.1	58	16	0	0	0	3	6	46	3	0
State Patrol	12	--	--	8	2	0	0	0	1	0	6	1	0
Dundy County		2,626	16.8	44	6	0	0	0	1	11	28	4	0
Sheriff's Office	12	2,626	16.8	44	6	0	0	0	1	11	28	4	0
State Patrol	12	--	--	0	0	0	0	0	0	0	0	0	0
Fillmore County		7,226	9.5	69	19	0	0	0	0	19	43	7	0
Sheriff's Office	12	4,876	9.0	44	9	0	0	0	0	13	26	5	0
Geneva P.D.	12	2,350	9.4	22	10	0	0	0	0	5	15	2	0
State Patrol	12	--	--	3	0	0	0	0	0	1	2	0	0
Franklin County		4,006	10.7	43	12	0	0	0	0	12	29	1	1
Sheriff's Office	12	4,006	10.7	43	12	0	0	0	0	12	29	1	1
State Patrol	12	--	--	0	0	0	0	0	0	0	0	0	0
Frontier County		3,154	29.5	93	12	0	0	0	0	37	55	1	0
Sheriff's Office	12	3,154	28.9	91	11	0	0	0	0	36	54	1	0
State Patrol	12	--	--	2	1	0	0	0	0	1	1	0	0
Furnas County		5,649	17.7	100	31	0	0	1	11	25	53	9	1
Sheriff's Office	12	5,649	17.7	100	31	0	0	1	11	25	53	9	1
State Patrol	12	--	--	0	0	0	0	0	0	0	0	0	0
Gage County		23,189	29.6	686	152	1	6	0	5	100	554	19	1
Sheriff's Office	12	8,982	15.7	141	23	0	0	0	2	30	101	7	1
Beatrice P.D.	12	12,569	41.8	526	127	1	5	0	3	66	440	11	0
Wymore P.D.	12	1,638	11.0	18	2	0	0	0	0	4	13	1	0
State Patrol	12	--	--	1	0	0	1	0	0	0	0	0	0
Garden County		2,502	24.4	61	11	0	1	0	4	17	39	0	0
Sheriff's Office	12	2,502	24.4	61	11	0	1	0	4	17	39	0	0
State Patrol	12	--	--	0	0	0	0	0	0	0	0	0	0
Garfield County		2,177	0.0	0	0	0	0	0	0	0	0	0	0
Sheriff's Office	7	2,177	0.0	0	0	0	0	0	0	0	0	0	0
State Patrol	12	--	--	0	0	0	0	0	0	0	0	0	0
Gosper County		1,960	31.1	58	9	0	0	0	0	18	39	1	0
Sheriff's Office	12	1,960	31.1	58	9	0	0	0	0	18	39	1	0
State Patrol	12	--	--	0	0	0	0	0	0	0	0	0	0

AGENCY	Number of Months Reported	Population	Crime Rate Per 1,000 Population	Total Crime Index	Index Offenses Cleared	Murder, Manslaughter	Forcible Rape	Robbery	Felony Assault	Burglary	Larceny-Theft	Motor Vehicle Theft	Arson
Grant County		782	1.3	1	0	0	0	0	0	1	0	0	0
Sheriff's Office	12	782	1.3	1	0	0	0	0	0	1	0	0	0
State Patrol	12	--	--	0	0	0	0	0	0	0	0	0	0
Greeley County		3,057	0.7	2	0	0	0	0	0	2	0	0	0
Sheriff's Office	9	3,057	0.0	0	0	0	0	0	0	0	0	0	0
State Patrol	12	--	--	2	0	0	0	0	0	2	0	0	0
Hall County		49,779	65.4	3,257	946	0	17	29	61	592	2,468	89	1
Sheriff's Office	12	9,705	30.7	298	72	0	2	0	6	74	206	9	1
Grand Island P.D.	12	40,074	72.8	2,917	866	0	15	28	53	513	2,229	79	0
State Patrol	12	--	--	42	8	0	0	1	2	5	33	1	0
Hamilton County		9,015	19.3	174	42	1	0	0	1	49	112	11	0
Sheriff's Office	12	5,139	23.9	123	29	0	0	0	1	46	66	10	0
Aurora P.D.	12	3,876	12.6	49	12	1	0	0	0	3	44	1	0
State Patrol	12	--	--	2	1	0	0	0	0	0	2	0	0
Harlan County		3,876	26.6	103	13	0	0	0	4	23	76	0	0
Sheriff's Office	12	3,876	26.1	101	12	0	0	0	3	23	75	0	0
State Patrol	12	--	--	2	1	0	0	0	1	0	1	0	0
Hayes County		1,243	21.7	27	20	0	0	0	18	2	7	0	0
Sheriff's Office	12	1,243	10.5	13	6	0	0	0	4	2	7	0	0
State Patrol	12	--	--	14	14	0	0	0	14	0	0	0	0
Hitchcock County		3,814	4.2	16	3	0	0	0	0	9	6	1	0
Sheriff's Office	12	3,814	4.2	16	3	0	0	0	0	9	6	1	0
State Patrol	12	--	--	0	0	0	0	0	0	0	0	0	0
Holt County		12,817	8.5	109	28	0	3	0	3	18	80	4	1
Sheriff's Office	12	8,899	3.9	35	1	0	1	0	0	7	26	1	0
O'Neill P.D.	12	3,918	18.1	71	27	0	1	0	3	10	53	3	1
State Patrol	12	--	--	3	0	0	1	0	0	1	1	0	0
Hooker County		806	0.0	0	0	0	0	0	0	0	0	0	0
Sheriff's Office	12	806	0.0	0	0	0	0	0	0	0	0	0	0
State Patrol	12	--	--	0	0	0	0	0	0	0	0	0	0
Howard County		6,160	15.9	96	25	0	0	0	2	12	76	8	0
Sheriff's Office	12	6,160	15.6	96	24	0	0	0	1	12	76	7	0
State Patrol	12	--	--	2	1	0	0	0	1	0	0	1	0

AGENCY	Number of Months Reported	Population	Crime Rate Per 1,000 Population	Total Crime Index	Index Offenses Cleared	Murder, Manslaughter	Forcible Rape	Robbery	Felony Assault	Burglary	Larceny-Theft	Motor Vehicle Theft	Arson
Jefferson County		8,910	20.7	184	29	0	1	1	3	33	132	13	1
Sheriff's Office	12	4,500	15.8	71	6	0	0	1	1	13	53	3	0
Fairbury P.D.	12	4,410	24.9	110	23	0	0	0	2	20	78	9	1
State Patrol	12	--	--	3	0	0	1	0	0	0	1	1	0
Johnson County		4,753	9.7	46	8	0	1	0	1	11	33	0	0
Sheriff's Office	12	3,022	8.9	27	4	0	0	0	0	5	22	0	0
Tecumseh P.D.	12	1,731	7.5	13	3	0	0	0	1	3	9	0	0
State Patrol	12	--	--	6	1	0	1	0	0	3	2	0	0
Kearney County		6,742	25.1	169	43	0	0	0	3	40	120	6	0
Sheriff's Office	12	3,946	24.1	95	29	0	0	0	1	23	66	5	0
Minden P.D.	12	2,796	26.5	74	14	0	0	0	2	17	54	1	0
State Patrol	12	--	--	0	0	0	0	0	0	0	0	0	0
Keith County		8,732	39.4	344	63	0	1	0	9	60	266	7	1
Sheriff's Office	12	3,549	22.3	75	9	0	0	0	5	10	63	1	0
Ogallala P.D.	12	5,183	48.4	251	52	0	0	0	3	48	193	6	1
State Patrol	12	--	--	14	2	0	1	0	1	2	10	0	0
Keya Paha County		1,046	5.7	6	2	0	0	0	0	2	4	0	0
Sheriff's Office	12	1,046	5.7	6	2	0	0	0	0	2	4	0	0
State Patrol	12	--	--	0	0	0	0	0	0	0	0	0	0
Kimball County		4,178	34.5	144	23	0	1	0	2	41	96	2	2
Sheriff's Office	11	1,560	18.6	29	0	0	0	0	0	1	27	0	1
Kimball P.D.	12	2,618	43.9	115	23	0	1	0	2	40	69	2	1
State Patrol	12	--	--	0	0	0	0	0	0	0	0	0	0
Knox County		9,700	6.3	61	23	1	1	0	4	16	38	1	0
Sheriff's Office	12	9,700	6.2	60	23	1	0	0	4	16	38	1	0
State Patrol	12	--	--	1	0	0	1	0	0	0	0	0	0
Lancaster County		217,458	76.0	16,519	4,320	11	117	142	1022	2,405	12,337	429	56
Sheriff's Office	12	22,129	29.2	647	141	3	3	3	8	130	467	27	6
Lincoln P.D.	12	195,329	76.1	14,868	4,094	7	109	136	981	2,211	10,986	388	50
UNL - Campus Police	12	--	--	935	80	0	3	3	1	64	853	11	0
State Patrol	12	--	--	69	5	1	2	0	32	0	31	3	0
Lincoln County		33,075	55.0	1,820	442	2	9	6	68	279	1,379	68	9
Sheriff's Office	12	10,075	24.8	250	26	0	3	0	10	62	168	6	1
North Platte P.D.	12	23,000	68.0	1,564	414	2	6	5	57	217	1,207	62	8
State Patrol	12	--	--	6	2	0	0	1	1	0	4	0	0

AGENCY	Number of Months Reported	Population	Crime Rate Per 1,000 Population	Total Crime Index	Index Offenses Cleared	Murder, Manslaughter	Forcible Rape	Robbery	Felony Assault	Burglary	Larceny-Theft	Motor Vehicle Theft	Arson
Logan County		893	2.2	2	0	0	0	0	0	1	0	1	0
Sheriff's Office	12	893	1.1	1	0	0	0	0	0	1	0	0	0
State Patrol	12	--	--	1	0	0	0	0	0	0	0	1	0
Loup County		694	0.0	0	0	0	0	0	0	0	0	0	0
Sheriff's Office	12	694	0.0	0	0	0	0	0	0	0	0	0	0
State Patrol	12	--	--	0	0	0	0	0	0	0	0	0	0
McPherson County		555	5.4	3	1	0	0	0	1	1	1	0	0
Sheriff's Office	9	555	3.6	2	0	0	0	0	0	1	1	0	0
State Patrol	12	--	--	1	1	0	0	0	1	0	0	0	0
Madison County		33,222	36.8	1,224	321	0	10	5	29	220	933	25	3
Sheriff's Office	12	9,201	10.3	95	14	0	1	0	4	32	56	2	0
Norfolk P.D.	12	21,850	50.0	1,092	304	0	9	5	24	177	855	20	2
Madison P.D.	0	2,171	--	1	1								1
State Patrol	12	--	--	37	2	0	0	0	1	11	22	3	0
Merrick County		8,180	24.2	198	26	0	0	0	2	48	144	3	1
Sheriff's Office	12	5,263	18.6	98	4	0	0	0	2	23	71	1	1
Central City P.D.	12	2,917	34.3	100	22	0	0	0	0	25	73	2	0
State Patrol	12	--	--	0	0	0	0	0	0	0	0	0	0
Morrill County		5,517	15.8	87	10	0	2	0	2	17	62	4	0
Sheriff's Office	12	5,517	15.4	85	10	0	1	0	2	17	61	4	0
State Patrol	12	--	--	2	0	0	0	0	0	0	1	0	0
Nance County		4,349	11.5	50	5	0	0	0	2	17	29	2	0
Sheriff's Office	10	4,349	11.0	48	5	0	0	0	1	17	28	2	0
State Patrol	12	--	--	2	0	0	0	0	1	0	1	0	0
Nemaha County		8,118	9.7	79	20	1	1	0	7	19	47	4	0
Sheriff's Office	10	4,616	9.7	45	7	0	0	0	6	12	26	1	0
Auburn P.D.	12	3,502	8.9	31	12	1	0	0	1	7	19	3	0
State Patrol	12	--	--	3	1	0	1	0	0	0	2	0	0
Nuckolls County		5,885	4.1	24	8	0	0	0	1	11	12	0	0
Sheriff's Office	12	3,447	4.9	17	3	0	0	0	0	7	10	0	0
Superior P.D.	12	2,438	2.9	7	5	0	0	0	1	4	2	0	0
State Patrol	12	--	--	0	0	0	0	0	0	0	0	0	0

AGENCY	Number of Months Reported	Population	Crime Rate Per 1,000 Population	Total Crime Index	Index Offenses Cleared	Murder, Manslaughter	Forcible Rape	Robbery	Felony Assault	Burglary	Larceny-Theft	Motor Vehicle Theft	Arson
Otoe County		14,498	22.3	323	81	0	2	1	8	70	231	10	1
Sheriff's Office	12	6,164	8.1	50	12	0	0	0	0	10	40	0	0
Nebraska City P.D.	12	6,660	33.3	222	60	0	1	1	7	48	154	10	1
Syracuse P.D.	12	1,674	28.1	47	9	0	0	0	1	11	35	0	0
State Patrol	12	--	--	4	0	0	1	0	0	1	2	0	0
Pawnee County		3,374	10.4	35	4	0	2	0	2	11	18	2	0
Sheriff's Office	12	3,374	8.3	28	3	0	0	0	2	7	17	2	0
State Patrol	12	--	--	7	1	0	2	0	0	4	1	0	0
Perkins County		3,425	10.2	35	5	0	0	0	1	7	26	1	0
Sheriff's Office	12	3,425	10.2	35	5	0	0	0	1	7	26	1	0
State Patrol	12	--	--	0	0	0	0	0	0	0	0	0	0
Phelps County		9,883	21.3	211	40	0	3	1	2	27	169	8	1
Sheriff's Office	12	4,114	14.6	60	4	0	0	0	1	6	53	0	0
Holdrege P.D.	12	5,769	26.2	151	36	0	3	1	1	21	116	8	1
State Patrol	12	--	--	0	0	0	0	0	0	0	0	0	0
Pierce County		7,961	11.4	91	17	1	0	1	6	10	65	2	6
Sheriff's Office	12	4,964	8.1	40	3	1	0	1	1	4	31	1	1
Pierce P.D.	12	1,642	14.0	23	8	0	0	0	4	2	16	1	0
Plainview P.D.	12	1,355	19.2	26	6	0	0	0	0	3	18	0	5
State Patrol	12	--	--	2	0	0	0	0	1	1	0	0	0
Platte County		30,340	32.5	985	166	0	8	3	7	128	797	41	1
Sheriff's Office	12	10,520	16.8	177	18	0	3	0	2	51	111	10	0
Columbus P.D.	12	19,820	40.7	806	148	0	3	3	5	77	686	31	1
State Patrol	12	--	--	2	0	0	2	0	0	0	0	0	0
Polk County		5,773	18.0	104	8	0	0	0	1	12	89	1	1
Sheriff's Office	12	5,773	17.7	102	8	0	0	0	1	12	87	1	1
State Patrol	12	--	--	2	0	0	0	0	0	0	2	0	0
Red Willow County		11,908	20.0	238	85	0	0	0	1	12	217	7	1
Sheriff's Office	12	3,655	8.5	31	6	0	0	0	0	3	23	5	0
McCook P.D.	12	8,253	25.0	206	79	0	0	0	1	9	193	2	1
State Patrol	12	--	--	1	0	0	0	0	0	0	1	0	0

AGENCY	Number of Months Reported	Population	Crime Rate Per 1,000 Population	Total Crime Index	Index Offenses Cleared	Murder, Manslaughter	Forcible Rape	Robbery	Felony Assault	Burglary	Larceny-Theft	Motor Vehicle Theft	Arson
Richardson County		10,109	15.2	154	26	0	1	0	7	28	109	2	7
Sheriff's Office	9	5,257	10.5	55	1	0	0	0	5	13	35	0	2
Falls City P.D.	11	4,852	17.9	87	24	0	0	0	0	7	73	2	5
State Patrol	12	--	--	12	1	0	1	0	2	8	1	0	0
Rock County		2,053	20.5	42	4	0	0	0	0	9	33	0	0
Sheriff's Office	12	2,053	20.0	41	4	0	0	0	0	8	33	0	0
State Patrol	12	--	--	1	0	0	0	0	0	1	0	0	0
Saline County		12,934	20.0	259	71	1	2	1	3	49	194	9	0
Sheriff's Office	12	6,457	16.4	106	28	1	0	0	3	35	62	5	0
Wilber P.D.	12	1,553	7.7	12	7	0	0	0	0	3	7	2	0
Crete P.D.	12	4,924	28.2	139	35	0	2	1	0	11	124	1	0
State Patrol	12	--	--	2	1	0	0	0	0	0	1	1	0
Sarpy County		104,375	27.6	2,878	704	2	13	25	56	413	2,263	97	9
Sheriff's Office	12	52,287	15.1	788	81	0	6	5	28	156	555	36	2
Bellevue P.D.	12	31,523	47.6	1,501	419	2	6	16	13	198	1,216	47	3
Papillion P.D.	12	10,553	19.2	203	52	0	1	0	5	13	173	8	3
LaVista P.D.	12	10,012	37.8	378	147	0	0	4	9	46	312	6	1
State Patrol	12	--	--	8	5	0	0	0	1	0	7	0	0
Saunders County		18,602	19.9	370	200	0	2	0	3	126	209	19	11
Sheriff's Office	12	12,685	19.5	247	141	0	0	0	2	109	117	10	9
Wahoo P.D.	12	3,745	17.9	67	38	0	0	0	0	12	52	3	0
Ashland P.D.	12	2,172	23.5	51	21	0	1	0	1	5	36	6	2
State Patrol	12	--	--	5	0	0	1	0	0	0	4	0	0
Scotts Bluff County		36,650	41.5	1,522	415	3	21	8	46	230	1,174	38	2
Sheriff's Office	12	12,188	16.3	199	46	1	7	0	8	50	130	3	0
* Scottsbluff P.D.	12	14,605	65.8	961	212	2	9	7	29	122	764	27	1
Gering P.D.	12	8,084	39.2	317	146	0	5	1	6	50	250	4	1
Mitchell P.D.	12	1,773	20.3	36	7	0	0	0	0	8	27	1	0
State Patrol	12	--	--	9	4	0	0	0	3	0	3	3	0
Seward County		15,718	20.8	327	62	1	3	1	15	52	243	9	3
Sheriff's Office	12	8,068	16.2	131	15	0	2	0	2	38	85	3	1
Seward P.D.	12	5,732	22.2	127	33	1	0	0	3	6	112	3	2
Milford P.D.	12	1,918	29.7	57	8	0	0	0	9	7	38	3	0
State Patrol	12	--	--	12	6	0	1	1	1	1	8	0	0

* Includes Terrytown

AGENCY	Number of Months Reported	Population	Crime Rate Per 1,000 Population	Total Crime Index	Index Offenses Cleared	Murder, Manslaughter	Forcible Rape	Robbery	Felony Assault	Burglary	Larceny-Theft	Motor Vehicle Theft	Arson
Sheridan County		6,865	31.3	215	88	0	2	0	10	50	140	11	2
Sheriff's Office	12	5,032	19.3	97	29	0	0	0	3	33	54	6	1
Gordon P.D.	12	1,833	62.7	115	58	0	2	0	7	16	85	4	1
State Patrol	12	--	--	3	1	0	0	0	0	1	1	1	0
Sherman County		3,782	16.4	62	3	0	1	0	0	22	37	1	1
Sheriff's Office	12	3,782	15.9	60	2	0	0	0	0	21	37	1	1
State Patrol	12	--	--	2	1	0	1	0	0	1	0	0	0
Sioux County		1,575	1.3	2	0	0	0	0	0	0	2	0	0
Sheriff's Office	12	1,575	1.3	2	0	0	0	0	0	0	2	0	0
State Patrol	12	--	--	0	0	0	0	0	0	0	0	0	0
Stanton County		6,351	11.7	74	33	0	2	0	6	16	47	2	1
Sheriff's Office	12	4,776	10.5	50	17	0	2	0	0	8	38	1	1
Stanton P.D.	12	1,575	12.1	19	15	0	0	0	4	7	8	0	0
State Patrol	12	--	--	5	1	0	0	0	2	1	1	1	0
Thayer County		6,750	16.6	112	27	0	0	0	4	35	69	2	2
Sheriff's Office	12	6,750	16.3	110	27	0	0	0	4	35	67	2	2
State Patrol	12	--	--	2	0	0	0	0	0	0	2	0	0
Thomas County		865	19.7	17	0	0	0	0	0	2	15	0	0
Sheriff's Office	12	865	17.3	15	0	0	0	0	0	1	14	0	0
State Patrol	12	--	--	2	0	0	0	0	0	1	1	0	0
Thurston County		7,057	2.8	20	2	0	0	0	1	4	10	0	5
Sheriff's Office	12	7,057	2.8	20	2	0	0	0	1	4	10	0	5
State Patrol	12	--	--	0	0	0	0	0	0	0	0	0	0
Valley County		5,257	20.9	110	16	0	0	0	8	17	81	3	1
Sheriff's Office	12	2,734	5.9	16	0	0	0	0	0	2	14	0	0
Ord P.D.	12	2,523	36.1	91	14	0	0	0	7	14	66	3	1
State Patrol	12	--	--	3	2	0	0	0	1	1	1	0	0
Washington County		16,896	16.0	270	29	0	1	1	4	57	188	14	5
Sheriff's Office	12	9,917	12.5	124	16	0	1	1	2	45	67	4	4
Blair P.D.	12	6,979	20.9	146	13	0	0	0	2	12	121	10	1
State Patrol	12	--	--	0	0	0	0	0	0	0	0	0	0
Wayne County		9,526	16.0	152	16	0	2	1	3	8	134	3	1
Sheriff's Office	11	4,295	9.1	39	4	0	1	0	0	5	33	0	0
Wayne P.D.	12	5,231	21.6	113	12	0	1	1	3	3	101	3	1
State Patrol	12	--	--	0	0	0	0	0	0	0	0	0	0

AGENCY	<i>Number of Months Reported</i>	<i>Population</i>	<i>Crime Rate Per 1,000 Population</i>	<i>Total Crime Index</i>	<i>Index Offenses Cleared</i>	<i>Murder, Manslaughter</i>	<i>Forcible Rape</i>	<i>Robbery</i>	<i>Felony Assault</i>	<i>Burglary</i>	<i>Larceny-Theft</i>	<i>Motor Vehicle Theft</i>	<i>Arson</i>
Webster County		4,353	18.6	81	3	0	0	0	1	11	65	3	1
Sheriff's Office	12	4,353	18.6	81	3	0	0	0	1	11	65	3	1
State Patrol	12	--	--	0	0	0	0	0	0	0	0	0	0
Wheeler County		963	8.3	8	2	0	0	0	2	0	6	0	0
Sheriff's Office	12	963	6.2	6	2	0	0	0	1	0	5	0	0
State Patrol	12	--	--	2	0	0	0	0	1	0	1	0	0
York County		14,678	24.4	358	105	0	4	0	7	37	286	24	0
Sheriff's Office	12	6,657	8.1	54	9	0	1	0	2	17	23	11	0
York P.D.	12	8,021	37.4	300	96	0	2	0	5	20	260	13	0
State Patrol	12	--	--	4	0	0	1	0	0	0	3	0	0
State Property	12	--	--	6	0	0	0	0	0	0	0	0	6

ARREST DATA BY COUNTY

ARREST DATA BY AGENCY	ARREST DATA BY AGENCY																														
	Total Arrests	Total Adult	Total Juvenile	Murder, Manslaughter	Death by Negligence	Forcible Rape	Robbery	Felony Assault	Burglary - Breaking and Entering	Larceny - Theft	Motor Vehicle Theft	Misdemeanor Assault	Arson	Forgery and Counterfeiting	Fraud - O.M.F.P.	Embezzlement	Stolen Property - Buying, Receiving, Possessing	Vandalism - Destruction of Property	Weapons - Carrying, Possessing, Etc.	Prostitution and Commercialized Vice	Sex Offenses Except Forcible Rape and Prostitution	Narcotic Drug Laws - TOTAL	Gambling - TD & SL	Offenses Against Family and Children - Nonsupport	Driving Under the Influence	Liquor Laws	Disorderly Conduct Disturbing the Peace	Vagrancy	All Other Offenses (Except Traffic)	Curfew and Loitering Law Violations	Runaways
Adams County	1294	1120	174	1	0	0	2	9	24	192	10	143	2	4	91	1	0	19	6	0	7	64	0	4	263	115	74	0	273	0	0
Sheriff's Office	422	421	1	1	0	0	0	1	2	7	3	10	1	3	89	0	0	0	0	4	26	0	2	60	3	4	0	216	0	0	
Hastings P.D.	827	658	169	0	0	0	2	8	22	185	7	133	1	1	2	1	0	19	6	0	3	22	0	2	181	86	70	0	56	0	0
State Patrol	45	41	4	0	0	0	0	0	0	0	0	0	0	0	0	0	0	0	0	0	0	16	0	0	12	16	0	0	1	0	0
Antelope County	55	51	4	0	0	0	0	0	0	4	0	2	0	0	0	0	2	0	0	1	4	0	0	28	8	1	0	6	0	0	
Sheriff's Office	25	25	0	0	0	0	0	0	0	1	0	2	0	0	0	2	0	0	0	1	0	0	14	0	1	0	4	0	0		
Neligh P.D.	4	2	2	0	0	0	0	0	0	3	0	0	0	0	0	0	0	0	0	0	0	0	1	0	0	0	0	0	0	0	
State Patrol	26	24	2	0	0	0	0	0	0	0	0	0	0	0	0	0	0	0	0	0	4	0	0	13	8	0	0	1	0	0	
Arthur County	4	4	0	0	0	0	0	0	0	0	0	0	0	0	0	0	0	0	0	0	0	0	0	4	0	0	0	0	0	0	
Sheriff's Office	4	4	0	0	0	0	0	0	0	0	0	0	0	0	0	0	0	0	0	0	0	0	4	0	0	0	0	0	0	0	
State Patrol	0	0	0	0	0	0	0	0	0	0	0	0	0	0	0	0	0	0	0	0	0	0	0	0	0	0	0	0	0	0	
Banner County	13	13	0	0	0	0	0	0	0	1	0	1	0	0	0	0	0	1	0	0	3	0	0	6	1	0	0	0	0	0	
Sheriff's Office	4	4	0	0	0	0	0	0	0	1	0	1	0	0	0	0	0	0	0	0	1	0	0	1	0	0	0	0	0	0	
State Patrol	9	9	0	0	0	0	0	0	0	0	0	0	0	0	0	0	0	1	0	0	2	0	0	5	1	0	0	0	0	0	
Blaine County	1	1	0	0	0	0	0	0	0	0	0	0	0	0	0	0	0	0	0	0	0	0	1	0	0	0	0	0	0	0	
Sheriff's Office	1	1	0	0	0	0	0	0	0	0	0	0	0	0	0	0	0	0	0	0	0	0	1	0	0	0	0	0	0	0	
State Patrol	1	1	0	0	0	0	0	0	0	0	0	0	0	0	0	0	0	0	0	0	0	0	1	0	0	0	0	0	0	0	
Boone County	52	44	8	0	0	0	0	1	0	1	0	7	0	0	0	0	0	0	0	1	2	0	25	14	0	0	1	0	0		
Sheriff's Office	6	6	0	0	0	0	0	0	0	0	0	0	0	0	0	0	0	0	0	0	0	0	6	0	0	0	0	0	0	0	
Albion P.D.	39	31	8	0	0	0	0	1	0	1	0	7	0	0	0	0	0	0	0	1	0	0	16	12	0	0	1	0	0		
State Patrol	7	7	0	0	0	0	0	0	0	0	0	0	0	0	0	0	0	0	0	0	2	0	3	2	0	0	0	0	0	0	
Box Butte County	1124	763	361	0	0	0	8	13	41	135	20	205	1	10	12	0	2	78	4	0	16	19	0	23	123	82	77	0	218	37	0
Sheriff's Office	127	99	28	0	0	0	0	5	0	13	0	7	0	1	3	0	0	12	0	1	0	0	3	4	13	0	0	65	0	0	
Alliance P.D.	987	665	332	0	0	0	8	8	41	122	20	188	1	9	9	0	2	66	4	0	15	19	0	20	113	66	77	0	152	37	0
State Patrol	10	9	1	0	0	0	0	0	0	0	0	0	0	0	0	0	0	0	0	0	0	0	0	6	3	0	0	1	0	0	
Boyd County	11	6	5	0	0	0	0	1	3	0	0	2	0	0	2	0	2	0	0	0	0	0	0	0	1	0	0	0	0	0	
Sheriff's Office*	11	6	5	0	0	0	0	1	3	0	0	2	0	0	2	0	2	0	0	0	0	0	0	0	1	0	0	0	0	0	
State Patrol	0	0	0	0	0	0	0	0	0	0	0	0	0	0	0	0	0	0	0	0	0	0	0	0	0	0	0	0	0	0	
Brown County	93	71	22	0	0	0	0	1	0	2	0	3	0	0	10	0	0	0	0	2	0	0	2	21	45	0	0	7	0	0	
Sheriff's Office	35	35	0	0	0	0	0	1	0	2	0	3	0	0	10	0	0	0	0	2	0	0	2	8	1	0	0	6	0	0	
State Patrol	58	36	22	0	0	0	0	0	0	0	0	0	0	0	0	0	0	0	0	0	0	0	13	44	0	0	1	0	0		
Buffalo County	2225	1854	371	2	1	6	1	18	36	211	20	156	1	6	226	1	22	71	7	0	18	61	0	24	548	334	165	0	234	0	65
Sheriff's Office	564	535	29	0	0	2	0	4	6	10	3	10	0	0	166	1	0	0	0	0	0	22	0	11	173	46	1	0	106	0	3
Kearney P.D.	1488	1157	331	2	1	4	1	14	30	201	17	143	1	6	60	0	16	71	6	0	18	20	0	13	326	203	165	0	118	0	52
Campus Security-KSC	30	40	0	0	0	0	0	0	0	0	0	1	0	0	0	0	0	0	0	0	0	0	0	0	39	0	0	0	0	0	
State Patrol	133	122	11	0	0	0	0	0	0	0	0	2	0	0	0	0	5	0	1	0	0	19	0	0	49	46	0	0	10	0	0
Burt County	174	150	24	0	1	0	0	1	0	8	6	16	0	0	4	0	0	1	0	0	0	3	0	2	43	22	2	0	56	0	9
Sheriff's Office	95	82	13	0	1	0	0	0	0	7	6	8	0	0	4	0	0	1	0	0	0	0	0	15	9	2	0	37	0	5	
Tekamah P.D.	69	59	10	0	0	0	0	0	0	1	0	8	0	0	0	0	0	0	0	0	0	3	0	2	25	7	0	0	19	0	4
State Patrol	10	9	1	0	0	0	0	1	0	0	0	0	0	0	0	0	0	0	0	0	0	0	3	6	0	0	0	0	0	0	
Butler County	144	80	64	0	0	1	0	0	4	14	1	9	0	0	11	0	0	19	0	0	1	8	0	28	40	1	0	5	0	2	
Sheriff's Office	35	30	5	0	0	0	0	0	4	1	1	1	0	0	9	0	0	0	0	0	1	1	0	11	5	1	0	1	0	0	
David City P.D.	90	31	59	0	0	0	0	0	0	13	0	8	0	0	2	0	0	19	0	0	1	1	0	8	32	0	0	4	0	2	
State Patrol	19	19	0	0	0	1	0	0	0	0	0	0	0	0	0	0	0	0	0	0	0	6	0	9	3	0	0	0	0	0	0

* Not a Complete 12-Month Total

ARREST DATA
BY AGENCY

	Total Arrests	Total Adult	Total Juvenile	Murder, Manslaughter	Death by Negligence	Forcible Rape	Robbery	Felony Assault	Burglary - Breaking and Entering	Larceny - Theft	Motor Vehicle Theft	Misdemeanor Assault	Arson	Forgery and Counterfeiting	Fraud - O.M.F.P.	Embezzlement	Stolen Property - Buying, Receiving, Possessing	Vandalism - Destruction of Property	Weapons - Carrying, Possessing, Etc.	Prostitution and Commercialized Vice	Sex Offenses Except Forcible Rape and Prostitution	Narcotic Drug Laws - TOTAL	Gambling - TOTAL	Offenses Against Family and Children - Nonsupport	Driving Under the Influence	Liquor Laws	Disorderly Conduct	Disturbing the Peace	Vagrancy	All Other Offenses (Except Traffic)	Curfew and Loitering Law Violations	Runaways
Cass County	699	605	84	1	0	1	0	7	15	47	1	48	3	11	122	1	7	1	9	0	9	30	0	18	119	30	10	0	188	22	0	
Sheriff's Office	370	369	1	1	0	0	6	4	4	15	1	15	1	2	120	0	6	0	0	0	4	7	0	13	32	0	0	0	167	0	0	
Plattsmouth P.D.	218	131	87	0	0	1	0	2	8	42	1	33	2	8	2	1	0	0	3	0	5	7	0	3	26	14	8	0	29	22	0	
State Patrol	111	105	6	0	0	0	0	0	3	0	0	1	0	0	0	0	1	1	6	0	0	18	0	0	61	16	2	0	2	0	0	
Cedar County	269	227	42	0	1	0	0	1	0	0	2	3	0	0	7	0	0	1	0	0	2	34	0	0	104	97	1	0	16	0	0	
Sheriff's Office	106	96	10	0	1	0	0	1	0	0	2	3	0	0	7	0	0	0	0	0	2	6	0	0	43	32	1	0	8	0	0	
State Patrol	163	131	32	0	0	0	0	0	0	0	0	0	0	0	0	0	1	0	0	0	0	28	0	0	61	65	0	0	8	0	0	
Chase County	72	60	12	0	0	0	0	1	1	3	1	1	0	0	1	0	1	2	0	0	0	5	0	0	22	30	4	0	0	0	0	
Sheriff's Office	23	21	2	0	0	0	0	1	1	2	1	0	0	0	1	0	0	2	0	0	0	4	0	0	10	2	0	0	0	0	0	
Imperial P.D.	28	24	4	0	0	0	0	1	0	1	0	1	0	0	0	0	1	0	0	0	0	0	0	0	8	13	2	0	0	0	0	
State Patrol	21	15	6	0	0	0	0	0	0	0	0	0	0	0	0	0	0	0	0	0	0	1	0	0	3	17	0	0	0	0	0	
Cherry County	152	131	21	0	0	1	0	1	1	4	0	3	1	1	2	1	2	0	1	0	0	2	0	2	65	42	13	0	10	0	0	
Sheriff's Office	26	24	2	0	0	0	0	1	0	4	0	0	0	1	2	1	1	0	0	0	0	0	0	0	0	6	0	0	10	0	0	
Valentine P.D.	90	76	14	0	0	1	0	0	1	0	0	3	1	0	0	0	1	0	1	0	0	2	0	2	40	25	13	0	0	0	0	
State Patrol	36	31	5	0	0	0	0	0	0	0	0	0	0	0	0	0	0	0	0	0	0	0	0	0	25	11	0	0	0	0	0	
Cheyenne County	328	284	62	0	0	0	2	9	3	37	0	41	0	2	11	1	1	24	1	0	4	51	0	11	39	42	21	0	20	5	1	
Sheriff's Office	72	72	0	0	0	0	2	1	1	7	0	3	0	2	10	0	1	1	0	4	16	0	7	8	1	2	0	6	0	0		
Sidney P.D.	202	151	51	0	0	0	6	2	2	30	0	37	0	0	1	1	23	0	0	0	27	0	4	24	18	19	0	3	5	1	0	
State Patrol	52	41	11	0	0	0	0	2	0	0	0	1	0	0	0	0	0	0	0	0	0	8	0	0	7	23	0	11	0	0	0	
Clay County	60	54	6	0	0	0	0	2	4	1	0	7	0	0	4	0	0	6	0	0	3	0	0	0	14	5	3	0	11	0	0	
Sheriff's Office *	56	50	6	0	0	0	0	2	4	1	0	7	0	0	4	0	0	4	0	0	3	0	0	0	13	5	3	0	10	0	0	
State Patrol	4	4	0	0	0	0	0	0	0	0	0	0	0	0	0	0	0	2	0	0	0	0	0	0	1	0	0	1	0	0		
Colfax County	369	271	98	0	0	0	3	5	8	54	1	32	0	6	28	0	4	12	3	0	1	11	0	4	41	41	24	0	66	7	18	
Sheriff's Office	97	87	10	0	0	0	1	2	4	1	9	0	3	26	0	0	0	0	3	0	0	6	0	0	8	9	4	0	22	0	0	
Schuyler P.D.	269	174	85	0	0	0	1	4	6	50	0	23	0	3	3	0	4	12	0	0	1	5	0	4	24	30	20	0	44	7	18	
State Patrol	13	10	3	0	0	0	2	0	0	0	0	0	0	0	0	0	0	0	0	0	0	0	0	0	8	2	0	0	0	0	0	
Cuming County	329	254	76	0	0	0	0	3	8	3	2	6	0	0	1	0	0	1	0	0	2	7	0	0	26	55	4	0	211	0	0	
Sheriff's Office	29	24	5	0	0	0	0	0	7	1	0	2	0	0	1	0	0	1	0	0	1	0	0	0	6	5	0	5	0	0		
West Point P.D.	262	200	62	0	0	0	0	3	1	2	0	3	0	0	0	0	0	0	0	0	1	5	0	0	8	29	4	0	206	0	0	
State Patrol	38	30	8	0	0	0	0	0	0	0	2	1	0	0	0	0	0	0	0	0	0	2	0	0	12	21	0	0	0	0		
Custer County	210	173	37	0	0	0	0	0	2	22	6	16	4	4	41	0	2	9	0	0	0	1	0	4	39	38	11	0	11	0	0	
Sheriff's Office	117	98	18	0	0	0	0	0	1	14	4	1	4	0	40	0	1	0	0	0	0	0	0	4	17	23	2	0	6	0	0	
Broken Bow P.D.	83	66	18	0	0	0	0	0	1	8	2	15	0	4	1	0	1	8	0	0	0	0	0	0	16	12	9	0	5	0	0	
State Patrol	10	9	1	0	0	0	0	0	0	0	0	0	0	0	0	0	0	0	0	0	0	1	0	0	6	3	0	0	0	0		
Dakota County	1313	1190	153	1	0	2	3	10	10	115	8	56	3	8	15	0	12	5	9	0	2	156	1	10	489	146	12	0	210	17	13	
Sheriff's Office	282	276	7	0	0	1	0	3	5	5	1	28	3	5	13	0	5	0	3	0	2	11	0	7	126	8	0	56	0	0		
So. Sioux City P.D.	441	321	120	1	0	0	3	1	5	109	7	28	0	3	2	0	6	5	3	0	0	0	0	2	23	86	12	0	115	17	13	
State Patrol	590	584	26	0	0	1	0	6	0	1	0	0	0	0	0	0	1	0	3	0	0	145	1	1	340	52	0	39	0	0		
Dawes County	353	292	71	0	0	6	1	5	8	57	22	22	1	2	4	0	2	8	1	0	0	5	0	5	66	89	14	0	32	0	0	
Sheriff's Office	63	48	15	0	0	0	0	2	2	8	14	6	0	4	0	2	3	0	0	0	0	8	0	2	4	2	1	0	8	0	0	
Chadron P.D.	226	180	46	0	0	4	1	3	6	49	4	16	1	2	0	0	5	0	0	0	0	3	0	2	28	65	13	0	24	0	0	
State Patrol	64	54	10	0	0	2	0	0	0	0	4	0	0	0	0	0	0	1	0	0	0	0	0	1	34	22	0	0	0	0		

* Not a Complete 12-Month Total

ARREST DATA BY AGENCY																															
	Total Arrests	Total Adult	Total Juvenile	Murder, Manslaughter	Death by Negligence	Forcible Rape	Robbery	Felony Assault	Burglary - Breaking and Entering	Larceny - Theft	Motor Vehicle Theft	Misdemeanor Assault	Arson	Forgery and Counterfeiting	Fraud - O.M.F.P.	Embezzlement	Stolen Property - Buying Receiving, Possessing	Vandalism - Destruction of Property	Weapons - Carrying, Possessing, Etc.	Prostitution and Commercialized Vice	Sex Offenses Except Forcible Rape and Prostitution	Narcotic Drug Laws - TOTAL	Gambling - TOTAL	Offenses Against Family and Children - Nonsupport	Driving Under the Influence	Liquor Laws	Disorderly Conduct Disturbing the Peace	Vagrancy	All Other Offenses (Except Traffic)	Curfew and Loitering Law Violations	Runaways
Dawson County	1558	1186	372	0	0	6	1	32	55	212	28	234	1	16	66	2	9	81	14	0	20	50	0	6	277	249	50	0	121	12	16
Sheriff's Office	288	241	47	0	0	3	0	4	15	18	3	26	0	1	6	0	1	12	3	0	4	14	0	1	55	94	12	0	17	0	0
Cozad P.D.	279	202	77	0	0	0	0	8	1	33	0	39	0	1	0	0	0	15	4	0	2	5	0	2	65	44	0	0	58	7	5
Gothenburg P.D.	87	59	28	0	0	1	0	2	1	17	1	21	0	1	0	2	0	0	0	2	3	0	0	5	12	11	0	3	5	0	
Lexington P.D.	758	553	205	0	0	2	1	18	38	138	24	147	1	13	61	0	8	54	6	0	12	6	0	3	91	67	26	0	38	0	4
State Patrol	146	131	15	0	0	0	0	0	0	6	0	1	0	0	0	0	0	0	1	0	0	22	0	0	71	32	1	0	5	0	7
Deuel County	36	36	0	0	0	0	0	3	0	5	0	3	0	1	1	1	0	0	0	0	0	8	0	1	3	1	1	0	8	0	0
Sheriff's Office	31	31	0	0	0	0	0	3	0	4	0	3	0	1	1	1	0	0	0	0	0	8	0	1	3	1	1	0	4	0	0
State Patrol	5	5	0	0	0	0	0	0	0	1	0	0	0	0	0	0	0	0	0	0	0	0	0	0	0	0	0	4	0	0	
Dixon County	264	220	44	0	0	1	0	0	11	5	2	15	0	0	5	0	0	14	0	0	1	21	0	3	45	40	12	0	88	0	1
Sheriff's Office	228	185	43	0	0	1	0	0	11	5	2	15	0	0	5	0	0	14	0	0	1	11	0	3	26	38	12	0	83	0	1
State Patrol	36	35	1	0	0	0	0	0	0	0	0	0	0	0	0	0	0	0	0	0	10	0	0	19	2	0	0	5	0	0	
Dodge County	1181	964	217	0	2	1	0	5	17	119	4	31	2	10	81	0	19	21	12	0	6	64	0	8	340	173	44	0	193	0	28
Sheriff's Office	470	436	34	0	2	1	0	0	3	5	0	9	0	3	57	0	10	1	4	0	2	40	0	6	150	114	0	0	63	0	0
Fremont P.D.	653	479	174	0	0	0	0	6	14	113	4	22	2	7	24	0	8	20	8	0	4	20	0	2	162	47	44	0	118	0	28
State Patrol	58	49	9	0	0	0	0	0	0	1	0	0	0	0	0	1	0	0	0	0	0	4	0	0	28	12	0	0	12	0	0
Douglas County	26876	22380	4486	27	6	113	192	266	377	3894	263	1305	52	206	622	52	746	828	802	211	246	2117	38	313	4449	1742	1496	5	6504	0	4
Sheriff's Office	1104	785	319	2	0	5	7	16	38	94	26	101	0	7	40	1	46	70	23	0	9	114	0	16	175	128	8	0	178	0	0
Omaha P.D.	24847	20807	4040	24	6	108	185	248	338	3785	236	1188	49	192	566	50	697	755	769	211	235	1886	34	297	3919	1355	1478	5	6231	0	0
Elkhorn P.D.	10	10	0	0	0	0	0	0	0	1	0	0	0	0	0	0	0	0	0	0	0	1	0	0	7	0	0	0	1	0	0
Ralston P.D.	301	233	68	1	0	0	0	1	0	6	0	11	0	2	1	0	1	2	4	0	2	16	0	0	107	120	9	0	16	0	2
Valley P.D.	51	40	11	0	0	0	0	0	1	7	1	5	3	0	0	0	0	0	0	0	0	3	0	0	18	5	0	0	6	0	2
State Patrol	563	505	58	0	0	0	0	1	0	1	0	0	0	5	15	1	2	1	6	0	0	97	4	0	223	134	1	0	72	0	0
Dundy County	52	36	16	0	0	0	0	0	1	2	0	4	0	0	0	0	0	0	0	0	0	4	0	1	16	15	0	0	9	0	0
Sheriff's Office	43	29	14	0	0	0	0	0	1	2	0	4	0	0	0	0	0	0	0	0	0	3	0	1	12	13	0	0	7	0	0
State Patrol	9	7	2	0	0	0	0	0	0	0	0	0	0	0	0	0	0	0	0	0	0	1	0	0	4	2	0	0	2	0	0
Fillmore County	72	65	7	0	0	0	0	0	5	5	2	4	0	0	9	0	1	0	0	0	0	4	0	2	24	7	2	0	7	0	0
Sheriff's Office	49	49	0	0	0	0	0	0	1	3	0	2	0	0	9	0	0	0	0	0	0	3	0	2	17	3	2	0	7	0	0
Geneva P.D.	10	4	6	0	0	0	0	0	4	2	2	2	0	0	0	0	0	0	0	0	0	0	0	0	0	0	0	0	0	0	0
State Patrol	13	12	1	0	0	0	0	0	0	0	0	0	0	0	0	1	0	0	0	0	0	1	0	0	7	4	0	0	0	0	0
Franklin County	34	31	3	0	0	0	0	0	5	2	1	1	0	0	6	0	1	0	0	0	0	2	0	1	8	5	0	0	2	0	0
Sheriff's Office	32	29	3	0	0	0	0	0	5	2	1	1	0	0	6	0	1	0	0	0	0	2	0	1	6	5	0	0	2	0	0
State Patrol	2	2	0	0	0	0	0	0	0	0	0	0	0	0	0	0	0	0	0	0	0	0	0	0	2	0	0	0	0	0	0
Frontier County	64	53	11	0	0	0	0	0	3	2	0	4	0	0	1	0	0	0	1	0	0	2	0	0	15	25	1	0	9	0	1
Sheriff's Office	40	31	9	0	0	0	0	0	2	2	0	4	0	0	1	0	0	0	0	0	0	0	0	0	8	13	1	0	8	0	1
State Patrol	24	22	2	0	0	0	0	0	1	0	0	0	0	0	0	0	0	0	1	0	0	2	0	0	7	12	0	0	1	0	0
Furnas County	136	109	27	0	0	0	2	3	5	26	1	6	1	1	5	0	0	7	1	0	0	24	0	0	31	17	2	0	4	0	0
Sheriff's Office	126	99	27	0	0	0	2	3	5	26	1	6	1	1	5	0	0	7	1	0	0	17	0	0	29	17	2	0	3	0	0
State Patrol	10	10	0	0	0	0	0	0	0	0	0	0	0	0	0	0	0	0	0	0	0	7	0	0	2	0	0	0	1	0	0
Gage County	704	555	148	1	0	2	4	3	25	113	8	67	0	1	35	2	1	1	2	0	6	24	0	8	202	109	29	0	59	0	2
Sheriff's Office	185	157	28	0	0	0	3	2	10	19	4	13	0	1	30	0	0	0	1	0	2	7	0	6	35	26	1	0	25	0	0
Beatrice P.D.	401	283	118	1	0	2	1	1	13	94	4	53	0	0	5	2	1	1	1	0	4	1	0	2	85	71	27	0	30	0	2
Wymore P.D.	12	12	0	0	0	0	0	0	2	0	0	1	0	0	0	0	0	0	0	0	0	0	0	0	6	1	1	0	1	0	0
State Patrol	106	104	2	0	0	0	0	0	0	0	0	0	0	0	0	0	0	0	0	0	0	16	0	0	76	11	0	0	3	0	0

* Not a Complete 12-Month Total

ARREST DATA BY AGENCY	Total Arrests	Total Adult	Total Juvenile	Murder, Manslaughter	Death by Negligence	Forcible Rape	Robbery	Felony Assault	Burglary - Breaking and Entering	Larceny - Theft	Motor Vehicle Theft	Misdemeanor Assault	Arson	Forgery and Counterfeiting	Fraud - O.M.F.P.	Embezzlement	Stolen Property - Buying	Receiving, Possessing	Vandalism - Destruction of Property	Weapons - Carrying, Possessing, Etc.	Prostitution and Commercialized Vice	Sex Offenses Except Forcible Rape and Prostitution	Narcotic Drug Laws - TOTAL	Gambling - TOTAL	Offenses Against Family and Children - Non-support	Driving Under the Influence	Liquor Laws	Disorderly Conduct	Vagrancy	All Other Offenses (Except Traffic)	Curfew and Loitering	Law Violations	Runaways
Garden County Sheriff's Office	38	36	2	0	0	1	0	4	4	1	0	1	0	0	1	0	0	0	0	0	0	0	7	0	0	12	2	1	0	4	0	0	
Garden County State Patrol	5	5	0	0	0	0	0	0	0	0	0	0	0	0	0	0	0	0	0	0	0	0	2	0	0	2	0	0	0	1	0	0	
Garfield County Sheriff's Office*	27	20	7	0	0	0	0	0	0	0	0	2	0	0	0	0	0	0	0	0	0	0	0	0	0	2	6	0	0	16	0	1	
Garfield County State Patrol	26	19	7	0	0	0	0	0	0	0	0	2	0	0	0	0	0	0	0	0	0	0	0	0	0	1	6	0	0	15	0	1	
Gosper County Sheriff's Office	60	45	15	0	0	0	0	0	0	13	0	5	0	0	2	0	2	0	0	1	0	2	0	0	0	6	28	1	0	0	0	0	
Gosper County State Patrol	57	42	15	0	0	0	0	0	0	13	0	5	0	0	2	0	2	0	0	1	0	1	0	0	0	4	28	1	0	0	0	0	
Grant County Sheriff's Office	0	0	0	0	0	0	0	0	0	0	0	0	0	0	0	0	0	0	0	0	0	0	4	0	0	0	0	0	0	0	0	0	
Grant County State Patrol	0	0	0	0	0	0	0	0	0	0	0	0	0	0	0	0	0	0	0	0	0	0	4	0	0	0	0	0	0	0	0	0	
Greeley County Sheriff's Office*	9	3	6	0	0	0	0	0	0	0	0	0	0	0	0	0	0	0	0	0	0	0	1	0	0	2	5	0	0	0	0	0	
Greeley County State Patrol	0	0	0	0	0	0	0	0	0	0	0	0	0	0	0	0	0	0	0	0	0	0	0	0	0	0	0	0	0	0	0	0	
Hall County Sheriff's Office	4987	4031	956	0	0	10	12	61	124	806	7	527	5	114	134	0	49	200	42	0	50	260	0	17	1037	266	168	1	1012	66	48		
Hall County Sheriff's Office	856	839	17	0	0	3	4	12	14	14	1	33	0	6	128	0	6	6	3	0	6	54	0	4	172	30	0	1	372	0	0		
Hall County State Patrol	3776	2863	913	0	0	8	9	48	112	781	6	493	5	106	6	0	42	193	34	0	44	102	0	13	716	182	168	0	604	66	48		
Hamilton County Sheriff's Office	294	262	32	0	0	0	0	1	6	21	0	13	0	0	16	0	5	4	3	0	1	24	0	3	84	26	3	0	73	1	1		
Hamilton County Sheriff's Office	116	114	2	0	0	0	0	1	6	5	0	5	0	0	15	0	0	2	0	0	0	5	0	3	47	0	0	0	27	0	0		
Hamilton County State Patrol	99	76	23	0	0	0	0	0	0	15	0	8	0	0	1	0	1	2	0	0	1	3	0	0	10	16	3	0	37	1	1		
Harian County Sheriff's Office	107	80	27	0	0	0	0	2	0	8	0	3	0	0	1	0	1	3	0	0	0	4	0	0	23	53	2	0	6	0	1		
Harian County State Patrol	92	65	27	0	0	0	0	1	0	8	0	3	0	0	0	0	1	3	0	0	0	0	0	0	18	52	2	0	2	0	1		
Hayes County Sheriff's Office	19	16	3	0	0	0	0	3	2	1	0	1	0	0	0	0	0	0	2	0	0	2	0	0	1	4	0	0	3	0	0		
Hayes County State Patrol	17	14	3	0	0	0	0	0	2	1	0	1	0	0	0	0	0	0	0	0	0	0	0	0	0	3	0	0	0	0	0		
Hitchcock County Sheriff's Office	33	29	4	0	0	0	0	0	2	0	0	0	0	0	0	0	0	0	0	0	0	0	1	0	0	7	2	0	3	0	0		
Hitchcock County State Patrol	8	8	0	0	0	0	0	0	2	0	0	0	0	0	0	0	0	0	0	0	0	0	0	0	0	1	0	0	1	0	0		
Holt County Sheriff's Office	155	128	27	0	0	2	0	0	5	10	0	18	0	1	7	0	0	2	2	0	2	4	0	12	32	34	8	0	14	0	2		
Holt County Sheriff's Office	31	31	0	0	0	1	0	0	0	1	0	2	0	0	6	0	0	0	0	0	0	2	0	4	9	0	1	0	6	0	0		
Holt County State Patrol	83	61	22	0	0	1	0	0	6	9	0	16	0	1	1	0	0	2	2	0	2	2	0	8	7	9	7	0	8	0	2		
Hooker County Sheriff's Office	41	36	5	0	0	0	0	0	0	0	0	0	0	0	0	0	0	0	0	0	0	0	0	0	16	25	0	0	0	0	0		
Hooker County State Patrol	2	2	0	0	0	0	0	0	0	0	0	0	0	0	0	0	0	0	0	0	0	0	0	0	2	0	0	0	0	0	0		
Howard County Sheriff's Office	72	58	14	0	0	0	0	1	1	1	1	0	0	0	4	0	0	1	0	0	0	0	1	0	1	17	33	0	0	11	0	0	
Howard County State Patrol	52	43	9	0	0	0	0	1	1	0	0	0	0	0	4	0	0	0	0	0	0	0	1	0	1	7	26	0	0	11	0	0	
	20	15	5	0	0	0	0	0	0	1	1	0	0	0	0	0	0	1	0	0	0	0	0	0	0	10	7	0	0	0	0		

* Not a Complete 12-Month Total

ARREST DATA BY AGENCY																															
	Total Arrests	Total Adult	Total Juvenile	Murder, Manslaughter	Death by Negligence	Forcible Rape	Robbery	Felony Assault	Burglary - Breaking and Entering	Larceny - Theft	Motor Vehicle Theft	Misdemeanor Assault	Arson	Forgery and Counterfeiting	Fraud - O.M.F.P.	Embezzlement	Stolen Property - Buying Receiving, Possessing	Vandalism - Destruction of Property	Weapons - Carrying, Possessing, Etc.	Prostitution and Commercialized Vice	Sex Offenses Except Forcible Rape and Prostitution	Narcotic Drug Laws - TOTAL	Gambling - TOTAL	Offenses Against Family and Children - Non-support	Driving Under the Influence	Liquor Laws	Disorderly Conduct Disturbing the Peace	Vagrancy	All Other Offenses (Except Traffic)	Curfew and Loitering Law Violations	Runaways
Jefferson County	146	116	30	0	0	0	0	3	4	19	5	14	0	0	2	0	2	0	0	0	4	9	0	0	33	37	5	0	8	0	1
Sheriff's Office	33	32	1	0	0	0	0	1	0	2	0	3	0	0	0	0	0	0	0	1	2	0	0	16	5	1	0	2	0	0	
Fairbury P.D.	92	64	28	0	0	0	0	2	4	17	5	11	0	0	2	0	2	0	0	3	1	0	0	11	23	4	0	6	0	1	
State Patrol	21	20	1	0	0	0	0	0	0	0	0	0	0	0	0	0	0	0	0	0	6	0	0	6	8	0	0	0	0	0	
Johnson County	132	122	10	0	0	0	0	0	0	3	0	2	0	4	23	0	0	0	0	0	0	7	0	12	22	23	2	0	34	0	0
Sheriff's Office	90	86	4	0	0	0	0	0	0	2	0	2	0	3	23	0	0	0	0	0	2	0	12	9	4	2	0	31	0	0	
Tecumseh P.D.	12	10	2	0	0	0	0	0	0	0	0	0	0	0	0	0	0	0	0	0	1	0	0	3	8	0	0	0	0	0	
State Patrol	30	26	4	0	0	0	0	0	0	1	0	0	0	1	0	0	0	0	0	0	4	0	0	10	11	0	0	3	0	0	
Kearney County	105	75	30	0	0	0	0	2	1	13	0	13	0	1	1	0	0	9	0	0	1	5	0	0	16	19	1	0	20	0	3
Sheriff's Office	44	30	14	0	0	0	0	0	0	4	0	5	0	1	1	0	0	5	0	0	1	1	0	5	12	1	0	9	0	0	
Minden P.D.	51	35	16	0	0	0	0	2	1	9	0	8	0	0	0	0	0	4	0	0	1	3	0	6	3	0	0	11	0	3	
State Patrol	10	10	0	0	0	0	0	0	0	0	0	0	0	0	0	0	0	0	0	0	1	0	0	5	4	0	0	0	0	0	
Keith County	511	435	76	0	0	1	0	3	4	25	2	37	0	1	18	0	3	10	2	0	3	60	0	4	112	110	10	4	102	0	0
Sheriff's Office	128	113	15	0	0	0	0	1	1	3	0	4	0	0	17	0	0	0	1	0	3	9	0	4	35	42	5	0	3	0	0
Ogallala P.D.	210	160	50	0	0	0	0	1	3	22	2	33	0	1	1	0	1	8	0	0	2	0	0	32	32	6	4	63	0	0	
State Patrol	173	162	11	0	0	1	0	1	0	0	0	0	0	0	0	2	2	1	0	0	48	0	0	45	36	0	0	36	0	0	
Keya Paha County	9	2	7	0	0	0	0	0	1	1	0	0	0	0	0	0	0	0	0	1	0	0	0	4	2	0	0	0	0	0	
Sheriff's Office	9	2	7	0	0	0	0	0	1	1	0	0	0	0	0	0	0	0	0	1	0	0	0	4	2	0	0	0	0	0	
State Patrol	0	0	0	0	0	0	0	0	0	0	0	0	0	0	0	0	0	0	0	0	0	0	0	0	0	0	0	0	0	0	
Kimball County	99	69	30	0	0	1	0	1	3	15	1	9	0	1	4	0	0	1	1	0	1	10	0	1	12	26	1	0	11	0	0
Sheriff's Office*	8	8	0	0	0	0	0	0	0	0	0	1	0	0	1	0	0	0	0	0	0	2	0	1	2	0	0	0	1	0	0
Kimball P.D.	73	43	30	0	0	1	0	1	3	15	1	8	0	1	3	0	0	1	1	0	1	1	0	5	22	1	0	8	0	0	
State Patrol	18	18	0	0	0	0	0	0	0	0	0	0	0	0	0	0	0	0	0	0	7	0	0	5	4	0	0	2	0	0	
Knox County	238	154	84	1	0	0	0	4	21	7	0	23	0	0	1	0	0	15	0	0	1	4	0	2	39	95	11	0	14	0	0
Sheriff's Office	204	131	73	1	0	0	0	4	21	7	0	23	0	0	1	0	0	15	0	0	1	2	0	2	31	71	11	0	14	0	0
State Patrol	34	23	11	0	0	0	0	0	0	0	0	0	0	0	0	0	0	0	0	0	2	0	0	8	24	0	0	0	0	0	
Lancaster County	17632	13917	3715	15	0	31	63	170	285	1672	44	2563	44	131	224	1	255	902	179	0	164	704	10	374	1833	1415	1539	0	4964	0	0
Sheriff's Office	1089	878	191	5	0	2	2	6	26	65	5	99	5	2	6	0	18	2	12	0	23	57	0	14	207	75	64	0	394	0	0
Lincoln P.D.	15529	12075	3453	9	0	29	61	160	259	1580	36	2435	39	123	206	0	227	884	156	0	136	469	10	358	1208	1168	1474	0	4502	0	0
Campus Police - UNL	145	127	18	0	0	0	0	1	0	35	1	27	0	2	5	0	8	16	1	0	3	2	0	7	8	10	0	19	0	0	
State Patrol	889	836	53	1	0	0	0	3	0	2	2	2	0	4	7	1	2	0	10	0	2	176	0	2	461	164	1	0	49	0	0
Lincoln County	2600	2134	466	6	1	7	3	41	63	330	27	345	1	21	60	4	27	101	42	1	30	116	0	18	282	342	247	0	410	40	35
Sheriff's Office	276	248	28	0	0	3	0	9	15	14	3	34	0	2	29	0	1	0	2	0	5	17	0	7	53	17	4	0	61	0	0
North Platte P.D.	2005	1602	403	6	0	4	3	31	48	315	24	310	1	19	31	4	20	101	32	1	25	22	0	11	157	211	243	0	311	40	35
State Patrol	319	284	35	0	1	0	0	1	0	1	0	1	0	0	0	0	6	0	8	0	0	77	0	0	72	114	0	0	38	0	0
Logan County	0	0	0	0	0	0	0	0	0	0	0	0	0	0	0	0	0	0	0	0	0	0	0	0	0	0	0	0	0	0	0
Sheriff's Office	0	0	0	0	0	0	0	0	0	0	0	0	0	0	0	0	0	0	0	0	0	0	0	0	0	0	0	0	0	0	0
State Patrol	0	0	0	0	0	0	0	0	0	0	0	0	0	0	0	0	0	0	0	0	0	0	0	0	0	0	0	0	0	0	0
Loup County	0	0	0	0	0	0	0	0	0	0	0	0	0	0	0	0	0	0	0	0	0	0	0	0	0	0	0	0	0	0	0
Sheriff's Office	0	0	0	0	0	0	0	0	0	0	0	0	0	0	0	0	0	0	0	0	0	0	0	0	0	0	0	0	0	0	0
State Patrol	0	0	0	0	0	0	0	0	0	0	0	0	0	0	0	0	0	0	0	0	0	0	0	0	0	0	0	0	0	0	0
McPherson County	1	1	0	0	0	0	0	1	0	0	0	0	0	0	0	0	0	0	0	0	0	0	0	0	0	0	0	0	0	0	0
Sheriff's Office	0	0	0	0	0	0	0	0	0	0	0	0	0	0	0	0	0	0	0	0	0	0	0	0	0	0	0	0	0	0	0
State Patrol	1	1	0	0	0	0	0	1	0	0	0	0	0	0	0	0	0	0	0	0	0	0	0	0	0	0	0	0	0	0	0

* Not a Complete 12-Month Total

ARREST DATA BY AGENCY																															
	Total Arrests	Total Adult	Total Juvenile	Murder, Manslaughter	Death by Negligence	Forcible Rape	Robbery	Felony Assault	Burglary - Breaking and Entering	Larceny - Theft	Motor Vehicle Theft	Misdemeanor Assault	Arson	Forgery and Counterfeiting	Fraud - O.M.F.P.	Embezzlement	Stolen Property - Buying, Receiving, Possessing	Vandalism - Destruction of Property	Weapons - Carrying, Possessing, Etc.	Prostitution and Commercialized Vice	Sex Offenses Except Forcible Rape and Prostitution	Narcotic Drug Laws - TOTAL	Gambling - TOTAL	Offenses Against Family and Children - Nonsupport	Driving Under the Influence	Liquor Laws	Disorderly Conduct Disturbing the Peace	Vagrancy	All Other Offenses (Except Traffic)	Curfew and Loitering Law Violations	Runaways
Madison County Sheriff's Office	1433	1134	299	0	0	10	0	13	19	225	5	87	0	2	97	0	12	45	6	0	9	43	0	15	370	168	51	0	189	57	10
Norfolk P.D.	977	730	247	0	0	9	0	10	10	217	4	68	0	1	67	0	5	44	3	0	8	10	0	3	41	26	2	0	26	0	8
Madison P.D.	No Reports Submitted																														
State Patrol	261	239	22	0	0	0	0	2	3	0	0	3	0	0	1	0	5	1	0	0	0	13	0	0	161	59	0	0	13	0	0
Merrick County Sheriff's Office	181	164	27	0	1	0	0	2	8	26	3	21	0	0	12	1	0	0	1	0	1	8	0	10	48	13	3	0	23	0	0
Central City P.D.	74	50	24	0	0	0	0	2	4	1	0	5	0	0	12	0	0	0	0	0	2	0	9	26	3	3	0	18	0	0	
State Patrol	20	18	2	0	0	0	0	0	0	0	0	0	0	0	1	0	0	0	0	1	4	0	0	10	2	0	0	2	0	0	
Morrill County Sheriff's Office	83	67	16	0	0	0	0	0	3	9	0	7	0	0	4	0	3	0	0	0	1	13	0	1	20	14	0	0	8	0	0
State Patrol	49	44	5	0	0	0	0	0	3	9	0	7	0	0	4	0	1	0	0	0	1	2	0	1	13	1	0	0	7	0	0
State Patrol	34	23	11	0	0	0	0	0	0	0	0	0	0	0	0	0	2	0	0	0	0	11	0	0	7	13	0	0	1	0	0
Nance County Sheriff's Office*	31	29	2	0	0	0	1	1	4	0	0	1	0	0	2	0	0	0	0	0	0	0	0	0	8	12	0	0	2	0	0
State Patrol	31	29	2	0	0	0	1	1	4	0	0	1	0	0	2	0	0	0	0	0	0	0	0	8	12	0	0	2	0	0	
State Patrol	0	0	0	0	0	0	0	0	0	0	0	0	0	0	0	0	0	0	0	0	0	0	0	0	0	0	0	0	0	0	
Nemaha County Sheriff's Office *	174	155	19	0	0	0	0	2	0	6	2	6	0	0	1	0	1	1	1	0	0	23	1	2	55	61	1	0	10	0	1
Auburn P.D.	61	49	12	0	0	0	0	2	0	0	0	3	0	0	0	1	0	0	0	0	0	0	0	14	36	0	0	5	0	0	
State Patrol	49	44	5	0	0	0	0	0	0	5	2	3	0	0	1	0	0	1	0	0	0	5	0	2	17	11	1	0	0	0	1
State Patrol	64	62	2	0	0	0	0	0	0	1	0	0	0	0	0	0	0	1	0	0	0	18	1	0	24	14	0	0	5	0	0
Nuckolls County Sheriff's Office	105	88	17	0	0	0	0	1	4	5	0	0	0	2	8	0	1	0	0	0	0	12	0	3	29	38	1	1	0	0	0
Superior P.D.	76	61	15	0	0	0	0	0	4	4	0	0	0	2	8	0	1	0	0	0	0	11	0	3	16	27	0	0	0	0	0
State Patrol	12	12	0	0	0	0	0	1	0	1	0	0	0	0	0	0	0	0	0	0	0	0	0	0	8	0	1	1	0	0	0
State Patrol	17	15	2	0	0	0	0	0	0	0	0	0	0	0	0	0	0	0	0	0	0	1	0	0	5	11	0	0	0	0	0
Otoe County Sheriff's Office	553	430	123	0	0	1	6	9	49	50	3	23	0	19	41	1	5	21	2	0	4	25	0	12	136	72	22	0	43	3	6
Nebraska City P.D.	143	140	3	0	0	0	1	1	6	1	0	2	0	7	40	1	0	0	0	2	6	0	4	50	2	0	0	20	0	0	
Syracuse P.D.	290	179	101	0	0	1	5	8	36	47	3	20	0	12	0	0	18	1	0	2	2	0	8	37	35	22	0	14	3	6	
State Patrol	34	19	15	0	0	0	0	0	7	2	0	1	0	0	1	0	5	3	0	0	3	0	0	4	8	0	0	0	0	0	
State Patrol	96	92	4	0	0	0	0	0	0	0	0	0	0	0	0	0	0	1	0	0	14	0	0	45	27	0	0	9	0	0	
Pawnee County Sheriff's Office	38	34	4	0	0	1	0	2	2	0	0	3	0	0	2	0	0	0	0	0	0	7	1	0	11	6	0	0	3	0	0
State Patrol	25	21	4	0	0	0	0	2	2	0	0	3	0	0	2	0	0	0	0	0	1	0	0	9	6	0	0	0	0	0	
State Patrol	13	13	0	0	0	1	0	0	0	0	0	0	0	0	0	0	0	0	0	0	6	1	0	2	0	0	0	3	0	0	
Perkins County Sheriff's Office	24	19	5	0	0	0	0	1	0	1	1	3	0	0	0	0	0	5	0	0	0	1	0	0	11	0	0	0	1	0	0
State Patrol	23	18	5	0	0	0	0	1	0	1	1	3	0	0	0	0	5	0	0	0	1	0	0	10	0	0	0	1	0	0	
State Patrol	1	1	0	0	0	0	0	0	0	0	0	0	0	0	0	0	0	0	0	0	0	0	0	1	0	0	0	0	0	0	
Phelps County Sheriff's Office	264	202	62	0	0	0	0	1	3	27	1	44	4	0	1	1	4	9	3	1	4	8	0	0	51	64	5	0	33	0	0
Holdrege P.D.	33	33	0	0	0	0	0	0	0	7	0	1	0	0	0	0	1	0	0	0	0	2	0	0	14	1	0	0	7	0	0
State Patrol	210	148	62	0	0	0	0	1	3	20	1	43	4	0	1	0	3	8	3	0	4	3	0	0	25	63	5	0	23	0	0
State Patrol	21	21	0	0	0	0	0	0	0	0	0	0	0	0	1	0	1	0	1	0	3	0	0	12	0	0	0	3	0	0	
Pierce County Sheriff's Office	162	145	17	1	0	0	0	1	8	0	1	8	0	0	14	0	2	1	1	0	2	5	0	1	76	18	4	0	15	4	0
Pierce P.D.	84	81	3	1	0	0	0	1	4	0	1	4	0	0	13	0	2	0	0	0	2	0	0	1	41	3	2	0	9	0	0
Plainview P.D.	16	16	0	0	0	0	0	0	1	0	0	2	0	0	0	0	0	0	0	0	0	0	0	0	11	0	0	0	2	0	0
State Patrol	24	12	12	0	0	0	0	0	3	0	0	2	0	0	1	0	0	1	0	0	0	0	0	0	1	8	2	0	2	4	0
State Patrol	38	36	2	0	0	0	0	0	0	0	0	0	0	0	0	0	0	1	0	0	5	0	0	23	7	0	0	2	0	0	

ARREST DATA BY AGENCY	Total Arrests			Arrest Categories																											
	Total Adult	Total Juvenile	Total	Murder, Manslaughter	Death by Negligence	Forcible Rape	Robbery	Felony Assault	Burglary - Breaking and Entering	Larceny - Theft	Motor Vehicle Theft	Misdemeanor Assault	Arson	Forgery and Counterfeiting	Fraud - O.M.F.P.	Embezzlement	Stolen Property - Buying Receiving, Possessing	Vandalism - Destruction of Property	Weapons - Carrying, Possessing, Etc.	Prostitution and Commercialized Vice	Sex Offenses Except Forcible Rape and Prostitution	Narcotic Drug Laws - TOTAL	Gambling - TOTAL	Offenses Against Family and Children - Nonsupport	Driving Under the Influence	Liquor Laws	Disorderly Conduct Disturbing the Peace	Vagrancy	All Other Offenses (Except Traffic)	Curfew and Loitering Law Violations	Runaways
Platte County	923	594	329	0	0	2	3	9	6	107	3	66	0	4	1	0	22	62	12	0	4	21	0	8	182	246	17	0	40	30	88
Sheriff's Office	274	179	95	0	0	1	2	2	2	12	2	22	0	0	0	7	6	3	0	4	2	0	7	41	131	1	0	29	0	0	
Columbus P.D.	579	357	222	0	0	1	1	7	4	95	1	44	0	4	1	0	15	46	9	0	0	10	0	1	105	93	16	0	8	30	88
State Patrol	70	58	12	0	0	0	0	0	0	0	0	0	0	0	0	0	0	0	0	0	0	9	0	0	36	22	0	0	3	0	0
Polk County	32	27	5	0	0	0	0	0	1	2	0	2	0	0	3	0	0	0	0	0	0	3	0	1	12	2	0	0	6	0	0
Sheriff's Office	31	26	5	0	0	0	0	0	1	2	0	2	0	0	3	0	0	0	0	0	0	2	0	1	12	2	0	0	6	0	0
State Patrol	1	1	0	0	0	0	0	0	0	0	0	0	0	0	0	0	0	0	0	0	0	1	0	0	0	0	0	0	0	0	0
Red Willow County	566	413	153	0	0	0	0	0	6	65	3	43	0	3	3	0	2	16	1	0	0	19	0	0	132	221	6	0	6	38	2
Sheriff's Office	14	10	4	0	0	0	0	0	0	3	3	2	0	0	0	0	0	0	0	0	0	1	0	0	1	0	4	0	0	0	0
McCook P.D.	474	331	143	0	0	0	0	0	6	62	0	41	0	3	2	0	1	16	1	0	0	12	0	0	88	200	2	0	0	38	2
State Patrol	78	72	6	0	0	0	0	0	0	0	0	0	0	1	0	1	0	0	0	0	0	6	0	0	43	21	0	0	6	0	0
Richardson County	178	145	33	0	0	0	0	1	4	27	1	16	1	1	9	0	1	10	0	1	0	14	0	24	36	5	11	0	13	3	0
Sheriff's Office*	43	43	0	0	0	0	0	1	0	2	0	1	0	0	7	0	0	0	0	0	0	1	0	21	7	1	0	0	2	0	0
Falls City P.D.*	104	73	31	0	0	0	0	0	1	25	1	15	1	1	2	0	1	10	0	1	0	7	0	3	14	1	11	0	7	3	0
State Patrol	31	29	2	0	0	0	0	0	3	0	0	0	0	0	0	0	0	0	0	0	0	6	0	0	15	3	0	0	4	0	0
Rock County	32	27	5	0	0	0	0	0	1	1	1	0	0	0	0	1	1	0	0	0	0	5	0	0	10	11	0	0	1	0	0
Sheriff's Office	12	12	0	0	0	0	0	0	1	1	1	0	0	0	0	1	1	0	0	0	0	1	0	0	5	0	0	0	1	0	0
State Patrol	20	15	5	0	0	0	0	0	0	0	0	0	0	0	0	0	0	0	0	0	0	4	0	0	5	11	0	0	0	0	0
Saline County	249	200	49	0	0	1	0	1	5	35	2	40	1	2	7	0	0	5	3	0	3	37	0	4	33	30	15	0	17	1	7
Sheriff's Office	96	90	6	0	0	0	0	1	2	12	1	4	0	1	7	0	0	2	1	0	3	35	0	4	12	7	3	0	1	0	0
Wilber P.D.	15	9	6	0	0	0	0	0	2	2	0	1	0	0	0	0	0	0	0	0	0	0	0	0	1	3	1	0	5	0	0
Crete P.D.	126	91	35	0	0	1	0	0	1	21	0	35	1	1	0	0	0	3	2	0	0	2	0	0	15	14	11	0	11	1	7
State Patrol	12	10	2	0	0	0	0	0	0	0	1	0	0	0	0	0	0	0	0	0	0	0	0	0	5	6	0	0	0	0	0
Sarpy County	4274	2950	1324	1	2	3	5	29	78	667	14	379	12	23	76	1	76	168	51	0	46	189	4	95	899	377	155	0	747	141	37
Sheriff's Office	1079	861	218	0	2	2	0	8	33	68	4	81	6	6	63	0	18	29	11	0	20	73	2	38	153	81	48	0	332	0	1
Bellevue P.D.	1623	1056	568	1	0	1	4	12	33	363	2	162	2	8	12	0	45	47	23	0	20	51	0	17	365	147	68	0	158	82	0
Papillion P.D.	413	233	180	0	0	0	0	3	3	66	4	29	2	0	0	0	2	35	3	0	6	0	0	13	93	63	9	0	42	36	4
LaVista P.D.	910	564	346	0	0	0	1	5	9	164	4	106	2	9	0	0	6	57	12	0	0	10	0	27	168	50	30	0	195	23	32
State Patrol	249	237	12	0	0	0	0	1	0	6	0	1	0	0	1	1	4	0	2	0	0	55	2	0	120	36	0	0	20	0	0
Saunders County	488	389	99	0	0	1	0	1	27	39	9	24	10	2	14	0	4	3	4	0	2	17	0	7	134	112	3	0	72	0	3
Sheriff's Office	206	172	34	0	0	0	0	0	18	8	2	6	10	0	13	0	3	3	1	0	2	6	0	6	63	41	0	0	24	0	0
Wahoo P.D.	82	49	33	0	0	0	0	0	7	22	3	6	0	2	1	0	1	0	2	0	0	0	0	0	12	22	0	0	1	0	3
Ashland P.D.	133	112	21	0	0	1	0	1	2	9	4	10	0	0	0	0	0	0	0	0	0	1	0	1	30	28	3	0	43	0	0
State Patrol	67	56	11	0	0	0	0	0	0	0	0	2	0	0	0	0	0	0	1	0	0	10	0	0	29	21	0	0	4	0	0
Scotts Bluff County	2043	1730	313	2	0	11	2	27	31	310	9	139	2	11	48	0	2	44	13	0	13	88	0	14	458	415	153	0	244	1	6
Sheriff's Office	335	335	0	2	0	3	2	7	11	10	3	18	0	1	43	0	1	0	0	0	8	11	0	11	45	4	6	0	149	0	0
Scottsbluff P.D.	968	782	186	0	0	3	0	15	14	178	2	64	2	5	3	0	1	29	6	0	3	37	0	0	207	262	114	0	23	0	0
Gering P.D.	401	301	100	0	0	5	0	4	6	113	1	54	0	4	2	0	0	13	5	0	2	7	0	3	86	35	23	0	33	0	6
Mitchell P.D.	92	80	12	0	0	0	0	0	0	8	1	2	0	0	0	0	0	2	1	0	0	3	0	0	15	16	10	0	33	1	0
State Patrol	247	232	15	0	0	0	0	1	0	1	2	1	0	1	0	0	0	0	1	0	0	30	0	0	106	98	0	0	6	0	0
Seward County	491	438	53	0	0	1	0	10	13	20	5	45	1	1	44	0	4	7	2	0	6	26	0	6	117	121	2	0	58	0	2
Sheriff's Office	108	106	2	0	0	1	0	0	4	1	2	11	1	0	31	0	0	0	1	0	2	3	0	3	30	5	1	0	12	0	0
Seward P.D.	111	91	20	0	0	0	0	3	3	11	2	23	0	1	12	0	0	4	0	0	0	1	0	0	12	14	1	0	21	0	2
Milford P.D.	153	130	23	0	0	0	0	6	5	1	1	11	0	0	1	0	0	3	0	0	4	1	0	1	25	78	0	0	16	0	0
State Patrol	119	111	8	0	0	0	0	1	1	6	0	0	0	0	0	0	4	0	1	0	0	21	0	2	50	24	0	0	9	0	0

* Not a Complete 12-Month Total

ARREST DATA BY AGENCY	ARREST DATA BY AGENCY																														
	Total Arrests	Total Adult	Total Juvenile	Murder, Manslaughter	Death by Negligence	Forcible Rape	Robbery	Felony Assault	Burglary - Breaking and Entering	Larceny - Theft	Motor Vehicle Theft	Misdemeanor Assault	Arson	Forgery and Counterfeiting	Fraud - O.M.F.P.	Embezzlement	Stolen Property - Buying Receiving, Possessing	Vandalism - Destruction of Property	Weapons - Carrying, Possessing, Etc.	Prostitution and Commercialized Vice	Sex Offenses Except Forcible Rape and Prostitution	Narcotic Drug Laws - TOTAL	Gambling - TOTAL	Offenses Against Family and Children - Nonsupport	Driving Under the Influence	Liquor Laws	Disorderly Conduct Disturbing the Peace	Vagrancy	All Other Offenses (except Traffic)	Curfew and Loitering Law Violations	Runaways
Sheridan County	549	415	134	0	0	2	0	5	27	59	3	23	0	2	12	0	9	21	2	0	0	6	0	14	153	129	26	0	66	0	0
Sheriff's Office	199	144	55	0	0	0	0	0	20	18	1	7	0	1	6	0	2	2	0	0	0	0	0	6	48	68	16	0	15	0	0
Gordon P.D.	262	188	74	0	0	2	0	6	6	39	2	16	0	1	7	0	7	16	2	0	0	6	0	7	47	51	10	0	38	0	0
State Patrol	88	83	6	0	0	0	0	0	1	2	0	0	0	0	0	0	3	0	0	0	0	0	1	58	20	0	0	3	0	0	
Sherman County	52	41	11	0	0	0	0	0	0	1	0	1	0	0	7	0	0	7	0	0	4	0	0	2	2	22	3	0	2	1	0
Sheriff's Office	33	26	7	0	0	0	0	0	0	1	0	1	0	0	7	0	0	7	0	0	3	0	0	2	1	5	3	0	2	1	0
State Patrol	19	15	4	0	0	0	0	0	0	0	0	0	0	0	0	0	0	0	0	1	0	0	0	1	17	0	0	0	0	0	
Sioux County	4	4	0	0	0	0	0	0	0	0	0	0	0	0	0	0	0	0	0	0	0	1	0	0	2	1	0	0	0	0	
Sheriff's Office	0	0	0	0	0	0	0	0	0	0	0	0	0	0	0	0	0	0	0	0	0	0	0	0	0	0	0	0	0	0	
State Patrol	4	4	0	0	0	0	0	0	0	0	0	0	0	0	0	0	0	0	0	0	0	1	0	0	2	1	0	0	0	0	
Stanton County	261	204	57	0	0	1	0	1	13	13	0	7	1	0	0	0	0	11	6	0	0	7	0	5	62	102	3	0	29	0	0
Sheriff's Office	203	161	42	0	0	1	0	0	8	7	0	5	1	0	0	0	0	6	6	0	0	7	0	2	48	84	2	0	28	0	0
Stanton P.D.	36	24	12	0	0	0	0	1	5	6	0	0	0	0	0	0	5	0	0	0	0	0	3	5	7	1	0	3	0	0	
State Patrol	22	19	3	0	0	0	0	0	0	0	0	2	0	0	0	0	0	0	0	0	0	0	0	9	11	0	0	0	0	0	
Thayer County	189	160	29	0	0	0	0	1	3	3	2	5	3	0	10	0	8	0	2	0	2	12	0	1	44	72	4	0	17	0	0
Sheriff's Office	152	124	28	0	0	0	0	1	3	3	2	5	3	0	10	0	4	0	0	0	2	3	0	1	33	66	4	0	12	0	0
State Patrol	37	36	1	0	0	0	0	0	0	0	0	0	0	0	0	4	0	2	0	0	9	0	0	11	6	0	0	5	0	0	
Thomas County	1	1	0	0	0	0	0	0	0	0	0	0	0	0	0	0	0	0	0	0	0	0	0	1	0	0	0	0	0	0	
Sheriff's Office	0	0	0	0	0	0	0	0	0	0	0	0	0	0	0	0	0	0	0	0	0	0	0	0	0	0	0	0	0	0	
State Patrol	1	1	0	0	0	0	0	0	0	0	0	0	0	0	0	0	0	0	0	0	0	0	0	1	0	0	0	0	0	0	
Thurston County	100	96	4	0	0	0	0	1	0	0	0	1	0	0	0	0	0	0	0	0	0	3	0	0	90	5	0	0	0	0	
Sheriff's Office	74	73	1	0	0	0	0	1	0	0	0	1	0	0	0	0	0	0	0	0	0	1	0	0	69	2	0	0	0	0	
State Patrol	26	23	3	0	0	0	0	0	0	0	0	0	0	0	0	0	0	0	0	0	0	2	0	0	21	3	0	0	0	0	
Valley County	53	50	3	0	0	0	0	5	2	3	1	8	1	1	0	0	0	5	0	0	1	0	0	0	4	8	3	0	11	0	0
Sheriff's Office	1	1	0	0	0	0	0	0	0	0	0	0	0	0	0	0	0	0	0	1	0	0	0	0	0	0	0	0	0	0	
Ord P.D.	47	44	3	0	0	0	0	4	2	2	1	7	1	0	0	0	0	5	0	0	0	0	0	3	8	3	0	11	0	0	
State Patrol	5	5	0	0	0	0	0	1	0	1	0	1	0	1	0	0	0	0	0	0	0	0	0	1	0	0	0	0	0	0	
Washington County	345	285	60	0	0	0	0	0	5	10	1	19	0	0	0	0	5	0	5	0	1	2	0	11	154	77	18	2	25	0	10
Sheriff's Office	110	108	2	0	0	0	0	0	2	3	1	8	0	0	0	0	0	0	1	0	0	0	0	10	69	6	3	2	15	0	0
Blair P.D.	178	129	48	0	0	0	0	0	3	7	0	11	0	0	0	0	0	4	0	1	1	0	1	57	59	15	0	9	0	10	
State Patrol	57	48	9	0	0	0	0	0	0	0	0	0	0	0	0	5	0	0	0	0	0	1	0	38	12	0	0	1	0	0	
Wayne County	205	167	38	0	0	1	0	2	8	16	2	5	1	2	3	0	1	1	1	0	1	16	0	2	34	87	8	0	11	0	3
Sheriff's Office*	56	41	15	0	0	1	0	0	6	10	0	1	0	1	1	0	0	0	0	0	0	8	0	0	6	15	4	0	3	0	0
Wayne P.D.	134	111	23	0	0	0	0	2	2	6	2	4	1	1	2	0	1	1	1	0	1	3	0	2	20	72	4	0	6	0	3
State Patrol	15	15	0	0	0	0	0	0	0	0	0	0	0	0	0	0	0	0	0	0	5	0	0	8	0	0	0	2	0	0	
Webster County	69	60	9	0	0	0	0	0	1	0	1	2	0	0	9	0	0	4	0	0	2	1	0	0	10	21	2	0	16	0	0
Sheriff's Office	64	56	8	0	0	0	0	0	1	0	1	2	0	0	9	0	0	4	0	0	2	1	0	0	7	20	2	0	15	0	0
State Patrol	5	4	1	0	0	0	0	0	0	0	0	0	0	0	0	0	0	0	0	0	0	0	0	3	1	0	0	1	0	0	
Wheeler County	10	8	2	0	0	0	0	0	0	0	0	2	0	0	0	0	0	1	0	0	0	0	0	0	4	3	0	0	0	0	0
Sheriff's Office	4	4	0	0	0	0	0	0	0	0	0	2	0	0	0	0	0	1	0	0	0	0	0	1	0	0	0	0	0	0	
State Patrol	6	4	2	0	0	0	0	0	0	0	0	0	0	0	0	0	0	0	0	0	0	0	0	3	3	0	0	0	0	0	
York County	512	378	134	0	0	2	1	7	12	62	13	24	3	2	51	0	4	19	1	0	8	33	0	8	81	55	14	0	90	14	8
Sheriff's Office	135	128	7	0	0	0	0	3	4	2	4	0	0	0	39	0	0	0	0	0	1	0	0	6	33	2	0	0	41	0	0
York P.D.	307	185	122	0	0	2	1	4	8	60	9	24	3	2	12	0	2	19	1	0	7	0	0	2	29	42	14	0	44	14	8
State Patrol	70	65	5	0	0	0	0	0	0	0	0	0	0	0	0	0	2	0	0	0	33	0	0	19	11	0	0	5	0	0	

* Not a Complete 12-Month Total