

146368

U.S. Department of Justice
National Institute of Justice

This document has been reproduced exactly as received from the person or organization originating it. Points of view or opinions stated in this document are those of the authors and do not necessarily represent the official position or policies of the National Institute of Justice.

Permission to reproduce this copyrighted material has been granted by

Georgia Department of Public
Safety

to the National Criminal Justice Reference Service (NCJRS).

Further reproduction outside of the NCJRS system requires permission of the copyright owner.

1990 Annual Report

Georgia Department of Public Safety

146368

TABLE OF CONTENTS

| | |
|--|---------------|
| Letter of Transmittal from Commissioner | 2 |
| Letter of Response from Governor | 3 |
| 1990 Fact Sheet | 4 |
| Executive Summary | 5 |
| Organizational Chart | 6 |
| Deputy Commissioner's Office | 8 |
| Georgia State Patrol Division | 10 |
| Troop Boundaries (Map) | 12 |
| DPS-521 Activity Summary (By County) | 13 |
| DPS-612 Activity | 19 |
| GSP Supplemental Activity | 20 |
| Driver Services Division | 21 |
| School Bus Safety | 23 |
| Troop L | 25 |
| Revocation and Suspension | 27 |
| Miscellaneous Activity | 30 |
| Personnel Services Division | 31 |
| Data Central Jobs | 33 |
| Faithful Service | 34 |
| Accident Statistics | 37 |
| Fiscal Division | 50 |
| Internal Audits | 51 |
| Combining Statement of Funds | 52 |

The 1990 Annual Report of the Georgia Department of Public Safety is published by the Public Information Office from information submitted by the various divisions, units and sections of the department. Additional copies may be obtained from the Public Information Office.

Gordy Wright
Editor



Department of Public Safety

Post Office Box 1456

Atlanta, Georgia 30371

Colonel Ronald L. Bowman
Commissioner

Governor Zell Miller
Members of the General Assembly
Citizens of Georgia

Please accept for your review the 1990 Department of Public Safety Annual Report, a summary of public safety activities for calendar year 1990, and a recap summary of traffic accident experience across Georgia.

There were 1,564 traffic deaths recorded during the year, a 4.2 percent decrease from the 1,632 in 1989. The downward trend was consistent with a decrease in the estimated motor vehicle mileage traveled.

But while traffic fatalities decrease, we must remain focused to the causes and work toward a common goal of making motor vehicle travel safer for all motorists. In order to accomplish this goal, we must continue our efforts to take the drinking driver off the roadways and work even harder to promote safety equipment use while traveling.

The coming years will present the greatest challenges ever as more vehicles are registered and more licensed drivers travel in the state. The men and women of the Georgia Department of Public Safety stand ready to meet those challenges in the most economic and efficient manner while serving with pride the citizens of Georgia.

Respectfully,

Ronald L. Bowman, Colonel
Commissioner



STATE OF GEORGIA
OFFICE OF THE GOVERNOR
ATLANTA 30334-0900

Zell Miller
GOVERNOR



To: Members of the Georgia Department of Public Safety:

It is my sincere pleasure to congratulate each of you for a job well done. The new decade will bring many challenges and the work each of you has performed will better enable you to meet the new tasks.

One area which concerns me greatly is the drinking driver. During 1990, the number of DUI-related fatal accidents climbed to 598, only 18 short of a ten-year high. Another area of concern is the number of motorists who travel the roadways of Georgia without wearing a seat belt. Traffic statistics have proven the benefits of safety equipment use.

I challenge each of you to make removing the drinking driver from the roadway and enforcing Georgia's seat belt law top priorities as you patrol throughout Georgia.

With kindest regards, I remain

Sincerely,

A handwritten signature of Zell Miller in cursive script.

Zell Miller

ZM/kll

1990 FACT SHEET

- ☐ Traffic accidents in Georgia during 1990 claimed the lives of 1,564 people, a 4.2% decrease from the 1,632 killed in 1989. The 228,163 accidents reported during the year resulted in 98,933 injuries.
- ☐ Of the 1,564 killed on Georgia highways, 185 occurred on the 1,220 miles of interstate highway, 733 on state highways; 474 on county roads and 172 on city streets.
- ☐ Of the traffic fatalities, 532 (34%) involved a drinking driver with a blood alcohol content of 0.10 grams percent or higher; 138 (8.8%) involved a driver under the influence of drugs.
- ☐ Motor vehicle travel in Georgia in 1990 was 53.29 billion miles, a 0.6% decrease over the previous year.
- ☐ The death rate per 100-million miles traveled was 2.9, a 3.3% decrease from 1989.
- ☐ Georgia troopers made 15,356 arrests for driving under the influence of alcohol and/or drugs.
- ☐ The Department of Public Safety suspended 124,734 licenses, revoked 15,194 and canceled 3,731. DUI suspensions totaled 42,801.
- ☐ 43.4% of all accidents resulted in at least one injury.
- ☐ There were 178 pedestrian fatalities (128 male, 50 female); 46.1% were caused by a pedestrian crossing a road or street between crosswalks or marked intersections.
- ☐ Georgia troopers issued 2,026 citations for violation of the Georgia seat belt law, the majority following citations for speeding violations. Troopers also issued 32,475 warnings.
- ☐ June, July and August were the three deadliest months in 1990 as traffic accidents claimed the lives of 160 people in July, and 139 each in June and August.

Executive Summary

The Georgia Department of Public Safety logged another near normal year in 1990. The year began, much as in recent preceding years, with a series of security details in and around Atlanta. Aside from a brief shouting match between a contingent of Ku Klux Klan members and counter-protesters at one detail, the demonstrations were peaceful.

In March, 52 cadets graduated from the 64th Georgia State Patrol Trooper School at the Georgia Public Safety Training Center in Forsyth. The 64th School was the single largest school ever conducted. Another first for the class was the "patrol-ready" distinction. Members of the class received their patrol vehicles and equipment on the eve of graduation, thus enabling them to report to their duty stations from the Training Center.

The nation's first "built-from-the-ground-up" Commercial Drivers License testing facility was dedicated in June during a ceremony at the facility in Milledgeville. Georgia had already become one of the first states in the nation to begin issuance of the federally-mandated commercial license, having cleared the final barrier to full implementation in early 1990. Georgia was one of six states eligible for the bulk of federal funds available to states conducting testing and issuance. As part of the CDL program, the first of three Georgia Licensing on Wheels (GLOW) mobiles was added to the fleet. The unit, a 1976 bus which had served as the department's mobile communications command center, is initially being used for remote CDL testing with future utilization anticipated where new industry is locating within the state.

The Georgia State Patrol received more than \$25,000 in seized asset funds from one incident under the Asset Forfeiture Fund Equitable Sharing Program. The program allows state and local law enforcement agencies to receive a percentage of property and currency forfeited in administrative or judicial proceedings filed as the result of a criminal prosecution. The prosecution stemmed from the work of troopers in the drug interdiction program. The interdiction program, initiated in 1985, has resulted in the seizure of illegal drugs valued into the millions of dollars from Georgia's roadways.

The ranks of the Georgia State Patrol lost two veteran troopers in 1990. Lieutenant M.G. Moss, assistant troop commander of Troop C, died suddenly on May 21, and TFC L.F. Peebles died on July 27 after an extended illness.

At the annual DPS Awards Program in May, 85 DPS employees were honored for accomplishments during 1989. TFC J.E. Kennedy (Post 18, Reidsville) and Mr. Jimmy Crump (HQ, Garage) were recipients of the employee of the year awards.

The year also marked the implementation of a program where residents of the state who have had their driver license suspended for insurance-related problems may apply for reinstatement at all GSP posts. Motorists also are able to obtain a copy of their motor vehicle report from their local patrol post.

The GSP Aviation Unit logged more than 1300 flight hours devoted to the Governor's Task Force on Drug Suppression. Aerial surveillance resulted in more than 180-million dollars in illegal drugs being confiscated and destroyed during the year.

Georgia Board of Public Safety

Governor Zell Miller
Board Chairman

Mr. R.E. Wilson
Board Vice Chairman
District Attorney - Dekalb County

Chief Bobby Moody
Board Secretary-Treasurer
Covington Police Department

Sheriff Pat Jarvis
Dekalb County

Commissioner Bobby Whitworth
Department of Corrections

Chief James Hansford
Clarke County Fire Department

Mr. A. Keith Logue
Member-at-large
Atlanta, Georgia

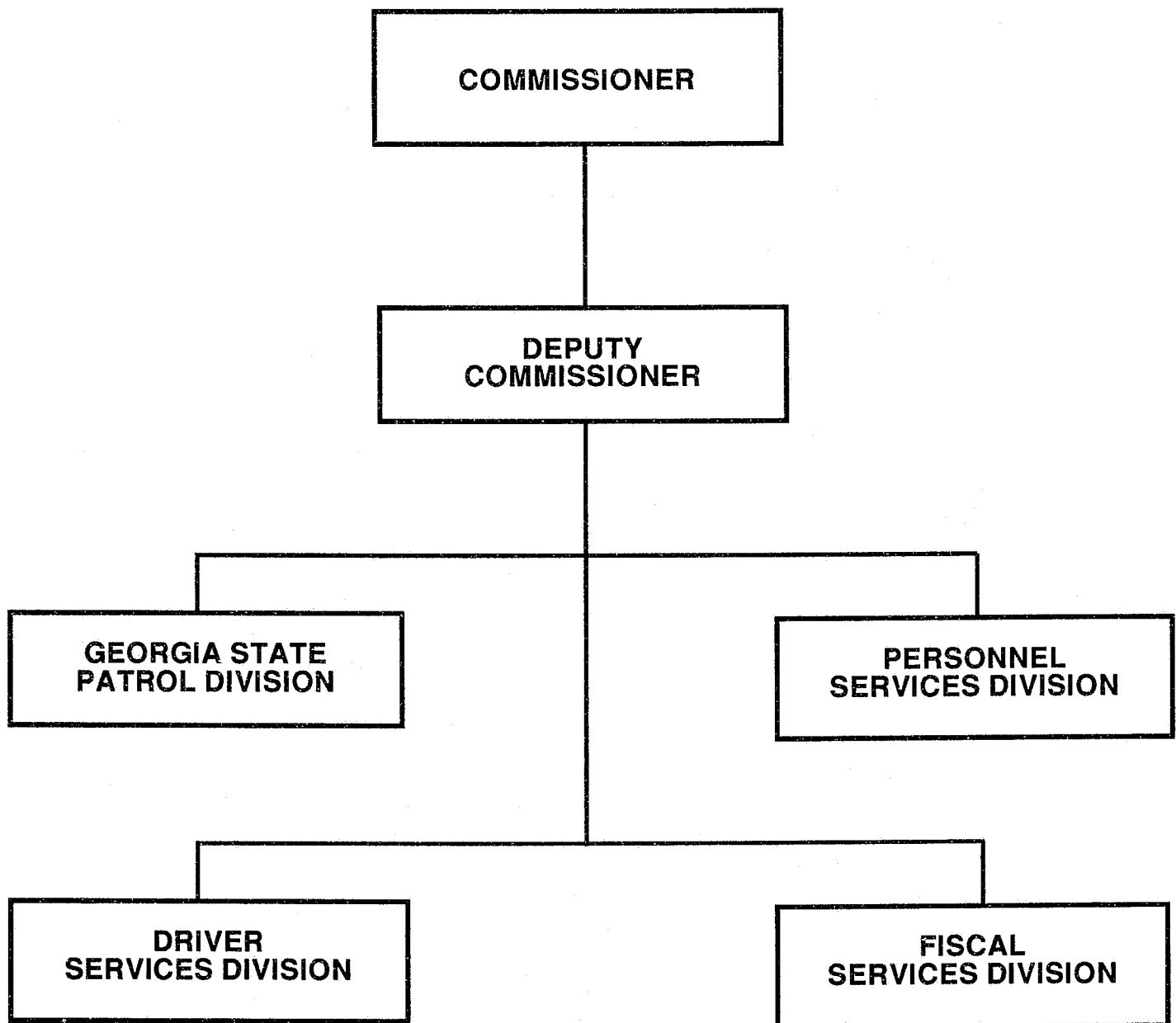
Mr. Wayne Abernathy
Member-at-large
Lula, Georgia

Mr. Coy Williamson
Member-at-large
Athens, Georgia

Mr. Eugene Stuckey
Member-at-large
Statesboro, Georgia

GEORGIA DEPARTMENT OF PUBLIC SAFETY ORGANIZATIONAL CHART

(As of December 31, 1990)



COMMISSIONER



Colonel Ronald L. Bowman

Colonel Ronald L. Bowman was appointed Commissioner of the Georgia Department of Public Safety in December, 1990, and assumed the duties on February 1, 1991.

Colonel Bowman is a 1970 graduate of Lakeview High School in Fort Oglethorpe, Georgia. He received both his bachelor of science degree in criminal justice administration and his master's degree in criminal justice systems planning from the University of Tennessee at Chattanooga. He is a graduate of the FBI National Academy and has received numerous awards and diplomas for law enforcement related training.

Colonel Bowman has been active in law enforcement since 1972 when he was employed by the Catoosa County Sheriff's Department as a dispatcher/jailer. He went on to become a patrolman for the Fort Oglethorpe Police Department, and in 1974 was employed as a trooper with the Georgia State Patrol. He was elected Sheriff of Catoosa County in 1986, and served in that capacity until Governor Zell Miller appointed him Commissioner of the Department of Public Safety.

Colonel Bowman is a Mason and Shriner, a member of the Peace Officers Association of Georgia, the National Criminal Justice Honor Society, and numerous other civic and professional organizations.

DEPUTY COMMISSIONER



Lieutenant Colonel K.D. Rearden

Lieutenant Colonel K.D. Rearden assumed the duties as Deputy Commissioner on December 1, 1988.

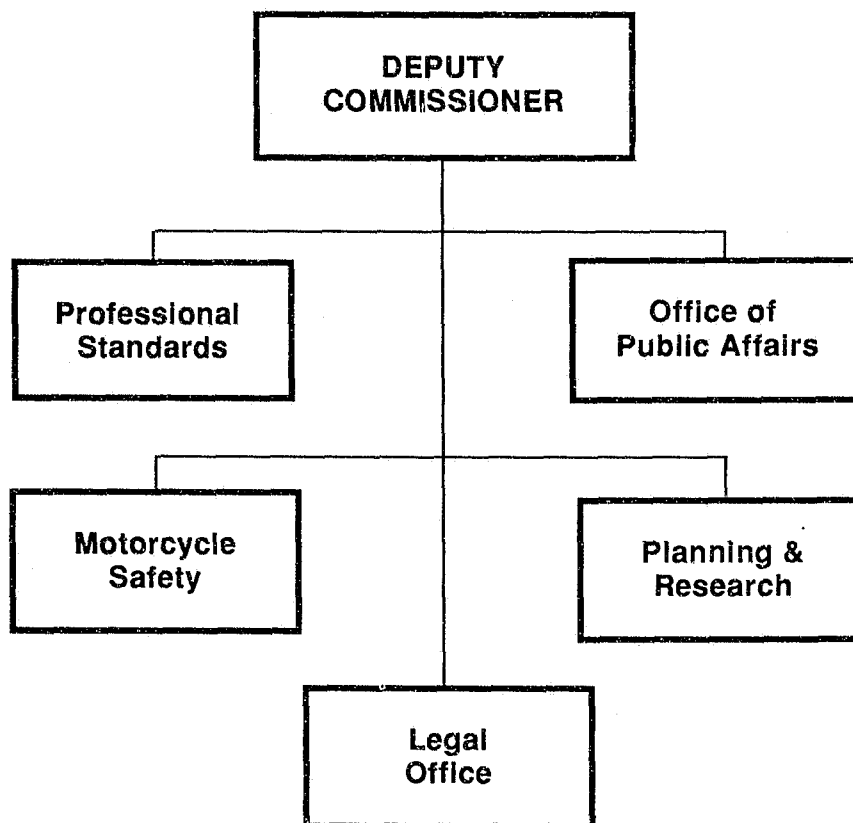
He was born in Lanett, Alabama and joined the Georgia State Patrol in 1965. Lt. Col. Rearden graduated with the 26th Georgia State Patrol Trooper School and was assigned to Post 26, Thomaston.

In 1969 he was selected to attend the Northwestern University Traffic Institute, a post-graduate level police management school. Over the next ten years, he attained increasing responsibility and rank.

Lt. Colonel Rearden was promoted to major in July, 1977, and assigned as Director of the Personnel and Training Division where he remained until named as Commanding Officer of Field Troops for the Northern Division of the Georgia State Patrol in 1979. In 1982, he was appointed Executive Officer, and in 1985, was designated Director of Personnel Services.

He has an associate degree from Clayton State College and a bachelor of science degree from Brenau College, where he majored in criminology.

Deputy Commissioner's Office



Legal Services

The Legal Services Office provides clarification and interpretation of traffic and criminal laws for members of the Department of Public Safety. The office is responsible for the publication and distribution of the DPS Policy Manual and ensures that department policy does not conflict with existing state laws.

The office also monitors changes in state and federal law and determines the impact the changes will have on the department.

Motorcycle Safety

The public rider education and training program exceeded its 1990 projected student enrollment estimate. With operation of a mobile training unit and fixed training sites in Americus, Atlanta, Augusta, Columbus, Dalton, Macon, Savannah, St. Marys, Tifton, Valdosta and Winder, student enrollment grew to 1,064.

The Motorcycle Safety Unit also conducts instructor training (certification) courses across the state. The instructor course, like most other course offerings, is conducted on evenings and weekends and focuses on teaching experienced Georgia motorcyclists how to teach the various curricula. Additional instructor certification

training has become reality as instructors attend annual refresher training, becoming both Experienced Rider Course and scooter certified and maintaining basic first aid and CPR certification.

The motorist awareness aspect of the program continued with a Capitol Ride-In, a bumper sticker campaign, as well as several proclamation/resolution signings. May was established as "Motorcycle Awareness and You Month," with Georgia joining more than 12 other states and Canada in the campaign.

The motorcycle licensing improvement effort resulted in receipt of the Motorcycle Safety

Foundation's top licensing award for the year. A combined effort on the part of the Governor's Office of Highway Safety, the Driver Services Division and the Motorcycle Safety Unit provided implementation of the latest state-of-the-art electronic skill/road testing, a major revision of the motorcycle licensing requirements and of annual certified motorcycle examiner training.

The license waiver program resulted in various major changes in the Motorcycle Safety Unit's operation including centralized course, student and instructor scheduling, centralized completion card issuance and ongoing course monitoring.

Deputy Commissioner's Office

Planning And Research

As a staff-oriented function, Planning and Research routinely develops and proposes plans for both immediate problem resolution and long-range goals of the Department. The office also reviews the effectiveness of many on-going programs. In addition, the office provides statistical and analytical support as needed by the Commissioner and his staff, the drafting of correspondence or studies which require supportive research, and other duties.

As Grants Management Office, we also seek and administer federal funds for Departmental programs. As the Emergency Coordinator, we represent the Department with the Georgia Emergency Management Agency (GEMA). We are also the point of contact for studying the impact of the 1996 Olympics.

In 1990, Planning and Research was assigned 263 projects. Of that number, 227 were completed, 14 were discontinued, three were transferred to other offices for completion, three are presently being evaluated or pending feedback, and 16 are presently being addressed by the office. We are also working on seven additional projects which were assigned prior to 1990.

Some examples of the projects completed in 1990 are: developed comparative study of salaries and number of troopers in several other states; coordinated psychological testing of employees; assisting with development of uniform policy concerning use of wreckers; developing a ticket accountability system for the Department; and conducted two management review studies.

Office of Public Affairs

Charged with the responsibility of being the conduit of information to the media and the department, the Office of Public Affairs produced news releases related to traffic safety, holiday accident forecasts and employee accomplishments during 1990.

News media inquiries were handled by the office, either directly or by referral to the appropriate office.

Day-to-day activities of the Department of Public Safety were reported through *The Bulletin* while the newsletter, *The Blue Line*, provided in-depth news stories relating to the DPS and its members. All departmental photos were processed by the Photo Lab, and the Graphics Unit provided layouts, designs and typesetting for most departmental publications.

Permit Section

The Permit Section of the Department of Public Safety governs the statewide issuance of all racetrack licenses, emergency light certifications (amber, red and blue), wholesale/retail firearm licenses, speed detection device permits, and exemptions to the tinted window law.

Racetracks in Georgia are required to be licensed with the Department of Public Safety in addition to State Fire Marshal's regulations. This annual license is valid through the calendar year, expiring the last day of each year.

Permits Issued - 1990

Racetrack Licenses 16

Emergency Light Permits

One Year

Amber 12,066

Red 2,995

Blue 56

Group (Amber) 6

Five Year

Amber 271

Red 643

Blue 541

**Total Emergency
Light Permits . . . 16,578**

Firearm Licenses

Wholesale/Retail . . . 1,341

Employee 892

Total 2,233

Radar Permits

New 16

Amendments 56

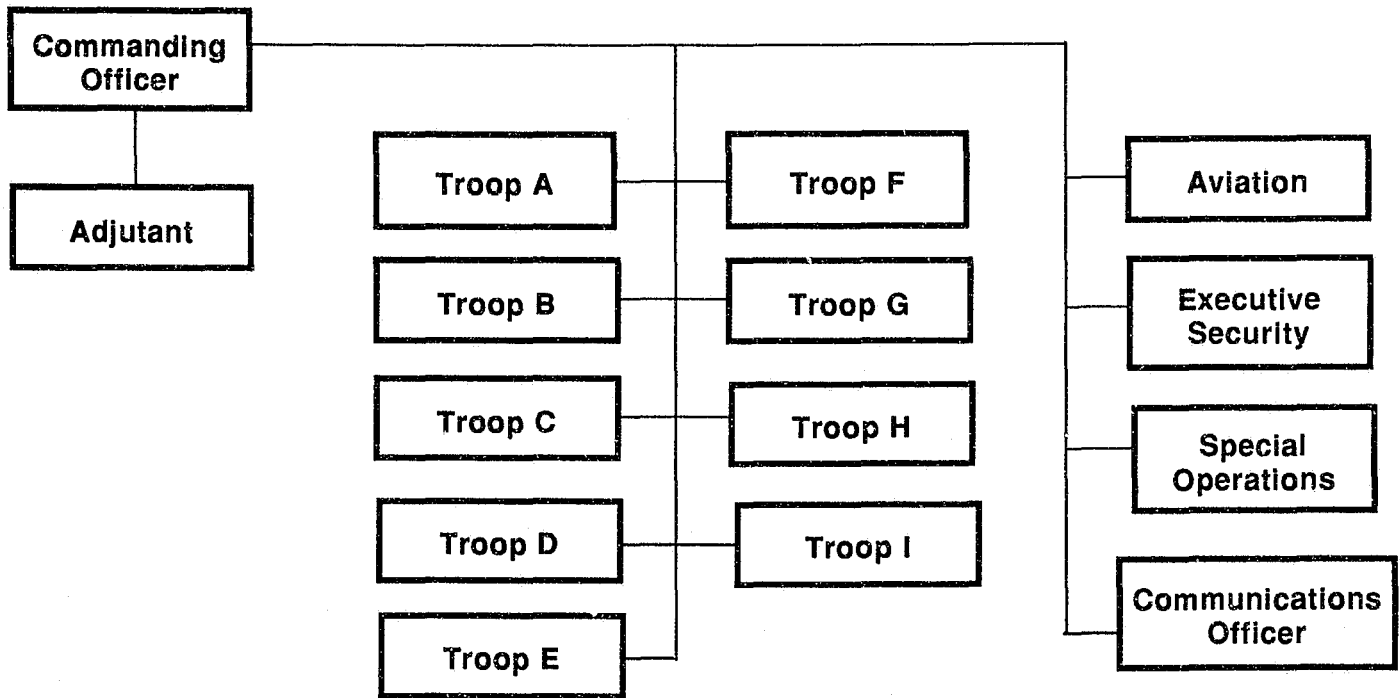
Tinted Window Permits

Individuals 147

Manufacturers 7

**Yearly Total for
All Permits 19,053**

Georgia State Patrol Division



Commanding Officer

Major W.J. Kiser assumed the duties of Commanding Officer in early 1990 and the office was reorganized to consist of the Commanding Officer, Field Adjutant, Special Operations Adjutant and the Special Assistant to the Commanding Officer.

The Commanding Officer provides administrative direction and control over all field operations. He also provides for the allocation of manpower and equipment for the enforcement of traffic laws throughout the state.

Troopers charged with enforcing Georgia traffic laws are organized into nine troops. Each troop is commanded by a captain and composed of five or six posts.

There are 48 posts across the state and each is responsible for traffic enforcement on public highways in anywhere from two to five counties, depending upon the population density and geography.

Adjutant

The Field Adjutant assists the Commanding Officer in his everyday duties with the Georgia State Patrol. The office is responsible for the transmission of data from the Aggressive Criminal Enforcement (ACE) program and the collection of data from the drug interdiction program. The office also supervises security for the headquarters complex.

The Special Operations Adjutant is responsible for the specialist units - Implied Consent, Safety Education and Emission Control.

Special Assistant

The Special Assistant to the Commanding Officer supervises the Communications Officer and the Headquarters Communications Center. The office is responsible for maintaining an itemized inventory of all communications equipment (radars, radios, etc.). The office is also responsible for administering the Georgia State Patrol promotion program and the Employee Suggestion Program.

Georgia State Patrol Division

Special Operations

Special Operations consists of Safety Education, the Implied Consent Unit and the Emission Inspection Unit.

The **Implied Consent Unit** has a staff of nine uniform troopers who are responsible for the training of intoximeter operators and the maintenance of the breath testing program for the state.

During 1990, the Implied Consent Unit conducted 18 basic intoximeter classes and 60 refresher classes. In addition, the unit responded to 398 calls to assist city, county and state agencies with their breath testing program.

The **Emission Inspection Unit** of the Georgia State Patrol continued to experience an increase in inspection stations and mechanic inspectors. The four counties that are presently under the emissions program consisted of 584 permanent stations, 55 fleet stations and 120 temporary stations for a total of 759 stations and some 3,000 mechanic inspectors.

Among the daily inspection of stations by troopers, there were 373 separate covert operations resulting in 129 suspensions and 128 probations. Of the covert operations, only 85 were completed according to proper procedures supporting the need for continued and increased covert activities.

The automobile emissions program involving the Department of Public Safety continues to operate extremely well with a very high rating from the federal Environmental Protection Agency.

Safety Education continues to play an integral role in the patrol's overall mission of reducing accidents, injuries and fatalities on the state's highways.

Efforts continue through the Alcohol and Drug Awareness Program to inform younger drivers of the perils of driving while intoxicated. Approximately 120,000 students are reached annually by this mandated effort

and the Safety Education Unit has the responsibilities of managing and coordinating the program.

Safety Education continues to provide instruction and assistance to the public in other critical areas of traffic safety. Defensive driving classes, bicycle safety rodeos, seat belt and child restraint programs, and DUI classes for older drivers were primary in the unit's efforts.

At right, TFC E.M. Hays conducts an Alcohol and Drug Awareness class.



GSP Airwing

The Georgia State Patrol Airwing consists of 13 pilots, 4 mechanics and civilian support personnel. Six hangars are geographically located throughout the state with headquarters at Fulton County Airport in Atlanta. These facilities are staffed with one or two pilots and equipped with both helicopters and fixed wing aircraft.

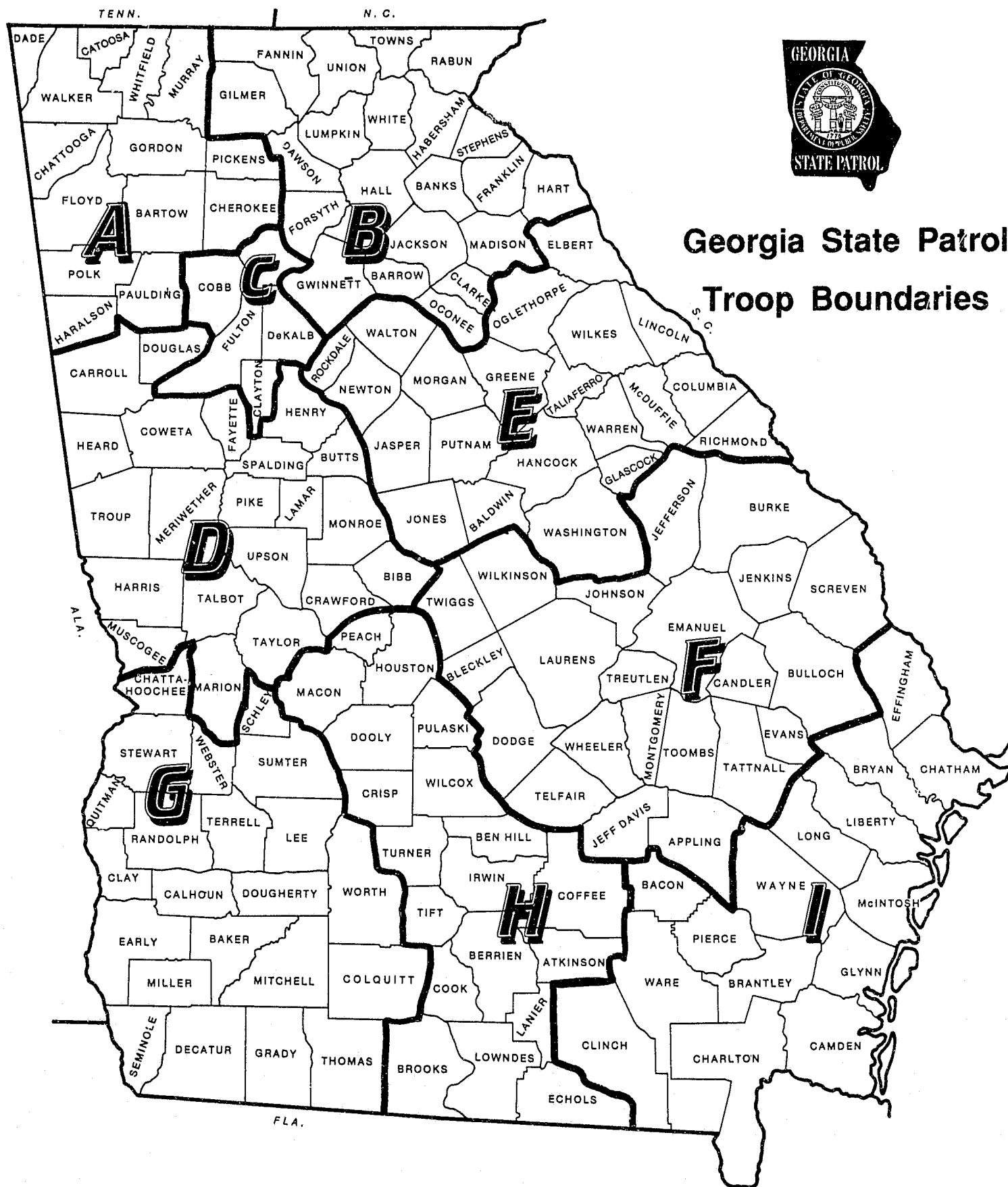
The Airwing continues to provide aircraft support to all federal, state and local law enforcement agencies throughout Georgia.

Airwing pilots and aircraft continue to support the Governor's Drug Task Force which confiscated

and destroyed \$184,633,600.00 in illegal drugs through aerial observation and surveillance by the pilots.

The Airwing logged more than 3209.83 flight hours during 1990 with 1312.70 flight hours devoted to the drug task force and 1896.95 hours for GSP and other law enforcement agencies on special details (civil disorder, robberies, escapes, etc.).

Video cameras, installed in the GSP helicopters, are proving to be a valuable tool in supporting court cases involving aircraft observations.



1990 Georgia State Patrol DPS-521 Activity Summary

| County | ARRESTS | | | | | WARNINGS | | ACCIDENT EXPERIENCE | | |
|---------------|---------|------------------|-------------|-----|----------|----------|------------------|---------------------|----------|------------|
| | All | Georgia Resident | Inter-State | DUI | Speeding | All | Georgia Resident | Accidents | Injuries | Fatalities |
| Appling | 1071 | 889 | 0 | 28 | 883 | 904 | 834 | 83 | 100 | 7 |
| Atkinson | 1170 | 911 | 0 | 68 | 860 | 1165 | 994 | 10 | 6 | 4 |
| Bacon | 598 | 533 | 0 | 52 | 327 | 1237 | 1153 | 39 | 38 | 8 |
| Baker | 657 | 572 | 0 | 20 | 484 | 1023 | 933 | 15 | 23 | 2 |
| Baldwin | 2375 | 2277 | 0 | 184 | 1404 | 2494 | 2413 | 168 | 145 | 6 |
| Banks | 524 | 465 | 148 | 97 | 223 | 763 | 701 | 65 | 83 | 5 |
| Barrow | 1291 | 1236 | 113 | 201 | 329 | 1488 | 1438 | 301 | 243 | 6 |
| Bartow | 5399 | 4229 | 1415 | 257 | 3035 | 6920 | 5725 | 1226 | 618 | 18 |
| Ben Hill | 745 | 709 | 0 | 63 | 386 | 928 | 887 | 33 | 54 | 4 |
| Berrien | 1860 | 1364 | 0 | 69 | 1498 | 1863 | 1588 | 98 | 100 | 4 |
| Bibb | 244 | 198 | 145 | 24 | 143 | 193 | 161 | 2 | 1 | 0 |
| Bleckley | 998 | 942 | 48 | 62 | 700 | 1080 | 1035 | 61 | 58 | 5 |
| Brantley | 485 | 398 | 0 | 37 | 313 | 777 | 684 | 39 | 59 | 6 |
| Brooks | 1191 | 929 | 0 | 50 | 813 | 577 | 516 | 125 | 115 | 4 |
| Bryan | 4719 | 1897 | 3982 | 107 | 3926 | 2155 | 1285 | 107 | 128 | 3 |
| Bulloch | 4207 | 3556 | 884 | 355 | 2813 | 3701 | 3445 | 507 | 317 | 9 |
| Burke | 1815 | 1567 | 0 | 120 | 1175 | 1784 | 1612 | 90 | 120 | 13 |
| Butts | 923 | 753 | 510 | 28 | 649 | 512 | 487 | 111 | 100 | 6 |
| Calhoun | 497 | 378 | 0 | 6 | 343 | 1106 | 932 | 11 | 11 | 2 |
| Camden | 5479 | 960 | 5280 | 126 | 5323 | 2475 | 921 | 102 | 125 | 15 |
| Candler | 2119 | 1702 | 1634 | 71 | 1853 | 879 | 814 | 74 | 59 | 1 |
| Carroll | 4247 | 3016 | 1800 | 197 | 2606 | 5410 | 4524 | 1122 | 691 | 22 |
| Catoosa | 3151 | 1855 | 1798 | 136 | 1688 | 3811 | 2428 | 735 | 381 | 10 |
| Charlton | 555 | 317 | 0 | 35 | 404 | 938 | 642 | 18 | 21 | 4 |
| Chatham | 4823 | 3428 | 2498 | 467 | 2722 | 3851 | 3133 | 40 | 29 | 0 |
| Chattahoochee | 278 | 237 | 0 | 25 | 97 | 374 | 298 | 5 | 2 | 3 |
| Chattooga | 2088 | 1882 | 0 | 226 | 772 | 4190 | 3837 | 307 | 203 | 9 |
| Cherokee | 4129 | 3889 | 1940 | 161 | 2809 | 7842 | 7541 | 197 | 178 | 9 |
| Clarke | 298 | 293 | 0 | 40 | 60 | 813 | 791 | 84 | 18 | 0 |
| Clay | 438 | 314 | 0 | 35 | 197 | 1023 | 798 | 6 | 1 | 0 |
| Clayton | 4888 | 4215 | 4629 | 25 | 3767 | 2585 | 2221 | 70 | 33 | 0 |
| Clinch | 262 | 218 | 0 | 33 | 164 | 422 | 353 | 3 | 3 | 1 |
| Cobb | 8780 | 6773 | 8051 | 66 | 6559 | 3608 | 2687 | 66 | 8 | 3 |
| Coffee | 2858 | 2660 | 0 | 298 | 1369 | 4007 | 3771 | 182 | 179 | 7 |
| Colquitt | 1282 | 1162 | 0 | 115 | 677 | 1453 | 1320 | 194 | 174 | 9 |
| Columbia | 1551 | 1099 | 1182 | 43 | 1335 | 1524 | 1182 | 14 | 8 | 0 |
| Cook | 1572 | 728 | 1255 | 44 | 1320 | 1256 | 703 | 147 | 141 | 10 |
| Coweta | 4287 | 3602 | 1587 | 215 | 2823 | 4456 | 3943 | 896 | 566 | 23 |
| Crawford | 1361 | 1138 | 0 | 32 | 1111 | 858 | 777 | 30 | 34 | 3 |
| Crisp | 2926 | 1639 | 1797 | 174 | 2208 | 2183 | 1642 | 130 | 139 | 6 |
| Dade | 1090 | 428 | 581 | 42 | 686 | 1310 | 625 | 150 | 109 | 2 |
| Dawson | 548 | 522 | 0 | 46 | 328 | 816 | 797 | 78 | 106 | 6 |
| Decatur | 1202 | 830 | 0 | 62 | 800 | 1583 | 1206 | 158 | 143 | 5 |
| Dekalb | 7175 | 6183 | 6464 | 33 | 5006 | 2706 | 2264 | 43 | 17 | 0 |
| Dodge | 1635 | 1556 | 0 | 196 | 754 | 1685 | 1637 | 127 | 105 | 6 |
| Dooley | 2249 | 1076 | 1906 | 56 | 1902 | 1387 | 920 | 105 | 74 | 3 |
| Dougherty | 2417 | 1989 | 0 | 59 | 1898 | 3322 | 2966 | 1 | 0 | 0 |
| Douglas | 4857 | 3684 | 2166 | 232 | 2648 | 5843 | 5048 | 1737 | 839 | 14 |
| Early | 612 | 334 | 0 | 20 | 484 | 981 | 648 | 18 | 15 | 2 |
| Echols | 144 | 105 | 0 | 4 | 104 | 60 | 52 | 21 | 27 | 0 |
| Effingham | 693 | 595 | 288 | 29 | 488 | 769 | 725 | 16 | 16 | 1 |
| Elbert | 723 | 654 | 0 | 66 | 370 | 1745 | 1592 | 78 | 85 | 5 |
| Emanuel | 3125 | 2650 | 512 | 157 | 2423 | 2014 | 1885 | 178 | 153 | 4 |
| Evans | 535 | 481 | 0 | 19 | 407 | 497 | 445 | 16 | 29 | 4 |
| Fannin | 738 | 627 | 0 | 84 | 477 | 1588 | 1402 | 199 | 180 | 3 |
| Fayette | 135 | 124 | 0 | 7 | 103 | 165 | 156 | 18 | 12 | 1 |
| Floyd | 1954 | 1796 | 0 | 71 | 1193 | 4176 | 3836 | 112 | 52 | 3 |

1990 Georgia State Patrol DPS-521 Activity Summary

| County | ARRESTS | | | | | WARNINGS | | ACCIDENT EXPERIENCE | | |
|------------|---------|------------------|-------------|-----|----------|----------|------------------|---------------------|----------|------------|
| | All | Georgia Resident | Inter-State | DUI | Speeding | All | Georgia Resident | Accidents | Injuries | Fatalities |
| Forsyth | 1724 | 1679 | 0 | 136 | 523 | 2527 | 2467 | 529 | 358 | 20 |
| Franklin | 671 | 516 | 230 | 68 | 345 | 809 | 613 | 71 | 74 | 5 |
| Fulton | 6003 | 4574 | 3700 | 32 | 3951 | 3550 | 3027 | 33 | 7 | 0 |
| Gilmer | 919 | 824 | 0 | 45 | 733 | 1604 | 1492 | 112 | 110 | 3 |
| Glascock | 107 | 106 | 0 | 8 | 69 | 130 | 126 | 19 | 20 | 1 |
| Glynn | 1323 | 716 | 583 | 53 | 841 | 2495 | 1909 | 188 | 99 | 7 |
| Gordon | 2896 | 2325 | 834 | 165 | 1679 | 4789 | 3764 | 580 | 365 | 11 |
| Grady | 1275 | 982 | 0 | 42 | 979 | 1142 | 949 | 96 | 132 | 5 |
| Greene | 1103 | 865 | 529 | 53 | 711 | 1469 | 1335 | 27 | 23 | 0 |
| Gwinnett | 2467 | 2317 | 888 | 344 | 1047 | 2936 | 2783 | 69 | 27 | 1 |
| Habersham | 1069 | 973 | 0 | 87 | 704 | 1698 | 1456 | 116 | 149 | 6 |
| Hall | 1945 | 1838 | 432 | 236 | 1066 | 3161 | 3049 | 75 | 30 | 1 |
| Hancock | 1126 | 1047 | 0 | 67 | 825 | 1148 | 1066 | 31 | 36 | 5 |
| Haralson | 2424 | 1620 | 1278 | 61 | 1906 | 2334 | 1762 | 210 | 206 | 4 |
| Harris | 2253 | 1719 | 1334 | 55 | 1826 | 1404 | 1032 | 195 | 196 | 7 |
| Hart | 616 | 561 | 36 | 108 | 201 | 672 | 634 | 66 | 80 | 7 |
| Heard | 486 | 424 | 0 | 58 | 246 | 685 | 603 | 94 | 73 | 6 |
| Henry | 1455 | 1324 | 573 | 30 | 1125 | 875 | 826 | 61 | 56 | 16 |
| Houston | 2743 | 1574 | 1719 | 189 | 2001 | 2615 | 1993 | 138 | 94 | 4 |
| Irwin | 1031 | 945 | 0 | 44 | 741 | 1168 | 1105 | 52 | 35 | 3 |
| Jackson | 1717 | 1462 | 481 | 119 | 932 | 3518 | 3302 | 127 | 163 | 7 |
| Jasper | 1085 | 1027 | 0 | 127 | 565 | 1319 | 1283 | 31 | 39 | 1 |
| Jeff Davis | 1132 | 1059 | 0 | 107 | 637 | 1662 | 1588 | 45 | 45 | 4 |
| Jefferson | 1410 | 1200 | 0 | 65 | 1094 | 938 | 867 | 122 | 85 | 8 |
| Jenkins | 1538 | 1239 | 0 | 141 | 1106 | 1353 | 1167 | 32 | 26 | 0 |
| Johnson | 918 | 811 | 0 | 43 | 726 | 549 | 517 | 57 | 49 | 3 |
| Jones | 1816 | 1447 | 0 | 27 | 1626 | 1610 | 1501 | 8 | 2 | 0 |
| Lamar | 1714 | 1593 | 93 | 99 | 896 | 2178 | 2065 | 207 | 159 | 3 |
| Lanier | 214 | 202 | 0 | 7 | 152 | 81 | 69 | 35 | 18 | 3 |
| Laurens | 3545 | 3111 | 1426 | 241 | 2334 | 3671 | 3448 | 355 | 326 | 11 |
| Lee | 1133 | 931 | 0 | 28 | 844 | 1855 | 1606 | 13 | 10 | 2 |
| Liberty | 2054 | 837 | 1254 | 103 | 1535 | 1585 | 988 | 167 | 171 | 4 |
| Lincoln | 238 | 213 | 0 | 16 | 166 | 553 | 517 | 17 | 18 | 1 |
| Long | 1013 | 826 | 0 | 63 | 626 | 1434 | 1176 | 52 | 41 | 2 |
| Lowndes | 7751 | 4874 | 2917 | 353 | 5563 | 4042 | 3206 | 585 | 442 | 15 |
| Lumpkin | 458 | 444 | 0 | 58 | 216 | 807 | 796 | 42 | 57 | 2 |
| Macon | 622 | 592 | 0 | 60 | 347 | 723 | 698 | 58 | 59 | 3 |
| Madison | 1017 | 982 | 0 | 99 | 411 | 2220 | 2161 | 259 | 226 | 4 |
| Marion | 863 | 775 | 0 | 27 | 430 | 691 | 610 | 40 | 47 | 1 |
| McDuffie | 2693 | 2235 | 914 | 215 | 1555 | 2608 | 2285 | 347 | 307 | 4 |
| McIntosh | 2786 | 777 | 2122 | 110 | 2337 | 1479 | 771 | 178 | 185 | 8 |
| Meriwether | 2725 | 2558 | 0 | 128 | 1636 | 2100 | 1972 | 220 | 165 | 9 |
| Miller | 772 | 571 | 0 | 29 | 632 | 1261 | 1017 | 43 | 52 | 2 |
| Mitchell | 1096 | 910 | 0 | 49 | 808 | 1079 | 967 | 86 | 133 | 11 |
| Monroe | 4686 | 3121 | 3858 | 131 | 3831 | 2951 | 2152 | 94 | 45 | 0 |
| Montgomery | 459 | 431 | 0 | 46 | 151 | 542 | 508 | 47 | 45 | 1 |
| Morgan | 4691 | 3307 | 3262 | 129 | 3660 | 2940 | 2442 | 120 | 119 | 6 |
| Murray | 1776 | 1511 | 0 | 74 | 1144 | 2572 | 2169 | 311 | 275 | 8 |
| Muscogee | 2 | 2 | 2 | 0 | 1 | 2 | 2 | 0 | 0 | 0 |
| Newton | 3183 | 2620 | 1897 | 128 | 2201 | 2704 | 2257 | 162 | 223 | 16 |
| Oconee | 1127 | 1070 | 0 | 50 | 802 | 1852 | 1787 | 120 | 175 | 5 |
| Oglethorpe | 743 | 693 | 0 | 42 | 445 | 1245 | 1172 | 99 | 66 | 7 |
| Paulding | 1274 | 1177 | 0 | 57 | 569 | 2654 | 2476 | 305 | 258 | 6 |
| Peach | 4685 | 2369 | 3701 | 161 | 4027 | 2369 | 1522 | 53 | 63 | 5 |

1990 Georgia State Patrol DPS-521 Activity Summary

| County | ARRESTS | | | | | WARNINGS | | ACCIDENT EXPERIENCE | | |
|-----------------|----------------|------------------|----------------|---------------|----------------|----------------|------------------|---------------------|---------------|------------|
| | All | Georgia Resident | Inter-State | DUI | Speeding | All | Georgia Resident | Accidents | Injuries | Fatalities |
| Pickens | 2880 | 2643 | 0 | 134 | 2085 | 3464 | 3247 | 176 | 181 | 7 |
| Pierce | 506 | 443 | 0 | 40 | 309 | 847 | 779 | 60 | 66 | 2 |
| Pike | 1065 | 1025 | 0 | 34 | 773 | 865 | 848 | 129 | 98 | 5 |
| Polk | 2195 | 1980 | 0 | 150 | 1009 | 4164 | 3785 | 381 | 308 | 10 |
| Pulaski | 200 | 188 | 0 | 23 | 123 | 342 | 325 | 22 | 21 | 1 |
| Putnam | 1114 | 995 | 0 | 93 | 696 | 982 | 933 | 77 | 90 | 4 |
| Quitman | 553 | 309 | 0 | 37 | 229 | 1145 | 682 | 13 | 8 | 2 |
| Rabun | 182 | 148 | 0 | 44 | 68 | 390 | 320 | 16 | 21 | 5 |
| Randolph | 1576 | 1065 | 0 | 60 | 1030 | 2999 | 2180 | 58 | 52 | 2 |
| Richmond | 770 | 681 | 194 | 28 | 362 | 896 | 795 | 5 | 2 | 0 |
| Rockdale | 1913 | 1666 | 1163 | 172 | 1134 | 1626 | 1455 | 25 | 15 | 0 |
| Schley | 407 | 365 | 0 | 16 | 251 | 924 | 835 | 17 | 18 | 0 |
| Screven | 2092 | 1823 | 0 | 213 | 1249 | 2693 | 2399 | 106 | 70 | 5 |
| Seminole | 921 | 530 | 0 | 31 | 665 | 1399 | 957 | 53 | 53 | 1 |
| Spalding | 3017 | 2957 | 14 | 212 | 1342 | 2645 | 2506 | 706 | 466 | 7 |
| Stephens | 698 | 655 | 0 | 117 | 246 | 1124 | 1054 | 113 | 71 | 1 |
| Stewart | 1009 | 677 | 0 | 29 | 749 | 1371 | 978 | 17 | 21 | 3 |
| Sumter | 1453 | 1342 | 0 | 86 | 713 | 3652 | 3309 | 241 | 167 | 7 |
| Talbot | 2313 | 1871 | 0 | 48 | 1639 | 1494 | 1257 | 97 | 84 | 0 |
| Taliaferro | 938 | 649 | 763 | 10 | 820 | 645 | 500 | 42 | 36 | 0 |
| Tattnall | 1990 | 1766 | 0 | 114 | 1388 | 2082 | 1990 | 153 | 129 | 2 |
| Taylor | 1813 | 1466 | 0 | 40 | 1528 | 1015 | 903 | 71 | 76 | 7 |
| Telfair | 1720 | 1545 | 0 | 170 | 846 | 2030 | 1917 | 107 | 81 | 4 |
| Terrell | 1301 | 922 | 0 | 52 | 1070 | 1908 | 1483 | 32 | 43 | 1 |
| Thomas | 2309 | 1772 | 0 | 118 | 1583 | 2426 | 2071 | 251 | 207 | 19 |
| Tift | 7021 | 4081 | 3258 | 159 | 5624 | 5997 | 4349 | 388 | 268 | 4 |
| Toombs | 1475 | 1280 | 0 | 90 | 1035 | 1524 | 1414 | 121 | 116 | 7 |
| Towns | 173 | 141 | 0 | 18 | 103 | 349 | 287 | 55 | 42 | 1 |
| Treutlen | 1414 | 1131 | 1136 | 28 | 1303 | 421 | 384 | 10 | 9 | 0 |
| Troup | 3855 | 2792 | 2194 | 178 | 2777 | 3012 | 2348 | 585 | 359 | 4 |
| Turner | 2307 | 1060 | 1873 | 48 | 1937 | 1551 | 1034 | 82 | 70 | 3 |
| Twiggs | 676 | 621 | 227 | 51 | 434 | 545 | 531 | 38 | 43 | 3 |
| Union | 395 | 342 | 0 | 16 | 287 | 868 | 768 | 136 | 120 | 5 |
| Upson | 2330 | 2103 | 0 | 96 | 1350 | 3197 | 3099 | 273 | 214 | 5 |
| Walker | 2927 | 2461 | 0 | 250 | 1103 | 4452 | 3753 | 791 | 480 | 1 |
| Walton | 1904 | 1740 | 172 | 53 | 1384 | 1648 | 1434 | 84 | 154 | 8 |
| Ware | 1158 | 775 | 0 | 51 | 960 | 2055 | 1646 | 31 | 19 | 3 |
| Warren | 868 | 690 | 349 | 46 | 668 | 909 | 778 | 83 | 80 | 5 |
| Washington | 972 | 930 | 0 | 37 | 751 | 1126 | 1085 | 12 | 24 | 8 |
| Wayne | 1038 | 880 | 0 | 33 | 636 | 1535 | 1332 | 22 | 32 | 2 |
| Webster | 1458 | 999 | 0 | 30 | 1272 | 1581 | 1215 | 20 | 13 | 4 |
| Wheeler | 721 | 660 | 0 | 35 | 440 | 706 | 657 | 58 | 55 | 1 |
| White | 632 | 605 | 0 | 141 | 246 | 1175 | 1128 | 75 | 94 | 4 |
| Whitfield | 5844 | 4353 | 2198 | 342 | 2611 | 7207 | 5789 | 1668 | 789 | 17 |
| Wilcox | 552 | 499 | 0 | 44 | 279 | 559 | 528 | 45 | 49 | 6 |
| Wilkes | 1086 | 978 | 0 | 53 | 765 | 2083 | 1913 | 124 | 76 | 5 |
| Wilkinson | 318 | 293 | 0 | 19 | 209 | 309 | 303 | 40 | 64 | 4 |
| Worth | 2915 | 1982 | 0 | 54 | 2028 | 3307 | 2921 | 130 | 115 | 10 |
| City of Atlanta | 15,401 | 13,516 | 13,019 | 394 | 10,092 | 5493 | 4755 | 89 | 26 | 0 |
| Other | 5125 | 4208 | 1016 | 431 | 3198 | 5146 | 4253 | 26 | 17 | 0 |
| TOTAL | 311,545 | 241,073 | 114,252 | 15,356 | 209,162 | 311,516 | 265,621 | 25,721 | 19,252 | 785 |

1990 Georgia State Patrol DPS-521 Citation Disposition

| County | DISPOSITIONS - CONVICTIONS | | | | | DISP. NON-CONVICTIONS | | | | Total Cases Disposed | Amount - Fines-Bonds Forfeited And Costs |
|---------------------|----------------------------|--------------|----------------|-------------|-------------|-----------------------|---------|----------------|-----------------|----------------------|--|
| | Conv. or Guilty Plea | Bond Forfeit | No Con-tenders | Moving Haz. | Total Conv. | No Pro or Dismiss | No Rec. | To Other Auth. | Total Non-Conv. | | |
| Appling | 310 | 615 | 20 | 885 | 945 | 95 | 0 | 0 | 95 | 1040 | \$ 70,883.00 |
| Atkinson | 135 | 704 | 24 | 775 | 863 | 67 | 0 | 0 | 67 | 930 | 83,759.06 |
| Bacon | 11 | 385 | 0 | 0 | 396 | 86 | 0 | 0 | 86 | 482 | 24,668.90 |
| Baker | 51 | 384 | 188 | 542 | 623 | 17 | 0 | 0 | 17 | 640 | 44,574.50 |
| Baldwin | 63 | 656 | 23 | 587 | 742 | 145 | 0 | 0 | 145 | 887 | 79,183.00 |
| Banks | 63 | 135 | 11 | 164 | 209 | 11 | 0 | 0 | 11 | 220 | 20,581.50 |
| Barrow | 632 | 194 | 237 | 718 | 1063 | 44 | 0 | 0 | 44 | 1107 | 246,922.50 |
| Bartow | 2894 | 196 | 1362 | 3758 | 4452 | 134 | 3 | 0 | 137 | 4589 | 399,930.00 |
| Ben Hill | 445 | 143 | 75 | 523 | 663 | 16 | 0 | 0 | 16 | 679 | 61,971.10 |
| Berrien | 73 | 1538 | 59 | 1579 | 1670 | 57 | 0 | 0 | 57 | 1727 | 135,334.50 |
| Bibb | 154 | 0 | 5 | 145 | 159 | 0 | 0 | 0 | 0 | 159 | 22,999.80 |
| Bleckley | 14 | 733 | 110 | 807 | 857 | 1 | 0 | 0 | 1 | 858 | 77,559.50 |
| Brantley | 128 | 213 | 24 | 0 | 365 | 46 | 0 | 0 | 46 | 411 | 37,816.00 |
| Brooks | 372 | 488 | 69 | 775 | 929 | 25 | 0 | 0 | 25 | 954 | 89,940.50 |
| Bryan | 285 | 2912 | 69 | 3101 | 3266 | 47 | 0 | 0 | 47 | 3313 | 321,247.21 |
| Bulloch | 753 | 2395 | 227 | 3058 | 3375 | 142 | 0 | 0 | 142 | 3517 | 393,041.50 |
| Burke | 109 | 1386 | 69 | 1499 | 1564 | 30 | 0 | 0 | 30 | 1594 | 112,823.95 |
| Butts | 87 | 612 | 64 | 634 | 763 | 7 | 0 | 0 | 7 | 770 | 63,723.56 |
| Calhoun | 359 | 39 | 17 | 292 | 415 | 10 | 0 | 0 | 10 | 425 | 40,356.97 |
| Camden | 81 | 4062 | 26 | 3807 | 4169 | 185 | 0 | 0 | 185 | 4354 | 375,958.00 |
| Candler | 354 | 1774 | 37 | 2086 | 2165 | 21 | 0 | 0 | 21 | 2186 | 356,670.50 |
| Carroll | 667 | 2450 | 155 | 0 | 3272 | 610 | 0 | 0 | 610 | 3882 | 364,807.00 |
| Catoosa | 988 | 1257 | 146 | 1999 | 2391 | 121 | 0 | 0 | 121 | 2512 | 243,371.10 |
| Charlton | 70 | 449 | 25 | 0 | 544 | 15 | 0 | 0 | 15 | 559 | 44,690.00 |
| Chatham | 2579 | 852 | 274 | 3268 | 3705 | 389 | 0 | 0 | 389 | 4094 | 401,113.75 |
| Chattahoochee | 40 | 127 | 26 | 109 | 193 | 7 | 0 | 0 | 7 | 200 | 25,443.50 |
| Chattooga | 308 | 982 | 86 | 1032 | 1376 | 85 | 0 | 0 | 85 | 1461 | 189,222.30 |
| Cherokee | 3359 | 28 | 179 | 3133 | 3566 | 262 | 0 | 0 | 262 | 3828 | 364,376.50 |
| Clarke | 176 | 0 | 61 | 165 | 237 | 13 | 0 | 0 | 13 | 250 | 51,100.17 |
| Clay | 311 | 35 | 32 | 266 | 378 | 33 | 0 | 0 | 33 | 411 | 50,617.60 |
| Clayton | 703 | 3355 | 329 | 3942 | 4387 | 1 | 0 | 0 | 1 | 4388 | 288,015.00 |
| Clinch | 3 | 191 | 6 | 0 | 200 | 1 | 0 | 0 | 1 | 201 | 18,932.50 |
| Cobb | 755 | 4964 | 141 | 5250 | 5860 | 0 | 0 | 0 | 0 | 5860 | 571,568.00 |
| Coffee | 438 | 1486 | 207 | 1649 | 2131 | 401 | 0 | 0 | 401 | 2532 | 238,519.75 |
| Colquitt | 213 | 848 | 87 | 961 | 1148 | 57 | 0 | 0 | 57 | 1205 | 122,615.00 |
| Columbia | 1410 | 1 | 56 | 1380 | 1467 | 41 | 0 | 0 | 41 | 1508 | 130,226.00 |
| Cook | 332 | 1431 | 21 | 1647 | 1784 | 44 | 0 | 0 | 44 | 1828 | 167,721.00 |
| Coweta | 1253 | 2760 | 126 | 3577 | 4139 | 77 | 0 | 0 | 77 | 4216 | 423,446.10 |
| Crawford | 1048 | 58 | 33 | 1054 | 1139 | 17 | 0 | 0 | 17 | 1156 | 65,108.30 |
| Crisp | 898 | 991 | 134 | 1836 | 2023 | 52 | 0 | 0 | 52 | 2075 | 231,670.25 |
| Dade | 138 | 671 | 261 | 900 | 1070 | 37 | 1 | 0 | 38 | 1108 | 76,556.76 |
| Dawson | 252 | 150 | 109 | 367 | 511 | 9 | 0 | 0 | 9 | 520 | 61,829.50 |
| Decatur | 277 | 829 | 28 | 959 | 1134 | 20 | 0 | 0 | 20 | 1154 | 161,968.00 |
| Dekalb | 3356 | 865 | 58 | 4024 | 4279 | 0 | 0 | 0 | 0 | 4279 | 317,610.00 |
| Dodge | 816 | 205 | 107 | 933 | 1128 | 15 | 0 | 0 | 15 | 1143 | 103,045.80 |
| Dooly | 218 | 1703 | 43 | 1851 | 1964 | 113 | 0 | 0 | 113 | 2077 | 217,388.85 |
| Dougherty | 62 | 1501 | 375 | 1758 | 1938 | 251 | 0 | 0 | 251 | 2189 | 151,964.51 |
| Douglas | 2399 | 1448 | 185 | 0 | 4032 | 327 | 0 | 0 | 327 | 4359 | 416,941.00 |
| Early | 26 | 486 | 7 | 461 | 519 | 26 | 0 | 0 | 26 | 545 | 39,721.00 |
| Echols | 4 | 124 | 2 | 103 | 130 | 48 | 0 | 0 | 48 | 178 | 12,762.00 |
| Effingham | 145 | 506 | 54 | 641 | 705 | 30 | 0 | 0 | 30 | 735 | 102,533.60 |
| Elbert | 133 | 390 | 76 | 485 | 599 | 26 | 0 | 0 | 26 | 625 | 100,196.10 |
| Emanuel | 499 | 2187 | 126 | 2516 | 2812 | 99 | 0 | 0 | 99 | 2911 | 202,123.00 |
| Evans | 41 | 384 | 20 | 403 | 445 | 54 | 0 | 0 | 54 | 499 | 44,916.95 |
| Fannin | 574 | 47 | 93 | 643 | 714 | 11 | 0 | 0 | 11 | 725 | 81,116.80 |
| Fayette | 100 | 45 | 10 | 149 | 155 | 0 | 0 | 0 | 0 | 155 | 14,053.50 |
| Floyd | 460 | 1092 | 80 | 1398 | 1632 | 41 | 0 | 0 | 41 | 1673 | 135,068.50 |

1990 Georgia State Patrol DPS-521 Citation Disposition

| County | DISPOSITIONS - CONVICTIONS | | | | | DISP. NON-CONVICTIONS | | | | Total Cases Disposed | Amount - Fines-Bonds Forfeited And Costs |
|------------|----------------------------|--------------|-----------------|-------------|-------------|-----------------------|---------|----------------|-----------------|----------------------|--|
| | Conv. or Guilty Plea | Bond Forfeit | Nolo Contendere | Moving Haz. | Total Conv. | Not Pros or Dismiss | No Rec. | To Other Auth. | Total Non-Conv. | | |
| Forsyth | 944 | 0 | 123 | 800 | 1067 | 124 | 0 | 0 | 124 | 1191 | \$136,335.44 |
| Franklin | 210 | 249 | 37 | 336 | 496 | 4 | 0 | 0 | 4 | 500 | 59,661.00 |
| Fulton | 2764 | 260 | 70 | 2775 | 3094 | 0 | 0 | 0 | 0 | 3094 | 196,240.50 |
| Gilmer | 799 | 1 | 29 | 775 | 829 | 35 | 0 | 0 | 35 | 864 | 60,931.00 |
| Glascocok | 21 | 69 | 11 | 80 | 101 | 3 | 0 | 0 | 3 | 104 | 9,244.00 |
| Glynn | 17 | 756 | 2 | 653 | 775 | 0 | 0 | 0 | 0 | 775 | 65,003.43 |
| Gordon | 1981 | 92 | 502 | 0 | 2575 | 89 | 0 | 0 | 89 | 2664 | 347,286.00 |
| Grady | 179 | 932 | 31 | 1030 | 1142 | 33 | 0 | 0 | 33 | 1175 | 89,262.38 |
| Greene | 307 | 559 | 96 | 765 | 962 | 10 | 0 | 0 | 10 | 972 | 85,633.20 |
| Gwinnett | 119 | 1107 | 282 | 1171 | 1508 | 1 | 0 | 0 | 1 | 1509 | 133,618.50 |
| Habersham | 248 | 836 | 111 | 859 | 1195 | 32 | 0 | 0 | 32 | 1227 | 168,062.00 |
| Hall | 1382 | 94 | 160 | 1035 | 1636 | 20 | 0 | 0 | 20 | 1656 | 280,914.37 |
| Hancock | 660 | 2 | 17 | 570 | 679 | 135 | 0 | 0 | 135 | 814 | 44,828.00 |
| Haralson | 1810 | 11 | 93 | 1319 | 1914 | 311 | 0 | 0 | 311 | 2225 | 221,616.50 |
| Harris | 1813 | 41 | 99 | 1438 | 1953 | 17 | 0 | 0 | 17 | 1970 | 147,940.00 |
| Hart | 342 | 81 | 77 | 312 | 500 | 16 | 0 | 0 | 16 | 516 | 127,259.44 |
| Heard | 281 | 62 | 52 | 316 | 395 | 7 | 0 | 0 | 7 | 402 | 47,133.50 |
| Henry | 68 | 1127 | 21 | 1017 | 1216 | 1 | 0 | 0 | 1 | 1217 | 70,546.50 |
| Houston | 1508 | 981 | 197 | 2409 | 2686 | 12 | 0 | 0 | 12 | 2698 | 397,573.73 |
| Irwin | 82 | 621 | 101 | 687 | 804 | 69 | 0 | 0 | 69 | 873 | 56,988.40 |
| Jackson | 177 | 829 | 125 | 1060 | 1131 | 36 | 0 | 0 | 36 | 1167 | 113,170.32 |
| Jasper | 31 | 626 | 92 | 626 | 749 | 0 | 0 | 0 | 0 | 749 | 76,224.50 |
| Jeff Davis | 222 | 696 | 77 | 824 | 995 | 58 | 0 | 0 | 58 | 1053 | 94,849.50 |
| Jefferson | 46 | 1376 | 42 | 1366 | 1464 | 6 | 0 | 0 | 6 | 1470 | 88,959.00 |
| Jenkins | 236 | 1023 | 49 | 1207 | 1308 | 12 | 0 | 0 | 12 | 1320 | 137,353.50 |
| Johnson | 76 | 631 | 15 | 697 | 722 | 21 | 0 | 0 | 21 | 743 | 35,842.40 |
| Jones | 1482 | 6 | 118 | 1384 | 1606 | 31 | 0 | 0 | 31 | 1637 | 100,305.68 |
| Lamar | 561 | 448 | 240 | 1072 | 1249 | 123 | 16 | 28 | 167 | 1416 | 146,556.30 |
| Lanier | 56 | 111 | 23 | 176 | 190 | 15 | 0 | 0 | 15 | 205 | 16,107.50 |
| Laurens | 293 | 2076 | 358 | 2289 | 2727 | 54 | 1 | 0 | 55 | 2782 | 305,445.00 |
| Lee | 96 | 291 | 674 | 397 | 1061 | 34 | 2 | 0 | 36 | 1097 | 80,632.10 |
| Liberty | 187 | 1712 | 37 | 1786 | 1936 | 56 | 67 | 1 | 124 | 2060 | 227,306.00 |
| Lincoln | 91 | 120 | 22 | 209 | 233 | 3 | 0 | 0 | 3 | 236 | 22,386.00 |
| Long | 89 | 621 | 0 | 587 | 710 | 28 | 9 | 0 | 37 | 747 | 42,376.00 |
| Lowndes | 479 | 6635 | 201 | 6613 | 7315 | 364 | 1 | 0 | 365 | 7680 | 683,734.00 |
| Lumpkin | 149 | 40 | 28 | 189 | 217 | 11 | 0 | 0 | 11 | 241 | 35,355.00 |
| Macon | 38 | 244 | 28 | 257 | 310 | 26 | 0 | 0 | 26 | 336 | 26,439.50 |
| Madison | 53 | 529 | 62 | 525 | 644 | 2 | 0 | 0 | 2 | 646 | 56,208.41 |
| Marion | 323 | 478 | 42 | 616 | 843 | 35 | 0 | 0 | 35 | 878 | 81,169.60 |
| McDuffie | 1215 | 952 | 128 | 2024 | 2295 | 123 | 0 | 0 | 123 | 2418 | 324,729.00 |
| McIntosh | 356 | 1192 | 94 | 1584 | 1642 | 11 | 3 | 0 | 14 | 1656 | 173,516.00 |
| Meriwether | 2068 | 11 | 194 | 1940 | 2273 | 428 | 0 | 0 | 428 | 2701 | 210,563.20 |
| Miller | 16 | 649 | 18 | 632 | 683 | 16 | 0 | 0 | 16 | 699 | 43,635.00 |
| Mitchell | 236 | 820 | 38 | 956 | 1094 | 10 | 0 | 0 | 10 | 1104 | 120,947.50 |
| Monroe | 717 | 2878 | 111 | 3392 | 3706 | 78 | 23 | 15 | 116 | 3822 | 265,143.40 |
| Montgomery | 68 | 15 | 11 | 55 | 94 | 3 | 0 | 0 | 3 | 97 | 9,778.50 |
| Morgan | 3976 | 159 | 232 | 3649 | 4367 | 82 | 0 | 0 | 82 | 4449 | 359,160.10 |
| Murray | 1429 | 18 | 56 | 0 | 1503 | 3 | 0 | 0 | 3 | 1506 | 130,891.00 |
| Muscogee | 0 | 0 | 0 | 0 | 0 | 0 | 0 | 0 | 0 | 0 | 0.00 |
| Newton | 311 | 1921 | 124 | 2012 | 2356 | 4 | 0 | 0 | 4 | 2360 | 204,247.00 |
| Oconee | 445 | 418 | 135 | 901 | 998 | 16 | 0 | 0 | 16 | 1014 | 77,549.49 |
| Oglethorpe | 273 | 352 | 78 | 591 | 703 | 8 | 0 | 0 | 8 | 711 | 83,081.50 |
| Paulding | 673 | 100 | 117 | 687 | 890 | 35 | 0 | 0 | 35 | 925 | 68,521.00 |
| Peach | 1081 | 289 | 58 | 1386 | 1428 | 2 | 0 | 0 | 2 | 1430 | 105,888.50 |

1990 Georgia State Patrol DPS-521 Citation Disposition

| County | DISPOSITIONS - CONVICTIONS | | | | | DISP. NON-CONVICTIONS | | | | Total Cases Disposed | Amount - Fines-Bonds Forfeited And Costs |
|-----------------------|----------------------------|----------------|-----------------|----------------|----------------|-----------------------|------------|----------------|-----------------|----------------------|--|
| | Conv. or Guilty Plea | Bond Forfeit | Nolo Contendere | Moving Haz. | Total Conv. | Not Pros or Dismiss | No Rec. | To Other Auth. | Total Non-Conv. | | |
| Pickens | 1125 | 1259 | 226 | 2303 | 2610 | 185 | 4 | 0 | 189 | 2799 | \$273,967.45 |
| Pierce | 50 | 362 | 21 | 0 | 433 | 35 | 0 | 0 | 35 | 468 | 38,417.50 |
| Pike | 681 | 214 | 51 | 833 | 946 | 12 | 0 | 0 | 12 | 958 | 71,073.80 |
| Polk | 1402 | 13 | 200 | 1034 | 1615 | 85 | 0 | 0 | 85 | 1700 | 134,008.10 |
| Pulaski | 59 | 18 | 5 | 55 | 82 | 0 | 0 | 0 | 0 | 82 | 10,053.00 |
| Putnam | 25 | 699 | 71 | 758 | 795 | 133 | 0 | 0 | 133 | 928 | 69,120.40 |
| Quitman | 35 | 449 | 7 | 309 | 491 | 45 | 0 | 0 | 45 | 536 | 47,346.41 |
| Rabun | 37 | 29 | 26 | 71 | 92 | 6 | 0 | 0 | 6 | 98 | 12,454.00 |
| Randolph | 44 | 795 | 47 | 702 | 886 | 57 | 2 | 0 | 59 | 945 | 79,156.93 |
| Richmond | 130 | 82 | 26 | 162 | 238 | 13 | 0 | 0 | 13 | 251 | 32,411.00 |
| Rockdale | 1220 | 236 | 121 | 1408 | 1577 | 179 | 0 | 0 | 179 | 1756 | 247,243.00 |
| Schley | 257 | 4 | 17 | 236 | 278 | 4 | 0 | 0 | 4 | 282 | 22,346.00 |
| Screven | 235 | 1393 | 62 | 1580 | 1690 | 137 | 0 | 0 | 137 | 1827 | 185,854.00 |
| Seminole | 46 | 631 | 30 | 590 | 707 | 44 | 0 | 0 | 44 | 751 | 63,671.25 |
| Spalding | 414 | 1925 | 150 | 1586 | 2489 | 3 | 0 | 0 | 3 | 2492 | 355,800.00 |
| Stephens | 285 | 314 | 114 | 454 | 713 | 52 | 0 | 3 | 55 | 768 | 136,149.67 |
| Stewart | 76 | 797 | 99 | 835 | 972 | 3 | 0 | 0 | 3 | 975 | 58,877.00 |
| Sumter | 331 | 895 | 61 | 1076 | 1287 | 16 | 0 | 0 | 16 | 1303 | 126,944.45 |
| Talbot | 1118 | 347 | 63 | 1214 | 1528 | 19 | 0 | 0 | 19 | 1547 | 110,273.12 |
| Taliaferro | 22 | 669 | 132 | 770 | 823 | 5 | 0 | 0 | 5 | 828 | 68,053.00 |
| Tattnall | 153 | 1730 | 52 | 1589 | 1935 | 32 | 0 | 0 | 32 | 1967 | 140,206.00 |
| Taylor | 1536 | 37 | 27 | 1501 | 1600 | 63 | 0 | 0 | 63 | 1663 | 101,829.00 |
| Telfair | 806 | 251 | 77 | 869 | 1134 | 43 | 0 | 0 | 43 | 1177 | 117,044.00 |
| Terrell | 183 | 955 | 84 | 1118 | 1222 | 3 | 0 | 0 | 3 | 1225 | 90,244.50 |
| Thomas | 1927 | 2 | 182 | 1814 | 2111 | 57 | 0 | 0 | 57 | 2168 | 180,406.03 |
| Tift | 466 | 5558 | 139 | 4436 | 6163 | 241 | 0 | 0 | 241 | 6404 | 646,423.50 |
| Toombs | 180 | 994 | 70 | 929 | 1244 | 82 | 0 | 0 | 82 | 1326 | 127,280.50 |
| Towns | 116 | 2 | 15 | 126 | 133 | 4 | 0 | 0 | 4 | 137 | 16,922.00 |
| Treutlen | 89 | 1292 | 57 | 1399 | 1438 | 58 | 0 | 0 | 58 | 1496 | 202,020.30 |
| Troup | 257 | 2428 | 95 | 2133 | 2780 | 82 | 1 | 0 | 83 | 2863 | 271,438.00 |
| Turner | 312 | 1577 | 171 | 1908 | 2060 | 85 | 0 | 0 | 85 | 2145 | 163,843.13 |
| Twiggs | 122 | 352 | 19 | 455 | 493 | 27 | 0 | 0 | 27 | 520 | 30,123.00 |
| Union | 175 | 102 | 90 | 340 | 367 | 6 | 0 | 0 | 6 | 373 | 24,445.50 |
| Upson | 857 | 979 | 150 | 1558 | 1986 | 62 | 0 | 0 | 62 | 2048 | 225,852.00 |
| Walker | 388 | 1697 | 167 | 1730 | 2252 | 157 | 9 | 0 | 166 | 2418 | 271,129.01 |
| Walton | 757 | 638 | 77 | 1287 | 1472 | 75 | 0 | 0 | 75 | 1547 | 117,469.50 |
| Ware | 87 | 720 | 40 | 0 | 847 | 62 | 0 | 0 | 62 | 909 | 77,634.75 |
| Warren | 106 | 675 | 39 | 724 | 820 | 21 | 0 | 0 | 21 | 841 | 67,155.50 |
| Washington | 104 | 681 | 22 | 720 | 807 | 31 | 0 | 1 | 32 | 839 | 66,696.00 |
| Wayne | 59 | 568 | 29 | 577 | 656 | 166 | 0 | 0 | 166 | 822 | 58,820.00 |
| Webster | 616 | 633 | 69 | 1258 | 1318 | 7 | 0 | 0 | 7 | 1325 | 82,603.50 |
| Wheeler | 468 | 16 | 34 | 394 | 518 | 35 | 0 | 0 | 35 | 553 | 36,945.00 |
| White | 221 | 9 | 66 | 227 | 296 | 2 | 0 | 0 | 2 | 298 | 17,642.00 |
| Whitfield | 3792 | 257 | 539 | 3915 | 4588 | 234 | 0 | 0 | 234 | 4822 | 320,234.49 |
| Wilcox | 332 | 52 | 31 | 343 | 415 | 35 | 0 | 0 | 35 | 450 | 38,904.00 |
| Wilkes | 329 | 467 | 156 | 862 | 952 | 11 | 0 | 0 | 11 | 963 | 76,989.50 |
| Wilkinson | 35 | 238 | 26 | 250 | 299 | 1 | 1 | 0 | 1 | 301 | 21,740.00 |
| Worth | 93 | 2305 | 18 | 2252 | 2416 | 74 | 0 | 0 | 74 | 2490 | 134,777.50 |
| City of Atlanta | 8531 | 342 | 354 | 6503 | 9227 | 8 | 0 | 0 | 8 | 9235 | 910,707.50 |
| Other | 514 | 163 | 68 | 598 | 745 | 42 | 0 | 0 | 42 | 787 | 87,653.50 |
| TOTAL | 96,711 | 127,460 | 16,704 | 192,421 | 240,875 | 10,011 | 143 | 48 | 10,202 | 251,077 | \$23,454,853.94 |

1991 Georgia State Patrol DPS-612 Activity

Enforcement Activity

| | |
|----------------------------------|----------------|
| Accident Number | 25,776 |
| Accident Hours | 54,812 |
| Fatalities Number | 787 |
| Injuries Number | 19,224 |
| Arrest M/H Total | 253,659 |
| Speeding <55 MPH | 610 |
| Speeding 56-70 MPH | 32,177 |
| Speeding 71-80 MPH | 133,941 |
| Speeding >80 MPH | 45,382 |
| Arrest DUI Alcohol/Drugs | 15,356 |
| Arrest Mechanical Defects | 1,688 |
| Arrest M/H Truckers | 5,985 |
| Arrest Other Total | 61,767 |
| Arrest Littering | 173 |
| Arrest MVI | 643 |
| Arrest I & M | 313 |
| Arrest Other Truckers | 642 |
| Arrest Total Interstate | 111,674 |
| Warning M/H Total | 243,287 |
| Warning Speeding | 116,695 |
| Warning Mechanical Defects | 63,172 |
| Warning M/H Truckers | 3,620 |
| Warning Other Total | 77,097 |
| Warning Littering | 218 |
| Warning MVI | 779 |
| Warning I & M | 126 |
| Warning Other Truckers | 672 |
| Warning Total Interstate | 49,876 |
| Pedestrian Enforcement Number | 461 |
| Criminal Investigation Number | 581 |
| Criminal Investigation Hours | 1,669 |
| Criminal Apprehended Number | 1,045 |
| Stolen Vehicles Recovered Number | 428 |
| Other Stolen Property Number | 89 |
| Aid To Other Agency Number | 5,581 |
| Aid To Other Agency Hours | 12,794 |
| Motorist Assists Number | 34,308 |
| Road Check Hours | 18,464 |
| Partner Number | 789 |
| Partner Hours | 5,550 |
| Enforcement Patrol Hours | 736,050 |
| Total Patrol Number | 119,185 |
| Total Enforcement Hours | 829,339 |

Non-Enforcement Activity

| | |
|------------------------------------|----------------|
| Dignitary Security Number | 75 |
| Dignitary Security Hours | 1,217 |
| Security Detail Number | 5,364 |
| Security Detail Hours | 45,994 |
| Escort Number | 111 |
| Escort Hours | 517 |
| Relay Medical Number | 1,411 |
| Relay Medical Hours | 2,037 |
| Other Relay Number | 2,319 |
| Other Relay Hours | 3,071 |
| Aviation Detail Hours | 16,384 |
| Safety Education Detail Hours | 583 |
| MVI Detail Hours | 6,316 |
| Radio Detail Hours | 36,681 |
| Drivers License Detail Hours | 214 |
| Training Hours - Instructor | 8,231 |
| Training Hours - Student | 79,623 |
| Civil Disorder Hours | 6,632 |
| Disaster Hours | 866 |
| Vehicle/Radio Repair Hours | 4,613 |
| Court Hours | 13,205 |
| Other Non-Enforcement Hours | 34,173 |
| Special Detail Hours | 26,635 |
| Recruitment Hours | 569 |
| Drivers License Hearing Hours | 1,438 |
| License Pickup Hours | 46,085 |
| License Pickup Number | 87,674 |
| Total Non-enforcement Hours | 335,084 |

Administrative Duty

| | |
|-----------------------------------|----------------|
| Staff Meeting Hours | 4,801 |
| Report Hours | 46,288 |
| Inspection Hours | 5,452 |
| Complaint Investigation Number | 998 |
| Complaint Investigation Hours | 2,766 |
| Other Investigation Hours | 5,653 |
| Other Administrative Hours | 175,700 |
| Total Administrative Hours | 240,660 |

Leave Hours

| | |
|--------------------------|----------------|
| Sick/Emergency Hours | 42,825 |
| Annual Leave Hours | 93,850 |
| Pass/Day Off Hours | 732,840 |
| Compensatory Hours | 12,372 |
| Military Leave Hours | 5,438 |
| AWOL Hours | 208 |
| W/O Pay Hour | 2,120 |
| Suspension Hours | 496 |
| Total Leave Hours | 890,149 |

| | |
|----------------------|------------|
| Total Other Miles | 1,036,512 |
| Total Patrol Miles | 19,730,081 |
| Total Miles Traveled | 20,766,593 |
| Total Hours On Duty | 1,405,083 |

1990 Georgia State Patrol Supplemental Activity

Emission Control Activity

| | |
|-----------------------------------|---------------|
| I&M Station Visits Number | 238 |
| I&M Station Visit Hours | 176 |
| I&M Station Inspection Number | 8,503 |
| I&M Station Inspection Hours | 9,758 |
| School Bus Inspection Number | 7,333 |
| School Bus Complaint Number | 0 |
| School Bus Insp/Comp Hours | 645 |
| I&M Investigation Number | 1,076 |
| I&M Investigation Hours | 1,711 |
| I&M Training Number | 55 |
| I&M Training Hours | 223 |
| I&M Training Attendance | 1,140 |
| Administrative Hours | 6,000 |
| Total I&M Detail Hours | 12,315 |

Aviation Activity

| | |
|-----------------------------|--------------|
| Aircraft Maintenance Hours | 3,417 |
| Flight Number | 1,207 |
| Flight Hours | 2,119 |
| Traffic Enforcement Hours | 24 |
| Searches Number | 44 |
| Searches Hours | 211 |
| Administrative Hours | 739 |
| Total Aviation Hours | 5,771 |

Alcohol/Drug Awareness Program

| | |
|--|---------------|
| School Instruction Hours | 5,408 |
| School Visitation Hours | 4,494 |
| School Program Number | 2,452 |
| School Program Attendance | 44,161 |
| No. Public School Students Passed | 26,682 |
| No. Public School Students Incomplete | 844 |
| No. Public School Students Failed | 1,539 |
| No. Private School Students Passed | 11,196 |
| No. Private School Students Incomplete | 265 |
| No. Private School Students Failed | 187 |
| No. Students In Other Schools | 326 |
| In-Service Training Hours | 6,663 |
| Total Alcohol/Drug Awareness Hours | 16,565 |
| Total Administrative Hours | 22,292 |

Safety Education Activity

| | |
|-------------------------------------|--------------|
| Number Schools Visited | 1,503 |
| School Program Number | 1,654 |
| School Program Attendance | 70,203 |
| School Program Hours | 1,504 |
| Films Shown Number | 1,197 |
| Slide Program Number | 603 |
| Pamphlets Distributed | 169,352 |
| Bicycle Rodeo Number | 28 |
| Bicycle Rodeo Attendance | 4,275 |
| Bicycle Rodeo Hours | 151 |
| D.D.C. Number | 140 |
| D.D.C. Attendance | 4,384 |
| D.D.C. Hours | 678 |
| Civic Club Number | 140 |
| Civic Club Attendance | 7,325 |
| Civic Club Hours | 319 |
| Employee Group Number | 385 |
| Employee Group Attendance | 21,807 |
| Employee Group Hours | 870 |
| Other Program Number | 361 |
| Other Program Attendance | 79,832 |
| Other Program Hours | 1,236 |
| Radio Spots Taped | 7,425 |
| Radio Spots Aired | 126,808 |
| Radio/TV Programs | 65 |
| Study Preparation Hours | 1,656 |
| Safety Education Contacts | 6,972 |
| Public Relations Visit Number | 3,637 |
| Public Relations Visit Hours | 3,370 |
| Administrative Hours | 15,553 |
| Total Safety Education Hours | 9,784 |

Seat Belt Enforcement Georgia State Patrol

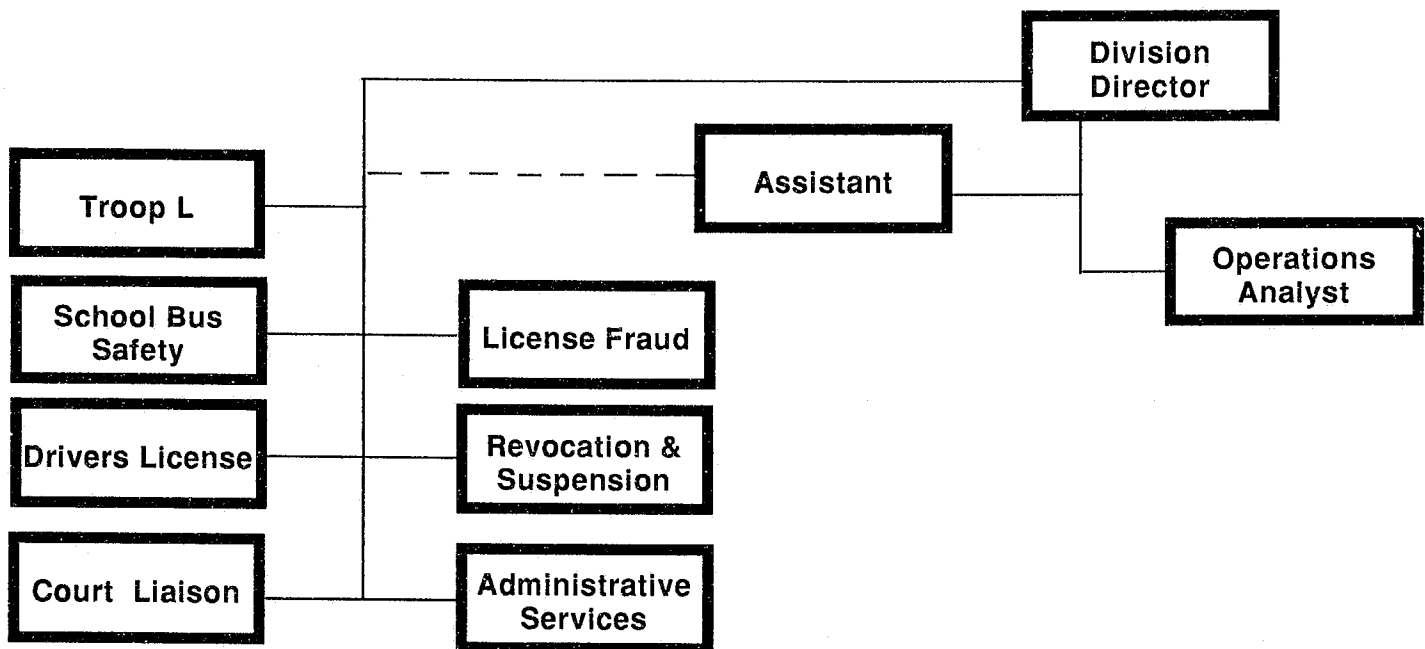
1990

| | |
|-----------------|---------------|
| Arrests | 2,026 |
| Warnings | 32,475 |

Since September 1, 1988

| | |
|-----------------|---------------|
| Arrests | 3,942 |
| Warnings | 60,281 |

Driver Services Division



License Issuance

1990 was the advent of several programs in **License Issuance** and the continuance of others. Two mobile units, "Georgia Licensing on Wheels" (GLOW), were obtained. One unit was reconditioned from the department's old mobile communications command post bus while the other was procured new. No state funds were used in this effort. The GLOW units are equipped with state-of-the-art testing equipment and used to administer CDL and other testing at remote locations.

A new testing facility at Milledgeville was opened and dedicated in June. Located on 17 acres deeded from another state agency, the new building boasts a 3,800 square foot building procured through a \$25,000 donation from the City of Milledgeville, a \$25,000 donation from Baldwin County, and

the remainder from state funds. The Milledgeville site is the only site in Georgia designed to administer all testing, knowledge and skills, for both commercial and non-commercial driver licenses. This is the first such site in the United States.

State-of-the-art testing equipment was installed at the license facilities in Decatur, Marietta and Milledgeville on a pilot test. The equipment has proved quite successful, reducing the waiting time for applicants almost 50 percent.

Georgia has continued its efforts in the eye and organ donor programs. Working closely with the organ donor foundations, we have attempted to educate the license applicants about the programs. More than 42,000 Georgia residents registered as donors during 1990 as a result of our program.

Process Section

The Process Section was established May 1, 1987, as a part of the Driver Services Division for the purpose of serving no fault insurance pick-up orders. This relieves trooper from the task and provides more time for assigned patrol duties.

There are 16 process officers statewide as eight are assigned to the Atlanta area and one each to posts in Marietta, Hapeville, Macon, Lawrenceville, Columbus, Gainesville and Savannah.

During 1990, the Process Section received 36,907 pick-up orders and 34,721 were cleared through either actual service on the individual or by determining that the person was unable to be located either by moving or giving an improper address.

License Processing Unit

The License Processing Unit is responsible for quality control and delivery of drivers' licenses and identification cards. In 1990, the unit prepared approximately 1,635,755 licenses and ID cards.

During this procedure, about 25,000 licenses were pulled due to suspension, revocation or cancellation. About 30,000 licenses were found to be flawed and retake letters were issued.

Some 60,000 telephone calls were handled regarding unclaimed licenses and retakes. Undeliverable or unclaimed licenses and ID cards returned by the postal service totaled 18,100.

Fraudulent License Unit

The Fraudulent License Unit was established in 1990 to combat the growing incidence of fraudulent licensing. There were 267 cases of fraud reported during the year with 220 being cleared by the Unit. Most cases involved family members obtaining licenses in another family member's name, to avoid fines and/or suspensions.

Post 57 (Military Issuance)

Post 57 issues all licenses to military personnel and dependents stationed outside Georgia and to full-time students attending a college or university in another state. There were 3,264 such licenses issued in 1990.

The statewide handicapped parking permit files are maintained in Post 57. There are 38,037 entries in this file. During 1990, Post 57 issued 1,041 handicapped parking permits.

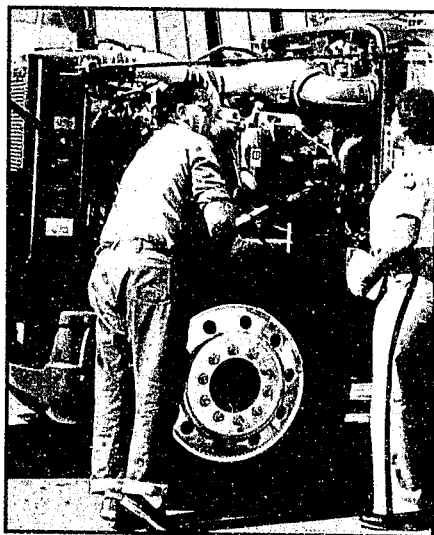
Court Liaison Officer

The Court Liaison Officer visited 339 of Georgia's 903 courts that adjudicate traffic offenses. The purpose of these visits is to provide coordination between the courts and the Department to insure proper reporting of traffic convictions, thereby enhancing accurate driving records.

Commercial Driver License Unit

The Commercial Driver License Unit is responsible for receiving and processing applications for Commercial Driver Licenses (CDL) and for oversight of the CDL licensing system. During 1990, in addition to coordinating with the state driver examiners and providing information to the public regarding the program, the CDL Unit had the following activity:

| | |
|--|--------|
| CDL Applications received | 61,260 |
| CDL Applications rejected | 16,312 |
| CDL Applications processed for licensing | 43,748 |
| Commercial License Issued | 29,173 |



Ticket Coding

The Ticket Coding Unit processes conviction reports received from the courts for entry into the driving records.

Activity:

| | |
|---|--------------|
| Conviction reports received from Georgia courts | 1,210,768 |
| Processed | 1,209,103 |
| Total amount paid to courts for processed citations | \$302,275.75 |
| Conviction reports received from out of state | 107,914 |
| Processed | 58,086 |
| Non-resident compact on out of state driver license | |
| Suspension | 20,957 |
| Reinstatements | 11,315 |
| Issuing department citations on DUI | 47,160 |
| Mailed Georgia citations and etc. | |
| on out of state residents to home state for processing | 195,000 |
| Typed returns to courts on incomplete citations | 15,250 |
| Separate and mail post citations | 5,000 |
| Phone calls received from clerks of court and patrol post | 15,000 |

School Bus Safety

The School Bus Safety Unit is responsible for safety training for school bus transportation and oversight and monitoring of the 75 defensive driver improvement schools and the 204 CDL Third Party Testing locations.

Each year, the unit provides safety instructor training to bus driver instructor/trainers in the 186 city and county school systems to assist them as they train their system's drivers on safety laws and regulations and on safe school bus operation.

The unit conducts three basic and three advanced instructor courses. Additionally, members of the unit provide safety information to over 4,000 drivers during personal appearances at institutes and mini-institutes throughout the state.

In May and June of each year, district bus driver "road-e-o's" are conducted to select winners to compete in the state competition. State winners then compete in the national road-e-o.



Motor Vehicle Report Unit

This unit issues motor vehicle reports (MVR) when requested either in person or through the mail. The unit also coordinates with the various Georgia State Patrol posts who issue MVR's. The unit is also responsible for obtaining photograph reprints for law enforcement use.

| | Number Issued | Fees Collected |
|--|------------------|-------------------|
| 3 year MVR's issued at \$3.00 each | 1,942,548 | \$5,827,644.00 |
| 7 year MVR's issued at \$3.50 each | 416,652 | \$1,458,282.00 |
| No fee MVR's | 43,046 | |
| Photograph reprints | 11,312 | |
| Telephone calls (approximate) | 85,000 | |

The GSP posts reported the following MVR activity:

| | | |
|---------------------------------------|--------|--------------|
| 3 year MVR's at \$3.00 each | 49,776 | \$149,328.00 |
| 7 year MVR's at \$3.50 each | 28,791 | \$100,768.50 |
| No Fee MVR's | 8,354 | |

Driver Improvement/Hearing Section

This section held 1,795 hearings under the Georgia Administrative Procedures Act and 2,364 administrative rulings regarding the suspensions, cancellations and revocations of driver licenses in 1990.

The computation of decisions rendered by this section can be broken down to 2,774 hearings where the decision was rendered to uphold the action taken by the department; 1,022 were withdrawn based on evidence or testimony given at the hearing; and seven were withdrawn by agency reviews.

During this period, 52 agency reviews were held. Of that number, 50 were in relation to the Implied Consent Act and two were held on other administrative suspensions.

This section also processes the appeals of implied consent suspensions where the licensee wishes the courts to review the action of the department. In providing this function, 24 transcripts were completed and 15 appeals were processed.

The 1990 Georgia General Assembly passed House Bill 663 which transferred the alcohol

portion of the Driver Improvement program to the Department of Human Resources on July 1, 1990. The Driver Improvement Section is now responsible for 75 defensive driving clinics and 27 driver training schools throughout the state. In 1990, one instructor's license was suspended and one canceled. Four clinics were suspended and two fined. Sixty new instructors were licensed. The School Bus Safety Unit is responsible for monitoring and inspecting all driver improvement clinics.

Troop L (Driver License)

Troop L includes all driver license facilities and the Process Section in Georgia. Troop L is divided into 11 regions with 57 license facilities. There are 251 license examiners, several clerk typists and 16 process officers.

During 1990, Troop L underwent many improvements and changes. The first commercial driver license facility was opened in Milledgeville as the CDL program was initiated.

State of the art automated testing equipment was installed at Marietta, Milledgeville and Decatur license facilities.

The eye donor program in cooperation with the Georgia Lions Eye Bank noted a dramatic increase as donations escalated from 8,390 in 1989 to 42,276 in 1990.

A new motorcycle testing program was enacted during the year and includes 28 testing sites.

Georgia was one of the first states to enact the Certified Examiner Program. In 1990, 70 new examiners were certified and 60 were re-certified.

Computers were added to license facilities in Decatur, Marietta, Albany, Lawrenceville and Dalton providing a link with Immigration and Naturalization Services.

Plans began in 1990 to establish CDL sites in Dalton, Gainesville and Tifton.

An addition to the building in Statesboro was completed in 1990 which almost doubled the size of the building. A new building at the Thomson testing facility is nearing completion. Renovation began in Albany to expand the office area to accommodate six effective workstations. A new office was completed for Savannah and land was acquired for a new license office in Hinesville.

Driver Examiners' Yearly Report

| Restriction Codes (Regular and Commercial) | | Restrictions | | |
|---|---|--------------|---------|------------|
| | | Code | Regular | Commercial |
| A | No restrictions | A | 248,045 | 4,557 |
| B | Corrective lens | B | 365,324 | 7,089 |
| C | Mechanical aids | C | 341 | 1 |
| D | Business only | D | 2,875 | 2 |
| E | Automatic transmission | E | 387 | |
| F | Outside mirrors right and left | F | 604 | 23 |
| G | Daylight hours only | G | 9,644 | 1 |
| H | Employer's vehicle only | H | 134 | |
| I | Inmate license | I | 111 | |
| J | Left outside mirror | J | 1,698 | 7 |
| K | Cushion | K | 259 | 297 |
| L | Right outside mirror | L | 1,572 | 1,343 |
| M | No expressway | M | 9,550 | |
| N | No power brakes | N | 93 | 5 |
| O | Power steering | O | 378 | |
| Q | No passengers | Q | 9,026 | |
| R | Motorcycle under 500cc | R | 5,233 | 139 |
| S | To and from school | S | 658 | |
| T | To and from medical | T | 562 | |
| U | All motorcycle except restriction X | U | 39,441 | 2,727 |
| X | Three-wheel motorcycle | X | 1,784 | 194 |

| Type Transaction | Number Issued | Amount Collected | Number Issued |
|--------------------------------------|------------------|-----------------------|---------------------------|
| \$65.00 License | 962 | \$62,530.00 | 82,878 |
| \$20.00 License | 3049 | 60,980.00 | 3,547 |
| \$25.00 License | 5531 | 138,275.00 | 17,772 |
| \$15.00 License | 22,684 | 340,260.00 | 102 |
| \$8.50 Non-CDL License | 6,722 | 57,137.00 | 939 |
| \$8.50 CDL Renewal | 488 | 4,148.00 | 10,642 |
| \$8.50 CDL Learner License | 565 | 4,802.50 | 2,749 |
| \$4.50 License | 1,203,803 | \$5,417,113.50 | 180 |
| \$2.00 License L/P | 958 | 1,916.00 | 1,264 |
| \$1.50 Learners Permit (AP-BP-MP) | 11,155 | 16,732.50 | 3,633 |
| \$1.50 Class C-P | 120,556 | 180,834.00 | 34,404 |
| \$2.00 90 NF Permit | 221 | 442.00 | 18,646 |
| National Guard License | 1,012 | N/A | 214 |
| Vet License/Limited Permit | 53,183 | N/A | 1 |
| CDL Vet License - All | 4,884 | N/A | |
| Vets W/O Photo - All | 360 | N/A | |
| 90 Day Temporary Permit | 24,700 | N/A | |
| 120 Day Limited Permit | 3,395 | N/A | |
| Inmate License | 524 | N/A | |
| Temporary License | 78,740 | N/A | |
| GRAND TOTAL LICENSE FEE | 1,562,139 | \$6,435,763.50 | |
| \$5.00 T Endorsement | 68 | 340.00 | |
| \$5.00 X Endorsement | 40 | 200.00 | |
| \$5.00 H Endorsement | 83 | 415.00 | |
| \$5.00 N Endorsement | 44 | 220.00 | |
| \$5.00 P Endorsement | 58 | 290.00 | |
| \$5.00 HC ID Card | 1 | 5.00 | |
| \$5.00 Public ID Card | 73,616 | 220,848.00 | |
| Vet ID | 54 | N/A | |
| Instructional Permit | 19 | N/A | |
| GRAND TOTAL FEE | | \$6,458,081.50 | |
| | | | Regular |
| | | | Total DPS-23 |
| | | | Total Renewals |
| | | | Total Out of State |
| | | | Commercial |
| | | | Total DPS-1224 |
| | | | Total Renewals |
| | | | Total Out of State |

| Examinations | | | | | | | | | |
|--------------------|---------|---------|-------|--------|---------|---------|-------|-------|--|
| Regular License | | Passing | | | | Failure | | | |
| Class | Written | Skill | Road | Eye | Written | Skill | Road | Eye | |
| A | 805 | 805 | | 2 | 205 | | | 1 | |
| AP | 479 | 479 | | 1 | 248 | | | 2 | |
| B | 526 | 526 | | 8 | 188 | 2 | | | |
| BP | 430 | 430 | | 1 | 270 | 2 | | 2 | |
| C | 158,680 | 158,680 | 6,738 | 38,059 | 51,462 | 2,727 | 1,357 | 1,375 | |
| CP | 74,006 | 74,006 | | 1,597 | 47,324 | 1,340 | | 117 | |
| M | 3,911 | 3,911 | 74 | 7 | 1,527 | 27 | 13 | | |
| MP | 8,698 | 8,698 | | 16 | 3,426 | 49 | | | |
| Commercial License | | | | | | | | | |
| A | 19,744 | 51 | 457 | | 6,676 | 60 | 69 | | |
| AP | 630 | | | | 177 | | | | |
| B | 9,172 | 28 | 360 | | 3,302 | 41 | 63 | | |
| BP | 138 | | | | 32 | | | | |
| C | 364 | | 87 | | 38 | | 1 | | |
| CP | 21 | | | | 1 | | | | |
| M | 166 | | | | 2 | | | | |
| End H | 5,967 | | | | 3,191 | | | | |
| End N | 3,983 | | | | 1,494 | | | | |
| End P | 11,747 | | | | 2,406 | | | | |
| End T | 6,348 | | | | 1,886 | | | | |
| End X | 4,349 | | | | 412 | | | | |

Revocation and Suspension Section

The No Fault Insurance Unit was combined with Revocation and Suspension Processing this year, creating the Revocation and Suspension Section under the supervision of Captain Robert Hightower.

The Section consists of eight units with distinct responsibilities.

The **Telephone Information Unit** responds to incoming calls concerning all aspects of the Department, especially those regarding driver licenses. Each operator responds to 38,000 to 40,000 calls each year, or 160 to 180 calls a day. Most calls are concern the suspension, revocation, cancellation or issuance of a driver license.

The **Walk-In Reinstatement Unit** provides personal service to people who appear at DPS Headquarters concerning any problem they may have regarding either a suspension, revocation or

cancellation of their driving privileges. During 1990, this unit reviewed and processed approximately 80,048 documents relating to the reinstatement of driving privileges. Also, this unit has the capacity to microfilm documents, receipt money and withdraw suspensions, revocations and cancellations instantaneously with online capabilities.

The **Habitual Violator Unit** is responsible for mailing all habitual violator revocation and cancellation orders by certified mail. There were 18,096 habitual violator orders mailed and 4,035 license pick-up orders issued in 1990. The unit is also responsible for entering court ordered corrections on habitual violator records. And, some 8,650 motor vehicle records were certified to be true and accurate in an effort to assist the courts in the prosecution of habitual violators charged with driving after being declared and served as an habitual violator.

The **Medical Advisory Unit** processes information received from persons in the medical or law enforcement fields or mental ability to operate a motor vehicle safely. As a result of investigation of this information, 811 new cases were established and 444 revocation orders were issued.

| | |
|--|-----|
| Driver license or privilege to operate revoked by Department | 444 |
| New cases established by Department | 811 |
| Cases updated on six month or yearly basis | .68 |
| Cases forwarded to GSP Posts for background investigation | .40 |
| Hearings | .41 |
| Cases appealed to Superior Courts | 5 |
| Requests for medical information sent via certified mail | 572 |
| Requests to retake license examination via certified mail | 176 |
| Pickup orders issued by Department | .62 |

Revocation and Suspension Processing Unit is responsible for mailing suspension and cancellation orders. Of the 128,540 orders mailed by the unit, 37,013 were by certified mail. Of the certified mail orders, 13,656 were returned. This unit processes limited driving permit applications, corrections of driving records, and maintains records of money deposits made daily to this unit's lockbox. It also processes documents concerning the withdrawal of suspensions or cancellations and withdrew approximately 123,000 suspensions or cancellations during 1990.

The **No Fault Insurance Unit** is responsible for processing insurance cancellation information received from insurance companies on cancellation of coverage for vehicles registered in the state. The unit mails all orders relating to insurance cancellations or conviction reports received from the courts on individuals operating a motor vehicle without insurance. This unit also reviews and processes documents concerning the withdrawal of insurance suspensions or cancellation and processes information to be submitted to the Attorney General's Office relating to cases on appeal.

No Fault Activity

| | |
|---------------------------------|--------------|
| FR-4's manually processed | 138,471 |
| FR's transmitted by tape | 115,003 |
| FR-4's rejected: | |
| processed manually | 10,847 |
| processed by tape | 87,850 |
| processed by Data Control | 55,939 |
| First Cancellation Suspensions | 168,498 |
| Reinstatements | 117,949 |
| Second Cancellation Suspensions | 35,449 |
| Reinstatements | 65,897 |
| Reinstatement Fees (\$25) | 31,667 |
| | \$791,675.00 |
| Lapse Fees (\$25) | 42,513 |
| | \$1,062,825 |
| Conviction (Ticket) suspensions | 36,529 |
| Reinstatement fees (\$25) | 20,793 |
| | \$519,825 |
| Court Corrections | 1,077 |
| Pickups: mailed | 92,393 |
| Served | 28,650 |
| Not Served | 22,117 |
| Insurance in Effect | 5,436 |

The **Safety Responsibility Unit** is responsible for suspending the driver license, tag and tag registration of owners or operators when a claim for damages is filed as a result of an accident occurring in Georgia or out of state, when information is

received from that licensing authority. This unit processes information from various courts when civil action is filed and judgements are obtained as a result of accidents. During 1990, there were 8,000 security claims processed as a result of accidents.

Safety Responsibility Activity

| | |
|-------------------------------|-------------|
| Accident reports | 3,289 |
| Accident claims processed | 6,358 |
| Accident claims closed | 3,761 |
| Judgment suspensions | 1,632 |
| Security suspensions | 5,784 |
| Out of state suspensions | 243 |
| Reinstatements | 2,920 |
| Pickup orders | 1,905 |
| Status reports | 1,614 |
| Number paying restoration fee | 2,444 |
| Restoration fee | \$60,665.00 |
| Security deposited | \$47,709.46 |
| Security disbursed | \$17,759.64 |
| Security returned | \$21,120.23 |
| Property bonds posted | \$34,970.76 |
| Property bonds released | \$12,366.86 |
| Balance on deposit | \$59,031.95 |

Revocation and Suspension Activity

| | Suspensions Year | Revocations Year | Cancellations Year |
|------------|---------------------|---------------------|-----------------------|
| Male | 88,027 | 14,094 | 3,439 |
| Female | 36,990 | 1,100 | 292 |
| Court | 283 | 0 | 0 |
| Department | 124,734 | 15,194 | 3,731 |

Breakdown

| | | | |
|---|----------------|---------------|--------------|
| DUI suspensions - 1 year | 26,980 | | |
| DUI suspensions - 3 year | 15,821 | | |
| Controlled substance possession - 120 day | 78 | | |
| Controlled substance possession - 3 year | 55 | | |
| Points suspensions - 1 year | 6,833 | | |
| Points suspensions - 3 year | 947 | | |
| Leaving scene of accident - 1 year | 2,597 | | |
| Leaving scene of accident - 3 year | 115 | | |
| Driving with susp/rev/canc license | 16,814 | | |
| Homicide by vehicle | 99 | | |
| License surrendered in lieu of bond | 10,079 | | |
| Failure to appear in court | 37,013 | | |
| All other suspensions | 7,303 | | |
| Habitual Violator revocations | | 14,430 | |
| HV probationary licenses revoked | | 689 | |
| HV probationary licenses canceled | | | 2,977 |
| Limited permit revoked | | 75 | |
| Limited permit canceled | | | 350 |
| 120 day DUI permit revoked | | | |
| 120 day DUI permit canceled | | | 36 |
| All other cancellations | | | 368 |
| Totals | 124,734 | 15,194 | 3,731 |

Reinstated

| | | | |
|------------|--------|-------|-----|
| Court | 159 | 0 | 0 |
| Department | 73,973 | 5,523 | 396 |

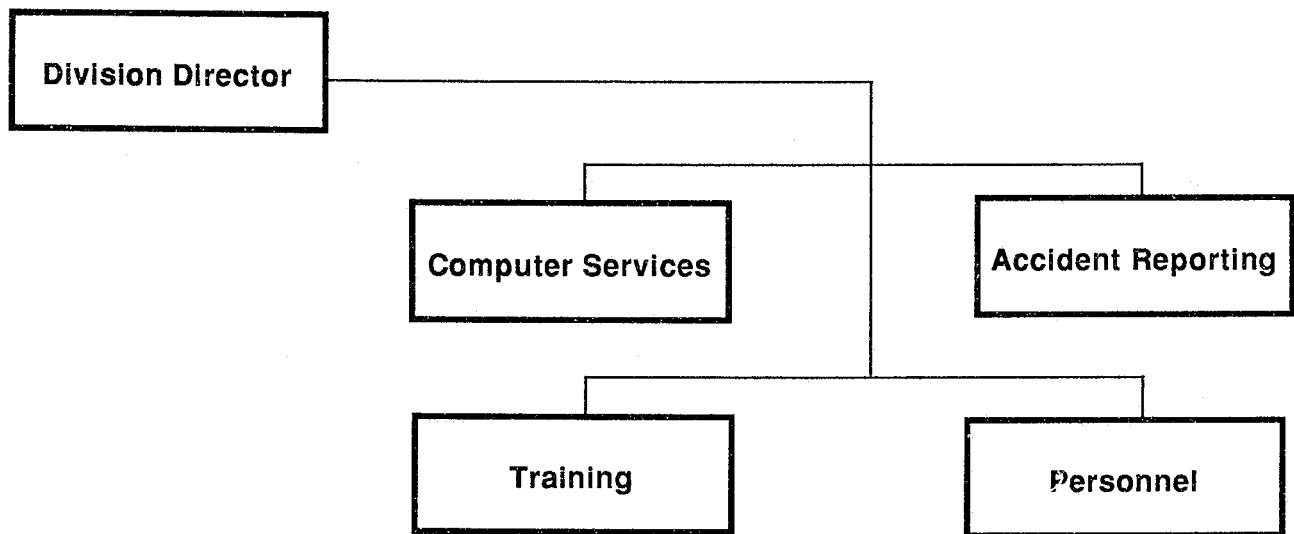
Other Actions Miscellaneous Statistics

| | | | |
|--|--------|-----------------------------------|-------|
| Corrected Reports - Year | 6,664 | Nolo Contenderes - Year | 789 |
| Driver Improvement Clinic Reinstatements | | SR-22 Insurance Reinstatements | |
| DUI | 20,688 | All | 70 |
| All Other | 4,903 | | |
| Habitual Violator | | Rescinded | |
| Exam Passed | 5,522 | DUI | 2,246 |
| | | HV | 432 |
| | | All Others | 4,775 |

Miscellaneous Statistics

| | |
|---|-------------|
| Number paying \$25 reinstatement fee | 58,936 |
| Amount paid | \$1,473,400 |
| Number fees transferred | 639 |
| Number fees refunded | 113 |
| Pending DUI nolo contendere | |
| Orders issued | 25,369 |
| Suspensions deleted | 11,401 |
| D.I. certificate entered for nolo credit | |
| ticket not on record | 9,273 |
| Pending controlled substance nolo contendere orders issued | 36 |
| Pickups issued for driver license | 4,035 |
| Pickups served | 711 |
| Bail receipts received from courts | 7,518 |
| Failure to appear reinstatements and deletions | 25,706 |
| Limited permits issued | 738 |
| Limited permits approved | 984 |
| Limited permits denied | 302 |
| Warning letters | 55,085 |
| Suspensions expired | 15,088 |
| Driver license surrendered | 24,922 |
| HV probationary licenses issued | 2,902 |
| HV probationary licenses approved | 6,054 |
| HV probationary licenses denied | 59 |
| Certified HV records for courts | 8,650 |
| Driver Improvement Clinic points reductions | 1,466 |
| Extension of 180 day DUI permits | 189 |
| Unclaimed suspension orders entered on driving records | 38,005 |
| Appeals filed | 37 |
| Appeals won by Department | 36 |
| Appeals lost by Department | 5 |
| Revocation and Suspension documents processed at front door | 38,151 |
| No Fault Insurance documents processed at front door | 40,674 |
| Other documents processed at front door | 1,233 |

Personnel Services Division



Computer Services

The Computer Services Section is composed of three units: Data Central, the Personal Computer Group, and the Application Support/RJE Unit.

The **Data Central Unit** is responsible for the keypunching of data from accident reports, traffic citations, driver license applications, motor vehicle records, insurance cancellation reports that are not reported in magnetic tape, and other miscellaneous data.

Another function is entering data on-line to reinstate suspended and revoked driver licenses.

Non-matching dispositions are researched in this office to insure that all arrests are added to the correct driver records.

The **Personal Computer Group** coordinates software and hardware purchases, training on PC use, and program development for PC users.

Close scrutiny of user needs and departmental goals, as set forth by the Department's EDP Committee, has enabled our continuing EDP operations and providing important advances in systems and hardware.

Typical of these advances were the replacement of the last 22 Georgia State Patrol network terminals with the new "CrimeBuster" terminals and providing assistance with the development and installation of a sub-system to process immigration green cards at four driver license locations. The unit also provided operator training on all major systems for departmental personnel and special training for the FBI.

The primary responsibility of the **Application Support/RJE Unit** is transmitting all batch data processed by Driver Services and Accident Reporting to the DOAS mainframe.

Other responsibilities include all programming that is required on the Nixdorf Data Entry Systems, maintaining monthly activity reports for statistical information and exchanging National Driver Registry data with Washington on a daily basis.

The Georgia General Assembly authorized the Georgia Net Authority allowing all MVR tape users to transmit and receive driving records directly through the driver license mainframe maintained by DOAS.

The unit also printed 53,547 alcohol/drug certificates for Safety Education and processed DUI convictions to be added to the driver license database.

Training

The Training Section of the Georgia State Patrol continues to be a proactive unit, aggressively pursuing training opportunities for all personnel.

The 64th GSP Trooper School graduated 52 "street ready" troopers on March 2. This was the largest graduating class since the organization of the Patrol.

In July, the Training Section launched a comprehensive physical fitness and in-service training program. This is a department-wide program that is mandated by policy, as well as Peace Officers Standards and Training. The program far exceeds the minimum requirements established by law and is the beginning of a healthier and more physically fit Georgia State Patrol.

In addition to these activities, 60 advanced and specialized training programs were coordinated throughout the year and were attended by 388 troopers.

Civilian employees were also afforded additional training programs. A total of 144 employees attended 12 various schools.

Everyone within the department attended a "Drug-Free Workplace" seminar.

Accident Reporting

The Accident Reporting Section is responsible for the collection of accident forms received from the Georgia State Patrol and all other law enforcement agencies in the state. Reports are microfilmed and retained for a ten-year period.

Employees process over 20,000 accident reports a month, and from these reports detailed statistical summaries of traffic accidents are prepared.

The Fatal Accident Reporting System (FARS), a federal project in Accident Reporting, reports detailed information on fatal accidents to Washington, DC.

Personnel

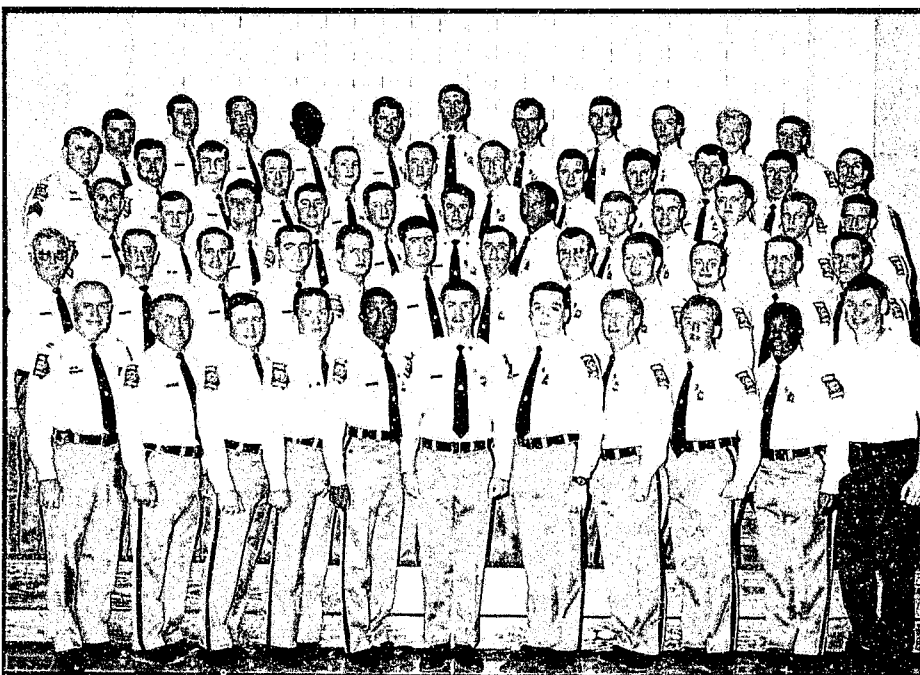
The Personnel Office is responsible for all personnel related activity for the Department of Public Safety and its attached agencies.

Announcements for all vacancies are made by Personnel and all applicant and employee interviewing is completed here. Appointments are made for polygraphs and the polygraph results are reviewed before a decision is made.

During 1990, the Personnel Office assumed responsibility for issuing background investigations for radio operator, driver examiner, process server and trooper applicants. The progress of the background is monitored and the results reviewed by this office before an applicant is considered for employment.

For most of the year, the Department was under a hiring freeze which severely curtailed the employment process. The office continued to process applicants to provide a pool of qualified applicants when funds are available.

The Personnel Office administers the leave programs, Flexible Benefits and Health Benefits Programs. Faithful Service Awards, warrants and commissions for employees are also prepared in the Personnel Office.



Jobs/Documents Processed By Data Central

| | | | |
|---|-----------|---|--------|
| License Renewal Forms | 18,986 | Suspensions Deleted | 274 |
| MVR's (Key punched) | 60,874 | Implied Consent Hearing Request | 1,164 |
| DPS 23's Original D/L Application | 378,973 | Hearing Decisions | 98 |
| Accident Reports | 220,780 | Certified Mail Receipts | 3,193 |
| License Attached Citations | 27,797 | Appeal | 1 |
| Trooper Activity | 9,829 | Delete | 1,132 |
| Drug and Alcohol Certificates | 86,591 | Affidavit Suspensions | 5,838 |
| DUI Arrest | 43,307 | Limited Permit App/Served | 907 |
| Citation Dispositions | 1,004,879 | License Attached (Surrender Date) | 23,049 |
| No-Fault FR4 Cancellation Notices | 166,346 | Nolo Credits | 8,811 |
| Affidavits for Lost License | 131,093 | Nolo Deletes | 10,354 |
| App. for Different Class of License | 19,384 | National Driver Registry | 215 |
| ID Cards | 87,496 | No-Fault Deletes | 46,785 |
| D/L Fiche Master Record Recovery Info. | 17,220 | SR 22A Overlay | 1,155 |
| D/L Histories-History Record Recovery | | Appeal | 7 |
| Information - IBM & Nixdorf | 24,688 | SR 22A Canc. | 358 |
| Scanner Edit Errors | 84,803 | Surr. Lic. | 9,769 |
| New Application Edit Errors | 55,911 | Correction | 2,014 |
| Citation Corrections (IBM) | 87,891 | Nolo | 1,006 |
| Citation Error File (Nixdorf) | 87,891 | Enter Surr. Date | 1,664 |
| Address Changes | 539 | Add Citation | 306 |
| Affidavits (Documents Stating License Lost) | 329 | Add Suspension | 310 |
| Bail Bonds (D/L Used as Bond) | 10,524 | Future Deletes - Suspension Deleted | 3,287 |
| Bail Bond Deletes | 36 | Reinstatements | 14,484 |
| Cancellations | 642 | Reinstated SR 22A Cancellations | 128 |
| Cancellation Deletes | 41 | Mandatory Appeal | 7 |
| Corrections | 8,341 | 180 Day Extension Permits | 72 |
| Failure to Appear Suspension | 39,998 | Consolidated Records | 489 |
| Deletes | 7,796 | Deceased Records | 350 |
| Green Cards | 16,289 | Nolo's | 2,372 |
| Hearing Decisions | 1,094 | Physical Disability App. | 481 |
| Habitual Violator Appeals | 33 | Physical Disability Delete | 29 |
| Clinics | 3,377 | Served Document Used to Notify Driver | |
| Duplicates | 34 | He/She is Suspended | 9,945 |
| Green Cards | 6,109 | Surrendered License | 14,282 |
| Orders Declares H/V | 334 | Point Credits | 1,469 |
| Proof Suspended | 4,317 | SR 22, SR 26 Insurance | 10,602 |
| Prob. License Application | 2,888 | Reinstatements | 27,672 |
| Prob. License Revoked Suspension | 45 | Court Suspensions | 32 |
| P L Certified Mail Receipts | 1,906 | Court Suspension Delete | 1 |
| Appeals Won | 32 | License Turned In to Comply | |
| Pickup Orders | 4,910 | with Federal CDL Law | 541 |
| Appeal Lost | 2 | Inmate License Purge | 77 |
| P L Canc. Delete | 134 | Citation Added | 249 |
| W/D | 301 | Suspension Add | 242 |
| Citation Deletes | 101 | Histories | 17,186 |
| Eye Test Results | 2,905 | Special Purges | 141 |
| Safety Responsibility Suspensions | 8,778 | Drug Convictions | 173 |
| Permit Deletes | 20 | Commercial Driver Applications | 25,154 |
| Hearing Request Withdrawn | 645 | Correspondence Entry | 232 |
| 180 Day Permit S/D | 162 | Correspondence Delete | 39 |
| Court Suspension Deletes | 1 | Juvenile Court Suspension | 199 |
| SR Certified Mail Receipts | 3,532 | 120 Day Permit Surrender Data | 7 |
| Identification Cards Deleted | 37 | No-Fault SR 22A's | 1,178 |

1990 Faithful Service Awards

30 Year

R.D. Killingsworth
James B. Logue
Eugene T. Arrington
Charles W. Esloon

Lester L. Rampy Jr.
Paul W. Nugent
James J. Canady

Billy J. Holley
Herbert A. Turner
Harriette J. Clower

25 Year

Luke E. Beck
Henry Covington
Dennis W. Dixon
Theron H. Johnson
Charles D. Ladson
Larry E. Miller
Kenneth D. Rearden
Douglas E. Simmons
Victor H. West
Joe A. Crocker
Charles R. Sanders Sr.
Michael E. Perkins
Jack N. Tucker
Jimmie H. Buckner
Neville C. Williams

Jimmy H. Collins
Melton R. Covington
William W. Hitchens Jr.
Gary L. Jones
Brantley Martin
Charles L. Moore
Patricia S. Rosamond
Raymond F. Taunton
Buddy R. Wilson
Charles L. Griffin
James R. Benefield
Thomas F. Raiford Jr.
Ronnie E. Angel
Gerald W. Emery

Charles W. Colston
Benny Deloach
Kenneth M. Hudson
Robert L. Jones
William C. McElmurray
Thomas E. Pritchett
Claude E. Sapp
Franklin M. Turner
Reginald Castleberry
Charles A. Lott
William J. Kiser
William F. Rooks
Elwin Q. Bracewell
William A. Maxwell

20 Year

Vernon A. Anderson
Ronald W. Campbell
William N. Dedmon
Phillip M. Hanners
Roger W. Hutchinson
Diane L. Moore
Robert M. Sanders
Carlton E. Stallings
Charlie W. Bennett
James A. Dixon Jr.
Donald E. Halstead
Ronnie H. McQuaig
Brenda Raines
Robert W. Scott Jr.
Daniel A. Woolley
Charles Bernie Edenfield
Gerald F. Moses
Jean L. Ross
Harold Ronald James
Martha L. Clement
Beuford D. Durrence
James D. Fincher
Troy H. Palmer
Pat A. Posey
Harry L. Thomas

Theril L. Boutwell
Barbara K. Carter
William Joseph Grant
Wayne D. Heard
William R. Kitchens Jr.
Pauline K. Nelms
Trina K. Senft
Larry H. Wilson
F.J. Boswell
Bobby Glynn Fennell
Helen J. Jackson
Reuben E. Odom
Wally L. Roberts
William S. Smith Jr.
Thomas J. Crawford Jr.
Francis D. Lane
Debra C. Nettles
W.E. Tatum Jr.
Donna Benefield Abbott
Royce G. Collins
Susan Davis Edmondson
Roy L. Hendrix
Clifford G. Payne
James L. Prine
Dennis L. Tucker

Thomas G. Busby Jr.
Johnny W. Cooper
Frederick N. Hailey
Robert Hightower
Windell W. Manning
Talmadge H. Perry
Charles Sizemore
William S. Young
James L. Conner Jr.
Charles L. Haines
Judson P. Kirkpatrick
Anthony E. Priest
Burton D. Robertson
Terrell D. Williams
Freddie W. Drake
Samuel D. Mobley
Donald R. Rice
James S. Underwood
Michael H. Chumley
Claude W. Duffey Jr.
Terry A. Evans
Carey J. Hilton
Donald Peacock
Ralph M. Rhodes

1990 Faithful Service Awards

15 Year

James Quinton Butler
Ivelyn N. Fowler
Lula L. Strickland
Charlotte J. Barnet
Arletha Denise Broner
Bruce Watson Harris
Nena Kaye Poole
Charles Joseph Shirling
William Burrell Sumner
Debra C. Wheeler-Shaw
Henry L. Calhoun Jr.
Ernest G. Dyal Jr.
Goldie D. Lumpkin
Thomas E. Tomlinson
Franky Lee Williams
Frank David Boyt
William Don Chastain
Vandiver William Keller
Benjamin Craig Standard

Grady W. Cook
Walter Washington Milton Green
Thelma E. Taylor
Robert Ross Beall
Frances H. Cathey
Timothy Grady Land
Rebecca J. Pryor
Kathy I. Simmons
Leroy Trimiar
Howard Lamar Youmans Jr.
Chryl S. Cochran
Billy Carson Exum
Rachel E. Sammons
Horace J. Wheeler
Charles Curtis Bennett
Robert Lee Burch
Robert Lee Clark
Glenda Diane Reid
George Theron Whittaker

Marsha G. Davis
Gail D. Lemieux
Benjamin Cecil Westmoreland
Harry Ellis Benton
June Dobbins
Arthur Lee Ponder
Morris Milton Shinall
Vicky L. Simpson
Emory Walker
Thomas Martin Bramlett
Johnny Floyd Cunningham
James Crawford Jordan Jr.
Rodney Eugene Singley
Terry Steven Wiley
George F. Boutwell
Alfred Wayne Carlisle
Emmett Neal Jump
Sherrie Ann Reid

10 Year

Rena T. Benefield
Allen Tillman Campbell
Peggy L. Denney
Gloria E. Fort
Jodie L. McLeod
Harriette M. Taylor
Abigail C. Anderson
William Collins Jr.
Rick D. Ogden
Beverly Tankersley
Annie F. Bridges
Richard E. Mason
Brenda Phillips
Cheryl C. Walsh
Harold Eugene Cochran
James K. Horne

Robert E. Bonner
David E. Cody
Lawanda D. Dominy
Jacquelyn D. Johnson
James D. Stultz Jr.
Hugh D. Tedders Jr.
Paul Hershel Carter
Benjie Hodges
Nadine Roberts
Kimberly A. Waldrip
Patricia B. Frazier
Vanessa Nolley
Gary J. Sharpton
George S. Young
Shirley A. Colvin
Joseph A. Medcalf Jr.
Douglas H. Ralston

David J. Brack
Edward Cunningham
Michael David Fagler
William D. Lee Jr.
Robert H. Talley
Anthony J. White
Josefina Colado
Dennis N. Howard
Denise M. Steger
Ricky Lynn Wilcox
Lynda E. Gossett
Janna N. Pelfrey
Phyllis C. Smith
Debby L. Brasseaux
Charles Edward Grier
David Thomas Patterson

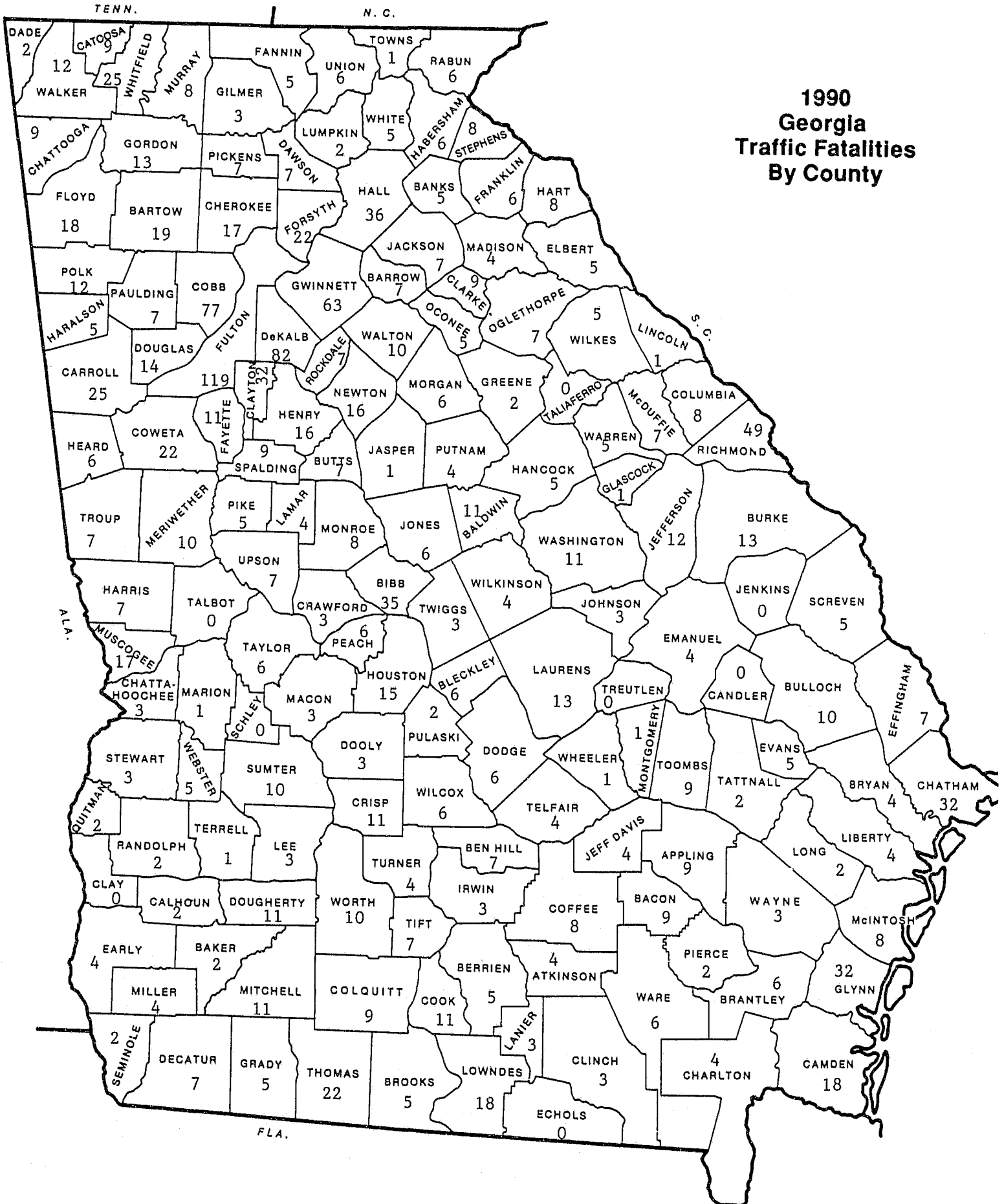
Department of Public Safety 1990 Retirees

G.W. Maloy
D.S. Whisenhunt Jr.
T.E. Faircloth
M.J. Etheridge
H.H. Helms
J.B. McDaniel
J.H. Davis

C.R. Pinyan
T.P. O'Neal Jr.
E.T. Arrington
O.J. Evans
C.W. Summers
P.W. Nugent
Ray S. Mikell
L.B. Miller

W.A. Shivers
J.S. Underwood
E.E. Tanner
C.L. Haines
J.H. Presley
W.W. Clement
J.L. Conner

1990 Georgia Traffic Fatalities By County

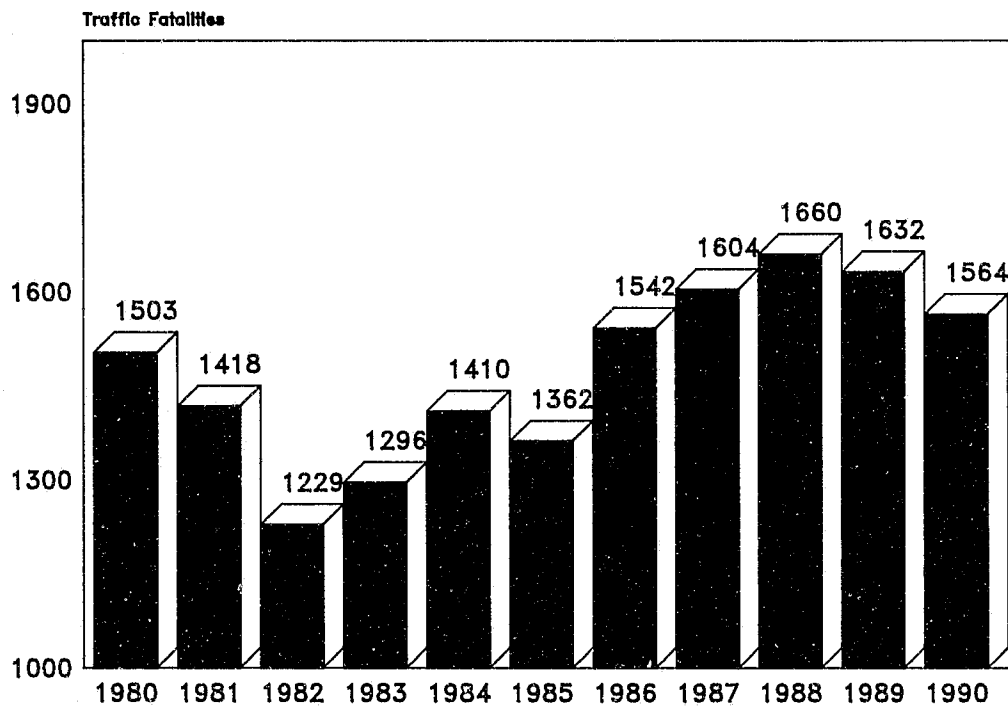


Accident Statistics

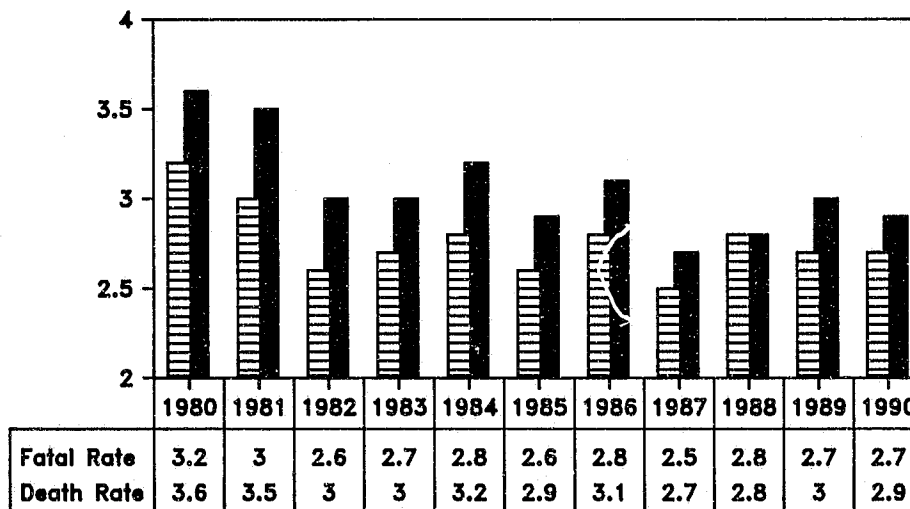
| | |
|--|-----|
| Georgia Traffic Fatality Map | .36 |
| Georgia Traffic Death Trends | .38 |
| Accident/DUI Accident Experience By County | .40 |
| Summary of Motor Vehicle Accidents | .42 |
| DUI Accident Information | .46 |
| Fatalities By Month | .46 |
| Safety Equipment | .47 |
| Pedestrian Fatalities | .48 |
| Holiday Traffic Toll | .49 |

Information furnished by the Accident Reporting Unit

GEORGIA TRAFFIC DEATH TRENDS

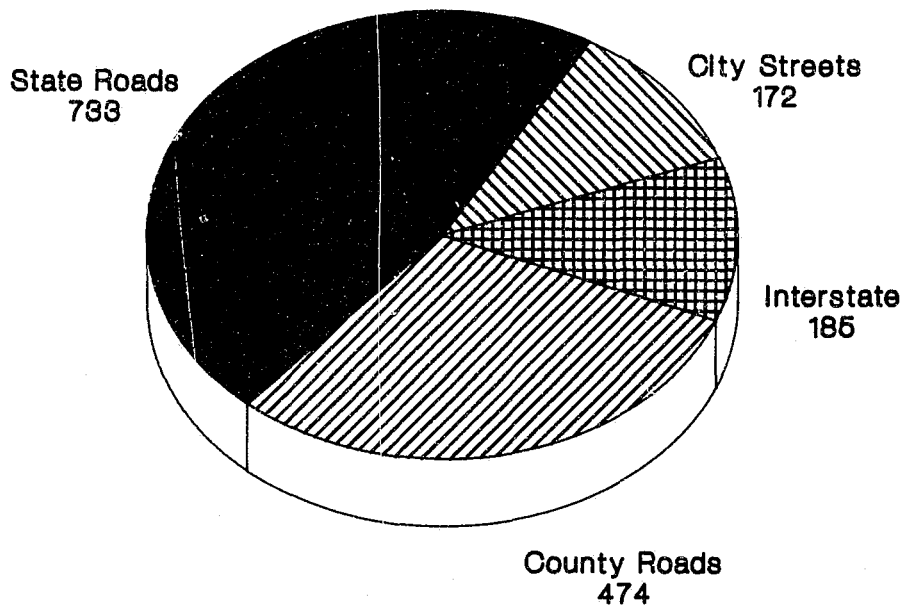


Death and Fatal Accident Rates Per 100,000,000 Vehicle-Miles



 Fatal Rate
  Death Rate

Traffic Fatalities By Road Type



Counties Without A Traffic Fatality in 1990:

Candler
Echols
Schley
Treutlen

Clay
Jenkins
Taliaferro

Statewide Accident and DUI Accident Experience By County

| STATEWIDE ACCIDENT EXPERIENCE | | | | STATEWIDE DUI EXPERIENCE | | | STATEWIDE ACCIDENT EXPERIENCE | | | | STATEWIDE DUI EXPERIENCE | | |
|----------------------------------|----------|--------|-------|-----------------------------|--------|-------|----------------------------------|----------|--------|-------|-----------------------------|--------|-------|
| County | Accident | Injury | Death | Accident | Injury | Death | County | Accident | Injury | Death | Accident | Injury | Death |
| Appling | 444 | 220 | 9 | 25 | 18 | 2 | Dade | 275 | 155 | 2 | 26 | 25 | 2 |
| Atkinson | 95 | 54 | 4 | 14 | 11 | 4 | Dawson | 223 | 150 | 7 | 30 | 33 | 4 |
| Bacon | 199 | 106 | 9 | 14 | 13 | 4 | Decatur | 613 | 349 | 7 | 47 | 44 | 3 |
| Baker | 46 | 47 | 2 | 4 | 2 | 1 | Dekalb | 23047 | 8486 | 82 | 768 | 624 | 28 |
| Baldwin | 1380 | 774 | 11 | 100 | 104 | 6 | Dodge | 288 | 191 | 6 | 32 | 31 | 4 |
| Banks | 67 | 84 | 5 | 10 | 17 | 2 | Dooly | 138 | 90 | 3 | 16 | 16 | 0 |
| Barrow | 983 | 504 | 7 | 81 | 68 | 3 | Dougherty | 3224 | 1618 | 11 | 229 | 200 | 8 |
| Bartow | 1968 | 850 | 19 | 128 | 94 | 7 | Douglas | 2571 | 1255 | 14 | 171 | 145 | 6 |
| Ben Hill | 374 | 253 | 7 | 21 | 26 | 2 | Early | 109 | 63 | 4 | 4 | 9 | 0 |
| Berrien | 346 | 194 | 5 | 39 | 38 | 0 | Echols | 21 | 27 | 0 | 2 | 3 | 0 |
| Bibb | 6613 | 3098 | 35 | 341 | 256 | 10 | Effingham | 243 | 135 | 7 | 20 | 21 | 3 |
| Bleckley | 181 | 96 | 6 | 17 | 10 | 2 | Elbert | 648 | 265 | 5 | 43 | 25 | 4 |
| Brantley | 139 | 100 | 6 | 17 | 21 | 1 | Emanuel | 484 | 316 | 4 | 51 | 49 | 1 |
| Brooks | 243 | 165 | 5 | 29 | 26 | 1 | Evans | 110 | 72 | 5 | 17 | 18 | 3 |
| Bryan | 344 | 234 | 4 | 34 | 42 | 1 | Fannin | 279 | 223 | 5 | 27 | 20 | 3 |
| Bulloch | 1347 | 554 | 10 | 134 | 97 | 3 | Fayette | 1525 | 582 | 11 | 64 | 37 | 3 |
| Burke | 276 | 183 | 13 | 40 | 41 | 7 | Floyd | 3287 | 1361 | 18 | 180 | 153 | 5 |
| Butts | 367 | 249 | 7 | 34 | 42 | 2 | Forsyth | 1387 | 662 | 22 | 93 | 70 | 6 |
| Calhoun | 55 | 32 | 2 | 5 | 3 | 2 | Franklin | 459 | 280 | 6 | 49 | 40 | 1 |
| Camden | 619 | 369 | 18 | 53 | 47 | 6 | Fulton | 38602 | 15387 | 119 | 1759 | 1369 | 38 |
| Candler | 86 | 59 | 0 | 12 | 10 | 0 | Gilmer | 252 | 177 | 3 | 27 | 28 | 1 |
| Carroll | 2365 | 1454 | 25 | 162 | 155 | 1 | Glascocock | 31 | 20 | 1 | 9 | 9 | 0 |
| Catoosa | 1377 | 586 | 9 | 61 | 57 | 3 | Glynn | 2138 | 1054 | 22 | 136 | 133 | 5 |
| Charlton | 118 | 85 | 4 | 9 | 15 | 0 | Gordon | 1256 | 657 | 13 | 93 | 85 | 4 |
| Chatham ... | 10682 | 3789 | 32 | 530 | 359 | 12 | Grady | 344 | 235 | 5 | 33 | 26 | 3 |
| Chattahoochee .. | 10 | 6 | 3 | 1 | 0 | 1 | Greene | 341 | 167 | 2 | 26 | 21 | 1 |
| Chattooga | 473 | 255 | 9 | 61 | 39 | 6 | Gwinnett | 12740 | 4644 | 63 | 473 | 341 | 19 |
| Cherokee | 2369 | 964 | 17 | 142 | 96 | 4 | Habersham | 400 | 266 | 6 | 20 | 26 | 4 |
| Clarke | 3652 | 1381 | 9 | 202 | 110 | 1 | Hall | 3929 | 1446 | 36 | 263 | 177 | 8 |
| Clay | 24 | 14 | 0 | 3 | 2 | 0 | Hancock | 31 | 36 | 5 | 7 | 9 | 3 |
| Clayton | 7817 | 3211 | 32 | 363 | 302 | 14 | Haralson | 447 | 359 | 5 | 38 | 40 | 0 |
| Clinch | 103 | 48 | 3 | 5 | 7 | 1 | Harris | 340 | 224 | 7 | 22 | 25 | 3 |
| Cobb | 19410 | 7529 | 77 | 828 | 603 | 20 | Hart | 496 | 257 | 8 | 48 | 37 | 5 |
| Coffee | 821 | 530 | 8 | 66 | 69 | 3 | Heard | 93 | 92 | 6 | 19 | 31 | 2 |
| Colquitt | 760 | 424 | 9 | 61 | 44 | 8 | Henry | 1644 | 667 | 16 | 73 | 40 | 6 |
| Columbia | 1828 | 603 | 8 | 115 | 72 | 4 | Houston | 2396 | 1121 | 15 | 182 | 128 | 3 |
| Cook | 302 | 199 | 11 | 23 | 29 | 1 | Irwin | 136 | 79 | 3 | 12 | 12 | 0 |
| Coweta | 1451 | 963 | 22 | 98 | 103 | 5 | Jackson | 842 | 427 | 7 | 46 | 37 | 2 |
| Crawford | 69 | 52 | 3 | 15 | 10 | 3 | Jasper | 176 | 89 | 1 | 16 | 14 | 0 |
| Crisp | 641 | 416 | 11 | 42 | 54 | 1 | Jeff Davis | 267 | 167 | 4 | 16 | 7 | 1 |

Statewide Accident and DUI Accident Experience By County

| STATEWIDE ACCIDENT EXPERIENCE | | | | STATEWIDE DUI EXPERIENCE | | | STATEWIDE ACCIDENT EXPERIENCE | | | | STATEWIDE DUI EXPERIENCE | | |
|----------------------------------|----------|--------|-------|-----------------------------|--------|-------|----------------------------------|---------------|--------------|-------------|-----------------------------|--------------|------------|
| County | Accident | Injury | Death | Accident | Injury | Death | County | Accident | Injury | Death | Accident | Injury | Death |
| Jefferson | 263 | 168 | 12 | 28 | 25 | 2 | Richmond | 8486 | 2967 | 49 | 557 | 408 | 15 |
| Jenkins | 158 | 72 | 0 | 12 | 4 | 0 | Rockdale | 1916 | 715 | 7 | 108 | 78 | 2 |
| Johnson | 122 | 73 | 3 | 18 | 12 | 2 | Schley | 28 | 23 | 0 | 1 | 1 | 0 |
| Jones | 630 | 250 | 6 | 36 | 16 | 2 | Screven | 195 | 99 | 5 | 20 | 15 | 4 |
| Lamar | 350 | 194 | 4 | 35 | 27 | 1 | Seminole | 147 | 85 | 2 | 12 | 11 | 1 |
| Lanier | 84 | 43 | 3 | 7 | 4 | 1 | Spalding | 2100 | 1091 | 9 | 124 | 75 | 3 |
| Laurens | 886 | 517 | 13 | 77 | 71 | 4 | Stephens | 586 | 275 | 8 | 26 | 22 | 2 |
| Lee | 172 | 87 | 3 | 22 | 27 | 3 | Stewart | 32 | 32 | 3 | 3 | 7 | 0 |
| Liberty | 755 | 357 | 4 | 78 | 48 | 1 | Sumter | 919 | 434 | 10 | 59 | 50 | 6 |
| Lincoln | 146 | 67 | 1 | 11 | 5 | 0 | Talbot | 95 | 84 | 0 | 10 | 7 | 0 |
| Long | 51 | 41 | 2 | 8 | 10 | 1 | Taliaferro | 55 | 41 | 0 | 4 | 6 | 0 |
| Lowndes | 2466 | 1234 | 18 | 149 | 113 | 3 | Tattnall | 210 | 156 | 2 | 27 | 27 | 2 |
| Lumpkin | 267 | 121 | 2 | 25 | 24 | 0 | Taylor | 82 | 79 | 6 | 12 | 11 | 2 |
| Macon | 287 | 138 | 3 | 34 | 27 | 2 | Telfair | 218 | 133 | 4 | 29 | 32 | 1 |
| Madison | 465 | 254 | 4 | 43 | 29 | 1 | Terrell | 142 | 104 | 1 | 19 | 22 | 1 |
| Marion | 49 | 51 | 1 | 7 | 8 | 0 | Thomas | 1086 | 587 | 22 | 76 | 81 | 5 |
| McDuffie | 590 | 396 | 7 | 75 | 89 | 2 | Tift | 968 | 512 | 7 | 67 | 54 | 2 |
| McIntosh | 268 | 228 | 8 | 40 | 34 | 2 | Toombs | 617 | 335 | 9 | 62 | 41 | 5 |
| Meriwether | 355 | 219 | 10 | 52 | 42 | 8 | Towns | 55 | 41 | 1 | 5 | 8 | 0 |
| Miller | 93 | 64 | 4 | 9 | 7 | 2 | Treutlen | 175 | 82 | 0 | 21 | 15 | 0 |
| Mitchell | 263 | 210 | 11 | 46 | 53 | 6 | Troup | 2221 | 859 | 7 | 143 | 113 | 4 |
| Monroe | 684 | 298 | 8 | 41 | 35 | 2 | Turner | 203 | 121 | 4 | 17 | 8 | 2 |
| Montgomery | 68 | 49 | 1 | 12 | 15 | 0 | Twiggs | 225 | 154 | 3 | 17 | 24 | 1 |
| Morgan | 425 | 225 | 6 | 21 | 20 | 1 | Union | 154 | 128 | 6 | 12 | 13 | 4 |
| Murray | 712 | 390 | 8 | 61 | 65 | 2 | Upson | 728 | 396 | 7 | 57 | 56 | 5 |
| Muscogee | 6510 | 1967 | 17 | 363 | 187 | 6 | Walker | 1280 | 691 | 12 | 125 | 119 | 4 |
| Newton | 779 | 465 | 16 | 63 | 61 | 7 | Walton | 907 | 496 | 10 | 64 | 54 | 4 |
| Oconee | 373 | 234 | 5 | 29 | 35 | 0 | Ware | 1028 | 449 | 6 | 54 | 46 | 1 |
| Oglethorpe | 100 | 79 | 7 | 18 | 18 | 2 | Warren | 133 | 9 | 5 | 13 | 13 | 1 |
| Paulding | 896 | 579 | 7 | 58 | 45 | 3 | Washington | 232 | 96 | 11 | 15 | 9 | 6 |
| Peach | 358 | 189 | 6 | 28 | 15 | 3 | Wayne | 590 | 300 | 3 | 48 | 35 | 2 |
| Pickens | 274 | 206 | 7 | 28 | 34 | 2 | Webster | 34 | 25 | 5 | 3 | 2 | 2 |
| Pierce | 179 | 101 | 2 | 16 | 11 | 1 | Wheeler | 61 | 57 | 1 | 10 | 21 | 0 |
| Pike | 130 | 99 | 5 | 17 | 12 | 0 | White | 238 | 152 | 5 | 26 | 20 | 1 |
| Polk | 771 | 473 | 12 | 84 | 76 | 5 | Whitfield | 3118 | 1355 | 25 | 212 | 161 | 9 |
| Pulaski | 231 | 123 | 2 | 21 | 16 | 1 | Wilcox | 57 | 50 | 6 | 9 | 11 | 0 |
| Putnam | 504 | 230 | 4 | 27 | 39 | 2 | Wilkes | 131 | 85 | 5 | 20 | 14 | 2 |
| Quitman | 16 | 16 | 2 | 4 | 4 | 1 | Wilkinson | 92 | 91 | 4 | 11 | 19 | 0 |
| Rabun | 207 | 89 | 6 | 21 | 17 | 2 | Worth | 295 | 200 | 10 | 34 | 36 | 3 |
| Randolph | 111 | 73 | 2 | 11 | 6 | 1 | TOTAL | 228163 | 98933 | 1564 | 12993 | 10401 | 532 |

Summary of Motor Vehicle Traffic Accidents In Georgia For Calendar Year 1990

Summary of statewide accidents: Legally reportable accidents are those involving death, bodily injury or property damage of \$250.00 or more in the accident. This summary includes reports and information available for calendar year 1990.

| 1A. Type of Motor Vehicle Accident | TOTAL | | | | NUMBER OF ACCIDENTS ON ROADWAY | | | | OFF ROADWAY | | | |
|--|---------------|-------------|--------------------|--------------------|-----------------------------------|-------------|--------------------|--------------------|--------------|------------|--------------------|--------------------|
| | Total | Fatal | Nonfatal Injury | Property Damage | Total | Fatal | Nonfatal Injury | Property Damage | Total | Fatal | Nonfatal Injury | Property Damage |
| Overturning* | 5692 | 154 | 3153 | 289 | 2628 | 84 | 1373 | 132 | 3064 | 70 | 1780 | 157 |
| Other Noncollision* | 3837 | 15 | 800 | 363 | 2524 | 12 | 488 | 190 | 1313 | 3 | 312 | 173 |
| Pedestrian | 2343 | 165 | 2114 | 5 | 2245 | 158 | 2027 | 3 | 98 | 7 | 87 | 2 |
| MV in transport | 175344 | 612 | 45088 | 1465 | 174290 | 608 | 44835 | 1349 | 1054 | 4 | 253 | 116 |
| MV on other roadway | 0 | 0 | 0 | 0 | 0 | 0 | 0 | 0 | 0 | 0 | 0 | 0 |
| Parked MV | 6217 | 17 | 487 | 196 | 5406 | 16 | 372 | 69 | 811 | 1 | 115 | 127 |
| Railway train | 202 | 15 | 73 | 13 | 188 | 12 | 68 | 12 | 14 | 3 | 5 | 1 |
| Pedalcyclist | 1100 | 10 | 886 | 8 | 1083 | 10 | 872 | 7 | 17 | 0 | 14 | 1 |
| Animal | 4464 | 0 | 341 | 459 | 4430 | 0 | 330 | 453 | 34 | 0 | 11 | 6 |
| Fixed object | 22015 | 383 | 9149 | 4325 | 8478 | 115 | 3052 | 1872 | 13537 | 268 | 6097 | 2453 |
| Other object | 6948 | 41 | 1387 | 3262 | 3395 | 16 | 559 | 1183 | 3553 | 25 | 828 | 2079 |
| | 1 | 1 | 0 | 0 | 0 | 0 | 0 | 0 | 1 | 1 | 0 | 0 |
| TOTALS | 228163 | 1413 | 63478 | 10385 | 204667 | 1031 | 53976 | 5270 | 23496 | 382 | 9502 | 5115 |

| 18. Type of Motor Vehicle Accident | NUMBER OF PERSONS | | | | |
|--|-------------------|------------------|------------------|----------------------------|--------------------|
| | Total Killed | Total Injured | Incap. Injury | Non-Incap. Evid. Injury | Possible Injury |
| Overturning * | 162 | 4653 | 463 | 2408 | 1782 |
| Other Noncollision * | 18 | 1015 | 71 | 431 | 513 |
| Pedestrian | 173 | 2258 | 377 | 1005 | 876 |
| MV in transport | 716 | 74519 | 2979 | 20623 | 50949 |
| MV on other roadway | 0 | 0 | 0 | 0 | 0 |
| Parked MV | 17 | 647 | 38 | 304 | 305 |
| Railway train | 17 | 94 | 14 | 52 | 28 |
| Pedalcyclist | 10 | 935 | 84 | 555 | 296 |
| Animal | 0 | 435 | 17 | 176 | 242 |
| Fixed object | 408 | 12597 | 1246 | 6651 | 4701 |
| Other object | 42 | 1780 | 132 | 905 | 743 |
| | 1 | 0 | 0 | 0 | 0 |
| TOTALS | 1564 | 98933 | 5421 | 33110 | 60435 |

| 2B | 1991 | 1990 | Change (%) |
|--|-------|-------|---------------|
| Mileage Rates | | | |
| Motor vehicle traffic deaths | 1564 | 1632 | -4.2 |
| Estimated motor vehicle mileage traveled (millions) | 53286 | 53622 | -.6 |
| Death rate per 100,000,000 vehicle-miles | 2.9 | 3.0 | -3.3 |
| Fatal accident rate per 100,000,000 vehicle miles | 2.7 | 2.7 | 0 |

| 2A Type of Motor Vehicle Accident | TOTAL | | | | | | ON ROADWAY | | | | | |
|---|-------------------|-------------------|--------------------|-----------------------|-------------------|--------------------|-------------------|-------------------|--------------------|-----------------------|-------------------|--------------------|
| | This Year To Date | | | Same Period Last Year | | | This Year To Date | | | Same Period Last Year | | |
| | All Accidents | Persons Killed | Persons Injured | All Accidents | Persons Killed | Persons Injured | All Accidents | Persons Killed | Persons Injured | All Accidents | Persons Killed | Persons Injured |
| Overturning * | 5692 | 162 | 4653 | 6029 | 171 | 4717 | 2628 | 87 | 2091 | 2905 | 80 | 2155 |
| Other Noncollision * | 3837 | 18 | 1015 | 3851 | 12 | 1015 | 2524 | 13 | 591 | 2344 | 9 | 541 |
| Pedestrian | 2343 | 173 | 2258 | 2195 | 182 | 2120 | 2245 | 166 | 2151 | 2120 | 174 | 2040 |
| MV in transport | 175344 | 716 | 74519 | 176306 | 744 | 73057 | 174290 | 712 | 74147 | 175095 | 733 | 72662 |
| MV on other roadway | 0 | 0 | 0 | 0 | 0 | 0 | 0 | 0 | 0 | 0 | 0 | 0 |
| Parked MV | 6217 | 17 | 647 | 6118 | 10 | 621 | 5406 | 16 | 499 | 5226 | 8 | 459 |
| Railway train | 202 | 17 | 94 | 184 | 24 | 77 | 188 | 12 | 88 | 165 | 23 | 71 |
| Pedalcyclist | 1100 | 10 | 935 | 1095 | 23 | 936 | 1083 | 10 | 921 | 1068 | 23 | 915 |
| Animal | 4464 | 0 | 435 | 3499 | 2 | 304 | 4430 | 0 | 420 | 3455 | 2 | 286 |
| Fixed object | 22015 | 408 | 12597 | 22666 | 388 | 12388 | 8478 | 124 | 4146 | 8862 | 90 | 4108 |
| Other object | 6948 | 42 | 1780 | 7044 | 25 | 1818 | 3395 | 16 | 726 | 3294 | 9 | 673 |
| | 1 | 1 | 0 | 0 | 0 | 0 | 0 | 0 | 0 | 0 | 0 | 0 |
| TOTALS | 228163 | 1564 | 98933 | 228987 | 1581 | 97053 | 204667 | 1156 | 85780 | 204534 | 1151 | 83910 |

* Noncollision

Summary of Motor Vehicle Traffic Accidents In Georgia For Calendar Year 1990

| 3. LOCATION Municipalities and Incorporated Townships | TOTAL | | | | NUMBER OF ACCIDENTS ON ROADWAY | | | | OFF ROADWAY | | | | Number of Persons | |
|---|----------|-------|----------|--------|-----------------------------------|-------|----------|--------|-------------|-------|----------|--------|----------------------|---------|
| | Nonfatal | | Property | | Nonfatal | | Property | | Nonfatal | | Property | | Killed | Injured |
| | Total | Fatal | Injury | Damage | Total | Fatal | Injury | Damage | Total | Fatal | Injury | Damage | | |
| 2,500-5,000 | 12325 | 43 | 3008 | 445 | 11545 | 36 | 2754 | 255 | 780 | 7 | 254 | 190 | 47 | 4651 |
| 5,000-10,000 | 9194 | 28 | 2375 | 361 | 8609 | 19 | 2176 | 198 | 585 | 9 | 199 | 163 | 31 | 3755 |
| 10,000-25,000 | 19421 | 37 | 4992 | 710 | 18400 | 35 | 4685 | 403 | 1021 | 2 | 307 | 307 | 43 | 7840 |
| 25,000-50,000 | 11922 | 24 | 2999 | 437 | 11371 | 22 | 2851 | 229 | 551 | 2 | 148 | 208 | 25 | 4396 |
| 50,000-100,000 | 10976 | 27 | 3031 | 493 | 10434 | 23 | 2872 | 277 | 542 | 4 | 159 | 216 | 29 | 4780 |
| 100,000-250,000 | 14857 | 26 | 3353 | 553 | 14042 | 17 | 3144 | 292 | 815 | 9 | 209 | 261 | 26 | 4770 |
| 250,000 or more | 28589 | 81 | 7813 | 858 | 27242 | 69 | 7334 | 451 | 1347 | 12 | 479 | 407 | 83 | 11928 |
| Totals | 107284 | 266 | 27571 | 3857 | 101643 | 221 | 25816 | 2105 | 5641 | 45 | 1755 | 1752 | 284 | 42120 |

| | | | | | | | | | | | | | | |
|---------------------------|--------|-----|-------|------|--------|-----|-------|------|------|----|-------|------|-----|-------|
| URBAN | | | | | | | | | | | | | | |
| Interstate system | 6063 | 44 | 1866 | 184 | 5753 | 41 | 1749 | 135 | 310 | 3 | 117 | 49 | 45 | 2921 |
| Other full control access | 0 | 0 | 0 | 0 | 0 | 0 | 0 | 0 | 0 | 0 | 0 | 0 | 0 | 0 |
| Other U.S. route numbered | 0 | 0 | 0 | 0 | 0 | 0 | 0 | 0 | 0 | 0 | 0 | 0 | 0 | 0 |
| Other state numbered | 57065 | 134 | 15208 | 1332 | 55167 | 112 | 14535 | 841 | 1898 | 22 | 673 | 491 | 146 | 23806 |
| Other major arterial | 0 | 0 | 0 | 0 | 0 | 0 | 0 | 0 | 0 | 0 | 0 | 0 | 0 | 0 |
| County roads | 1724 | 9 | 482 | 72 | 1488 | 6 | 384 | 30 | 236 | 3 | 98 | 42 | 9 | 738 |
| Local Streets | 57390 | 158 | 13903 | 2851 | 52995 | 123 | 12601 | 1408 | 4395 | 35 | 13002 | 1443 | 171 | 20789 |
| Totals | 122242 | 345 | 31459 | 4439 | 115403 | 282 | 29269 | 2414 | 6839 | 63 | 2190 | 2025 | 371 | 48254 |

| | | | | | | | | | | | | | | |
|---------------------------|--------|------|-------|------|-------|-----|-------|------|-------|-----|------|------|------|-------|
| RURAL | | | | | | | | | | | | | | |
| Interstate System | 10932 | 122 | 3009 | 459 | 9887 | 102 | 2609 | 321 | 1045 | 20 | 400 | 138 | 140 | 4777 |
| Other full control access | 0 | 0 | 0 | 0 | 0 | 0 | 0 | 0 | 0 | 0 | 0 | 0 | 0 | 0 |
| Other U.S. route numbered | 0 | 0 | 0 | 0 | 0 | 0 | 0 | 0 | 0 | 0 | 0 | 0 | 0 | 0 |
| Other state numbered | 47100 | 516 | 15122 | 1941 | 41319 | 407 | 12341 | 1125 | 5781 | 109 | 2781 | 816 | 587 | 24968 |
| Other major arterial | 0 | 0 | 0 | 0 | 0 | 0 | 0 | 0 | 0 | 0 | 0 | 0 | 0 | 0 |
| County roads | 47542 | 429 | 13793 | 3522 | 37773 | 240 | 9686 | 1401 | 9769 | 189 | 4107 | 2121 | 465 | 20799 |
| Local Streets | 347 | 1 | 95 | 23 | 285 | 0 | 71 | 8 | 62 | 1 | 24 | 15 | 1 | 135 |
| Totals | 105921 | 1068 | 32019 | 5945 | 89264 | 749 | 24707 | 2855 | 16657 | 319 | 7312 | 3090 | 1193 | 50679 |

| | | | | | | | | | |
|-----------------------|--------------------------|------|--------|-------------|------|--------|--------------|------|--------|
| 4. AGE OF CASUALTY | NUMBER OF PERSONS KILLED | | | | | | | | |
| | Total Killed | | | Pedestrians | | | Pedalcyclist | | |
| | Total | Male | Female | Total | Male | Female | Total | Male | Female |
| 0 to 4 | 50 | 24 | 26 | 15 | 8 | 7 | 0 | 0 | 0 |
| 5 to 9 | 31 | 16 | 15 | 10 | 5 | 5 | 0 | 0 | 0 |
| 10 to 14 | 28 | 11 | 17 | 3 | 1 | 2 | 1 | 1 | 0 |
| 15 to 19 | 187 | 126 | 61 | 6 | 3 | 3 | 2 | 2 | 0 |
| 20 to 24 | 197 | 137 | 63 | 9 | 8 | 1 | 1 | 1 | 0 |
| 25 to 34 | 344 | 237 | 107 | 34 | 26 | 8 | 1 | 1 | 0 |
| 35 to 44 | 226 | 159 | 67 | 25 | 20 | 5 | 1 | 1 | 0 |
| 45 to 54 | 156 | 106 | 50 | 25 | 22 | 3 | 1 | 1 | 0 |
| 55 to 64 | 125 | 82 | 43 | 19 | 17 | 2 | 1 | 1 | 0 |
| 65 to 74 | 110 | 64 | 46 | 16 | 8 | 8 | 1 | 1 | 0 |
| 75 & older | 99 | 58 | 41 | 15 | 9 | 6 | 0 | 0 | 0 |
| Not stated | 11 | 7 | 4 | 1 | 1 | 0 | 1 | 1 | 0 |
| TOTALS | 1564 | 1024 | 540 | 178 | 128 | 50 | 10 | 10 | 0 |

| | | | | | | | | | |
|---------------------------|-------|--------|-------------|------|--------|--------------|------|--------|-----|
| NUMBER OF PERSONS INJURED | | | | | | | | | |
| Total Injured | | | Pedestrians | | | Pedalcyclist | | | |
| Total | Male | Female | Total | Male | Female | Total | Male | Female | |
| 0 to 4 | 2809 | 1472 | 1337 | 123 | 86 | 37 | 9 | 7 | 2 |
| 5 to 9 | 3208 | 1661 | 1547 | 356 | 239 | 117 | 143 | 115 | 28 |
| 10 to 14 | 3486 | 1653 | 1833 | 269 | 171 | 98 | 177 | 150 | 27 |
| 15 to 19 | 15101 | 7654 | 7447 | 196 | 116 | 80 | 90 | 77 | 13 |
| 20 to 24 | 14533 | 7465 | 7068 | 195 | 135 | 60 | 67 | 55 | 12 |
| 25 to 34 | 23028 | 11555 | 11473 | 364 | 234 | 130 | 111 | 91 | 20 |
| 35 to 44 | 14400 | 6833 | 7567 | 261 | 176 | 85 | 51 | 46 | 5 |
| 45 to 54 | 7781 | 3584 | 4197 | 157 | 120 | 37 | 20 | 18 | 2 |
| 55 to 64 | 5031 | 2359 | 2672 | 89 | 52 | 37 | 14 | 14 | 0 |
| 65 to 74 | 3521 | 1510 | 2011 | 67 | 39 | 28 | 5 | 5 | 0 |
| 75 & older | 2357 | 1073 | 1284 | 50 | 35 | 15 | 21 | 19 | 2 |
| Not stated | 3711 | 1895 | 1815 | 229 | 167 | 62 | 145 | 119 | 26 |
| TOTALS | 98966 | 48714 | 50251 | 2356 | 1570 | 786 | 853 | 716 | 137 |

Summary of Motor Vehicle Traffic Accidents In Georgia For Calendar Year 1990

| 5a. - At intersection | Accidents | | | |
|---------------------------------|--------------|-----------|--------------|-------------|
| | Total | Fatal | Injury | Prop. Dmge. |
| Entering at angle | 34345 | 59 | 11016 | 366 |
| From same direction - | | | | |
| both going straight | 18649 | 4 | 3593 | 92 |
| Same-one turn, one straight | 179 | 0 | 44 | 11 |
| Same-one stopped | 57 | 0 | 4 | 1 |
| Same-all others | 364 | 2 | 53 | 27 |
| From opposite direction - | | | | |
| both going straight | 515 | 7 | 181 | 9 |
| Same-one left turn, on straight | 1524 | 5 | 565 | 9 |
| Same-all others | 776 | 0 | 127 | 14 |
| Not stated | 898 | 0 | 258 | 52 |
| TOTALS | 57307 | 77 | 15841 | 581 |

| 5b. - Not at intersection | Accidents | | | |
|-----------------------------------|---------------|------------|--------------|-------------|
| | Total | Fatal | Injury | Prop. Dmge. |
| Going opposite dir. - both moving | 18073 | 239 | 5027 | 278 |
| Going same dir. - both moving | 72109 | 130 | 14214 | 817 |
| One car parked | 1902 | 1 | 62 | 76 |
| One car stopped in traffic | 1211 | 4 | 155 | 13 |
| One car entering parked position | 0 | 0 | 0 | 0 |
| One car leaving parked position | 727 | 1 | 144 | 3 |
| One car entering driveway access | 0 | 0 | 0 | 0 |
| One car leaving driveway access | 3599 | 11 | 807 | 21 |
| All others | 16086 | 139 | 4172 | 166 |
| Not stated | 0 | 0 | 0 | 0 |
| TOTALS | 113707 | 525 | 24581 | 1374 |

5. DIRECTIONAL ANALYSIS - An accident consisting of a series of collisions, overturning, etc., is classified according to the first damage or injury producing event; includes on roadway and off roadway.

| 5d. - All Other Accidents | Accidents | | | |
|--------------------------------------|--------------|------------|--------------|-------------|
| | Total | Fatal | Injury | Prop. Dmge. |
| At Intersection | | | | |
| Collision with: | | | | |
| Other road vehicle, or railway train | 4 | 0 | 1 | 1 |
| Fixed object | 1710 | 14 | 617 | 446 |
| Other object or animal | 751 | 0 | 130 | 308 |
| Overturning | 222 | 1 | 123 | 12 |
| Other noncollision | 114 | 1 | 41 | 15 |
| Not At Intersection | | | | |
| Collision with: | | | | |
| Other road vehicle, or railway train | 22 | 0 | 10 | 6 |
| Fixed object | 19189 | 357 | 8152 | 3669 |
| Other object or animal | 9822 | 36 | 1464 | 3216 |
| Overturning | 5125 | 149 | 2885 | 263 |
| Other noncollision | 2291 | 10 | 544 | 261 |
| Not stated | 15597 | 89 | 6959 | 230 |
| TOTALS | 54847 | 657 | 20926 | 8427 |

5C. Pedestrian Accidents

| | Vehicle Action | | | | All Others | Total |
|-----------------------------------|----------------|---------------|--------------|---------|------------|-------|
| | Going Straight | Turning Right | Turning Left | Backing | | |
| All Pedestrian Accidents | 1887 | 140 | 123 | 71 | 145 | 2366 |
| FATAL ACCIDENTS: | | | | | | |
| Total | 152 | 1 | 2 | 1 | 11 | 167 |
| At Intersection, | | | | | | |
| Intersection related | 8 | 0 | 1 | 0 | 0 | 9 |
| Driveway Access, | | | | | | |
| Nonjunction | 144 | 1 | 1 | 1 | 11 | 158 |
| NON-FATAL INJURY ACCIDENTS | | | | | | |
| Total | 1735 | 139 | 121 | 70 | 134 | 2199 |
| At Intersection, | | | | | | |
| Intersection related | 238 | 60 | 47 | 9 | 12 | 366 |
| Driveway Access, | | | | | | |
| Nonjunction | 1497 | 79 | 74 | 61 | 122 | 1833 |

| 6. Pedestrian Actions by Age | Pedestrians Killed | Total | AGES OF PEDESTRIANS KILLED OR INJURED | | | | | | | 65 & older |
|---|-----------------------|-------|---------------------------------------|-----|-------|-------|-------|-------|-------|---------------|
| | | | 0-4 | 5-9 | 10-14 | 15-19 | 20-24 | 25-44 | 45-64 | |
| Crossing at intersection or in crosswalk | 1 | 313 | 3 | 23 | 25 | 25 | 29 | 105 | 44 | 59 |
| Crossing not at intersection or in crosswalk | 82 | 1180 | 71 | 243 | 151 | 80 | 67 | 262 | 136 | 170 |
| Walking in roadway - with traffic | 11 | 149 | 1 | 1 | 10 | 16 | 10 | 69 | 20 | 22 |
| Same - against traffic | 12 | 80 | 2 | 2 | 6 | 11 | 14 | 26 | 2 | 17 |
| Standing in roadway | 19 | 157 | 5 | 4 | 9 | 18 | 19 | 60 | 23 | 19 |
| Pushing or working on vehicle in roadway | 3 | 42 | 1 | 1 | 0 | 2 | 11 | 15 | 4 | 8 |
| Other working in roadway | 4 | 35 | 0 | 0 | 0 | 0 | 5 | 20 | 9 | 1 |
| Playing in roadway | 2 | 130 | 31 | 54 | 27 | 5 | 3 | 2 | 0 | 8 |
| Other in roadway | 29 | 311 | 15 | 31 | 36 | 34 | 31 | 83 | 33 | 48 |
| Not in roadway | 15 | 136 | 9 | 7 | 8 | 11 | 15 | 41 | 19 | 26 |
| TOTALS | 178 | 2533 | 138 | 366 | 272 | 202 | 204 | 683 | 290 | 378 |

Summary of Motor Vehicle Traffic Accidents In Georgia For Calendar Year 1990

(Drivers of parked vehicles in proper parking locations are excluded)

| 7. AGE OF DRIVER | Accidents | | |
|------------------|---------------|-------------|---------------|
| | All | Fatal | Injury |
| 15 & younger | 2363 | 17 | 1045 |
| 16 | 11579 | 42 | 3489 |
| 17 | 12893 | 56 | 3685 |
| 18 to 19 | 29347 | 144 | 8578 |
| 20 to 24 | 64483 | 327 | 18320 |
| 25 to 34 | 115121 | 576 | 32299 |
| 35 to 44 | 77523 | 402 | 21298 |
| 45 to 54 | 42352 | 241 | 11677 |
| 55 to 64 | 26760 | 162 | 7365 |
| 65 to 74 | 17408 | 114 | 4762 |
| 75 & older | 8981 | 83 | 2584 |
| Not stated | 23858 | 61 | 4223 |
| TOTAL | 432668 | 2225 | 119325 |

8. SEX OF DRIVER

| | | | |
|--------------|---------------|-------------|---------------|
| Male | 263349 | 1624 | 70426 |
| Female | 169180 | 598 | 48875 |
| Not stated | 139 | 3 | 24 |
| TOTAL | 432668 | 2225 | 119325 |

9. RESIDENCE OF DRIVER

| | | | |
|-----------------------------|---------------|-------------|---------------|
| Local resident | 367266 | 1822 | 102989 |
| Residing elsewhere in state | 0 | 0 | 0 |
| Non-resident of state | 35950 | 249 | 9607 |
| Not stated | 29452 | 154 | 6729 |
| TOTAL | 432668 | 2225 | 119325 |

10. CONTRIBUTING CIRCUMSTANCES

| | | | |
|------------------------------|---------------|-------------|--------------|
| Speed too fast | 20027 | 444 | 8621 |
| Failed to yield right of way | 54228 | 228 | 16322 |
| Passed stop sign | 3642 | 48 | 1575 |
| Disregarded traffic signal | 9043 | 31 | 3406 |
| Drove left of center | 6543 | 226 | 2581 |
| Improper overtaking | 4861 | 32 | 945 |
| Followed too closely | 55256 | 39 | 14556 |
| Made improper turn | 8712 | 9 | 1694 |
| Had been drinking | 17033 | 548 | 7732 |
| Other improper driving | 38435 | 80 | 5229 |
| Mechanical defects | 5675 | 29 | 1759 |
| Other | 72325 | 849 | 23620 |
| TOTAL | 295780 | 2563 | 88040 |

(Vehicles in proper parking locations are included)

| 11. TYPE OF VEHICLE | Accidents | | |
|--------------------------------|---------------|-------------|---------------|
| | All | Fatal | Injury |
| Passenger car | 315516 | 1259 | 87465 |
| Vehicle with trailer | 1517 | 10 | 381 |
| Truck tractor, tri-axle trucks | 1636 | 14 | 410 |
| Tractor trailer | 7921 | 148 | 1874 |
| Other truck | 9293 | 87 | 2287 |
| Farm or const. equipment | 407 | 3 | 105 |
| Pickup, panel truck, van | 86741 | 557 | 22778 |
| Bus | 1437 | 5 | 379 |
| School bus | 936 | 2 | 185 |
| Motorcycle, scooter, minibike | 2037 | 63 | 1427 |
| Moped | 25 | 0 | 20 |
| Other | 4423 | 53 | 1790 |
| Logging trucks | 542 | 23 | 170 |
| TOTAL | 432431 | 2224 | 119271 |

Special Vehicle (Included Above)

| | | | |
|-----------------------------|------|----|-----|
| Emergency (inc. pvt. owned) | 2948 | 8 | 795 |
| Military vehicles | 122 | 3 | 38 |
| Other government owned | 3709 | 15 | 809 |

12. ROAD SURFACE CONDITION

| | | | |
|--------------|---------------|-------------|--------------|
| Dry | 177775 | 1187 | 49384 |
| Wet | 50069 | 224 | 13997 |
| Snowy or icy | 107 | 0 | 26 |
| Other | 212 | 2 | 71 |
| TOTAL | 228163 | 1413 | 63478 |

13. LIGHT CONDITION

| | | | |
|--------------|---------------|-------------|--------------|
| Daylight | 167117 | 704 | 44081 |
| Dawn or dusk | 7334 | 45 | 2075 |
| Darkness | 53712 | 664 | 17322 |
| TOTAL | 228163 | 1413 | 63478 |

14. MANNER OF TWO MOTOR VEHICLE COLLISION

| | | | |
|---------------------|---------------|------------|--------------|
| Head on | 4822 | 174 | 2362 |
| Rear end | 57906 | 65 | 14067 |
| Angle | 64347 | 276 | 18833 |
| Sideswipe - meeting | 6159 | 20 | 1218 |
| Sideswipe - passing | 21539 | 14 | 2260 |
| Backed into | 8645 | 3 | 410 |
| Not stated | 7570 | 50 | 1270 |
| TOTAL | 170988 | 602 | 40420 |

Alcohol/Drug Related Accidents

| | Alcohol | Drugs |
|----------------------------------|---------|-------|
| Accidents | 12,993 | 546 |
| Injuries | 10,401 | 567 |
| Fatalities | 532 | 138 |
| Total Fatal Accidents | 478 | 120 |
| Total Injury Accidents | 6,186 | 258 |

DUI Fatalities By Age Group

| | |
|-------------------|-----|
| 0-4 | 7 |
| 5-9 | 4 |
| 10-14 | 7 |
| 15-19 | .46 |
| 20-24 | .93 |
| 25-34 | 172 |
| 35-44 | .96 |
| 45-54 | .52 |
| 55-64 | .26 |
| 65-74 | .15 |
| Over 74 | 9 |
| Unknown | 5 |
| Total | 532 |

DUI Drivers Involved in Accidents by Age Group

| | |
|-------------------------|--------|
| Less than 16 | .48 |
| 16 | .91 |
| 17 | .191 |
| 18 | .325 |
| 19 | .416 |
| 20 | .421 |
| 21 | .546 |
| Older than 21 | 10,856 |

DUI Drivers Involved in Fatal Accidents

| | Alcohol | Drugs |
|-------------------------|---------|-------|
| Less than 16 | 0 | 0 |
| 16 | .1 | 3 |
| 17 | .6 | 2 |
| 18 | 12 | 3 |
| 19 | 20 | 2 |
| 20 | 21 | 6 |
| 21 | 29 | 3 |
| older than 21 | 399 | 101 |

1990 Fatalities By Month

| Month | Rural | Urban | Total |
|--------------|--------------|------------|--------------|
| January | 94 | 32 | 126 |
| February | 94 | 23 | 117 |
| March | 115 | 20 | 135 |
| April | 108 | 21 | 129 |
| May | 108 | 20 | 128 |
| June | 116 | 23 | 139 |
| July | 129 | 31 | 160 |
| August | 119 | 20 | 139 |
| September | 98 | 25 | 123 |
| October | 107 | 19 | 126 |
| November | 92 | 17 | 109 |
| December | 115 | 18 | 133 |
| TOTAL | 1,295 | 269 | 1,564 |

DUI Accidents* and GSP Enforcement

| Year | Total DUI Fatal Accidents | Total Fatal Accidents | % DUI Fatal Accidents | DUI Injuries | DUI Fatalities | GSP DUI Arrests |
|------|------------------------------|--------------------------|--------------------------|-----------------|-------------------|--------------------|
| 1990 | 598 | 1,413 | 42.3 | 10,968 | 670 | 15,356 |
| 1989 | 581 | 1,422 | 40.9 | 10,629 | 684 | 13,464 |
| 1988 | 491 | 1,493 | 32.9 | 10,753 | 573 | 12,205 |
| 1987 | 503 | 1,446 | 34.8 | 10,131 | 568 | 13,053 |
| 1986 | 487 | 1,387 | 35.1 | 10,458 | 539 | 15,930 |
| 1985 | 369 | 1,224 | 30.2 | 9,293 | 424 | 17,096 |
| 1984 | 452 | 1,260 | 35.9 | 10,312 | 515 | 21,482 |
| 1983 | 421 | 1,157 | 36.4 | 7,216 | 609 | 17,929 |
| 1982 | 456 | 1,097 | 41.6 | N/A | 516 | 17,039 |
| 1981 | 616 | 1,256 | 49.0 | N/A | 696 | 14,417 |

* Alcohol and/or Drugs

Safety Equipment & Child Restraint

| Children Under Age 5 Killed In 1990 | | Safety Equipment Use | | |
|---|----|------------------------|----------------|---------------|
| | | <u>Equipment</u> | <u>Injured</u> | <u>Killed</u> |
| Fatalities | 33 | | | |
| Fatal Accidents | 32 | Seat Belts | 18,752 | 66 |
| DUI related fatalities | 3 | Seat Belt & Harness | 18,164 | 111 |
| Fatalities where driver drinking, not impaired | 2 | Child Restraint | | |
| | | Properly Used | 636 | 9 |
| | | Improperly Used | 150 | 4 |
| Children Under Four: | | Air Bags | 225 | 1 |
| Child restraint properly used | 9 | | | |
| Child restraints not properly used | 4 | | | |
| Not restrained | 10 | | | |
| Seatbelts only | 3 | | | |
| Four Year Olds: | | | | |
| No seat belts | 6 | | | |
| Seat belt use unknown | 1 | | | |

Fatalities By Troop

| Troop | Fatalities |
|-------|------------|
| A | 163 |
| B | 221 |
| C | 310 |
| D | 220 |
| E | 167 |
| F | 114 |
| G | 118 |
| H | 121 |
| I | 130 |

Fatalities By Post

| Post | Fatalities | Post | Fatalities |
|------|------------|------|----------------------------|
| 1 | .32 | 25 | .70 |
| 2 | .31 | 26 | .21 |
| 3 | .26 | 27 | .15 |
| 4 | .39 | 28 | .24 |
| 5 | .34 | 29 | .17 |
| 6 | .55 | 30 | .24 |
| 7 | .34 | 31 | .26 |
| 8 | .13 | 32 | .25 |
| 9 | .196 | 33 | .33 |
| 10 | .19 | 34 | .11 |
| 11 | .14 | 35 | 0 |
| 12 | .47 | 36 | .22 |
| 13 | .23 | 37 | .92 |
| 14 | .17 | 38 | .27 |
| 15 | .26 | 39 | .12 |
| 16 | .16 | 40 | .23 |
| 17 | .18 | 41 | .14 |
| 18 | .25 | 42 | .43 |
| 19 | .19 | 43 | .21 |
| 20 | .26 | 44 | .47 |
| 21 | .18 | 45 | .10 |
| 22 | .30 | 46 | .33 |
| 23 | .43 | 47 | .114 |
| 24 | .39 | 48 | Included in 9, 46, & 47 |

Pedestrian Fatalities By Month

| | |
|-----------|-----|
| January | 14 |
| February | 18 |
| March | 9 |
| April | 20 |
| May | 6 |
| June | 10 |
| July | 13 |
| August | 15 |
| September | 20 |
| October | 15 |
| November | 20 |
| December | 18 |
| Total | 178 |

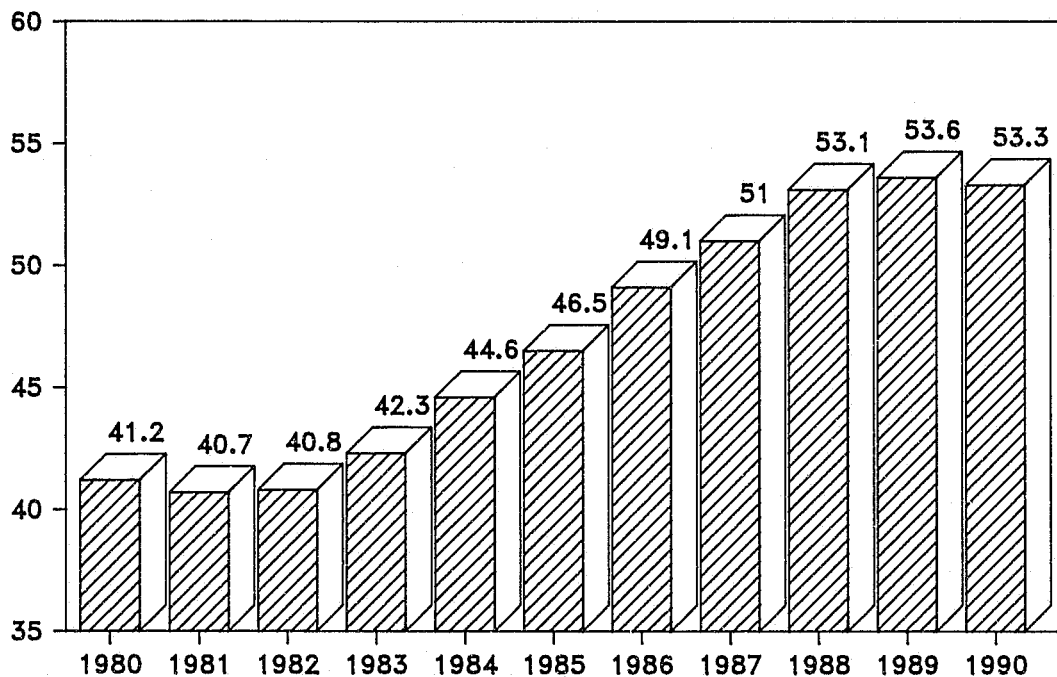
Post 9 includes all of Fulton and Cobb counties

1990 Holiday Traffic Toll

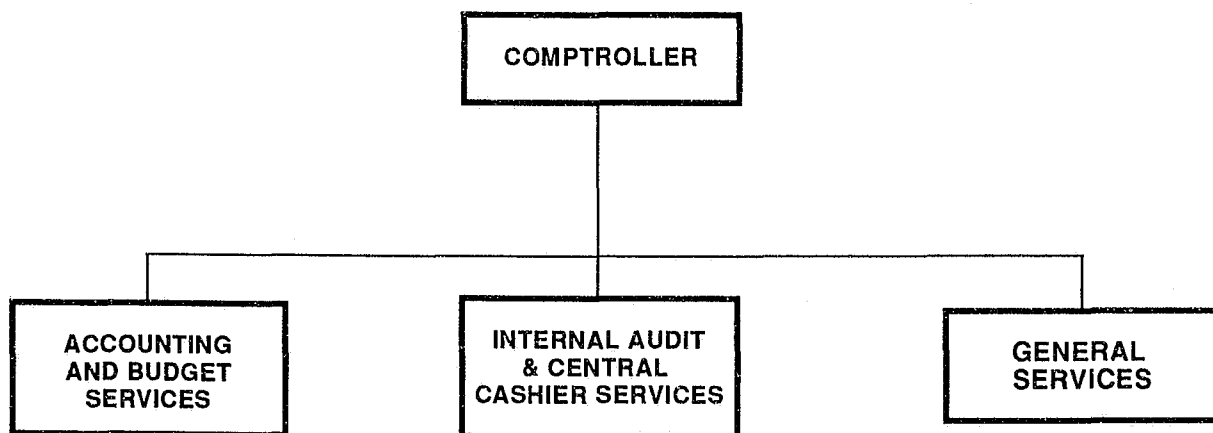
| <u>Holiday Period</u> | <u>Accidents</u> | <u>Injuries</u> | <u>Fatalities</u> | <u>DUI Fatalities</u> | <u>Hours</u> |
|-----------------------|------------------|-----------------|-------------------|-----------------------|--------------|
| Memorial Day | 2,090 | 858 | 27 | 14 | 78 |
| Fourth of July | 315 | 145 | 11 | 6 | 30 |
| Labor Day | 1,372 | 566 | 10 | 4 | 78 |
| Thanksgiving | 1,736 | 642 | 16 | 7 | 102 |
| Christmas | 2,459 | 814 | 20 | 11 | 102 |
| New Year's | 2,050 | 619 | 14 | 9 | 102 |
| TOTAL | 10,022 | 3,644 | 98 | 51 | 492 |

- One fatality every 5.02 holiday hour
- One DUI fatality every 9.6 holiday hour

Estimated Motor Vehicle Mileage Traveled (In Billions)



Fiscal Division



Accounting and Budget Services

The **Accounting Office** consists of Payroll/Revenue and Accounts Payable. It is responsible for establishing and maintaining a system of internal accounting controls to ensure that all revenues and expenditures are recorded and are accounted for properly as required by generally accepted auditing standards.

Payroll is responsible for the preparation and statewide distribution of the Department's payroll and related reporting requirements. Payroll issued approximately 1,284 checks each payroll period in addition to handling direct deposit for about 616 employees.

It handles the payroll/revenue for the seven administratively attached agencies. For FY 1990,

the total payroll was in excess of \$65,000,000.

Revenue is responsible for processing all revenue through the Fiscal Accounting and Control System (FACS).

Part of the revenue accounts receivable involves calculating gas expenditures from the gas tickets received from field personnel, headquarters and the attached agencies.

The **Accounts Payable Office** is responsible for payment of expenditures through the Fiscal Accounting and Control System for the Department and the seven administratively attached agencies. The Department has eight separate appropriations and involves having about 32 activities

with 227 cost centers. There are approximately 110 projects and six fund sources with redistribution between two or more fund sources per one project.

The **Budget Office** develops and prepares the annual operating budget for submission to the Office of Planning and Budget. It then controls and maintains the annual operating budget through expenditures analysis and various projection techniques.

The office also develops, coordinates and prepares the department budget request.

Federal grant awards are forwarded to this office from project directors. Federal claims for expense reimbursements are prepared and submitted to the appropriate federal agency.

Fiscal Division

Procurement is responsible for the purchasing of equipment and general supplies as well as large dollar items such as buses and helicopters. It assists in the building of new facilities, managing construction projects at existing locations, and entering into lease agreements for other facilities and equipment, where appropriate.

This office assists departmental field budget officers with purchases and contracts within their respective areas. This assistance is provided to insure that all purchasing and contract transactions conform to guidelines established by state and federal laws, and state and departmental policies.

The Procurement Office will handle approximately 20,000 purchase orders during a fiscal year. Any item over \$1500, not under state contract, must be handled by requisition and go out for competitive bidding.

The **Property Management Office** began a new conversion from the decal system to the bar code scanning system during 1990. This will enable inventories to be conducted in a more timely manner.

The Property Management Office is responsible for maintaining an inventory of 30,935 items of non-expendable property and insuring proper usage, maintenance and disposition of these items from the date of acquisition to the date of final disposition. Also, Property Management ensures compliance with various federal and state regulations governing disposition.

The office is responsible for 60 statewide facilities and seven agencies that are administratively

attached. The Property Office is also responsible for the scheduling and transportation of property to and from headquarters and the various statewide facilities.

The **Records Management Office** applies management techniques to the creation, utilization, maintenance, retention, preservation and disposal of records to reduce costs and improve efficiency of the record keeping process. The office also coordinates printing services for the department.

Internal Audits And Central Cashier Services

Fiscal year 1990 was the first year for the new **Internal Audits Office**. The office was able to begin the development of auditing procedures and guidelines.

Central Cashier functions as a revenue collecting and audit section. It consists of 12 employees responsible for receiving and auditing approximately 3,016 license examiners' reports; receiving, auditing and depositing all revenue generated from 15 different sources and collected by nine individual sections in Headquarters; receiving and auditing approximately 2,808 revenue reports from collecting units throughout the state.

This section also maintains records for accurate and proper revenue accountability; prepares bank deposits; and initiates various bank transactions, one of which is to transfer all revenue collected to the Department of Administrative Services.

GENERAL SERVICES

The General Services Section provides support in the areas of logistics, fleet management and maintenance/construction.

This past fiscal year saw the completion of the second full year of operation of the fleet management system, CAMS. This system allows us to manage the fleet more effectively and assists the budget office with projection information for new vehicle purchases.

The **Supply Unit** formulates and maintains inventory stock levels and utilization rates of all supplies, forms, uniforms and weapons. This unit also maintains the CAMS and GIS computer systems for fleet management and inventory control.

The **Mail Room** handles well over three million pieces of outgoing mail during the year. The unit also handled the distribution of incoming mail to the various offices within the headquarters complex.

Maintenance is responsible for the general maintenance of the Department's headquarters building, grounds and, when feasible, assists patrol posts and examining stations with repairs and maintenance in the field.

The **Garage Unit** is the base unit from which patrol vehicles are repaired and equipped for duty. The director of General Services works closely with this unit and the CAMS system to provide direction in the fleet management program.

DEPARTMENT OF PUBLIC SAFETY
COMBINING STATEMENT OF FUNDS AVAILABLE AND EXPENDITURES
BUDGET FUND YEAR ENDED JUNE 30, 1990

| Funds Available | "A" Department of Public Safety | "B" Units Attached for Administrative Purposes Only | | Totals Year Ended | |
|-------------------------------------|---------------------------------------|--|-----------------------------|----------------------|-----------------|
| | | Attached Units | Office of Highway Safety | June 30, 1990 | June 30, 1989 |
| REVENUES | | | | | |
| STATE APPROPRIATION | | | | | |
| General Appropriation | \$78,154,637.00 | \$13,671,400.00 | \$335,561.00 | \$92,161,598.00 | \$84,449,538.00 |
| Amended Appropriation | -253,366.00 | -64,697.00 | -16,033.00 | -334,096.00 | 1,169,000.00 |
| Governor's Emergency Fund * | 13,181.00 | | | 13,181.00 | 153,456.00 |
| | \$77,914,452.00 | \$13,606,703.00 | \$319,528.00 | \$91,840,683.00 | \$85,771,994.00 |
| Less: Lapsed Funds | -13,181.00 | -85,000.00 | | -98,181.00 | 0.00 |
| Total State Appropriation | \$77,901,271.00 | \$13,521,703.00 | \$319,528.00 | \$91,742,502.00 | \$85,771,994.00 |
| FEDERAL FINANCIAL ASSISTANCE * | 213,026.47 | 186,539.25 | 3,024,286.07 | 3,423,851.79 | 3,846,474.88 |
| OTHER REVENUES RETAINED * | 2,489,569.36 | 1,365,007.22 | | 3,854,576.58 | 3,195,822.83 |
| Total Revenues | \$80,603,866.83 | \$15,073,249.47 | \$3,343,814.07 | \$99,020,930.37 | \$92,814,291.71 |
| CARRY-OVER FROM PRIOR YEAR | | | | | |
| Transfer from Reserved Fund Balance | | | | | |
| Donated Foods Inventory | | \$976.06 | | \$976.06 | \$ 0.00 |
| Donated Funds | | 3,500.00 | | 3,500.00 | 3,500.00 |
| Drug Asset Sharing Program | \$108,284.56 | | | \$108,284.56 | \$66,533.50 |
| Federal Financial Assistance | | 7,007.19 | | 7,007.19 | 2,129.23 |
| Total Carry-Over from Prior Year | \$108,284.56 | \$11,483.25 | | \$119,767.81 | \$72,162.73 |
| Total Funds Available | \$80,712,151.39 | \$15,084,732.72 | \$3,343,814.07 | \$99,140,698.18 | \$92,886,454.44 |
| <u>EXPENDITURES</u> | | | | | |
| PERSONAL SERVICES | | | | | |
| Salaries and Wages | \$42,645,617.96 | \$5,288,540.28 | \$255,594.17 | \$48,189,752.41 | \$44,568,408.89 |
| Employer's Contribution for: | | | | | |
| F.I.C.A. | 3,067,953.21 | 373,927.37 | 18,681.42 | 3,460,562.00 | 3,258,789.63 |
| Retirement | 8,423,658.51 | 966,823.74 | 46,722.00 | 9,437,204.25 | 8,675,344.77 |
| Health Insurance | 3,975,968.27 | 490,710.46 | 23,999.30 | 4,490,678.03 | 4,265,048.58 |
| Personal Liability Insurance | 463,335.00 | 26,515.00 | 900.00 | 490,750.00 | 229,875.00 |
| Unemployment Compensation Insurance | 22,748.00 | 1,933.00 | 73.00 | 24,754.00 | 33,816.00 |
| Workers' Compensation Insurance | 645,142.00 | 8,414.00 | 463.00 | 654,019.00 | 666,008.00 |
| Assessments by Merit System | 273,216.00 | 17,441.76 | 652.00 | 291,309.76 | 255,363.55 |
| | \$59,517,638.95 | \$7,174,305.61 | \$347,084.89 | \$67,039,029.45 | \$61,952,654.42 |
| REGULAR OPERATING EXPENSES | | | | | |
| Motor Vehicle Expenses | \$2,633,322.12 | \$201,170.73 | \$3,061.46 | \$2,837,554.31 | \$2,771,606.84 |
| Supplies and Materials | 2,441,195.42 | 1,551,117.53 | 11,728.14 | 4,004,041.09 | 3,512,766.23 |
| Repairs and Maintenance | 1,865,504.29 | 273,276.34 | 2,426.23 | 2,141,206.86 | 1,937,504.52 |
| Utilities | 674,514.11 | 781,354.41 | | 1,455,868.52 | 1,048,796.76 |
| Rents (Other than Real Estate) | 28,317.90 | 10,441.11 | 1,726.00 | 40,485.01 | 40,944.74 |
| Insurance and Bonding | 379,506.34 | 69,128.00 | 791.00 | 449,425.34 | 406,191.00 |
| Claims and Indemnities | 13,240.14 | 74.00 | | 13,314.14 | 15,101.95 |
| Tuition and Scholarships | 5,200.00 | 295.00 | | 5,495.00 | 5,843.00 |
| Other Operating Expenses * | 245,086.51 | 91,055.12 | 8,972.26 | 345,113.89 | 524,898.01 |
| Duplicating and Rapid Copy | 17,299.85 | 4.00 | 973.09 | 18,276.94 | 7,813.43 |
| Publications and Printing | 785,738.08 | 147,431.96 | 17,907.25 | 951,077.29 | 941,342.32 |
| | \$9,088,924.76 | \$3,125,348.20 | \$47,585.43 | \$12,261,858.39 | \$11,212,808.80 |
| TRAVEL | \$165,330.56 | 132,111.54 | 9,767.76 | 307,209.86 | 371,690.13 |
| MOTOR VEHICLE PURCHASES | \$2,768,490.26 | 111,578.53 | | 2,880,068.79 | 3,233,447.84 |
| EQUIPMENT | | | | | |
| Equipment Purchases | \$1,240,343.57 | 148,711.35 | 499.99 | 1,389,554.91 | 1,224,790.61 |
| Lease/Purchase of Equipment | 43,765.23 | 4,103.63 | | 47,868.86 | 102,066.10 |
| Rental of Equipmnt | 25,820.21 | | | 25,820.21 | 33,322.07 |
| | \$1,309,929.01 | \$152,814.98 | \$499.99 | \$1,463,243.98 | 1,360,178.78 |

* See Schedule

DEPARTMENT OF PUBLIC SAFETY
COMBINING STATEMENT OF FUNDS AVAILABLE AND EXPENDITURES
BUDGET FUND YEAR ENDED JUNE 30, 1990

| Expenditures | "A" Department of Public Safety | "B" Units Attached for Administrative Purposes Only Attached Units | Office of Highway Safety | Totals Year Ended June 30, 1990 | June 30, 1989 |
|--|---------------------------------------|---|-----------------------------|---------------------------------------|-----------------|
| COMPUTER CHARGES | | | | | |
| Other Costs | | | | | |
| Supplies and Materials | \$5,819.52 | \$24,236.91 | \$3,116.72 | \$33,173.15 | \$26,409.08 |
| Repairs and Maintenance | 39,452.21 | 28,322.81 | | 67,775.02 | 74,510.86 |
| Other Operating Expenses * | | 223.97 | | 223.97 | 1,509.97 |
| Software | 23,194.72 | 23,955.83 | 4,190.25 | 51,340.80 | 56,784.67 |
| Equipment | | | | | |
| Equipment Purchases | 84,377.61 | 121,504.50 | 8,963.28 | 214,845.39 | 317,184.35 |
| Lease/Purchase of Equipment | | 0.00 | | 0.00 | 360.00 |
| Per Diem, Fees and Contracts | | | | | |
| Contracts | 0.00 | | | 0.00 | 58.00 |
| Computer Billings, DOAS | 4,150,280.00 | 162,776.14 | 23,054.09 | 4,336,110.23 | 3,726,545.74 |
| | \$4,303,124.06 | \$361,020.16 | \$39,324.34 | \$4,703,468.56 | \$4,203,362.67 |
| REAL ESTATE RENTALS | \$53,874.10 | \$84,509.19 | \$69,987.96 | \$208,371.25 | \$182,434.22 |
| TELECOMMUNICATIONS | \$1,196,877.85 | \$132,513.62 | \$3,733.48 | \$1,333,124.95 | \$1,345,131.08 |
| PER DIEM, FEES AND CONTRACTS | | | | | |
| Per Diem and Fees | \$68,679.85 | \$868,989.16 | \$11,855.69 | \$949,524.70 | \$831,304.36 |
| Contracts | 210,946.26 | 109,738.05 | 18,909.47 | 339,593.78 | 703,159.33 |
| | \$279,626.11 | \$978,727.21 | \$30,765.16 | \$1,289,118.48 | \$1,534,463.69 |
| CAPITAL OUTLAY | | | | | |
| Other Costs | | | | | |
| Repairs and Maintenance | 0.00 | | | 0.00 | 50,000.00 |
| Equipment | | | | | |
| Equipment Purchases | 59,928.45 | | | 59,928.45 | 0.00 |
| Per Diem, Fees and Contracts | | | | | |
| Contracts | 221,703.52 | | | 221,703.52 | 100,000.00 |
| | \$281,631.97 | | | \$281,631.97 | \$150,000.00 |
| OTHER | | | | | |
| Conviction Reports | | | | | |
| Other Costs | | | | | |
| Other Operating Expenses * | \$305,642.56 | | | \$305,642.56 | \$204,960.25 |
| State Patrol Posts Repair And Maintenance | | | | | |
| Other Costs | | | | | |
| Repairs and Maintenance | \$259,999.06 | | | \$259,999.06 | \$162,990.84 |
| Driver License Processing | | | | | |
| Other Costs | | | | | |
| Publications and Printing | \$1,046,599.15 | | | \$1,046,599.15 | \$876,723.84 |
| Peace Officer Training Grants | | | | | |
| Other Costs | | | | | |
| Grants to Counties, Cities and Civil Divisions | | \$2,757,319.44 | | \$2,757,319.44 | \$2,662,788.32 |
| Highway Safety Grants | | | | | |
| Other Costs | | | | | |
| Grants to Counties, Cities and Civil Divisions | | | \$2,733,036.18 | \$2,733,036.18 | \$3,106,900.67 |
| Total Other | \$1,612,240.77 | \$2,757,319.44 | \$2,733,036.18 | \$7,102,596.39 | \$7,014,363.92 |
| Total Expenditures | \$80,577,688.40 | \$15,010,248.48 | \$3,281,785.19 | \$98,869,722.07 | \$92,560,535.55 |
| Excess of Funds Available over Expenditures | 134,462.99 | 74,484.24 | 62,028.88 | 270,976.11 | 325,918.89 |
| | \$80,712,151.39 | \$15,084,732.72 | \$3,343,814.07 | \$99,140,698.18 | \$92,886,454.44 |

* See Schedule