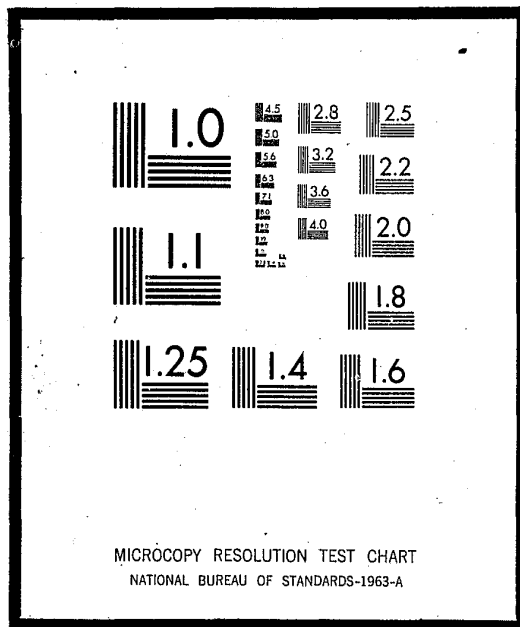


NCJRS

This microfiche was produced from documents received for inclusion in the NCJRS data base. Since NCJRS cannot exercise control over the physical condition of the documents submitted, the individual frame quality will vary. The resolution chart on this frame may be used to evaluate the document quality.



Microfilming procedures used to create this fiche comply with the standards set forth in 41CFR 101-11.504

Points of view or opinions stated in this document are those of the author(s) and do not represent the official position or policies of the U.S. Department of Justice.

U.S. DEPARTMENT OF JUSTICE
LAW ENFORCEMENT ASSISTANCE ADMINISTRATION
NATIONAL CRIMINAL JUSTICE REFERENCE SERVICE
WASHINGTON, D.C. 20531

Date filmed

8/27/75

014256



Solicitor General
Canada

Solliciteur général
Canada

**One-Year Follow-Up of 1970
Penitentiary Parole Releases**

January 1973

STATISTICAL
INFORMATION
CENTRE

PAROLE RECIDIVISM STUDY

ONE-YEAR FOLLOW-UP OF 1970 PENITENTIARY PAROLE RELEASES

STATISTICAL INFORMATION CENTRE

January, 1973.

INTRODUCTION

These tabulations represent the most recent output received from Judicial Division, Statistics Canada, in the continuing study of parole recidivism. They are preceded by an analysis completed by the Statistical Information Centre, Department of the Solicitor General.

This material, therefore, is supplementary to that contained in the publication Parole Recidivism Study, as of June 1972. Specifically, it considers recidivism patterns for a twelve-month period following releases on parole during 1970. For example, if the parole release was in January 1970, the twelve-month period would terminate one day prior to the anniversary in January 1971. The content relates to parole releases from penitentiaries only.

For the purposes of this study, recidivism is considered to represent a revocation or forfeiture of parole or conviction for an indictable offence following release on parole and within the 5-year follow-up period involved. The Criminal Records Section of the R.C.M. Police furnishes up-dated copies of the F.P.S. Record which serve as the source for determining subsequent convictions.

Excluded from the study are those cases that were released on parole that did not necessarily involve exposure to a supervisory relationship, i.e. those cases released on Short Parole, Day Parole, Parole for Deportation or Voluntary Departure.

The tables are numbered according to the following configuration:

- 70.X.X - the year of release
- XX.1.X - Ordinary and Minimum parole releases
- XX.2.X - Ordinary parole releases
- XX.3.X - Minimum Parole releases

- XX.X.1 - Type of Recidivism by Time Elapsed after Release
- XX.X.2 - Type of Recidivism by Time Elapsed after Release, Accumulative Totals
- XX.X.3 - Recidivism & Parole Status at Time of Recidivism, by Time Period

January, 1973

ANALYSIS

This analysis includes comparison with published figures for releases in 1963-66, inclusive. No related information is available for releases in 1967-69, inclusive.

Tables 70.1.1, 70.2.1, 70.3.1

Considering the combined total of 2,671 releases in Table 70.1.1 on ordinary parole and minimum parole during 1970, 30.6% recidivated during the full 12 months under study. This figure compares with 23.4% for such releases in 1965, and 21.2% for such releases during 1966 for the same time period.

Table 70.2.1 indicates that 29.2% of the 2,518 releases on ordinary parole in 1970 recidivated during the first twelve months in the community. The comparative figures are as follows: 1963 - 28.9%; 1964 - 32.4%; 1965 - 17.6%; 1966 - 16.1%.

With regard to Minimum Parole, Table 70.3.1 demonstrates that 53.6% of the 153 such releases in 1970 recidivated during the twelve month period. Again, the comparable figures: 1965 - 37.1%; 1966 - 44.4%. The Minimum Parole program was introduced in September, 1964, resulting in the first such releases in 1965.

The three tables indicate that recidivism among both ordinary parole and minimum parole releases was relatively evenly distributed between each of the twelve months elapsed during the study period.

The following tables indicate the distribution of recidivism types, for releases in 1970 and the earlier years, during the twelve months following release:

ANALYSIS (Contd.)

1) ORDINARY PAROLE

<u>Year of Release</u>	<u>Total Releases</u>	<u>Type of Recidivism</u>							
		<u>Revocation</u>		<u>Forfeiture</u>		<u>After Expiry</u>		<u>Total Recidivism</u>	
		<u>No.</u>	<u>%</u>	<u>No.</u>	<u>%</u>	<u>No.</u>	<u>%</u>	<u>No.</u>	<u>%</u>
1970	2,518	128	17.4	481	65.5	125	17.1	734	100.00
1966	847	37	27.2	84	61.8	15	11.0	136	100.00
1965	720	45	35.4	63	49.6	19	15.0	127	100.00
1964	623	70	34.6	63	31.2	69	34.2	202	100.00
1963	575	48	28.9	45	27.1	73	44.0	166	100.00
Average 1963-66	691	50.0	31.5	63.8	42.4	44.0	26.1	157.8	100.00

2) MINIMUM PAROLE

1970	153	14	17.1	44	53.6	24	29.3	82	100.00
1966	189	19	22.6	38	45.2	27	32.2	84	100.00
1965	302	31	27.7	62	55.3	19	17.0	112	100.00
Average 1965-66	245.5	25	25.2	50	50.2	23	24.6	98	100.00

ANALYSIS (Contd.)

These tables demonstrate that during the twelve month study period following release in 1970 by either ordinary or minimum parole, recidivism through forfeiture was proportionately between three and four times that by way of revocation. By comparison, the average figures for releases 1963-1966 are not significantly different for ordinary paroles (31.5% revocation, 42.4% forfeiture), while the 1965-66 average for minimum parole recidivism by forfeiture was proportionately approximately twice that through revocation (25.2%, 50.2%, respectively).

The balance of the tables offer varying representations of the trends identified above.

Parole Recidivism Study

Table 70.1.1 Penitentiary Releases, Parole, (1) 1970 - Type of Recidivism by Time Elapsed After Release

Time Elapsed After Release	Total Parole Releases	Total Recidivism in Each Time Period		Recidivism During Parole Period						Recidivism After Expiry(3) of Parole	
		No.	%	Revoked(2)		Forfeited		Total		No.	%
Total for 12 Month Study Period	2,671	816	30.6	142	5.3	525	19.7	667	25.0	149	5.6
Under 1 Month	2,671	50	1.9	3	0.2	36	1.3	39	1.5	11	0.4
1& Under 2 Months	2,671	77	2.9	2	0.1	61	2.3	63	2.4	14	0.5
2& Under 3 Months	2,671	83	3.1	14	0.5	50	1.9	64	2.4	19	0.7
3& Under 4 Months	2,671	91	3.4	15	0.6	65	2.4	80	3.0	11	0.4
4& Under 5 Months	2,671	68	2.5	17	0.6	39	1.5	56	2.1	12	0.4
5& Under 6 Months	2,671	73	2.7	17	0.7	44	1.6	61	2.3	12	0.4
6& Under 7 Months	2,671	68	2.5	11	0.4	46	1.7	57	2.1	11	0.4
7& Under 8 Months	2,671	72	2.7	17	0.6	42	1.6	59	2.2	13	0.5
8& Under 9 Months	2,671	74	2.8	16	0.6	48	1.8	64	2.4	10	0.4
9& Under 10 Months	2,671	61	2.3	9	0.3	34	1.3	43	1.6	18	0.7
10& Under 11 Months	2,671	53	2.0	12	0.4	32	1.2	44	1.6	9	0.4
11& Under 12 Months	2,671	46	1.8	9	0.3	28	1.1	37	1.4	9	0.4

(1) Including all ordinary, and minimum paroles

(2) Including all recommitals upon revocation of parole

(3) Following conviction for Indictable offence

Total released on parole in 1970: 2,692

Number deceased (excluded from study): 21

Total included in study: 2,671

Parole Recidivism Study

Table 70.2.1 Penitentiary Releases, Ordinary Parole, (1) 1970 - Type of Recidivism By Time Elapsed After Release

Time Elapsed After Release	Total Parole Releases	Total Recidivism in Each Time Period		Recidivism During Parole Period						Recidivism After Expiry(3) of Parole	
		No.	%	Revoked(2)		Forfeited		Total		No.	%
Total for 12 Months Study Period	2,518	734	29.2	128	5.1	481	19.1	609	24.2	125	5.0
Under 1 Month	2,518	46	1.8	3	0.1	33	1.3	36	1.4	10	0.4
1& Under 2 Months	2,518	69	2.7	2	0.1	54	2.1	56	2.2	13	0.5
2& Under 3 Months	2,518	76	3.0	12	0.5	46	1.8	58	2.3	18	0.7
3& Under 4 Months	2,518	82	3.3	13	0.5	59	2.4	72	2.9	10	0.4
4& Under 5 Months	2,518	59	2.3	15	0.6	34	1.3	49	1.9	10	0.4
5& Under 6 Months	2,518	67	2.7	17	0.7	39	1.5	56	2.2	11	0.5
6& Under 7 Months	2,518	62	2.5	11	0.4	41	1.7	52	2.1	10	0.4
7& Under 8 Months	2,518	63	2.5	13	0.5	40	1.6	53	2.1	10	0.4
8& Under 9 Months	2,518	67	2.7	15	0.6	46	1.9	61	2.5	6	0.2
9& Under 10 Months	2,518	53	2.1	8	0.3	33	1.3	41	1.6	12	0.5
10& Under 11 Months	2,518	47	1.9	10	0.4	30	1.2	40	1.6	7	0.3
11& Under 12 Months	2,518	43	1.7	9	0.4	26	1.0	35	1.4	8	0.3

(1) Including all ordinary paroles

(2) Including all recommitals upon revocation of parole

(3) Following conviction for indictable offence

Total released on parole in 1970: 2,536

Number deceased (excluded from study): 18

Total included in study: 2,518

Parole Recidivism Study

Table 70.3.1 Penitentiary Releases, Minimum Parole, 1970 - Type of Recidivism by Time Elapsed After Release

Time Elapsed After Release	Total Parole Releases	Total Recidivism in Each Time Period		Recidivism During Parole Period						Recidivism After Expiry(2) of Parole	
		No.	%	Revoked(1)		Forfeited		Total		No.	%
Total for 12 Month Study Period	153	82	53.6	14	9.2	44	28.7	58	37.9	24	15.7
Under 1 Month	153	4	2.6	-	-	3	1.9	3	1.9	1	0.7
1& Under 2 Months	153	8	5.2	-	-	7	4.6	7	4.6	1	0.6
2& Under 3 Months	153	7	4.6	2	1.3	4	2.6	6	3.9	1	0.7
3& Under 4 Months	153	9	5.9	2	1.3	6	3.9	8	5.2	1	0.7
4& Under 5 Months	153	9	5.9	2	1.3	5	3.3	7	4.6	2	1.3
5& Under 6 Months	153	6	3.9	-	-	5	3.3	5	3.3	1	0.6
6& Under 7 Months	153	6	3.9	-	-	5	3.3	5	3.3	1	0.6
7& Under 8 Months	153	9	5.9	4	2.6	2	1.3	6	3.9	3	2.0
8& Under 9 Months	153	7	4.6	1	0.7	2	1.3	3	2.0	4	2.6
9& Under 10 Months	153	8	5.2	1	0.7	1	0.6	2	1.3	6	3.9
10& Under 11 Months	153	6	3.9	2	1.3	2	1.3	4	2.6	2	1.3
11& Under 12 Months	153	3	2.0	-	-	2	1.3	2	1.3	1	0.7

(1) Including all recommitals upon revocation of parole

(2) Following conviction for indictable offence

Total released on minimum parole in 1970: 156
 Number deceased (excluded from study): 3
 Total included in study: 153

Parole Recidivism Study

Table 70.1.2 Penitentiary Releases, Parole, 1970 - Type of Recidivism By Time Elapsed After Release
(Accumulated Totals)

Time Elapsed After Release (Accumulated Totals)	Total Parole Releases		No Subsequent Convictions		Total Recidivism		Recidivism During Parole Period						Recidivism (2) After Expiry of Parole	
	No.	%	No.	%	No.	%	Revoked(1)		Forfeited		Total		No.	%
Within 1 Month	2,671	100.0	2,621	98.1	50	1.9	3	0.1	36	1.4	39	1.5	11	0.4
Within 2 Months	2,671	100.0	2,544	95.2	127	4.8	5	0.2	97	3.6	102	3.8	25	1.0
Within 3 Months	2,671	100.0	2,461	92.1	210	7.9	19	0.7	147	5.5	166	6.2	44	1.7
Within 4 Months	2,671	100.0	2,370	88.7	301	11.3	34	1.3	212	7.9	246	9.2	55	2.1
Within 5 Months	2,671	100.0	2,302	86.2	369	13.8	51	1.9	251	9.4	302	11.3	67	2.5
Within 6 Months	2,671	100.0	2,229	83.5	442	16.5	68	2.5	295	11.0	363	13.5	79	3.0
Within 7 Months	2,671	100.0	2,161	81.0	510	19.0	79	3.0	341	12.7	420	15.7	90	3.3
Within 8 Months	2,671	100.0	2,089	78.3	582	21.7	96	3.6	383	14.3	479	17.9	103	3.8
Within 9 Months	2,671	100.0	2,015	75.5	656	24.5	112	4.2	431	16.1	543	20.3	113	4.2
Within 10 Months	2,671	100.0	1,954	73.2	717	26.8	121	4.5	465	17.4	586	21.9	131	4.9
Within 11 Months	2,671	100.0	1,901	71.2	770	28.8	133	5.0	497	18.6	630	23.6	140	5.2
Within 12 Months	2,671	100.0	1,855	69.4	816	30.6	142	5.3	525	19.7	667	25.0	149	5.6

(1) Including all recommitals upon revocation of parole.

(2) Following conviction for indictable offence.

Parole Recidivism Study

Table 70.2.2 Penitentiary Releases, Ordinary Parole, 1970 - Type of Recidivism by Time Elapsed After Release (Accumulated Totals)

Time Elapsed After Release (Accumulated Totals)	Total Parole Releases		No Subsequent Convictions		Total Recidivism		Recidivism During Parole Period						Recidivism(2) After Expiry of Parole	
	No.	%	No.	%	No.	%	Revoked(1)		Forfeited		Total		No.	%
Within 1 Month	2,518	100.0	2,472	98.2	46	1.8	3	0.1	33	1.3	36	1.4	10	0.4
Within 2 Months	2,518	100.0	2,403	95.4	115	4.6	5	0.2	87	3.5	92	3.7	23	0.9
Within 3 Months	2,518	100.0	2,327	92.4	191	7.6	17	0.7	133	5.3	150	6.0	41	1.6
Within 4 Months	2,518	100.0	2,245	89.2	273	10.8	30	1.2	192	7.6	222	8.8	51	2.0
Within 5 Months	2,518	100.0	2,186	86.8	332	13.2	45	1.8	226	9.0	271	10.8	61	2.4
Within 6 Months	2,518	100.0	2,119	84.2	399	15.8	62	2.4	265	10.5	327	12.9	72	2.9
Within 7 Months	2,518	100.0	2,057	81.7	461	18.3	73	2.9	306	12.1	379	15.0	82	3.3
Within 8 Months	2,518	100.0	1,994	79.2	524	20.8	86	3.4	346	13.7	432	17.1	92	3.7
Within 9 Months	2,518	100.0	1,927	76.5	591	23.5	101	4.0	392	15.6	493	19.6	98	3.9
Within 10 Months	2,518	100.0	1,874	74.4	644	25.6	109	4.3	425	16.9	534	21.2	110	4.4
Within 11 Months	2,518	100.0	1,827	72.6	691	27.4	119	4.7	455	18.1	574	22.8	117	4.6
Within 12 Months	2,518	100.0	1,784	70.8	734	29.2	128	5.1	481	19.1	609	24.2	125	5.0

(1) Including all recommitals upon revocation of parole

(2) Following conviction for indictable offence

Parole Recidivism Study

Table 70.3.2 Penitentiary Releases, Minimum Parole, 1970 - Type of Recidivism by Time Elapsed After Release (Accumulated Totals)

Time Elapsed After Release (Accumulated Totals)	Total Parole Releases		No Subsequent Convictions		Total Recidivism		Recidivism During Parole Period						Recidivism(2) After Expiry of Parole	
	No.	%	No.	%	No.	%	Revoked(1)		Forfeited		Total		No.	%
Within 1 Month	153	100.0	149	97.4	4	2.6	-	-	3	1.9	3	1.9	1	0.7
Within 2 Months	153	100.0	141	92.2	12	7.8	-	-	10	6.5	10	6.5	2	1.3
Within 3 Months	153	100.0	134	87.6	19	12.4	2	1.3	14	9.1	16	10.4	3	2.0
Within 4 Months	153	100.0	125	81.7	28	18.3	4	2.6	20	13.1	24	15.7	4	2.6
Within 5 Months	153	100.0	116	75.8	37	24.2	6	3.9	25	16.4	31	20.3	6	3.9
Within 6 Months	153	100.0	110	71.9	43	28.1	6	3.9	30	19.6	36	23.5	7	4.6
Within 7 Months	153	100.0	104	68.0	49	32.0	6	3.9	35	22.9	41	26.8	8	5.2
Within 8 Months	153	100.0	95	62.1	58	37.9	10	6.5	37	24.2	47	30.7	11	7.2
Within 9 Months	153	100.0	88	57.5	65	42.5	11	7.2	39	25.5	50	32.7	15	9.8
Within 10 Months	153	100.0	80	52.3	73	47.7	12	7.8	40	26.2	52	34.0	21	13.7
Within 11 Months	153	100.0	74	48.4	79	51.6	14	9.2	42	27.4	56	36.6	23	15.0
Within 12 Months	153	100.0	71	46.4	82	53.6	14	9.2	44	28.7	58	37.9	24	15.7

(1) Including all recommitals upon revocation of parole

(2) Following conviction for indictable offence

Parole Recidivism Study
 Table 70.1.3 Penitentiary Releases, Parole, 1970 - Recidivism and Parole Status of Recidivism
 By Time Period

Time Period	Total Persons At Liberty at Start of Time Period		Non-Recidivists At End of Time Period		Total Recidivated During Time Period		Parole Status at Time of Recidivism							
							On Parole				After Parole (2) Expired			
							Revoked(1)		Forfeited			Total		
No.	%	No.	%	No.	%	No.	%	No.	%	No.	%	No.	%	
Total For 12 Months Study Period	2,671	100.0	1,855	69.4	816	30.6	142	5.3	525	19.7	667	25.0	149	5.6
1 Month	2,671	100.0	2,621	98.1	50	1.9	3	0.2	36	1.3	39	1.5	11	0.4
2 Months	2,621	98.1	2,544	95.2	77	2.9	2	0.1	61	2.3	63	2.4	14	0.5
3 Months	2,544	95.2	2,461	92.1	83	3.1	14	0.5	50	1.9	64	2.4	19	0.7
4 Months	2,461	92.1	2,370	88.7	91	3.4	15	0.6	65	2.4	80	3.0	11	0.4
5 Months	2,370	88.7	2,302	86.2	68	2.5	17	0.6	39	1.5	56	2.1	12	0.4
6 Months	2,302	86.2	2,229	83.5	73	2.7	17	0.7	44	1.6	61	2.3	12	0.4
7 Months	2,229	83.5	2,161	81.0	68	2.5	11	0.4	46	1.7	57	2.1	11	0.4
8 Months	2,161	81.0	2,089	78.3	72	2.7	17	0.6	42	1.6	59	2.2	13	0.5
9 Months	2,089	78.3	2,015	75.5	74	2.8	16	0.6	48	1.8	64	2.4	10	0.4
10 Months	2,015	75.5	1,954	73.2	61	2.3	9	0.3	34	1.3	43	1.6	18	0.7
11 Months	1,954	73.2	1,901	71.2	53	2.0	12	0.4	32	1.2	44	1.6	9	0.4
12 Months	1,901	71.2	1,855	69.4	46	1.8	9	0.3	28	1.1	37	1.4	9	0.4

(1) Including all recommitals upon revocation of parole

(2) Following conviction for indictable offence.

Parole Recidivism Study
 Table 70.2.3 Penitentiary Releases, Ordinary Parole, 1970 - Recidivism and Parole Status of Recidivism
 By Time Period

Time Period	Total Persons At Liberty at Start of Time Period		Non-Recidivists At End of Time Period		Total Recidivated During Time Period		Parole Status at Time of Recidivism							
							On Parole				After (2) Parole Expired			
							Revoked (1)		Forfeited				Total	
No.	%	No.	%	No.	%	No.	%	No.	%	No.	%	No.	%	
Total For 12 Month Study Period	2,518	100.0	1,784	70.8	734	29.2	128	5.1	481	19.1	609	24.2	125	5.0
1 Month	2,518	100.0	2,472	98.2	46	1.8	3	0.1	33	1.3	36	1.4	10	0.4
2 Months	2,472	98.2	2,403	95.4	69	2.7	2	0.1	54	2.1	56	2.2	13	0.5
3 Months	2,403	95.4	2,327	92.4	76	3.0	12	0.5	46	1.8	58	2.3	18	0.7
4 Months	2,327	92.4	2,245	89.2	82	3.3	13	0.5	59	2.4	72	2.9	10	0.4
5 Months	2,245	89.2	2,186	86.8	59	2.3	15	0.6	34	1.3	49	1.9	10	0.4
6 Months	2,186	86.8	2,119	84.2	67	2.7	17	0.7	39	1.5	56	2.2	11	0.5
7 Months	2,119	84.2	2,057	81.7	62	2.5	11	0.4	41	1.7	52	2.1	10	0.4
8 Months	2,057	81.9	1,994	79.2	63	2.5	13	0.5	40	1.6	53	2.1	10	0.4
9 Months	1,994	79.2	1,927	76.5	67	2.7	15	0.6	46	1.9	61	2.5	6	0.2
10 Months	1,927	76.5	1,874	74.4	53	2.1	8	0.3	33	1.3	41	1.6	12	0.5
11 Months	1,874	74.4	1,827	72.6	47	1.9	10	0.4	30	1.2	40	1.6	7	0.3
12 Months	1,827	72.6	1,784	70.8	43	1.7	9	0.4	26	1.0	35	1.4	8	0.3

(1) Including all recommitals upon revocation of parole

(2) Following conviction for indictable offence

Parole Recidivism Study
 Table 70.3.3 Penitentiary Releases Minimum Paroles 1970 - Recidivism and Parole Status at Time of
 Recidivism by Time Period

Time Period	Total Persons At Liberty at Start of Time Period		Non-Recidivists At End of Time Period		Total Recidivated During Time Period		Parole Status At Time of Recidivism							
							On Parole						After (2) Parole Expired	
							Revoked (1)		Forfeited		Total			
No.	%	No.	%	No.	%	No.	%	No.	%	No.	%	No.	%	
Total for 12 Month Study Period	153	100.0	71	46.4	82	53.6	14	9.2	44	28.7	58	37.9	24	15.7
1 Month	153	100.0	149	97.4	4	2.6	-	-	3	1.9	3	1.9	1	0.7
2 Months	149	97.4	141	92.2	8	5.2	-	-	7	4.6	7	4.6	1	0.6
3 Months	141	92.2	134	87.6	7	4.6	2	1.3	4	2.6	6	3.9	1	0.7
4 Months	134	87.6	125	81.7	9	5.9	2	1.3	6	3.9	8	5.2	1	0.7
5 Months	125	81.7	116	75.8	9	5.9	2	1.3	5	3.3	7	4.6	2	1.3
6 Months	116	75.8	110	71.9	6	3.9	-	-	5	3.3	5	3.3	1	0.6
7 Months	110	71.9	104	68.0	6	3.9	-	-	5	3.3	5	3.3	1	0.6
8 Months	104	68.0	95	62.1	9	5.9	4	2.6	2	1.3	6	3.9	3	2.0
9 Months	95	62.1	88	57.5	7	4.6	1	0.7	2	1.3	3	2.0	4	2.6
10 Months	88	57.5	80	52.3	8	5.2	1	0.7	1	0.6	2	1.3	6	3.9
11 Months	80	52.3	74	48.4	6	3.9	2	1.3	2	1.3	4	2.6	2	1.3
12 Months	74	48.4	71	46.4	3	2.0	-	-	2	1.3	2	1.3	1	0.7

(1) Including all recommittals upon revocation of parole

(2) Following conviction for indictable offence

Etude de la récidive chez les libérés conditionnels
 Tableau 70.3.3 Détenus de pénitenciers, libération conditionnelle minimale, 1970
 Nature de la récidive et de la libération conditionnelle au moment de la récidive, par période

Période	Nombre total de personnes en liberté au début de la période		Non-récidive à la fin de la période		Total des récidives au cours de la période		Nature de la libération conditionnelle au moment de la récidive							
							Libération conditionnelle en cours						Libération conditionnelle expirée (2)	
							Révocation(1)		Déchéance		Total			
No.	%	No.	%	No.	%	No.	%	No.	%	No.	%	No.	%	
Total pour la période de 12 Mois soumise à l'étude	153	100.0	71	46.4	82	53.6	14	9.2	44	28.7	58	37.9	24	15.7
1 mois	153	100.0	149	97.4	4	2.6	-	-	3	1.9	3	1.9	1	0.7
2 mois	149	97.4	141	92.2	8	5.2	-	-	7	4.6	7	4.6	1	0.6
3 mois	141	92.2	134	87.6	7	4.6	2	1.3	4	2.6	6	3.9	1	0.7
4 mois	134	87.6	125	81.7	9	5.9	2	1.3	6	3.9	8	5.2	1	0.7
5 mois	125	81.7	116	75.8	9	5.9	2	1.3	5	3.3	7	4.6	2	1.3
6 mois	116	75.8	110	71.9	6	3.9	-	-	5	3.3	5	3.3	1	0.6
7 mois	110	71.9	104	68.0	6	3.9	-	-	5	3.3	5	3.3	1	0.6
8 mois	104	68.0	95	62.1	9	5.9	4	2.6	2	1.3	6	3.9	3	2.0
9 mois	95	62.1	88	57.5	7	4.6	1	0.7	2	1.3	3	2.0	4	2.6
10 mois	88	57.5	80	52.3	8	5.2	1	0.7	1	0.6	2	1.3	6	3.9
11 mois	80	52.3	74	48.4	6	3.9	2	1.3	2	1.3	4	2.6	2	1.3
12 mois	74	48.4	71	46.4	3	2.0	-	-	2	1.3	2	1.3	1	0.7

(1) Y compris toutes les réincarcération découlant de la révocation de la libération conditionnelle

(2) Par suite d'une condamnation pour un acte criminel.

END