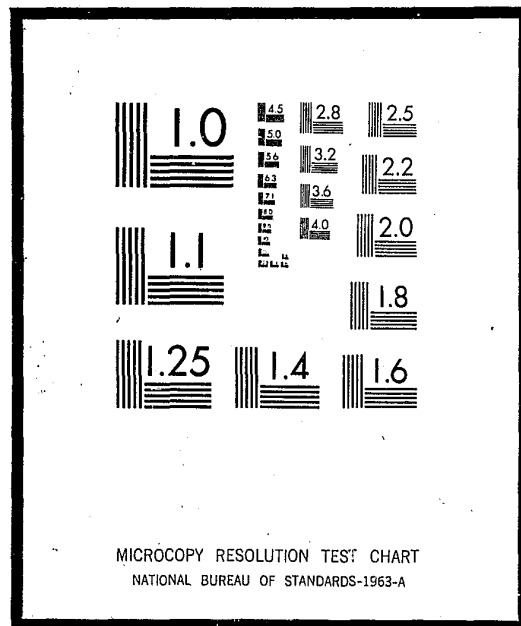


# NCJRS

This microfiche was produced from documents received for inclusion in the NCJRS data base. Since NCJRS cannot exercise control over the physical condition of the documents submitted, the individual frame quality will vary. The resolution chart on this frame may be used to evaluate the document quality.



Microfilming procedures used to create this fiche comply with the standards set forth in 41CFR 101-11.504

Points of view or opinions stated in this document are those of the author(s) and do not represent the official position or policies of the U.S. Department of Justice.

U.S. DEPARTMENT OF JUSTICE  
LAW ENFORCEMENT ASSISTANCE ADMINISTRATION  
NATIONAL CRIMINAL JUSTICE REFERENCE SERVICE  
WASHINGTON, D.C. 20531

Date filmed

8/27/75

ANNUAL STATISTICAL REPORT

1971

W. Dee Kutach  
ASSISTANT FOR TREATMENT

TEXAS-DEPARTMENT  
OF CORRECTIONS

Dan V. McKaskle  
BUREAU OF CLASSIFICATION

Henry R. Small  
BUREAU OF RECORDS AND IDENTIFICATION

014252



PRESTON SMITH  
Governor  
State of Texas

TEXAS BOARD OF CORRECTIONS

H. H. COFFIELD  
Chairman  
Rockdale, Texas

JAMES M. WINDHAM  
Vice-Chairman  
Livingston, Texas

W. ERVIN JAMES  
Member  
Houston, Texas

WALTER M. MISCHER  
Secretary  
Houston, Texas

FRED W. SHIELD  
Member  
San Antonio, Texas

LESTER BOYD  
Member  
Vernon, Texas

L. H. TRUE  
Member  
Wimberley, Texas

DAVID D. ALLEN  
Member  
Houston, Texas

T. LOUIS AUSTIN, Jr.  
Member  
Dallas, Texas

ADMINISTRATION

GEORGE J. BETO, Ph.D.  
Director

W. J. ESTELLE, Jr.  
Assistant Director

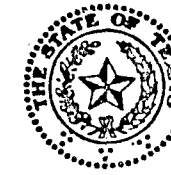
W. D. KUTACH  
Assistant Director  
In Charge of Treatment

BYRON W. FRIERSON  
Assistant Director  
In Charge of Agriculture

SAMMIE D. BRADLEY  
Assistant Director  
In Charge of Industries

ALTON L. AKINS  
Assistant Director  
In Charge of Construction

JACK D. KYLE  
Assistant Director  
In Charge of Business



TEXAS  
DEPARTMENT OF CORRECTIONS  
HUNTSVILLE, TEXAS 77340

Gentlemen:

Enclosed is the Texas Department of Corrections Annual Inmate Information Statistical Report for the Calendar Year 1971.

This report presents a statistical analysis of the background and characteristics of inmates admitted to and released from the Texas Department of Corrections during 1971. A similar analysis of the current inmate population as of December 31, 1971, is also included. The information presented here was extracted from data processing files that are regularly updated with inmate information furnished by the Bureau of Records and Classification.

This report provides a profile of the sociological characteristics of the adult public offenders incarcerated in the Texas Department of Corrections. Court commitment data is also surveyed. Your continued cooperation in assisting the Department of Corrections to achieve its primary goal of reformation and rehabilitation is appreciated.

## CONTENTS

I. SUMMARY OF INS AND OUTS (*)	1
II. DEATHS IN PRISON SYSTEM IN 1971	4
III. COMPARISON OF ESCAPES AND RECAPTURES	5
IV. AVERAGE INMATE POPULATION BY UNIT (*)	6
V. ANALYSIS OF INMATES RECEIVED IN 1971	
A. BY OFFENSE (*)	7
B. BY EDUCATIONAL ACHIEVEMENT	11
C. BY IQ SCORE	12
D. BY RELIGIOUS PREFERENCE	13
E. BY NATIVITY AND RESIDENCE	14
F. BY OCCUPATION	22
G. BY AGE	23

## CONTENTS

VI. ANALYSIS OF INMATES DEPARTED IN 1971	
A. BY LENGTH OF TIME SERVED (*)	24
B. BY OFFENSE (*)	26
C. BY EDUCATIONAL ACHIEVEMENT	30
D. BY IQ SCORE	31
E. BY RELIGIOUS PREFERENCE	32
F. BY NATIVITY AND RESIDENCE	33
G. BY OCCUPATION	41
H. BY AGE	42
VII. ANALYSIS OF CURRENT INMATE POPULATION	
A. BY TRUSTY STATUS (*)	43
B. BY PREVIOUS SENTENCES (*)	44
C. BY OFFENSE	45
D. BY EDUCATIONAL ACHIEVEMENT	50
E. BY IQ SCORE	51
F. BY RELIGIOUS PREFERENCE	52
G. BY NATIVITY AND RESIDENCE	53
H. BY OCCUPATION	61
I. BY AGE	62

NOTE - THE REPORTS INDICATED BY (\*) INCLUDE THE NINE INMATES WHO WERE RECEIVED ON DEATH ROW, THE NINE INMATES WHO DEPARTED FROM DEATH ROW, AND THE THIRTY-EIGHT INMATES WHO WERE ON DEATH ROW DECEMBER 31, 1971.

COMPUTER REPORT PDSPS72041

TABLE 1 - SUMMARY OF INS AND OUTS- 1971 1970

STRENGTH AS OF FIRST OF THE YEAR 14,331 12,622

\*\*\* INS \*\*\*

RA NEW RECEIVED	7120	6468
RB NEW REC., VOLUNTARY SURRENDER	20	14
RC NEW REC., ADDITIONAL SENTENCE	88	128
RD RETD FROM BENCH WARRANT-STATE	905	854
RE RETD FROM BENCH WARRANT-FEDERAL	119	97
RF RETD CONDITIONAL PARDON VIOLATOR	3	4
RH RETD FROM ESCAPE	7	5
RI RETD FROM ATTEMPTED ESCAPE		3
RK RETD PAROLE VIOLATOR	648	643
RM RETD PAROLE VIOLATOR, VOL. SURR.	1	
RP RETD FROM REPRIEVE-DEFINITE	77	83
RQ RETD FROM MEDICAL REPRIEVE-INDEF.	323	290
RR RETD REPRIEVE VIOLATOR	1	2
RT RETD FROM STATE HOSPITAL	1	6
RZ OTHER RETURNS	117	10
*** TOTAL INS -	9,430	8,507

\*\*\* OUTS \*\*\*

DC PAPERWORK ONLY - ADDTL SENTENCE	91	123
DD BENCH WARRANT-STATE	929	901
DE BENCH WARRANT-FEDERAL	112	96
DF CONDITIONAL PARDON	32	25
DH ESCAPE - COMPLETE	8	5
DI ESCAPE - ATTEMPTED		2
DK PAROLE	2278	1979
DL PAROLE - HOLD	76	57
DN PAROLE - REINSTATEMENT	3	2
DP REPRIEVE - DEFINITE	95	79
DQ REPRIEVE - MEDICAL INDEFINITE	313	289
DT TRANSFERRED TO STATE HOSPITAL		4
DU DISCHARGE - EXPIRATION OF SENT.	3522	3110
DV DISCHARGE - HOLD	153	166
DW DISCHARGE - COURT ORDER		2
DX DECEASED	38	40
DZ OTHER DEPARTURES	122	18
*** TOTAL OUTS -	7,772	6,898

STRENGTH AS OF END OF THE YEAR 15,989 14,331

COMPUTER REPORT 1A14972042

TABLE 2 - YEAR-TO-DATE SUMMARY OF INS.

	RA	RB	RC	RD	RE	RF	RH	RI	RK	RM	RP	RQ	RR	RT	RZ	TOTAL
JANUARY	610	2	6	70	7		1		50		12	24	1		8	791
FEBRUARY	565	1	12	77	11				46	1	6	25		1	20	765
MARCH	654	2	12	84	8	1			61		6	37				855
APRIL	702	1	12	86	18	1	1		73		10	16			7	927
MAY	533	1	6	77	12	1	1		58		1	33			6	731
JUNE	548	1	7	85	11			1	47		5	21			6	732
JULY	587	2	2	62	5				46		6	18			10	738
AUGUST	487	3	8	61	7			1	37		9	31			36	676
SEPTEMBER	578		6	84	19				56		12	33				788
OCTOBER	612	2	4	63	12				55			23				771
NOVEMBER	523	2	9	83	5			2	53		5	41			12	735
DECEMBER	721	3	4	73	8				66		3	21			12	911
TOTALS -	7120	20	88	905	119	3	7		648	1	77	323	1	1	117	9430

NOTE - SEE TABLE 1 FOR DESCRIPTION OF CODES.

COMPUTER REPORT IA14972042

TABLE 3 - YEAR-TO-DATE SUMMARY OF OUTS.

	1971														TOTAL			
	DC	DD	DE	DF	DH	DI	DK	DL	DN	DP	DQ	DT	DU	DV		DW	DX	DZ
JAN	6	77	10	4			116	5		16	28		221	12		7	8	510
FEB	12	87	7				202	4		22	24		293	13			21	685
MAR	12	73	18	5	2		196	13		6	22		304	9		2		662
APR	12	94	13	1			205	7		7	34		285	12		3	9	682
MAY	6	79	9	3	3		158	9		3	16		263	9		5	6	569
JUN	8	70	6	7			216	8		5	17		346	11		2	6	702
JUL	3	81	2	4			204	3		9	21		280	16		4	11	638
AUG	8	51	11	2	1		205	9	2	8	46		296	10		5	36	690
SEP	6	91	13				206	2		11	33		333	13		3		711
OCT	4	94	12	2			147	10			26		292	15		1		603
NOV	10	78	5	4	2		110	2	1	5	28		308	18		5	13	589
DEC	4	54	6				313	4		3	18		301	15		1	12	731
TOTAL	91	929	112	32	8		2278	76	3	95	313		3522	153		38	122	7772

NOTE - SEE TABLE 1 FOR DESCRIPTION OF CODES.

DEATHS IN PRISON SYSTEM IN 1971

DATE	UNIT	CAUSE OF DEATH
01/05/71	JOHN SEALY	SUB ARACHNOID HEMORRHAGE
01/08/71	HUNTSVILLE	MYOCARDIAL INFARCTION
01/11/71	HUNTSVILLE	CANCER OF LUNG
01/23/71	HUNTSVILLE	MALIGNANT NEOPLASM OF BRONCHUS, LUNG & BRAIN
01/25/71	ELLIS UNIT	STRANGULATION BY HANGING
01/29/71	HUNTSVILLE	STRANGULATION BY HANGING
03/01/71	HUNTSVILLE	ACUTE HEART FAILURE
03/07/71	GALVESTON	CEREBRAL LACERATIONS-TRAUMA TO HEAD
03/15/71	HUNTSVILLE	MALIGNANT NEOPLASM GENERALIZED CARCINOMATOSIS
04/01/71	HUNTSVILLE	ACUTE CORONARY OCCLUSION
04/04/71	HUNTSVILLE	MULTIPLE STAB WOUNDS, CHEST & ABDOMEN
04/15/71	ELLIS UNIT	STRANGULATION BY HANGING
05/05/71	COFFIELD	DROWNED DURING ESCAPE ATTEMPT
05/07/71	HUNTSVILLE	PERITONITIS
05/13/71	EASTHAM	STAB WOUND, ABDOMEN
05/20/71	JOHN SEALY	CANCER RIGHT LUNG
05/23/71	HUNTSVILLE	CHRONIC ISCHEMIC HEART DISEASE, PNEUMONIA
05/26/71	HUNTSVILLE	UREMIA, TERMINAL, GANEROUS BOWEL OBSTRUCTION
05/27/71	HUNTSVILLE	INTESTIONAL OBSTRUCTION VOLVULUS, ILEUM
06/11/71	HUNTSVILLE	NEOPLASM, UNSPECIFIED, THROAT
06/29/71	HUNTSVILLE	ACUTE CORONARY OCCLUSION
07/20/71	HUNTSVILLE	MYOCARDIAL INFARCTION
07/20/71	EASTHAM	STRANGULATION
07/22/71	HUNTSVILLE	MYOCARDIAL DEGENERATION
07/23/71	GOREE	MALIGNANT NEOPLASM OF CERVIX UTERI
07/27/71	GALVESTON	CARDIAC ARREST, FAILURE
08/03/71	HUNTSVILLE	INFECTIOUS HEPATITIS
08/07/71	WYNNE UNIT	MYOCARDIAL INFARCTION
08/17/71	HUNTSVILLE	ASEPTIC MENINGITIS
08/23/71	HUNTSVILLE	CEREBRAL HEMORRHAGE
08/23/71	GOREE UNIT	VENTICULAR FIBRILLATION, CARDIAC ARREST
09/21/71	HUNTSVILLE	CHRONIC ISCHEMIC HEART DISEASE
09/25/71	JOHN SEALY	STAB WOUND, LEFT SIDE
09/26/71	WYNNE UNIT	ACUTE CORONARY INFARCTION
09/28/71	HUNTSVILLE	CARCINOMA OF PANCREASE
10/06/71	GOREE UNIT	PNEUMONIA PREMIARY
11/08/71	WYNNE UNIT	STRANGULATION BY HANGING
11/09/71	HUNTSVILLE	PULMONARY TUBERCULOSIS
11/15/71	HUNTSVILLE	CEREBROVASCULAR HEMORRHAGE
11/25/71	WYNNE UNIT	MYOCARDIAL INFARCTION
11/01/71	FREEPORT	STAB WOUNDS OF ABDOMEN & LOWER LEFT ARM
12/31/71	HUNTSVILLE	MYOCARDIAL INFARCTION

COMPARISON OF ESCAPES AND RECAPTURES SINCE 1940

YEAR	ESCAPES	RECAPTURES
1940	55	63
1941	81	78
1942	92	100
1943	151	120
1944	103	121
1945	115	94
1946	121	105
1947	126	120
1948	91	95
1949	49	59
1950	56	51
1951	25	35
1952	29	32
1953	16	27
1954	27	28
1955	9	18
1956	14	9
1957	24	23
1958	18	21
1959	5	12
1960	13	14
1961	16	10
1962	12	9
1963	16	19
1964	5	6
1965	11	12
1966	13	13
1967	8	9
1968	19	15
1969	4	4
1970	5	5
1971	8	7

COMPUTER REPORT IA08072011

UNITS	DAILY AVERAGE
CENTRAL	705.33
CLEMENS	1,011.87
COFFIELD	489.77
DARRINGTON	782.49
DIAGNOSTIC	668.73
ELLIS	1,592.21
EASTHAM	1,621.50
FERGUSON	1,121.86
GOREE	561.59
HUNTSVILLE	1,723.02
JESTER	907.08
RAMSEY	1,847.99
RETRIEVE	644.07
WYNNE	1,583.18
TOTAL AVERAGE INMATE POPULATION FOR 1971	15,260.70
LOWEST DAILY POPULATION, JANUARY 4, 1971	14,318
HIGHEST DAILY POPULATION, DECEMBER 14, 1971	16,042

COMPUTER REPORT PDSPD72042

ANALYSIS OF INMATES RECEIVED IN 1971 - BY OFFENSE

DECEMBER 31, 1971

DESCRIPTION OF OFFENSE	NUMBER OF COMMITMENTS	NUMBER OF INMATES	PERCENT INMATES
ABORTION WITH CONSENT	1	1	.01
ACQUISITION OF PROPERTY BY THREATS	3	3	.03
AIDING ONE CHARGED WITH FELONY TO ESCAPE	2	1	.01
AIDING ONE CHARGED WITH FELONY TO ESCAPE FROM JAIL	1	1	.01
ALTER AN WRITTEN INSTR W/INTENT TO INJURE OR DEFRAUD	5	4	.04
ARSON - WILFUL BURNING OF ANY HOUSE	46	45	.48
ASSAULT OR ASSLT&BATTERY WITH A PROHIBITED WEAPON	26	25	.27
ASSAULT W/I TO MURDER WITH MALICE	281	244	2.59
ASSAULT W/I TO MURDER WITHOUT MALICE	36	34	.36
ASSAULT WITH INTENT TO RAPE	70	63	.67
ASSAULT WITH INTENT TO ROB	121	115	1.22
ASSAULT WITH MOTOR VEH-DEATH RESULTS	15	13	.14
ATTEMPT AT ARSON	4	4	.04
ATTEMPT AT BURGLARY	117	116	1.23
ATTEMPT TO COMMIT THEFT FROM THE PERSON	3	3	.03
ATTEMPTED BURGLARY OF VESSEL STEAMBOAT OR RR CAR	1	1	.01
ATTEMPTED RAPE BY FORCE THREAT OR FRAUD	2	2	.02
BIGAMY	4	4	.04
BREAKING AND ENTERING MTR VEH TO STEAL	264	242	2.57
BREAKING AND ENTERING VEH TO ROB	7	4	.04
BREAKING AND ENTERING VESSELS STMBOTAT RR CARS	2	2	.02
BREAKING AND ENTERING W/I TO STEAL	7	1	.01
BREAKING BY ACTUAL FORCE - BURGLARY	5	5	.05
BURGLARY	3,788	2,652	28.12
BURGLARY BY BREAKING-ENTERS HOUSE IN DAYTIME	69	57	.60
BURGLARY OF PRIVATE RESIDENCE AT NIGHT	113	103	1.09
BURGLARY W/I OF THEFT	4	2	.02
CARRY ARMS INTO PREMISES COVERED BY LIQUOR CONTROL ACT	81	80	.85
COIN OPR MCH - BREAK&ENTER W/I TO COMMIT THEFT	58	55	.58
CONVERSION BY A BAILEE-CONVERT PROP TO OWN SUE	21	16	.17
DEFRAUD BY CHECK W/O SUFFICIENT FUNDS	193	135	1.43
DESERTION OF CHILD UNDER 16 YRS OF AGE OR WIFE	3	3	.03
DISFIGURING	4	4	.04
DRIVING VEH W/O OWNERS CONSENT-VL MORE THAN 200 DOLLARS	65	61	.65
DRUG-DANGEROUS-UNLAWFUL DELIVERY OF	79	44	.47
EMBEZZLEMENT - PUNISHED AS THEFT OF MONEY/PROPERTY	39	32	.34
ENHANCED SENTENCE BURGLARY	3	3	.03
ENHANCED SENTENCE BURGLARY PRIVATE RESIDENCE AT NIGHT	1	1	.01
ENHANCED SENTENCE DRIVING WHILE INTOXICATED D W I	1	1	.01
ENHANCED SENTENCE THEFT IN GENERAL	1	1	.01
ENTICING CHILD FOR IMMORAL PURPOSES OR TO COMMIT ASSAULT	3	3	.03
ESCAPE FR PENITENTIARY OR O/PRISON-USE FIREARMS&VOL RET	1	1	.01

COMPUTER REPORT PDSPD72042

ANALYSIS OF INMATES RECEIVED IN 1971 - BY OFFENSE

DECEMBER 31, 1971

DESCRIPTION OF OFFENSE	NUMBER OF COMMITMENTS	NUMBER OF INMATES	PERCENT INMATES
ESCAPE FROM CUSTODY OF OFFICER WITH OR WO/ FORCE	6	6	.06
ESCAPE FROM JAIL	47	45	.48
ESCAPE FROM PENITENTIARY OR OTHER PRISON&VOL RETURNS	6	6	.06
FAIL TO STOP AND RENDER AID	12	12	.13
FELONY THEFT - OVER 50 DOLLARS	2,778	2,069	21.94
FORGERY	371	252	2.67
FORGERY AND PASSING	109	72	.76
FRAUDULENT DISPOSITION OF MORTGAGED PROPERTY	13	13	.14
GIVE CHECK DRAFT OR ORDER W/O SUFFICIENT FUNDS	85	61	.65
HABITUAL ASSAULT W/I TO RAPE	1	1	.01
HABITUAL BURGLARY	15	15	.16
HABITUAL CRIMINAL CRIME NOT SPECIFIED	3	3	.03
HABITUAL FORGERY	10	10	.11
HABITUAL NARCOTIC OFFENSE	11	11	.12
HABITUAL RAPE	1	1	.01
HABITUAL ROBBERY	1	1	.01
HABITUAL ROBBERY BY ASSAULT	9	9	.10
HABITUAL THEFT IN GENERAL	6	6	.06
HANDLING OR FONDLING CHILDS SEXUAL PARTS	32	26	.28
INCEST-PERSONS FORBIDDEN TO MARRY-CARNALLY KNOW EACH OTH	5	5	.05
INDECENT EXPOSURE TO CHILD	47	34	.36
INJURE DESTROY PROP OF ANOTHER-DTH OCCASNED BY OFFNS	1	1	.01
INTOXICATED DRIVER INVOLVED IN ACCIDENT CAUSING DEATH	4	4	.04
KIDNAPPING	5	4	.04
KIDNAPPING FOR EXTORTION	3	3	.03
MAIMING	1	1	.01
MAL MISCHIEF - INJ DESTROY ATPT PROP OF ANOTHER	38	37	.39
MALICIOUS MISCH W/TELEGRAPH TELEPHONE/ELEC TRANSMIS LINE	2	2	.02
MISAPPLY COUNTY OR CITY FUNDS TO OWN USE	2	1	.01
MURDER - ACCOMPLICE TO	3	3	.03
MURDER - DEGREE NOT SPECIFIED -	66	62	.66
MURDER - WITH MALICE	371	359	3.91
MURDER - WITHOUT MALICE	147	146	1.55
NARC - ANY PERSON UNLAWFULLY DISPENSE	1	1	.01
NARC - ANY PERSON UNLAWFULLY POSSESS	1,350	1,108	11.75
NARC - CONTRABAND - TRANSPORT OR POSSESS	1	1	.01
NARC - MAKE/UTTER FLS OR FORGD PRESCRIP/ORDER TO OBTAIN	3	1	.01
NARC - OBTAIN/ATMPT TO BY ALTER PRESCRIP/ORDER	3	2	.02
NARC - SELLS OR OFFERS TO SELL PROHIBITED	389	240	2.55
NARC - UNLAWFULLY HAVE/POSSESS ANY INSTR ADAPTED FOR	141	141	1.50
PANDERING PROCURE W/O CONSENT FE FOR HSE OF PROSTITUTION	2	2	.02
PASSING FORGED INSTRUMENTS	832	497	5.27

COMPUTER REPORT PDSPD72042

ANALYSIS OF INMATES RECEIVED IN 1971 - BY OFFENSE

DECEMBER 31, 1971

DESCRIPTION OF OFFENSE	NUMBER OF COMMITMENTS	NUMBER OF INMATES	PERCENT INMATES
PERJURY - FALSE STATEMENT WRITTEN OR VERBAL UNDER OATH	6	6	.06
POSSESS BOMB ETC FOR UNLAWFUL PURPOSE/FOR COMM OF CRIME	3	3	.03
POSSESS F/ARMS B/PERSON CONVCTO FLNY INVLV F/ARMS	11	11	.12
POSSESS PARTS OF BOMB WITH INTENT TO COMBINE	2	2	.02
POSSESS WRITTEN INSTRUMENT WITH INTENT TO PASS AS TRUE	20	18	.19
POSSESSION BURGLARY TOOL	10	9	.10
PRESENT CREDIT CARD W/I TO DEFRAUD-3RD CONVICTN/OVER 50	40	34	.36
PRIOR CONVICTION ASSAULT W/I TO MURDER	1	1	.01
PRIOR CONVICTION ASSAULT W/I TO ROB	1	1	.01
PRIOR CONVICTION BURGLARY	28	28	.30
PRIOR CONVICTION DRIVING WHILE INTOXICATED D W I	1	1	.01
PRIOR CONVICTION ESCAPE FROM JAIL PRISON ETC	1	1	.01
PRIOR CONVICTION INDECENT EXPOSURE	1	1	.01
PRIOR CONVICTION NARCOTIC OFFENSE	7	7	.07
PRIOR CONVICTION RECEIVE AND/OR CONCEAL STOLEN PROPERTY	1	1	.01
PRIOR CONVICTION ROBBERY	8	5	.05
PRIOR CONVICTION ROBBERY BY ASSAULT	14	12	.13
PRIOR CONVICTION THEFT IN GENERAL	12	12	.13
RAPE	186	165	1.75
RAPE - STATUTORY	30	28	.30
RAPE BY FORCE	8	7	.07
RECEIVE AND/OR CONCEAL STOLEN PROPERTY	47	42	.45
REMOVAL OR MOLESTING WITH AIRCRAFT OR INSTR FORBIDDEN	1	1	.01
REPEATER BURGLARY	4	4	.04
REPEATER DRIVING WHILE INTOXICATED D W I	8	8	.09
REPEATER NARCOTIC OFFENSE	2	2	.02
REPEATER ROBBERY BY ASSAULT	2	2	.02
REPEATER THEFT IN GENERAL	2	2	.02
REPEATER THEFT OF ANIMALS	1	1	.01
ROBBERY	459	341	3.62
ROBBERY BY ASSAULT VIOLENCE FEAR OF LIFE OR BODILY INJRY	1,138	730	7.74
ROBBERY BY FIREARMS OR OTHER DEADLY WEAPON	325	268	2.84
SHOPLIFTING UPON 3RD OR ANY SUBSEQUENT CONVICTION	112	86	.91
SODOMY	36	34	.36
STEAL EDIBLE MEAT	15	13	.14
SUBSEQUENT OFFENSE BURGLARY	3	3	.03
SUBSEQUENT OFFENSE DRIVING WHILE INTOXICATED D W I	105	95	1.01
SUBSEQUENT OFFENSE NARCOTIC OFFENSE	1	1	.01
SUBSEQUENT OFFENSE OF DRIVING WHILE INTOXICATED- DWI	243	183	1.94
SUBSEQUENT OFFENSE RECEIVE AND/OR CONCEAL STOLEN PROPERT	1	1	.01
SUBSEQUENT OFFENSE ROBBERY BY ASSAULT	1	1	.01
SUBSEQUENT OFFENSE THEFT IN GENERAL	1	1	.01

COMPUTER REPORT PDSPD72042

ANALYSIS OF INMATES RECEIVED IN 1971 - BY OFFENSE

DECEMBER 31, 1971

DESCRIPTION OF OFFENSE	NUMBER OF COMMITMENTS	NUMBER OF INMATES	PERCENT INMATES
SWINDLE BY WORTHLESS CHECK	60	55	.58
THEFT & ILLEGAL TRANSPORTATION OF MERCURY	3	3	.03
THEFT BY FALSE PRETEXT	56	41	.44
THEFT FROM THE PERSON	52	51	.54
THEFT OF CATTLE OR HOG	19	16	.17
THEFT OF MOTOR VEHICLES	22	20	.21
3RD OFFENSE BURGLARY	2	2	.02
3RD OFFENSE FORGERY	2	2	.02
UNSPECIFIED	0	16	.17
OFFENSES FOR WHICH THE DESCRIPTION AS SHOWN ON COMMITMENT PAPERS RECEIVED FROM THE DISTRICT COURT DID NOT MATCH - PER SE - THE DESCRIPTION GLEANED FROM A REVIEW OF THE VERNONS TEXAS CRIMINAL STATUTES	1,355		11.33
TOTAL INMATES	9,430		
TOTAL COMMITMENTS	16,952		
NUMBER COMMITMENTS PER INMATE		1.8	



ANALYSIS OF INMATES RECEIVED IN 1971  
BY EDUCATIONAL ACHIEVEMENT

SCORE RANGES	ORIGINAL TOTAL	CURRENT TOTAL
NOT TESTED	405	93
ILLITERATE	775	610
LESS THAN 01.0	8	8
01.0 TO 02.0	1	0
02.0 TO 03.0	1	0
03.0 TO 04.0	763	616
04.0 TO 05.0	1,162	1,076
05.0 TO 06.0	1,319	1,402
06.0 TO 07.0	1,324	1,363
07.0 TO 08.0	1,340	1,456
08.0 TO 09.0	1,002	1,128
09.0 TO 10.0	630	884
10.0 TO 11.0	364	422
11.0 TO 12.0	184	198
12.0 OR OVER	143	165
	9,421	9,421

ANALYSIS OF INMATES RECEIVED IN 1971  
BY IQ SCORES

SCORE RANGES	ORIGINAL TOTAL	CURRENT TOTAL
NOT TESTED	1,559	1,164
ILLITERATE	1	1
LESS THAN 30	14	14
30 TO 50	104	110
50 TO 60	130	141
60 TO 70	368	385
70 TO 80	707	743
80 TO 100	3,138	3,308
100 TO 120	3,136	3,294
120 TO 150	263	260
150 OR OVER	1	1
	9,421	9,421

COMPUTER REPORT PDSPD72042  
ANALYSIS OF INMATES RECEIVED IN 1971 BY RELIGION

RELIGION	TOTAL
UNSPECIFIED	2,294
ALL OTHERS	7
NO AFFILIATION	143
PROTESTANTS	27
BAHAI FAITH	2
BUDDHIST	2
MOSLEMS	1
ATHIEST	2
ROMAN CATHOLIC	1,153
UNION OF ORTHODOX JEWISH CONG OF AMERICA	4
MUSLIM	5
ADVENTIST BODIES	5
APOSTOLIC FAITH	1
ASSEMBLIES OF GOD	31
BAPTIST BODIES	4,294
CHRISTIAN CHURCH, INTERNATL. CONV.	278
CHRISTIAN CHURCH OF NORTH AMERICA	70
CHRISTIAN SCIENTISTS	9
CHURCHES OF CHRIST	1
CHURCH OF GOD	35
CHURCH OF THE NAZARENE	17
EPISCOPAL CHURCH - PROTESTANT	55
HOLINESS - CHURCHES OF GOD	114
JEHOVAH WITNESSES	20
LATTER DAY SAINTS MORMANS	21
LUTHERAN BODIES	82
MENNONITE BODIES	1
METHODIST BODIES	543
PENTECOSTAL ASSEMBLIES	126
PRESBYTERIAN BODIES	77
UNITARIAN UNIVERSALIST ASSN. UNITED IN CHRIST, BRETERN.	1
<b>TOTAL INMATES</b>	<b>9,421</b>

COMPUTER REPORT PDSPD72042  
ANALYSIS OF INMATES RECEIVED IN 1971  
BY NATIVITY AND RESIDENCE

LOCATION	NATIVITY	RESIDENCE
NOT IDENTIFIED	390	287
ANDERSON COUNTY	39	7
ANDREWS COUNTY	0	3
ANGELINA COUNTY	26	21
ARANSAS COUNTY	1	11
ARCHER COUNTY	2	0
ARMSTRONG COUNTY	0	0
ATASCOSA COUNTY	19	9
AUSTIN COUNTY	15	11
BAILEY COUNTY	1	6
BANDERA COUNTY	0	0
BASTROP COUNTY	31	8
BAYLOR COUNTY	4	0
BEE COUNTY	9	2
BELL COUNTY	59	120
BEXAR COUNTY	480	618
BLANCO COUNTY	2	0
BORDEN COUNTY	0	0
BOSQUE COUNTY	14	1
BOWIE COUNTY	44	33
BRAZORIA COUNTY	27	48
BRAZOS COUNTY	38	22
BREWSTER COUNTY	9	3
BRISCOE COUNTY	0	1
BROOKS COUNTY	7	6
BROWN COUNTY	23	13
BURLESON COUNTY	15	4
BURNET COUNTY	9	4
CALDWELL COUNTY	41	8
CALHOUN COUNTY	7	11
CALLAHAN COUNTY	0	4
CAMERON COUNTY	78	58
CAMP COUNTY	18	2
CARSON COUNTY	2	2
CASS COUNTY	34	9
CASTRO COUNTY	2	9
CHAMBERS COUNTY	6	6
CHEROKEE COUNTY	42	13
CHILDRESS COUNTY	11	3
CLAY COUNTY	1	1
COCHRAN COUNTY	3	2
COKE COUNTY	2	0
COLEMAN COUNTY	15	4

COMPUTER REPORT PDSPD72042  
 ANALYSIS OF INMATES RECEIVED IN 1971  
 BY NATIVITY AND RESIDENCE

LOCATION	NATIVITY	RESIDENCE
COLLIN COUNTY	55	34
COLLINGSWORTH COUNTY	7	2
COLORADO COUNTY	23	12
COMAL COUNTY	7	6
COMANCHE COUNTY	2	4
CONCHO COUNTY	1	0
COOKE COUNTY	14	8
CORYELL COUNTY	10	10
COTTLE COUNTY	8	2
CRANE COUNTY	2	3
CROCKETT COUNTY	2	0
CROSBY COUNTY	2	1
CULBERSON COUNTY	3	1
DALLAM COUNTY	2	5
DALLAS COUNTY	774	1,867
DAWSON COUNTY	19	9
DEAF SMITH COUNTY	3	11
DELTA COUNTY	15	3
DENTON COUNTY	45	58
DEWITT COUNTY	12	5
DICKINS COUNTY	6	6
DIMMIT COUNTY	4	1
DONLEY COUNTY	1	1
DUVAL COUNTY	8	3
EASTLAND COUNTY	27	7
ECTOR COUNTY	20	87
EDWARDS COUNTY	6	2
ELLIS COUNTY	69	18
EL PASO COUNTY	56	100
ERATH COUNTY	8	5
FALLS COUNTY	56	11
FANNIN COUNTY	35	15
FAYETTE COUNTY	15	1
FISHER COUNTY	10	0
FLOYD COUNTY	6	6
FOARD COUNTY	4	0
FORT BEND COUNTY	49	22
FRANKLIN COUNTY	11	4
FREESTONE COUNTY	19	0
FRIO COUNTY	4	3
GAINES COUNTY	5	5
GALVESTON COUNTY	94	110
GARZA COUNTY	0	5
GILLESPIE COUNTY	6	0

COMPUTER REPORT PDSPD72042  
 ANALYSIS OF INMATES RECEIVED IN 1971  
 BY NATIVITY AND RESIDENCE

LOCATION	NATIVITY	RESIDENCE
GLASSCOCK COUNTY	0	1
GOLIAD COUNTY	14	2
GONZALES COUNTY	27	13
GRAY COUNTY	7	10
GRAYSON COUNTY	38	26
GREGG COUNTY	71	89
GRIMES COUNTY	15	5
GUADALUPE COUNTY	21	22
HALE COUNTY	11	36
HALL COUNTY	10	3
HAMILTON COUNTY	3	1
HANSFORD COUNTY	0	6
HARDEMAN COUNTY	11	4
HARDIN COUNTY	18	16
HARRIS COUNTY	883	2,130
HARRISON COUNTY	81	30
HARTLEY COUNTY	2	0
HASKELL COUNTY	12	6
HAYS COUNTY	14	3
HEMPHILL COUNTY	0	1
HENDERSON COUNTY	26	15
HIDALGO COUNTY	68	78
HILL COUNTY	23	3
HOCKLEY COUNTY	12	7
HOOD COUNTY	4	0
HOPKINS COUNTY	17	18
HOUSTON COUNTY	30	0
HOWARD COUNTY	24	28
HUDSPETH COUNTY	1	0
HUNT COUNTY	59	22
HUTCHINSON COUNTY	9	8
IRION COUNTY	3	0
JACK COUNTY	8	0
JACKSON COUNTY	14	5
JASPER COUNTY	15	13
JEFF DAVIS COUNTY	2	1
JEFFERSON COUNTY	149	183
JIM HOGG COUNTY	2	0
JIM WELLS COUNTY	20	17
JOHNSON COUNTY	19	19
JONES COUNTY	28	8
KARNES COUNTY	22	8
KAUFMAN COUNTY	56	10
KENDALL COUNTY	3	1

COMPUTER REPORT PDSPD72042  
 ANALYSIS OF INMATES RECEIVED IN 1971  
 BY NATIVITY AND RESIDENCE

LOCATION	NATIVITY	RESIDENCE
KENEDY COUNTY	0	0
KENT COUNTY	2	0
KERR COUNTY	6	12
KIMBLE COUNTY	0	1
KING COUNTY	0	0
KINNEY COUNTY	1	2
KLEBERG COUNTY	10	15
KNOX COUNTY	7	0
LAMAR COUNTY	47	7
LAMB COUNTY	7	7
LAMPASAS COUNTY	5	0
LA SALLE COUNTY	1	0
LAVACA COUNTY	12	2
LEE COUNTY	8	3
LEON COUNTY	22	3
LIBERTY COUNTY	24	15
LIMESTONE COUNTY	36	1
LIPSCOMB COUNTY	2	1
LIVE OAK COUNTY	4	2
LLANO COUNTY	1	2
LOVING COUNTY	0	0
LUBBOCK COUNTY	54	145
LYNN COUNTY	6	3
MCCULLOCH COUNTY	8	1
MCLENNAN COUNTY	133	134
MCMULLEN COUNTY	0	1
MADISON COUNTY	18	5
MARION COUNTY	10	5
MARTIN COUNTY	9	0
MASON COUNTY	1	3
MATAGORDA COUNTY	15	9
MAVERICK COUNTY	6	5
MEDINA COUNTY	11	7
MENARD COUNTY	3	1
MIDLAND COUNTY	20	66
MILAM COUNTY	29	3
MILLS COUNTY	1	0
MITCHELL COUNTY	7	1
MONTAGUE COUNTY	11	7
MONTGOMERY COUNTY	32	24
MOORE COUNTY	5	10
MORRIS COUNTY	21	7
MOTLEY COUNTY	3	1
NACOGDOCHES COUNTY	46	31

COMPUTER REPORT PDSPD72042  
 ANALYSIS OF INMATES RECEIVED IN 1971  
 BY NATIVITY AND RESIDENCE

LOCATION	NATIVITY	RESIDENCE
NAVARRO COUNTY	55	20
NEWTON COUNTY	9	3
NOLAN COUNTY	25	17
NUECES COUNTY	120	133
OCHILTREE COUNTY	1	11
OLDHAM COUNTY	0	0
ORANGE COUNTY	24	18
PALO PINTO COUNTY	12	31
PANOLA COUNTY	38	14
PARKER COUNTY	9	13
PARMER COUNTY	1	1
PECOS COUNTY	10	8
POLK COUNTY	22	4
POTTER COUNTY	58	118
PRESIDIO COUNTY	11	8
RAINS COUNTY	3	0
RANDALL COUNTY	1	7
REAGAN COUNTY	0	1
REAL COUNTY	1	0
RED RIVER COUNTY	19	5
REEVES COUNTY	16	12
REFUGIO COUNTY	7	1
ROBERTS COUNTY	1	0
ROBERTSON COUNTY	41	6
ROCKWALL COUNTY	17	3
RUNNELS COUNTY	16	6
RUSK COUNTY	49	17
SABINE COUNTY	6	4
SAN AUGUSTINE COUNTY	7	2
SAN JACINTO COUNTY	7	0
SAN PATRICIO COUNTY	38	28
SAN SABA COUNTY	10	8
SCHLEICHER COUNTY	1	0
SCURRY COUNTY	13	14
SHACKELFORD COUNTY	4	5
SHELBY COUNTY	42	33
SHERMAN COUNTY	2	0
SMITH COUNTY	90	68
SOMERVELL COUNTY	5	1
STARR COUNTY	5	1
STEPHENS COUNTY	11	15
STERLING COUNTY	1	0
STONEWALL COUNTY	3	2
SUTTON COUNTY	1	3

COMPUTER REPORT PDSPD72042  
 ANALYSIS OF INMATES RECEIVED IN 1971  
 BY NATIVITY AND RESIDENCE

LOCATION	NATIVITY	RESIDENCE
SWISHER COUNTY	3	8
TARRANT COUNTY	262	550
TAYLOR COUNTY	47	111
TERRELL COUNTY	0	0
TERRY COUNTY	10	7
THROCKMORTON COUNTY	3	2
TITUS COUNTY	14	10
TOM GREEN COUNTY	37	52
TRAVIS COUNTY	154	283
TRINITY COUNTY	9	1
TYLER COUNTY	5	4
UPSHUR COUNTY	23	5
UPTON COUNTY	1	4
UVALDE COUNTY	8	9
VAL VERDE COUNTY	12	9
VAN ZANDT COUNTY	19	3
VICTORIA COUNTY	22	31
WALKER COUNTY	35	13
WALLER COUNTY	12	3
WARD COUNTY	4	5
WASHINGTON COUNTY	13	3
WEBB COUNTY	27	12
WHARTON COUNTY	35	16
WHEELER COUNTY	6	2
WICHITA COUNTY	58	48
WILBARGER COUNTY	22	14
WILLACY COUNTY	8	2
WILLIAMSON COUNTY	26	8
WILSON COUNTY	10	2
WINKLER COUNTY	1	6
WISE COUNTY	11	6
WOOD COUNTY	14	2
YOAKUM COUNTY	0	2
YOUNG COUNTY	7	10
ZAPATA COUNTY	0	0
ZAVALA COUNTY	8	1
	6,895	8,811
DIST. OF COLUMBIA	10	2
ALABAMA	72	6
ALASKA	2	0
ARIZONA	28	16
ARKANSAS	170	12
CALIFORNIA	34	21

COMPUTER REPORT PDSPD72042  
 ANALYSIS OF INMATES RECEIVED IN 1971  
 BY NATIVITY AND RESIDENCE

LOCATION	NATIVITY	RESIDENCE
COLORADO	18	17
CONNECTICUT	6	1
DELAWARE	1	0
FLORIDA	33	20
GEORGIA	42	8
HAWAII	3	1
IDAHO	0	0
ILLINOIS	62	8
INDIANA	47	5
IOWA	18	2
KANSAS	37	10
KENTUCKY	33	2
LOUISIANA	498	33
MAINE	0	0
MARYLAND	14	1
MASSACHUSETTS	22	3
MICHIGAN	63	9
MINNESOTA	18	1
MISSISSIPPI	72	2
MISSOURI	79	19
MONTANA	3	1
NEBRASKA	12	2
NEVADA	2	4
NEW HAMPSHIRE	2	0
NEW JERSEY	18	5
NEW MEXICO	38	15
NEW YORK	51	3
NORTH CAROLINA	33	4
NORTH DAKOTA	3	0
OHIO	62	15
OKLAHOMA	249	29
OREGON	5	3
PENNSYLVANIA	27	4
RHODE ISLAND	1	0
SOUTH CAROLINA	19	5
SOUTH DAKOTA	7	0
TENNESSEE	48	8
TEXAS	6,895	8,811
UTAH	4	1
VERMONT	1	0
VIRGINIA	22	5
WASHINGTON	23	3
WEST VIRGINIA	17	1
WISCONSIN	12	1

COMPUTER REPORT PDSPD72042  
 ANALYSIS OF INMATES RECEIVED IN 1971  
 BY NATIVITY AND RESIDENCE

LOCATION	NATIVITY	RESIDENCE
WYOMING	2 8,938	1 9,120
AUSTRIA	2	0
CANADA	4	0
CUBA	2	0
ENGLAND	1	0
GERMANY	6	0
MEXICO	67	14
PUERTO RICO	7	0
POLAND	2	0
SOUTH AMERICA	1	0
WEST INDIES	1	0
	93	14
TOTAL INMATES	9,421	9,421

COMPUTER REPORT PDSPD72042  
 ANALYSIS OF INMATES RECEIVED IN 1971 BY OCCUPATION  
 DECEMBER 31, 1971

OCCUPATION	NUMBER OF INMATES
PROFESSIONAL AND MANAGERIAL OCCUPATIONS	
PROFESSIONAL OCCUPATIONS	107
SEMI-PROFESSIONAL OCCUPATIONS	102
MANAGERIAL AND OFFICIAL OCCUPATIONS	15
CLERICAL AND SALES OCCUPATIONS	
CLERICAL AND KINDRED OCCUPATIONS	399
SALES AND KINDRED OCCUPATIONS	143
SERVICE OCCUPATIONS	
DOMESTIC SERVICE OCCUPATIONS	154
PERSONAL SERVICE OCCUPATIONS	923
BUILDING SERVICE WORKERS AND PORTERS	308
AGRICULTURAL, FISHERY, FORESTRY, AND KINDRED OCCUPATIONS	
AGRICULTURAL AND HORTICULTURAL OCCUPATIONS, ETC	226
FISHERY OCCUPATIONS	14
SKILLED OCCUPATIONS	
MANUFACTURING AND RELATED ACTIVITIES	581
NONMANUFACTURING ACTIVITIES	750
MISCELLANEOUS SKILLED OCCUPATIONS	500
SEMISKILLED OCCUPATIONS	
MANUFACTURING AND RELATED ACTIVITIES	130
NONMANUFACTURING ACTIVITIES	1,201
MISCELLANEOUS SEMISKILLED OCCUPATIONS	142
APPRENTICES	142
UNSKILLED OCCUPATIONS	
MANUFACTURING AND RELATED ACTIVITIES	252
NONMANUFACTURING ACTIVITIES	642
MISCELLANEOUS UNSKILLED OCCUPATIONS	2,690
TOTAL INMATES	9,421

COMPUTER REPORT POSPD72045  
 ANALYSIS OF INMATES RECEIVED IN 1971 BY AGE GROUP  
 DECEMBER 31, 1971

AGE GROUP	TOTALS
17 TO 20	1,356
20 TO 25	3,094
25 TO 30	1,845
30 TO 35	996
35 TO 40	696
40 TO 50	843
50 TO 60	281
60 TO 70	61
70 AND OVER	4
NOT SPECIFIED	245
TOTAL INMATES	9,421

COMPUTER REPORT PDSP572045

TIME SERVED BY INMATES DISCHARGED IN 1971

MAXIMUM SENTENCE	NUMBER OF INMATES	SHORTEST TIME SERVED			LONGEST TIME SERVED			AVERAGE TIME SERVED		
		YRS	MOS	DAYS	YRS	MOS	DAYS	YRS	MOS	DAYS
6 MONTHS OR LESS	11	0	1	15	0	5	29	0	5	5
6 MONTHS 1 DAY TO 1 YEAR	97	0	6	0	0	11	29	0	9	16
1 YEAR 1 DAY TO 2 YEARS	1188	0	8	10	2	0	0	1	3	3
2 YEARS 1 DAY TO 3 YEARS	809	0	9	25	3	0	0	1	10	13
3 YEARS 1 DAY TO 4 YEARS	312	1	11	10	4	0	0	2	5	28
4 YEARS 1 DAY TO 5 YEARS	633	2	1	21	4	11	29	3	1	8
5 YEARS 1 DAY TO 10 YEARS	455	2	2	6	9	11	29	4	8	13
10 YEARS 1 DAY TO 15 YEARS	103	5	11	21	14	2	5	8	2	18
15 YEARS 1 DAY TO 20 YEARS	36	0	7	15	15	3	9	10	10	14
20 YEARS 1 DAY TO 25 YEARS	13	9	2	2	20	6	26	14	9	1
25 YEARS 1 DAY TO 30 YEARS	3	12	10	29	14	6	26	13	6	21
30 YEARS 1 DAY TO 35 YEARS	3	11	3	22	21	9	16	17	8	20
40 YEARS 1 DAY TO 45 YEARS	1	30	0	7	30	0	7	30	0	7
55 YEARS 1 DAY TO 60 YEARS	1	9	6	17	9	6	17	9	6	17
60 YEARS 1 DAY TO 65 YEARS	1	29	3	7	29	3	7	29	3	7
95 YEARS 1 DAY TO 100 YEARS	1	10	6	1	10	6	1	10	6	1
LIFE	8	2	6	3	13	3	10	8	2	12
	3675							2	7	14

COMPUTER REPORT PDSPS72045

TIME SERVED BY INMATES PAROLED IN 1971

MAXIMUM SENTENCE	NUMBER OF INMATES	SHORTEST TIME SERVED			LONGEST TIME SERVED			AVERAGE TIME SERVED		
		YRS	MOS	DAYS	YRS	MOS	DAYS	YRS	MOS	DAYS
6 MONTHS 1 DAY TO 1 YEAR	1	0	11	29	0	11	29	1	0	0
1 YEAR 1 DAY TO 2 YEARS	474	0	6	8	1	11	29	1	0	24
2 YEARS 1 DAY TO 3 YEARS	506	0	8	22	2	11	14	1	2	28
3 YEARS 1 DAY TO 4 YEARS	205	0	11	3	2	9	18	1	5	27
4 YEARS 1 DAY TO 5 YEARS	466	1	0	26	4	11	29	1	11	3
5 YEARS 1 DAY TO 10 YEARS	377	1	4	22	7	1	17	3	4	5
10 YEARS 1 DAY TO 15 YEARS	87	2	3	25	8	0	21	5	4	18
15 YEARS 1 DAY TO 20 YEARS	52	3	4	19	13	8	29	7	8	18
20 YEARS 1 DAY TO 25 YEARS	45	4	3	24	20	1	28	9	1	7
25 YEARS 1 DAY TO 30 YEARS	12	4	6	27	22	3	29	9	10	19
30 YEARS 1 DAY TO 35 YEARS	14	2	3	21	21	9	25	11	4	27
35 YEARS 1 DAY TO 40 YEARS	6	8	4	17	23	4	19	12	9	23
40 YEARS 1 DAY TO 45 YEARS	6	7	6	10	26	0	25	16	7	17
45 YEARS 1 DAY TO 50 YEARS	10	9	1	15	26	5	7	14	6	6
55 YEARS 1 DAY TO 60 YEARS	1	11	1	28	11	1	28	11	1	28
60 YEARS 1 DAY TO 65 YEARS	1	18	1	8	18	1	8	18	1	8
70 YEARS 1 DAY TO 75 YEARS	5	10	10	5	19	1	24	13	5	21
95 YEARS 1 DAY TO 100 YEARS	16	8	4	26	31	3	27	13	11	23
MORE THAN 100 YEARS LIFE	1	41	9	8	41	9	8	41	9	8
	69	7	10	7	40	6	29	15	10	16
	2354							2	11	10
TOTAL INMATES RELEASED IN 1971	6029							2	8	29

COMPUTER REPORT PDSPD72041

ANALYSIS OF INMATES DEPARTED IN 1971 - BY OFFENSE

DECEMBER 31, 1971

DESCRIPTION OF OFFENSE	NUMBER OF COMMITMENTS	NUMBER OF INMATES	PERCENT INMATE
ACQUISITION OF PROPERTY BY THREATS	5	5	.06
ALL PARTICIPANTS GUILTY-OFFENSE AFFECTING WRITTEN INSTRU	7	6	.08
ALTER AN WRITTEN INSTR W/INTENT TO INJURE OR DEFRAUD	3	3	.04
ARSON - WILFUL BURNING OF ANY HOUSE	46	42	.54
ASSAULT OR ASSLT&BATTERY WITH A PROHIBITED WEAPON	28	26	.34
ASSAULT TO DISFIGURE	1	1	.01
ASSAULT W/I TO MURDER WITH MALICE	233	197	2.54
ASSAULT W/I TO MURDER WITHOUT MALICE	38	37	.48
ASSAULT WITH INTENT TO RAPE	82	74	.95
ASSAULT WITH INTENT TO ROB	109	106	1.36
ASSAULT WITH MOTOR VEH-DEATH RESULTS	14	13	.17
ASSAULT WITH MOTOR VEHICLE	1	1	.01
ATTEMPT AT ARSON	3	3	.04
ATTEMPT AT BURGLARY	118	117	1.51
ATTEMPT TO COMMIT THEFT FROM THE PERSON	2	2	.03
ATTEMPTED BURGLARY OF VESSEL STEAMBOAT OR RR CAR	1	1	.01
BIGAMY	3	3	.04
BOOKMAKING - ACCEPTING OR PLACING WAGERS	4	1	.01
BREAKING AND ENTERING MTR VEH TO STEAL	236	211	2.72
BREAKING AND ENTERING VESSELS STMBOAT RR CARS	1	1	.01
BREAKING AND ENTERING W/I TO STEAL	1	1	.01
BREAKING AND ENTERING WITH INTENT TO RAPE	1	1	.01
BREAKING BY ACTUAL FORCE - BURGLARY	29	18	.23
BURGLARY	3,412	2,285	29.40
BURGLARY BY BREAKING-ENTERS HOUSE IN DAYTIME	53	37	.48
BURGLARY OF PRIVATE RESIDENCE AT NIGHT	142	130	1.67
BURGLARY W/I OF THEFT	9	5	.06
BURGLARY WITH EXPLOSIVES	3	3	.04
CARRY ARMS INTO PREMISES COVERED BY LIQUOR CONTROL ACT	76	76	.98
COIN OPR MCH - BREAK&ENTER W/I TO COMMIT THEFT	75	61	.79
CONSPIRACY TO COMMIT FORGERY	1	1	.01
CONSPIRACY TO SWINDLE	1	1	.01
CONVERSION BY A BAILEE-CONVERT PROP TO OWN SUE	26	25	.32
DEFRAUD BY CHECK W/O SUFFICIENT FUNDS	155	114	1.47
DESERTION OF CHILD UNDER 16 YRS OF AGE OR WIFE	6	6	.08
DRIVING VEH W/O OWNERS CONSENT-VL MORE THAN 200 DOLLARS	77	75	.97
DRUG - UNLAWFUL REFILL OF PRESCRIPTION	2	2	.03
DRUG-DANGEROUS-UNLAWFUL DELIVERY OF	54	24	.31
EMBEZZLEMENT - PUNISHED AS THEFT OF MONEY/PROPERTY	30	29	.37
ENHANCED SENTENCE BURGLARY	7	7	.09
ENHANCED SENTENCE BURGLARY PRIVATE RESIDENCE AT NIGHT	1	1	.01
ENHANCED SENTENCE THEFT IN GENERAL	3	3	.04



COMPUTER REPORT PDSPD72041

ANALYSIS OF INMATES DEPARTED IN 1971 - BY OFFENSE

DECEMBER 31, 1971

DESCRIPTION OF OFFENSE	NUMBER OF COMMITMENTS	NUMBER OF INMATES	PERCENT INMATES
ENTICING CHILD FOR IMMORAL PURPOSES OR TO COMMIT ASSAULT	5	5	.06
ESCAPE FROM CUSTODY OF OFFICER WITH OR WO/ FORCE	9	9	.12
ESCAPE FROM JAIL	59	53	.68
ESCAPE FROM PENITENTIARY OR OTHER PRISON&VOL RETURNS	3	3	.04
FAIL TO STOP AND RENDER AID	10	10	.13
FALSE SWEARING - MAKE FALSE STATEMENT UNDER OATH	1	1	.01
FELONY THEFT - OVER 50 DOLLARS	2,519	1,855	23.87
FILLING UP OVER SIGNATURE - FORGERY	1	1	.01
FORGERY	344	251	3.23
FORGERY AND PASSING	91	60	.77
FRAUDULENT DISPOSITION OF MORTGAGED PROPERTY	12	12	.15
GIVE CHECK DRAFT OR ORDER W/O SUFFIENT FUNDS	61	53	.68
HABITUAL ASSAULT W/I TO ROB	1	1	.01
HABITUAL BREAKING AND ENTERING MOTOR VEHICLE	1	1	.01
HABITUAL BURGLARY	16	16	.21
HABITUAL CRIMINAL CRIME NOT SPECIFIED	1	1	.01
HABITUAL FORGERY	9	9	.12
HABITUAL INDECENT EXPOSURE	1	1	.01
HABITUAL NARCOTIC OFFENSE	7	7	.09
HABITUAL RAPE	1	1	.01
HABITUAL ROBBERY	2	2	.03
HABITUAL ROBBERY BY ASSAULT	10	10	.13
HABITUAL THEFT IN GENERAL	9	9	.12
HANDLING OR FONDLING CHILDS SEXUAL PARTS	44	37	.48
INCEST-PERSONS FORBIDDEN TO MARRY-CARNALLY KNOW EACH OTH	9	9	.12
INDECENT EXPOSURE TO CHILD	45	30	.39
INTOXICATED DRIVER INVOLVED IN ACCIDENT CAUSING DEATH	6	6	.08
KEEP PREMISES BLDG ROOM ETC FOR PLACE TO BET OR WAGER	1	1	.01
KEEPING OR EXHIBITING GAMING TABLE BANK ETC	1	1	.01
KIDNAPPING	5	5	.06
KILLING CERTAIN DOMESTIC ANIMALS O/50 DOLLARS	1	1	.01
MAIMING	3	3	.04
MAL MISCHIEF - INJ DESTROY ATPT PROP OF ANOTHER	39	36	.46
MALICIOUS MISCH W/TELEGRAPH TELEPHONE/ELEC TRANSMIS LINE	2	2	.03
MISAPPLY COUNTY OR CITY FUNDS TO OWN USE	2	1	.01
MURDER - ACCOMPLICE TO	1	1	.01
MURDER - DEGREE NOT SPECIFIED -	56	50	.64
MURDER - WITH MALICE	270	261	3.36
MURDER - WITHOUT MALICE	132	128	1.65
NARC - ANY PERSON UNLAWFULLY DISPENSE	1	1	.01
NARC - ANY PERSON UNLAWFULLY POSSESS	891	760	9.78
NARC - CONTRABAND - TRANSPORT OR POSSESS	1	1	.01

COMPUTER REPORT PDSPD72041

ANALYSIS OF INMATES DEPARTED IN 1971 - BY OFFENSE

DECEMBER 31, 1971

DESCRIPTION OF OFFENSE	NUMBER OF COMMITMENTS	NUMBER OF INMATES	PERCENT INMATES
NARC - MAKE/ITFER FLS OR FORGD PRESCRIP/ORDER TO OBTAIN	3	1	.01
NARC - OBTAIN/ATTMPT TO BY ALTER PRESCRIP/ORDER	3	2	.03
NARC - OBTAIN/ATTMPT TO OBTAIN BY FRAUD	2	2	.03
NARC - SELLS OR OFFERS TO SELL PROHIBITED	144	86	1.11
NARC - UNLAWFULLY HAVE/POSSESS ANY INSTR ADAPTED FOR	87	85	1.09
NARC ADDICT VIOLATE ANY PROVISION OF NARC ACT	1	1	.01
PANDERING PROCURE W/O CONSENT FE FOR HSE OF PROSTITUTION	3	3	.04
PASSING FORGED INSTRUMENTS	914	546	7.03
PERJURY - FALSE STATEMENT WRITTEN OR VERBAL UNDER OATH	4	4	.05
POSSESS BOMB ETC FOR UNLAWFUL PURPOSE/FOR COMM OF CRIME	5	5	.06
POSSESS F/ARMS B/PERSON CONVCTD FLNY INVLV F/ARMS	16	16	.21
POSSESS PARTS OF BOMB WITH INTENT TO COMBINE	1	1	.01
POSSESS WRITTEN INSTRUMENT WITH INTENT TO PASS AS TRUE	23	16	.21
POSSESSION BURGLARY TOOL	8	8	.10
PRESENT CREDIT CARD W/I TO DEFRAUD-3RD CONVICTN/OVER 50	32	25	.32
PRIOR CONVICTION ASSAULT W/I TO ROB	1	1	.01
PRIOR CONVICTION BURGLARY	12	12	.15
PRIOR CONVICTION FORGERY	2	2	.03
PRIOR CONVICTION MUR W/O MALICE	1	1	.01
PRIOR CONVICTION NARCOTIC OFFENSE	2	2	.03
PRIOR CONVICTION RECEIVE AND/OR CONCEAL STOLEN PROPERTY	1	1	.01
PRIOR CONVICTION ROBBERY	7	4	.05
PRIOR CONVICTION ROBBERY BY ASSAULT	8	6	.08
PRIOR CONVICTION THEFT IN GENERAL	10	10	.13
PRISONER ESCAPES FR PENITENTIARY OR OTHER PRISON	1	1	.01
RAPE	133	117	1.51
RAPE - STATUTORY	25	23	.30
RAPE BY FORCE	2	2	.03
RAPE BY THREAT	1	1	.01
RECEIVE AND/OR CONCEAL STOLEN PROPERTY	31	31	.40
REPEATER BURGLARY	1	1	.01
REPEATER DRIVING WHILE INTOXICATED O W I	3	3	.04
REPEATER NARCOTIC OFFENSE	2	2	.03
REPEATER ROBBERY	1	1	.01
REPEATER THEFT OF ANIMALS	1	1	.01
ROBBERY	330	236	3.04
ROBBERY BY ASSAULT VIOLENCE FEAR OF LIFE OR BODILY INJRY	753	488	6.28
ROBBERY BY FIREARMS OR OTHER DEADLY WEAPON	208	169	2.17
SHOPLIFTING UPON 3RD OR ANY SUBSEQUENT CONVICTION	85	63	.81
SODOMY	41	35	.45
STEAL EDIBLE MEAT	9	9	.12
SUBSEQUENT OFFENSE BURGLARY	8	8	.10

COMPUTER REPORT PDSPD72041

ANALYSIS OF INMATES DEPARTED IN 1971 - BY OFFENSE

DECEMBER 31, 1971

DESCRIPTION OF OFFENSE	NUMBER OF COMMITMENTS	NUMBER OF INMATES	PERCENT INMATES
SUBSEQUENT OFFENSE BURGLARY PRIVATE RESIDENCE AT NIGHT	1	1	.01
SUBSEQUENT OFFENSE DRIVING WHILE INTOXICATED D W I	87	74	.95
SUBSEQUENT OFFENSE FORGERY	1	1	.01
SUBSEQUENT OFFENSE NARCOTIC OFFENSE	2	2	.03
SUBSEQUENT OFFENSE OF DRIVING WHILE INTOXICATED- DWI	221	170	2.19
SUBSEQUENT OFFENSE ROBBERY BY ASSAULT	3	3	.04
SUBSEQUENT OFFENSE THEFT IN GENERAL	3	3	.04
SWINDLE BY WORTHLESS CHECK	77	59	.76
THEFT & ILLEGAL TRANSPORTATION OF MERCURY	7	7	.09
THEFT BY FALSE PRETEXT	60	49	.63
THEFT FROM THE PERSON	54	52	.67
THEFT OF CATTLE OR HOG	16	14	.18
THEFT OF CERTAIN DOMESTIC FOWL	1	1	.01
THEFT OF DOG	2	2	.03
THEFT OF MOTOR VEHICLES	27	22	.28
THEFT OF ONES OWN PROPERTY	1	1	.01
THEFT OF SHEEP OR GOAT	1	1	.01
3RD OFFENSE BURGLARY	2	2	.03
3RD OFFENSE FORGERY	3	3	.04
3RD OFFENSE ROBBERY BY ASSAULT	1	1	.01
UNSPECIFIED	0	9	.12
OFFENSES FOR WHICH THE DESCRIPTION AS SHOWN ON COMMITMENT PAPERS RECEIVED FROM THE DISTRICT COURT DID NOT MATCH - PER SE - THE DESCRIPTION GLEANED FROM A REVIEW OF THE VERNONS TEXAS CRIMINAL STATUTES	740		7.66
TOTAL INMATES	7,772		
TOTAL COMMITMENTS	14,017		
NUMBER COMMITMENTS PER INMATE		1.8	

COMPUTER REPORT PDSPD72041

ANALYSIS OF INMATES DEPARTED IN 1971 BY EDUCATIONAL ACHIEVEMENT

SCORE RANGES	ORIGINAL TOTAL	CURRENT TOTAL
NOT TESTED	289	72
ILLITERATE	1,001	457
LESS THAN 01.0	24	13
01.0 TO 02.0	2	1
02.0 TO 03.0	5	0
03.0 TO 04.0	495	391
04.0 TO 05.0	726	755
05.0 TO 06.0	1,058	1,200
06.0 TO 07.0	1,162	1,180
07.0 TO 08.0	1,092	1,172
08.0 TO 09.0	835	953
09.0 TO 10.0	544	908
10.0 TO 11.0	283	367
11.0 TO 12.0	143	160
12.0 OR OVER	104	134
	7,763	7,763

COMPUTER REPORT PDSPD72041

ANALYSIS OF INMATES DEPARTED IN 1971  
BY IQ SCORES

SCORE RANGES	ORIGINAL TOTAL	CURRENT TOTAL
NOT TESTED	782	685
ILLITERATE	0	0
LESS THAN 30	46	45
30 TO 50	310	310
50 TO 60	296	300
60 TO 70	699	705
70 TO 80	1,073	1,075
80 TO 100	2,518	2,564
100 TO 120	1,798	1,841
120 TO 150	238	235
150 OR OVER	3	3
	7,763	7,763

COMPUTER REPORT PDSPD72041

ANALYSIS OF INMATES DEPARTED IN 1971 BY RELIGION

RELIGION	TOTAL
UNSPECIFIED	1,924
NO AFFILIATION	81
PROTESTANTS	21
BAHAI FAITH	1
SALVATION ARMY	1
ATHIEST	1
ROMAN CATHOLIC	912
UNION OF ORTHODOX JEWISH CONG OF AMERICA	5
MUSLIM	2
ADVENTIST BODIES	5
APOSTOLIC FAITH	2
ASSEMBLIES OF GOD	24
BAPTIST BODIES	3,488
BIBLE PROTESTANT CHURCH	1
CHRISTIAN CHURCH, INTERNATL. CONV.	225
CHRISTIAN CHURCH OF NORTH AMERICA	46
CHRISTIAN SCIENTISTS	7
CHURCHES OF CHRIST	13
CHURCH OF GOD	32
CHURCH OF GOD IN CHRIST	3
CHURCH OF THE LIVING GOD	2
CHURCH OF THE NAZARENE	15
CONGREGATIONAL CHRISTIAN CH. NATL. ASSN.	1
EVANGELISTIC ASSOCIATIONS - APOSTOLIC	1
EPISCOPAL CHURCH - PROTESTANT	47
FUNDAMENTAL CHURCHES OF AMERICA-INDEPENDT	1
HOLINESS - CHURCH OF CHRIST	4
HOLINESS CHURCH - PILGRIM	1
HOLINESS - CHURCHES OF GOD	72
JEHOVAH WITNESSES	11
LATTER DAY SAINTS MORMANS	24
LUTHERAN BODIES	66
METHODIST BODIES	498
PENTECOSTAL ASSEMBLIES	143
PRESBYTERIAN BODIES	83
TOTAL INMATES	7,763

COMPUTER REPORT PDSPD72041  
 ANALYSIS OF INMATES DEPARTED IN 1971  
 BY NATIVITY AND RESIDENCE

LOCATION	NATIVITY	RESIDENCE
NOT IDENTIFIED	68	37
ANDERSON COUNTY	44	9
ANDREWS COUNTY	0	0
ANGELINA COUNTY	25	26
ARANSAS COUNTY	1	3
ARCHER COUNTY	3	0
ARMSTRONG COUNTY	0	0
ATASCOSA COUNTY	13	9
AUSTIN COUNTY	12	13
BAILEY COUNTY	1	5
BANDERA COUNTY	1	2
BASTROP COUNTY	33	8
BAYLOR COUNTY	5	5
BEE COUNTY	7	2
BELL COUNTY	49	64
BEXAR COUNTY	357	471
BLANCO COUNTY	2	1
BORDEN COUNTY	0	0
BOSQUE COUNTY	16	1
BOWIE COUNTY	41	20
BRAZORIA COUNTY	23	37
BRAZOS COUNTY	28	16
BREWSTER COUNTY	5	2
BRISCOE COUNTY	1	0
BROOKS COUNTY	4	2
BROWN COUNTY	15	12
BURLESON COUNTY	21	7
BURNET COUNTY	3	3
CALDWELL COUNTY	21	6
CALHOUN COUNTY	6	3
CALLAHAN COUNTY	2	4
CAMERON COUNTY	50	45
CAMP COUNTY	9	1
CARSON COUNTY	1	0
CASS COUNTY	27	9
CASTRO COUNTY	4	10
CHAMBERS COUNTY	4	6
CHEROKEE COUNTY	29	11
CHILDRESS COUNTY	9	2
CLAY COUNTY	5	1
COCHRAN COUNTY	3	2
COKE COUNTY	1	0
COLEMAN COUNTY	8	2

COMPUTER REPORT PDSPD72041  
 ANALYSIS OF INMATES DEPARTED IN 1971  
 BY NATIVITY AND RESIDENCE

LOCATION	NATIVITY	RESIDENCE
COLLIN COUNTY	63	28
COLLINGSWORTH COUNTY	6	2
COLORADO COUNTY	20	12
COMAL COUNTY	4	2
COMANCHE COUNTY	3	4
CONCHO COUNTY	1	0
COOKE COUNTY	8	5
CORYELL COUNTY	8	12
COTTLE COUNTY	9	6
CRANE COUNTY	0	3
CROCKETT COUNTY	2	1
CROSBY COUNTY	2	4
CULBERSON COUNTY	0	2
DALLAM COUNTY	2	4
DALLAS COUNTY	608	1,579
DAWSON COUNTY	12	7
DEAF SMITH COUNTY	2	19
DELTA COUNTY	9	1
DENTON COUNTY	24	42
DEWITT COUNTY	9	4
DICKINS COUNTY	8	5
DIMITT COUNTY	7	1
DONLEY COUNTY	1	1
DUVAL COUNTY	8	2
EASTLAND COUNTY	29	9
ECTOR COUNTY	13	75
EDWARDS COUNTY	4	1
ELLIS COUNTY	52	13
EL PASO COUNTY	41	78
ERATH COUNTY	6	3
FALLS COUNTY	50	7
FANNIN COUNTY	27	12
FAYETTE COUNTY	18	4
FISHER COUNTY	7	3
FLOYD COUNTY	2	6
FOARD COUNTY	1	0
FORT BEND COUNTY	29	15
FRANKLIN COUNTY	6	0
FREESTONE COUNTY	19	0
FRIO COUNTY	11	6
GAINES COUNTY	4	7
GALVESTON COUNTY	66	98
GARZA COUNTY	2	2
GILLESPIE COUNTY	5	2

COMPUTER REPORT PDSPD72041  
 ANALYSIS OF INMATES DEPARTED IN 1971  
 BY NATIVITY AND RESIDENCE

LOCATION	NATIVITY	RESIDENCE
GLASSCOCK COUNTY	0	2
GOLIAD COUNTY	12	2
GONZALES COUNTY	26	9
GRAY COUNTY	8	9
GRAYSON COUNTY	42	23
GREGG COUNTY	62	75
GRIMES COUNTY	20	9
GUADALUPE COUNTY	19	17
HALE COUNTY	15	38
HALL COUNTY	3	1
HAMILTON COUNTY	6	2
HANSFORD COUNTY	0	4
HARDEMAN COUNTY	11	6
HARDIN COUNTY	12	12
HARRIS COUNTY	666	1,637
HARRISON COUNTY	70	29
HARTLEY COUNTY	1	0
HASKELL COUNTY	14	6
HAYS COUNTY	10	10
HEMPHILL COUNTY	1	1
HENDERSON COUNTY	28	10
HIDALGO COUNTY	46	46
HILL COUNTY	21	7
HOCKLEY COUNTY	9	8
HOOD COUNTY	2	1
HOPKINS COUNTY	20	10
HOUSTON COUNTY	25	4
HOWARD COUNTY	22	20
HUDSPETH COUNTY	3	0
HUNT COUNTY	44	19
HUTCHINSON COUNTY	3	7
IRION COUNTY	1	0
JACK COUNTY	3	2
JACKSON COUNTY	13	6
JASPER COUNTY	14	14
JEFF DAVIS COUNTY	0	0
JEFFERSON COUNTY	122	153
JIM HOGG COUNTY	2	0
JIM WELLS COUNTY	13	13
JOHNSON COUNTY	18	16
JONES COUNTY	27	7
KARNES COUNTY	14	6
KAUFMAN COUNTY	63	13
KENDALL COUNTY	3	1

COMPUTER REPORT PDSPD72041  
 ANALYSIS OF INMATES DEPARTED IN 1971  
 BY NATIVITY AND RESIDENCE

LOCATION	NATIVITY	RESIDENCE
KENEDY COUNTY	0	0
KENT COUNTY	3	1
KERR COUNTY	7	6
KIMBLE COUNTY	0	0
KING COUNTY	0	0
KINNEY COUNTY	2	1
KLEBERG COUNTY	11	10
KNOX COUNTY	4	0
LAMAR COUNTY	56	14
LAMB COUNTY	7	7
LAMPASAS COUNTY	3	1
LA SALLE COUNTY	4	2
LAVACA COUNTY	14	2
LEE COUNTY	10	2
LEON COUNTY	22	5
LIBERTY COUNTY	18	9
LIMESTONE COUNTY	29	3
LIPSCOMB COUNTY	2	1
LIVE OAK COUNTY	6	3
LLANO COUNTY	1	2
LOVING COUNTY	0	0
LUBBOCK COUNTY	38	109
LYNN COUNTY	6	0
MCCULLOCH COUNTY	6	2
MCLENNAN COUNTY	121	119
MC MULLEN COUNTY	0	1
MADISON COUNTY	14	2
MARION COUNTY	16	5
MARTIN COUNTY	9	1
MASON COUNTY	1	1
MATAGORDA COUNTY	15	8
MAVERICK COUNTY	7	2
MEDINA COUNTY	13	6
MENARD COUNTY	2	0
MIDLAND COUNTY	19	51
MILAM COUNTY	21	8
MILLS COUNTY	5	1
MITCHELL COUNTY	9	2
MONTAGUE COUNTY	14	4
MONTGOMERY COUNTY	21	18
MOORE COUNTY	1	7
MORRIS COUNTY	10	7
MOTLEY COUNTY	3	0
NACOGDOCHES COUNTY	46	25

COMPUTER REPORT PDSPD72041  
 ANALYSIS OF INMATES DEPARTED IN 1971  
 BY NATIVITY AND RESIDENCE

LOCATION	NATIVITY	RESIDENCE
NAVARRO COUNTY	52	10
NEWTON COUNTY	6	2
NOLAN COUNTY	17	18
NUECES COUNTY	97	132
OCHILTREE COUNTY	2	10
OLDHAM COUNTY	1	1
ORANGE COUNTY	18	22
PALO PINTO COUNTY	10	17
PANOLA COUNTY	27	10
PARKER COUNTY	7	4
PARMER COUNTY	0	3
PECOS COUNTY	9	5
POLK COUNTY	14	3
POTTER COUNTY	44	111
PRESIDIO COUNTY	4	2
RAINS COUNTY	3	2
RANDALL COUNTY	1	5
REAGAN COUNTY	1	4
REAL COUNTY	1	0
RED RIVER COUNTY	19	5
REEVES COUNTY	8	6
REFUGIO COUNTY	10	3
ROBERTS COUNTY	1	0
ROBERTSON COUNTY	29	5
ROCKWALL COUNTY	13	2
RUNNELS COUNTY	15	0
RUSK COUNTY	38	24
SABINE COUNTY	11	2
SAN AUGUSTINE COUNTY	11	2
SAN JACINTO COUNTY	3	1
SAN PATRICIO COUNTY	42	29
SAN SABA COUNTY	6	2
SCHLEICHER COUNTY	0	0
SCURRY COUNTY	5	12
SHACKELFORD COUNTY	4	4
SHELBY COUNTY	37	32
SHERMAN COUNTY	1	3
SMITH COUNTY	67	57
SOMERVELL COUNTY	3	0
STARR COUNTY	2	2
STEPHENS COUNTY	13	12
STERLING COUNTY	1	0
STONEWALL COUNTY	4	3
SUTTON COUNTY	1	1

COMPUTER REPORT PDSPD72041  
 ANALYSIS OF INMATES DEPARTED IN 1971  
 BY NATIVITY AND RESIDENCE

LOCATION	NATIVITY	RESIDENCE
SWISHER COUNTY	0	7
TARRANT COUNTY	214	442
TAYLOR COUNTY	40	78
TERRELL COUNTY	1	0
TERRY COUNTY	10	7
THROCKMORTON COUNTY	1	0
TITUS COUNTY	19	5
TOM GREEN COUNTY	33	46
TRAVIS COUNTY	146	259
TRINITY COUNTY	16	4
TYLER COUNTY	8	5
UPSHUR COUNTY	26	7
UPTON COUNTY	0	1
UVALDE COUNTY	6	7
VAL VERDE COUNTY	1	3
VAN ZANDT COUNTY	19	7
VICTORIA COUNTY	23	23
WALKER COUNTY	25	6
WALLER COUNTY	7	4
WARD COUNTY	7	5
WASHINGTON COUNTY	17	6
WEBB COUNTY	14	8
WHARTON COUNTY	27	10
WHEELER COUNTY	11	3
WICHITA COUNTY	42	62
WILBARGER COUNTY	19	16
WILLACY COUNTY	7	4
WILLIAMSON COUNTY	36	8
WILSON COUNTY	10	5
WINKLER COUNTY	0	5
WISE COUNTY	6	6
WOOD COUNTY	11	3
YOAKUM COUNTY	0	3
YOUNG COUNTY	8	7
ZAPATA COUNTY	1	1
ZAVALA COUNTY	9	8
	5,685	7,249
DIST. OF COLUMBIA	6	2
ALABAMA	67	6
ALASKA	1	0
ARIZONA	26	14
ARKANSAS	165	12
CALIFORNIA	91	67

COMPUTER REPORT PDSPD72041

ANALYSIS OF INMATES DEPARTED IN 1971  
BY NATIVITY AND RESIDENCE

LOCATION	NATIVITY	RESIDENCE
COLORADO	18	19
CONNECTICUT	5	3
DELAWARE	0	0
FLORIDA	30	24
GEORGIA	48	17
HAWAII	1	0
IDAHO	2	0
ILLINOIS	68	16
INDIANA	41	11
IOWA	18	4
KANSAS	22	8
KENTUCKY	24	6
LOUISIANA	433	57
MAINE	3	0
MARYLAND	12	2
MASSACHUSETTS	12	3
MICHIGAN	52	8
MINNESOTA	13	2
MISSISSIPPI	64	7
MISSOURI	58	18
MONTANA	10	2
NEBRASKA	14	2
NEVADA	2	2
NEW HAMPSHIRE	2	0
NEW JERSEY	7	0
NEW MEXICO	47	18
NEW YORK	47	5
NORTH CAROLINA	32	6
NORTH DAKOTA	0	0
OHIO	40	11
OKLAHOMA	227	46
OREGON	6	4
PENNSYLVANIA	37	6
RHODE ISLAND	2	1
SOUTH CAROLINA	17	4
SOUTH DAKOTA	5	1
TENNESSEE	50	11
TEXAS	5,685	7,249
UTAH	3	1
VERMONT	1	0
VIRGINIA	20	2
WASHINGTON	22	5
WEST VIRGINIA	21	3
WISCONSIN	13	1

COMPUTER REPORT PDSPD72041

ANALYSIS OF INMATES DEPARTED IN 1971  
BY NATIVITY AND RESIDENCE

LOCATION	NATIVITY	RESIDENCE
WYOMING	4	5
	7,594	7,691
BAHAMAS	1	0
CANADA	2	0
CHINA	1	0
ENGLAND	1	0
GERMANY	5	0
JAPAN	3	0
MEXICO	75	35
PANAMA	1	0
PUERTO RICO	7	0
POLAND	3	0
WEST INDIES	2	0
	101	35
TOTAL INMATES	7,763	7,763

COMPUTER REPORT PDSPD72041

ANALYSIS OF INMATES DEPARTED IN 1971 BY OCCUPATION

DECEMBER 31, 1971

OCCUPATION	NUMBER OF INMATES
PROFESSIONAL AND MANAGERIAL OCCUPATIONS	
PROFESSIONAL OCCUPATIONS	100
SEMI-PROFESSIONAL OCCUPATIONS	69
MANAGERIAL AND OFFICIAL OCCUPATIONS	19
CLERICAL AND SALES OCCUPATIONS	
CLERICAL AND KINDRED OCCUPATIONS	396
SALES AND KINDRED OCCUPATIONS	128
SERVICE OCCUPATIONS	
DOMESTIC SERVICE OCCUPATIONS	118
PERSONAL SERVICE OCCUPATIONS	768
PROTECTIVE SERVICE OCCUPATIONS	1
BUILDING SERVICE WORKERS AND PORTERS	224
AGRICULTURAL, FISHERY, FORESTRY, AND KINDRED OCCUPATIONS	
AGRICULTURAL AND HORTICULTURAL OCCUPATIONS, ETC	287
FISHERY OCCUPATIONS	13
SKILLED OCCUPATIONS	
MANUFACTURING AND RELATED ACTIVITIES	485
NONMANUFACTURING ACTIVITIES	596
MISCELLANEOUS SKILLED OCCUPATIONS	422
FOREMEN	3
SEMISKILLED OCCUPATIONS	
MANUFACTURING AND RELATED ACTIVITIES	138
NONMANUFACTURING ACTIVITIES	1,113
MISCELLANEOUS SEMISKILLED OCCUPATIONS	134
APPRENTICES	123
UNSKILLED OCCUPATIONS	
MANUFACTURING AND RELATED ACTIVITIES	234
NONMANUFACTURING ACTIVITIES	502
MISCELLANEOUS UNSKILLED OCCUPATIONS	1,890
TOTAL INMATES	7,763

COMPUTER REPORT PDSPD72045

ANALYSIS OF INMATES DEPARTED IN 1971 BY AGE GROUP  
DECEMBER 31, 1971

AGE GROUP	TOTALS
17 TO 20	458
20 TO 25	2,388
25 TO 30	1,722
30 TO 35	1,016
35 TO 40	744
40 TO 50	907
50 TO 60	377
60 TO 70	111
70 AND OVER	11
NOT SPECIFIED	29
TOTAL INMATES	7,763



TEXAS DEPARTMENT OF CORRECTIONS  
INMATE DAILY STRENGTH REPORT CONTROL

12/31/71

	.....W H I T E.....						.....L A T I N.....						.....N E G R O.....						UNIT TOTALS
	STATE APPROVED TRUSTY.			TOTAL			STATE APPROVED TRUSTY.			TOTAL			STATE APPROVED TRUSTY.			TOTAL			
	I	II	III	CONST	LINE	WHITE	I	II	III	CONST	LINE	LATIN	I	II	III	CONST	LINE	NEGRO	
CENTRAL PERCENTAGES	7 3.48	25 12.44	52 25.87	0.00	117 58.21	201 27.69	7 4.00	19 10.86	51 29.14	0.00	98 56.00	175 24.10	26 7.43	25 7.14	76 21.71	0.00	223 63.71	350 48.21	726
CLEMENS PERCENTAGES	11 3.81	15 5.19	77 26.64	0.00	186 64.36	289 28.61	3 2.13	5 3.55	35 24.82	0.00	98 69.50	141 13.96	25 4.31	75 12.93	202 34.83	9 1.55	269 46.38	580 57.43	1010
CAMPBELL PERCENTAGES	13 6.60	9 4.57	113 57.36	1.52	59 29.95	197 39.96	2 2.60	3 3.90	55 71.43	1 1.30	16 20.78	77 15.62	11 5.02	16 7.31	121 55.25	5 2.28	66 30.14	219 44.42	493
DARRINGTON PERCENTAGES	9 2.96	16 5.26	108 35.53	0.33	170 55.92	304 38.63	2 2.30	8 9.20	24 27.59	0.00	53 60.92	87 11.05	9 2.27	48 12.12	83 20.96	2 0.51	254 64.14	396 50.32	787
DIAGNOSTIC PERCENTAGES	1 0.35	3 1.06	36 12.77	0.00	242 85.82	282 43.86	0.00	0.00	7 6.60	0.00	99 93.40	106 16.49	10 3.92	1 0.39	17 6.67	0.00	227 89.02	255 39.66	643
EASTHAM PERCENTAGES	16 2.16	32 4.32	233 31.49	0.41	456 61.62	740 43.30	5 1.31	11 2.88	121 31.68	2 0.52	243 63.61	382 22.35	25 4.26	38 6.47	114 19.42	2 0.34	408 69.51	587 34.35	1709
ELLIS PERCENTAGES	11 1.60	12 1.75	127 18.49	0.00	537 78.17	687 40.87	2 0.70	4 1.37	52 18.12	0.00	229 79.79	287 17.07	24 3.39	30 4.24	68 9.62	1 0.14	584 82.60	707 42.06	1681
FERGUSON PERCENTAGES	8 1.50	22 4.14	220 41.35	0.00	282 53.01	532 43.82	3 1.63	11 5.98	67 36.41	0.00	103 55.98	184 15.16	20 4.02	13 2.61	184 36.95	0.00	281 56.43	498 41.02	1214
GREEN PERCENTAGES WORK FURLOUGH	14 6.45 10	5 2.30	102 47.00	0.00	96 44.24	217 35.99	1 1.37	0.00	33 45.21	0.00	39 53.42	73 12.11	19 6.07	5 1.60	132 42.17	0.00	157 50.16	313 51.91	603 17
HUNTSVILLE PERCENTAGES	45 5.67	46 5.79	361 45.47	2.02	326 41.06	794 46.16	11 3.70	12 4.04	177 59.60	3 1.01	94 31.65	297 17.27	72 11.45	32 5.09	305 48.49	4 0.64	216 34.34	629 36.57	1720
JESTER PERCENTAGES WORK FURLOUGH	29 7.71 3	34 9.04	267 71.01	2.39	37 9.84	376 38.29	9 5.33	11 6.51	139 82.25	3 1.78	7 4.14	169 17.21	59 13.50	29 6.64	310 70.94	3 0.69	36 8.24	437 44.50	982 24
RAMSEY PERCENTAGES	23 3.27	43 6.12	212 30.16	11.95	341 48.51	703 36.31	7 1.74	36 8.93	112 27.79	17 4.22	231 57.32	403 20.82	26 3.13	67 8.07	215 25.90	51 6.14	471 56.75	830 42.87	1936
RETRIEVE PERCENTAGES	5 2.99	13 7.78	26 15.57	0.60	122 73.05	167 22.42	1 0.94	1 0.94	16 15.09	2 1.89	86 81.13	106 14.23	31 6.57	37 7.84	94 19.92	8 1.69	302 63.98	472 63.36	745
WYNE PERCENTAGES WORK FURLOUGH	10 1.15 2	21 2.41	289 33.18	4.02	35 59.24	871 50.06	0.00	1 0.45	53 23.98	3 1.36	164 74.21	221 12.70	20 3.09	20 3.09	182 28.09	8 1.23	418 64.51	648 37.24	1740 15
TOTALS INMATE POPULATION PERCENTAGES WORK FURLOUGH	202 3.18 13	296 4.65 2	2223 34.95 5	152 2.39	3487 54.83	6360 39.78	53 1.96	122 4.51	942 34.79	31 1.14	1560 57.61	2708 16.94	377 5.45	436 6.30	2103 30.39	93 1.34	3912 56.52	6921 43.29	15989 56

T E X A S D E P A R T M E N T O F C O R R E C T I O N S

PREVIOUS SENTENCE SUMMARY AS OF 12/31/71

INMATE POPULATION THIS DATE	15,989		
RECORDS WITH NO SUMMARY INFO	250		
RECORDS ANALYZED BELOW	15,739		
		ADULT	JUVENILE
1. SUSPENDED SENTENCES		959	22
2. PROBATED SENTENCES, FEDERAL		281	45
3. PROBATED SENTENCES, STATE		6,267	2,099
INMATES WITH PRIOR SENTENCES		7,260	2,156
4. DETENTION HOME CONFINEMENTS			3,349
5. REFORMATORY CONFINEMENTS			3,466
INMATES WITH PRIOR JUVENILE CONFINEMENT			5,213
6. JAIL CONFINEMENTS		10,749	
7. MILITARY PRISON CONFINEMENTS		1,031	
8. PRIOR TDC CONFINEMENTS		5,477	
9. OTHER PRISON CONFINEMENTS		2,454	
INMATES WITH PRIOR ADULT CONFINEMENTS		11,746	
		COMPLETED	ATTEMPTED
		ESCAPES	ESCAPES
10. JUVENILE INSTITUTIONS	885	144	8
11. OTHER INSTITUTIONS	1,314	231	13
12. TDC	133	113	1,200
13. OTHER PRISONS	212	54	184
INMATES WITH ESCAPE RECORDS	2,256	494	1,383
			PAROLE
			VIOLATIONS

ANALYSIS OF CURRENT INMATE POPULATION BY OFFENSE

DECEMBER 31, 1971

DESCRIPTION OF OFFENSE	NUMBER OF COMMITMENTS	NUMBER OF INMATES	PERCENT INMATES
ABORTION WITH CONSENT.	1	1	.01
ACQUISITION OF PROPERTY BY THREATS	1	1	.01
ADMINISTERING INJURIOUS SUBSTANCES	1	1	.01
AIDING ONE CHARGED WITH FELONY TO ESCAPE	3	2	.01
AIDING ONE CHARGED WITH FELONY TO ESCAPE FROM JAIL	1	1	.01
ALL PARTICIPANTS GUILTY-OFFENSE AFFECTING WRITTEN INSTRU	1	1	.01
ALTER AN WRITTEN INSTR W/INTENT TO INJURE OR DEFRAUD	9	8	.05
ARSON - WILFUL BURNING OF ANY HOUSE	54	46	.29
ASSAULT OR ASSLT&BATTERY WITH A PROHIBITED WEAPON	38	36	.23
ASSAULT W/I TO MURDER WITH MALICE	660	560	3.51
ASSAULT W/I TO MURDER WITHOUT MALICE	42	41	.26
ASSAULT WITH INTENT TO RAPE	261	232	1.45
ASSAULT WITH INTENT TO ROB	204	195	1.22
ASSAULT WITH MOTOR VEH-DEATH RESJLTS	12	10	.06
ATTEMPT AT ARSON	6	6	.04
ATTEMPT AT BURGLARY	153	150	.94
ATTEMPT TO COMMIT THEFT FROM THE PERSON	1	1	.01
ATTEMPTED BURGLARY OF VESSEL STEAMBOAT OR RR CAR	1	1	.01
ATTEMPTED RAPE BY FORCE THREAT OR FRAUD	6	6	.04
BIGAMY	3	3	.02
BREAKING AND ENTERING MTR VEH TO STEAL	308	269	1.69
BREAKING AND ENTERING VEH TO ROB	9	6	.04
BREAKING AND ENTERING VEHICLE WITH INTENT TO RAPE	1	1	.01
BREAKING AND ENTERING VESSELS STMBOAT RR CARS	2	2	.01
BREAKING AND ENTERING W/I TO STEAL	7	1	.01
BREAKING AND ENTERING WITH INTENT TO RAPE	11	9	.06
BREAKING BY ACTUAL FORCE - BURGLARY	19	15	.09
BURGLARY	6,139	4,129	25.89
BURGLARY BY BREAKING-ENTERS HOUSE IN DAYTIME	98	81	.51
BURGLARY OF PRIVATE RESIDENCE AT NIGHT	381	302	1.89
BURGLARY W/I OF THEFT	11	8	.05
BURGLARY WITH EXPLOSIVES	1	1	.01
CARRY ARMS INTO PREMISES COVERED BY LIQUOR CONTROL ACT	102	101	.63
COIN OPR MCH - BREAK&ENTER W/I TO COMMIT THEFT	74	65	.41
COLLECING ILLEGAL FEES BY OFFICER ETC	1	1	.01
CONSPIRACY TO COMMIT FELONY O/T MURDER	3	3	.02
CONSPIRACY TO COMMIT ROBBERY	1	1	.01
CONVERSION BY A BAILEE-CONVERT PROP TO OWN SUE	18	14	.09
DEFRAUD BY CHECK W/O SUFFICIENT FUNDS	165	124	.78
DESERTION OF CHILD UNDER 16 YRS OF AGE OR WIFE	5	5	.03
DISFIGURING	6	6	.04
DRIVING VEH W/O OWNERS CONSENT-VL MORE THAN 200 DOLLARS	62	60	.38

ANALYSIS OF CURRENT INMATE POPULATION BY OFFENSE

DECEMBER 31, 1971

DESCRIPTION OF OFFENSE	NUMBER OF COMMITMENTS	NUMBER OF INMATES	PERCENT INMATES
DRUG-DANGEROUS-UNLAWFUL DELIVERY OF DRUGS - FAIL TO KEEP RECORDS AS REQUIRED	62	37	.23
EMBEZZLEMENT - PUNISHED AS THEFT OF MONEY/PROPERTY	1	1	.01
ENHANCED SENTENCE BURGLARY	53	40	.25
ENHANCED SENTENCE BURGLARY PRIVATE RESIDENCE AT NIGHT	18	16	.10
ENHANCED SENTENCE DRIVING WHILE INTOXICATED D W I	2	2	.01
ENHANCED SENTENCE ROBBERY TO ASSAULT	1	1	.01
ENHANCED SENTENCE THEFT IN GENERAL	2	2	.01
ENTICING CHILD FOR IMMORAL P/RPOSES OR TO COMMIT ASSAULT	1	1	.01
ESCAPE FR PENITENTIARY OR O/PRISON-USE FIREARMS&VOL RET	6	6	.04
ESCAPE FROM CUSTODY OF OFFICER WITH OR WO/ FORCE	1	1	.01
ESCAPE FROM JAIL	17	17	.11
ESCAPE FROM PENITENTIARY OR OTHER PRISON&VOL RETURNS	90	86	.54
FAIL TO STOP AND RENDER AID	4	4	.03
FALSE SWFARING - MAKE FALSE STATEMENT UNDER OATH	20	20	.13
FELONY THEFT - OVER 50 DOLLARS	2	2	.01
FORGERY	4,148	3,022	18.95
FORGERY AND PASSING	561	344	2.16
FRAUDULENT DISPOSITION OF MORTGAGED PROPERTY	177	96	.60
GIVE CHECK DRAFT OR ORDER W/D SUFFIENT FUNDS	7	7	.04
HABITUAL MURDER WITH MALICE	78	53	.33
HABITUAL ASSAULT W/I TO MURDER	1	1	.01
HABITUAL ASSAULT W/I TO RAPE	9	9	.06
HABITUAL ASSAULT W/I TO ROB	1	1	.01
HABITUAL BOMB OFFENSES	2	2	.01
HABITUAL BREAKING AND ENTERING MOTOR VEHICLE	1	1	.01
HABITUAL BURGLARY	6	6	.04
HABITUAL BURGLARY PRIVATE RESIDENCE AT NIGHT	90	88	.55
HABITUAL CRIMINAL CRIME NOT SPECIFIED	1	1	.01
HABITUAL DRIVING W/O OWNERS CONSENT	5	5	.03
HABITUAL DRUG OFFENSE	1	1	.01
HABITUAL ESCAPE FROM JAIL PRISON ETC	1	1	.01
HABITUAL FONDLING	2	2	.01
HABITUAL FORGERY	19	19	.12
HABITUAL INDECENT EXPOSURE	1	1	.01
HABITUAL MURDER DEGREE NOT SPECIFIED	1	1	.01
HABITUAL NARCOTIC OFFENSE	17	17	.11
HABITUAL PRESENT CR CARD W/I TO DEFRAUD	1	1	.01
HABITUAL ROBBERY	9	9	.06
HABITUAL ROBBERY BY ASSAULT	34	34	.21
HABITUAL ROBBERY BY FIREARMS OR OTHER DEADLY WEAPON	2	2	.01
HABITUAL SODOMY	1	1	.01

ANALYSIS OF CURRENT INMATE POPULATION BY OFFENSE

DECEMBER 31, 1971

DESCRIPTION OF OFFENSE	NUMBER OF COMMITMENTS	NUMBER OF INMATES	PERCENT INMATES
HABITUAL THEFT FROM THE PERSON	3	3	.02
HABITUAL THEFT IN GENERAL	40	40	.25
HABITUAL THEFT OF MOTOR VEHICLES	1	1	.01
HABITUAL THEFT OR CONVERSION BY BAILEE	2	2	.01
HABITUAL WORTHLESS CHECK	1	1	.01
HANDLING OR FONDLING CHILDS SEXUAL PARTS	113	91	.57
INCEST-PERSONS FORBIDDEN TO MARRY-CARNALLY KNOW EACH OTH	30	25	.16
INDECENT EXPOSURE TO CHILD	96	80	.50
INJURE DESTROY PROP OF ANOTHER-DTH OCCASNED BY OFFNS	2	2	.01
INTOXICATED DRIVER INVOLVED IN ACCIDENT CAUSING DEATH	4	4	.03
KIDNAPPING	21	19	.12
KIDNAPPING FOR EXTORTION	7	7	.04
MAIMING	2	2	.01
MAL MISCHIEF - INJ DESTROY ATPT PROP OF ANOTHER	58	52	.33
MALICIOUS MISCH W/TELEGRAPH TELEPHONE/ELEC TRANSMIS LINE	1	1	.01
MURDER - ACCOMPLICE TO	4	4	.03
MURDER - DEGREE NOT SPECIFIED -	229	219	1.37
MURDER - WITH MALICE	1,336	1,276	8.00
MURDER - WITHOUT MALICE	190	188	1.18
NARC - ANY PERSON UNLAWFULLY DISPENSE	1	1	.01
NARC - ANY PERSON UNLAWFULLY POSSESS	1,949	1,604	10.06
NARC - ANY PERSON UNLAWFULLY PRESCRIBE	1	1	.01
NARC - CONTRABAND - TRANSPORT OR POSSESS	4	4	.03
NARC - FALSE STATEMENT IN PRESCRIPTION TO OBTAIN	2	1	.01
NARC - MAKE/UTTER FLS OR FORGD PRESCRIP/ORDER TO OBTAIN	4	2	.01
NARC - OBTAIN/ATMPT TO BY ALTER PRESCRIP/ORDER	1	1	.01
NARC - SELLS OR OFFERS TO SELL PROHIBITED	516	318	1.99
NARC - UNLAWFULLY HAVE/POSSESS ANY INSTR ADAPTED FOR	217	210	1.32
PANDERING PROCURE W/O CONSENT FE FOR HSE OF PROSTITUTION	2	2	.01
PASSING FORGED INSTRUMENTS	1,063	646	4.05
PERJURY - FALSE STATEMENT WRITTEN OR VERBAL UNDER OATH	5	5	.03
POSSESS BOMB ETC FOR UNLAWFUL PURPOSE/FOR COMM OF CRIME	6	6	.04
POSSESS F/ARMS B/PERSON CONVCTD FLNY INVLV F/ARMS	47	45	.28
POSSESS PARTS OF BOMB WITH INTENT TO COMBINE	1	1	.01
POSSESS WRITTEN INSTRUMENT WITH INTENT TO PASS AS TRUE	46	31	.19
POSSESSION BURGLARY TOOL	8	7	.04
PREPARING IMPLEMENTS FOR FORGERY	3	1	.01
PRESENT CREDIT CARD W/I TO DEFRAUD-3RD CONVICTN/OVER 50	56	38	.24
PRIOR CONVICTION ASSAULT W/I TO MURDER	6	6	.04
PRIOR CONVICTION ASSAULT W/I TO ROB	5	5	.03
PRIOR CONVICTION BOMB OFFENSES	2	1	.01
PRIOR CONVICTION BREAKING AND ENTERING MOTOR VEHICLE	1	1	.01

ANALYSIS OF CURRENT INMATE POPULATION BY OFFENSE

DECEMBER 31, 1971

DESCRIPTION OF OFFENSE	NUMBER OF COMMITMENTS	NUMBER OF INMATES	PERCENT INMATES
PRIOR CONVICTION BURGLARY	93	93	.58
PRIOR CONVICTION DRIVING WHILE INTOXICATED D W I	4	3	.02
PRIOR CONVICTION DRUG OFFENSE	2	2	.01
PRIOR CONVICTION ESCAPE FROM JAIL PRISON ETC	1	1	.01
PRIOR CONVICTION FORGERY	5	5	.03
PRIOR CONVICTION INDECENT EXPOSURE	1	1	.01
PRIOR CONVICTION MUR W/O MALICE	1	1	.01
PRIOR CONVICTION NARCOTIC OFFENSE	15	15	.09
PRIOR CONVICTION PANDERING	1	1	.01
PRIOR CONVICTION RAPE	1	1	.01
PRIOR CONVICTION ROB BY FIREARMS OR OTHER DEADLY WEAPON	1	1	.01
PRIOR CONVICTION ROBBERY	15	12	.08
PRIOR CONVICTION ROBBERY BY ASSAULT	40	38	.24
PRIOR CONVICTION THEFT FROM THE PERSON	4	4	.03
PRIOR CONVICTION THEFT IN GENERAL	28	28	.18
PRIOR CONVICTION THEFT OF MOTOR VEHICLES	1	1	.01
PRISONER ESCAPE FR PEN O/PRISONUSE FIREARMS	1	1	.01
PRISONER ESCAPES FR PENITENTIARY OR OTHER PRISON	11	11	.07
RAPE	695	607	3.81
RAPE - STATUTORY	85	80	.50
RAPE BY FORCE	19	18	.11
RECEIVE AND/OR CONCEAL STOLEN PROPERTY	54	49	.31
REMOVAL OR MOLESTING WITH AIRCRAFT OR INSTR FORBIDDEN	1	1	.01
REPEATER BURGLARY	19	19	.12
REPEATER DRIVING WHILE INTOXICATED D W I	5	5	.03
REPEATER FORGERY	1	1	.01
REPEATER NARCOTIC OFFENSE	1	1	.01
REPEATER RAPE	1	1	.01
REPEATER ROBBERY	1	1	.01
REPEATER ROBBERY BY ASSAULT	4	4	.03
REPEATER ROBBERY BY FIREARMS OR OTHER DEADLY SEAPON	1	1	.01
REPEATER THEFT IN GENERAL	4	4	.03
REPEATER THEFT OF ANIMALS	2	2	.01
REPEATER WORTHLESS CHECK	1	1	.01
ROBBERY	1,582	1,003	6.29
ROBBERY BY ASSAULT VIOLENCE FEAR OF LIFE OR BODILY INJRY	3,062	1,871	11.73
ROBBERY BY FIREARMS OR OTHER DEADLY WEAPON	963	754	4.73
SECURITY LAW - BLUE SKY	2	1	.01
SHOPLIFTING UPON 3RD OR ANY SUBSEQUENT CONVICTION	162	120	.75
SODOMY	96	89	.56
STEAL EDIBLE MEAT	19	17	.11
SUBORDINATION OF PERJURY OR FALSE SWEARING	1	1	.01

ANALYSIS OF CURRENT INMATE POPULATION BY OFFENSE

DECEMBER 31, 1971

DESCRIPTION OF OFFENSE	NUMBER OF COMMITMENTS	NUMBER OF INMATES	PERCENT INMATES
SUBSEQUENT OFFENSE ASSAULT W/I TO MURDER	1	1	.01
SUBSEQUENT OFFENSE ASSAULT W/I TO ROB	1	1	.01
SUBSEQUENT OFFENSE BREAKING AND ENTERING MOTOR VEHICLE	1	1	.01
SUBSEQUENT OFFENSE BURGLARY	8	8	.05
SUBSEQUENT OFFENSE DRIVING WHILE INTOXICATED D W I	90	82	.51
SUBSEQUENT OFFENSE NARCOTIC OFFENSE	6	6	.04
SUBSEQUENT OFFENSE OF DRIVING WHILE INTOXICATED- DWI	193	156	.98
SUBSEQUENT OFFENSE RECEIVE AND/OR CONCEAL STOLEN PROPERT	1	1	.01
SUBSEQUENT OFFENSE ROBBERY BY ASSAULT	21	21	.13
SUBSEQUENT OFFENSE THEFT IN GENERAL	1	1	.01
SWINDLE BY WORTHLESS CHECK	75	69	.43
THEFT & ILLEGAL TRANSPORTATION OF MERCURY	13	6	.04
THEFT BY FALSE PRETEXT	60	46	.29
THEFT FROM THE PERSON	68	65	.41
THEFT OF CATTLE OR HOG	38	29	.18
THEFT OF HORSE MULE ETC	1	1	.01
THEFT OF MOTOR VEHICLES	35	34	.21
THEFT ON BOARD BY SERVANT-VESSELS STEAMBOATS & RR CARS	1	1	.01
UNLAWFUL MFG OWN STORE KEEP SELL ETC BOMBS	1	1	.01
WILFUL BURNING/ARSON-WHEN DEATH ENSUES	1	1	.01
3RD OFFENSE ASSAULT W/I TO MURDER	1	1	.01
3RD OFFENSE BREAKING AND ENTERING MOTOR VEHICLE	1	1	.01
3RD OFFENSE BURGLARY	15	15	.09
3RD OFFENSE FORGERY	5	5	.03
3RD OFFENSE NARCOTIC OFFENSE	1	1	.01
3RD OFFENSE ROBBERY BY ASSAULT	1	1	.01
3RD OFFENSE THEFT IN GENERAL	2	2	.01
UNSPECIFIED	0	8	.05
OFFENSES FOR WHICH THE DESCRIPTION AS SHOWN ON COMMITMENT PAPERS RECEIVED FROM THE DISTRICT COURT DID NOT MATCH - PER SE - THE DESCRIPTION GLEANED FROM A REVIEW OF THE VERNONS TEXAS CRIMINAL STATUTES	1,556		7.76
TOTAL INMATES		15,951	
TOTAL COMMITMENTS		29,630	
NUMBER COMMITMENTS PER INMATE			1.9

COMPUTER REPORT PDSPD72042

ANALYSIS OF CURRENT INMATE POPULATION  
BY EDUCATIONAL ACHIEVEMENT      DECEMBER 31, 1971

SCORE RANGES	ORIGINAL TOTAL	CURRENT TOTAL
NOT TESTED	613	108
ILLITERATE	1,825	872
LESS THAN 01.0	47	25
01.0 TO 02.0	4	1
02.0 TO 03.0	0	0
03.0 TO 04.0	1,230	893
04.0 TO 05.0	2,022	1,673
05.0 TO 06.0	2,223	2,372
06.0 TO 07.0	2,178	2,299
07.0 TO 08.0	2,146	2,445
08.0 TO 09.0	1,591	1,977
09.0 TO 10.0	995	1,836
10.0 TO 11.0	539	780
11.0 TO 12.0	310	372
12.0 OR OVER	228	298
	15,951	15,951

COMPUTER REPORT PDSPD72042

ANALYSIS OF CURRENT INMATE POPULATION  
BY IQ SCORES      DECEMBER 31, 1971

SCORE RANGES	ORIGINAL TOTAL	CURRENT TOTAL
NOT TESTED	2,096	1,679
ILLITERATE	7	7
LESS THAN 30	101	91
30 TO 50	457	481
50 TO 60	528	538
60 TO 70	1,135	1,146
70 TO 80	1,900	1,935
80 TO 100	5,299	5,472
100 TO 120	4,004	4,171
120 TO 150	422	429
150 OR OVER	2	2
	15,951	15,951

COMPUTER REPORT PDSPD72042

ANALYSIS OF CURRENT INMATE POPULATION BY RELIGION  
DECEMBER 31, 1971

RELIGION	TOTAL
UNSPECIFIED	4,070
ALL OTHERS	7
HEBREW OR JEWISH	1
NO AFFILIATION	212
PROTESTANTS	55
BAHAI FAITH	1
BUDDHIST	3
MOSLEMS	3
SPIRITUALISTS	1
ATHIEST	2
ROMAN CATHOLIC	2,021
UNION OF ORTHODOX JEWISH CONG OF AMERICA	1
MUSLIM	5
ADVENTIST BODIES	11
APOSTOLIC FAITH	2
ARMENIAN CHURCH OF AMERICA	1
ASSEMBLIES OF GOD	59
BAPTIST BODIES	7,125
CHRISTIAN CHURCH, INTERNATL. CONV.	468
CHRISTIAN CHURCH OF NORTH AMERICA	94
CHRISTIAN AND MISSIONARY ALLIANCE	1
CHRISTIAN SCIENTISTS	14
CHRISTS SANTIFIED HOLY CHURCH	1
CHURCHES OF CHRIST	17
CHURCH OF GOD	89
CHURCH OF GOD IN CHRIST	13
CHURCH OF THE NAZARENE	21
CONGREGATIONAL CHRISTIAN CH. NATL. ASSN.	2
EVANGELICAL COVENANT CHURCH OF AMERICA	1
EVANGELISTIC ASSOCIATIONS - APOSTOLIC	1
EPISCOPAL CHURCH - PROTESTANT	75
HOLINESS - CHURCH OF CHRIST	10
HOLINESS - CHURCHES OF GOD	186
JEHOVAH WITNESSES	25
LATTER DAY SAINTS MDRMANS	39
LUTHERAN BODIES	109
MENNONITE BODIES	1
METHODIST BODIES	860
PENTECOSTAL ASSEMBLIES	225
PRESBYTERIAN BODIES	115
UNITARIAN UNIVERSALIST ASSN. UNITED IN CHRIST, BRETHERN.	3
UNITED HOLY CHURCH OF AMERICA	1
<b>TOTAL INMATES</b>	<b>15,951</b>

COMPUTER REPORT PDSPD72042

ANALYSIS OF CURRENT INMATE POPULATION  
BY NATIVITY AND RESIDENCE DECEMBER 31, 1971

LOCATION	NATIVITY	RESIDENCE
NOT IDENTIFIED	376	285
ANDERSON COUNTY	60	16
ANDREWS COUNTY	0	3
ANGELINA COUNTY	45	34
ARANSAS COUNTY	6	11
ARCHER COUNTY	3	2
ARMSTRONG COUNTY	0	0
ATASCOSA COUNTY	32	13
AUSTIN COUNTY	32	7
BAILEY COUNTY	2	12
BANDERA COUNTY	1	2
BASTROP COUNTY	59	20
BAYLOR COUNTY	10	2
BEE COUNTY	17	6
BELL COUNTY	94	181
BEXAR COUNTY	898	1,152
BLANCO COUNTY	2	0
BORDEN COUNTY	0	0
BOSQUE COUNTY	11	2
BOWIE COUNTY	72	62
BRAZORIA COUNTY	36	67
BRAZOS COUNTY	62	38
BREWSTER COUNTY	12	4
BRISCOE COUNTY	1	3
BROOKS COUNTY	9	5
BROWN COUNTY	37	24
BURLESON COUNTY	23	7
BURNET COUNTY	13	6
CALDWELL COUNTY	72	17
CALHOUN COUNTY	10	21
CALLAHAN COUNTY	4	4
CAMERON COUNTY	109	82
CAMP COUNTY	26	5
CARSON COUNTY	2	4
CASS COUNTY	49	14
CASTRO COUNTY	3	15
CHAMBERS COUNTY	10	3
CHEROKEE COUNTY	65	17
CHILDRESS COUNTY	16	6
CLAY COUNTY	4	1
COCHRAN COUNTY	4	5
COKE COUNTY	3	0
COLEMAN COUNTY	24	6

COMPUTER REPORT PDSPD72042

ANALYSIS OF CURRENT INMATE POPULATION  
BY NATIVITY AND RESIDENCE DECEMBER 31, 1971

LOCATION	NATIVITY	RESIDENCE
COLLIN COUNTY	66	46
COLLINGSWORTH COUNTY	7	3
COLORADO COUNTY	36	9
COMAL COUNTY	17	9
COMANCHE COUNTY	11	7
CONCHO COUNTY	0	0
COOKE COUNTY	20	14
CORYELL COUNTY	15	15
COTTLE COUNTY	13	3
CRANE COUNTY	2	3
CROCKETT COUNTY	6	0
CROSBY COUNTY	5	4
CULBERSON COUNTY	3	2
DALLAM COUNTY	3	7
DALLAS COUNTY	1,318	3,150
DAWSON COUNTY	31	15
DEAF SMITH COUNTY	3	26
DELTA COUNTY	21	4
DENTON COUNTY	64	75
DEWITT COUNTY	49	20
DICKINS COUNTY	10	5
DIMMIT COUNTY	4	1
DONLEY COUNTY	3	1
DUVAL COUNTY	17	5
EASTLAND COUNTY	34	9
ECTOR COUNTY	27	159
EDWARDS COUNTY	9	2
ELLIS COUNTY	116	44
EL PASO COUNTY	89	149
ERATH COUNTY	13	8
FALLS COUNTY	89	20
FANNIN COUNTY	55	12
FAYETTE COUNTY	34	4
FISHER COUNTY	15	2
FLOYD COUNTY	10	4
FOARD COUNTY	7	0
FORT BEND COUNTY	81	31
FRANKLIN COUNTY	11	4
FREESTONE COUNTY	35	3
FRIO COUNTY	9	3
GAINES COUNTY	4	8
GALVESTON COUNTY	155	183
GARZA COUNTY	3	6
GILLESPIE COUNTY	4	1

COMPUTER REPORT PDSPD72042

ANALYSIS OF CURRENT INMATE POPULATION  
BY NATIVITY AND RESIDENCE DECEMBER 31, 1971

LOCATION	NATIVITY	RESIDENCE
GLASSCOCK COUNTY	0	2
GOLIAD COUNTY	12	4
GONZALES COUNTY	61	25
GRAY COUNTY	12	25
GRAYSON COUNTY	68	52
GREGG COUNTY	137	135
GRIMES COUNTY	46	11
GUADALUPE COUNTY	41	27
HALE COUNTY	14	44
HALL COUNTY	21	6
HAMILTON COUNTY	5	4
HANSFORD COUNTY	1	10
HARDEMAN COUNTY	12	2
HARDIN COUNTY	24	26
HARRIS COUNTY	1,502	3,679
HARRISON COUNTY	152	72
HARTLEY COUNTY	2	0
HASKELL COUNTY	17	10
HAYS COUNTY	32	9
HEMPHILL COUNTY	1	0
HENDERSON COUNTY	48	18
HIDALGO COUNTY	102	97
HILL COUNTY	55	17
HOCKLEY COUNTY	16	8
HOOD COUNTY	4	1
HOPKINS COUNTY	39	20
HOUSTON COUNTY	64	9
HOWARD COUNTY	47	59
HUDSPETH COUNTY	2	2
HUNT COUNTY	89	28
HUTCHINSON COUNTY	15	23
IRION COUNTY	3	1
JACK COUNTY	10	1
JACKSON COUNTY	20	14
JASPER COUNTY	27	12
JEFF DAVIS COUNTY	2	1
JEFFERSON COUNTY	232	308
JIM HOGG COUNTY	1	0
JIM WELLS COUNTY	29	22
JOHNSON COUNTY	29	19
JONES COUNTY	42	13
KARNES COUNTY	41	14
KAUFMAN COUNTY	105	22
KENDALL COUNTY	3	2

COMPUTER REPORT PDSPD72042

ANALYSIS OF CURRENT INMATE POPULATION  
BY NATIVITY AND RESIDENCE DECEMBER 31, 1971

LOCATION	NATIVITY	RESIDENCE
KENEDY COUNTY	1	0
KENT COUNTY	4	0
KERR COUNTY	7	9
KIMBLE COUNTY	1	1
KING COUNTY	0	0
KINNEY COUNTY	2	2
KLEBERG COUNTY	18	18
KNOX COUNTY	14	1
LAMAR COUNTY	72	22
LAMB COUNTY	12	12
LAMPASAS COUNTY	15	4
LA SALLE COUNTY	7	2
LAVACA COUNTY	24	9
LEE COUNTY	17	7
LEON COUNTY	51	13
LIBERTY COUNTY	32	28
LIMESTONE COUNTY	78	7
LIPSCOMB COUNTY	1	2
LIVE OAK COUNTY	8	2
LLANO COUNTY	11	5
LOVING COUNTY	0	0
LUBBOCK COUNTY	94	216
LYNN COUNTY	9	6
MCCULLOCH COUNTY	10	6
MCLENNAN COUNTY	237	227
MCMULLEN COUNTY	1	1
MADISON COUNTY	34	5
MARION COUNTY	30	7
MARTIN COUNTY	11	2
MASON COUNTY	2	2
MATAGORDA COUNTY	36	26
MAVERICK COUNTY	9	4
MEDINA COUNTY	12	8
MENARD COUNTY	4	3
MIDLAND COUNTY	38	103
MILAM COUNTY	61	4
MILLS COUNTY	2	0
MITCHELL COUNTY	12	2
MONTAGUE COUNTY	14	12
MONTGOMERY COUNTY	40	25
MOORE COUNTY	5	12
MORRIS COUNTY	27	5
MOTLEY COUNTY	4	1
NACOGDOCHES COUNTY	67	39

COMPUTER REPORT PDSPD72042

ANALYSIS OF CURRENT INMATE POPULATION  
BY NATIVITY AND RESIDENCE DECEMBER 31, 1971

LOCATION	NATIVITY	RESIDENCE
NAVARRO COUNTY	102	33
NEWTON COUNTY	24	5
NOLAN COUNTY	32	23
NUECES COUNTY	218	246
OCHILTREE COUNTY	4	13
OLDHAM COUNTY	0	1
ORANGE COUNTY	33	32
PALO PINTO COUNTY	24	43
PANOLA COUNTY	51	18
PARKER COUNTY	15	20
PARMER COUNTY	1	3
PECOS COUNTY	15	10
POLK COUNTY	35	6
POTTER COUNTY	70	210
PRESIDIO COUNTY	15	7
RAINS COUNTY	9	1
RANDALL COUNTY	2	6
REAGAN COUNTY	1	1
REAL COUNTY	1	0
RED RIVER COUNTY	33	6
REEVES COUNTY	27	17
REFUGIO COUNTY	18	8
ROBERTS COUNTY	1	0
ROBERTSON COUNTY	77	13
ROCKWALL COUNTY	26	5
RUNNELS COUNTY	27	10
RUSK COUNTY	100	34
SABINE COUNTY	10	9
SAN AUGUSTINE COUNTY	24	4
SAN JACINTO COUNTY	14	2
SAN PATRICIO COUNTY	52	33
SAN SABA COUNTY	11	11
SCHLEICHER COUNTY	3	1
SCURRY COUNTY	18	21
SHACKELFORD COUNTY	3	3
SHELBY COUNTY	61	41
SHERMAN COUNTY	1	5
SMITH COUNTY	148	111
SOMERVELL COUNTY	3	2
STARR COUNTY	11	2
STEPHENS COUNTY	13	15
STERLING COUNTY	1	0
STONEWALL COUNTY	3	0
SUTTON COUNTY	1	4



COMPUTER REPORT PDSPD72042  
 ANALYSIS OF CURRENT INMATE POPULATION  
 BY NATIVITY AND RESIDENCE DECEMBER 31, 1971

LOCATION	NATIVITY	RESIDENCE
SWISHER COUNTY	8	5
TARRANT COUNTY	482	1,050
TAYLOR COUNTY	85	152
TERRELL COUNTY	2	1
TERRY COUNTY	15	10
THROCKMORTON COUNTY	3	3
TITUS COUNTY	28	17
TOM GREEN COUNTY	70	91
TRAVIS COUNTY	317	523
TRINITY COUNTY	23	5
TYLER COUNTY	9	5
UPSHUR COUNTY	36	14
UPTON COUNTY	2	6
UVALDE COUNTY	13	11
VAL VERDE COUNTY	16	11
VAN ZANDT COUNTY	32	4
VICTORIA COUNTY	39	60
WALKER COUNTY	54	17
WALLER COUNTY	24	7
WARD COUNTY	9	10
WASHINGTON COUNTY	37	8
WEBB COUNTY	50	23
WHARTON COUNTY	61	22
WHEELER COUNTY	8	4
WICHITA COUNTY	89	98
WILBARGER COUNTY	38	23
WILLACY COUNTY	12	4
WILLIAMSON COUNTY	67	12
WILSON COUNTY	27	7
WINKLER COUNTY	4	6
WISE COUNTY	19	7
WOOD COUNTY	35	9
YOAKUM COUNTY	1	3
YOUNG COUNTY	12	12
ZAPATA COUNTY	1	0
ZAVALA COUNTY	14	7
	11,861	14,951
DIST. OF COLUMBIA	10	3
ALABAMA	134	14
ALASKA	1	1
ARIZONA	43	24
ARKANSAS	295	33
CALIFORNIA	124	77

COMPUTER REPORT PDSPD72042  
 ANALYSIS OF CURRENT INMATE POPULATION  
 BY NATIVITY AND RESIDENCE DECEMBER 31, 1971

LOCATION	NATIVITY	RESIDENCE
COLORADO	28	24
CONNECTICUT	7	1
DELAWARE	2	0
FLORIDA	58	34
GEORGIA	65	16
HAWAII	4	2
IDAHO	2	1
ILLINOIS	112	29
INDIANA	71	14
IOWA	29	2
KANSAS	71	18
KENTUCKY	51	12
LOUISIANA	862	79
MAINE	3	0
MARYLAND	24	2
MASSACHUSETTS	33	6
MICHIGAN	101	22
MINNESOTA	28	4
MISSISSIPPI	148	7
MISSOURI	126	28
MONTANA	7	2
NEBRASKA	15	3
NEVADA	4	7
NEW HAMPSHIRE	5	1
NEW JERSEY	24	9
NEW MEXICO	84	37
NEW YORK	78	15
NORTH CAROLINA	55	12
NORTH DAKOTA	8	0
OHIO	93	15
OKLAHOMA	416	69
OREGON	8	4
PENNSYLVANIA	44	8
RHODE ISLAND	2	0
SOUTH CAROLINA	30	5
SOUTH DAKOTA	14	0
TENNESSEE	100	16
TEXAS	11,861	14,951
UTAH	6	4
VERMONT	2	1
VIRGINIA	42	11
WASHINGTON	42	10
WEST VIRGINIA	28	1
WISCONSIN	16	3

COMPUTER REPORT PDSPD72042  
 ANALYSIS OF CURRENT INMATE POPULATION  
 BY NATIVITY AND RESIDENCE DECEMBER 31, 1971

LOCATION	NATIVITY	RESIDENCE
WYOMING	6 15,422	1 15,638
AUSTRIA	3	0
CANADA	3	0
CUBA	4	0
ENGLAND	4	0
GERMANY	15	1
ITALY	1	0
JAPAN	1	0
MEXICO	102	26
PANAMA	3	0
PUERTO RICO	11	0
POLAND	2	0
SICILY	1	0
SOUTH AMERICA	2	0
WEST INDIES	1	0
YUCATAN	0	1
	153	28
TOTAL INMATES	15,951	15,951

COMPUTER REPORT PDSPD72042  
 ANALYSIS OF CURRENT INMATE POPULATION BY OCCUPATION  
 DECEMBER 31, 1971

OCCUPATION	NUMBER OF INMATES
PROFESSIONAL AND MANAGERIAL OCCUPATIONS	
PROFESSIONAL OCCUPATIONS	133
SEMI-PROFESSIONAL OCCUPATIONS	161
MANAGERIAL AND OFFICIAL OCCUPATIONS	32
CLERICAL AND SALES OCCUPATIONS	
CLERICAL AND KINDRED OCCUPATIONS	571
SALES AND KINDRED OCCUPATIONS	197
SERVICE OCCUPATIONS	
DOMESTIC SERVICE OCCUPATIONS	215
PERSONAL SERVICE OCCUPATIONS	1,570
PROTECTIVE SERVICE OCCUPATIONS	4
BUILDING SERVICE WORKERS AND PORTERS	573
AGRICULTURAL, FISHERY, FORESTRY, AND KINDRED OCCUPATIONS	
AGRICULTURAL AND HORTICULTURAL OCCUPATIONS, ETC	511
FISHERY OCCUPATIONS	23
SKILLED OCCUPATIONS	
MANUFACTURING AND RELATED ACTIVITIES	944
NONMANUFACTURING ACTIVITIES	1,295
MISCELLANEOUS SKILLED OCCUPATIONS	748
FOREMEN	4
SEMISKILLED OCCUPATIONS	
MANUFACTURING AND RELATED ACTIVITIES	255
NONMANUFACTURING ACTIVITIES	2,210
MISCELLANEOUS SEMISKILLED OCCUPATIONS	296
APPRENTICES	240
UNSKILLED OCCUPATIONS	
MANUFACTURING AND RELATED ACTIVITIES	478
NONMANUFACTURING ACTIVITIES	1,195
MISCELLANEOUS UNSKILLED OCCUPATIONS	4,296
TOTAL INMATES	15,951

COMPUTER REPORT PDSPD72045  
ANALYSIS OF CURRENT INMATE POPULATION BY AGE GROUP  
DECEMBER 31, 1971

AGE GROUP	TOTALS
17 TO 20	958
20 TO 25	4,491
25 TO 30	3,625
30 TO 35	2,243
35 TO 40	1,501
40 TO 50	1,893
50 TO 60	752
60 TO 70	233
70 AND OVER	25
NOT SPECIFIED	230
TOTAL INMATES	15,951

**END**