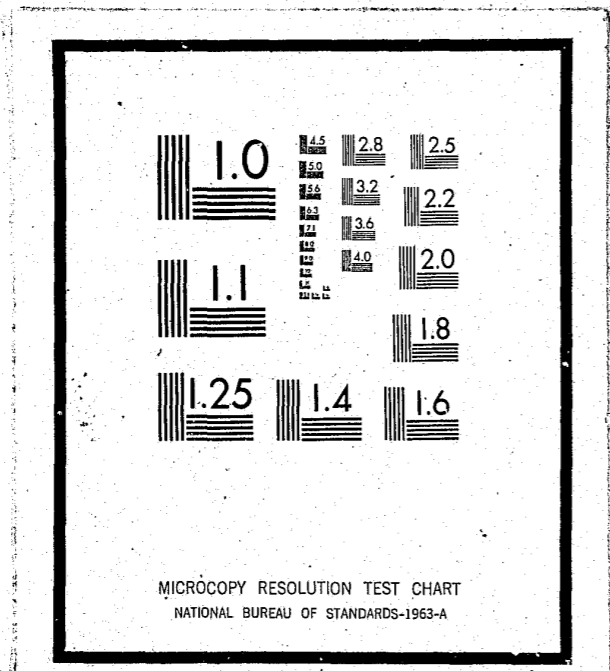


NCJRS

This microfiche was produced from documents received for inclusion in the NCJRS data base. Since NCJRS cannot exercise control over the physical condition of the documents submitted, the individual frame quality will vary. The resolution chart on this frame may be used to evaluate the document quality.



Microfilming procedures used to create this fiche comply with the standards set forth in 41CFR 101-11.504

Points of view or opinions stated in this document are those of the author(s) and do not represent the official position or policies of the U.S. Department of Justice.

U.S. DEPARTMENT OF JUSTICE
LAW ENFORCEMENT ASSISTANCE ADMINISTRATION
NATIONAL CRIMINAL JUSTICE REFERENCE SERVICE
WASHINGTON, D.C. 20531

Date filmed

8/26/75

161410

TENTH ANNUAL REPORT 1973 MINNESOTA COURTS



SUPREME COURT OF MINNESOTA
OFFICE OF THE
STATE COURT ADMINISTRATOR

THE SUPREME COURT OF MINNESOTA
ST. PAUL

OFFICE OF
STATE COURT ADMINISTRATOR

To Chief Justice Robert J. Sheran
To Senate and House of Representatives
To The Judicial Council of Minnesota

Submitted herewith, as required by Minnesota Statutes §480.15, is the annual statistical report of the judicial business transacted by the courts of Minnesota during 1973.

Statistics for the new county courts are not available at this time due to computer problems. Rather than delay the printing of this report, we plan to prepare a supplemental issue containing the county court statistics when they are available.

We are also involved in an eleven state program known as the "State Judicial Information System Project", which is funded by the L.E.A.A. Benefits to accrue to the Minnesota Court Systems from this project are many. They may be summarized as follows:

- . minimum increase in overall court work burden
- . speedy trial information
- . better information at the local and state level for planning
- . better administration of justice

The caseload of the Supreme Court continues to increase; however, the additions of two associate justices and the system of prescreening by the commissioner's staff have made it possible for the courts to remain current. Having appeals from county courts heard by the district judges and then by the Supreme Court only by permission is also helpful, although quite a lot of work is required in arriving at the decision as to whether or not to grant permission for the appeal to the Supreme Court.

The district courts are maintaining their positions of currency and the time for filing to trial, while it might be reduced slightly, is just about the optimum to permit the attorneys to complete all pretrial proceedings.

After January 1, 1975 there will be only two municipal courts remaining in the state, which are in Hennepin and Ramsey Counties. With the exception of these two counties, the court system will be uniform and consist of the County Court, District Court and Supreme Court. Hennepin and Ramsey Counties will continue to have separate probate courts, juvenile and family court divisions of the District Courts.

Hopefully, the statistics for the year ending December 31, 1974 will be accurate and include all courts and that the end of 1975 will see the completion of the State Judicial Information System Project and we will be able to provide a great deal more information in the annual report than is now possible.

Respectfully submitted,

Richard E. Klein
State Court Administrator

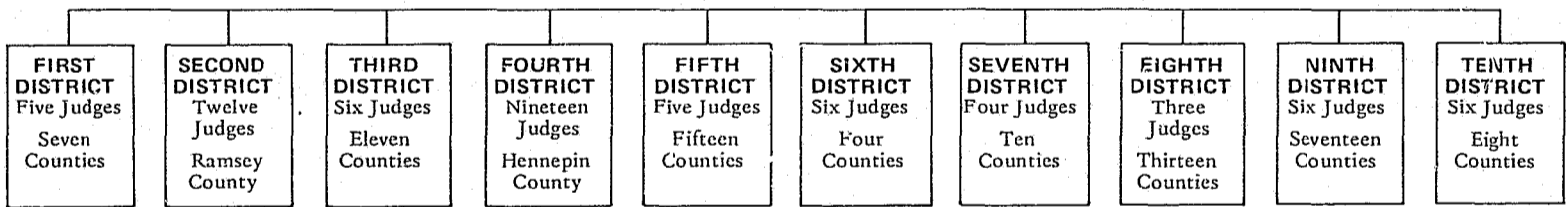
TABLE OF CONTENTS

| | |
|---------------------------------------|----|
| Court Organization Chart | 1 |
| Information Chart | 2 |
| Judicial District Map | 3 |
| Minnesota Couhty Courts Map | 4 |
| The Supreme Court | 5 |
| The District Courts | 9 |
| Comparative Tables - 1971 - 1973 | 10 |
| Judicial Statistics: District Courts | 22 |
| Cost of District Courts - 1973 | 31 |
| Judicial Statistics: Municipal Courts | 34 |
| Cost of Municipal Courts - 1973 | 39 |
| Cost of Probate/County Courts - 1973 | 40 |
| Members of the Judiciary | 43 |

THE SUPREME COURT
 Chief Justice and Six Associate Justices elected for six year terms. General appellate jurisdiction. Original jurisdiction as prescribed by law.

DISTRICT COURT

Original jurisdiction in all civil actions; all cases of crime, special proceedings not exclusively cognizable by some other court; appellate jurisdiction as prescribed by law.*



COUNTY COURT***

Exclusive original jurisdiction in administration of estates of deceased persons, guardianships and incompetency proceedings and juvenile matters. Concurrent jurisdiction in civil matters in which amount in controversy does not exceed \$5,000.**

67 County Court Districts
 85 Counties
 99 Judges

PROBATE COURT

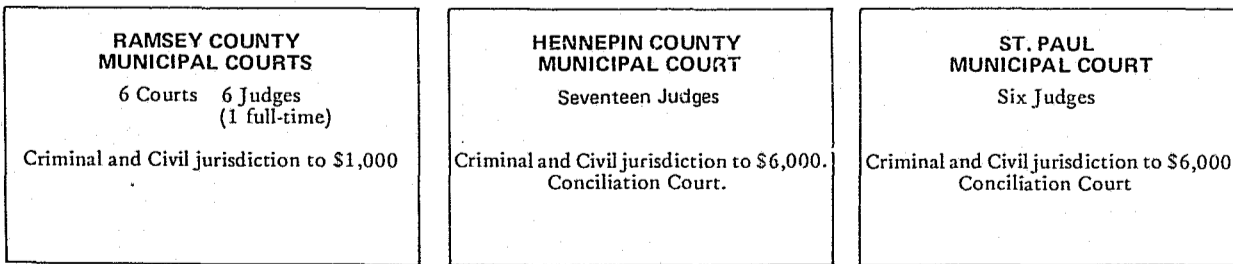
Original jurisdiction in law and equity for the administration of estates of deceased persons and all guardianship and incompetency proceedings and such further jurisdiction as the legislature may establish in these three counties.****

HENNEPIN COUNTY
 One Judge

RAMSEY COUNTY
 One Judge

MUNICIPAL COURT

Civil jurisdiction as specified (except cases involving title to real estate); forcible entry and detainer; petty misdemeanors; misdemeanors; ordinance violations; preliminary hearings in criminal



JUSTICES OF THE PEACE
 387 Active
 jurisdiction over pleas of guilty in misdemeanors, petty misdemeanors and ordinance violations, and in default civil cases where the amount in question is less than \$100.

*Also Juvenile Court jurisdiction in the Second and Fourth Districts.

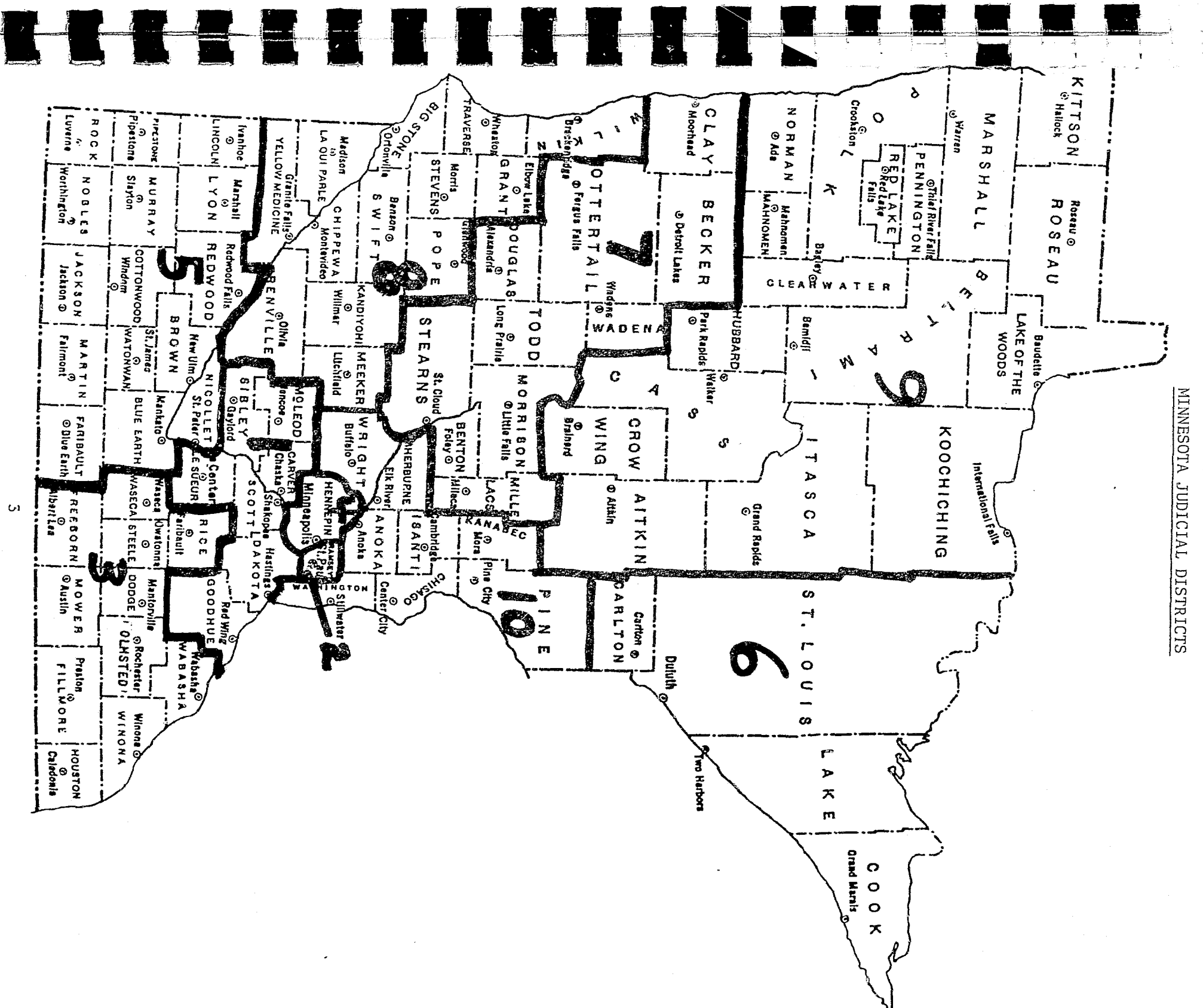
**Criminal jurisdiction over misdemeanors, petty misdemeanors, violations of ordinance, charter provisions, rule or regulation and over preliminary hearings. Appellate jurisdiction as prescribed by law.

***In 1971, in all counties except Hennepin, Ramsey and St. Louis, a County Court was created to be in existence no later than July 1, 1972, incorporating the Probate and Municipal Courts and adding some concurrent jurisdiction with the District Courts.

****The Probate Court in St. Louis County also has Juvenile Court jurisdiction.

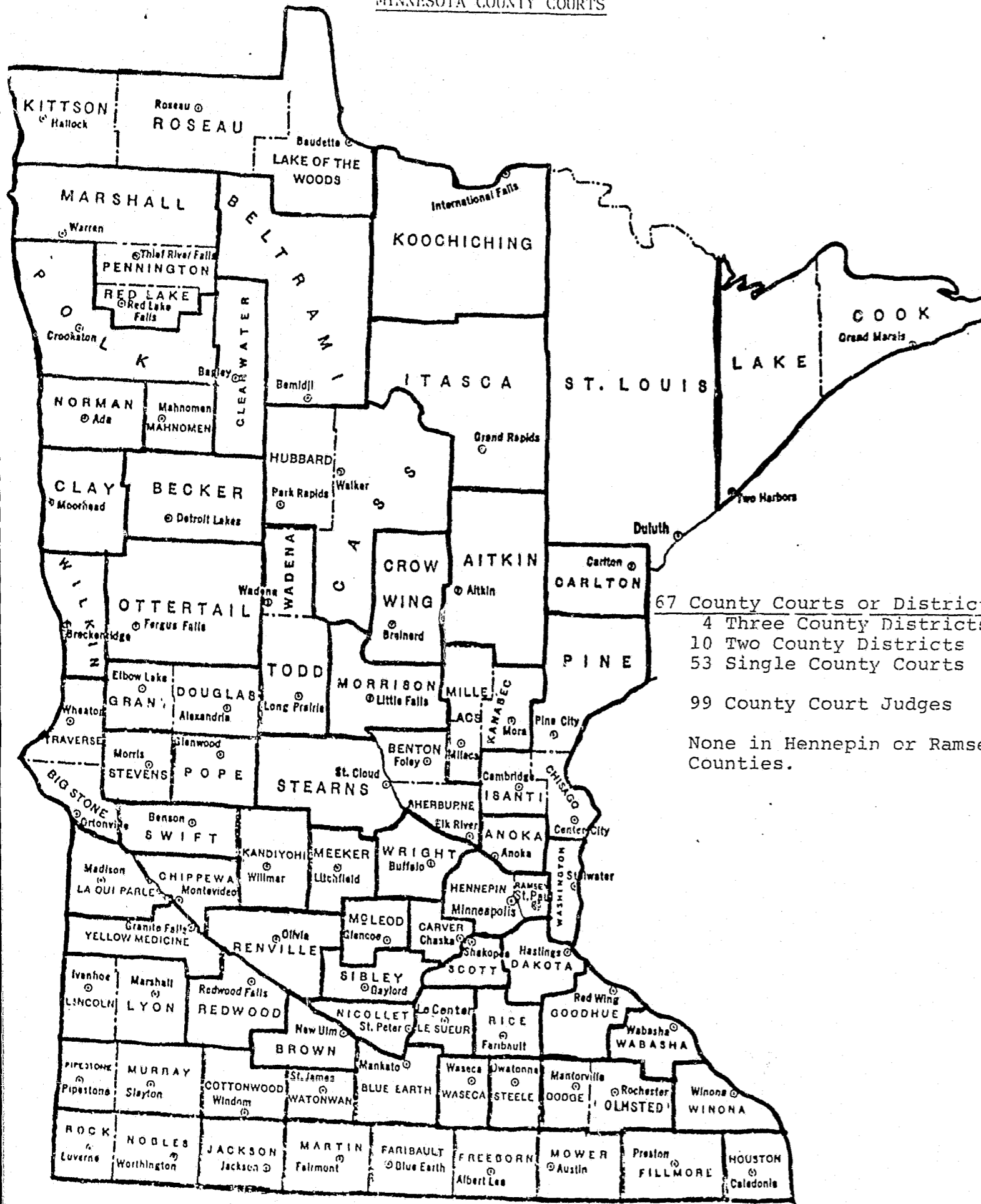
| COURT | JURISDICTION | JUDICIAL QUALIFICATIONS | TERM OF OFFICE | METHOD OF SELECTION ¹ | METHOD OF REMOVAL | SALARY | RETIREMENT |
|------------------------|--|---------------------------------|----------------|----------------------------------|--|-----------------------|---|
| SUPREME COURT | Original jurisdiction in such remedial cases as may be prescribed by law, and appellate jurisdiction in all cases. | Learned in the law | Six years | Statewide election | Impeachment | \$32,500 ² | At age 70 after serving two full terms; at age 65 with minimum of 15 years service. Benefits equal to one-half salary plus 2½ percent for each year of service in excess of two terms. (The 2½ percent increment is limited to a maximum of 10 years.) |
| DISTRICT COURT | Original jurisdiction in all civil and criminal cases. Appellate jurisdiction as prescribed by law. | Learned in the law | Six years | Election within district | Impeachment; removal by governor after hearing on petition alleging mental or physical incapacity. | \$29,000 ³ | At age 70 with 15 years of service or at age 65 with 25 years as judge or a court of record. Benefits equal to one-half compensation allotted for the office. |
| PROBATE COURT | Unlimited original jurisdiction in law and equity for the administration of estates of deceased persons and all guardianship and incompetency proceedings and such further jurisdiction as the legislature may establish. | Learned in the law ⁴ | Six years | County election | Removal by governor for malfeasance or non-feasance in performance of official duties. May be removed by Supreme Court upon recommendation of the Commission on Judicial Standards. | \$7,150 to \$29,000 | At age 70 with 20 years of service in court of record, or at age 65 with 24 years of service. Benefits equal to one-half compensation but subject to diminution by amount of other pension. |
| COUNTY COURT | Exclusive original jurisdiction in administration of estates of deceased persons, guardianship and incompetency proceedings and juvenile matters. Concurrent jurisdiction in civil matters in which amount in controversy does not exceed \$5,000. Criminal jurisdiction over misdemeanors, petty misdemeanors, violations of ordinance, charter provision, rule or regulation and over preliminary hearings. Appellate jurisdiction as prescribed by law. | Learned in the law ⁴ | Six years | County election ⁶ | May be removed by Supreme Court upon recommendation of Commission on Judicial Standards. | \$20,000 to \$24,000 | If a county court judge has served as a probate judge or referee, and if at the expiration of his term, he is over 65 and under 70 and has served as judge or referee for ten years, upon age 70 he shall receive ½ of the 1970 compensation for the remainder of his life reduced 1/20 for each year less than 20 he has served. |
| MUNICIPAL COURT | Civil jurisdiction to \$6,000 in Hennepin County; to \$4,000 in Hennepin County and St. Paul in Duluth Municipal Court and \$1,000 in all other municipal courts (except in cases involving title to real estate); forcible entry and detainer; petty misdemeanor, misdemeanor, and ordinance violations and preliminary hearings in criminal matters. | Learned in the law ⁵ | Six years | Municipal election | Removal by governor for malfeasance or non-feasance in performance of official duties. May be removed by Supreme Court upon recommendations of the Commission on Judicial Standards. | \$240 to \$26,000 | No uniform retirement plan. Participation in PERA optional. |

1. Vacancies filled by appointment by the governor.
2. Chief Justice receives \$35,000.
3. Judges in counties with population of over 200,000 incumbent to \$1,500 supplement.
4. See paragraph (b) of Schedule in Judicial Article. Incumbent non-lawyer judges deemed "learned in the law" for the purpose of continuing in and re-election to office.
5. Non-lawyer may be appointed if no qualified person available. Sec. 488.06 (5).
6. Initially, probate judges in office on July 1, 1972 became county court judges and were eligible for reelection. Henceforth, election in county court district.



MINNESOTA JUDICIAL DISTRICTS

MINNESOTA COUNTY COURTS



67 County Courts or District
 4 Three County Districts
 10 Two County Districts
 53 Single County Courts
 99 County Court Judges
 None in Hennepin or Ramsey
 Counties.

THE SUPREME COURT

Even though filings increased substantially in 1973 the number of hearings decreased during the same period. It must be assumed that unless many of the appeals are dismissed, the number of hearings will increase during 1974 in order to dispose of the difference. Hearings of regular appeals decreased by 8.58% to 341 and hearings of special matters decreased by 1.79% to 219. The size of the court was increased on July 1, 1973 by adding two associate justices, thereby reaching the limit of one chief justice and eight associate justices permitted by the state constitution. The commissioners continue to pre-screen cases and prepare full scale memoranda in those cases placed on the calendar for disposition without oral argument. Thirty-four of the cases in which opinions were filed in 1973 were on the non-oral argument calendars. The court continued the practice of having one district court judge sit as a member of the court on division cases.

The following table shows the total number of filings each year commencing in 1964. Many special matters are disposed of after conference under Rule 120.02 of the Rules of Civil Appellate Procedure and are not filed and, therefore, are not included.

| Year | Matters Filed |
|------|---------------|
| 1964 | 419 |
| 1965 | 449 |
| 1966 | 470 |
| 1967 | 525 |
| 1968 | 578 |
| 1969 | 631 |
| 1970 | 576 |
| 1971 | 584 |
| 1972 | 603 |
| 1973 | 677 |

The average time from filing of notice of appeal to release of opinion decreased slightly to 15.1 months down .4 months from 1972. The change to monthly from quarterly calendars and the restrictions imposed on extensions of time for filing transcripts and briefs resulted in the average time from filing notice of appeal to submission or hearing decreasing by 1.5 months to 11.0 months.

The average time from submission or hearing to filing of opinion, which has remained at near 3 months for the past few years, increased to 4.1 months. It is hoped that the expanded use of the calendar of cases to be decided without oral argument and the hearing of more cases by divisions of only three justices will allow the justices more time for the writing of opinions and reduce this time substantially. It must be remembered, however, that certain cases necessarily take considerably longer than others for a decision to be reached and opinion written and filed.

Time spent in preparing to move and actually moving to temporary quarters and the problems connected with being housed in such quarters away from the library undoubtedly contributed to the increase in the time between hearing and opinion.

SUPREME COURT
VOLUME OF CASES
(1958 - 1973)

| <u>Year</u> | <u>Regular</u> | <u>Special</u> | <u>Total</u> | <u>Opinions Filed</u> |
|-------------------------------|----------------|----------------|--------------|-----------------------|
| 1958 | 149 | 71 | 220 | 184 |
| 1959 | 163 | 57 | 230 | 182 |
| 1960 | 174 | 54 | 216 | 174 |
| 1961 | 171 | 83 | 254 | 179 |
| 1962 | 180 | 95 | 275 | 222 |
| 1963 | 173 | 100 | 273 | 194 |
| 1964 | 192 | 127 | 319 | 207 |
| 1965 | 214 | 87 | 301 | 215 |
| 1966 | 235 | 89 | 324 | 242 |
| 1967 | 277 | 95 | 372 | 280 |
| 1968 | 291 | 109 | 400 | 313 |
| 1969 | 316 | 121 | 437 | 335 |
| 1970 | 329 | 180 | 509 | 328 |
| 1971 | 339 | 196 | 535 | 322 |
| 1972 | 373 | 223 | 596 | 371 |
| 1973 | 341 | 219 | 560 | 341 |
| Change from 1972 | -8.58% | -1.79% | -6.04% | -8.09% |
| 3 Year Average (1971-1973) | 351 | 213 | 564 | 345 |

SUPREME COURT

TYPES OF CASES

| | 1969 | 1970 | 1971 | 1972 | 1973 |
|---|------|------|------|------|------|
| Civil Appeals | 204 | 207 | 212 | 209 | 237 |
| Criminal Appeals & Post Convictions | 81 | 87 | 99 | 113 | 63 |
| Criminal Cases - Habeas Corpus & Other Extraordinary Writs | 5 | 7 | 3 | | 2 |
| Certiorari - Workmen's Compensation Comm. | 19 | 16 | 12 | 24 | 21 |
| Other Extraordinary Writs | 2 | | 5 | 8 | 4 |
| Tax Court Writs | 2 | 3 | 5 | 10 | 5 |
| Department of Employment Services Writs | 1 | 2 | 2 | 2 | 6 |
| Rehearings | 2 | 3 | 1 | 4 | |
| Code For Professional Responsibility | | 2 | | 2 | 3 |
| Petitions for Reinstatement by Disbarred Attorneys | | 2 | | 1 | |
| Total Cases Heard | 316 | 329 | 339 | 373 | 341 |
| Special Matters - including Motions, Petitions for Extraordinary Writs, Disbarments, etc. | 121 | 180 | 196 | 223 | 219 |
| TOTAL | 437 | 509 | 535 | 596 | 560 |

Motions for extensions of time for filing transcripts and briefs which are submitted to the Court Administrator as referee pursuant to Rules 110.02 and 131.011 of the Rules of Civil Appellate Procedure. -----426

DISTRICT COURT

COMMENTS AND ANALYSIS

The accompanying tables and statistics clearly show that the District Courts of Minnesota are in a very current position. The two largest courts (Ramsey and Hennepin Counties) have a delay in jury cases of less than 9 months. Ramsey County has the longest delay in court cases which is 6.2 months.

DELAY TABLES
Jury Cases

| | 1973 Terminations Per Month | Total Cases Pending 12-31-73 | Delay Months | Change From 1972 |
|--------------------|-----------------------------|------------------------------|--------------|------------------|
| Hennepin | 265.8 | 2273 | 8.6 | + .9 |
| Ramsey | 148.4 | 915 | 6.2 | +2.1 |
| Anoka | 19.1 | 242 | 12.7 | - .4 |
| Washington | 15.2 | 95 | 6.3 | +2.1 |
| St. Louis (Duluth) | 17.0 | 185 | 10.9 | -7.4 |
| Dakota | 21.2 | 142 | 6.7 | -5.9 |

Court Cases

| | 1973 Terminations Per Month | Total Cases Pending 12-31-73 | Delay Months | Change From 1972 |
|--------------------|-----------------------------|------------------------------|--------------|------------------|
| Hennepin | 407.6 | 1275 | 3.1 | +3.5 |
| Ramsey | 106.8 | 661 | 6.2 | + .1 |
| Anoka | 11.0 | 44 | 4.0 | -1.5 |
| Washington | 11.0 | 89 | 8.1 | -1.5 |
| St. Louis (Duluth) | 122.7 | 174 | 1.4 | -- |
| Dakota | 13.0 | 49 | 3.8 | -2.4 |

Computation of the delay is purely statistical and is done by dividing the number of cases pending as of December 31, 1973 by the monthly average of cases terminated and does not necessarily reflect the time delay between note of issue and trial. It is reasonably accurate computation of the time delay before a court will reach for trial the next case to be filed in the particular court. As such, it is a true reflection of the operation of the court, and when compared to the previous year's report, graphically demonstrates trends and warns of forthcoming problems which are best remedied before they become acute.

The statistics for the Fourth and Sixth Judicial Districts for court cases in the following tables are misleading in that they have both included default divorce cases and trust hearings in with other dispositions. There is included in this report for the first time the statistics for the Family Court Divisions in the Second and Fourth Judicial Districts.

DISTRICT COURT COMPARATIVE TABLES -

DISTRICT COURT COMPARATIVE TABLES

TABLE I

New Jury Cases Filed

| <u>District</u> | <u>1971</u> | <u>1972</u> | <u>1973</u> | <u>Changes From Prior Year</u> |
|-----------------|-------------|-------------|-------------|--------------------------------|
| First | 607 | 600 | 591 | - 9 |
| Second | 1824 | 1392 | 1357 | -35 |
| Third | 804 | 775 | 715 | -60 |
| Fourth | 2743 | 2919 | 2826 | -93 |
| Fifth | 748 | 701 | 628 | -73 |
| Sixth | 487 | 527 | 572 | +45 |
| Seventh | 765 | 655 | 620 | -35 |
| Eighth | 424 | 319 | 257 | -62 |
| Ninth | 553 | 650 | 559 | -91 |
| Tenth | 568 | 551 | 578 | +27 |
| TOTAL | 9523 | 9089 | 8703 | -386 |

TABLE II

New Court Cases Filed

| <u>District</u> | <u>1971</u> | <u>1972</u> | <u>1973</u> | <u>Changes From Prior Year</u> |
|-----------------|-------------|-------------|-------------|--------------------------------|
| First | 663 | 471 | 379 | -92 |
| Second | 1586 | 1132 | 1264 | +132 |
| Third | 876 | 772 | 668 | -104 |
| Fourth | 2691 | 2466 | 4831 | +2365 |
| Fifth | 716 | 402 | 338 | -64 |
| Sixth | 893 | 1846 | 2162 | +316 |
| Seventh | 560 | 412 | 320 | -92 |
| Eighth | 180 | 189 | 152 | -37 |
| Ninth | 437 | 409 | 299 | -110 |
| Tenth | 977 | 598 | 385 | -213 |
| TOTAL | 9579 | 8697 | 10798 | +2101 |

TABLE III

New Criminal Cases Filed

| <u>District</u> | <u>1971</u> | <u>1972</u> | <u>1973</u> | <u>Changes From Prior Year</u> |
|-----------------|-------------|-------------|-------------|--------------------------------|
| First | 351 | 433 | 394 | -39 |
| Second | 788 | 845 | 773 | -72 |
| Third | 395 | 382 | 403 | +21 |
| Fourth | 1725 | 1771 | 2268 | +497 |
| Fifth | 354 | 344 | 308 | -36 |
| Sixth | 435 | 344 | 293 | -51 |
| Seventh | 268 | 294 | 387 | +93 |
| Eighth | 146 | 161 | 151 | -10 |
| Ninth | 537 | 609 | 666 | +57 |
| Tenth | 393 | 430 | 400 | -30 |
| TOTAL | 5392 | 5613 | 6043 | +430 |

TABLE IV

Jury Cases Terminated

| <u>District</u> | <u>1971</u> | <u>1972</u> | <u>1973</u> | <u>Changes From Prior Year</u> |
|-----------------|-------------|-------------|-------------|--------------------------------|
| First | 736 | 743 | 544 | -199 |
| Second | 1681 | 1928 | 1781 | -147 |
| Third | 876 | 801 | 665 | -136 |
| Fourth | 3110 | 3316 | 3190 | -126 |
| Fifth | 832 | 704 | 605 | -99 |
| Sixth | 434 | 557 | 498 | -59 |
| Seventh | 818 | 652 | 620 | -32 |
| Eighth | 430 | 341 | 280 | -61 |
| Ninth | 521 | 616 | 590 | -26 |
| Tenth | 637 | 587 | 601 | +14 |
| TOTAL | 10075 | 10245 | 9374 | -871 |

DISTRICT COURT COMPARATIVE TABLES -

TABLE V

Court Cases Terminated

| <u>District</u> | <u>1971</u> | <u>1972</u> | <u>1973</u> | <u>Changes From Prior Year</u> |
|-----------------|-------------|-------------|-------------|--------------------------------|
| First | 728 | 471 | 363 | -108 |
| Second | 1329 | 1284 | 1282 | - 2 |
| Third | 843 | 864 | 665 | -199 |
| Fourth | 2545 | 2424 | 4892 | +2468 |
| Fifth | 543 | 504 | 493 | -11 |
| Sixth | 780 | 1839 | 2144 | +305 |
| Seventh | 541 | 469 | 347 | -122 |
| Eighth | 185 | 184 | 148 | -36 |
| Ninth | 386 | 454 | 313 | -141 |
| Tenth | 954 | 754 | 432 | -322 |
| TOTAL | 8834 | 9247 | 11079 | +1832 |

TABLE VI

Criminal Dispositions

| <u>District</u> | <u>1971</u> | <u>1972</u> | <u>1973</u> | <u>Change From Prior Year</u> |
|-----------------|-------------|-------------|-------------|-------------------------------|
| First | 316 | 391 | 467 | +76 |
| Second | 795 | 849 | 788 | -61 |
| Third | 421 | 431 | 425 | - 6 |
| Fourth | 1717 | 1789 | 2211 | +422 |
| Fifth | 402 | 285 | 334 | +49 |
| Sixth | 365 | 402 | 291 | -111 |
| Seventh | 258 | 286 | 354 | +68 |
| Eighth | 160 | 167 | 141 | -26 |
| Ninth | 490 | 602 | 681 | +79 |
| Tenth | 404 | 438 | 439 | + 1 |
| TOTAL | 5328 | 5640 | 6131 | +491 |

DISTRICT COURT COMPARATIVE TABLES -

TABLE VII

Court Trials

| <u>District</u> | <u>1971</u> | <u>1972</u> | <u>1973</u> | <u>Change From Prior Year</u> |
|-----------------|-------------|-------------|-------------|-------------------------------|
| First | 305 | 148 | 116 | -32 |
| Second | 455 | 336 | 413 | +77 |
| Third | 359 | 429 | 311 | -118 |
| Fourth | 273 | 388 | 2793 | +2405 |
| Fifth | 280 | 216 | 281 | +65 |
| Sixth | 472 | 1207 | 1569 | +362 |
| Seventh | 218 | 194 | 117 | -77 |
| Eighth | 42 | 43 | 49 | + 6 |
| Ninth | 145 | 137 | 86 | -51 |
| Tenth | 254 | 159 | 115 | -44 |
| TOTAL | 2803 | 3257 | 5850 | +2593 |

TABLE VIII

Jury Trials

| <u>District</u> | <u>1971</u> | <u>1972</u> | <u>1973</u> | <u>Change From Prior Year</u> |
|-----------------|-------------|-------------|-------------|-------------------------------|
| First | 125 | 94 | 63 | -31 |
| Second | 133 | 174 | 145 | -29 |
| Third | 111 | 108 | 83 | -25 |
| Fourth | 290 | 359 | 337 | -22 |
| Fifth | 116 | 106 | 87 | -19 |
| Sixth | 65 | 65 | 62 | - 3 |
| Seventh | 111 | 94 | 84 | -10 |
| Eighth | 74 | 75 | 48 | -27 |
| Ninth | 61 | 67 | 63 | - 4 |
| Tenth | 71 | 66 | 56 | -10 |
| TOTAL | 1157 | 1208 | 1028 | -180 |

DISTRICT COURT COMPARATIVE TABLES -

TABLE IX

| District | Settlements of Jury Cases | | | | Change From Prior Year | |
|----------|---------------------------|--------------|--------------|--------------|------------------------|--------------|
| | 1972 | | 1973 | | During Trial | Before Trial |
| | During Trial | Before Trial | During Trial | Before Trial | | |
| First | 25 | 624 | 37 | 444 | +12 | -180 |
| Second | 165 | 1589 | 223 | 1413 | +58 | -176 |
| Third | 50 | 643 | 37 | 545 | -13 | -98 |
| Fourth | 520 | 2437 | 775 | 2078 | +255 | -359 |
| Fifth | 31 | 567 | 37 | 481 | + 6 | -86 |
| Sixth | 49 | 443 | 54 | 382 | + 5 | -61 |
| Seventh | 78 | 480 | 68 | 468 | -10 | -12 |
| Eighth | 24 | 242 | 21 | 211 | - 3 | -31 |
| Ninth | 30 | 519 | 24 | 503 | - 6 | -16 |
| Tenth | 39 | 482 | 25 | 520 | -14 | +38 |
| TOTAL | 1011 | 8026 | 1301 | 7045 | +290 | -981 |

TABLE X

| District | Percent of Jury Cases Settled | | | | 1972 Percent Settled | 1973 Percent Settled |
|----------|-------------------------------|------|-------------|------|----------------------|----------------------|
| | Total Terminated | | Jury Trials | | | |
| | 1972 | 1973 | 1972 | 1973 | | |
| First | 743 | 544 | 94 | 63 | 87.3% | 88.4% |
| Second | 1928 | 1781 | 174 | 145 | 90.9% | 91.8% |
| Third | 801 | 665 | 108 | 83 | 86.5% | 87.5% |
| Fourth | 3316 | 3190 | 359 | 337 | 89.2% | 89.4% |
| Fifth | 704 | 605 | 106 | 87 | 84.9% | 85.6% |
| Sixth | 557 | 498 | 65 | 62 | 88.3% | 87.6% |
| Seventh | 652 | 620 | 94 | 84 | 85.6% | 86.5% |
| Eighth | 341 | 280 | 75 | 48 | 78.0% | 82.9% |
| Ninth | 616 | 590 | 67 | 63 | 89.1% | 89.3% |
| Tenth | 587 | 601 | 66 | 56 | 88.8% | 90.6% |
| TOTAL | 10245 | 9374 | 1208 | 1028 | 88.2% | 89.0% |

TABLE XI

AVERAGE CASES PENDING PER JUDGE - DECEMBER 31, 1973

| District & Number of Counties in Each | No. of Judges | Court Cases | | Jury Cases | | Criml. Cases | | Total Cases | Ave. per Judge |
|---------------------------------------|---------------|----------------|-----------|----------------|-----------|----------------|-----------|-------------|----------------|
| | | Ave. per Judge | per Judge | Ave. per Judge | per Judge | Ave. per Judge | per Judge | | |
| First (7) | 5 | 156 | 31 | 305 | 61 | 67 | 13 | 528 | 106 |
| Second (1) | *11 | 661 | 60 | 915 | 83 | 84 | 76 | 1660 | 151 |
| Third (11) | 6 | 253 | 42 | 447 | 75 | 79 | 13 | 779 | 130 |
| Fourth (1) | *18 | 1275 | 71 | 2273 | 126 | 221 | 12 | 3769 | 209 |
| Fifth (15) | 5 | 251 | 50 | 357 | 71 | 111 | 22 | 719 | 144 |
| Sixth (4) | 6 | 238 | 40 | 303 | 50 | 93 | 16 | 634 | 106 |
| Seventh (10) | 4 | 93 | 23 | 131 | 33 | 107 | 27 | 331 | 83 |
| Eighth (13) | 3 | 62 | 21 | 79 | 26 | 31 | 10 | 172 | 57 |
| Ninth (17) | 6 | 133 | 22 | 145 | 24 | 156 | 26 | 434 | 72 |
| Tenth (8) | 6 | 184 | 31 | 391 | 65 | 95 | 16 | 670 | 112 |
| State Total | 87 | 3306 | 47 | 5346 | 76 | 1044 | 14 | 9696 | 139 |

*Does not include Juvenile Court Judge.

TABLE XII

1973 Terminations per Judge

| District | No. of Judges | Court, Jury & Criminal Terminations | Average Per Judge |
|----------|---------------|-------------------------------------|-------------------|
| First | 5 | 1374 | 269 (a) |
| Second | *11 | 3851 | 351 (b) |
| Third | 6 | 1755 | 297 (c) |
| Fourth | *18 | 8043 | 421 (d) |
| Fifth | 5 | 1432 | 286 |
| Sixth | 6 | 2933 | **489 |
| Seventh | 4 | 1321 | 331 |
| Eighth | 3 | 569 | 190 |
| Ninth | 6 | 1584 | 264 |
| Tenth | 6 | 1472 | 245 |
| TOTAL | 70 | 24,334 | 343 (e) |

*Juvenile Judge not included.

**Increase arises from inclusion of tax appeals and illegitimacies.

- (a) Average is computed for 5 judges plus services of assigned judge equivalent to .1 judge.
- (b) Average is computed for 11 judges plus services of assigned judge for 14 weeks, equivalent to .28 judges, and less .3 judges which takes into account one judge serving temporarily as an associate justice of the Supreme Court.
- (c) Average is computed for 6 judges plus services of assigned judges for 43 days, equivalent to .2 judges and less .3 judges which takes into account one judge serving temporarily as an associate justice of the Supreme Court.
- (d) Average is computed for 18 judges plus services of assigned judges for 51 weeks, equivalent to 1.1 judges.
- (e) Average is computed for 70 regular judges plus services of assigned judges equivalent to 1.88 judges less .9 judges which takes into account 3 judges serving temporarily as associate justices of the Supreme Court.

TABLE XIII

ASSIGNMENT OF ASSIGNED JUDGES

| JUDGE | ASSIGNED TO | PERIOD |
|-------------------------|-----------------|-----------------|
| Arlo E. Haering | First District | 39 days |
| Leslie Anderson | Second District | 71 days |
| Arnold Hatfield | Third District | 37 days |
| Leslie Anderson | Third District | 6 days |
| | | <u>43 days</u> |
| William C. Christianson | Fourth District | 37 days |
| William D. Gunn | Fourth District | 118 days |
| Thomas Tallakson | Fourth District | 68 days |
| Levi M. Hall | Fourth District | 31 days |
| | | <u>254 days</u> |
| Arlo E. Haering | Tenth District | 2 days |
| | TOTAL | 409 days |

New Cases Filed Per Judge

| <u>District</u> | <u>No. of Judges</u> | <u>Court, Jury & Criminal Filings</u> | <u>Average Per Judge</u> |
|-----------------|----------------------|---|--------------------------|
| First | 5 | 1364 | 273 |
| Second | *11 | 3394 | 309 |
| Third | 6 | 1786 | 298 |
| Fourth | *18 | 9925 | 551 |
| Fifth | 5 | 1274 | 255 |
| Sixth | 6 | 3027 | 505 |
| Seventh | 4 | 1327 | 331 |
| Eighth | 3 | 560 | 187 |
| Ninth | 6 | 1524 | 254 |
| Tenth | 6 | 1363 | 227 |
| TOTAL | 70 | 25544 | 365 |

*Juvenile Judge not included.

NUMBER AND AGE OF COURT CASES PENDING DECEMBER 31, 1973

| <u>DISTRICT</u> | <u>CASES PENDING</u> | <u>ONE YEAR OR LESS</u> | <u>ONE TO TWO YEARS</u> | <u>TWO TO THREE YEARS</u> | <u>THREE TO FOUR YEARS</u> | <u>OVER FOUR YEARS</u> |
|-----------------|----------------------|-------------------------|-------------------------|---------------------------|----------------------------|------------------------|
| 1 | 160 | 129 | 27 | 3 | 1 | |
| 2 | 657 | 657 | | | | |
| 3 | 234 | 186 | 40 | 6 | 2 | |
| 4 | 1301 | 1270 | 30 | 1 | | |
| 5 | 227 | 147 | 52 | 16 | 7 | 5 |
| 6 | 112 | 101 | 7 | 2 | 1 | 1 |
| 7 | 107 | 97 | 4 | 5 | 1 | |
| 8 | 33 | 31 | 2 | | | |
| 9 | 124 | 74 | 14 | 11 | 13 | 12 |
| 10 | 185 | 158 | 19 | 5 | 2 | 1 |
| TOTAL | 3140 | 2850 | 195 | 49 | 27 | 19 |

NUMBER AND AGE OF JURY CASES PENDING DECEMBER 31, 1973

| <u>DISTRICT</u> | <u>CASES PENDING</u> | <u>ONE YEAR OR LESS</u> | <u>ONE TO TWO YEARS</u> | <u>TWO TO THREE YEARS</u> | <u>THREE TO FOUR YEARS</u> | <u>OVER FOUR YEARS</u> |
|-----------------|----------------------|-------------------------|-------------------------|---------------------------|----------------------------|------------------------|
| 1 | 307 | 269 | 34 | 4 | | |
| 2 | 915 | 899 | 16 | | | |
| 3 | 428 | 368 | 54 | 6 | | |
| 4 | 2277 | 2019 | 253 | 5 | | |
| 5 | 350 | 320 | 27 | 2 | 1 | |
| 6 | 259 | 229 | 30 | | | |
| 7 | 141 | 138 | | 3 | | |
| 8 | 69 | 66 | 2 | 1 | | |
| 9 | 142 | 135 | 5 | 1 | 1 | |
| 10 | 400 | 340 | 53 | 5 | 2 | |
| TOTAL | 5288 | 4783 | 474 | 27 | 4 | |

NUMBER AND AGE OF CRIMINAL CASES PENDING DECEMBER 31, 1973

| DISTRICT | CASES PENDING | ONE YEAR OR LESS | ONE TO TWO YEARS | TWO TO THREE YEARS | THREE TO FOUR YEARS | OVER FOUR YEARS |
|----------|---------------|------------------|------------------|--------------------|---------------------|-----------------|
| 1 | 60 | 58 | 1 | 1 | | |
| 2 | 84 | 84 | | | | |
| 3 | 83 | 74 | 7 | 1 | 1 | |
| 4 | 221 | 221 | | | | |
| 5 | 98 | 93 | 2 | 2 | 1 | |
| 6 | 81 | 70 | 9 | | | 2 |
| 7 | 118 | 112 | 3 | 2 | | 1 |
| 8 | 19 | 19 | | | | |
| 9 | 154 | 135 | 14 | 5 | | |
| 10 | 95 | 81 | 8 | 5 | | |
| TOTAL | 1013 | 947 | 44 | 16 | 2 | 4 |

FAMILY COURT DIVISION

Contested Divorce Cases

| District | Pending 12/31/72 | Filed | Tried | Stricken or Dismissed | Transferred to Default | Pending 12/31/73 |
|----------|------------------|-------|-------|-----------------------|------------------------|------------------|
| Second | 352 | 733 | 302 | 187 | 229 | 367 |
| Fourth | 780 | 1002 | 384 | 450 | 212 | 736 |

Default Divorce Cases

| District | Pending 12/31/72 | Filed | Heard | Stricken or Dismissed | Pending 12/31/73 |
|----------|------------------|-------|-------|-----------------------|------------------|
| Second | 235 | 1797 | 1445 | 284 | 303 |
| Fourth | 914 | 3596 | 3402 | 666 | 442 |

Paternity Cases

| District | Pending 12/31/72 | Filed or Reinstated | Terminated | Pending 12/31/73 |
|----------|------------------|---------------------|------------|------------------|
| Second | 27 | 135 | 151 | 11 |
| Fourth | | | 432 | |

| DISTRICT COURTS - CIVIL CASES | | | | | | | | | | | |
|-------------------------------|-----------------|------------------------|------|-------------|------|------------------|------|------------------------|------|------------------|------|
| DISTRICT | NO. OF COUNTIES | CASES PENDING 01/01/73 | | CASES FILED | | CASES TERMINATED | | CASES PENDING 12/31/73 | | NET GAIN OR LOSS | |
| | | COURT | JURY | COURT | JURY | COURT | JURY | COURT | JURY | COURT | JURY |
| FIRST | 7 | 140 | 258 | 379 | 591 | 363 | 544 | 156 | 305 | -16 | -47 |
| SECOND | 1 | 679 | 1339 | 1264 | 1357 | 1282 | 1781 | 661 | 915 | +18 | +424 |
| THIRD | 11 | 250 | 397 | 668 | 715 | 665 | 665 | 253 | 447 | -3 | -50 |
| FOURTH | 1 | 1336 | 2637 | 4831 | 2826 | 4892 | 3190 | 1275 | 2273 | +61 | +364 |
| FIFTH | 15 | 406 | 334 | 338 | 628 | 493 | 605 | 251 | 357 | +155 | -23 |
| SIXTH | 7 | 220 | 229 | 2162 | 572 | 2144 | 498 | 238 | 303 | -18 | -74 |
| SEVENTH | 10 | 120 | 131 | 320 | 620 | 347 | 620 | 93 | 131 | +27 | +0 |
| EIGHTH | 13 | 58 | 102 | 152 | 257 | 148 | 280 | 62 | 79 | -4 | +23 |
| NINTH | 17 | 147 | 176 | 299 | 559 | 313 | 590 | 133 | 145 | +14 | +31 |
| TENTH | 8 | 231 | 414 | 385 | 578 | 432 | 601 | 184 | 391 | +47 | +23 |
| STATEWIDE TOTALS | | 3587 | 6017 | 10798 | 8703 | 11079 | 9374 | 3306 | 5346 | +281 | +671 |

| DISTRICT COURTS - CIVIL CASES | | | | | | | | | | | | |
|-------------------------------|-----------------|------------------------|------|-------------|------|------------------|------|------------------------|------|------------------|------|--|
| DISTRICT | NO. OF COUNTIES | CASES PENDING 01/01/73 | | CASES FILED | | CASES TERMINATED | | CASES PENDING 12/31/73 | | NET GAIN OR LOSS | | |
| | | COURT | JURY | COURT | JURY | COURT | JURY | COURT | JURY | COURT | JURY | |
| CARVER | | 27 | 24 | 61 | 56 | 52 | 57 | 36 | 23 | -9 | +1 | |
| DAKOTA | | 26 | 101 | 179 | 296 | 156 | 255 | 49 | 142 | -23 | -41 | |
| GOODHUE | | 13 | 11 | 30 | 60 | 35 | 49 | 8 | 22 | +5 | -11 | |
| 1 LE SUEUR | | 8 | 12 | 20 | 38 | 24 | 44 | 4 | 6 | +4 | +6 | |
| MCLEOD | | 26 | 17 | 22 | 46 | 20 | 43 | 28 | 20 | -2 | -3 | |
| SCOTT | | 37 | 80 | 49 | 71 | 57 | 68 | 29 | 83 | +8 | -3 | |
| SIBLEY | | 3 | 13 | 18 | 24 | 19 | 28 | 2 | 9 | +1 | +4 | |
| FIRST | 7 | 140 | 258 | 379 | 591 | 363 | 544 | 156 | 305 | -16 | -47 | |
| RAMSEY | | 679 | 1339 | 1264 | 1357 | 1282 | 1781 | 661 | 915 | +18 | +424 | |
| SECOND | 1 | 679 | 1339 | 1264 | 1357 | 1282 | 1781 | 661 | 915 | +18 | +424 | |
| DODGE | | 4 | 0 | 11 | 25 | 10 | 16 | 5 | 9 | -1 | -9 | |
| FILLMORE | | 12 | 1 | 29 | 43 | 26 | 29 | 15 | 15 | -3 | -14 | |
| FREEBORN | | 36 | 48 | 116 | 74 | 130 | 69 | 22 | 53 | +14 | -5 | |
| HOUSTON | | 11 | 7 | 49 | 40 | 52 | 31 | 8 | 16 | +3 | -9 | |
| MOWER | | 38 | 94 | 109 | 95 | 106 | 97 | 41 | 72 | -3 | +2 | |
| OLMSTED | | 83 | 114 | 159 | 169 | 163 | 134 | 79 | 149 | +4 | -35 | |
| RICE | | 6 | 26 | 58 | 76 | 50 | 88 | 14 | 14 | -8 | +12 | |
| 2 STEELE | | 9 | 28 | 30 | 52 | 18 | 38 | 21 | 42 | -12 | -14 | |
| WABASHA | | 10 | 21 | 36 | 40 | 36 | 51 | 10 | 10 | +0 | +11 | |
| WASECA | | 3 | 8 | 13 | 51 | 14 | 47 | 2 | 12 | +1 | -4 | |
| WINDONA | | 38 | 50 | 58 | 50 | 60 | 65 | 36 | 35 | +2 | +15 | |
| THIRD | 11 | 250 | 397 | 668 | 715 | 665 | 665 | 253 | 447 | -3 | -50 | |
| HENNEPIN | | 1336 | 2637 | 4831 | 2826 | 4892 | 3190 | 1275 | 2273 | +61 | +364 | |
| FOURTH | 1 | 1336 | 2637 | 4831 | 2826 | 4892 | 3190 | 1275 | 2273 | +61 | +364 | |
| 2 BLUE EARTH | | 21 | 131 | 32 | 170 | 23 | 124 | 30 | 177 | -9 | -46 | |
| BROWN | | 190 | 17 | 64 | 29 | 211 | 30 | 43 | 16 | +147 | +1 | |
| COTTONWOOD | | 7 | 7 | 5 | 21 | 11 | 22 | 1 | 6 | +6 | +1 | |
| FARIBAULT | | 6 | 13 | 17 | 53 | 21 | 54 | 2 | 12 | +4 | +1 | |
| JACKSON | | 1 | 5 | 21 | 33 | 11 | 29 | 11 | 9 | -10 | -4 | |
| LINCOLN | | 3 | 6 | 3 | 6 | 3 | 10 | 3 | 2 | +0 | +4 | |
| LYON | | 17 | 28 | 18 | 32 | 24 | 45 | 11 | 15 | +6 | +13 | |
| MARTIN | | 2 | 45 | 6 | 98 | 5 | 86 | 3 | 57 | -1 | -12 | |
| MURRAY | | 3 | 10 | 58 | 25 | 54 | 31 | 7 | 4 | -4 | +6 | |
| NICOLLET | | 21 | 22 | 35 | 41 | 38 | 42 | 18 | 21 | +3 | +1 | |
| 1 NOBLES | | 14 | 13 | 8 | 29 | 13 | 35 | 9 | 7 | +5 | +6 | |
| PIPESTONE | | 13 | 2 | 5 | 16 | 16 | 11 | 2 | 7 | +11 | -5 | |
| REDWOOD | | 3 | 11 | 11 | 42 | 7 | 36 | 7 | 17 | -4 | -6 | |
| ROCK | | 1 | 6 | 7 | 9 | 6 | 15 | 2 | 0 | -1 | +6 | |
| WATONWAN | | 104 | 18 | 48 | 24 | 50 | 35 | 102 | 7 | +2 | +11 | |
| FIFTH | 15 | 406 | 334 | 338 | 628 | 493 | 605 | 251 | 357 | +155 | -23 | |
| CARLTON | | 17 | 23 | 35 | 49 | 47 | 38 | 5 | 34 | +12 | -11 | |
| COOK | | 13 | 9 | 14 | 4 | 23 | 11 | 4 | 2 | +9 | +7 | |
| 6 LAKE | | 6 | 7 | 13 | 8 | 15 | 12 | 4 | 3 | +2 | +4 | |
| ST LOUIS-DULUTH | | 158 | 83 | 1489 | 307 | 1473 | 205 | 174 | 185 | -16 | -102 | |
| ST LOUIS-ELY | | 1 | 0 | 10 | 7 | 7 | 5 | 4 | 2 | -3 | -2 | |
| ST LOUIS-HIBBING | | 16 | 52 | 280 | 113 | 273 | 107 | 23 | 58 | -7 | -6 | |
| ST LOUIS-VIRGINIA | | 9 | 55 | 321 | 84 | 306 | 120 | 24 | 19 | -15 | +36 | |
| SIXTH | 7 | 220 | 229 | 2162 | 572 | 2144 | 498 | 238 | 303 | -18 | -74 | |
| 2 BECKER | | 3 | 19 | 28 | 37 | 24 | 32 | 7 | 24 | -4 | -5 | |
| BFNTON | | 7 | 22 | 16 | 58 | 12 | 57 | 11 | 23 | -4 | -1 | |

DISTRICT COURTS - CIVIL CASES

| DISTRICT | NO. OF COUNTIES | CASES PENDING 01/01/73 | | CASES FILED | | CASES TERMINATED | | CASES PENDING 12/31/73 | | NET GAIN OR LOSS | |
|---------------------|-----------------|------------------------|------|-------------|------|------------------|------|------------------------|------|------------------|------|
| | | COURT | JURY | COURT | JURY | COURT | JURY | COURT | JURY | COURT | JURY |
| CLAY | | 2 | 3 | 40 | 103 | 34 | 104 | 8 | 2 | -6 | +1 |
| DOUGLAS | | 8 | 4 | 36 | 51 | 42 | 51 | 2 | 4 | +6 | +0 |
| HILLE LACS | | 9 | 9 | 13 | 42 | 16 | 32 | 6 | 19 | +3 | -10 |
| MORRISON | | 11 | 11 | 23 | 38 | 24 | 41 | 10 | 8 | +1 | +3 |
| 1 OTTER TAIL | | 17 | 2 | 16 | 70 | 25 | 72 | 8 | 0 | +9 | +2 |
| STEARNS | | 50 | 39 | 74 | 190 | 88 | 196 | 36 | 33 | +14 | +6 |
| TODD | | 5 | 14 | 19 | 21 | 21 | 23 | 3 | 12 | +2 | +2 |
| WADENA | | 8 | 8 | 55 | 10 | 61 | 12 | 2 | 6 | +6 | +2 |
| SEVENTH | 10 | 120 | 131 | 320 | 620 | 347 | 620 | 93 | 131 | +27 | +0 |
| BIG STONE | | 4 | 5 | 4 | 18 | 7 | 21 | 1 | 2 | +3 | +3 |
| CHIPPEWA | | 9 | 26 | 20 | 17 | 27 | 40 | 2 | 3 | +7 | +23 |
| GRANT | | 1 | 9 | 1 | 6 | 2 | 14 | 0 | 1 | +1 | +8 |
| KANDIYOHI | | 0 | 15 | 24 | 94 | 22 | 68 | 2 | 41 | -2 | -26 |
| LAC QUI PARLE | | 4 | 6 | 9 | 7 | 10 | 7 | 3 | 6 | +1 | +0 |
| MEEKER | | 9 | 8 | 12 | 13 | 17 | 20 | 4 | 1 | +5 | +7 |
| POPE | | 3 | 1 | 7 | 17 | 9 | 17 | 1 | 1 | +2 | +0 |
| 1 RENVILLE | | 12 | 20 | 12 | 35 | 22 | 44 | 2 | 11 | +10 | +9 |
| STEVENS | | 7 | 2 | 48 | 7 | 20 | 7 | 35 | 2 | -28 | +0 |
| SWIFT | | 2 | 6 | 1 | 22 | 2 | 21 | 1 | 7 | +1 | -1 |
| 10 TRAVERSE | | 4 | 2 | 7 | 0 | 0 | 1 | 11 | 1 | -7 | +1 |
| 1 WILKIN | | 1 | 0 | 0 | 3 | 1 | 3 | 0 | 0 | +1 | +0 |
| YELLOW MEDICINE | | 2 | 2 | 7 | 18 | 9 | 17 | 0 | 3 | +2 | -1 |
| EIGHTH | 13 | 58 | 102 | 152 | 257 | 148 | 280 | 62 | 79 | -4 | +23 |
| AITKIN | | 19 | 16 | 12 | 16 | 15 | 28 | 16 | 4 | +3 | +12 |
| BELTRAMI | | 5 | 3 | 19 | 55 | 21 | 50 | 3 | 8 | +2 | -5 |
| CASS | | 12 | 16 | 25 | 32 | 29 | 29 | 8 | 19 | +4 | -3 |
| CLEARWATER | | 16 | 3 | 32 | 10 | 43 | 11 | 5 | 2 | +11 | +1 |
| CROW WING | | 35 | 37 | 50 | 88 | 39 | 95 | 46 | 30 | -11 | +7 |
| HUBBARD | | 4 | 6 | 42 | 19 | 37 | 21 | 9 | 4 | -5 | +2 |
| ITASCA | | 11 | 29 | 42 | 98 | 26 | 100 | 27 | 27 | -16 | +2 |
| 1 KITTSO | | 5 | 3 | 6 | 13 | 6 | 16 | 5 | 0 | +0 | +3 |
| KOOCHICHING | | 2 | 1 | 28 | 49 | 28 | 41 | 2 | 9 | +0 | -8 |
| 2 LAKE OF THE WOODS | | 2 | 4 | 0 | 16 | 2 | 16 | 0 | 4 | +2 | +0 |
| 11 MAHNOMEN | | 1 | 10 | 2 | 2 | 0 | 6 | 3 | 6 | -2 | +4 |
| MARSHALL | | 2 | 8 | 5 | 31 | 4 | 39 | 3 | 0 | -1 | +8 |
| NORMAN | | 12 | 3 | 2 | 15 | 12 | 14 | 2 | 4 | +10 | -1 |
| PENNINGTON | | 0 | 12 | 12 | 47 | 11 | 49 | 1 | 10 | -1 | +2 |
| POLK | | 20 | 9 | 15 | 50 | 32 | 44 | 3 | 15 | +17 | -6 |
| RED LAKE | | 1 | 12 | 4 | 5 | 5 | 17 | 0 | 0 | +1 | +12 |
| ROSEAU | | 0 | 4 | 3 | 13 | 3 | 14 | 0 | 3 | +0 | +1 |
| NINTH | 17 | 147 | 176 | 299 | 559 | 313 | 590 | 133 | 145 | +14 | +31 |
| ANOKA | | 58 | 234 | 118 | 238 | 132 | 230 | 44 | 242 | +14 | -8 |
| CHISAGO | | 21 | 8 | 24 | 23 | 33 | 24 | 12 | 7 | +9 | +1 |
| ISANTI | | 10 | 7 | 27 | 35 | 30 | 32 | 7 | 10 | +3 | -3 |
| KANABEC | | 1 | 4 | 14 | 11 | 15 | 11 | 0 | 4 | +1 | +0 |
| PINE | | 2 | 10 | 15 | 23 | 9 | 23 | 8 | 10 | -6 | +0 |
| 1 SHERBURNE | | 6 | 17 | 18 | 37 | 18 | 44 | 6 | 10 | +0 | +7 |
| WASHINGTON | | 95 | 107 | 127 | 171 | 133 | 183 | 89 | 95 | +6 | +12 |
| WRIGHT | | 38 | 27 | 42 | 40 | 62 | 54 | 18 | 13 | +20 | +14 |
| TENTH | 8 | 231 | 414 | 385 | 578 | 432 | 601 | 184 | 391 | +47 | +23 |
| STATEWIDE TOTALS | | 3587 | 6017 | 10798 | 8703 | 11079 | 9374 | 3306 | 5346 | +281 | +671 |

DISTRICT COURTS - CRIMINAL CASES
01/01/73 - 12/31/73

| DISTRICT | NO. OF COUNTIES | CASES PENDING 01/01/73 | CASES FILED | CASES TERMINATED | CASES PENDING 12/31/73 | COURT TRIAL | JURY TRIAL | CASES DIS-MISSED | PLEA OF GUILT |
|------------------|-----------------|------------------------|-------------|------------------|------------------------|-------------|------------|------------------|---------------|
| FIRST | 7 | 140 | 394 | 467 | 67 | 15 | 22 | 93 | 337 |
| SECOND | 1 | 99 | 773 | 788 | 84 | 18 | 65 | 114 | 591 |
| THIRD | 11 | 101 | 403 | 425 | 79 | 17 | 22 | 81 | 305 |
| FOURTH | 1 | 164 | 2268 | 2211 | 221 | 26 | 179 | 40 | 1966 |
| FIFTH | 15 | 137 | 308 | 334 | 111 | 22 | 34 | 60 | 218 |
| SIXTH | 7 | 91 | 293 | 291 | 93 | 15 | 17 | 81 | 178 |
| SEVENTH | 10 | 74 | 387 | 354 | 107 | 22 | 6 | 63 | 263 |
| EIGHTH | 13 | 21 | 151 | 141 | 31 | 18 | 7 | 15 | 101 |
| NINTH | 17 | 171 | 666 | 681 | 156 | 27 | 28 | 150 | 476 |
| TENTH | 8 | 134 | 400 | 439 | 95 | 12 | 17 | 65 | 345 |
| STATEWIDE TOTALS | | 1132 | 6043 | 6131 | 1044 | 192 | 397 | 762 | 4780 |

DISTRICT COURTS - CRIMINAL CASES
01/01/73 - 12/31/73

| DISTRICT | NO. OF COUNTIES | CASES PENDING 01/01/73 | CASES FILED | CASES TERMINATED | CASES PENDING 12/31/73 | COURT TRIAL | JURY TRIAL | CASES DIS-MISSED | PLEA OF GUILTY |
|-------------------|-----------------|------------------------|-------------|------------------|------------------------|-------------|------------|------------------|----------------|
| CARVER | | 3 | 37 | 29 | 11 | 1 | 3 | 2 | 23 |
| DAKOTA | | 55 | 201 | 230 | 26 | 4 | 11 | 49 | 166 |
| GOODHUE | | 4 | 37 | 36 | 5 | 0 | 1 | 5 | 30 |
| 1 LE SUEUR | | 9 | 16 | 21 | 4 | 1 | 2 | 3 | 15 |
| MCLEOD | | 4 | 16 | 16 | 4 | 0 | 0 | 1 | 15 |
| SCOTT | | 55 | 70 | 110 | 15 | 6 | 5 | 25 | 74 |
| SIBLEY | | 10 | 17 | 25 | 2 | 3 | 0 | 8 | 14 |
| FIRST | 7 | 140 | 394 | 467 | 67 | 15 | 22 | 93 | 337 |
| RAMSEY | | 99 | 773 | 788 | 84 | 18 | 65 | 114 | 591 |
| SECOND | 1 | 99 | 773 | 788 | 84 | 18 | 65 | 114 | 591 |
| DOOGE | | 3 | 14 | 17 | 0 | 0 | 0 | 1 | 16 |
| FILLMORE | | 0 | 15 | 11 | 4 | 0 | 0 | 2 | 9 |
| FREEBORN | | 10 | 44 | 47 | 7 | 2 | 4 | 4 | 37 |
| HOUSTON | | 10 | 19 | 24 | 5 | 2 | 1 | 11 | 10 |
| MOWER | | 5 | 56 | 55 | 6 | 0 | 0 | 14 | 41 |
| OLMSTED | | 31 | 88 | 97 | 22 | 10 | 4 | 35 | 48 |
| RICE | | 12 | 39 | 43 | 8 | 1 | 3 | 2 | 37 |
| 2 STEELE | | 12 | 24 | 21 | 15 | 0 | 0 | 5 | 16 |
| WABASHA | | 5 | 18 | 16 | 7 | 1 | 4 | 3 | 8 |
| WASECA | | 0 | 21 | 20 | 1 | 0 | 0 | 3 | 17 |
| WINONA | | 13 | 65 | 74 | 4 | 1 | 6 | 1 | 66 |
| THIRD | 11 | 101 | 403 | 425 | 79 | 17 | 22 | 81 | 305 |
| HENNEPIN | | 164 | 2268 | 2211 | 221 | 26 | 179 | 40 | 1966 |
| FOURTH | 1 | 164 | 2268 | 2211 | 221 | 26 | 179 | 40 | 1966 |
| 2 BLUE EARTH | | 44 | 66 | 80 | 30 | 1 | 5 | 4 | 70 |
| BROWN | | 8 | 28 | 24 | 12 | 3 | 0 | 4 | 17 |
| COTTONWOOD | | 2 | 6 | 6 | 2 | 0 | 4 | 1 | 1 |
| FARIBAULT | | 13 | 23 | 33 | 3 | 0 | 3 | 12 | 18 |
| JACKSON | | 2 | 3 | 4 | 1 | 1 | 1 | 1 | 1 |
| LINCOLN | | 3 | 2 | 3 | 2 | 0 | 1 | 2 | 0 |
| LYON | | 2 | 18 | 17 | 3 | 2 | 1 | 1 | 13 |
| MARTIN | | 15 | 47 | 50 | 12 | 0 | 5 | 9 | 36 |
| MURRAY | | 3 | 24 | 25 | 2 | 11 | 2 | 2 | 10 |
| NICOLLET | | 24 | 31 | 46 | 9 | 2 | 6 | 11 | 27 |
| 1 NOBLES | | 4 | 12 | 11 | 5 | 0 | 0 | 1 | 10 |
| PIPESTONE | | 1 | 1 | 2 | 0 | 0 | 0 | 2 | 0 |
| REDWOOD | | 0 | 16 | 13 | 3 | 0 | 4 | 5 | 4 |
| ROCK | | 1 | 2 | 3 | 0 | 0 | 2 | 1 | 0 |
| WATONWAN | | 15 | 29 | 17 | 27 | 2 | 0 | 4 | 11 |
| FIFTH | 15 | 137 | 308 | 334 | 111 | 22 | 34 | 60 | 218 |
| CARLTON | | 2 | 23 | 19 | 6 | 0 | 1 | 5 | 13 |
| COOK | | 1 | 6 | 7 | 0 | 3 | 0 | 1 | 3 |
| 6 LAKE | | 2 | 20 | 13 | 9 | 9 | 0 | 4 | 0 |
| ST LOUIS-DULUTH | | 69 | 126 | 161 | 34 | 0 | 8 | 64 | 89 |
| ST LOUIS-ELY | | 0 | 2 | 0 | 2 | 0 | 0 | 0 | 0 |
| ST LOUIS-HIBBING | | 12 | 69 | 55 | 26 | 1 | 8 | 3 | 43 |
| ST LOUIS-VIRGINIA | | 5 | 47 | 36 | 16 | 2 | 0 | 4 | 30 |
| SIXTH | 7 | 91 | 293 | 291 | 93 | 15 | 17 | 81 | 178 |
| 2 BECKER | | 10 | 49 | 49 | 10 | 16 | 1 | 3 | 29 |
| BENTON | | 10 | 19 | 22 | 7 | 0 | 0 | 6 | 16 |

DISTRICT COURTS - CRIMINAL CASES
01/01/73 - 12/31/73

| DISTRICT | NO. OF COUNTIES | CASES PENDING 01/01/73 | CASES FILED | CASES TERMINATED | CASES PENDING 12/31/73 | COURT TRIAL | JURY TRIAL | CASES DIS-MISSED | PLEA OF GUILTY |
|---------------------|-----------------|------------------------|-------------|------------------|------------------------|-------------|------------|------------------|----------------|
| CLAY | | 4 | 42 | 33 | 13 | 1 | 0 | 7 | 25 |
| DOUGLAS | | 4 | 23 | 18 | 9 | 0 | 0 | 7 | 11 |
| MILLE LACS | | 2 | 10 | 8 | 4 | 0 | 1 | 0 | 7 |
| MORRISON | | 9 | 30 | 30 | 9 | 3 | 0 | 7 | 20 |
| 1 OTTER TAIL | | 1 | 65 | 54 | 12 | 0 | 0 | 16 | 38 |
| STEARNS | | 10 | 115 | 95 | 30 | 2 | 1 | 10 | 82 |
| TODD | | 19 | 17 | 31 | 5 | 0 | 2 | 7 | 22 |
| WADENA | | 5 | 17 | 14 | 8 | 0 | 1 | 0 | 13 |
| SEVENTH | 10 | 74 | 387 | 354 | 107 | 22 | 6 | 63 | 263 |
| BIG STONE | | 3 | 5 | 7 | 1 | 0 | 0 | 1 | 6 |
| CHIPPEWA | | 0 | 9 | 6 | 3 | 5 | 0 | 0 | 1 |
| GRANT | | 0 | 1 | 1 | 0 | 1 | 0 | 0 | 0 |
| KANDIYOHI | | 9 | 57 | 56 | 10 | 2 | 1 | 2 | 51 |
| LAC QUI PARLE | | 1 | 1 | 2 | 0 | 1 | 0 | 1 | 0 |
| MEEKER | | 1 | 11 | 12 | 0 | 1 | 1 | 0 | 10 |
| POPE | | 2 | 11 | 12 | 1 | 0 | 2 | 4 | 6 |
| 1 RENVILLE | | 3 | 13 | 10 | 6 | 2 | 0 | 2 | 6 |
| STEVENS | | 0 | 12 | 8 | 4 | 6 | 0 | 0 | 2 |
| SWIFT | | 2 | 5 | 5 | 2 | 0 | 0 | 0 | 5 |
| 10 TRAVERSE | | 0 | 0 | 0 | 0 | 0 | 0 | 0 | 0 |
| 1 WILKIN | | 0 | 10 | 8 | 2 | 0 | 1 | 1 | 6 |
| YELLOW MEDICINE | | 0 | 16 | 14 | 2 | 0 | 2 | 4 | 8 |
| EIGHTH | 13 | 21 | 151 | 141 | 31 | 18 | 7 | 15 | 101 |
| AITKIN | | 8 | 15 | 17 | 6 | 0 | 0 | 7 | 10 |
| BELTRAMI | | 17 | 60 | 70 | 7 | 2 | 6 | 7 | 55 |
| CASS | | 18 | 42 | 47 | 13 | 3 | 0 | 19 | 25 |
| CLEARWATER | | 3 | 15 | 18 | 0 | 0 | 4 | 4 | 10 |
| CROW WING | | 35 | 113 | 100 | 48 | 0 | 2 | 18 | 80 |
| HUBBARD | | 13 | 24 | 26 | 11 | 5 | 3 | 9 | 9 |
| ITASCA | | 32 | 111 | 111 | 32 | 1 | 4 | 29 | 77 |
| 1 KITTSON | | 5 | 3 | 7 | 1 | 2 | 0 | 5 | 0 |
| KOOCHICHING | | 13 | 154 | 159 | 8 | 3 | 5 | 27 | 124 |
| 2 LAKE OF THE WOODS | | 0 | 5 | 1 | 4 | 0 | 0 | 0 | 1 |
| 11 MAHNOHEN | | 3 | 1 | 0 | 4 | 0 | 0 | 0 | 0 |
| MARSHALL | | 2 | 1 | 3 | 0 | 0 | 0 | 3 | 0 |
| NORMAN | | 1 | 14 | 9 | 6 | 9 | 0 | 0 | 0 |
| PENNINGTON | | 3 | 20 | 18 | 5 | 0 | 1 | 3 | 14 |
| POLK | | 10 | 67 | 70 | 7 | 0 | 3 | 11 | 56 |
| RED LAKE | | 2 | 2 | 4 | 0 | 2 | 0 | 0 | 2 |
| ROSEAU | | 6 | 19 | 21 | 4 | 0 | 0 | 8 | 13 |
| NINTH | 17 | 171 | 666 | 681 | 156 | 27 | 28 | 150 | 476 |
| ANOKA | | 65 | 146 | 173 | 38 | 2 | 11 | 32 | 128 |
| CHISAGO | | 6 | 28 | 26 | 8 | 0 | 3 | 6 | 17 |
| ISANTI | | 7 | 8 | 9 | 6 | 1 | 0 | 3 | 5 |
| KANABEC | | 0 | 3 | 3 | 0 | 0 | 0 | 1 | 2 |
| PINE | | 10 | 23 | 30 | 3 | 2 | 1 | 2 | 25 |
| 1 SHERBURNE | | 21 | 28 | 44 | 5 | 3 | 0 | 5 | 36 |
| WASHINGTON | | 21 | 125 | 125 | 21 | 3 | 2 | 14 | 106 |
| WRIGHT | | 4 | 39 | 29 | 14 | 1 | 0 | 2 | 26 |
| TENTH | 8 | 134 | 400 | 439 | 95 | 12 | 17 | 65 | 345 |
| STATEWIDE TOTALS | | 1132 | 6043 | 6131 | 1044 | 192 | 397 | 762 | 4780 |

DISTRICT COURTS - TERMINATIONS
01/01/73 - 12/31/73

| DISTRICT | NO. OF COUNTIES | TRIAL | | SETTLED DURING TRIAL | | SETTLED, STRICKEN OR DISMISSED | | CRIMINAL DISPOSI. | TOTAL DISPOSI. |
|------------------|-----------------|-------|------|----------------------|------|--------------------------------|------|-------------------|----------------|
| | | COURT | JURY | COURT | JURY | COURT | JURY | | |
| FIRST | 7 | 116 | 63 | 4 | 37 | 243 | 444 | 467 | 1374 |
| SECOND | 1 | 413 | 145 | 42 | 223 | 827 | 1413 | 788 | 3851 |
| THIRD | 11 | 311 | 83 | 3 | 37 | 351 | 545 | 425 | 1755 |
| FOURTH | 1 | 2793 | 337 | 535 | 775 | 1564 | 2078 | 2211 | 10293 |
| FIFTH | 15 | 281 | 87 | 5 | 37 | 207 | 481 | 334 | 1432 |
| SIXTH | 7 | 1569 | 62 | 4 | 54 | 571 | 382 | 291 | 2933 |
| SEVENTH | 10 | 117 | 84 | 3 | 68 | 227 | 468 | 354 | 1321 |
| EIGHTH | 13 | 49 | 48 | 2 | 21 | 97 | 211 | 141 | 569 |
| NINTH | 17 | 86 | 63 | 8 | 24 | 219 | 503 | 681 | 1584 |
| TENTH | 8 | 115 | 56 | 22 | 25 | 295 | 520 | 439 | 1472 |
| STATEWIDE TOTALS | | 5850 | 1628 | 628 | 1301 | 4601 | 7045 | 6131 | 26584 |

DISTRICT COURTS - TERMINATIONS
01/01/73 - 12/31/73

| DISTRICT | NO. OF COUNTIES | TRIAL | | SETTLED DURING TRIAL | | SETTLED, STRICKEN OR DISMISSED | | CRIMINAL DISPOSI. | TOTAL DISPOSI. |
|-------------------|-----------------|-------|------|----------------------|------|--------------------------------|------|-------------------|----------------|
| | | COURT | JURY | COURT | JURY | COURT | JURY | | |
| CARVER | | 20 | 9 | 0 | 2 | 32 | 46 | 29 | 138 |
| DAKOTA | | 29 | 26 | 3 | 20 | 124 | 209 | 230 | 641 |
| GOODHUE | | 19 | 7 | 0 | 1 | 16 | 41 | 36 | 120 |
| 1 LE SUEUR | | 10 | 7 | 0 | 4 | 14 | 33 | 21 | 89 |
| MCLEOD | | 10 | 8 | 0 | 4 | 10 | 31 | 16 | 79 |
| SCOTT | | 22 | 5 | 1 | 6 | 34 | 57 | 110 | 235 |
| SIBLEY | | 6 | 1 | 0 | 0 | 13 | 27 | 25 | 72 |
| FIRST | 7 | 116 | 63 | 4 | 37 | 243 | 444 | 467 | 1374 |
| RAMSEY | | 413 | 145 | 42 | 223 | 827 | 1413 | 788 | 3851 |
| SECOND | 1 | 413 | 145 | 42 | 223 | 827 | 1413 | 788 | 3851 |
| DODGE | | 6 | 1 | 0 | 1 | 4 | 14 | 17 | 43 |
| FILLMORE | | 5 | 4 | 0 | 1 | 21 | 24 | 11 | 66 |
| FREEBORN | | 85 | 14 | 2 | 8 | 43 | 47 | 47 | 246 |
| HOUSTON | | 39 | 3 | 0 | 2 | 13 | 26 | 24 | 107 |
| MOWER | | 79 | 10 | 0 | 3 | 27 | 84 | 55 | 258 |
| OLMSTED | | 24 | 15 | 0 | 2 | 139 | 117 | 97 | 394 |
| RICE | | 4 | 5 | 0 | 6 | 46 | 77 | 43 | 181 |
| 2 STEELE | | 1 | 4 | 1 | 2 | 16 | 32 | 21 | 77 |
| WABASHA | | 24 | 12 | 0 | 5 | 12 | 34 | 16 | 103 |
| WASECA | | 4 | 6 | 0 | 5 | 10 | 36 | 20 | 81 |
| WINONA | | 40 | 9 | 0 | 2 | 20 | 54 | 74 | 199 |
| THIRD | 11 | 311 | 83 | 3 | 37 | 351 | 545 | 425 | 1755 |
| HENNEPIN | | 2793 | 337 | 535 | 775 | 1564 | 2078 | 2211 | 10293 |
| FOURTH | 1 | 2793 | 337 | 535 | 775 | 1564 | 2078 | 2211 | 10293 |
| 2 BLUE EARTH | | 8 | 17 | 0 | 5 | 15 | 102 | 80 | 227 |
| BROWN | | 164 | 1 | 0 | 0 | 47 | 29 | 24 | 265 |
| COTTONWOOD | | 3 | 4 | 0 | 2 | 8 | 16 | 6 | 39 |
| FARIBAULT | | 7 | 3 | 0 | 1 | 14 | 50 | 33 | 108 |
| JACKSON | | 0 | 6 | 0 | 0 | 11 | 23 | 4 | 44 |
| LINCOLN | | 0 | 3 | 0 | 1 | 3 | 6 | 3 | 16 |
| LYON | | 3 | 6 | 2 | 4 | 19 | 35 | 17 | 86 |
| MARTIN | | 1 | 8 | 0 | 3 | 4 | 75 | 50 | 141 |
| MURRAY | | 37 | 7 | 0 | 5 | 17 | 19 | 25 | 110 |
| NICOLLET | | 18 | 15 | 1 | 3 | 19 | 24 | 46 | 126 |
| 1 NOBLES | | 6 | 3 | 0 | 2 | 7 | 30 | 11 | 59 |
| PIPESTONE | | 3 | 0 | 0 | 0 | 13 | 11 | 2 | 29 |
| REDWOOD | | 2 | 7 | 0 | 5 | 5 | 24 | 13 | 56 |
| ROCK | | 1 | 5 | 0 | 0 | 5 | 10 | 3 | 24 |
| WATONWAN | | 28 | 2 | 2 | 6 | 20 | 27 | 17 | 102 |
| FIFTH | 15 | 281 | 87 | 5 | 37 | 207 | 481 | 334 | 1432 |
| CARLTON | | 7 | 7 | 0 | 4 | 40 | 27 | 19 | 104 |
| COOK | | 10 | 0 | 0 | 2 | 13 | 9 | 7 | 41 |
| 6 LAKE | | 0 | 1 | 3 | 3 | 12 | 8 | 13 | 40 |
| ST LOUIS-DULUTH | | 1031 | 26 | 0 | 13 | 442 | 166 | 161 | 1839 |
| ST LOUIS-ELY | | 6 | 1 | 0 | 1 | 1 | 3 | 0 | 12 |
| ST LOUIS-HIBBING | | 257 | 21 | 1 | 19 | 15 | 67 | 55 | 435 |
| ST LOUIS-VIRGINIA | | 258 | 6 | 0 | 12 | 48 | 102 | 36 | 462 |
| SIXTH | 7 | 1569 | 62 | 4 | 54 | 571 | 382 | 291 | 2933 |
| 2 BECKER | | 11 | 4 | 0 | 8 | 13 | 20 | 49 | 105 |
| BENTON | | 3 | 2 | 0 | 2 | 9 | 53 | 22 | 91 |

DISTRICT COURTS - TERMINATIONS
01/01/73 - 12/31/73

| DISTRICT | NO. OF COUNTIES | TRIAL | | SETTLED DURING TRIAL | | SETTLED, STRICKEN OR DISMISSED | | CRIMINAL DISPOST. | TOTAL DISPOST. |
|---------------------|-----------------|-------|------|----------------------|------|--------------------------------|------|-------------------|----------------|
| | | COURT | JURY | COURT | JURY | COURT | JURY | | |
| CLAY | | 22 | 23 | 0 | 25 | 12 | 56 | 33 | 171 |
| DOUGLAS | | 4 | 4 | 0 | 3 | 38 | 44 | 18 | 111 |
| MILLE LACS | | 0 | 7 | 0 | 2 | 16 | 23 | 8 | 56 |
| MORRISON | | 5 | 6 | 0 | 5 | 19 | 30 | 30 | 95 |
| 1 OTTER TAIL | | 4 | 6 | 2 | 9 | 19 | 57 | 54 | 151 |
| STEARNS | | 21 | 26 | 0 | 11 | 67 | 159 | 95 | 379 |
| TODD | | 0 | 5 | 1 | 0 | 20 | 18 | 31 | 75 |
| WADENA | | 47 | 1 | 0 | 3 | 14 | 8 | 14 | 87 |
| SEVENTH | 10 | 117 | 84 | 3 | 68 | 227 | 468 | 354 | 1321 |
| BIG STONE | | 2 | 0 | 0 | 0 | 5 | 21 | 7 | 35 |
| CHIPPEWA | | 12 | 11 | 2 | 3 | 13 | 26 | 6 | 73 |
| GRANT | | 2 | 1 | 0 | 0 | 0 | 13 | 1 | 17 |
| KANDIYOHI | | 5 | 16 | 0 | 7 | 17 | 45 | 56 | 146 |
| LAC QUI PARLE | | 2 | 1 | 0 | 0 | 8 | 6 | 2 | 19 |
| MEEKER | | 4 | 1 | 0 | 3 | 13 | 16 | 12 | 49 |
| POPE | | 5 | 3 | 0 | 0 | 4 | 14 | 12 | 38 |
| 1 RENVILLE | | 11 | 8 | 0 | 5 | 11 | 31 | 10 | 76 |
| STEVENS | | 5 | 2 | 0 | 2 | 15 | 3 | 8 | 35 |
| SWIFT | | 0 | 3 | 0 | 0 | 2 | 18 | 5 | 28 |
| 10 TRAVERSE | | 0 | 1 | 0 | 0 | 0 | 0 | 0 | 1 |
| 1 WILKIN | | 0 | 0 | 0 | 0 | 1 | 3 | 8 | 12 |
| YELLOW MEDICINE | | 1 | 1 | 0 | 1 | 8 | 15 | 14 | 40 |
| EIGHTH | 13 | 49 | 48 | 2 | 21 | 97 | 211 | 141 | 569 |
| AITKIN | | 4 | 4 | 0 | 1 | 11 | 23 | 17 | 60 |
| BELTRAMI | | 2 | 8 | 0 | 1 | 19 | 41 | 70 | 141 |
| CASS | | 8 | 4 | 0 | 2 | 21 | 23 | 47 | 105 |
| CLEARWATER | | 16 | 2 | 5 | 2 | 22 | 7 | 18 | 72 |
| CROW WING | | 11 | 6 | 2 | 2 | 26 | 87 | 100 | 234 |
| HUBBARD | | 8 | 2 | 1 | 1 | 28 | 18 | 26 | 84 |
| ITASCA | | 12 | 15 | 0 | 1 | 14 | 84 | 111 | 237 |
| 1 KITSON | | 0 | 2 | 0 | 0 | 6 | 14 | 7 | 29 |
| KOOCHICING | | 10 | 2 | 0 | 0 | 18 | 39 | 159 | 228 |
| 2 LAKE OF THE WOODS | | 0 | 1 | 0 | 0 | 2 | 15 | 1 | 19 |
| 11 MAHNOHEN | | 0 | 0 | 0 | 0 | 0 | 6 | 0 | 6 |
| MARSHALL | | 0 | 5 | 0 | 3 | 4 | 31 | 3 | 46 |
| NORMAN | | 0 | 0 | 0 | 4 | 12 | 10 | 9 | 35 |
| PENNINGTON | | 2 | 2 | 0 | 3 | 9 | 44 | 18 | 78 |
| POLK | | 11 | 7 | 0 | 3 | 21 | 34 | 70 | 146 |
| RED LAKE | | 0 | 0 | 0 | 1 | 5 | 16 | 4 | 26 |
| ROSEAU | | 2 | 3 | 0 | 0 | 1 | 11 | 21 | 38 |
| NINTH | 17 | 86 | 63 | 8 | 24 | 219 | 503 | 681 | 1584 |
| ANOKA | | 22 | 20 | 20 | 9 | 90 | 201 | 173 | 535 |
| CHISAGO | | 16 | 3 | 0 | 0 | 17 | 21 | 26 | 83 |
| ISANTI | | 12 | 0 | 2 | 2 | 16 | 30 | 9 | 71 |
| KANABEC | | 7 | 3 | 0 | 3 | 8 | 5 | 3 | 29 |
| PINE | | 4 | 0 | 0 | 4 | 5 | 19 | 30 | 62 |
| 1 SHERBURNE | | 9 | 2 | 0 | 3 | 9 | 39 | 44 | 106 |
| WASHINGTON | | 18 | 26 | 0 | 3 | 115 | 154 | 125 | 441 |
| WRIGHT | | 27 | 2 | 0 | 1 | 35 | 51 | 29 | 145 |
| TENTH | 8 | 115 | 56 | 22 | 25 | 295 | 520 | 439 | 1472 |
| STATEWIDE TOTALS | | 5850 | 1028 | 628 | 1301 | 4601 | 7045 | 6131 | 26584 |

COST OF DISTRICT COURTS - 1973

FIRST DISTRICT

| | |
|---------|---------------------|
| Dakota | \$185,486.07 |
| Goodhue | 66,162.86 |
| McLeod | 51,343.64 |
| Scott | 27,844.16 |
| Carver | 60,080.77 |
| LeSueur | 46,318.91 |
| Sibley | 36,558.13 |
| TOTAL | <u>\$473,794.54</u> |

SECOND DISTRICT

| | |
|--------|--------------|
| Ramsey | \$799,402.00 |
|--------|--------------|

THIRD DISTRICT

| | |
|----------|---------------------|
| Olmsted | \$138,241.00 |
| Mower | 71,481.71 |
| Winona | 76,435.51 |
| Rice | 78,175.46 |
| Freeborn | 73,043.17 |
| Steele | 55,072.07 |
| Fillmore | 31,546.50 |
| Wabasha | 42,532.56 |
| Houston | 45,421.46 |
| Waseca | 42,475.67 |
| Dodge | 21,896.00 |
| TOTAL | <u>\$679,321.11</u> |

FOURTH DISTRICT

| | |
|----------|----------------|
| Hennepin | \$2,552,790.47 |
|----------|----------------|

FIFTH DISTRICT

| | |
|------------|---------------------|
| Blue Earth | \$88,166.12 |
| Brown | 58,563.28 |
| Martin | 60,308.15 |
| Faribault | 45,304.60 |
| Nobles | 42,306.61 |
| Nicollet | 54,056.92 |
| Lyon | 57,504.33 |
| Redwood | 46,122.99 |
| Cottonwood | 45,178.21 |
| Jackson | 31,297.60 |
| Murray | 24,970.88 |
| Watsonwan | 34,653.24 |
| Pipestone | 23,614.65 |
| Rock | 28,725.14 |
| Lincoln | 25,101.88 |
| TOTAL | <u>\$665,874.60</u> |

COST OF DISTRICT COURTS - 1973 (Continued)

SIXTH DISTRICT

| | |
|-------------|---------------------|
| Saint Louis | \$494,968.00 |
| Carlton | 61,994.00 |
| Lake | no report |
| Cook | 16,226.21 |
| TOTAL | <u>\$573,188.21</u> |

SEVENTH DISTRICT

| | |
|------------|---------------------|
| Stearns | \$116,831.10 |
| Otter Tail | 50,314.09 |
| Clay | 68,729.01 |
| Morrison | 42,498.46 |
| Becker | 38,615.13 |
| Todd | 40,566.29 |
| Douglas | 32,726.58 |
| Benton | 33,180.10 |
| Mille Lacs | 37,846.13 |
| Wadena | 21,393.55 |
| TOTAL | <u>\$482,700.44</u> |

EIGHTH DISTRICT

| | |
|-----------------|---------------------|
| Kandiyohi | \$71,163.03 |
| Renville | 40,307.45 |
| Meeker | 32,259.41 |
| Chippewa | 41,989.25 |
| Yellow Medicine | 25,498.31 |
| Swift | 25,631.01 |
| Lac qui Parle | 21,323.40 |
| Pope | 19,918.83 |
| Stevens | 35,096.48 |
| Wilkin | 21,970.05 |
| Big Stone | 17,745.55 |
| Grant | 16,011.20 |
| Traverse | 16,008.48 |
| TOTAL | <u>\$384,922.45</u> |

COST OF DISTRICT COURTS - 1973 (Continued)

NINTH DISTRICT

| | |
|-------------------|---------------------|
| Itasca | \$75,032.42 |
| Polk | 64,402.16 |
| Crow Wing | no report |
| Beltrami | no report |
| Koochiching | 46,406.87 |
| Cass | 43,825.55 |
| Marshall | 29,174.56 |
| Pennington | 30,942.83 |
| Aitkin | 26,549.69 |
| Roseau | 32,711.62 |
| Norman | 22,580.21 |
| Hubbard | 21,773.60 |
| Clearwater | 22,730.46 |
| Kittson | 26,987.40 |
| Mahnomen | no report |
| Red Lake | no report |
| Lake of the Woods | 11,345.87 |
| TOTAL | <u>\$454,463.24</u> |

TENTH DISTRICT

| | |
|------------|---------------------|
| Anoka | \$284,370.67 |
| Washington | 141,793.67 |
| Wright | 60,079.77 |
| Pine | 33,682.60 |
| Isanti | 26,806.71 |
| Chisago | 33,120.69 |
| Sherburne | 45,866.48 |
| Kanabec | 20,111.63 |
| TOTAL | <u>\$645,835.22</u> |

TOTAL - ALL DISTRICT COURTS-----\$7,712,292.28

MUNICIPAL COURTS - CIVIL CASES

| | CASES PENDING 1/1/73 | | CASES FILED | | CASES TERMINATED | | CASES PENDING 12/31/73 | | NET GAIN OR LOSS | |
|--------------------|----------------------------|------|----------------|------|---------------------|------|------------------------------|------|---------------------|------|
| | COURT | JURY | COURT | JURY | COURT | JURY | COURT | JURY | COURT | JURY |
| AURORA | 0 | 0 | 0 | 0 | 0 | 0 | 0 | 0 | 0 | 0 |
| 3 BUHL | 0 | 0 | 3 | 0 | 3 | 0 | 0 | 0 | 0 | 0 |
| 7 CHISHOLM | 4 | 1 | 22 | 2 | 22 | 0 | 4 | 3 | 0 | -2 |
| 12 ELY | 0 | 0 | 0 | 0 | 0 | 0 | 0 | 0 | 0 | 0 |
| 1 EVELETH | 1 | 0 | 17 | 0 | 7 | 0 | 11 | 0 | -10 | 0 |
| HIBBING | 101 | 0 | 400 | 0 | 439 | 0 | 62 | 0 | +39 | 0 |
| 2 MAPLEWOOD | 0 | 0 | 0 | 0 | 0 | 0 | 0 | 0 | 0 | 0 |
| 1 NEW BRIGHTON | 0 | 0 | 32 | 0 | 26 | 0 | 6 | 0 | -6 | 0 |
| 6 NORTH OAKS | 0 | 0 | 0 | 0 | 0 | 0 | 0 | 0 | 0 | 0 |
| 1 NORTH ST. PAUL | 20 | 2 | 5 | 4 | 10 | 1 | 15 | 5 | +5 | -3 |
| PROCTOR | 0 | 0 | 16 | 0 | 11 | 0 | 5 | 0 | -5 | 0 |
| ROSEVILLE | 0 | 0 | 0 | 0 | 0 | 0 | 0 | 0 | 0 | 0 |
| 12 TOWER | 0 | 0 | 0 | 0 | 0 | 0 | 0 | 0 | 0 | 0 |
| VIRGINIA | 28 | 0 | 615 | 0 | 627 | 0 | 16 | 0 | +12 | 0 |
| 11 WHITE BEAR LAKE | 121 | 23 | 40 | 1 | 25 | 0 | 136 | 24 | -15 | -1 |
| SUB-TOTAL | 275 | 26 | 1150 | 7 | 1170 | 1 | 255 | 32 | +20 | -6 |
| DULUTH** | 362 | 39 | 1743 | 28 | 1697 | 17 | 408 | 50 | -46 | -11 |
| HENNEPIN | 1053 | 708 | 4539 | 641 | 4527 | 662 | 1065 | 687 | -12 | +21 |
| ST. PAUL | 157 | 446 | 527 | 439 | 493 | 375 | 191 | 510 | -34 | -64 |
| STATEWIDE TOTALS | 1847 | 1219 | 7959 | 1115 | 7887 | 1055 | 1919 | 1279 | -72 | -60 |

34

CONCILIATION COURT STATISTICS

| | CASES PENDING | CASES FILED | CASES TERMINATED | CASES PENDING | NET GAIN OR LOSS |
|----------|------------------|----------------|---------------------|------------------|---------------------|
| HENNEPIN | 2882 | 20944 | 21169 | 2657 | +225 |
| ST. PAUL | 543 | 8001 | 7815 | 566 | -23 |
| TOTALS | 3425 | 28945 | 28984 | 3223 | +202 |

**DULUTH CONCILIATION COURT IS INCLUDED.

MUNICIPAL COURTS - CIVIL DISPOSITIONS

1/1/73 - 12/31/73

| | TRIAL | | DISMISSED, SETTLED, STRICKEN, OR DEFAULT | | TOTAL DISPOSITIONS | |
|--------------------|-------|------|---|------|-----------------------|------|
| | COURT | JURY | COURT | JURY | COURT | JURY |
| AURORA | 0 | 0 | 0 | 0 | 0 | 0 |
| 3 BUHL | 2 | 0 | 1 | 0 | 3 | 0 |
| 7 CHISHOLM | 22 | 0 | 0 | 0 | 22 | 0 |
| 12 ELY | 0 | 0 | 0 | 0 | 0 | 0 |
| 1 EVELETH | 0 | 0 | 7 | 0 | 7 | 0 |
| HIBBING | 79 | 0 | 360 | 0 | 439 | 0 |
| 2 MAPLEWOOD | 0 | 0 | 0 | 0 | 0 | 0 |
| 1 NEW BRIGHTON | 5 | 0 | 21 | 0 | 26 | 0 |
| 6 NORTH OAKS | 0 | 0 | 0 | 0 | 0 | 0 |
| 1 NORTH ST. PAUL | 3 | 0 | 7 | 1 | 10 | 1 |
| PROCTOR | 7 | 0 | 4 | 0 | 11 | 0 |
| ROSEVILLE | 0 | 0 | 0 | 0 | 0 | 0 |
| 12 TOWER | 0 | 0 | 0 | 0 | 0 | 0 |
| VIRGINIA | 197 | 0 | 430 | 0 | 627 | 0 |
| 11 WHITE BEAR LAKE | 3 | 0 | 22 | 0 | 25 | 0 |
| SUB-TOTAL | 318 | 0 | 852 | 1 | 1170 | 1 |
| DULUTH** | 500 | 6 | 1197 | 11 | 1697 | 17 |
| HENNEPIN | 1493 | 154 | 3034 | 508 | 4527 | 662 |
| ST. PAUL | 109 | 25 | 384 | 350 | 493 | 375 |
| STATEWIDE TOTALS | 2420 | 185 | 5467 | 870 | 7887 | 1055 |

35

CONCILIATION COURT STATISTICS

| | GUILTY PLEA | PRELIM. HEARING | COURT TRIAL | JURY TRIAL | DISMISSED | TOTAL DISPOSITIONS |
|----------|----------------|--------------------|----------------|---------------|-----------|-----------------------|
| HENNEPIN | 0 | 0 | 14087 | 0 | 7082 | 21169 |
| ST. PAUL | 0 | 0 | 2842 | 0 | 4973 | 7815 |
| TOTALS | 0 | 0 | 16929 | 0 | 12055 | 28984 |

**DULUTH CONCILIATION COURT IS INCLUDED.

MUNICIPAL COURTS - CRIMINAL CASES

| | CASES PENDING 1/1/73 | | CASES FILED | | CASES TERMINATED | | CASES PENDING 12/31/73 | | NET GAIN OR LOSS | |
|--------------------|----------------------|-------|-------------|-------|------------------|-------|------------------------|-------|------------------|-------|
| | TRAF. | OTHER | TRAF. | OTHER | TRAF. | OTHER | TRAF. | OTHER | TRAF. | OTHER |
| AURORA | 0 | 0 | 148 | 58 | 148 | 58 | 0 | 0 | 0 | 0 |
| 3 BUHL | 0 | 0 | 59 | 26 | 59 | 26 | 0 | 0 | 0 | 0 |
| 7 CHISHOLM | 0 | 0 | 210 | 77 | 210 | 77 | 0 | 0 | 0 | 0 |
| 12 ELY | 2 | 3 | 0 | 0 | 0 | 0 | 2 | 3 | 0 | 0 |
| 1 EVELETH | 59 | 8 | 413 | 111 | 431 | 87 | 41 | 32 | +18 | -24 |
| HIBBING | 18 | 21 | 1542 | 621 | 1553 | 625 | 7 | 17 | +11 | +4 |
| 2 MAPLEWOOD | 530 | 146 | 4023 | 1323 | 4069 | 1320 | 484 | 149 | +46 | -3 |
| 1 NEW BRIGHTON | 39 | 5 | 999 | 207 | 998 | 201 | 40 | 11 | -1 | -6 |
| 6 NORTH OAKS | 5 | 4 | 101 | 13 | 92 | 11 | 14 | 6 | -9 | -2 |
| 1 NORTH ST. PAUL | 25 | 34 | 620 | 199 | 628 | 210 | 17 | 23 | +8 | +11 |
| PROCTOR | 20 | 6 | 273 | 26 | 281 | 30 | 12 | 2 | +8 | +4 |
| ROSEVILLE | 117 | 31 | 2770 | 690 | 2627 | 671 | 260 | 50 | -143 | -19 |
| 12 TOWER | 0 | 0 | 0 | 0 | 0 | 0 | 0 | 0 | 0 | 0 |
| VIRGINIA | 18 | 20 | 1444 | 487 | 1441 | 473 | 21 | 34 | -3 | -14 |
| 11 WHITE BEAR LAKE | 186 | 55 | 44 | 20 | 47 | 23 | 183 | 52 | +3 | 3 |
| SUB-TOTAL | 1019 | 333 | 12646 | 3858 | 12584 | 3812 | 1081 | 379 | -62 | -46 |
| DULUTH** | 180 | 344 | 7965 | 1446 | 7900 | 1488 | 245 | 302 | -65 | +42 |
| HENNEPIN | 4398 | 1705 | 49326 | 19617 | 47239 | 18207 | 6485 | 3115 | -2087 | -1410 |
| ST. PAUL | 810 | 381 | 15282 | 4638 | 14759 | 4610 | 1333 | 409 | -523 | -28 |
| STATEWIDE TOTALS | 6407 | 2763 | 85219 | 29559 | 82482 | 28117 | 9144 | 4205 | -2737 | -1442 |

**DULUTH CONCILIATION COURT IS INCLUDED.

MUNICIPAL COURTS - CRIMINAL DISPOSITIONS

1/1/73 - 12/31/73

| | GUILTY PLEA | | PRELIM. HEARING | | COURT TRIAL | | JURY TRIAL | | DIS., SET., STRICK., DEF. | | DISPOSITIONS | |
|------------------|-------------|-------|-----------------|------|-------------|------|------------|----|---------------------------|------|--------------|-------|
| | T | OV | T | OV | T | OV | T | OV | T | OV | T | OV |
| AURORA | 130 | 30 | 0 | 0 | 12 | 6 | 0 | 0 | 6 | 22 | 148 | 58 |
| 3 BUHL | 53 | 21 | 1 | 0 | 5 | 5 | 0 | 0 | 0 | 0 | 59 | 26 |
| 7 CHISHOLM | 210 | 70 | 0 | 6 | 0 | 0 | 0 | 0 | 0 | 1 | 210 | 77 |
| 12 ELY | 0 | 0 | 0 | 0 | 0 | 0 | 0 | 0 | 0 | 0 | 0 | 0 |
| 1 EVELETH | 397 | 67 | 1 | 8 | 0 | 0 | 0 | 0 | 33 | 12 | 431 | 87 |
| HIBBING | 854 | 204 | 0 | 36 | 190 | 137 | 1 | 2 | 508 | 246 | 1553 | 625 |
| 2 MAPLEWOOD | 3534 | 954 | 0 | 47 | 394 | 160 | 38 | 3 | 103 | 156 | 4069 | 1320 |
| 1 NEW BRIGHTON | 829 | 109 | 0 | 21 | 64 | 25 | 12 | 0 | 93 | 46 | 998 | 201 |
| 6 NORTH OAKS | 82 | 10 | 0 | 0 | 2 | 0 | 0 | 0 | 8 | 1 | 92 | 11 |
| 1 NORTH ST. PAUL | 552 | 138 | 0 | 11 | 28 | 15 | 1 | 7 | 47 | 39 | 628 | 210 |
| PROCTOR | 232 | 11 | 0 | 0 | 7 | 1 | 0 | 0 | 42 | 18 | 281 | 30 |
| ROSEVILLE | 2094 | 389 | 0 | 38 | 59 | 17 | 13 | 0 | 461 | 227 | 2627 | 671 |
| 12 TOWER | 0 | 0 | 0 | 0 | 0 | 0 | 0 | 0 | 0 | 0 | 0 | 0 |
| VIRGINIA | 1369 | 317 | 10 | 41 | 24 | 28 | 1 | 0 | 37 | 87 | 1441 | 473 |
| WHITE BEAR LAKE | 41 | 15 | 0 | 1 | 5 | 4 | 0 | 0 | 1 | 3 | 47 | 23 |
| SUB-TOTAL | 10377 | 2335 | 12 | 209 | 790 | 398 | 66 | 12 | 1339 | 858 | 12584 | 3812 |
| DULUTH** | 7576 | 884 | 0 | 158 | 94 | 79 | 19 | 7 | 211 | 360 | 7900 | 1488 |
| HENNEPIN | 24592 | 7551 | 1781 | 3198 | 2084 | 1497 | 101 | 6 | 18681 | 5955 | 47239 | 18207 |
| ST. PAUL | 9120 | 1924 | 0 | 527 | 1111 | 552 | 53 | 10 | 4475 | 1597 | 14759 | 4610 |
| STATEWIDE TOTALS | 51665 | 12694 | 1793 | 4092 | 4079 | 2526 | 239 | 35 | 24706 | 8770 | 82482 | 28117 |

**DULUTH CONCILIATION COURT IS INCLUDED.

MUNICIPAL COURTS
 RECAPITULATION TOTAL DISPOSITIONS
 1/1/73 - 12/31/73

| | CIVIL DISPOSITIONS | | CRIMINAL DISPOSITIONS | | DISPOSITIONS |
|-------------------------|--------------------|-------------|-----------------------|------------------|---------------|
| | COURT | JURY | TRAFFIC | OTHER VIOLATIONS | |
| AURORA | 0 | 0 | 148 | 58 | 206 |
| 3 BUHL | 3 | 0 | 59 | 26 | 88 |
| 7 CHISHOLM | 22 | 0 | 210 | 77 | 309 |
| 12 ELY | 0 | 0 | 0 | 0 | 0 |
| 1 EVELETH | 7 | 0 | 431 | 87 | 525 |
| HIBBING | 439 | 0 | 1553 | 625 | 2617 |
| 2 MAPLEWOOD | 0 | 0 | 4069 | 1320 | 5389 |
| 1 NEW BRIGHTON | 26 | 0 | 998 | 201 | 1225 |
| 6 NORTH OAKS | 0 | 0 | 92 | 11 | 103 |
| 1 NORTH ST. PAUL | 10 | 1 | 628 | 210 | 849 |
| PROCTOR | 11 | 0 | 281 | 30 | 322 |
| ROSEVILLE | 0 | 0 | 2627 | 671 | 3298 |
| 12 TOWER | 0 | 0 | 0 | 0 | 0 |
| VIRGINIA | 627 | 0 | 1441 | 473 | 2541 |
| 11 WHITE BEAR LAKE | 25 | 0 | 47 | 23 | 95 |
| SUB-TOTAL | 1170 | 1 | 12584 | 3812 | 17567 |
| DULUTH** | 1697 | 17 | 7900 | 1488 | 11102 |
| HENNEPIN | 4527 | 662 | 47239 | 18207 | 70635 |
| ST. PAUL | 493 | 375 | 13749 | 4610 | 20237 |
| STATEWIDE TOTALS | 7887 | 1055 | 82482 | 28117 | 119541 |

**DULUTH CONCILIATION COURT IS INCLUDED

| COST OF MUNICIPAL COURTS | |
|--------------------------|-----------------------|
| HENNEPIN COUNTY | \$2,059,496.00 |
| RAMSEY COUNTY | |
| Maplewood | 75,686.00 |
| New Brighton | 21,672.98 |
| North Oaks | no report |
| North St. Paul | no report |
| Roseville | 712,583.00 |
| St. Paul | 19,355.89 |
| White Bear Lake | |
| TOTAL | \$2,888,793.87 |

COST OF PROBATE/COUNTY COURTS - 1973

FIRST DISTRICT

| | |
|---------|---------------------|
| Dakota | \$434,927.98 |
| Goodhue | 82,732.27 |
| McLeod | 94,664.47 |
| Scott | 123,348.62 |
| Carver | 87,011.18 |
| LeSueur | 46,882.59 |
| Sibley | 45,755.82 |
| TOTAL | <u>\$915,322.93</u> |

SECOND DISTRICT

| | |
|----------|--------------|
| **Ramsey | \$249,028.00 |
|----------|--------------|

THIRD DISTRICT

| | |
|----------|---------------------|
| Olmsted | \$210,309.00 |
| Mower | 99,900.22 |
| Winona | 116,811.63 |
| Rice | 102,817.77 |
| Freeborn | 90,171.79 |
| Steele | 89,042.36 |
| Fillmore | 38,491.39 |
| Wabasha | 56,388.54 |
| Houston | 46,236.67 |
| Waseca | 32,000.00 |
| Dodge | 32,956.00 |
| TOTAL | <u>\$915,125.37</u> |

FOURTH DISTRICT

| | |
|------------|--------------|
| **Hennepin | \$875,420.00 |
|------------|--------------|

FIFTH DISTRICT

| | |
|------------|---------------------|
| Blue Earth | \$129,067.91 |
| Brown | 81,974.45 |
| Martin | 56,627.77 |
| Faribault | 59,309.00 |
| Nobles | 71,576.60 |
| Nicollet | 56,096.11 |
| Lyon | 121,951.23 |
| Redwood | 69,568.94 |
| Cottonwood | 35,367.38 |
| Jackson | 38,491.19 |
| Murray | 30,089.03 |
| Watonwan | 44,926.60 |
| Pipestone | 44,984.32 |
| Rock | 22,759.75 |
| Lincoln | 26,511.52 |
| TOTAL | <u>\$889,301.80</u> |

**Probate Courts

COST OF PROBATE/COUNTY COURTS - 1973 (Continued)

SIXTH DISTRICT

| | |
|---------------|---------------------|
| **Saint Louis | \$181,652.00 |
| Carlton | 81,037.00 |
| Lake | no report |
| Cook | 22,634.58 |
| TOTAL | <u>\$285,323.58</u> |

SEVENTH DISTRICT

| | |
|------------|---------------------|
| Stearns | \$232,799.92 |
| Otter Tail | 93,695.73 |
| Clay | 91,296.91 |
| Morrison | 66,969.18 |
| Becker | 35,842.55 |
| Todd | 42,511.44 |
| Douglas | 72,039.61 |
| Benton | 38,553.53 |
| Mille Lacs | 46,826.19 |
| Wadena | 35,736.96 |
| TOTAL | <u>\$756,272.02</u> |

EIGHTH DISTRICT

| | |
|-----------------|---------------------|
| Kandiyohi | \$91,266.66 |
| Renville | 59,830.01 |
| Meeker | 53,463.35 |
| Chippewa | 51,674.82 |
| Yellow Medicine | 41,190.51 |
| Swift | 47,304.00 |
| Lac qui Parle | 41,339.49 |
| Pope | 47,180.45 |
| Stevens | 35,786.55 |
| Wilkin | 42,115.90 |
| Big Stone | 38,985.19 |
| Grant | 34,726.43 |
| Traverse | 23,743.31 |
| TOTAL | <u>\$609,606.67</u> |

**Probate Court

COST OF PROBATE/COUNTY COURTS - 1973 (Continued)

NINTH DISTRICT

| | |
|-------------------|---------------------|
| Itasca | \$84,203.60 |
| Polk | 97,920.94 |
| Crow Wing | no report |
| Beltrami | no report |
| Koochiching | 51,868.54 |
| Cass | 54,711.20 |
| Marshall | 21,425.36 |
| Pennington | 36,325.72 |
| Aitkin | 45,747.04 |
| Roseau | 36,428.08 |
| Norman | 46,649.99 |
| Hubbard | 26,278.10 |
| Clearwater | no report |
| Kittson | 29,770.64 |
| Mahnomen | no report |
| Red Lake | no report |
| Lake of the Woods | 18,643.15 |
| TOTAL | <u>\$549,972.36</u> |

TENTH DISTRICT

| | |
|------------|-----------------------|
| Anoka | \$370,269.42 |
| Washington | 304,936.98 |
| Wright | 96,790.98 |
| Pine | 64,926.22 |
| Isanti | 51,171.31 |
| Chisago | 61,039.32 |
| Sherburne | 53,735.27 |
| Kanabec | 31,857.35 |
| TOTAL | <u>\$1,034,726.85</u> |

TOTAL - ALL PROBATE/COUNTY COURTS-----\$7,080,099.58

MEMBERS OF THE JUDICIARY

SUPREME COURT

Chief Justice
Robert J. Sheran

Associate Justices

James C. Otis
W. F. Rogosheske
C. Donald Peterson
Fallon Kelly

John J. Todd
Harry H. MacLaughlin
Lawrence R. Yetka
George M. Scott

DISTRICT COURT

| District | Name | Chambers | Term Expires |
|----------|----------------------|-------------|--------------|
| 1 | John M. Fitzgerald | LeCenter | 1977 |
| 1 | John B. Friedrich | Red Wing | 1977 |
| 1 | *Robert J. Breunig | Hastings | 1977 |
| 1 | Lawrence L. Lenertz | Shakopee | 1979 |
| 1 | J. Jerome Kluck | Glencoe | 1979 |
| 2 | *Ronald E. Hachey | St. Paul | 1975 |
| 2 | Archie L. Gingold | St. Paul | 1975 |
| 2 | Edward D. Mulally | St. Paul | 1975 |
| 2 | Harold W. Schultz | St. Paul | 1977 |
| 2 | David E. Marsden | St. Paul | 1979 |
| 2 | J. Jerome Plunkett | St. Paul | 1975 |
| 2 | Otis H. Godfrey, Jr. | St. Paul | 1977 |
| 2 | Stephen L. Maxwell | St. Paul | 1977 |
| 2 | Hyam Segell | St. Paul | 1979 |
| 2 | James M. Lynch | St. Paul | 1979 |
| 2 | Sidney P. Abramson | St. Paul | 1979 |
| 2 | E. Thomas Brennan | St. Paul | 1977 |
| 3 | Warren F. Plunkett | Austin | 1975 |
| 3 | O. Russell Olson | Rochester | 1977 |
| 3 | *Donald T. Franke | Rochester | 1977 |
| 3 | Daniel F. Foley | Albert Lea | 1975 |
| 3 | Urban J. Steimann | Faribault | 1977 |
| 3 | Glenn E. Kelley | Winona | 1977 |
| 4 | Rolf Fosseen | Minneapolis | 1975 |
| 4 | Dana Nicholson | Minneapolis | 1979 |
| 4 | Lindsay G. Arthur | Minneapolis | 1977 |
| 4 | *Douglas K. Amdahl | Minneapolis | 1977 |
| 4 | Donald T. Barbeau | Minneapolis | 1977 |

*Chief Judge

DISTRICT COURT JUDGES -

| District | Name | Chambers | Term Expires |
|----------|--------------------------|---------------------|--------------|
| 4 | Stanley D. Kane | Minneapolis | 1977 |
| 4 | Eugene Minenko | Minneapolis | 1975 |
| 4 | Edward J. Parker | Minneapolis | 1975 |
| 4 | Elmer R. Anderson | Minneapolis | 1974 |
| 4 | Irving C. Iverson | Minneapolis | 1975 |
| 4 | Robert Crane Winton, Jr. | Minneapolis | 1975 |
| 4 | Bruce C. Stone | Minneapolis | 1977 |
| 4 | A. Paul Lommen | Minneapolis | 1979 |
| 4 | David R. Leslie | Minneapolis | 1975 |
| 4 | Harold Kalina | Minneapolis | 1975 |
| 4 | Andrew W. Danielson | Minneapolis | 1975 |
| 4 | Richard J. Kantorowicz | Minneapolis | 1975 |
| 4 | Jonathan G. Lebedoff | Minneapolis | 1977 |
| 4 | Susanne Sedgwick | Minneapolis | 1977 |
| 5 | *Milton D. Mason | Mankato | 1975 |
| 5 | L. J. Irvine | Fairmont | 1975 |
| 5 | Walter H. Mann | Marshall | 1975 |
| 5 | Noah S. Rosenbloom | New Ulm | 1977 |
| 5 | Harvey A. Holtan | Windom | 1975 |
| 6 | *Donald C. Odden | Duluth | 1975 |
| 6 | Nicholas S. Chanak | Hibbing | 1977 |
| 6 | Mitchell A. Dubow | Virginia | 1975 |
| 6 | Donald E. Anderson | Duluth | 1979 |
| 6 | C. Luther Eckman | Duluth | 1975 |
| 6 | Patrick D. O'Brien | Duluth | 1975 |
| 7 | Charles W. Kennedy | Little Falls | 1977 |
| 7 | *Chester G. Rosengren | Fergus Falls | 1977 |
| 7 | Gaylord Saetre | Moorhead | 1977 |
| 7 | Paul Hoffman | St. Cloud | 1977 |
| 8 | *Clarence A. Rolloff | Montevideo | 1977 |
| 8 | Thomas J. Stahler | Morris | 1979 |
| 8 | Leif Langsjoen | Willmar | 1979 |
| 9 | Gordon L. McRae | International Falls | 1979 |
| 9 | Harley G. Swenson | Crookston | 1979 |
| 9 | *James E. Preece | Bemidji | 1975 |
| 9 | Ben F. Grussendorf | Brainerd | 1977 |
| 9 | Warren A. Saetre | Thief River Falls | 1977 |
| 9 | John A. Spellacy | Grand Rapids | 1979 |
| 10 | *Robert B. Gillespie | Cambridge | 1975 |
| 10 | William T. Johnson | Mahtomedi | 1977 |
| 10 | Robert Bakke | Anoka | 1975 |
| 10 | Carroll E. Larson | Buffalo | 1975 |
| 10 | John F. Thoreen | Stillwater | 1975 |
| 10 | Thomas G. Forsberg | Anoka | 1977 |

*Chief Judge

PROBATE/COUNTY COURT JUDGES

| Name | County | Chambers | Term Expires |
|------------------------|--------------------|---------------------|--------------|
| Robert S. Graff | Aitkin | Aitkin | 1975 |
| Lawrence Green | Anoka | Anoka | 1977 |
| James T. Knutson | Anoka | Anoka | 1979 |
| Spencer J. Sokolowski | Anoka | Anoka | 1975 |
| Joseph Wargo | Anoka | Anoka | 1979 |
| Sigwel Wood | Becker | Detroit Lakes | 1975 |
| Marcus A. Reed | Beltrami | Bemidji | 1975 |
| Lowell C. Bigelow | Big Stone-Traverse | Wheaton | 1975 |
| Carl W. Peterson | Blue Earth | Mankato | 1977 |
| William B. Mather, Jr. | Brown | New Ulm | 1975 |
| LaDean A. Overlie | Carlton | Carlton | 1977 |
| John A. Fahey | Carver | Chaska | 1979 |
| Edward H. Luedloff | Carver | Chaska | 1977 |
| Keith L. Kraft | Cass-Hubbard | Park Rapids | 1975 |
| Douglas P. Hunt | Chippewa | Montevideo | 1975 |
| Goodwin L. Dosland | Clay | Moorhead | 1977 |
| Homer A. Saetre | Clay | Moorhead | 1979 |
| Melvin T. Anderson | Clearwater | Bagley | 1975 |
| Lucille Stahl | Cottonwood | Windom | 1975 |
| Henry W. Longfellow | Crow Wing | Brainerd | 1975 |
| Darrell M. Sears | Crow Wing | Brainerd | 1977 |
| Irving Beaudoin | Dakota | South St. Paul | 1979 |
| Gerald W. Kalina | Dakota | Hastings | 1975 |
| John J. Daly | Dakota | Burnsville | 1979 |
| Charles F. Gegen | Dakota | Hastings | 1979 |
| Martin J. Mansur | Dakota | West St. Paul | 1979 |
| Robert A. Neseth | Dodge-Olmsted | Mantorville | 1977 |
| Gerard Ring | Dodge-Olmsted | Rochester | 1975 |
| Thomas J. Scanlan | Dodge-Olmsted | Rochester | 1975 |
| Paul L. Ballard | Douglas-Grant | Alexandria | 1975 |
| Richard Roberts | Douglas-Grant | Elbow Lake | 1975 |
| J. W. Schindler | Faribault | Blue Earth | 1975 |
| George A. Murray | Fillmore | Preston | 1975 |
| A. K. Grinley | Freeborn | Albert Lea | 1975 |
| William R. Sturtz | Freeborn | Albert Lea | 1977 |
| Elmer J. Tomfohr | Goodhue | Red Wing | 1975 |
| **Melvin J. Peterson | Hennepin | Minneapolis | 1979 |
| Elmer M. Anderson | Houston | Caledonia | 1975 |
| John J. Benton | Itasca | Grand Rapids | 1975 |
| William G. Kreger | Jackson | Jackson | 1975 |
| M. A. Wahlstrand | Kandiyohi | Willmar | 1975 |
| Donald Shanahan | Kittson-Roseau | | |
| | Lake of the Woods | Roseau | 1979 |
| George Hnatiuk | Koochiching | International Falls | 1977 |
| John J. Weyrens | Lac qui Parle | Madison | 1979 |
| Walter A. Egeland | Lake-Cook | Two Harbors | 1975 |
| Ruth Brown | LeSueur | LeCenter | 1975 |
| Irving J. Wiltrout | Lincoln-Lyon | Marshall | 1975 |
| LeRoy W. Yost | McLeod | Glencoe | 1977 |

**Probate Court Judge

PROBATE/COUNTY COURT JUDGES -

| Name | County | Chambers | Term Expires |
|------------------------|------------------------------|-------------------|--------------|
| Larry G. Jorgenson | Marshall-Red Lake-Pennington | Warren | 1977 |
| J. A. Harren | Marshall-Red Lake-Pennington | Thief River Falls | 1977 |
| Conrad F. Gaarenstroom | Martin | Fairmont | 1975 |
| Cedric F. Williams | Meeker | Litchfield | 1975 |
| Leonard M. Paulson | Mille Lacs-Kanabec | Milaca | 1975 |
| George P. Wetzel | Morrison | Little Falls | 1977 |
| Paul Kimball, Jr. | Mower | Austin | 1977 |
| Roger S. Plunkett | Mower | Austin | 1977 |
| James H. Manion | Murray-Pipestone | Pipestone | 1977 |
| Henry N. Benson, Jr. | Nicollet | St. Peter | 1975 |
| Milton A. Kludt | Norman | Ada | 1977 |
| Elliot O. Boe | Otter Tail | Fergus Falls | 1975 |
| Henry Polkinghorn | Otter Tail | Fergus Falls | 1977 |
| James Gunderson | Pine-Isanti-Chisago | Center City | 1977 |
| George E. Sausen | Pine-Isanti-Chisago | Pine City | 1975 |
| Robert A. Peterson | Polk | Crookston | 1977 |
| Gilman P. Gandrud | Pope | Glenwood | 1975 |
| **Andrew A. Glenn | Ramsey | St. Paul | 1975 |
| Donald L. Crooks | Redwood | Redwood Falls | 1975 |
| James E. Zeug | Renville | Olivia | 1979 |
| Robert W. Martin | Rice | Faribault | 1975 |
| Vincent Hollaren | Rock-Nobles | Worthington | 1975 |
| Edmund J. Belanger | St. Louis | Duluth | 1977 |
| Thomas J. Bujold | St. Louis | Duluth | 1977 |
| Robert V. Campbell | St. Louis | Duluth | 1977 |
| Ralph E. Harvey | St. Louis | Virginia | 1977 |
| Harry T. Lathrop | St. Louis | Duluth | 1977 |
| Gail Murray | St. Louis | Hibbing | |
| Richard J. Menke | Scott | Shakopee | 1977 |
| Kermit J. Lindmeyer | Scott | Shakopee | 1979 |
| Wendell Y. Henning | Sherburne-Benton-Stearns | St. Cloud | 1975 |
| John Lang | Sherburne-Benton-Stearns | St. Cloud | 1977 |
| Willard P. Lorette | Sherburne-Benton-Stearns | St. Cloud | 1975 |
| Lloyd O. Stein | Sherburne-Benton-Stearns | Elk River | 1979 |
| Kenneth W. Bull | Sibley | Gaylord | 1975 |
| Charles E. Cashman | Steele | Owatonna | 1975 |
| O. K. Alger | Stevens | Morris | 1975 |
| R. A. Bodger | Swift | Benson | 1975 |
| Ken Kalbrenner | Wabasha | Wabasha | 1975 |
| Donald A. Gray | Wadena-Todd | Wadena | 1979 |
| John H. McLoone | Waseca | Waseca | 1979 |
| Howard R. Albertson | Washington | Stillwater | 1979 |
| John T. McDonough | Washington | Stillwater | 1975 |
| Searle R. Sandeen | Washington | Stillwater | 1975 |
| James F. Crowley | Watowan | St. James | 1975 |

**Probate Court Judge

PROBATE/COUNTY COURT JUDGES -

| Name | County | Chambers | Term Expires |
|-----------------------|-----------------|---------------|--------------|
| Bruce N. Reuther | Wilkin | Breckenridge | 1977 |
| Dennis A. Challeen | Winona | Winona | 1979 |
| S. A. Sawyer | Winona | Winona | 1977 |
| Clifford E. Olson | Wright | Buffalo | 1979 |
| Glen W. Swenson | Wright | Buffalo | 1975 |
| Frederick M. Ostensoe | Yellow Medicine | Granite Falls | 1975 |

MUNICIPAL COURT JUDGES

| Name | Municipality | Term Expires |
|------------------------|--|--------------|
| John J. Kirby | Maplewood-Little Canada-Vadnais Heights-Gem Lake | 1978 |
| Robert E. Bowen | Minneapolis | 1975 |
| *Donald S. Burris | Minneapolis | 1977 |
| Edwin P. Chapman | Minneapolis | 1977 |
| Eugene J. Farrell | Minneapolis | 1974 |
| Patrick W. Fitzgerald | Minneapolis | 1977 |
| Kenneth J. Gill | Minneapolis | 1975 |
| John H. Johnston | Minneapolis | 1975 |
| Peter Lindberg | Minneapolis | 1977 |
| O. Harold Odland | Minneapolis | 1977 |
| Allen Oliesky | Minneapolis | 1975 |
| Delilah M. Pierce | Minneapolis | 1977 |
| William S. Posten | Minneapolis | 1977 |
| Neil A. Riley | Minneapolis | 1977 |
| James D. Rogers | Minneapolis | 1979 |
| C. William Sykora | Minneapolis | 1979 |
| Herbert Wolner | Minneapolis | 1975 |
| Donald E. Gross | New Brighton | 1976 |
| Frank A. Steldt | North Oaks | 1975 |
| Robert F. Johnson | North St. Paul | 1974 |
| Jerome E. Franke | Roseville | 1975 |
| Roland J. Faricy, Jr. | St. Paul | 1976 |
| Kenneth J. Fitzpatrick | St. Paul | 1976 |
| *Allan R. Markert | St. Paul | 1976 |
| Bertrand Poritsky | St. Paul | 1974 |
| Joseph Salland | St. Paul | 1977 |
| Joseph P. Summers | St. Paul | 1976 |
| William J. Fleming | White Bear Lake | 1976 |

*Chief Judge

CLERK OF THE DISTRICT/COUNTY COURT

| Name | County | County Seat | Term Expires |
|-----------------------|-------------------|---------------------|--------------|
| Robert E. Haas | Aitkin | Aitkin | 1975 |
| Raymond Nilsson | Anoka | Anoka | 1977 |
| Frances Brainard | Becker | Detroit Lakes | 1977 |
| C. Buiford Qualle | Beltrami | Bemidji | 1977 |
| S. J. Tomporowski | Benton | Foley | 1975 |
| Ora Mae George | Big Stone | Ortonville | 1977 |
| Audrey Handahl Connor | Blue Earth | Mankato | 1977 |
| Walter A. Grams | Brown | New Ulm | 1975 |
| Stuart A. Beck | Carlton | Carlton | 1975 |
| Albert A. Vojtisek | Carver | Chaska | 1975 |
| Anona Riviere | Cass | Walker | 1979 |
| A. Milton Johnson | Chippewa | Montevideo | 1975 |
| Violet Zeien | Chisago | Center City | 1975 |
| James P. Slette | Clay | Moorhead | 1977 |
| Vernon K. Lundin | Clearwater | Bagley | 1977 |
| Carl A. Noyes | Cook | Grand Marais | 1975 |
| Pansy Purrington | Cottonwood | Windom | 1977 |
| Leone Bouck | Crow Wing | Brainerd | 1975 |
| Nick Vujovich | Dakota | Hastings | 1975 |
| Pauline J. Huse | Dodge | Mantorville | 1975 |
| Hazel I. Holt | Douglas | Alexandria | 1975 |
| Paul Belau | Faribault | Blue Earth | 1977 |
| George H. Milne | Fillmore | Preston | 1977 |
| William Aanerud | Freeborn | Albert Lea | 1977 |
| Mabel J. Olson | Goodhue | Red Wing | 1975 |
| Harold Bartness | Grant | Elbow Lake | 1977 |
| Gerald R. Nelson | Hennepin | Minneapolis | 1975 |
| Merle H. Schultz | Houston | Caledonia | 1975 |
| E. W. Andrews | Hubbard | Park Rapids | 1975 |
| Henry C. Howard | Isanti | Cambridge | 1977 |
| Tyrus L. Bischoff | Itasca | Grand Rapids | 1977 |
| David E. Johnson | Jackson | Jackson | 1975 |
| Swan Stromberg | Kanabec | Mora | 1977 |
| Gregory W. Solien | Kandiyohi | Willmar | 1975 |
| Jean Pemberton | Kittson | Hallock | 1975 |
| Terrance Carew | Koochiching | International Falls | 1977 |
| Obert E. Hanson | Lac qui Parle | Madison | 1975 |
| Lyla M. Olson | Lake | Two Harbors | 1977 |
| Evelyn Slick | Lake of the Woods | Baudette | 1975 |
| Edsel J. Janovsky | Le Sueur | Le Center | 1975 |
| James Gilronan | Lincoln | Ivanhoe | 1975 |
| Beatrice Rubertus | Lyon | Marshall | 1975 |
| Lloyd E. Lipke | McLeod | Glencoe | 1975 |
| Lois Jean Cook | Mahnomen | Mahnomen | 1977 |

DISTRICT/COUNTY COURT CLERKS -

| Name | County | County Seat | Term Expires |
|-------------------------|-----------------|-------------------|--------------|
| Hubert L. Charboneau | Marshall | Warren | 1975 |
| Kenneth W. Koenecke | Martin | Fairmont | 1975 |
| Hardy D. Silverberg | Meeker | Litchfield | 1975 |
| Kenneth J. Johnson | Mille Lacs | Milaca | 1975 |
| Edward L. Ciminski | Morrison | Little Falls | 1975 |
| Dale Rolfson | Mower | Austin | 1975 |
| Douglas E. Johnson | Murray | Slayton | 1975 |
| Donald P. Schmidt | Nicollet | St. Peter | 1975 |
| Vivian E. Erbes | Nobles | Worthington | 1975 |
| Milton Lien | Norman | Ada | 1975 |
| John N. Rice | Olmsted | Rochester | 1977 |
| Myrtle E. Logas | Otter Tail | Fergus Falls | 1977 |
| Ardith Johnson | Pennington | Thief River Falls | 1977 |
| Ina M. D'Aoust | Pine | Pine City | 1977 |
| R. J. Risch | Pipestone | Pipestone | 1975 |
| Doris Morberg | Polk | Crookston | 1975 |
| Hartvig Pederson | Pope | Glenwood | 1975 |
| Joseph P. LaNasa | Ramsey | St. Paul | 1977 |
| Duane Dargon | Red Lake | Red Lake Falls | 1975 |
| Keith H. Baldwin | Redwood | Redwood Falls | 1977 |
| Glenn Agre | Renville | Olivia | 1975 |
| Ray L. Sanders | Rice | Faribault | 1977 |
| Eleanor Boysen | Rock | Luverne | 1975 |
| Clarence A. Corneliusen | Roseau | Roseau | 1977 |
| Henry Sandstrom | St. Louis | Duluth | 1977 |
| Brendan L. Suel | Scott | Shakopee | 1975 |
| Loretta Moos | Sherburne | Elk River | 1975 |
| Robert Busse | Sibley | Gaylord | 1977 |
| Genevieve M. Sand | Stearns | St. Cloud | 1975 |
| Gail R. Lipelt | Steele | Owatonna | 1977 |
| J. W. Schmidt | Stevens | Morris | 1977 |
| Irene E. Grendahl | Swift | Benson | 1975 |
| Margaret A. Minke | Todd | Long Prairie | 1977 |
| Walter H. Klugman | Traverse | Wheaton | 1977 |
| David E. Meyer | Wabasha | Wabasha | 1975 |
| Florence Claydon | Wadena | Wadena | 1975 |
| John A. Rohde | Waseca | Waseca | 1977 |
| Margaret Casanova | Washington | Stillwater | 1977 |
| Ruth Steel Eppeland | Watsonwan | St. James | 1975 |
| A. W. Gruenberg | Wilkin | Breckenridge | 1975 |
| Gertrude Miller | Winona | Winona | 1975 |
| Carl Nordberg | Wright | Buffalo | 1977 |
| Joyce I. Blindt | Yellow Medicine | Granite Falls | 1975 |