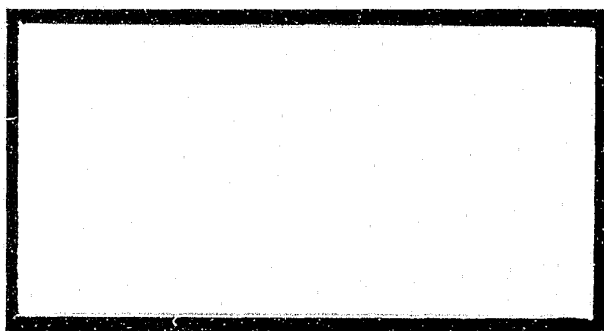


**SAC**

**Statistical  
Analysis  
Center**



**140636**

**Missouri State Highway Patrol**

A division of the

**Department of Public Safety**

140636

MISSOURI

1991

CRIME AND ARREST

1991

MISSOURI

CRIME AND ARREST

DIGEST

Principal Staff Researchers:

Phyllis Emmel, Research Analyst  
Bill Aber, Data Processing Specialist

STATISTICAL ANALYSIS CENTER  
1510 East Elm  
Jefferson City, Missouri 65101  
(314) 751-4026

U.S. Department of Justice  
National Institute of Justice

This document has been reproduced exactly as received from the person or organization originating it. Points of view or opinions stated in this document are those of the authors and do not necessarily represent the official position or policies of the National Institute of Justice.

Permission to reproduce this copyrighted material has been granted by

Missouri Department of Public  
Safety

to the National Criminal Justice Reference Service (NCJRS).

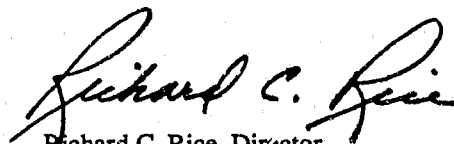
Further reproduction outside of the NCJRS system requires permission of the copyright owner.

## FOREWORD

This 1991 edition of the *Missouri Crime and Arrest Digest* presents a detailed analysis of the incidence of crime in Missouri. After several years of minimal decreases in the rates of some types of crime, it appears that in 1991 crime is once again on the rise. Even more troubling is the projection of significant increases in violent crimes through 1995 now being reported by the Statistical Analysis Center (SAC), Missouri State Highway Patrol. It behooves all law enforcement administrators to study the crime rates for their immediate locale and to devise programs to increase citizen awareness of crime, to facilitate crime prevention, and to aggressively apprehend crime suspects.

As in the past, the data presented in the Digest are collected by the FBI as part of their national Uniform Crime Reporting System. At the end of each calendar year, the FBI provides these data to the SAC for analysis and interpretation. It is, therefore, extremely important that each law enforcement agency in Missouri participate in the FBI UCR Program and submit all required data.

Agencies which require additional statistics on crime or traffic safety should contact the Center directly. Also, any suggestions for improvements in the Digest or for additional statistics should be forwarded to my attention.



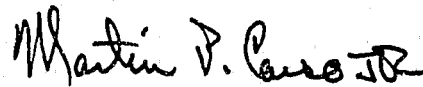
Richard C. Rice, Director  
Missouri Department of Public Safety

## ACKNOWLEDGEMENTS

The Federal Bureau of Investigation's Uniform Crime Reporting Section provided the data used in this publication. On a yearly basis, they submit computer tapes to the Missouri State Highway Patrol, Statistical Analysis Center containing all Missouri crime and arrest data reported to their Uniform Crime Reporting Program. In addition, they continually provide timely technical assistance in the interpretation and analysis of these data.

Special recognition must be given to all Missouri law enforcement agencies who voluntarily report their crime and arrest activity to the Federal Bureau of Investigation's Uniform Crime Reporting Program. Because of their efforts the criminal justice community and other public officials are able to analyze the State's crime problems and law enforcement activity levels.

Finally, the U.S. Department of Justice, Bureau of Justice Statistics has, over the years, provided federal grant funds to support the development, printing, and dissemination of this report as well as other criminal justice publications produced by the Missouri Statistical Analysis Center.



Martin P. Carso Jr., Director  
Missouri Statistical Analysis Center

## CONTENTS

	PAGE
EXECUTIVE SUMMARY .....	ix
INTRODUCTION .....	1
1. MISSOURI CRIME CLOCK.....	3
2. MISSOURI CRIME INDEX COMPARISON ANALYSIS .....	7
3. MISSOURI ARREST ANALYSIS .....	17
4. MISSOURI DETAIL CRIME INDEX ANALYSIS .....	27
4.1 Murder .....	29
4.2 Forcible Rape .....	37
4.3 Robbery .....	43
4.4 Aggravated Assault .....	49
4.5 Burglary .....	55
4.6 Theft.....	61
4.7 Motor Vehicle Theft .....	67
4.8 Arson .....	73
5. MISSOURI LAW ENFORCEMENT AGENCY CRIME AND ARREST ANALYSIS..	79
GLOSSARY .....	101

## TABLES

PAGE

### MISSOURI CRIME INDEX COMPARISON ANALYSIS

2.0.1	Crime Index Offenses, State of Missouri, 1991 .....	9
2.0.2	Actual Reported Crime Index Offenses, State of Missouri, 1982-1991 .....	10
2.0.3	Estimated Crime Index Offenses, State of Missouri, 1982-1991 .....	11
2.0.4	Crime Index Offense Rates, State of Missouri, 1982-1991 .....	12
2.0.5	Property Crime Index Economic Analysis, 1991 .....	13

### MISSOURI ARREST ANALYSIS

3.0.1	Crime Index Clearance Rates, State of Missouri, 1982-1991 .....	19
3.0.2	Crime Index Arrests, State of Missouri, 1982-1991 .....	20
3.0.3	Crime Index Arrest Rates, State of Missouri, 1982-1991 .....	21
3.0.4	Total Persons Arrested by Most Serious Offense, State of Missouri, 1991 .....	22

### MISSOURI DETAIL CRIME INDEX ANALYSIS

#### Murder

4.1.1	Murder Rates by Population Group, 1991 .....	30
4.1.2	Murder Clearance Rates, 1990-1991 .....	31
4.1.3	Murder Arrests by Sex and Age Group, 1991 .....	31
4.1.4	Murder Arrests by Race and Age Group, 1991 .....	31
4.1.5	Murder Victims by Sex and Age Group, 1991 .....	32
4.1.6	Murder Victims by Race and Age Group, 1991 .....	32
4.1.7	Type of Weapon Used by Offenders in Murders, 1991 .....	33
4.1.8	Circumstances with Murders, 1991 .....	34

#### Forcible Rape

4.2.1	Forcible Rape Rates by Population Group, 1991 .....	38
4.2.2	Actual/Attempted Rape Offenses, 1991 .....	39
4.2.3	Forcible Rape Clearance Rates, 1990-1991 .....	39
4.2.4	Forcible Rape Arrests by Sex and Age Group, 1991 .....	39
4.2.5	Forcible Rape Arrests by Race and Age Group, 1991 .....	40

#### Robbery

4.3.1	Robbery Rates by Population Group, 1991 .....	44
4.3.2	Type of Weapon Used in Robberies, 1991 .....	45
4.3.3	Robbery Loss/Location, 1991 .....	45
4.3.4	Robbery Clearance Rates, 1990-1991 .....	46
4.3.5	Robbery Arrests by Sex and Age Group, 1991 .....	46
4.3.6	Robbery Arrests by Race and Age Group, 1991 .....	46

## TABLES

	PAGE
<b>Aggravated Assault</b>	
4.4.1 Aggravated Assault Rates by Population Group, 1991 .....	50
4.4.2 Type of Weapon Used in Aggravated Assaults, 1991 .....	51
4.4.3 Aggravated Assault Clearance Rates, 1990-1991 .....	51
4.4.4 Aggravated Assault Arrests by Sex and Age Group, 1991 .....	52
4.4.5 Aggravated Assault Arrests by Race and Age Group, 1991 .....	52
<b>Burglary</b>	
4.5.1 Burglary Rates by Population Group, 1991 .....	56
4.5.2 Type of Burglary, 1991 .....	57
4.5.3 Burglary Loss/Location/Time, 1991 .....	57
4.5.4 Burglary Clearance Rates, 1990-1991 .....	58
4.5.5 Burglary Arrests by Sex and Age Group, 1991 .....	58
4.5.6 Burglary Arrests by Race and Age Group, 1991 .....	58
<b>Theft</b>	
4.6.1 Theft Rates by Population Group, 1991 .....	62
4.6.2 Theft by Value of Stolen Items, 1991 .....	63
4.6.3 Nature of Theft, 1991 .....	63
4.6.4 Theft Clearance Rates, 1990-1991 .....	64
4.6.5 Theft Arrests by Sex and Age Group, 1991 .....	64
4.6.6 Theft Arrests by Race and Age Group, 1991 .....	64
<b>Motor Vehicle Theft</b>	
4.7.1 Motor Vehicle Theft Rates by Population Group, 1991 .....	68
4.7.2 Type of Vehicle Stolen, 1991 .....	69
4.7.3 Motor Vehicle Theft Yearly Loss, 1990-1991 .....	69
4.7.4 Motor Vehicle Theft Clearance Rates, 1990-1991 .....	70
4.7.5 Motor Vehicle Theft Arrests by Sex and Age Group, 1991 .....	70
4.7.6 Motor Vehicle Theft Arrests by Race and Age Group, 1991 .....	70
<b>Arson</b>	
4.8.1 Arson Rates by Population Group, 1991 .....	74
4.8.2 Arson Loss by Type of Property, 1991 .....	75
4.8.3 Arson Clearance Rates, 1990-1991 .....	76
4.8.4 Arson Arrests by Sex and Age Group, 1991 .....	76
4.8.5 Arson Arrests by Race and Age Group, 1991 .....	76

## TABLES

	PAGE
<b>MISSOURI LAW ENFORCEMENT AGENCY CRIME AND ARREST ANALYSIS</b>	
5.01 Crime Index Offenses, Municipalities 25,000 and Over by Reporting Agency, 1991 .....	81
5.02 Crime Index Offenses, Municipalities Under 25,000 by Reporting Agency, 1991 .....	83
5.03 Crime Index Offenses, Suburban Counties by Reporting Agency, 1991 .....	87
5.04 Crime Index Offenses, Rural Counties by Reporting Agency, 1991 .....	89
5.05 Total Persons Arrested, Municipalities 25,000 and Over by Reporting Agency, 1991 .....	91
5.06 Total Persons Arrested, Municipalities Under 25,000 by Reporting Agency, 1991 .....	93
5.07 Total Persons Arrested, Suburban Counties by Reporting Agency, 1991 .....	97
5.08 Total Persons Arrested, Rural Counties by Reporting Agency, 1991 .....	99



## FIGURES

PAGE

### MISSOURI CRIME INDEX COMPARISON ANALYSIS

2.0.1	Crime Index Offense Rates, State of Missouri, Time Series .....	14
2.0.2	Crime Index Offense Rates, State of Missouri by County, 1991 .....	14
2.0.3	Violent Index Offense Rates, State of Missouri, Time Series .....	15
2.0.4	Violent Index Offense Rates, State of Missouri by County, 1991 .....	15
2.0.5	Property Index Offense Rates, State of Missouri, Time Series .....	16
2.0.6	Property Index Offense Rates, State of Missouri by County, 1991 .....	16

### MISSOURI ARREST ANALYSIS

3.0.1	Crime Index Arrest Rates, State of Missouri, Time Series .....	23
3.0.2	Violent Index Arrest Rates, State of Missouri, Time Series .....	24
3.0.3	Property Index Arrest Rates, State of Missouri, Time Series .....	25

### MISSOURI DETAIL CRIME INDEX ANALYSIS

#### Murder

4.1.1	Murder Offense Rates, State of Missouri, Time Series .....	35
-------	--	----

#### Forcible Rape

4.2.1	Rape Offense Rates, State of Missouri, Time Series .....	41
-------	--	----

#### Robbery

4.3.1	Robbery Offense Rates, State of Missouri, Time Series .....	47
-------	---	----

#### Aggravated Assault

4.4.1	Aggravated Assault Offense Rates, State of Missouri, Time Series .....	53
-------	--	----

#### Burglary

4.5.1	Burglary Offense Rates, State of Missouri, Time Series .....	59
-------	--	----

#### Theft

4.6.1	Theft Offense Rates, State of Missouri, Time Series .....	65
-------	---	----

#### Motor Vehicle Theft

4.7.1	Motor Vehicle Theft Offense Rates, State of Missouri, Time Series .....	71
-------	---	----

#### Arson

4.8.1	Arson Offense Rates, State of Missouri, Time Series .....	77
-------	---	----

## EXECUTIVE SUMMARY

The Digest is produced annually by the Missouri State Highway Patrol, Statistical Analysis Center (SAC). The primary source of data for the Digest is the Federal Bureau of Investigation's (FBI) Uniform Crime Reporting System (UCR). Although this publication contains statistics on Missouri crime and arrest activity from 1982 through 1991, emphasis is placed on the most recent year (1991).

For statewide crime activity, estimation routines have been used to better identify the actual number of crimes that have occurred in the State. These estimation routines are designed to compensate for those law enforcement agencies that did not report their crime activity into the FBI UCR Program. Please note that no estimation routines were employed in the presentation of arrest activity.

The Crime Index is the sum of eight major offenses and is used to measure the magnitude of crime in the United States. The major offenses are included in the Index because of their frequency of occurrence and the fact that they are most likely to be reported to law enforcement agencies. These eight offenses are: murder, forcible rape, robbery, aggravated assault, burglary, theft, motor vehicle theft, and arson. The first four make up the Violent Crime Index and the last four make up the Property Crime Index.

### 1991 Crime Index Offenses - - - 5.2% Increase From 1990

In 1991, a total of 259,712 Crime Index offenses were reported in the State of Missouri. It is estimated that a total of 278,051 Crime Index offenses actually occurred on a statewide basis. This was a 5.2 percent increase from 1990. In 1991, one Index Crime was committed every 1.9 minutes. In 23.3 of every 100 Crime Index offenses, the cases were cleared by arrest or exceptional means.

### 1991 Violent Offenses - - - 6.5% Increase Over 1990

Violent offenses made up 14.0 percent of the total 1991 Missouri Crime Index. There were 37,281 Violent Index offenses reported in 1991. It is estimated that a total of 39,025 Violent Index offenses actually occurred on a statewide basis. This was an increase of 6.5 percent compared to 1990. A violent offense was committed in Missouri every 13.5 minutes. In 44.7 of every 100 Violent Index offenses, the cases were cleared by arrest or exceptional means. A brief analysis of each type of Violent Index offense is given below.

- There were 501 murders reported in 1991. It is estimated that a total of 525 murders actually occurred on a statewide basis. This was an increase of 16.9 percent compared to 1990. Murder had the largest rate of increase of any of the Crime Index offenses comparing 1990 to 1991. While murder is the most serious Index offense, it made up only 0.2 percent of the total 1991 Missouri Crime Index. One murder was committed in the State every 16.7 hours. In 76.7 of every 100 murders, the cases were cleared by arrest or exceptional means.
- There were 1,611 forcible rapes reported in 1991. It is estimated that a total of 1,734 rapes actually occurred on a statewide basis. This was an increase of 4.0 percent compared to 1990. Forcible rape accounted for 0.6 percent of the total 1991 Missouri Crime Index. One forcible rape was committed every 5.1 hours. In 58.1 of every 100 forcible rapes, the cases were cleared by arrest or exceptional means.

- There were 12,333 robberies reported in 1991. It is estimated that a total of 12,542 robberies actually occurred on a statewide basis. This was an increase of 12.9 percent compared to 1990. Robbery accounted for 4.5 percent of the total 1991 Missouri Crime Index. One robbery occurred every 41.9 minutes. In 24.0 of every 100 robberies, the cases were cleared by arrest or exceptional means.
- There were 22,836 aggravated assaults reported in 1991. It is estimated that a total of 24,224 aggravated assaults actually occurred on a statewide basis. This was an increase of 3.5 percent compared to 1990. Aggravated assault accounted for 8.7 percent of the total 1991 Missouri Crime Index. One aggravated assault occurred every 21.7 minutes. In 54.3 of every 100 aggravated assaults, the cases were cleared by arrest or exceptional means.

### 1991 Property Offenses - - - 5.0% Increase From 1990

Property offenses made up 86.0 percent of the total 1991 Missouri Crime Index. There were 222,431 Property Index offenses reported in 1991. It is estimated that a total of 239,026 Property Index offenses actually occurred on a statewide basis. This was an increase of 5.0 percent compared to 1990. It is estimated that property offenses accounted for \$301,655,343 in property stolen or destroyed. One such offense occurred every 2.2 minutes in the State. In 19.7 of every 100 Property Index offenses, the cases were cleared by arrest or exceptional means. A brief analysis of each type of Property Index offense is given below.

- There were 55,149 burglaries reported in 1991. It is estimated that a total of 60,100 burglaries actually occurred on a statewide basis. This was an increase of 10.5 percent compared to 1990. Burglary accounted for 21.6 percent of the total 1991 Missouri Crime Index. One burglary occurred every 8.7 minutes and it is estimated that \$64,795,012 in property/cash was stolen in 1991 due to this offense. In 15.3 of every 100 burglaries, the cases were cleared by arrest or exceptional means.
- There were 137,219 thefts reported in 1991. It is estimated that a total of 147,624 thefts actually occurred on a statewide basis. This was an increase of 2.9 percent compared to 1990. Theft accounted for 53.1 percent of the total 1991 Missouri Crime Index. One theft occurred every 3.6 minutes and it is estimated that \$58,276,050 in property/cash was stolen in 1991 due to this offense. In 22.4 of every 100 thefts, the cases were cleared by arrest or exceptional means.
- There were 27,861 motor vehicle thefts reported in 1991. It is estimated that a total of 28,986 motor vehicle thefts actually occurred on a statewide basis. This was an increase of 4.8 percent compared to 1990. Motor vehicle theft accounted for 10.4 percent of the total 1991 Missouri Crime Index. One motor vehicle theft occurred every 18.1 minutes and it is estimated that \$136,378,840 in property was stolen in 1991 due to this offense. In 15.1 of every 100 motor vehicle thefts, the cases were cleared by arrest or exceptional means.
- There were 2,202 arsons reported in 1991. It is estimated that a total of 2,316 arsons actually occurred on a statewide basis. This was an increase of 5.8 percent compared to 1990. Arson accounted for 0.8 percent of the total 1991 Missouri Crime Index. One arson occurred every 3.8 hours and it is estimated that \$42,205,441 in property was destroyed due to arson in 1991. In 23.5 of every 100 arsons, the cases were cleared by arrest or exceptional means.

## INTRODUCTION

This Digest is one in a series of publications prepared by the Missouri State Highway Patrol, Statistical Analysis Center (SAC). It is designed to present data on crime and arrest activity in Missouri from 1982 through 1991 with special emphasis on the most recent year's crime and arrest activity (1991).

The crime and arrest data contained in this publication are segmented into five parts. The first section displays the Missouri Crime Clock. This clock offers an overview of the frequency of occurrence of Crime Index offenses committed in the State in relation to time. The Crime Index is the sum of the eight major offenses used to indicate the occurrence of crime in the United States. The eight offenses making up the total Crime Index are: murder, forcible rape, robbery, aggravated assault, burglary, theft, motor vehicle theft, and arson. The second section provides data related to Crime Index offenses committed in the State of Missouri. Its purpose is to provide a comparison of the various types of Crime Index offenses so that their relative importance can be assessed. In addition, Crime Index activity is displayed by geographical regions of the State and also over time to observe trends. The third section presents data on arrest activity and clearance rates associated with Crime Index offenses as well as arrest activity associated with other classes of criminal offenses. These data provide an appreciation of criminal enforcement activity being performed in the State of Missouri by class of crime. The fourth section provides a series of data and analysis related to each of the eight types of Crime Index offenses. Data are provided on crime activity, clearance rates, crime patterns, and arrest activity associated with each of these offenses. Finally, the last section provides summary data on Crime Index offenses and arrest activity for specific law enforcement jurisdictions in the State of Missouri.

The data contained in this Digest were provided on a voluntary basis by Missouri law enforcement agencies to the Federal Bureau of Investigation's (FBI), Uniform Crime Reporting (UCR) Program.

The national UCR Program was initiated in 1930 by the Committee on Uniform Crime Reports of the International Association of Chiefs of Police (IACP). This committee developed uniform offense and arrest classifications as well as reporting procedures which could be used by law enforcement agencies throughout the nation. The FBI was designated to administer the Program and became the national clearinghouse for UCR data. The Committee on Uniform Crime Reports of the IACP continues to serve the national Program in an advisory capacity. In 1966, the National Sheriff's Association also established a Committee on Uniform Crime Reports to act as an advisory body for this program and to promote reporting to the UCR Program.

Crime and arrest data are, for the most part, collected on a monthly basis in the UCR Program. The FBI provides report forms, tally sheets, and self-addressed envelopes to Missouri law enforcement agencies who complete and return them to the FBI.

The fact that this program is voluntary in nature in the State of Missouri increases the problems associated with the completeness and representativeness of the information being captured and analyzed. Certain Missouri law enforcement agencies either do not report to the program or they send incomplete data. In most states, reporting to this program is mandatory for law enforcement agencies through the enactment of state statute.

To reduce the problems associated with both non-reporting and incomplete reporting, a number of techniques have been used for displaying statewide crime and arrest activity. For statewide arrest activity, reliance has been placed on displaying arrest rates on a per 100,000 population basis. This type of data display identifies arrest activity in relation to the population of only those jurisdictions that reported the activity. For statewide crime activity, mathematical routines have been employed to estimate the actual number of crimes that occurred in the State. Crime rates on a per 100,000 population basis also are included. These rates are based on the estimates of actual crimes being committed rather than on those that were reported. Individual data displays in the Digest fully identify whether reported, estimated, or rates per 100,000 population data are used in the display.

Data displays identifying a specific law enforcement jurisdiction's crime and arrest activity contain only the activity reported into the UCR Program. No effort has been made to estimate individual law enforcement agency's crime and arrest activity.

Slight discrepancies may be found if comparisons are made with FBI UCR publications and this Digest covering the same subject matter for the State of Missouri. Although similar, estimation routines and rates per 100,000 population calculations used by the FBI are not the same as those used in this Digest. Discrepancies also may be noted when examining actual reported figures. This is a result of updates having been made to the UCR files between the time the FBI data were processed and the time the SAC analysis was performed.

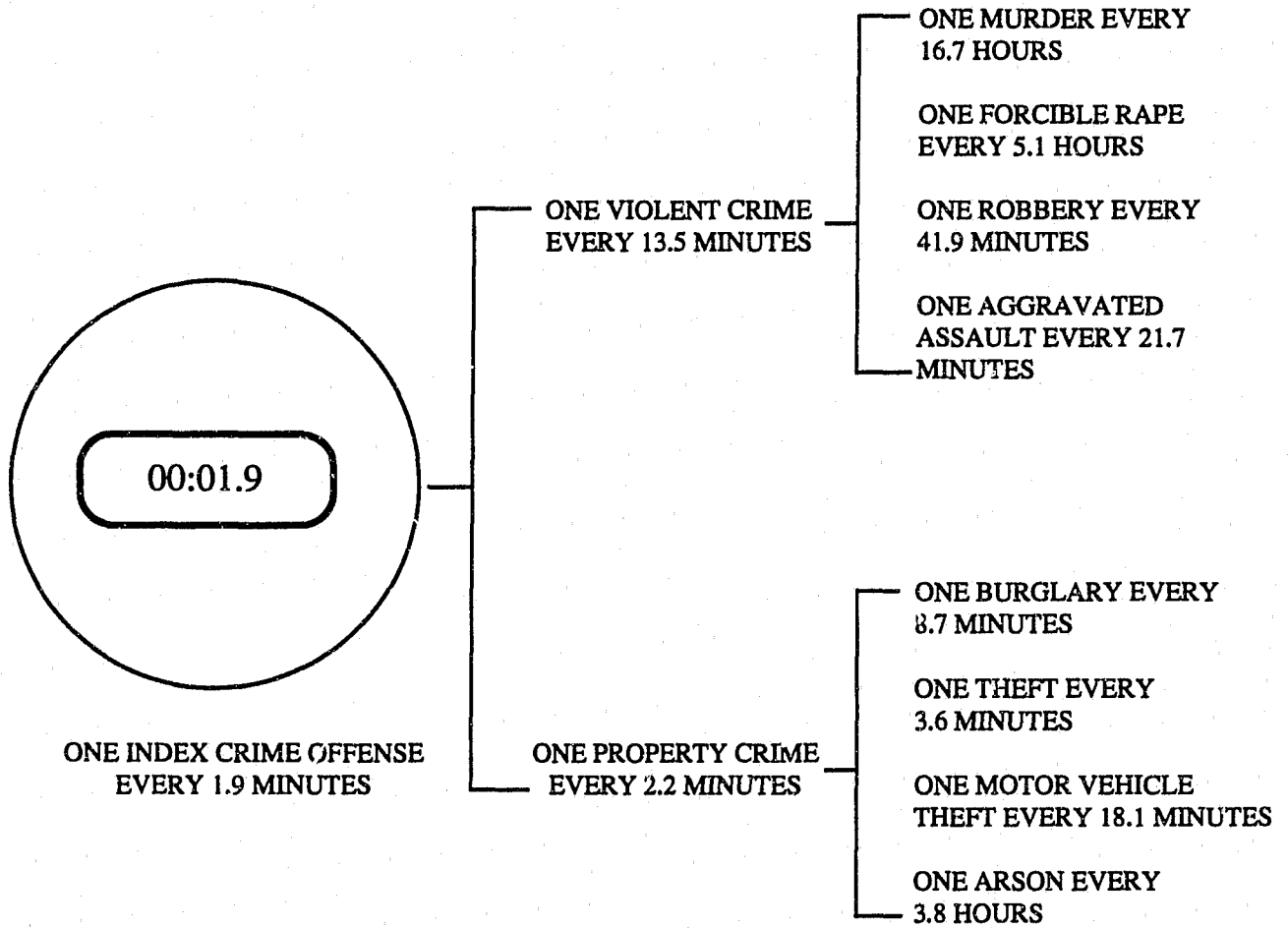
## **1.0 MISSOURI CRIME CLOCK**

---

THE CRIME CLOCK SUMMARIZES ESTIMATED CRIMINAL ACTIVITY IN THE STATE OF MISSOURI DURING 1991 IN RELATION TO TIME. FROM THIS PERSPECTIVE, AN APPRECIATION OF THE RELATIVE FREQUENCY OF VARIOUS CRIMINAL OFFENSES CAN BE OBTAINED. THE CRIME CLOCK SHOULD BE VIEWED WITH CARE. IT IS DESIGNED TO CONVEY ANNUAL ESTIMATED CRIME EXPERIENCE BY SHOWING THE RELATIVE FREQUENCY OF OCCURRENCE OF THE INDEX OFFENSES. THIS MODE OF DISPLAY SHOULD NOT BE TAKEN TO IMPLY A REGULARITY IN THE COMMISSION OF CRIME; RATHER, IT REPRESENTS THE ANNUAL RATIO OF CRIME TO FIXED TIME INTERVALS.

# MISSOURI CRIME CLOCK

1991



## **2.0 MISSOURI CRIME INDEX COMPARISON ANALYSIS**

---

A SERIES OF TABLES AND FIGURES SUMMARIZES CRIME INDEX OFFENSES COMMITTED IN THE STATE OF MISSOURI. THE PURPOSE OF THESE DISPLAYS IS TO COMPARE THE VARIOUS TYPES OF CRIME INDEX OFFENSES BEING COMMITTED ACCORDING TO THEIR RELATIVE CONTRIBUTION TO THE CRIME INDEX. IN ADDITION, CRIME INDEX OFFENSE RATES ARE DISPLAYED BY GEOGRAPHICAL REGIONS OF THE STATE AND OVER TIME IN ORDER TO OBSERVE TRENDS.



**CRIME INDEX OFFENSES, STATE OF MISSOURI**

1991

<b>OFFENSE</b>	<b>REPORTED</b>	<b>ESTIMATED<sup>1</sup></b>	<b>% OF ESTIMATED TOTAL CRIME INDEX</b>	<b>% OF ESTIMATED VIOLENT CRIME INDEX</b>	<b>% OF ESTIMATED PROPERTY CRIME INDEX</b>	<b>RATE PER<sup>2</sup> 100,000 POPULATION</b>
TOTAL INDEX	259,712	278,051	100.0	—	—	5,390.7
VIOLENT INDEX	37,281	39,025	14.0	100.0	—	756.6
PROPERTY INDEX	222,431	239,026	86.0	—	100.0	4,634.1
MURDER	501	525	0.2	1.3	—	10.2
FORCIBLE RAPE	1,611	1,734	0.6	4.4	—	33.6
ROBBERY	12,333	12,542	4.5	32.1	—	243.2
AGGRAVATED ASSAULT	22,836	24,224	8.7	62.1	—	469.7
BURGLARY	55,149	60,100	21.6	—	25.1	1,165.2
THEFT	137,219	147,624	53.1	—	61.8	2,862.1
MOTOR VEHICLE THEFT	27,861	28,986	10.4	—	12.1	562.0
ARSON	2,202	2,316	0.8	—	1.0	44.9

<sup>1</sup>See Glossary for an explanation of the computations used to obtain estimates of Missouri's Crime Index offenses.

<sup>2</sup>Crime Index Offense rates are based on estimated crime index offenses occurring in the State of Missouri. They are computed on a per 100,000 population basis. See Glossary for an explanation of the computations used to obtain these rates.

**TABLE 2.0.1**

**ACTUAL REPORTED CRIME INDEX OFFENSES, STATE OF MISSOURI**

**1982 - 1991**

OFFENSE	1982	1983	1984	1985	1986	1987	1988	1989	1990	1991
TOTAL INDEX	233,084	214,023	204,036	208,491	223,104	226,310	236,791	253,230	251,200	259,712
VIOLENT INDEX	24,233	22,884	22,027	24,247	27,998	26,504	27,228	31,421	35,357	37,281
PROPERTY INDEX	208,851	191,139	182,009	184,244	195,106	199,806	209,563	221,809	215,843	222,431
MURDER	454	379	333	381	437	394	388	392	427	501
FORCIBLE RAPE	1,228	1,266	1,243	1,389	1,382	1,372	1,404	1,496	1,578	1,611
ROBBERY	9,397	8,223	6,921	7,251	8,446	8,239	8,475	9,935	10,971	12,333
AGGRAVATED ASSAULT	13,154	13,016	13,530	15,226	17,733	16,499	16,961	19,598	22,381	22,836
BURGLARY	64,527	56,221	51,825	51,435	53,290	52,282	54,052	54,865	51,013	55,149
THEFT	126,868	118,295	112,760	113,623	118,486	124,824	131,774	138,674	135,811	137,219
MOTOR VEHICLE THEFT	15,767	15,055	15,776	17,576	21,358	20,811	21,557	26,299	26,942	27,861
ARSON	1,689	1,568	1,648	1,610	1,972	1,889	2,180	1,971	2,077	2,202
NUMBER OF REPORTING AGENCIES <sup>1</sup>	238	240	237	249	241	242	245	246	252	251

<sup>1</sup>Number of law enforcement agencies that reported crime index offense activity to the UCR Program in a given year.

**TABLE 2.0.2**

**ESTIMATED CRIME INDEX OFFENSES, STATE OF MISSOURI<sup>1</sup>**

**1982 - 1991**

OFFENSE	1982	1983	1984	1985	1986	1987	1988	1989	1990	1991
TOTAL INDEX	246,583	226,397	217,819	221,223	237,842	242,276	251,719	266,848	264,359	278,051
VIOLENT INDEX	25,117	23,795	23,083	25,311	29,362	27,862	28,519	32,658	36,631	39,025
PROPERTY INDEX	221,466	202,602	194,736	195,912	208,480	214,414	223,200	234,190	227,728	239,026
MURDER	481	409	362	411	467	426	412	411	449	525
FORCIBLE RAPE	1,292	1,327	1,322	1,484	1,476	1,470	1,500	1,588	1,667	1,734
ROBBERY	9,550	8,358	7,041	7,392	8,633	8,388	8,622	10,068	11,106	12,542
AGGRAVATED ASSAULT	13,794	13,701	14,358	16,024	18,786	17,578	17,985	20,591	23,409	24,224
BURGLARY	68,730	60,244	55,906	55,184	57,480	56,697	58,016	58,639	54,412	60,100
THEFT	134,296	124,895	120,415	120,642	126,550	133,957	140,510	146,374	143,472	147,624
MOTOR VEHICLE THEFT	16,618	15,756	16,582	18,353	22,315	21,723	22,351	27,067	27,655	28,986
ARSON	1,822	1,707	1,833	1,733	2,135	2,037	2,323	2,110	2,189	2,316

<sup>1</sup>See Glossary for an explanation of the computations used to obtain estimates of Missouri's Crime Index offenses.

**TABLE 2.0.3**

**CRIME INDEX OFFENSE RATES, STATE OF MISSOURI<sup>1</sup>**

**1982 - 1991**

OFFENSE	1982	1983	1984	1985	1986	1987	1988	1989	1990	1991
TOTAL INDEX	4,980.5	4,555.2	4,349.5	4,398.9	4,694.8	4,747.8	4,898.2	5,172.5	5,166.2	5,390.7
VIOLENT INDEX	507.3	478.8	460.9	503.3	579.6	546.0	554.9	633.0	715.8	756.6
PROPERTY INDEX	4,473.2	4,076.5	3,888.5	3,895.6	4,115.3	4,201.8	4,343.3	4,539.4	4,450.4	4,634.1
MURDER	9.7	8.2	7.2	8.2	9.2	8.4	8.0	8.0	8.8	10.2
FORCIBLE RAPE	26.1	26.7	26.4	29.5	29.1	28.8	29.2	30.8	32.6	33.6
ROBBERY	192.9	168.2	140.6	147.0	170.4	164.4	167.8	195.2	217.0	243.2
AGGRAVATED ASSAULT	278.6	275.7	286.7	318.6	370.8	344.5	350.0	399.1	457.5	469.7
BURGLARY	1,388.2	1,212.2	1,116.3	1,097.3	1,134.6	1,111.1	1,128.9	1,136.6	1,063.3	1,165.2
THEFT	2,712.5	2,513.0	2,404.5	2,398.9	2,498.0	2,625.1	2,734.2	2,837.2	2,803.8	2,862.1
MOTOR VEHICLE THEFT	335.7	317.0	331.1	365.0	440.5	425.7	434.9	524.6	540.4	562.0
ARSON	36.8	34.3	36.6	34.4	42.1	39.9	45.2	40.9	42.8	44.9

<sup>1</sup>Crime Index offense rates are based on estimated crime index offenses occurring in the State of Missouri. They are computed on a per 100,000 population basis. See Glossary for an explanation of the computations used to obtain these rates.

**TABLE 2.0.4**

**PROPERTY CRIME INDEX**  
**ECONOMIC ANALYSIS**  
**(PROPERTY STOLEN/DESTROYED)**

1991

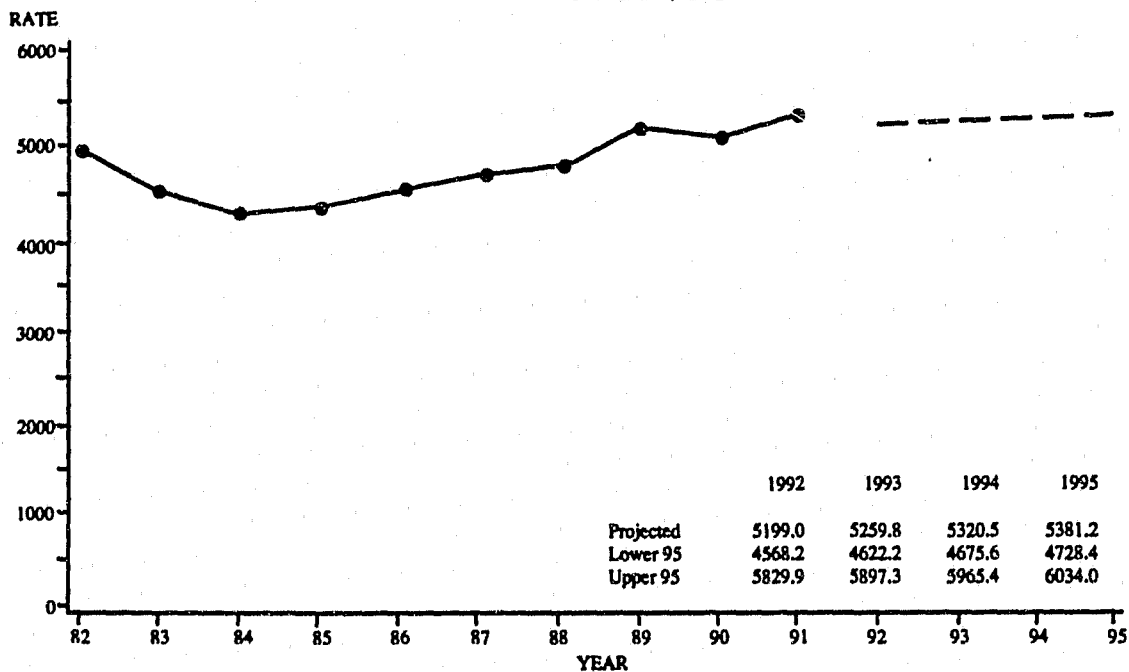
TYPE	LOSS PER <sup>1</sup> OFFENSE	ESTIMATE <sup>2</sup> TOTAL OFFENSES
BURGLARY	\$1,078.12	\$64,795,012
THEFT	394.76	58,276,050
MOTOR VEHICLE THEFT	4,704.99	136,378,840
ARSON	18,223.42	42,205,441
<b>TOTAL</b>	-----	<b>\$301,655,343</b>

<sup>1</sup>The dollar loss per offense was calculated using only those property offenses for which law enforcement agencies reported an actual dollar amount for the property stolen or destroyed.

<sup>2</sup>The estimate was calculated by multiplying the dollar loss per offense by the estimated number of such offenses that occurred in 1991.

**TABLE 2.0.5**

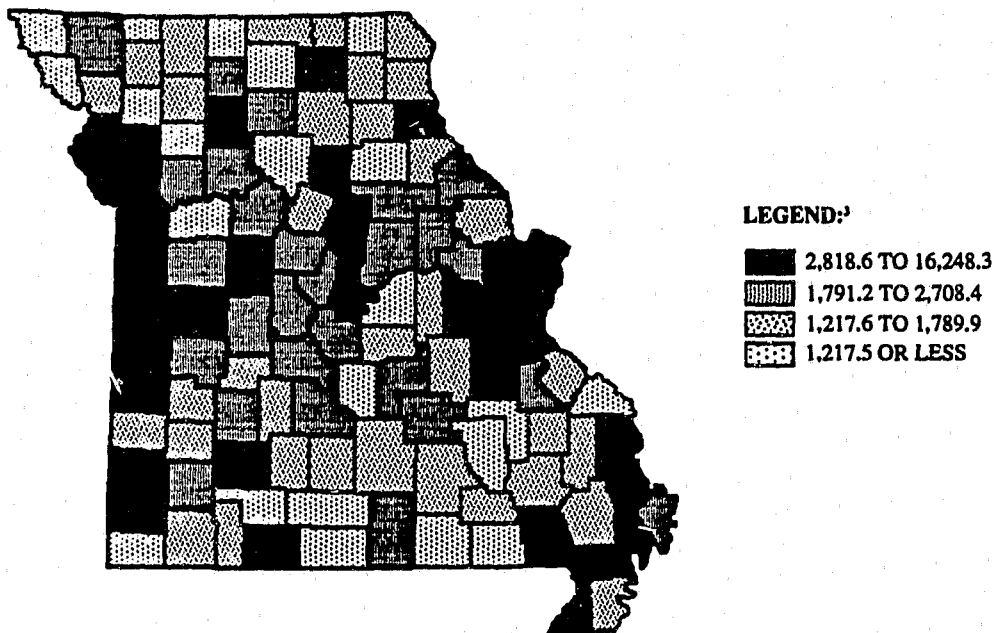
**CRIME INDEX OFFENSE RATES, STATE OF MISSOURI<sup>1</sup>**  
**TIME SERIES**



<sup>1</sup>Crime Index offense rates are based on estimated crime index offenses occurring in the State of Missouri. They are computed on a per 100,000 population basis. See Glossary for an explanation of the computations used to obtain these rates.

**FIGURE 2.0.1**

**CRIME INDEX OFFENSE RATES,<sup>1</sup>**  
**STATE OF MISSOURI**  
**BY COUNTY / 1991<sup>2</sup>**



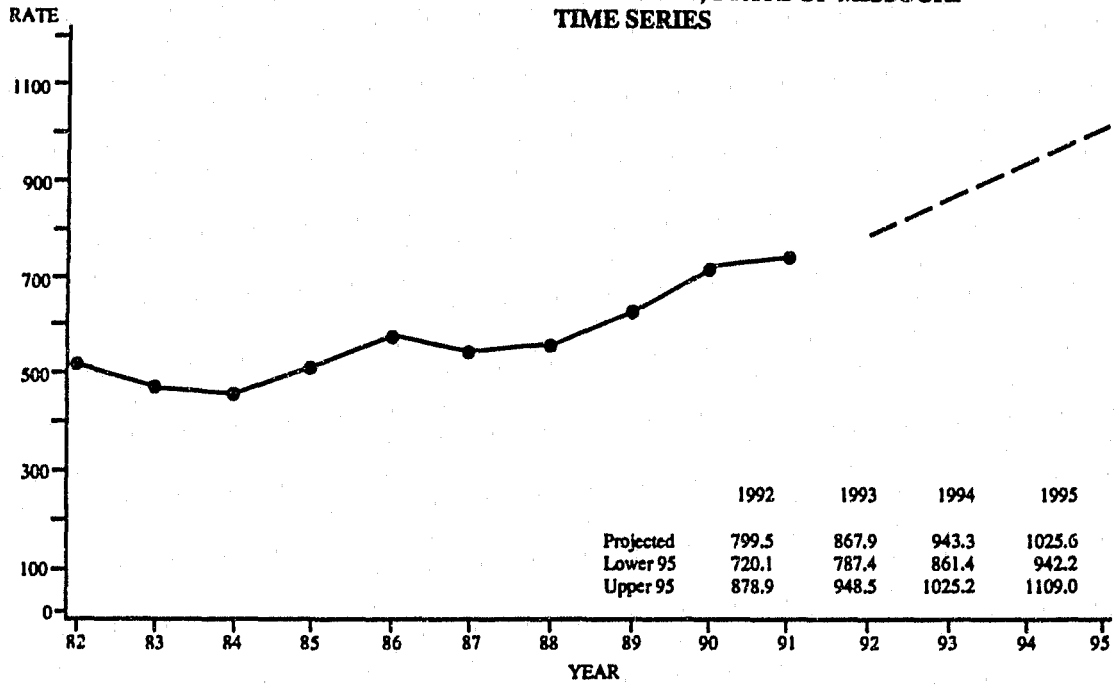
<sup>1</sup>Crime Index offense rates are based on estimated crime index offenses occurring in the State of Missouri. They are computed on a per 100,000 population basis. See Glossary for an explanation of the computations used to obtain these rates.

<sup>2</sup>Because the jurisdictional boundaries of reporting agencies do not coincide with county boundaries in some instances, the following counties were combined: (Clay/Platte/Jackson) and (Scott/New Madrid).

<sup>3</sup>Legend categories are based on quartiles of counties.

**FIGURE 2.0.2**

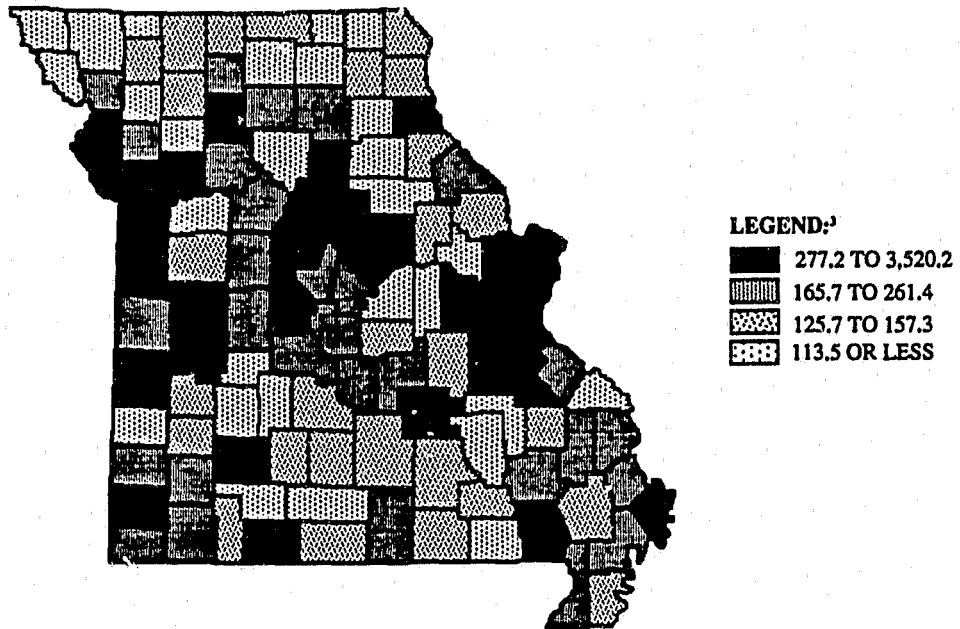
**VIOLENT INDEX OFFENSE RATES, STATE OF MISSOURI<sup>1</sup>**  
**TIME SERIES**



<sup>1</sup>Violent Index offense rates are based on estimated violent index offenses occurring in the State of Missouri. They are computed on a per 100,000 population basis. See Glossary for an explanation of the computations used to obtain these rates.

**FIGURE 2.0.3**

**VIOLENT INDEX OFFENSE RATES,<sup>1</sup>**  
**STATE OF MISSOURI**  
**BY COUNTY / 1991<sup>2</sup>**



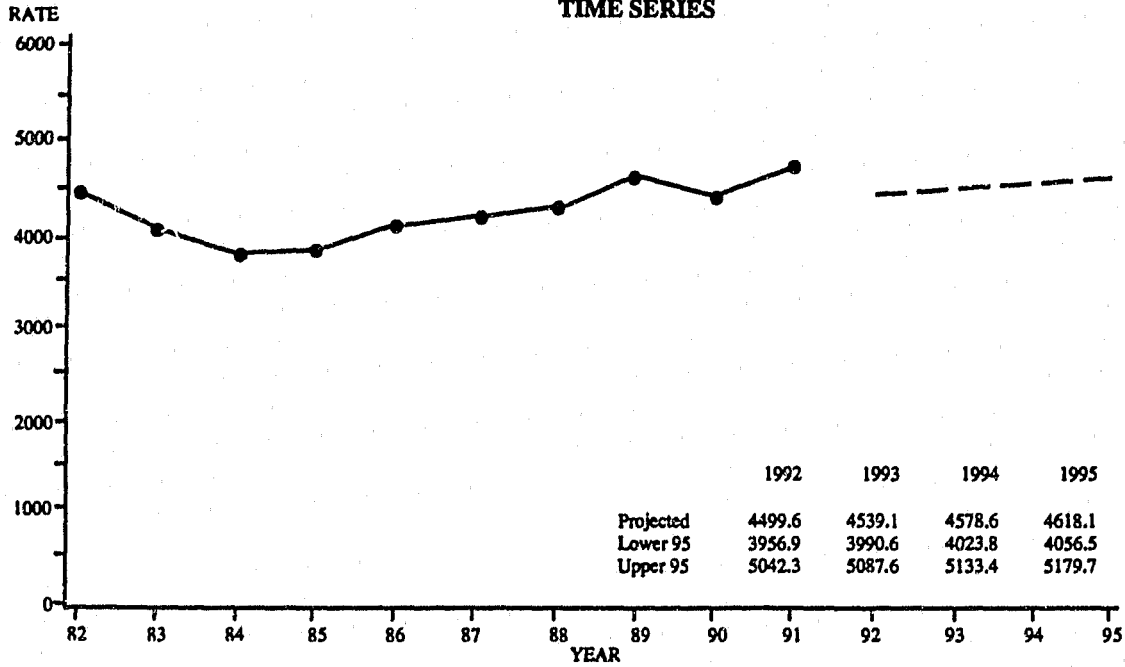
<sup>1</sup>Violent Index offense rates are based on estimated violent index offenses occurring in the State of Missouri. They are computed on a per 100,000 population basis. See Glossary for an explanation of the computations used to obtain these rates.

<sup>2</sup>Because the jurisdictional boundaries of reporting agencies do not coincide with county boundaries in some instances, the following counties were combined: (Clay/Platte/Jackson) and (Scott/New Madrid).

<sup>3</sup>Legend categories are based on quartiles of counties.

**FIGURE 2.0.4**

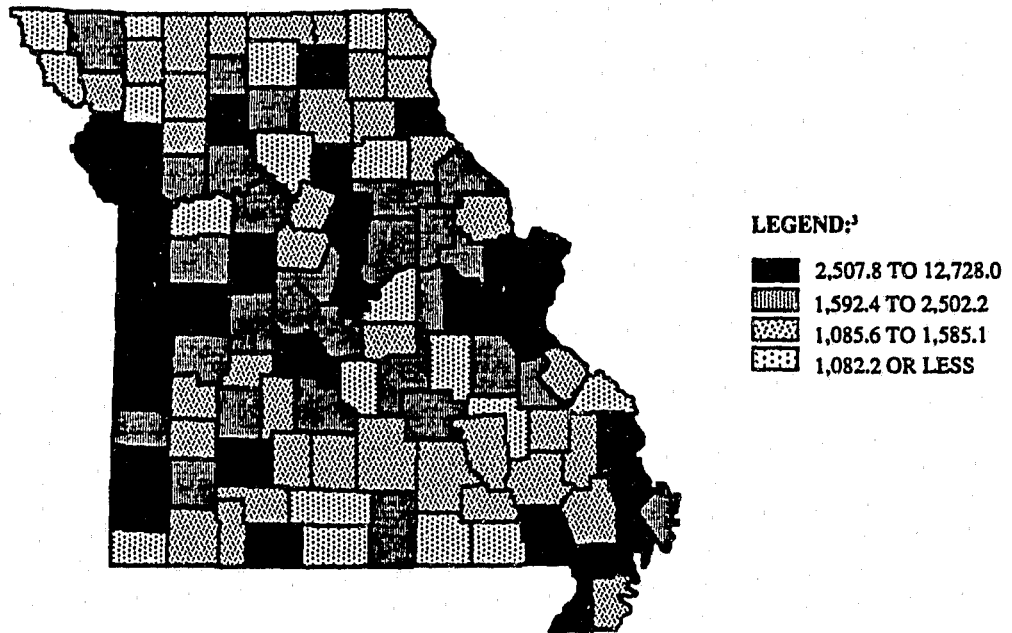
**PROPERTY INDEX OFFENSE RATES, STATE OF MISSOURI<sup>1</sup>**  
**TIME SERIES**



<sup>1</sup>Property Index offense rates are based on estimated property index offenses occurring in the State of Missouri. They are computed on a per 100,000 population basis. See Glossary for an explanation of the computations used to obtain these rates.

**FIGURE 2.0.5**

**PROPERTY INDEX OFFENSE RATES,<sup>1</sup>**  
**STATE OF MISSOURI**  
**BY COUNTY / 1991<sup>2</sup>**



<sup>1</sup>Property Index offense rates are based on estimated property index offenses occurring in the State of Missouri. They are computed on a per 100,000 population basis. See Glossary for an explanation of the computations used to obtain these rates.

<sup>2</sup>Because the jurisdictional boundaries of reporting agencies do not coincide with county boundaries in some instances, the following counties were combined: (Clay/Platte/Jackson) and (Scott/New Madrid).

<sup>3</sup>Legend categories are based on quartiles of counties.

**FIGURE 2.0.6**



### **3.0 MISSOURI ARREST ANALYSIS**

---

**A SERIES OF TABLES AND FIGURES SUMMARIZES MISSOURI CRIME INDEX ARREST CLEARANCE RATES, ACTUAL ARREST ACTIVITY ASSOCIATED WITH CRIME INDEX OFFENSES, AND ARREST ACTIVITY ASSOCIATED WITH ALL OTHER CLASSES OF CRIMINAL ACTIVITY REPORTED TO THE UCR SYSTEM. THE PURPOSE OF THESE DISPLAYS IS TO PROVIDE AN OVERVIEW OF CRIMINAL ENFORCEMENT ACTIVITY BEING PERFORMED IN THE STATE OF MISSOURI BY CLASS OF CRIME. IN ADDITION, ARREST RATES ARE DISPLAYED OVER TIME IN ORDER TO OBSERVE TRENDS.**

**CRIME INDEX CLEARANCE RATES, STATE OF MISSOURI<sup>1</sup>**

**1982 - 1991**

OFFENSE	1982	1983	1984	1985	1986	1987	1988	1989	1990	1991
TOTAL INDEX	20.1	21.7	21.6	22.3	22.3	22.4	22.7	22.4	23.3	23.3
VIOLENT INDEX	46.0	50.0	50.6	51.2	49.7	50.6	51.0	48.4	47.8	44.7
PROPERTY INDEX	17.1	18.3	18.0	18.4	18.4	18.7	19.0	18.8	19.2	19.7
MURDER	70.0	79.5	76.1	77.8	74.7	71.5	88.0	87.5	82.6	76.7
FORCIBLE RAPE	56.7	59.2	54.1	60.0	55.0	57.3	61.4	60.5	59.8	58.1
ROBBERY	25.0	31.0	28.5	28.5	26.6	29.1	28.8	27.3	25.7	24.0
AGGRAVATED ASSAULT	59.2	60.4	61.0	60.6	59.7	60.5	60.6	57.6	57.3	54.3
BURGLARY	14.9	16.9	15.8	15.1	14.6	14.6	16.0	16.2	15.7	15.3
THEFT	18.4	19.2	19.6	20.5	20.7	21.0	20.8	20.2	21.3	22.4
MOTOR VEHICLE THEFT	15.0	15.9	14.1	14.6	15.1	14.5	15.3	16.1	15.4	15.1
ARSON	14.4	22.5	20.7	18.3	19.0	20.9	27.6	20.6	20.8	23.5

<sup>1</sup>Clearance rates indicate the percent of reported offenses that were cleared by arrest or exceptional means. See Glossary for a further explanation.

**TABLE 3.0.1**

**CRIME INDEX ARRESTS, STATE OF MISSOURI**

**1982 - 1991**

OFFENSE	1982	1983	1984	1985	1986	1987	1988	1989	1990	1991
TOTAL INDEX	50,845	44,024	43,820	43,650	44,095	43,513	45,372	52,982	55,830	55,127
VIOLENT INDEX	11,986	11,196	12,351	11,094	9,600	9,578	9,754	12,722	14,405	13,302
PROPERTY INDEX	38,859	32,828	31,469	32,556	34,495	33,935	35,618	40,260	41,425	41,825
MURDER	462	332	313	259	390	362	390	478	494	553
FORCIBLE RAPE	1,031	978	997	981	775	760	708	766	778	762
ROBBERY	2,901	2,535	2,161	2,028	2,116	2,296	2,218	2,700	2,936	3,099
AGGRAVATED ASSAULT	7,592	7,351	8,880	7,826	6,319	6,160	6,438	8,778	10,197	8,888
BURGLARY	10,374	8,189	7,056	6,717	7,034	6,696	6,697	7,450	7,224	7,451
THEFT	26,460	23,244	22,686	23,849	24,875	24,926	25,984	29,065	30,304	30,440
MOTOR VEHICLE THEFT	1,631	1,099	1,407	1,689	2,210	1,963	2,556	3,417	3,527	3,568
ARSON	394	296	320	301	376	350	381	328	370	366
NUMBER OF REPORTING AGENCIES <sup>1</sup>	226	228	226	241	233	231	238	241	240	244

<sup>1</sup>Number of law enforcement agencies that reported arrest activity to the UCR Program in a given year.

**TABLE 3.0.2**

**CRIME INDEX ARREST RATES, STATE OF MISSOURI<sup>1</sup>**

**1982 - 1991**

OFFENSE	1982	1983	1984	1985	1986	1987	1988	1989	1990	1991
TOTAL INDEX	1,189.3	1,158.1	1,158.6	1,106.1	1,152.2	1,130.9	1,112.6	1,278.6	1,349.8	1,311.0
VIOLENT INDEX	280.4	294.5	326.6	281.1	250.8	248.9	239.2	307.0	348.3	316.3
PROPERTY INDEX	909.0	863.6	832.1	824.9	901.3	882.0	873.4	971.6	1,001.5	994.6
MURDER	10.8	8.7	8.3	6.6	10.2	9.4	9.6	11.5	11.9	13.2
FORCIBLE RAPE	24.1	25.7	26.4	24.9	20.3	19.8	17.4	18.5	18.8	18.1
ROBBERY	67.9	66.7	57.1	51.4	55.3	59.7	54.4	65.2	71.0	73.7
AGGRAVATED ASSAULT	177.6	193.4	234.8	198.3	165.1	160.1	157.9	211.8	246.5	211.4
BURGLARY	242.7	215.4	186.6	170.2	183.8	174.0	164.2	179.8	174.7	177.2
THEFT	618.9	611.5	599.8	604.3	650.0	647.8	637.2	701.4	732.7	723.9
MOTOR VEHICLE THEFT	38.2	28.9	37.2	42.8	57.7	51.0	62.7	82.5	85.3	84.9
ARSON	9.2	7.8	8.5	7.6	9.8	9.1	9.3	7.9	8.9	8.7

<sup>1</sup>Crime Index arrest rates relate to arrests made for crime index offenses reported by law enforcement agencies in the State of Missouri. They are computed on a per 100,000 population basis. See Glossary for a further explanation of the computations used to obtain these rates. Due to a change in computation methods, crime index arrest rates in this Digest will vary slightly when compared to arrest rates found in earlier editions.

**TABLE 3.0.3**

**TOTAL PERSONS ARRESTED BY MOST SERIOUS OFFENSE, STATE OF MISSOURI**

**1991**

<b>OFFENSES CHARGED</b>	<b>TOTAL</b>	<b>JUVENILE</b>	<b>ADULT</b>	<b>MALES</b>	<b>FEMALES</b>
<b>TOTAL<sup>1</sup></b>	<b>257,266</b>	<b>35,295</b>	<b>221,971</b>	<b>207,483</b>	<b>49,783</b>
<b>Murder &amp; Non-negligent Manslaughter</b>	<b>553</b>	<b>118</b>	<b>435</b>	<b>501</b>	<b>52</b>
<b>Forcible Rape</b>	<b>762</b>	<b>129</b>	<b>633</b>	<b>754</b>	<b>8</b>
<b>Robbery</b>	<b>3,099</b>	<b>721</b>	<b>2,378</b>	<b>2,845</b>	<b>254</b>
<b>Aggravated Assault</b>	<b>8,888</b>	<b>1,195</b>	<b>7,693</b>	<b>7,369</b>	<b>1,519</b>
<b>Burglary</b>	<b>7,451</b>	<b>1,856</b>	<b>5,595</b>	<b>6,842</b>	<b>609</b>
<b>Theft</b>	<b>30,440</b>	<b>7,230</b>	<b>23,210</b>	<b>21,201</b>	<b>9,239</b>
<b>Motor Vehicle Theft</b>	<b>3,568</b>	<b>1,429</b>	<b>2,139</b>	<b>3,207</b>	<b>361</b>
<b>Arson</b>	<b>366</b>	<b>110</b>	<b>256</b>	<b>306</b>	<b>60</b>
<b>Violent Crime<sup>2</sup></b>	<b>13,302</b>	<b>2,163</b>	<b>11,139</b>	<b>11,469</b>	<b>1,833</b>
<b>Property Crime<sup>3</sup></b>	<b>41,825</b>	<b>10,625</b>	<b>31,200</b>	<b>31,556</b>	<b>10,269</b>
<b>CRIME INDEX TOTAL<sup>4</sup></b>	<b>55,127</b>	<b>12,788</b>	<b>42,339</b>	<b>43,025</b>	<b>12,102</b>
<b>Other Assaults</b>	<b>30,576</b>	<b>3,267</b>	<b>27,309</b>	<b>26,387</b>	<b>4,189</b>
<b>Forgery &amp; Counterfeiting</b>	<b>1,885</b>	<b>136</b>	<b>1,749</b>	<b>1,144</b>	<b>741</b>
<b>Fraud</b>	<b>3,802</b>	<b>85</b>	<b>3,717</b>	<b>2,155</b>	<b>1,647</b>
<b>Embezzlement</b>	<b>48</b>	<b>3</b>	<b>45</b>	<b>36</b>	<b>12</b>
<b>Stolen Property</b>	<b>1,994</b>	<b>348</b>	<b>1,646</b>	<b>1,717</b>	<b>277</b>
<b>Vandalism</b>	<b>8,485</b>	<b>2,414</b>	<b>6,071</b>	<b>7,501</b>	<b>984</b>
<b>Weapons</b>	<b>6,441</b>	<b>1,033</b>	<b>5,408</b>	<b>5,823</b>	<b>618</b>
<b>Prostitution</b>	<b>2,177</b>	<b>22</b>	<b>2,155</b>	<b>1,112</b>	<b>1,065</b>
<b>Sex Offenses</b>	<b>2,340</b>	<b>278</b>	<b>2,062</b>	<b>2,228</b>	<b>112</b>
<b>Drug Abuse Violations</b>	<b>12,140</b>	<b>1,128</b>	<b>11,012</b>	<b>10,333</b>	<b>1,807</b>
<b>Gambling</b>	<b>258</b>	<b>21</b>	<b>237</b>	<b>249</b>	<b>9</b>
<b>Offenses Against Family and Children</b>	<b>2,001</b>	<b>32</b>	<b>1,969</b>	<b>1,616</b>	<b>385</b>
<b>Driving under Influence</b>	<b>25,455</b>	<b>299</b>	<b>25,156</b>	<b>21,956</b>	<b>3,499</b>
<b>Liquor Laws</b>	<b>8,198</b>	<b>1,587</b>	<b>6,611</b>	<b>6,947</b>	<b>1,251</b>
<b>Drunkenness</b>	<b>1,254</b>	<b>33</b>	<b>1,221</b>	<b>1,132</b>	<b>122</b>
<b>Disorderly Conduct</b>	<b>11,242</b>	<b>1,175</b>	<b>10,067</b>	<b>9,094</b>	<b>2,148</b>
<b>Vagrancy</b>	<b>352</b>	<b>26</b>	<b>326</b>	<b>323</b>	<b>29</b>
<b>Other Offenses (except Traffic)</b>	<b>78,202</b>	<b>5,331</b>	<b>72,871</b>	<b>61,706</b>	<b>16,496</b>
<b>Suspicion<sup>1</sup></b>	<b>1,223</b>	<b>172</b>	<b>1,051</b>	<b>1,037</b>	<b>186</b>
<b>Curfew and Loitering</b>	<b>1,912</b>	<b>1,912</b>	<b>0</b>	<b>1,352</b>	<b>560</b>
<b>Runaways</b>	<b>3,377</b>	<b>3,377</b>	<b>0</b>	<b>1,647</b>	<b>1,730</b>

<sup>1</sup>Arrests for suspicion are not included in Total.

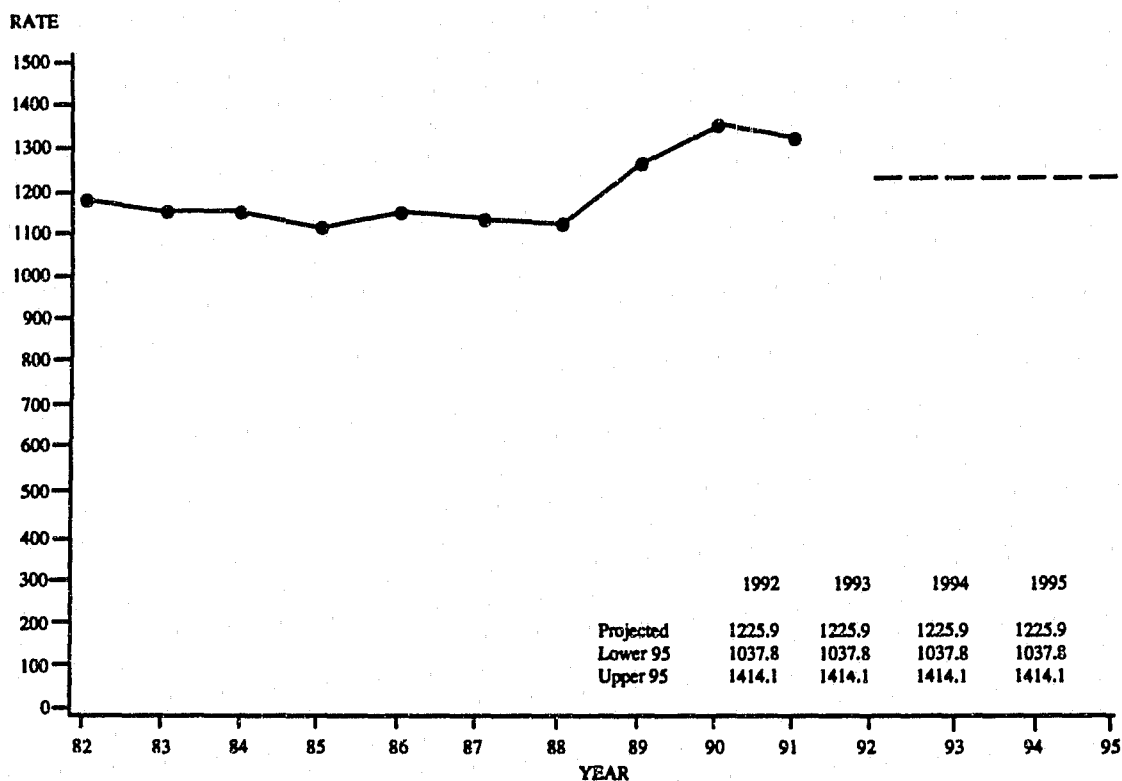
<sup>2</sup>Violent crimes include arrests for murder, forcible rape, robbery, and aggravated assault.

<sup>3</sup>Property crimes include arrests for burglary, theft, motor vehicle theft, and arson.

<sup>4</sup>Includes arson.

**TABLE 3.0.4**

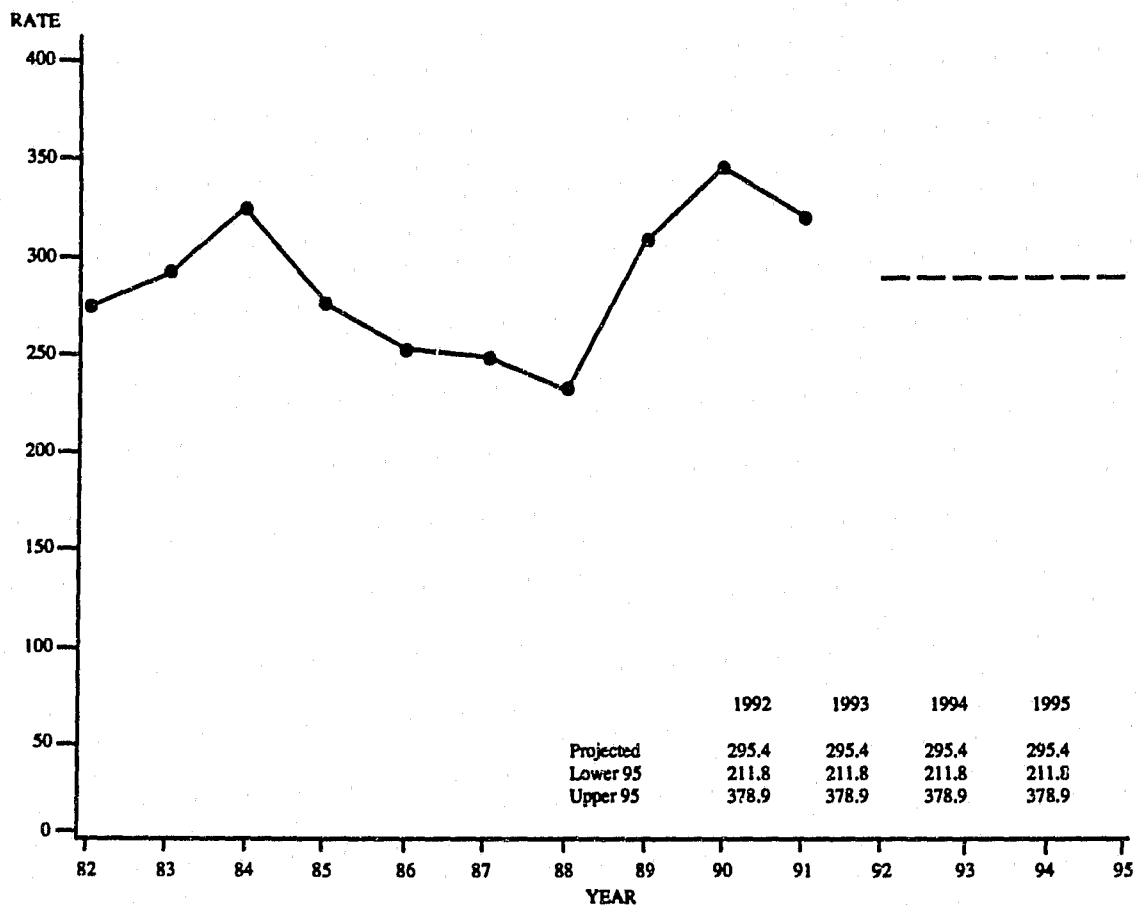
**CRIME INDEX ARREST RATES, STATE OF MISSOURI<sup>1</sup>**  
**TIME SERIES**



<sup>1</sup>Crime Index arrest rates relate to arrests made for crime index offenses reported by law enforcement agencies in the State of Missouri. They are computed on a per 100,000 population basis. See Glossary for an explanation of the computations used to obtain these rates.

**FIGURE 3.0.1**

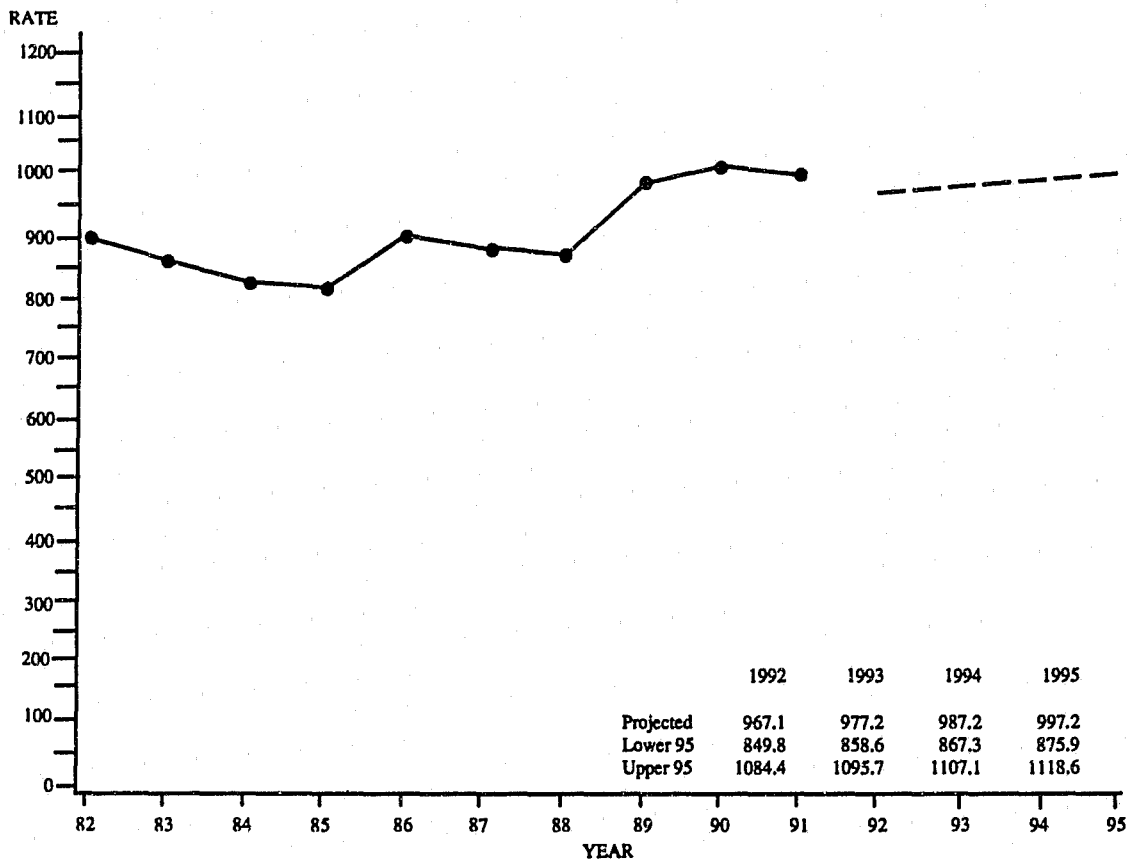
**VIOLENT INDEX ARREST RATES, STATE OF MISSOURI<sup>1</sup>**  
**TIME SERIES**



<sup>1</sup>Violent Index arrest rates relate to arrests made for violent index offenses reported by law enforcement agencies in the State of Missouri. They are computed on a per 100,000 population basis. See Glossary for an explanation of the computations used to obtain these rates.

**FIGURE 3.0.2**

**PROPERTY INDEX ARREST RATES, STATE OF MISSOURI<sup>1</sup>**  
**TIME SERIES**



<sup>1</sup>Property Index arrest rates relate to arrests made for property index offenses reported by law enforcement agencies in the State of Missouri. They are computed on a per 100,000 population basis. See Glossary for an explanation of the computations used to obtain these rates.

**FIGURE 3.0.3**



## **4.0 MISSOURI DETAIL CRIME INDEX ANALYSIS**

---

A SERIES OF TABLES AND FIGURES SUMMARIZES CRIME ACTIVITY, CLEARANCE RATES, CRIME PATTERNS, AND ARREST ACTIVITY ASSOCIATED WITH SPECIFIC TYPES OF CRIME INDEX OFFENSES COMMITTED IN THE STATE OF MISSOURI. DETAIL ANALYSIS IS PROVIDED ON THE FOLLOWING TYPES OF CRIME:

- MURDER
- FORCIBLE RAPE
- ROBBERY
- AGGRAVATED ASSAULT
- BURGLARY
- THEFT
- MOTOR VEHICLE THEFT
- ARSON

## 4.1 MURDER

### DEFINITION

***Murder and non-negligent manslaughter are the willful killing of one human being by another. Not included in this offense classification are deaths caused by negligence, suicide, accident, justifiable homicide (the killing of a felon by a peace officer in the line of duty or a private citizen during the commission of a felony), and attempts to murder (these are classified as aggravated assaults). Murder offenses are reported on a per victim basis.***

### 1990 SUMMARY ANALYSIS

- There were 501 murders reported during 1991. It is estimated that a total of 525 murders actually occurred on a statewide basis. Based on this estimate, this was a 16.9 percent increase from 1990.
- It is estimated that one murder occurred every 16.7 hours.
- Murder accounted for 0.2 percent of the Total Crime Index and 1.3 percent of all Violent Index offenses.
- The murder rate per 100,000 population was 10.2 in 1991 compared to 8.8 in 1990.
- In 1991, 76.7 of every 100 murders were cleared by arrest or exceptional means.
- 553 persons were reported arrested for murder in 1991. Of these, 78.7 percent were adults and 21.3 percent were juveniles.
- Of the murder victims reported, 79.9 percent were male and 20.2 percent were female. Of the total, 84.1 percent were adults, 15.0 percent were juveniles, and 1.0 percent had an unknown age.
- A firearm was used by 62.9 percent of the offenders associated with murders and 10.1% of the offenders used a knife.

**MURDER SUMMARY: 1990 and 1991**

Year	Number of Estimated Offenses	Rate per 100,000 Population
1990	449	8.8
1991	525	10.2
Percent of Change	+ 16.9	+ 15.9

**MURDER RATES BY POPULATION GROUP**

1991

POPULATION GROUP	REPORTED	ESTIMATED	% OF TOTAL	RATE PER 100,000 POPULATION
<u>Police Agencies</u>				
250,000 +	395	395	75.3	47.1
100,000 - 249,999	9	9	1.7	3.5
50,000 - 99,999	7	7	1.3	2.8
25,000 - 49,999	8	8	1.5	1.7
10,000 - 24,999	17	19	3.6	3.3
2,500 - 9,999	12	13	2.5	2.9
Under 2,500	2	3	0.5	5.9
<u>Sheriff's Dept./County Police Suburban</u>	24	24	4.5	2.3
<u>Sheriff's Dept. -- Rural</u>	27	47	8.9	3.7
<b>TOTAL</b>	<b>501</b>	<b>525</b>	<b>100.0</b>	<b>10.2</b>

**TABLE 4.1.1**

## MURDER CLEARANCE RATES

1990 - 1991

YEAR	PERCENT CLEARED	% OF CLEARED OFFENSES ONLY JUVENILES
1990	82.6	10.1
1991	76.7	14.2

TABLE 4.1.2

## MURDER ARRESTS BY SEX AND AGE GROUP

1991

SEX	AGE GROUPS	REPORTED	% OF TOTAL MURDER ARRESTS
MALE	ADULTS	387	70.0
	JUVENILES	114	20.6
FEMALE	ADULTS	48	8.7
	JUVENILES	4	0.7
TOTAL		553	100.0

TABLE 4.1.3

## MURDER ARRESTS BY RACE AND AGE GROUP

1991

RACE	AGE GROUPS	REPORTED	% OF TOTAL MURDER ARRESTS
WHITE	ADULTS	102	18.7
	JUVENILES	12	2.2
BLACK	ADULTS	326	59.7
	JUVENILES	106	19.4
UNKNOWN		7	-
TOTAL		553	100.0

TABLE 4.1.4

**MURDER VICTIMS BY SEX AND AGE GROUP**

1991

SEX	AGE GROUPS	REPORTED <sup>1</sup>	% OF TOTAL
MALE	ADULTS	337	67.3
	JUVENILES	58	11.6
	UNKNOWN	5	1.0
FEMALE	ADULTS	84	16.8
	JUVENILES	17	3.4
	UNKNOWN	0	0.0
UNKNOWN	ADULTS	0	0.0
	JUVENILES	0	0.0
	UNKNOWN	1	-
<b>TOTAL</b>		<b>502</b>	<b>100.0</b>

<sup>1</sup>Victim data were obtained from the UCR Supplemental Homicide Report. The total number of victims in this table may not exactly correspond to the 501 murders reported in 1991 because law enforcement agencies report murder offenses on a separate form entitled the Return A. Discrepancies can occur as a result of an agency inadvertently updating or adjusting only one of these reports but not the other.

**TABLE 4.1.5**

**MURDER VICTIMS BY RACE AND AGE GROUP**

1991

RACE	AGE GROUPS	REPORTED <sup>1</sup>	% OF TOTAL
WHITE	ADULTS	127	25.4
	JUVENILES	15	3.0
	UNKNOWN	0	0.0
BLACK	ADULTS	294	58.8
	JUVENILES	60	12.0
	UNKNOWN	4	0.8
UNKNOWN	ADULTS	0	0.0
	JUVENILES	0	0.0
	UNKNOWN	2	-
<b>TOTAL</b>		<b>502</b>	<b>100.0</b>

<sup>1</sup>Victim data were obtained from the UCR Supplemental Homicide Report. The total number of victims in this table may not exactly correspond to the 501 murders reported in 1991 because law enforcement agencies report murder offenses on a separate form entitled the Return A. Discrepancies can occur as a result of an agency inadvertently updating or adjusting only one of these reports but not the other.

**TABLE 4.1.6**

## TYPE OF WEAPON USED BY OFFENDERS IN MURDERS

1991

TYPE	REPORTED <sup>1</sup>	% OF TOTAL
FIREARM	338	62.9
KNIFE	54	10.1
BLUNT OBJECT	22	4.1
PERSONAL WEAPONS (Hands, Feet, etc.)	28	5.2
FIRE	3	0.6
DROWNING	1	0.2
STRANGULATION	2	0.4
ASPHYXIATION	2	0.4
OTHER	87	16.2
TOTAL	537	100.0

<sup>1</sup>The 537 offenders in this table are directly associated with 502 victims murdered in 1991. Victim and offender data were both obtained from the UCR Supplemental Homicide Report.

TABLE 4.1.7

**CIRCUMSTANCES WITH MURDERS**

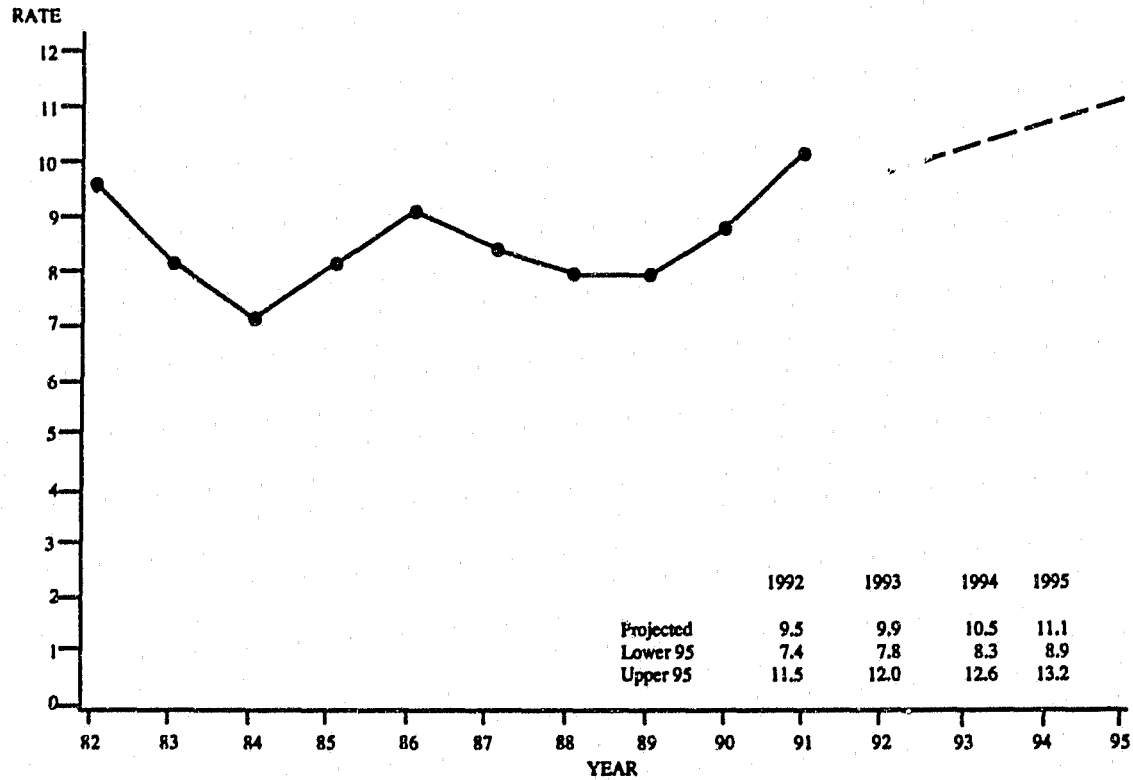
1991

<b>TYPE</b>	<b>CIRCUMSTANCE</b>	<b>REPORTED<sup>1</sup></b>	<b>% OF TOTAL</b>
<b>FELONY RELATED</b>	RAPE	1	0.5
	ROBBERY	31	14.9
	BURGLARY	6	12.9
	MOTOR VEHICLE THEFT	1	0.5
	ARSON	2	1.0
	NARCOTICS LAWS	7	3.4
<b>NOT FELONY RELATED</b>	GAMBLING	1	0.5
	LOVER'S TRIANGLE	2	1.0
	BRAWL INFLUENCED BY ALCOHOL	2	1.0
	ARGUMENT OVER MONEY/PROPERTY	6	2.9
	OTHER ARGUMENTS	106	51.0
	GANGLAND KILLING	1	0.5
	JUVENILE GANG KILLINGS	1	0.5
	OTHER	41	19.7
<b>UNKNOWN</b>		280	-
<b>TOTAL</b>		488	100.0

<sup>1</sup>The 488 circumstances in this table are directly associated with the first victim and first offender in a murder incident. Victim and offender data were both obtained from the UCR Supplemental Homicide Report.

**TABLE 4.1.8**

**MURDER OFFENSE RATES, STATE OF MISSOURI<sup>1</sup>**  
**TIME SERIES**



<sup>1</sup>Murder offense rates are based on estimated murder offenses occurring in the State of Missouri. They are computed on a per 100,000 population basis. See Glossary for an explanation of the computations used to obtain these rates.

**FIGURE 4.1.1**



## 4.2 FORCIBLE RAPE

### DEFINITION

***Forcible rape is the carnal knowledge of a female forcibly and against her will. Assaults or attempts to commit rape by force or threat of force also are included. However, statutory rape (without force), sex attacks on males, and other types of sex offenses are not included in this category. Forcible rape offenses are reported on a per victim basis.***

### 1991 SUMMARY ANALYSIS

- There were 1,611 rapes reported during 1991. It is estimated that a total of 1,734 rapes actually occurred on a statewide basis. Based on this estimate, this was a 4.0 percent increase from 1990.
- It is estimated that one rape occurred every 5.1 hours.
- Rape accounted for 0.6 percent of the Total Crime Index and 4.4 percent of all Violent Index offenses.
- The rape rate per 100,000 population was 33.6 in 1991 compared to 32.6 in 1990.
- Rape by force constituted 83.5 percent of the estimated rapes while attempted rapes accounted for 16.5 percent.
- In 1991, 58.1 of every 100 rapes were cleared by arrest or exceptional means.
- 762 persons were reported arrested for rape in 1991.
- Of those persons arrested for rape in 1991, 83.1 percent were adults and 17.0 percent were juveniles.

**FORCIBLE RAPE SUMMARY: 1990 and 1991**

Year	Number of Estimated Offenses	Rate per 100,000 Population
1990	1,667	32.6
1991	1,734	33.6
Percent of Change	+ 4.0	+ 3.1

**FORCIBLE RAPE RATES BY POPULATION GROUP**

**1991**

POPULATION GROUP	REPORTED	ESTIMATED	% OF TOTAL	RATE PER 100,000 POPULATION
<b>Police Agencies</b>				
250,000 +	819	819	47.2	97.7
100,000 - 249,999	77	77	4.4	30.2
50,000 - 99,999	86	86	5.0	34.6
25,000 - 49,999	100	100	5.8	21.8
10,000 - 24,999	130	141	8.1	25.1
2,500 - 9,999	92	114	6.6	24.4
Under 2,500	25	38	2.2	78.2
<b>Sheriff's Dept./County Police Suburban</b>	212	240	13.8	23.4
<b>Sheriff's Dept. -- Rural</b>	70	119	6.9	9.5
<b>TOTAL</b>	<b>1,611</b>	<b>1,734</b>	<b>100.0</b>	<b>33.6</b>

**TABLE 4.2.1**

**ACTUAL/ATTEMPTED RAPE OFFENSES**

**1991**

TYPE	REPORTED	ESTIMATED	% OF TOTAL
FORCIBLE RAPE	1,354	1,449	83.5
ATTEMPTED RAPE	257	285	16.5
UNKNOWN	0	0	-
<b>TOTAL</b>	<b>1,611</b>	<b>1,734</b>	<b>100.0</b>

**TABLE 4.2.2**

**FORCIBLE RAPE CLEARANCE RATES**

**1990 - 1991**

YEAR	PERCENT CLEARED	% OF CLEARED OFFENSES ONLY JUVENILES
1990	59.8	12.9
1991	58.1	13.5

**TABLE 4.2.3**

**FORCIBLE RAPE ARRESTS BY SEX AND AGE GROUP**

**1991**

SEX	AGE GROUPS	REPORTED	% OF TOTAL RAPE ARRESTS
MALE	ADULTS	627	82.3
	JUVENILES	127	16.7
FEMALE	ADULTS	6	0.8
	JUVENILES	2	0.3
<b>TOTAL</b>		<b>762</b>	<b>100.0</b>

**TABLE 4.2.4**

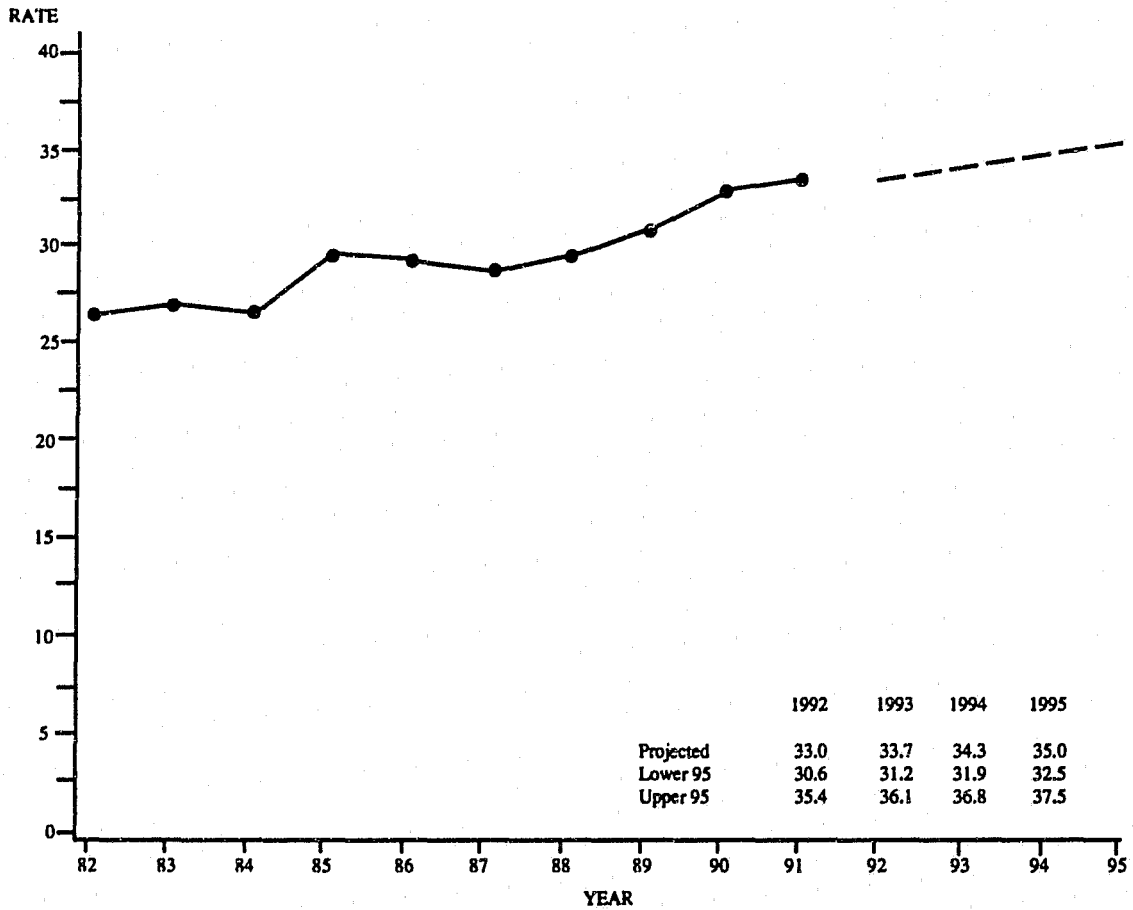
**FORCIBLE RAPE ARRESTS BY RACE AND AGE GROUP**

**1991**

<b>RACE</b>	<b>AGE GROUPS</b>	<b>REPORTED</b>	<b>% OF TOTAL RAPE ARRESTS</b>
<b>WHITE</b>	<b>ADULTS</b>	271	36.2
	<b>JUVENILES</b>	54	7.2
<b>BLACK</b>	<b>ADULTS</b>	352	47.0
	<b>JUVENILES</b>	72	9.6
<b>UNKNOWN</b>		13	-
<b>TOTAL</b>		762	100.0

**TABLE 4.2.5**

**RAPE OFFENSE RATES, STATE OF MISSOURI<sup>1</sup>**  
**TIME SERIES**



<sup>1</sup>Rape offense rates are based on estimated rape offenses occurring in the State of Missouri. They are computed on a per 100,000 population basis. See Glossary for an explanation of the computations used to obtain these rates.

**FIGURE 4.2.1**

## 4.3 ROBBERY

### DEFINITION

***Robbery is the taking or attempting to take anything of value from the care, custody, or control of a person or persons by force or threat of force or violence and/or by putting the victim in fear. Robbery involves a theft or larceny but is aggravated by the element of force or threat of force. Robbery offenses are reported on an incident-by-incident basis.***

### 1991 SUMMARY ANALYSIS

- There were 12,333 robberies reported during 1991. It is estimated that a total of 12,542 robberies actually occurred on a statewide basis. Based on this estimate, this was a 12.9 percent increase over 1990.
- It is estimated that one robbery occurred every 41.9 minutes.
- Robbery accounted for 4.5 percent of the Total Crime Index and 32.1 percent of all Violent Index offenses.
- The robbery rate per 100,000 population was 243.2 in 1991 compared to 217.0 in 1990.
- It is estimated that in 44.8 percent of all robberies, a firearm was used.
- Street robbery was the most prevalent class of robbery accounting for an estimated 70.6 percent of all such offenses.
- It is estimated that \$9,081,913 in property/cash was stolen in 1991 due to this offense.
- In 1991, 24.0 of every 100 robberies were cleared by arrest or exceptional means.
- 3,099 persons were reported arrested for robbery in 1991. Of these, 76.8 percent were adults and 23.2 percent were juveniles.

**ROBBERY SUMMARY: 1990 and 1991**

Year	Number of Estimated Offenses	Rate per 100,000 Population
1990	11,106	217.0
1991	12,542	243.2
Percent of Change	+ 12.9	+ 12.1

**ROBBERY RATES BY POPULATION GROUP**

1991

POPULATION GROUP	REPORTED	ESTIMATED	% OF TOTAL	RATE PER 100,000 POPULATION
<b>Police Agencies</b>				
250,000 +	10,249	10,249	81.7	1,223.0
100,000 - 249,999	297	297	2.4	116.6
50,000 - 99,999	199	199	1.6	80.0
25,000 - 49,999	429	429	3.4	93.4
10,000 - 24,999	492	533	4.2	94.8
2,500 - 9,999	196	229	1.8	49.0
Under 2,500	50	76	0.6	157.1
<b>Sheriff's Dept./County Police</b>				
Suburban	365	432	3.4	42.1
Sheriff's Dept. -- Rural	56	98	0.8	7.8
<b>TOTAL</b>	<b>12,333</b>	<b>12,542</b>	<b>100.0</b>	<b>243.2</b>

TABLE 4.3.1

**TYPE OF WEAPON USED IN ROBBERIES**

**1991**

TYPE	REPORTED	ESTIMATED	% OF TOTAL
FIREARMS	5,543	5,624	44.8
KNIVES OR CUTTING INSTRUMENTS	951	965	7.7
OTHER WEAPONS	927	943	7.5
STRONG ARMED (Hands, Feet, etc.)	4,912	5,009	39.9
UNKNOWN	0	1	-
<b>TOTAL</b>	<b>12,333</b>	<b>12,542</b>	<b>100.0</b>

**TABLE 4.3.2**

**ROBBERY LOSS/LOCATION**

**1991**

TYPE	REPORTED	ESTIMATED	% OF TOTAL	\$ LOSS/ INCIDENT
SERVICE STATION	295	305	2.5	\$151.86
CONVENIENCE STORE	304	324	2.6	283.82
BANK	63	69	0.6	6,543.31
OTHER COMMERCIAL	1,144	1,171	9.5	749.23
STREET/HIGHWAY	8559	8,678	70.6	732.30
RESIDENCE	1,166	1,193	9.7	634.78
MISCELLANEOUS	518	557	4.5	743.75
UNKNOWN	284	245	-	-
<b>TOTAL</b>	<b>12,333</b>	<b>12,542</b>	<b>100.0</b>	<b>724.12</b>
<b>1991 TOTAL STATE LOSS ESTIMATE<sup>2</sup> = \$9,081,913</b>				

<sup>1</sup>The dollar loss per incident was calculated using only those robbery offenses for which law enforcement agencies reported an actual monetary loss.

<sup>2</sup>This estimate of property loss was calculated by multiplying the total dollar loss per offense by the estimated number of such offenses that occurred in 1991.

**TABLE 4.3.3**



**ROBBERY CLEARANCE RATES**

1990 - 1991

YEAR	PERCENT CLEARED	% OF CLEARED OFFENSES ONLY JUVENILES
1990	25.7	15.2
1991	24.0	14.2

**TABLE 4.3.4**

**ROBBERY ARRESTS BY SEX AND AGE GROUP**

1991

SEX	AGE GROUPS	REPORTED	% OF TOTAL ROBBERY ARRESTS
MALE	ADULTS	2,162	69.8
	JUVENILES	683	22.0
FEMALE	ADULTS	216	7.0
	JUVENILES	38	1.2
<b>TOTAL</b>		<b>3,099</b>	<b>100.0</b>

**TABLE 4.3.5**

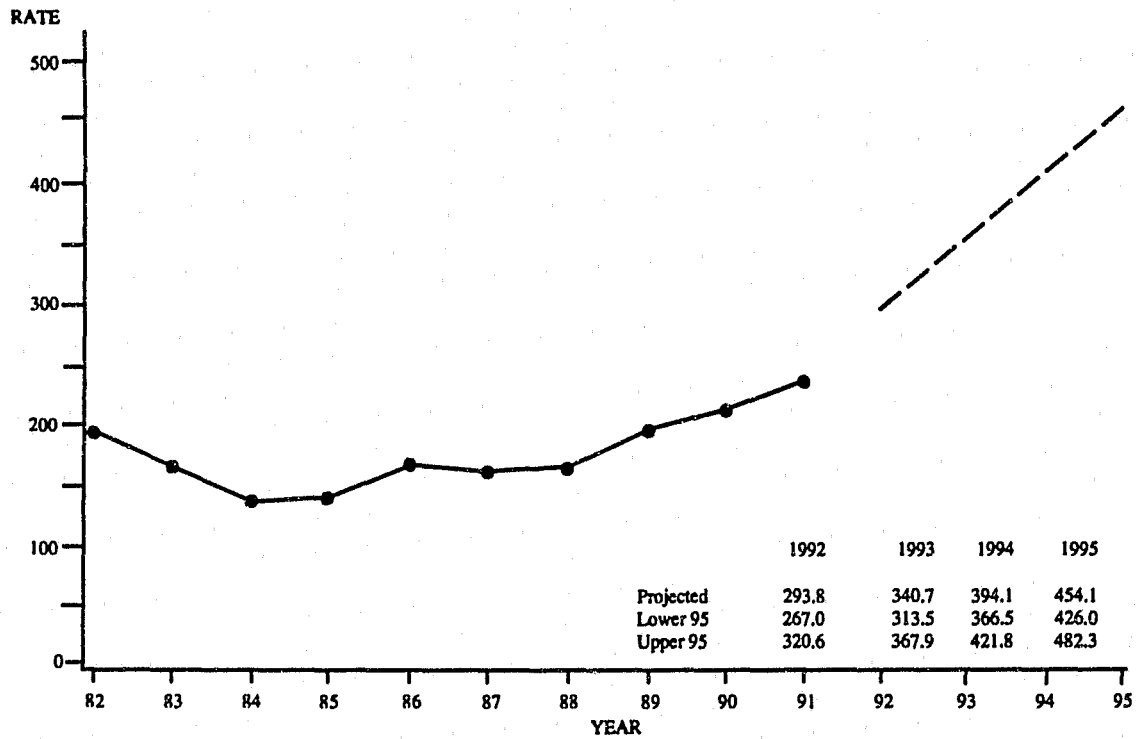
**ROBBERY ARRESTS BY RACE AND AGE GROUP**

1991

RACE	AGE GROUPS	REPORTED	% OF TOTAL ROBBERY ARRESTS
WHITE	ADULTS	530	17.2
	JUVENILES	139	4.5
BLACK	ADULTS	1,837	59.5
	JUVENILES	575	18.6
ASIAN	ADULTS	6	0.2
	JUVENILES	2	0.1
UNKNOWN		10	-
<b>TOTAL</b>		<b>3,099</b>	<b>100.0</b>

**TABLE 4.3.6**

**ROBBERY OFFENSE RATES, STATE OF MISSOURI<sup>1</sup>**  
**TIME SERIES**



	1992	1993	1994	1995
Projected	293.8	340.7	394.1	454.1
Lower 95	267.0	313.5	366.5	426.0
Upper 95	320.6	367.9	421.8	482.3

<sup>1</sup>Robbery offense rates are based on estimated robbery offenses occurring in the State of Missouri. They are computed on a per 100,000 population basis. See Glossary for an explanation of the computations used to obtain these rates.

**FIGURE 4.3.1**

## 4.4 AGGRAVATED ASSAULT

### DEFINITION

***Aggravated assault is an unlawful attack or attempted attack by one person upon another for the purpose of inflicting severe or aggravated bodily injury. This type of assault usually is accompanied by the use of a weapon or by means likely to produce death or great bodily harm. All assaults or attempted assaults by one person upon another with the intent to kill, maim, or inflict severe bodily injury with the use of any dangerous weapon are classified under this category of offense. Aggravated assault offenses are reported on a per victim basis.***

### 1991 SUMMARY ANALYSIS

- There were 22,836 aggravated assaults reported in 1991. It is estimated that a total of 24,224 aggravated assaults actually occurred on a statewide basis. Based on this estimate, this was a 3.5 percent increase over 1990.
- It is estimated that one aggravated assault occurred every 21.7 minutes.
- Aggravated assault accounted for 8.7 percent of the Total Crime Index and 62.1 percent of all Violent Index offenses.
- The aggravated assault rate per 100,000 population was 469.7 in 1991 compared to 457.5 in 1990.
- It is estimated that a firearm was used in 35.0 percent of the cases.
- In 1991, 54.3 of every 100 aggravated assaults were cleared by arrest or exceptional means.
- 8,888 persons were reported arrested for aggravated assault in 1991. Of these, 86.6 percent were adults and 13.4 percent were juveniles.

**AGGRAVATED ASSAULT SUMMARY: 1990 and 1991**

Year	Number of Estimated Offenses	Rate per 100,000 Population
1990	23,409	457.5
1991	24,224	469.7
Percent of Change	+ 3.5	+ 2.7

**AGGRAVATED ASSAULT RATES BY POPULATION GROUP**

**1991**

POPULATION GROUP	REPORTED	ESTIMATED	% OF TOTAL	RATE PER 100,000 POPULATION
<u>Police Agencies</u>				
250,000 +	15,026	15,026	62.0	1,793.0
100,000 - 249,999	865	865	3.6	339.5
50,000 - 99,999	765	765	3.2	307.6
25,000 - 49,999	870	870	3.6	189.4
10,000 - 24,999	1,052	1,141	4.7	203.1
2,500 - 9,999	1,272	1,536	6.3	328.2
Under 2,500	147	207	0.9	429.6
Sheriff's Dept./County Police Suburban	2,038	2,424	10.0	236.3
Sheriff's Dept. -- Rural	801	1,390	5.7	111.0
<b>TOTAL</b>	<b>22,836</b>	<b>24,224</b>	<b>100.0</b>	<b>469.7</b>

**TABLE 4.4.1**

**TYPE OF WEAPON USED IN AGGRAVATED ASSAULTS**

**1991**

<b>TYPE</b>	<b>REPORTED</b>	<b>ESTIMATED</b>	<b>% OF TOTAL</b>
FIREARMS	8,313	8,489	35.0
KNIVES OR CUTTING INSTRUMENTS	3,683	3,840	15.9
OTHER WEAPONS	6,984	7,289	30.1
HANDS, FEET, ETC./ AGGRAVATED INJURY	3,845	4,606	19.0
UNKNOWN	11	0	-
<b>TOTAL</b>	<b>22,836</b>	<b>24,224</b>	<b>100.0</b>

**TABLE 4.4.2**

**AGGRAVATED ASSAULT CLEARANCE RATES**

**1990 - 1991**

<b>YEAR</b>	<b>PERCENT CLEARED</b>	<b>% OF CLEARED OFFENSES ONLY JUVENILES</b>
1990	57.3	12.1
1991	54.3	13.3

**TABLE 4.4.3**

**AGGRAVATED ASSAULT ARRESTS BY SEX AND AGE GROUP**

1991

SEX	AGE GROUPS	REPORTED	% OF TOTAL ASSAULT ARRESTS
MALE	ADULTS	6,355	71.5
	JUVENILES	1,014	11.4
FEMALE	ADULTS	1,338	15.1
	JUVENILES	181	2.0
<b>TOTAL</b>		<b>8,888</b>	<b>100.0</b>

TABLE 4.4.4

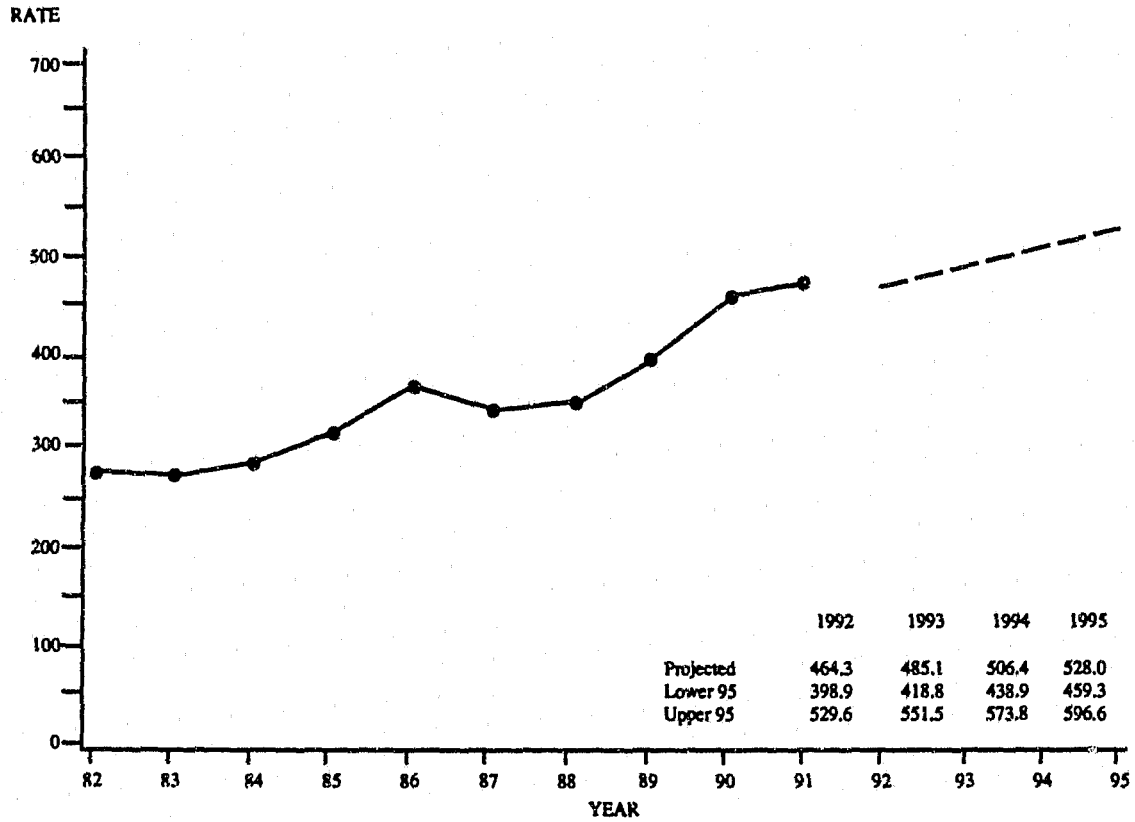
**AGGRAVATED ASSAULT ARRESTS BY RACE AND AGE GROUP**

1991

RACE	AGE GROUPS	REPORTED	% OF TOTAL ASSAULT ARRESTS
WHITE	ADULTS	3,079	35.0
	JUVENILES	460	5.2
BLACK	ADULTS	4,531	51.5
	JUVENILES	711	8.1
AMERICAN INDIAN	ADULTS	9	0.1
	JUVENILES	0	0.0
ASIAN	ADULTS	7	0.1
	JUVENILES	1	0.0
UNKNOWN		90	-
<b>TOTAL</b>		<b>8,888</b>	<b>100.0</b>

TABLE 4.4.5

**AGGRAVATED ASSAULT OFFENSE RATES, STATE OF MISSOURI<sup>1</sup>**  
**TIME SERIES**



<sup>1</sup>Aggravated assault offense rates are based on estimated aggravated assault offenses occurring in the State of Missouri. They are computed on a per 100,000 population basis. See Glossary for an explanation of the computations used to obtain these rates.

**FIGURE 4.4.1**

## 4.5 BURGLARY

### DEFINITION

***Burglary is the unlawful entry or attempted unlawful entry of a structure to commit a felony or a theft. Burglary offenses are reported on an incident-by-incident basis.***

### 1991 SUMMARY ANALYSIS

- There were 55,149 burglaries reported during 1991. It is estimated that a total of 60,100 burglaries actually occurred on a statewide basis. Based on this estimate, this was a 10.5 percent increase over 1990.
- It is estimated that one burglary occurred every 8.7 minutes.
- Burglary accounted for 21.6 percent of the Total Crime Index and 25.1 percent of all Property Index offenses.
- The burglary rate per 100,000 population was 1,165.2 in 1991 compared to 1,063.3 in 1990.
- It is estimated that 69.7 percent of all burglaries involved a residential dwelling and 68.5 percent were accomplished by forcible entry.
- It is estimated that \$64,795,012 in property/cash was stolen in 1991 due to this offense.
- In 1991, 15.3 of every 100 burglaries were cleared by arrest or exceptional means.
- 7,451 persons were reported arrested for burglary in 1991. Of these, 75.1 percent were adults and 24.9 percent were juveniles.



**BURGLARY SUMMARY: 1990 and 1991**

Year	Number of Estimated Offenses	Rate per 100,000 Population
1990	54,412	1,063.3
1991	60,100	1,165.2
Percent of Change	+ 10.5	+ 9.6

**BURGLARY RATES BY POPULATION GROUP**

1991

POPULATION GROUP	REPORTED	ESTIMATED	% OF TOTAL	RATE PER 100,000 POPULATION
<b>Police Agencies</b>				
250,000 +	26,404	26,404	43.9	3,150.7
100,000 - 249,999	4,245	4,245	7.1	1,665.9
50,000 - 99,999	2,283	2,283	3.8	918.0
25,000 - 49,999	4,248	4,248	7.1	924.6
10,000 - 24,999	4,510	4,923	8.2	876.2
2,500 - 9,999	2,865	3,454	5.7	738.0
Under 2,500	526	751	1.3	1,557.0
Sheriff's Dept./County Police Suburban	6,490	7,512	12.5	732.2
Sheriff's Dept. -- Rural	3,578	6,280	10.4	501.2
<b>TOTAL</b>	<b>55,149</b>	<b>60,100</b>	<b>100.0</b>	<b>1,165.2</b>

TABLE 4.5.1

**TYPE OF BURGLARY**

**1991**

TYPE	REPORTED	ESTIMATED	% OF TOTAL
FORCIBLE ENTRY	37,849	41,194	68.5
UNLAWFUL ENTRY NO FORCE	12,963	14,303	23.8
ATTEMPTED FORCIBLE ENTRY	4,286	4,603	7.7
UNKNOWN	51	0	-
<b>TOTAL</b>	<b>55,149</b>	<b>60,100</b>	<b>100.0</b>

**TABLE 4.5.2**

**BURGLARY LOSS/LOCATION/TIME**

**1991**

TYPE	REPORTED	ESTIMATED	% OF TOTAL	\$ LOSS/ INCIDENT
<b>RESIDENCE</b>				
NIGHT (6 p.m. to 6 a.m.)	10,104	11,143	20.1	\$962.75
DAY (6 a.m. to 6 p.m.)	10,048	10,955	19.7	1,105.60
TIME UNKNOWN	15,235	16,593	29.9	1,165.47
<b>NON-RESIDENCE</b>				
NIGHT (6 p.m. to 6 a.m.)	6,190	6,972	12.5	831.91
DAY (6 a.m. to 6 p.m.)	1,399	1,506	2.7	794.86
TIME UNKNOWN	7,763	8,394	15.1	1,262.27
UNKNOWN	4,410	4,537	-	-
<b>TOTAL</b>	<b>55,149</b>	<b>60,100</b>	<b>100.0</b>	<b>1,078.12</b>
<b>1991 TOTAL STATE LOSS ESTIMATE<sup>2</sup> = \$64,795,012</b>				

<sup>1</sup>The dollar loss per incident was calculated using only those burglary offenses for which law enforcement agencies reported an actual monetary loss.

<sup>2</sup>This estimate of property loss was calculated by multiplying the total dollar loss per offense by the estimated number of such offenses that occurred in 1991.

**TABLE 4.5.3**

**BURGLARY CLEARANCE RATES**

1990 - 1991

YEAR	PERCENT CLEARED	% OF CLEARED OFFENSES ONLY JUVENILES
1990	15.7	18.2
1991	15.3	15.6

TABLE 4.5.4

**BURGLARY ARRESTS BY SEX AND AGE GROUP**

1991

SEX	AGE GROUPS	REPORTED	% OF TOTAL BURGLARY ARRESTS
MALE	ADULTS	5,127	68.8
	JUVENILES	1,715	23.0
FEMALE	ADULTS	468	6.3
	JUVENILES	141	1.9
TOTAL		7,451	100.0

TABLE 4.5.5

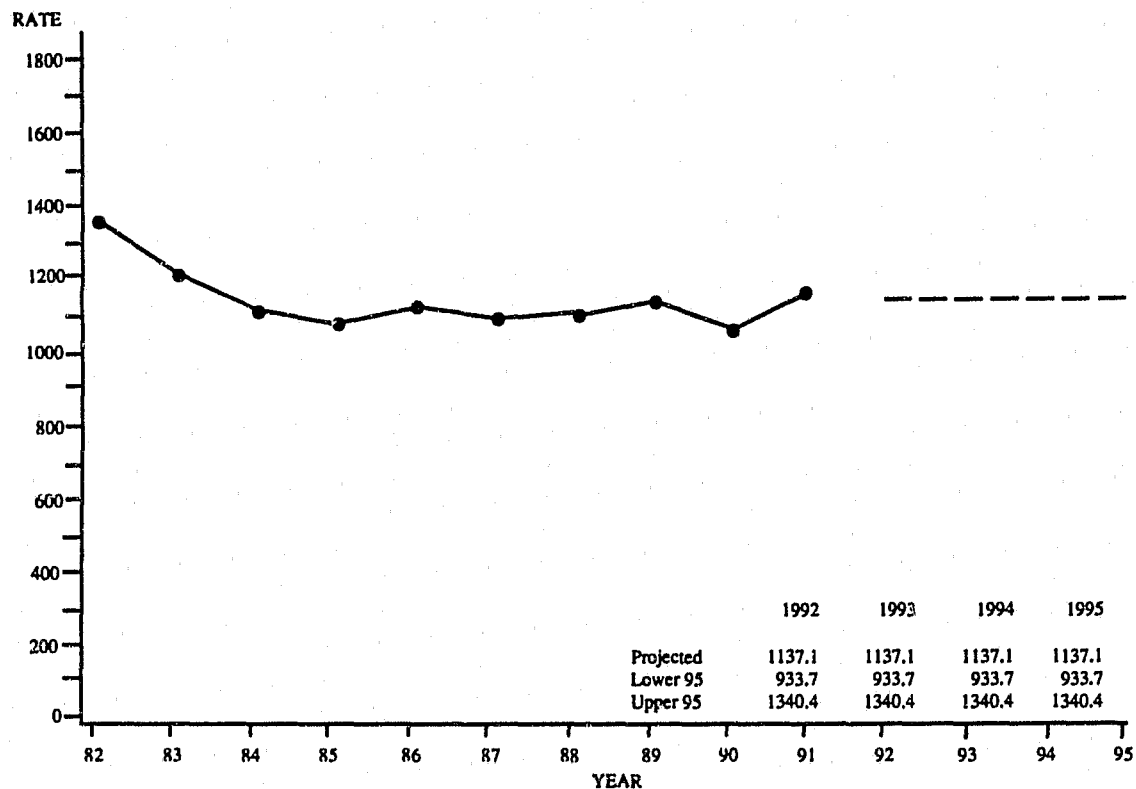
**BURGLARY ARRESTS BY RACE AND AGE GROUP**

1991

RACE	AGE GROUPS	REPORTED	% OF TOTAL BURGLARY ARRESTS
WHITE	ADULTS	3,010	41.4
	JUVENILES	1,194	16.4
BLACK	ADULTS	2,439	33.5
	JUVENILES	615	8.5
AMERICAN INDIAN	ADULTS	6	0.1
	JUVENILES	2	0.0
ASIAN	ADULTS	9	0.1
	JUVENILES	3	0.0
UNKNOWN		173	-
TOTAL		7,451	100.0

TABLE 4.5.6

**BURGLARY OFFENSE RATES, STATE OF MISSOURI<sup>1</sup>**  
**TIME SERIES**



<sup>1</sup>Burglary offense rates are based on estimated burglary offenses occurring in the State of Missouri. They are computed on a per 100,000 population basis. See Glossary for an explanation of the computations used to obtain these rates.

**FIGURE 4.5.1**

## 4.6 THEFT

### DEFINITION

***Theft is the unlawful taking, carrying, leading, or riding away of property from the possession or constructive possession of another. Attempted thefts also are included. This category includes crimes such as shoplifting, pocket-picking, purse-snatching, thefts from motor vehicles, thefts of motor vehicle parts or accessories, bicycle thefts, etc., in which no use of force, violence, or fraud occurs. It does not include embezzlement, "con" games, forgery, or worthless checks. Motor vehicle theft also is excluded inasmuch as it is a separate crime index offense. Theft offenses are reported on an incident-by-incident basis.***

### 1991 SUMMARY ANALYSIS

- There were 137,219 thefts reported during 1991. It is estimated that a total of 147,624 thefts actually occurred on a statewide basis. Based on this estimate, this was a 2.9 percent increase over 1990.
- It is estimated that one theft occurred every 3.6 minutes.
- Theft accounted for 53.1 percent of the Total Crime Index and 61.8 percent of all Property Index offenses.
- The theft rate per 100,000 population in 1991 was 2,862.1 compared to 2,803.8 in 1990.
- It is estimated that 41.7 percent of all thefts involved the taking of vehicle parts/accessories or other types of property from a vehicle.
- It is estimated that \$58,276,050 in property/cash was stolen in 1991 due to this offense.
- In 1991, 22.4 of every 100 thefts were cleared by arrest or exceptional means.
- 30,440 persons were reported arrested for theft in 1991. Of these, 76.2 percent were adults and 23.7 percent were juveniles.

**THEFT SUMMARY: 1990 and 1991**

Year	Number of Estimated Offenses	Rate per 100,000 Population
1990	143,472	2,803.8
1991	147,624	2,862.1
Percent of Change	+ 2.9	+ 2.1

**THEFT RATES BY POPULATION GROUP**

1991

POPULATION GROUP	REPORTED	ESTIMATED	% OF TOTAL	RATE PER 100,000 POPULATION
<u>Police Agencies</u>				
250,000 +	49,908	49,908	33.8	5,955.3
100,000 - 249,999	12,968	12,968	8.8	5,089.2
50,000 - 99,999	9,030	9,030	6.1	3,631.1
25,000 - 49,999	15,416	15,416	10.4	3,355.3
10,000 - 24,999	17,985	19,543	13.2	3,478.3
2,500 - 9,999	11,433	13,854	9.4	2,960.2
Under 2,500	2,077	2,902	2.0	6,014.3
Sheriff's Dept./County Police Suburban	14,679	17,513	11.9	1,707.1
Sheriff's Dept. -- Rural	3,723	6,490	4.4	518.0
<b>TOTAL</b>	<b>137,219</b>	<b>147,624</b>	<b>100.0</b>	<b>2,862.1</b>

TABLE 4.6.1

## THEFT BY VALUE OF STOLEN ITEMS

1991

AMOUNT	REPORTED	ESTIMATED	% OF TOTAL
\$200 AND OVER	42,494	47,122	33.7
\$50 TO \$200	31,582	35,046	25.1
UNDER \$50	53,447	57,501	41.2
UNKNOWN	9,696	7,955	-
<b>TOTAL</b>	<b>137,219</b>	<b>147,624</b>	<b>100.0</b>

TABLE 4.6.2

## NATURE OF THEFT

1991

TYPE	REPORTED	ESTIMATED	% OF TOTAL	\$ LOSS <sup>1</sup> / INCIDENT
POCKET PICKING	223	257	0.2	\$244.15
PURSE SNATCHING	1,133	1,221	0.9	306.20
SHOPLIFTING	20,965	22,433	16.1	77.23
FROM MOTOR VEHICLE	24,952	27,376	19.6	525.05
MOTOR VEHICLE PARTS & ACC.	29,167	30,854	22.1	236.24
BICYCLES	4,246	4,748	3.4	172.04
FROM BUILDINGS	13,574	15,805	11.3	720.17
COIN OPERATED MACHINES	895	1,044	0.7	163.57
ALL OTHERS	32,391	35,930	25.7	545.40
UNKNOWN	9,673	7,956	-	-
<b>TOTAL</b>	<b>137,219</b>	<b>147,624</b>	<b>100.0</b>	<b>394.76</b>
<b>1991 TOTAL STATE LOSS ESTIMATE<sup>2</sup> = \$58,276,050</b>				

<sup>1</sup>The dollar loss per incident was calculated using only those theft offenses for which law enforcement agencies reported an actual monetary loss.

<sup>2</sup>This estimate of property loss was calculated by multiplying the total dollar loss per offense by the estimated number of such offenses that occurred in 1991.

TABLE 4.6.3

**THEFT CLEARANCE RATES**

**1990 - 1991**

<b>YEAR</b>	<b>PERCENT CLEARED</b>	<b>% OF CLEARED OFFENSES ONLY JUVENILES</b>
1990	21.3	21.1
1991	22.4	19.4

**TABLE 4.6.4**

**THEFT ARRESTS BY SEX AND AGE GROUP**

**1991**

<b>SEX</b>	<b>AGE GROUPS</b>	<b>REPORTED</b>	<b>% OF TOTAL THEFT ARRESTS</b>
MALE	ADULTS	15,929	52.3
	JUVENILES	5,272	17.3
FEMALE	ADULTS	7,281	23.9
	JUVENILES	1,958	6.4
<b>TOTAL</b>		30,440	100.0

**TABLE 4.6.5**

**THEFT ARRESTS BY RACE AND AGE GROUP**

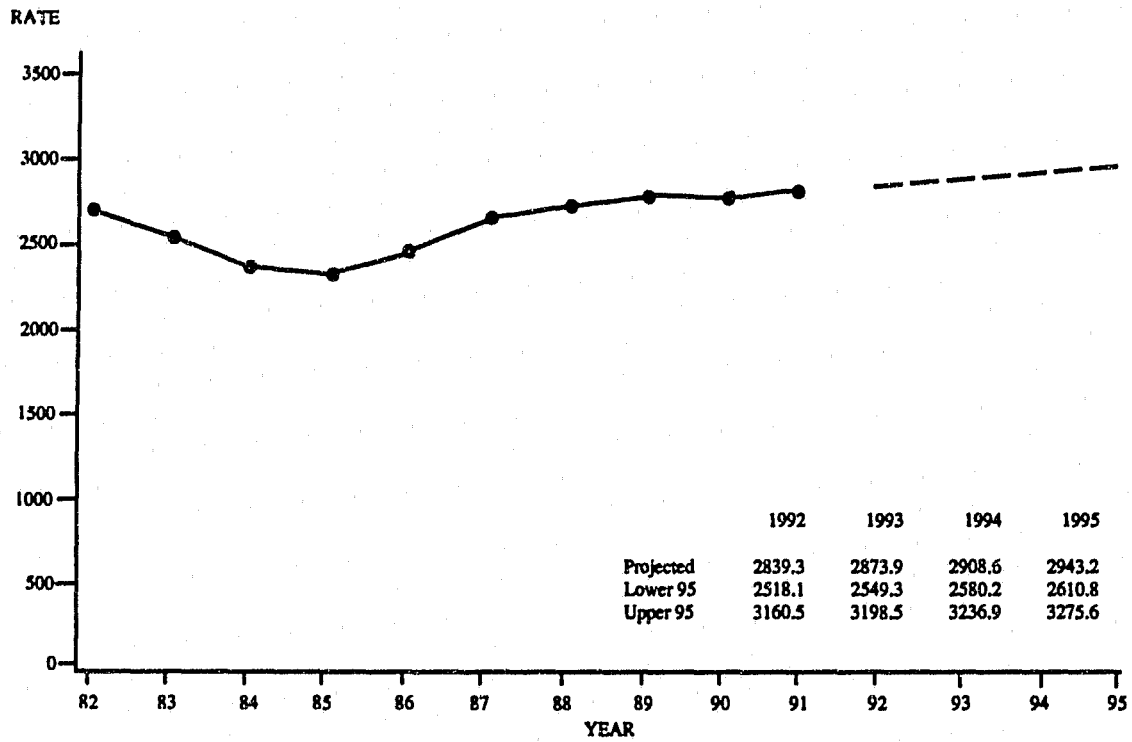
**1991**

<b>RACE</b>	<b>AGE GROUPS</b>	<b>REPORTED</b>	<b>% OF TOTAL THEFT ARRESTS</b>
WHITE	ADULTS	11,250	37.2
	JUVENILES	4,702	15.5
BLACK	ADULTS	11,749	38.8
	JUVENILES	2,462	8.1
AMERICAN INDIAN	ADULTS	11	0.0
	JUVENILES	4	0.0
ASIAN	ADULTS	50	0.2
	JUVENILES	21	0.1
UNKNOWN		191	-
<b>TOTAL</b>		30,440	100.0

**TABLE 4.6.6**



**THEFT OFFENSE RATES, STATE OF MISSOURI<sup>1</sup>**  
**TIME SERIES**



<sup>1</sup>Theft offense rates are based on estimated theft offenses occurring in the State of Missouri. They are computed on a per 100,000 population basis. See Glossary for an explanation of the computations used to obtain these rates.

**FIGURE 4.6.1**

## 4.7 MOTOR VEHICLE THEFT

### DEFINITION

***Motor vehicle theft is the theft or attempted theft of a motor vehicle. By definition, a motor vehicle is a self-propelled vehicle that runs on the surface and not on rails. Motor vehicles include automobiles, trucks, buses, motorcycles, motor scooters, snowmobiles, etc. Motor vehicle theft offenses are reported on a per vehicle basis.***

### 1991 SUMMARY ANALYSIS

- There were 27,861 motor vehicle thefts reported during 1991. It is estimated that a total of 28,986 motor vehicle thefts actually occurred on a statewide basis. Based on this estimate, this was a 4.8 percent increase over 1990.
- It is estimated that one motor vehicle theft occurred every 18.1 minutes.
- Motor vehicle theft accounted for 10.4 percent of the Total Crime Index and 12.1 percent of all Property Index offenses.
- The motor vehicle theft rate per 100,000 population was 562.0 in 1991 compared to 540.4 in 1990.
- Of vehicles stolen in 1991, it is estimated that 78.4 percent were recovered.
- It is estimated that the cost of vehicles stolen in 1991 was \$136,378,840.
- In 1991, 15.1 of every 100 motor vehicle thefts were cleared by arrest or exceptional means.
- 3,568 persons were reported arrested for motor vehicle theft in 1991. Of these, 60.0 percent were adults and 40.1 percent were juveniles.

**MOTOR VEHICLE THEFT SUMMARY: 1990 and 1991**

Year	Number of Estimated Offenses	Rate per 100,000 Population
1990	27,655	540.4
1991	28,986	562.0
Percent of Change	+ 4.8	+ 4.0

**MOTOR VEHICLE THEFT RATES BY POPULATION GROUP**

1991

POPULATION GROUP	REPORTED	ESTIMATED	% OF TOTAL	RATE PER 100,000 POPULATION
<u>Police Agencies</u>				
250,000 +	19,136	19,136	66.0	2,283.4
100,000 - 249,999	1,219	1,219	4.2	478.4
50,000 - 99,999	637	637	2.2	256.1
25,000 - 49,999	1,487	1,487	5.1	323.6
10,000 - 24,999	1,678	1,799	6.2	320.3
2,500 - 9,999	1,119	1,343	4.6	286.9
Under 2,500	207	298	1.0	618.1
Sheriff's Dept./County Police Suburban	1,978	2,364	8.2	230.5
Sheriff's Dept. -- Rural	400	703	2.4	56.1
<b>TOTAL</b>	<b>27,861</b>	<b>28,986</b>	<b>100.0</b>	<b>562.0</b>

TABLE 4.7.1

**TYPE OF VEHICLE STOLEN**

**1991**

TYPE	REPORTED	ESTIMATED	% OF TOTAL
AUTOMOBILES	22,066	22,836	78.8
TRUCKS AND BUSES	4,274	4,492	15.5
OTHER VEHICLES	1,517	1,658	5.7
UNKNOWN	4	0	-
<b>TOTAL</b>	<b>27,861</b>	<b>28,986</b>	<b>100.0</b>

**TABLE 4.7.2**

**MOTOR VEHICLE THEFT YEARLY LOSS**

**1990 - 1991**

YEAR	\$ LOSS <sup>1</sup> PER INCIDENT	ESTIMATED PERCENT <sup>2</sup> RECOVERED
1990	\$4,728.87	78.3
1991	4,704.99	78.4
<b>1991 TOTAL STATE LOSS ESTIMATE<sup>3</sup> = \$136,378,840</b>		

<sup>1</sup>The dollar loss per incident was calculated using only those motor vehicle theft offenses for which law enforcement agencies reported an actual monetary loss.

<sup>2</sup>The estimated percent recovered was calculated using those motor vehicle theft offenses in which a motor vehicle was stolen locally and was recovered either locally or otherwise.

<sup>3</sup>This estimate of property loss was calculated by multiplying the total dollar loss per offense by the estimated number of such offenses that occurred in 1991.

**TABLE 4.7.3**

**MOTOR VEHICLE THEFT CLEARANCE RATES**

1990 - 1991

YEAR	PERCENT CLEARED	% OF CLEARED OFFENSES ONLY JUVENILES
1990	15.4	28.7
1991	15.1	27.2

TABLE 4.7.4

**MOTOR VEHICLE THEFT ARRESTS BY SEX AND AGE GROUP**

1991

SEX	AGE GROUPS	REPORTED	% OF TOTAL ARRESTS
MALE	ADULTS	1,912	53.6
	JUVENILES	1,295	36.3
FEMALE	ADULTS	227	6.4
	JUVENILES	134	3.8
TOTAL		3,568	100.0

TABLE 4.7.5

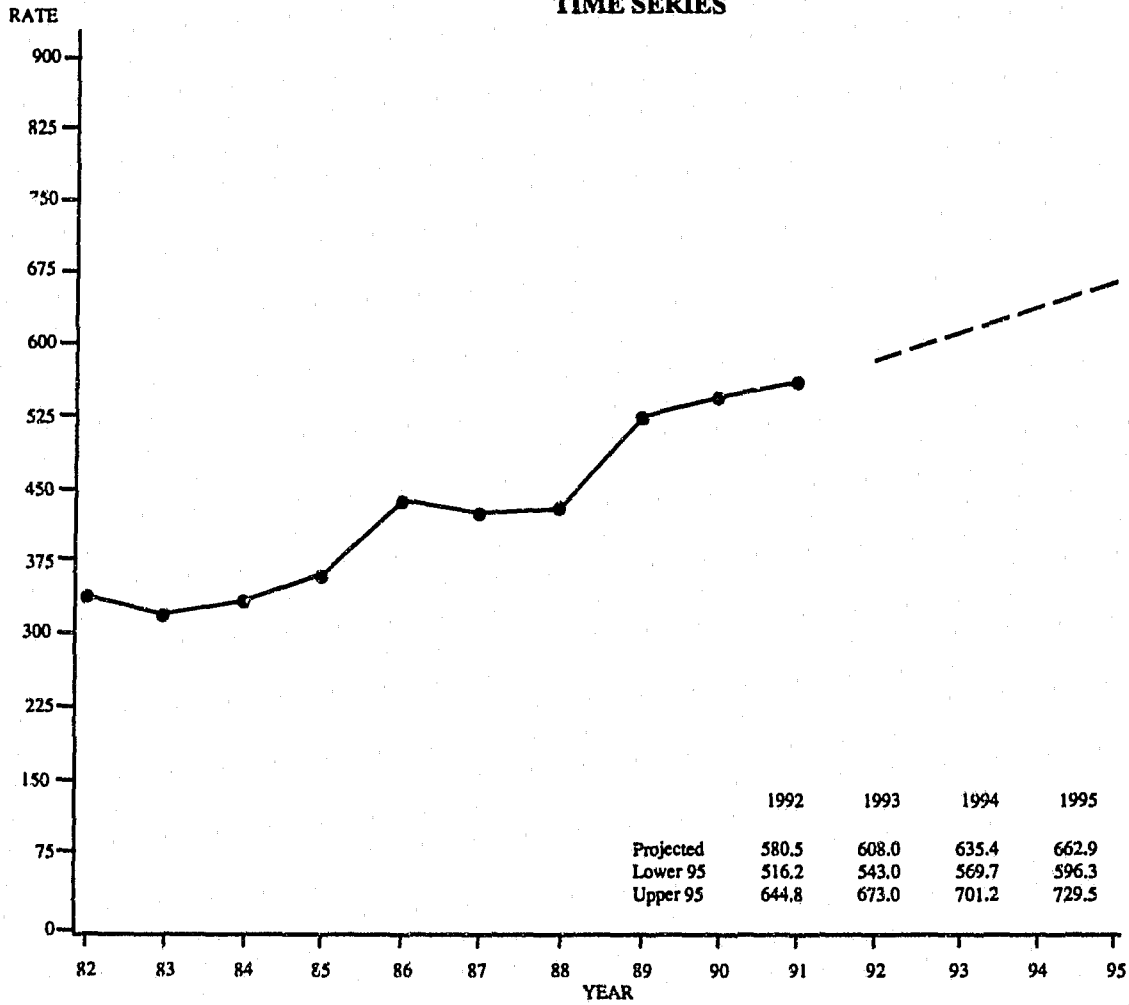
**MOTOR VEHICLE THEFT ARRESTS BY RACE AND AGE GROUP**

1991

RACE	AGE GROUPS	REPORTED	% OF TOTAL ARRESTS
WHITE	ADULTS	692	19.6
	JUVENILES	497	14.1
BLACK	ADULTS	1,422	40.2
	JUVENILES	916	25.9
ASIAN	ADULTS	2	0.1
	JUVENILES	0	0.0
ASIAN	ADULTS	2	0.1
	JUVENILES	4	0.1
UNKNOWN		33	-
TOTAL		3,568	100.0

TABLE 4.7.6

**MOTOR VEHICLE THEFT OFFENSE RATES, STATE OF MISSOURI<sup>1</sup>**  
**TIME SERIES**



<sup>1</sup>Motor Vehicle Theft offense rates are based on estimated motor vehicle theft offenses occurring in the State of Missouri. They are computed on a per 100,000 population basis. See Glossary for an explanation of the computations used to obtain these rates.

**FIGURE 4.7.1**

## 4.8 ARSON

### DEFINITION

***Arson is defined by the Uniform Crime Reporting Program as any willful or malicious burning or attempt to burn, with or without intent to defraud, a dwelling house, public building, motor vehicle or aircraft, personal property of another, etc. Only fires determined through investigation to have been willfully or maliciously set are classified as arsons. Fires of suspicious or unknown origins are excluded. Arson offenses are reported on an incident-by-incident basis.***

### 1991 SUMMARY ANALYSIS

- There were 2,202 arsons reported during 1991. It is estimated that a total of 2,316 arsons actually occurred on a statewide basis. Based on this estimate, this was a 5.8 percent increase over 1990.
- It is estimated that one arson occurred every 3.8 hours.
- Arsons accounted for 0.8 percent of the Total Crime Index and 1.0 percent of all Property Index offenses.
- The arson rate per 100,000 population in 1991 was 44.9 compared to 42.8 in 1990.
- Residential dwellings accounted for an estimated 47.2 percent of all types of property destroyed by arson. Motor vehicles accounted for an estimated 25.0 percent.
- It is estimated that arson accounted for \$42,205,441 in property loss in 1991.
- In 1991, 23.5 of every 100 arsons were cleared by arrest or exceptional means.
- 366 persons were reported arrested for arson in 1991. Of these, 69.9 percent were adults and 30.1 percent were juveniles.

**ARSON SUMMARY: 1990 and 1991**

Year	Number of Estimated Offenses	Rate per 100,000 Population
1990	2,189	42.8
1991	2,316	44.9
Percent of Change	+ 5.8	+ 4.9

**ARSON RATES BY POPULATION GROUP**

1991

POPULATION GROUP	REPORTED	ESTIMATED	% OF TOTAL	RATE PER 100,000 POPULATION
<u>Police Agencies</u>				
250,000 +	1,407	1,407	60.8	167.9
100,000 - 249,999	143	143	6.2	56.1
50,000 - 99,999	78	78	3.4	31.4
25,000 - 49,999	140	141	6.1	30.6
10,000 - 24,999	109	116	5.0	20.6
2,500 - 9,999	82	102	4.4	21.8
Under 2,500	15	22	0.9	45.3
Sheriff's Dept./County Police Suburban	156	178	7.7	17.4
Sheriff's Dept. -- Rural	72	129	5.6	10.3
<b>TOTAL</b>	<b>2,202</b>	<b>2,316</b>	<b>100.0</b>	<b>44.9</b>

TABLE 4.8.1



**ARSON LOSS BY TYPE OF PROPERTY**

**1991**

<b>PROPERTY</b>	<b>REPORTED</b>	<b>ESTIMATED</b>	<b>% OF TOTAL</b>	<b>\$ LOSS/ INCIDENT</b>
<b>STRUCTURES</b>				
Single Occupancy Dwelling	712	751	32.4	\$16,426.00
Other Residential	332	343	14.8	4,854.92
Storage	115	130	5.6	8,649.56
Industrial/Manufacturing	27	28	1.2	553,225.00
Other Commercial	106	111	4.8	22,859.47
Community/Public	91	101	4.4	17,424.22
All Other Structures or Type of Structure Not Known	49	55	2.4	995.39
<b>MOBILE</b>				
Motor Vehicle	565	578	25.0	3,593.19
All Mobile Property or Type of Mobile Property Known	15	17	0.8	6,847.50
<b>OTHER</b>				
Other Property or Type of Property Not Known	190	202	8.7	1,008.34
<b>TOTAL</b>	<b>2,202</b>	<b>2,316</b>	<b>100.0</b>	<b>18,223.42</b>
<b>1991 TOTAL STATE LOSS ESTIMATE<sup>2</sup> = \$42,205,441</b>				

<sup>1</sup>The dollar loss per incident was calculated using only those arson offenses for which law enforcement agencies reported an actual monetary loss.

<sup>2</sup>This estimate of property loss was calculated by multiplying the total dollar loss per offense by the total number of such offenses that were reported in 1991.

**TABLE 4.8.2**

**ARSON CLEARANCE RATES**

1990 - 1991

YEAR	PERCENT CLEARED	% OF CLEARED OFFENSES ONLY JUVENILES
1990	20.8	40.0
1991	23.5	38.4

**TABLE 4.8.3**

**ARSON ARRESTS BY SEX AND AGE GROUP**

1991

SEX	AGE GROUPS	REPORTED	% OF TOTAL ARSON ARRESTS
MALE	ADULTS	200	54.6
	JUVENILES	106	29.0
FEMALE	ADULTS	56	15.3
	JUVENILES	4	1.1
<b>TOTAL</b>		366	100.0

**TABLE 4.8.4**

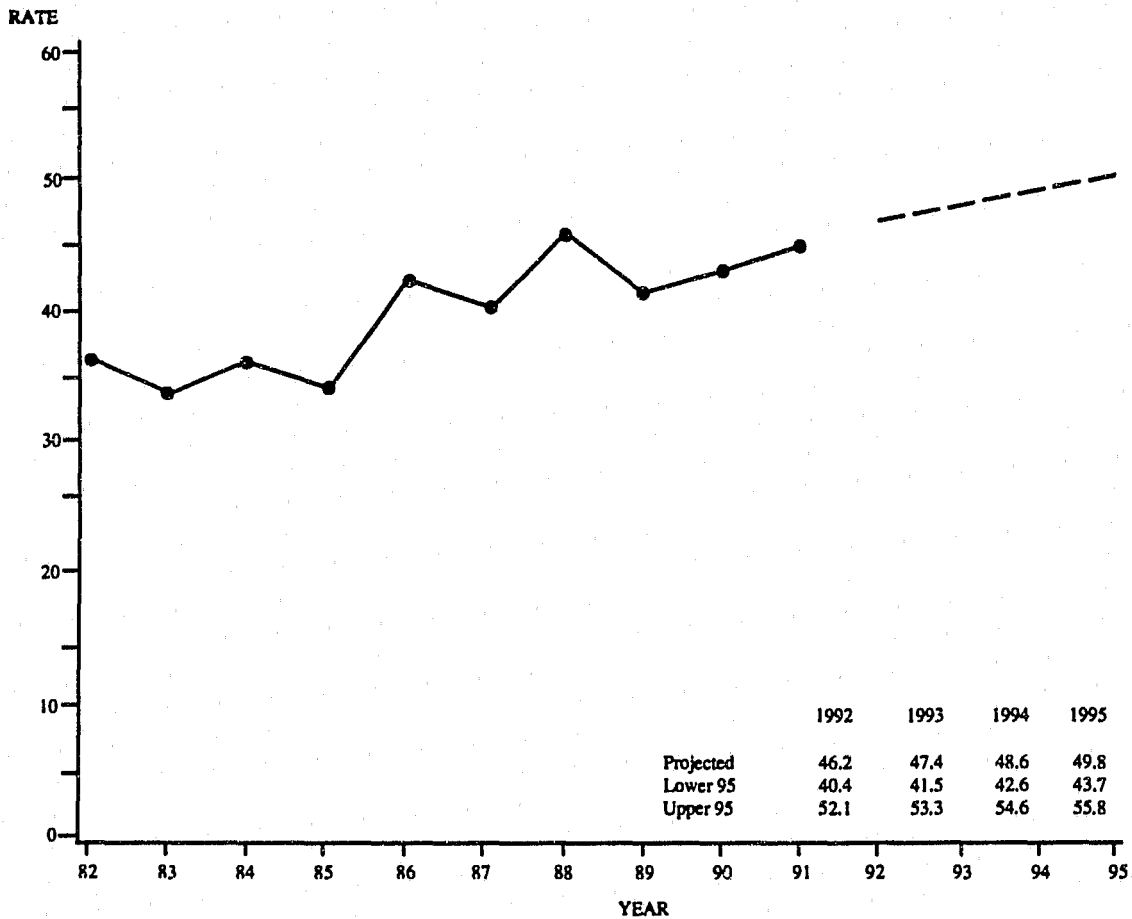
**ARSON ARRESTS BY RACE AND AGE GROUP**

1991

RACE	AGE GROUPS	REPORTED	% OF TOTAL ARSON ARRESTS
WHITE	ADULTS	144	39.9
	JUVENILES	83	23.0
BLACK	ADULTS	109	30.2
	JUVENILES	24	6.6
AMERICAN INDIAN	ADULTS	1	0.3
	JUVENILES	0	0.0
UNKNOWN		5	-
<b>TOTAL</b>		366	100.0

**TABLE 4.8.5**

**ARSON OFFENSE RATES, STATE OF MISSOURI<sup>1</sup>**  
**TIME SERIES**



<sup>1</sup>Arson offense rates are based on estimated arson offenses occurring in the State of Missouri. They are computed on a per 100,000 population basis. See Glossary for an explanation of the computations used to obtain these rates.

**FIGURE 4.8.1**

## **5.0 MISSOURI LAW ENFORCEMENT AGENCY CRIME AND ARREST ANALYSIS**

---

A SERIES OF TABLES SUMMARIZES CRIME INDEX OFFENSE AND ARREST ACTIVITY ASSOCIATED WITH LAW ENFORCEMENT JURISDICTIONS IN THE STATE OF MISSOURI. THESE DATA DISPLAYS PROVIDE AN OVERVIEW OF THE EXTENT OF THE CRIME PROBLEM WITHIN MISSOURI COMMUNITIES.

**CRIME INDEX OFFENSES, MUNICIPALITIES 25,000 AND OVER**

**BY REPORTING AGENCY**

1991

REPORTING AGENCY	MOS.	POPULATION	CRIME INDEX		VIOLENT CRIME					PROPERTY CRIME				
			TOTAL	RATE/100,000	TOTAL	MURDER	RAPE	ROBBERY	AGG. ASSAULT	TOTAL	BURGLARY	THEFT	M.V. THEFT	ARSON
BLUE SPRINGS	12	40,474	1,641	4,054.3	93	1	8	25	59	1,548	268	1,186	85	9
CAPE GIRARDEAU	12	34,713	2,219	6,392.4	106	0	9	17	80	2,113	279	1,770	60	4
CHESTERFIELD	12	38,294	967	2,525.2	61	1	2	8	50	906	149	724	27	6
COLUMBIA	12	69,653	4,702	6,750.6	435	5	34	83	313	4,267	786	3,291	150	40
FLORISSANT	12	51,615	1,488	2,882.9	106	0	7	34	65	1,382	260	1,045	68	9
GLADSTONE	12	26,452	923	3,489.3	90	0	7	11	72	833	230	496	95	12
GRANDVIEW	12	25,166	1,637	6,504.8	123	2	10	60	51	1,514	314	1,001	195	4
INDEPENDENCE	12	113,199	7,823	6,910.8	613	5	23	146	439	7,210	1,685	4,693	784	48
JEFFERSON CITY	12	35,764	1,810	5,061.0	126	0	12	31	83	1,684	341	1,231	91	21
JOPLIN	12	41,287	4,017	9,729.5	143	1	13	44	85	3,874	661	3,011	158	44
KANSAS CITY	12	438,188	58,374	13,321.7	12,413	135	477	4,955	6,846	45,961	13,008	22,527	9,886	540
KIRKWOOD	12	27,509	804	2,922.7	32	0	3	9	20	772	154	583	33	2
LEE'S SUMMIT	12	46,789	1,388	2,966.5	53	0	2	16	35	1,335	295	943	92	5
MARYLAND HEIGHTS	12	25,610	1,110	4,334.2	83	0	6	14	63	1,027	160	784	79	4
RAYTOWN	12	30,845	1,253	4,062.2	88	0	8	46	34	1,165	288	763	113	1
SAINT CHARLES	12	54,991	2,265	4,118.9	170	0	12	47	111	2,095	416	1,516	157	6
SAINT JOSEPH	12	72,426	4,630	6,392.7	346	2	33	35	276	4,284	821	3,178	262	23
SAINT LOUIS	12	399,858	64,970	16,248.3	14,076	260	342	5,294	8,180	50,894	13,396	27,381	9,250	867
SAINT PETERS	12	46,145	2,177	4,717.7	169	1	6	30	132	2,008	330	1,591	81	6
SPRINGFIELD	12	141,617	12,000	8,473.6	635	4	54	151	426	11,365	2,560	8,275	435	95
UNIVERSITY CITY	12	40,407	2,752	6,810.7	240	2	14	118	106	2,512	779	1,333	378	22
<b>TOTAL</b>	—	<b>1,801,002</b>	<b>178,950</b>	<b>9,936.1</b>	<b>30,201</b>	<b>419</b>	<b>1,082</b>	<b>11,174</b>	<b>17,526</b>	<b>148,749</b>	<b>37,180</b>	<b>87,322</b>	<b>22,479</b>	<b>1,768</b>

TABLE 5.0.1

CRIME INDEX OFFENSES, MUNICIPALITIES UNDER 25,000

BY REPORTING AGENCY

1991

REPORTING AGENCY	MOS.	POPULATION	CRIME INDEX		VIOLENT CRIME					PROPERTY CRIME				
			TOTAL	RATE/100,000	TOTAL	MURDER	RAPE	ROBBERY	AGG. ASSAULT	TOTAL	BURGLARY	THEFT	M.V. THEFT	ARSON
ARNOLD	12	18,978	821	4,326.1	49	2	8	6	33	772	125	606	41	0
AURORA	12	6,510	279	4,285.7	26	0	2	2	22	253	46	192	13	2
BALLWIN	12	21,990	513	2,332.9	23	0	2	5	16	490	92	384	12	2
BEL-NOR	12	2,958	67	2,265.0	9	0	0	3	6	58	18	33	7	0
BEL-RIDGE	11	3,224	135	4,187.3	8	0	0	4	4	127	39	63	25	0
BELLEFONTAINE NBRS	12	11,009	465	4,223.8	12	0	0	11	1	453	114	293	46	0
BELTON	12	18,295	657	3,591.1	48	0	5	4	39	609	96	472	39	2
BERKELEY	12	12,549	820	6,534.4	128	5	14	45	64	692	239	323	124	6
BOLIVAR	10	6,899	161	2,333.7	12	0	0	0	12	149	35	106	7	1
BONNE TERRE	12	3,901	115	2,948.0	34	0	1	0	33	81	7	61	12	1
BOONVILLE	12	7,151	304	4,251.2	103	0	0	2	101	201	43	151	7	0
BRANSON	12	3,735	539	14,431.1	10	3	2	0	5	529	117	397	14	1
BRECKENRIDGE HILLS	12	5,447	374	6,866.2	39	1	3	10	25	335	70	237	27	1
BRENTWOOD	12	8,215	328	3,992.7	11	0	0	4	7	317	37	242	37	1
BRIDGETON	12	17,921	1,299	7,248.5	81	1	6	37	37	1,218	186	938	94	0
BROOKFIELD	12	4,927	177	3,592.4	19	0	2	0	17	158	39	117	1	1
BUCKNER	12	2,895	116	4,006.9	25	0	1	0	24	91	18	65	8	0
BUTLER	12	4,131	162	3,921.6	13	0	0	0	13	149	31	113	3	2
CALVERTON PARK	10	1,415	18	1,272.1	4	0	0	0	4	14	4	8	2	0
CAMERON	12	4,870	200	4,106.8	19	0	3	1	15	181	21	145	14	1
CANTON	12	2,643	34	1,286.4	3	0	2	0	1	31	17	13	1	0
CARROLLTON	1	4,441	19	427.8	5	0	0	0	5	14	7	5	2	0
CARTHAGE	12	10,832	510	4,708.3	15	0	3	3	9	495	126	348	18	3
CENT. MO. ST. UNIV.	12	0	246	—	4	0	1	1	2	242	43	194	2	3
CENTRALIA	12	3,441	79	2,295.8	13	0	0	1	12	66	7	56	3	0
CHAFFEE	12	3,083	95	3,081.4	4	0	0	1	3	91	17	71	3	0
CHARLACK	12	1,399	81	5,789.8	12	1	1	2	8	69	19	40	10	0
CHILLICOTHE	2	8,874	32	360.6	1	0	0	0	1	31	4	27	0	0
CLARKSON VALLEY	12	2,528	44	1,740.5	2	0	0	0	2	42	10	30	2	0
CLAYCOMO	12	1,681	127	7,555.0	10	0	0	1	9	117	17	83	17	0
CLAYTON	12	13,984	842	6,021.2	49	0	0	11	38	793	195	541	53	4
CLINTON	12	8,772	436	4,970.4	17	0	3	2	12	419	53	352	12	2
COOL VALLEY	12	1,418	163	11,495.1	14	0	0	1	13	149	42	83	22	2
COUNTRY CLUB HILLS	12	1,769	39	2,204.6	16	0	2	4	10	23	6	17	0	0
CRESTWOOD	12	11,323	450	3,974.2	19	0	1	13	5	431	46	345	36	4
CREVE COEUR	12	12,402	504	4,063.9	24	0	0	9	15	480	59	367	54	0

TABLE 5.0.2

CRIME INDEX OFFENSES, MUNICIPALITIES UNDER 25,000

BY REPORTING AGENCY

1991

REPORTING AGENCY	MOS.	POPULATION	CRIME INDEX		VIOLENT CRIME					PROPERTY CRIME				
			TOTAL	RATE/100,000	TOTAL	MURDER	RAPE	ROBBERY	AGG. ASSAULT	TOTAL	BURGLARY	THEFT	M.V. THEFT	ARSON
CRYSTAL CITY	12	4,120	282	6,844.7	25	0	0	1	24	257	39	198	19	1
DE SOTO	12	6,040	212	3,509.9	6	1	2	1	2	206	40	156	10	0
DELLWOOD	5	5,286	63	1,191.8	5	0	0	5	0	58	11	39	8	0
DES PERES	12	8,462	334	3,947.1	21	0	0	3	18	313	45	255	13	0
EDMUNDSON	12	1,119	62	5,540.7	1	0	0	1	0	61	7	32	22	0
ELLISVILLE	12	7,605	195	2,564.1	16	0	0	0	16	179	22	137	20	0
EUREKA	6	4,720	128	2,711.9	7	0	3	1	3	121	16	99	6	0
EXCELSIOR SPRINGS	12	10,436	631	6,046.4	17	0	4	0	13	614	113	470	27	4
FARMINGTON	12	11,690	649	5,551.8	84	0	4	0	80	565	55	477	33	0
FAYETTE	12	2,911	91	3,126.1	29	0	0	0	29	62	19	40	3	0
FENTON	12	3,372	400	11,862.4	8	0	0	5	3	392	46	316	28	2
FERGUSON	12	22,464	1,091	4,856.7	95	1	4	52	38	996	281	578	135	2
FESTUS	11	8,169	308	3,770.4	54	0	0	0	54	254	32	206	16	0
FLAT RIVER	12	4,861	166	3,414.9	25	0	3	0	22	141	24	106	8	3
FLORDELL HILLS	12	957	119	12,434.7	10	0	1	6	3	109	16	77	15	1
FRONTENAC	12	3,400	108	3,176.5	5	0	0	0	5	103	15	83	5	0
FULTON	12	10,113	563	5,567.1	80	0	5	10	65	483	119	355	9	0
GLENDALE	12	5,992	22	367.2	3	0	0	0	3	19	2	16	1	0
HANNIBAL	12	18,147	970	5,345.2	67	0	3	5	59	903	181	670	48	4
HARRISONVILLE	12	7,744	471	6,082.1	14	0	0	2	12	457	93	339	22	3
HAZELWOOD	12	15,446	741	4,797.4	23	0	1	14	8	718	161	488	67	2
HILLSDALE	9	1,963	90	4,584.8	22	0	6	13	3	68	37	11	20	0
IRONTON	12	10,811	38	351.5	5	0	0	1	4	33	5	25	3	0
JACKSON	12	9,330	221	2,368.7	20	0	0	2	18	201	36	156	8	1
JENNINGS	12	16,032	1,441	8,988.3	116	0	11	67	38	1,325	256	895	161	13
KEARNEY	12	1,804	88	4,878.0	3	0	0	1	2	85	17	63	4	1
KIRKSVILLE	12	17,289	738	4,268.6	13	0	8	3	2	725	111	581	32	1
LADUE	12	8,917	216	2,422.3	9	0	0	3	6	207	51	145	11	0
LAKE LOTAWANA	12	2,158	68	3,151.1	2	0	0	0	2	66	24	38	3	1
LAKE SAINT LOUIS	12	7,459	207	2,775.2	15	0	0	0	15	192	38	142	12	0
LAMAR	12	4,201	158	3761	1	0	0	0	1	157	20	135	1	1
LEBANON	12	10,062	484	4,810.2	12	1	1	1	9	472	95	326	48	3
LEXINGTON	12	4,898	78	1,592.5	8	0	0	0	8	70	23	44	3	0
LINCOLN UNIVERSITY	12	0	65	---	3	0	1	0	2	62	8	54	0	0
MACON	10	5,615	72	1,282.3	11	0	0	0	11	61	36	22	3	0
MANCHESTER	12	6,594	226	3,427.4	7	0	2	0	5	219	39	169	10	1

TABLE 5.0.2

CRIME INDEX OFFENSES, MUNICIPALITIES UNDER 25,000

BY REPORTING AGENCY

1991

REPORTING AGENCY	MOS.	POPULATION	CRIME INDEX		VIOLENT CRIME					PROPERTY CRIME				
			TOTAL	RATE/100,000	TOTAL	MURDER	RAPE	ROBBERY	AGG. ASSAULT	TOTAL	BURGLARY	THEFT	M.V. THEFT	ARSON
MAPLEWOOD	12	10,041	820	8,166.5	90	0	6	33	51	730	105	559	65	0
MARCELINE	12	2,666	31	1,162.8	2	0	0	0	2	29	6	22	1	0
MARSHALL	12	12,812	265	2,068.4	2	0	0	2	0	263	62	195	5	1
MARYVILLE	12	10,748	295	2,744.7	8	0	1	1	6	287	32	245	8	2
MEXICO	12	11,380	246	2,161.7	14	0	1	5	8	232	97	128	6	1
MOBERLY	12	12,941	608	4,698.2	64	1	5	6	52	544	96	425	15	4
MOLINE ACRES	6	2,731	72	2,636.4	20	0	1	3	16	52	18	25	8	0
NEOSHO	12	9,328	533	5,714.0	19	0	3	0	16	514	95	392	23	4
NEVADA	12	8,665	505	5,828.0	31	1	6	3	21	474	97	347	23	7
NORMANDY	12	4,515	289	6,400.9	41	0	0	16	25	248	58	132	57	1
NORTH KANSAS CITY	12	4,163	649	15,589.7	53	0	3	15	35	596	68	421	102	5
NORTHWOODS	10	5,146	166	3,225.8	27	1	1	18	7	139	15	80	44	0
O'FALLON	12	18,847	695	3,687.6	20	1	0	7	12	675	105	554	15	1
OAKLAND	12	1,605	41	2,554.5	2	0	0	1	1	39	9	28	2	0
OAKVIEW	12	353	27	7,648.7	5	0	0	2	3	22	3	19	0	0
ODESSA	12	3,724	84	2,255.6	1	0	0	0	1	83	16	57	9	1
OLIVETTE	12	7,633	221	2,895.3	47	0	2	3	42	174	45	107	22	0
OSAGE BEACH	12	2,619	298	11,378.4	20	0	1	3	16	278	52	217	8	1
OVERLAND	12	18,130	1,161	6,403.8	67	0	3	28	36	1,094	197	829	63	5
PACIFIC	11	4,384	245	5,588.5	27	0	3	0	24	218	46	157	9	6
PAGEDALE	1	3,801	32	841.9	9	0	0	0	9	23	3	14	4	2
PARKVILLE	12	2,421	90	3,717.5	4	0	0	1	3	86	12	69	5	0
PASADENA HILLS	12	1,174	49	4,173.8	1	0	0	1	0	48	20	24	4	0
PASADENA PARK	12	536	32	5,970.1	5	0	0	0	5	27	9	14	4	0
PEVELY	12	2,853	143	5,012.3	7	0	0	3	4	136	35	86	8	5
PINE LAWN	2	5,132	60	1,169.1	18	1	2	4	11	42	13	16	13	0
PLEASANT HILL	12	3,857	138	3,577.9	4	0	0	0	4	134	13	119	2	0
POPLAR BLUFF	7	17,131	913	5,329.5	55	1	4	15	35	858	190	640	28	0
POTOSI	12	2,704	207	7,655.3	37	0	0	0	37	170	22	142	6	0
REPUBLIC	12	6,342	236	3,721.2	3	0	1	0	2	233	38	181	12	2
RICHMOND	12	5,783	312	5,395.1	58	0	3	1	54	254	78	167	8	1
RICHMOND HEIGHTS	12	10,531	1,039	9,866.1	59	1	2	20	36	980	97	779	95	9
RIVERSIDE	12	3,034	315	10,382.3	25	0	6	2	17	290	48	228	14	0
RIVERVIEW	12	3,267	148	4,530.1	37	0	2	3	32	111	45	54	10	2
ROCK HILL	5	5,258	51	970.0	7	0	0	4	3	44	19	20	5	0
ROLLA	12	14,202	657	4,626.1	46	0	1	4	41	611	104	483	19	5

TABLE 5.0.2



**CRIME INDEX OFFENSES, MUNICIPALITIES UNDER 25,000**

**BY REPORTING AGENCY**

1991

REPORTING AGENCY	MOS.	POPULATION	CRIME INDEX		VIOLENT CRIME					PROPERTY CRIME				
			TOTAL	RATE/100,000	TOTAL	MURDER	RAPE	ROBBERY	AGG. ASSAULT	TOTAL	BURGLARY	THEFT	M.V. THEFT	ARSON
SAINT ANN	12	14,604	1,315	9,004.4	41	2	2	20	17	1,274	112	1,021	141	0
SAINT GEORGE	12	1,280	47	3,671.9	3	0	0	0	3	44	12	26	6	0
SAINT JOHN	12	7,525	336	4,465.1	56	0	2	9	45	280	52	205	23	0
SAINT ROBERT	12	1,743	279	16,006.9	37	0	8	4	25	242	46	183	13	0
SAINTE GENEVIEVE	12	4,446	111	2,496.6	8	0	0	0	8	103	52	49	1	1
SALEM	12	4,521	236	5,220.1	27	0	1	0	26	209	40	148	20	1
SAVANNAH	9	4,386	60	1,368.0	12	0	2	0	10	48	7	36	4	1
SEDALIA	12	19,958	992	4,970.4	59	1	1	10	37	933	135	766	32	0
SHREWSBURY	12	6,467	236	3,649.3	13	0	0	3	30	223	29	176	18	0
SIKESTON	12	17,782	1,097	6,169.2	68	0	10	25	33	1,029	238	731	49	11
SLATER	12	2,203	111	5,038.6	25	0	2	0	23	86	18	65	3	0
SMITHVILLE	7	2,545	9	353.6	0	0	0	0	0	9	4	5	0	0
SUGAR CREEK	12	4,013	254	6,329.4	18	0	1	3	14	236	48	147	32	9
SULLIVAN	12	5,705	228	3,996.5	9	0	2	1	6	219	32	182	5	0
SUNSET HILLS	12	4,954	236	4,763.8	14	0	0	1	13	222	22	176	24	0
TOWN AND COUNTRY	12	9,595	203	2,115.7	24	0	0	7	17	179	28	140	10	1
TRENTON	12	6,178	234	3,787.6	25	0	0	0	25	209	34	162	13	0
UNION	12	5,956	279	4,684.4	6	0	0	0	6	273	49	213	10	1
UNIV. MO. COLUMBIA	12	0	716	—	12	0	3	5	4	704	113	579	7	5
UNIV. MO. ST. LOUIS	12	0	104	—	1	0	0	0	1	103	4	95	4	0
VALLEY PARK	12	4,198	121	2,882.3	7	0	0	1	6	114	22	87	4	1
VANDALIA	12	2,704	76	2,810.7	3	0	0	0	3	73	5	66	2	0
VINITA PARK	12	2,017	52	2,578.1	10	0	0	3	7	42	12	24	5	1
WARRENSBURG	12	15,365	548	3,566.5	19	0	1	2	16	529	93	408	20	8
WARRENTON	12	3,592	204	5,679.3	6	0	1	2	3	198	16	176	5	1
WARSON WOODS	12	2,065	34	1,646.5	1	0	0	1	0	33	1	32	0	0
WASHINGTON	12	10,789	551	5,107.1	77	0	1	4	72	474	69	389	15	1
WASHINGTON UNIV.	12	0	211	—	2	0	0	2	0	209	7	168	33	1
WEBB CITY	12	7,508	340	4,528.5	4	0	2	2	0	336	97	228	11	0
WEBSTER GROVES	12	23,170	544	2,347.9	42	0	2	13	27	502	122	347	22	11
WELLSTON	12	3,640	499	13,708.8	124	2	12	27	83	375	82	231	60	2
WENTZVILLE	12	5,128	356	6,942.3	17	0	5	3	9	339	56	254	29	0
WEST PLAINS	12	8,984	506	5,632.2	25	1	1	1	22	481	55	395	29	2
WESTON	12	1,540	40	2,597.4	9	1	0	0	8	31	8	20	3	0
WESTWOOD	12	311	6	1,929.3	0	0	0	0	0	6	5	1	0	0
WINCHESTER	12	1,691	44	2,602.0	6	0	0	0	6	38	7	30	1	0
WOODSON TERRACE	12	4,396	158	3,594.2	19	1	0	5	13	139	22	91	26	0
<b>TOTAL</b>	—	987,213	46,093	4,669.0	3,487	31	247	738	2,471	42,606	7,901	31,495	3,004	206

TABLE 5.0.2

**CRIME INDEX OFFENSES, SUBURBAN COUNTIES**

**BY REPORTING AGENCY**

**1991**

REPORTING AGENCY	MOS.	POPULATION	CRIME INDEX		VIOLENT CRIME					PROPERTY CRIME				
			TOTAL	RATE/100,000	TOTAL	MURDER	RAPE	ROBBERY	AGG. ASSAULT	TOTAL	BURGLARY	THEFT	M.V. THEFT	ARSON
BOONE	1	40,182	4	10.0	0	0	0	0	0	4	4	0	0	0
BUCHANAN	12	11,320	211	1,864.0	49	0	5	2	42	162	54	93	14	1
CASS	12	33,186	468	1,410.2	104	0	9	0	95	364	320	30	10	4
CHRISTIAN	12	32,905	400	1,215.6	6	0	4	0	2	394	202	178	9	5
CLAY	12	22,716	219	964.1	56	0	2	2	52	163	77	77	9	0
FRANKLIN	12	55,532	1,461	2,630.9	201	1	14	8	178	1,260	526	634	100	0
GREENE	12	61,652	1,414	2,293.5	85	1	9	12	63	1,329	439	825	63	2
JACKSON	12	12,267	935	7,622.1	85	1	13	11	60	850	301	487	54	8
JASPER	12	34,820	599	1,720.3	11	0	6	5	0	588	228	305	54	1
JEFFERSON	5	132,587	1,382	1,042.3	142	5	20	19	98	1,240	475	665	86	14
LAFAYETTE	12	22,732	114	501.5	3	1	2	0	0	111	60	43	8	0
PLATTE	12	31,157	442	1,418.6	64	0	7	3	54	378	125	223	30	0
RAY	12	16,185	189	1,167.7	13	0	2	2	9	176	64	94	14	4
SAINT CHARLES	12	82,038	2,114	2,576.9	219	4	19	14	182	1,895	418	1,336	125	16
SAINT LOUIS POLICE	12	404,416	15,983	3,953.8	1,601	11	100	287	1,203	14,389	3,197	9,689	1,402	101
<b>TOTAL</b>	—	993,695	25,942	2,610.7	2,639	24	212	365	2,038	23,303	6,490	14,679	1,978	156

**TABLE 5.0.3**

CRIME INDEX OFFENSES, RURAL COUNTIES

BY REPORTING AGENCY

1991

REPORTING AGENCY	MOS.	POPULATION	CRIME INDEX		VIOLENT CRIME					PROPERTY CRIME				
			TOTAL	RATE/100,000	TOTAL	MURDER	RAPE	ROBBERY	AGG. ASSAULT	TOTAL	BURGLARY	THEFT	M.V. THEFT	ARSON
ANDREW	12	10,362	148	1,428.3	19	0	2	0	17	129	33	85	7	4
ATCHISON	12	7,663	43	561.1	2	0	0	0	2	41	13	23	5	0
AUDRAIN	12	9,703	128	1,319.2	5	0	1	0	7	120	41	78	0	1
BARRY	12	23,068	174	754.3	45	0	3	4	38	129	59	57	11	2
BARTON	12	7,201	82	1,138.7	8	1	1	0	6	74	27	39	8	0
BATES	12	9,685	149	1,538.5	5	0	0	1	4	144	53	73	10	8
BENTON	12	13,969	255	1,825.5	34	1	3	2	28	221	91	118	12	0
BOLLINGER	7	10,703	94	878.3	15	1	2	1	11	79	49	26	4	0
BUTLER	12	21,943	321	1,462.9	61	0	2	10	49	260	133	125	1	1
CALDWELL	12	8,447	99	1,172.0	3	0	0	0	3	96	58	34	4	0
CALLAWAY	1	22,958	3	13.1	0	0	0	0	0	3	2	1	0	0
CAMDEN	12	25,095	449	1,789.2	32	0	1	2	29	417	203	188	20	6
CAPE GIRARDEAU	12	18,082	206	1,139.3	15	1	2	4	8	191	81	89	18	3
CARROLL	12	6,392	66	1,032.5	4	0	1	0	3	62	20	40	2	0
CHARITON	12	9,275	43	463.6	0	0	0	0	0	43	16	27	0	0
CLARK	1	7,607	3	39.4	0	0	0	0	0	3	3	0	0	0
COLE	12	28,322	392	1,384.1	16	1	2	0	13	376	116	241	17	2
COOPER	10	7,801	31	397.4	1	0	0	1	0	30	20	4	4	2
CRAWFORD	12	18,204	224	1,230.5	27	0	3	0	24	197	112	73	9	3
DALLAS	12	13,747	174	1,365.0	2	0	0	0	2	172	71	94	7	0
DAVISS	12	7,927	108	1,362.4	12	0	0	1	11	96	35	55	6	0
DE KALB	12	7,611	55	722.6	1	0	1	0	0	54	20	29	5	0
DOUGLAS	12	11,971	86	718.4	4	0	0	0	4	82	79	1	2	0
DUNKLIN	8	17,184	166	966.0	8	2	0	2	4	158	56	96	6	0
GASCONADE	10	11,342	102	899.3	4	0	0	0	4	98	70	24	4	0
GENTRY	3	6,902	4	58.0	0	0	0	0	0	4	4	0	0	0
GRUNDY	12	4,442	44	990.5	2	0	0	0	2	42	21	21	0	0
HARRISON	3	8,536	17	199.2	2	0	0	0	2	15	4	10	1	0
HENRY	12	8,363	237	2,833.9	45	0	4	2	39	192	70	104	7	11
HICKORY	12	7,393	119	1,609.6	5	1	1	0	3	114	44	66	2	2
HOLT	12	6,082	65	1,068.7	0	0	0	0	0	65	30	33	2	0
LACLEDE	12	17,312	68	392.8	23	0	2	5	16	45	19	25	1	0
LINN	2	6,402	8	125.0	1	1	0	0	0	7	0	7	0	0
LIVINGSTON	12	5,834	114	1,954.1	6	0	0	0	6	108	45	6	1	1
MARIES	2	8,035	16	199.0	1	0	0	1	0	15	12	3	0	0
MARION	12	9,973	124	1,243.4	15	1	2	1	11	109	26	69	12	2

68

TABLE 5.0.4

CRIME INDEX OFFENSES, RURAL COUNTIES

BY REPORTING AGENCY

1991

REPORTING AGENCY	MOS.	POPULATION	CRIME INDEX		VIOLENT CRIME					PROPERTY CRIME				
			TOTAL	RATE/100,000	TOTAL	MURDER	RAPE	ROBBERY	AGG. ASSAULT	TOTAL	BURGLARY	THEFT	M.V. THEFT	ARSON
MCDONALD	8	17,073	81	474.4	23	1	2	0	20	58	25	31	1	1
MERCER	4	3,752	7	186.6	1	0	0	0	1	6	4	2	0	0
MISSISSIPPI	6	9,431	47	498.4	14	0	1	0	13	33	27	4	2	0
MONITEAU	9	8,903	121	1,359.1	5	0	1	0	4	116	38	70	6	2
MONROE	8	9,176	11	119.9	0	0	0	0	0	11	3	6	2	0
MONTGOMERY	12	11,445	205	1,791.2	18	1	2	4	11	187	87	90	8	2
MORGAN	12	15,698	383	2,439.8	65	1	0	0	64	318	189	118	9	2
OREGON	12	9,545	28	293.3	12	2	2	0	8	16	3	8	5	0
OSAGE	7	12,114	52	429.3	5	0	0	1	4	47	23	18	5	1
OZARK	12	8,666	95	1,096.2	11	0	1	0	10	84	22	55	4	3
PEMISCOT	1	22,096	9	40.7	1	0	0	0	1	8	4	4	0	0
PERRY	12	16,781	142	846.2	16	0	0	0	16	126	43	73	9	1
PIKE	12	9,098	49	538.6	4	0	1	0	3	45	24	18	3	0
POLK	12	15,100	248	1,642.4	3	0	0	1	2	245	77	156	11	1
PULASKI	12	39,893	140	350.9	32	0	4	3	25	108	58	45	5	0
REYNOLDS	12	6,714	79	1,176.6	3	1	0	0	2	76	53	16	6	1
RIPLEY	12	12,401	53	427.4	2	1	0	0	1	51	39	11	1	0
SAINT CLAIR	12	8,524	215	2,522.3	39	0	3	2	34	176	75	95	6	0
SAINT FRANCOIS	12	28,840	230	797.5	11	2	0	0	9	219	71	134	14	0
SAINTE GENEVIEVE	12	11,719	165	1,408.0	22	4	1	1	16	143	63	64	16	0
SALINE	12	8,695	170	1,955.1	14	1	3	0	10	156	44	103	8	1
SCHUYLER	12	4,269	61	1,428.9	0	0	0	0	0	61	57	3	1	0
SCOTLAND	12	4,860	19	390.9	0	0	0	0	0	19	19	0	0	0
SCOTT	3	18,825	52	276.2	16	2	4	0	10	36	22	14	0	0
SHELBY	12	6,997	92	1,314.8	1	0	1	0	0	91	45	45	1	0
STODDARD	5	29,126	105	360.5	15	0	1	0	14	90	46	34	10	0
STONE	2	19,230	85	442.0	18	0	0	1	17	67	33	34	0	0
SULLIVAN	12	6,376	33	517.6	0	0	0	0	0	33	20	12	0	1
TANEY	12	22,029	340	1,543.4	76	0	3	1	72	264	97	147	20	0
VERNON	12	10,527	283	2,588.3	44	0	1	2	41	239	136	76	20	7
WARREN	12	16,097	228	1,416.4	16	0	4	3	9	212	77	125	9	1
WASHINGTON	12	17,838	372	2,085.4	28	0	2	0	26	344	244	73	27	0
WAYNE	7	11,635	95	816.5	13	1	0	0	12	82	59	20	3	0
WORTH	11	2,459	15	610.0	0	0	0	0	0	15	15	0	0	0
<b>TOTAL</b>	-	880,472	8,727	991.2	954	27	70	56	801	7,773	3,578	3,723	400	72

TABLE 5.0.4

TOTAL PERSONS ARRESTED, MUNICIPALITIES 25,000 AND OVER

BY REPORTING AGENCY

1991

REPORTING AGENCY	MOS.	POPULATION	TOTAL <sup>1</sup> ARRESTS	TOTAL PART I ARRESTS	MURDER	RAPE	ROBBERY	AGG. ASSAULT	BURG-LARY	THEFT	MOTOR VEHICLE THEFT	ARSON	TOTAL <sup>1</sup> PART II ARRESTS
BLUE SPRINGS	12	40,474	1,534	374	1	5	25	24	73	227	16	3	1,160
CAPE GIRARDEAU	12	34,713	3,357	534	0	1	8	5	52	408	58	2	2,823
CHESTERFIELD	12	38,294	851	215	2	1	8	0	16	180	7	1	636
COLUMBIA	12	69,653	4,993	1,571	4	21	44	255	169	1,029	42	7	3,422
FLORISSANT	12	51,615	2,959	484	0	3	45	20	83	303	28	2	2,475
GLADSTONE	12	26,452	1,363	120	0	1	2	21	19	65	10	2	1,243
GRANDVIEW	12	25,166	1,436	432	3	5	17	36	73	270	25	3	1,004
INDEPENDENCE	12	113,199	6,509	1,710	5	6	34	105	118	1,355	81	6	4,799
JEFFERSON CITY	12	35,764	988	273	0	2	14	32	29	179	14	3	715
JOPLIN	12	41,287	3,070	743	0	1	14	13	97	593	21	4	2,327
KANSAS CITY	12	438,188	90,062	12,781	143	196	734	1,408	1,134	7,548	1,568	50	77,281
KIRKWOOD	12	27,509	1,090	292	0	2	4	5	23	247	9	2	798
LEE'S SUMMIT	12	46,789	2,356	187	0	3	5	16	21	124	17	1	2,169
MARYLAND HEIGHTS	12	25,610	958	215	0	5	10	34	32	118	15	1	743
RAYTOWN	12	30,845	666	232	0	3	12	8	26	160	23	0	434
SAINT CHARLES	6	54,991	1,615	385	0	2	29	42	48	250	14	0	1,230
SAINT JOSEPH	12	72,426	2,994	768	0	2	4	218	48	471	11	14	2,226
SAINT LOUIS	12	399,858	39,354	13,640	327	233	1,426	4,091	1,932	4,812	702	117	25,714
SAINT PETERS	10	46,145	951	394	0	6	14	125	36	208	5	0	557
SPRINGFIELD	12	141,617	8,999	2,459	4	24	91	404	271	1,598	59	8	6,540
UNIVERSITY CITY	12	40,407	2,359	757	6	14	80	92	131	372	60	2	1,602
<b>TOTAL</b>	—	1,801,002	178,464	38,566	495	536	2,620	6,954	4,431	20,517	2,785	228	139,898

<sup>1</sup>Arrests for suspicion are not included in total.

TABLE 5.0.5

TOTAL PERSONS ARRESTED, MUNICIPALITIES UNDER 25,000

BY REPORTING AGENCY

1991

REPORTING AGENCY	MOS.	POPULATION	TOTAL ARRESTS	TOTAL PART I ARRESTS	MURDER	RAPE	ROBBERY	AGG. ASSAULT	BURGLARY	THEFT	MOTOR VEHICLE THEFT	ARSON	TOTAL PART II ARRESTS
ARNOLD	12	18,978	1,162	289	1	5	9	24	48	193	7	2	873
AURORA	12	6,510	594	110	0	1	0	14	14	71	6	4	484
BALLWIN	12	21,990	452	192	0	4	2	10	32	138	6	0	260
BEL-NOR	12	2,958	336	28	0	0	3	5	7	10	3	0	308
BEL-RIDGE	6	3,224	343	3	0	0	1	0	2	0	0	0	340
BELLEFONTAINE NBRS	12	11,009	180	148	0	0	5	1	30	110	2	0	32
BELTON	12	18,295	2,203	189	0	0	0	17	28	128	14	2	2,014
BERKELEY	12	12,549	849	138	3	9	15	35	36	24	16	0	711
BOLIVAR	10	6,899	159	51	0	1	0	2	8	36	4	0	108
BONNE TERRE	12	3,901	162	50	0	0	0	31	3	14	2	0	112
BOONVILLE	12	7,151	731	84	0	0	0	5	7	69	3	0	647
BRANSON	12	3,735	478	97	0	0	2	3	16	72	4	0	381
BRECKENRIDGE HILLS	12	5,447	713	120	1	1	2	15	12	78	11	0	593
BRENTWOOD	12	8,215	138	70	0	0	2	1	13	45	8	1	68
BRIDGETON	12	17,921	2,055	602	0	3	26	24	59	469	20	1	1,453
BROOKFIELD	12	4,927	180	29	0	0	0	5	7	16	0	1	151
BUCKNER	12	2,895	81	20	0	0	0	5	2	10	3	0	61
BUTLER	12	4,131	359	62	0	0	0	8	12	36	4	2	297
CALVERTON PARK	5	1,415	77	12	0	0	0	6	3	2	1	0	65
CAMERON	3	4,870	63	17	0	0	0	3	6	7	1	0	46
CANTON	12	2,643	51	7	0	0	0	0	1	3	3	0	44
CARROLLTON	1	4,441	6	2	0	0	0	0	0	1	1	0	4
CARTHAGE	12	10,832	957	113	0	1	1	9	19	76	7	0	844
CENT. MO. ST. UNIV.	12	0	226	30	0	0	0	2	9	19	0	0	196
CENTRALIA	2	3,441	12	1	0	0	0	0	0	1	0	0	11
CHANCE	12	3,083	128	10	0	0	0	1	2	6	1	0	118
CHARLACK	12	1,399	487	12	1	0	0	8	0	3	0	0	475
CLARKSON VALLEY	12	2,528	65	18	0	0	0	0	2	14	2	0	47
CLAYCOMO	12	1,681	136	16	0	0	1	0	1	12	2	0	120
CLAYTON	12	13,984	782	219	0	0	12	2	21	158	24	2	563
CLINTON	12	8,772	495	100	0	0	0	9	2	84	4	1	395
COOL VALLEY	12	1,418	244	47	0	0	0	0	2	39	6	0	197
COUNTRY CLUB HILLS	12	1,769	95	13	0	2	3	1	0	6	1	0	82
CRESTWOOD	12	11,323	603	238	0	0	6	9	14	200	5	4	365
CREVE COEUR	12	12,402	966	164	0	0	6	8	17	122	11	0	802
CRYSTAL CITY	4	4,120	30	15	0	0	0	2	0	10	1	2	15

TABLE 5.0.6

TOTAL PERSONS ARRESTED, MUNICIPALITIES UNDER 25,000

BY REPORTING AGENCY

1991

REPORTING AGENCY	MOS.	POPULATION	TOTAL ARRESTS	TOTAL PART I ARRESTS	MURDER	RAPE	ROBBERY	AGG. ASSAULT	BURGLARY	THEFT	MOTOR VEHICLE THEFT	ARSON	TOTAL PART II ARRESTS
DE SOTO	12	6,040	242	58	1	2	0	0	4	50	1	0	184
DES PERES	12	8,462	169	50	0	0	1	5	1	42	1	0	119
EDMUNDSON	12	1,119	98	12	0	0	2	0	3	2	5	0	86
ELLISVILLE	12	7,605	211	52	0	0	1	8	8	26	9	0	159
EUREKA	6	4,720	169	28	0	0	0	2	7	19	0	0	141
EXCELSIOR SPRINGS	12	10,436	1,464	144	0	1	7	34	29	66	7	0	1,320
FARMINGTON	12	11,690	665	220	0	1	0	47	9	154	9	0	445
FAYETTE	12	2,911	95	37	0	0	0	16	5	15	1	0	58
FENTON	12	3,372	405	174	0	0	2	2	10	159	1	0	231
FERGUSON	12	22,464	2,389	510	0	1	29	23	66	337	52	2	1,879
FESTUS	11	8,169	471	38	0	0	0	5	10	19	4	0	433
FLAT RIVER	12	4,861	240	44	0	0	0	9	13	19	3	0	196
FLORDELL HILLS	12	957	106	60	0	0	5	1	11	40	2	1	46
FRONTENAC	11	3,400	403	55	0	0	1	0	6	46	2	0	348
FULTON	12	10,113	474	104	0	1	2	21	18	59	0	3	370
GLENDALE	12	5,992	213	7	0	0	0	2	2	3	0	0	206
HANNIBAL	12	18,147	2,045	246	0	1	0	15	39	172	17	2	1,799
HARRISONVILLE	12	7,744	787	69	0	0	3	11	8	46	1	0	718
HAZELWOOD	12	15,446	925	195	0	1	12	10	37	118	16	1	730
HILLSDALE	9	1,963	108	47	0	2	6	30	4	3	2	0	61
IRONTON	12	10,811	80	12	0	0	0	5	0	4	3	0	68
JACKSON	12	9,330	253	53	0	0	2	6	9	34	1	1	200
JENNINGS	12	16,032	1,014	616	0	4	34	20	41	508	5	4	398
KEARNEY	12	1,804	74	15	0	0	0	3	4	7	1	0	59
KIRKSVILLE	12	17,289	936	108	0	1	0	7	20	77	1	2	828
LADUE	12	8,917	191	61	0	0	0	8	3	35	15	0	130
LAKE LOTAWANA	12	2,158	51	8	0	0	0	2	4	2	0	0	43
LAKE SAINT LOUIS	12	7,459	317	32	0	0	0	2	10	17	3	0	285
LAMAR	12	4,201	198	29	0	0	0	1	6	22	0	0	169
LEBANON	12	10,062	895	161	1	4	3	2	24	119	8	0	734
LEXINGTON	11	4,898	4	3	0	0	0	2	0	0	0	1	1
MACON	10	5,615	83	16	0	0	0	6	4	5	1	0	67
MANCHESTER	12	6,594	226	97	0	1	0	5	16	73	2	0	129
MAPLEWOOD	12	10,041	1,376	200	1	4	15	33	25	119	3	0	1,176
MARCELINE	12	2,666	51	13	0	0	0	2	1	10	0	0	38
MARSHALL	12	12,812	242	47	0	0	1	0	9	35	2	0	195
MARYVILLE	12	10,748	652	41	0	0	0	0	1	40	0	0	611

TABLE 5.0.6

TOTAL PERSONS ARRESTED, MUNICIPALITIES UNDER 25,000

BY REPORTING AGENCY

1991

REPORTING AGENCY	MOS.	POPULATION	TOTAL ARRESTS	TOTAL PART I ARRESTS	MURDER	RAPE	ROBBERY	AGG. ASSAULT	BURGLARY	THEFT	MOTOR VEHICLE THEFT	ARSON	TOTAL PART II ARRESTS
MEXICO	1	11,380	0	0	0	0	0	0	0	0	0	0	0
MOBERLY	12	12,941	463	87	4	3	3	9	15	49	4	0	376
MOLINE ACRES	5	2,731	63	7	0	0	0	0	2	3	2	0	56
NEOSHO	12	9,328	684	152	0	1	0	84	12	52	3	0	532
NEVADA	12	8,665	995	85	1	2	0	5	18	48	9	2	910
NORMANDY	12	4,515	424	133	0	0	6	37	30	40	20	0	291
NORTH KANSAS CITY	12	4,163	325	51	0	0	0	4	1	45	1	0	274
NORTHWOODS	10	5,146	125	47	1	1	4	1	0	40	0	0	78
O'FALLON	12	18,847	553	85	1	0	2	1	15	66	0	0	468
OAKLAND	12	1,605	38	12	0	0	0	1	5	6	0	0	26
OAKVIEW	11	353	24	7	0	0	3	1	0	3	0	0	17
ODESSA	12	3,724	185	20	0	0	0	1	7	9	3	0	165
OLIVETTE	12	7,633	191	66	0	3	0	18	6	25	12	2	125
OSAGE BEACH	12	2,619	193	55	0	1	0	17	3	34	0	0	138
OVERLAND	12	18,130	1,070	490	1	2	20	17	61	385	0	4	580
PACIFIC	11	4,384	492	81	0	1	3	8	17	48	0	4	411
PAGEDALE	1	3,801	0	0	0	0	0	0	0	0	0	0	0
PARKVILLE	12	2,421	346	19	0	0	0	0	2	15	2	0	327
PASADENA HILLS	12	1,174	16	6	0	0	0	0	2	1	3	0	10
PASADENA PARK	12	536	43	18	0	0	0	4	6	7	1	0	25
PEVELY	12	2,853	394	27	0	0	4	4	4	14	1	0	367
PINE LAWN	2	5,132	59	21	0	3	0	6	3	3	6	0	38
PLEASANT HILL	12	3,857	226	36	0	0	0	1	6	28	1	0	190
POPLAR BLUFF	7	17,131	1,244	231	1	4	10	24	41	145	6	0	1,013
POTOSI	6	2,704	158	27	0	0	0	12	4	11	0	0	131
REPUBLIC	12	6,342	148	42	0	0	0	0	2	38	1	1	106
RICHMOND	12	5,783	247	48	0	1	2	16	6	21	3	0	198
RICHMOND HEIGHTS	12	10,531	1,022	261	5	0	13	32	17	166	28	0	761
RIVERSIDE	12	3,034	549	16	0	0	0	0	0	16	0	0	533
RIVERVIEW	12	3,267	35	30	0	0	0	12	11	4	3	0	5
ROCK HILL	5	5,258	397	14	0	0	3	6	1	3	1	0	383
ROLLA	12	14,202	620	169	0	0	0	8	11	150	0	0	451
SAINT ANN	12	14,604	1,360	788	0	1	7	51	24	700	5	0	572
SAINT GEORGE	12	1,280	145	3	0	0	0	1	0	2	0	0	142
SAINT JOHN	12	7,525	283	108	0	0	2	45	7	53	1	0	175
SAINT ROBERT	12	1,743	380	98	0	8	2	12	14	59	3	0	282

TABLE 5.0.6



TOTAL PERSONS ARRESTED, MUNICIPALITIES UNDER 25,000

BY REPORTING AGENCY

1991

REPORTING AGENCY	MOS.	POPULATION	TOTAL <sup>1</sup> ARRESTS	TOTAL PART I ARRESTS	MURDER	RAPE	ROBBERY	AGG. ASSAULT	BURG-LARY	THEFT	MOTOR VEHICLE THEFT	ARSON	TOTAL <sup>1</sup> PART II ARRESTS
SAINTE GENEVIEVE	5	4,446	58	1	0	0	0	0	0	1	0	0	57
SALEM	12	4,521	426	79	1	1	1	8	13	37	17	1	347
SAVANNAH	8	4,386	50	12	0	3	0	0	3	4	2	0	38
SEDALIA	12	19,958	1,207	151	0	9	7	24	6	97	8	0	1,056
SHREWSBURY	12	6,467	363	73	0	0	1	4	5	59	4	0	290
SIKESTON	12	17,782	1,060	282	0	1	6	50	25	193	6	1	778
SLATER	12	2,203	129	41	0	0	0	17	1	21	2	0	88
SMITHVILLE	7	2,545	17	0	0	0	0	0	0	0	0	0	17
SUGAR CREEK	12	4,013	593	51	0	0	0	1	11	35	4	0	542
SULLIVAN	12	5,705	343	36	0	1	0	0	1	29	0	0	312
SUNSET HILLS	12	4,954	162	72	0	0	0	14	2	56	0	0	90
TOWN AND COUNTRY	12	9,595	706	31	0	0	0	5	3	23	0	0	675
TRENTON	12	6,178	186	12	0	0	1	2	2	5	2	0	174
UNION	12	5,956	356	44	0	3	0	4	14	22	1	0	312
UNIV. MO. COLUMBIA	12	0	611	85	0	0	4	1	15	64	0	1	526
UNIV. MO. ST. LOUIS	12	0	10	6	0	0	0	0	3	2	1	0	4
VALLEY PARK	12	4,198	124	28	0	0	0	4	9	14	1	0	96
VANDALIA	12	2,704	158	21	0	0	0	0	0	20	1	0	137
VINITA PARK	12	2,017	101	17	0	0	4	4	4	4	0	1	84
WARRENSBURG	12	15,365	1,100	137	0	0	1	3	19	110	3	1	963
WARRENTON	12	3,592	255	85	0	2	2	3	6	63	7	2	170
WARSON WOODS	12	2,065	43	10	0	0	0	0	0	10	0	0	33
WASHINGTON	12	10,789	819	136	0	6	3	9	20	95	2	1	683
WASHINGTON UNIV.	4	0	0	0	0	0	0	0	0	0	0	0	0
WEBB CITY	12	7,508	390	69	0	2	0	1	1	65	0	0	321
WEBSTER GROVES	12	23,170	519	218	0	1	13	20	60	98	9	17	301
WELLSTON	4	3,640	176	51	3	0	5	10	9	16	8	0	125
WENTZVILLE	12	5,128	790	90	0	4	0	6	2	75	3	0	700
WEST PLAINS	12	8,984	685	170	1	2	2	11	17	117	17	3	515
WESTON	12	1,540	33	17	0	0	0	12	0	3	2	0	16
WESTWOOD	12	311	67	11	0	0	0	0	2	8	1	0	56
WINCHESTER	12	1,691	114	9	0	0	0	6	1	2	0	0	105
WOODSON TERRACE	12	4,396	620	58	1	1	2	3	4	43	4	0	562
TOTAL	—	973,053	60,688	12,417	29	118	358	1,270	1,513	8,464	585	80	48,271

<sup>1</sup>Arrests for suspicion are not included in total.

TABLE 5.0.6

**TOTAL PERSONS ARRESTED, SUBURBAN COUNTIES**

**BY REPORTING AGENCY**

1991

REPORTING AGENCY	MOS.	POPULATION	TOTAL <sup>1</sup> ARRESTS	TOTAL PART I ARRESTS	MURDER	RAPE	ROBBERY	AGG. ASSAULT	BURGLARY	THEFT	MOTOR VEHICLE THEFT	ARSON	TOTAL <sup>1</sup> PART II ARRESTS
BOONE	1	40,182	0	0	0	0	0	0	0	0	0	0	0
BUCHANAN	10	11,320	176	37	1	0	0	11	13	7	4	1	139
CASS	4	33,186	73	43	0	2	2	8	28	2	0	1	30
CHRISTIAN	12	32,905	352	36	1	1	0	3	14	12	5	0	316
CLAY	1	22,716	0	0	0	0	0	0	0	0	0	0	0
FRANKLIN	12	55,532	1,063	240	0	12	6	28	86	103	1	4	823
GREENE	12	61,652	1,121	229	1	7	18	7	59	133	3	1	892
JACKSON	11	12,267	462	93	0	2	3	11	39	28	10	0	369
JASPER	12	34,820	1,267	240	0	3	6	15	96	117	0	3	1,027
JEFFERSON	5	132,587	485	229	4	7	9	55	76	62	13	3	256
LAFAYETTE	6	22,732	70	25	0	1	1	0	8	11	4	0	45
PLATTE	12	31,157	467	146	0	7	4	39	30	47	16	3	321
RAY	12	16,185	247	56	0	2	1	21	17	15	0	0	191
SAINT CHARLES	9	82,038	1,014	328	4	7	19	65	78	146	8	1	686
<b>TOTAL</b>	—	589,279	6,797	1,702	11	51	69	263	544	683	64	17	5,095

<sup>1</sup>Arrests for suspicion are not included in total.

**TABLE 5.0.7**

TOTAL PERSONS ARRESTED, RURAL COUNTIES

BY REPORTING AGENCY

1991

REPORTING AGENCY	MOS.	POPULATION	TOTAL ARRESTS	TOTAL PART I ARRESTS	MURDER	RAPE	ROBBERY	AGG. ASSAULT	BURGLARY	THEFT	MOTOR VEHICLE THEFT	ARSON	TOTAL PART II ARRESTS
ANDREW	10	10,362	107	24	0	2	0	0	4	9	7	2	83
ATCHISON	12	7,663	64	5	0	0	0	0	2	2	1	0	59
AUDRAIN	12	9,703	360	59	0	1	0	10	19	27	1	1	301
BARRY	1	23,068	45	13	0	0	3	2	4	4	0	0	32
BARTON	12	7,201	175	45	1	1	0	6	8	28	1	0	130
BATES	12	9,685	96	21	0	0	0	4	6	9	2	0	75
BENTON	2	13,969	2	2	0	0	0	1	0	0	1	0	0
BOLLINGER	7	10,703	135	28	0	0	1	9	6	12	0	0	107
BUTLER	11	21,943	354	161	0	0	1	28	68	60	4	0	193
CALDWELL	12	8,447	50	10	0	0	0	2	2	5	1	0	40
CAMDEN	5	25,095	247	39	0	0	2	5	8	22	1	1	208
CAPE GIRARDEAU	12	18,082	404	106	0	3	1	25	46	20	11	0	298
CARROLL	12	6,392	83	53	0	2	0	7	17	21	6	0	30
CHARITON	12	9,275	25	9	0	0	0	0	8	1	0	0	16
CLARK	1	7,607	11	3	0	0	0	1	2	0	0	0	8
COLE	12	28,322	1,681	243	1	7	8	20	190	7	8	2	1,438
COOPER	10	7,801	40	19	0	0	1	6	10	1	1	0	21
CRAWFORD	12	18,204	224	45	0	4	0	0	20	17	0	4	179
DALLAS	12	12,747	68	28	0	0	0	1	10	15	2	0	40
DAVISS	12	7,927	55	27	0	0	0	3	12	10	2	0	28
DE KALB	11	7,611	83	24	0	0	2	0	14	4	4	0	59
DOUGLAS	12	11,971	150	14	0	1	0	3	8	1	1	0	136
DUNKLIN	7	17,184	289	76	1	4	0	20	24	27	0	0	213
GASCONADE	1	11,342	0	0	0	0	0	0	0	0	0	0	0
GRUNDY	12	4,442	151	32	0	0	0	1	14	14	3	0	119
HARRISON	3	8,536	9	6	0	0	0	1	5	0	0	0	3
HENRY	12	8,363	126	41	0	1	4	15	9	8	1	3	85
HICKORY	2	7,393	8	2	0	0	0	0	0	2	0	0	6
HOLT	5	6,082	10	1	0	0	0	0	0	0	1	0	9
LACLEDE	12	17,312	462	86	2	2	1	8	34	36	3	0	376
LINN	2	6,402	2	0	0	0	0	0	0	0	0	0	2
LIVINGSTON	10	5,834	216	47	0	1	0	6	24	16	0	0	169
MARIES	1	8,039	3	0	0	0	0	0	0	0	0	0	3
MARION	12	9,973	406	74	1	1	4	20	28	14	5	1	332
MCDONALD	6	17,073	346	39	0	1	0	11	14	11	1	1	307

66

TABLE 5.0.8

TOTAL PERSONS ARRESTED, RURAL COUNTIES

BY REPORTING AGENCY

1991

REPORTING AGENCY	MOS.	POPULATION	TOTAL <sup>1</sup> ARRESTS	TOTAL PART I ARRESTS	MURDER	RAPE	ROBBERY	AGG. ASSAULT	BURG-LARY	THEFT	MOTOR VEHICLE THEFT	ARSON	TOTAL <sup>1</sup> PART II ARRESTS
MERCER	4	3,752	18	4	0	0	0	0	3	1	0	0	14
MISSISSIPPI	6	9,431	19	3	0	1	0	1	1	0	0	0	16
MONROE	4	9,176	10	5	0	0	0	0	2	2	1	0	5
MONTGOMERY	10	11,445	66	17	1	0	0	1	10	3	1	1	49
MORGAN	10	15,698	329	45	1	1	3	2	9	19	2	8	284
OREGON	11	9,545	56	20	1	2	0	3	2	6	6	0	36
OSAGE	7	12,114	23	14	0	0	2	0	3	6	2	1	9
OZARK	12	8,666	65	30	0	1	0	9	8	7	5	0	35
PEMISCOT	1	22,096	37	12	0	1	2	1	2	4	2	0	25
PERRY	12	16,781	113	23	0	0	0	3	14	3	3	0	90
PIKE	12	9,098	113	21	0	1	0	3	3	13	1	0	92
POLK	12	15,100	128	29	0	0	0	2	9	13	1	4	99
PULASKI	11	39,893	170	58	0	2	1	19	23	8	4	1	112
REYNOLDS	6	6,714	22	10	0	0	0	3	5	1	0	1	12
RIPLEY	12	12,401	113	26	1	0	1	0	22	0	2	0	87
SAINT CLAIR	12	8,524	201	56	0	1	8	21	8	16	2	0	145
SAINT FRANCOIS	12	28,840	1,009	106	2	2	0	12	31	56	3	0	903
SAINTE GENEVIEVE	12	11,719	101	48	4	1	0	4	10	23	6	0	53
SALINE	12	8,695	273	64	1	3	0	7	29	23	0	1	209
SCHUYLER	12	4,269	12	9	0	0	0	0	5	4	0	0	3
SCOTLAND	10	4,860	3	2	0	0	0	0	0	2	0	0	1
SCOTT	2	18,825	31	17	0	2	0	11	2	2	0	0	14
SHELBY	12	6,997	47	12	0	1	0	0	7	3	1	0	35
STODDARD	5	29,126	147	68	0	1	0	9	28	26	4	0	79
STONE	2	19,230	53	19	0	0	0	1	4	13	1	0	34
SULLIVAN	12	6,376	14	13	0	0	0	0	4	7	0	2	1
TANEY	12	22,029	556	146	0	3	4	54	20	57	8	0	410
VERNON	12	10,527	357	69	0	2	2	11	29	22	2	1	288
WARREN	12	16,097	184	30	0	0	1	0	10	15	0	4	154
WASHINGTON	12	17,838	441	52	0	1	0	5	34	6	6	0	389
WAYNE	6	11,635	96	31	1	0	0	4	9	12	3	2	65
WORTH	9	2,459	23	1	0	0	0	0	1	0	0	0	22
<b>TOTAL</b>	—	841,709	11,317	2,442	18	57	52	401	963	776	134	41	8,875

<sup>1</sup>Arrests for suspicion are not included in total.

TABLE 5.0.8

100

## GLOSSARY

**ADULT:** A person 18 years of age or older.

**ARREST:** Taking into physical or other legal custody for committing an offense in the local reporting jurisdiction. Arrests for all criminal offenses are scored. Arrests for ordinance violations are included. Arrests for traffic offenses, with the exception of driving under the influence of intoxicants and arrests in connection with negligent manslaughter in traffic accidents, are not scored. Included are those persons arrested but released without being formally charged.

**CLEARANCE:** The resolution of a criminal offense by the arrest, charging, and turning over to the court for prosecution one or more persons alleged to have committed a crime. An offense also can be cleared by exceptional means when the law enforcement agency has: 1) established the identity of the offender, 2) has enough information to support an arrest, charge, and prosecution in court, 3) the exact location of the offender is known so that he/she could be taken into custody, and 4) there is some reason outside law enforcement control that precludes arresting, charging, and prosecuting the offender, (Ex., offender dies).

**CLEARED OFFENSES ONLY JUVENILES:** The number of clearances for an offense in which only juveniles were arrested or were identified as the offender but for some valid reason could not be arrested divided by the total number of clearances for that offense expressed as a percentage. The formula is:

$$\frac{\text{Number of Offenses Cleared Involving Only Juveniles}}{\text{Number of Clearances}} \times 100$$

**CLEARANCE RATES:** The number of clearances divided by the total number of offenses, expressed as a percentage. The formula is:

$$\frac{\text{Number of Clearances}}{\text{Number of Offenses}} \times 100$$

**CRIME INDEX:** The Crime Index is the sum of the eight major offenses used to indicate the occurrence of crime in the United States. They were selected because of their frequency of occurrence and because they are most likely to be reported to a law enforcement agency. The eight offenses are: murder, forcible rape, robbery, aggravated assault, burglary, theft, motor vehicle theft, and arson. The first four make up the Violent Crime Index and the last four make up the Property Crime Index. Definitions of each of the offenses making up the Crime Index are provided in the section entitled "Missouri Detail Crime Index Analysis". In addition, refer to Crime Index Offense in this section for an explanation of how each type of offense is reported to the UCR Program.

**CRIME INDEX OFFENSE:** In the UCR Program, the offenses of murder, forcible rape, and aggravated assault are crimes against persons. For these crimes, one offense is counted for each victim. Robbery, burglary, theft, motor vehicle theft, and arson are crimes against property. For these crimes, with the exception of motor vehicle theft, one offense is counted for each distinct operation. In the case of motor vehicle theft, one offense is counted for each stolen vehicle.

**CRIME INDEX OFFENSE ESTIMATES:** Estimation routines were used in the Digest to identify the actual number of index crimes that occurred in the State on an annual basis. They are designed to compensate for non-reporting and incomplete reporting of such offenses by Missouri law enforcement agencies. The following procedures and formulas were used to obtain statewide crime index offense estimates:

- Law enforcement agencies in the State of Missouri were categorized into Groups. The following categories were used:

Municipal agency - 250,000 and over  
 Municipal agency - population 100,000 - 249,999  
 Municipal agency - population 50,000 - 99,999  
 Municipal agency - population 25,000 - 49,999  
 Municipal agency - population 10,000 - 24,999  
 Municipal agency - population 2,500 - 9,999  
 Municipal agency - population under 2,500  
 Rural Sheriff's Department  
 Suburban Sheriff's Department and County Police

- For those law enforcement agencies within a group that reported six months or more, a yearly estimate of their crime index offenses was obtained using the following formula:

$$\frac{\text{Crime Index Offenses Reported}}{\text{No. of Months Reported}} \times 12 = \text{Yearly Crime Index Offenses}$$

- For each group, the yearly crime index offenses for all law enforcement agencies reporting six months or more and their jurisdiction's population were summed and the following group crime index rate was computed.

$$\frac{\text{Sum of Rpt. Agency's Yearly Crime Index Offenses}}{\text{Sum of Rpt. Agency's Population}} = \text{Group Crime Index Rate}$$

- For those law enforcement agencies that reported less than six months or no activity at all within a group, their yearly crime index offenses were computed using the following formula:

$$\text{Law Enforcement Agency Population} \times \text{Group Crime Index Rate} = \text{Yearly Crime Index Offenses}$$

- Yearly crime index offenses computed above for all Missouri law enforcement agencies were then summed in order to obtain a statewide yearly crime index offense estimate for use in this Digest.

No estimation routines were used in data displays that identify specific law enforcement agency's yearly crime activity in the Digest. In these data displays, only crime activity that was reported into the UCR Program is displayed.

**JUVENILE:** A person under 18 years of age.

**JUVENILE ARREST:** Juvenile arrests do not include law enforcement contacts with juveniles where no offense has been committed. Juveniles taken into custody for their own protection, such as in neglect cases, are not scored since they have not committed any crime.

**PERCENT CHANGE:** The formula is:

$$\frac{\text{Value in Current Period} - \text{Value in Base Period}}{\text{Value in Base Period}} \times 100$$

**POPULATION:** The total number of persons residing in a jurisdiction based on United States Census data.

**QUARTILE:** The value that marks the boundary between two consecutive intervals in a frequency distribution of four intervals with each containing one quarter of the total population.

**RATE PER 100,000 POPULATION:** Rates per 100,000 population are indicators of activity standardized by the population of those law enforcement agencies associated with the activity. Three types of rates are provided: statewide crime index offense rates, reporting agency crime index offense rates, and arrest rates.

The statewide offense rate formula is:

$$\frac{\text{Number of Estimated Offenses Reported} \times 100,000}{\text{Population of all Agencies Used in Estimate}}$$

The reporting agency offense rate formula is:

$$\frac{\text{Number of Offenses Reported} \times 100,000}{\text{Population of Reporting Agency(ies)}}$$

The arrest rate formula is:

$$\frac{\text{Number of Arrests Reported} \times 100,000}{\text{Population of Reporting Agency(ies)}}$$

**STRONG ARMED ROBBERY:** A robbery wherein no weapons were used but tactics (limited to the use of personal weapons such as hands, arms, feet, fists, teeth, etc.) were employed to deprive the victim of his/her property.

**TIME SERIES:** Time-series analysis was used in the Digest to forecast future crime and arrest activity. With this technique, data for past periods were used as the basis for projecting levels of future activity. Ten years of past data were used to make these projections.

Crime and arrest rates on a per 100,000 population basis were used in making the forecasts. These rates reflect crime and arrest activity in relation to population.

The technique used to project crime and arrest activity was Exponential Smoothing (available through the SAS Econometrics and Time Series software package). Use of this technique took into consideration the limited number of data points in the time series, as well as whether or not the time series was best characterized as constant, linear, or non-linear. In applying the smoothing technique, greater weight was given to the more recent data values than to the earlier data values when projecting future levels of activity.