

140603

FLORIDA DEPARTMENT OF CORRECTIONS
OFFICE OF THE INSPECTOR GENERAL
BUREAU OF JAIL ASSISTANCE

COUNTY DETENTION FACILITIES
DAILY INMATE POPULATION DATA

MONTHLY REPORT

JUNE - 1992

140603

U.S. Department of Justice
National Institute of Justice

This document has been reproduced exactly as received from the person or organization originating it. Points of view or opinions stated in this document are those of the authors and do not necessarily represent the official position or policies of the National Institute of Justice.

Permission to reproduce this copyrighted material has been granted by
Florida Department of Corrections

to the National Criminal Justice Reference Service (NCJRS).
Further reproduction outside of the NCJRS system requires permission of the copyright owner.

NCJRS

JAN 28 1993

ACQUISITIONS



COUNTY DETENTION FACILITIES:
INMATE PROFILE SUMMARY
JUNE - 1992

ABSTRACT

The County Detention Facilities Summary provides a monthly profile of Florida's detention facilities inmate population. Average daily population figures for June 1992, are collapsed into male and female categories for both adult and juvenile inmates. These population figures are also categorized into felony, misdemeanor and "other" subcategories in order to facilitate interpretation. Within both felony and misdemeanor subcategories the number of inmates held for trial or sentencing and those detained or sentenced for violation of probation are presented for June 1992. The "other" subcategory documents the number of parole violators, state inmates, undocumented aliens, holdings for other jurisdictions and individuals detained under the Baker (mental health) and Myers (alcoholism) Acts. In addition, the average daily population figures, the incarceration rates for each county, the number of overcrowded county detention facilities and the pretrial inmate levels for each facility are included in this report. County detention facilities with amended capacities since May 1992, are denoted in Table 3.

TABLE OF CONTENTS

COUNTY DETENTION FACILITIES:
PROFILE DATA SUMMARY
JUNE - 1992

	Page
Average Daily Population.....	1
Incarceration Rates.....	1
Overcrowding: Capacity vs. Population.....	2
Pretrial Population Levels.....	2

LIST OF TABLES

Table 1	Categorical Daily Averages.....	3
Table 2	Average Daily Populations and Incarceration Rates Per 1,000 County Population.....	4-5
Table 3	Inmate Capacity Report.....	6-8
Table 4	Pretrial Capacity Report.....	9-11

LIST OF FIGURES

Figures 1 & 1a	Incarceration Rates Per 1,000 County Population.....	12-14
Figures 2 & 2a	Percent ADP Over DC Rated Capacity..	15-17
Figures 3 & 3a	County Pretrial Percentages.....	18-20

COUNTY DETENTION FACILITIES:
PROFILE DATA SUMMARY
JUNE - 1992

Average Daily Population

On the average, there were 36,038 inmates in Florida's county detention facilities during the month of June, 1992. This figure represents a 1.8 percent decrease in the inmate population from that reported for May 1992. The statewide average daily population (ADP) totals for June, 1992 include 31,290 adult males (86.3%), 3,831 adult females (10.6%), and 917 juvenile offenders (2.6%). The overall distribution of male and female inmates has remained fairly constant in county detention facilities for the past five years. The following provides an analysis of the inmate population for June, 1992:

- * 72.4% of the total inmate population were incarcerated for felony offenses, while 21.4% were detained for misdemeanor crimes. All others confined included 6.2% .
- * Offenders held for trial represented 56.5% of the inmate population and 26.6 percent were sentenced on either felony or misdemeanor crimes.
- * Inmates detained for violation of probation represented 8.9% of the inmate population
- * The remaining 8.0% were various groups as listed in Table 1.

Incarceration Rates

In June of 1992, the statewide county detention incarceration rate was 2.7 per 1,000 county residents based

on the population estimate for 1990-91. Incarceration rates range from a low of 0.9 in Clay, Holmes and Union Counties to a high of 8.4 per 1,000 population in Hamilton County. Hamilton, Taylor, and Wakulla Counties' high incarceration rate is the direct result of holding a large proportion of their inmate population for the U.S. Marshals Service. Other counties may also be experiencing high incarceration rates due to the contracting of bed space.

Overcrowding: Capacity Versus Population

In June 1992, 10.45 percent (7) of the 67 counties in the State of Florida had average daily inmate populations which exceeded their Department of Corrections (DC) rated capacity between 1 and 25 percent, and the remaining sixty (89.55%) Florida's counties were at or below capacity.

Pretrial Population Levels

During the month of June 1992, 20,403 of the inmates housed in county detention facilities were classified as awaiting trial. Of these 20,403 offenders, 84.3% were awaiting trial for felony offenses while 15.7% were detained for misdemeanor violations.

TABLE 1
COUNTY DETENTION FACILITIES
CATEGORICAL DAILY AVERAGES
JUNE - 1992

	<u>ADULT MALES</u>		<u>ADULT FEMALES</u>	
	<u>NUMBER</u>	<u>PERCENT</u>	<u>NUMBER</u>	<u>PERCENT</u>
<u>FELONIES:</u>				
Sentenced (365 Days or More).....	1,654	5.3	165	4.1
Sentenced (364 Days or Less).....	3,552	11.4	526	13.1
Awaiting Trial.....	15,145	48.4	1,384	37.6
Awaiting Sentencing.....	394	1.3	46	1.3
Probation Violators (Technical).....	2,041	6.5	301	8.1
<u>MISDEMEANORS:</u>				
Sentenced (365 Days or More).....	170	0.5	31	0.6
Sentenced (364 Days or Less).....	2,917	9.3	444	11.5
Awaiting Trial.....	2,646	8.5	536	13.9
Awaiting Sentencing.....	67	0.2	11	0.3
Probation Violators (Technical).....	740	2.4	110	3.0
<u>OTHERS:</u>				
Parole Violators.....	109	0.3	16	0.4
Baker Act (Mental Health).....	6	0.0	0	0.0
Myers Act (Alcoholism).....	14	0.0	1	0.1
State Inmates.....	521	1.7	49	1.1
Undocumented Aliens.....	16	0.1	8	0.0
Other Jurisdictions.....	1,298	4.1	203	4.9
SUBTOTAL:	<u>31,290</u>		<u>3,831</u>	

	<u>JUVENILE MALES</u>		<u>JUVENILE FEMALES</u>	
	<u>NUMBER</u>	<u>PERCENT</u>	<u>NUMBER</u>	<u>PERCENT</u>
<u>FELONIES:</u>				
Sentenced (365 Days or More).....	67	7.5	2	4.3
Sentenced (364 Days or Less).....	43	4.8	0	0.0
Pretrial.....	660	73.4	13	74.0
Awaiting Sentencing.....	106	11.9	3	13.1
<u>MISDEMEANORS:</u>				
Sentenced (365 Days or More).....	2	0.2	0	0.0
Sentenced (364 Days or Less).....	1	0.1	0	0.0
Pretrial.....	19	2.1	0	0.0
Awaiting Sentencing.....	1	0.1	0	4.3
Minors Beyond Staff Control (HRS)...	0	0.0	0	4.3
SUBTOTAL:	<u>899</u>		<u>18</u>	

	<u>NUMBER</u>	<u>PERCENT</u>
Adult Males.....	31,290	86.8
Adult Females.....	3,831	10.6
Juvenile Males.....	899	2.5
Juvenile Females.....	18	0.1
TOTAL:	<u>36,038</u>	

TABLE 2

**COUNTY DETENTION FACILITIES
AVERAGE DAILY POPULATIONS AND
INCARCERATION RATES PER 1,000
COUNTY POPULATION
JUNE - 1992**

	<u>COUNTY POPULATION</u>	<u>AVERAGE DAILY POPULATION</u>	<u>INCARCERATION RATE</u>
Alachua.....	185,919	458	2.5
Baker.....	18,880	73	3.9
Bay.....	130,329	460	3.5
Bradford.....	22,763	38	1.7
Brevard.....	415,067	696	1.7
Broward.....	1,289,685	3,152	2.4
Calhoun.....	11,139	12	1.1
Charlotte.....	118,094	143	1.2
Citrus.....	98,972	179	1.8
Clay.....	111,392	98	0.9
Collier.....	161,167	355	2.2
Columbia.....	43,562	157	3.6
Dade.....	1,977,120	6,133	3.1
DeSoto.....	24,442	75	3.1
Dixie.....	10,851	16	1.5
Duval.....	684,942	2,129	3.1
Escambia.....	265,813	1,037	3.9
Flagler.....	30,977	50	1.6
Franklin.....	9,050	45	5.0
Gadsden.....	41,121	110	2.7
Gilchrist.....	10,152	33	4.3
Glades.....	7,730	26	3.4
Gulf.....	11,560	27	2.3
Hamilton.....	11,115	93	8.4
Hardee.....	19,537	66	3.4
Hendry.....	26,584	100	3.8
Hernando.....	108,460	218	2.0
Highlands.....	71,198	170	2.4
Hillsborough.....	857,638	2,300	2.7
Holmes.....	15,823	15	0.9
Indian River.....	94,322	281	3.0
Jackson.....	41,516	71	1.7
Jefferson.....	11,313	18	1.6
Lafayette.....	5,734	7	1.2
Lake.....	158,660	332	2.1
Lee.....	352,329	714	2.0
Leon.....	197,807	527	2.7
Levy.....	26,754	84	3.1
Liberty.....	5,626	8	1.4
Madison.....	16,551	26	1.6

	<u>COUNTY</u> <u>POPULATION</u>	<u>AVERAGE</u> <u>DAILY</u> <u>POPULATION</u>	<u>INCARCERATION</u> <u>RATE</u>
Manatee.....	220,130	677	3.1
Marion.....	214,617	820	3.8
Martin.....	106,085	375	3.5
Monroe.....	79,721	396	3.7
Nassau.....	45,331	99	2.2
Okaloosa.....	147,565	284	1.9
Okeechobee.....	30,800	137	4.4
Orange.....	705,603	3,634	5.1
Osceola.....	115,358	269	2.3
Palm Beach.....	901,765	1,683	1.9
Pasco.....	293,621	413	1.4
Pinellas.....	866,795	1,575	1.8
Polk.....	416,489	1,297	3.1
Putnam.....	66,951	148	2.2
St. Johns.....	88,101	200	2.3
St. Lucie.....	158,527	602	3.8
Santa Rosa.....	85,014	158	1.9
Sarasota.....	287,929	436	1.5
Seminole.....	302,982	643	2.1
Sumter.....	32,524	120	3.7
Suwannee.....	27,376	35	1.3
Taylor.....	17,098	123	7.2
Union.....	10,486	10	0.9
Volusia.....	386,434	1,236	3.2
Wakulla.....	14,612	119	8.1
Walton.....	28,523	98	3.4
Washington.....	17,210	18	1.0
ALL COUNTIES.....	13,359,337	36,038	2.7

NOTE: County population figures are projections for FY90-91 by the Florida Consensus Estimating Conference (April 1991), Executive Office of the Governor, Office of Planning and Budgeting, Revenue and Economic Analysis Unit.

TABLE 3

COUNTY DETENTION FACILITIES
INMATE CAPACITY REPORT
JUNE - 1992

	<u>RATED</u> <u>CAPACITY</u>	<u>AVERAGE</u> <u>DAILY</u> <u>POPULATION</u>	<u>NUMBER</u> <u>OVER/UNDER</u> <u>CAPACITY</u>	<u>PERCENT</u> <u>OVER/UNDER</u> <u>CAPACITY</u>
Alachua County Detention Center.....	498	437	- 64	- 12.3
Alachua County Work Release.....	30	21	- 9	- 30.0
Baker County Detention Center.....	81	73	- 8	- 9.9
Bay County Jail (CCA).....	204	224	+ 20	+ 9.8
Bay County Jail Annex (CCA).....	257	236	- 21	- 8.2
Bradford County Jail.....	42	38	- 4	- 9.5
Brevard County Detention Center.....	732	696	- 36	- 4.9
Broward County Jail	1,439	1,400	- 39	- 2.7
Broward County Stockade.....	604	469	-135	- 22.3
Broward County Jail/North.....	1,569	1,283	-286	- 18.2
Calhoun County Jail.....	24	12	- 12	- 50.0
Charlotte County Jail.....	186	143	- 43	- 23.1
Citrus County Detention Center.....	77	92	+ 15	+ 19.5
Citrus County Temp.Dtn.Center.....	101	87	- 14	- 13.9
Clay County Jail.....	125	98	- 27	- 21.6
Collier County Jail.....	450	321	-129	- 28.7
Collier County Jail Center.....	172	34	-138	- 80.2
Columbia County Jail.....	159	157	- 2	- 1.3
Dade County Jail (Main).....	1,336	2,067	+731	+ 54.7
Dade County Jail Annex (Female).....	168	346	+178	+105.9
Dade County Stockade.....	978	1,393	+415	+ 42.4
Dade County North Dade Detention.....	160	213	+ 53	+ 33.1
Dade County Central Detention.....	234	293	+ 59	+ 25.2
Dade County West Detention.....	*1,004	936	- 68	- 6.8
Dade County Turner Guilford Knight Cntr.....	994	885	-109	- 11.0
DeSoto County Jail.....	106	75	- 31	- 29.3
Dixie County Jail.....	14	16	+ 2	+ 14.1
Duval County J.I. Montgomery Corr. Center....	814	414	-400	- 49.1
Duval County Corrections Div.	300	177	-123	- 41.0
Duval County Jail/Pre-Trial (Main).....	2,189	1,538	-651	- 29.7
Escambia County Jail (Main).....	808	680	-128	- 15.8
Escambia County Jail Annex.....	330	227	- 93	- 63.0
Escambia County Road Prison.....	142	120	- 22	- 15.5
Flagler County Jail.....	134	50	- 84	- 63.0
Franklin County Jail.....	64	45	- 19	- 30.0
Gadsden County Jail.....	154	110	- 44	- 28.6
Gilchrist County Jail.....	34	33	- 1	- 2.9
Glades County Detention Facility.....	32	26	- 6	- 18.7
Gulf County Jail.....	40	27	- 13	- 32.5
Hamilton County Jail.....	102	93	- 9	- 8.8
Hardee County Jail.....	100	66	- 34	- 34.0
Hendry County Jail	110	100	- 10	- 9.1

	<u>RATED</u> <u>CAPACITY</u>	<u>AVERAGE</u> <u>DAILY</u> <u>POPULATION</u>	<u>NUMBER</u> <u>OVER/UNDER</u> <u>CAPACITY</u>	<u>PERCENT</u> <u>OVER/UNDER</u> <u>CAPACITY</u>
Hernando County Jail (CCA).....	252	218	- 34	- 13.5
Highlands County Jail.....	174	170	- 4	- 2.3
Hillsborough County Jail - West.....	508	699	+191	+ 37.6
Hillsborough County Jail - Central.....	1,714	1,530	-184	- 10.7
Hillsborough County Jail - Work Release.....	54	71	+ 17	+ 31.5
Holmes County Jail.....	17	15	- 2	- 11.8
Indian River County Jail.....	413	281	-132	- 32.0
Jackson County Jail.....	80	71	- 9	- 11.3
Jefferson County Jail.....	18	18	0	0.0
Lafayette County Jail.....	16	7	- 9	- 56.3
Lake County Jail.....	**576	332	-244	- 42.4
Lee County Jail.....	425	372	- 53	- 12.5
Lee County Stockade - Annex.....	398	342	- 56	- 14.1
Leon County Jail.....	534	527	- 7	- 1.3
Levy County Jail.....	124	84	- 40	- 32.3
Liberty County Jail.....	15	8	- 7	- 46.7
Madison County Jail.....	23	26	+ 3	+ 13.0
Manatee County Work Release.....	152	147	- 5	- 3.3
Manatee County Jail.....	180	166	- 14	- 7.8
Manatee County Port Manatee Facility.....	384	364	- 20	- 5.2
Marion County Detention Facility.....	888	820	- 68	- 7.7
Martin County Detention Facility.....	456	375	- 81	- 17.8
Monroe County Jail.....	172	208	+ 36	+ 20.9
Monroe County Jail/Plantation Key.....	46	40	- 6	- 13.0
Monroe County/Marathan.....	59	48	- 11	- 18.6
Nassau County Jail.....	102	91	- 11	- 10.9
Okaloosa County Jail.....	***316	284	+ 36	+ 14.5
Okeechobee County Jail.....	168	137	- 31	- 18.5
Orange County Jail - Orlando Annex.....	216	303	+ 87	+ 40.3
Orange County 33rd Str.(Includes Genesis).....	1,592	2,027	+435	+ 27.3
Orange County Work Release.....	124	173	+ 49	+ 39.5
Orange County Central Booking.....	127	154	+ 27	+ 21.2
Orange County/Whitcomb Bldg.....	182	218	+ 36	+ 19.8
Orange County/Horizons.....	768	759	- 9	- 1.2
Osceola County Jail.....	356	269	- 87	- 24.4
Palm Beach County Adult Detention Center.....	838	927	+ 89	+ 10.6
Palm Beach County Detention Center Annex.....	104	85	- 19	- 18.3
Palm Beach County Stockade.....	718	606	-112	- 15.6
Palm Beach County Drug Farm.....	176	65	-111	- 63.1
Pasco County Jail New Port Richey Annex.....	163	122	- 41	- 25.1
Pasco County Jail/Land 'O Lakes.....	359	291	- 68	- 18.9
Pinellas County Maximum Security Center.....	1,014	895	-119	- 11.7
Pinellas County Female Security Center.....	96	78	- 18	- 18.7
Pinellas County Medium Security Center.....	552	444	-108	- 19.6
Pinellas County Minimum Housing ,.....	240	158	- 82	- 34.2
Polk County Jail.....	394	445	+ 51	+ 12.9
Polk County Jail Annex.....	696	852	+156	+ 22.4
Putnam County Jail.....	215	148	- 67	- 31.2

	<u>RATED</u> <u>CAPACITY</u>	<u>AVERAGE</u> <u>DAILY</u> <u>POPULATION</u>	<u>NUMBER</u> <u>OVER/UNDER</u> <u>CAPACITY</u>	<u>PERCENT</u> <u>OVER/UNDER</u> <u>CAPACITY</u>
St. Johns County Detention Center.....	318	200	-118	- 37.1
St. Lucie County Jail - 2nd Street.....	98	30	- 68	- 69.4
St. Lucie County Jail Corr. Ctr.....	664	572	- 92	- 13.9
Santa Rosa County Jail.....	176	158	- 18	- 10.2
Sarasota County Jail.....	717	436	-281	- 39.2
Seminole County Correctional Facility.....	812	643	-169	- 20.8
Sumter County Jail.....	123	120	- 3	- 2.4
Suwannee County Jail.....	48	35	- 13	- 27.1
Taylor County Jail.....	188	123	- 65	- 34.6
Union County Jail.....	26	10	- 16	- 61.5
Volusia County Jail Correctional Facility....	595	435	-160	- 26.9
Volusia County Branch Jail.....	899	801	- 98	- 10.9
Wakulla County Jail.....	129	119	- 10	- 7.7
Walton County Jail.....	101	98	- 3	- 3.0
Washington County Jail.....	26	18	- 8	- 30.8
TOTAL:	39,211	36,038	-3,173	- 8.1

* Revised Capacity

** New Jail Opened, Effective 6/92

***Increase in Cap, Effective 6/92

OFFICE OF THE INSPECTOR GENERAL

2601 Blairstone Road • Tallahassee, Florida 32399-2500 • Phone: 904/488-9265

Lawton Chiles
Governor

Harry K. Singletary, Jr.
Secretary

140603



FLORIDA
DEPARTMENT OF CORRECTIONS

TABLE 4
COUNTY DETENTION FACILITIES
PRETRIAL INMATE REPORT
JUNE - 1992

	AVERAGE DAILY <u>POPULATION</u>	NUMBER FELONY <u>PRETRIAL</u>	NUMBER MISDEMEANOR <u>PRETRIAL</u>	TOTAL PERCENT <u>PRETRIAL</u>
Alachua County Detention Center.....	437	267	59	74.6
Alachua County Work Release.....	21	7	4	52.4
Baker County Detention Center.....	73	18	3	28.8
Bay County Jail (CCA).....	224	146	6	67.9
Bay County Jail Annex (CCA).....	236	111	7	50.9
Bradford County Jail.....	38	28	3	81.6
Brevard County Detention Center.....	696	371	84	65.4
Broward County Jail	1,400	933	77	72.1
Broward County Stockade.....	469	77	114	40.7
Broward County Jail/North.....	1,283	810	28	65.3
Calhoun County Jail.....	12	1	0	8.3
Charlotte County Jail.....	143	450	13	44.0
Citrus County Detention Center.....	92	49	7	60.9
Citrus County Temp.Dtn. Center.....	87	9	15	27.6
Clay County Jail.....	98	49	24	74.5
Collier County Jail.....	321	159	60	68.2
Collier County Jail Center.....	34	7	9	47.1
Columbia County Jail.....	157	1	0	0.6
Dade County Jail (Main).....	2,067	1,229	181	68.2
Dade County Jail Annex (Female).....	346	201	15	62.4
Dade County Stockade.....	1,393	1,039	0	74.6
Dade County North Dade Detention.....	213	0	91	42.7
Dade County Central Detention.....	293	250	10	88.7
Dade County West Detention.....	936	747	0	79.8
Dade County Turner Guilford Knight Cntr.....	885	461	0	52.1
DeSoto County Jail.....	75	47	5	69.3
Dixie County Jail.....	16	13	1	87.5
Duval County J.I. Montgomery Corr. Center....	414	0	0	0.0
Duval County Corrections Division (Jr.Jail)..	177	0	0	0.0
Duval County Jail/Pre-Trial (Main).....	1,538	807	350	75.2
Escambia County Jail (Main).....	680	387	31	61.5
Escambia County Jail Annex.....	237	57	45	43.0
Escambia County Road Prison.....	120	17	1	15.0
Flagler County Jail.....	50	18	3	42.0
Franklin County Jail.....	45	12	0	26.7
Gadsden County Jail.....	110	67	12	71.8
Gilchrist County Jail.....	33	10	2	36.4
Glades County Detention Facility.....	26	14	3	65.4
Gulf County Jail.....	27	21	0	77.8
Hamilton County Jail.....	93	23	9	34.4
Hardee County Jail.....	66	29	6	53.0
Hendry County Jail	100	57	10	67.0

	<u>AVERAGE</u> <u>DAILY</u> <u>POPULATION</u>	<u>NUMBER</u> <u>FELONY</u> <u>PRETRIAL</u>	<u>NUMBER</u> <u>MISDEMEANOR</u> <u>PRETRIAL</u>	<u>TOTAL</u> <u>PERCENT</u> <u>PRETRIAL</u>
Hernando County Jail (CCA).....	218	71	7	35.7
Highlands County Jail.....	170	51	37	51.8
Hillsborough County Jail - West.....	699	371	14	55.0
Hillsborough County Jail - Central.....	1,530	684	186	56.9
Hillsborough County Jail - Work Release.....	71	0	0	0.0
Holmes County Jail.....	15	4	2	40.0
Indian River County Jail.....	281	83	22	37.4
Jackson County Jail.....	01	23	5	39.4
Jefferson County Jail.....	18	9	2	61.1
Lafayette County Jail.....	7	0	0	0.0
Lake County Jail.....	332	141	0	42.5
Lee County Jail.....	372	211	44	68.5
Lee County Stockade - Annex.....	342	100	25	36.5
Leon County Jail.....	527	314	59	70.8
Levy County Jail.....	84	5	8	15.5
Liberty County Jail.....	8	5	0	62.5
Madison County Jail.....	26	10	2	46.1
Manatee County Work Release.....	147	0	0	0.0
Manatee County Jail.....	166	93	7	60.2
Manatee County Port Manatee Facility.....	364	243	27	74.2
Marion County Detention Facility.....	820	254	54	37.6
Martin County Detention Facility.....	375	181	21	53.9
Monroe County Jail.....	208	147	17	78.8
Monroe County Jail/Plantation Key.....	40	24	8	80.0
Monroe County Jail/Marathan.....	48	28	12	83.3
Nassau County Jail.....	99	51	29	80.8
Okaloosa County Jail.....	284	177	34	74.3
Okeechobee County Jail.....	137	40	23	45.0
Orange County Jail - Orlando Annex.....	303	79	57	44.9
Orange County/33rd Street.....	2,027	630	156	38.8
Orange County Work Release.....	173	0	0	0.0
Orange County Central Booking.....	154	44	59	66.9
Orange County/Whitcomb Bldg.....	218	61	32	42.7
Orange County/Horizons.....	759	232	48	36.9
Osceola County Jail.....	269	104	46	55.8
Palm Beach County Adult Detention Center.....	927	582	6	63.4
Palm Beach County Detention Center Annex.....	85	36	7	50.6
Palm Beach County Stockade.....	606	176	137	51.7
Palm Beach County Drug Farm.....	65	0	0	0.0
Pasco County Jail New Port Richey Annex.....	122	23	33	45.9
Pasco County Jail/Land 'O Lakes.....	291	178	21	68.4
Pinellas County Maximum Security Center.....	895	587	75	74.0
Pinellas County Female Security Center.....	78	30	8	48.7
Pinellas County Medium Security Center.....	444	276	57	75.0
Pinellas County Minimum Housing.....	158	38	9	29.7
Polk County Jail.....	445	106	42	33.3
Polk County Jail Annex.....	852	348	79	50.1
Putnam County Jail.....	148	71	9	54.1

	<u>AVERAGE</u> <u>DAILY</u> <u>POPULATION</u>	<u>NUMBER</u> <u>FELONY</u> <u>PRETRIAL</u>	<u>NUMBER</u> <u>MISDEMEANOR</u> <u>PRETRIAL</u>	<u>TOTAL</u> <u>PERCENT</u> <u>PRETRIAL</u>
St. Johns County Detention Center.....	200	115	17	66.0
St. Lucie County Jail - 2nd Street.....	30	30	0	100.0
St. Lucie County Jail Corr. Ctr.....	572	308	73	66.6
Santa Rosa County Jail.....	158	60	13	46.2
Sarasota County Jail.....	436	151	49	45.9
Seminole County Correctional Facility.....	643	257	60	49.3
Sumter County Jail.....	120	59	9	56.7
Suwannee County Jail.....	35	21	2	65.7
Taylor County Jail.....	123	58	12	56.9
Union County Jail.....	10	6	1	70.0
Volusia County Jail Correctional Facility....	435	43	136	41.1
Volusia County Branch Jail.....	801	546	4	68.7
Wakulla County Jail.....	119	12	1	10.9
Walton County Jail.....	98	24	8	32.7
Washington County Jail.....	18	8	1	50.0
TOTAL:	36,038	17,202	3,201	56.5

INCARCERATION RATES PER 1,000
JUNE - 1992

0.1 TO 0.9 (3 = 4.48%)

Clay, Holmes, Union

1.0 TO 1.9 (20 = 29.85%)

Bradford, Brevard, Calhoun, Charlotte, Citrus, Dixie, Flagler,
Jackson, Jefferson, Lafayette, Liberty, Madison, Okaloosa, Palm
Beach, Pasco, Pinellas, Santa Rosa, Sarasota, Suwannee, Washington

2.0 TO 2.9 (16 = 23.88%)

Alachua, Baker, Collier, Gadsden, Gulf, Hernando, Highlands,
Hillsborough, Lake, Lee, Leon, Nassau, Osceola, Putnam, Seminole

3.0 TO 3.9 (31 = 31.34%)

Bay, Columbia, Dade, DeSoto Duval, Escambia, Glades, Hardee,
Hendry, Indian River, Levy, Manatee, Marion, Martin, Monroe, Polk,
St. Johns, St. Lucie, Sumter, Volusia, Walton

4.0 AND OVER (7 = 10.45%)

Franklin, Gilchrist, Hamilton, Okeechobee, Orange, Taylor, Wakulla

FIGURE 1

INCARCERATION RATES PER 1,000
COUNTY POPULATION
JUNE - 1992

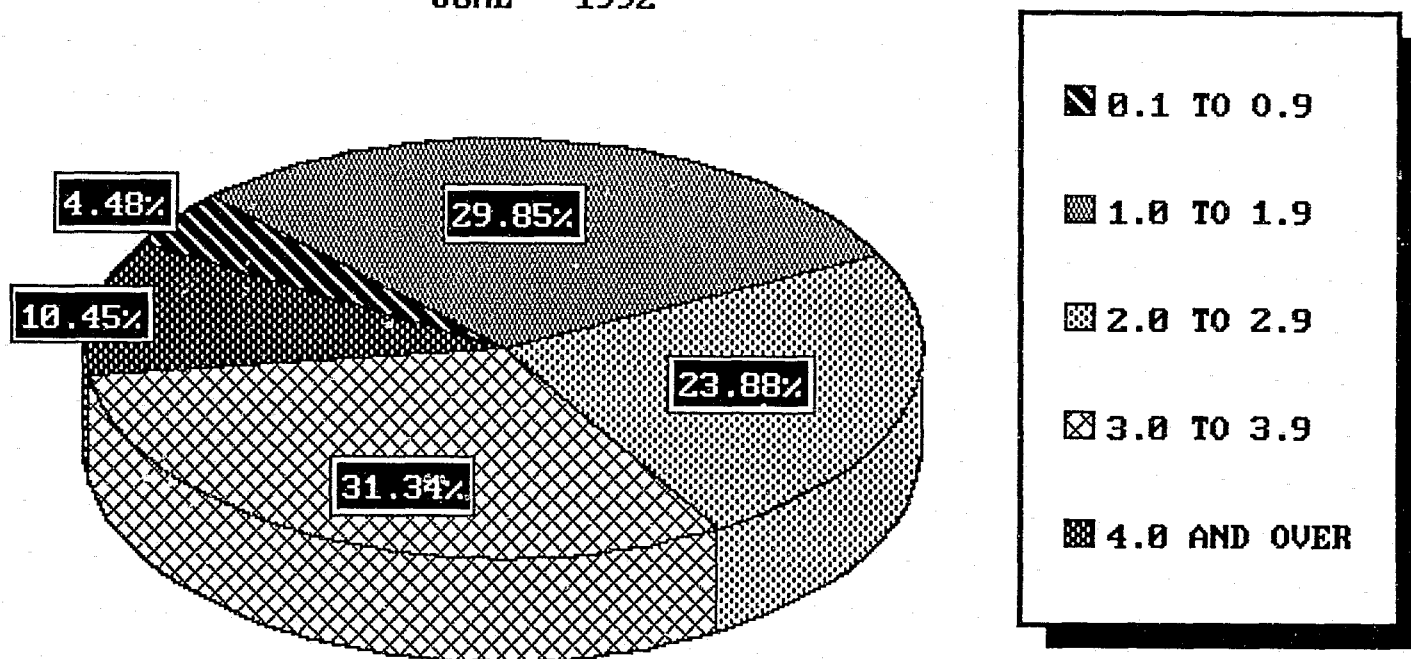
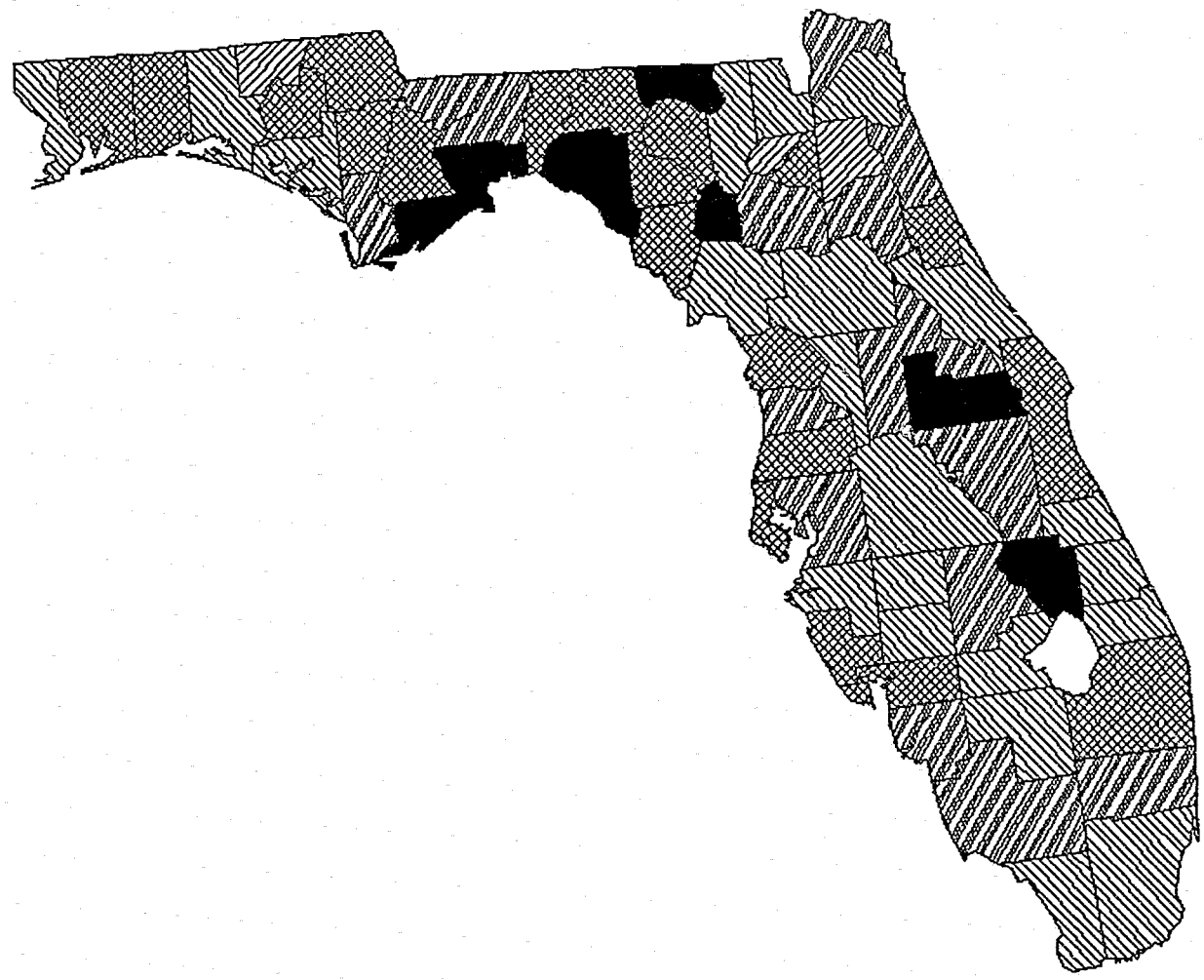


FIGURE 1a
INCARCERATION RATES PER 1,000
JUNE - 1992



INCARCERATION RATES

- ▨ 0.1 to 0.9
- ▩ 1.0 to 1.9
- ▧ 2.0 to 2.9
- ▦ 3.0 to 3.9
- 4.0 and Over

PERCENT ADP VS DC RATED CAPACITY
JUNE - 1992

ADP AT OR BELOW CAPACITY (60 = 89.55%)

Alachua, Baker, Bay, Bradford, Brevard, Broward, Calhoun,
Charlotte, Clay, Collier, Columbia, DeSoto, Dixie, Duval, Escambia,
Flagler, Franklin, Gadsden, Gilchrist, Glades, Gulf, Hamilton,
Hardee, Hendry, Hernando, Highlands, Holmes, Indian River, Jackson,
Jefferson, Lafayette, Lake, Lee, Leon, Levy, Liberty, Manatee,
Marion, Martin, Nassau, Okaloosa, Okeechobee, Osceola, Palm Beach,
Pasco, Pinellas, Putnam, St. Johns, St. Lucie, Santa Rosa,
Sarasota, Seminole, Sumter, Suwannee, Taylor, Union, Volusia,
Wakulla, Walton, Washington

ADP 1 - 25% OVER CAPACITY (7 = 10.45%)

Citrus, Dade, Hillsborough, Madison, Monroe, Orange, Polk

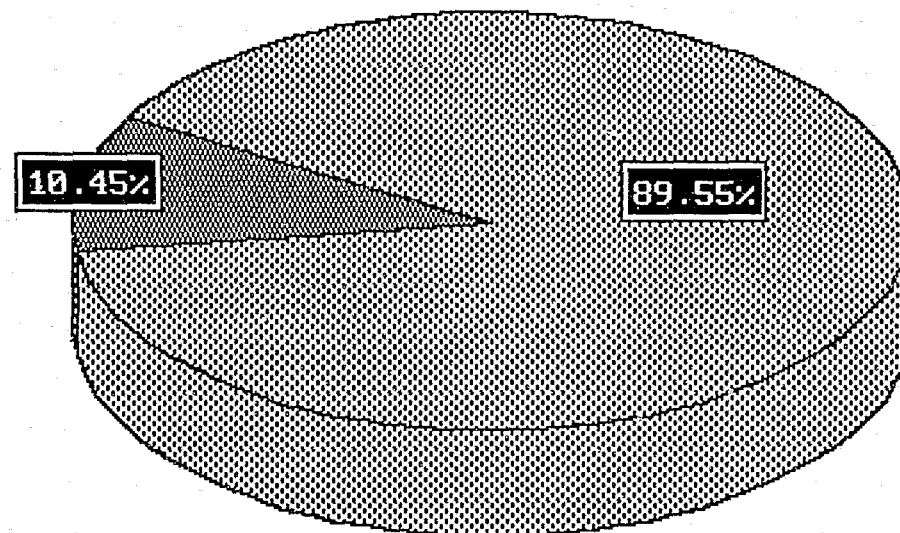
ADP 26 - 50% OVER CAPACITY (0 = 0.00%)

ADP ABOVE 50% OVER CAPACITY (0 = 0.00%)

FIGURE 2

PERCENT ADP VS DC RATED CAPACITY

JUNE - 1992



NOT OVER
CAPACITY

1-25% OVER
CAPACITY

26-50% OVER
CAPACITY

50% OVER
CAPACITY

COUNTY PRETRIAL PERCENTAGES
JUNE - 1992

0 - 25% PRETRIAL (5 = 7.46%)

Calhoun, Columbia, Lafayette, Levy, Wakulla

26 - 50% PRETRIAL (23 = 34.33%)

Baker, Charlotte, Citrus, Escambia, Flagler, Franklin, Gilchrist,
Hamilton, Hernando, Holmes, Indian River, Jackson, Lake, Madison,
Marion, Orange, Polk, Santa Rosa, Sarasota, Seminole, Sumter,
Walton, Washington

51 - 75% PRETRIAL (33 = 49.25%)

Alachua, Bay, Brevard, Broward, Clay, Collier, Dade, Desoto, Duval,
Gadsden, Glades, Hardee, Hendry, Highlands, Hillsborough,
Jefferson, Lee, Leon, Liberty, Manatee, Martin, Okaloosa,
Okeechobee, Osceola, Palm Beach, Pasco, Pinellas, Putnam, St.
Johns, Suwannee, Taylor, Union, Volusia

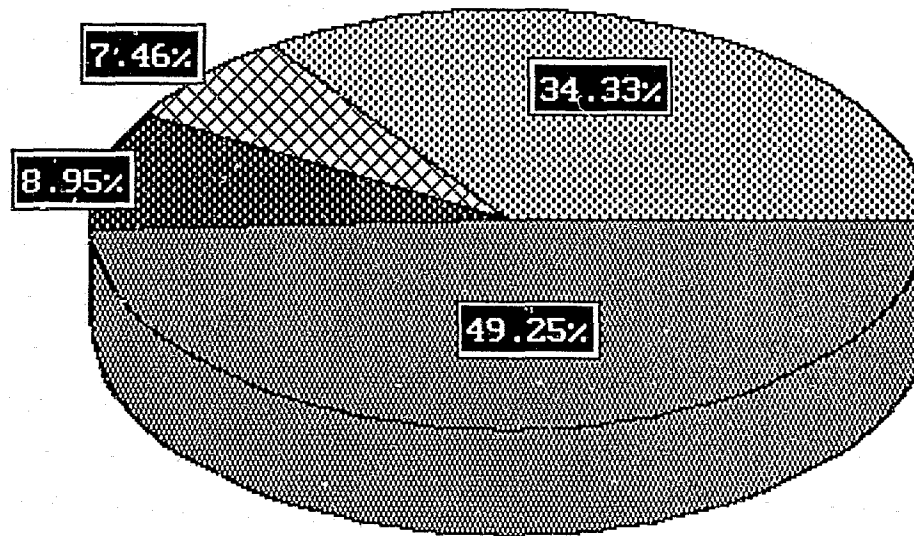
76% AND ABOVE PRETRIAL (6 = 8.96%)

Braford, Dixie, Gulf, Monroe, Nassau, St. Lucie

FIGURE 3

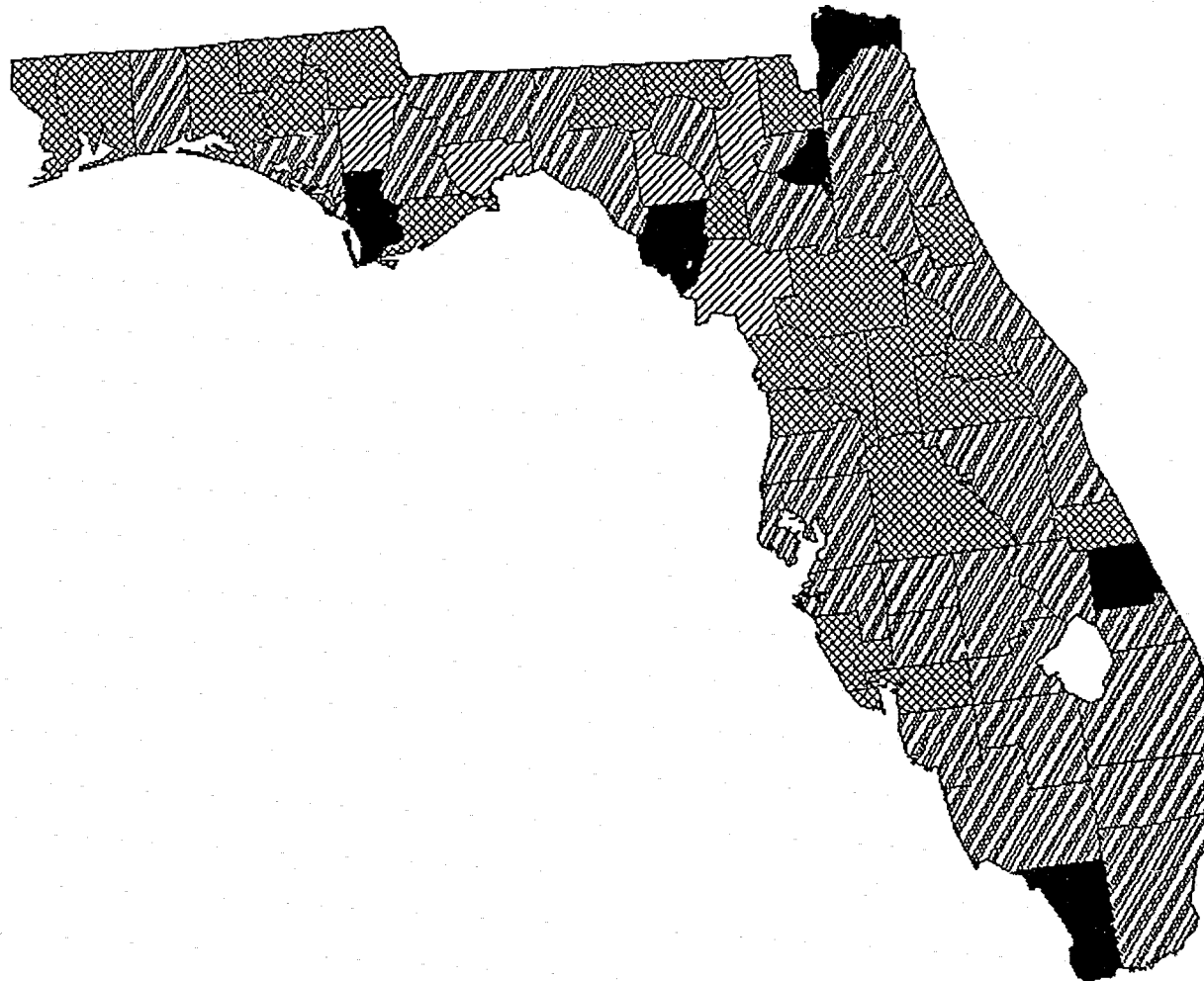
COUNTY PRETRIAL PERCENTAGES

JUNE - 1992







- ☒ 0-25%
PRETRIAL
- ☒ 26-50%
PRETRIAL
- ☒ 51-75%
PRETRIAL
- ☒ 76% AND ABOVE

FIGURE 3a
COUNTY PRETRIAL PERCENTAGES
JUNE - 1992



PRETRIAL PERCENTAGES

-  0-25% Pre-Trial
-  26-50% Pre-Trial
-  51-75% Pre-Trial
-  76% and Above