

137339



A COMPARISON OF FIELD SERVICES IN KANSAS  
COURT SERVICES, COMMUNITY CORRECTIONS AND PAROLE

PRESENTED TO THE CRIMINAL JUSTICE COORDINATING COUNCIL

OCTOBER 19, 1990

REVISED OCTOBER 25, 1990, FOR PRESENTATION TO  
SPECIAL COMMITTEE ON JUDICIARY

PREPARED BY THE KANSAS DEPARTMENT OF CORRECTIONS,  
DIVISION OF COMMUNITY AND FIELD SERVICES MANAGEMENT

137339

U.S. Department of Justice  
National Institute of Justice

This document has been reproduced exactly as received from the person or organization originating it. Points of view or opinions stated in this document are those of the authors and do not necessarily represent the official position or policies of the National Institute of Justice.

Permission to reproduce this copyrighted material has been granted by

Kansas Department of  
Corrections

to the National Criminal Justice Reference Service (NCJRS).

Further reproduction outside of the NCJRS system requires permission of the copyright owner.

## GENERAL STATEMENT

The information contained in this document was gathered from Kansas Department of Corrections records for parole services as well as records and reports submitted to the Kansas Department of Corrections by local community corrections programs. The information on court services was gathered from testimony and handouts presented by Mr. Paul Shelby of the Office of the Judicial Administrator to the Criminal Justice Coordinating Council. Mr. Shelby also gathered the information on county contributions to court services.

INDEX

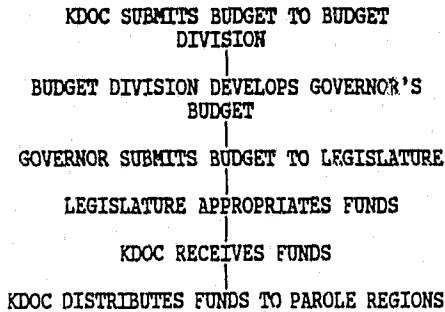
<u>Topic</u>	<u>Pages</u>
General Statement. . . . .	i
Costs. . . . .	1
Administration . . . . .	2
Staff-Programs-Caseload. . . . .	3 - 16
Divisions and Flow of Administration . . . . .	17 - 37
Public Contact . . . . .	38 - 40

COMMUNITY SUPERVISION PROGRAMS

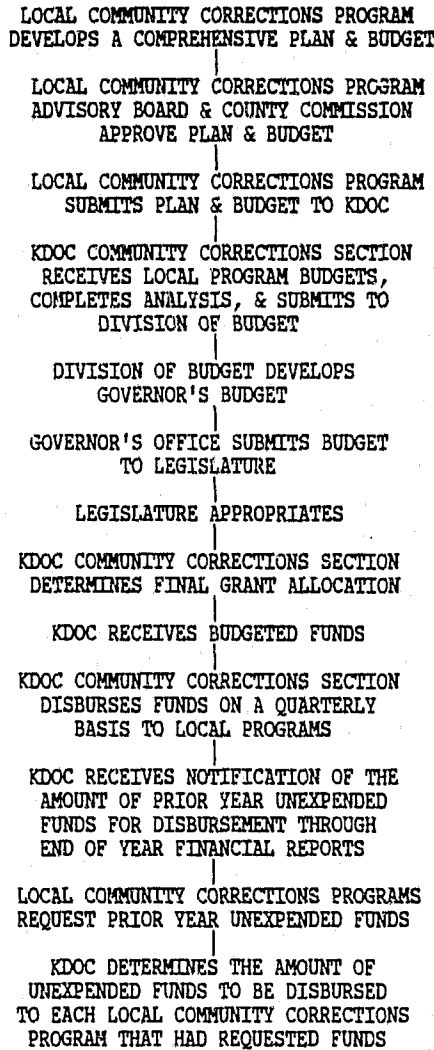
1. Costs

a. Money flow.

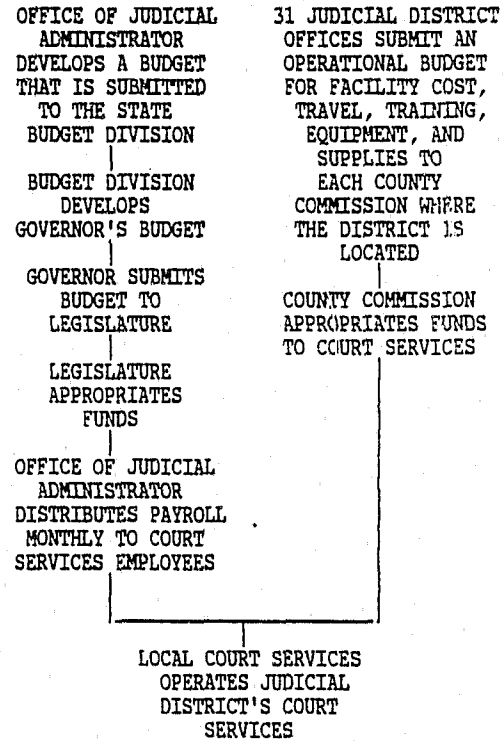
PAROLE



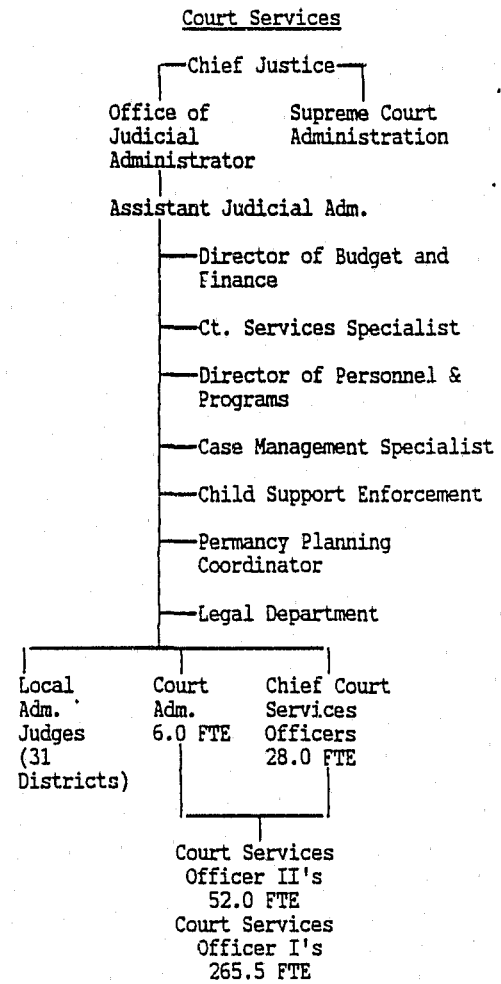
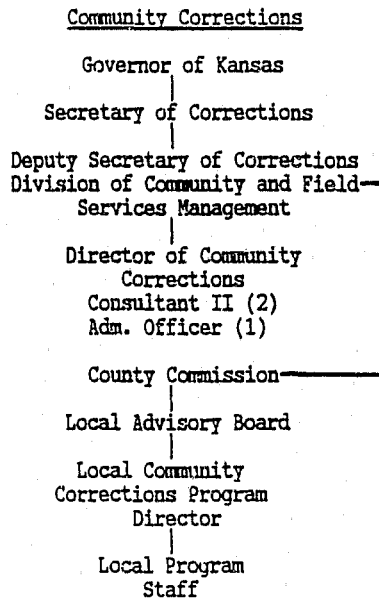
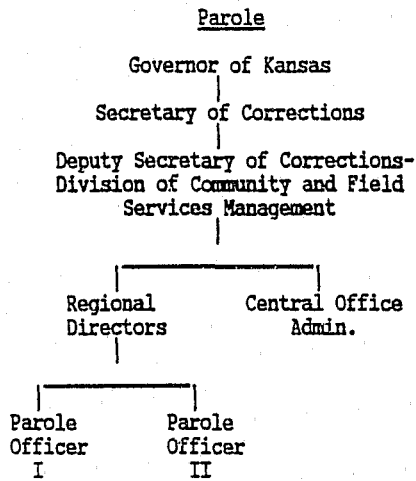
COMMUNITY CORRECTIONS



COURT SERVICES



b. Administration (Path of Authority/Decisions)



c. Staff-Programs-Caseload

Parole

Community Corrections

Court Services

Summary Table

Community Corrections Staffing Pattern

Staffing Pattern:

1 Deputy Secretary  
 3 Correctional Manager I  
 5 Parole Supervisors  
 15 Parole Officer II  
 63 Parole Officer I  
 5 Secretary I  
 1 Office Assistant III  
 11.5 Office Assistant II  
 104.5 Total FTE

Staffing Pattern:

20 Directors of Community Corrections  
 1 Director of Residential Services  
 5 Director/Intensive Supervision Officers  
 9 Adult Intensive Supervision Supervisors  
 1 Assistant Supervisor  
 3 Adult Residential Supervisors  
 1 Administrative Coordinator Supervisor  
 1 Intake/Evaluation Coordinator Supervisor  
 1 Community Services Coordinator Supervisor  
 1 Community Service Work Supervisor  
 93.50 Adult Intensive Supervision Officers  
 9 Residential Case Managers  
 3 Juvenile Intensive Supervision Officers  
 3 Juvenile Social Workers  
 3 Surveillance Officers  
 6 Resource Developers  
 3.5 Adult Diversion Staff  
 3 Victim Witness Coordinators  
 3 Substance Abuse Counselors  
 2 Community Corrections Program Coordinators  
 1 Residential Program Coordinator  
 1 Work Coordinator  
 3 Pre-sentence Investigators  
 5 House Arrest Officers  
 42.5 Clerical  
 224.5 Total FTE

Staffing Pattern:

Court Services Administrative Officers: 6.0 FTE  
 Court Services Officer III's: 28.0 FTE  
 Court Services Officer II's: 52.0 FTE  
 Court Services Officer I's: 265.5 FTE  
 345.5 FTE

Caseload:

Formula for determining caseload:

Number of clients under supervision divided by combined number of parole officer I's and parole officer II's.

Statistics as of 10-8-90:

4,994 cases under supervision  
 78 parole officers  
 64 average caseload

Caseload:

Programs are funded for caseloads of 25. Some programs actually have smaller caseloads.

Caseload:

FY 1989 court services handled 23,378 probation cases:

- 8,177 were felony cases
- 16,838 were adult cases
- 6,540 were juvenile cases

Adult cases include: felony misdemeanor, misdemeanor parole and traffic

Juvenile cases include: children in need of care and juvenile offenders

The statewide caseload average is 73.63 per officer. The average was computed by dividing the total number of cases by the total number of court services officer II's plus court services officer I's. Court services officer III's were not included in computing the average as they are supervisory for the most part.

Parole

Percentage of Total Offender Population Supervised in the Community:

FY 1990 16%  
FY 1991 16%

Percentage of Total State Dollars:

FY 1990 21%  
FY 1991 19%

Services:

Supervision  
Drug Testing  
Mental Health  
Substance Abuse  
Halfway Houses  
Pre-Revocation Diversion  
Crisis Intervention  
AA/NA  
Family Guidance  
Volunteer  
Intern  
Investigations

Community Corrections

Percentage of Total Offender Population Supervised in the Community:

FY 1990 7%  
FY 1991 9%

Percentage of Total State Dollars:

FY 1990 35%  
FY 1991 41%

Services:

See individual program summaries on following pages.

Court Services

Percentage of Total Offender Population Supervised in the Community:

FY 1990 77%  
FY 1991 75%

Percentage of Total State Dollars:

FY 1990 44%  
FY 1991 40%

Services:

Court Services Officers provide a variety of services for probationers. Some of these are:

Pre-sentence Investigation  
Individual Counseling  
Job Development  
Restitution/Compensation Program  
Parenting Classes  
Supervised Home Release  
Intensive Supervision  
Urine Testing

Community Resources:

Alcoholics Anonymous  
Counseling at Mental Health Centers  
Inpatient treatment at State Mental Hospitals  
Drug/Alcohol treatment at contract facilities  
State Alcohol Safety Projects  
Community Service Work  
Diversion Programs (often with supervision by CSO)  
Job Service Centers or other vocational or educational training programs  
Shoplifter and Checkwriter Programs  
Victim Assistance Program

Some of those services are provided by court services officers themselves, and others are obtained by court services officers through referral to community resources or agencies.

B/L/M

Staffing:

1 Director  
0 Supervisors  
3 Intensive Supervision Officers  
1 Clerical - 4 Professional Staff  
TOTAL: 5 Full Time Employees

Caseload:

Adult Intensive Supervision Program Average  
Daily Population 44 for 3 Intensive  
Supervision Officers  
Adult Jail Work Release Average Daily  
Population 13 (Adult Work Release handled by  
Adult Intensive Supervision Officer's)  
Juvenile Intensive Supervision Program  
Average Daily Population 1 (Juvenile  
caseload handled by Adult Intensive  
Supervision Officer)

SERVICES:

Adult Intensive Supervision Program  
Adult Jail Work Release (contracted)  
Community Service Work  
Juvenile Intensive Supervision Program  
Electronic Monitoring Devices (contracted)  
Evaluations (contracted)  
Substance Abuse Testing

DOUGLAS

Staffing:

1 Director  
1 Supervisor - 4 Staff  
2 Intensive Supervision Officers  
2 Surveillance Officers  
1 Resource Developer  
2 Clerical - 10 Professional Staff  
TOTAL: 9 Full Time Employees

Caseload:

Adult Intensive Supervision Program Average  
Daily Population 75 for 4.5 officers  
Juvenile Intensive Supervision Program  
Average Daily Population 7 (Juvenile  
Intensive Supervision Program caseload  
handled by Intensive Supervision Program  
Supervisor)

SERVICES:

Adult Intensive Supervision Program  
Juvenile Intensive Supervision Program  
Surveillance  
Electronic Monitoring Devices (contracted)  
Evaluations (contracted)  
Education/Employment Program  
Community Service Work Program  
Intensive Supervision Program Drug Treatment  
Track (contracted)  
Mental Health Counseling (contracted)

LEAVENWORTH

Staffing:

1 Director  
1 Supervisor - 2 Staff  
2 Intensive Supervision Officers  
1 Education Employment Specialist



1 Adult Diversion Specialist  
1 Check Diversion Specialist  
2 Clerical - 7 Professional Staff  
TOTAL: 9 Full Time Employees

Caseload:

Adult Intensive Supervision Program Average  
Daily Population 36 for 3 staff  
Juvenile Intensive Supervision Program  
Average Daily Population 10 (Juvenile  
caseload handled by Adult Intensive  
Supervision Officer)  
2 Adult Diversion for 319 offenders

Services:

Adult Intensive Supervision Program  
Adult Diversion  
Juvenile Intensive Supervision Program  
Victim Services  
Second Mile Home (contracted)  
Family Training Program (contracted)  
Evaluations (contracted)  
Rape Crisis Organization (contracted)  
Family Alliance (contracted)  
Community Service Work  
Substance Abuse Testing  
Volunteers/Interim

MONTGOMERY

Staffing:

1 Director  
0 Supervisors  
3 Intensive Supervision Officers  
Community Service Work Supervisor  
Victim Services Coordinator  
0 Clerical - 5 Professional Staff (each  
Intensive Supervision Officer handles  
clerical responsibility)  
TOTAL: 6 Full Time Employees

Caseload:

Adult Intensive Supervision Program Average  
Daily Population 34 for 2.5 Intensive  
Supervision Officers  
Juvenile Intensive Supervision Program  
Average Daily Population 11 (Juvenile  
caseload handled by Adult Intensive  
Supervision Officer)

Services:

Adult Intensive Supervision Program  
Juvenile Intensive Supervision Program  
Supervised Community Service Work Program  
Victim Witness Service Program  
Adult Intensive Supervision Program for  
Chautauqua County (contracted)

RILEY

Staffing:

1 Director  
1 Supervisor (.90 8th Judicial District  
Supervisor .10 Riley Community Corrections)  
2.5 Adult Intensive Supervision Officers  
1 Victim Witness Coordinator  
.5 Diversion  
1 Clerical - 5 Professional Staff  
TOTAL: 7 Full Time Employees

Caseload:

Adult Intensive Supervision Program Average  
Daily Population 62 for 2.5 Intensive  
Supervision Officers

Juvenile Intensive Supervision Program  
Average Daily Population 4 (Juvenile  
caseload handled by Adult Intensive  
Supervision Officer)

1 Diversion monitor for 136 offenders

Services:

Adult Intensive Supervision Program

Adult/Juvenile Diversion

Juvenile Intensive Supervision Program

Victim Witness

Electronic Monitoring Devices (contracted)

Evaluations (contracted)

Prevention

Adult Intensive Supervision Program for 22nd

Judicial District (contracted)

Adult Intensive Supervision Program for 8th

Judicial District (contracted)

Substance Abuse Testing

Community Service Work

Adult Work Release (contracted)

SALTIER

Staffing:

1 Director

1 Supervisor - 3 Staff (One Intensive  
Supervision Officer is the supervisor and  
carries a caseload)

4 Intensive Supervision Officers

Victim Witness Coordinator

Diversion Monitor

1.5 Clerical - 5 Professional Staff

TOTAL: 8 Full Time Employees

Caseload:

Adult Intensive Supervision Program Average  
Daily Population 72 for 4 officers

Juvenile Intensive Supervision Program  
Average Daily Population 8 (Juvenile  
caseload handled by Adult Intensive  
Supervision Officer)

1 Diversion monitor for 84 offenders

Services:

Adult Intensive Supervision Program

Adult Diversion Services

Juvenile Intensive Supervision Program

Juvenile Diversion Services

Victim Witness Services

Surveillance (contracted)

Adult Intensive Supervision Program for  
Ottawa County (contracted)

Adult Intensive Supervision Program for 12th  
Judicial District (contracted)

Volunteer/Interim

Community Services

Substance Abuse Testing

SEDGWICK

Staffing:

1 Director

1 Supervisor (Administrative Coordinator)

4 Staff  
1 Supervisor (Intake/Evaluation Coordinator)  
4 Staff  
1 Field Services Supervisor - 13 Staff  
1 Residential Supervisor - 36 Staff  
11 Adult Intensive Supervision Officers  
6 Residential Case Managers  
2 Juvenile Intensive Supervision Officers  
3 Clerical Intensive Supervision Program -  
21 Staff  
3 Clerical Residential - 34 Staff  
TOTAL: 64 Full Time Employees

Caseload:

Adult Intensive Supervision Program Average  
Daily Population 301 for 11 Intensive  
Supervision Officers  
Home Surveillance 18 to 1 Intensive  
Supervision Officer  
Adult Residential Average Daily Population  
92 for 6 Counselors  
Juvenile Intensive Supervision Program  
Average Daily Population 20 for 2 Intensive  
Supervision Officers

Services:

Adult Intensive Supervision Program  
Adult Residential  
Juvenile Intensive Supervision Program  
Home Surveillance  
On site Drug Testing  
Employment/Vocational/Educational Services  
Substance Abuse Evaluations  
3/4 Residential Program  
Residential Inpatient Treatment (contracted)  
Community Service Work  
Life Skills Training  
Predispositional assessments  
Mentally Ill/Mentally Retarded Residential  
Volunteer Program

SHAWNEE

Staffing:

1 Director of Community Corrections  
1 Adult Intensive Supervision Program  
Supervisor -9 Staff  
1 Adult Residential Manager - 17 Staff  
\* 6 Intensive Supervision Officers (one  
Intensive Supervision Officer assigned to  
2nd Judicial District)  
Community Corrections Program Coordinator  
Residential Program Coordinator  
Residential Counselor  
Work Coordinator  
Surveillance Officer  
3 Social Workers (Juveniles)  
\* 2 Clerical Adult Intensive Supervision  
Program -9 Staff (one clerical assigned to  
2nd Judicial District)  
1 Clerical Adult Residential - 16 Staff  
TOTAL: 32 Full Time Employees

Caseload:

Adult Intensive Supervision Program Average  
Daily Population 155 for 5 Intensive  
Supervision Officers  
Adult Residential Average Daily Population  
29 for 1 Counselor

Juvenile Intensive Supervision Officer  
Average Daily Population 14 for 3 Social  
Workers

Services:

Adult Intensive Supervision Program  
Adult Residential  
Juvenile Intensive Supervision Program  
Surveillance  
Volunteers/Interim  
Evaluations (contracted)  
Halfway House Women (contracted)  
Provides Adult Intensive Supervision Program  
for the 2nd Judicial District (contracted)  
Substance Abuse Testing  
Community Service Work

WYANDOTTE

Staffing:

1 Director  
1 Business Manager  
1 Intensive Supervision Program Supervisor  
- 26 Staff  
1 Assistant Supervisor - 21 Staff  
\* 17 Intensive Supervision Officers (1  
Intensive Supervision Officer for House  
Arrest)  
4 Surveillance Officers House Arrest  
3 Pre-Sentence Investigators  
1 Program Developer  
1 Clerical Administration/2 Staff  
1 Clerical Intensive Supervision Program -  
22 Staff  
1 Clerical House Arrest - 5 Staff  
TOTAL: 31 Full Time Employees

Caseload:

Adult Intensive Supervision Program Average  
Daily Population 375 for 16 Intensive  
Supervision Officers  
House Arrest Average Daily Population 18 for  
1 Intensive Supervision Officer  
Presentence Investigations 34 for 3  
Presentence Investigation writers

Services:

Adult Intensive Supervision Program  
House Arrest/Electronic Surveillance  
Pre-Sentence Investigation Reports  
Substance Abuse Testing (contracted)  
Outpatient Substance Abuse Treatment  
(contracted)  
Specialized Substance Abuse Counseling  
Job Readiness Training  
Community Service Work

JOHNSON

Staffing:

1 Director  
1 Director of Residential Services  
2 Adult Intensive Supervision Program  
Supervisors -17 Intensive Supervision  
Officers  
1 Community Services Coordinator Supervisor  
(support services) - 6 Staff  
1 Case Monitor  
2 Resource Developers

1 Adult Residential Supervisor - 16 Staff  
2 Substance Abuse Counselors - Day Reporting  
Center  
1 House Arrest Officer  
1 Clerical Administrative - 2 Staff  
1 Clerical Support Services - 6 Staff  
2 Clerical - Intensive Supervision - 18  
Staff  
1 Clerical Residential - 12 Staff  
TOTAL: 48 Full Time Employees

Caseload:

Adult Intensive Supervision Program Average  
Daily Population 436 for 17 Intensive  
Supervision Officers  
Adult Residential Average Daily Population  
33 for 2 Counselors  
Juvenile Residential (contracted)  
Electronic Monitoring Devices Average Daily  
Population 13 for 1 officer

Services:

Adult Intensive Supervision Program  
Adult Residential  
Juvenile Residential (contracted)  
Electronic Monitoring Devices (contracted)  
Substance Abuse Testing  
Substance Abuse Counseling  
Community Service Work  
Employment/Vocational/Educational Program  
Day Reporting Center  
Volunteer Sponsors  
Life Skill Training  
In-House AA/NA or Substance Abuse Class  
Evaluations (contracted)

ATCHISON

Staffing:

1 Director/Intensive Supervision Officer  
1 Clerical  
TOTAL: 2 Full Time Employees

Services:

Adult Intensive Supervision Program  
Evaluations (contracted)  
Community Service Work  
Substance Abuse Testing  
Victim Witness  
Juvenile Intensive Supervision Program

2ND JUDICIAL DISTRICT (CONTRACTING WITH  
SHAWNEE)

Staffing:

1 Intensive Supervision Officer  
1 Clerical

Caseload:

Adult Intensive Supervision Program Average  
Daily Population 13 for 1 Intensive  
Supervision Officer

Services:

Adult Intensive Supervision Program  
Community Service Work  
Substance Abuse Testing

4TH JUDICIAL DISTRICT

Staffing:

1 Director  
2 Intensive Supervision Officers  
1 Clerical - 3 Staff  
TOTAL: 4 Full Time Employees

Services:

Adult Intensive Supervision Program  
Adult Jail Work Release  
Community Service Work  
Substance Abuse Testing  
Juvenile Intensive Supervision Program

5TH JUDICIAL DISTRICT

Staffing:

1 Director/Intensive Supervision Officer  
1 Secretary  
TOTAL: 2 Full Time Employees

Services:

Adult Intensive Supervision Program  
Community Service Work  
Substance Abuse Testing  
Electronic Monitoring Devices (contracted)  
Evaluations (contracted)

8TH JUDICIAL DISTRICT (CONTRACTING WITH RILEY COUNTY)

Staffing:

1 Supervisor (.90 8th & .10 Riley County)  
2 Intensive Supervision Officers  
1 Clerical/3 Staff  
TOTAL: 4 Full Time Employees

Services:

Adult Intensive Supervision Program  
Community Service Work  
Substance Abuse Testing  
Electronic Monitoring Devices (contracted)  
Evaluations (contracted)  
Juvenile Intensive Supervision Program

9TH JUDICIAL DISTRICT

Staffing:

1 Director  
2 Intensive Supervision Officers  
2 Clerical/3 Staff  
TOTAL: 5 Full Time Employees

Services:

Adult Intensive Supervision Program  
Adult Jail Work Release  
Community Service Work  
Substance Abuse Testing  
Evaluations (contracted)  
Electronic Monitoring Devices (contracted)  
Surveillance (contracted)

11TH & 31ST JUDICIAL DISTRICT

Staffing:

1 Director  
3 Intensive Supervision Officers  
1 Clerical/4 Staff  
TOTAL: 5 Full Time Employees

Services:

Adult Intensive Supervision Program  
Community Service Work  
Substance Abuse Testing  
Electronic Monitoring Devices (contracted)  
Evaluations (contracted)

12TH JUDICIAL DISTRICT (CONTRACTING WITH  
SALINE COUNTY)

Staffing:

1 Half-Time Intensive Supervision Officer  
1 Half-Time Clerical  
TOTAL: 1 Full Time Employees

Services:

Adult Intensive Supervision Program  
Community Service Work  
Substance Abuse Testing  
Surveillance (contracted)  
Evaluations (contracted)

13TH JUDICIAL DISTRICT

Staffing:

1 Director  
1.5 Intensive Supervision Officers  
1 Clerical - 2.5 Staff  
TOTAL: 3.5 Full Time Employees

Services:

Adult Intensive Supervision Program  
Juvenile Intensive Supervision Program  
Community Service Work  
Substance Abuse Testing  
Electronic Monitoring Devices (contracted)  
Evaluations (contracted)

14TH CHAUTAQUA COUNTY (CONTRACTING WITH  
MONTGOMERY COUNTY)

Staffing:

No Staff - Montgomery County provides  
Community Corrections services with existing  
staff

15TH, 17TH, & 23RD JUDICIAL DISTRICT

Staffing:

1 Director  
3 Intensive Supervision Officers  
1 Clerical - 4 Staff  
TOTAL: 5 Full Time Employees

Services:

Adult Intensive Supervision Program  
Juvenile Intensive Supervision Program  
Community Service Work  
Substance Abuse Testing  
Surveillance (contracted)  
Evaluation (contracted)  
Volunteers/Interim  
Sex Offender

16TH & 26TH JUDICIAL DISTRICT

Staffing:

1 Director

2 Intensive Supervision Officers  
1 Clerical - 3 Staff  
TOTAL: 4 Full Time Employees

Services:

Adult Intensive Supervision Program  
Adult Jail Work Release  
Surveillance (contracted)  
Electronic Monitoring Devices (contracted)  
Evaluations (contracted)  
Substance Abuse Testing  
Community Service Work

19TH JUDICIAL DISTRICT

Staffing:

1 Director/Intensive Supervision Officer  
1 Clerical  
TOTAL: 2 Full Time Employees

Services:

Adult Intensive Supervision Program  
Community Service Work  
Electronic Monitoring Devices (contracted)  
Surveillance (contracted)  
Substance Abuse Testing

20TH JUDICIAL DISTRICT

Staffing:

1 Director  
2 Intensive Supervision Officers  
1 Clerical - 3 Staff  
TOTAL: 4 Full Time Employees

Services:

Adult Intensive Supervision Program  
Juvenile Intensive Supervision Program  
Surveillance (contracted)  
Electronic Monitoring Devices (contracted)  
Evaluations (contracted)  
Community Service Work  
Substance Abuse Testing

21ST CLAY COUNTY (CONTRACT WITH RILEY COUNTY)

Staffing:

No Staff - Riley County will provide  
Community Corrections services with existing  
staff

22ND JUDICIAL DISTRICT (CONTRACTING WITH RILEY COUNTY)

Staffing:

1 Intensive Supervision Officer  
1 Clerical  
TOTAL: 2 Full Time Employees

Services:

Adult Intensive Supervision Program  
Community Service Work  
Substance Abuse Testing  
Electronic Monitoring Devices (contracted)  
Evaluations (contracted)

24TH JUDICIAL DISTRICT



Staffing:

1 Director/Intensive Supervision Officer  
1 Part Time Clerical

Services:

Adult Intensive Supervision Program  
CSW  
Electronic Monitoring Devices  
Evaluations (contracted)  
Surveillance (contracted)  
Substance Abuse Testing

25TH JUDICIAL DISTRICT

Staffing:

1 Director  
2 Intensive Supervision Officers  
1 Clerical - 3 Staff  
TOTAL: 4 Full Time Employees

Services:

Adult Intensive Supervision Program  
Community Service Work  
Electronic Monitoring Devices  
Evaluations (contracted)  
Volunteer/Interim  
Substance Abuse Testing

27TH JUDICIAL DISTRICT (REMO)

Staffing:

1 Director  
3 Intensive Supervision Officers  
1 Clerical - 4 Staff  
TOTAL: 5 Full Time Employees

Services:

Adult Intensive Supervision Program  
Juvenile Intensive Supervision Program  
Surveillance  
Electronic Monitoring Devices  
Evaluations (contracted)  
Community Service Work  
Substance Abuse Testing  
Substance Abuse Counseling (contracted)  
Family Therapy (contracted)

OTTAWA COUNTY (CONTRACTING WITH SALINE COUNTY)

Staffing:

No Staff - Saline County will provide  
Community Corrections services with existing  
staff

Services:

Adult Intensive Supervision Program  
Community Service Work  
Substance Abuse Testing

30TH JUDICIAL DISTRICT (EXCLUDING SUMNER COUNTY)

Staffing:

1 Director/Intensive Supervision Officer  
1 Clerical

Services:

Adult Intensive Supervision Program

Community Service Work  
Substance Abuse Testing  
Evaluations (contracted)

SUMNER COUNTY

Staffing:

1 Director  
2 Intensive Supervision Officers  
1 Clerical - 3 staff  
TOTAL: 4 Full Time Employees

Services:

Adult Intensive Supervision Program  
Juvenile Intensive Supervision Program  
Electronic Monitoring Devices (contracted)  
Evaluations (contracted)  
Substance Abuse Testing  
Community Service Work

d. Operational costs.

	<u>Parole</u>		<u>Community Corrections</u>		<u>Court Services</u>	
	<u>FY90 Actual</u>	<u>FY91 Budgeted</u>	<u>FY90 Actual</u>	<u>FY91 Budgeted</u>	<u>FY90 Actual</u>	<u>FY91 Budgeted</u>
Personnel	2,798,088.00	3,157,665.00	6,148,395.78	7,786,912.18	10,735,743.00	11,158,271.00
Travel	129,212.00	168,730.00	141,390.82	357,393.59		
Training	See Travel	See Travel	69,685.87	75,765.84		
Equipment	16,648.00	46,532.00	509,376.87	274,308.48		
Supplies	45,022.00	48,529.00	311,188.60	339,220.78		
Facility Costs	324,273.00	362,095.00	548,715.55	803,851.62		
Contractuals	1,701,397.00	1,708,816.00	508,998.49	717,050.76		
Other	5,990.00	10,228.00	71,188.18	4,103.00	1,207,875.00 <sup>4</sup>	
Indirects	0	0	49,443.44			
Total	5,020,630.00	5,502,595.00	8,358,383.60	10,358,606.25 225,000.00 <sup>1</sup> 75,000.00 <sup>2</sup> 858,030.74 <sup>3</sup>	11,943,618.00	11,158,271.00 <sup>5</sup>
<b>GRAND TOTAL</b>	<b>5,020,630.00</b>	<b>5,502,595.00</b>	<b>8,358,383.60</b>	<b>11,516,636.99</b>	<b>11,943,618.00</b>	<b>11,158,271.00<sup>5</sup></b>

1. Governor's Anti-Drug Grant funds
2. State matching funds
3. Redistributed FY90 unexpended funds
4. This figure represents only 18 of 31 judicial districts
5. Represents personnel costs only - operational costs are unavailable

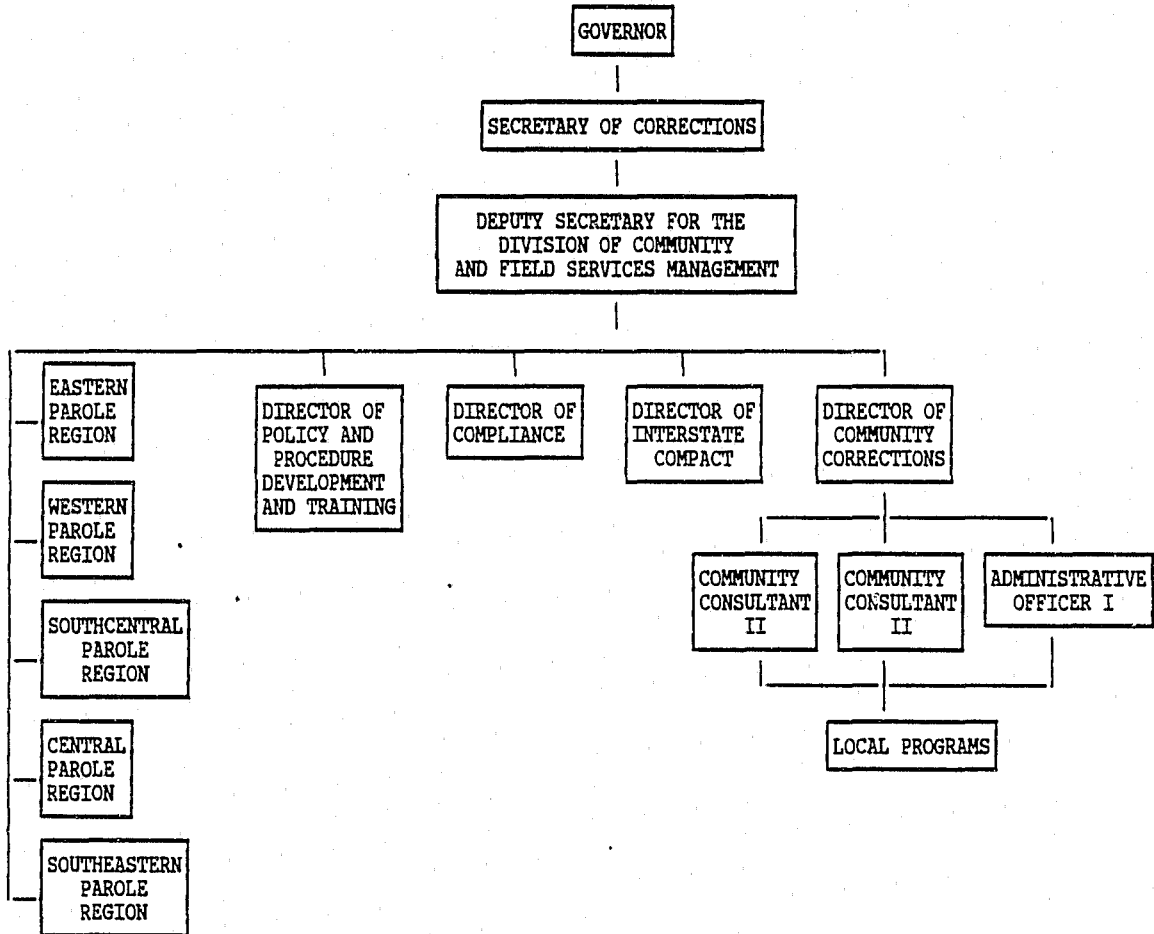
State Dollar Expenditures By Field Service Type:

<u>Service</u>	<u>FY 1990</u>				<u>FY 1991</u>			
	<u>Expenditures</u>	<u>%</u>	<u>Population</u>	<u>%</u>	<u>Budget</u>	<u>%</u>	<u>Est. Population</u>	<u>%</u>
Parole	5,020,630	21%	4,994	16%	5,502,595	19%	4,994*	16%
Community Corrections	8,358,383	35%	2,034	7%	11,516,637	41%	2,698	9%
Court Services	10,735,743	44%	23,378	77%	11,158,271	40%	23,378*	75%
<b>Total</b>	<b>24,114,756</b>	<b>100%</b>	<b>30,406</b>	<b>100%</b>	<b>28,177,503</b>	<b>100%</b>	<b>31,070</b>	<b>100%</b>

\* Reflects no growth for FY 1991 which will cause percentages to be understated.

2. Divisions and Flow of Administration

ORGANIZATIONAL CHARTS  
FOR  
PAROLE & COMMUNITY CORRECTIONS (STATE LEVEL)



Court Services

Chief Justice

Office of Judicial Administrator      Supreme Court Administration

Assistant Judicial Adm.

Director of Budget and Finance

Ct. Services Specialist

Director of Personnel & Programs

Case Management Specialist

Child Support Enforcement

Permanency Planning Coordinator

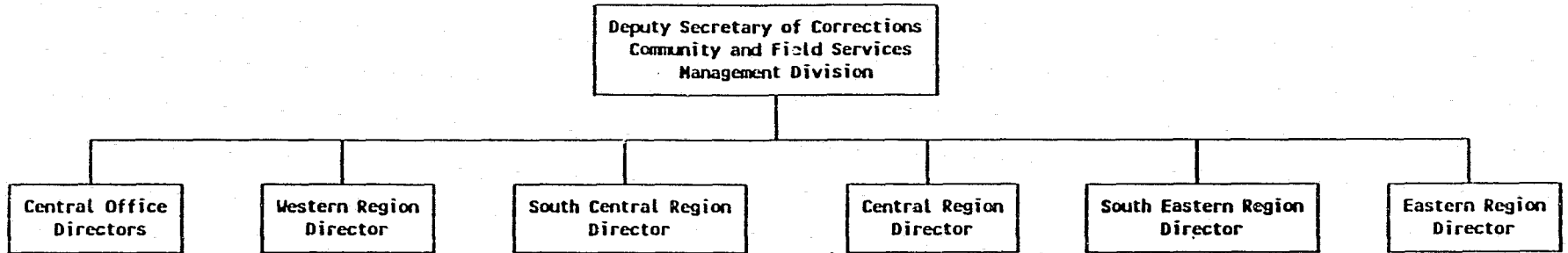
Legal Department

Local Adm. Judges (31 Districts)	Court Adm. 6.0 FTE	Chief Court Services Officers 28.0 FTE
----------------------------------	--------------------	--

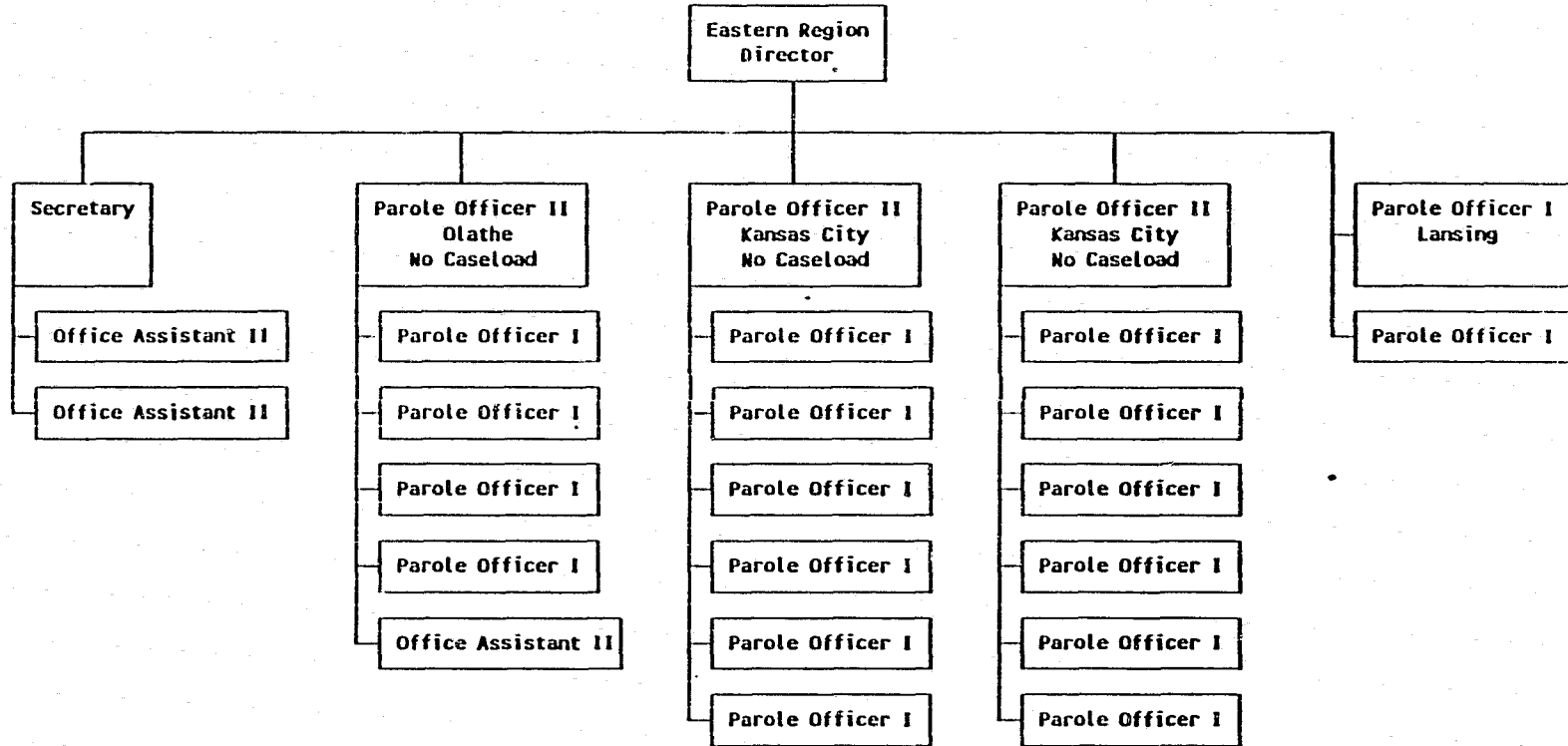
Court Services Officer II's 52.0 FTE  
Court Services Officer I's 265.5 FTE

2. Divisions and Flow of Administration

Parole:



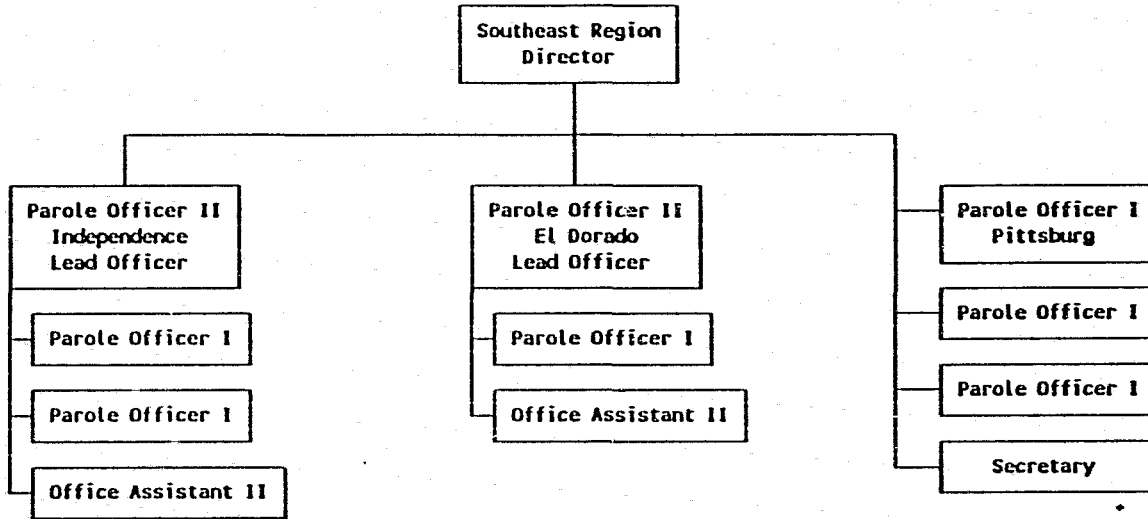
DIVISION OF COMMUNITY AND FIELD SERVICES MANAGEMENT  
PAROLE SERVICES



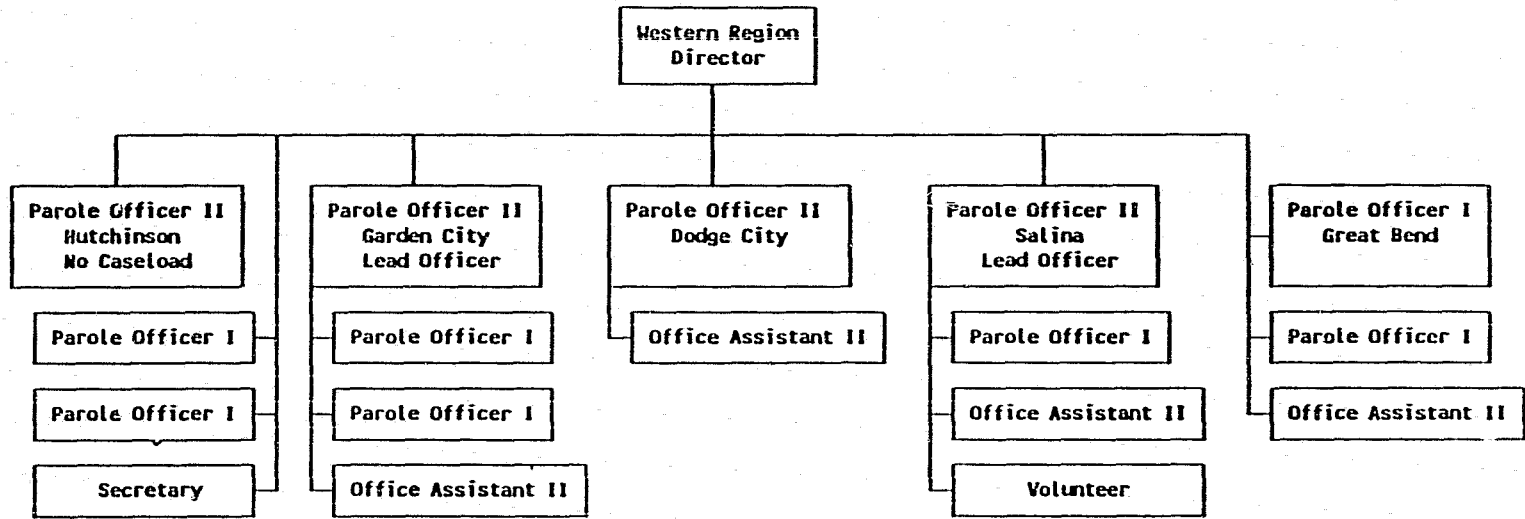




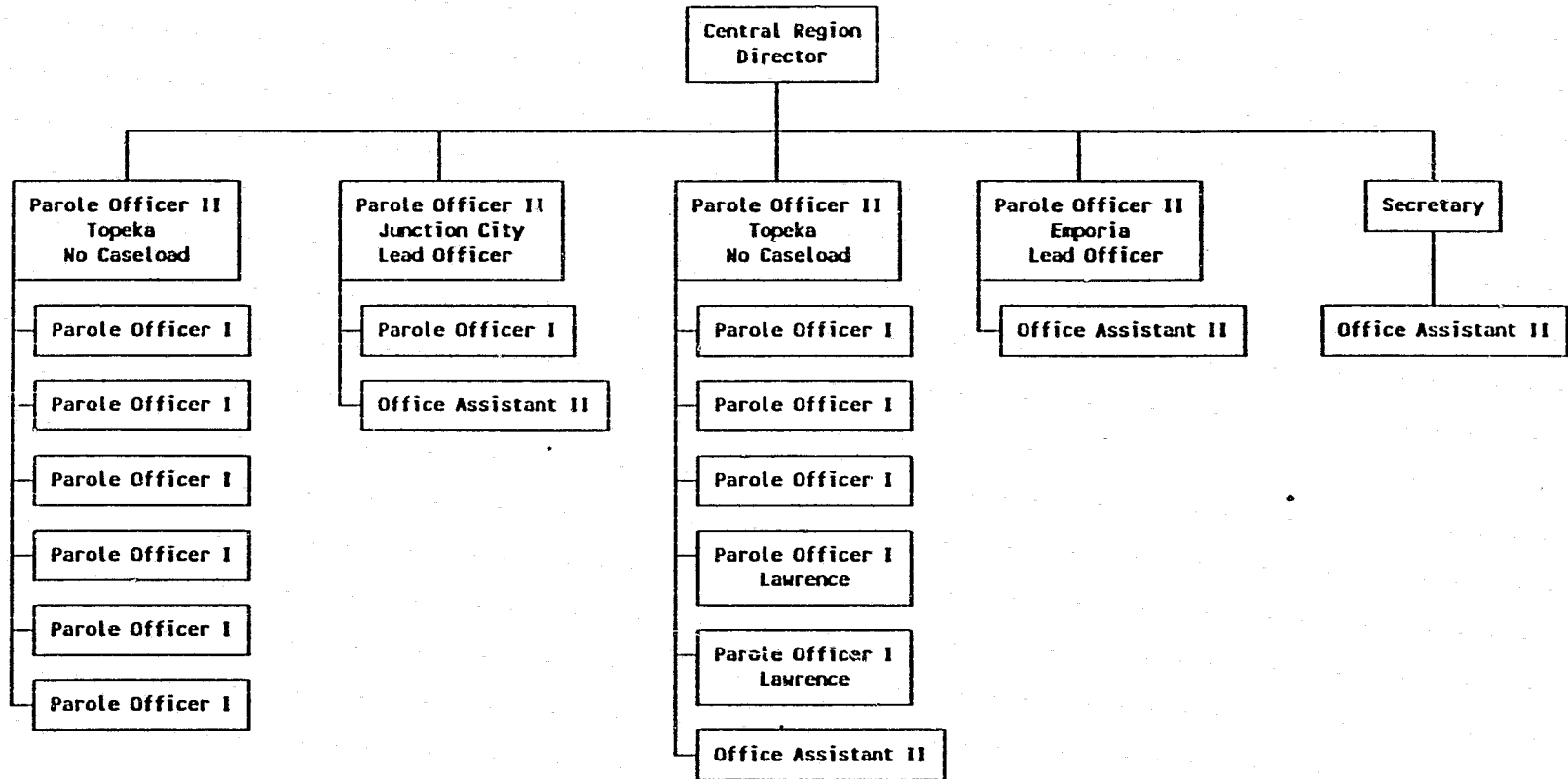
DIVISION OF COMMUNITY AND FIELD SERVICES MANAGEMENT  
PAROLE SERVICES



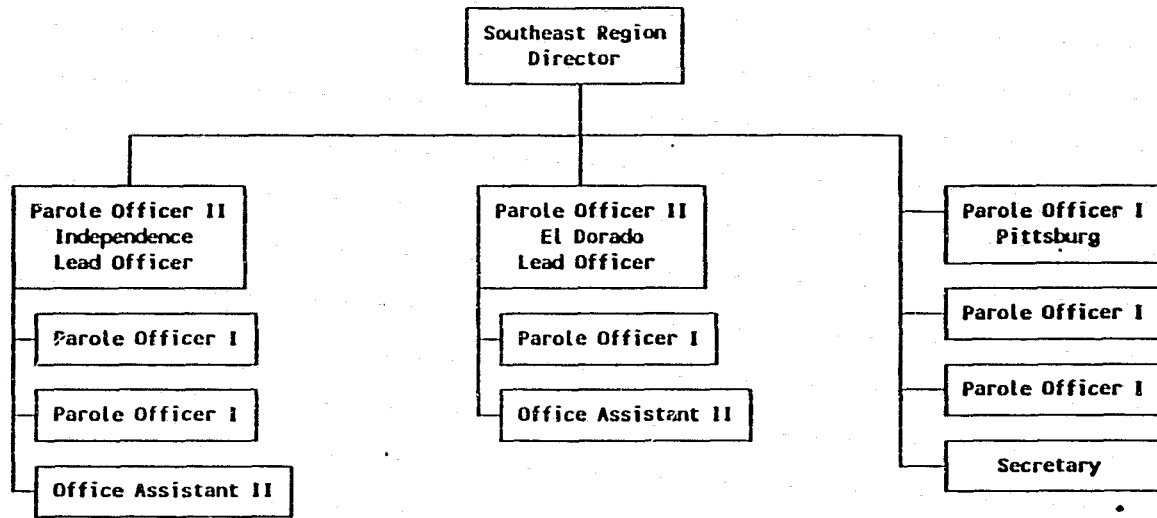
DIVISION OF COMMUNITY AND FIELD SERVICES MANAGEMENT  
PAROLE SERVICES



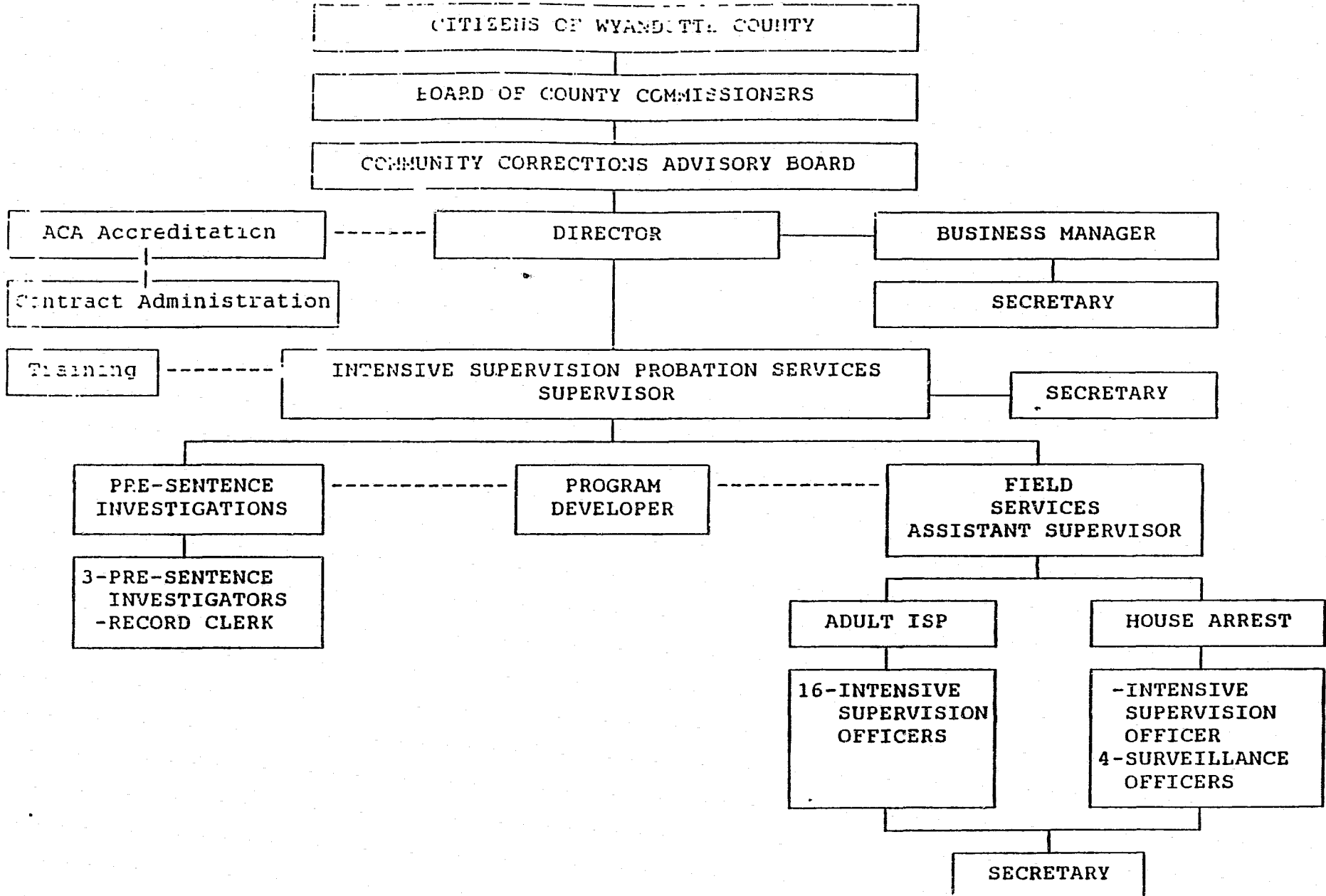
DIVISION OF COMMUNITY AND FIELD SERVICES MANAGEMENT  
PAROLE SERVICES



DIVISION OF COMMUNITY AND FIELD SERVICES MANAGEMENT  
PAROLE SERVICES



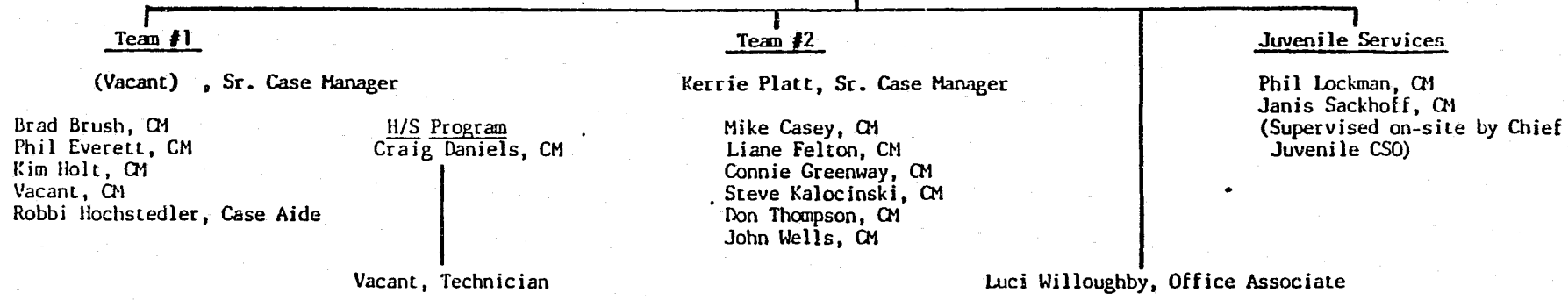
COMMUNITY CORRECTIONS OF WYANDOTTE COUNTY  
 ORGANIZATIONAL CHART  
 OCTOBER 1, 1990 - JUNE 30, 1991



FIELD SERVICES DIVISION

STAFF STRUCTURE

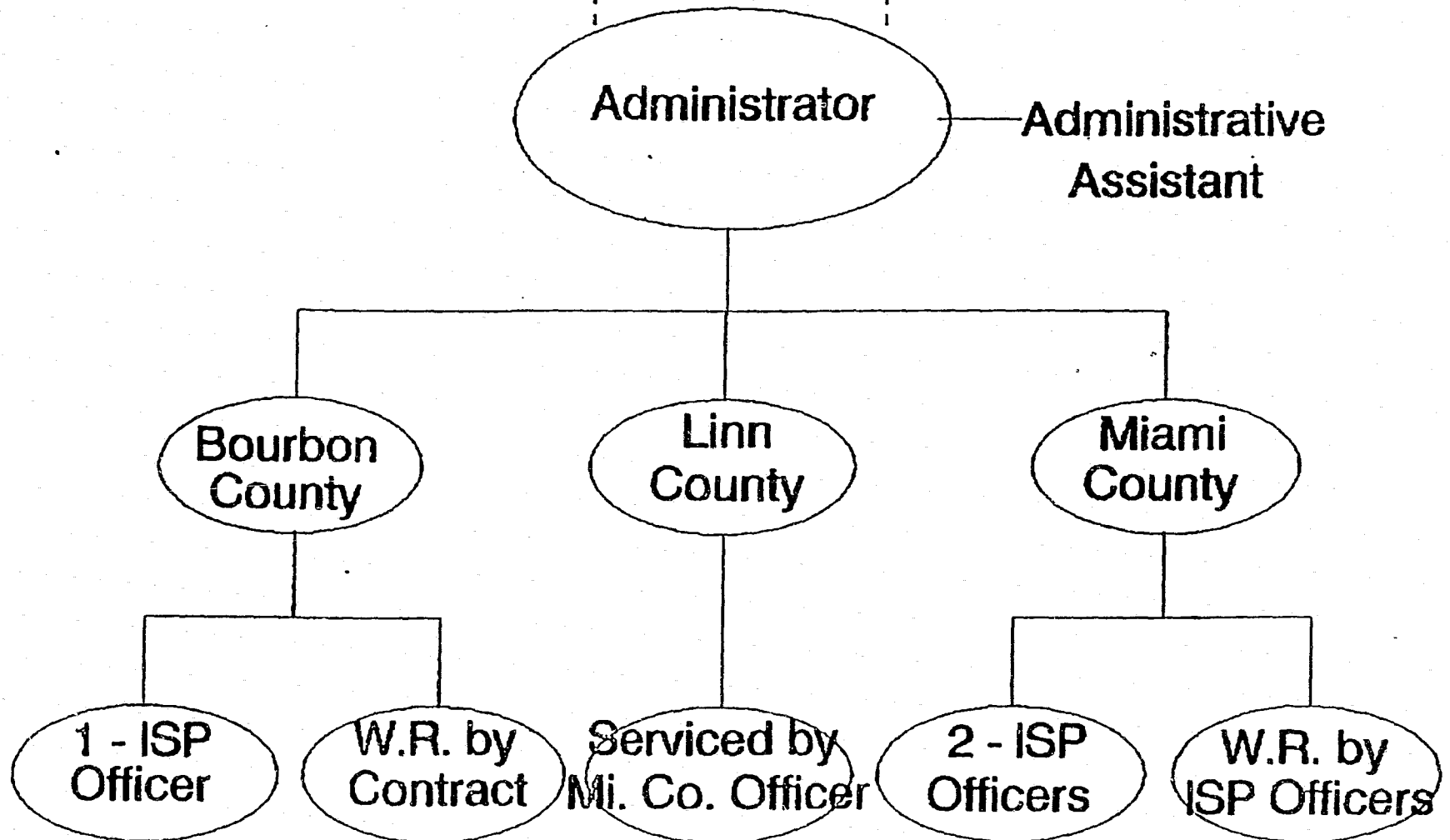
DONNA HAJJAR, FIELD SERVICES SUPERVISOR



Department of Corrections

Advisory Board

B/L/M Boards of County Commissioners



DOUGLAS

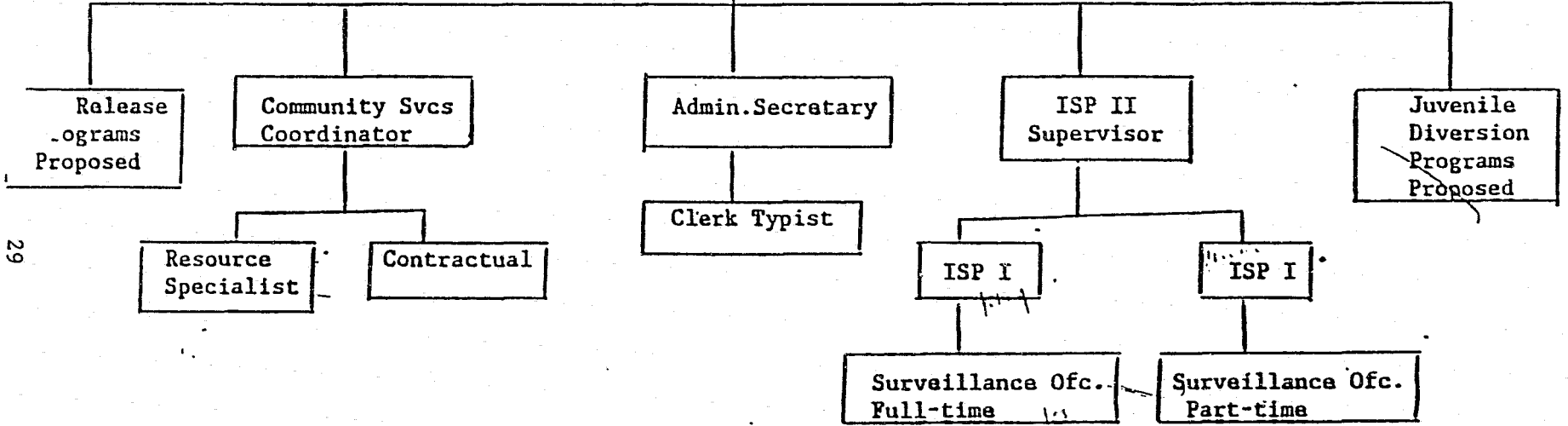
COUNTY COMMISSION

COUNTY ADMINISTRATOR

KDOC

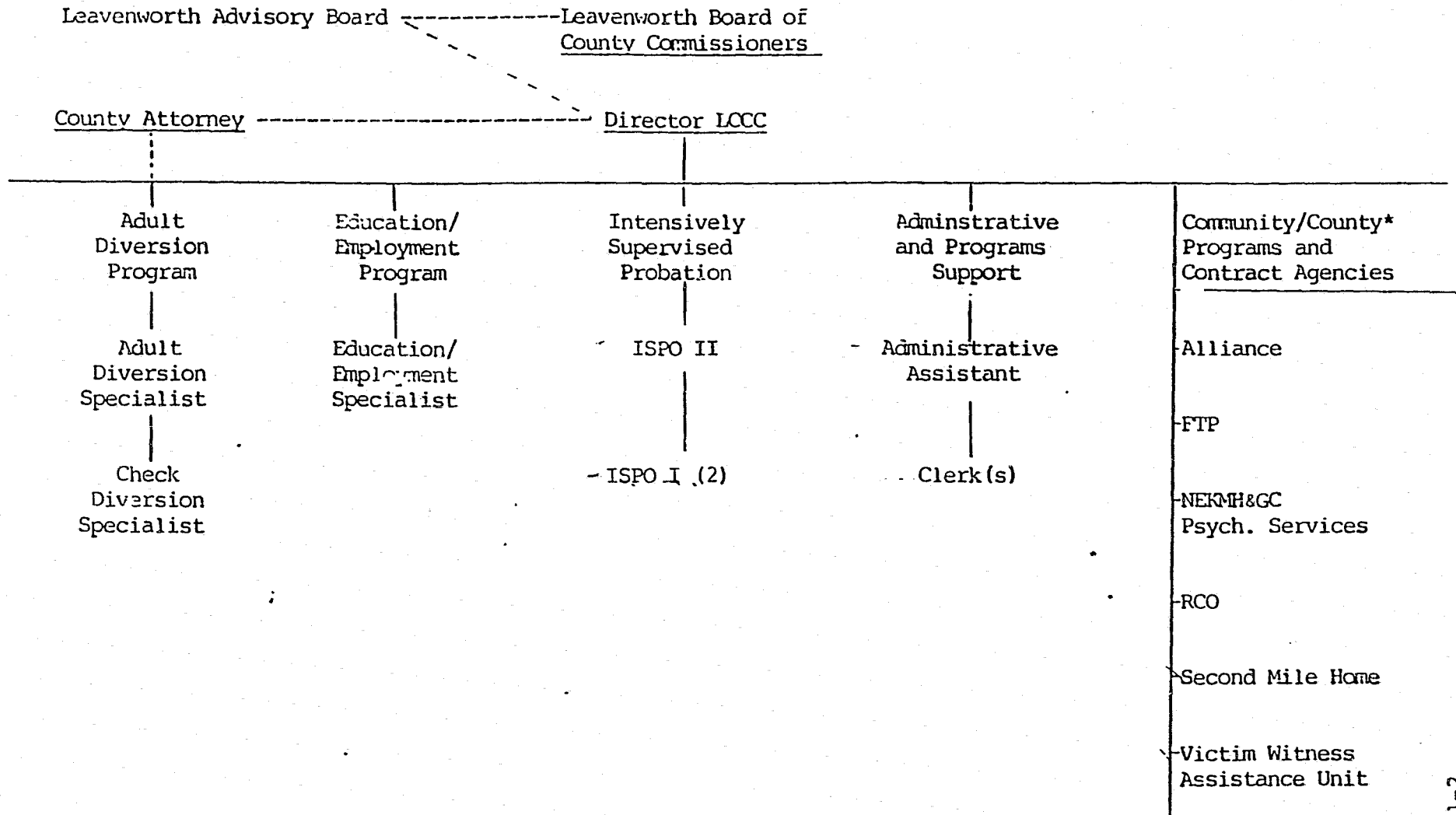
DIRECTOR

ADVISORY BOARD





Department of Corrections

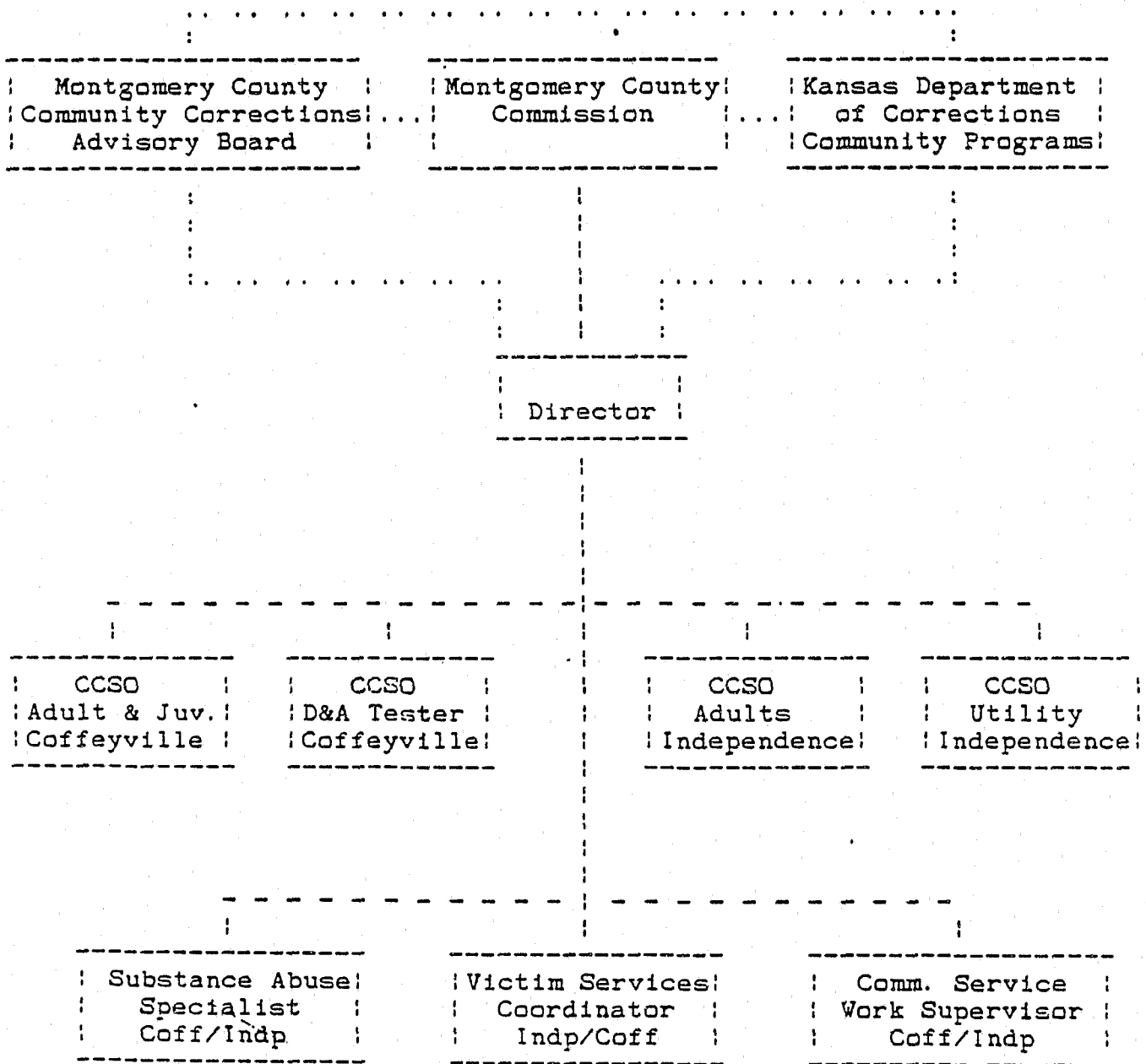


30

\*Not supervised by the Director LCCC.

ENCLOSURE

ORGANIZATIONAL STRUCTURE  
JUNE 14, 1990

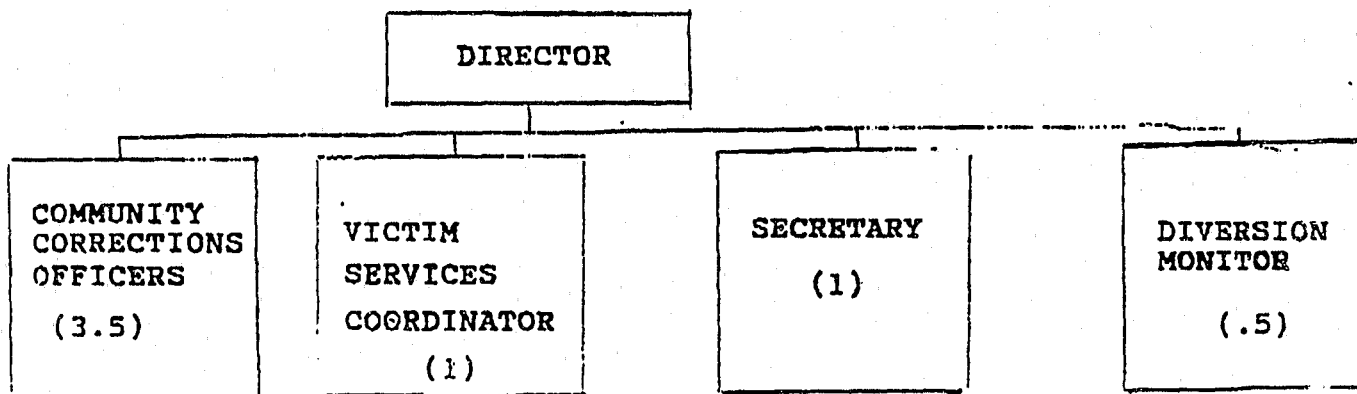


Broken lines indicate advisory and consultive relationships.  
Bold lines are lines of authority.

TO: TERRY REILING

RILEY COUNTY COMMUNITY CORRECTIONS

(AS OF 6-30-90)



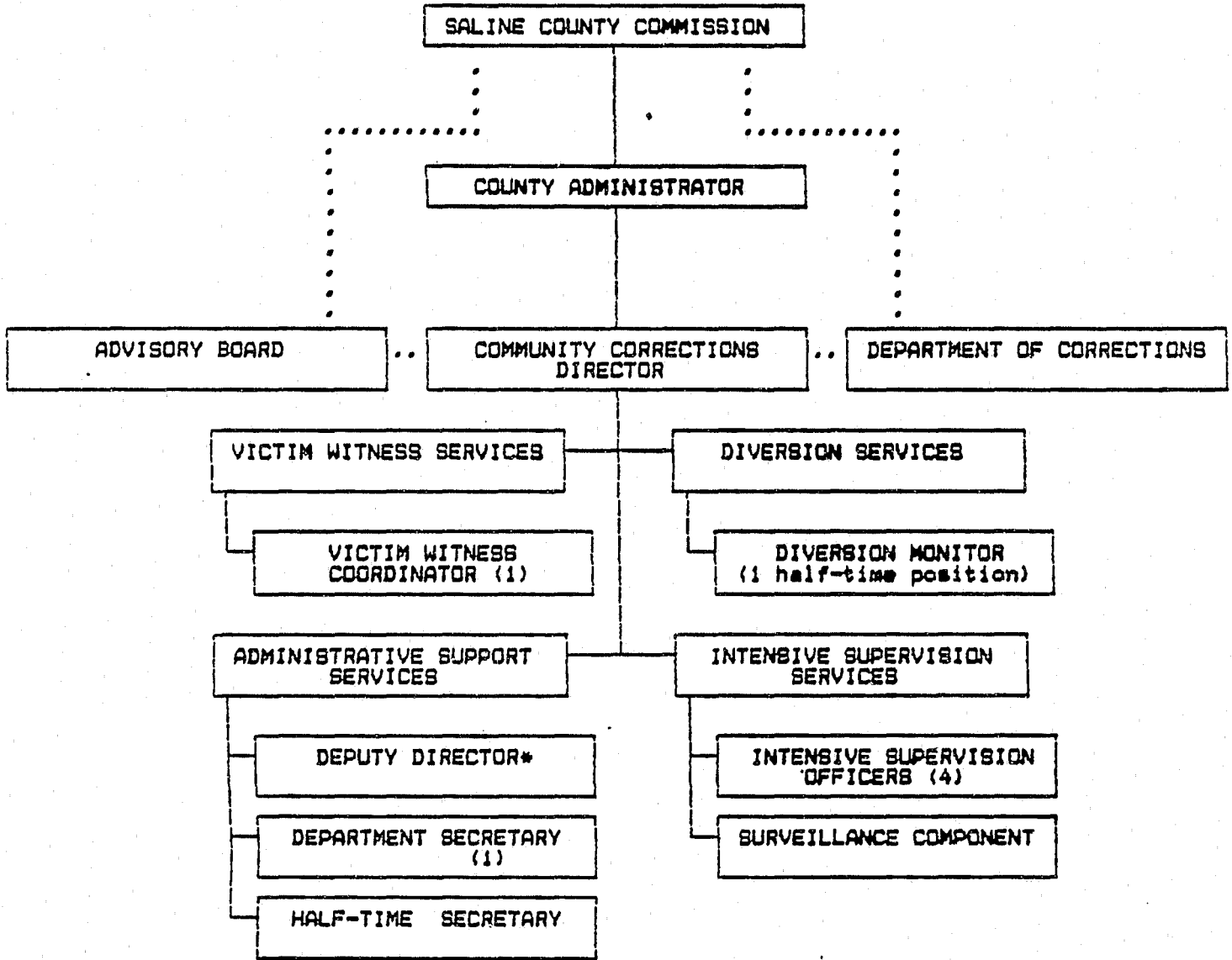
TOTAL: 6 F.T. POSITIONS

2 P.T. POSITIONS

ALL POSITIONS ARE FILLED WITH THE EXCEPTION OF THE SECRETARY POSITION WHICH IS .5 FILLED AS THE <sup>EMPLOYEE</sup> ~~EMPLOYEE~~ ALSO DOES THE DIVERSION MONITORING DUTIES. THIS IS TEMPORARY.

FY 1991 ORGANIZATIONAL CHART WILL FOLLOW TOMORROW

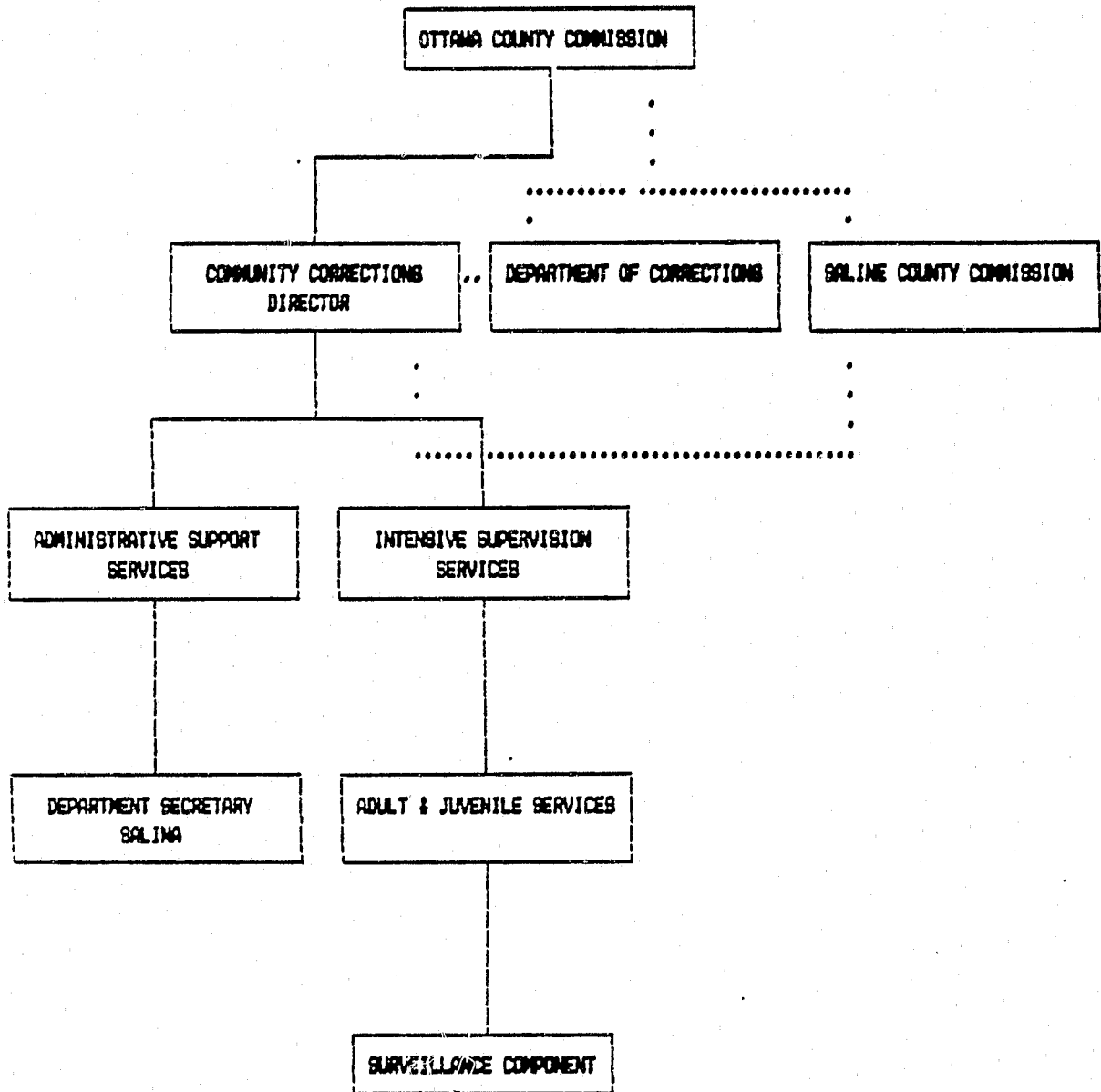
SALINE COUNTY COMMUNITY CORRECTIONS  
ADMINISTRATIVE FLOW CHART



..... PROGRAM/POLICY RESPONSIBILITIES  
 ..... COORDINATION/CONSULTANCY

\*DEPUTY DIRECTOR HAS ADMINISTRATIVE RESPONSIBILITIES DURING TEMPORARY ABSENCE OF DIRECTOR. IS APPOINTED YEARLY BY DIRECTOR FROM LINE STAFF.

OTTAWA COUNTY COMMUNITY CORRECTIONS  
ADMINISTRATIVE FLOW CHART



\*S.O. HALF-TIME FROM SALINA OFFICE  
SERVICES ARE PROVIDED BY CONTRACT WITH  
ALINE COUNTY COMMUNITY CORRECTIONS.

\_\_\_\_\_ PROGRAM/POLICY RESPONSIBILITIES  
..... COORDINATION/CONSULTANCY

Saline County Board of Commission - - - Department of Corrections

County Administrator

Saline County Community Corrections - - - - - Advisory Board  
Director

Victim/Witness Services

Victim/Witness Coordinator

Diversion Services

Diversion Monitor

Half-time Secretary

Administrative Support Services

Deputy Director\*

Department Secretary

Work Study

Intensive Supervision Services

I.S.O. Juvenile Specialist

I.S.O. Employment Specialist

I.S.O. Chemical Dependency Specialist

I.S.O. Community Service Specialist

Surveillance Component

Legend: \_\_\_\_\_ Supervisory and program/policy responsibilities

----- Coordination/consultancy

\* Deputy Director has administrative supervisory responsibilities during temporary absence of Director. Is appointed on a yearly basis by Director and is one of the line staff.

DEPARTMENT OF COMMUNITY CORRECTIONS  
ORGANIZATIONAL CHART

Sedgwick

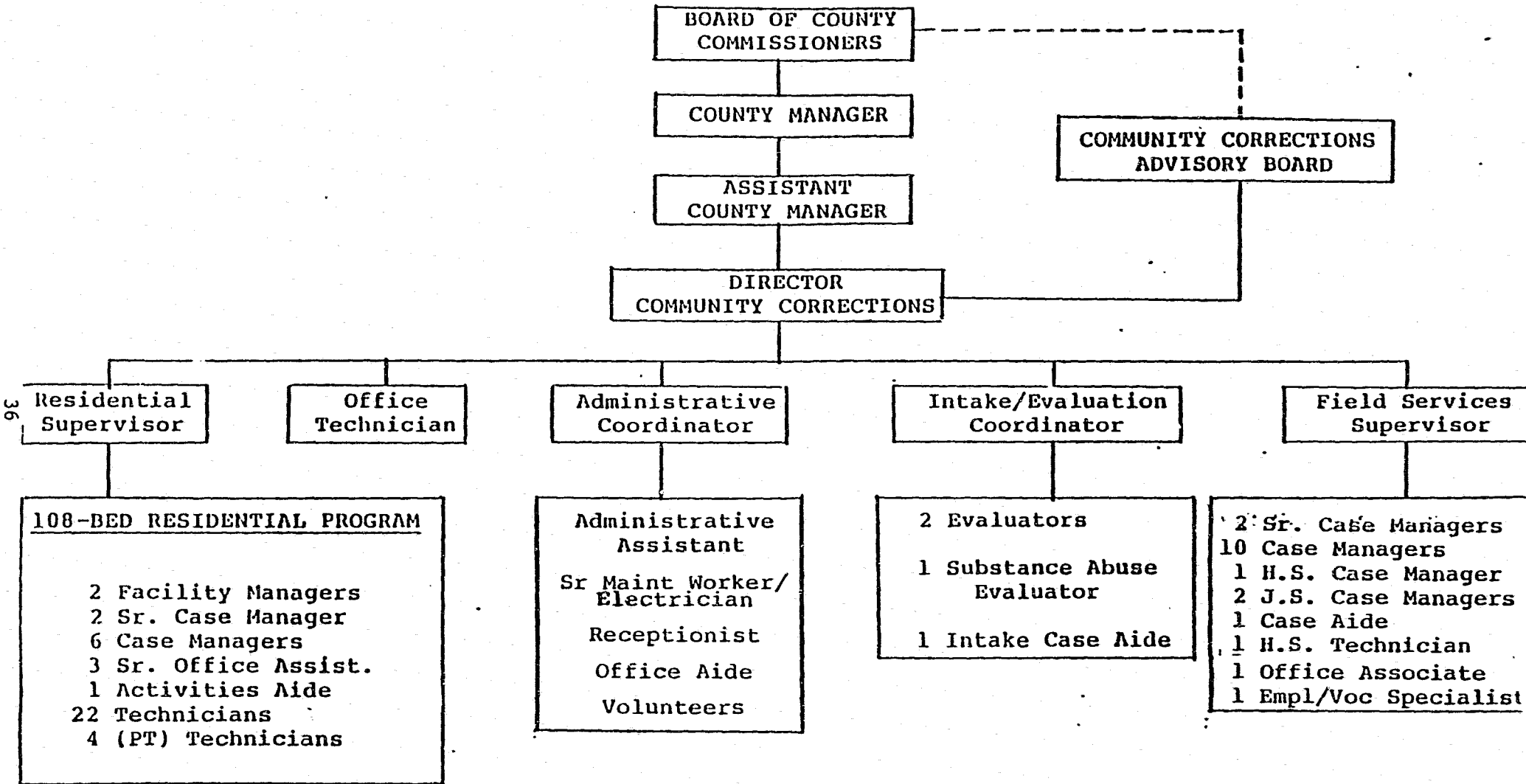
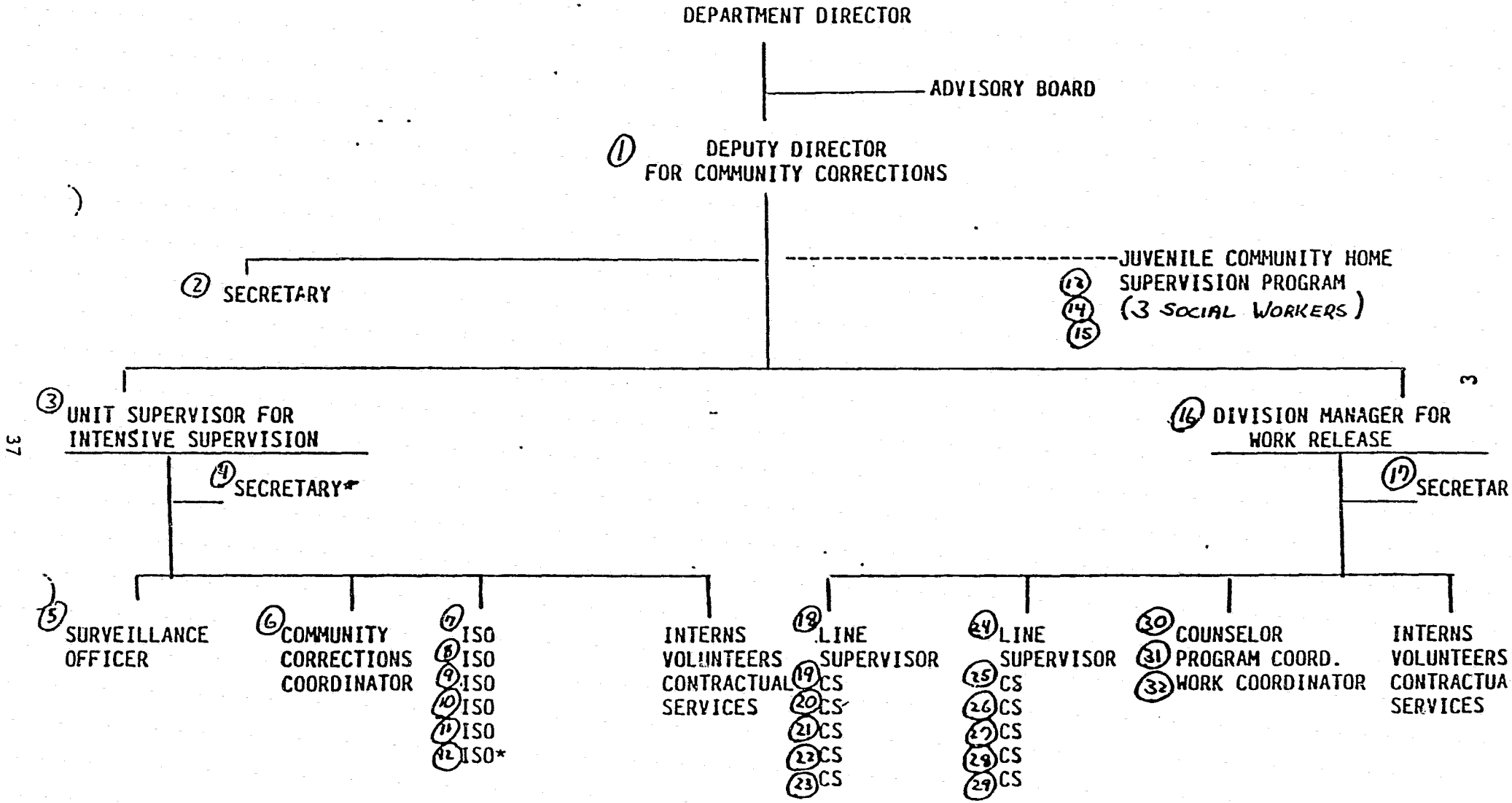


FIGURE 1

ORGANIZATIONAL CHART  
SHAWNEE COUNTY COMMUNITY CORRECTIONS

10 18 03 15 11 12 13 14 15  
18 1000



\*Expansion positions for Second Judicial District  
#4 and #12

37



3. Public Contact

Parole

a. Boards

Not applicable

b. Power of boards explained

Not applicable

c. Public bonding programs

Speeches given to civic groups

Maintain contact with colleges and universities (intern programs)

Contact with public officials

Contact with news media

Interaction with other government agencies

Community Corrections

a. Boards

Local advisory boards are developed by appointment by statutory authority within the Community Corrections Act. Attached see list of advisory board responsibilities.

b. Power of boards explained

See following pages

c. Public bonding programs

Local and state developed brochure

Media education/articles

Community service work

Victim/witness services

Prevention Services (Happy Bear)

Public speaking to schools and civic organization

Offender groups

Development and use of community resources and employer support activities

Court Services

a. Boards

Not applicable

b. Power of boards explained

Not applicable

c. Public bonding programs

Parenting programs

Domestic mediation

Child visitation

Public speaking

Participants of community corrections advisory boards

Offender groups

Community resource

Domestic investigation

KANSAS COMMUNITY CORRECTIONS PROGRAMS

LOCAL ADVISORY BOARD  
RESPONSIBILITIES

- IDENTIFY STRATEGIES USED TO SUPERVISE CERTAIN GROUPS OF OFFENDERS.
- WHICH PRISON BOUND ADULTS WILL THE PROGRAM ATTEMPT TO RETAIN IN THE COMMUNITY?
- WHAT IS THE SELECTION/ADMISSION CRITERIA?
- WHAT IS THE REVOCATION CRITERIA?
- WHAT ARE REVOCATION PROCEDURES?
- HOW DOES THE PROGRAM RELATE TO THE COURTS?
- WHAT ARE THE LINKAGES, IF ANY, WITH PAROLE AND COURT SERVICES?
- WHAT ANCILLARY SERVICES ARE OFFERED TO THE TARGET POPULATION? SUBSTANCE ABUSE TREATMENT? MENTAL HEALTH TREATMENT? LIFE SKILLS TRAINING AND EDUCATION?
- WHAT IS THE ORGANIZATIONAL STRUCTURE OF THE PROGRAMS?
- HOW WILL STAFF BE COMPENSATED?
- WHAT ARE LOCAL PERSONNEL POLICIES AND PROCEDURES?
- WHAT ARE LOCAL OPERATIONAL POLICIES AND PROCEDURES?
- WHAT SERVICES ARE PROVIDED DIRECTLY BY STAFF AND WHAT ARE PROVIDED BY CONTRACT?
- WHICH CONTRACTORS ARE SELECTED?
- WHAT NEW INITIATIVES OR DIRECTIONS SHOULD THE PROGRAM TAKE IN DEALING WITH TARGETED POPULATIONS?
- WHAT IS WORKING?
- WHAT SHOULD BE CHANGED?
- WHEN ADDITIONAL RESOURCES EXIST, WHAT OTHER CRIMINAL JUSTICE AREAS SHOULD THE PROGRAM ADDRESS?
- WHAT STRATEGIES SHOULD BE USED TO ADDRESS THOSE NEEDS?

- HOW WILL ALL OF THE OTHER ISSUES MENTIONED ABOVE FOR TARGETED OFFENDERS PROGRAMS BE RESOLVED FOR THESE PROGRAMS?
- WHAT LOCAL PARTNERSHIP AND FUNDING RESOURCES COULD BE DEVELOPED IN ORDER TO SERVE, NOT ONLY THE TARGETED OFFENDERS, BUT ALSO SECONDARY CLIENT GROUPS?
- OTHER LOCAL ADVISORY BOARD FUNCTIONS INCLUDE:
  - CONSIDERATION AND EVALUATION OF LOCAL RESOURCES WHICH ROUTINELY GENERATE OTHER BOARD FUNCTIONS WHICH CAN RESULT IN THE DEVELOPMENT OF OTHER COMMUNITY RESOURCES.
  - POPULATION MANAGEMENT GOALS AND STRATEGIES FOR LOCAL OVERCROWDED JAILS.
  - STRATEGIES TO FILL GAPS IN LOCAL SERVICES, OR THE DEVELOPMENT OF STRATEGIES AND RESOURCES TO MANAGE JUVENILE OFFENDER PROGRAMS OR OTHER SERVICES WHICH ARE NOT NECESSARILY FUNDED ENTIRELY THROUGH STATE COMMUNITY CORRECTIONS DOLLARS.
  - LOCAL ADVISORY BOARD EXPERTISE CAN LOGICALLY BE USED TO PROVIDE GUIDANCE AND DIRECTION TO LOCAL OFFICIALS IN CRIMINAL JUSTICE MATTERS.
  - THE LOCAL ADVISORY BOARD IS ALSO INSTRUMENTAL IN THE DEVELOPMENT OF RECOMMENDATIONS TO THE LOCAL PROGRAM DIRECTORS IN BUDGET ALLOCATION AND REALLOCATION DECISIONS.