

**RAPE
IN
ARKANSAS
1990**

131822

Arkansas Crime Information Center

Arkansas Crime Information Center

David Eberdt
Director

Charles Pruitt
Deputy Director

Larry Cockrell
Special Services Manager

Gary Vanderslice
System Support Manager

ACIC Supervisory Board

Judge David Hale, Chairman
Municipal Judges Association

Jack Lassiter, Vice Chairman
Arkansas Bar Association

Will Feland
Prosecuting Attorneys Association

Cary Gaines
Association of Arkansas Counties

Colonel Tommy Goodwin
Arkansas State Police

David Guntharp
Department of Correction

Chief Justice Jack Holt, Jr.
Arkansas Supreme Court

Representative James Jordan
General Assembly

Chief Paul Rivaldo
Chiefs of Police Association

Major Ron Stobaugh
Municipal Police Association

Joseph Svoboda
Attorney General's Office

Arch Wylie
Citizen-at-large

Sheriff Jack Yancey
Arkansas Sheriff's Association

Uniform Crime Reporting Staff

Lynn Bulloch
UCR Supervisor

Glenda Smith
Quality Control

Julie Collier
Composition

Berea Stennis
DP Section, Data Input

Introduction

Rape In Arkansas is an annual publication. Data in this report comes from the state Uniform Crime Reporting program and a special supplement that allows collection of additional information on each rape and attempted rape. It should be understood that only those incidents that are reported to law enforcement are contained in this publication.

U.S. Department of Justice
National Institute of Justice

This document has been reproduced exactly as received from the person or organization originating it. Points of view or opinions stated in this document are those of the authors and do not necessarily represent the official position or policies of the National Institute of Justice.

Permission to reproduce this ~~copyrighted~~ material has been granted by

Public Domain/BJS

U.S. Department of Justice

to the National Criminal Justice Reference Service (NCJRS).

Further reproduction outside of the NCJRS system requires permission of the ~~copyright~~ owner.

A Special Services Report

**RAPE IN ARKANSAS
1990**

June, 1991

Arkansas Crime Information Center
One Capitol Mall
Little Rock, AR 72201
501/682-2222

Acknowledgement

We thank all the law enforcement agencies in the state who participated in the Arkansas Uniform Crime Reporting Program during 1990. Without their support and cooperation, this publication and the resulting overview of crime would not be possible.

Dedication

We are aware that numerous rapes occur that are not reported to law enforcement. This report is dedicated to rape victims who had the courage to report these offenses, and to all law enforcement officers endeavoring to uphold the laws and serve the people of Arkansas.

Definitions of Rape

The definition of rape in Arkansas, according to Arkansas Code 5-14-103 as amended is:

A person commits rape if he engages in sexual intercourse or deviate sexual activity with another person:

- (a) by forcible compulsion; or*
- (b) who is incapable of consent because he is physically helpless; or*
- (c) who is less than fourteen (14) years of age. It is an affirmative defense to prosecution under this Section that the actor was not more than two (2) years older than the victim. Rape is a class Y felony.*

The definition of forcible rape in the Uniform Crime Reporting (UCR) Program is:

Forcible rape is the carnal knowledge of a female forcibly and against her will. Assaults to commit forcible rape are also included; however, statutory rape (without force) is not counted in this category.

There is a wide disparity between these two definitions. **This report utilizes the Uniform Crime Reporting definition of rape.** The report includes all data collected, with the cooperation of law enforcement agencies from their offense reports, as reported to the Arkansas Crime Information Center in the UCR Program.

Throughout this report, except where noted, rape and attempted rape are combined for statistical purposes.

Rape in Arkansas 1990

There were 1,009 rapes and attempted rapes in Arkansas reported through the Uniform Crime Reporting Program. Of these, 856 were rapes and 153 were attempted rapes reported by law enforcement agencies. This is an increase of 10% over 1989, and is 49% higher than five years ago.

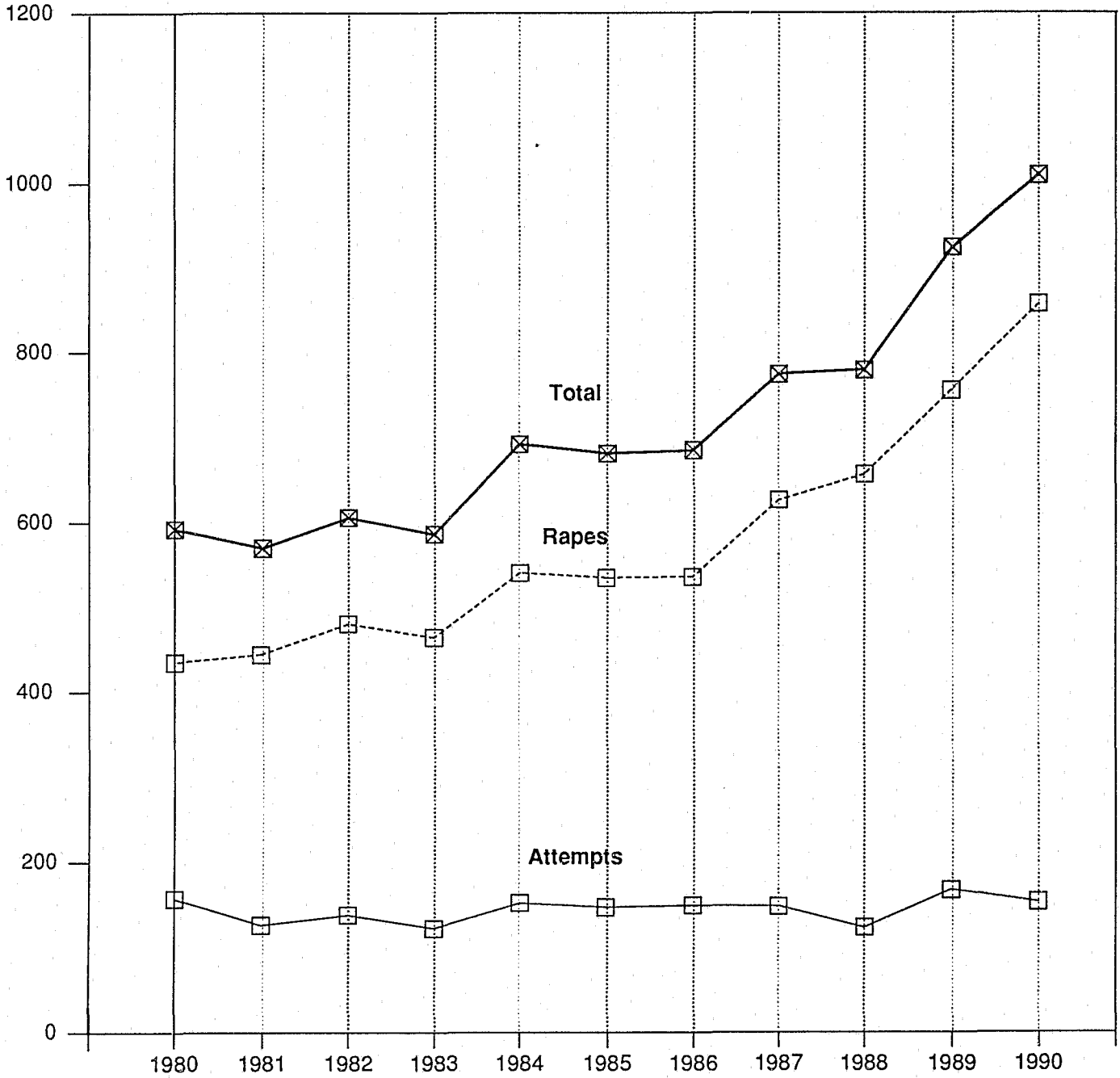
Rape and Attempted Rape

Rape/Attempted Rape	Number	Percent Distribution
Rape	856	84.8
Attempted Rape	153	15.2
Total	1,009	100

Trend

Year	Number of Offenses	Percent Change (Over Previous Year)	Rate Per 100,000	Percent Cleared
1986	684	+ 0.4	29.2	70.8
1987	774	+13.2	32.8	69.3
1988	779	+ 0.6	32.4	62.9
1989	922	+18.4	38.5	61.2
1990	1,009	+ 9.4	43.1	57.2

Comparison of Rapes and Attempted Rapes 1980 through 1990



Rape by Time of Day

When time of day was known, 57% of all rapes occurred during the 8 hour period, between 8:00 p.m. and 4:00 a.m. The most common two hour period was from midnight to 2:00 a.m.

Time of Day	Number	Percent Distribution
A.M. 12:01 - 2	151	15.0
2:01 - 4	124	12.3
4:01 - 6	72	7.1
6:01 - 8	39	3.9
8:01 - 10	25	2.5
10:01 - Noon	45	4.5
P.M. 12:01 - 2	34	3.4
2:01 - 4	44	4.4
4:01 - 6	54	5.3
6:01 - 8	55	5.4
8:01 - 10	89	8.8
10:01 -Midnight	122	12.1
Unknown	155	15.3

Rape by Day of Week

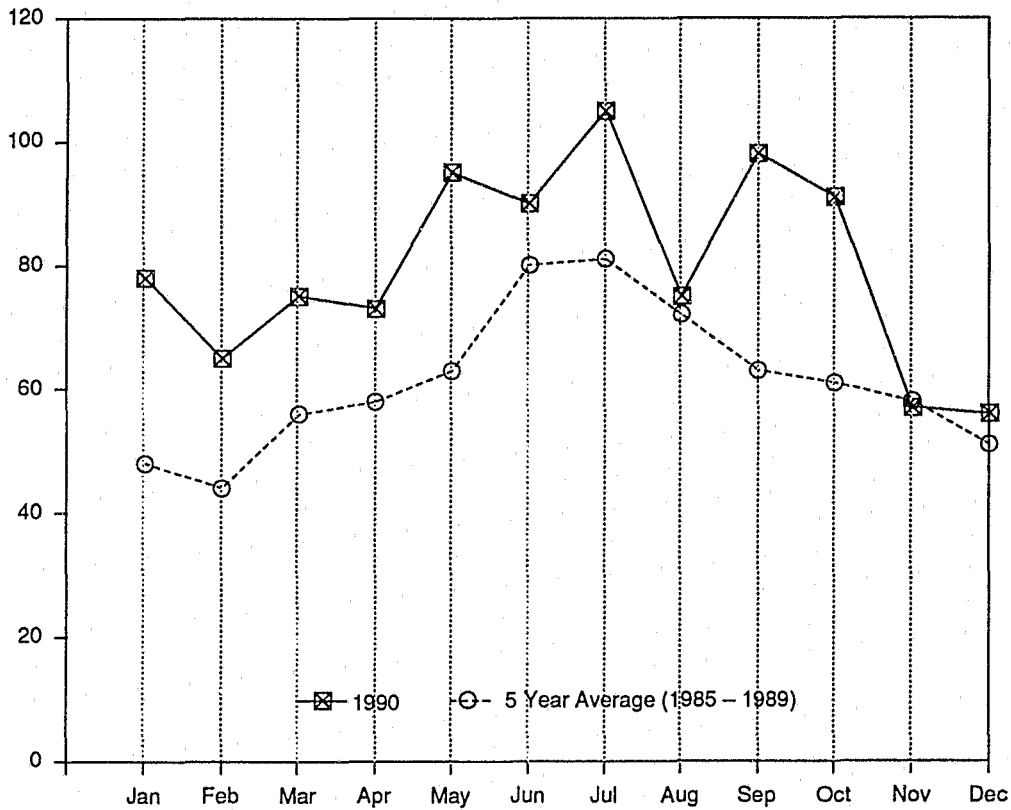
Almost one-third of the rapes were committed on Friday or Saturday.

Day of Rape	Number	Percent Distribution
Sunday	126	12.5
Monday	132	13.1
Tuesday	113	11.2
Wednesday	111	11.0
Thursday	138	13.7
Friday	149	14.8
Saturday	155	15.3
Unknown	85	8.4

Rapes by Month

(1990 compared to a five year average – 1985 to 1990)

In 1990, more rapes occurred in July than any other month. From 1985 through 1989, the five year average was highest for June and July.



Month	Number	Percent Distribution
January	78	7.7
February	65	6.5
March	75	7.4
April	73	7.2
May	95	9.4
June	90	8.9
July	105	10.4
August	75	7.4
September	98	9.7
October	91	9.0
November	57	5.7
December	56	5.6
Unknown	51	5.1
Total	1,009	100

Victims of Rape

There were slightly more white victims of rape than black victims (52.4%). This proportion has changed gradually over the past five years from 65% white victims in 1986, to almost the same number of black and white victims in 1990.

The age distribution for victims has remained very constant over the past five years. Thirty-eight percent were younger than eighteen years old and 63% were younger than 25. Five years ago 65% were younger than 25. The youngest victim was 18 months and the oldest 91.

Victim Characteristics	Number	Percent Distribution
Race		
White	529	52.4
Black	471	46.7
Other	4	.4
Unknown	5	.5
Age		
5 & Under	35	3.5
6 - 9	55	5.4
10 - 13	109	10.8
14 - 17	181	17.9
18 - 20	137	13.6
21 - 24	118	11.7
25 - 29	152	15.1
30 - 34	88	8.7
35 - 39	56	5.5
40 - 59	44	4.4
60 & Over	24	2.4
Unknown	10	1.0
Total	1,009	100

Weapons Used to Exert Force Upon Victim

There were 90 victims under the age of 10 in which no external weapons were used to exert force on the victim. Of the remaining incidents one of five involved the use of a firearm, knife or club/blunt instrument.

Weapon Used	Number	Percent Distribution
Firearm	73	7.9
Knife/Sharp Instrument	75	8.1
Club/Blunt Instrument	23	2.5
Verbal threats, fists, etc.	710	77.4
Unknown	38	4.1

Victim-Offender Race Relationship

The first race listed is the race of the *victim*, and the second race is that of the *offender(s)*. For example: *white/black* means that the victim was white and the offender was black (1 or more). For offenses in which race is known, 83% of the rapes were between members of the same race.

Victim/Offender(s) Race	Number	Percent Distribution
White/White	365	36.2
Black/Black	455	45.0
Total Intraracial Rapes (same race)	820	81.2
White/Black	148	14.7
White/Other	4	.4
Black/White	10	1.0
White/White & Black*	3	.3
Total Interracial Rapes (different races)	165	16.4
White/Unknown	14	1.4
Black/Unknown	6	.6
Unknown/White	3	.3
Unknown/Black	1	.1
Total Unknown Rapes	24	2.4
Total Rapes	1,009	100

*Rapes involving victims and offenders of different races are counted as interracial.

Relationship of Offender to Victim

Sixty-six percent of all rapes were committed by persons known to the victim.

Relationship	Number	Percent Distribution
Known to victim	632	52.5
Unknown to victim	408	33.9
Family member	158	13.2
Unknown (data not available)	5	.4

Rapes Involving Family Members

Where the offender was known to the victim 20% of the rapes involved family members. Where the offender was a family member, 55 victims (35%) were age 10 or younger, and 52 victims (33%) were age 11 to 15.

Relationship	Number	Percent Distribution
Husband	13	8.2
Ex-Husband	10	6.3
Father	35	22.2
Stepfather	34	21.5
Grandfather	4	2.6
Stepgrandfather	3	1.9
Brother	12	7.6
Stepbrother	3	1.9
Uncle	16	10.1
Cousin	12	7.6
Brother-in-law	9	5.7
Other family member	7	4.4
Total	158	100

Location of Actual Rapes and Attempted Rapes

In 1990, 43% of all rapes occurred in the victim's residence.

Location of Rape	Number	Percent Distribution
Victim's residence	430	42.6
Suspect's residence	135	13.4
Other residences	86	8.5
Automobiles	57	5.5
Public outdoor areas (streets, parks, etc.)	118	11.7
Fields, vacant lots, wooded areas, etc.	46	4.6
Motels/Hotels	39	3.9
Place of Employment	11	1.1
School/playground	11	1.1
Vacant house/building	28	2.8
All other locations	29	2.9
Unknown	19	1.9

Rape Reporting Time Lapse

Where time lapse was known 55.5% of the rapes were reported to law enforcement agencies within four hours of the commission of the offense.

In 9% of the offenses, the time lapse was unknown or could not be used because more than one rape occurred over a time period of a month or more.

Hours Reporting Time	Number	Percent Distribution
Less than 1	382	37.0
1 - 4	187	18.5
4 + - 8	82	8.1
8 + - 12	56	5.0
12 + - 24	80	7.9
More than 24	130	12.9
Unknown	92	9.1

Number of Offenders Per Rape

There were two or more offenders in 13% of the rapes or attempted rapes.

Offender(s) Per Offense	Number	Percent Distribution
One	875	86.7
Two	87	8.6
Three	30	3.0
Four	9	.9
More than four	5	.5
Unknown	3	.3

Rape Offenders (Suspects)

Where the age of the offender was known, 43% were between the ages of 20 and 30 years.

Age of Offender	White	Black	Unknown	Total
Under 20	63 (5.2%)	150 (12.4%)	1 (.1%)	214 (17.7%)
20 – 30	175 (4.4%)	338 (27.9%)	3 (.2%)	516 (42.6%)
Over 30	132 (10.9%)	187 (15.5%)	0	319 (26.4%)
Unknown	48 (4.0%)	93 (7.7%)	20 (1.7%)	161 (13.3%)
Total	418 (34.5%)	768 (63.5%)	24 (2.0%)	1,210 (100%)

Medical Attention for Victims

Of the 856 victims of actual rape, 617 (72%) received medical attention.

Type of Rape	Medical Attention			Total
	Received Medical Attention	No Medical Attention	Unknown	
Actual	617 (61.1%)	129 (12.8%)	110 (10.9%)	856 (84.8%)
Attempt	29 (2.9%)	97 (9.6%)	27 (2.7%)	153 (15.2%)
Total	646 (64.0%)	226 (22.4%)	137 (13.6%)	1,009 (100%)

Number of Rapes and Attempted Rapes
 *(By Reporting Agency)

AGENCY	RAPES	ATTEMPTED	AGENCY	RAPES	ATTEMPTED
ARKANSAS COUNTY	7	1	CRAIGHEAD COUNTY	19	1
Sheriff	4	0	Sheriff	1	0
Stuttgart	3	1	Jonesboro	18	1
ASHLEY COUNTY	9	2	CRAWFORD COUNTY	6	1
Sheriff	8	2	Sheriff	5	0
Crossett	1	0	Van Buren	1	1
BENTON COUNTY	8	0	CRITTENDEN COUNTY	60	0
Sheriff	2	0	Sheriff	7	0
Lowell	1	0	West Memphis	53	0
Rogers	5	0	CROSS COUNTY	1	0
BOONE COUNTY	1	0	Wynne	1	0
Sheriff	1	0	DALLAS COUNTY	1	0
BRADLEY COUNTY	1	0	Fordyce	1	0
Sheriff	1	0	DESHA COUNTY	6	1
CALHOUN COUNTY	1	0	Sheriff	1	0
Sheriff	1	0	Dumas	5	0
CARROLL COUNTY	3	1	McGehee	0	1
Sheriff	3	1	DREW COUNTY	5	0
CHICOT COUNTY	5	2	Sheriff	1	0
Sheriff	0	1	Monticello	4	0
Dermott	1	1	FAULKNER COUNTY	22	2
Eudora	1	0	Sheriff	7	0
Lake Village	3	0	Conway	14	2
CLARK COUNTY	1	0	Vilonia	1	0
Arkadelphia	1	0	FRANKLIN COUNTY	0	1
CLEBURNE COUNTY	2	0	Sheriff	0	1
Sheriff	2	0	FULTON COUNTY	1	0
CLEVELAND COUNTY	4	0	Sheriff	1	0
Sheriff	4	0	GARLAND COUNTY	21	1
COLUMBIA COUNTY	5	0	Sheriff	5	0
Sheriff	2	0	Hot Springs	16	1
Magnolia	3	0	GRANT COUNTY	1	0
CONWAY COUNTY	1	1	Sheriff	1	0
Sheriff	1	1	GREENE COUNTY	11	2
			Sheriff	2	2
			Paragould	9	0

*Agencies reporting no rapes are not listed.

Number of Rapes and Attempted Rapes

AGENCY	RAPES	ATTEMPTED	AGENCY	RAPES	ATTEMPTED
HEMPSTEAD COUNTY	5	1	MONROE COUNTY	3	0
Sheriff	3	0	Sheriff	3	0
Hope	2	1	MONTGOMERY COUNTY	2	0
HOT SPRING COUNTY	5	0	Sheriff	2	0
Sheriff	3	0	OUACHITA COUNTY	13	1
Malvern	2	0	Sheriff	1	0
HOWARD COUNTY	1	1	Camden	12	1
Nashville	1	1	PERRY COUNTY	5	0
INDEPENDENCE COUNTY	6	0	Sheriff	5	0
Sheriff	6	0	PHILLIPS COUNTY	7	0
JEFFERSON COUNTY	77	16	Helena	7	0
Sheriff	8	1	POINSETT COUNTY	5	0
Pine Bluff	68	14	Sheriff	3	0
U of A Pine Bluff	1	1	Marked Tree	2	0
JOHNSON COUNTY	0	1	POLK COUNTY	8	2
Clarksville	0	1	Sheriff	8	2
LAFAYETTE COUNTY	4	1	POPE COUNTY	7	1
Sheriff	4	1	Sheriff	3	0
LAWRENCE COUNTY	2	0	Russellville	4	1
Walnut Ridge	2	0	PRAIRIE COUNTY	1	0
LEE COUNTY	4	1	Sheriff	1	0
Marianna	4	1	PULASKI COUNTY	313	83
LINCOLN COUNTY	1	0	Sheriff	38	7
Sheriff	1	0	Jacksonville	14	3
LITTLE RIVER COUNTY	1	1	Little Rock	197	56
Sheriff	0	1	North Little Rock	61	16
Ashdown	1	0	Sherwood	3	1
MADISON COUNTY	1	0	ST. FRANCIS COUNTY	11	1
Sheriff	1	0	Sheriff	6	0
MILLER COUNTY	22	6	Forrest City	5	1
Sheriff	8	1	SALINE COUNTY	22	2
Texarkana	14	5	Sheriff	12	1
MISSISSIPPI COUNTY	18	11	Benton	10	1
Sheriff	6	2	SEARCY COUNTY	1	0
Blytheville	9	8	Sheriff	1	0
Osceola	3	1			

Number of Rapes and Attempted Rapes

AGENCY	RAPES	ATTEMPTED
SEBASTIAN COUNTY	50	6
Sheriff	8	0
Barling	1	0
Fort Smith	41	6
SEVIER COUNTY	2	0
Sheriff	1	0
DeQueen	1	0
SHARP COUNTY	2	0
Sheriff	2	0
UNION COUNTY	10	0
El Dorado	10	0
VAN BUREN COUNTY	4	0
Sheriff	4	0
WASHINGTON COUNTY	35	3
Sheriff	8	0
Fayetteville	22	1
Springdale	4	2
U of A Fayetteville	1	0
WHITE COUNTY	5	0
Sheriff	1	0
Kensett	1	0
Searcy	3	0
YELL COUNTY	1	0
Sheriff	1	0
STATE TOTAL	855	154

ACIC Agent Staff Areas

