

HPD

HONOLULU POLICE DEPARTMENT

CR. Ser + mpa
9-4-90

123351



ANNUAL REPORT 1988



HONOLULU POLICE DEPARTMENT



ANNUAL REPORT 1988

123351

U.S. Department of Justice
National Institute of Justice

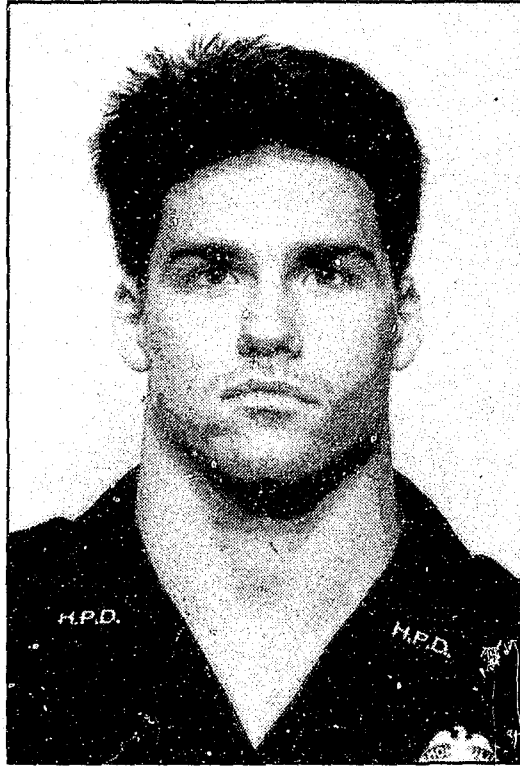
This document has been reproduced exactly as received from the person or organization originating it. Points of view or opinions stated in this document are those of the authors and do not necessarily represent the official position or policies of the National Institute of Justice.

Permission to reproduce this copyrighted material has been
granted by
Honolulu Police Department

to the National Criminal Justice Reference Service (NCJRS).

Further reproduction outside of the NCJRS system requires permission of the copyright owner.

IN MEMORIAM



OFFICER TROY LOUIS BARBOZA

1963 - 1987

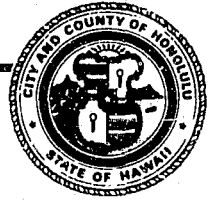
Metropolitan Police Officer Troy L. Barboza, 24, was slain at his home on October 22, 1987. He was born in Castro Valley, California and moved to Honolulu in 1983. Officer Barboza was a graduate of the 92nd Recruit Class and assigned to District 1.



TABLE OF CONTENTS

Mayor, City and County of Honolulu	1
The Honolulu Police Commission	2
A Message From the Chief of Police	3
The Deputy Chief and Assistant Chiefs	4
Organizational Chart	5
Powers, Duties, and Functions	6
HPD Value Statements	7
Law Enforcement	8
Traffic Safety	10
Crime Prevention	11
Organization and Management	13
Training and Support Activities	15
Telecommunications and Information Systems	16
Awards	17
Statistics	18
Comparative Summary-Statistics	18
Internal Affairs Statistics	19
Firearms Registration Statistics	20
Crime Statistics	21
Arrest Statistics	37





This report describes the major activities of the Honolulu Police Department during the calendar year 1988. It also presents a compilation of crime statistics for the City and County of Honolulu.

We publish this report to inform citizens of Honolulu about the accomplishments and directions the department has taken in the last year.

I am pleased to say that we have a strong force of police officers and support staff who work hard to make Hawaii a safer place for all of us.

A handwritten signature in cursive script, reading "Frank F. Fasi".

FRANK F. FASI, Mayor
City and County of Honolulu

THE POLICE COMMISSION



Back row (l to r): Commissioner Robert Y. Nakamoto, Chairman William B. C. Hee, Vice-Chairman Skip S. Y. Hong, and Commissioner Marshall Potts. Front row (l to r): Commissioners Romeo M. Mindo, Yuklin Aluli, and Mary Lou Livingston.

The Police Commission consists of seven members who are appointed by the Mayor and confirmed by the City Council. All members serve staggered terms of five years, volunteer their services, and receive no compensation. A chairman and vice chairman are elected annually by the members of the Commission.

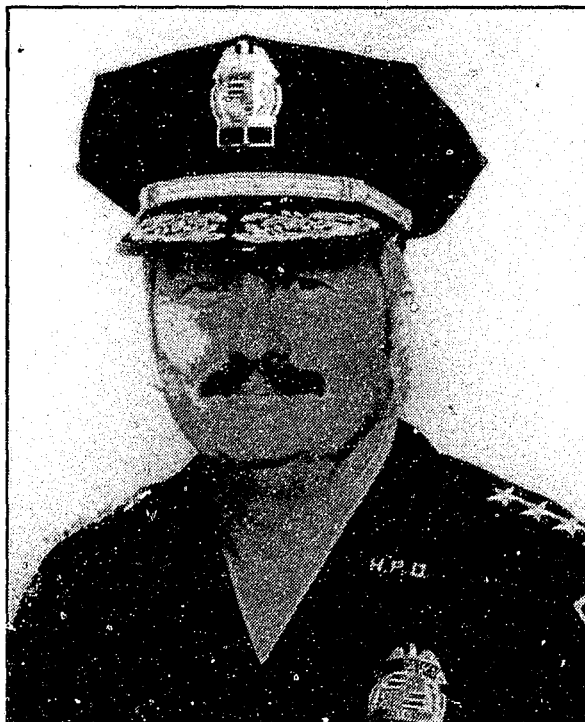
The Police Commission has the following responsibilities:

- Appoints and may remove the Chief of Police.
- Reviews rules and regulations for the administration of the Honolulu Police Department.

- Reviews the annual budget prepared by the Chief of Police and may make recommendations thereon to the Mayor.
- Receives, considers and investigates charges brought by the public against the conduct of the department or any of its members and submits written reports of its findings to the Chief of Police.

Except for purposes of inquiry or as otherwise provided in the Revised Charter of the City and County of Honolulu, neither the Commission nor its members are authorized to interfere in any way with the administrative affairs of the department.

A MESSAGE FROM THE CHIEF



We are pleased to present the Honolulu Police Department's Annual Report for calendar year 1988.

This year, efforts were focused particularly on preparing the department to successfully meet the challenges of the future. This proactive approach is reflected in the changes in organizational structure, development of new facilities, and acquisition of technologically advanced equipment. Such projects are long-term investments in the fight against crime in Honolulu.

The department is determined to enter the 1990s with a progressive as well as aggressive attitude towards anticipating crime problems and preventing them.

We are grateful for all the cooperation and support we received from the community this past year and hope to enhance our working relationships with the public in the years to come.

A handwritten signature in cursive script that reads "Douglas G. Gibb".

DOUGLAS G. GIBB
Chief of Police

DEPUTY CHIEF AND ASSISTANT CHIEFS



WARREN FERREIRA
Deputy Chief



RONALD SOUZA
Assistant Chief
Support Services Bureau



CHESTER HUGHES
Assistant Chief
Administrative Bureau



ERSEL KILBURN
Assistant Chief
Office of the Chief



EUGENE UEMURA
Assistant Chief
Investigative Bureau



DAVID HEAUKULANI
Assistant Chief
Special Field Operations Bureau

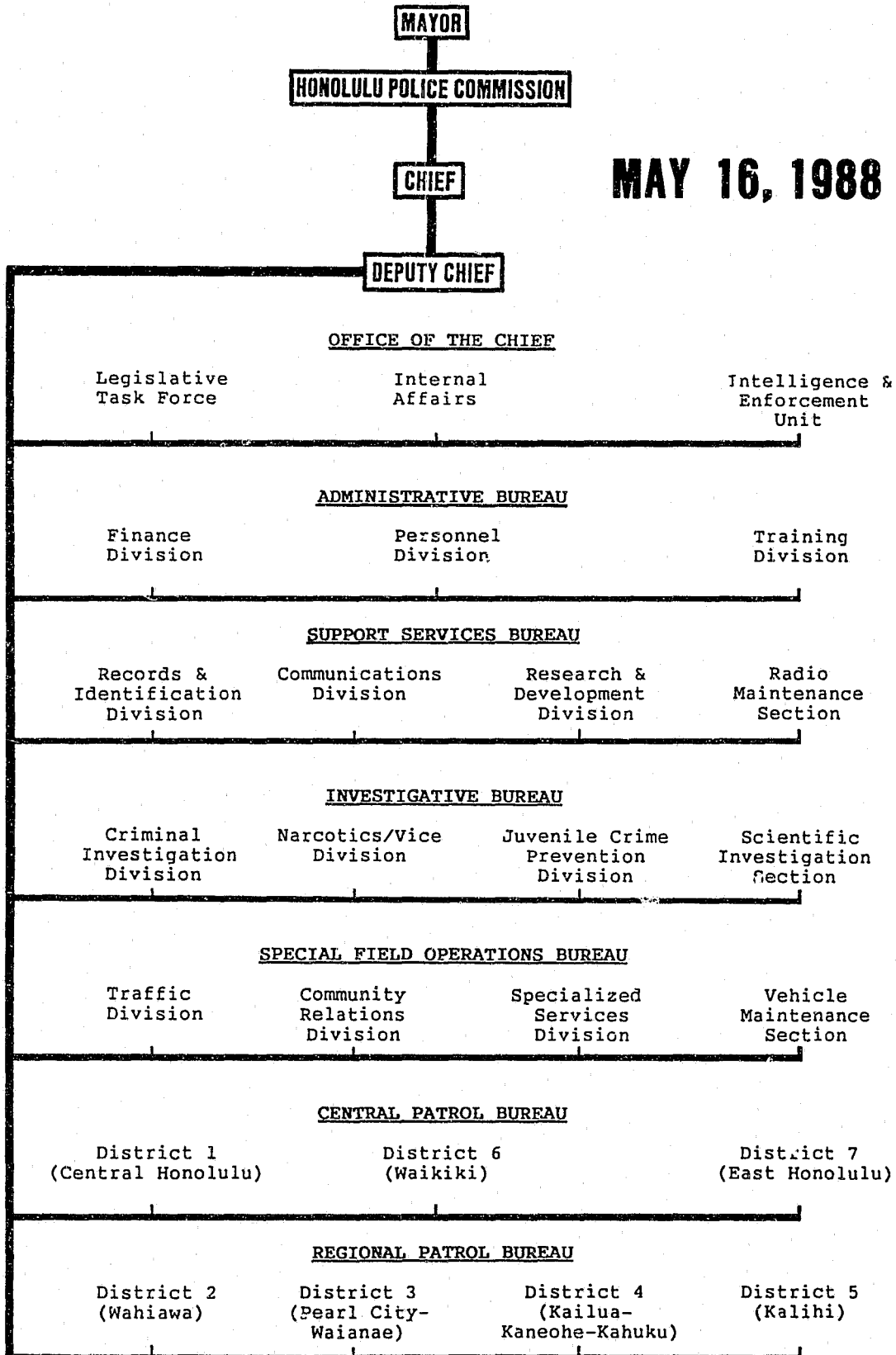


HAROLD KAWASAKI
Assistant Chief
Central Patrol Bureau

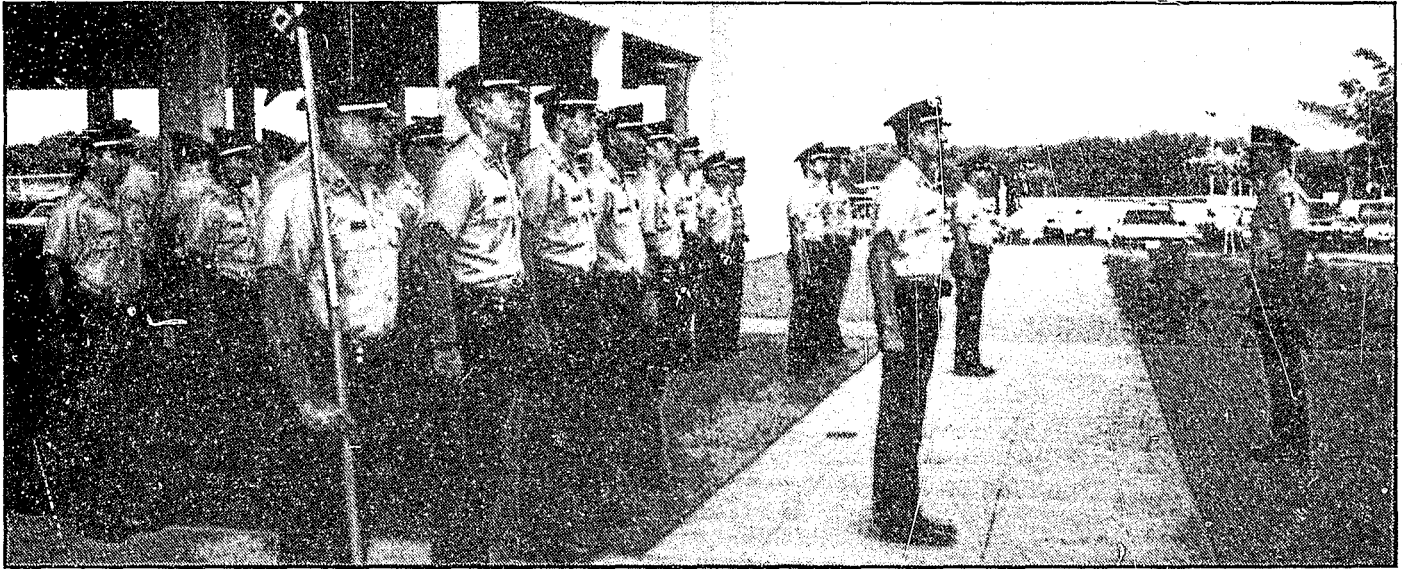


RALPH YEE
Assistant Chief
Regional Patrol Bureau

ORGANIZATIONAL CHART



POWERS, DUTIES AND FUNCTIONS



"I solemnly swear that I will faithfully support the Constitution and laws of the United States of America and the Constitution and laws of the State of Hawaii, and that I will conscientiously and impartially discharge my duties as a police officer in the Police Department of the City and County of Honolulu, State of Hawaii, and any and all other duties devolving upon me in connection with such office. So help me God."

The Honolulu Police Department serves as the law enforcement agency for the City and County of Honolulu. The department consists of a chief of police, a police commission, a force of police officers, and other support personnel.

The Chief of Police, who is appointed by the Police Commission, directs the operation and administration of the department and is responsible for:

- The preservation of public peace.
- The protection of property and the rights of persons.
- The prevention of crime.
- The detection and arrest of offenders against the law.

- The enforcement and prevention of violations of state laws and city ordinances.
- The serving of process and notices in civil and criminal proceedings.

The department is headquartered in the Pawa'a Annex at 1455 South Beretania Street. As of January 1, 1988, the department's authorized personnel strength was 2,192: 1,779 officers and 413 civilians.

The department's jurisdiction includes the entire City and County of Honolulu and is divided into seven geographic districts: District 1, Central Honolulu; District 2, Wahiawa; District 3, Pearl City-Waianae; District 4, Kailua - Kaneohe - Kahuku; District 5, Kalihi; District 6, Waikiki; and District 7, East Honolulu.

HPD VALUE STATEMENTS

These value statements articulate the major assumptions, beliefs, and aspirations that serve to motivate and guide us in the performance of our duties.

VALUE STATEMENTS

- The responsibility for developing a safe and secure community is shared by the police, other governmental agencies, and the public.
- The community is entitled to the best police service that the department and the City and County can provide.
- The department aggressively investigates all criminal activity while safeguarding individual rights.
- The department demands the highest standards of professionalism and integrity from all police personnel.
- The department firmly believes in the use of technological developments to improve police operations and management.
- The department constantly strives to make the best use of its resources.
- The department is fully committed to a management style that is open and participatory.
- The department strives to maintain a posture of openness with critics and the media.

LAW ENFORCEMENT

Several different programs were implemented to help control major crime problems in Honolulu.

Marijuana/Narcotics

The Drug Assets Seizure Program continued to hurt drug dealers by seizing assets, including money, vehicles, materials, equipment, and real estate. In addition to the criminal charges filed, approximately \$568,000 in drug wealth was seized locally.

In 1988, a total of 8,671 marijuana plants were seized. Also, an increased effort to use search warrants against marijuana growers has had positive results. Twenty-six marijuana search warrants were served, resulting in 37 arrests and the federal seizure of a house in Kaneohe that was valued at \$150,000. The threat of being arrested and losing their property may have helped reduce the number of people growing marijuana on this island. HPD's helicopter surveillances have spotted fewer plants this year than in recent years.



HPD officers keeping marijuana growers out of business.

To help prevent the importation of narcotics from other states and countries, the Narcotics/Vice Division formed a unit that will be totally dedicated to the interdiction of narcotics at the Honolulu airport.



Crystal Methamphetamine or "Ice", a major contributor to Hawaii's drug problem.

Prostitution

The department's Morals Detail continued to address the problem of prostitution in Honolulu. In the reporting period, approximately 339 prostitutes were arrested and 30 arrests were made for other morals-related offenses.

Youth Gangs

A Gang Task Force was formed to prevent the mainland's severe youth gang problems from spreading to Hawaii. It was also developed to help officers recognize the kinds of threats each particular gang represents.

With the aid of federal funds, the Gang Task Force sponsored a series of training classes given by representatives of the Los Angeles County Sheriff's Office. These classes covered several topics for dealing with street gangs: community awareness, alternative activities, and legislation.

With the cooperation of the Los Angeles County Sheriff's Office, similar classes were made available to the community. About 120 people attended the open classes, including several representatives from other city and state agencies.



Confiscated Video Gambling Machines.



Gambling

The department's Gambling Detail continued to pressure organized cockfighting and was able to seriously disrupt the larger, more lucrative fights. An undercover operation called "Operation Manok" obtained felony indictments against cockfight organizers and promoters. The efforts of this operation also resulted in 105 arrests for a total of 162 offenses.

In the ongoing effort to eliminate video gambling on Oahu, 289 video gambling machines were seized by the Gambling Detail. In addition, this detail handled 516 cases, served 64 search warrants, arrested 882 people, and seized approximately \$913,274 in gambling evidence in calendar year 1988.

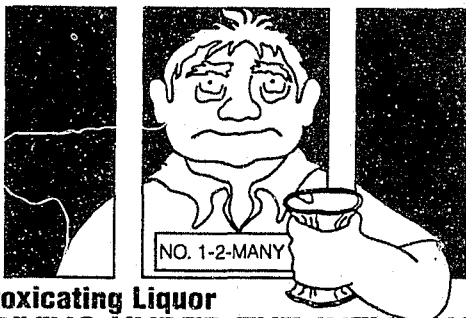
TRAFFIC SAFETY

Driving Under the Influence (DUI)

The department has continued its efforts to keep the highways safe from drunken drivers. DUI arrests play a vital role in reducing traffic accidents and fatalities; this year about 5,628 DUI arrests were made on Honolulu's roadways.

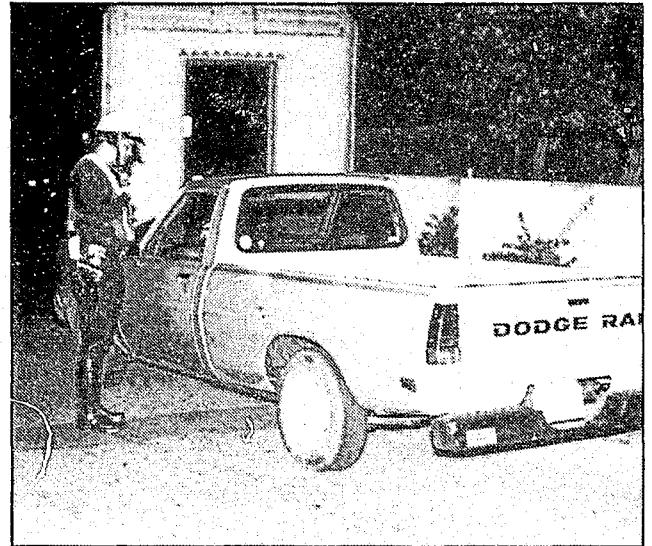


DUI roadblocks during a holiday weekend.



Intoxicating Liquor DRIVING UNDER THE INFLUENCE

Special DUI teams have been active in patrol/arrest activities and in setting up roadblocks to deal with this problem. With the aid of federal funds, additional officers were assigned to weekend DUI roadblocks. Roadblocks were set up every weekend during the Christmas and New Year season as well as every holiday weekend throughout the year.



Focusing traffic safety efforts.

Selective Traffic Enforcement Program

The Selective Traffic Enforcement Program continued to focus on accident-causing violations and locations with a high rate of motor vehicle accidents. Data collected on accident patterns were used as a basis for assigning personnel to enforce traffic safety in selected locations.

Highway Management Program

A Highway Management Program was developed to help alleviate traffic congestions and hazards that are caused by the increase in vehicles on our main thoroughfares during peak traffic periods.

Under this program, officers were assigned to major highways specifically to keep traffic flowing in a safe and orderly manner. They accomplished this by immediately clearing roadways of stalled vehicles and traffic accidents and patrolling their assigned areas for potential traffic problems.

CRIME PREVENTION

The safety of the community is a responsibility that is shared by everyone: government and private agencies/businesses, community organizations, and, of course, the public.

With this in mind, the department has been building relationships with residents, community organizations, and the business community to promote a "teamwork" approach to solving our crime problems. This effort resulted in the expansion of ongoing crime prevention programs and the initiation of new programs.



McGruff Truck Program

The McGruff Truck program was designed to provide children who are in need of help with a place to stay or a person to turn to when a police officer is not readily available.

HPD worked closely this year with three large businesses in Hawaii: Oceanic Cablevision, Hawaiian Telephone, and the Hawaiian Electric Company. Van/truck drivers of all three companies were trained by our officers to respond when they are approached by children who need help. Police officers also conducted classes to teach youngsters about the vehicles they should approach and how to communicate their need for help.



Council of Police and Private Security (COPPS)

COPPS was formed to promote cooperation, understanding and a good working relationship between HPD and the private security industry.

This year, COPPS began presenting special plaques for exceptional performance of duty to individuals in the private security industry.

Also this year, COPPS subcommittees were formed in every patrol district on the island. Each station/substation assigned at least one police officer to represent the department in its district subcommittee.



Drug Abuse Resistance Education (DARE)

The DARE program continued to be a focus of the department's effort to eliminate the drug abuse problem in Hawaii. Seven more private schools joined the program this year and well over 10,000 fifth graders received anti-drug classes this last school year.

Also this year, the DARE program became the first in the nation to work with the military. Several members from various branches of the military were trained by our department to conduct DARE classes. This joint effort was especially effective at schools that were located either on a military base or in a military housing area.



Neighborhood Security Watch

In keeping with the team approach to crime prevention, the Neighborhood Security Watch program continued to expand; the number of participating neighborhoods increased from 96 to 160. By December 1988, there were approximately 16,000 households in this program.

This year, the program began to equip neighborhood watch coordinators with a secured mailbox that will serve as a communication link between the beat officer and his/her neighborhood residents. So far, 59 mailboxes have been installed throughout the island.

Plans were finalized this year to include business organizations as participants in the Neighborhood Security Watch Program.

ORGANIZATION AND MANAGEMENT

Reorganization

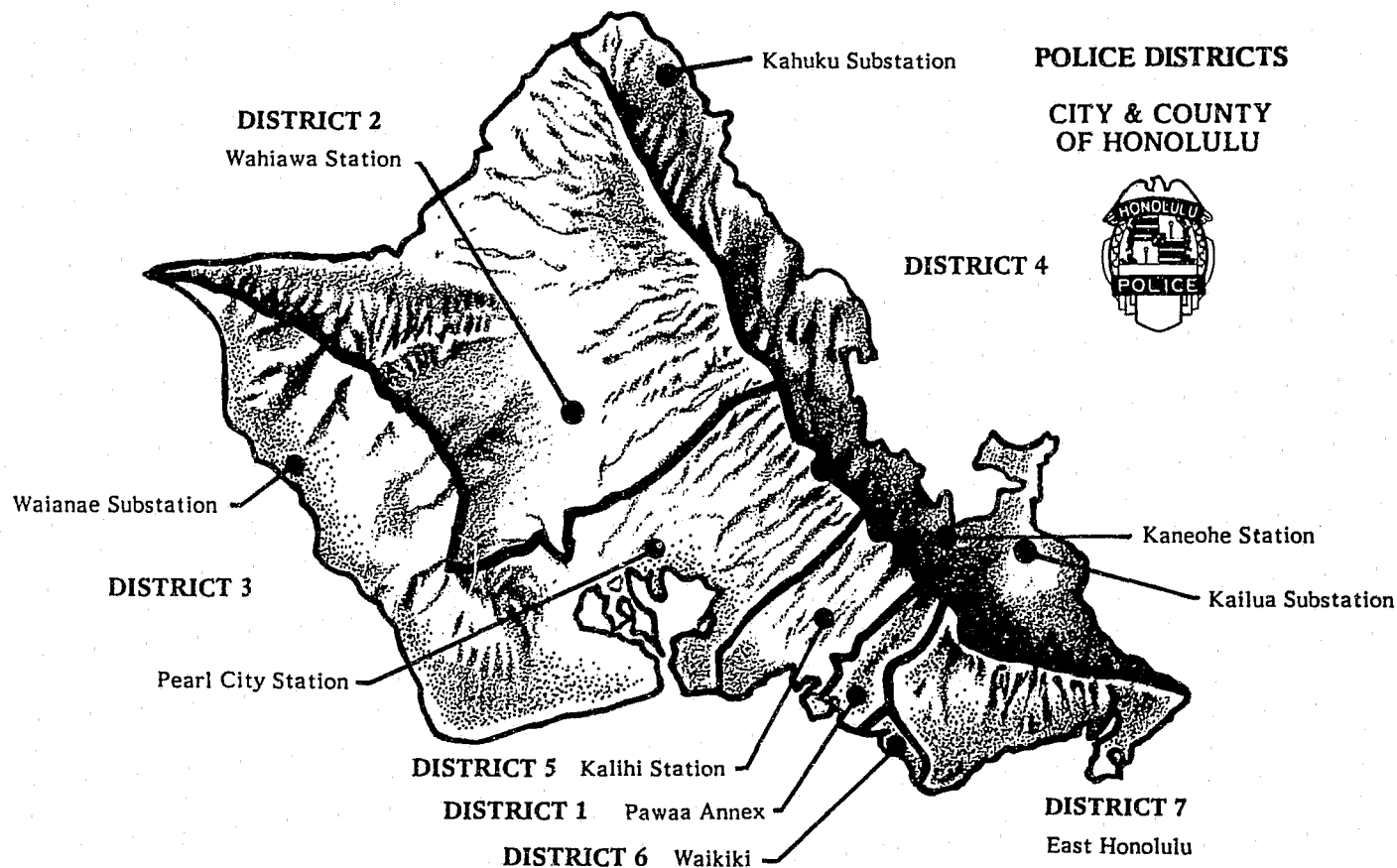
The first major departmental reorganization in decades became effective on May 16, 1988. It was planned to distribute the workload more evenly among police commands and improve each command's accountability and responsiveness to the community.

Among other things, this reorganization increased the number of bureaus from four to six, eliminated the rank of inspector, and divided the Honolulu patrol district into three separate districts.

One of the major changes was the separation of the former Field Operations Bureau into the Central Patrol, Regional Patrol, and Special Field Operations

Bureaus. The Central Patrol Bureau commands District 1 (Honolulu) and two new districts: District 6 (Waikiki) and District 7 (East Honolulu). District 6 has a storefront station on Kalakaua Avenue that is open 24 hours to provide walk-in service for inquiries and complaints. District 7 is currently managed out of Pawa'a Annex, but exploration began this year to locate a site in Hawaii Kai for a substation.

The Regional Patrol Bureau commands the other previously existing patrol districts: District 2 (Wahiawa), District 3 (Pearl City-Waianae), District 4 (Kailua-Kaneohe-Kahuku), and District 5 (Kalihi).



The Technical Bureau was replaced by a Support Services Bureau that commands the Records and Identification, Communications, and Research and Development Divisions and the Radio Maintenance Section.

A new Scientific Investigation Section was formed. This new section includes the Crime Lab, evidence specialists, polygraph operators, and graphic artists.

Service First

In February 1988, the department began a campaign to promote service as a main priority in performing all duties. The motto "Service First" was adopted and communicated in various ways. Pin-on buttons and crack-n-peel decals, imprinted with the motto, were worn and displayed by HPD personnel to remind everyone of their commitment to provide the best possible service to the public.

A series of instructional videos were produced that took a humorous approach to communicating the importance of a "Service First" attitude among department personnel.

Alapai Headquarters

A new police headquarters at the present Alapai Bus Yard became more of a reality as final drawings were completed July 1988.

Detailed planning for the accommodation of computers and other equipment in the new headquarters began. A consultant was hired to design the cabling and conduit systems and to recommend adjustments to the microwave telecommunication system.

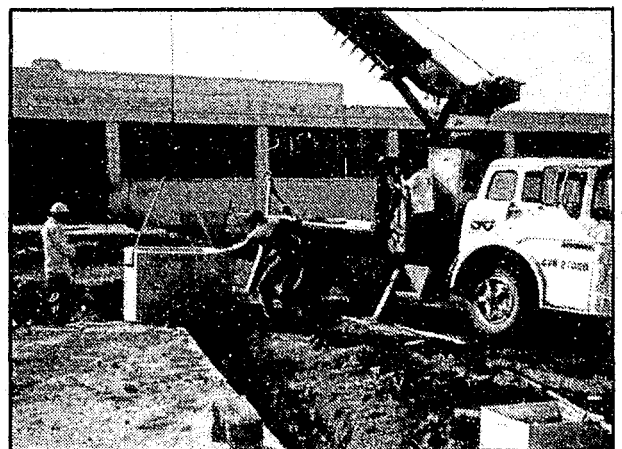
The contract for building the new station was awarded at the end of 1988 and groundbreaking is scheduled for April of 1989.

Kalihi Station Renovation

1988 brought a new appearance and a look at the future for the Kalihi police station. A renovation of the receiving area has made it possible to use the front desk area more efficiently to accommodate police and office equipment. The new area was also designed to closely monitor people entering the station. This not only serves as a security measure, but it makes the assisting and processing of individuals much more systematic.

In addition to the changes in the receiving area, a locker room for female officers and several new offices were built.

Plans for a new Kalihi Station building progressed as design work for the new station was completed this year and groundbreaking for the new structure was celebrated on October 6, 1988. Major site preparations are under way as planning and engineering tasks are being finalized.



Construction for the new Kalihi Station

TRAINING AND SUPPORT ACTIVITIES

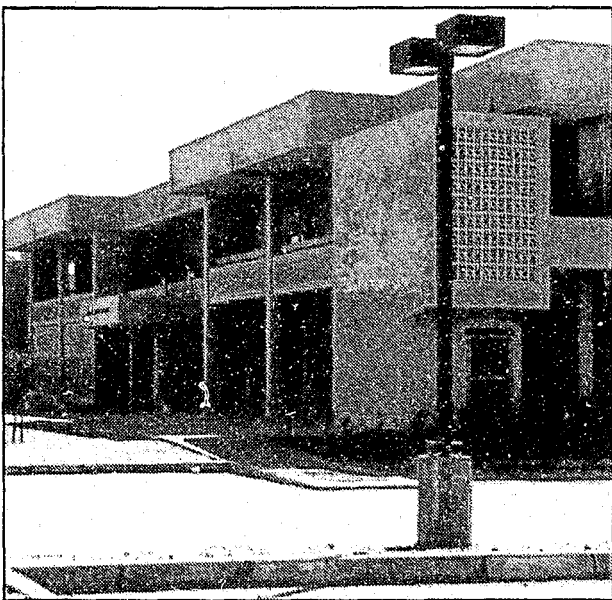
The Police Academy

The department's plan to centralize and improve its training facilities was carried out this year.

In April 1988, the entire Training Division relocated to the newly completed Police Academy, "Ke Kula Maka'i," which includes an administration building and a physical fitness building.

Several classrooms, which are located in the administration building, are equipped with state-of-the-art audio/video equipment that is available for training classes, seminars, conferences, and presentations.

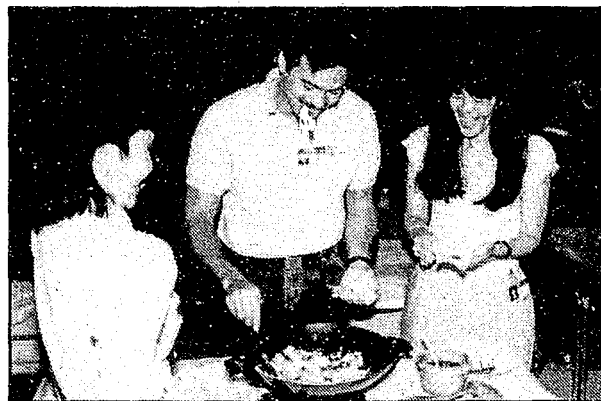
The next phase of construction, which includes an Emergency Vehicle Operations Course and a tactical assault structure, was near completion by the last quarter of this year.



The Training Academy --- Ke Kula Maka'i

Health and Wellness

The Honolulu Police Department continued to promote health and wellness. In October 1987, the department initiated a Worksite Wellness Program with its first "Healthplate." Healthplates are monthly workshops covering a variety of health-related topics, e.g., nutrition, cholesterol, exercise, diabetes, and AIDS.



An enjoyable way to a "Wellness" lifestyle.

With the help of the state and city health departments, Kaiser Permanente, and the Honolulu Fire Department, HPD sponsored a free Health Risk Appraisal. Some 696 departmental personnel were screened for high blood pressure, cholesterol, diabetes, and body fat, and a "health age" was calculated for each participant.

HPD became one of the 24 local organizations selected to participate in the first year of the American Heart Association's Heart At Work Program in Hawaii. The program is conducted at the worksite and focuses on educating individuals on the prevention of heart attacks.

The Weight Management Program continued to help overweight officers get into shape. A total of 198 officers participated in the program this past year and lost a total of 1,032 pounds.

TELECOMMUNICATIONS AND INFORMATION SYSTEM

TELECOMMUNICATIONS AND INFORMATION SYSTEMS

Telecommunications

Communication systems play a major role in determining how effectively the department can serve the public. HPD has taken advantage of technological improvements to upgrade its communication system. Two major changes involve the Enhanced 911 (E911) system and the Computer-Aided Dispatch (CAD) System.

The Communications Division has worked with the city building department to acquire and install a highly advanced Enhanced 911 system. The system will provide automatic number information and automatic location information for all incoming calls. Installation of the necessary hardware began on June 1988 and the system was officially implemented on September 11, 1988

Information Systems and Technology

The department's word processing system was upgraded and expanded, providing more terminals and greater access to HPD's mainframe files. Enhancements such as time management, electronic mailing, calendaring, and graphics continue to be installed to the system.

Plans were established to incorporate personal computers into a local area network. Some networking between PCs was started to test the operation of the system.

The Police Department is continuing to work with its vendor, PSW3, on the Computer-Aided Dispatch/Records Management System (CAD/RMS). CAD/RMS will enable the department to provide better service to the public through faster response times. The



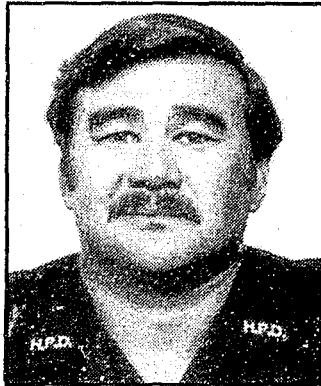
system will also enhance the case management system, communicating case information and transferring reports much more quickly.

CAD was made partially operational so that tests of the system and its files could be conducted. The Communications Division has utilized the testing procedures to begin training its personnel and familiarizing personnel in patrol with computer-aided dispatching. CAD/RMS should be in full operation by February 1989.

The department is also exploring the possibility of acquiring several computer-related capabilities: mobile data terminals, computer mapping for crime analysis, and an optical disk storage system.

HPD played a major role in initiating the plans for a statewide automated fingerprint identification system. The department also worked closely with others to develop this system to ensure that it would operate properly. The system is expected to be operational by late 1989.

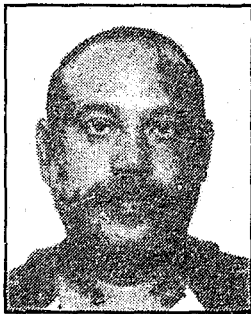
AWARDS



Warrior Bronze Medal of Valor

Officer Rodney Duyag

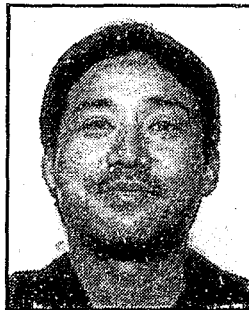
Officer Rodney Duyag was awarded the Warrior Bronze Medal of Valor for his heroic display of bravery and selfless concern for the lives of others in a life-threatening situation. Officer Duyag entered a burning building to warn and evacuate its tenants and provided assistance to a burn victim.



1988 Police Officer of the Year

Officer David A. K. Brown

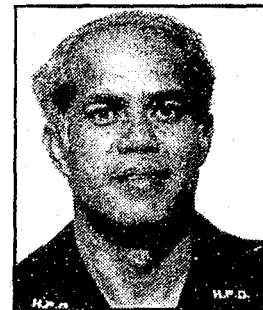
Officer David Brown received the 1988 Police Officer of the Year award for demonstrating dedication to public service and providing exceptional leadership as the officer in charge of a unit that investigated drug trafficking by local organized crime figures. He was also instrumental in the success of a protracted covert investigation of eight drug dealers on Oahu.



1988 Reserve Officer of the Year

Officer Brian D. Sugimoto

Officer Brian Sugimoto earned the Reserve Officer of the Year award for his dedication to public service, which was exhibited by his involvement in a shooting incident that resulted in his being wounded. Also, Officer Sugimoto was the first reserve officer to be accepted for and successfully complete the Field Training Officer Development Course. Among his numerous commendations is a Certificate of Merit presented by Chief of Police Douglas G. Gibb.



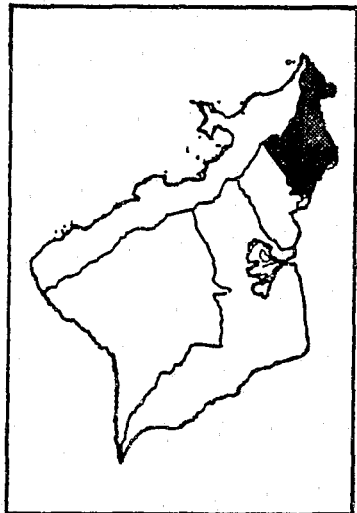
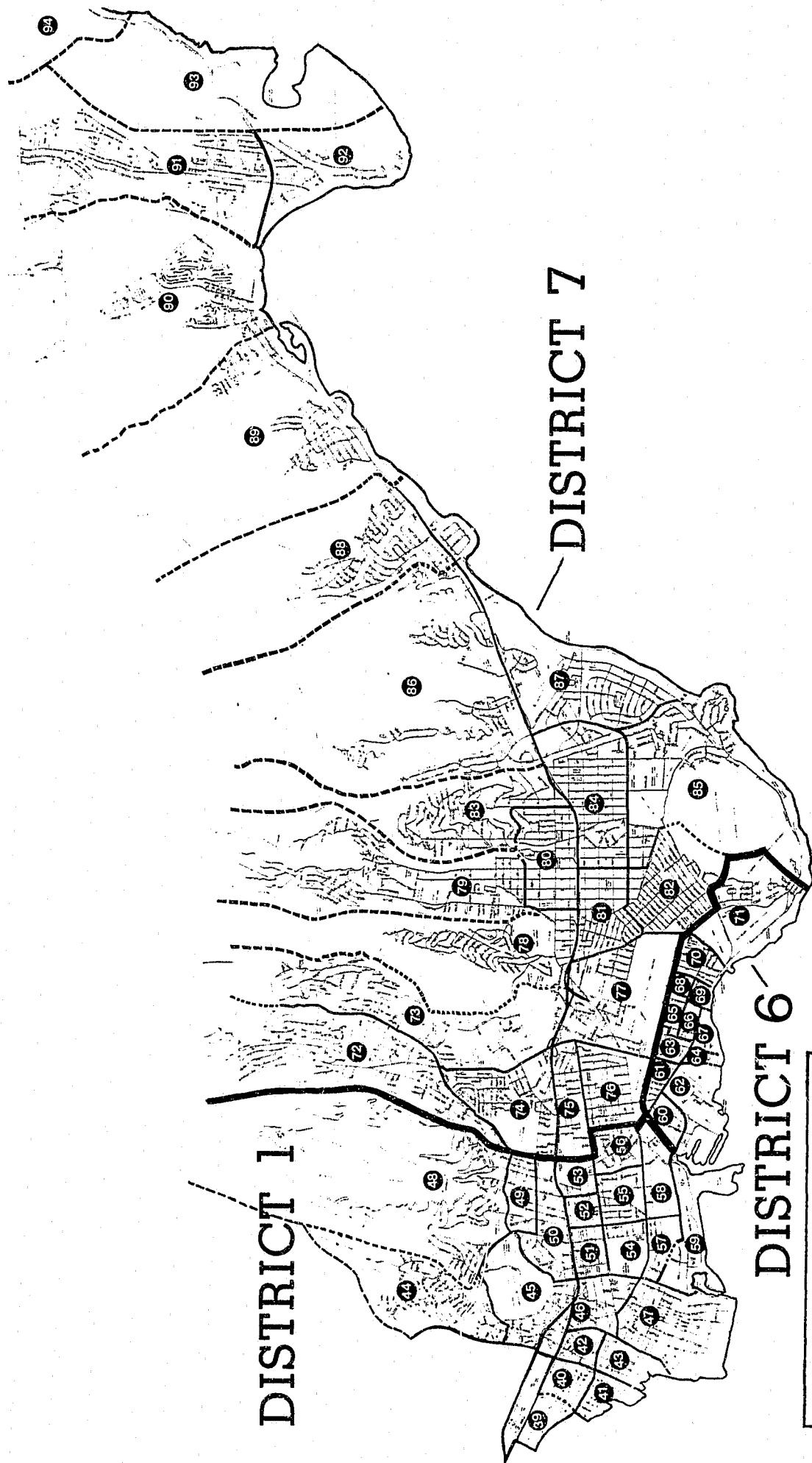
1988 Parent of the Year

Officer Bruce K. Mossman, Sr.

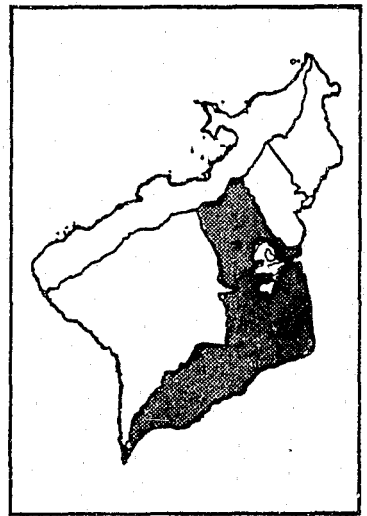
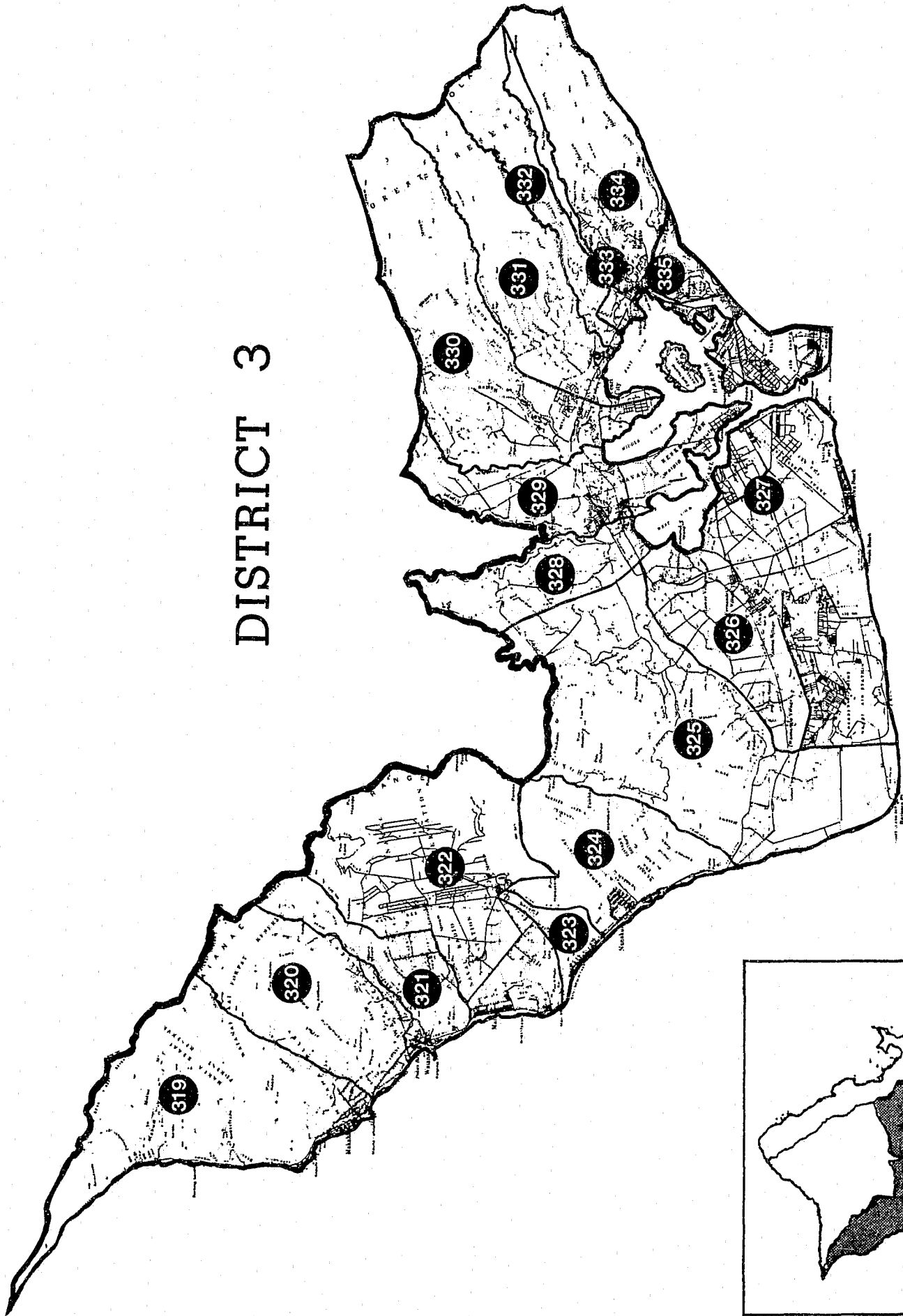
Officer Bruce Mossman, Sr., was named the department's Parent of the Year. He is the father of five children: sons Bruce Jr., Vaughn, and Albert, and daughters Elizabeth and Rebecca. In addition, over the last six years Officer Mossman and his wife have been foster parents to five children.

COMPARATIVE SUMMARY: 1986-1988

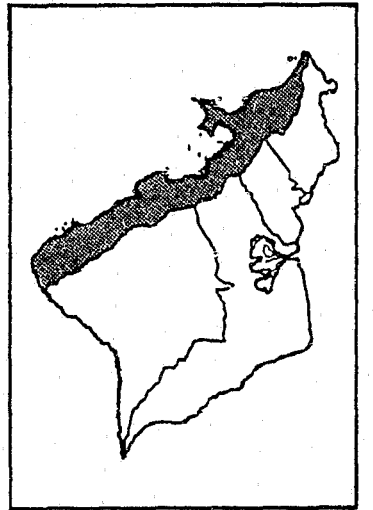
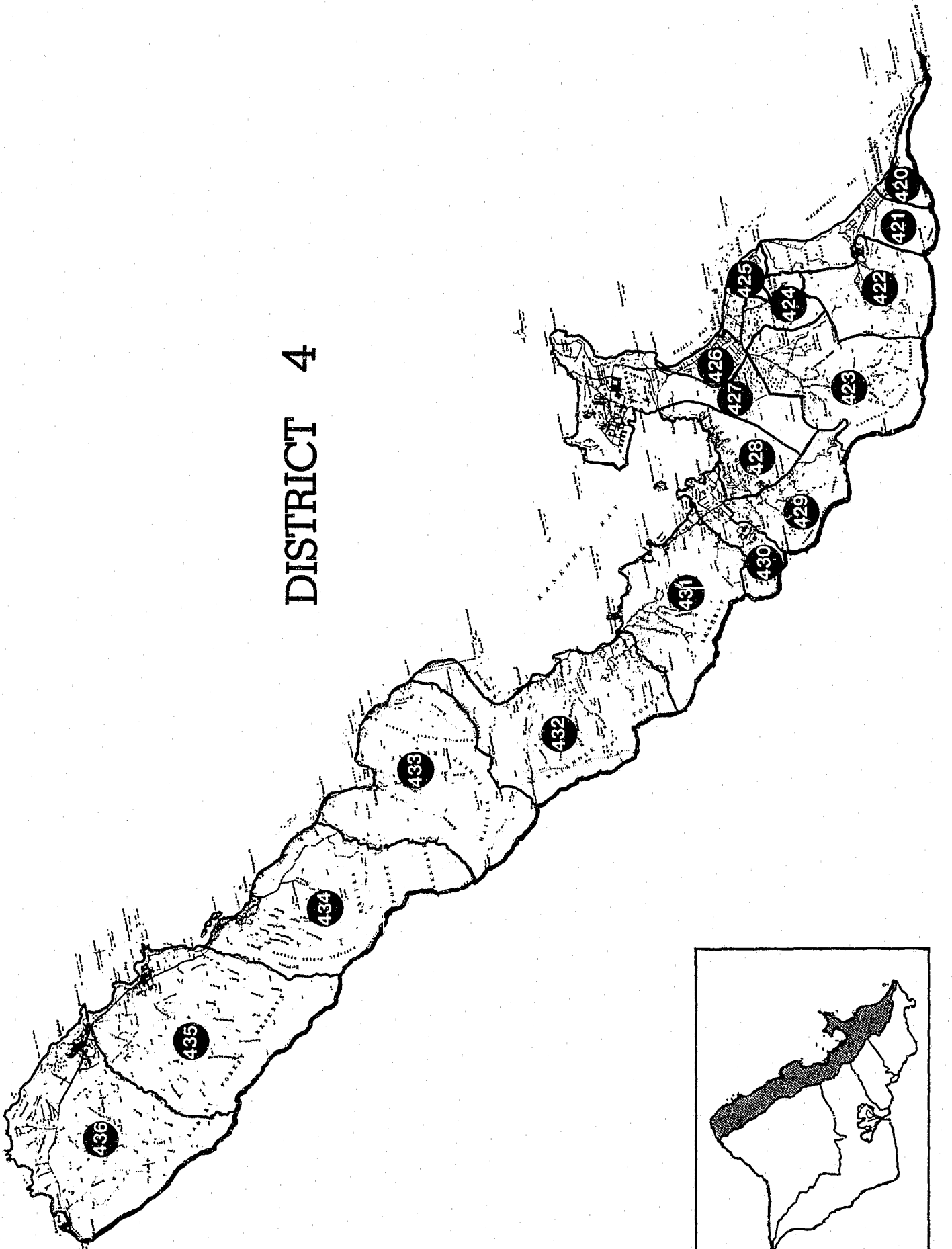
	<u>1986</u>	<u>1987</u>	<u>1988</u>
Personnel Strength (Actual) as of December 31			
Police Employees	1,974	2,079	2,084
Sworn Police Officers	1,617	1,707	1,704
Average Number of Ofcrs. per 1,000 Population	2.0	2.1	2.0
Appointments	184	281	198
Separations from Service	163	176	194
Operating Expenditures (End of Fiscal Period).....	\$63,099,088	\$69,454,434	\$75,343,398
Part I Actual Offenses	46,449	49,014	49,337
Rate per 1,000 Population	56.7	59.1	58.8
Offenses Cleared	7,937	9,335	8,702
Percent Cleared	17.1	19.0	17.6
Part II Actual Offenses	71,879	78,827	84,128
Rate per 1,000 Population	87.8	95.1	100.3
Offenses Cleared	46,804	53,713	57,754
Percent Cleared	65.1	68.1	68.7
Adult Arrests(except traffic).....	27,330	30,945	33,532
Juvenile Arrests .(except traffic).....	10,566	12,290	11,955
Value of Property Stolen	\$34,251,782	\$38,900,118	\$43,743,389
Value of Stolen Property Recovered	\$8,570,578	\$11,192,021	\$12,620,273
Percent Recovered	25.0	28.8	28.9
Motor Vehicle Traffic Accidents	26,983	29,186	29,867
Major	16,256	19,265	21,205
Minor	10,727	9,921	8,662
Persons Killed	70	75	84
Resident Population	819,100	829,000	838,500

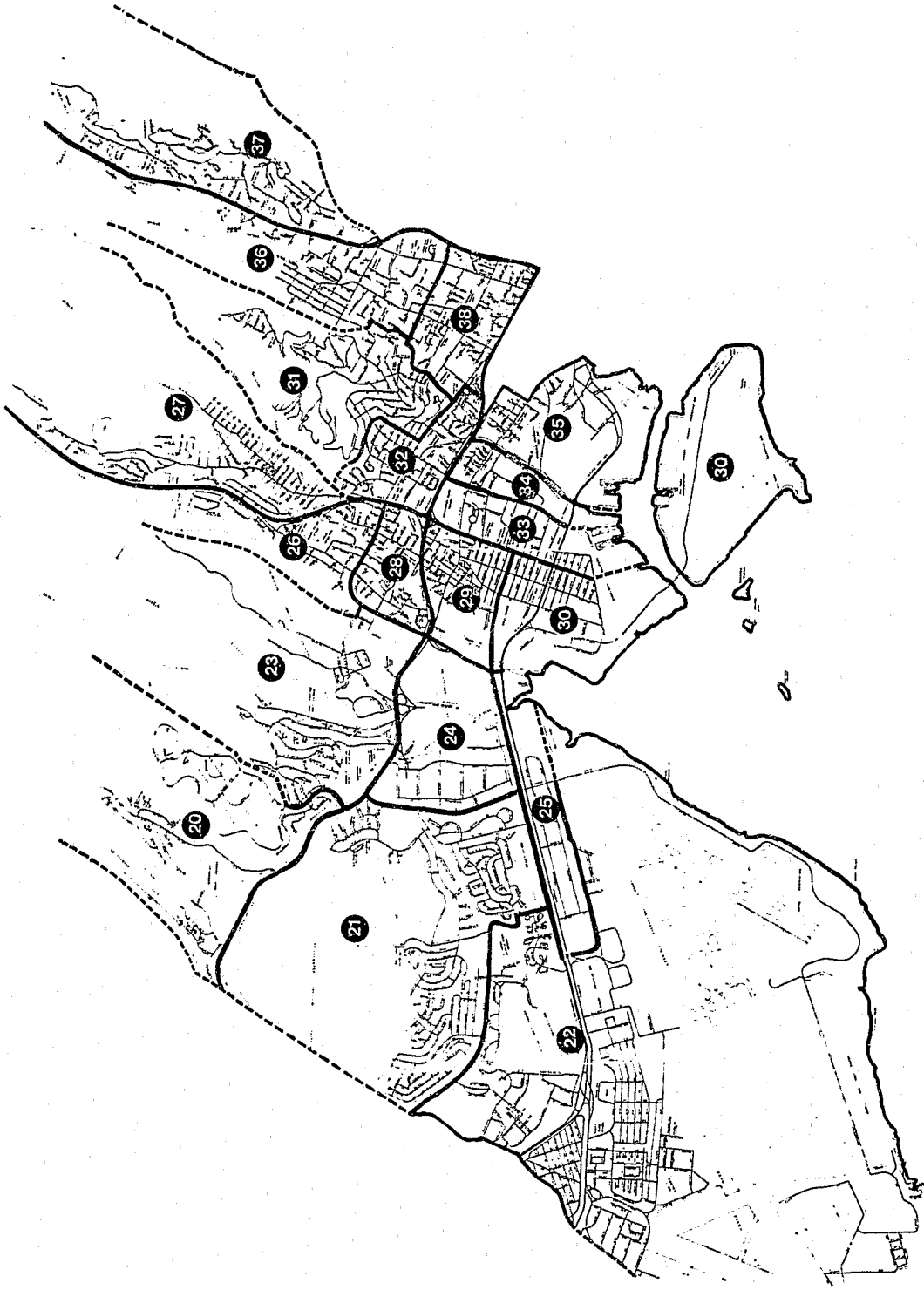


DISTRICT 3

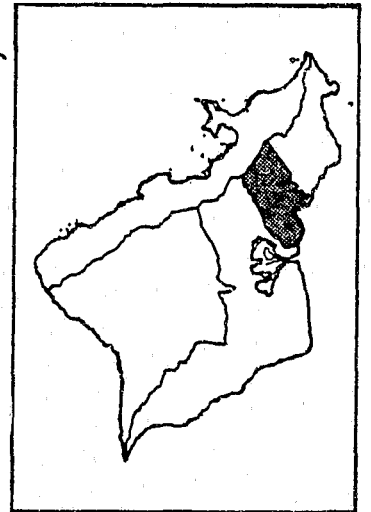


DISTRICT 4





DISTRICT 5



INTERNAL AFFAIRS, ADMINISTRATIVE COMPLAINTS: 1986-1988

<u>INVESTIGATIONS</u>	<u>1986</u>	<u>1987</u>	<u>1988</u>
External Complaints	200	168	203
Others	285	302	272
TOTAL.....	485	470	475
<u>DISPOSITIONS OF SUSTAINED COMPLAINTS</u>			
Counseled	19	29	102
Written Reprimand	144	115	67
Suspended	70	103	49
Dismissed	5	8	9
TOTAL	238	255	227

FIREARMS REGISTRATION SECTION: 1986-1988

<u>APPLICANTS QUALIFYING FOR PERMIT TO ACQUIRE FIREARMS</u>	<u>1986</u>	<u>1987</u>	<u>1988</u>
Handguns	3,687	3,820	4,139
Rifles/Shotguns	1,886	2,034	2,209
TOTAL.....	5,573	5,854	6,348
 <u>REGISTRATION VIA PERMIT</u>			
Handguns	3,635	4,058	4,154
Rifles/Shotguns	496	543	503
TOTAL	4,131	4,601	4,657
 <u>DEALERS' REGISTRATION</u>			
Handguns	2,870	2,978	2,592
Rifles/Shotguns	1,743	1,854	1,898
TOTAL	4,613	4,832	4,490
 <u>OUT OF STATE REGISTRATION</u>			
Handguns	1,745	1,838	2,095
Rifles/Shotguns	1,668	1,898	1,830
TOTAL	3,413	3,736	3,925

ACTUAL OFFENSES AND CLEARANCES: 1988

<u>OFFENSES</u>	<u>NUMBER OF OFFENSES</u>	<u>NUMBER OF CLEARANCES</u>	<u>PERCENT</u>
Murder & NN Manslaughter	28	15	53.6
Negligent Manslaughter.....	64	40	62.5
Forcible Rape	281	151	53.7
Robbery	828	279	33.7
Aggravated Assault	1,052	599	56.9
Burglary	9,750	1,005	10.3
Larceny-Theft	34,140	5,968	17.5
Motor Vehicle Theft	3,194	645	20.2
 TOTAL PART I	 49,337	 8,702	 17.6
 Other Assaults	 9,245	 5,659	 61.2
Arson	315	39	12.4
Forgery & Counterfeiting	1,518	433	28.5
Fraud	2,578	1,363	52.9
Embezzlement	156	74	47.4
Stolen Property	179	139	77.7
Vandalism	9,141	1,581	17.3
Weapons	631	428	67.8
Prostitution	572	540	94.4
Sex Offenses	718	383	53.3
Drug Laws	3,052	1,880	61.6
Gambling	264	229	86.7
Offenses Against Family	4,298	3,667	85.3
Driving Under Influence	6,180	5,874	95.0
Liquor Laws	1,437	1,323	92.1
Disorderly Conduct	1,038	967	93.2
All Other Offenses (Except Traffic).....	42,806	33,175	77.5
 TOTAL - PART II	 84,128	 57,754	 68.7
 TOTAL BOTH CLASSES	 133,465	 66,456	 49.8

VALUE OF PROPERTY STOLEN AND RECOVERED BY TYPE OF OFFENSE: 1988

	<u>STOLEN</u>		<u>RECOVERED</u>	
	<u>OFFENSES</u>	<u>VALUE(\$)</u>	<u>OFFENSES</u>	<u>VALUE(\$)</u>
<u>ROBBERY</u>				
Highway	243	87,907	29	14,096
Commercial House	66	115,675	6	13,458
Service Station	18	7,390	2	63
Convenience Store	54	36,054	17	1,701
Residence	60	68,367	7	7,639
Bank	33	23,138	1	150
Miscellaneous	328	283,637	51	97,551
Unknown	26	13,147	2	53
TOTAL	828	635,315	115	134,711
<u>BURGLARY</u>				
Residence: Night	2,120	2,597,051	151	342,682
Day	5,138	8,470,953	273	311,874
Non-Residence: Night	1,030	1,531,652	64	721,203
Day	1,462	1,285,536	44	79,171
TOTAL	9,750	13,885,192	532	1,454,930
<u>LARCENY-THEFT</u>				
Over \$200	13,497	15,878,743	1,320	1,247,529
\$50 - \$200	7,582	1,004,573	1,195	122,844
\$5 - \$50	7,832	218,514	2,383	74,506
Under \$5	5,229	23,174	1,133	3,785
TOTAL	34,140	17,125,004	6,031	1,448,664
<u>LARCENY-THEFT BY TYPE</u>				
Pocket-Picking	340	181,865	34	10,672
Purse Snatching	272	165,385	43	14,585
Shoplifting	5,004	608,377	3,684	200,666
Theft From Motor Vehicle	8,503	3,620,225	438	131,750
Motor Vehicle Parts & Access ...	6,729	2,326,750	223	54,107
Bicycles	1,979	586,411	614	222,615
From Buildings	5,591	4,881,282	559	494,585
From Coin Operated Machines	219	22,409	11	344
All Others	5,503	4,732,300	425	319,340
TOTAL	34,140	17,125,004	6,031	1,448,664

VALUE OF PROPERTY STOLEN AND RECOVERED: 1988

<u>TYPE OF PROPERTY</u>	<u>VALUE STOLEN (\$)</u>	<u>VALUE RECOVERED (\$)</u>
Currency, Notes, etc.	3,996,074	92,450
Jewelry and Precious Metals	11,883,426	998,712
Clothing and Furs	1,328,897	103,600
Local Stolen Motor Vehicles	12,671,166	10,536,931
Office Equipment	473,093	30,714
Televisions, Radios, Stereos, etc.	5,081,388	157,650
Firearms	101,217	9,647
Household Goods	229,918	8,728
Consumable Goods	217,366	31,511
Livestock	31,395	9,250
Miscellaneous	7,729,449	641,080
TOTAL	43,743,389	12,620,273

REPORTED OFFENSES BY POLICE DISTRICT: 1988

<u>OFFENSES</u>	<u>TOTAL</u>	<u>I</u>	<u>II</u>	<u>III</u>	<u>IV</u>	<u>V</u>	<u>VI</u>	<u>VII</u>
Murder	29	6	3	4	4	5	5	2
Neg. Manslaughter	65	7	9	17	14	8	0	10
Forcible Rape	298	51	24	58	48	43	41	33
Robbery	841	221	28	154	51	115	190	82
Aggravated Assault	1,058	157	82	302	136	185	99	97
Burglary	9,869	982	652	2,444	1,432	1,310	1,315	1,734
Larceny-Theft	34,557	6,690	2,154	6,232	4,231	5,008	5,053	5,189
Motor Vehicle Theft	3,704	631	161	895	394	821	329	473
TOTAL - PART I	50,421	8,745	3,113	10,106	6,310	7,495	7,032	7,620
Other Assaults	9,251	1,735	676	2,088	1,047	1,335	1,478	892
Arson	318	43	21	110	44	33	23	44
Forgery	1,524	610	84	174	102	234	126	194
Fraud	2,626	800	111	362	266	322	447	318
Embezzlement	157	46	4	11	16	23	16	41
Stolen Property	179	44	14	48	26	14	16	17
Vandalisms	9,145	1,430	704	2,161	1,207	1,390	854	1,399
Weapons Offenses	634	112	48	143	60	136	86	49
Prostitution	572	220	7	4	1	68	259	13
Sex Offenses	772	146	66	184	117	91	54	114
Drug Laws	3,056	1,066	216	437	263	313	592	169
Gambling	264	91	26	69	32	35	3	8
Family Offenses	4,436	529	561	1,391	647	625	239	444
D.U.I.	6,184	1,483	593	913	873	1,064	715	543
Liquor Laws	1,437	355	76	93	161	56	459	237
Disorderly Conduct	1,039	281	105	171	75	97	236	74
All Other Offenses	32,105	12,294	1,957	5,056	2,825	2,925	4,324	2,724
Delinquent Child	10,761	924	982	4,079	1,496	1,697	310	1,273
TOTAL - PART II	84,460	22,209	6,251	17,494	9,258	10,458	10,237	8,553
Misc. Reports	63,185	14,295	3,449	11,525	7,052	11,734	6,647	8,483
Major Accidents	21,205	4,185	1,181	4,362	2,483	4,363	1,096	3,535
Minor Accidents	8,662	1,844	443	1,465	912	1,896	811	1,291
Non-Traf. Accidents	7,580	1,822	359	1,423	800	1,315	738	1,123
Other Service Calls	175,206	29,260	12,408	35,954	20,616	29,382	17,961	29,595
GRAND TOTAL	410,719	82,360	27,204	82,359	47,431	66,643	44,522	60,200

DISTRICT I REPORTED OFFENSES BY POLICE BEAT: 1988

<u>OFFENSES</u>	<u>TOTAL</u>	<u>39</u>	<u>40</u>	<u>41</u>	<u>42</u>	<u>43</u>	<u>44</u>	<u>45</u>	<u>46</u>	<u>47</u>	<u>48</u>
Murder	6	0	1	1	0	0	0	0	0	0	0
Neg. Manslaughter	7	2	0	2	0	1	0	0	1	0	0
Forcible Rape	51	4	11	0	2	0	1	2	0	5	0
Robbery	221	24	40	19	11	6	5	7	11	8	3
Aggravated Assault	157	18	15	9	2	4	0	4	21	7	4
Burglary	982	55	54	53	9	18	46	75	53	62	26
Larceny-Theft	6,690	282	507	391	88	254	105	154	281	363	123
Motor Vehicle Theft	631	30	45	17	13	10	11	28	24	73	6
TOTAL - PART I	8,745	415	673	492	125	293	168	270	391	518	162
Other Assaults	1,735	123	257	131	39	25	21	45	113	95	42
Arson	43	3	5	1	2	0	0	1	2	3	0
Forgery	610	33	22	110	67	107	0	0	6	20	1
Fraud	800	12	53	80	72	61	3	8	31	69	3
Embezzlement	46	0	4	1	0	9	0	0	3	5	0
Stolen Property	44	5	5	2	0	3	1	0	0	1	1
Vandalisms	1,430	86	122	59	27	33	28	64	71	102	40
Weapons Offenses	112	6	18	1	2	3	2	1	2	0	2
Prostitution	220	30	129	32	4	1	0	1	4	3	0
Sex Offenses	146	5	8	0	1	2	1	2	2	6	0
Drug Laws	1,066	32	183	64	14	4	4	9	9	13	13
Gambling	91	13	13	4	0	0	0	1	0	7	0
Family Offenses	529	33	54	10	5	3	29	25	37	15	25
D.U.I.	1,483	95	244	99	25	37	9	32	81	73	18
Liquor Laws	355	35	151	43	5	5	3	3	7	9	3
Disorderly Conduct	281	16	95	44	6	9	5	4	9	2	7
All Other Offenses	12,294	182	558	444	6,311	331	66	82	188	1,595	68
Delinquent Child	924	149	84	21	16	9	34	31	24	25	38
TOTAL - PART II	22,209	858	2,005	1,146	6,596	642	206	309	589	2,043	261
Misc. Reports	14,295	382	982	784	294	377	139	281	888	2,965	304
Major Accidents	4,185	245	171	148	115	150	79	202	423	347	112
Minor Accidents	1,844	97	132	88	67	76	33	69	164	178	23
Non-Traf. Accidents	1,822	75	127	80	31	28	9	25	116	149	10
Other Service Calls	29,260	1,697	2,240	1,307	872	608	1,016	1,596	1,919	1,461	1,085
GRAND TOTAL	82,360	3,769	6,330	4,045	8,100	2,174	1,650	2,752	4,490	7,661	1,957

DISTRICT I REPORTED OFFENSES BY POLICE BEAT: 1988

OFFENSES	49	50	51	52	53	54	55	56	57	58	59
Murder	0	0	0	0	0	0	2	0	0	1	1
Neg. Manslaughter	0	0	0	0	1	0	0	0	0	0	0
Forcible Rape	1	2	2	0	5	1	10	2	1	0	2
Robbery	2	5	1	2	5	2	16	17	3	25	9
Aggravated Assault	4	12	5	3	10	1	19	8	2	7	2
Burglary	40	97	51	26	18	23	115	65	42	45	9
Larceny-Theft	178	347	196	139	210	122	574	551	143	1,369	313
Motor Vehicle Theft	26	42	12	6	12	12	64	44	18	110	28
TOTAL - PART I	251	505	267	176	261	161	800	687	209	1,557	364
Other Assaults	28	72	34	24	86	68	252	76	26	122	56
Arson	0	3	3	0	2	4	8	1	2	2	1
Forgery	2	9	20	21	47	4	53	24	12	49	3
Fraud	4	22	16	22	37	4	75	43	32	125	28
Embezzlement	0	0	0	0	1	2	3	9	1	7	1
Stolen Property	0	1	0	0	7	0	4	1	4	7	2
Vandalisms	55	114	45	33	56	41	150	86	42	138	38
Weapons Offenses	0	4	3	2	13	2	13	9	3	22	4
Prostitution	0	0	0	0	6	0	8	0	0	2	0
Sex Offenses	5	9	4	1	7	0	70	2	3	9	9
Drug Laws	2	12	9	7	569	4	33	17	4	54	10
Gambling	0	5	0	1	30	0	10	1	2	4	0
Family Offenses	29	64	8	5	66	10	39	34	4	20	14
D.U.I.	18	78	49	65	58	42	208	75	53	98	26
Liquor Laws	7	7	7	8	10	4	17	9	2	8	12
Disorderly Conduct	4	8	5	5	7	1	20	7	7	17	3
All Other Offenses	87	172	133	70	315	73	253	327	88	845	106
Delinquent Child	58	63	78	10	37	51	41	22	13	109	11
TOTAL - PART II	299	643	414	274	1,354	310	1,257	743	298	1,638	324
Misc. Reports	202	423	280	334	1,092	187	1,097	700	894	1,139	551
Major Accidents	138	302	226	191	228	103	321	176	135	253	120
Minor Accidents	58	109	75	73	108	37	152	75	59	124	47
Non-Traf. Accidents	25	54	63	60	60	32	161	100	62	447	108
Other Service Calls	1,930	4,017	795	744	1,061	558	2,161	1,744	568	1,184	697
GRAND TOTAL	2,903	6,053	2,120	1,852	4,164	1,388	5,949	4,225	2,225	6,342	2,211

DISTRICT II REPORTED OFFENSES BY POLICE BEAT: 1988

OFFENSES	TOTAL	220	221	222	223	224	225	226	227	228	229	230
Murder	3	0	0	0	2	0	0	0	1	0	0	0
Neg. Manslaughter	9	0	1	2	1	1	0	1	2	0	1	0
Forcible Rape	24	1	4	1	1	4	3	5	5	0	0	0
Robbery	28	0	8	3	1	5	3	4	0	0	2	2
Aggravated Assault	82	3	7	2	13	9	21	6	8	3	4	6
Burglary	652	86	145	47	79	34	57	21	89	32	16	46
Larceny-Theft	2,154	187	404	78	103	248	132	149	200	186	154	313
Motor Vehicle Theft	161	19	29	8	18	16	11	10	13	11	6	20
TOTAL - PART I	3,113	296	598	141	218	317	227	196	318	232	183	387
Other Assaults	676	36	80	33	70	133	90	46	58	44	20	66
Arson	21	1	7	2	0	4	0	0	1	5	1	0
Forgery	84	2	8	0	3	12	1	20	4	12	0	22
Fraud	111	11	14	4	13	22	13	7	5	17	3	2
Embezzlement	4	1	2	0	0	0	0	0	0	1	0	0
Stolen Property	14	1	1	0	1	0	6	1	1	1	0	2
Vandalisms	704	99	133	41	60	91	71	38	65	43	25	38
Weapons Offenses	48	1	4	1	7	11	12	0	3	4	4	1
Prostitution	7	0	0	0	0	6	0	1	0	0	0	0
Sex Offenses	66	4	16	3	4	3	11	5	9	2	1	8
Drug Laws	216	3	21	10	16	71	52	6	14	10	11	2
Gambling	26	0	2	0	1	3	1	4	0	11	4	0
Family Offenses	561	44	65	42	53	65	109	58	62	27	12	24
D.U.I.	593	22	119	56	18	113	108	54	36	23	23	21
Liquor Laws	76	0	23	2	1	10	19	1	3	4	5	8
Disorderly Conduct	105	3	10	7	9	35	20	3	8	3	1	6
All Other Offenses	1,957	208	291	109	163	484	140	76	148	217	26	95
Delinquent Child	982	79	194	47	144	161	66	49	81	111	13	37
TOTAL - PART II	6,251	515	990	357	563	1,224	719	369	498	535	149	332
Misc. Reports	3,449	334	623	138	259	576	321	250	340	292	91	225
Major Accidents	1,181	110	167	58	71	218	126	124	106	98	35	68
Minor Accidents	443	52	60	23	34	81	31	40	34	43	14	31
Non-Traf. Accidents	359	29	74	21	31	93	15	25	14	31	6	20
Other Service Calls	12,408	1,218	1,911	977	1,026	1,783	1,798	643	1,149	691	373	839
GRAND TOTAL	27,204	2,554	4,423	1,715	2,202	4,292	3,237	1,647	2,459	1,922	851	1,902

DISTRICT III REPORTED OFFENSES BY POLICE BEAT: 1988

<u>OFFENSES</u>	<u>TOTAL</u>	<u>319</u>	<u>320</u>	<u>321</u>	<u>322</u>	<u>323</u>	<u>324</u>	<u>325</u>	<u>326</u>
Murder	4	0	1	0	0	0	0	0	0
Neg. Manslaughter	17	0	0	1	1	1	2	7	0
Forcible Rape	58	2	3	4	1	3	1	2	1
Robbery	154	6	7	4	7	6	5	4	2
Aggravated Assault	302	15	13	27	31	16	22	10	13
Burglary	2,444	82	153	129	128	69	59	161	95
Larceny-Theft	6,232	211	234	379	259	121	218	294	196
Motor Vehicle Theft	895	25	29	28	39	10	18	46	23
TOTAL - PART I	10,106	341	440	572	466	226	325	524	330
Other Assaults	2,088	69	159	171	110	69	80	57	79
Arson	110	12	0	7	4	4	5	10	14
Forgery	174	0	4	31	2	0	2	4	6
Fraud	362	3	3	34	4	3	7	5	7
Embezzlement	11	0	0	0	0	0	0	0	0
Stolen Property	48	6	3	2	1	2	1	0	2
Vandalisms	2,161	73	102	96	89	52	81	87	95
Weapons Offenses	143	5	7	13	6	8	5	2	4
Prostitution	4	0	0	0	0	0	2	0	0
Sex Offenses	184	9	15	16	8	6	13	8	9
Drug Laws	437	9	39	27	11	10	9	15	13
Gambling	69	0	11	5	5	0	2	1	14
Family Offenses	1,391	72	95	116	108	85	97	46	51
D.U.I.	913	13	20	61	50	30	59	72	32
Liquor Laws	93	2	8	10	6	6	3	8	9
Disorderly Conduct	171	5	10	24	10	6	9	3	3
All Other Offenses	5,056	132	220	284	190	308	204	182	175
Delinquent Child	4,079	124	558	147	123	73	197	158	195
TOTAL - PART II	17,494	534	1,254	1,044	727	662	776	658	708
Misc. Reports	11,525	224	415	557	398	204	339	630	309
Major Accidents	4,362	56	94	157	106	86	125	321	142
Minor Accidents	1,465	22	40	81	44	32	41	77	25
Non-Traf. Accidents	1,423	21	50	74	16	19	26	35	36
Other Service Calls	35,984	1,226	1,750	2,134	1,652	1,326	1,546	1,560	1,751
GRAND TOTAL	82,359	2,424	4,043	4,619	3,409	2,555	3,178	3,805	3,301

DISTRICT III REPORTED OFFENSES BY POLICE BEAT: 1988

<u>OFFENSES</u>	<u>327</u>	<u>328</u>	<u>329</u>	<u>330</u>	<u>331</u>	<u>332</u>	<u>333</u>	<u>334</u>	<u>335</u>
Murder	1	2	0	0	0	0	0	0	0
Neg. Manslaughter	1	0	1	2	0	0	0	0	1
Forcible Rape	5	5	7	8	4	1	7	1	3
Robbery	6	29	15	5	18	7	17	2	14
Aggravated Assault	15	35	28	9	12	12	14	18	12
Burglary	126	302	305	121	261	122	134	89	108
Larceny-Theft	156	957	621	251	716	304	773	214	328
Motor Vehicle Theft	16	119	93	54	91	63	144	26	71
TOTAL - PART I	326	1,449	1,070	450	1,102	509	1,089	350	537
Other Assaults	126	297	236	88	168	69	97	99	114
Arson	12	15	12	3	7	0	2	1	2
Forgery	2	16	29	1	46	2	19	6	4
Fraud	6	52	24	12	52	37	68	28	17
Embezzlement	0	5	0	0	2	1	1	0	2
Stolen Property	5	6	5	4	4	3	0	2	2
Vandalisms	112	321	241	156	195	92	169	87	113
Weapons Offenses	6	8	22	5	11	10	18	10	3
Prostitution	0	0	2	0	0	0	0	0	0
Sex Offenses	7	17	13	8	12	5	16	9	13
Drug Laws	28	33	39	86	36	17	30	21	14
Gambling	1	7	7	1	2	2	0	9	2
Family Offenses	74	200	139	72	68	40	37	35	56
D.U.I.	20	93	119	74	105	48	43	26	48
Liquor Laws	2	7	11	1	8	3	4	3	2
Disorderly Conduct	10	18	16	9	17	5	15	4	7
All Other Offenses	223	512	433	285	1,030	157	360	180	181
Delinquent Child	372	464	491	229	379	66	281	63	159
TOTAL - PART II	1,006	2,071	1,839	1,034	2,142	557	1,160	583	739
Misc. Reports	402	1,427	1,186	712	1,626	865	1,018	693	520
Major Accidents	101	343	660	314	686	263	235	377	296
Minor Accidents	41	131	197	90	212	96	96	131	109
Non-Traf. Accidents	20	191	120	56	255	93	233	81	97
Other Service Calls	1,572	5,102	4,286	2,311	3,299	1,725	1,458	1,349	1,937
GRAND TOTAL	3,468	10,714	9,358	4,967	9,322	4,108	5,289	3,564	4,235

DISTRICT IV REPORTED OFFENSES BY POLICE BEAT: 1988

<u>OFFENSES</u>	<u>TOTAL</u>	<u>420</u>	<u>421</u>	<u>422</u>	<u>423</u>	<u>424</u>	<u>425</u>	<u>426</u>	<u>427</u>
Murder	4	1	0	0	1	0	0	0	0
Neg. Manslaughter	14	5	0	0	1	2	0	1	1
Forcible Rape	48	1	0	3	1	5	6	4	4
Robbery	51	3	3	1	0	6	2	7	0
Aggravated Assault	136	1	2	18	10	9	6	17	8
Burglary	1,432	26	54	39	63	169	90	199	58
Larceny-Theft	4,231	282	167	101	128	533	314	362	172
Motor Vehicle Theft	394	6	18	14	11	36	15	45	28
TOTAL - PART I	6,310	325	244	176	215	760	433	635	271
Other Assaults	1,047	36	20	40	77	78	51	129	57
Arson	44	1	2	3	2	0	1	2	3
Forgery	102	0	0	1	9	19	2	3	7
Fraud	266	20	1	2	12	24	15	34	5
Embezzlement	16	0	0	3	0	1	0	1	1
Stolen Property	26	0	1	1	0	4	2	1	0
Vandalisms	1,207	60	29	37	38	125	92	131	58
Weapons Offenses	60	0	2	4	1	4	5	3	1
Prostitution	1	0	0	0	0	0	0	0	1
Sex Offenses	117	1	0	1	5	8	8	7	3
Drug Laws	263	5	3	6	18	19	11	15	14
Gambling	32	0	15	3	0	0	0	0	2
Family Offenses	647	27	17	23	20	72	13	86	28
D.U.I.	873	12	8	23	95	86	50	123	44
Liquor Laws	161	2	3	2	8	8	28	18	19
Disorderly Conduct	75	2	1	1	1	10	2	22	2
All Other Offenses	2,825	54	45	93	106	239	120	295	104
Delinquent Child	1,496	29	33	50	117	133	73	112	121
TOTAL - PART II	9,258	249	180	293	509	830	473	982	470
Misc. Reports	7,052	142	152	284	504	778	609	683	340
Major Accidents	2,483	68	41	71	238	191	109	200	181
Minor Accidents	912	10	9	21	84	93	57	83	45
Non-Traf. Accidents	800	17	9	27	17	116	58	72	34
Other Service Calls	20,616	529	542	743	1,048	2,416	1,441	2,819	970
GRAND TOTAL	47,431	1,340	1,177	1,615	2,615	5,184	3,180	5,474	2,311

DISTRICT IV REPORTED OFFENSES BY POLICE BEAT: 1988

<u>OFFENSES</u>	<u>428</u>	<u>429</u>	<u>430</u>	<u>431</u>	<u>432</u>	<u>433</u>	<u>434</u>	<u>435</u>	<u>436</u>
Murder	0	0	1	0	0	0	0	0	1
Neg. Manslaughter	0	0	1	1	1	1	0	0	0
Forcible Rape	2	6	4	2	1	3	5	1	0
Robbery	6	3	6	3	2	2	3	1	3
Aggravated Assault	7	5	16	5	8	6	6	6	6
Burglary	126	45	94	200	59	28	54	90	38
Larceny-Theft	328	133	693	318	90	52	117	235	206
Motor Vehicle Theft	38	16	76	53	11	5	6	6	10
TOTAL - PART I	507	208	891	582	172	97	191	339	264
Other Assaults	104	26	115	75	25	19	59	53	83
Arson	8	0	12	1	4	1	1	2	1
Forgery	2	0	43	4	1	0	1	4	6
Fraud	31	4	65	9	5	0	16	9	14
Embezzlement	2	0	5	0	0	0	2	0	1
Stolen Property	4	3	4	1	3	0	0	0	2
Vandalisms	102	58	186	95	24	11	41	53	67
Weapons Offenses	4	1	12	8	5	0	3	1	6
Prostitution	0	0	0	0	0	0	0	0	0
Sex Offenses	8	5	23	21	6	3	6	6	6
Drug Laws	27	8	49	20	47	1	5	1	14
Gambling	6	1	2	0	0	0	0	0	3
Family Offenses	50	23	84	63	21	11	60	24	25
D.U.I.	72	77	64	70	34	20	28	30	37
Liquor Laws	20	5	5	14	14	2	3	2	8
Disorderly Conduct	4	5	11	3	2	1	1	3	4
All Other Offenses	208	116	792	216	81	56	87	121	92
Delinquent Child	222	30	168	99	50	23	70	32	134
TOTAL - PART II	874	362	1,640	699	322	148	383	341	503
Misc. Reports	532	327	964	607	156	121	224	224	405
Major Accidents	226	347	231	199	122	60	78	64	57
Minor Accidents	96	117	114	54	33	19	28	24	25
Non-Traf. Accidents	78	28	188	42	4	12	21	30	47
Other Service Calls	1,614	1,295	2,290	1,852	575	328	804	702	648
GRAND TOTAL	3,927	2,684	6,318	4,035	1,384	785	1,729	1,724	1,949

DISTRICT V REPORTED OFFENSES BY POLICE BEAT: 1988

<u>OFFENSES</u>	<u>TOTAL</u>	<u>20</u>	<u>21</u>	<u>22</u>	<u>23</u>	<u>24</u>	<u>25</u>	<u>26</u>	<u>27</u>	<u>28</u>
Murder	5	0	2	0	0	0	0	0	0	0
Neg. Manslaughter	8	1	0	0	0	2	1	0	0	0
Forcible Rape	43	3	3	0	1	0	4	3	3	3
Robbery	115	4	3	5	0	1	3	14	4	7
Aggravated Assault	185	7	13	8	3	0	9	14	7	15
Burglary	1,310	39	133	30	45	49	61	108	53	72
Larceny-Theft	5,008	58	521	897	57	180	268	152	105	154
Motor Vehicle Theft	823	7	121	77	5	27	145	26	23	40
TOTAL - PART I	7,495	119	796	1,017	111	259	491	317	195	291
Other Assaults	1,335	43	136	84	14	20	68	94	53	86
Arson	33	0	4	3	1	0	3	1	3	2
Forgery	234	2	3	30	1	7	7	1	0	20
Fraud	322	3	18	26	2	26	41	2	5	7
Embezzlement	23	0	0	1	5	0	3	0	0	1
Stolen Property	14	0	5	2	0	0	2	0	0	2
Vandalisms	1,390	23	185	133	15	32	94	98	59	103
Weapons Offenses	136	0	10	32	8	1	20	7	7	6
Prostitution	68	0	1	0	1	0	1	0	0	0
Sex Offenses	91	5	15	4	2	1	3	7	7	4
Drug Laws	313	4	31	95	10	3	29	16	14	10
Gambling	35	0	1	3	0	2	0	1	3	1
Family Offenses	625	25	130	11	14	2	10	42	40	107
D.U.I.	1,064	35	74	61	44	52	61	47	44	50
Liquor Laws	56	1	4	5	0	0	7	12	0	6
Disorderly Conduct	97	5	8	22	2	2	5	10	4	6
All Other Offenses	2,925	67	324	355	35	62	312	111	153	154
Delinquent Child	1,697	29	286	51	44	15	13	182	116	174
TOTAL - PART II	10,458	242	1,235	918	198	225	679	631	508	739
Misc. Reports	11,734	215	742	928	113	1,206	1,102	328	307	383
Major Accidents	4,363	172	375	337	97	198	227	172	207	180
Minor Accidents	1,896	53	153	237	41	89	91	68	75	66
Non-Traf. Accidents	1,315	27	106	153	9	47	129	29	26	32
Other Service Calls	29,382	757	4,891	1,199	557	683	1,239	1,844	1,999	2,087
GRAND TOTAL	66,645	1,585	8,298	4,789	1,126	2,707	3,958	3,389	3,317	3,778

DISTRICT V REPORTED OFFENSES BY POLICE BEAT: 1988

OFFENSES	29	30	31	32	33	34	35	36	37	38
Murder	0	2	0	0	0	0	1	0	0	0
Neg. Manslaughter	1	0	0	1	0	0	1	1	0	0
Fercible Rape	4	4	0	1	4	0	2	1	4	3
Robbery	10	6	2	7	10	5	17	2	2	13
Aggravated Assault	10	31	1	10	13	3	33	4	1	3
Burglary	62	90	85	48	62	36	105	38	45	149
Larceny-Theft	267	324	129	316	321	364	403	130	86	276
Motor Vehicle Theft	39	64	19	31	52	28	78	7	4	30
TOTAL - PART I	393	521	236	414	462	436	640	183	142	474
Other Assaults	76	119	34	47	161	34	156	20	5	85
Arson	4	5	1	2	3	0	1	0	0	0
Forgery	26	8	0	29	37	10	49	0	1	3
Fraud	21	27	4	7	42	24	45	6	1	15
Embezzlement	1	0	1	1	3	2	5	0	0	0
Stolen Property	1	1	0	0	0	0	0	0	0	1
Vandalisms	116	62	49	72	82	41	88	39	25	74
Weapons Offenses	16	3	1	3	14	1	6	0	0	1
Prostitution	1	1	1	0	0	2	24	1	2	33
Sex Offenses	4	2	1	2	13	2	13	1	2	3
Drug Laws	10	8	5	15	21	10	12	2	3	15
Gambling	4	6	0	4	2	6	2	0	0	0
Family Offenses	41	22	19	26	39	11	44	10	3	29
D.U.I.	82	80	20	60	85	60	131	10	23	45
Liquor Laws	1	2	2	2	4	2	5	1	1	1
Disorderly Conduct	4	2	3	0	8	3	10	1	0	2
All Other Offenses	176	195	72	173	152	100	252	51	27	154
Delinquent Child	201	44	48	89	207	34	61	25	13	65
TOTAL - PART II	785	587	261	532	873	342	904	167	106	526
Misc. Reports	781	1,151	201	320	904	674	1,395	210	262	512
Major Accidents	323	317	63	268	232	130	415	130	129	391
Minor Accidents	170	170	32	78	91	67	178	51	45	141
Non-Traf. Accidents	94	81	36	94	94	74	156	21	11	96
Other Service Calls	1,960	1,812	824	1,255	1,660	679	2,226	958	610	2,142
GRAND TOTAL	4,506	4,639	1,653	2,961	4,316	2,402	5,914	1,720	1,305	4,282

DISTRICT VI REPORTED OFFENSES BY POLICE BEAT: 1988

OFFENSES	TOTAL	60	61	62	63	64	65	66	67	68	69	70	71
Murder	5	0	1	1	0	0	1	0	0	1	1	0	0
Neg. Manslaughter	0	0	0	0	0	0	0	0	0	0	0	0	0
Forcible Rape	41	4	5	2	3	6	4	4	2	1	2	8	0
Robbery	190	21	13	16	18	14	21	19	6	5	15	33	9
Agg. Assault	99	16	14	6	8	4	14	6	3	5	5	11	7
Burglary	1,315	138	104	108	118	108	125	94	110	38	58	269	45
Larceny-Theft	5,053	499	291	448	320	269	464	524	529	159	546	693	311
Motor Veh. Theft	329	45	37	43	36	15	36	18	8	15	11	36	29
TOTAL - PART I	7,032	723	465	624	503	416	665	665	658	224	638	1,050	401
Other Assaults	1,478	217	129	67	139	148	223	108	76	49	138	112	72
Arson	23	2	0	5	2	1	1	1	4	1	3	0	3
Forgery	126	49	15	3	9	6	5	21	7	2	7	1	1
Fraud	447	89	33	40	50	41	20	71	22	6	29	36	10
Embezzlement	16	2	0	2	2	0	1	6	1	0	2	0	0
Stolen Property	16	5	2	1	0	0	2	2	1	0	2	0	1
Vandalisms	854	108	100	46	74	47	107	40	50	58	58	114	52
Weapons Offenses	86	7	11	8	3	9	18	7	2	2	8	9	2
Prostitution	259	16	24	4	29	13	27	20	4	25	40	34	23
Sex Offenses	54	8	6	2	3	7	3	3	5	1	4	1	11
Drug Laws	592	65	31	73	57	52	82	41	21	10	85	33	42
Gambling	3	0	0	0	0	0	1	0	0	1	1	0	0
Family Offenses	239	51	30	7	32	7	22	9	7	19	16	29	10
D.U.I.	715	81	131	27	66	37	95	45	17	21	71	67	57
Liquor Laws	459	35	34	44	38	46	82	35	23	12	33	19	58
Disorderly	236	33	23	10	20	21	41	17	8	6	33	14	10
All Oth. Offense	4,324	457	339	233	317	564	494	452	384	101	469	408	106
Delinquent Child	310	48	21	21	30	16	51	27	9	13	21	30	23
TOTAL - PART II	10,237	1,273	929	593	871	1,015	1,275	905	641	327	1,020	907	481
Misc. Reports	6,647	748	396	447	573	366	520	880	522	218	899	586	492
Major Accidents	1,096	162	155	74	111	49	120	56	27	31	56	150	105
Minor Accidents	811	105	111	79	108	49	96	57	36	24	40	67	39
Non-Traf. Acc.	738	107	49	91	47	58	52	64	92	11	59	64	44
Other Serv. Calls	17,961	3,062	1,760	1,111	1,848	851	1,932	944	606	1,195	1,266	2,023	1,353
GRAND TOTAL	44,522	6,180	3,865	3,019	4,061	2,804	4,660	3,571	2,582	2,030	3,978	4,847	2,925

DISTRICT VII REPORTED OFFENSES BY POLICE BEAT: 1988

OFFENSES	TOTAL	72	73	74	75	76	77	78	79	80	81	82
Murder	2	0	0	0	0	0	0	0	2	0	0	0
Neg. Manslaughter	10	0	0	0	0	0	0	1	1	1	0	0
Forcible Rape	33	1	0	1	5	6	3	0	2	0	0	1
Robbery	82	2	3	0	5	12	12	1	5	9	4	3
Aggravated Assault	97	1	7	3	5	9	16	6	14	2	3	1
Burglary	1,734	92	90	62	49	105	116	65	162	61	37	51
Larceny-Theft	5,189	129	337	306	497	427	663	248	236	163	95	80
Motor Vehicle Theft	473	11	20	25	18	48	70	36	58	17	9	12
TOTAL - PART I	7,620	236	457	397	579	607	880	357	480	253	148	148
Other Assaults	892	9	37	27	61	89	156	51	66	40	31	27
Arson	44	0	3	2	2	4	6	0	3	2	0	1
Forgery	194	7	15	1	46	5	4	3	3	13	14	3
Fraud	318	7	14	4	26	25	46	15	4	32	34	11
Embezzlement	41	0	0	0	0	3	1	1	0	2	0	0
Stolen Property	17	0	0	1	0	3	2	0	1	2	3	0
Vandalisms	1,399	29	77	62	70	127	206	49	107	59	35	49
Weapons Offenses	49	1	0	3	2	11	5	2	1	5	3	0
Prostitution	13	0	0	1	0	4	3	1	0	0	0	3
Sex Offenses	114	2	4	4	11	4	22	3	8	9	1	2
Drug Laws	169	1	3	4	7	20	25	7	18	15	5	8
Gambling	8	0	0	1	0	0	4	0	2	0	0	0
Family Offenses	444	9	11	19	35	58	56	19	51	11	19	21
D.U.I.	543	9	12	23	58	91	63	24	24	31	26	16
Liquor Laws	237	4	1	1	4	15	14	2	3	2	2	4
Disorderly Conduct	74	0	3	3	4	10	8	3	12	5	1	3
All Other Offenses	2,724	83	162	104	224	231	301	99	137	66	69	102
Delinquent Child	1,273	101	21	167	61	78	125	22	80	34	7	25
TOTAL - PART II	8,553	262	363	427	611	778	1,047	301	520	328	250	275
Misc. Reports	8,483	298	283	283	576	589	760	280	287	361	169	257
Major Accidents	3,535	109	175	235	280	309	376	198	111	176	129	151
Minor Accidents	1,291	33	69	73	127	100	134	88	54	75	58	49
Non-Traf. Accidents	1,123	19	73	24	134	86	138	89	27	50	42	25
Other Service Calls	29,595	854	1,202	1,839	1,619	2,956	4,388	1,581	1,783	1,396	931	1,100
GRAND TOTAL	60,200	1,811	2,622	3,278	3,926	5,425	7,723	2,894	3,262	2,639	1,727	2,005

DISTRICT VII REPORTED OFFENSES BY POLICE BEAT: 1988

OFFENSES	83	84	85	86	87	88	89	90	91	92	93	94
Murder	0	0	0	0	0	0	0	0	0	0	0	0
Neg. Manslaughter	1	0	0	0	1	0	3	1	0	0	0	1
Forcible Rape	0	2	1	1	2	0	2	1	1	0	3	1
Robbery	0	7	5	5	0	0	0	4	1	0	2	2
Aggravated Assault	1	8	0	3	5	0	1	3	4	0	1	4
Burglary	52	72	69	120	119	49	54	80	123	46	1	59
Larceny-Theft	66	297	210	149	121	62	92	236	263	56	166	290
Motor Vehicle Theft	6	26	14	19	12	8	7	18	21	3	2	13
TOTAL - PART I	126	412	299	297	260	119	159	343	413	105	175	370
Other Assaults	11	59	47	20	12	15	21	23	67	7	6	10
Arson	0	0	2	3	1	3	2	2	6	1	0	1
Forgery	31	16	2	1	2	2	6	8	11	1	0	0
Fraud	3	29	5	11	10	10	1	16	10	1	1	3
Embezzlement	30	1	0	0	0	1	1	0	1	0	0	0
Stolen Property	0	0	2	0	1	0	0	0	1	0	1	0
Vandalisms	18	83	60	46	53	34	27	62	88	12	7	39
Weapons Offenses	2	2	5	1	1	2	1	0	0	1	0	1
Prostitution	0	0	0	0	1	0	0	0	0	0	0	0
Sex Offenses	1	4	10	0	7	0	2	6	4	0	3	7
Drug Laws	2	2	6	13	1	5	2	2	11	0	0	12
Gambling	0	1	0	0	0	0	0	0	0	0	0	0
Family Offenses	11	12	8	18	6	7	17	21	23	1	1	10
D.U.I.	6	19	3	21	10	20	38	18	16	6	4	5
Liquor Laws	0	8	34	5	37	1	5	4	13	2	13	63
Disorderly Conduct	4	2	2	1	1	0	2	0	6	2	2	0
All Other Offenses	56	230	104	102	104	45	86	144	156	44	9	66
Delinquent Child	12	221	32	36	27	12	27	46	101	10	8	20
TOTAL - PART II	187	689	322	278	274	157	238	352	514	88	55	237
Misc. Reports	139	328	621	571	753	228	354	374	357	292	104	219
Major Accidents	64	180	77	163	84	108	193	117	141	35	34	90
Minor Accidents	32	64	20	61	18	47	49	48	56	7	6	23
Non-Traf. Accidents	3	97	32	42	24	26	17	52	74	1	26	22
Other Service Calls	783	1,197	1,119	1,096	809	469	823	1,204	1,264	633	114	435
GRAND TOTAL	1,334	2,967	2,490	2,508	2,222	1,154	1,833	2,490	2,819	1,161	514	1,396

NUMBER AND DISPOSITION OF ADULTS ARRESTED: 1988

<u>OFFENSES</u>	<u>ARRESTED</u>	<u>RELEASED</u>	<u>CHARGED</u>
Murder & NN Manslaughter	18	7	11
Negligent Manslaughter.....	5	3	2
Forcible Rape	82	40	42
Robbery	175	90	85
Aggravated Assault	383	230	153
Burglary	626	452	174
Larceny-Theft	3,153	424	2,729
Motor Vehicle Theft	337	243	94
TOTAL - PART I	4,779	1,489	3,290
Other Assaults	1,635	117	1,518
Arson	9	6	3
Forgery & Counterfeiting	142	47	95
Fraud	445	158	287
Embezzlement	25	13	12
Stolen Property	151	100	51
Vandalism	542	76	466
Weapons	488	300	188
Prostitution	562	7	555
Sex Offenses	121	40	81
Drug Laws	2,335	1,185	1,150
Gambling	463	79	384
Offenses Against Family	1,388	24	1,364
Driving Under Influence	5,628	445	5,183
Liquor Laws	1,594	32	1,562
Disorderly Conduct	878	16	862
All Other Offenses (Except Traffic).....	12,347	544	11,803
TOTAL - PART II	28,753	3,189	25,564
TOTAL BOTH CLASSES	33,532	4,678	28,854

AGE AND SEX OF ADULTS ARRESTED: 1988

OFFENSES	SEX	18	19	20	21	22	23	24	25-29	30-34	35-39	40-44	45-49	50+	TOTAL
Murder	M	1	0	1	1	0	1	1	4	1	3	1	0	1	15
	F	1	1	0	0	0	0	0	0	0	1	0	0	0	3
Negligent Manslaughter	M	0	0	0	0	2	0	0	1	2	0	0	0	0	5
	F	0	0	0	0	0	0	0	0	0	0	0	0	0	0
Forcible Rape	M	6	2	7	7	5	3	5	13	19	4	7	0	3	81
	F	1	0	0	0	0	0	0	0	0	0	0	0	0	1
Robbery	M	13	12	13	2	8	9	11	31	34	10	8	1	0	152
	F	0	0	0	2	0	3	1	10	6	1	0	0	0	23
Aggravated Assault	M	23	11	16	13	13	19	15	67	68	42	21	15	11	334
	F	3	2	3	1	0	0	1	17	6	9	3	0	4	49
Burglary	M	63	109	125	36	32	14	18	87	50	29	7	1	5	576
	F	0	16	9	7	1	1	0	14	0	0	1	1	0	50
Larceny-Theft	M	195	143	99	95	101	71	71	308	286	189	135	121	246	2,060
	F	56	55	48	47	39	45	35	227	155	94	75	53	164	1,093
Motor Vehicle Theft	M	46	45	24	28	18	11	8	57	24	10	6	5	1	283
	F	8	6	4	4	2	4	4	8	11	1	2	0	0	54
Other Assaults	M	83	83	82	93	90	70	70	332	213	145	70	43	47	1,421
	F	10	9	10	14	2	15	6	47	39	21	20	11	10	214
Arson	M	0	0	1	0	1	0	1	3	0	0	1	1	0	8
	F	0	0	0	0	0	0	0	0	0	0	1	0	0	1
Forgery & Counterfeiting	M	1	8	4	11	4	9	2	13	10	2	0	1	1	66
	F	0	12	0	2	0	3	0	31	3	8	0	16	1	76
Fraud	M	15	21	6	18	13	14	19	48	39	18	25	18	37	291
	F	1	3	1	12	7	3	10	15	43	16	11	28	4	154

AGE AND SEX OF ADULTS ARRESTED: 1988

OFFENSES	SEX	18	19	20	21	22	23	24	25-29	30-34	35-39	40-44	45-49	50+	TOTAL
Embezzlement	M	1	1	1	2	0	1	5	4	0	1	0	0	1	17
	F	0	1	0	3	0	0	0	0	3	1	0	0	0	8
Stolen Property	M	12	13	4	18	8	7	10	17	22	5	5	1	9	131
	F	2	3	0	2	1	0	2	2	3	3	0	0	2	20
Vandalism	M	38	46	21	25	23	25	33	112	65	41	25	14	15	483
	F	4	2	4	4	1	2	3	16	12	5	6	0	0	59
Weapons	M	31	26	19	36	16	18	20	86	80	52	22	16	20	442
	F	3	1	1	2	0	1	0	14	10	9	3	1	1	46
Prostitution	M	5	12	10	14	13	5	7	47	15	14	2	1	0	145
	F	7	16	26	26	25	40	25	140	79	19	13	0	1	417
Sex Offenses	M	3	1	4	1	8	3	6	22	21	11	13	4	17	114
	F	0	0	0	0	0	0	0	2	0	1	0	0	4	7
Drug Laws Total	M	59	74	89	104	116	72	70	477	374	218	100	56	61	1,870
	F	20	9	15	24	21	25	13	129	100	51	20	19	19	465
Possession- Opium/Cocaine	M	7	14	13	17	24	17	21	91	103	53	28	13	18	419
	F	3	0	4	3	7	10	5	39	32	10	5	5	4	127
Possession- Marijuana	M	37	44	51	53	54	47	33	234	182	106	41	22	21	925
	F	9	4	7	9	9	3	5	51	34	21	9	9	8	178
Possession- Synthetic Narco.	M	0	1	1	4	3	3	2	10	4	2	1	3	1	35
	F	1	0	0	0	0	2	0	1	0	1	0	0	0	5
Possession- Other Dangerous	M	5	3	3	1	6	1	3	24	16	15	2	0	2	81
	F	2	1	1	2	3	1	0	5	3	2	0	1	1	22

AGE AND SEX OF ADULTS ARRESTED: 1988

OFFENSES	SEX	18	19	20	21	22	23	24	25-29	30-34	35-39	40-44	45-49	50+	TOTAL
Drug Laws (con't.)															
Distribution- Opium/Cocaine	M	1	3	3	7	6	2	2	28	17	7	14	7	6	103
	F	0	1	0	5	1	4	1	11	11	6	2	2	3	47
Distribution- Marijuana	M	4	4	3	12	4	0	0	15	22	4	2	3	4	77
	F	0	0	0	0	0	0	0	6	3	1	0	0	0	10
Distribution- Synthetic Narco.	M	0	0	0	0	0	0	2	4	0	4	0	0	0	10
	F	0	0	0	3	0	0	0	0	2	1	0	0	0	6
Distribution- Other Dangerous	M	3	0	0	0	1	0	0	7	3	4	0	0	0	18
	F	0	0	0	0	0	0	0	2	1	1	0	0	0	4
Unspecified Drugs	M	2	5	15	10	18	2	7	64	27	23	12	8	9	202
	F	5	3	3	2	1	5	2	14	14	8	4	2	3	66
Gambling	M	1	2	2	6	5	3	8	29	32	36	56	54	161	395
	F	0	0	0	0	1	0	0	0	3	13	15	13	23	68
Offenses Against Family & Children	M	15	16	34	45	71	49	60	276	249	153	122	53	72	1,215
	F	6	4	5	7	11	10	9	42	35	20	7	13	4	173
Driving Under The Influence	M	67	123	133	210	228	222	244	1,102	901	625	453	288	470	5,066
	F	4	3	16	19	26	36	26	146	122	76	42	25	21	562
Liquor Laws	M	179	180	163	82	101	60	56	226	150	97	63	36	65	1,458
	F	36	25	12	8	3	7	3	17	11	7	1	4	2	136
Disorderly Conduct	M	29	29	31	36	30	55	36	140	110	49	36	24	39	644
	F	9	4	9	16	10	14	14	66	40	19	10	13	10	234
All Other Offenses	M	231	412	467	474	612	602	566	2,632	2,021	1,152	749	290	452	10,660
	F	29	45	53	57	61	126	95	470	365	158	87	71	70	1,687
GRAND TOTAL		1,317	1,586	1,572	1,614	1,729	1,678	1,589	7,547	5,832	3,439	2,244	1,311	2,074	33,532

RACE AND SEX OF ADULTS ARRESTED: 1988

<u>OFFENSES</u>	<u>SEX</u>	<u>CAUC</u>	<u>CHNS</u>	<u>FILP</u>	<u>HAWN</u>	<u>JPNS</u>	<u>KORN</u>	<u>BLCK</u>	<u>SAMN</u>	<u>AMER INDN</u>	<u>OTHR</u>	<u>TOTAL</u>
Murder	M	5	0	2	1	1	0	2	2	0	2	15
	F	0	0	0	1	0	0	1	0	0	1	3
Negligent Manslaughter	M	2	0	0	1	1	0	0	0	0	1	5
	F	0	0	0	0	0	0	0	0	0	0	0
Forcible Rape	M	27	2	0	18	12	0	5	9	0	8	81
	F	0	0	0	0	0	0	0	0	0	1	1
Robbery	M	42	5	19	35	5	1	13	20	0	12	152
	F	14	0	0	3	0	0	4	0	0	2	23
Aggravated Assault	M	93	1	59	82	13	7	18	29	0	32	334
	F	17	1	5	9	1	2	4	2	0	8	49
Burglary	M	143	6	53	130	12	4	26	133	0	69	576
	F	3	0	2	34	0	0	0	2	0	9	50
Larceny-Theft	M	849	61	174	303	201	17	125	77	4	249	2,060
	F	416	74	108	159	106	29	37	42	3	119	1,093
Motor Vehicle Theft	M	88	4	39	46	13	1	18	29	0	45	283
	F	17	0	2	15	3	0	2	2	0	13	54
Other Assaults	M	459	16	137	273	64	19	108	122	3	220	1,421
	F	96	2	14	38	7	17	10	7	0	23	214
Arson	M	4	0	0	0	1	1	1	1	0	0	8
	F	1	0	0	0	0	0	0	0	0	0	1
Forgery & Counterfeiting	M	25	2	6	13	3	0	10	0	0	7	66
	F	41	0	11	9	2	1	0	1	2	9	76
Fraud	M	125	16	7	34	12	2	37	4	1	53	291
	F	79	0	9	21	4	7	3	13	1	17	154

RACE AND SEX OF ADULTS ARRESTED: 1988

<u>OFFENSES</u>	<u>SEX</u>	<u>CAUC</u>	<u>CHNS</u>	<u>FILP</u>	<u>HAWN</u>	<u>JPNS</u>	<u>KORN</u>	<u>BLCK</u>	<u>SAMN</u>	<u>AMER INDN</u>	<u>OTHR</u>	<u>TOTAL</u>
Embezzlement	M	2	1	5	3	3	0	0	1	0	2	17
	F	3	0	3	0	1	0	0	0	0	1	8
Stolen Property	M	40	3	17	24	7	3	9	9	0	19	131
	F	4	0	2	7	1	0	1	0	0	5	20
Vandalism	M	151	8	40	120	25	9	26	30	2	72	483
	F	18	0	4	15	4	3	3	3	0	9	59
Weapons	M	100	8	146	61	20	12	17	26	0	52	442
	F	17	0	7	12	5	0	0	1	0	4	46
Prostitution	M	27	4	29	35	6	0	5	16	0	23	145
	F	260	1	16	12	2	6	77	4	1	38	417
Sex Offenses	M	47	0	16	14	11	0	8	3	0	15	114
	F	1	0	4	1	0	0	1	0	0	0	7
Drug Laws Total	M	624	37	254	330	186	19	173	47	3	197	1,870
	F	156	9	23	100	26	17	29	9	0	96	465
Possession- Opium/Cocaine	M	116	11	73	84	40	3	47	10	0	35	419
	F	46	6	3	25	7	4	10	2	0	24	127
Possession- Marijuana	M	390	12	71	144	91	8	82	23	3	101	925
	F	68	2	9	36	9	6	9	3	0	36	178
Possession- Synthetic Narco.	M	7	0	13	0	6	0	2	1	0	6	35
	F	2	0	1	1	1	0	0	0	0	0	5
Possession- Other Dangerous	M	14	4	31	6	8	2	3	6	0	7	81
	F	7	0	2	4	3	2	1	1	0	2	22

RACE AND SEX RACE OF ADULTS ARRESTED: 1988

OFFENSES	SEX	CAUC	CHNS	FILP	HAWN	JPNS	KORN	BLCK	SAMN	AMER INDN	OTHR	TOTAL
Drug Laws (con't.)												
Distribution- Opium/Cocaine	M	18	3	4	37	9	3	15	0	0	14	103
	F	8	0	2	13	1	1	6	2	0	14	47
Distribution- Marijuana	M	29	1	9	22	3	1	3	1	0	8	77
	F	1	0	2	4	0	0	1	0	0	2	10
Distribution- Synthetic Narco.	M	0	0	8	0	2	0	0	0	0	0	10
	F	3	0	0	0	0	0	0	0	0	3	6
Distribution- Other Dangerous	M	1	1	11	4	1	0	0	0	0	0	18
	F	1	0	0	2	0	0	0	0	0	1	4
Unspecified drugs	M	49	5	34	33	26	2	21	6	0	26	202
	F	20	1	4	15	5	4	2	1	0	14	66
Gambling	M	26	28	164	27	106	17	0	6	0	21	395
	F	7	8	16	2	6	27	0	0	0	2	68
Offenses Against Family & Children	M	364	29	183	236	63	29	101	62	1	147	1,215
	F	57	3	20	29	10	10	15	2	0	27	173
Driving Under The Influence	M	2,128	114	465	597	673	110	199	174	8	598	5,066
	F	278	7	17	101	43	54	14	10	0	38	562
Liquor Laws	M	591	16	140	205	98	12	104	96	2	194	1,458
	F	71	1	9	20	6	3	6	2	0	18	136
Disorderly Conduct	M	248	11	36	125	29	6	46	53	0	90	644
	F	97	4	7	55	9	13	15	6	2	26	234
All Other Offenses	M	3,744	170	1,138	2,128	595	131	881	597	11	1,265	10,660
	F	798	38	93	316	49	25	120	63	0	185	1,687
GRAND TOTAL		12,405	690	3,501	5,800	2,445	614	2,274	1,715	44	4,044	33,532

NUMBER AND DISPOSITIONS OF JUVENILES ARRESTED: 1988

<u>OFFENSES</u>	<u>ARRESTS</u>	<u>RELEASED WITHOUT CHARGES</u>	<u>COUNSELED AND RELEASED</u>	<u>OTHER AGENCIES</u>	<u>FAMILY COURT</u>
Murder & NN Manslaughter	3	0	0	0	3
Negligent Manslaughter	2	0	0	0	2
Forcible Rape	19	6	0	0	13
Robbery	101	44	1	0	37
Aggravated Assault	82	41	1	0	27
Burglary	667	143	6	1	416
Larceny-Theft	2,846	268	1,133	0	1,097
Motor Vehicle Theft	421	199	1	0	139
TOTAL - PART I	4,141	701	1,142	1	1,734
Other Assaults	918	17	241	0	605
Arson	27	5	6	0	15
Forgery & Counterfeiting	12	8	1	0	1
Fraud	35	1	2	0	27
Embezzlement	1	0	1	0	0
Stolen Property	48	10	6	0	21
Vandalism	505	23	66	0	389
Weapons	58	24	11	0	24
Prostitution	6	0	2	0	4
Sex Offenses	52	15	3	0	34
Drug Laws	298	45	71	0	159
Gambling	69	1	43	0	25
Offenses Against Family	32	2	1	0	29
Driving Under Influence	60	9	8	32	9
Liquor Laws	343	2	183	1	142
Disorderly Conduct	79	3	25	0	47
All Other Offenses (Except Traffic).....	1,052	86	239	68	586
Delinquent Child	4,209	40	1,667	3	2,453
TOTAL - PART II	7,814	291	2,576	104	4,570
TOTAL BOTH CLASSES	11,955	992	3,718	105	6,304

AGE AND SEX OF JUVENILES ARRESTED: 1988

OFFENSES	SEX	UNDER	10-12	13-14	15	16	17	TOTAL
		10						
Murder	M	0	0	1	1	1	0	3
	F	0	0	0	0	0	0	0
Negligent Manslaughter	M	0	0	0	2	0	0	2
	F	0	0	0	0	0	0	0
Forcible Rape	M	0	0	2	9	4	2	17
	F	0	0	0	0	0	2	2
Robbery	M	0	11	33	14	15	13	86
	F	0	1	8	0	5	1	15
Aggravated Assault	M	0	6	12	16	25	19	78
	F	0	0	2	0	1	1	4
Burglary	M	9	82	227	104	114	87	623
	F	2	8	9	11	6	8	44
Larceny-Theft	M	101	374	695	286	318	337	2,111
	F	22	119	248	132	119	95	735
Motor Vehicle Theft	M	2	13	94	76	67	78	330
	F	0	3	33	18	25	12	91
Other Assaults	M	21	93	227	128	134	155	758
	F	1	16	62	21	32	28	160
Arson	M	4	2	10	5	4	1	26
	F	0	0	1	0	0	0	1
Forgery & Counterfeiting	M	0	0	0	0	3	2	5
	F	0	0	1	0	2	4	7
Fraud	M	0	0	5	11	1	8	25
	F	0	0	2	2	3	3	10

AGE AND SEX OF JUVENILES ARRESTED: 1988

OFFENSES	SEX	AGE						TOTAL
		UNDER 10	10-12	13-14	15	16	17	
Embezzlement	M	0	0	0	0	0	0	0
	F	0	0	0	0	0	1	1
Stolen Property	M	0	1	10	10	7	17	45
	F	0	0	0	1	1	1	3
Vandalism	M	8	64	123	64	85	82	426
	F	1	13	26	17	14	8	79
Weapons	M	0	2	17	12	17	10	58
	F	0	0	4	4	1	1	10
Prostitution	M	0	0	0	1	0	3	4
	F	0	0	1	0	0	1	2
Sex Offenses	M	3	7	20	11	6	2	49
	F	0	0	0	0	0	3	3
Drug Laws Total	M	0	4	39	53	56	76	228
	F	0	0	13	16	19	22	70
Possession- Opium/Cocaine	M	0	0	1	1	6	10	18
	F	0	0	1	0	1	5	7
Possession- Marijuana	M	0	3	37	48	41	55	184
	F	0	0	9	14	11	16	50
Possession- Synthetic Narco.	M	0	0	0	0	0	0	0
	F	0	0	1	0	2	0	3
Possession- Other Dangerous	M	0	1	1	2	2	3	9
	F	0	0	1	2	1	0	4

AGE AND SEX OF JUVENILES ARRESTED: 1988

<u>OFFENSES</u>	<u>SEX</u>	<u>UNDER</u> <u>10</u>	<u>10-12</u>	<u>13-14</u>	<u>15</u>	<u>16</u>	<u>17</u>	<u>TOTAL</u>
Drug Laws (con't.)								
Distribution- Opium/Cocaine	M	0	0	0	0	0	0	0
	F	0	0	0	0	0	1	1
Distribution- Marijuana	M	0	0	0	0	1	1	2
	F	0	0	0	0	0	0	0
Distribution- Synthetic Narco.	M	0	0	0	0	0	0	0
	F	0	0	0	0	0	0	0
Distribution- Other Dangerous	M	0	0	0	0	0	1	1
	F	0	0	0	0	1	0	1
Unspecified Drug	M	0	0	0	2	6	6	14
	F	0	0	1	0	3	0	4
Gambling	M	0	4	23	19	16	6	68
	F	1	0	0	0	0	0	1
Offenses Against Family & Children	M	0	0	2	3	12	5	22
	F	0	0	3	1	4	2	10
Driving Under The Influence	M	0	4	3	4	11	32	54
	F	0	0	2	0	0	4	6
Liquor Laws	M	0	1	17	32	67	137	254
	F	0	1	15	15	18	40	89
Disorderly Conduct	M	2	3	4	14	8	25	56
	F	0	2	9	3	6	3	23
All Other Offenses	M	10	64	227	148	188	219	856
	F	1	15	40	44	41	55	196

AGE AND SEX OF JUVENILES ARRESTED: 1988

OFFENSES	SEX	AGE						TOTAL
		UNDER 10	10-12	13-14	15	16	17	
Delinquent Child- Total	M	13	169	709	604	505	341	2,341
	F	1	98	667	489	417	196	1,868
Curfew-Loitering	M	1	41	211	171	5	1	430
	F	1	24	95	83	2	1	206
Runaway	M	6	46	174	138	137	93	594
	F	0	35	299	186	207	106	833
Incorrigible	M	3	36	116	70	95	62	382
	F	0	16	114	83	73	33	319
Injurious Behavior	M	1	4	6	21	47	28	107
	F	0	6	17	10	22	15	70
Truancy	M	2	42	200	199	215	153	811
	F	0	17	142	126	112	41	438
Others	M	0	0	2	5	6	4	17
	F	0	0	0	1	1	0	2
GRAND TOTAL		202	1,180	3,646	2,401	2,378	2,148	11,955

RACE AND SEX OF JUVENILES ARRESTED: 1988

OFFENSES	SEX	CAUC	CHNS	FILP	HAWN	JPNS	KORN	BLCK	SAMN	AMER INDN	OTHR	TOTAL
Murder	M	0	0	1	2	0	0	0	0	0	0	3
	F	0	0	0	0	0	0	0	0	0	0	0
Negligent Manslaughter	M	0	0	1	1	0	0	0	0	0	0	2
	F	0	0	0	0	0	0	0	0	0	0	0
Forcible Rape	M	4	0	2	4	0	1	1	2	0	3	17
	F	2	0	0	0	0	0	0	0	0	0	2
Robbery	M	5	2	12	27	2	1	2	29	0	6	86
	F	0	0	0	6	0	0	0	9	0	0	15
Aggravated Assault	M	8	0	37	22	0	0	0	7	0	4	78
	F	1	0	0	3	0	0	0	0	0	0	4
Burglary	M	96	5	71	271	26	8	4	94	0	48	623
	F	8	1	0	9	0	2	0	15	0	9	44
Larceny-Theft	M	324	61	334	769	169	34	22	176	0	222	2,111
	F	134	20	102	260	54	8	7	64	0	86	735
Auto Theft	M	44	3	51	124	5	7	5	66	0	25	330
	F	9	0	14	41	3	0	1	18	0	5	91
Other Assaults	M	95	8	144	269	25	4	19	121	0	73	758
	F	21	0	14	68	2	1	6	29	0	19	160
Arson	M	5	0	4	10	0	1	0	2	0	4	26
	F	0	0	0	1	0	0	0	0	0	0	1
Forgery & Counterfeiting	M	1	0	1	2	0	0	1	0	0	0	5
	F	1	0	1	4	1	0	0	0	0	0	7
Fraud	M	14	0	1	8	0	0	0	1	0	1	25
	F	2	0	1	5	0	0	0	0	0	2	10

RACE AND SEX OF JUVENILES ARRESTED: 1988

<u>OFFENSES</u>	<u>SEX</u>	<u>CAUC</u>	<u>CHNS</u>	<u>FILP</u>	<u>HAWN</u>	<u>JPNS</u>	<u>KORN</u>	<u>BLCK</u>	<u>SAMN</u>	<u>AMER INDN</u>	<u>OTHR</u>	<u>TOTAL</u>
Embezzlement	M	0	0	0	0	0	0	0	0	0	0	0
	F	0	0	0	1	0	0	0	0	0	0	1
Stolen Property	M	5	0	9	17	3	0	2	2	0	7	45
	F	1	0	0	1	1	0	0	0	0	0	3
Vandalism	M	60	0	48	154	46	0	6	56	0	56	426
	F	18	0	9	29	1	0	0	13	0	9	79
Weapons	M	5	3	22	16	6	3	0	0	0	3	58
	F	2	0	0	6	0	0	0	1	0	1	10
Prostitution	M	0	0	0	3	0	0	0	0	0	1	4
	F	1	0	0	1	0	0	0	0	0	0	2
Sex Offenses	M	10	0	5	17	0	1	1	6	0	9	49
	F	1	0	0	2	0	0	0	0	0	0	3
Drug Laws Total	M	53	4	39	84	17	2	4	6	0	19	228
	F	21	0	7	27	8	1	0	2	0	4	70
Possession- Opium/Cocaine	M	0	1	6	9	1	0	0	0	0	1	18
	F	2	0	0	4	0	1	0	0	0	0	7
Possession- Marijuana	M	49	2	22	69	15	2	4	5	0	16	184
	F	15	0	6	19	6	0	0	2	0	2	50
Possession- Synthetic Narco.	M	0	0	0	0	0	0	0	0	0	0	0
	F	0	0	1	0	1	0	0	0	0	1	3
Possession- Other Dangerous	M	2	1	4	1	1	0	0	0	0	0	9
	F	1	0	0	2	0	0	0	0	0	1	4

RACE AND SEX OF JUVENILES ARRESTED: 1988

<u>OFFENSES</u>	<u>SEX</u>	<u>CAUC</u>	<u>CHNS</u>	<u>FILP</u>	<u>HAWN</u>	<u>JPNS</u>	<u>KORN</u>	<u>BLCK</u>	<u>SAMN</u>	<u>AMER INDN</u>	<u>OTHR</u>	<u>TOTAL</u>
Drug Laws (con't.)												
Distribution- Opium/Cocaine	M	0	0	0	0	0	0	0	0	0	0	0
	F	0	0	0	1	0	0	0	0	0	0	1
Distribution- Marijuana	M	1	0	1	0	0	0	0	0	0	0	2
	F	0	0	0	0	0	0	0	0	0	0	0
Distribution- Synthetic Narco.	M	0	0	0	0	0	0	0	0	0	0	0
	F	0	0	0	0	0	0	0	0	0	0	0
Distribution- Other Dangerous	M	0	0	1	0	0	0	0	0	0	0	1
	F	1	0	0	0	0	0	0	0	0	0	1
Unspecified drugs	M	1	0	5	5	0	0	0	1	0	2	14
	F	2	0	0	1	1	0	0	0	0	0	4
Gambling	M	8	1	7	42	0	1	0	3	0	6	68
	F	0	0	1	0	0	0	0	0	0	0	1
Offenses Against Family & Children	M	6	0	1	9	3	0	0	0	0	3	22
	F	2	0	3	2	1	0	0	0	0	2	10
Driving Under The Influence	M	11	0	3	20	6	0	0	4	0	10	54
	F	2	0	0	2	0	0	0	2	0	0	6
Liquor Laws	M	83	1	32	72	21	6	3	13	0	23	254
	F	39	0	6	24	5	1	1	2	0	11	89
Disorderly Conduct	M	8	0	3	28	0	0	2	13	0	2	56
	F	3	0	0	4	1	0	0	11	0	4	23
All Other Offenses	M	142	10	145	314	59	7	6	81	0	92	856
	F	32	1	19	72	16	2	4	27	0	23	196

RACE AND SEX OF JUVENILES ARRESTED: 1988

<u>OFFENSES</u>	<u>SEX</u>	<u>CAUC</u>	<u>CHNS</u>	<u>FILP</u>	<u>HAWN</u>	<u>JPNS</u>	<u>KORN</u>	<u>BLCK</u>	<u>SAMN</u>	<u>AMER INDN</u>	<u>OTHR</u>	<u>TOTAL</u>
Delinquent Child- Total	M	467	35	407	785	139	29	52	197	0	230	2,341
	F	441	15	302	605	110	23	46	144	0	182	1,868
Curfew-Loitering	M	59	7	73	148	26	10	2	51	0	54	430
	F	51	3	26	65	24	2	0	19	0	16	206
Runaway	M	130	13	53	221	40	7	25	37	0	68	594
	F	211	4	114	275	45	10	26	65	0	83	833
Incorrigible	M	85	1	57	124	27	3	11	31	0	43	382
	F	82	0	34	108	18	7	18	19	0	33	319
Injurious Behavior	M	46	1	13	28	6	0	2	3	0	8	107
	F	20	0	11	14	3	1	0	12	0	9	70
Truancy	M	147	12	206	257	38	8	12	75	0	56	811
	F	77	8	116	143	20	3	2	29	0	40	438
Others	M	0	1	5	7	2	1	0	0	0	1	17
	F	0	0	1	0	0	0	0	0	0	1	2
GRAND TOTAL		2,195	170	1,859	4,243	730	143	195	1,216	0	1,204	11,955

JUVENILE ARRESTS BY SCHOOL: 1988

HONOLULU DISTRICT PUBLIC SCHOOL	PART I	PART II	HONOLULU DISTRICT PUBLIC SCHOOL	PART I	PART II	WINDWARD DISTRICT PUBLIC SCHOOL	PART I	PART II
Aina Haina Elem.	1	0	Kuhio Elementary	1	8	Ahuimanu Elementary	0	0
Ala Wai Elementary	8	3	Kaiser High	39	137	Aikahi Elementary	0	0
Aliiolani Elem.	0	0	Lanakila Elementary	2	0	Castle High	78	272
Anuenue Elementary	1	1	Liholiho Elementary	1	1	Enchanted Lake Elem.	0	0
Booth Memorial	0	0	Likelike Elementary	1	1	Hauula Elementary	2	2
Central Interm.	47	63	Liliuokalani Elem.	2	2	Heeia Elementary	1	5
Dole Intermediate	113	164	Linapuni Elementary	0	0	Kaaawa Elementary	0	4
Farrington High	173	319	Lincoln Elementary	6	1	Kaelepulu Elem.	0	0
Fern Elementary	11	4	Lunalilo Elementary	7	5	Kahaluu Elementary	0	1
Hahaione Elementary	1	1	Maemae Elementary	1	0	Kahuku Elem.-High	97	201
Hokulani Elementary	0	0	Manoa Elementary	1	1	Kailua Elementary	8	0
Jarrett Interm.	51	42	McKinley High	156	244	Kailua High	101	240
Jefferson Elem.	5	7	Niu Valley Interm.	17	17	Kailua Intermediate	39	60
Kaahumanu Elem.	5	9	Noelani Elementary	0	0	Kainalu Elementary	1	1
Kaewai Elementary	2	0	Palolo Elementary	5	8	Kalaheo Elem.-High	41	170
Kahala Elementary	0	0	Pauoa Elementary	0	3	Kaneohe Elementary	6	1
Kaimuki High	168	266	Puuhaie Elementary	2	0	Kapunahala Elem.	1	4
Kaimuki Interm.	16	39	Roosevelt High	74	173	Keolu Elementary	0	0
Kaiulani Elementary	15	4	Royal Elementary	6	3	King Intermediate	50	93
Kalakaua Interm.	152	261	Salvation Army	18	91	Laie Elementary	4	0
Kalani High	48	97	Stevenson Interm.	13	24	Lanikai Elem.	0	1
Kalihi Elementary	6	2	Waialae Elementary	1	0	Maunawili Elem.	0	1
Kalihi Kai Elem.	14	4	Waikiki Elementary	0	0	Mokapu Elementary	0	1
Kalihi Uka Elem.	11	2	Wailupe Valley Elem.	0	0	Parker Elementary	1	2
Kalihi Waena Elem.	23	8	Washington Interm.	87	80	Pope Elementary	1	5
Kamiloiki Elem.	0	0	Wilson Elementary	1	0	Puohala Elem.	0	2
Kapalama Elementary	10	2				Waiahole Elem.	0	0
Kauluwela Elem.	3	3	TOTAL	1,350	2,139	Waimanalo Elem.-Inter.	7	9
Kawananakoa Interm.	24	39				TOTAL	438	1,075
Koko Head Elem.	1	0						

JUVENILE ARRESTS BY SCHOOL: 1988

LEEWARD DISTRICT PUBLIC SCHOOL	PART I	PART II	CENTRAL DISTRICT PUBLIC SCHOOL	PART I	PART II	CENTRAL DISTRICT PUBLIC SCHOOL	PART I	PART II
August Ahrens Elem.	31	33	Aiea Elementary	0	1	Wahiawa Elementary	4	9
Barbers Point Elem.	1	1	Aiea High	78	157	Wahiawa Interm.	45	105
Campbell High	84	272	Aiea Intermediate	46	49	Waialua Elementary	3	2
Ewa Elementary	5	1	Aliamanu Elementary	1	3	Waialua Interm.-High	88	111
Ewa Beach Elem.	0	1	Aliamanu Interm.	18	41	Waimalu Elementary	6	0
Highlands Interm.	61	113	Hale Kula Elem.	0	0	Wheeler Elementary	0	1
Honowai Elementary	14	3	Haleiwa Elementary	1	0	Wheeler Interm.	41	55
Ilima Intermediate	57	110	Halemano Elem.	1	4	TOTAL	649	1,250
Iroquois Point Elem.	0	1	Iliahi Elementary	1	1			
Kaimiloa Elementary	2	9	Kaala Elementary	1	2			
Kanoelani Elem.	11	2	Kipapa Elementary	6	6			
Leihoku Elementary	7	3	Leilehua High	70	208			
Lehua Elementary	0	0	Makalapa Elementary	0	2			
Maili Elementary	17	6	Mililani High	97	234	ALL OTHER PUBLIC	81	78
Makaha Elementary	2	5	Mililani-Uka Elem.	4	0			
Makakilo Elem.	1	3	Mililani-Waena Elem.	5	2			
Manana Elementary	0	1	Moanalua High	57	118			
Mauka Lani Elem.	0	0	Moanalua Elementary	6	0			
Momilani Elementary	0	1	Moanalua Interm.	1	1			
Nanaikapono Elem.	4	2	Nimitz Elementary	1	0			
Nanakuli Elementary	2	6	Pearl Harbor Elem.	1	1			
Nanakuli Inter.-High	87	140	Pearl Harbor Kai Elem.	1	1			
Palisades Elem.	0	0	Pearl Ridge Elem.	0	0			
Pearl City Elem.	10	3	Radford High	49	123			
P.C. Highlands Elem.	15	17	Red Hill Elementary	11	0			
Pohakea Elementary	1	0	Salt Lake Elem.	0	0			
Pearl City High	136	309	Scott Elementary	4	5			
Waiau Elementary	1	1	Solomon Elementary	2	0			
Waianae Elementary	9	9	Sunset Beach Elem.	0	3			
Waianae High	144	368	Wahiawa Community	0	5			
Waianae Interm.	86	103						
Waipahu Elementary	25	16						
Waipahu High	125	359						
Waipahu Interm.	145	202						
TOTAL	1,083	2,100						

JUVENILE ARRESTS BY SCHOOL, 1988

HONOLULU DISTRICT <u>PRIVATE SCHOOL</u>	PART <u>I</u>	PART <u>II</u>	CENTRAL DISTRICT <u>PRIVATE SCHOOL</u>	PART <u>I</u>	PART <u>II</u>
Acad. of the Pacific Intermed.-High	0	0	Lutheran Church of Pearl Harbor	4	2
Cathedral School Elem.-Interm.	0	0			
Damien Memorial High	7	13	TOTAL	4	2
Hanahouoli Elementary	0	0			
Hawaii Baptist Academy Elem.-High	2	30			
Haw. School For Girls Intermed.-High	1	0			
Haw. Mission Acad. Elem.-Interm.	1	2			
Hawaiian Mission Academy High	2	0	LEeward DISTRICT		
Holy Trinity Elementary-Interm.	2	0	<u>PRIVATE SCHOOL</u>		
Acad. of the Pacific Intermed.-High	1	15	Lanakila Baptist Elem.-Interm.	0	0
Iolani Elementary-High	1	5	Our Lady of Good Coun. Elem.-Interm.	3	0
Island Paradise Elementary	0	0	St. Joseph's Elementary-Interm.	5	1
Kamehameha Intermediate Division	4	4			
Kamehameha High Division	21	20	TOTAL	8	1
Maryknoll Grade Elem.-Interm.	1	0			
Maryknoll High	7	7			
Mid-Pacific Institute Intermed.-High	12	22			
Our Redeemer Lutheran Elem.-High	2	4			
Pacific Preparatory Academy	0	0			
Punahou Junior Elem.-Interm.	7	1	WINDWARD DISTRICT		
Punahou Academy High	8	24	<u>PRIVATE SCHOOL</u>		
Sacred Hearts Academy Elem.-Interm.	0	1	Le Jardin Academy Elementary-Interm.	0	0
Sacred Hearts Academy High	9	7	St. Ann's Elementary-Intermediate	0	1
Sacred Hearts Convent Elem.-Interm.	0	1	St. Anthony's (Kailua) Elem.-Interm.	0	0
St. Andrew's Priory Elem.-High	1	2	St. John Vianney Elementary-Interm.	0	3
St. Anthony's (Kalihi) Elem.-Interm.	2	2	St. Mark Lutheran Elementary-Interm.	0	0
St. Elizabeth (720 N. King)	2	0	Windward Preparatory Elem.-Interm.	0	1
St. Francis Intermediate-High	0	16			
St. John The Baptist Elem.-Interm.	0	1	TOTAL	0	5
St. Louis Intermediate-High	26	18			
St. Patrick Elementary-Interm.	1	2			
St. Theresa's Elementary-Interm.	1	0			
Star of the Sea Elem.-Interm.	2	1			
Star of the Sea High	3	2			
University Lab School Elem.-High	2	8	<u>ALL OTHER PRIVATE</u>	17	28
TOTAL	128	208			

JUVENILE ARRESTS BY SCHOOL, 1988

	PART <u>I</u>	PART <u>II</u>
<u>SPECIAL EDUCATION</u>		
Olomana (Special School)	34	115
Kalihi-Palama Children's Day	10	12
Special Education Center of Oahu	0	0
Variety Club	0	0
Armed Services Sp. Ed. & Training	0	0
All Other Special Schools	167	192
TOTAL	211	319
 <u>PRIVATE AND PUBLIC COLLEGES</u>		
Chaminade College of Honolulu	0	0
Honolulu Community College	0	1
Kapiolani Community College	1	6
Leeward Community College	0	0
University of Hawaii	3	3
Other Colleges	1	2
TOTAL	5	12
Non-Students	225	495
Outside Isle Students	19	47
Out of State Students	31	40
Palama Settlement	0	0
All Other	2	1
GRAND TOTAL	4,251	7,800

endering of the new 'alih' Station provided by **KIMURA/YBL & ASSOCIATES, L.P.**

Acknowledgements

Design and Pasteup:	Graphic Arts
Printing:	Publications Section
Crime Statistics:	Statistical Unit
Cartographers:	Public Information Office
	Alihi Section
	Photo Lab
	Neoties/Vic Division
	Training Division