

122923

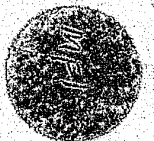
122923

U.S. Department of Justice
Federal Bureau of Investigation

122923

Denver Police Department

Denver Police Department
Annual Report
1988



Contents

Denver Data	3
City Government	4
Manager of Safety	6
Chief of Police	7
Division Command	8
Table of Organization	10
Staffing	11
Police Personnel Profile, Age, Tenure & Rank Distribution	12
Personnel Allocations	13
Ethnic Composition, Department & City	14
1988 Finances	15
Kop's 'N Kids	16
Calls for Police Service	18
Crime Index	20
Offense Comparisons	21
District One	22
District Two	26
District Three	30
District Four	34
Adult Arrests	38
Juvenile Statistics	40
Traffic Statistics	44
Points of Importance	46
In Recognition	48
Crimes Against the Elderly	50
Officers Assaulted	51
They Made It!	52
Served Honorably	58
In Memoriam	59



NCJRS
APR 20 1990
ACQUISITIONS

*Designed and edited by the staff of the
Research and Development Bureau*

*Miriam Reed
Al Mitterer
Kay Davidson
Ben Noffsinger
Mark Shonk
Sue Todd
and
Shirley Williams*

*Cover design by
Paul M. Chipman
Central Services
City and County of Denver*

*Photography by
Denver Police Photo Lab
Ron Hanna
Kay Davidson
Mark Shonk*

Denver Data

	1988	1987
Denver Area (Square Miles)	154.97	111.32
Miles of Streets	1,707.25	1,665.52
Signal Lights	1,204	1,228
Denver Population	508,150	510,700
Metropolitan Area	1,884,050	1,876,500
Vehicle Registrations	441,880	417,714
Class I Actual Offenses	28,528	31,641
Class II Actual Offenses	24,723	25,853
Requests for Police Service	987,541	1,069,663
Juvenile Arrests (Excluding Traffic)	8,967	9,822
Adult Arrests (Excluding Traffic)	43,080	55,219
Adult Traffic Arrests (Excluding DUI)	2,182	2,234
Driving Under the Influence Arrests	4,486	4,655
Traffic Citations (Moving)	176,911	213,459
Traffic Accidents (NSC Standards)	18,542	20,798
Traffic Fatalities	41	47
Traffic Injuries	6,546	7,480
Hit and Run Accidents	5,173	6,868
Total Police Personnel	1,320	1,316
Sworn Police Personnel per 1,000 Population	2.60	2.58

Mayor

HONORABLE FEDERICO PEÑA

Mayor's Cabinet

Manager of Revenue
Alan Charnes

Managers of Parks and Recreation
Carolyn and Don Etter

Manager of Health and Hospitals
John Fairman

Manager of General Services
Paul Hoskins

City Attorney
Stephen H. Kaplan

Manager of Social Services
Mary Krane

Manager of Safety
Manuel L. Martinez

Manager of Public Works
John S. Mrozek

City Council Members

District 1
Wm. A. "Bill" Scheitler

District 2
T. J. "Ted" Hackworth

District 3
Ramona Martinez

District 4
Stephanie A. Foote

District 5
Paul L. Swalm

District 6
Mary A. DeGroot

District 7
Dave M. Doering

District 8
Hiawatha Davis, Jr.

District 9
Deborah L. Ortega

District 10
Cathy Donohue

District 11
William R. Roberts

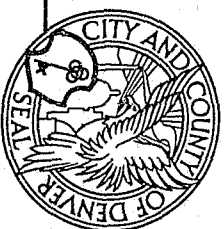
Councilwoman at Large
Cathy Reynolds

Councilman at Large
Robert L. "Bob" Crider



Federico Peña

Mayor of Denver





Manuel L. Martinez
Manager of Safety



FEDERICO PEÑA
Mayor

CITY AND COUNTY OF DENVER

DEPARTMENT OF SAFETY
FIRE • POLICE • SHERIFF

OFFICE OF THE MANAGER
ROOM 302
1331 CHEROKEE STREET
DENVER, CO 80204-2787
575-3141

April 28, 1989

The Honorable Federico Peña
Mayor, City and County of Denver
350 City and County Building
Denver, CO 80202

Dear Mayor Peña:

I am submitting to you the Annual Report of the Denver Police Department for 1988 with a great deal of pride for our accomplishments during the year. We have strengthened our management structure and simultaneously stimulated greater involvement in cooperative joint ventures among our Safety agencies. Many of these joint venture activities have been led by our Police Department. We have implemented a civilianization program to gradually increase our productivity in certain bureaus of the Department. The crime rate continues to be restrained and in several categories is declining. During the year, we have made significant progress on computerizing our records management functions within the Department and long-range facility planning for satellite police facilities commenced with the development of a mathematical prototype method for siting district police stations.

Chief Aristedes Zavaras has demonstrated exceptional leadership in negotiating resolutions to past promotional exam litigation and we have enjoyed the fruits of our successful Public Safety Cadet Program. Despite the scarcity of resources, Chief Zavaras has not significantly reduced basic police services and, in fact, has mobilized special initiatives to confront gang activities and illegal substance trafficking.

I join with all our our Denver Police Officers and our dedicated civilians in submitting this annual report for your review and consideration.

Sincerely,

Manuel L. Martinez
Manager of Safety



Aristedes W. Zavaras
Chief of Police



FEDERICO PEÑA
Mayor

CITY AND COUNTY OF DENVER

DEPARTMENT OF SAFETY

DENVER POLICE DEPARTMENT
ADMINISTRATION BUILDING
1331 CHEROKEE STREET
DENVER, COLORADO 80204-2787
PHONE: (303) 575-2011

1989

Manuel Martinez
Manager of Safety
1331 Cherokee Street
Denver, Colorado 80204

Dear Manager Martinez:

It is my privilege, on behalf of all members of the Denver Police Department, to present to you the Annual Report for the year 1988. I am extremely proud of the many accomplishments performed by members of the Department in meeting the everyday demands for police service.

Some demands for police service go beyond the ordinary and result in tragedy and heroics. Such an incident occurred on February 9, 1988, when Detective Robert (Bob) Wallis was killed in the line of duty. It was through the heroic actions of three civilians that Bob's killer was pursued and apprehended.

This is the second consecutive year to show a decline in reported Class I and II Offenses. This 7.2% reduction over 1987 can be attributed to crime prevention programs and the implementation of proactive crime fighting techniques.

One example of a proactive program is the Gang Task Force. This unit was created to combat the devastating effect that gang activity and illegal drugs have on our youth. The overall success of this program, however, will depend upon the continuing support of the entire community.

Another worthwhile program was streamlining the collection process involving payable warrants on the Open Items list. Violators now can be transported to the nearest police substation to pay their traffic fines by check, credit card, or money order. This new procedure not only makes fine paying more convenient, but also increases revenue for the City.

The accomplishments described in this Report are the result of the dedicated efforts of all the employees of the Denver Police Department.

Sincerely,

Aristedes W. Zavaras
Chief of Police



*Deputy Chief
Clifford Stanley*



*Division Chief
Stephen R. Kern
Community Service Division*



*Division Chief
C. Jerry Kennedy
Criminal Investigation Division*



Division Chief
Robert Cantwell
Patrol Division

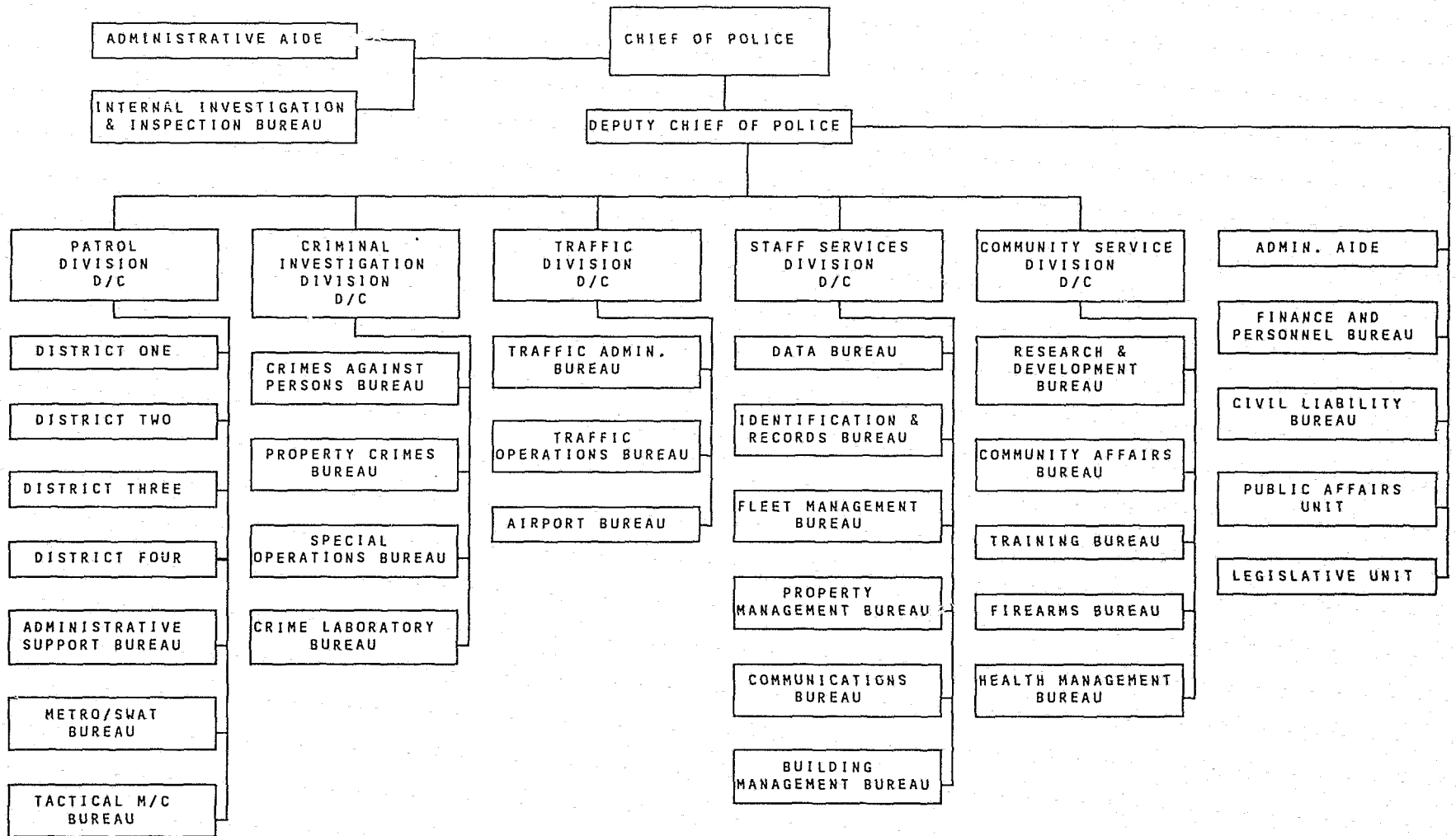


Division Chief
Joseph Ortiz
Staff Services Division



Division Chief
Robert Dunkley
Traffic Division

Table of Organization



Staffing

**OFFICE OF THE CHIEF OF POLICE
AND SUPPORT STAFF**

15 OFFICERS 1%
2 CIVILIANS 1%

**DEPUTY CHIEF OF POLICE
AND SUPPORT STAFF**

16 OFFICERS 1%
11 CIVILIANS 5%

PATROL DIVISION

District One Officers 158
District Two Officers 179
District Three Officers 130
District Four Officers 111
Metro/SWAT Bureau 45
Tactical Motorcycle Bureau 39

667 OFFICERS 51%
6 CIVILIANS 2%

CRIMINAL INVESTIGATION DIVISION

278 OFFICERS 21%
25 CIVILIANS 11%

TRAFFIC DIVISION

173 OFFICERS 13%
5 CIVILIANS 2%

STAFF SERVICES DIVISION

114 OFFICERS 9%
150 CIVILIANS 63%

COMMUNITY SERVICE DIVISION

57 OFFICERS 4%
38 CIVILIANS 16%

1320 Sworn Officers

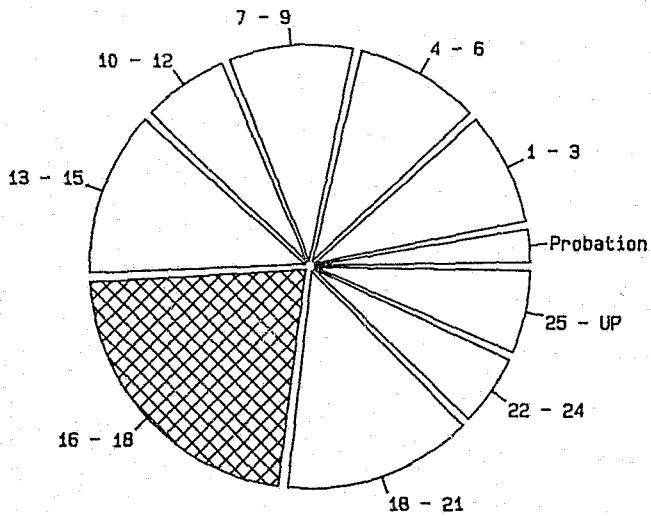
237 Civilian Members

Note: Personnel percentages in each Division represent comparisons of the total numbers of Police Department employees and December, 1988, assignments.

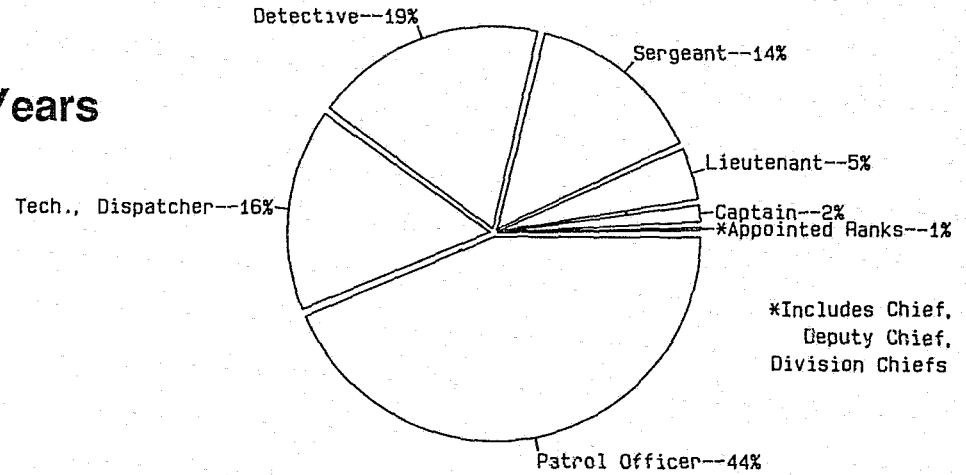
Police Personnel Profile

Average Age - 40.0 Years
 Average Length of Service - 14.3 Years

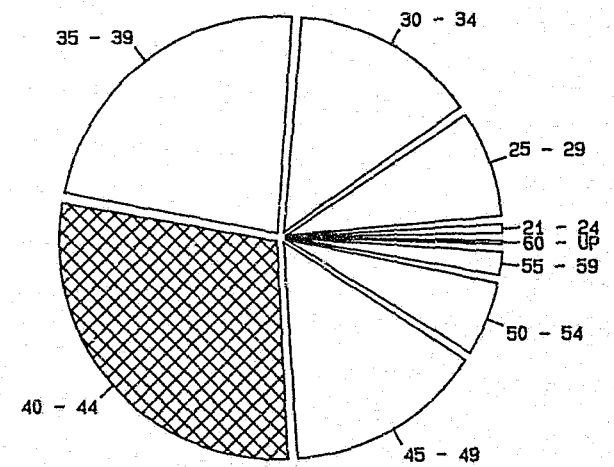
Years of Service



Rank Distribution



Age



Personnel

Police

	1988	1987
Chief of Police	1	1
Deputy Chief of Police	1	1
Division Chief of Police	5	5
Captain of Police	23	18
Lieutenant of Police	60	51
Superintendent of Radio Engineers	1	1
Sergeant of Police	182	175
Radio Engineers	7	9
Detectives	247	264
Technicians	184	201
Dispatchers	33	28
Patrol Officers	576	562
Total Police Personnel	1320	1316

Changes in Police Personnel

In Service, January 1, 1988	1315
Recruited and Reinstated, 1988	41
Separated from Service, 1988	34
Died	2
Dismissed	0
Resigned	10
Retired	22
In Service on December 31, 1988	1320

Civilian

	1988
Account Clerk	3
Administrative Assistant I	1
Administrative Clerk	2
Administrative Clerk Typist	32
Auto Body Repairman I	4
Auto Body Repairman II	1
Auto Garage Supervisor	1
Auto Parts Handler	1
Auto Parts Room Supervisor	1
Auto Service Supervisor	1
Auto Service Technician	5
Clerical Supervisor	2
Clerk III	1
Clerk Steno II	2
Clerk Steno III	4
Clerk Steno IV	1
Clerk Typist II	9
Clerk Typist III	29
Closed Circuit TV Engineer	1
Communications Clerk	51
Computer Operator I	1
Computer Operator II	1
Criminal Intelligence Analyst	1
Data Control Technician IV	1
Data Entry Senior Operator	8
Delivery Clerk I	1
Equipment Operator II	1
Fingerprint Identification Technician	8
Forensic Chemist	4
Garage Attendant I	1
Hearings Reporter	1
Helicopter Mechanic	1
Office Services Supervisor	2
Police Garage Auto Mechanic	12
Police Garage Auto Mechanic Lead	2
Police Psychologist	1
Public Safety Cadet	31
Radio Electronic Technician	2
Radio Installer	2
Senior Accountant	1
Staff Accountant	2
Stock Keeper	1
Switchboard Operator I	1
Technical Clerk	3
Victim Advocate	1
Positions Occupied at Year End	242
Total Civilian Positions	277

Ethnic Composition

Police Officers

	1984		1985		1986		1987		1988	
	M	F	M	F	M	F	M	F	M	F
Anglo	1023	69	997	69	988	72	959	73	956	78
Minority	236	39	241	40	246	39	244	40	245	41
Total	1259	108	1238	109	1234	111	1203	113	1201	119
Hispanic	165	25	167	24	175	24	177	25	180	26
Black	61	10	64	12	63	11	60	11	58	11
Asian	4	1	4	1	3	1	2	1	2	1
Indian	6	3	6	3	5	3	5	3	5	3
Total	236	39	241	40	246	39	244	40	245	41
GRAND TOTAL	1367		1347		1345		1316		1320	

City Population

Source: 1980 Census

American Indian	Asian	Black	White/Other	Hispanic*
.8%	1.4%	12.1%	85.8%	18.7%

Denver Public Schools

Enrollment September 30, 1988

American Indian	Asian	Black	White/Other	Hispanic
1.3%	3.4%	22.2%	35.2%	37.9%

*Hispanic is a separate breakout which is also included in other ethnic totals such as White or Black.

1988 Finances

Budget

Officer & Civilian Salaries/Benefits	\$62,917,431.00
Operating Expenses	\$6,055,555.00
Pension	\$18,139,400.00
Equipment Fund	\$350,000.00
Total Police Budget	\$87,462,386.00
Per Capita Cost	\$172.12

Salaries

Position	Annual	Monthly
Police Officer		
4th Grade (Probationary)	\$24,720.00	\$2060.00
3rd Grade	\$27,600.00	\$2300.00
2nd Grade	\$29,904.00	\$2492.00
1st Grade	\$32,952.00	\$2746.00
Dispatcher/Technician	\$35,184.00	\$2932.00
Detective	\$36,312.00	\$3026.00
Sergeant/Radio Engineer	\$38,448.00	\$3204.00
Lieutenant/Superintendent		
Radio Engineers	\$43,800.00	\$3650.00
Captain	\$50,592.00	\$4216.00
Division Chief	\$59,112.00	\$4926.00
Deputy Chief	\$62,112.00	\$5176.00
Chief of Police	\$75,324.00	\$6277.00

LONGEVITY PAY: After five years of service, each member of the Police Department in the Classified Service receives \$4.00 per month for each year of service, not to exceed \$100.00.

Kops 'N Kids



The Denver Police Orphans' Fund had a very informal beginning in 1958, when three officers "passed the hat" to buy Christmas gifts for the children of deceased officers. Things continued in this casual manner until the late 1960's when a businessman contributed \$1500 to their efforts. This money was to be the start of an educational fund for police orphans.

From this humble, grass-roots beginning, the Denver Police

Orphans' Fund developed into an incorporated, non-profit, tax-exempt organization. The goal remains providing financial assistance to any child of a deceased Denver officer, active or retired, and to continually remind survivors that they are still a part of the Denver Police family.

In 1987, after a succession of tragic deaths of law enforcement officers in the Metropolitan Denver area, two needs became apparent to Denver District Attorney Norm Early and Chief of Police Aristedes Zavaras. Firstly, additional financial support for the children of slain officers had to be secured. Secondly, the support of the community, which became apparent after each of these tragedies, also had to be encouraged. Backed by the guidance and enthusiasm of these two men and the support of other metropolitan law enforcement agencies, "Kops 'N Kids" was born, a multifaceted opportunity to address and satisfy those needs.

In the months of planning which followed, a wide variety of community resources was tapped. Corporate sponsors gave financial support and advisory assistance. Volunteer workers came from all segments of the community, the Denver Police Department and other City agencies. As Kops 'N Kids Day drew near, local school children became involved, showing their support by collecting donations in special can banks.

After months of planning, the program was kicked off on May 19 at the downtown Radisson Hotel with a formal dinner dance and media event. "Tennies & Tux", based on the theme of running shoes and tuxedos, included 1940's big band era entertainment provided by Hot Tomato. Area police departments were well represented, with many officers attending in uniform.



The high point of the endeavor was on June 5, 1988, the first annual Kops 'N Kids Day. Three runs and three bicycle rides were officially scheduled. The starting point of each race symbolized the station where a slain officer worked or the location near which one was slain.

Special inter-agency and intra-department challenges were made, such as the "Ironmouse" competition between the Denver Police Department and the District Attorney's staff. This competition consisted of a 13 mile bicycle ride starting at the Aurora Police Department, followed by a 1 kilometer run/walk terminating at 13th & Champa. A 21-member platoon consisting of sworn officers and recruits ran the 10K dressed in their summer uniform shirts and navy shorts. Special individual efforts were also made, such as the 60 mile solo run by Denver teacher Essie Garrett.

Over 1500 participants enjoyed the events which concluded at 13th and Champa where additional activities, such as the "Dunk an Officer" game, were held.



The first annual Kops 'N Kids Day will be remembered as a day of sharing, a day of remembrance and a day of celebration. On this day, participants and supporters, police officers and the civilians they serve joined together in a meaningful display of support for the law enforcement community.

Citizens and officers raised over \$50,000 for the benefit of several law enforcement orphan funds.

There was the sad recollection that four outstanding law enforcement officers could not be there to enjoy the festivities. But there was the firm commitment from thousands who never knew them that their sacrifice would not be forgotten and that their families would not be left impoverished.

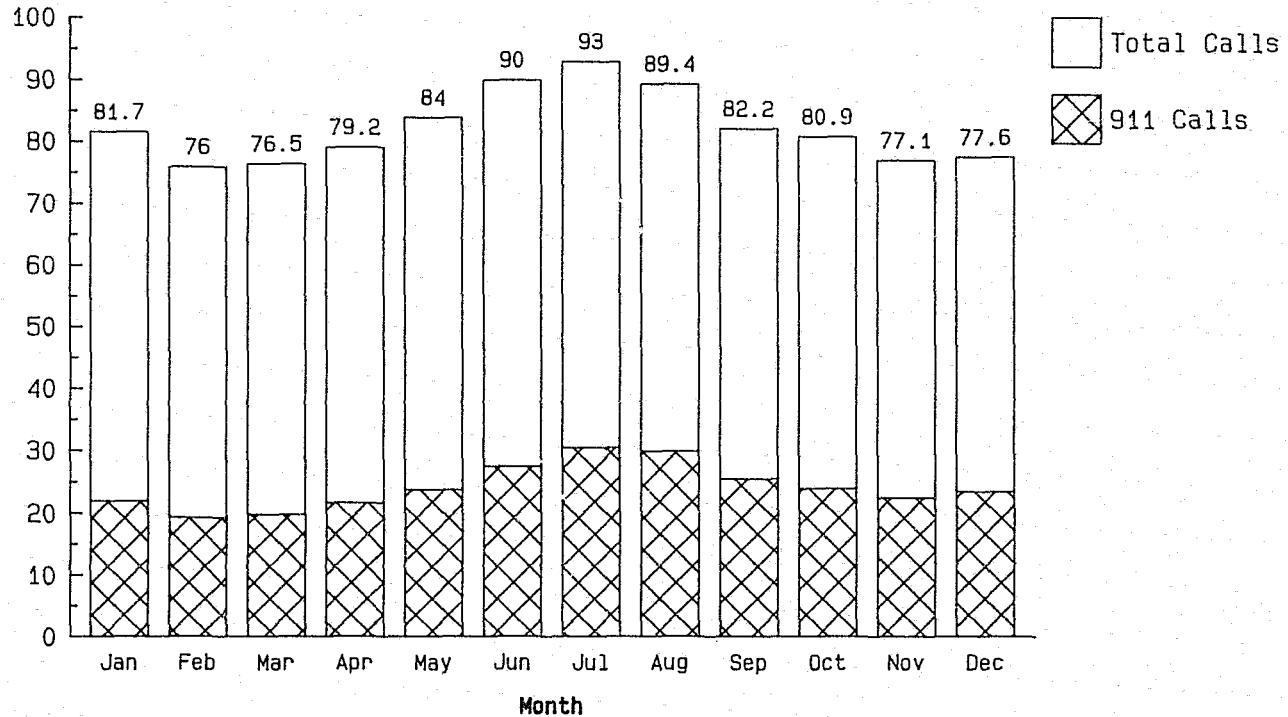


They are all in my heart...
In the final analysis, they all belong to everyone,
each of us holding responsibility for their lives.
Without them, there would be no more us.

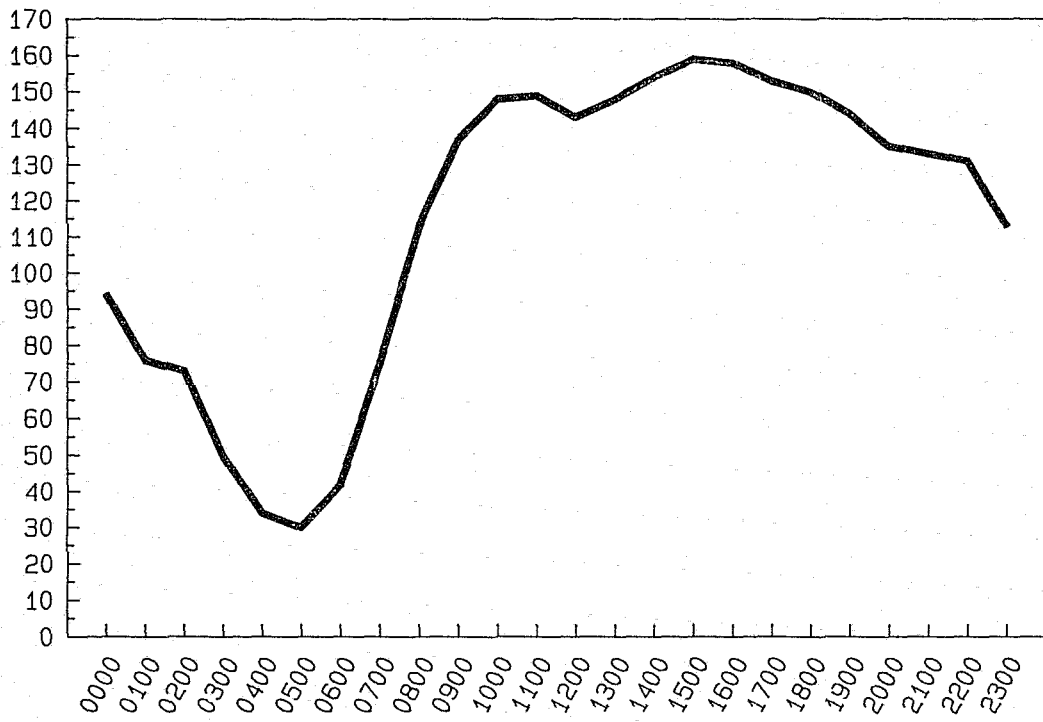
John Coit, as quoted in the Rocky Mountain News, 1984

Calls for Police Service

Thousands of Calls Received

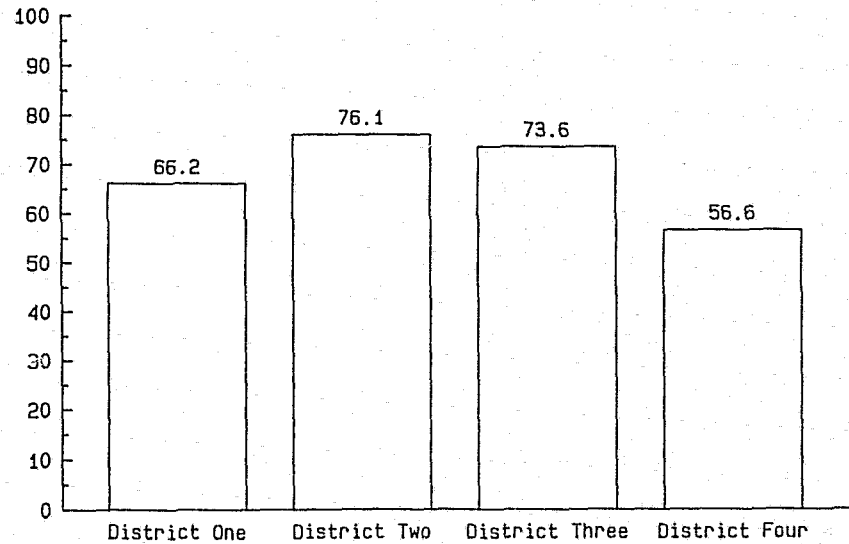


Total Calls for Service - 987,541
911 Calls - 298,049



**Average Number
of Calls for Service
by Hour of Day**

**Thousands of Calls Dispatched
by District**



Crime Index

Offenses Reported by District

OFFENSE	District 1		District 2		District 3		District 4	
	1988	1987	1988	1987	1988	1987	1988	1987
Murder	21	19	31	35	11	16	11	12
Manslaughter	0	0	0	1	0	0	0	1
Forcible Rape	104	109	181	177	118	112	82	79
Aggravated Robbery	196	222	417	413	315	412	158	213
Simple Robbery	118	116	248	261	126	157	47	78
Aggravated Assault	450	468	821	745	327	291	386	375
Burglary	2665	2993	3114	3796	3559	4131	2682	3125
Grand Larceny	2283	2347	1875	2005	2377	2675	1250	1317
Auto Theft	1353	1650	1842	1850	1302	1345	1130	1165
Arson	131	109	159	168	52	67	69	105
Total	7321	8033	8688	9451	8187	9206	5815	6470
Petty Larceny	4565	4821	3143	3523	3782	4279	2917	2725
Other Assaults	359	439	428	352	297	304	335	279
Forgery	154	169	214	473	109	156	104	164
Embezzlement & Fraud	128	108	84	86	125	157	63	60
Statutory Rape	0	4	0	0	0	0	0	2
Sex Offenses	128	155	131	103	133	139	121	98
All Other Offenses	806	797	1103	754	874	767	645	588
Larceny by Bailee	8	38	61	102	13	59	27	53
Malicious Mischief	1135	1251	1136	1078	1281	1444	1126	1200
Total	7283	7782	6300	6471	6614	7305	5338	5169
GRAND TOTAL	14604	15815	14988	15922	14801	16511	11153	11639

Offense Comparison

OFFENSE	REPORTED OFFENSES			UNFOUNDED		ACTUAL OFFENSES			CLEARED BY ARREST	
	TOTAL		%	1987	1988	TOTAL		%	1987	1988
	1987	1988	Change			1987	1988	Change		
Murder	82	74	-9.8	2	4	80	70	-12.5	78.5	62.9
Manslaughter	2	0	-100.0	1	0	1	0	-100.0	100.0	0.0
Forcible Rape	477	485	+1.7	76	112	401	373	-7.0	53.9	55.7
Aggravated Robbery	1260	1086	-13.8	170	144	1090	942	-13.6	39.5	34.0
Simple Robbery	612	539	-11.9	89	68	523	471	-10.0	25.4	30.7
Aggravated Assault	1879	1984	+5.6	128	166	1751	1818	+3.8	65.8	60.5
Burglary	14045	12020	-14.4	326	267	13719	11753	-14.3	12.9	12.4
Grand Larceny	8344	7785	-6.7	181	205	8163	7580	-7.1	8.7	7.7
Auto Theft	6010	5627	-6.4	542	515	5468	5110	-6.5	16.0	19.4
Arson	449	411	-8.4	4	0	445	411	-7.6	8.5	7.2
Total	33160	30011	-9.5	1519	1481	31641	28528	-9.8	17.0	17.2
Petty Larceny	15348	14407	-6.1	310	258	15038	14149	-5.9	34.8	35.2
Other Assaults	1374	1419	+3.3	78	121	1296	1298	0.0	57.9	60.6
Forgery	962	581	-39.6	40	12	922	569	-38.3	75.1	75.8
Embezzlement & Fraud	411	400	-2.7	31	28	380	372	-2.1	68.7	59.8
Statutory Rape	6	0	-100.0	1	0	5	0	-100.0	100.0	0.0
Sex Offenses	495	513	+3.6	46	62	449	451	0.0	54.3	54.6
All Other Offenses	2906	3428	+18.0	168	197	2738	3231	+18.0	49.3	56.4
Larceny by Bailee	252	109	-56.7	56	32	196	77	-60.7	50.0	71.1
Malicious Mischief	4973	4678	-5.9	144	102	4829	4576	-5.2	10.8	10.5
Total	26727	25535	-4.5	874	812	25853	24723	-4.4	35.4	36.5
GRAND TOTAL	59887	55546	-7.2	2393	2293	57494	53251	-7.4	25.3	26.2

Actual Offenses

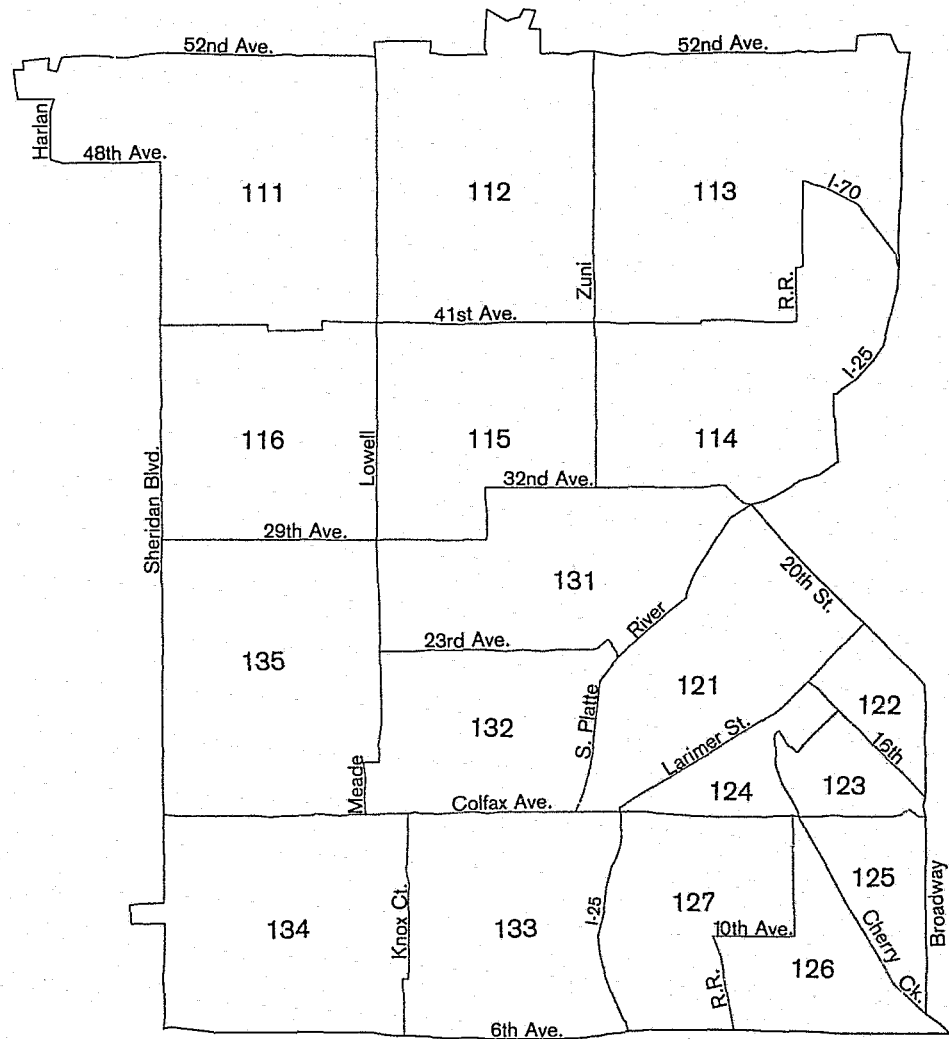
	1979	1980	1981	1982	1983	1984	1985	1986	1987	1988
Class I Crimes	34,442	40,498	42,738	40,587	37,785	37,020	37,512	39,398	31,641	28,528
Class II Crimes	33,891	34,793	33,116	33,117	31,501	29,016	30,409	31,160	25,853	24,723
Total Crimes	68,333	75,291	75,854	73,704	69,286	66,036	67,921	70,558	57,494	53,251

District One



Captain C. K. Carpenter
Commanding Officer

Precinct Boundaries



Actual Class I Offenses

By Precinct 1988

Precinct	Murder	Mansl.	Forc. Rape	Aggr. Robbery	Simple Robbery	Aggr. Assault	Burglary	Grand Larceny	Auto Theft	Arson	Total
111	2 +200		3 -25	5 -44	2 -50	12 -8	166 +9	55 -20	47 -25	1 -83	293 -8
112	1 0		2 -75	13 -28	6 +20	12 -14	218 +32	93 -10	76 -12	4 -20	425 +5
113		-100	7 +40	4 -33	4 0	27 +17	192 -6	101 +28	83 -37	10 +25	428 -8
114	1 -67		7 -30	6 -25	4 +33	34 -35	226 +1	109 -6	70 -40	6 -25	463 -14
115		-100	8 -11	8 -47	2 -75	28 -42	215 -20	89 +5	70 -15	6 +20	426 -19
116			2 +100	5 -55	1 -75	21 +40	181 -18	66 -7	49 +9	11 +175	336 -10
121	1 +100		5 +400	13 +44	2 -50	16 +45	83 +19	314 -4	100 -10	3 -40	537 0
122			2 -50	17 -23	14 +8	13 +8	86 -12	274 -1	71 -12	2 -50	479 -6
123			1 -75	9 -31	8 +14	11 +38	46 -52	159 -42	66 -40	2 +100	302 -41
124	1 -50		4 +100	2 -71	3 -63	3 -50	38 +6	119 +18	19 0	2 0	191 +4
125		-100	2 -50	5 -17	4 +33	11 +120	44 +1	80 -21	36 -20	4 -20	186 -11
126	6 +500		8 +167	8 0	5 0	26 -24	127 -15	100 +37	78 -4	15 +114	373 +3
127	2 +100		7 +75	12 +71	10 +150	33 +10	113 -15	82 +58	67 -3	8 +300	334 +11
131	2 +200		4 -60	13 +18	10 +25	57 +4	238 -18	141 -6	88 -12	18 +29	571 -11
132		-100	2 -78	14 +17	13 +160	22 -12	96 -11	181 +5	69 -32	3 -50	400 -10
133		-100	5 -44	11 +10	5 +25	40 +48	134 -24	98 -7	56 -32	7 -36	356 -16
134	3 +300		7 +133	14 0	9 0	39 -23	241 -23	64 -17	123 +12	22 +144	522 -12
135	1 +100		2 +200	1 -80	5 -29	12 -25	131 -21	71 +4	49 -29	6 +50	278 -18
TOTAL	20 +11		78 -20	160 -16	107 +2	417 -6	2575 -12	2196 -5	1217 -19	130 +23	6900 -10

Actual Class II Offenses

By Precinct 1988

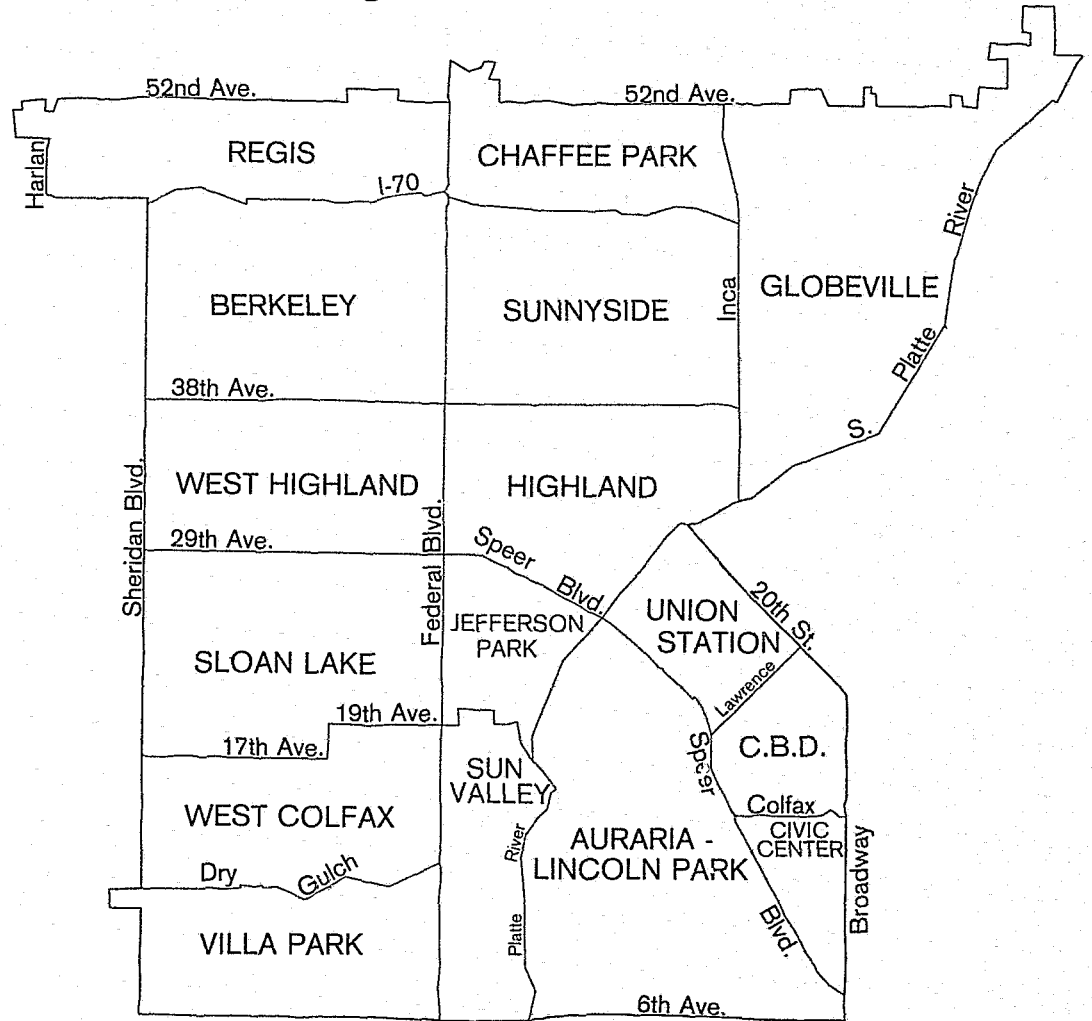
Precinct	Petty Larceny	Other Assaults	Forgery	Embz. & Fraud	Stat. Rape	Sex Offenses	All Other	Larceny Ballees	Malic. Mlsch.	Total
111	137 -40	8 -60	-100	3 0		6 -50	28 0	-100	65 -1	247 -33
112	299 +18	16 -6	9 +12	3 0		5 -17	32 -3	-100	61 -14	425 +8
113	145 -9	25 -7	3 -73	4 -43		4 -64	34 -10	-100	54 -24	269 -18
114	150 +14	19 -17	6 0	4 +33		2 -82	38 -12	-100	67 -4	286 -1
115	222 +16	28 -15	11 +267	4 0		8 -33	56 +30	-100	83 +9	412 +12
116	140 -7	13 -43	2 +100	2 +100		15 +67	28 -18	1 -50	71 -20	272 -12
121	268 -25	16 -24	3 +300	6 +200		3 -57	19 -39		78 +30	393 -17
122	378 -21	28 +100	42 +35	39 +77		5 -38	56 +19	1 -75	49 -2	598 -8
123	785 -5	7 -67	10 -17	18 +20		8 +60	27 +50	1 -67	37 -18	893 -5
124	226 +57	9 -31	10 +11	3 -63		6 +50	30 +114		25 +19	309 +45
125	109 -33	12 -37	3 -40	8 0		1 0	128 +49	-100	33 -8	294 -7
126	396 +4	20 -43	16 -36	6 0	-100	3 -57	36 -31	-100	67 0	544 -5
127	131 +54	22 +10	2 0	8 +700		5 +400	24 +14	3 +200	66 +43	261 +47
131	379 +7	30 -25	3 0	4 -33		14 +40	39 -23	1 0	79 -32	549 -6
132	240 -21	19 +27	4 +300	3 +50	-100	4 -50	45 -13	-100	72 -3	387 -16
133	186 -6	12 -54	9 -61	2 -50		6 +50	50 +16		63 -31	328 -15
134	125 -30	37 +3	18 +80	2 0	-100	8 -50	52 -21		84 -21	326 -22
135	188 +19	12 +9	-100			10 +43	25 -32		60 -1	295 +6
TOTAL	4504 -5	333 -20	151 -4	119 +18	-100	113 -19	747 +1	7 -78	1114 -9	7088 -62

District One



District Police Station
2195 Decatur Street

Neighborhood Boundaries



1988 Neighborhood Crime Rates

Per 1000 persons

Neighborhood	+ Popu- lation	Female Popu- lation	# House holds	Police Precincts	Total	Murder	++ Forc. Rape	Rob- bery	Aggr. Assault	* Burg- lary	** Lar- ceny	Auto Theft	Arson	All Other
Auraria-Lincoln Park	7,185	3,109	2,843	121, 124, 126, 127	316.8	1.4	5.5	6.3	9.2	96.4	161.7	27.1	2.8	67.8
Berkeley	9,043	4,643	3,984	111, 112, 115, 116	102.5	0.1	0.4	1.8	2.1	65.5	36.7	8.5	0.3	23.9
Central Business District (CBD)***	1,998	687	1,753	122, 123	1262.3	0.0	8.7	24.5	13.5	83.3	822.8	68.6	2.5	254.3
Chaffee Park	3,459	1,871	1,393	112, 113	127.8	0.0	1.1	1.7	1.7	66.0	65.0	11.9	0.0	20.2
Civic Center***	805	233	433	125	726.7	0.0	4.3	12.4	13.7	108.5	246.0	44.7	5.0	345.3
Globeville	3,682	1,842	1,184	113, 123, 211	189.3	0.0	2.7	4.3	7.1	114.0	78.8	19.3	1.1	40.7
Highland	10,228	4,979	3,563	114, 115, 131	111.8	0.2	2.6	1.9	4.3	75.5	44.5	9.4	1.9	22.1
Jefferson Park	2,470	1,215	995	114, 115, 131	253.4	0.4	1.6	5.3	11.3	117.6	122.7	15.0	1.6	49.0
Regis	4,185	2,167	1,534	111, 112	70.3	0.5	0.9	1.9	1.2	53.5	24.4	6.5	0.2	15.5
Sloan Lake	8,072	4,262	3,498	131, 132, 135	89.3	0.0	0.5	1.5	3.0	58.3	30.7	7.1	0.7	20.8
Sunnyside	10,965	5,669	3,945	112, 113, 114, 115	98.1	0.0	1.6	1.8	4.6	82.9	26.6	9.0	1.2	24.3
Sun Valley	2,207	1,151	572	132, 133	280.5	0.0	3.5	13.1	10.4	115.4	130.9	19.5	2.3	72.5
Union Station***	836	420	551	121	1023.9	1.2	4.8	21.5	10.8	157.9	600.5	84.9	2.4	196.2
Villa Park	6,981	3,731	2,713	133, 134	99.3	0.3	0.8	1.9	4.0	80.7	23.1	11.3	2.1	24.8
West Colfax	9,712	5,209	3,625	132, 133, 134, 135	127.3	0.2	1.2	5.0	5.7	54.9	46.8	14.3	1.6	32.4
West Highland	9,216	4,988	3,918	115, 116	85.1	0.0	0.4	0.9	2.7	55.6	28.6	6.7	1.2	21.1
Citywide Rates					112.5	0.1	1.5	3.1	3.6	55.1	43.1	10.1	0.8	27.3

+ According to 1985 Population Figures

++ Offenses Per 1000 Females (1980 Population)

* Offenses Per 1000 Households

** Includes both petty and grand larceny

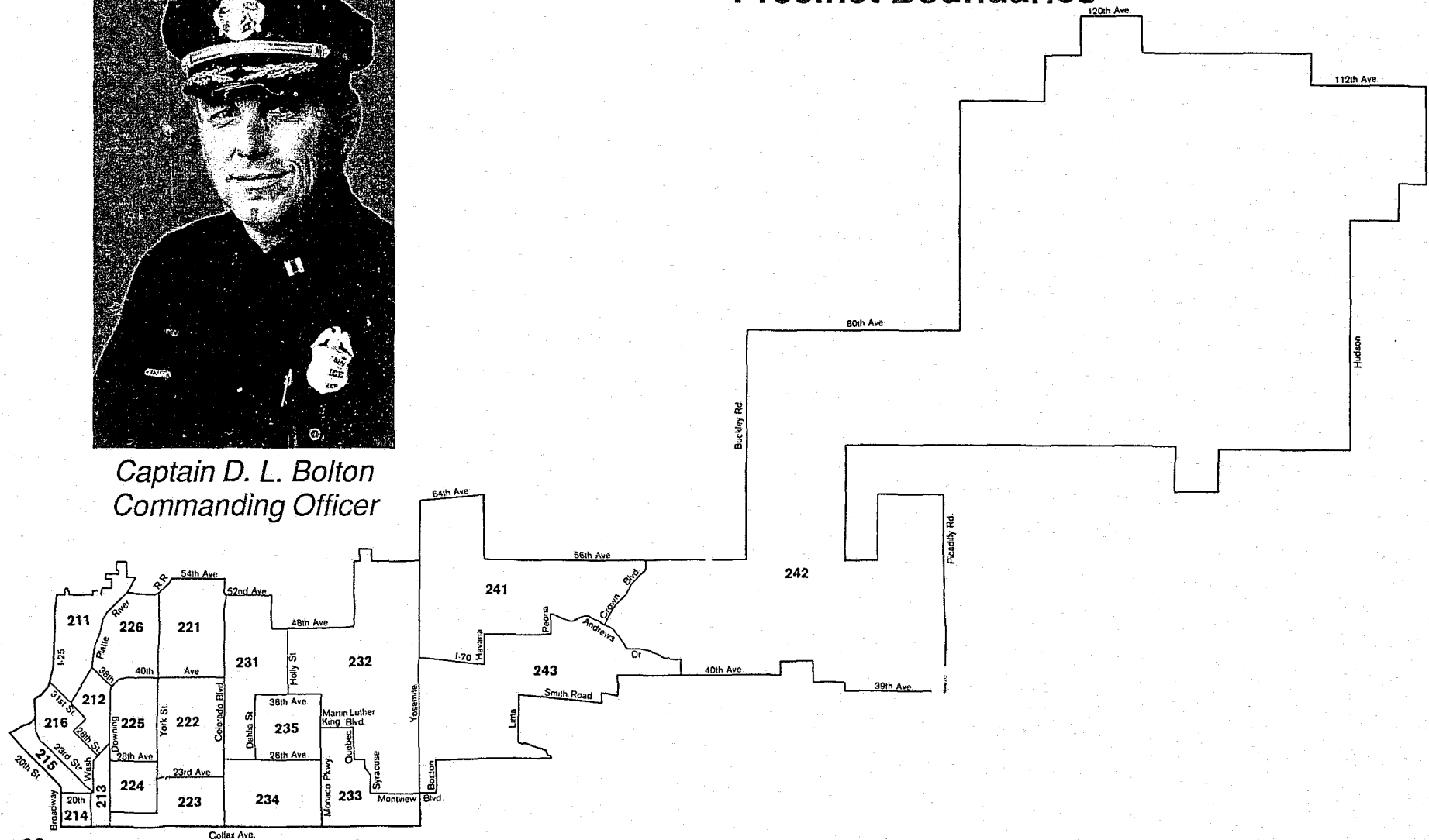
*** Very high neighborhood crime rates because of small resident population

District Two



Captain D. L. Bolton
Commanding Officer

Precinct Boundaries



Actual Class I Offenses

By Precinct 1988

Precinct	Murder	Mansl.	Forc. Rape	Aggr. Robbery	Simple Robbery	Aggr. Assault	Burglary	Grand Larceny	Auto Theft	Arson	Total
211			3 0	4 +33	5 0	24 +14	76 -24	67 +34	48 0	3 -40	230 -2
212	-100		7 -12	15 +114	13 +160	36 +38	121 -28	50 +35	46 -2	6 -40	294 -5
213	2 +100		10 0	29 0	16 -36	63 +21	128 -12	76 +3	66 -8	11 +37	401 -4
214	-100		5 -37	24 -8	16 -30	15 -37	94 +22	121 -34	85 -1	8 -11	368 -16
215	5 +67		7 +250	16 +33	19 +46	54 -5	71 -16	182 -14	185 -9	16 +220	555 -6
216	-100		13 +116	22 +47	9 -31	54 -22	110 -32	109 +25	71 -26	14 -26	402 -14
221	-100		2 0	12 +100	5 +25	23 +44	176 -20	56 +4	65 +14	7 -12	346 -6
222	1 -80		11 +37	27 +17	9 -10	76 +9	221 -24	63 0	112 +8	11 +10	531 -9
223	2 -33		9 -25	36 +24	18 -31	41 +8	186 -16	109 -38	79 -1	10 +11	490 -18
224	1 -75		5 0	26 -13	16 -6	37 +32	198 -7	66 -30	97 +13	6 -25	452 -7
225	5 -29		17 -35	25 -14	21 -19	11 -2	308 -18	75 +21	86 -28	26 +62	574 -13
226	1 +100		1 0	1 -80	2 +200	11 +120	64 -10	86 +32	49 +53	1 -75	216 +18
231			4 +33	13 +86	3 -40	36 +112	88 +22	65 +3	59 +26	2 -60	270 +23
232	1 -67		7 +75	11 -21	1 -75	18 +29	76 -30	128 +17	144 -12	2 -33	388 -8
233	3 +300		10 +11	26 +24	10 -33	34 +26	255 -6	58 -28	109 +43	6 -54	511 -1
234	2 +200		11 +37	17 -41	7 -12	15 -21	277 -33	83 -35	107 +19	5 0	524 -25
235	4 +100		4 -75	11 -27	6 -33	44 -8	142 -34	28 -40	71 +9	10 +11	320 -27
241			1 -67	1 -89	-100	16 -6	165 -19	70 -3	47 -4	4 +33	304 -15
242	1 +100		-100	2 -33	2 +100	7 -36	66 -14	20 +33	21 0	3 -62	122 -13
243	-100		9 +29	21 +50	15 +114	26 +13	147 -28	89 -8	42 -56	2 -82	351 -24
259*			1 0	1 -67	3 +300	3 +50	8 -43	189 -4	23 -26	2 +200	230 -7
TOTAL	28 -20		137 -6	340 +3	196 -11	644 +7	2977 -20	1790 -9	1612 -4	155 -8	7879 -11

Actual Class II Offenses

By Precinct 1988

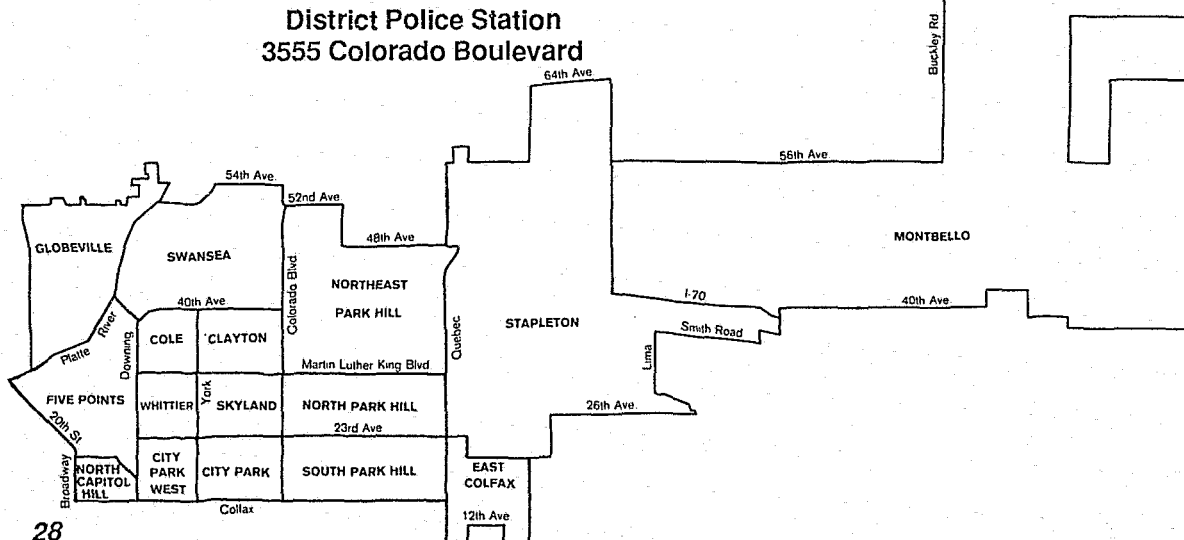
Precinct	Petty Larceny	Other Assaults	Forgery	Embz. & Fraud	Stat. Rape	Sex Offenses	All Other	Larceny Baillee	Mailc. Misc.	Total
211	81 +23	5 -55	1 -67	-100		7 +133	16 +700		46 +77	156 +38
212	73 -5	12 -14	3 -40	1 0		2 0	35 +67		46 +28	172 +10
213	503 +7	26 -7	123 -64	4 -56		4 -20	78 +160	1 -50	42 +13	781 -18
214	189 -15	14 0	24 +20	11 +83		7 +75	32 +45	-100	40 +43	317 0
215	201 -10	13 -19	5 -29	2 0		1 -80	30 -27	3 +50	38 +41	293 -9
216	175 +24	25 +39	4 +400	2 -33		4 +300	47 +17	-100	51 0	308 +20
221	74 +3	8 -20	2 +100	3 +300		4 -33	23 0	1 +100	38 +23	153 +7
222	101 -31	33 +65	3 +50	-100		7 0	51 +16	8 +300	53 -37	256 -17
223	225 -25	32 -3	14 -18	11 +83		10 -17	43 +2	1 -94	65 -14	401 -20
224	179 -10	27 +50	1 -75	-100		9 +80	77 +141		71 +22	364 +15
225	178 -30	46 0	7 -65	3 -25		12 0	125 +79	1 +100	86 -1	458 -7
226	83 +38	5 +500	-100	2 0		1 +100	7 +250	-100	28 +154	127 +61
231	55 -37	15 +200	2 +100	8 +300		2 -50	20 -29	1 -67	42 +20	145 -13
232	124 +1	15 +150	1 0	5 -58		2 +200	25 +39	29 +32	57 +16	258 +12
233	131 -14	29 +26	4 +100	5 +150		10 +150	74 +61	1 -91	85 +42	339 +13
234	150 -30	16 +23	4 -60	5 0		9 +200	50 +56	1 -80	83 -8	318 -15
235	60 -26	18 +50	1 -90	-100		5 -17	83 +15		42 -21	209 -11
241	80 +29	11 -27		3 -40		5 0	33 +65	-100	61 +3	193 +16
242	53 -15	15 +25	4 +400	0		4 -33	20 +33	-100	40 +21	136 +5
243	119 -5	26 +86	4 +33	4 0		2 0	127 +57		56 -21	338 +13
259*	233 -15	7 +75	2 -60	8 +14		1 -50	42 +40	-100	39 -9	332 -10
TOTAL	3067 -11	399 +20	209 -54	77 0		108 +15	1038 +46	47 -37	1109 +6	6054 -3

*259 denotes crimes which occurred at Stapleton International Airport which falls within the boundaries of Precincts 232, 241 and 243.

District Two



Neighborhood Boundaries



1988 Neighborhood Crime Rates

Per 1000 persons

Neighborhood	+ Popu- lation	Female Popu- lation	# House holds	Police Precincts	Total	Murder	++ Forc. Rape	Rob- bery	Aggr. Assault	* Bur- glary	** Larceny	Auto Theft	Arson	All Other
City Park	2,240	1,223	1,133	223	215.6	0.9	4.1	8.9	5.8	86.5	87.5	20.1	2.2	44.2
City Park West	4,427	2,936	2,196	223, 224	266.1	0.2	2.7	19.7	12.6	103.4	81.1	27.3	2.3	69.8
Clayton	4,758	2,396	1,544	222	105.5	0.2	3.3	4.8	11.3	76.4	19.1	12.4	1.7	29.4
Cole	4,870	2,486	1,543	225	152.6	0.2	2.8	6.4	8.6	113.4	35.9	13.6	4.3	46.2
East Colfax	8,804	4,496	3,998	233, 322	111.8	0.3	2.9	6.4	5.5	73.3	23.5	13.3	0.7	27.4
Five Points	9,351	5,075	3,550	212, 213, 215, 216	313.1	0.7	5.1	13.0	20.5	110.7	133.8	36.8	5.1	58.3
Globeville	3,682	1,842	1,184	211, 113, 123	189.3	0.0	2.7	4.3	7.1	114.0	78.8	19.3	1.1	40.7
Montbello	21,643	8,135	6,343	241, 242, 243	52.6	0.0	1.1	1.4	1.9	51.7	13.7	4.5	0.4	15.2
North Capitol Hill	4,301	1,868	2,757	213, 214	259.7	0.0	5.9	17.7	6.7	56.9	90.9	25.3	2.1	77.9
Northeast Park Hill	7,991	4,482	2,608	231, 235	153.7	9.6	2.9	5.3	10.1	76.3	42.7	23.5	1.3	43.7
North Park Hill	12,390	6,319	4,008	231, 233, 234, 235	57.1	0.0	1.6	1.2	3.3	56.6	10.4	7.7	0.5	14.9
Skyland	3,731	1,952	1,417	222	95.7	0.0	1.5	4.6	6.4	76.2	19.0	13.7	1.1	21.2
South Park Hill	9,793	4,952	3,639	233, 234	91.5	0.3	2.2	2.8	1.1	76.4	24.4	11.8	0.7	20.8
Stapleton***	952	61	25	232, 241, 243	1431.7	0.0	32.8	27.3	13.7	1800.0	654.4	98.7	1.1	587.2
Swansea	5,427	2,656	1,824	221, 226	165.7	0.2	1.1	3.7	6.1	137.1	55.5	20.8	1.5	31.3
Whittier	5,457	2,810	2,050	224, 225	126.3	0.7	3.9	4.2	14.7	109.8	21.3	7.7	1.1	33.4
Citywide Rates					112.5	0.1	1.5	3.1	3.6	55.1	43.1	10.1	0.8	27.3

+ According to 1985 Population Figures

++ Offenses Per 1000 Females (1980 Population)

* Offenses Per 1000 Households

** Includes both petty and grand larceny

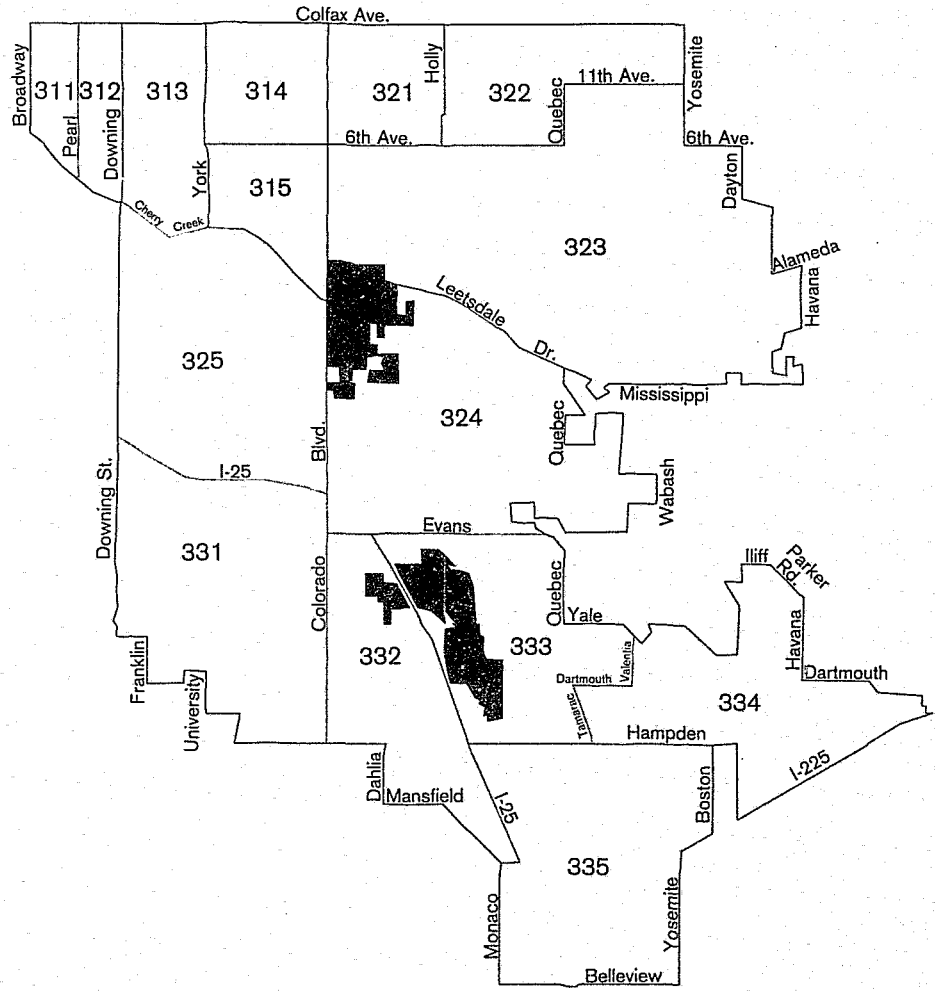
*** Very high neighborhood crime rates because of small resident population

District Three



*Captain J. R. Collier
Commanding Officer*

Precinct Boundaries



Actual Class I Offenses

By Precinct 1988

Precinct	Murder	Mansl.	Forc. Rape	Aggr. Robbery	Simple Robbery	Aggr. Assault	Burglary	Grand Larceny	Auto Theft	Arson	Total
311	1 0		7 -36	22 -37	15 -28	26 -36	186 -4	142 -12	78 -32	5 -28	482 -18
312	2 -71		14 -12	40 -30	27 +17	37 -8	341 -5	102 -29	83 -26	11 +83	657 -14
313	1 0		13 +30	18 -45	15 +7	29 +21	427 +32	150 -14	71 -20	7 +250	731 +9
314			7 +133	25 -14	11 +10	24 +9	303 -11	138 +3	88 +42	3 -25	599 -1
315			1 0	22 -12	4 0	11 -27	171 -14	171 -33	38 -36	2 +100	420 -25
321	1 +100		4 +33	7 -63	2 +71	13 +160	139 -34	124 +25	83 +30	3 +50	376 -8
322	1 0		10 0	35 +25	13 -31	37 +37	242 -31	63 -39	98 -15	2 -82	501 -25
323	3 +200		5 +67	11 -63	4 -43	19 +58	216 -32	164 -8	98 -4	1 -80	521 -21
324	-100		8 +33	29 +38	12 +50	20 +66	334 -20	207 -20	108 -13	4 0	722 -15
325			2 +100	10 -37	1 +80	11 +83	291 -2	202 -2	66 +27	3 +50	586 0
331			3 -40	12 -45	4 +300	10 -37	217 -39	180 -18	67 +2	2 -75	495 -28
332			2 0	20 +33	1 -75	2 +100	105 -23	82 -15	35 +35	1 -75	248 -13
333	-100		4 -25	13 -41	4 +33	11 +22	142 -12	211 -4	72 0	2 -60	459 -8
334	1 -50		6 -25	7 +75	1 -67	21 -12	160 -9	154 +3	82 -10	4 0	436 -6
335	1 0		2 -71	13 -13	2 +100	21 +110	165 -14	164 -20	73 -5	2 0	443 -13
TOTAL	11 -31		88 -3	284 -23	116 -11	292 +11	3439 -15	2254 -14	1140 -7	52 -22	7676 -13

Actual Class II Offenses

By Precinct 1988

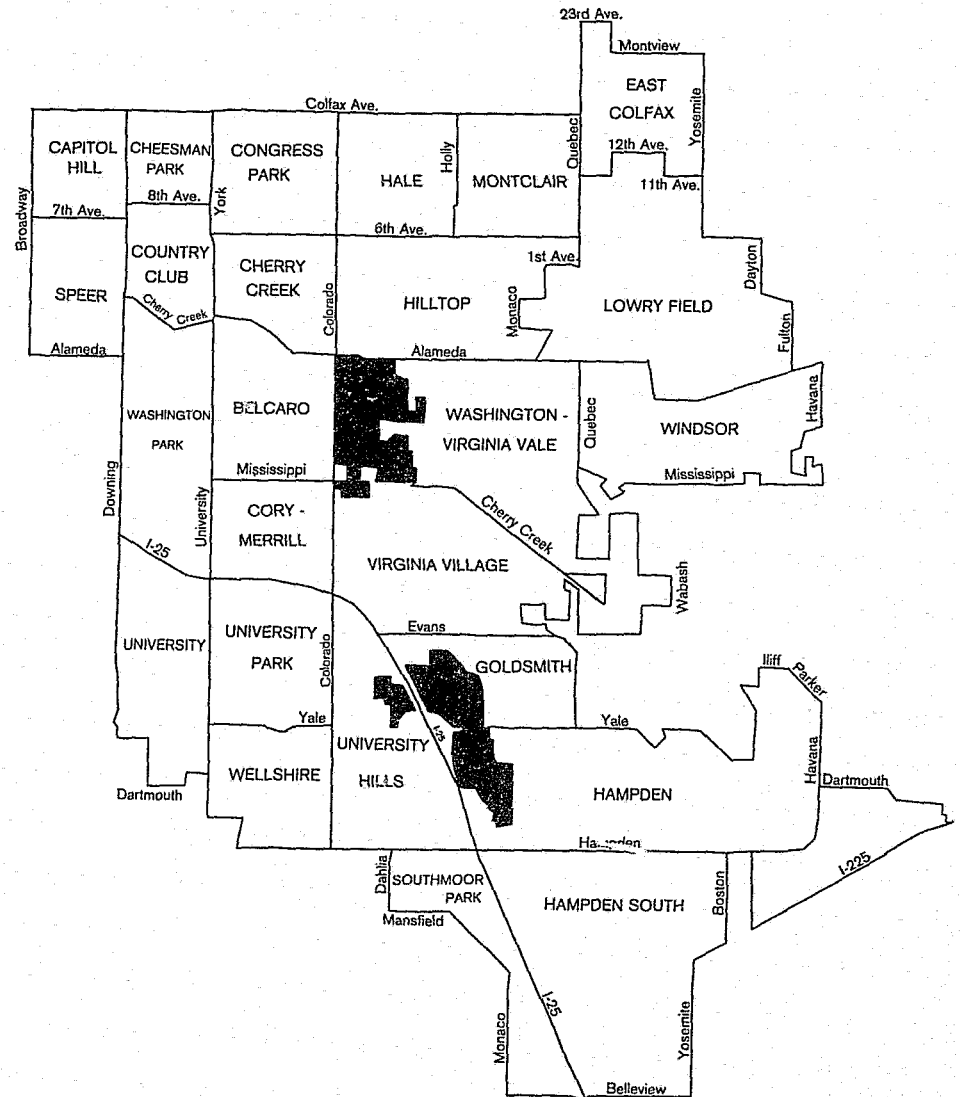
Precinct	Petty Larceny	Other Assaults	Forgery	Embz. & Fraud	Stat. Rape	Sex Offenses	All Other	Larceny Baillee	Mailc. Misch.	Total
311	215 -14	23 -34	6 -33	9 -10		10 +25	69 +77	-100	81 -2	413 -5
312	396 -18	42 +45	15 +7	5 +150		16 +45	55 -8	-100	89 -18	618 -13
313	196 -18	22 -27	4 -43	1 0		11 +120	65 +48	-100	87 +2	386 -6
314	206 -13	22 +29	4 -64	4 +100		7 -22	44 -2	-100	89 -4	376 -10
315	269 -33	12 +20	10 -50	19 -50		1 -83	35 +40	-100	71 -26	417 -31
321	171 +40	11 -27	4 -20	4 -20		6 +50	46 +24	-100	55 +10	297 +24
322	378 -30	23 -12	10 -41	3 -70		4 -20	48 0	-100	92 +19	558 +24
323	185 -18	18 +50	5 -44	7 +40		15 +7	77 +51	-100	92 -4	399 -3
324	317 +1	14 -44	12 +33	9 -18		12 -29	101 +6	2 -78	30 -23	597 -8
325	260 +7	13 -24	5 -38	8 +14		4 -33	47 0	1 -50	91 -24	429 -4
331	229 -20	12 +71	8 -38	7 -30		11 +57	49 -2	1 +100	88 -31	405 -19
332	142 -16	7 -50	7 -56	10 +25		6 +100	31 -14	1 0	45 -27	249 -20
333	304 -4	10 -41	5 -44	13 -41		2 -82	40 -9	-100	76 +6	450 -10
334	136 -8	22 +10	3 +200	6 +20		9 -55	55 0	-100	74 -15	305 -11
335	253 +17	14 0	8 +100	11 +10		10 +100	56 +6		69 -16	421 +10
TOTAL	3657 -13	265 -8	106 -30	116 -21		124 -5	818 +12	5 -90	1229 -13	6320 -11

District Three



District Police Station
1625 South University Boulevard

Neighborhood Boundaries



1988 Neighborhood Crime Rates

Per 1000 persons

Neighborhood	+ Popu- lation	Female Popu- lation	# House holds	Police Precincts	Total	Murder	++ Forc. Rape	Rob- bery	Aggr. Assault	* Bur- glary	** Larceny	Auto Theft	Arson	All Other
Belcaro	3,581	1,888	1,697	325	58.4	0.0	0.0	0.3	0.6	24.7	30.2	3.1	0.0	12.6
Capitol Hill	13,518	6,556	9,344	311, 312	152.7	0.1	3.2	7.9	4.4	46.4	59.3	10.7	1.1	35.4
Cheesman Park	8,240	4,397	5,388	313	108.3	0.1	2.7	3.4	3.2	60.3	30.2	7.6	0.5	22.3
Cherry Creek	3,627	2,266	2,015	315	250.3	0.0	0.4	7.2	3.0	87.3	125.7	10.5	0.6	54.6
Congress Park	10,772	5,765	5,580	314	95.8	0.0	1.2	3.4	2.1	56.1	32.5	8.4	0.3	19.4
Cory-Merrill	3,849	1,949	1,838	325	96.6	0.0	0.0	2.6	0.5	43.5	42.6	6.0	0.0	24.2
Country Club	3,263	1,663	1,370	313	90.1	0.0	1.2	2.1	0.3	85.4	31.6	4.3	0.9	14.4
East Colfax	8,804	4,496	3,998	322, 233	111.8	0.3	2.9	6.4	5.5	73.3	23.5	13.3	0.7	27.4
Goldsmith	5,285	2,817	2,735	333	88.7	0.0	0.4	2.6	0.9	25.6	49.4	7.4	0.4	14.6
Hale	7,249	4,218	3,968	321	102.8	0.1	0.9	1.2	1.8	35.8	43.0	11.7	0.4	24.3
Hampden	16,607	7,039	7,821	333, 334	64.9	0.0	0.6	0.5	1.5	25.1	27.5	6.0	0.2	17.2
Hampden South	13,001	6,403	5,606	335	67.7	0.1	0.2	1.2	1.5	29.3	30.7	5.1	0.2	16.4
Hilltop	8,157	4,304	3,538	323	40.3	0.0	0.0	0.0	0.5	23.5	14.5	3.1	0.0	12.1
Lowry Field	6,979	2,352	1,041	323	12.2	0.0	0.0	0.0	0.1	18.3	4.0	2.3	0.0	3.0
Montclair	5,622	3,214	2,522	322	114.0	0.0	0.3	4.6	0.9	44.4	61.0	7.6	0.0	19.7
Southmoor Park	2,013	973	868	332	50.2	0.0	0.0	3.0	0.5	23.0	23.3	3.0	0.0	10.4
Speer	11,592	5,863	7,254	311, 312, 422	101.2	0.0	0.7	2.7	4.0	48.7	34.2	7.5	0.3	21.7
University	8,874	3,084	3,998	331	57.1	0.0	0.6	1.1	0.2	28.5	23.4	4.4	0.0	14.9
University Hills	6,299	3,226	2,538	332	71.4	0.0	0.9	2.7	0.2	36.2	29.8	4.9	0.2	18.6
University Park	6,807	3,705	3,277	331	51.7	0.0	0.3	1.0	1.0	21.1	23.8	2.8	0.1	12.6
Virginia Village	13,436	7,127	6,301	324	64.7	0.0	0.7	2.0	0.8	34.6	23.6	5.1	0.2	16.3
Washington Park	7,204	3,649	3,429	325	71.8	0.0	0.3	0.4	1.0	51.0	26.0	4.6	0.4	15.0
Wash-Virginia Vale	12,058	5,770	6,084	323, 324	64.0	0.0	1.2	2.2	1.0	25.3	24.6	5.5	0.1	17.3
Wellshire	3,315	1,761	1,386	331	33.2	0.0	0.6	0.3	0.3	28.1	12.7	2.4	0.3	5.1
Windsor	8,695	4,646	5,882	323	34.4	0.3	0.6	1.3	0.9	11.7	11.3	3.2	0.1	9.0
Citywide Rates					112.5	0.1	1.5	3.1	3.6	55.1	43.1	10.1	0.8	27.3

+ According to 1985 Population Figures

++ Offenses Per 1000 Females (1980 Population)

* Offenses Per 1000 Households

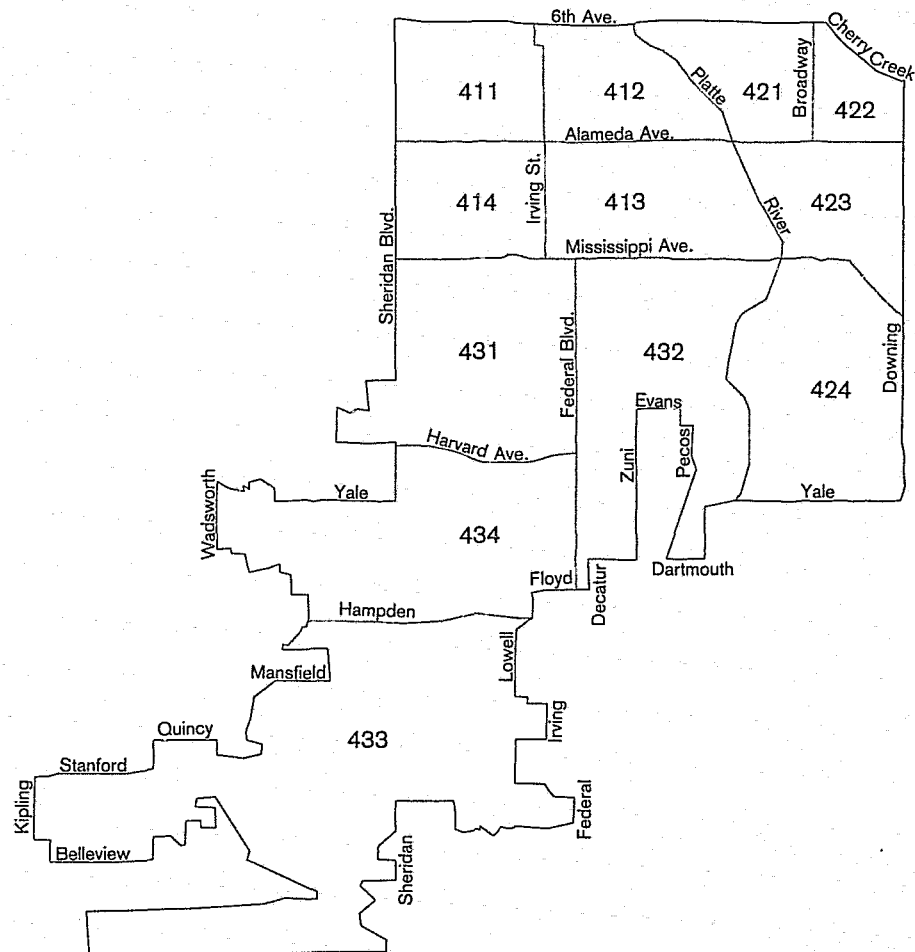
** Includes both petty and grand larceny

District Four



*Captain M. T. O'Neill
Commanding Officer*

Precinct Boundaries



Actual Class I Offenses

By Precinct 1988

Precinct	Murder	Mansl.	Forc. Rape	Aggr. Robbery	Simple Robbery	Aggr. Assault	Burglary	Grand Larceny	Auto Theft	Arson	Total
411	1 +100		1 -67	8 +167	1 -75	27 +8	188 -15	34 -28	76 +10	1 -83	337 -11
412			5 +67	21 +31	3 0	33 +27	181 +15	91 -11	88 +1	1 -87	423 +5
413	-100		7 +17	28 0	6 0	35 -12	292 -1	105 -3	134 +21	10 -9	617 +2
414	1 0		10 +43	10 -28	5 -23	52 +8	295 -4	64 -19	105 +54	9 -50	551 0
421	1 +100		11 +22	21 +31	8 +60	19 -42	185 -23	99 -14	84 -38	16 +7	444 -22
422	-100		3 -57	14 -56	2 -82	40 +29	220 -28	115 -9	63 -34	3 0	460 -25
423			2 0	3 -86	3 +50	9 -18	239 +9	152 +27	45 -13	3 -25	456 +5
424	2 0		7 +75	10 -41	5 0	23 -4	222 -26	142 +4	91 -1	6 -14	508 -14
431	5 +400		10 +11	13 -35	2 -80	40 0	240 -24	125 -6	124 +8	9 +12	568 -13
432	-100		5 -29	9 -53	6 0	47 +17	248 -21	128 -10	140 +4	2 -86	585 -13
433			2 -33	4 +33	-100	8 -11	122 -6	81 0	26 -30	7 0	250 -8
434			4 -43	6 -40	3 -62	15 -17	180 -31	72 -23	62 +9	2 -33	344 -24
TOTAL	10 -9		67 0	147 -26	44 -35	348 +1	2612 -15	1208 -6	1038 -1	69 -34	5543 -11

Actual Class II Offenses

By Precinct 1988

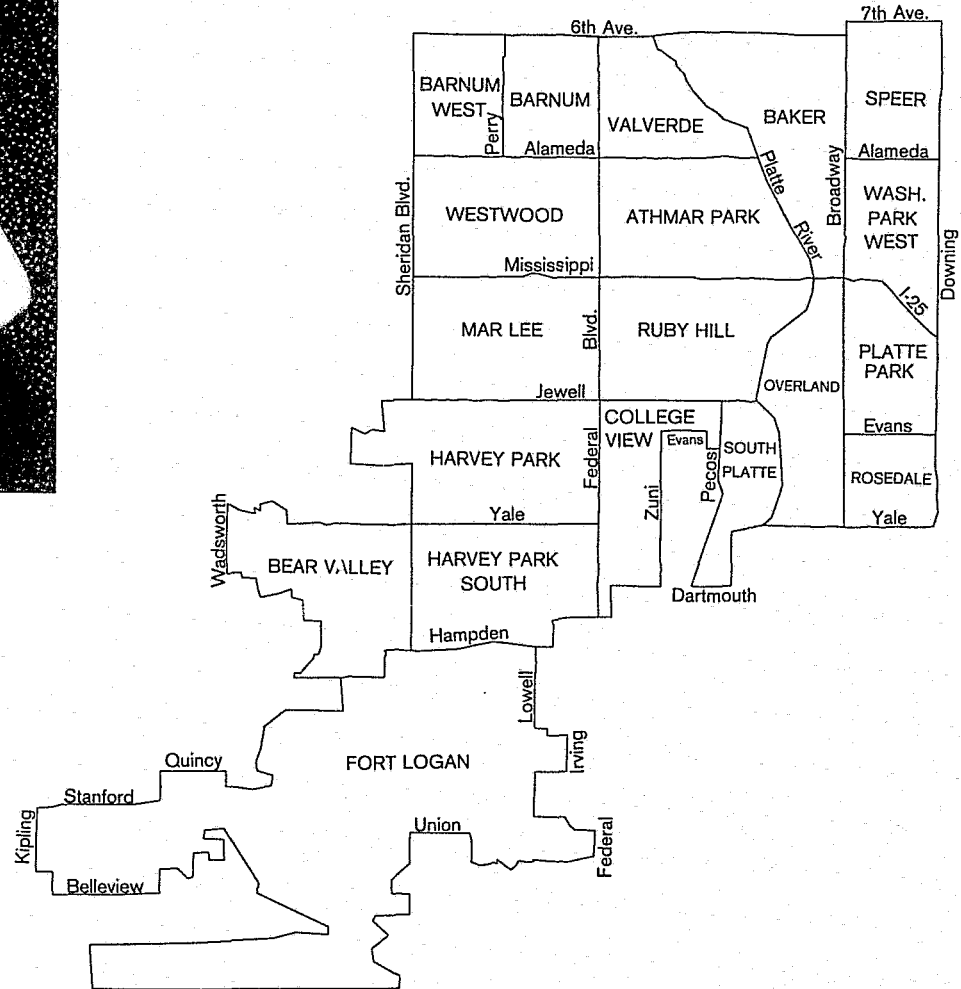
Precinct	Petty Larceny	Other Assaults	Forgery	Embz. & Fraud	Stat. Rape	Sex Offenses	All Other	Larceny Ballee	Malc. Misch.	Total
411	100 +10	14 -26	2 -33	2 0	7 +40	51 +89	-100	61 -16	237 +7	
412	180 -10	18 +12	2 -60	3 -25	3 -25	33 -3	1 -83	80 +19	320 -4	
413	323 +23	38 +52	21 -50	12 +200	8 -53	55 +15	1 -67	101 +12	559 +14	
414	145 -3	46 +77	6 +600	3 +300	12 +9	45 -20	-100	117 +13	374 +8	
421	147 -26	31 +72	19 -61	7 -50	5 +400	36 0	4 +33	75 -29	324 -24	
422	172 -4	24 +71	1 -50	1 -75	7 +75	32 -29	2 -33	62 -13	301 -7	
423	156 +10	16 +45	3 -57	3 0	4 +100	34 -6	3 +200	60 +15	279 +10	
424	228 -9	20 -23	5 -38	5 -17	10 +25	69 +19	5 -29	107 0	449 -4	
431	551 +25	32 +33	12 -33	4 -50	13 +30	74 -3	2 -75	135 -14	823 +11	
432	496 +16	25 -29	24 0	14 +100	14 +40	82 +41	-100	132 -6	787 +12	
433	127 +7	10 -60	2 +200	1 +100	5 -29	36 +6	-100	64 -17	245 -8	
434	210 +1	20 -9	5 +150	3 -25	11 +83	53 0	-100	82 -28	384 -6	
TOTAL	2835 +6	294 +13	102 -36	58 +4	99 +16	600 +7	18 -56	1076 -7	5082 +2	

District Four



District Police Station
2100 South Clay Street

Neighborhood Boundaries



1988 Neighborhood Crime Rates

Per 1000 persons

Neighborhood	+ Population	Female Population	# House holds	Police Precincts	Total	Murder	++ Forc. Rape	Robbery	Aggr. Assault	* Burglary	** Larceny	Auto Theft	Arson	All Other
Athmar Park	7,636	3,687	3,076	413	130.0	0.0	1.1	2.8	3.1	73.1	49.8	12.7	0.7	31.0
Baker	6,203	3,134	2,504	421	159.3	0.2	4.5	5.6	3.5	84.7	53.7	15.3	2.4	42.1
Barnum	4,738	2,452	1,783	411, 412	112.1	0.0	1.2	2.3	4.0	75.7	34.2	14.1	0.2	28.1
Barnum West	4,958	2,472	1,743	411	64.5	0.2	0.0	1.4	2.6	63.7	14.7	7.5	0.0	15.7
Bear Valley	7,237	3,375	3,056	434	51.0	0.0	0.6	0.8	0.8	22.3	23.9	4.0	0.0	11.7
College View	4,107	1,973	1,584	432	184.1	0.0	0.5	3.2	6.8	65.0	90.6	13.4	0.5	44.3
Fort Logan	7,153	3,739	2,951	433	44.7	0.0	0.5	0.3	0.4	24.4	19.4	2.4	0.7	11.2
Harvey Park	10,503	5,414	3,942	431, 434	76.5	0.1	1.3	0.7	1.6	38.1	34.8	5.2	0.5	18.8
Harvey Park South	7,110	3,861	2,488	434	37.1	0.0	0.5	0.4	0.8	25.7	11.3	3.8	0.0	11.5
Mar Lee	10,521	5,372	3,874	431	77.3	0.4	0.6	0.8	2.3	35.9	32.2	7.3	0.5	20.3
Overland	2,117	1,080	893	424	160.1	0.9	1.9	3.8	7.1	61.6	63.8	12.3	1.9	43.5
Platte Park	5,741	3,072	2,842	424	80.1	0.0	1.0	0.5	0.7	40.5	28.2	8.2	0.3	21.6
Rosedale	2,558	1,362	1,173	424	88.4	0.0	1.5	2.7	1.6	45.2	30.5	6.6	0.0	25.4
Ruby Hill	8,516	4,540	3,214	432	73.7	0.0	0.7	0.2	1.8	43.2	27.9	8.6	0.0	18.6
South Platte***	188	98	51	432	414.9	0.0	10.2	0.0	26.6	196.1	191.5	53.2	0.0	85.1
Speer	11,592	5,863	7,254	422, 311, 312	101.2	0.0	0.7	2.7	4.0	48.7	34.2	7.5	0.3	21.7
Valverde	3,306	1,735	1,205	412	170.3	0.0	1.7	6.0	8.5	111.2	51.7	19.4	0.3	43.0
Washington Park West	7,252	3,709	3,586	423	85.6	0.0	0.3	0.8	0.7	63.0	31.2	4.6	0.4	16.7
Westwood	12,537	6,012	4,262	413, 414	103.1	0.1	2.0	2.5	5.1	88.5	22.1	10.9	1.3	30.2
Citywide Rates					112.5	0.1	1.5	3.1	3.6	55.1	43.1	10.1	0.8	27.3

+ According to 1985 Population Figures

++ Offenses Per 1000 Females (1980 Population)

* Offenses Per 1000 Households

** Includes both petty and grand larceny

*** Very high neighborhood crime rates because of small resident population

Adult Arrests - By Age and Sex

	18-19		20-24		25-29		30-34		35-39		40-44		45-49		50+		TOTAL		GRAND TOTAL
	M	F	M	F	M	F	M	F	M	F	M	F	M	F	M	F	M	F	
Murder	6	1	12	1	8	2	9		6	1	2	2	5		2		50	7	57
Manslaughter	2		1				2		1		1	1	1				8	1	9
Forcible Rape	14		46		57		39	1	33		16		6		15		226	1	227
Robbery	17	2	46	6	50	6	29	6	21		9		5		2		179	20	199
Aggravated Assault	44	2	99	20	99	26	73	18	64	13	33	8	16	4	31	2	459	93	552
Burglary	86	8	174	12	127	9	80	4	52	8	13		9	1	4	1	545	43	588
Larceny	268	135	616	316	624	272	577	257	439	193	220	108	145	77	244	126	3133	1484	4617
Auto Theft	90	13	115	11	64	13	44	4	20	4	12	1	1		5		351	46	397
Other Assaults	389	87	1313	275	1536	308	1189	191	776	134	417	61	191	29	217	37	6028	1122	7150
Arson	1		3	2	4	3	5		3		2	1	1		3		22	6	28
Forgery & Counterfeiting	18	16	43	24	43	27	38	16	24	13	10	5	1	2	7	1	184	104	288
Fraud	5	1	21	8	16	6	10	4	5	3	2	1	3	1	2		64	24	88
Embezzlement									1		1				2		4		4
Stolen Property	7	1	11	3	15	1	8	2	8		1		4	1	5	1	59	9	68
Vandalism	139	15	301	61	316	61	219	50	135	33	70	15	28	7	45	5	1253	247	1500
Weapons	129	12	237	30	216	34	186	22	120	15	61	11	44	9	76	5	1069	138	1207
Prostitution & Vice	26	39	134	126	134	113	117	76	80	37	66	3	44	3	92		693	397	1090
Sex Offenses	6	5	30	6	44	10	51	5	49		37	1	27		68		312	27	339
Against Family	3	4	12	16	12	19	22	15	18	7	10	1	1	5	8		86	67	153
Drug Abuse	326	64	802	155	788	162	546	96	327	82	144	29	54	13	50	7	3037	608	3645
Gambling	1		5		11		12		11		15		3		4		62	1	63
Liquor Laws	226	48	545	68	604	64	423	59	337	34	245	22	149	12	250	23	2779	330	3109
Disorderly Conduct	320	78	825	235	879	219	732	163	495	122	304	60	159	22	259	51	3973	950	4923
Vagrancy	121	34	153	77	245	60	197	47	170	16	129	7	72	1	85	5	1172	247	1419
All Other Offenses	1104	443	1744	494	1296	299	961	182	653	126	330	51	215	22	271	30	6574	1647	8221
DUI	107	19	511	81	614	124	501	85	370	53	234	46	125	14	221	34	2683	456	3139
Subtotal	3455	1027	7799	2028	7802	1838	6070	1303	4218	894	2384	434	1309	223	1968	328	35005	8075	43080
TOTAL	4482		9827		9640		7373		5112		2818		1532		2296		43080		

Adult Arrests - By Race

	Total	White	Black	Indian	Asian	Hispanic
Murder	57	17	18	2		20
Manslaughter	9	3	3			3
Forcible Rape	227	72	73	5	3	74
Robbery	199	39	108	4	3	45
Aggravated Assault	552	119	217	13	3	200
Burglary	588	155	225	3	1	204
Larceny	4617	1850	1348	76	52	1291
Auto Theft	397	91	172	3	3	128
Other Assaults	7150	2176	2321	109	71	2473
Arson	28	14	5		1	8
Forgery & Counterfeiting	288	127	105	6	1	49
Fraud	88	48	28			12
Embezzlement	4	2				2
Stolen Property	68	15	23		1	29
Vandalism	1500	555	405	35	16	489
Weapons	1207	411	488	14	4	290
Prostitution & Vice	1090	628	327	6	14	115
Sex Offenses	339	230	51	3	2	53
Against Family	153	58	31	2	3	59
Drug Abuse	3645	1110	1378	29	19	1109
Gambling	63	2	39			22
Liquor Laws	3109	1102	898	185	16	908
Disorderly Conduct	4923	1872	1378	109	31	1533
Vagrancy	1419	333	791	78	5	212
All Other Offenses	8221	3206	2566	176	63	2210
DUI	3139	1555	464	26	18	1076
TOTAL	43080	15790	13462	884	330	12614

Juvenile Arrests - By Age & Sex

	0-10		11-12		13-14		15		16		17		TOTAL		GRAND
	M	F	M	F	M	F	M	F	M	F	M	F	M	F	TOTAL
Murder											4		4		4
Manslaughter															
Forcible Rape	2		12		27		10		5		8		64		64
Robbery			3		8		8	4	8		17	1	44	5	49
Aggravated Assault	5		5	1	15	4	11	3	24	10	28	4	88	22	110
Burglary	12		47	3	137	10	67	4	74	3	59	4	396	24	420
Larceny	13	4	148	60	277	146	177	105	174	87	164	88	953	490	1443
Auto Theft			11	1	118	19	90	13	111	14	93	16	423	63	486
Other Assaults	8	3	70	39	84	69	70	46	100	39	146	39	478	235	713
Arson	5		5	1	9		2		3		3		27	1	28
Forgery & Counterfeiting	1				2	1	3	1	4	4	9	3	19	9	28
Fraud					1			1			1	1	2	2	4
Embezzlement															
Stolen Property					1				2		5		8		8
Vandalism	14	1	62	4	79	20	54	10	54	12	69	7	332	54	386
Weapons	2		12		40	2	24	4	32	2	71	2	181	10	191
Prostitution & Vice					4	2	1	2	3	1	7	1	15	6	21
Sex Offenses	2				1		3		1		2	2	9	2	11
Against Family											1		1		1
Drug Abuse	1		4	1	35	10	39	8	61	8	71	5	211	32	243
Gambling							2						2		2
Liquor Laws	2		1		8	6	13	6	40	26	57	20	121	58	179
Disorderly Conduct			21	3	90	32	56	18	85	26	125	34	377	113	490
Vagrancy											2		2		2
All Other Offenses	8	2	71	20	268	102	296	100	382	165	508	207	1533	596	2129
DUI		1									1		1	1	2
Curfew & Loitering			24	9	180	76	208	90	236	101	253	126	901	402	1303
Runaway	7	2	25	22	84	145	56	93	43	84	41	48	256	394	650
Subtotal	82	13	521	164	1468	644	1190	508	1442	582	1745	608	6448	2519	8967
TOTAL	95		685		2112		1698		2024		2353		8967		

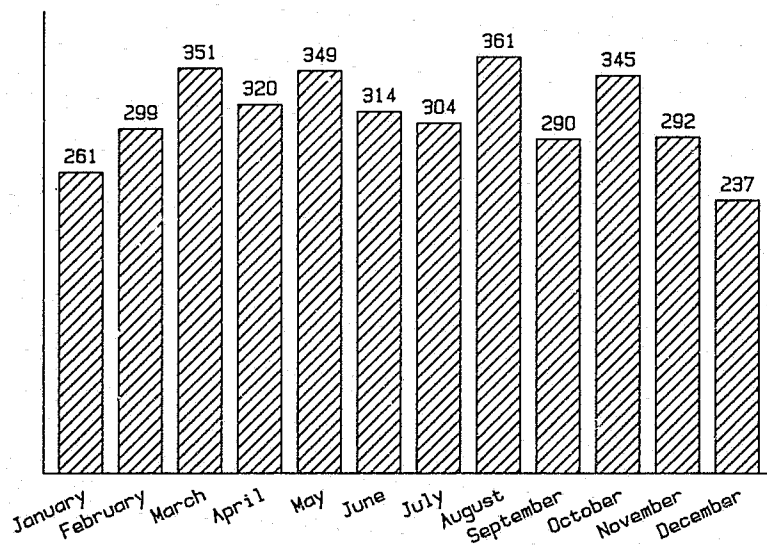
Juvenile Arrests - By Race

	Total	White	Black	Indian	Asian	Hispanic
Murder	4		2			2
Manslaughter						
Forcible Rape	64	19	26			19
Robbery	49	6	22	1		20
Aggravated Assault	110	13	67		1	29
Burglary	420	105	132	5	1	177
Larceny	1443	482	373	11	17	560
Auto Theft	486	77	208	2	1	198
Other Assaults	713	151	266	9	4	283
Arson	28	9	2			17
Forgery & Counterfeiting	28	18	8			2
Fraud	4	3	1			
Embezzlement						
Stolen Property	8	2	2			4
Vandalism	386	117	116	3		150
Weapons	191	51	82	1	5	52
Prostitution & Vice	21	17	2			2
Sex Offenses	11	4	4			3
Against Family	1		1			
Drug Abuse	243	62	58	1		122
Gambling	2		2			
Liquor Laws	179	120	13	1		45
Disorderly Conduct	490	123	189	4	5	169
Vagrancy	2	2				
All Other Offenses	2129	847	449	15	10	808
DUI	2	2				
Curfew & Loitering	1303	363	319	10	7	604
Runaway	650	343	117	18	7	165
TOTAL	8967	2936	2461	81	58	3431

Juvenile Processing

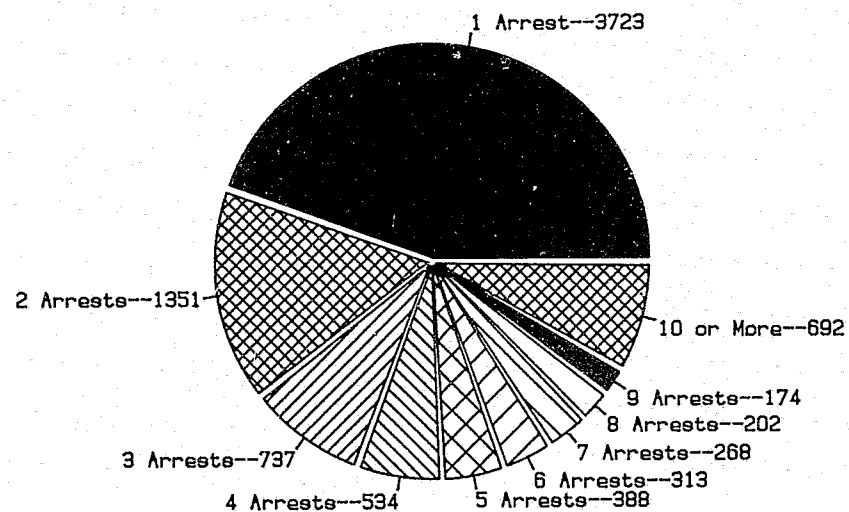
Monthly Arrest Rates

Number of Arrests



NOTE: Traffic Violations Not Included

Recidivism





I would like to hold on, just a little longer, to the little boy who hums at his work, who cheerfully accepts the tasks of daily life, who still impulsively seeks a hug and kiss, who listens, smiling in the dark, to stories about grandparents a long time dead, and who can still lose himself in the vast sweep of his own imagination.

But you are moving away from those things, and I must let you go, little by little, until you are gone and alone against the long howl of life.

John Coit, as quoted in the Rocky Mountain News, 1984

Traffic Statistics

Accidents

	1984	1985	1986	1987	1988
Total Accidents *	24,151	24,513	23,084	20,798	18,542
Total Injuries	8,368	8,361	7,792	7,480	6,546
Total Fatal Accidents	48	48	49	46	39

* Private property and counter reports not included

Investigations

	1984	1985	1986	1987	1988
Hit and Run	7,710	7,499	7,916 *	6,868 *	5,173 *
Fatalities	53	50	52	47	41
Police Vehicle Accidents	320	313	301	230	232
D.U.I. Cases	4,835	5,279	4,818	4,655	4,486
Other	372	360	5 *	3 *	9 *
Total Case Load - Investigation Section	13,290	13,501	13,092	11,803	9,941

* Due to a procedure change in 1986, Incomplete cases were deleted from the Other category and classified as Hit & Run Investigations.

Pedestrian Statistics

	1984	1985	1986	1987	1988
Fatalities	10	14	10	10	16
Injuries	483	468	506	466 *	422 *
Accidents	493	482	516	450 *	404 *
Citations Issued	1,144	744	766	686	636

* Figures per new computer report

Driver's License Restraint Offenses

	1984	1985	1986	1987	1988
Driving Under Suspension	3,518	2,993	2,938	3,167	3,785
Driving Under Denial	440	648	732	865	1,158
Driving Under Revocation	302	403	413	430	625

Citations Issued

Moving Violations

206,861	1984
213,519	1985
223,993	1986
213,459 *	1987
176,911 *	1988

Parking Violations

655,208
735,323
663,981
522,160
470,920

* Figures exclude General Session Citations as of 11-1-87

Driving Under the Influence

	1984	1985	1986	1987	1988
Not Involved in an Accident	3,434	3,982	3,551	3,574	3,450
Involved in an Accident	1,401	1,297	1,267	1,081	1,036
Total Arrests D.U.I.	4,835	5,279	4,818	4,655	4,486
D.U.I.'s Tested and Released	123	208	131	167	182

Points Of Importance!

- 2/5/88: The Denver Police Reserve Section was reinstated to augment the field strength of the Department. Also on this date, semiautomatic handguns were approved for use by uniform officers.
- 2/9/88: Detective Robert W. Wallis was killed in the line of duty by a robbery suspect.
- 2/19/88: The vacant fire station in City Park was refurbished into a substation for the Tactical Motorcycle and Gang Task Force Units.
- 3/1/88: Tina Rowe became Denver's first female police Captain. Also promoted to Captain were Timothy Leary and Art Hutchison.
- 3/2/88: Channel 4 KCNC helicopter pilot Mike Silva, camera-man Jim Stair, and hostage John Laurienti were made honorary Lieutenants and given commendations for their roles in capturing Detective Wallis' killer.
- 4/8/88: A Storefront was opened in District Four to serve Southeast Asians with crime prevention material and other information printed in their native languages.
- 4/14/88: Officers Steven Carter, Dennis Cribari, Michael Scanlan, Steven Cooper, Gerald Whitman, Stephen Tanberg, Brian Gallagher, Judy Will-Singleton, Joseph Black, M. Patricia Ross, Mark Crowley, and Kenneth Vasquez were promoted to Sergeant.
- 4/26/88: Division Chief Casey Simpson retired after 32 years of service. Eight days later, Division Chief Jerry Kennedy took over command of the Investigation Division and Lieutenant Stephen Kern was promoted to Division Chief of Community Service.
- 5/24/88: A Family Crisis Unit was created to handle the increasing number of domestic violence crimes.

- 5/26/88: District Two acquired an additional 44.6 square miles to patrol as a result of the airport annexation.
- 6/5/88: The Kops 'n Kids Run raised over \$50,000 for the Police Orphans' Fund.
- 6/12/88: Thirty-nine officers graduated from the Academy. The class started on 2/1/88 with 40 recruits.



- 6/16/88: Officers John Costigan, Kirk Hon, Samuel Neumeyer, Thomas O'Byrne, Marco Vasquez, Joan Vecchi, and Cecilia White were promoted to Sergeant. Promoted to Lieutenant were Robert Cribbs, Gerald Frazzini, Robert Hake, Daniel O'Hayre, Bobby Reagan, Larry Shinofield, and Curtis Williams.
- 7/1/88: A system of penalizing chronic false burglary alarm users was started. Such fines are intended to reduce the number of costly police responses to false alarms.
- 7/10/88: 31 officers from District Two were reassigned to the newly established Green Valley Ranch satellite station, sharing facilities with Denver Fire Station #29.



- 7/16/88: Officers John Goodfellow, Armedia Gordon, and Antonio Lopez were promoted to Sergeant. Promoted to lieutenant were Loren Boydston, Monte Patterson, Robert Steely, and Frank Vessa. Promoted to Captain was John Kilpatrick.
- 8/1/88: The Juvenile Bureau was disbanded and its personnel were reassigned to specific bureaus within the Investigation Division.
- 8/15/88: An Officers' Bill of Rights was adopted to guarantee consistent discipline and treatment among police personnel.

- 8/16/88: The Department was named the Best Dressed Police Department for 1988 in a competition sponsored by the National Association of Uniform Manufacturers and Distributors.
- 9/1/88: Metrowide guidelines and tactics were adopted for vehicular pursuits that cross jurisdictional boundaries.
- 9/20/88: An innovative system for collecting unpaid fines for moving violations was begun. Persons on the Open Items List can pay their fines at any District Station by money order, credit card or guarantee check.
- 10/30/88: A Health Management Bureau, consisting of a Fitness Section and Safety Section was started.
- 11/16/88: Officers Marsha Harper, Marybeth Klee, Gary Rini, and Elizabeth Walter were promoted to Sergeant. Promoted to Lieutenant were Phillip Baca, Wayne Krieger, Gary Leuthauser, and Raymond Libonati.
- 12/15/88: Detective Michael Quinones was promoted to Sergeant. Promoted to Lieutenant were Owen Haase, Patrick Mulhern, and John Thompson. Promoted to Captain was Vince DiManna.



In Recognition

The Denver Police Department is proud to recognize the following officers whose performance and dedication to duty have brought honor to us all.

The **Medal of Honor** is awarded by the Chief of Police to members who distinguish themselves conspicuously by gallantry and intrepidity at the risk of their lives above and beyond the call of duty. To justify the decoration, the individual must clearly render himself conspicuous above his comrades by an act so outstanding that it clearly distinguishes his gallantry beyond the call of duty from lesser forms of bravery. Fifteen officers received this, the highest decoration awarded by the Denver Police Department, in 1988.

Michael Calo
Keith Fowler
Bernard Montoya
Richard Mumford
Michael O'Brien

Roger Prince
Michael Quinones
David Roberts
Michael Scanlan
Steven Shott

Robert Silvas
Paul Waldoock
Robert Wallis*
James Weissman
Troy Zimmerman

The **Medal of Valor** is awarded by the Chief of Police to members who distinguish themselves by extraordinary heroism not justifying the award of the Medal of Honor. To warrant this distinctive decoration, the act or the execution of duty must be performed in the presence of great danger or at great personal risk and must be performed in such a manner as to render the individual highly conspicuous in the police service. Five officers received this award in 1988.

Patrick Carver
Peter Diaz

Jerry Garcia
Kirk Miller

Stephen Palka

The **Distinguished Service Cross** is awarded by the Chief of Police to members who are cited for gallantry not warranting a Medal of Honor or a Medal Of Valor. The heroic act(s) performed must render the individual conspicuous and well above the standard expected. Twenty officers received this award in 1988.

William Baker
Hubert Benz
Harold Chatman
Daril Cinquanta
Dennis Cribari
Peter Diaz
Stan Flint

Gerald Frazzini
Rex Freeburg
John Hafer
John James
John Lamb
David Levy
Angelo Martinelli

David Miller
William Nagle
Samuel Neumeyer
Andrew Ramirez
Kevin Smolka
Lawrence Subia

The **Purple Heart** is awarded by the Chief of Police to members who are killed, seriously wounded or seriously injured in the performance of an official action. Seven officers were awarded the Purple Heart in 1988.

William Baker
Gary Hoffman

Robert Moravek
Michael Scanlan
Robert Wallis*

Sam Singleton
Paul Waldoock

The **Merit Award** is awarded by the Chief of Police to members who distinguish themselves by exceptional meritorious service. This service may be rendered through personal initiative, tenacity and great effort to solve a major crime or series of crimes, or through personal initiative and ingenuity, to develop a program or plan which contributes significantly to the Department's objectives and goals. Forty four officers received the Merit Award in 1988.

Danny Alverson
 Dominic Arcuri
 Victor Baca
 Richard Barber
 John Cain
 Richard Gastricone
 Daril Cinquanta
 Timothy Conley
 Robert Crago
 William Danos
 David Dawkins
 Wayne Dudley
 Ronald Fox
 Douglas Gehm
 Carl Gustafson

Jerry Heimbigner
 John Johnson
 Alan Keiser
 Gary Lauricella
 James Lebedoff
 Richard Major
 Ernest Martinez
 Gerald Meineke
 Thomas Metzler
 Robert Miller
 David Murphy
 Thomas O'Neill
 George Palaze
 Peter Palombi
 Russell Parisi

John Pinder
 Andrew Ramirez
 Jeffrey Rawson
 Daniel Rojas
 Gary Salazar
 Dennis Sanchez
 David Shultz
 William Snyder
 Michael Staskin
 Lawrence Subia
 John Thompson
 Richard Thompson
 Robert Turner
 Richard Welch

The **Lifesaving Award** is awarded by the Chief of Police to members who, through exceptional knowledge and behavior, perform a physical act which saves the life of another person and there is no danger to the officer's life. Sixteen officers received the Lifesaving Award in 1988.

John Bolte
 Russell Brooks
 Peter Corr
 John Hafer
 Jeanne Isbell

John Lamb
 Don Lindley
 Thomas McKibben
 Lester Melonakis
 James Myers
 Larry Watts

William Oliver
 David Ollila
 Richard Schneider
 Richard Stensgaard
 Mark Treidel

The **Community Service Award** is awarded by the Chief of Police to a member who, by virtue of sacrifice and expense of his or her own time, fosters or contributes to a valuable and successful program in the area of community affairs, or who acts to substantially improve police/community relations through contribution of time and effort when not involved in an official police capacity. Ten officers received the Community Service Award in 1988.

Kenneth Chavez
 Kirk Dunham
 Michael Gargaro

Ralph Gonzales
 Samuel Neumeyer
 Robert Ortiz
 Roger Wehr

Jodie Stickney
 Rick Vigil
 Joseph Webb

*These awards were presented posthumously.

Crimes Against the Elderly

Victims of Person-to-Person Crime

Age 60 and Older

OFFENSE	White		Black		Hispanic		Other		Total		Race or Sex Unknown	Grand Total	% of Total Victims
	M	F	M	F	M	F	M	F	M	F			
Homicide	1				1				2		1	3	6.1
Rape		6				1				7		7	1.5
Aggravated Robbery	15	5	8	1					23	6	2	31	5.6
Simple Robbery	31	29	6	1	7	4			44	34	1	79	15.3
Assault With Intent to Rob	1	3							1	3		4	9.8
Aggravated Assault and Robbery	10	3	1						11	3	1	15	7.3
Aggravated Assault	14	8	6		5	2			25	10	1	39	2.2
All Other Assaults	14	7	2		3	1			19	8	1	28	2.2
Theft - Pickpocket	10	1	1		1				12	1	2	15	31.1
Theft - Purse Snatch	3	57		1		4			3	62		65	26.5
Theft - Roll Job	11	4	2	2	4	1			17	7	2	26	19.7
Other Sex Offenses	2					1				3		3	0.7
Phone Disturbance Obscene Language	1	2	1						2	2		4	4.3
Threats	9	8	1	1		2			10	11	1	22	4.5
Confidence Game	1								1			1	50.0
Kidnapping		1			1				1	1		2	3.0
TOTAL	123	134	28	6	22	16			171	158	12	344	5.4

Elderly persons represent 5.4% of the 6,382 victims of the person-to-person crimes identified in the chart. Victim ages were tabulated from birthdate data recorded on the offense report. The percentage of error in totals because of this missing data on offense reports is estimated to be consistent throughout all age categories.

Officers Assaulted - 1988

Activity	Total Assaults	Weapon				Assignment				Police Assaults Cleared		
		Firearm	Knife or Other Cutting Instrument	Other Dangerous Weapon	Hands, Fists, Feet, etc.	Two Man Vehicle	One-Man Vehicle		Detective or Special Assign.		Other	
						Alone	Assisted	Alone	Assisted	Alone	Assisted	
Responding to disturbance calls	13			13		9	2			2		1
Robberies in progress or pursuing robbery suspects	1			1					1			1
Burglaries in progress or pursuing burglary suspects	1			1			1					
Attempting other arrests	20	1		19		3	2			10	2	11
Civil disorder												
Handling, transporting, custody of prisoners	5			5		1				1	3	3
Investigating suspicious persons or circumstances	4			4			1	1	1	1		1
Ambush - no warning												
Mentally deranged	3			3		2	1					3
Traffic pursuits and stops	5			5		2	1					3
All other	18			12	6	2	3	1		9	3	10
TOTAL	70	1		63	6	19	13	5	2	23	8	33
Officers injured	69	1		62	6	19	13	5	1	23	8	32
Officers killed	1			1					1			1

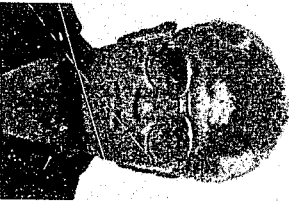
TIME OF ASSAULTS	AM	9	9	4	0	1	2
	PM	4	3	4	11	15	8
	12:01	2:00	4:00	6:00	8:00	10:00	12:00

They Made It!

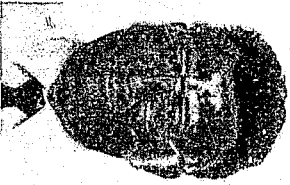
Class 63-1

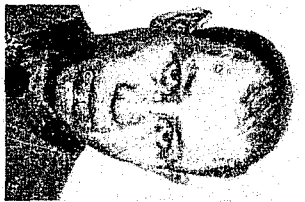


D. Snider

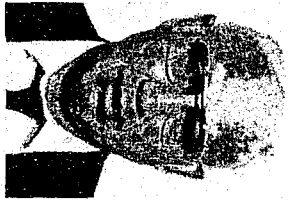


L. Iantorno

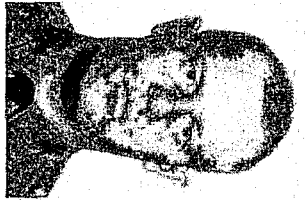




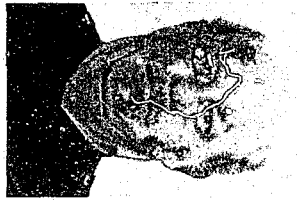
J. Russell



D. Frodine



J. Warren



A. DePinto

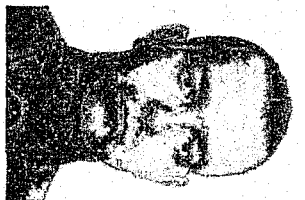
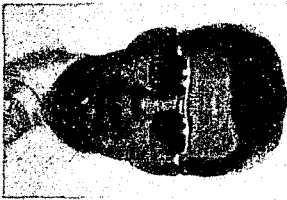
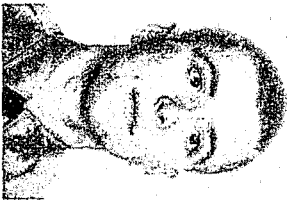


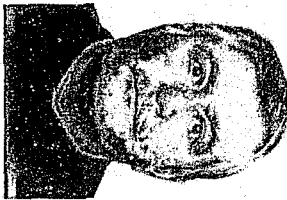
Photo
Not
Available



K. Harris



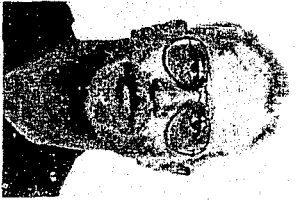
J. Lindsey



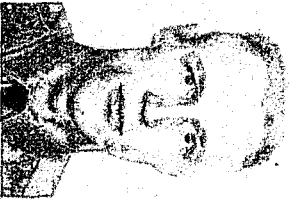
F. Boston



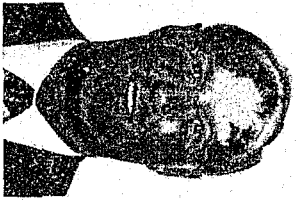
D. Ray



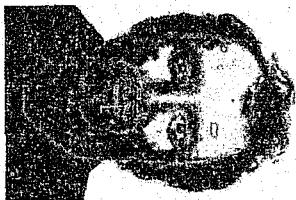
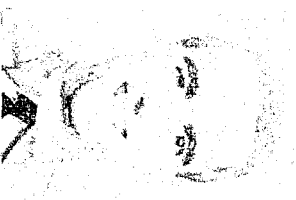
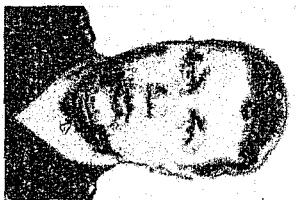
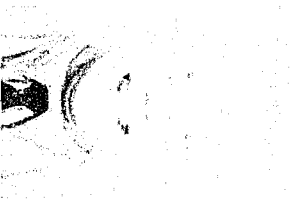
R. Gray

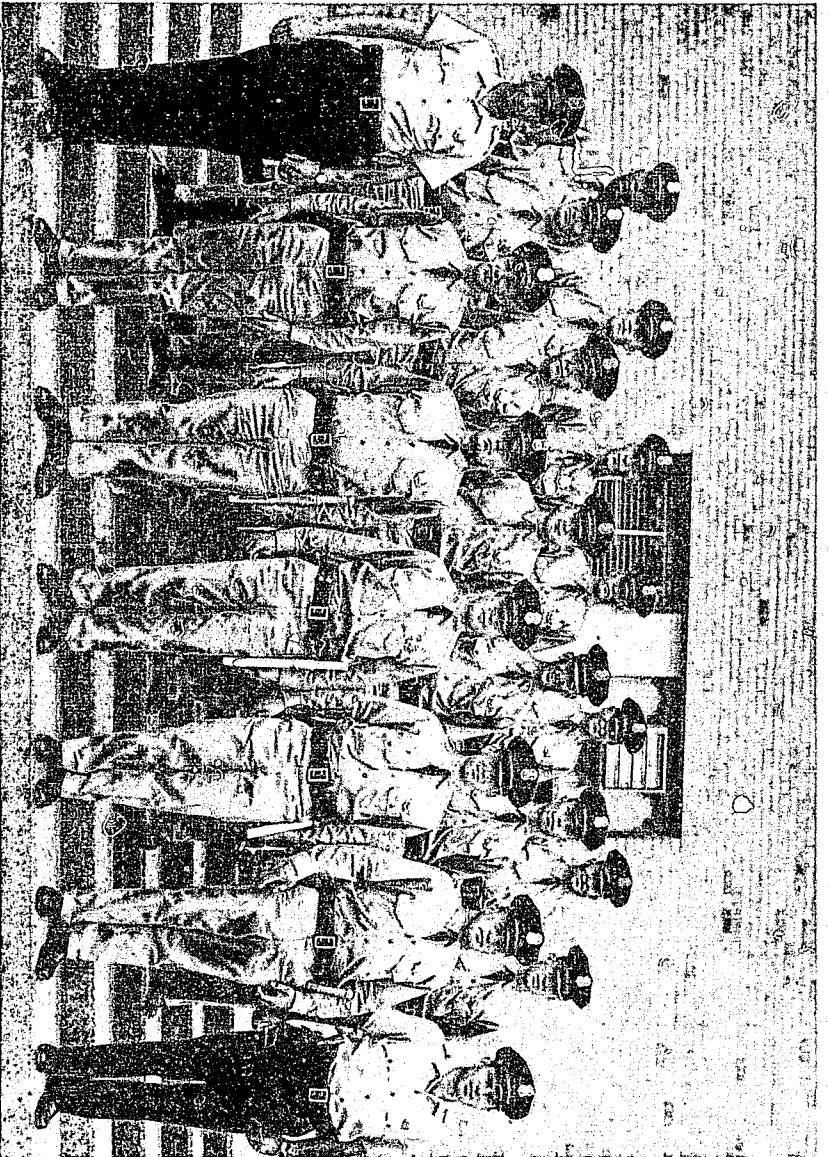


D. Brown

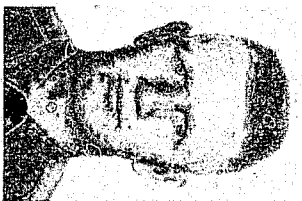


D. Brenning

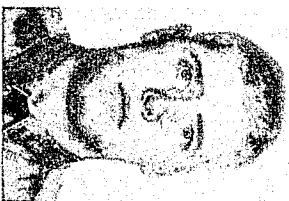




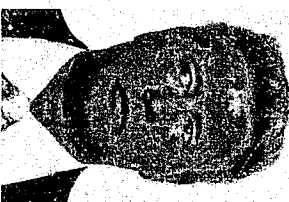
Class 63-2



R. Johnson

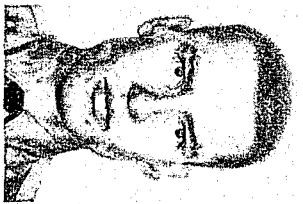


R. Shaffer



C. Scavo

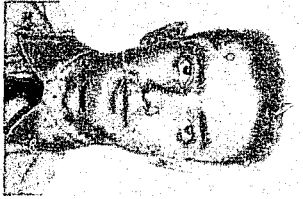




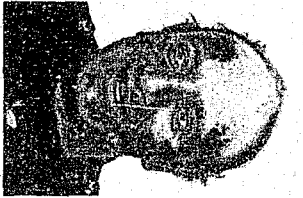
A. Mitterer



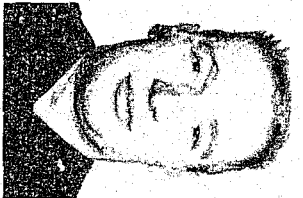
N. Kelsey



R. Ebell



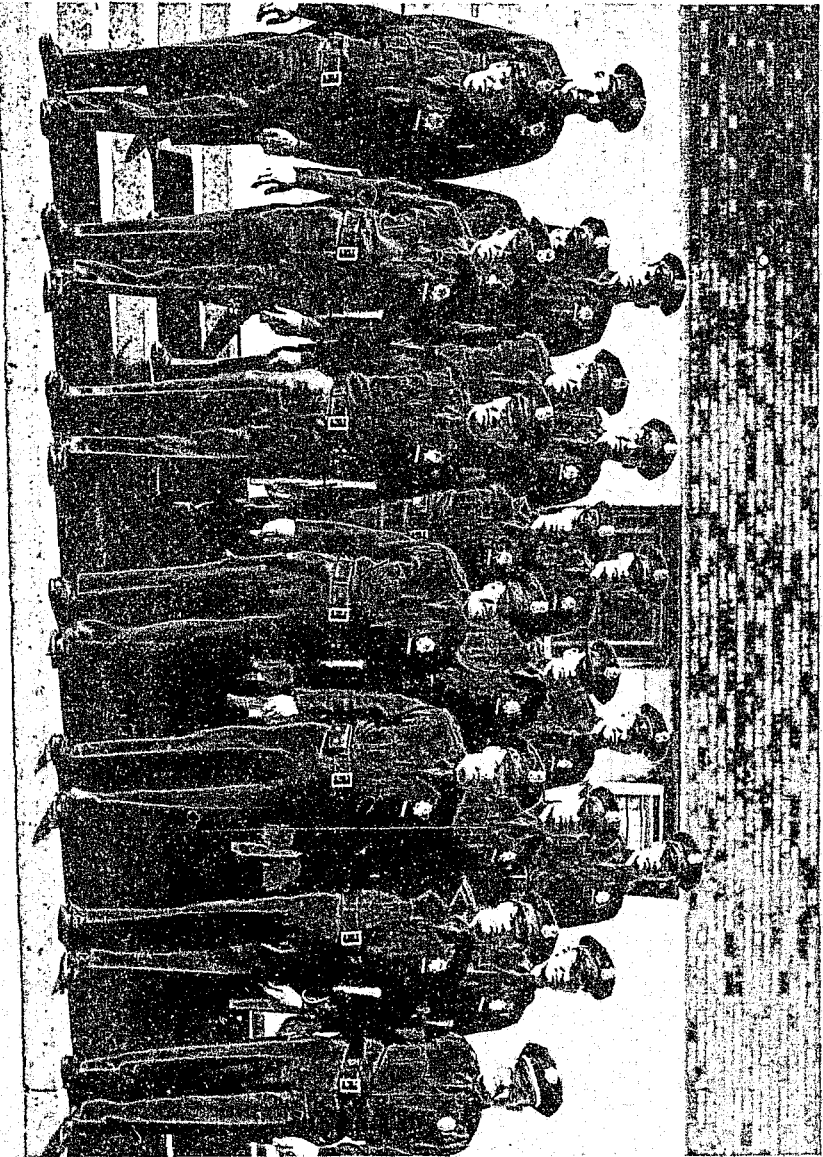
K. Tuten

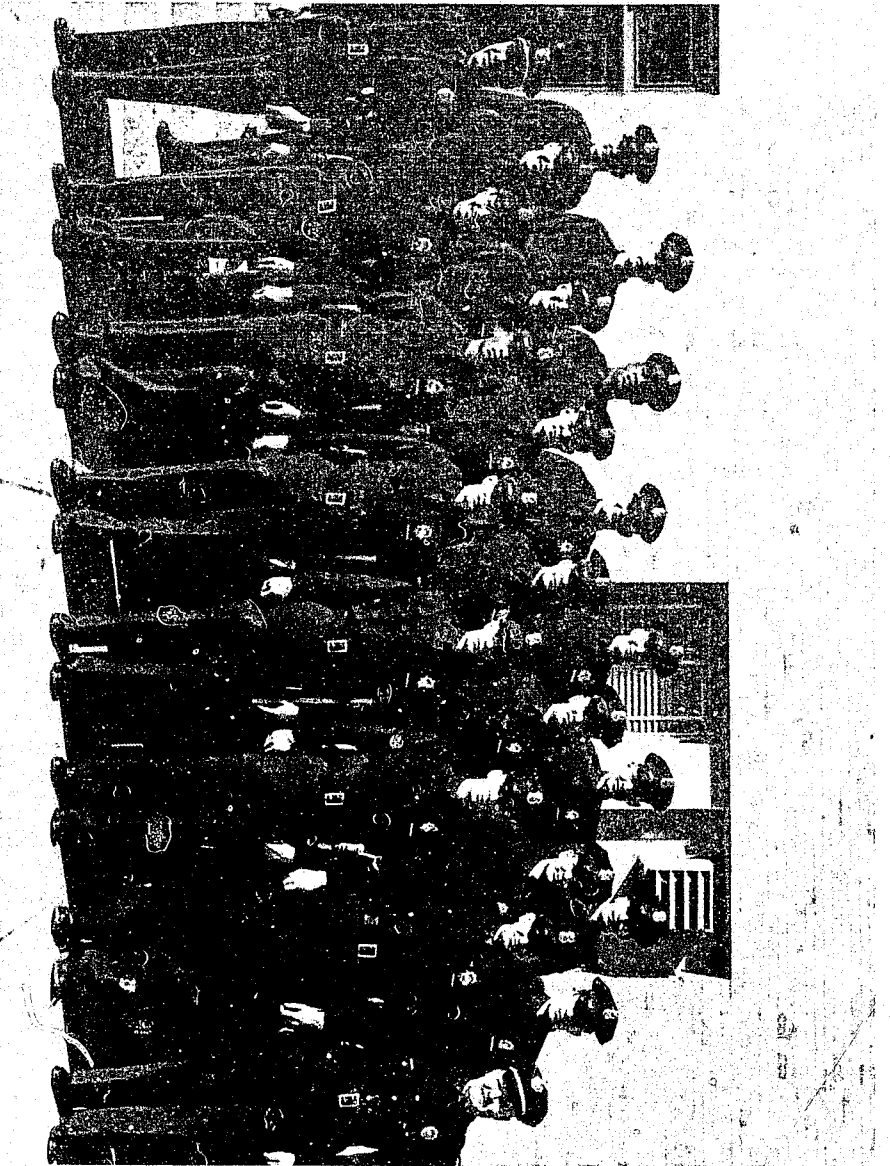


J. Fitzpatrick



Class 63-3

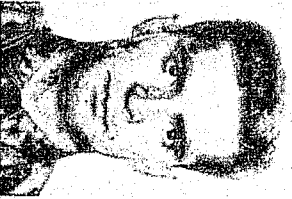




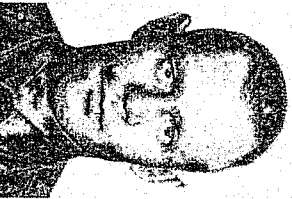
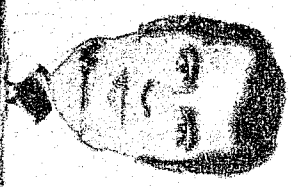
Class 63-4



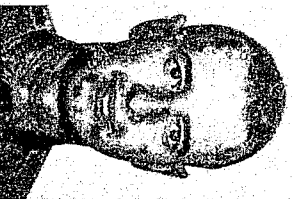
J. Isenhart



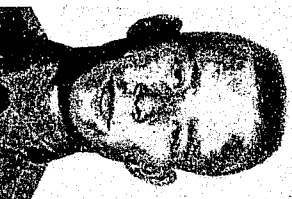
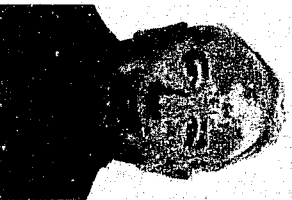
A. Marinelli



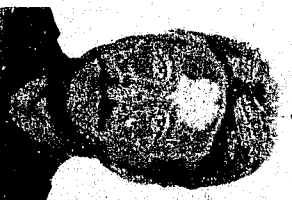
M. Orton



J. Stubbelfield



L. Shinofield





D. Bowling



R. Carroli



H. Dressel



L. Shaw



S. Laurita



M. Karlin



L. Driskill



Not Pictured

M. Wilson
W. Haynes

Even the seasons form a great circle in their changing,
and always come back again to where they were.
The life of a man is a circle from childhood to childhood
and so it is in everything where power moves.

Black Elk

Served Honorably

<u>NAME</u>	<u>S/N</u>	<u>RANK</u>	<u>APPOINTED</u>	<u>RETIRED</u>
John W. Arko	61002	Detective	03/01/61	05/16/88
Lloyd E. Baca	57039	Sergeant	11/01/57	01/16/88
Leo J. Bellio	57041	Detective	11/01/57	08/01/88
Jacques J. Bensard	58020	Technician	01/16/58	02/03/88
Floyd Boston Jr.	63023	Detective	06/03/63	06/03/88
Robert G. Cribbs	62017	Lieutenant	06/01/62	07/16/88
Jack L. Davoll	84004	Patrolman	03/16/84	09/07/88*
Cecil D. Dressel	56001	Lieutenant	01/03/56	05/01/88
David J. Dunne	63042	Patrolman	09/03/63	03/01/88
Kenneth W. Harris	63020	Detective	06/03/63	10/01/88
Willis A. Haynes	63021	Patrolman	06/03/63	06/13/88
Louis L. Iantorno	63010	Detective	01/02/63	01/02/88
Green J. Jackson	57038	Sergeant	11/01/57	06/01/88
Robert G. Johnson	63028	Technician	06/03/63	06/03/88
Melvin R. Karlin	63063	Detective	11/18/63	11/18/88
Nicholas W. Kelsey	63037	Dispatcher	09/03/63	09/16/88
John W. Martin	53008	Detective	04/01/53	01/16/88
Thomas A. Orecchio	61056	Technician	09/18/61	09/18/88
Edward D. Ornelas	68021	Radio Engineer	06/16/68	09/07/88
Casey J. Simpson	56017	Division Chief	03/01/56	04/26/88
Kenneth D. Tuten Jr.	63039	Technician	09/03/63	09/03/88
James D. Warren	63014	Detective	01/02/63	01/07/88
Billy D. Wolfe	58016	Lieutenant	01/16/58	07/16/88

* Retired on Medical Disability

The Denver Police Department and the citizens of Denver salute these officers for their 637 years of combined faithful service.

IN MEMORIAM

<u>NAME</u>	<u>S/N</u>	<u>RANK</u>	<u>APPOINTED</u>	<u>DIED</u>
Wallis, Robert W.	67020	Detective	04/01/67	02/09/88
Gautier, Derald G.	78045	Sergeant	06/16/75	08/31/88

In Memoriam

"When good men die their goodness does not perish,
But lives though they are gone..."
Euripides

Detective Robert W. Wallis
May 9, 1936 to February 9, 1988

Detective Robert W. Wallis, badge number 67020, was struck and killed by a stolen vehicle driven by a robbery suspect on February 9, 1988.

At the time of his death, Detective Wallis was fifty-one years old and had been a member of the Denver Police Department for twenty years. He was assigned to the Auto Theft Section.

Detective Wallis was posthumously awarded both the Department's Medal of Honor and Purple Heart.



Know you what it is to be a child? It is to be something very different from the man of today. It is to have a spirit yet streaming from the waters of baptism; it is to believe in love, to believe in loveliness, to believe in belief; it is to be so little that the elves can reach to whisper in your ear; it is to turn pumpkins into coaches, and mice into horses, lowness into loftiness, and nothing into everything, for each child has its fairy godmother in its soul.

Francis Thompson

