

121600

U.S. Department of Justice  
National Institute of Justice

This document has been reproduced exactly as received from the person or organization originating it. Points of view or opinions stated in this document are those of the authors and do not necessarily represent the official position or policies of the National Institute of Justice.

Permission to reproduce this copyrighted material has been

granted by  
Dakota County Community  
Corrections

to the National Criminal Justice Reference Service (NCJRS).

Further reproduction outside of the NCJRS system requires permission of the copyright owner.

1990

# DAKOTA COUNTY COMMUNITY CORRECTIONS PLAN

CR-SENT  
05-04-90 MP

121600



# TABLE OF CONTENTS

PREFACE.....	1
INTRODUCTION.....	3
A    County Description.....	5
1.    General.....	5
2.    Population.....	5
3.    Economic Indicators.....	8
B.    Crime Information.....	11
1.    Reported Crime.....	11
2.    Disposition.....	13
3.    Juvenile Arrests.....	14
Budget Summary.....	17
I. ADMINISTRATION AND ORGANIZATION OF CORRECTIONAL SERVICES.....	19
Administrative Structure.....	21
II. PROGRAM DESCRIPTIONS.....	24a
A.    ADMINISTRATION.....	25
Organizational Structure of Community Corrections Department.....	28
Administration Budget Summary.....	29
B.    TRADITIONAL FIELD SERVICES.....	31
B1.    Juvenile Probation.....	31
Juvenile Probation Budget Summary.....	35
B2.    Adult Gross Misdemeanor/Felony and Supervised Release.....	37
Adult Budget Felony Budget Summary.....	39
B3.    Adult Misdemeanor.....	40
Adult Misdemeanor Budget Summary.....	42
C.    NON-SECURE CLIENT PROGRAMMING.....	45
C1.    Residential Juvenile.....	45
Residential Juvenile Budget Summary.....	47
C2.    Residential Adult.....	48
Residential Adult Budget Summary.....	48a

## Table of Contents (continued)

C3.	Non-residential Juvenile.....	49
3a.	Day Treatment.....	49
3b.	Out-patient Sex Offender Treatment.....	50
	Juvenile Non-residential Budget Summary.....	53
C4.	Non-residential Adult.....	54
	Out-patient Services.....	54
D.	LOCAL INCARCERATION AND DETENTION.....	55
D1.	Juvenile.....	55
	Juvenile Detention Budget Summary.....	55a
D2.	Adult.....	56
	Adult Local Incarceration Budget Summary.....	59
E.	RELATED SERVICES.....	61
	Domestic Relations.....	61
	Victim Advocate Services.....	62
	Related Services Budget Summary.....	63
F.	USE OF STATE INSTITUTIONS.....	65
F1.	Juvenile.....	65
F2.	Adult.....	66
III.	PLANNING FOR FEMALE OFFENDERS.....	67
	Female Offenders - Juvenile.....	68a
	Female Offenders - Adult.....	69
	BUDGET ADDENDUM.....	71 - 112

## PREFACE

The recommendation to the Dakota County Board for 1990 from the Community Corrections Department is for a current level budget--continuing services at 1989 levels. During 1990, community corrections will participate with the Community Corrections Advisory Board in the preparation of a long range strategic planning process, focusing on the evaluation of current correctional services and the prioritizing of correctional programming requests.

Advisory Board members have been appointed for a two year term. The following are advisory board members who will continue to serve during 1990.

Sheriff Rod Boyd, Dakota County  
Judge Robert Carolan, First Judicial District  
Tim Cleveland, Representative of Corrections  
Jan Dallenbach, Citizen  
Charles Diemer, Representative of County Attorney  
John F. Edwards II, Citizen  
Karen Ganley, Representative of Social Services  
Shirley Gilmore, Representative of an Educational Institution  
David Harmeyer, City Prosecutor  
Chief Gerald Husman, Representative of Local Law Enforcement  
Commissioner Steven G. Loeding  
Commissioner Donald J. Maher  
Emilia Martineau, Citizen  
Rick Mattox, Public Defender  
Judge Thomas Murphy, First Judicial District  
James A Smith, Citizen  
William Swanstrom, Citizen  
Mark Thompson, Judicial Administration Representative

The Community Corrections Advisory Board has established four committees. The adult, juvenile and victim committees are program committees, focusing on current and proposed correctional programs and victim services. A separate coordinating committee has been established as an executive committee composed of the the program committee chairs and the Advisory Board chairperson. The coordinating committee reviews major issues, assists in the setting of program priorities and advises in the establishment of program evaluations.

During 1990, the Community Corrections Advisory Board will focus time and effort on the three program areas, adult and juvenile corrections and victim services. A proposal has been made for the full Advisory Board to meet on a quarterly basis during 1990, instead of the current monthly meeting.

The Advisory Board adopted the following mission statement on February 28, 1989:

*The purpose of community corrections is to promote public safety in Dakota County through the control, punishment and rehabilitation of juvenile and appropriate adult offenders in community based programs. It is also the purpose of community corrections to provide support for services and programs which provide aid to the victims of crime. The involvement of all of the components of the criminal justice system, including elected officials and the citizens of the County will be promoted to help develop and coordinate policies and programs which are designed to meet the unique correctional needs of the County in a creative and innovative manner. Offender programs will be developed that are just and humane and provide for individualized justice while being responsive to judicial sentencing.*

# INTRODUCTION

## A. COUNTY DESCRIPTION

### 1. GENERAL

Dakota County is located in the southern part of the metropolitan area near Minneapolis and St. Paul. It is a diverse county containing fast-growing suburbs, older cities, and rural communities.

Eleven police departments provide services to local communities. The Sheriff's Department is located in Hastings at the Law Enforcement Center, the newly built Dakota County jail. The Law Enforcement began operation in October, 1988.

The Dakota County Technical College, located in Rosemount, enrolled 1550 post-secondary students in 1989. The school also serves 2500 student in the adult extension programs. Educational services are provided to 631 secondary students in twenty programs. The Dakota County Alternative Learning School enrolled 39 students in 1989.

The Inver Hills Community College in Inver Grove Heights enrolled 1800 full time students and 3400 part time students in 1989.

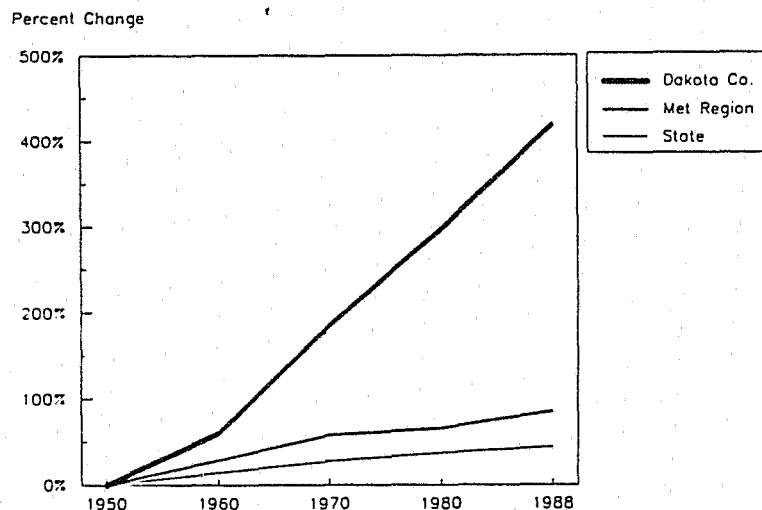
### 2. POPULATION

#### Population Growth

*The Minnesota Department of Jobs and Training, Research and Statistics Office, prepared the following information on population and economic indicators. It was prepared for the Dakota County Private Industry Council.*

**Dakota County population growth rate is nearly three times the Metro Regions's rate. An average of 7,500 new residents, nearly equal to the population of Mendota Heights, has been added each year since 1980.**

Population Trends 1950 - 1988



**Population**  
(continued)

The greatest population growth is in the northwest quadrant of the County. Eagan is Minnesota's fastest growing city.

**Population Growth 1980-1988**

<u>Area</u>	<u>1980 Census</u>	<u>April 1988 Estimate</u>	<u>Percent Change</u>
Minnesota	4,075,970	4,306,550	5.7
Met Region	1,985,873	2,200,321	10.8
Dakota County	194,279	254,017	30.7
Apple Valley	21,818	31,674	45.2
Burnsville	35,674	46,687	30.9
Castle Rock Twp.	1,340	1,503	12.2
Coates	207	192	-7.2
Douglas Twp.	614	623	1.5
Eagan	20,700	42,556	105.6
Empire Twp.	1,224	1,370	11.9
Eureka Twp.	1,268	1,375	8.4
Farmington	4,370	5,350	22.4
Greenvale Twp.	641	675	5.3
Hampton	299	322	7.7
Hampton Twp.	848	964	13.7
Hastings (Pt.)	12,811	14,481	13.0
Inver Grove Heights	17,171	21,477	25.1
Lakeville	14,790	20,500	38.6
Lilydale	417	575	37.9
Marshan Twp.	1,655	1,595	-3.6
Mendota	219	219	0.0
Mendota Heights	7,288	8,680	19.1
Miesville	179	179	0.0
New Trier	115	115	0.0
Nininger Twp.	774	851	9.9
Northfield (Pt.)	13	20	53.8
Randolph	351	356	1.4
Randolph Twp.	385	425	10.4
Ravenna Twp.	1,683	1,936	15.0
Rosemount	5,083	7,420	46.0
Sciota Twp.	242	276	14.0
South St. Paul	21,235	20,361	-4.1
Sunfish Lake	344	379	10.2
Vermillion	438	559	27.6
Vermillion Twp.	1,070	1,229	14.9
Waterford Twp.	486	502	3.3
West St. Paul	18,527	18,591	0.3

Source: Metropolitan Council, Office of State Demographer, 1980 Census of Population, Bureau of the Census, U.S. Department of Commerce

**Population**  
(continued)

The population in Dakota County is projected to continue to grow much more rapidly than the Region and State.

**Distribution of Population  
By Age, 1986**

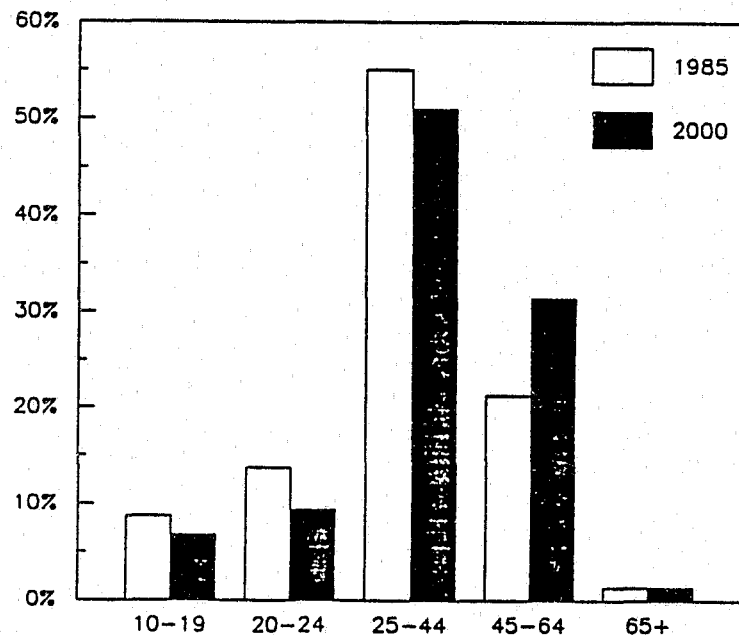
<u>Age</u>	<u>Dakota Co.</u>	<u>Met Region</u>	<u>State</u>
Total, All Ages	100.0	100.0	100.0
Under 5 Years old	9.2	7.9	8.1
5-14 years	17.1	13.6	14.4
15-24 years	16.7	18.6	18.0
25-44 years	36.4	33.1	29.7
45-64 years	15.3	16.9	17.4
65 + years	5.4	9.8	12.3

Source: 1986 Minnesota Health Statistics,  
Minnesota Department of Health

The most rapid growing age category will be middle age to upper age, followed by senior citizens. Dakota County is unique in that all young age categories will see continued population growth.

**Dakota Co. Age Distribution  
1985 & 2000**

Percent of Total





### 3. ECONOMIC INDICATORS

Dakota County's unemployment rate is nearly identical to over all Metro Region and below the State rate. Despite the large youth population, plentiful part-time job opportunities in retail trade keep the unemployment rate low.

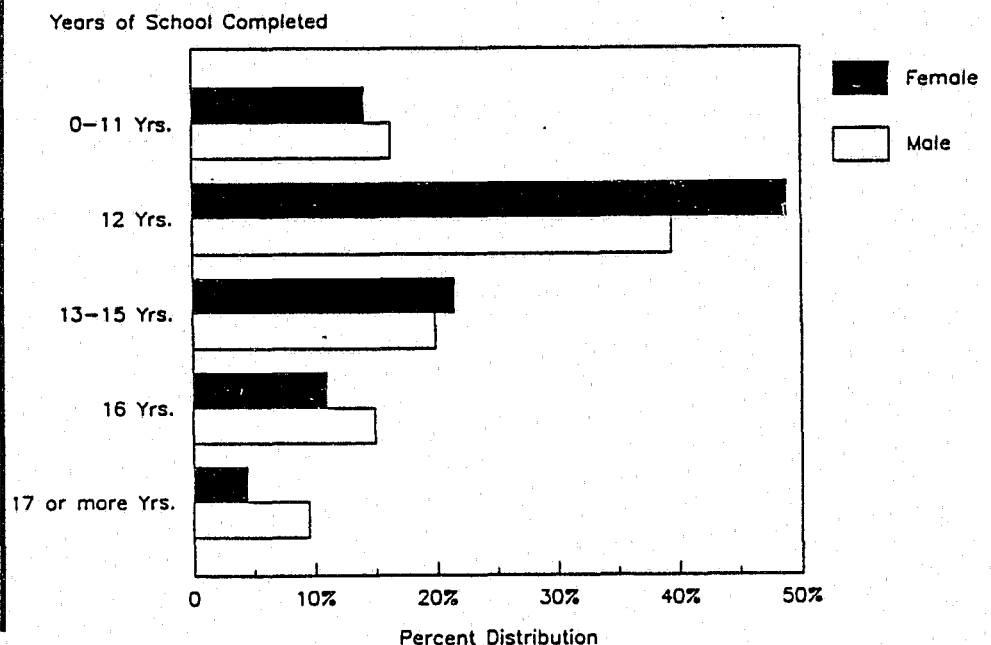
Labor Force Estimates  
Annual Average 1988

Area	Labor Force	Employment	Unemployed	Unemployment Rate
Minnesota	2,327,000	2,233,000	94,000	4.0%
Met Region	1,300,985	1,257,667	43,318	3.3%
Dakota County	141,959	137,116	4,843	3.4%
Apple Valley	16,879	16,400	479	2.8%
Burnsville	27,457	26,532	925	3.4%
Eagan	20,855	20,161	694	3.3%
Hastings	8,206	7,837	369	4.5%
Inver grove Heights	12,414	11,976	437	3.5%
Lakeville	10,074	10,348	326	3.1%
Mendota Heights	4,538	4,449	88	1.9%
Rosemount	3,550	3,336	214	6.0%
South St. Paul	12,403	11,951	453	3.7%
West St. Paul	11,619	11,237	381	3.3%

Source: Research Office, Minnesota Department of Jobs and Training

The percentage of workers without a high school diploma was lower in Dakota County than in the State or the Metro Region. The percentage of persons with college degrees in Dakota County's labor force was higher for men and approximately the same for women compared to the State and the Metro Region percentages. Since 1980, attainment of females in all areas has increased.

### Educational Attainment of the Labor Force



**Economic Indicators**  
(continued)

**Nearly all employed Dakota County residents worked in the Metro Region.**

**Four out of ten employed Dakota County residents worked at jobs located within Dakota County.**

**Forty-six percent of employed Dakota County residents commuted to jobs in Hennepin County or Ramsey County, with St. Paul the most frequent destination.**

**Work Location of Dakota Co. Residents**

Persons who live in Dakota County and work in:	Percent Distribution
Anoka County	0.3%
Carver County	0.1
Dakota County	41.7
Hennepin County	26.6
Bloomington	7.9
Edina	2.4
Minneapolis Downtown	2.2
Rest of Minneapolis	6.5
Rest of Hennepin County	7.7
Ramsey County	20.1
St. Paul Downtown	5.2
Rest of St. Paul	13.1
Rest of Ramsey County	1.8
Scott County	1.0
Washington County	1.8
Outside Met Region	1.3
Outside Minnesota	0.6
Not Reported	6.4

Source: 1980 Census of Population, Bureau of the Census,  
U.S. Department of Commerce

**Economic Indicators**  
(continued)

Compared to the Metro Region, a greater percentage of Dakota County Job Service applicants are youth.

The proportion of the total number of applicants who are minority races is much less than the Region average, about 4.5 percent compared to about 18 percent. Minority applicants are represented similarly to their incidence in Dakota County's population.

**Age/Sex/Race Characteristics of Job Service Applicants  
Registered During Calendar Year 1988**

Age	Dakota County		Percent Distribution			
	Female	Male	Female		Male	
			Dakota Co.	Met Region	Dakota Co.	Met Region
Total, All Ages	4,835	6,061	44.4	42.7	55.6	57.5
14-15	229	609	2.1	0.9	5.6	1.6
16-21	1,138	1,491	10.4	8.9	13.7	10.8
22-39	2,554	3,009	23.4	24.4	27.6	34.1
40-54	740	718	6.8	6.7	6.6	8.4
55-64	135	178	1.2	1.3	1.6	1.8
65+	39	56	0.4	0.4	0.5	0.6
<b>Race</b>						
White	4,617	5,757	42.4	35.2	52.8	46.9
Black	77	115	0.7	4.7	1.1	6.0
Hispanic	53	74	0.5	0.5	0.7	1.0
American Indian	23	22	0.2	0.8	0.2	1.0
Asia, Pacific Islander	54	75	0.5	1.2	0.7	2.1

Source: Research Office, Minnesota Department of Jobs and Training

Dakota County's 16-19 year old labor force is projected to grow between 1985 and 2000, in contrast to the Region. However, growth will be much slower than the previous 15-year period. Growth of the labor force in prime working age categories will be exploding between 1985 and 2000.

**Projected Labor Force  
By Age and Sex, 1985-2000**

Age	Dakota Co.				Percent Change 1985-2000					
	Female		Male		Dakota Co.		Met Region		State	
	1985	2000	1985	2000	Female	Male	Female	Male	Female	Male
Total, All Ages	55,987	90,594	69,576	101,277	61.8	45.6	18.1	8.4	21.0	10.3
16-19 years	5,272	6,321	5,625	6,635	19.9	18.0	0.0	-1.3	6.2	3.8
20-24 years	8,178	8,770	9,011	9,201	7.2	2.1	-25.8	-29.5	-18.0	-23.5
25-44 years	31,015	46,244	38,035	51,613	49.1	35.7	9.7	1.4	15.1	5.5
45-64 years	10,797	27,971	15,868	32,372	159.1	104.0	75.3	48.8	66.4	44.0
65 and older	725	1,288	1,037	1,456	77.7	40.4	26.4	-1.7	19.2	14.2

Source: Office of State Demographer

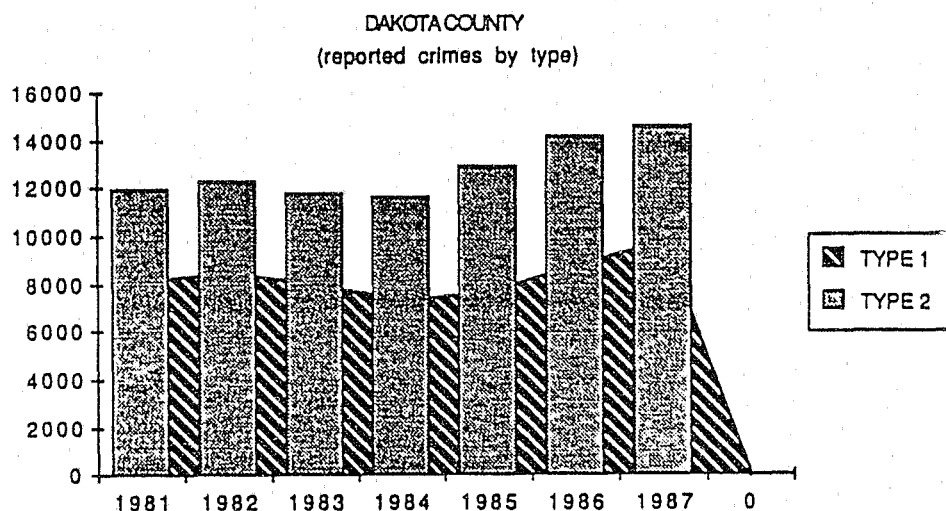
## B. CRIME INFORMATION

### 1. REPORTED CRIME

Total reported crime in Dakota County increased by 4,158 occurrences (+20.6%) from 1980 to 1987. More serious crimes did not increase at a greater rate than less serious crimes. Part I reports (+21.2%) and Part II reports (+19.7%) increased at almost the same rates.

*Part I Crime: Crimes in this category include murder, rape, aggravated assault, robbery, burglary, larceny, motor vehicle theft, and arson.*

*Part II Crime: Crimes in this category are represented by twenty "less serious" crime classifications.*

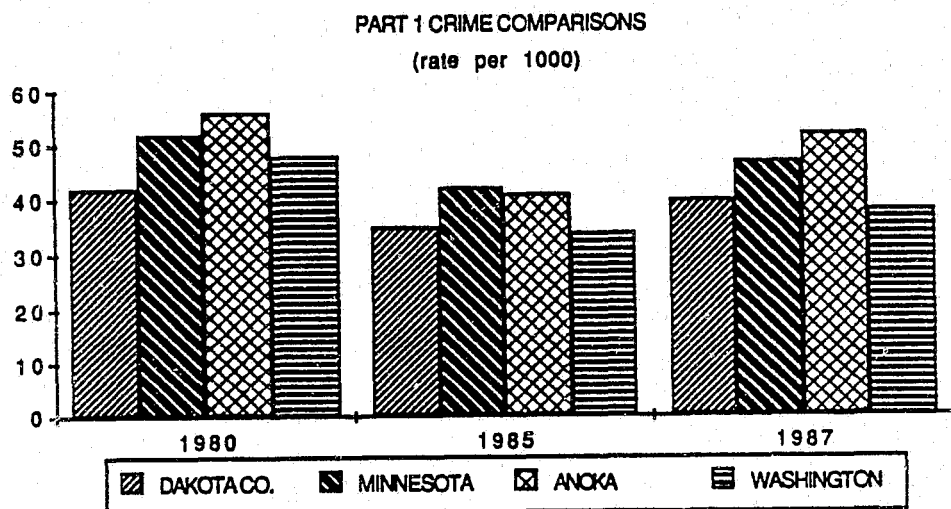


While the number of reported crimes showed significant increases since 1980, the large population growth resulted in declining crime rates (per 1,000 in the population). The Part I rate declined from 42 to 40 and the Part II rate declined from 62 to 60.

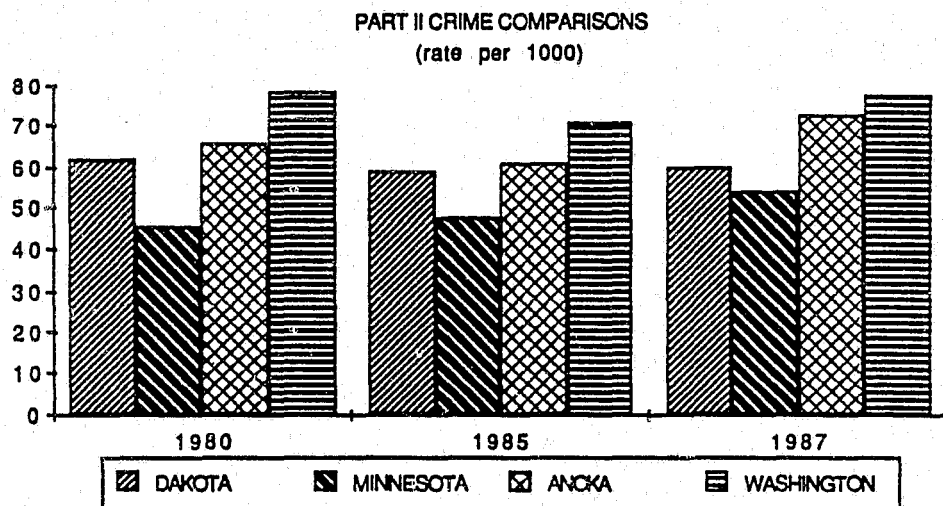
Crime rates are also compared with the state and two other counties in the Twin Cities area -- Anoka which is most similar in number of residents and Washington which is similar demographically.

**Reported Crime**  
(continued)

For the more serious Part I crimes Dakota County was consistently below the state figure. In 1985 the rate increased and remained slightly ahead of Washington County.



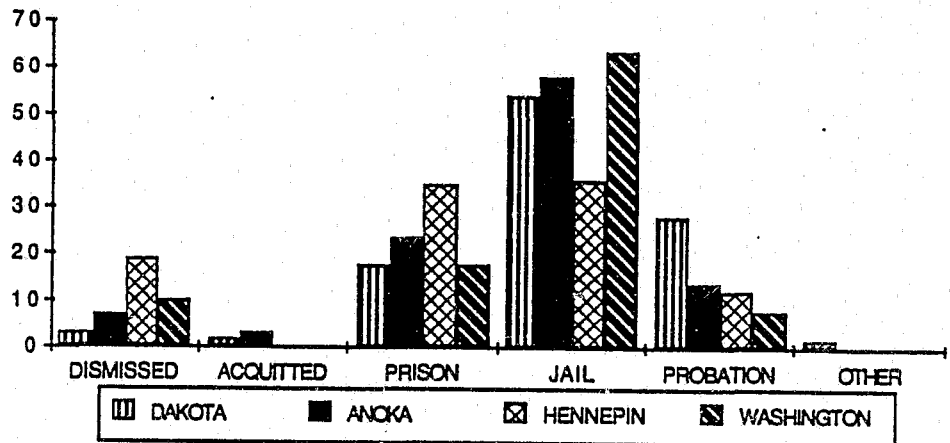
For Part II rates, Dakota County, while higher than the state, remained behind the other two counties reported. Both the state and Anoka County showed sizable increases.



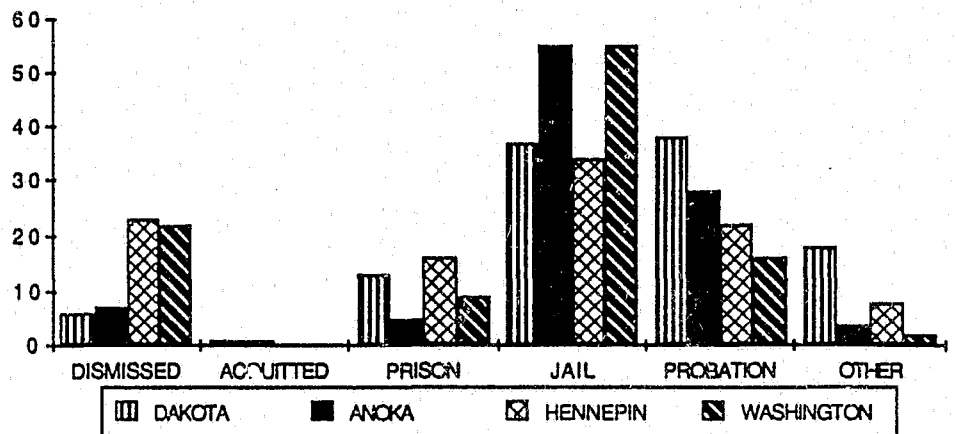
## 2. DISPOSITIONS

The data on dispositions shows a number of interesting trends. Again, the information is broken out according to Parts I and II crime categories

**PART I DISPOSITIONS**  
(county comparisons)



**PART II DISPOSITIONS**  
(county comparisons)



**Dispositions**  
(continued)

The most pronounced trend is that those charged and convicted of crime in Dakota County are more likely to receive probation than in the comparison counties.

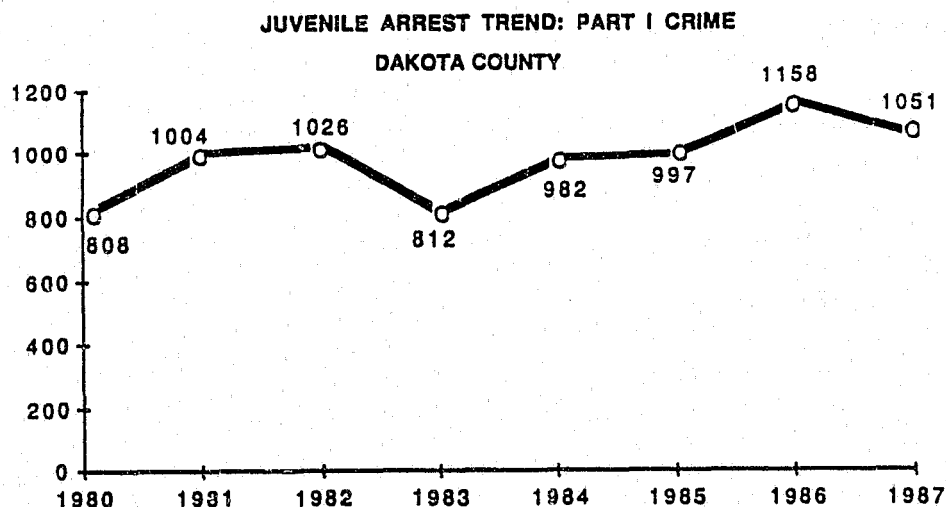
For Part I (24.1%) and Part II (34.4%) crimes respectively, the Dakota County percentages for probation are at least 10 percentage points greater.

Dakota County also has the lowest percentages of cases dismissed for both Part I (3.2%) and Part II (5.7%), respectively. Hennepin shows the highest figures for dismissals for both types of crime.

Jail is used in Dakota County at about the same rate as in Anoka for Part I convictions, but less than Anoka and Washington for Part II convictions.

**3. JUVENILE ARRESTS**

Part I arrests of juveniles shows overall growth since 1980. The increase of 243 arrests results in a percentage increase (23%) which is very close to the overall crime growth.

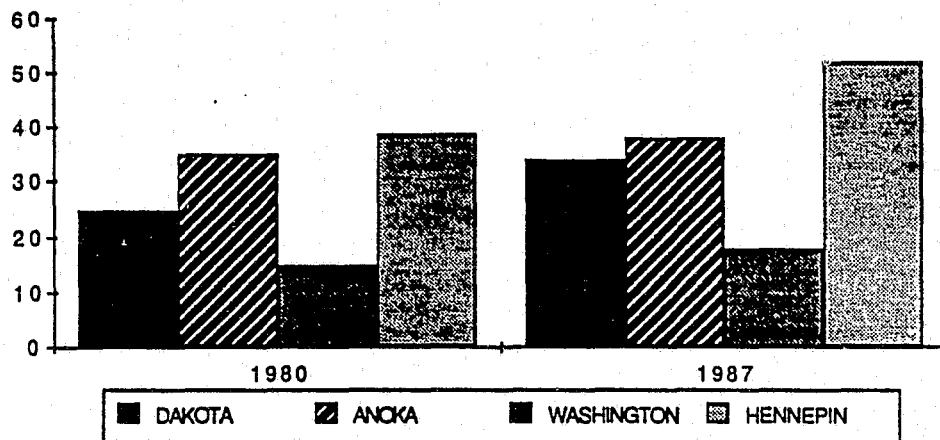


## Juvenile Arrests (continued)

While the Dakota County juvenile arrest rates were below Anoka and Hennepin and greater than Washington, different growth patterns for the two categories of crime emerge.

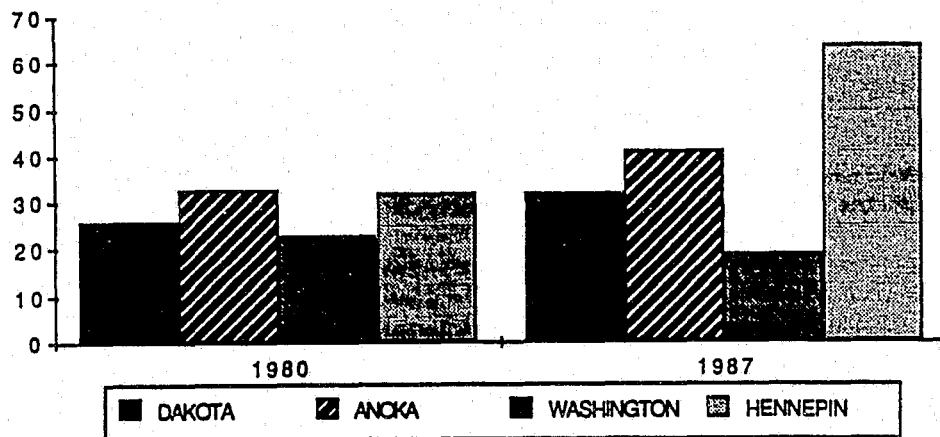
The juvenile arrest rate for Part I crimes saw the percentage growth larger for Dakota (+36%) than for all the comparison counties, including Hennepin (+33%).

PART I JUVENILE ARRESTS  
(rate per 1000 10-17 year olds)



Part II juvenile arrest rate growth in Dakota County (+23%) rose more moderately than the Part I rate. Only Hennepin experienced a very large increase.

PART II JUVENILE ARRESTS  
(rate per 1000 10-17 year olds)





MINNESOTA DEPARTMENT OF CORRECTIONS (DOC)

COMMUNITY CORRECTIONS ACT SUBSIDY COMPREHENSIVE PLAN BUDGET

County of: DAKOTA Budget Year 1990 ☒ Annual ☐ Supplemental

FUNDING SOURCE	DOC SUBSIDY	COUNTY	OTHER	TOTAL FUNDING
<u>Expense Class</u>				
Personnel	.....			2,121,312
Service and Contractual	.....			1,301,137
Supplies & Materials	.....			16,613
Capital Outlays	.....			28,000
Other Expenditures	.....			
DIRECT EXPENSES BUDGETED (S-T)	1,241,074	1,997,488	228,500	3,467,062
Use of State Institutions	300,000	.....	.....	300,000
ALL BUDGETED EXPENSES (S-T)	1,541,074	1,997,488	228,500	3,767,062
Allotment Free Non-Budgeted				
TOTAL ALLOTMENTS	1,541,074	1,997,488	228,500	3,767,062
Unallotted Non - Programmed	44,124			44,124
TOTAL APPROPRIATION	1,585,198	1,997,488	228,500	3,811,186

FUNDING SOURCE REALIZATION SUMMARY	DOC SUBSIDY	COUNTY	OTHER	TOTAL
Estimated Free Balance Forward				
Plus: Confirmed Budget Year Receipts				
Plus: Conditional Budget Year Receipts				
TOTAL ANTICIPATED BUDGET YEAR RECEIPTS				

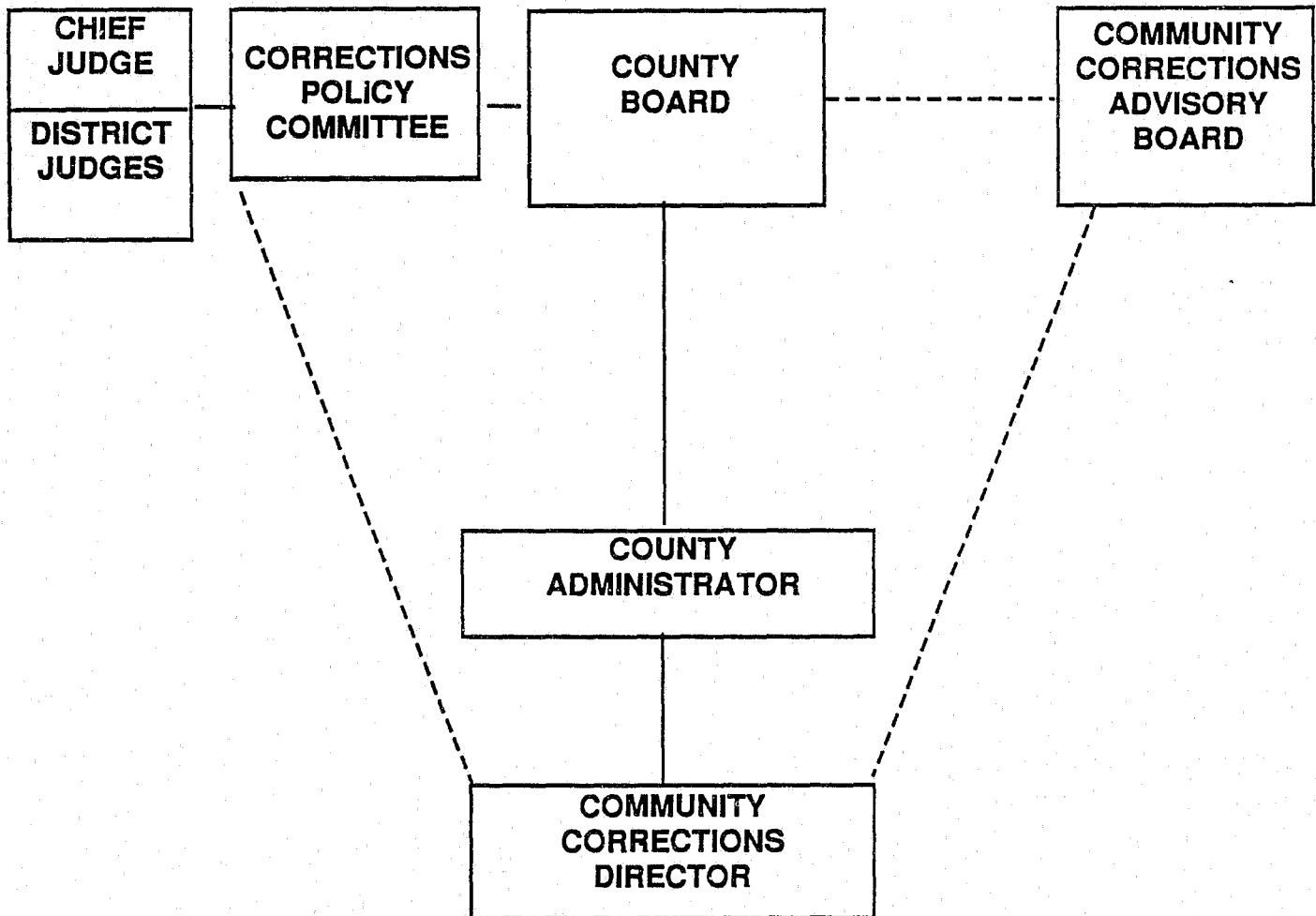
Staff Training Budget (Minimum Requirement - 2% of Subsidy) \$ \_\_\_\_\_

Minimum County Level of Spending Base Year: \_\_\_\_\_ \$ \_\_\_\_\_

Minimum County Level of Spending Current Year: \_\_\_\_\_ \$ \_\_\_\_\_

# **I. ADMINISTRATION AND COORDINATION OF CORRECTIONS SERVICES**

## DAKOTA COUNTY COMMUNITY CORRECTIONS ADMINISTRATIVE STRUCTURE



*Note: solid lines indicate direct reporting lines. Broken lines indicate communication and advice.*

Under the administrative structure, the appointment of the Director of Community Corrections shall be made on a bi-ennial contractual basis with the concurrence of the Dakota County Board and the Chief Judge.

The Corrections Policy Committee is comprised of two judges appointed by the Chief Judge, and two County Commissioners appointed by the County Board.

The Corrections Policy Committee will be responsible for developing a structure to review corrections policy issues, conduct monitoring of the corrections program and perform regular evaluations of the performance of the Corrections Director with input from the Dakota County Administrator. The evaluation will be forwarded to the County Board and Chief Judge on an annual basis for review.

## **RESPONSIBILITIES OF THE COUNTY BOARD**

1. Approve a budget and levy taxes to finance community corrections and other county services.
2. Appoint thirteen (13) members to the Community Corrections Advisory Board.
3. Serve as employer to community corrections personnel.
4. Approve an annual plan for community corrections as recommended by the Community Corrections Advisory Board.
5. Appoint two board members to serve on the Corrections Policy Committee.
6. On a biennial basis, review the performance of the Community Corrections director for reappointment.

## **RESPONSIBILITIES OF THE JUDICIARY**

1. Provide input for program development to the Community Corrections Advisory Board.
2. Provide direction on matters of general community corrections policy.
3. Appoint five (5) members to the Community Corrections Advisory Board to include two judges, a prosecutor, a corrections representative and one member of judicial administration.

## **RESPONSIBILITIES OF THE COMMUNITY CORRECTIONS ADVISORY BOARD**

As provided by statute, the Community Corrections Advisory Board of Dakota County actively participates in the formulation of a comprehensive plan for the development, implementation and operation of the corrections programs and services prescribed by statute. The Advisory Board makes an annual recommendation concerning the comprehensive plan and its implementation to the County Board.

The Advisory Board consists of eighteen members who are representatives of law enforcement, county board, prosecution, the judiciary, education, corrections, ethnic minorities, social service agencies, and lay citizens.

The operation of programs is the responsibility of the Community Corrections Department.

The Advisory Board has established three program committees and a coordinating committee. The CCAB chair appoints the chair of each program committee and committee members were assigned. The coordinating committee is comprised of the chairs of the program committees and is chaired by the chairperson of the CCAB. The purpose of each committee is as follows:

Adult Committee - Review and plan adult offender services and programs.

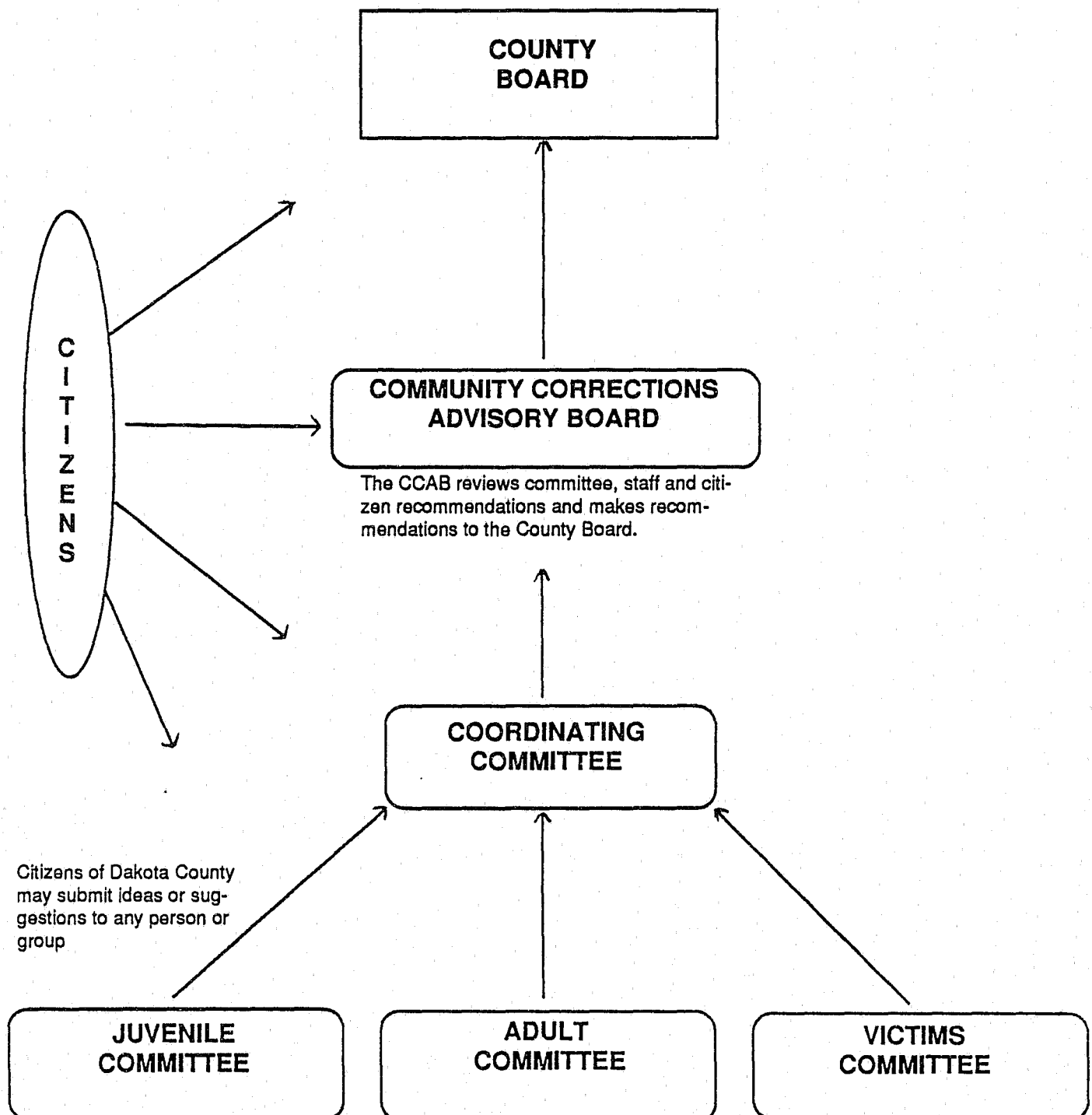
Juvenile Committee - Review and plan juvenile offender services and programs

Victims Committee - Monitor and promote services to victims of crimes

Coordinating Committee - Make recommendations to the full Advisory Board regarding requests for program funding, unresolved issues, and prioritization of committee recommendations.

Each committee has at least two Advisory Board members, reflecting the membership of the Board as a whole. The chairperson of the Advisory Board appoints a committee chair on a yearly basis. The committee meetings are open to the public. Community Corrections Department staff is assigned to each committee to advise regarding current correctional practice and provide assistance to the committee.

**FLOW CHART  
for  
SUBMITTAL OF RECOMMENDATIONS TO THE ADVISORY BOARD**



## **II. PROGRAM DESCRIPTIONS**

## A. ADMINISTRATION

### MISSION STATEMENT

*The purpose of community corrections is to promote public safety in Dakota County through the control, punishment and rehabilitation of juvenile and appropriate adult offenders in community based programs. It is also the purpose of community corrections to provide support for services and programs which provide aid to the victims of crime. The involvement of all of the components of the criminal justice system, including elected officials and the citizens of the County will be promoted to help develop and coordinate policies and programs which are designed to meet the unique correctional needs of the County in a creative and innovative manner. Offender programs will be developed that are just and humane and provide for individualized justice while being responsive to judicial sentencing.*

### 1. ORGANIZATION

The administrative organization of the Dakota County Corrections Department includes a director and support staff for training. The director is the administrative officer for corrections in Dakota County. The Director reports to the Dakota County Board of Commissioners through the County Administrator. The appointment of the director is for a two year period. A corrections policy committee composed of two county commissioners and two judges from the First Judicial District will be responsible for reviewing the goals and objectives of the corrections department and performance of the Community Corrections Director.

During 1990, the corrections department will move to the Dakota County Government Center. Under construction is a Western Court facility located in the Apple Valley community. Departmental staff will be located in the Western facility during late 1990.

The department also maintains an office in the northern part of the county in the community of So. St. Paul. Additional staff are housed in rental space in the community of Hastings.

### 2. DESCRIPTION

The community corrections director has responsibility for the implementation of the comprehensive corrections plan for Dakota County. The plan is presented annually to the Community Corrections Advisory Board for review and approval.

The director administers and manages the plan through a management team composed of two section managers for adult and juvenile corrections and three supervisors assigned to the department's juvenile, adult misdemeanor and adult felony units. Support staff, reporting to the director, include an administrative assistant, and staff person assigned to provide staff training, program planning and evaluation support.

The director is assigned as the staff person to the full community corrections advisory board.

**Description**  
(continued)

Internally, the administrative division accomplishes budget preparation, financial reporting and provides personnel functions for the departmental staffing.

An annual training plan will be implemented in January, 1990. The plan includes the following elements:

- Mandated training for certification of staff
- Orientation and training of new employees
- Interdepartmental staff development activities
- Quarterly staff meetings
- Management team planning
- Annual staff retreat
- Organizational consultation
- Community Corrections Advisory Board training
- Public Education

Guidelines are established for work time allowance for staff development activities. Professional staff are allotted forty (40) hours; paraprofessional staff are allotted thirty two (32) hours, and support staff are allotted twenty four (24) hours. Each staff may attend one conference per year as it relates to job assignment.

The Department plans to provide public education forums to provide information to the citizens of Dakota County about correctional practice. In turn, the public will have an opportunity to ask questions and express concerns of their own to correctional professionals.

During 1990, \$8,500 has been budgeted for program evaluation. The corrections department is in the process of developing a management information system which will be the foundation for evaluation efforts in the future.

**3. CLIENT ACTIVITY**

Not applicable.

**4. STAFF COMPLEMENT**

	<u>CURRENT</u> <u>1989</u>	<u>PROPOSED</u> <u>1990</u>
Director	1.0	1.0
Administrative / clerical	1.0	1.0
Coord. of Training/ Planning / Evaluation	<u>1.0</u>	<u>1.0</u>
<b>TOTAL</b>	<b>3.0</b>	<b>3.0</b>



## 5. ANNUAL ACTION PLAN

**Maintenance Goal:** To provide the planning, organization and supervision of Dakota County correctional programs. The administrative division, and the director, are accountable for the leadership in proposing and implementing correctional programs that are effective, both program and cost wise. The administrative division maintains a comprehensive management information and program evaluation system for correctional programs in Dakota County. Staff development opportunities will be provided to promote high quality of service to the public and according to an annual training plan.

### **Objectives:**

- a. Using case classification, continue to develop workload standards for all departmental work activities, by 6-30-90.
  - b. Develop and implement an annual training plan by 1-1-90
  - c. Continue the development of program evaluation through 1990 (ongoing).
  - d. Involve staff in the strategic planning process, through an annual retreat, held during the Fall of 1990.
  - e. Provide staff services to the Community Corrections Advisory Board (ongoing).
-

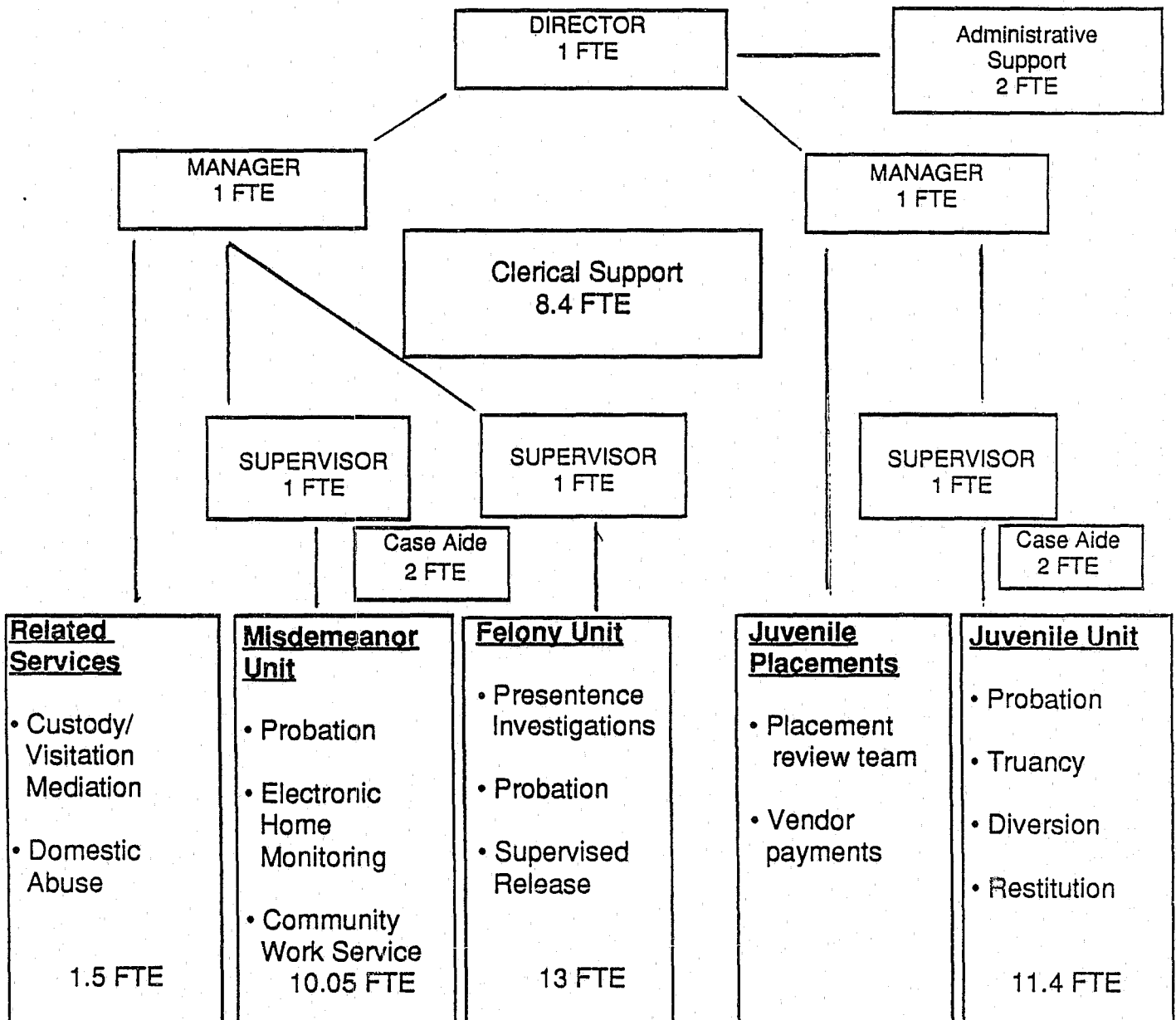
## ORGANIZATIONAL STRUCTURE Community Corrections Department

The Dakota County Board, through the Community Corrections Department, provides services to the First Judicial District Judges that they may perform their judicial functions. The staff of Community Corrections carries out the orders of the Court.

The director of Community Corrections reports to the County Board through the County Administrator, and to the Corrections Policy Committee. The director provides overall management and direction for the Department. Besides overall management responsibility for Community Corrections, the director supervises the managers of the adult and juvenile sections of the Department.

The section managers have direct responsibility for the operation of their respective sections and provide supervision to the unit supervisors, clerical support staff, and case aides.

The director, section managers, and unit supervisors, or their designees, serve as the Department's liaisons to the Community Corrections Advisory Board and provide staff support to its committees.



# MINNESOTA DEPARTMENT OF CORRECTIONS (DOC)

## COMMUNITY CORRECTIONS ACT

BUDGET SUMMARY FOR THE Administration PROGRAM

☒ ANNUAL

19 90 DAKOTA COUNTY COMMUNITY CORRECTIONS SYSTEM

☐ SUPPLEMENT #       

FUNDING SOURCE	DOC SUBSIDY	COUNTY	OTHER	TOTAL FUNDING
<u>Expense Class</u>				
Personnel				143,661
Service and Contractual				103,350
Supplies & Materials				16,613
Capital Outlays				28,000
Other Expenditures				
DIRECT EXPENSES BUDGETED (S-T)	81,552	210,072		291,624
Use of State Institutions				
ALL BUDGETED EXPENSES (S-T)	81,552	210,072		291,624
Allotment Free Non-Budgeted				
TOTAL ALLOTMENTS	81,552	210,072		291,624

FUNDING SOURCE	DOC SUBSIDY	COUNTY	OTHER	TOTAL
State Community Corrections Subsidy				
County General Revenue Fund				
Other (explain)				
Fees from General Revenue		210 072		210 072
CCA Subsidy	81,552			?
Grants from				
Other Dept.				
Miscellaneous				
TOTAL BUDGETED FUNDING FOR PROGRAM	81,552	210,072		291,624

## B. TRADITIONAL FIELD SERVICES

### B1. JUVENILE PROBATION

#### 1. ORGANIZATION

Traditional field services in the juvenile area serve the Juvenile Court in Dakota County, providing services to juvenile offenders. The Dakota County Juvenile court is a division of the District Court and is located in the Government Center in Hastings.

The traditional services offered the Juvenile Court include probation, parole, diversion from court and restitution services. The department also provides community work service programming for selected juvenile traffic offenders in place of monetary fines.

Community Corrections management staff will continue to explore ways to establish joint policies and programs with Human Services management staff that will best serve all of Dakota County youth. Staff from Community Corrections and Social Services have formed an interdepartmental staff planning group to create recommendations for programming centered around children at high risk for placement. The goal of this High Risk Children Task Force is to develop programs that will enable children to remain at home whenever possible, and to have community based placement options when the home is not available.

#### 2. DESCRIPTION

Juvenile probation officers, who are employed by Dakota County are responsible for probation services to the Juvenile Court. In addition, officers are responsible for providing post-release parole services to juveniles released from Department of Corrections juvenile institutions on parole status.

Services are provided to young people who are between the ages of 10-18, and whose parents reside in Dakota County. The department offers a range of services that support the Juvenile Court. These services include:

- Probation supervision of offenders under conditions ordered by the court and which may prescribe rules of conduct and treatment.
- Pre-dispositional reports which are prepared by the probation officer when a juvenile has admitted a petition charging him/her with a delinquent offense.

Diversion services allow the juvenile and parent(s) to respond to a first time property offense complaint by meeting with a probation officer. At the meeting, the officer reviews the complaint and, with the assistance of the parent(s), determines a remedial course of action which could include restitution or counseling. In selected cases, diversion staff may choose to send a formal warning letter to parents, advising attention to the young person's behavior.

**Description**  
(continued)

First time truancy complaints are handled through a diversion process. Corrections staff meet with the truant and parent(s). If the referred truant is receiving social services, the matter is referred on to the appropriate department. Cases involving repeated truancy are referred by the County Attorney to the Juvenile Court for formal action.

The payment of restitution by juvenile offenders is supported and expected by the Juvenile Court. Juvenile offenders may also be expected to perform community work service as a court sanction. Corrections staff arrange for the community work service placement and monitor the performance of the offender.

To assist the juvenile offender to pay restitution, the department offers opportunities for the youth to work on a paid basis in a supervised work crew. Work crews assist in recycling programs, park improvement efforts and are a source of labor for communities to use, usually in summer months. The work crews expand during the summer, and to a lesser extent are operational during the school year on weekends and after school.

Juvenile probation staff are responsible for the coordination of services with other public and private agencies. This includes arranging placement for care or custody, detention services and transportation of the offender to and from court. Staff are responsible for the monitoring of the placement and the reporting of the clients' adjustment to management staff as well as the court.

**3. CLIENT ACTIVITY**

<b>Diversion</b>	<b>1987</b>	<b>1988</b>
Conferences held	340	359
Warning letter sent	58	66
Truancy referrals	158	177
Traffic Court - Community Work Services hrs.	4660	2547
<b>Probation Services</b>	<b>1987</b>	<b>1988</b>
Delinquency petitions	793	739
Social histories	80	73
Referred for probation	430	520
Committed to DOC	16	11
Average # of cases under probation supervision	191	220
<b>Restitution Service</b>	<b>1987</b>	<b>1988</b>
Contracts opened	202	217
Contracts closed	191	221
CWS hours performed	5230	5255
Victim/offender mtngs.	27	36
Restitution collected	\$32,310	\$39,661

#### 4. STAFF COMPLEMENT

	<u>CURRENT</u> <u>1989</u>	<u>PROPOSED</u> <u>1990</u>
Program Manager	1.0	1.0
Supervisor	1.0	1.0
Probation officers	10.5	10.5
Case Aide	3.0	2.0
Community work service	.9	.9
Clerical	<u>2.3</u>	<u>2.3</u>
 TOTAL	 18.7	 17.7

---

#### 5. ANNUAL ACTION PLAN

**Maintenance Goal:** To provide services to the Juvenile Court of Dakota County as ordered. To provide parole services to the Minnesota Department of Corrections as required. To work with juvenile offenders of Dakota County as court ordered or referred by the Dakota County Attorney for diversion services.

##### **OBJECTIVES:**

- a. Continue to plan and develop a client classification system based on risk and need by March 31, 1990.
  - b. Based on case classification of juvenile clients, develop a system to provide appropriate levels of supervision, to be implemented by April 30, 1990.
  - c. Present a model for home restriction program to the Community Corrections Advisory Board Juvenile Committee by February 28, 1990.
  - d. Assess options to expand paid work crew and present to the Community Corrections Advisory Board Juvenile Committee by March 31, 1990.
  - e. Prepare a report by March 1, 1990, describing the non-residential programs which are currently being used, their locations and the resources expended with recommendations for developing programs within the county.
-

MINNESOTA DEPARTMENT OF CORRECTIONS (DOC)

COMMUNITY CORRECTIONS ACT

BUDGET SUMMARY FOR THE Juvenile Probation PROGRAM

☒ ANNUAL

1990 DAKOTA COUNTY COMMUNITY CORRECTIONS SYSTEM

☐ SUPPLEMENT #       

FUNDING SOURCE	DOC SUBSIDY	COUNTY	OTHER	TOTAL FUNDING
<b>Expense Class</b>				
Personnel	.....	.....	.....	640,725
Service and Contractual	.....	.....	.....	29,670
Supplies & Materials	.....	.....	.....	
Capital Outlays	.....	.....	.....	
Other Expenditures	.....	.....	.....	
<b>DIRECT EXPENSES BUDGETED (S-T)</b>	250,269	268,599	151,525	670,395
Use of State Institutions	300,000	.....	.....	300,000
<b>ALL BUDGETED EXPENSES (S-T)</b>	550,269	268,599	151,525	970,395
Allotment Free Non-Budgeted				
<b>TOTAL ALLOTMENTS</b>	550,269	268,599	151,525	970,395

FUNDING SOURCE	DOC SUBSIDY	COUNTY	OTHER	TOTAL
State Community Corrections Subsidy				
County General Revenue Fund				
Other (explain)	.....	.....	.....	.....
<b>Fees from</b>				
County General Revenue		268,599		268,599
Probation Officer Subsidy			151,525	151,525
CCA subsidy	550,269			550,269
<b>Grants from</b>				
<b>Other Dept.</b>				
<b>Miscellaneous</b>				
<b>TOTAL BUDGETED FUNDING FOR PROGRAM</b>	550,269	268,599	151,525	970,395

## B2. ADULT GROSS MISDEMEANOR/FELONY PROBATION SUPERVISED RELEASE

### 1. ORGANIZATION

Adult probation/supervised release serve the District Courts of Dakota County, providing services to gross misdemeanor/felony offenders.

### 2. DESCRIPTION

Adult probation/supervised release provide pre-sentence investigations to the Court, supervise gross misdemeanor/felony offenders on probation and those offenders released from state correctional institutions who reside in Dakota County.

The majority of the adult gross misdemeanor/felony caseload is supervised by assigned probation officers. The responsibility of the officers includes conducting pre-sentence investigations as ordered by the District Courts in Dakota County. The Department supervises cases transferred from other states and other counties as required.

### 3. CLIENT ACTIVITY

	<u>12-31-86</u>	<u>12-31-87</u>	<u>12-31-88</u>
Individual felons on supervision	991	1192	1307
Presentence investigations performed			
• by probation officer		150	89
• by contract		199	239

### 4. STAFF COMPLEMENT

	<u>CURRENT</u>	<u>PROPOSED</u>
Program Manager	.5	.5
Supervisor	1.0	1.0
Probation officers	12.0	13.0
Clerical support	<u>3.5</u>	<u>3.5</u>
<b>TOTAL</b>	<b>17.0</b>	<b>18.0</b>



## 5. ANNUAL ACTION PLAN

**Maintenance Goal:** To provide pre and post trial services to correctional clients in order to minimize their involvement in the activities that would return them to a correctional institution or court. Provide the District Courts of Dakota County and the Department of Corrections with accurate information and workable recommendations. Provide services to cases transferred from other counties and states.

### **Objectives:**

- a. Plan and develop a case classification system for implementation by mid 1991.
  - b. Utilize the management information system to provide client demographic data for the purpose of planning by March 31, 1990.
  - c. Review need for additional pre-sentence investigation resources, addressing the need for staff by March 31, 1990.
  - d. Explore the feasibility of a diversion program to include gross misdemeanor and felony offenders by March 31, 1990.
-

## MINNESOTA DEPARTMENT OF CORRECTIONS (DOC)

## COMMUNITY CORRECTIONS ACT

BUDGET SUMMARY FOR THE Adult Felony Probation PROGRAM☒ ANNUAL19 90 DAKOTA COUNTY COMMUNITY CORRECTIONS SYSTEM☐ SUPPLEMENT #     

FUNDING SOURCE	DOC SUBSIDY	COUNTY	OTHER	TOTAL FUNDING
Expense Class				
Personnel	.....	.....		624,296
Service and Contractual	.....	.....		61,925
Supplies & Materials	.....	.....		
Capital Outlays	.....	.....		
Other Expenditures	.....	.....		
DIRECT EXPENSES BUDGETED (S-T)	625,038	61,183		686,221
Use of State Institutions		.....	.....	
ALL BUDGETED EXPENSES (S-T)	625,038	61,183		686,221
Allotment Free Non-Budgeted				
TOTAL ALLOTMENTS	625,038	61,183		686,221

FUNDING SOURCE	DOC SUBSIDY	COUNTY	OTHER	TOTAL
State Community Corrections Subsidy				
County General Revenue Fund				
Other (explain)	.....	.....	.....	.....
Fees from <u>County General Revenue</u>		61,183		, 83
<u>CCA Subsidy</u>	625,038			625,038
Grants from				
Other Dept.				
Miscellaneous				
TOTAL BUDGETED FUNDING FOR PROGRAM	625,038	61,183		686,221

## B3. ADULT MISDEMEANOR PROBATION

### 1. ORGANIZATION

Adult misdemeanor probation serves the District Courts of Dakota County, providing services to misdemeanor offenders. This service level also provides services to the Dakota County jail, such as work release, bail review and electronic home monitored detention. Services at this level also include the evaluation of chemically impaired drivers (DWI).

### 2. DESCRIPTION

The primary objectives of the misdemeanor probation program is to provide the courts with relevant pre and post sentence information on offenders charged with gross misdemeanor and misdemeanor offenses.

The department is responsible under the law to provide screening and assessment of chemical dependency for drivers charged with DWI. The department also evaluates family violence cases and makes presentence recommendations on a variety of other misdemeanor matters as ordered by the courts.

The misdemeanor unit provides for the electronic monitoring of offenders in their home. ReEntry Services Inc., currently provides contracted services for the on-site monitoring of the offender in his/her home. This unit also provides a supervised and unsupervised community work service program for courts to use as a sentencing alternative for selected misdemeanor and felony offenders.

The misdemeanor program also monitors the compliance with conditions of supervision, such as attendance at AA or payment of restitution. The monitoring is usually accomplished using a case tracking system which measures offender compliance.

Court ordered community work service for the first time DWI driver, and other misdemeanor offenders, is coordinated and monitored by a departmental part time staff person. Coordination with organizations and agencies allows for the placement of selected property offenders to complete community work services as a court sentence.

### 3. CLIENT ACTIVITY

	<u>1987</u>	<u>1988</u>
DWI assessments performed	1755	1862
Pre-sentence interviews	856	801
Work release evaluations	86	92
Bail review	35	84
Community work services hours performed	16,005	12,428
Monetary value of work service performed @ 5.00 per hr.	\$80,0025	\$62,140

#### 4. STAFF COMPLEMENT

	<u>CURRENT</u>	<u>PROPOSED</u>
Program Manager	.5	.5
Supervisor	1.0	1.0
Probation officers	7.85	7.85
Case Aide	2.0	1.5
Community work service	2.2	1.2
Clerical	<u>2.4</u>	<u>2.4</u>
<b>Total</b>	<b>15.95</b>	<b>14.45</b>

#### 5. ANNUAL ACTION PLAN

Maintenance Goal: To provide services to the adult misdemeanor offender when placed on probation. The corrections department will provide pre and post sentence investigations of those offenders ordered by the court. The department will continue to provide sentencing alternatives for the court that will cover the needs of a broad range of offenders. Enforcing collection of restitution for victims will be a priority. The department will continue to use computerized case tracking to monitor the misdemeanor offender who is ordered to pay restitution.

##### Objectives:

- a. Explore feasibility of family violence program for perpetrators which provides evaluation and education for domestic abuse offenders by March 31, 1990.
- b. Explore feasibility of diversion program for misdemeanor offenders by March 31, 1990.
- c. Plan and develop expanded community work service program for adult offenders by March 31, 1990.

# MINNESOTA DEPARTMENT OF CORRECTIONS (DOC)

## COMMUNITY CORRECTIONS ACT

BUDGET SUMMARY FOR THE Adult Misdemeanor Probation PROGRAM

☒ ANNUAL

19 90 DAKOTA COUNTY COMMUNITY CORRECTIONS SYSTEM

☐ SUPPLEMENT #     

FUNDING SOURCE	DOC SUBSIDY	COUNTY	OTHER	TOTAL FUNDING
<u>Expense Class</u>				
Personnel				560,971
Service and Contractual				21,784
Supplies & Materials				
Capital Outlays				
Other Expenditures				
DIRECT EXPENSES BUDGETED (S-T)	250,266	264,840	67,649	582,755
Use of State Institutions				
ALL BUDGETED EXPENSES S-T	250,266	264,840	67,649	
Allotment Free Non-Budgeted				
TOTAL ALLOTMENTS	250,266	264,840	67,649	582,755

FUNDING SOURCE	DOC SUBSIDY	COUNTY	OTHER	TOTAL
State Community Corrections Subsidy				
County General Revenue Fund				
Other (explain)				
Fees from				
County General Revenue				
CCA Subsidy				
Probation Reimbursement				
Grants from				
Other Dept.				
Miscellaneous				
TOTAL BUDGETED FUNDING FOR PROGRAM			67 649	582 755

## C. NON-SECURE CLIENT PROGRAMMING

### C1. RESIDENTIAL - JUVENILE

#### 1. ORGANIZATION

Juvenile residential placement services are provided by the Department of Community Corrections Department under supervision of the Juvenile Program Manager.

---

#### 2. DESCRIPTION

This program utilizes funds provided by the Human Services Department of Dakota County for juveniles who come under the jurisdiction of the Dakota County Juvenile Court. Costs for detention, foster home placements, and residential care are paid for by Human Services according to State statute.

Clients under probation supervision who are no longer appropriate for continued supervision in the home setting, are eligible for placement.

When placement out of the home appears imminent, due to a new offense, a particularly severe offense, or other circumstances, a Placement Team meets to insure that all community resources are considered before placement occurs. The Placement Team consists of the Juvenile Supervisor and two probation officers, who review the case and formulate a recommendation.

---

#### 3. CLIENT ACTIVITY

Funds are provided for juveniles coming under the jurisdiction of the Dakota County Juvenile Court for out of home placements.

1988 placements were as follows:

PLACEMENT TYPE	No.of Youth	Service Days	Cost
Foster Homes	22	1870	\$65,450
Group Homes	12	1432	\$83,056
Detention	82	632	\$42,976
Shelter Care	87	1066	\$71,166
Residential	27	2264	\$200,254
Correctional	38	3821	\$259,622
		<u>TOTAL</u>	<u>\$722,524</u>

---

#### 4. STAFF COMPLEMENT

Not applicable.

---

#### 5. ANNUAL ACTION PLAN

**Maintenance Goal:** To provide residential care to juveniles whose situation does not allow continued supervision within the home setting. Continue to utilize the Placement Team to evaluate proposed placement recommendations, and for periodic review of children in placement. Continue to minimize use of state institutions.

**Objectives:**

- a. Analyze current placement options to determine the need for residential programming in Dakota County with recommendations for future programming by March 1, 1990.
-

MINNESOTA DEPARTMENT OF CORRECTIONS (DOC)

COMMUNITY CORRECTIONS ACT

BUDGET SUMMARY FOR THE Residential Juvenile PROGRAM

☒ ANNUAL

19 90 Dakota COUNTY COMMUNITY CORRECTIONS SYSTEM

☐ SUPPLEMENT #     

FUNDING SOURCE	DOC SUBSIDY	COUNTY	OTHER	TOTAL FUNDING
<u>Expense Class</u>				
Personnel	.....			
Service and	.....			
Contractual	.....			790,265
Supplies &	.....			
Materials	.....			
Capital	.....			
Outlays	.....			
Other	.....			
Expenditures	.....			
DIRECT EXPENSES				
BUDGETED (S-T)		790,265		790,265
Use of State		.....	.....	
Institutions		.....	.....	
ALL BUDGETED				
EXPENSES (S-T)				
Allotment Free				
Non-Budgeted				
TOTAL				
ALLOTMENTS		790,265		790,265

FUNDING SOURCE	DOC SUBSIDY	COUNTY	OTHER	TOTAL
State Community Corrections Subsidy				
County General Revenue Fund				
Other (explain)	.....	.....	.....	.....
Fees from				
<u>Human services levy</u>		790 265		790 265
Grants from				
Other Dept.				
Miscellaneous				
TOTAL BUDGETED FUNDING FOR PROGRAM		790 265		790 265



## C2. RESIDENTIAL - ADULT

### 1. ORGANIZATION

During 1989, \$20,000 was allocated for the purchase of adult residential services. The advisory board has approved the recommendation for \$30,000 being made available for adult residential services in 1990. The funding for residential services will focus primarily on the need to have resources available for the sex offender who cannot be treated in the community on an outpatient basis.

Other selected offenders, including female offenders, will be reviewed for residential placement if community outpatient treatment is not available and/or appropriate and if security/public protection is an issue.

### 2. DESCRIPTION

Residential programs provide an additional program alternative at the time of sentencing for eligible offenders.

### 3. CLIENT ACTIVITY

During 1989 two (2) offenders were placed in residential facilities, one male and one female.

### 4. STAFF COMPLEMENT

The management staff and professional staff in the adult corrections section refers and recommends as needed..

### 5. ANNUAL ACTION PLAN

**Maintenance Goal:** Provide the adult committee and the Community Corrections Advisory Board with staff support, direction and data in order to assist the Community Corrections Advisory Board in developing a recommendation for appropriate residential services.

**Objectives:**

- a. Utilize management information system to define population characteristics to determine eligibility criteria for residential services by March 31, 1990.
- b. Assess existing resources for potential placement of adult offenders by March 31, 1990.

## MINNESOTA DEPARTMENT OF CORRECTIONS (DOC)

## COMMUNITY CORRECTIONS ACT

BUDGET SUMMARY FOR THE Adult residential PROGRAM☒ ANNUAL19 90 DAKOTA COUNTY COMMUNITY CORRECTIONS SYSTEM☐ SUPPLEMENT #       

FUNDING SOURCE	DOC SUBSIDY	COUNTY	OTHER	TOTAL FUNDING
Expense Class				
Personnel				
Service and Contractual				30,000
Supplies & Materials				
Capital Outlays				
Other Expenditures				
DIRECT EXPENSES BUDGETED (S-T)	30,000			30,000
Use of State Institutions				
ALL BUDGETED EXPENSES (S-T)				
Allotment Free Non-Budgeted				
TOTAL ALLOTMENTS	30,000			30,000

FUNDING SOURCE	DOC SUBSIDY	COUNTY	OTHER	TOTAL
State Community Corrections Subsidy				
County General Revenue Fund				
Other (explain)				
Fees from <u>Community Corrections Subsidy</u>	30,000			30,000
Grants from				
Other Dept.				
Miscellaneous				
TOTAL BUDGETED FUNDING FOR PROGRAM	30,000			30,000

### **C3. NON-RESIDENTIAL-JUVENILE**

#### **3A. DAY TREATMENT**

#### **1. ORGANIZATION**

Juvenile day treatment services are provided by private vendors doing business in Dakota County through contracts with Dakota County Human Services Department.

The Youth Transition Program (YTP) is a program of Human Resource Associates and provides day treatment programming at a site in Apple Valley for youngsters referred by either Community Corrections or Human Services departments.

The Intensive Day Treatment Program (IDT) is a program of the Merriam Park Community Center in St. Paul, Minnesota. Day treatment programs are operated at sites in St. Paul and Bloomington for youngsters referred by the Juvenile Courts in Ramsey, Dakota and Hennepin counties.

---

#### **2. DESCRIPTION**

Day treatment programs are an alternative to residential treatment. Probation officers refer youngsters to YTP and IDT when the needs of the child have resulted in a court order for day treatment. Day treatment is directed at those youth who are experiencing significant adjustment problems within the community as well as learning and behavioral problems in school. Each program offers a special education setting as well as counseling and development of problem solving skills.

---

#### **3. CLIENT ACTIVITY**

During 1988, 31 youngsters were referred by the Juvenile Court to either YTP or IDT. At an approximate cost of \$46 per day, these youngsters spent 2361 days in day treatment for a cost of \$108,648.

---

#### **4. STAFF COMPLEMENT**

Not applicable.

---

#### **5. ANNUAL ACTION PLAN**

**Maintenance Goal:** To provide an alternative to residential placement to juveniles who are under the jurisdiction of the Court and are in need of a supportive environment within the community.

#### **Objectives:**

- a. Evaluate effectiveness of day treatment program by July 1, 1990.
-

### 3b. OUTPATIENT SEX OFFENDER TREATMENT

#### 1. ORGANIZATION

Out-patient sex offender treatment is provided through purchase of service with several vendors who offer specialized treatment programs for juvenile sex offenders.

At the request of Dakota County Community Corrections, the Dakota Mental Health Center developed a program to serve Dakota County clients within Dakota County. This program began in November, 1988, and offers evaluation, individual therapy, group therapy and family involvement for juvenile offenders referred. Juvenile offenders are court ordered to this program, and Community Corrections pays the costs not covered by insurance providers by utilizing placement budget dollars.

The Program for Healthy Adolescent Sexual Expression (PHASE), is used on a less frequent basis. PHASE is a program of East Communities Family Center in St. Paul. That program offers an initial assessment at their offices in Maplewood, and follow-up group meetings in South St. Paul.

#### 2. DESCRIPTION

Out-patient sex offender treatment allows a juvenile offender to live at home while receiving treatment necessary to correct his behavior. All juveniles charged with criminal sexual conduct are court ordered for an assessment and for follow-up therapy if that is determined to be necessary after evaluation.

#### 3. CLIENT ACTIVITY

During 1988, eight (8) juvenile males received these services at a cost of \$17,586.00.

#### 4. STAFF COMPLEMENT

Not applicable.

#### 5. ANNUAL ACTION PLAN

**Maintenance Goal:** To provide an alternative to residential placement for all juveniles charged with criminal sexual conduct who are appropriate to remain at home while receiving therapy.

##### Objectives:

- a. Ensure that all staff supervising convicted sex offenders will receive training to comply with requirements of new legislation (MSA 241.67 Subd. 6).

**Annual Action Plan  
(continued)**

- b. Review current sex offender programming to insure compliance with new legislation (260.185 subd. 1) requiring independent assessment of the need for sex offender treatment by April 1, 1990.
-

# MINNESOTA DEPARTMENT OF CORRECTIONS (DOC)

## COMMUNITY CORRECTIONS ACT

BUDGET SUMMARY FOR THE Juvenile Non-residential PROGRAM

☒ ANNUAL

19 90 DAKOTA COUNTY COMMUNITY CORRECTIONS SYSTEM

☐ SUPPLEMENT #     

FUNDING SOURCE	DOC SUBSIDY	COUNTY	OTHER	TOTAL FUNDING
<u>Expense Class</u>				
Personnel				
Service and Contractual				180,353
Supplies & Materials				
Capital				
Outlays				
Other Expenditures				
DIRECT EXPENSES BUDGETED (S-T)		180,353		180,353
Use of State Institutions				
ALL BUDGETED EXPENSES (S-T)				
Allotment Free Non-Budgeted				
TOTAL ALLOTMENTS		180,353		180,353

FUNDING SOURCE	DOC SUBSIDY	COUNTY	OTHER	TOTAL
State Community Corrections Subsidy				
County General Revenue Fund				
Other (explain)				
Fees from Dakota County Human Services Revenue		180,353		180,353
Grants from				
Other Dept.				
Miscellaneous				
TOTAL BUDGETED FUNDING FOR PROGRAM		180,353		180,353

## C4. NONRESIDENTIAL - ADULT Outpatient Services

### 1. ORGANIZATION

The adult misdemeanor and adult felony units have not been budgeted in the past for outpatient services.

---

### 1. DESCRIPTION

Department of Corrections and Court Services staff refer clients to human services and mental health resources for chemical dependency services (Rule #25) and psychological testing. These services are provided through a county contract or with social services staff. Consequently, there is no corrections cost. Many clients receive chemical dependency treatment using their own insurance.

Education programs that focus on the DWI offender are supported entirely by offender fees. Client fees are used for this purpose.

---

### 3. CLIENT ACTIVITY

Not applicable.

---

### 4. STAFF COMPLEMENT

Not applicable.

---

### 5. ANNUAL ACTION PLAN

**Maintenance Goal:** Provide a variety of services to offenders by utilizing the metropolitan resources that fill each defendant's needs.

**Objectives:**

- a. Provide staff support to allow the Community Corrections Advisory Board Adult Committee to focus attention on misdemeanor offenses suitable for referral to outpatient programs by June 30, 1990.
  - b. Develop a list of community based alternatives which provide education for misdemeanor offenders by March 31, 1990.
-

## D. LOCAL INCARCERATION AND DETENTION

### D1. JUVENILE

#### 1. ORGANIZATION

Dakota County does not have a juvenile detention center.

#### 2. DESCRIPTION

For youngsters requiring secure detention, services are purchased from the Anoka County Juvenile Center, Minnesota Correctional Facility-Red Wing, Ramsey County Juvenile Center and the Hennepin County Juvenile Center.

For youngsters requiring shelter care, services are purchased from Harbor Shelter South and Harbor Shelter North, or in emergency foster homes when available.

#### 3. CLIENT ACTIVITY

Eighty-two (82) juveniles were detained in secure facilities during 1988. An additional eighty-seven (87) were detained in shelter care or emergency foster care.

#### 4. STAFF COMPLEMENT

Not applicable.

#### 5. ANNUAL ACTION PLAN

**Maintenance Goal:** To provide a range of detention alternatives through the use of purchase of service for juveniles under the jurisdiction of the Court.

**Objectives:**

- a. Utilize emergency foster homes or shelter care facilities when the safety of the community and the safety of the child are not jeopardized.
- b. Continue to provide secure detention capability through purchase of service.



## MINNESOTA DEPARTMENT OF CORRECTIONS (DOC)

## COMMUNITY CORRECTIONS ACT

BUDGET SUMMARY FOR THE Juvenile Detention PROGRAM☒ ANNUAL19 90 DAKOTA COUNTY COMMUNITY CORRECTIONS SYSTEM☐ SUPPLEMENT #       

FUNDING SOURCE	DOC SUBSIDY	COUNTY	OTHER	TOTAL FUNDING
<u>Expense Class</u>				
Personnel	.....			
Service and Contractual	.....			60,000
Supplies & Materials	.....			
Capital	.....			
Outlays	.....			
Other Expenditures	.....			
DIRECT EXPENSES BUDGETED (S-T)		60,000		60,000
Use of State Institutions		.....	.....	
ALL BUDGETED EXPENSES (S-T)		60,000		60,000
Allotment Free				
Non-Budgeted				
TOTAL ALLOTMENTS		60,000		60,000

FUNDING SOURCE	DOC SUBSIDY	COUNTY	OTHER	TOTAL
State Community Corrections Subsidy				
County General Revenue Fund				
Other (explain)	.....	.....	.....	.....
Fees from <u>Dakota County Human Services</u>				
<u>Revenues</u>		60,000		60,000
Grants from				
Other Dept.				
Miscellaneous				
TOTAL BUDGETED FUNDING FOR PROGRAM		60,000		60,000

## **D2. ADULT**

### **1. ORGANIZATION**

The adult corrections facility for Dakota County is the Dakota County Jail. Construction completion and opening of the jail facility in Dakota County occurred in late 1988. The facility has space for a maximum of 144 inmates. Classification of inmates, however, predicated the overcrowding of some inmate areas (maximum security vs. work release), while the overall population remains under the maximum number.

Clients detained as inmates report as ordered by the Dakota County District Court. Overload of inmates, such as work release, is periodically contracted to other counties when space is not available.

The Dakota County Jail is a division of the Dakota County Sheriff's Department. The Department is under the administrative and statutory authority of the sheriff.

---

### **2. DESCRIPTION**

During 1989, the corrections department provided jail programming support to the Dakota County Law Enforcement facility. In the early part of 1989, deferred sentencing was implemented to alleviate overcrowding and reduce the need for outside contracting for "jail space".

On February 23, 1989, the corrections department initiated electronic home monitored detention as a sentencing alternative for the repeat DWI offender. Through September 1, 1989, approximately 150 offenders participated in the program and eliminated the need for 4,000+ bed space days that would have had to have been purchased, or made available in the jail facility. The department participates in the Dakota County family violence project. Offenders arrested and charged with violence, are reviewed by staff on a daily basis for conditional release. During 1989, the department centralized its' work release processing from the court. Corrections staff located in the law enforcement center, review all court approved work release inmates for eligibility and assignment to work release.

---

### **3. CLIENT ACTIVITY**

Corrections staff provide the court, located in the law enforcement facility with bail reviews, as requested by the court

Table # 1 indicates the number of jail days sentenced, number of offenders and average number of days between Court sentencing and incarceration.

Table # 2 demonstrates offense type, individual offenders in the offense category and average number of jail days served.

## Client Activity (continued)

I. Represents the number of jail days, offenders and average wait before reporting to jail.

MONTH	TOTAL DAYS	# OFFENDERS	AVE. WAIT (Days)
August (1988)	1,038	11	94
September	3,300	43	76
October	3,099	57	54
November	2,383	49	48
December	1,439	45	31

II. The table below represents how many offenders of each offense type were deferred. The table also indicates the average jail days sentenced.

OFFENDER TYPE	# OFFENDERS	AVE. JAIL SENTENCE (Days)
Repeat DWI	65	25
DAS, DAR, DAC	43	8
Misd. DWI	25	14
Drug Possession	15	89
Crim. Sex. 2,3,4	7	96
Assault	5	16
OTHER	52	51
Total number of offenders from driving violations	133	Average Sentence 16 days

## 4. STAFF COMPLEMENT

One (1) FTE is assigned to coordinate the start of sentence scheduling. The position is directly supervised by Sheriff's Department personnel. The Sheriff's Department contracts with the Dakota County Community Corrections Department for the responsibilities and activities of this position. A case aide position is assigned half time to assist the probation officer. The sheriff's Department provides quarterly reporting as required.

	<u>CURRENT</u>	<u>PROPOSED</u>
Probation Officer	1.0	1.0
Case Aide	<u>.5</u>	<u>.5</u>
<b>TOTAL</b>	<b>1.5</b>	<b>1.5</b>

## 5. ANNUAL ACTION PLAN

**Maintenance Goal:** Continue to develop alternatives for inmates of the Dakota County Jail to reduce overcrowding.

### **Objectives:**

- Provide for the planned introduction of electronic monitored home detention for sentenced appropriate inmates, as a method of returning the offender to the community while remaining under jail sentence. Introduce program recommendation to the adult committee by March 31, 1990.
- Develop and implement a centralized work release program for the courts to use when sentencing offenders to jail custody under work release provisions March 31, 1990.

## Annual Action Plan (continued)

- c. Develop and implement a centralized bail evaluation and public defender eligibility program for courts to use when arraigning felony, domestic violence and other defendants subject to the court's discretion by 3-31-90.
-

## MINNESOTA DEPARTMENT OF CORRECTIONS (DOC)

## COMMUNITY CORRECTIONS ACT

BUDGET SUMMARY FOR THE Adult Local Incarceration PROGRAM☒ ANNUAL19 90 DAKOTA COUNTY COMMUNITY CORRECTIONS SYSTEM☐ SUPPLEMENT

FUNDING SOURCE	DOC SUBSIDY	COUNTY	OTHER	TOTAL FUNDING
----------------	-------------	--------	-------	---------------

## Expense Class

Personnel				66,667
Service and Contractual				
Supplies & Materials				
Capital Outlays				
Other Expenditures				
DIRECT EXPENSES BUDGETED (S-T)		68,481	9,326	77,807
Use of State Institutions				
ALL BUDGETED EXPENSES (S-T)		68,481	9,326	77,807
Allotment Free Non-Budgeted				
TOTAL ALLOTMENTS		68,481	9,326	77,807

FUNDING SOURCE	DOC SUBSIDY	COUNTY	OTHER	TOTAL
State Community Corrections Subsidy				
County General Revenue Fund				
Other (explain)				
Fees from				
Probation Officer Subsidy				
General Revenue		68,481		68,481
Grants from				
Other Dept.				
Miscellaneous				
TOTAL BUDGETED FUNDING FOR PROGRAM		68,481	9,326	77,807

## E. RELATED SERVICES

### DOMESTIC RELATIONS

#### 1. ORGANIZATION

The domestic relations division is a related service of the Department of Community Corrections.

#### 2. DESCRIPTION

Custody mediation counseling is a process designed to give the family primary responsibility for the determination of custody of children. Mediation is a process that is outlined in statute. Courts in Dakota County are required to keep a list of approved mediators. The qualifications of the mediators are promulgated by the state courts training office, which is an administrative arm of the State Supreme Court.

Mediation is a service which has been extended by the Community Corrections Department since 1981. In 1986, the Dakota County Court determined that mediation would be offered to all parties in dispute concerning the custody and needs of their children. Parties who could not agree to mediation, and who needed more formal structured investigation, were referred to outside agencies for evaluation, at the parties' personal expense.

The resolution of child visitation issues is also a responsibility of the Community Corrections Department. The probation officer assigned to these cases, helps the parties focus on the needs and rights of their children.

The above services are provided as ordered to clients in the divorce process whose case involving children is before the Dakota County Court.

#### 3. CLIENT ACTIVITY

CASE ASSIGNMENT:	1987	1988
Custody	82	81
Visitation	100	124
Total	182	205

#### 4. STAFF COMPLEMENT

	Current 1989	Proposed 1990
Probation Officer	1.5	1.5
Clerical staff	.2	.2
TOTAL	1.7	1.7

#### 5. ANNUAL ACTION PLAN

**Maintenance Goal:** Provide mediation and visitation resolution services ordered by the Courts of Dakota County as ordered in a timely and professional manner.

# VICTIM ADVOCATE SERVICES

## 1. ORGANIZATION

Services for victims of family abuse are provided by the B. Robert Lewis House Shelter, located in Eagan, Minnesota.

---

## 2. DESCRIPTION

A Domestic Abuse Intervention Project is in place for the communities of Apple Valley, Eagan and Burnsville, all located in the Western part of Dakota County. The project has as its primary goal to promote a consistent criminal justice and social service response to family violence. The project seeks to accomplish this goals by:

- coordinating with criminal justice professionals.
  - providing support and advocacy for victims of family violence.
- 

## 3. CLIENT ACTIVITY

Thirty five volunteers worked with the Intervention Project in 1988, donating 6,789 hours. During 1988, there were 1,755 contacts with victims and assailants.

---

## 4. STAFF COMPLEMENT

### Proposed 1990

	United Way	CCA
Salary (1FTE @ \$9.68 hr.)	\$17,666	
Fringe benefits	<u>2,334</u>	3,723
Program costs		<u>2,243</u>
<b>Total</b>	<b>\$20,000</b>	<b>\$5,966</b>

---

## 5. ANNUAL ACTION PLAN

**Maintenance Goal:** Coordinate and promote a consistent criminal justice and social service response to victims and perpetrators involved in family violence and alleviate stressful consequences for victims relating to the criminal justice system.

**Objective:**

- a. Seek funding for services in 1991 by applying for United Way funds by 7-1-90.
-

MINNESOTA DEPARTMENT OF CORRECTIONS (DOC)  
COMMUNITY CORRECTIONS ACT

BUDGET SUMMARY FOR THE Related Service PROGRAM

☒ ANNUAL

19 90 DAKOTA COUNTY COMMUNITY CORRECTIONS SYSTEM

☐ SUPPLEMENT #     

FUNDING SOURCE	DOC SUBSIDY	COUNTY	OTHER	TOTAL FUNDING
<b>Expense Class</b>				
Personnel	.....			84,992
Service and Contractual	.....			12,650
Supplies & Materials	.....			
Capital Outlays	.....			
Other Expenditures	.....			
DIRECT EXPENSES BUDGETED (S-T)	450			97,642
Use of State Institutions		.....	.....	
ALL BUDGETED EXPENSES (S-T)	450	97,192		
Allotment Free Non-Budgeted				
TOTAL ALLOTMENTS	450	97,192		97,642

FUNDING SOURCE	DOC SUBSIDY	COUNTY	OTHER	TOTAL
State Community Corrections Subsidy				
County General Revenue Fund				
Other (explain)	.....	.....	.....	.....
Fees from <u>General Revenue</u>		97,642		97,642
Grants from				
Other Dept.				
Miscellaneous				
TOTAL BUDGETED FUNDING FOR PROGRAM		97,642		97,642



## F. USE OF STATE INSTITUTION

### F1. JUVENILE

#### 1. ORGANIZATION

There are two state facilities for the incarceration of juveniles, at Red Wing and Sauk Centre.

---

#### 2. DESCRIPTION

The program provides funds for juveniles committed to the Commissioner of Corrections and placed at the Minnesota Correctional Facility at Red Wing or Sauk Centre.

Clients under probation supervision who have exhausted all community based resources are eligible for this program.

---

#### 3. CLIENT ACTIVITY

During 1988, fourteen (14) juvenile boys were under commitment orders to the Commissioner. Eleven boys were committed during 1988. There were no juvenile females committed to the Commissioner during 1988.

---

#### 4. STAFF COMPLEMENT

Not applicable.

---

#### 5. ANNUAL ACTION PLAN

**Maintenance Goal:** To reserve sufficient funding to pay for chargeable juvenile commitments.

**Objective:**

- a. Minimize the use of state institutions by utilizing appropriate community resources prior to commitment.
-

## F 2. ADULT

### 1. ORGANIZATION

Commitments are made to the Commissioner of Corrections of those felons deemed appropriate per sentencing guidelines.

### 2. DESCRIPTION

The following Minnesota Corrections facilities are utilized for committed felons:

- >Oak Park Heights
- >Stillwater
- >St. Cloud
- >Lino Lakes
- >Shakopee
- >Red Wing
- >Willow River Camp

### 3. CLIENT ACTIVITY

During 1988, there were 69 adult offenders committed to state correctional institutions.

### 4. STAFF COMPLEMENT

Not applicable.

### 5. ANNUAL ACTION PLAN

Maintenance Goal: To continue to provide the current level of service to correctional clients.

Objective: To study the feasibility of intensive supervision for offenders on supervised release from State Correctional Institutions to reduce return to prison by 7-1-90.

**III.  
PLANNING  
FOR THE  
FEMALE OFFENDER**

## FEMALE OFFENDERS - JUVENILE

### 1. ORGANIZATION

Juvenile female offenders are served by the Juvenile Probation Unit. Juveniles are assigned to probation officers in relation to the geographical area they serve. No specialized services are offered.

### 2. DESCRIPTION

During 1988, 110 juvenile females were referred to Juvenile Court. Of these females, 102 are White, 3 are Hispanic, 2 are Black, and 3 are Oriental.

### 3. CLIENT ACTIVITY

In 1988, 110 offenders were charged on 140 petitions. The majority of crimes committed by female offenders fall into the following categories:

Assault V	9
Shoplifting	14
Other theft	26
Criminal damage to property	6
Forgery or uttering	11
Unauthorized use of a motor vehicle	8
Tampering with auto	8
DWI	7
Other traffic	26
<b>TOTAL</b>	<b>115</b>

The remainder of the crimes committed included burglary, assault II, disorderly conduct, drug related crimes, receiving stolen property, obstructing legal process, trespassing, fleeing police, curfew, runaway, and false report of crime.

Out of home placements were arranged for 38 juvenile females during 1988 at a cost of \$69,314.40. The majority (21) were placed in shelter care. No females were placed in State correctional facilities.

### 4. STAFF COMPLEMENT

No specialized staff is assigned to serving juvenile female offenders.

### 5. ANNUAL ACTION PLAN

**Maintenance Goal:** To provide services appropriate to the needs of juvenile female offenders.

**Objectives:**

- a. Present information to the Community Corrections Advisory Board Juvenile Committee regarding programming available for juvenile female offenders by August 1, 1990.

## FEMALE OFFENDER - ADULT

### INTRODUCTION

The Dakota County Adult Probation Units provide service to those adult female offenders who commit misdemeanor, gross misdemeanor and felony crimes. Sanctions include fines, incarceration, restitution and/or community work service. Female offenders are frequently the sole parent or principally responsible for parenting. Therefore, community work service is used more often than with men and we anticipate a growing use of electronic home monitoring as a way of holding female offenders accountable and, at the same time, address their special needs. Additional ways to improve case management and services to female offenders will be addressed in 1990.

Female felony offenders are supervised by probation officers in the felony unit. The felony pre-sentence investigation unit provides reports to the court.

---

### ANNUAL ACTION PLAN

**Maintenance Goal:** To provide appropriate and comprehensive services to female offenders to facilitate compliance with the orders of the court and to address the unique needs of female offenders.

**Objectives:**

- a. Develop a system of data collection to provide information about the female offender in Dakota County by March 31, 1990.
  - b. Collect data on female offenders by way of the case classification system by March 31, 1990.
  - c. Review current services offered for female offenders in Dakota county by June 30, 1990.
  - d. Develop a plan for meeting the needs of female offenders by September 30, 1990.
-

## **BUDGET ADDENDUM**

MINNESOTA DEPARTMENT OF CORRECTIONS (DOC)

COMMUNITY CORRECTIONS ACT SUBSIDY COMPREHENSIVE PLAN BUDGET

County of: DAKOTA Budget Year 1990 ☒ Annual ☐ Supplement

FUNDING SOURCE	DOC SUBSIDY	COUNTY	OTHER	TOTAL FUNDING
<u>Expense Class</u>				
Personnel				2,121 312
Service and Contractual				1 301 137
Supplies & Materials				16 613
Capital Outlays				
Other Expenditures				
DIRECT EXPENSES				
BUDGETED S-T	1,241,074	1 997 488	228 500	3 467 062
Use of State Institutions	300,000			300 000
ALL BUDGETED EXPENSES (S-T)	1,541,074	1,997,488	228,500	3,767,062
Allotment Free Non-Budgeted				
TOTAL ALLOTMENTS	1,541,074	1,997 488	228 500	3 767 062
Unallotted Non - Programmed	44 124			44 124
TOTAL APPROPRIATION	1 585 198	1 997 4	22 00	

FUNDING SOURCE REALIZATION SUMMARY	DOC SUBSIDY	COUNTY	OTHER	TOTAL
Estimated Free Balance Forward				
Plus: Confirmed Budget Year Receipts				
Plus: Conditional Budget Year Receipts				
TOTAL ANTICIPATED BUDGET YEAR RECEIPTS				

Staff Training Budget (Minimum Requirement - 2% of Subsidy) \$ \_\_\_\_\_

Minimum County Level of Spending Base Year: \_\_\_\_\_ \$ \_\_\_\_\_

Minimum County Level of Spending Current Year: \_\_\_\_\_ \$ \_\_\_\_\_

MINNESOTA DEPARTMENT OF CORRECTIONS (DOC)  
COMMUNITY CORRECTIONS ACT

BUDGET SUMMARY FOR THE Administration PROGRAM

☒ ANNUAL

19 90 DAKOTA COUNTY COMMUNITY CORRECTIONS SYSTEM

☐ SUPPLEMENT

FUNDING SOURCE	DOC SUBSIDY	COUNTY	OTHER	TOTAL FUNDING
<u>Expense Class</u>				
Personnel				143,661
Service and Contractual				103,350
Supplies & Materials				16,613
Capital Outlays				28,000
Other Expenditures				
DIRECT EXPENSES BUDGETED (S-T)	81,552	210,072		291,624
Use of State Institutions				
ALL BUDGETED EXPENSES (S-T)	81,552	210,072		291,624
Allotment Free Non-Budgeted				
TOTAL ALLOTMENTS	81,552	210,072		291,624

FUNDING SOURCE	DOC SUBSIDY	COUNTY	OTHER	TOTAL
State Community Corrections Subsidy				
County General Revenue Fund				
Other (explain)				
Fees from General Revenue		210,072		210,072
CCA Subsidy	81,552			81,552
Grants from				
Other Dept.				
Miscellaneous				
TOTAL BUDGETED FUNDING FOR PROGRAM	81,552	210,072		291,624



## MINNESOTA DEPARTMENT OF CORRECTIONS (DOC)

## COMMUNITY CORRECTIONS ACT

EXPENDITURE DETAIL FOR THE Administration PROGRAM☒ ANNUAL19 90 DAKOTA COUNTY COMMUNITY CORRECTIONS SYSTEM☐ SUPPLEMENT #

PERSONNEL	DOC SUBSIDY	COUNTY	OTHER	TOTAL FUNDING
<u>Salaries: Position Title</u>	<u>%TIME</u>			
1) <u>Director</u>				55 478
2) <u>Probation Officer</u>	100	36 851		36,851
3) <u>Administrative Clerical</u>	100	26,962		26,962
4) _____				
5) _____				
6) _____				
7) _____				
8) _____				
9) _____				
10) _____				
<u>Client/</u>				
<u>Inmate:</u>				
<u>Salaries Subtotal</u>	38 042	81 049		119,291
<u>Fringe Benefits (% Rate of Salar =</u>		24 370		24,370
<u>Salaries and Fringe Benefits Subtotal</u>	38,042	105,619		143,661
<u>Estimate for Salaries &amp; Fringe Increase</u>				
<u>TOTAL PERSONNEL</u>	38,042	105,619		143,661

SERVICE AND CONTRACTUAL	DOC SUBSIDY	COUNTY	OTHER	TOTAL FUNDING
<u>Travel</u>				
<u>Mileage &amp;</u>				
<u>Auto Gas</u>		3 623		3,623
<u>Common</u>				
<u>Carrier</u>				
<u>Meals</u>				
<u>Lod In</u>				
<u>Per Diem</u>	5,200			5,200
<u>Conference</u>				
<u>Fees &amp; Expense</u>	15,050			15,050
<u>Miscellaneous Ex lain</u>				
<u>Travel Subtotal</u>	20,250	3,623		23,873

## MINNESOTA DEPARTMENT OF CORRECTIONS (DOC)

## COMMUNITY CORRECTIONS ACT

EXPENDITURE DETAIL FOR THE Administration PROGRAM

☒ ANNUAL

19 90 DAKOTA COUNTY COMMUNITY CORRECTIONS SYSTEM

☐ SUPPLEMENT #

SERVICE AND CONTRACTUAL (Continued)	DOC SUBSIDY	COUNTY	OTHER	TOTAL FUNDING
Rents & Leases		26,261		26,261
Advertising		523		523
Repair Services		19,504		19,504
Insurance & Bonds				
Printing & Duplicating		6,136		6,136
Consultant Advisement	8,500	2,100		10,600
Professional & Technical Services		800		800
Data Processing				
Purchased Services				
Communications	13,260			13,260
Utility Services				
Care of Persons Purchased / Contract				
Medical Care				
Freight & Express		160		160
Permits & Licenses				
Tuition Fees				
Individual / Group Subscriptions & Memberships	1,500	733		2,233
TOTAL SERVICE & CONTRACTUAL Includes Travel	43,510	59,840		103,350
SUPPLIES AND MATERIALS	DOC SUBSIDY	COUNTY	OTHER	TOTAL FUNDING
Office Supplies		12,000		12,000
Educational, Library, and Training Supplies				
Security, Detention, and Safety Supplies				
Food and Beverages				
Clothing and Individual Supplies				
Household and Medical Supplies				
Recreational and Cultural Supplies				
Tools, Shop, Repair, and Replacements				
Other Supplies (Explain)		4,613		4,613
TOTAL SUPPLIES AND MATERIALS		16,613		16,613

## MINNESOTA DEPARTMENT OF CORRECTIONS (DOC)

## COMMUNITY CORRECTIONS ACT

EXPENDITURE DETAIL FOR THE Administration PROGRAM☒ ANNUAL19 90 DAKOTA COUNTY COMMUNITY CORRECTIONS SYSTEM☐ SUPPLEMENT #

CAPITAL OUTLAYS	DOC SUBSIDY	COUNTY	OTHER	TOTAL FUNDING
-----------------	-------------	--------	-------	---------------

Equipment (Itemize)

1) <u>    Furnishings    </u>		8,000		8,000
2) <u>Personal Computer Hardware</u>		20,000		20,000
3) _____				
4) _____				
5) _____				
6) _____				
<u>Equipment Subtotal</u>		28,000		28,000

Real Property (Itemize)

1) _____				
2) _____				
<u>TOTAL CAPITAL OUTLAYS</u>				28,000

OTHER EXPENDITURES	DOC SUBSIDY	COUNTY	OTHER	TOTAL FUNDING
<u>Client Allowances</u>				
<u>Claims and Awards</u>				
<u>Taxes and Fines</u>				
<u>Grants and Subsidies</u>				
<u>Miscellaneous (Explain)</u>				
<u>TOTAL OTHER EXPENDITURES</u>				

## USE OF STATE DOC INSTITUTIONS

Juvenile _____	Commit's @ _____	Average Day x \$ _____ / Day = \$ _____	(Per Diem #1)
Juvenile _____	Commit's @ _____	Average Day x \$ _____ / Day = \$ _____	(Per Diem #2)
<u>Juvenile Total .....</u>			\$ _____

## MINNESOTA DEPARTMENT OF CORRECTIONS (DOC)

## COMMUNITY CORRECTIONS ACT

BUDGET SUMMARY FOR THE Juvenile Probation PROGRAM☒ ANNUAL1990 DAKOTA COUNTY COMMUNITY CORRECTIONS SYSTEM☐ SUPPLEMENT #

FUNDING SOURCE	DOC SUBSIDY	COUNTY	OTHER	TOTAL FUNDING
----------------	-------------	--------	-------	---------------

Expense Class

Personnel				640,725
-----------	--	--	--	---------

Service and Contractual				29,670
-------------------------	--	--	--	--------

Supplies & Materials				
----------------------	--	--	--	--

Capital Outlays				
-----------------	--	--	--	--

Other Expenditures				
--------------------	--	--	--	--

DIRECT EXPENSES BUDGETED (S-T)	250,269	268,599	151,525	670,395
--------------------------------	---------	---------	---------	---------

Use of State Institutions	300,000			300,000
---------------------------	---------	--	--	---------

ALL BUDGETED EXPENSES (S-T)	550,269	268,599	151,525	970,395
-----------------------------	---------	---------	---------	---------

Allotment Free Non-Budgeted				
-----------------------------	--	--	--	--

TOTAL ALLOTMENTS	550,269	268,599	151,525	970,395
------------------	---------	---------	---------	---------

FUNDING SOURCE	DOC SUBSIDY	COUNTY	OTHER	TOTAL
----------------	-------------	--------	-------	-------

State Community Corrections Subsidy				
County General Revenue Fund				
Other (explain)				

Fees from				
County General Revenue		268,599		268,599

Probation Officer Subsidy			151,525	151,525
CCA subsidy	550,269			550,269

Grants from				
-------------	--	--	--	--

--	--	--	--	--

Other Dept.				
-------------	--	--	--	--

--	--	--	--	--

Miscellaneous				
---------------	--	--	--	--

--	--	--	--	--

TOTAL BUDGETED FUNDING FOR PROGRAM	550,269	268,599	151,525	970,395
------------------------------------	---------	---------	---------	---------

## MINNESOTA DEPARTMENT OF CORRECTIONS (DOC)

## COMMUNITY CORRECTIONS ACT

EXPENDITURE DETAIL FOR THE Juvenile Probation PROGRAM☒ ANNUAL19 90 DAKOTA COUNTY COMMUNITY CORRECTIONS SYSTEM☐ SUPPLEMENT #

PERSONNEL		DOC SUBSIDY	COUNTY	OTHER	TOTAL FUND	
Salary :	Position Title	TIME				
1)	Program Manager (1)	100	18,170	18,170	12,122	48,462
2)	Supervisor (1)	100	13,003	13,003	12,122	38,128
3)	Probation Officers (10.5)	100	109,142	109,142	127,281	345,565
4)	Case Managers (2)	100	21,873	21,873		43,746
5)	Community Work Service (.9)	100	6,992	6,992		13,985
6)	Clerical (2.3)	100	17,862	17,862		35,724
7)						
8)						
9)						
10)						
Client/ Inmate:						
Salaries Subtotal					151 525	525 610
Prin e Benefits % Rate of Salar =						115 115
Salaries and Prin e Benefits Subtotal			244 599	244,599	151,525	640,724
Estimate for Salaries & Prin e Increase						
TOTAL PERSONNEL			244,599	244,599	151,525	640,724

SERVICE AND CONTRACTUAL	DOC SUBSIDY	COUNTY	OTHER	TOTAL FUND
Travel				
Mileage & Auto Gas		00		24,000
Common Carrier				
Meals				
Lod in				
Per Diem				
Conference Fees & Ex ense	5,670			5,670
Miscellaneous (Explain)				
T-avel Subtotal				

## MINNESOTA DEPARTMENT OF CORRECTIONS (DOC)

## COMMUNITY CORRECTIONS ACT

EXPENDITURE DETAIL FOR THE Juvenile Probation PROGRAM☒ ANNUAL19 90 DAKOTA COUNTY COMMUNITY CORRECTIONS SYSTEM☐ SUPPLEMENT #

SERVICE AND CONTRACTUAL (Continued) DOC-SUBSIDY COUNTY OTHER TOTAL FUNDING

Rents &amp; Leases

Advertising

Repair Services

Insurance &amp; Bonds

Printing &amp;

Du ca in

Consultant

Advisement

Professional &amp;

Technical Services

Data Processing

Purchased Services

Communications

Utility Services

Care of Persons

Purchased / Contract

Medical Care

Freight &amp; Express

Permits &amp; Licenses

Tuition Fees

Individual / Group

Subscriptions

&amp; Memberships

	Includes Travel	DOC-SUBSIDY	COUNTY	OTHER	TOTAL FUNDING
TOTAL SERVICE & CONTRACTUAL		5,670	24,000		29,670

SUPPLIES AND MATERIALS DOC SUBSIDY COUNTY OTHER TOTAL FUNDING

Office Supplies

Educational, Library,  
and Training SuppliesSecurity, Detention,  
and Safety Supplies

Food and Beverages

Clothing and  
Individual SuppliesHousehold and  
Medical SuppliesRecreational and  
Cultural SuppliesTools, Shop, Repair,  
and ReplacementsOther Supplies  
(Explain)

TOTAL SUPPLIES AND MATERIALS

# MINNESOTA DEPARTMENT OF CORRECTIONS (DOC)

## COMMUNITY CORRECTIONS ACT

EXPENDITURE DETAIL FOR THE Juvenile Probation PROGRAM

☒ ANNUAL

19 90 DAKOTA COUNTY COMMUNITY CORRECTIONS SYSTEM

☐ SUPPLEMENT #

CAPITAL OUTLAYS	COUNTY	COUNTY	OTHER	TOTAL FUNDING
<u>Equipment (Itemize)</u>				
1) _____				
2) _____				
3) _____				
4) _____				
5) _____				
6) _____				
<u>Equipment Subtotal</u>				
<u>Real Property (Itemize)</u>				
1) _____				
2) _____				
<u>TOTAL CAPITAL OUTLAYS</u>				

OTHER EXPENDITURES	DOC SUBSIDY	COUNTY	OTHER	TOTAL FUNDING
<u>Client Allowances</u>				
<u>Claims and Awards</u>				
<u>Taxes and Fines</u>				
<u>Grants and Subsidies</u>				
<u>Miscellaneous Exlain</u>				
<u>TOTAL OTHER EXPENDITURES</u>				

### USE OF STATE DOC INSTITUTIONS

Juvenile \_\_\_\_\_ Commit's @ \_\_\_\_\_ Average Day x \$ \_\_\_\_\_ / Day = \$ \_\_\_\_\_ (Per Diem #1)

Juvenile \_\_\_\_\_ Commit's @ \_\_\_\_\_ Average Day x \$ \_\_\_\_\_ / Day = \$ \_\_\_\_\_ (Per Diem #2)

Juvenile Total ..... \$

# MINNESOTA DEPARTMENT OF CORRECTIONS (DOC)

## COMMUNITY CORRECTIONS ACT

BUDGET SUMMARY FOR THE Adult Felony Probation PROGRAM

☒ ANNUAL

19 90 DAKOTA COUNTY COMMUNITY CORRECTIONS SYSTEM

☐ SUPPLEMENT #

FUNDING SOURCE	DOC SUBSIDY	COUNTY	OTHER	TOTAL FUNDING
<u>Expense Class</u>				
Personnel				624,296
Service and Contractual				61,925
Supplies & Materials				
Capital Outlays				
Other Expenditures				
DIRECT EXPENSES				
BUDGETED (S-T)	625,038	61,183		686,221
Use of State Institutions				
ALL BUDGETED EXPENSES (S-T)	625,038	61,183		686,221
Allotment Free Non-Budgeted				
TOTAL ALLOTMENTS	625,038	61,183		686,221

FUNDING SOURCE	DOC SUBSIDY	COUNTY	OTHER	TOTAL
State Community Corrections Subsidy				
County General Revenue Fund				
Other (explain)				
Fees from <u>County General Revenue</u>		61,183		61,183
<u>CCA Subsidy</u>	625,038			625,038
Grants from				
Other Dept.				
Miscellaneous				
TOTAL BUDGETED FUNDING FOR PROGRAM	625,038	61,183		686,221



## MINNESOTA DEPARTMENT OF CORRECTIONS (DOC)

## COMMUNITY CORRECTIONS ACT

EXPENDITURE DETAIL FOR THE Adult Felony Probation PROGRAM☒ ANNUAL19 90 DAKOTA COUNTY COMMUNITY CORRECTIONS SYSTEM☐ SUPPLEMENT #     

PERSONNEL	DOC SUBSIDY	COUNTY	OTHER	TOTAL FUNDING
<u>Salaries: Position Title</u>	<u>%TIME</u>			
1) Program Manager (.5)	100	23,164		23,164
2) Supervisor (1)	100	8,912	33,364	42,276
3) Probation Officers (13)	100	399,893		399,893
4) Clerical (3.5)	100	54,438		54,438
5)				
6)				
7)				
8)				
9)				
10)				
Client/				
Inmate:				
Salaries Subtotal	463,243	56,528		519,771
Fringe Benefits (% Rate of Salary= )	99,870	4,655		104,525
Salaries and Fringe Benefits Subtotal	563,113	61,183		624,296
Estimate for Salaries & Fringe Increase				
TOTAL PERSONNEL	563,113	61,183		624,296

SERVICE AND CONTRACTUAL	DOC SUBSIDY	COUNTY	OTHER	TOTAL FUNDING
<u>Travel</u>				
Mileage & Auto Gas	30,000			30,000
Common Carrier				
Meals				
Lodging				
Per Diem				
Conference Fees & Expense	5,700			5,700
Miscellaneous (Explain)				
Travel Subtotal	35,700			35,700

## MINNESOTA DEPARTMENT OF CORRECTIONS (DOC)

## COMMUNITY CORRECTIONS ACT

EXPENDITURE DETAIL FOR THE Adult Felony Probation PROGRAM☒ ANNUAL1990 DAKOTA COUNTY COMMUNITY CORRECTIONS SYSTEM☐ SUPPLEMENT #

SERVICE AND CONTRACTUAL (Continued) DOC SUBSIDY COUNTY OTHER TOTAL FUNDING

Rents & Leases				
Advertising				
Repair Services				
Insurance & Bonds				
Printing &				
Duplicating				
Consultant				
Advisement				
Professional &				
Technical Services(PSI)	24,725			24,725

Data Processing				
Purchased Services				
Communications				
Utility Services				
Care of Persons				
Purchased / Contract				
Medical Care (UA's)	1,500			1,500

Freight & Express				
Permits & Licenses				
Tuition Fees				
Individual / Group				
Subscriptions				
& Memberships				

TOTAL SERVICE & CONTRACTUAL	Includes Travel	61,925			61,925
-----------------------------	-----------------	--------	--	--	--------

SUPPLIES AND MATERIALS DOC SUBSIDY COUNTY OTHER TOTAL FUNDING

Office Supplies				
Educational, Library, and Training Supplies				
Security, Detention, and Safety Supplies				
Food and Beverages				
Clothing and				
Individual Supplies				
Household and				
Medical Supplies				
Recreational and				
Cultural Supplies				
Tools, Shop, Repair, and Replacements				
Other Supplies				
(Explain)				

TOTAL SUPPLIES AND MATERIALS

MINNESOTA DEPARTMENT OF CORRECTIONS (DOC)

COMMUNITY CORRECTIONS ACT

EXPENDITURE DETAIL FOR THE Adult Felony Probation PROGRAM

☒ ANNUAL

19 90 DAKOTA COUNTY COMMUNITY CORRECTIONS SYSTEM

☐ SUPPLEMENT #

CAPITAL OUTLAYS	DOC SUBSIDY	COUNTY	OTHER	TOTAL FUNDING
<u>Equipment (Itemize)</u>				
1)				
2)				
3)				
4)				
5)				
6)				
<u>Equipment Subtotal</u>				
<u>Real Property (Itemize)</u>				
1)				
2)				
<u>TOTAL CAPITAL OUTLAYS</u>				

OTHER EXPENDITURES	DOC SUBSIDY	COUNTY	OTHER	TOTAL FUNDING
<u>Client Allowances</u>				
<u>Claims and Awards</u>				
<u>Taxes and Fines</u>				
<u>Grants and Subsidies</u>				
<u>Miscellaneous (Explain)</u>				
<u>TOTAL OTHER EXPENDITURES</u>				

USE OF STATE DOC INSTITUTIONS

Juvenile	Commit's	Average Day x \$	/ Day = \$	(Per Diem #1)
Juvenile	Commit's	Average Day x \$	/ Day = \$	(Per Diem #2)
<u>Juvenile Total</u>				<u>\$</u>

MINNESOTA DEPARTMENT OF CORRECTIONS (DOC)

COMMUNITY CORRECTIONS ACT

BUDGET SUMMARY FOR THE Adult Misdemeanor Probation PROGRAM

☒ ANNUAL

19 90 DAKOTA COUNTY COMMUNITY CORRECTIONS SYSTEM

☐ SUPPLEMENT #

FUNDING SOURCE	DOC SUBSIDY	COUNTY	OTHER	TOTAL FUNDING
<u>Expense Class</u>				
Personnel				560,971
Service and				
Contractual				21,784
Supplies &				
Materials				
Capital				
Outlays				
Other				
Expenditures				
DIRECT EXPENSES				
BUDGETED (S-T)	250,266	264,840	67,649	582,755
Use of State				
Institutions				
ALL BUDGETED				
EXPENSES (S-T)	250,266	264,840	67,649	
Allotment Free				
Non-Budgeted				
TOTAL				
ALLOTMENTS	250,266	264,840	67,649	582,755

FUNDING SOURCE	DOC SUBSIDY	COUNTY	OTHER	TOTAL
State Community Corrections Subsidy				
County General Revenue Fund				
Other (explain)				
Fees from				
County General Revenue		264,840		264,840
CCA Subsidy	250,266			250,266
Probation Reimbursement			67,649	67,649
Grants from				
Other Dept.				
Miscellaneous				
TOTAL BUDGETED FUNDING FOR PROGRAM	260,266	264,840	67,649	582,755

## MINNESOTA DEPARTMENT OF CORRECTIONS (DOC)

## COMMUNITY CORRECTIONS ACT

EXPENDITURE DETAIL FOR THE Adult Misdemeanor Probation PROGRAM☒ ANNUAL19 90 DAKOTA COUNTY COMMUNITY CORRECTIONS SYSTEM☐ SUPPLEMENT #

PERSONNEL	DOC SUBSIDY	COUNTY	OTHER	TOTAL FUNDING
<u>Salaries: Position Title</u>	<u>%TIME</u>			
1) Program Manager 5	100 11,582	11,582		23,164
2) Supervisor (1)	100 20,230	20,230		40,460
3) Probation Officers (6.35)	100 115,837	115,837	67,649	299,323
4) Case Managers (1.5)	100 13,014	13,014		26,029
5) Clerical (2.4)	100 18,647	18,647		37,295
6) Community Work Service (1.2)	100 15,000	15,000		30,000
7)				
8)				
9)				
10)				
Client/				
Inmate:				
Salaries Subtotal	194,310	194,310	67,649	456,270
Fringe Benefits (% Rate of Salary= )	52,351	52,351		104,702
Salaries and Fringe Benefits Subtotal	246,661	246,661	67,649	560,971
Estimate for Salaries & Fringe Increase				
TOTAL PERSONNEL	246,661	246,661	67,649	560,971

SERVICE AND CONTRACTUAL	DOC SUBSIDY	COUNTY	OTHER	TOTAL FUNDING
<u>Travel</u>				
Mileage & Auto Gas		8,179		8,179
Common Carrier				
Meals				
Lodging				
Per Diem				
Conference Fees & Expense	3,605			3,605
Miscellaneous (Explain)				
Travel Subtotal	3,605	8,179		11,784

## MINNESOTA DEPARTMENT OF CORRECTIONS (DOC)

## COMMUNITY CORRECTIONS ACT

EXPENDITURE DETAIL FOR THE Adult Misdemeanor Probation PROGRAM☒ ANNUAL19 90 DAKOTA COUNTY COMMUNITY CORRECTIONS SYSTEM ☐ SUPPLEMENT #

SERVICE AND CONTRACTUAL (Continued) DOC SUBSIDY COUNTY OTHER TOTAL FUNDING

Rents & Leases				
Advertising				
Repair Services				
Insurance & Bonds				
Printing & Duplicating				
Consultant				
Advisement				
Professional & Technical Services				
Data Processing				
Purchased Services (EHM)		10,000		10,000
Communications				
Utility Services				
Care of Persons				
Purchased / Contract				
Medical Care				
Freight & Express				
Permits & Licenses				
Tuition Fees				
Individual / Group				
Subscriptions				
& Memberships				
TOTAL SERVICE & CONTRACTUAL	Includes Travel	3,605	18,179	21,784
SUPPLIES AND MATERIALS	DOC SUBSIDY	COUNTY	OTHER	TOTAL FUNDING
Office Supplies				
Educational, Library, and Training Supplies				
Security, Detention, and Safety Supplies				
Food and Beverages				
Clothing and Individual Supplies				
Household and Medical Supplies				
Recreational and Cultural Supplies				
Tools, Shop, Repair, and Replacements				
Other Supplies				
(Explain)				

TOTAL SUPPLIES AND MATERIALS

MINNESOTA DEPARTMENT OF CORRECTIONS (DOC)

COMMUNITY CORRECTIONS ACT

EXPENDITURE DETAIL FOR THE Adult Misdemeanor Probation PROGRAM

☐ ANNUAL

19 90 DAKOTA COUNTY COMMUNITY CORRECTIONS SYSTEM

☐ SUPPLEMENT #

CAPITAL OUTLAYS	COUNTY SUBSIDY	COUNTY	OTHER	TOTAL FUNDING
-----------------	----------------	--------	-------	---------------

Equipment (Itemize)

1) _____				
2) _____				
3) _____				
4) _____				
5) _____				
6) _____				

Equipment Subtotal

Real Property (Itemize)

1) _____				
2) _____				

TOTAL CAPITAL OUTLAYS

OTHER EXPENDITURES	DOC SUBSIDY	COUNTY	OTHER	TOTAL FUNDING
--------------------	-------------	--------	-------	---------------

<u>Client Allowances</u>				
<u>Claims and Awards</u>				
<u>Taxes and Fines</u>				
<u>Grants and Subsidies</u>				
<u>Miscellaneous (Explain)</u>				
<u>TOTAL OTHER EXPENDITURES</u>				

USE OF STATE DOC INSTITUTIONS

Juvenile _____	Commit's @ _____	Average Day x \$ _____ / Day = \$ _____	(Per Diem #1)
Juvenile _____	Commit's @ _____	Average Day x \$ _____ / Day = \$ _____	(Per Diem #2)
Juvenile Total .....			\$ _____

## MINNESOTA DEPARTMENT OF CORRECTIONS (DOC)

## COMMUNITY CORRECTIONS ACT

BUDGET SUMMARY FOR THE Residential Juvenile PROGRAM☒ ANNUAL19 90 Dakota COUNTY COMMUNITY CORRECTIONS SYSTEM☐ SUPPLEMENT #

FUNDING SOURCE	DOC SUBSIDY	COUNTY	OTHER	TOTAL FUNDING
<u>Expense Class</u>				
Personnel	*****			
Service and	*****			
Contractual	*****			790,265
Supplies &	*****			
Materials	*****			
Capital	*****			
Outlays	*****			
Other	*****			
Expenditures	*****			
DIRECT EXPENSES				
BUDGETED (S-T)		790,265		790,265
Use of State		*****	*****	
Institutions		*****	*****	
ALL BUDGETED				
EXPENSES (S-T)				
Allotment Free				
Non-Budgeted				
TOTAL				
ALLOTMENTS		790,265		790,265

FUNDING SOURCE	DOC SUBSIDY	COUNTY	OTHER	TOTAL
State Community Corrections Subsidy				
County General Revenue Fund				
Other (explain)	*****	*****	*****	*****
Fees from				
Human services levy		790,265		790,265
Grants from				
Other Dept.				
Miscellaneous				
TOTAL BUDGETED FUNDING FOR PROGRAM		790,265		790,265



## MINNESOTA DEPARTMENT OF CORRECTIONS (DOC)

## COMMUNITY CORRECTIONS ACT

EXPENDITURE DETAIL FOR THE Residential Juvenile PROGRAM☒ ANNUAL19 90 Dakota COUNTY COMMUNITY CORRECTIONS SYSTEM☐ SUPPLEMENT #     

PERSONNEL	DOC SUBSIDY	COUNTY	OTHER	TOTAL FUNDI
<u>Salaries: Position Title</u>	<u>%TIME</u>			
1) _____				
2) _____				
3) _____				
4) _____				
5) _____				
6) _____				
7) _____				
8) _____				
9) _____				
10) _____				
Client/				
Inmate:				
Salaries Subtotal				
Fringe Benefits (% Rate of Salary= )				
Salaries and Fringe Benefits Subtotal				
Estimate for Salaries & Fringe Increase				
TOTAL PERSONNEL				

SERVICE AND CONTRACTUAL	DOC SUBSIDY	COUNTY	OTHER	TOTAL FUNDIN
<u>Travel</u>				
Mileage &				
Auto Gas				
Common				
Carrier				
Meals				
Lodging				
Per Diem				
Conference				
Fees & Expense				
Miscellaneous (Explain)				
Travel Subtotal				

## MINNESOTA DEPARTMENT OF CORRECTIONS (DOC)

## COMMUNITY CORRECTIONS ACT

EXPENDITURE DETAIL FOR THE Residential , Juvenile PROGRAM☒ ANNUAL1990 Dakota COUNTY COMMUNITY CORRECTIONS SYSTEM☐ SUPPLEMENT #

SERVICE AND CONTRACTUAL (Continued)	DOC SUBSIDY	COUNTY	OTHER	TOTAL FUNDING
Rents & Leases				
Advertising				
Re a r Services				
Insurance & Bonds				
Printing & Duplicating				
Consultant				
Advisement				
Professional & Technical Services				
Data Processing				
Purchased Services				
Communications				
Utility Services				
Care of Persons				
Purchased / Contract (JUVENILE PLACEMENTS)		790,265		790,265
Medical Care				
Freight & Express				
Permits & Licenses				
Tuition Fees				
Individual / Group				
Subscriptions & Memberships				
TOTAL SERVICE & CONTRACTUAL	Includes Travel	790,265		790,265
SUPPLIES AND MATERIALS	DOC SUBSIDY	COUNTY	OTHER	TOTAL FUNDING
Office Supplies				
Educational, Library, and Training Supplies				
Security, Detention, and Safety Supplies				
Food and Beverages				
Clothing and Individual Supplies				
Household and Medical Supplies				
Recreational and Cultural Supplies				
Tools, Shop, Repair, and Replacements				
Other Supplies				
Ex lain				
TOTAL SUPPLIES AND MATERIALS				

MINNESOTA DEPARTMENT OF CORRECTIONS (DOC)

COMMUNITY CORRECTIONS ACT

BUDGET SUMMARY FOR THE Adult residential PROGRAM

☒ ANNUAL

19 90 DAKOTA COUNTY COMMUNITY CORRECTIONS SYSTEM

☐ SUPPLEMENT #     

FUNDING SOURCE	DOC SUBSIDY	COUNTY	OTHER	TOTAL FUNDING
<u>Expense Class</u>				
Personnel				
Service and Contractual				30,000
Supplies & Materials				
Capital Outlays				
Other Expenditures				
DIRECT EXPENSES BUDGETED (S-T)	30,000			30,000
Use of State Institutions				
ALL BUDGETED EXPENSES (S-T)				
Allotment Free Non-Budgeted				
TOTAL ALLOTMENTS	30,000			30,000

FUNDING SOURCE	DOC SUBSIDY	COUNTY	OTHER	TOTAL
State Community Corrections Subsidy				
County General Revenue Fund				
Other (explain)				
Fees from <u>Community Corrections Subsidy</u>	30,000			30,000
Grants from				
Other Dept.				
Miscellaneous				
TOTAL BUDGETED FUNDING FOR PROGRAM	30,000			30,000

## MINNESOTA DEPARTMENT OF CORRECTIONS (DOC)

## COMMUNITY CORRECTIONS ACT

EXPENDITURE DETAIL FOR THE Adult Residential PROGRAM☒ ANNUAL19 90 DAKOTA COUNTY COMMUNITY CORRECTIONS SYSTEM☐ SUPPLEMENT #

PERSONNEL	DOC SUBSIDY	COUNTY	OTHER	TOTAL FUNDING
<u>Salaries: Position Title</u>	<u>%TIME</u>			
1)				
2)				
3)				
4)				
5)				
6)				
7)				
8)				
9)				
10)				
Client/				
Inmate:				
Salaries Subtotal				
Fringe Benefits (% Rate of Salary= )				
Salaries and Fringe Benefits Subtotal				
Estimate for Salaries & Fringe Increase				
TOTAL PERSONNEL				

SERVICE AND CONTRACTUAL	DOC SUBSIDY	COUNTY	OTHER	TOTAL FUNDING
<u>Travel</u>				
Mileage &				
Auto Gas				
Common				
Carrier				
Meals				
Lodging				
Per Diem				
Conference				
Fees & Expense				
Miscellaneous (Explain)				
Travel-Subtotal				

## MINNESOTA DEPARTMENT OF CORRECTIONS (DOC)

## COMMUNITY CORRECTIONS ACT

EXPENDITURE DETAIL FOR THE Adult residential PROGRAM☒ ANNUAL19 90 DAKOTA COUNTY COMMUNITY CORRECTIONS SYSTEM☐ SUPPLEMENT #

CAPITAL OUTLAYS	OC SU S	COUNT	OTHER	TOTAL FUNDING
<u>Equipment (Itemize)</u>				
1)				
2)				
3)				
4)				
5)				
6)				
<u>Equipment Subtotal</u>				
<u>Real Property (Itemize)</u>				
1)				
2)				
<u>TOTAL CAPITAL OUTLAYS</u>				

OTHER EXPENDITURES	DOC SUBSIDY	COUNTY	OTHER	TOTAL FUNDING
<u>Client Allowances</u>				
<u>Claims and Awards</u>				
<u>Taxes and Fines</u>				
<u>Grants and Subsidies</u>				
<u>Miscellaneous Ex lain</u>				
<u>TOTAL OTHER EXPENDITURES</u>				

## USE OF STATE DOC INSTITUTIONS

Juvenile \_\_\_\_\_ Commit's @ \_\_\_\_\_ Average Day x \$ \_\_\_\_\_ / Day = \$ \_\_\_\_\_ (Per Diem #1)

Juvenile \_\_\_\_\_ Commit's @ \_\_\_\_\_ Average Day x \$ \_\_\_\_\_ / Day = \$ \_\_\_\_\_ (Per Diem #2)

Juvenile Total ..... \$

## MINNESOTA DEPARTMENT OF CORRECTIONS (DOC)

## COMMUNITY CORRECTIONS ACT

EXPENDITURE DETAIL FOR THE Adult Residential PROGRAM☒ ANNUAL19 90 DAKOTA COUNTY COMMUNITY CORRECTIONS SYSTEM☐ SUPPLEMENT &

SERVICE AND CONTRACTU. Co Inued DOC SUBS D COUNTY OTHER TOTAL FUNDING

Rents & Leases					
Advertising					
Repair Services					
Insurance & Bonds					
Printing & Duplicating					
Consultant					
Advisement					
Professional & Technical Services					
Data Process n					
Purchased Services		30,000			30,000
Communications					
Utility Services					
Care of Persons					
Purchased / Contract					
Medical Care					
Frei ht & Ex ress					
Permits & Licenses					
Tuition Fees					
Individual / Group					
Subscriptions & Memberships					
TOTAL SERVICE CONTRACTUAL	Includes Travel	0			30,000
SUPPLIES AND MATERIALS		DOC SUBSIDY	COUNTY	OTHER	TOTAL FUNDI
Office Su lles					
Educational, Library, and Training Supplies					
Security, Detention, and Safety Supplies					
Food and Beverages					
Clothing and Individual Supplies					
Household and Medical Supplies					
Recreational and Cultural Supplies					
Tools, Shop, Repair, and Replacements					
Other Supplies					
Ex laln					
TOTAL SUPPLIES AND MATERIALS					

MINNESOTA DEPARTMENT OF CORRECTIONS (DOC)

COMMUNITY CORRECTIONS ACT

BUDGET SUMMARY FOR THE Juvenile Non-residential PROGRAM

☒ ANNUAL

19 90 DAKOTA COUNTY COMMUNITY CORRECTIONS SYSTEM

☐ SUPPLEMENT #       

FUNDING SOURCE	DOC SUBSIDY	COUNTY	OTHER	TOTAL FUNDING
<u>Expense Class</u>				
Personnel	*****			
Service and Contractual	*****			180,353
Supplies & Materials	*****			
Capital Outlays	*****			
Other Expenditures	*****			
DIRECT EXPENSES BUDGETED (S-T)		180,353		180,353
Use of State Institutions		*****	*****	
ALL BUDGETED EXPENSES (S-T)				
Allotment Free Non-Budgeted				
TOTAL ALLOTMENTS		180,353		180,353

FUNDING SOURCE	DOC SUBSIDY	COUNTY	OTHER	TOTAL
State Community Corrections Subsidy				
County General Revenue Fund				
Other (explain)	*****	*****	*****	*****
Fees from <u>Dakota County Human Services</u>				
Revenue		180,353		180,353
Grants from				
Other Dept.				
Miscellaneous				
TOTAL BUDGETED FUNDING FOR PROGRAM		180,353		180,353

## MINNESOTA DEPARTMENT OF CORRECTIONS (DOC)

## COMMUNITY CORRECTIONS ACT

EXPENDITURE DETAIL FOR THE Juvenile Non-residential PROGRAM☒ ANNUAL19 90 DAKOTA COUNTY COMMUNITY CORRECTIONS SYSTEM☐ SUPPLEMENT #

PERSONNEL	DOC SUBSIDY	COUNTY	OTHER	TOTAL FUNDING
Salaries: Position Title	%TIME			
1)				
2)				
3)				
4)				
5)				
6)				
7)				
8)				
9)				
10)				
Client/				
Inmate:				
Salaries Subtotal				
Fringe Benefits (% Rate of Salary= )				
Salaries and Fringe Benefits Subtotal				
Estimate for Salaries & Fringe Increase				
TOTAL PERSONNEL				

SERVICE AND CONTRACTUAL	DOC SUBSIDY	COUNTY	OTHER	TOTAL FUNDING
Travel				
Mileage &				
Auto Gas				
Common				
Carrier				
Meals				
Lodging				
Per Diem				
Conference				
Fees & Expense				
Miscellaneous (Explain)				
Travel Subtotal				



## MINNESOTA DEPARTMENT OF CORRECTIONS (DOC)

## COMMUNITY CORRECTIONS ACT

EXPENDITURE DETAIL FOR THE Juvenile Non-residential PROGRAM☒ ANNUAL19 90 DAKOTA COUNTY COMMUNITY CORRECTIONS SYSTEM☐ SUPPLEMENT #

SERVICE AND CONTRACTU	Co inued	DOC SUBS DY	COUNTY	OTHER	TOTAL FUNDING
Rents & Leases					
Advertising					
Re air Serv ces					
Insurance & Bonds					
Printing &					
Du l ca in					
Consultant					
Advisement					
Professional &			180,353		180,353
Technical Services					
Data Processing					
Purchased Services					
Communications					
Utility Services					
Care of Persons					
Purchased Contract					
Medical Care					
Freight & Express					
Permits & Licenses					
Tuition Fees					
Individual Grou					
Subscriptions					
& Memberships					
TOTAL SERVICE & CONTRACTUAL	Includes Travel		180,353		180,353
SUPPLIES AND MATERIALS		DOC SUBSIDY	COUNTY	OTHER	TOTAL FUNDING
Office Supplies					
Educational, Library, and Traini u lies					
Security, Detention, and Safety Supplies					
Food and Save a es					
Clothing and					
Individual Su lies					
Household and					
Medical Su lies					
Recreational and					
Cultural Su lies					
Tools, Shop, Repair, and Re lacements					
Other Supplies					
Ex lain					
TOTAL SUPPLIES AND MATERIALS					

MINNESOTA DEPARTMENT OF CORRECTIONS (DOC)

COMMUNITY CORRECTIONS ACT

EXPENDITURE DETAIL FOR THE Juvenile Non-residential PROGRAM

☒ ANNUAL

19 90 DAKOTA COUNTY COMMUNITY CORRECTIONS SYSTEM

☐ SUPPLEMENT

CAPITAL OUTLAYS	OC SUBSID	COUNTY	OTHER	TOTAL FUNDING
<u>Equipment (Itemize)</u>				
1) _____				
2) _____				
3) _____				
4) _____				
5) _____				
6) _____				
<u>Equipment Subtotal</u>				
<u>Real Property (Itemize)</u>				
1) _____				
2) _____				
<u>TOTAL CAPITAL OUTLAYS</u>				

OTHER EXPENDITURES	DOC SUBSIDY	COUNTY	OTHER	TOTAL FUNDING
<u>Client Allowances</u>				
<u>Claims and Awards</u>				
<u>Taxes and Fines</u>				
<u>Grants and Subsidies</u>				
<u>Miscellaneous Explain</u>				
<u>TOTAL OTHER EXPENDITURES</u>				

USE OF STATE DOC INSTITUTIONS

Juvenile \_\_\_\_\_ Commit's @ \_\_\_\_\_ Average Day x \$ \_\_\_\_\_ / Day = \$ \_\_\_\_\_ (Per Diem #1)  
 Juvenile \_\_\_\_\_ Commit's @ \_\_\_\_\_ Average Day x \$ \_\_\_\_\_ / Day = \$ \_\_\_\_\_ (Per Diem #2)  
 Juvenile Total ..... \$ \_\_\_\_\_

MINNESOTA DEPARTMENT OF CORRECTIONS (DOC)

COMMUNITY CORRECTIONS ACT

BUDGET SUMMARY FOR THE Juvenile Detention PROGRAM

☒ ANNUAL

19 90 DAKOTA COUNTY COMMUNITY CORRECTIONS SYSTEM

☐ SUPPLEMENT #     

FUNDING SOURCE	DOC SUBSIDY	COUNTY	OTHER	TOTAL FUNDING
Expense Class				
Personnel				
Service and Contractual				60,000
Supplies & Materials				
Capital Outlays				
Other Expenditures				
DIRECT EXPENSES BUDGETED (S-T)	60,000			60,000
Use of State Institutions				
ALL BUDGETED EXPENSES (S-T)	60,000			60,000
Allotment Free Non-Budgeted				
TOTAL ALLOTMENTS	60,000			60,000

FUNDING SOURCE	DOC SUBSIDY	COUNTY	OTHER	TOTAL
State Community Corrections Subsidy				
County General Revenue Fund				
Other (explain)				
Fees from <u>Dakota County Human Services</u>				
<u>Revenues</u>		60,000		60,000
Grants from				
Other Dept.				
Miscellaneous				
TOTAL BUDGETED FUNDING FOR PROGRAM		60,000		60,000

## MINNESOTA DEPARTMENT OF CORRECTIONS (DOC)

## COMMUNITY CORRECTIONS ACT

EXPENDITURE DETAIL FOR THE Juvenile Detention PROGRAM☒ ANNUAL19 90 DAKOTA COUNTY COMMUNITY CORRECTIONS SYSTEM☐ SUPPLEMENT #

SERVICE AND CONTRACTUAL (Continued) DOC SUBSIDY COUNTY OTHER TOTAL FUNDING

Rents & Leases				
Advertising				
Repair Services				
Insurance & Bonds				
Printing &				
Duplicating				
Consultant				
Advisement				
Professional &				
Technical Services (Juvenile Detention)		60.000		60.000

Data Processing

Purchased Services

Communications

Utility Services

Care of Persons

Purchased / Contract

Medical Care

Freight &amp; Express

Permits &amp; Licenses

Tuition Fees

Individual / Group

Subscriptions

&amp; Memberships

TOTAL SERVICE & CONTRACTUAL	Includes Travel	60.000		60.000
-----------------------------	-----------------	--------	--	--------

SUPPLIES AND MATERIALS DOC SUBSIDY COUNTY OTHER TOTAL FUNDING

Office Supplies

Educational, Library,  
and Training SuppliesSecurity, Detention,  
and Safety Supplies

Food and Beverages

Clothing and

Individual Supplies

Household and

Medical Supplies

Recreational and

Cultural Supplies

Tools, Shop, Repair,  
and Replacements

Other Supplies

(Explain)

TOTAL SUPPLIES AND MATERIALS

## MINNESOTA DEPARTMENT OF CORRECTIONS (DOC)

## COMMUNITY CORRECTIONS ACT

EXPENDITURE DETAIL FOR THE Juvenile Detention PROGRAM☐ ANNUAL19 90 DAKOTA COUNTY COMMUNITY CORRECTIONS SYSTEM☐ SUPPLEMENT #

PERSONNEL	DOC SUBSIDY	COUNTY	OTHER	TOTAL FUNDS
<u>Salaries: Position Title</u>	<u>%TIME</u>			
1)				
2)				
3)				
4)				
5)				
6)				
7)				
8)				
9)				
10)				
Client/				
Inmate:				
Salaries Subtotal				
Fringe Benefits (% Rate of Salary= )				
Salaries and Fringe Benefits Subtotal				
Estimate for Salaries & Fringe Increase				
TOTAL PERSONNEL				

SERVICE AND CONTRACTUAL	DOC SUBSIDY	COUNTY	OTHER	TOTAL FUNDS
<u>Travel</u>				
Mileage &				
Auto Gas				
Common				
Carrier				
Meals				
Lodging				
Per Diem				
Conference				
Fees & Expense				
Miscellaneous (Explain				
Travel Subtotal				

## MINNESOTA DEPARTMENT OF CORRECTIONS (DOC)

## COMMUNITY CORRECTIONS ACT

EXPENDITURE DETAIL FOR THE Juvenile Detention PROGRAM☐ ANNUAL1990 DAKOTA COUNTY COMMUNITY CORRECTIONS SYSTEM☐ SUPPLEMENT

CAPITAL OUTLAYS	DOC SUBSIDY	COUNTY	OTHER	TOTAL FUNDING
-----------------	-------------	--------	-------	---------------

Equipment (Itemize)

1)				
2)				
3)				
4)				
5)				
6)				

Equipment SubtotalReal Property (Itemize)

1)				
2)				

TOTAL CAPITAL OUTLAYS

OTHER EXPENDITURES	DOC SUBSIDY	COUNTY	OTHER	TOTAL FUNDING
--------------------	-------------	--------	-------	---------------

Client Allowances				
Claims and Awards				
Taxes and Fines				
Grants and Subsidies				
Miscellaneous (Explain)				
<u>TOTAL OTHER EXPENDITURES</u>				

## USE OF STATE DOC INSTITUTIONS

Juvenile \_\_\_\_\_ Commit's ● \_\_\_\_\_ Average Day x \$ \_\_\_\_\_ / Day = \$ \_\_\_\_\_ (Per Diem #1)

Juvenile \_\_\_\_\_ Commit's ● \_\_\_\_\_ Average Day x \$ \_\_\_\_\_ / Day = \$ \_\_\_\_\_ (Per Diem #2)

Juvenile Total ..... \$

## MINNESOTA DEPARTMENT OF CORRECTIONS (DOC)

## COMMUNITY CORRECTIONS ACT

BUDGET SUMMARY FOR THE Adult Local Incarceration PROGRAM☒ ANNUAL19 90 DAKOTA COUNTY COMMUNITY CORRECTIONS SYSTEM☐ SUPPLEMENT #

FUNDING SOURCE	DOC SUBSIDY	COUNTY	OTHER	TOTAL FUNDING
<u>Expense Class</u>				
Personnel	.....			66,667
Service and Contractual	.....			11,140
Supplies & Materials	.....			
Capital Outlays	.....			
Other Expenditures	.....			
DIRECT EXPENSES BUDGETED (S-T)		68,481	9,326	77,807
Use of State Institutions		.....	.....	
ALL BUDGETED EXPENSES (S-T)		68,481	9,326	77,807
Allotment Free Non-Budgeted				
TOTAL ALLOTMENTS		68,481	9,326	77,807

FUNDING SOURCE	DOC SUBSIDY	COUNTY	OTHER	TOTAL
State Community Corrections Subsidy				
County General Revenue Fund				
Other (explain)	.....	.....	.....	.....
Fees from				
Probation Officer Subsidy				
General Revenue		68 481		68 481
Grants from				
Other Dept.				
Miscellaneous				
TOTAL BUDGETED FUNDING FOR PROGRAM		68 481	9 326	77,807

## MINNESOTA DEPARTMENT OF CORRECTIONS (DOC)

## COMMUNITY CORRECTIONS ACT

EXPENDITURE DETAIL FOR THE Adult Local Incarceration PROGRAM☒ ANNUAL19 90 DAKOTA COUNTY COMMUNITY CORRECTIONS SYSTEM☐ SUPPLEMENT

PERSONNEL	DOC SUBSIDY	COUNTY	OTHER	TOTAL FUND
<u>Salaries: Position Title</u>	<u>%TIME</u>			
1) Probation Officer (1)	100			45,867
2) Case Manager (.5)	100			9,689
3)				
4)				
5)				
6)				
7)				
8)				
9)				
10)				
Client/ Inmate:				
<u>Salaries Subtotal</u>				55,556
<u>Fringe Benefits (% Rate of Salary= )</u>				11,111
<u>Salaries and Fringe Benefits Subtotal</u>				
<u>Estimate for Salaries &amp; Fringe Increase</u>				
<u>TOTAL PERSONNEL</u>				66,667

SERVICE AND CONTRACTUAL	DOC SUBSIDY	COUNTY	OTHER	TOTAL FUND
<u>Travel</u>				
Mileage & Auto Gas				
Common Carrier				
Meals				
Lod In				
Per Diem				
Conference				
Fees & Expense	540			540
Miscellaneous Expense				
<u>Travel Subtotal</u>	540			1,140



## MINNESOTA DEPARTMENT OF CORRECTIONS (DOC)

## COMMUNITY CORRECTIONS ACT

EXPENDITURE DETAIL FOR THE Adult Local Incarceration PROGRAM☒ ANNUAL19 90 DAKOTA COUNTY COMMUNITY CORRECTIONS SYSTEM☐ SUPPLEMENT #

SERVICE AND CONTRACTU.	Continued	DOC SUBSIDY	COUNTY	OTHER	TOTAL FUNDING
------------------------	-----------	-------------	--------	-------	---------------

Rents &amp; Leases

Advertising

Real Services

Insurance &amp; Bonds

Printing &amp;

Duplicating

Consultant

Advisement

Professional &amp;

Technical Services (EHM)

10,000

10,000

Data Processin

Purchased Services

Communications

Utility Services

Care of Persons

Purchased / Contract

Medical Care

Freight &amp; Express

Permits &amp; Licenses

Tuition Fees

Individual Group

Subscriptions

&amp; Memberships

TOTAL SERVICE CONTRACTUAL

Includes  
Travel

10,000

SUPPLIES AND MATERIALS

DOC SUBSIDY

COUNTY

OTHER

TOTAL FUNDING

Office Supplies

Educational, Library,

and Training Supplies

Security, Detention,

and Safety Supplies

Food and Beverages

Clothing and

Individual Supplies

Household and

Medical Supplies

Recreational and

Cultural Supplies

Tools, Shop, Repair,

and Replacements

Other Supplies

(Explain)

TOTAL SUPPLIES AND MATERIALS

# MINNESOTA DEPARTMENT OF CORRECTIONS (DOC)

## COMMUNITY CORRECTIONS ACT

EXPENDITURE DETAIL FOR THE Adult Local Incarceration PROGRAM

☒ ANNUAL

19 90 DAKOTA COUNTY COMMUNITY CORRECTIONS SYSTEM

☐ SUPPLEMENT

CAPITAL OUTLAYS	DOC SUBSIDY	COUNTY	OTHER	TOTAL FUNDING
-----------------	-------------	--------	-------	---------------

### Equipment (Itemize)

1)				
2)				
3)				
4)				
5)				
6)				

### Equipment Subtotal

### Real Property (Itemize)

1)				
2)				

### TOTAL CAPITAL OUTLAYS

OTHER EXPENDITURES	DOC SUBSIDY	COUNTY	OTHER	TOTAL FUNDING
--------------------	-------------	--------	-------	---------------

Client Allowances				
Claims and Awards				
Taxes and Fines				
Grants and Subsidies				
Miscellaneous (Explain)				
TOTAL OTHER EXPENDITURES				

### USE OF STATE DOC INSTITUTIONS

Juvenile	Commit's	Average Day x \$	/ Day = \$	(Per Diem #1)
Juvenile	Commit's	Average Day x \$	/ Day = \$	(Per Diem #2)
Juvenile Total			\$	

## MINNESOTA DEPARTMENT OF CORRECTIONS (DOC)

## COMMUNITY CORRECTIONS ACT

BUDGET SUMMARY FOR THE Related Service

PROGRAM

☒ ANNUAL19 90 DAKOTA COUNTY COMMUNITY CORRECTIONS SYSTEM☐ SUPPLEMENT #

FUNDING SOURCE	DOC SUBSIDY	COUNTY	OTHER	TOTAL FUNDING
<u>Expense Class</u>	=====			
Personnel	=====			84,992
Service and Contractual	=====			12,650
Supplies & Materials	=====			
Capital Outlays	=====			
Other Expenditures	=====			
DIRECT EXPENSES BUDGETED (S-T)	450			97,642
Use of State Institutions		=====	=====	
ALL BUDGETED EXPENSES (S-T)	450	97,192		
Allotment Free Non-Budgeted				
TOTAL ALLOTMENTS	450	97,192		97,642

FUNDING SOURCE	DOC SUBSIDY	COUNTY	OTHER	TOTAL
State Community Corrections Subsidy				
County General Revenue Fund				
Other (explain)	=====	=====	=====	=====
Fees from <u>General Revenue</u>		97,642		97,642
Grants from				
Other Dept.				
Miscellaneous				
TOTAL BUDGETED FUNDING FOR PROGRAM		97,642		97,642

## MINNESOTA DEPARTMENT OF CORRECTIONS (DOC)

## COMMUNITY CORRECTIONS ACT

EXPENDITURE DETAIL FOR THE Related services PROGRAM☒ ANNUAL19 90 DAKOTA COUNTY COMMUNITY CORRECTIONS SYSTEM☐ SUPPLEMENT #

PERSONNEL	DOC SUBSIDY	COUNTY	OTHER	TOTAL FUNDING
<u>Salaries: Position Title</u>	<u>%TIME</u>			
1) Probation Officer (1.5)	1.00	67,538		67,538
2) Clerical (.2)		3,009		3,009
3)				
4)				
5)				
6)				
7)				
8)				
9)				
10)				
Client/				
Inmate:				
Salaries Subtotal		70,547		70,547
Fringe Benefits (% Rate of Salary= )		14,445		14,445
Salaries and Fringe Benefits Subtotal		84,992		84,992
Estimate for Salaries & Fringe Increase				
TOTAL PERSONNEL		84,992		84,992

SERVICE AND CONTRACTUAL	DOC SUBSIDY	COUNTY	OTHER	TOTAL FUNDING
<u>Travel</u>				
Mileage & Auto Gas		1,200		1,200
Common Carrier				
Meals				
Lodging				
Per Diem				
Conference Fees & Expense	450			450
Miscellaneous (Explain)				
Travel Subtotal	450	1,200		1,650

## MINNESOTA DEPARTMENT OF CORRECTIONS (DOC)

## COMMUNITY CORRECTIONS ACT

EXPENDITURE DETAIL FOR THE Related Services PROGRAM☒ ANNUAL19 90 DAKOTA COUNTY COMMUNITY CORRECTIONS SYSTEM☐ SUPPLEMENT #

SERVICE AND CONTRACTUAL (Continued) DOC SUBSIDY COUNTY OTHER TOTAL FUNDING

Rents &amp; Leases

Advertising

Repair Services

Insurance &amp; Bonds

Printing &amp;

Duplicating

Consultant

Advisement

Professional &amp;

Technical Services

Data Processing

Purchased Services (Victim assistance)

11,000

11,000

Communications

Utility Services

Care of Persons

Purchased / Contract

Medical Care

Freight &amp; Express

Permits &amp; Licenses

Tuition Fees

Individual / Group

Subscriptions

&amp; Memberships

TOTAL SERVICE &amp; CONTRACTUAL Includes Travel

450

12,200

12,650

SUPPLIES AND MATERIALS

DOC SUBSIDY

COUNTY

OTHER

TOTAL FUNDING

Office Supplies

Educational, Library,  
and Training SuppliesSecurity, Detention,  
and Safety Supplies

Food and Beverages

Clothing and

Individual Supplies

Household and

Medical Supplies

Recreational and

Cultural Supplies

Tools, Shop, Repair,  
and Replacements

Other Supplies

(Explain)

TOTAL SUPPLIES AND MATERIALS

MINNESOTA DEPARTMENT OF CORRECTIONS (DOC)

COMMUNITY CORRECTIONS ACT

EXPENDITURE DETAIL FOR THE Related Services PROGRAM

☒ ANNUAL

19 90 Dakota COUNTY COMMUNITY CORRECTIONS SYSTEM

☐ SUPPLEMENT

CAPITAL OUTLAYS	DOC SUBSIDY	COUNTY	OTHER	TOTAL FUNDING
-----------------	-------------	--------	-------	---------------

Equipment (Itemize)

1)				
2)				
3)				
4)				
5)				
6)				

Equipment Subtotal

Real Property (Itemize)

1)				
2)				

TOTAL CAPITAL OUTLAYS

OTHER EXPENDITURES	DOC SUBSIDY	COUNTY	OTHER	TOTAL FUNDING
--------------------	-------------	--------	-------	---------------

Client Allowances				
Claims and Awards				
Taxes and Fines				
Grants and Subsidies				
Miscellaneous (Explain)				
<u>TOTAL OTHER EXPENDITURES</u>				

USE OF STATE DOC INSTITUTIONS

Juvenile	Commit's	Average Day x \$	/ Day = \$	(Per Diem #1)
Juvenile	Commit's	Average Day x \$	/ Day = \$	(Per Diem #2)
Juvenile Total				\$