

120276

STATE OF CALIFORNIA
YOUTH AND ADULT CORRECTIONAL AGENCY



LIFE PRISONER REPORT
ANNUAL
JULY 1, 1987 THROUGH JUNE 30, 1988

BOARD OF PRISON TERMS
NOVEMBER 30, 1988

120276

STATE OF CALIFORNIA BOARD OF PRISON TERMS

120276

U.S. Department of Justice
National Institute of Justice

This document has been reproduced exactly as received from the person or organization originating it. Points of view or opinions stated in this document are those of the authors and do not necessarily represent the official position or policies of the National Institute of Justice.

Permission to reproduce this copyrighted material has been
granted by
California Youth and Adult
Authority

to the National Criminal Justice Reference Service (NCJRS).

Further reproduction outside of the NCJRS system requires permission of the copyright owner.

RON E. KOENIG, Chairman

Commissioners
JOSEPH A. ACETO
DAVID E. BROWN
RUDOLPH CASTRO
RAY JAUREGUI
ALBERT M. LEDDY
MAUREEN A. O'CONNELL
DONALD E. RUDLOFF
EDMUND Y. S. TONG

ROBERT L. PATTERSON
Executive Officer

NOVEMBER 30, 1988

LIFE PRISONER REPORT

Prepared by
Management Information Section
ERLINDA T. CRUZ, Chief

545 Downtown Plaza, Suite 200
Sacramento, Ca 95814
(916)922-8148

PREFACE

The Annual Life Prisoner Report is a compendium of statistics generated during a fiscal year with respect to felons in state prison committed for sentences of life (with or without possibility of parole) or death. There are five major offenses with a life or death sentence term; 1) First degree murder, 2) Second degree murder, 3) Conspiracy to commit first degree murder, second degree murder, or kidnapping 4) Kidnapping for robbery or ransom, and 5) Assault by a life prisoner.

The report is presented in statistical tables classified in five categories:

- 1) Prisoner population data, by offense, by institution;
- 2) Decisions for parole consideration, by offense, by race, by sex;
- 3) Decisions on term setting, by offense and enhancements;
- 4) Confinement data, by total term, by post-conviction credit, by total period of confinement;
- 5) Parole data, by county, by offense.

The statistical charts present the highlights during Fiscal Year 1987/88 in graphic form. The life prisoner population is shown by offense with a frequency distribution by offense/sentence and by institution. The average parole denial rate is given in a historical trend by quarter from January 1983 through June 1988. The length of time until the next parole consideration hearing is presented with a frequency distribution by offense.

As of June 30, 1988, there were 7,256 persons in California prisons with a life or death sentence. This represents an increase of 703 or 10.7% over the June 30, 1987 level. Of this figure, 6,427 (88.6%) have sentences of life with possibility of parole

CONTENTS

NARRATIVES

Preface	i
Determination of Suitability For Release From Prison	10
Selection of Base Term	18
First Degree Murder, Category Descriptions	19
Second Degree Murder, Category Descriptions	23
Kidnapping For Robbery or Ransom, Category Descriptions	27
Confinement Data	40
Parole Data	44

CHARTS

Life Prisoner Population, By Offense/Sentence	1
Location Of Life Prisoner Population, By Institution/Sentence ..	2
Average Denial Rate By Quarter For Parole Consideration Hearings held	3
Length of Time Until Next Parole Consideration Hearing For Life Prisoners Found Unsuitable For Parole During Hearings Held, By Offense	4

TABLES

I. POPULATION DATA

Population of Life Prisoners With A "Death", "Life Without" or "Life With" Sentence By Institution And Offense For Life Prisoners In Prison As Of June 30, 1987	5
Population Of Life Prisoners With A "Death", "Life Without" Or "Life With" Sentence By Institution And Offense For Life Prisoners In Prison As Of June 30, 1988	6
Population Of Life Prisoners With A "Life With Possibility Of Parole" Sentence By Institution And Offense For Life Prisoners In Prison As Of June 30, 1988	8

II. SUITABILITY DATA

Suitable/Unsuitable Decision Rate For Parole Consideration Hearings Held, By Offense	11
Decision by Ethnicity For Life Prisoners With Parole Consideration Hearings Held	12
Use Of Factors of Unsuitability For Life Prisoners Found Unsuitable For Parole In Hearings Held	13
Use Of Suitability Factors For Life Prisoners Found Suitable For Parole In Hearings Held	14
Percentage Of Life Prisoners Found Suitable For Parole During Parole Consideration Hearings Held, By Quarter	15

Length Of Time Until Next Parole Consideration Hearing For Life Prisoners Found Unsuitable For Parole During Hearings Held, By Offense	16
Number Of Life Prisoner Parole Suitability Hearings Completed By Institution And By Hearing Type	17

III. TERM SETTING DATA

Frequency Of Placement In Base Term Matrix For Persons Convicted Of First Degree Murder And Found Suitable For Parole In Hearings Held	21
Placement Not As Suggested By Matrix For Persons Convicted Of First Degree Murder And Found Suitable For Parole In Hearings Held	22
Frequency Of Placement In Base Term Matrix For Persons Convicted Of Second Degree Murder And Found Suitable For Parole In Hearings Held	25
Placement Not As Suggested By Matrix For Persons Convicted Of Second Degree Murder And Found Suitable For Parole In Hearings Held	26
Frequency Of Placement In Base Term Matrix For Persons Convicted Of Kidnapping And Found Suitable For Parole In Hearings Held	29
Placement Not As Suggested By Matrix For Persons Convicted Of Kidnapping And Found Suitable For Parole In Hearings Held	30

Use Of Mitigation Factors For Base Offense For Life Prisoners Found Suitable For Parole In Hearings Held	31
Use Of Aggravation Factors For Base Offense For Life Prisoners Found Suitable For Parole In Hearings Held	32
Use Of Firearm And Enhancement For Use For Life Prisoners Found Suitable For Parole In Hearings Held	33
Number Of Consecutive Or Concurrent Crimes And Enhancements For Life Prisoners Found Suitable For Parole During Hearings Held	34
Consecutive Or Concurrent Crimes And Enhancements For Life Prisoners Convicted Of First Degree Murder And Found Suitable For Parole During Hearings Held, By Term In Months	35
Consecutive Or Concurrent Crimes And Enhancements For Life Prisoners Convicted Of Second Degree Murder And Found Suitable For Parole During Hearings Held, By Terms In Months	36
Consecutive Or Concurrent Crimes And Enhancements For Life Prisoners Convicted Of Kidnapping And Found Suitable For Parole During Hearings Held, By Term In Months	37
Consecutive Or Concurrent Crimes And Enhancements For Life Prisoners Convicted Of Assault By Life Prisoners And Found Suitable For Parole During Hearings Held	38
Number Of Prior Felony Convictions For Life Prisoners Found Suitable For Parole During Hearings Held	39

IV. CONFINEMENT DATA

Time From Date Received In Prison Until Currently Established
Parole Date (Time Will Be Reduced By Future Post-Conviction
Credits) For Life Prisoners In Prison With A Parole Date 41

Time From Hearing Date Until Currently Established Parole
Date (Time Will Be Reduced By Future Post-Conviction Credits)
For Life Prisoners In Prison With A Known Hearing Date And A
Parole Date 42

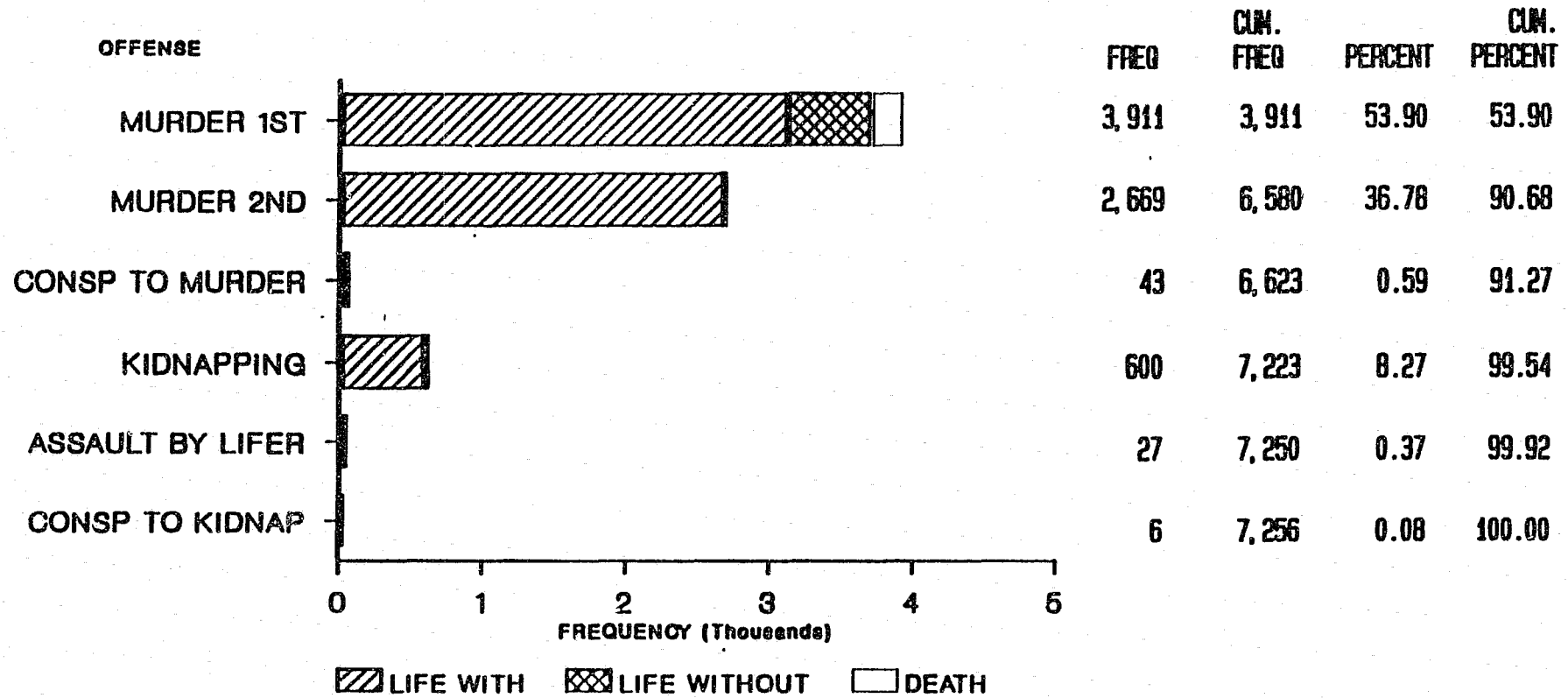
Total Term, Post-Conviction Credits, And Total Period Of
Confinement Established By The Panel For Life Prisoners
Found Suitable For Parole In Hearings Held 43

V. PAROLE DATA

Life Prisoners Released To Parole, By County Of Commitment
And Offense 45

Life Prisoners Released to Parole, By County Of Parole And
Offense 46

LIFE PRISONER POPULATION BY OFFENSE/SENTENCE AS OF JUNE 30, 1998

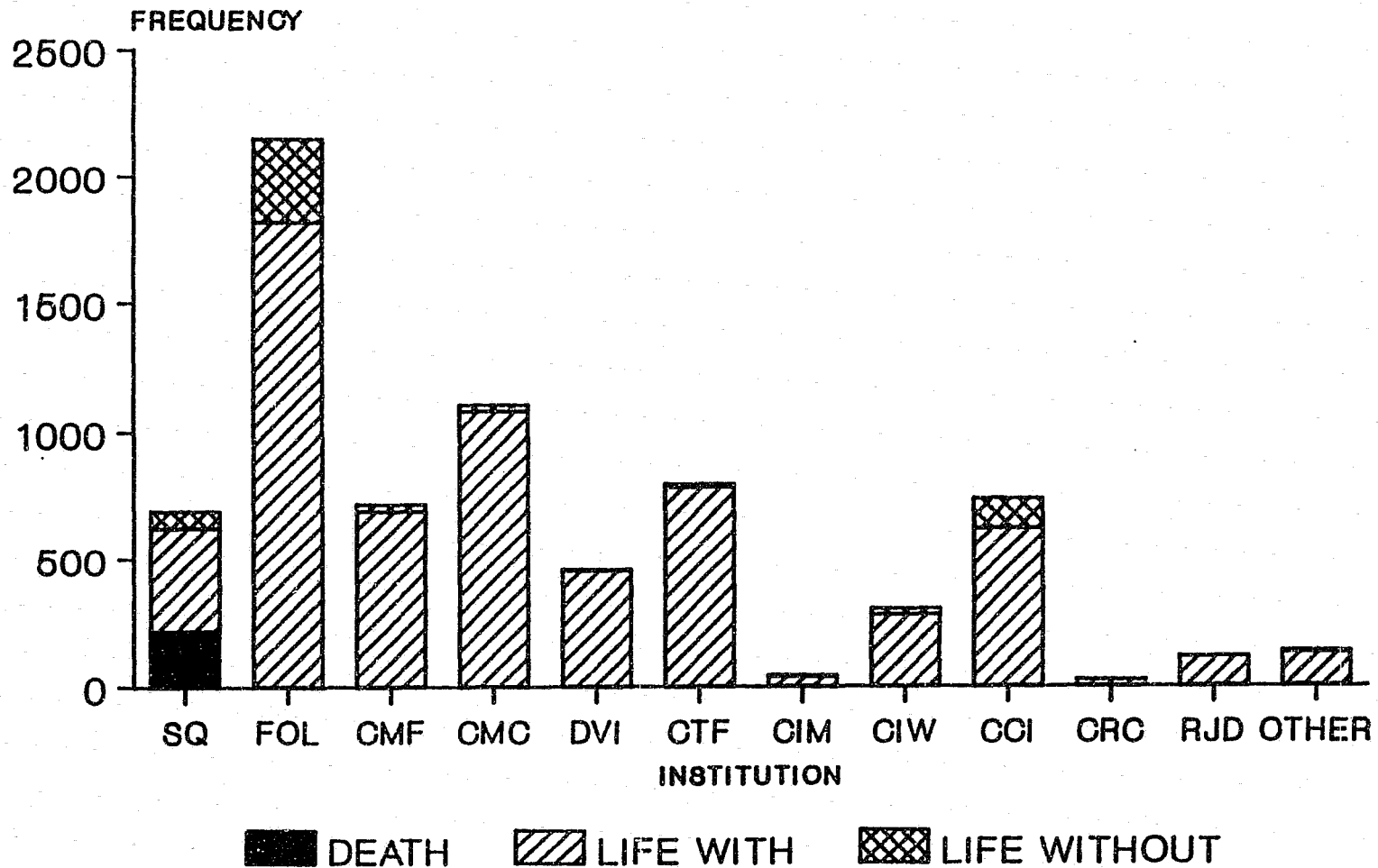


Excludes six persons who were convicted of attempted first degree murder, 18 habitual offenders, and two sex offenders, all serving 'life with parole' sentences.

LOCATION OF LIFE PRISONER POPULATION

BY INSTITUTION/SENTENCE

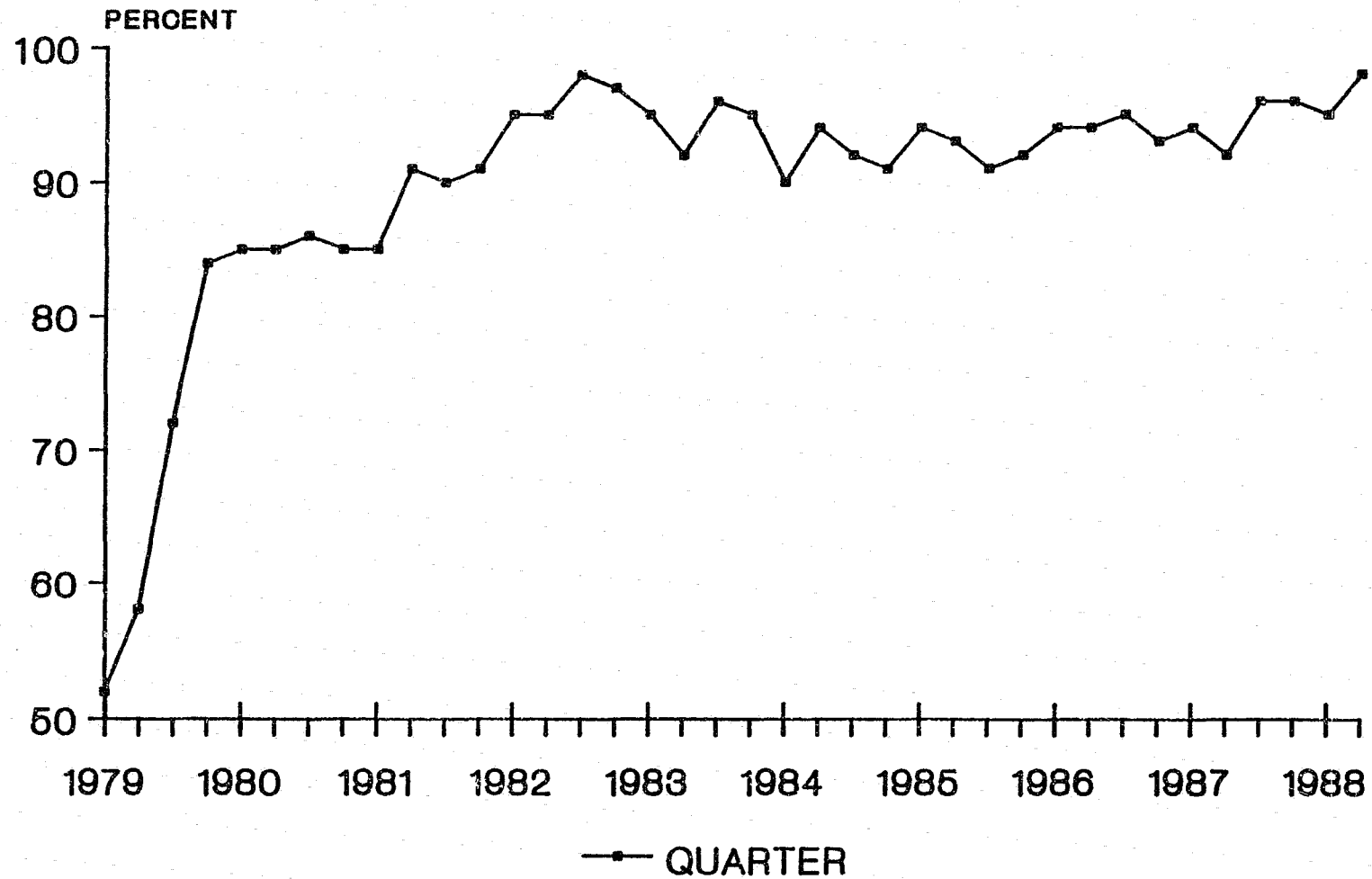
AS OF JUNE 30, 1988



AVERAGE DENIAL RATE BY QUARTER

FOR PAROLE CONSIDERATION HEARINGS HELD

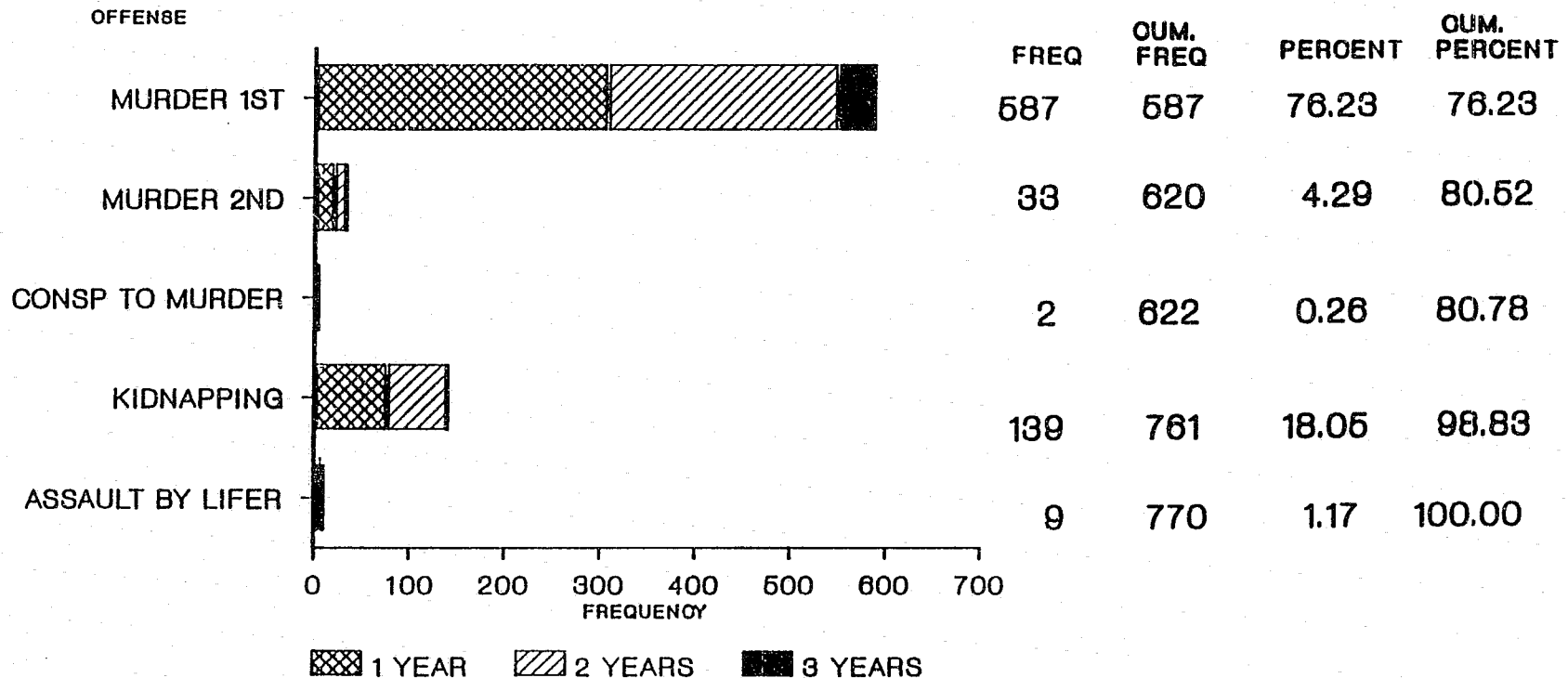
FROM JANUARY 1, 1979 TO JUNE 30, 1988



LENGTH OF TIME UNTIL NEXT PAROLE CONSIDERATION HEARING FOR LIFE PRISONERS FOUND UNSUITABLE FOR PAROLE

DURING HEARINGS HELD BETWEEN JULY 1, 1987 AND JUNE 30, 1988

BY OFFENSE



POPULATION OF LIFE PRISONERS WITH A "DEATH", "LIFE WITHOUT" OR "LIFE WITH"* SENTENCE
BY INSTITUTION AND OFFENSE
FOR LIFE PRISONERS IN PRISON AS OF JUNE 30, 1987

INSTITUTION	FIRST DEGREE MURDER	SECOND DEGREE MURDER	KID- NAPPING	CONSPIRACY TO COMMIT MURDER 1ST	CONSPIRACY TO COMMIT MURDER 2ND	CONSPIRACY TO COMMIT KIDNAPPING	ASSAULT BY LIFE PRISONER	TRAIN WRECKING	TOTAL
CA CORRECTIONAL INST	40	44	8	-	-	-	-	-	92
CA CORRECTIONAL INST MAX A	201	95	34	-	1	-	3	-	334
CA CORRECTIONAL INST MAX B	204	86	22	2	1	-	6	-	321
CA INST FOR MEN	4	-	-	-	-	-	-	-	4
CA INST FOR MEN, EAST	4	-	2	1	-	-	-	-	7
CA INST FOR WOMEN	133	108	9	1	1	-	-	-	252
CA INST FOR WOMEN RECEP	2	4	-	1	-	-	-	-	7
CA MEN'S COLONY	553	390	88	2	1	-	8	-	1042
CA MEDICAL FACILITY	371	139	51	5	-	-	2	-	568
CA MEDICAL FACILITY, SOUTH	36	63	8	-	-	1	-	-	108
CA REHABILITATION CENTER	10	6	2	-	-	-	-	-	18
CORR TRAINING FACILITY, C	196	311	52	1	-	-	-	1	561
CORR TRAINING FACILITY, N	38	58	17	-	-	-	-	-	113
CORR TRAINING FACILITY, S	6	-	-	1	-	-	-	-	7
DEUEL VOCATIONAL INST	248	257	45	5	-	-	-	-	555
FOLSOM STATE PRISON	600	327	97	4	1	1	1	-	1031
FOLSOM STATE PRISON (NEW)	310	174	48	4	2	-	3	-	541
NORTHERN RECEPTION CENTER	15	10	2	-	-	-	-	-	27
RECEPTION CENTER CENTRAL	37	19	3	-	1	-	1	-	61
SIERRA CONSERVATION CENTER	1	3	-	-	-	-	-	-	4
SAN QUENTIN PRISON	557	128	58	4	-	-	2	-	749
OUT OF STATE AND OTHER	72	70	8	-	-	-	1	-	151
	=====	=====	====	==	=	=	==	=	=====
	3638	2292	554	31	8	2	27	1	6553

*EXCLUDES 10 HABITUAL OFFENDERS AND 2 SEX OFFENDERS SERVING "LIFE WITH" SENTENCES.

POPULATION OF LIFE PRISONERS WITH A "DEATH", "LIFE WITHOUT" OR "LIFE WITH"* SENTENCE
BY INSTITUTION AND OFFENSE
FOR LIFE PRISONERS IN PRISON AS OF JUNE 30, 1988

INSTITUTION	FIRST DEGREE MURDER	SECOND DEGREE MURDER	KID- NAPPING	CONSPIRACY TO COMMIT MURDER 1ST	CONSPIRACY TO COMMIT MURDER 2ND	CONSPIRACY TO COMMIT KIDNAPPING	ASSAULT BY LIFE PRISONER	TOTAL
AVENAL STATE PRISON	-	2	1	-	-	-	-	3
CA CORRECTIONAL CENTER	-	2	-	-	-	-	-	2
CA CORRECTIONAL INST	35	40	9	-	-	-	-	84
CA CORRECTIONAL INST MAX A	213	83	30	-	1	-	4	331
CA CORRECTIONAL INST MAX B	198	85	26	2	1	-	6	318
CA INST FOR MEN	1	1	-	-	-	-	-	2
CA INST FOR MEN, EAST	3	1	1	-	-	-	-	5
CA INST FOR WOMEN	145	141	9	4	-	-	-	299
CA INST FOR WOMEN RECEP	1	1	-	-	-	-	-	2
CA MEN'S COLONY	563	437	93	4	1	-	6	1104
CA MEDICAL FACILITY	316	135	43	4	-	-	2	500
CA MEDICAL FACILITY, SOUTH	80	109	9	2	-	1	-	201
CA STATE PRISON, CORCORAN	2	5	-	-	1	-	-	8
CA REHABILITATION CENTER	10	10	3	-	-	-	-	23
CORR TRAINING FACILITY, C	228	327	52	1	-	-	-	608
CORR TRAINING FACILITY, N	35	118	22	-	-	-	-	175
CORR TRAINING FACILITY, S	3	1	-	-	-	-	-	4
DEUEL VOCATIONAL INST	189	199	44	3	-	-	-	435
DEUEL VOCATIONAL INST RECEP	8	3	1	1	-	-	-	13
FOLSOM STATE PRISON	701	430	111	3	3	2	1	1251
FOLSOM STATE PRISON (NEW)	531	281	77	7	3	1	5	905
MULE CREEK STATE PRISON	10	22	1	-	-	-	-	33
NO CA WOMEN'S FACILITY	1	-	-	-	-	-	-	1

*EXCLUDES 6 PERSONS CONVICTED OF ATTEMPTED FIRST DEGREE MURDER, 18 HABITUAL OFFENDERS AND 2 SEX OFFENDERS SERVING "LIFE WITH" SENTENCES.

POPULATION OF LIFE PRISONERS WITH A "DEATH", "LIFE WITHOUT" OR "LIFE WITH"* SENTENCE
BY INSTITUTION AND OFFENSE
FOR LIFE PRISONERS IN PRISON AS OF JUNE 30, 1988

INSTITUTION	FIRST DEGREE MURDER	SECOND DEGREE MURDER	KID- NAPPING	CONSPIRACY TO COMMIT MURDER 1ST	CONSPIRACY TO COMMIT MURDER 2ND	CONSPIRACY TO COMMIT KIDNAPPING	ASSAULT BY LIFE PRISONER	TOTAL
NORTHERN RECEPTION CENTER	10	7	-	-	-	-	-	17
RECEPTION CENTER CENTRAL	11	20	3	-	-	2	-	36
RECEPTION CENTER WEST	1	-	-	-	-	-	-	1
R. J. DONOVAN CORR FACILITY	38	67	11	-	-	-	-	116
SIERRA CONSERVATION CENTER	3	4	-	-	-	-	-	7
SAN QUENTIN PRISON	521	114	47	2	-	-	2	686
OUT OF STATE AND OTHER	54	24	7	-	-	-	1	86
	=====	=====	=====	=====	=====	=====	=====	=====
	3911	2669	600	33	10	6	27	7256

*EXCLUDES 6 PERSONS CONVICTED OF ATTEMPTED FIRST DEGREE MURDER, 18 HABITUAL OFFENDERS AND 2 SEX OFFENDERS SERVING "LIFE WITH" SENTENCES.

POPULATION OF LIFE PRISONERS WITH SENTENCE OF LIFE WITH POSSIBILITY OF PAROLE*
BY INSTITUTION AND OFFENSE
FOR LIFE PRISONERS IN PRISON AS OF JUNE 30, 1988

INSTITUTION	FIRST DEGREE MURDER	SECOND DEGREE MURDER	KID- NAPPING	CONSPIRACY TO COMMIT MURDER 1ST	CONSPIRACY TO COMMIT MURDER 2ND	CONSPIRACY TO COMMIT KIDNAPPING	ASSAULT BY LIFE PRISONER	TOTAL
AVENAL STATE PRISON	-	2	1	-	-	-	-	3
CA CORRECTIONAL CENTER	-	2	-	-	-	-	-	2
CA CORRECTIONAL INST	32	40	9	-	-	-	-	81
CA CORRECTIONAL INST MAX A	153	83	28	-	1	-	4	269
CA CORRECTIONAL INST MAX B	151	84	25	2	1	-	5	268
CA INST FOR MEN	1	1	-	-	-	-	-	2
CA INST FOR MEN, EAST	3	1	1	-	-	-	-	5
CA INST FOR WOMEN	123	141	9	4	-	-	-	277
CA INST FOR WOMEN RECEP	1	1	-	-	-	-	-	2
CA MEN'S COLONY	540	437	93	4	1	-	6	1081
CA MEDICAL FACILITY	297	135	42	3	-	-	1	478
CA MEDICAL FACILITY, SOUTH	79	109	9	2	-	1	-	200
CA STATE PRISON, CORCORAN	2	5	-	-	1	-	-	8
CA REHABILITATION CENTER	10	10	3	-	-	-	-	23
CORR TRAINING FACILITY, C	216	327	52	1	-	-	-	596
CORR TRAINING FACILITY, N	35	118	22	-	-	-	-	175
CORR TRAINING FACILITY, S	3	1	-	-	-	-	-	4
DEUEL VOCATIONAL INST	189	199	44	3	-	-	-	435
DEUEL VOCATIONAL INST RECEP	4	3	-	1	-	-	-	8
FOLSOM STATE PRISON	515	429	104	3	3	2	1	1057
FOLSOM STATE PRISON (NEW)	401	281	75	7	3	-	2	769
MULE CREEK STATE PRISON	10	22	1	-	-	-	-	33
NO CA WOMEN'S FACILITY	1	-	-	-	-	-	-	1

*EXCLUDES 6 PERSONS CONVICTED OF ATTEMPTED FIRST DEGREE MURDER, 18 HABITUAL OFFENDERS AND 2 SEX OFFENDERS SERVING "LIFE WITH" SENTENCES.

POPULATION OF LIFE PRISONERS WITH SENTENCE OF LIFE WITH POSSIBILITY OF PAROLE*
BY INSTITUTION AND OFFENSE
FOR LIFE PRISONERS IN PRISON AS OF JUNE 30, 1988

INSTITUTION	FIRST DEGREE MURDER	SECOND DEGREE MURDER	KID- NAPPING	CONSPIRACY TO COMMIT MURDER 1ST	CONSPIRACY TO COMMIT MURDER 2ND	CONSPIRACY TO COMMIT KIDNAPPING	ASSAULT BY LIFE PRISONER	TOTAL
NORTHERN RECEPTION CENTER	7	7	-	-	-	-	-	14
RECEPTION CENTER CENTRAL	10	20	2	-	-	-	-	32
RECEPTION CENTER WEST	1	-	-	-	-	-	-	1
R. J. DONOVAN CORR FACILITY	38	67	11	-	-	-	-	116
SIERRA CONSERVATION CENTER	3	4	-	-	-	-	-	7
SAN QUENTIN PRISON	240	114	46	2	-	-	2	404
OUT OF STATE AND OTHER	45	24	6	-	-	-	1	76
	=====	=====	=====	=====	=====	=====	=====	=====
	3110	2667	583	32	10	3	22	6427

*EXCLUDES 6 PERSONS CONVICTED OF ATTEMPTED FIRST DEGREE MURDER, 18 HABITUAL OFFENDERS AND 2 SEX OFFENDERS
SERVING "LIFE WITH" SENTENCES.

THE DETERMINATION OF SUITABILITY FOR RELEASE FROM PRISON

The Board of Prison Terms is responsible for setting parole dates for life prisoners. The procedure in determining suitability is described in the California Code of Regulations, Title 15, Section 2281, Article 5.

During FY 1987/88, there were 801 parole consideration hearings held. At only 31 (3.9%) of these hearings were prisoners found suitable for parole. Out of the 801 hearings, 75 (9.4%) were initial hearings and 726 (90.6%) subsequent hearings. In addition, there were 115 progress hearings. During the previous four years the parole suitability rate fluctuated from 6% to 7%, but for FY 1987/88 the rate declined to 3.9%.

The 31 found suitable for parole were all males, with 48.4% Whites, 29.0% Blacks, 19.4% Hispanics and the remaining 3.2% other ethnic groups combined.

The tables on pages 13 and 14 show the lists of factors that the Board used in determining unsuitability or suitability for parole. Several factors may be associated with a single person.

**SUITABLE/UNSUITABLE DECISION RATE FOR PAROLE CONSIDERATION HEARINGS HELD
BETWEEN JULY 1, 1987 AND JUNE 30, 1988
BY OFFENSE**

OFFENSE	DECISION		TOTAL
	SUITABLE	UNSUITABLE	
FIRST DEGREE MURDER	22 (3.6%)	587 (96.4%)	609 (76.2%)
SECOND DEGREE MURDER	4 (10.8%)	33 (89.2%)	37 (4.7%)
KIDNAPPING	4 (2.8%)	139 (97.2%)	143 (17.9%)
ASSAULT BY LIFE PRISONER	0 (0.0%)	9 (100.0%)	9 (4.1%)
CONSPIRACY TO COMMIT MURDER	1 (33.3%)	2 (66.7%)	3 (0.4%)
 TOTAL HEARINGS HELD	 31 (3.9%)	 770 (96.1%)	 801 (100.0%)

DECISION BY ETHNICITY FOR LIFE PRISONERS
WITH PAROLE CONSIDERATION HEARINGS HELD
BETWEEN JULY 1, 1987 AND JUNE 30, 1988

ETHNICITY	DECISION					
	SUITABLE		UNSUITABLE		TOTAL	
	MALE	FEMALE	MALE	FEMALE	MALE	FEMALE
WHITE	15	0	275	17	290	17
BLACK	9	0	310	9	319	9
HISPANIC	6	0	132	3	138	3
AMERICAN INDIAN	0	0	8	2	8	2
FILIPINO	0	0	3	0	3	0
HAWAIIAN	0	0	1	0	1	0
OTHER	1	0	10	0	11	0
TOTAL HEARINGS HELD	31	0	739	31	770	31

USE OF FACTORS OF UNSUITABILITY
FOR LIFE PRISONERS FOUND UNSUITABLE FOR PAROLE IN HEARINGS HELD
BETWEEN JULY 1, 1987 AND JUNE 30, 1988

COMMITMENT OFFENSE INVOLVED MULTIPLE VICTIMS	288
COMMITMENT OFFENSE INVOLVED EXECUTION-STYLE MURDER	342
COMMITMENT OFFENSE INVOLVED ABUSED VICTIM	193
COMMITMENT OFFENSE SHOWED DISREGARD FOR HUMAN SUFFERING	718
COMMITMENT OFFENSE SHOWED TRIVIAL, INEXPLICABLE MOTIVE	417
PREVIOUS RECORD OF VIOLENCE	513
UNSTABLE SOCIAL HISTORY	542
SEXUAL OFFENSES	73
PSYCHOLOGICAL FACTORS	690
INSTITUTIONAL MISBEHAVIOR	556
PRIOR CRIMINAL HISTORY	540
NO PROGRAM ACTIVITIES	6
OTHER REASONS	6
 TOTAL FOUND UNSUITABLE FOR PAROLE	 770

**USE OF SUITABILITY FACTORS
FOR LIFE PRISONERS FOUND SUITABLE FOR PAROLE IN HEARINGS HELD
BETWEEN JULY 1, 1987 AND JUNE 30, 1988**

HAS NO JUVENILE RECORD	19
HAS NO CRIMINAL HISTORY	18
HAS STABLE SOCIAL HISTORY	12
AGE CONSIDERED SUITABLE FACTOR	21
SHOWS SIGNS OF REMORSE	27
HAS PLANS FOR THE FUTURE	30
INSTITUTIONAL BEHAVIOR SUITABLE	30
IS IN CLEAR PSYCHIATRIC STATE	28
HAS STRESS MOTIVATION FOR CRIME	13
OTHER REASON(S)	3
 TOTAL FOUND SUITABLE FOR PAROLE	 31

PERCENTAGE OF LIFE PRISONERS FOUND SUITABLE FOR PAROLE
DURING PAROLE CONSIDERATION HEARINGS HELD
BETWEEN JULY 1, 1983 AND JUNE 30, 1988
BY QUARTER

	TOTAL HEARD	GRANTED PAROLE	PERCENTAGE
3RD QUARTER 1983	184	7	5%
4TH QUARTER 1983	219	10	5%
1ST QUARTER 1984	247	24	10%
2ND QUARTER 1984	186	12	6%
TOTAL FISCAL YEAR 1983-84	836	53	6%
3RD QUARTER 1984	109	9	8%
4TH QUARTER 1984	175	12	7%
1ST QUARTER 1985	176	11	6%
2ND QUARTER 1985	201	17	8%
TOTAL FISCAL YEAR 1984-85	661	49	7%
3RD QUARTER 1985	177	17	10%
4TH QUARTER 1985	221	18	8%
1ST QUARTER 1986	269	15	6%
2ND QUARTER 1986	168	11	7%
TOTAL FISCAL YEAR 1985-1986	835	61	7%
3RD QUARTER 1986	192	10	5%
4TH QUARTER 1986	180	12	7%
1ST QUARTER 1987	191	12	6%
2ND QUARTER 1987	177	14	8%
TOTAL FISCAL YEAR 1986-1987	740	48	6%
3RD QUARTER 1987	203	8	4%
4TH QUARTER 1987	166	8	5%
1ST QUARTER 1988	210	11	5%
2ND QUARTER 1988	222	4	2%
TOTAL FISCAL YEAR 1987-1988	801	31	4%

LENGTH OF TIME UNTIL NEXT PAROLE CONSIDERATION HEARING
FOR LIFE PRISONERS FOUND UNSUITABLE FOR PAROLE DURING HEARINGS HELD
BETWEEN JULY 1, 1987 AND JUNE 30, 1988
BY OFFENSE

OFFENSE	TIME UNTIL NEXT HEARING			
	ONE YEAR	TWO YEARS	THREE YEARS	TOTAL
FIRST DEGREE MURDER	305 (52.0%)	241 (41.1%)	41 (7.0%)	587 (76.2%)
SECOND DEGREE MURDER	19 (57.6%)	12 (36.4%)	2 (6.1%)	33 (4.3%)
KIDNAPPING	75 (54.0%)	63 (45.3%)	1 (0.7%)	139 (18.1%)
ASSAULT BY LIFE PRISONER	4 (44.4%)	4 (44.4%)	1 (11.1%)	9 (1.2%)
CONSPIRACY TO COMMIT MURDER	1 (50.0%)	1 (50.0%)	0 (0.0%)	2 (0.3%)
 TOTAL HEARINGS HELD	 404 (52.5%)	 321 (41.7%)	 45 (5.8%)	 770 (100.0%)

NUMBER OF LIFE PRISONER PAROLE SUITABILITY HEARINGS COMPLETED
BETWEEN JULY 1, 1987 AND JUNE 30, 1988
BY INSTITUTION AND BY HEARING TYPE

INSTITUTION	INITIAL	SUBSEQUENT	PROGRESS	TOTAL
CALIFORNIA CORRECTIONAL INSTITUTION	4	45	13	62
CALIFORNIA CORRECTIONAL INSTIT MAX A	-	8	-	8
CALIFORNIA CORRECTIONAL INSTIT MAX B	3	10	-	13
CALIFORNIA INSTITUTION FOR MEN	-	1	8	9
CALIFORNIA INSTITUTION FOR WOMEN	5	26	2	33
CALIFORNIA MEN'S COLONY	16	224	28	268
CALIFORNIA MEDICAL FACILITY	7	178	24	209
CALIFORNIA MEDICAL FACILITY, SOUTH	2	6	3	11
CALIFORNIA REHABILITATION CENTER	-	4	1	5
CORRECTIONAL TRAINING FACILITY, CENTRAL	15	50	4	69
DEUEL VOCATIONAL INSTITUTION	10	37	8	55
FOLSOM STATE PRISON	2	42	1	45
FOLSOM STATE PRISON (NEW FACILITY)	2	20	1	23
NORTHERN CALIFORNIA WOMEN'S FACILITY	-	-	1	1
RECEPTION CENTER CENTRAL	-	1	-	1
RICHARD J. DONOVAN CORRECTIONAL FACILITY	2	3	-	5
SIERRA CONSERVATION CENTER	-	-	2	2
SAN QUENTIN PRISON	4	56	17	77
OUT OF STATE AND OTHER JURISDICTIONS	3	15	2	20
	==	===	===	===
	75	726	115	916

SELECTION OF BASE TERM

Based on the California Code of Regulations, Title 15, Article 5, Section 2282, and Article 11, Section 2403, the Board of Prison Terms selects a base term for suitable life prisoners. Accordingly, the tables on pages 21 and 22 correspond to the category descriptions and the base terms for first degree murder; pages 25 and 26 correspond to second degree murder; pages 29 and 30 correspond to kidnapping for robbery or ransom.

The relative frequencies with which the Board selected options within matrices are shown in the number beneath each suggested term. For example on page 21, there were six people placed in the middle level of Category III B of the first degree murder matrix indicating 15-year terms.

Other mitigation factors, aggravation factors and enhancements related to term setting are detailed in pages 31-39. There were 8 mitigating factors and 17 aggravation factors used for the base offenses in the 31 cases found suitable for parole. Of these 31 cases, 17 (54.8%) used guns; 11 (35.5%) had consecutive or concurrent crime enhancements; only 2 (6.5%) had prior felony convictions.

FIRST DEGREE MURDER

CATEGORY DESCRIPTIONS

VICTIM CATEGORIES

I. Participating Victim

Victim was accomplice or otherwise implicated in a criminal act with the prisoner during which or as a result of which the death occurred; e.g., crime partner, drug dealer, etc.

II. Prior Relationship

Victim was involved in a personal relationship with prisoner (spouse, family member, friend, etc.) which contributed to the motivation for the act resulting in death. If victim had a personal relationship but prisoner hired and/or paid a person to commit the offense, see Category IV.

III. No Prior Relationship

Victim had little or no personal relationship with prisoner; or motivation for act resulting in death was related to the accomplishment of another crime; e.g., death of victim during robbery, rape or other felony.

IV. Threat to Public Order or Murder for Hire

The act resulting in the victim's death constituted a threat to the public order includes the murder of a police officer, prison guard, public official, fellow patient or prisoner, any killing within an institution, or any killing where the prisoner hired and/or paid another person to commit the offense.

CIRCUMSTANCE CATEGORIES

A. Indirect

Victim died of causes related to the act of the prisoner but was not directly assaulted by prisoner with deadly force; e.g., shock producing heart attack; a crime partner actually did the killing.

B. Direct or Victim Contribution

Death was almost immediate or resulted at least partially from contributing factors from the victim; e.g., victim initiated struggle or had goaded the prisoner. This does not include victims acting in defense of self or property.

C. Severe Trauma

Death resulted from severe trauma inflicted with deadly intensity; e.g., beating, clubbing, stabbing, strangulation, suffocation, burning, multiple wounds inflicted with a weapon not resulting in immediate death or actions calculated to induce terror in the victim.

D. Torture

Victim was subjected to the prolonged infliction of physical pain through the use of nondeadly force prior to act resulting in death.

FREQUENCY OF PLACEMENT IN BASE TERM MATRIX
FOR PERSONS CONVICTED OF F I R S T D E G R E E M U R D E R
AND FOUND SUITABLE FOR PAROLE IN HEARINGS HELD
BETWEEN JULY 1, 1987 AND JUNE 30, 1988

CIRCUMSTANCES

2282(B) FIRST DEGREE MURDER	A. INDIRECT	B. DIRECT OR VICTIM CONTRIBUTION	C. SEVERE TRAUMA	D. TORTURE
I. PARTICIPATING VICTIM	8 - 10 - 12 0 0 1	10 - 12 - 14 0 0 0	11 - 13 - 15 0 0 0	13 - 15 - 17 0 0 0
II. PRIOR RELATIONSHIP	10 - 12 - 14 0 0 0	12 - 14 - 16 0 1 1	13 - 15 - 17 0 2 0	15 - 17 - 19 0 0 0
III. NO PRIOR RELATIONSHIP	11 - 13 - 15 0 0 0	13 - 15 - 17 1 6 1	14 - 16 - 18 0 3 3	16 - 18 - 20 0 0 0
IV. THREAT TO PUBLIC ORDER OR MURDER FOR HIRE	13 - 15 - 17 0 0 0	15 - 17 - 19 0 0 0	16 - 18 - 20 0 0 0	18 - 20 - 22 0 0 0
SENTENCE AS SUGGESTED BY MATRIX	19			
SENTENCE NOT AS SUGGESTED BY MATRIX	3			
TOTAL FOUND SUITABLE FOR PAROLE	22			

PLACEMENT NOT AS SUGGESTED BY MATRIX
FOR PERSONS CONVICTED OF F I R S T D E G R E E M U R D E R
AND FOUND SUITABLE FOR PAROLE IN HEARINGS HELD
BETWEEN JULY 1, 1987 AND JUNE 30, 1988

BELOW RANGE

WITHIN RANGE BUT BETWEEN SUGGESTED TERMS

ABOVE RANGE

LOWER MIDDLE

MIDDLE UPPER

0

1

1

1

SECOND DEGREE MURDER

CATEGORY DESCRIPTIONS

VICTIM CATEGORIES

I. Participating Victim

Victim was accomplice or otherwise implicated in a criminal act with the prisoner during which or as a result of which the death occurred; e.g., crime partner, drug dealer, etc.

II. Prior Relationship

Victim was involved in a personal relationship with prisoner (spouse, family member, friend, etc.) which contributed to the motivation for the act resulting in death. If victim had a personal relationship but prisoner hired and/or paid a person to commit the offense, see Category IV.*

III. No Prior Relationship

Victim had little or no personal relationship with prisoner; or motivation for act resulting in death was related to the accomplishment of another crime; e.g., death of victim during robbery, rape or other felony.

*Since there is no Category IV, the last sentence of this category is actually not correct. This section of the California Code of Regulations, Title 15, Division 2, Board of Prison Terms from which this information was taken, will be corrected when it is reprinted next year.

CIRCUMSTANCE CATEGORIES

A. Indirect

Victim died of causes related to the act of the prisoner but was not directly assaulted by prisoner with deadly force; e.g., shock producing heart attack; a crime partner actually did the killing.

B. Direct or Victim Contribution

Death was almost immediate or resulted at least partially from contributing factors from the victim; e.g., victim initiated struggle or had goaded the prisoner. This does not include victims acting in defense of self or property.

C. Severe Trauma

Death resulted from severe trauma inflicted with deadly intensity; e.g., beating, clubbing, stabbing, strangulation, suffocation, burning, multiple wounds inflicted with a weapon not resulting in immediate death or actions calculated to induce terror in the victim.

FREQUENCY OF PLACEMENT IN BASE TERM MATRIX
FOR PERSONS CONVICTED OF S E C O N D D E G R E E M U R D E R
AND FOUND SUITABLE FOR PAROLE IN HEARINGS HELD
BETWEEN JULY 1, 1987 AND JUNE 30, 1988

2403(C) SECOND DEGREE MURDER	CIRCUMSTANCES			B. DIRECT OR VICTIM CONTRIBUTION	C. SEVERE TRAUMA
	A. INDIRECT				
I. PARTICIPATING VICTIM	15 - 16 - 17			16 - 17 - 18	17 - 18 - 19
	0 0 0			0 0 0	0 0 0
II. PRIOR RELATIONSHIP	16 - 17 - 18			17 - 18 - 19	18 - 19 - 20
	0 0 0			1 0 0	0 0 0
III. NO PRIOR RELATIONSHIP	17 - 18 - 19			18 - 19 - 20	19 - 20 - 21
	2 0 0			0 0 1	0 0 0
SENTENCE AS SUGGESTED BY MATRIX	4				
SENTENCE NOT AS SUGGESTED BY MATRIX	0				
TOTAL FOUND SUITABLE FOR PAROLE	4				

PLACEMENT NOT AS SUGGESTED BY MATRIX
FOR PERSONS CONVICTED OF S E C O N D D E G R E E M U R D E R
AND FOUND SUITABLE FOR PAROLE IN HEARINGS HELD
BETWEEN JULY 1, 1987 AND JUNE 30, 1988

BELOW RANGE

0

ABOVE RANGE

0

KIDNAPPING FOR ROBBERY OR RANSOM
CATEGORY DESCRIPTIONS

VICTIM CATEGORIES

I. Minor Injury

Victim unharmed or received minor injury.

II. Victim Assaulted

Victim was sexually assaulted or otherwise seriously injured or assaulted.

III. Major Injury

Victim's major injuries required extensive treatment or the victim was seriously disabled.

IV. Death

Victim died.

CIRCUMSTANCE CATEGORIES

A. Minor Movement

Movement was of short duration and resultant location would not substantially increase risk of harm.

B. Extensive Movement

Movement was of lengthy duration or resultant location would substantially increase risk of harm.

CIRCUMSTANCE CATEGORIES - continued

C. Hostage

Victim was taken as hostage.

D. Planning

The crime involved intricate prior planning.

FREQUENCY OF PLACEMENT IN BASE TERM MATRIX
FOR PERSONS CONVICTED OF K I D N A P P I N G
AND FOUND SUITABLE FOR PAROLE IN HEARINGS HELD
BETWEEN JULY 1, 1987 AND JUNE 30, 1988

2282(C) KIDNAP FOR ROBBERY OR RANSOM	CIRCUMSTANCES			
	A. MINOR MOVEMENT	B. EXTENSIVE MOVEMENT	C. HOSTAGE	D. PLANNING
I. MINOR INJURY	8 - 10 - 12 0 1 0	9 - 11 - 13 0 2 1	10 - 12 - 14 0 0 0	11 - 13 - 15 0 0 0
II. VICTIM ASSAULTED	9 - 11 - 13 0 0 0	10 - 12 - 14 0 0 0	11 - 13 - 15 0 0 0	12 - 14 - 16 0 0 0
III. MAJOR INJURY	10 - 12 - 14 0 0 0	11 - 13 - 15 0 0 0	12 - 14 - 16 0 0 0	13 - 15 - 17 0 0 0
IV. DEATH	13 - 15 - 17 0 0 0	15 - 17 - 19 0 0 0	16 - 18 - 20 0 0 0	18 - 20 - 22 0 0 0
SENTENCE AS SUGGESTED BY MATRIX	4			
SENTENCE NOT AS SUGGESTED BY MATRIX	0			
TOTAL FOUND SUITABLE FOR PAROLE	4			

PLACEMENT NOT AS SUGGESTED BY MATRIX
FOR PERSONS CONVICTED OF K I D N A P P I N G
AND FOUND SUITABLE FOR PAROLE IN HEARINGS HELD
BETWEEN JULY 1, 1987 AND JUNE 30, 1988

BELOW RANGE

WITHIN RANGE BUT BETWEEN SUGGESTED TERMS

ABOVE RANGE

LOWER MIDDLE

MIDDLE UPPER

0

0

0

0

USE OF MITIGATION FACTORS FOR BASE OFFENSE
FOR LIFE PRISONERS FOUND SUITABLE FOR PAROLE IN HEARINGS HELD
BETWEEN JULY 1, 1987 AND JUNE 30, 1988

CRIME FACTOR LOWER THAN MATRIX	1
MINIMAL/NO CRIMINAL HISTORY	3
ACTIONS EXCUSABLE/NOT A DEFENSE	2
MINIMAL/NO INVOLVEMENT IN CRIME	0
INDUCED TO COMMIT CRIME	0
UNLIKELY TO COMMIT SAME CRIME AGAIN	1
SOUGHT TO STOP CRIME/AID VICTIM	0
EXTREME MENTAL/EMOTIONAL TRAUMA	0
SPECIFIC MITIGATING CIRCUMSTANCES	1

TOTAL FOUND SUITABLE FOR PAROLE	31
---------------------------------	----

USE OF AGGRAVATION FACTORS FOR BASE OFFENSE
FOR LIFE PRISONERS FOUND SUITABLE FOR PAROLE IN HEARINGS HELD
BETWEEN JULY 1, 1987 AND JUNE 30, 1988

GENERAL	
CRIME FACTOR HIGHER THAN MATRIX	0
VICTIM VULNERABLE	3
CRIME LEADER, DOMINANT	2
CRIMINAL HISTORY	2
DID NOT TRY TO STOP CRIME	2
WAS INVOLVED IN OTHER CRIMES	0
SPECIAL VICTIM RELATIONSHIP	1
POTENTIAL SERIOUS INJURY TO OTHERS	2
STATUS: PAROLE/PROBATION/ESCAPE	1
SPECIFIC CIRCUMSTANCES FIRST DEGREE MURDER	
WANTON, SENSELESS, ETC	0
CORPSE MUTILATED, ETC	1
BODY HIDDEN; AVOIDED DETECTION	0
VICTIMS POSSIBLE WITNESS	0
TO AVOID DETECTION OF OTHER CRIME(S)	0
USED EXPLOSIVE DEVICE	0
MULTIPLE VICTIMS	1
SPECIFIC CIRCUMSTANCES KIDNAPPING	
MULTIPLE VICTIMS	0
TAKE OR RANSOM \$25,000 OR MORE	0
PUBLIC THREAT/PUBLIC OFFICIAL	0
OTHER CIRCUMSTANCES	
MISCELLANEOUS	2
TOTAL FOUND SUITABLE FOR PAROLE	31

USE OF FIREARM AND ENHANCEMENT FOR USE
FOR LIFE PRISONERS FOUND SUITABLE FOR PAROLE IN HEARINGS HELD
BETWEEN JULY 1, 1987 AND JUNE 30, 1988

FIREARM ENHANCEMENT IN MONTHS

	0 MONTHS	24 MONTHS	MORE THAN 24 MONTHS	TOTAL
GUN USED	0	15	2	17
GUN NOT USED	14	0	0	14
TOTAL NUMBER OF LIFE PRISONERS FOUND SUITABLE FOR PAROLE	14	15	2	31

NUMBER OF CONSECUTIVE OR CONCURRENT CRIMES AND ENHANCEMENTS FOR LIFE PRISONERS
FOUND SUITABLE FOR PAROLE DURING HEARINGS HELD
BETWEEN JULY 1, 1987 AND JUNE 30, 1988

OFFENSE	NONE	ONE	TWO	THREE	FOUR	FIVE	SIX OR MORE	TOTAL FOUND SUITABLE FOR PAROLE
FIRST DEGREE MURDER	15	4	3	0	0	0	0	22
SECOND DEGREE MURDER	3	0	1	0	0	0	0	4
KIDNAPPING	1	1	2	0	0	0	0	4
CONSPIRACY TO COMMIT MURDER	1	0	0	0	0	0	0	1
TOTAL	20	5	6	0	0	0	0	31

CONSECUTIVE OR CONCURRENT CRIMES AND ENHANCEMENTS
 FOR LIFE PRISONERS CONVICTED OF F I R S T D E G R E E M U R D E R
 AND FOUND SUITABLE FOR PAROLE DURING HEARINGS HELD
 BETWEEN JULY 1, 1987 AND JUNE 30, 1988
 BY TERM IN MONTHS

TERM	CONSPIRACY TO COMMIT MURDER	ROBBERY	DRUG OFFENSE	RECEIVING STOLEN PROP	POSSESSION OF FIREARM	BURGLARY	ASSAULT WITH DEADLY WEAPON	SODOMY	TOTAL
-	1	1	-	-	-	-	-	-	2
6	-	-	1	1	-	-	-	-	2
12	-	-	-	-	1	2	-	-	3
24	-	-	-	-	-	-	1	1	2
36	-	-	-	-	-	1	-	-	1
	=	=	=	=	=	=	=	=	=
	1	1	1	1	1	3	1	1	10

CONSECUTIVE OR CONCURRENT CRIMES AND ENHANCEMENTS
 FOR LIFE PRISONERS CONVICTED OF S E C O N D D E G R E E M U R D E R
 AND FOUND SUITABLE FOR PAROLE IN HEARINGS HELD
 BETWEEN JULY 1, 1987 AND JUNE 30, 1988

BY TERM IN MONTHS			
TERM	P12022	ROBBERY	TOTAL
6	1	-	1
18	-	1	1
	=	=	=
	1	1	2

CONSECUTIVE OR CONCURRENT CRIMES AND ENHANCEMENTS
 FOR LIFE PRISONERS CONVICTED OF K I D N A P P I N G
 AND FOUND SUITABLE FOR PAROLE DURING HEARINGS HELD
 BETWEEN JULY 1, 1987 AND JUNE 30, 1988
 BY TERM IN MONTHS

TERM	USE OF DEADLY WEAPON	ROBBERY	TOTAL
-	1	-	1
36	-	3	3
	=	=	=
	1	3	4

CONSECUTIVE OR CONCURRENT CRIMES AND ENHANCEMENTS
FOR LIFE PRISONERS CONVICTED OF A S S A U L T B Y L I F E P R I S O N E R
AND FOUND SUITABLE FOR PAROLE DURING HEARINGS HELD
BETWEEN JULY 1, 1987 AND JUNE 30, 1988
BY TERM IN MONTHS

TERM	TOTAL
------	-------

-	-
	=
	0

NUMBER OF PRIOR FELONY CONVICTIONS FOR LIFE PRISONERS
 FOUND SUITABLE FOR PAROLE DURING HEARINGS HELD
 BETWEEN JULY 1, 1987 AND JUNE 30, 1988

NUMBER OF PRIOR FELONY CONVICTIONS	FIRST DEGREE MURDER	SECOND DEGREE MURDER	KIDNAPPING	ASSAULT BY LIFE PRISONER	CONSPIRACY TO COMMIT MURDER
NONE	21	4	3	0	1
ONE	1	0	0	0	0
TWO	0	0	1	0	0
THREE	0	0	0	0	0
FOUR OR MORE	0	0	0	0	0
TOTAL FOUND SUITABLE FOR PAROLE	22	4	4	0	1

CONFINEMENT DATA

As of June 30, 1988, there were 171 life prisoners with a parole date. The mean and median years from date received in prison until currently established parole date are summarized in the statistical table on page 41. The table on page 42, on the other hand, gives the mean and median years from hearing date until currently established parole date.

The statistics on total term, post-conviction credits and total period of confinement established by the Board of Prison Terms panel for life prisoners found suitable for parole are shown on page 43.

The overall average period of confinement of the mean is 15.0 years and of the median is 14.9 years.

TIME FROM DATE RECEIVED IN PRISON UNTIL CURRENTLY ESTABLISHED PAROLE DATE
 (TIME WILL BE REDUCED BY FUTURE POST-CONVICTION CREDITS)
 FOR LIFE PRISONERS IN PRISON AS OF JUNE 30, 1988
 WITH A PAROLE DATE

OFFENSE	MEAN (IN YEARS)	MEDIAH (IN YEARS)	NUMBER OF LIFE PRISONERS
FIRST DEGREE MURDER	16.0	15.4	150
SECOND DEGREE MURDER	15.4	15.6	3
KIDNAPPING	17.3	15.2	17
ASSAULT BY LIFE PRISONER	0.0	0.0	0
CONSPIRACY TO COMMIT MURDER	15.4	15.4	1
TOTAL NUMBER OF LIFE PRISONERS WITH A PAROLE DATE			171

TIME FROM HEARING DATE UNTIL CURRENTLY ESTABLISHED PAROLE DATE
 (TIME WILL BE REDUCED BY FUTURE POST-CONVICTION CREDITS)
 FOR LIFE PRISONERS IN PRISON AS OF JUNE 30, 1988
 WITH A KNOWN HEARING DATE AND A PAROLE DATE

OFFENSE	MEAN (IN YEARS)	MEDIAH (IN YEARS)	NUMBER OF LIFE PRISONERS
FIRST DEGREE MURDER	4.5	4.2	150
SECOND DEGREE MURDER	6.7	6.9	3
KIDNAPPING	6.5	5.5	17
ASSAULT BY LIFE PRISONER	0.0	0.0	0
CONSPIRACY TO COMMIT MURDER	3.1	3.1	1
TOTAL NUMBER OF LIFE PRISONERS WITH A PAROLE DATE			171

TOTAL TERM, POST-CONVICTION CREDITS, AND TOTAL PERIOD OF CONFINEMENT ESTABLISHED BY THE PANEL
FOR LIFE PRISONERS FOUND SUITABLE FOR PAROLE IN HEARINGS HELD
BETWEEN JULY 1, 1987 AND JUNE 30, 1988

OFFENSE	MEAN (IN YEARS)	MEDIAN (IN YEARS)	NUMBER OF LIFE PRISONERS
FIRST DEGREE MURDER			
TOTAL TERM	17.9	18.0	22
POST-CONVICTION CREDITS	2.8	3.0	
TOTAL PERIOD OF CONFINEMENT	15.0	14.8	
SECOND DEGREE MURDER			
TOTAL TERM	19.3	19.0	4
POST-CONVICTION CREDITS	2.7	2.9	
TOTAL PERIOD OF CONFINEMENT	16.6	16.1	
KIDNAPPING			
TOTAL TERM	15.6	16.3	4
POST-CONVICTION CREDITS	2.1	2.3	
TOTAL PERIOD OF CONFINEMENT	13.5	14.4	
CONSPIRACY TO COMMIT MURDER			
TOTAL TERM	14.0	14.0	1
POST-CONVICTION CREDITS	0.0	0.0	
TOTAL PERIOD OF CONFINEMENT	14.0	14.0	

PAROLE DATA

The two tables on pages 45 and 46 show the number of life prisoners released to parole by offense, by county of commitment and by county of parole. Out of the 84 life prisoners released to parole, 30 (35.7%) were released to Los Angeles County, 6 (7.1%) each to Alameda, Sacramento and San Joaquin Counties. In terms of county of commitment, 27 (32.1%) were committed from Los Angeles County, 8 (9.5%) from Sacramento County, 6 (7.1%) from Alameda County and 5 (6.0%) each from Fresno, Kern, and San Diego Counties.

LIFE PRISONERS RELEASED TO PAROLE
BETWEEN JULY 1, 1987 AND JUNE 30, 1988
BY COUNTY OF COMMITMENT AND OFFENSE

COUNTY OF COMMITMENT	FIRST DEGREE MURDER	OFFENSE KIDNAPPING	CONSPIRACY TO COMMIT MURDER	ASSAULT BY LIFE PRISONER	TOTAL
ALAMEDA	5	1	0	0	6
CONTRA COSTA	3	0	0	0	3
FRESNO	3	1	1	0	5
KERN	4	0	1	0	5
LOS ANGELES	23	3	1	0	27
MARIN	1	0	0	0	1
MERCED	2	0	0	0	2
MONTEREY	1	0	0	0	1
ORANGE	3	1	0	0	4
PLACER	2	0	0	0	2
RIVERSIDE	0	1	0	0	1
SACRAMENTO	6	0	0	2	8
SAN BERNARDINO	0	0	0	1	1
SAN DIEGO	5	0	0	0	5
SAN JOAQUIN	2	0	0	0	2
SAN LUIS OBISPO	2	0	0	0	2
SAN MATEO	1	0	0	0	1
SANTA BARBARA	1	0	0	0	1
SANTA CLARA	2	1	0	0	3
STANISLAUS	1	0	0	0	1
TULARE	1	0	1	0	2
YOLO	1	0	0	0	1
TOTAL RELEASED	69	8	4	3	84

LIFE PRISONERS RELEASED TO PAROLE
BETWEEN JULY 1, 1987 AND JUNE 30, 1988
BY COUNTY OF PAROLE AND OFFENSE

COUNTY OF PAROLE	FIRST DEGREE MURDER	OFFENSE KIDNAPPING	CONSPIRACY TO COMMIT MURDER	ASSAULT BY LIFE PRISONER	TOTAL
ALAMEDA	5	1	0	0	6
CONTRA COSTA	4	0	0	0	4
FRESNO	1	0	1	0	2
HUMBOLT	1	0	0	0	1
KERN	0	0	1	0	1
LOS ANGELES	23	3	1	3	30
MONTEREY	1	0	0	0	1
ORANGE	3	0	0	0	3
PLACER	2	0	0	0	2
RIVERSIDE	2	1	0	0	3
SACRAMENTO	6	0	0	0	6
SAN DIEGO	3	0	0	0	3
SAN FRANCISCO	1	0	0	0	1
SAN JOAQUIN	6	0	0	0	6
SANTA CLARA	2	1	0	0	3
SHASTA	1	0	0	0	1
SOLANO	2	1	0	0	3
SONOMA	0	0	1	0	1
STANISLAUS	1	0	0	0	1
TULARE	1	0	0	0	1
VENTURA	1	0	0	0	1
UNKNOWN	3	1	0	0	4
TOTAL RELEASED	69	8	4	3	84