

CR-Sept
4-26-89

PENNSYLVANIA DEPARTMENT OF CORRECTIONS

1987 ANNUAL STATISTICAL REPORT

OF PENNSYLVANIA COUNTY PRISONS AND JAILS



CR-Sept

114776

ROBERT P. CASEY

Governor

DAVID S. OWENS, JR.

Commissioner

LEE T. BERNARD II

Deputy Commissioner for Administration

114776

ROBERT P. CASEY
Governor

DAVID S. OWENS, JR.
Commissioner

114776

U.S. Department of Justice
National Institute of Justice

This document has been reproduced exactly as received from the person or organization originating it. Points of view or opinions stated in this document are those of the authors and do not necessarily represent the official position or policies of the National Institute of Justice.

Permission to reproduce this copyrighted material has been granted by
Pennsylvania Department
of Corrections

to the National Criminal Justice Reference Service (NCJRS).

Further reproduction outside of the NCJRS system requires permission of the copyright owner.

NCJRS

JAN 3 Rec'd

ACQUISITIONS

PREPARED BY

Deputy Secretary for Administration
LEE T. BERNARD, II

Chief, Planning, Research and Statistics Division
TED E. SHUMAKER

Chief, Statistical Section
JOHN H. MEASE

Statistical Assistant
NANCY L. BLEYER

Support Staff
LINDA WOODS
JUNE WOLF
NANCY CEASE
ROBERTA RIDER
RUTH GIBSON

Intern
ANDY KEYSER

DAVID S. OWENS, JR.
COMMISSIONER



DEPUTY COMMISSIONERS
ADMINISTRATION
LEE T. BERNARD II
CORRECTIONAL SERVICES
LOWELL D. HEWITT
PROGRAMS
ERSKIND DERAMUS

PENNSYLVANIA DEPARTMENT OF CORRECTIONS
P. O. BOX 598
CAMP HILL, PENNSYLVANIA 17011
(717) 975-4860

October, 1988

PREFACE

It is a privilege to offer the Pennsylvania Department of Corrections' 1987 Annual Statistics Report for Pennsylvania County Prisons and Jails. This report contains a wide-range of statistical and demographic information about the Commonwealth's county prison population.

The statistical information contained in this report is particularly important in light of the recent growth of the populations in the county prisons and jails. We must better understand the characteristics of our local inmate population if we are to understand the problem of prison and jail overcrowding that faces all of us.

I hope you find the report useful, and I want to thank all local correctional administrators and their staffs for assistance in the preparation of this report.

Sincerely,

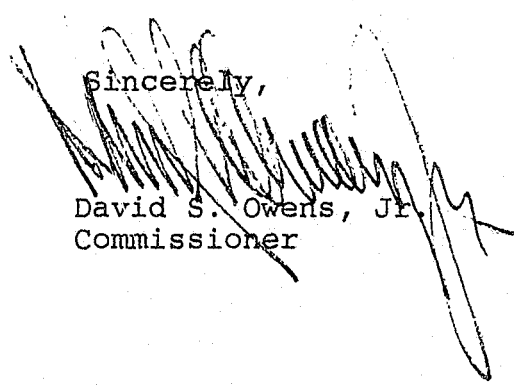

David S. Owens, Jr.
Commissioner

TABLE OF CONTENTS

	<u>PAGE</u>
PREFACE	iii
INTRODUCTION	1
Purpose	1
Explanatory Notes	1-2
Source of Information	3
SELECTIVE NARRATIVE SUMMARY	4-5
POPULATION - GENERAL, BY COUNTY	6-11
POPULATION - RACE AND SEX	12-14
POPULATION - METROPOLITAN STATISTICAL AREA AND RATIO.	15-16
PRISONERS - SENTENCED AND DETENTIONERS	17-18
ADMISSIONS	19-33
RELEASES	34-42
SUMMARY INFORMATION	43
WORK RELEASE	44
ESCAPES	45
FOOTNOTES	46

INTRODUCTION

The Commonwealth's county prison system is just as diverse as the political and structural make-up of the counties themselves. However, one characteristic binds them together, the recent increase in the county prison population. This report will enable the reader to comprehend the increasing demands placed upon these county facilities, especially when they are reviewed in terms of increasing populations during recent years.

Purpose

The purpose of this annual statistical report is to provide summary data on county prison inmate populations.

Explanatory Notes

Committing county - Where indicated, several tables displaying detail data on defendants sentenced to and released from county prisons and jails are compiled by common pleas court or "committing county." This is necessary because several counties commit or transfer their sentenced prisoners to other surrounding county prisons and jails because of the crowded condition of their own facilities.

Conditional release - This term identifies those parolees who are released under the supervision of the Pennsylvania Board of Probation and Parole (PBPP) or who are paroled directly by the Court of Record (often referred to as "county parole"). Unless otherwise specified, these two groups will be combined in this report.

County prisons and jails - Generally, first through fifth class counties have "prisons" and sixth through eighth class counties have "jails", though local terminology may vary (e.g., Allegheny County Jail). Generally, the county prisons are administered by a prison board and an appointed warden; county jails are usually administered by an elected sheriff. In recent years the county prisons and jails have primarily received only the short-term sentenced prisoners and pre-trial detentioners.

Court sentences - This term identifies those county prisoners committed by a Court of Record to serve sentences for felony and misdemeanor offenses.

Detentioners received - This term identifies those individuals detained prior to trial as well as other prisoners not sentenced directly to the local prisons where they are contained. Detentioners include those individuals who were: (1) held for trial, further hearing, or as a material witness, (2) held for various federal, state or other police authorities, and (3) held for mental examination or observation.

Detentioners released - This term identifies those individuals released by the following methods: (1) bail, (2) holding authority (i.e., court, minor judiciary, coroner, etc.), (3) sentenced to local county prison, (4) sentenced to state correctional institutions, (5) sentenced to state regional correctional facilities, (6) by various federal, state, and police authorities, and (7) mental patients released.

Metropolitan Statistical Area (MSA) - The Office of Management and Budget (Federal) has announced the designation of 257 Metropolitan Statistical Areas (MSA's), 23 Consolidated Metropolitan Statistical Areas (CMSA's), and 78 Primary Metropolitan Statistical Areas (PMSA's). An area qualifies as an MSA if there is a city with a population of at least 50,000 or an urbanized area of at least 50,000 with a total population of at least 100,000. If an area has more than one million population and meets certain criteria, that area is classified as a CMSA and its components are considered as PMSA's. MSA's and PMSA's are classified by size as follows:

- Level A - Areas of 1,000,000 or more
- Level B - Areas of 250,000 to 1,000,000
- Level C - Areas of 100,000 to 250,000
- Level D - Areas of less than 100,000

Minor judiciary sentences - This term identifies those individuals who receive sentences by the minor judiciary (district magistrates, justices, etc.) for county prison commitment. (Note: The municipal court in Philadelphia County handles this type of case.)

Part I offenses - In general, Part I crimes are those serious offenses that are reported to law enforcement agencies and are commonly referred to as crime index offenses. Part I offenses consist of murder, manslaughter, forcible rape, robbery, aggravated assault, burglary, theft-larceny, motor vehicle theft, and arson.

Part II offenses - Part II offenses are made up of all other crimes not classified a Part I crime.

Rate per 100,000 civilian population - This term represents the ratio of a prison population with respect to the civilian population of the county.

Sentenced prisoners - In this report, sentenced prisoners include both defendants sentenced by a Court of Record and the Minor Judiciary (district magistrates, justices and etc.) to serve a sentence in a local county prison or jail.

Unconditional releases - This term identifies those sentenced county prisoners who were given a final discharge and are no longer under any type of supervision after their release from county prison. Unconditional releases include the following: (1) expiration of maximum sentence, (2) by court order, (3) by minor

judiciary order, and (4) by payment of fines and costs.

Yearly average daily population - This term represents the cumulative daily inmate population count as of midnight, divided by the number of days in the calendar year.

Source of Information

Information found in this report is based entirely upon monthly and quarterly statistical reports submitted by county prisons and jails to the department's Planning, Research, and Statistics Division, organized under the Deputy Commissioner for Administration. The data is then edited, corrected, and summarized for input into this report.

SELECTIVE NARRATIVE SUMMARY

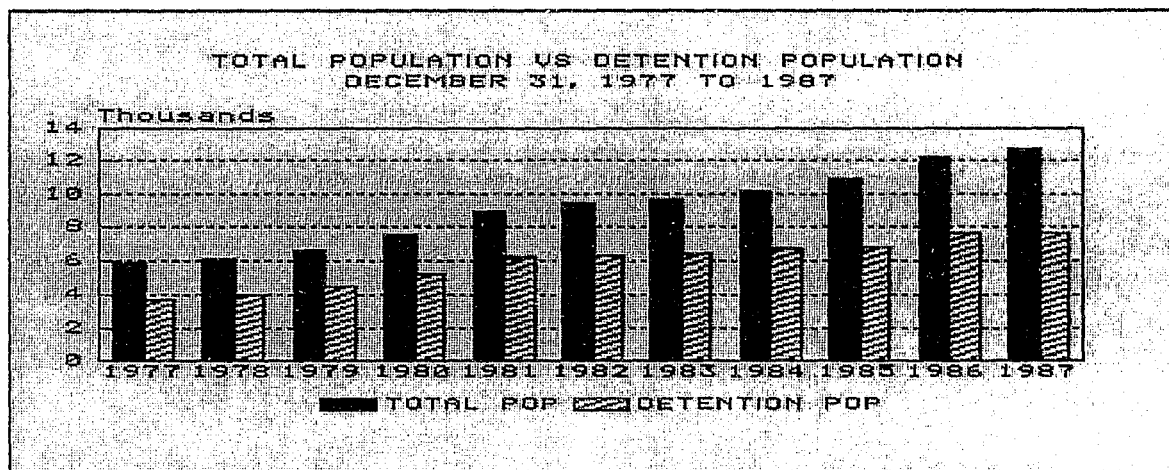
Population Trends

Even though several county prisons are under court order to limit or reduce their inmate population, populations in Pennsylvania county prisons and jails have doubled during the last ten years. Since 1978, the yearly average populations in these correctional facilities increased by 6,781 or 105.7 percent, from 6,414 in 1978 to 13,195 in 1987.

Characteristics of Inmate Population

A review of the statewide county prison inmate population on December 31, 1987 revealed the following:

1. 54.3% were white; 45.7% were non-white;
2. 93.7% were males; 6.3% were females;
3. 30.5% were confined in Philadelphia County Prisons;
4. There were 107.5 county prisoners per 100,000 civilian population;
5. 40.3% were sentenced; 59.7% were detentioners (unsentenced).



Admissions

During 1987, there were 100,681 admissions to county prisons and jails. As expected, 77,512 (77.0%) were detained for various reasons and the remaining 23,169 (23.0%) were sentenced to serve short-term sentences in local correctional facilities. Drunken drivers represented 40.1 percent of all defendants sentenced to county prisons and jails in 1987. The average maximum sentence of all sentenced prisoners was 443 days and their average age was 30.4 years.

Releases

During 1987, 15,282 or 69% of all sentenced prisoners released from county prisons and jails were placed under supervision of state and county paroling authorities. Sentenced prisoners released served an average of 94.9 days; 36.3 percent of these served from one to fifteen days. Of the 77,635 detentioners released in 1987, 29,340 or 37.8 percent were released on bail, 37,605 or 48.4 percent were released from detention by various authorities, and only 10,690 or 13.8 percent were sentenced to state and local correctional facilities.

The Largest County Prisons

In 1987 twenty-seven counties had average populations exceeding 100 prisoners that accounted for 88.9 percent of the Commonwealth's total population in local correctional facilities. County prisons averaging over 300 prisoners were: Philadelphia (4,092), Allegheny (979), Delaware (592), Montgomery (589), Bucks (536), Chester (455), Dauphin (437), Lancaster (376), Berks (362), Lehigh (358), York (344), and Northampton (312).

Driving Under the Influence

Defendants convicted and sentenced to county prisons and jails for driving under the influence (drunken driving) increased by 2,198 or 31% from 7,089 in 1986 to 9,287 in 1987. Since 1983, the number of drunk drivers sentenced to county prisons and jails increased by 6,400 or 221.7 percent from 2,887 in 1983 to 9,287 in 1987. Drunk drivers released during 1987 served an average of 27 days and 59 percent of them served fifteen days or less.

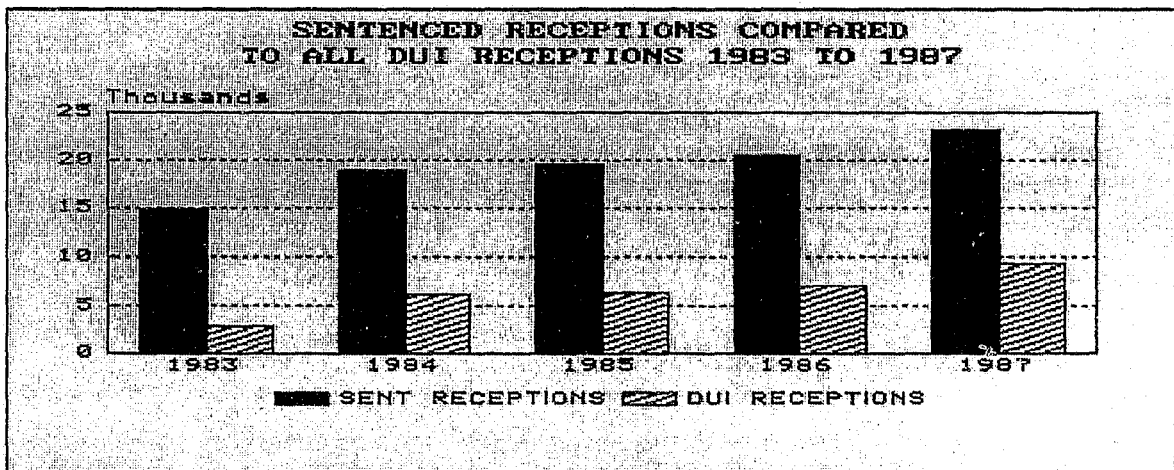


TABLE 1

Yearly Average Populations in Pennsylvania County Prisons and Jails,
1986 and 1987

COUNTY	1986	1987	CHANGE 1986 - 1987	
			AMOUNT	PERCENT
Adams	66	65	-1	-1.5
Allegheny	746	979	233	31.2
Armstrong	43	41	-2	-4.7
Beaver	95	115	20	21.1
Bedford	18	24	(a)	(a)
Berks	331	362	31	9.7
Blair	159	164	5	3.1
Bradford	40	39	-1	-2.5
Bucks	468	536	68	14.5
Butler	77	94	17	22.1
Cambria	132	134	2	1.5
Cameron	3	3	(a)	(a)
Carbon	33	46	13	28.3
Centre	48	63	15	31.3
Chester	476	455	-21	-4.4
Clarion	22	24	(a)	(a)
Clearfield	107	115	8	7.5
Clinton	29	31	2	6.9
Columbia	56	53	-3	-5.4
Crawford	58	56	-2	-3.4
Cumberland	178	206	28	15.7
Dauphin	369	437	68	18.4
Delaware	583	592	9	1.5
Elk	7	10	(a)	(a)
Erie	220	240	20	9.1
Fayette	72	91	19	26.4
Forest	(b)	(b)	(b)	(b)
Franklin	96	127	31	32.3
Fulton	(c)	(c)	(c)	(c)
Greene	24	30	(a)	(a)
Huntingdon	32	33	1	3.1
Indiana	45	51	6	13.3
Jefferson	29	43	14	48.3
Juniata	28	25	-3	-10.7
Lackawanna	153	173	20	13.1
Lancaster	347	376	29	8.4
Lawrence	73	73	0	0.0
Lebanon	160	180	20	12.5
Lehigh	321	358	37	11.5
Luzerne	260	234	-26	-10.0
Lycoming	133	132	-1	-0.8
McKean	23	25	(a)	(a)
Mercer	65	67	2	3.1
Mifflin	32	38	6	18.8
Monroe	63	64	1	1.6
Montgomery	422	589	167	39.6
Montour	40	36	-4	-10.0
Northampton	291	312	21	7.2
Northumberland	128	127	-1	-0.8
Perry	11	11	(a)	(a)
Philadelphia	4,086	4,092	6	0.1
Pike	17	18	(a)	(a)
Potter	8	9	(a)	(a)
Schuylkill	99	116	17	17.2
Snyder	16	21	(a)	(a)
Somerset	54	54	0	0.0
Sullivan	(c)	(c)	(c)	(c)
Susquehanna	17	14	(a)	(a)
Tioga	22	20	(a)	(a)
Union	18	19	(a)	(a)
Venango	37	39	2	5.4
Warren	60	74	14	23.3
Washington	113	128	15	13.3
Wayne	18	27	(a)	(a)
Westmoreland	89	104	15	16.9
Wyoming	20	37	(a)	(a)
York	314	344	30	9.6
TOTAL	12,200	13,195	995	8.2

TABLE 2

Populations in Pennsylvania County Prisons and Jails on
on December 31, 1986 and 1987

COUNTY	1986	1987	CHANGE 1986 - 1987	
			AMOUNT	PERCENT
Adams	68	54	-14	-20.6
Allegheny	826	933	107	13.0
Armstrong	43	41	-2	-4.7
Beaver	72	131	59	81.9
Bedford	14	34	(a)	(a)
Berks	311	382	71	22.8
Blair	147	156	9	6.1
Bradford	27	40	13	48.1
Bucks	457	537	80	17.5
Butler	94	97	3	3.2
Cambria	134	123	-11	-8.2
Cameron	2	3	(a)	(a)
Carbon	33	45	12	36.4
Centre	51	64	13	25.5
Chester	417	454	37	8.9
Clarion	22	30	(a)	(a)
Clearfield	91	130	39	42.9
Clinton	21	27	(a)	(a)
Columbia	50	58	8	16.0
Crawford	51	58	7	13.7
Cumersland	187	191	4	2.1
Dauphin	371	400	29	7.8
Delaware	568	548	-20	-3.5
Elk	11	9	(a)	(a)
Erie	216	230	14	6.5
Fayette	76	82	6	7.9
Forest	0	0	(a)	(a)
Franklin	101	96	-5	-5.0
Fulton	(c)	(c)	(c)	(c)
Greene	22	26	(a)	(a)
Huntingdon	33	34	1	3.0
Indiana	46	53	7	15.2
Jefferson	36	45	9	25.0
Juniata	29	16	-13	-44.8
Lackawanna	146	181	35	24.0
Lancaster	341	380	39	11.4
Lawrence	73	64	-9	-12.3
Lebanon	187	170	-17	-9.1
Lehigh	315	367	52	16.5
Luzerne	229	224	-5	-2.2
Lycoming	115	137	22	19.1
McKean	15	18	(a)	(a)
Mercer	54	63	9	16.7
Mifflin	36	32	-4	-11.1
Monroe	59	71	12	20.3
Montgomery	494	578	84	17.0
Montour	39	30	-9	-23.1
Northampton	278	280	2	0.7
Northumberland	121	139	18	14.9
Perry	11	12	(a)	(a)
Philadelphia	4,188	3,896	-292	-7.0
Pike	19	18	(a)	(a)
Potter	4	10	(a)	(a)
Schuylkill	95	123	28	29.5
Snyder	22	20	(a)	(a)
Somerset	53	51	-2	-3.8
Sullivan	(c)	(a)	(c)	(c)
Susquehanna	15	17	(a)	(a)
Tioga	22	16	(a)	(a)
Union	18	14	(a)	(a)
Venango	31	45	14	45.2
Warren	79	71	-8	-10.0
Washington	95	122	27	28.4
Wayne	14	27	(a)	(a)
Westmoreland	71	108	37	52.1
Wyoming	39	35	-4	-10.1
York	295	339	44	14.9
TOTAL	12,200	12,785	585	4.8

TABLE 3

Month-End Populations in County Prisons and Jails,
January 1983 to December 1987

MONTH	1983	1984	1985	1986	1987
JANUARY 31	10,058	10,386	10,822	11,556	13,270
FEBRUARY 28	10,079	10,660*	10,844	11,812	13,315
MARCH 31	10,034	10,915	10,982	11,781	13,197
APRIL 30	10,270	10,723	10,786	11,897	13,062
MAY 31	10,014	10,521	10,895	12,184	12,976
JUNE 30	9,970	10,597	10,989	12,134	13,051
JULY 31	10,050	10,406	10,987	12,262	13,155
AUGUST 31	10,111	10,481	11,181	12,431	13,347
SEPTEMBER 30	10,504	10,648	11,453	12,804	13,485
OCTOBER 31	10,490	10,684	11,380	12,957	13,684
NOVEMBER 30	10,487	10,835	11,480	12,877	13,430
DECEMBER 31	9,780	10,156	10,870	12,200	12,785

* February 29

Figure 1

MONTH-END POPULATIONS IN COUNTY JAILS
JANUARY 1983 TO DECEMBER 1987

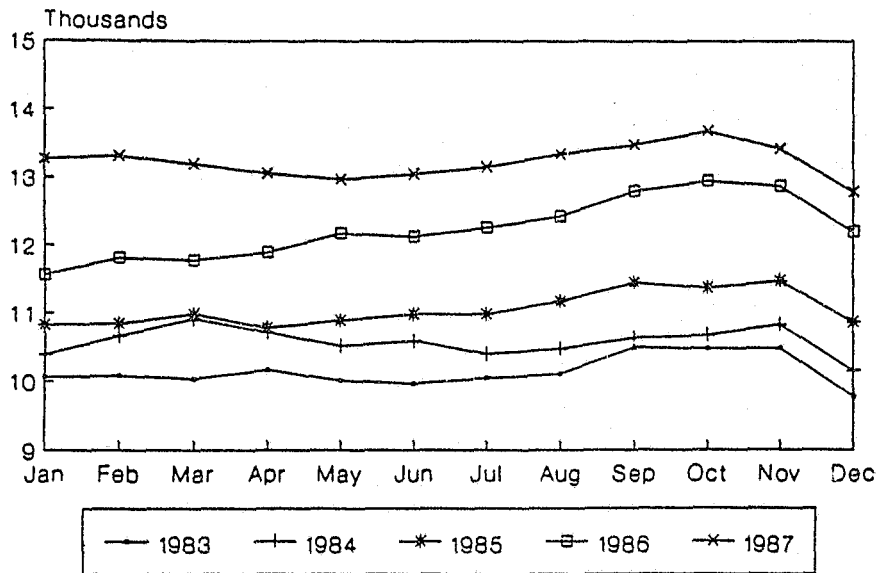


TABLE 4

Populations Trends in Pennsylvania County
Prisons and Jails from 1978 to 1987

YEAR	YEARLY AVERAGE DAILY POPULATION	PERCENT CHANGE
1978	6,414	--
1979	6,714	4.7
1980	7,493	11.6
1981	8,851	18.1
1982	9,622	8.7
1983	10,146	5.4
1984	10,568	4.2
1985	11,044	4.5
1986	12,200	10.5
1987	13,195	8.2

POPULATION IN COUNTY JAILS 1978 TO 1987

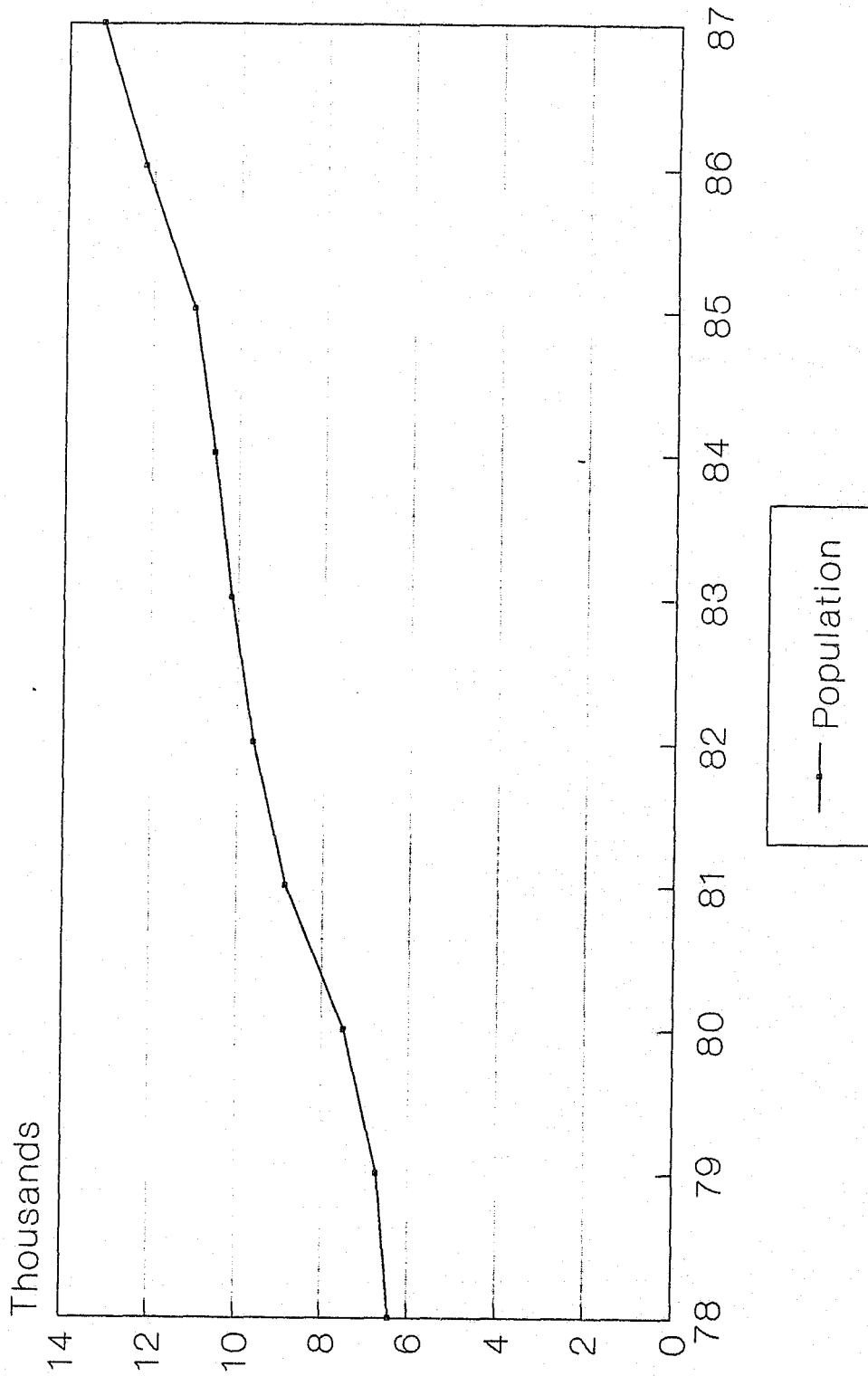


Figure 2

Source: Table 4

TABLE 5

Comparison of Average Daily Populations of Selected County Prisons, 1978 to 1987

YEAR	ALL COUNTY PRISONS	PHILADELPHIA*	ALLEGHENY	REMAINING TOTAL	COUNTY PRISONS PERCENT OF TOTAL
1978	6,414	2,145	441	3,828	59.7
1979	6,714	2,198	439	4,077	60.7
1980	7,493	2,435	488	4,570	61.0
1981	8,851	3,072	561	5,218	59.0
1982	9,622	3,427	584	5,611	58.3
1983	10,146	3,606	613	5,927	58.4
1984	10,568	3,680	535	6,353	60.1
1985	11,044	3,686	531	6,827	61.8
1986	12,200	4,086	746	7,368	60.4
1987	13,195	4,092	979	8,124	61.6

* Represents the total of Holmesburg, House of Correction, Detention Center, and Philadelphia Industrial Correctional Center. Also includes Laurel Hill, Cannery, and YWCA, which hold work release prisoners.

TABLE 6

Populations in Pennsylvania County Prisons and Jails
on December 31, 1986 and 1987, by Race

COUNTY	1986			1987			PERCENT NON-WHITE	
	WHITE	NON-WHITE	TOTAL	WHITE	NON-WHITE	TOTAL	December 1986	31st 1987
Adams	57	11	68	39	15	54	16.2	27.8
Allegheny	331	495	826	419	514	933	59.9	55.1
Armstrong	42	1	43	39	2	41	2.3	4.9
Beaver	55	17	72	87	44	131	23.6	33.6
Bedford	13	1	14	34	0	34	7.1	0.0
Berks	258	53	311	279	103	382	17.0	27.0
Blair	146	1	147	137	19	156	0.7	12.3
Bradford	26	1	27	40	0	40	3.7	0.0
Bucks	358	99	457	420	117	537	21.7	21.8
Butler	84	10	94	92	5	97	10.6	5.2
Cambria	111	23	134	103	20	123	17.2	16.3
Cameron	2	0	2	3	0	3	0.0	0.0
Carbon	32	1	33	44	1	45	3.0	2.2
Centre	47	4	51	63	1	64	7.8	1.6
Chester	234	183	417	286	168	454	43.9	37.0
Clarion	22	0	22	30	0	30	0.0	0.0
Clearfield	81	10	91	111	19	130	11.0	14.6
Clinton	21	0	21	27	0	27	0.0	0.0
Columbia	49	1	50	57	1	58	2.0	1.7
Crawford	43	8	51	51	7	58	15.7	12.1
Cumberland	142	45	187	171	20	191	24.1	10.5
Dauphin	138	233	371	131	269	400	62.8	67.3
Delaware	267	301	568	267	281	548	53.0	51.3
Elk	11	0	11	9	0	9	0.0	0.0
Erie	156	60	216	164	66	230	27.8	28.7
Fayette	60	16	76	70	12	82	21.1	14.6
Forest	0	0	0	0	0	0	0.0	0.0
Franklin	78	23	101	71	25	96	22.8	26.0
Fulton	(c)	(c)	(c)	(c)	(c)	(c)	(c)	(c)
Greene	22	0	22	26	0	26	0.0	0.0
Huntingdon	26	7	33	30	4	34	21.2	11.8
Indiana	42	4	46	51	2	53	8.7	3.8
Jefferson	36	0	36	40	5	45	0.0	11.1
Juniata	29	0	29	16	0	16	0.0	0.0
Lackawanna	130	16	146	161	20	181	11.0	11.0
Lancaster	242	99	341	221	159	380	29.0	41.8
Lawrence	61	12	73	44	20	64	16.4	31.3
Lebanon	168	19	187	160	10	170	10.2	5.9
Lehigh	180	135	315	198	169	367	42.9	46.0
Luzerne	215	14	229	204	20	224	6.1	8.9
Lycoming	97	18	115	122	15	137	15.7	10.9
McKean	15	0	15	18	0	18	0.0	0.0
Mercer	37	17	54	48	15	63	31.5	23.8
Mifflin	36	0	36	32	0	32	0.0	0.0
Monroe	47	12	59	62	9	71	20.3	12.7
Montgomery	295	199	494	316	262	578	40.3	45.3
Montour	36	3	39	25	5	30	7.7	16.7
Northampton	259	19	278	243	37	280	6.8	13.2
Northumberland	120	1	121	124	15	139	0.8	10.8
Perry	11	0	11	12	0	12	0.0	0.0
Philadelphia	747	3,441	4,188	712	3,184	3,896	82.2	81.7
Pike	17	2	19	17	1	18	10.5	5.6
Potter	4	0	4	10	0	10	0.0	0.0
Schuylkill	92	3	95	113	10	123	3.2	8.1
Snyder	22	0	22	19	1	20	0.0	5.0
Somerset	53	0	53	51	0	51	0.0	0.0
Sullivan	(c)	(c)	(c)	(c)	(c)	(c)	(c)	(c)
Susquehanna	15	0	15	17	0	17	0.0	0.0
Tioga	22	0	22	16	0	16	0.0	0.0
Union	18	0	18	14	0	14	0.0	0.0
Venango	29	2	31	44	1	45	6.5	2.2
Warren	78	1	79	70	1	71	1.3	1.4
Washington	71	24	95	91	31	122	25.3	25.4
Wayne	13	1	14	27	0	27	7.1	0.0
Westmoreland	59	12	71	88	20	108	16.9	18.5
Wyoming	39	0	39	34	1	35	0.0	2.9
York	193	102	295	225	114	339	34.6	33.6
TOTAL	6,440	5,760	12,200	6,945	5,840	12,785	47.2	45.7

Table 7

Racial Distribution of Inmates Confined in Pennsylvania
County Prison and Jails as of December 31, 1978 TO 1987

YEAR	WHITE	PERCENT	NON-WHITE	PERCENT	TOTAL
1978	3,317	54.5	2,764	45.5	6,081
1979	3,603	54.5	3,005	45.5	6,608
1980	3,989	52.8	3,564	47.2	7,553
1981	4,600	51.2	4,377	48.8	8,977
1982	4,955	52.6	4,473	47.4	9,428
1983	4,953	50.6	4,827	49.4	9,780
1984	5,352	52.7	4,804	47.3	10,156
1985	5,801	53.4	5,069	46.6	10,870
1986	6,440	52.8	5,760	47.2	12,200
1987	6,945	54.3	5,840	45.7	12,785

TABLE 8

Populations in Pennsylvania County Prisons and Jails
on December 31, 1986 and 1987, by Sex

COUNTY	1986			1987		
	MALE	FEMALE	TOTAL	MALE	FEMALE	TOTAL
Adams	68	0	68	54	0	54
Allegheny	769	57	826	875	58	933
Armstrong	43	0	43	40	1	41
Beaver	65	7	72	119	12	131
Bedford	13	1	14	34	0	34
Berks	282	29	311	342	40	382
Blair	139	8	147	140	16	156
Bradford	27	0	27	40	0	40
Bucks	441	16	457	501	36	537
Butler	88	6	94	89	8	97
Cambria	127	7	134	118	5	123
Cameron	2	0	2	3	0	3
Carbon	32	1	33	42	3	45
Centre	51	0	51	64	0	64
Chester	394	23	417	428	26	454
Clarion	21	1	22	29	1	30
Clearfield	87	4	91	106	24	130
Clinton	21	0	21	27	0	27
Columbia	48	2	50	57	1	58
Crawford	49	2	51	55	3	58
Cumberland	172	15	187	180	11	191
Dauphin	339	32	371	369	31	400
Delaware	538	30	568	520	28	548
Elk	11	0	11	9	0	9
Erie	197	19	216	214	16	230
Fayette	71	5	76	78	4	82
Forest	0	0	0	0	0	0
Franklin	94	7	101	89	7	96
Fulton	(c)	(c)	(c)	(c)	(c)	(c)
Greene	22	0	22	26	0	26
Huntingdon	33	0	33	34	0	34
Indiana	46	0	46	51	2	53
Jefferson	35	1	36	38	7	45
Junata	29	0	29	16	0	16
Lackawanna	135	11	146	174	7	181
Lancaster	331	10	341	356	24	380
Lawrence	70	3	73	60	4	64
Lebanon	177	10	187	158	12	170
Lehigh	286	29	315	325	42	367
Luzerne	218	11	229	216	8	224
Lycoming	108	7	115	127	10	137
McKean	15	0	15	18	0	18
Mercer	52	2	54	61	2	63
Mifflin	34	2	36	23	9	32
Monroe	59	0	59	71	0	71
Montgomery	455	39	494	533	45	578
Montour	39	0	39	30	0	30
Northampton	266	12	278	257	23	280
Northumberland	109	12	121	120	19	139
Perry	11	0	11	12	0	12
Philadelphia	3,977	211	4,188	3,694	202	3,896
Pike	19	0	19	18	0	18
Potter	4	0	4	8	2	10
Schuylkill	91	4	95	120	3	123
Snyder	22	0	22	20	0	20
Somerset	52	1	53	51	0	51
Sullivan	(c)	(c)	(c)	(c)	(c)	(c)
Susquehanna	15	0	15	17	0	17
Tioga	22	0	22	16	0	16
Union	18	0	18	14	0	14
Venango	28	3	31	43	2	45
Warren	75	4	79	69	2	71
Washington	93	2	95	112	10	122
Wayne	14	0	14	27	0	27
Westmoreland	69	2	71	102	6	108
Wyoming	32	7	39	32	3	35
York	274	21	295	309	30	339
TOTAL	11,524	676	12,200	11,980	805	12,785

TABLE 9

1987 County Prison Population and 1986 Civilian Population from
Metropolitan Statistical Areas in Pennsylvania

METROPOLITAN STATISTICAL AREA	AVG. DAILY PRISON POP.	CIVILIAN POPULATION*	INCAR. RATE
Allentown - Bethlehem MSA (Includes Carbon, Lehigh & Northampton Counties; excludes Warren County, N.J.)	716	570,039	126
Altoona MSA (Includes Blair County)	164	132,498	124
Beaver MSA (Includes Beaver County)	115	193,216	60
Erie MSA (Includes Erie County)	240	279,250	86
Harrisburg - Lebanon - Carlisle MSA (Includes Cumberland, Dauphin, Lebanon & Perry Counties)	834	577,318	144
Johnstown MSA (Includes Cambria & Somerset Counties)	188	254,145	74
Lancaster MSA (Includes Lancaster County)	376	393,538	96
Philadelphia PMSA (Includes Bucks, Chester, Delaware, Montgomery & Philadelphia Counties; excludes Burlington, Camden & Gloucester Counties, N.J.)	6,264	3,736,677	168
Pittsburgh PMSA (Includes Allegheny, Fayette, Washington & Westmoreland Counties)	1,302	2,122,905	61
Reading MSA (Includes Berks County)	362	320,976	113
Scranton - Wilkes Barre MSA (Includes Columbia, Lackawanna, Luzerne, Monroe, & Wyoming Counties)	561	725,937	77
Sharon MSA (Includes Mercer County)	67	123,563	54
State College MSA (Includes Centre County)	63	114,551	55
Williamsport MSA (Includes Lycoming County)	132	116,334	114
York MSA (Includes Adams & York Counties)	409	397,739	103
MSA & PMSA Total	11,793	10,058,686	117
Outside MSA & PMSA	1,402	1,830,371	77
Pennsylvania Total	13,195	11,889,057	111

* Civilian populations are based on population estimates for July 1, 1986 produced jointly by the Pennsylvania State Data Center, Pennsylvania State University Capital Campus and the U.S. Bureau of Census.

TABLE 10

Number and Ratio of Prisoners Per 100,000 Civilian Population
on December 31, 1986 and 1987, by County

COUNTY	1986		1987	
	PRISONERS	RATIO*	PRISONERS	RATIO**
Adams	68	96.8	54	75.9
Allegheny	826	59.6	933	67.9
Armstrong	43	54.9	41	52.2
Beaver	72	36.9	131	67.8
Bedford	14	29.5	34	71.2
Berks	311	97.6	382	119.0
Blair	147	110.5	156	117.7
Bradford	27	42.3	40	62.2
Bucks	457	89.0	537	102.9
Butler	94	62.5	97	64.2
Cambria	134	76.6	123	71.0
Cameron	2	30.6	3	46.3
Carbon	33	61.2	45	82.7
Centre	51	44.6	64	55.9
Chester	417	124.5	454	133.9
Clarion	22	51.5	30	70.4
Clearfield	91	110.1	130	158.3
Clinton	21	55.2	27	70.9
Columbia	50	81.9	58	94.6
Crawford	51	58.0	58	66.5
Cumberland	187	99.5	191	100.6
Dauphin	371	156.7	400	169.0
Delaware	568	102.2	548	97.8
Elk	11	29.3	9	24.0
Erie	216	77.4	230	82.4
Fayette	76	48.5	82	52.6
Forest	0	0.0	0	0.0
Franklin	101	85.9	96	80.9
Fulton	(c)	(c)	(c)	(c)
Greene	22	53.7	26	63.7
Huntingdon	33	77.1	34	79.3
Indiana	46	49.8	53	57.4
Jefferson	36	74.5	45	93.0
Juniata	29	145.7	16	79.9
Lackawanna	146	65.4	181	81.2
Lancaster	341	88.0	380	96.6
Lawrence	73	70.9	64	62.8
Lebanon	187	167.7	170	151.9
Lehigh	315	112.7	367	130.4
Luzerne	229	68.9	224	67.6
Lycoming	115	98.8	137	117.8
McKean	15	31.1	18	38.0
Mercer	54	43.5	63	51.0
Mifflin	36	77.6	32	68.9
Monroe	59	74.6	71	85.9
Montgomery	494	74.4	578	86.0
Montour	39	233.9	30	179.9
Northampton	278	119.9	280	119.6
Northumberland	121	121.5	139	139.8
Perry	11	29.0	12	30.9
Philadelphia	4,188	254.2	3,896	237.1
Pike	19	89.4	18	80.6
Potter	4	21.9	10	54.6
Schuylkill	95	60.7	123	78.7
Snyder	22	62.0	20	56.2
Somerset	53	65.1	51	63.0
Sullivan	(c)	(c)	(c)	(c)
Susquehanna	15	38.1	17	42.6
Tioga	22	54.5	16	39.6
Union	18	52.3	14	40.4
Venango	31	49.4	45	72.4
Warren	79	169.8	71	153.2
Washington	95	44.5	122	57.4
Wayne	14	36.7	27	69.7
Westmoreland	71	18.5	108	28.3
Wyoming	39	141.4	35	125.8
York	295	91.3	339	103.8
TOTAL	12,200	102.8	12,785	107.5

TABLE 11

Status of Prisoners in Pennsylvania County Prisons and Jails on December 31, 1986 and 1987

COUNTY	1986			1987			PERCENT DETENTIONERS	
	SENTENCED	DETENTIONERS	TOTAL	SENTENCED	DETENTIONERS	TOTAL	1986	1987
Adams	43	25	68	26	28	54	36.8	51.9
Allegheny	56	770	826	132	801	933	93.2	85.9
Armstrong	12	31	43	20	21	41	72.1	51.2
Beaver	54	18	72	47	84	131	25.0	64.1
Bedford	5	9	14	16	18	34	(a)	52.9
Berks	122	189	311	138	244	382	60.8	63.9
Blair	55	92	147	95	61	156	62.6	39.1
Bradford	13	14	27	18	22	40	51.9	55.0
Bucks	283	174	457	310	227	537	38.1	42.3
Butler	29	65	94	30	67	97	69.1	69.1
Cambria	69	65	134	78	45	123	48.5	36.6
Cameron	0	2	2	1	2	3	(a)	(a)
Carbon	25	8	33	32	13	45	24.2	28.9
Centre	25	26	51	42	22	64	51.0	34.4
Chester	197	220	417	187	267	454	52.8	58.8
Clarion	13	9	22	21	9	30	(a)	30.0
Clearfield	28	63	91	60	70	130	69.2	53.8
Clinton	11	10	21	15	12	27	(a)	44.4
Columbia	23	27	50	24	34	58	54.0	58.6
Crawford	24	27	51	28	30	58	52.9	51.7
Cumberland	123	64	187	135	56	191	34.2	29.3
Dauphin	187	184	371	235	165	400	49.6	41.3
Delaware	278	290	568	263	285	548	51.1	52.0
Elk	6	5	11	9	0	9	(a)	(a)
Erie	80	136	216	108	122	230	63.0	53.0
Fayette	13	63	76	10	72	82	82.9	87.8
Forest	(d)	(d)	(d)	0	0	0	(d)	(d)
Franklin	64	37	101	70	26	96	36.6	27.1
Fulton	(c)	(c)	(c)	(c)	(c)	(c)	(c)	(c)
Greene	9	13	22	10	16	26	(a)	61.5
Huntingdon	7	26	33	11	23	34	78.8	67.6
Indiana	26	20	46	28	25	53	43.5	47.2
Jefferson	6	30	36	14	31	45	83.3	68.9
Juniata	21	8	29	10	6	16	27.6	(a)
Lackawanna	71	75	146	90	91	181	51.4	50.3
Lancaster	163	178	341	146	234	380	52.2	61.6
Lawrence	23	50	73	30	34	64	68.5	53.1
Lebanon	141	46	187	115	55	170	24.6	32.4
Lehigh	137	178	315	176	191	367	56.5	52.0
Luzerne	136	93	229	128	96	224	40.6	42.9
Lycoming	66	49	115	81	56	137	42.6	40.9
McKean	6	9	15	12	6	18	(a)	(a)
Mercer	19	35	54	23	40	63	64.8	63.5
Hiffilin	21	15	36	19	13	32	41.7	40.6
Monroe	30	29	59	40	31	71	49.2	43.7
Montgomery	186	308	494	300	278	578	62.3	48.1
Montour	22	17	39	24	6	30	43.6	20.0
Northampton	234	44	278	242	38	280	15.8	13.6
Northumberland	80	41	121	63	76	139	33.9	54.7
Perry	2	9	11	6	6	12	(a)	(a)
Philadelphia	961	3,227	4,188	966	2,930	3,896	77.1	75.2
Pike	13	6	19	9	9	18	(a)	(a)
Potter	4	0	4	7	3	10	(a)	(a)
Schuylkill	52	43	95	63	60	123	45.3	48.8
Snyder	15	7	22	14	6	20	(a)	(a)
Somerset	18	35	53	27	24	51	66.0	47.1
Sullivan	(c)	(c)	(c)	(c)	(c)	(c)	(c)	(c)
Susquehanna	7	8	15	12	5	17	(a)	(a)
Tioga	7	15	22	2	14	16	(a)	(a)
Union	8	10	18	7	7	14	(a)	(a)
Venango	16	15	31	24	21	45	48.4	46.7
Warren	53	26	79	44	27	71	32.9	38.0
Washington	36	59	95	53	69	122	62.1	56.6
Wayne	7	7	14	15	12	27	(a)	44.4
Westmoreland	9	62	71	35	73	108	87.3	67.6
Wyoming	25	14	39	23	12	35	35.9	34.3
York	105	190	295	136	203	339	64.4	59.9
TOTAL	4,580	7,620	12,200	5,155	7,630	12,785	62.5	59.7

TABLE 12

Detentioners Confined in County Prisons and
Jails on December 31, 1978 to 1987

YEAR	NUMBER OF DETENTIONERS	PERCENT OF TOTAL POPULATION
1978	3,980	65.4
1979	4,519	68.4
1980	5,256	69.6
1981	6,171	68.7
1982	6,247	66.3
1983	6,341	65.5
1984	6,658	65.6
1985	6,834	62.9
1986	7,620	62.5
1987	7,630	59.7

TABLE 13

Major Types of Admissions to and Releases from Pennsylvania
County Prisons and Jails, 1978 to 1987

YEAR	ADMISSIONS				RELEASES	
	COURT COMMITMENTS*	MINOR JUDICIARY COMMITMENTS*	ADULT DETENTIONERS	UNCONDITIONAL*	CONDITIONAL (PAROLES)*	ADULT DETENTIONERS
1978	6,336	4,966	54,435	6,246	4,810	54,106
1979	6,169	4,457	55,845	5,425	4,835	55,607
1980	6,225	4,642	60,816	5,641	4,823	60,281
1981	7,359	4,121	66,268	5,335	5,328	65,645
1982	8,966	4,268	66,032	5,961	6,642	66,565
1983	11,098	3,999	64,570	5,888	8,929	64,802
1984	14,973	3,986	68,298	6,881	11,641	69,044
1985	15,120	4,368	69,316	6,959	11,938	69,332
1986	16,239	4,209	73,572	7,060	12,917	72,790
1987	19,581	3,588	77,512	6,866	15,282	77,635

* Represents prisoners sentenced to serve time in local county correctional facilities.

NOTE: Since the above data does not include admissions and releases such as transfers, outmate and weekend movements, and miscellaneous movements (too numerous to mention), the above totals will not balance with end-of-year population counts.

TABLE 14

Prisoners Sentenced to Pennsylvania County Prisons and Jails
During 1986 and 1987

COUNTY	1986		1987	
	BY COURT OF RECORDS	BY MINOR JUDICIARY	BY COURT OF RECORDS	BY MINOR JUDICIARY
Adams	163	87	122	47
Allegheny	1,066	490	1,767	594
Armstrong	48	15	66	14
Beaver	173	34	184	23
Bedford	48	39	68	54
Berks	446	42	421	42
Blair	256	162	407	122
Bradford	26	1	59	0
Bucks	1,108	103	1,614	67
Butler	171	225	220	195
Cambria	124	2	161	3
Cameron	4	0	2	0
Carbon	70	9	98	9
Centre	202	18	226	19
Chester	774	236	744	106
Clarion	35	11	43	15
Clearfield	168	60	193	81
Clinton	33	3	43	2
Columbia	94	24	80	15
Crawford	248	92	214	113
Cumberland	417	59	515	48
Dauphin	667	116	780	146
Delaware	892	125	881	70
Elk	29	11	42	9
Erie	549	234	705	234
Fayette	86	108	97	112
Forest	(d)	(d)	(d)	(d)
Franklin	212	131	198	107
Fulton	(c)	(c)	(c)	(c)
Greene	56	22	65	9
Huntingdon	67	22	71	16
Indiana	104	53	145	59
Jefferson	58	9	44	5
Juniata	40	6	29	4
Lackawanna	123	11	238	1
Lancaster	383	35	360	28
Lawrence	112	14	145	15
Lebanon	294	90	310	92
Lehigh	326	2	332	0
Luzerne	276	39	329	35
Lycoming	511	46	459	47
McKean	40	11	50	4
Mercer	177	84	204	87
Mifflin	37	2	51	0
Monroe	127	11	122	9
Montgomery	773	92	1,074	57
Montour	24	11	15	7
Northampton	443	157	466	142
Northumberland	130	81	142	58
Perry	23	4	29	13
Philadelphia	2,242	287	2,761	0
Pike	23	9	53	18
Potter	33	5	21	8
Schuylkill	204	36	240	21
Snyder	40	5	51	48
Somerset	74	47	98	24
Sullivan	(c)	(c)	(c)	(c)
Susquehanna	41	49	43	36
Tioga	26	11	27	10
Union	53	17	37	14
Venango	106	97	114	95
Warren	134	27	119	22
Washington	241	79	281	71
Wayne	34	0	32	2
Westmoreland	212	71	349	70
York	27	5	37	0
York	516	225	688	214
TOTAL	16,239	4,209	19,581	3,588

TABLE 15

Comparison of Sentenced Prisoners Received in County Prisons
and Jails, 1986 and 1987, by Selected Offense

OFFENSE CLASSIFICATION	1986	1987	CHANGE, 1986-1987	
			AMOUNT	PERCENT
Robbery	604	683	79	13.1
Burglary	1,524	1,512	-12	-0.8
Aggravated Assault	497	535	38	7.6
Other Assaults	906	998	92	10.2
Theft(excl. retail theft)	1,077	1,103	26	2.4
Retail Theft	603	737	134	22.2
Fraud	445	423	-22	-0.4
Receiving Stolen Property	318	329	11	3.5
Forgery	179	171	-8	-4.5
Forcible Rape	43	40	-3	-7.0
Narcotic Drug Laws	1,413	1,726	313	22.2
Weapons	182	163	-19	-10.4
Non-Support	425	423	-2	-0.5
Drunken Driving	7,089	9,287	2,198	31.0
Disorderly Conduct	831	672	-159	-19.1
Drunkenness	495	451	-44	-8.9
Arson	70	65	-5	-7.1
Criminal Mischief	321	301	-20	-6.2

TABLE 16

Number of Sentenced Prisoners Received in County Prisons and Jails During 1987,
by Part I Offense and Committing County

COUNTY	MURDER*	HANSLAUGHTER**	FORCIBLE RAPE	ROBBERY	AGGRAVATED ASSAULT	BURGLARY	THEFT	ARSON
Adams	0	0	0	2	2	16	12	1
Allegheny	1	2	5	26	16	77	142	5
Armstrong	0	0	2	0	0	9	5	0
Beaver	0	0	0	0	3	10	8	0
Bedford	0	1	0	0	0	0	0	2
Berks	0	4	1	6	7	42	60	1
Blair	0	6	0	4	12	28	20	1
Bradford	0	0	0	0	2	6	6	0
Bucks	4	10	9	17	18	86	126	5
Butler	0	0	0	1	5	18	15	0
Cambria	0	3	0	2	4	22	16	1
Cameron	0	0	0	0	0	0	1	0
Carbon	0	2	0	3	2	11	6	0
Centre	0	4	0	0	1	10	13	0
Chester	2	9	3	13	20	76	80	4
Clarion	0	2	0	0	1	0	1	0
Clearfield	0	2	0	2	2	16	24	1
Clinton	0	0	0	0	1	2	6	0
Columbia	0	0	0	0	1	5	15	0
Crawford	0	0	0	0	4	28	29	0
Cumberland	0	3	0	6	4	26	35	1
Dauphin	0	5	0	16	31	57	62	2
Delaware	0	9	1	33	37	77	103	2
Elk	0	1	1	0	2	1	5	0
Erie	0	3	0	4	25	40	74	0
Fayette	0	0	0	0	1	8	10	1
Forest	0	0	0	0	0	1	0	0
Franklin	0	3	0	1	0	8	19	0
Fulton	0	0	0	0	0	0	0	0
Greene	0	0	0	1	1	4	2	0
Huntingdon	0	1	0	1	0	2	5	0
Indiana	0	3	0	0	2	5	11	0
Jefferson	0	0	0	0	0	7	3	0
Juniata	0	1	0	0	0	1	7	1
Lackawanna	0	3	0	1	0	14	11	1
Lancaster	0	0	0	8	9	30	9	5
Lawrence	0	1	0	3	1	11	11	0
Lebanon	0	1	0	5	8	19	10	1
Lehigh	0	1	0	5	12	20	43	1
Luzerne	1	3	1	7	4	13	21	2
Lycoming	1	0	0	1	14	14	51	1
McKean	0	0	0	0	0	3	6	0
Mercer	0	0	0	2	1	12	26	0
Hifflin	0	0	0	0	0	7	4	0
Honroe	0	2	0	1	1	8	4	1
Montgomery	0	9	0	28	34	79	101	1
Montour	0	0	0	0	0	1	1	0
Northampton	0	3	3	4	21	38	44	3
Northumberland	0	3	0	1	2	8	18	0
Perry	0	0	0	0	0	2	0	0
Philadelphia	1	5	9	454	172	367	390	11
Pike	0	0	0	0	2	2	9	0
Potter	0	1	0	0	0	4	1	0
Schuylkill	0	1	2	2	15	33	27	2
Snyder	0	1	0	0	0	0	5	0
Somerset	0	1	1	0	0	5	12	0
Sullivan	0	0	0	0	0	0	0	0
Susquehanna	0	1	1	0	0	8	5	1
Tioga	0	0	0	0	2	0	0	0
Union	0	0	0	0	0	3	0	0
Venango	0	0	0	1	1	11	10	0
Warren	0	0	0	0	0	10	8	0
Washington	0	7	1	4	8	29	34	5
Wayne	0	0	0	0	0	2	2	0
Westmoreland	0	0	0	7	9	25	25	0
Wyoming	0	0	0	0	3	1	6	0
York	0	2	0	11	12	34	25	2
Federal	0	1	0	0	0	0	0	0
TOTAL	10	120	40	683	535	1,512	1,840	65

TABLE 17

Number of Sentenced Prisoners Received in County Prisons and Jails During 1987,
by Selected Part II Offense and Committing County

COUNTY	OTHER ASSAULTS	FRAUDS	RECEIVING STOLEN PROPERTY	NARCOTIC DRUG LAWS	DRUNKEN DRIVING	DRUNKENNESS	DISORDERLY CONDUCT	CRIMINAL MISCHIEF
Adams	2	6	0	9	66			
Allegheny	143	41	31	107	1,331	2	4	1
Armstrong	1	2	1	8	32	19	127	44
Beaver	2	4	2	5	137	4	2	1
Bedford	2	3	0	7	54	2	1	2
Berks	27	20	9	51	104	3	6	3
Blair	28	8	10	37	244	5	6	8
Bradford	5	2	1	4	28	11	23	7
Bucks	58	5	23	120	871	0	0	0
Butler	10	14	3	27	116	3	16	0
Cambria	13	7	17	7	49	86	62	7
Cameron	0	0	0	1	0	1	2	1
Carbon	6	1	2	9	30	0	0	0
Centre	10	3	9	12	110	0	0	5
Chester	51	15	15	64	301	5	1	0
Clarion	1	4	0	1	34	13	14	9
Clearfield	8	10	6	14	119	0	1	1
Clinton	4	0	0	1	25	9	12	2
Columbia	4	2	1	6	38	0	0	0
Crawford	6	26	4	13	113	3	1	0
Cumberland	16	20	11	41	298	18	19	9
Dauphin	49	20	11	117	346	3	4	6
Delaware	31	7	9	103	390	21	34	22
Elk	1	1	0	2	25	10	21	4
Erie	62	25	10	56	308	1	2	1
Fayette	13	11	1	7	76	47	44	16
Forest	0	0	0	0	3	10	18	10
Franklin	9	12	8	30	86	0	0	0
Fulton	0	0	0	0	1	33	12	14
Greene	2	3	1	6	31	0	0	0
Huntingdon	3	1	0	5	53	5	0	0
Indiana	5	7	2	9	90	1	6	0
Jefferson	0	0	0	1	24	10	7	6
Juniata	3	0	0	0	10	0	0	0
Lackawanna	6	0	6	34	139	0	0	0
Lancaster	16	5	5	46	147	0	4	2
Lawrence	10	1	7	12	68	3	0	4
Lebanon	19	5	1	42	127	2	4	0
Lehigh	13	8	8	38	144	0	13	3
Luzerne	15	5	8	9	140	0	2	3
Lycoming	25	5	4	23	265	5	7	1
McKean	2	3	0	5	22	7	9	7
Mercer	12	8	6	5	135	0	1	0
Mifflin	5	1	0	2	23	4	25	14
Monroe	6	2	0	12	65	0	4	1
Montgomery	16	14	9	60	564	2	1	2
Montour	2	0	0	2	6	7	21	2
Northampton	15	9	0	62	174	1	4	0
Northumberland	16	3	10	13	66	20	21	17
Perry	3	0	0	4	23	9	17	11
Philadelphia	93	4	23	316	433	1	0	2
Pike	5	2	10	2	18	2	10	2
Potter	1	0	0	0	13	1	1	0
Schuylkill	16	2	5	29	72	0	2	1
Snyder	1	5	1	5	49	2	5	10
Somerset	5	2	1	8	58	2	2	5
Sullivan	0	0	0	0	0	2	4	2
Susquehanna	5	3	3	4	35	0	0	0
Tioga	0	0	0	3	21	0	1	0
Union	4	0	0	2	34	0	0	1
Venango	11	11	2	18	106	0	0	0
Warren	8	4	2	3	55	7	5	9
Washington	19	8	7	17	110	3	3	2
Wayne	6	1	5	4	5	11	26	8
Westmoreland	12	5	5	17	228	0	0	0
Wyoming	3	1	2	8	7	5	13	9
York	53	25	10	40	392	0	0	0
Federal	0	1	2	1	0	30	22	3
TOTAL	998	423	329	1,726	9,287	451	672	301

TABLE 18

Number of Sentenced Prisoners Received in County Prisons
and Jails During 1987, by Part I and Part II Offenses

OFFENSE CLASSIFICATION	TOTAL RECEIVED	PERCENT OF TOTAL
PART I OFFENSES:		
Murder (generally 3rd Degree)	10	0.0
Manslaughter	120	0.5
Forcible Rape	40	0.2
Robbery	683	3.0
Aggravated Assault	535	2.3
Burglary	1,512	6.5
Theft	1,840	7.9
Arson	65	0.3
TOTAL PART I	4,805	20.7
PART II OFFENSES:		
Other Assaults	998	4.3
Forgery	171	0.7
Fraud	423	1.8
Receiving Stolen Properties	329	1.4
Weapons	163	0.7
Other Sex Offenses	297	1.3
Narcotic Drug Laws	1,726	7.5
Non-Support	423	1.8
Driving While Intoxicated (DWI)	9,287	40.2
Other Motor Vehicle Violations	1,276	5.5
Liquor Laws	185	0.8
Drunkenness (except DWI)	451	2.0
Disorderly Conduct	672	2.9
Criminal Mischief	301	1.3
Corruption of Minors	142	0.6
Criminal Conspiracy	165	0.7
Prison Breach	102	0.4
County/Local Ordinances	47	0.2
Contempt of Court	419	1.8
Violation of Probation	329	1.4
Other Part II Offenses	458	2.0
TOTAL PART II	18,364	79.3
ALL RECEPTIONS	23,169	100.0

% OFFENDERS RECEIVED BY OFFENSE FOR COUNTY JAILS IN 1987

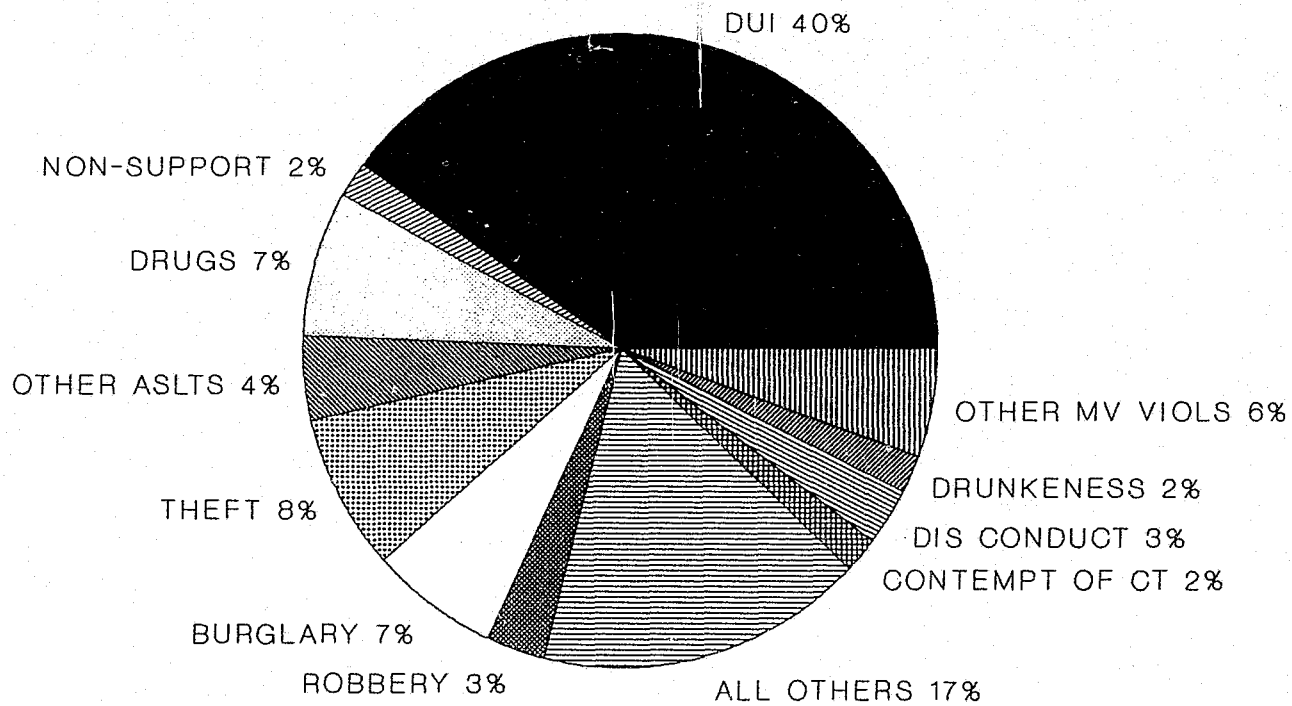


Figure 3

Source: Table 18

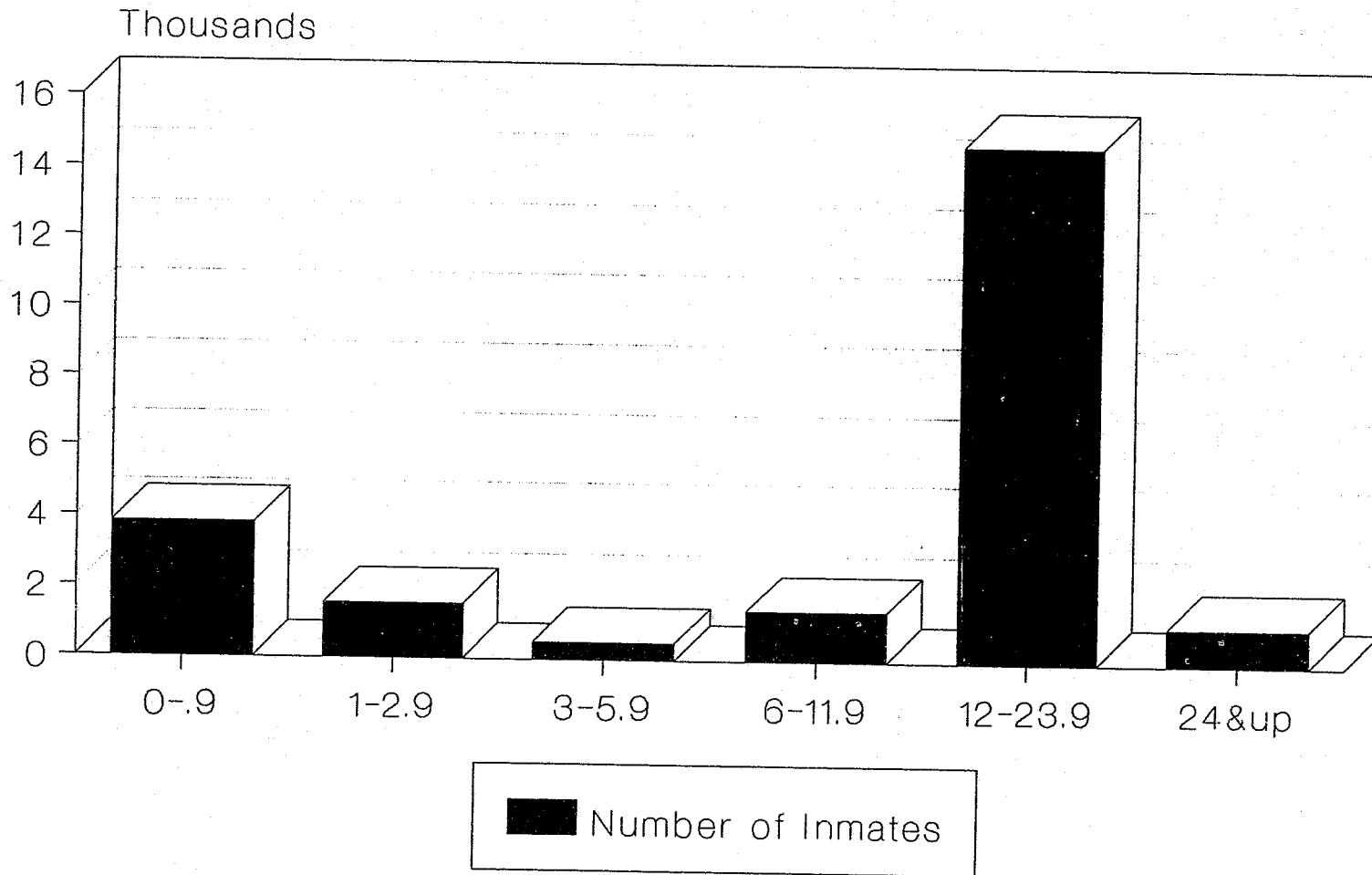
TABLE 19

Sentenced Prisoners Received for Drunken Driving, 1983 to 1987,
by Committing County

COUNTY	1983	1984	1985	1986	1987	AMOUNT OF CHANGE 1983-1987
Adams	39	64	77	66	66	27
Allegheny	352	693	478	802	1,331	979
Armstrong	11	23	19	28	32	21
Beaver	31	92	87	112	137	106
Bedford	19	35	59	41	54	35
Berks	48	109	105	102	104	56
Blair	29	112	246	155	244	215
Bradford	1	8	9	9	28	27
Bucks	204	500	498	493	871	667
Butler	69	165	146	109	116	47
Cambria	12	24	22	16	49	37
Cameron	0	0	0	0	0	0
Carbon	15	22	19	18	30	15
Centre	21	63	103	102	110	89
Chester	92	343	241	321	301	209
Clarion	5	28	33	30	34	29
Clearfield	155	180	98	85	119	-36
Clinton	6	20	21	10	25	19
Columbia	19	47	52	55	38	19
Crawford	114	118	157	127	113	-1
Cumberland	43	92	135	219	298	255
Dauphin	104	185	229	275	346	242
Delaware	129	436	441	420	390	261
Elk	3	6	10	13	25	22
Erie	87	152	138	227	308	221
Fayette	9	40	52	60	76	67
Forest	0	3	4	1	3	3
Franklin	54	84	91	93	86	32
Fulton	0	1	2	5	1	1
Greene	12	11	19	27	31	19
Huntingdon	27	68	47	47	53	26
Indiana	15	39	41	62	90	75
Jefferson	7	26	29	28	24	17
Juniata	3	7	14	15	10	7
Lackawanna	22	33	31	46	139	117
Lancaster	47	72	131	158	147	100
Lawrence	6	29	47	36	68	62
Lebanon	58	94	106	97	127	69
Lehigh	35	82	82	96	144	109
Luzerne	44	66	83	82	140	96
Lycoming	96	187	202	263	265	169
McKean	9	18	11	10	22	13
Mercer	40	98	157	137	135	95
Mifflin	17	9	18	15	23	6
Monroe	9	46	26	38	65	56
Montgomery	86	254	319	393	564	478
Montour	4	6	14	11	6	2
Northampton	49	92	137	126	174	125
Northumberland	75	75	45	60	66	-9
Perry	2	28	27	19	23	21
Philadelphia	116	429	368	418	433	317
Pike	4	12	5	9	18	14
Potter	15	13	11	15	13	-2
Schuylkill	35	60	84	81	72	37
Snyder	7	29	25	27	49	42
Somerset	22	53	51	36	58	36
Sullivan	0	1	0	0	0	0
Susquehanna	20	44	35	29	35	15
Tioga	4	32	23	20	21	17
Union	5	24	25	43	34	29
Venango	62	113	104	84	106	44
Warren	58	45	51	61	55	-3
Washington	60	94	95	78	110	50
Wayne	7	4	2	6	5	-2
Westmoreland	32	89	111	130	228	196
Wycming	4	8	6	11	7	3
York	101	251	254	279	392	291
Federal	1	0	1	2	0	-1
TOTAL	2,887	6,286	6,409	7,089	9,287	6,400

DISTRIBUTION OF MAXIMUM COUNTY SENTENCES FOR 1987

Figure 4



Max sentence expressed in months

Source: Table 20 and Table 21

TABLE 20

Distribution of Maximum Sentences of County Prisoners Received During 1987,
by Committing County

COUNTY	1-5 DAYS	6-10 DAYS	11-15 DAYS	16-30 DAYS	31-60 DAYS	61-90 DAYS	91-182 DAYS
Adams	25	5	2	14	15	12	4
Allegheny	354	67	25	421	113	166	34
Armstrong	8	5	1	0	2	1	6
Beaver	0	0	0	5	1	3	14
Bedford	4	2	8	15	8	17	1
Berks	2	3	0	14	9	13	10
Blair	55	24	12	44	11	20	4
Bradford	0	0	0	0	0	0	0
Bucks	15	8	3	63	65	51	3
Butler	174	26	15	112	13	20	6
Cambria	3	0	0	3	3	3	1
Cameron	0	0	0	0	0	0	0
Carbon	0	4	0	5	6	17	9
Centre	0	3	7	21	10	14	0
Chester	26	18	7	32	8	27	5
Clarion	8	0	2	2	5	3	2
Clearfield	24	4	6	17	6	12	4
Clinton	0	0	1	1	0	2	0
Columbia	0	2	2	6	2	6	1
Crawford	5	20	9	37	9	7	44
Cumberland	0	1	3	17	6	0	31
Dauphin	3	17	16	59	25	47	32
Delaware	3	0	6	44	17	42	15
Elk	4	2	3	2	1	1	1
Erie	113	49	22	56	12	14	28
Fayette	46	31	9	31	10	3	8
Forest	0	0	0	0	0	2	0
Franklin	15	12	17	39	17	24	4
Fulton	0	0	0	0	0	1	0
Greene	8	0	1	3	3	5	0
Huntingdon	2	0	1	4	2	5	2
Indiana	8	9	6	22	10	7	0
Jefferson	0	0	0	7	0	3	2
Juniata	0	0	0	3	1	2	0
Lackawanna	2	0	1	6	1	2	1
Lancaster	4	3	4	41	13	14	8
Lawrence	0	0	0	7	4	12	3
Lebanon	4	7	7	40	23	28	17
Lehigh	1	0	0	5	2	4	2
Luzerne	36	7	4	26	8	10	17
Lycoming	9	7	10	21	12	15	14
McKean	3	2	0	2	3	0	2
Mercer	14	15	7	24	5	20	4
Mifflin	0	0	0	0	0	0	2
Monroe	0	0	0	5	1	18	2
Montgomery	4	8	3	17	17	27	3
Montour	0	3	1	3	0	2	0
Northampton	48	20	8	17	13	24	26
Northumberland	4	5	2	14	6	23	4
Perry	5	2	1	3	1	2	2
Philadelphia	98	25	23	153	33	37	60
Pike	2	0	1	7	3	3	1
Potter	5	0	1	3	1	2	1
Schuylkill	4	0	2	8	5	11	5
Snyder	1	1	0	8	4	6	1
Somerset	7	0	0	6	2	3	0
Sullivan	0	0	0	0	0	0	0
Susquehanna	26	1	1	2	5	2	1
Tioga	1	0	2	1	3	5	0
Union	0	1	0	2	0	0	1
Venango	4	5	9	21	4	4	3
Warren	1	1	0	6	1	4	0
Washington	44	5	3	15	3	11	7
Wayne	0	0	1	1	0	0	0
Westmoreland	118	14	9	44	21	29	8
Wyoming	0	0	0	0	1	0	0
York	7	15	15	97	40	63	16
Federal	0	0	1	1	0	1	0
TOTAL	1,357	459	300	1,705	625	932	482

TABLE 21

Distribution of Maximum Sentences of County Prisoners Received During 1987,
by Committing County (continued)

COUNTY	6-11.9 MONTHS	1-1.9 YEARS	2-2.9 YEARS	3-3.9 YEARS	4 YEARS & OVER	TOTAL	AVE. MAX. SENT. DAYS
Adams	9	79	4	3	1	173	389.0
Allegheny	492	673	15	0	2	2,362	201.0
Armstrong	2	54	1	0	0	80	492.5
Beaver	5	177	2	0	0	207	548.7
Bedford	1	65	0	1	0	122	277.0
Berks	25	267	37	44	38	462	708.1
Blair	22	290	12	13	22	529	449.8
Bradford	1	49	4	2	3	59	581.9
Bucks	17	1,409	17	9	22	1,682	480.1
Butler	22	24	1	0	2	415	72.2
Cambria	9	124	5	5	8	164	584.5
Cameron	1	0	1	0	0	2	502.0
Carbon	8	44	8	4	2	107	397.0
Centre	1	178	4	3	4	245	440.8
Chester	3	671	8	13	32	850	639.0
Clarion	2	31	0	0	3	58	458.2
Clearfield	9	177	7	3	5	274	440.2
Clinton	2	34	2	3	0	45	572.4
Columbia	0	69	4	2	1	95	478.3
Crawford	27	168	1	0	0	327	256.8
Cumberland	32	433	4	2	11	540	469.2
Dauphin	60	641	11	6	11	928	389.6
Delaware	20	687	26	34	57	951	650.0
Elk	0	35	2	0	0	51	387.1
Erie	31	607	3	2	1	938	413.5
Fayette	59	13	0	0	0	210	99.2
Forest	0	3	0	0	0	5	255.0
Franklin	13	142	4	2	5	294	380.1
Fulton	0	1	0	0	0	2	405.1
Greene	2	44	2	0	5	73	501.0
Huntingdon	1	66	0	0	3	86	614.8
Indiana	2	140	0	0	0	204	437.1
Jefferson	0	36	1	0	0	49	375.0
Juniata	1	23	0	1	0	31	494.6
Lackawanna	64	89	55	15	3	239	463.2
Lancaster	7	285	1	3	5	388	531.9
Lawrence	4	126	3	0	1	160	426.0
Lebanon	33	212	12	10	9	402	477.7
Lehigh	13	273	6	14	13	333	631.3
Luzerne	67	154	10	9	14	362	404.1
Lycoming	6	411	1	0	0	506	409.8
McKean	9	30	1	0	1	53	335.1
Mercer	9	188	4	0	0	290	328.6
Mifflin	10	37	1	0	1	51	412.3
Monroe	5	95	3	0	2	131	390.1
Montgomery	4	1,019	5	1	23	1,131	643.5
Montour	1	12	0	0	0	22	328.2
Northampton	25	295	18	33	30	557	444.8
Northumberland	3	114	6	3	16	200	554.8
Perry	4	24	0	0	0	44	320.7
Philadelphia	161	2,139	15	4	13	2,761	525.6
Pike	6	33	5	6	3	70	464.8
Potter	0	16	0	0	0	29	278.2
Schuylkill	1	197	9	12	8	262	545.9
Snyder	15	62	0	0	0	98	362.4
Somerset	1	84	6	1	2	112	511.3
Sullivan	0	0	0	0	0	0	0.0
Susquehanna	7	30	2	0	1	78	301.5
Tioga	1	22	2	0	0	37	378.7
Union	1	46	0	0	0	51	459.0
Venango	10	147	0	2	0	209	322.1
Warren	27	62	9	1	1	113	432.0
Washington	4	240	7	5	7	351	420.6
Wayne	5	25	1	0	1	34	574.9
Westmoreland	11	165	0	0	0	419	275.0
Wyoming	2	24	3	1	6	37	703.6
York	16	621	4	3	4	901	344.5
Federal	3	0	0	0	0	6	107.3
TOTAL	1,414	14,731	375	275	402	23,057	442.6

TABLE 22

Age Distribution of Sentenced Prisoners Received in County Prisons and Jails
During 1987, by Committing County

COUNTY	18 & UNDER	19-20	21-24	25-29	30-34	35-39	40-44	45-49
Adams	4	16	36	36	24	23	12	7
Allegheny	30	120	380	619	482	302	176	94
Armstrong	1	2	19	21	11	13	6	4
Beaver	0	10	47	46	35	24	15	11
Bedford	2	12	29	29	12	10	10	3
Berks	11	67	112	107	76	34	25	10
Blair	13	61	101	107	80	60	40	24
Bradford	1	11	14	15	7	2	6	2
Bucks	29	108	342	415	335	201	118	53
Butler	14	41	93	95	61	35	23	23
Cambria	6	18	41	42	21	16	10	5
Cameron	0	1	0	0	1	0	0	0
Carbon	4	14	16	22	18	14	10	4
Centre	9	21	69	57	34	21	17	8
Chester	8	75	152	220	177	84	63	31
Clarion	1	5	14	15	9	4	3	4
Clearfield	8	21	74	54	39	22	21	12
Clinton	0	6	14	10	6	3	5	1
Columbia	0	9	21	22	9	13	7	6
Crawford	14	36	86	74	47	25	16	16
Cumberland	12	41	139	160	77	55	33	18
Dauphin	31	70	184	230	143	111	60	33
Delaware	18	82	188	250	177	95	66	25
Elk	1	4	10	20	8	4	1	1
Erie	34	90	202	194	173	98	52	30
Fayette	6	21	55	37	32	18	15	11
Forest	0	0	2	2	2	0	0	0
Franklin	13	38	75	64	46	27	10	5
Fulton	0	0	1	0	0	0	1	0
Greene	1	2	12	20	11	13	5	5
Huntingdon	4	9	16	22	11	6	3	4
Indiana	3	11	47	45	36	22	20	11
Jefferson	1	7	11	9	8	4	2	2
Juniata	2	3	8	12	1	0	1	3
Lackawanna	2	26	63	50	46	23	6	10
Lancaster	7	39	83	111	74	26	21	14
Lawrence	5	15	23	41	29	19	9	7
Lebanon	9	30	99	110	54	53	15	14
Lehigh	4	32	72	83	58	31	20	17
Luzerne	10	26	86	90	57	42	26	12
Lycoming	12	51	104	131	84	44	25	19
McKean	1	5	9	8	13	7	4	2
Mercer	8	29	73	64	52	29	15	6
Mifflin	3	5	16	10	7	2	6	0
Monroe	3	4	25	28	27	18	12	6
Montgomery	21	88	279	291	225	99	65	21
Montour	1	2	5	6	2	4	2	0
Northampton	15	56	117	143	107	69	46	15
Northumberland	3	23	56	48	34	14	7	6
Perry	0	12	8	10	4	2	3	1
Philadelphia	48	270	639	716	429	277	144	92
Pike	4	8	7	22	11	5	6	3
Potter	0	3	6	4	7	4	3	1
Schuylkill	13	25	65	69	42	19	9	8
Snyder	3	20	25	16	15	12	2	5
Somerset	4	10	20	30	24	13	3	6
Sullivan	0	0	0	0	0	0	0	0
Susquehanna	2	11	11	18	15	6	4	4
Tioga	3	6	9	6	7	3	2	1
Union	0	4	10	10	10	4	4	3
Venango	6	18	49	47	32	12	18	9
Warren	2	15	29	36	17	9	8	8
Washington	16	23	71	95	58	36	19	11
Wayne	0	1	9	6	6	6	3	3
Westmoreland	6	24	83	116	70	60	23	17
Wyoming	1	9	9	9	4	2	2	1
York	11	89	190	253	149	84	55	34
Federal	0	0	1	1	1	1	1	1
TOTAL	504	2,011	4,961	5,749	3,979	2,394	1,440	823

TABLE 23

Age Distribution of Sentenced Prisoners Received in County Prisons and Jails
During 1987, by Committing County (continued)

COUNTY	50-54	55-59	60-64	65 & OVER	UNKNOWN	TOTAL	AVERAGE AGE
Adams	7	1	4	3	0	173	31.4
Allegheny	68	47	28	16	0	2,362	32.0
Armstrong	3	0	0	0	0	80	31.1
Beaver	12	4	1	2	0	207	32.3
Bedford	8	2	2	3	0	122	31.8
Berks	9	7	1	3	0	462	28.6
Blair	12	13	12	6	0	529	31.4
Bradford	1	0	0	0	0	59	27.8
Bucks	37	22	12	10	0	1,682	30.7
Butler	6	10	3	11	0	415	30.8
Cambria	4	0	1	0	0	164	28.5
Cameron	0	0	0	0	0	2	25.0
Carbon	2	1	1	1	0	107	30.7
Centre	2	0	1	6	0	245	29.2
Chester	15	14	7	4	0	850	30.7
Clarion	0	1	2	0	0	58	30.4
Clearfield	8	8	5	3	0	275	31.2
Clinton	0	0	0	0	0	45	27.9
Columbia	3	3	1	1	0	95	32.0
Crawford	5	6	2	0	0	327	28.7
Cumberland	8	10	5	5	0	563	29.7
Dauphin	28	19	7	12	0	928	31.0
Delaware	18	14	6	12	0	951	30.3
Elk	3	1	0	0	0	53	29.3
Erie	23	15	12	15	0	938	30.6
Fayette	5	6	2	1	1	210	30.6
Forest	0	0	0	1	0	7	32.9
Franklin	9	5	0	2	0	294	28.5
Fulton	0	0	0	0	0	2	33.0
Greene	0	0	0	4	0	73	33.4
Huntingdon	3	1	3	4	1	87	32.2
Indiana	3	3	1	2	0	204	31.2
Jefferson	1	1	2	1	0	49	31.1
Juniata	0	0	1	0	0	31	28.5
Lackawanna	7	4	2	0	0	239	29.5
Lancaster	5	2	4	2	0	388	29.3
Lawrence	5	3	2	2	0	160	31.2
Lebanon	9	4	3	2	0	402	29.7
Lehigh	7	5	2	2	0	333	30.3
Luzerne	1	6	0	5	1	362	30.0
Lycoming	19	8	5	4	0	506	30.2
McKean	1	0	1	2	0	53	32.6
Mercer	2	5	1	5	0	290	29.5
Mifflin	0	1	1	0	0	51	28.5
Monroe	2	2	3	1	0	131	32.4
Montgomery	23	12	5	2	0	1,131	29.2
Montour	0	0	0	0	0	22	28.4
Northampton	18	9	7	3	3	608	30.6
Northumberland	1	4	1	3	0	200	29.0
Perry	1	2	1	0	0	44	29.3
Philadelphia	63	45	23	15	0	2,761	29.8
Pike	4	1	0	0	0	71	30.8
Potter	0	1	0	0	0	29	30.9
Schuylkill	9	2	1	0	0	262	28.4
Snyder	0	0	1	0	0	99	27.7
Somerset	6	4	0	2	0	122	31.8
Sullivan	0	0	0	0	0	0	0.0
Susquehanna	2	2	2	1	0	78	31.3
Tioga	0	0	0	0	0	37	27.2
Union	3	1	1	1	0	51	33.0
Venango	1	6	6	5	0	209	31.4
Warren	4	2	3	0	0	133	30.3
Washington	11	5	3	3	0	351	30.3
Wayne	0	0	0	0	0	34	31.4
Westmoreland	6	8	4	2	0	419	30.9
Wyoming	0	0	0	0	0	37	26.1
York	16	11	6	3	0	901	29.6
Federal	0	0	0	0	0	6	34.0
TOTAL	529	370	210	193	6	23,169	30.4

AGE DISTRIBUTION OF SENTENCED COUNTY PRISONERS FOR 1987

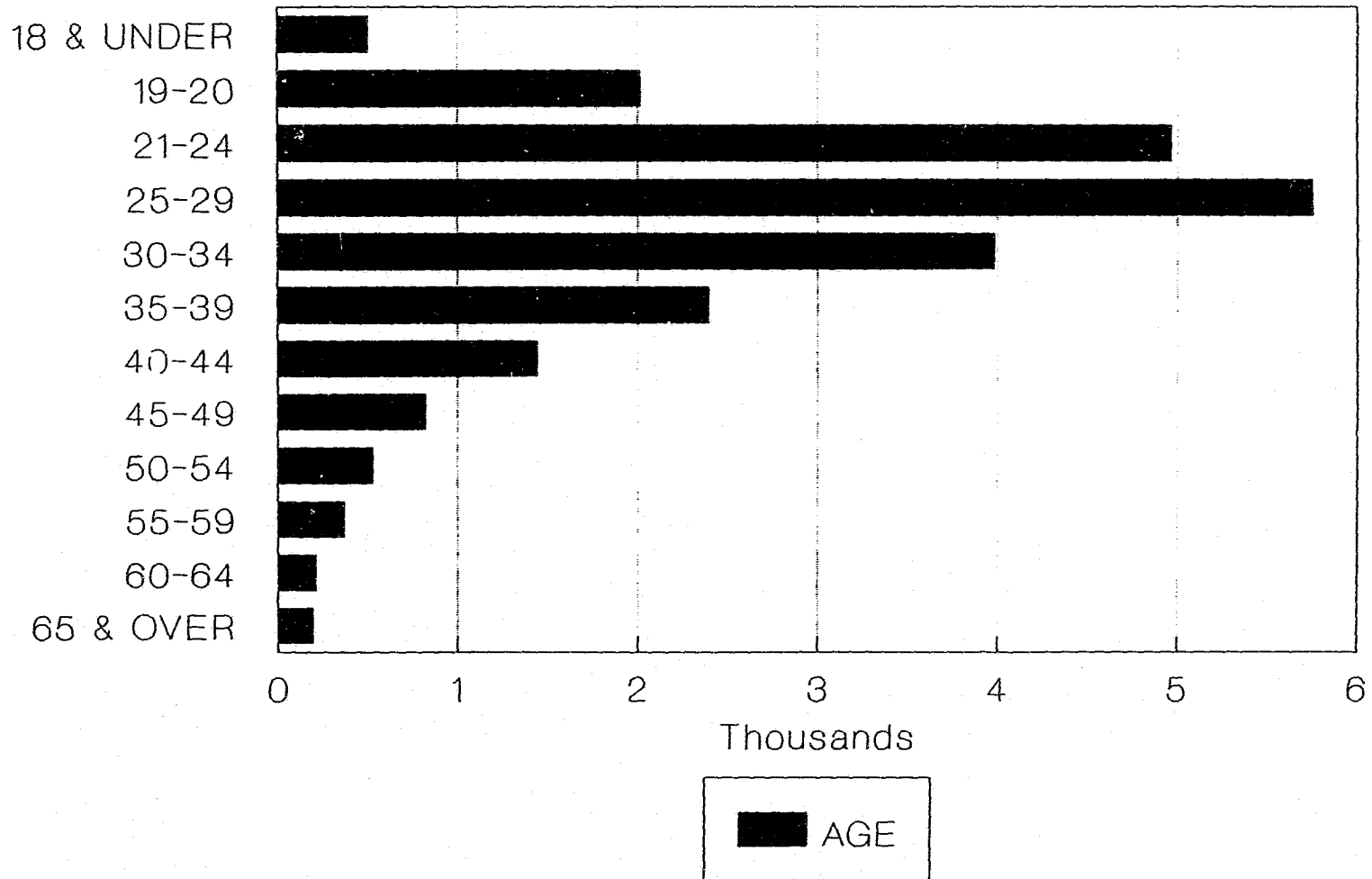


Figure 5

Source: Table 22 and Table 23

TABLE 24

Pre-Trial Detentioners Received in Pennsylvania County Prisons and Jails During 1987

COUNTY	TYPE OF POPULATION MOVEMENTS			TOTAL DETENTIONERS RECEIVED
	HELD FOR TRIAL OR FURTHER HEARINGS	HELD FOR VARIOUS AUTHORITIES	HELD FOR MENTAL EXAMINATIONS	
Adams	424	7	0	431
Allegheny	9,553	600	47	10,200
Armstrong	260	48	5	313
Beaver	612	120	0	732
Bedford	170	71	0	241
Berks	2,089	2	0	2,091
Blair	778	3	0	781
Bradford	178	48	0	226
Bucks	3,236	286	0	3,522
Butler	664	96	0	760
Cambria	614	8	0	622
Cameron	37	0	0	37
Carbon	118	21	0	139
Centre	503	67	9	579
Chester	1,889	181	0	2,070
Clarion	112	62	0	174
Clearfield	503	68	0	571
Clinton	41	143	0	184
Columbia	257	18	0	275
Crawford	312	203	0	515
Cumberland	652	136	0	788
Dauphin	2,561	213	8	2,782
Delaware	2,088	829	0	2,917
Elk	59	5	0	64
Erie	1,617	29	0	1,646
Fayette	870	0	0	870
Forest	27	0	0	27
Franklin	543	21	0	564
Fulton	(c)	(c)	(c)	(c)
Greene	126	30	0	156
Huntingdon	109	8	0	117
Indiana	287	33	0	320
Jefferson	113	33	0	146
Juniata	69	11	0	80
Lackawanna	540	320	0	860
Lancaster	1,491	2	0	1,493
Lawrence	480	24	0	504
Lebanon	446	11	0	457
Lehigh	1,855	237	0	2,092
Luzerne	764	135	0	899
Lycoming	325	532	0	857
McKean	139	18	0	157
Mercer	377	263	0	640
Hifflin	323	5	0	328
Monroe	672	0	0	672
Montgomery	2,462	0	0	2,462
Montour	35	2	0	37
Northampton	1,022	34	1	1,057
Northumberland	343	156	0	499
Perry	82	5	0	87
Philadelphia	19,205	3,056	164	22,425
Pike	51	74	0	125
Potter	15	31	0	46
Schuylkill	427	32	0	459
Snyder	104	7	0	111
Somerset	331	55	0	386
Sullivan	(c)	(c)	(c)	(c)
Susquehanna	103	1	0	104
Tioga	238	3	0	241
Union	92	84	0	176
Venango	283	0	0	283
Warren	105	196	0	301
Washington	658	28	0	686
Wayne	91	6	0	97
Hestmoreland	1,155	21	0	1,176
Wyoming	107	3	0	110
York	2,634	111	0	2,745
TOTAL	68,426	8,852	234	77,512

TABLE 25

Unconditional and Conditional Releases of Sentenced Prisoners from Pennsylvania County Prisons and Jails During 1987

COUNTY	EXPIRATION OF MAXIMUM SENTENCE	UNCONDITIONAL RELEASES (FINAL)		PAYMENT FINES &/OR COSTS	TOTAL	CONDITIONAL RELEASES		
		BY COURT'S ORDER	BY MINOR JUDICIARY'S ORDER			PAROLED BY PBPP*	PAROLED BY COURT	TOTAL
Adams	51	9	0	24	84	5	101	106
Allegheny	507	1,010	6	230	1,753	8	460	468
Armstrong	18	0	0	0	18	0	46	46
Beaver	8	1	4	2	15	0	178	178
Bedford	19	0	0	34	53	0	55	55
Berks	49	19	4	0	72	116	277	393
Blair	139	5	2	2	148	28	284	312
Bradford	2	1	0	0	3	0	14	14
Bucks	152	71	10	0	233	47	1,264	1,311
Butler	276	35	4	80	395	0	19	19
Cambria	12	3	0	1	16	19	90	109
Cameron	2	0	0	0	2	0	0	0
Carbon	20	1	0	0	21	10	62	72
Centre	30	4	2	24	60	8	182	190
Chester	121	7	9	6	143	33	751	784
Clarion	21	0	0	0	21	1	34	35
Clearfield	68	7	3	12	90	6	204	210
Clinton	2	0	1	0	3	10	25	35
Columbia	13	0	4	1	18	3	64	67
Crawford	60	4	44	24	132	0	200	200
Cumberland	49	12	4	23	88	12	498	510
Dauphin	127	12	19	57	215	14	762	776
Delaware	119	16	6	12	153	108	640	748
Elk	12	1	1	1	15	1	37	38
Erie	209	50	22	6	287	6	583	589
Fayette	63	0	0	42	105	1	78	79
Forest	(d)	(d)	(d)	(d)	(d)	(d)	(d)	(d)
Franklin	148	8	9	1	166	4	155	159
Fulton	(c)	(c)	(c)	(c)	(c)	(c)	(c)	(c)
Greene	13	2	0	6	21	2	50	52
Huntingdon	11	1	1	1	14	2	58	60
Indiana	30	0	4	24	58	0	118	118
Jefferson	7	0	0	1	8	0	44	44
Juniata	3	0	0	1	4	0	23	23
Lackawanna	7	0	0	0	7	78	144	222
Lancaster	84	0	0	22	106	16	326	342
Lawrence	14	1	3	0	18	0	132	132
Lebanon	73	32	19	26	150	38	221	259
Lehigh	3	0	0	0	3	41	331	372
Luzerne	95	44	4	21	164	50	189	239
Lycoming	71	18	2	0	91	2	406	408
McKean	10	0	0	0	10	1	56	57
Mercer	66	10	7	7	90	2	211	213
Mifflin	3	0	0	3	6	2	73	75
Monroe	19	0	0	12	31	5	129	134
Montgomery	14	0	0	1	15	11	692	703
Montour	12	0	0	0	12	4	25	29
Northampton	128	54	4	20	206	68	293	361
Northumberland	56	0	15	1	72	39	128	167
Perry	12	1	0	0	13	0	26	26
Philadelphia	293	256	0	81	630	24	1,824	1,848
Pike	10	0	0	13	23	5	32	37
Potter	7	0	0	0	7	0	15	15
Schuylkill	27	3	2	2	34	29	183	212
Snyder	3	0	3	12	18	1	83	84
Somerset	11	0	1	15	27	10	101	111
Sullivan	(c)	(c)	(c)	(c)	(c)	(c)	(c)	(c)
Susquehanna	31	1	1	10	43	3	26	29
Tioga	6	1	3	0	10	1	26	27
Union	2	0	13	0	15	0	40	40
Venango	25	0	15	7	47	9	153	162
Warren	3	6	2	24	35	16	101	117
Washington	61	1	7	5	74	11	226	237
Wayne	4	2	1	3	10	10	23	33
Westmoreland	188	4	35	0	227	1	152	153
Wyoming	1	1	0	1	3	13	25	38
York	209	6	8	32	255	14	586	600
TOTAL	3,909	1,720	304	933	6,866	948	14,334	15,282

* Pennsylvania Board of Probation and Parole.

TABLE 26

Detentioners Released from Pennsylvania County Prisons and Jails During 1987

COUNTIES	ON BAIL	BY HOLDING AUTHORITIES (COURT & ETC)	SENTENCED TO LOCAL COUNTY PRISONS	SENTENCED TO STATE CORRECTIONAL INSTITUTIONS	SENTENCED TO STATE REG. CORR. FACILITY	BY VARIOUS FED., STATE & POLICE AUTHORITIES	MENTAL PATIENTS RELEASED	TOTAL DETENTIONERS RELEASED
Adams	161	210	30	6	0	4	1	412
Allegheny	5,045	3,276	156	719	25	536	168	9,925
Armstrong	110	144	14	6	2	23	5	304
Beaver	419	234	14	2	1	1	0	671
Bedford	125	29	1	2	0	85	0	242
Berks	731	776	264	87	0	29	51	1,938
Blair	42	593	183	18	0	7	0	843
Bradford	108	70	25	1	0	0	0	204
Bucks	681	1,885	427	57	0	394	47	3,491
Butler	464	139	40	19	2	84	4	752
Cambria	289	312	69	28	0	35	0	733
Cameron	23	7	1	0	0	0	0	31
Carbon	63	17	34	7	0	8	5	134
Centre	358	183	38	13	0	0	8	600
Chester	660	691	316	15	0	142	0	1,824
Clarion	54	74	1	1	3	41	3	177
Clearfield	147	179	66	35	2	69	7	505
Clinton	81	56	1	11	0	37	1	187
Columbia	87	147	20	6	0	16	0	276
Crawford	132	159	24	40	18	138	1	512
Cumberland	333	265	74	54	0	140	0	866
Dauphin	743	1,505	169	131	0	212	22	2,782
Delaware	1,328	1,060	332	0	0	1	0	2,721
Elk	35	17	4	3	1	3	0	63
Erie	573	598	246	171	13	24	0	1,625
Fayette	282	348	0	70	22	17	3	742
Forest	0	27	0	0	0	0	0	27
Franklin	172	221	116	49	0	31	4	593
Fulton	(c)	(c)	(c)	(c)	(c)	(c)	(c)	(c)
Greene	68	63	11	10	7	4	0	163
Huntingdon	78	27	6	8	0	6	1	126
Indiana	125	122	32	19	0	24	3	325
Jefferson	32	98	6	0	9	10	2	157
Juniata	57	9	1	6	0	0	0	73
Lackawanna	331	203	0	15	0	146	4	699
Lancaster	516	697	47	72	0	50	1	1,383
Lawrence	251	192	27	40	1	29	1	541
Lebanon	187	232	80	45	0	7	0	551
Lehigh	899	560	98	7	0	412	0	1,976
Luzerne	433	255	81	10	0	99	0	878
Lycowling	324	449	59	59	0	29	0	920
McKean	66	42	12	9	5	17	0	151
Mercer	138	173	55	64	10	172	0	612
Mifflin	33	233	2	12	0	4	1	285
Monroe	251	360	0	14	0	0	3	628
Montgomery	718	2,057	318	137	0	0	0	3,230
Montour	14	7	0	0	0	4	1	26
Northampton	457	389	163	54	0	0	4	1,067
Northumberland	151	177	37	58	0	167	3	593
Perry	29	38	0	8	0	3	0	78
Philadelphia	7,891	8,822	1,811	2,050	0	2,434	22	23,030
Pike	68	20	8	16	0	3	2	117
Potter	18	33	2	4	0	1	0	58
Schuylkill	232	108	92	12	0	14	4	462
Snyder	31	52	1	9	0	6	2	101
Somerset	140	159	2	10	0	54	3	368
Sullivan	(c)	(c)	(c)	(c)	(c)	(c)	(c)	(c)
Susquehanna	69	21	3	7	0	2	1	103
Tioga	79	123	1	35	0	13	0	251
Union	24	62	0	6	0	88	3	183
Venango	119	89	43	15	4	0	0	270
Warren	73	128	38	22	2	0	4	267
Washington	291	307	61	2	0	24	0	685
Wayne	43	36	2	3	0	0	2	86
Westmoreland	587	481	46	16	7	9	0	1,146
Wyoming	73	6	24	9	0	4	1	117
York	1,198	1,125	228	80	0	107	11	2,749
TOTAL	29,340	31,177	6,062	4,494	134	6,019	409	77,635

TABLE 27

Number of Sentenced Prisoners Released from County Prisons and Jails During 1987,
by Part I Offense and Committing County

COUNTY	MURDER*	MANSLAUGHTER	FORCIBLE RAPE	ROBBERY	AGGRAVATED ASSAULTS	BURGLARY	THEFT	ARSON
Adams	0	0	0	4	1	20	14	1
Allegheny	1	1	0	19	17	64	109	3
Armstrong	0	0	2	0	1	5	4	0
Beaver	0	1	0	0	7	4	5	0
Bedford	0	1	0	0	0	0	0	0
Berks	0	2	0	9	10	50	63	0
Blair	0	3	0	1	8	24	24	1
Bradford	0	0	0	0	0	2	3	0
Bucks	8	3	9	31	17	121	138	3
Butler	0	0	1	0	6	24	21	0
Cambria	0	2	0	3	5	13	14	0
Cameron	0	0	0	0	0	0	2	0
Carbon	0	3	0	6	3	9	5	0
Centre	0	2	0	0	1	14	16	0
Chester	0	3	6	15	23	83	96	6
Clarion	0	0	0	1	0	1	3	0
Clearfield	0	0	0	0	0	27	17	1
Clinton	0	0	0	0	0	4	7	0
Columbia	0	0	0	1	0	5	12	0
Crawford	0	0	0	0	5	31	32	0
Cumberland	0	1	0	6	6	26	40	1
Dauphin	0	5	1	16	22	76	88	0
Delaware	0	3	1	37	33	86	99	5
Elk	0	1	0	0	2	3	4	0
Erie	0	4	0	3	20	35	71	1
Fayette	0	0	0	1	2	6	9	1
Forest	0	0	0	0	0	0	2	0
Franklin	0	7	0	0	4	13	23	0
Fulton	0	0	0	0	0	0	0	0
Greene	0	0	0	1	1	7	1	0
Huntingdon	0	0	0	0	0	1	3	0
Indiana	0	1	0	0	2	4	10	0
Jefferson	0	0	0	0	0	9	2	0
Junata	0	0	0	0	1	2	4	0
Lackawanna	1	4	1	0	1	14	7	1
Lancaster	0	2	3	6	9	36	25	6
Lawrence	0	1	0	2	1	8	9	0
Lebanon	1	1	1	4	11	24	16	1
Lehigh	0	1	0	13	11	33	43	3
Luzerne	1	2	0	5	9	30	24	2
Lycoming	0	1	1	2	11	14	51	0
McKean	0	1	0	0	0	8	8	1
Mercer	0	0	0	2	3	11	25	0
Mifflin	0	0	0	0	1	9	5	0
Monroe	0	1	0	3	0	9	13	0
Montgomery	1	2	0	10	9	46	57	1
Montour	0	0	0	0	1	2	2	1
Northampton	1	1	1	7	21	47	37	4
Northumberland	0	1	0	1	2	15	19	1
Perry	0	0	0	0	0	3	1	0
Philadelphia	0	2	14	423	144	346	358	13
Pike	0	1	0	0	3	1	5	0
Potter	0	0	0	0	0	3	1	0
Schuylkill	0	1	1	5	11	37	24	0
Snyder	0	0	0	0	0	0	7	0
Somerset	0	1	0	1	3	9	14	0
Sullivan	0	0	0	0	0	0	0	0
Susquehanna	0	1	0	0	0	5	4	1
Tioga	0	0	0	0	0	0	0	0
Union	0	0	0	0	0	3	0	0
Venango	0	0	0	0	2	13	12	1
Warren	0	0	0	0	1	11	10	0
Washington	0	5	2	3	5	24	31	2
Wayne	0	0	0	1	0	2	3	0
Westmoreland	0	1	0	6	8	19	19	1
Wyoming	0	0	0	0	0	2	10	1
York	0	1	0	12	9	33	26	1
Federal	0	0	0	0	0	0	0	0
TOTAL	14	74	44	660	473	1,586	1,807	64

*Includes 3rd degree and unspecified murder only.

TABLE 28

Average Days Served by Sentenced Prisoners Released from County Prisons and Jails
During 1987, by Part I and Committing County

COUNTY			FORCIBLE	AGGRAVATED			THEFT	ARSON
	MURDER*	MANSLAUGHTER	RAPE	ROBBERY	ASSAULT	BURGLARY		
Adams	0.0	0.0	0.0	253.3	122.0	191.8	152.1	61.0
Allegheny	243.0	335.0	0.0	103.5	102.7	79.1	59.0	61.7
Armstrong	0.0	0.0	76.0	0.0	122.0	177.8	134.3	0.0
Beaver	0.0	86.0	0.0	0.0	145.3	156.3	173.0	0.0
Bedford	0.0	364.0	0.0	0.0	0.0	0.0	0.0	0.0
Berks	0.0	364.5	0.0	529.7	237.8	245.2	195.7	0.0
Blair	0.0	107.3	0.0	102.0	152.5	220.0	201.1	316.0
Bradford	0.0	0.0	0.0	0.0	0.0	24.0	291.0	0.0
Bucks	551.0	674.7	195.2	314.1	199.1	229.2	129.0	131.7
Butler	0.0	0.0	209.0	0.0	105.0	74.8	78.9	0.0
Cambria	0.0	370.0	0.0	774.7	276.2	185.0	229.1	0.0
Cameron	0.0	0.0	0.0	0.0	0.0	0.0	121.5	0.0
Carbon	0.0	205.3	0.0	548.0	465.3	204.2	194.4	0.0
Centre	0.0	673.0	0.0	0.0	461.0	297.1	89.3	0.0
Chester	0.0	514.0	771.0	320.0	244.1	201.3	122.6	331.2
Clarion	0.0	0.0	0.0	183.0	0.0	183.0	103.7	0.0
Clearfield	0.0	0.0	0.0	0.0	0.0	85.9	77.7	55.0
Clinton	0.0	0.0	0.0	0.0	0.0	148.3	189.0	0.0
Columbia	0.0	0.0	0.0	364.0	0.0	237.2	113.9	0.0
Crawford	0.0	0.0	0.0	0.0	53.2	71.8	41.3	0.0
Cumberland	0.0	1,095.0	0.0	218.7	395.0	209.9	140.2	275.0
Dauphin	0.0	438.2	183.0	262.8	197.2	176.6	145.1	0.0
Delaware	0.0	132.3	668.0	371.2	285.1	346.3	220.4	406.0
Elk	0.0	348.0	0.0	0.0	90.5	67.0	103.5	0.0
Erie	0.0	115.5	0.0	98.0	106.7	121.1	73.1	268.0
Fayette	0.0	0.0	0.0	6.0	252.5	98.2	93.0	122.0
Forest	0.0	0.0	0.0	0.0	0.0	0.0	192.0	0.0
Franklin	0.0	434.9	0.0	0.0	398.3	222.5	139.1	0.0
Fulton	0.0	0.0	0.0	0.0	0.0	0.0	0.0	0.0
Greene	0.0	0.0	0.0	183.0	122.0	194.3	3.0	0.0
Huntingdon	0.0	0.0	0.0	0.0	0.0	304.0	94.7	0.0
Indiana	0.0	24.0	0.0	0.0	328.0	98.8	106.4	0.0
Jefferson	0.0	0.0	0.0	0.0	0.0	173.8	30.0	0.0
Juniata	0.0	0.0	0.0	0.0	91.0	167.5	209.0	0.0
Lackawanna	197.0	303.5	545.0	0.0	365.0	263.4	240.4	426.0
Lancaster	0.0	820.0	299.3	268.8	180.8	237.5	210.5	215.8
Lawrence	0.0	93.0	0.0	214.5	159.0	73.0	82.1	0.0
Lebanon	366.0	944.0	585.0	529.3	458.5	268.1	127.2	152.0
Lehigh	0.0	271.0	0.0	260.8	174.5	328.7	199.1	297.0
Luzerne	350.0	613.5	0.0	351.8	103.3	437.4	177.2	304.0
Lycoming	0.0	277.0	350.0	282.0	134.8	120.3	101.0	0.0
McKean	0.0	274.0	0.0	0.0	0.0	181.9	120.0	350.0
Mercer	0.0	0.0	0.0	109.0	86.3	75.1	39.4	0.0
Mifflin	0.0	0.0	0.0	0.0	397.0	163.2	92.0	0.0
Monroe	0.0	183.0	0.0	495.3	0.0	208.2	202.2	0.0
Montgomery	350.0	296.5	0.0	208.5	146.2	240.8	185.5	152.0
Montour	0.0	0.0	0.0	0.0	183.0	76.0	274.0	30.0
Northampton	762.0	335.0	365.0	415.0	221.5	343.4	197.1	254.8
Northumberland	0.0	365.0	0.0	758.0	420.0	350.5	247.2	299.0
Perry	0.0	0.0	0.0	0.0	0.0	155.3	183.0	0.0
Philadelphia	0.0	25.0	257.6	246.0	203.7	210.6	204.0	256.8
Pike	0.0	7.0	0.0	0.0	101.3	2.0	64.2	0.0
Potter	0.0	0.0	0.0	0.0	0.0	213.0	10.0	0.0
Schuylkill	0.0	60.0	548.0	407.4	356.4	270.9	210.7	0.0
Snyder	0.0	0.0	0.0	0.0	0.0	0.0	96.1	0.0
Somerset	0.0	6.0	0.0	548.0	258.7	330.1	96.9	0.0
Sullivan	0.0	0.0	0.0	0.0	0.0	0.0	0.0	0.0
Susquehanna	0.0	243.0	0.0	0.0	0.0	134.8	156.3	243.0
Tioga	0.0	0.0	0.0	0.0	0.0	0.0	0.0	0.0
Union	0.0	0.0	0.0	0.0	0.0	122.0	0.0	0.0
Venango	0.0	0.0	0.0	0.0	120.5	124.5	109.2	285.0
Warren	0.0	0.0	0.0	0.0	1.0	200.5	247.0	0.0
Washington	0.0	156.4	299.0	384.3	155.4	178.6	140.0	105.0
Wayne	0.0	0.0	0.0	243.0	0.0	509.5	161.0	0.0
Westmoreland	0.0	213.0	0.0	162.8	83.0	92.6	48.7	152.0
Wyoming	0.0	0.0	0.0	0.0	0.0	365.0	226.9	274.0
York	0.0	348.0	0.0	246.2	283.3	185.0	147.8	123.0
Federal	0.0	0.0	0.0	0.0	0.0	0.0	0.0	0.0
TOTAL	476.9	335.0	343.0	269.0	209.0	213.5	152.7	242.8

*Includes 3rd degree and unspecified murder only.

TABLE 29

Number of Sentenced Prisoners from County Prisons and Jails During 1987,
by Selected Part II Offenses and Committing County

COUNTY	OTHER ASSAULTS	FRAUDS	RECEIVING STOLEN PROPERTY	MARCOTIC DRUG LAWS	DRUNKEN DRIVING	DRUNKENNESS	DISORDERLY CONDUCT	CRIMINAL MISCHIEF
Adams	4	6	3	8	69	2	5	1
Allegheny	111	46	17	72	1,325	25	116	44
Armstrong	1	2	1	5	29	4	2	0
Beaver	6	6	3	5	132	1	2	2
Bedford	2	3	0	2	49	2	6	3
Berks	28	13	9	45	107	1	6	8
Blair	22	6	5	21	244	10	24	4
Bradford	1	2	0	0	8	0	0	0
Bucks	57	10	35	129	656	2	12	3
Butler	15	10	0	20	110	78	73	7
Cambria	12	6	8	4	36	1	2	2
Cameron	0	0	0	0	0	0	0	0
Carbon	3	0	1	6	25	0	0	4
Centre	8	5	7	7	117	3	3	0
Chester	58	15	18	64	312	13	13	11
Clarion	1	5	0	2	28	1	1	1
Clearfield	9	13	6	25	121	8	10	2
Clinton	2	0	1	2	16	0	0	0
Columbia	6	3	2	6	28	2	1	0
Crawford	7	24	2	9	117	19	23	7
Cumberland	19	24	7	52	302	5	3	5
Dauphin	55	27	15	100	354	25	37	24
Delaware	40	8	10	88	333	7	24	4
Elk	0	0	0	1	24	1	2	2
Erie	54	22	11	37	300	42	39	17
Fayette	10	9	3	10	70	8	17	4
Forest	0	0	0	0	1	0	0	1
Franklin	17	11	9	17	93	32	10	13
Fulton	0	0	0	0	1	0	0	0
Greene	4	2	1	1	31	4	1	2
Huntingdon	3	0	1	4	50	2	3	0
Indiana	5	6	3	10	72	9	4	6
Jefferson	1	0	0	3	24	0	2	0
Juniata	2	0	0	1	10	0	0	1
Lackawanna	10	0	10	24	127	0	8	3
Lancaster	22	6	6	39	135	4	0	1
Lawrence	11	0	7	8	69	1	4	0
Lebanon	11	4	0	48	126	0	13	2
Lehigh	18	9	10	47	137	0	4	1
Luzerne	16	7	13	19	130	4	9	3
Lycoming	20	3	3	29	258	7	9	13
McKean	3	4	1	4	24	0	1	1
Mercer	16	8	6	7	138	7	26	10
Mifflin	9	2	1	5	29	0	4	6
Monroe	11	4	3	21	67	1	4	4
Montgomery	13	9	5	37	458	1	3	0
Montour	5	0	0	3	10	3	4	0
Northampton	16	9	8	33	170	18	18	18
Northumberland	19	1	3	26	72	8	16	8
Perry	2	0	0	3	17	1	0	2
Philadelphia	103	8	25	233	364	1	9	4
Pike	8	3	5	2	17	1	1	1
Potter	0	0	0	1	12	0	0	0
Schuylkill	21	3	4	28	68	2	3	7
Snyder	1	5	0	1	56	1	4	5
Somerset	7	3	1	7	63	1	4	2
Sullivan	0	0	0	0	0	0	0	0
Susquehanna	5	3	2	1	32	0	1	0
Tioga	0	0	0	2	24	0	1	1
Union	4	2	0	2	35	0	2	0
Venango	9	9	1	19	100	7	6	10
Warren	8	2	3	4	64	2	3	3
Washington	13	4	7	11	104	11	26	9
Wayne	8	4	9	4	3	0	0	0
Westmoreland	13	4	4	12	213	6	11	7
Wyoming	2	1	3	3	10	0	0	0
York	54	22	6	31	396	29	19	4
Federal	0	2	1	3	1	0	0	0
TOTAL	1,021	425	325	1,473	8,723	423	654	303

TABLE 30

Average Days Served by Sentenced Prisoners from County Prisons and Jails
During 1987, by Selected Part II Offense and Committing County

COUNTY NAME	OTHER ASSAULTS	FRAUDS	RECEIVING STOLEN PROPERTY	NARCOTIC DRUG LAWS	DRUNKEN DRIVING	DRUNKENNESS	DISORDERLY CONDUCT	CRIMINAL MISCHIEF
Adams	89.8	33.2	107.3	174.3	56.7	19.0	9.4	4.0
Allegheny	40.9	37.3	119.8	129.4	10.5	34.0	22.0	27.1
Armstrong	30.0	6.5	61.0	110.2	15.9	7.8	7.0	0.0
Beaver	171.0	105.3	139.0	164.4	40.3	30.0	30.0	112.5
Bedford	40.5	21.7	0.0	76.0	6.2	5.5	6.2	2.3
Berks	173.1	141.5	177.8	246.6	27.1	45.0	93.7	144.3
Blair	136.9	240.0	115.2	204.0	31.6	11.5	15.2	54.0
Bradford	64.0	120.5	0.0	0.0	6.6	0.0	0.0	0.0
Bucks	115.7	101.6	140.8	174.4	29.3	20.0	112.4	149.7
Butler	81.7	18.5	0.0	52.6	25.7	3.2	5.3	79.3
Cambria	291.7	213.5	148.9	256.5	54.2	5.0	61.5	138.5
Cameron	0.0	0.0	0.0	0.0	0.0	0.0	0.0	0.0
Carbon	158.0	0.0	346.0	147.0	23.7	0.0	0.0	55.0
Centre	72.5	149.4	93.1	118.6	37.6	14.3	53.3	0.0
Chester	154.3	109.7	171.3	240.7	29.8	23.3	27.0	56.2
Clarion	364.0	44.8	0.0	61.0	7.1	30.0	15.0	3.0
Clearfield	73.1	46.3	75.8	153.0	26.5	24.6	19.5	29.0
Clinton	37.5	0.0	30.0	116.5	24.5	0.0	0.0	0.0
Columbia	142.8	79.0	561.0	177.5	60.9	67.5	15.0	0.0
Crawford	44.3	25.1	9.0	86.8	19.8	17.4	19.7	37.1
Cumberland	113.2	126.5	104.0	150.0	31.2	137.4	94.0	36.4
Dauphin	99.1	90.6	182.0	155.6	26.9	26.3	32.1	46.2
Delaware	231.3	83.1	202.1	185.5	26.2	39.1	55.2	50.0
Elk	0.0	0.0	0.0	183.0	17.3	30.0	11.5	55.5
Erie	87.0	59.0	96.5	80.9	38.6	13.2	14.8	37.5
Fayette	2.9	3.3	152.0	142.7	21.7	7.6	22.9	23.0
Forest	0.0	0.0	0.0	0.0	25.0	0.0	0.0	220.0
Franklin	143.1	69.2	147.0	153.7	66.3	17.8	30.0	43.5
Fulton	0.0	0.0	0.0	0.0	30.0	0.0	0.0	0.0
Greene	74.5	18.5	183.0	15.0	21.4	12.0	91.0	236.5
Huntingdon	50.3	0.0	172.0	75.8	21.1	31.0	51.0	0.0
Indiana	89.6	41.3	198.0	139.9	25.1	15.1	16.5	35.2
Jefferson	61.0	0.0	0.0	208.0	49.8	0.0	44.0	0.0
Juniata	152.5	0.0	0.0	274.0	36.9	0.0	0.0	303.0
Lackawanna	221.9	0.0	287.4	202.0	26.4	0.0	145.6	232.0
Lancaster	133.7	166.2	266.2	184.2	56.9	92.5	0.0	1.0
Lawrence	119.2	0.0	91.3	74.0	41.8	30.0	39.3	0.0
Lebanon	102.0	435.8	0.0	195.0	38.6	0.0	77.8	1.5
Lehigh	153.7	214.9	94.1	163.7	35.4	0.0	215.0	96.0
Luzerne	182.1	81.4	193.8	369.8	27.8	45.5	98.6	283.7
Lycoming	51.5	36.3	91.0	198.9	15.7	13.9	24.1	65.1
McKean	144.0	118.8	223.0	87.8	34.6	0.0	40.0	183.0
Mercer	72.6	35.9	90.5	56.7	28.7	14.3	23.5	28.1
Mifflin	96.0	179.5	99.0	133.8	91.1	0.0	75.0	27.7
Monroe	150.0	128.0	481.3	168.7	42.0	2.0	75.8	128.8
Montgomery	144.0	135.1	149.0	157.6	10.1	5.0	40.3	0.0
Montour	141.0	0.0	0.0	220.7	130.1	30.0	71.5	0.0
Northampton	40.7	76.7	177.3	253.2	26.9	7.2	67.6	59.7
Northumberland	142.2	30.0	116.7	209.1	53.5	25.9	76.3	95.0
Perry	21.5	0.0	0.0	1.3	42.1	2.0	0.0	57.5
Philadelphia	200.0	200.9	219.8	162.9	37.6	15.0	58.6	172.0
Pike	125.8	70.3	223.0	190.0	42.6	3.0	30.0	194.0
Potter	0.0	0.0	0.0	350.0	35.3	0.0	0.0	0.0
Schuylkill	167.4	135.7	167.0	192.0	21.8	15.0	42.3	81.3
Snyder	188.0	38.0	0.0	126.0	30.9	12.0	39.0	7.2
Somerset	227.3	4.3	537.0	30.1	27.4	5.0	42.5	2.0
Sullivan	0.0	0.0	0.0	0.0	0.0	0.0	0.0	0.0
Susquehanna	77.0	47.7	59.0	76.0	3.3	0.0	14.0	0.0
Tioga	0.0	0.0	0.0	131.5	51.9	0.0	29.0	5.0
Union	84.0	60.5	0.0	68.5	6.8	0.0	45.5	0.0
Venango	38.9	47.3	259.0	137.9	7.6	11.4	20.0	24.8
Warren	131.3	8.5	151.0	265.5	62.7	3.0	147.7	168.0
Washington	86.9	7.3	145.4	146.2	36.7	2.5	10.2	55.1
Wayne	103.3	77.8	193.3	106.8	58.0	0.0	0.0	0.0
Westmoreland	47.2	46.0	95.0	138.4	21.8	13.5	30.4	19.7
Wyoming	137.0	365.0	213.0	182.7	112.0	0.0	0.0	0.0
York	81.9	57.0	124.8	228.5	25.0	23.1	33.2	39.0
Federal	0.0	83.0	61.0	183.0	120.0	0.0	0.0	0.0
TOTAL	121.0	83.7	163.1	171.8	27.0	18.1	34.4	59.3

TABLE 31

Time Served Distribution of Sentenced Prisoners Released from County Prisons and Jails During 1987,
Part I and Part II Offense

OFFENSE CLASSIFICATION	1-15 DAYS	16-30 DAYS	31-60 DAYS	61-90 DAYS	91-179 DAYS	180- 364 DAYS	365- DAYS & OVER	TOTAL RELEASED	AVERAGE DAYS SERVED
Part I Offenses:									
Murder (Gen. 3rd Degree)					1	6	7	14	476.9
Manslaughter	3	2	5	5	10	28	21	74	335.0
Forcible Rape	0	0	1	3	9	16	15	44	343.0
Robbery	10	12	22	34	180	262	140	660	269.0
Aggravated Assault	28	24	25	29	146	157	64	473	209.0
Burglary	115	97	90	120	424	511	229	1,586	213.5
Theft	246	171	141	189	469	443	148	1,807	152.7
Arson	2	3	2	1	15	32	9	64	242.8
TOTAL PART I	404	309	286	381	1,254	1,455	633	4,722	201.8
PART II OFFENSES:									
Other Assaults	192	135	94	121	226	195	58	1,021	121.0
Forgery	10	13	10	23	74	61	25	216	199.3
Frauds	160	58	47	35	61	50	14	425	83.7
Receiving Stolen Properties	18	18	26	39	110	88	26	325	163.1
Weapons	10	13	16	36	52	34	13	174	144.7
Other Sex Offenses	17	22	20	26	83	99	43	310	219.6
Narcotic Drug Laws	88	102	88	129	484	477	105	1,473	171.8
Non-Support	228	79	45	35	22	31	1	441	38.3
Driving While Intoxicated(DWI)	5,159	1,896	545	452	491	137	43	8,723	27.0
Other Motor Vehicle Violations	489	203	99	317	84	8	3	1,203	42.8
Liquor Laws	108	33	14	9	6	4	0	174	25.8
Drunkenness (except DWI)	292	75	36	11	6	3	0	423	18.1
Disorderly Conduct	350	137	67	50	27	18	5	654	34.4
Criminal Mischief	115	61	37	27	31	29	3	303	59.3
Corruption of Minors	6	10	7	9	38	59	25	154	227.9
Criminal Conspiracy	7	8	10	20	41	42	14	142	186.6
Prison Breach	13	16	11	9	27	23	13	112	162.6
County/Local Ordinances	33	6	3	2	1	0	0	45	16.8
Contempt of Court	198	42	38	20	34	27	2	361	42.5
Violation of Probation	17	23	31	19	56	54	20	220	153.6
Other Part II Offenses	130	66	53	58	111	78	31	527	121.4
TOTAL PART II	7,640	3,016	1,297	1,447	2,065	1,517	444	17,426	66.0
All Releases	8,044	3,325	1,583	1,828	3,319	2,972	1,077	22,148	94.9

* Average days served for all Part I Offenses

** Average days served for all Part II Offenses

*** Average days served for all Offenses

TABLE 32
Time Served Distribution of Sentenced Prisoners Released from County Prisons and Jails
During 1987, by Committing County

COUNTY	1-15 DAYS	16-30 DAYS	31-60 DAYS	61-90 DAYS	91-179 DAYS	180-364 DAYS	365 DAYS & OVER	TOTAL RELEASED	AVERAGE DAYS SERVED
Adams	58	38	12	30	25	23	8	194	89.6
Allegheny	1,511	290	86	139	106	80	9	2,221	27.6
Armstrong	29	11	3	5	10	6	0	64	54.2
Beaver	44	57	22	11	42	15	1	192	65.0
Bedford	80	13	6	7	1	1	0	108	16.9
Berks	76	36	46	37	114	106	50	465	157.8
Blair	206	82	22	51	33	44	22	460	77.6
Bradford	8	1	2	1	3	0	2	17	118.1
Bucks	622	115	129	150	252	196	79	1,543	96.1
Butler	240	101	13	20	24	16	0	414	31.1
Cambria	10	12	19	20	21	23	20	125	207.0
Cameron	0	0	0	0	2	0	0	2	121.5
Carbon	16	18	6	12	15	19	7	93	143.8
Centre	81	53	23	35	30	17	10	249	77.6
Chester	240	106	69	91	196	178	47	927	127.2
Clarion	31	5	2	7	4	5	2	56	62.1
Clearfield	106	69	45	19	34	18	3	294	55.8
Clinton	9	10	0	6	5	7	1	38	92.5
Columbia	24	12	8	5	12	21	3	85	123.6
Crawford	161	63	35	19	50	5	0	333	35.3
Cumberland	220	100	42	25	120	71	20	598	83.4
Dauphin	325	167	66	76	162	171	24	991	89.9
Delaware	219	162	39	79	125	164	113	901	156.0
Elk	26	11	4	4	6	5	0	56	47.5
Erie	390	109	121	56	119	64	16	875	57.5
Fayette	127	17	7	3	19	11	1	185	36.2
Forest	2	1	0	0	0	4	0	7	131.4
Franklin	72	69	38	27	41	57	12	316	100.6
Fulton	0	1	0	1	0	0	0	2	60.0
Greene	30	15	3	10	4	10	0	72	57.8
Huntingdon	38	16	5	3	8	3	1	74	46.5
Indiana	76	42	9	15	20	14	0	176	53.3
Jefferson	8	13	4	9	10	8	0	52	91.0
Juniata	7	4	1	1	6	8	0	27	100.6
Lackawanna	78	29	18	10	34	37	23	229	117.3
Lancaster	82	77	21	55	99	102	12	448	117.5
Lawrence	19	19	47	29	24	10	1	149	66.7
Lebanon	128	79	30	33	53	49	37	409	123.0
Lehigh	35	103	15	32	93	67	30	375	145.4
Luzerne	147	48	14	20	66	62	45	402	135.7
Lycoming	253	65	51	34	53	40	4	500	53.9
McKean	13	8	12	1	18	14	1	67	102.2
Mercer	111	85	39	36	27	5	0	303	38.5
Mifflin	4	9	9	21	25	13	1	82	103.5
Monroe	39	31	9	20	24	33	9	165	122.9
Montgomery	372	82	12	46	86	110	10	718	71.7
Montour	7	6	2	4	9	9	4	41	153.4
Northampton	199	95	29	54	72	65	53	567	114.3
Northumberland	43	42	23	32	36	42	21	239	137.0
Perry	19	8	1	1	4	4	1	38	48.8
Philadelphia	431	140	152	168	637	678	273	2,479	169.3
Pike	22	10	3	5	16	4	2	62	75.8
Potter	9	3	3	1	3	3	0	22	70.2
Schuylkill	50	41	18	30	49	34	25	247	148.0
Snyder	66	16	3	6	8	2	1	102	35.3
Somerset	55	36	5	7	16	9	10	138	83.6
Sullivan	0	0	0	0	0	0	0	0	0.0
Susquehanna	41	3	4	5	7	11	0	71	55.9
Tioga	6	12	7	5	7	0	0	37	58.8
Union	33	7	0	4	10	1	0	55	33.3
Venango	116	37	9	11	13	20	4	210	49.9
Warren	44	23	4	13	27	21	11	143	108.6
Washington	106	54	41	29	45	25	10	310	77.8
Wayne	4	5	3	5	9	15	1	42	150.8
Westmoreland	160	101	24	49	29	17	0	380	42.3
Wyoming	1	3	1	2	12	15	7	41	197.2
York	258	228	87	85	87	79	30	854	78.3
Federal	1	1	0	1	2	6	0	11	132.9
TOTAL	8,044	3,325	1,583	1,828	3,319	2,972	1,077	22,148	94.9

TIME SERVED BY COUNTY PRISONERS FOR 1987

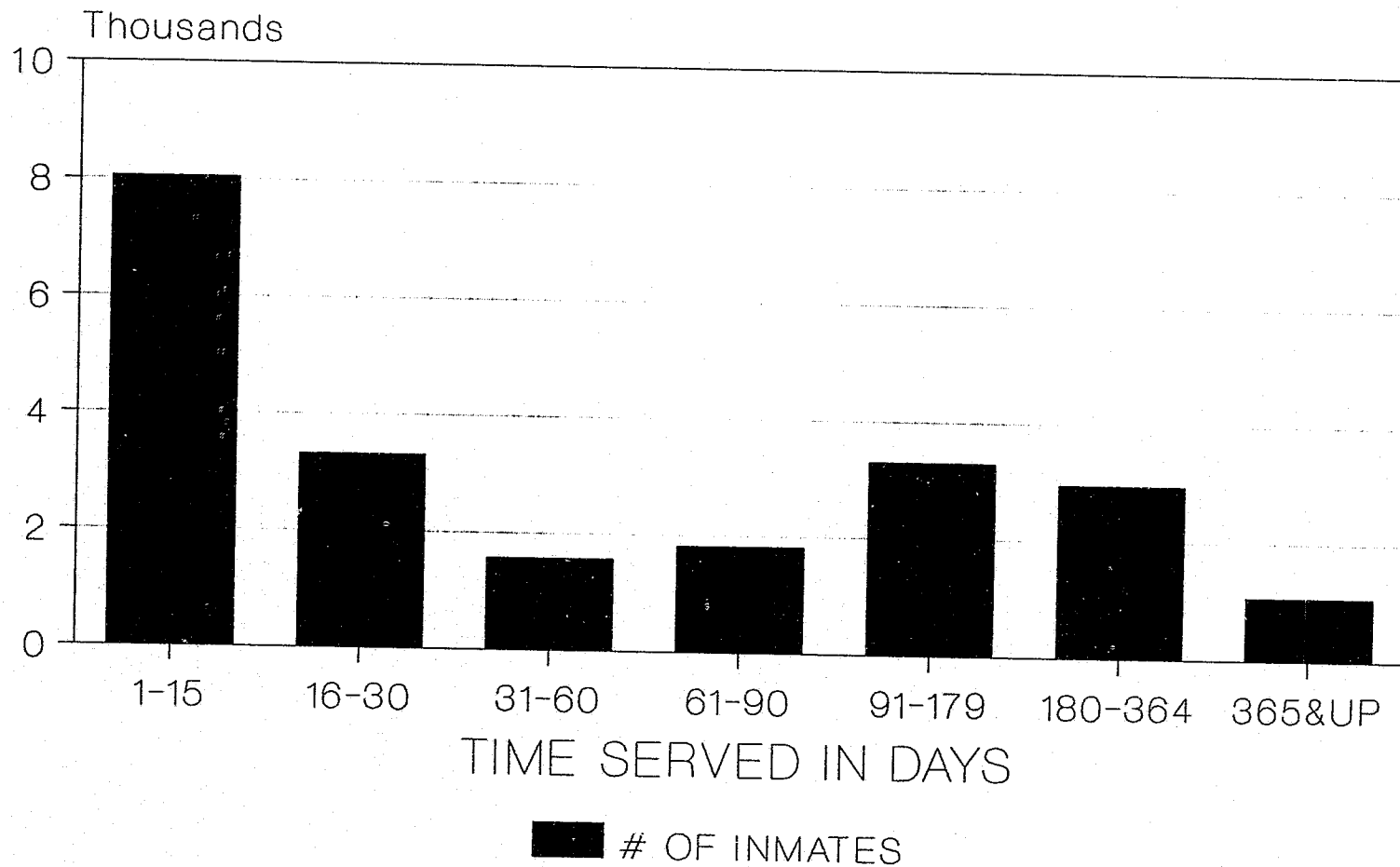


Figure 6

Source: Table 31 and Table 32

TABLE 33

Summary Information on Pennsylvania County Prisons and Jails

COUNTY	CLASS OF COUNTY	YEAR BUILT	1987 YEARLY AVERAGE DAILY POP.	AVERAGE COST PER DAY**
Adams	6	1947*	65	25.00
Allegheny	2	1888*	979	33.00
Armstrong	6	1871*	41	35.00
Beaver	4	1962	115	30.00
Bedford	7	1895	24	32.00
Berks	3	1931*	362	30.00
Blair	5	1868*	164	NA
Bradford	6	1871	39	65.00
Bucks	3	1986	536	40.33
Butler	5	1956	94	40.00
Cambria	4	1890	134	NA
Cameron	8	1867	3	120.00
Carbon	6	1869	46	30.00
Centre	5	1964*	63	40.00
Chester	3	1959	455	37.99
Clarion	7	1873	24	35.00
Clearfield	6	1981	115	25.00
Clinton	7	1851	31	35.00
Columbia	6	1876	53	24.10
Crawford	6	1849*	56	30.00
Cumberland	4	1986	206	40.00
Dauphin	4	1956*	437	40.00
Delaware	2A	1931*	592	45.00
Elk	7	1885	10	35.00
Erie	3	1975	240	35.70
Fayette	4	1883*	91	42.59
Forest	8	1895	(b)	289.76
Franklin	5	1972	127	22.00
Fulton	8	1851	(c)	(c)
Greene	7	1980	30	35.00
Huntingdon	6	1979	33	24.00
Indiana	6	1973	51	39.00
Jefferson	6	1982	43	33.00
Juniata	8	1980	25	30.26
Lackawanna	4	1880	173	32.00
Lancaster	3	1850*	376	31.49
Lawrence	5	1964	73	18.03
Lebanon	5	1980	180	23.27
Lehigh	3	1867*	358	40.00
Luzerne	3	1868	234	34.37
Lycoming	5	1986	132	51.72
McKean	6	1880	25	35.00
Mercer	5	1976	67	29.00
Mifflin	6	1856*	38	35.00
Monroe	6	1862	64	36.00
Montgomery	2A	1986	589	NA
Montour	8	1892	36	22.17
Northampton	4	1873*	312	40.00
Northumberland	5	1876	127	26.40
Perry	7	1900	11	30.00
Philadelphia	1	***	4,092	61.10
Pike	8	1895	18	45.00
Potter	8	1863	9	32.00
Schuylkill	4	1854*	116	11.31
Snyder	7	1885	21	31.75
Somerset	6	1981	54	35.00
Sullivan	8	1895	(c)	(c)
Susquehanna	7	1867	14	30.00
Tioga	7	1860	20	40.00
Union	7	1972	19	35.70
Venango	6	1905	39	33.26
Warren	6	1980	74	35.00
Washington	4	1898	128	35.00
Wayne	7	1934	27	3.12
Westmoreland	3	1976	104	34.06
Wyoming	8	1986	37	25.00
York	3	1979	344	26.79

NA - NOT AVAILABLE

* Adams Renovated in 1986
 Allegheny Annex opened in 1986
 Armstrong Renovated in 1981
 Berks Renovated in 1983
 Blair Renovated in 1984
 Centre Renovated in 1987
 Crawford Renovated in 1987
 Dauphin Addition in 1986
 Delaware Renovated in 1987
 Fayette Renovated in 1964
 Lancaster Renovated in 1982
 Lehigh Renovated in 1982
 Mifflin Renovated in 1978
 Northampton Renovated in 1987
 Schuylkill Renovated in 1986

**As of January 1988. Data provided by Bureau of Special Services, Department of Corrections from questionnaire returned by counties.

***Philadelphia County Prison System - The House of Correction was built in 1927, Holmesburg in 1876, the Detention Center in 1963, and Philadelphia Industrial Correctional Center in 1986.

TABLE 34

Number of County Prisoners on Work Release
on December 31, 1986 and 1987

COUNTY	1986		1987	
	NUMBER	PERCENT OF TOTAL POP.	NUMBER	PERCENT OF TOTAL POP.
Adams	29	42.6	20	37.0
Allegheny	38	4.6	80	8.6
Armstrong	5	11.6	3	7.3
Beaver	0	0.0	29	22.1
Bedford	0	0.0	6	17.6
Berks	17	5.5	22	5.8
Blair	18	12.2	28	17.9
Bradford	10	37.0	2	5.0
Bucks	132	28.9	140	26.1
Butler	5	5.3	14	14.4
Cambria	14	10.4	29	23.6
Cameron	0	0.0	1	33.3
Carbon	5	15.2	8	17.8
Centre	9	17.6	19	29.7
Chester	35	8.4	20	4.4
Clarion	0	0.0	10	33.3
Clearfield	11	12.1	10	7.7
Clinton	2	9.5	4	14.8
Columbia	11	22.0	13	22.4
Crawford	8	15.7	16	27.6
Cumberland	52	27.8	29	15.2
Dauphin	30	8.1	28	7.0
Delaware	26	4.6	15	2.7
Elk	2	18.2	4	44.4
Erie	16	7.4	20	8.7
Fayette	0	0.0	0	0.0
Forest	0	0.0	0	0.0
Franklin	24	23.8	40	41.7
Fulton	(c)	(c)	(c)	(c)
Greene	0	0.0	6	23.1
Huntingdon	0	0.0	8	23.5
Indiana	5	10.9	8	15.1
Jefferson	4	11.1	1	2.2
Juniata	3	10.3	8	50.0
Lackawanna	22	15.1	32	17.7
Lancaster	0	0.0	92	24.2
Lawrence	14	19.2	11	17.2
Lebanon	0	0.0	56	32.9
Lehigh	34	10.8	38	10.3
Luzerne	0	0.0	15	6.7
Lycoming	34	29.6	41	29.9
McKean	1	6.7	2	11.1
Mercer	4	7.4	4	6.3
Mifflin	9	25.0	14	43.8
Monroe	1	1.7	10	14.1
Montgomery	43	8.7	63	10.9
Montour	4	10.3	3	10.0
Northampton	48	17.3	39	13.9
Northumberland	31	25.6	29	20.9
Perry	0	0.0	0	0.0
Philadelphia	130	3.1	108	2.8
Pike	4	21.1	5	27.8
Potter	2	50.0	0	0.0
Schuylkill	4	4.2	13	10.6
Snyder	3	13.6	5	25.0
Somerset	7	13.2	8	15.7
Sullivan	(c)	(c)	(c)	(c)
Susquehanna	4	26.7	4	23.5
Tioga	4	18.2	1	6.3
Union	5	27.8	5	35.7
Venango	0	0.0	8	17.8
Warren	16	20.3	8	11.3
Washington	7	7.4	12	9.8
Wayne	1	7.1	7	25.9
Westmoreland	9	12.7	10	9.3
Wyoming	0	0.0	6	17.1
York	31	10.5	46	13.6
TOTAL	983	8.1	1,336	10.4

TABLE 35

Reported Escapes from County Prisons and Jails, 1983 to 1987

COUNTY	1983	1984	1985	1986	1987
Adams	2	2	2	5	3
Allegheny	0	0	0	0	0
Armstrong	0	0	1	0	1
Beaver	2	0	0	1	3
Bedford	0	0	0	3	0
Berks	1	3	9	3	5
Blair	1	0	3	0	2
Bradford	0	1	0	0	0
Bucks/Rehab Center	0/19	0/4	1/4	0/25	0/35
Butler	0	0	0	0	0
Cambria	0	0	0	3	0
Cameron	0	0	0	0	0
Carbon	1	1	2	1	2
Centre	0	0	0	0	1
Chester	0	0	0	0	0
Clarion	0	0	0	1	0
Clearfield	0	1	0	0	1
Clinton	0	2	0	2	4
Columbia	0	0	0	0	0
Crawford	0	0	1	0	0
Cumberland	0	0	2	1	7
Dauphin	4	9	8	13	8
Delaware	5	1	0	2	0
Elk	0	0	2	0	0
Erie	1	0	1	0	0
Fayette	0	0	0	0	2
Forest	0	0	0	0	0
Franklin	2	1	5	0	4
Fulton	(c)	(c)	(c)	(c)	(c)
Greene	0	0	0	1	1
Huntingdon	0	3	0	0	1
Indiana	0	1	0	0	0
Jefferson	2	1	0	0	1
Juniata	0	3	0	0	0
Lackawanna	0	0	0	0	0
Lancaster	2	0	0	0	0
Lawrence	0	5	0	1	0
Lebanon	0	0	1	4	0
Lehigh	11	7	5	1	1
Luzerne	1	0	3	0	0
Lycoming	1	4	3	2	3
McKean	3	0	1	0	0
Mercer	1	0	0	0	0
Mifflin	0	0	0	0	5
Monroe	0	0	0	0	0
Montgomery	2	8	0	6	18
Montour	3	0	0	0	0
Northampton	4	2	6	7	3
Northumberland	1	0	4	1	2
Perry	0	0	0	0	0
Philadelphia	17	15	12	2	17
Pike	0	0	2	0	0
Potter	0	0	1	0	0
Schuylkill	3	0	0	3	0
Snyder	6	1	1	0	0
Somerset	0	0	0	1	6
Sullivan	(c)	(c)	(c)	(c)	(c)
Susquehanna	0	0	3	0	1
Tioga	1	0	0	0	1
Union	0	0	0	0	0
Venango	0	0	0	0	1
Warren	0	0	1	0	0
Washington	1	0	0	1	1
Wayne	1	0	2	2	0
Westmoreland	0	0	0	1	0
Wyoming	4	0	0	1	0
York	0	3	0	0	0
TOTAL	102	78	86	94	140

FOOTNOTES

- a. Not calculated for base populations under 25.
- b. Less than one yearly average prisoner.
- c. Closed
- d. Forest County Jail is functioning only as a 48 hour holding facility. Sentenced prisoners are transferred to Warren County Jail and are included in Warren's totals.

Table 10

- * Ratio for 1986 are based on population estimates for July 1, 1985.
- ** Ratio for 1987 are based on population estimates for July 1, 1986.

They are produced jointly by the Pennsylvania State Data Center, Pennsylvania State University Capitol Campus, and the U.S. Bureau of the Census.

Table 16

- * Murder includes 3rd degree and unspecified murder only
- ** Manslaughter includes a total of 87 homicide by motor vehicle