

M61

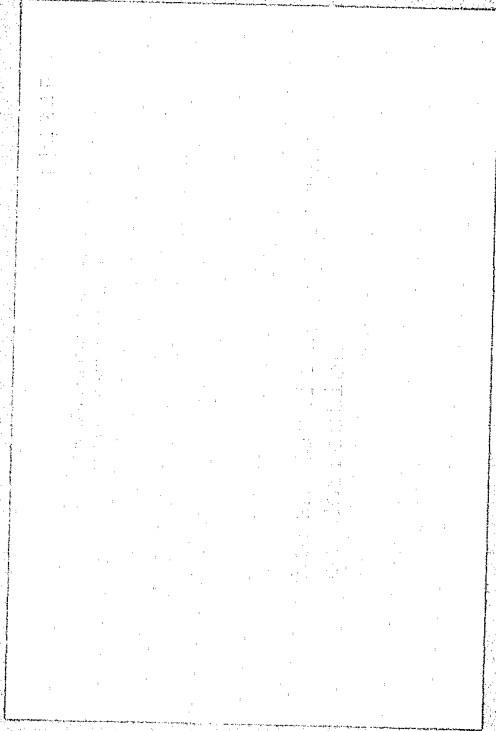
# ABSTRACT STATISTICAL

114345

FISCAL YEAR  
7/01/87 - 6/30/88

**NORTH CAROLINA**

**DEPARTMENT OF CORRECTION**



**DIVISION OF ADULT PROBATION AND PAROLE**

**JAMES G. MARTIN**  
GOVERNOR

**AARON J. JOHNSON**  
SECRETARY

**C. MONROE WATERS**  
DIRECTOR

114345

TABLE OF CONTENTS

<u>Report Number</u>	<u>Column Headings</u>	<u>Row Labels</u>	<u>Page</u>
SECTION 1 - ENTRIES ONTO SUPERVISION			
1A	Probation/Parole/Intensive	Supervision level	1
1B	Probation/Parole/Intensive	Supervision length	2
1C	Probation/Parole/Intensive	Crime	3
1D	Probation/Parole/Intensive	County of Conviction	5
1E	Probation/Parole/Intensive	Sex/Race	10
1F	Probation/Parole/Intensive	Age at entry	11
1G	Supervision level (Probation)	Branch/Unit	12
	Supervision level (Parole)	Branch/Unit	18
1H	Supervision level (Probation)	Officer Perception	24
	Supervision level (Parole)	Officer Perception	25
SECTION 2 - REMOVALS FROM SUPERVISION			
2A	Probation/Parole/Intensive	Time under supervision	26
2B	Supervision level (Probation)	Reason for termination	27
	Supervision level (Parole)	Reason for termination	29
2C	Crime	Time under supervision	31
2D	Time under supervision	Reason for term. (number)	33
2E	Time under supervision	Reason for term. (percent)	39
SECTION 3 - SUPERVISED POPULATION AT PERIOD END			
3A	Probation/Parole/Intensive	Supervision level	37
3B	Probation/Parole/Intensive	Crime	38
3C	Probation/Parole/Intensive	County of Conviction	40
3D	Probation/Parole/Intensive	Sex/Race	45
3E	Probation/Parole/Intensive	Age at period end	46
3F	Supervision level (Probation)	Unit	47
	Supervision level (Parole)	Unit	53
3G	Crime	Sex/Race	59
3H	Crime	County of conviction	61
3I	Age	Crime	71
3J	Age	County of conviction	73
3K	Age	Supervision level	79
Appendix	Procedure and Definitions used in creating the Abstract		80

NCJRS  
 DEC 2 1988  
 ACQUISITIONS

JUL 1 1987 - JUN 30 1988

S U P E R V I S E D I N S T A T E ALL CLIENTS

REPORT 1A: RECEIVED: BY SUPERVISION LEVEL	INTENSIVE PROB/DUAL		TOTAL PROBATION/DUAL		INTENSIVE PAROLE/DUAL		TOTAL PAROLE/DUAL		TOTAL CLIENTS IN-STATE		(INCLUDES OUT OF STATE)	
	NUMBER	PERCENT	NUMBER	PERCENT	NUMBER	PERCENT	NUMBER	PERCENT	NUMBER	PERCENT	NUMBER	PERCENT
INTENSIVE SUPERVISION	485	60.4	487	1.4	227	93.4	231	3.2	718	1.7	721	1.7
SUSPENDED	2	0.2	288	0.8	0	0.0	76	1.0	364	0.9	364	0.9
HIGH RISK	50	6.2	3353	9.7	3	1.2	1924	26.4	5239	12.6	5251	12.3
SELECTIVE	14	1.7	3364	9.8	1	0.4	573	7.9	3931	9.4	3948	9.3
INTERMEDIATE	52	6.5	19029	55.2	3	1.2	2641	36.2	21626	51.9	21702	50.9
SPECIAL	2	0.2	4305	12.5	0	0.0	300	4.1	4601	11.0	4628	10.9
DEFERRED	191	23.8	2541	7.4	8	3.3	96	1.3	2625	6.3	3467	8.1
MAX SELECTIVE OR NOT REPORTED	7	0.9	1097	3.2	1	0.4	1448	19.9	2544	6.1	2544	6.0
TOTAL	803	100.0	34464	100.0	243	100.0	7289	100.0	41648	100.0	42625	100.0

JUL 1 1987 - JUN 30 1988

S U P E R V I S E D I N S T A T E ALL CLIENTS

REPORT 1B: RECEIVED:-BY SUPERVISION LENGTH	INTENSIVE PROB/DUAL		TOTAL PROBATION/DUAL		INTENSIVE PAROLE/DUAL		TOTAL PAROLE/DUAL		TOTAL CLIENTS IN-STATE		(INCLUDES OUT OF STATE)	
	NUMBER	PERCENT	NUMBER	PERCENT	NUMBER	PERCENT	NUMBER	PERCENT	NUMBER	PERCENT	NUMBER	PERCENT
SIX MONTHS OR LESS	1	0.1	1048	3.0	0	0.0	0	0.0	1048	2.5	1066	2.5
OVER 6 MO, THROUGH 1 YEAR	7	0.9	8274	24.0	0	0.0	3	0.0	8275	19.9	8398	19.7
OVER 1, THROUGH 2 YEARS	14	1.7	10742	31.2	0	0.0	2	0.0	10742	25.8	10919	25.6
OVER 2, THROUGH 3 YEARS	147	18.3	7766	22.5	2	0.8	20	0.3	7766	18.6	7977	18.7
OVER 3, THROUGH 4 YEARS	41	5.1	709	2.1	0	0.0	2	0.0	709	1.7	729	1.7
OVER 4, THROUGH 5 YEARS	589	73.3	5888	17.1	9	3.7	78	1.1	5888	14.1	6132	14.4
MORE THAN 5 YEARS	3	0.4	36	0.1	0	0.0	1	0.0	36	0.1	36	0.1
NOT REPORTED	1	0.1	1	0.0	232	95.5	7183	98.5	7184	17.2	7368	17.3
TOTAL	803	100.0	34464	100.0	243	100.0	7289	100.0	41648	100.0	42625	100.0

JUL 1 1987 - JUN 30 1988

S U P E R V I S E D I N S T A T E ALL CLIENTS

REPORT 1C: RECEIVED:- BY CRIME	INTENSIVE PROB/DUAL		TOTAL PROBATION/DUAL		INTENSIVE PAROLE/DUAL		TOTAL PAROLE/DUAL		TOTAL CLIENTS IN-STATE		(INCLUDES OUT OF STATE)	
	NUMBER	PERCENT	NUMBER	PERCENT	NUMBER	PERCENT	NUMBER	PERCENT	NUMBER	PERCENT	NUMBER	PERCENT
MURDER FIRST DEGREE	1	0.1	11	0.0	9	3.7	34	0.5	45	0.1	47	0.1
MURDER SECOND DEGREE	0	0.0	3	0.0	38	15.6	158	2.2	161	0.4	170	0.4
MANSLAUGHTER	2	0.2	99	0.3	7	2.9	177	2.4	275	0.7	286	0.7
ROBBERY	34	4.2	164	0.5	36	14.8	425	5.8	584	1.4	615	1.4
ASSAULT	44	5.5	3004	8.7	21	8.6	533	7.3	3528	8.5	3566	8.4
RAPE	10	1.2	56	0.2	22	9.1	143	2.0	199	0.5	207	0.5
SEXUAL ASSAULT	0	0.0	0	0.0	0	0.0	2	0.0	2	0.0	2	0.0
MISC. SEX CRIMES	28	3.5	545	1.6	1	0.4	178	2.4	722	1.7	755	1.8
KIDNAP, ABDUCTION	3	0.4	14	0.0	1	0.4	31	0.4	45	0.1	47	0.1
BURGLARY	0	0.0	21	0.1	8	3.3	59	0.8	80	0.2	82	0.2
BREAKING, ENTERING	228	28.4	2558	7.4	31	12.8	1474	20.2	4016	9.6	4128	9.7
LARCENY	146	18.2	5357	15.5	22	9.1	1163	16.0	6495	15.6	6678	15.7
AUTO THEFT	3	0.4	305	0.9	0	0.0	53	0.7	358	0.9	370	0.9
BURNINGS	8	1.0	63	0.2	5	2.1	67	0.9	129	0.3	139	0.3
FRAUD	28	3.5	949	2.8	4	1.6	175	2.4	1118	2.7	1175	2.8
FORGERY	57	7.1	802	2.3	2	0.8	332	4.6	1128	2.7	1165	2.7
WORTHLESS CHECKS	0	0.0	1009	2.9	0	0.0	66	0.9	1073	2.6	1100	2.6
TRESPASS	5	0.6	1236	3.6	0	0.0	55	0.8	1289	3.1	1301	3.1
NARCOTICS AND DRUGS	187	23.3	3409	9.9	31	12.8	933	12.8	4324	10.4	4486	10.5
ABANDONMENT & NONSUPPORT	0	0.0	68	0.2	0	0.0	18	0.2	86	0.2	87	0.2
DRIVING WHILE IMPAIRED	2	0.2	10364	30.1	1	0.4	780	10.7	11140	26.7	11300	26.5
OTHER TRAFFIC VIOLATIONS	7	0.9	2305	6.7	1	0.4	286	3.9	2585	6.2	2620	6.1
HABITUAL DRUNK	0	0.0	1	0.0	0	0.0	0	0.0	1	0.0	1	0.0

(CONTINUED)

JUL 1 1987 - JUN 30 1988

S U P E R V I S E D I N S T A T E ALL CLIENTS

REPORT 1C: RECEIVED:- BY CRIME	INTENSIVE PROB/DUAL		TOTAL PROBATION/DUAL		INTENSIVE PAROLE/DUAL		TOTAL PAROLE/DUAL		TOTAL CLIENTS IN-STATE		(INCLUDES OUT OF STATE)	
	NUMBER	PERCENT	NUMBER	PERCENT	NUMBER	PERCENT	NUMBER	PERCENT	NUMBER	PERCENT	NUMBER	PERCENT
OTHERS	10	1.2	2119	6.1	3	1.2	147	2.0	2263	5.4	2296	5.4
NOT REPORTED	0	0.0	2	0.0	0	0.0	0	0.0	2	0.0	2	0.0
TOTAL	803	100.0	34464	100.0	243	100.0	7389	100.0	41648	100.0	42625	100.0

JUL 1 1987 - JUN 30 1988

S U P E R V I S E D I N S T A T E ALL CLIENTS

REPORT ID: RECEIVED:- BY COUNTY	INTENSIVE PROB/DUAL		TOTAL PROBATION/DUAL		INTENSIVE PAROLE/DUAL		TOTAL PAROLE/DUAL		TOTAL CLIENTS IN-STATE		(INCLUDES OUT OF STATE)	
	NUMBER	PERCENT	NUMBER	PERCENT	NUMBER	PERCENT	NUMBER	PERCENT	NUMBER	PERCENT	NUMBER	PERCENT
ALAMANCE	13	1.6	811	2.4	4	1.6	192	2.6	1000	2.4	1011	2.4
ALLEGHANY	0	0.0	50	0.1	0	0.0	3	0.0	53	0.1	57	0.1
ALEXANDER	0	0.0	168	0.5	0	0.0	24	0.3	192	0.5	195	0.5
ANSON	0	0.0	160	0.5	0	0.0	40	0.5	199	0.5	204	0.5
ASHE	0	0.0	100	0.3	0	0.0	20	0.3	120	0.3	125	0.3
AVERY	0	0.0	56	0.2	0	0.0	5	0.1	61	0.1	64	0.2
BEAUFORT	4	0.5	303	0.9	3	1.2	72	1.0	375	0.9	381	0.9
BERTIE	0	0.0	120	0.3	0	0.0	29	0.4	147	0.4	149	0.3
BLADEN	0	0.0	217	0.6	0	0.0	37	0.5	254	0.6	257	0.6
BRUNSWICK	0	0.0	289	0.8	1	0.4	50	0.7	338	0.8	349	0.8
BUNCOMBE	21	2.6	493	1.4	10	4.1	140	1.9	633	1.5	654	1.5
BURKE	2	0.2	331	1.0	0	0.0	56	0.8	387	0.9	390	0.9
CABARRUS	14	1.7	551	1.6	5	2.1	152	2.1	702	1.7	707	1.7
CALDWELL	9	1.1	375	1.1	2	0.8	75	1.0	449	1.1	457	1.1
CAMDEN	0	0.0	11	0.0	0	0.0	4	0.1	15	0.0	17	0.0
CARTERET	17	2.1	213	0.6	3	1.2	29	0.4	241	0.6	250	0.6
CASWELL	2	0.2	76	0.2	1	0.4	26	0.4	100	0.2	102	0.2
CATAWBA	18	2.2	724	2.1	3	1.2	105	1.4	829	2.0	840	2.0
CHATHAM	0	0.0	204	0.6	1	0.4	21	0.3	224	0.5	227	0.5
CHEROKEE	0	0.0	137	0.4	0	0.0	17	0.2	154	0.4	175	0.4
CHOWAN	1	0.1	51	0.1	0	0.0	8	0.1	59	0.1	60	0.1
CLAY	0	0.0	35	0.1	0	0.0	3	0.0	38	0.1	39	0.1
CLEVELAND	17	2.1	162	0.5	6	2.5	109	1.5	267	0.6	274	0.6

(CONTINUED)

JUL 1 1987 - JUN 30 1988

S U P E R V I S E D I N S T A T E ALL CLIENTS

REPORT 1D: RECEIVED:- BY COUNTY	INTENSIVE PROB/DUAL		TOTAL PROBATION/DUAL		INTENSIVE PAROLE/DUAL		TOTAL PAROLE/DUAL		TOTAL CLIENTS IN-STATE		(INCLUDES OUT OF STATE)	
	NUMBER	PERCENT	NUMBER	PERCENT	NUMBER	PERCENT	NUMBER	PERCENT	NUMBER	PERCENT	NUMBER	PERCENT
COLUMBUS	0	0.0	327	0.9	1	0.4	44	0.6	371	0.9	376	0.9
CRAVEN	15	1.9	424	1.2	2	0.8	69	0.9	492	1.2	513	1.2
CUMBERLAND	45	5.6	1019	3.0	13	5.3	234	3.2	1252	3.0	1316	3.1
CURRITUCK	0	0.0	27	0.1	0	0.0	6	0.1	33	0.1	46	0.1
DARE	0	0.0	113	0.3	1	0.4	19	0.3	132	0.3	167	0.4
DAVIE	0	0.0	123	0.4	0	0.0	21	0.3	144	0.3	147	0.3
DAVIDSON	6	0.7	803	2.3	4	1.6	129	1.8	931	2.2	942	2.2
DUPLIN	16	2.0	316	0.9	1	0.4	63	0.9	374	0.9	378	0.9
DURHAM	23	2.9	1051	3.0	14	5.8	225	3.1	1275	3.1	1287	3.0
EDGECOMBE	10	1.2	230	0.7	1	0.4	47	0.6	277	0.7	278	0.7
FORSYTH	27	3.4	974	2.8	17	7.0	333	4.6	1304	3.1	1315	3.1
FRANKLIN	10	1.2	146	0.4	0	0.0	30	0.4	176	0.4	180	0.4
GASTON	12	1.5	388	1.1	5	2.1	130	1.8	517	1.2	522	1.2
GATES	0	0.0	25	0.1	0	0.0	8	0.1	33	0.1	41	0.1
GRAHAM	0	0.0	43	0.1	0	0.0	4	0.1	47	0.1	51	0.1
GRANVILLE	1	0.1	171	0.5	1	0.4	45	0.6	215	0.5	218	0.5
GREENE	0	0.0	84	0.2	2	0.8	21	0.3	105	0.3	105	0.2
GUILFORD	43	5.4	1175	3.4	15	6.2	407	5.6	1580	3.8	1613	3.8
HALIFAX	18	2.2	331	1.0	2	0.8	69	0.9	397	1.0	409	1.0
HARNETT	11	1.4	346	1.0	4	1.6	72	1.0	418	1.0	426	1.0
HAYWOOD	0	0.0	344	1.0	4	1.6	58	0.8	402	1.0	417	1.0
HENDERSON	15	1.9	216	0.6	0	0.0	73	1.0	289	0.7	295	0.7
HERTFORD	0	0.0	163	0.5	0	0.0	28	0.4	191	0.5	191	0.4

(CONTINUED)



JUL 1 1987 - JUN 30 1988

S U P E R V I S E D I N S T A T E ALL CLIENTS

REPORT ID: RECEIVED:- BY COUNTY	INTENSIVE PROB/DUAL		TOTAL PROBATION/DUAL		INTENSIVE PAROLE/DUAL		TOTAL PAROLE/DUAL		TOTAL CLIENTS IN-STATE		(INCLUDES OUT OF STATE)	
	NUMBER	PERCENT	NUMBER	PERCENT	NUMBER	PERCENT	NUMBER	PERCENT	NUMBER	PERCENT	NUMBER	PERCENT
HOKE	0	0.0	239	0.7	1	0.4	44	0.6	282	0.7	283	0.7
HYDE	0	0.0	34	0.1	0	0.0	10	0.1	44	0.1	47	0.1
IREDELL	13	1.6	827	2.4	1	0.4	144	2.0	971	2.3	989	2.3
JACKSON	0	0.0	110	0.3	0	0.0	10	0.1	120	0.3	128	0.3
JOHNSON	16	2.0	451	1.3	1	0.4	84	1.2	533	1.3	534	1.3
JONES	0	0.0	32	0.1	1	0.4	11	0.2	43	0.1	43	0.1
LEE	5	0.6	323	0.9	2	0.8	81	1.1	402	1.0	404	0.9
LENOIR	15	1.9	439	1.3	3	1.2	83	1.1	522	1.3	524	1.2
LINCOLN	1	0.1	87	0.3	0	0.0	47	0.6	134	0.3	138	0.3
MACON	0	0.0	73	0.2	0	0.0	6	0.1	78	0.2	87	0.2
MADISON	0	0.0	57	0.2	0	0.0	3	0.0	60	0.1	60	0.1
MARTIN	2	0.2	157	0.5	0	0.0	53	0.7	210	0.5	213	0.5
MCDOWELL	4	0.5	138	0.4	0	0.0	32	0.4	170	0.4	170	0.4
MECKLENBURG	48	6.0	3443	10.0	19	7.8	497	6.8	3934	9.4	4044	9.5
MITCHELL	0	0.0	61	0.2	1	0.4	5	0.1	66	0.2	66	0.2
MONTGOMERY	0	0.0	119	0.3	0	0.0	32	0.4	151	0.4	152	0.4
MOORE	7	0.9	317	0.9	3	1.2	57	0.8	374	0.9	379	0.9
NASH	25	3.1	332	1.0	1	0.4	59	0.8	389	0.9	398	0.9
NEW HANOVER	25	3.1	804	2.3	9	3.7	230	3.2	1029	2.5	1057	2.5
NORTHAMPTON	1	0.1	91	0.3	0	0.0	18	0.2	109	0.3	111	0.3
ONslow	23	2.9	658	1.9	3	1.2	106	1.5	761	1.8	832	2.0
ORANGE	6	0.7	382	1.1	2	0.8	38	0.5	419	1.0	425	1.0
PAMLICO	0	0.0	47	0.1	0	0.0	7	0.1	54	0.1	55	0.1

(CONTINUED)

JUL 1 1987 - JUN 30 1988

S U P E R V I S E D I N S T A T E ALL CLIENTS

REPORT ID: RECEIVED:- BY COUNTY	INTENSIVE PROB/DUAL		TOTAL PROBATION/DUAL		INTENSIVE PAROLE/DUAL		TOTAL PAROLE/DUAL		TOTAL CLIENTS IN-STATE		(INCLUDES OUT OF STATE)	
	NUMBER	PERCENT	NUMBER	PERCENT	NUMBER	PERCENT	NUMBER	PERCENT	NUMBER	PERCENT	NUMBER	PERCENT
PASQUOTANK	0	0.0	117	0.3	0	0.0	31	0.4	148	0.4	156	0.4
PENDER	0	0.0	154	0.4	0	0.0	24	0.3	178	0.4	180	0.4
PERQUIMANS	0	0.0	34	0.1	1	0.4	8	0.1	42	0.1	49	0.1
PERSON	0	0.0	127	0.4	1	0.4	37	0.5	164	0.4	172	0.4
PITT	22	2.7	699	2.0	4	1.6	143	2.0	834	2.0	847	2.0
POLK	2	0.2	32	0.1	0	0.0	6	0.1	38	0.1	45	0.1
RANDOLPH	6	0.7	357	1.0	2	0.8	69	0.9	426	1.0	430	1.0
RICHMOND	5	0.6	327	0.9	5	2.1	91	1.2	417	1.0	423	1.0
ROBESON	19	2.4	777	2.3	13	5.3	211	2.9	985	2.4	999	2.3
ROCKINGHAM	30	3.7	418	1.2	2	0.8	119	1.6	533	1.3	551	1.3
ROWAN	11	1.4	629	1.8	3	1.2	139	1.9	766	1.8	773	1.8
RUTHERFORD	18	2.2	245	0.7	6	2.5	83	1.1	325	0.8	341	0.8
SAMPSON	10	1.2	258	0.7	2	0.8	57	0.8	313	0.8	316	0.7
SCOTLAND	4	0.5	231	0.7	3	1.2	73	1.0	304	0.7	315	0.7
STANLY	6	0.7	250	0.7	1	0.4	43	0.6	293	0.7	296	0.7
STOKES	3	0.4	178	0.5	0	0.0	26	0.4	204	0.5	212	0.5
SURRY	28	3.5	354	1.0	3	1.2	114	1.6	457	1.1	470	1.1
SWAIN	2	0.2	69	0.2	0	0.0	6	0.1	75	0.2	78	0.2
TRANSYLVANIA	0	0.0	91	0.3	0	0.0	16	0.2	107	0.3	111	0.3
TYRRELL	0	0.0	38	0.1	0	0.0	4	0.1	42	0.1	42	0.1
UNION	12	1.5	379	1.1	6	2.5	88	1.2	466	1.1	484	1.1
VANCE	7	0.9	193	0.6	2	0.8	61	0.8	253	0.6	258	0.6
WAKE	43	5.4	2627	7.6	9	3.7	301	4.1	2927	7.0	2986	7.0

(CONTINUED)

JUL 1 1987 - JUN 30 1988

S U P E R V I S E D I N S T A T E ALL CLIENTS

REPORT ID: RECEIVED:- BY COUNTY	INTENSIVE PROB/DUAL		TOTAL PROBATION/DUAL		INTENSIVE PAROLE/DUAL		TOTAL PAROLE/DUAL		TOTAL CLIENTS IN-STATE		(INCLUDES OUT OF STATE)	
	NUMBER	PERCENT	NUMBER	PERCENT	NUMBER	PERCENT	NUMBER	PERCENT	NUMBER	PERCENT	NUMBER	PERCENT
WARREN	0	0.0	71	0.2	0	0.0	16	0.2	87	0.2	94	0.2
WASHINGTON	0	0.0	84	0.2	0	0.0	15	0.2	99	0.2	105	0.2
WATAUGA	0	0.0	110	0.3	0	0.0	10	0.1	120	0.3	124	0.3
WAYNE	11	1.4	520	1.5	6	2.5	114	1.6	631	1.5	640	1.5
WILKES	1	0.1	560	1.6	0	0.0	54	0.7	614	1.5	618	1.4
WILSON	2	0.2	261	0.8	0	0.0	60	0.8	319	0.8	319	0.7
YADKIN	0	0.0	146	0.4	0	0.0	26	0.4	172	0.4	172	0.4
YANCEY	0	0.0	33	0.1	0	0.0	3	0.0	36	0.1	36	0.1
OUT OF STATE	0	0.0	398	1.2	1	0.4	232	3.2	626	1.5	627	1.5
TOTAL	803	100.0	34464	100.0	243	100.0	7289	100.0	41643	100.0	42625	100.0

JUL 1 1987 - JUN 30 1988

S U P E R V I S E D I N S T A T E ALL CLIENTS

REPORT 1E, RECEIVED:- BY RACE/SEX	INTENSIVE PROB/DUAL		TOTAL PROBATION/DUAL		INTENSIVE PAROLE/DUAL		TOTAL PAROLE/DUAL		TOTAL CLIENTS IN-STATE		(INCLUDES OUT OF STATE)	
	NUMBER	PERCENT	NUMBER	PERCENT	NUMBER	PERCENT	NUMBER	PERCENT	NUMBER	PERCENT	NUMBER	PERCENT
WHITE MALES	385	47.9	15718	45.6	95	39.1	2983	40.9	18648	44.8	19233	45.1
BLACK MALES	309	38.5	11785	34.2	124	51.0	3614	49.6	15351	36.9	15580	36.6
INDIAN MALES	18	2.2	597	1.7	12	4.9	166	2.3	761	1.8	770	1.8
ORIENTAL MALES	0	0.0	27	0.1	0	0.0	0	0.0	27	0.1	30	0.1
OTHER MALES	1	0.1	190	0.6	0	0.0	32	0.4	222	0.5	226	0.5
WHITE FEMALES	44	5.5	3162	9.2	7	2.9	210	2.9	3370	8.1	3473	8.1
BLACK FEMALES	44	5.5	2813	8.2	5	2.1	275	3.8	3088	7.4	3128	7.3
INDIAN FEMALES	2	0.2	147	0.4	0	0.0	9	0.1	156	0.4	157	0.4
ORIENTAL FEMALES	0	0.0	6	0.0	0	0.0	0	0.0	6	0.0	8	0.0
OTHER FEMALES	0	0.0	19	0.1	0	0.0	0	0.0	19	0.0	20	0.0
TOTAL	803	100.0	34464	100.0	243	100.0	7289	100.0	41648	100.0	42625	100.0

JUL 1 1987 - JUN 30 1988

S U P E R V I S E D I N S T A T E ALL CLIENTS

REPORT 1F: RECEIVED:- BY AGE	INTENSIVE PROB/DUAL		TOTAL PROBATION/DUAL		INTENSIVE PAROLE/DUAL		TOTAL PAROLE/DUAL		TOTAL CLIENTS- IN-STATE		(INCLUDES OUT OF STATE)	
	NUMBER	PERCENT	NUMBER	PERCENT	NUMBER	PERCENT	NUMBER	PERCENT	NUMBER	PERCENT	NUMBER	PERCENT
16 AND UNDER	45	5.6	1448	4.2	1	0.4	8	0.1	1456	3.5	1489	3.5
17	62	7.7	1788	5.2	0	0.0	87	1.2	1873	4.5	1910	4.5
18	60	7.5	1669	4.8	4	1.6	200	2.7	1863	4.5	1916	4.5
19	49	6.1	1461	4.2	4	1.6	245	3.4	1705	4.1	1760	4.1
20	38	4.7	1433	4.2	12	4.9	310	4.3	1736	4.2	1795	4.2
21-24	168	20.9	6218	18.0	27	11.1	1415	19.4	7606	18.3	7795	18.3
25-29	159	19.8	6984	20.3	35	14.4	1841	25.3	8800	21.1	8993	21.1
30-39	172	21.4	8506	24.7	90	37.0	2140	29.4	10624	25.5	10866	25.5
40-49	33	4.1	3241	9.4	46	18.9	697	9.6	3926	9.4	4005	9.4
50-59	10	1.2	1190	3.5	17	7.0	248	3.4	1436	3.4	1464	3.4
60 AND OVER	7	0.9	526	1.5	7	2.9	98	1.3	623	1.5	632	1.5
TOTAL	803	100.0	34464	100.0	243	100.0	7289	100.0	41648	100.0	42625	100.0

PROBATIONERS

JUL 1 1987 - JUN 30 1988

S U P E R V I S I O N L E V E L

REPORT 1G: ENTRIES, BY BRANCH, UNIT		INTENSIVE		SUSPENDED		HIGH RISK		SELECTIVE		INTER-MEDIATE		SPECIAL		MAX SELECT, DEFERRED OR NOT REPORTD		TOTAL,
		NUMBR	PERCT	NUMBR	PERCT	NUMBR	PERCT	NUMBR	PERCT	NUMBR	PERCT	NUMBR	PERCT	NUMBR	PERCT	ALL
A	A-I	22	58	0	0	2	5	1	3	1	3	0	0	12	32	38
	A-K	0	0	1	0	30	7	55	12	267	59	65	14	37	8	455
	A-M	1	0	4	1	98	19	19	4	228	43	122	23	57	11	529
	A-P	0	0	3	1	26	6	34	8	229	54	62	15	72	17	426
	A-R	0	0	4	1	46	13	31	9	158	45	66	19	43	12	348
	SUBTOTAL	23	1	12	1	202	11	140	8	883	49	315	18	221	12	1796
B	B-I	40	53	0	0	10	13	0	0	6	8	1	1	18	24	75
	B-K	0	0	2	0	97	14	30	4	345	50	114	17	99	14	687
	B-L	0	0	2	0	43	6	68	10	442	64	60	9	78	11	693
	B-M	1	0	7	1	62	8	75	10	331	42	165	21	138	18	779
	B-N	1	0	1	0	53	14	44	12	183	49	44	12	45	12	371
	B-P	0	0	0	0	13	2	38	7	339	64	70	13	67	13	527
	B-R	1	1	1	1	23	13	23	13	87	48	25	14	23	13	183
	SUBTOTAL	43	1	13	0	301	9	278	8	1733	52	479	14	468	14	3315
C	C-I	29	51	1	2	6	11	2	4	4	7	0	0	15	26	57
	C-K	2	0	3	0	47	8	48	8	371	61	72	12	64	11	607
	C-L	0	0	4	1	90	12	38	5	485	62	114	15	48	6	779
	C-M	2	0	6	1	76	9	84	10	471	59	100	12	64	8	803
	C-N	2	0	5	1	44	7	18	3	428	71	69	11	38	6	604
	C-P	2	0	5	1	60	8	61	8	460	63	84	11	63	9	735

(CONTINUED)

PROBATIONERS

JUL 1 1987 - JUN 30 1988

S U P E R V I S I O N L E V E L

REPORT 1G: ENTRIES, BY BRANCH, UNIT		INTENSIVE		SUSPENDED		HIGH RISK		SELECTIVE		INTER- MEDIATE		SPECIAL		MAX SELECT, DEFERRED OR NOT REPORTD		TOTAL,	
		NUMBR	PERCT	NUMBR	PERCT	NUMBR	PERCT	NUMBR	PERCT	NUMBR	PERCT	NUMBR	PERCT	NUMBR	PERCT	ALL	LEVELS
C	SUBTOTAL	37	1	24	1	323	9	251	7	2219	62	439	12	292	8	3585	
D	D-I	50	70	0	0	5	7	0	0	3	4	0	0	13	18	71	
	D-K	0	0	4	1	20	5	36	9	242	63	47	12	37	10	386	
	D-L	0	0	5	2	16	6	24	9	153	56	54	20	23	8	275	
	D-M	0	0	10	3	76	21	34	9	145	40	51	14	45	12	361	
	D-P	2	1	6	2	32	11	31	11	114	40	61	21	39	14	285	
	D-R	1	0	4	1	29	9	37	11	137	42	68	21	54	16	330	
	D-S	1	0	2	1	32	10	15	5	109	35	71	23	83	27	313	
	D-T	0	0	1	0	51	14	50	14	175	49	41	11	39	11	357	
		SUBTOTAL	54	2	32	1	261	11	227	10	1078	45	393	17	333	14	2378
E	E-I	43	69	0	0	7	11	0	0	5	8	0	0	7	11	62	
	E-K	4	1	1	0	51	9	18	3	315	57	112	20	55	10	556	
	E-L	0	0	3	1	34	11	4	1	171	57	45	15	43	14	300	
	E-M	0	0	2	1	36	11	23	7	133	41	34	11	93	29	321	
	E-N	0	0	3	1	51	13	25	6	186	47	75	19	58	15	398	
	E-P	0	0	1	0	41	9	43	9	171	37	53	11	155	33	464	
	E-R	1	0	7	1	66	13	13	3	292	59	86	17	33	7	498	
		SUBTOTAL	48	2	17	1	286	11	126	5	1273	49	405	16	444	17	2599
F	F-J	36	50	0	0	5	7	2	3	10	14	0	0	19	26	72	
	F-K	2	0	1	0	54	9	18	3	424	73	50	9	32	6	581	

(CONTINUED)

PROBATIONERS

JUL 1 1987 - JUN 30 1988

S U P E R V I S I O N L E V E L

REPORT 1G: ENTRIES, BY BRANCH, UNIT		INTENSIVE		SUSPENDED		HIGH RISK		SELECTIVE		INTER- MEDIATE		SPECIAL		MAX SELECT, DEFERRED OR NOT REPORTD		TOTAL,
		NUMBR	PERCT	NUMBR	PERCT	NUMBR	PERCT	NUMBR	PERCT	NUMBR	PERCT	NUMBR	PERCT	NUMBR	PERCT	ALL
																LEVELS
F	F-L	1	0	1	0	18	6	11	4	215	72	19	6	32	11	297
	F-M	1	0	9	1	26	4	57	9	436	65	42	6	96	14	667
	F-N	1	0	3	1	34	7	35	7	312	67	61	13	22	5	468
	F-O	3	1	3	1	42	8	26	5	367	67	75	14	34	6	550
	SUBTOTAL	44	2	17	1	179	7	149	6	1764	67	247	9	235	9	2635
G	G-I	34	52	0	0	4	6	2	3	7	11	0	0	19	29	66
	G-K	0	0	10	2	55	10	29	5	259	49	126	24	50	9	529
	G-L	0	0	13	2	82	15	29	5	273	51	95	18	39	7	531
	G-M	1	0	1	0	30	5	14	2	410	68	94	16	51	8	601
	G-N	2	0	4	1	47	7	23	4	425	65	112	17	42	6	655
	G-O	2	0	6	1	57	9	21	3	379	62	109	18	40	7	614
	G-P	4	1	1	0	57	9	38	6	367	61	92	15	47	8	606
	SUBTOTAL	43	1	35	1	332	9	156	4	2120	59	628	17	288	8	3602
H	H-I	37	43	0	0	13	15	3	3	10	12	0	0	23	27	86
	H-K	1	0	0	0	46	11	22	5	285	69	25	6	36	9	415
	H-L	1	0	3	1	34	6	54	9	377	64	76	13	45	8	590
	H-M	0	0	0	0	42	15	41	15	149	54	27	10	19	7	278
	H-N	2	0	1	0	44	8	28	5	391	74	17	3	46	9	529
	H-P	1	0	5	1	60	11	88	16	232	43	37	7	116	22	539
	SUBTOTAL	42	2	9	0	239	10	236	10	1444	59	182	7	285	12	2437

(CONTINUED)



PROBATIONERS

JUL 1 1987 - JUN 30 1988

S U P E R V I S I O N L E V E L

REPORT 1G: ENTRIES, BY BRANCH, UNIT		INTENSIVE		SUSPENDED		HIGH RISK		SELECTIVE		INTER- MEDIATE		SPECIAL		MAX SELECT, DEFERRED OR NOT REPORTD		TOTAL, ALL
		NUMBR	PERCT	NUMBR	PERCT	NUMBR	PERCT	NUMBR	PERCT	NUMBR	PERCT	NUMBR	PERCT	NUMBR	PERCT	LEVELS
		I	I-I	24	44	0	0	5	9	6	11	3	5	0	0	17
	I-K	0	0	1	0	44	8	24	5	294	55	60	11	110	21	533
	I-L	0	0	0	0	63	15	40	9	223	52	62	15	37	9	425
	I-M	3	1	2	1	40	12	47	14	200	60	9	3	34	10	335
	I-N	0	0	2	1	47	13	48	14	213	61	20	6	19	5	349
	I-P	3	1	10	2	50	10	28	6	251	52	80	17	59	12	481
	I-R	1	0	1	0	13	6	45	22	125	61	5	2	16	8	206
	I-S	0	0	7	2	36	11	59	18	182	56	10	3	30	9	324
	SUBTOTAL	31	1	23	1	298	11	297	11	1491	55	246	9	322	12	2708
J	J-I	40	61	0	0	4	6	2	3	7	11	0	0	13	20	66
	J-K	1	0	8	2	50	12	24	6	217	51	68	16	56	13	424
	J-L	1	0	0	0	43	9	25	5	256	55	90	19	47	10	462
	J-M	0	0	1	0	33	8	41	9	271	62	49	11	41	9	436
	J-N	0	0	1	0	21	6	50	15	226	66	19	6	27	8	344
	J-P	2	0	3	0	57	8	26	3	463	62	105	14	94	13	750
	J-R	1	0	2	1	28	8	37	10	182	51	47	13	58	16	355
	J-S	0	0	3	1	20	4	69	13	318	59	72	13	56	10	538
	SUBTOTAL	45	1	18	1	256	8	274	8	1940	57	450	13	392	12	3375
K	K-I	44	70	0	0	2	3	0	0	2	3	0	0	15	24	63
	K-K	2	1	7	2	28	9	44	14	161	52	28	9	38	12	308

(CONTINUED)

PROBATIONERS

JUL 1 1987 - JUN 30 1988

S U P E R V I S I O N L E V E L

REPORT 1G: ENTRIES, BY BRANCH, UNIT		INTENSIVE		SUSPENDED		HIGH RISK		SELECTIVE		INTER-MEDIATE		SPECIAL		MAX SELECT, DEFERRED OR NOT REPORTD		TOTAL, ALL
		NUMBR	PERCT	NUMBR	PERCT	NUMBR	PERCT	NUMBR	PERCT	NUMBR	PERCT	NUMBR	PERCT	NUMBR	PERCT	LEVELS
K	K-L	0	0	6	2	26	9	26	9	127	46	61	22	28	10	274
	K-M	0	0	10	4	33	12	35	13	155	55	20	7	27	10	280
	K-N	1	0	2	1	16	6	26	10	155	58	34	13	34	13	268
	K-O	0	0	3	1	57	14	24	6	252	61	45	11	33	8	414
	K-P	0	0	2	0	59	10	20	3	370	63	93	16	44	7	588
	K-R	1	0	2	0	47	11	26	6	267	62	35	8	51	12	429
	SUBTOTAL	48	2	32	1	268	10	201	8	1489	57	316	12	270	10	2624
L	L-I	26	53	0	0	1	2	0	0	5	10	0	0	17	35	49
	L-J	3	23	0	0	0	0	1	8	1	8	0	0	8	62	13
	L-K	1	0	1	0	52	10	75	15	286	55	11	2	90	17	516
	L-L	0	0	3	1	78	14	6	1	242	44	69	13	151	28	549
	L-M	0	0	42	6	73	11	30	5	264	41	88	14	153	24	650
	L-N	0	0	3	1	90	18	41	8	234	47	15	3	119	24	502
	L-P	0	0	4	1	71	11	43	7	417	65	3	0	108	17	646
	L-R	0	0	1	0	14	1	823	77	112	10	34	3	90	8	1074
	SUBTOTAL	30	1	54	1	379	9	1019	25	1561	39	220	6	736	18	3999
SPECIAL CATEGORIES	P30	0	0	2	5	6	15	3	7	24	59	1	2	5	12	41
	Q30	0	0	0	0	11	29	1	3	17	45	4	11	5	13	38
	R30	1	3	0	0	2	7	7	24	14	48	2	7	3	10	29
	S30	0	0	0	0	6	19	3	10	17	55	3	10	2	6	31

(CONTINUED)

PROBATIONERS

JUL 1 1987 - JUN 30 1988

S U P E R V I S I O N L E V E L

REPORT 1G: ENTRIES, BY BRANCH, UNIT		INTENSIVE		SUSPENDED		HIGH RISK		SELECTIVE		INTER- MEDIATE		SPECIAL		MAX SELECT, DEFERRED OR NOT REPORTD		TOTAL,
		NUMBR	PERCT	NUMBR	PERCT	NUMBR	PERCT	NUMBR	PERCT	NUMBR	PERCT	NUMBR	PERCT	NUMBR	PERCT	ALL
SPECIAL CATEGORIES	T30	0	0	0	0	2	11	1	6	13	72	1	6	1	6	18
	U30	0	0	0	0	4	21	5	26	7	37	1	5	2	11	19
	V30	0	0	0	0	6	22	6	22	15	56	0	0	0	0	27
	X01	0	0	0	0	0	0	0	0	0	0	0	0	1	100	1
	SUBTOTAL	1	0	2	1	37	18	26	13	107	52	12	6	19	9	204
TOTAL		489	1	288	1	3361	10	3380	10	19102	54	4332	12	4305	12	35257

PAROLEES

JUL 1 1987 - JUN 30 1988

S U P E R V I S I O N L E V E L

REPORT 1G: ENTRIES, BY BRANCH, UNIT		INTENSIVE		SUSPENDED		HIGH RISK		SELECTIVE		INTER-MEDIATE		SPECIAL		MAX SELECT, DEFERRED OR NOT REPORTD		TOTAL, ALL
		NUMBR	PERCT	NUMBR	PERCT	NUMBR	PERCT	NUMBR	PERCT	NUMBR	PERCT	NUMBR	PERCT	NUMBR	PERCT	LEVELS
A	A-I	12	92	0	0	1	8	0	0	0	0	0	0	0	0	13
	A-M	0	0	0	0	3	75	0	0	0	0	1	25	0	0	4
	A-P	0	0	0	0	1	100	0	0	0	0	0	0	0	0	1
	A-R	0	0	0	0	0	0	0	0	1	100	0	0	0	0	1
	SUBTOTAL	12	63	0	0	5	26	0	0	1	5	1	5	0	0	19
B	B-I	18	95	0	0	0	0	0	0	0	0	0	0	1	5	19
	B-K	0	0	0	0	1	25	0	0	2	50	1	25	0	0	4
	B-L	0	0	0	0	1	33	0	0	2	67	0	0	0	0	3
	B-N	0	0	0	0	3	75	0	0	1	25	0	0	0	0	4
	B-P	0	0	0	0	2	100	0	0	0	0	0	0	0	0	2
	B-R	0	0	0	0	2	50	0	0	1	25	0	0	1	25	4
	SUBTOTAL	18	50	0	0	9	25	0	0	6	17	1	3	2	6	36
C	C-I	10	91	0	0	0	0	0	0	0	0	0	0	1	9	11
	C-K	0	0	0	0	1	7	1	7	9	64	1	7	2	14	14
	C-L	2	25	0	0	2	25	0	0	4	50	0	0	0	0	8
	C-M	0	0	0	0	6	86	0	0	1	14	0	0	0	0	7
	C-N	0	0	0	0	2	18	1	9	8	73	0	0	0	0	11
	C-P	0	0	1	11	5	56	0	0	3	33	0	0	0	0	9
	SUBTOTAL	12	20	1	2	16	27	2	3	25	42	1	2	3	5	60
D	D-I	23	96	0	0	0	0	0	0	0	0	0	0	1	4	24

(CONTINUED)

PAROLEES

JUL 1 1987 - JUN 30 1988

S U P E R V I S I O N L E V E L

REPORT 1G: ENTRIES, BY BRANCH, UNIT		INTENSIVE		SUSPENDED		HIGH RISK		SELECTIVE		INTER- MEDIATE		SPECIAL		MAX SELECT, DEFERRED OR NOT REPORTD		TOTAL, ALL
		NUMBR	PERCT	NUMBR	PERCT	NUMBR	PERCT	NUMBR	PERCT	NUMBR	PERCT	NUMBR	PERCT	NUMBR	PERCT	LEVELS
		D	D-K	0	0	0	0	5	42	1	8	6	50	0	0	0
	D-L	0	0	0	0	0	0	0	0	0	0	0	0	1	100	1
	D-M	0	0	0	0	4	100	0	0	0	0	0	0	0	0	4
	D-P	0	0	0	0	0	0	0	0	0	0	0	0	1	100	1
	D-S	0	0	0	0	0	0	0	0	0	0	0	0	1	100	1
	SUBTOTAL	23	53	0	0	9	21	1	2	6	14	0	0	4	9	43
E	E-I	14	93	0	0	0	0	0	0	0	0	0	0	1	7	15
	E-K	0	0	0	0	2	100	0	0	0	0	0	0	0	0	2
	E-L	0	0	0	0	1	20	0	0	3	60	0	0	1	20	5
	E-M	0	0	0	0	1	50	0	0	1	50	0	0	0	0	2
	E-N	0	0	0	0	1	100	0	0	0	0	0	0	0	0	1
	E-P	0	0	0	0	2	50	0	0	2	50	0	0	0	0	4
	E-R	0	0	0	0	1	50	0	0	1	50	0	0	0	0	2
	SUBTOTAL	14	45	0	0	8	26	0	0	7	23	0	0	2	6	31
F	F-J	15	88	0	0	0	0	0	0	1	6	0	0	1	6	17
	F-K	0	0	0	0	2	50	0	0	2	50	0	0	0	0	4
	F-L	0	0	0	0	1	100	0	0	0	0	0	0	0	0	1
	F-M	0	0	0	0	1	13	2	25	3	38	0	0	2	25	8
	F-N	0	0	0	0	1	33	0	0	1	33	1	33	0	0	3
	F-O	0	0	0	0	5	56	0	0	4	44	0	0	0	0	9

(CONTINUED)

PAROLEES

JUL 1 1987 - JUN 30 1988

S U P E R V I S I O N L E V E L

REPORT 1G: ENTRIES, BY BRANCH, UNIT		INTENSIVE		SUSPENDED		HIGH RISK		SELECTIVE		INTER-MEDIATE		SPECIAL		MAX SELECT, DEFERRED OR NOT REPORTD		TOTAL, ALL
		NUMBR	PERCT	NUMBR	PERCT	NUMBR	PERCT	NUMBR	PERCT	NUMBR	PERCT	NUMBR	PERCT	NUMBR	PERCT	LEVELS
		F	SUBTOTAL	15	36	0	0	10	24	2	5	11	26	1	2	3
G	G-I	23	77	0	0	5	17	0	0	0	0	0	0	2	7	30
	G-K	0	0	0	0	1	100	0	0	0	0	0	0	0	0	1
	G-L	0	0	0	0	1	14	1	14	2	29	1	14	2	29	7
	G-M	0	0	0	0	1	25	0	0	2	50	0	0	1	25	4
	G-N	0	0	0	0	1	50	0	0	0	0	0	0	1	50	2
	G-O	0	0	0	0	4	57	0	0	2	29	1	14	0	0	7
	G-P	0	0	0	0	3	60	1	20	1	20	0	0	0	0	5
	SUBTOTAL	23	41	0	0	16	29	2	4	7	13	2	4	6	11	56
H	H-I	9	90	0	0	0	0	1	10	0	0	0	0	0	0	10
	H-K	0	0	0	0	3	100	0	0	0	0	0	0	0	0	3
	H-L	0	0	0	0	2	50	0	0	2	50	0	0	0	0	4
	H-M	0	0	0	0	1	50	1	50	0	0	0	0	0	0	2
	H-N	0	0	0	0	0	0	0	0	1	100	0	0	0	0	1
	H-P	0	0	0	0	0	0	1	50	1	50	0	0	0	0	2
	SUBTOTAL	9	41	0	0	6	27	3	14	4	18	0	0	0	0	22
I	I-I	6	75	0	0	0	0	1	13	0	0	0	0	1	13	8
	I-K	0	0	0	0	0	0	1	100	0	0	0	0	0	0	1
	I-L	0	0	0	0	2	50	0	0	1	25	0	0	1	25	4
	I-M	0	0	0	0	1	20	1	20	3	60	0	0	0	0	5

(CONTINUED)

PAROLEES

JUL 1 1987 - JUN 30 1988

S U P E R V I S I O N L E V E L

REPORT 16: ENTRIES, BY BRANCH, UNIT		INTENSIVE		SUSPENDED		HIGH RISK		SELECTIVE		INTER- MEDIATE		SPECIAL		MAX SELECT, DEFERRED OR NOT REPORTD		TOTAL, ALL
		NUMBR	PERCT	NUMBR	PERCT	NUMBR	PERCT	NUMBR	PERCT	NUMBR	PERCT	NUMBR	PERCT	NUMBR	PERCT	LEVELS
		I	I-N	0	0	0	0	0	0	0	0	0	0	0	0	1
	I-P	0	0	0	0	2	29	1	14	1	14	1	14	2	29	7
	I-S	0	0	0	0	2	40	2	40	0	0	0	0	1	20	5
	SUBTOTAL	6	19	0	0	7	23	6	19	5	16	1	3	6	19	31
J	J-I	18	86	0	0	0	0	0	0	3	14	0	0	0	0	21
	J-K	0	0	0	0	2	29	2	29	3	43	0	0	0	0	7
	J-L	0	0	0	0	1	17	0	0	5	83	0	0	0	0	6
	J-M	0	0	0	0	0	0	0	0	1	25	1	25	2	50	4
	J-N	0	0	0	0	0	0	1	50	1	50	0	0	0	0	2
	J-P	0	0	0	0	2	29	0	0	2	29	0	0	3	43	7
	J-R	0	0	0	0	1	25	0	0	2	50	0	0	1	25	4
	J-S	0	0	0	0	2	40	0	0	2	40	0	0	1	20	5
	SUBTOTAL	18	32	0	0	8	14	3	5	19	34	1	2	7	13	56
K	K-I	17	100	0	0	0	0	0	0	0	0	0	0	0	0	17
	K-K	0	0	0	0	3	100	0	0	0	0	0	0	0	0	3
	K-L	1	100	0	0	0	0	0	0	0	0	0	0	0	0	1
	K-M	0	0	0	0	0	0	0	0	1	100	0	0	0	0	1
	K-N	0	0	0	0	1	50	0	0	1	50	0	0	0	0	2
	K-O	0	0	0	0	2	33	0	0	2	33	0	0	2	33	6
	K-P	0	0	0	0	2	67	0	0	1	33	0	0	0	0	3

(CONTINUED)

PAROLEES

JUL 1 1987 - JUN 30 1988

S U P E R V I S I O N L E V E L

REPORT 1G: ENTRIES, BY BRANCH, UNIT		INTENSIVE		SUSPENDED		HIGH RISK		SELECTIVE		INTER-MEDIATE		SPECIAL		MAX SELECT, DEFERRED OR NOT REPORTD		TOTAL,
		NUMBR	PERCT	NUMBR	PERCT	NUMBR	PERCT	NUMBR	PERCT	NUMBR	PERCT	NUMBR	PERCT	NUMBR	PERCT	ALL
																LEVELS
K	K-R	0	0	0	0	2	67	0	0	1	33	0	0	0	0	3
	SUBTOTAL	18	50	0	0	10	28	0	0	6	17	0	0	2	6	36
L	L-I	16	94	0	0	0	0	0	0	1	6	0	0	0	0	17
	L-J	2	100	0	0	0	0	0	0	0	0	0	0	0	0	2
	L-K	0	0	0	0	0	0	1	25	3	75	0	0	0	0	4
	L-L	0	0	0	0	2	50	0	0	2	50	0	0	0	0	4
	L-M	0	0	0	0	2	50	0	0	1	25	0	0	1	25	4
	L-N	0	0	0	0	2	100	0	0	0	0	0	0	0	0	2
	L-P	0	0	0	0	2	67	0	0	1	33	0	0	0	0	3
	L-R	0	0	0	0	0	0	0	0	2	100	0	0	0	0	2
	SUBTOTAL	18	47	0	0	8	21	1	3	10	26	0	0	1	3	38
SPECIAL CATEGORIES	P30	5	0	7	1	205	20	37	4	462	46	54	5	231	23	1001
	Q30	7	1	7	1	290	23	69	5	502	40	69	5	320	25	1264
	R30	9	1	22	2	267	20	117	9	542	41	55	4	303	23	1315
	S30	10	1	16	2	342	34	48	5	416	41	49	5	130	13	1011
	T30	4	1	14	2	259	34	73	10	208	27	25	3	174	23	757
	U30	2	0	6	1	272	35	162	21	98	13	10	1	220	29	770
	V30	8	1	3	0	179	26	48	7	307	44	30	4	125	18	700
	X01	1	1	0	0	3	2	0	0	2	1	0	0	165	96	171
	X02	0	0	0	0	0	0	0	0	0	0	0	0	16	100	16

(CONTINUED)



PAROLEES

JUL 1 1987 - JUN 30 1988

S U P E R V I S I O N L E V E L

REPORT 16: ENTRIES, BY BRANCH, UNIT		INTENSIVE		SUSPENDED		HIGH RISK		SELECTIVE		INTER- MEDIATE		SPECIAL		MAX SELECT, DEFERRED OR NOT REPORTD		TOTAL, ALL
		NUMBR	PERCT	NUMBR	PERCT	NUMBR	PERCT	NUMBR	PERCT	NUMBR	PERCT	NUMBR	PERCT	NUMBR	PERCT	LEVELS
SPECIAL CATEGORIES	X04	0	0	0	0	0	0	0	0	0	0	0	0	3	100	3
	SUBTOTAL	46	1	75	1	1817	26	554	8	2537	36	292	4	1687	24	7008
TOTAL		232	3	76	1	1929	26	574	8	2644	35	300	4	1723	23	7478

PROBATIONERS

JUL 1 1987 - JUN 30 1988

S U P E R V I S I O N L E V E L

REPORT 1H: ENTRIES, BY OFFICER PERCEPTION	INTENSIVE		SUSPENDED		HIGH RISK		SELECTIVE		INTER-MEDIATE		SPECIAL		MAX SELECT, DEFERRED OR NOT REPORTED		TOTAL,	
	NUMBR	PERCT	NUMBR	PERCT	NUMBR	PERCT	NUMBR	PERCT	NUMBR	PERCT	NUMBR	PERCT	NUMBR	PERCT	ALL LEVELS	
															NUMBR	PERCT
AWARE AND UNWILLING	16	4	0	0	142	32	126	28	147	33	14	3	1	0	446	
AWARE AND WILLING	354	2	0	0	2584	13	1731	8	11512	56	4253	21	56	0	20490	
NOT REPORTED	36	0	288	2	19	0	1065	9	6388	53	1	0	4237	35	12034	
UNAWARE AND UNWILLING	49	3	0	0	485	29	331	20	741	45	50	3	7	0	1663	
UNAWARE AND WILLING	34	5	0	0	131	21	127	20	314	50	14	2	4	1	624	
SUBTOTAL	489	1	288	1	3361	10	3380	10	19102	54	4332	12	4305	12	35257	
TOTAL	489	1	288	1	3361	10	3380	10	19102	54	4332	12	4305	12	35257	

PAROLEES

JUL 1 1987 - JUN 30 1988

S U P E R V I S I O N L E V E L

REPORT 1H: ENTRIES, BY OFFICER PERCEPTION		INTENSIVE		SUSPENDED		HIGH RISK		SELECTIVE		INTER-MEDIATE		SPECIAL		MAX SELECT, DEFERRED OR NOT REPORTD		TOTAL, ALL
		NUMBR	PERCT	NUMBR	PERCT	NUMBR	PERCT	NUMBR	PERCT	NUMBR	PERCT	NUMBR	PERCT	NUMBR	PERCT	LEVELS
		PERCEPTION	AWARE AND UNWILLING	2	2	0	0	54	67	16	17	14	15	0	0	0
	AWARE AND WILLING	195	4	0	0	1561	34	466	10	2029	45	293	6	8	0	4552
	NOT REPORTED	10	0	76	3	18	1	4	0	428	19	1	0	1714	76	2251
	UNAWARE AND UNWILLING	14	4	0	0	202	53	59	15	106	28	1	0	1	0	383
	UNAWARE AND WILLING	11	6	0	0	84	43	29	15	67	34	5	3	0	0	196
	SUBTOTAL	232	3	76	1	1929	26	574	8	2644	35	300	4	1723	23	7478
TOTAL		232	3	76	1	1929	26	574	8	2644	35	300	4	1723	23	7478

JUL 1 1987 - JUN 30 1988

S U P E R V I S E D I N S T A T E ALL CLIENTS

REPORT 2A: REMOVED TIME UNDER SUPERVISION	INTENSIVE PROB/DUAL		TOTAL PROBATION/DUAL		INTENSIVE PAROLE/DUAL		TOTAL PAROLE/DUAL		TOTAL CLIENTS IN-STATE		(INCLUDES OUT OF STATE)	
	NUMBER	PERCENT	NUMBER	PERCENT	NUMBER	PERCENT	NUMBER	PERCENT	NUMBER	PERCENT	NUMBER	PERCENT
3 MONTHS OR LESS	29	7.2	907	3.0	5	4.9	1167	18.7	2073	5.7	2102	5.7
OVER 3, THROUGH 6 MONTHS	65	16.0	1854	6.1	29	28.4	2257	36.2	4105	11.3	4174	11.3
OVER 6, THROUGH 9 MONTHS	65	16.0	3016	9.9	34	33.3	1369	22.0	4367	12.0	4414	11.9
OVER 9 MONTHS, THROUGH 1 YEAR	54	13.3	2262	7.4	9	8.8	344	5.5	2583	7.1	2608	7.0
OVER 1 YEAR, THROUGH 18 MONTHS	71	17.5	7510	24.6	2	2.0	287	4.6	7734	21.3	7865	21.3
OVER 18 MONTHS, THROUGH 2 YEARS	34	8.4	3196	10.5	4	3.9	149	2.4	3294	9.1	3357	9.1
OVER 2 YEARS, THROUGH 2.5	25	6.2	4261	13.9	4	3.9	125	2.0	4321	11.9	4427	12.0
OVER 2.5 YEARS, THROUGH 3	19	4.7	1535	5.0	5	4.9	89	1.4	1569	4.3	1611	4.4
OVER 3 YEARS, THROUGH 3.5	15	3.7	2812	9.2	3	2.9	143	2.3	2887	8.0	2968	8.0
OVER 3.5 YEARS, THROUGH 4	11	2.7	875	2.9	1	1.0	44	0.7	897	2.5	930	2.5
OVER 4 YEARS, THROUGH 4.5	8	2.0	734	2.4	3	2.9	45	0.7	750	2.1	769	2.1
OVER 4.5 YEARS, THROUGH 5	3	0.7	450	1.5	1	1.0	36	0.6	468	1.3	484	1.3
OVER 5 YEARS	6	1.5	1146	3.8	2	2.0	181	2.9	1224	3.4	1300	3.5
TOTAL	405	100.0	30558	100.0	102	100.0	6236	100.0	36272	100.0	37009	100.0

PROBATIONERS

JUL 1 1987 - JUN 30 1988

S U P E R V I S I O N L E V E L

REPORT 2B: PROBATION EXITS BY SUCCESS/FAILURE RATES		INTENSIVE		SUSPENDED		HIGH RISK		SELECTIVE		INTER-MEDIATE		SPECIAL		DEFERRED		ALL	
		NUMBR	PERCT	NUMBR	PERCT	NUMBR	PERCT	NUMBR	PERCT	NUMBR	PERCT	NUMBR	PERCT	NUMBR	PERCT	NUMBR	PERCT
SATISFACTORY	COMPLETED	10	4.0	67	3.0	253	13.7	1288	50.6	5254	32.0	1540	34.2	639	23.7	9051	29.7
	NO FINANCIAL OBLG	3	1.2	37	1.7	90	4.9	74	2.9	1077	6.6	501	11.1	127	4.7	1909	6.3
	FINANCIAL OBLG COMPLETED	15	6.0	219	9.9	365	19.7	382	15.0	6870	41.8	2229	49.4	631	23.4	10711	35.1
	FINANCIAL OBLG OUTSTANDING	3	1.2	27	1.2	29	1.6	20	0.8	110	0.7	16	0.4	53	2.0	258	0.8
	SUBTOTAL	31	12.5	350	15.8	737	39.8	1764	69.4	13311	81.0	4286	95.1	1450	53.8	21929	71.9
FAILURE/REVOCATION	UNSATISFACTORY	6	2.4	991	44.7	107	5.8	159	6.3	428	2.6	41	0.9	291	10.8	2023	6.6
	TECHNICAL	160	64.5	763	34.4	611	33.0	380	14.9	1636	10.0	92	2.0	509	18.9	4151	13.6
	PROPERTY-MIS	5	2.0	21	0.9	63	3.4	45	1.8	127	0.8	6	0.1	51	1.9	318	1.0
	PROPERTY-FEL	11	4.4	13	0.6	40	2.2	35	1.4	76	0.5	7	0.2	89	3.3	271	0.9
	PERSONS-MISD	3	1.2	5	0.2	66	3.6	17	0.7	57	0.3	4	0.1	25	0.9	177	0.6
	PERSONS-FEL	1	0.4	1	0.0	13	0.7	8	0.3	22	0.1	2	0.0	45	1.7	92	0.3
	DRUGS	19	7.7	5	0.2	29	1.6	13	0.5	71	0.4	4	0.1	40	1.5	181	0.6
	ALCOHOL	4	1.6	6	0.3	26	1.4	16	0.6	125	0.8	7	0.2	20	0.7	204	0.7
	UTTERING	1	0.4	2	0.1	4	0.2	1	0.0	9	0.1	1	0.0	8	0.3	26	0.1
	NON-SUPPORT	0	0.0	4	0.2	0	0.0	0	0.0	2	0.0	0	0.0	0	0.0	6	0.0
	TRAFFIC	3	1.2	8	0.4	38	2.1	14	0.6	131	0.8	12	0.3	27	1.0	233	0.8
	OTHER CRIMES	2	0.8	32	1.4	89	4.8	58	2.3	233	1.4	18	0.4	110	4.1	542	1.8
	SUBTOTAL	215	86.7	1851	83.5	1086	58.7	746	29.3	2917	17.8	194	4.3	1215	45.1	8224	27.0

(CONTINUED)

PROBATIONERS

JUL 1 1987 - JUN 30 1988

S U P E R V I S I O N L E V E L

REPORT 2B: PROBATION EXITS BY SUCCESS/FAILURE RATES		INTENSIVE		SUSPENDED		HIGH RISK		SELECTIVE		INTER- MEDIATE		SPECIAL		DEFERRED		ALL	
		NUMBR	PERCT	NUMBR	PERCT	NUMBR	PERCT	NUMBR	PERCT	NUMBR	PERCT	NUMBR	PERCT	NUMBR	PERCT	NUMBR	PERCT
OTHER	DIED	2	0.8	17	0.8	28	1.5	33	1.3	202	1.2	29	0.6	29	1.1	340	1.1
	CANCELLED BY COURT	0	0.0	0	0.0	0	0.0	0	0.0	1	0.0	0	0.0	0	0.0	1	0.0
	SUBTOTAL	2	0.8	17	0.8	28	1.5	33	1.3	203	1.2	29	0.6	29	1.1	341	1.1
TOTAL		248	100.0	2218	100.0	1851	100.0	2543	100.0	16431	100.0	4509	100.0	2694	100.0	30494	100.0

PAROLEES

JUL 1 1987 - JUN 30 1988

S U P E R V I S I O N L E V E L

REPORT 2B: PAROLE EXITS BY SUCCESS/FAILURE RATES		INTENSIVE		SUSPENDED		HIGH RISK		SELECTIVE		INTER-MEDIATE		SPECIAL		MAX SELECT, NOT REPORTD		ALL	
		NUMBR	PERCT	NUMBR	PERCT	NUMBR	PERCT	NUMBR	PERCT	NUMBR	PERCT	NUMBR	PERCT	NUMBR	PERCT	NUMBR	PERCT
SATISFACTORY	COMPLETED	56	63.6	45	16.5	803	76.9	325	81.3	1642	83.8	382	74.6	1519	72.2	4772	74.8
	NO FINANCIAL OBLG	2	2.3	16	5.9	59	5.7	18	4.5	91	4.6	79	15.4	64	3.0	329	5.2
	FINANCIAL OBLG COMPLETED	3	3.4	5	1.8	19	1.8	8	2.0	69	3.5	37	7.2	21	1.0	162	2.5
	FINANCIAL OBLG OUTSTANDING	0	0.0	1	0.4	1	0.1	0	0.0	4	0.2	0	0.0	3	0.1	9	0.1
	SUBTOTAL	61	69.3	67	24.5	882	84.5	351	87.7	1806	92.1	498	97.3	1607	76.4	5272	82.6
FAILURE/REVOCATION	UNSATISFACTORY	1	1.1	29	10.6	16	1.5	5	1.2	20	1.0	2	0.4	30	1.4	103	1.6
	TECHNICAL	24	27.3	158	57.9	85	8.1	29	7.2	80	4.1	7	1.4	340	16.2	723	11.3
	PROPERTY-MIS	0	0.0	1	0.4	13	1.2	3	0.7	6	0.3	0	0.0	9	0.4	32	0.5
	PROPERTY-FEL	0	0.0	3	1.1	10	1.0	2	0.5	15	0.8	0	0.0	33	1.6	63	1.0
	PERSONS-MISD	0	0.0	0	0.0	11	1.1	0	0.0	2	0.1	2	0.4	11	0.5	26	0.4
	PERSONS-FEL	0	0.0	0	0.0	2	0.2	2	0.5	4	0.2	0	0.0	15	0.7	23	0.4
	DRUGS	1	1.1	1	0.4	5	0.5	1	0.2	4	0.2	0	0.0	11	0.5	23	0.4
	ALCOHOL	0	0.0	2	0.7	3	0.3	1	0.2	3	0.2	0	0.0	7	0.3	16	0.3
	UTTERING	0	0.0	0	0.0	0	0.0	0	0.0	0	0.0	0	0.0	3	0.1	3	0.0
	TRAFFIC	0	0.0	2	0.7	4	0.4	0	0.0	2	0.1	0	0.0	4	0.2	12	0.2
	OTHER CRIMES	0	0.0	7	2.6	7	0.7	3	0.7	5	0.3	1	0.2	28	1.3	51	0.8
	SUBTOTAL	26	29.5	203	74.4	156	14.9	46	11.5	141	7.2	12	2.3	491	23.3	1075	16.8
OTHER	DIED	1	1.1	3	1.1	6	0.6	3	0.7	13	0.7	2	0.4	5	0.2	33	0.5

(CONTINUED)

PAROLEES

JUL 1 1987 - JUN 30 1988

S U P E R V I S I O N L E V E L

REPORT 2B: PAROLE EXITS BY SUCCESS/FAILURE RATES		INTENSIVE		SUSPENDED		HIGH RISK		SELECTIVE		INTER- MEDIATE		SPECIAL		MAX SELECT, NOT REPORTD		ALL	
		NUMBR	PERCT	NUMBR	PERCT	NUMBR	PERCT	NUMBR	PERCT	NUMBR	PERCT	NUMBR	PERCT	NUMBR	PERCT	NUMBR	PERCT
OTHER	SUBTOTAL	1	1.1	3	1.1	6	0.6	3	0.7	13	0.7	2	0.4	5	0.2	33	0.5
TOTAL		88	100.0	273	100.0	1044	100.0	400	100.0	1960	100.0	512	100.0	2103	100.0	6380	100.0



JUL 1 1987 - JUN 30 1988  
C R I M E C A T E G O R Y

REPORT 2C: REMOVED BY TIME SUPERVISED	ASSAULTIVE CRIMES								PUBLIC ORDER								
	HOMI- CIDE	RAPE, SEX ASLT	ROB- BERY	OTHER		TOTAL			DRUGS		DWI	TRAF- FIC	OTHER		TOTAL		
				ASSAULTIVE		ASSAULTIVE			& NARCOTICS				PUBLIC ORDER		PUBLIC ORDER		
				MIS	FEL	MIS	FELON	TOTAL	MIS	FEL			MIS	FELON	MIS	FELON	TOTAL
3 MONTHS OR LESS	41	73	24	102	56	102	194	296	17	62	429	93	41	10	580	72	652
OVER 3, UP TO 6 MOS	65	82	81	166	86	166	314	480	34	171	790	147	65	27	1036	198	1234
OVER 6, UP TO 9 MOS	37	31	51	125	38	125	157	282	42	155	826	114	83	7	1065	162	1227
OVER 9 MONTHS, UP TO 1 YEAR	11	17	29	111	10	111	67	178	34	56	691	78	71	4	874	60	934
OVER 1 YEAR, UP TO 18 MONTHS	10	56	32	413	11	413	109	522	139	102	2358	304	211	7	3012	109	3121
OVER 18 MONTHS, UP TO 2 YEARS	13	28	28	164	14	164	83	247	56	61	845	137	97	4	1135	65	1200
OVER 2 YEARS, UP TO 2.5	17	27	25	215	13	215	82	297	99	71	1040	123	147	4	1409	75	1484
OVER 2.5, UP TO 3	9	16	10	81	11	81	46	127	23	42	268	50	54	6	395	48	443
OVER 3, UP TO 3.5	32	26	24	103	15	103	97	200	48	122	403	71	95	11	617	133	750
OVER 3.5, UP TO 4	10	8	7	29	6	29	31	60	10	37	119	38	31	1	198	38	236
OVER 4, UP TO 4.5	4	2	2	22	9	22	17	39	8	27	69	31	33	5	141	32	173
OVER 4.5, UP TO 5	3	5	7	23	8	23	23	46	3	20	39	13	22	3	77	23	100
OVER 5 YEARS	15	12	23	42	12	42	62	104	11	67	62	39	54	24	166	91	257
TOTAL	267	383	343	1596	289	1596	1282	2878	524	993	7939	1238	1004	113	10705	1106	11811

(CONTINUED)

JUL 1 1987 - JUN 30 1988

CRIME CATEGORY

REPORT 2C: REMOVED BY TIME SUPERVISED	PROPERTY CRIMES									TOTAL CRIMES			
	BURGLARY,		LARCENY,		FORGERY, BAD		TOTAL		TOTAL PROPER- TY	NOT REP.	TOTAL, ALL MIS	TOTAL, ALL FEL	TOTAL, ALL CRIMES
	BREAK & ENTER		AUTO THEFT		CHECKS & FRAUD		TOTAL						
	MIS	FEL	MIS	FEL	MIS	FEL	MIS	FEL					
3 MONTHS OR LESS	41	91	161	73	27	27	261	197	458	696	943	463	2102
OVER 3, UP TO 6 MOS	95	257	291	181	71	111	526	560	1086	1374	1728	1072	4174
OVER 6, UP TO 9 MOS	92	248	285	114	73	91	513	468	981	1924	1703	787	4414
OVER 9 MONTHS, UP TO 1 YEAR	64	75	193	46	71	29	382	155	537	959	1367	282	2608
OVER 1 YEAR, UP TO 18 MONTHS	142	103	572	46	149	44	1055	200	1255	2967	4480	418	7865
OVER 18 MONTHS, UP TO 2 YEARS	102	71	258	30	95	33	497	141	638	1272	1796	289	3357
OVER 2 YEARS, UP TO 2.5	135	55	358	29	105	21	683	109	792	1854	2307	266	4427
OVER 2.5, UP TO 3	46	47	113	25	33	13	218	88	306	735	694	182	1611
OVER 3, UP TO 3.5	78	82	181	56	57	29	344	174	518	1500	1064	404	2968
OVER 3.5, UP TO 4	25	36	67	15	28	6	131	57	188	446	358	126	930
OVER 4, UP TO 4.5	27	26	56	13	31	14	124	55	179	378	287	104	769
OVER 4.5, UP TO 5	17	12	42	18	10	16	75	50	125	213	175	96	484
OVER 5 YEARS	53	84	84	41	42	42	193	173	366	573	401	326	1300
TOTAL	917	1187	2661	687	792	476	5002	2427	7429	14891	17303	4815	37009

JUL 1 1987 - JUN 30 1988

TERMINATIONS BY TIME UNDER SUPERVISION

REPORT 2D: TERMINATIONS, BY MONTHS SUPVD		NUMBER, BY TIME SUPERVISED											TOTAL
		0-3	3-6	6-9	9-12	12-18	18-24	24-30	30-36	36-48	48-60	60+	
REASON FOR TERMINATION													
SATISFACTORY	COMPLETED	1110	2126	1756	257	3377	340	2317	205	1539	219	510	13756
	NO FINANCIAL OBLIGATION	68	136	176	199	450	297	277	170	247	99	115	2234
	FIN OBLG COMPL	418	687	1053	971	2341	1668	1131	769	1267	396	192	10893
	FIN OBLG OUTST	15	16	19	23	44	38	27	19	33	18	17	269
	SUBTOTAL	1611	2965	3004	1450	6212	2343	3752	1163	3086	732	834	27152
FAILURE/REVOCA-TION	UNSATISFACTORY	61	131	164	138	226	142	133	71	381	351	325	2123
	TECHNICAL	251	713	864	684	908	537	335	235	270	112	91	5000
	PROPERTY-MIS	31	68	53	51	62	42	25	8	19	3	2	364
	PROPERTY-FEL	11	47	51	38	66	34	22	14	20	6	12	321
	PERSONS-MISD	22	45	32	20	30	21	14	9	11	3	2	209
	PERSONS-FEL	1	12	18	14	26	13	11	7	4	3	3	112
	DRUGS	10	21	30	20	32	27	17	16	17	10	8	208
	ALCOHOL	21	25	31	29	42	30	20	14	10	2	2	226
	UTTERING	0	5	6	6	5	4	2	2	0	1	1	32
	NON-SUPPORT	1	0	1	1	1	2	1	0	0	0	0	7
	TRAFFIC	8	34	31	38	55	38	13	16	18	10	4	265
	OTHER CRIMES	31	68	87	72	129	77	53	34	42	10	7	610
	SUBTOTAL	448	1169	1368	1111	1582	967	646	426	792	511	457	9477
OTHER	DIED	43	39	41	47	71	47	29	22	20	10	9	378
	CANCELLED BY COURT	0	1	1	0	0	0	0	0	0	0	0	2

(CONTINUED)

JUL 1 1987 - JUN 30 1988

TERMINATIONS BY TIME UNDER SUPERVISION

REPORT 2D: TERMINATIONS, BY MONTHS SUPVD		NUMBER, BY TIME SUPERVISED										TOTAL		
		0-3	3-6	6-9	9-12	12-18	18-24	24-30	30-36	36-48	48-60		60+	
REASON FOR TERMINATION	SUBTOTAL													
OTHER		43	40	42	47	71	47	29	22	20	10	9	380	
TOTAL		2102	4174	4414	2608	7865	3357	4427	1611	3898	1253	1300	37009	

JUL 1 1987 - JUN 30 1988

TERMINATIONS BY TIME UNDER SUPERVISION

REPORT 2E: PERCENTAGE BY NBR MON SUPVD.		PERCENT, BY TIME SUPERVISED										
		0-3	3-6	6-9	9-12	12-18	18-24	24-30	30-36	36-48	48-60	60+
REASON FOR TERMINATION												
SATISFACTORY	COMPLETED	8.1	15.5	12.8	1.9	24.5	2.5	16.8	1.5	11.2	1.6	3.7
	NO FINANCIAL OBLIGATION	3.0	6.1	7.9	8.9	20.1	13.3	12.4	7.6	11.1	4.4	5.1
	FIN OBLG COMPL	3.8	6.3	9.7	8.9	21.5	15.3	10.4	7.1	11.6	3.6	1.8
	FIN OBLG OUTST	5.6	5.9	7.1	8.6	16.4	14.1	10.0	7.1	12.3	6.7	6.3
	SUBTOTAL	5.9	10.9	11.1	5.3	22.9	8.6	13.8	4.3	11.4	2.7	3.1
FAILURE/REVOC- ATION	UNSATISFACTORY	2.9	6.2	7.7	6.5	10.6	6.7	6.3	3.3	17.9	16.5	15.3
	TECHNICAL	5.0	14.3	17.3	13.7	18.2	10.7	6.7	4.7	5.4	2.2	1.8
	PROPERTY-MIS	8.5	18.7	14.6	14.0	17.0	11.5	6.9	2.2	5.2	0.8	0.5
	PROPERTY-FEL	3.4	14.6	15.9	11.8	20.6	10.6	6.9	4.4	6.2	1.9	3.7
	PERSONS-MISD	10.5	21.5	15.3	9.6	14.4	10.0	6.7	4.3	5.3	1.4	1.0
	PERSONS-FEL	0.9	10.7	16.1	12.5	23.2	11.6	9.8	6.3	3.6	2.7	2.7
	DRUGS	4.8	10.1	14.4	9.6	15.4	13.0	8.2	7.7	8.2	4.8	3.8
	ALCOHOL	9.3	11.1	13.7	12.8	18.6	13.3	8.8	6.2	4.4	0.9	0.9
	UTTERING	0.0	15.6	18.8	18.8	15.6	12.5	6.3	6.3	0.0	3.1	3.1
	NON-SUPPORT	14.3	0.0	14.3	14.3	14.3	28.6	14.3	0.0	0.0	0.0	0.0
	TRAFFIC	3.0	12.8	11.7	14.3	20.8	14.3	4.9	6.0	6.8	3.8	1.5
	OTHER CRIMES	5.1	11.1	14.3	11.8	21.1	12.6	8.7	5.6	6.9	1.6	1.1
	SUBTOTAL	4.7	12.3	14.4	11.7	16.7	10.2	6.8	4.5	8.4	5.4	4.8
	OTHER	DIED	11.4	10.3	10.8	12.4	18.8	12.4	7.7	5.8	5.3	2.6
CANCELLED BY COURT		0.0	50.0	50.0	0.0	0.0	0.0	0.0	0.0	0.0	0.0	0.0

(CONTINUED)

JUL 1 1987 - JUN 30 1988

TERMINATIONS BY TIME UNDER SUPERVISION

REPORT 2E: PERCENTAGE BY NBR MON SUPVD.		PERCENT, BY TIME SUPERVISED										
		0-3	3-6	6-9	9-12	12-18	18-24	24-30	30-36	36-48	48-60	60+
REASON FOR TERMINATION	SUBTOTAL											
OTHER		11.3	10.5	11.1	12.4	18.7	12.4	7.6	5.8	5.3	2.6	2.4
TOTAL		5.7	11.3	11.9	7.0	21.3	9.1	12.0	4.4	10.5	3.4	3.5

JUL 1 1987 - JUN 30 1988

S U P E R V I S E D I N S T A T E ALL CLIENTS

REPORT 3A: POPULATION:- B SUPERVISION LEVEL	INTENSIVE PROB/DUAL		TOTAL PROBATION/DUAL		INTENSIVE PAROLE/DUAL		TOTAL PAROLE/DUAL		TOTAL CLIENTS IN-STATE		(INCLUDES OUT OF STATE)	
	NUMBER	PERCENT	NUMBER	PERCENT	NUMBER	PERCENT	NUMBER	PERCENT	NUMBER	PERCENT	NUMBER	PERCENT
INTENSIVE SUPERVISION	882	73.7	885	1.4	200	89.3	202	3.5	1052	1.5	1052	1.5
SUSPENDED	54	4.5	7421	11.4	7	3.1	529	9.2	7921	11.3	8024	11.1
HIGH RISK	0	0.0	3967	6.1	0	0.0	1205	21.0	5036	7.2	5037	7.0
SELECTIVE	0	0.0	4502	6.9	0	0.0	395	6.9	4863	6.9	4893	6.8
INTERMEDIATE	0	0.0	34901	53.7	0	0.0	1992	34.7	36692	52.2	36716	50.7
SPECIAL	0	0.0	8826	13.6	0	0.0	587	10.2	9385	13.4	9397	13.0
DEFERRED	259	21.6	3576	5.5	17	7.6	325	5.7	3827	5.4	5838	8.1
MAX SELECTIVE OR NOT REPORTED	2	0.2	974	1.5	0	0.0	506	8.8	1477	2.1	1477	2.0
TOTAL	1197	100.0	65052	100.0	224	100.0	5741	100.0	70253	100.0	72434	100.0

JUL 1 1987 - JUN 30 1988

S U P E R V I S E D I N S T A T E ALL CLIENTS

REPORT 3B: POPULATION:- BY CRIME	INTENSIVE PROB/DUAL		TOTAL PROBATION/DUAL		INTENSIVE PAROLE/DUAL		TOTAL PAROLE/DUAL		TOTAL CLIENTS IN-STATE		(INCLUDES OUT OF STATE)	
	NUMBER	PERCENT	NUMBER	PERCENT	NUMBER	PERCENT	NUMBER	PERCENT	NUMBER	PERCENT	NUMBER	PERCENT
MURDER FIRST DEGREE	2	0.2	24	0.0	10	4.5	72	1.3	94	0.1	107	0.1
MURDER SECOND DEGREE	2	0.2	17	0.0	40	17.9	206	3.6	221	0.3	245	0.3
MANSLAUGHTER	5	0.4	313	0.5	5	2.2	128	2.2	440	0.6	476	0.7
ROBBERY	43	3.6	409	0.6	29	12.9	556	9.7	941	1.3	1024	1.4
ASSAULT	66	5.5	5671	8.7	13	5.8	304	5.3	5948	8.5	6057	8.4
RAPE	12	1.0	174	0.3	17	7.6	137	2.4	311	0.4	337	0.5
SEXUAL ASSAULT	0	0.0	5	0.0	0	0.0	5	0.1	9	0.0	10	0.0
MISC. SEX CRIMES	32	2.7	1166	1.8	0	0.0	83	1.4	1244	1.8	1315	1.8
KIDNAP, ABDUCTION	4	0.3	51	0.1	6	2.7	45	0.8	93	0.1	99	0.1
BURGLARY	1	0.1	112	0.2	6	2.7	111	1.9	220	0.3	224	0.3
BREAKING, ENTERING	342	28.6	5786	8.9	27	12.1	1122	19.5	6792	9.7	7080	9.8
LARCENY	221	18.5	9438	14.5	23	10.3	835	14.5	10180	14.5	10542	14.6
AUTO THEFT	7	0.6	592	0.9	0	0.0	33	0.6	624	0.9	649	0.9
BURNINGS	9	0.8	222	0.3	3	1.3	61	1.1	277	0.4	299	0.4
FRAUD	43	3.6	2239	3.4	3	1.3	158	2.8	2365	3.4	2499	3.5
FORGERY	82	6.9	1763	2.7	4	1.8	291	5.1	2018	2.9	2106	2.9
WORTHLESS CHECKS	9	0.8	1916	2.9	0	0.0	52	0.9	1958	2.8	2014	2.8
TRESPASS	17	1.4	1878	2.9	1	0.4	39	0.7	1906	2.7	1933	2.7
NARCOTICS AND DRUGS	250	20.9	7468	11.5	32	14.3	740	12.9	8128	11.6	8514	11.8
ABANDONMENT & NONSUPPORT	0	0.0	204	0.3	0	0.0	10	0.2	213	0.3	220	0.3
DRIVING WHILE IMPAIRED	17	1.4	17488	26.9	0	0.0	459	8.0	17901	25.5	18158	25.1
OTHER TRAFFIC VIOLATIONS	14	1.2	3878	6.0	1	0.4	172	3.0	4021	5.7	4084	5.6
HABITUAL DRUNK	0	0.0	3	0.0	0	0.0	0	0.0	3	0.0	3	0.0

(CONTINUED)



JUL 1 1987 - JUN 30 1988

S U P E R V I S E D I N S T A T E ALL CLIENTS

REPORT 3B: POPULATION:-- BY CRIME	INTENSIVE PROB/DUAL		TOTAL PRCBATION/DUAL		INTENSIVE PAROLE/DUAL		TOTAL PAROLE/DUAL		TOTAL CLIENTS IN-STATE		(INCLUDES OUT OF STATE)	
	NUMBER	PERCENT	NUMBER	PERCENT	NUMBER	PERCENT	NUMBER	PERCENT	NUMBER	PERCENT	NUMBER	PERCENT
OTHERS	19	1.6	4233	6.5	4	1.8	122	2.1	4344	6.2	4437	6.1
NOT REPORTED	0	0.0	2	0.0	0	0.0	0	0.0	2	0.0	2	0.0
TOTAL	1197	100.0	65052	100.0	224	100.0	5741	100.0	70253	100.0	72434	100.0

JUL 1 1987 - JUN 30 1988

S U P E R V I S E D I N S T A T E ALL CLIENTS

REPORT 3C: POPULATION:- COUNTY OF CONVICTION	INTENSIVE PROB/DUAL		TOTAL PROBATION/DUAL		INTENSIVE PAROLE/DUAL		TOTAL PAROLE/DUAL		TOTAL CLIENTS IN-STATE		(INCLUDES OUT OF STATE)	
	NUMBER	PERCENT	NUMBER	PERCENT	NUMBER	PERCENT	NUMBER	PERCENT	NUMBER	PERCENT	NUMBER	PERCENT
ALAMANCE	22	1.8	1192	1.8	7	3.1	129	2.2	1312	1.9	1316	1.8
ALLEGHANY	0	0.0	92	0.1	0	0.0	4	0.1	95	0.1	95	0.1
ALEXANDER	0	0.0	293	0.5	0	0.0	11	0.2	304	0.4	304	0.4
ANSON	0	0.0	327	0.5	0	0.0	38	0.7	363	0.5	363	0.5
ASHE	0	0.0	176	0.3	0	0.0	10	0.2	184	0.3	187	0.3
AVERY	0	0.0	115	0.2	0	0.0	1	0.0	116	0.2	116	0.2
BEAUFORT	13	1.1	575	0.9	1	0.4	49	0.9	617	0.9	618	0.9
BERTIE	0	0.0	223	0.3	0	0.0	27	0.5	247	0.4	247	0.3
BLADEN	0	0.0	394	0.6	0	0.0	34	0.6	426	0.6	426	0.6
BRUNSWICK	0	0.0	583	0.9	0	0.0	42	0.7	619	0.9	621	0.9
BUNCOMBE	45	3.8	1031	1.6	9	4.0	116	2.0	1136	1.6	1139	1.6
BURKE	5	0.4	721	1.1	0	0.0	54	0.9	772	1.1	773	1.1
CABARRUS	22	1.8	926	1.4	4	1.8	100	1.7	1007	1.4	1008	1.4
CALDWELL	15	1.3	628	1.0	3	1.3	55	1.0	680	1.0	682	0.9
CAMDEN	0	0.0	31	0.0	0	0.0	5	0.1	36	0.1	36	0.0
CARTERET	21	1.8	397	0.6	0	0.0	28	0.5	423	0.6	423	0.6
CASWELL	2	0.2	184	0.3	0	0.0	16	0.3	197	0.3	197	0.3
CATAWBA	25	2.1	1091	1.7	7	3.1	100	1.7	1186	1.7	1187	1.6
CHATHAM	0	0.0	326	0.5	1	0.4	16	0.3	340	0.5	340	0.5
CHEROKEE	0	0.0	227	0.3	0	0.0	13	0.2	240	0.3	241	0.3
CHOWAN	0	0.0	141	0.2	0	0.0	13	0.2	149	0.2	149	0.2
CLAY	0	0.0	72	0.1	0	0.0	2	0.0	73	0.1	74	0.1
CLEVELAND	24	2.0	422	0.6	4	1.8	86	1.5	501	0.7	502	0.7

(CONTINUED)

JUL 1 1987 - JUN 30 1988

S U P E R V I S E D I N S T A T E ALL CLIENTS

REPORT 3C: POPULATION:- COUNTY OF CONVICTION	INTENSIVE PROB/DUAL		TOTAL PROBATION/DUAL		INTENSIVE PAROLE/DUAL		TOTAL PAROLE/DUAL		TOTAL CLIENTS IN-STATE		(INCLUDES OUT OF STATE)	
	NUMBER	PERCENT	NUMBER	PERCENT	NUMBER	PERCENT	NUMBER	PERCENT	NUMBER	PERCENT	NUMBER	PERCENT
COLUMBUS	0	0.0	636	1.0	0	0.0	36	0.6	671	1.0	671	0.9
CRAVEN	15	1.3	658	1.0	3	1.3	42	0.7	693	1.0	693	1.0
CUMBERLAND	49	4.1	2356	3.6	8	3.6	206	3.6	2550	3.6	2551	3.5
CURRITUCK	0	0.0	85	0.1	0	0.0	11	0.2	94	0.1	94	0.1
DARE	0	0.0	177	0.3	0	0.0	9	0.2	186	0.3	187	0.3
DAVIE	1	0.1	223	0.3	0	0.0	8	0.1	231	0.3	232	0.3
DAVIDSON	15	1.3	1323	2.0	4	1.8	110	1.9	1424	2.0	1425	2.0
DUPLIN	18	1.5	614	0.9	2	0.9	48	0.8	655	0.9	655	0.9
DURHAM	58	4.8	2632	4.0	15	6.7	201	3.5	2808	4.0	2812	3.9
EDGECOMBE	17	1.4	590	0.9	3	1.3	39	0.7	624	0.9	624	0.9
FORSYTH	64	5.3	2249	3.5	7	3.1	277	4.8	2505	3.6	2507	3.5
FRANKLIN	6	0.5	365	0.6	0	0.0	10	0.2	374	0.5	374	0.5
GASTON	27	2.3	1197	1.8	5	2.2	152	2.6	1338	1.9	1338	1.8
GATES	0	0.0	47	0.1	0	0.0	6	0.1	52	0.1	52	0.1
GRAHAM	0	0.0	71	0.1	0	0.0	2	0.0	73	0.1	74	0.1
GRANVILLE	0	0.0	379	0.6	0	0.0	36	0.6	414	0.6	414	0.6
GREENE	1	0.1	163	0.3	0	0.0	13	0.2	175	0.2	175	0.2
GUILFORD	60	5.0	2856	4.4	12	5.4	318	5.5	3141	4.5	3145	4.3
HALIFAX	20	1.7	715	1.1	2	0.9	54	0.9	764	1.1	764	1.1
HARNETT	17	1.4	718	1.1	3	1.3	62	1.1	770	1.1	771	1.1
HAYWOOD	0	0.0	506	0.8	0	0.0	47	0.8	551	0.8	552	0.8
HENDERSON	16	1.3	436	0.7	2	0.9	56	1.0	483	0.7	483	0.7
HERTFORD	0	0.0	226	0.3	0	0.0	16	0.3	240	0.3	240	0.3

(CONTINUED)

JUL 1 1987 - JUN 30 1988

S U P E R V I S E D I N S T A T E ALL CLIENTS

REPORT 3C: POPULATION:- COUNTY OF CONVICTION	INTENSIVE PROB/DUAL		TOTAL PROBATION/DUAL		INTENSIVE PAROLE/DUAL		TOTAL PAROLE/DUAL		TOTAL CLIENTS IN-STATE		(INCLUDES OUT OF STATE)	
	NUMBER	PERCENT	NUMBER	PERCENT	NUMBER	PERCENT	NUMBER	PERCENT	NUMBER	PERCENT	NUMBER	PERCENT
HOKE	0	0.0	352	0.5	0	0.0	30	0.5	381	0.5	381	0.5
HYDE	0	0.0	49	0.1	0	0.0	7	0.1	56	0.1	56	0.1
IREDELL	17	1.4	1366	2.1	3	1.3	91	1.6	1452	2.1	1452	2.0
JACKSON	0	0.0	206	0.3	0	0.0	11	0.2	217	0.3	217	0.3
JOHNSON	20	1.7	717	1.1	3	1.3	79	1.4	791	1.1	791	1.1
JONES	2	0.2	90	0.1	0	0.0	5	0.1	94	0.1	94	0.1
LEE	16	1.3	554	0.9	3	1.3	60	1.0	612	0.9	612	0.8
LENOIR	24	2.0	751	1.2	0	0.0	40	0.7	788	1.1	789	1.1
LINCOLN	0	0.0	262	0.4	0	0.0	24	0.4	285	0.4	286	0.4
MACON	0	0.0	161	0.2	0	0.0	4	0.1	164	0.2	165	0.2
MADISON	0	0.0	126	0.2	0	0.0	2	0.0	127	0.2	127	0.2
MARTIN	3	0.3	247	0.4	2	0.9	34	0.6	279	0.4	279	0.4
MCDOWELL	3	0.3	247	0.4	0	0.0	20	0.3	267	0.4	268	0.4
MECKLENBURG	78	6.5	5414	8.3	18	8.0	403	7.0	5791	8.2	5796	8.0
MITCHELL	0	0.0	97	0.1	0	0.0	4	0.1	101	0.1	101	0.1
MONTGOMERY	1	0.1	247	0.4	1	0.4	31	0.5	275	0.4	276	0.4
MOORE	13	1.1	530	0.8	3	1.3	43	0.7	568	0.8	568	0.8
NASH	38	3.2	739	1.1	1	0.4	53	0.9	783	1.1	783	1.1
NEW HANOVER	38	3.2	1412	2.2	5	2.2	150	2.6	1548	2.2	1550	2.1
NORTHAMPTON	3	0.3	228	0.4	0	0.0	18	0.3	242	0.3	242	0.3
ONslow	31	2.6	1177	1.8	2	0.9	57	1.0	1227	1.7	1231	1.7
ORANGE	7	0.6	700	1.1	4	1.8	30	0.5	725	1.0	725	1.0
PAMLICO	0	0.0	108	0.2	0	0.0	4	0.1	112	0.2	112	0.2

(CONTINUED)

JUL 1 1987 - JUN 30 1988

S U P E R V I S E D I N S T A T E ALL CLIENTS

REPORT 3C: POPULATION-- COUNTY OF CONVICTION	INTENSIVE PROB/DUAL		TOTAL PROBATION/DUAL		INTENSIVE PAROLE/DUAL		TOTAL PAROLE/DUAL		TOTAL CLIENTS IN-STATE		(INCLUDES OUT OF STATE)	
	NUMBER	PERCENT	NUMBER	PERCENT	NUMBER	PERCENT	NUMBER	PERCENT	NUMBER	PERCENT	NUMBER	PERCENT
PASQUOTANK	0	0.0	266	0.4	0	0.0	28	0.5	287	0.4	287	0.4
PENDER	1	0.1	266	0.4	0	0.0	21	0.4	286	0.4	286	0.4
PERQUIMANS	0	0.0	68	0.1	0	0.0	9	0.2	75	0.1	75	0.1
PERSON	0	0.0	297	0.5	0	0.0	27	0.5	322	0.5	323	0.4
PITT	26	2.2	1164	1.8	6	2.7	100	1.7	1252	1.8	1254	1.7
POLK	2	0.2	88	0.1	1	0.4	5	0.1	90	0.1	90	0.1
RANDOLPH	8	0.7	753	1.2	1	0.4	54	0.9	803	1.1	803	1.1
RICHMOND	5	0.4	574	0.9	2	0.9	77	1.3	644	0.9	645	0.9
ROBESON	28	2.3	1830	2.8	18	8.0	205	3.6	2023	2.9	2026	2.8
ROCKINGHAM	29	2.4	709	1.1	2	0.9	88	1.5	789	1.1	789	1.1
ROWAN	14	1.2	1125	1.7	4	1.8	135	2.4	1241	1.8	1241	1.7
RUTHERFORD	18	1.5	375	0.6	5	2.2	62	1.1	431	0.6	433	0.6
SAMPSON	15	1.3	514	0.8	1	0.4	44	0.8	555	0.8	555	0.8
SCOTLAND	4	0.3	505	0.8	2	0.9	41	0.7	542	0.8	542	0.7
STANLY	6	0.5	398	0.6	0	0.0	32	0.6	428	0.6	428	0.6
STOKES	3	0.3	259	0.4	0	0.0	27	0.5	283	0.4	284	0.4
SURRY	28	2.3	652	1.0	3	1.3	86	1.5	716	1.0	716	1.0
SWAIN	0	0.0	114	0.2	0	0.0	6	0.1	120	0.2	120	0.2
TRANSYLVANIA	0	0.0	157	0.2	0	0.0	17	0.3	172	0.2	172	0.2
TYRRELL	0	0.0	42	0.1	0	0.0	3	0.1	44	0.1	44	0.1
UNION	20	1.7	892	1.4	3	1.3	62	1.1	949	1.4	950	1.3
VANCE	13	1.1	484	0.7	3	1.3	39	0.7	522	0.7	522	0.7
WAKE	77	6.4	4675	7.2	21	9.4	323	5.6	4961	7.1	4970	6.9

(CONTINUED)

JUL 1 1987 - JUN 30 1988

S U P E R V I S E D I N S T A T E ALL CLIENTS

REPORT 3C: POPULATION:- COUNTY OF CONVICTION	INTENSIVE PROB/DUAL		TOTAL PROBATION/DUAL		INTENSIVE PAROLE/DUAL		TOTAL PAROLE/DUAL		TOTAL CLIENTS IN-STATE		(INCLUDES OUT OF STATE)	
	NUMBER	PERCENT	NUMBER	PERCENT	NUMBER	PERCENT	NUMBER	PERCENT	NUMBER	PERCENT	NUMBER	PERCENT
WARREN	0	0.0	142	0.2	0	0.0	13	0.2	154	0.2	154	0.2
WASHINGTON	0	0.0	125	0.2	0	0.0	11	0.2	136	0.2	136	0.2
WATAUGA	0	0.0	172	0.3	0	0.0	7	0.1	179	0.3	179	0.2
WAYNE	27	2.3	1166	1.8	4	1.8	84	1.5	1246	1.8	1246	1.7
WILKES	0	0.0	841	1.3	0	0.0	55	1.0	893	1.3	893	1.2
WILSON	0	0.0	619	1.0	1	0.4	42	0.7	650	0.9	651	0.9
YADKIN	0	0.0	254	0.4	0	0.0	20	0.3	271	0.4	271	0.4
YANCEY	0	0.0	105	0.2	0	0.0	6	0.1	110	0.2	110	0.2
OUT OF STATE	1	0.1	252	0.4	0	0.0	104	1.8	355	0.5	2461	3.4
TOTAL	1197	100.0	65052	100.0	224	100.0	5741	100.0	70253	100.0	72434	100.0

JUL 1 1987 - JUN 30 1988

S U P E R V I S E D I N S T A T E ALL CLIENTS

REPORT 3D: POPULATION:- BY RACE/SEX	INTENSIVE PROB/DUAL		TOTAL PROBATION/DUAL		INTENSIVE PAROLE/DUAL		TOTAL PAROLE/DUAL		TOTAL CLIENTS IN-STATE		(INCLUDES OUT OF STATE)	
	NUMBER	PERCENT	NUMBER	PERCENT	NUMBER	PERCENT	NUMBER	PERCENT	NUMBER	PERCENT	NUMBER	PERCENT
WHITE MALES	583	48.7	29605	45.5	95	42.4	2439	42.5	31783	45.2	33064	45.6
BLACK MALES	458	38.3	22217	34.2	103	46.0	2727	47.5	24715	35.2	25235	34.8
INDIAN MALES	19	1.6	1174	1.8	14	6.3	140	2.4	1305	1.9	1318	1.8
ORIENTAL MALES	2	0.2	45	0.1	0	0.0	0	0.0	45	0.1	49	0.1
OTHER MALES	0	0.0	319	0.5	0	0.0	32	0.6	350	0.5	365	0.5
WHITE FEMALES	73	6.1	5799	8.9	8	3.6	186	3.2	5965	8.5	6203	8.6
BLACK FEMALES	59	4.9	5558	8.5	3	1.3	209	3.6	5749	8.2	5853	8.1
INDIAN FEMALES	3	0.3	288	0.4	1	0.4	8	0.1	294	0.4	296	0.4
ORIENTAL FEMALES	0	0.0	11	0.0	0	0.0	0	0.0	11	0.0	13	0.0
OTHER FEMALES	0	0.0	36	0.1	0	0.0	0	0.0	36	0.1	38	0.1
TOTAL	1197	100.0	65052	100.0	224	100.0	5741	100.0	70253	100.0	72434	100.0

JUL 1 1987 - JUN 30 1988

S U P E R V I S E D I N S T A T E ALL CLIENTS

REPORT 3E: POPULATION:- BY AGE	INTENSIVE PROB/DUAL		TOTAL PROBATION/DUAL		INTENSIVE PAROLE/DUAL		TOTAL PAROLE/DUAL		TOTAL CLIENTS IN-STATE		(INCLUDES OUT OF STATE)	
	NUMBER	PERCENT	NUMBER	PERCENT	NUMBER	PERCENT	NUMBER	PERCENT	NUMBER	PERCENT	NUMBER	PERCENT
16 AND UNDER	21	1.8	632	1.0	0	0.0	2	0.0	634	0.9	649	0.9
17	67	5.6	1813	2.8	2	0.9	45	0.8	1852	2.6	1894	2.6
18	90	7.5	2477	3.8	2	0.9	131	2.3	2583	3.7	2652	3.7
19	87	7.3	2592	4.0	5	2.2	161	2.8	2730	3.9	2816	3.9
20	81	6.8	2696	4.1	7	3.1	219	3.8	2885	4.1	2987	4.1
21-24	280	23.4	11725	18.0	34	15.2	995	17.3	12590	17.9	13071	18.0
25-29	250	20.9	14408	22.1	30	13.4	1393	24.3	15677	22.3	16161	22.3
30-39	244	20.4	18114	27.8	87	38.8	1828	31.8	19796	28.2	20385	28.1
40-49	54	4.5	6960	10.7	35	15.6	638	11.1	7558	10.8	7789	10.8
50-59	14	1.2	2533	3.9	13	5.8	235	4.1	2755	3.9	2817	3.9
60 AND OVER	9	0.8	1102	1.7	9	4.0	94	1.6	1193	1.7	1213	1.7
TOTAL	1197	100.0	65052	100.0	224	100.0	5741	100.0	70253	100.0	72434	100.0



PROBATIONERS

JUL 1 1987 - JUN 30 1988

S U P E R V I S I O N L E V E L

REPORT 3F: POPULATION, BY BRANCH, UNIT		INTENSIVE		SUSPENDED		HIGH RISK		SELECTIVE		INTER- MEDIATE		SPECIAL		MAX SELECT, DEFERRED OR NOT REPORTD		TOTAL, ALL
		NUMBR	PERCT	NUMBR	PERCT	NUMBR	PERCT	NUMBR	PERCT	NUMBR	PERCT	NUMBR	PERCT	NUMBR	PERCT	LEVELS
		A	A-I	35	61	3	5	0	0	0	0	1	2	0	0	18
	A-K	0	0	88	10	29	3	67	8	444	53	129	15	86	10	843
	A-M	4	0	124	12	85	8	18	2	405	39	286	27	125	12	1047
	A-P	0	0	99	13	28	4	37	5	335	43	110	14	172	22	781
	A-R	1	0	90	12	43	6	38	5	293	40	157	22	102	14	724
	SUBTOTAL	40	1	404	12	185	5	160	5	1478	43	682	20	503	15	3452
B	B-I	63	58	9	8	0	0	0	0	0	0	0	0	36	33	108
	B-K	0	0	94	8	110	10	46	4	616	55	172	15	74	7	1112
	B-L	0	0	117	10	42	4	87	8	686	60	107	9	105	9	1144
	B-M	2	0	130	10	78	6	87	6	646	47	321	24	100	7	1364
	B-N	1	0	64	10	53	8	43	7	295	47	100	16	71	11	627
	B-P	0	0	82	8	18	2	59	6	633	61	156	15	95	9	1043
	B-R	0	0	38	9	33	8	31	8	210	51	68	17	31	8	411
	SUBTOTAL	66	1	534	9	334	6	353	6	3086	53	924	16	512	9	5809
C	C-I	50	78	0	0	0	0	0	0	1	2	0	0	13	20	64
	C-K	1	0	86	7	46	4	97	8	652	56	165	14	110	10	1157
	C-L	1	0	216	16	109	8	56	4	719	54	147	11	74	6	1322
	C-M	0	0	123	9	79	6	116	8	793	58	173	13	95	7	1379
	C-N	0	0	117	10	60	5	23	2	725	63	147	13	76	7	1148
	C-P	0	0	132	10	84	6	67	5	755	58	176	14	83	6	1297

(CONTINUED)

PROBATIONERS

JUL 1 1987 - JUN 30 1988

S U P E R V I S I O N L E V E L

REPORT 3F: POPULATION, BY BRANCH, UNIT		INTENSIVE		SUSPENDED		HIGH RISK		SELECTIVE		INTER- MEDIATE		SPECIAL		MAX SELECT, DEFERRED OR NOT REPORTD		TOTAL, ALL
		NUMBR	PERCT	NUMBR	PERCT	NUMBR	PERCT	NUMBR	PERCT	NUMBR	PERCT	NUMBR	PERCT	NUMBR	PERCT	LEVELS
		C	SUBTOTAL	52	1	674	11	378	6	359	6	3645	57	808	13	451
D	D-I	91	75	4	3	0	0	0	0	2	2	0	0	25	20	122
	D-K	3	0	111	13	21	2	69	8	497	58	93	11	61	7	855
	D-L	2	0	75	13	16	3	32	6	301	53	113	20	28	5	567
	D-M	1	0	175	22	75	9	46	6	292	37	139	17	69	9	797
	D-P	2	0	141	19	42	6	58	8	270	36	149	20	79	11	741
	D-R	1	0	57	9	35	6	50	8	260	42	151	24	67	11	621
	D-S	0	0	80	11	57	7	38	5	263	35	180	24	142	19	760
	D-T	0	0	103	13	85	11	98	13	345	45	86	11	51	7	768
	SUBTOTAL	100	2	746	14	331	6	391	7	2230	43	911	17	522	10	5231
E	E-I	57	78	4	5	1	1	0	0	0	0	0	0	11	15	73
	E-K	2	0	92	9	55	6	32	3	529	54	170	17	101	10	981
	E-L	2	0	90	14	43	7	9	1	325	51	121	19	48	8	638
	E-M	0	0	54	8	44	6	31	5	420	62	89	13	43	6	681
	E-N	2	0	80	11	63	8	37	5	351	47	142	19	70	9	745
	E-P	0	0	77	8	57	6	58	6	556	57	157	16	75	8	980
	E-R	4	1	103	14	65	9	10	1	381	52	131	18	38	5	732
	SUBTOTAL	67	1	500	10	328	7	177	4	2562	53	810	17	386	8	4830
F	F-J	88	79	3	3	0	0	0	0	1	1	0	0	20	18	112
	F-K	1	0	139	13	62	6	28	3	690	63	125	11	52	5	1097

(CONTINUED)

PROBATIONERS

JUL 1 1987 - JUN 30 1988

S U P E R V I S I O N L E V E L

REPORT 3F: POPULATION, BY BRANCH, UNIT		INTENSIVE		SUSPENDED		HIGH RISK		SELECTIVE		INTER-MEDIATE		SPECIAL		MAX SELECT, DEFERRED OR NOT REPORTD		TOTAL,	
		NUMBR	PERCT	NUMBR	PERCT	NUMBER	PERCT	NUMBR	PERCT	NUMBER	PERCT	NUMBR	PERCT	NUMBER	PERCT	LEVELS	ALL
F	F-L	3	1	49	9	15	3	6	1	393	73	21	4	48	9	535	
	F-M	3	0	108	9	34	3	111	9	847	67	73	6	86	7	1262	
	F-N	1	0	34	5	30	4	36	5	462	64	130	18	31	4	724	
	F-O	0	0	95	9	51	5	51	5	676	61	144	13	84	8	1101	
	SUBTOTAL	96	2	428	9	192	4	232	5	3069	64	493	10	321	7	4831	
G	G-I	98	75	5	4	1	1	0	0	3	2	0	0	23	18	130	
	G-K	2	0	143	12	74	6	51	4	600	50	238	20	96	8	1204	
	G-L	1	0	212	15	116	8	64	4	727	51	201	14	118	8	1439	
	G-M	0	0	118	11	39	3	17	2	653	58	207	18	89	8	1123	
	G-N	3	0	156	12	66	5	57	4	724	54	226	17	108	8	1340	
	G-O	0	0	162	13	56	5	29	2	671	55	220	18	91	7	1229	
	G-P	3	0	132	13	66	6	50	5	557	54	155	15	74	7	1037	
	SUBTOTAL	107	1	928	12	418	6	268	4	3935	52	1247	17	599	8	7502	
H	H-I	86	71	2	2	1	1	0	0	1	1	0	0	31	26	121	
	H-K	0	0	76	8	54	6	29	3	619	66	78	8	81	9	937	
	H-L	0	0	146	11	49	4	109	8	737	57	152	12	99	8	1292	
	H-M	0	0	37	6	55	9	89	15	317	52	44	7	64	11	606	
	H-N	0	0	85	8	74	7	52	5	689	69	33	3	67	7	1000	
	H-P	8	1	156	14	88	8	180	16	539	47	92	8	87	8	1150	
	SUBTOTAL	94	2	502	10	321	6	459	9	2902	57	399	8	429	8	5106	

(CONTINUED)

PROBATIONERS

JUL 1 1987 - JUN 30 1988

S U P E R V I S I O N L E V E L

REPORT 3F: POPULATION, BY BRANCH, UNIT		INTENSIVE		SUSPENDED		HIGH RISK		SELECTIVE		INTER-MEDIATE		SPECIAL		MAX SELECT, DEFERRED OR NOT REPORTD		TOTAL,
		NUMBR	PERCT	NUMBR	PERCT	NUMBR	PERCT	NUMBR	PERCT	NUMBR	PERCT	NUMBR	PERCT	NUMBR	PERCT	ALL
																LEVELS
I	I-I	49	64	1	1	0	0	0	0	0	0	0	0	27	35	77
	I-K	0	0	142	14	63	6	28	3	514	49	123	12	170	16	1040
	I-L	0	0	41	6	77	11	70	10	319	45	139	19	69	10	715
	I-M	0	0	64	10	45	7	75	12	343	55	19	3	73	12	619
	I-N	0	0	64	9	41	6	72	10	424	59	54	8	63	9	718
	I-P	1	0	92	12	53	7	42	5	380	48	131	17	92	12	791
	I-R	0	0	27	7	17	4	55	14	246	63	9	2	39	10	393
	I-S	0	0	59	11	42	8	87	16	283	51	23	4	58	11	552
	SUBTOTAL	50	1	490	10	338	7	429	9	2509	51	498	10	591	12	4905
J	J-I	74	78	4	4	0	0	0	0	2	2	0	0	15	16	95
	J-K	0	0	175	20	48	5	40	5	343	39	133	15	140	16	879
	J-L	0	0	1	0	53	7	49	6	460	57	153	19	98	12	814
	J-M	1	0	122	13	46	5	77	8	568	60	81	9	54	6	949
	J-N	0	0	76	12	19	3	81	12	380	58	49	7	49	7	654
	J-P	1	0	237	18	104	8	44	3	571	42	132	10	257	19	1346
	J-R	0	0	127	14	43	5	67	7	496	54	123	13	66	7	922
	J-S	0	0	126	12	25	2	112	11	521	51	133	13	95	9	1012
	SUBTOTAL	76	1	868	13	338	5	470	7	3341	50	804	12	774	12	6671
K	K-I	68	78	6	7	1	1	0	0	1	1	0	0	11	13	87
	K-K	1	0	137	20	32	5	55	8	312	46	55	8	88	13	680

(CONTINUED)

PROBATIONERS

JUL 1 1987 - JUN 30 1988

S U P E R V I S I O N L E V E L

REPORT 3F: POPULATION, BY BRANCH, UNIT		INTENSIVE		SUSPENDED		HIGH RISK		SELECTIVE		INTER- MEDIATE		SPECIAL		MAX SELECT, DEFERRED OR NOT REPORTD		TOTAL,
		NUMBR	PERCT	NUMBR	PERCT	NUMBR	PERCT	NUMBR	PERCT	NUMBR	PERCT	NUMBR	PERCT	NUMBR	PERCT	ALL
																LEVELS
K	K-L	0	0	121	19	42	6	35	5	280	43	107	16	65	10	650
	K-M	0	0	61	11	34	6	46	9	295	55	41	8	60	11	537
	K-N	1	0	72	13	23	4	36	6	304	54	64	11	60	11	560
	K-O	0	0	87	10	81	9	51	6	461	53	123	14	69	8	872
	K-P	1	0	99	8	74	6	18	1	698	57	258	21	82	7	1230
	K-R	0	0	60	7	68	8	49	6	490	58	93	11	81	10	841
	SUBTOTAL	71	1	643	12	355	7	290	5	2841	52	741	14	516	9	5457
L	L-I	49	70	1	1	0	0	0	0	0	0	0	0	20	29	70
	L-J	13	54	1	4	0	0	0	0	0	0	0	0	10	42	24
	L-K	2	0	144	12	86	7	116	10	678	58	61	5	90	8	1177
	L-L	0	0	11	1	91	8	12	1	646	59	180	16	156	14	1096
	L-M	0	0	589	40	71	5	38	3	539	36	120	8	124	8	1481
	L-N	2	0	17	2	112	12	69	7	579	60	78	8	109	11	966
	L-P	0	0	32	3	68	7	72	7	680	68	17	2	132	13	1001
	L-R	0	0	0	0	21	2	637	65	204	21	63	6	62	6	987
SUBTOTAL	66	1	795	12	449	7	944	14	3326	49	519	8	703	10	6802	
SPECIAL CATEGORIES	Q30	0	0	0	0	0	0	0	0	1	100	0	0	0	0	1
	R30	0	0	0	0	1	100	0	0	0	0	0	0	0	0	1
	S30	0	0	0	0	0	0	0	0	0	0	2	100	0	0	2
	X01	0	0	0	0	0	0	0	0	0	0	0	0	2	100	2

(CONTINUED)

PROBATIONERS

JUL 1 1987 - JUN 30 1988

S U P E R V I S I O N L E V E L

REPORT 3F: POPULATION, BY BRANCH, UNIT		INTENSIVE		SUSPENDED		HIGH RISK		SELECTIVE		INTER- MEDIATE		SPECIAL		MAX SELECT, DEFERRED OR NOT REPORTD		TOTAL, ALL
		NUMBR	PERCT	NUMBR	PERCT	NUMBR	PERCT	NUMBR	PERCT	NUMBR	PERCT	NUMBR	PERCT	NUMBR	PERCT	LEVELS
		SPECIAL CATEGORIES	SUBTOTAL													
	0	0	0	0	1	17	0	0	1	17	2	33	2	33	6	
TOTAL	885	1	7512	11	3968	6	4532	7	34925	52	8838	13	6309	9	66969	

PAROLEES

JUL 1 1987 - JUN 30 1988

S U P E R V I S I O N L E V E L

REPORT 3F: POPULATION, BY BRANCH, UNIT		INTENSIVE		SUSPENDED		HIGH RISK		SELECTIVE		INTER- MEDIATE		SPECIAL		MAX SELECT, DEFERRED OR NOT REPORTD		TOTAL, ALL
		NUMBR	PERCT	NUMBR	PERCT	NUMBR	PERCT	NUMBR	PERCT	NUMBR	PERCT	NUMBR	PERCT	NUMBR	PERCT	LEVELS
		A	A-I	8	80	1	10	0	0	0	0	0	0	0	0	1
	A-K	0	0	0	0	1	33	0	0	0	0	0	0	2	67	3
	A-M	0	0	2	20	3	30	0	0	4	40	1	10	0	0	10
	A-P	0	0	0	0	1	100	0	0	0	0	0	0	0	0	1
	A-R	0	0	1	7	6	40	0	0	4	27	0	0	4	27	15
	SUBTOTAL	8	21	4	10	11	28	0	0	8	21	1	3	7	18	39
B	B-I	20	95	0	0	0	0	0	0	0	0	0	0	1	5	21
	B-K	0	0	0	0	0	0	1	50	0	0	1	50	0	0	2
	B-L	0	0	1	9	1	9	2	18	6	55	1	9	0	0	11
	B-M	1	10	2	20	1	10	0	0	3	30	2	20	1	10	10
	B-N	0	0	1	14	3	43	0	0	1	14	0	0	2	29	7
	B-P	0	0	0	0	2	40	0	0	1	20	0	0	2	40	5
	B-R	0	0	0	0	3	43	0	0	1	14	1	14	2	29	7
	SUBTOTAL	21	33	4	6	10	16	3	5	12	19	5	8	8	13	63
C	C-I	9	100	0	0	0	0	0	0	0	0	0	0	0	0	9
	C-K	0	0	2	8	4	17	5	21	9	38	0	0	4	17	24
	C-L	0	0	0	0	4	33	1	8	3	25	0	0	4	33	12
	C-M	0	0	1	20	2	40	1	20	1	20	0	0	0	0	5
	C-N	0	0	1	4	4	17	1	4	13	57	1	4	3	13	23
	C-P	0	0	1	4	7	28	1	4	10	40	4	16	2	8	25

(CONTINUED)

PAROLEES

JUL 1 1987 - JUN 30 1988

S U P E R V I S I O N L E V E L

REPORT 3F: POPULATION, BY BRANCH, UNIT		INTENSIVE		SUSPENDED		HIGH RISK		SELECTIVE		INTER-MEDIATE		SPECIAL		MAX SELECT, DEFERRED OR NOT REPORTD		TOTAL, ALL
		NUMBR	PERCT	NUMBR	PERCT	NUMBR	PERCT	NUMBR	PERCT	NUMBR	PERCT	NUMBR	PERCT	NUMBR	PERCT	LEVELS
		C	SUBTOTAL	9	9	5	5	21	21	9	9	36	37	5	5	13
D	D-I	15	79	2	11	0	0	0	0	0	0	0	0	2	11	19
	D-K	0	0	0	0	1	9	5	45	3	27	1	9	1	9	11
	D-L	0	0	0	0	0	0	0	0	2	100	0	0	0	0	2
	D-M	0	0	4	27	1	7	1	7	2	13	2	13	5	33	15
	D-P	0	0	1	8	2	17	0	0	5	42	1	8	3	25	12
	D-R	0	0	0	0	0	0	1	25	2	50	1	25	0	0	4
	D-S	0	0	1	10	4	40	0	0	2	20	1	10	2	20	10
	D-T	0	0	1	11	4	44	1	11	1	11	1	11	1	11	9
	SUBTOTAL	15	18	9	11	12	15	8	10	17	21	7	9	14	17	82
E	E-I	14	88	0	0	0	0	0	0	0	0	0	0	2	13	16
	E-K	0	0	0	0	2	20	1	10	6	60	0	0	1	10	10
	E-L	0	0	0	0	2	29	0	0	4	57	1	14	0	0	7
	E-M	0	0	0	0	0	0	1	25	0	0	1	25	2	50	4
	E-N	0	0	1	13	2	25	0	0	4	50	0	0	1	13	8
	E-P	0	0	1	50	0	0	0	0	1	50	0	0	0	0	2
	E-R	0	0	1	14	1	14	0	0	4	57	1	14	0	0	7
	SUBTOTAL	14	26	3	6	7	13	2	4	19	35	3	6	6	11	54
F	F-J	14	93	0	0	0	0	0	0	0	0	0	0	1	7	15
	F-K	0	0	0	0	2	29	0	0	5	71	0	0	0	0	7

(CONTINUED)



PAROLEES

JUL 1 1987 - JUN 30 1988

S U P E R V I S I O N L E V E L

REPORT 3F: POPULATION, BY BRANCH, UNIT		INTENSIVE		SUSPENDED		HIGH RISK		SELECTIVE		INTER- MEDIATE		SPECIAL		MAX SELECT, DEFERRED OR NOT REPORTD		TOTAL,
		NUMBR	PERCT	NUMBR	PERCT	NUMBR	PERCT	NUMBR	PERCT	NUMBR	PERCT	NUMBR	PERCT	NUMBR	PERCT	ALL
F	F-L	0	0	0	0	1	17	0	0	1	17	1	17	3	50	6
	F-M	0	0	0	0	2	20	2	20	5	50	0	0	1	10	10
	F-N	0	0	1	25	2	50	0	0	0	0	0	0	1	25	4
	F-O	0	0	2	18	4	36	0	0	3	27	0	0	2	18	11
	SUBTOTAL	14	26	3	6	11	21	2	4	14	26	1	2	8	15	53
G	G-I	26	96	0	0	0	0	0	0	0	0	0	0	1	4	27
	G-K	1	11	0	0	1	11	0	0	6	67	1	11	0	0	9
	G-L	0	0	1	6	1	6	0	0	8	50	0	0	6	38	16
	G-M	0	0	0	0	2	25	0	0	3	38	1	13	2	25	8
	G-N	0	0	0	0	1	10	0	0	6	60	0	0	3	30	10
	G-O	0	0	1	10	4	40	0	0	3	30	0	0	2	20	10
	G-P	0	0	2	22	1	11	1	11	3	33	1	11	1	11	9
	SUBTOTAL	27	30	4	4	10	11	1	1	29	33	3	3	15	17	89
H	H-I	6	86	1	14	0	0	0	0	0	0	0	0	0	0	7
	H-K	0	0	0	0	3	38	0	0	5	63	0	0	0	0	8
	H-L	0	0	1	6	3	19	1	6	10	63	0	0	1	6	16
	H-M	0	0	0	0	5	42	2	17	2	17	0	0	3	25	12
	H-N	0	0	0	0	1	20	1	20	2	40	0	0	1	20	5
	H-P	0	0	0	0	2	40	2	40	0	0	1	20	0	0	5
	SUBTOTAL	6	11	2	4	14	26	6	11	19	36	1	2	5	9	53

(CONTINUED)

PAROLEES

JUL 1 1987 - JUN 30 1988

S U P E R V I S I O N L E V E L

REPORT 3F: POPULATION, BY BRANCH, UNIT		INTENSIVE		SUSPENDED		HIGH RISK		SELECTIVE		INTER-MEDIATE		SPECIAL		MAX SELECT, DEFERRED OR NOT REPORTD		TOTAL,
		NUMBR	PERCT	NUMBR	PERCT	NUMBR	PERCT	NUMBR	PERCT	NUMBR	PERCT	NUMBR	PERCT	NUMBR	PERCT	ALL
																LEVELS
I	I-I	11	100	0	0	0	0	0	0	0	0	0	0	0	0	11
	I-K	0	0	2	10	5	24	0	0	10	48	1	5	3	14	21
	I-L	0	0	0	0	3	33	0	0	5	56	1	11	0	0	9
	I-M	0	0	0	0	2	29	1	14	2	29	0	0	2	29	7
	I-N	0	0	0	0	3	43	1	14	3	43	0	0	0	0	7
	I-P	1	17	0	0	2	33	0	0	2	33	1	17	0	0	6
	I-R	0	0	0	0	0	0	1	100	0	0	0	0	0	0	1
	I-S	0	0	1	25	2	50	0	0	0	0	0	0	1	25	4
	SUBTOTAL	12	18	3	5	17	26	3	5	22	33	3	5	6	9	66
J	J-I	17	89	0	0	0	0	0	0	0	0	0	0	2	11	19
	J-K	0	0	0	0	4	50	0	0	1	13	2	25	1	13	8
	J-L	0	0	0	0	0	0	0	0	7	100	0	0	0	0	7
	J-M	0	0	0	0	1	20	0	0	3	60	0	0	1	20	5
	J-N	0	0	0	0	0	0	0	0	1	50	0	0	1	50	2
	J-P	0	0	3	33	0	0	0	0	3	33	0	0	3	33	9
	J-R	0	0	1	8	1	8	0	0	6	50	3	25	1	8	12
	J-S	0	0	1	13	1	13	1	13	3	38	1	13	1	13	8
	SUBTOTAL	17	24	5	7	7	10	1	1	24	34	6	9	10	14	70
K	K-I	12	75	1	6	0	0	0	0	0	0	0	0	3	19	16
	K-K	0	0	1	17	2	33	0	0	2	33	0	0	1	17	6

(CONTINUED)

PAROLEES

JUL 1 1987 - JUN 30 1988

S U P E R V I S I O N L E V E L

REPORT 3F: POPULATION, BY BRANCH, UNIT		INTENSIVE		SUSPENDED		HIGH RISK		SELECTIVE		INTER- MEDIATE		SPECIAL		MAX SELECT, DEFERRED OR NOT REPORTD		TOTAL, ALL
		NUMBR	PERCT	NUMBR	PERCT	NUMBR	PERCT	NUMBR	PERCT	NUMBR	PERCT	NUMBR	PERCT	NUMBR	PERCT	LEVELS
		K	K-L	0	0	0	0	1	33	0	0	2	67	0	0	0
	K-N	0	0	1	33	0	0	0	0	0	0	1	33	1	33	3
	K-O	0	0	1	17	2	33	0	0	1	17	0	0	2	33	6
	K-P	0	0	0	0	3	30	1	10	3	30	2	20	1	10	10
	K-R	0	0	1	11	5	56	0	0	2	22	0	0	1	11	9
	SUBTOTAL	12	23	5	9	13	25	1	2	10	19	3	6	9	17	53
L	L-I	13	87	0	0	0	0	0	0	0	0	0	0	2	13	15
	L-J	1	50	0	0	0	0	0	0	0	0	0	0	1	50	2
	L-K	0	0	1	8	2	17	2	17	5	42	0	0	2	17	12
	L-L	0	0	1	7	2	14	0	0	5	36	3	21	3	21	14
	L-M	0	0	2	33	2	33	0	0	2	33	0	0	0	0	6
	L-N	0	0	1	33	1	33	0	0	0	0	1	33	0	0	3
	L-P	0	0	0	0	3	38	1	13	2	25	0	0	2	25	8
	L-R	0	0	0	0	0	0	0	0	1	50	0	0	1	50	2
	SUBTOTAL	14	23	5	8	10	16	3	5	15	24	4	6	11	18	62
SPECIAL CATEGORIES	P30	2	0	43	6	134	19	19	3	323	45	92	13	110	15	723
	Q30	9	1	90	10	182	20	48	5	345	38	108	12	122	13	904
	R30	0	0	88	9	154	17	72	8	363	39	104	11	152	16	933
	S30	11	1	77	10	197	26	37	5	274	36	96	13	63	8	755
	T30	1	0	62	12	129	26	42	8	149	30	45	9	69	14	497

(CONTINUED)

PAROLEES

JUL 1 1987 - JUN 30 1988

S U P E R V I S I O N L E V E L

REPORT 3F: POPULATION, BY BRANCH, UNIT		INTENSIVE		SUSPENDED		HIGH RISK		SELECTIVE		INTER- MEDIATE		SPECIAL		MAX SELECT, DEFERRED OR NOT REPORTD		TOTAL, ALL
		NUMBR	PERCT	NUMBR	PERCT	NUMBR	PERCT	NUMBR	PERCT	NUMBR	PERCT	NUMBR	PERCT	NUMBR	PERCT	LEVELS
		SPECIAL CATEGORIES	U30	3	1	45	9	148	29	111	21	91	18	18	3	102
V30	7		1	45	8	117	21	28	5	222	40	82	15	60	11	561
X01	0		0	0	0	1	0	0	0	0	0	0	0	201	100	202
X02	0		0	7	10	0	0	0	0	0	0	0	0	66	90	73
X03	0		0	0	0	0	0	0	0	0	0	0	0	37	100	37
X04	0		0	32	94	0	0	0	0	0	0	0	0	2	6	34
SUBTOTAL	33		1	489	9	1062	20	357	7	1767	34	545	10	984	19	5237
TOTAL		202	3	541	9	1205	20	396	7	1992	33	587	10	1096	18	6019

JUL 1 1987 - JUN 30 1988  
C R I M E C A T E G O R Y

REPORT 3G: POPULATION BY RACE/SEX	ASSAULTIVE CRIMES								PUBLIC ORDER								
	HOMI- CIDE	RAPE, SEX ASLT	ROB- BERY	OTHER		TOTAL			DRUGS & NARCOTICS		DWI	TRAF- FIC	OTHER		TOTAL		
				ASSAULTIVE		ASSAULTIVE							PUBLIC ORDER		PUBLIC ORDER		
				MIS	FEL	MIS	FELON	TOTAL	MIS	FEL			MIS	FELON	MIS	FELON	TOTAL
WHITE MALES	352	1041	347	1847	467	1847	2207	4054	1291	2888	10255	2060	1104	196	14710	3084	17794
BLACK MALES	302	491	601	2500	539	2500	1933	4433	634	1787	5851	1581	1247	189	9313	1976	11289
INDIAN MALES	27	16	8	104	45	104	96	200	25	170	348	79	41	13	493	183	676
ORIENTAL MALES	1	2	1	3	2	3	6	9	2	2	10	2	2	0	16	2	18
OTHER MALES	5	8	6	20	15	20	34	54	7	40	126	28	10	2	171	42	213
WHITE FEMALES	77	62	33	123	38	123	210	333	355	674	1169	207	394	91	2125	765	2890
BLACK FEMALES	60	40	26	348	77	348	203	551	181	388	330	113	1051	294	1675	682	2357
INDIAN FEMALES	3	1	2	17	6	17	12	29	9	52	60	12	14	8	95	60	155
ORIENTAL FEMALES	0	1	0	1	1	1	2	3	2	1	1	0	0	0	3	1	4
OTHER FEMALES	1	0	0	3	0	3	1	4	1	5	8	2	3	1	14	6	20
TOTAL	828	1662	1024	4966	1190	4966	4704	9670	2507	6007	18158	4084	3866	794	28615	6801	35416

(CONTINUED)

JUL 1 1987 - JUN 30 1988  
 CRIME CATEGORY

REPORT 3G: POPULATION BY RACE/SEX	PROPERTY CRIMES									TOTAL CRIMES			
	BURGLARY, BREAK & ENTER		LARCENY, AUTO THEFT		FORGERY, BAD CHECKS & FRAUD		TOTAL		TOTAL PROPER- TY	NOT REP.	TOTAL, ALL MIS	TOTAL, ALL FEL	TOTAL, ALL CRIMES
	MIS	FEL	MIS	FEL	MIS	FEL	MIS	FEL					
WHITE MALES	1755	2092	3091	1186	1132	853	6908	4308	11216	0	23465	9599	33064
BLACK MALES	1087	1777	2979	1160	932	815	5694	3818	9512	1	17507	7727	25235
INDIAN MALES	40	140	99	58	26	36	201	240	441	1	798	519	1318
ORIENTAL MALES	4	3	9	0	3	0	19	3	22	0	38	11	49
OTHER MALES	13	12	40	5	10	10	70	28	98	0	261	104	365
WHITE FEMALES	147	130	963	129	921	526	2171	809	2980	0	4419	1784	6203
BLACK FEMALES	51	39	1291	128	791	508	2255	690	2945	0	4278	1575	5853
INDIAN FEMALES	1	12	41	5	19	26	69	43	112	0	181	115	296
ORIENTAL FEMALES	0	0	1	0	3	2	4	2	6	0	8	5	13
OTHER FEMALES	0	1	6	0	2	4	9	5	14	0	26	12	38
TOTAL	3098	4206	8520	2671	3839	2780	17400	9946	27346	2	50981	21451	72434

JUL 1 1987 - JUN 30 1988  
CRIME CATEGORY

REPORT 3H: POPULATION BY COUNTY	ASSAULTIVE CRIMES								PUBLIC ORDER								
	HOMI- CIDE	RAPE, SEX ASLT	ROB- BERY	OTHER		TOTAL			DRUGS		DWI	TRAF- FIC	OTHER		TOTAL		
				ASSAULTIVE		ASSAULTIVE			& NARCOTICS				PUBLIC ORDER		PUBLIC ORDER		
				MIS	FEL	MIS	FELON	TOTAL	MIS	FEL			MIS	FELON	MIS	FELON	TOTAL
ALAMANCE	10	25	13	114	20	114	68	182	46	81	399	119	69	6	633	87	720
ALLEGHANY	0	0	0	2	1	2	1	3	3	2	44	6	8	0	61	2	63
ALEXANDER	3	8	0	19	3	19	14	33	16	18	132	20	20	1	188	19	207
ANSON	6	1	7	43	6	43	20	63	5	15	124	21	14	1	164	16	180
ASHE	1	3	0	8	0	8	4	12	12	0	67	16	15	1	110	1	111
AVERY	0	1	0	4	0	4	1	5	6	9	43	5	4	3	58	12	70
BEAUFORT	6	15	10	63	10	63	41	104	7	28	193	36	27	10	263	38	301
BERTIE	3	6	2	33	5	33	16	49	5	17	52	14	19	1	90	18	108
BLADEN	3	5	7	34	7	34	22	56	7	16	142	19	41	7	209	23	232
BRUNSWICK	3	14	6	57	3	57	26	83	27	55	159	38	35	3	259	58	317
BUNCOMBE	15	53	14	59	24	59	106	165	51	92	161	60	47	10	319	102	421
BURKE	8	18	5	35	6	35	37	72	32	81	221	35	32	3	320	84	404
CABARRUS	8	17	15	46	24	46	64	110	14	74	339	65	38	10	456	84	540
CALDWELL	9	13	2	33	8	33	32	65	27	67	200	34	28	2	289	69	358
CAMDEN	0	3	1	2	0	2	4	6	1	1	8	3	1	1	13	2	15
CARTERET	2	21	10	22	8	22	41	63	15	44	102	12	27	1	156	45	201
CASWELL	1	6	0	28	3	28	10	38	8	10	47	19	5	2	79	12	91
CATAWBA	11	38	9	60	13	60	71	131	49	89	315	50	52	13	466	102	568
CHATHAM	5	8	1	27	14	27	28	55	13	17	99	32	16	2	160	19	179
CHEROKEE	2	6	1	14	2	14	11	25	10	11	109	21	11	0	151	11	162
CHOWAN	2	3	0	13	3	13	8	21	3	9	24	6	7	3	40	12	52

(CONTINUED)

JUL 1 1987 - JUN 30 1988  
C R I M E C A T E G O R Y

REPORT 3H: POPULATION BY COUNTY	PROPERTY CRIMES									TOTAL CRIMES			
	BURGLARY,		LARCENY,		FORGERY, BAD		TOTAL		TOTAL PROPER- TY	NOT REP.	TOTAL, ALL MIS	TOTAL, ALL FEL	TOTAL, ALL CRIMES
	BREAK & ENTER		AUTO THEFT		CHECKS & FRAUD		TOTAL						
	MIS	FEL	MIS	FEL	MIS	FEL	MIS	FEL					
ALAMANCE	52	58	130	38	70	34	281	133	414	0	1028	288	1316
ALLEGHANY	6	2	9	3	5	1	23	6	29	0	86	9	95
ALEXANDER	7	2	27	3	8	5	53	11	64	0	260	44	304
ANSON	12	14	42	14	14	14	78	42	120	0	285	78	363
ASHE	16	9	21	1	9	1	53	11	64	0	171	16	187
AVERY	3	2	19	2	7	3	33	8	41	0	95	21	116
BEAUFORT	15	43	59	21	29	30	117	96	213	0	443	175	618
BERTIE	19	7	32	8	10	5	69	21	90	0	192	55	247
BLADEN	13	10	47	14	30	7	101	37	138	0	344	82	426
BRUNSWICK	35	22	76	17	39	17	163	58	221	0	479	142	621
BUNCOMBE	57	119	137	51	97	61	318	235	553	0	696	443	1139
BURKE	44	41	83	37	54	15	202	95	297	0	557	216	773
CABARRUS	23	82	96	41	32	54	177	181	358	0	679	329	1008
CALDWELL	33	34	81	33	39	17	172	87	259	0	494	188	682
CAMDEN	1	2	7	1	0	4	8	7	15	0	23	13	36
CARTERET	16	23	56	9	28	12	114	45	159	0	292	131	423
CASWELL	5	16	13	12	9	8	32	36	68	0	139	58	197
CATAWBA	51	79	162	45	63	44	315	173	488	0	841	346	1187
CHATHAM	10	13	45	13	12	7	72	34	106	0	259	81	340
CHEROKEE	8	6	18	5	5	4	37	17	54	0	202	39	241
CHOWAN	11	9	32	8	6	5	54	22	76	0	107	42	149

(CONTINUED)



JUL 1 1987 - JUN 30 1988

CRIME CATEGORY

REPORT 3H: POPULATION BY COUNTY	ASSAULTIVE CRIMES								PUBLIC ORDER								
	HOMI- CIDE	RAPE, SEX ASLT	ROB- BERY	OTHER		TOTAL			DRUGS		DWI	TRAF- FIC	OTHER		TOTAL		
				ASSAULTIVE		ASSAULTIVE			& NARCOTICS				PUBLIC ORDER		PUBLIC ORDER		
				MIS	FEL	MIS	FELON	TOTAL	MIS	FEL			MIS	FELON	MIS	FELON	TOTAL
CLAY	1	0	0	2	2	2	3	5	5	3	36	4	1	1	46	4	50
CLEVELAND	10	16	10	33	11	33	47	80	15	88	61	19	31	2	126	90	216
COLUMBUS	3	14	2	61	10	61	29	90	13	27	208	51	33	3	305	30	335
CRAVEN	4	12	11	60	9	60	36	96	26	41	170	28	64	8	288	49	337
CUMBERLAND	27	59	40	111	43	111	169	280	48	279	570	161	125	44	904	323	1227
CURRITUCK	1	2	2	8	0	8	5	13	2	10	27	6	4	1	39	11	50
DARE	0	5	0	12	2	12	7	19	10	27	51	13	5	2	79	29	108
DAVIE	2	8	0	15	4	15	14	29	14	9	94	4	12	0	124	9	133
DAVIDSON	12	19	13	114	24	114	68	182	60	96	443	76	74	3	653	99	752
DUPLIN	10	14	5	42	10	42	39	81	7	45	204	17	48	16	276	61	337
DURHAM	26	70	43	210	54	210	193	403	122	170	710	110	186	42	1128	212	1340
EDGECOMBE	7	13	14	69	7	69	41	110	23	18	123	43	28	6	217	24	241
FORSYTH	32	65	49	112	37	112	183	295	82	250	498	183	160	65	923	315	1238
FRANKLIN	1	12	3	28	5	28	21	49	12	19	116	25	27	2	180	21	201
GASTON	24	29	34	64	24	64	111	175	62	121	204	75	47	3	388	124	512
GATES	2	0	1	7	0	7	3	10	3	4	12	3	1	1	19	5	24
GRAHAM	1	1	0	3	2	3	4	7	5	1	33	8	0	0	46	1	47
GRANVILLE	5	15	9	30	5	30	34	64	16	22	122	21	22	1	181	23	204
GREENE	4	4	1	12	3	12	12	24	2	11	62	9	9	2	82	13	95
GUILFORD	47	70	80	219	60	219	257	476	96	383	506	141	135	90	878	473	1351
HALIFAX	6	15	7	114	6	114	34	148	20	22	101	30	133	3	284	25	309

(CONTINUED)

JUL 1 1987 - JUN 30 1988  
C R I M E C A T E G O R Y

REPORT 3H: POPULATION BY COUNTY	PROPERTY CRIMES									TOTAL CRIMES			
	BURGLARY,		LARCENY,		FORGERY, BAD		TOTAL		TOTAL PROPER- TY	NOT REP.	TOTAL, ALL MIS	TOTAL, ALL FEL	TOTAL, ALL CRIMES
	BREAK & ENTER		AUTO THEFT		CHECKS & FRAUD		TOTAL						
	MIS	FEL	MIS	FEL	MIS	FEL	MIS	FEL					
CLAY	12	0	1	0	1	1	18	1	19	0	66	8	74
CLEVELAND	49	33	52	21	18	20	131	75	206	0	290	212	502
COLUMBUS	37	25	96	9	51	15	195	51	246	0	561	110	671
CRAVEN	35	37	69	22	32	25	174	86	260	0	522	171	693
CUMBERLAND	80	231	372	107	101	89	609	435	1044	0	1624	927	2551
CURRITUCK	5	8	6	1	2	6	16	15	31	0	63	31	94
DARE	3	15	14	10	3	10	25	35	60	0	116	71	187
DAVIE	8	4	23	4	19	2	57	13	70	0	196	36	232
DAVIDSON	83	32	220	31	51	21	405	86	491	0	1172	253	1425
DUPLIN	18	32	53	29	38	36	135	102	237	0	453	202	655
DURHAM	135	158	349	119	131	107	676	393	1069	0	2014	798	2812
EDGECOMBE	42	29	88	21	43	21	200	73	273	0	486	138	624
FORSYTH	117	163	320	87	106	103	601	373	974	0	1636	871	2507
FRANKLIN	20	21	28	13	22	8	80	44	124	0	288	86	374
GASTON	115	129	195	57	76	38	419	232	651	0	871	467	1338
GATES	3	3	5	1	3	3	11	7	18	0	37	15	52
GRAHAM	2	6	7	1	2	2	11	9	20	0	60	14	74
GRANVILLE	23	30	36	16	23	9	89	57	146	0	300	114	414
GREENE	9	9	16	0	7	6	40	16	56	0	134	41	175
GUILFORD	137	226	328	177	169	201	695	623	1318	0	1792	1353	3145
HALIFAX	46	30	131	24	30	10	240	67	307	0	638	126	764

(CONTINUED)

JUL 1 1987 - JUN 30 1988  
C R I M E C A T E G O R Y

REPORT 3H: POPULATION BY COUNTY	ASSAULTIVE CRIMES								PUBLIC ORDER								
	HOMI- CIDE	RAPE, SEX ASLT	ROB- BERY	OTHER		TOTAL			DRUGS & NARCOTICS		DWI	TRAF- FIC	OTHER		TOTAL		
				ASSAULTIVE		ASSAULTIVE							PUBLIC ORDER		PUBLIC ORDER		
				MIS	FEL	MIS	FELON	TOTAL	MIS	FEL			MIS	FELON	MIS	FELON	TOTAL
HARNETT	13	10	7	40	16	40	46	86	22	62	265	36	30	5	353	67	420
HAYWOOD	6	9	3	36	12	36	30	66	11	42	182	41	33	3	267	45	312
HENDERSON	7	7	7	26	7	26	28	54	38	38	107	28	18	4	191	42	233
HERTFORD	0	7	1	24	5	24	13	37	7	11	41	6	25	2	79	13	92
HOKE	6	4	1	36	4	36	15	51	20	30	108	24	30	4	182	34	216
HYDE	2	2	0	6	0	6	4	10	1	3	20	5	3	0	29	3	32
IREDELL	8	15	7	103	15	103	45	148	118	51	454	77	79	2	728	53	781
JACKSON	3	6	2	8	2	8	13	21	8	15	87	16	6	2	117	17	134
JOHNSON	8	14	5	44	11	44	38	82	17	53	283	59	35	8	394	61	455
JONES	0	3	2	6	2	6	7	13	0	5	36	4	4	0	44	5	49
LEE	1	6	10	35	10	35	27	62	29	55	131	45	40	7	245	62	307
LENOIR	5	11	7	61	7	61	30	91	24	66	226	38	51	3	339	69	408
LINCOLN	3	7	6	13	4	13	20	33	10	25	55	17	11	5	93	30	123
MACON	1	7	0	7	1	7	9	16	7	3	63	17	6	2	93	5	98
MADISON	2	2	1	5	4	5	9	14	13	6	33	11	15	4	72	10	82
MARTIN	3	5	2	26	3	26	13	39	3	15	80	7	18	5	108	20	128
MCDOWELL	2	15	4	15	3	15	24	39	27	34	61	13	12	0	113	34	147
MECKLENBURG	65	154	105	512	67	512	391	903	253	458	1207	356	355	49	2171	507	2678
MITCHELL	0	5	0	4	0	4	5	9	15	14	30	9	5	1	59	15	74
MONTGOMERY	2	9	4	15	6	15	21	36	6	32	75	10	29	2	120	34	154
MOORE	11	9	6	37	6	37	32	69	9	59	169	31	29	2	238	61	299

(CONTINUED)

JUL 1 1987 - JUN 30 1988  
CRIME CATEGORY

REPORT 3H: POPULATION BY COUNTY	PROPERTY CRIMES									TOTAL CRIMES			
	BURGLARY,		LARCENY,		FORGERY, BAD		TOTAL		TOTAL PROPER- TY	NOT REP.	TOTAL, ALL MIS	TOTAL, ALL FEL	TOTAL, ALL CRIMES
	BREAK & ENTER		AUTO THEFT		CHECKS & FRAUD		TOTAL						
	MIS	FEL	MIS	FEL	MIS	FEL	MIS	FEL					
HARNETT	33	36	93	23	34	18	182	83	265	0	575	196	771
HAYWOOD	24	34	51	13	16	19	108	66	174	0	411	141	552
HENDERSON	42	17	69	13	33	12	154	42	196	0	371	112	483
HERTFORD	19	12	44	7	10	14	77	34	111	0	180	60	240
HOKE	20	15	35	4	12	16	79	35	114	0	297	84	381
HYDE	0	3	2	4	0	2	5	9	14	0	40	16	56
IREDELL	62	22	274	11	89	12	476	47	523	0	1307	145	1452
JACKSON	14	9	23	5	3	6	42	20	62	0	167	50	217
JOHNSON	34	36	73	19	52	21	175	79	254	0	613	178	791
JONES	1	2	10	4	9	2	23	9	32	0	73	21	94
LEE	24	31	89	27	36	21	163	80	243	0	443	169	612
LENOIR	29	40	96	25	46	28	197	93	290	0	597	192	789
LINCOLN	25	16	38	11	16	8	88	42	130	0	194	92	286
MACON	10	4	13	5	5	6	34	17	51	0	134	31	165
MADISON	5	1	7	4	6	5	21	10	31	0	98	29	127
MARTIN	9	24	34	9	8	18	60	52	112	0	194	85	279
MCDOWELL	13	18	18	7	11	9	46	36	82	0	174	94	268
MECKLENBURG	178	302	769	207	429	170	1524	691	2215	0	4207	1589	5796
MITCHELL	3	7	3	0	2	1	10	8	18	0	73	28	101
MONTGOMERY	5	16	22	12	14	8	49	37	86	0	184	92	276
MOORE	20	24	57	18	22	35	116	84	200	0	391	177	568

(CONTINUED)

JUL 1 1987 - JUN 30 1988  
 CRIME CATEGORY

REPORT 3H: POPULATION BY COUNTY	ASSAULTIVE CRIMES								PUBLIC ORDER								
	HOMI- CIDE	RAPE, SEX ASLT	ROB- BERY	OTHER		TOTAL			DRUGS		DWI	TRAF- FIC	OTHER		TOTAL		
				ASSAULTIVE		ASSAULTIVE			& NARCOTICS				PUBLIC ORDER		PUBLIC ORDER		
				MIS	FEL	MIS	FELON	TOTAL	MIS	FEL			MIS	FELON	MIS	FELON	TOTAL
NASH	6	17	18	58	8	58	49	107	25	39	162	33	51	2	271	41	312
NEW HANOVER	10	41	20	92	31	92	102	194	44	159	279	84	87	22	494	181	675
NORTHAMPTON	2	7	0	25	7	25	16	41	7	18	36	17	22	1	82	19	101
ONslow	9	60	10	62	15	62	94	156	28	138	247	38	82	19	395	157	552
ORANGE	8	13	10	55	8	55	39	94	22	47	233	57	31	8	343	55	398
PAMLICO	0	0	0	7	1	7	1	8	11	22	19	7	13	0	50	22	72
PASQUOTANK	4	12	1	21	6	21	23	44	6	32	40	15	20	7	81	39	120
PENDER	5	5	3	28	6	28	19	47	16	24	76	16	14	4	122	28	150
PERQUIMANS	1	4	1	8	1	8	7	15	4	3	13	4	3	1	24	4	28
PERSON	6	5	4	29	6	29	21	50	4	21	111	19	21	4	155	25	180
PITT	9	21	16	102	9	102	55	157	48	79	287	81	65	17	481	96	577
POLK	0	2	0	6	2	6	4	10	9	4	18	9	3	0	39	4	43
RANDOLPH	9	15	6	42	17	42	47	89	22	62	194	44	39	11	299	73	372
RICHMOND	8	10	11	37	8	37	37	74	21	58	158	40	25	3	244	61	305
ROBESON	33	27	25	131	72	131	157	288	34	242	451	104	89	18	678	260	938
ROCKINGHAM	4	15	8	65	19	65	46	111	38	101	160	42	37	10	277	111	388
ROWAN	10	23	13	67	15	67	61	128	33	113	455	77	40	8	605	121	726
RUTHERFORD	6	7	9	37	13	37	35	72	33	32	85	31	20	3	169	35	204
SAMPSON	5	5	3	37	7	37	20	57	11	29	213	21	42	2	287	31	318
SCOTLAND	6	10	6	65	24	65	46	111	14	63	92	16	19	4	141	67	208
STANLY	1	9	1	42	6	42	17	59	9	26	122	26	33	5	190	31	221

(CONTINUED)

JUL 1 1987 - JUN 30 1988

CRIME CATEGORY

REPORT 3H: POPULATION BY COUNTY	PROPERTY CRIMES									TOTAL CRIMES			
	BURGLARY,		LARCENY,		FORGERY, BAD		TOTAL		TOTAL PROPER- TY	NOT REP.	TOTAL, ALL MIS	TOTAL, ALL FEL	TOTAL, ALL CRIMES
	BREAK & ENTER		AUTO THEFT		CHECKS & FRAUD		TOTAL						
	MIS	FEL	MIS	FEL	MIS	FEL	MIS	FEL					
NASH	67	41	113	26	51	35	260	104	364	0	589	194	783
NEW HANOVER	71	120	203	69	85	87	401	280	681	0	987	563	1550
NORTHAMPTON	22	9	24	9	14	5	76	24	100	0	183	59	242
ONSLow	66	54	128	57	143	46	363	160	523	0	820	411	1231
ORANGE	25	30	76	9	42	30	162	71	233	0	560	165	725
PAMLICO	4	5	7	3	2	1	23	9	32	0	80	32	112
PASQUOTANK	6	21	31	22	10	17	57	66	123	0	159	128	287
PENDER	10	11	23	10	19	10	56	33	89	0	206	80	286
PERQUIMANS	2	4	8	3	6	1	23	9	32	0	55	20	75
PERSON	11	12	25	6	12	14	57	36	93	0	241	82	323
PITT	61	67	160	43	95	52	355	165	520	0	938	316	1254
POLK	5	3	17	5	4	0	29	8	37	0	74	16	90
RANDOLPH	50	56	104	16	51	30	235	107	342	0	576	227	803
RICHMOND	18	46	90	37	20	32	149	117	266	0	430	215	645
ROBESON	34	217	192	85	95	123	368	432	800	0	1177	849	2026
ROCKINGHAM	29	51	76	41	26	43	154	136	290	0	496	293	789
ROWAN	35	80	123	45	36	36	223	164	387	0	895	346	1241
RUTHERFORD	28	32	44	12	16	17	96	61	157	0	302	131	433
SAMPSON	26	15	50	16	28	25	122	58	180	0	446	109	555
SCOTLAND	22	40	70	24	28	24	132	90	222	1	338	203	542
STANLY	9	20	47	18	16	20	89	59	148	0	321	107	428

(CONTINUED)

JUL 1 1987 - JUN 30 1988  
CRIME CATEGORY

REPORT 3H: POPULATION BY COUNTY	ASSAULTIVE CRIMES								PUBLIC ORDER								
	HOMI- CIDE	RAPE, SEX ASLT	ROB- BERY	OTHER		TOTAL			DRUGS & NARCOTICS		DWI	TRAF- FIC	OTHER		TOTAL		
				ASSAULTIVE		ASSAULTIVE			PUBLIC ORDER				PUBLIC ORDER				
				MIS	FEL	MIS	FELON	TOTAL	MIS	FEL			MIS	FELON	MIS	FELON	TOTAL
STOKES	6	7	2	12	9	12	24	36	8	31	65	23	13	3	109	34	143
SURRY	6	18	12	39	14	39	50	89	30	69	157	72	34	3	293	72	365
SWAIN	2	2	1	6	2	6	7	13	7	10	61	4	1	0	73	10	83
TRANSYLVANIA	2	6	3	10	6	10	17	27	17	9	32	15	8	0	72	9	81
TYRRELL	0	0	0	8	1	8	1	9	1	0	12	3	3	0	19	0	19
UNION	9	9	8	49	10	49	36	85	24	54	339	68	38	5	469	59	528
VANCE	6	9	5	49	8	49	28	77	11	28	146	14	36	14	207	42	249
WAKE	65	133	77	359	86	359	361	720	147	482	1502	236	199	53	2084	535	2619
WARREN	2	2	3	12	8	12	15	27	4	1	59	10	8	0	81	1	82
WASHINGTON	1	0	2	22	1	22	4	26	4	5	24	8	11	5	47	10	57
WATAUGA	3	4	2	6	1	6	10	16	7	12	49	13	6	1	75	13	88
WAYNE	11	19	10	64	21	64	61	125	26	101	350	90	89	8	555	109	664
WILKES	11	9	6	56	9	56	35	91	32	46	322	102	56	1	512	47	559
WILSON	7	7	10	58	9	58	33	91	14	32	128	25	35	1	202	33	235
YADKIN	4	8	4	17	6	17	22	39	10	19	76	25	16	0	127	19	146
YANCEY	0	5	1	4	4	4	10	14	6	15	40	6	7	1	59	16	75
OUT OF STATE	80	102	106	78	51	78	339	417	82	322	301	81	55	65	519	387	906
TOTAL	828	1662	1024	4966	1190	4966	4704	9670	2507	6007	18158	4084	3866	794	28615	6801	35416

(CONTINUED)

JUL 1 1987 - JUN 30 1988  
 CRIME CATEGORY

REPORT 3H: POPULATION BY COUNTY	PROPERTY CRIMES									TOTAL CRIMES			
	BURGLARY, BREAK & ENTER		LARCENY, AUTO THEFT		FORGERY, BAD CHECKS & FRAUD		TOTAL		TOTAL PROPER- TY	NOT REP.	TOTAL, ALL MIS	TOTAL, ALL FEL	TOTAL, ALL CRIMES
	MIS	FEL	MIS	FEL	MIS	FEL	MIS	FEL					
STOKES	9	18	34	9	11	8	67	38	105	0	188	96	284
SURRY	23	47	84	19	23	27	166	96	262	0	498	218	716
SWAIN	6	3	8	0	2	4	16	8	24	0	95	25	120
TRANSYLVANIA	9	7	18	7	10	5	44	20	64	0	126	46	172
TYRRELL	0	1	5	3	0	3	8	8	16	0	35	9	44
UNION	27	51	94	61	46	33	189	148	337	0	707	243	950
VANCE	24	39	55	16	31	17	121	75	196	0	377	145	522
WAKE	159	243	448	205	231	224	950	681	1631	0	3393	1577	4970
WARREN	6	8	13	5	11	1	31	14	45	0	124	30	154
WASHINGTON	1	8	27	4	4	5	36	17	53	0	105	31	136
WATAUGA	13	10	25	3	15	6	55	19	74	1	136	42	179
WAYNE	39	43	166	41	78	40	326	131	457	0	945	301	1246
WILKES	40	20	79	11	49	10	200	43	243	0	768	125	893
WILSON	45	38	120	20	44	30	232	93	325	0	492	159	651
YADKIN	9	14	24	2	16	12	56	30	86	0	200	71	271
YANCEY	0	6	6	2	2	1	10	11	21	0	73	37	110
OUT OF STATE	101	233	282	153	120	194	535	603	1138	0	1132	1329	2461
TOTAL	3098	4206	8520	2671	3839	2780	17400	9946	27346	2	50981	21451	72434



JUL 1 1987 - JUN 30 1988

AGE CATEGORIES

REPORT 31: POPULATION BY CRIME	YOUTH							ADULTS						TOTAL, ALL AGES
	UNDER 17	17 YEARS	18 YEARS	19 YEARS	20 YEARS	21 YEARS	TOTAL 16-21	22 - 24 YEARS	25 - 29 YEARS	30 - 39 YEARS	40 - 49 YEARS	50 - 59 YEARS	60+ YEARS	
MURDER FIRST DEGREE	0	0	1	3	4	2	10	3	9	34	22	16	13	107
MURDER SECOND DEGREE	0	0	2	0	0	2	4	6	30	91	68	25	21	245
MANSLAUGHTER	1	4	7	18	15	22	67	54	99	132	67	31	26	476
ROBBERY	7	10	26	36	62	48	189	156	227	345	83	16	8	1024
ASSAULT	52	132	213	222	223	234	1076	813	1320	1721	726	270	131	6057
RAPE	7	3	7	11	9	9	46	36	41	111	72	18	13	337
SEXUAL ASSAULT	0	0	0	0	0	0	0	0	4	2	1	3	0	10
MISC. SEX CRIMES	5	22	35	35	38	51	186	115	256	367	223	92	76	1315
KIDNAP, ABDUCTION	0	1	1	2	0	0	4	8	21	47	15	4	0	99
BURGLARY	0	1	2	6	9	13	31	49	58	57	20	8	1	224
BREAKING, ENTERING	160	444	666	719	693	561	3243	1325	1330	937	196	41	8	7080
LARCENY	241	689	811	716	754	704	3915	1791	2080	1985	542	169	60	10542
AUTO THEFT	18	54	68	56	54	51	301	114	119	85	20	10	0	649
BURNINGS	0	4	6	9	11	14	44	48	72	78	42	8	7	299
FRAUD	5	45	67	69	70	114	370	343	526	793	339	91	37	2499
FORGERY	7	31	55	78	113	118	402	397	530	572	157	36	6	2106
WORTHLESS CHECKS	1	7	14	32	44	79	177	307	421	712	294	73	30	2014
TRESPASS	47	128	163	163	144	95	740	272	415	339	118	40	9	1933
NARCOTICS AND DRUGS	24	98	169	217	256	321	1085	1174	2283	2875	805	213	79	8514
ABANDONMENT AND NON-SUPPORT	0	1	3	3	1	2	10	18	48	88	50	5	1	220

(CONTINUED)

JUL 1 1987 - JUN 30 1988

AGE CATEGORIES

REPORT 31: POPULATION BY CRIME	YOUTH							ADULTS						TOTAL,
	UNDER 17	17 YEARS	18 YEARS	19 YEARS	20 YEARS	21 YEARS	TOTAL 16-21	22 - 24 YEARS	25 - 29 YEARS	30 - 39 YEARS	40 - 49 YEARS	50 - 59 YEARS	60+ YEARS	ALL AGES
DRIVING WHILE IMPAIRED	11	57	104	167	224	308	871	1938	4416	6331	2885	1236	481	18158
OTHER TRAFFIC VIOLATIONS	27	83	143	157	165	188	763	634	964	1105	392	147	79	4084
HABITUAL DRUNK	0	0	0	0	1	0	1	1	0	1	0	0	0	3
OTHERS	36	80	89	97	97	108	507	423	886	1577	652	265	127	4437
YNREP	0	0	0	0	0	0	0	2	0	0	0	0	0	2
TOTAL	649	1894	2652	2816	2987	3044	14042	10027	16161	20385	7789	2817	1213	72434

JUL 1 1987 - JUN 30 1988

AGE CATEGORIES

REPORT 3J: POPULATION BY COUNTY	YOUTH							ADULTS						TOTAL,
	UNDER 17	17 YEARS	18 YEARS	19 YEARS	20 YEARS	21 YEARS	TOTAL 16-21	22 - 24 YEARS	25 - 29 YEARS	30 - 39 YEARS	40 - 49 YEARS	50 - 59 YEARS	60+ YEARS	ALL AGES
ALAMANCE	13	36	38	48	59	50	244	191	304	372	142	46	17	1316
ALLEGHANY	1	0	4	3	2	4	14	16	14	32	12	6	1	95
ALEXANDER	1	11	10	15	7	12	56	51	68	66	30	27	6	304
ANSON	1	5	9	19	15	16	65	48	80	104	40	14	12	363
ASHE	5	5	11	7	8	15	51	30	38	38	19	7	4	187
AVERY	0	3	6	3	7	7	26	19	24	25	15	6	1	116
BEAUFORT	7	13	18	23	33	19	113	74	141	178	71	23	18	618
BERTIE	0	1	7	6	5	14	33	41	57	74	28	10	4	247
BLADEN	3	9	12	13	21	5	63	48	88	136	53	28	10	426
BRUNSWICK	5	21	31	33	22	21	133	84	148	165	57	25	9	621
BUNCOMBE	10	27	33	48	45	59	222	174	253	322	119	35	14	1139
BURKE	5	25	35	35	26	47	173	107	165	203	80	32	13	773
CABARRUS	8	29	36	42	43	43	201	149	238	261	107	42	10	1008
CALDWELL	6	21	31	31	37	37	163	109	157	157	59	27	10	682
CAMDEN	0	2	0	2	1	2	7	2	8	10	6	2	1	36
CARTERET	3	15	13	14	15	18	78	62	114	111	42	13	3	423
CASWELL	2	5	6	8	5	8	34	25	40	55	29	9	5	197
CATAWBA	12	38	46	57	43	54	260	186	277	299	116	40	9	1187
CHATHAM	5	8	10	10	12	9	54	42	72	105	44	17	6	340
CHEROKEE	3	6	8	8	8	12	45	36	38	62	37	14	9	241

(CONTINUED)

JUL 1 1987 - JUN 30 1988  
A G E C A T E G O R I E S

REPORT 3J: POPULATION BY COUNTY	YOUTH							ADULTS						TOTAL,
	UNDER 17	17 YEARS	18 YEARS	19 YEARS	20 YEARS	21 YEARS	TOTAL 16-21	22 - 24 YEARS	25 - 29 YEARS	30 - 39 YEARS	40 - 49 YEARS	50 - 59 YEARS	60+ YEARS	ALL AGES
CHOWAN	2	4	3	11	2	7	29	13	27	54	18	6	2	149
CLAY	1	3	5	5	2	6	22	6	14	17	12	2	1	74
CLEVELAND	4	19	21	23	26	21	114	76	102	127	60	18	5	502
COLUMBUS	1	17	10	18	29	24	99	93	145	179	81	57	17	671
CRAVEN	7	17	26	20	25	30	125	96	168	200	66	28	10	693
CUMBERLAND	21	64	71	92	106	99	453	364	620	719	260	101	34	2551
CURRITUCK	0	2	4	1	3	4	14	13	20	31	10	4	2	94
DARE	0	1	12	3	9	10	35	33	41	58	16	4	0	187
DAVIE	0	10	12	14	7	13	56	29	48	61	19	15	4	232
DAVIDSON	13	48	49	49	50	47	256	220	329	377	144	75	24	1425
DUPLIN	6	9	23	24	27	27	116	77	145	166	90	42	19	655
DURHAM	22	39	88	94	103	103	449	334	639	879	348	111	52	2812
EDGECOMBE	11	16	25	31	27	26	136	80	128	182	70	19	9	624
FORSYTH	17	74	98	88	106	123	506	312	546	743	275	97	28	2507
FRANKLIN	3	5	14	17	11	14	64	43	97	110	43	11	6	374
GASTON	11	31	57	54	87	64	304	210	305	351	117	37	14	1338
GATES	1	2	1	3	4	2	13	9	8	15	6	0	1	52
GRAHAM	1	4	4	2	5	4	20	5	14	16	11	4	4	74
GRANVILLE	2	7	15	15	14	12	65	49	94	121	57	17	11	414
GREENE	3	1	3	8	0	2	17	20	43	54	24	7	10	175

(CONTINUED)

JUL 1 1987 - JUN 30 1988  
A G E C A T E G O R I E S

REPORT 3J: POPULATION BY COUNTY	YOUTH							ADULTS						TOTAL,
	UNDER 17	17 YEARS	18 YEARS	19 YEARS	20 YEARS	21 YEARS	TOTAL 16-21	22 - 24 YEARS	25 - 29 YEARS	30 - 39 YEARS	40 - 49 YEARS	50 - 59 YEARS	60+ YEARS	ALL AGES
GUILFORD	16	68	117	138	142	151	632	413	674	964	321	96	45	3145
HALIFAX	8	14	29	38	49	20	158	93	175	206	90	28	14	764
HARNETT	6	13	17	23	33	23	115	123	174	219	89	34	17	771
HAYWOOD	4	13	25	27	17	25	111	86	117	130	71	19	18	552
HENDERSON	6	11	18	20	32	25	112	71	87	123	59	28	3	483
HERTFORD	2	4	10	9	6	15	46	36	42	79	24	10	3	240
HOKE	4	14	8	3	17	10	56	45	76	139	38	20	7	381
HYDE	1	1	1	1	3	2	9	12	14	13	4	3	1	56
IREDELL	19	58	61	70	52	56	316	210	333	382	147	46	18	1452
JACKSON	3	5	6	10	7	10	41	29	47	60	24	12	4	217
JOHNSON	10	20	28	18	32	24	132	109	164	222	101	42	21	791
JONES	0	2	3	0	1	2	8	6	21	37	14	5	3	94
LEE	4	17	25	28	32	28	134	91	143	147	60	23	14	612
LENOIR	5	18	32	33	29	31	148	103	147	260	85	34	12	789
LINCOLN	2	13	12	14	16	14	71	50	59	71	24	8	3	286
MACON	0	3	10	5	4	7	29	23	40	38	21	9	5	165
MADISON	1	0	6	4	6	9	26	11	23	32	23	8	4	127
MARTIN	4	11	12	10	14	15	66	33	59	79	26	10	6	279
MCDOWELL	2	4	15	11	11	16	59	41	59	70	25	10	4	268
MECKLENBURG	79	214	239	209	188	229	1158	709	1286	1744	617	213	69	5796

(CONTINUED)

JUL 1 1987 - JUN 30 1988

AGE CATEGORIES

REPORT 3J: POPULATION BY COUNTY	YOUTH							ADULTS						TOTAL,
	UNDER 17	17 YEARS	18 YEARS	19 YEARS	20 YEARS	21 YEARS	TOTAL 16-21	22 - 24 YEARS	25 - 29 YEARS	30 - 39 YEARS	40 - 49 YEARS	50 - 59 YEARS	60+ YEARS	ALL AGES
MITCHELL	0	3	3	5	4	5	20	8	21	30	14	6	2	101
MONTGOMERY	0	3	4	7	7	7	28	41	71	77	40	14	5	276
MOORE	6	17	15	23	18	27	106	88	114	176	51	22	11	568
NASH	11	24	27	34	45	28	169	121	169	215	71	20	18	783
NEW HANOVER	15	47	68	75	63	84	352	222	342	420	140	48	26	1550
NORTHAMPTON	2	10	9	10	9	13	53	23	46	74	28	11	7	242
ONslow	8	34	41	53	68	67	271	237	303	294	89	31	6	1231
ORANGE	5	25	24	20	18	32	124	108	160	232	65	23	13	725
PAMLICO	0	2	8	3	5	2	20	9	23	33	16	10	1	112
PASQUOTANK	2	6	8	16	13	16	61	58	68	61	26	9	4	287
PENDER	0	12	6	7	13	10	48	36	62	77	39	14	10	286
PERQUIMANS	1	2	2	13	3	3	24	8	20	17	5	1	0	75
PERSON	4	6	6	8	8	11	43	38	87	77	50	15	13	323
PITT	22	30	50	46	55	54	257	159	266	367	141	41	23	1254
POLK	1	2	6	4	2	3	18	15	20	18	15	3	1	90
RANDOLPH	3	24	30	48	36	32	173	127	197	192	79	19	16	803
RICHMOND	11	18	33	30	21	24	137	90	130	176	70	34	8	645
ROBESON	16	47	82	71	84	89	389	259	445	592	217	82	42	2026
ROCKINGHAM	13	34	42	35	39	39	202	99	162	193	81	35	17	789
ROWAN	16	42	49	48	59	39	253	158	290	347	123	49	21	1241

(CONTINUED)

JUL 1 1987 - JUN 30 1988

AGE CATEGORIES

REPORT 3J: POPULATION BY COUNTY	YOUTH							ADULTS						TOTAL,
	UNDER 17	17 YEARS	18 YEARS	19 YEARS	20 YEARS	21 YEARS	TOTAL 16-21	22 - 24 YEARS	25 - 29 YEARS	30 - 39 YEARS	40 - 49 YEARS	50 - 59 YEARS	60+ YEARS	ALL AGES
RUTHERFORD	3	12	18	17	15	17	82	75	100	108	39	17	12	433
SAMPSON	2	6	18	14	22	17	79	68	109	166	76	38	19	555
SCOTLAND	12	24	16	24	30	14	120	75	121	159	41	13	13	542
STANLY	6	13	18	18	15	16	86	63	90	116	42	21	10	428
STOKES	0	12	12	12	17	14	67	40	54	71	34	15	3	284
SURRY	4	19	35	34	37	36	165	119	141	173	79	26	13	716
SWAIN	2	1	7	2	5	2	19	12	27	33	19	5	5	120
TRANSYLVANIA	3	7	12	8	7	11	48	28	39	34	15	6	2	172
TYRRELL	1	3	1	3	0	0	8	5	10	12	4	4	1	44
UNION	3	26	49	31	32	41	182	147	220	248	96	34	23	950
VANCE	5	14	15	21	19	12	86	63	105	167	67	24	10	522
WAKE	22	90	143	168	200	207	830	696	1172	1463	568	168	73	4970
WARREN	3	4	5	6	0	12	30	17	22	55	17	7	6	154
WASHINGTON	2	9	6	5	4	3	29	21	25	37	16	6	2	136
WATAUGA	1	2	9	6	10	14	42	31	42	36	18	6	4	179
WAYNE	11	22	38	34	45	28	178	154	291	388	147	58	30	1246
WILKES	17	19	40	32	45	34	187	119	204	240	97	34	12	893
WILSON	5	17	37	35	27	33	154	84	142	191	51	18	11	651
YADKIN	3	6	11	14	16	18	68	27	68	67	18	14	9	271
YANCEY	0	0	3	7	6	0	16	15	22	27	21	6	3	110

(CONTINUED)

JUL 1 1987 - JUN 30 1988  
A G E . C A T E G O R I E S

REPORT 3J: POPULATION BY COUNTY	YOUTH							ADULTS						TOTAL,
	UNDER 17	17 YEARS	18 YEARS	19 YEARS	20 YEARS	21 YEARS	TOTAL 16-21	22 - 24 YEARS	25 - 29 YEARS	30 - 39 YEARS	40 - 49 YEARS	50 - 59 YEARS	60+ YEARS	ALL AGES
OUT OF STATE	16	44	67	91	117	128	463	394	564	676	268	74	22	2461
TOTAL	649	1894	2652	2816	2987	3044	14042	10027	16161	20385	7789	2817	1213	72434



JUL 1 1987 - JUN 30 1988  
A G E C A T E G O R I E S

REPORT 3K: POPULATION BY SUPERVISION LEVEL	YOUTH							ADULTS						TOTAL,
	UNDER 17	17 YEARS	18 YEARS	19 YEARS	20 YEARS	21 YEARS	TOTAL 16-21	22 - 24 YEARS	25 - 29 YEARS	30 - 39 YEARS	40 - 49 YEARS	50 - 59 YEARS	60+ YEARS	ALL AGES
INTENSIVE SUPERVISION	15	54	71	71	62	70	343	149	200	253	68	23	16	1052
SUSPENDED	10	51	126	170	240	290	887	1215	2063	2643	883	263	70	8024
HIGH RISK	45	133	162	217	227	232	1016	809	1236	1392	419	109	56	5037
SELECTIVE	132	324	376	314	251	259	1656	605	897	1099	408	165	63	4893
INTERMEDIATE	279	879	1287	1365	1447	1461	6718	4894	8149	10383	4169	1676	727	36716
SPECIAL	86	269	377	383	399	383	1897	1252	2005	2587	1084	379	193	9397
DEFERRED	40	130	191	238	296	292	1187	895	1279	1624	613	170	70	5838
MAX SELECTIVE OR NOT REPORTED	42	54	62	58	65	57	338	208	332	404	145	32	18	1477
TOTAL	649	1894	2652	2816	2987	3044	14042	10027	16161	20385	7789	2817	1213	72434

## APPENDIX: Procedure and Definitions Used in Creating the Abstract

Issues published: Two annual issues (fiscal-year and calendar-year) and two quarterly issues (January-March, July -September) are published each year.

Coverage: Persons placed onto supervised parole, supervised probation, and certain cases of deferred prosecution. Excluded are unsupervised paroles, and persons given suspended sentences without probation supervision.

Conditions causing a person to be counted in the Abstract:

Section 1- Entries onto supervision. Includes persons whose supervision began during the period covered by the report. Persons already under supervision but who received a new case during the period are not counted as new entries. The case-begin and case-end dates are used to determine this. If the offender has more than one case, then the "initiation case" (the earliest of the cases beginning in the period covered) is used to determine crime, county, etc.)

Section 2- Removals from supervision. Includes persons whose supervision ended during the period due to expiration of their term (completion), early termination, revocation, or death (but not by absconding or deferral).

Section 3- Supervised population at year-end. Counts only persons who had one or more active cases on the last day of the period (even if on deferred or suspended status). This group of reports thus provide a "snapshot" of the population under supervision on one day.

Definitions of terms (Column headings and row labels)

Probation/parole dual (Reports 1A,1B,1C,1D,1E,1F,2A,3A,3B,3C, 3D)

Intensive probation/dual. Includes all clients supervised in-state under intensive supervision with a probation case. Some of these may be dual supervision (i.e. have both a probation and a parole case)

Total probation/dual. Includes all probation and dual supervision clients supervised in-state. Also includes clients already counted as intensive probation/dual.

Intensive parole/dual. Includes parole intensive cases and dual supervision intensive cases, including those dual cases already counted under intensive probation/dual.

Total parole dual. Includes all parole and dual supervision clients supervised in-state. Also includes clients already counted as intensive parole/dual.

Total clients in-state. Includes parole, probation, and dual cases, whether or not intensive. It is not the sum of previous columns, because a client can appear in more than one of them but can only be counted once in this column.

All clients (includes out-of-state). All probationers and parolees whether supervised in North Carolina or not.

Supervision length (Report 1B). The supervision period imposed by the court.

Crime (Reports 1C,2C,3B,3G,3H,3I). If more than one crime, then the most serious one based on the length of the maximum imposed prison sentence.

County of Conviction (Reports 1D,3C,3H,3J) The county associated with the crime, as described above.

Supervision level.

A. Entries (Report 1A) The initial supervision level assigned, usually based on the offender's first assessment. If the supervision period begins as an intensive case then the offender is counted as being in the intensive supervision level.

B. Removals and C. Under supervision (Reports 2B,3A,3F, 3K) The supervision level at the time the Abstract was generated (Note: each of these reports is in two parts. One part includes just probation and dual cases; the other just parole and dual.)

Time under supervision (Reports 2D,2E) The total time the offender was under requirement for supervision, from the first case-begin date to the last completion or termination date, including time spent in deferred or suspended status.