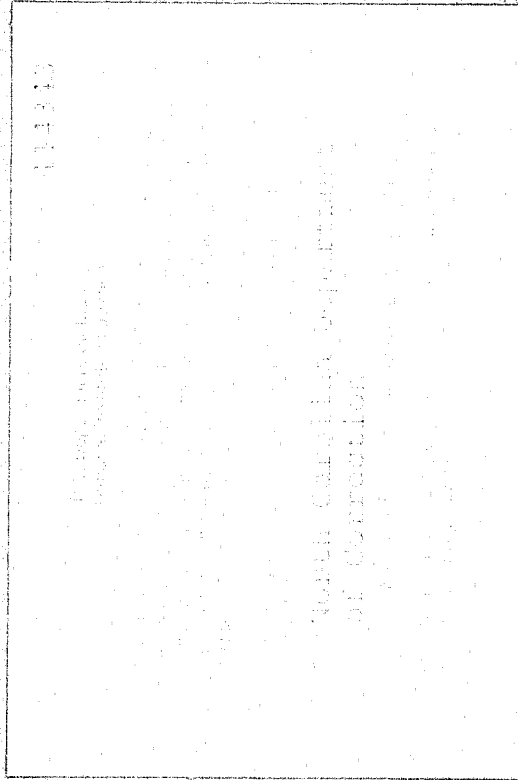


NORTH CAROLINA

114343

DEPARTMENT OF CORRECTION



**ABSOLUTE
STATISTICAL**

DIVISION OF ADULT PROBATION AND PAROLE

JAMES G. MARTIN

GOVERNOR

ARON J. OLSON

SECRET

MONROE WATERS

SECRET

TABLE OF CONTENTS

114343

<u>Report Number</u>	<u>Column Headings</u>	<u>Row Labels</u>	<u>Page</u>
SECTION 1 - ENTRIES ONTO SUPERVISION			
1A	Probation/Parole/Intensive	Supervision level	1
1B	Probation/Parole/Intensive	Supervision length	2
1C	Probation/Parole/Intensive	Crime	3
1D	Probation/Parole/Intensive	County of Conviction	5
1E	Probation/Parole/Intensive	Sex/Race	10
1F	Probation/Parole/Intensive	Age at entry	11
1G	Supervision level (Probation)	Branch/Unit	12
	Supervision level (Parole)	Branch/Unit	18
1H	Supervision level (Probation)	Officer Perception	23
	Supervision level (Parole)	Officer Perception	24
SECTION 2 - REMOVALS FROM SUPERVISION			
2A	Probation/Parole/Intensive	Time under supervision	25
2B	Supervision level (Probation)	Reason for termination	26
	Supervision level (Parole)	Reason for termination	28
2C	Crime	Time under supervision	30
2D	Time under supervision	Reason for term.(number)	32
2E	Time under supervision	Reason for term. (percent)	34
SECTION 3 - SUPERVISED POPULATION AT PERIOD END			
3A	Probation/Parole/Intensive	Supervision level	36
3B	Probation/Parole/Intensive	Crime	38
3C	Probation/Parole/Intensive	County of Conviction	40
3D	Probation/Parole/Intensive	Sex/Race	45
3E	Probation/Parole/Intensive	Age at period end	46
3F	Supervision level (Probation)	Unit	47
	Supervision level (Parole)	Unit	53
3G	Crime	Sex/Race	58
3H	Crime	County of conviction	60
3I	Age	Crime.	72
3J	Age	County of conviction	74
3K	Age	Supervision level	79

NCJRS

DEC 2 1988

ACQUISITIONS

JAN 1 - DEC 31 1986

S U P E R V I S E D I N S T A T E ALL CLIENTS

REPORT 1A: RECEIVED: BY SUPERVISION LEVEL	INTENSIVE PROB/DUAL		TOTAL PROBATION/DUAL		INTENSIVE PAROLE/DUAL		TOTAL PAROLE/DUAL		TOTAL CLIENTS IN-STATE		(INCLUDES OUT OF STATE)	
	NUMBER	PERCENT	NUMBER	PERCENT	NUMBER	PERCENT	NUMBER	PERCENT	NUMBER	PERCENT	NUMBER	PERCENT
INTENSIVE SUPERVISION	18	7.1	18	0.1	0	0.0	1	0.0	19	0.1	19	0.1
SUSPENDED	0	0.0	197	0.6	0	0.0	64	1.2	261	0.7	261	0.7
HIGH RISK	117	46.1	3554	11.2	19	90.5	1003	18.9	4519	12.2	4532	12.0
SELECTIVE	26	10.2	3413	10.7	1	4.8	349	6.6	3754	10.1	3766	9.9
INTERMEDIATE	72	28.3	16591	52.1	1	4.8	1454	27.4	17996	48.6	18064	47.7
SPECIAL	10	3.9	4339	13.6	0	0.0	186	3.5	4507	12.2	4526	11.9
DEFERRED	11	4.3	3154	9.9	0	0.0	69	1.3	3221	8.7	3998	10.5
NOT REPORTED	0	0.0	550	1.7	0	0.0	2184	41.1	2734	7.4	2734	7.2
TOTAL	254	100.0	31816	100.0	21	100.0	5310	100.0	37011	100.0	37900	100.0

JAN 1 - DEC 31 1986

S U P E R V I S E D I N S T A T E ALL CLIENTS

REPORT 1B: RECEIVED--BY SUPERVISION LENGTH	INTENSIVE PROB/DUAL		TOTAL PROBATION/DUAL		INTENSIVE PAROLE/DUAL		TOTAL PAROLE/DUAL		TOTAL CLIENTS IN-STATE		(INCLUDES OUT OF STATE)	
	NUMBER	PERCENT	NUMBER	PERCENT	NUMBER	PERCENT	NUMBER	PERCENT	NUMBER	PERCENT	NUMBER	PERCENT
SIX MONTHS OR LESS	0	0.0	971	3.1	0	0.0	0	0.0	971	2.6	996	2.6
OVER 6 MO, THROUGH 1 YEAR	1	0.4	8242	25.9	0	0.0	3	0.1	8242	22.3	8340	22.0
OVER 1, THROUGH 2 YEARS	6	2.4	10026	31.5	0	0.0	9	0.2	10026	27.1	10183	26.9
OVER 2, THROUGH 3 YEARS	45	17.7	7212	22.7	0	0.0	21	0.4	7212	19.5	7408	19.5
OVER 3, THROUGH 4 YEARS	7	2.8	595	1.9	0	0.0	3	0.1	595	1.6	607	1.6
OVER 4, THROUGH 5 YEARS	195	76.8	4733	14.9	4	19.0	79	1.5	4734	12.8	4913	13.0
MORE THAN 5 YEARS	0	0.0	36	0.1	0	0.0	1	0.0	36	0.1	36	0.1
NOT REPORTED	0	0.0	1	0.0	17	81.0	5194	97.8	5195	14.0	5417	14.3
TOTAL	254	100.0	31816	100.0	21	100.0	5310	100.0	37011	100.0	37900	100.0

JAN 1 - DEC 31 1986

S U P E R V I S E D I N S T A T E ALL CLIENTS

REPORT IC: RECEIVED.- BY CRIME	INTENSIVE PROB/DUAL		TOTAL PROBATION/DUAL		INTENSIVE PAROLE/DUAL		TOTAL PAROLE/DUAL		TOTAL CLIENTS IN-STATE		(INCLUDES OUT OF STATE)	
	NUMBER	PERCENT	NUMBER	PERCENT	NUMBER	PERCENT	NUMBER	PERCENT	NUMBER	PERCENT	NUMBER	PERCENT
MURDER FIRST DEGREE	0	0.0	3	0.0	0	0.0	16	0.3	19	0.1	20	0.1
MURDER SECOND DEGREE	0	0.0	6	0.0	2	9.5	73	1.4	79	0.2	83	0.2
MANSLAUGHTER	3	1.2	97	0.3	0	0.0	135	2.5	232	0.6	249	0.7
ROBBERY	10	3.9	105	0.3	10	47.6	388	7.3	487	1.3	511	1.3
ASSAULT	7	2.8	2932	9.2	0	0.0	351	6.6	3277	8.9	3327	8.8
RAPE	3	1.2	49	0.2	0	0.0	117	2.2	165	0.4	173	0.5
SEXUAL ASSAULT	0	0.0	1	0.0	0	0.0	2	0.0	3	0.0	3	0.0
MISC. SEX CRIMES	6	2.4	541	1.7	1	4.8	136	2.6	676	1.8	710	1.9
KIDNAP, ABDUCTION	0	0.0	14	0.0	0	0.0	24	0.5	37	0.1	38	0.1
BURGLARY	0	0.0	28	0.1	1	4.8	55	1.0	83	0.2	85	0.2
BREAKING, ENTERING	60	23.6	2314	7.3	3	14.3	1192	22.4	3488	9.4	3619	9.5
LARCENY	41	16.1	4860	15.3	0	0.0	889	16.7	5728	15.5	5901	15.6
AUTO THEFT	2	0.8	294	0.9	0	0.0	30	0.6	324	0.9	333	0.9
BURNINGS	4	1.6	73	0.2	1	4.8	60	1.1	133	0.4	135	0.4
FRAUD	9	3.5	892	2.8	1	4.8	127	2.4	1007	2.7	1071	2.8
FORGERY	12	4.7	656	2.1	0	0.0	275	5.2	922	2.5	947	2.5
WORTHLESS CHECKS	0	0.0	863	2.7	0	0.0	35	0.7	897	2.4	908	2.4
TRESPASS	0	0.0	1204	3.8	0	0.0	42	0.8	1243	3.4	1254	3.3
NARCOTICS AND DRUGS	92	36.2	2819	8.9	2	9.5	737	13.9	3528	9.5	3679	9.7
ABANDONMENT AND NON- SUPPORT	0	0.0	101	0.3	0	0.0	11	0.2	112	0.3	114	0.3

(CONTINUED)

JAN 1 - DEC 31 1986

S U P E R V I S E D I N S T A T E ALL CLIENTS

REPORT IC: RECEIVED:- BY CRIME	INTENSIVE PROB/DUAL		TOTAL PROBATION/DUAL		INTENSIVE PAROLE/DUAL		TOTAL PAROLE/DUAL		TOTAL CLIENTS IN-STATE		(INCLUDES OUT OF STATE)	
	NUMBER	PERCENT	NUMBER	PERCENT	NUMBER	PERCENT	NUMBER	PERCENT	NUMBER	PERCENT	NUMBER	PERCENT
DRIVING WHILE IMPAIRED	0	0.0	10267	32.3	0	0.0	345	6.5	10611	28.7	10715	28.3
OTHER TRAFFIC VIOLATIONS	3	1.2	1752	5.5	0	0.0	167	3.1	1916	5.2	1949	5.1
HABITUAL DRUNK	0	0.0	2	0.0	0	0.0	0	0.0	2	0.0	2	0.0
OTHERS	2	0.8	1943	6.1	0	0.0	103	1.9	2042	5.5	2074	5.5
TOTAL	254	100.0	31816	100.0	21	100.0	5310	100.0	37011	100.0	37900	100.0

JAN 1 - DEC 31 1986

S U P E R V I S E D I N S T A T E ALL CLIENTS

REPORT ID: RECEIVED:- BY COUNTY	INTENSIVE PROB/DUAL		TOTAL PROBATION/DUAL		INTENSIVE PAROLE/DUAL		TOTAL PAROLE/DUAL		TOTAL CLIENTS IN-STATE		(INCLUDES OUT OF STATE)	
	NUMBER	PERCENT	NUMBER	PERCENT	NUMBER	PERCENT	NUMBER	PERCENT	NUMBER	PERCENT	NUMBER	PERCENT
ALAMANCE	2	0.8	839	2.6	0	0.0	88	1.7	925	2.5	933	2.5
ALLEGHANY	0	0.0	40	0.1	0	0.0	3	0.1	43	0.1	48	0.1
ALEXANDER	0	0.0	139	0.4	0	0.0	13	0.2	152	0.4	154	0.4
ANSON	0	0.0	159	0.5	0	0.0	22	0.4	181	0.5	183	0.5
ASHE	0	0.0	100	0.3	0	0.0	10	0.2	109	0.3	111	0.3
AVERY	0	0.0	34	0.1	0	0.0	9	0.2	43	0.1	43	0.1
BEAUFORT	4	1.6	338	1.1	0	0.0	47	0.9	385	1.0	395	1.0
BERTIE	0	0.0	113	0.4	0	0.0	20	0.4	132	0.4	135	0.4
BLADEN	0	0.0	163	0.5	0	0.0	24	0.5	187	0.5	189	0.5
BRUNSWICK	0	0.0	152	0.5	0	0.0	23	0.4	175	0.5	188	0.5
BUNCOMBE	26	10.2	480	1.5	0	0.0	115	2.2	592	1.6	620	1.6
BURKE	0	0.0	324	1.0	0	0.0	28	0.5	352	1.0	356	0.9
CABARRUS	4	1.6	480	1.5	0	0.0	111	2.1	591	1.6	597	1.6
CALDWELL	3	1.2	251	0.8	0	0.0	43	0.8	292	0.8	294	0.8
CAMDEN	0	0.0	16	0.1	0	0.0	0	0.0	16	0.0	20	0.1
CARTERET	1	0.4	195	0.6	0	0.0	25	0.5	219	0.6	232	0.6
CASNELL	0	0.0	64	0.2	0	0.0	17	0.3	80	0.2	84	0.2
CATAWBA	2	0.8	576	1.8	0	0.0	78	1.5	653	1.8	660	1.7
CHATHAM	0	0.0	206	0.6	0	0.0	23	0.4	229	0.6	229	0.6
CHEROKEE	1	0.4	129	0.4	0	0.0	9	0.2	138	0.4	149	0.4
CHOWAN	0	0.0	38	0.1	0	0.0	8	0.2	46	0.1	47	0.1

(CONTINUED)

JAN 1 - DEC 31 1986

S U P E R V I S E D I N S T A T E ALL CLIENTS

REPORT ID: RECEIVED:- BY COUNTY	INTENSIVE PROB/DUAL		TOTAL PROBATION/DUAL		INTENSIVE PAROLE/DUAL		TOTAL PAROLE/DUAL		TOTAL CLIENTS IN-STATE		(INCLUDES OUT OF STATE)	
	NUMBER	PERCENT	NUMBER	PERCENT	NUMBER	PERCENT	NUMBER	PERCENT	NUMBER	PERCENT	NUMBER	PERCENT
CLAY	0	0.0	28	0.1	0	0.0	4	0.1	32	0.1	34	0.1
CLEVELAND	4	1.6	183	0.6	0	0.0	76	1.4	259	0.7	261	0.7
COLUMBUS	0	0.0	205	0.6	0	0.0	35	0.7	240	0.6	248	0.7
CRAVEN	0	0.0	497	1.6	0	0.0	68	1.3	550	1.5	559	1.5
CUMBERLAND	22	8.7	865	2.7	1	4.8	204	3.8	1069	2.9	1107	2.9
CURRITUCK	0	0.0	29	0.1	0	0.0	9	0.2	38	0.1	45	0.1
DARE	0	0.0	132	0.4	0	0.0	9	0.2	141	0.4	163	0.4
DAVIE	0	0.0	118	0.4	0	0.0	10	0.2	128	0.3	130	0.3
DAVIDSON	1	0.4	784	2.5	0	0.0	51	1.0	835	2.3	843	2.2
DUPLIN	1	0.4	320	1.0	0	0.0	44	0.8	362	1.0	364	1.0
DURHAM	4	1.6	843	2.6	0	0.0	144	2.7	987	2.7	1009	2.7
EDGECOMBE	0	0.0	192	0.6	0	0.0	50	0.9	238	0.6	242	0.6
FORSYTH	25	9.8	912	2.9	0	0.0	245	4.6	1154	3.1	1169	3.1
FRANKLIN	0	0.0	156	0.5	0	0.0	23	0.4	179	0.5	182	0.5
GASTON	1	0.4	397	1.2	0	0.0	119	2.2	514	1.4	520	1.4
GATES	0	0.0	23	0.1	0	0.0	1	0.0	23	0.1	28	0.1
GRAHAM	0	0.0	50	0.2	0	0.0	6	0.1	56	0.2	57	0.2
GRANVILLE	0	0.0	157	0.5	0	0.0	24	0.5	180	0.5	181	0.5
GREENE	0	0.0	74	0.2	0	0.0	14	0.3	88	0.2	89	0.2
GUILFORD	35	13.8	1275	4.0	15	71.4	340	6.4	1614	4.4	1650	4.4
HALIFAX	0	0.0	379	1.2	0	0.0	40	0.8	417	1.1	420	1.1

(CONTINUED)

JAN 1 - DEC 31 1986

S U P E R V I S E D I N S T A T E ALL CLIENTS

REPORT ID: RECEIVED:- BY COUNTY	INTENSIVE PROB/DUAL		TOTAL PROBATION/DUAL		INTENSIVE PAROLE/DUAL		TOTAL PAROLE/DUAL		TOTAL CLIENTS IN-STATE		(INCLUDES OUT OF STATE)	
	NUMBER	PERCENT	NUMBER	PERCENT	NUMBER	PERCENT	NUMBER	PERCENT	NUMBER	PERCENT	NUMBER	PERCENT
HARNETT	0	0.0	319	1.0	0	0.0	46	0.9	364	1.0	370	1.0
HAYWOOD	0	0.0	326	1.0	0	0.0	37	0.7	363	1.0	377	1.0
HENDERSON	0	0.0	280	0.9	0	0.0	55	1.0	335	0.9	353	0.9
HERTFORD	0	0.0	134	0.4	0	0.0	23	0.4	157	0.4	160	0.4
HOKE	1	0.4	181	0.6	0	0.0	19	0.4	200	0.5	204	0.5
HYDE	0	0.0	36	0.1	0	0.0	1	0.0	37	0.1	41	0.1
IREDELL	0	0.0	732	2.3	0	0.0	64	1.2	796	2.2	810	2.1
JACKSON	0	0.0	104	0.3	0	0.0	10	0.2	112	0.3	119	0.3
JOHNSON	1	0.4	366	1.2	0	0.0	52	1.0	417	1.1	420	1.1
JONES	0	0.0	31	0.1	0	0.0	0	0.0	31	0.1	31	0.1
LEE	0	0.0	212	0.7	0	0.0	46	0.9	256	0.7	257	0.7
LENOIR	0	0.0	385	1.2	0	0.0	66	1.2	450	1.2	457	1.2
LINCOLN	0	0.0	107	0.3	0	0.0	31	0.6	138	0.4	141	0.4
MACON	0	0.0	69	0.2	0	0.0	2	0.0	71	0.2	85	0.2
MADISON	0	0.0	36	0.1	0	0.0	5	0.1	41	0.1	43	0.1
MARTIN	0	0.0	195	0.6	0	0.0	20	0.4	215	0.6	215	0.6
MCDOWELL	0	0.0	143	0.4	0	0.0	32	0.6	175	0.5	178	0.5
MECKLENBURG	28	11.0	3392	10.7	1	4.8	331	6.2	3715	10.0	3828	10.1
MITCHELL	0	0.0	41	0.1	0	0.0	10	0.2	51	0.1	54	0.1
MONTGOMERY	0	0.0	117	0.4	0	0.0	19	0.4	135	0.4	137	0.4
MOORE	2	0.8	350	1.1	0	0.0	45	0.8	391	1.1	398	1.1

(CONTINUED)

JAN 1 - DEC 31 1986

S U P E R V I S E D I N S T A T E ALL CLIENTS

REPORT ID: RECEIVED:- BY COUNTY	INTENSIVE PROB/DUAL		TOTAL PROBATION/DUAL		INTENSIVE PAROLE/DUAL		TOTAL PAROLE/DUAL		TOTAL CLIENTS IN-STATE		(INCLUDES OUT OF STATE)	
	NUMBER	PERCENT	NUMBER	PERCENT	NUMBER	PERCENT	NUMBER	PERCENT	NUMBER	PERCENT	NUMBER	PERCENT
NASH	0	0.0	308	1.0	0	0.0	59	1.1	365	1.0	372	1.0
NEW HANOVER	14	5.5	632	2.0	1	4.8	156	2.9	786	2.1	816	2.2
NORTHAMPTON	0	0.0	98	0.3	0	0.0	13	0.2	109	0.3	112	0.3
ONslow	7	2.8	535	1.7	1	4.8	80	1.5	611	1.7	671	1.8
ORANGE	0	0.0	275	0.9	0	0.0	39	0.7	314	0.8	320	0.8
PAMLICO	0	0.0	52	0.2	0	0.0	5	0.1	55	0.1	56	0.1
PASQUOTANK	0	0.0	127	0.4	0	0.0	32	0.6	159	0.4	162	0.4
PENDER	0	0.0	86	0.3	0	0.0	17	0.3	103	0.3	105	0.3
PERQUIMANS	0	0.0	26	0.1	0	0.0	9	0.2	35	0.1	35	0.1
PERSON	0	0.0	133	0.4	0	0.0	33	0.6	166	0.4	172	0.5
PITT	1	0.4	640	2.0	0	0.0	115	2.2	753	2.0	770	2.0
POLK	0	0.0	37	0.1	0	0.0	5	0.1	42	0.1	47	0.1
RANDOLPH	3	1.2	248	0.8	0	0.0	68	1.3	316	0.9	319	0.8
RICHMOND	0	0.0	256	0.8	0	0.0	68	1.3	322	0.9	333	0.9
ROBESON	5	2.0	950	3.0	0	0.0	156	2.9	1105	3.0	1123	3.0
ROCKINGHAM	2	0.8	528	1.7	0	0.0	109	2.1	634	1.7	660	1.7
ROWAN	27	10.6	577	1.8	0	0.0	103	1.9	679	1.8	688	1.8
RUTHERFORD	0	0.0	193	0.6	0	0.0	37	0.7	229	0.6	238	0.6
SAMPSON	0	0.0	283	0.9	0	0.0	60	1.1	338	0.9	344	0.9
SCOTLAND	0	0.0	240	0.8	0	0.0	52	1.0	292	0.8	300	0.8
STANLY	1	0.4	169	0.5	0	0.0	31	0.6	200	0.5	202	0.5

(CONTINUED)

JAN 1 - DEC 31 1986

S U P E R V I S E D I N S T A T E ALL CLIENTS

REPORT ID: RECEIVED: - BY COUNTY	INTENSIVE PROB/DUAL		TOTAL PROBATION/DUAL		INTENSIVE PAROLE/DUAL		TOTAL PAROLE/DUAL		TOTAL CLIENTS IN-STATE		(INCLUDES OUT OF STATE)	
	NUMBER	PERCENT	NUMBER	PERCENT	NUMBER	PERCENT	NUMBER	PERCENT	NUMBER	PERCENT	NUMBER	PERCENT
STOKES	0	0.0	87	0.3	0	0.0	33	0.6	119	0.3	121	0.3
SURRY	0	0.0	209	0.7	0	0.0	70	1.3	277	0.7	282	0.7
SWAIN	0	0.0	52	0.2	0	0.0	3	0.1	55	0.1	59	0.2
TRANSYLVANIA	0	0.0	117	0.4	0	0.0	14	0.3	131	0.4	140	0.4
TYRRELL	0	0.0	28	0.1	0	0.0	14	0.3	42	0.1	43	0.1
UNION	1	0.4	414	1.3	0	0.0	50	0.9	463	1.3	476	1.3
VANCE	0	0.0	202	0.6	0	0.0	27	0.5	229	0.6	233	0.6
WAKE	20	7.9	2333	7.3	2	9.5	213	4.0	2537	6.9	2579	6.8
WARREN	0	0.0	50	0.2	0	0.0	11	0.2	61	0.2	63	0.2
WASHINGTON	0	0.0	68	0.2	0	0.0	14	0.3	82	0.2	83	0.2
WATAUGA	0	0.0	75	0.2	0	0.0	21	0.4	95	0.3	104	0.3
WAYNE	4	1.6	493	1.5	0	0.0	87	1.6	575	1.6	581	1.5
WILKES	0	0.0	442	1.4	0	0.0	32	0.6	473	1.3	477	1.3
WILSON	0	0.0	240	0.8	0	0.0	40	0.8	277	0.7	277	0.7
OUT OF STATE	0	0.0	0	0.0	0	0.0	1	0.0	1	0.0	1	0.0
YADKIN	0	0.0	123	0.4	0	0.0	16	0.3	139	0.4	141	0.4
YANCEY	0	0.0	25	0.1	0	0.0	4	0.1	29	0.1	29	0.1
NOT REPORTED	1	0.4	454	1.4	0	0.0	267	5.0	719	1.9	720	1.9
TOTAL	254	100.0	31816	100.0	21	100.0	5310	100.0	37011	100.0	37900	100.0

JAN 1 - DEC 31 1986

S U P E R V I S E D I N S T A T E ALL CLIENTS

REPORT 1E: RECEIVED:- BY RACE/SEX	INTENSIVE PROB/DUAL		TOTAL PROBATION/DUAL		INTENSIVE PAROLE/DUAL		TOTAL PAROLE/DUAL		TOTAL CLIENTS IN-STATE		(INCLUDES OUT OF STATE)	
	NUMBER	PERCENT	NUMBER	PERCENT	NUMBER	PERCENT	NUMBER	PERCENT	NUMBER	PERCENT	NUMBER	PERCENT
WHITE MALES	106	41.7	15146	47.6	8	38.1	2259	42.5	17341	46.9	17876	47.2
BLACK MALES	110	43.3	10477	32.9	12	57.1	2544	47.9	12980	35.1	13180	34.8
INDIAN MALES	6	2.4	564	1.8	0	0.0	144	2.7	707	1.9	713	1.9
ORIENTAL MALES	0	0.0	25	0.1	0	0.0	0	0.0	25	0.1	26	0.1
OTHER MALES	0	0.0	137	0.4	0	0.0	6	0.1	143	0.4	153	0.4
WHITE FEMALES	20	7.9	2916	9.2	1	4.8	156	2.9	3066	8.3	3157	8.3
BLACK FEMALES	12	4.7	2414	7.6	0	0.0	188	3.5	2599	7.0	2642	7.0
INDIAN FEMALES	0	0.0	117	0.4	0	0.0	12	0.2	129	0.3	129	0.3
ORIENTAL FEMALES	0	0.0	7	0.0	0	0.0	0	0.0	7	0.0	7	0.0
OTHER FEMALES	0	0.0	13	0.0	0	0.0	1	0.0	14	0.0	17	0.0
TOTAL	254	100.0	31816	100.0	21	100.0	5310	100.0	37011	100.0	37900	100.0

JAN 1 - DEC 31 1986

S U P E R V I S E D I N S T A T E ALL CLIENTS

REPORT IF: RECEIVED:- BY AGE	INTENSIVE PROB/DUAL		TOTAL PROBATION/DUAL		INTENSIVE PAROLE/DUAL		TOTAL PAROLE/DUAL		TOTAL CLIENTS IN-STATE		(INCLUDES OUT OF STATE)	
	NUMBER	PERCENT	NUMBER	PERCENT	NUMBER	PERCENT	NUMBER	PERCENT	NUMBER	PERCENT	NUMBER	PERCENT
16 AND UNDER	13	5.1	1255	3.9	1	4.8	9	0.2	1264	3.4	1280	3.4
17	18	7.1	1585	5.0	0	0.0	71	1.3	1652	4.5	1705	4.5
18	23	9.1	1570	4.9	0	0.0	128	2.4	1695	4.6	1738	4.6
19	17	6.7	1470	4.6	0	0.0	153	2.9	1618	4.4	1672	4.4
20	16	6.3	1356	4.3	1	4.8	223	4.2	1570	4.2	1623	4.3
21-24	45	17.7	6085	19.1	2	9.5	1209	22.8	7265	19.6	7459	19.7
25-29	56	22.0	6375	20.0	5	23.8	1329	25.0	7680	20.8	7851	20.7
30-39	57	22.4	7460	23.4	9	42.9	1533	28.9	8965	24.2	9157	24.2
40-49	8	3.1	2885	9.1	3	14.3	445	8.4	3325	9.0	3405	9.0
50-59	1	0.4	1245	3.9	0	0.0	143	2.7	1383	3.7	1405	3.7
60 AND OVER	0	0.0	530	1.7	0	0.0	67	1.3	594	1.6	605	1.6
TOTAL	254	100.0	31816	100.0	21	100.0	5310	100.0	37011	100.0	37900	100.0

PROBATIONERS

JAN 1 - DEC 31 1986

S U P E R V I S I O N L E V E L

REPORT 1G: ENTRIES, BY BRANCH, UNIT		INTENSIVE		SUSPENDED		HIGH RISK		SELECTIVE		INTER-MEDIATE		SPECIAL		DEFERRED OR NOT REPORTD		TOTAL,
		NUMBR	PERCT	NUMBR	PERCT	NUMBR	PERCT	NUMBR	PERCT	NUMBR	PERCT	NUMBR	PERCT	NUMBR	PERCT	ALL
A	A-I	1	3	0	0	13	43	2	7	8	27	2	7	4	13	30
	A-K	0	0	0	0	43	9	41	9	244	54	57	13	69	15	454
	A-M	0	0	5	1	80	15	22	4	254	47	116	21	69	13	546
	A-P	0	0	0	0	28	7	17	4	223	58	48	12	70	18	386
	A-R	0	0	0	0	44	10	25	6	238	54	92	21	39	9	438
	SUBTOTAL	1	0	5	0	208	11	107	6	967	52	315	17	251	14	1854
	B	B-I	0	0	0	0	5	56	0	0	4	44	0	0	0	0
B-K		0	0	0	0	60	11	35	7	218	42	111	21	101	19	525
B-L		0	0	0	0	35	6	47	8	287	51	63	11	127	23	559
B-M		0	0	4	1	58	8	69	10	254	36	109	16	207	30	701
B-N		0	0	0	0	33	10	49	15	183	55	40	12	29	9	334
B-P		0	0	1	0	22	5	52	12	177	41	57	13	121	28	430
B-R		0	0	1	1	21	11	16	8	96	50	27	14	30	16	191
SUBTOTAL		0	0	6	0	234	9	268	10	1219	44	407	15	615	22	2749
C	C-I	0	0	0	0	3	14	9	43	8	38	1	5	0	0	21
	C-K	0	0	2	0	41	9	63	14	265	58	50	11	34	7	455
	C-L	0	0	2	0	108	14	37	5	482	62	119	15	28	4	776
	C-M	0	0	4	1	59	8	84	12	459	63	83	11	34	5	723
	C-N	0	0	4	1	64	12	37	7	357	66	53	10	27	5	542
	C-P	0	0	1	0	47	7	50	8	352	53	98	15	117	18	665

(CONTINUED)

PROBATIONERS

JAN 1 - DEC 31 1986

S U P E R V I S I O N L E V E L

REPORT 1G: ENTRIES, BY BRANCH, UNIT		INTENSIVE		SUSPENDED		HIGH RISK		SELECTIVE		INTER- MEDIATE		SPECIAL		DEFERRED OR NOT REPORTD		TOTAL, ALL LEVELS
		NUMBR	PERCT	NUMBR	PERCT	NUMBR	PERCT	NUMBR	PERCT	NUMBR	PERCT	NUMBR	PERCT	NUMBR	PERCT	
		C	SUBTOTAL	0	0	13	0	322	10	280	9	1923	60	404	13	240
D	D-I	6	10	0	0	37	64	4	7	5	9	0	0	6	10	58
	D-K	0	0	1	0	30	9	41	12	198	57	30	9	47	14	347
	D-L	0	0	0	0	24	9	22	8	128	49	55	21	30	12	259
	D-M	0	0	11	3	51	14	40	11	180	50	37	10	40	11	359
	D-P	0	0	1	0	65	16	42	10	164	41	71	18	57	14	400
	D-R	0	0	1	0	21	9	23	10	99	42	53	22	40	17	237
	D-S	0	0	2	1	31	8	19	5	155	41	85	23	83	22	375
	D-T	0	0	2	1	72	21	49	14	153	44	29	8	40	12	345
	SUBTOTAL	6	0	18	1	331	14	240	10	1082	45	360	15	343	14	2380
E	E-I	0	0	0	0	4	67	0	0	0	0	0	0	2	33	6
	E-K	0	0	0	0	82	13	40	6	360	55	93	14	76	12	651
	E-L	0	0	2	1	66	17	9	2	173	45	76	20	58	15	384
	E-M	0	0	2	1	34	11	34	11	107	35	31	10	100	32	308
	E-N	0	0	0	0	28	9	18	6	162	52	67	22	36	12	311
	E-P	0	0	1	0	51	12	38	9	170	39	67	15	111	25	438
	E-R	0	0	2	0	60	13	15	3	257	57	79	18	38	8	451
	SUBTOTAL	0	0	7	0	325	13	154	6	1229	48	413	16	421	17	2549
F	F-I	1	10	0	0	0	0	1	10	4	40	2	20	2	20	10
	F-J	0	0	0	0	2	100	0	0	0	0	0	0	0	0	2

(CONTINUED)

PROBATIONERS

JAN 1 - DEC 31 1986

S U P E R V I S I O N L E V E L

REPORT 1G: ENTRIES, BY BRANCH, UNIT		INTENSIVE		SUSPENDED		HIGH RISK		SELECTIVE		INTER- MEDIATE		SPECIAL		DEFERRED OR NOT REPORTD		TOTAL, ALL LEVELS
		NUMBR	PERCT	NUMBR	PERCT	NUMBR	PERCT	NUMBR	PERCT	NUMBR	PERCT	NUMBR	PERCT	NUMBR	PERCT	
		F	F-K	0	0	2	0	73	13	30	5	352	64	57	10	32
	F-L	0	0	1	0	53	10	35	7	308	58	55	10	78	15	530
	F-M	0	0	1	0	20	6	29	8	189	54	30	8	84	24	353
	F-N	0	0	3	1	54	13	27	7	247	60	56	13	28	7	415
	F-O	0	0	5	1	50	8	41	7	381	64	71	12	44	7	592
	SUBTOTAL	1	0	12	0	252	10	163	7	1481	60	271	11	268	11	2448
G	G-I	2	7	0	0	19	68	1	4	3	11	0	0	3	11	28
	G-K	0	0	6	1	82	18	22	5	214	47	91	20	37	8	452
	G-L	0	0	5	1	49	10	16	3	274	58	87	19	38	8	469
	G-M	0	0	1	0	19	4	5	1	254	58	132	30	28	6	439
	G-N	0	0	2	0	68	11	38	6	359	59	104	17	37	6	608
	G-O	0	0	2	0	77	12	36	6	369	60	97	16	37	6	618
	G-P	0	0	2	0	49	9	26	5	326	61	98	18	35	7	536
	SUBTOTAL	2	0	18	1	363	12	144	5	1799	57	609	19	215	7	3150
H	H-I	1	7	0	0	5	36	0	0	1	7	1	7	6	43	14
	H-K	0	0	2	0	28	6	55	11	245	51	36	7	114	24	480
	H-L	0	0	3	1	46	8	48	9	333	60	95	17	29	5	554
	H-M	0	0	2	1	29	11	48	19	160	62	14	5	5	2	258
	H-N	0	0	0	0	41	8	33	7	341	70	36	7	33	7	484
	H-P	0	0	2	0	32	6	38	7	201	38	110	21	143	27	526

(CONTINUED)

PROBATIONERS

JAN 1 - DEC 31 1986

S U P E R V I S I O N L E V E L

REPORT 1G: ENTRIES, BY BRANCH, UNIT		INTENSIVE		SUSPENDED		HIGH RISK		SELECTIVE		INTER- MEDIATE		SPECIAL		DEFERRED OR NOT REPORTD		TOTAL, ALL
		NUMBR	PERCT	NUMBR	PERCT	NUMBR	PERCT	NUMBR	PERCT	NUMBR	PERCT	NUMBR	PERCT	NUMBR	PERCT	LEVELS
		H	SUBTOTAL	1	0	9	0	181	8	222	10	1281	55	292	13	330
I	I-I	0	0	0	0	2	25	4	50	0	0	1	13	1	13	8
	I-K	0	0	3	1	45	10	16	3	278	60	36	8	88	19	466
	I-L	0	0	0	0	59	13	44	10	237	52	108	24	11	2	459
	I-M	0	0	0	0	31	9	56	16	187	53	31	9	45	13	350
	I-N	0	0	1	0	53	13	52	13	266	65	16	4	23	6	411
	I-P	0	0	5	1	79	15	40	7	292	54	82	15	41	8	539
	I-R	0	0	2	1	12	6	28	13	141	67	14	7	13	6	210
	I-S	0	0	1	0	25	10	44	17	140	54	28	11	21	8	259
	SUBTOTAL	0	0	12	0	306	11	284	11	1541	57	316	12	243	9	2702
J	J-I	1	3	0	0	8	28	5	17	11	38	0	0	4	14	29
	J-K	0	0	17	5	54	16	26	8	159	46	58	17	29	8	343
	J-L	0	0	0	0	32	10	27	8	177	53	79	24	19	6	334
	J-M	0	0	2	0	42	10	48	11	257	60	31	7	50	12	430
	J-N	0	0	0	0	21	9	46	20	125	54	9	4	30	13	231
	J-P	0	0	3	0	22	4	15	2	345	57	143	24	72	12	600
	J-R	0	0	2	0	38	7	65	13	227	44	103	20	85	16	520
	J-S	0	0	5	1	19	5	55	15	202	55	43	12	46	12	370
	SUBTOTAL	1	0	29	1	236	8	287	10	1503	53	466	16	335	12	2857
K	K-I	2	7	0	0	10	33	4	13	9	30	2	7	3	10	50

(CONTINUED)

PROBATIONERS

JAN 1 - DEC 31 1986

S U P E R V I S I O N L E V E L

REPORT 16: ENTRIES, BY BRANCH, UNIT		INTENSIVE		SUSPENDED		HIGH RISK		SELECTIVE		INTER-MEDIATE		SPECIAL		DEFERRED OR NOT REPORTD		TOTAL, ALL	
		NUMBR	PERCT	NUMBR	PERCT	NUMBR	PERCT	NUMBR	PERCT	NUMBR	PERCT	NUMBR	PERCT	NUMBR	PERCT	LEVELS	
		K		K-K	0	0	2	1	26	10	44	17	139	53	22	8	27
		K-L	0	0	2	1	17	8	5	2	116	56	45	22	24	11	209
		K-M	0	0	3	1	27	9	20	7	184	64	30	10	25	9	289
		K-N	0	0	1	1	23	12	20	11	103	55	20	11	19	10	186
		K-O	0	0	0	0	74	18	18	4	197	48	58	14	62	15	409
		K-P	0	0	4	1	61	10	41	7	313	53	104	18	64	11	587
		K-R	0	0	4	1	61	17	28	8	184	51	47	13	36	10	360
		SUBTOTAL	2	0	16	1	299	13	180	8	1245	53	328	14	260	11	2330
L		L-I	4	13	0	0	15	50	1	3	7	23	2	7	1	3	30
		L-J	0	0	0	0	1	100	0	0	0	0	0	0	0	0	1
		L-K	0	0	1	0	66	11	99	17	282	49	14	2	117	20	579
		L-L	0	0	1	0	71	14	19	4	217	42	67	13	139	27	514
		L-M	0	0	38	7	105	21	23	5	203	40	19	4	122	24	510
		L-N	0	0	12	2	87	14	34	5	284	44	43	7	180	28	640
		L-P	0	0	0	0	98	18	40	7	267	49	16	3	129	23	550
		L-R	0	0	0	0	53	5	873	80	100	9	15	1	50	5	1091
		SUBTOTAL	4	0	52	1	496	13	1089	28	1360	35	176	4	738	19	3915
SPECIAL CATEGORIES		P30	0	0	0	0	1	10	4	40	4	40	0	0	1	10	10
		Q30	0	0	0	0	2	20	1	10	6	60	0	0	1	10	10
		R30	0	0	0	0	1	20	0	0	4	80	0	0	0	0	5

(CONTINUED)

PROBATIONERS

JAN 1 - DEC 31 1986

S U P E R V I S I O N L E V E L

REPORT 1G: ENTRIES, BY BRANCH, UNIT		INTENSIVE		SUSPENDED		HIGH RISK		SELECTIVE		INTER-MEDIATE		SPECIAL		DEFERRED OR NOT REPORTD		TOTAL,
		NUMBR	PERCT	NUMBR	PERCT	NUMBR	PERCT	NUMBR	PERCT	NUMBR	PERCT	NUMBR	PERCT	NUMBR	PERCT	ALL
																LEVELS
SPECIAL CATEGORIES	S30	0	0	0	0	2	22	0	0	5	56	0	0	2	22	9
	T30	0	0	0	0	1	20	0	0	2	40	1	20	1	20	5
	U30	0	0	0	0	4	67	0	0	1	17	0	0	1	17	6
	V30	0	0	0	0	0	0	2	33	3	50	0	0	1	17	6
	SUBTOTAL	0	0	0	0	11	22	7	14	25	49	1	2	7	14	51
TOTAL		18	0	197	1	3564	11	3425	11	16655	51	4358	13	4266	13	32483

PAROLEES

JAN 1 - DEC 31 1986

S U P E R V I S I O N L E V E L

REPORT 1G: ENTRIES, BY BRANCH, UNIT		INTENSIVE		SUSPENDED		HIGH RISK		SELECTIVE		INTER- MEDIATE		SPECIAL		DEFERRED OR NOT REPORTD		TOTAL, ALL
		NUMBR	PERCT	NUMBR	PERCT	NUMBR	PERCT	NUMBR	PERCT	NUMBR	PERCT	NUMBR	PERCT	NUMBR	PERCT	LEVELS
		A	A-K	0	0	0	0	2	50	1	25	1	25	0	0	0
	A-M	0	0	0	0	1	20	0	0	2	40	0	0	2	40	5
	A-P	0	0	0	0	0	0	0	0	1	50	0	0	1	50	2
	A-R	0	0	0	0	0	0	0	0	1	100	0	0	0	0	1
	SUBTOTAL	0	0	0	0	3	25	1	8	5	42	0	0	3	25	12
B	B-I	0	0	0	0	0	0	0	0	1	50	0	0	1	50	2
	B-K	0	0	0	0	3	60	0	0	2	40	0	0	0	0	5
	B-L	0	0	0	0	1	17	0	0	1	17	0	0	4	67	6
	B-M	0	0	0	0	1	33	0	0	1	33	0	0	1	33	3
	B-N	0	0	0	0	2	100	0	0	0	0	0	0	0	0	2
	B-R	0	0	0	0	0	0	0	0	0	0	1	100	0	0	1
	SUBTOTAL	0	0	0	0	7	37	0	0	5	26	1	5	6	32	19
C	C-I	0	0	0	0	1	100	0	0	0	0	0	0	0	0	1
	C-K	0	0	0	0	0	0	0	0	2	67	1	33	0	0	3
	C-L	0	0	0	0	1	20	0	0	3	60	0	0	1	20	5
	C-M	0	0	0	0	2	50	0	0	1	25	0	0	1	25	4
	C-N	0	0	0	0	2	67	0	0	0	0	1	33	0	0	3
	C-P	0	0	0	0	0	0	0	0	2	67	0	0	1	33	3
	SUBTOTAL	0	0	0	0	6	32	0	0	8	42	2	11	3	16	19
D	D-I	0	0	0	0	15	88	1	6	1	6	0	0	0	0	17

(CONTINUED)

PAROLEES

JAN 1 - DEC 31 1986

S U P E R V I S I O N L E V E L

REPORT 1G: ENTRIES, BY BRANCH, UNIT		INTENSIVE		SUSPENDED		HIGH RISK		SELECTIVE		INTER-MEDIATE		SPECIAL		DEFERRED OR NOT REPORTD		TOTAL, ALL
		NUMBR	PERCT	NUMBR	PERCT	NUMBR	PERCT	NUMBR	PERCT	NUMBR	PERCT	NUMBR	PERCT	NUMBR	PERCT	LEVELS
		D	D-K	0	0	0	0	1	33	0	0	2	67	0	0	0
	D-L	0	0	0	0	2	100	0	0	0	0	0	0	0	0	2
	D-M	0	0	0	0	1	100	0	0	0	0	0	0	0	0	1
	D-P	0	0	0	0	2	50	1	25	1	25	0	0	0	0	4
	D-R	0	0	0	0	0	0	0	0	1	100	0	0	0	0	1
	D-S	0	0	0	0	0	0	0	0	0	0	0	0	1	100	1
	D-T	0	0	0	0	2	67	0	0	0	0	0	0	1	33	3
	SUBTOTAL	0	0	0	0	23	72	2	6	5	16	0	0	2	6	32
E	E-I	0	0	0	0	1	100	0	0	0	0	0	0	0	0	1
	E-K	0	0	0	0	2	50	1	25	0	0	0	0	1	25	4
	E-L	0	0	0	0	0	0	0	0	2	100	0	0	0	0	2
	E-M	0	0	0	0	1	50	0	0	1	50	0	0	0	0	2
	E-N	0	0	0	0	1	100	0	0	0	0	0	0	0	0	1
	E-P	0	0	0	0	0	0	0	0	1	100	0	0	0	0	1
	E-R	0	0	0	0	1	50	0	0	0	0	0	0	1	50	2
	SUBTOTAL	0	0	0	0	6	46	1	8	4	31	0	0	2	15	13
F	F-K	0	0	0	0	1	50	0	0	0	0	0	0	1	50	2
	F-L	0	0	0	0	4	67	0	0	2	33	0	0	0	0	6
	F-M	0	0	0	0	0	0	0	0	2	50	1	25	1	25	4
	F-N	0	0	0	0	2	40	0	0	3	60	0	0	0	0	5

(CONTINUED)

PAROLEES

JAN 1 - DEC 31 1986

S U P E R V I S I O N L E V E L

REPORT 1G: ENTRIES, BY BRANCH, UNIT		INTENSIVE		SUSPENDED		HIGH RISK		SELECTIVE		INTER- MEDIATE		SPECIAL		DEFERRED OR NOT REPORTD		TOTAL, ALL LEVELS
		NUMBR	PERCT	NUMBR	PERCT	NUMBR	PERCT	NUMBR	PERCT	NUMBR	PERCT	NUMBR	PERCT	NUMBR	PERCT	
		F	F-0	0	0	2	14	4	29	1	7	4	29	2	14	1
	SUBTOTAL	0	0	2	6	11	35	1	3	11	35	3	10	3	10	31
G	G-I	0	0	0	0	3	100	0	0	0	0	0	0	0	0	3
	G-K	0	0	0	0	1	50	0	0	1	50	0	0	0	0	2
	G-L	0	0	0	0	1	100	0	0	0	0	0	0	0	0	1
	G-M	0	0	0	0	0	0	0	0	5	71	1	14	1	14	7
	G-N	0	0	0	0	1	33	1	33	1	33	0	0	0	0	3
	G-O	0	0	1	14	2	29	0	0	2	29	0	0	2	29	7
	G-P	0	0	0	0	1	25	0	0	2	50	0	0	1	25	4
	SUBTOTAL	0	0	1	4	9	33	1	4	11	41	1	4	4	15	27
H	H-I	1	100	0	0	0	0	0	0	0	0	0	0	0	0	1
	H-K	0	0	0	0	1	20	0	0	4	80	0	0	0	0	5
	H-L	0	0	0	0	2	29	0	0	3	43	2	29	0	0	7
	H-M	0	0	0	0	1	33	1	33	1	33	0	0	0	0	3
	H-N	0	0	0	0	1	33	0	0	1	33	0	0	1	33	3
	H-P	0	0	0	0	1	10	0	0	6	60	2	20	1	10	10
	SUBTOTAL	1	3	0	0	6	21	1	3	15	52	4	14	2	7	29
I	I-K	0	0	0	0	2	33	0	0	3	50	0	0	1	17	6
	I-L	0	0	0	0	0	0	1	50	0	0	1	50	0	0	2
	I-M	0	0	0	0	1	50	1	50	0	0	0	0	0	0	2

(CONTINUED)

PAROLEES

JAN 1 - DEC 31 1986

S U P E R V I S I O N L E V E L

REPORT 1G: ENTRIES, BY BRANCH, UNIT		INTENSIVE		SUSPENDED		HIGH RISK		SELECTIVE		INTER-MEDIATE		SPECIAL		DEFERRED OR NOT REPORTD		TOTAL,
		NUMBR	PERCT	NUMBR	PERCT	NUMBR	PERCT	NUMBR	PERCT	NUMBR	PERCT	NUMBR	PERCT	NUMBR	PERCT	ALL
																LEVELS
I	I-N	0	0	0	0	1	25	1	25	1	25	0	0	1	25	4
	I-P	0	0	0	0	3	20	0	0	3	20	9	60	0	0	15
	I-R	0	0	0	0	1	100	0	0	0	0	0	0	0	0	1
	I-S	0	0	0	0	1	33	0	0	2	67	0	0	0	0	3
	SUBTOTAL	0	0	0	0	9	27	3	9	9	27	10	30	2	6	33
J	J-I	0	0	0	0	1	50	1	50	0	0	0	0	0	0	2
	J-K	0	0	0	0	0	0	1	100	0	0	0	0	0	0	1
	J-M	0	0	0	0	2	50	0	0	2	50	0	0	0	0	4
	J-N	0	0	0	0	1	50	0	0	1	50	0	0	0	0	2
	J-P	0	0	0	0	0	0	0	0	5	83	1	17	0	0	6
	SUBTOTAL	0	0	0	0	4	27	2	13	8	53	1	7	0	0	15
K	K-L	0	0	0	0	0	0	0	0	1	100	0	0	0	0	1
	K-N	0	0	0	0	0	0	0	0	1	100	0	0	0	0	1
	K-O	0	0	0	0	2	67	0	0	1	33	0	0	0	0	3
	K-P	0	0	0	0	0	0	0	0	0	0	0	0	1	100	1
	K-R	0	0	0	0	1	25	0	0	2	50	0	0	1	25	4
	SUBTOTAL	0	0	0	0	3	30	0	0	5	50	0	0	2	20	10
L	L-I	0	0	0	0	0	0	0	0	1	100	0	0	0	0	1
	L-K	0	0	0	0	0	0	2	50	2	50	0	0	0	0	4
	L-L	0	0	0	0	2	67	0	0	1	33	0	0	0	0	3

(CONTINUED)

PAROLEES

JAN 1 - DEC 31 1986

S U P E R V I S I O N L E V E L

REPORT 1G: ENTRIES, BY BRANCH, UNIT		INTENSIVE		SUSPENDED		HIGH RISK		SELECTIVE		INTER-MEDIATE		SPECIAL		DEFERRED OR NOT REPORTD		TOTAL, ALL
		NUMBR	PERCT	NUMBR	PERCT	NUMBR	PERCT	NUMBR	PERCT	NUMBR	PERCT	NUMBR	PERCT	NUMBR	PERCT	LEVELS
		L	L-M	0	0	0	0	3	75	0	0	1	25	0	0	0
	L-N	0	0	0	0	2	20	1	10	6	60	0	0	1	10	10
	L-P	0	0	0	0	0	0	1	50	0	0	0	0	1	50	2
	SUBTOTAL	0	0	0	0	7	29	4	17	11	46	0	0	2	8	24
SPECIAL CATEGORIES	P30	0	0	8	1	103	14	34	5	228	31	20	3	343	47	736
	Q30	0	0	13	1	150	17	33	4	240	27	35	4	428	48	899
	R30	0	0	21	2	135	14	66	7	262	28	37	4	423	45	944
	S30	0	0	10	1	192	26	23	3	241	33	22	3	242	33	730
	T30	0	0	6	1	121	22	42	8	120	21	17	3	253	45	559
	U30	0	0	2	0	118	20	120	20	76	13	11	2	276	46	603
	V30	0	0	1	0	91	16	15	3	192	34	22	4	241	43	562
	X01	0	0	0	0	2	1	0	0	3	1	0	0	217	98	222
	X02	0	0	0	0	0	0	0	0	0	0	0	0	18	100	18
		SUBTOTAL	0	0	61	1	912	17	333	6	1362	26	164	3	2441	46
TOTAL		1	0	64	1	1006	18	349	6	1459	26	186	3	2472	45	5537

PROBATIONERS

JAN 1 - DEC 31 1986

S U P E R V I S I O N L E V E L

REPORT 1H: ENTRIES, BY OFF-ICER PERCEPTION		INTENSIVE		SUSPENDED		HIGH RISK		SELECTIVE		INTER-MEDIATE		SPECIAL		DEFERRED OR NOT REPORTD		TOTAL,
		NUMBR	PERCT	NUMBR	PERCT	NUMBR	PERCT	NUMBR	PERCT	NUMBR	PERCT	NUMBR	PERCT	NUMBR	PERCT	ALL
																LEVELS
PERCEPTION	AWARE AND UNWILLING	0	0	0	0	178	37	129	27	161	33	13	3	0	0	481
	AWARE AND WILLING	0	0	0	0	2609	14	1698	9	9816	53	4246	23	0	0	18369
	NOT REPORTED	18	0	197	2	11	0	1061	9	5704	51	5	0	4266	38	11262
	UNAWARE AND UNWILLING	0	0	0	0	549	35	346	22	622	39	61	4	0	0	1578
	UNAWARE AND WILLING	0	0	0	0	217	27	191	24	352	44	33	4	0	0	793
	SUBTOTAL	18	0	197	1	3564	11	3425	11	16655	51	4358	13	4266	13	32483
TOTAL		18	0	197	1	3564	11	3425	11	16655	51	4358	13	4266	13	32483

PAROLEES

JAN 1 - DEC 31 1986

S U P E R V I S I O N L E V E L

REPORT 1H: ENTRIES, BY OFFICER PERCEPTION		INTENSIVE		SUSPENDED		HIGH RISK		SELECTIVE		INTER-MEDIATE		SPECIAL		DEFERRED OR NOT REPORTD		TOTAL,
		NUMBR	PERCT	NUMBR	PERCT	NUMBR	PERCT	NUMBR	PERCT	NUMBR	PERCT	NUMBR	PERCT	NUMBR	PERCT	ALL
																LEVELS
PERCEPTION	AWARE AND UNWILLING	0	0	0	0	26	67	8	21	5	13	0	0	0	0	39
	AWARE AND WILLING	0	0	0	0	809	32	304	12	1199	48	182	7	0	0	2494
	NOT REPORTED	1	0	64	2	21	1	3	0	180	7	2	0	2472	90	2743
	UNAWARE AND UNWILLING	0	0	0	0	88	55	20	13	51	32	1	1	0	0	160
	UNAWARE AND WILLING	0	0	0	0	62	61	14	14	24	24	1	1	0	0	101
	SUBTOTAL	1	0	64	1	1006	18	349	6	1459	26	186	3	2472	45	5537
TOTAL		1	0	64	1	1006	18	349	6	1459	26	186	3	2472	45	5537

JAN 1 - DEC 31 1986

S U P E R V I S E D I N S T A T E ALL CLIENTS

REPORT 2A: REMOVED: TIME UNDER SUPERVISION	INTENSIVE PROB/DUAL		TOTAL PROBATION/DUAL		INTENSIVE PAROLE/DUAL		TOTAL PAROLE/DUAL		TOTAL CLIENTS IN-STATE		(INCLUDES OUT OF STATE)	
	NUMBER	PERCENT	NUMBER	PERCENT	NUMBER	PERCENT	NUMBER	PERCENT	NUMBER	PERCENT	NUMBER	PERCENT
3 MONTHS OR LESS	6	8.5	971	3.3	0	0.0	1547	28.8	2517	7.3	2601	7.4
OVER 3, THROUGH 6 MONTHS	14	19.7	1883	6.4	6	37.5	1978	36.8	3854	11.2	3971	11.3
OVER 6, THROUGH 9 MONTHS	11	15.5	2852	9.7	3	18.8	509	9.5	3351	9.8	3390	9.6
OVER 9 MONTHS, THROUGH 1 YEAR	6	8.5	2088	7.1	1	6.3	145	2.7	2223	6.5	2245	6.4
OVER 1 YEAR, THROUGH 18 MONTHS	10	14.1	7535	25.6	1	6.3	233	4.3	7731	22.5	7860	22.3
OVER 18 MONTHS, THROUGH 2 YEARS	9	12.7	3093	10.5	2	12.5	131	2.4	3180	9.3	3254	9.2
OVER 2 YEARS, THROUGH 2.5	5	7.0	4223	14.3	2	12.5	202	3.8	4369	12.7	4515	12.8
OVER 2.5 YEARS, THROUGH 3	4	5.6	1294	4.4	0	0.0	88	1.6	1342	3.9	1397	4.0
OVER 3 YEARS, THROUGH 3.5	3	4.2	2577	8.8	1	6.3	200	3.7	2691	7.8	2825	8.0
OVER 3.5 YEARS, THROUGH 4	2	2.8	842	2.9	0	0.0	71	1.3	874	2.5	901	2.6
OVER 4 YEARS, THROUGH 4.5	0	0.0	672	2.3	0	0.0	56	1.0	691	2.0	719	2.0
OVER 4.5 YEARS, THROUGH 5	0	0.0	449	1.5	0	0.0	55	1.0	467	1.4	483	1.4
OVER 5 YEARS	1	1.4	963	3.3	0	0.0	156	2.9	1046	3.0	1093	3.1
TOTAL	71	100.0	29442	100.0	16	100.0	5371	100.0	34336	100.0	35254	100.0

PROBATIONERS

JAN 1 - DEC 31 1986

S U P E R V I S I O N L E V E L

REPORT 2B: EXITS BY SUCCESS/FAILURE RATES		INTENSIVE		SUSPENDED		HIGH RISK		SELECTIVE		INTER-MEDIATE		SPECIAL		DEFERRED		ALL	
		NUMBR	PERCT	NUMBR	PERCT	NUMBR	PERCT	NUMBR	PERCT	NUMBR	PERCT	NUMBR	PERCT	NUMBR	PERCT	NUMBR	PERCT
SATISFACTORY	COMPLETED	2	2.8	53	2.7	233	14.2	1292	48.7	5085	33.0	1826	36.0	651	23.8	9142	30.9
	NO FINANCIAL OBLG	3	4.2	37	1.9	88	5.4	118	4.4	986	6.4	508	10.0	154	5.6	1894	6.4
	FINANCIAL OBLG COMPLETED	6	8.5	199	10.1	369	22.5	457	17.2	6847	44.4	2502	49.3	727	26.6	11107	37.6
	FINANCIAL OBLG OUTSTANDING	3	4.2	37	1.9	17	1.0	14	0.5	84	0.5	18	0.4	48	1.8	221	0.7
	SUBTOTAL	14	19.7	326	16.6	707	43.1	1881	70.9	13002	84.4	4854	95.6	1580	57.8	22364	75.7
FAILURE/REVOCATION	UNSATISFACTORY	7	9.9	897	45.6	94	5.7	182	6.9	296	1.9	23	0.5	234	8.6	1733	5.9
	TECHNICAL	37	52.1	639	32.5	462	28.2	337	12.7	1100	7.1	69	1.4	440	16.1	3084	10.4
	PROPERTY-MIS	7	9.9	25	1.3	55	3.4	55	2.1	125	0.8	10	0.2	85	3.1	362	1.2
	PROPERTY-FEL	2	2.8	16	0.8	43	2.6	36	1.4	97	0.6	13	0.3	114	4.2	321	1.1
	PERSONS-MISD	1	1.4	6	0.3	84	5.1	25	0.9	75	0.5	9	0.2	31	1.1	231	0.8
	PERSONS-FEL	0	0.0	0	0.0	11	0.7	5	0.2	17	0.1	1	0.0	27	1.0	61	0.2
	DRUGS	1	1.4	4	0.2	13	0.8	17	0.6	42	0.3	11	0.2	23	0.8	111	0.4
	ALCOHOL	0	0.0	5	0.3	24	1.5	13	0.5	142	0.9	8	0.2	27	1.0	219	0.7
	UTTERING	0	0.0	4	0.2	1	0.1	7	0.3	9	0.1	2	0.0	10	0.4	33	0.1
	NON-SUPPORT	0	0.0	0	0.0	2	0.1	1	0.0	8	0.1	1	0.0	2	0.1	14	0.0
	TRAFFIC	0	0.0	10	0.5	36	2.2	23	0.9	132	0.9	19	0.4	38	1.4	258	0.9
	OTHER CRIMES	1	1.4	21	1.1	71	4.3	56	2.1	189	1.2	23	0.5	83	3.0	444	1.5
	SUBTOTAL	56	78.9	1627	82.8	896	54.6	757	28.5	2232	14.5	189	3.7	1114	40.7	6871	23.2

(CONTINUED)

PROBATIONERS

JAN 1 - DEC 31 1986

S U P E R V I S I O N L E V E L

REPORT 2B: EXITS BY SUCCESS/FAILURE RATES		INTENSIVE		SUSPENDED		HIGH RISK		SELECTIVE		INTER- MEDIATE		SPECIAL		DEFERRED		ALL	
		NUMBR	PERCT	NUMBR	PERCT	NUMBR	PERCT	NUMBR	PERCT	NUMBR	PERCT	NUMBR	PERCT	NUMBR	PERCT	NUMBR	PERCT
OTHER	DIED	1	1.4	11	0.6	36	2.2	15	0.6	177	1.1	35	0.7	40	1.5	315	1.1
	CANCELLED BY COURT	0	0.0	1	0.1	1	0.1	0	0.0	0	0.0	0	0.0	1	0.0	3	0.0
	SUBTOTAL	1	1.4	12	0.6	37	2.3	15	0.6	177	1.1	35	0.7	41	1.5	318	1.1
TOTAL		71	100.0	1965	100.0	1640	100.0	2653	100.0	15411	100.0	5078	100.0	2735	100.0	29553	100.0

PAROLEES

JAN 1 - DEC 31 1986

S U P E R V I S I O N L E V E L

REPORT 2B: EXITS BY SUCCESS/FAILURE RATES		INTENSIVE		SUSPENDED		HIGH RISK		SELECTIVE		INTER- MEDIATE		SPECIAL		DEFERRED OR NOT REPORTD		ALL	
		NUMBR	PERCT	NUMBR	PERCT	NUMBR	PERCT	NUMBR	PERCT	NUMBR	PERCT	NUMBR	PERCT	NUMBR	PERCT	NUMBR	PERCT
SATISFACTORY	COMPLETED	6	37.5	43	20.0	446	74.1	247	81.8	1104	78.6	284	70.0	2388	88.1	4518	79.9
	NO FINANCIAL OBLG	0	0.0	10	4.7	41	6.8	19	6.3	117	8.3	72	17.7	43	1.6	302	5.3
	FINANCIAL OBLG COMPLETED	0	0.0	3	1.4	13	2.2	8	2.6	81	5.8	32	7.9	13	0.5	150	2.7
	FINANCIAL OBLG OUTSTANDING	0	0.0	1	0.5	1	0.2	0	0.0	1	0.1	1	0.2	2	0.1	6	0.1
	SUBTOTAL	6	37.5	57	26.5	501	83.2	274	90.7	1303	92.8	389	95.8	2446	90.2	4976	88.0
FAILURE/REVOC- ATION	UNSATISFACTORY	1	6.3	38	17.7	9	1.5	4	1.3	10	0.7	1	0.2	24	0.9	87	1.5
	TECHNICAL	8	50.0	105	48.8	56	9.3	10	3.3	49	3.5	5	1.2	143	5.3	376	6.6
	PROPERTY-MIS	0	0.0	2	0.9	2	0.3	4	1.3	7	0.5	0	0.0	13	0.5	28	0.5
	PROPERTY-FEL	0	0.0	4	1.9	10	1.7	4	1.3	8	0.6	1	0.2	23	0.8	50	0.9
	PERSONS-MISD	1	6.3	0	0.0	2	0.3	1	0.3	3	0.2	0	0.0	10	0.4	17	0.3
	PERSONS-FEL	0	0.0	0	0.0	2	0.3	1	0.3	3	0.2	1	0.2	5	0.2	12	0.2
	DRUGS	0	0.0	0	0.0	1	0.2	0	0.0	2	0.1	0	0.0	3	0.1	6	0.1
	ALCOHOL	0	0.0	2	0.9	1	0.2	0	0.0	0	0.0	0	0.0	7	0.3	10	0.2
	UTTERING	0	0.0	0	0.0	0	0.0	1	0.3	2	0.1	0	0.0	3	0.1	6	0.1
	TRAFFIC	0	0.0	2	0.9	4	0.7	0	0.0	2	0.1	2	0.5	5	0.2	15	0.3
	OTHER CRIMES	0	0.0	2	0.9	10	1.7	1	0.3	5	0.4	2	0.5	19	0.7	39	0.7
	SUBTOTAL	10	62.5	155	72.1	97	16.1	26	8.6	91	6.5	12	3.0	255	9.4	646	11.4
OTHER	DIED	0	0.0	3	1.4	4	0.7	2	0.7	10	0.7	5	1.2	11	0.4	35	0.6

(CONTINUED)

PAROLEES

JAN 1 - DEC 31 1986

S U P E R V I S I O N L E V E L

REPORT 2B: EXITS BY SUCCESS/FAILURE RATES		INTENSIVE		SUSPENDED		HIGH RISK		SELECTIVE		INTER- MEDIATE		SPECIAL		DEFERRED OR NOT REPORTD		ALL	
		NUMBR	PERCT	NUMBR	PERCT	NUMBR	PERCT	NUMBR	PERCT	NUMBR	PERCT	NUMBR	PERCT	NUMBR	PERCT	NUMBR	PERCT
OTHER	SUBTOTAL	0	0.0	3	1.4	4	0.7	2	0.7	10	0.7	5	1.2	11	0.4	35	0.6
TOTAL		16	100.0	215	100.0	602	100.0	302	100.0	1404	100.0	406	100.0	2712	100.0	5657	100.0

JAN 1 - DEC 31 1986
C R I M E C A T E G O R Y

REPORT 2C: REMOVED BY TIME SUPERVISED	ASSAULTIVE CRIMES								PUBLIC ORDER								
	HOMI- CIDE	RAPE, SEX ASLT	ROB- BERY	OTHER		TOTAL			DRUGS		DWI	TRAF- FIC	OTHER		TOTAL		
				ASSAULTIVE		ASSAULTIVE			& NARCOTICS				PUBLIC ORDER		PUBLIC ORDER		
				MIS	FEL	MIS	FELON	TOTAL	MIS	FEL			MIS	FELON	MIS	FELON	TOTAL
3 MONTHS OR LESS	33	76	65	71	71	71	245	316	20	135	478	102	33	14	633	149	782
OVER 3, UP TO 6 MOS	37	83	73	119	73	119	266	385	23	191	711	88	64	16	886	207	1093
OVER 6, UP TO 9 MOS	5	14	20	115	17	115	56	171	10	51	797	84	59	2	950	53	1003
OVER 9 MONTHS, UP TO 1 YEAR	4	4	10	93	12	93	30	123	21	20	570	49	35	3	675	23	698
OVER 1 YEAR, UP TO 18 MONTHS	17	44	19	277	16	277	96	373	91	52	1901	241	178	5	2411	57	2468
OVER 18 MONTHS, UP TO 2 YEARS	14	24	11	144	12	144	61	205	42	52	592	133	83	6	850	58	908
OVER 2 YEARS, UP TO 2.5	43	32	28	181	16	181	119	300	82	86	748	138	132	5	1100	91	1191
OVER 2.5, UP TO 3	8	5	14	33	14	33	41	74	26	43	161	65	46	5	298	48	346
OVER 3, UP TO 3.5	45	26	48	103	26	103	145	248	48	125	199	94	78	14	419	139	558
OVER 3.5, UP TO 4	8	8	18	30	12	30	46	76	12	36	69	36	28	8	145	44	189
OVER 4, UP TO 4.5	6	8	12	21	4	21	30	51	8	34	29	31	35	6	103	40	143
OVER 4.5, UP TO 5	5	4	8	16	7	16	24	40	10	33	23	25	22	5	80	38	118
OVER 5 YEARS	17	7	25	42	33	42	82	124	11	83	37	34	49	11	131	94	225
TOTAL	242	335	351	1245	313	1245	1241	2486	404	941	6315	1120	842	100	8681	1041	9722

JAN 1 - DEC 31 1986
CRIME CATEGORY

REPORT 2C: REMOVED BY TIME SUPERVISED	PROPERTY CRIMES									TOTAL CRIMES			
	BURGLARY, BREAK & ENTER		LARCENY, AUTO THEFT		FORGERY, BAD CHECKS & FRAUD		TOTAL		TOTAL PROPER- TY	NOT REP.	TOTAL, ALL MIS	TOTAL, ALL FEL	TOTAL, ALL CRIMES
	MIS	FEL	MIS	FEL	MIS	FEL	MIS	FEL					
3 MONTHS OR LESS	56	185	176	124	29	69	303	392	695	808	1007	786	2601
OVER 3, UP TO 6 MOS	94	326	210	205	62	127	427	671	1098	1395	1432	1144	3971
OVER 6, UP TO 9 MOS	63	135	177	64	48	31	336	233	569	1647	1401	342	3390
OVER 9 MONTHS, UP TO 1 YEAR	55	36	147	26	31	14	277	78	355	1069	1045	131	2245
OVER 1 YEAR, UP TO 18 MONTHS	120	93	559	42	138	29	935	171	1106	3913	3623	324	7860
OVER 18 MONTHS, UP TO 2 YEARS	80	56	211	31	72	27	414	120	534	1607	1408	239	3254
OVER 2 YEARS, UP TO 2.5	105	64	335	35	85	31	601	135	736	2288	1882	345	4515
OVER 2.5, UP TO 3	57	24	96	25	41	31	220	82	302	675	551	171	1397
OVER 3, UP TO 3.5	122	91	178	50	54	45	373	194	567	1452	895	478	2825
OVER 3.5, UP TO 4	29	42	72	22	31	14	149	79	228	408	324	169	901
OVER 4, UP TO 4.5	26	39	60	30	21	13	122	83	205	320	246	153	719
OVER 4.5, UP TO 5	26	31	40	21	16	22	86	76	162	163	182	138	483
OVER 5 YEARS	49	94	74	58	49	66	186	226	412	332	359	402	1093
TOTAL	882	1216	2335	733	677	519	4429	2540	6969	16077	14355	4822	35254

JAN 1 - DEC 31 1986

TERMINATIONS BY TIME UNDER SUPERVISION

REPORT 2D: TERMINATIONS, BY MONTHS SUPVD		NUMBER, BY TIME SUPERVISED											TOTAL
		0-3	3-6	6-9	9-12	12-18	18-24	24-30	30-36	36-48	48-60	60+	
REASON FOR TERMINATION	COMPLETED	1571	2088	1035	188	3688	359	2387	150	1494	221	411	13592
	NO FINANCIAL OBLIGATION	88	126	194	186	434	278	293	131	256	103	91	2180
	FINANCIAL OBLG COMPLETED	487	815	1106	990	2404	1701	1226	707	1284	372	163	11255
	FINANCIAL OBLG OUTSTANDING	12	15	21	14	45	20	23	10	25	17	25	227
	SUBTOTAL	2158	3044	2356	1378	6571	2358	3929	998	3059	713	690	27254
FAILURE/REVOCA-TION	UNSATISFACTORY	52	119	140	113	175	116	92	62	311	329	308	1817
	TECHNICAL	200	472	523	433	641	447	284	175	222	98	64	3559
	PROPERTY-MIS	42	60	59	48	69	50	23	20	17	10	3	401
	PROPERTY-FEL	10	43	46	42	66	51	32	22	16	14	8	350
	PERSONS-MISD	30	38	50	30	44	22	19	9	8	2	3	255
	PERSONS-FEL	2	9	13	7	13	5	9	7	2	4	1	72
	DRUGS	3	12	12	16	19	24	9	13	11	7	1	127
	ALCOHOL	15	34	35	32	35	31	19	13	19	5	0	238
	UTTERING	1	7	4	7	4	4	4	1	3	0	1	36
	NON-SUPPORT	0	0	1	1	5	4	1	0	2	0	0	14
	TRAFFIC	10	28	46	39	69	37	21	15	14	3	4	286
	OTHER CRIMES	34	59	66	56	90	64	48	33	26	11	6	493
	SUBTOTAL	399	881	995	824	1230	855	561	370	651	483	399	7648

(CONTINUED)

JAN 1 - DEC 31 1986

TERMINATIONS BY TIME UNDER SUPERVISION

REPORT 2D: TERMINATIONS, BY MONTHS SUPVD		NUMBER, BY TIME SUPERVISED										TOTAL	
		0-3	3-6	6-9	9-12	12-18	18-24	24-30	30-36	36-48	48-60		60+
REASON FOR TERMINATION	DIED	42	45	39	43	59	41	25	28	16	6	4	348
OTHER	CANCELLED BY COURT	2	1	0	0	0	0	0	1	0	0	0	4
	SUBTOTAL	44	46	39	43	59	41	25	29	16	6	4	352
TOTAL		2601	3971	3390	2245	7860	3254	4515	1397	3726	1202	1093	35254

JAN 1 - DEC 31 1986

TERMINATIONS BY TIME UNDER SUPERVISION

REPORT 2E: PERCENTAGE BY NBR MON SUPVD.		PERCENT, BY TIME SUPERVISED										
		0-3	3-6	6-9	9-12	12-18	18-24	24-30	30-36	36-48	48-60	60+
REASON FOR TERMINATION												
SATISFACTORY	COMPLETED	11.6	15.4	7.6	1.4	27.1	2.6	17.6	1.1	11.0	1.6	3.0
	NO FINANCIAL OBLIGATION	4.0	5.8	8.9	8.5	19.9	12.8	13.4	6.0	11.7	4.7	4.2
	FINANCIAL OBLG COMPLETED	4.3	7.2	9.8	8.8	21.4	15.1	10.9	6.3	11.4	3.3	1.4
	FINANCIAL OBLG OUTSTANDING	5.3	6.6	9.3	6.2	19.8	8.8	10.1	4.4	11.0	7.5	11.0
	SUBTOTAL	7.9	11.2	8.6	5.1	24.1	8.7	14.4	3.7	11.2	2.6	2.5
FAILURE/REVOC- ATION	UNSATISFACTORY	2.9	6.5	7.7	6.2	9.6	6.4	5.1	3.4	17.1	18.1	17.0
	TECHNICAL	5.6	13.3	14.7	12.2	18.0	12.6	8.0	4.9	6.2	2.8	1.8
	PROPERTY-MIS	10.5	15.0	14.7	12.0	17.2	12.5	5.7	5.0	4.2	2.5	0.7
	PROPERTY-FEL	2.9	12.3	13.1	12.0	18.9	14.6	9.1	6.3	4.6	4.0	2.3
	PERSONS-MISD	11.8	14.9	19.6	11.8	17.3	8.6	7.5	3.5	3.1	0.8	1.2
	PERSONS-FEL	2.8	12.5	18.1	9.7	18.1	6.9	12.5	9.7	2.8	5.6	1.4
	DRUGS	2.4	9.4	9.4	12.6	15.0	18.9	7.1	10.2	8.7	5.5	0.8
	ALCDHOL	6.3	14.3	14.7	13.4	14.7	13.0	8.0	5.5	8.0	2.1	0.0
	UTTERING	2.8	19.4	11.1	19.4	11.1	11.1	11.1	2.8	8.3	0.0	2.8
	NON-SUPPORT	0.0	0.0	7.1	7.1	35.7	28.6	7.1	0.0	14.3	0.0	0.0
	TRAFFIC	3.5	9.8	16.1	13.6	24.1	12.9	7.3	5.2	4.9	1.0	1.4
	OTHER CRIMES	6.9	12.0	13.4	11.4	18.3	13.0	9.7	6.7	5.3	2.2	1.2
	SUBTOTAL	5.2	11.5	13.0	10.8	16.1	11.2	7.3	4.8	8.5	6.3	5.2

(CONTINUED)

JAN 1 - DEC 31 1986

TERMINATIONS BY TIME UNDER SUPERVISION

REPORT 2E: PERCENTAGE BY NBR MON SUPVD.		PERCENT, BY TIME SUPERVISED										
		0-3	3-6	6-9	9-12	12-18	18-24	24-30	30-36	36-48	48-60	60+
REASON FOR TERMINATION	DIED	12.1	12.9	11.2	12.4	17.0	11.8	7.2	8.0	4.6	1.7	1.1
OTHER	CANCELLED BY COURT	50.0	25.0	0.0	0.0	0.0	0.0	0.0	25.0	0.0	0.0	0.0
	SUBTOTAL	12.5	13.1	11.1	12.2	16.8	11.6	7.1	8.2	4.5	1.7	1.1
TOTAL		7.4	11.3	9.6	6.4	22.3	9.2	12.8	4.0	10.6	3.4	3.1

SECTION 3 - SUPERVISED POPULATION AT PERIOD END

JAN 1 - DEC 31 1986

S U P E R V I S E D I N S T A T E ALL CLIENTS

REPORT 3A: POPULATION: BY SUPERVISION LEVEL	INTENSIVE PROB/DUAL		TOTAL PROBATION/DUAL		INTENSIVE PAROLE/DUAL		TOTAL PAROLE/DUAL		TOTAL CLIENTS IN-STATE		(INCLUDES OUT OF STATE)	
	NUMBER	PERCENT	NUMBER	PERCENT	NUMBER	PERCENT	NUMBER	PERCENT	NUMBER	PERCENT	NUMBER	PERCENT
INTENSIVE SUPERVISION	280	100.0	280	0.5	26	100.0	26	0.7	301	0.5	301	0.5
SUSPENDED	0	0.0	6451	10.8	0	0.0	400	10.5	6815	10.8	6824	10.8
HIGH RISK	0	0.0	3853	6.4	0	0.0	606	15.9	4388	6.9	4388	6.9
SELECTIVE	0	0.0	4172	7.0	0	0.0	220	5.8	4364	6.9	4368	6.9
INTERMEDIATE	0	0.0	30553	51.1	0	0.0	1123	29.5	31544	49.9	31548	49.8
SPECIAL	0	0.0	9012	15.1	0	0.0	435	11.4	9418	14.9	9418	14.9
DEFERRED	0	0.0	4883	8.2	0	0.0	428	11.2	5266	8.3	5356	8.5
NOT REPORTED	0	0.0	555	0.9	0	0.0	567	14.9	1116	1.8	1120	1.8
TOTAL	280	100.0	59759	100.0	26	100.0	3805	100.0	63212	100.0	63323	100.0

JAN 1 - DEC 31 1986

S U P E R V I S E D I N S T A T E ALL CLIENTS

REPORT 3B: POPULATION BY CRIME	INTENSIVE PROB/DUAL		TOTAL PROBATION/DUAL		INTENSIVE PAROLE/DUAL		TOTAL PAROLE/DUAL		TOTAL CLIENTS IN-STATE		(INCLUDES OUT OF STATE)	
	NUMBER	PERCENT	NUMBER	PERCENT	NUMBER	PERCENT	NUMBER	PERCENT	NUMBER	PERCENT	NUMBER	PERCENT
MURDER FIRST DEGREE	1	0.4	18	0.0	1	3.8	71	1.9	84	0.1	84	0.1
MURDER SECOND DEGREE	0	0.0	13	0.0	3	11.5	174	4.6	186	0.3	187	0.3
MANSLAUGHTER	4	1.4	341	0.6	0	0.0	123	3.2	460	0.7	460	0.7
ROBBERY	14	5.0	389	0.7	10	38.5	567	14.9	935	1.5	939	1.5
ASSAULT	7	2.5	5359	9.0	0	0.0	180	4.7	5523	8.7	5532	8.7
RAPE	2	0.7	152	0.3	2	7.7	112	2.9	263	0.4	263	0.4
SEXUAL ASSAULT	0	0.0	4	0.0	0	0.0	7	0.2	11	0.0	11	0.0
MISC. SEX CRIMES	4	1.4	1037	1.7	2	7.7	52	1.4	1082	1.7	1087	1.7
KIDNAP, ABDUCTION	0	0.0	38	0.1	0	0.0	35	0.9	70	0.1	70	0.1
BURGLARY	0	0.0	110	0.2	1	3.8	104	2.7	208	0.3	208	0.3
BREAKING, ENTERING	71	25.4	5711	9.6	3	11.5	747	19.6	6379	10.1	6393	10.1
LARCENY	47	16.8	8906	14.9	0	0.0	526	13.8	9370	14.8	9392	14.8
AUTO THEFT	1	0.4	600	1.0	0	0.0	14	0.4	613	1.0	616	1.0
BURNINGS	3	1.1	223	0.4	1	3.8	46	1.2	264	0.4	265	0.4
FRAUD	5	1.8	2077	3.5	0	0.0	100	2.6	2155	3.4	2160	3.4
FORGERY	13	4.6	1462	2.4	0	0.0	171	4.5	1604	2.5	1606	2.5
WORTHLESS CHECKS	0	0.0	1718	2.9	0	0.0	23	0.6	1739	2.8	1742	2.8
TRESPASS	2	0.7	1759	2.9	0	0.0	23	0.6	1779	2.8	1782	2.8
NARCOTICS AND DRUGS	96	34.3	6528	10.9	1	3.8	417	11.0	6896	10.9	6911	10.9
ABANDONMENT AND NON-SUPPORT	0	0.0	329	0.6	0	0.0	8	0.2	336	0.5	337	0.5

(CONTINUED)

JAN 1 - DEC 31 1986

S U P E R V I S E D I N S T A T E ALL CLIENTS

REPORT 3B: POPULATION BY CRIME	INTENSIVE PROB/DUAL		TOTAL PROBATION/DUAL		INTENSIVE PAROLE/DUAL		TOTAL PAROLE/DUAL		TOTAL CLIENTS IN-STATE		(INCLUDES OUT OF STATE)	
	NUMBER	PERCENT	NUMBER	PERCENT	NUMBER	PERCENT	NUMBER	PERCENT	NUMBER	PERCENT	NUMBER	PERCENT
DRIVING WHILE IMPAIRED	4	1.4	15751	26.4	0	0.0	128	3.4	15864	25.1	15875	25.1
OTHER TRAFFIC VIOLATIONS	4	1.4	3242	5.4	1	3.8	72	1.9	3305	5.2	3308	5.2
HABITUAL DRUNK	0	0.0	6	0.0	0	0.0	0	0.0	6	0.0	6	0.0
OTHERS	2	0.7	3985	6.7	1	3.8	105	2.8	4079	6.5	4088	6.5
OUT OF STATE	0	0.0	1	0.0	0	0.0	0	0.0	1	0.0	1	0.0
TOTAL	280	100.0	59759	100.0	26	100.0	3805	100.0	63212	100.0	63323	100.0

JAN 1 - DEC 31 1986

S U P E R V I S E D I N S T A T E ALL CLIENTS

REPORT 3C: POPULATION:- COUNTY OF CONVICTION	INTENSIVE PROB/DUAL		TOTAL PROBATION/DUAL		INTENSIVE PAROLE/DUAL		TOTAL PAROLE/DUAL		TOTAL CLIENTS IN-STATE		(INCLUDES OUT OF STATE)	
	NUMBER	PERCENT	NUMBER	PERCENT	NUMBER	PERCENT	NUMBER	PERCENT	NUMBER	PERCENT	NUMBER	PERCENT
ALAMANCE	2	0.7	1243	2.1	1	3.8	51	1.3	1287	2.0	1287	2.0
ALLEGHANY	0	0.0	81	0.1	0	0.0	3	0.1	82	0.1	82	0.1
ALEXANDER	0	0.0	248	0.4	0	0.0	5	0.1	253	0.4	253	0.4
ANSON	0	0.0	262	0.4	0	0.0	16	0.4	277	0.4	277	0.4
ASHE	0	0.0	207	0.3	0	0.0	5	0.1	212	0.3	213	0.3
AVERY	0	0.0	95	0.2	0	0.0	3	0.1	98	0.2	98	0.2
BEAUFORT	6	2.1	575	1.0	0	0.0	26	0.7	600	0.9	600	0.9
BERTIE	0	0.0	211	0.4	0	0.0	11	0.3	222	0.4	222	0.4
BLADEN	0	0.0	374	0.6	0	0.0	11	0.3	384	0.6	384	0.6
BRUNSWICK	0	0.0	465	0.8	0	0.0	31	0.8	494	0.8	494	0.8
BUNCOMBE	26	9.3	942	1.6	0	0.0	89	2.3	1020	1.6	1020	1.6
BURKE	1	0.4	576	1.0	0	0.0	22	0.6	597	0.9	597	0.9
CABARRUS	7	2.5	765	1.3	0	0.0	43	1.1	803	1.3	803	1.3
CALDWELL	2	0.7	427	0.7	0	0.0	33	0.9	456	0.7	456	0.7
CAMDEN	0	0.0	45	0.1	0	0.0	3	0.1	46	0.1	46	0.1
CARTERET	0	0.0	351	0.6	0	0.0	21	0.6	368	0.6	369	0.6
CASWELL	0	0.0	163	0.3	0	0.0	12	0.3	173	0.3	173	0.3
CATAWBA	4	1.4	884	1.5	0	0.0	58	1.5	940	1.5	940	1.5
CHATHAM	0	0.0	327	0.5	0	0.0	14	0.4	341	0.5	341	0.5
CHEROKEE	0	0.0	222	0.4	0	0.0	5	0.1	226	0.4	226	0.4
CHOWAN	0	0.0	133	0.2	0	0.0	11	0.3	140	0.2	140	0.2

(CONTINUED)

JAN 1 - DEC 31 1986

S U P E R V I S E D I N S T A T E ALL CLIENTS

REPORT 3C: POPULATION - COUNTY OF CONVICTION	INTENSIVE PROB/DUAL		TOTAL PROBATION/DUAL		INTENSIVE PAROLE/DUAL		TOTAL PAROLE/DUAL		TOTAL CLIENTS IN-STATE		(INCLUDES OUT OF STATE)	
	NUMBER	PERCENT	NUMBER	PERCENT	NUMBER	PERCENT	NUMBER	PERCENT	NUMBER	PERCENT	NUMBER	PERCENT
CLAY	0	0.0	54	0.1	0	0.0	2	0.1	55	0.1	55	0.1
CLEVELAND	6	2.1	431	0.7	0	0.0	53	1.4	480	0.8	480	0.8
COLUMBUS	0	0.0	579	1.0	0	0.0	22	0.6	599	0.9	599	0.9
Craven	1	0.4	670	1.1	0	0.0	32	0.8	700	1.1	700	1.1
CUMBERLAND	35	12.5	2229	3.7	0	0.0	111	2.9	2337	3.7	2337	3.7
CURRITUCK	0	0.0	106	0.2	0	0.0	4	0.1	109	0.2	109	0.2
DARE	0	0.0	173	0.3	0	0.0	6	0.2	179	0.3	179	0.3
DAVIE	1	0.4	143	0.2	0	0.0	7	0.2	150	0.2	150	0.2
DAVIDSON	0	0.0	1176	2.0	0	0.0	37	1.0	1209	1.9	1209	1.9
DUPLIN	1	0.4	537	0.9	0	0.0	23	0.6	559	0.9	559	0.9
DURHAM	4	1.4	2254	3.8	0	0.0	117	3.1	2361	3.7	2361	3.7
EDGECOMBE	0	0.0	459	0.8	0	0.0	40	1.1	494	0.8	494	0.8
FORSYTH	26	9.3	2136	3.6	1	3.8	191	5.0	2299	3.6	2299	3.6
FRANKLIN	0	0.0	326	0.5	0	0.0	17	0.4	343	0.5	343	0.5
GASTON	1	0.4	1160	1.9	0	0.0	115	3.0	1265	2.0	1265	2.0
GATES	0	0.0	31	0.1	0	0.0	2	0.1	32	0.1	32	0.1
GRAHAM	0	0.0	73	0.1	0	0.0	3	0.1	76	0.1	76	0.1
GRANVILLE	0	0.0	333	0.6	0	0.0	18	0.5	349	0.6	349	0.6
GREENE	0	0.0	144	0.2	0	0.0	10	0.3	154	0.2	154	0.2
GUILFORD	27	9.6	2666	4.5	19	73.1	231	6.1	2875	4.5	2875	4.5
HALIFAX	0	0.0	610	1.0	0	0.0	29	0.8	635	1.0	635	1.0

(CONTINUED)

JAN 1 - DEC 31 1986

S U P E R V I S E D I N S T A T E ALL CLIENTS

REPORT 3C: POPULATION:- COUNTY OF CONVICTION	INTENSIVE PROB/DUAL		TOTAL PROBATION/DUAL		INTENSIVE PAROLE/DUAL		TOTAL PAROLE/DUAL		TOTAL CLIENTS IN-STATE		(INCLUDES OUT OF STATE)	
	NUMBER	PERCENT	NUMBER	PERCENT	NUMBER	PERCENT	NUMBER	PERCENT	NUMBER	PERCENT	NUMBER	PERCENT
HARNETT	0	0.0	627	1.0	0	0.0	26	0.7	648	1.0	648	1.0
HAYWOOD	0	0.0	501	0.8	0	0.0	23	0.6	523	0.8	523	0.8
HENDERSON	0	0.0	458	0.8	0	0.0	36	0.9	490	0.8	490	0.8
HERTFORD	0	0.0	209	0.3	0	0.0	14	0.4	221	0.3	221	0.3
HOKE	0	0.0	290	0.5	0	0.0	12	0.3	300	0.5	300	0.5
HYDE	0	0.0	35	0.1	0	0.0	0	0.0	35	0.1	35	0.1
IREDELL	1	0.4	1180	2.0	0	0.0	30	0.8	1209	1.9	1209	1.9
JACKSON	0	0.0	196	0.3	0	0.0	4	0.1	199	0.3	199	0.3
JOHNSON	0	0.0	613	1.0	0	0.0	36	0.9	647	1.0	647	1.0
JONES	0	0.0	72	0.1	0	0.0	3	0.1	75	0.1	75	0.1
LEE	1	0.4	429	0.7	0	0.0	34	0.9	461	0.7	461	0.7
LENOIR	0	0.0	619	1.0	0	0.0	29	0.8	646	1.0	646	1.0
LINCOLN	0	0.0	232	0.4	0	0.0	18	0.5	248	0.4	248	0.4
MACON	0	0.0	179	0.3	0	0.0	2	0.1	181	0.3	181	0.3
MADISON	0	0.0	107	0.2	0	0.0	5	0.1	112	0.2	112	0.2
MARTIN	0	0.0	239	0.4	0	0.0	18	0.5	256	0.4	256	0.4
MCDOWELL	0	0.0	265	0.4	0	0.0	18	0.5	278	0.4	278	0.4
MECKLENBURG	32	11.4	4903	8.2	0	0.0	247	6.5	5128	8.1	5129	8.1
MITCHELL	0	0.0	76	0.1	0	0.0	3	0.1	79	0.1	79	0.1
MONTGOMERY	0	0.0	241	0.4	0	0.0	16	0.4	257	0.4	257	0.4
MOORE	3	1.1	548	0.9	0	0.0	18	0.5	566	0.9	566	0.9

(CONTINUED)

JAN 1 - DEC 31 1986

S U P E R V I S E D I N S T A T E ALL CLIENTS

REPORT 3C: POPULATION:- COUNTY OF CONVICTION	INTENSIVE PROB/DUAL		TOTAL PROBATION/DUAL		INTENSIVE PAROLE/DUAL		TOTAL PAROLE/DUAL		TOTAL CLIENTS IN-STATE		(INCLUDES OUT OF STATE)	
	NUMBER	PERCENT	NUMBER	PERCENT	NUMBER	PERCENT	NUMBER	PERCENT	NUMBER	PERCENT	NUMBER	PERCENT
NASH	0	0.0	547	0.9	0	0.0	39	1.0	584	0.9	584	0.9
NEW HANOVER	15	5.4	1106	1.9	0	0.0	107	2.8	1205	1.9	1205	1.9
NORTHAMPTON	0	0.0	200	0.3	0	0.0	10	0.3	207	0.3	207	0.3
ONSLow	6	2.1	969	1.6	1	3.8	45	1.2	1006	1.6	1007	1.6
ORANGE	1	0.4	634	1.1	0	0.0	37	1.0	669	1.1	669	1.1
PAMLICO	0	0.0	126	0.2	0	0.0	6	0.2	128	0.2	128	0.2
PASQUOTANK	0	0.0	281	0.5	0	0.0	16	0.4	293	0.5	293	0.5
PENDER	1	0.4	239	0.4	0	0.0	7	0.2	246	0.4	246	0.4
PERQUIMANS	0	0.0	51	0.1	0	0.0	5	0.1	55	0.1	55	0.1
PERSON	0	0.0	304	0.5	0	0.0	33	0.9	335	0.5	335	0.5
PITT	2	0.7	1070	1.8	0	0.0	71	1.9	1131	1.8	1131	1.8
POLK	0	0.0	86	0.1	0	0.0	6	0.2	91	0.1	91	0.1
RANDOLPH	3	1.1	646	1.1	1	3.8	31	0.8	674	1.1	674	1.1
RICHMOND	0	0.0	529	0.9	0	0.0	49	1.3	572	0.9	572	0.9
ROBESON	2	0.7	1907	3.2	0	0.0	109	2.9	2013	3.2	2013	3.2
ROCKINGHAM	0	0.0	710	1.2	0	0.0	69	1.8	772	1.2	772	1.2
ROWAN	23	8.2	848	1.4	0	0.0	85	2.2	930	1.5	930	1.5
RUTHERFORD	0	0.0	333	0.6	0	0.0	34	0.9	365	0.6	365	0.6
SAMPSON	2	0.7	505	0.8	0	0.0	30	0.8	530	0.8	531	0.8
SCOTLAND	0	0.0	437	0.7	0	0.0	34	0.9	471	0.7	471	0.7
STANLY	1	0.4	393	0.7	0	0.0	13	0.3	403	0.6	403	0.6

(CONTINUED)

JAN 1 - DEC 31 1986

S U P E R V I S E D I N S T A T E ALL CLIENTS

REPORT 3C: POPULATION:- COUNTY OF CONVICTION	INTENSIVE PROB/DUAL		TOTAL PROBATION/DUAL		INTENSIVE PAROLE/DUAL		TOTAL PAROLE/DUAL		TOTAL CLIENTS IN-STATE		(INCLUDES OUT OF STATE)	
	NUMBER	PERCENT	NUMBER	PERCENT	NUMBER	PERCENT	NUMBER	PERCENT	NUMBER	PERCENT	NUMBER	PERCENT
STOKES	0	0.0	226	0.4	0	0.0	17	0.4	240	0.4	240	0.4
SURRY	0	0.0	491	0.8	0	0.0	37	1.0	521	0.8	521	0.8
SWAIN	0	0.0	81	0.1	0	0.0	4	0.1	85	0.1	85	0.1
TRANSYLVANIA	0	0.0	164	0.3	0	0.0	10	0.3	174	0.3	174	0.3
TYRRELL	0	0.0	36	0.1	0	0.0	3	0.1	39	0.1	39	0.1
UNION	2	0.7	802	1.3	0	0.0	31	0.8	830	1.3	830	1.3
VANCE	0	0.0	441	0.7	0	0.0	18	0.5	458	0.7	458	0.7
WAKE	28	10.0	3875	6.5	3	11.5	217	5.7	4059	6.4	4062	6.4
WARREN	0	0.0	114	0.2	0	0.0	6	0.2	120	0.2	120	0.2
WASHINGTON	0	0.0	114	0.2	0	0.0	6	0.2	120	0.2	120	0.2
WATAUGA	0	0.0	144	0.2	0	0.0	9	0.2	153	0.2	153	0.2
WAYNE	7	2.5	1115	1.9	0	0.0	43	1.1	1153	1.8	1153	1.8
WILKES	0	0.0	659	1.1	0	0.0	39	1.0	695	1.1	695	1.1
WILSON	0	0.0	542	0.9	0	0.0	28	0.7	567	0.9	567	0.9
OUT OF STATE	0	0.0	1	0.0	0	0.0	0	0.0	1	0.0	1	0.0
YADKIN	0	0.0	225	0.4	0	0.0	10	0.3	232	0.4	232	0.4
YANCEY	0	0.0	80	0.1	0	0.0	7	0.2	86	0.1	86	0.1
N.C. MISCELANEOUS	0	0.0	18	0.0	0	0.0	1	0.0	19	0.0	19	0.0
NOT REPORTED	0	0.0	1805	3.0	0	0.0	348	9.1	2142	3.4	2245	3.5
TOTAL	280	100.0	59759	100.0	26	100.0	3805	100.0	63212	100.0	63323	100.0

JAN 1 - DEC 31 1986

S U P E R V I S E D I N S T A T E ALL CLIENTS

REPORT 3D: POPULATION:- BY RACE/SEX	INTENSIVE PROB/DUAL		TOTAL PROBATION/DUAL		INTENSIVE PAROLE/DUAL		TOTAL PAROLE/DUAL		TOTAL CLIENTS IN-STATE		(INCLUDES OUT OF STATE)	
	NUMBER	PERCENT	NUMBER	PERCENT	NUMBER	PERCENT	NUMBER	PERCENT	NUMBER	PERCENT	NUMBER	PERCENT
WHITE MALES	130	46.4	28198	47.2	11	42.3	1702	44.7	29725	47.0	29790	47.0
BLACK MALES	115	41.1	19755	33.1	14	53.8	1774	46.6	21394	33.8	21414	33.8
INDIAN MALES	4	1.4	1133	1.9	0	0.0	88	2.3	1216	1.9	1216	1.9
ORIENTAL MALES	0	0.0	40	0.1	0	0.0	0	0.0	40	0.1	40	0.1
OTHER MALES	0	0.0	246	0.4	0	0.0	10	0.3	255	0.4	259	0.4
WHITE FEMALES	20	7.1	5230	8.8	1	3.8	119	3.1	5324	8.4	5341	8.4
BLACK FEMALES	11	3.9	4897	8.2	0	0.0	104	2.7	4990	7.9	4995	7.9
INDIAN FEMALES	0	0.0	223	0.4	0	0.0	7	0.2	230	0.4	230	0.4
ORIENTAL FEMALES	0	0.0	10	0.0	0	0.0	0	0.0	10	0.0	10	0.0
OTHER FEMALES	0	0.0	27	0.0	0	0.0	1	0.0	28	0.0	28	0.0
TOTAL	280	100.0	59759	100.0	26	100.0	3805	100.0	63212	100.0	63323	100.0

JAN 1 - DEC 31 1986

S U P E R V I S E D I N S T A T E ALL CLIENTS

REPORT 3E: POPULATION BY AGE	INTENSIVE PROB/DUAL		TOTAL PROBATION/DUAL		INTENSIVE PAROLE/DUAL		TOTAL PAROLE/DUAL		TOTAL CLIENTS IN-STATE		(INCLUDES OUT OF STATE)	
	NUMBER	PERCENT	NUMBER	PERCENT	NUMBER	PERCENT	NUMBER	PERCENT	NUMBER	PERCENT	NUMBER	PERCENT
16 AND UNDER	2	0.7	502	0.8	0	0.0	5	0.1	505	0.8	505	0.8
17	15	5.4	1610	2.7	1	3.8	30	0.8	1636	2.6	1639	2.6
18	20	7.1	2292	3.8	0	0.0	77	2.0	2358	3.7	2362	3.7
19	23	8.2	2562	4.3	0	0.0	97	2.5	2641	4.2	2648	4.2
20	23	8.2	2598	4.3	0	0.0	129	3.4	2703	4.3	2708	4.3
21-24	55	19.6	11673	19.5	1	3.8	675	17.7	12265	19.4	12295	19.4
25-29	61	21.8	13197	22.1	5	19.2	853	22.4	13979	22.1	14002	22.1
30-39	70	25.0	15856	26.5	12	46.2	1216	32.0	16986	26.9	17014	26.9
40-49	9	3.2	6076	10.2	5	19.2	497	13.1	6538	10.3	6546	10.3
50-59	2	0.7	2405	4.0	2	7.7	158	4.2	2549	4.0	2552	4.0
60 AND OVER	0	0.0	988	1.7	0	0.0	68	1.8	1052	1.7	1052	1.7
TOTAL	280	100.0	59759	100.0	26	100.0	3805	100.0	63212	100.0	63323	100.0

PROBATIONERS

JAN 1 - DEC 31 1986

S U P E R V I S I O N L E V E L

REPORT 3F: POPULATION, BY BRANCH, UNIT		INTENSIVE		SUSPENDED		HIGH RISK		SELECTIVE		INTER- MEDIATE		SPECIAL		DEFERRED OR NOT REPORTD		TOTAL, ALL
		NUMBR	PERCT	NUMBR	PERCT	NUMBR	PERCT	NUMBR	PERCT	NUMBR	PERCT	NUMBR	PERCT	NUMBR	PERCT	LEVELS
		A	A-I	25	69	2	6	1	3	1	3	0	0	0	0	7
	A-K	0	0	100	12	28	3	67	8	455	56	96	12	67	8	813
	A-M	1	0	108	11	86	9	25	3	365	38	265	28	109	11	959
	A-P	0	0	90	12	32	4	19	3	337	47	86	12	158	22	722
	A-R	0	0	86	11	47	6	30	4	317	41	183	24	110	14	773
	SUBTOTAL	26	1	386	12	194	6	142	4	1474	45	630	19	451	14	3365
B	B-I	13	100	0	0	0	0	0	0	0	0	0	0	0	0	13
	B-K	0	0	74	9	67	8	37	4	413	50	189	23	52	6	832
	B-L	0	0	95	10	28	3	74	8	592	60	116	12	80	8	985
	B-M	0	0	90	8	72	6	82	7	565	50	187	17	134	12	1130
	B-N	0	0	73	12	39	6	54	9	294	49	85	14	60	10	605
	B-P	0	0	66	8	24	3	70	8	452	53	136	16	99	12	847
	B-R	0	0	42	11	24	5	19	4	208	47	102	23	39	9	438
	SUBTOTAL	13	0	444	9	254	5	336	7	2524	52	815	17	464	10	4850
C	C-I	25	93	1	4	0	0	0	0	0	0	0	0	1	4	27
	C-K	1	0	71	8	47	5	112	12	469	51	140	15	81	9	921
	C-L	0	0	185	16	137	12	54	5	593	50	155	13	57	5	1181
	C-M	0	0	99	8	61	5	114	10	730	61	142	12	53	4	1199
	C-N	4	0	95	11	83	10	29	3	500	59	81	10	53	6	845
	C-P	1	0	117	10	50	4	72	6	617	53	209	18	98	8	1164

(CONTINUED)

PROBATIONERS

JAN 1 - DEC 31 1986

S U P E R V I S I O N L E V E L

REPORT 3F: POPULATION, BY BRANCH, UNIT		INTENSIVE		SUSPENDED		HIGH RISK		SELECTIVE		INTER-MEDIATE		SPECIAL		DEFERRED OR NOT REPORTD		TOTAL, ALL LEVELS
		NUMBR	PERCT	NUMBR	PERCT	NUMBR	PERCT	NUMBR	PERCT	NUMBR	PERCT	NUMBR	PERCT	NUMBR	PERCT	
		C	SUBTOTAL	31	1	568	11	378	7	381	7	2909	55	727	14	343
D	D-I	50	72	2	3	0	0	1	1	0	0	0	0	16	23	69
	D-K	0	0	11	2	28	4	56	8	453	64	90	13	70	10	708
	D-L	0	0	6	1	27	6	32	7	288	59	108	22	29	6	490
	D-M	0	0	244	27	54	6	58	6	347	39	138	15	60	7	901
	D-P	2	0	128	17	70	9	59	8	245	33	157	21	86	12	747
	D-R	0	0	44	9	29	6	38	8	211	42	113	23	63	13	498
	D-S	0	0	95	12	54	7	28	4	290	37	164	21	146	19	777
	D-T	0	0	79	12	89	13	58	9	312	47	74	11	53	8	665
		SUBTOTAL	52	1	609	13	351	7	330	7	2146	44	844	17	523	11
E	E-I	3	38	0	0	3	38	0	0	0	0	0	0	2	25	8
	E-K	0	0	82	8	91	9	61	6	484	49	163	17	103	10	984
	E-L	0	0	73	11	66	10	10	1	297	45	161	24	60	9	667
	E-M	0	0	47	7	47	7	44	7	376	59	97	15	31	5	642
	E-N	0	0	86	13	48	7	25	4	316	47	152	22	49	7	676
	E-P	0	0	74	8	45	5	56	6	464	52	183	21	64	7	886
	E-R	0	0	89	12	62	8	22	3	398	52	150	19	51	7	772
		SUBTOTAL	3	0	451	10	362	8	218	5	2335	50	906	20	360	8
F	F-I	6	55	0	0	0	0	1	9	0	0	1	9	3	27	11
	F-J	3	75	0	0	0	0	0	0	0	0	0	0	1	25	4

(CONTINUED)

PROBATIONERS

JAN 1 - DEC 31 1986

S U P E R V I S I O N L E V E L

REPORT 3F: POPULATION, BY BRANCH, UNIT		INTENSIVE		SUSPENDED		HIGH RISK		SELECTIVE		INTER- MEDIATE		SPECIAL		DEFERRED OR NOT REPORTED		TOTAL, ALL
		NUMBR	PERCT	NUMBR	PERCT	NUMBR	PERCT	NUMBR	PERCT	NUMBR	PERCT	NUMBR	PERCT	NUMBR	PERCT	LEVELS
		F	F-K	1	0	89	9	79	8	24	2	591	60	143	14	66
	F-L	0	0	105	11	48	5	53	5	598	60	108	11	78	8	990
	F-M	0	0	59	9	25	4	49	8	419	65	55	9	35	5	642
	F-N	0	0	38	6	39	6	25	4	379	60	114	18	33	5	628
	F-O	0	0	84	8	69	7	59	6	619	60	148	14	61	6	1040
	SUBTOTAL	10	0	375	9	260	6	211	5	2606	60	569	13	277	6	4308
G	G-I	32	68	0	0	1	2	0	0	2	4	0	0	12	26	47
	G-K	0	0	131	13	99	9	45	4	485	46	170	16	115	11	1045
	G-L	0	0	137	11	102	8	44	3	651	52	199	16	131	10	1264
	G-M	0	0	65	8	14	2	8	1	448	52	267	31	57	7	859
	G-N	0	0	96	8	53	5	48	4	594	52	245	22	98	9	1134
	G-O	0	0	117	11	80	7	51	5	555	51	188	17	103	9	1094
	G-P	0	0	106	13	48	6	44	5	450	54	127	15	56	7	831
	SUBTOTAL	32	1	652	10	397	6	240	4	3185	51	1196	19	572	9	6274
H	H-I	8	47	0	0	0	0	0	0	1	6	0	0	8	47	17
	H-K	0	0	68	8	31	4	61	7	502	61	80	10	79	10	821
	H-L	0	0	78	8	48	5	76	7	533	52	217	21	70	7	1022
	H-M	0	0	44	8	53	10	84	16	284	52	40	7	36	7	541
	H-N	0	0	53	6	56	7	57	7	562	67	61	7	56	7	845
	H-P	0	0	131	12	34	3	83	7	551	50	232	21	79	7	1110

(CONTINUED)

PROBATIONERS

JAN 1 - DEC 31 1986

S U P E R V I S I O N L E V E L

REPORT 3F: POPULATION, BY BRANCH, UNIT		INTENSIVE		SUSPENDED		HIGH RISK		SELECTIVE		INTER- MEDIATE		SPECIAL		DEFERRED OR NOT REPORTD		TOTAL, ALL LEVELS
		NUMBR	PERCT	NUMBR	PERCT	NUMBR	PERCT	NUMBR	PERCT	NUMBR	PERCT	NUMBR	PERCT	NUMBR	PERCT	
		H	SUBTOTAL	8	0	374	9	222	5	361	8	2433	56	630	14	328
I	I-I	9	75	0	0	1	8	0	0	0	0	0	0	2	17	12
	I-K	0	0	165	17	61	6	31	3	481	50	73	8	154	16	965
	I-L	0	0	66	9	71	10	60	8	310	43	172	24	42	6	721
	I-M	0	0	72	12	41	7	66	11	290	50	58	10	56	10	583
	I-N	0	0	53	8	46	7	68	10	424	61	43	6	65	9	699
	I-P	0	0	72	9	77	9	50	6	409	50	132	16	78	10	818
	I-R	0	0	41	11	14	4	41	11	222	60	26	7	29	8	373
	I-S	0	0	48	9	21	4	61	12	284	55	51	10	48	9	513
		SUBTOTAL	9	0	517	11	332	7	377	8	2420	52	555	12	474	10
J	J-I	24	59	0	0	0	0	0	0	2	5	0	0	15	37	41
	J-K	0	0	137	19	46	6	36	5	265	37	132	18	110	15	726
	J-L	1	0	1	0	48	7	36	5	384	56	141	20	80	12	691
	J-M	0	0	114	12	59	6	76	8	575	59	88	9	59	6	971
	J-N	0	0	60	10	17	3	83	14	348	58	43	7	47	8	598
	J-P	0	0	230	20	24	2	13	1	470	42	206	18	185	16	1128
	J-R	0	0	97	10	35	4	87	9	472	49	207	21	70	7	968
	J-S	0	0	118	14	14	2	86	10	459	53	108	12	87	10	872
		SUBTOTAL	25	0	757	13	243	4	417	7	2975	50	925	15	653	11
K	K-I	36	80	1	2	1	2	0	0	0	0	0	0	7	16	45

(CONTINUED)

PROBATIONERS

JAN 1 - DEC 31 1986

S U P E R V I S I O N L E V E L

REPORT 3F: POPULATION, BY BRANCH, UNIT		INTENSIVE		SUSPENDED		HIGH RISK		SELECTIVE		INTER- MEDIATE		SPECIAL		DEFERRED OR NOT REPORTD		TOTAL,
		NUMBR	PERCT	NUMBR	PERCT	NUMBR	PERCT	NUMBR	PERCT	NUMBR	PERCT	NUMBR	PERCT	NUMBR	PERCT	ALL
																LEVELS
K	K-K	1	0	119	19	28	4	45	7	289	46	77	12	72	11	631
	K-L	0	0	110	19	21	4	9	2	292	50	88	15	64	11	584
	K-M	0	0	78	14	26	5	41	8	311	57	53	10	36	7	545
	K-N	0	0	84	16	29	5	43	8	262	49	72	13	47	9	537
	K-O	0	0	78	10	89	12	31	4	355	47	125	17	70	9	748
	K-P	0	0	95	9	57	5	27	2	596	54	238	22	85	8	1098
	K-R	0	0	71	9	83	10	40	5	416	52	116	15	72	9	798
	SUBTOTAL	37	1	636	13	334	7	236	5	2521	51	769	15	453	9	4986
L	L-I	32	74	1	2	2	5	0	0	1	2	0	0	7	16	43
	L-J	2	100	0	0	0	0	0	0	0	0	0	0	0	0	2
	L-K	0	0	145	13	80	7	113	10	682	59	49	4	89	8	1158
	L-L	0	0	18	2	83	9	20	2	539	57	165	17	123	13	948
	L-M	0	0	491	40	103	8	32	3	413	33	40	3	157	13	1236
	L-N	0	0	18	2	102	10	55	5	639	62	108	10	110	11	1032
	L-P	0	0	16	2	96	10	75	8	608	64	47	5	110	12	952
	L-R	0	0	0	0	60	7	632	70	146	16	35	4	26	3	899
	SUBTOTAL	34	1	689	11	526	8	927	15	3028	48	444	7	622	10	6270
SPECIAL CATEGORIES	P30	0	0	0	0	0	0	0	0	0	0	0	0	1	100	1
	Q30	0	0	0	0	0	0	0	0	1	50	0	0	1	50	2
	R30	0	0	0	0	0	0	0	0	0	0	1	50	1	50	2

(CONTINUED)

PROBATIONERS

JAN 1 - DEC 31 1986

S U P E R V I S I O N L E V E L

REPORT 3F: POPULATION, BY BRANCH, UNIT		INTENSIVE		SUSPENDED		HIGH RISK		SELECTIVE		INTER- MEDIATE		SPECIAL		DEFERRED OR NOT REPORTD		TOTAL, ALL
		NUMBR	PERCT	NUMBR	PERCT	NUMBR	PERCT	NUMBR	PERCT	NUMBR	PERCT	NUMBR	PERCT	NUMBR	PERCT	LEVELS
		SPECIAL CATEGORIES	S30	0	0	1	50	0	0	0	0	0	0	1	50	0
V30	0		0	1	100	0	0	0	0	0	0	0	0	0	0	1
X01	0		0	0	0	0	0	0	0	0	0	0	0	1	100	1
SUBTOTAL	0		0	2	22	0	0	0	0	1	11	2	22	4	44	9
TOTAL		280	0	6460	11	3853	6	4176	7	30557	51	9012	15	5524	9	59862

PAROLEES

JAN 1 - DEC 31 1986

S U P E R V I S I O N L E V E L

REPORT 3F: POPULATION, BY BRANCH, UNIT		INTENSIVE		SUSPENDED		HIGH RISK		SELECTIVE		INTER- MEDIATE		SPECIAL		DEFERRED OR NOT REPORTD		TOTAL, ALL
		NUMBR	PERCT	NUMBR	PERCT	NUMBR	PERCT	NUMBR	PERCT	NUMBR	PERCT	NUMBR	PERCT	NUMBR	PERCT	LEVELS
		A	A-K	0	0	0	0	0	0	1	25	2	50	0	0	1
	A-M	0	0	0	0	0	0	0	0	8	67	2	17	2	17	12
	A-P	0	0	0	0	0	0	0	0	0	0	0	0	1	100	1
	A-R	0	0	1	25	0	0	0	0	3	75	0	0	0	0	4
	SUBTOTAL	0	0	1	5	0	0	1	5	13	62	2	10	4	19	21
B	B-K	0	0	0	0	0	0	0	0	3	60	1	20	1	20	5
	B-L	0	0	1	9	0	0	1	9	8	73	1	9	0	0	11
	B-M	0	0	1	7	3	20	0	0	10	67	1	7	0	0	15
	B-N	0	0	1	8	3	25	0	0	4	33	1	8	3	25	12
	B-P	0	0	0	0	0	0	0	0	4	80	0	0	1	20	5
	B-R	0	0	0	0	2	25	0	0	1	13	4	50	1	13	8
	SUBTOTAL	0	0	3	5	8	14	1	2	30	54	8	14	6	11	56
C	C-K	0	0	0	0	2	15	5	38	3	23	2	15	1	8	13
	C-L	0	0	2	40	0	0	0	0	2	40	1	20	0	0	5
	C-M	0	0	1	33	1	33	0	0	0	0	0	0	1	33	3
	C-N	0	0	0	0	2	40	0	0	2	40	1	20	0	0	5
	C-P	0	0	1	8	0	0	1	8	3	25	6	50	1	8	12
	SUBTOTAL	0	0	4	11	5	13	6	16	10	26	10	26	3	8	38
D	D-I	21	100	0	0	0	0	0	0	0	0	0	0	0	0	21
	D-K	0	0	1	11	0	0	1	11	3	33	2	22	2	22	9

(CONTINUED)

PAROLEES

JAN 1 - DEC 31 1986

S U P E R V I S I O N L E V E L

REPORT 3F: POPULATION, BY BRANCH, UNIT		INTENSIVE		SUSPENDED		HIGH RISK		SELECTIVE		INTER- MEDIATE		SPECIAL		DEFERRED OR NOT REPORTD		TOTAL, ALL
		NUMBR	PERCT	NUMBR	PERCT	NUMBR	PERCT	NUMBR	PERCT	NUMBR	PERCT	NUMBR	PERCT	NUMBR	PERCT	LEVELS
D	D-L	0	0	0	0	1	20	0	0	4	80	0	0	0	0	5
	D-M	0	0	4	24	2	12	1	6	5	29	2	12	3	18	17
	D-P	0	0	1	17	2	33	0	0	0	0	3	50	0	0	6
	D-R	0	0	0	0	1	33	0	0	1	33	1	33	0	0	3
	D-S	0	0	1	13	1	13	1	13	4	50	1	13	0	0	8
	D-T	0	0	0	0	0	0	0	0	0	0	0	0	1	100	1
	SUBTOTAL	21	30	7	10	7	10	3	4	17	24	9	13	6	9	70
E	E-I	1	100	0	0	0	0	0	0	0	0	0	0	0	0	1
	E-K	0	0	0	0	1	10	2	20	4	40	1	10	2	20	10
	E-L	0	0	1	17	2	33	0	0	3	50	0	0	0	0	6
	E-M	0	0	0	0	1	17	1	17	3	50	1	17	0	0	6
	E-N	0	0	2	40	1	20	0	0	2	40	0	0	0	0	5
	E-P	0	0	0	0	0	0	0	0	1	50	0	0	1	50	2
	E-R	0	0	1	50	0	0	0	0	0	0	0	0	1	50	2
	SUBTOTAL	1	3	4	13	5	16	3	9	13	41	2	6	4	13	32
F	F-K	0	0	2	50	0	0	0	0	1	25	1	25	0	0	4
	F-L	0	0	0	0	0	0	0	0	1	33	0	0	2	67	3
	F-M	0	0	0	0	1	20	0	0	3	60	0	0	1	20	5
	F-N	0	0	1	33	2	67	0	0	0	0	0	0	0	0	3
	F-O	0	0	4	44	1	11	1	11	2	22	0	0	1	11	9

(CONTINUED)

PAROLEES

JAN 1 - DEC 31 1986

S U P E R V I S I O N L E V E L

REPORT 3F: POPULATION, BY BRANCH, UNIT		INTENSIVE		SUSPENDED		HIGH RISK		SELECTIVE		INTER- MEDIATE		SPECIAL		DEFERRED OR NOT REPORTD		TOTAL, ALL LEVELS
		NUMBR	PERCT	NUMBR	PERCT	NUMBR	PERCT	NUMBR	PERCT	NUMBR	PERCT	NUMBR	PERCT	NUMBR	PERCT	
		F.	SUBTOTAL	0	0	7	29	4	17	1	4	7	29	1	4	4
G	G-I	3	75	0	0	0	0	0	0	0	0	0	0	1	25	4
	G-K	0	0	2	22	3	33	0	0	2	22	0	0	2	22	9
	G-L	0	0	0	0	3	50	0	0	1	17	0	0	2	33	6
	G-M	0	0	0	0	0	0	0	0	5	83	0	0	1	17	6
	G-N	0	0	1	11	1	11	0	0	4	44	2	22	1	11	9
	G-O	0	0	0	0	3	50	0	0	1	17	1	17	1	17	6
	G-P	0	0	1	11	4	44	0	0	3	33	0	0	1	11	9
	SUBTOTAL	3	6	4	8	14	29	0	0	16	33	3	6	9	18	49
H	H-K	0	0	0	0	3	38	1	13	3	38	1	13	0	0	8
	H-L	0	0	1	11	2	22	1	11	5	56	0	0	0	0	9
	H-M	0	0	2	33	1	17	2	33	1	17	0	0	0	0	6
	H-N	0	0	1	25	1	25	0	0	1	25	1	25	0	0	4
	H-P	0	0	1	17	1	17	0	0	2	33	1	17	1	17	6
	SUBTOTAL	0	0	5	15	8	24	4	12	12	36	3	9	1	3	33
I	I-K	0	0	2	17	2	17	0	0	7	58	0	0	1	8	12
	I-L	0	0	1	17	0	0	1	17	2	33	1	17	1	17	6
	I-M	0	0	0	0	2	29	1	14	4	57	0	0	0	0	7
	I-N	0	0	0	0	0	0	1	50	0	0	0	0	1	50	2
	I-P	0	0	0	0	1	14	0	0	1	14	4	57	1	14	7

(CONTINUED)

PAROLEES

JAN 1 - DEC 31 1986

S U P E R V I S I O N L E V E L

REPORT 3F: POPULATION, BY BRANCH, UNIT		INTENSIVE		SUSPENDED		HIGH RISK		SELECTIVE		INTER- MEDIATE		SPECIAL		DEFERRED OR NOT REPORTD		TOTAL, ALL
		NUMBR	PERCT	NUMBR	PERCT	NUMBR	PERCT	NUMBR	PERCT	NUMBR	PERCT	NUMBR	PERCT	NUMBR	PERCT	LEVELS
		I	I-R	0	0	0	0	1	25	0	0	2	50	0	0	1
	I-S	0	0	1	33	0	0	0	0	2	67	0	0	0	0	3
	SUBTOTAL	0	0	4	10	6	15	3	7	18	44	5	12	5	12	41
J	J-I	1	100	0	0	0	0	0	0	0	0	0	0	0	0	1
	J-K	0	0	0	0	1	50	0	0	1	50	0	0	0	0	2
	J-L	0	0	0	0	3	50	0	0	1	17	0	0	2	33	6
	J-M	0	0	0	0	3	60	0	0	2	40	0	0	0	0	5
	J-N	0	0	0	0	0	0	0	0	2	67	0	0	1	33	3
	J-P	0	0	1	11	0	0	2	22	4	44	1	11	1	11	9
	J-R	0	0	1	50	1	50	0	0	0	0	0	0	0	0	2
	J-S	0	0	0	0	0	0	2	67	1	33	0	0	0	0	3
	SUBTOTAL	1	3	2	6	8	26	4	13	11	35	1	3	4	13	31
K	K-K	0	0	2	50	0	0	0	0	0	0	1	25	1	25	4
	K-L	0	0	0	0	0	0	0	0	1	100	0	0	0	0	1
	K-M	0	0	1	50	0	0	0	0	1	50	0	0	0	0	2
	K-N	0	0	1	25	0	0	0	0	2	50	1	25	0	0	4
	K-O	0	0	1	20	0	0	0	0	2	40	1	20	1	20	5
	K-P	0	0	1	11	1	11	0	0	1	11	3	33	3	33	9
	K-R	0	0	1	14	1	14	0	0	3	43	0	0	2	29	7
	SUBTOTAL	0	0	7	22	2	6	0	0	10	31	6	19	7	22	32

(CONTINUED)

PAROLEES

JAN 1 - DEC 31 1986

S U P E R V I S I O N L E V E L

REPORT 3F: POPULATION, BY BRANCH, UNIT		INTENSIVE		SUSPENDED		HIGH RISK		SELECTIVE		INTER- MEDIATE		SPECIAL		DEFERRED OR NOT REPORTD		TOTAL, ALL LEVELS
		NUMBR	PERCT	NUMBR	PERCT	NUMBR	PERCT	NUMBR	PERCT	NUMBR	PERCT	NUMBR	PERCT	NUMBR	PERCT	
		L	L-K	0	0	3	14	4	19	3	14	9	43	0	0	2
	L-L	0	0	3	21	2	14	0	0	5	36	2	14	2	14	14
	L-M	0	0	2	20	1	10	0	0	5	50	0	0	2	20	10
	L-N	0	0	2	25	2	25	0	0	2	25	0	0	2	25	8
	L-P	0	0	1	13	0	0	2	25	2	25	1	13	2	25	8
	L-R	0	0	0	0	1	100	0	0	0	0	0	0	0	0	1
	SUBTOTAL	0	0	11	18	10	16	5	8	23	37	3	5	10	16	62
SPECIAL CATEGORIES	P30	0	0	25	6	72	17	21	5	156	36	43	10	115	27	432
	Q30	0	0	62	12	89	17	11	2	167	32	80	16	106	21	515
	R30	0	0	59	11	71	13	40	7	179	32	83	15	129	23	561
	S30	0	0	63	12	110	22	15	3	175	34	65	13	80	16	508
	T30	0	0	30	9	69	21	23	7	93	28	38	12	74	23	327
	U30	0	0	35	11	68	21	68	21	59	18	20	6	73	23	323
	V30	0	0	22	7	50	16	11	3	114	36	53	17	66	21	316
	X01	0	0	0	0	0	0	0	0	0	0	0	0	186	100	186
	X02	0	0	11	13	0	0	0	0	0	0	0	0	72	87	83
	X03	0	0	0	0	0	0	0	0	0	0	0	0	38	100	38
	X04	0	0	34	97	0	0	0	0	0	0	0	0	1	3	35
	SUBTOTAL	0	0	341	10	529	16	189	6	943	28	382	11	940	28	3324
TOTAL		26	1	400	10	606	16	220	6	1123	29	435	11	1003	26	3813

JAN 1 - DEC 31 1986
C R I M E C A T E G O R Y

REPORT 3G: POPULATION BY RACE/SEX	ASSAULTIVE CRIMES								PUBLIC ORDER								
	HOMI- CIDE	RAPE, SEX ASLT	ROB- BERY	OTHER		TOTAL			DRUGS & NARCOTICS		DWI	TRAF- FIC	OTHER		TOTAL		
				ASSAULTIVE		ASSAULTIVE							PUBLIC ORDER		PUBLIC ORDER		
				MIS	FEL	MIS	FELON	TOTAL	MIS	FEL			MIS	FELON	MIS	FELON	TOTAL
WHITE MALES	334	826	335	1760	386	1760	1881	3641	1146	2557	8944	1788	1036	180	12914	2737	15651
BLACK MALES	249	390	535	2236	468	2236	1642	3878	473	1323	5080	1186	1177	189	7916	1512	9428
INDIAN MALES	19	13	5	82	48	82	85	167	27	129	349	69	47	9	492	138	630
ORIENTAL MALES	0	2	0	4	4	4	6	10	3	2	9	2	1	0	15	2	17
OTHER MALES	3	4	6	12	5	12	18	30	5	23	89	23	8	0	125	23	148
WHITE FEMALES	69	72	34	129	30	129	205	334	249	523	1035	155	370	92	1809	615	2424
BLACK FEMALES	54	50	24	348	71	348	199	547	120	290	307	79	991	310	1497	600	2097
INDIAN FEMALES	3	1	0	10	6	10	10	20	5	32	54	6	14	6	79	38	117
ORIENTAL FEMALES	0	1	0	0	0	0	1	1	0	0	4	0	0	0	4	0	4
OTHER FEMALES	0	2	0	3	0	3	2	5	0	4	4	0	1	0	5	4	9
TOTAL	731	1361	939	4584	1018	4584	4049	8633	2028	4883	15875	3308	3645	786	24856	5669	30525

JAN 1 - DEC 31 1986
CRIME CATEGORY

REPORT 3G: POPULATION BY RACE/SEX	PROPERTY CRIMES									TOTAL CRIMES			
	BURGLARY, BREAK & ENTER		LARCENY, AUTO THEFT		FORGERY, BAD CHECKS & FRAUD		TOTAL		TOTAL PROPER- TY	NOT REP.	TOTAL, ALL MIS	TOTAL, ALL FEL	TOTAL, ALL CRIMES
	MIS	FEL	MIS	FEL	MIS	FEL	MIS	FEL					
WHITE MALES	1625	1955	2897	1145	1007	755	6475	4022	10497	1	21149	8640	29790
BLACK MALES	996	1508	2545	1006	742	676	4864	3244	8108	0	15016	6398	21414
INDIAN MALES	43	124	98	56	29	28	205	214	419	0	779	437	1216
ORIENTAL MALES	1	3	6	0	1	0	10	3	13	0	29	11	40
OTHER MALES	8	18	25	7	7	10	46	35	81	0	183	76	259
WHITE FEMALES	122	114	884	117	807	413	1915	668	2583	0	3853	1488	5341
BLACK FEMALES	36	34	1076	96	609	378	1829	522	2351	0	3674	1321	4995
INDIAN FEMALES	1	11	40	2	15	22	58	35	93	0	147	83	230
ORIENTAL FEMALES	0	0	3	0	2	0	5	0	5	0	9	.1	10
OTHER FEMALES	0	2	5	0	2	5	7	7	14	0	15	13	28
TOTAL	2832	3769	7579	2429	3221	2287	15414	8750	24164	1	44854	18468	63323

JAN 1 - DEC 31 1986
CRIME CATEGORY

REPORT 3H: POPULATION BY COUNTY	ASSAULTIVE CRIMES								PUBLIC ORDER								
	HOMI- CIDE	RAPE, SEX ASLT	ROB- BERY	OTHER		TOTAL			DRUGS		DWI	TRAF- FIC	OTHER		TOTAL		
				ASSAULTIVE		ASSAULTIVE			& NARCOTICS				PUBLIC ORDER		PUBLIC ORDER		
				MIS	FEL	MIS	FELON	TOTAL	MIS	FEL			MIS	FELON	MIS	FELON	TOTAL
ALAMANCE	15	21	19	135	9	135	64	199	36	86	460	87	65	4	648	90	738
ALLEGHANY	0	0	0	6	0	6	0	6	1	6	32	4	7	0	44	6	50
ALEXANDER	3	6	0	14	2	14	11	25	18	10	100	11	11	1	140	11	151
ANSON	6	2	4	18	4	18	16	34	6	12	91	18	13	2	128	14	142
ASHE	0	1	1	12	0	12	2	14	16	2	74	9	23	1	122	3	125
AVERY	1	0	0	2	1	2	2	4	10	10	28	3	3	1	44	11	55
BEAUFORT	2	11	7	55	4	55	24	79	9	26	177	35	32	15	253	41	294
BERTIE	4	1	2	36	10	36	17	53	1	9	46	11	22	0	80	9	89
BLADEN	1	2	5	43	5	43	13	56	3	19	118	18	31	6	170	25	195
BRUNSWICK	5	15	7	34	8	34	35	69	14	37	129	19	25	6	187	43	230
BUNCOMBE	15	43	22	42	23	42	103	145	32	83	144	46	48	10	270	93	363
BURKE	7	14	3	30	6	30	30	60	15	60	174	30	15	3	234	63	297
CABARRUS	5	19	11	52	15	52	50	102	9	51	248	60	49	12	366	63	429
CALDWELL	13	9	3	21	5	21	30	51	15	52	115	20	14	1	164	53	217
CAMDEN	0	1	1	3	0	3	2	5	2	1	19	2	0	0	23	1	24
CARTERET	1	12	4	23	4	23	21	44	18	43	91	12	24	1	145	44	189
CASNELL	1	3	1	22	5	22	10	32	8	7	53	7	5	2	73	9	82
CATAWBA	11	20	13	42	9	42	53	95	19	57	250	51	46	9	366	66	432
CHATHAM	4	8	4	46	14	46	30	76	16	12	109	27	20	3	172	15	187

(CONTINUED)

JAN 1 - DEC 31 1986
 CRIME CATEGORY

REPORT 3H: POPULATION BY COUNTY	PROPERTY CRIMES									TOTAL CRIMES			
	BURGLARY,		LARCENY,		FORGERY, BAD		TOTAL		TOTAL PROPER- TY	NOT REP.	TOTAL, ALL MIS	TOTAL, ALL FEL	TOTAL, ALL CRIMES
	BREAK & ENTER		AUTO THEFT		CHECKS & FRAUD		TOTAL						
	MIS	FEL	MIS	FEL	MIS	FEL	MIS	FEL					
ALAMANCE	47	49	113	22	67	23	255	95	350	0	1038	249	1287
ALLEGHANY	5	1	8	1	5	2	21	5	26	0	71	11	82
ALEXANDER	10	2	32	4	12	3	67	10	77	0	221	32	253
ANSON	9	15	19	12	13	19	55	46	101	0	201	76	277
ASHE	23	6	23	4	9	0	64	10	74	0	198	15	213
AVERY	6	4	8	6	8	1	27	12	39	0	73	25	98
BEAUFORT	24	38	67	26	25	21	139	88	227	0	447	153	600
BERTIE	15	5	29	5	10	5	65	15	80	0	181	41	222
BLADEN	17	12	46	15	19	10	93	40	133	0	306	78	384
BRUNSWICK	19	17	59	22	38	18	136	59	195	0	357	137	494
BUNCOMBE	49	122	125	49	76	67	270	242	512	0	582	438	1020
BURKE	32	30	63	29	55	9	167	73	240	0	431	166	597
CABARRUS	14	59	79	36	33	28	146	126	272	0	564	239	803
CALDWELL	22	19	68	29	26	8	131	57	188	0	316	140	456
CAMDEN	1	1	6	3	0	5	7	10	17	0	33	13	46
CARTERET	22	19	38	12	20	11	93	43	136	0	261	108	369
CASWELL	4	10	15	11	8	6	32	27	59	0	127	46	173
CATAWBA	56	69	132	35	54	34	268	145	413	0	676	264	940
CHATHAM	12	7	28	10	8	5	55	23	78	0	273	68	341

(CONTINUED)

61

JAN 1 - DEC 31 1986
CRIME CATEGORY

REPORT 3H: POPULATION BY COUNTY	ASSAULTIVE CRIMES								PUBLIC ORDER								
	HOMI- CIDE	RAPE, SEX ASLT	ROB- BERY	OTHER		TOTAL			DRUGS		DWI	TRAF- FIC	OTHER		TOTAL		
				ASSAULTIVE		ASSAULTIVE			& NARCOTICS				PUBLIC ORDER		PUBLIC ORDER		
				MIS	FEL	MIS	FELON	TOTAL	MIS	FEL			MIS	FELON	MIS	FELON	TOTAL
CHEROKEE	2	3	0	10	2	10	7	17	6	11	109	18	9	1	142	12	154
CHOWAN	0	2	1	11	2	11	5	16	2	2	20	6	6	1	34	3	37
CLAY	2	0	0	2	2	2	4	6	1	2	24	4	2	0	31	2	33
CLEVELAND	7	12	7	28	17	28	43	71	14	46	98	21	34	2	167	48	215
COLUMBUS	1	10	4	44	7	44	22	66	19	27	184	40	32	5	275	32	307
CRAVEN	4	13	3	49	14	49	34	83	21	48	179	26	93	7	319	55	374
CUMBERLAND	23	40	45	134	40	134	148	282	39	250	529	134	122	44	824	294	1118
CURRITUCK	0	4	2	8	2	8	8	16	2	14	18	7	4	3	31	17	48
DARE	1	3	0	13	0	13	4	17	5	26	54	11	3	1	73	27	100
DAVIE	1	1	0	13	0	13	2	15	2	5	51	12	11	0	76	5	81
DAVIDSON	14	10	17	110	16	110	57	167	63	56	372	80	61	1	576	57	633
DUPLIN	6	16	2	36	8	36	32	68	3	32	184	13	44	13	244	45	289
DURHAM	23	46	27	220	40	220	136	356	98	123	574	91	183	45	946	168	1114
EDGECOMBE	8	8	18	62	3	62	37	99	15	17	101	21	14	5	151	22	173
FORSYTH	31	56	48	124	36	124	171	295	69	240	469	110	149	76	797	316	1113
FRANKLIN	5	8	3	27	6	27	22	49	10	21	103	20	27	5	160	26	186
GASTON	24	32	34	73	16	73	106	179	74	78	224	80	33	0	411	78	489
GATES	1	0	0	3	1	3	2	5	0	4	9	1	2	1	12	5	17
GRAHAM	1	1	0	7	3	7	5	12	3	1	29	12	4	0	48	1	49

(CONTINUED)

62

JAN 1 - DEC 31 1986
CRIME CATEGORY

REPORT 3H: POPULATION BY COUNTY	PROPERTY CRIMES									TOTAL CRIMES			
	BURGLARY, BREAK & ENTER		LARCENY, AUTO THEFT		FORGERY, BAD CHECKS & FRAUD		TOTAL		TOTAL PROPER- TY	NOT REP.	TOTAL, ALL MIS	TOTAL, ALL FEL	TOTAL, ALL CRIMES
	MIS	FEL	MIS	FEL	MIS	FEL	MIS	FEL					
CHEROKEE	8	5	14	3	7	2	43	12	55	0	195	31	226
CHOWAN	10	11	37	10	9	6	60	27	87	0	105	35	140
CLAY	6	2	1	0	0	2	12	4	16	0	45	10	55
CLEVELAND	42	37	49	23	14	17	115	79	194	0	310	170	480
COLUMBUS	28	29	80	11	50	14	170	56	226	0	489	110	599
CRAVEN	37	35	68	10	41	16	182	61	243	0	550	150	700
CUMBERLAND	63	221	284	125	104	70	516	421	937	0	1474	863	2337
CURRITUCK	10	5	12	6	1	5	28	17	45	0	67	42	109
DARE	7	11	14	9	8	6	36	26	62	0	122	57	179
DAVIE	9	6	22	1	7	2	42	12	54	0	131	19	150
DAVIDSON	71	25	184	21	49	11	351	58	409	0	1037	172	1209
DUPLIN	24	22	55	19	35	28	130	72	202	0	410	149	559
DURHAM	116	107	291	99	134	83	596	295	891	0	1762	599	2361
EDGECOMBE	39	30	83	11	30	12	165	57	222	0	378	116	494
FORSYTH	104	162	276	94	65	115	499	392	891	0	1420	879	2299
FRANKLIN	21	20	19	13	17	8	62	46	108	0	249	94	343
GASTON	122	98	184	52	73	29	412	185	597	0	896	369	1265
GATES	3	1	1	2	1	1	6	4	10	0	21	11	32
GRAHAM	3	0	4	4	4	0	11	4	15	0	66	10	76

(CONTINUED)

(P. 3)

JAN 1 - DEC 31 1986
CRIME CATEGORY

REPORT 3H: POPULATION BY COUNTY	ASSAULTIVE CRIMES								PUBLIC ORDER								
	HOMI- CIDE	RAPE, SEX ASLT	ROB- BERY	OTHER		TOTAL			DRUGS		DWI	TRAF- FIC	OTHER		TOTAL		
				ASSAULTIVE		ASSAULTIVE			& NARCOTICS				PUBLIC ORDER		PUBLIC ORDER		
				MIS	FEL	MIS	FELON	TOTAL	MIS	FEL			MIS	FELON	MIS	FELON	TOTAL
GRANVILLE	3	8	10	27	2	27	23	50	12	14	106	23	18	0	159	14	173
GREENE	1	4	2	10	0	10	7	17	4	15	44	12	15	1	75	16	91
GUILFORD	39	77	70	209	53	209	239	448	92	333	504	124	130	105	850	438	1288
HALIFAX	7	11	3	82	4	82	25	107	15	20	87	20	133	2	255	22	277
HARNETT	8	10	5	43	15	43	38	81	10	59	206	29	36	7	281	66	347
HAYWOOD	3	6	4	48	9	48	22	70	15	24	168	34	46	0	263	24	287
HENDERSON	3	8	6	22	8	22	25	47	35	43	107	45	21	4	208	47	255
HERTFORD	1	5	2	25	3	25	10	35	2	16	43	5	17	0	67	16	83
HOKE	4	4	1	30	7	30	16	46	5	21	89	18	35	5	147	26	173
HYDE	0	2	0	4	0	4	2	6	1	0	15	1	1	1	18	1	19
IREDELL	3	12	4	85	7	85	26	111	77	32	399	70	58	2	604	34	638
JACKSON	3	3	1	10	0	10	7	17	16	9	77	12	9	1	114	10	124
JOHNSON	7	11	8	42	10	42	36	78	13	31	242	37	29	7	321	38	359
JONES	0	1	1	5	1	5	3	8	3	3	24	5	3	0	35	3	38
LEE	4	6	14	28	10	28	34	62	15	44	105	29	27	4	176	48	224
LENOIR	5	9	2	45	7	45	23	68	18	53	190	34	47	4	289	57	346
LINCOLN	0	7	4	13	8	13	19	32	9	16	48	7	12	2	76	18	94
MACON	1	4	0	7	3	7	8	15	4	6	77	20	11	0	112	6	118
MADISON	2	4	1	6	4	6	11	17	6	9	26	10	7	4	49	13	62

(CONTINUED)

JAN 1 - DEC 31 1986
 CRIME CATEGORY

REPORT 3H: POPULATION BY COUNTY	PROPERTY CRIMES									TOTAL CRIMES			
	BURGLARY,		LARCENY,		FORGERY, BAD		TOTAL		TOTAL PROPER- TY	NOT REP.	TOTAL, ALL MIS	TOTAL, ALL FEL	TOTAL, ALL CRIMES
	BREAK & ENTER		AUTO THEFT		CHECKS & FRAUD		TOTAL						
	MIS	FEL	MIS	FEL	MIS	FEL	MIS	FEL					
GRANVILLE	14	18	36	10	23	9	89	37	126	0	275	74	349
GREENE	4	6	11	6	6	7	26	20	46	0	111	43	154
GUILFORD	128	206	308	124	138	155	638	501	1139	0	1697	1178	2875
HALIFAX	58	24	94	16	31	8	202	49	251	0	539	96	635
HARNETT	30	26	76	22	28	11	152	68	220	0	476	172	648
HAYWOOD	31	26	49	13	14	14	112	54	166	0	423	100	523
HENDERSON	33	16	68	15	24	13	143	45	188	0	373	117	490
HERTFORD	16	7	39	4	13	18	74	29	103	0	166	55	221
HOKE	9	13	23	7	10	9	52	29	81	0	229	71	300
HYDE	0	1	2	1	0	1	7	3	10	0	29	6	35
IREDELL	49	9	273	13	66	10	428	32	460	0	1117	92	1209
JACKSON	15	11	14	2	6	6	39	19	58	0	163	36	199
JOHNSON	28	26	78	14	34	14	151	59	210	0	514	133	647
JONES	0	2	15	3	3	4	19	10	29	0	59	16	75
LEE	24	22	46	28	26	16	109	66	175	0	313	148	461
LENOIR	24	34	84	19	29	26	151	81	232	0	485	161	646
LINCOLN	25	17	38	9	9	9	81	41	122	0	170	78	248
MACON	15	3	11	6	2	5	33	15	48	0	152	29	181
MADISON	9	2	10	1	5	5	25	8	33	0	80	32	112

(CONTINUED)

JAN 1 - DEC 31 1986
CRIME CATEGORY

REPORT 3H: POPULATION BY COUNTY	ASSAULTIVE CRIMES								PUBLIC ORDER								
	HOMI- CIDE	RAPE, SEX ASLT	ROB- BERY	OTHER		TOTAL			DRUGS		DWI	TRAF- FIC	OTHER		TOTAL		
				ASSAULTIVE		ASSAULTIVE			& NARCOTICS				PUBLIC ORDER		PUBLIC ORDER		
				MIS	FEL	MIS	FELON	TOTAL	MIS	FEL			MIS	FELON	MIS	FELON	TOTAL
MARTIN	4	5	1	27	4	27	14	41	7	11	71	11	18	2	107	13	120
MCDOWELL	2	15	4	11	5	11	26	37	14	16	73	21	15	0	123	16	139
MECKLENBURG	59	154	91	536	50	536	354	890	136	396	1106	276	311	32	1829	428	2257
MITCHELL	0	1	0	4	1	4	2	6	8	13	18	2	7	1	35	14	49
MONTGOMERY	1	13	2	13	8	13	24	37	5	34	55	13	19	1	92	35	127
MOORE	7	10	6	42	10	42	33	75	27	29	144	32	37	1	240	30	270
NASH	13	15	10	48	4	48	42	90	20	22	120	18	34	1	192	23	215
NEW HANOVER	12	33	18	68	23	68	86	154	28	114	242	53	77	8	400	122	522
NORTHAMPTON	1	7	1	21	4	21	13	34	1	9	41	13	19	0	74	9	83
ONSLOW	8	42	9	51	6	51	65	116	22	127	204	29	57	14	312	141	453
ORANGE	6	18	11	56	9	56	44	100	19	43	208	52	38	13	317	56	373
PAMLICO	1	1	0	13	3	13	5	18	7	24	33	5	8	1	53	25	78
PASQUOTANK	4	9	2	25	2	25	17	42	5	21	44	19	14	3	82	24	106
PENDER	5	3	4	18	3	18	15	33	5	17	71	13	7	2	96	19	115
PERQUIMANS	1	2	0	6	1	6	4	10	0	3	10	5	2	1	17	4	21
PERSON	9	5	4	36	4	36	22	58	4	18	102	24	24	4	154	22	176
PITT	7	22	9	94	10	94	48	142	46	73	243	53	68	13	410	86	496
POLK	1	3	0	7	0	7	4	11	12	10	13	11	3	0	39	10	49
RANDOLPH	6	16	9	37	14	37	45	82	14	44	143	28	39	4	224	48	272

(CONTINUED)

66

JAN 1 - DEC 31 1986
C R I M E C A T E G O R Y

REPORT 3H: POPULATION BY COUNTY	PROPERTY CRIMES									TOTAL CRIMES			
	BURGLARY,		LARCENY,		FORGERY, BAD		TOTAL		TOTAL PROPER- TY	NOT REP.	TOTAL, ALL MIS	TOTAL, ALL FEL	TOTAL, ALL CRIMES
	BREAK & ENTER		AUTO THEFT		CHECKS & FRAUD		TOTAL						
	MIS	FEL	MIS	FEL	MIS	FEL	MIS	FEL					
MARTIN	12	18	28	6	3	18	52	43	95	0	186	70	256
MCDOWELL	12	20	37	9	8	6	62	40	102	0	196	82	278
MECKLENBURG	204	286	674	163	334	141	1374	608	1982	0	3739	1390	5129
MITCHELL	9	3	5	0	1	0	20	4	24	0	59	20	79
MONTGOMERY	4	9	31	15	10	8	60	33	93	0	165	92	257
MOORE	23	30	58	30	27	26	128	93	221	0	410	156	566
NASH	55	26	89	16	40	33	204	75	279	0	444	140	584
NEW HANOVER	39	106	147	56	60	84	281	248	529	0	749	456	1205
NORTHAMPTON	13	12	31	9	14	3	64	26	90	0	159	48	207
ONslow	51	54	106	41	125	36	305	133	438	0	668	339	1007
ORANGE	25	27	64	7	35	20	141	55	196	0	514	155	669
PAMLICO	1	4	20	0	0	2	26	6	32	0	92	36	128
PASQUOTANK	10	36	35	22	13	15	69	76	145	0	176	117	293
PENDER	17	20	27	5	14	13	60	38	98	0	174	72	246
PERQUIMANS	0	6	9	1	2	3	14	10	24	0	37	18	55
PERSON	7	19	28	11	17	9	59	42	101	0	249	86	335
PITT	55	60	147	36	108	46	343	150	493	0	847	284	1131
POLK	6	4	11	4	4	0	23	8	31	0	69	22	91
RANDOLPH	34	44	111	26	49	23	222	98	320	0	483	191	674

(CONTINUED)

JAN 1 - DEC 31 1986
CRIME CATEGORY

REPORT 3H: POPULATION BY COUNTY	ASSAULTIVE CRIMES								PUBLIC ORDER								
	HOMI- CIDE	RAPE, SEX ASLT	ROB- BERY	OTHER		TOTAL			DRUGS		DWI	TRAF- FIC	OTHER		TOTAL		
				ASSAULTIVE		ASSAULTIVE			& NARCOTICS				PUBLIC ORDER		PUBLIC ORDER		
				MIS	FEL	MIS	FELON	TOTAL	MIS	FEL			MIS	FELON	MIS	FELON	TOTAL
RICHMOND	8	8	13	43	8	43	37	80	19	55	107	28	26	3	180	58	238
ROBESON	25	17	17	114	63	114	122	236	36	189	513	95	107	18	751	207	958
ROCKINGHAM	9	15	8	64	17	64	49	113	22	78	199	37	33	12	291	90	381
ROWAN	14	16	14	63	16	63	60	123	12	67	324	61	49	6	446	73	519
RUTHERFORD	3	5	13	23	8	23	29	52	26	16	76	29	18	3	149	19	168
SAMPSON	6	6	4	30	6	30	22	52	4	32	190	26	53	4	273	36	309
SCOTLAND	5	2	5	42	19	42	31	73	11	57	87	19	20	4	137	61	198
STANLY	0	4	4	30	4	30	12	42	11	32	103	19	22	7	155	39	194
STOKES	4	6	1	18	3	18	14	32	3	24	64	15	5	4	87	28	115
SURRY	4	11	6	32	14	32	35	67	28	45	112	32	16	5	190	50	240
SHAIN	1	0	2	2	2	2	5	7	2	4	42	7	1	2	52	6	58
TRANSYLVANIA	2	3	1	11	6	11	12	23	14	16	34	14	17	1	79	17	96
TYRRELL	0	0	0	8	0	8	0	8	0	1	4	1	8	0	13	1	14
UNION	6	6	15	59	6	59	33	92	22	62	253	51	40	3	366	65	431
VANCE	3	7	6	42	8	42	24	66	15	23	114	16	22	11	167	34	201
WAKE	45	105	58	256	81	256	289	545	211	350	1204	193	165	86	1773	436	2209
WARREN	4	2	2	13	5	13	13	26	4	4	33	7	8	0	52	4	56
WASHINGTON	0	3	0	21	1	21	4	25	2	1	27	5	9	5	43	6	49
WATAUGA	3	3	2	3	1	3	9	12	15	9	46	7	2	1	70	10	80

(CONTINUED)

65

JAN 1 - DEC 31 1986
CRIME CATEGORY

REPORT 3H: POPULATION BY COUNTY	PROPERTY CRIMES									TOTAL CRIMES			
	BURGLARY, BREAK & ENTER		LARCENY, AUTO THEFT		FORGERY, BAD CHECKS & FRAUD		TOTAL		TOTAL PROPER- TY	NOT REP.	TOTAL, ALL MIS	TOTAL, ALL FEL	TOTAL, ALL CRIMES
	MIS	FEL	MIS	FEL	MIS	FEL	MIS	FEL					
RICHMOND	15	53	83	38	13	30	130	124	254	0	353	219	572
ROBESON	47	198	254	76	90	90	449	370	819	0	1314	699	2013
ROCKINGHAM	32	54	79	43	23	23	154	124	278	0	509	263	772
ROWAN	35	68	86	29	21	24	167	121	288	0	676	254	930
RUTHERFORD	19	25	44	15	16	15	87	58	145	0	259	106	365
SAMPSON	19	19	60	11	22	23	115	55	170	0	418	113	531
SCOTLAND	17	37	68	27	15	24	112	88	200	0	291	180	471
STANLY	12	22	50	26	16	27	91	76	167	0	276	127	403
STOKES	6	19	24	17	7	8	45	48	93	0	150	90	240
SURRY	19	37	70	26	20	17	130	84	214	0	352	169	521
SWAIN	5	6	5	0	2	1	12	8	20	0	66	19	85
TRANSYLVANIA	9	4	20	2	10	5	42	13	55	0	132	42	174
TYRRELL	0	3	3	2	0	4	8	9	17	0	29	10	39
UNION	31	39	91	51	41	26	189	118	307	0	614	216	830
VANCE	33	20	65	14	32	8	146	45	191	0	355	103	458
WAKE	116	216	347	175	167	191	715	592	1307	1	2744	1317	4062
WARREN	7	1	21	3	2	0	33	5	38	0	98	22	120
WASHINGTON	1	7	22	7	2	2	30	16	46	0	94	26	120
WATAUGA	10	7	19	2	15	5	46	15	61	0	119	34	153

(CONTINUED)

JAN 1 - DEC 31 1986
 CRIME CATEGORY

REPORT 3H: POPULATION BY COUNTY	ASSAULTIVE CRIMES								PUBLIC ORDER								
	HOMI- CIDE	RAPE, SEX ASLT	ROB- BERY	OTHER		TOTAL			DRUGS & NARCOTICS		DWI	TRAF- FIC	OTHER		TOTAL		
				ASSAULTIVE		ASSAULTIVE							PUBLIC ORDER		PUBLIC ORDER		
				MIS	FEL	MIS	FELON	TOTAL	MIS	FEL			MIS	FELON	MIS	FELON	TOTAL
WAYNE	14	17	11	65	17	65	59	124	22	77	350	73	110	8	555	85	640
WILKES	8	5	3	44	5	44	21	65	26	37	253	62	70	6	411	43	454
WILSON	5	9	8	42	12	42	34	76	19	24	108	28	23	1	178	25	203
YADKIN	3	6	2	9	5	9	14	23	8	15	76	23	19	1	126	16	142
YANCEY	1	2	1	5	2	5	6	11	3	17	22	3	7	2	35	19	54
NORTH CAROLINA	0	1	1	1	0	1	2	3	0	2	8	0	1	2	9	4	13
NOT REPORTED	69	83	106	80	60	80	318	398	67	288	239	67	54	54	427	362	769
OUT OF STATE	0	0	0	0	0	0	0	0	0	0	0	0	0	0	0	0	0
TOTAL	731	1361	939	4584	1018	4584	4049	8633	2028	4883	15875	3308	3645	786	24856	5669	30525

JAN 1 - DEC 31 1986
CRIME CATEGORY

REPORT 3H: POPULATION BY COUNTY	PROPERTY CRIMES									TOTAL CRIMES			
	BURGLARY,		LARCENY,		FORGERY, BAD		TOTAL		TOTAL PROPER- TY	NOT REP.	TOTAL, ALL MIS	TOTAL, ALL FEL	TOTAL, ALL CRIMES
	BREAK & ENTER		AUTO THEFT		CHECKS & FRAUD		TOTAL						
	MIS	FEL	MIS	FEL	MIS	FEL	MIS	FEL					
WAYNE	25	39	159	42	55	30	273	116	389	0	893	260	1153
WILKES	24	18	54	14	27	13	128	48	176	0	583	112	695
WILSON	44	36	105	27	36	26	197	91	288	0	417	150	567
YADKIN	4	11	18	3	11	8	44	23	67	0	179	53	232
YANCEY	0	13	1	4	0	1	3	18	21	0	43	43	86
NORTH CAROLINA	0	1	1	0	0	0	2	1	3	0	12	7	19
NOT REPORTED	103	251	260	161	112	158	500	578	1078	0	1007	1238	2245
OUT OF STATE	0	0	1	0	0	0	1	0	1	0	1	0	1
TOTAL	2832	3769	7579	2429	3221	2287	15414	8750	24164	1	44854	18468	63323

JAN 1 - DEC 31 1986

AGE CATEGORIES

REPORT 3I: POPULATION BY CRIME	YOUTH							ADULTS						TOTAL, ALL AGES
	UNDER 17	17 YEARS	18 YEARS	19 YEARS	20 YEARS	21 YEARS	TOTAL 16-21	22 - 24 YEARS	25 - 29 YEARS	30 - 39 YEARS	40 - 49 YEARS	50 - 59 YEARS	60+ YEARS	
MURDER FIRST DEGREE	0	0	0	1	1	1	3	3	6	28	21	15	8	84
MURDER SECOND DEGREE	0	0	0	0	0	0	0	6	22	66	55	23	15	187
MANSLAUGHTER	1	8	17	8	12	22	68	62	81	121	66	33	29	460
ROBBERY	3	9	11	33	41	46	143	178	213	313	72	15	5	939
ASSAULT	51	132	165	195	211	223	977	765	1204	1586	623	242	135	5532
RAPE	5	3	8	5	6	4	31	27	35	102	54	7	7	263
SEXUAL ASSAULT	0	0	0	0	0	0	0	1	3	3	3	1	0	11
MISC. SEX CRIMES	6	29	33	39	38	27	172	115	196	315	163	85	41	1087
KIDNAP, ABDUCTION	0	0	0	0	1	1	2	6	9	36	16	1	0	70
BURGLARY	0	0	3	7	10	13	33	60	39	51	23	1	1	208
BREAKING, ENTERING	110	413	622	628	627	520	2920	1291	1200	778	169	28	7	6393
LARCENY	170	501	728	757	688	630	3474	1681	1806	1735	477	164	55	9392
AUTO THEFT	21	54	58	75	50	61	319	99	93	78	19	8	0	616
BURNINGS	2	2	11	15	8	15	53	38	61	69	26	16	2	265
FRAUD	7	29	54	62	81	87	320	305	466	665	293	91	20	2160
FORGERY	6	25	53	72	93	105	354	322	367	415	120	17	11	1606
WORTHLESS CHECKS	0	8	16	29	44	71	168	234	373	644	231	67	25	1742
TRESPASS	50	125	155	159	112	96	697	308	327	280	124	34	12	1782
NARCOTICS AND DRUGS	17	86	126	174	246	290	939	1094	1983	2188	508	140	59	6911
ABANDONMENT AND NON-SUPPORT	0	0	2	2	1	11	16	35	63	158	57	7	1	337

(CONTINUED)

JAN 1 - DEC 31 1986

AGE CATEGORIES

REPORT 3I: POPULATION BY CRIME	YOUTH							ADULTS						TOTAL, ALL AGES
	UNDER 17	17 YEARS	18 YEARS	19 YEARS	20 YEARS	21 YEARS	TOTAL 16-21	22 - 24 YEARS	25 - 29 YEARS	30 - 39 YEARS	40 - 49 YEARS	50 - 59 YEARS	60+ YEARS	
DRIVING WHILE IMPAIRED	13	71	112	169	225	366	956	1880	3824	5138	2487	1148	442	15875
OTHER TRAFFIC VIOLATIONS	25	86	102	134	135	164	646	526	758	859	333	127	59	3308
HABITUAL DRUNK	0	0	0	0	0	0	0	3	1	1	1	0	0	6
OTHERS	18	58	86	84	78	100	424	403	871	1385	605	282	118	4088
OUT OF STATE	0	0	0	0	0	0	0	0	1	0	0	0	0	1
TOTAL	505	1639	2362	2648	2708	2853	12715	9442	14002	17014	6546	2552	1052	63323

JAN 1 - DEC 31 1986

AGE CATEGORIES

REPORT 3J: POPULATION BY COUNTY	YOUTH							ADULTS						TOTAL,
	UNDER 17	17 YEARS	18 YEARS	19 YEARS	20 YEARS	21 YEARS	TOTAL 16-21	22 - 24 YEARS	25 - 29 YEARS	30 - 39 YEARS	40 - 49 YEARS	50 - 59 YEARS	60+ YEARS	ALL AGES
ALAMANCE	9	25	35	54	60	52	235	185	295	342	151	54	25	1287
ALLEGHANY	1	2	1	4	1	4	13	12	24	18	10	4	1	82
ALEXANDER	4	6	9	17	12	13	61	45	52	55	24	15	1	253
ANSON	0	5	12	11	17	9	54	38	60	78	26	14	7	277
ASHE	4	2	8	11	15	15	55	34	44	46	22	6	6	213
AVERY	0	0	5	4	6	9	24	20	20	17	14	2	1	98
BEAUFORT	4	18	33	34	19	20	128	79	128	155	64	28	18	600
BERTIE	1	6	5	4	9	11	36	29	51	63	31	9	3	222
BLADEN	4	8	17	11	7	17	64	48	74	118	41	32	7	384
BRUNSWICK	0	14	17	17	21	26	95	70	116	129	49	27	8	494
BUNCOMBE	6	19	53	33	55	49	215	170	230	269	96	25	15	1020
BURKE	5	10	29	26	27	28	125	90	126	167	58	24	7	597
CABARRUS	6	22	36	31	34	33	162	130	177	208	81	29	16	803
CALDWELL	4	13	22	27	25	13	104	84	93	107	36	24	8	456
CAMDEN	2	0	2	1	0	0	5	5	10	12	10	3	1	46
CARTERET	4	8	10	12	16	20	70	69	84	102	28	11	5	369
CASWELL	0	1	8	2	4	11	26	21	33	50	30	10	3	173
CATAWBA	9	28	47	49	36	53	222	145	226	217	92	24	14	940
CHATHAM	3	7	10	15	10	18	63	37	80	98	37	20	6	341
CHEROKEE	3	7	5	11	14	9	49	28	44	55	32	11	7	226
CHOWAN	0	4	4	1	6	6	21	22	32	48	13	3	1	140

(CONTINUED)

JAN 1 - DEC 31 1986

AGE CATEGORIES

REPORT 3J: POPULATION BY COUNTY	YOUTH							ADULTS						TOTAL,
	UNDER 17 YEARS	17 YEARS	18 YEARS	19 YEARS	20 YEARS	21 YEARS	TOTAL 16-21	22 - 24 YEARS	25 - 29 YEARS	30 - 39 YEARS	40 - 49 YEARS	50 - 59 YEARS	60+ YEARS	ALL AGES
CLAY	0	2	2	5	1	4	14	7	16	7	9	0	2	55
CLEVELAND	3	12	16	20	17	31	99	73	92	134	61	16	5	480
COLUMBUS	1	1	17	31	21	23	94	83	127	166	75	45	9	599
CRAVEN	7	18	14	18	31	40	128	106	177	181	73	23	12	700
CUMBERLAND	9	62	70	84	96	101	422	376	553	604	256	87	39	2337
CURRITUCK	0	2	6	3	5	7	23	19	29	27	7	3	1	109
DARE	0	4	4	8	7	12	35	29	54	43	16	2	0	179
DAVIE	2	4	8	8	7	5	34	25	27	36	13	11	4	150
DAVIDSON	7	39	45	49	61	54	255	213	266	294	122	47	12	1209
DUPLIN	7	17	18	22	19	21	104	61	111	154	73	35	21	559
DURHAM	8	43	73	80	81	97	382	329	547	692	274	95	42	2361
EDGECOMBE	14	24	25	23	23	14	123	67	104	133	44	11	12	494
FORSYTH	16	68	85	90	125	99	483	325	488	660	221	90	32	2299
FRANKLIN	4	3	13	9	12	14	55	42	76	103	44	17	6	343
GASTON	14	47	59	62	53	59	294	195	305	310	110	34	17	1265
GATES	0	1	2	0	1	0	4	5	4	13	5	0	1	32
GRAHAM	1	2	2	4	4	3	16	4	19	21	9	5	2	76
GRANVILLE	2	5	16	6	12	11	52	44	70	103	59	15	6	349
GREENE	0	1	3	2	8	6	20	29	39	36	20	8	2	154
GUILFORD	13	66	120	134	119	119	571	428	635	834	268	100	39	2875
HALIFAX	8	21	29	31	25	25	139	80	122	186	64	31	13	635

(CONTINUED)

JAN 1 - DEC 31 1986
AGE CATEGORIES

REPORT 3J: POPULATION BY COUNTY	YOUTH							ADULTS						TOTAL, ALL AGES
	UNDER 17	17 YEARS	18 YEARS	19 YEARS	20 YEARS	21 YEARS	TOTAL 16-21	22 - 24 YEARS	25 - 29 YEARS	30 - 39 YEARS	40 - 49 YEARS	50 - 59 YEARS	60+ YEARS	
HARNETT	3	11	22	26	28	40	130	89	142	155	83	35	14	648
HAYWOOD	3	10	24	24	33	19	113	86	105	121	64	19	15	523
HENDERSON	3	17	23	21	27	32	123	81	102	118	42	19	5	490
HERTFORD	2	6	4	8	9	5	34	38	49	58	27	12	3	221
HOKE	4	8	6	8	10	12	48	41	65	97	29	17	3	300
HYDE	0	1	1	0	2	2	6	4	8	10	4	2	1	35
IREDELL	14	38	35	64	42	63	256	187	262	303	122	50	29	1209
JACKSON	2	6	9	10	7	13	47	28	38	52	19	9	6	199
JOHNSON	6	17	19	27	16	20	105	96	126	170	96	37	17	647
JONES	1	1	0	3	0	6	11	12	18	23	6	2	3	75
LEE	5	9	17	22	16	24	93	72	104	118	50	18	6	461
LENOIR	4	18	15	24	27	23	111	92	141	194	71	20	17	646
LINCOLN	6	9	8	9	10	21	63	43	47	57	28	7	3	248
MACON	1	5	4	6	5	10	31	29	38	53	12	9	9	181
MADISON	0	3	3	6	2	5	19	15	23	21	21	6	7	112
MARTIN	6	11	11	8	11	11	58	40	46	71	28	12	1	256
MCDOWELL	4	11	15	12	12	8	62	51	54	62	30	15	4	278
MECKLENBURG	42	152	196	231	201	202	1024	695	1148	1498	522	175	67	5129
MITCHELL	1	3	0	8	2	7	21	7	20	16	8	5	2	79
MONTGOMERY	2	4	9	9	9	9	42	41	65	68	26	12	3	257
MOORE	5	20	21	33	20	29	128	82	124	154	52	20	6	566

(CONTINUED)

JAN 1 - DEC 31 1986

AGE CATEGORIES

REPORT 3J: POPULATION BY COUNTY	YOUTH							ADULTS						TOTAL,
	UNDER 17	17 YEARS	18 YEARS	19 YEARS	20 YEARS	21 YEARS	TOTAL 16-21	22 - 24 YEARS	25 - 29 YEARS	30 - 39 YEARS	40 - 49 YEARS	50 - 59 YEARS	60+ YEARS	ALL AGES
NASH	9	20	34	20	21	20	124	78	139	148	61	22	12	584
NEW HANOVER	6	45	47	44	61	44	247	187	265	333	109	39	25	1205
NORTHAMPTON	4	5	7	11	12	6	45	27	40	53	23	14	5	207
ONslow	9	18	28	39	54	65	213	211	260	228	60	28	7	1007
ORANGE	1	16	26	10	27	36	116	100	172	183	58	32	8	669
PAMLICO	2	6	7	2	6	3	26	13	25	36	16	7	5	128
PASQUOTANK	2	9	13	16	15	17	72	43	74	59	32	11	2	293
PENDER	2	4	4	15	15	12	52	35	50	61	28	17	3	246
PERQUIMANS	0	1	2	3	3	1	10	8	10	23	2	2	0	55
PERSON	1	2	4	7	7	14	35	58	71	103	38	17	13	335
PITT	9	20	50	53	57	46	235	135	251	334	112	49	15	1131
POLK	2	2	7	3	7	5	26	17	14	17	11	5	1	91
RANDOLPH	5	31	42	34	31	44	187	112	147	136	58	23	11	674
RICHMOND	7	18	24	30	26	26	131	94	121	130	56	31	9	572
ROBESON	25	51	73	88	96	81	414	283	438	562	197	82	37	2013
ROCKINGHAM	7	37	31	37	44	29	185	117	165	185	81	22	17	772
ROWAN	10	23	46	40	30	42	191	147	204	233	100	40	15	930
RUTHERFORD	4	16	22	20	13	20	95	55	80	93	33	8	1	365
SAMPSON	2	6	14	18	20	15	75	71	93	169	76	34	13	531
SCOTLAND	7	18	16	22	24	16	103	63	95	138	46	17	9	471
STANLY	3	8	12	16	22	25	86	66	88	107	32	15	9	403

(CONTINUED)

JAN 1 - DEC 31 1986

AGE CATEGORIES

REPORT 3J: POPULATION BY COUNTY	YOUTH							ADULTS						TOTAL, ALL AGES
	UNDER 17	17 YEARS	18 YEARS	19 YEARS	20 YEARS	21 YEARS	TOTAL 16-21	22 - 24 YEARS	25 - 29 YEARS	30 - 39 YEARS	40 - 49 YEARS	50 - 59 YEARS	60+ YEARS	
STOKES	1	9	12	14	6	15	57	23	64	49	24	15	8	240
SURRY	3	11	25	36	25	27	127	91	103	135	39	20	6	521
SWAIN	1	2	2	1	2	4	12	13	23	21	10	3	3	85
TRANSYLVANIA	4	9	12	13	11	16	65	30	22	36	13	8	0	174
TYRRELL	0	2	2	0	4	2	10	5	8	13	2	1	0	39
UNION	12	38	41	44	39	41	215	129	145	207	82	30	22	830
VANCE	3	16	21	23	16	24	103	54	109	123	43	16	10	458
WAKE	31	94	133	156	156	188	758	577	937	1137	444	160	49	4062
WARREN	1	1	4	5	8	3	22	12	25	35	18	5	3	120
WASHINGTON	2	2	5	2	2	5	18	27	21	29	17	6	2	120
WATAUGA	1	1	7	16	9	8	42	28	33	28	15	6	1	153
WAYNE	7	17	25	36	44	38	167	181	247	328	131	72	27	1153
WILKES	4	10	25	28	26	25	118	109	161	189	81	27	10	695
WILSON	8	15	17	23	26	30	119	93	121	161	47	19	7	567
OUT OF STATE	0	0	0	0	0	0	0	0	0	1	0	0	0	1
YADKIN	3	2	4	10	14	11	44	33	59	62	14	16	4	232
YANCEY	1	1	2	4	5	5	18	11	22	17	12	4	2	86
N.C. - MISC.	0	0	0	1	0	0	1	1	5	8	1	2	1	19
NOT REPORTED	7	46	79	85	113	122	452	375	510	594	216	76	22	2245
TOTAL	505	1639	2362	2648	2708	2853	12715	9442	14002	17014	6546	2552	1052	63323

JAN 1 - DEC 31 1986

AGE CATEGORIES

REPORT 3K: POPULATION BY SUPERVISION LEVEL	YOUTH							ADULTS						TOTAL,
	UNDER 17	17 YEARS	18 YEARS	19 YEARS	20 YEARS	21 YEARS	TOTAL 16-21	22 - 24 YEARS	25 - 29 YEARS	30 - 39 YEARS	40 - 49 YEARS	50 - 59 YEARS	60+ YEARS	ALL AGES
INTENSIVE SUPERVISION	2	16	20	23	23	10	94	45	65	80	14	3	0	301
SUSPENDED	5	42	95	165	233	297	837	1111	1768	2110	747	194	57	6824
HIGH RISK	46	127	169	190	219	194	945	755	1027	1169	346	100	46	4388
SELECTIVE	114	284	326	286	232	214	1456	656	825	905	326	157	43	4368
INTERMEDIATE	205	722	1116	1262	1264	1358	5927	4469	6908	8565	3512	1505	662	31548
SPECIAL	87	292	392	426	414	449	2060	1358	1932	2529	986	388	165	9418
DEFERRED	27	131	215	249	288	280	1190	854	1218	1347	503	179	65	5356
NOT REPORTED	19	25	29	47	35	51	206	194	259	309	112	26	14	1120
TOTAL	505	1639	2362	2648	2708	2853	12715	9442	14002	17014	6546	2552	1052	63323