

CR-Sent  
3-8-89

MPL

114204

114204

114204

U.S. Department of Justice  
National Institute of Justice

This document has been reproduced exactly as received from the person or organization originating it. Points of view or opinions stated in this document are those of the authors and do not necessarily represent the official position or policies of the National Institute of Justice.

Permission to reproduce this copyrighted material has been granted by  
Nebraska Department of  
Correctional Services

to the National Criminal Justice Reference Service (NCJRS).

Further reproduction outside of the NCJRS system requires permission of the copyright owner.

NEBRASKA DEPARTMENT  
OF  
CORRECTIONAL SERVICES

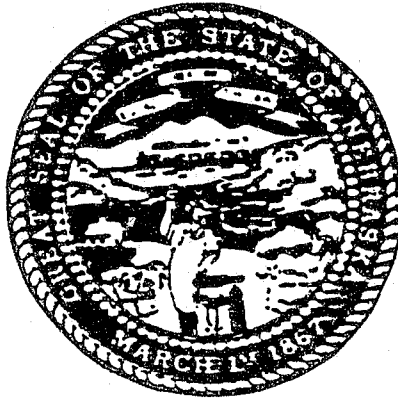
12th ANNUAL REPORT  
FY 1985 - 86

NCJRS

OCT 26 1988

ACQUISITIONS

DEPARTMENT OF CORRECTIONAL SERVICES



FRANK O. GUNTER, DIRECTOR

DIVISION OF ADMINISTRATIVE SERVICES  
Jack L. Falconer, Deputy Director

DIVISION OF JUVENILE SERVICES  
Donald F. Best, Assistant Director

DIVISION OF ADULT SERVICES  
Assistant Director

DIVISION OF COMMUNITY CENTERED SERVICES  
Brien E. Hendrickson, Assistant Director

Department of Correctional Services  
P.O. Box 94661, State House Station  
Lincoln, Nebraska 68509-4661

ADVISORY COMMITTEE  
TO  
DEPARTMENT OF PUBLIC INSTITUTIONS, PUBLIC WELFARE,  
AND  
CORRECTIONAL SERVICES  
FOR FY 1985 - 86

BERNARD R. GYGER, CHAIRPERSON  
Omaha

SALLY (MRS. ROBERT E.) BATES  
Lincoln

RAY R. YOUNG  
Omaha

RON COPE  
Kearney

ELLA OCHOA  
North Platte

TABLE OF CONTENTS

Statutory Authority.....	12
Agency Purpose, Programs, and Goals.....	12
History.....	12
Accreditation.....	25
Recidivism.....	26
Division of Administrative Services.....	29
Division of Classification and Correctional Programming.....	34
Division of Adult Services.....	37
Division of Community Centered Services.....	68
Division of Juvenile Services.....	74

TABLE OF FIGURES

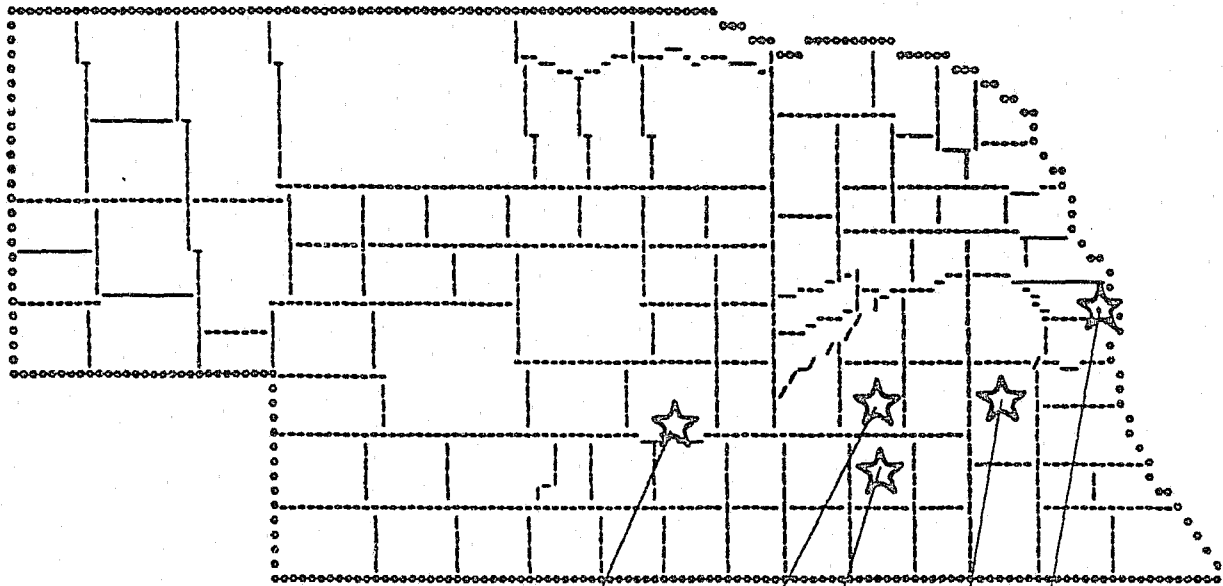
Nebraska Correctional Facilities.....	6
Department of Correctional Services - Organizational Chart.....	8
Total Incarcerated Population By Fiscal Year.....	10
Inmate Population vs. Rated Design Capacity.....	11
Division of Administrative Services - Organizational Chart.....	28
Classification and Correctional Programming - Organizational Chart.....	33
Division of Adult Services - Organizational Chart.....	36
Total Adult Population By Fiscal Year.....	39
Total Adult Population - Male & Female - By Fiscal Year.....	40
Total Adult Institutional Population.....	41
Total Adult Admissions.....	43
Total Adult Releases.....	44
Age At Admittance.....	47
Age At Release.....	48
Total Adult Admissions By Race.....	51
Total Adult Male Population By Race.....	52
Total Adult Female Population By Race.....	53
Division of Community Centered Services - Organizational Chart.....	67
Total Parole and Community Corrections Population.....	69
Division of Juvenile Services - Organizational Chart.....	73
Youth Development Centers - Population.....	77

TABLE OF DATA

Offender Population as of July 1, 1980, at all Facilities and Programs.....	9
Per Capita/Inmate Costs - Facilities, Centers, and Programs FY 1984-85 and FY 1985-86.....	15
Department of Correctional Services Personnel (FTE) Totals - FY 1984-85 and FY 1985-86.....	16
Per Capita Statements - Department of Correctional Services FY 1985-86.....	17
Recidivism Data - FY 1979-80 to FY 1982-83.....	27
Federal Surplus Property and Correctional Industries FY 1985-86.....	32
Escapes From all Adult Facilities and Programs By Fiscal Year - FY 1981-82 to FY 1985-86.....	42
Escapes For Total Adult Population By Fiscal Year - FY 1981-82 to FY 1985-86.....	42
Total Adult Admissions - FY 1978 to FY 1986.....	45
Total Adult Releases - FY 1978 to FY 1986.....	45
Total Adult Population Release Information FY 1984-85 and FY 1985-86.....	46
Summary of Institutionalized Inmates - Average Population - FY 1979-80 to FY 1985-86.....	49
Total Adult Population By Custody Level - FY 1983-84, FY 1984-85 and FY 1985-86 (June Figures).....	49
Total Adult Population by Age (Currently Confined - June, 1986).....	50
Mean Age by Facility, Center or Program (Currently Confined - June, 1986).....	50
Total Adult Population Currently Confined By Offense (June, 1986).....	54
Length of Stay (Based on Releases) FY 1979-80 to FY 1985-86.....	55
Length of Stay (Based on Incarcerated Adult Males) FY 1979-80 to FY 1985-86.....	56
Average Length of Stay in Institution (in months) For FY 86 Releases Who Had More Than One Offense Count.....	57
Average Length of Stay in Institution (in months) For FY 86 Releases Who Had Only a Count 1 Offense.....	58
Average Minimum Sentence (In Months) For FY 86 Releases Having More Than One Offense Count.....	60
Average Maximum Sentence (In Months) For FY 86 Releases Having More Than One Offense Count.....	61
Average Minimum Sentence (in months) For FY 86 Releases Who Had Only a Count 1 Offense.....	62
Average Maximum Sentence (in months) For FY 86 Releases Who Had Only a Count 1 Offense.....	64
Total Adult Population - Release Information - Minimum and Maximum Sentence - FY 1984-85 and FY 1985-86.....	66
Total Adult Population - Releases to Community Corrections Information - FY 1984-85 and FY 1985-86.....	70
Total Adult Population - Releases to Parole Information	

FY 1984-85 and FY 1985-86.....	71
Total Adult Population - Releases to Parole - Minimum and Maximum Sentence - FY 1984-85 and FY 1985-86.....	72
Summary of Admissions and Release Information Youth Development Centers, FY 1984-85 and FY 1985-86.....	76
Length of Stay For Commitments, Youth Development Centers FY 1984-85 and FY 1985-86.....	76
Admissions By Race (Commitments), Youth Development Centers - FY 1985-86.....	78
Age at Admission (Commitments), Youth Development Centers - FY 1985-86.....	78
Age of Male and Female Evaluators at YDC-Geneva FY 1985-86.....	79
Race of Female and Male Evaluators at YDC-Geneva FY 1985-86.....	79
Juvenile Parole - Paroles, Revocations, Commitments, and Discharges by Sex, FY 1985-86.....	80
Juvenile Parole - Race and Sex of Paroled Cases FY 1985-86.....	80
Juvenile Parole - Race and Sex of Revocations FY 1985-86.....	80
Juvenile Parole - Length of Stay on Parole FY 1985-86.....	81
Juvenile Parole - Recommitments by Race and Sex FY 1985-86.....	81
Juvenile Parole - Discharges By Race and Sex FY 1985-86.....	81

# NEBRASKA CORRECTIONAL FACILITIES



Youth Development Center - Kearney

Nebraska Center for Women

Youth Development Center - Geneva

Nebraska State Penitentiary  
Lincoln Correctional Center  
Diagnostic & Evaluation Center  
Community Corrections Center-  
Lincoln

Omaha Correctional Center  
Community Corrections  
Center-Omaha



DEPARTMENT OF CORRECTIONAL SERVICES

ROSTER OF FACILITIES

Diagnostic & Evaluation Center  
John J. Dahm  
Acting Superintendent  
P.O. Box 2800, Station B  
3229 West Van Dorn  
Lincoln, Nebraska 68502  
(402) 471-3330

Lincoln Correctional Center  
William J. Foster  
Superintendent  
P.O. Box 2800, Station B  
3210 West Van Dorn  
Lincoln, Nebraska 68502  
(402) 471-2861

Nebraska Center for Women  
Lucille M. Splinter  
Superintendent  
Route 1, Box 33  
York, Nebraska 68467  
(402) 362-3317

Nebraska State Penitentiary  
Gary Grammer  
Warden  
P.O. Box 2500, Station B  
Lincoln, Nebraska 68502  
(402) 471-3161

Omaha Correctional Center  
Karen Shortridge  
Superintendent  
P.O. Box 11099  
2323 East Avenue J  
Omaha, Nebraska 68110  
(402) 554-3963

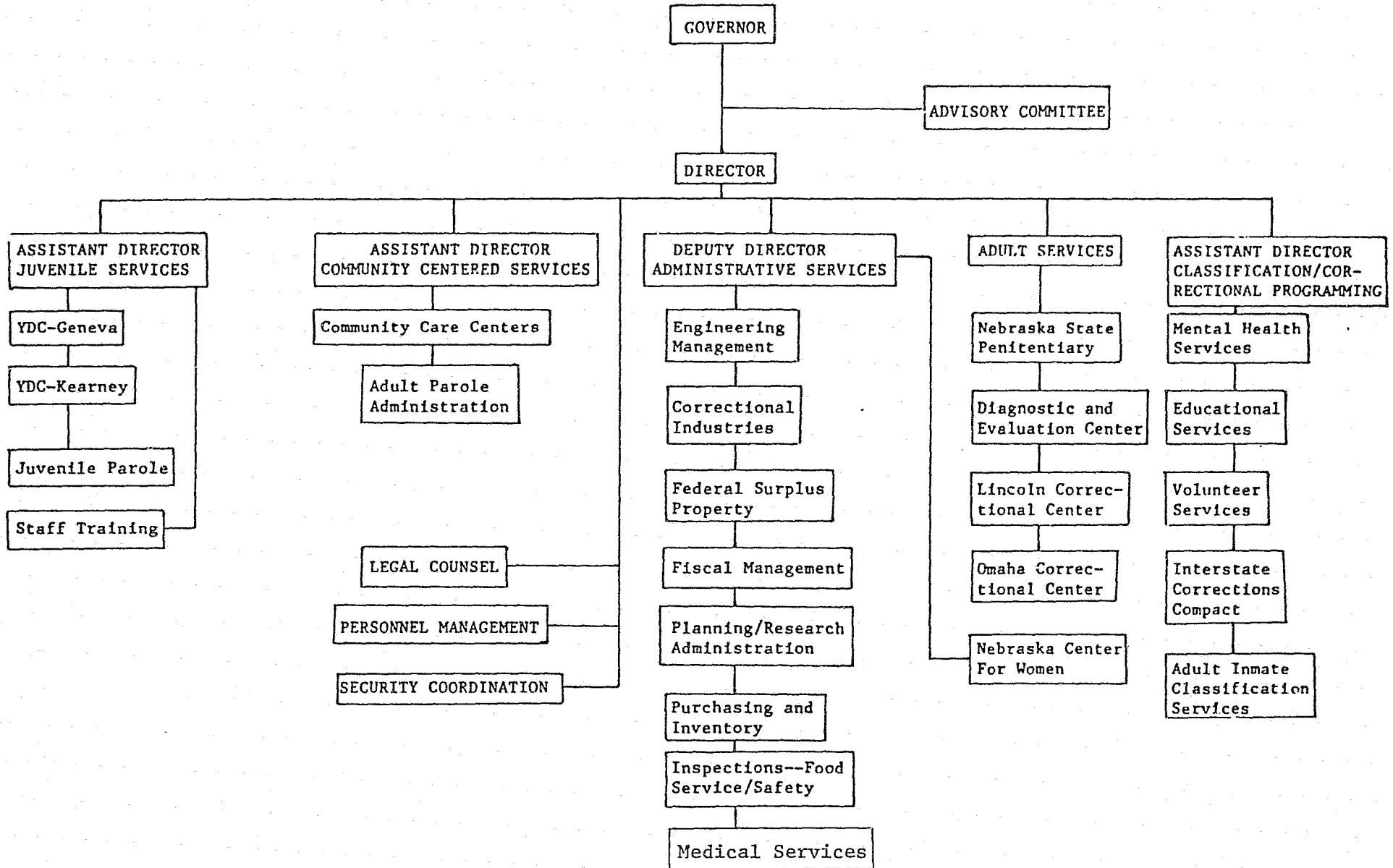
Community Corrections Center  
Nick Combs  
Superintendent  
2320 East Avenue J  
Omaha, Nebraska 68110  
(402) 554-2010

Community Corrections Center  
4621 N.W. 45th Street  
Community Corrections Annex  
4520 West Stanton  
Lincoln, Nebraska 68524  
Dave Avery  
Superintendent  
(402) 470-3315/470-3308

Youth Development Center  
Don Best  
Superintendent  
P.O. Box 23A  
Geneva, Nebraska 68361  
(402) 759-3164

Youth Development Center  
John McCarty  
Superintendent  
Kearney, Nebraska 68847  
(308) 237-3181

DEPARTMENT OF CORRECTIONAL SERVICES  
ORGANIZATIONAL CHART



OFFENDER POPULATION AS OF JULY 1, 1986  
AT ALL FACILITIES AND PROGRAMS

ADULT

Nebraska State Penitentiary.....	684
Lincoln Correctional Center.....	376
Omaha Correctional Center.....	290
Diagnostic & Evaluation Center.....	268
Nebraska Center for Women.....	<u>63</u>

INSTITUTIONAL TOTAL 1,681

Community Care Centers	
Lincoln Center (male/female).....	134
Omaha Center (male).....	<u>79</u>

POST CARE TOTAL 213

Parole - Adult..... 272

ADULT TOTAL 2,166

JUVENILE

Youth Development Centers	
Kearney (male).....	155
Geneva (female plus male/female evaluators).....	<u>69</u>

INSTITUTIONAL TOTAL 224

Parole - Juvenile..... 170

JUVENILE TOTAL 394

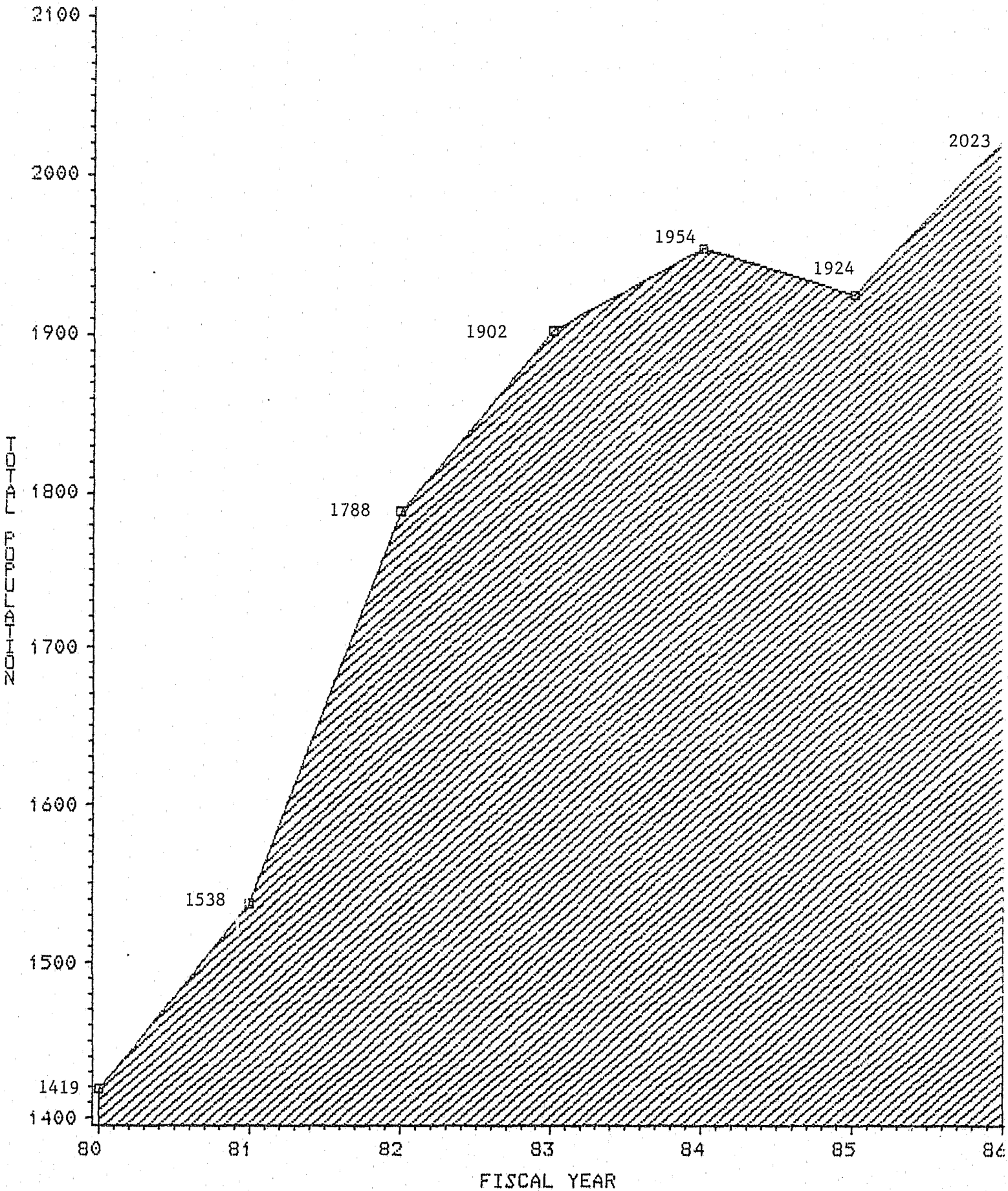
ADULT TOTAL .....	2,166
JUVENILE TOTAL.....	<u>394</u>

DEPARTMENT TOTAL.....2,560

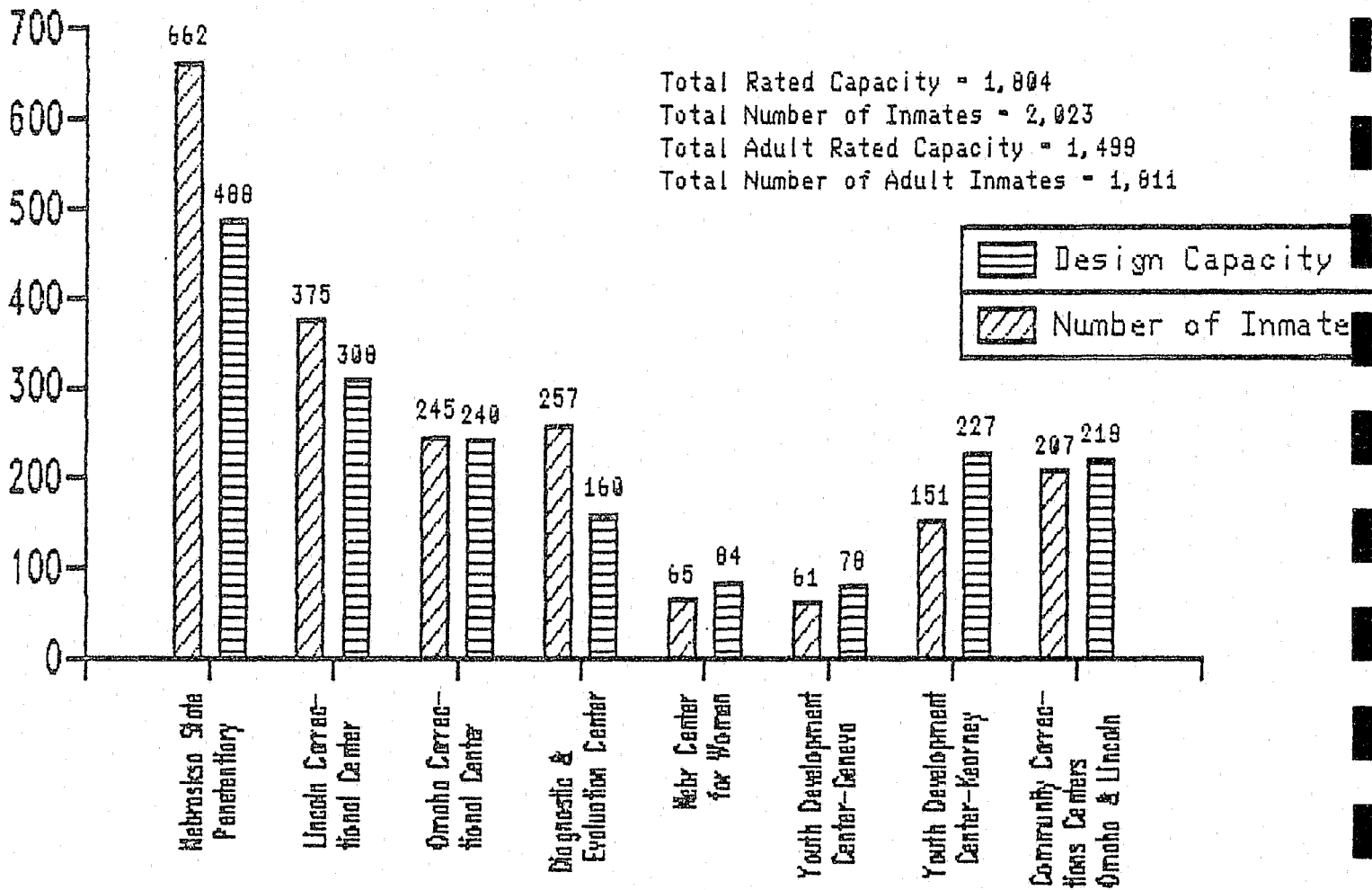
# TOTAL INCARCERATED POPULATION BY FISCAL YEAR

## ADULT & JUVENILE FACILITIES & COMMUNITY CENTERS

### 42.6% INCREASE



## Inmate Population vs. Rated Design Capacity Fiscal Year 86



#### STATUTORY AUTHORITY

Nebraska Revised Statutes §83-171 and 83-901 (Reissue 1981) establish the Department of Correctional Services as an independent agency of State Government for the custody, control, study, correctional treatment, training, and rehabilitation of persons committed to the Department so that they may be prepared for lawful and productive community living.

#### AGENCY PURPOSE, PROGRAMS, AND GOALS

By Statute, the mission of the Nebraska Department of Correctional Services is to provide for the custody, study, care, discipline, training, and the treatment of persons in correctional institutions; to supervise persons committed to the department on parole, and to develop policies and programs for the correctional treatment and rehabilitation of persons committed to the department (Nebraska Revised Statutes §83-171 and 83-901, Reissue 1981).

The Committee for the Development of the Statewide Correctional Services Plan of 1974 established the primary goal of corrections in Nebraska to be the successful reintegration of the offender into the community, through functional and realistic programming, while providing for the protection of society. To assist in fulfilling these functions, LB417 in 1975 created the following divisions within the Department: the Division of Adult Services; the Division of Juvenile Services; the Division of Community-Centered Services; and the Division of Administrative Services. Through this organization, the Department seeks to refine its processes and policies through an ongoing planning framework which focuses on specific areas targeted for improvement during an annual planning cycle. The philosophic framework for all actions planned by the Department is contained in statutory requirements (Revised Statutes of Nebraska §83-171, 181, 182, 183, 901, 924, 927, 932, 936, 939, and 943), and in the primary planning principles found in budget documents over the past several years. These principles are:

1. Reduction of Escapes - Maintain the level of custody required to ensure that individuals under the control of the Department do not escape or abscond thereby jeopardizing persons in free society.
2. Reduction of Criminal Activity - Activities which can be construed to be unlawful or counter to rules and regulations of the Department should be controlled. Activities and programs within the Department shall strive to reduce the frequency of such incidences.
3. Maintenance of Equitable Length of Stay - Offenders should be treated consistently in classification and programming considerations. The Department shall provide a system of gradual reduction of supervision designed to promote positive behavioral change and allow for custody assignment which places offenders in the least restrictive environment while providing appropriate controls.
4. Maintenance of a Low Recidivism Rate - The Department provides the vehicle through which an offender can make positive changes. Department activity shall attempt to further reduce this rate.
5. To Operate the Department in an Efficient and Effective Manner - The Department has a responsibility to the State's citizens to provide a quality system, with scarce resources, as prudently and beneficially as possible.

Major Departmental goals for the fiscal year, from which all facilities, centers, and major programs formulate objectives are outlined below:

86-01: Facility Maintenance and Cleanliness - Continue the Department's efforts to ensure a high standard of cleanliness, hygiene, and safety to all facilities. Improvements in facilities necessary for achievement of this goal will receive high priority.

86-02: Establishment and Maintenance of the Eight Hour Work/Program Day - Of major importance to a properly functioning system is the reduction of inmate idleness and promotion of a work ethic based on acceptable community standards.

86-03: Implementation of a Systematic Reintegration Program from Intake Through Release - The process of rehabilitation should develop a plan designed in the early incarceration period to achieve acceptable ends which facilitate timely movement through the correctional process and into the community with an enhanced chance for success.

86-04: Achievement and Maintenance of Department-Wide Accreditation - The major tool available for the overall evaluation of excellence in a correctional system is the accreditation process developed by the American Correctional Association. The Department has been involved in this process since 1979 and is dedicated to achieving success in accreditation for all facilities, centers, and programs.

86-05: An Upgraded Program of Personnel Recruitment and Development - Efforts will be made to recruit highly qualified people, to develop the abilities of staff once on board and to provide for a career service within the Department.

86-06: Expansion and Maintenance of the Unit Management Concept to all Facilities Other Than Short-Term Housing - To be adopted by all adult facilities to provide follow-up necessary for adequate program planning and preparation for release. Juvenile institutions will base their residential treatment modalities on these concepts also.

86-07: Development of a Fully Operative Correctional Tracking System With a Complete and Accurate Data Bank - Designed to provide detailed and quality information to management for decision-making purposes. Refinements in certain areas are to be made to improve the utility of information.

#### HISTORY

Corrections in Nebraska began operations as a territorial prison in a barn-like structure with its first commitment arriving on February 22, 1869. The following year, on March 4, 1870, the Legislature approved the construction of the Nebraska State Penitentiary. The original magnesia limestone structure, capable of housing 375 inmates, became operational in 1876. In 1879, the Nebraska State Legislature passed a law establishing the Nebraska State Reform School for Juvenile Offenders. The first offender was committed on July 15, 1881. Ten years later, the Girls Industrial School was established by Legislative Act.

During the first two decades of the 1900's, correctional services were expanded, raising adult male and female inmate capacity to 750. In 1920, the Nebraska Center for Women was founded according to Nebraska State Statute, and accepted its first female offender on May 11, 1920. Initially called the Reformatory for Women, the institution was located on a farm in a two-story frame house. In the years that followed, Nebraska's correctional needs continued to grow and existing penal units were enlarged and additional units were opened.

In 1974, pursuant to the provisions of LB563, the Department of Correctional Services was established as a separate agency of state government. Subsequently, the Department has been involved in a decade of rigorous prison reform and rebuilding. Legislative Bills 417, in 1975, and 984, in 1976, began the initial authorization for medium-minimum security facilities and for a receiving center respectively. Today, the Department of Correctional Services provides care, custody, control, and supervision for 2,560 individuals in its adult and juvenile facilities, 2 community corrections centers, and parole programs.



PER CAPITA/INMATE COSTS - FACILITIES, CENTERS, AND PROGRAMS  
 FY 1984-85 and FY 1985-86

<u>FACILITY/CENTER/PROGRAM</u>	<u>AVERAGE POPULATION</u>		<u>PER CAPITA YEARLY COST</u>		<u>PER CAPITA DAILY COST</u>	
	<u>84-85</u>	<u>85-86</u>	<u>84-85</u>	<u>85-86</u>	<u>84-85</u>	<u>85-86</u>
Nebraska State Penitentiary	757.5	667.6	\$15,932	\$17,475	\$43.65	\$47.88
Lincoln Correctional Center	348.9	374.1	16,831	15,708	46.11	43.04
Diagnostic & Evaluation Center	202.6	252.4	20,023	14,086	54.86	38.59
Omaha Correctional Center	209.5	245.2	22,956	16,600	62.89	45.48
Nebraska Center for Women	70.3	64.8	23,779	28,718	65.15	78.68
Youth Development Center-Kearney	148.4	144.9	21,636	21,817	59.28	59.77
Youth Development Center-Geneva	55.8	61.4	28,269	26,992	77.45	73.95
Community Corrections Centers	153.7	208.1	9,832	9,075	26.94	24.86
Adult Parole Administration	303.0	250.7	1,838	2,335	5.04	6.40
Juvenile Parole Administration	162.2	177.4	4,095	3,662	11.22	10.03

DCS PERSONNEL (FTE) TOTALS  
FY 1984-85 and FY 1985-86

	<u>Actual FTE</u> <u>FY 84-85</u>	<u>Actual FTE</u> <u>FY 85-86</u>	<u>Appropriation FTE</u> <u>FY 86-87</u>
NSP	366.7	343.3	343.3
LCC	189.7	183.7	175.7
DEC	188.0	119.5	112.5
OCC	123.9	113.0	113.0
NCW	64.0	64.0	64.0
Central Ofc.	66.9	140.2	143.2
Community Based	71.3	65.0	65.0
Juvenile Parole	15.6	14.0	13.0
YDC-Geneva	65.5	65.5	64.2
YDC-Kearney	117.7	113.4	113.4
Federal Surplus Property	5.0	5.0	5.0
Correctional Industries	25.0	29.0	29.0
 TOTALS	 1,299.3	 1,255.6	 1,241.3

PER CAPITA STATEMENT - DCS - FY 1985-86

Facility/Program: ALL FACILITIES, CENTERS, & PROGRAMS  
 Average Daily Population: 2446.6

<u>Category</u>	<u>Cost</u>	<u>Cost Per Capita</u>
Personal Services	\$20,971,540	\$8,572
Supply and Expenses:		
Food	1,797,281	735
Utilities	1,370,891	560
Household	759,931	311
Medical (inc. per. serv.)	2,358,995	964
Dental (inc. per. serv.)	293,983	120
Psych (inc. per. serv.)	585,760	239
Education	1,706,285	697
All Other*	2,728,335	1,115
Travel	210,969	86
Capital Outlay	71,711	29
Indirect Costs**	2,115,613	865
TOTAL	\$34,971,294	\$14,294

(\$39.16 per capita per day)

\*Includes: security, activities, religion, maintenance, library, counseling, etc.

\*\*Is a prorata portion of central office based on FTE.

Facility/Program: ALL ADULT & JUVENILE FACILITIES AND COMMUNITY CENTERS  
 (Does not include Juvenile or Adult Parole)

Average Daily Population: 2018.5

<u>Category</u>	<u>Cost</u>	<u>Cost Per Capita</u>
Personal Services	\$20,189,917	\$10,002
Supply and Expenses		
Food	1,797,281	890
Utilities	1,368,892	678
Household	759,664	376
Medical (inc. per. serv.)	2,357,899	1,168
Dental (inc. per. serv.)	293,983	146
Psych (inc. per. serv.)	585,760	290
Education	1,706,285	845
All Other	2,430,199	1,204
Travel	125,109	62
Capital Outlay	70,281	35
Indirect Costs	2,051,053	1,016
TOTAL	\$33,736,323	\$16,714

(\$45.79 per capita per day)

PER CAPITA STATEMENT - DCS - FY 1985-86

Facility/Program: ADULT FACILITIES & CENTERS (does not include juvenile  
 (Ave. daily pop. facilities, Adult Parole, and Juvenile Parole.  
1812.2)

<u>Category</u>	<u>Cost</u>	<u>Cost Per Capita</u>
Personal Services	\$17,427,758	9,617
Supply & Expenses		
Food	1,573,154	868
Utilities	1,136,483	627
Household	643,746	355
Medical (including personal services)	2,218,636	1,224
Dental (including personal services)	242,917	134
Psych (including personal services)	507,684	280
Education	1,167,096	644
All Other	2,121,350	1,171
Travel	109,951	61
Capital Outlay	67,850	37
Indirect Costs	1,701,059	939
Total	\$28,917,683	15,957 (\$43.72 per capita per day)

PER CAPITA STATEMENT - DCS - FY 1985-86

Facility/Program: ALL FACILITIES (does not include Community Correction  
Centers, Adult or Juvenile Parole  
Average Daily Population: 1810.4

<u>Category</u>	<u>Cost</u>	<u>Cost Per Capita</u>
Personal Services	\$19,080,190	\$10,539
Supply and Expenses		
Food	1,640,988	906
Utilities	1,250,768	691
Household	724,559	400
Medical (inc. pers. serv.)	2,357,864	1,302
Dental (inc. pers. serv.)	293,983	162
Psych. (inc. pers. serv.)	585,760	324
Education	1,705,079	942
All Other	2,127,213	1,175
Travel	52,907	29
Capital Outlay	67,364	37
Indirect Costs	1,961,060	1,083
TOTAL	\$31,847,735	\$17,592 (\$48.20 per capita per day)

Facility/Program: NEBRASKA STATE PENITENTIARY  
Average Daily Population: 667.6

<u>Category</u>	<u>Cost</u>	<u>Cost Per Capita</u>
Personal Services	\$6,838,891	\$10,244
Supply and Expenses		
Food	580,421	869
Utilities	399,898	599
Household	237,549	356
Medical (inc. pers. serv.)	1,432,174	2,145
Dental (inc. pers. serv.)	179,845	269
Psych. (inc. pers. serv.)	308,046	461
Education	237,422	356
All Other	759,404	1,138
Travel	7,629	11
Capital Outlay	13,510	20
Indirect Costs	671,620	1,006
TOTAL	\$11,666,409	\$17,475 (\$47.88 per capita per day)

PER CAPITA STATEMENT - DCS - FY 1985-86

Facility/Program: LINCOLN CORRECTIONAL CENTER

Average Daily Population: 374.1

<u>Category</u>	<u>Cost</u>	<u>Cost Per Capita</u>
Personal Services	\$3,746,086	\$10,014
Supply and Expenses		
Food	328,988	879
Utilities	235,854	630
Household	139,528	373
Medical (inc. pers. serv.)	69,866	187
Dental (inc. pers. serv.)	25,025	67
Psych. (inc. pers. serv.)	51,765	138
Education	536,568	1,434
All Other	367,023	981
Travel	5,443	15
Capital Outlay	10,657	28
Indirect Costs	359,384	961
TOTAL	\$5,876,187	\$15,708 (\$43.04 per capita per day)

Facility/Program: DIAGNOSTIC & EVALUATION CENTER

Average Daily Population: 252.4

<u>Category</u>	<u>Cost</u>	<u>Cost Per Capita</u>
Personal Services	\$2,326,235	\$9,216
Supply and Expenses		
Food	221,963	879
Utilities	115,884	459
Household	74,668	296
Medical (inc. pers. serv.)	265,816	1,053
Dental (inc. pers. serv.)	19,720	78
Psych. (inc. pers. serv.)	95,908	380
Education	---	---
All Other	193,086	765
Travel	6,820	27
Capital Outlay	1,484	6
Indirect Costs	233,786	926
TOTAL	3,555,370	\$14,086 (\$38.59 per capita per day)

PER CAPITA STATEMENT - DCS - FY 1985-86

Facility/Program: OMAHA CORRECTIONAL CENTER  
Average Daily Population: 245.2

<u>Category</u>	<u>Cost</u>	<u>Cost Per Capita</u>
Personal Services	\$2,278,648	\$9,293
Supply and Expenses		
Food	233,129	951
Utilities	217,635	888
Household	130,583	533
Medical (inc. pers. serv.)	243,579	993
Dental (inc. pers. serv.)	13,980	57
Psych. (inc. pers. serv.)	17,191	70
Education	264,796	1,080
All Other	405,697	1,655
Travel	13,225	54
Capital Outlay	30,697	125
Indirect Costs	221,069	902
TOTAL	\$4,070,229	\$16,600 (\$45.48 per capita per day)

Facility/Program: NEBRASKA CENTER FOR WOMEN  
Average Daily Population: 64.8

<u>Category</u>	<u>Cost</u>	<u>Cost Per Capita</u>
Personal Services	\$1,128,171	\$17,410
Supply and Expenses		
Food	52,360	808
Utilities	49,088	758
Household	26,313	406
Medical (inc. pers. serv.)	207,166	3,197
Dental (inc. pers. serv.)	4,347	67
Psych. (inc. pers. serv.)	34,774	537
Education	127,104	1,961
All Other	93,153	1,438
Travel	4,632	71
Capital Outlay	8,585	132
Indirect Costs	125,207	1,932
TOTAL	\$1,860,900	\$28,718 (\$78.68 per capita per day)

PER CAPITA STATEMENT - DCS - FY 1985-86

Facility/Program: YOUTH DEVELOPMENT CENTER-KEARNEY  
Average Daily Population: 144.9

<u>Category</u>	<u>Cost</u>	<u>Cost Per Capita</u>
Personal Services	\$1,739,167	\$12,003
Supply and Expenses		
Food	175,388	1,210
Utilities	150,410	1,038
Household	101,905	703
Medical (inc. pers. serv.)	90,017	621
Dental (inc. pers. serv.)	44,232	305
Psych. (inc. pers. serv.)	45,332	313
Education	350,750	2,421
All Other	233,113	1,609
Travel	7,275	50
Capital Outlay	1,905	13
Indirect Costs	221,852	1,531
TOTAL	\$3,161,346	\$21,817 (\$59.77 per capita per day)

Facility/Program: YOUTH DEVELOPMENT CENTER - GENEVA  
Average Daily Population: 61.4

<u>Category</u>	<u>Cost</u>	<u>Cost Per Capita</u>
Personal Services	\$1,022,992	\$16,661
Supply and Expenses		
Food	48,739	794
Utilities	81,999	1,335
Household	14,013	228
Medical (inc. pers. serv.)	49,246	802
Dental (inc. pers. serv.)	6,834	111
Psych. (inc. pers. serv.)	32,744	533
Education	188,439	3,069
All Other	75,736	1,233
Travel	7,883	128
Capital Outlay	526	9
Indirect Costs	128,142	2,087
TOTAL	\$1,657,294	\$26,992 (\$73.95 per capita per day)



PER CAPITA STATEMENT - DCS - FY 1985-86

Facility/Program: COMMUNITY CORRECTIONS CENTERS (Lincoln & Omaha)

Average Daily Population: 208.1

<u>Category</u>	<u>Cost</u>	<u>Cost Per Capita</u>
Personal Services	\$1,109,727	\$5,333
Supply and Expenses		
Food	156,293	751
Utilities	118,124	568
Household	35,105	169
Medical (inc. per. serv.)	35	---
Dental (inc. per. serv.)	---	---
Psych. (inc. per. serv.)	---	---
Education	1,206	6
All Other	302,986	1,456
Travel	72,202	347
Capital Outlay	2,917	14
Indirect Costs	89,993	432
TOTAL	\$1,888,588	\$9,075 (\$24.86 per capita per day)

Facility/Program: ADULT PAROLE ADMINISTRATION

Average Daily Population: 250.7

<u>Category</u>	<u>Cost</u>	<u>Cost Per Capita</u>
Personal Services	\$ 451,637	\$1,802
Supply and Expenses		
Food	---	---
Utilities	487	2
Household	21	---
Medical (inc. per. serv.)	11	---
Dental (inc. per. serv.)	---	---
Psych. (inc. per. serv.)	---	---
Education	---	---
All Other	54,261	216
Travel	40,683	162
Capital Outlay	1,030	4
Indirect Costs	37,171	148
TOTAL	\$585,344	\$2,335 (\$6.40 per capita per day)

PER CAPITA STATEMENT - DCS - FY 1985-86

Facility/Program: JUVENILE PAROLE ADMINISTRATION

Average Daily Population: 177.4

<u>Category</u>	<u>Cost</u>	<u>Cost Per Capita</u>
Personal Services	\$329,986	\$1,860
Supply and Expenses		
Food	---	---
Utilities	1,512	9
Household	203	1
Medical (inc. per. serv.)	1,085	6
Dental (inc. per. serv.)	---	---
Psych. (inc. per. serv.)	---	---
Education	---	---
All Other	243,875	1,375
Travel	45,177	255
Capital Outlay	400	2
Indirect Costs	27,389	154
TOTAL	\$649,627	\$3,662

(\$10.03 per capita per day)

## ACCREDITATION

The increasing numbers of incarcerated individuals and new legislative directives have created significant operational problems for correctional institutions. During the 1970's, professionals across the nation worked to establish a set of standards designed to upgrade the levels of correctional services and operations while protecting the rights of offenders. In 1978, the American Correctional Association and the Commission on Accreditation for Corrections established a national accreditation program. Nebraska entered this accreditation process in 1979.

The process is based on a comprehensive set of standards covering all correctional operation and program areas. An institution must formally enter the process and ultimately pass an independent, comprehensive audit by trained Commission consultants to verify compliance. The standards establish clear goals and objectives critical to the provision of constitutional and humane correctional services and programs. These include the requirement for practices to promote sound administration and fiscal controls, an adequate physical plant, adherence to legal criteria and provision of basic services. Basic services called for by the standards include the establishment of a functional physical plant, training of staff, adoption of sanitation and safety minimums, and provision of a safe and secure living environment. In offering specific guidelines for facility and program operations, courts, mail and visitation, searches and conditions of confinement for special management inmates.

The Department of Correctional Services has been dedicated to achieving success in accreditation for all facilities and programs. Since 1979, all facilities and programs, except the Penitentiary, have been accredited, and have been working on maintaining compliance levels through the 3 year reaccreditation procedure.

The current accreditation status for all facilities and programs is as follows:

Nebraska State Penitentiary - supplemental standards compliance reaudit on June 20-21, 1985; hearing and accreditation award granted August 10-11, 1985. Current accreditation expires August, 1988; scheduled for reaccreditation.

Lincoln Correctional Center - reaccreditation standards compliance audit July 9-11, 1984; hearing and reaccreditation award granted November 8-9, 1984. Current accreditation expires November, 1987; scheduled for reaccreditation.

Diagnostic and Evaluation Center - reaccreditation standards compliance audit July 11-13, 1984; hearing and reaccreditation award granted November 8-9, 1984. Current accreditation expires November, 1987; scheduled for reaccreditation.

Nebraska Center for Women - reaccreditation standards compliance audit June 25-27, 1984, with supplemental reaudit on September 7, 1984; hearing and reaccreditation award granted November 8-9, 1984. Current accreditation expires November, 1987; scheduled for reaccreditation.

Community Corrections-reaccreditation standards compliance audit April 24-27, 1984; hearing and reaccreditation award granted August 19, 1984. Current accreditation expires August, 1987; scheduled for reaccreditation.

Juvenile Parole Program - reaccreditation standards compliance audit June 13-15, 1984; hearing and reaccreditation award granted August 19, 1984. Current accreditation expires August, 1987; scheduled for reaccreditation.

Youth Development Center-Kearney - facility failed audit in August, 1985, but passed supplemental audit conducted in May, 1986; hearing and accreditation award granted on August 9, 1986.

Youth Development Center-Geneva - originally scheduled for reaccreditation standards compliance audit during the fall of 1984, subsequently lost accreditation status. Scheduled for initial audit in the spring of 1987.

Omaha Correctional Center - entered accreditation process in the fall of 1985; initial audit conducted on July 30-August 1, 1986; hearing and reaccreditation award granted November 7, 1986.

Adult Parole Program - reaccreditation standards compliance audit January 16-18, 1984; hearing and reaccreditation award granted May 4, 1984. Current accreditation expires May, 1987; scheduled for reaccreditation.

#### RECIDIVISM

Many individuals in prison have been there before, and many will return at some point after their next release. The effectiveness of the criminal justice system is often gauged by the extent to which offenders continue to engage in crime after their release from prison. The rate at which released prisoners return to confinement is termed recidivism. The Department utilized a standardized definition of recidivism (Admin. Reg. 103.5). It is defined as follows:

"Recidivism is measured by criminal acts that result in conviction by a court when committed by legal offenders released from the Nebraska Prison System during a specified base time period who return to the Nebraska System within three years of their release date."

The recidivist rate is the number of convictions for new crimes divided by the number of releases. This rate represents the proportion of offenders who left the Nebraska Prison System during a specified time period who were reincarcerated because of convictions for committing a new offense.

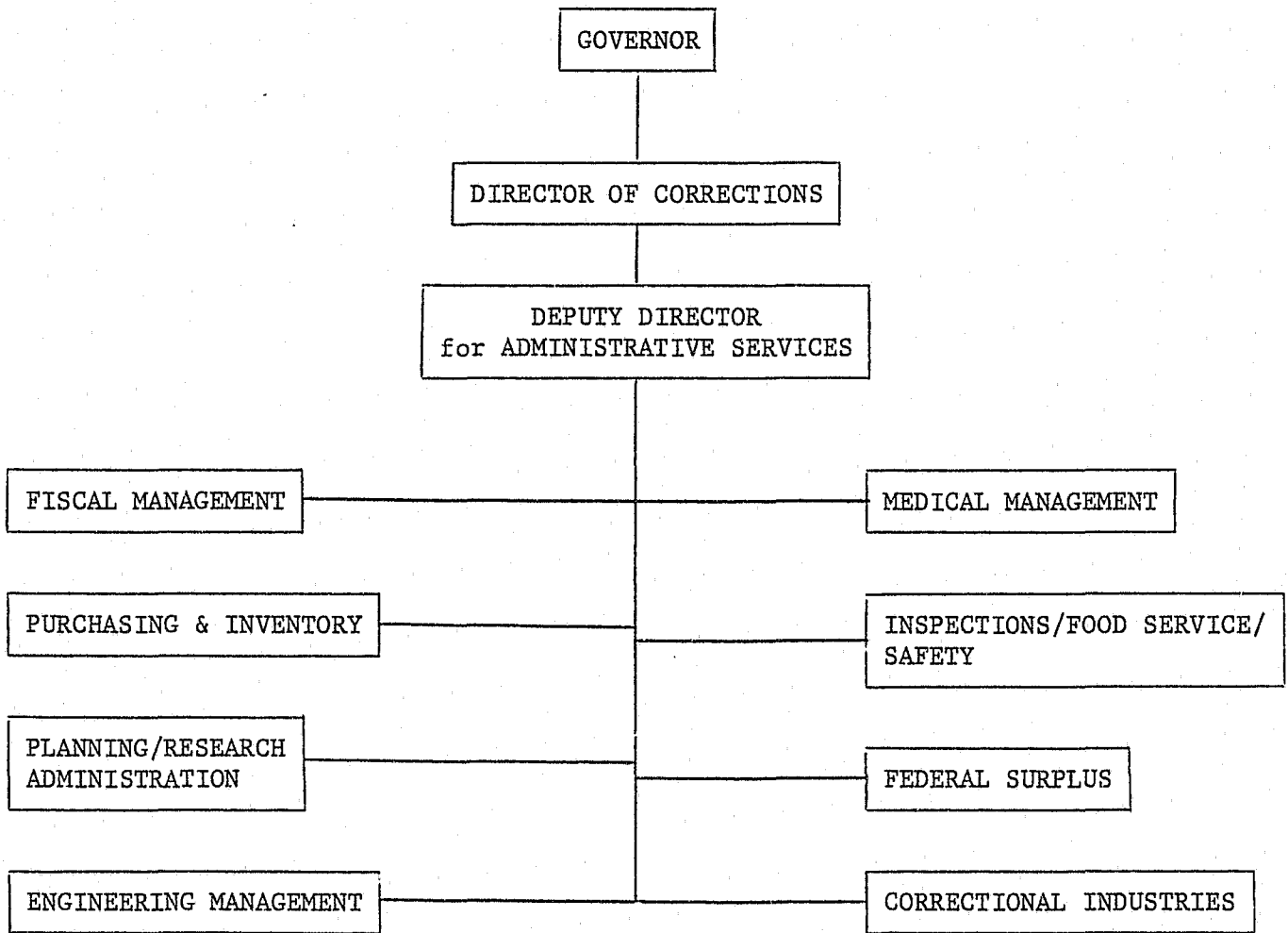
The maintenance and lowering of the recidivist rate is one of the planning principles of the Department. A review of this data since 1978-79 indicates a relatively constant rate with a significant decrease for the most recent 1982-83 fiscal year. The current reported 12.9 recidivism rate is the lowest in the nation. However, it should be noted that the definition, criteria, and method of defining recidivism varies from state to state.

RECIDIVISM DATA\*  
FY 1979-80 to FY 1982-83

Category	NUMBER RELEASED				NUMBER RECIDIVIST				% RECIDIVIST RATE			
	FY 79-80	FY 80-81	FY 81-82	FY 82-83	FY 79-80	FY 80-81	FY 81-82	FY 82-83	FY 79-80	FY 80-81	FY 81-82	FY 82-83
<u>Females</u>												
Paroles	33	25	22	27	4	2	2	2	12.1	8.0	9.1	7.4
Institutional Discharges	<u>25</u>	<u>19</u>	<u>18</u>	<u>32</u>	<u>2</u>	<u>2</u>	<u>2</u>	<u>4</u>	<u>8.0</u>	<u>10.5</u>	<u>11.1</u>	<u>12.5</u>
TOTAL	58	44	40	59	6	4	4	6	10.3	9.1	10.0	10.2
<u>Males</u>												
Paroles	260	238	244	289	38	23	24	25	14.6	9.7	9.8	8.7
Institutional Discharges	<u>263</u>	<u>305</u>	<u>291</u>	<u>359</u>	<u>60</u>	<u>65</u>	<u>75</u>	<u>60</u>	<u>22.8</u>	<u>21.3</u>	<u>25.7</u>	<u>16.7</u>
TOTAL	523	543	535	648	98	88	99	85	18.7	16.2	18.5	13.1
<u>Combined Males and Females</u>												
Paroles	293	263	266	316	42	25	26	27	14.3	9.5	9.8	8.5
Institutional Discharges	<u>288</u>	<u>324</u>	<u>309</u>	<u>391</u>	<u>62</u>	<u>68</u>	<u>77</u>	<u>64</u>	<u>21.5</u>	<u>21.0</u>	<u>24.9</u>	<u>16.4</u>
TOTAL	581	587	575	707	104	93	103	91	17.9	15.8	17.9	12.9

\*Recidivism consists of new crime commitments only.

DIVISION OF ADMINISTRATIVE SERVICES



## DIVISION OF ADMINISTRATIVE SERVICES

### PROGRAM STATEMENT

Established in accordance with Nebraska Revised Statute Section 83-922 (Reissue 1976), the Division of Administrative Services provides assistance and support services to facilities and programs within the Department of Correctional Services.

The mission of the Division is accomplished through four primary goals:

- 1) Provide timely response to requests for assistance and information;
- 2) Provide an effective management information system;
- 3) Provide support services effectively and efficiently; and
- 4) Provide technical analysis, research, and recommendations for functional improvement.

As illustrated in the Figure, the Division is organized into eight functional sections: 1) Fiscal Management; 2) Procurement and Inventory; 3) Planning/Research Administration; 4) Engineering Management; 5) Medical Management; 6) Food Service Coordinator; 7) Surplus Property; and 8) Correctional Industries.

### FISCAL MANAGEMENT

Fiscal Management (Central Accounting) is responsible for coordination of all agency payment submissions and investment of surplus agency funds through the Investment Council. All accounting functions for Lincoln-based institutions and programs have been centralized. Accounting acts as a clearing center for all expenditure and transfer of appropriations for the Department of Correctional Services.

### PURCHASING AND INVENTORY CONTROL

Purchasing and Inventory Control is responsible for coordinating the centralized purchasing system and for effecting a more efficient communication and paper flow within the Department. The basic goal is to reduce delays in procurement. Quality control is emphasized in all areas to ensure that supplies are received as ordered. Coordination of volume ordering with other state agencies is carried out where items are compatible.

### PLANNING/RESEARCH ADMINISTRATION

The Planning/Research Administration Section is organized into three major components: 1) Research and Information; 2) Planning and Management; and 3) Evaluation and Monitoring Officer. This organizational structure allows the section to allocate staff time more efficiently, enabling effective performance of its analytic, planning, budgeting, management, and evaluation functions.

#### ENGINEERING MANAGEMENT

The Engineering Management Section provides technical and management assistance for construction projects of all sizes from the preliminary planning stage until projects are completed and ready for occupancy. Additionally, the section provides guidance and assistance for institutional maintenance programs.

#### MEDICAL MANAGEMENT

The primary objective of this component is the provision of health care services through the Department ensuring the maintenance of good health for all offenders. The Department health care program provides a wide range of medical services under the direction of a Health Care Administrator. The diversified professional staff at the five primary facilities includes fifty-four full-time equivalent positions. Two chief medical officers serve within the system; one serves the Nebraska State Penitentiary; while the other serves the Diagnostic and Evaluation Center, the Lincoln Correctional Center, the Nebraska Center for Women, and Community Corrections. The medical services provided within the facilities include: health care records, initial medical screening, comprehensive health care examinations; pharmacy services, and sick call.

#### FOOD SERVICE COORDINATION

The goal of the Food Service Section is to maintain acceptable standards of food preparation resulting in a product of high quality served in the most attractive and efficient manner possible. Toward the attainment of this goal, this office provided technical assistance to Food Service Administrators and implemented in-service training for Food Service employees at the facilities. In cooperation with Health Department officials, sanitation classes were established for all Food Service personnel.

#### FEDERAL SURPLUS PROPERTY

The purpose of the Nebraska State Agency for Federal Surplus Property is to provide the services necessary for maximum utilization and equitable distribution of Federal Surplus Property to eligible public and nonprofit tax exempt organizations within the state.

The goals of the division are to increase participation of eligible organizations and/or institutions, to provide a bimonthly bulletin of available property to eligible and potential eligible organizations, submit the rewritten state plan of operations to General Services Administration, maximize utilization of inmates to fill positions that cannot be filled due to economic limitations of the agency, but are essential to the agency operation. This also provides a viable work program for the inmates, continues to improve effectiveness, efficiency, and the economic situation of the division, develop coordination and communication between this agency and the Department of Correctional Services, completes new inventory and location systems, and continues to cross-train employees to provide backup for each position.



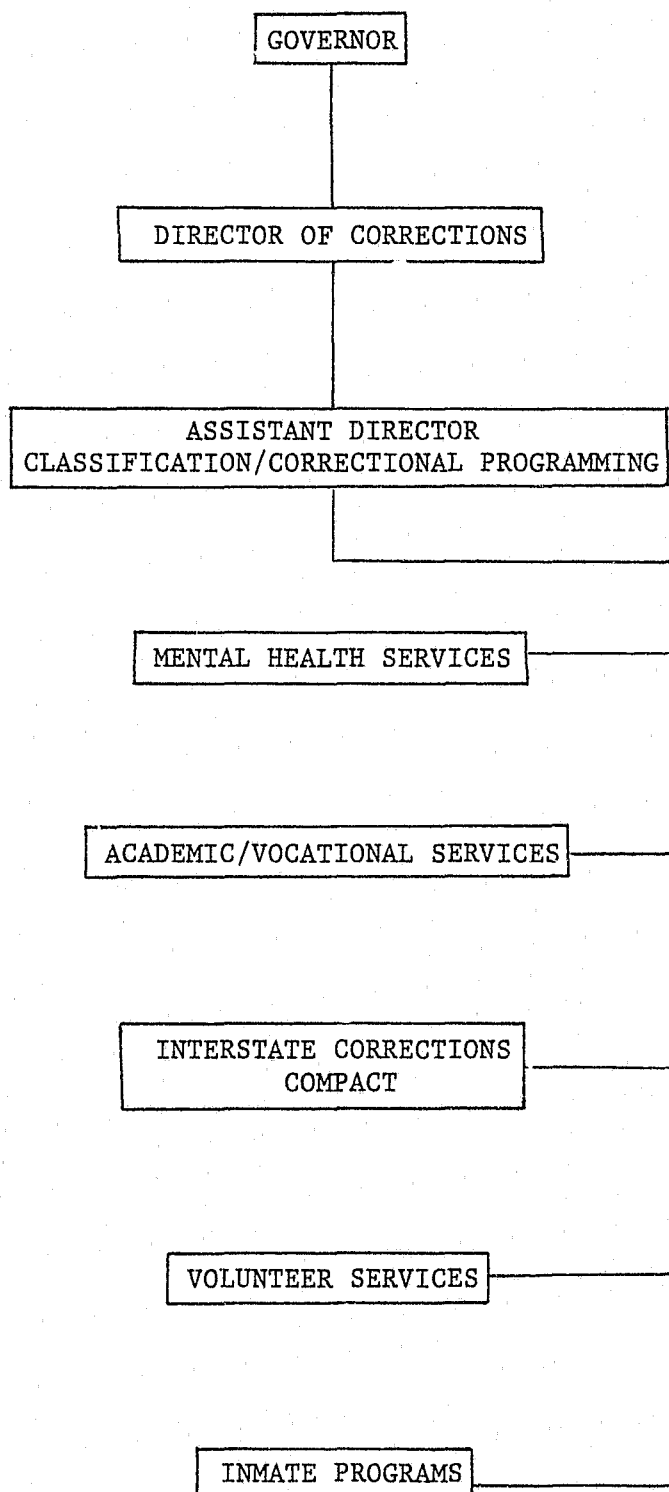
CORRECTIONAL INDUSTRIES

Nebraska Correctional Industries produces a wide variety of products for sale to Nebraska state agencies, county and local governmental entities, nonprofit and religious organizations. The primary purpose is to operate cost effective, self-sustaining programs comparable to private industry within the constraints imposed by the correctional institution environment. The programs provide work and training opportunities for the confined inmate which reduces the cost of incarceration while reducing inmate idleness.

FEDERAL SURPLUS PROPERTY AND CORRECTIONAL INDUSTRIES  
 FISCAL STATEMENTS  
 FY 1985 - 1986

	<u>Federal Surplus Property</u>	<u>Correctional Industries</u>
Revenue	\$256,350	\$2,635,782
Expenditures:		
Personal Services	102,722	578,713
Operating Expenses	171,634	1,481,424
Travel	9,308	19,380
Capital Outlay	100	294,416
Net Gain/Net Loss	(\$27,414)	\$ 261,849

CLASSIFICATION AND CORRECTIONAL PROGRAMMING



## CLASSIFICATION AND CORRECTIONAL PROGRAMMING

### PROGRAM STATEMENT

Established by the Director of the Department of Correctional Services, the Division of Classification and Correctional Programming supervises the Department's adult inmate classification system and various support programs for both adult and juvenile divisions.

As illustrated on the organization chart, the division is organized into six functional areas: Inmate Classification; Mental Health Services, Academic/Vocational Education; Interstate Corrections Compact; Volunteer Services; and Inmate Programs.

### Inmate Classification

Inmate Classification is a systematic process of coordinating inmate assessment and assignment procedures with available resources. It utilizes a procedure of identifying factors of an inmate's potential and level of functioning to determine his/her individual security and supervision needs. Specifically, it seeks to:

- A. Assign each inmate to the least restrictive environment appropriate to maintain the public's confidence and safety.
- B. Facilitate the timely movement of inmates through the correctional system.
- C. Provide for the assignment, continuation and removal of inmates from administrative segregation status.
- D. Identify inmate needs and recommend program involvement which will assist in meeting those needs, and
- E. Assure the most difficult classification decisions are made at the highest level of authority within the Department.

### Mental Health Services

Mental Health Services for adult incarcerants is headed by a certified clinical psychologist. It is responsible for providing psychological and substance abuse counseling and intervention for those adult inmates identified needing mental health services. Organizationally, it operates four distinct inpatient programs, located within the Lincoln Correctional Center; provides outpatient services in each of the other adult institutions, as well as provides crisis intervention and ongoing evaluation services. Psychiatric services are provided by contract with several psychiatrists from the community; severe mentally ill inmates and inmates found to be treatable mentally disordered sex offenders are transferred to the Lincoln Regional Center for intense inpatient treatment.

### Academic/Vocational Services

The academic and vocational education section is headed by the Department's educational coordinator responsible for planning, development and providing assistance in operation of the academic and vocational education and pre-release programming within the Department. Organizationally, the Department operates its own approved schools in its two juvenile facilities and its adult female institution. Lincoln based institutions receive educational services through contractual arrangements with Southeast Community College Corrections Division, while Metropolitan Technical Community College is under contract with the Department to provide educational services at the Omaha institution.

### Interstate Corrections Compact

In accordance with Nebraska Statutes, R.S. Supp., 1974, Chapter 29, Article 34 and the Interstate Corrections Compact Act, the Department has entered into contracts with several states providing inmates the opportunity to request a transfer to another state. The Interstate Corrections Compact Administrator, under the supervision of the Assistant Director for Classification and Programs, coordinates and documents all actions undertaken under the provisions of the compact. Inmates are given consideration for transfer to: enable an inmate to be closer to and maintain family ties; allow an inmate to concurrently serve sentences; provide for the greater immediate personal safety of an inmate; provide greater institutional security, custody and control; and provide specialized programs for treatment and rehabilitation not otherwise available.

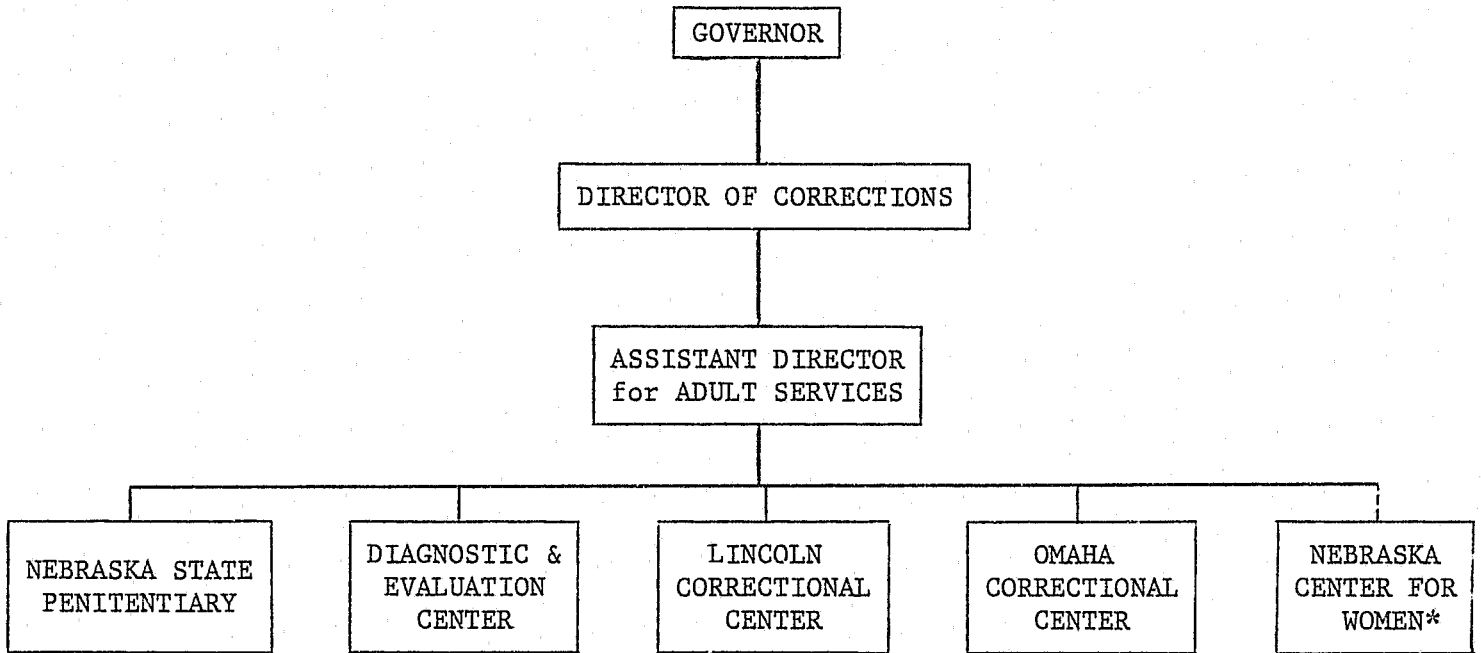
### Volunteer Services

Citizen involvement through volunteerism generates a variety of services for inmates in all facilities and programs including but not limited to: alcohol/drug treatment, mental health services, education, religious activities, athletics and recreation, and self-betterment groups. In addition, volunteers provide counseling, transportation, and employment assistance to inmates, as well as clerical and office assistance to staff. Each facility/program has a designated staff member responsible for recruiting, training, and the overall coordination of volunteer programs within his/her respective facility/program. The Central Office volunteer services coordinator has overall departmental responsibility for the Volunteer Services Program and for chairing the Volunteer Services Committee comprised of facility/program coordinators and volunteers, to assure appropriate policy and procedure is followed.

### Inmate Programs

Direct supervision of various inmate programs is the responsibility of the individual institution's administration. The Division of Classification and Correctional Programming functions in a coordinating role, in an effort to ensure consistent programming activities for inmates in the various institutions. Currently, inmate programs include religious services; recreational services; self betterment clubs and cultural organizations.

DIVISION OF ADULT SERVICES



\*Reports to the Deputy Director.

## DIVISION OF ADULT SERVICES

### PROGRAM STATEMENT

Organized under Section 83-939, Neb. Rev. Stat. (Reissue 1976), the Division of Adult Services exists to administer and supervise the state's adult correctional facilities. All adult female offenders are received at the Nebraska Center for Women, where they are evaluated and subsequently assigned to programs and work at that facility. All adult male offenders are received at the Diagnostic and Evaluation Center, where screening and evaluation are performed and a mental health unit is maintained for special adjustment cases. Upon completion of evaluation, offenders are assigned to the Nebraska State Penitentiary, the Lincoln Correctional Center, or the Omaha Correctional Center, and are placed in program and/or work assignments at the respective facilities. Release from any of the adult institutions is via parole, placement in work/education release programs, or expiration of sentence. The remaining statutory responsibilities of the Division of Adult Services include assisting the Division of Community Centered Services with work release, education release, and furlough programs; establishment and maintenance of a Chemical Dependency Program; and development, coordination, and implementation of volunteer programs at the adult facilities.

The adult facilities all provide custodial care for the offenders placed with us by the courts. The Diagnostic and Evaluation Center is a maximum security special purpose facility with its central function being the reception of new male offenders. The Nebraska State Penitentiary is for the care, custody and program needs of older, multiple male offenders in a variety of custody levels. The Lincoln Correctional Center provides these services for younger, first time male offenders in a variety of custody levels. The Omaha Correctional Center handles minimum/community custody level offenders from eastern and northeastern Nebraska who are close to the end of their sentences. The Nebraska Center for Women serves all female offenders with care, custody and programs in a variety of custody levels.

### NEBRASKA STATE PENITENTIARY

Site of the original limestone structure opened in 1876. The Nebraska State Penitentiary stood as the only adult male facility until 1921 when the Men's Reformatory was opened to house minimum security, male offenders. Renovation of the Penitentiary was completed during the spring of 1982, with demolition of the old cell blocks, administrative building, and kitchen. The new physical plant, operational since the beginning of 1982, includes four housing units, administrative complex and central utilities plant. Facility responsibility rests with a Warden who is assisted by three Associate Wardens.

### LINCOLN CORRECTIONAL CENTER

Provided for by the 1975 Legislature and the provisions of LB 417 (Neb. Rev. Statutes, 83-953), the Lincoln Correctional Center was dedicated on

July 30, 1979, as a medium-minimum security institution with a capacity to house 308 adult male legal offenders. The day to day management of the Center is provided by a Superintendent who is charged with the overall responsibility for the function of the institution. The Superintendent is assisted by an Assistant Superintendent for Programs and Custody and by an Assistant Superintendent for Administration.

#### DIAGNOSTIC AND EVALUATION CENTER

The Diagnostic and Evaluation Center, as enacted in Nebraska's 83rd Legislature, is a multi-functional facility providing reception, diagnostic, evaluation, classification, and assignment services to all adult male felons from the State of Nebraska District Court System. In addition, through written and verbal presentation, an orientation program is maintained to facilitate the best possible kind of integration into institutional life and a therapeutic unit incorporating 48 beds and provide a therapeutic atmosphere for special needs offenders. Medical, dental, and optometric services are provided to all offenders residing within the Adult Division facilities; and Mental Health staff provide out-patient care and treatment within the Nebraska State Penitentiary and Lincoln Correctional Center. Clinical psychological oversight is provided to the Omaha Correctional Center. Continuing service is provided to the State District Courts as they request evaluation assistance in felony cases prior to determination as provided for in Chapter 38, Section 1105, Statutes of Nebraska.

#### OMAHA CORRECTIONAL CENTER

The Omaha Correctional Center was created in 1975 by LB 417 which provided for a medium-minimum security facility to be located in Douglas County. The Center, which opened on April 24, 1984, on a 33-acre site in East Omaha, is designed to house 240 inmates. The opening aided in the solution to two major problems--overcrowding and inmate idleness. Organization at the facility includes a Superintendent and two Assistant Superintendents.

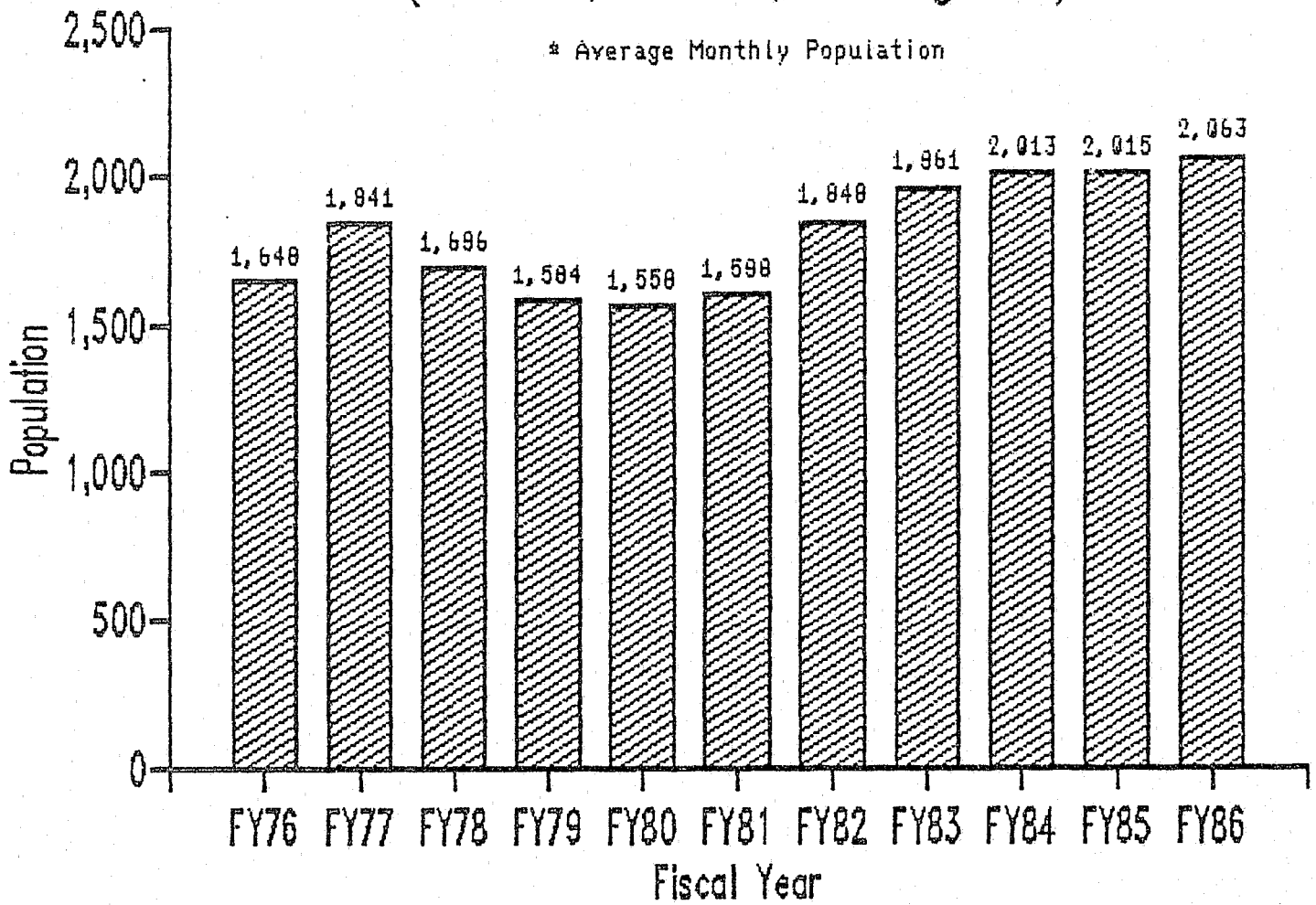
#### NEBRASKA CENTER FOR WOMEN

The Nebraska Center for Women is classified as a minimum security institution, although it provides any type of security necessary for handling Nebraska female offenders, including Orientation offenders and females who require administrative segregation. The Center is under the direction of a Superintendent, with the help of an Assistant Superintendent. The classification system provides three levels of supervision with commensurate privileges, beginning with a 30-day reception period that requires much supervision and a few privileges, progressing to regular programming in the general population based on individualized plans, and ending with honor status. A minimum of four to six months is required to reach the third level.



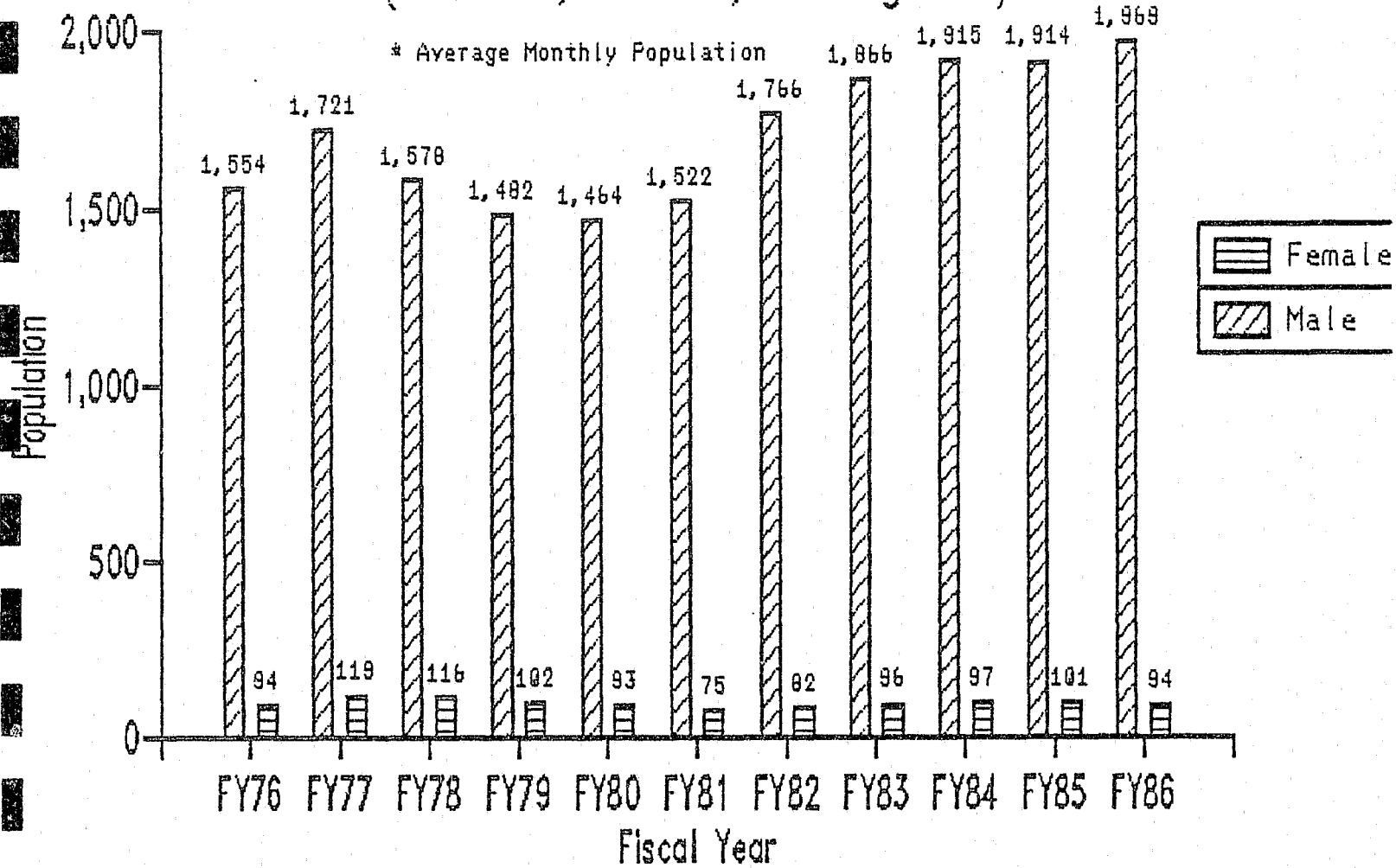
# Total Adult Population by Fiscal Year\* (Facilities, Centers, & Programs)

\* Average Monthly Population



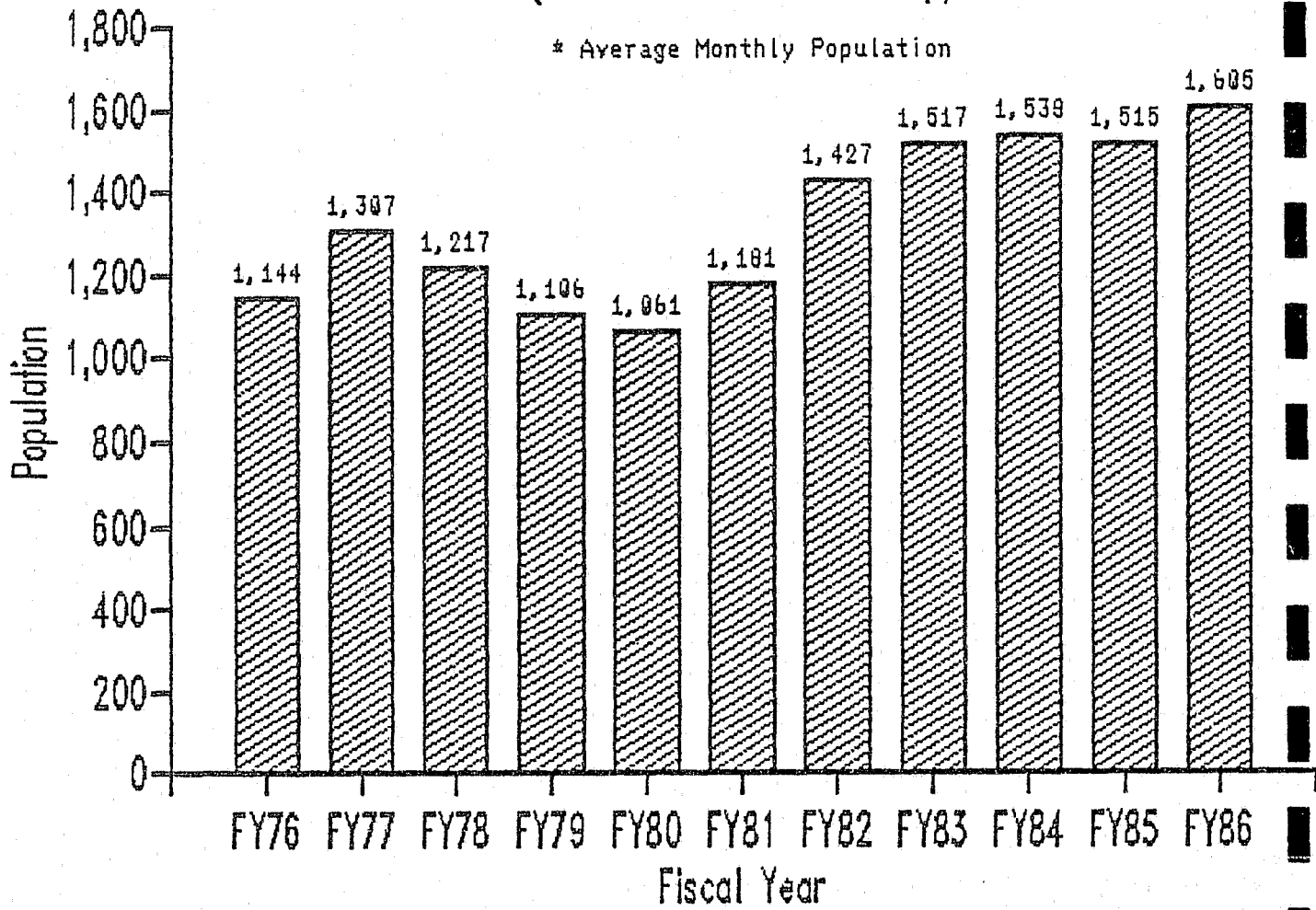
## Total Adult Male & Female Population\* (Facilities, Centers, & Programs)

\* Average Monthly Population



# Total Adult Institutional Population\* (Adult Facilities Only)

\* Average Monthly Population



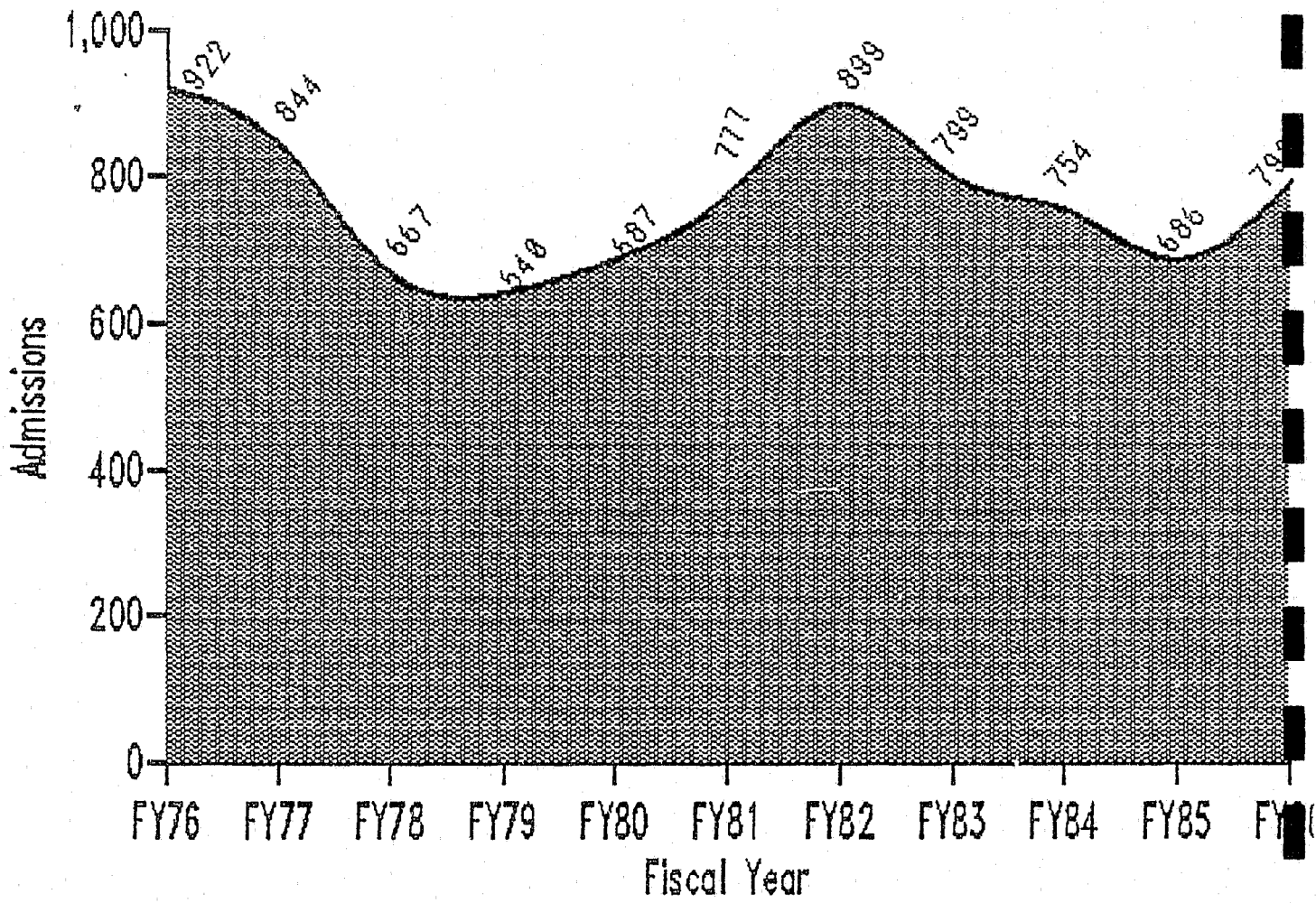
ESCAPES FROM ALL ADULT FACILITIES AND PROGRAMS BY FISCAL YEAR  
 FY 1981-82 to FY 1985-86

	<u>FY 1981-82</u>	<u>FY 1982-83</u>	<u>FY 1983-84</u>	<u>FY 1984-85</u>	<u>FY 1985-86</u>
Successful Escapes From Inside Institution	2	2	2	5	-0-
Successful Escape While Outside Institution	14	11	6	6	1
Escape/Abscond From Furloughs - Institutions	1	3	2	1	-0-
Escape/Abscond From Work Release	17	23	13	19	25
Community Based Escapes From Work Details	--	--	--	1	-0-
Escape/Abscond From Community Corrections Furloughs	<u>--</u>	<u>--</u>	<u>2</u>	<u>1</u>	<u>-0-</u>
TOTAL	34	39	25	33	26

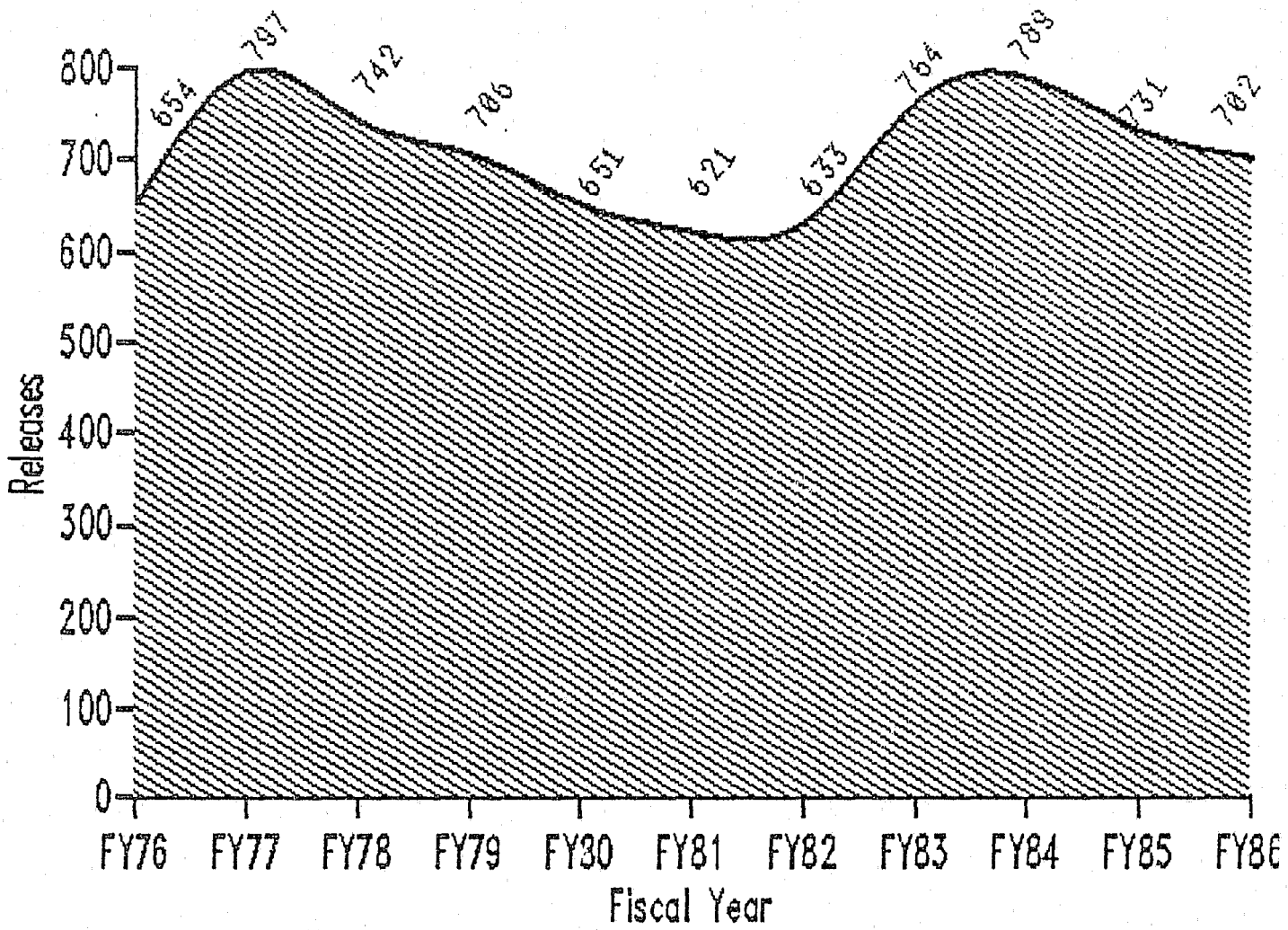
ESCAPES FOR TOTAL ADULT POPULATION BY FISCAL YEAR  
 FY 1981-82 to FY 1985-86

	<u>FY 1981-82</u>	<u>FY 1982-83</u>	<u>FY 1983-84</u>	<u>FY 1984-85</u>	<u>FY 1985-86</u>
Total Escapes	34	39	25	33	26
Total Adult Population	1848	1961	2013	2015	2063
Percent of Total	1.84%	1.99%	1.25%	1.64%	1.26%

# Total Adult Admissions



# Total Adult Releases



TOTAL ADULT ADMISSIONS\*  
FY 78 to FY 86

<u>Fiscal Year</u>	<u>Regular</u>			<u>Evaluator/Safekeeper</u>			<u>Total</u>
	<u>Males</u>	<u>Females</u>	<u>Total</u>	<u>Males</u>	<u>Females</u>	<u>Total</u>	
1978	566	38	604	-0-	-0-	-0-	604
1979	518	54	572	-0-	10	10	582
1980	592	46	638	91	17	108	746
1981	695	37	732	95	8	103	835
1982	793	55	848	143	13	156	1,004
1983	654	65	719	117	9	126	845
1984	693	61	754	119	7	126	880
1985	641	41	682	127	8	135	817
1986	728	64	792	163	12	175	967

\*Does not include Interstate Transfer Parolees

TOTAL ADULT RELEASES  
FY 78 to FY 86

<u>Fiscal Year</u>	<u>Parole</u>	<u>Discharges</u>	<u>Total</u>
1978	418	324	742
1979	387	319	706
1980	376	275	651
1981	310	311	621
1982	322	311	633
1983	385	379	764
1984	407	382	789
1985	330	401	731
1986	340	362	702

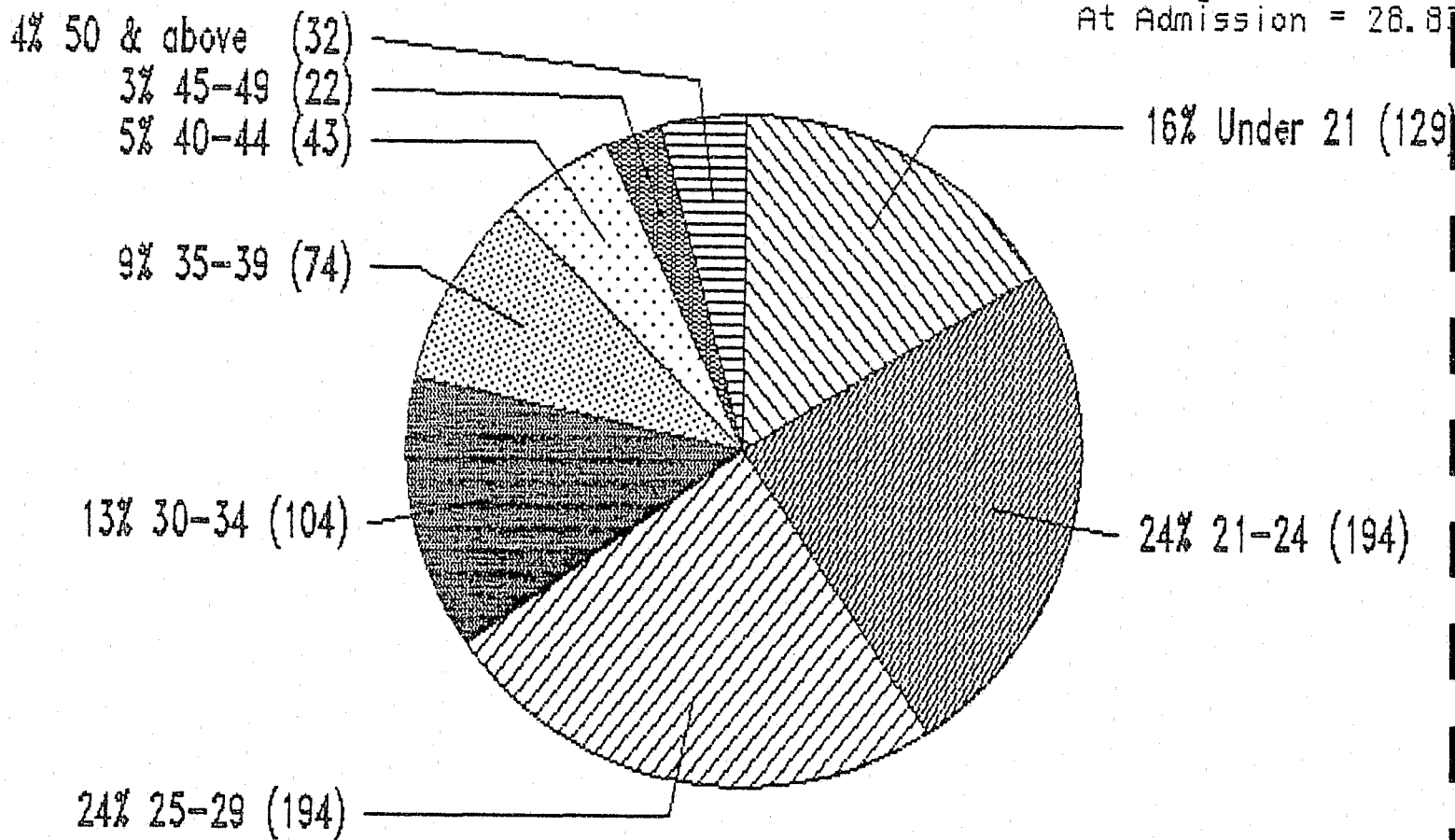
TOTAL ADULT POPULATION - RELEASE INFORMATION  
FY 1984-85 AND FY 1985-86

<u>RELEASE INFORMATION</u>	<u>FY 1984-85</u>	<u>% TOTAL</u>	<u>FY 1985-86</u>	<u>% TOTAL</u>
<u>ID STATUS</u>				
First-Time Offender	485	66.3	455	64.8
Multiple Offender	286	33.7	246	35.0
Federal Safekeeper	---	----	1	0.1
TOTAL	731		702	
<u>SEX</u>				
Male	680	93.0	645	91.9
Female	51	7.0	57	8.1
<u>RACE</u>				
Black	183	25.0	200	28.5
Hispanic	19	2.6	24	3.4
American Indian	40	5.5	27	3.8
Other	4	0.5	3	0.4
White	485	66.3	448	63.8
<u>LENGTH OF STAY IN INSTITUTION</u>				
0-6 months	86	11.8	80	11.4
7-12 months	167	22.8	171	24.4
13-18 months	103	14.1	91	13.0
19-24 months	72	9.8	87	12.4
25-30 months	61	8.3	52	7.4
31-36 months	55	7.5	47	6.7
37-42 months	41	5.6	34	4.8
43-48 months	32	4.4	31	4.4
49-54 months	14	1.9	14	2.0
55-60 months	22	3.0	19	2.7
Over 60 months	78	10.7	76	10.8

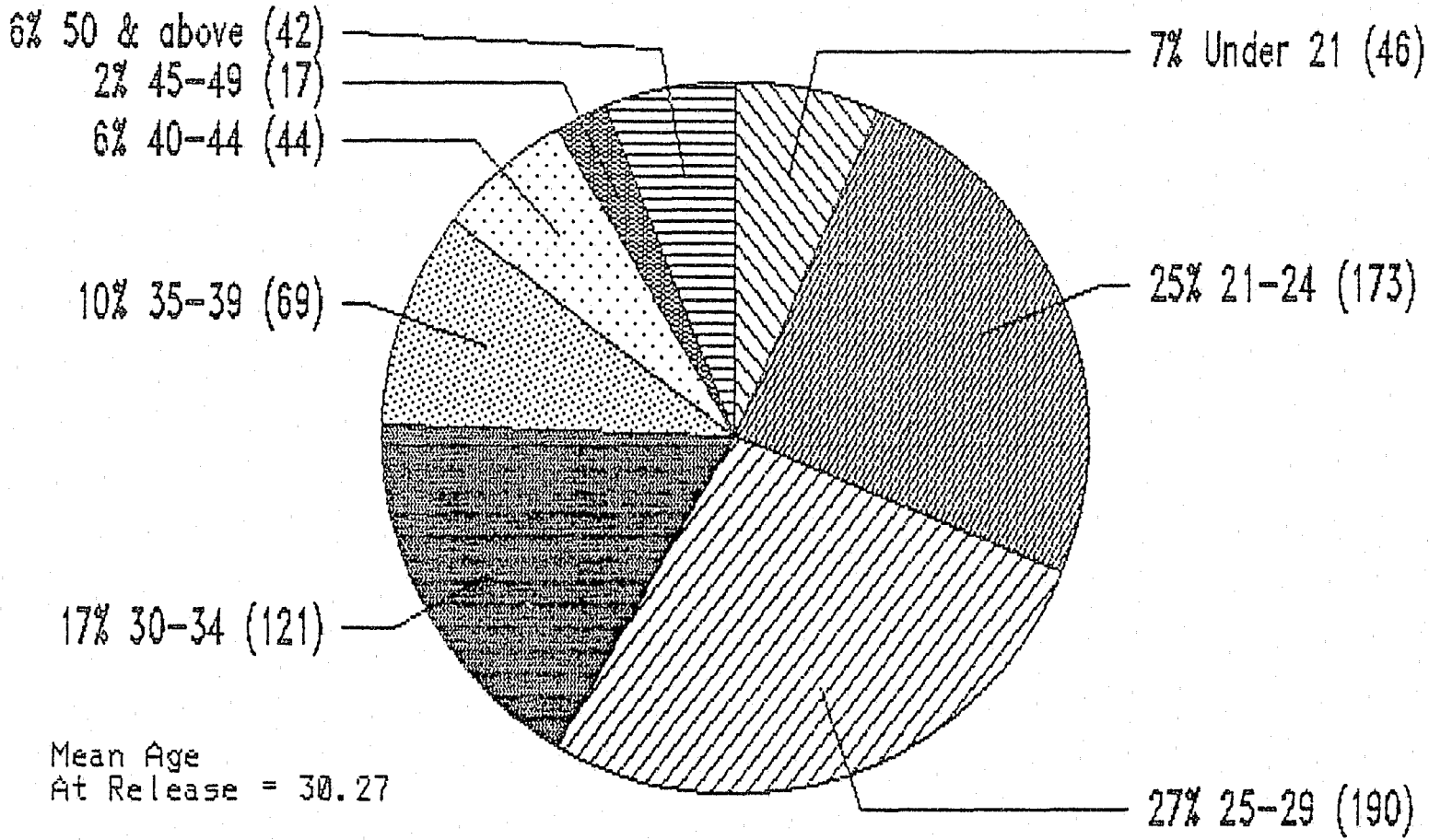


# Age At Admittance Fiscal Year 86

Mean Age  
At Admission = 28.87



# Age At Release Fiscal Year 86



SUMMARY OF INSTITUTIONALIZED INMATES - AVERAGE POPULATION  
FY 79-80 to FY 85-86

<u>Facility</u>	<u>FY 79-80</u>	<u>FY 80-81</u>	<u>FY 81-82</u>	<u>FY 82-83</u>	<u>FY 83-84</u>	<u>FY 84-85</u>	<u>FY 85-86</u>
Nebraska State Penitentiary	618	701	837	847	830	704	662
Lincoln Correctional Center	270	299	346	380	382	323	375
Omaha Correctional Center	---	---	---	---	67	213	245
Diagnostic & Evaluation Center	116	143	183	230	244	204	257
Nebraska Center For Women	54	47	58	77	66	71	65
Community Corrections	158	148	163	181	168	198	207
YDC-Geneva	50	47	45	40	47	57	61
YDC-Kearney	<u>153</u>	<u>153</u>	<u>156</u>	<u>147</u>	<u>150</u>	<u>154</u>	<u>151</u>
TOTAL	1419	1538	1788	1902	1954	1924	2023
% Change	+8.4%	+16.3%	+6.4%	+2.7%	-1.6%	+5.1%	

(42.6% increase since FY 1979-80)

TOTAL ADULT POPULATION - CUSTODY LEVEL  
FY 1983-84, FY 1984-85, and FY 1985-86 (June Figures)

<u>Custody Level</u>	<u>FY 1983-84</u>	<u>% Of Total</u>	<u>FY 1984-85</u>	<u>% Of Total</u>	<u>FY 1985-86</u>	<u>% Of Total</u>
Maximum	572	32.8	572	32.2	745	39.4
Medium	307	17.6	376	21.2	361	19.1
Minimum	385	22.1	517	29.2	538	28.4
Community	<u>481</u>	27.6	<u>306</u>	17.3	<u>249</u>	13.2
TOTAL	1745		1771		1893	

TOTAL ADULT POPULATION - BY AGE  
(Currently Confined - June, 1986)

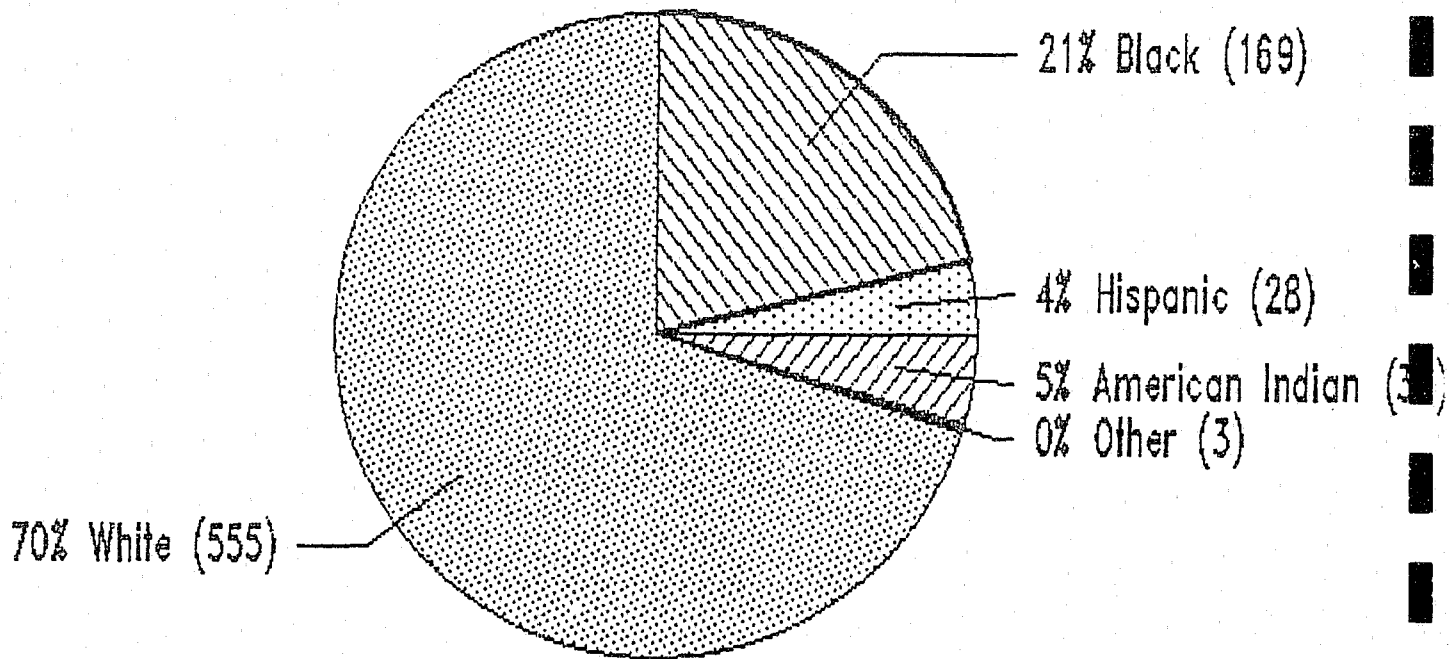
<u>Age Category</u>	<u>Number Male</u>	<u>Number Female</u>	<u>Total Number</u>	<u>% Of Total</u>
Under 21	120	3	123	6.5
21-22	190	7	197	10.4
23-24	197	8	205	10.8
25-29	456	23	479	25.3
30-34	344	14	358	18.9
35-39	229	6	235	12.4
40-44	110	8	118	6.2
45-49	60	5	65	3.4
50-54	45	2	47	2.5
55-59	21	1	22	1.2
60 & Over	44	-	44	2.3
TOTAL	1816	77	1893	

MEAN AGE BY FACILITY OR PROGRAM  
(Currently Confined - June, 1986)

<u>Facility/Center</u>	<u>Mean Age</u>
Nebraska State Penitentiary	34.190
Lincoln Correctional Center	27.110
Diagnostic & Evaluation Center	28.708
Omaha Correctional Center	30.022
Nebraska Center for Women	30.871
Community Corrections Centers - Males	34.167
Community Corrections Centers - Females	33.000
Adult Parole	32.402
Adult Male Total Population	31.313
Adult Male Facilities	30.929
Adult Female Total Population	31.286

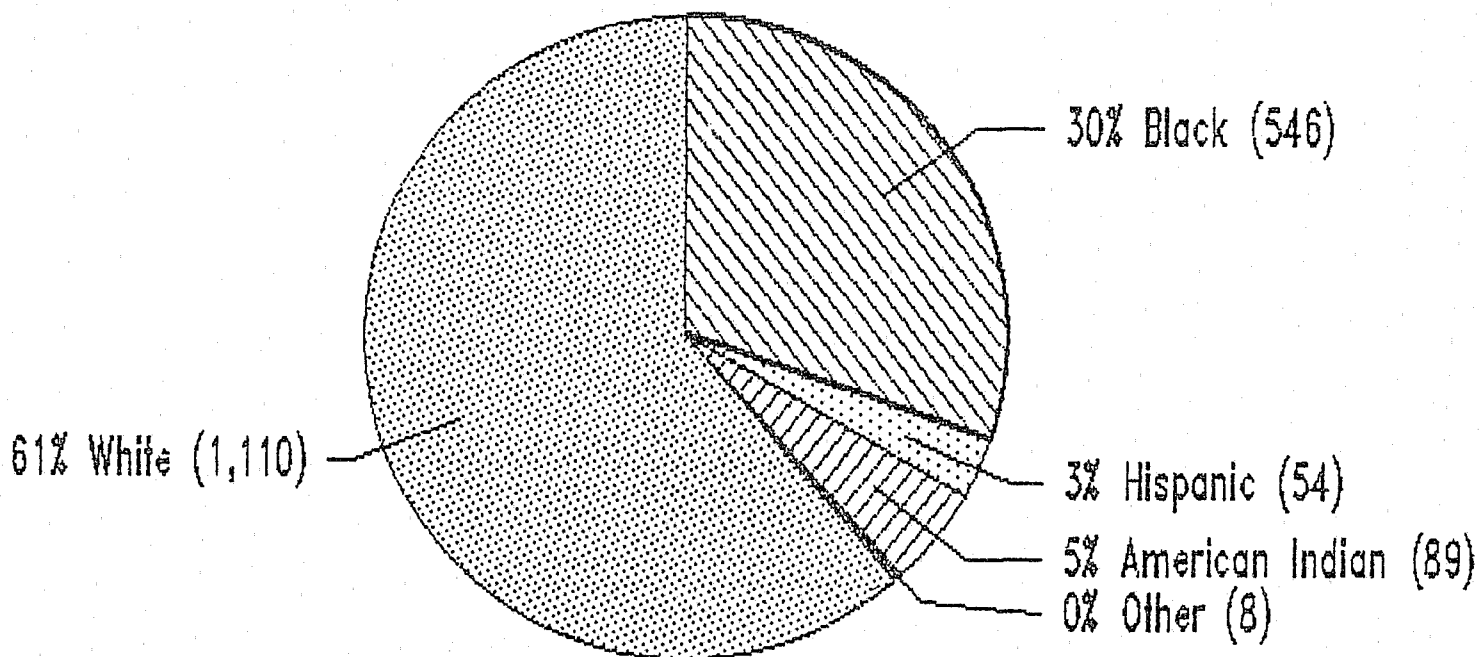
# Total Adult Admissions by Race Fiscal Year 86

Total = 791  
Missing Values = 1



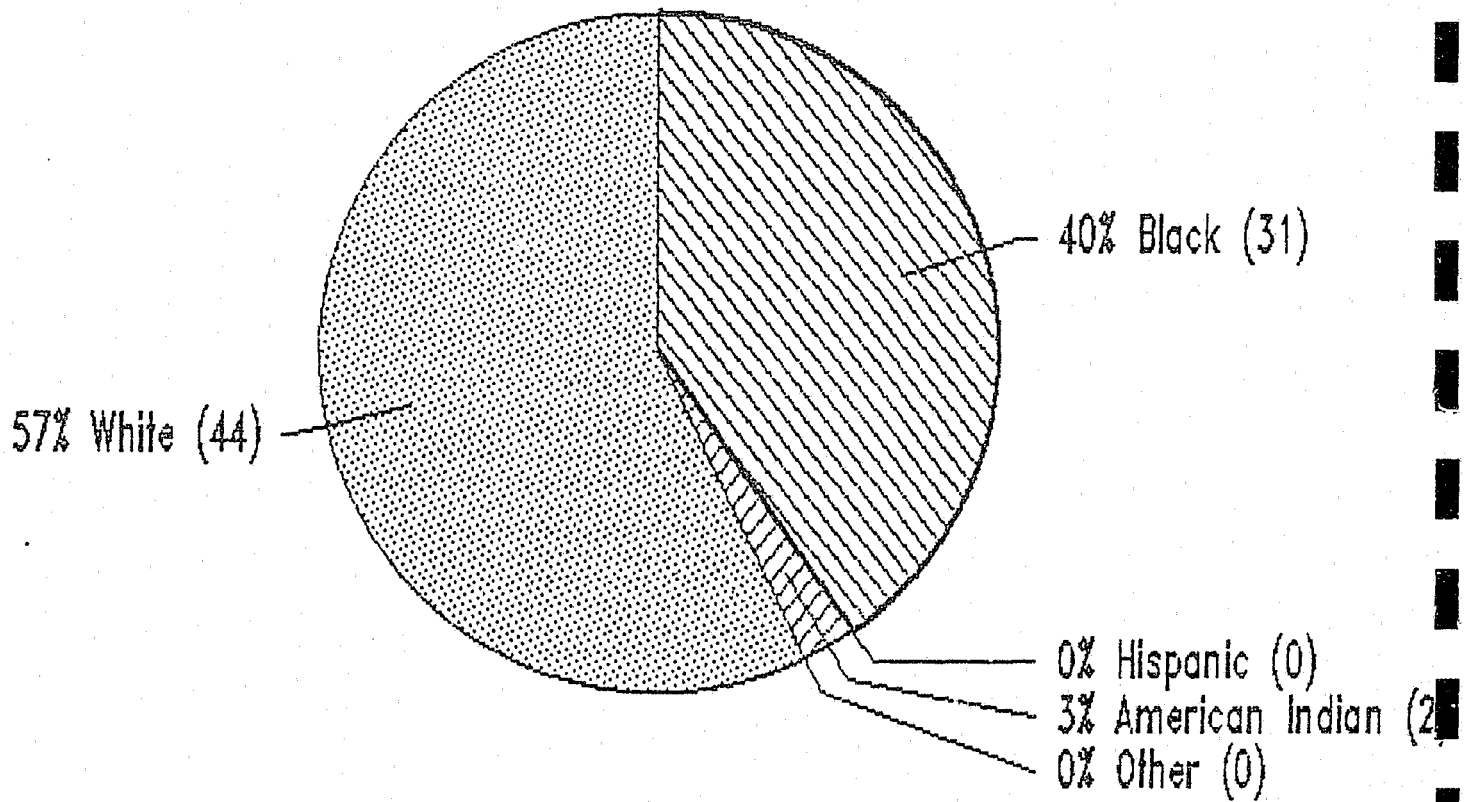
# Total Adult Male Population by Race Fiscal Year 86

Total = 1,816  
Missing Values = 9



# Total Adult Female Population by Race Fiscal Year 86

Total = 77  
Missing Values = 0



TOTAL ADULT POPULATION CURRENTLY CONFINED  
BY OFFENSE (June, 1986)

Offense Category	Number		% of Total	
	<u>1984-85</u>	<u>1985-86</u>	<u>1984-85</u>	<u>1985-86</u>
Homicide	227	235	14.0	13.0
Robbery	236	245	14.5	13.6
Burglary	338	361	20.8	20.0
Assault	110	120	6.8	6.7
Theft	168	204	10.3	11.3
Sex Offenses	167	194	10.3	10.8
Restraint	33	42	2.0	2.3
Arson	16	11	1.0	0.6
Drugs	72	103	4.4	5.7
Fraud	119	124	7.3	6.9
Weapons	27	22	1.7	1.2
Morals	11	18	0.7	1.0
Motor Vehicle	27	31	1.7	1.7
Other	<u>73</u>	<u>94</u>	4.5	5.2
TOTAL	1624	1804*		

\*Missing Cases - 89 (Not included)



LENGTH OF STAY  
 (Based on Releases)  
 FY 1979-80 to FY 1985-86  
 (As of June 30th each year)

FISCAL YEAR/PER CENT OF TOTAL

<u>Length of Stay (Years)</u>	<u>79-80</u>	<u>80-81</u>	<u>81-82</u>	<u>82-83</u>	<u>83-84</u>	<u>84-85</u>	<u>85-86</u>
0 - 1 yrs.	187 35.76	229 41.04	262 47.85	289 43.85	236 35.28	219 33.23	251 35.75
1.01 - 2 yrs.	146 27.92	139 24.91	144 26.04	184 27.92	178 26.61	153 23.21	178 25.36
2.01 - 3 yrs.	81 15.49	81 14.52	57 10.31	80 12.14	110 16.44	109 16.54	99 14.10
3.01 - 4 yrs.	52 9.94	37 6.63	22 3.98	36 5.46	60 8.97	70 10.62	65 9.26
4.01 - 5 yrs.	20 3.82	19 3.41	16 2.89	27 4.10	27 4.04	33 5.01	33 4.70
5.01 yrs.	37 7.07	53 9.50	52 9.40	43 6.53	58 8.67	75 11.38	76 10.83
5.01 - 6 yrs.	12 2.29	22 3.94	21 3.80	12 1.82	22 3.29	13 1.97	28 3.99
6.01 - 7 yrs.	5 0.96	7 1.25	15 2.71	4 0.61	9 1.35	13 1.97	12 1.71
7.01 - 8 yrs.	6 1.15	4 0.72	2 0.36	5 0.76	8 1.20	8 1.21	10 1.42
8.01 - 9 yrs.	1 0.19	10 1.89	4 0.72	3 0.46	3 0.45	10 1.51	2 0.28
9.01 - 10 yrs.	3 0.59	2 0.36	6 1.03	6 0.91	6 0.90	9 1.36	8 1.14
10.01 yrs	9 1.72	8 1.43	4 0.72	13 1.97	10 1.49	22 3.33	16 2.28
N	523	558	553	659	669	659	702
Mean	26.69	25.34	22.73	23.97	26.56	31.77	28.59
Missing	1						

LENGTH OF STAY  
 (Based on incarcerated adult males)  
 FY 1979-80 to FY 1985-86  
 (As of June 30th each year)

Length of Stay (years)	FISCAL YEAR/PER CENT OF TOTAL						
	79-80	80-81	81-82	82-83	83-84	84-85	85-86
0 - 1 yrs.	553	658	745	607	650	618	671
	40.42	43.63	42.62	34.77	36.70	35.15	36.95
1.01 - 2 yrs.	242	286	358	399	328	367	318
	17.69	18.97	20.48	22.85	18.52	20.88	17.51
2.01 - 3 yrs.	172	141	193	242	241	216	256
	12.57	9.35	11.04	13.86	13.61	12.29	14.10
3.01 - 4 yrs.	107	110	107	133	173	138	128
	7.82	7.29	6.12	7.62	9.77	7.85	7.05
4.01 - 5 yrs.	75	80	91	76	83	132	95
	5.48	5.31	5.21	4.35	4.69	7.51	5.23
5.01 yrs.	219	233	254	289	296	287	348
	16.01	15.45	14.53	16.55	16.71	16.33	19.16
5.01 - 6 yrs.	56	53	61	73	56	53	102
	4.09	3.51	3.49	4.10	3.16	3.01	5.62
6.01 - 7 yrs.	36	46	41	52	59	45	41
	2.63	3.05	2.35	2.98	3.33	2.56	2.26
7.01 - 8 yrs.	42	30	33	37	40	48	33
	3.07	1.99	1.89	2.12	2.26	2.73	1.82
8.01 - 9 yrs.	22	32	27	28	31	31	44
	1.61	2.12	1.54	1.60	1.75	1.76	2.42
9.01 - 10 yrs.	27	18	26	23	24	21	24
	1.97	1.19	1.49	1.32	1.36	1.19	1.32
10.01 yrs.	37	54	66	76	80	85	104
	2.70	3.58	3.76	4.35	4.52	4.84	5.73
N	1368	1508	1748	1746	1771	1758	1816
Mean	31.42	30.26	30.09	32.97	34.28	34.50	35.70

AVERAGE LENGTH OF STAY IN INSTITUTION IN MONTHS FOR FY 86 RELEASES  
WHO HAD MORE THAN ONE OFFENSE COUNT

<u>COUNT 1 OFFENSE</u>	<u>LENGTH OF STAY</u> <u>(IN MONTHS)</u>	
	<u>Mean</u>	<u>N</u>
Total Population	39.36	207
Criminal Attempt	14.33	3
2nd Degree Murder	153.50	2
Manslaughter	50.00	1
Motor Vehicle Homicide	31.50	2
1st Degree Assault	42.22	9
2nd Degree Assault	32.50	6
3rd Degree Assault	10.40	5
1st Degree Sexual Assault	50.20	5
2nd Degree Sexual Assault	21.85	7
Kidnapping	75.50	2
1st Degree False Imprisonment	19.00	3
Robbery	73.59	27
Dealing Drugs	28.20	5
Possession Controlled Substance	27.50	2
Possession Marijuana over 1 lb.	10.00	2
Deliver Dangerous Substance	45.33	3
1st Degree Arson	47.50	2
2nd Degree Arson	52.00	1
3rd Degree Arson	85.00	1
Burglary	41.17	47
Grand Larceny	71.00	1
Breaking & Entering	36.00	1
Receiving Stolen Property	16.50	2
Theft	23.52	25
Petty Larceny	8.00	4
Criminal Mischief	16.80	5
Criminal Trespass	5.50	2
1st Degree Forgery	5.00	1
2nd Degree Forgery	26.64	14
Possession Forgery Instrument 300+	118.00	1
Bad Check \$300-\$999	10.00	1
No Account Check	74.00	1
Resisting Arrest	25.00	1
Motor Vehicle Violations	16.00	3
False Reporting	5.00	1
Escape	5.00	1
Failure to Appear	8.00	1
Possession Concealed Weapon	19.00	1
Use Firearm in Felony	91.00	1
Possession of Firearm by Felon	52.50	2
DWI 3rd Offense	47.00	1
Habitual Criminal	132.00	1

AVERAGE LENGTH OF STAY IN INSTITUTION IN MONTHS FOR FY 86 RELEASES  
WHO HAD ONLY A COUNT 1 OFFENSE

<u>OFFENSE</u>	<u>LENGTH OF STAY</u> <u>(IN MONTHS)</u>	
	<u>Mean</u>	<u>N</u>
Total Population	24.09	495
Criminal Attempt	27.33	3
Conspiracy	29.00	1
Accessory to Felony	21.50	2
Aiding in a Felony	18.83	6
1st Degree Murder	71.00*	1
2nd Degree Murder	106.50	10
Manslaughter	54.25	4
Motor Vehicle Homicide	24.00	6
1st Degree Assault	32.15	13
2nd Degree Assault	10.83	12
3rd Degree Assault	11.00	2
1st Degree Sexual Assault	31.92	28
2nd Degree Sexual Assault	17.00	9
Sexual Sociopath	88.00	1
1st Degree False Imprisonment	18.66	3
Robbery	36.85	27
Dealing Drugs	20.71	7
Possession Marijuana over 1 lb.	11.57	7
Possession of a Controlled Substance	20.12	8
Deliver Dangerous Substance	17.55	18
2nd Degree Arson	27.00	3
Burning to Defraud	6.00	1
Burglary	23.77	110
Possession of Burglary Tools	33.00	1
Breaking & Entering	31.50	2
Receiving Stolen Property	20.71	7
Theft	16.11	79
Petty Larceny	6.00	1
Criminal Mischief	12.50	2
Criminal Trespass	6.00	3
1st Degree Forgery	23.20	5
2nd Degree Forgery	17.94	39
Possession Forged Instrument \$300+	117.00	3
Bad Check \$100+	23.00	2
Bad Check \$300-999	16.00	3
Bad Check \$75-299	6.00	1
No Account Check	8.00	2
False Book Entries	16.00	1
Receiving Altered Article	115.00	1
Incest	15.00	4
Criminal Non-Support	11.00	1
Child Abuse	31.00	1
Porno-Sale, Manufacturing, Promote	27.00	1
Resisting Arrest	8.00	2
Operating Motor Vehicle to Avoid Arrest	20.00	1

\*Discharge was due to an out-of-state transfer

<u>OFFENSE</u>	<u>LENGTH OF STAY</u> <u>(IN MONTHS)</u>	
	<u>Mean</u>	<u>N</u>
Motor Vehicle Violations	11.71	7
Escape	19.75	8
Failure to Appear	13.50	2
Possession Firearm by Felon	23.33	6
Possession Defaced Firearm	33.00	1
Explosives to Destroy Property	7.00	1
DWI 3rd Offense	40.00	1

AVERAGE MINIMUM SENTENCE IN MONTHS FOR FY86 RELEASES  
WHO HAD MORE THAN ONE OFFENSE COUNT

<u>COUNT 1 OFFENSE</u>	<u>MINIMUM SENTENCE</u> <u>(IN MONTHS)</u>	
	<u>Mean</u>	<u>N</u>
Total Population	34.90	207
Criminal Attempt	8.00	3
2nd Degree Murder	156.00	2
Manslaughter	60.00	1
Motor Vehicle Homicide	16.00	2
1st Degree Assault	43.11	9
2nd Degree Assault	21.33	6
3rd Degree Assault	6.00	5
1st Degree Sexual Assault	60.00	5
2nd Degree Sexual Assault	11.42	7
Kidnapping	72.00	2
1st Degree False Imprisonment	13.33	3
Robbery	63.11	27
Dealing Drugs	31.20	5
Possession Controlled Substance	30.00	2
Possession Marijuana over 1 lb.	9.00	2
Deliver Dangerous Substance	42.00	3
1st Degree Arson	138.00	2
2nd Degree Arson	24.00	1
3rd Degree Arson	96.00	1
Burglary	34.59	47
Grand Larceny	42.00	1
Breaking & Entering	36.00	1
Receiving Stolen Property	12.00	2
Theft	19.08	25
Petty Larceny	0	4
Criminal Mischief	10.80	5
Criminal Trespass	0	2
1st Degree Forgery	12.00	1
2nd Degree Forgery	17.28	14
Possession Forgery Instrument \$300+	138.00	1
Bad Check \$300-\$999	36.00	1
No Account Check	54.00	1
Resisting Arrest	0	1
Motor Vehicle Violations	4.00	3
False Reporting	0	1
Escape	0	1
Failure to Appear	0	1
Possession Concealed Weapon	12.00	1
Use Firearm in Felony	144.00	1
Possession Firearm by Felon	69.00	2
DWI 3rd Offense	24.00	1
Habitual Criminal	156.00	1

AVERAGE MAXIMUM SENTENCE IN MONTHS FOR FY86 RELEASES  
WHO HAD MORE THAN ONE OFFENSE COUNT

<u>COUNT 1 OFFENSE</u>	<u>MAXIMUM SENTENCE (IN MONTHS)</u>	
	<u>Mean</u>	<u>N</u>
Total Population	131.85	207
Criminal Attempt	29.33	3
2nd Degree Murder	6090.00*	2
Manslaughter	120.00	1
Motor Vehicle Homicide	48.00	2
1st Degree Assault	90.66	9
2nd Degree Assault	53.33	6
3rd Degree Assault	23.60	5
1st Degree Sexual Assault	108.00	5
2nd Degree Sexual Assault	48.00	7
Kidnapping	120.00	2
1st Degree False Imprisonment	40.00	3
Robbery	137.55	27
Dealing Drugs	62.40	5
Possession Controlled Substance	54.00	2
Possession Marijuana over 1 lb.	24.00	2
Deliver Dangerous Substance	78.00	3
1st Degree Arson	162.00	2
2nd Degree Arson	60.00	1
3rd Degree Arson	132.00	1
Burglary	73.12	47
Grand Larceny	66.00	1
Breaking & Entering	72.00	1
Receiving Stolen Property	30.00	2
Theft	63.48	25
Petty Larceny	15.00	4
Criminal Mischief	36.00	5
Criminal Trespass	12.00	2
1st Degree Forgery	12.00	1
2nd Degree Forgery	43.57	14
Possession Forgery Instrument \$300+	228.00	1
Bad Check \$300-\$999	84.00	1
No Account Check	132.00	1
Resisting Arrest	36.00	1
Motor Vehicle Violations	24.00	3
False Reporting	12.00	1
Escape	12.00	1
Failure to Appear	12.00	1
Possession Concealed Weapon	36.00	1
Use Firearm in Felony	180.00	1
Possession Firearm by Felon	90.00	2
DWI 3rd Offense	54.00	1
Habitual Criminal	216.00	1

\*The mean maximum sentence for 2nd Degree Murder is skewed due to the fact that one of the releases was serving a maximum sentence of life.

AVERAGE MINIMUM SENTENCE IN MONTHS FOR FY86 RELEASES  
WHO HAD ONLY A COUNT 1 OFFENSE

<u>OFFENSE</u>	<u>MINIMUM SENTENCE</u> <u>(IN MONTHS)</u>	
	<u>Mean</u>	<u>N</u>
Total Population	44.68	495
Criminal Attempt	16.00	3
Conspiracy	30.00	1
Accessory to Felony	20.00	2
Aiding in a Felony	12.00	6
1st Degree Murder	Life*	1
2nd Degree Murder	144.00	10
Manslaughter	30.00	4
Motor Vehicle Homicide	12.00	6
1st Degree Assault	28.46	13
2nd Degree Assault	9.25	12
3rd Degree Assault	0	2
1st Degree Sexual Assault	29.14	28
2nd Degree Sexual Assault	8.55	9
Sexual Sociopath	100.00	1
1st Degree False Imprisonment	12.66	3
Robbery	41.55	27
Dealing Drugs	15.85	7
Possession of Controlled Substance	12.87	8
Possession of Marijuana over 1 lb.	7.71	7
Deliver Dangerous Substance	19.33	18
2nd Degree Arson	28.00	3
Burning to Defraud	0	1
Burglary	20.36	110
Possession of Burglary Tools	18.00	1
Breaking & Entering	36.00	2
Receiving Stolen Property	14.57	7
Theft	13.05	79
Petty Larceny	0	1
Criminal Mischief	10.00	2
Criminal Trespass	0	3
1st Degree Forgery	21.60	5
2nd Degree Forgery	13.79	39
Possession Forgery Instrument \$300+	30.66	3
Bad Check \$1000+	24.00	2
Bad Check \$300-999	11.00	3
Bad Check \$75-299	0	1
No Account Check	0	2
False Book Entries	16.00	1
Receiving Altered Article	36.00	1
Incest	17.00	4
Criminal Non-Support	12.00	1
Child Abuse	20.00	1
Porno-Sale, Manufacturing, Promote	12.00	1
Resisting Arrest	0	2
Operating Motor Vehicle to Avoid Arrest	12.00	1

\*Discharge was due to an out-of-state transfer.



<u>OFFENSE</u>	<u>MINIMUM SENTENCE</u> <u>(IN MONTHS)</u>	
	<u>Mean</u>	<u>N</u>
Motor Vehicle Violations	4.57	7
Escape	9.00	8
Failure to Appear	0	2
Possession Firearm by Felon	14.00	6
Possession Defaced Firearm	20.00	1
Explosives to Destroy Property	12.00	1
DWI 3rd Offense	12.00	1

AVERAGE MAXIMUM SENTENCE IN MONTHS FOR FY 86 RELEASES  
WHO HAD ONLY A COUNT 1 OFFENSE

<u>OFFENSE</u>	<u>MAXIMUM SENTENCE</u> <u>(IN MONTHS)</u>	
	<u>Mean</u>	<u>N</u>
Total Population	117.55	495
Criminal Attempt	48.00	3
Conspiracy	72.00	1
Accessory to Felony	60.00	2
Aiding in a Felony	32.66	6
1st Degree Murder	Life*	1
2nd Degree Murder	2572.80	10
Manslaughter	126.00	4
Motor Vehicle Homicide	44.00	6
1st Degree Assault	56.30	13
2nd Degree Assault	23.50	12
3rd Degree Assault	18.00	2
1st Degree Sexual Assault	68.67	28
2nd Degree Sexual Assault	32.44	9
Sexual Sociopath	180.00	1
1st Degree False Imprisonment	32.00	3
Robbery	79.33	27
Dealing Drugs	33.85	7
Possession Controlled Substance	35.25	8
Possession of Marijuana over 1 lb.	15.85	7
Deliver Dangerous Substance	35.66	18
2nd Degree Arson	52.00	3
Burning to Defraud	18.00	1
Burglary	44.10	110
Possession of Burglary Tools	36.00	1
Breaking & Entering	55.50	2
Receiving Stolen Property	42.85	7
Theft	33.34	79
Petty Larceny	12.00	1
Criminal Mischief	24.00	2
Criminal Trespass	12.00	3
1st Degree Forgery	45.60	5
2nd Degree Forgery	33.92	39
Possession Forgery Instrument \$300+	112.00	3
Bad Check \$1000+	54.00	2
Bad Check \$300-999	28.00	3
Bad Check \$75-299	12.00	1
No Account Check	6.00	2
False Book Entries	24.00	1
Receiving Altered Article	108.00	1
Incest	31.50	4
Criminal Non-Support	18.00	1
Child Abuse	60.00	1
Porno-Sale, Manufacturing, Promote	60.00	1
Resisting Arrest	12.00	2
Operating Motor Vehicle to Avoid Arrest	48.00	1

\*Discharge was due to an out-of-state transfer.

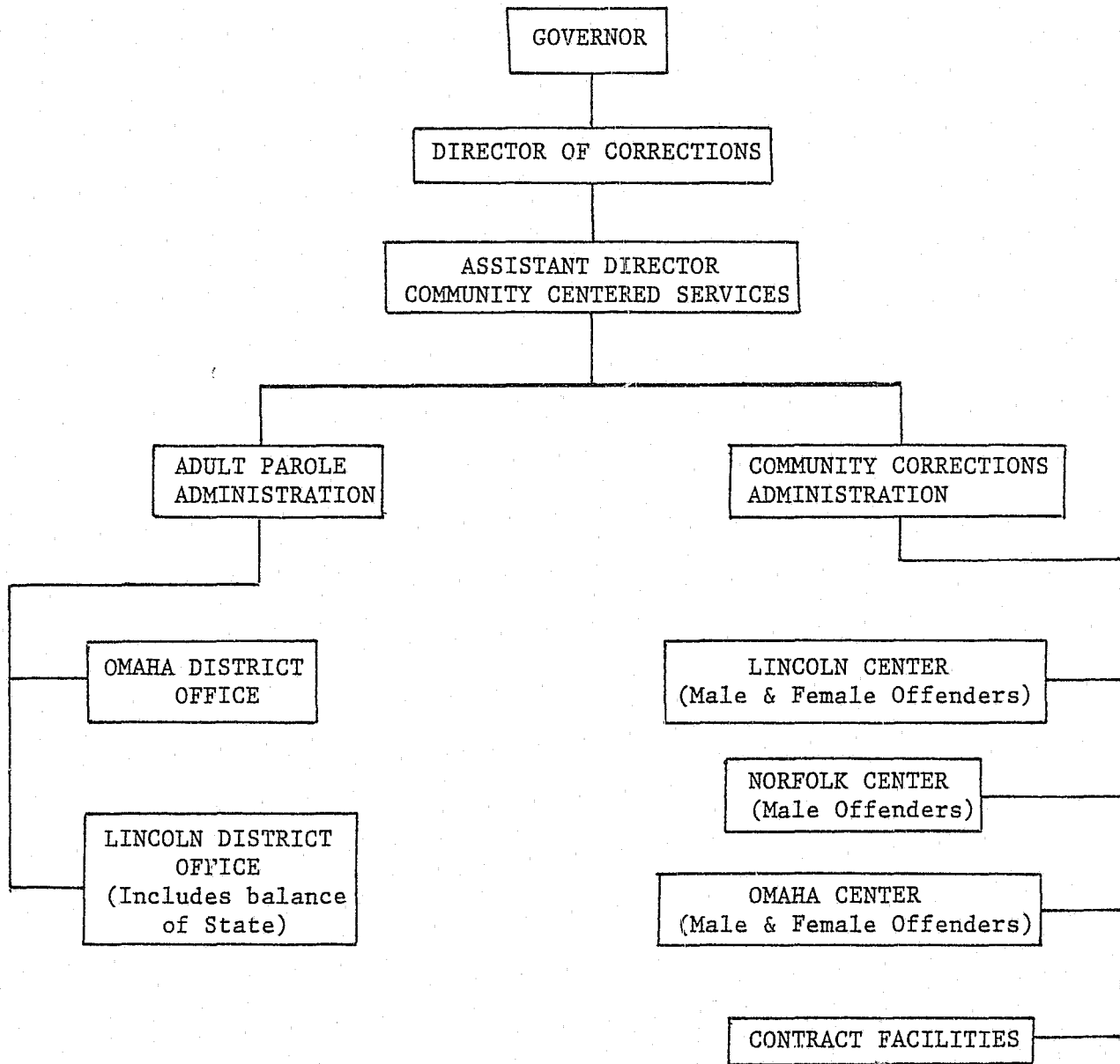
<u>OFFENSE</u>	<u>MAXIMUM SENTENCE</u> <u>(IN MONTHS)</u>	
	<u>Mean</u>	<u>N</u>
Motor Vehicle Violations	21.42	7
Escape	32.25	8
Failure to Appear	24.00	2
Possession Firearm by Felon	42.00	6
Possession of Defaced Firearm	60.00	1
Explosives to Destroy Property	12.00	1
DWI 3rd Offense	36.00	1

TOTAL ADULT POPULATION - RELEASE INFORMATION  
 MINIMUM AND MAXIMUM SENTENCE  
 FY 1984-85 and 1985-86

<u>Sentence In Year</u>	<u>Number FY 84-85</u>	<u>% Of Total</u>	<u>Number FY 85-86</u>	<u>% Of Total</u>
<u>Minimum Sentence</u>				
1.00 yr. or less	345	47.2	216	48.1
1.01 - 2.00 yrs.	201	27.5	115	25.6
2.01 - 3.00 yrs.	70	9.6	41	9.1
3.01 - 4.00 yrs.	53	7.3	18	4.0
4.01 - 5.00 yrs.			14	3.1
5.01 - 6.00 yrs.			14	3.1
6.01 - 7.00 yrs.			3	0.7
7.01 - 8.00 yrs.	45	6.2	8	1.8
8.01 - 9.00 yrs.			1	0.2
9.01 - 10.00 yrs.			8	1.8
10.01 - 15.00 yrs.	8	1.1	8	1.8
15.01 - 20.00 yrs.	2	0.3	2	0.4
Over 20 yrs.	3	0.4	--	--
Life	4	0.5	1	0.2
TOTAL	731		449	

<u>Maximum Sentence</u>				
1.00 yr. or less	145	19.8	35	7.8
1.01 - 2.00 yrs.	122	16.7	79	17.6
2.01 - 3.00 yrs.	146	20.0	92	20.5
3.01 - 4.00 yrs.	140	19.2	42	9.4
4.01 - 5.00 yrs.			60	13.4
5.01 - 6.00 yrs.			27	6.0
6.01 - 7.00 yrs.			16	3.6
7.01 - 8.00 yrs.	118	16.1	12	2.7
8.01 - 9.00 yrs.			2	0.4
9.01 - 10.00 yrs.			34	7.6
10.01 - 15.00 yrs.	29	4.0	22	4.9
15.01 - 20.00 yrs.	10	1.4	12	2.6
Over 20 yrs.	12	1.6	14	3.1
Life	9	1.2	2	0.4
TOTAL	731		449	

DIVISION OF COMMUNITY CENTERED SERVICES



## COMMUNITY CORRECTIONS ADMINISTRATION

The Community Corrections Administration, previously known as the Post Care Program, was established in October, 1967 (Reissue Revised Statute 83-184, 1943) in order to allow a select group of adult inmates to be employed in the community or attend an educational or training program not available within the confines of the institution. Those inmates initially participating in the program were housed in the institution during non-working hours. In 1971, a community residential program was established and female inmates were included in the program in 1974.

Three Community Corrections Centers are operated by the Administration and are located in Lincoln and Omaha, both housing male and female inmates, and one in Norfolk, housing male inmates. The facilities provide such services as transportation to/from work or school, employment and educational counseling and placement, and individual/group counseling opportunities. Food service, general housekeeping and maintenance are provided by inmates assigned to an in-house detail crew and supervised by Center staff.

In July, the newly constructed Community Corrections Center-Omaha was dedicated. Construction had begun in the fall of 1984. This new facility provides housing for female inmates. The Community Corrections Center-Norfolk was closed in October and staff and inmates were relocated to other Department institutions and programs.

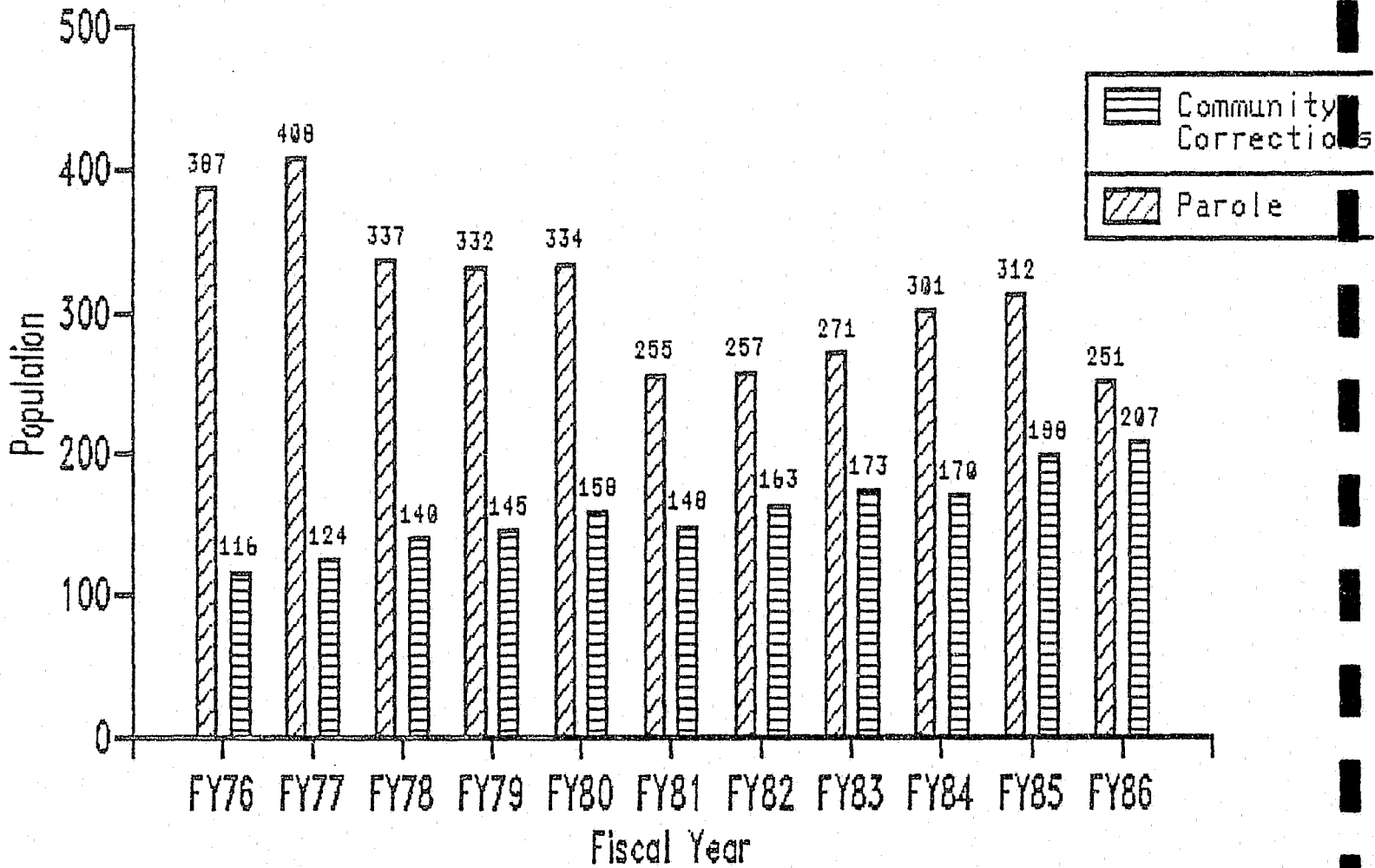
Participation in Community Corrections programming is not a requirement for placement on parole or for release on discharge from the institutions. The Program is strictly voluntary and placement becomes a part of the individuals' personalized plan. This plan provides a structured program designed to facilitate transition from institutional living to community residence and to enhance the person's success on parole and after discharge.

## ADULT PAROLE ADMINISTRATION

Parole Administration was established by Legislative action on August 23, 1969. The mission of the Adult Parole Administration is to protect the public and provide supervision and assistance to enable the paroled offender to become a productive and law-abiding citizen. The Administration is responsible for providing statewide parole services in the community for all offenders paroled from Nebraska's adult correctional institutions, and for those offenders from other states who have been transferred under the Interstate Compact for the supervision of parolees and probationers. District parole offices are maintained in Omaha and Lincoln. Individual regional offices are maintained in Norfolk and North Platte, Nebraska.

# Total Parole and Community Corrections Population\*

\* Average Monthly Population



TOTAL ADULT POPULATION - RELEASES TO COMMUNITY  
CORRECTIONS - INFORMATION  
FY 1984-85 AND FY 1985-86

<u>COMMUNITY CORRECTIONS INFORMATION</u>	<u>FY 1984-85</u>	<u>% OF TOTAL</u>	<u>FY 1985-86</u>	<u>% OF TOTAL</u>
<u>ID STATUS</u>				
First-Time Offender	246	60.6	301	58.9
Multiple Offender	145	35.7	196	38.4
Federal Safekeeper	15	3.6	14	2.7
TOTAL	406		511	
<u>SEX</u>				
Male	399	98.3	471	92.2
Female	7	1.7	40	7.8
<u>RACE</u>				
Black	99	24.9	155	31.2
Hispanic	13	3.3	8	1.6
American Indian	19	4.8	20	4.0
Other	--	--	1	0.2
White	267	67.1	313	63.0
(Missing Value)	8	(Missing)	14	(Missing)
<u>WORK/EDUCATION INDICATOR</u>				
Education Release	18	4.4	32	6.3
Utility Worker	148	36.5	203	39.7
Work Release	240	59.1	276	54.0



TOTAL ADULT POPULATION - RELEASES TO PAROLE INFORMATION  
FY 1984-85 AND FY 1985-86

<u>PAROLE INFORMATION</u>	<u>FY 1984-85</u>	<u>% OF TOTAL</u>	<u>FY 1985-86</u>	<u>% OF TOTAL</u>
<u>ID STATUS</u>				
First-Time Offender	254	55.1	272	60.6
Multiple Offender	132	28.6	116	25.8
Interstate Transfer	75	16.3	61	13.6
TOTAL	461		449	
<u>SEX</u>				
Male	434	94.1	419	93.3
Female	27	5.9	30	6.7
<u>RACE</u>				
Black	121	26.2	117	26.1
Hispanic	9	2.0	12	2.7
American Indian	16	3.5	18	4.0
Other	3	0.7	2	0.4
White	312	67.7	300	66.8
<u>LENGTH OF STAY IN INSTITUTION</u>				
0-6 months	17	4.8	32	9.2
7-12 months	59	16.5	83	24.0
13-18 months	64	17.9	55	15.9
19-24 months	41	11.5	44	12.7
25-30 months	33	9.2	34	9.8
31-36 months	28	7.8	18	5.2
37-42 months	19	5.3	12	3.5
43-48 months	21	5.9	16	4.6
49-54 months	10	2.8	5	1.4
55-60 months	11	3.1	7	2.0
Over 60 months	54	15.1	40	11.6
(Missing Value)	104	(Missing)	103	(Missing)

TOTAL ADULT POPULATION - RELEASES TO PAROLE  
 MINIMUM AND MAXIMUM SENTENCE  
 FY 1984-85 AND FY 1985-86

<u>SENTENCE IN YEAR</u>	<u>NUMBER FY 1984-85</u>	<u>PER CENT OF TOTAL</u>	<u>NUMBER FY 1985-86</u>	<u>PER CENT OF TOTAL</u>
<u>Minimum Sentence</u>				
1.00 yr. or less	179	38.8	216	48.1
1.01 - 2.00 yrs.	140	30.4	115	25.6
2.01 - 3.00 yrs.	56	12.1	41	9.1
3.01 - 5.00 yrs.	41	8.9	32	7.1
5.01 - 10.00 yrs.	30	6.5	34	7.6
10.01 - 15.00 yrs.	10	2.2	8	1.8
15.01 - 20.00 yrs.	2	0.4	2	0.4
Over 20.00 yrs.	3	0.7	--	--
Life	--	--	1	0.2
TOTAL	461		449	

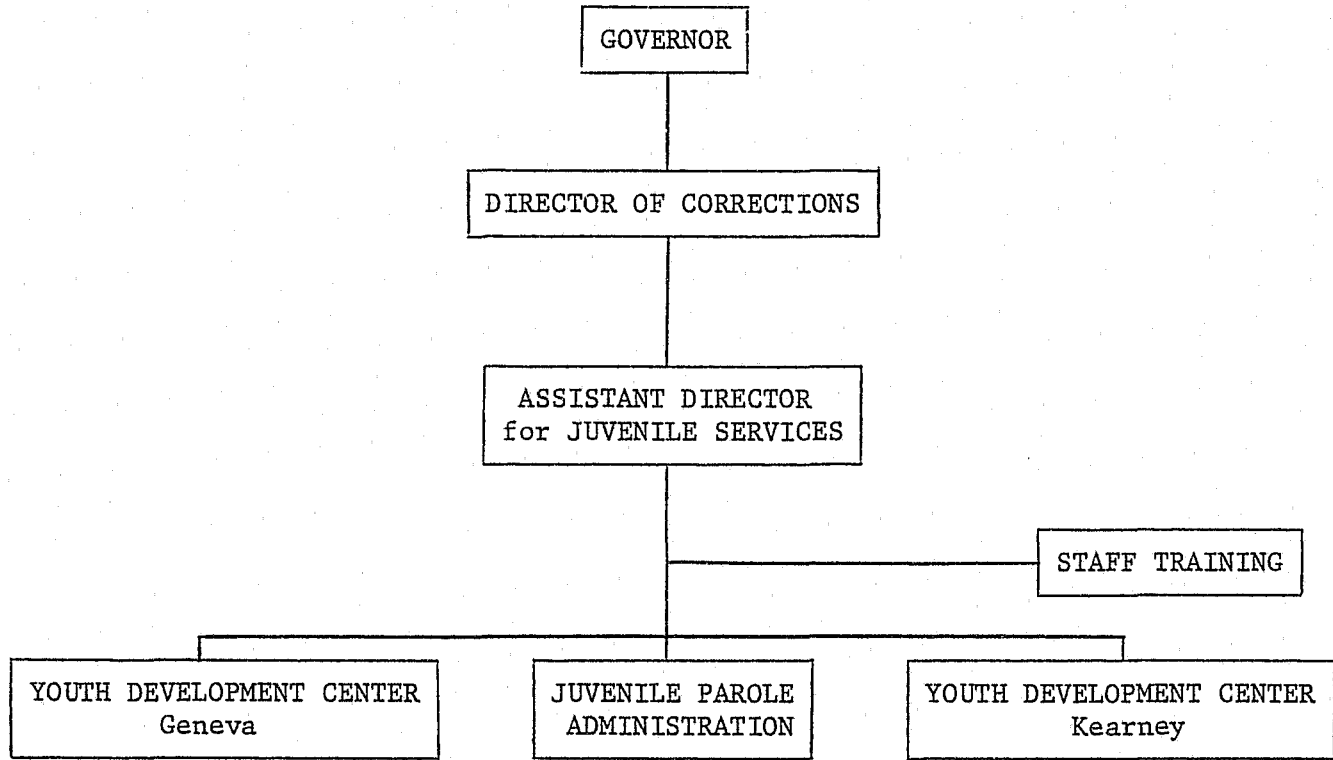
Mean: 52.28

MAXIMUM SENTENCE

1.00 yr. or less	25	5.4	35	7.8
1.01 - 2.00 yrs.	48	10.4	79	17.6
2.01 - 3.00 yrs.	106	23.0	92	20.5
3.01 - 5.00 yrs.	120	26.0	102	22.7
5.01 - 10.00 yrs.	102	22.1	91	20.3
10.01 - 15.00 yrs.	30	6.5	22	4.9
15.01 - 20.00 yrs.	12	2.6	12	2.7
Over 20.00 yrs.	12	2.6	14	3.1
Life	6	1.3	2	0.4
TOTAL	461		449	

Mean: 122.15

DIVISION OF JUVENILE SERVICES



## DIVISION OF JUVENILE SERVICES

Organized under Sections 83-935 through 83-930 inclusive, Neb. Rev. Stat. (Reissue 1976), the Division of Juvenile Services exists to administer and supervise the State's juvenile correctional facilities and programs, specifically the Youth Development Centers in Geneva (females) and Kearney (males) and the Juvenile Parole Administration. The mission of the Division is to provide services and programs enabling the juvenile offender to develop the skills necessary to return to the community as a responsible, law-abiding individual.

### YOUTH DEVELOPMENT CENTER - KEARNEY

First established by the Legislature in 1879, "The Nebraska State Reform School for Juvenile Offenders" accepted its first offender on July 15, 1881. According to Nebraska Reissue Revised Statutes (1943, 83-463 - 474), the purpose of the Center is to provide for the retention, education, discipline, industrial training and reformation of male juvenile offenders.

### YOUTH DEVELOPMENT CENTER - GENEVA

The Youth Development Center-Geneva was established by a Legislative act on March 4, 1891. The Center receives females who have been adjudicated as delinquent by the various courts for the state. In addition to the regular commitments, Geneva also provides predisposition evaluations (male and females) for the courts and detention, on an immediate, short-term basis. The YDC-Geneva program is designed to meet the needs of each student under a plan which includes: 1) an individual profile with psychological testing and evaluation; 2) testing and placement; and 3) a developmental appraisal to determine attitudes, thought processes and awareness. The primary goal is to bring about a self-development program for each student that provides a satisfactory and productive life with no further delinquency involvement.

### JUVENILE PAROLE ADMINISTRATION

The Nebraska State Statute 83-922 provided authority for the Department of Correctional Services to fulfill the functions of State Government relating to the care, custody, discipline, training and treatment of persons in correctional and detention institutions. This Statute also established separate divisions within the Department of Correctional Services. The Division of Juvenile Services is one such section. The State Statute also established the authority for the Director of the Department of Correctional Services to appoint a separate Assistant Director to head the Juvenile Division. The Assistant Director of Juvenile Services, standardizes policies and procedures, and promulgates and prescribes rules and regulations for all Juvenile Services in the state. The Assistant Director also supervises and coordinates all activities in the field of Juvenile Parole Aftercare.

The Juvenile Parole Administration was created by the Director of Correctional Services in April, 1979. This move separated Juvenile Parole from Adult Parole and enabled Juvenile Parole Administration to be more effective in serving and supervising the juveniles in their care.

The Juvenile Parole Administration is responsible for the supervision, custody and control of all juvenile persons paroled from juvenile institutions. This Administration is also given the responsibility for the supervision of those juvenile parolees and probationers who qualify for placement in the State of Nebraska under the jurisdiction of the Interstate Compact on Juveniles. In addition, it is the responsibility of the Juvenile Parole Administration to supervise a limited number of juvenile probationers committed to the Department of Correctional Services by order of Nebraska Juvenile Courts for placement in foster homes.

#### ACCOMPLISHMENTS

The Juvenile Parole Administration became accredited by the Commission on Accreditation for Corrections for the second time on August 19, 1984, thus become the first juvenile parole agency in the United States to be accredited for the second time.

SUMMARY OF ADMISSIONS AND RELEASE INFORMATION  
 YOUTH DEVELOPMENT CENTERS (YDC) - KEARNEY AND GENEVA  
 FY 1985 - 86

<u>CATEGORY</u>	<u>YDC - KEARNEY</u>		<u>YDC - GENEVA</u>	
	<u>NUMBER</u>	<u>PER CENT</u>	<u>NUMBER</u>	<u>PER CENT</u>
<u>Admissions</u>				
Commitments	200	74.6	38	7.2
Recommitments	33	12.3	--	--
Court Evaluators	2	0.7	423	80.1
Court Safekeepers	--	--	57	10.8
Parole Violators	33	12.3	10	1.9
TOTAL	268		528	

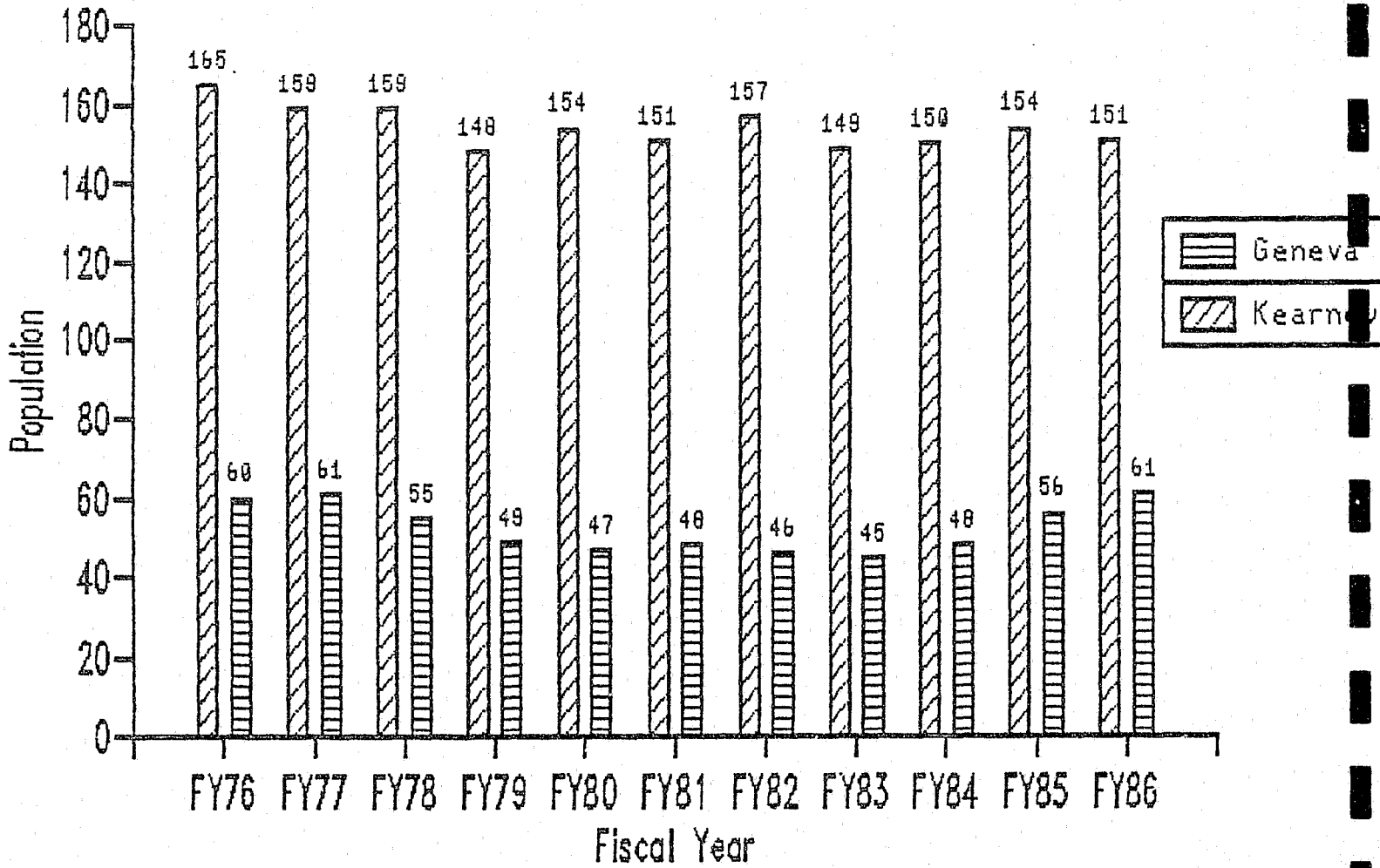
<u>Releases</u>				
Paroled	200		39	7.6
Institutional				
Discharges	48		4	0.8
Court Evaluators	2		414	80.05
Parole				
Safekeepers			4	0.8
Court				
Safekeepers	---		53	10.3
TOTAL	250		514	

LENGTH OF STAY FOR COMMITMENTS  
 YOUTH DEVELOPMENT CENTERS - KEARNEY AND GENEVA  
 FY 1984-85 AND FY 1985 - 86

<u>YOUTH FACILITY</u>	<u>FY 84-85</u> <u>AVERAGE LENGTH OF STAY</u>	<u>FY 85-86</u> <u>AVERAGE LENGTH OF STAY</u>
YDC-Kearney	7 months, 23 days (236 days)	7 months, 4 days (217 days)
YDC-Geneva	9 months, 14 days (288 days)	11 months, 15 days (350 days)

# Youth Development Centers' Population\*

\* Average Weekly Population



ADMISSIONS BY RACE (COMMITMENTS)  
 YOUTH DEVELOPMENT CENTERS - KEARNEY AND GENEVA  
 FY 1985 - 86

<u>Youth Facility (YDC)</u>	<u>White</u>	<u>Black</u>	<u>Hispanic</u>	<u>Indian</u>	<u>Other</u>
YDC-Kearney (233)	172 (73.8)	27 (11.6)	21 (9.0)	12 (5.2)	1 (0.4)
YDC-Geneva (38)	22 (57.9)	7 (18.4)	4 (10.5)	5 (13.2)	--
TOTAL	<u>194</u>	<u>34</u>	<u>25</u>	<u>17</u>	<u>1</u>

AGE AT ADMISSION (COMMITMENTS)  
 YOUTH DEVELOPMENT CENTERS - KEARNEY AND GENEVA  
 FY 1985 - 86

<u>Youth Facility (YDC)</u>	<u>13/%</u>	<u>Age/ 14/%</u>	<u>% of Total 15/%</u>	<u>16/%</u>	<u>17/%</u>	<u>18/%</u>
YDC-Kearney (233) (3 missing values)	6 (2.6)	22 (9.6)	42 (18.3)	79 (34.3)	69 (30.0)	12 (5.2)
YDC-Geneva (38)	3 (7.9)	8 (21.0)	11 (28.9)	7 (18.4)	7 (18.4)	2 (5.3)
			YDC-Kearney Mean Age	16.0		
			YDC-Geneva Mean Age	15.3		



AGE OF FEMALE AND MALE EVALUATORS AT YDC-GENEVA  
FY 1985-86

<u>Sex</u>	<u>Age/% of Total</u>									
	<u>9/%</u>	<u>10/%</u>	<u>11/%</u>	<u>12/%</u>	<u>13/%</u>	<u>14/%</u>	<u>15/%</u>	<u>16/%</u>	<u>17/%</u>	<u>18/%</u>
Female (122)	1 (0.8)	-- --	-- --	2 (1.6)	8 (6.6)	35 (28.7)	35 (28.7)	31 (25.4)	10 (8.2)	-- --
Male (301)	-- -	2 (0.7)	2 (0.7)	8 (2.7)	43 (14.3)	65 (21.6)	69 (22.9)	67 (22.3)	40 (13.3)	5 (1.7)
TOTAL (423)	1 (0.2)	2 (0.5)	2 (0.5)	10 (2.4)	51 (12.1)	100 (23.6)	104 (24.6)	98 (23.2)	50 (11.8)	5 (1.2)
									Mean Age: Females	14.9
									Males	14.9

RACE OF FEMALE AND MALE EVALUATOR AT YDC-GENEVA  
FY 1985-86

<u>Sex</u>	<u>Race/% of Total</u>				
	<u>White</u>	<u>Black</u>	<u>Mexican American</u>	<u>American Indian</u>	<u>Asian</u>
Female (122)	91 (74.6)	24 (19.7)	2 (1.6)	5 (4.1)	-- --
Male (301)	241 (80.1)	29 (9.6)	14 (4.7)	16 (5.3)	1 (0.3)
TOTAL (423)	332 (78.5)	53 (12.5)	16 (3.8)	21 (5.0)	1 (0.2)

JUVENILE PAROLE - PAROLES, REVOCATIONS, RECOMMITMENTS, DISCHARGES BY SEX  
FY 1985-86

<u>Category</u>	<u>Total</u>	<u>Male %</u>	<u>Female %</u>
Paroles	238	200 (84.0)	38 (16.0)
Revocations	42	32 (76.2)	10 (23.8)
Recommitments	21	21 (100.0)	0
Discharges	200	173 (86.5)	27 (13.5)

JUVENILE PAROLE - RACE & SEX OF PAROLED CASES  
FY 1985-86

<u>Race</u>	<u>Total %</u>	<u>Male %</u>	<u>Female %</u>
White	176 (73.9)	152 (76.0)	24 (63.2)
Black	31 (13.0)	28 (14.0)	3 (7.9)
American Indian	13 (5.5)	6 (3.0)	7 (18.4)
Mexican American	18 (7.6)	14 (7.0)	4 (10.5)
TOTAL	238	200 (84.0%)	38 (16.0%)

JUVENILE PAROLE - RACE & SEX OF REVOCATIONS  
FY 1985-86

<u>Race</u>	<u>Total %</u>	<u>Male %</u>	<u>Female %</u>
White	32 (76.2)	25 (78.0)	7 (70.0)
Black	3 (7.1)	2 (6.3)	1 (10.0)
American Indian	2 (4.8)	2 (6.3)	0 (0)
Mexican American	5 (11.9)	3 (9.4)	2 (20.0)
TOTAL	42	32 (76.2%)	10 (23.8%)

JUVENILE PAROLE - LENGTH OF STAY ON PAROLE  
FY 1985-86

<u>Months</u>	<u>Number of Juveniles</u>	<u>Percent</u>
0 - 2.50	8	( 4.0)
2.51 - 4.50	29	(14.5)
4.51 - 6.50	37	(18.5)
6.51 - 8.50	50	(25.0)
8.51 - 10.50	36	(18.0)
10.51 - 12.50	20	(10.0)
12.51 - 19.00	12	( 6.0)
19.01 - 29.00	<u>8</u>	( 4.0)
TOTAL	200	

JUVENILE PAROLE - RECOMMITMENTS BY RACE & SEX  
FY 1985-86

<u>Race</u>	<u>Male %</u>	<u>Female %</u>
White	12 (57.1)	-----
Black	5 (23.8)	-----
American Indian	3 (14.3)	-----
Mexican American	<u>1</u> ( 4.8)	-----
TOTAL	21	

JUVENILE PAROLE - DISCHARGES BY RACE & SEX  
FY 1985-86

<u>Race</u>	<u>Total %</u>	<u>Male %</u>	<u>Female %</u>
White	154 (77.0)	133 (76.9)	21 (77.8)
Black	21 (10.5)	18 (10.4)	3 (11.1)
American Indian	7 ( 3.5)	5 ( 2.9)	2 ( 7.4)
Mexican American	<u>18</u> ( 9.0)	<u>17</u> ( 9.8)	<u>1</u> ( 3.7)
TOTAL	200	173 (87.9%)	27 (12.1%)