

CR sent
04-15-85

108000

U.S. Department of Justice
National Institute of Justice

108000

This document has been reproduced exactly as received from the person or organization originating it. Points of view or opinions stated in this document are those of the authors and do not necessarily represent the official position or policies of the National Institute of Justice.

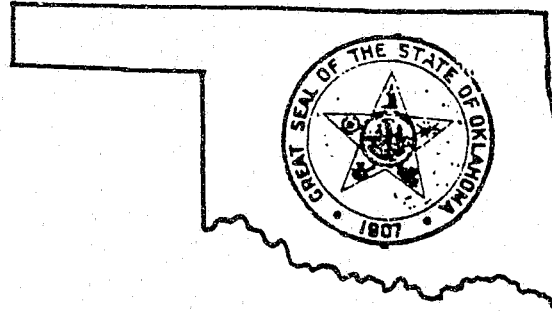
Permission to reproduce this copyrighted material has been granted by

Oklahoma Department of Corrections

to the National Criminal Justice Reference Service (NCJRS).

Further reproduction outside of the NCJRS system requires permission of the copyright owner.

PLANNING AND RESEARCH



Recidivism Among Offenders Incarcerated by the
Oklahoma Department of Corrections Who Received
Vocational-Technical Training: A Survival Data Analysis
of Offenders Released January 1982 Through July 1986

Dr. Steven Davis
Planning and Research

Bill Chown
Planning and Research

NCJRS

NOV 18 1987

November 1986

ACQUISITIONS

Recidivism Among Offenders Incarcerated by the
Oklahoma Department of Corrections Who Received
Vocational-Technical Training: A Survival Data Analysis
of Offenders Released January 1982 Through July 1986

Introduction

An issue of continuing concern to the Department of Corrections is recidivism among those released from the department's custody. That is, how often, or at what rate, are offenders re-incarcerated after having been released from prison. More importantly, are there differences in recidivism rates among different groups of offenders? A report released by the department in 1985 (Davis, 1985), which reviewed a randomly selected sample of offenders released in 1982, made comparisons based on race, sex, offense category and type of release. Few differences were found among these groups. Non-violent offenders released to community supervision were found to be the least successful group at the end of the three-year follow-up period. On the other hand, violent offenders released on parole were the most successful. In general, the recidivism rate was higher among non-violent offenders compared to violent offenders, and higher for those released to the community supervision portion of a split sentence when compared to paroles and discharges.

This report is extracted from a larger study which also reviewed recidivism among inmates who had been judged intellectually impaired, who had been given emergency releases because of overcrowding, and youthful offenders who had participated in the Regimented Inmate Discipline program. The focus of this excerpt is a group of inmates who received vocational-technical training between January 1982 and July 1986 while incarcerated by the Oklahoma Department of Corrections.

Method

This analysis used offender data from the Department of Corrections computerized inmate/client master files and from specialized computer files of vo-tech participation data. An offender is counted only once within the analysis period. The time period of interest for each offender is the number of "months out," the number of 30 day periods from the date of the offender's first release within the timeframe until the first subsequent reception, or until the end of the study period if the offender did not return to the Department of Corrections. Thus, in this study, recidivism is defined as a re-incarceration within the Oklahoma Department of Corrections.

The data analysis was based on the "life-table method" of "survival analysis" as described by Lee (1980). Survival analysis allows for the estimation of a "survival function" over time, which can be used to make comparisons among various groups. The results of the survival analysis in the present study are displayed graphically to facilitate comparisons between groups. The method used in this study compensates for the fact that offenders within each group may be "at risk" of recidivism for varying lengths of time, depending on the date of their release. A summary of the numeric results, which are the basis of the graphs, is also included for review.

Results

The Oklahoma Department of Corrections provides inmates the opportunity to acquire vocational skills needed to obtain and retain employment upon release to the community. The vocational program consists of training in auto body repair, auto mechanics, machine tool, air conditioning and refrigeration, building trades, farm machinery repair, heavy equipment operation, diesel mechanics, welding, masonry, carpentry, parts clerk, plumbing and small engine repair. The training is provided by the State Department of Vocational Technical Education and the Vocational Rehabilitation Division of the Department of Human Services, in cooperation with the Educational Services Unit of the Department of Corrections. Data for inmate enrollees in vo-tech programs since 1980 have been compiled in a computerized data base. The present study examined the recidivism trends among inmates released after completion of vo-tech training, compared to inmates who did not receive vo-tech training.

The vo-tech group consisted of all vo-tech participants who had completed a training program, and who were released between January 1, 1982 and July 31, 1986. This sample included 2,372 released inmates. The comparison group included all released inmates who had not completed a vo-tech training program prior to their release, during this same time period of January 1, 1982 to July 31, 1986. The comparison group included 9,851 released inmates.

The "survival curves" for these two groups are shown in the attached graph. The results were unexpected, in that the vo-tech group returned to the Department of Corrections at a faster rate than the comparison group. The "survival curve" projects that at the end of 4 1/2 years (54 months), 65% of the comparison group will remain successful, while 62% of the vo-tech group will not have returned to the Oklahoma Department of Corrections. Points of interest concerning these two groups include the following:

- Of all vo-tech graduates released during the study period, 26% have been re-incarcerated. In the comparison group, 22% have returned to the Department of Corrections.
- Of the vo-tech graduates released during 1982, 39% have at least one subsequent incarceration in the Oklahoma Department of Corrections.
- The peak period of recidivism for both groups was between the seventh to fourteenth months after release.

Discussion

As mentioned earlier, these results were counterintuitive since the inmates who had received vocational training, and were thus thought to be prepared for release with new job skills, returned at a faster rate than the comparison group. On the other hand, those without job skills may be more likely to have deficits in other areas as well. In that case, those chosen to take vo-tech may be at higher risk to fail after release in spite of the training they receive. Further study needs to be undertaken to determine whether there are other characteristics, such as offender age, classification need areas or criminal history, which would account for the higher recidivism rate among the vo-tech group.

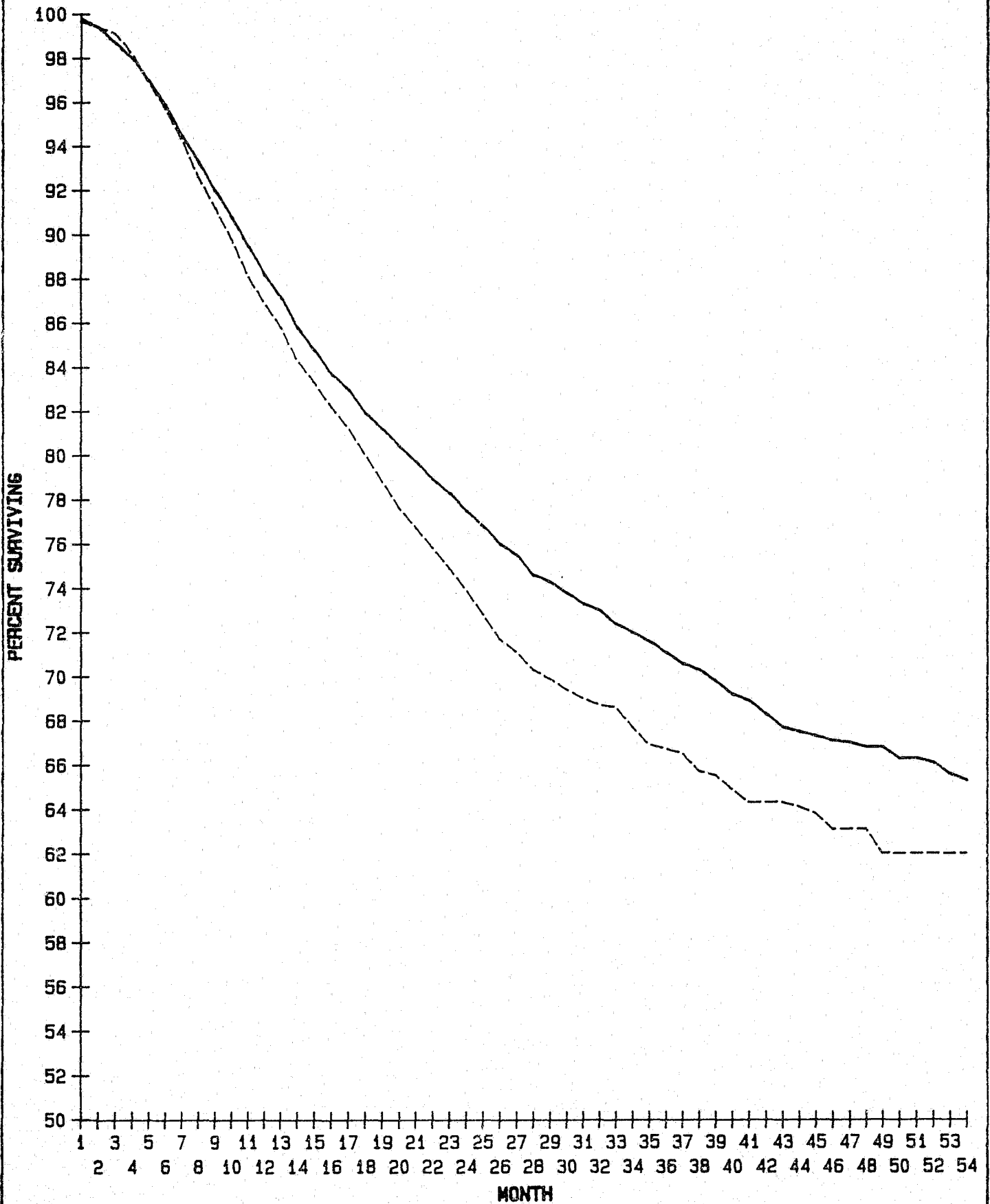
Oklahoma Department of Corrections
Projected Cumulative Proportion Surviving After Release
from Prison Among Vo-Tech Participants and Comparison Group
1982 - 1986

Months After Release	Vo-Tech Group N=2,372	Comparison Group N=9,851
1	99.8%	99.7%
12	86.9%	88.2%
24	73.9%	77.5%
36	66.7%	71.1%
48	63.1%	66.8%
54	62.0%	65.3%

PROPORTION SURVIVING AT END OF MONTH FOR VO-TECH COMPARISON GROUP AND FOR VO-TECH GROUP

VOTECH COMPARISON

VOTECH GROUP



ADULT PROBATION ACTIVE CASELOAD ON DECEMBER 31, 1986
 TYPE OF COURT AND PERCENT DISTRIBUTION BY COUNTY

* * * * * TYPE OF COURT * * * * *

COUNTY	TOTAL	SUPERIOR COURT	LOWER COURT	PERCENT SUPERIOR COURT	PERCENT LOWER COURT
ALAMEDA	11,110	4,579	6,531	41.2	58.8
ALPINE	18	7	11	38.9	61.1
AMADOR	303	142	161	46.9	53.1
BUTTE	557	370	187	66.4	33.6
CALAVERAS	217	106	111	48.8	51.2
COLUSA	74	36	38	48.6	51.4
CONTRA COSTA	6,264	1,383	4,881	22.1	77.9
DEL NORTE	331	80	251	24.2	75.8
EL DORADO	1,102	517	585	46.9	53.1
FRESNO	16,421	2,283	14,138	13.9	86.1
GLENN	695	147	548	21.2	78.8
HUMBOLDT	326	260	66	79.8	20.2
IMPERIAL	968	471	497	48.7	51.3
INYO	414	171	243	41.3	58.7
KERN	2,489	2,216	273	89.0	11.0
KINGS	3,787	375	3,412	9.9	90.1
LAKE	256	169	87	66.0	34.0
LASSEN	241	123	118	51.0	49.0
LOS ANGELES	54,037	20,696	33,341	38.3	61.7
MADERA	621	317	304	51.0	49.0
MARIN	1,535	488	1,047	31.8	68.2
MARIPOSA	51	40	11	78.4	21.6
MENDOCINO	468	278	190	59.4	40.6
MERCED	643	466	177	72.5	27.5
MODOC	105	39	66	37.1	62.9
MONO	154	69	85	44.8	55.2
MONTEREY	2,198	1,518	680	69.1	30.9
NAPA	865	268	597	31.0	69.0
NEVADA	1,070	347	723	32.4	67.6
ORANGE	8,537	4,753	3,784	55.7	44.3
PLACER	762	467	295	61.3	38.7
PLUMAS	247	117	130	47.4	52.6
RIVERSIDE	4,129	2,022	2,107	49.0	51.0
SACRAMENTO	8,031	4,516	3,515	56.2	43.8
SAN BENITO	178	162	16	91.0	9.0

ADULT PROBATION ACTIVE CASELOAD ON DECEMBER 31, 1986
 TYPE OF COURT AND PERCENT DISTRIBUTION BY COUNTY

***** TYPE OF COURT *****

COUNTY	TOTAL	SUPERIOR COURT	LOWER COURT	PERCENT SUPERIOR COURT	PERCENT LOWER COURT
SAN BERNARDINO	4,231	3,095	1,136	73.2	26.8
SAN DIEGO	12,582	10,505	2,077	83.5	16.5
SAN FRANCISCO	10,097	4,142	5,955	41.0	59.0
SAN JOAQUIN	10,559	894	9,665	8.5	91.5
SAN LUIS OBISPO	1,052	676	376	64.3	35.7
SAN MATEO	4,180	1,254	2,926	30.0	70.0
SANTA BARBARA	6,079	1,029	5,050	16.9	83.1
SANTA CLARA	20,210	7,076	13,134	35.0	65.0
SANTA CRUZ	1,278	995	283	77.9	22.1
SHASTA	1,016	624	392	61.4	38.6
SIERRA	197	26	171	13.2	86.8
SISKIYOU	156	131	25	84.0	16.0
SOLANO	5,888	1,200	4,688	20.4	79.6
SONOMA	3,741	635	3,106	17.0	83.0
STANISLAUS	2,147	1,205	942	56.1	43.9
SUTTER	496	246	250	49.6	50.4
TEHAMA	472	126	346	26.7	73.3
TRINITY	127	73	54	57.5	42.5
TULARE	784	767	17	97.8	2.2
TUOLUMNE	1,474	149	1,325	10.1	89.9
VENTURA	3,171	1,422	1,749	44.8	55.2
YOLO	887	617	270	69.6	30.4
YUBA	586	309	277	52.7	47.3
TOTAL	220,614	87,194	133,420	39.5	60.5

ADULTS PLACED ON PROBATION, JANUARY 1 - DECEMBER 31, 1986
 TYPE OF COURT AND PERCENT DISTRIBUTION BY COUNTY

* * * * * TYPE OF COURT * * * * *

COUNTY	TOTAL	SUPERIOR COURT	LOWER COURT	PERCENT SUPERIOR COURT	PERCENT LOWER COURT
ALAMEDA	8,994	3,917	5,077	43.6	56.4
ALPINE	10	3	7	30.0	70.0
AMADOR	105	39	66	37.1	62.9
BUTTE	184	138	46	75.0	25.0
CALAVERAS	107	36	71	33.6	66.4
COLUSA	41	21	20	51.2	48.8
CONTRA COSTA	3,620	869	2,751	24.0	76.0
DEL NORTE	107	43	64	40.2	59.8
EL DORADO	365	146	219	40.0	60.0
FRESNO	6,806	959	5,847	14.1	85.9
GLENN	200	43	157	21.5	78.5
HUMBOLDT	154	119	35	77.3	22.7
IMPERIAL	470	247	223	52.6	47.4
INYO	176	53	123	30.1	69.9
KERN	1,234	1,092	142	88.5	11.5
KINGS	1,848	161	1,687	8.7	91.3
LAKE	91	55	36	60.4	39.6
LASSEN	104	39	65	37.5	62.5
LOS ANGELES	32,117	16,052	16,065	50.0	50.0
MADERA	207	106	101	51.2	48.8
MARIN	763	190	573	24.9	75.1
MARIPOSA	27	17	10	63.0	37.0
MENDOCINO	290	157	133	54.1	45.9
MERCED	457	330	127	72.2	27.8
MODOC	41	7	34	17.1	82.9
MONO	60	23	37	38.3	61.7
MONTEREY	1,017	653	364	64.2	35.8
NAPA	377	86	291	22.8	77.2
NEVADA	573	134	439	23.4	76.6
ORANGE	6,103	2,935	3,168	48.1	51.9
PLACER	306	171	135	55.9	44.1
PLUMAS	160	65	95	40.6	59.4
RIVERSIDE	3,406	1,038	2,368	30.5	69.5
SACRAMENTO	3,660	2,068	1,592	56.5	43.5
SAN BENITO	117	78	39	66.7	33.3

ADULTS PLACED ON PROBATION, JANUARY 1 - DECEMBER 31, 1986
 TYPE OF COURT AND PERCENT DISTRIBUTION BY COUNTY

* * * * * TYPE OF COURT * * * * *

COUNTY	TOTAL	SUPERIOR COURT	LOWER COURT	PERCENT SUPERIOR COURT	PERCENT LOWER COURT
SAN BERNARDINO	1,918	1,421	497	74.1	25.9
SAN DIEGO	7,679	6,069	1,610	79.0	21.0
SAN FRANCISCO	4,463	1,575	2,888	35.3	64.7
SAN JOAQUIN	4,799	543	4,256	11.3	88.7
SAN LUIS OBISPO	514	306	208	59.5	40.5
SAN MATEO	2,889	760	2,129	26.3	73.7
SANTA BARBARA	3,716	498	3,218	13.4	86.6
SANTA CLARA	15,108	7,027	8,081	46.5	53.5
SANTA CRUZ	620	451	169	72.7	27.3
SHASTA	596	327	269	54.9	45.1
SIERRA	166	16	150	9.6	90.4
SISKIYOU	101	70	31	69.3	30.7
SOLANO	2,704	502	2,202	18.6	81.4
SONOMA	1,560	216	1,344	13.8	86.2
STANISLAUS	837	444	393	53.0	47.0
SUTTER	291	114	177	39.2	60.8
TEHAMA	352	94	258	26.7	73.3
TRINITY	67	33	34	49.3	50.7
TULARE	408	394	14	96.6	3.4
TUOLUMNE	913	81	832	8.9	91.1
VENTURA	1,558	1,021	537	65.5	34.5
YOLO	305	188	117	61.6	38.4
YUBA	391	163	228	41.7	58.3
TOTAL	126,252	54,403	71,849	43.1	56.9

ADULTS REMOVED FROM SUPERIOR COURT PROBATION, JANUARY 1 - DECEMBER 31, 1986
 TYPE OF REMOVAL AND PERCENT DISTRIBUTION BY COUNTY

***** TYPE OF REMOVALS *****

COUNTY	TOTAL	TERMINATED PROBATION	VIOLATED PROBATION	OTHER(a)	PERCENT TERMINATED PROBATION	PERCENT VIOLATED PROBATION	PERCENT OTHER(a)
ALAMEDA	3,176	733	2,010	433	23.1	63.3	13.6
ALPINE	1	1	0	0	100.0	0.0	0.0
AMADOR	22	19	3	0	86.4	13.6	0.0
BUTTE	90	46	43	1	51.1	47.8	1.1
CALAVERAS	42	18	11	13	42.9	26.2	31.0
COLUSA	7	2	5	0	28.6	71.4	0.0
CONTRA COSTA	695	370	225	100	53.2	32.4	14.4
DEL NORTE	24	15	8	1	62.5	33.3	4.2
EL DORADO	67	62	5	0	92.5	7.5	0.0
FRESNO	631	266	365	0	42.2	57.8	0.0
GLENN	43	30	10	3	69.8	23.3	7.0
HUMBOLDT	55	34	15	6	61.8	27.3	10.9
IMPERIAL	169	77	92	0	45.6	54.4	0.0
INYO	34	31	3	0	91.2	8.8	0.0
⁹⁶ KERN	839	315	505	19	37.5	60.2	2.3
KINGS	116	61	55	0	52.6	47.4	0.0
LAKE	33	24	9	0	72.7	27.3	0.0
LASSEN	12	7	5	0	58.3	41.7	0.0
LOS ANGELES	15,046	8,592	6,335	119	57.1	42.1	0.8
MADERA	88	42	45	1	47.7	51.1	1.1
MARIN	181	103	74	4	56.9	40.9	2.2
MARIPOSA	8	7	0	1	87.5	0.0	12.5
MENDOCINO	105	51	54	0	48.6	51.4	0.0
MERCED	395	235	160	0	59.5	40.5	0.0
MODOC	10	2	8	0	20.0	80.0	0.0
MONO	18	16	1	1	88.9	5.6	5.6
MONTEREY	550	298	252	0	54.2	45.8	0.0
NAPA	90	53	37	0	58.9	41.1	0.0
NEVADA	127	70	57	0	55.1	44.9	0.0
ORANGE	2,162	1,079	905	178	49.9	41.9	8.2
PLACER	87	52	35	0	59.8	40.2	0.0
PLUMAS	30	28	2	0	93.3	6.7	0.0
RIVERSIDE	1,021	464	462	95	45.4	45.2	9.3
SACRAMENTO	2,233	1,214	833	186	54.4	37.3	8.3
SAN BENITO	49	35	13	1	71.4	26.5	2.0

ADULTS REMOVED FROM SUPERIOR COURT PROBATION, JANUARY 1 - DECEMBER 31, 1986
 TYPE OF REMOVAL AND PERCENT DISTRIBUTION BY COUNTY

***** TYPE OF REMOVALS *****

COUNTY	TOTAL	TERMINATED PROBATION	VIOLATED PROBATION	OTHER(a)	PERCENT TERMINATED PROBATION	PERCENT VIOLATED PROBATION	PERCENT OTHER(a)
SAN BERNARDINO	1,298	571	636	91	44.0	49.0	7.0
SAN DIEGO	4,977	2,032	2,829	116	40.8	56.8	2.3
SAN FRANCISCO	2,127	843	1,212	72	39.6	57.0	3.4
SAN JOAQUIN	521	200	261	60	38.4	50.1	11.5
SAN LUIS OBISPO	184	123	61	0	66.8	33.2	0.0
SAN MATEO	765	449	304	12	58.7	39.7	1.6
SANTA BARBARA	417	181	222	14	43.4	53.2	3.4
SANTA CLARA	6,869	3,214	1,844	1,811	46.8	26.8	26.4
SANTA CRUZ	268	118	147	3	44.0	54.9	1.1
SHASTA	338	195	54	89	57.7	16.0	26.3
SIERRA	5	4	0	1	80.0	0.0	20.0
SISKIYOU	55	53	1	1	96.4	1.8	1.8
SOLANO	472	254	218	0	53.8	46.2	0.0
SONOMA	238	119	118	1	50.0	49.6	0.4
STANISLAUS	478	251	220	7	52.5	46.0	1.5
SUTTER	93	48	35	10	51.6	37.6	10.8
TEHAMA	70	41	26	3	58.6	37.1	4.3
TRINITY	19	16	2	1	84.2	10.5	5.3
TULARE	371	225	136	10	60.6	36.7	2.7
TUOLUMNE	54	23	24	7	42.6	44.4	13.0
VENTURA	932	360	283	289	38.6	30.4	31.0
YOLO	142	64	78	0	45.1	54.9	0.0
YUBA	171	70	98	3	40.9	57.3	1.8
TOTAL	49,120	23,906	21,451	3,763	48.7	43.7	7.7

ADULTS REMOVED FROM LOWER COURT PROBATION, JANUARY 1 - DECEMBER 31, 1986
 TYPE OF REMOVAL AND PERCENT DISTRIBUTION BY COUNTY

***** TYPE OF REMOVALS *****

COUNTY	TOTAL	TERMINATED PROBATION	VIOLATED PROBATION	OTHER(a)	PERCENT TERMINATED PROBATION	PERCENT VIOLATED PROBATION	PERCENT OTHER(a)
ALAMEDA	5,113	1,412	2,400	1,301	27.6	46.9	25.4
ALPINE	5	5	0	0	100.0	0.0	0.0
AMADOR	25	18	6	1	72.0	24.0	4.0
BUTTE	43	24	18	1	55.8	41.9	2.3
CALAVERAS	45	28	13	4	62.2	28.9	8.9
COLUSA	33	22	11	0	66.7	33.3	0.0
CONTRA COSTA	2,858	1,782	933	143	62.4	32.6	5.0
DEL NORTE	111	28	77	6	25.2	69.4	5.4
EL DORADO	121	111	10	0	91.7	8.3	0.0
FRESNO	7,397	5,854	1,543	0	79.1	20.9	0.0
GLENN	96	84	11	1	87.5	11.5	1.0
HUMBOLDT	222	210	10	2	94.6	4.5	0.9
IMPERIAL	213	134	79	0	62.9	37.1	0.0
INYO	104	87	16	1	83.7	15.4	1.0
KERN	122	75	39	8	61.5	32.0	6.6
KINGS	801	381	420	0	47.6	52.4	0.0
LAKE	26	22	4	0	84.6	15.4	0.0
LASSEN	26	21	3	2	80.8	11.5	7.7
LOS ANGELES	14,443	10,645	3,653	145	73.7	25.3	1.0
MADERA	96	64	32	0	66.7	33.3	0.0
MARIN	410	219	183	8	53.4	44.6	2.0
MARIPOSA	11	11	0	0	100.0	0.0	0.0
MENDOCINO	110	37	72	1	33.6	65.5	0.9
MERCED	130	80	50	0	61.5	38.5	0.0
MODOC	33	20	13	0	60.6	39.4	0.0
MONO	17	13	4	0	76.5	23.5	0.0
MONTEREY	299	122	177	0	40.8	59.2	0.0
NAPA	130	84	46	0	64.6	35.4	0.0
NEVADA	274	181	93	0	66.1	33.9	0.0
ORANGE	4,203	2,721	1,390	92	64.7	33.1	2.2
PLACER	138	99	39	0	71.7	28.3	0.0
PLUMAS	56	50	6	0	89.3	10.7	0.0
RIVERSIDE	2,298	1,534	710	54	66.8	30.9	2.3
SACRAMENTO	1,426	770	651	5	54.0	45.7	0.4
SAN BENITO	32	26	6	0	81.3	18.8	0.0

ADULTS REMOVED FROM LOWER COURT PROBATION, JANUARY 1 - DECEMBER 31, 1986
 TYPE OF REMOVAL AND PERCENT DISTRIBUTION BY COUNTY

***** TYPE OF REMOVALS *****

COUNTY	TOTAL	TERMINATED PROBATION	VIOLATED PROBATION	OTHER(a)	PERCENT TERMINATED PROBATION	PERCENT VIOLATED PROBATION	PERCENT OTHER(a)
SAN BERNARDINO	609	331	249	29	54.4	40.9	4.8
SAN DIEGO	2,015	1,287	680	50	63.8	33.7	2.5
SAN FRANCISCO	2,141	810	1,010	315	38.1	47.2	14.7
SAN JOAQUIN	702	423	209	70	60.3	29.8	10.0
SAN LUIS OBISPO	136	88	48	0	64.7	35.3	0.0
SAN MATEO	2,139	1,262	855	22	59.0	40.0	1.0
SANTA BARBARA	3,021	2,168	809	44	71.8	26.8	1.5
SANTA CLARA	8,964	5,705	2,262	997	63.6	25.2	11.1
SANTA CRUZ	100	45	54	1	45.0	54.0	1.0
SHASTA	274	186	59	29	67.9	21.5	10.6
SIERRA	121	100	20	1	82.6	16.5	0.8
SISKIYOU	48	30	4	14	62.5	8.3	29.2
SOLANO	1,671	1,045	626	0	62.5	37.5	0.0
SONOMA	1,464	807	646	11	55.1	44.1	0.8
STANISLAUS	255	148	103	4	58.0	40.4	1.6
SUTTER	99	53	43	3	53.5	43.4	3.0
TEHAMA	251	156	91	4	62.2	36.3	1.6
TRINITY	30	23	7	0	76.7	23.3	0.0
TULARE	31	27	3	1	87.1	9.7	3.2
TUOLUMNE	689	233	451	5	33.8	65.5	0.7
VENTURA	309	99	50	160	32.0	16.2	51.8
YOLO	311	255	56	0	82.0	18.0	0.0
YUBA	173	98	71	4	56.6	41.0	2.3
TOTAL	67,020	42,357	21,124	3,539	63.2	31.5	5.3

REFERRALS OF JUVENILES TO PROBATION DEPARTMENTS
FOR DELINQUENT ACTS, 1986
NEW REFERRALS SHOWING PROBATION DEPARTMENT DISPOSITION BY COUNTY

***** PROBATION DEPARTMENT DISPOSITION *****

COUNTY	TOTAL	CLOSED	TRANSFERRED	INFORMAL PROBATION	PETITION FILED
ALAMEDA	6,334	3,964	0	139	2,231
ALPINE	12	1	4	2	5
AMADOR	152	25	14	68	45
BUTTE	818	406	51	89	272
CALAVERAS	97	1	0	24	72
COLUSA	130	42	22	21	45
CONTRA COSTA	4,713	2,106	154	773	1,680
DEL NORTE	202	122	1	38	41
EL DORADO	686	396	36	141	113
FRESNO	6,665	2,058	27	2,723	1,857
GLENN	175	60	3	87	25
HUMBOLDT	673	351	1	147	174
100 IMPERIAL	683	432	8	110	133
INYO	191	53	1	72	65
KERN	2,962	1,565	8	21	1,368
KINGS	1,419	950	80	141	248
LAKE	260	130	22	56	52
LASSEN	175	25	3	109	38
LOS ANGELES	18,155	6,088	0	2,566	9,501
MADERA	1,169	819	51	28	271
MARIN	657	352	28	27	250
MARIPOSA	83	44	3	10	26
MENDOCINO	676	340	28	130	178
MERCED	1,844	1,136	167	243	298
MODOC	81	35	11	17	18
MONO	31	2	0	17	12
MONTEREY	2,089	1,143	75	188	683
NAPA	271	37	2	30	202
NEVADA	400	204	10	117	69
ORANGE	8,628	3,654	0	1,529	3,445
PLACER	1,225	558	165	272	230
PLUMAS	155	87	0	21	47
RIVERSIDE	5,258	2,547	562	730	1,419
SACRAMENTO	5,049	2,539	439	426	1,645
SAN BENITO	287	155	23	59	50

REFERRALS OF JUVENILES TO PROBATION DEPARTMENTS
FOR DELINQUENT ACTS, 1986
NEW REFERRALS SHOWING PROBATION DEPARTMENT DISPOSITION BY COUNTY

***** PROBATION DEPARTMENT DISPOSITION *****

COUNTY	TOTAL	CLOSED	TRANSFERRED	INFORMAL PROBATION	PETITION FILED
SAN BERNARDINO	8,208	5,363	149	1,027	1,669
SAN DIEGO	7,576	3,828	0	1,293	2,455
SAN FRANCISCO	5,037	4,035	0	35	967
SAN JOAQUIN	3,771	2,056	152	328	1,235
SAN LUIS OBISPO	996	119	54	546	277
SAN MATEO	2,190	1,223	4	0	963
SANTA BARBARA	2,457	1,558	24	293	482
SANTA CLARA	5,557	2,094	345	910	2,208
SANTA CRUZ	1,230	810	0	52	368
SHASTA	972	475	81	76	340
SIERRA	36	9	1	16	10
SISKIYOU	229	52	7	136	34
101 SOLANO	1,031	343	0	64	624
SONOMA	2,464	1,686	17	146	615
STANISLAUS	2,771	1,275	156	541	799
SUTTER	499	345	42	32	80
TEHAMA	374	144	43	85	102
TRINITY	81	28	4	22	27
TULARE	1,117	375	1	0	741
TUOLUMNE	412	174	50	87	101
VENTURA	4,076	3,009	125	283	659
YOLO	912	583	115	23	191
YUBA	437	200	52	97	88
TOTAL	124,838	62,211	3,421	17,363	41,843

REFERRALS OF JUVENILES TO PROBATION DEPARTMENTS
FOR DELINQUENT ACTS, 1986
NEW REFERRALS SHOWING PROBATION DEPARTMENT DISPOSITION BY REFERRAL OFFENSE
STATEWIDE

***** PROBATION DEPARTMENT DISPOSITION *****

REFERRAL OFFENSE	TOTAL	CLOSED	TRANSFERRED	INFORMAL PROBATION	PETITION FILED
LAW VIOLATIONS					
FELONY LEVEL					
HOMICIDE	176	29	0	1	146
MANSLAUGHTER-VEHICULAR	17	2	0	2	13
FORCIBLE RAPE	367	115	1	15	236
ROBBERY	2,285	457	10	153	1,665
ASSAULT	4,223	1,108	28	414	2,673
BURGLARY	14,921	3,756	140	2,368	8,657
THEFT	9,058	3,439	129	1,272	4,218
MOTOR VEHICLE THEFT	4,005	1,471	164	374	1,996
FORGERY/CHECKS/CREDIT CARDS	659	151	6	81	421
ARSON	485	185	7	78	215
NARCOTICS	2,723	779	13	256	1,675
MARIJUANA	1,761	470	14	201	1,076
DANGEROUS DRUGS	1,188	391	19	176	602
OTHER DRUG VIOLATIONS	65	31	1	14	19
ALL OTHER	4,494	1,834	65	492	2,103
TOTAL FELONY LEVEL	46,427	14,218	597	5,897	25,715
MISDEMEANOR LEVEL					
ASSAULT AND BATTERY	9,331	4,705	264	1,470	2,892
PETTY THEFT	17,335	10,193	792	3,366	2,984
OTHER THEFT	467	259	15	42	151
CHECKS/CREDIT CARDS	55	28	0	6	21
MARIJUANA	3,297	2,165	69	680	383
OTHER DRUGS	2,442	993	67	385	997
WEAPONS	1,166	578	25	193	370
DRIVE UNDER INFLUENCE	2,747	471	70	215	1,991
DRUNK	3,278	1,952	145	603	578
DISTURBING THE PEACE	2,310	1,461	54	418	377
GLUE SNIFFING	143	82	3	26	32
MALICIOUS MISCHIEF	424	189	18	54	163
VANDALISM	4,841	2,815	115	969	942
LIQUOR LAW VIOLATIONS	6,516	5,067	372	786	291
JOY RIDING	967	499	14	171	283
ALL OTHER	14,119	9,413	614	1,160	2,932
TOTAL MISDEMEANOR LEVEL	69,438	40,870	2,637	10,544	15,387
STATUS OFFENSES					
RUNAWAY	3,244	2,816	108	89	231
TRUANCY	1,342	472	9	606	255
CURFEW	1,786	1,701	31	41	13
INCORRIGIBLE	2,576	2,122	27	186	241
ALL OTHER	25	12	12	0	1
TOTAL STATUS OFFENSES	8,973	7,123	187	922	741
TOTAL	124,838	62,211	3,421	17,363	41,843

102

REFERRALS OF JUVENILES TO PROBATION DEPARTMENTS
FOR DELINQUENT ACTS, 1986
NEW REFERRALS SHOWING PROBATION DEPARTMENT DISPOSITION BY SEX, AGE, RACE/ETHNIC GROUP
DETENTION, REFERRAL SOURCE, AND PROSECUTOR ACTION
STATEWIDE

***** PROBATION DEPARTMENT DISPOSITION *****

	TOTAL	CLOSED	TRANSFERRED	INFORMAL PROBATION	PETITION FILED
SEX					
MALE	96,001	45,588	2,412	13,357	34,644
FEMALE	28,837	16,623	1,009	4,006	7,199
AGE					
9-UNDER	1,147	863	28	185	71
10-11	2,965	1,922	49	613	381
12-13	12,551	6,736	330	2,376	3,109
14-15	38,926	19,133	953	6,558	12,282
16-17	61,006	29,981	1,904	7,238	21,883
18-OVER	8,243	3,576	157	393	4,117
RACE/ETHNIC GROUP					
WHITE (NOT HISPANIC)	67,164	34,698	2,137	10,331	19,998
HISPANIC	30,984	14,743	739	4,354	11,148
BLACK	17,875	8,116	284	1,663	7,812
AMERICAN INDIAN	696	297	32	109	258
CHINESE	454	290	5	32	127
JAPANESE	129	71	5	20	33
FILIPINO	663	363	15	97	188
OTHER	3,802	1,920	70	468	1,344
UNKNOWN	3,071	1,713	134	289	935
DETENTION					
NOT DETAINED	91,226	50,529	2,448	15,491	22,758
DETAINED-NONSECURE FACILITY	2,489	1,894	50	57	488
DETAINED-SECURE FACILITY	30,519	9,539	905	1,709	18,366
UNKNOWN	604	249	18	106	231
REFERRAL SOURCE					
LAW ENFORCEMENT	112,542	56,741	3,179	15,851	36,771
SCHOOL	2,170	950	10	774	436
OTHER PUBLIC AGENCY/INDIVIDUAL	4,090	2,015	135	273	1,667
PARENTS/GUARDIAN	403	288	1	64	50
PRIVATE AGENCY/INDIVIDUAL	46	25	2	4	15
TRANSFER-OTHER COUNTY/STATE	3,880	1,292	60	154	2,374
OTHER	1,707	900	34	243	530
PROSECUTOR ACTION					
NO AFFIDAVIT FILED	78,224	57,696	3,170	16,617	741
AFFIDAVIT ACCEPTED	41,102	0	0	0	41,102
AFFIDAVIT NOT ACCEPTED	5,512	4,515	251	746	0
TOTAL	124,838	62,211	3,421	17,363	41,843

103

DISPOSITIONS OF JUVENILES REFERRED TO PROBATION DEPARTMENTS
FOR DELINQUENT ACTS, 1986
NEW REFERRALS SHOWING SEX AND RACE/ETHNIC GROUP BY TYPE OF DISPOSITION
STATEWIDE

	* * * * * SEX * * * * *			* * * * * RACE/ETHNIC GROUP * * * * *				
	TOTAL	MALE	FEMALE	WHITE (NOT HISPANIC)	HISPANIC	BLACK	OTHER	UNKNOWN
DISPOSITIONS OF REFERRALS FOR DELINQUENT ACTS								
NOT DETAINED	91,226	69,951	21,275	51,279	22,147	11,220	3,891	2,689
DETAINED-NONSECURE FACILITY	2,489	1,226	1,263	1,567	499	262	96	65
DETAINED-SECURE FACILITY	30,519	24,377	6,142	13,929	8,277	6,279	1,742	292
UNKNOWN	604	447	157	389	61	114	15	25
TOTAL	124,838	96,001	28,837	67,164	30,984	17,875	5,744	3,071
PROBATION DEPARTMENT DISPOSITION								
CLOSED	62,211	45,588	16,623	34,698	14,743	8,116	2,941	1,713
TRANSFERRED	3,421	2,412	1,009	2,137	739	284	127	134
INFORMAL PROBATION	17,363	13,357	4,006	10,331	4,354	1,663	726	289
PETITION FILED	41,843	34,644	7,199	19,998	11,148	7,812	1,950	935
TOTAL	124,838	96,001	28,837	67,164	30,984	17,875	5,744	3,071
104 PROSECUTOR ACTION								
NO AFFIDAVIT FILED	78,224	57,178	21,046	44,678	18,592	9,446	3,514	1,994
AFFIDAVIT ACCEPTED	41,102	34,327	6,775	19,590	10,998	7,706	1,920	888
AFFIDAVIT NOT ACCEPTED	5,512	4,496	1,016	2,896	1,394	723	310	189
TOTAL	124,838	96,001	28,837	67,164	30,984	17,875	5,744	3,071
COURT DISPOSITION								
CLOSED/DISMISSED/TRANSFERRED	9,440	7,520	1,920	4,676	2,228	1,832	433	271
REMANDED TO ADULT COURT	153	135	18	49	53	33	15	3
INFORMAL PROBATION	600	482	118	339	108	104	44	5
NON-WARD PROBATION	1,412	1,126	286	906	253	166	50	37
WARDSHIP PROBATION	29,698	24,881	4,817	13,888	8,327	5,487	1,380	616
CALIFORNIA YOUTH AUTHORITY	540	500	40	140	179	190	28	3
TOTAL	41,843	34,644	7,199	19,998	11,148	7,812	1,950	935
WARDSHIP PLACEMENTS								
OWN/RELATIVE'S HOME	22,444	18,916	3,528	10,610	6,375	3,941	1,079	439
NONSECURE COUNTY FACILITY	434	349	85	224	41	140	17	12
SECURE COUNTY FACILITY	2,939	2,515	424	1,520	936	223	145	115
CALIFORNIA YOUTH AUTHORITY	540	500	40	140	179	190	28	3
OTHER PUBLIC FACILITY	1,701	1,556	145	368	571	684	58	20
PRIVATE FACILITY	822	568	254	543	93	143	32	11
OTHER	1,358	977	381	623	311	356	49	19
TOTAL	30,238	25,381	4,857	14,028	8,506	5,677	1,408	619

REFERRALS OF JUVENILES TO PROBATION DEPARTMENTS
FOR DELINQUENT ACTS, 1986

REFERRAL TYPE AND PROBATION DEPARTMENT DISPOSITION BY REFERRAL OFFENSE

STATEWIDE

REFERRAL OFFENSE	TOTALREFERRAL TYPE.....	PROBATION DEPARTMENT DISPOSITION....		
		NEW	SUBSEQUENT	CLOSED/ TRANSFERRED	INFORMAL PROBATION	PETITION FILED
LAW VIOLATIONS						
FELONY LEVEL						
HOMICIDE	248	176	72	32	1	215
MANSLAUGHTER-VEHICULAR	21	17	4	2	2	17
FORCIBLE RAPE	457	367	90	130	15	312
ROBBERY	3160	2285	875	536	154	2470
ASSAULT	5299	4223	1076	1243	416	3640
BURGLARY	18961	14921	4040	4339	2381	12241
THEFT	11073	9058	2015	3864	1284	5925
MOTOR VEHICLE THEFT	5396	4005	1391	1878	379	3139
FORGERY/CHECKS/CREDIT CARDS	804	659	145	167	84	553
ARSON	556	485	71	203	78	275
NARCOTICS	3602	2723	879	866	256	2480
MARIJUANA	2177	1761	416	523	201	1453
DANGEROUS DRUGS	1553	1188	365	442	178	933
OTHER DRUG VIOLATIONS	73	65	8	32	14	27
ALL OTHER	5341	4494	847	2072	495	2774
TOTAL FELONY LEVEL	58721	46427	12294	16329	5938	36454
MISDEMEANOR LEVEL						
ASSAULT AND BATTERY	11647	9331	2316	5542	1498	4607
PETTY THEFT	19737	17335	2402	11561	3429	4747
OTHER THEFT	594	467	127	313	42	239
CHECKS/CREDIT CARDS	61	55	6	29	6	26
MARIJUANA	3759	3297	462	2430	695	634
OTHER DRUGS	3646	2442	1204	1279	389	1978
WEAPONS	1411	1166	245	640	197	574
DRIVE UNDER INFLUENCE	3128	2747	381	569	217	2342
DRUNK	4041	3278	763	2370	622	1049
DISTURBING THE PEACE	2823	2310	513	1747	428	648
GLUE SNIFFING	228	143	85	119	26	83
MALICIOUS MISCHIEF	509	424	85	233	54	222
VANDALISM	5522	4841	681	3144	987	1391
LIQUOR LAW VIOLATIONS	7165	6516	649	5734	312	619
JOY RIDING	1186	967	219	571	173	442
ALL OTHER	27737	14119	13618	11821	1177	14739
TOTAL MISDEMEANOR LEVEL	93194	69438	23756	48102	10752	34340
STATUS OFFENSES						
RUNAWAY	3431	3244	187	3069	90	272
TRUANCY	1440	1342	98	508	610	322
CURFEW	1980	1786	194	1889	44	47
INCORRIGIBLE	2945	2576	369	2477	192	276
ALL OTHER	68	25	43	54	0	14
TOTAL STATUS OFFENSES	9864	8973	891	7997	936	931
TOTAL	161779	124838	36941	72428	17626	71725

105

JUVENILE COURT DISPOSITIONS RESULTING FROM PETITIONS
FOR DELINQUENT ACTS, 1986
NEW REFERRALS SHOWING COURT DISPOSITION BY COUNTY

***** COURT DISPOSITION *****

COUNTY	TOTAL	CLOSED/ DISMISSED/ TRANSFERRED	REMANDED TO ADULT COURT	INFORMAL PROBATION	NON-WARD PROBATION	WARDSHIP PROBATION	CALIFORNIA YOUTH AUTHORITY
ALAMEDA	2,231	475	17	172	33	1,523	6
ALPINE	5	1	0	0	0	4	0
AMADOR	45	13	0	2	6	24	0
BUTTE	272	90	0	25	27	126	4
CALAVERAS	72	11	2	3	1	54	1
COLUSA	45	5	2	0	4	33	1
CONTRA COSTA	1,680	643	1	0	263	772	1
DEL NORTE	41	6	0	2	4	26	3
EL DORADO	113	13	0	2	0	97	1
FRESNO	1,857	772	2	4	0	1,063	16
GLENN	25	7	0	4	0	14	0
HUMBOLDT	174	61	0	5	3	105	0
IMPERIAL	133	22	0	11	3	96	1
INYO	65	16	0	2	14	33	0
KERN	1,368	301	0	16	4	1,029	18
KINGS	248	39	5	0	50	151	3
LAKE	52	18	1	1	0	28	4
LASSEN	38	12	0	0	0	25	1
LOS ANGELES	9,501	1,132	7	0	89	7,949	324
MADERA	271	28	1	1	5	226	10
MARIN	250	73	0	1	42	134	0
MARIPOSA	26	9	0	0	6	11	0
MENDOCINO	178	50	1	1	1	123	2
MERCED	298	68	6	5	13	205	1
MODOC	18	6	0	0	1	11	0
MONO	12	1	0	0	5	6	0
MONTEREY	683	157	0	11	1	511	3
NAPA	202	35	0	1	19	143	4
NEVADA	69	5	0	2	0	62	0
ORANGE	3,445	743	21	13	7	2,656	5
PLACER	230	77	0	3	5	144	1
PLUMAS	47	16	0	3	4	22	2
RIVERSIDE	1,419	326	4	11	72	999	7
SACRAMENTO	1,645	375	7	132	26	1,099	6
SAN BENITO	50	7	0	0	4	37	2

106

JUVENILE COURT DISPOSITIONS RESULTING FROM PETITIONS
FOR DELINQUENT ACTS, 1986
NEW REFERRALS SHOWING COURT DISPOSITION BY COUNTY

***** COURT DISPOSITION *****

COUNTY	TOTAL	CLOSED/ DISMISSED/ TRANSFERRED	REMANDED TO ADULT COURT	INFORMAL PROBATION	NON-WARD PROBATION	WARDSHIP PROBATION	CALIFORNIA YOUTH AUTHORITY
SAN BERNARDINO	1,669	431	1	2	0	1,230	5
SAN DIEGO	2,455	448	37	0	40	1,912	18
SAN FRANCISCO	967	241	6	4	32	678	6
SAN JOAQUIN	1,235	471	0	28	1	723	12
SAN LUIS OBISPO	277	73	1	4	47	151	1
SAN MATEO	963	289	4	0	0	661	9
SANTA BARBARA	482	128	2	19	5	324	4
SANTA CLARA	2,208	418	7	26	20	1,720	17
SANTA CRUZ	368	146	1	6	122	93	0
SHASTA	340	55	2	0	43	236	4
SIERRA	10	2	0	0	0	8	0
SISKIYOU	34	4	0	0	1	27	2
SOLANO	624	182	1	11	12	413	5
SONOMA	615	187	4	43	132	248	1
STANISLAUS	799	223	0	1	161	410	4
SUTTER	80	16	2	0	7	52	3
TEHAMA	102	7	1	1	1	89	3
TRINITY	27	4	0	1	7	14	1
TULARE	741	238	5	0	20	473	5
TUOLUMNE	101	31	0	2	5	63	0
VENTURA	659	159	2	8	0	483	7
YOLO	191	41	0	3	44	98	5
YUBA	88	33	0	8	0	46	1
TOTAL	41,843	9,440	153	600	1,412	29,698	540

JUVENILE COURT DISPOSITIONS RESULTING FROM PETITIONS
FOR DELINQUENT ACTS, 1986
NEW REFERRALS SHOWING COURT DISPOSITION BY OFFENSE
STATEWIDE

OFFENSE	TOTAL	COURT DISPOSITION					CALIFORNIA YOUTH AUTHORITY
		CLOSED/ DISMISSED/ TRANSFERRED	REMANDED TO ADULT COURT	INFORMAL PROBATION	NON-WARD PROBATION	WARDSHIP PROBATION	
LAW VIOLATIONS							
FELONY LEVEL							
HOMICIDE	146	24	28	0	0	38	56
MANSLAUGHTER-VEHICULAR	13	5	0	0	0	6	2
FORCIBLE RAPE	236	59	10	2	7	136	22
ROBBERY	1,665	370	23	7	20	1,136	109
ASSAULT	2,673	627	12	46	72	1,838	78
BURGLARY	8,657	1,603	21	99	204	6,642	88
THEFT	4,218	854	8	51	115	3,148	42
MOTOR VEHICLE THEFT	1,996	483	2	23	44	1,423	21
FORGERY/CHECKS/CREDIT CARDS	421	81	0	7	20	311	2
ARSON	215	37	0	11	10	156	1
NARCOTICS	1,675	318	6	9	11	1,296	35
MARIJUANA	1,076	163	1	7	40	855	10
DANGEROUS DRUGS	602	116	1	8	17	455	5
OTHER DRUG VIOLATIONS	19	2	0	2	1	14	0
ALL OTHER	2,103	484	14	41	55	1,475	34
TOTAL FELONY LEVEL	25,715	5,226	126	313	616	18,929	505
MISDEMEANOR LEVEL							
ASSAULT AND BATTERY	2,892	786	2	66	135	1,895	8
PETTY THEFT	2,984	791	2	89	141	1,959	2
OTHER THEFT	151	39	0	10	9	93	0
CHECKS/CREDIT CARDS	21	7	0	0	1	13	0
MARIJUANA	383	99	0	2	44	237	1
OTHER DRUGS	997	181	3	8	14	784	7
WEAPONS	370	69	0	8	12	281	0
DRIVE UNDER INFLUENCE	1,991	350	15	5	156	1,464	1
DRUNK	578	172	1	4	23	378	0
DISTURBING THE PEACE	377	101	0	6	24	244	2
GLUE SNIFFING	32	7	0	1	0	24	0
MALICIOUS MISCHIEF	163	29	0	2	8	123	1
VANDALISM	942	304	0	33	41	561	3
LIQUOR LAW VIOLATIONS	291	83	0	5	28	175	0
JOY RIDING	283	59	0	4	18	202	0
ALL OTHER	2,932	881	4	40	136	1,861	10
TOTAL MISDEMEANOR LEVEL	15,387	3,958	27	283	790	10,294	35
STATUS OFFENSES							
RUNAWAY	231	106	0	0	1	124	0
TRUANCY	255	86	0	3	3	163	0
CURFEW	13	2	0	1	1	9	0
INCORRIGIBLE	241	61	0	0	1	179	0
ALL OTHER	1	1	0	0	0	0	0
TOTAL STATUS OFFENSES	741	256	0	4	6	475	0
TOTAL	41,843	9,440	153	600	1,412	29,698	540

JUVENILE COURT DISPOSITIONS RESULTING FROM PETITIONS
FOR DELINQUENT ACTS, 1986
NEW REFERRALS SHOWING COURT DISPOSITION BY SEX, AGE,
RACE/ETHNIC GROUP, AND DEFENSE REPRESENTATION
STATEWIDE

***** COURT DISPOSITION *****

	TOTAL	CLOSED/ DISMISSED/ TRANSFERRED	REMAINED TO ADULT COURT	INFORMAL PROBATION	NON-WARD PROBATION	WARDSHIP PROBATION	CALIFORNIA YOUTH AUTHORITY
SEX							
MALE	34,644	7,520	135	482	1,126	24,881	500
FEMALE	7,199	1,920	18	118	286	4,817	40
AGE							
9-UNDER	71	25	0	4	2	40	0
10-11	381	125	0	18	9	229	0
12-13	3,109	646	0	80	84	2,295	4
14-15	12,282	2,388	1	203	317	9,273	100
16-17	21,883	4,793	76	276	814	15,578	346
18-OVER	4,117	1,463	76	19	186	2,283	90
RACE/ETHNIC GROUP							
WHITE (NOT HISPANIC)	19,998	4,676	49	339	906	13,888	140
HISPANIC	11,148	2,228	53	108	253	8,327	179
BLACK	7,812	1,832	33	104	166	5,487	190
AMERICAN INDIAN	258	58	3	2	12	178	5
CHINESE	127	30	3	1	6	85	2
JAPANESE	33	10	0	0	0	21	2
FILIPINO	188	37	0	2	8	136	5
OTHER	1,344	298	9	39	24	960	14
UNKNOWN	935	271	3	5	37	616	3
DEFENSE REPRESENTATION							
NONE	5,750	1,830	18	77	236	3564	25
PRIVATE COUNSEL	4,428	826	15	60	198	3,296	33
COURT APPOINTED COUNSEL	8,143	1,297	58	94	148	6,428	118
PUBLIC DEFENDER	23,477	5,466	62	369	828	16,389	363
OTHER	45	21	0	0	2	21	1
TOTAL	41,843	9,440	153	600	1,412	29,698	540

109

JUVENILE COURT DISPOSITIONS RESULTING FROM PETITIONS
FOR DELINQUENT ACTS, 1986

PETITION TYPE AND COURT DISPOSITION BY OFFENSE

STATEWIDE

OFFENSE	TOTAL	NEW	SUBSEQUENT	COURT DISPOSITION.....					
				...PETITION TYPE..	CLOSED/ DISMISSED/ TRANSFERRED	REMANDED TO ADULT COURT	INFORMAL PROBATION	NON-WARD PROBATION	WARDSHIP PROBATION
LAW VIOLATIONS									
FELONY LEVEL									
HOMICIDE	215	146	69	28	50	0	0	52	85
MANSLAUGHTER-VEHICULAR	17	13	4	6	0	0	0	8	3
FORCIBLE RAPE	312	236	76	65	15	2	7	176	47
ROBBERY	2470	1665	805	443	46	7	22	1608	344
ASSAULT	3640	2673	967	711	34	47	76	2524	248
BURGLARY	12241	8657	3584	1903	34	102	217	9485	500
THEFT	5925	4218	1707	1005	11	52	124	4559	174
MOTOR VEHICLE THEFT	3139	1996	1143	571	5	25	46	2353	139
FORGERY/CHECKS/CREDIT CARDS	553	421	132	93	0	7	20	420	13
ARSON	275	215	60	46	1	12	12	200	4
NARCOTICS	2480	1675	805	368	7	9	12	1898	186
MARIJUANA	1453	1076	377	189	3	8	42	1165	46
DANGEROUS DRUGS	933	602	331	136	1	8	17	726	45
OTHER DRUG VIOLATIONS	27	19	8	2	0	2	1	21	1
ALL OTHER	2774	2103	671	538	17	43	61	2005	110
TOTAL FELONY LEVEL	36454	25715	10739	6104	224	324	657	27200	1945
MISDEMEANOR LEVEL									
ASSAULT AND BATTERY	4607	2892	1715	1013	5	69	147	3273	100
PETTY THEFT	4747	2984	1763	973	2	89	166	3487	30
OTHER THEFT	239	151	88	45	0	12	10	171	1
CHECKS/CREDIT CARDS	26	21	5	7	0	0	1	18	0
MARIJUANA	634	383	251	127	0	2	45	456	4
OTHER DRUGS	1978	997	981	259	6	9	16	1615	73
WEAPONS	574	370	204	80	1	8	12	456	17
DRIVE UNDER INFLUENCE	2342	1991	351	364	17	5	161	1790	5
DRUNK	1049	578	471	229	1	5	27	783	4
DISTURBING THE PEACE	648	377	271	145	0	6	25	463	9
GLUE SNIFFING	83	32	51	11	1	1	0	69	1
MALICIOUS MISCHIEF	222	163	59	36	0	2	9	173	2
VANDALISM	1391	942	449	380	0	33	47	922	9
LIQUOR LAW VIOLATIONS	619	291	328	132	0	6	34	445	2
JOY RIDING	442	283	159	76	0	4	21	340	1
ALL OTHER	14739	2932	11807	2606	10	47	186	11514	376
TOTAL MISDEMEANOR LEVEL	34340	15387	18953	6483	43	298	907	25975	634
STATUS OFFENSES									
RUNAWAY	272	231	41	113	0	0	1	158	0
TRUANCY	322	255	67	94	0	6	4	218	0
CURFEW	47	13	34	6	0	1	1	39	0
INCORRIGIBLE	276	241	35	69	0	0	1	206	0
ALL OTHER	14	1	13	5	0	0	0	9	0
TOTAL STATUS OFFENSES	931	741	190	287	0	7	7	630	0
TOTAL	71725	41843	29882	12874	267	629	1571	53805	2579

REMOVALS AND CHANGES OF STATUS OF JUVENILES ON PROBATION
FOR DELINQUENT ACTS, 1986

SEX AND RACE/ETHNIC GROUP BY REASON FOR CHANGE

STATEWIDE

REASON FOR CHANGE	TOTAL	SEX		RACE/ETHNIC GROUP				
		MALE	FEMALE	WHITE (NOT HISPANIC)	HISPANIC	BLACK	OTHER	UNKNOWN
INFORMAL PROBATION								
REMOVAL BY TERMINATION	7163	5638	1525	4260	1771	679	348	105
REPLACED ON INFORMAL PROBATION	287	229	58	193	62	17	10	5
PLACED ON NON-WARD PROBATION	90	78	12	70	7	9	1	3
PLACED ON WARDSHIP PROBATION	1522	1287	235	830	406	186	72	28
REMANDED TO ADULT COURT	1	1	0	0	0	0	0	1
COMMITTED TO CYA	13	12	1	3	6	3	1	0
TOTAL	9076	7245	1831	5356	2252	894	432	142
NON-WARD PROBATION								
REMOVAL BY TERMINATION	522	408	114	357	86	43	19	17
PLACED ON INFORMAL PROBATION	0	0	0	0	0	0	0	0
REPLACED ON NON-WARD PROBATION	63	49	14	42	8	8	2	3
PLACED ON WARDSHIP PROBATION	214	189	25	131	40	32	7	4
REMANDED TO ADULT COURT	0	0	0	0	0	0	0	0
COMMITTED TO CYA	2	2	0	2	0	0	0	0
TOTAL	801	648	153	532	134	83	28	24
WARDSHIP PROBATION								
REMOVAL BY TERMINATION	11267	9315	1952	6000	2537	1831	564	335
PLACED ON INFORMAL PROBATION	5	3	2	2	1	1	1	0
PLACED ON NON-WARD PROBATION	6	5	1	4	1	0	1	0
REPLACED ON WARDSHIP PROBATION	22354	19599	2755	10227	6167	4565	820	575
REMANDED TO ADULT COURT	23	21	2	7	5	7	4	0
COMMITTED TO CYA	1876	1767	109	527	572	689	65	23
TOTAL	35531	30710	4821	16767	9283	7093	1455	933
CALIFORNIA YOUTH AUTHORITY								
REMOVAL BY TERMINATION	180	168	12	72	39	61	5	3
PLACED ON INFORMAL PROBATION	0	0	0	0	0	0	0	0
PLACED ON NON-WARD PROBATION	0	0	0	0	0	0	0	0
PLACED ON WARDSHIP PROBATION	17	17	0	2	4	7	3	1
REMANDED TO ADULT COURT	3	3	0	0	2	1	0	0
RECOMMITTED TO CYA	148	143	5	60	37	43	6	2
TOTAL	348	331	17	134	82	112	14	6
TOTAL	45756	38934	6822	22789	11751	8182	1929	1105

CURRENT STATUS OF JUVENILES ON PROBATION
FOR DELINQUENT ACTS
ON DECEMBER 31, 1986
CURRENT STATUS BY COUNTY

***** CURRENT STATUS *****

COUNTY	TOTAL	INFORMAL PROBATION	NON-WARD PROBATION	WARDSHIP PROBATION	PERCENT INFORMAL PROBATION	PERCENT NON-WARD PROBATION	PERCENT WARDSHIP PROBATION
ALAMEDA	3,917	69	11	3,837	1.8	0.3	98.0
ALPINE	7	3	0	4	42.9	0.0	57.1
AMADOR	58	18	0	40	31.0	0.0	69.0
BUTTE	360	63	25	272	17.5	6.9	75.6
CALAVERAS	129	22	0	107	17.1	0.0	82.9
COLUSA	54	10	2	42	18.5	3.7	77.8
CONTRA COSTA	1,856	251	260	1,345	13.5	14.0	72.5
DEL NORTE	86	27	4	55	31.4	4.7	64.0
EL DORADO	178	34	5	139	19.1	2.8	78.1
FRESNO	1,578	525	1	1,052	33.3	0.1	66.7
GLENN	169	95	39	35	56.2	23.1	20.7
HUMBOLDT	255	43	3	209	16.9	1.2	82.0
12 IMPERIAL	224	126	5	93	56.3	2.2	41.5
INYO	99	27	3	69	27.3	3.0	69.7
KERN	1,915	18	7	1,890	0.9	0.4	98.7
KINGS	364	88	45	231	24.2	12.4	63.5
LAKE	89	21	6	62	23.6	6.7	69.7
LASSEN	126	70	0	56	55.6	0.0	44.4
LOS ANGELES	16,578	1,109	32	15,437	6.7	0.2	93.1
MADERA	426	25	36	365	5.9	8.5	85.7
MARIN	389	22	34	333	5.7	8.7	85.6
MARIPOSA	32	6	5	21	18.8	15.6	65.6
MENDOCINO	320	45	0	275	14.1	0.0	85.9
MERCED	514	82	3	429	16.0	0.6	83.5
MODOC	24	2	8	14	8.3	33.3	58.3
MONO	35	10	6	19	28.6	17.1	54.3
MONTEREY	633	81	0	552	12.8	0.0	87.2
NAPA	402	25	20	357	6.2	5.0	88.8
NEVADA	161	60	1	100	37.3	0.6	62.1
ORANGE	4,609	386	3	4,220	8.4	0.1	91.6
PLACER	251	114	4	133	45.4	1.6	53.0
PLUMAS	55	16	0	39	29.1	0.0	70.9
RIVERSIDE	2,394	213	34	2,147	8.9	1.4	89.7
SACRAMENTO	2,000	193	0	1,807	9.7	0.0	90.4
SAN BENITO	114	33	3	78	28.9	2.6	68.4

CURRENT STATUS OF JUVENILES ON PROBATION
FOR DELINQUENT ACTS
ON DECEMBER 31, 1986
CURRENT STATUS BY COUNTY

***** CURRENT STATUS *****

COUNTY	TOTAL	INFORMAL PROBATION	NON-WARD PROBATION	WARDSHIP PROBATION	PERCENT INFORMAL PROBATION	PERCENT NON-WARD PROBATION	PERCENT WARDSHIP PROBATION
SAN BERNARDINO	2,447	0	337	2,110	0.0	13.8	86.2
SAN DIEGO	3,472	529	25	2,918	15.2	0.7	84.0
SAN FRANCISCO	1,287	14	3	1,270	1.1	0.2	98.7
SAN JOAQUIN	1,337	82	0	1,255	6.1	0.0	93.9
SAN LUIS OBISPO	529	203	38	288	38.4	7.2	54.4
SAN MATEO	1,498	32	40	1,426	2.1	2.7	95.2
SANTA BARBARA	954	187	5	762	19.6	0.5	79.9
SANTA CLARA	3,537	441	0	3,096	12.5	0.0	87.5
SANTA CRUZ	378	60	129	189	15.9	34.1	50.0
SHASTA	541	37	12	492	6.8	2.2	90.9
SIERRA	38	19	1	18	50.0	2.6	47.4
SISKIYOU	87	35	2	50	40.2	2.3	57.5
SOLANO	608	41	8	559	6.7	1.3	91.9
SONOMA	525	98	63	364	18.7	12.0	69.3
STANISLAUS	921	158	57	706	17.2	6.2	76.7
SUTTER	79	12	4	63	15.2	5.1	79.7
TEHAMA	187	35	1	151	18.7	0.5	80.7
TRINITY	33	9	3	21	27.3	9.1	63.6
TULARE	1,275	246	15	1,014	19.3	1.2	79.5
TUOLUMNE	158	54	2	102	34.2	1.3	64.6
VENTURA	1,050	59	0	991	5.6	0.0	94.4
YOLO	177	12	25	140	6.8	14.1	79.1
YUBA	125	37	1	87	29.6	0.8	69.6
TOTAL	61,644	6,332	1,376	53,936	10.3	2.2	87.5

KNOWN DATA LIMITATIONS, 1986

CRIMES

- Mammoth Lakes began reporting in July 1986.
- Orinda began reporting in July 1986.

ARRESTS

ARREST AND CITATION REGISTER

- Homicide arrests may be inflated to some degree. Assault with intent to commit murder is included in some cases because of a 1981 law change that repealed Penal Code Section 217.
- Race/ethnic data must be considered in light of the subjectivity of the labeling process and recent classification changes, such as those of the U.S. Bureau of the Census (1980).
- Felony arrest counts may include some misdemeanor warrants for felony offenses.
- Agency reporting problems account for almost all of the increase recorded in 1983 other drug law violations.
- Morgan Hill did not report data for November and December 1986.
- Mammoth Lakes began reporting in July 1986.
- Orinda began reporting in July 1986.

DISPOSITIONS OF ADULT FELONY ARRESTS OFFENDER-BASED TRANSACTION STATISTICS SYSTEM

- This file contains over 94 percent of all documents which were available for processing when the annual statistical file was created on April 25, 1987.
- Caution should be used when comparing adult felony arrest disposition data with reported arrest data. Disposition data are based on the year of final disposition, regardless of when the felony arrest occurred. Arrest data are based upon the year in which the arrest took place.
- For multiple arrest offenses, OBTS selects only the most serious offense, based on the severity of possible punishment. For multiple court dispositions, OBTS selects the most serious court disposition and the associated offense.
- OBTS counts the *INITIAL* sentence resulting from an adult felony arrest. "Intermediate" sentences (e.g., being placed on a diversionary program) and "subsequent actions" after the initial sentence is given (e.g., probation revocation actions which may result in a jail or prison commitment, death penalty reversals with new sentences, etc.) are *not* included in OBTS sentence data.
- Bureau of Criminal Statistics (BCS) disposition data on state institutional commitments are counted differently from those of other state agencies. For example, the Department of Corrections counts the number of defendants received, even though a defendant may have received a commitment from two or more jurisdictions. In the same situation, BCS counts each commitment as a separate disposition.
- From 1985 to 1986, assault offenses increased 41.1 percent. A significant portion of the increase can be attributed to the "Domestic Violence" program, implemented January 1, 1986. This program required law enforcement officers to actively intervene in complaints of violence between spouses or sexual partners. Most of the increase in assault offenses was adjudicated in lower court.
- The adult felony arrest disposition data base includes 232 persons whose age at disposition was under 18. These minors were tried in adult court by provision of the Welfare and Institutions Code.
- Comparisons between counties should be made with caution since the level of reporting may vary between jurisdictions and from year to year.

ADULT PROBATION

- The data include adults placed on supervised probation only.
- Persons are counted once for each jurisdiction. Thus, data include original grants of probation and do not include subsequent grants of probation to persons already under probation supervision ordered by the same level court in the same county. Also, the probationers under jurisdiction of both superior and lower courts and any who are jurisdictional cases of more than one county are counted more than one time in statewide totals.
- The sources of data are county probation departments' monthly reports of summary data.

JUVENILE PROBATION

- In 1986, the new juvenile justice reporting system included 55 counties. Los Angeles, San Diego, and Santa Clara counties are still reporting in the old format.
- In cases where a juvenile has multiple petitions filed for more than one offense, only the petition with the most serious offense is recorded. This accounts for the differences between BCS counts and the statistics generated by the Administrative Office of the Courts, which counts the number of petitions processed.
- In 1986, BCS developed a new one-day survey form to collect juvenile probation caseload counts. Prior to 1986, these data were developed programmatically from transactions reported by probation departments.

CRIMINAL JUSTICE GLOSSARY

CRIMINAL JUSTICE GLOSSARY

ABSCOND: to leave the judicial jurisdiction without consent.

ACQUITTAL: a judgment of a court, based either on the verdict of a jury or a judicial officer, that the defendant is not guilty of the offense(s) for which he was tried.

ADJUDICATION: the formal giving or pronouncing of a judgment or decree in a cause.

ADULT: a person 18 years of age or older.

AFFIDAVIT: a written summary of charges against a juvenile presented by the probation department to the prosecutor with a request that a petition be filed.

APPEAL: a petition initiated by a defendant for a rehearing in an appellate court of a previous sentence or motion.

ARREST: "... taking a person into custody, in a case and in the manner authorized by law. An arrest may be made by a peace officer or by a private person." (P.C. 834)

ARREST RATE: the number of arrests per 100,000 population.

CALIFORNIA DEPARTMENT OF CORRECTIONS (CDC): the state agency which has jurisdiction over the California Rehabilitation Center and the California prison system.

CALIFORNIA REHABILITATION CENTER (CRC): an institution operated by the California Department of Corrections which is designated for the treatment of persons addicted to narcotics or in imminent danger of addiction. Commitment to the facility is by civil procedure only.

CALIFORNIA YOUTH AUTHORITY (CYA): the state agency which has jurisdiction over and maintains institutions as correctional schools for the reception of wards of the juvenile court and other persons committed from justice, municipal, and superior courts.

CAMPS, RANCHES, HOMES, AND SCHOOLS: county-level juvenile correctional facilities for post-court treatment of juvenile offenders. These facilities are maintained by county probation departments.

CASELOAD: the total number of clients or cases on probation or under supervision with a given agency at a specified point in time.

CHARGE: a formal allegation that a specific person has committed a specific offense.

CITATION: a written order, issued by the police for a violation, to appear before a magistrate or probation officer at a later date.

CIVIL COMMITMENT: a type of commitment in which criminal proceedings are suspended while a defendant undergoes treatment at the California Rehabilitation Center (CRC) as a narcotic addict.

CLEARANCE: an offense is cleared or "solved" for crime reporting purposes when at least one person is arrested, charged with the commission of the offense, and turned over to the court for prosecution or cited to juvenile authorities. In certain situations a clearance may be counted by "exceptional" means when the police definitely know the identity of the offender, have enough information to support an arrest, and know the location of the offender but for some reason cannot take the offender into custody.

CLEARANCE RATE: method used to determine the percentage of crimes cleared. The rate is based on the number of crimes reported.

CLOSED AT INTAKE: a case closed by the probation department at the time the juvenile is referred to the department, following an investigation of the juvenile's circumstances and nature of the alleged offense. No further action is taken.

COMMITMENT: a warrant, order, or process by which the court directs a judicial officer to take a person to a correctional facility.

COMPLAINT: a verified written accusation, filed by a prosecuting attorney with a local criminal court, which charges one or more persons with the commission of one or more offenses.

CONTROLLED SUBSTANCE: a drug, substance, or immediate precursor which is included in Schedules I through V inclusive, as set forth in Health and Safety Code Sections 11054 through 11058. These would include heroin, marijuana, amphetamines, barbiturates, and psychedelics.

CONVICTION: a judgment, based either on the verdict of a jury or a judicial officer or on the guilty plea of the defendant, that the defendant is guilty.

CORRECTIONS: those agencies or facilities concerned with the custody, confinement, supervision, or treatment of alleged or adjudicated offenders. See also, California Department of Corrections.

COURT: an agency of the judicial branch of government, authorized or established by statute or constitution, having one or more judicial officers on its staff. A court has the authority to decide upon controversies in law and disputed matters of fact brought before it.

CRC: see California Rehabilitation Center.

CRIME: "... an act committed or omitted in violation of a law forbidding or commanding it..." (P.C. 15)

CRIME RATE: the number of crimes per 100,000 general population.

CRIMINAL COMMITMENT: a type of commitment which results when a defendant is sentenced to prison or the California Youth Authority.

CYA: see California Youth Authority.

DEFENDANT: a person against whom a criminal proceeding is pending.

DELINQUENT ACTS: those acts described under Welfare and Institutions Code Section 602 which involve violations by a juvenile of any law or ordinance defining crime, or the violation of a court order of the juvenile court.

DETERMINATE SENTENCING: sentencing which, by law, requires imposition of a term of imprisonment proportionate to the seriousness of the crime, with sentences uniform for like crimes.

DISMISSAL: a decision by a judicial officer to terminate a case without a determination of guilt or innocence.

DISPOSITION - COURT: an action taken as the result of an appearance in court by a defendant. Examples would be: adults - dismissed, acquitted, or convicted and sentenced; juveniles - dismissed, transferred, remanded to adult court, placed on probation, or sentenced to the California Youth Authority.

DISPOSITION - LAW ENFORCEMENT: an action taken as the result of an arrest. Examples of police dispositions are: adults - released by law enforcement, referred to another jurisdiction, or a misdemeanor or felony complaint sought; juveniles - handled within the department, referred to another agency, or referred to the probation department or juvenile court.

DISPOSITION - PROSECUTOR: an action taken as the result of complaints which were requested by the arresting agency. Dispositions include granting a misdemeanor or a felony complaint, or denying a complaint for such reasons as lack of corpus, lack of probable cause, interest of justice, victim declines to prosecute, witness unavailable, illegal search and seizure, combined with other courts, etc.

DRUGS: see Controlled Substance.

EMANCIPATED MINOR: a person under 18 years of age who has been released from parental control and supervision by either: a) a valid marriage, b) active duty with the armed forces of the United States, or c) a declaration of emancipation (see Civil Code Sections 62 and 64).

FELONY: "... a crime which is punishable with death or by imprisonment in the state prison. . . ." (P.C. 17)

FILING: a document filed with the municipal court clerk or county clerk by a prosecuting attorney alleging that a person committed or attempted to commit a crime.

FINE: the penalty imposed upon a convicted person by a court requiring that he pay a specified sum of money.

GRANT: the act of placing an adult on probation.

GUILTY PLEA: a defendant's formal answer in open court to the charge(s) in a complaint, indictment, or information, stating that the charge(s) is true and that he has committed the offense(s) as charged.

INDICTMENT: a formal, written accusation charging one or more persons with the commission of a crime, presented, by a grand jury to the superior court when the jury has found after examining the evidence presented, that there is a valid case.

INFORMATION: a formal accusation of crime(s) differing from an indictment only in that it is presented by a prosecuting attorney instead of a grand jury. Information filings are used when the lower court determines, at the preliminary hearing, that there is sufficient evidence to hold the defendant for a felony trial and prosecution at the superior court level.

INFRACTION: an offense punishable by fine or other penalty, but not by incarceration.

INITIAL PETITION: see New Petition.

INITIAL REFERRAL: see New Referral.

INTAKE DETERMINATION: the probation department disposition of a new referral; these are usually "closed or transferred," "informal probation," or "petition filed."

JAIL: a county or city facility for incarceration of sentenced and unsentenced persons.

JURISDICTION: the territory, subject matter, or person over which lawful authority may be exercised.

JUVENILE: a person under the age of 18.

JUVENILE COURT: the court responsible for adjudicating juvenile offenders.

JUVENILE HALL: a county-operated facility used for temporary detention of juvenile offenders pending their court appearance, and in some instances, for short-term (up to 180 days) post-adjudication rehabilitative purposes.

LAW VIOLATIONS: in the juvenile system, those acts described under Welfare and Institutions Code Section 602 which involve violations by a juvenile of any law or ordinance defined as a crime.

LOCAL SUPERVISION: local correctional agencies provide confinement, rehabilitation, and probation services for those sentenced to their care and also house persons awaiting trial or sentencing.

LOWER COURT: municipal or justice court.

MANDATORY SENTENCING: sentencing mandated by law which limits judicial discretion for specific convicted offenders.

MISDEMEANOR: a crime punishable by imprisonment in a county jail, by a fine, or by both. Under certain conditions defined by Section 17 of the Penal Code, a felony crime can be treated as a misdemeanor.

MONTHLY ARREST AND CITATION REGISTER: a reporting system used to collect information on adult and juvenile arrests. The Arrest Register reports details which identify age, sex, and race/ethnic characteristics of offenders and creates a link to subsequent court activity.

MUNICIPAL OR JUSTICE COURT: the court of original or trial jurisdiction for the prosecution of persons accused of misdemeanor or certain felony offenses. Also, municipal and justice courts conduct preliminary hearings to determine probable cause in the case of felony offenders who are subject to jurisdiction of superior courts - the felony trial court.

NEW PETITION: a petition filed in juvenile court for a minor, who is currently not under active probation supervision or on parole from CYA, alleging that the minor has committed a delinquent act.

NEW REFERRAL: a juvenile who is not actively being supervised or on CYA parole brought to the attention of the probation department for alleged behavior under Welfare and Institutions Code Sections 601 or 602.

NONSECURE FACILITY: shelter care, crisis resolution home, or counseling and educational centers.

OFFENDER-BASED TRANSACTION STATISTICS (OBTS): a system designed to collect statistical information on the various processes within the criminal justice system that occur between the point of arrest and the point of final disposition.

OFFENSE: the charged offense is the offense for which the defendant was arrested or filed on by the district attorney. The convicted offense is the offense the defendant was convicted of or pled guilty to in court. The sustained offense is the offense for which the juvenile court sustains a petition.

OUTPATIENT: a person receiving treatment or care at the California Rehabilitation Center (CRC) while no longer an inmate of the facility.

PAROLE: an added period of control following completion of the determinate prison sentence (P.C. 3000(a)).

PETITION: the formal presentation to the juvenile court of information surrounding the alleged offense by a juvenile, similar to a criminal complaint for an adult.

POPULATION AT RISK: that portion of the total population, who because of like characteristics to the specific study group, are considered "at-risk." For example, when studying juvenile arrestees, all persons between 10 and 17 years of age would be the "at-risk" population.

PRISON: a state correctional facility where persons are confined following conviction of a felony offense.

PROBATION: a judicial requirement that a person fulfill certain conditions of behavior in lieu of a sentence to confinement but sometimes including a jail sentence.

PROBATION WITH JAIL: a type of disposition rendered upon conviction which imposes a jail term as a condition of probation status.

PROBATION - FORMAL: a probation grant in which the minor is declared a ward of the juvenile court and placed on formal probation.

PROBATION - INFORMAL: supervision of a minor in lieu of filing a petition, for a period not to exceed six months. The supervision is based on a contractual agreement between the probation officer and the minor's parents or guardian provided for under Welfare and Institutions Code Section 654.

PROBATION - NON-WARD: a probation grant without wardship from juvenile court for a specific time not to exceed six months as described under Welfare and Institutions Code Section 725a.

PROSECUTOR: an attorney employed by a governmental agency whose official duty is to initiate and maintain criminal proceedings on behalf of the government against a person accused of committing criminal offenses.

PUNISHMENT: a minimum sentence for a felony conviction is six months in state prison; maximum is death. Misdemeanor convictions are punishable by imprisonment in the county jail for one day to one year, or by a fine, or both.

RATE: the ratio of the number of one specific group to the population.

REFERRAL: in juvenile proceedings, a request (by police, parents, school, etc.), that the probation department or juvenile court take appropriate action concerning a juvenile alleged to have committed a law violation or status offense.

REMAND TO ADULT COURT: a juvenile at least 16 years of age is referred to adult court under provisions of Welfare and Institutions Code Section 707 because he is not "amenable" to the treatment available through the juvenile court.

REMOVAL: a case removed from the active caseload and no longer under the supervision of the probation department, or a case not removed but escalated to a more advanced level of supervision.

REREFERRAL: see Subsequent Referral.

REVOCAATION: cancellation or suspension of parole or probation.

REVOKE: withdraw, repeal, or cancel probation or parole for an adult.

SARB (SCHOOL ATTENDANCE REVIEW BOARD): a school system board which provides a review process outside of and prior to the probation department referral system for juveniles.

SECONDARY GRANT: a subsequent grant of probation in the same court for an adult still on probation for the initial grant. That is, a probation sentence following conviction in a given court on a subsequent offense when the sentence in the same court for the first offense was also probation.

SECURE FACILITY: a facility in which a juvenile is held behind a locked door, gate or fence, or in which some person is responsible for physically preventing the juvenile's escape or departure from the facility.

SENTENCE: the penalty imposed by a court upon a convicted person.

STATE INSTITUTION: a facility for housing defendants that are under the jurisdiction of the state correctional or treatment programs.

STATE SUPERVISION: the state correctional system provides confinement, rehabilitation, and parole services (prison, YA, state hospital) through California Department of Corrections (CDC), California Youth Authority (CYA), California Rehabilitation Center (CRC) and California Department of Mental Health (CDMH).

STATUS OFFENDER: a juvenile who has been adjudicated by a judicial officer of a juvenile court, as having committed a status offense, which is an act or conduct which is an offense only when committed or engaged in by a juvenile.

STATUS OFFENSE: an act or conduct, described by Welfare and Institutions Code Section 601, which is declared by statute to be an offense, but only when committed or engaged in by a juvenile, and which can be adjudicated only by a juvenile court.

STRAIGHT PROBATION: probation granted to adults with no condition or stipulation that the defendant serve time in jail as a condition of probation.

SUBSEQUENT DISPOSITION: a judicial decision or sentence given at the time of a court return.

SUBSEQUENT GRANT: see Secondary Grant.

SUBSEQUENT PETITION: a petition filed on behalf of a juvenile who is already under the jurisdiction of the juvenile court.

SUBSEQUENT REFERRAL: a juvenile who is actively under probation supervision or on parole at the time of referral to a probation department.

SUMMARY SYSTEM: a data collection method based on gross counts as differentiated from one based on an individual incident count.

SUPERIOR COURT: the court of original or trial jurisdiction for felony cases and all juvenile hearings. Also, the first court of appeal for municipal or justice court cases.

SUSTAINED: to affirm or approve, as when an appellate court sustains the decision of a lower court.

SWORN PERSONNEL: a full-time employee of a law enforcement agency who has sworn to carry out law enforcement duties and has full arrest powers.

TERMINATED: completed specified term of probation.

TRANSFER: a disposition which transfers a juvenile to another agency within the county such as a welfare department, a health department, a legal aid society, etc. or referral to any agency outside the county including the probation departments of other counties.

TRIAL: a determination of guilt or innocence by a judge, jury, or by the court on the basis of testimony contained in a transcript. There are three types of trials:

COURT: the decision is rendered by the judge.

JURY: the decision is rendered by a panel of the defendant's peers.

TRANSCRIPT: the decision is rendered by the court on a basis of the testimony contained in the transcript of the preliminary hearing held in lower court.

UNIFORM CRIME REPORTS (UCR): a federal reporting system which provides data on crime based on police statistics submitted by law enforcement agencies in the nation. The Bureau of Criminal Statistics administers and forwards the data for California to the federal program.

VIOLATION: breach or infringement of the terms or conditions of probation.

WARDS: a minor determined by the juvenile court to be in need of court ordered supervision due to the youth's behavior and or actions.

YA - YOUTH AUTHORITY: see California Youth Authority.

OFFENSE DEFINITIONS OF CRIMES REPORTED

FBI CRIME INDEX OFFENSES: "... seven offenses were chosen to serve as an Index for gauging fluctuations in the overall volume and rate of crime. Known jointly as the Crime Index, these offenses included the violent crimes of murder and nonnegligent manslaughter, forcible rape, robbery, aggravated assault and the property crimes of burglary, larceny-theft, and motor vehicle theft. By congressional mandate, arson was added as the eighth Index offense in 1979." These offenses were chosen on the basis of their seriousness, frequency of occurrence, pervasiveness in all geographic areas of the country, and likelihood of being reported to law enforcement. (This definition was taken from "Crime in the United States, 1985.")

LARCENY-THEFT: the unlawful taking, carrying, leading, or riding away of property from the possession or constructive possession of another (except embezzlement, fraud, forgery, and worthless checks).

ARSON: any willful or malicious burning or attempt to burn, with or without intent to defraud, a dwelling house, public building, motor vehicle or aircraft, personal property of another, etc.

NONAGGRAVATED (SIMPLE) ASSAULT: assaults and attempted assaults where no weapon was used and which did not result in serious or aggravated injury to the victim.

CALIFORNIA CRIME INDEX: offenses most likely to be reported to the police by the public. These offenses are willful homicide, forcible rape, robbery, aggravated assault, burglary, and motor vehicle theft, and are reported according to definitions taken from the FBI Uniform Crime Reporting Handbook.

Violent Crimes

Willful Homicide — the willful (nonnegligent) killing of one human being by another. Murder and nonnegligent manslaughter are included.

Forcible Rape — the carnal knowledge of a female forcibly and against her will. Assaults or attempts to commit rape by force or threat of force are included.

Robbery — the taking or attempting to take anything of value from the care, custody, or control of a person or persons by force or threat of force or violence and/or by putting the victim in fear.

Aggravated Assault — an unlawful attack by one person upon another for the purpose of inflicting severe or aggravated bodily injury. This type of assault is usually accompanied by the use of a weapon or by means likely to produce death or great bodily harm.

Property Crimes

Burglary — the unlawful entry of a structure to commit a felony or a theft. Attempted forcible entry is included.

Motor Vehicle Theft — the theft or attempted theft of a motor vehicle.

FELONY-LEVEL ARREST OFFENSES^a

Homicide - 128, 187, 187(a), 189, 192 (except vehicular manslaughter), 192(a), 192(b), 193(a), 193(b), 399

Forcible Rape - 220/261, 220/264.1, 261, 261(1), 261(2), 261(3), 261(4), 261(5), 261(6), 261(7), 262, 262(a), 264.1, 266c, 664/261

Robbery - 211, 211a, 213, 213.5, 214, 664/211

Assault - 69, 71, 76, 76.1, 148.1, 148.1(a), 148.1(b), 148.1(c), 148.1(d), 148.3(b), 148.4(b), 149, 151(a)(2), 203, 204, 217.1(a), 217.1(b), 218, 219, 219.1, 219.2, 220/203, 222, 241.1, 241.4, 242^b, 242/243^b, 243^b, 243(c), 243(d), 243.1, 243.3^b, 243.5^b, 244, 244.5(c), 245(a)(1), 245(a)(2), 245(b), 245(c), 245.2, 245.3, 246, 247, 273a(1), 273d, 273.5, 273.5(a), 347, 368(a), 375(a)^b, 375(d), 401, 405a, 405b, 417(b), 417.1, 417.6, 417.6(a), 417.8, 422, 422(a), 422(b), 422(c), 422(d), 588a^b, 625c, 664/187, 664/189, 4131.5, 4500, 4501, 4501.5, 11413(a), 12301, 12303, 12303.1, 12303.1(a), 12303.1(b), 12303.1(c), 12303.2, 12303.3, 12303.6, 12304^b, 12305, 12308, 12309, 12310(a), 12310(b), 12312, 12355(a), 12355(b), 21464(c) VC, 23110(b) VC, 38318(b) VC, 38318.5(b) VC

Kidnapping - 157, 207, 207(a), 207(b), 208, 209(a), 209(b), 210, 277, 278, 278.5, 278.5(a), 278.5(b), 278.5(c), 280(b), 4503

Burglary - 459, 460, 460.1, 460.2, 461, 461.1, 461.2, 464, 664/459, 664/459(1), 664/459(2), 664/460, 664/460(1), 664/460(2)

Theft - 72, 115(a), 116, 117, 134, 154^b, 155^b, 156, 182.4, 304 HN, 305 HN, 332^b, 334(a)^b, 337.7, 368(c)^b, 424, 424.1, 424.2, 424.3, 424.4, 424.5, 424.6, 424.7, 474, 481, 484^b, 484(a)^b, 484(b)^b, 484b^b, 484c, 485^b, 487, 487a, 487a(a), 487a(b), 487b, 487d, 487e, 487g, 487.1, 487.2, 487.3^c, 489, 495, 496^b, 496a, 496a(a), 496c^b, 496.1, 496.2, 496.5, 497, 499c(b) 499c(b)(1), 499c(b)(2), 499c(b)(3), 499c(b)(4), 499d, 500, 502, 502(b), 502(b)(1), 502(b)(2), 502(c), 502(d), 502.5^b, 503^b, 504^b, 504a^b, 504b^b, 505^b, 506^b, 506b, 507^b, 508^b, 514^b, 528, 529, 529.1, 529.2, 529.3, 530^b, 532^b, 532a^b, 532a(1)^b, 532a(2)^b, 532a(3)^b, 533, 534, 535, 537(a)(2), 537e^b, 537e(a)^b, 538^b, 538.5, 540, 541, 542, 543, 548, 556 IC, 556(a)(1) IC, 556(a)(2) IC, 556(a)(3) IC, 556(b) IC, 560, 560.4, 566, 577, 578, 580, 581, 620, 648^b, 664/487, 666, 1733 IC, 2116 UI, 3531 FC, 4463(a) VC, 4463(a)(1) VC, 7026.10 BP, 10238.3 BP, 10238.6 BP, 10238.6(c) BP, 10752 VC, 10855 VC^b, 10980(b) WI, 10980(c)(2) WI, 11010 BP, 11019 BP, 11022 BP, 11023 BP, 11482.5 WI, 11483 WI, 11483(2) WI, 11483.5 WI, 14014 WI^b, 14107 WI, 17410 WI, 17551 FAC, 18848 FAC^b, 25110 CC, 25401 CC, 25540 CC, 25541 CC, 27443 GC, 29610 EC, 31110 CC, 31201 CC, 31410 CC

Motor Vehicle Theft - 487.3^c, 499b.1(a), 499b.1(b), 664/487.3, 664/10851 VC, 10851(a) VC, 10851(b) VC

Forgery, Checks, Credit Cards - 366, 470, 470a, 470b, 471, 472, 473, 475, 475a, 476, 476a(a), 476a(b)^b, 477, 478, 479, 480, 484e(4), 484f(1), 484f(2), 484g^b, 484g(a)^b, 484g(b)^b, 484h(a)^b, 484h(b)^b, 484i(b), 617, 664/470

Arson - 451(a), 451(b), 451(c), 451(d), 452(a), 452(b), 452(c), 453(a), 453(b), 454, 454(a), 454(b), 455

Other Sex Law Violations

Lewd or Lascivious - 220/288, 266j, 288, 288(a), 288(b)

All Other - 220/286, 220/289, 243.4(a), 243.4(b), 243.4(c), 261.5, 265, 266, 266a, 266b, 266d, 266e, 266f, 266g, 266h, 266i, 267, 285, 286(a), 286(b)(1), 286(b)(2), 286(c), 286(d), 286(e), 286(f), 286(g), 286(h), 288a(a), 288a(b)(1), 288a(b)(2), 288a(c), 288a(d), 288a(e), 288a(f), 288a(g), 288(h), 289(a), 289(b), 289(c), 311.10, 311.10(a), 311.2(a)^b, 311.2(b), 311.2(c)^b, 311.3(a)^b, 311.4(a)^b, 311.4(b), 311.4(c), 311.5^b, 311.7^b, 313.1(a)^b, 313.1(b)^b, 313.1(c)^b, 314.1^b, 647a^b, 664/286(b)(1), 664/286(b)(2), 664/286(c), 664/286(d), 664/286(e)

Drug Law Violations

Narcotics - 11350 HS, 11350(a) HS, 11350(b) HS, 11351 HS, 11352 HS, 11353 HS, 11354(a) HS

Marijuana - 11357(a) HS, 11358 HS, 11359 HS, 11360(a) HS, 11361 HS

Dangerous Drugs - 11140 HS^b, 11353.5 HS, 11375 HS, 11375(a) HS, 11377 HS, 11377(a) HS, 11378 HS, 11378.5 HS, 11379 HS, 11379.5 HS, 11380 HS, 11380(a) HS, 11380.5 HS, 11380.5(a) HS

All Other - 4234 BP, 4390 BP, 11104 HS, 11152 HS, 11153(a) HS, 11154 HS, 11155 HS, 11156 HS, 11173 HS, 11173(a) HS, 11173(b) HS, 11173(c) HS, 11173(d) HS, 11174 HS, 11355 HS, 11363 HS, 11366 HS, 11366.5 HS, 11366.5b HS, 11366.5a HS, 11366.6 HS, 11366.7 HS, 11368 HS, 11371 HS, 11371.1 HS, 11379.6(a) HS, 11382 HS, 11383(a) HS, 11383(b) HS

Weapons - 171b, 171c, 171d, 171d.1, 171d.2, 626.9, 4502, 8101 WI, 12001.5, 12020, 12020(a), 12020(c), 12020(d)(1), 12021, 12021(a), 12021(b), 12021.1, 12021.1(a), 12025^b, 12025(a)^b, 12025(b)^b, 12090, 12091, 12220, 12320, 12321, 12403.7(a)(8), 12422, 12520, 12560

Driving Under the Influence - 655(c) HN, 23153 VC, 23153(a) VC, 23153(b) VC

Hit-and-Run - 20001 VC

Escape - 107, 109, 110, 1026.4(a), 1370.5, 1768.7(a) WI, 2042, 3002 WI, 4011.7^b, 4530(a), 4530(b), 4530(c), 4532, 4532(a), 4532(b), 4533, 4534, 4535, 4536(a), 4550.1, 4550.2, 6133, 7326 WI

Bookmaking - 337a.1, 337a.2, 337a.3, 337a.4, 337a.5, 337a.6, 337i

All Other Felony Offenses

^a Penal Code Sections unless indicated as follows: BP-Business and Professions Code; CC-Corporations Code; EC-Elections Code; FAC-Food and Agriculture Code; GC-Government Code; HN-Harbors and Navigation Code; HS-Health and Safety Code; UI-Unemployment Insurance Code; VC-Vehicle Code; WI-Welfare and Institutions Code. All other felony offenses also include sections in the Financial Code, Fish and Game Code, and Revenue and Taxation Code.

^b Code section can also be shown as a misdemeanor.

^c Code section can be shown as theft or theft of a motor vehicle.

MISDEMEANOR-LEVEL ARREST OFFENSES^a

Assault and Battery - 140, 147, 148, 148.2, 148.2.1, 148.2.2, 148.2.3, 148.2.4, 148.3(a), 148.4(a), 151(a)(1), 240, 240/241; 240/242, 241(a), 241(b), 241.2, 241.2(a), 241.3, 241/243, 242^b, 242/243^b, 243^b, 243(a), 243(b), 243.2, 243.2(a), 243.3^b, 243.5^b, 243.5(a)(1), 243.5(a)(2), 243.6, 244.5(b), 273a(2), 361, 368(b), 374c, 375(a)^b, 375(b), 375(c), 383, 402a, 417(a), 417(a)(1), 417(a)(2), 2652, 2653, 2654, 12304^b, 12680 HS

Petty Theft - 368(c)^b, 484^b, 484(a)^b, 484(b)^b, 484b^b, 485^b, 487c, 487j, 488, 490, 490.5, 490.5(a), 496c^b, 502.5^b, 530^b, 532^b, 538^b, 565, 22435.2 BP, 22435.11 BP, 22435.12 BP

Checks and Credit Cards - 476a(b)^b, 484e(1), 484e(2), 484e(3), 484g^b, 484g(a)^b, 484g(b)^b, 484h(a)^b, 484h(b)^b, 484i(a), 484j

Drug Law Violations - 377, 647(f)^c, 2241 BP, 2762(e) BP, 2878.5(a), 4143 BP, 4149 BP, 4150 BP, 4151 BP, 4211 BP, 4227 BP, 4227(a) BP, 4230 BP, 4390.1 BP, 4390.5 BP, 11140 HS^b, 11150 HS, 11157 HS, 11159 HS, 11161 HS, 11162 HS, 11166 HS, 11170 HS, 11171 HS, 11172 HS, 11175 HS, 11190 HS, 11216 HS, 11217 HS, 11357(b) HS, 11357(c) HS, 11357(d) HS, 11357(e) HS, 11360(b) HS, 11364 HS, 11364.7 HS, 11364.7(a) HS, 11364.7(b) HS, 11365 HS, 11550 HS, 11550(a) HS, 11550(b) HS, 11590 HS, 11594 HS, 11680 HS, 11681 HS, 23222(b) VC

Indecent Exposure - 314.1^b, 314.2

Annoying Children - 647a^b

Obscene Matter - 311, 311(a), 311.2(a)^b, 311.2(c)^b, 311.3(a)^b, 311.4(a)^b, 311.5^b, 311.6, 311.7^b, 313.1(a)^b, 313.1(b)^b, 313.1(c)^b

Lewd Conduct - 647(a), 647(d), 647(h), 653g

Prostitution - 315, 316, 647(b), 25601 BP

Drunk - 647(f)^c

Disorderly Conduct - 647, 647(c), 647(e), 647(g), 647(i), 647b

Disturbing the Peace - 171f, 171f.2, 302, 403, 404, 404(a), 404.6, 405, 406, 407, 408, 409, 415, 415(1), 415(1.3), 415(3), 415.5, 415.5(a), 415.5(a)(1), 415.5(a)(2), 415.5(a)(3), 416, 602.10, 626.2, 626.4(d), 626.6, 626.8, 626.8(a), 626.8(a)(1), 626.8(a)(2), 626.8(a)(3), 650, 653m, 653m(a), 653m(b), 727, 9051 GC, 11460

Driving Under the Influence - 655(b) HN, 23152(a) VC, 23152(b) VC, 23152(c) VC

Hit-and-Run - 20002 VC, 20002(a) VC, 20002(b) VC

Selected Traffic Violations - 23103 VC, 23104(a) VC, 23109(a) VC, 23109(b) VC, 23109(c) VC, 38316 VC, 38317 VC, 40508 VC, 40508(a) VC, 40508(b) VC, 40519 VC, 42005 VC

Gambling - 318, 319, 320, 321, 322, 323, 324, 326, 327, 330, 330a, 330b, 330b(1), 330c, 330.1, 330.4, 331, 335, 336, 337s(b), 337.1, 337.2, 337.5, 11300

Nonsupport - 270^b, 270a, 270c

Weapons - 467, 468, 626.10, 626.10(a), 653k, 12020.5, 12021.5, 12021.5(a), 12021.5(b), 12025^b, 12025(a)^b, 12025(b)^b, 12031, 12031(a), 12034, 12070, 12072, 12076, 12093, 12094, 12403.7, 12403.7(a), 12403.8(a), 12403.8(b), 12420, 12450, 12550, 12551, 12552, 12582, 12651(a), 12651(b), 12651(c), 12651(d)

Glue Sniffing - 380(a), 381, 381(a), 381(b), 381b, 647(f)^c

Malicious Mischief - 555.1, 587a, 588b, 590, 592, 594, 594(a)^b, 594(a)(1), 594(a)(2), 594(a)(3), 594(b)(2), 603, 604, 605, 605.1, 605.2, 605.3, 606^b, 607, 615, 616, 618, 622, 622 1/2, 623(a), 623(a)(1), 623(a)(2), 623(a)(3), 623(a)(4), 623(a)(5), 623(a)(6), 625b(a), 10750 VC, 10750(a) VC, 10851.5 VC, 10852 VC, 10853 VC, 10854 VC, 23110(a) VC, 38318(a) VC

Liquor Law Violations - 172a, 172b.1, 172d.1, 172g.1, 172l, 303, 303a, 307, 347b, 397, 398, 3356 HS, 11200, 23220 VC, 23222(a) VC, 23300 BP, 23301 BP, 25351 BP, 25602 BP, 25602(a) BP, 25604 BP, 25606 BP, 25607 BP, 25608 BP, 25609 BP, 25617 BP, 25620 BP, 25631 BP, 25632 BP, 25657(a) BP, 25657(b) BP, 25658 BP, 25658(a) BP, 25658(b) BP, 25658(c) BP, 25660.5 BP, 25661 BP, 25662 BP, 25663 BP, 25664 BP, 25665 BP

All Other Misdemeanor Offenses

^a Penal Code sections unless indicated as follows: BP-Business and Professions Code; EC-Education Code; GC-Government Code; HS-Health and Safety Code; VC-Vehicle Code. All other misdemeanor offenses also include: California Administrative Code; City or County Ordinance; Civil Procedure Code; Elections Code; Fish and Game Code; Food and Agriculture Code; Harbors and Navigation Code; Labor Code; Military and Veterans Code; Parks and Recreation Code; Public Utility Code; Revenue and Taxation Code; Unemployment Insurance Code; Welfare and Institutions Code.

^b Code section can also be shown as a felony (e.g., with prior).

^c Code section may include those found in any public place under the influence of intoxicating liquor, or any drug, toluene, any substance defined as a poison in Schedule D of Section 4160 BP, or any combination of the above.