

107692

1984 ANNUAL REPORT



Or Sent
2-12-88

107692

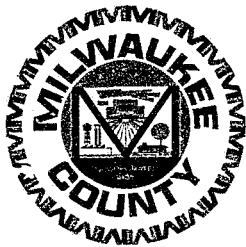
**U.S. Department of Justice
National Institute of Justice**

This document has been reproduced exactly as received from the person or organization originating it. Points of view or opinions stated in this document are those of the authors and do not necessarily represent the official position or policies of the National Institute of Justice.

Permission to reproduce this copyrighted material has been granted by
Milwaukee County Sheriff
Department

to the National Criminal Justice Reference Service (NCJRS).

Further reproduction outside of the NCJRS system requires permission of the copyright owner.



OFFICE OF THE SHERIFF

Milwaukee County

RICHARD E. ARTISON • Sheriff

107692

May 1, 1985

The Honorable
County Board of Supervisors
Court House
Milwaukee, Wisconsin

Ladies and Gentlemen:

The publishing of an annual report affords the Milwaukee County Sheriff's Department the opportunity to present to your Honorable Body, as well as the citizens of Milwaukee County with an accounting of our past year's activities.

It is my pleasure to show you what the Milwaukee County Sheriff's Department has accomplished during the 1984 fiscal year.

On behalf of the Milwaukee County Sheriff's Department I would like to take this opportunity to thank you the County Board, and the citizens of our community for your continued support. Your cooperation in regards to our new programs and requests in providing the citizens with the finest and most professional law enforcement is hereby gratefully acknowledged and sincerely appreciated.

I would also like to take this occasion to publicly praise all the Department personnel for their excellent cooperation and support, making this one of the finest law enforcement agencies in the country.

Respectfully submitted,

A handwritten signature in cursive script that reads "Richard E. Artison".

RICHARD E. ARTISON, SHERIFF
Milwaukee County, Wisconsin

NCJRS

NOV 3 1987

ACQUISITIONS

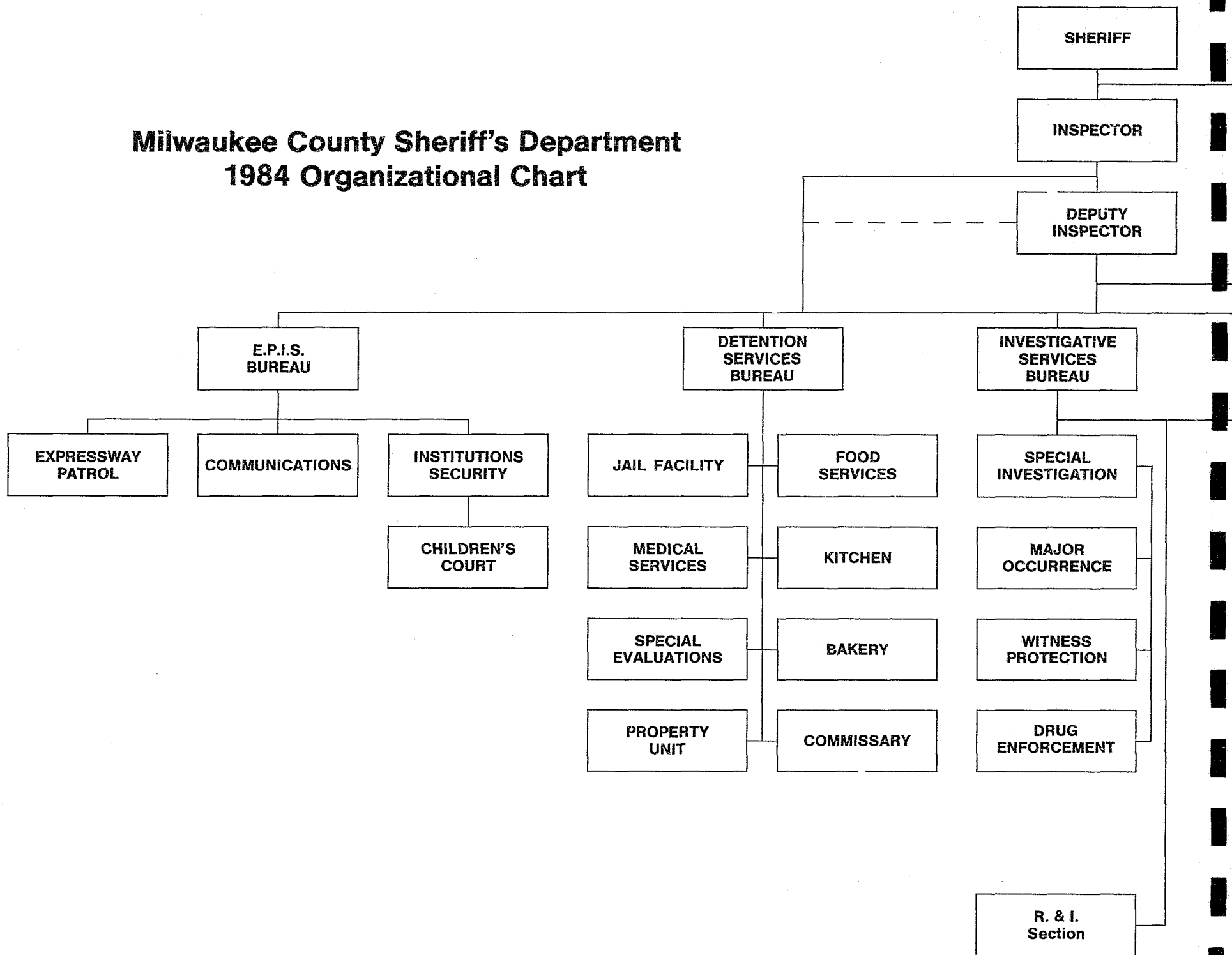


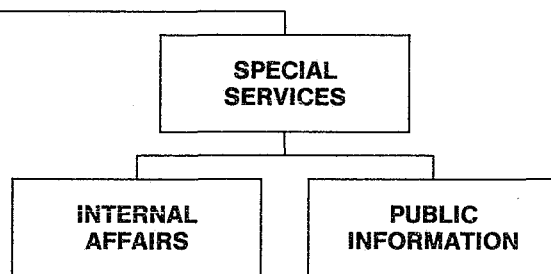
TABLE OF CONTENTS

	Page		Page
Sheriff's Address	1	Special Service Units:	
Table of Contents	3	S.W.A.T. (Special Weapons and Tactics)	34
Organizational Charts	4	Scuba	34
Personnel Changes and Assignments	6	Explosive Ordnance Disposal	35
Administration	8	Mounted Patrol	
Administration (Photo Page)	10	(Historical Review)	36
Detention Bureau	12	(Photo Page)	37
Photo Page	14	Training Academy	38
Investigative Services:		Recruit Class XXVIII (Photo Page)	39
General Investigations	16	Food Services:	
Special Investigations	17	Sheriff's Food Service Center	40
Drug Enforcement	18	Sheriff's Bakery	41
(Photo Page)	19	Looking Ahead	42
Records and Identification	20	New Programs and Ideas:	
Sheriff's Swearing-In Ceremony (Photo Page)	21	Department Reorganization	43
Security/Process Bureau:		Internal Affairs	43
Process/Courts	22	Officer's Uniforms	43
Transit/Parks Security	23	Canines	44
Mounted Patrol Unit	23	(Photo Page)	45
Welfare Security Unit	23	Night Watch Command	46
Water Safety Patrol	23	Promotions and Retirements	47
Stadium Security	24	Special Events:	
Airport Security	25	Eagles Club Award Recipients	48
Community Relations:		Eagles Club Award Recipients (Photo Page)	49
"Kids Fest"	26	Memorial	51
Sheriff Artison/United Way Campaign	27		
"CAP" Community Against Pushers	28		
Marine Corp. Presentation	29		
E.P.I.S. Bureau: (Expressway/Patrol Institutions Sec.)			
Expressway Patrol	30		
Institutions Security	32		
Communications	33		

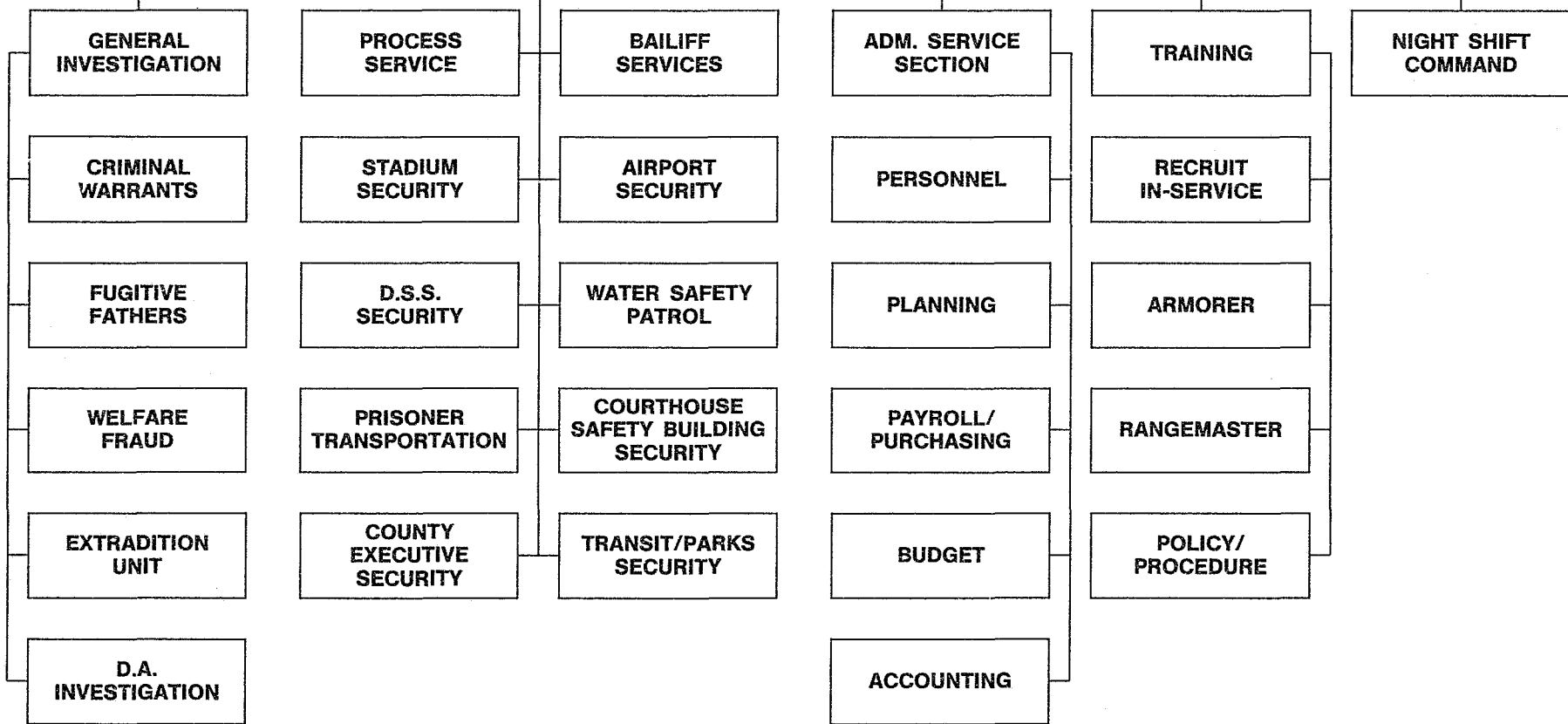
MILWAUKEE COUNTY SHERIFF'S DEPARTMENT 1984 ANNUAL REPORT

Milwaukee County Sheriff's Department 1984 Organizational Chart





**SECURITY/
PROCESS
BUREAU**



Changes

Clerical and Technicians

17-Budget Creations
 44-Recruited
 9-Resignations
 6-Transfers Out
 6-Retirement
 3-Promotions
 0-Terminated during Probation
 0-Voluntary Demotion
 4-Reclass
 0-Layoffs
 0-Recalls from Layoff
 3-Deceased

Sworn Personnel

0-Abolishments
 2-Budget Creations
 3-Resignations
 6-Retirements
 19-Promotions
 1-Demotion
 1-Voluntary Demotion
 0-Transfer
 0-Deceased
 8-Terminated
 0-Reclassifications
 29-Recruited

Personnel

1-Sheriff
 1-Deputy Sheriff Inspector
 1-Deputy Sheriff Deputy Inspector
 4-Deputy Sheriff Captain
 12-Deputy Sheriff Lieutenant
 42-Deputy Sheriff Sergeant
 1-Communications Supervisor
 1-Identification Supervisor
 64-Deputy Sheriff II's
 303-Deputy Sheriff I's
 163-Technicians and Clerical

Department Personnel Assignments

Total personnel	593
Sworn personnel	430
Technical and Clerical	163
Sworn Personnel:	
Sheriff	1
Inspector	1
Deputy Inspector	1
Captains	4
Lieutenants	12
Sergeants	42
Deputy Sheriff II	64
Deputy Sheriff I	303
Communications Supervisor	1
Identification Bureau Supervisor	1
Total	430

Administration Bureau

Sheriff	1
Inspector	1
Deputy Inspector	1
Lieutenants	3
Technical/Clerical	14
Total	20

Training Bureau

Lieutenant	1
Sergeant	1
Technical/Clerical	1
Total	3

Detention Bureau

Captain	1
Jail	
Lieutenant	1
Sergeants	7
Deputy Sheriff II	3
Deputy Sheriff I	101
Technical/Clerical	11
Total	124

County Commissary

Technical/Clerical	1
Total	1

Bakery

Technical/Clerical	8
Total	8

Kitchen

Technical/Clerical	36
Total	36

Special Evaluations

Technical/Clerical	5
Total	5

E.P.I.S. BUREAU

Captain	1
---------------	---

Expressway Patrol

Lieutenant	1
Sergeants	6
Deputy Sheriff I	58
Technical/Clerical	<u>4</u>
Total	70

Communications Bureau

Communications Supervisor	1
Sergeants	4
Technical/Clerical	<u>14</u>
Total	19

Institutions Security

Lieutenant	1
Sergeants	4
Deputy Sheriff I	14
Technical/Clerical	<u>40</u>
Total	59

SECURITY/PROCESS BUREAU

Captain	1
---------------	---

Process/Bailiff Services

Lieutenant	2
Sergeants	5
Deputy Sheriff II	8
Deputy Sheriff I	85
Technical/Clerical	<u>6</u>
Total	107

Airport Security

Lieutenant	1
Sergeants	5
Deputy Sheriff I	23
Technical/Clerical	<u>2</u>
Total	31

Courthouse Security

Deputy Sheriff I	<u>1</u>
Total	1

Transit/Parks Security

Sergeants	2
Deputy Sheriff I	12
Technical/Clerical	<u>1</u>
Total	15

Welfare Security

Deputy Sheriff I	<u>7</u>
Total	7

County Executive Security

Sergeant	1
Deputy Sheriff I	<u>1</u>
Total	2

INVESTIGATIVE SERVICES

Captain	1
---------------	---

General Investigations

Lieutenant	1
Sergeants	4
Deputy Sheriff II	46
Deputy Sheriff I	1
Technical/Clerical	<u>13</u>
Total	66

Special Investigations

Lieutenant	1
Sergeants	3
Deputy Sheriff II	7
Technical/Clerical	<u>1</u>
Total	12

Records and Identification

Supervisor	1
Technical/Clerical	<u>6</u>
Total	7



Richard E. Artison
Sheriff



Daniel J. Jarecki
Inspector



Ronald A. Bollhoffer
Deputy Inspector

Milwaukee County Sheriff's Department Administration

ELECTORATE

COMMAND STAFF
Sheriff

1 Deputy Sheriff Inspector
1 Deputy Sheriff Deputy
Inspector

The Sheriff's Department Administrative Services section is responsible for department wide management functions such as planning, personnel, budget, accounting, payroll, purchasing and liaison with county staff departments.

WEEKLY STAFF MEETINGS

Each Tuesday a staff meeting is held with bureau Captains to discuss issues and problems. Information is exchanged to avoid potential problems, and to coordinate activities. Minutes from the weekly staff meetings are distributed to all bureaus and posted for the information of employees.

TRANSIT AND PARKS SECURITY

In 1984 the County Board approved changing the Transit and Parks Security program into a full time operation. This resulted in 14 officers and one clerical being assigned, and resulted in a more cost effective utilization of personnel resources.

LABOR DISTRIBUTION

The Sheriff's Department has 28 separately budgeted programs. To enable accurate cross-charging, over 40 different programs and activities have to be recorded. In January the Department initiated a manual labor distribution system to more accurately capture program and activity hours, control budget expenditures and permit improved analysis of personnel resource utilization. The labor distribution forms are now being completed on a timely basis and the system has been partially automated on word processing (DOSF). The labor distribution system will highlight the diverse activities performed by deputies on a daily basis. The most recent performance audit recommended the implementation of an automated labor distribution system.

SHERIFF'S SALES

There were 654 Sheriff's sales in 1982 requiring approximately 60 manhours weekly. Transition occurred in 1983 with a change in personnel and automation. Now with implementation complete only 20 hours are spent weekly in processing an estimated 914 sales in 1984. The additional hours now made available have been reallocated through the implementation of the labor distribution system.

FIREARMS POLICY

A new firearm policy was established in 1984. Every officer now must qualify with the weapon they use for duty. A certified armorer is present during qualifications. Each qualification is documented, and each weapon inspected. The new policy is intended to ensure that all officers are properly prepared to use a weapon and to protect the county against liability.

ADMINISTRATION

RECEIPTS	1982	1983	1984	REVENUE	1982	1983	1984
Bakery	\$ —	\$ 3,359.67	\$ 22,538.96	1136 Interest—Personal			
Stipulations	178,544.60	169,550.60	165,284.70	Property Tax	\$ 1,683.52	\$ 2,362.50	\$ 632.81
Sundry Revenue	12,194.04	12,605.67	14,186.99	1310 Fines and State Forfeitures	184,807.09	215,805.88	106,639.96
Service Fee	30,323.81	27,091.22	35,330.37	1340 County Forfeitures	657,595.26	694,783.82	705,982.46
Process Service Fees	586,162.70	664,269.88	727,686.66	1340 Parking Stipulation	89,545.95	102,384.60	60,764.28
Miscellaneous Revenue	15,511.53	19,244.05	13,536.47	1410 Interest on Investments		8,621.76	9,815.01
Personal Property Taxes	34,668.10	46,800.81	12,571.91	2211 County Trunk Maintenance	694,338.29	1,192,258.73	1,228,026.50
Parking Stipulations	40,105.75	54,727.20	13,985.60	2286 St. Grt. — Exp. Patrol	600,750.00	487,800.00	502,450.00
Traffic Forfeitures	176,506.06	188,414.76	180,492.53	2287 St. Grt. — Law Enf. Trng.	36,325.11	56,134.55	105,194.93
Cash Overage/(shortage)	104.74	(259.02)	(312.35)	2299 Other St. Grts. & Reimb.	94,365.34	227,336.12	318,317.94
Revenue from Other Govts	8,000.00	5,248.00	—	2312 Witness Support	107,597.87	111,162.00	123,490.61
Prisoner's Board — General	6,596.67	6,555.00	8,039.51	2399 Other Fed. Grt. & Reimb.	82,573.92	33,917.00	—
Trust Funds	1,567,846.96	1,851,862.00	2,055,203.39	2499 Revenue from Other			
Airport Parking Stipulations	49,435.20	49,826.50	30,979.79	Gov't Units	1,570.50	—	—
Sale of Unclaimed Property	2,039.50	973.55	300.00	3153 Sheriff's Witness Fees	12,095.00	2,860.50	3,536.00
Meals	811.76	5,188.62	675.92	3189 Sheriff's Fee Recovery	9,649.72	10,749.77	13,299.52
Accident Reports	25,702.22	26,228.39	29,888.03	3360 Copy & Dupl. Fees	25,698.02	26,220.19	29,888.03
Used Uniform Sales	666.87	1,234.92	2,413.51	3514 Comm. on Executions	42,231.84	69,485.59	67,958.49
Extradition Recovery	—	3,549.98	—	3515 Pers. Prop. Tax Coll. Fee	1,883.12	1,844.35	775.40
Bomb Squad Disposal	261.19	782.91	1,602.89	3516 Process Service	553,205.02	568,613.14	587,026.62
Restitution	5,014.67	4,901.71	7,147.89	3599 Other Service Charges	14,668.01	12,406.38	26,017.58
Other State Reimbursement	101,928.30	170,777.64	114,974.07	4099 Other Co. Concessions	68,049.12	61,294.27	71,062.96
Mass Transit Security	52,124.52	224,274.81	308,018.62	4903 Sale of Uncl. Peoperty	2,039.50	353.75	300.00
Gym User Fee	9,575.88	10,657.15	11,294.44	4912 Meals — Rev. fr. Empl.	2,311.79	3,453.87	2,387.57
Stadium Security	—	2,475.00	9,662.50	4921 Prisoners Bd — General	6,596.67	6,555.00	8,039.51
Institutions Parking Stipulations	—	68,994.82	31,563.00	4999 Other Miscellaneous			
	<u>\$2,904,125.07</u>	<u>\$3,619,335.84</u>	<u>\$3,793,016.40</u>	Revenue	33,598.79	31,547.56	40,410.31
				8498 (Cash over — short)	115.76	(450.72)	(360.35)
					<u>\$3,323,295.21</u>	<u>\$3,927,500.61</u>	<u>\$4,011,656.14</u>
DISBURSEMENTS				MISCELLANEOUS			
Airport Parking Stipulations	1,530.57	1,141.00	967.50	Budget Appropriations	\$16,993,128.00	\$17,818,550.00	\$17,920,861.00
Stipulations	178,536.60	169,550.60	164,036.95	Budget Expenditures	16,221,691.00	16,752,374.00	17,015,570.00
Parking Stipulations	463.52	505.10	253.00	Sheriff Sales	669.00	949.00	1,047.00
Traffic Forfeitures	176,375.56	188,676.36	179,590.53	Sheriff Sales Volume	25,107,204.03	44,681,595.45	50,323,539.31
Process Fees & Other Refds.	96,481.25	150,469.89	202,752.81	Sheriff Sales Revenue	27,428.60	46,173.00	59,093.31
Trust Funds	1,452,968.51	1,714,464.70	2,019,873.52				
To Treasurer	963,197.84	1,297,762.88	1,278,622.72				
	<u>\$2,869,553.85</u>	<u>\$3,522,570.53</u>	<u>\$3,846,097.03</u>				

Cash from Sales Reflected Revenue Portion Only

*Change in Accounting Procedures

Sheriff's Department Merit Award Recipients

On November 21, 1984, the Merit Award Committee approved awards for four employees of the Milwaukee County Sheriff's Department:

Sgt. Robert McDermott — awarded \$2,000 and named Milwaukee County's Suggester of the Year. His suggestion to relocate the jail monitors frees up five positions for reallocation of staff resources. The Committee recognizes this as a savings of \$152,120.

Mr. Jon Priebe — awarded \$1,735 for his 1981 suggestion to keep trust money in an interest bearing checking account. This resulted in \$8,675 additional revenue for one year alone.

Ms. Theresa Kroll — awarded \$2,000 for her 1984 suggestion to convert all Sheriff's Sale forms to word processing and eliminate preprinted forms and typing and production time. This resulted in an annual savings of \$11,224.

Dep. Thomas Johnson — awarded \$200 for his 1983 suggestion to reduce use of forms in the Process area.

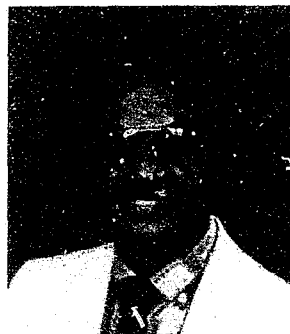
Administration Bureau Personnel



GEORGE U. BROTZ

(Planning & Research)

Responsible for directing the activities of the Administrative Services section, including personnel, accounting, payroll/purchasing, budget and planning.



PRENTIS L. NORWOOD

(Administrative Assistant III)

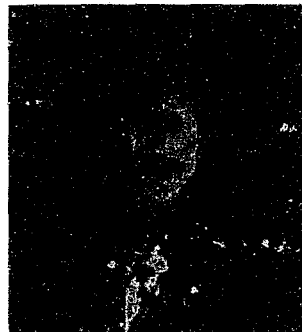
Supervises the office staff and the activities of the Administrative Services section, and coordinates all personnel and administrative functions for the department.



JON C. PRIEBE

(Accountant III)

Organizes, coordinates and directs the accounting functions for the entire department, and prepares and monitors the departments entire budget.



THERESA F. KROLL

(Administrative Assistant I)

Responsible for all facets of the Sheriff's sales, also develops, coordinates, monitors and maintains programs and instructs department employees in data processing such as SAS and CA.



JACQUELINE M. HOTZFELD

(Clerk Stenographer IV)

Serves as secretary to the Sheriff's top Administration staff.



ANTOINETTE M. CARINI

(Clerk Typist IV)

Serves as secretary to the Sheriff's top Administration staff, and prepares all personnel forms, and serves as a back-up for the Sheriff's sales and cashier.



DANIEL P. EMMER

(Clerk Typist IV)

Prepares the department payroll, issues purchase orders and stores requisitions.

Administration Bureau Personnel



EVELYN I. SHEEHAN

(Clerk Typist III)

Assists in preparing the department payroll, issues purchase orders and stores requisitions.



CARROL J. RUECKERT

(Account Clerk II)

Reconciles prisoner fund transactions as well as other trust accounts, prepares weekly cash reports to the Treasurer and assists the Accountant III, and the payroll section.



THOMAS C. BRAUN

(Account Clerk I)

Reconciles the jail cash receipts, prepares bail transfers to the Clerk of Courts, assists the Account Clerk II in the preparation of weekly cash reports and provides back-up for Account Clerk II and Clerk Typist II.



MARY JANE KORNBUM

(Clerk Typist II)

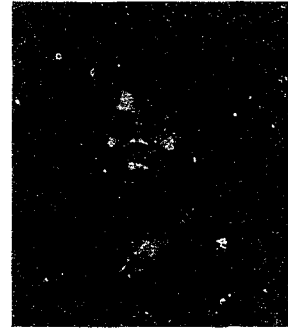
Prepares the checks disbursing funds from the Sheriff's trust accounts, and makes refunds and invoices for services rendered.



NANCY J. MacFARLANE

(Cashier II)

Processes all funds received by the department, completes bank deposits, operates and balances cash registers, and supervises Cashier I and Clerk III.



THERESA GRIFFIN-ROBINSON

(Cashier I)

Balances department cash box, assists Cashier II, and dispenses information to attorneys and the public.



JEAN L. OBRY

(Clerk III)

Assists the cashiers in review of all legal papers received by mail, records all prisoner trust fund transactions and provides back-up for the Cashier II and I.

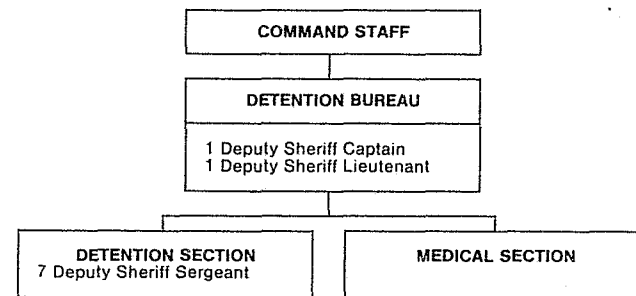


Bernard Tesmer
Captain



Richard Cox
Lieutenant

Milwaukee County Sheriff's Department Detention Bureau



The Sheriff's Department Detention Bureau is the department's largest bureau when budgetary expenditures are concerned as the Detention Bureau's \$8.1 million budget amounts to approximately 43% of the entire Sheriff Department's annual budget. The Detention Bureau has a total of 169 personnel to administer and operate the County Jail, which had an average daily custody count in 1984 of 350 inmates.

The County Jail had a record number of bookings in 1984, as 25,186 prisoners were booked in the County Jail. The average number of inmates in custody is 350, with the highest number ever in custody on any given day being 425, and the lowest being 283. All of the inmates housed in the County Jail are pretrial detainees with 75% of the inmates being felons and 25% being misdemeanants. 75% of the inmates in custody are minorities (Black, Hispanic, American Indian), and 25% are majorities. The average length of stay for felons is sixty days, and for misdemeanants is thirteen days.

In 1984, the Bail Evaluation Unit, which was under the direction of the County Jail and had a total of five employees, was phased out and eliminated as of December 31, 1984. This unit was replaced by a new Intake Screening Center which will operate in coordination with the District Attorney's Office, the Chief Judge and courts, and the Sheriff's Department, with hopes of reducing the number of inmates booked into the County Jail as defendants will be screened prior to booking in the County Jail. The Bail Evaluation Unit had been interviewing misdemeanants and felons after they had been booked in the County Jail. Consequently the new concept of the Intake Screening Center will hopefully help reduce the total number of bookings and hopefully relieve some of the tensions that occur in the County Jail Booking Room.

Although the jail is an old facility, the jail command staff goes to great length to keep the jail as clean as possible. A daily tier inspection system has been instituted in which inmates must clean their respective living area and have it in good condition prior to any daily privileges, such as television and visiting, to be made available to them. Along with the above stated procedures, the Central Services maintenance workers perform a fine job in helping keep this declining facility clean.

The Department also wants to commend the Central Services for the continual assistance to the command staff of the jail with the almost daily repairs that need to be made to the electrical system, plumbing system, heating system, ventilation system, and other general maintenance duties.

Improvements that occurred in 1984 in the County Jail are the following:

1. An improved ventilation system in the Main Jail.
2. New stainless steel showers were put in place on all tiers in the Main Jail.
3. The Jail Medical Section was relocated to a more suitable location.
4. The Sergeants Office and roll call room was moved to a larger area.
5. Five attorney cubicles for contact visits with inmates were installed.
6. The cash register and proper accounting system became operational in Room 310 for all the bail monies taken in by the jail.
7. Meals of the inmates' were changed to better coordinate their meal times with the deputies' shift times and the inmates' court times. By feeding the evening meal at 5:30 instead of 4:00 P.M., the inmates, of course, ended up with less leisure time in the evening and consequently tensions were reduced and less problems occurred in the evening leisure hours within the jail.
8. Family visiting was dramatically increased allowing visitors to come every day of the week in the afternoon or evening and allowing each inmate 4 separate one-half hour visits per week.

The County Government has been moving ahead at the initial request of Sheriff Artison into providing a new Milwaukee County Jail. County Supervisor Tom Meaux is the Chairman of the County Board Jail Study Committee that is seriously looking at the many options that are open to County Government regarding the County Jail.

DETENTION BUREAU

COUNTY JAIL	1982	1983	1984
Bookings	21,428	20,946	25,186
Adult Males	19,256	18,733	22,487
Adult Females	2,061	2,130	2,612
Juvenile Males	104	77	84
Juvenile Females	7	6	3
Daily Average Population			
Jurisdiction	351	374	430
Physical	349	372	425
Medical Services			
Medical Visits	77,300	70,526	87,331
Requests for Medical Services	4,991	5,258	6,254
Hospital Referrals -			
Outpatient Clinics	453	415	486
Inpatient Departments	12	20	17
Telephone Consultations -			
Nonduty Hours	58	38	79
Psychiatric Evaluations	229	279	311
Drug Addicts Treated	66	74	112
Hospital Conveyances			
Prisoners Conveyed	455	417	487
Deputies Assigned	587	483	603
Deputy Hours Consumed	1,538	1,212	1,272
Hospital Guard			
Prisoners	12	20	17
Deputies Assigned	156	467	204
Deputy Hours Consumed	1,245	3,736	1,629

Number of Forensic Exams at Jail: 161

Number of Lineups in Room 308,
requiring Jail assistance: 92

Others

Number of Special Details: 20 (6 Inmate Marriages)
(2 Critically Ill Hospital Runs)
(4 Funeral Runs)
(6 Medical Runs)
(1 Polygraph Exam)
(1 Psychological Test)

61.3 Man Hours at Straight Time Rate \$20.2024 Hourly - \$1,238.42

33.5 Man Hours at Overtime Rate 24.6081 Hourly - 824.37

Spanish Interpretation By Stores Clerk

10 Incidents in 1984 - 4 Hours at \$10.98 Hourly - \$ 43.92

**Detention Bureau Clerk IV Assisted Front Office Clerk IV in
Preparing The Departmental Inventory.**

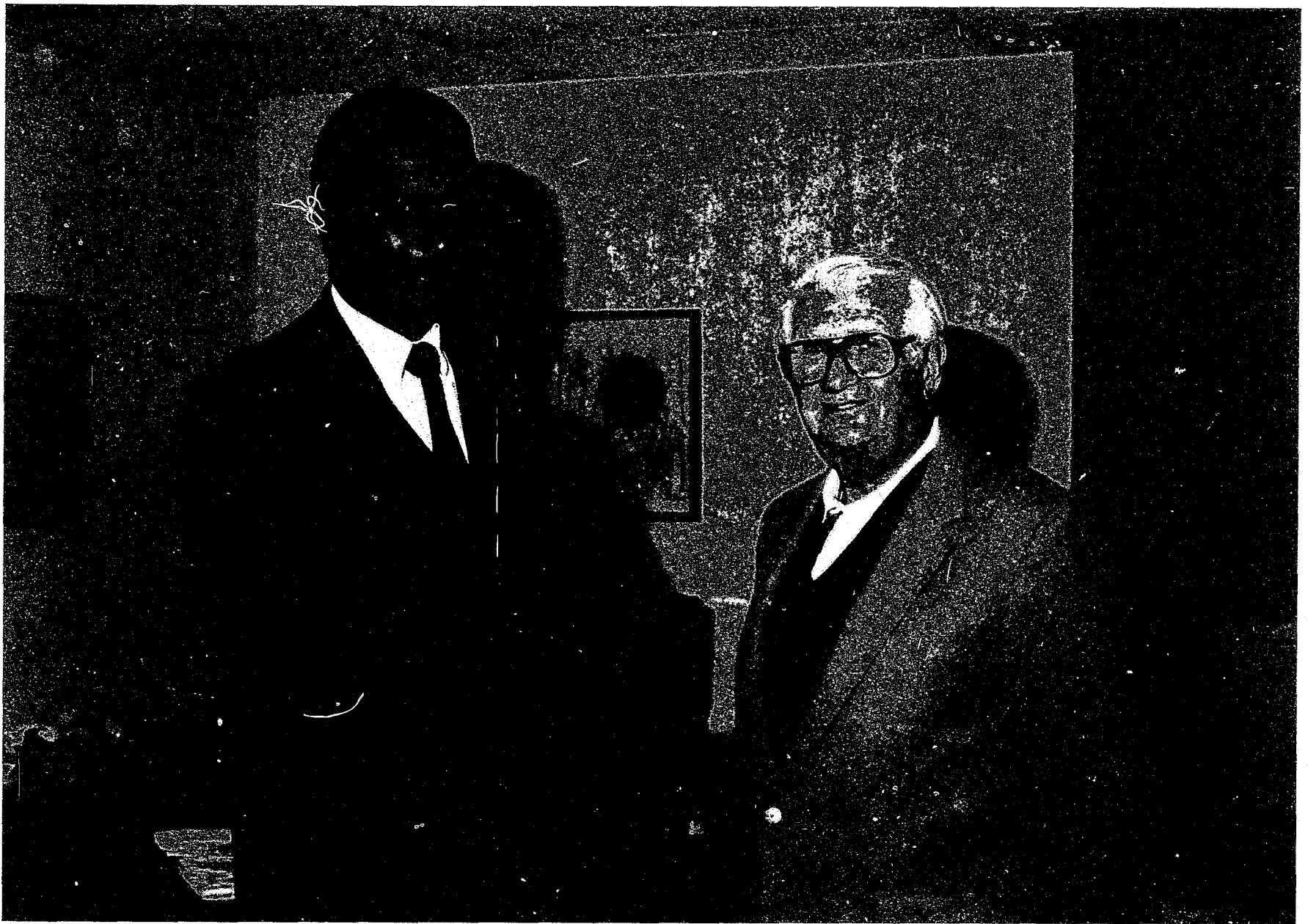
12 Hours at \$8.7806 Hourly - \$ 105.37

Booked Into County Jail

	1983	1984	Change	Percent Change
Adult Males	18,733	22,487	+3,754	+20.1
Adult Females	2,130	2,612	+ 482	+22.6
Juvenile Males	77	84	+ 7	+ 9.0
Juvenile Females	6	3	- 3	-50.0
Totals	<u>20,946</u>	<u>25,186</u>	<u>+4,240</u>	<u>+20.2</u>

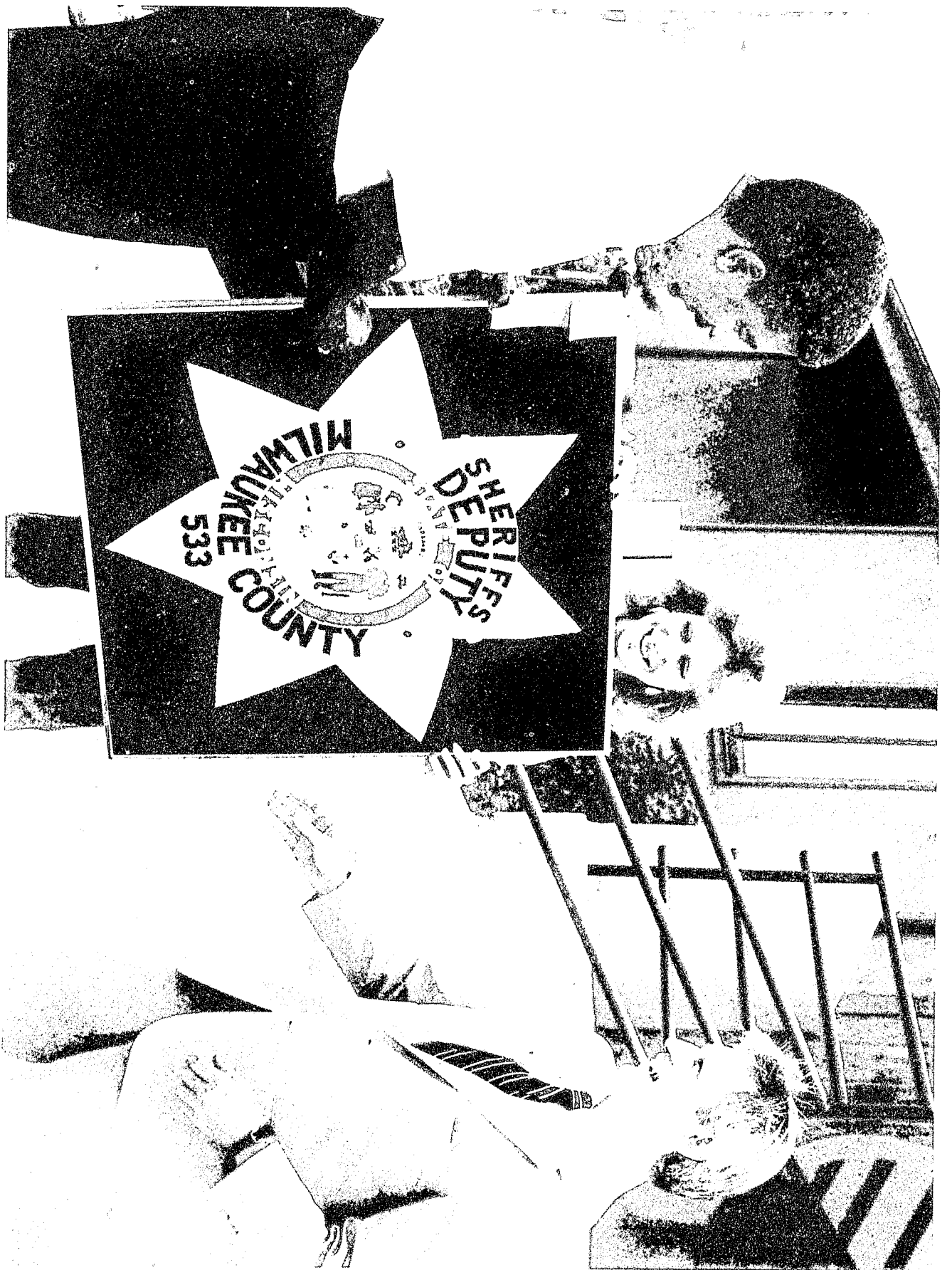
Daily Average in Custody

	1982	1983	1984
Felons	261.512	266.241	265.789
Misdemeanors	87.760	64.791	83.990



The Past Meets The Present . . .

In the fall of 1984, retired Sheriff Max Barczak (right) 1953-1957, stopped in while visiting Milwaukee to meet the new Sheriff, Richard E. Artison (left). Retired Sheriff Barczak is the father of Gary Barczak, presently the Clerk of the Circuit Courts for Milwaukee County.



While Governor Anthony Earl looks on, Sheriff Richard E. Arison (left) accepts a Mill Hanging Needle Point entry from Mrs. Lynn M. Mahor. The project by Mrs. Mahor took 1st place at the 1964 Wisconsin State Fair.



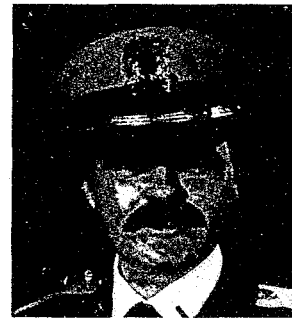
Richard Brefka
Captain



Donald Rieck
Lieutenant
(General Investigations)



James Krause
Lieutenant
(Special Investigations)



Leverett Baldwin
Supervisor
(Record Identification)

General Investigations

General Investigative Services operates as an enforcement arm of the Criminal Justice System, receives criminal writs from the Circuit Courts of Milwaukee County, the District Attorney's Office, the Corporation Counsel as well as local and foreign agencies. These writs range from serious felonies to traffic and minor local ordinance violations. In all cases, the bureau receives the actual warrant and, together with the duty to effect service, is responsible for the storage of these writs as well as maintaining any files associated with this storage.

Welfare Fraud investigations and extradition of Fugitives from Justice and the Fugitive Fathers section are also responsibilities of the General Investigations section.

As an investigative bureau, follow-up investigations are conducted by Deputy Sheriffs from within the bureau. They are assigned additional areas of investigations originating from citizen and employe complaints of crimes committed on county owned lands as well as the Freeway System within Milwaukee County. Investigations also originate from the District Attorney's Office, Corporation Counsel and both foreign and local law enforcement agencies. Examples of a few of these conducted last year are:

The Welfare Fraud Squad successfully completed a case which involved nine recipients, one ex-employe and one employe in a scheme where the employe sent out checks for part of the take in the amount of \$55,000.

Allegations of wrong doing by House of Correction employes and inmates. This very involved investigation resulted in several employes resignations in lieu of charges. This case is still open.

An investigation of the alleged mishandling of funds at the Zoo was conducted in concert with the Audit Department. This resulted in the implementation of security measures being adopted to prevent future similar situations.

Two jail deaths, one ruled by inquest as unknown to cause, the other a homicide occurred during an altercation between inmates, 2nd degree murder is charged and pending.

SHERIFF'S FIVE MOST WANTED	
RICHARD E. ARTISON, Sheriff	
BULLETIN NO. 5 DATE: FEB 1, 1985	
IF YOU HAVE INFORMATION ABOUT ANY OF THESE WANTED PERSONS, PLEASE CONTACT THE SHERIFF'S DEPARTMENT DETECTIVE BUREAU AT 278-4713	
	NAME Dominique Lambert ALIAS S/R M/W DOB 10-06-61 HEIGHT 5' 11" WEIGHT 150 OCCUPATION(S) Unknown SCARS, MARKS, TATTOOS None noted AUTO(S) Unknown CHARGES: Carrying A Concealed Weapon; Felon in Possession of a Firearm; Burglary; Battery REMARKS: May be armed
	NAME Emerito Oulea ALIAS Joseph Oulea; Tony; Rilo S/R M/W DOB 11-10-52 HEIGHT 5' 11" WEIGHT 154 OCCUPATION(S) Unknown SCARS, MARKS, TATTOOS 1" scar above right eye; 1 1/2" scar on right wrist AUTO(S) 1974 Chevrolet 2 door NS423 WI 84 1978 Oldsmobile coupe G06290 WI 65 CHARGES: Burglary; Salt Jumping; Obstructing Off-icer; Conviction after Judgement, Probation REMARKS: SUBJECT MAY BE ARMED
	NAME James Robinson ALIAS S/R M/B DOB 9-24-42 HEIGHT 5'5" WEIGHT 140 OCCUPATION(S) Self-employed Painter SCARS, MARKS, TATTOOS None noted AUTO(S) UNKNOWN CHARGES: Enticing Child for Immoral Purposes REMARKS: To be held without Bail upon Arrest
	NAME Nick Anthony Merrill ALIAS Nick Merrill; Nick Andrews S/R M/W DOB 8-26-50 HEIGHT 5'11" WEIGHT 165 OCCUPATION(S) UNKNOWN SCARS, MARKS, TATTOOS None Noted AUTO(S) Unknown CHARGES: Three counts Felony Theft; Theft; 1st Degree Parole Violation REMARKS: Uses additional aliases of Nick Andrews; Craig Andrews; Craig Nicholas
	NAME Angel Luis Lopez ALIAS Darryl Martinez (12-12-63) S/R M/W DOB 8-15-64 HEIGHT 5'7" WEIGHT 133 OCCUPATION(S) UNKNOWN SCARS, MARKS, TATTOOS Scar on upper right forearm AUTO(S) Unknown CHARGES: Endangering Safety by Conduct Regardless of Life; Salt Jumping; Driving without a License

Milwaukee County Sheriff's Department Investigative Services

General Investigations

Departmental reports reviewed for follow-up investigations

	1982	1983	1984
Mitchell Field	532	393	1,074
Water Safety Patrol	—	—	2
Courthouse Complex	129	132	192
Detention Bureau	996	687	738
E.O.D.	49	52	53
Administration	—	—	0
General	106	229	272
Horse Patrol	—	—	0
Institutions Complex	607	678	1,140
Juveniles	466	566	1,254
Witness Protection	—	—	2
Major Occurrence	76	112	103
Drug Enforcement	551	565	392
County Parks	209	94	799
Canine	—	—	33
Communications	—	—	4
County Stadium	596	551	1,027
County Transit System	41	165	325
Welfare Security	250	206	230
Traffic Bureau	1,241	1,397	2,174
	5,878	5,859	9,637

IV-D Writs

Received	6,990	7,248	6,686
Cleared	7,419	8,162	6,631

Non IV-D

Received	15,559	9,200	9,686
Cleared	14,519	10,915	12,123

Extraditions

Prisoners Returned to Wisconsin	168	127	83
Prisoners Returned within Wisconsin	220	159	194
Arrested fugitives for other States	60	60	57

Fraud

Complaints Received	2,225	2,575	2,505
Complaints Substantiated	365	338	386
Fraud Amount Uncovered	\$825,964	\$1,100,864	\$1,462,290
Total Cases Investigated	708	1,039	797

Investigative Services

(Special Investigations)

Major Occurrence Unit

In 1984, expanded responsibility in the area of computerized analysis of investigative information and the Presidential campaign, added to the activity of the Major Occurrence Unit.

The Unit developed the capabilities of categorizing, analyzing and following crime trends and career criminals of Southeastern Wisconsin. This service is available to all law enforcement officers as needed. There are over 8,000 entries on a micro computer at this time, and expansion of this service is planned.

Support services to area law enforcement also continued. Using the County Jail facilities, 92 line-ups were conducted for 11 separate law enforcement agencies, an increase of 30% over 1983. Criminal investigations and technical assistance for law enforcement agencies also increased 16%, while recruitment of "street sources" was increased in excess of 100%.

Investigations covered the full range of criminal violations. Examples of the type of cases the Major Occurrence Unit handled included: Organized Crime, Commercial Gambling, Perjury, Fraud, Motorcycle Gangs, etc.

As in prior election years, Sheriff's Department officers were called upon to assist in the protection of visiting dignitaries, such as President Reagan, the Vice-President and numerous other candidates. In 1984, on 23 occasions, special protection was afforded to these visiting dignitaries. Coordination of these protection details were handled by M.O.U. officers.

Witness Protection Unit

In reviewing the past years activities, a few noticeable changes have occurred in the Witness Protection Unit. The most significant change has to be the case load. In 1983, the Unit handled a total of 70 cases. In 1984, the Unit handled a total of 150 cases, a little over 100% increase. Despite the increase in case load, the officers were able to maintain a substantial level of effectiveness.

At the start of 1984, a Witness Protection Unit goal was to promote the Unit to the Sensitive Crime area. This promotion was earmarked as a way to make the Unit more visible to the public who seemed to retain the horror filled details of the sexual assault cases. By comparison, the Witness Protection Unit handled a 400% increase in cases of a sensitive nature over 1983. In 1984, the Unit handled 27 cases directly referred by the Sensitive Crime Unit as compared to 7 in 1983.

A significant statistic in comparing the two previous years, 1982-1983, with 1984, is that there has been a total elimination of any actual physical abuse towards a victim/witness once he or she has been accepted in the Witness Protection program. In 1981-1982, there were two instances of retaliation. In 1983, 1984, these retaliations were non-existent.

The last area that stands out as a significant improvement concerns itself with witness relocation. This area, witness relocation, has been in the past and still is the most expensive aspect of our program. What was projected to increase as a result in our case load, never did materialize due to a strong and concerted effort in having the witness relocate by themselves or temporarily relocate with a friend. In 1984, the Unit expended funds for relocation of witnesses in 11 cases. While having the witnesses relocate themselves in 25 cases. This "relocation by self" category, that was increased by the Witness Protection Unit, has been estimated to have saved \$4,500 of the Witness Protection Unit funds.

Investigative Services

(Special Investigations)

Drug Enforcement

The Drug Enforcement Unit made 200 arrests in 1984, which resulted in 311 criminal charges. As a result of these arrests, \$3,926,977.50 worth of illicit drugs were removed from the streets of Milwaukee County.

The Drug Enforcement Unit assisted the State Fair Police Department during State Fair week in 1984. Enforcement of laws regarding controlled substances, gambling, and drinking, resulted in 43 persons being arrested by our Department.

During 1984, the Unit, on two separate occasions, conducted evidence destruction by incineration. This evidence no longer needed by the Courts, was destroyed by Order of the Court. Destroyed on these two occasions were 1,564 exhibits with a total street value of \$3,744,355.00.

The D.E.U. hosted six meetings of the Southeastern Narcotics Enforcement Officers Association during 1984. Guest speakers for these meetings came from the Milwaukee County District Attorney's Office, the F.B.I., State Regional Crime Lab, and the State Attorney General's Office (D.C.I.).

As part of the D.E.U. support function, Drug Enforcement Deputies trained six undercover officers from other law enforcement agencies. Also numerous classes and presentations were presented to public and private groups in the area of controlled substances.

The Drug Enforcement Unit also assisted the F.B.I., State D.C.I. and adjacent city and county law enforcement agencies in their drug investigations.

Six motor vehicles were seized by the Unit in 1984.

In 1984, the Milwaukee County Sheriff's Department implemented a new program, Narcotic's Detecting Dogs. Two Sheriff's deputies were picked to attend a 480 hour training program at the U.S. Customs Facility at Front Royal, Virginia. The two deputies were

introduced to their new partners, Mac and Merlin, at Front Royal, Virginia. The program has proven very successful. The narcotic detecting dogs were used 33 times by the Sheriff's D.E.U., M.P.D. Vice Squad, State D.C.I., I.R.S., F.B.I., U.S. Customs and other law enforcement agencies. The dogs and their handlers are stationed at General Mitchell Field.

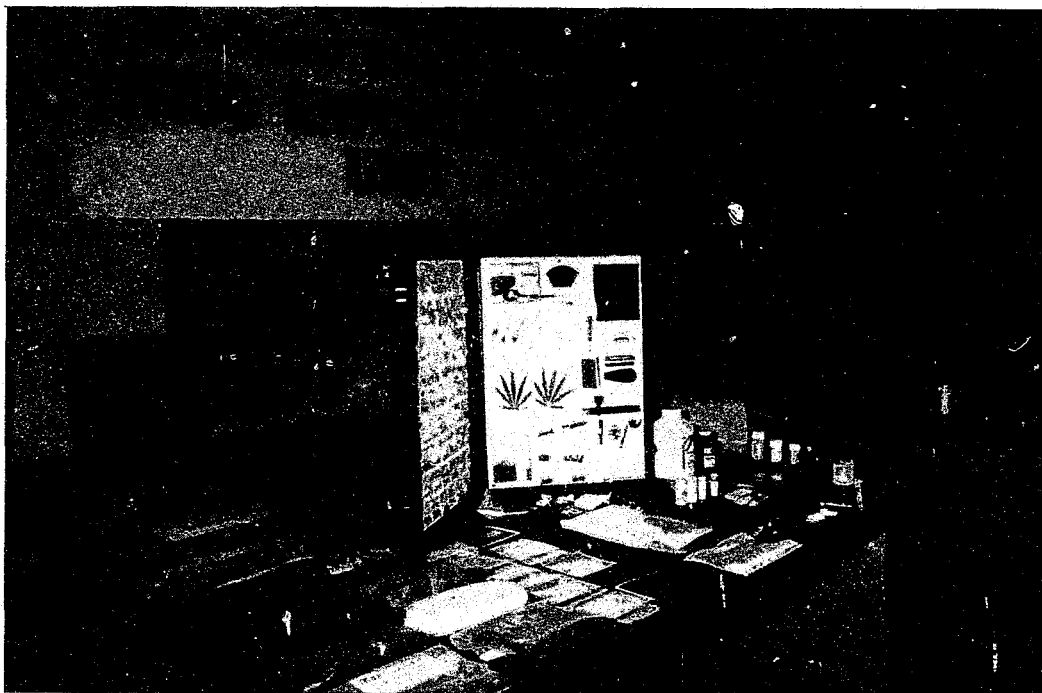
In October, 1984, a "Hot-Line" program was established. The program is known as "C.A.P." or Community Against Pushers. The program is a cooperative effort among Sheriff, Police Departments and the media to curb drug dealing in the Milwaukee area. The Hot Line number (273-2020) is intended to give the public an opportunity to report activities of drug dealings in their neighborhoods or wherever such illegal transactions are observed. The hot line number is answered by civilians not at the Police or Sheriff's Departments. From October 24, 1984 to December 31, 1984, the Sheriff's Department received 57 complaints, 44 complaints were cleared and 7 arrests were made.

Drug Enforcement Unit Statistics

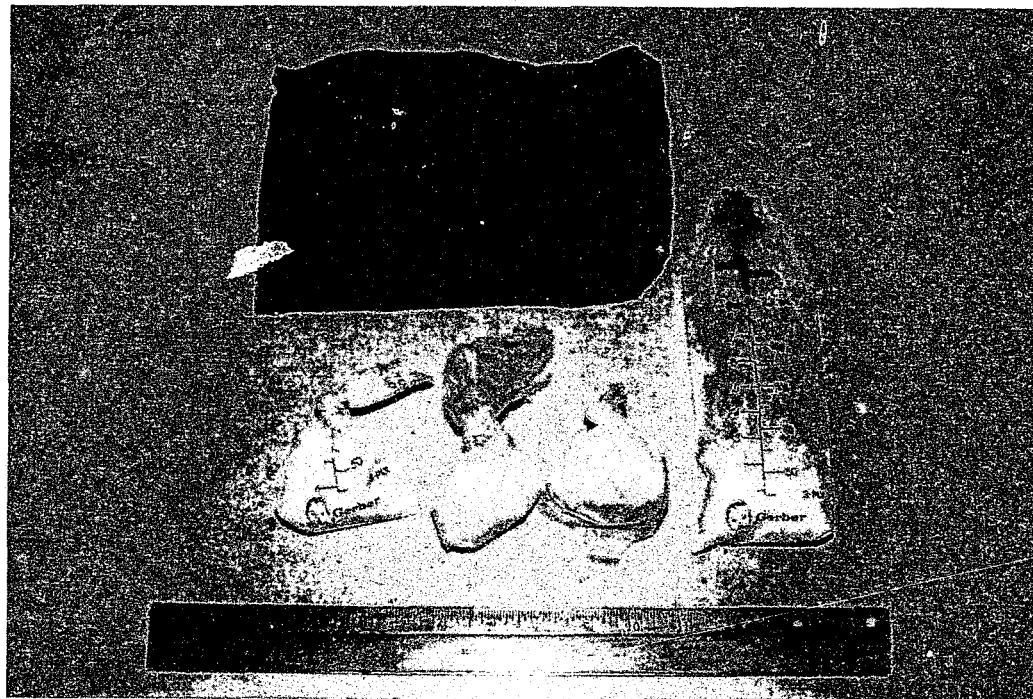
Name of drug	Number Counts	Amount Pounds	Amount Ounces	Amount Grams	Street Value
Marijuana	165	59,125		1,860.80	\$ 78,254.00
Hashish	3		2.75		
Cocaine	102	15.25	32.00	245.59	3,845,729.00
Heroin	9			7.25	1,580.00
Methamphetamines					
Halostin	1	28 tablets			28.00
Librium	1	13 tablets			131.50
L.S.D.	4	61 tablets			369.50
Other drugs	26				885.50
TOTAL					\$3,926,977.50

Vehicles Seized: 6

Use of K-9 Unit: 33 times



(Photo left) Part of the Milwaukee County Sheriff's Department Drug Enforcements educational display material.



(Photo right) As part of a collaborative investigation with the Waukesha Police Department, a "buy-bust" nets over \$300,000.00 worth of cocaine.

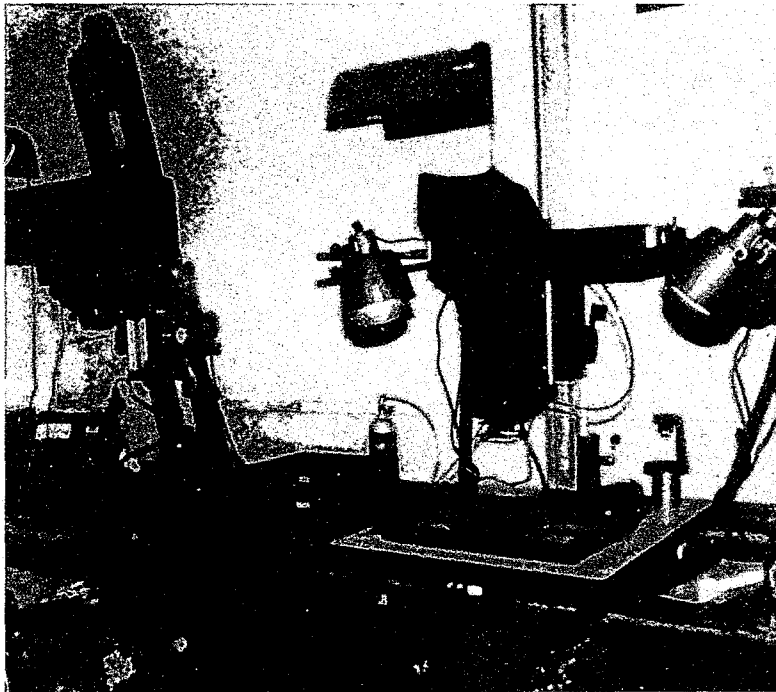
Investigative Services (Records and Identification)

COMMAND STAFF

INVESTGATIVE SERVICES
1 Deputy Sheriff Captain

RECORD AND IDENTIFAION
1 Deputy Sheriff Supervisor

The Records & Identification staff are service oriented and act as a support team for the entire Milwaukee County Sheriff's Department as well as many other local and regional Law Enforcement Agencies. The agencies include, but are not limited to Milwaukee Police Department, FBI, State Investigators, Secret Service, to name a few.



Records & Identification Bureau Data - 1984

Sheriff's Department Arrests	1982	1983	1984
New Arrests Processed	3,583	3,226	3,731
Repeaters Processed	3,475	3,101	4,363
Total	7,058	6,427	8,094
Number of Fingerprints Taken			
Prisoners	13,675	12,486	14,648
Civil Service Employees	325	291	563
Citizenship	151	130	104
Civilian	87	70	62
Total	14,248	12,977	15,377
Photographs			
Mug Photos Printed & Developed	17,417	15,404	20,295
Accident & Investigation Photos Taken	3,251	2,672	3,247
Accident & Investigation Photos Printed	5,493	4,231	5,767
Civil Service Employees I.D. Photos Taken	489	460	735
Photos For District Attorney Battery Cases	50	202	159
I.D. Photos For Sheriff's Dept. and Special Deputies	401	466	578
I.D. Photos For Gymnasium	248	58	49
Total	27,349	23,493	30,830
Revenue Generated From Fingerprints Taken	\$1,240.00	\$1,000.00	\$ 830.00
Revenue Generated From Sale of Photographs	\$1,859.45	\$4,099.00	\$6,072.25
Total	\$3,099.45	\$5,099.00	\$6,902.25
Records Checked For Other Agencies	8,450	7,964	9,184
Records Checked For Our Department	3,002	3,478	3,715
Dispositions Entered	1,106	1,041	949
Stars			562
Latent Fingerprint Cases Examined For 1984 - 580			
Court-Ordered Record Expungement - 4			
Fingerprint Cards on File For 1984			
Prisoners	—	65,201	
Civil Service	—	40,415	
Total		105,616	
Jail Booking Cards Microfilmed For 1982 & 1983 - 84,748			
T.I.M.E. Terminal Messages Sent			T.I.M.E. Terminal Messages Received
1982	1983	1984	1982
22,000	18,395	21,548	65,293
			61,831
			70,564

Sheriff's Swearing-In Ceremony



Sheriff Richard E. Artison and Judge Frank T. Crivello

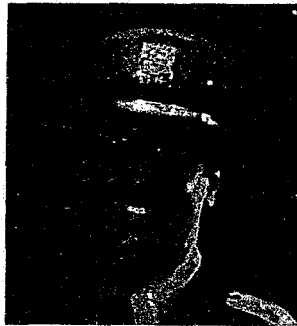


Taking oath of office, (from left to right), Thomas Zablocki, (County Clerk), Walter Barczak (Register of Deeds), Richard E. Artison, (Sheriff) and Paul McCormick. (Treasurer).

On November 28, 1984, Sheriff Richard E. Artision was sworn in as Sheriff by Judge Frank T. Crivello.



Francis Estrada
Captain



George Paras
Lieutenant
(Process Bureau)



Robert Nolan
Lieutenant
(Security Bureau)



Thomas Orlick
Lieutenant
(Airport Security)

Milwaukee County Sheriff's Department Security/Process Bureau

The Fall of 1984 saw the implementation of a program known as the "Automated Allocation System." This program, developed by Audit and Sheriff's personnel, is the result of a performance audit conducted in 1983.

Traditionally Civil Process papers to be served were distributed into set geographical districts by clerical staff. This resulted in varying individual workloads dependent on the number of papers for service within each district. Under the new allocation system, the districts vary in size on a daily basis, depending on the work load of papers to be served. Management then can adjust these districts to obtain the productivity level desired.

In 1985, we expect to see the advent of portable hand held micro-computers for deputies assigned to the service of civil process. The result of this would be the elimination of separate tasks of clearance of a paper, preparation of affidavits of service, and recording of related activity on each paper.

1984 also saw an increase in the number of deputy sheriffs assigned to attend the courts operating in Milwaukee County. These deputies are charged with the tasks of providing security for the safe and efficient operation of these courts.

This newly created unit, the result of a 1984 reorganization, combines the following services within the Sheriff's Department:

Civil Process	Transit Security
Court Services Transportation	Mounted Patrol
Courthouse Complex Security	Water Safety Patrol
Airport Security	Welfare Center Security
Canine Unit	Stadium Security
Park Patrol	

	1982	1983	1984
Process Service			
Process Received	110,424	92,015	91,980
Process Served	109,535	91,559	91,586
Miles Traveled	291,141	293,633	268,706
Average Daily Service By Deputy	20.5	16.2	19
Deputies Assigned to Process	21	21	18.5
Revenue - Process Fees	\$494,034	\$531,900	\$528,501
Body Attachments Effected	1,097	993	1,053
Writs of Restitution Served	1,200	1,340	1,756
Deputies Assigned to Writ/Seizures & Levies	7	7	7
Courts Section			
Deputy Sheriffs Assigned	51	49	56
Number of Courts with Full-Time Bailiffs (incl. Court Comm.)	43	43	43
Bailiff Services to Outside Judges	22	9	2
Transportation			
Deputies Assigned to Transportation and Post Services	16	16	15
Patients and Prisoners Conveyed	5,246	5,508	6,618
No. of Trips Outside County	708	737	634
Miles Traveled	149,540	150,605	131,785
Prisoners Returned from Other States	4	2	0
Courthouse Security			
Deputies Assigned	1	1	1
Service Calls & Assignments	3,569	1,493	2,003
Special Assignments			
No. of Hours on Assignments	9,141	8,340.3	5,901

Security/Process Bureau (Special Security Programs)

Transit/Park Security Unit:

This Unit under the direction of the Bureau Captain and Lieutenant provides coverage to both the Milwaukee County Transit System and the Milwaukee County Park System.

Primary attention of the Unit's activity is dedicated to the Transit System during the School year and then primary attention of the Unit's activity is dedicated to the Park System from late spring through early autumn.

The Unit operated on an overtime basis, utilizing personnel from throughout the Department, directed in the field by two (2) full time Sergeants during the period January 1, 1984 through September 30, 1984.

Twelve full time Deputy Sheriffs were assigned to the Unit on October 1, 1984.

The following is a summary of activity compiled by Unit members for 1984:

Transit:

Activity	Total	=	Adults	+	Juveniles
County Citations	165		80		85
State Citations	218		206		12
Summary Arrests	67		41		26
Warrant Arrests	32		30		2
Field Contacts/Warnings	606		295		311
Transit Radio Responses	502				
Silent Alarms	137				
Transit Complaints	260				
Complaints Investigated	97				

Park:

Activity	Total	=	Adults	+	Juveniles
County Citations	319		268		51
State Citations	132		118		14
Summary Arrests	33		20		13
Warrant Arrests	9		8		1
Parking Citations	667				
Fields Contacts/Warnings	521		425		96

Mounted Patrol Unit:

The Sheriff's Mounted Patrol Unit supplemented personnel assigned to the Park Unit in 1984, participating in 6 parades, 6 special events and 25 park assignments.

The following is a summary of activity compiled by Unit members for 1984:

Mounted Patrol Unit:

Activity	Total
County Citations	52
State Citations	21
Parking Citations	925

Welfare Security Unit:

The Milwaukee County Sheriff's Department Uniformed Security Unit assigned to provide police services consists of 7 officers assigned to three (3) sites, namely 1) 1220 W. Vliet St., 2) 600 W. Walnut St., and 3) 1515 W. National Ave., also monthly Courthouse assignment for General Assistance check distribution.

The hours of coverage range from 6:45 A.M. until 5:45 P.M. depending on the site.

The following is a summary of activity for the whole unit:

Welfare Security Unit:

Activity	Total
Summary Arrests	94
Warrant Arrests	205
County Citations	118
Disturbance Calls	1,313
Threats	9
Complaints	319
Thefts	58
Escorts (money/stamps)	848
First Aid	171
Ambulance Conveyance	74

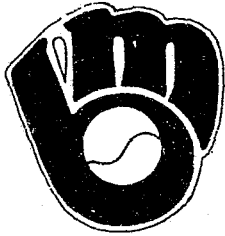
Water Safety Patrol:

The Milwaukee County Sheriff's Department Water Safety Patrol Unit normally consists of three department personnel knowledgeable and capable of providing patrol and enforcement operations as well as search and rescue operations on the waters of Lake Michigan adjacent to Milwaukee County. The boat is normally operational from Mid-April through Mid-October.

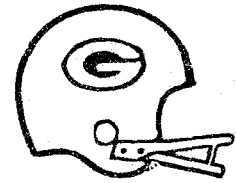
The following is a summary of the Unit's activity in addition to normal patrol-maintenance and search-rescue operations:

Water Safety Patrol:

Activity	Total
County Citations	13
Warnings	21
Boat Contacts	64
Disabled Vessel Tow	15
Removal of Navigation Hazard	4
Search/Rescue Operations	2



Security/Process Bureau (Stadium Security)



The Milwaukee County Sheriff's Department provided police services at the Milwaukee County Stadium for a total of 88 dates, of which 4 were football games.

A total of 1,865,884 citizens utilized the facility.

The following is a summary of activity of officers assigned:

Stadium Security:

Activity	Total	Adults	Juveniles
County Citations:	249	235	14
Charges:			
Indecent Exposure	15	15	-0-
Disorderly Conduct	120	117	3
Possession of Marijuana	10	10	-0-
Assault	2	1	1
Sales/Solicitation	32	29	3
Throwing Objects	30	29	1
Trespass onto Playing Field	11	8	3
Trespass/Malicious	2	2	-0-
Obstructing an Officer	11	10	1
Resisting an Officer	9	9	-0-
Misleading an Officer	2	2	-0-
Hindering	3	1	2
Improper Use of Firearms	2	2	-0-
Felony Summary Arrests:	4	4	-0-
Charges:			
Battery to a Peace Officer	2	2	-0-
Second Degree Sexual Assault	1	1	-0-
Cruelty to Animals	1	1	-0-
Misdemeanors:	9	8	1
Charges:			
Disorderly Conduct	4	4	-0-
Resisting an Officer	3	3	-0-
POCS - Cocaine	1	1	-0-
Intoxicated Juvenile (SS#125.07)	1	-0-	1
Fan Ejection from Stadium:	320	281	39
Field Interview Contacts:	689	569	120

Milwaukee County Sheriff's Department Security/Process Bureau Airport Security

The Sheriff's Airport Security Bureau was originally created to comply with the security requirements set forth by the Federal Aviation Administration.

Since the unit's inception in 1973, it has been the effective force in the deterring of hijacking of commercial aircraft. The Security Bureau has been the primary law enforcement unit responsible for all law enforcement functions at General Mitchell Field.

Deputy Sheriffs have the responsibility of patrolling the airport complex itself, which consists of more than 2,000 acres. The area includes two (2) private businesses and millions of dollars worth of commercial and private aircraft and an indoor parking structure that parks 3,600 automobiles.

1984 being a presidential election year, brought a number of political hopefuls to Milwaukee to campaign for either themselves or on behalf of other party favorites. Security assignments for this year included President Reagan (twice), Vice President Bush, Walter Mondale (twice), Geraldine Ferraro (twice), Gerald Ford, Gary Hart, Jessie Jackson, Jean Kirkpatrick, Nancy Reagan and Joan Mondale. In the highest spirit of co-operation between the White House Secret Service offices and the Airport Security offices, the challenges of protecting the lives of these fine Americans had been met and overcome.

A Mock Air Disaster Exercise at the 440th, April 5th, with Military, State, County and City Disaster Co-ordinators was reported as a great success.

On June 29th, 1984, Phase I of Mitchell Field's expansion project was completed and the south half of the new terminal was opened to the public. The second half of the project, termed Phase 2, is due to be completed in 1985 about September. With this new terminal, additional patrolling areas and duties have been placed upon our officers.

On July 10th, a tornado warning hit the air field, 80 MPH winds caused minor damage to 6 commercial airlines, citizens in the terminal had to be escorted to basement shelter areas.

The Airport Security personnel have responded to 9697 calls. These range from helping citizens locate their "lost" vehicles in the parking structure, up to and including the apprehending of wanted felons.



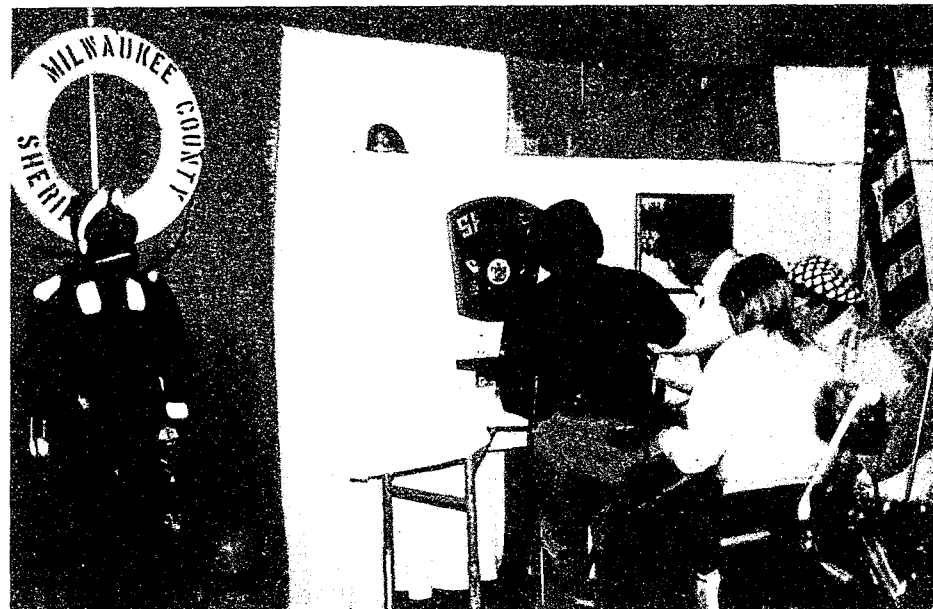
Response Type:	1982	1983	1984
Passenger Screening:			
Threats-Bomb	1	1	0
Threats-Hi-jack	0	3	0
Threats-Other	11	3	1
Security Breaches	3	9	0
Weapons Detected - Response			
Team Calls	200	167	123
Confiscations	195	118	60
Arrests & Citations	131	34	13
Concourse Gate Openings	—	1,065	943
Motor Vehicle:			
Property Damage Accidents	77	65	70
Personal Injury Accidents	3	7	6
Stolen Autos Recovered	9	2	6
Taxi Cab Violations	68	32	27
State Traffic Violations	83	56	82
Parking Citations	5,941	5,659	3,586
Other:			
Assaults	2	3	0
Disorderly Conduct	82	158	100
Illness/Injury	181	176	145
Theft/Robbery	152	156	96
Criminal Damage to Property	34	36	49
Police Assistance	3,427	3,629	3,955
Arrests	99	27	105
Fire Calls/alerts	88	105	158
County Citations	138	41	44
Special Services	35	34	103
Totals:	10,960	11,586	9,697

Community Relations

The Milwaukee County Sheriff's Department is proud of its Community relations efforts. Members of the department participate in special charitable fund raising projects, speaking engagements at schools, churches and social organizations, as well as appearances at community based functions.

The Sheriff's Department welcomes the opportunity to meet with members of the community, and will continue to offer assistance whenever and wherever possible.

The Milwaukee County Sheriff's Department was invited to participate at the 1st Annual "KIDS FEST" held at MECCA on Nov. 25th.



Members of the department fingerprinted over 500 children at "Kids Fest". Attendance for the 6 $\frac{1}{2}$ hr. event was over 18,000 people.



UNITED WAY CAMPAIGN

In 1984 County Executive William F. O'Donnell, called upon Sheriff Richard E. Artison to serve as Chairman for the Milwaukee County United Way Campaign.

Sheriff Artison accepted the assignment without reservation, and set out to reach Milwaukee County's goal of \$130,000.00, which was a 12% increase over 1983.

Milwaukee County employees met the challenge and attained the largest increase in the history of Milwaukee County, as well as the largest dollar amount ever donated.



Sheriff Artison and Tom Parker, President of the United Way Board of Directors attend the kick-off campaign for the Milwaukee County Park employees 1984 United Way Campaign, along with Richard Swetalla and Walter Rose.

Community Against Pushers

COMMUNITY LEADERS ANNOUNCE NEW PROGRAM TO COMBAT DRUGS

"CAP" - Community Against Pushers

Milwaukee area Law Enforcement agencies, and Community leaders, in conjunction with area Media T.V. Channels Four, Six and Twelve, and MARS (Milwaukee Area Radio Stations), have engaged in a campaign to put a "CAP" on drugs.

This program is intended to unite all of the Milwaukee County Community to stop drug use and traffic in Milwaukee County.

Drugs and drug pushers are everyone's concern. The establishment of a "CAP" hotline will enable local Law Enforcement personnel to target-in on those directly involved in selling drugs.

The programs primary goal is to develop community concern and awareness to fight against all types of drug traffic and use.

Citizens will be encouraged to phone in license numbers or names of all suspected drug dealers to the "CAP" hotline.

Parents will be urged to know more about their children's activities, as well as their children's friends.

Teachers and School Administrators will be given support to deal with drug related problems in the schools.

Drug dealers will be dealt with more severely in the Judicial system by Judges and the District Attorneys.

It is not intended for this program to be just a one time effort, rather a complete program of constant community effort to put pushers out of business and behind bars.



CHANNEL FOUR
WTMJ WKTI
720 E. CAPITOL DR
PO BOX 693
MILWAUKEE WI 53201
(414) 332-7611

EDITORIAL

23-52

WTMJ-TV at 6:25 p.m., Tuesday, Nov. 6, 1984 and 6:58 a.m., Wednesday, Nov. 7, 1984.

WTMJ Radio at 6:15 p.m., Tuesday, Nov. 6, 1984 and 8:35 a.m., Wednesday, Nov. 7, 1984.

WKTI-FM at 12 midnight and 5:00 a.m., Wednesday, Nov. 7, 1984.

Even before it was well-publicized, it had its first successes. It's the CAP Hotline - Community Against Pushers Hotline. The number is 273-2020. It's a major effort to stop drug use and traffic in Milwaukee County.

The CAP Hotline is a cooperative effort of law enforcement agencies, community groups and most of the Milwaukee radio and television stations. It's a coalition we haven't seen very often in this town.

It works this way. If you've seen some activity which makes you suspect drug dealing is going on, you telephone 273-2020 to report it. Your information will be passed on to the appropriate law enforcement agency for investigation. You will remain anonymous. You don't even have to identify yourself.

During the first week of the program, forty-five tips were phoned in. Several of them were of significant value to the development of cases involving drug trafficking. The CAP Hotline - 273-2020. Use it - anonymously.

Broadcast by Ed Hinshaw

THE MILWAUKEE COURIER

VOL. XX, NO. 43 OCTOBER 27, 1984 THE NEWSPAPER YOU CAN TRUST

Community and Media Unite Against Drugs

By Linda Lenz Ossinik

A new community effort to halt the activities of drug dealers in Milwaukee and the surrounding area is being coordinated with the help of the local radio and T.V. media in conjunction with local law enforcement agencies.

C.A.P., which stands for "Community Against Pushers" is the name of the program that will soon be putting a "cap" on Milwaukee's drug problem.

O.C. White, the Vice President of Business and Development for a local radio station said, "I'm just sick and tired of the degradation caused by illegal drugs, ruining the lives of our young people."

White is the Coordinator of the program. With the help of M.A.R.S., Milwaukee Area Radio Stations, White has introduced the idea of a C.A.P. Hotline. The hotline would be staffed by trained personnel who would take any and all tips on drug dealers in the area.

According to local radio manager and personality, Jack Lee, who is also involved in the C.A.P. program, there is a need for a hotline that is not directly connected with the police department.

The drug problems that people like White and Lee along with other radio and T.V. officials are

concerned with are "ALL" illegal drugs. Lee however explained that certain hard drugs such as 'cocaine' for example, are becoming easier to obtain in Milwaukee.

According to Lee, students are often approached by a pusher and given small amounts of the drug in exchange for their services as a dealer in their school or neighborhood.

The establishment of programs like C.A.P. will help to combat the occurrence of dealing that goes on in the community as well as in schools. Any information regarding suspicious cars or persons that loiter around schools or neighborhoods should be reported to the hotline. The hotline will weed out the information and a pattern may emerge as to a certain person or auto being involved drug dealings...then the necessary information will be turned over to the appropriate law enforcement agency.

The C.A.P. hotline number will be 273-2020, and it will be operational in approximately one week.

"When parents start taking an interest in their children and their activities, it will surely help," stated O.C. White emphatically.

concerned with are "ALL" illegal drugs. Lee however explained that certain hard drugs such as 'cocaine' for example, are becoming easier to obtain in Milwaukee.

According to Lee, students are often approached by a pusher and given small amounts of the drug in exchange for their services as a dealer in their school or neighborhood.

The establishment of programs like C.A.P. will help to combat the occurrence of dealing that goes on in the community as well as in schools. Any information regarding suspicious cars or persons that loiter around schools or neighborhoods should be reported to the hotline. The hotline will weed out the information and a pattern may emerge as to a certain person or auto being involved drug dealings...then the necessary information will be turned over to the appropriate law enforcement agency.

The C.A.P. hotline number will be 273-2020, and it will be operational in approximately one week.

"When parents start taking an interest in their children and their activities, it will surely help," stated O.C. White emphatically.

© WTMJ, Inc 1984

This editorial is the opinion of the management of Channel Four, WTMJ and WKTI for the purpose of stimulating thought and consideration of matters which are of concern to the public. Replies and other responses are welcome. Write to Public Affairs Dept., WTMJ, Inc., P.O. Box 693, Milwaukee, WI 53201

Hot line created to take citizen tips on drug dealers

A hot line number that the public can call with tips on drug dealers will be announced Friday.

The Community Against Pushers program will be a cooperative effort among the police and sheriff's departments and radio and television stations to curb drug dealing in the Milwaukee area, a source said.

Details of the program, including the hot line number, will be released at a news conference in the Satey Building at 10 a.m. Friday.

Representatives of television stations, the Milwaukee Area Radio Stations, Sheriff Richard E. Arlison, Police Chief Robert J. Zimnik, Chief Judge Victor Manias and others have met for six weeks to work out details, a source said.

The hot line number is intended to give the public an opportunity to report activities of drug dealers in their neighborhoods or wherever such illegal transactions are observed.

"We are going to give the money and cash an outlet to identify those people who are causing

help their communities doing the peddling and pushing of drugs," the source said. "This is a program intended to unite the Milwaukee community against drug pushers."

The number will be answered by volunteers, not at the police or sheriff's departments.

No reward will be offered for the information. Zimnik said a sheriff's department official declined to give details about the program, but acknowledged that their departments were involved.

Hot line helps a lot, drug enforcers say

By M.J. Blackwell of The Journal Staff

Six weeks ago, the Milwaukee Police Department and the Milwaukee County Sheriff's Department established a telephone hot line aimed at collecting tips to curb drug dealing in the Milwaukee area.

The public, so far at least, has responded enthusiastically. The Community Against Pushers hot line has handled 223 calls to date, a police official said. Seventy-one of the five have been cleared, meaning information provided in those calls has been used in drug investigations, he said.

Six of the tips have resulted in arrests of people on charges of intent to deliver marijuana, possession with

intent to deliver marijuana, and possession of cocaine. The cases are under review by the district attorney's office.

A total of 119 tips are being studied by the police and the Sheriff's Department. Twenty-seven other calls were from residents outside the metropolitan area, and information obtained in those calls was transferred to their local law enforcement agencies.

The 24-hour hot line number, 273-2020, is answered in City Hall, and the information is relayed to law enforcement groups. No rewards are given.

Program sponsors, which also include area radio and television sta-

223 have called hot line

Drugs, from Metro Page

Police and Sheriff's Department officials said the program was out a one-time effort but was rather a "constant community effort to put pushers out of business and behind bars."

Sgt. Dale Schaub, of the Police Department vice squad, said, "We are pretty pleased with the results. We are getting the message across to the citizens of Milwaukee about drug-related crime. I think the people are anxious to get involved in combating crime in the community."

"It's helping. I'm optimistic with the results we've gotten so far," he said.

"It has been our experience that

people need a place to call anonymously, and maybe that spurred them on."

Lt. James Krause, in charge of Sheriff's Department drug unit, also praised the hot line.

"It's a good program, excellent," he said. "We may get one call and crack some big guy. We want to keep them like public allies."

Both Krause and Schaub asked that callers be as specific as possible with information about drug dealing in their neighborhoods. "Some reports are very specific, a good description about how drugs are being handled," Krause said. "Others give no specific information. Any specific information would be of great value."



Drug hot line number announced

A new telephone hot line for turning in suspected drug dealers will start operation Wednesday.

The hot line number, 273-2020, was announced Friday.

The hot line is part of a new program, Community Against Pushers, sponsored by local law-enforcement groups and television and radio stations.

The hot line will be answered in City Hall, and information will be relayed to law enforcement groups. No rewards will be given.

Program sponsors said Friday that the program was not intended as a one-time effort but rather as a "constant community effort to put pushers out of business and behind bars."

Anti-drug hot line leads to 68 arrests

Tips to the Community Against Pushers hot line, which began in October, have resulted in 68 arrests.

Included were eight arrests by Milwaukee police for delivery of cocaine and eight for delivery of marijuana, officials said Friday.

Other Milwaukee arrests were for possession of cocaine, marijuana, heroin and Talwin, and in some cases, for possession of these drugs with the intent to deliver. Talwin is a

prescription drug used in Ts and blues, a heroin substitute.

Three arrests were made by Milwaukee sheriff's deputies, who did not specify the nature of the arrests.

Thirty-nine search warrants were served because of the tips, officials said.

The hot line began Oct. 24 and has received 756 calls. Of those, 250 are now under investigation by Milwaukee police and 506 have been "cleared." Those cleared are tips that led to arrests as well as useless tips or tips referred to other law enforcement agencies.

The 24-hour hot line number, 273-2020, is answered in City Hall. Callers, who may remain anonymous, do not receive rewards. The hot line is sponsored by the Police and Sheriff's Departments, with support largely from radio and television stations.



On August 9, 1984 Deputy Sheriff Jerry Brown was presented with a certificate of appreciation from the United States Marine Corp.

Pictured from left to right, Deputy Brown, GySgt. Hedgley, GySgt. Braun, SSgt. Felski



UNITED STATES MARINE CORPS
PRIOR SERVICE PROCUREMENT SITE
MARINE CORPS RESERVE CENTER
2104 SOUTH LINCOLN MEMORIAL DRIVE
MILWAUKEE, WISCONSIN 53207

IN REPLY REFER TO:
CLH:mcb
1 August 1984

From: Marine Corps Reserve Support Center, Prior Service Recruiting Site, Milwaukee
To: Richard E. Artison, Sheriff, Milwaukee County

Subj: Letter of Appreciation; case of Jerry Brown, Sheriff's Deputy Milwaukee County

The Prior Service Recruiting Site, Milwaukee, Wisconsin would like to express our thanks to The Milwaukee County Sheriff for donating the services of one of their traffic officers.

Deputy Jerry Brown gave the Marines in attendance an interesting and informative period of instruction on driver's safety. Deputy Brown used his excellent public speaking and his vast experiences to pass much information to the class. Many people with much knowledge do not have the ability to convey this knowledge to others. This was not the case with Deputy Brown. He also used video and photographs to accent his talk. The photographs served as a grim reminder of the importance of safe driving, and the film brought up many points and reminders that all drivers should know.

The Prior Service Reserve recruiters cover vast areas and spend many hours and miles behind the wheel. Deputy Brown has had an effect on safe driving in many states including Wisconsin.

Safe driving is the primary duty of traffic officers everywhere, and Deputy Brown can take pride that his instruction has touched the recruiters, their family and friends. This has made the roads safer for everyone who uses them.

Craig L. Hedgley GySgt. USMC

Michael C. Braun GySgt. USMC

Richard S. Felski SSgt. USMC



Robert Mooney
Captain



William Woger
Lieutenant
(Expressway Patrol)



William Lucey
Lieutenant
(Institutions)



Tom Piotrowski
Supervisor
(Communications)

Milwaukee County Sheriff's Department E.P.I.S. Bureau (Expressway Patrol/Institutions Security)

E.P.I.S.

The E.P.I.S. Bureau which includes the Expressway Patrol, the Institutions Security, and the Children's Court Center was formed as a Unit in December of 1983. The year 1984 was its first full year of operation. The complement of the Bureau consists of 90 sworn officers, and 44 non-sworn personnel. The 44 figure represents five clerical staff, five radio dispatchers and 34 Institutions Security officers who also provide physical plant security throughout the Institutions grounds. The 90 sworn officers are assigned within the Bureau as follows: 62 in the Expressway Patrol Division, 18 in the Institutions Unit and nine at the Children's Court Center. (Statistics covering the Children's Court unit are included in the Courts and Process 1984 Annual Report). The Captain of the Bureau is headquartered on the Institution grounds at 8535 Watertown Plank Road.

Expressway Patrol

The Sheriff's Department has the responsibility to police the 68.3 miles of freeway system in Milwaukee County.

Professional attitude and dedication by the personnel assigned to this division has made our highway network one of the safest for the motoring public in the nation. We have maintained the lowest fatal accident ratio in the United States at 0.88 per 100 million vehicle miles, compared to the national average of over 3.0. Through constant and timely patrol, strict enforcement and attendance to the motorist needs, we have maintained our high level of performance.

Squad officers logged 1,625,727 miles in 1984 in their patrol activities. 17,964 traffic citations were issued for moving traffic violations. Warnings and equipment violations totaled 6,278. More than 7,600 disabled motorists were assisted by a patrol unit.

As always, we have focused on strict enforcement of drunk drivers. In 1983 we increased OWI arrests by 31% over 1982. In 1984 we increased by 43% over 1983.

The Traffic Bureau received a federal grant amounting to \$50,000 for the S.A.V.E. (Selective Alcoholic Violation Enforcement) program, directed at reducing the **Had Been Drinking** accidents on Milwaukee County Freeways. We reached our goal set by the federal grant managers along with increased revenue generated by OWI arrests.

Red Light/Blue Light

The State of Wisconsin passed a law effective May 1, 1984 permitting the use of red and blue light bars on emergency vehicles. As a result the Sheriff's Department has switched to red and blue light bars on expressway squads for added safety to motorists and deputies. The combination of lights is more clearly visible under varying conditions. Some males have an inability to perceive red but have no difficulty in observing blue lights.

Milwaukee County Sheriff's Department

E.P.I.S. Bureau

Expressway Patrol

Patrol Activities	1982	1983	1984
Traffic Citations Issued	17,976	18,734	17,964
Parking Citations Issued	11,551	12,463	9,297
Auto Acc. Reports & Investigations	3,066	3,344	3,737
Miles Travelled in Patrol Work	1,537,289	1,634,674	1,625,727
Daily Average Patrol Units	32.93	32.17	32.03
Daily Average Miles Per Unit	122.95	130.64	139.04
Requests for Accident Reports	6,243	5,243	7,095
OWI Arrests	735	963	871
Traffic Accident Facts			
Vehicle Miles of Travel	1,531,000,000	1,597,000,000	1,035,456,000
Property Damage			
Accidents	2,180	2,383	2,737
Personal Injury Accidents	878	955	991
Persons Injured	1,212	1,348	1,394
Fatal Accidents	8	6	9
Persons Killed	8	6	9
Acc. For 100 Million Veh. Miles	200.20	200.39	361.06
Fatals Per 100 Million Veh. Miles	.25	.39	.88
Dispositions			
Co. Ord. Citation			
Dispositions	\$ 52,639.70	\$ 38,202.15	\$ 26,482.10
Uniform Traffic Citations:			
Stipulations	178,544.60	169,550.60	165,284.70
Forfeitures	176,506.06	188,414.76	180,492.52
Parking	89,545.95	102,352.60	74,490.88
Warrant Fines	119,491.13	82,006.61	85,337.90
Accident Fees	25,698.02	26,220.00	29,888.03
Totals	\$642,425.46	\$606,719.72	\$561,976.13

1984 Traffic Facts - Expressway

1,035,456,000 (Estimated) - Vehicle Miles of Travel
3,737 - Accidents Reported and Investigated
361.06 - Accidents per 1,000,000 Vehicle Miles of Travel
Accidents
3,737 Accidents - Property Damage
991 Accidents - Non-Fatal Injuries
Fatal Accidents
9 Accidents - Fatal
.88 Deaths Per 100 Million Vehicle Miles of Travel
Accident Experience 1980 - 1984
1980 - 3,392 accidents recorded for 1,524 MVM
1981 - 3,277 accidents recorded for 1,519 MVM
1982 - 3,066 accidents recorded for 1,531 MVM
1983 - 3,344 accidents recorded for 1,597 MVM
1984 - 3,737 accidents recorded for 1,035 MVM

Fatal Accidents 1984

- 2 Car (One disabled with pedestrian)
Wednesday, February 1, 1984, 4:08 P.M. Vehicle #1 was northbound on I-94 at Edgerton Ave. attempting to slow down, brakes failed, struck Vehicle #2, which was disabled in lane #1, pushing Vehicle #2 into and over pedestrian (driver).
Deceased was pedestrian (driver), massive head and internal injuries.
- 1 Truck Tractor
Tuesday, April 19, 1984, 10:20 A.M. Vehicle entering ramp I-94 northbound to I-94 westbound went out of control, scraping bridge wall and shearing off two light poles. Passenger was ejected and crushed between truck and concrete wall.
Deceased with massive head and chest injuries. No seat belt worn.
- 1 Motorcycle Struck Parapet Wall
Friday, May 11, 1984, 1:59 A.M. Motorcycle with passenger was northbound STH 145 from Milwaukee Street on ramp, went wide in the curve and struck the GM concrete parapet wall. Both driver and passenger were ejected off vehicle.
Deceased with multiple head injuries.
- 1 Truck, 2 Car Fire
Wednesday, June 20, 1984, 4:50 P.M. Vehicles were southbound US 45 at North Mayfair Road slowing down for traffic backup. Truck rear ended Vehicle #2 into Vehicle #3. Vehicle #2 started on fire.
Deceased was badly burned over entire body. Unknown if seat-belt was worn.
- 1 Motorcycle Struck Curbing
Saturday, June 23, 1984, 8:17 P.M. Motorcycle was northbound I-94 going straight ahead, struck nonmountable curbing and skidded out of control. Both driver and passenger were ejected off vehicle.
Deceased with lacerations to head, arms, legs.
- 1 Pickup Truck, 1 Truck Tractor
Friday, August 31, 1984, 11:50 P.M. Vehicles were southbound on US 45 at West Hampton Ave. when Vehicle #2 was struck in the rear by Vehicle #1.
Deceased with blunt trauma to chest. No seatbelt worn.
- 1 Car, 1 Pedestrian
Saturday, September 22, 1984, 12:28 A.M. Pedestrian on roadway northbound US 41 off ramp at Lloyd St. with bicycle, struck by an unknown vehicle which left the scene.
Deceased with trauma to head, fractured right arm, rib, collar.
- 1 Car, 1 Truck Tractor, Wrong Way Driver
Thursday, November 1, 1984, 2:35 A.M. Truck was northbound I-43 south of Brown Deer Rd., car was southbound in northbound lanes I-43 at Brown Deer Rd. where they collided.
Deceased with massive trauma. No seatbelt worn.
- 1 Truck Struck Concrete Curbing
Saturday, November 11, 1984, 4:30 A.M. Vehicle I-94 southbound struck concrete curbing and steel plate beam guard, GM barrier, rolled over and ejected the driver.
Deceased with skull fracture, right leg nearly severed. Unknown if seatbelt was worn.

Citations

Speed exceeds zone posted limit	9839
Operating unregistered vehicle	1640
OAWI	707
OAWI 10%	565
OAR 3rd offense	380
Operating vehicle/registration suspended	358
Deviating from marked traffic lane	300
Speed not reasonable/prudent	284
Driving without operators license	209
Failure to control vehicle	156
Following vehicle too closely	138
Deviating from lane of traffic	137
Improper use of evidence of registration	108
No mud guards on truck	100
Other	1,677
Total	16,598

State Offenses

OAR 3rd offense	520
Driving without operators license	264
OAWI	170
Other	412
Total	1,366
Total Citations:	16,598
Total State Offenses:	1,366
Total Juveniles:	435
TOTAL:	17,964
TOTAL PARKING CITATIONS:	9,297

General Information

Patrol Units Assigned (Daily Average)	32.03
Total Miles Patrolled	1,625,727.00
Average Daily Miles Per Unit	139.04

Officer Activity Computer

Compliation	Incidents	Percentage
Accidents Investigated	3,651	4.59
Accident Investigation		
Assists	2,424	3.05
Accident Investigation		
Follow Up	1,627	2.04
Other Traffic Investigation	41,152	51.68
Court	1,662	2.09
Criminal Investigation		
at Scene	146	.18
Criminal Investigation		
Follow Up	51	.06
Escorts	553	.69
Fixed Post	13	.02
Motorist Service	25,649	32.21
Office Detail	369	.46
Parking Control	1,312	1.65
Special Detail	1,006	1.26
Miscellaneous	13	.02
Total	79,628	100.00%

Milwaukee County Sheriff's Department E.P.I.S. Bureau Institutions Security

The Institutions Security Division is a part of the E.P.I.S. Bureau (Expressway Patrol/Institutions Security) of the Milwaukee County Sheriff's Department. The division is responsible for all safety and security problems on the Milwaukee County Institutions grounds. This area of responsibility covers a total of 1280 acres of land and encompasses the following county facilities, their associated buildings and all unoccupied buildings on Institutions grounds.

- Milwaukee County Medical Complex
- Mental Health Complex
- Central Automotive Maintenance Division
- Propagation Center
- Power Plant
- Food Services
- Sheriff's Department Bakery
- Child Adolescent Treatment Center
- Children's Court Center
- Milwaukee County Nursing Home
- Employee Service Building
- Institutions Administration Building

Also located on the Institutions grounds are private geographical members that receive law enforcement services from the Milwaukee County Sheriff. They include the following:

- Curative Rehabilitation Center
- Medical College of Wisconsin
- Froedtert Lutheran Memorial Hospital
- New Beginnings Group Home, Inc.
- Milwaukee Blood Center
- Ronald McDonald House

Accomplishments - 1984

During 1984, security personnel assisted in the acquisition and instrumentation of a new alarm system, and upgrading of the current system, at the Mental Health Complex.

All security officers participated in a sixteen hour R.I.S.C. Management Course, and an on-going program to train all security personnel in C.P.R. (Cardio Pulmonary Resuscitation) was instituted.

Special Events - 1984

The summer of 1984 saw the opening of the long awaited and planned for "Ronald McDonald House", the newest private geographical member to the Institutions grounds. Institutions Security personnel assisted with traffic and crowd control, in making their grand opening a success.



Institutions Security personnel were assigned special security duty for the senior citizens of our community at their annual picnic. In addition, special security was provided for them at Summerfest, Festa Italiana, South Shore Water Frolics, and a Brewer's baseball game at the county stadium.

Activities	Totals			Activities	1982	1983	1984
	1982	1983	1984		1982	1983	1984
Missing Patients	334	396	296	Juvenile Arrests	44	28	15
Fire Alarms	369	360	421	Adult Arrests	41	70	142
Motorist Service	478	483	297	Co. Ordinance Citations	26	46	48
Theft Reports	264	250	257	State Traffic Citations	75	67	37
Traffic Accidents	72	51	46	Parking Citations	4,693	4,812	3,987
Parking Problems	63	74	15	Trouble With Patients/Inmates			
Trouble w/Equipment & Safety	381	260	26		1982	1983	1984
Damage to County Property	37	28	-	MCMC	1,138	309	397
Security Searches	39	47	7	MCMC Emer. Rm.	-	1,007	1,372
Fines Collected	302	352	424	MHC	466	726	1,070
Suspicious Auto/Person	370	354	263	South Division	(new category)		47
Injury/Illness/Rescue	118	123	140	CATC	11	21	48
Bank Runs	213	243	260	Day Hospital	162	123	121
Payroll Check Runs	26	26	26	HDC	104	39	27
				MCNH	15	30	57
				Detox	74	78	99
				CCC	8	11	8
				PGM's	13	17	24
				Other	10	43	31
				Total	2,001	2,404	3,301

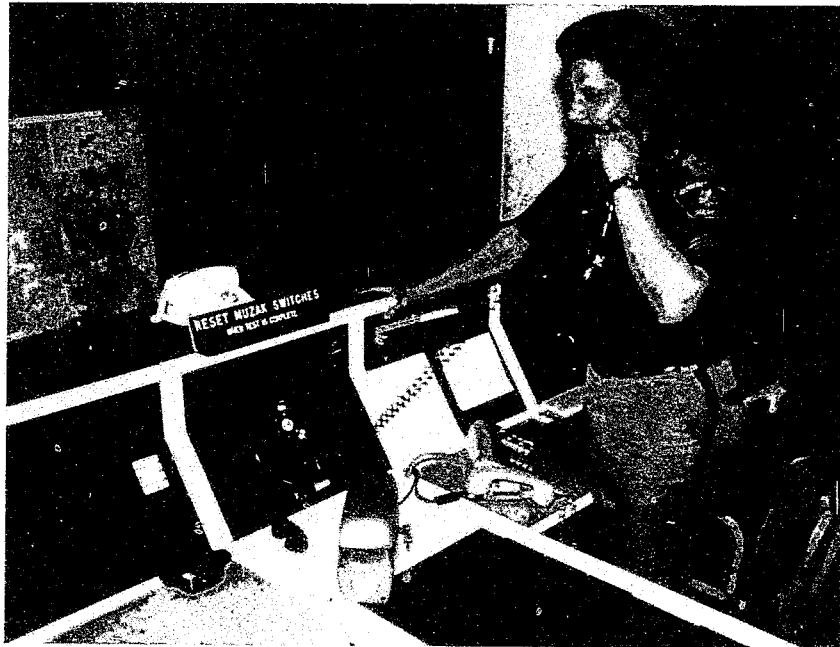
During the period from January 23rd to June 29th, the EPIS Bureau, and specifically the Institutions Security Bureau, was assigned the responsibility of providing transportation services for all juvenile con-

Milwaukee County Sheriff's Department E.P.I.S. Bureau Communications

The Communication Section is responsible for providing an accurate and complete dispatching service for all bureaus within the department, also monitoring frequencies assigned to the Highway Department, House of Correction, Milwaukee Police, Paramedics, Emergency Government, and State Patrol.

The county microwave radio system now has eight sites located within the borders of Milwaukee County which provide much improved radio reception. The microwave system is in a constant state of improvement with recent addition of a new receiving site for the Highway Department and improved paging in the downtown area.

All assigned personnel of the Communications Bureau are continually being given state approved training courses to help improve their skills.



Sgt. Samuel Leatherwood answers telephones in the Communications Bureau.



Communications Dispatchers Answering Calls.

Communications

Activity	1982	1983	1984
Total Activity Incidents	79,478	78,066	78,832
Radio Messages recorded by shift			
12:00 Midnight — 8:00 a.m.	142,108	133,792	150,106
8:00 a.m. — 4:00 p.m.	192,695	193,567	207,663
4:00 p.m. — 12:00 midnight	229,206	210,193	215,583
Radio Messages Recorded Yearly	564,009	537,549	573,352
Teletype Message Sent			
Entire Department	272,887	278,292	304,556
By Communications	110,973	111,937	124,325
Incidents Reports/County Highway Dept.	1,888	1,902	1,714
Emergency Government Test and Warnings Disseminated	264	230	374

Special Service Units

S.W.A.T. - Special Weapons and Tactics

Training and practical exercises were the priorities of the S.W.A.T. Unit in 1984. The S.W.A.T. team consists of command post personnel, 28 S.W.A.T. trained officers and 7 hostage negotiators. The Unit trained and coordinated activities within the Sheriff's Department and with outside agencies such as the F.B.I., U.S. Secret Services and other law enforcement agencies.

As part of the training curriculum, S.W.A.T. officers modified an existing obstacle course into a "shoot, don't shoot" or stress shooting facility.

In the Spring of 1984, law enforcement agencies and emergency government directors of North Central Wisconsin, were faced with a potentially explosive situation. They called upon the Sheriff's S.W.A.T. officers to provide technical assistance and tactical expertise. The situation was resolved without incident. During 1984, this rapid response team was activated 11 times to handle high risk situations and 7 times to assist with dignitary protection.

Also in 1984, at the annual "Association of S.W.A.T. Personnel (A.S.P.) Conference," a member of the Unit was elected to the Board of Directors of this organization.

Scuba

The Sheriff's Department Scuba Team consists of 8 Deputy Sheriff's. In 1984, members of the Scuba Team were activated 3 times for search/rescue type operations. Two of the calls were to assist in locating/recovering bodies and one was to retrieve stolen property. Three deputies were specially trained in ice rescue techniques by the International Association of Dive Rescue Specialists.

Sheriff's Boat

In 1984, the Sheriff's Boat was involved in 31 search and rescue operations.

During one period in the summer of 1984, the Sheriff's Boat was on alert to handle the U.S. Coast Guard Rescue calls. The Coast Guard boat was out of service, and in for repairs.



Special Weapons and Tactics response vehicle.

Special Service Units

Explosive Ordnance Disposal Unit

In 1984, the Explosive Ordnance Disposal (E.O.D.) Unit responded to a total of 44 requests for assistance from various police agencies, both within and outside of Milwaukee County. In addition to these requests, there were 13 bomb threats received at various Milwaukee County facilities.

Bomb threats received at Milwaukee County facilities:

Milwaukee County Department of Social Services: 5
Milwaukee County Institutions: 5
General Mitchell Field: 1
Milwaukee County Stadium: 1
Milwaukee County Sheriff's Department: 1
Total: 13

Requests for E.O.D. assistance within Milwaukee County:

Wauwatosa Police Department: 3 hoax devices
Milwaukee County Courthouse: 2 hoax devices
West Milwaukee Police Department: 2 hoax devices
2 aged chemicals
West Allis Police Department: 2 aged chemicals
1 hoax device
Brown Deer Police Department: 1 E.I.D.*
Franklin Police Department: 1 aged chemical
South Milwaukee Police Department: 1 aged chemical
Milwaukee County Institutions: 1 hoax device
1 aged chemical
Oak Creek Police Department: 1 hoax device
Greenfield Police Department: 1 hoax military ord.
Total: 19

Request for E.O.D. assistance outside Milwaukee County:

Fond du Lac County Sheriff: 2 aged chemicals
Waukesha Police Department: 2 hoax devices
Little Chute Police Department: 1 aged chemical
Burlington Fire Department: 1 aged chemical
Neenah Police Department: 1 pipe bomb
Waterford Police Department: 1 hoax device
Mukwonago Police Department: 1 aged chemical
Racine Police Department: 1 hoax device
Washington County Sheriff: 1 aged dynamite
Green Bay Police Department: 1 hoax device
Brookfield Police Department: 1 military hoax
1 I.E.D.*
1 aged caps

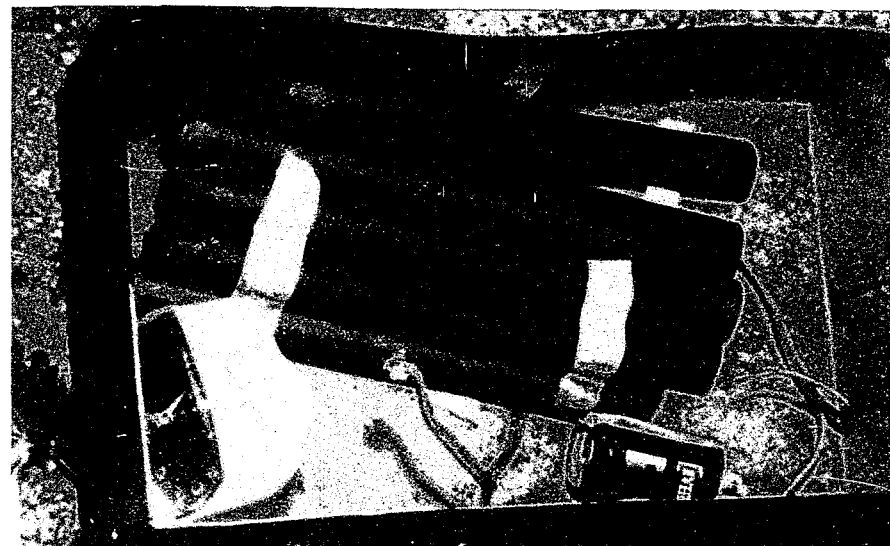
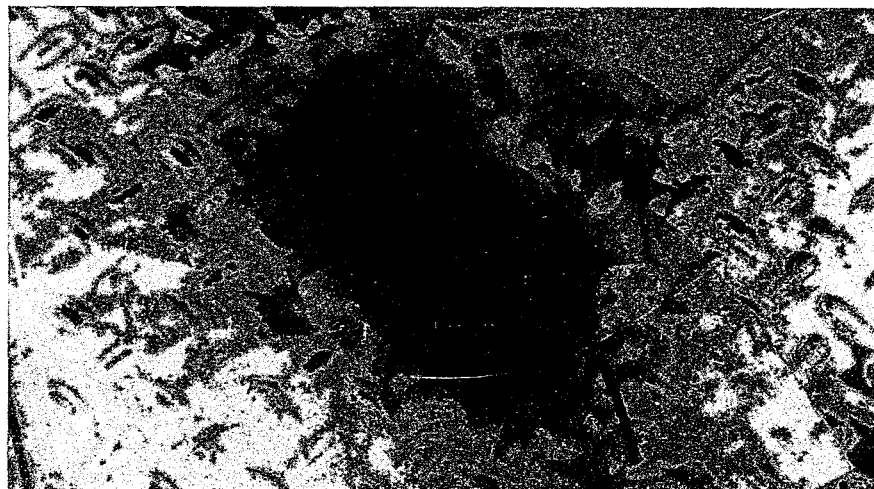
Walworth County Sheriff: 1 aged chemical
1 aged dynamite
1 hoax device

Waukesha County Sheriff: 1 aged chemical
1 hoax device
1 I.E.D.*

Sheboygan County Sheriff: 1 Civil War Cannon Round (authentic)
Brown County Sheriff: 1 aged dynamite
2 trips (9 different locations)

Total: 25

* (I.E.D.) — Improvised Explosive Device



Milwaukee County Sheriff's Department Mounted Patrol (Historical Review)

The Milwaukee County Sheriff's mounted patrol unit was formed on February 2, 1980. The original Milwaukee County Sheriff's mounted unit consisted of five experienced deputy sheriffs.

On May 26, 1980, Memorial Day, the Milwaukee County Sheriff's Department mounted unit officially made their debut in Whitnall Park.

The Milwaukee County Sheriff's Department mounted patrol unit was also invited to participate in the Wisconsin State Fair horse show along with the Wisconsin State fair mounted police in the presentation of colors.

The mounted patrol unit of the Sheriff's Department patrols the entire park system of Milwaukee County.

On request, the mounted patrol unit has participated in the following events:

- Parades
- Senior citizen day
- Shrine football game
- Jerry Lewis Muscular Dystrophy Telethon
- Green Bay Packer football games
- Milwaukee Brewers baseball games
- Milwaukee Brewers Division baseball games
- Milwaukee Brewers World series games
- Escorted Mr. Gunderson through the city in his ride on horseback from California to Washington, D.C. to show the nation the blind are not handicapped.
- Wisconsin State Fair
- Presidential protection

A member from the Sheriff's Department mounted patrol unit also participated in a documentary "Human Bondage with Animals" depicting the police officer and his horse which was shown in all major cities during the year.

CITATIONS ISSUED IN 1984

STATE CITATIONS	21	1,419.00
COUNTY CITATIONS	52	2,136.00
PARKING CITATIONS	925	9,250.00
		\$12,805.00



Deputies from the mounted patrol unit participated in the TV-6 muscular dystrophy telethon.

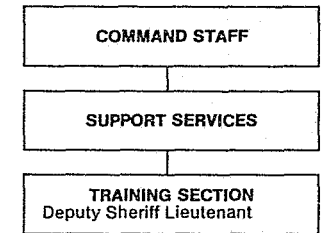


(From Left to Right) Deputy Dean Garny, Sgt. Stanley Wojtasiak, Deputy Peggy Lane and Deputy William Dunning



Richard Krizan
Lieutenant
(Training Academy)

Milwaukee County Sheriff's Department Training Academy



The Milwaukee County Sheriff's Department Training Academy bears the primary mission of providing basic recruit, jailor, firearms, in-service and specialized training to members of the Department. It is the only Sheriff's training academy in the State of Wisconsin certified by the State of Wisconsin Law Enforcement Standards Board to provide recruit law enforcement training. It provides such training, on a contract basis, to police and sheriff's recruits from throughout Wisconsin, as well as to department personnel. The Training Academy also maintains the department armory and operates the Sheriff's gymnasium.

The Academy normally runs two 8-week recruit schools a year, but because of unusual hiring needs in 1984, one class of 36 recruits was run through the summer. The class was the largest ever graduated in the Academy's history, and had the highest number of female recruits ever graduated—13. An additional 40 hours was added to the basic recruit curriculum by the State of Wisconsin, making this the longest recruit class ever presented by the Academy.

Additional training was provided to department personnel in the form of two 25 day in-service training sessions in defensive tactics, CPR and current general subjects. Also, two weapons qualifications, one in spring and one in fall, were administered to department personnel.

Several new projects were undertaken, the largest of which was presenting the first state certified Jailor Training course ever run by the Academy. The 80 hour course, which covers basic skills necessary for an officer assigned to jail duties, became mandatory for all jailor personnel after July of 1983.

Another major project was the initiation of a five year in-service program to have all sworn department personnel certified in the verbal and physical control techniques which comprise the RISC System. RISC is an acronym for Rapid Intense Specific Competencies. The system is a highly court defensible and sophisticated system of verbalization skills, coupled with physical alternatives which the officer can use when dealing with individuals ranging from uncooperative to violently resisting. The system emphasizes verbalization and body language and is designed so that the officer is constantly verbalizing his/her intentions so there is little chance for a later claim of misunderstanding on the part of the uncooperative person. This system was developed by Dr. Kevin Parsons, and is the only defensive tactics system to be recognized by the State of Wisconsin Law Enforcement Standards Board for use in law enforcement recruit schools. All police and sheriff's recruits graduating from the Academy's basic recruit school were certified in this system. The five year program of in-service certification was targeted to those veteran personnel who never received RISC training.

- Department personnel attending recruit classes - 23
- Outside police personnel attending recruit classes - 13
- Number of times gymnasium was used - 9,804
- Number paying gym user fee - 275
- Revenue from gym user fee - \$11,776.08
- Total hours of in-service presented to sworn personnel - 560
- Department personnel attending specialized training courses - 33
- LESB reimbursements and other revenue - \$104,067.89
- Total hours of recruit training presented - 320 hours
- Total hours of jailor training presented - 80 hours

Franklin Police Department

(1) Crowley, Sean

Kenosha Police Department

- (1) Krueger, David
- (2) Maccari, Edo
- (3) Niccolai, David
- (4) Oberst, Randy

Milwaukee County District Attorney's Office

(1) Stutika, Diane

Milwaukee County Sheriff's Department

- (1) Babich, Michael
- (2) Banyard, Lannie
- (3) Coleman, Gale
- (4) Derby, Deborah
- (5) Ferrill, Ben
- (6) Foulks, Johnnie Joy
- (7) Greengrass/Lopez, Debra
- (8) Hawkins, Bridget
- (9) Kumar, Anand
- (10) Maas, William
- (11) McCoy, Martha
- (12) Moore, Larry
- (13) Myler, Marie
- (14) Ockwood, Mark
- (15) Omdahl, Gina
- (16) Palok, Debra
- (17) Parks, Stephen
- (18) Rubio, Sary
- (19) Schires, Lawrence
- (20) Skenadore, Dory
- (21) Smith, Eldora
- (22) Smith, Thomas
- (23) Welch, Esther

Oak Creek Police Department

- (1) Dodge, Jeffrey
- (2) Sietmann, Daniel

Racine Police Department

- (1) Howell, Arthel
- (2) Lampman, David
- (3) Warmington, William
- (4) Weitzel, Charles

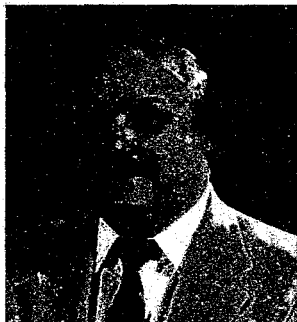
Shorewood Police Department

(1) Zack, Frederick

**Milwaukee County Sheriff's Department
Training Academy LESB
Recruit Class XXVIII**

July 16 - September 7, 1984



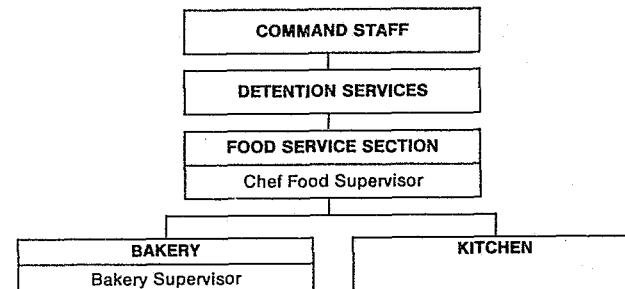


Myron Kuczynski
Food Service Director



Howard Strupp
Bakery Supervisor

Milwaukee County Sheriff's Department Food Services



Paul Wallner, Chef I

The Food Service Center, adjusting to the changes in 1984, continues to provide nutritional well-balanced meals to the inmates and jurors.

One of the major changes this year was the reorganization by Sheriff Artison, placing the Sheriff's Food Service Center and Sheriff's Bakery under the the direction of the Detention Bureau Captain.

Also, this year, the Clerk Typist II position was reclassified to Administrative Assistant I.

In conjunction with the new visiting procedure in the County Jail and in order to have less time between supper and breakfast, feeding times had to be changed and shift hours for the employees adjusted accordingly.

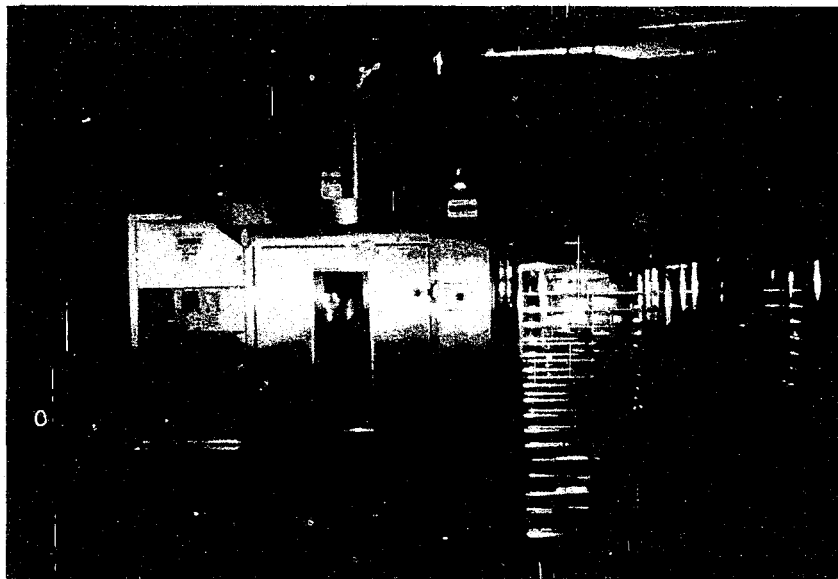
Tray service for some of the inmates was initiated this year. Trays are prepared in advance and handed to the inmates. This procedure is being done in the Women's Jail and the Annex at breakfast and 5-East is fed this way for both breakfast and supper.

	1982	1983	1984
Meals to County Jail	416,998	425,000	427,752
Meals Served Jurors	9,500	10,000	6,507
Meals for Special Events & Activities	6,500	11,100	6,385

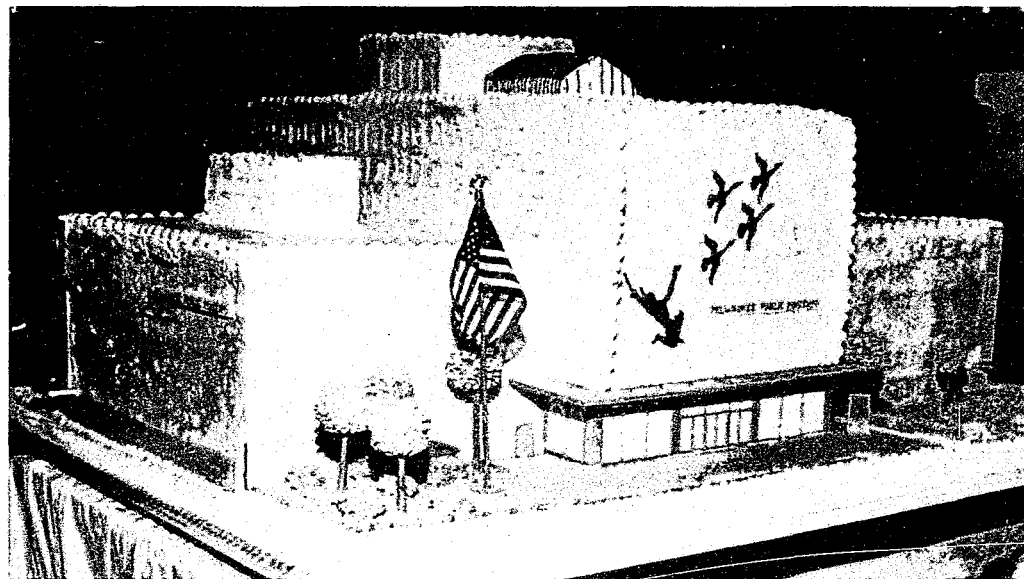
Due to the extensive medical problems experienced by the Food Director, Myron Kuczynski, Chef I, Paul Wallner had to assume the additional responsibilities of that position since June of 1984.

These responsibilities were in addition to his regular duties which consist of being in charge of the entire operation of the kitchen area; supervising Cooks and Food Service Workers and non-Civil Service workers; training; scheduling; taking inventories; requisitioning foods; preparing foods with nutritional value but also keeping costs down.

Unlike other Chefs in the County system, Paul Wallner is what we refer to as a "Working Chef". He enjoys preparing food for meeting luncheons, special events, and other setups within the County system that the Sheriff's Food Service Center caters.



The Sheriff's Department Bakery has installed a new 30 Pan Rack Oven this year. The ovenman can now put 30 pans into the oven at one time compared to handling each pan separately. This oven is more efficient and a time saver.

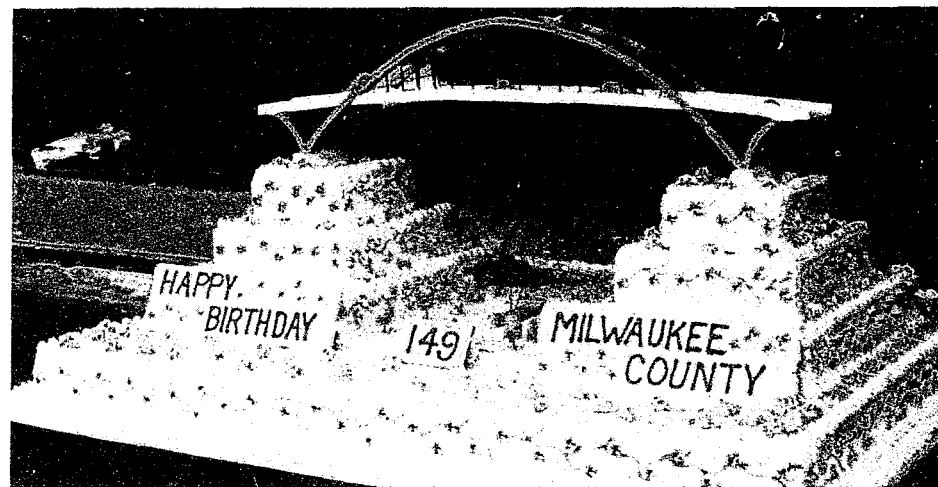


When the Museum celebrated their 100th Anniversary, a replica of the Museum Building was made out of cake and served over 5000 people. 10,000 Dinosaur cookies were furnished when the Museum had the grand opening of their "Third Planet" wing.

In the past year production has increased for buns, rolls, danish, sweet rolls, doughnuts, pies, muffins, cake, speciality items and individually wrapped bread. All other products are holding at a steady pace. The overall picture shows that the Bakery is becoming more versatile and more County Units are using the products available.

Bakery Production December, 1984

Item	Quantity Dec. '84	Unit	1984	1983	Dec. '83
Bread	7,989	Lvs.	98,149	99,272	8,989
Buns & Rolls	3,727	Doz.	43,494	35,082	3,967
Danish & Sweet Rolls	1,077	Doz.	12,460	11,165	1,039
Doughnuts	466	Doz.	5,681	3,825	320
Pies	775	Each	9,408	7,825	791
Cookies	1,714	Doz.	13,095	16,506	3,034
Cupcakes & Muffins	398	Doz.	10,392	1,342	38
Sheet Cakes	303	Each	3,216	3,286	340
Jelly Roll & 10" Cakes	81	Each	1,300	1,099	98
Coffee Cake & Stollen	317	Each	1,268	1,553	335
Specialty Items	394	Doz.	4,755	3,651	603
Indv. Wrap Bread	33,580	Each	421,900	334,170	36,260



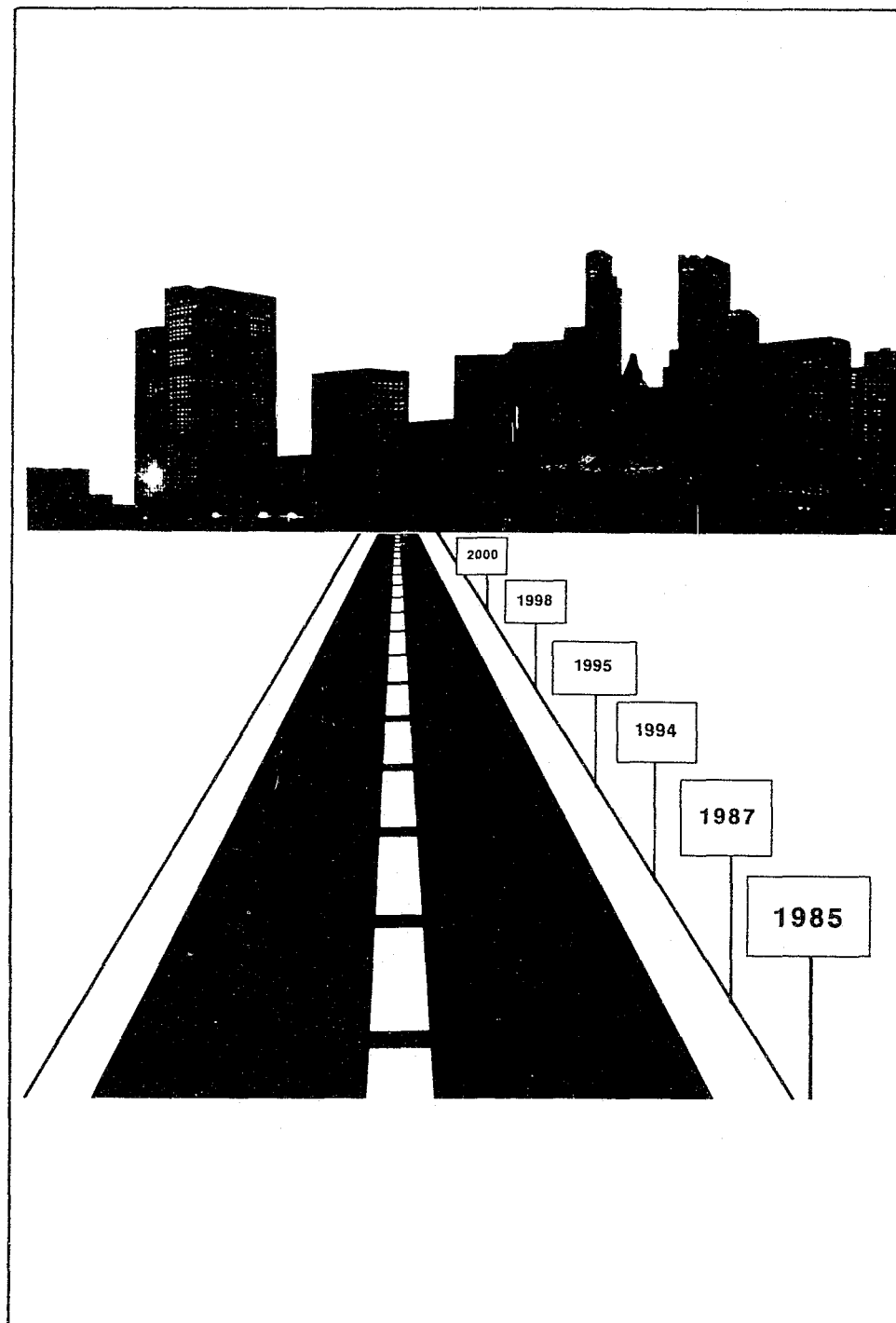
The Bakery handles many special events throughout the year. When the Hoan Bridge is closed for traffic in August, a large showpiece cake with a replica of the Bridge made out of icing is furnished. This cake usually serves around 4000 people. Cake has been served for four (4) years at the crest of the Hoan Bridge.

Looking Ahead

Deputies serving civil process papers are expected to begin utilizing hand held computers in 1985 to record the service of papers while in the field. Upon return to the office the information will be automatically uploaded to the mainframe computer thereby reducing error, saving clerical data entry, allowing deputies to remain in their districts for longer periods of time and automating the completion of return-of-service forms.

In 1985 Administrative Services intends to further automate labor distribution by combining payroll salary information with hourly assignments to produce more accurate crosscharge information in less time.

The department also plans to implement a security intern program in 1985 that will hire college students enrolled in public safety/law enforcement related curriculums. The program would offer students job related experience, financial assistance and opportunities for careers in public safety/law enforcement agencies, and would ultimately improve police agencies educational standards.



New Programs and Ideas

Department Reorganization

One of the first accomplishments of the new administration in 1984 was a significant reorganization involving the entire Sheriff's Department. Five bureaus were reduced to four, which provides each bureau with a full-time Captain.

The Expressway Patrol/Institutions Security Bureau was designed on a geographic basis, bringing together all of the Sheriff's various activities on the Department of Health and Human Services grounds; bailiff services at the Children's Court Center, Expressway Patrol and Institutions Security.

Bureaus were also made more equal in staff size. Furthermore bureaus were given sufficient personnel to permit them to make intra-bureau transfers at their own discretion between programs on a daily basis to meet operational needs. This reduced a constant exchange of personnel between bureaus which had expended considerable amounts of administrative time and effort by top staff and made position control for reimbursement purposes and contractual agreements difficult.

The reorganization also provided a number of bureaus with more than one Lieutenant, creating greater flexibility, more efficient use of management in operating programs and a greater degree of cross-training.

Internal Affairs

In 1984 Internal Affairs had serviced approximately two hundred fifty (250) citizens whose problems were adjudicated via phone without the need for an official case to open.

Also, eighteen (18) additional citizens wished to file formal complaints, but failed to respond to Internal Affairs investigators. These complaints became moot due to the citizens failure to respond. Lastly, Internal Affairs officially opened one hundred forty (140) cases which include:

- a) Complaints against the department
- b) Complaints against an individual employe
- c) Open record demands
- d) Special requests
- e) Notice of Claims (lawsuits)

Investigation and review of the one hundred forty (140) cases resulted in the following:

A) Counseled by Command	6
B) Reprimands	11
C) Transfers	1
D) Suspensions	14
E) Demotion	1
F) Resignation	2
G) Retirement	1
H) Separation	4
I) Outside Treatment	7

Officer's Uniforms

In 1984 all officers from the rank of Sheriff to Lieutenant were issued a uniform. The Officers received two types of uniforms, one a work type Class - "A", and the other is a more formal sport coat and slacks combination. The issuance of uniforms will make officers more recognizable and instill more professionalism into the ranks.

Canines (Narcotic Sniffing)

The Milwaukee County Sheriff's Department Canine Corp. came into being upon the graduation of 2 dogs and 2 handlers from the U.S. Custom Service Training School on June 7th, 1984. Both dogs and handlers were assigned to the Airport Security Bureau to assist the department in locating illegal narcotics that may be entering the Milwaukee area through Mitchell Field and assist our drug enforcement unit at any time. On November 29th, "Mac" alerted on 2 suitcases of a suspected drug dealer. An investigation of the suspects had been going on about a month by our officers. In cooperation with the department drug enforcement unit, an arrest was effected and 2 people taken into custody. The suitcases contained 48 pounds of marijuana with a street value of approximately \$50,000. The services of our Canine unit have been extended to all police agencies in Milwaukee County and the City of Milwaukee Police have used the dogs on numerous search warrant assignments.



48 pounds of marijuana, with a street value of \$50,000.

CityLights/ PERRY M. LAMEK

Deputy Dog

A cop and his partner sniff out trouble at Mitchell Field



Deputy Lyle Luedke and Merlin, his canine partner.

There is a unique sense of brotherhood, a very special bond, that develops between a cop and his partner.

"I treat Merlin with respect," says Milwaukee County Sheriff's Deputy Lyle Luedke. "And he responds through the work he does for me."

"He gets excited as heck when he sees me come in. He can't wait to get out and go to work. As far as a partnership goes, I don't think I could find a better partner."

Luedke is preparing for airport duty at Mitchell Field. He dons his beige and brown uniform with unabashed enthusiasm and speaks proudly of the uncommon

personal and professional rapport he shares with Merlin, MCS-1.

"Yeah," he smiles, "I guess there is an emotional attachment."

Deputy Luedke's partner is a dog. A spunky three-year-old black Labrador trained to detect narcotics by scent. Together, they've worked baggage at the airport since mid-June.

"This is the most enjoyable and satisfying assignment I've had with the department," says Luedke, who previously served as a "tier ape" at the County Jail. "Personality conflicts are a lot greater between people than between a man and a dog. A dog rarely argues with you."

Luedke leaves the Sheriff's tiny Mitchell Field headquarters and starts toward the converted garage that houses Wisconsin's first official doggy deputies.

"With a regular human partner," Lyle Luedke is saying, "you might be in the mood to converse and he might say, 'Shut up, I don't feel like talking tonight.' But you can talk to a dog all night long and he'll just sit and listen. He's glad to do whatever you want to do. I suppose you'd call it a blind loyalty in a way."

Deputy Kenneth Kujawa has completed his eight-hour shift and is feeding Mac, a five-year-old black Lab, when Luedke arrives at the kennels. Kujawa, 36, and Luedke, 30, were selected from a field of more than 30 applicants to establish the County's elite K-9 corps.

"I guess I was chosen because of my experience working with dogs," says Kujawa, a former bailiff. "I've shown Retrievers as a hobby for years."

According to Luedke, who handled patrol and drug dogs while in the Air Force, there's more to K-9 duty than just holding a leash.

"A lot of people don't understand that every dog has his own distinct personality," he says. "You really have to know your dog to get the most out of him. There'll be days when he doesn't feel like working, and you can't take it out on him aggressively. You have to have respect and patience. You have to talk to him, coax him, inspire him to work for you."

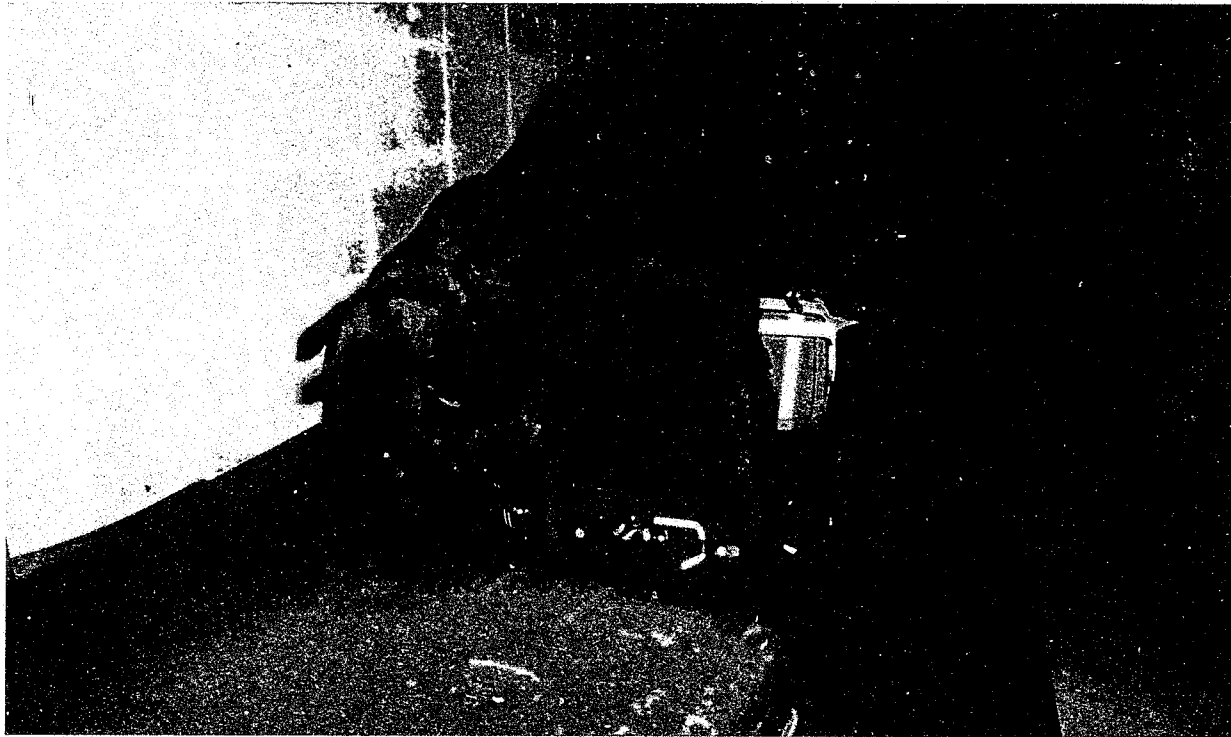
Merlin leaps up and down, thrashing his tail eagerly as his partner continues.

"It sounds kinda corny, but I get real affectionate with my dog. When people see me talking to him they probably think, 'This guy's a real flake. He's in love with his dog.' And I guess I do love my dog. You have to, to be a successful handler."

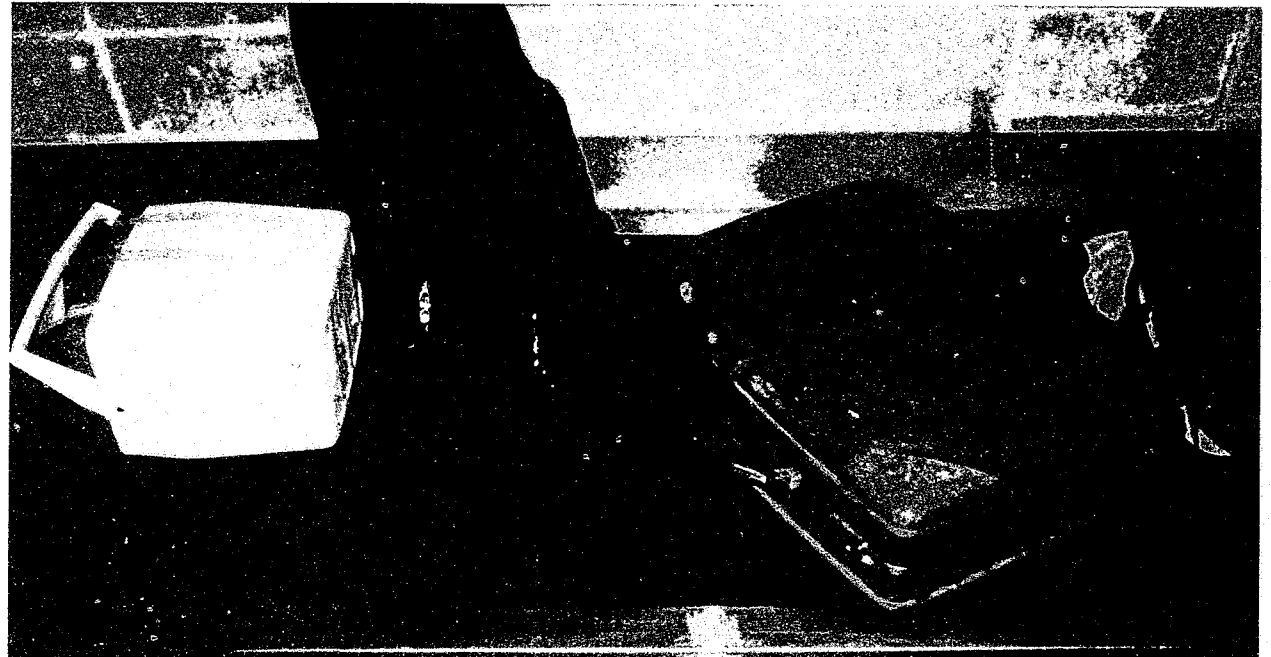
Luedke and Kujawa were introduced to their partners earlier this year, and began duty in Milwaukee after completing an intense 480-hour training program at the U.S. Customs facility in Front Royal, Virginia.

"It was basically a scent-association process," says Kujawa of the preparation method. "Drugs are wrapped in a towel and the towel is thrown and retrieved."

Eventually, the dogs came to associate the scent of narcotics with the prospect of a rousing game of fetch-the-towel. Now, whenever Mac or Merlin "alert" to a piece of luggage containing drugs — in either actual or simulated circumstances — they must be rewarded with several minutes of fetch-and-tug.



◀ "MAC" — One of the Milwaukee County Sheriff's Department narcotic sniffing dogs checks out a piece of luggage at Mitchell Field.



"MAC" thinks this piece of luggage is just what he's ► been looking for.



Eugene Lutomski
Lieutenant
37 Years



William Versnik
Lieutenant
37 Years



Arnold Nannetti
Lieutenant
20 Years

Night Watch Command

There is a section of the department which is not readily visible, nor is it able to furnish statistics on an annual basis, however, it provides an invaluable service to the department.

This section is the Sheriff's Department Night Watch Command, and is staffed by, Lieutenants, Eugene Lutomski, William Versnik and Arnold Nannetti. The night watch commander in the absence of the Sheriff, and the Inspectors makes decisions affecting the operation of the department. Emergencies, daily operational problems, and special requests are just part of the night watch commanders responsibilities.

The Department is extremely fortunate to have these fine officers on its staff, and would like to take this opportunity to publicly acknowledge the fine job they do for the department.

Milwaukee County Sheriff's Department
Promotions and Retirements

Promotions

To: Deputy Sheriff Inspector
 From: Deputy Sheriff Deputy Inspector
 Daniel J. Jarecki 10/10/84

To: Deputy Sheriff Captain
 From: Deputy Sheriff Lieutenant
 Bernard J. Tesmer Jr. 5/23/84

To: Deputy Sheriff Lieutenant
 From: Deputy Sheriff Sergeant
 Richard C. Cox 2/26/84
 George A. Paras 5/23/84
 Richard A. Krizan 7/26/84

To: Deputy Sheriff Sergeant
 From: Deputy Sheriff II
 Kurt Roussell 2/20/84
 Ronald A. Hanson 3/7/84
 Stacey Black 3/22/84
 Jeffery Zens 3/22/84
 John K. Filipowicz 8/22/84

To: Deputy Sheriff Sergeant
 From: Deputy Sheriff I
 Gary T. Klugiewicz 8/22/84

To: Deputy Sheriff II
 From: Deputy Sheriff I
 Gary Erickson 1/1/84
 Karen Neconish 4/4/84
 John K. Filipowicz 4/4/84
 Joyce M. Jasper 4/4/84
 Mark Plennes 4/4/84
 Otis Jones 4/4/84
 Michael Pautz 9/9/84

To: Deputy Sheriff I
 From: Security Officer
 Marie Myler 7/16/84

To: Deputy Sheriff I
 From: Communications Dispatcher
 Dory Skenadore 7/16/84

Retirements

Rank	Name	Appointed	Retired
Deputy Sheriff Captain	Robert Biak	9/18/53	6/22/84
Deputy Sheriff Lieutenant	Daniel Richardson	6/10/51	8/31/84
Deputy Sheriff Lieutenant	David A. Hoffman	6/10/57	6/27/84
Deputy Sheriff II	Frank Theis	3/8/60	11/2/84
Deputy Sheriff I	Herbert J. Marx	6/2/58	6/8/84
Deputy Sheriff I	Carl R. Hoyt	1/3/66	4/11/84

Special Events



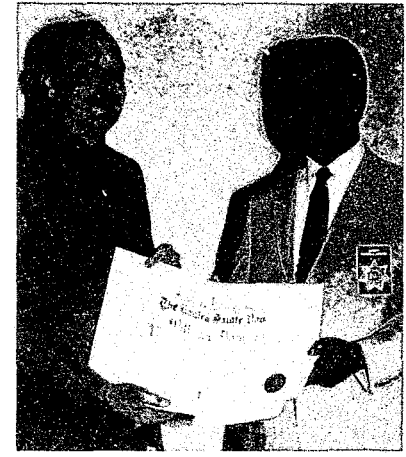
Deputy Larry Brenneman, who spent long hours on high seas searching for three people whose sailboat had capsized. One of the victims body was recovered.



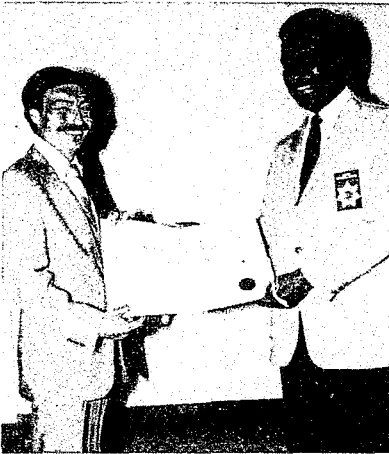
Deputy Thomas Capak, who spent long hours on high seas searching for three people whose sailboat had capsized. One of the victims body was recovered.



Deputy David Czynsz, for his efforts in breaking up a California-to-Milwaukee cocaine drug operation.



Deputy William Dangers, for preventing an intoxicated prisoner from chocking on a piece of jewelry that the prisoner swallowed.



Deputy Lloyd Hanus, for entering a burning home after an explosion and rescuing an injured woman.



Deputy Judith Knitter, for preventing an intoxicated prisoner from chocking on a piece of jewelry that the prisoner swallowed.



Deputy William Willmann, for the apprehension of a suspect in a shooting.



Deputy Chris Winter, who spent long hours on high seas searching for three people whose sailboat had capsized. One of the victims body was recovered.

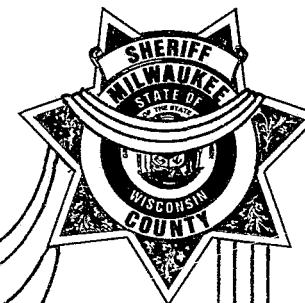
May 10, 1984
Eagles Club Awards Luncheon



From left to right: William Willmann, William Dangers, Sheriff Artison, Larry Brenneman, Lloyd Hanus, Thomas Capak, David Czysz, Chris Winter, Judith Knitter



In Memory



Each year across our nation a statistic is printed ...
"Officer Killed-Summary"

According to information received by the F.B.I., 59 local, county, state and federal law enforcement officers were killed due to criminal action during 1984. Seventy-four officers were slain in 1983. Six killed in connection with robbery matters, two while handling burglaries, 18 while attempting arrest for crimes other than robbery or burglary. Eight were killed while investigating suspicious persons or circumstances, eight enforcing traffic laws, six while responding to disturbance calls, six in ambush-type situations, three during drug-related investigations, and two while handling prisoners.

During 1984, the Milwaukee County Sheriff's Department did not lose any active members, however at the time of preparing this report two of Milwaukee's Police Officers were slain in the line of duty, Officers Leonard R. Lesnieski, 48, and Rosario J. Callura, 39, died March 19, 1985.

This very sad reminder not only impacts on every law enforcement officer, but also upon our community. Nothing can bring these officers back to their loved ones, and their loss is also our loss.

"Greater love hath no man than this, that a man lay down his life for his friends. John 15.13

Researched, Prepared and Edited by:

Sergeant John K. Filipowicz

Statistics/Narrative Furnished by:

Department Personnel

Photos from:

Bureau Personnel, Records and
Identification, Milwaukee Magazine,
State Fair Park, United Way Organization,
and Milwaukee Journal.

Printed by:

Milwaukee County Graphic
Reproduction