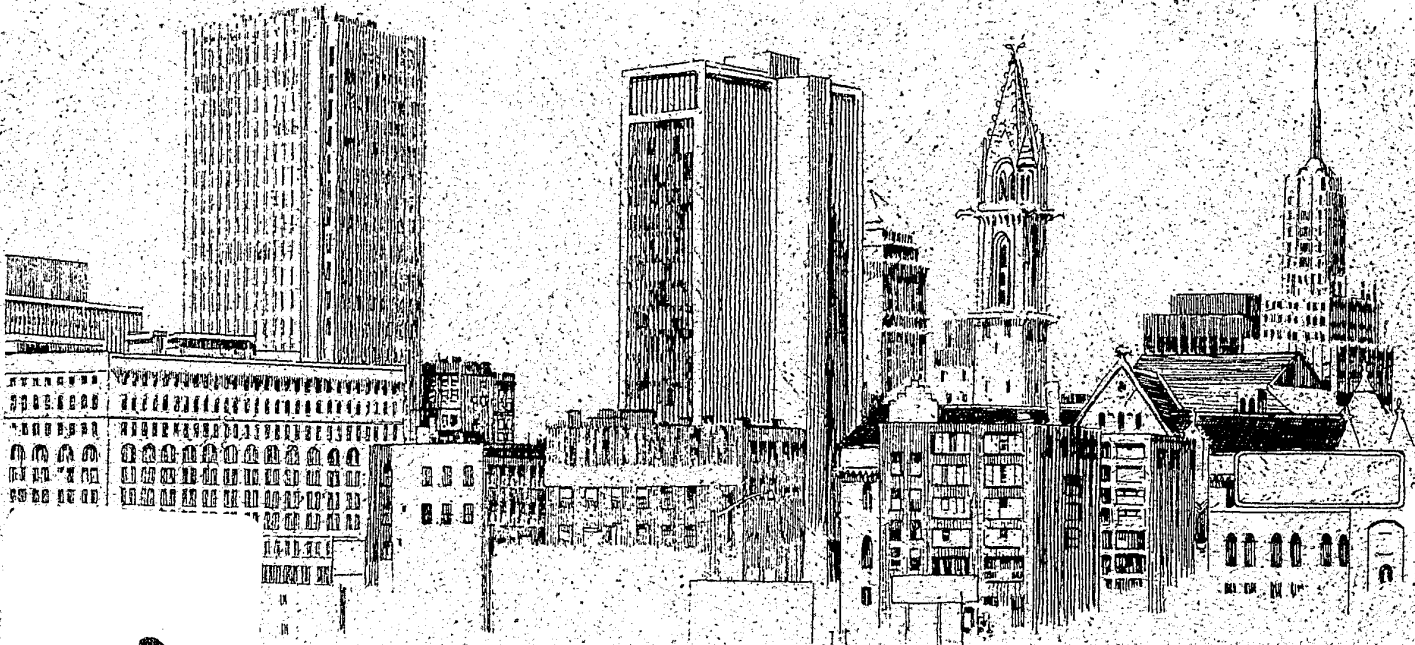


R-Sent
2-15-88

*1984
Annual Report*



107686

City of Buffalo, New York

Police Department

107686

Buffalo Police Department

Annual Report

1984



MAYOR

JAMES D. GRIFFIN

COMMISSIONER

RALPH V. DEGENHART

DEPUTY COMMISSIONER

KENNETH P. KENNEDY

NCJRS

NOV 3 1987

ACQUISITIONS

INSPECTORS

WILLIAM J. FRAWLEY

ANTHONY A. LABEDZ

JAMES A. MAHONEY

FREDERICK J. PLATEK

DANIEL E. REDMOND

ANGELO P. ALESSANDRA

KEVIN R. CONNORS

**U.S. Department of Justice
National Institute of Justice**

107686

This document has been reproduced exactly as received from the person or organization originating it. Points of view or opinions stated in this document are those of the authors and do not necessarily represent the official position or policies of the National Institute of Justice.

Permission to reproduce this copyrighted material has been granted by

Buffalo Police Department

to the National Criminal Justice Reference Service (NCJRS).

Further reproduction outside of the NCJRS system requires permission of the copyright owner.

In Memoriam



John B. Myers

Born: December 20, 1914

Appointed: Commissioner - February 6, 1984

Died: March 24, 1985

TABLE OF CONTENTS

Academy Report	45
Age of Personnel; by Rank, Title	20
Analysis by Precinct (Part II Crimes)	34, 35
Architecture of the City	6, 7
Arrests - F.B.I. Part I & Part II	36
Budget	12
Bureau of Identification (Statistics)	43, 44
Calls for Police Service - 911	25
Calls for Police Service; 3-Year Comparison	26
Central Booking Bureau Statistics	37
Commissioner, Ralph V. Degenhart (Photograph)	5
Commissioner's Letter	1
Community Services	46
Comparison of F.B.I. Part I Crimes (5-Year)	33
Complaints by Council District	27
Complaints by Shift & Day, by Precinct (All Complaints)	28
Complaints by Shift & Day, by Precinct (Crime Only)	29
Crime Clock (Index)	32
Deputy Commissioner (Photograph)	11
Distribution of Personnel	22
General Fund	13
Juvenile Bureau Referrals	41
Law Enforcement Officers Assaulted	19
Mayor, Honorable James D. Griffin (Photograph)	3
Offenses Known to Police	30
Offenses Known to Police by Precinct	31
Organizational Chart	10
Patrol Division Manpower	23
Precinct Population and Manpower	24
Property Value (Stolen & Recovered)	40
Salary Scale (Civilian)	15
Salary Scale (Sworn)	14
Sex Offense Squad Statistics	42
Strength of Department (Civilian)	17
Strength of Department (Sworn)	16
Summonses Issued by Unit	38
Surgeons' Report	18
Traffic - Accidents & Summonses	39
Waterfront Scene (Photograph)	8, 9
Years of Service by Rank, Title	21



74 Franklin Street
Buffalo, N. Y. 14202
Phone (716) 855-4444

Ralph V. Degenhart
Commissioner

Honorable James D. Griffin
Mayor, City of Buffalo
Members of the Common Council
Buffalo, New York 14202

Gentlemen:

The year 1984 continued to be a very successful one in our efforts to reduce crime in the City of Buffalo.


F.B.I. Index Crimes decreased by approximately 5.5%, 25,900 in 1983 compared to 24,481 during 1984. The most significant decreases were for the crimes of murder (-19.6%), burglary (-10.4%), and rape (-6.7%). This decrease is particularly encouraging because it represents the third consecutive year that we have experienced a substantial decrease in Index Crimes.

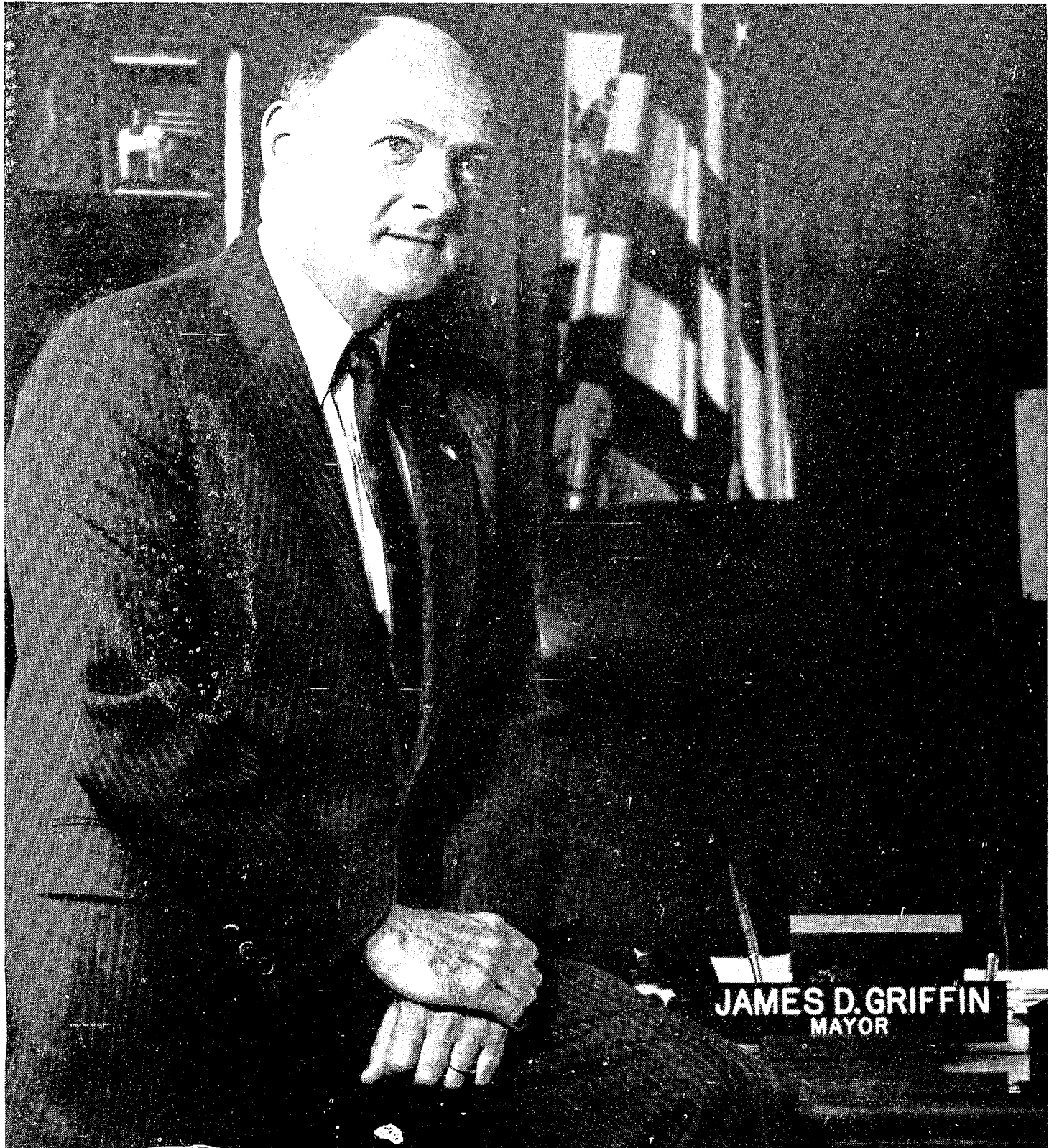
Also encouraging, is our traffic safety record. During 1984 traffic fatalities in our City decreased to twenty-three (23) compared to thirty-three (33) in 1983, a reduction of 30.3%, making our City one of the safest cities in the nation for its population group.

Much of our success in these areas can be attributed to our vigorous law enforcement efforts. Arrests for Index and Non-Index crimes increased by 14.6% during 1984 (10,800) compared to 1983 (9,416). Also, playing a large role in this success were the Major Offense Police Program and the Special Warrant Enforcement Enhancement Program which are both funded by the New York State Division of Criminal Justice Services. Our Sex Offense Squad was also formed during this period and has performed beyond all expectations.

I thank you for the excellent cooperation from your office, which has made our task a much easier one. Also, I wish to thank the many dedicated men and women in this Department for their untiring efforts in making our City a safer place in which to live and work.

Sincerely,


Ralph V. Degenhart
Commissioner of Police



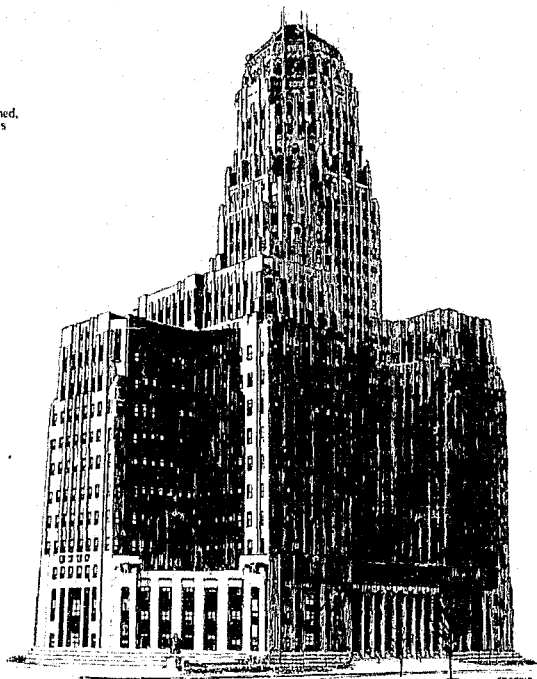
JAMES D. GRIFFIN
MAYOR



RALPH V. DEGENHART
COMMISSIONER OF POLICE

Buffalo City Hall

Built between 1929 and 1931 in the midst of the Great Depression, Buffalo's City Hall was a daring departure from the golden domed, pseudo classical structures of many cities. Its architect and chief designer, John J. Wade, wished to erect an edifice that would reflect the energetic, powerful image of an industrial city throbbing with purpose. Along with New York City's Chrysler Building, Buffalo City Hall remains one of the outstanding Art Deco public buildings in our country. Its architect seized on the Art Moderne style (started at the Paris Exposition of 1925 and characterized by linear, geometric designs) to best express Western New York's promising future as a rapidly growing industrial center.



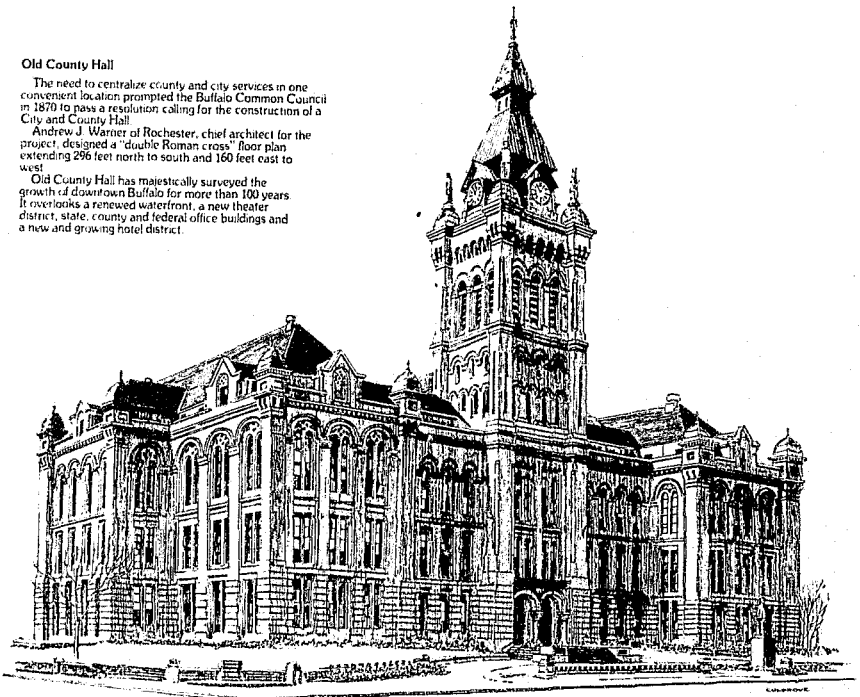
Architecture of the

Old County Hall

The need to centralize county and city services in one convenient location prompted the Buffalo Common Council in 1870 to pass a resolution calling for the construction of a City and County Hall.

Andrew J. Warner of Rochester, chief architect for the project, designed a "double Roman cross" floor plan extending 296 feet north to south and 160 feet east to west.

Old County Hall has majestically surveyed the growth of downtown Buffalo for more than 100 years. It overlooks a renewed waterfront, a new theater district, state, county and federal office buildings and a new and growing hotel district.

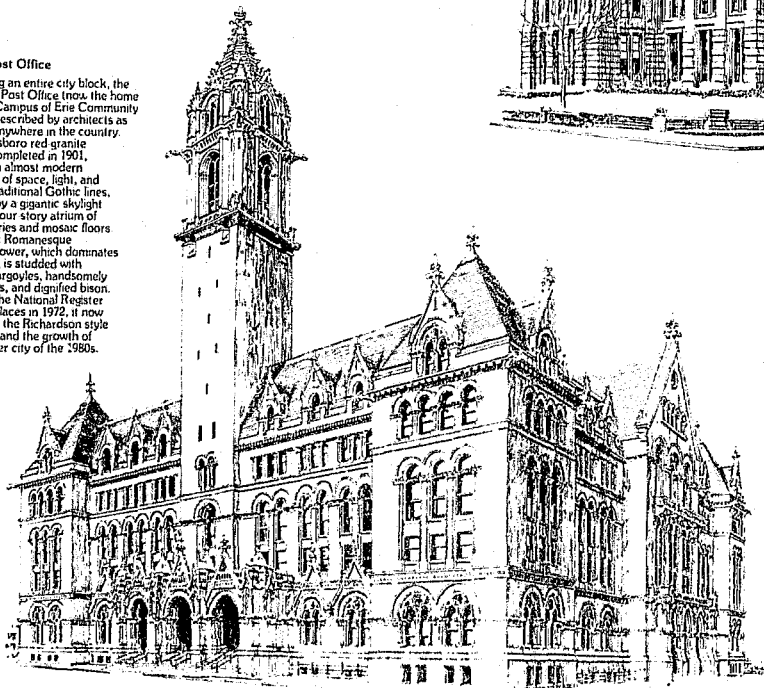


The Old Post Office

Occupying an entire city block, the Buffalo City Post Office (now the home of the City Campus of Erie Community College) is described by architects as unequalled anywhere in the country.

The Jonesboro red granite structure, completed in 1901, combines an almost modern composition of space, light, and scale with traditional Gothic lines, highlighted by a gigantic skylight enclosing a four story atrium of arched galleries and mosaic floors. The 244 foot Romanesque Florentine Tower, which dominates the roof line, is studded with grotesque gargoyles, handsomely carved eagles, and dignified lions.

Listed in the National Register of Historic Places in 1972, it now reflects both the Richardson style of the 1880s and the growth of Buffalo's inner city of the 1900s.



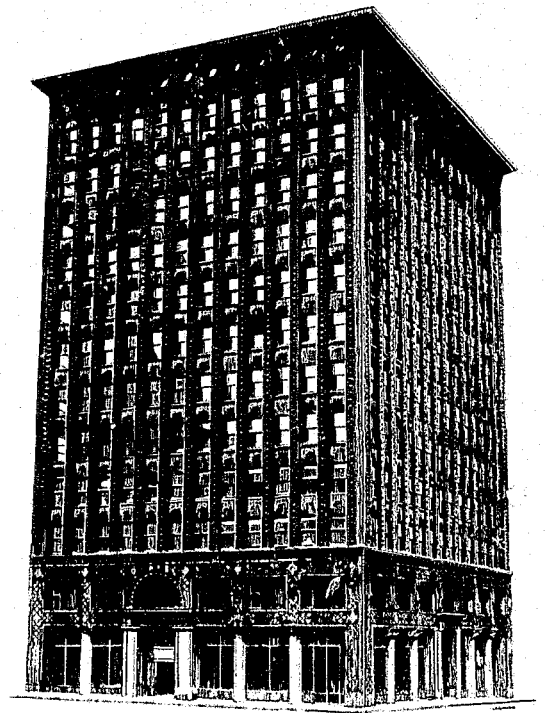
City of Buffalo, N. Y.

Guaranty/Prudential Building

Situated in the heart of downtown Buffalo, Louis Sullivan's Guaranty/Prudential Building is a testament to the spirit of industry expressed as aspiring art. Completed in 1896, the building graces Pearl and Church Streets with a terra cotta garden of floral designs and geometric forms, growing organically over the logical steel structure.

The last project Chicago architects Adler and Sullivan completed together, the building was designed in response to a request to build "the largest and best office building in the city."

In 1973 the building was entered on the National Register of Historic Places and, in 1975, was declared a National Historic Landmark. Thanks to the efforts of dedicated local citizens, Sullivan's exquisite stained glass skylight and fine mosaics remain intact and the magnificent illusion of vibrant life finding nourishment and vitality in functional steel will remain available to all who visit Buffalo.

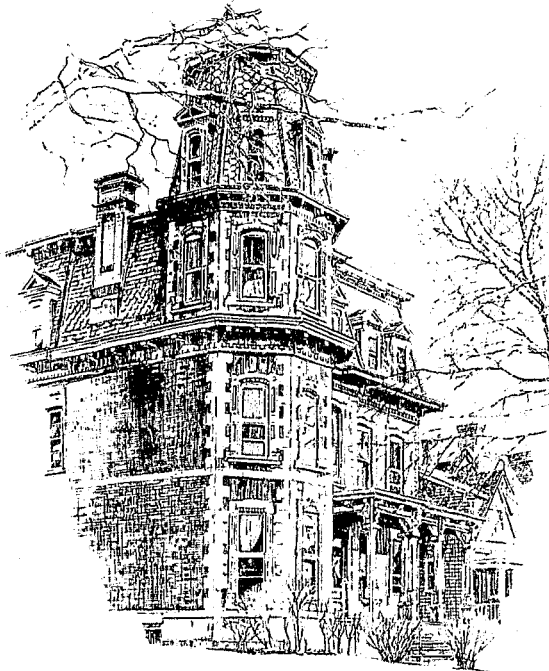


Coatsworth House

The Coatsworth house is a dignified example of the High Victorian style. Built in 1859, the structure is dominated by a four-story octagonal pavilion crowned with ornate wrought iron grillwork.

Counted among Buffalo's early settlers, the Coatsworth family owned and operated a grain elevator along Buffalo Harbor, now the site of the Marine Drive Apartments. Thomas Coatsworth, who came to Buffalo in 1820, proudly saluted his family's heritage through the crest of arms that still remains above the Coatsworth house doorway.

Passing from family to institutional to private ownership, the Coatsworth house has aged well despite its varied group of occupants. Its long spacious hallways, high stately ceilings, and imposing staircase maintain their original sense of grace thanks to those who respect and wish to preserve such examples of grandeur.

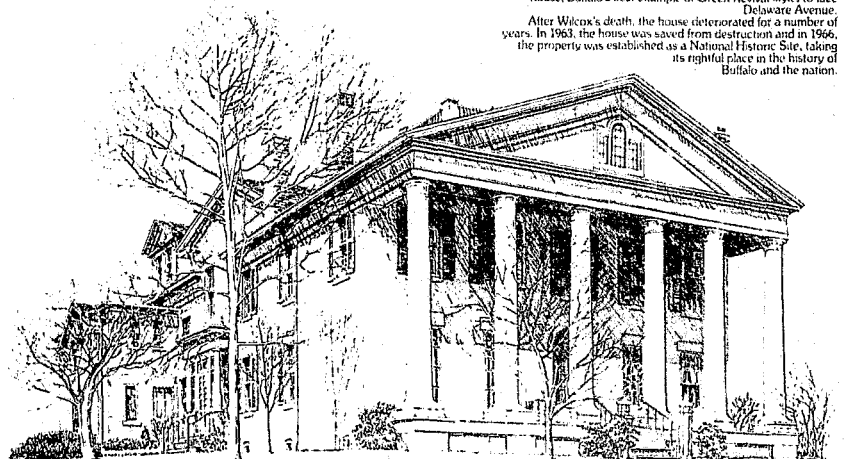


Theodore Roosevelt Inaugural Site (Ansley Wilcox House)

Five houses along the coastal background of the Wilcox House, and fewer still have established such a secure niche in American history. On its grounds have walked well-known figures from our past, none more famous than Theodore Roosevelt, who became the 26th President of the United States in the Wilcox library following the assassination of President William McKinley.

Originally, the property was the site of a military post which, in 1838, faced East toward the present Franklin Street. After reverting to civilian ownership, the property was moved to the west side, which caused the house, Buffalo's best example of Greek Revival style, to face Delaware Avenue.

After Wilcox's death, the house deteriorated for a number of years. In 1963, the house was saved from destruction and in 1966, the property was established as a National Historic Site, taking its rightful place in the history of Buffalo and the nation.

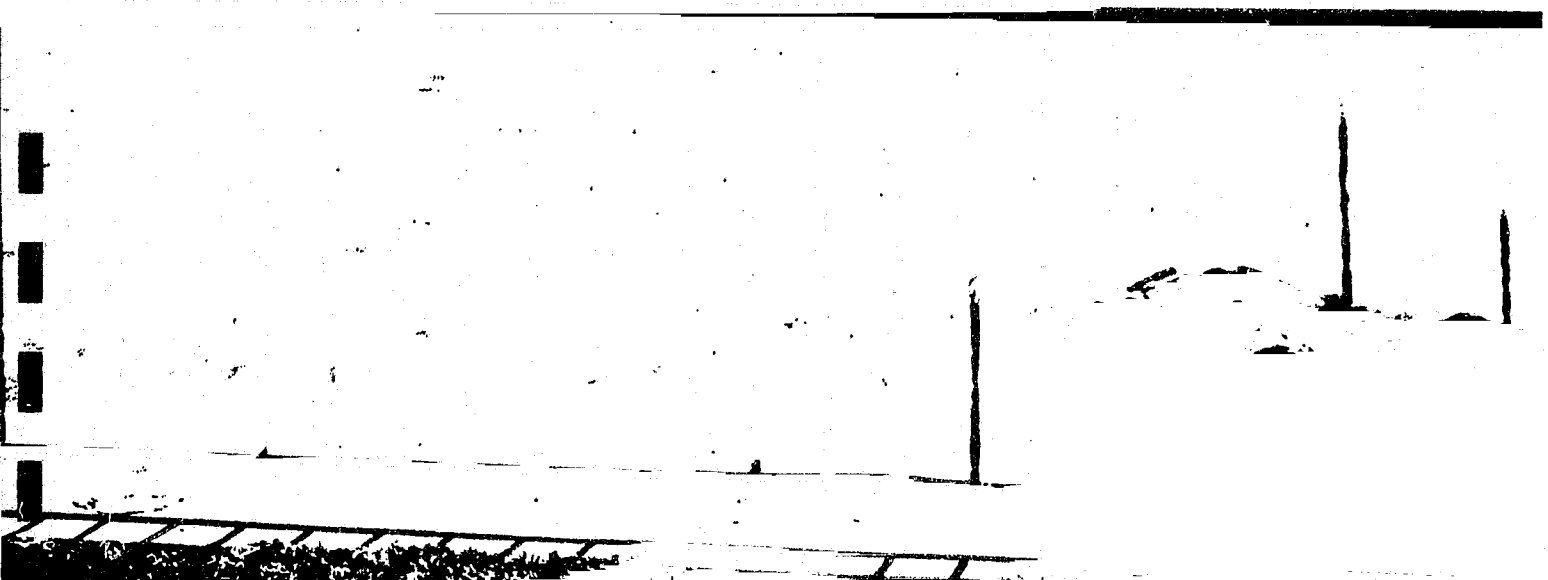






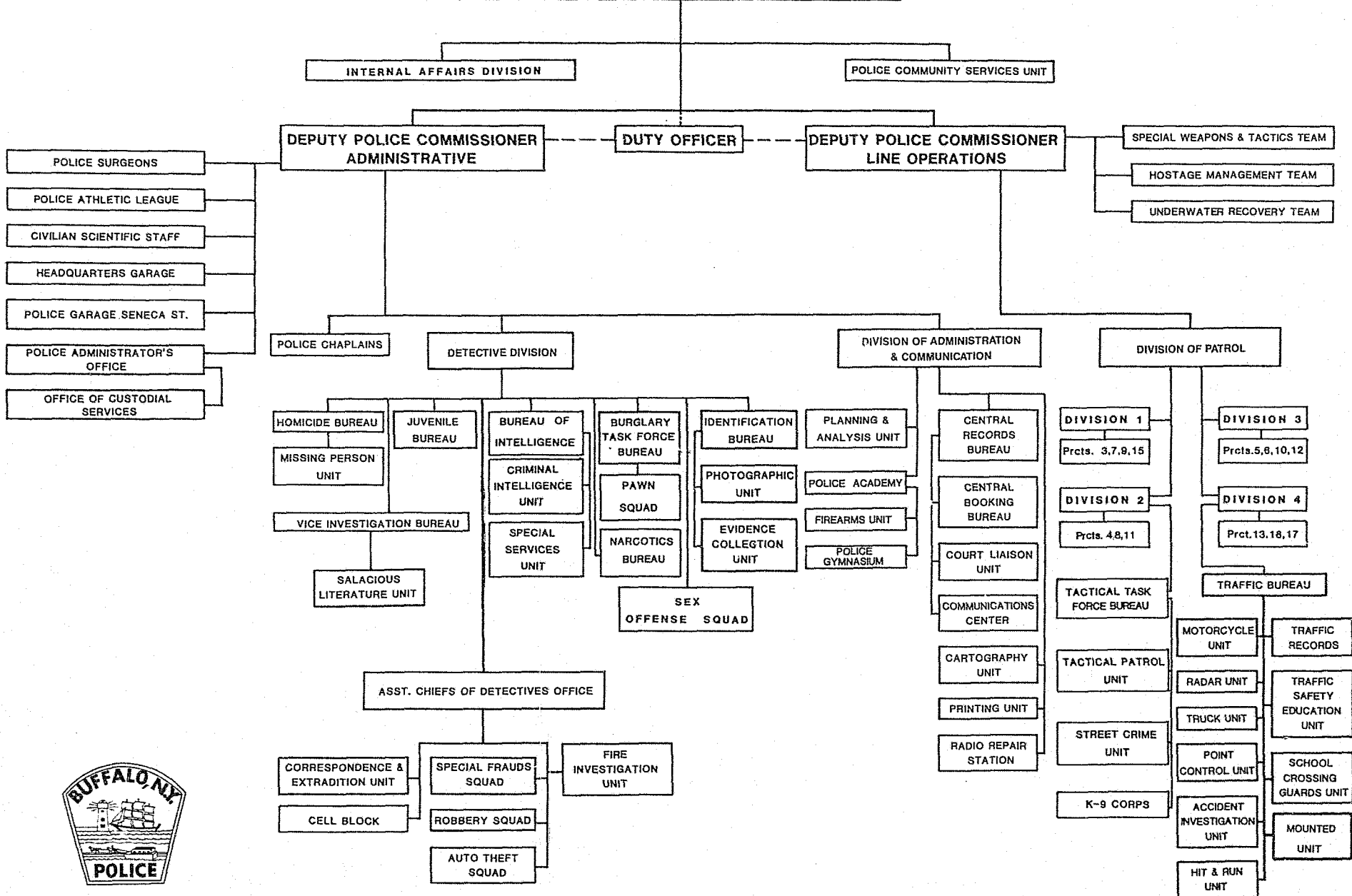
BUFFALO PROFILE

Population (1980 Census)	357,870
Metropolitan Area Population	1,242,826
City Land Area	41.7 Square Miles
City Area Including Water Rights	50.0 Square Miles
City Government	Mayor - Council
City Budget ['83 - '84 Appropriation]	\$367,134,803



BUFFALO POLICE DEPARTMENT ORGANIZATION CHART

POLICE COMMISSIONER



10



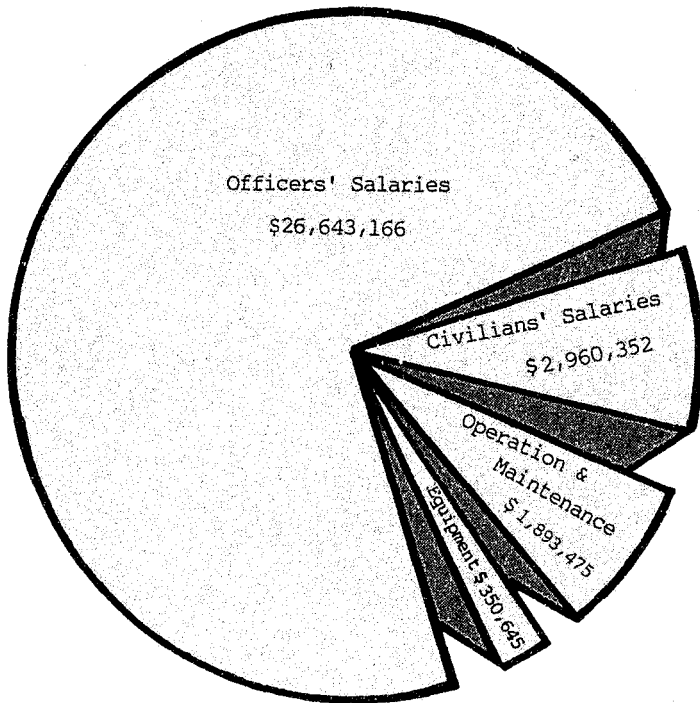


**DEPUTY COMMISSIONER
KENNETH P. KENNEDY**

POLICE BUDGET

TOTAL POLICE BUDGET

\$31,847,638



% of Total	Budget Category	\$ Amount
83.7	Officers' Salaries*	26,643,166
9.3	Civilians' Salaries	2,960,352
5.9	Operation & Maintenance	1,893,475
1.1	Equipment (Capital Outlay)	350,645
100.0		\$31,847,638

*Does not include pensions and retirement expenses.

POLICE BUDGET COMPARISONS

	1982-1983 Fiscal Year	1983-1984 Fiscal Year	1984-1985 Fiscal Year	Requested Budget 1985-1986 Fiscal Year
Officers' Salaries	\$24,164,856	\$25,668,667	\$26,643,166	\$28,444,475
Civilians' Salaries	2,427,455	2,639,424	2,960,352	3,160,498
Operation & Maintenance	1,338,025	1,923,166	1,893,475	1,524,275
Equipment (Capital Outlay)	267,891	415,743	350,645	620,185
TOTAL	\$28,198,227	\$30,647,000	\$31,847,638	\$33,749,433

GENERAL FUND

Analysis of Current Revenue - Actual for the
Fiscal Year ending June 30, 1984

<u>SOURCE</u>	<u>AMOUNT REALIZED</u>
Photocopy Charges	\$ 1,220.00
Police Records Fees	3,542.00
Vending Machine Commissions	136.00
Criminal Process	4,649.00
Telephone Service	378.00
Auction Sales	6,564.00
Miscellaneous, State and Federal Grants	1,096,209.00
	<hr/>
TOTAL	\$1,112,698.00

MISCELLANEOUS SERVICES OF POLICE ADMINISTRATOR

Money Found and Turned In	\$ 253.14
Estimated Value of Other Found Property	107,250.00
Estimated Value of Other Recovered Property	246,471.00
Prisoners Money Turned In	229,279.85
Bail Money Processed	140,375.00
Fees Collected from Accident, Burglary & Other Records	4,762.00
	<hr/>
TOTAL	\$ 728,390.99

SWORN PERSONNEL SALARY SCALE

TITLE	Fiscal Year 1982-1983	Fiscal Year 1983-1984	Fiscal Year 1984-1985
1 Police Commissioner	\$41,449	\$43,106	\$43,106
2 Deputy Commissioners of Police	33,913	37,134	37,134
6 Police Inspectors	29,171	30,338	31,248
1 Chief of Detectives	29,171	30,338	31,248
1 Police Administrator	29,171	30,338	31,248
25 Police Captains	26,455	27,513	28,338
5 Assistant Chiefs of Detectives	24,681	25,668	26,438
1 Chief of Homicide	26,455	27,513	28,338
1 Police Instructor	24,681	25,668	26,438
102 Police Lieutenants	23,013	23,934	24,652
20 Detective Sergeants	21,511	22,371	23,042
2 Police Photographers	21,266	22,117	22,780
69 Detectives	20,540	21,362	22,002
844 Police Officers	19,628	20,413	21,025
<u>15</u> Assistant Police Dispatchers	21,266	22,117	22,780
1,095 TOTAL			

CIVILIAN PERSONNEL SALARY SCALE

TITLE	Fiscal Year 1982-1983	Fiscal Year 1983-1984	Fiscal Year 1984-1985
1 Supervisor of Police Radio	\$ 22,860	\$ 23,774	\$ 24,963
2 Police Surgeons	19,259	20,029	21,129
4 Radio Mechanics	16,488	18,421	18,421*
1 Accountant	18,680	19,427	20,527
1 Drafting Technician	16,627	17,292	18,392
1 Senior Stenographer	14,794	15,385	15,385
4 Senior Typists	14,264	14,834	15,934
3 Senior Clerks	14,264	14,834	15,934
51 Report Technicians	14,264	14,834	15,934
1 Account Clerk	14,324	14,896	15,996
2 Telephone Operators	14,794	15,385	16,485
6 Clerks	13,451	13,989	15,089
2 Typists	13,451	13,989	15,089
1 Clothing Clerk	13,451	13,989	15,089
7 Cleaners	12,414	14,184	14,184*
4 Cleaning Workers	11,217	12,939	12,939*
200 School Crossing Guards	4.38 hr.	4.75 hr.	4.12-4.89 hr.
1 Head Janitor	13,844	15,671	15,671*
2 Motor Equipment Maintenance Supervisors	17,003	18,957	18,957*
1 Head Motor Equipment Mechanic	16,488	18,421	18,421*
10 Motor Equipment Mechanics	15,614	17,512	17,512*
1 Auto Mechanic Helper	13,401	15,211	15,211*
4 Laborers (Level II)	13,404	15,200	15,200*
6 Laborers (Level I)	12,068	13,822	13,822*
2 Research Aides	16,092	16,735	17,835
318 TOTAL			

* The salaries for these positions (Local 264) were still being negotiated for the 1984-1985 fiscal year at the time of this report.

STRENGTH OF THE DEPARTMENT - SWORN PERSONNEL

<u>FORCE, RANK AND GRADE</u>	<u>AUTHORIZED</u>	<u>ACTUAL</u>
Commissioner	1	1
Deputy Commissioners	2	2
Inspectors	6	6
Chief of Detectives	1	1
Assistant Chiefs of Detectives	5	5
Chief of Homicide	1	1
Captains	25	25
Lieutenants	102	102
Police Officers	844	800
Detective Sergeants	20	20
Detectives	69	57
Police Administrator	1	0
Police Instructor	1	1
Photographers	2	2
Assistant Police Dispatchers	15	15
TOTALS:	1,095	1,038

CIVILIAN STRENGTH OF THE DEPARTMENT

<u>TITLE</u>	<u>AUTHORIZED</u>	<u>ACTUAL</u>
Account Clerk	1	1
Accountant	1	1
Cleaning Workers	4	4
Cleaners	7	7
Clerks	6	6
Clothing Clerk	1	1
Drafting Technician	1	1
Radio Mechanics	4	3
Report Technicians	51	50
School Crossing Guards	200	192
Senior Clerks	3	3
Senior Stenographer	1	1
Senior Typists	4	4
Supervisor, Police Radio	1	1
Surgeons	2	1
Telephone Operators	2	2
Typists	2	2
Head Janitor	1	1
Motor Equipment Maintenance - Supervisors	2	2
Head Motor Equipment Mechanic	1	1
Motor Equipment Mechanics	10	10
Auto Mechanic Helper	1	1
Laborers (Level II)	4	4
Laborers (Level I)	6	6
Research Aides	2	1
TOTALS:	318	306

POLICE SURGEONS' REPORT

	DISTRICT 1	DISTRICT 2	TOTAL
SWORN PERSONNEL ONLY			
Number of Sworn Personnel	415	623	1,038
Number of Sick or Disabled Calls	519	696	1,215
Average Calls per Man	1.3	1.1	1.2
Total Number of Sick Days	3,716	5,395	9,111
Average Sick Days per Man	9.0	8.7	8.8
Total Number of Disabled Days *	901	2,565	3,466
Average Disabled Days per Man	2.2	4.1	3.3
Total Number of Disabled Days for Off-Duty Injuries	136	150	286
Average Disabled Days per Man (Off-Duty Injuries)	.3	.2	.3
Total Number of Sick and Disabled Days	4,753	8,110	12,863
Average Sick and Disabled Days per Man	11.5	13.0	12.3
CIVILIAN PERSONNEL ONLY			
Number of Civilian Personnel	49	65	114
Number of Sick or Disabled Calls	108	150	258
Average Calls per Man	2.2	2.3	2.3
Total Number of Sick Days	1,005	1,487	2,492
Average Sick Days per Man	20.5	22.9	21.9
Total Number of Disabled Days *	407	128	535
Average Disabled Days per Man	8.3	2.0	4.7
Total Number of Disabled Days for Off-Duty Injuries	0	0	0
Average Disabled Days per Man (Off-Duty Injuries)	0	0	0
Total Number of Sick and Disabled Days	1,412	1,615	3,027
Average Sick and Disabled Days per Man	28.8	24.8	26.5

*Disabled Days are considered Sick Days
Attributed to an Injury On-Duty

LAW ENFORCEMENT OFFICERS ASSAULTED*

Activity	<u>Type of Weapon</u>					TOTAL
	Handgun	Other Firearm	Knife or Cutting Instruments	Other Dangerous Weapons	Hands, Fists, Feet, etc.	
Domestics	1	1	4	6	74	86
Burglaries	1			2	3	6
Robberies					1	1
Other Arrests				6	53	59
Civil Disorders				1	1	2
Transporting Prisoners					9	9
Suspicious Persons		1	3		5	9
Ambush						
Mentally Deranged			2			2
Traffic Situations				2	11	13
All Other			1		4	5
TOTAL:	2	2	10	17	161	192

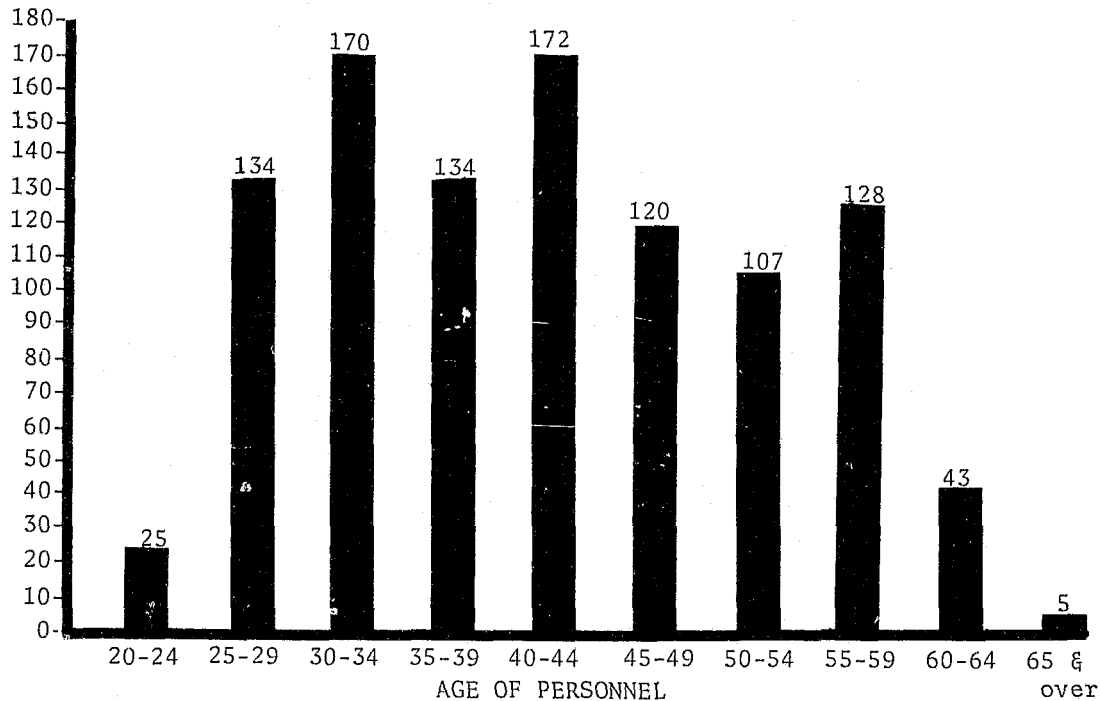
Activity	<u>Type of Assignment</u>					TOTAL
	Two-Man Vehicle	One-Man Vehicle Alone Assisted	Detective or Special Assign. Alone Assisted		Other Alone Assisted	
Domestics	82		2	2		86
Burglaries	5	1				6
Robberies					1	1
Other Arrests	47	1	2	7	2	59
Civil Disorders	2					2
Transporting Prisoners	6		1	2		9
Suspicious Persons	6		2	1		9
Ambush						
Mentally Deranged	1				1	2
Traffic Situations	11		1		1	13
All other	4				1	5
TOTAL:	164	2	3	14	7	192

*No Officers were killed during 1984

AGE OF PERSONNEL BY RANK-TITLE

AGE OF PERSONNEL*

OF PERSONNEL



RANK/TITLE	20-24	25-29	30-34	35-39	40-44	45-49	50-54	55-59	60-64	65 & over	TOTAL	AVG. AGE
Comm. of Police										1	1	70
Deputy Commissioner										2	2	66.5
Inspector						1		4		1	6	56.2
Chief of Dets.					1						1	44
Asst. Chief of Dets.					1			1	3		5	55.6
Chief of Homicide										1	1	66
Captain				1	3	1	3	13	4		25	54.2
Lieutenant		1	14	18	22	13	9	19	6		102	45.1
Det. Sergeant					3	3	5	4	5		20	53.2
Detective			2	2	13	10	13	16	1		57	49.2
Acting Detective			4	4	10	9	2	4	1		34	44.5
Police Officer	25	133	147	108	117	80	69	65	22		766	36.4
Police Instructor								1			1	58
Photographer				1					1		2	50
Asst. Pol. Dispatcher			3		2	3	6	1			15	46.0
TOTAL:	25	134	170	134	172	120	107	128	43	5	1,038	41.7
% OF TOTAL:	2.4	12.8	16.4	12.9	16.6	11.6	10.3	12.3	4.2	.5	100%	

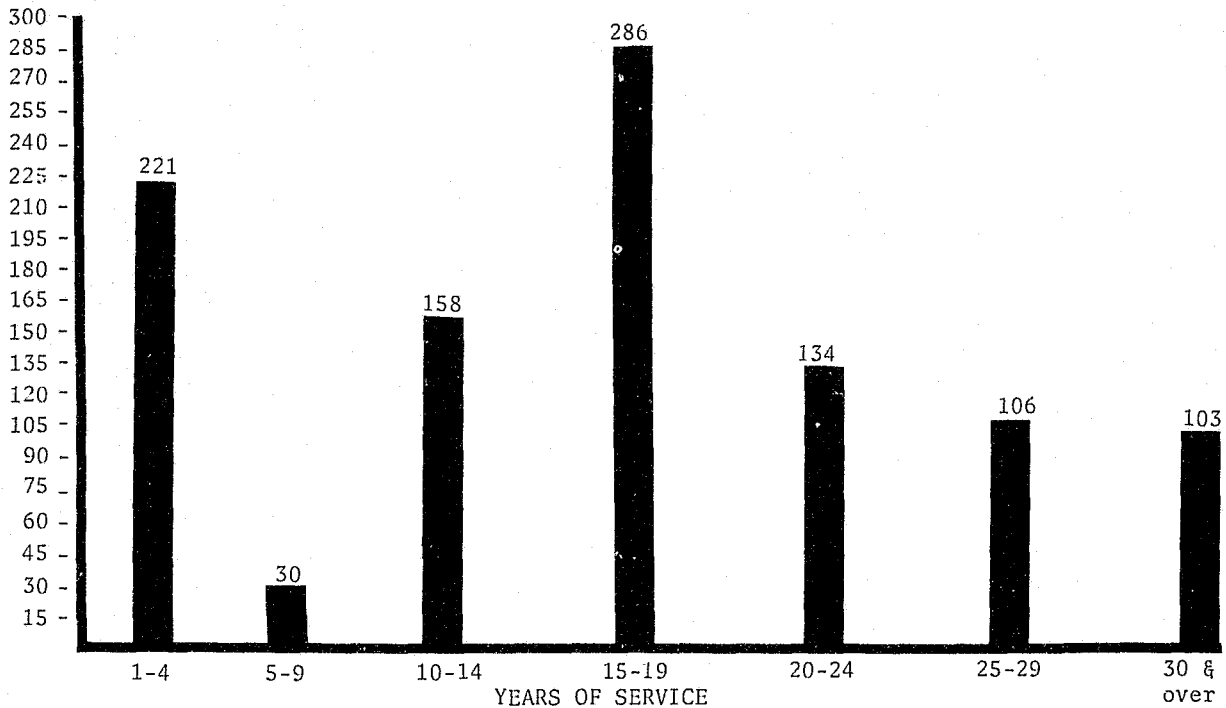
*as of December 31, 1984

Data: Personnel History System
Chart: Planning & Analysis Unit

YEARS OF SERVICE BY RANK-TITLE

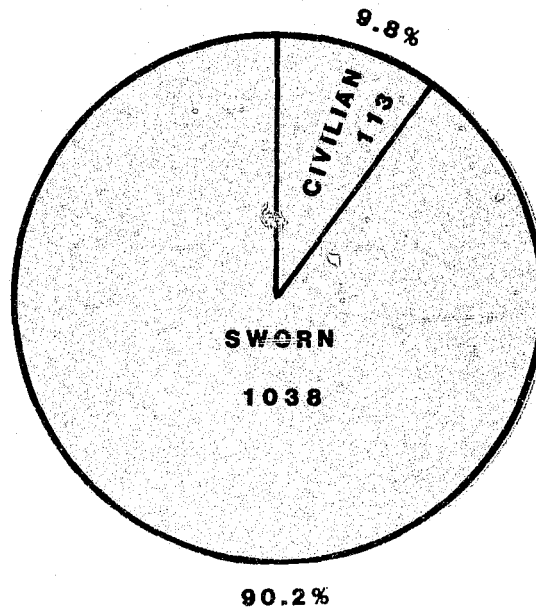
YEARS OF SERVICE*

OF PERSONNEL

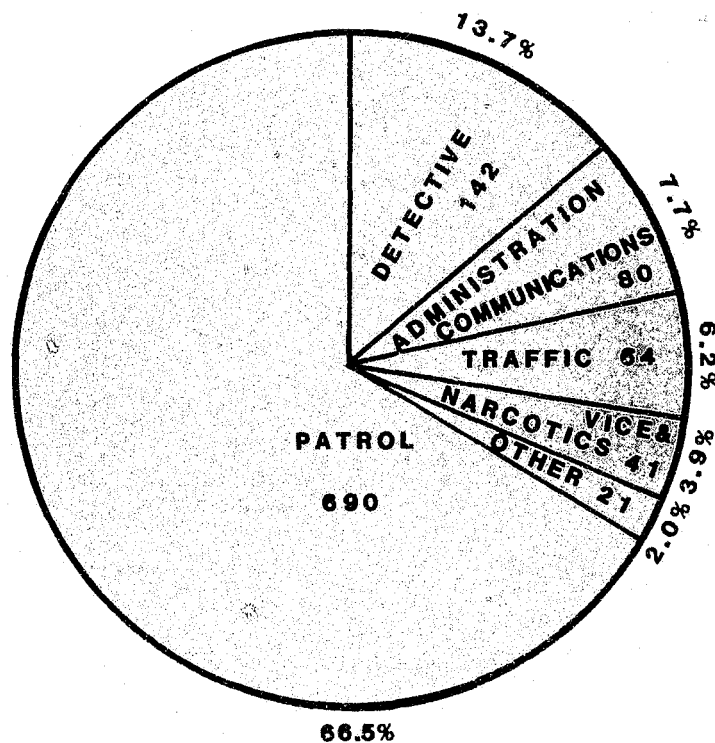


RANK/TITLE	1-4	5-9	10-14	15-19	20-24	25-29	30 & over	TOTAL	Average Length of Service*
Comm. of Police							1	1	43
Deputy Commissioner							2	2	42.5
Inspector					1		5	6	33.3
Chief of Dets.					1			1	23
Asst. Chief of Dets.				1			4	5	28.4
Chief of Homicide							1	1	42
Captain				4	2	7	12	25	28.8
Lieutenant		3	17	34	19	10	19	102	20.5
Detective Sergeant				5	3	6	7	21	26.4
Detective			4	19	13	10	11	57	25.1
Acting Detective	2	1	6	16	4	4	1	34	19.6
Police Officer	219	25	128	201	88	66	38	765	13.9
Police Instructor							1	1	33.0
Photographer			1				1	2	27.0
Asst. Pol. Dispatcher		1	2	6	3	3		15	18.7
TOTAL:	221	30	158	286	134	106	103	1,038	16.4
% OF TOTAL:	21.3	2.9	15.2	27.6	12.9	10.2	9.9	100%	

DISTRIBUTION OF PERSONNEL



SWORN PERSONNEL BY ASSIGNMENT



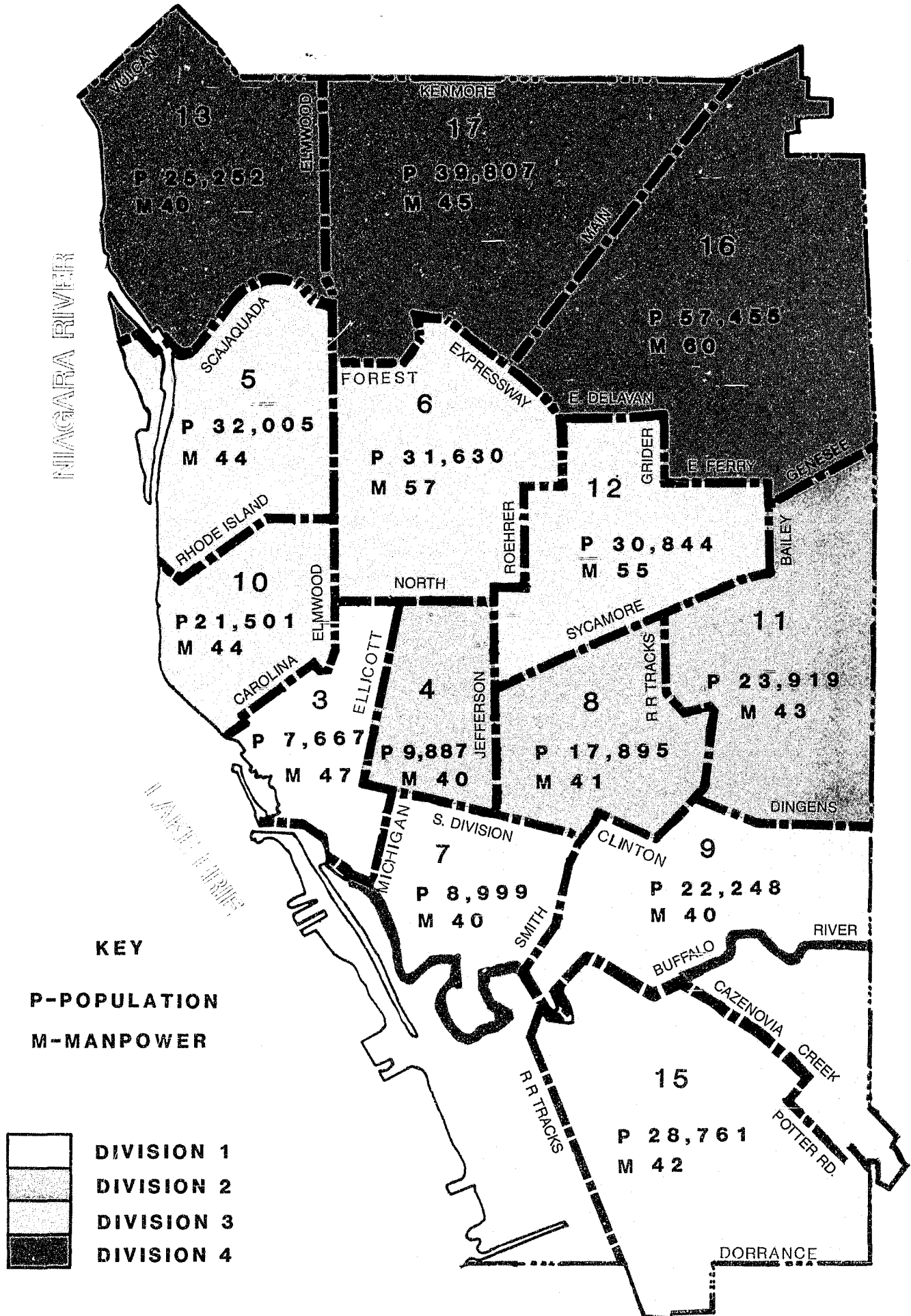
DOES NOT INCLUDE 192 PART - TIME SCHOOL CROSSING GUARDS.



PATROL DIVISION MANPOWER
Sworn Personnel by Platoon

<u>PRECINCT</u>	<u>CAPT.</u>	<u>LIEUT.</u>	<u>1st PLATOON</u>	<u>2nd PLATOON</u>	<u>3rd PLATOON</u>	<u>PO'S</u>	<u>DETS.</u>	<u>TOTAL</u>
3	1	5	10	13	12	35	6	47
4	1	5	11	10	9	30	4	40
5	1	5	9	12	12	33	5	44
6	1	5	16	14	15	45	6	57
7	1	5	7	12	11	30	4	40
8	1	5	10	10	11	31	4	41
9	1	5	10	11	9	30	4	40
10	1	5	11	12	10	33	5	44
11	1	5	8	12	13	33	4	43
12	1	5	12	17	13	42	7	55
13	1	5	12	10	8	30	4	40
15	1	5	11	11	10	32	4	42
16	1	5	16	18	14	48	6	60
17	1	5	10	12	11	33	6	45
Sub-Total:	14	70	153	174	158	485	69	638
T.T.F.B.	1	5				51		57
Traffic	1	5				57		63
TOTAL:	16	80	153	174	158	593	69	758

PRECINCT POPULATION AND MANPOWER



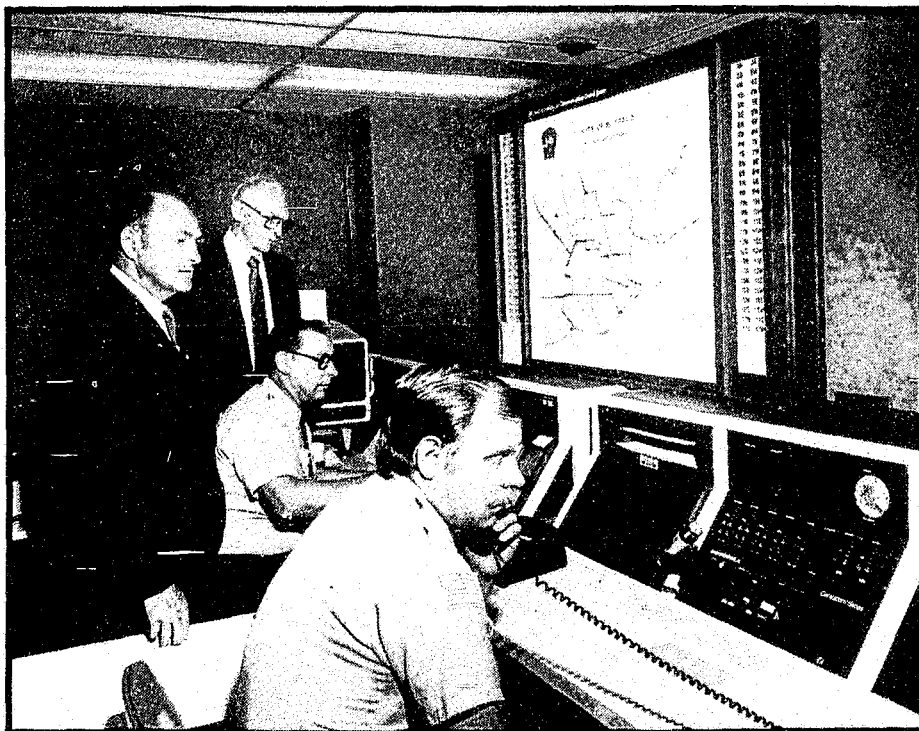
CALLS FOR SERVICE 1984

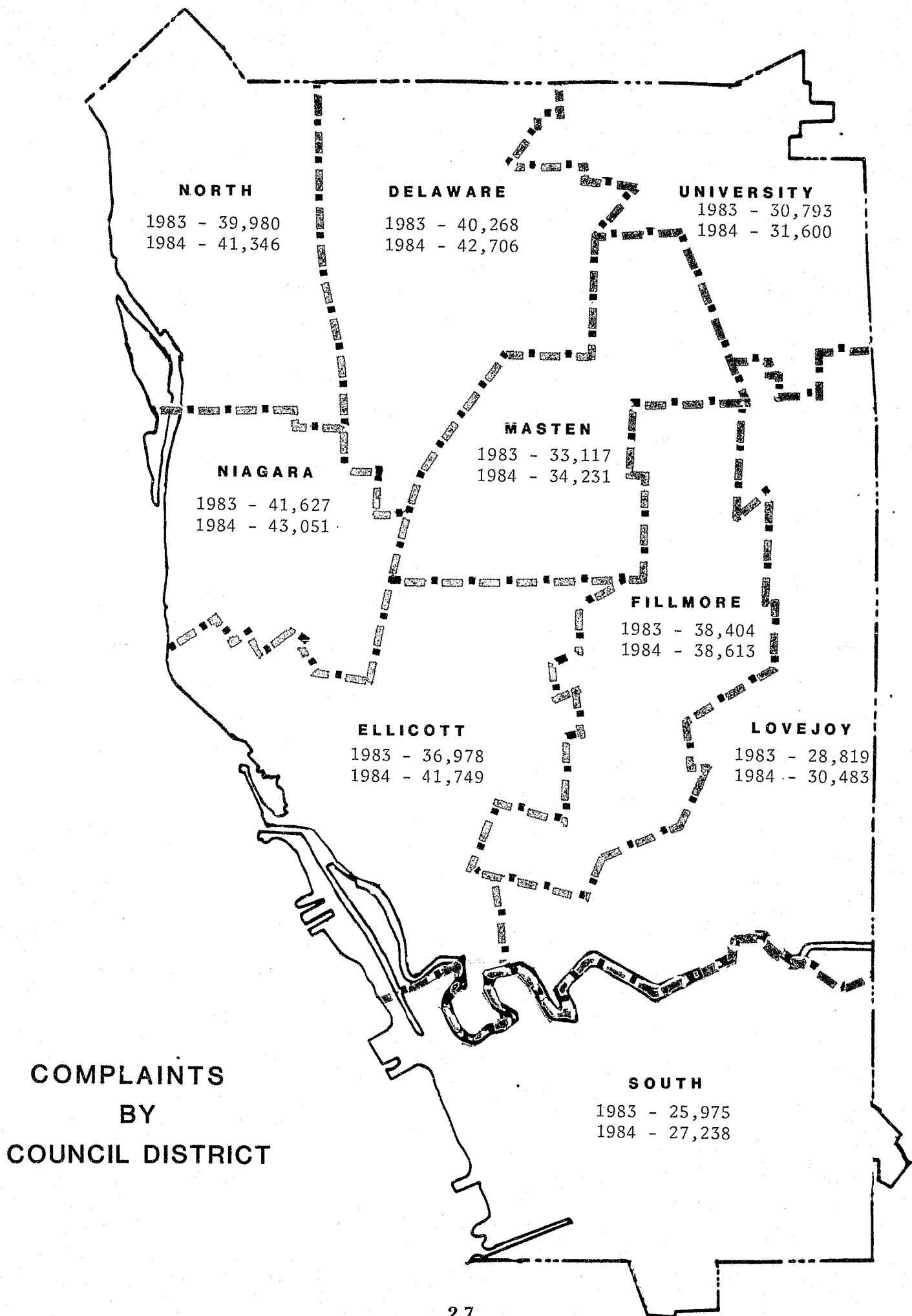
911 EMERGENCY CONTROL CENTER

<u>Type of Call</u>	<u>Number</u>	<u>Type of Call</u>	<u>Number</u>
Accident, Fatal	5	Miscellaneous Arrests	8,172
Accident, Injury	3,197	Missing Person	1,288
Accident, No Injury	8,944	Missing Person, Juvenile	1,697
Alarm of Fire	8,749	Molesting	225
Ambulance	9,670	Motorist, Stranded	405
Animal Bite	1,452	Narcotics	1,022
Animal Death	550	Neighbor Dispute	2,964
Animal Nuisance	5,113	Officer, Backup	181
Arson	129	Officer, Help (Urgent)	142
Assault	10,080	Officer, Pickup	41
Assault, Deadly Weapon	992	Parking, Illegal	28,872
Assist Citizen	22,845	Patrol Increase	60
Attractive Nuisance	260	Peeping Tom	26
Bicycles, Stolen & Recovered	1,570	Person Down	2,575
Bomb Scare	129	Person Soliciting	51
Break, Water, Gas, Sewer	643	Phone Calls	1,006
Burglary	7,919	Police Car Stolen	4
Burglary Alarm	16,336	Prostitution	239
Burglary in Progress	5,904	Prowler	1,829
Child Neglect	298	Purse Snatch	590
Dead Body	361	Rape	524
Dead Body, Floater	9	Rape, Attempted	67
Death Message or Emergency	33	Rescue	12,965
Disorderly Conduct	68	Robbery, Armed	406
Domestic Trouble	13,312	Robbery, Strong Arm	1,171
Drunk	3,012	Shoplifting	1,616
D.W.I.	84	Shots Fired	983
Explosion	36	Sidewalk Damage	47
Fight	9,295	Speeding or Racing	1,076
Fire Follow-Up	6	Stop Sign Down	249
Forgery	128	Street Light Out	60
Found Report	720	Suicide or Attempt	646
Gambling	552	Suspicious Person	
Gangs	1,553	Check Activity	5,838
Gun, Subject with a	2,630	Suspicious Person & Vehicle	1,824
Hit and Run (All)	3,279	Theft	14,331
Homicide (See Dead Body)	17	Threat	8,554
Indecent Exposure	417	Tow Truck	41
Injured/Sick Person	4,029	Traffic Arrests	0
Juvenile Disturbance	8,328	Traffic Hazard, Congestion	1,394
Juvenile, Found	77	Traffic Light Out	2,172
Juvenile, Incurigible	166	Trespassing	509
Kidnapped	118	Trouble, Unknown	3,425
Knife, Subject with a	1,387	Unauthorized Use of Vehicle	5,917
Labor Dispute	269	Unwelcome Guest	3,876
Landlord/Tenant Trouble	2,051	Vehicle, Abandoned	7,951
Liquor Violations	115	Wagon Call	728
Loss Report	1,009	Welfare, Check the	4,499
Lous Music or Noise	14,829	Wire Down or Arcing	356
Malicious Mischief	13,014	Invalid Action Codes or Void	121
Mental Cases	2,495		
Miscellaneous	13,809	TOTAL:	334,728

CALLS FOR POLICE SERVICE
3-YEAR COMPARISON BY PRECINCT

<u>PRECINCT</u>	<u>1982</u>	<u>1983</u>	<u>1984</u>
# 3	29,728	27,737	29,573
4	13,809	13,939	14,681
5	26,917	27,243	28,815
6	29,488	30,051	32,003
7	11,700	10,941	10,426
8	22,211	22,424	23,954
9	14,173	13,654	14,459
10	22,897	23,676	26,826
11	15,145	14,995	16,105
12	30,533	32,693	34,505
13	18,349	19,663	20,420
15	13,832	13,976	14,865
16	39,467	38,885	40,552
17	23,808	23,364	24,896
Other Units	3,317	2,806	2,526
TOTAL:	315,374	316,047	334,606





DEPARTMENT REPORT BY PRECINCT - ALL COMPLAINTS

All Complaints by Shift

Pct./Unit	MDNT-8AM	8AM-4PM	4PM-MDNT	Total	Daily Average
Pct. # 3	7,188	11,508	10,877	29,573	81
4	3,109	5,037	6,535	14,681	40
5	6,619	9,109	13,087	28,815	79
6	7,207	11,120	13,676	32,003	88
7	2,441	3,194	4,791	10,426	29
8	5,179	7,881	10,894	23,954	66
9	3,659	4,273	6,527	14,459	40
10	6,097	8,290	12,439	26,826	73
11	3,385	5,209	7,511	16,105	44
12	7,998	10,472	16,036	34,506	95
13	4,815	6,179	9,426	20,420	56
15	3,156	4,499	7,210	14,865	41
16	8,866	13,349	18,337	40,552	111
17	5,171	9,000	10,725	24,896	68
Signal Div.	433	1,302	786	2,521	7
K-9 Wagon	1	1	1	3	
Administrative	1			1	
Traffic Unit			1	1	
TOTAL:	75,325	110,423	148,859	334,607	917

All Complaints by Day

Pct./Unit	Sunday	Monday	Tuesday	Wednesday	Thursday	Friday	Saturday	Total
Pct. # 3	3,990	3,224	4,082	4,400	4,362	4,584	4,931	29,573
4	2,256	1,788	2,163	2,007	2,094	2,129	2,244	14,681
5	4,642	4,185	4,017	3,828	3,959	4,141	4,043	28,815
6	4,734	4,119	4,596	4,574	4,644	4,661	4,675	32,003
7	1,694	1,542	1,486	1,386	1,344	1,442	1,532	10,426
8	3,749	3,032	3,435	3,386	3,342	3,520	3,490	23,954
9	2,413	2,174	2,034	1,906	1,836	1,965	2,131	14,459
10	4,281	3,779	3,735	3,696	3,704	3,863	3,768	26,826
11	2,518	2,471	2,240	2,073	2,144	2,362	2,297	16,105
12	5,562	4,651	4,792	4,872	4,830	4,759	5,040	34,506
13	3,348	3,169	2,854	2,618	2,763	2,797	2,871	20,420
15	2,337	2,320	2,063	1,897	2,101	2,047	2,100	14,865
16	6,301	5,966	5,614	5,396	5,688	5,730	5,857	40,552
17	4,035	3,534	3,469	3,261	3,288	3,547	3,762	24,896
Signal Div.	326	234	389	403	347	414	408	2,521
K-9 Wagon		1	1				1	3
Administrative					1			1
Traffic Unit		1						1
TOTAL:	52,186	46,190	46,970	45,703	46,447	47,961	49,150	334,607

DEPARTMENT REPORT BY PRECINCT - CRIME ONLY

Crime Complaints by Shift

Pct./Unit	MDNT-8AM	8AM-4PM	4PM-MDNT	Total	Daily Average
Pct. # 3	1,139	1,987	1,545	4,671	13
4	538	751	768	2,057	6
5	822	1,442	1,112	3,376	9
6	1,171	1,678	1,605	4,454	12
7	367	514	487	1,368	4
8	668	1,185	952	2,805	8
9	506	698	551	1,755	5
10	766	1,166	1,135	3,067	8
11	395	717	666	1,778	5
12	1,288	1,469	1,761	4,518	12
13	723	1,036	974	2,733	7
15	421	789	610	1,820	5
16	1,284	2,234	1,965	5,483	15
17	738	1,526	1,329	3,593	10
Signal Div.	2	5	4	11	
K-9 Wagon	1			1	
TOTAL:	10,829	17,197	15,464	43,490	119

Crime Complaints by Day

Pct./Unit	Sunday	Monday	Tuesday	Wednesday	Thursday	Friday	Saturday	Total
Pct. # 3	631	467	702	718	675	736	742	4,671
4	263	197	347	317	327	313	293	2,057
5	494	436	529	452	501	506	458	3,376
6	629	543	672	665	667	647	631	4,454
7	214	209	215	197	169	172	192	1,368
8	418	328	461	383	398	399	418	2,805
9	291	248	288	238	235	241	214	1,755
10	443	355	462	455	487	455	410	3,067
11	272	246	265	242	251	253	249	1,778
12	660	522	626	673	653	690	694	4,518
13	441	394	436	382	375	321	384	2,733
15	263	258	269	245	260	272	253	1,820
16	761	702	787	838	772	845	778	5,483
17	597	492	526	519	452	482	525	3,593
Signal Div.	1	1	2	2	5			11
K-9 Wagon		1						1
TOTAL:	6,378	5,399	6,587	6,326	6,227	6,332	6,241	43,490

ANNUAL REPORT OF OFFENSES KNOWN TO THE POLICE

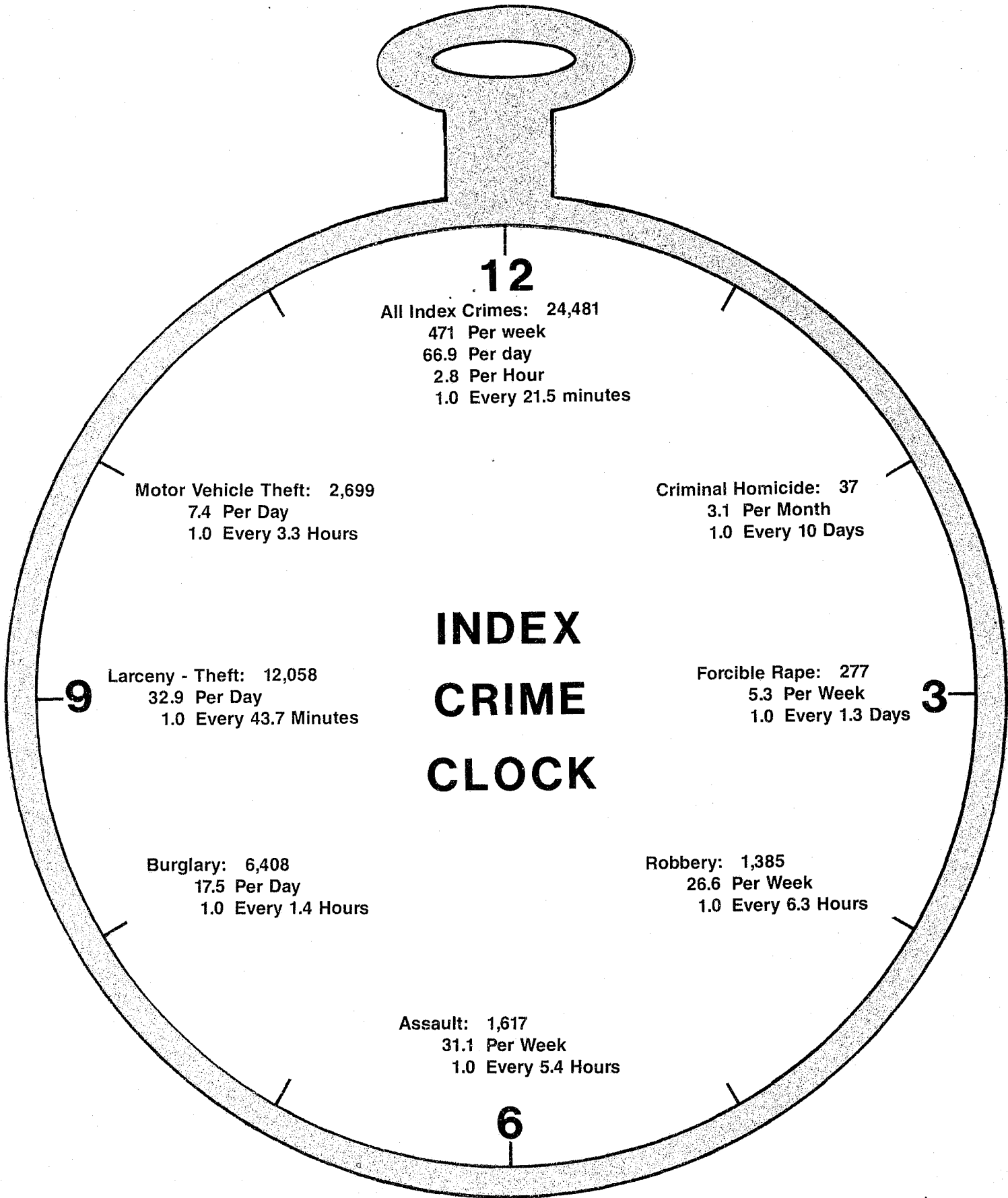
YEAR ENDING DECEMBER 31, 1984

CLASSIFICATION OF OFFENSES	OFFENSES REPORTED	UNFOUNDED	NUMBER OF ACTUAL OFFENSES	NUMBER OF OFFENSES CLEARED BY ARREST	
				TOTAL CLEARED	UNDER 18
1. Criminal Homicide					
a. Murder & Non-Negligent Manslaughter	38	3	35	26	2
b. Vehicular Manslaughter	2	0	2	2	0
TOTAL:	40	3	37	28	2
2. Forcible Rape					
a. Rape by Force	252	9	243	126	12
b. Assault by Rape-Attempts	35	1	34	18	3
TOTAL:	287	10	277	144	15
3. Robbery					
a. Firearm	189	2	187	52	1
b. Knife or Cutting Instrument	244	4	240	66	6
c. Other Dangerous Weapon	107	3	104	42	4
d. Strong Arm - No Weapon	866	12	854	199	25
TOTAL:	1,406	21	1,385	359	36
4. Assault					
a. Firearm	143	0	143	83	2
b. Knife or Cutting Instrument	506	9	497	241	13
c. Other Dangerous Weapon	711	20	691	303	32
d. Hands, Fists, Feet, etc.-Aggr.	315	29	286	138	10
TOTAL:	1,675	58	1,617	765	57
5. Burglary					
a. Forcible Entry	5,258	76	5,182	1,055	137
b. Unlawful Entry - No Force	951	15	936	112	17
c. Attempted Forcible Entry	295	5	290	84	10
TOTAL:	6,504	96	6,408	1,251	164
6. Larceny-Theft (exc. Auto Theft)	12,203	145	12,058	2,070	347
7. Motor Vehicle Theft					
a. Autos	2,390	124	2,266	173	27
b. Trucks and Buses	304	8	296	23	4
c. Other Vehicles	138	1	137	17	6
TOTAL:	2,832	133	2,699	213	37
GRAND TOTAL:	24,947	466	24,481	4,830	658

ANNUAL REPORT OF OFFENSES KNOWN TO THE POLICE
ANALYSIS BY PRECINCT FOR THE YEAR ENDING DECEMBER 31, 1984*

PCT.#	Criminal Homicide	Forcible Rape	Robbery	Assault	Burglary	Larceny/Theft (Except UUV)	Motor Vehicle Theft	TOTAL INDEX
3	1	11	204	70	344	1,908	218	2,756
4	3	25	130	128	232	454	104	1,076
5	3	20	79	117	526	889	259	1,893
6	3	40	157	173	702	1,294	308	2,677
7	2	12	39	89	192	287	75	696
8	4	17	122	167	438	606	124	1,478
9	1	3	27	66	256	451	113	917
10	2	24	112	142	602	801	171	1,854
11	2	8	26	43	238	438	87	842
12	9	45	186	318	731	835	300	2,424
13	3	6	41	90	457	606	124	1,327
15	0	4	18	49	295	469	111	946
16	4	40	176	170	971	1,493	471	3,325
17	1	11	67	53	420	1,526	235	2,313
TOTAL:	38	266	1,384	1,675	6,404	12,057	2,700	24,524

*These figures vary slightly from the figures for the City as a whole (Monthly Return A). This is attributed to slight variations in the programs used to generate these reports.



5-YEAR COMPARISON OF F.B.I. PART I CRIMES

	<u>1980</u>	<u>1981</u>	<u>1982</u>	<u>1983</u>	<u>1984</u>
Murder	62	37	43	46	37
% Increase/Decrease*		-40.3	-30.6	-25.8	-40.3
Rape	297	277	247	297	277
% Increase/Decrease		- 6.7	-16.8	0	- 6.7
Robbery	1,914	2,120	1,653	1,411	1,385
% Increase/Decrease		+10.8	-13.6	-26.3	-27.6
Assault	1,561	1,557	1,615	1,547	1,617
% Increase/Decrease		- .3	+ 3.5	- .9	+ 3.6
Sub-Total Violent	3,834	3,991	3,558	3,301	3,316
% Increase/Decrease		+ 4.1	- 7.2	-13.9	-13.5
Burglary	8,595	9,582	8,088	7,149	6,408
% Increase/Decrease		+11.5	- 5.9	-16.8	-25.4
Larceny	12,863	13,673	13,608	12,720	12,058
% Increase/Decrease		+ 6.3	+ 5.8	- 1.1	- 6.3
U.U.V.	3,794	4,459	3,458	2,820	2,699
% Increase/Decrease		+17.5	- 8.9	-25.7	-28.9
Sub-Total Property	25,252	27,714	25,154	22,689	21,165
% Increase/Decrease		+ 9.7	- .4	-10.1	-16.2
TOTAL:	29,086	31,705	28,712	25,990	24,481
% Increase/Decrease		+ 9.0	- 1.3	-10.6	-15.8

*The % Increase/Decrease represents the % of increase or decrease over the base year which is 1980.

ANALYSIS BY PRECINCT

	3	4	5	6	7	8
Assaults, Not Aggravated	131	154	178	193	105	186
Child Abandonment, Abuse	0	2	2	1	0	3
Sex Offenses (Except Forcible Rape & Prostitution)	25	22	23	29	9	18
Arson	11	16	33	34	65	33
Criminal Trespass	110	26	50	43	6	25
Possession of Stolen Property	32	22	7	20	3	14
Forgery, Counterfeiting	45	9	9	22	3	30
Fraud, Embezzlement	297	41	47	86	7	44
Criminal Mischief, Tampering	409	192	556	449	253	474
Bribery	2	4	0	0	0	0
Coercion	1	0	0	2	0	0
Conspiracy	0	0	0	0	0	0
Disorderly Conduct	207	72	133	50	66	175
Loitering	0	2	1	2	0	0
Escape	5	1	1	1	0	1
Falsely Reporting an Incident	203	83	192	124	47	78
Gambling	0	9	1	16	2	4
Liquor Law Violations	1	1	1	6	1	1
Vehicle Law Violations	107	80	73	283	63	84
Drug Violations	53	73	21	204	9	31
Weapons Violations	12	15	7	31	4	22
Prostitution	89	111	0	32	3	1
Miscellaneous	104	34	99	99	16	51
TOTAL:	1,844	969	1,434	1,727	662	1,275

FOR F.B.I. PART II CRIMES

9	10	11	12	13	15	16	17	TOTAL
102	149	97	407	151	99	283	106	2,341
4	2	2	4	3	0	6	1	30
13	46	18	48	34	16	36	32	369
34	40	27	71	26	32	37	19	478
16	23	18	27	26	12	62	18	462
1	19	6	15	5	5	30	10	189
4	11	3	24	8	3	26	16	213
14	31	15	60	26	15	82	78	843
432	481	399	568	557	337	697	586	6,390
0	0	0	1	0	0	1	1	9
0	0	0	1	2	0	0	0	6
0	0	0	1	0	0	0	0	1
47	65	138	87	227	99	173	106	1,645
0	0	0	1	0	0	4	0	10
0	0	0	0	0	0	0	0	9
82	83	60	116	106	96	250	65	1,585
0	1	1	13	3	1	6	0	57
0	1	0	2	0	1	2	0	17
32	109	69	71	82	67	185	68	1,373
8	50	4	139	19	14	53	15	693
3	22	6	26	14	7	28	7	204
0	24	2	262	0	3	19	0	546
33	62	42	72	77	34	96	83	902
825	1,219	907	2,016	1,366	841	2,076	1,211	18,372

F.B.I. PART I ARRESTS

<u>OFFENSE</u>	<u>SEX</u>		<u>AGE</u>		<u>RACE</u>			<u>TOTAL</u>
	Male	Female	Under 18	18 & Over	White	Black	Other	
Homicide	21	9	2	28	16	14	0	30
Rape	130	3	20	113	29	104	0	133
Robbery	317	48	59	306	84	268	13	365
Assault	567	93	73	587	232	415	13	660
Burglary	733	29	189	573	355	396	11	762
Larceny	1,203	569	377	1,395	610	1,144	18	1,772
U.U.V.	247	11	72	186	80	175	3	258
TOTAL:	3,218	762	792	3,188	1,406	2,516	58	3,980

F.B.I. PART II ARRESTS

<u>OFFENSE</u>	<u>SEX</u>		<u>AGE</u>		<u>RACE</u>			<u>TOTAL</u>
	Male	Female	Under 18	18 & Over	White	Black	Other	
Manslaughter	3	0	0	3	3	0	0	3
Arson	21	5	3	23	14	12	0	26
Drugs	719	92	41	770	206	603	2	811
Weapons	211	28	10	229	92	147	0	239
Sex Offenses	179	24	26	177	127	74	2	203
Bribery	7	1	0	8	2	6	0	8
Prostitution	196	377	42	531	147	422	4	573
Stolen Property	136	42	32	146	56	122	0	178
Fraud	307	86	9	384	132	258	3	393
Criminal Mischief	475	55	83	447	293	228	9	530
Gambling	93	17	0	110	20	90	0	110
Disorderly Conduct	439	82	25	496	271	235	15	521
Simple Assault	931	118	73	976	541	491	17	1,049
Family Offenses	13	4	1	16	11	5	1	17
Forgery & Counterfeit	98	31	2	127	38	91	0	129
Driving While Intox.	910	92	9	993	685	300	17	1,002
Driving Under Influence-Drugs	9	1	0	10	8	2	0	10
Poss. of Burg. Tools	31	0	4	27	11	20	0	31
Liquor Laws	22	8	0	30	11	19	0	30
All Other	912	287	90	1,109	461	717	21	1,199
TOTAL:	5,712	1,350	450	6,612	3,129	3,842	91	7,062

CENTRAL BOOKING BUREAU

MONTHLY RECAPITULATION OF ARRESTS FOR "1984"

<u>MONTH</u>	<u>NO. OF ARRESTS</u>	<u>APPEARANCE TICKETS</u>
January	1,397	205
February	1,383	251
March	1,410	197
April	1,473	213
May	1,500	190
June	1,507	244
July	1,939	487
August	1,660	235
September	1,703	284
October	1,774	284
November	1,362	169
December	1,208	155
TOTAL:	18,316 *	2,914



*This number will not agree with F.B.I. Part I and Part II arrests because it includes all arrests processed at Central Booking, which includes arrests made by other agencies, and arrests for violations.

YEARLY REPORT OF SUMMONSES ISSUED

<u>Unit</u>	<u>Uniform Traffic Summonses</u>		<u>Parking Violations Summonses</u>	
	<u>1983</u>	<u>1984</u>	<u>1983</u>	<u>1984</u>
Pct. # 3	446	983	6,828	7,909
Pct. # 4	511	748	1,385	1,597
Pct. # 5	275	377	5,489	8,254
Pct. # 6	2,449	5,828	10,538	13,797
Pct. # 7	297	892	1,004	1,021
Pct. # 8	1,515	2,075	2,274	2,380
Pct. # 9	334	471	2,451	3,309
Pct. #10	720	942	6,577	9,797
Pct. #11	341	492	2,425	5,098
Pct. #12	661	876	2,485	1,894
Pct. #13	635	1,010	3,341	4,365
Pct. #15	315	584	3,820	4,938
Pct. #16	3,028	3,536	9,392	12,689
Pct. #17	694	1,261	12,193	13,323
Det./Bur.	346	424		
T.T.F.B.	212	303	623	1,367
A.I.U.	372	452		
H.D.	33	36	4,245	4,195
P.C.U.	34	104	31,977	32,312
M.C.U.	5,107	5,397	18,328	18,165
Radar	21,176	16,045		
Total:	39,501	42,836	125,375	146,410

TRAFFIC ACCIDENTS BY TYPE

	<u>1982</u>	<u>1983</u>	<u>1984</u>
Fatal	32	33	23
Injury Accidents	2,605	3,128	3,269
Property Damage Only	6,785	5,871	6,125
Total Accidents:	9,422	9,032	9,417

TRAFFIC SUMMONSES AND PARKING VIOLATIONS

Summonses Issued	<u>1982</u>	<u>1983</u>	<u>1984</u>
------------------	-------------	-------------	-------------

Moving Violations

Failure to Obey Signal/Signs	3,695	6,692	8,546
Speeding	11,154	12,184	9,767
Driving While Intoxicated/Impaired	479	747	1,180
Reckless Driving	66	103	131
Leaving Scene of Accident	132	168	197
Left of Center	122	220	309
Failure to Signal	53	102	259
Improper/Turn Movement	129	93	171
Following Too Close	7	14	10
Sub-Total:	15,837	20,323	20,570

Non-Moving Violations

Unlicensed Operators	4,181	5,674	6,750
Unregistered Motor Vehicle & Improper Registration	4,565	5,307	5,396
Improper Lights	887	1,352	1,687
Defective Brakes	9	33	39
Others	6,007	7,028	8,775
Sub-Total:	15,649	19,394	22,647

TOTAL SUMMONSES:	31,486	39,717	43,217
-------------------------	---------------	---------------	---------------

Parking Violations	125,955	123,779	144,265
--------------------	---------	---------	---------

VALUE OF PROPERTY REPORTED STOLEN AND RECOVERED

	<u>1983</u>		<u>1984</u>	
	<u>STOLEN</u>	<u>RECOVERED</u>	<u>STOLEN</u>	<u>RECOVERED</u>
JANUARY	\$ 1,599,462	\$ 739,137	\$ 2,032,225	\$ 1,136,278
FEBRUARY	1,163,466	469,196	1,754,660	1,140,322
MARCH	1,517,669	711,921	1,639,094	943,681
APRIL	1,357,488	494,872	1,938,147	1,080,895
MAY	1,297,104	539,647	2,271,973	1,286,264
JUNE	1,325,611	504,264	2,001,318	1,123,451
JULY	1,442,962	595,128	1,611,055	905,025
AUGUST	1,849,552	641,678	1,864,814	973,690
SEPTEMBER	1,834,850	723,409	1,914,888	961,968
OCTOBER	1,923,542	875,790	1,816,488	860,056
NOVEMBER	2,489,426	1,316,139	2,094,135	1,277,544
DECEMBER	2,551,104	1,450,319	1,801,036	919,647
TOTAL	\$ 20,352,236	\$ 9,061,500	\$ 22,739,833	\$ 12,608,821

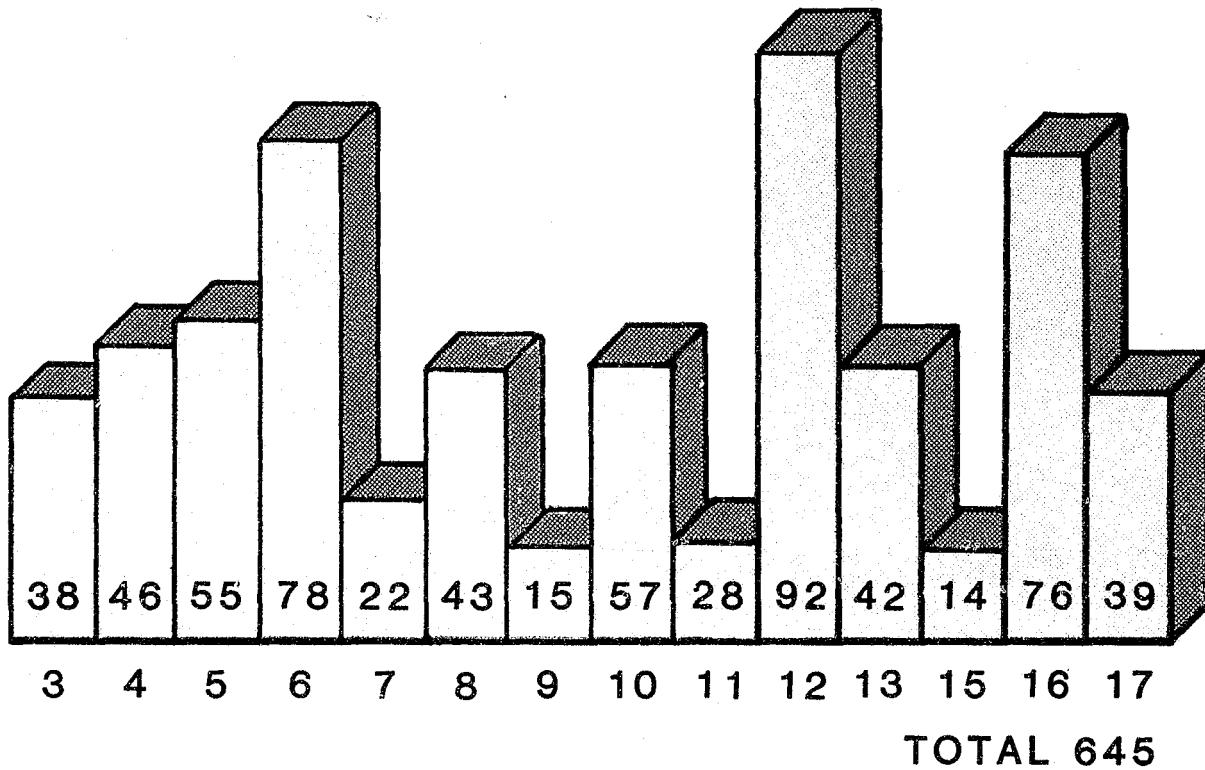
REFERRALS TO JUVENILE BUREAU

	<u>1983</u>	<u>1984</u>
Arson	9	1
Assault	39	65
Burglary & Criminal Trespass	123	119
Criminal Possession of Stolen Property	17	23
Disorderly Conduct	24	12
Drug Offenses	4	7
Intoxication	2	0
Family Court Offenses	47	33
Homicide	0	0
Larceny	274	188
Other Offenses	0	26
Prostitution	11	8
Rape	13	8
Robbery	32	18
Runaways	158	94
Sex Offenses	9	26
U.U.V.	11	13
Criminal Mischief	57	45
Weapons Offenses	11	5
TOTAL REFERRALS:	841	691

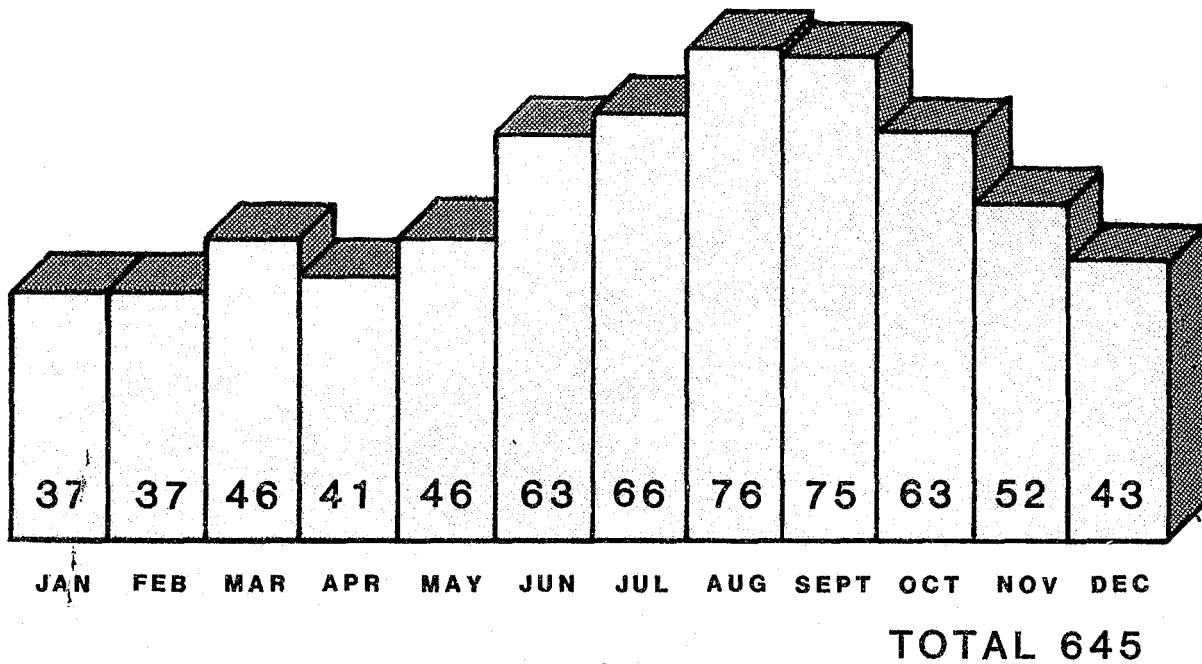
SEX OFFENSE SQUAD

NUMBER OF CRIMES

PRECINCT OF OCCURRENCE



MONTHLY COMPLAINTS



BUREAU OF IDENTIFICATION

EVIDENCE COLLECTION UNIT

Crime Scenes Investigated:

Residential Burglary	289
Non-Residential Burglary	178
Robbery	40
Homicide	35
Rape & Assault	55
Post-Mortem Fingerprint Examinations	61
Arson	13
Vehicles Examined	87
Miscellaneous	48

TOTAL:	<hr/> 806
--------	-----------

Latent Print Identifications	44
Assistance; Outside Agencies	36
Line-Ups Conducted (B.P.D.)	26
Line-Ups for Outside Agencies	4

TOTAL:	<hr/> 110
--------	-----------

BUREAU OF IDENTIFICATION

PHOTOGRAPHIC UNIT

Prisoners Photographed	11,694
Pictures Developed	39,894
I.D. Folders Processed	385
Crime Scenes Photographed	492
Crime Scenes - Prints Taken	8,250
Miscellaneous Photographs	990
Color Photographs	480
Microfilm Processed (Rolls)	584
Line-Ups Photographed	30

BUREAU OF IDENTIFICATION

RECORDS SECTION

Arrests Processed	18,314
Summonses Recorded	1,648
Warrants Recorded	6,336
Arrest Entries	18,314
Warrants Received	6,336
Warrants Served	2,730
Warrants Outstanding	17,120

BUFFALO POLICE ACADEMY



Courtesy of Buffalo News

<u>RECRUIT OFFICER TRAINING</u>	<u>PARTICIPANTS</u>	<u>TOTAL MAN HOURS</u>
Basic Recruit Course (CPS)	82	87,444
Basic Firearms Training (CPS)	82	5,904
Basic Physical Training (CPS)	82	5,576
Basic Firearms Remedial Training	14	322
Basic Physical Training - Remedial	11	88
Recruit Orientation	82	880
 <u>IN-SERVICE TRAINING</u>		
Youth Alcohol Training Seminars	3,350	439
SWAT Training	15	1,680
Training Conferences	75	230
Alcoholic Anonymous Meetings	5,180	9,680
Police Headquarters Tours	1,001	1,501
In-Service Training Phase I	1,029	2,108
Evaluation Training for Supervisors	20	40
Surveillance Seminar	40	320
Statement Taking Seminar	42	42
Stungun Demonstration	60	60
Law Enforcement Explorers Meetings	35	36

POLICE COMMUNITY SERVICES UNIT

ACTIVITY REPORT

	<u>1983</u>	<u>1984</u>
Business and Community Contacts (Door to Door)	88,065	94,461
Elementary Student Contacts	56,577	66,555
High School Student Contacts	10,537	12,360
Youth Contacts	4,466	10,661
Senior Citizen Contacts	11,626	12,626
Crime Prevention Programs	25,695	30,695
Community Group Contacts	3,201	4,102
Meetings Attended	1,418	1,702
Juvenile Complaints	407	516
Senior Citizen Complaints	619	702
Traffic Complaints	176	193
General Citizen Complaints	497	845
Mayor's Hot Line Complaints	207	235

OTHER ACTIVITIES

Details	351
Liaison Officer's Meetings	146
Precinct Council Meetings	105
Juvenile Contacts	8,500
Juvenile Complaints	145
Child Molestation Programs	52



Courtesy of Buffalo News