

107491

U.S. Department of Justice  
National Institute of Justice

This document has been reproduced exactly as received from the person or organization originating it. Points of view or opinions stated in this document are those of the authors and do not necessarily represent the official position or policies of the National Institute of Justice.

Permission to reproduce this copyrighted material has been granted by

Kansas City, Missouri  
Police Department

to the National Criminal Justice Reference Service (NCJRS).

Further reproduction outside of the NCJRS system requires permission of the copyright owner.

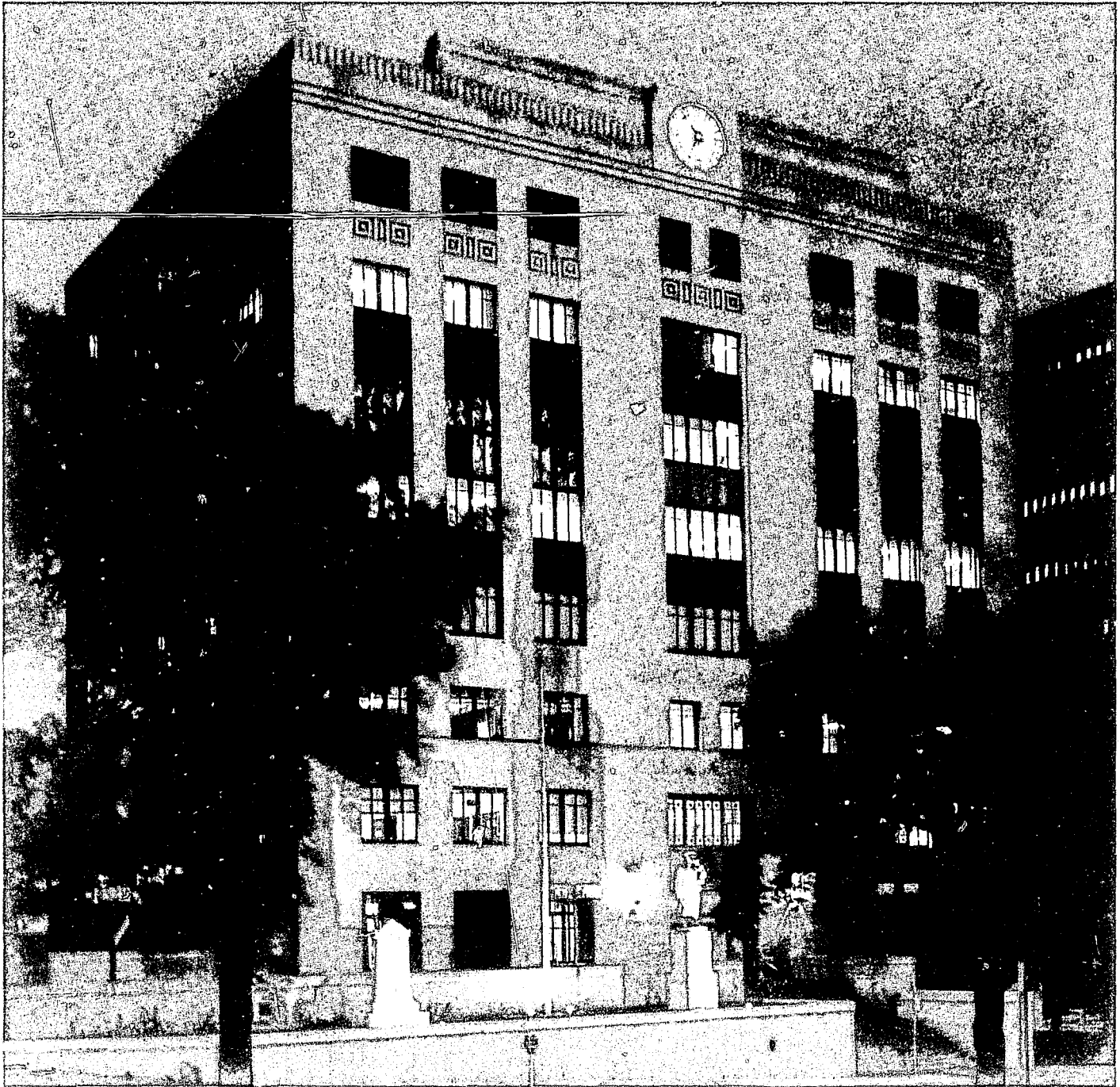
107491

Kansas City, Missouri  
Police Department  
1986 Annual Report

Cr. Sent  
1074912-88



Ernie J. Joiner  
Chief of Police



## Credits

**Narrative and Layout by:**

Officer Daniel J. Witcher  
Ms. JoAnne Sweet  
Public Affairs Unit

**Statistical Summary by:**

Ms. Judith C. Weston, Administrative Analysis Division

**Graphic Illustration and Transparent Oil Work by:**

Mrs. Cathy Williams, Printing and Publications Unit

**Photographs by:**

Sergeant Steven W. Wright  
Officer Stephen C. Warden  
Mr. John J. Falk  
Regional Criminalistics Laboratory

**Printed by:**

Printing and Publications Unit, Mr. Wayne L. Bosler III, Supervisor

# Table of Contents

---

NCJRS

OCT 15 1987

ACQUISITIONS

Police

Chief's Letter of Transmittal.....	2	Law Enforcement Salary Schedule.....	30
Board of Police Commissioners.....	3	Civilian Salary Schedule.....	31
Office of the Chief of Police.....	5	Calls-For-Service (Car Dispatches).....	32
Field Services Bureau.....	9	Part I Offenses Reported to the Police.....	33
Investigations Bureau.....	13	Controlled Substance Enforcement.....	34
Information and Budget Bureau.....	17	Arrests by Organizational Elements.....	35
Administration and Services Bureau.....	21	Persons Arrested.....	36
1986 Award Recipients.....	24	Juvenile Summary.....	37
Police Facilities and Patrol Division Boundaries.....	26	Value of Property Stolen.....	38
Financial and Statistical Summary.....	27	Value of Property.....	39
Distribution and Comparison of Police Budget.....	28	Traffic Summary.....	40
Length of Service and Age of Personnel by Rank/Title.....	29		

# In Memoriam

Martin Hynes	1881	Michael Y. Sayeg	1918	George R. Johnson	1929	Clyde W. Harrison	1951
Patrick Jones	1882	Frank Mansfield	1918	Charles H. Dingman Jr.	1929	Mike Pearson	1954
John Martin	1892	Issac Fenno	1919	Oliver P. Carpenter	1932	William Kenner	1955
John E. Jacobson	1897	Frederick F. Tierney	1919	Richard E. Fitzgerald	1933	Richard Reeves	1957
Frank McNamara	1902	Ula A. McMahan	1920	Leroy Van Meter	1933	Kieffer C. Burris	1960
Alexander R. McKinney	1903	William H. Scobee	1920	William J. Grooms	1933	Herbert E. Bybee	1960
Stephen O. Flanagan	1903	James H. Horn	1920	Frank E. Hermanson	1933	Bennie A. Hudson	1960
Joseph P. Keenan	1903	Frank S. Archer	1920	Morris Bigus	1933	Arthur J. Marti	1961
Frank C. McGinnis	1904	William C. Bayne	1921	Eric O. Bjorkback	1933	Richard L. Chatburn	1962
William P. Mulvihill	1905	Carl J. Bickett	1921	John Ruffolo	1934	Hugh L. Butler	1968
John Dwyer	1906	James N. Brink	1921	William E. Wood	1934	Marion R. Bowman	1968
Albert O. Dolbow	1908	Gerald L. Fackert	1921	Grant V. Schroder	1934	George E. Lanigan	1968
Michael P. Mullane	1908	Richard P. McDonald	1922	Frank Franano	1935	Larry D. Oliver	1968
Joseph Raimo	1911	Hershel M. Wyatt	1923	Frank Stevens	1936	David C. Woodson	1968
Homer Darling	1911	William C. Zinn	1923	William T. Cavanaugh	1936	Ronald D. Yoakum	1968
Robert L. Marshall	1912	Willard L. Ferguson	1923	Lawrence K. Morrison	1937	James W. Glenn	1969
Homer Riggle	1913	Wright D. Bryant	1923	Thomas McAuliffe	1937	Richard D. Bird	1969
Andrew Lynch	1913	Thomas J. Wilson	1923	Henry Shipe	1938	John E. Dacy	1969
William F. Koger	1913	Dennis J. Whalen	1924	Ralph R. Miller	1941	Robert W. Evans	1971
Bernard M. Kernan	1914	Barney Jasper	1924	Arthur J. Morris	1942	Russell D. Mestdagh	1975
Samuel K. Holmes	1914	George E. Lawson Jr.	1924	Melvon L. Huff	1945	Charles C. Massey Jr.	1975
William Hauserman	1915	Emmett C. Barnes	1924	James H. Owens	1947	Warren G. Jackman	1976
Glenn Marshall	1916	Jack P. Wilcox	1924	Floyd H. Montgomery	1948	Douglas A. Perry	1978
William A. Spangler	1916	Albert B. Cummings	1925	Charles H. Perrine	1948	John J. O'Sullivan	1978
John Houlehan	1916	John V. Kincaid	1926	William S. Wells	1948	David J. Inlow	1980
Harris W. West	1917	John W. Leiter	1926	Charles W. Neaves	1948	Phillip A. Miller	1983
Arthur M. Dorsett	1917	James H. Smith	1928	Sandy W. Washington	1948		
Harry J. Keating	1918	Ralph Hinds	1929	Robert D. Edmunds	1949		



ERECTED  
BY THE PEOPLE  
AS A TRIBUTE TO  
POLICE  
OF THIS CITY  
WHO GAVE THEIR  
LIVES  
IN THE DISCHARGE OF  
DUTY

# Chief's Letter of Transmittal

---

## POLICE DEPARTMENT KANSAS CITY, MISSOURI 64106



LARRY J. JOINER  
Chief of Police



Commissioners:

I hereby respectfully submit the Annual Report for 1986.

During the past year, several changes were made to combat the rising crime rate in Kansas City. This rise in crime is largely attributed to the increase in drug trafficking.

Although the city was unable to provide the funds to hire 108 officers and 70 civilian personnel as requested, the City Council passed an ordinance authorizing a \$2 surcharge to be applied to certain traffic and municipal ordinance violations. This revenue provided the department with the resources to hire 23 police officers. The department's separation leave policy was modified in May to allow for the immediate hiring of replacement personnel for retiring officers. With this change, the department was able to increase manpower availability by 23 officers.

Additionally, eleven officers were transferred from administrative positions to patrol division stations; and, in an effort to redistribute the workload of the officers, the patrol beat plan was revised. This reorganization placed more officers on the street to handle calls for service, and increased patrol flexibility.

In 1986, seven additional officers were transferred to the Special Investigations Division when the Morals and Gambling Unit was combined with the Enforcement Unit. All the units within this division concentrated their efforts on battling the drug problem. The division's activities led to the filing of charges against 290 individuals in state or federal court, as well as 305 individuals charged in city court. The citizens are also becoming involved with the war on drugs. Last year, the department received 1720 calls from concerned citizens reporting suspected illegal drug activity.

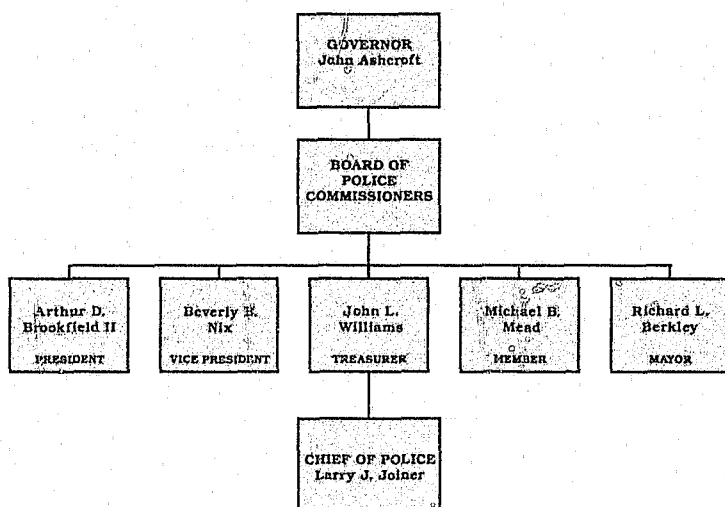
This past year has been a difficult one for the members of this department. The manpower shortage, along with the rising crime rate and increased demand for police service, placed a heavy burden on the men and women of this department. In spite of this, they continue to provide the excellent police service the citizens expect and deserve from our department.

Respectfully,

Larry J. Joiner  
Chief of Police



# Board of Police Commissioners



The Board of Police Commissioners, as mandated by Missouri state statute, is charged with the responsibility of providing police service to the residents of Kansas City, Missouri. The Governor of Missouri, with the consent of the State Senate, appoints four citizens to serve on the Board of Police Commissioners. The Commissioners serve four-year terms with one member's term expiring each year. By virtue of his elected office, the Mayor of Kansas City serves as the fifth member of the Board. The Secretary/Attorney of the Board of Police Commissioners is appointed by the Board and acts as legal consultant, as well as handling clerical matters for the Board.

The Board is responsible for the appointment of a Chief of Police, police surgeons, physicians, attorneys, chaplains, and consultants, and has the exclusive responsibility for the management and control of the Kansas City, Missouri Police Department.

Having been sworn in on May 14, 1986, during ceremonies conducted by Clay County Circuit Court Judge Stephen R. Pratt, Mr. Michael B. Mead became the newest member of the Board of Police Commissioners. Commissioner Mead is a native of Kansas City, Missouri, having graduated from North Kansas City High School, receiving an undergraduate degree from the University of Kansas, and going on to receive a Masters degree in Business Finance from Stanford University. Commissioner Mead is married and has four children. He is currently the President of Mead & Sons, Inc., a company founded by his father.



**ARTHUR D. BROOKFIELD II**  
President



**BEVERLY B. NIX**  
Vice President



**JOHN L. WILLIAMS**  
Treasurer



**MICHAEL B. MEAD**  
Member



**RICHARD L. BERKLEY**  
Ex-Officio Member



**WILLIAM RAY PRICE, JR.**  
Secretary-Attorney





Lt. Col. Lester N. Harris  
Executive Officer  
Office of the Chief



Larry J. Jolner  
Chief of Police



Maj. James A. Reynolds  
Commander  
Special Investigations Div.



Mr. Michael Allan Wee  
Legal Advisor



Capt. Les Goss  
Commander  
Enforcement Unit



Maj. Richard C. Fletcher  
Commander  
Internal Affairs Div.



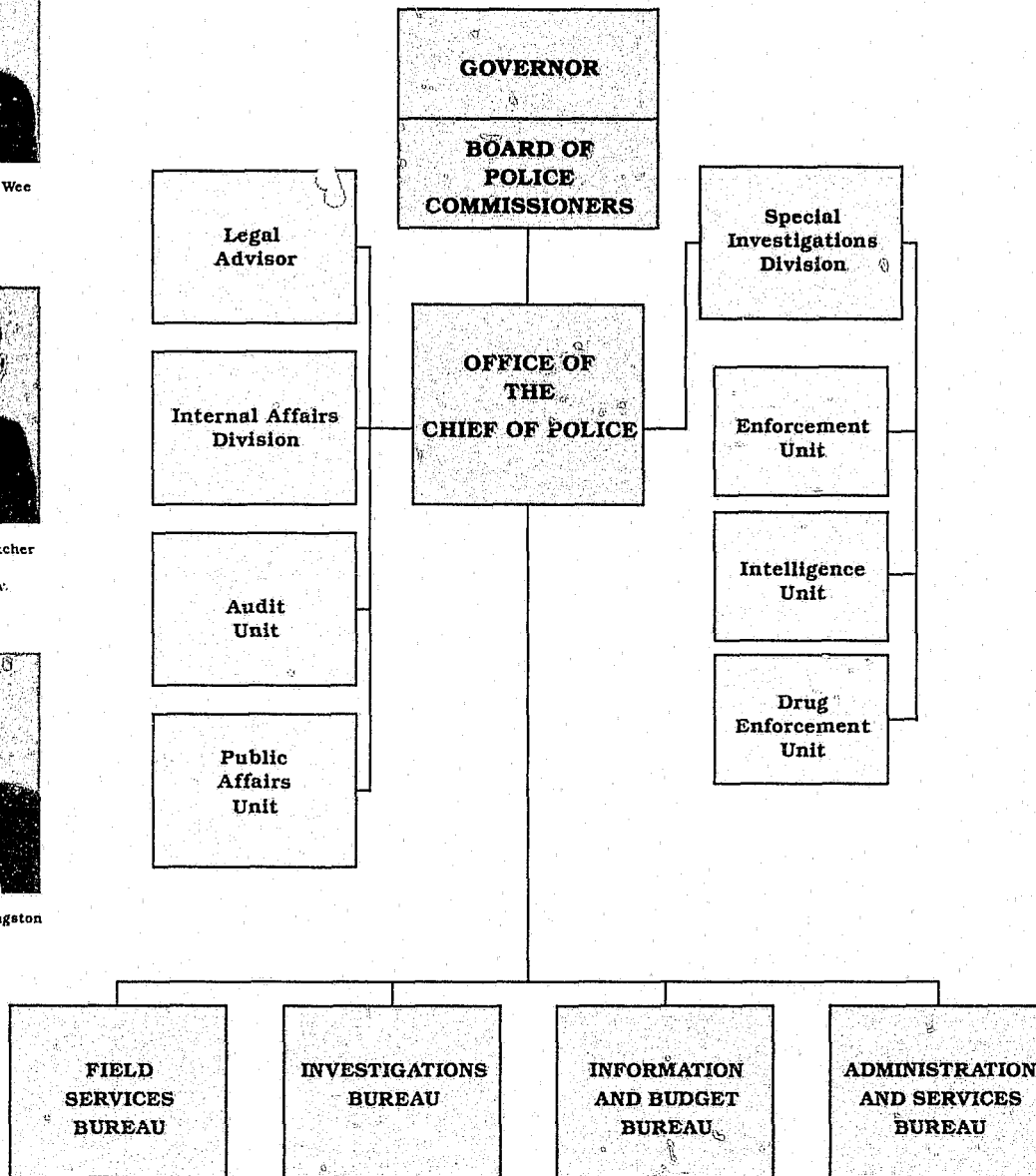
Capt. Dennis R. Shreve  
Commander  
Intelligence Unit



Capt. Robert L. Livingston  
Commander  
Audit Unit



Capt. David M. Barton  
Commander  
Drug Enforcement Unit



# Office of the Chief of Police



Larry J. Joiner, a 26-year veteran of the Kansas City, Missouri Police Department, was appointed Chief of Police by the Board of Police Commissioners on March 30, 1984, and is the 37th man to serve in that capacity.

Under the present department structure, the Chief's Office oversees four bureaus, each commanded by a lieutenant colonel. Those bureaus are the Field Services Bureau, the Investigations Bureau, the Information and Budget Bureau, and the Administration and Services Bureau. The Chief's Office is also directly responsible for the department's Legal Office, Public Affairs Unit, Audit Unit, and two divisions; the Internal Affairs Division and the Special Investigations Division.

Assigned to the Office of the Chief and assisting Chief Joiner in his administrative duties is the Executive Officer, Lieutenant Colonel Lester N. Harris. Lieutenant Colonel Harris supervises the activities of the Internal Affairs Division, the Special Investigations Division, the Audit Unit, and the Public Affairs Unit.

Mr. Michael A. Wee serves as the department's legal advisor. His responsibilities include updating department policies and procedures in light of the voluminous amounts of new legislation, amendments, opinions, and case decisions each year.



## Office of the Chief of Police (cont.)

---

### Special Investigations Division

The Special Investigations Division consists of an administrative office staff and three units: Intelligence Unit, Enforcement Unit, and Drug Enforcement Unit.

The division is primarily responsible for the department's pro-active investigations, as opposed to reacting to reported crimes. The division's personnel are trained and assigned to: gather and report intelligence data for resource allocation purposes, and target groups or individuals in an undercover capacity who are known or suspected of being involved in criminal activities, drug trafficking, or who are advocates of public disorder.

In 1986, a highly addictive form of cocaine called "crack" continued to surface in the Kansas City area. In an effort to battle the problem, 55 search warrants were served on known or suspected "dope houses."

### Internal Affairs Division

The Internal Affairs Division is charged with the responsibility of conducting thorough and objective investigations of citizen complaints lodged against department employees through the Office of Citizen Complaints. The division is further charged with the responsibility of conducting investigations of miscellaneous nature, disarming of an officer or the discharge of firearms by department members, and investigations into the circumstances regarding any recommendations for commendations and honor awards.

In June of 1986, the division acquired four IBM personal computers which have a spelling dictionary with a 4,000 word capacity. These computers have had a significant impact in reducing the turn-around time pertaining to reports and statements, and increasing work productivity.

The chief purpose of the Audit Unit is to assist management in recognizing problems and the recommending of realistic courses of action to correct the problems. Operational auditing permits management to evaluate performance not only on the basis of periodic reports, which may not reflect conditions as they actually exist, but on the basis of direct observation by the auditors. Using the operational audit approach, auditors normally detect unnecessary activities, inefficiencies, and deficiencies which, when corrected, may result in cost savings, better work time utilization, and overall increase in element productivity.



The Public Affairs Unit is primarily responsible for publishing the department's monthly newsletter and the Citizens Crusade Against Crime quarterly newsletter, processing of all department awards for presentation by the Chief of Police, and making all the necessary



arrangements for various department functions and banquets that occur throughout the year. The supervisor of the Public Affairs Unit is responsible for the dissemination of newsworthy items to the media and assisting the media in obtaining information useful in their news-gathering activities.



Norman A. Caron



L. E. Irvin



M.



Thomas N. Vallins



Bernard C. Brandon



Henry S. Julian



Thomas M. Speers



Lear B. Reed



Joseph D. McNamara



Thomas P. Flahive



Robert J. Coffey



John Hayes



Henry W. Johnson



Richard R. Foster



Marvin L. VanKirk



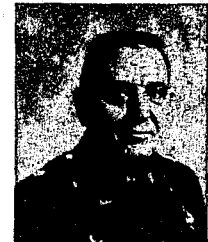
Lt. Col. Manfred W. Guenther  
Commander  
Field Services Bureau



Major Steven C. Bishop  
Executive Officer  
Field Services Bureau



Maj. Alfred C. Lomax  
Commander  
Metro Patrol Division



Maj. Lester D. Hash  
Commander  
East Patrol Division



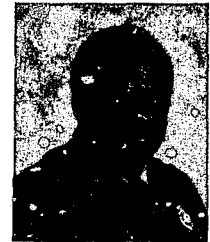
Maj. Victor A. Kauzlarich  
Commander  
Central Patrol Division



Maj. Joseph E. Chambers  
Commander  
North Patrol Division



Maj. Raymond D. Roberts  
Commander  
South Patrol Division



Maj. John L. Coleman  
Commander  
Patrol Support Division

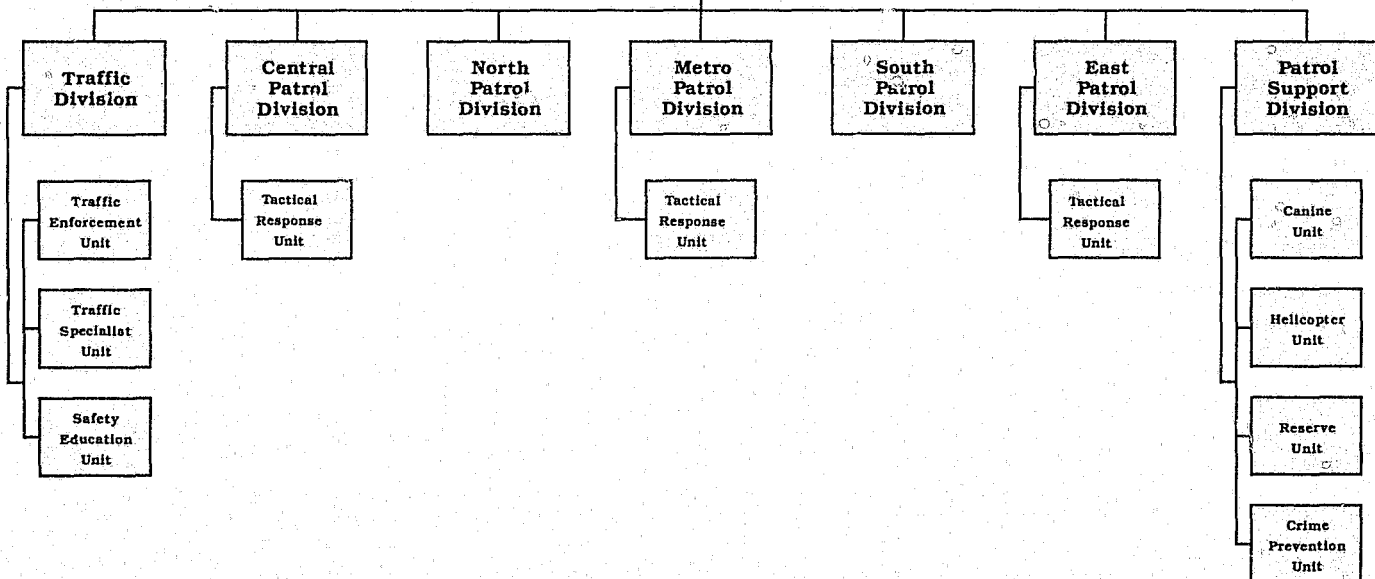


Maj. Donald D. Rey  
Commander  
Traffic Division

City-Wide  
Duty Officer

FIELD  
SERVICES  
BUREAU

Municipal  
Court  
Liaison



## Field Services Bureau



The Field Services Bureau, commanded by Lieutenant Colonel Manfred W. Guenther, is the largest bureau in the department, consisting of 843 authorized positions for full-time law enforcement officers and civilian members, 88 volunteer reserve and auxiliary officers, and 70 part-time crossing guards. The bureau includes five patrol division stations: Central, Metro, East, North, and South; as well as the Traffic and Patrol Support Divisions.

The goals of the police department are to provide continuous police patrol service, while maintaining a secure and peaceful environment for the citizens of Kansas City, Missouri. This is achieved through the use of updated police procedures and techniques, apprehension and diligent prosecution of criminal offenders and traffic violators, as well as community-oriented patrol services.

During the past year, officers answered over 350,000 calls for service, resulting in 210,826 arrests. The majority of these calls and arrests were made by the men and women assigned to the patrol divisions. These positions are staffed twenty-four hours a day and require that these officers have the ability to perform their duties under a variety of high stress conditions involving inclement weather, physical danger, and emotional trauma.

Due to a renewed awareness within the community of the crime rate, there are over 2,100 block watch and neighborhood groups throughout the city. The Citizens Crusade Against Crime was established in 1979 to bring together the citizens and the police, to develop programs aimed at reducing crime in the community, and to improve relations between the two groups. A Community Interaction Officer is appointed for each of the five stations to act as liaison for the department and help coordinate the efforts of the citizens' groups.



## Field Services Bureau (cont.)

The three Tactical Response Units of the police department are assigned to the Central, Metro, and East Patrol Divisions. These units consist of two squads, each staffed by six officers and one sergeant, and are commanded by a captain at each division. In 1986, Tactical Response Unit officers handled eleven incidents involving armed, barricaded parties or hostage situations, commonly referred to as "Operation 100s." Each of these potentially dangerous events was concluded without a single injury to officers or subjects. This is indeed a tribute to the skills, discipline, and training of the officers assigned to these units.

During the month of September, the Tactical Response Units participated in "Aircraft Hostage Rescue," a joint effort sponsored by TWA and the FBI, dealing with the rescue of passengers on an aircraft which has been commandeered by terrorists. The officers received classroom instructions, and participated in a mock situation, with actors playing the roles of pilot, crew, passengers, and terrorists.

Throughout the year, members of the units were also involved in security for visiting dignitaries and special events.



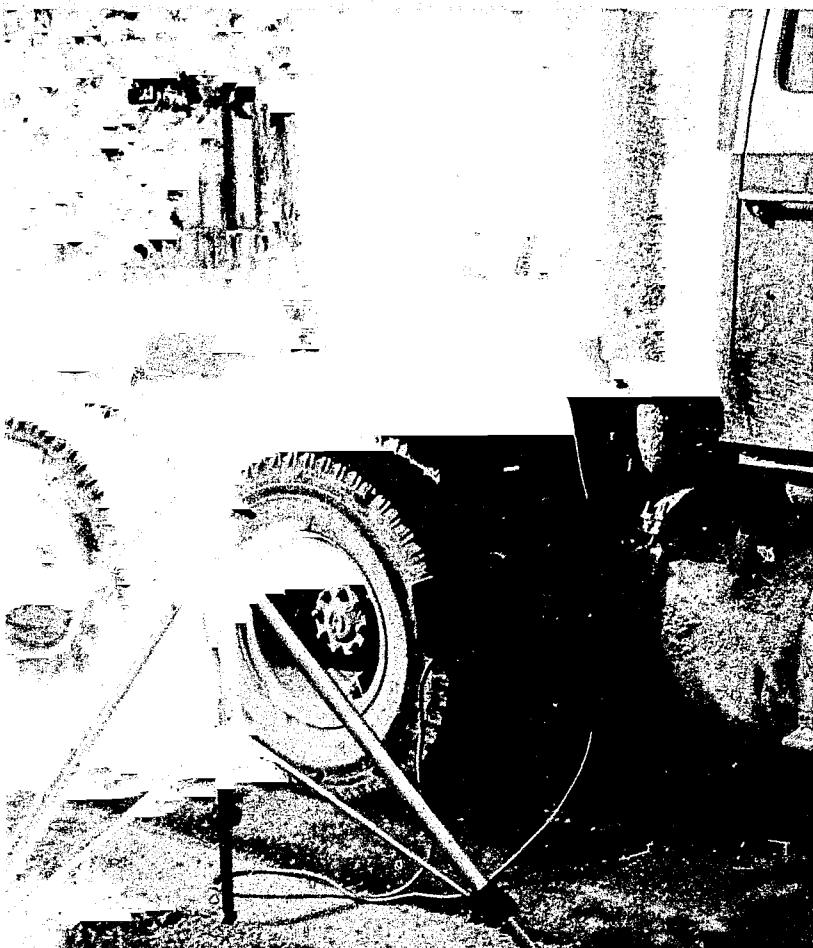
### Traffic Division

The Traffic Division consists of the Safety Education Unit, the Traffic Specialist Unit, and the Traffic Enforcement Unit. The division is responsible for the enforcement of traffic laws, and the apprehension and prosecution of violators.

The Safety Education Unit is responsible for presenting programs on traffic safety to groups and organizations. Funded by a grant from the Motor Carrier Safety Assistance Program, the unit conducted 740 commercial vehicle inspections, resulting in 311 vehicles being placed out of service.

The Traffic Specialist Unit is responsible for investigating vehicular accidents resulting in serious injuries or fatalities, as well as hit and run accidents. The unit has also been participating in a Sobriety Checkpoint Program to detect intoxicated drivers. During 1986, 9 checkpoints were conducted and 3,500 vehicles were checked, with an average of 10.3 intoxicated drivers detected per checkpoint.

The Traffic Enforcement Unit is responsible for the enforcement of the traffic code as well as handling traffic problems and traffic flow for special events. A grant from the state of Missouri enabled the unit to place or assign extra officers on the street to enforce the 55 mph speed law.

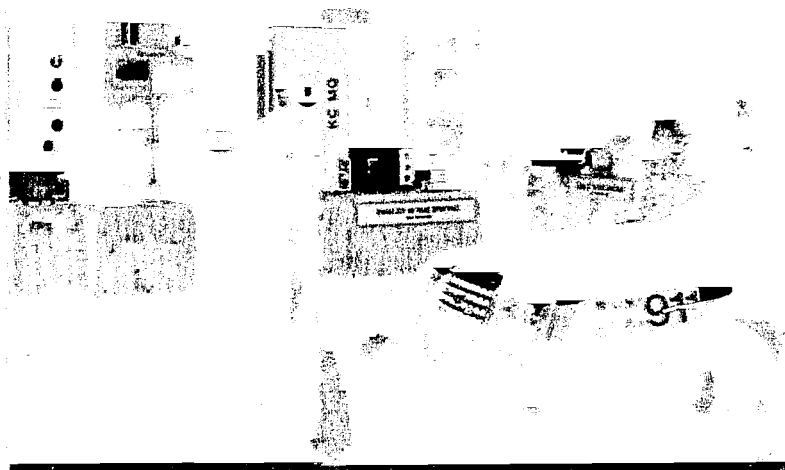


### Patrol Support Division

The Patrol Support Division consists of the Crime Prevention Unit, Special Equipment Section, Canine Unit, Helicopter Unit, and the Reserve Unit. The division's primary function is to provide supplementary and specialized support to the patrol and traffic divisions.

The Crime Prevention Unit was established in 1971 to reduce crime through public awareness. This is accomplished through a variety of educational programs offered as a public service to both business owners and homeowners. The unit provides booths and displays in local shopping malls, at the Home Show, and during Career Days at local schools. The unit also conducts security surveys which point out potential weaknesses in security to businesses and residences. The unit also provides programs for groups of all ages covering topics such as rape prevention, sexual abuse, personal safety, auto theft, robbery, and shoplifting, as well as a drug program coordinated with the Royals STAR Program.

The Special Equipment Section is responsible for the installation and maintenance of alarms and cameras at locations with a high incidence of crime. During 1986, there were approximately 104 cameras operating at 100 locations, and 20 alarms. Officers assigned to this section have the task of installing new equipment, and maintaining and monitoring alarms and cameras already in use.



The Canine Unit uses dogs specially trained in building search techniques and the detection of narcotics and explosives. Canine officers made 3,344 calls for service in 1986 with a total of 160 felony arrests, 48 of which were a direct result of the use of a canine.

During the past year, the Helicopter Unit responded on 6,007 calls for service, assisted in 141 arrests, and helped locate 143 fleeing suspects. Helicopter response is in high demand by patrol officers, particularly during car chase situations where the presence of the helicopter allows the officer to continue pursuit at a safe speed without losing the fleeing vehicle.

During 1986, the Reserve Unit's 58 officers each donated a minimum of 24 hours of service per month for a total in excess of 19,000 hours. These officers handled approximately 9,000 calls for service with over 1,500 arrests. The members of the Reserve Unit are all volunteers who contribute this time at no cost to the department, in addition to holding full-time jobs.





Maj. Gerald A. Kimmls  
Commander  
Criminalistics Div.



Maj. Elmer Meyer  
Commander  
Crimes Against Persons Div.



Lt. Col. Robert E. Jenkins  
Commander  
Investigations Bureau



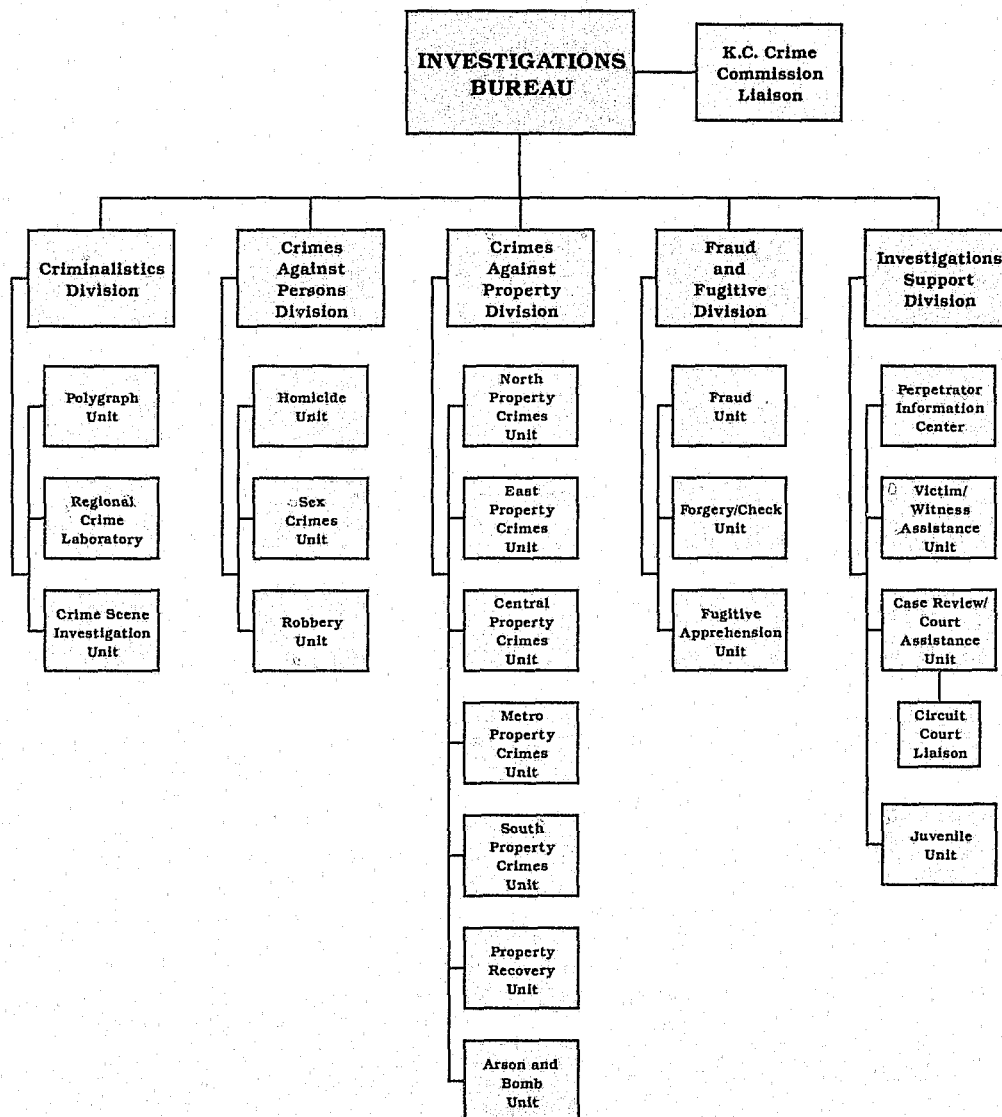
Maj. Thomas O. Mills  
Commander  
Crimes Against Property Div.



Maj. Carl T. Foxworthy  
Commander  
Fraud and Fugitive Div.



Capt. Ralph T. Pugh  
Commander  
Investigations Support Div.



# Investigations Bureau



The Investigations Bureau, commanded by Lieutenant Colonel Robert E. Jenkins, consists of approximately 238 sworn and civilian members. The overall objective of the bureau is to conduct investigations into criminal offenses in an effort to identify, apprehend, and prosecute those persons responsible. The bureau is comprised of five divisions.

### **Crimes Against Persons Division**

The Crimes Against Persons Division consists of three units: Homicide Unit, Robbery Unit, and the Sex Crimes Unit. The Homicide Unit investigates assaults, both aggravated and non-aggravated, dead bodies, suicides, harassments, threats against witnesses, and all homicides. In June of 1986, the unit developed an alternative method to deal with the increased number of minor assaults and harassing telephone calls. Form letters are now sent to victims of these incidents; and, if they fail to respond in ten to fifteen days, the case is inactivated.

In addition to having responsibility for investigating the 3,442 reported robberies in 1986, the Robbery Unit also investigated 12 bank robberies, along with the F.B.I., resulting in the identification of suspects in 11 of the robberies.

The Sex Crimes Unit conducts investigations into reported sex offenses, kidnappings, abductions, obscene telephone calls, and reported child abuse or neglect. This past year, the unit moved into new quarters previously occupied by the Case Review/Court Assistance Unit. This new space provides a private waiting area for rape victims and children who are victims of child and sexual abuse.



## Investigations Bureau (cont.)

### Crimes Against Property Division

The only decentralized division within the Investigations Bureau is the Crimes Against Property Division. A Property Crimes Unit is assigned to each of the five patrol division stations. Each unit is responsible for the investigation of a variety of criminal offenses that occur within their respective geographical boundaries. Those offenses include both residence and non-residence burglaries, as well as auto thefts and larcenies from buildings and vehicles. In 1986, there were over 44,000 such offenses.

The Arson and Bomb Unit investigates arson fires and incidents involving explosive devices. In 1986, the unit's specially trained detectives investigated 340 arsons and worked 13 cases involving explosive devices.

Another element assigned to the Crimes Against Property Division is the Property Recovery Unit. This unit enforces a 1981 city ordinance that regulates precious metal dealers and a 1983 city ordinance regulating salvage dealers. During the past year, the unit's activities resulted in the recovery of nearly \$105,000 worth of stolen property.



### Investigations Support Division

The Investigations Support Division consists of the Case Review/Court Assistance Unit, the Perpetrator Information Center, the Victim/Witness Assistance Unit, and the Juvenile Unit.

The Case Review/Court Assistance Unit is responsible for reviewing criminal files for quality, presenting the files to the appropriate prosecutors office for filing of charges, arraigning prisoners on case files presented, and notifying officers to appear in state courts.

The services provided by the Perpetrator Information Center include the acquisition and maintenance of intelligence data, the analysis of crime, the dissemination of information and assistance to department elements and outside agencies, and the videotaping for the department's investigative needs.

The Victim/Witness Assistance Unit continues to familiarize victims and witnesses of crime with the criminal justice system and the process requiring their participation. The unit also notifies crime victims of any progress made in the investigation of their incidents and contacts them concerning any court appearances they are to attend.

The Juvenile Unit has the responsibility for the administrative booking of all juveniles for state and municipal violations except for traffic, and processing all juveniles taken into custody within the city.





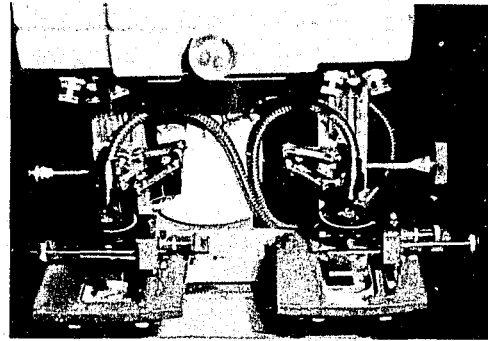
### Fraud and Fugitive Division

The Fraud and Fugitive Division is composed of three units: the Forgery/Check Unit, the Fraud Unit, and the Fugitive Apprehension Unit. This division is responsible for conducting investigations into a variety of crimes including forgeries, frauds, shoplifts, con games, destruction of property, embezzlements, telephone harassment, missing persons, and missing or runaway juveniles.

The Fugitive Apprehension Unit is responsible for receiving information on missing persons, runaway juveniles, and fugitives wanted on local and outside state and federal warrants. During the past year, unit members arrested 630 people on outside state and federal warrants, handled 1,306 reports of missing or runaway juveniles, and investigated 242 missing adult cases.

Frauds, pickpockets, con games, property damages, embezzlements, and shoplifts are just some of the offenses investigated by the Fraud Unit. In 1986, there were over 12,000 such offenses reported in Kansas City, Missouri.

The members of the Forgery/Check Unit are charged with the responsibility of investigating forgeries and other crimes involving checks. This past year, unit members cleared 649 of the 741 assigned cases resulting in an 87.6% clearance rate.



### Criminalistics Division

The Criminalistics Division consists of the Crime Scene Investigation Unit, Regional Crime Laboratory, and the Polygraph Unit. This division's responsibilities include the collection and preservation of evidence related to criminal offenses, the forensic examination of the collected evidence, and the administration of polygraph examinations.

The Regional Crime Laboratory performs examinations of physical evidence on over 8,000 cases a year. This workload involves approximately 100,000 separate items of evidence. The members of the lab use sophisticated equipment and techniques to provide chemical analysis, firearms and tool mark comparisons, and specialized photography, as well as many other scientific services. The laboratory also provides forensic science support to approximately 80 other agencies.

The members of the Crime Scene Investigation Unit are trained to locate and properly collect evidence at the scene of a crime. In 1986, unit members collected approximately 40% of all the evidence examined by the Regional Crime Lab.

The Polygraph Unit began the transition from law enforcement to civilian personnel in 1985 with the hiring of a civilian polygraph examiner. In January, the second civilian examiner was hired, giving the unit two civilian and two law enforcement examiners.

	2734
DECEMBER 5 1986	18-7159/3010
	\$ 150.00
dollars and DOLLARS	
Bert T. Smith	



Lt. Col. Floyd O. Barch  
Commander  
Information & Budget Bureau



Capt. William E. Frazier  
Commander  
Purchasing & Accounting Div.



Capt. Richard C. Sayles  
Commander  
Budget Development Div.

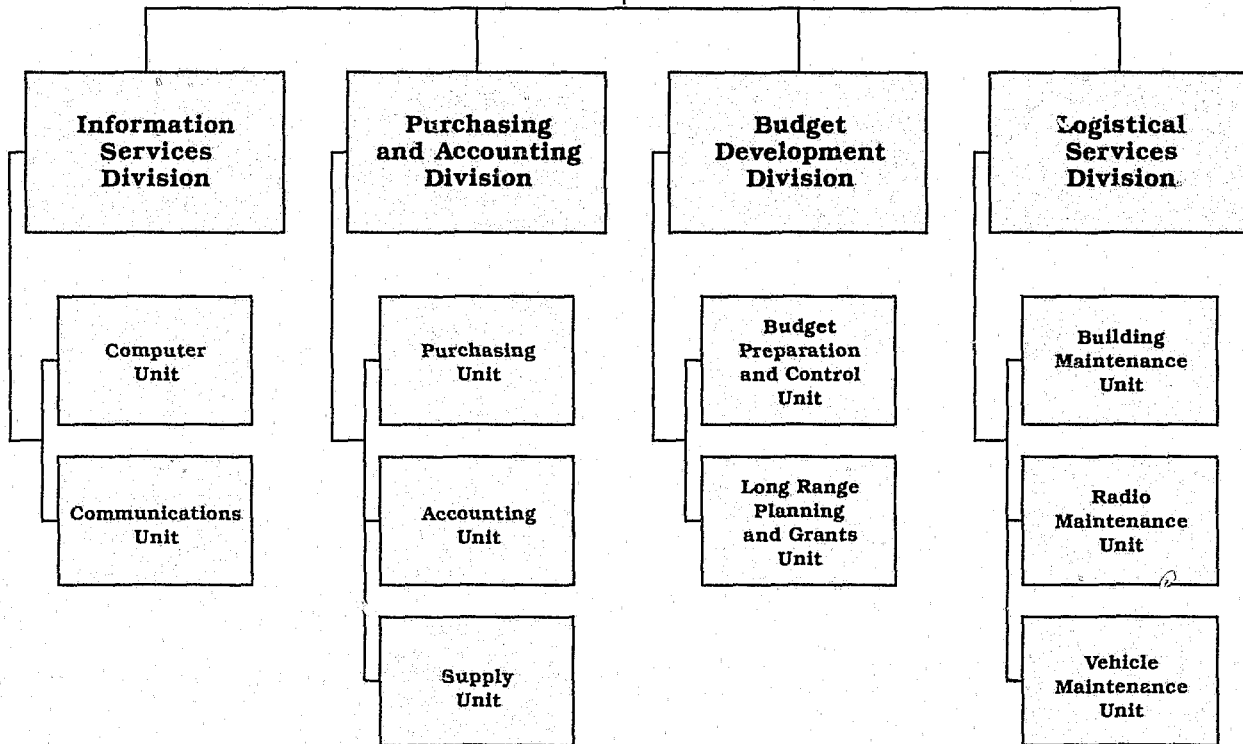


Maj. Michael L. Boyle  
Commander  
Logistical Services Div.



Maj. William H. Trimble  
Commander  
Information Services Div.

**INFORMATION  
AND BUDGET  
BUREAU**



# Information and Budget Bureau



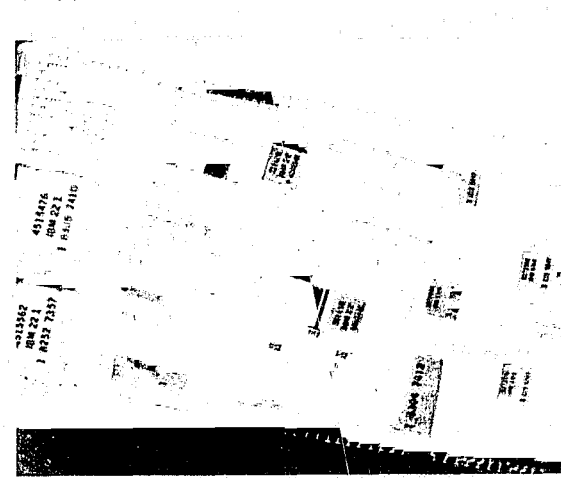
The Information and Budget Bureau, formed in May of 1986 and commanded by Lieutenant Colonel Floyd Bartch, has a staff of 250 law enforcement and civilian personnel. The bureau's four divisions, the Information Services Division, Budget Development Division, Purchasing and Accounting Division, and the Logistical Services Division, assure the proper use and care of the department's resources, including an operating budget of \$59,888,984 for the fiscal year 1986-87.

## Information Services Division

The Information Services Division, comprised of the Computer Unit and the Communications Unit, provides computer services twenty-four hours a day to the Kansas City Police Department and to other criminal justice agencies, now totaling sixty-seven, that make up the ALERT II network.

During 1986, the Computer Unit automated the fiscal system, employee driving records, Special Investigations Division files, and the Property and Evidence Unit inventory files, as well as being involved in the design and implementation of an automated system for the Police Retirement System.

The Communications Unit is responsible for all incoming 911 calls for police, fire, and ambulance, as well as all other calls for police service and for dispatching on these calls. In October, a new position of Calltaker was created. The person in this position is required to answer the incoming calls for service and route them through the computer, but not dispatch on them. In 1986, an extensive 911 awareness campaign was conducted, after which the use of 911 for emergency service needs increased by 18% over the previous year.



## Information and Budget Bureau (cont.)

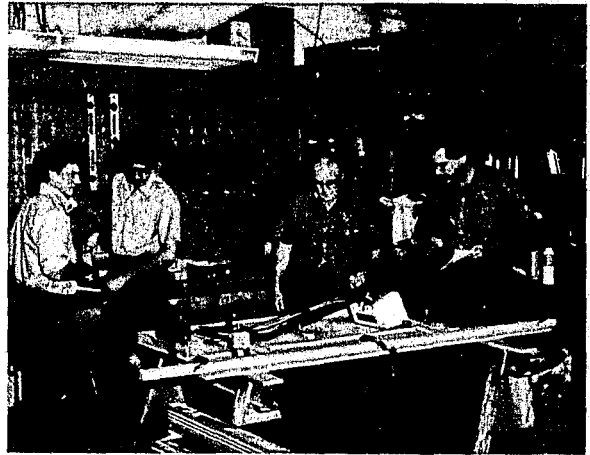
### Budget Development Division

The Budget Development Division is divided into two units: the Budget Preparation and Control Unit and the Long Range Planning and Grants Unit. The division is responsible for the preparation of the department's budget request and continually reviewing expenditures and balances as they relate to appropriated funds. During the fiscal year 1986-87, the department was provided with \$67,883,255 for an overall budget, with \$59,888,984 of this amount for the operating budget to insure payment for payroll, benefits, supplies, equipment, and various other expenses.

The Budget Preparation and Control Unit's responsibilities are the preparation and maintenance of the police department's budget and continual analysis of the status or condition of the budget; maintenance of the Position Control Roster; and maintenance of the Comprehensive Program Information Summary (C.P.I.S.). The Position Control Roster is a procedure that allows constant monitoring of personnel, classifications, pay ranges, salaries, assignments, and anniversary dates; thereby allowing for an on-going audit of the department payroll, making salary projections, and monitoring personnel transactions. The Comprehensive Program Information Summary is a process of using management information and taking actions leading to improvements in police services.

The Long Range Planning and Grants Unit is responsible for developing long range programs and strategies designed to enhance the department's abilities to perform effectively; ascertain the financial requirements of said programs and seek project development funds through grants-in-aid, from either public or private sources; and develop and maintain close liaisons with other private and public planning elements within and outside the criminal justice system. This includes developing department policies, programs, and procedures on a long-term basis, for the proper utilization of manpower, equipment, and facility needs.

The unit is also responsible for the study, coordinating, and channeling of requests for grants, to assure approval for the department's grant applications. The unit is concerned with studying, acquiring, and coordinating state, federal, and private grants sought by the department, as well as collecting and maintaining current information on legislation concerning criminal justice grants from both state and federal governments.



### Logistical Services Division

The Logistical Services Division consists of the Building Maintenance Unit, Radio Maintenance Unit, and the Vehicle Maintenance Unit. The division is responsible for the repair and upkeep of the police facilities, motor vehicle fleet, and all electronic equipment within the department.

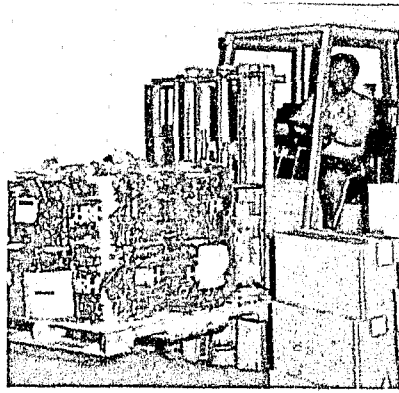
The Building Maintenance Unit is responsible for 256,907 square feet of office space, grounds care, and adjoining parking areas.

Radio Maintenance Unit has the task of installation and repair of most of the radio and electronic equipment within the department, as well as providing service to sixteen other elements within the city government.

The Vehicle Maintenance Unit, responsible for keeping the department's vehicle



fleet in good working order, handled over 9,400 service requests in 1986. The Vehicle Maintenance Unit equipped for service 90 new police vehicles, purchased by the department, as a commitment to provide safe, dependable vehicles for police officers.



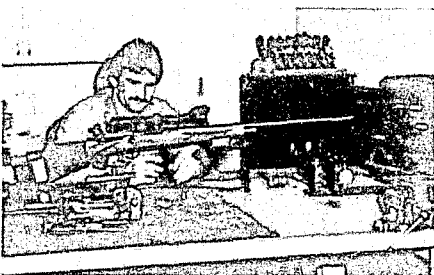
### **Purchasing and Accounting Division**

The Purchasing and Accounting Division, consisting of the Purchasing Unit, Accounting Unit, and the Supply Unit, is responsible for recording all financial transactions of the department, purchasing, and disbursement of materials and services required for the operation of the department. In 1986, the division implemented the automated fiscal system, whereby all manual ledgers and journals were entered into the computer system. Almost all of these manual ledgers and journals had been maintained in a parallel system for a full year, but were discontinued after it was demonstrated that the new equipment could perform the same functions with equal accuracy and greater speed.

The Purchasing Unit has the task of accounting for all appropriated funds and the purchase of equipment, materials, supplies, and services. The unit also has the task of receiving and reviewing bids for supplies and services. During the past year, the unit completed almost seventy-five percent of the refurbishing of the office equipment within the department, and the re-upholstering of the chairs. Some of the accomplishments of the unit in the past year have been re-working of the police bullet-resistant vests to better fit the officer's individual needs, the tailoring of the uniform shirts for women, and the researching of software systems and compatible hardware to computerize the Supply Unit inventory, allowing for a greater accountability and control of resources.

The Accounting Unit has the task of keeping track of all financial transactions, receipts, and invoices, as well as providing monthly financial reports for the elements, enabling the commanders and supervisors to continually monitor the status of their budgets.

The Supply Unit is responsible for maintaining an adequate inventory of supplies and equipment for issue to department elements and, over the last year, has extended its hours of operation to accommodate officers on all three shifts. The unit also has the task of monitoring Gun Repair, which is currently conducting maintenance checks on all department firearms on an annual basis.







Lt. Col. Rufus Evans  
Commander  
Administration & Services Bureau



Maj. William D. Dycus  
Commander  
Records Division



Maj. Charles R. Key  
Commander  
Training Division



Maj. Milan E. Mulac  
Executive Officer  
Administration & Services Bureau

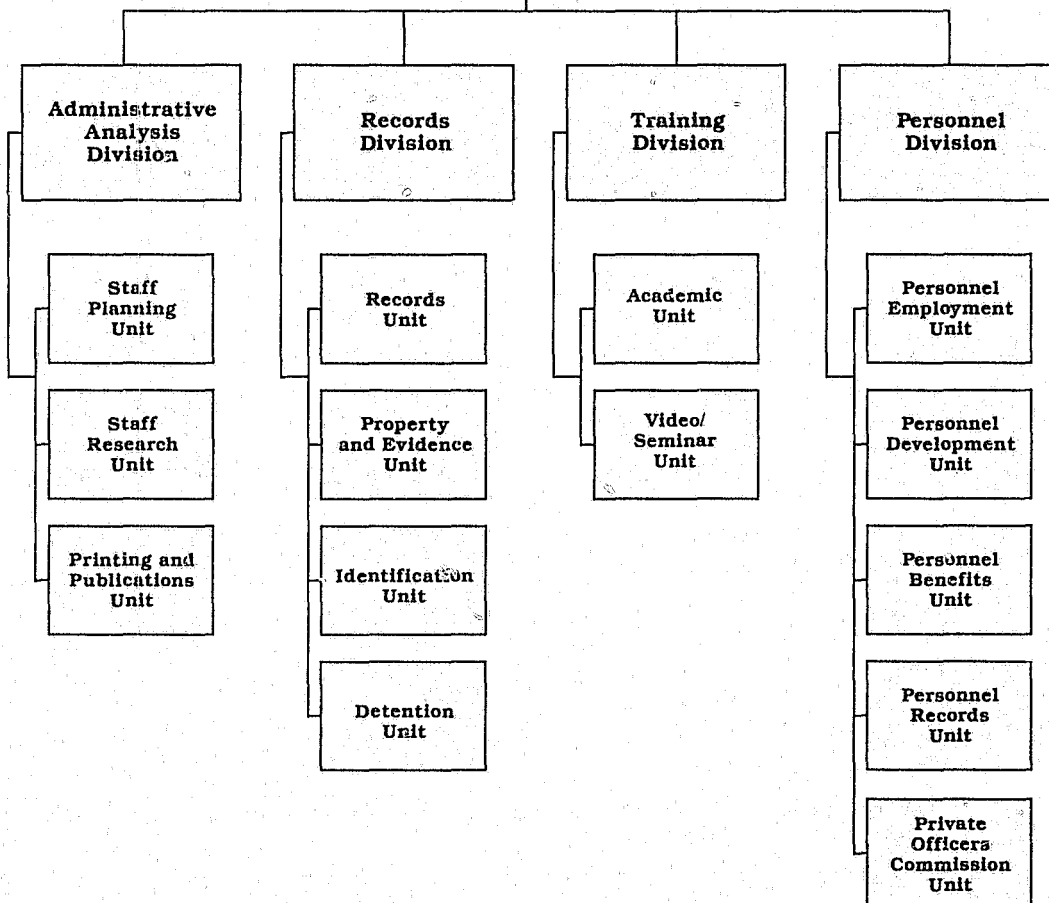


Maj. Robert L. Wesley  
Commander  
Personnel Division

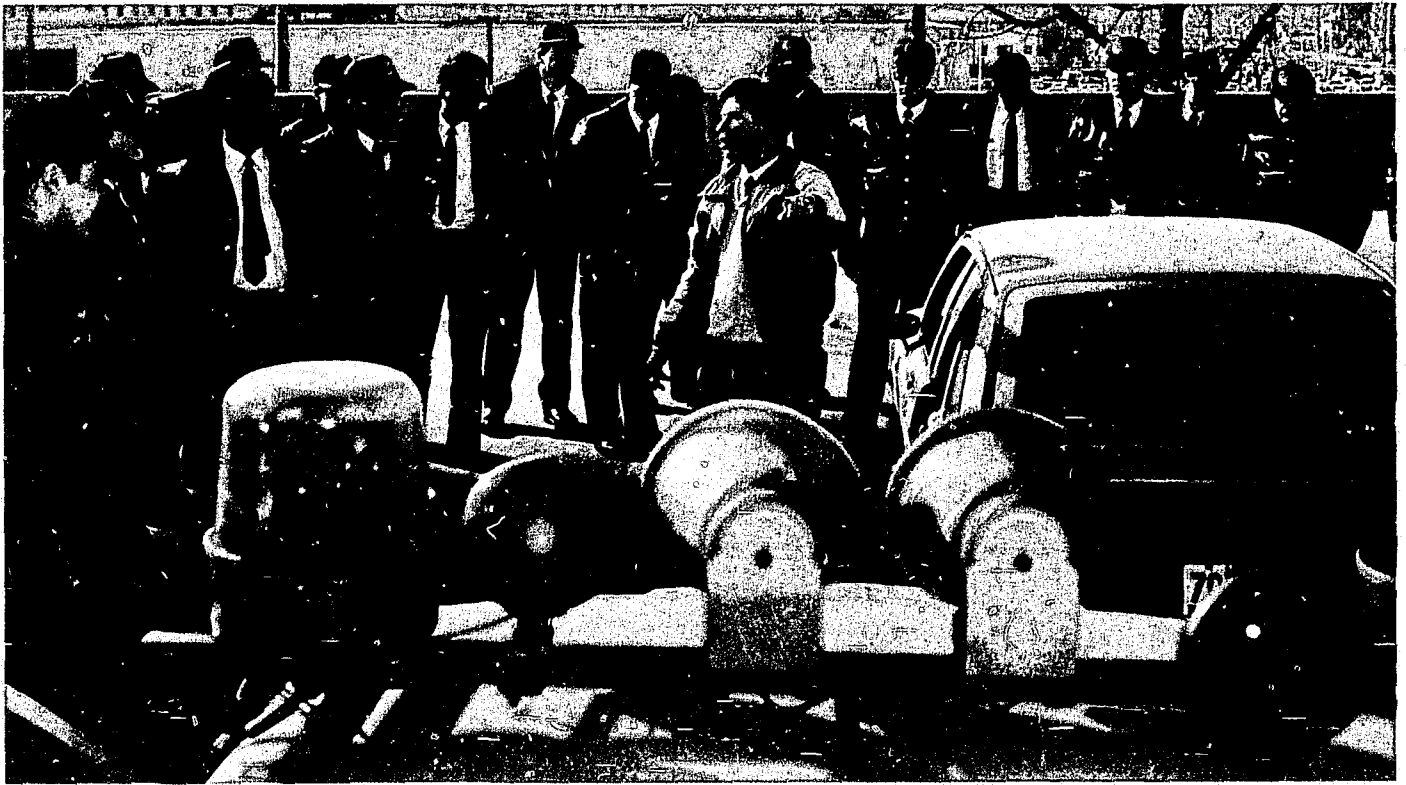


Maj. Arthur F. Barnett  
Commander  
Administrative Analysis Division

**ADMINISTRATION  
AND SERVICES  
BUREAU**



# Administration and Services Bureau

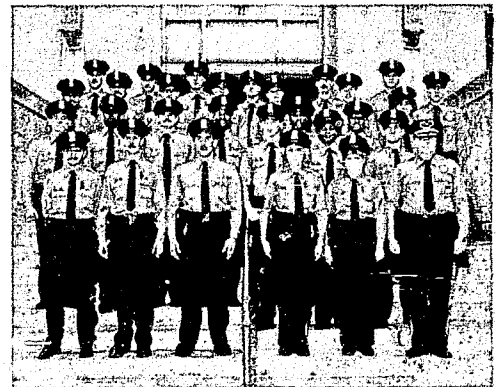


The Administration and Services Bureau, commanded by Lieutenant Colonel Rufus Evans, consists of four divisions: the Training Division, Personnel Division, Administrative Analysis Division, and the Records Division. The bureau is responsible for providing the necessary administrative support for all department elements. There are 195 law enforcement and civilian members assigned to the bureau.

## **Training Division**

The Training Division provides basic police training for seventy-seven law enforcement agencies in the eight-county metropolitan area. It administers in-service police training, specialized training for various police technical positions, and management training for all levels in a police organization. The division also provides situational training for new recruits.

In cooperation with the FBI, the Training Division conducted four national teleconferences in 1986, designed specifically for law enforcement officers and administrators. These first-of-a-kind teleconferences initially had an audience of approximately 1,500 to 2,000 viewers, growing to more than 5,000 by the end of the year. The first satellite hook-ups were solely within the continental United States; by year's end, the teleconference hook-ups were in Canada, Puerto Rico, and Mexico, with hook-ups in other countries planned for 1987.



## Administration and Services Bureau (cont.)

---



### Personnel Division

The Personnel Division consists of five units: the Employment Unit, Development Unit, Employee Benefits Unit, Personnel Records Unit, and the Private Officers Commission Unit. The division is responsible for testing and processing of applicants and internal requests for transfer; administering and researching pay, classifications and reclassifications of jobs; a full range of employee benefits; the promotional processes for sergeant and captain; and maintaining records of past and present members.

The Employment Unit is responsible for the entire process of hiring personnel for all sworn and non-sworn positions. During 1986, the recruitment efforts of the unit were successful in bringing in 1,446 new applicants for the position of police officer, with 133 of those selected for appointment to the police academy. Also during 1986, 1,257 applications for civilian positions were accepted, with 85 applicants hired by the department. This unit is also responsible for processing requests for transfer by members within the department.

The Development Unit is responsible for policy development, all pay and classification actions, promotional testing for sworn positions, special projects assigned by the commander, documenting pay legislation recommendations, and writing and revising the Personnel Policy and Benefit Manual. During the past year, the manual was almost completely revised and rewritten.

The Employee Benefits Unit has the responsibility for administering injury leave, health insurance and other employee benefits, and coordinating the off-duty employment of sworn officers. The unit also handles the college incentive program, whereby the department pays the officers, upon completion of their probationary period, for college degrees earned. Of the 494 officers participating in the program, 74 have completed their master's degrees, 255 have earned bachelor's degrees, and 165 have completed their associate's degrees.

The Personnel Records Unit is responsible for the management of all department members' records. Many previous members' files have been placed on microfilm, freeing up space for new files. During the past year, the unit acquired a power file, making these files readily accessible.

The Private Officers Commission Unit is responsible for the regulating and licensing of private security officers in Kansas City, Missouri. During 1986, more than 2,400 applications for new commissions were received, with over 2,300 commissions being conferred.





### **Records Division**

The Records Division is made up of four units: the Records Unit, Identification Unit, Property and Evidence Unit, and the Detention Unit. The division is responsible for: maintaining criminal records and files and arrest warrants, fingerprint identification, detention of arrests, reports taken by department personnel, and management of property and evidence. During 1986, the Records Unit processed 148,977 complaint reports, furnished 37,329 copies of reports to the citizens, and microfilmed over 487,000 documents.

The Property and Evidence Unit provided processing and storing of recovered property, while the Detention Unit was responsible for the temporary detention of individuals who were arrested for violation of city ordinances and state statutes.



### **Administrative Analysis Division**

The Administrative Analysis Division, consisting of three units (the Printing and Publications Unit, Staff Research Unit, and the Staff Planning Unit), attempts to predict and anticipate problems and future needs of the department by conducting analyses and surveys of procedures and equipment.

The Printing and Publications Unit prints most of the material used by the department. Over the past year, the unit has been involved in the development of an automated program whereby all department forms, over 900 in all, are entered in the computer for easy access by other elements of the department. The unit received an honorable mention award in the Inplant Printing Manager's Association fine printing awards competition, and they also played host to the Kansas City Chapter in August of 1986.

During the past year, the Staff Research Unit began a two-year study of police holsters. Of the many styles researched, five are currently being tested by officers on patrol.

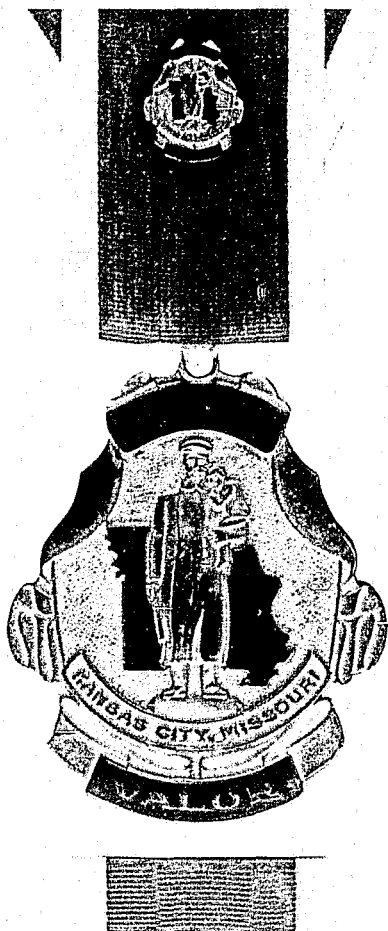
The Staff Planning Unit has the responsibility of writing and revising Procedural Instructions and General Orders, as well as aiding in the various decision-making processes of the department.



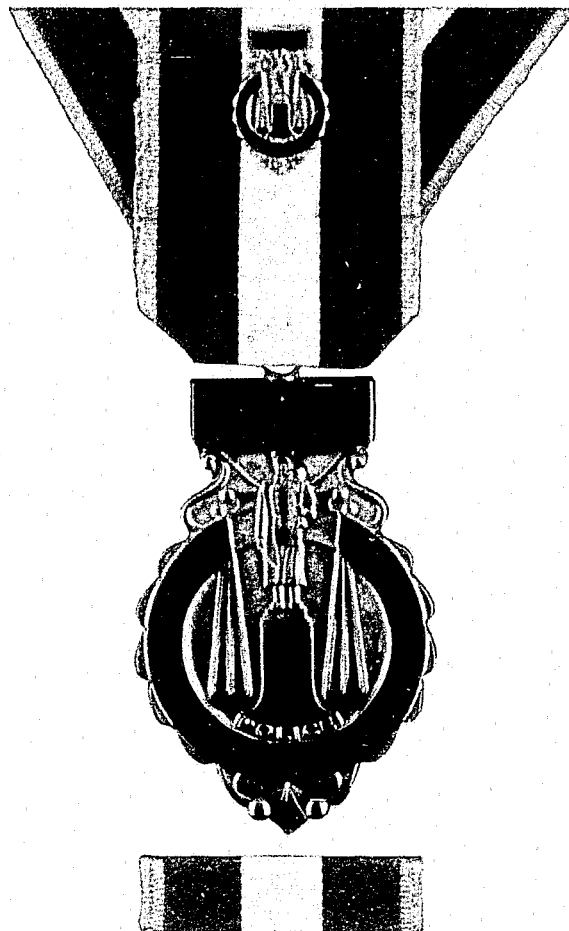
# 1986 Award Recipients

---

## Valor



## Distinguished Service




**Investigator Michael C. Coughlin**  
Medal of Valor



**P.O. Larry J. Brennaman**  
Medal of Valor

# 1986 Award Recipients

---




## Certificate of Commendation

### Medal of Valor

P.O. Larry J. Brennaman  
Investigator Michael C. Coughlin

### Certificate of Commendation


P.O. Barbara L. Baker  
Detective Douglas A. Bush  
P.O. John J. Cisper  
Civilian Jennifer L. Cullen  
P.O. Albert A. DeValkenaere  
Investigator Robert A. Fletcher  
Sergeant Robert P. Knudsen  
Detective Stephen L. Kramer  
Aux/Off James R. Lage  
Civilian William R. Martin III  
Detective Charles M. McKinnie  
P.O. Joseph J. Pils  
Civilian Ronald W. Reilly  
Detective Thomas L. Robinson  
P.O. Stephen D. Sharman  
P.O. Bennie J. Solomon  
P.O. Bruce Solomon  
Detective Larry D. Wilson



## Meritorious Service Award

### Special Unit Citation


North Property Crimes Unit  
Sergeant Gary I. Van Buskirk  
Detective Loren D. Funke  
Detective Donald E. Mansell  
Detective Frank A. Mazzuca



## Special Unit Citation

### Meritorious Service Award


Detective Donald A. Bowerman  
Detective Gary R. Buchanan  
Aux/Off Judy R. Haushahn  
P.O. Joseph O. Reed  
Ret. Lt. Col. Mark V. Ruckel  
Civilian Belinda J. Wilkerson



## Red Cross Award

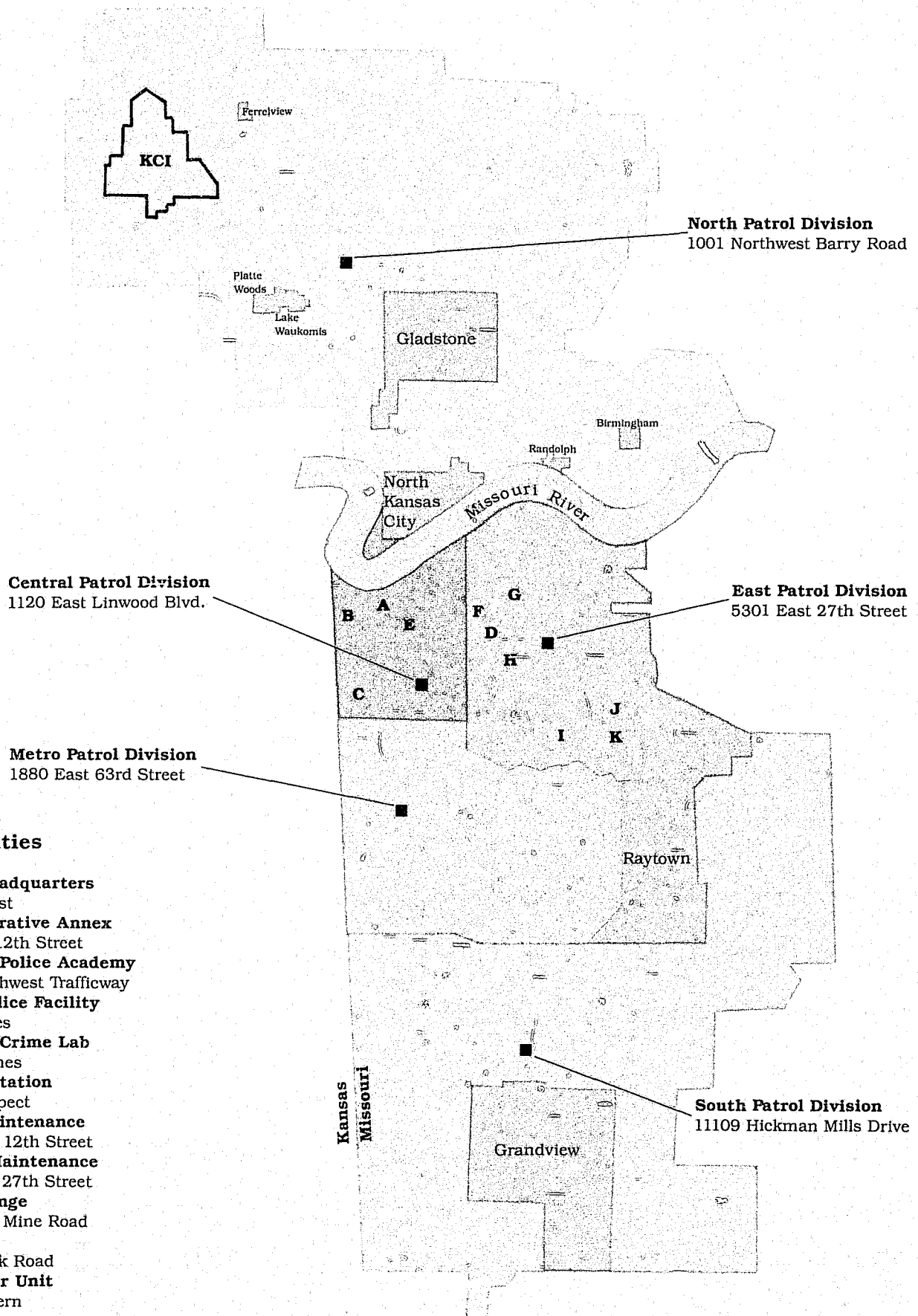


## Firearms Proficiency



## Training Officer

# Police Facilities & Patrol Division Boundaries



## Police Facilities

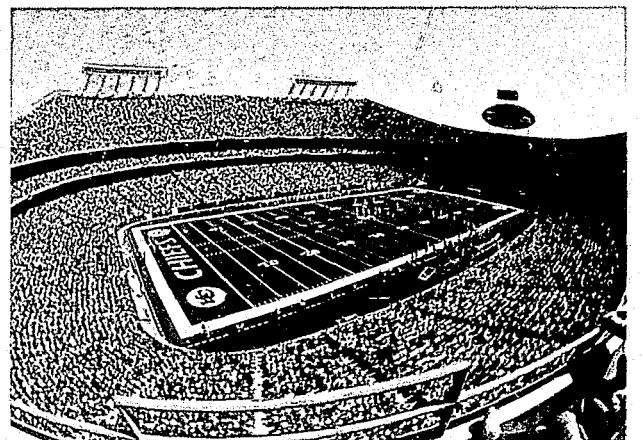
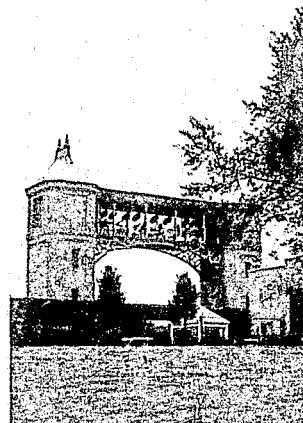
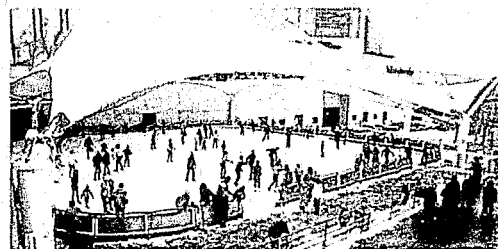
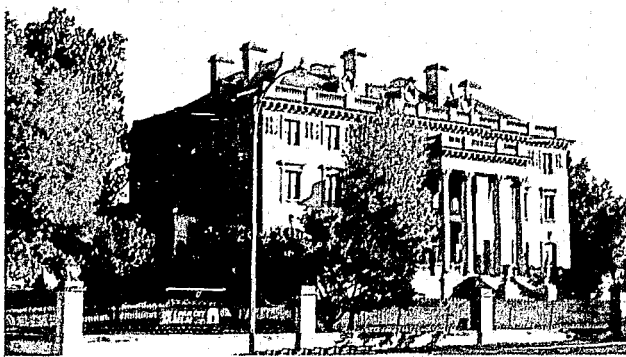
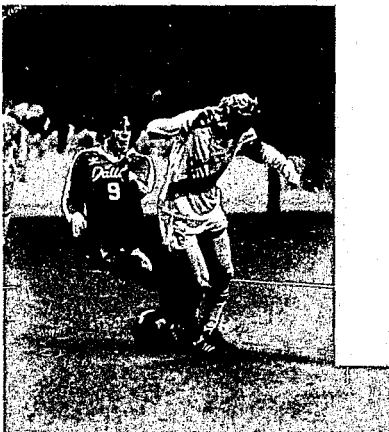
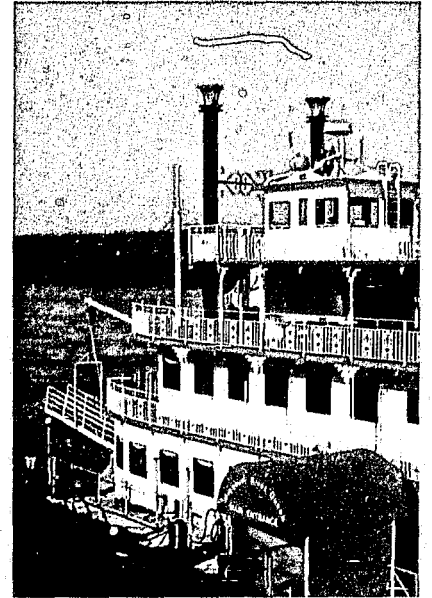
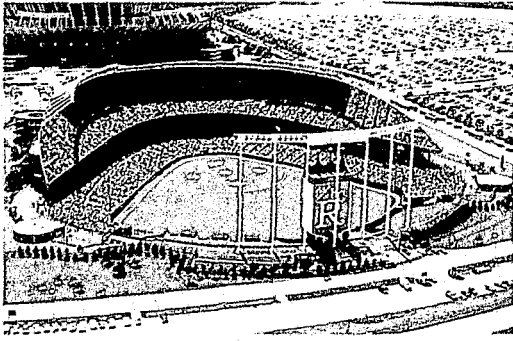
- A. Police Headquarters**  
1125 Locust
- B. Administrative Annex**  
306 East 12th Street
- C. Regional Police Academy**  
3201 Southwest Trafficway
- D. Agnes Police Facility**  
1328 Agnes
- E. Regional Crime Lab**  
1525 Holmes
- F. Service Station**  
1245 Prospect
- G. Radio Maintenance**  
3224 East 12th Street
- H. Vehicle Maintenance**  
5215 East 27th Street
- I. Pistol Range**  
6900 Coal Mine Road
- J. K-9 Unit**  
8100 Ozark Road
- K. Helicopter Unit**  
4601 Eastern

# **Financial and Statistical Summary**

## **Kansas City, Missouri Data**

<b>Population (Ranked 29th in U.S.)</b>	<b>443,075</b>
<b>Land Area (Ranked 7th in U.S.)</b>	<b>317 Square Miles</b>
<b>Government</b>	<b>Council-Manager</b>
<b>Budget</b>	<b>\$451,494,597</b>
<b>Roadways</b>	<b>2,613 Miles</b>
<b>Parks</b>	<b>7,634 Acres</b>
<b>Registered Vehicles</b>	<b>266,020</b>





# Distribution of Police Budget\*

## 1986 - 1987 POLICE BUDGET

SALARIES .....	\$50,168,368 =	83.8%
RENT, STRUCTURAL REPAIRS, UTILITIES, ADVERTISING, INSURANCE, ETC. ....	\$6,781,524 =	11.3%
MISC. MINOR EQUIPMENT, VEHICLE FUEL AND PARTS, UNIFORMS, OFFICE SUPPLIES, ETC. ....	\$2,089,092 =	3.5%
VEHICLES, COMMUNICATION EQUIPMENT, OFFICE EQUIPMENT, ETC. ....	\$850,000 =	1.4%
<b>TOTAL BUDGET APPROPRIATION .....</b>	<b>\$59,888,984 =</b>	<b>100.0%</b>

## Police Budget Comparisons

	1984-1985 Fiscal Year	1985-1986 Fiscal Year	1986-1987 Fiscal Year	Requested Budget 1987-1988 Fiscal Year
PERSONAL SERVICES	\$45,662,402	\$48,532,426	\$50,168,368	\$54,986,517
CONTRACTUAL SERVICES	6,607,402	7,972,369	6,781,524	8,962,569
COMMODITIES	2,185,883	2,347,633	2,089,092	2,355,930
CAPITAL OUTLAY	663,724	891,000	850,000	2,344,048
<b>TOTAL</b>	<b>\$55,119,411</b>	<b>\$59,743,428</b>	<b>**\$59,888,984</b>	<b>\$68,649,064</b>

\* Does not include pension and F.I.C.A. contributions

\*\* As of December 31, 1986

## Length of Service by Rank - Title

Years	Chief	Lt. Col.	Major	Capt.	Sgt.	Det.	Officer and Invest.	Sr. Anal. Tech.	Dir. of OCC	Heli. Pilots	Prog. Tech. II	Poly-graph.	Total	Percent in Each Service Group
0- 4						4	191						195	17.9
5- 9					18	21	116						155	14.3
10-14				5	34	39	87						165	15.2
15-19		1	5	22	77	74	149			2			330	30.4
20-24			7	13	37	17	61			2	1	1	139	12.8
25-29	1	4	8	11	27	12	35	1	1	1		1	102	9.4
<b>TOTALS</b>	<b>1</b>	<b>5</b>	<b>20</b>	<b>51</b>	<b>193</b>	<b>167</b>	<b>639</b>	<b>1</b>	<b>1</b>	<b>5</b>	<b>1</b>	<b>2</b>	<b>1,086</b>	<b>100.0%</b>

Average length of service of all law enforcement personnel - 13.96 years

## Age of Personnel by Rank - Title

Age	Chief	Lt. Col.	Major	Capt.	Sgt.	Det.	Officer and Invest.	Sr. Anal. Tech.	Dir. of OCC	Heli. Pilots	Prog. Tech. II	Poly-graph.	Total	Percent in Each Service Group
21-24							57						57	5.3
25-29						8	125						133	12.3
30-34				1	18	20	110						149	13.7
35-39				12	54	55	140						261	24.0
40-44			5	17	60	42	112			2			238	21.9
45-49	1	1	12	12	36	27	55	1		3	1		149	13.7
50-54		3	2	4	21	13	31					2	76	7.0
55-59		1	1	5	3	2	9		1				22	2.0
60-64					1								1	0.1
<b>TOTALS</b>	<b>1</b>	<b>5</b>	<b>20</b>	<b>51</b>	<b>193</b>	<b>167</b>	<b>639</b>	<b>1</b>	<b>1</b>	<b>5</b>	<b>1</b>	<b>2</b>	<b>1,086</b>	<b>100.0%</b>

Average age of all law enforcement personnel - 38.0 years

# Salary Schedule

## Law Enforcement

As of December 31, 1986

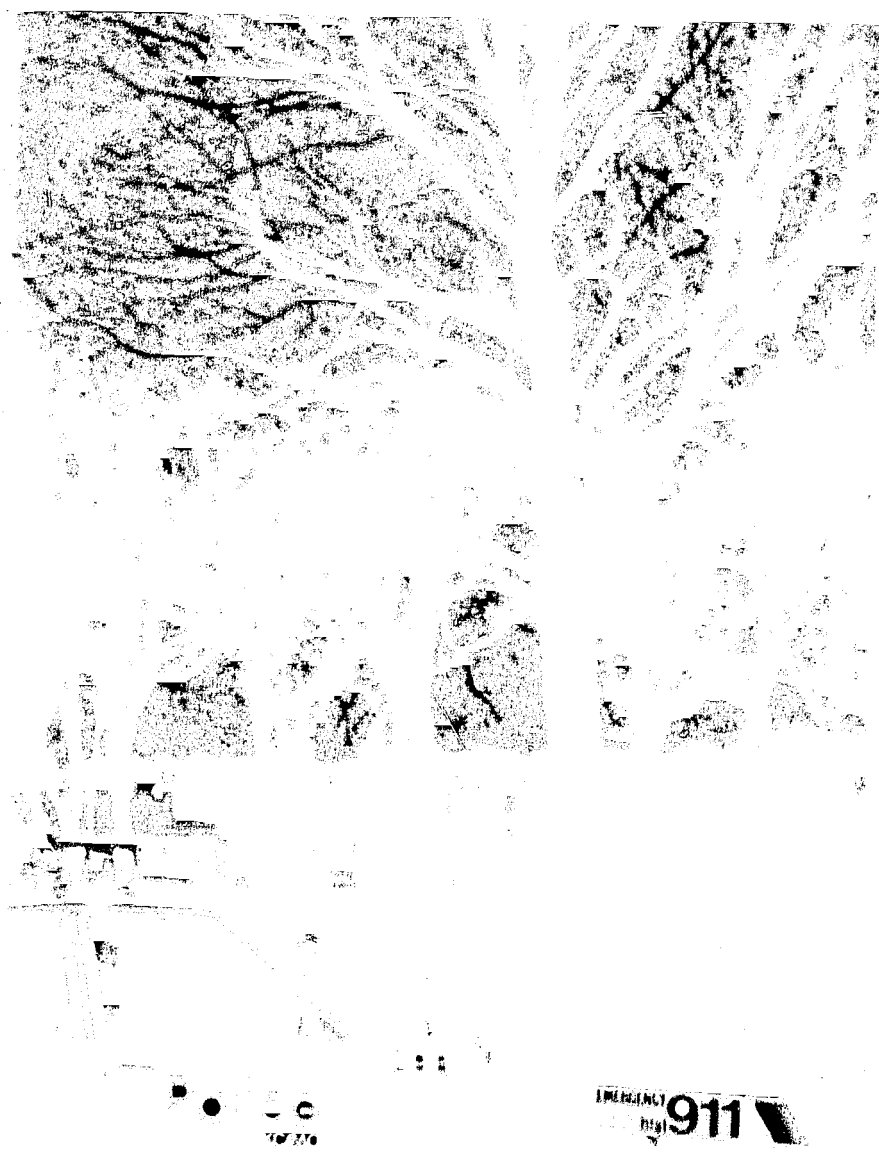
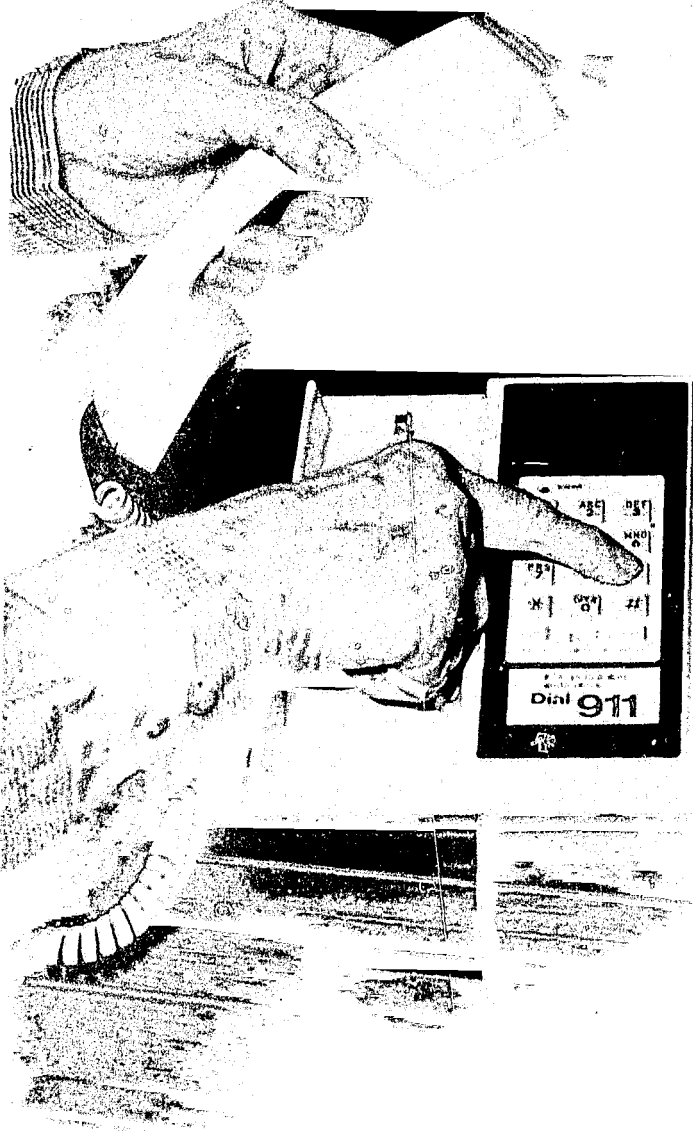
<u>Number of Personnel</u>	<u>Rank/Title</u>	<u>Annual Minimum Salary</u>	<u>Annual Maximum Salary</u>
1	Chief of Police	\$69,468	\$69,468
5	Lieutenant Colonel	51,936	55,056
20	Major	46,596	49,392
51	Captain	42,276	44,820
193	Sergeant	35,316	39,300
167	Detective	23,544	33,408
18	Investigator	23,544	33,408
589	Police Officer	21,348	33,408
32	Probationary Police Officer	20,340	20,340
5	Helicopter Pilot	35,316	39,300
2	Polygraphist	35,316	39,300
1	Programmer Technician II	35,316	39,300
1	Senior Analyst Technician	46,596	49,392
1	Director - Office of Citizen Complaints	42,276	44,820
<hr/> 1,086	TOTAL		

# Salary Schedule

## Civilian

As of December 31, 1986

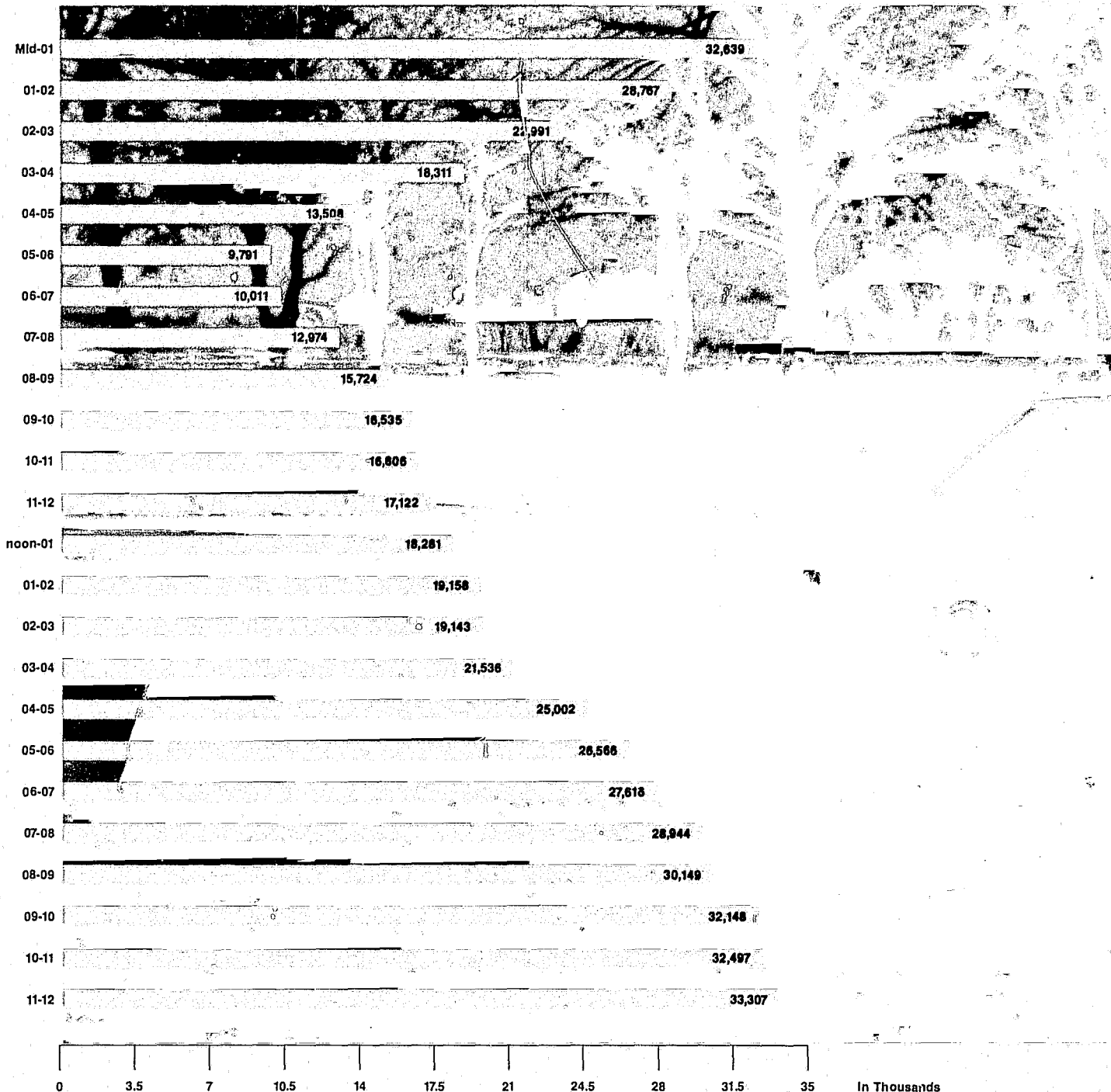
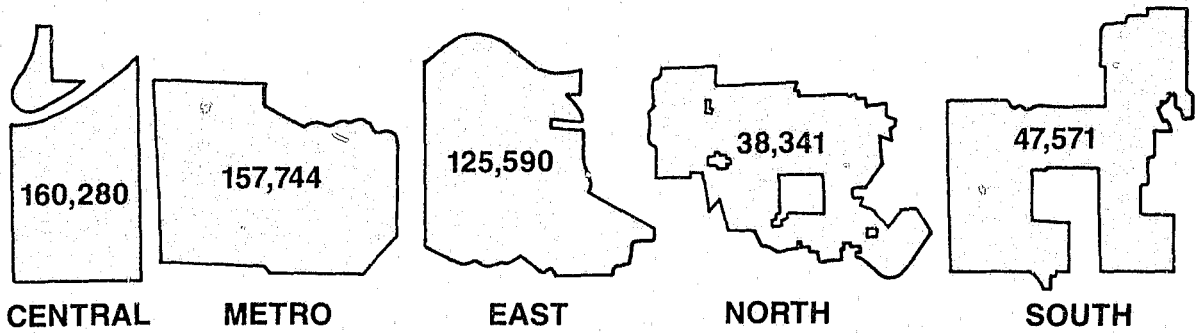
NO.	TITLE OR CLASSIFICATION	Minimum Annual Salary	Maximum Annual Salary	NO.	TITLE OR CLASSIFICATION	Minimum Annual Salary	Maximum Annual Salary
5	Accounting Assistant	\$15,984	25,032	3	O.C.C. Analyst	24,792	38,820
2	Aircraft & Power Plant Mechanic	18,504	28,968	1	O.C.C. Assistant	15,984	25,032
2	Alert II Coordinator	19,440	30,420	1	Operations Analyst	23,616	36,960
1	Applicant Interviewer	11,916	18,684	1	Painter	16,788	26,280
1	Applicant Processor	15,216	23,844	1	Paralegal Assistant	17,628	27,588
1	Assistant Legal Advisor	19,440	30,420	15	Parking Control Officer	13,812	21,624
1	Asst. Supv., Bldg. Maintenance	19,440	30,420	2	Parking Facility Attendant	11,352	17,808
2	Asst. Supv., Communications	18,504	28,968	1	Personnel Assistant	14,496	22,704
2	Asst. Supv., Input Control	17,628	27,588	1	Personnel Specialist I	15,984	25,032
4	Automotive Body Mechanic	17,628	27,588	2	Personnel Specialist II	19,440	30,420
19	Automotive Mechanic	17,628	27,588	2	Photographer	14,496	22,704
1	Automotive Parts Custodian	14,496	22,704	54	Police Clerk	10,812	16,956
11	Automotive Servicer	17,516	19,620	61	Police Dispatcher	15,216	23,844
3	Benefits Coordinator	15,984	25,032	58	Police Officer Candidate	17,220	17,220
1	Benefits Specialist	19,440	30,420	20	Police Secretary	13,140	20,592
1	Board Assistant	15,984	25,032	39	Police Typist	11,352	17,808
2	Budget Assistant	15,984	25,032	2	Polygraph Examiner	23,616	36,960
1	Building Manager	30,132	47,184	3	Programmer I	17,628	27,588
5	Building Security Guard	11,916	18,684	5	Programmer II	21,408	33,528
2	Call Taker	13,812	21,624	2	Programmer / Analyst	26,028	40,725
1	Carpenter	15,216	23,844	2	Project Coordinator	30,132	47,184
4	Cashier	12,516	19,620	1	Public Affairs Specialist	16,788	26,280
2	Chief Forensic Chemist	30,132	47,184	1	Purchasing Assistant	15,984	25,032
1	Chief Forensic Firearms and Toolmark Examiner	30,132	47,184	8	Real Time Operator	13,812	21,624
2	Clerical Assistant	15,984	25,032	5	Reprographic Technician	16,788	26,280
1	Clerical Supervisor	18,504	28,968	1	Secretary to the Chief	15,216	23,844
7	Communications Servicer	21,408	33,528	3	Senior Computer Operator	18,504	28,968
5	Computer Operator I	13,140	20,592	2	Software Analyst	30,132	47,184
3	Computer Operator II	15,216	23,844	8	Stock Clerk	12,516	19,620
1	Data Base Analyst	30,132	47,184	1	Supv., Aircraft Maintenance	23,616	36,960
35	Detention Facility Officer	14,496	22,704	1	Supv., App. Programming Unit	31,632	49,548
1	Director, Criminalistics Lab	34,860	54,624	3	Supv., Communications	24,792	38,820
1	Duplicating Serv. Crew Leader	19,440	30,420	1	Supv., Communications Maint.	26,028	40,752
1	Evidence Custodian	13,812	21,624	1	Supv., Computer Operations	24,792	38,820
8	Fingerprint Classifier	14,496	22,704	1	Supv., Duplicating Services	23,616	36,960
1	Forensic Chemist I	19,440	30,420	1	Supv., Employee Benefits	27,324	42,804
2	Forensic Chemist II	21,408	33,528	1	Supv., Identification	21,408	33,528
1	Forensic Chemist III	23,616	36,960	1	Supv., Input Control	24,792	38,820
0	Forensic Firearms & Toolmark Examiner I	19,440	30,420	1	Supv., Parking Control	20,400	31,944
0	Forensic Firearms & Toolmark Examiner II	21,408	33,528	1	Supv., Personnel Records	23,616	36,960
2	Forensic Firearms & Toolmark Examiner III	23,616	36,960	1	Supv., Physical Training & Self Defense	27,324	42,804
5	Garage Crew Leader	20,400	31,944	4	Switchboard Operator	10,296	16,140
1	Graphic Illustrator	14,496	22,704	2	Systems Analyst	27,324	42,804
1	Gunsmith	17,628	27,588	1	Testing Specialist	19,440	30,420
13	Input Control Operator I	12,516	19,620	0	Training Development Specialist	19,440	30,420
2	Input Control Operator II	13,812	21,624	1	Training Supv., Communications	24,792	38,820
1	Intelligence Analyst	18,504	28,968	1	Video Production Specialist	19,440	30,420
2	Internal Auditor	21,408	33,528	3	Word Processing Specialist	13,812	21,624
26	Investigative Typist	12,516	19,620	2	Work Leader, Input Control	15,216	23,844
4	Latent Fingerprint Examiner	18,504	28,968				
1	Legal Advisor	38,448	60,216	<b>570</b>	<b>TOTAL</b>		
24	Maintenance Custodian I	10,812	16,956	11	Board Employees		
9	Maintenance Custodian II	13,140	20,592	0	Contract Employee		
2	Maint. Custodian Crew Leader	15,984	25,032	70	Crossing Guards		



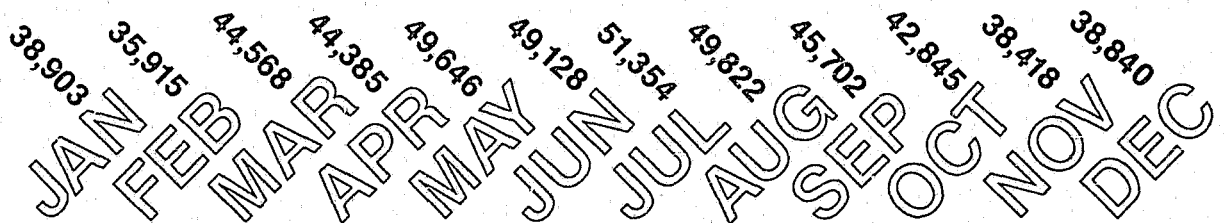
EMERGENCY  
Dial 911

Call for

By Division



By Month

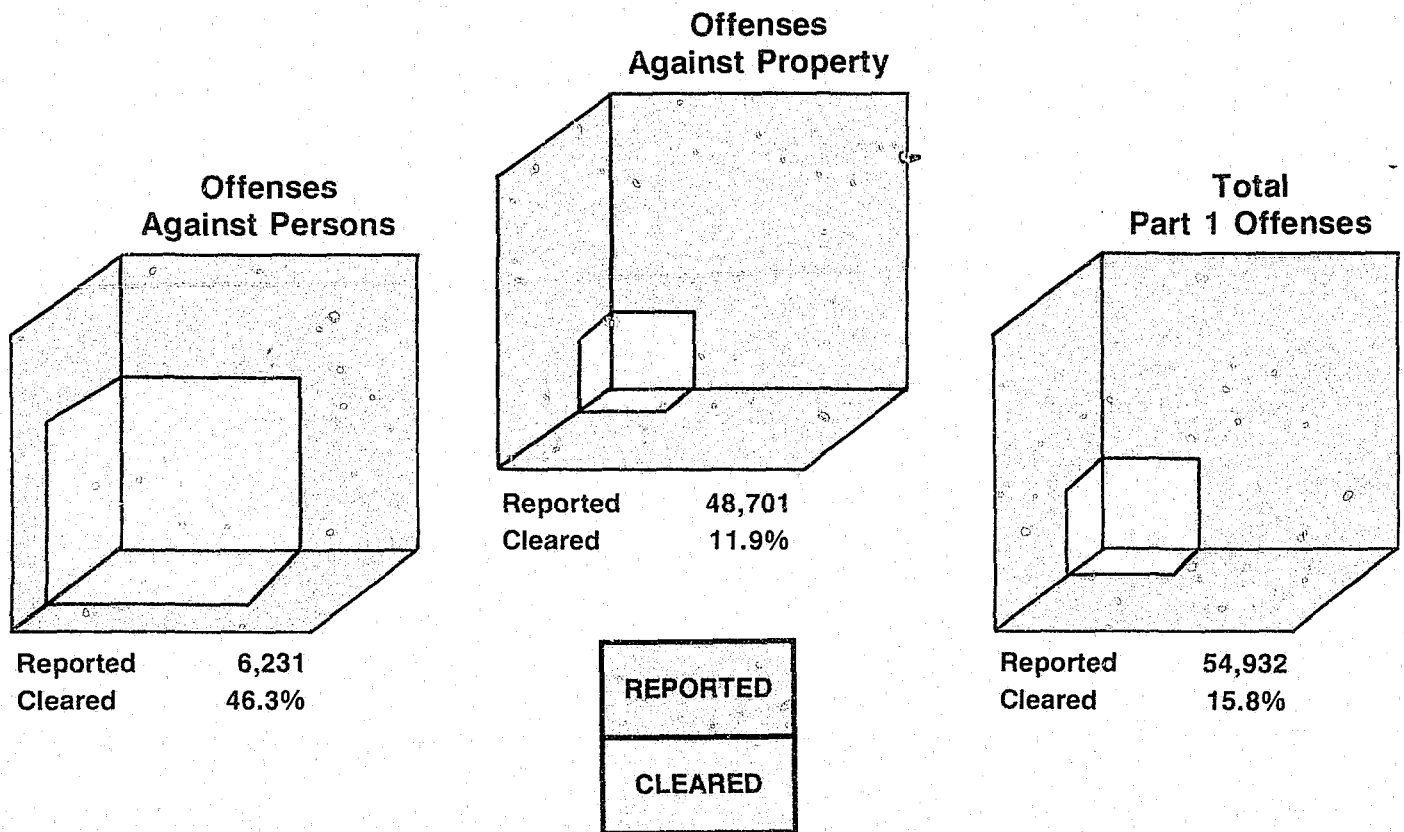


TOTAL 529,526 (Car Dispatches)

# Part 1 Offenses Reported to the Police

Classification of Offenses	Offenses Reported 1985	Offenses Reported 1986	Cleared by Arrest	Percentage Cleared by Arrest	Offenses Per 100,000 Population 1985*	Offenses Per 100,000 Population 1986*
Murder & nonnegligent manslaughter	91	116	70	60.3	20.3	25.9
Manslaughter by negligence	-	-	-	-	-	-
Rape	424	460	154	33.5	94.6	102.6
Robbery	2,646	3,442	753	21.9	590.4	768.0
Assault-aggravated	4,851	5,655	2,661	47.1	1,082.4	1,261.8
Burglary	11,164	13,525	972	7.2	2,491.1	3,017.9
Larceny over \$200	8,017	8,851	470	5.3	1,788.9	1,975.0
Larceny under \$200	13,871	15,524	3,071	19.8	3,095.1	3,463.9
Auto theft	5,552	6,805	504	7.4	1,238.8	1,518.4
Arson	495	554	47	8.5	110.5	123.6
<b>TOTALS</b>	<b>47,111</b>	<b>54,932</b>	<b>3,702</b>	<b>15.8</b>	<b>10,512.1</b>	<b>12,257.2</b>

\*Figures based on 1980 U.S. Census population of 448,159.



Readers are cautioned against drawing conclusions from comparisons of crime figures between communities without considering the factors which will affect the amount and type of crime. Some of those factors are: density and size of the community and metropolitan populations, economic status and mores, attitude of the public toward law enforcement problems, and the administrative and investigative efficiency of the law enforcement agency.



# Controlled Substance Enforcement



At the forefront of activities performed for the year by the Drug Enforcement Unit was a community education program. During 1986, a total of 98 drug education presentations were conducted.

Over the course of the year, \$37,767 in federal, local, and grant funds were expended in the investigation of, and the undercover purchase of, controlled substances from illicit dealers. This investment was returned by the recovery of controlled substances with an estimated value of \$549,818; recovery of firearms with an estimated value of \$16,811; and other property with an estimated value of \$180,279, for a total estimated value of \$746,908 in recoveries.

A total of 142 cases involving the undercover purchase of controlled substances were worked during the year, with 104 of these being initiated during the year. Sixty-five of these purchase cases were successfully submitted for prosecution: 25 accepted by the federal prosecutor; 39 accepted by the state prosecutor; 1 accepted by the juvenile court system. Overall, during the year, 212 controlled substance purchases were made from illegal sources, with 83% in the hard drug group of PCP, heroin, cocaine, LSD, and methamphetamine.

The Drug Enforcement Unit processed 1,793 controlled substance possession cases submitted by other elements of the department. Charges were filed in 1,194 cases (67%) at the federal, state, city, and juvenile court system levels.

During the early months of the year, department enforcement personnel identified the existence of an extensive drug distribution organization in the city. This was accomplished through cooperation and exchange of information with federal agencies and other municipal agencies in the nation. In late August, a Task Force of department personnel and federal agency personnel was formed to attack the growth of this drug distribution organization, consisting of Jamaican nationals and local citizens. The joint efforts of all agencies have resulted in the following for the year:

- Search warrants obtained and served on 43 drug distribution locations, commonly termed "dope houses."
- Ten multi-count federal indictments obtained against ten individuals believed to be in the higher levels of management of the identified Jamaican cocaine organization. A total of 40 persons, Jamaican and local citizens, were charged with felonies in the federal court system.
- A total of 22 persons, Jamaican and local citizens, charged with felonies in the Missouri state court system.
- Approximately 8.5 kilograms of cocaine/crack seized, having an estimated street sale value of \$1,020,000.
- Currency/assets seized having an estimated value of \$372,000. Ninety-one firearms, including handguns, shotguns, semi-auto rifles, and one machine gun, seized in search warrants and arrests.



# Arrests by Organizational Elements

Part I Offense Arrests	TOTAL	Central Patrol Division			Metro Patrol Division			East Patrol Division			North Patrol Division			South Patrol Division			Traffic & Patrol Support Divisions	Invest. Divs.	Other
		Watch I	Watch II	Watch III	Watch I	Watch II	Watch III	Watch I	Watch II	Watch III	Watch I	Watch II	Watch III	Watch I	Watch II	Watch III			
Murder & nonnegligent manslaughter	109	13	19	22	1	7	9	6	6	11	1	1	-	-	-	-	-	4	-
Manslaughter by negligence	5	-	1	1	-	1	-	-	1	-	-	-	-	-	-	-	1	-	-
Rape	167	29	32	22	12	13	9	13	11	13	-	4	1	3	1	-	-	2	1
Robbery	591	66	96	99	27	58	59	21	46	69	2	7	12	-	4	10	-	14	1
Assault-aggravated	1,516	144	160	246	96	79	134	115	118	228	20	16	44	19	29	34	1	15	18
Burglary	1,320	91	196	175	61	143	112	105	147	135	11	34	32	24	23	16	-	13	2
Larceny	6,403	282	897	715	191	516	572	186	555	461	89	268	289	53	421	433	19	135	321
Auto theft	956	94	123	114	74	113	99	76	97	77	8	19	2	10	21	19	-	10	-
Arson	53	2	8	14	-	1	6	5	3	9	-	2	-	1	-	1	-	-	1
<b>Subtotal</b>	<b>11,111</b>	<b>721</b>	<b>1,532</b>	<b>1,408</b>	<b>462</b>	<b>931</b>	<b>1,000</b>	<b>527</b>	<b>984</b>	<b>1,003</b>	<b>131</b>	<b>351</b>	<b>380</b>	<b>108</b>	<b>501</b>	<b>514</b>	<b>21</b>	<b>193</b>	<b>344</b>
<b>Part II Offense Arrests</b>																			
Assault-nonaggravated	6,764	615	693	973	392	389	714	528	426	839	131	135	227	115	129	183	27	95	153
Forgery & counterfeiting	494	29	161	138	7	29	23	3	30	23	-	7	4	2	13	6	-	19	-
Fraud	296	21	41	38	11	32	25	5	18	17	6	5	15	6	20	17	-	14	5
Embezzlement	3	-	-	-	-	-	1	-	-	1	-	1	-	-	-	-	-	-	-
Vandalism	1,709	162	168	202	122	116	143	150	107	189	42	44	77	31	35	48	4	33	36
Sex offenses	1,024	111	140	193	38	33	76	25	20	70	18	7	16	9	11	6	16	55	180
Weapons	1,406	193	145	284	64	80	155	119	52	156	19	11	21	8	11	24	9	18	37
Prost./commercialized vice	1,654	673	96	316	35	3	36	17	4	35	-	4	5	2	1	11	-	410	6
Narcotics	1,483	125	154	210	55	109	151	125	111	221	14	31	38	5	19	17	12	20	66
Gambling	1	-	-	-	-	-	-	-	-	1	-	-	-	-	-	-	-	-	-
Offenses vs. family & child	206	9	45	35	4	12	14	5	13	14	1	3	5	1	4	2	2	37	-
Violation of liquor laws	2,007	56	317	312	39	37	173	42	21	91	50	20	154	9	7	35	28	19	597
Disorderly conduct	3,141	355	328	605	199	138	339	259	141	270	94	28	78	60	23	80	22	27	95
Other offenses except traffic	34,174	1,838	4,739	3,940	1,223	4,027	2,397	1,533	4,196	2,660	488	1,984	1,103	368	1,537	943	488	195	515
<b>Subtotal</b>	<b>54,362</b>	<b>4,187</b>	<b>7,027</b>	<b>7,246</b>	<b>2,189</b>	<b>5,005</b>	<b>4,247</b>	<b>2,811</b>	<b>5,139</b>	<b>4,587</b>	<b>863</b>	<b>2,280</b>	<b>1,743</b>	<b>616</b>	<b>1,810</b>	<b>1,372</b>	<b>608</b>	<b>942</b>	<b>1,690</b>
<b>Traffic Arrests</b>																			
Driving under influence	6,899	806	634	567	325	344	240	662	224	716	360	285	160	232	179	92	960	-	103
Careless driving	9,018	375	735	381	340	898	439	390	438	763	249	615	329	259	657	284	1,382	-	484
Speeding	65,320	36	78	71	658	1,025	347	233	119	340	1,082	2,502	1,824	676	1,548	655	53,358	-	768
Other traffic violations	64,126	2,306	5,137	2,802	1,686	3,579	2,283	2,324	1,784	4,039	720	1,667	931	674	1,681	901	30,551	-	1,061
<b>Subtotal</b>	<b>145,353</b>	<b>3,523</b>	<b>6,584</b>	<b>3,821</b>	<b>3,009</b>	<b>5,846</b>	<b>3,309</b>	<b>3,609</b>	<b>2,565</b>	<b>5,858</b>	<b>2,411</b>	<b>5,069</b>	<b>3,244</b>	<b>1,841</b>	<b>4,065</b>	<b>1,932</b>	<b>86,251</b>	<b>1,135</b>	<b>2,416</b>
<b>GRAND TOTAL</b>	<b>210,826</b>	<b>8,431</b>	<b>15,143</b>	<b>12,475</b>	<b>5,660</b>	<b>11,782</b>	<b>8,556</b>	<b>6,947</b>	<b>8,688</b>	<b>11,448</b>	<b>3,405</b>	<b>7,700</b>	<b>5,367</b>	<b>2,565</b>	<b>6,376</b>	<b>3,818</b>	<b>86,880</b>	<b>1,135</b>	<b>4,450</b>

# Persons Arrested

Part 1 Offense Arrests	TOTAL	WHITE MALE	BLACK MALE	OTHER MALE	WHITE FEMALE	BLACK FEMALE	OTHER FEMALE
Murder & nonnegligent manslaughter	100	17	70	-	2	11	-
Manslaughter by negligence	5	3	2	-	-	-	-
Rape	167	37	128	-	1	1	-
Robbery	591	114	428	-	8	41	-
Assault-aggravated	1,516	454	795	4	61	202	-
Burglary	1,320	510	734	2	50	24	-
Larceny	6,403	1,913	2,586	11	803	1,083	7
Auto theft	956	215	678	-	15	48	-
Arson	53	27	14	-	10	2	-
<b>Subtotal</b>	<b>11,111</b>	<b>3,290</b>	<b>5,435</b>	<b>17</b>	<b>950</b>	<b>1,412</b>	<b>7</b>

## Part II Offense Arrests

Assault-nonaggravated	6,764	2,605	3,227	21	409	501	1
Forgery & counterfeiting	494	106	195	-	55	137	1
Fraud	296	112	82	-	41	61	-
Embezzlement	3	2	1	-	-	-	-
Vandalism	1,709	734	698	4	99	173	1
Sex offenses	1,024	542	410	4	31	37	-
Weapons	1,406	400	823	2	38	143	-
Prost. / commercialized vice	1,654	606	382	13	213	440	-
Narcotics	1,483	503	781	-	84	115	-
Gambling	1	-	1	-	-	-	-
Offenses vs. family & child	206	40	57	-	34	75	-
Violation of liquor laws	2,007	1,249	482	3	234	39	-
Disorderly conduct	3,141	1,180	1,416	7	237	301	-
Other offenses except traffic	34,146	13,410	12,446	52	4,856	3,367	15
<b>Subtotal*</b>	<b>54,334</b>	<b>21,489</b>	<b>21,001</b>	<b>106</b>	<b>6,331</b>	<b>5,389</b>	<b>18</b>

## Traffic Arrests

Driving under influence	6,889	4,147	1,918	11	649	164	-
Careless driving	9,018	4,835	1,999	12	1,643	526	3
Speeding	65,320	35,532	8,667	88	16,637	4,377	19
Other traffic violations	64,126	31,506	14,821	141	12,965	4,648	45
<b>Subtotal</b>	<b>145,353</b>	<b>76,020</b>	<b>27,405</b>	<b>252</b>	<b>31,894</b>	<b>9,715</b>	<b>67</b>
<b>GRAND TOTAL</b>	<b>210,798</b>	<b>100,799</b>	<b>53,841</b>	<b>375</b>	<b>39,175</b>	<b>16,516</b>	<b>92</b>

\*Does not include 28 violations by businesses

# Juvenile Summary

Part I Offense Arrests	1986									
	1986	1985	Offender			Disposition		Juvenile Court	Invest. Divisions	Not Stated
			Repeat	First	Not Stated	On Pro- tion	On Parole			
Murder & nonnegligent manslaughter	3	3	1	1	1	-	-	2	-	1
Manslaughter by negligence	1	-	-	1	-	-	-	1	-	-
Rape	14	18	10	2	2	-	-	12	-	2
Robbery	86	65	59	24	3	-	-	77	6	3
Assault-aggravated	238	218	133	102	3	-	-	201	34	3
Burglary	398	354	242	150	6	-	-	355	37	6
Larceny	930	981	414	504	12	3	-	683	235	12
Auto theft	303	199	213	87	3	-	-	277	23	3
Arson	12	18	7	5	-	-	-	12	-	-
<b>Subtotal</b>	<b>1,985</b>	<b>1,856</b>	<b>1,079</b>	<b>876</b>	<b>30</b>	<b>3</b>	<b>-</b>	<b>1,620</b>	<b>335</b>	<b>30</b>

## Part II Offense Arrests

Assault-nonaggravated	81	88	33	43	5	-	-	54	22	5
Forgery & counterfeiting	12	8	7	5	-	-	-	11	1	-
Fraud	6	11	3	3	-	-	-	6	-	-
Embezzlement	1	1	-	1	-	-	-	1	-	-
Vandalism	102	94	38	61	3	-	-	77	22	3
Sex offenses	29	42	11	17	1	-	-	25	3	1
Weapons	54	43	28	24	2	-	-	38	14	2
Prost./commercialized vice	36	29	26	10	-	-	-	32	4	-
Narcotics	26	9	8	18	-	-	-	25	1	-
Gambling	-	-	-	-	-	-	-	-	-	-
Offenses vs. family & child	2	1	-	-	2	-	-	-	-	2
Violation of liquor laws	45	31	13	30	2	-	-	9	34	2
Disorderly conduct	94	123	51	41	2	-	-	58	34	2
Other offenses except traffic	1,473	1,668	528	808	137	3	1	1,086	250	137
<b>Subtotal</b>	<b>1,961</b>	<b>2,148</b>	<b>746</b>	<b>1,061</b>	<b>154</b>	<b>3</b>	<b>1</b>	<b>1,422</b>	<b>385</b>	<b>154</b>

## Traffic Arrests

Driving under influence	25	24	-	-	-	-	-	-	-	-
Careless driving	376	359	-	-	-	-	-	-	-	-
Speeding	1,091	973	-	-	-	-	-	-	-	-
Other traffic violations	1,326	1,294	-	-	-	-	-	-	-	-
<b>Subtotal</b>	<b>2,818</b>	<b>2,650</b>	<b>-</b>	<b>-</b>	<b>-</b>	<b>-</b>	<b>-</b>	<b>-</b>	<b>-</b>	<b>-</b>
<b>GRAND TOTAL</b>	<b>6,764</b>	<b>6,654</b>	<b>1,825</b>	<b>1,937</b>	<b>184</b>	<b>6</b>	<b>1</b>	<b>3,042</b>	<b>720</b>	<b>184</b>

# Value of Property Stolen



KANSAS CITY, MISSOURI POLICE DEPARTMENT  
PROPERTY INVENTORY REPORT

Robbery	Number	Amount
Highway	2,094	\$949,769
Commercial House	576	311,655
Service Station	185	34,472
Chain Store	76	7,323
Residence	378	222,447
Bank	7	22,738
Miscellaneous	126	36,380
<b>TOTAL</b>	<b>3,442</b>	<b>\$1,584,784</b>

(Average loss each robbery - \$460)

Burglary	Number	Amount
Residence, Night	2,453	\$2,735,836
Residence, Day	2,538	2,562,631
Residence, Unknown	4,891	5,826,494
Nonresidence, Night	951	546,155
Nonresidence, Day	269	86,406
Nonresidence, Unknown	2,423	2,911,409
<b>TOTAL</b>	<b>13,525</b>	<b>\$14,668,931</b>

(Average loss each burglary - \$1,085)

Larceny	Number	Amount
Pickpocket	99	\$26,332
Purse Snatch	425	83,841
Shoplifting	4,106	322,526
Theft From Auto	4,652	2,341,026
Auto Accessories	7,820	2,006,828
Bicycles	609	112,410
From Building	829	284,128
Coin-Operated Machines	157	7,791
Miscellaneous	5,678	4,343,287
<b>TOTAL</b>	<b>24,375</b>	<b>\$9,528,169</b>

(Average loss each larceny - \$391)

Larceny By Value	Number	Amount
\$200 and over	8,851	\$8,594,110
\$50 to \$200	5,119	605,843
Under \$50	10,405	228,216
<b>TOTAL</b>	<b>24,375</b>	<b>\$9,528,169</b>

(Average loss each larceny - \$391)

Auto Theft	Number	Amount
Auto Theft	6,805	\$27,721,441
<b>TOTAL</b>	<b>6,805</b>	<b>\$27,721,441</b>

(Average loss each theft - \$4,074)

Other Crimes	Number	Amount
Miscellaneous*	576	\$25,060
<b>TOTAL</b>	<b>576</b>	<b>\$25,060</b>

\* (Property loss in connection with homicides & rapes - \$44)

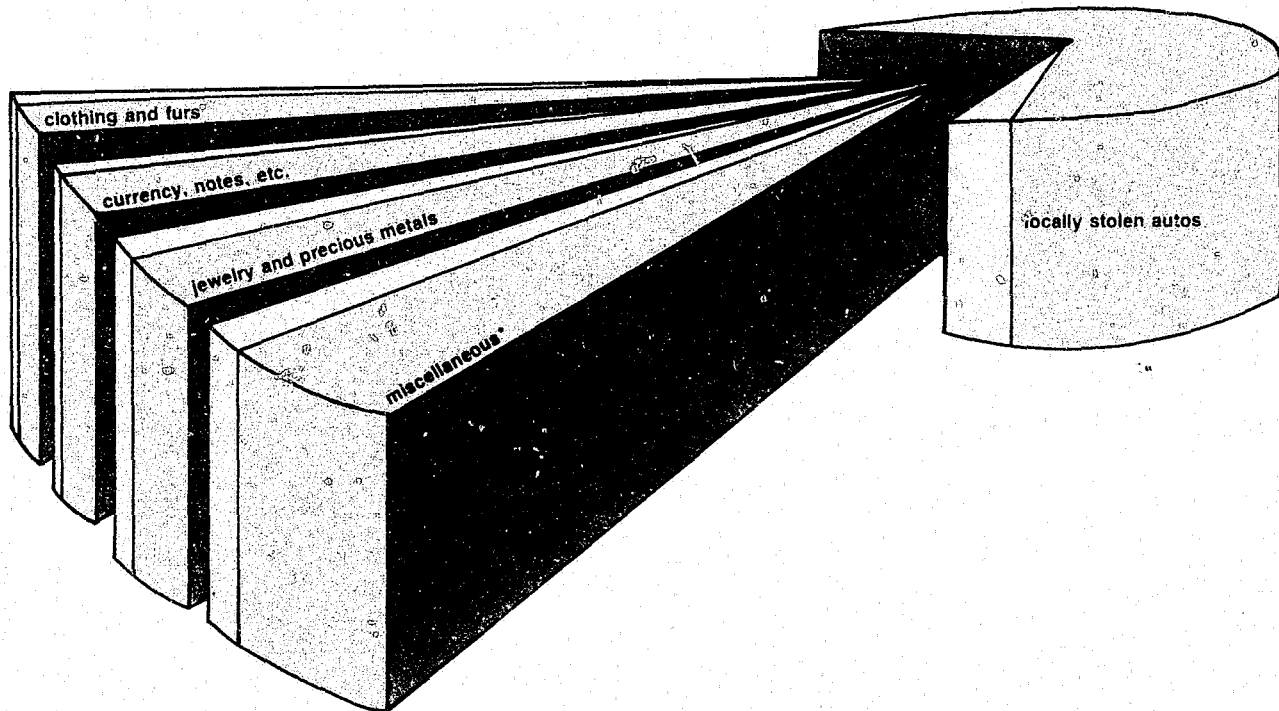
**Grand Total of Property Stolen \$53,528,385**  
**Grand Total of Property Recovered \$24,743,751**

# Value of Property

## VALUE OF PROPERTY STOLEN

Amount	Type of Property	Value of Property Stolen
3.5%	currency, notes, etc.	\$ 1,893,290
8.7%	jewelry and precious metals	4,661,445
2.7%	clothing and furs	1,438,909
54.7%	locally stolen autos	29,264,993
30.4%	miscellaneous*	16,269,748
<b>100.0%</b>	<b>Total</b>	<b>\$53,528,385</b>

\*Includes auto accessories, appliances, bicycles, etc.



STOLEN
RECOVERED

## VALUE OF PROPERTY RECOVERED

Amount	Type of Property	Value of Property Recovered
.1%	currency, notes, etc.	\$ 38,236
.9%	jewelry and precious metals	219,786
.5%	clothing and furs	121,231
94.4%	locally stolen autos	23,356,140
4.1%	miscellaneous*	1,008,358
<b>100.0%</b>	<b>Total</b>	<b>\$24,743,751</b>

\*Includes auto accessories, appliances, bicycles, etc.

# Traffic Summary

## ACCIDENTS & HAZARDOUS MOVING VIOLATION ARRESTS BY HOUR

Hour Beginning	Number of Accidents	Percent of Accidents	Number of MV Arrests	Percent of MV Arrests
1 AM	801	2.5	3,431	2.6
2	546	1.7	2,710	2.1
3	400	1.2	1,817	1.4
4	242	.8	972	.7
5	206	.6	1,088	.8
6	647	2.0	2,123	1.6
7	1,925	6.0	6,403	4.9
8	1,638	5.1	6,594	5.0
9	1,210	3.8	5,427	4.1
10	1,456	4.5	8,132	6.2
11	1,686	5.3	10,199	7.7
12 Noon	2,138	6.7	9,802	7.4
1	1,693	5.3	6,824	5.2
2	2,019	6.3	4,941	3.7
3	2,455	7.7	4,678	3.6
4	3,020	9.4	9,666	7.3
5	2,686	8.4	10,473	7.9
6	1,664	5.2	5,490	4.2
7	1,370	4.3	7,335	5.6
8	1,031	3.2	7,523	5.7
9	972	3.0	5,719	4.3
10	854	2.7	4,104	3.1
11	882	2.7	3,446	2.6
12 Midnight	508	1.6	3,081	2.3
<b>TOTAL</b>	<b>32,049</b>	<b>100.0%</b>	<b>131,978</b>	<b>100.0%</b>

## ACCIDENTS & HAZARDOUS MOVING VIOLATION ARRESTS BY DAY OF WEEK

Day	Number of Accidents	Percent of Accidents	Number of MV Arrests	Percent of MV Arrests
Monday	4,575	14.3	19,304	14.6
Tuesday	4,608	14.4	22,989	17.4
Wednesday	5,133	16.0	24,881	18.9
Thursday	4,607	14.4	23,288	17.7
Friday	5,811	18.1	18,601	14.1
Saturday	4,450	13.9	12,195	9.2
Sunday	2,865	8.9	10,720	8.1
<b>TOTAL</b>	<b>32,049</b>	<b>100.0%</b>	<b>131,978</b>	<b>100.0%</b>

## ACCIDENTS & CORRESPONDING ENFORCEMENT ACTIVITY

Type	Number of Accidents	Summons Issued
Prop. damage	24,666	13,112
Injury	7,305	
Fatal	78*	
<b>TOTAL</b>	<b>32,049</b>	

\* Represents 89 persons killed

## TOTAL ENFORCEMENT ACTIVITY

Type	Summons Issued
Hazardous moving violations	131,978
Nonhazardous moving violations	13,375
<b>TOTAL MOVING VIOLATIONS</b>	<b>145,353</b>
Parking violations	186,488
<b>TOTAL TRAFFIC VIOLATIONS</b>	<b>331,841</b>

## HAZARDOUS MOVING VIOLATION ARRESTS BY CAUSE

Type of Violation	Number of Arrests
Speeding	64,900
Fail to yield right-of-way	3,196
Drive wrong side/wrong way	1,504
Improper passing	303
Failure to obey stop sign	5,221
Disregard traffic signal	12,703
Following too close	242
Made improper turn	18,972
Other improper driving	17,620
Driving under the influence	6,889
Failure to signal	428
<b>TOTAL</b>	<b>131,978</b>

## SEX OF VIOLATOR

Male	92,530
Female	39,448
<b>TOTAL</b>	<b>131,978</b>

## AGE OF VIOLATOR

15 and younger	173
16	2,160
17	3,307
18 to 19	8,175
20 to 24	28,582
25 to 34	45,312
35 to 44	22,381
45 to 54	10,928
55 to 64	6,962
65 to 74	2,967
75 and older	1,031
<b>TOTAL</b>	<b>131,978</b>

## TYPE OF VEHICLE

Passenger car	94,538
Truck	18,180
Semi-trailer	12
Taxi	-
Bus	3
Motorcycle	273
Other	18,972
<b>TOTAL</b>	<b>131,978</b>

## RESIDENCE OF VIOLATOR

Local resident	87,614
Resident elsewhere in state	28,521
Nonresident	15,843
<b>TOTAL</b>	<b>131,978</b>

