

PENNSYLVANIA DEPARTMENT OF CORRECTIONS

1985 ANNUAL STATISTICAL REPORT

OF PENNSYLVANIA COUNTY PRISONS AND JAILS



107361

DICK THORNBURGH
Governor

WILLIAM W. SCRANTON III
Lieutenant Governor

GLEN R. JEFFES
Commissioner

LEE T. BERNARD II
Deputy Commissioner for Administration

107361

DICK THORNBURGH
Governor

GLEN R. JEFFES
Commissioner

107361

U.S. Department of Justice
National Institute of Justice

This document has been reproduced exactly as received from the person or organization originating it. Points of view or opinions stated in this document are those of the authors and do not necessarily represent the official position or policies of the National Institute of Justice.

Permission to reproduce this copyrighted material has been granted by

Pennsylvania Department of
Corrections

to the National Criminal Justice Reference Service (NCJRS).

Further reproduction outside of the NCJRS system requires permission of the copyright owner.

NCJRS

JUN 22 1987

ACQUISITIONS



PREPARED BY

Deputy Commissioner for Administration
LEE T. BERNARD, II

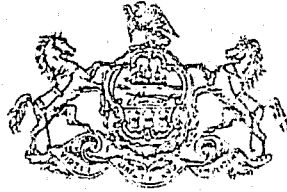
Chief, Planning, Research and Statistics Division
TED E. SHUMAKER

Chief, Statistics Section
JOHN H. MEASE

Statistical Assistant
NANCY L. BLEYER

Support Staff
LINDA WOODS
JUNE WOLF
NANCY CEASE
MARTY MUHLBAUER

Commissioner
GLEN R. JEFFES



PENNSYLVANIA DEPARTMENT OF CORRECTIONS
P. O. BOX 598
CAMP HILL, PENNSYLVANIA 17011
(717) 975-4860

Deputy Commissioners
Administration
LEE T. BERNARD II
Correctional Services
LOWELL D. HEWITT
Programs
ERSKIND DERAMUS

January, 1987

PREFACE

I am pleased to present the Pennsylvania Department of Corrections' 1985 Annual Statistical Report for Pennsylvania County Prisons and Jails. This report provides pertinent information regarding the Commonwealth's county prison population and, therefore, represents an important document for county wardens, sheriffs, president judges, commissioners and various other officials.

Because of the lateness in the routine submission of data by several county prisons, this report is being issued late.

The importance of maintaining a statistical program, which documents the Commonwealth's prison population, is especially evident in light of recent population growth of county prisons.

On behalf of the Department of Corrections, I wish to thank all local correctional administrators and their staff for their continued cooperation, and the success of this important statistical program.

Respectfully submitted,

A handwritten signature in cursive script that reads "Glen R. Jeffes".

Glen R. Jeffes
Commissioner

TABLE OF CONTENTS

	<u>PAGE</u>
PREFACE	iii
INTRODUCTION	1
Purpose	1
Explanatory Notes	1-2
Source of Information	2
Comment	2
SELECTIVE NARRATIVE SUMMARY	3-4
POPULATION - GENERAL, BY COUNTY	5-13
POPULATION - RACE AND SEX	14-16
POPULATION - METROPOLITAN STATISTICAL AREA AND RATIO	17-18
PRISONERS - SENTENCED AND DETENTIONERS	19-20
ADMISSIONS	21-35
RELEASES	36-44
SUMMARY INFORMATION	45
WORK RELEASE	46
ESCAPES	47
FOOTNOTES	48

INTRODUCTION

The Commonwealth's county prison system is just as diverse as the political and cultural make-up of the counties themselves. However, one characteristic binds them together-the recent increase in the county prison population. This report will enable the reader to comprehend the increasing demands placed upon these county facilities, especially when they are reviewed in terms of increasing populations during recent years.

Purpose

The purpose of this annual statistical report is to provide summary data on county prison inmate populations.

Explanatory Notes

Committing county - Where indicated, several tables in this report were compiled by the 'committing' county instead of the reporting county. The committing county represents the actual county where the defendant was sentenced and not the receiving county prison or jail.

Conditional releases - This term identifies those parolees who are released under the supervision of the Pennsylvania Board of Probation and Parole (PBPP) or who are paroled directly by the Court of Record (often referred to as "county parole"). Unless otherwise specified, these two groups will be combined in this report.

County prisons and jails - Generally, first through fifth class counties have "prisons" and sixth through eighth class counties have "jails", though local terminology may vary (e.g., Allegheny County Jail). Generally, the county prisons are administered by a prison board and an appointed warden; county jails are usually administered by an elected sheriff. In recent years the county prisons and jails have primarily received only the short-term sentenced prisoners and pre-trial detentioners.

Court sentences - This term identifies those county prisoners committed by a Court of Record to serve sentences for felony and misdemeanor offenses.

Detentioners received - This term identifies those individuals detained prior to trial as well as other prisoners not sentenced directly to the local prisons where they are contained. Detentioners include those individuals who were: (1) held for trial, further hearing, or as a material witness, (2) held for various federal, state or other police authorities, and (3) held for mental examination or observation.

Detentioners released - This term identifies those individuals released by the following methods: (1) bail, (2) holding authority (i.e., court, minor judiciary, coroner, etc.), (3) sentenced to local county prison, (4) sentenced to state correctional institutions, (5) sentenced to state regional correctional facilities, (6) by various federal, state, and police authorities, and (7) mental patients released.

Metropolitan Statistical Area (MSA) - The Office of Management and Budget (Federal) has announced the designation of 257 Metropolitan Statistical Areas (MSA's), 23 Consolidated Metropolitan Statistical Areas (CMSA's), and 78 Primary Metropolitan Statistical Areas (PMSA's). An area qualifies as an MSA if there is a city with a population of at least 50,000 or an urbanized area of at least 50,000 with a total population of at least 100,000. If an area has more than one million population and meets certain criteria, that area is classified as a CMSA and its components are

considered as PMSA's. MSA's and PMSA's are classified by size as follows:

- Level A - Areas of 1,000,000 or more
- Level B - Areas of 250,000 to 1,000,000
- Level C - Areas of 100,000 to 250,000
- Level D - Areas of less than 100,000

Minor judiciary sentences - This term identifies those individuals who receive sentences by the minor judiciary (district magistrates, justices, etc.) for county prison commitment. (Note: The municipal court in Philadelphia County handles this type of case.)

Part I offenses - In general, Part I crimes are those serious offenses that are reported to law enforcement agencies and are commonly referred to as crime index offenses. Part I offenses consist of murder, manslaughter, forcible rape, robbery, aggravated assault, burglary, theft-larceny, motor vehicle theft, and arson.

Part II offenses - Part II offenses are made up of all other crimes not classified a Part I crime.

Rate per 100,000 civilian population - This term represents the ratio of a prison population with respect to the civilian population of the county.

Sentenced prisoners - In this report, sentenced prisoners include both defendants sentenced by a Court of Record and the Minor Judiciary (district magistrates, justices and etc.) to serve a sentence in a local county prison or jail.

Unconditional releases - This term identifies those sentenced county prisoners who were given a final discharge and are no longer under any type of supervision after their release from county prison. Unconditional releases include the following : (1) expiration of maximum sentence, (2) by court order, (3) by minor judiciary order, and (4) by payment of fines and costs.

Yearly average daily population - This term represents the cumulative daily inmate population count as of midnight, divided by the number of days in the calendar year.

Source of Information

Information found in this report is based entirely upon monthly and quarterly statistical reports submitted by county prisons and jails to the department's Planning, Research, and Statistics Division, organized under the Deputy Commissioner for Administration. The data is then edited, corrected, and summarized for input into this report.

Comment

The Department of Corrections has no means of verifying the accuracy of statistical data reported by each county prison and jail. As a result, the data used in statistical calculations from this report should be done so with caution. Moreover, trends and detail analysis from this report may not reflect criminal justice practices of the reporting county prison or jail. This report does provide the best possible profile of short-term defendants sentenced (and detained) in local correctional facilities located within the Commonwealth of Pennsylvania.

SELECTIVE NARRATIVE SUMMARY

Population Trends

During the past decade, 1976 to 1985, populations in Pennsylvania county prisons and jails increased substantially in excess of 68%. The largest growth rates occurred during 1980 and 1981. Since 1981, these populations showed a much slower growth rate because the two largest counties, Philadelphia and Allegheny, were under court order to reduce populations in their local county prisons. Populations during 1985 showed slight increases.

Characteristics of Inmate Population

A review of the statewide county prison inmate population on December 31, 1985 revealed the following:

1. 53.4% were white; 46.6% were non-white;
2. 94.7% were males; 5.3% were females;
3. 37.1% were sentenced; 62.9% were detentioners (unsentenced);
4. 34.6% were confined in Philadelphia County Prisons;
5. There were 91.7 county prisoners per 100,000 civilian population.

Admissions

During 1985, admissions to county prisons and jails increased only 1.8% over the previous year. As expected, 69,316 (78.1%) were being detained for various reasons and the remaining 19,488 (21.9%) admissions were sentenced to serve short-term sentences in local correctional facilities. Of those sentenced during the period of this report, 6,409 (32.7%) were convicted for drunken driving. The average maximum sentence was 406 days, and the average age was 29.9 years.

Releases

During 1985, 11,938 or 63.7% of all sentenced prisoners released from county prisons and jails were placed under supervision of state and county paroling authorities. Sentenced prisoners released served an average of 93.8 days, up from 90.4 days in 1984; 38.5% of these served from one to fifteen days.

The Largest County Prisons

Twenty-three counties in 1985 had average populations exceeding 100 prisoners that accounted for 85.8% of the Commonwealth's total population in local correctional facilities. County prisons averaging over 300 prisoners were: Philadelphia (3,686), Delaware (555), Allegheny (531), Chester (446), Montgomery (395), Bucks (367), Dauphin (337), Lancaster (331), and York (328).

Driving Under The Influence

Defendants convicted and sentenced to county prisons and jails for driving under the influence (drunken driving) increased 123 or 2% from 6,286 in 1984 to 6,409 in 1985. This compares to an increase of 117.7% from 1983 to 1984. Drunken drivers served an average 24.5 days in 1985. Sixty-two percent (62%) of these served less than 15 days.

TABLE 1

Monthly Average Daily Populations in County Prisons
and Jails, January to July 1986

County	Jan.	Feb.	March	April	May	June	July
Adams	56	61	64	63	63	61	65
Allegheny	543	557	565	654	743	781	804
Armstrong	48	49	47	44	42	43	37
Beaver	79	88	96	90	99	101	94
Bedford	19	19	22	18	16	17	15
Berks	317	315	329	334	335	341	326
Blair	146	144	158	156	152	166	167
Bradford	45	40	47	40	42	41	39
Bucks	449	457	470	465	471	467	468
Butler	68	62	59	62	69	71	79
Cambria	123	122	134	133	123	122	129
Cameron	4	3	3	3	3	4	2
Carbon	33	29	32	35	34	33	32
Centre	50	50	46	46	45	43	46
Chester	473	474	488	479	468	479	492
Clarion	23	27	20	14	12	16	26
Clearfield	119	116	119	103	118	94	81
Clinton	30	28	34	34	30	33	32
Columbia	60	65	64	62	53	53	52
Crawford	63	56	49	56	60	64	60
Cumberland	150	158	153	173	165	176	191
Dauphin	321	350	341	362	364	380	380
Delaware	548	556	577	585	574	579	580
Elk	3	5	4	5	7	9	10
Erle	200	223	225	222	222	208	206
Fayette	73	70	64	62	62	58	68
Forest	0	0	0	0	0	0	0
Franklin	77	81	93	101	97	97	102
Fulton	(c)	(c)	(c)	(c)	(c)	(c)	(c)
Greene	29	33	29	25	24	19	14
Huntingdon	25	34	33	21	25	27	25
Indiana	51	50	50	47	43	35	41
Jefferson	25	23	20	27	30	30	27
Juniata	24	26	26	25	27	24	29
Lackawanna	137	153	161	153	151	156	151
Lancaster	319	339	346	352	348	341	341
Lawrence	80	74	67	67	69	66	61
Lebanon	155	150	147	152	157	167	151
Lehigh	291	291	310	316	309	318	328
Luzerne	258	260	268	262	261	270	262
Lycoming	103	106	137	135	140	151	145
McKean	24	19	22	22	21	24	24
Mercer	61	57	66	60	63	67	63
Mifflin	23	22	28	30	32	32	35
Monroe	60	61	60	63	63	59	64
Montgomery	394	394	392	398	388	399	400
Montour	36	41	43	43	41	37	40
Northampton	290	285	282	269	285	289	302
Northumberland	138	129	124	121	126	125	125
Perry	9	10	10	8	9	11	12
Philadelphia	3,867	3,950	3,979	3,974	4,007	4,011	4,093
Pike	21	21	19	17	15	15	16
Potter	12	9	6	6	7	11	11
Schuylkill	99	101	99	96	99	97	90
Snyder	17	12	11	14	15	16	17
Somerset	52	57	53	53	56	50	55
Sullivan	(c)	(c)	(c)	(c)	(c)	(c)	(c)
Susquehanna	16	14	17	17	18	16	14
Tioga	21	20	24	23	21	20	26
Union	23	21	18	18	21	17	13
Venango	29	41	38	34	39	35	36
Warren	45	48	53	61	57	62	55
Washington	114	117	120	122	107	102	105
Wayne	17	21	21	19	17	17	17
Westmoreland	85	84	90	97	84	85	87
Wyoming	0	0	0	0	7	18	25
York	320	330	342	329	318	308	306
Total	11,390	11,608	11,814	11,877	11,969	12,064	12,189

TABLE 2

Month-End Populations in Pennsylvania County
Prisons and Jails, January to July 1986

County	Jan. 31	Feb. 28	March 31	April 30	May 31	June 30	July 31
Adams	57	65	65	65	57	65	64
Allegheny	522	575	579	680	800	827	799
Armstrong	53	49	45	42	43	45	35
Beaver	84	92	100	99	101	94	110
Bedford	19	21	19	14	18	14	17
Berks	319	324	335	330	334	330	332
Blair	153	163	162	153	178	164	169
Bradford	43	43	44	38	44	41	38
Bucks	430	457	472	462	460	470	488
Butler	66	61	59	69	67	71	80
Cambria	121	138	139	127	127	119	138
Cameron	4	1	3	3	3	4	3
Carbon	32	31	34	36	33	31	32
Centre	47	52	45	49	44	43	47
Chester	467	479	493	478	471	493	483
Clarion	24	27	15	11	14	21	28
Clearfield	123	116	117	119	120	87	82
Clinton	29	26	33	30	30	35	33
Columbia	69	65	64	58	49	53	50
Crawford	72	53	44	61	66	66	59
Cumberland	160	144	162	179	174	176	195
Dauphin	358	333	344	348	375	375	390
Delaware	564	587	579	572	592	594	566
Elk	4	5	3	7	8	9	6
Erie	212	228	221	210	215	219	204
Fayette	75	75	60	55	69	52	70
Forest	0	0	0	0	0	0	0
Franklin	74	89	97	104	96	93	97
Fulton	(c)	(c)	(c)	(c)	(c)	(c)	(c)
Greene	36	40	25	20	30	17	14
Huntingdon	37	32	31	18	25	21	33
Indiana	50	48	49	53	33	36	42
Jefferson	19	22	21	30	27	30	25
Juniata	23	30	25	25	26	24	32
Lackawanna	145	168	154	152	148	148	146
Lancaster	332	340	351	350	348	334	357
Lawrence	78	69	68	70	68	65	63
Lebanon	156	138	152	154	165	159	155
Lehigh	284	300	318	326	310	310	340
Luzerne	272	273	263	252	277	266	256
Lycoming	106	113	140	137	146	155	146
McKean	21	19	21	19	21	28	19
Mercer	55	66	63	60	64	63	67
Mifflin	25	22	31	34	33	35	35
Monroe	63	62	61	65	64	61	66
Montgomery	403	395	393	390	392	405	397
Montour	36	41	44	44	40	41	45
Northampton	283	286	266	282	281	286	301
Northumberland	135	136	123	121	126	129	125
Perry	9	12	7	7	10	11	13
Philadelphia	3,915	4,001	3,919	4,014	4,035	4,040	4,089
Pike	19	19	18	19	15	15	18
Potter	11	6	9	4	8	12	12
Schuylkill	99	103	93	96	105	94	91
Snyder	15	10	13	12	14	17	16
Somerset	53	51	54	55	55	49	59
Sullivan	(c)	(c)	(c)	(c)	(c)	(c)	(c)
Susquehanna	14	17	16	19	19	13	16
Tioga	16	26	22	24	20	23	23
Union	25	18	17	19	22	14	11
Venango	41	38	33	36	44	35	40
Warren	49	51	62	56	59	58	55
Washington	119	122	118	120	116	102	95
Wayne	19	24	20	18	16	20	18
Westmoreland	86	91	97	80	93	89	91
Wyoming	0	0	0	0	18	21	26
York	326	324	351	317	323	317	310
Total	11,556	11,812	11,781	11,897	12,184	12,134	12,262

TABLE 3

Month-End Populations in County Prisons and Jails,
January 1982 to July 1986

Month	1982	1983	1984	1985	1986
January 31	9,436	10,058	10,386	10,822	11,556
February 28	9,702	10,079	10,660	10,844	11,812
March 31	9,563	10,034	10,915	10,982	11,781
April 30	9,535	10,270	10,723	10,786	11,897
May 31	9,470	10,014	10,521	10,895	12,184
June 30	9,305	9,970	10,597	10,989	12,134
July 31	9,484	10,050	10,406	10,987	12,262
August 31	9,681	10,111	10,481	11,181	
September 30	9,952	10,504	10,648	11,453	
October 31	10,217	10,490	10,684	11,380	
November 30	9,969	10,487	10,835	11,480	
December 31	9,428	9,780	10,156	10,870	

Note: 1986 populations subject to minor changes.

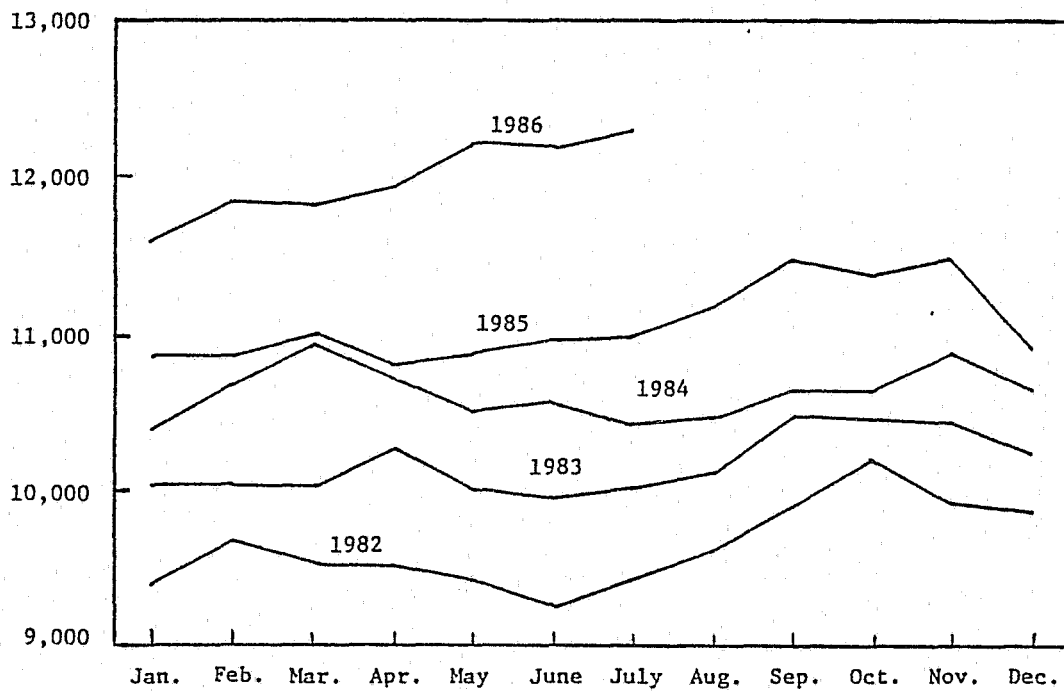


TABLE 4

Yearly Average Populations in Pennsylvania
County Prisons and Jails, 1984 and 1985

County	1984	1985	Change 1984-1985	
			Amount	Percent
Adams	45	54	9	20.0
Allegheny	535	531	-4	-0.7
Armstrong	42	41	-1	-2.4
Beaver	91	89	-2	-2.2
Bedford	40	16	-24	-60.0
Berks	316	299	-17	-5.4
Blair	82	135	53	64.6
Bradford	30	36	6	20.0
Bucks	285	367	82	28.8
Butler	68	67	-1	-1.5
Cambria	133	115	-18	-13.5
Cameron	4	2	(a)	(a)
Carbon	29	36	7	24.1
Centre	45	47	2	4.4
Chester	409	446	37	9.0
Clarion	18	22	(a)	(a)
Clearfield	110	111	1	0.9
Clinton	31	35	4	12.9
Columbia	49	51	2	4.1
Crawford	53	58	5	9.4
Cumberland	91	127	36	39.6
Dauphin	322	337	15	4.7
Delaware	506	555	49	9.7
Elk	4	6	(a)	(a)
Erie	201	213	12	6.0
Fayette	65	62	-3	-4.6
Forest	(b)	(b)	(b)	(b)
Franklin	78	89	11	14.1
Fulton	(c)	(c)	(c)	(c)
Greene	20	24	(a)	(a)
Huntingdon	28	26	-2	-7.1
Indiana	47	50	3	6.4
Jefferson	32	34	2	6.3
Juniata	23	23	(a)	(a)
Lackawanna	157	143	-14	-8.9
Lancaster	296	331	35	11.8
Lawrence	56	49	-7	-12.5
Lebanon	154	158	4	2.6
Lehigh	277	290	13	4.7
Luzerne	247	278	31	12.6
Lycoming	105	104	-1	-1.0
McKean	23	18	(a)	(a)
Mercer	48	61	13	27.1
Mifflin	45	34	-11	-24.4
Monroe	65	66	1	1.5
Montgomery	391	395	4	1.0
Montour	32	41	9	28.1
Northampton	237	271	34	14.3
Northumberland	121	143	22	18.2
Perry	11	10	(a)	(a)
Philadelphia	3,680	3,686	6	0.2
Pike	16	16	(a)	(a)
Potter	12	12	(a)	(a)
Schuylkill	84	93	9	10.7
Snyder	14	16	(a)	(a)
Somerset	47	49	2	4.3
Sullivan	(c)	(c)	(c)	(c)
Susquehanna	17	16	(a)	(a)
Tioga	19	20	(a)	(a)
Union	16	19	(a)	(a)
Venango	31	29	-2	-6.5
Warren	40	52	12	30.0
Washington	123	114	-9	-7.3
Wayne	17	15	(a)	(a)
Westmoreland	56	81	15	22.7
Wyoming	8	2	(a)	(a)
York	281	328	47	16.7
Total	10,568	11,044	476	4.5

TABLE 5

Populations in Pennsylvania County Prisons and
Jails on December 31, 1984 and 1985

County	1984	1985	Change 1984-1985	
			Amount	Percent
Adams	46	55	9	19.6
Allegheny	533	526	-7	-1.3
Armstrong	35	48	13	37.1
Beaver	67	59	-8	-11.9
Bedford	41	17	-24	-58.5
Berks	295	300	5	1.7
Blair	74	140	66	89.2
Bradford	43	47	4	9.3
Bucks	284	431	147	51.8
Butler	55	57	2	3.6
Cambria	121	117	-4	-3.3
Cameron	1	3	(a)	(a)
Carbon	24	30	(a)	(a)
Centre	44	45	1	2.3
Chester	402	457	55	13.7
Clarion	17	20	(a)	(a)
Clearfield	98	112	14	14.3
Clinton	29	26	-3	-10.3
Columbia	48	53	5	10.4
Crawford	42	56	14	33.3
Cumberland	101	145	44	43.6
Dauphin	314	304	-10	-3.2
Delaware	505	532	27	5.3
Elk	1	4	(a)	(a)
Erie	179	178	-1	-0.6
Fayette	59	67	8	13.6
Forest	0	0	(a)	(a)
Franklin	77	74	-3	-3.9
Fulton	(c)	(c)	(c)	(c)
Greene	20	22	(a)	(a)
Huntingdon	26	27	1	3.8
Indiana	45	49	4	8.9
Jefferson	27	25	-2	-7.4
Juniata	24	23	(a)	(a)
Lackawanna	140	123	17	12.1
Lancaster	291	301	10	3.4
Lawrence	60	72	12	20.0
Lebanon	148	154	6	4.1
Lehigh	254	279	25	9.8
Luzerne	263	239	24	9.1
Lycoming	93	91	2	2.2
McKean	14	22	(a)	(a)
Mercer	50	56	6	12.0
Mifflin	25	21	-4	-16.0
Monroe	74	58	16	21.6
Montgomery	384	384	0	0.0
Montour	27	38	11	40.7
Northampton	245	281	36	14.7
Northumberland	126	133	7	5.6
Perry	9	9	(a)	(a)
Philadelphia	3,496	3,760	264	7.6
Pike	13	18	(a)	(a)
Potter	11	16	(a)	(a)
Schuylkill	83	92	9	10.8
Snyder	16	14	(a)	(a)
Somerset	39	48	9	23.1
Sullivan	(c)	(c)	(c)	(c)
Susquehanna	24	16	(a)	(a)
Tioga	16	21	(a)	(a)
Union	19	19	(a)	(a)
Venango	36	23	13	36.1
Warren	40	47	7	17.5
Washington	111	102	9	8.1
Wayne	11	15	(a)	(a)
Westmoreland	68	77	9	13.2
Wyoming	8	0	(a)	(a)
York	285	292	7	2.5
Total	10,156	10,870	714	7.0

TABLE 6

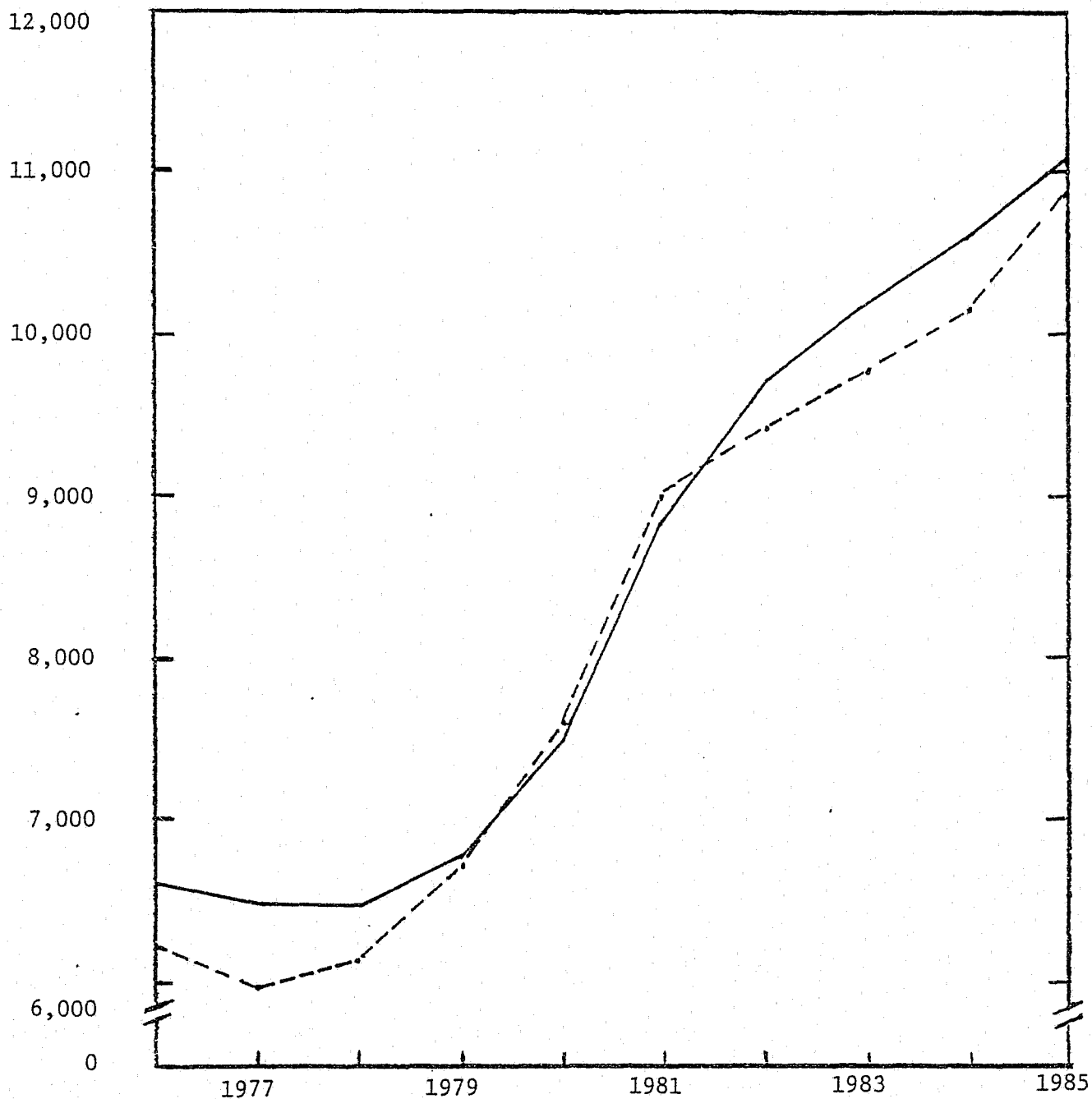
Population Trends in Pennsylvania County Prisons and Jails
from 1976 to 1985

Year	December 31st Pop.	Percent Change	Yrly. Avg. Daily Pop.	Percent Change
1976	6,156	1.0	6,573	1.4
1977	5,940	-3.5	6,425	-2.3
1978	6,081	2.4	6,414	-0.2
1979	6,608	8.7	6,714	4.7
1980	7,553	14.3	7,493	11.6
1981	8,977	18.9	8,851	18.1
1982	9,428	5.0	9,622	8.7
1983	9,780	3.7	10,146	5.4
1984	10,156	3.8	10,568	4.2
1985	10,870	7.0	11,044	4.5

Figure 1

POPULATIONS IN COUNTY PRISONS AND JAILS 1976 TO 1985

Population



— Average Population

- - - December 31st

TABLE 7

Comparison of Average Daily Populations of Selected
County Prisons, 1976 to 1985

Year	All County Prisons	Philadelphia*		Remaining County Prisons	
		Allegheny	Total	Percent of Total	
1976	6,573	2,216	427	3,930	59.8
1977	6,386	2,120	449	3,817	59.8
1978	6,414	2,145	441	3,828	59.7
1979	6,714	2,198	439	4,077	60.7
1980	7,493	2,435	488	4,570	61.0
1981	8,851	3,072	561	5,218	59.0
1982	9,622	3,427	584	5,611	58.3
1983	10,146	3,606	613	5,927	58.4
1984	10,568	3,680	535	6,353	60.1
1985	11,044	3,686	531	6,827	61.8

* Represents the total of Holmesburg, House of Correction, and Detention Center, Laurel Hill, Cannery, and YWCA.

TABLE 8

County Prisons Averaging Over One Hundred Inmates
During 1985

County Prison	Yearly average population	Percent of State total
Philadelphia	3,686	33.4
Delaware	555	5.1
Allegheny	531	4.8
Chester	446	4.0
Montgomery	395	3.6
Bucks	367	3.3
Dauphin	337	3.1
Lancaster	331	3.0
York	328	3.0
Berks	299	2.7
Lehigh	290	2.6
Luzerne	278	2.5
Northampton	271	2.5
Erie	213	1.9
Lebanon	158	1.4
Lackawanna	143	1.3
Northumberland	143	1.3
Blair	135	1.2
Cumberland	127	1.2
Cambria	115	1.0
Washington	114	1.0
Clearfield	111	1.0
Lycoming	104	0.9
Sub-total	9,477	85.8
State total	11,044	100.0

TABLE 9

Populations in Pennsylvania County Prisons and Jails on
December 31, 1984 and 1985, by Race

County	1984			1985			Percent Non-White on Dec. 31st	
	White	Non-White	Total	White	Non-White	Total	1984	1985
Adams	42	4	46	45	10	55	8.7	18.2
Allegheny	174	359	533	168	358	526	67.4	68.1
Armstrong	31	4	35	43	5	48	11.4	10.4
Beaver	40	27	67	38	21	59	40.3	35.6
Bedford	41	0	41	17	0	17	0.0	0.0
Berks	226	69	295	241	59	300	23.4	19.7
Blair	73	1	74	132	8	140	1.4	5.7
Bradford	42	1	43	46	1	47	2.3	2.1
Bucks	227	57	284	340	51	431	20.1	21.1
Butler	53	2	55	54	3	57	3.6	5.3
Cambria	103	18	121	103	14	117	14.9	12.0
Cameron	1	0	1	2	1	3	0.0	33.3
Carbon	22	2	24	30	0	30	8.3	0.0
Centre	42	2	44	43	2	45	4.5	4.4
Chester	262	140	402	316	141	457	34.8	30.9
Clarion	17	0	17	19	1	20	0.0	5.0
Clearfield	93	5	98	99	13	112	5.1	11.6
Clinton	27	2	29	26	0	26	6.9	0.0
Columbia	48	0	48	52	1	53	0.0	1.9
Crawford	41	1	42	49	7	56	2.4	12.5
Cumberland	90	11	101	122	23	145	10.9	15.9
Dauphin	138	176	314	141	163	304	56.1	53.6
Delaware	256	249	505	244	288	532	49.3	54.1
Elk	1	0	1	4	0	4	0.0	0.0
Erie	121	58	179	126	52	178	32.4	29.2
Fayette	49	10	59	57	10	67	16.9	14.9
Forest	0	0	0	0	0	0	0.0	0.0
Franklin	65	12	77	59	15	74	15.6	20.3
Fulton	(c)	(c)	(c)	(c)	(c)	(c)	(c)	(c)
Greene	20	0	20	21	1	22	0.0	4.5
Huntingdon	22	4	26	23	4	27	15.4	14.8
Indiana	38	7	45	45	4	49	15.6	8.2
Jefferson	22	5	27	25	0	25	18.5	0.0
Juniata	24	0	24	23	0	23	0.0	0.0
Lackawanna	131	9	140	112	11	123	6.4	8.9
Lancaster	136	155	291	178	123	301	53.3	40.9
Lawrence	52	8	60	57	15	72	13.3	20.8
Lebanon	141	7	148	142	12	154	4.7	7.8
Lehigh	166	88	254	186	93	279	34.6	33.3
Luzerne	252	11	263	231	8	239	4.2	3.3
Lycoming	74	19	93	78	13	91	20.4	14.3
McKean	14	0	14	22	0	22	0.0	0.0
Mercer	34	16	50	43	13	56	32.0	23.2
Mifflin	24	1	25	21	0	21	4.0	0.0
Monroe	71	3	74	54	4	58	4.1	6.9
Montgomery	205	179	384	198	186	384	46.6	48.4
Montour	27	0	27	37	1	38	0.0	2.6
Northampton	190	55	245	215	66	281	22.4	23.5
Northumberland	124	2	126	132	1	133	1.6	0.7
Perry	9	0	9	9	0	9	0.0	0.0
Philadelphia	628	2,868	3,496	681	3,079	3,760	82.0	82.0
Pike	13	0	13	18	0	18	0.0	0.0
Potter	11	0	11	16	0	16	0.0	0.0
Schuylkill	82	1	83	92	0	92	1.2	0.0
Snyder	16	0	16	12	2	14	0.0	14.3
Somerset	39	0	39	47	1	48	0.0	2.1
Sullivan	(c)	(c)	(c)	(c)	(c)	(c)	(c)	(c)
Susquehanna	24	0	24	16	0	16	0.0	0.0
Tioga	16	0	16	21	0	21	0.0	0.0
Union	18	1	19	16	3	19	5.3	15.8
Venango	35	1	36	22	1	23	2.8	4.3
Warren	39	1	40	45	2	47	2.5	4.3
Washington	89	22	111	81	21	102	19.8	20.6
Wayne	11	0	11	15	0	15	0.0	0.0
Westmoreland	53	15	68	61	16	77	22.1	20.8
Wyoming	8	0	8	0	0	0	0.0	0.0
York	169	116	285	190	102	292	40.7	34.9
Total	5,352	4,804	10,156	5,801	5,069	10,870	47.3	46.6

TABLE 10

Racial Distribution of Inmates Confined in Pennsylvania
County Prison and Jails as of December 31, 1976-1985

Year	White	Percent	Non-White	Percent	Total
1976	3,252	52.8	2,904	47.2	6,156
1977	3,168	53.3	2,772	46.7	5,940
1978	3,317	54.5	2,764	45.5	6,081
1979	3,603	54.5	3,005	45.5	6,608
1980	3,989	52.8	3,564	47.2	7,553
1981	4,600	51.2	4,377	48.8	8,977
1982	4,955	52.6	4,473	47.4	9,428
1983	4,953	50.6	4,827	49.4	9,780
1984	5,352	52.7	4,804	47.3	10,156
1985	5,801	53.4	5,069	46.6	10,870

TABLE 11

Populations in Pennsylvania County Prisons and Jails on
December 31, 1984 and 1985, By Sex

County	1984			1985		
	Male	Female	Total	Male	Female	Total
Adams	46	0	46	55	0	55
Allegheny	503	30	533	495	31	526
Armstrong	35	0	35	43	5	48
Beaver	66	1	67	56	3	59
Bedford	41	0	41	17	0	17
Berks	278	17	295	283	17	300
Blair	71	3	74	129	11	140
Bradford	42	1	43	46	1	47
Bucks	270	14	284	412	19	431
Butler	50	5	55	53	4	57
Cambria	117	4	121	114	3	117
Cameron	1	0	1	3	0	3
Carbon	24	0	24	30	0	30
Centre	44	0	44	45	0	45
Chester	394	8	402	441	16	457
Clarion	17	0	17	20	0	20
Clearfield	89	9	98	92	20	112
Clinton	29	0	29	26	0	26
Columbia	47	1	48	49	4	53
Crawford	42	0	42	52	4	56
Cumberland	96	5	101	131	14	145
Dauphin	286	28	314	276	28	304
Delaware	491	14	505	512	20	532
Elk	1	0	1	4	0	4
Erie	171	8	179	167	11	178
Fayette	58	1	59	65	2	67
Forest	0	0	0	0	0	0
Franklin	72	5	77	71	3	74
Fulton	(c)	(c)	(c)	(c)	(c)	(c)
Greene	20	0	20	22	0	22
Huntingdon	26	0	26	27	0	27
Indiana	41	4	45	44	5	49
Jefferson	22	5	27	24	1	25
Juniata	24	0	24	23	0	23
Lackawanna	132	8	140	117	6	123
Lancaster	272	19	291	288	13	301
Lawrence	56	4	60	65	7	72
Lebanon	141	7	148	146	8	154
Lehigh	233	21	254	259	20	279
Luzerne	251	12	263	219	20	239
Lycoming	90	3	93	87	4	91
McKean	14	0	14	22	0	22
Mercer	48	2	50	55	1	56
Mifflin	23	2	25	19	2	21
Monroe	74	0	74	58	0	58
Montgomery	343	41	384	348	36	384
Montour	27	0	27	38	0	38
Northampton	237	8	245	265	16	281
Northumberland	112	14	126	116	17	133
Perry	9	0	9	9	0	9
Philadelphia	3,369	127	3,496	3,601	159	3,760
Pike	13	0	13	18	0	18
Potter	10	1	11	14	2	16
Schuylkill	83	0	83	92	0	92
Snyder	16	0	16	14	0	14
Somerset	38	1	39	47	1	48
Sullivan	(c)	(c)	(c)	(c)	(c)	(c)
Susquehanna	24	0	24	16	0	16
Tioga	16	0	16	19	2	21
Union	19	0	19	19	0	19
Venango	31	5	36	22	1	23
Warren	40	0	40	43	4	47
Washington	101	10	111	94	8	102
Wayne	11	0	11	15	0	15
Westmoreland	63	5	68	74	3	77
Wyoming	8	0	8	0	0	0
York	263	22	285	270	22	292
Total	9,681	475	10,156	10,296	574	10,870

TABLE 12

1985 County Prison Population and 1985 Civilian Population For
Metropolitan Statistical Areas in Pennsylvania

Metropolitan Statistical Area	Prison Population		Civilian Population*	
	Avg. Daily Pop.	Percent of Total	Population	Percent of Total
Allentown - Bethlehem - MSA (Includes Carbon, Lehigh & Northampton Counties; excludes Warren County, N.J.)	597	5.4	563,245	4.7
Altoona MSA (Includes Blair County)	135	1.2	132,513	1.1
Beaver MSA (Includes Beaver County)	89	0.8	198,708	1.6
Erie MSA (Includes Erie County)	213	1.9	280,609	2.4
Harrisburg - Lebanon - Carlisle - MSA (Includes Cumberland, Dauphin, Lebanon & Perry Counties)	632	5.7	572,869	4.8
Johnstown MSA (Includes Cambria & Somerset Counties)	164	1.5	256,309	2.2
Lancaster MSA (Includes Lancaster County)	331	3.0	386,598	3.3
Philadelphia PMSA (Includes Bucks, Chester, Delaware, Montgomery and Philadelphia Counties; excludes Burlington, Camden & Gloucester Counties, N.J.)	5,449	49.4	3,704,794	31.3
Pittsburgh PMSA (Includes Allegheny, Fayette, Washington & Westmoreland Counties)	788	7.1	2,142,709	18.1
Reading MSA (Includes Berks County)	299	2.7	318,055	2.7
Scranton - Wilkes Barre, MSA (Includes Columbia, Lackawanna, Luzerne, Monroe, and Wyoming Counties)	540	4.9	723,426	6.1
Sharon MSA (Includes Mercer County)	61	0.6	124,205	1.0
State College MSA (Includes Centre County)	47	0.4	113,114	1.0
Williamsport MSA (Includes Lycoming County)	104	0.9	116,088	1.0
York MSA (Includes Adams and York Counties)	382	3.5	393,716	3.3
MSA and PMSA Total	9,831	89.0	10,022,958	84.6
Outside MSA and PMSA	1,213	11.0	1,830,410	15.4
Pennsylvania Total	11,044	100.0	11,853,368	100.0

* Civilian populations are based on provisional population estimates for July 1, 1985 produced jointly by the Pennsylvania State Data Center, Pennsylvania State University Capital Campus and the U.S. Bureau of Census.

TABLE 13

Number and Ratio of Prisoners Per 100,000 Civilian Population
on December 31, 1984 and 1985, by County

County	1984		1985	
	Prisoners	Ratio ^a	Prisoners	Ratio ^a
Adams	46	65.3	55	78.6
Allegheny	533	37.5	526	37.9
Armstrong	35	44.5	48	61.0
Beaver	67	33.4	59	30.3
Bedford	41	85.2	17	35.6
Berks	295	93.5	300	94.3
Blair	74	54.8	140	105.7
Bradford	43	67.3	47	73.9
Bucks	284	56.6	431	84.1
Butler	55	36.6	57	37.9
Cambria	121	67.9	117	66.8
Cameron	1	14.9	3	45.4
Carbon	24	44.4	30	55.7
Centre	44	38.4	45	39.8
Chester	402	121.9	457	136.7
Clarion	17	39.2	20	47.0
Clearfield	98	115.3	112	135.2
Clinton	29	73.8	26	69.1
Columbia	48	77.0	53	86.8
Crawford	42	46.3	56	62.9
Cumberland	101	55.0	145	77.1
Dauphin	314	133.3	304	128.9
Delaware	505	91.6	532	95.5
Elk	1	2.7	4	10.7
Erie	179	63.4	178	63.4
Fayette	59	37.2	67	42.7
Forest	0	0.0	0	0.0
Franklin	77	66.6	74	63.0
Fulton	(c)	(c)	(c)	(c)
Greene	20	48.7	22	53.7
Huntingdon	26	60.9	27	63.1
Indiana	45	48.2	49	53.0
Jefferson	27	55.3	25	51.6
Juniata	24	121.8	23	115.7
Lackawanna	140	62.2	123	55.2
Lancaster	291	77.1	301	77.9
Lawrence	60	56.6	72	69.1
Lebanon	148	133.3	154	124.2
Lehigh	254	92.3	279	100.4
Luzerne	263	77.3	239	71.8
Lycoming	93	79.2	91	78.4
McKean	14	28.3	22	45.6
Mercer	50	39.3	56	45.1
Mifflin	25	53.6	21	45.6
Monroe	74	98.3	58	73.4
Montgomery	384	58.6	384	57.9
Montour	27	158.3	38	225.6
Northampton	245	106.9	281	121.4
Northumberland	126	125.6	133	134.0
Perry	9	24.3	9	23.9
Philadelphia	3,496	211.1	3,760	229.6
Pike	13	65.6	18	84.5
Potter	11	60.3	16	87.6
Schuylkill	83	52.6	92	59.0
Snyder	16	45.7	14	39.6
Somerset	39	47.7	48	59.1
Sullivan	(c)	(c)	(c)	(c)
Susquehanna	24	62.7	16	40.7
Tioga	16	39.9	21	52.6
Union	19	56.5	19	55.1
Venango	36	55.6	23	36.6
Warren	40	83.3	47	100.0
Washington	111	51.1	102	47.7
Wayne	11	29.6	15	39.2
Westmoreland	68	17.4	77	20.1
Wyoming	8	29.6	0	0.0
York	285	89.7	292	90.2
Total	10,156	85.4	10,870	91.7

^a Ratio for 1984 are based on population estimates for July 1, 1983; for 1985 they are based on provisional population estimates for July 1, 1985. Both are produced jointly by the Pennsylvania State Data Center, Pennsylvania State University Capitol Campus and the U.S. Bureau of Census.

TABLE 14

Status of Prisoners in Pennsylvania County Prisons and Jails
on December 31, 1984 and 1985

County	1984			1985			Percent detentioners	
	Sentenced	Detentioners	Total	Sentenced	Detentioners	Total	1984	1985
Adams	23	23	46	39	16	55	50.0	29.1
Allegheny	38	495	533	29	497	526	92.9	94.5
Armstrong	14	21	35	15	33	48	60.0	68.8
Beaver	42	25	67	28	31	59	37.3	52.5
Bedford	10	31	41	7	10	17	75.6	(a)
Berks	80	215	295	113	187	300	72.9	62.3
Blair	23	51	74	58	82	140	68.9	58.6
Bradford	12	31	43	32	15	47	72.1	31.9
Bucks	137	147	284	282	149	431	51.8	34.6
Butler	16	39	55	11	46	57	70.9	80.7
Cambria	68	53	121	60	57	117	43.8	48.7
Cameron	1	0	1	0	3	3	(a)	(a)
Carbon	15	9	24	18	12	30	(a)	40.0
Centre	17	27	44	19	26	45	61.4	57.8
Chester	130	272	402	150	307	457	67.7	67.2
Clarion	6	11	17	10	10	20	(a)	(a)
Clearfield	32	66	98	41	71	112	67.3	63.4
Clinton	14	15	29	11	15	26	51.7	57.7
Columbia	21	27	48	30	23	53	56.3	43.4
Crawford	22	20	42	27	29	56	47.6	51.8
Cumberland	70	31	101	97	48	145	30.7	33.1
Dauphin	138	176	314	160	144	304	56.1	47.4
Delaware	226	279	505	276	256	532	55.2	48.1
Elk	0	1	1	3	1	4	(a)	(a)
Erie	51	128	179	33	145	178	71.5	81.5
Fayette	4	55	59	1	66	67	93.2	98.5
Forest	(d)	(d)	(d)	(d)	(d)	(d)	(d)	(d)
Franklin	47	30	77	46	28	74	39.0	37.8
Fulton	(c)	(c)	(c)	(c)	(c)	(c)	(c)	(c)
Greene	4	16	20	8	14	22	(a)	(a)
Huntingdon	7	19	26	13	14	27	73.1	51.9
Indiana	9	36	45	11	38	49	80.0	77.6
Jefferson	3	24	27	9	16	25	88.9	64.0
Juniata	22	2	24	18	5	23	(a)	(a)
Lackawanna	66	74	140	53	70	123	52.9	56.9
Lancaster	138	153	291	125	176	301	52.6	58.5
Lawrence	37	23	60	23	49	72	38.3	68.1
Lebanon	109	39	148	108	46	154	26.3	29.9
Lehigh	112	142	254	133	146	279	55.9	52.3
Luzerne	138	125	263	160	79	239	47.5	33.1
Lycoming	45	48	93	47	44	91	51.6	48.4
McKean	3	11	14	11	11	22	(a)	(a)
Mercer	13	37	50	16	40	56	74.0	71.4
Mifflin	8	17	25	13	8	21	68.0	(a)
Monroe	41	33	74	29	29	58	44.6	50.0
Montgomery	142	242	384	132	252	384	63.0	65.6
Montour	16	11	27	24	14	38	40.7	36.8
Northampton	118	127	245	152	129	281	51.8	45.9
Northumberland	63	63	126	75	58	133	50.0	43.6
Perry	4	5	9	5	4	9	(a)	(a)
Philadelphia	802	2,694	3,496	959	2,801	3,760	77.1	74.5
Pike	6	7	13	13	5	18	(a)	(a)
Potter	6	5	11	9	7	16	(a)	(a)
Schuylkill	47	36	83	62	30	92	43.4	32.6
Snyder	6	10	16	8	6	14	(a)	(a)
Somerset	21	18	39	16	32	48	46.2	66.7
Sullivan	(c)	(c)	(c)	(c)	(c)	(c)	(c)	(c)
Susquehanna	9	15	24	6	10	16	(a)	(a)
Tioga	5	11	16	3	18	21	(a)	(a)
Union	5	14	19	11	8	19	(a)	(a)
Venango	25	11	36	11	12	23	30.6	(a)
Warren	30	10	40	25	22	47	27.5	46.8
Washington	42	69	111	41	61	102	62.2	59.8
Wayne	7	4	11	5	10	15	(a)	(a)
Westmoreland	5	63	68	8	69	77	92.6	89.6
Wyoming	7	1	8	0	0	0	(a)	(a)
York	120	165	285	98	194	292	57.9	66.4
Total	3,498	6,658	10,156	4,036	6,834	10,870	65.6	62.9

TABLE 15

Detentioners Confined in County Prisons
and Jails on December 31, 1976 to 1985

Year	Number of detentioners	Percent of total population
1976	3,792	61.6
1977	3,740	63.4
1978	3,980	65.4
1979	4,519	68.4
1980	5,256	69.6
1981	6,171	68.7
1982	6,247	66.3
1983	6,341	65.5
1984	6,658	65.6
1985	6,834	62.9

TABLE 16

**Major Types of Admissions to and Releases from Pennsylvania
County Prisons and Jails 1976-1985**

Year	Admissions			Releases		
	Court Commitments*	Minor Judiciary Commitments*	Adult Detentioners	Unconditional*	Conditional (paroles)*	Adult Detentioners
1976	7,773	4,241	61,082	6,247	5,539	61,055
1977	7,102	5,486	57,543	7,143	5,550	57,259
1978	6,336	4,966	54,435	6,246	4,810	54,106
1979	6,169	4,457	55,845	5,425	4,835	55,607
1980	6,225	4,642	60,816	5,641	4,823	60,281
1981	7,359	4,121	66,268	5,335	5,328	65,645
1982	8,966	4,268	66,032	5,961	6,642	66,565
1983	11,098	3,999	64,570	5,888	8,929	64,802
1984	14,973	3,986	68,298	6,881	11,641	69,044
1985	15,120	4,368	69,316	6,959	11,938	69,332

* Represents prisoners sentenced to serve time in local county correctional facilities.

NOTE: Since the above data does not include admissions and releases such as transfers, outmate and weekend movements, and miscellaneous movements (too numerous to mention), the above totals will not balance with end-of-year population counts.

TABLE 17

Prisoners Sentenced to Pennsylvania County Prisons
and Jails During 1984 and 1985

County	1984		1985	
	By Court of Record	By Minor Judiciary	By Court of Record	By Minor Judiciary
Adams	140	124	179	76
Allegheny	973	452	664	610
Armstrong	41	20	49	14
Beaver	139	40	138	27
Bedford	37	68	68	43
Berks	387	38	408	36
Blair	145	137	308	136
Bradford	43	0	36	2
Bucks	916	44	1034	64
Butler	206	57	190	148
Cambria	136	4	109	4
Cameron	3	2	2	0
Carbon	57	9	72	14
Centre	126	34	182	43
Chester	643	180	559	236
Clarion	47	52	35	19
Clearfield	141	143	133	70
Clinton	31	1	52	6
Columbia	91	19	76	33
Crawford	202	96	246	99
Cumberland	256	42	315	47
Dauphin	607	62	669	55
Delaware	944	176	928	177
Elk	9	15	20	13
Erie	428	219	430	183
Fayette	39	133	61	104
Forest	(d)	(d)	(d)	(d)
Franklin	174	156	189	176
Fulton	(c)	(c)	(c)	(c)
Greene	36	19	52	21
Huntingdon	94	29	76	13
Indiana	56	3	66	30
Jefferson	45	19	62	16
Juniata	31	4	28	3
Lackawanna	140	16	99	4
Lancaster	304	36	338	32
Lawrence	130	35	90	22
Lebanon	285	43	279	77
Lehigh	351	24	313	4
Luzerne	254	30	350	40
Lycoming	378	92	464	76
McKean	53	16	35	23
Mercer	151	107	202	106
Mifflin	48	8	51	11
Monroe	128	28	99	20
Montgomery	568	51	680	81
Montour	22	6	25	9
Northampton	320	110	539	195
Northumberland	158	96	143	74
Perry	29	2	39	0
Philadelphia	2,798	239	2,258	362
Pike	32	5	28	13
Potter	32	3	35	8
Schuylkill	148	24	206	19
Snyder	28	42	31	36
Somerset	88	39	114	13
Sullivan	(c)	(c)	(c)	(c)
Susquehanna	59	29	49	39
Tioga	37	23	26	22
Union	40	10	41	13
Venango	108	127	90	140
Warren	120	40	106	32
Washington	250	83	243	110
Wayne	29	1	30	5
Westmoreland	129	44	153	62
Wyoming	22	9	12	12
York	511	171	516	190
Total	14,973	3,986	15,120	4,368

TABLE 18

**Comparison of Sentenced Prisoners Received in County Prisons
and Jails, 1984 and 1985, by Selected Offense**

Offense Classification	1984	1985	Change, 1984-85	
			Amount	Percent
Robbery	566	585	19	3.3
Burglary	1,684	1,542	-142	-8.4
Aggravated assault	458	459	1	0.2
Other assaults	816	877	61	7.5
Theft (excl. retail theft)	1,187	1,132	-55	-4.6
Retail theft	594	689	95	16.0
Fraud	442	410	-32	-7.2
Receiving stolen property	322	293	-29	-9.0
Forgery	177	165	-12	-6.8
Forcible rape	30	51	21	70.0
Narcotic drug laws	991	1,062	71	7.2
Weapons	176	162	-14	-8.0
Non-support	388	578	190	49.0
Drunken driving	6,286	6,409	123	2.0
Disorderly conduct	668	780	112	16.8
Drunkenness	527	538	11	2.1
Arson	51	55	4	7.8
Criminal mischief	265	352	87	32.8

TABLE 19

Number of Sentenced Prisoners Received in County Prisons and Jails During 1985,
by Part I Offense and by Committing County

Committing County	Murder ¹	Manslaughter ²	Forcible rape	Robbery	Aggravated assault	Burglary	Theft	Arson
Adams	0	1	0	3	1	16	16	0
Allegheny	0	1	0	4	9	64	124	0
Armstrong	0	0	0	0	1	2	3	0
Beaver	0	1	0	0	1	2	13	0
Bedford	0	2	0	0	0	1	1	0
Berks	1	3	0	5	14	44	50	0
Blair	0	0	1	2	4	16	17	0
Bradford	0	1	0	0	2	5	8	1
Bucks	8	8	14	20	17	98	107	2
Butler	0	1	1	0	2	11	11	2
Cambria	0	2	0	2	3	12	13	2
Cameron	0	0	0	0	0	0	0	0
Carbon	0	0	0	6	2	11	8	0
Centre	0	3	0	1	1	21	12	1
Chester	0	6	2	10	12	81	61	7
Clarion	0	0	0	0	2	2	1	0
Clearfield	0	1	0	1	7	4	9	2
Clinton	0	0	0	0	1	8	11	0
Columbia	0	0	0	0	0	1	11	0
Crawford	0	0	0	1	2	16	19	0
Cumberland	0	3	0	8	6	24	44	0
Dauphin	0	3	0	21	29	63	64	2
Delaware	0	4	5	46	40	94	117	1
Elk	0	1	0	0	2	3	2	0
Erie	0	2	2	5	13	37	47	4
Fayette	0	0	0	0	1	6	6	0
Forest	0	0	0	0	0	1	0	0
Franklin	0	0	0	2	3	10	18	0
Fulton	0	0	0	0	0	1	0	0
Greene	0	1	0	0	0	7	5	1
Huntingdon	0	0	0	1	0	4	7	1
Indiana	0	1	1	0	3	6	2	0
Jefferson	0	0	0	0	0	7	4	0
Juniata	0	0	0	0	1	0	2	0
Lackawanna	0	3	0	1	1	12	6	3
Lancaster	0	2	0	13	6	31	14	2
Lawrence	0	0	0	0	2	5	10	0
Lebanon	0	2	0	3	7	19	16	1
Lehigh	0	3	0	8	8	23	45	3
Luzerne	0	5	0	5	7	48	23	1
Lycoming	1	1	5	0	11	46	72	0
McKean	0	0	1	0	1	9	6	0
Mercer	0	0	0	0	0	7	17	0
Mifflin	0	0	0	0	0	4	12	0
Monroe	0	2	0	1	3	6	13	0
Montgomery	2	10	2	20	11	60	75	0
Montour	0	0	0	0	0	2	1	0
Northampton	2	5	2	7	16	43	42	0
Northumberland	0	1	0	4	3	11	15	0
Perry	0	1	0	0	1	3	0	0
Philadelphia	3	3	14	378	167	375	481	12
Pike	0	0	0	0	1	5	5	0
Potter	0	0	0	0	0	0	6	0
Schuylkill	0	6	0	1	6	39	21	2
Snyder	0	1	0	1	0	0	7	0
Somerset	0	0	1	0	2	7	10	0
Sullivan	0	0	0	0	0	0	0	0
Susquehanna	0	0	0	0	1	7	1	2
Tioga	0	0	0	0	0	0	1	0
Union	0	2	0	0	0	4	0	0
Venango	0	0	0	0	1	14	17	0
Warren	0	1	0	0	1	6	8	0
Washington	0	3	0	2	7	35	30	0
Wayne	0	0	0	0	1	6	3	0
Westmoreland	0	1	0	2	3	3	8	0
Wyoming	0	0	0	0	0	1	0	0
York	0	2	0	1	11	33	42	2
Federal	0	0	0	0	1	0	1	1
Total	17	99	51	585	459	1,542	1,821	55

¹ Includes 3rd degree and unspecified murder only.

² Includes a total of 65 homicide by motor vehicle.

TABLE 20

Number of Sentenced Prisoners Received in County Prisons and Jails During 1985,
by Selected Part II Offense and by Committing County

Committing county	Other assaults	Frauds	Receiving stolen property	Narcotic drug laws	Drunken driving	Drunkenness	Disorderly conduct	Criminal mischief
Adams	11	18	2	4	77	10	12	4
Allegheny	69	35	9	39	478	25	179	39
Armstrong	1	3	1	19	19	0	5	1
Beaver	10	3	4	8	87	7	3	1
Bedford	4	2	0	0	59	2	1	3
Berks	37	9	12	38	105	0	9	6
Blair	16	15	1	17	246	11	24	11
Bradford	2	0	0	1	9	0	2	0
Bucks	37	2	14	75	498	4	8	6
Butler	6	5	2	8	146	65	36	4
Cambria	7	2	7	5	22	2	4	3
Cameron	0	0	0	0	0	0	0	0
Carbon	4	2	2	11	19	1	3	0
Centre	4	8	4	9	103	7	7	4
Chester	49	13	18	35	241	22	40	43
Clarion	0	1	0	0	33	0	0	0
Clearfield	12	11	1	9	98	6	8	3
Clinton	4	0	0	2	21	0	3	0
Columbia	7	0	1	6	52	1	6	5
Crawford	14	19	2	11	157	30	7	11
Cumberland	20	21	7	15	135	2	5	2
Dauphin	27	16	16	95	229	11	15	10
Delaware	50	19	27	87	441	10	41	3
Elk	1	0	0	0	10	0	2	2
Erie	27	28	13	36	138	37	46	13
Fayette	9	9	0	0	52	18	21	9
Forest	0	0	0	0	4	0	0	0
Franklin	22	8	4	4	91	83	17	17
Fulton	0	0	0	0	2	0	0	0
Greene	1	3	3	8	19	4	3	2
Huntingdon	2	3	0	6	47	2	4	4
Indiana	4	4	0	0	41	2	5	2
Jefferson	4	1	0	6	29	1	2	3
Juniata	2	0	0	1	14	0	0	0
Lackawanna	11	2	5	10	31	1	1	1
Lancaster	7	1	3	33	131	3	9	3
Lawrence	9	3	2	4	47	6	1	5
Lebanon	9	14	0	13	106	3	5	5
Lehigh	14	7	16	26	82	0	3	1
Luzerne	20	6	16	28	83	6	4	5
Lycoming	20	9	6	52	202	5	19	9
McKean	4	1	2	1	11	1	2	3
Mercer	11	7	2	3	157	13	27	17
Mifflin	2	1	1	5	18	2	4	0
Monroe	4	1	4	16	26	4	6	2
Montgomery	10	7	5	51	319	5	29	6
Montour	0	0	0	5	14	1	1	1
Northampton	27	6	13	35	137	11	32	20
Northumberland	23	12	5	12	45	3	17	8
Perry	1	0	1	4	27	0	2	1
Philadelphia	133	6	24	93	368	2	4	7
Pike	1	0	1	1	5	0	2	3
Potter	3	0	0	3	11	0	0	1
Schuylkill	5	5	7	21	84	0	5	4
Snyder	4	3	0	0	25	0	3	1
Somerset	8	3	6	5	51	3	5	2
Sullivan	0	0	0	0	0	0	0	0
Susquehanna	5	2	0	6	35	1	2	0
Tioga	0	1	0	1	23	2	2	1
Union	4	2	1	5	25	1	2	1
Venango	13	8	2	4	104	18	17	5
Warren	6	5	2	8	51	10	1	2
Washington	21	3	11	10	95	35	31	9
Wayne	2	1	1	2	2	1	0	0
Westmoreland	2	7	2	8	111	8	9	9
Wyoming	1	2	0	4	6	0	0	1
York	34	25	5	35	254	30	17	8
Federal	0	0	0	3	1	0	0	0
Total	877	410	293	1,062	6,409	538	780	352

TABLE 21

Number of Sentenced Prisoners Received in County Prisons
and Jails
During 1985, by Part I and Part II Offenses

Offense classification	Total received	Percent of total
Part I Offenses:		
Murder (generally 3rd degree)	17	0.1
Manslaughter	99	0.5
Forcible rape	51	0.2
Robbery	585	3.0
Aggravated assaults	459	2.3
Burglary	1,542	7.9
Theft (except motor vehicle)	1,818	9.3
Motor vehicle theft	3	0.0
Arson	55	0.3
Total Part I Offenses	4,629	23.6
Part II Offenses:		
Other assaults	877	4.5
Forgery	165	0.8
Frauds	410	2.1
Receiving stolen property	293	1.5
Weapons	162	0.8
Other sex offenses	323	1.7
Narcotic drug laws	1,062	5.4
Non-support	578	3.0
Drunken driving (M.V.)	6,409	32.7
Other M.V. violations	1,186	6.1
Liquor laws	178	0.9
Drunkenness	538	2.7
Disorderly conduct	780	4.0
Criminal mischief	352	1.8
Criminal conspiracy	135	0.7
Prison breach	58	0.3
Contempt of court	557	2.8
Violation of probation	202	1.0
Other Part II offenses	704	3.6
Total Part II Offenses	14,969	76.4
All receptions	19,598	100.0

Figure 2

SENTENCED PRISONERS RECEIVED BY COUNTY PRISONS BY OFFENSE
1985

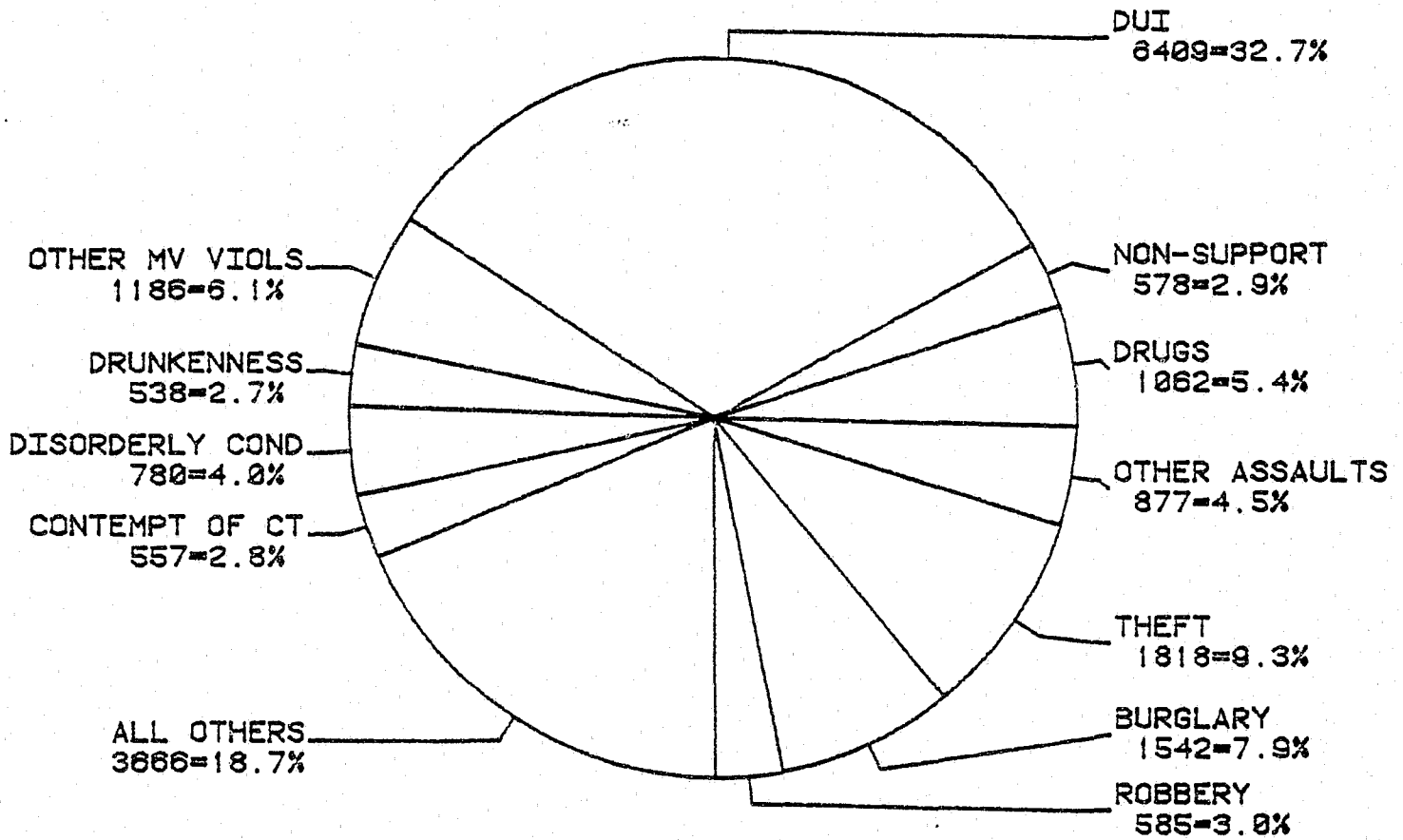


TABLE 22
Sentenced Prisoners Received for Drunken Driving,
1983, 1984 and 1985

County	1983	1984	1985	County	1983	1984	1985
Adams	39	64	77	Lancaster	47	72	131
Allegheny	352	693	478	Lawrence	6	29	47
Armstrong	11	23	19	Lebanon	58	94	106
Beaver	31	92	87	Lehigh	35	82	82
Bedford	19	35	59	Luzerne	44	66	83
Berks	48	109	105	Lycoming	96	187	202
Blair	29	112	246	McKean	9	18	11
Bradford	1	8	9	Mercer	40	98	157
Bucks	204	500	498	Mifflin	17	9	18
Butler	69	165	146	Monroe	9	46	26
Cambria	12	24	22	Montgomery	86	254	319
Cameron	0	0	0	Montour	4	6	14
Carbon	15	22	19	Northampton	49	92	137
Centre	21	63	103	Northumberland	75	75	45
Chester	92	343	241	Perry	2	28	27
Clarion	5	28	33	Philadelphia	116	429	368
Clearfield	155	180	98	Pike	4	12	5
Clinton	6	20	21	Potter	15	13	11
Columbia	19	47	52	Schuylkill	35	60	84
Crawford	114	118	157	Snyder	7	29	25
Cumberland	43	92	135	Somerset	22	53	51
Dauphin	104	185	229	Sullivan	0	1	0
Delaware	129	436	441	Susquehanna	20	44	35
Elk	3	6	10	Tioga	4	32	23
Erie	87	152	138	Union	5	24	25
Fayette	9	40	52	Venango	62	113	104
Forest	0	3	4	Warren	58	45	51
Franklin	54	84	91	Washington	60	94	95
Fulton	0	1	2	Wayne	7	4	2
Greene	12	11	19	Westmoreland	32	89	111
Huntingdon	27	68	47	Wyoming	4	8	6
Indiana	15	39	41	York	101	251	254
Jefferson	7	26	29	Federal	1	0	1
Juniata	3	7	14				
Lackawanna	22	33	31				
				Total	2,887	6,286	6,409

Figure 3

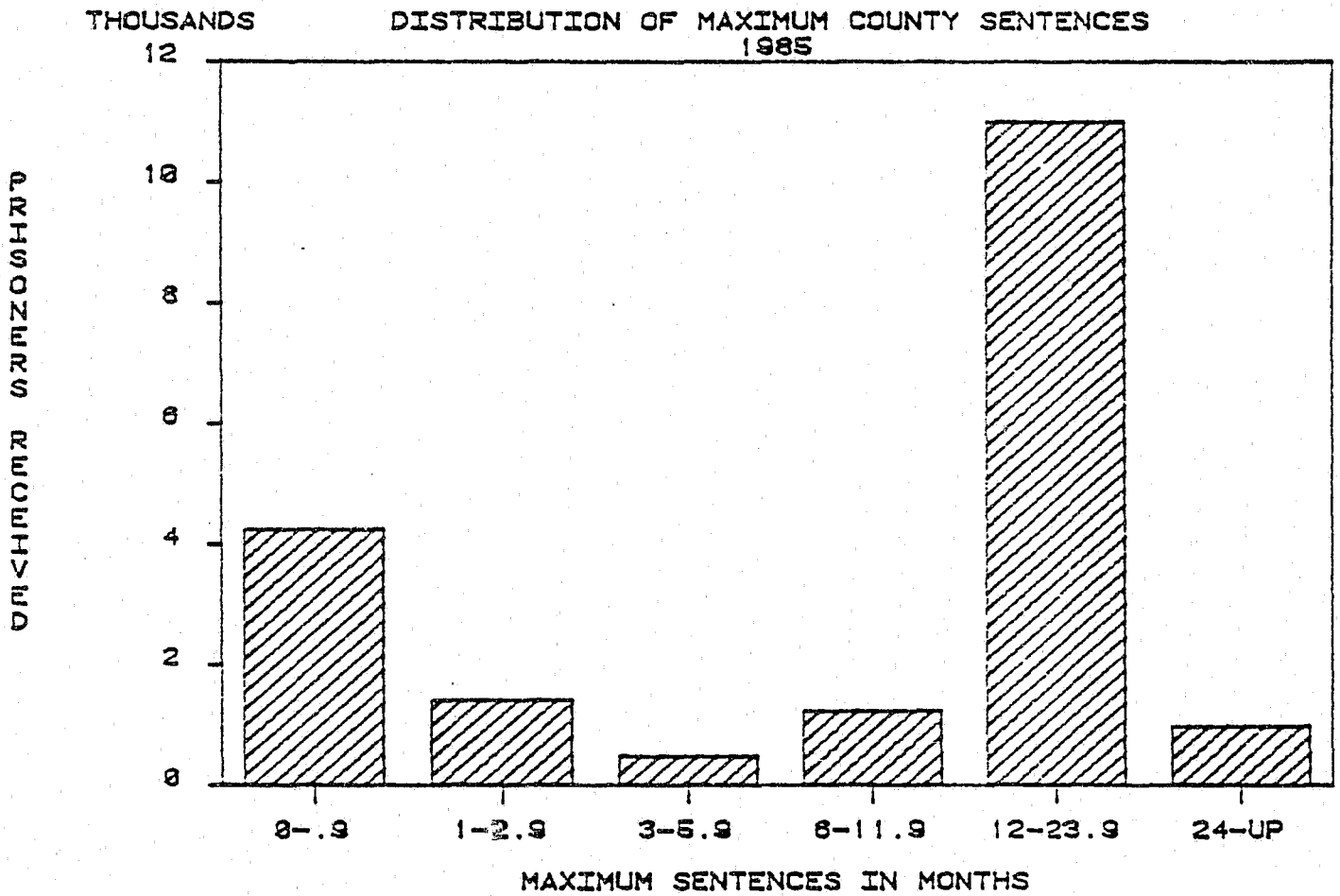


TABLE 23

Distribution of Maximum Sentences of County Prisoners Received
During 1985

County	1-5 days	6-10 days	11-15 days	16-30 days	31-60 days	61-90 days	91-182 days
Adams	43	8	10	17	16	19	10
Allegheny	277	124	55	239	59	79	64
Armstrong	7	3	6	11	3	1	1
Beaver	3	1	0	7	1	3	10
Bedford	5	3	3	13	7	11	4
Berks	1	5	5	10	12	11	5
Blair	87	27	15	55	17	18	7
Bradford	0	0	0	2	2	0	1
Bucks	10	7	6	49	19	48	10
Butler	99	55	14	89	15	29	6
Cambria	4	0	0	3	0	0	2
Cameron	0	0	0	1	0	0	0
Carbon	0	1	1	8	5	14	5
Centre	10	12	3	17	11	9	3
Chester	37	50	23	60	26	66	7
Clarion	14	2	0	2	0	4	0
Clearfield	23	6	2	16	5	5	5
Clinton	0	2	1	2	1	2	1
Columbia	3	8	0	11	1	8	4
Crawford	17	22	18	30	12	8	19
Cumberland	1	4	2	7	1	0	15
Dauphin	3	9	11	15	16	10	12
Delaware	5	13	8	67	45	56	14
Elk	10	2	2	5	1	3	1
Erie	122	33	7	29	9	11	9
Fayette	54	18	4	50	14	3	15
Forest	1	0	0	2	0	3	0
Franklin	30	34	16	53	21	27	10
Fulton	0	0	0	0	0	1	0
Greene	2	2	4	6	2	6	3
Huntingdon	2	1	2	9	1	3	1
Indiana	5	4	3	7	6	5	2
Jefferson	0	3	1	8	1	3	5
Juniata	0	0	2	2	1	1	1
Lackawanna	3	0	0	3	1	3	2
Lancaster	3	6	5	49	10	9	5
Lawrence	6	4	2	16	0	2	0
Lebanon	12	13	12	42	16	23	12
Lehigh	0	0	1	27	2	15	1
Luzerne	18	8	4	19	8	5	19
Lycoming	22	5	20	22	10	21	9
McKean	1	4	6	10	2	13	4
Mercer	28	11	6	36	10	26	4
Mifflin	8	2	1	2	1	3	3
Monroe	10	0	1	10	1	10	4
Montgomery	6	10	7	20	21	21	6
Montour	1	4	0	3	1	2	0
Northampton	61	27	8	24	8	25	31
Northumberland	19	6	5	12	4	19	2
Perry	1	0	1	3	0	2	1
Philadelphia	200	195	17	98	42	34	88
Pike	1	1	1	0	1	6	0
Potter	0	4	0	15	7	2	2
Schuylkill	0	2	1	9	6	8	1
Snyder	3	3	1	6	0	6	0
Somerset	4	4	0	1	1	13	4
Sullivan	0	0	0	0	0	0	0
Susquehanna	23	3	2	6	4	2	0
Tioga	12	2	0	2	4	9	0
Union	2	1	0	2	1	4	1
Venango	6	10	12	40	5	4	2
Warren	3	2	2	8	6	10	3
Washington	91	6	1	14	4	5	2
Wayne	2	0	3	0	0	2	0
Westmoreland	88	9	6	38	18	21	10
Wyoming	2	2	3	2	1	2	0
York	5	14	10	94	50	38	12
Federal	0	0	1	2	0	2	2
Total	1,516	817	363	1,537	575	834	482

TABLE 24

Distribution of Maximum Sentences of County Prisoners Received
During 1985 (continued)

County	6-11.9 months	1-1.9 years	2-2.9 years	3-3.9 years	4 years & over	Total	Avg. Max. Sent. (Days)
Adams	24	102	3	5	8	265	369.8
Allegheny	264	99	14	0	0	1,274	100.6
Armstrong	3	28	0	0	0	63	299.7
Beaver	13	120	5	0	1	164	465.6
Bedford	11	52	1	0	1	111	248.8
Berks	24	282	26	28	35	444	601.2
Blair	7	167	14	9	21	444	361.4
Bradford	2	29	1	0	1	38	461.3
Bucks	24	867	15	13	30	1,098	491.1
Butler	26	4	1	0	0	338	46.7
Cambria	7	78	9	5	5	113	606.7
Cameron	0	1	0	0	0	2	379.5
Carbon	15	26	7	1	3	86	354.7
Centre	2	146	3	3	6	225	399.4
Chester	12	486	4	6	18	795	492.4
Clarion	3	29	1	0	0	55	388.0
Clearfield	8	125	3	4	1	203	381.5
Clinton	0	28	4	12	5	58	720.5
Columbia	1	66	4	2	1	109	349.9
Crawford	15	203	1	0	0	345	264.3
Cumberland	125	163	5	0	7	330	409.6
Dauphin	94	540	5	2	7	724	436.1
Delaware	31	761	27	32	46	1,105	552.7
Elk	2	7	0	0	0	33	131.9
Erie	14	374	3	0	0	611	392.4
Fayette	7	1	0	0	0	166	36.7
Forest	1	3	0	0	0	10	191.9
Franklin	9	140	0	0	4	344	284.7
Fulton	0	2	0	0	0	3	385.0
Greene	3	40	0	2	3	73	408.3
Huntingdon	2	64	1	2	1	89	561.3
Indiana	0	62	2	0	0	96	362.8
Jefferson	0	54	2	1	0	78	401.9
Juniata	1	20	0	0	0	28	472.8
Lackawanna	10	33	42	2	4	103	550.6
Lancaster	2	267	0	2	12	370	518.7
Lawrence	9	71	0	1	0	111	382.8
Lebanon	40	155	4	6	21	356	439.0
Lehigh	9	223	13	19	7	317	557.0
Luzerne	66	163	21	15	44	390	559.9
Lycoming	15	415	0	0	1	540	387.9
McKean	10	8	0	0	1	59	166.8
Mercer	10	176	1	0	0	308	279.1
Mifflin	12	29	0	0	0	61	261.7
Monroe	30	46	1	2	4	119	360.6
Montgomery	8	646	0	3	13	761	580.7
Montour	0	20	2	0	1	34	440.1
Northampton	26	216	25	24	24	499	398.1
Northumberland	5	117	4	12	12	217	523.1
Perry	1	32	0	0	1	42	479.9
Philadelphia	123	1,877	21	17	18	2,730	475.3
Pike	3	23	5	0	0	41	389.2
Potter	7	6	0	0	0	43	132.0
Schuylkill	3	162	10	7	15	224	569.3
Snyder	0	46	1	1	0	67	331.6
Somerset	1	84	4	3	2	121	477.0
Sullivan	0	0	0	0	0	0	0.0
Susquehanna	14	31	0	1	2	88	267.5
Tioga	1	17	1	0	0	48	206.8
Union	0	43	0	0	0	54	491.9
Venango	13	129	6	1	0	228	261.8
Warren	19	65	2	1	0	121	313.7
Washington	3	223	2	0	1	352	326.9
Wayne	9	19	0	0	0	35	387.8
Westmoreland	14	11	0	0	0	215	67.5
Wyoming	0	12	0	0	0	24	224.5
York	14	451	5	7	5	705	325.0
Federal	1	4	0	0	1	13	370.5
Total	1,228	10,989	331	251	393	19,316	405.9

TABLE 25

Age Distribution of Sentenced Prisoners Received in County
Prisons and Jails During 1985

County	18 & under	19-20	21-24	25-29	30-34	35-39	40-44	45-49
Adams	14	30	66	39	36	27	20	13
Allegheny	23	106	258	315	236	135	70	57
Armstrong	2	9	13	18	14	2	0	4
Beaver	4	11	37	44	29	18	4	9
Bedford	1	8	30	23	11	11	8	4
Berks	9	58	111	86	87	28	27	12
Blair	9	49	104	98	60	38	22	24
Bradford	3	7	11	5	4	2	2	2
Bucks	22	93	234	281	192	123	62	40
Butler	12	38	84	81	47	20	32	8
Cambria	10	15	21	26	13	5	8	2
Cameron	2	0	0	0	0	0	0	0
Carbon	5	8	27	21	11	2	6	2
Centre	3	14	61	51	42	22	14	8
Chester	17	67	177	201	141	89	36	26
Clarion	2	10	15	8	9	3	1	2
Clearfield	0	26	47	38	31	18	10	13
Clinton	5	8	15	15	5	5	0	2
Columbia	5	14	19	19	17	22	4	4
Crawford	19	27	88	73	45	32	25	20
Cumberland	14	40	77	94	57	35	13	9
Dauphin	24	68	158	179	117	62	43	27
Delaware	30	99	249	275	211	93	49	36
Elk	2	3	12	5	6	3	0	1
Erie	16	60	149	136	79	56	36	30
Fayette	4	19	33	45	19	15	7	10
Forest	1	0	3	0	1	1	1	0
Franklin	5	41	64	78	53	30	29	11
Fulton	0	0	0	1	1	1	0	0
Greene	2	5	11	13	12	10	9	5
Huntingdon	3	9	11	23	9	14	7	7
Indiana	5	12	21	21	10	11	10	4
Jefferson	2	6	18	17	16	5	6	1
Juniata	0	1	11	4	4	5	0	2
Lackawanna	3	9	28	29	14	10	4	2
Lancaster	6	35	82	100	61	37	12	16
Lawrence	0	9	32	31	10	8	8	4
Lebanon	5	43	77	80	67	40	14	11
Lehigh	6	32	69	74	51	38	14	15
Luzerne	13	25	95	106	57	36	22	13
Lycoming	8	70	138	143	68	50	29	15
McKean	8	13	14	9	5	6	3	0
Mercer	11	31	56	77	43	36	19	17
Mifflin	1	7	18	13	7	4	7	1
Monroe	6	13	18	31	14	12	10	3
Montgomery	14	78	180	188	144	71	33	16
Montour	3	3	9	5	7	3	1	3
Northampton	28	48	160	196	134	76	33	25
Northumberland	10	31	66	41	25	15	11	6
Perry	2	7	10	8	5	1	2	2
Philadelphia	69	329	694	617	420	223	132	87
Pike	4	6	8	5	2	4	2	6
Potter	2	4	8	9	8	4	4	3
Schuylkill	12	23	69	53	35	13	8	4
Snyder	6	11	12	14	11	5	1	2
Somerset	4	11	32	34	12	15	11	3
Sullivan	0	0	0	0	0	0	0	0
Susquehanna	1	8	16	22	13	10	7	4
Tioga	2	3	10	10	10	5	3	2
Union	2	5	15	6	14	6	0	2
Venango	10	28	48	51	33	15	12	9
Warren	2	16	24	30	14	13	10	4
Washington	11	33	67	92	44	33	15	15
Wayne	1	8	9	5	2	5	1	1
Westmoreland	4	14	53	68	27	27	7	3
Wyoming	0	2	7	8	2	0	1	0
York	8	72	168	191	110	54	43	19
Federal	0	0	1	1	1	4	4	0
Total	537	1,988	4,528	4,680	3,095	1,822	1,044	708

TABLE 26

Age Distribution of Sentenced Prisoners Received in County Prisons and Jails During 1985 (continued)

County	50-54	55-59	60-64	65 & over	Unknown	Total	Average age
Adams	11	3	4	2	0	265	30.6
Allegheny	23	22	16	13	0	1,274	30.8
Armstrong	0	1	0	0	0	63	27.8
Beaver	2	3	0	3	0	164	30.3
Bedford	7	6	1	1	0	111	32.1
Berks	14	7	1	1	3	444	29.1
Blair	8	13	14	5	0	444	31.1
Bradford	0	1	0	0	1	38	27.1
Bucks	25	11	10	5	0	1,098	30.1
Butler	2	9	3	2	0	338	29.3
Cambria	7	2	2	2	0	113	30.2
Cameron	0	0	0	0	0	2	18.0
Carbon	0	2	1	1	0	86	28.2
Centre	4	2	3	1	0	225	30.0
Chester	17	13	6	4	1	795	29.9
Clarion	3	1	0	1	0	55	28.6
Clearfield	6	7	2	5	0	203	31.7
Clinton	0	1	2	0	0	58	27.4
Columbia	3	1	0	1	0	109	30.0
Crawford	6	4	0	3	0	345	30.0
Cumberland	10	11	0	2	0	362	29.4
Dauphin	24	15	5	2	0	724	30.1
Delaware	31	11	13	8	0	1,105	29.8
Elk	0	0	1	0	0	33	27.4
Erie	22	14	4	9	0	611	30.8
Fayette	6	4	1	3	0	166	30.7
Forest	1	2	0	0	0	10	36.0
Franklin	15	11	3	4	0	344	31.4
Fulton	0	0	0	0	0	3	32.7
Greene	3	2	0	1	0	73	33.5
Huntingdon	2	1	3	0	0	89	31.9
Indiana	0	1	0	1	0	96	29.1
Jefferson	0	1	2	3	1	78	31.0
Juniata	0	1	0	0	0	28	29.9
Lackawanna	3	1	0	0	0	103	28.3
Lancaster	11	5	2	1	2	370	29.7
Lawrence	5	2	2	0	0	111	30.1
Lebanon	9	4	3	3	0	356	29.8
Lehigh	7	4	3	4	0	317	30.4
Luzerne	8	8	3	4	0	390	30.0
Lycoming	9	6	3	1	0	540	28.6
McKean	1	0	0	0	0	59	25.5
Mercer	6	7	4	1	0	308	30.7
Mifflin	2	1	0	1	0	62	29.9
Monroe	2	7	0	3	0	119	31.4
Montgomery	17	13	2	2	3	761	29.1
Montour	0	0	0	0	0	34	28.5
Northampton	21	8	5	1	0	735	29.7
Northumberland	2	4	5	1	0	217	28.2
Perry	1	1	2	1	0	42	30.4
Philadelphia	62	48	29	14	6	2,730	29.2
Pike	3	0	1	0	0	41	31.4
Potter	1	0	0	0	0	43	30.2
Schuylkill	2	1	2	2	0	224	27.6
Snyder	3	1	0	0	1	67	28.0
Somerset	2	1	1	1	0	127	29.5
Sullivan	0	0	0	0	0	0	0.0
Susquehanna	6	1	0	0	0	88	31.3
Tioga	1	1	0	1	0	48	31.0
Union	2	0	1	1	0	54	30.2
Venango	6	7	4	5	0	228	30.7
Warren	4	5	4	2	0	128	32.2
Washington	14	12	13	3	0	352	31.7
Wayne	1	1	0	1	0	35	29.5
Westmoreland	7	4	1	0	0	215	29.4
Wyoming	0	3	0	0	1	24	30.4
York	17	15	4	4	0	705	29.5
Federal	1	1	0	0	0	13	38.5
Total	488	355	194	140	19	19,598	29.9

Figure 4

AGE DISTRIBUTION OF SENTENCED COUNTY PRISONERS
1985

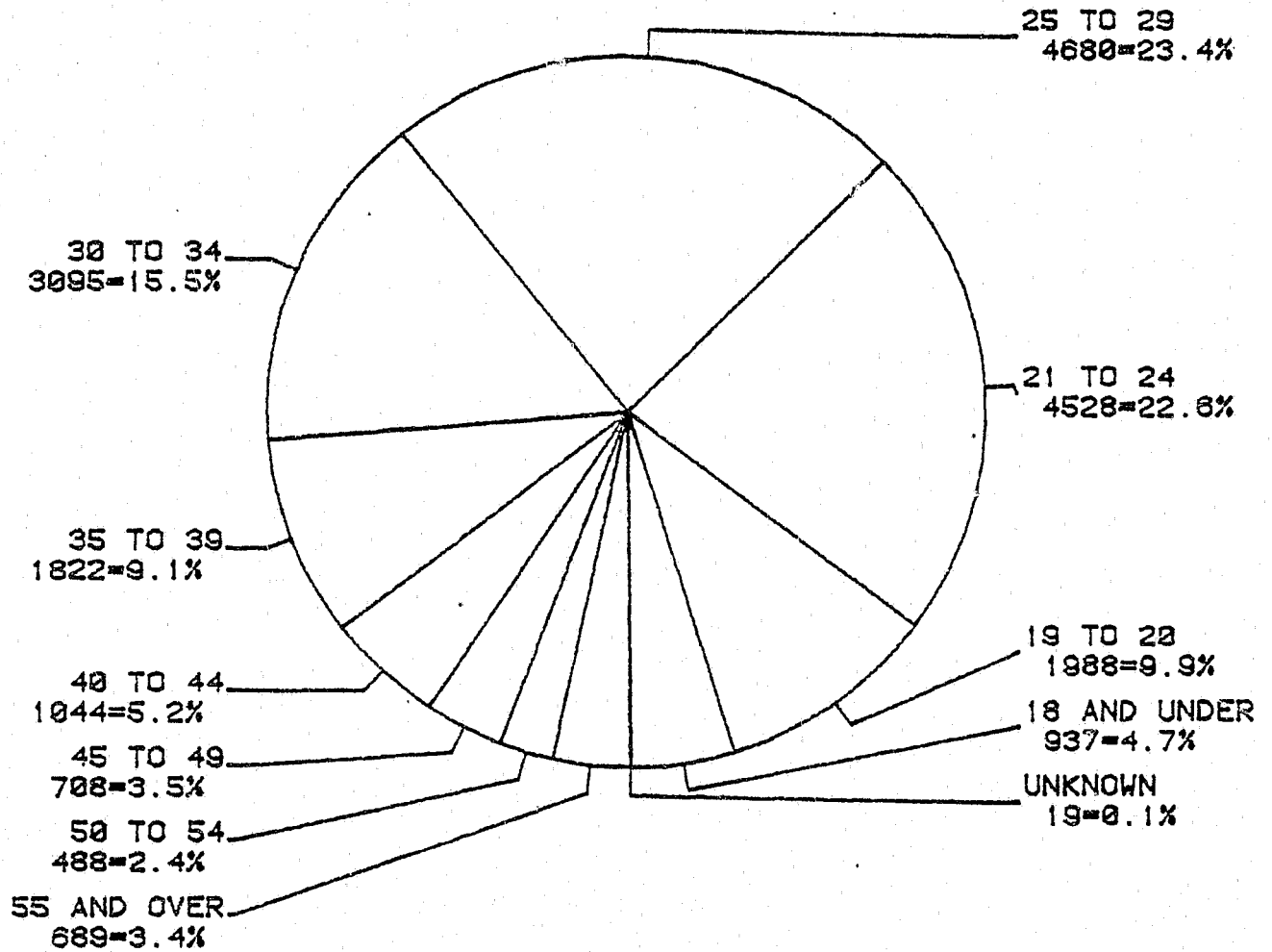


TABLE 27

Pre-Trial Detentioners Received in Pennsylvania
County Prisons and Jails During 1985

County	Types of Population Movements			Total detentioners received
	Held for trial or further hearing	Held for various authorities	Held for mental examination	
Adams	356	2	0	358
Allegheny	7,513	711	50	8,274
Armstrong	229	14	0	243
Beaver	480	114	1	595
Bedford	135	88	0	223
Berks	1,537	50	1	1,588
Blair	572	5	0	577
Bradford	42	188	0	230
Bucks	2,398	193	1	2,592
Butler	801	15	0	816
Cambria	474	16	0	490
Cameron	49	0	0	49
Carbon	104	16	0	120
Centre	449	18	0	467
Chester	2,019	122	0	2,141
Clarion	110	29	2	141
Clearfield	472	49	0	521
Clinton	101	23	0	124
Columbia	229	9	0	238
Crawford	247	214	0	461
Cumberland	535	148	0	683
Dauphin	1,967	227	0	2,194
Delaware	2,167	497	0	2,664
Elk	69	3	0	72
Erie	1,496	38	0	1,534
Fayette	785	1	0	786
Forest	13	0	0	13
Franklin	600	20	0	620
Fulton	(c)	(c)	(c)	(c)
Greene	140	65	0	205
Huntingdon	124	8	0	132
Indiana	331	163	0	494
Jefferson	129	35	0	164
Juniata	79	4	0	83
Lackawanna	260	560	0	820
Lancaster	1,211	9	0	1,220
Lawrence	353	65	0	418
Lebanon	397	16	0	413
Lehigh	1,534	68	0	1,602
Luzerne	651	114	0	765
Lycoming	40	728	0	768
McKean	90	23	0	113
Mercer	379	230	0	609
Mifflin	240	6	0	246
Monroe	195	500	0	695
Montgomery	2,079	0	0	2,079
Montour	51	0	0	51
Northampton	744	58	0	802
Northumberland	438	153	0	591
Perry	62	8	0	70
Philadelphia	20,340	1,142	0	21,482
Pike	32	37	0	69
Potter	30	29	1	60
Schuylkill	229	42	0	271
Snyder	64	11	0	75
Somerset	284	104	1	389
Sullivan	(c)	(c)	(c)	(c)
Susquehanna	64	4	0	68
Tioga	240	0	0	240
Union	95	163	0	258
Venango	235	0	0	235
Warren	64	161	0	225
Washington	629	407	0	1,036
Wayne	57	9	0	66
Westmoreland	1,116	13	0	1,129
Wyoming	63	3	1	67
York	2,397	95	0	2,492
Total	61,415	7,843	58	69,316

TABLE 28

Unconditional and Conditional Releases of Sentenced Prisoners from
Pennsylvania County Prisons and Jails During 1985

County	Expiration of maximum sentence	Unconditional Releases (final)			Total	Conditional Releases		
		By court's order	By minor judiciary's order	Payment of fines and/or costs		Paroled by PBPP*	Paroled by court	Total
Adams	83	26	1	30	140	6	93	99
Allegheny	479	385	0	242	1,106	2	148	150
Armstrong	30	0	0	2	32	0	26	26
Beaver	15	2	3	6	26	7	139	146
Bedford	23	1	6	21	51	0	60	60
Berks	50	27	2	3	82	115	291	406
Blair	185	8	9	11	213	19	157	176
Bradford	2	0	0	0	2	4	15	19
Bucks	84	31	8	1	124	29	730	759
Butler	228	22	21	59	330	0	12	12
Cambria	15	5	0	0	20	20	75	95
Cameron	0	0	0	1	1	0	1	1
Carbon	8	1	6	0	15	8	55	63
Centre	43	2	5	18	68	14	157	171
Chester	221	9	12	17	259	32	529	561
Clarion	26	1	0	0	27	2	38	40
Clearfield	49	1	5	8	63	14	147	161
Clinton	5	0	0	0	5	19	29	48
Columbia	34	2	3	0	39	4	67	71
Crawford	91	1	7	20	119	0	237	237
Cumberland	21	2	5	33	61	7	285	292
Dauphin	52	6	22	5	85	10	633	643
Delaware	183	25	19	10	237	64	736	800
Elk	15	3	2	4	24	0	6	6
Erie	202	7	7	6	222	0	366	366
Fayette	101	1	0	39	141	0	5	5
Forest	(d)	(d)	(d)	(d)	(d)	(d)	(d)	(d)
Franklin	184	18	11	7	220	10	151	161
Fulton	(c)	(c)	(c)	(c)	(c)	(c)	(c)	(c)
Greene	14	0	0	6	20	4	33	37
Huntingdon	10	0	0	7	17	6	67	73
Indiana	19	0	1	12	32	1	67	68
Jefferson	10	0	3	1	14	0	48	48
Juniata	3	0	3	0	6	1	26	27
Lackawanna	7	0	1	0	8	78	47	125
Lancaster	75	0	0	26	101	12	297	309
Lawrence	29	3	3	1	36	1	94	95
Lebanon	83	45	9	20	157	37	153	190
Lehigh	49	1	1	14	65	32	202	234
Luzerne	85	56	10	10	161	71	186	257
Lycoming	93	5	6	4	108	1	441	442
McKean	21	0	0	6	27	0	30	30
Mercer	82	2	4	7	95	2	204	206
Mifflin	14	3	0	1	18	0	48	48
Monroe	41	0	0	17	58	10	92	102
Montgomery	38	0	9	38	85	17	587	604
Montour	13	1	0	0	14	3	39	42
Northampton	162	228	5	26	421	61	220	281
Northumberland	51	4	12	4	71	30	120	150
Perry	4	0	0	0	4	0	32	32
Philadelphia	614	96	18	144	872	32	1,441	1,473
Pike	5	1	0	9	15	2	14	16
Potter	10	0	2	1	13	0	21	21
Schuylkill	20	7	2	5	34	20	150	170
Snyder	5	0	1	8	14	3	48	51
Somerset	9	4	1	19	33	11	96	107
Sullivan	(c)	(c)	(c)	(c)	(c)	(c)	(c)	(c)
Susquehanna	27	15	0	9	51	3	37	40
Tioga	20	5	1	2	28	1	12	13
Union	5	0	5	1	11	0	39	39
Venango	47	1	6	25	79	4	160	164
Warren	22	10	5	8	45	9	96	105
Washington	103	3	9	0	115	3	223	226
Wayne	6	4	0	4	14	1	22	23
Westmoreland	129	6	22	2	159	0	22	22
Wyoming	8	1	0	3	12	1	13	14
York	185	13	14	22	234	19	461	480
Total	4,547	1,100	307	1,005	6,959	862	11,076	11,938

* Pennsylvania Board of Probation and Parole

TABLE 29

Detentioners Released from Pennsylvania County Prisons
and Jails During 1985

County	On bail	By holding authorities (court & etc.)	Sentenced to local county prison	Sentenced to State correctional institutions	Sentenced to State Reg. corr. facility	By various Fed., State and police authorities	Mental patients released	Total detentioners released
Adams	124	167	65	3	0	2	3	364
Allegheny	4,074	2,957	0	421	573	30	152	8,207
Armstrong	83	104	0	0	1	5	2	195
Beaver	265	283	26	22	0	11	1	608
Bedford	81	41	5	0	0	118	0	245
Berks	566	620	216	64	0	49	53	1,568
Blair	79	406	74	4	0	8	0	571
Bradford	94	83	29	2	0	0	2	210
Bucks	545	1,525	284	73	0	286	55	2,768
Butler	371	394	0	4	21	8	0	798
Cambria	175	206	43	26	0	54	0	504
Cameron	22	18	1	0	0	0	0	41
Carbon	48	28	25	11	0	8	11	131
Centre	280	104	56	26	0	7	6	479
Chester	588	997	301	0	0	97	0	1,983
Clarion	72	78	0	7	5	7	0	169
Clearfield	160	155	44	41	10	7	4	421
Clinton	77	48	6	5	0	6	1	143
Columbia	81	119	19	4	0	9	0	232
Crawford	110	96	24	29	16	168	0	443
Cumberland	265	194	53	26	0	144	4	686
Dauphin	619	1,273	148	119	0	260	42	2,461
Delaware	1,315	815	370	0	0	8	0	2,508
Elk	32	38	0	7	5	6	0	88
Erie	544	566	149	109	117	31	0	1,516
Fayette	267	273	0	59	79	15	8	701
Forest	0	13	0	0	0	0	0	13
Franklin	172	228	171	32	0	26	4	633
Fulton	(c)	(c)	(c)	(c)	(c)	(c)	(c)	(c)
Greene	68	76	16	20	7	0	0	187
Huntingdon	89	4	9	5	0	4	2	113
Indiana	148	173	7	10	8	155	3	504
Jefferson	93	87	22	1	4	12	3	222
Juniata	49	7	3	2	0	0	0	61
Lackawanna	293	185	21	57	0	251	0	817
Lancaster	401	627	57	53	0	44	0	1,182
Lawrence	182	125	18	9	19	57	3	413
Lebanon	139	202	105	25	0	8	0	479
Lehigh	802	439	138	32	0	177	0	1,588
Luzerne	323	269	72	23	0	99	0	786
Lycoming	267	308	115	74	0	1	2	767
McKean	40	17	20	6	14	17	0	114
Mercer	133	153	28	31	60	169	3	577
Mifflin	51	162	0	25	0	3	0	241
Monroe	290	325	0	28	0	0	7	650
Montgomery	602	1,399	254	165	0	0	0	2,420
Montour	21	6	0	0	0	2	0	29
Northampton	307	345	141	24	0	1	15	833
Northumberland	144	192	59	30	0	344	4	773
Perry	25	38	0	1	0	3	0	67
Philadelphia	10,115	7,345	1,243	1,265	0	1,164	99	21,231
Pike	33	11	12	4	0	5	1	66
Potter	18	37	1	3	2	2	4	67
Schuylkill	141	50	77	5	0	2	6	281
Snyder	24	14	3	3	0	7	0	51
Somerset	184	47	18	14	0	140	7	410
Sullivan	(c)	(c)	(c)	(c)	(c)	(c)	(c)	(c)
Susquehanna	34	18	8	3	0	9	1	73
Tioga	66	140	13	16	0	2	0	237
Union	18	96	1	7	0	145	1	268
Venango	76	95	39	5	20	0	0	235
Warren	57	92	22	5	1	0	2	179
Washington	2	318	51	1	0	405	0	1,047
Wayne	24	28	2	4	0	8	1	67
Westmoreland	460	550	29	16	46	9	0	1,110
Wyoming	10	4	1	2	0	5	1	23
York	829	1,225	208	131	0	85	0	2,478
Total	27,937	27,038	4,922	3,199	1,008	4,715	513	69,332

TABLE 30

Number of Sentenced Prisoners Released from County Prisons and Jails During 1985, by Part I
Offense and by Committing County

Committing County	Murder ¹	Manslaughter	Forcible rape	Robbery	Aggravated assault	Burglary	Theft	Arson
Adams	0	0	0	0	2	18	12	1
Allegheny	0	1	0	4	9	69	117	0
Armstrong	0	0	0	0	1	6	3	0
Beaver	0	2	1	1	2	7	15	0
Bedford	0	0	0	0	0	2	1	0
Berks	0	6	0	4	16	54	56	1
Blair	0	0	0	2	4	14	12	0
Bradford	0	0	0	0	1	8	2	1
Bucks	6	5	7	18	9	81	74	1
Butler	0	1	0	0	3	12	11	2
Cambria	0	1	0	2	5	18	11	1
Cameron	0	0	0	0	2	1	0	0
Carbon	0	0	0	0	3	11	5	0
Centre	1	0	0	1	5	28	12	2
Chester	1	5	4	13	22	79	65	7
Clarion	0	0	0	0	1	2	1	0
Clearfield	0	2	0	0	5	14	13	1
Clinton	0	1	0	0	0	10	10	0
Columbia	0	0	0	0	0	2	12	0
Crawford	0	0	0	1	3	18	26	0
Cumberland	0	0	0	8	3	33	37	0
Dauphin	0	3	0	13	21	69	66	1
Delaware	0	4	2	34	33	97	113	1
Elk	0	1	0	0	2	1	3	0
Erie	0	2	1	5	11	34	39	4
Fayette	0	0	0	0	2	0	4	0
Forest	0	0	0	0	0	1	0	0
Franklin	0	0	0	1	2	19	25	1
Fulton	0	0	0	0	0	2	0	0
Greene	0	1	1	0	0	9	3	0
Huntingdon	0	1	0	0	1	5	7	0
Indiana	0	1	0	0	3	7	2	0
Jefferson	0	0	1	0	0	4	3	0
Juniata	1	0	0	0	1	3	4	0
Lackawanna	1	4	0	2	4	16	10	3
Lancaster	0	1	2	18	9	41	20	1
Lawrence	0	0	0	0	2	7	15	0
Lebanon	0	0	0	4	9	20	14	3
Lehigh	0	1	0	16	7	25	38	4
Luzerne	0	5	0	4	14	60	29	1
Lycoming	0	3	3	0	7	46	80	1
McKean	0	0	0	0	0	4	8	0
Mercer	0	0	0	0	0	9	17	0
Mifflin	0	0	0	0	1	8	11	0
Monroe	0	1	0	1	6	16	26	1
Montgomery	3	6	3	16	12	44	62	2
Montour	0	0	0	0	2	3	4	0
Northampton	2	1	2	9	9	53	42	1
Northumberland	0	1	0	1	0	13	22	0
Perry	0	1	0	0	1	3	0	0
Philadelphia	8	11	14	385	153	403	473	8
Pike	0	0	0	1	3	1	3	3
Potter	0	0	0	0	0	0	4	0
Schuylkill	0	2	1	3	10	31	23	1
Snyder	0	0	0	1	0	2	4	0
Somerset	0	0	1	0	5	7	16	0
Sullivan	0	0	0	0	0	0	0	0
Susquehanna	0	0	0	0	2	13	1	1
Tioga	0	0	0	0	0	0	1	0
Union	0	0	0	0	0	4	0	1
Venango	0	0	0	0	2	16	17	0
Warren	0	1	0	0	1	7	10	0
Washington	0	3	0	2	5	30	28	0
Wayne	0	0	0	0	2	7	3	0
Westmoreland	0	0	0	1	4	3	4	0
Wyoming	0	0	0	0	0	3	2	0
York	0	3	0	3	7	30	45	2
Federal	0	0	0	0	0	0	1	1
Total	23	81	43	574	449	1,663	1,797	58

¹ Includes 3rd degree and unspecified murder only.

TABLE 31

Average Days Served by Sentenced Prisoners Released from County Prisons
and Jails During 1985, by Part I Offense and by Committing County

Committing County	Murder ¹	Manslaughter	Forcible rape	Robbery	Aggravated assault	Burglary	Theft	Arson
Adams	0.0	0.0	0.0	0.0	323.5	146.2	119.9	104.0
Allegheny	0.0	335.0	0.0	127.3	115.7	19.1	27.0	33.6
Armstrong	0.0	0.0	0.0	0.0	183.0	162.5	41.7	0.0
Beaver	0.0	128.5	198.0	710.0	123.0	155.0	161.4	0.0
Bedford	0.0	0.0	0.0	0.0	0.0	360.5	10.0	0.0
Berks	0.0	278.8	0.0	421.0	211.1	348.5	172.6	525.0
Blair	0.0	0.0	0.0	675.5	639.5	187.6	89.0	0.0
Bradford	0.0	0.0	0.0	0.0	183.0	398.1	79.5	243.0
Bucks	240.5	408.4	232.1	424.8	200.2	204.8	119.3	51.0
Butler	0.0	85.0	0.0	0.0	54.7	65.2	109.4	87.5
Cambria	0.0	389.0	0.0	398.5	499.0	251.1	239.4	127.0
Cameron	0.0	0.0	0.0	0.0	75.0	60.0	0.0	0.0
Carbon	0.0	0.0	0.0	0.0	284.3	303.5	142.4	0.0
Centre	789.0	0.0	0.0	243.0	198.0	138.8	66.0	471.5
Chester	364.0	239.0	588.5	483.4	329.2	197.9	148.8	432.7
Clarion	0.0	0.0	0.0	0.0	91.0	77.5	6.0	0.0
Clearfield	0.0	60.5	0.0	0.0	188.2	133.6	152.4	69.0
Clinton	0.0	426.0	0.0	0.0	0.0	183.5	105.8	0.0
Columbia	0.0	0.0	0.0	0.0	0.0	190.0	124.3	0.0
Crawford	0.0	0.0	0.0	15.0	93.7	95.2	50.0	0.0
Cumberland	0.0	0.0	0.0	305.3	59.3	193.9	116.6	0.0
Dauphin	0.0	285.3	0.0	249.4	136.1	167.6	136.3	152.0
Delaware	0.0	200.0	182.0	360.5	268.9	250.4	139.8	52.0
Elk	0.0	122.0	0.0	0.0	74.5	84.0	51.3	0.0
Erie	0.0	60.0	96.0	119.0	45.5	90.2	80.5	77.0
Fayette	0.0	0.0	0.0	0.0	46.5	0.0	16.8	0.0
Forest	0.0	0.0	0.0	0.0	0.0	35.0	0.0	0.0
Franklin	0.0	0.0	0.0	187.0	249.5	249.9	224.1	240.0
Fulton	0.0	0.0	0.0	0.0	0.0	60.0	0.0	0.0
Greene	0.0	183.0	190.0	0.0	0.0	269.6	132.7	0.0
Huntingdon	0.0	183.0	0.0	0.0	183.0	335.8	222.3	0.0
Indiana	0.0	181.0	0.0	0.0	154.0	142.6	149.0	0.0
Jefferson	0.0	0.0	145.0	0.0	0.0	96.0	147.3	0.0
Juniata	242.0	0.0	0.0	0.0	243.0	142.0	95.3	0.0
Lackawanna	182.0	221.3	0.0	744.0	280.5	488.0	322.1	276.3
Lancaster	0.0	30.0	319.5	191.9	214.8	217.7	152.9	243.0
Lawrence	0.0	0.0	0.0	0.0	93.0	98.9	80.1	0.0
Lebanon	0.0	0.0	0.0	681.3	366.7	542.0	272.0	943.3
Lehigh	0.0	267.0	0.0	290.6	539.0	325.5	234.8	533.0
Luzerne	0.0	399.4	0.0	220.0	373.2	327.1	280.1	225.0
Lycoming	0.0	85.7	246.7	0.0	98.4	139.0	78.8	700.0
McKean	0.0	0.0	0.0	0.0	0.0	102.5	72.1	0.0
Mercer	0.0	0.0	0.0	0.0	0.0	88.2	40.4	0.0
Mifflin	0.0	0.0	0.0	0.0	350.0	123.6	58.0	0.0
Monroe	0.0	350.0	0.0	352.0	179.2	245.6	188.3	730.0
Montgomery	349.7	276.5	309.3	272.9	169.7	220.8	154.7	547.5
Montour	0.0	0.0	0.0	0.0	181.0	114.0	50.3	0.0
Northampton	568.0	122.0	502.0	627.6	228.4	273.4	189.1	296.0
Northumberland	0.0	183.0	0.0	350.0	0.0	288.8	185.1	0.0
Perry	0.0	350.0	0.0	0.0	15.0	65.3	0.0	0.0
Philadelphia	656.8	276.2	172.5	236.6	170.5	216.7	179.6	205.0
Pike	0.0	0.0	0.0	2.0	172.3	128.0	152.3	314.3
Potter	0.0	0.0	0.0	0.0	0.0	0.0	88.8	0.0
Schuylkill	0.0	76.0	639.0	574.0	406.4	257.7	194.0	175.0
Snyder	0.0	0.0	0.0	106.0	0.0	365.0	13.0	0.0
Somerset	0.0	0.0	113.0	0.0	311.0	180.7	179.1	0.0
Sullivan	0.0	0.0	0.0	0.0	0.0	0.0	0.0	0.0
Susquehanna	0.0	0.0	0.0	0.0	109.5	169.7	70.0	185.0
Tioga	0.0	0.0	0.0	0.0	0.0	0.0	90.0	0.0
Union	0.0	0.0	0.0	0.0	0.0	113.8	0.0	183.0
Venango	0.0	0.0	0.0	0.0	136.5	76.8	91.9	0.0
Warren	0.0	204.0	0.0	0.0	284.0	266.3	192.5	0.0
Washington	0.0	168.7	0.0	204.5	83.6	138.7	68.2	0.0
Wayne	0.0	0.0	0.0	0.0	623.5	199.6	58.7	0.0
Westmoreland	0.0	0.0	0.0	350.0	54.0	38.3	24.0	0.0
Wyoming	0.0	0.0	0.0	0.0	0.0	225.7	137.0	0.0
York	0.0	219.3	0.0	231.3	248.0	299.1	146.9	412.0
Federal	0.0	0.0	0.0	0.0	0.0	0.0	548.0	33.0
Total	454.7	242.3	266.3	272.2	214.7	211.5	143.9	329.0

¹ Includes 3rd degree and unspecified murder only.

TABLE 32

Number of Sentenced Prisoners Released from County Prisons and Jails During 1985,
by Selected Part II Offense and by Committing County

Committing county	Other assaults	Frauds	Receiving stolen property	Narcotic drug laws	Drunken driving	Drunkenness	Disorderly conduct	Criminal mischief
Adams	12	18	0	5	77	14	11	3
Allegheny	67	37	12	29	477	24	173	45
Armstrong	1	3	1	11	17	0	6	1
Beaver	8	0	6	8	88	6	3	2
Bedford	3	2	0	0	58	2	2	3
Berks	45	12	14	38	97	0	9	7
Blair	17	13	0	13	221	11	22	6
Bradford	1	0	0	1	5	0	0	0
Bucks	42	6	16	56	392	3	2	6
Butler	6	6	2	7	130	52	32	3
Cambridia	9	1	6	8	21	2	5	5
Cameron	1	0	0	0	15	11	4	1
Carbon	8	1	1	10	19	1	3	0
Centre	6	6	3	9	106	7	8	1
Chester	51	19	20	34	241	25	35	43
Clarion	0	3	0	2	33	0	0	2
Clearfield	17	7	3	6	106	4	5	6
Clinton	4	0	0	1	21	0	2	0
Columbia	8	0	2	7	49	1	6	5
Crawford	13	18	3	15	150	29	7	12
Cumberland	16	19	4	19	136	0	6	4
Dauphin	32	20	18	107	213	13	18	6
Delaware	53	13	19	81	415	9	31	3
Elk	1	0	0	0	11	0	3	1
Erie	25	27	10	36	136	39	46	14
Fayette	6	9	0	0	49	20	19	7
Forest	0	0	0	0	4	0	0	0
Franklin	15	6	8	7	90	77	19	19
Fulton	0	0	0	0	3	0	0	0
Greene	1	1	3	1	17	4	4	0
Huntingdon	4	3	0	3	49	2	5	4
Indiana	4	5	1	0	42	4	4	1
Jefferson	4	1	0	3	28	0	0	3
Juniata	3	0	0	1	10	0	0	0
Lackawanna	14	3	13	13	34	0	1	2
Lancaster	14	2	7	35	131	4	5	2
Lawrence	7	4	5	7	45	6	5	3
Lebanon	7	11	1	19	105	3	9	2
Lehigh	7	6	10	24	78	0	3	1
Luzerne	19	9	10	31	72	5	9	9
Lycoming	27	8	4	43	204	5	19	10
McKean	3	2	1	2	10	0	3	5
Mercer	10	7	2	4	159	14	24	13
Mifflin	1	1	1	5	19	3	2	0
Monroe	9	8	3	8	26	3	6	2
Montgomery	7	8	15	42	298	8	29	3
Montour	0	1	1	6	19	1	5	1
Northampton	30	6	14	28	133	13	22	18
Northumberland	21	10	9	21	44	5	18	8
Perry	1	0	1	3	25	0	2	1
Philadelphia	139	7	24	87	379	1	5	6
Pike	1	0	1	0	5	0	2	0
Potter	1	0	0	2	12	0	0	1
Schuylkill	7	3	2	11	80	0	4	5
Snyder	6	3	0	0	23	0	3	2
Somerset	4	3	4	9	56	2	11	3
Sullivan	0	0	0	0	1	0	0	0
Susquehanna	4	2	0	6	33	1	2	0
Tioga	0	1	0	1	25	2	0	0
Union	3	1	1	6	25	1	2	0
Venango	12	9	1	12	108	19	14	5
Warren	6	5	3	16	48	9	1	2
Washington	21	4	14	14	91	32	29	12
Wayne	2	0	2	2	4	1	0	0
Westmoreland	2	6	3	6	101	5	7	6
Wyoming	2	2	0	5	4	0	0	1
York	32	20	7	40	260	29	14	9
Federal	1	0	0	2	1	0	0	0
Total	903	408	311	1,028	6,184	532	746	345

TABLE 33

Average Days Served by Sentenced Prisoners Released from County Prisons and Jails
During 1985, by Selected Part II Offense and by Committing County

Committing county	Other assaults	Frauds	Receiving stolen property	Narcotic drug laws	Drunken driving	Drunkness	Disorderly conduct	Criminal mischief
Adams	140.7	34.9	0.0	175.6	25.2	8.2	25.2	54.3
Allegheny	18.9	20.7	78.8	49.5	6.8	24.3	13.5	21.2
Armstrong	61.0	27.3	91.0	66.6	43.5	0.0	12.8	15.0
Beaver	137.5	0.0	112.8	128.1	32.2	37.0	63.0	52.0
Bedford	148.3	8.5	0.0	0.0	7.6	3.0	2.5	11.3
Berks	173.6	101.8	291.8	247.9	20.5	0.0	73.1	94.4
Blair	175.9	112.8	0.0	162.3	15.5	18.9	16.0	37.0
Bradford	91.0	0.0	0.0	148.0	9.0	0.0	0.0	0.0
Bucks	165.5	221.0	192.2	164.5	20.5	43.3	38.5	78.5
Butler	27.8	14.0	105.0	33.0	25.6	3.5	3.2	20.7
Cambria	319.4	336.0	64.2	449.0	49.0	1.5	105.8	298.0
Cameron	120.0	0.0	0.0	0.0	34.3	3.6	1.3	3.0
Carbon	231.9	29.0	402.0	209.4	30.7	7.0	12.7	0.0
Centre	35.8	67.3	26.0	120.0	35.6	11.0	18.5	22.0
Chester	141.5	135.7	217.1	202.8	24.3	26.2	26.4	46.6
Clarion	0.0	8.3	0.0	357.5	23.2	0.0	0.0	78.5
Clearfield	60.8	53.4	126.3	109.7	30.2	22.5	81.0	27.2
Clinton	83.3	0.0	0.0	30.0	70.3	0.0	17.5	0.0
Columbia	125.1	0.0	6.0	192.7	47.7	90.0	18.3	11.8
Crawford	27.7	22.7	49.3	88.6	17.7	13.8	6.6	26.0
Cumberland	53.3	56.5	90.0	94.1	27.9	0.0	13.5	45.0
Dauphin	83.2	104.1	185.4	148.9	26.8	24.0	16.9	23.2
Delaware	156.8	102.7	172.2	151.5	21.3	21.2	40.4	106.7
Elk	2.0	0.0	0.0	0.0	17.8	0.0	14.3	2.0
Erie	97.0	13.1	152.8	60.5	29.0	5.1	16.8	29.1
Fayette	25.3	1.8	0.0	0.0	21.2	17.9	14.1	14.0
Forest	0.0	0.0	0.0	0.0	28.0	0.0	0.0	0.0
Franklin	125.6	38.7	232.0	254.1	36.2	16.0	33.7	61.3
Fulton	0.0	0.0	0.0	0.0	29.7	0.0	0.0	0.0
Greene	122.0	81.0	72.3	237.0	106.2	6.5	19.0	0.0
Huntingdon	38.3	54.0	0.0	205.0	25.7	0.0	4.5	8.5
Indiana	105.5	41.2	55.0	0.0	44.4	12.8	6.0	3.0
Jefferson	119.5	45.0	0.0	202.3	27.3	0.0	0.0	92.7
Juniata	227.0	0.0	0.0	61.0	76.3	0.0	0.0	0.0
Lackawanna	255.6	386.7	338.6	196.5	46.5	0.0	17.0	173.0
Lancaster	162.8	91.0	137.0	213.6	51.0	42.5	16.0	10.0
Lawrence	79.1	35.8	114.8	107.7	53.5	14.2	56.2	14.3
Lebanon	25.6	92.9	183.0	164.7	41.6	19.7	118.2	306.5
Lehigh	200.9	171.3	183.7	240.3	41.0	0.0	65.3	365.0
Luzerne	238.7	131.9	230.6	163.5	27.0	25.8	194.0	128.3
Lycoming	97.6	100.5	77.8	61.5	12.0	14.8	18.3	41.5
McKean	37.0	8.5	152.0	122.0	16.5	0.0	39.7	18.8
Mercer	47.4	107.6	20.0	36.8	18.5	10.7	19.5	15.5
Mifflin	61.0	61.0	61.0	144.4	44.8	1.0	18.0	0.0
Monroe	157.4	122.4	133.0	87.4	42.3	38.0	34.5	106.5
Montgomery	80.4	165.4	187.5	154.6	13.5	31.0	20.5	9.7
Montour	0.0	150.0	456.0	143.3	40.6	7.0	100.2	30.0
Northampton	58.3	65.5	184.8	230.9	31.9	5.7	26.9	47.5
Northumberland	122.5	77.1	195.3	225.6	30.0	19.6	41.2	44.9
Perry	352.0	0.0	91.0	10.0	14.7	0.0	40.0	30.0
Philadelphia	181.7	162.1	174.3	165.5	29.5	189.0	6.0	41.7
Pike	30.0	0.0	183.0	0.0	72.4	0.0	20.0	0.0
Potter	192.0	0.0	0.0	30.0	22.8	0.0	0.0	7.0
Schuylkill	63.0	107.0	178.5	119.6	19.9	0.0	26.3	66.6
Snyder	69.7	1.7	0.0	0.0	9.6	0.0	115.7	13.5
Somerset	35.5	34.3	109.3	261.3	29.6	1.5	22.0	40.7
Sullivan	0.0	0.0	0.0	0.0	30.0	0.0	0.0	0.0
Susquehanna	46.3	23.5	0.0	64.2	5.5	1.0	6.0	0.0
Tioga	0.0	4.0	0.0	122.0	28.0	20.0	0.0	0.0
Union	61.0	3.0	61.0	101.3	7.6	5.0	27.5	0.0
Venango	31.8	67.1	92.0	97.7	13.0	18.2	21.6	40.8
Warren	256.3	89.6	66.3	256.8	53.0	25.3	75.0	15.5
Washington	116.7	83.0	128.3	111.8	32.5	3.5	3.2	78.5
Wayne	642.5	0.0	151.0	130.0	39.8	1.0	0.0	0.0
Westmoreland	44.5	43.0	76.0	80.0	8.7	35.0	39.7	51.5
Wyoming	365.0	1.5	0.0	169.6	141.3	0.0	0.0	108.0
York	58.5	48.3	273.1	208.7	26.3	27.4	27.7	38.8
Federal	34.0	0.0	0.0	49.0	30.0	0.0	0.0	0.0
Total	125.6	72.4	174.1	157.9	24.5	15.6	25.5	49.2

TABLE 34

Time Served Distribution of Sentenced Prisoners Released from County Prisons and Jails During 1985, by Part I and Part II Offense

Offense Classification	Time served distribution							Total released	Average days served
	1-15 days	16-30 days	31-60 days	61-90 days	91-179 days	180-364 days	365 days and over		
Part I Offenses:									
Murder (gen. 3rd degree)	0	1	0	1	3	7	11	23	454.7
Manslaughter	1	2	6	10	16	33	13	81	242.3
Forcible rape	4	1	2	2	9	15	10	43	266.3
Robbery	16	14	22	47	117	239	119	574	272.2
Aggravated assault	34	25	35	28	127	141	59	449	214.7
Burglary	150	123	97	124	409	511	249	1,663	211.5
Theft	287	182	167	196	422	410	133	1,797	143.9
Arson	2	1	5	2	10	21	17	58	329.0
Total Part I	494	349	334	410	1,113	1,377	611	4,688	197.5
Part II Offenses:									
Other assaults	192	126	89	96	182	149	69	903	125.6
Forgery	11	15	12	17	50	45	23	173	201.6
Frauds	172	50	35	39	66	36	10	408	72.4
Receiving stolen properties	28	22	24	36	82	91	28	311	174.1
Weapons	17	18	5	24	50	34	11	159	146.3
Other sex offenses	32	23	32	38	82	77	39	323	176.6
Narcotic drug laws	97	84	82	122	283	273	87	1,028	157.9
Non-support	346	96	50	20	41	34	1	588	32.2
Driving while intoxicated (DWI)	3,818	1,306	355	298	294	82	31	6,184	24.5
Other motor vehicle violations	499	187	105	255	60	7	2	1,115	38.7
Liquor laws	106	45	18	4	4	2	0	179	22.6
Drunkenness (except DWI)	371	107	33	17	3	1	0	532	15.6
Disorderly conduct	472	155	53	30	22	10	4	746	25.5
Criminal mischief	150	71	49	31	23	14	7	345	49.2
Corruption of minors	15	12	7	9	32	28	11	114	152.7
Criminal conspiracy	8	7	10	17	36	34	15	127	196.2
Prison breach	2	4	4	5	15	18	9	57	212.1
County/local ordinances	39	9	1	2	0	0	0	51	13.0
Contempt of court	358	63	46	24	21	19	0	531	26.0
Violation of probation	13	18	24	24	53	55	17	204	156.5
Other Part II offenses	181	90	50	38	84	69	18	530	71.5
Total Part II	6,927	2,508	1,084	1,146	1,483	1,078	382	14,608	60.5
All releases	7,421	2,857	1,418	1,556	2,596	2,455	993	19,296	93.8

TABLE 35

Time Served Distribution of Sentenced Prisoners Released from County Prisons and Jails During 1985, by Committing County

Committing county	1-15 days	16-30 days	31-60 days	61-90 days	91-179 days	180-364 days	365 days and over	Total released	Average days served
Adams	112	34	27	25	27	20	4	249	61.2
Allegheny	931	177	43	54	38	12	1	1,256	17.5
Armstrong	19	13	2	11	6	7	0	58	58.5
Beaver	43	37	17	15	42	13	4	171	76.9
Bedford	81	16	5	5	0	3	1	111	26.0
Berks	100	43	37	52	101	85	70	488	167.9
Blair	240	61	19	19	22	12	16	389	54.8
Bradford	5	0	2	0	5	3	6	21	232.4
Bucks	343	109	77	62	126	117	49	883	96.0
Butler	162	80	16	28	10	3	0	299	26.4
Cambria	14	20	7	8	17	30	19	115	219.3
Cameron	27	9	3	3	2	1	0	45	25.8
Carbon	18	12	3	10	16	11	8	78	134.4
Centre	91	55	23	26	21	13	10	239	68.5
Chester	264	111	69	81	131	125	39	820	112.6
Clarion	32	15	4	6	6	3	1	67	46.8
Clearfield	83	53	24	19	22	16	7	224	66.7
Clinton	9	14	2	9	6	7	6	53	112.6
Columbia	43	21	5	12	11	13	5	110	79.4
Crawford	179	66	34	16	52	9	0	356	34.7
Cumberland	124	76	23	28	58	37	7	353	72.6
Dauphin	188	154	56	56	128	122	24	728	94.4
Delaware	374	135	85	84	142	156	61	1,037	108.6
Elk	15	8	2	2	3	0	0	30	28.2
Erie	314	63	57	47	70	33	4	588	46.5
Fayette	98	32	6	3	7	0	0	146	16.5
Forest	0	5	4	1	0	0	0	10	37.0
Franklin	126	83	36	35	29	24	23	356	83.9
Fulton	0	4	0	1	0	0	0	5	41.8
Greene	14	4	5	5	18	9	2	57	107.6
Huntingdon	45	16	3	5	6	10	5	90	72.3
Indiana	41	17	11	7	14	9	1	100	58.4
Jefferson	18	13	4	9	15	2	1	62	67.4
Juniata	5	3	3	3	9	7	1	31	105.5
Lackawanna	11	15	8	12	21	34	32	133	247.7
Lancaster	83	69	19	65	75	91	8	410	111.6
Lawrence	24	25	21	27	29	6	0	132	63.5
Lebanon	145	45	29	26	25	44	33	347	128.5
Lehigh	37	64	25	31	48	57	37	299	162.9
Luzerne	92	50	33	22	64	97	60	418	176.7
Lycoming	258	79	58	52	55	39	9	550	56.9
McKean	22	14	5	5	10	2	0	58	47.1
Mercer	155	86	21	24	9	6	0	301	28.1
Mifflin	22	8	8	5	13	10	0	66	79.8
Monroe	27	21	10	21	34	37	10	160	132.8
Montgomery	287	69	20	65	99	131	18	689	92.6
Montour	20	8	5	3	7	11	1	55	86.9
Northampton	353	93	26	41	69	69	51	702	86.0
Northumberland	66	30	22	17	33	34	19	221	109.6
Perry	22	7	3	2	2	2	0	38	39.8
Philadelphia	729	160	165	199	539	700	252	2,744	151.5
Pike	12	4	2	2	4	4	3	31	93.5
Potter	17	9	4	0	2	2	0	34	34.4
Schuylkill	69	31	9	15	42	15	23	204	128.1
Snyder	35	12	1	6	8	1	2	65	44.8
Somerset	57	26	5	13	24	10	5	140	82.0
Sullivan	0	1	0	0	0	0	0	1	30.0
Susquehanna	57	2	8	9	7	7	1	91	45.1
Tioga	15	8	7	8	3	0	0	41	39.1
Union	24	5	2	7	9	3	0	50	45.3
Venango	135	55	12	6	25	8	1	242	35.8
Warren	23	39	9	18	22	19	10	140	113.4
Washington	164	48	38	17	38	29	7	341	57.9
Wayne	11	3	4	4	8	3	4	37	144.1
Westmoreland	111	33	18	12	5	2	0	181	23.6
Wyoming	7	0	2	2	5	7	3	26	131.2
York	172	177	103	72	100	62	28	714	85.4
Federal	1	2	2	1	2	1	1	10	115.5
Total	7,421	2,857	1,418	1,556	2,596	2,455	993	19,296	93.7

Figure 5

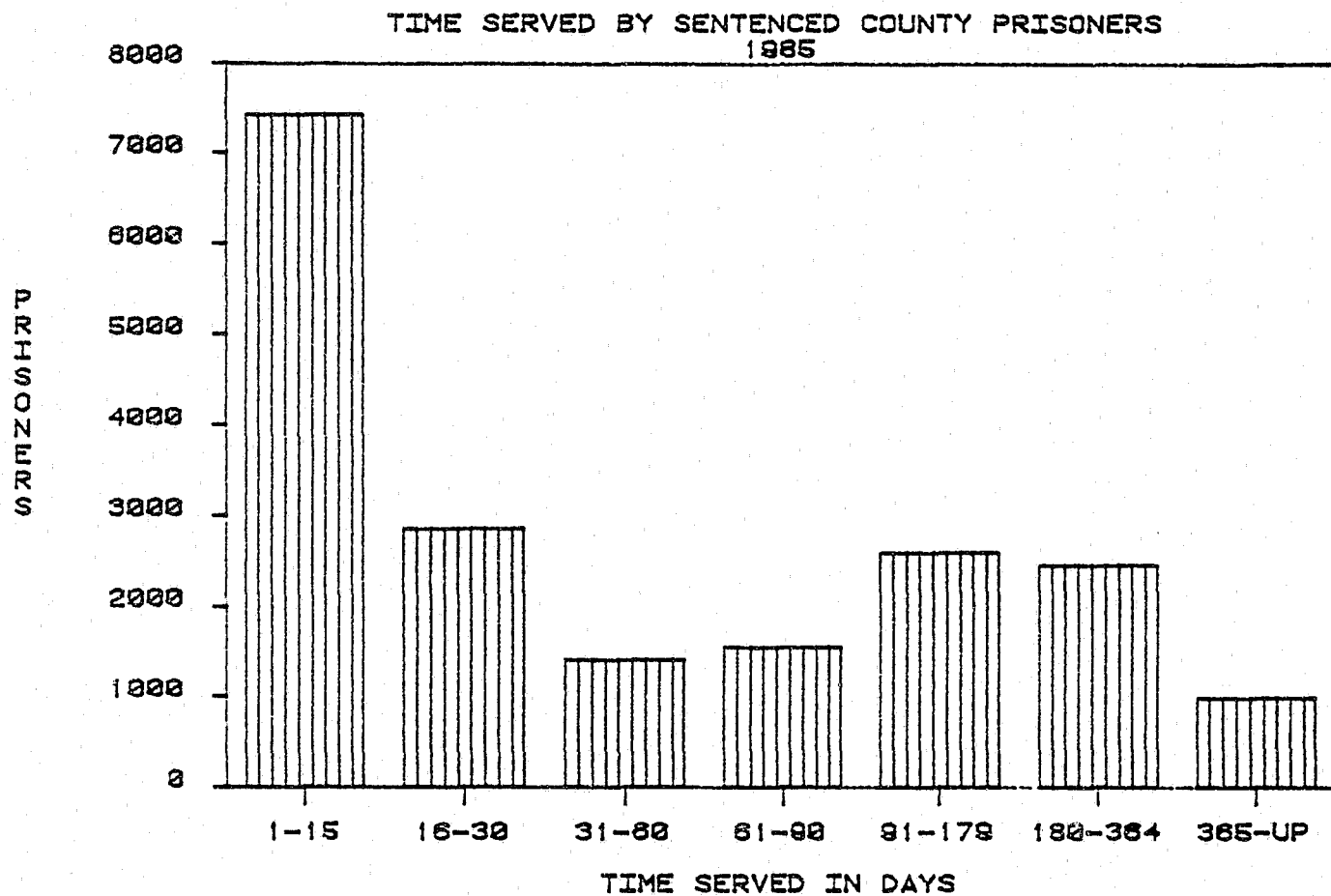


TABLE 36

Summary Information on Pennsylvania County Prisons

County	Class of County	Year Built	1985 Yearly Avg. Daily Pop.	Average Cost Per Day ¹	County	Class of County	Year Built	1985 Yearly Avg. Daily Pop.	Average Cost Per Day ¹
Adams	6	1947	54	18.37	Lancaster	3	1850	331	32.82
Allegheny	2	1888	531	27.34	Lawrence	5	1964	49	24.71
Armstrong	6	1871*	41	30.00	Lebanon	5	1980	158	23.25
Beaver	4	1962	89	20.67	Lehigh	3	1867*	290	35.00
Bedford	7	1895	16	30.00	Luzerne	3	1868	278	21.17
Berks	3	1931*	299	29.32	Lycoming	5	1986	104	34.53
Blair	5	1868*	135	N/A	McKean	6	1880	18	34.00
Bradford	6	1871	36	37.00	Mercer	5	1976	61	29.00
Bucks	3	1986	367	46.06	Mifflin	6	1856*	34	35.00
Butler	5	1956	67	30.00	Monroe	6	1862	66	28.96
Cambria	4	1890	115	22.50	Montgomery	2A	1851	395	38.05
Cameron	8	1867	2	132.33	Montour	8	1892	41	21.71
Carbon	6	1869	36	35.00	Northampton	4	1873*	271	40.00
Centre	5	1964	47	42.62	Northumberland	5	1876	143	N/A
Chester	3	1959	446	34.72	Perry	7	1900	10	29.00
Clarion	7	1873	22	35.00	Philadelphia	1	(2)	3,686	55.31
Clearfield	6	1981	111	19.32	Pike	8	1895	16	4.50
Clinton	7	1851	35	20.80	Potter	8	1863	12	32.00
Columbia	6	1876	51	21.86	Schuylkill	4	1854	93	7.27
Crawford	6	1849	58	25.00	Snyder	7	1885	16	20.25
Cumberland	4	1986	127	38.00	Somerset	6	1981	49	N/A
Dauphin	4	1956	337	34.25	Sullivan	8	1895	(c)	(c)
Delaware	2A	1931*	555	45.00	Susquehanna	7	1867	16	23.00
Elk	7	1885	6	35.00	Tioga	7	1860	20	45.00
Erie	3	1975	213	28.00	Union	7	1972	19	29.67
Fayette	4	1883*	62	38.50	Venango	6	1905	29	25.72
Forest	8	1895	(b)	248.00	Warren	6	1980	52	23.00
Franklin	5	1972	89	N/A	Washington	4	1898	114	N/A
Fulton	8	1851	(c)	(c)	Wayne	7	1934	15	3.12
Greene	7	1980	24	35.00	Westmoreland	3	1976	81	32.90
Huntingdon	6	1979	26	30.00	Wyoming	8	1843	2	N/A
Indiana	6	1973	50	40.00	York	3	1979	328	23.16
Jefferson	6	1982	34	25.69					
Juniata	8	1980	23	28.55					
Lackawanna	4	1880	143	28.00					

- * Armstrong - Renovated in 1981
 Berks - Renovated in 1983
 Blair - Renovated in 1984
 Delaware - Renovated in 1983
 Fayette - Renovated in 1964
 Lancaster - Renovated in 1982
 Lehigh - Renovated in 1982
 Mifflin - Renovated in 1978
 Northampton - Renovated in 1984

¹ As of January, 1986

² Philadelphia County Prison System - The House of Corrections was built in 1927, Holmesburg in 1876, and the Detention Center in 1963.

Data provided by Bureau of Special Services, Department of Corrections from questionnaires returned by counties.

TABLE 37

Number of County Prisoners on Work Release as of
December 31, 1984 and 1985

County	1984		1985	
	Number	Percent of total pop.	Number	Percent of total pop.
Adams	16	34.8	22	40.0
Allegheny	2	0.4	21	4.0
Armstrong	8	22.9	10	20.8
Beaver	6	9.0	9	15.3
Bedford	0	0.0	1	5.9
Berks	26	8.8	17	5.7
Blair	4	5.4	6	4.3
Bradford	8	18.6	10	21.3
Bucks	94	33.1	121	28.1
Butler	9	16.4	0	0.0
Cambria	13	10.7	16	26.7
Cameron	0	0.0	0	0.0
Carbon	5	20.8	5	16.7
Centre	10	22.7	9	20.0
Chester	13	3.2	19	4.2
Clarion	0	0.0	4	20.0
Clearfield	9	9.2	8	7.1
Clinton	4	13.8	4	15.4
Columbia	5	10.4	7	13.2
Crawford	10	23.8	8	14.3
Cumberland	21	20.8	29	20.0
Dauphin	39	12.4	22	7.2
Delaware	15	3.0	39	7.3
Elk	0	0.0	1	25.0
Erie	8	4.5	9	5.1
Fayette	0	0.0	0	0.0
Forest	0	0.0	0	0.0
Franklin	21	27.3	20	27.0
Fulton	(c)	(c)	(c)	(c)
Greene	0	0.0	0	0.0
Huntingdon	8	30.8	5	18.5
Indiana	5	11.1	3	6.1
Jefferson	3	11.1	0	0.0
Juniata	5	20.8	7	30.4
Lackawanna	18	12.9	21	17.1
Lancaster	0	0.0	62	20.6
Lawrence	11	18.3	7	9.7
Lebanon	29	19.6	33	21.4
Lehigh	16	6.3	21	7.5
Luzerne	26	9.9	29	12.1
Lycoming	22	23.7	25	27.5
McKean	1	7.1	2	9.1
Mercer	5	10.0	5	8.9
Mifflin	0	0.0	1	4.8
Monroe	9	12.2	2	17.2
Montgomery	34	8.9	31	8.9
Montour	3	11.1	3	7.9
Northampton	34	13.9	43	15.3
Northumberland	16	12.7	23	17.3
Perry	0	0.0	0	0.0
Philadelphia	33	0.9	236	6.3
Pike	3	23.1	1	5.6
Potter	0	0.0	2	12.5
Schuylkill	3	3.6	6	6.5
Snyder	1	6.3	2	14.3
Somerset	5	12.8	6	12.5
Sullivan	(c)	(c)	(c)	(c)
Susquehanna	0	0.0	1	6.3
Tioga	4	25.0	3	14.3
Union	5	26.3	6	31.6
Venango	8	22.2	0	0.0
Warren	10	25.0	4	9.5
Washington	7	6.3	5	4.9
Wayne	0	0.0	0	0.0
Westmoreland	1	1.5	3	3.9
Wyoming	2	25.0	0	0.0
York	26	9.1	25	8.6
Total	699	6.9	1,040	9.6

TABLE 38

Reported Escapes from County Prisons and Jails, 1981 to 1985

County	1981	1982	1983	1984	1985
Adams	1	5	2	2	2
Allegheny	5	29	0	0	0
Armstrong	4	0	0	0	1
Beaver	7	0	2	0	0
Bedford	0	1	0	0	0
Berks	6	1	1	3	9
Blair	0	0	1	0	3
Bradford	6	0	0	1	0
Bucks/Rehab Center	0/39	0/16	0/19	0/4	1/4
Butler	0	0	0	0	0
Cambria	0	0	0	0	0
Cameron	0	0	0	0	0
Carbon	1	1	1	1	2
Centre	1	1	0	0	0
Chester	0	0	0	0	0
Clarion	0	0	0	0	0
Clearfield	0	2	0	1	0
Clinton	1	1	0	2	0
Columbia	3	0	0	0	0
Crawford	0	0	0	0	1
Cumberland	1	2	0	0	2
Dauphin	5	8	4	9	8
Delaware	4	2	5	1	0
Elk	0	0	0	0	2
Erie	0	2	1	0	1
Fayette	1	0	0	0	0
Forest	0	0	0	0	0
Franklin	0	1	2	1	5
Fulton	(c)	(c)	(c)	(c)	(c)
Greene	0	0	0	0	0
Huntingdon	0	1	0	3	0
Indiana	1	0	0	1	0
Jefferson	0	0	2	1	0
Juniata	0	0	0	3	0
Lackawanna	0	1	0	0	0
Lancaster	2	2	2	0	0
Lawrence	3	3	0	5	0
Lebanon	2	3	0	0	1
Lehigh	0	19	11	7	5
Luzerne	12	1	1	0	3
Lycoming	4	1	1	4	3
McKean	2	0	3	0	1
Mercer	0	3	1	0	0
Mifflin	1	0	0	0	0
Monroe	0	1	0	0	0
Montgomery	3	2	2	8	0
Montour	0	0	3	0	0
Northampton	18	2	4	2	6
Northumberland	0	1	1	0	4
Perry	0	2	0	0	0
Philadelphia	25	14	17	15	12
Pike	0	1	0	0	2
Potter	0	0	0	0	1
Schuylkill	1	2	3	0	0
Snyder	0	0	6	1	1
Somerset	3	3	0	0	0
Sullivan	(c)	(c)	(c)	(c)	(c)
Susquehanna	0	0	0	0	3
Tioga	0	2	1	0	0
Union	0	0	0	0	0
Venango	2	2	0	0	0
Warren	3	0	0	0	1
Washington	0	0	1	0	0
Wayne	1	0	1	0	2
Westmoreland	0	0	0	0	0
Wyoming	3	0	4	0	0
York	0	0	0	3	0
Total	171	138	102	78	86

FOOTNOTES

- a. Not Calculated for base populations under 25.
- b. Less than one yearly average prisoner.
- c. Closed
- d. Forest County Jail is functioning only as a 48 hour holding facility. Sentenced prisoners are transferred to Warren County Jail and are included in Warren's totals.