

Population Movement Summary

107300

U.S. Department of Justice
National Institute of Justice

This document has been reproduced exactly as received from the person or organization originating it. Points of view or opinions stated in this document are those of the authors and do not necessarily represent the official position or policies of the National Institute of Justice.

Permission to reproduce this copyrighted material has been granted by

California Department of the
Youth Authority

to the National Criminal Justice Reference Service (NCJRS).

Further reproduction outside of the NCJRS system requires permission of the copyright owner

NCJRS

OCT 7 1987

ACQUISITIONS

State of California

DEPARTMENT OF THE YOUTH AUTHORITY

Calendar Year, 1986

107300

State of California

GEORGE DEUKMEJIAN,
GOVERNOR

Youth and Adult Correctional Agency

N. A. CHADERJIAN,
SECRETARY



Department of the

Youth Authority

MAX ZEIGLER, CHIEF
Information Management Division

DARRELL BRAY
Chief, Data Analysis and
Information Systems Bureau

BEVERLY L. SPALDING
Research Analyst II

SUSAN EASTERWOOD
Research Analyst I

PATRICIA VITT
Office Technician

JAMES ROWLAND,
DIRECTOR

CRAIG L. BROWN
CHIEF DEPUTY DIRECTOR

C. A. TERHUNE,
Deputy Director
**INSTITUTIONS AND CAMPS
BRANCH**

WILBUR A. BECKWITH,
Deputy Director
PAROLE SERVICES BRANCH

RONALD W. HAYES,
Deputy Director
**PREVENTION AND COMMUNITY
CORRECTIONS BRANCH**

FRANCISCO J. ALARCON,
Deputy Director
**ADMINISTRATIVE SERVICES
BRANCH**

POPULATION HIGHLIGHTS

As of December 31, 1986, the Youth Authority had 13,137 youths under commitment--a decrease of 0.4 percent from the 13,195 youths under commitment on December 31, 1985. The number of youths in institutions increased 16.2 percent, from 7,139 to 8,294, while the number of Youth Authority wards on parole decreased by 22.5 percent, from 5,735 to 4,442. The remainder was off institution; e.g., jail, furlough, Department of Mental Health, etc.

During 1986, a total of 3,835 youths were newly admitted to Youth Authority institutions--2,326 from juvenile courts and 1,509 from criminal courts. Of the criminal court commitments, 247 were direct commitments to the Youth Authority and 1,262 were commitments to the Department of Corrections who were sent to the Youth Authority to serve their sentences. Welfare and Institutions Code Section 1731.5(c), which was amended January 1, 1984 by the passage of Senate Bill 821, allows the court to order the transfer of Department of Corrections' cases to the Youth Authority. These cases remain in the Youth Authority institutions until they are ordered returned to CDC facilities (usually for disciplinary reasons), their sentence is completed, or they reach the age of 25.

Juvenile court commitments to the Youth Authority in 1986 increased by 5.2 percent from 1985 and criminal court commitments (including the Department of Corrections' cases) decreased by 2.2 percent. Criminal court cases committed directly to the Youth Authority decreased by 19.8 percent.

In addition, 1,587 parolees were returned to Youth Authority institutions as a result of parole revocation. This is an increase of 9.5 percent over 1985 parole returns.

Releases to parole from institutions decreased by 22.4 percent--from 3,232 in 1985 to 2,508 in 1986. The average length of stay in Youth Authority institutions was 17.8 months for wards paroled in 1986, up from 17.1 months in 1985. The length of stay for females paroled in 1986 was 17.4 months, .4 month shorter than the 17.8 months for males.

The Parole Consideration Date (PCD) interval average was 16.0 months in 1986, a decrease from 16.4 months in 1985.

The average length of stay on parole during 1986 was 19.5 months, an increase from 19.0 months in 1985.

The commitment rate was 111.0 per 100,000 youths, aged 12-20, in the State of California, an increase from 106.2 for the previous year. The juvenile court commitment rate increased from 100.7 in 1985 to 107.2 this year. The criminal court commitment rate, including CDC cases, increased from 115.1 in 1985 to 117.3 in 1986.

YOUTH AUTHORITY POPULATION MOVEMENT

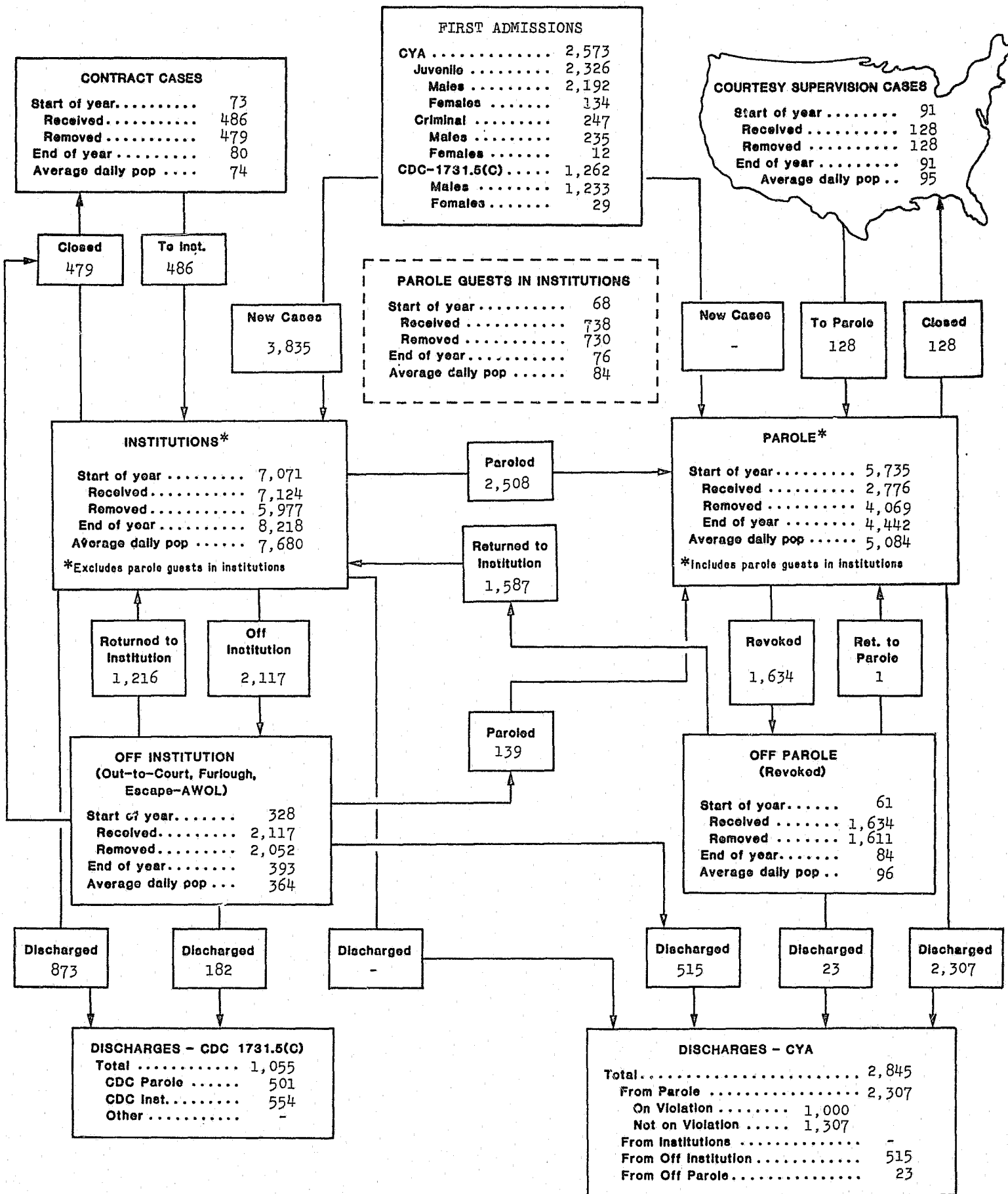


TABLE I

**WARDS UNDER JURISDICTION OF
THE CALIFORNIA YOUTH AUTHORITY**

CALENDAR YEAR 1986

STATUS	Start of Year	Received	Removed	End of Year	Percent Change
GRAND TOTAL¹	13,195	13,651	13,709	13,137	-0.4
In Institutions	7,139	7,862	6,707	8,294	+16.2
Y. A. Facilities²	7,107	7,795	6,297	8,249	+16.1
CDC & Fed. Facilities²	32	67	410	45	+40.6
Off Institution	328	2,117	2,052	393	+19.8
On Parole	5,735	2,776	4,069	4,442	-22.5
Off Parole³	61	1,634	1,611	84	+37.7
SPECIAL CASES IN Y.A. FACILITIES⁴					
Diagnostic	64	471	471	64	-
Federal & O. S. cases	9	15	8	16	+77.8
CDC - W & I 1731.5(c)	1,280	1,546	1,410	1,416	+10.6
CDC Other	-	-	-	-	-
Parole Detention	68	738	730	76	+11.8

¹Parole detention cases are included in both the institution and parole totals; they are counted just once in the grand total.

²May not add across due to intrafacility transfers

³Revoked, awaiting delivery

⁴Included in above institution totals

TABLE II

INSTITUTION MOVEMENTS IN
THE CALIFORNIA YOUTH AUTHORITY
(Selected Movements)

CALENDAR YEAR 1986

YOUTH AUTHORITY WARDS	1985	1986	PERCENT CHANGE
FIRST ADMISSIONS	2,520	2,573	+2.1
Juvenile Court	2,212	2,326	+5.2
Males.....	2,061	2,192	+6.4
Females	151	134	-11.3
Criminal Court	308	247	-19.8
Males.....	294	235	-20.1
Females	14	12	-14.3
PAROLE VIOLATOR RETURNS	1,449	1,587	+9.5
Males.....	1,395	1,539	+10.3
Females	54	48	-11.1
RELEASES TO PAROLE	3,232	2,508	-22.4
Males.....	3,070	2,350	-23.5
Females	162	158	-2.5
DEPARTMENT OF CORRECTIONS W & I Code 1731.5(c)			
ADMISSIONS	1,235	1,262	+2.2
Males.....	1,210	1,233	+1.9
Females	25	29	+16.0
RELEASES TO CDC PAROLE	338	501	+48.2
Males.....	332	490	+47.6
Females	6	11	+83.3
RETURNS TO CDC INSTITUTIONS	139	366	+163.3
Males.....	137	363	+165.0
Females	2	3	+50.0

Table III

	BEGIN POP	TOTAL IN	<-----ADMISSIONS----->							TOTAL OUT	<-----DEPARTURES----->										END POP
			FST ADM CYA	FST ADM CDC	PAR RTN	INST TFR	TRP RTN	OFF INST RTN	DIAG TD OTHR		PAR CYA	PAR CDC	INST TNFR	ESC	TRP	TO OFF INS	DISH CYA	DISH CDC	DIAG TD OTHR		
TOTAL	7139	20066	2573	1252	1587	12204	10	1206	1224	18911	2508	501	12204	164	92	1861		372	1209	8294	
MALE	6821	19558	2427	1233	1539	12056	10	1114	1179	18417	2350	490	12056	164	88	1734		369	1166	7962	
FEMALE	318	508	146	29	48	148		92	45	494	158	11	148		4	127		3	43	332	
CYA INST	7107	19618	2573	1262	1587	11823	10	1139	1224	18476	2497	481	12179	164	92	1854			1209	8249	
MALE	6793	19121	2427	1233	1539	11685	10	1048	1179	17993	2341	471	12035	164	88	1728			1166	7921	
FEMALE	314	497	146	29	48	139		91	45	483	156	10	144		4	126			43	328	
REC CNTR	871	7822	2423	1230	1242	1424	9	398	1096	7594	70	18	6203	3	11	220			1069	1099	
NRCC M	426	3749	984	613	582	851		224	495	3682	46	16	3019	1	1	87			512	493	
NRCC F	1	18			6	3		1	8	18	1		9			1			7	1	
SRCC M	444	4054	1439	617	654	569	9	173	593	3893	23	2	3174	2	10	132			550	605	
SRCC F		1				1				1			1								
SCH & CMPS	6236	11796	150	32	345	10399	1	741	128	10882	2427	463	5976	161	81	1634			140	7150	
MALE	5923	11318	4	3	303	10265	1	651	91	10418	2272	453	5842	161	77	1509			104	6823	
FEMALE	313	478	146	29	42	134		90	37	464	155	10	134		4	125			36	327	
FCN M	687	753			11	709		34		684	206	1	402	4	6	65				756	
DHC M	457	542				505		37		476	198		229	13		35			1	523	
PASO M	549	838			8	784		39	7	704	193		445	7	5	48			6	683	
KH M	479	717		1	34	636		34	12	677	294	2	324	7		37			13	519	
JWN M	489	849	2		4	789		52	3	722	146	112	353	10		97			4	616	
PSI M	689	2058	1	1	2	1910		144		1932	283	100	1314	5	1	227			2	815	
YTS M	1493	3049	1	1	230	2578		177	62	2806	463	103	1510		51	611			68	1736	
VS M	442	652			13	601	1	36	1	614	114		401	5	13	79			2	480	
VS F	266	351	146	29	42	36		61	37	352	110	9	107		4	86			36	265	
SL M	29	325			1	313		7	4	311	163	9	88	39		8			4	43	
EL CEN F	47	127				99		29		112	45	1	27			39				62	
NCF M	1	42				32		10		24	3		20	1						19	
CAMPS (M)	608	1493				1410		81	2	1468	209	126	756	70	1	302			4	633	
3L	94	258				204		53	1	254	56		42	17		137			2	98	
4B	96	182				174		7	1	177	34	22	58	6		55			2	101	
0G	121	369				367		2		368	40	9	288	17		14				122	
PG	97	213				204		9		211	31	32	119	5		24				99	
WR	89	190				185		5		178	22	32	75	4		45				101	
FC	111	281				275		5		280	26	31	174	21	1	27				112	
CDC INST	27	430				364		66		422	8	20	17			5			372	35	
MALE	24	425				360		65		415	7	19	15			5			369	34	
FEMALE	3	5				4		1		7	1	1	2						3	1	
FED INST	5	18				17		1		13	3		8			2				10	
MALE	4	12				11		1		9	2		6			1				7	
FEMALE	1	6				6				4	1		2			1				3	
TRP **	27	101				92		9		60			10	38		12				14	
MALE	27	97				88		9		59			10	37		12				11	
FEMALE		4				4				1				1						3	

**INFORMATIONAL ONLY - NOT INCLUDED IN TOTALS

TABLE IV
SUMMARY OF PAROLE CASELOAD MOVEMENTS
CALENDAR YEARS 1985 and 1986

	1985	1986	PERCENT CHANGE
I. TOTAL PAROLES, beginning of year	6,490	5,735	-11.6
Received on parole	3,584	2,776	-22.5
Released from institutions.	3,231	2,508	-22.4
Received from other states	118	128	+8.5
Reinstated and other ^a	235	140	-40.4
Removed from parole	4,339	4,069	-6.2
Revoked	1,480	1,634	+10.4
Discharged and other.	2,859	2,435	-14.8
TOTAL PAROLES, end of year	5,735	4,442	-22.5
II. CALIFORNIA SUPERVISION, beginning of year	6,154	5,539	-10.0
Received	3,601	2,781	-22.8
New cases	3,456	2,679	-22.5
Transferred to California supervision from out-of-state supervision	145	102	-29.7
Removed	4,214	4,027	-4.4
Revoked	1,465	1,628	+11.1
Discharged and other.	2,668	2,331	-12.6
Transferred to out-of-state supervision	81	68	-16.0
CALIFORNIA SUPERVISION, end of year	5,539	4,293	-22.5
III. OUT-OF-STATE SUPERVISION, beginning of year.	336	196	-41.7
Received	209	165	-21.1
New cases	128	97	-24.2
Transferred from California supervision to out-of-state supervision	81	68	-16.0
Removed	351	212	-39.6
Revoked	15	6	-60.0
Discharged.	191	104	-45.6
Transferred to California supervision.	145	102	-29.7
OUT-OF-STATE SUPERVISION, end of year	196	149	-24.0

^a Includes releases to parole from furlough, out-to-court, DOH, Co. Jail or escape status.

TABLE V

PAROLE CASELOAD MOVEMENT OF YOUTH AUTHORITY WARDS

CALENDAR YEAR 1986

SUPERVISION UNIT	Caseload start of year	CASES RECEIVED			CASES REMOVED					Caseload end of year
		Total	New cases	Transfer	Total	Ordered returned	Transfer	Discharged		
								Under viol.	Not under viol.	
GRAND TOTAL	5,822									4,523
Regular Parole	5,735	4,087	2,776	1,311	5,380	1,634	1,311	1,000	1,435	4,442
Institution Escapes*	87									81
Out-of-State Supervision	207									158
Regular Parole	196	165	97	68	212	6	102	36	68	149
Males	191	149	85	64	205	6	96	36	67	135
Females	5	16	12	4	7	-	6	-	1	14
Institution Escapes	11									9
California Supervision	5,606									4,354
Regular Parole	5,539	3,922	2,679	1,243	5,168	1,628	1,209	964	1,367	4,293
Males	5,211	3,662	2,502	1,160	4,901	1,579	1,128	929	1,265	3,972
Females	328	260	177	83	267	49	81	35	102	321
Institution Escapes	67									61
Region I	1,223									939
Regular Parole	1,217	642	548	94	927	335	106	218	268	932
Institution Escapes	6									7
Region II	1,195									1,009
Regular Parole	1,189	825	639	186	1,013	360	182	194	277	1,001
Institution Escapes	6									8
Region III	2,159									1,636
Regular Parole	2,118	1,832	1,051	781	2,350	707	758	374	511	1,600
Institution Escapes	41									36
Region IV	1,029									770
Regular Parole	1,015	623	441	182	878	226	163	178	311	760
Institution Escapes	14									10

*Total includes W&I 1731.5(c) (CDC) cases: 9 at start of year, 11 at end of year.
Not distributed by region.

TABLE VI
SUMMARY OF PAROLE VIOLATIONS
 CALENDAR YEARS 1985 and 1986

	1985	1986	PERCENT CHANGE
	Placed on violation	4,642	4,381
Removed from violation	4,673	4,507	-3.6
a. Continued on parole	1,914	1,873	-2.1
b. Revoked or recommitted	1,480	1,634	+10.4
c. Discharged	1,279	1,000	-21.8
Youth Authority wards under a parole violation action at end of year	653	524	-19.8

TABLE VII
DISPOSITION OF VIOLATION ACTIONS BY TYPE OF VIOLATION
 CALENDAR YEAR 1986

TYPE OF VIOLATION	TOTAL		CONTINUED ON PAROLE		REVOKED OR RECOMMMITTED		DISCHARGED	
	Number	Percent	Number	Percent	Number	Percent	Number	Percent
Total	4,507	100.0	1,873	41.6	1,634	36.2	1,000	22.2
Technical violation (AWOL)	557	100.0	160	28.7	179	32.1	218	39.2
Technical violation (other)	972	100.0	675	69.4	295	30.4	2	0.2
Law violation:								
Not prosecuted or not guilty	299	100.0	153	51.2	143	47.8	3	1.0
Pending trial or released to Y.A. ...	218	100.0	41	18.8	33	15.1	144	66.1
Law violation - convicted:								
Probation, fine, suspended sentence	275	100.0	181	65.8	81	29.5	13	4.7
Jail	722	100.0	332	46.0	356	49.3	34	4.7
Probation and jail	744	100.0	331	44.5	369	49.6	44	5.9
Prison, reformatory or CYA	720	100.0	-	-	178	24.7	542	75.3

TABLE VIII

MEAN LENGTH OF STAY IN INSTITUTIONS
 PRIOR TO RELEASE ON PAROLE
 BY INSTITUTION OF RELEASE
 (In Months)

CALENDAR YEARS 1985 and 1986

INSTITUTION OF RELEASE ^a	1985	1986
Total ^b	17.1	17.8
Males	17.1	17.8
Females	17.1	17.4
CYA Institutions	17.0	17.8
Schools & Camps - Males	17.0	17.8
Nelles	17.8	18.4
Close	14.5	16.7
El Paso de Robles	17.6	17.1
Holton	11.3	11.8
Nelson	18.2	19.4
Preston	18.9	19.3
Youth Training School	19.9	20.3
Ventura	17.7	18.6
Camps	15.9	16.7
Ventura - Females	17.2	18.2
CDC & Federal Institutions	27.1	25.8

^a Includes time in clinic.

^b Includes all institutions operating during periods shown.

TABLE IX

MEAN LENGTH OF STAY ON PAROLE
 PRIOR TO REMOVAL FROM PAROLE
 (In Months)

CALENDAR YEARS 1985 and 1986

PAROLE REGION	1985	1986
Total	19.0	19.5
Region I	20.3	21.3
Region II	18.3	19.6
Region III	17.1	17.5
Region IV	21.5	21.6
Out of State	21.0	21.8

TABLE X
PAROLE CONSIDERATION DATE INTERVALS
AT INITIAL APPEARANCE HEARINGS
BY INSTITUTION OF ASSIGNMENT
(In Months)

CALENDAR YEARS 1985 and 1986

INSTITUTION OF ASSIGNMENT ^a	1985	1986
CYA Institutions	16.4	16.0
Schools & Camps-Males	16.5	16.2
Nelles	21.1	23.3
Close	19.3	18.8
El Paso de Robles	20.6	19.8
Holton	16.1	15.2
Nelson	15.6	15.5
Preston	13.7	12.7
Youth Training School . . .	12.9	12.4
Ventura	16.0	14.8
Camps	13.6	14.5
Ventura-Females	17.1	17.5
CDC & Federal Insts.	16.5	11.1

^a Includes time from date of acceptance.

TABLE XI
 FIRST COMMITMENTS TO THE CALIFORNIA YOUTH AUTHORITY, 1972-1986
 BY SEX, COMMITTING COURT, AND RATE PER 100,000 YOUTH POPULATION

YEAR	TOTAL		JUVENILE COURT		CRIMINAL COURT		Males						Females	
	First Commitments	Rate ^a	First Commitments	Rate ^b	First Commitments	Rate ^c	Total		Juvenile Court		Criminal Court		Juvenile and Criminal Courts	
							First Commitments	Rate ^a	First Commitments	Rate ^b	First Commitments	Rate ^c	First Commitments	Rate ^a
1972.....	2,728	75.9	1,462	61.8	1,266	103.2	2,476	133.0	1,267	105.3	1,209	183.5	252	14.6
1973.....	2,757	74.8	1,464	61.0	1,293	100.4	2,534	132.7	1,296	106.5	1,238	178.9	223	12.5
1974.....	3,002	82.5	1,527	63.4	1,475	111.0	2,790	144.4	1,367	112.0	1,423	199.9	212	11.7
1975.....	3,404	90.0	1,829	75.8	1,575	115.0	3,224	165.1	1,714	140.1	1,510	206.8	180	9.8
1976.....	3,559	93.7	1,754	72.8	1,805	129.9	3,377	172.6	1,633	133.9	1,744	237.0	182	9.9
1977.....	3,626	95.9	2,013	83.8	1,613	117.0	3,457	177.7	1,904	156.3	1,553	213.6	169	9.2
1978.....	3,776	100.9	2,196	92.8	1,580	114.9	3,614	187.8	2,082	173.2	1,532	211.9	162	8.9
1979.....	3,640	98.7	2,058	88.8	1,582	115.6	3,487	183.8	1,956	165.8	1,531	213.5	153	8.5
1980.....	3,968	107.0	2,189	94.8	1,779	127.1	3,814	201.4	2,088	177.2	1,726	241.1	154	8.5
1981.....	4,083	110.8	2,170	95.5	1,913	134.2	3,914	206.9	2,055	177.5	1,859	253.3	169	9.4
1982.....	3,316	89.6	2,231	98.8	1,085	75.3	3,156	166.2	2,109	183.4	1,047	139.8	160	8.9
1983.....	2,891	78.3	2,231	99.5	660	45.5	2,742	144.6	2,102	183.9	640	84.8	149	8.3
1984 TOTAL....	3,216	88.9	2,128	95.9	1,088	77.7	3,079	165.7	2,020	178.8	1,059	145.5	137	7.8
CYA.....	2,554	70.6	2,128	95.9	426	30.4	2,432	130.9	2,020	178.8	412	56.6	122	6.9
CDC ^d	662	18.3	-	-	662	47.3	647	34.8	-	-	647	88.9	15	0.9
1985 TOTAL....	3,756	106.2	2,213	100.7	1,543	115.1	3,566	196.3	2,062	183.9	1,504	216.1	190	11.0
CYA.....	2,521	71.3	2,213	100.7	308	23.0	2,356	129.7	2,062	183.9	294	42.2	165	9.6
CDC ^d	1,235	34.9	-	-	1,235	92.1	1,210	66.6	-	-	1,210	173.9	25	1.4
1986 TOTAL....	3,835	111.0	2,326	107.2	1,509	117.3	3,660	206.2	2,192	198.2	1,468	219.4	175	10.4
CYA.....	2,573	74.5	2,326	107.2	247	19.2	2,427	136.7	2,192	198.2	235	35.1	146	8.7
CDC ^d	1,262	36.5	-	-	1,262	98.1	1,233	69.5	-	-	1,233	184.3	29	1.7

a 12-20 year age group

b 12-17 year age group

c 18-20 year age group

d Committed under Welfare and Institutions Code Section 1731.5(c); may have had previous CYA commitment.