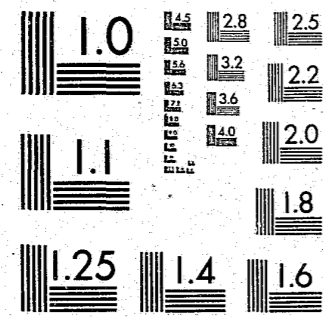


National Criminal Justice Reference Service

ncjrs

This microfiche was produced from documents received for inclusion in the NCJRS data base. Since NCJRS cannot exercise control over the physical condition of the documents submitted, the individual frame quality will vary. The resolution chart on this frame may be used to evaluate the document quality.



MICROCOPY RESOLUTION TEST CHART
NATIONAL BUREAU OF STANDARDS-1963-A

Microfilming procedures used to create this fiche comply with the standards set forth in 41CFR 101-11.504.

Points of view or opinions stated in this document are those of the author(s) and do not represent the official position or policies of the U. S. Department of Justice.

National Institute of Justice
United States Department of Justice
Washington, D. C. 20531

11/04/86

CR Sent
9.23.86

INTER-UNIVERSITY CONSORTIUM FOR
POLITICAL AND SOCIAL RESEARCH

I
C
P
S

JUVENILE DETENTION AND CORRECTIONAL
FACILITY CENSUS OF 1971

(ICPSR 7637)

101967

Principal
Investigator

Law Enforcement
Assistance Administration

Second ICPSR Edition, Spring 1986

U.S. Department of Justice
National Institute of Justice

101967

This document has been reproduced exactly as received from the person or organization originating it. Points of view or opinions stated in this document are those of the authors and do not necessarily represent the official position or policies of the National Institute of Justice.

Permission to reproduce this copyrighted material in microfilm only has been granted by

Inter-university Consortium for
Political and Social Research

to the National Criminal Justice Reference Service (NCJRS).

Further reproduction outside of the NCJRS system requires permission of the copyright owner.

JUVENILE DETENTION AND CORRECTIONAL
FACILITY CENSUS OF 1971

(ICPSR 7637)

Principal Investigator

U.S. Department of Justice
Bureau of Justice Statistics

Second ICPSR Edition
Spring 1986

Inter-university Consortium for
Political and Social Research
P.O. Box 1248
Ann Arbor, Michigan 48106

ACKNOWLEDGEMENT OF ASSISTANCE

All manuscripts utilizing data made available through the Consortium should acknowledge that fact as well as identify the original collector of the data. The ICPSR Council urges all users of the ICPSR data facilities to follow some adaptation of this statement with the parentheses indicating items to be filled in appropriately or deleted by the individual user.

The data (and tabulations) utilized in this (publication) were made available (in part) by the Inter-university Consortium for Political and Social Research. The data for the JUVENILE DETENTION AND CORRECTIONAL FACILITY CENSUS OF 1971 were originally collected by the U.S. Department of Justice, Bureau of Justice Statistics. Neither the collector of the original data nor the Consortium bear any responsibility for the analyses or interpretations presented here.

In order to provide funding agencies with essential information about the use of archival resources and to facilitate the exchange of information about ICPSR participants' research activities, each user of the ICPSR data facilities is expected to send two copies of each completed manuscript or thesis abstract to the Consortium. Please indicate in the cover letter which data were used.

TABLE OF CONTENTS

	PAGE NO.
INTRODUCTION	1
Study Description	1
Methodology	1
Census Coverage	2
Period covered by the Census	3
Sampling	3
Archiving History	4
Archive File Description	4
Codebook Information	6
ICPSR Processing Information	8
VARIABLE DESCRIPTION LIST	9
CODEBOOK	17
APPENDIX 1: DEFINITION OF TERMS	71
APPENDIX 2: ERRORS AND PROBLEMS IN THE DATA	75
APPENDIX 3: COUNTIES BY NAME	79
APPENDIX 4: QUESTIONNAIRE	87
APPENDIX 5: OSIRIS III TYPE DICTIONARY DESCRIPTION	95

INTRODUCTION

STUDY DESCRIPTION

The JUVENILE DETENTION AND CORRECTIONAL FACILITY CENSUS OF 1971 represents the first census of such facilities operated by State and local governments in the juvenile justice system. A second census, also held by the Bureau of Justice Statistics Data Archive, collected data for 1972 and 1973. For many years an annual survey of public facilities for adjudicated juveniles was conducted by the U.S. Department of Health, Education, and Welfare and published under the title, STATISTICS ON PUBLIC INSTITUTIONS FOR DELINQUENT CHILDREN (SPIDC).

The coverage of the present census has been broadened to include those public facilities which serve children awaiting court action as well as those already adjudicated. As a result, detention centers and shelters were included in the enumerated facilities, whereas previously only correctional facilities and diagnostic or reception centers had been surveyed. The addition of shelters and detention centers to the census completes coverage of publicly administered residential institutions in the juvenile justice system. The census was designed by B.J.S. and H.S.S, while the data collection effort was carried out by the Bureau of the Census.

The data include: type of facility; level of government administering the facility; agency identifier; resident population by sex, by age range, by detention status, and by offense; admissions and discharges; average length of stay; staffing and expenditures; age and capacity of facility; and programs and services available.

METHODOLOGY

Information about census coverage, census period, data collection, and the definitions of terms in the appendix were taken from the publication titled CHILDREN IN CUSTODY, prepared by the Statistics Division, National Criminal Justice Information and Statistics Service. This report is for sale by the Superintendent of Documents, United States Government Printing Office, Washington D.C. The stock number is 5-45-413-577.

In this publication, six facilities are misclassified; in addition some detention status data were incorrectly reported to the data collection agency. The data file has since been corrected for these errors. See Appendix 2 for details.

The reader is urged to read CHILDREN IN CUSTODY and this codebook carefully in order to fully understand the scope and limitations of the data. Anyone wishing to analyze the 1971, 1972, or 1973 data is referred to Appendix 2 of this codebook and to JUVENILE DETENTION AND CORRECTIONAL FACILITY CENSUS OF 1972-73 also available from the Bureau of Justice Statistic Data Archive.

Census Coverage

The census included juvenile detention and correctional facilities that were operated by State or local governments at the time the survey was conducted (October 1971), had been in operation at least a month prior to June 30, 1971, and had a resident population of at least 50 percent juveniles. All facilities that held youthful offenders in addition to juveniles were also included. Juvenile detention centers that were part of adult jails were not included because their staff and budget figures could not be reported separately. An individual facility, such as a camp or annex, which was administratively dependent upon a parent institution, was counted as a separate facility if it was located in a separate geographic area. Nonresidential facilities, privately operated facilities, facilities exclusively for drug abusers or for dependent and neglected children, foster homes, and Federal correctional facilities were not counted.

The 1971 census included 722 public juvenile detention and correctional facilities. They were classified as: (1) detention centers, (2) shelters, (3) reception or diagnostic centers, (4) training schools, (5) ranches, forestry camps, and farms, or (6) halfway houses and group homes.

Classification of the facilities was based on responses to the questionnaire, which asked the respondent to mark the type of facility most applicable according to the definitions provided.

Multi-functional facilities, such as training schools with reception centers or detention facilities with long-term treatment programs, were classified according to

the function having the largest capacity or resident population.

Facilities administered by more than one level of government were classified according to the level of government providing the largest funding.

Period Covered By The Census

The census sought to cover the period July 1, 1970 through June 30, 1971. Institutional population data were collected for September 30, 1970, December 31, 1970, March 31, 1971, and June 30, 1971. Average daily population was computed from the populations on those four dates. Numbers of staff members were reported as of June 30, 1971.

Both admissions and discharges data and institutional cost data were reported for varying reference periods. The majority reported for the period July 1, 1970 through June 30, 1971 as requested.

SAMPLING

In the summer of 1971, a mailing list of juvenile detention and correctional facilities was prepared using as a basic source the NATIONAL CRIMINAL JUSTICE DIRECTORY, compiled in 1970 by the Bureau of the Census for the Bureau of Justice Statistics. This directory list was updated from a number of other sources, including the mailing list maintained by the Department of Health, Education, and Welfare for the SPIDC; the 1970 DIRECTORY OF CORRECTIONAL INSTITUTIONS AND AGENCIES, published by the American Correctional Association; the 1969 MASTER FACILITY INVENTORY, maintained by the Bureau of the Census for the National Center for Health Statistics; the 1970 or the 1971 State Comprehensive Law Enforcement Plans for each State; the 1968 DIRECTORY OF JUVENILE DETENTION CENTERS published by The National Council on Crime and Delinquency; and the 1970 INTERNATIONAL HALFWAY HOUSE ASSOCIATION DIRECTORY. The updated list was then subdivided by State and sent to the juvenile correctional authorities in the respective States for review. The resulting list included 833 facilities, 111 of which were eliminated in the course of the census because they did not meet one or more of the coverage criteria.

The census was conducted by mail with an initial mailout in October 1971. Questionnaires were mailed to central agencies where this procedure had been used in the Department of Health, Education, and Welfare study the previous year. Three hundred forty-seven questionnaires were mailed to 42 central reporters (34 State agencies and 8 local agencies). The remaining 486 questionnaires were mailed directly to facilities.

Facilities which failed to respond to the initial mailout were sent second and third mail requests and then telegrams if necessary. The response rate achieved was 100 percent for most data items. Telephone follow-up was used extensively to clarify inadequate and inconsistent survey returns.

Archiving History

The B.J.S. Data Archive has done some editing, consistency checking, and correction of the data. Uncorrected errors, inconsistencies, and other known problems in the data are documented in Appendix 2.

The B.J.S. Data Archive ran frequency distributions for categorical variables, and minima and maxima for continuous variables in order to determine undefined or undefined or unreasonable values. Two-way crosstabulations were run on the Governments Division identification variables and identification variables from the questionnaire where the variables seemed to represent the same information. The variables concerned covered the level government administering the facility, type of facility, and sex of residents held. Other consistency checking concerned the existence of parole or aftercare programs. All known errors have been corrected.

Archive File Description

The archive file consists of three physical files stored on magnetic tape; a machine-readable codebook file (this document) which documents the data for a human user, an OSIRIS III Type 3 dictionary file which describes the data to a computer program, and a data file. All information in the three files is in character format.

In the data file, the unit of observation is a juvenile facility. There are 722 units. Each unit is identified by variables including State, county, and city numbers, level of government responsible for facility, type of agency, and an agency number. These variables were assigned by the Governments Division of the Bureau of the Census.

The records in the data file are sorted on: State number, level of government administering the facility, county number, city number, type of facility, and agency identifier (Reference Numbers 2-5, 8, and 9). A unique sequence number was assigned to each case in the sorted file.

All data in the data file are stored as numeric character and are in whole numbers. The record for each facility is 544 characters in length and contains 245 variables.

CODEBOOK INFORMATION

This section contains an explanation of typical entries in the codebook section which follows. The numbers in brackets do not appear in the codebook, but are references to the descriptions which follow the examples.

.....

[1] V238	[5] Reference: 0238
[2] FAMILY/JUVEN COUNSELNG?	[6] File I.D. JD1
[3] Location: 537 Width: 1	[7] Numeric character
[4] Missing data: GE 3	

[8] VIII.D.1.(3) Does this facility routinely provide counseling involving the juvenile and his family?

[9] [10] [11]

413 1 Yes

309 2 No

[12] Ref. No. 239-245. These variables apply to training schools, forestry camps, and similar facilities, only.

.....

1. The OSIRIS variable number. The variable number is used as the SPSS variable name when an OSIRIS file is processed by SPSS.
2. The abbreviated (24 characters maximum) variable label used within the OSIRIS or SPSS systems to identify the variable for the user.
3. The starting location and width of this variable in the data as stored on a magnetic tape. This is the format information needed to read the data into other systems.
4. The designation of missing data. In the example, code values for FAMILY/JUVEN COUNSELNG? greater than or equal to 3 (GE 3) are missing data. Other notation, EQ meaning equal to or LE meaning less than or equal to, may also be used. Some analysis software packages (including the OSIRIS and SPSS packages) require that certain types of data which are usually excluded from analysis be designated as "missing data;" e.g.,

inappropriate, unascertained, unascertainable or ambiguous data categories. If need be, this designation can be changed by the user and the values used in a substantive manner.

5. The OSIRIS reference number. The B.J.S. Data Archive has adopted the OSIRIS III convention of assigning both a variable number and a reference number to each data item when a file is created. In the archive file, they are the same. Should the data be subsetted or rearranged, the variable numbers change to reflect the order of the new data file, while the reference numbers remain to reflect the variable numbers in the codebook describing the archived data file.
6. The three column identification number unique to this data file.
7. The storage mode of the variable. All data in this file are in numeric character form.
8. The unabbreviated variable label or the text of the question from the survey form. The letters and numbers at the beginning of the text are the question numbers from the survey form. Although in many instances the actual question text has been paraphrased, an effort was made to use the same vocabulary and to retain the meaning on the original phrasing.
9. The frequency of occurrence of each code value.
10. The code values occurring in the data for a variable.
11. The textual definitions of the codes. The first 20 characters is a short label which is sometimes used to document the output of analysis programs. A longer description follows the short label when necessary.
12. Explanatory text referring to a group of variables which follows. These entries are used whenever a lengthy description applies to more than one or two variables or when some comment about a group of variables is needed.

ICPSR PROCESSING INFORMATION

The data collection was processed according to the standard ICPSR processing procedures. The data were checked for illegal or inconsistent code values which, when found, were recoded to QSIRIS missing data values. No consistency checks were performed. Statements bracketed in "<" and ">" signs in the body of the codebook were added by the processors for explanatory purposes.

VARIABLE DESCRIPTION LIST

Identification Variables

- V001. Sequence Number
- V002. State Number
- V003. Level of Government
- V004. County Number
- V005. City Number
- V006. Check Digit

Agency Information

- V007. Type of Criminal Justice Agency
- V008. Type of Juvenile Facility
- V009. Agency Identification Number
- V010. Sex of Population
- V011. Number of Full-Time Staff
- V012. Resident Population as of June 30, 1971

Type of Facility or Program

- V013. Primary Function of Facility
- V014. Level of Government Administering Facility
- V015. Sex of Residents Held by Facility

Movement Data Reporting Period

- V016. Reporting Period Starting Date-Month
- V017. Reporting Period Starting Date-Day
- V018. Reporting Period Starting Date-Year
- V019. Reporting Period Ending Date-Month
- V020. Reporting Period Ending Date-Day
- V021. Reporting Period Ending Date-Year

Population Movement into Long-term Facilities

- V022. Number of Males Committed by a Court for a First Offense
- V023. Number of Females Committed by a Court for a First Offense
- V024. Number of Males Recommitted by a Court for a New Offense
- V025. Number of Females Recommitted by a Court for a New Offense
- V026. Number of Males Returned for Violation of Aftercare or Parole
- V027. Number of Females Returned for Violation of Aftercare or Parole

- V028. Number of Males Returned from Aftercare or Parole For Other Reasons
- V029. Number of Females Returned from Aftercare/Parole for Other Reasons
- V030. Number of Males Transferred from Another Facility
- V031. Number of Females Transferred from Another Facility
- V032. Number of Males Admitted for Other Reasons
- V033. Number of Females Admitted for Other Reasons
- Population Movement out of Long-term Facilities
- V034. Number of Males Discharged with No Further Agency Supervision
- V035. Number of Females Discharged with No Further Agency Supervision
- V036. Number of Males Placed in an Aftercare or Parole Program Operated by Facility
- V037. Number of Females Placed in an Aftercare or Parole Program Operated by Facility
- V038. Number of Males Placed in an Aftercare or Parole Program Operated by Another Agency
- V039. Number of Females Placed in an Aftercare/Parole Program Operated by Another Agency
- V040. Number of Males Transferred out to Another Facility
- V041. Number of Females Transferred out to Another Facility
- V042. Number of Males Released for Other Releases
- V043. Number of Females Released for Other Releases
- Population Movement in Short-term Facilities
- V044. Number of Males Admitted to Custody
- V045. Number of Females Admitted to Custody
- V046. Number of Males Discharged or Remanded to Other Court Agencies or Facilities
- V047. Number of Females Discharged or Remanded to Other Court Agencies or Facilities
- Quarterly Population by Detention Status and Sex
- V048. Number of Male Juveniles Adjudicated, Delinquent, Declared in Need of Supervision, or Voluntarily Admitted, as of 9/30/70
- V049. Number of Female Juveniles Adjudicated, Delinquent, Declared in Need of Supervision, or Voluntarily Admitted, as of 9/30/70
- V050. Number of Male Juveniles Held Pending Disposition by Court on 9/30/70
- V051. Number of Female Juveniles Held Pending Disposition by Court on 9/30/70
- V052. Number of Dependent and Neglected Male Children Held on 9/30/70.

- V053. Number of Dependent and Neglected Female Children Held on 9/30/70
- V054. Number of Male Juveniles Awaiting Transfer to Another Jurisdiction on 9/30/70
- V055. Number of Female Juveniles Awaiting Transfer to Another Jurisdiction on 9/30/70
- V056. Number of Male Juveniles Adjudicated, Delinquent, Declared in Need of Supervision, or Voluntarily Admitted, as of 12/31/70
- V057. Number of Female Juveniles Adjudicated, Delinquent, Declared in Need of Supervision, or Voluntarily Admitted, as of 12/31/70
- V058. Number of Male Juveniles Held Pending Disposition by Court on 12/31/70
- V059. Number of Female Juveniles Held Pending Disposition by Court on 12/31/70
- V060. Number of Dependent and Neglected Male Children Held on 12/31/70
- V061. Number of Dependent and Neglected Female Children Held on 12/31/70
- V062. Number of Males Awaiting Transfer to Another Jurisdiction on 12/31/70
- V063. Number of Females Awaiting Transfer to Another Jurisdiction on 12/31/70
- V064. Number of Male Juveniles Adjudicated, Delinquent, Declared in Need of Supervision, or Voluntarily Admitted, as of 3/31/71
- V065. Number of Female Juveniles Adjudicated, Delinquent, Declared in Need of Supervision, or Voluntarily Admitted, as of 3/31/71
- V066. Number of Male Juveniles Held Pending Disposition by Court on 3/31/71
- V067. Number of Female Juveniles Held Pending Disposition by Court on 3/31/71
- V068. Number of Dependent and Neglected Male Children Held on 3/31/71
- V069. Number of Dependent and Neglected Female Children Held on 3/31/71
- V070. Number of Male Juveniles Awaiting Transfer to Another Jurisdiction on 3/31/71
- V071. Number of Female Juveniles Awaiting Transfer to Another Jurisdiction on 3/31/71
- V072. Number of Male Juveniles Adjudicated, Delinquent, Declared in Need of Supervision, or Voluntarily Admitted, as of 6/30/71
- V073. Number of Female Juveniles Adjudicated, Delinquent, Declared in Need of Supervision, or Voluntarily Admitted, as of 6/30/71

- V074. Number of Male Juveniles Held Pending Disposition by Court on 6/30/71
- V075. Number of Female Juveniles Held Pending Disposition by Court on 6/30/71
- V076. Number of Dependent and Neglected Male Children Held on 6/30/71
- V077. Number of Dependent and Neglected Female Children Held on 6/30/71
- V078. Number of Male Juveniles Awaiting Transfer to Another Jurisdiction on 6/30/71
- V079. Number of Female Juveniles Awaiting Transfer to Another Jurisdiction on 6/30/71

Facility Population by Type of Offense

- V080. Number of Males Juveniles Adjudicated Delinquent, Held on 6/30/71 for a Felony, except Drug Offenses
- V081. Number of Females Juveniles Adjudicated Delinquent, Held on 6/30/71 for a Felony, except Drug Offenses
- V082. Number of Male Juveniles Adjudicated Delinquent Held on 6/30/71 for a Misdemeanor, except Drug Offenses
- V083. Number of Female Juveniles Adjudicated Delinquent Held on 6/30/71 for a Misdemeanor, except Drug Offenses
- V084. Number of Male Juveniles Adjudicated Delinquent for Drug Offenses
- V085. Number of Female Juveniles Adjudicated Delinquent for Drug Offenses
- V086. Number of Male Juveniles Adjudicated Delinquent for Status Offenses
- V087. Number of Female Juveniles Adjudicated Delinquent for Status Offenses-

Age Range of Population

- V088. Age of Youngest Male Currently Under Supervision
- V089. Age of Youngest Female Currently Under Supervision
- V090. Age of Oldest Male Currently Under Supervision
- V091. Age of Oldest Female Currently Under Supervision

Facility Characteristics

- V092. Capacity of Facility - Number of Males
- V093. Capacity of Facility - Number of Females
- V094. Adults Held Separately from Juveniles?
- V095. Juveniles Adjudicated Delinquent, etc. category Held Separately from Juveniles Pending Disposition by a Court?
- V096. Juveniles Adjudicated Delinquent, etc. category Held Separately from Dependent or Neglected Children?

- V097. Juveniles Pending Disposition by a Court Held Separately from Dependent or Neglected Children?
- V098. Dependent or Neglected Children Held Separately from Juveniles Awaiting Transfer to Another Jurisdiction?

Length of Stay

- V099. Average Length of Stay in Months for Long-Term Facilities
- V100. Average Length of Stay in Days for Short-term Facilities

Facility Administrative Personnel

- V101. Number of Superintendents Full-Time
- V102. Number of Superintendents Part-Time
- V103. Number of Full-Time Vacancies for Superintendent
- V104. Number of Part-Time Vacancies for Superintendent
- V105. Superintendent a Civil Service Position?
- V106. Number of Full-Time Assistant Superintendents
- V107. Number of Part-Time Assistant Superintendents
- V108. Number of Full-Time Vacancies for Assistant Superintendents
- V109. Number of Part-Time Vacancies for Assistant Superintendents
- V110. Assistant Superintendent a Civil Service Position?
- V111. Number of Full-Time Other Administrative Employees
- V112. Number of Part-Time Other Administrative Employees
- V113. Number of Full-Time Other Administrative Vacancies
- V114. Number of Part-Time Other Administrative Vacancies
- V115. Other Administrative Personnel a Civil Service Position?

Facility Treatment and Educational Personnel

- V116. Number of Full-Time Psychiatrists
- V117. Number of Part-Time Psychiatrists
- V118. Number of Full-Time Vacancies for Psychiatrists
- V119. Number of Part-Time Vacancies for Psychiatrists
- V120. Psychiatrist, a Civil Service Position?
- V121. Number of Full-Time Psychologists
- V122. Number of Part-Time Psychologists
- V123. Number of Full-Time Vacancies for Psychologists
- V124. Number of Part-Time Vacancies for Psychologists
- V125. Psychologist, a Civil Service Position?
- V126. Number of Full-Time Chaplains
- V127. Number of Part-Time Chaplains
- V128. Number of Full-Time Vacancies for Chaplains
- V129. Number of Part-Time Vacancies for Chaplains
- V130. Chaplain, a Civil Service Position?

- V131. Number of Full-Time Cottage Personnel
- V132. Number of Part-Time Cottage Personnel
- V133. Number of Full-Time Vacancies for Cottage Personnel
- V134. Number of Part-Time Vacancies for Cottage Personnel
- V135. Cottage Personnel, Civil Service Position?
- V136. Number of Full-Time Academic Principals or Directors of Vocational Training
- V137. Number of Part-Time Academic Principals or Directors of Vocational Training
- V138. Number of Full-Time Vacancies for Academic Principals or Directors of Vocational Training
- V139. Number of Part-Time Vacancies for Academic Principals or Directors of Vocational Training
- V140. Academic Principals or Directors of Vocational Training, Civil Service Positions?
- V141. Number of Full-Time Academic Teachers
- V142. Number of Part-Time Academic Teachers
- V143. Number of Full-Time Vacancies for Academic Teachers
- V144. Number of Part-Time Vacancies for Academic Teachers
- V145. Academic Teacher, a Civil Service Position?
- V146. Number of Full-Time Vocational Teachers
- V147. Number of Part-Time Vocational Teachers
- V148. Number of Full-Time Vacancies - Vocational Teachers
- V149. Number of Part-Time Vacancies - Vocational Teachers
- V150. Vocational Teacher, a Civil Service Position?
- V151. Number of Full-Time Social Workers
- V152. Number of Part-Time Social Workers
- V153. Number of Full-Time Vacancies for Social Workers
- V154. Number of Part-Time Vacancies for Social Workers
- V155. Social Worker, a Civil Service Position?
- V156. Number of Full-Time Librarians
- V157. Number of Full-Time Librarians
- V158. Number of Full-Time Vacancies for Librarians
- V159. Number of Part-Time Vacancies for Librarians
- V160. Librarian, a Civil Service Position?
- V161. Number of Full-Time Aftercare and/or Parole Workers
- V162. Number of Part-Time Aftercare and/or Parole Workers
- V163. Number of Full-Time Vacancies for Aftercare or Parole Workers
- V164. Number of Part-Time Vacancies for Aftercare or Parole Workers
- V165. Aftercare and Parole Workers, Civil Service Positions?
- V166. Number of Full-Time Recreation Workers
- V167. Number of Part-Time Recreation Workers
- V168. Number of Full-Time Vacancies for Recreation Workers
- V169. Number of Part-Time Vacancies for Recreation Workers
- V170. Recreation Worker, a Civil Service Position?
- V171. Number of Full-Time Physicians
- V172. Number of Part-Time Physicians

- V173. Number of Full-Time Vacancies for Physicians
 - V174. Number of Part-Time Vacancies for Physicians
 - V175. Physician, a Civil Service Position?
 - V176. Number of Full-Time Registered Nurses
 - V177. Number of Part-Time Registered Nurses
 - V178. Number of Full-Time Vacancies for Registered Nurses
 - V179. Number of Part-Time Vacancies for Registered Nurses
 - V180. Registered Nurse, a Civil Service Position?
 - V181. Number of Full-Time Dentists
 - V182. Number of Part-Time Dentists
 - V183. Number of Full-Time Vacancies for Dentists
 - V184. Number of Part-Time Vacancies for Dentists
 - V185. Dentists, a Civil Service Position
 - V186. Number of Full-Time Medical Aides
 - V187. Number of Part-Time Medical Aides
 - V188. Number of Full-Time Vacancies for Medical Aides
 - V189. Number of Part-Time Vacancies for Medical Aides
 - V190. Medical Aide, a Civil Service Position?
 - V191. Number of Full-Time Classification Officers
 - V192. Number of Part-Time Classification Officers
 - V193. Number of Full-Time Vacancies for Classification Officers
 - V194. Number of Part-Time Vacancies for Classification Officers
 - V195. Classification Officer, a Civil Service Position?
 - V196. Number of Full-Time Other Treatment and Educational Personnel
 - V197. Number of Part-Time Other Treatment and Educational Personnel
 - V198. Number of Full-Time Vacancies Other Treatment and Education Staff
 - V199. Number of Part-Time Vacancies Other Treatment and Education Staff
 - V200. Other Treatment and Education Personnel, a Civil Service Position?
- Facility Operational and Maintenance Personnel
- V201. Number of Full-Time Operational and Maintenance Personnel
 - V202. Number of Part-Time Operational and Maintenance Personnel
 - V203. Number of Full-Time Vacancies Operational and Maintenance Personnel
 - V204. Number of Part-Time Vacancies Operational and Maintenance Personnel
 - V205. Operations and Maintenance Personnel, Civil Service Positions?

- V131. Number of Full-Time Cottage Personnel
- V132. Number of Part-Time Cottage Personnel
- V133. Number of Full-Time Vacancies for Cottage Personnel
- V134. Number of Part-Time Vacancies for Cottage Personnel
- V135. Cottage Personnel, Civil Service Position?
- V136. Number of Full-Time Academic Principals or Directors of Vocational Training
- V137. Number of Part-Time Academic Principals or Directors of Vocational Training
- V138. Number of Full-Time Vacancies for Academic Principals or Directors of Vocational Training
- V139. Number of Part-Time Vacancies for Academic Principals or Directors of Vocational Training
- V140. Academic Principals or Directors of Vocational Training, Civil Service Positions?
- V141. Number of Full-Time Academic Teachers
- V142. Number of Part-Time Academic Teachers
- V143. Number of Full-Time Vacancies for Academic Teachers
- V144. Number of Part-Time Vacancies for Academic Teachers
- V145. Academic Teacher, a Civil Service Position?
- V146. Number of Full-Time Vocational Teachers
- V147. Number of Part-Time Vocational Teachers
- V148. Number of Full-Time Vacancies - Vocational Teachers
- V149. Number of Part-Time Vacancies - Vocational Teachers
- V150. Vocational Teacher, a Civil Service Position?
- V151. Number of Full-Time Social Workers
- V152. Number of Part-Time Social Workers
- V153. Number of Full-Time Vacancies for Social Workers
- V154. Number of Part-Time Vacancies for Social Workers
- V155. Social Worker, a Civil Service Position?
- V156. Number of Full-Time Librarians
- V157. Number of Full-Time Librarians
- V158. Number of Full-Time Vacancies for Librarians
- V159. Number of Part-Time Vacancies for Librarians
- V160. Librarian, a Civil Service Position?
- V161. Number of Full-Time Aftercare and/or Parole Workers
- V162. Number of Part-Time Aftercare and/or Parole Workers
- V163. Number of Full-Time Vacancies for Aftercare or Parole Workers
- V164. Number of Part-Time Vacancies for Aftercare or Parole Workers
- V165. Aftercare and Parole Workers, Civil Service Positions?
- V166. Number of Full-Time Recreation Workers
- V167. Number of Part-Time Recreation Workers
- V168. Number of Full-Time Vacancies for Recreation Workers
- V169. Number of Part-Time Vacancies for Recreation Workers
- V170. Recreation Worker, a Civil Service Position?
- V171. Number of Full-Time Physicians
- V172. Number of Part-Time Physicians

- V173. Number of Full-Time Vacancies for Physicians
 - V174. Number of Part-Time Vacancies for Physicians
 - V175. Physician, a Civil Service Position?
 - V176. Number of Full-Time Registered Nurses
 - V177. Number of Part-Time Registered Nurses
 - V178. Number of Full-Time Vacancies for Registered Nurses
 - V179. Number of Part-Time Vacancies for Registered Nurses
 - V180. Registered Nurse, a Civil Service Position?
 - V181. Number of Full-Time Dentists
 - V182. Number of Part-Time Dentists
 - V183. Number of Full-Time Vacancies for Dentists
 - V184. Number of Part-Time Vacancies for Dentists
 - V185. Dentists, a Civil Service Position
 - V186. Number of Full-Time Medical Aides
 - V187. Number of Part-Time Medical Aides
 - V188. Number of Full-Time Vacancies for Medical Aides
 - V189. Number of Part-Time Vacancies for Medical Aides
 - V190. Medical Aide, a Civil Service Position?
 - V191. Number of Full-Time Classification Officers
 - V192. Number of Part-Time Classification Officers
 - V193. Number of Full-Time Vacancies for Classification Officers
 - V194. Number of Part-Time Vacancies for Classification Officers
 - V195. Classification Officer, a Civil Service Position?
 - V196. Number of Full-Time Other Treatment and Educational Personnel
 - V197. Number of Part-Time Other Treatment and Educational Personnel
 - V198. Number of Full-Time Vacancies Other Treatment and Education Staff
 - V199. Number of Part-Time Vacancies Other Treatment and Education Staff
 - V200. Other Treatment and Education Personnel, a Civil Service Position?
- Facility Operational and Maintenance Personnel
- V201. Number of Full-Time Operational and Maintenance Personnel
 - V202. Number of Part-Time Operational and Maintenance Personnel
 - V203. Number of Full-Time Vacancies Operational and Maintenance Personnel
 - V204. Number of Part-Time Vacancies Operational and Maintenance Personnel
 - V205. Operations and Maintenance Personnel, Civil Service Positions?

Turnover of Full-Time Employees During Reporting Period

- V206. Number of Full-Time Administrative Personnel Hired
- V207. Number of Full-Time Administrative Personnel Separated
- V208. Number of Full-Time Treatment and Educational Personnel Hired
- V209. Number of Full-Time Treatment and Educational Personnel Separated
- V210. Number of Full-Time Operational and Maintenance Personnel Hired
- V211. Number of Full-Time Operational and Maintenance Personnel Separated
- V212. Average Number of Full-Time Employees

Facility Costs

- V213. Beginning Month of Reporting Period
- V214. Beginning Year of Reporting Period
- V215. Ending Month of Reporting Period
- V216. Ending Year of Reporting Period
- V217. Capital Expenditures
- V218. Salaries, Wages, etc. for Administrative Personnel
- V219. Salaries, Wages, etc. for Treatment and Educational Personnel
- V220. Salaries, Wages, etc. for Operational/Maintenance Personnel
- V221. All Other Costs

Facility Construction

- V222. Year Construction Began on Facility
- V223. Year of Latest Construction or Renovation of Facility costing more than \$50,000
- V224. Approximate Cost of Planned Construction During Fiscal Year 1970-71

Availability of Services and Programs

- V225. Medical Facilities
- V226. Competitive or Intramural Sports
- V227. Radio
- V228. Television
- V229. Motion Pictures
- V230. Library
- V231. Gymnasium
- V232. Athletic Field
- V233. Other Recreational Facilities and Programs
- V234. Academic Educational Services
- V235. Vocational Services
- V236. Individual Counseling
- V237. Group Counseling
- V238. Family and Juvenile Counseling
- V239. Aftercare or Parole Program
- V240. Aftercare or Parole Program Operated by Facility
- V241. Aftercare or Parole Program Operated by State Parole Authority
- V242. Aftercare or Parole Program Operated by Court Probation Dept
- V243. Aftercare or Parole Program Operated by State Department
- V244. Aftercare or Parole Program Operated by Other Agency
- V245. Job Placement Program

CODEBOOK

V1
 SEQUENCE NUMBER
 Location: 1 Width: 3
 <No Missing Data Defined>

Reference: 0001
 File I.D.: JD1
 Numeric character

The values range from 1 to 722 and are in ascending order. Sequence numbers were assigned to the file sorted on Ref. Nos. 2,3,4,5,8 and 9.

Ref. Nos. 2-12. These variables are the identification variables assigned by the Governments Division of the Bureau of the Census.

V2
 STATE NUMBER
 Location: 4 Width: 2
 Missing Data: EQ 99

Reference: 0002
 File I.D.: JD1
 Numeric character

- 9 01 Alabama
- 3 02 Alaska
- 9 03 Arizona
- 7 04 Arkansas
- 105 05 California
- 9 06 Colorado
- 6 07 Connecticut
- 5 08 Delaware
- 10 09 District of Columbia
- 38 10 Florida
- 18 11 Georgia
- 3 12 Hawaii

(V2, STATE NUMBER, Continued)

- 3 13 Idaho
- 32 14 Illinois
- 9 15 Indiana
- 7 16 Iowa
- 8 17 Kansas
- 15 18 Kentucky
- 11 19 Louisiana
- 2 20 Maine
- 14 21 Maryland
- 12 22 Massachusetts
- 38 23 Michigan
- 9 24 Minnesota
- 4 25 Mississippi
- 24 26 Missouri
- 4 27 Montana
- 4 28 Nebraska
- 5 29 Nevada
- 1 30 New Hampshire
- 23 31 New Jersey
- 4 32 New Mexico
- 50 33 New York
- 15 34 North Carolina
- 3 35 North Dakota
- 37 36 Ohio
- 6 37 Oklahoma

CODEBOOK

V1
SEQUENCE NUMBER
Location: 1 Width: 3
<No Missing Data Defined>

Reference: 0001
File I.D.: JD1
Numeric character

The values range from 1 to 722 and are in ascending order. Sequence numbers were assigned to the file sorted on Ref. Nos. 2,3,4,5,8 and 9.

Ref. Nos. 2-12. These variables are the identification variables assigned by the Governments Division of the Bureau of the Census.

V2
STATE NUMBER
Location: 4 Width: 2
Missing Data: EQ 99

Reference: 0002
File I.D.: JD1
Numeric character

- 9 01 Alabama
- 3 02 Alaska
- 9 03 Arizona
- 7 04 Arkansas
- 105 05 California
- 9 06 Colorado
- 6 07 Connecticut
- 5 08 Delaware
- 10 09 District of Columbia
- 38 10 Florida
- 18 11 Georgia
- 3 12 Hawaii

(V2, STATE NUMBER, Continued)

- 3 13 Idaho
- 32 14 Illinois
- 9 15 Indiana
- 7 16 Iowa
- 8 17 Kansas
- 15 18 Kentucky
- 11 19 Louisiana
- 2 20 Maine
- 14 21 Maryland
- 12 22 Massachusetts
- 38 23 Michigan
- 9 24 Minnesota
- 4 25 Mississippi
- 24 26 Missouri
- 4 27 Montana
- 4 28 Nebraska
- 5 29 Nevada
- 1 30 New Hampshire
- 23 31 New Jersey
- 4 32 New Mexico
- 50 33 New York
- 15 34 North Carolina
- 3 35 North Dakota
- 37 36 Ohio
- 6 37 Oklahoma

(V2, STATE NUMBER, Continued)

- 10 38 Oregon
- 33 39 Pennsylvania
- 3 40 Rhode Island
- 5 41 South Carolina
- 3 42 South Dakota
- 11 43 Tennessee
- 21 44 Texas
- 5 45 Utah
- 1 46 Vermont
- 20 47 Virginia
- 28 48 Washington
- 8 49 West Virginia
- 10 50 Wisconsin
- 2 51 Wyoming

V3
LEVEL OF GOVERNMENT
Location: 6 Width: 1
Missing Data: EQ 9

Reference: 0003
File I.D.: JD1
Numeric character

Level of government administering facility.

- 318 0 State
- 363 1 County
- 41 2 City

Ref. Nos. 4-5. If the facility is operated by a State, then COUNTY NUMBER is the number of the county in which the facility is located and CITY NUMBER is equal to zero. If the facility is operated by a county, then CITY NUMBER is the county number and has the same value as COUNTY NUMBER. County numbers are assigned sequentially within a State. If the facility is operated by a city, then CITY NUMBER is a unique number assigned sequentially within the county to the city. LEVEL OF GOVERNMENT (Ref. No. 3) determines the contents of CITY NUMBER.

V4
COUNTY NUMBER
Location: 7 Width: 3
Missing Data: EQ 999

Reference: 0004
File I.D.: JD1
Numeric character

See Appendix 3 for a list of county names and numbers appearing in this file.

V5
CITY NUMBER
Location: 10 Width: 3
Missing Data: EQ 999

Reference: 0005
File I.D.: JD1
Numeric character

V6
CHECK DIGIT
Location: 13 Width: 1
<No Missing Data Defined>

Reference: 0006
File I.D.: JD1
Numeric character

V7
AGENCY CODE
Location: 14 Width: 1
Missing Data: EQ 9

Reference: 0007
File I.D.: JD1
Numeric character

- 722 5 Juv detent/cor facil
Juvenile detention or correctional facility.

V8
TYPE OF FACILITY
Location: 15 Width: 1
Missing Data: EQ 9

Reference: 0008
File I.D.: JD1
Numeric character

- 305 1 Detention center
- 17 2 Shelter
- 16 3 Reception/diagnostic
Reception or diagnostic center.
- 191 4 Training school
- 115 5 Ranch/camp/farm
Ranch, forestry camp, or farm.
- 78 6 Halfway/group home
Halfway house or group home.

Juvenile Detention and Correctional
Facility Census of 1971

21

V9
AGENCY ID NUMBER
Location: 16 Width: 2
Missing Data: EQ 99

Reference: 0009
File I.D.: JDI
Numeric character

An ID number to uniquely identify a facility of a given type (Ref. No. 8) within a unit of government (Ref. Nos. 2-5).

V10
SEX OF POPULATION
Location: 18 Width: 1
Missing Data: EQ 9

Reference: 0010
File I.D.: JDI
Numeric character

278 1 Male only
86 2 Female only
358 3 Female and male

V11.
OF FULL-TIME STAFF
Location: 19 Width: 1
Missing Data: EQ 9

Reference: 0011
File I.D.: JDI
Numeric character

Full-time staff includes payroll and nonpayroll staff.

209 1 1-9 full-time staff
282 2 10-49 fulltime staff
108 3 50-99 fulltime staff
123 4 100+ full-time staff

V12
RESIDENT POP-6/30/71
Location: 20 Width: 1
Missing Data: EQ 0

Reference: 0012
File I.D.: JDI
Numeric character

Resident population as of 6/30/71.

1 0 Missing data
119 1 1-9 residents
164 2 10-24 residents

22

Juvenile Detention and Correctional
Facility Census of 1971

(V12, RESIDENT POP-6/30/71, Continued)

136 3 25-49 residents
81 4 50-74 residents
43 5 75-99 residents
91 6 100-199 residents
87 7 200+ residents

V13
PRIMARY FUNCT OF FACILTY
Location: 21 Width: 1
Missing Data: EQ 9

Reference: 0013
File I.D.: JDI
Numeric character

11.A. What is the primary function of this facility?

305 1 Detention center
Provides temporary care in a physically restricting facility for juveniles in custody pending court disposition, and often for juveniles who are adjudicated delinquent or are awaiting return to another jurisdiction.

17 2 Shelter
Provides temporary care, similar to that of a detention center, in a physically unrestricting facility.

16 3 Reception/diagn ctnr
Reception or diagnostic center. A facility that screens juvenile court commitments and assigns them to appropriate treatment facilities.

191 4 Training school
A specialized institution serving delinquent juveniles committed directly to it by juvenile courts or placed in it by an agency having such authority.

115 5 Ranch/fors camp/farm
Ranch, forestry camp, farm. A residential treatment facility for juveniles, whose behavior does not necessitate the strict confinement of a training school often allowing them greater contact with the community.

78 6 Halfway house
Halfway house, group home. A facility where children live in the facility but are permitted extensive contact with the community such as jobs and schools.

V14
LEVEL GOVT ADMIN FACILTY
Location: 22 Width: 1
Missing Data: EQ 9

Reference: 0014
File I.D.: JD1
Numeric character

11.B. What is the level of government administering
this facility?

318 1 State

363 2 County

41 3 City

V15
SEX OF RESIDENTS
Location: 23 Width: 1
Missing Data: EQ 9

Reference: 0015
File I.D.: JD1
Numeric character

11.C. What is the sex of the residents accepted by this
facility?

278 1 Males only

86 2 Females only

358 3 Both males & females

Ref. Nos. 16-21. The reporting period is for admissions
and discharges, staff turnover, and average number of full-
time employees on duty, Ref. Nos. 22-47 and 206-212.

V16
REPORT PERIOD START-MO
Location: 24 Width: 2
Missing Data: EQ 99

Reference: 0016
File I.D.: JD1
Numeric character

V17
REPORT PERIOD START-DAY
Location: 26 Width: 2
Missing Data: EQ 99

Reference: 0017
File I.D.: JD1
Numeric character

V18
REPORT PERIOD START-YEAR
Location: 28 Width: 2
Missing Data: EQ 99

Reference: 0018
File I.D.: JD1
Numeric character

V19
REPORT PERIOD END-MONTH
Location: 30 Width: 2
Missing Data: EQ 99

Reference: 0019
File I.D.: JD1
Numeric character

V20
REPORT PERIOD END-DAY
Location: 32 Width: 2
Missing Data: EQ 99

Reference: 0020
File I.D.: JD1
Numeric character

V21
REPORT PERIOD END-YEAR
Location: 34 Width: 2
Missing Data: EQ 99

Reference: 0021
File I.D.: JD1
Numeric character

Ref. Nos. 22-43. These variables apply to training
schools, forestry camps, ranches, halfway houses, and group
homes.

Ref. Nos. 22-87. Data for these variables includes non-
juveniles where they were held in the same facility as
juveniles. Warning: See Appendix 2 for more information
about this variable.

V22
1ST COURT COMMITMNT-M
Location: 36 Width: 4
Missing Data: EQ -1

Reference: 0022
File I.D.: JD1
Numeric character

111.A.1. Number of males committed by a court for a
first offense. Where applicable, first placements received
through reception or diagnostic centers are included.

V23
1ST COURT COMMITMNT-F
Location: 40 Width: 3
Missing Data: EQ -1

Reference: 0023
File I.D.: JD1
Numeric character

111.A.1. Number of females committed by a court for a
first offense. Where applicable, first placements received
through reception or diagnostic centers are included.

Juvenile Detention and Correctional
Facility Census of 1971

27

V34
#DISCHRGD NO SUPRVISON-M
Location: 73 Width: 3
Missing Data: EQ -1

Reference: 0034
File I.D.: JD1
Numeric character

III.B.1. Number of males discharged with no further agency supervision.

V35
#DISCHRGD NO SUPRVISON-F
Location: 76 Width: 3
Missing Data: EQ -1

Reference: 0035
File I.D.: JD1
Numeric character

III.B.1 Number of females discharged with no further agency supervision.

V36
TO FACILITY PAROLE-M
Location: 79 Width: 4
Missing Data: EQ -1

Reference: 0036
File I.D.: JD1
Numeric character

III.B.2. Number of males placed in an aftercare or parole program operated by the facility itself.

V37
TO FACILITY PAROLE-F
Location: 83 Width: 3
Missing Data: EQ -1

Reference: 0037
File I.D.: JD1
Numeric character

III.B.2. Number of females placed in an aftercare or parole program operated by the facility itself.

V38
#TO OTHR AGENCY PAROLE-M
Location: 86 Width: 4
Missing Data: EQ -1

Reference: 0038
File I.D.: JD1
Numeric character

III.B.3. Number of males placed in an aftercare or parole program operated by an agency other than this facility.

V39
#TO OTHR AGENCY PAROLE-F
Location: 90 Width: 3
Missing Data: EQ -1

Reference: 0039
File I.D.: JD1
Numeric character

28

Juvenile Detention and Correctional
Facility Census of 1971

(V39, #TO OTHR AGENCY PAROLE-F, Continued)

III.B.3. Number of females placed in an aftercare or parole program operated by an agency other than this facility.

V40
TRANS TO OTHER INST-M
Location: 93 Width: 3
Missing Data: EQ -1

Reference: 0040
File I.D.: JD1
Numeric character

III.B.4. Number of males transferred out to another facility for delinquent juveniles. Where applicable, transfers out to reception or diagnostic centers are included.

V41
TRANS TO OTHER INST-F
Location: 96 Width: 3
Missing Data: EQ -1

Reference: 0041
File I.D.: JD1
Numeric character

III.B.4. Number of females transferred out to another facility for delinquent juveniles. Where applicable, transfers out to reception or diagnostic centers are included.

V42
OTHER RELEASES-MALE
Location: 99 Width: 4
Missing Data: EQ -1

Reference: 0042
File I.D.: JD1
Numeric character

III.B.5. Number of males released for other reasons.

V43
OTHER RELEASES-FEMALE
Location: 103 Width: 3
Missing Data: EQ -1

Reference: 0043
File I.D.: JD1
Numeric character

III.B.5. Number of females released for other reasons.

Ref. Nos. 44-47. These variables apply to short-term institutions only, i.e., detention centers, shelters, and reception or diagnostic centers.

Juvenile Detention and Correctional
Facility Census of 1971

29

V44
ADMITTED TO CUSTODY-M
Location: 106 Width: 5
Missing Data: EQ -1

Reference: 0044
File I.D.: JD1
Numeric character

III.C.1. Number of males admitted to custody.

V45
ADMITTED TO CUSTODY-F
Location: 111 Width: 4
Missing Data: EQ -1

Reference: 0045
File I.D.: JD1
Numeric character

III.C.1. Number of females admitted to custody.

V46
DISCHARGED/REMANDED-M
Location: 115 Width: 5
Missing Data: EQ -1

Reference: 0046
File I.D.: JD1
Numeric character

III.C.2. Number of males discharged or remanded to
other court agencies or facilities.

V47
DISCHARGED/REMANDED-F
Location: 120 Width: 4
Missing Data: EQ -1

Reference: 0047
File I.D.: JD1
Numeric character

III.C.2. Number of females discharged or remanded to
other court agencies or facilities.

V48
#ADJUD DELINQ,ETC 9/70-M
Location: 124 Width: 4
Missing Data: EQ -1

Reference: 0048
File I.D.: JD1
Numeric character

III.D.1. Number of male juveniles adjudicated
delinquent, declared in need of supervision, or voluntarily
admitted in this facility on 9/30/70.

V49
#ADJUD DELINQ,ETC 9/70-F
Location: 128 Width: 3
Missing Data: EQ -1

Reference: 0049
File I.D.: JD1
Numeric character

III.D.1. Number of female juveniles adjudicated
delinquent, declared in need of supervision, or voluntarily
admitted in this facility on 9/30/70.

30

Juvenile Detention and Correctional
Facility Census of 1971

V50
#PEND DISPOSITION 9/70-M
Location: 131 Width: 3
Missing Data: EQ -1

Reference: 0050
File I.D.: JD1
Numeric character

III.D.1. Number of male juveniles held pending
disposition by a court on 9/30/70.

V51
#PEND DISPOSITION 9/70-F
Location: 134 Width: 3
Missing Data: EQ -1

Reference: 0051
File I.D.: JD1
Numeric character

III.D.1. Number of female juveniles held pending
disposition by a court on 9/30/70.

V52
#DEPEND/NEGLECTED 9/70-M
Location: 137 Width: 2
Missing Data: EQ -1

Reference: 0052
File I.D.: JD1
Numeric character

III.D.1. Number of dependent and neglected male
children held on 9/30/70.

V53
#DEPEND/NEGLECTED 9/70-F
Location: 139 Width: 2
Missing Data: EQ -1

Reference: 0053
File I.D.: JD1
Numeric character

III.D.1. Number of dependent and neglected female
children held on 9/30/70.

V54
#WAITING TRANSFER 9/70-M
Location: 141 Width: 2
Missing Data: EQ -1

Reference: 0054
File I.D.: JD1
Numeric character

III.D.1. Number of male juveniles awaiting transfer to
another jurisdiction on 9/30/70.

V55
#WAITING TRANSFER 9/70-F
Location: 143 Width: 2
Missing Data: EQ -1

Reference: 0055
File I.D.: JD1
Numeric character

III.D.1. Number of female juveniles awaiting transfer
to another jurisdiction on 9/30/70.

Juvenile Detention and Correctional
Facility Census of 1971

31

V56 Reference: 0056
#ADJUD DELIN,ETC 12/70-M File I.D.: JD1
Location: 145 Width: 4 Numeric character
Missing Data: EQ -1

III.D.2. Number of male juveniles adjudicated delinquent, declared in need of supervision, or voluntarily admitted in this facility on 12/31/70.

V57 Reference: 0057
#ADJUD DELIN,ETC 12/70-F File I.D.: JD1
Location: 149 Width: 3 Numeric character
Missing Data: EQ -1

III.D.2. Number of female juveniles adjudicated delinquent, declared in need of supervision, or voluntarily admitted in this facility on 12/31/70.

V58 Reference: 0058
#PEND DISPOSITON 12/70-M File I.D.: JD1
Location: 152 Width: 3 Numeric character
Missing Data: EQ -1

III.D.2. Number of males held pending disposition by a court on 12/31/70.

V59 Reference: 0059
#PEND DISPOSITON 12/70-F File I.D.: JD1
Location: 155 Width: 2 Numeric character
Missing Data: EQ -1

III.D.2. Number of females held pending disposition by a court on 12/31/70.

V60 Reference: 0060
#DEPEND/NEGLECTD 12/70-M File I.D.: JD1
Location: 157 Width: 2 Numeric character
Missing Data: EQ -1

III.D.2. Number of dependent and neglected male children held on 12/31/70.

V61 Reference: 0061
#DEPEND/NEGLECTD 12/70-F File I.D.: JD1
Location: 159 Width: 2 Numeric character
Missing Data: EQ -1

32

Juvenile Detention and Correctional
Facility Census of 1971

(V61, #DEPEND/NEGLECTD 12/70, Continued)

III.D.2. Number of dependent and neglected female children held on 12/31/70.

V62 Reference: 0062
#WAITING TRANSFR 12/70-M File I.D.: JD1
Location: 161 Width: 2 Numeric character
Missing Data: EQ -1

III.D.2. Number of males awaiting transfer to another jurisdiction on 12/31/70.

V63 Reference: 0063
#WAITING TRANSFR 12/70-F File I.D.: JD1
Location: 163 Width: 2 Numeric character
Missing Data: EQ -1

III.D.2. Number of females awaiting transfer to another jurisdiction on 12/31/70.

V64 Reference: 0064
#ADJUD DELINQ,ETC 3/71-M File I.D.: JD1
Location: 165 Width: 4 Numeric character
Missing Data: EQ -1

III.D.3. Number of male juveniles adjudicated delinquent, declared in need of supervision, or voluntarily admitted in this facility on 3/31/71.

V65 Reference: 0065
#ADJUD DELINQ,ETC 3/71-F File I.D.: JD1
Location: 169 Width: 3 Numeric character
Missing Data: EQ -1

III.D.3. Number of female juveniles adjudicated delinquent, declared in need of supervision, or voluntarily admitted in this facility on 3/31/71.

V66 Reference: 0066
#PEND DISPOSITION 3/71-M File I.D.: JD1
Location: 172 Width: 3 Numeric character
Missing Data: EQ -1

III.D.3. Number of male juveniles held pending disposition by a court on 3/31/71.

Juvenile Detention and Correctional
Facility Census of 1971

33

V67 Reference: 0067
#PEND DISPOSITION 3/71-F File I.D.: JD1
Location: 175 Width: 3 Numeric character
Missing Data: EQ -1

III.D.3. Number of female juveniles held pending disposition by a court on 3/31/71.

V68 Reference: 0068
#DEPEND/NEGLECTED 3/71-M File I.D.: JD1
Location: 178 Width: 2 Numeric character
Missing Data: EQ -1

III.D.3. Number of dependent and neglected male children held on 3/31/71.

V69 Reference: 0069
#DEPEND/NEGLECTED 3/71-F File I.D.: JD1
Location: 180 Width: 2 Numeric character
Missing Data: EQ -1

III.D.3. Number of dependent and neglected female children held on 3/31/71.

V70 Reference: 0070
#WAITING TRANSFER 3/71-M File I.D.: JD1
Location: 182 Width: 2 Numeric character
Missing Data: EQ -1

III.D.3. Number of male juveniles awaiting transfer to another jurisdiction on 3/31/71.

V71 Reference: 0071
#WAITING TRANSFER 3/71-F File I.D.: JD1
Location: 184 Width: 2 Numeric character
Missing Data: EQ -1

III.D.3. Number of female juveniles awaiting transfer to another jurisdiction on 3/31/71.

V72 Reference: 0072
#ADJUD DELINQ,ETC 6/71-M File I.D.: JD1
Location: 186 Width: 4 Numeric character
Missing Data: EQ -1

III.D.4. Number of male juveniles adjudicated delinquent, declared in need of supervision, or voluntarily admitted in this facility on 6/30/71.

34

Juvenile Detention and Correctional
Facility Census of 1971

V73 Reference: 0073
#ADJUD DELINQ,ETC 6/71-F File I.D.: JD1
Location: 190 Width: 3 Numeric character
Missing Data: EQ -1

III.D.3. Number of female juveniles adjudicated delinquent, declared in need of supervision, or voluntarily admitted in this facility on 6/30/71.

V74 Reference: 0074
#PEND DISPOSITION 6/71-M File I.D.: JD1
Location: 193 Width: 3 Numeric character
Missing Data: EQ -1

III.D.4. Number of male juveniles held pending disposition by a court on 6/30/71.

V75 Reference: 0075
#PEND DISPOSITION 6/71-F File I.D.: JD1
Location: 196 Width: 3 Numeric character
Missing Data: EQ -1

III.D.4. Number of female juveniles held pending disposition by a court on 6/30/71.

V76 Reference: 0076
#DEPEND/NEGLECTED 6/71-M File I.D.: JD1
Location: 199 Width: 2 Numeric character
Missing Data: EQ -1

III.D.4. Number of dependent and neglected male children held on 6/30/71.

V77 Reference: 0077
#DEPEND/NEGLECTED 6/71-F File I.D.: JD1
Location: 201 Width: 2 Numeric character
Missing Data: EQ -1

III.D.4. Number of dependent and neglected female children held on 6/30/71.

V78 Reference: 0078
#WAITING TRANSFER 6/71-M File I.D.: JD1
Location: 203 Width: 2 Numeric character
Missing Data: EQ -1

Juvenile Detention and Correctional
Facility Census of 1971

35

(V78, #WAITING TRANSFER 6/71-, Continued)

III.D.4. Number of male juveniles awaiting transfer to
another jurisdiction on 6/30/71.

V79
#WAITING TRANSFER 6/71-F
Location: 205 Width: 2
Missing Data: EQ -1

Reference: 0079
File I.D.: JD1
Numeric character

III.D.4. Number of female juveniles awaiting transfer
to another jurisdiction on 6/30/71.

Ref. Nos. 80-87. The counts in these variables are of
juveniles adjudicated delinquent, declared in need of
supervision, or who were admitted voluntarily.

V80
#HELD FOR FELONY-MALE
Location: 207 Width: 3
Missing Data: EQ -1

Reference: 0080
File I.D.: JD1
Numeric character

IV.C.1. Number of male juveniles adjudicated delinquent
held on June 30, 1971 for a felony, except a drug offense.
Felony offenses are those that would be felonies if
committed by an adult.

V81
#HELD FOR FELONY-FEMALE
Location: 210 Width: 2
Missing Data: EQ -1

Reference: 0081
File I.D.: JD1
Numeric character

IV.C.1. Number of female juveniles adjudicated
delinquent held on June 30, 1971 for a felony, except a drug
offense. Felony offenses are those that would be felonies if
committed by an adult.

V82
#HELD FOR MISDEMEANOR-M
Location: 212 Width: 3
Missing Data: EQ -1

Reference: 0082
File I.D.: JD1
Numeric character

IV.C.2. Number of male juveniles adjudicated delinquent
held on June 30, 1971 for a misdemeanor, except a drug
offenses. Misdemeanor offenses are those that would be
misdemeanors if committed by an adult.

36

Juvenile Detention and Correctional
Facility Census of 1971

V83
#HELD FOR MISDEMEANOR-F
Location: 215 Width: 3
Missing Data: EQ -1

Reference: 0083
File I.D.: JD1
Numeric character

IV.C.2. Number of female juveniles adjudicated
delinquent held on June 30, 1971 for a misdemeanor, except a
drug offenses. Misdemeanor offenses are those that would be
misdemeanors if committed by an adult.

V84
#HELD FOR DRUG OFFENSE-M
Location: 218 Width: 3
Missing Data: EQ -1

Reference: 0084
File I.D.: JD1
Numeric character

IV.C.3. Number of male juveniles adjudicated delinquent
held on June 30, 1971 for drug offenses.

V85
#HELD FOR DRUG OFFENSE-F
Location: 221 Width: 2
Missing Data: EQ -1

Reference: 0085
File I.D.: JD1
Numeric character

IV.C.3. Number of female juveniles adjudicated
delinquent held on June 30, 1971 for drug offenses.

V86
#HELD STATUS OFFENSE-M
Location: 223 Width: 3
Missing Data: EQ -1

Reference: 0086
File I.D.: JD1
Numeric character

IV.C.4. Number of male juveniles adjudicated delinquent
held on June 30, 1971 for status offenses. Status offenses
are those that would not be considered crimes if committed
by an adult.

V87
#HELD STATUS OFFENSE-F
Location: 226 Width: 3
Missing Data: EQ -1

Reference: 0087
File I.D.: JD1
Numeric character

IV.C.4. Number of female juveniles adjudicated
delinquent held on June 30, 1971 for status offenses. Status
offenses are those that would not be considered crimes if
committed by an adult.

V88
AGE OF YOUNGEST MALE
Location: 229 Width: 2
Missing Data: EQ 99

Reference: 0088
File I.D.: JD1
Numeric character

IV.A.1. Age of the youngest male currently under supervision (at the time the questionnaire was completed.)

V89
AGE OF YOUNGEST FEMALE
Location: 231 Width: 2
Missing Data: EQ 99

Reference: 0089
File I.D.: JD1
Numeric character

IV.A.1. Age of the youngest female currently under supervision (at the time the questionnaire was completed.)

V90
AGE OF OLDEST MALE
Location: 233 Width: 2
Missing Data: EQ 99

Reference: 0090
File I.D.: JD1
Numeric character

IV.A.2. Age of the oldest male currently under supervision. Warning: See Appendix 2 for more information about this variable.

V91
AGE OF OLDEST FEMALE
Location: 235 Width: 2
Missing Data: EQ 99

Reference: 0091
File I.D.: JD1
Numeric character

IV.A.2. Age of the oldest female currently under supervision.

V92
FACILITY CAPACITY-MALE
Location: 237 Width: 4
Missing Data: EQ -1

Reference: 0092
File I.D.: JD1
Numeric character

III.E. The number of males the facility was designed to hold without overcrowding. Overcrowding would include double decked bunks where facility was designed for single bunks, or temporary use of a room as sleeping quarters that would not ordinarily be used as such.

V93
FACILITY CAPACITY-FEMALE
Location: 241 Width: 3
Missing Data: EQ -1

Reference: 0093
File I.D.: JD1
Numeric character

III.E. The number of Females the facility was designed to hold without overcrowding. Overcrowding would include double decked bunks where facility was designed for single bunks, or temporary use of a room as sleeping quarters that would not ordinarily be used as such.

V94
ADULT/JUVENILE SEPARATE?
Location: 244 Width: 1
Missing Data: EQ 3 OR GE 4

Reference: 0094
File I.D.: JD1
Numeric character

IV.B.1. Are adults held separately from juveniles?

5 1 Yes

2 2 No

714 3 Not applicable

V95
ADJUDICAT/PEND DISP SEP?
Location: 245 Width: 1
Missing Data: EQ 3 OR GE 4

Reference: 0095
File I.D.: JD1
Numeric character

IV.B.2. Are juveniles in the adjudicated delinquent, etc. category held separately from juveniles pending disposition by a court?

26 1 Yes

291 2 No

405 3 Not applicable

V96
ADJUD/DEPEND CHILD SEP?
Location: 246 Width: 1
Missing Data: EQ 3 OR GE 4

Reference: 0096
File I.D.: JD1
Numeric character

IV.B.3. Are juveniles in the adjudicated delinquent, etc. category held separately from dependent or neglected children?

(V96, ADJUD/DEPEND CHILD SEP?, Continued)

33 1 Yes
124 2 No
565 3 Not applicable

V97 Reference: 0097
PEND DISP/DEP CHILD SEP? File I.D.: JD1
Location: 247 Width: 1 Numeric character
Missing Data: EQ 3 OR GE 4

IV.B.4. Are juveniles pending disposition by a court held separately from dependent or neglected children?

33 1 Yes
117 2 No
572 3 Not applicable

V98 Reference: 0098
DPN CHILD/WAIT TRAN SEP? File I.D.: JD1
Location: 248 Width: 1 Numeric character
Missing Data: EQ 3 OR GE 4

IV.B.5. Are dependent or neglected children held separately from alleged juvenile delinquents awaiting transfer to another jurisdiction?

35 1 Yes
113 2 No
574 3 Not applicable

V99 Reference: 0099
AVERAGE STAY-MONTHS File I.D.: JD1
Location: 249 Width: 2 Numeric character
Missing Data: EQ -1

IX.A. Average length of stay in months for training schools, forestry camps, ranches, halfway houses, and group homes.

V100 Reference: 0100
AVERAGE STAY-DAYS File I.D.: JD1
Location: 251 Width: 3 Numeric character
Missing Data: EQ -1

IX.B. Average length of stay in days for detention centers, shelters, and reception or diagnostic centers.

Ref. Nos. 101-205. Respondents were requested to count their staff as full-time if they regularly worked 30 hours or more per week. Staff who regularly worked less than 30 hours per week were to be counted as part-time. All staff counts are as of June 30, 1971 and include both payroll and nonpayroll staff. Community volunteers were not included.

V101 Reference: 0101
#SUPERINTENDNT FULL-TIME File I.D.: JD1
Location: 254 Width: 2 Numeric character
Missing Data: EQ -1

V.A. Number of full-time superintendents.

V102 Reference: 0102
#SUPERINTENDNT PART-TIME File I.D.: JD1
Location: 256 Width: 2 Numeric character
Missing Data: EQ -1

V.A. Number of part-time superintendents.

V103 Reference: 0103
SUPER VACNCY FULL-TIME File I.D.: JD1
Location: 258 Width: 2 Numeric character
Missing Data: EQ -1

V.A. Number of full-time vacancies for superintendents.

V104 Reference: 0104
SUPER VACNCY PART-TIME File I.D.: JD1
Location: 260 Width: 2 Numeric character
Missing Data: EQ -1

V.A. Number of part-time vacancies for superintendents.

Juvenile Detention and Correctional
Facility Census of 1971

41

V105
SUPERINTEND CIVL SERVICE?
Location: 262 Width: 1
Missing Data: EQ 8 OR GE 9

Reference: 0105
File I.D.: JD1
Numeric character

V.A. Was the position of superintendent a civil service
position?

336 1 Yes

330 2 No

56 9 Missing Data

V106
#AST SUPERINTEND FUL-TIM
Location: 263 Width: 2
Missing Data: EQ -1

Reference: 0106
File I.D.: JD1
Numeric character

V.A. Number of full-time assistant superintendents.

V107
#AST SUPERINTEND PRT-TIM
Location: 265 Width: 2
Missing Data: EQ -1

Reference: 0107
File I.D.: JD1
Numeric character

V.A. Number of part-time assistant superintendents.

V108
#AST SUPR VACNCY FUL-TIM
Location: 267 Width: 2
Missing Data: EQ -1

Reference: 0108
File I.D.: JD1
Numeric character

V.A. Number of full-time vacancies for assistant
superintendents.

V109
#AST SUPR VACNCY PRT-TIM
Location: 269 Width: 2
Missing Data: EQ -1

Reference: 0109
File I.D.: JD1
Numeric character

V.A. Number of part-time vacancies for assistant
superintendents.

42

Juvenile Detention and Correctional
Facility Census of 1971

V110
ASST SUPER CIVL SERVICE?
Location: 271 Width: 1
Missing Data: EQ 8 OR GE 9

Reference: 0110
File I.D.: JD1
Numeric character

V.A. Was the position of assistant superintendent a
civil service position?

251 1 Yes

177 2 No

1 8 Undefined

293 9 Missing Data

Ref. Nos. 111-115. Included under "other"
administrative staff are those in positions such as business
manager, purchasing agent, stenographer, bookkeeper,
accountant, switchboard operator, clerk, and typist.

V111
OTHER ADMIN FULL-TIME
Location: 272 Width: 2
Missing Data: EQ -1

Reference: 0111
File I.D.: JD1
Numeric character

V.A. Number of full-time other administrative
employees.

V112
OTHER ADMIN PART-TIME
Location: 274 Width: 2
Missing Data: EQ -1

Reference: 0112
File I.D.: JD1
Numeric character

V.A. Number of part-time other administrative
employees.

V113
#OTHR ADM VACNCY FUL-TIM
Location: 276 Width: 2
Missing Data: EQ -1

Reference: 0113
File I.D.: JD1
Numeric character

V.A. Number of full-time vacancies for other
administrative positions.

Juvenile Detention and Correctional
Facility Census of 1971

43

V114
#OTHR ADM VACNCY PRT-TIM
Location: 278 Width: 2
Missing Data: EQ -1

Reference: 0114
File I.D.: JD1
Numeric character

V.A. Number of part-time vacancies for other
administrative positions.

V115
OTHER ADM CIVIL SERVICE?
Location: 280 Width: 1
Missing Data: EQ 8 OR GE 9

Reference: 0115
File I.D.: JD1
Numeric character

V.A. Were the other administrative positions civil
service positions?

315 1 Yes

171 2 No

236 9 Missing Data

V116
#PSYCHIATRISTS FULL-TIME
Location: 281 Width: 2
Missing Data: EQ -1

Reference: 0116
File I.D.: JD1
Numeric character

V.A. Number of full-time psychiatrists.

V117
#PSYCHIATRISTS PART-TIME
Location: 283 Width: 2
Missing Data: EQ -1

Reference: 0117
File I.D.: JD1
Numeric character

V.A. Number of part-time psychiatrists.

V118
#PSYCHIAT VACNCY FUL-TIM
Location: 285 Width: 2
Missing Data: EQ -1

Reference: 0118
File I.D.: JD1
Numeric character

V.A. Number of full-time vacancies for psychiatrists.

44

Juvenile Detention and Correctional
Facility Census of 1971

V119
#PSYCHIAT VACNCY PRT-TIM
Location: 287 Width: 2
Missing Data: EQ -1

Reference: 0119
File I.D.: JD1
Numeric character

V.A. Number of part-time vacancies for psychiatrists.

V120
PSYCHIATRIST CIVIL SERV?
Location: 289 Width: 1
Missing Data: EQ 8 OR GE 9

Reference: 0120
File I.D.: JD1
Numeric character

V.A. Was the position of psychiatrist a civil service
position?

50 1 Yes

121 2 No

551 9 Missing Data

V121
#PSYCHOLOGISTS FULL-TIME
Location: 290 Width: 2
Missing Data: EQ -1

Reference: 0121
File I.D.: JD1
Numeric character

V.A. Number of full-time psychologists.

V122
#PSYCHOLOGISTS PART-TIME
Location: 292 Width: 2
Missing Data: EQ -1

Reference: 0122
File I.D.: JD1
Numeric character

V.A. Number of part-time psychologists.

V123
#PSYCHOL VACANCY FUL-TIM
Location: 294 Width: 2
Missing Data: EQ -1

Reference: 0123
File I.D.: JD1
Numeric character

V.A. Number of full-time vacancies for psychologists.

V124
#PSYCHOL VACANCY PRT-TIM
Location: 296 Width: 2
Missing Data: EQ -1

Reference: 0124
File I.D.: JD1
Numeric character

Juvenile Detention and Correctional
Facility Census of 1971

45

(V124, #PSYCHOL VACANCY PRT-TIM, Continued)

V.A. Number of part-time vacancies for psychologists.

V125
PSYCHOLOGIST CIVIL SERV?
Location: 298 Width: 1
Missing Data: EQ 8 OR GE 9

Reference: 0125
File I.D.: JD1
Numeric character

V.A. Was the the position of psychologist a civil
service position?

132 1 Yes

128 2 No

462 9 Missing Data

V126
CHAPLAINS FULL-TIME
Location: 299 Width: 2
Missing Data: EQ -1

Reference: 0126
File I.D.: JD1
Numeric character

V.A. Number of full-time chaplains.

V127
CHAPLAINS PART-TIME
Location: 301 Width: 2
Missing Data: EQ -1

Reference: 0127
File I.D.: JD1
Numeric character

V.A. Number of part-time chaplains.

V128
#CHAPLAIN VACNCY FUL-TIM
Location: 303 Width: 2
Missing Data: EQ -1

Reference: 0128
File I.D.: JD1
Numeric character

V.A. Number of full-time vacancies for chaplains.

V129
#CHAPLAIN VACNCY PRT-TIM
Location: 305 Width: 2
Missing Data: EQ -1

Reference: 0129
File I.D.: JD1
Numeric character

V.A. Number of part-time vacancies for chaplains.

46

Juvenile Detention and Correctional
Facility Census of 1971

V130
#CHAPLAIN CIVIL SERVICE?
Location: 307 Width: 2
Missing Data: EQ 8 OR GE 9

Reference: 0130
File I.D.: JD1
Numeric character

V.A. Was the position of chaplain a civil service
position?

105 1 Yes

178 2 No

439 9 Missing Data

V131
#COTTAGE PERSONL FUL-TIM
Location: 309 Width: 3
Missing Data: EQ -1

Reference: 0131
File I.D.: JD1
Numeric character

V.A. Number of full-time cottage personnel.

V132
#COTTAGE PERSONL PRT-TIM
Location: 312 Width: 2
Missing Data: EQ -1

Reference: 0132
File I.D.: JD1
Numeric character

V.A. Number of part-time cottage personnel.

V133
#COTTG PERSNL VAC FUL-TM
Location: 314 Width: 2
Missing Data: EQ -1

Reference: 0133
File I.D.: JD1
Numeric character

V.A. Number of full-time vacancies for cottage
personnel.

V134
#COTTAG PRSNL VAC PRT-TM
Location: 316 Width: 2
Missing Data: EQ -1

Reference: 0134
File I.D.: JD1
Numeric character

V.A. Number of part-time vacancies for cottage
personnel.

Juvenile Detention and Correctional
Facility Census of 1971

47

V135 Reference: 0135
COTTAG PRSNL CIVIL SERV? File I.D.: JD1
Location: 318 Width: 1 Numeric character
Missing Data: EQ 8 OR GE 9

V.A. Were cottage personnel positions civil service positions?

331 1 Yes
282 2 No
109 9 Missing Data

V136 Reference: 0136
#ACAD PRINCIPALS FUL-TIM File I.D.: JD1
Location: 319 Width: 2 Numeric character
Missing Data: EQ -1

V.A. Number of full-time academic principals or directors of vocational training.

V137 Reference: 0137
#ACAD PRINCIPALS PRT-TIM File I.D.: JD1
Location: 321 Width: 2 Numeric character
Missing Data: EQ -1

V.A. Number of part-time academic principals or directors of vocational training.

V138 Reference: 0138
#AC PRINCIPL VAC FUL-TIM File I.D.: JD1
Location: 323 Width: 2 Numeric character
Missing Data: EQ -1

V.A. Number of full-time vacancies for academic principals or directors of vocational training.

V139 Reference: 0139
#AC PRINCIPL VAC PRT-TIM File I.D.: JD1
Location: 325 Width: 2 Numeric character
Missing Data: EQ -1

V.A. Number of part-time vacancies for academic principals or directors of vocational training.

48

Juvenile Detention and Correctional
Facility Census of 1971

V140 Reference: 0140
AC PRINCIPAL CIVIL SERV? File I.D.: JD1
Location: 327 Width: 1 Numeric character
Missing Data: EQ 8 OR GE 9

V.A. Were the positions of academic principal or director of vocational training civil service positions?

144 1 Yes
141 2 No
437 9 Missing Data

V141 Reference: 0141
#ACAD TEACHERS FULL-TIME File I.D.: JD1
Location: 328 Width: 2 Numeric character
Missing Data: EQ -1

V.A. Number of full-time academic teachers.

V142 Reference: 0142
#ACAD TEACHERS PART-TIME File I.D.: JD1
Location: 330 Width: 2 Numeric character
Missing Data: EQ -1

V.A. Number of part-time academic teachers.

V143 Reference: 0143
#AC TEACHER VACNCY FL-TM File I.D.: JD1
Location: 332 Width: 2 Numeric character
Missing Data: EQ -1

V.A. Number of full-time vacancies for academic teachers.

V144 Reference: 0144
#AC TEACHER VACNCY PT-TM File I.D.: JD1
Location: 334 Width: 2 Numeric character
Missing Data: EQ -1

V.A. Number of part-time vacancies for academic teachers.

Juvenile Detention and Correctional
Facility Census of 1971

51

V155
SOC WORKER CIVL SERVICE?
Location: 354 Width: 1
Missing Data: EQ 8 OR GE 9

Reference: 0155
File I.D.: JD1
Numeric character

V.A. Was the position of social worker a civil service
position?

197 1 Yes

120 2 No

405 9 Missing data

V156
LIBRARIANS FULL-TIME
Location: 355 Width: 2
Missing Data: EQ -1

Reference: 0156
File I.D.: JD1
Numeric character

V.A. Number of full-time librarians.

V157
LIBRARIAN PART-TIME
Location: 357 Width: 2
Missing Data: EQ -1

Reference: 0157
File I.D.: JD1
Numeric character

V.A. Number of part-time librarians.

V158
#LIBRARIAN VACNCY FUL-TM
Location: 359 Width: 2
Missing Data: EQ -1

Reference: 0158
File I.D.: JD1
Numeric character

V.A. Number of full-time vacancies for librarians.

V159
#LIBRARIAN VACNCY PRT-TM
Location: 361 Width: 2
Missing Data: EQ -1

Reference: 0159
File I.D.: JD1
Numeric character

V.A. Number of part-time vacancies for librarians.

V160
LIBRARIAN CIVIL SERVICE?
Location: 363 Width: 1
Missing Data: EQ 8 OR GE 9

Reference: 0160
File I.D.: JD1
Numeric character

52

Juvenile Detention and Correctional
Facility Census of 1971

(V160, LIBRARIAN CIVIL SERVICE?, Continued)

V.A. Was the position of librarian a civil service
position?

52 1 Yes

68 2 No

602 9 Missing Data

V161
#PAROLE WORKER FULL-TIME
Location: 364 Width: 2
Missing Data: EQ -1

Reference: 0161
File I.D.: JD1
Numeric character

V.A. Number of full-time aftercare and/or parole
workers.

V162
#PAROLE WORKER PART-TIME
Location: 366 Width: 2
Missing Data: EQ -1

Reference: 0162
File I.D.: JD1
Numeric character

V.A. Number of part-time aftercare and/or parole
workers.

V163
#PAROLE WORK VAC FUL-TIM
Location: 368 Width: 2
Missing Data: EQ -1

Reference: 0163
File I.D.: JD1
Numeric character

V.A. Number of full-time vacancies for aftercare or
parole workers.

V164
#PAROLE WORK VAC PRT-TIM
Location: 370 Width: 2
Missing Data: EQ -1

Reference: 0164
File I.D.: JD1
Numeric character

V.A. Number of part-time vacancies for aftercare or
parole workers.

V165
PAROLE WORKR CIVIL SERV?
Location: 372 Width: 2
Missing Data: EQ 8 OR GE 9

Reference: 0165
File I.D.: JD1
Numeric character

(V165, PAROLE WORKR CIVIL SERV?, Continued)

V.A. Were the positions of aftercare and parole workers
civil service positions?

62 1 Yes
29 2 No
1 8 Undefined
630 9 Missing Data

V166 Reference: 0166
REC WORKERS FULL-TIME File I.D.: JD1
Location: 374 Width: 2 Numeric character
Missing Data: EQ -1

V.A. Number of full-time recreation workers.

V167 Reference: 0167
REC WORKERS PART-TIME File I.D.: JD1
Location: 376 Width: 2 Numeric character
Missing Data: EQ -1

V.A. Number of part-time recreation workers.

V168 Reference: 0168
#REC WORK VACNCY FUL-TIM File I.D.: JD1
Location: 378 Width: 2 Numeric character
Missing Data: EQ -1

V.A. Number of full-time vacancies for recreation
workers.

V169 Reference: 0169
#REC WORK VACNCY PRT-TIM File I.D.: JD1
Location: 380 Width: 2 Numeric character
Missing Data: EQ -1

V.A. Number of part-time vacancies for recreation
workers.

V170 Reference: 0170
REC WORKER CIVIL SERV? File I.D.: JD1
Location: 382 Width: 1 Numeric character
Missing Data: EQ 8 OR GE 9

(V170, REC WORKER CIVIL SERV?, Continued)

V.A. Was the position of recreation worker a civil
service position?

148 1 Yes
112 2 No
462 9 Missing Data

V171 Reference: 0171
PHYSICIANS FULL-TIME File I.D.: JD1
Location: 383 Width: 2 Numeric character
Missing Data: EQ -1

V.A. Number of full-time physicians.

V172 Reference: 0172
PHYSICIANS PART-TIME File I.D.: JD1
Location: 385 Width: 2 Numeric character
Missing Data: EQ -1

V.A. Number of part-time physicians.

V173 Reference: 0173
#PHYSICIAN VACNCY FUL-TM File I.D.: JD1
Location: 387 Width: 2 Numeric character
Missing Data: EQ -1

V.A. Number of full-time vacancies for physicians.

V174 Reference: 0174
#PHYSICIAN VACNCY PRT-TM File I.D.: JD1
Location: 389 Width: 2 Numeric character
Missing Data: EQ -1

V.A. Number of part-time vacancies for physicians.

V175 Reference: 0175
PHYSICIAN CIVIL SERVICE? File I.D.: JD1
Location: 391 Width: 1 Numeric character
Missing Data: EQ 8 OR GE 9

V.A. Was the position of physician a civil service
position?

Juvenile Detention and Correctional
Facility Census of 1971

55

(V175, PHYSICIAN CIVIL SERVICE?, Continued)

90 1 Yes
222 2 No
410 9 Missing Data

V176 Reference: 0176
#REGISTER NURSE FUL-TIME File I.D.: JD1
Location: 392 Width: 2 Numeric character
Missing Data: EQ -1

V.A. Number of full-time registered nurses.

V177 Reference: 0177
#REGISTER NURSE PRT-TIME File I.D.: JD1
Location: 394 Width: 2 Numeric character
Missing Data: EQ -1

V.A. Number of part-time registered nurses.

V178 Reference: 0178
#REG NURSE VACNCY FUL-TM File I.D.: JD1
Location: 396 Width: 2 Numeric character
Missing Data: EQ -1

V.A. Number of full-time vacancies for registered nurses.

V179 Reference: 0179
#REG NURSE VACNCY PRT-TM File I.D.: JD1
Location: 398 Width: 2 Numeric character
Missing Data: EQ -1

V.A. Number of part-time vacancies for registered nurses.

V180 Reference: 0180
REG NURSE CIVIL SERVICE? File I.D.: JD1
Location: 400 Width: 1 Numeric character
Missing Data: EQ 8 OR GE 9

V.A. Was the position of registered nurse a civil service position?

183 1 Yes

56

Juvenile Detention and Correctional
Facility Census of 1971

(V180, REG NURSE CIVIL SERVICE?, Continued)

117 2 No
422 9 Missing Data

V181 Reference: 0181
DENTISTS FULL-TIME File I.D.: JD1
Location: 401 Width: 2 Numeric character
Missing Data: EQ -1

V.A. Number of full-time dentists.

V182 Reference: 0182
DENTISTS PART-TIME File I.D.: JD1
Location: 403 Width: 2 Numeric character
Missing Data: EQ -1

V.A. Number of part-time dentists.

V183 Reference: 0183
#DENTIST VACANCY FUL-TIM File I.D.: JD1
Location: 405 Width: 2 Numeric character
Missing Data: EQ -1

V.A. Number of full-time vacancies for dentists.

V184 Reference: 0184
#DENTIST VACANCY PRT-TIM File I.D.: JD1
Location: 407 Width: 2 Numeric character
Missing Data: EQ -1

V.A. Number of part-time vacancies for dentists.

V185 Reference: 0185
DENTIST CIVIL SERVICE? File I.D.: JD1
Location: 409 Width: 1 Numeric character
Missing Data: EQ 8 OR GE 9

V.A. Was the position of dentist a civil service position?

71 1 Yes
103 2 No
1 8 Undefined

(V185, DENTIST CIVIL SERVICE?, Continued)

547 9 Missing Data

V186 Reference: 0186
#MEDICAL AIDES FULL-TIME File I.D.: JD1
Location: 410 Width: 2 Numeric character
Missing Data: EQ -1

V.A. Number of full-time medical aides.

V187 Reference: 0187
#MEDICAL AIDES PART-TIME File I.D.: JD1
Location: 412 Width: 2 Numeric character
Missing Data: EQ -1

V.A. Number of part-time medical aides.

V188 Reference: 0188
#MED AIDE VACNCY FUL-TIM File I.D.: JD1
Location: 414 Width: 2 Numeric character
Missing Data: EQ -1

V.A. Number of full-time vacancies for medical aides.

V189 Reference: 0189
#MED AIDE VACNCY PRT-TIM File I.D.: JD1
Location: 416 Width: 2 Numeric character
Missing Data: EQ -1

V.A. Number of part-time vacancies for medical aides.

V190 Reference: 0190
MED AIDE CIVIL SERVICE? File I.D.: JD1
Location: 418 Width: 1 Numeric character
Missing Data: EQ 8 OR GE 9

V.A. Was the position of medical aide a civil service position?

70 1 Yes

49 2 No

603 9 Missing Data

V191 Reference: 0191
#CLASSIFICAT OFCR FUL-TM File I.D.: JD1
Location: 419 Width: 2 Numeric character
Missing Data: EQ -1

V.A. Number of full-time classification officers.

V192 Reference: 0192
#CLASSIFICAT OFCR PRT-TM File I.D.: JD1
Location: 421 Width: 2 Numeric character
Missing Data: EQ -1

V.A. Number of part-time classification officers.

V193 Reference: 0193
#CLASS OFCR VAC FUL-TIME File I.D.: JD1
Location: 423 Width: 2 Numeric character
Missing Data: EQ -1

V.A. Number of full-time vacancies for classification officers.

V194 Reference: 0194
#CLASS OFCR VAC PART-TIM File I.D.: JD1
Location: 425 Width: 2 Numeric character
Missing Data: EQ -1

V.A. Number of part-time vacancies for classification officers.

V195 Reference: 0195
CLASS OFCR CIVIL SERV? File I.D.: JD1
Location: 427 Width: 1 Numeric character
Missing Data: EQ 8 OR GE 9

V.A. Was the position of classification officer a civil service position?

18 1 Yes

8 2 No

1 8 Undefined

695 9 Missing Data

Juvenile Detention and Correctional
Facility Census of 1971

59

V196
#OTHER TREAT/ED FUL-TIME
Location: 428 Width: 3
Missing Data: EQ -1

Reference: 0196
File I.D.: JD1
Numeric character

V.A. Number of other full-time treatment and
educational staff.

V197
#OTHER TREAT/ED PART-TIM
Location: 431 Width: 2
Missing Data: EQ -1

Reference: 0197
File I.D.: JD1
Numeric character

V.A. Number of other part-time treatment and
educational staff.

V198
#OTHR TREAT/ED VAC FL-TM
Location: 433 Width: 2
Missing Data: EQ -1

Reference: 0198
File I.D.: JD1
Numeric character

V.A. Number of full-time vacancies for other treatment
and educational staff.

V199
#OTHR TREAT/ED VAC PT-TM
Location: 435 Width: 2
Missing Data: EQ -1

Reference: 0199
File I.D.: JD1
Numeric character

V.A. Number of part-time vacancies for other treatment
and educational staff.

V200
OTHR TREAT/ED CIVL SERV?
Location: 437 Width: 1
Missing Data: EQ 8 OR GE 9

Reference: 0200
File I.D.: JD1
Numeric character

V.A. Were the other educational positions civil service
positions?

156 1 Yes

108 2 No

458 9 Missing Data

Ref. Nos. 201-205. Operational and maintenance staff
include positions such as gardener, janitor, watchman,
chauffeur, carpenter, plumber, cook, baker, painter,
printer, barber, laundress, maid, and dairyman.

60

Juvenile Detention and Correctional
Facility Census of 1971

V201
OPERAT/MAINT FULL-TIME
Location: 438 Width: 3
Missing Data: EQ -1

Reference: 0201
File I.D.: JD1
Numeric character

V.A. Number of full-time operational and maintenance
staff.

V202
OPERAT/MAINT PART-TIME
Location: 441 Width: 2
Missing Data: EQ -1

Reference: 0202
File I.D.: JD1
Numeric character

V.A. Number of part-time operational and maintenance
staff.

V203
#OPR/MAINT VAC FULL-TIME
Location: 443 Width: 2
Missing Data: EQ -1

Reference: 0203
File I.D.: JD1
Numeric character

V.A. Number of full-time vacancies for operational and
maintenance staff.

V204
#OPR/MAINT VAC PART-TIME
Location: 445 Width: 2
Missing Data: EQ -1

Reference: 0204
File I.D.: JD1
Numeric character

V.A. Number of part-time vacancies for operational and
maintenance staff.

V205
OPR/MAINT CIVIL SERVICE?
Location: 447 Width: 1
Missing Data: EQ 8 OR GE 9

Reference: 0205
File I.D.: JD1
Numeric character

V.A. Were operational and maintenance positions civil
service positions?

315 1 Yes

232 2 No

175 9 Missing Data

Ref. Nos. 206-212. The data in these variables are for
the period covered by this report, Ref. Nos. 16-21.

Juvenile Detention and Correctional
Facility Census of 1971

61

V206 Reference: 0206
#ADMINISTRATIV ADDITIONS File I.D.: JD1
Location: 448 Width: 3 Numeric character
Missing Data: EQ -1

V.B.1 Number of full-time administrative personnel
hired.

V207 Reference: 0207
#ADMINISTRATIV SEPARATION File I.D.: JD1
Location: 451 Width: 2 Numeric character
Missing Data: EQ -1

V.B.1. Number of full-time administrative personnel
separated from staff.

V208 Reference: 0208
TREAT/EDUC ADDITIONS File I.D.: JD1
Location: 453 Width: 3 Numeric character
Missing Data: EQ -1

V.B.2. Number of full-time treatment and educational
personnel hired.

V209 Reference: 0209
TREAT/EDUC SEPARATIONS File I.D.: JD1
Location: 456 Width: 3 Numeric character
Missing Data: EQ -1

V.B.2. Number of full-time treatment and educational
personnel separated from staff.

V210 Reference: 0210
OPR/MAINT ADDITIONS File I.D.: JD1
Location: 459 Width: 3 Numeric character
Missing Data: EQ -1

V.B.3. Number of full-time operational and maintenance
personnel hired.

V211 Reference: 0211
OPR/MAINT SEPARATIONS File I.D.: JD1
Location: 462 Width: 2 Numeric character
Missing Data: EQ -1

V.B.3. Number of full-time operational and maintenance
personnel separated from staff.

62

Juvenile Detention and Correctional
Facility Census of 1971

V212 Reference: 0212
AVG # FUL-TIME EMPLOYEES File I.D.: JD1
Location: 464 Width: 3 Numeric character
Missing Data: EQ -1

V.C. Estimated average number of full-time employees.

V213 Reference: 0213
EXPEND PERIOD BEGIN-MO File I.D.: JD1
Location: 467 Width: 2 Numeric character
Missing Data: EQ 99

VI. Beginning month of reporting period for
institutional costs.

V214 Reference: 0214
EXPEND PERIOD BEGIN-YEAR File I.D.: JD1
Location: 469 Width: 2 Numeric character
Missing Data: EQ 99

VI. Beginning year of reporting period for
institutional costs.

V215 Reference: 0215
EXPEND PERIOD END-MONTH File I.D.: JD1
Location: 471 Width: 2 Numeric character
Missing Data: EQ 99

VI. Ending month of reporting period for institutional
costs.

V216 Reference: 0216
EXPEND PERIOD END-YEAR File I.D.: JD1
Location: 473 Width: 2 Numeric character
Missing Data: EQ 99

VI. Ending year of reporting period for institutional
costs.

V217 Reference: 0217
CAPITAL EXPENDITURES File I.D.: JD1
Location: 475 Width: 7 Numeric character
Missing Data: EQ -1

VI.A. Capital expenditures; respondents were requested
to include new buildings, major repairs or improvements, and
new equipment for which the cost is \$100 or more.

V218 Reference: 0218
ADMINISTRATIVE SALARIES File I.D.: JD1
Location: 482 Width: 6 Numeric character
Missing Data: EQ -1

VI.B.1. Salaries, wages, and other compensation, such as meals, lodging and uniforms, for administrative personnel.

V219 Reference: 0219
TREATMENT/EDUC SALARIES File I.D.: JD1
Location: 488 Width: 7 Numeric character
Missing Data: EQ -1

VI.B.2. Salaries, wages, and other compensation, such as meals, lodging, and uniforms, for treatment and educational personnel.

V220 Reference: 0220
OPR/MAINT SALARIES File I.D.: JD1
Location: 495 Width: 6 Numeric character
Missing Data: EQ -1

VI.B.3. Salaries, wages, and other compensation, such as meals, lodging, and uniforms, for operational and maintenance personnel.

V221 Reference: 0221
OTHER EXPENSES File I.D.: JD1
Location: 501 Width: 7 Numeric character
Missing Data: EQ -1

VI.C. All other costs, respondents were requested to include the fair market value of free commodities or services received from any public or charitable organization.

V222 Reference: 0222
YEAR CONSTRUCTION BEGAN File I.D.: JD1
Location: 508 Width: 4 Numeric character
Missing Data: EQ 9999

VII.A.1. What year was construction begun on your facility? An estimate will suffice if the facility is very old and the exact year is not known.

V223 Reference: 0223
YEAR LATEST CONSTRUCTION File I.D.: JD1
Location: 512 Width: 4 Numeric character
Missing Data: EQ 9999

VII.A.2. What year did the latest construction or renovation of your facility costing more than \$50,000 take place?

V224 Reference: 0224
COST PLANNED CONSTRUCTION File I.D.: JD1
Location: 516 Width: 8 Numeric character
Missing Data: EQ -1

VII.A.3. Approximate cost of construction underway or planned for fiscal year 1970-71.

V225 Reference: 0225
MEDICAL FACILITIES File I.D.: JD1
Location: 524 Width: 1 Numeric character
Missing Data: EQ 9

VIII.A. Kind of medical facilities available.

- 289 1 None
- 162 2 Infirmary w/o beds
Infirmary without beds for overnight stays.
- 169 3 Infirmary with beds
Infirmary with beds for overnight stays.
- 102 4 Other

V226 Reference: 0226
SPORTS PROGRAM? File I.D.: JD1
Location: 525 Width: 1 Numeric character
Missing Data: GE 3

VIII.B.1. Does this facility have competitive or intramural sports?

- 474 1 Yes
- 248 2 No

Juvenile Detention and Correctional
Facility Census of 1971

65

V227
RADIO AVAILABLE?
Location: 526 Width: 1
Missing Data: GE 3

Reference: 0227
File I.D.: JD1
Numeric character

VIII.B.2. Does this facility have a radio?

660 1 Yes

62 2 No

V228
TELEVISION AVAILABLE?
Location: 527 Width: 1
Missing Data: GE 3

Reference: 0228
File I.D.: JD1
Numeric character

VIII.B.3. Does this facility have a television set?

691 1 Yes

31 2 No

V229
MOVIES AVAILABLE?
Location: 528 Width: 1
Missing Data: GE 3

Reference: 0229
File I.D.: JD1
Numeric character

VIII.B.4. Does this facility have motion pictures?

536 1 Yes

186 2 No

V230
LIBRARY AVAILABLE?
Location: 529 Width: 1
Missing Data: GE 3

Reference: 0230
File I.D.: JD1
Numeric character

VIII.B.5. Does this facility have a library?

588 1 Yes

134 2 No

66

Juvenile Detention and Correctional
Facility Census of 1971

V231
GYMNASIUM AVAILABLE?
Location: 530 Width: 1
Missing Data: GE 3

Reference: 0231
File I.D.: JD1
Numeric character

VIII.B.6. Does this facility have a gymnasium?

376 1 Yes

346 2 No

V232
ATHLETIC FIELD AVAILABLE?
Location: 531 Width: 1
Missing Data: GE 3

Reference: 0232
File I.D.: JD1
Numeric character

VIII.B.7. Does this facility have an athletic field?

519 1 Yes

203 2 No

V233
OTHR REC FACILITY AVAIL?
Location: 532 Width: 1
Missing Data: GE 3

Reference: 0233
File I.D.: JD1
Numeric character

VIII.B.8. Does this facility have other recreational facilities and programs?

361 1 Yes

361 2 No

V234
EDUC SERVICES AVAILABLE?
Location: 533 Width: 1
Missing Data: EQ 5 OR GE 6

Reference: 0234
File I.D.: JD1
Numeric character

VIII.C.1. If academic educational services are available at this facility, where are they located?

85 1 In the community

476 2 At the facility

92 3 Both

Juvenile Detention and Correctional
Facility Census of 1971

67

(V234, EDUC SERVICES AVAILABLE?, Continued)

0 4 None

69 6 Missing Data
All 69 cases contained a value of blank, which was not defined and thus was recoded to a missing data value. These institutions probably have no academic education services.

V235
VOC EDUC AVAILABLE?
Location: 534 Width: 1
Missing Data: EQ 5 OR GE 6

Reference: 0235
File I.D.: JD1
Numeric character

VIII.C.2. If vocational services are available at this facility, where are they located?

119 1 In the community

217 2 At the facility

65 3 Both

0 4 None

321 6 Missing Data
All 321 cases contained a value of blank, which was not defined and thus was recoded to a missing data value. These institutions probably have no vocational education services.

V236
INDIVIDUAL COUNSELING?
Location: 535 Width: 1
Missing Data: GE 3

Reference: 0236
File I.D.: JD1
Numeric character

VIII.D.1.(1) Does this facility routinely provide individual counseling?

679 1 Yes

43 2 No

V237
GROUP COUNSELING?
Location: 536 Width: 1
Missing Data: GE 3

Reference: 0237
File I.D.: JD1
Numeric character

VIII.D.1.(2) Does this facility routinely provide group counseling?

68

Juvenile Detention and Correctional
Facility Census of 1971

(V237, GROUP COUNSELING?, Continued)

558 1 Yes

164 2 No

V238
FAMILY/JUVEN COUNSELNG?
Location: 537 Width: 1
Missing Data: GE 3

Reference: 0238
File I.D.: JD1
Numeric character

VIII.D.1.(3) Does this facility routinely provide counseling involving the juvenile and his family?

413 1 Yes

309 2 No

Ref. Nos. 239-245. These variables apply to training schools, forestry camps, and similar facilities, only.

V239
AFTERCARE/PAROLE PROGRM?
Location: 538 Width: 1
Missing Data: GE 3

Reference: 0239
File I.D.: JD1
Numeric character

VIII.D.2.(1) Is there an aftercare or parole program available for children who are released from your facility?

4 1 No

718 2 Yes

V240
PAROLE OPR BY FACILITY?
Location: 539 Width: 1
Missing Data: GE 3

Reference: 0240
File I.D.: JD1
Numeric character

VIII.D.2.(2) Does the facility itself operate an aftercare or parole program for children who are released from the facility?

81 1 Yes

641 2 No

Juvenile Detention and Correctional
Facility Census of 1971

69

V241
PAROLE OPERATD BY STATE?
Location: 540 Width: 1
Missing Data: GE 3

Reference: 0241
File I.D.: JD1
Numeric character

VIII.D.2.(3) Does the state parole authority operate an
aftercare or parole program for children who are released
from the facility?

52 1 Yes

670 2 No

V242
PAROLE OPERATD BY COURT?
Location: 541 Width: 1
Missing Data: GE 3

Reference: 0242
File I.D.: JD1
Numeric character

VIII.D.2.(4) Does the probation department of the
committing court operate an aftercare or parole program for
children who are released from the facility? Warning: See
Appendix 2 for more information about this variable.

134 1 Yes

588 2 No

V243
PAROLE OPR BY SAME DEPT?
Location: 542 Width: 1
Missing Data: GE 3

Reference: 0243
File I.D.: JD1
Numeric character

VIII.D.2.(5) Does the State department of which this
facility is a unit operate an aftercare or parole program
for children who are released from the facility?

189 1 Yes

533 2 No

V244
PAROLE OPR BY OTHER?
Location: 543 Width: 1
Missing Data: GE 3

Reference: 0244
File I.D.: JD1
Numeric character

VIII.D.2.(6) Does an agency other than those mentioned
in question VIII.D.2.(2)-(5) (Ref. Nos. 240-243) operate an
aftercare or parole program for children who are released
from the facility?

70

Juvenile Detention and Correctional
Facility Census of 1971

(V244, PAROLE OPR BY OTHER?, Continued)

25 1 Yes

697 2 No

V245
JOB PLACEMENT PROGRAM?
Location: 544 Width: 1
Missing Data: EQ 3 OR GE 4

Reference: 0245
File I.D.: JD1
Numeric character

VIII.D.3. Does this facility have a job placement
program for juveniles who are released and are planning to
enter the work force?

166 1 Yes

229 2 No

327 3 Missing Data

APPENDIX 1: DEFINITION OF TERMS

Following is a glossary of terms, concepts, and categories used in collecting the Juvenile Detention and Correctional Facility Census of 1971. This glossary was, for the most part, taken from the above cited publication, Children in Custody.

Classification Of Residents

In terms of an person's being charged with a criminal offense, a juvenile is one over whom the juvenile court has original jurisdiction in cases of delinquency. The juvenile court's jurisdiction is determined by the age of the client who must, in most States, be under 18 years old. In this census, the actual definition of a juvenile or child was left to each jurisdiction since no universal definition seemed applicable to all phases of the individual's contact with the juvenile justice system. is one who, through formal judicial proceedings, has been adjudged guilty of a criminal offense or has been declared in need of supervision by the court. Purely for statistical purposes, voluntary admissions to juvenile facilities were also tallied as adjudicated delinquents. Voluntary admissions include juveniles who committed themselves or who were referred to the facility for treatment by parents, court, school or social agency without being adjudged delinquent or declared in need of supervision by a court.

Juveniles awaiting transfer to another jurisdiction are juveniles who have allegedly committed a crime in or have run away from another jurisdictional area, including runaways from correctional facilities. Juveniles adjudicated delinquent and awaiting placement in a correctional facility are not included here but in the "juveniles adjudicated delinquent" category.

Juveniles held pending disposition by a court are juveniles held for delinquency who have not had any hearing or who have had only a preliminary hearing or screening, and who are awaiting further court action.

Dependent and neglected children are juveniles held in public facilities as a result of the inability or unwillingness of their parents to care for them. Juveniles held on delinquency charges, adjudicated delinquent or declared in need of supervision, are not included here even if they may also be considered dependent or neglected. They

are included in one of the other categories, as appropriate.

Classificaion Of Offenses

Drug offenses are offenses related to drugs, whether classified as felonies or misdemeanors if committed by adults.

Felonies are offenses that would be felonies if committed by adults, except drug offenses.

Misdemeanors are offenses that would be misdemeanors if committed by adults, except drug offenses.

A status offense is an offense for which only juveniles, as opposed to adults, can be charged. It is an act prohibited to and often applicable only to juveniles such as truancy, curfew violation or the consumption of alcoholic beverages. The questionnaire uses the term juvenile offense to mean status offense.

Facility Descriptions

A detention center is a facility that provides temporary care in a physically restricting facility for juveniles in custody pending court disposition, and often for juveniles who have been adjudicated, or are awaiting return to another jurisdiction.

A halfway house or group home is a facility where juveniles live but are permitted extensive contact with the community through jobs, attendance at school, etc.

A ranch, forestry camp, or farm is a residential treatment facility for juveniles whose behavior does not necessitate the strict confinement of a training school. Often the children are allowed greater contact with the community than are the residents of training schools.

A reception or diagnostic center is a facility that screens juvenile court commitments and assigns them to appropriate correctional facilities.

A shelter is a facility that provides temporary care, similar to that of a detention center, in a physically unrestricting facility.

A training school is a specialized institution serving delinquent juveniles committed directly to it by juvenile

court or placed in it by an agency having such authority.

The capacity of a detention or correctional facility is defined as the number of persons the facility was designed to hold, exclusive of arrangements for the accommodation of overcrowding.

The term ages held is defined as the ages of the youngest and oldest residents, males and females, held on the day the questionnaire was completed.

The term average length of stay is defined as follows: facilities were asked for the average length of stay of their inmates in fiscal 1971. The method of computation for this statistic was not specified. Therefore, such data should be regarded as estimates.

Classification Of Facility Staff

Administrative staff includes superintendents, assistant superintendents, business managers, purchasing agents, stenographers, bookkeepers, accountants, switchboard operators, clerks and typists. Included are both payroll and nonpayroll staff, except community volunteers.

Operational and maintenance personnel includes positions such as gardener, janitor, watchmen, chauffeur, carpenter, plumber, cook, baker, painter, printer, barber, laundress, maid and dairyman. Included are both payroll and nonpayroll staff, except community volunteers.

Treatment and educational personnel includes positions such as psychiatrist, psychologist, chaplain, cottage personnel, academic principal, director of vocational training, academic teacher, vocational teacher, social worker, librarian, aftercare worker, parole worker, recreation worker, physician, registered nurse, dentist, medical aide, and classification officer. Included are both payroll and nonpayroll staff, except community volunteers.

Data on educational or other requirements for holding these positions were not collected.

Expenditure Definitions

Operating expenditures include salaries, wages, and other operating expenditures, such as the purchase of food, supplies, and contractual services. Also, respondents were requested to include in "other operating expenditures" the fair market value of free commodities or services received

from any public or charitable organization.

In capital expenditures respondents were to include expenditures for new buildings, major repairs or improvements, and new equipment for which the cost is \$100 or more.

The year of latest construction or renovation is the year in which the latest construction or renovation costing more than \$50,000 took place.

APPENDIX 2: ERRORS AND PROBLEMS IN THE DATA

This appendix contains a discussion of known errors, inconsistencies, and other limitations in the 1971 juvenile facility census data.

In the first section, errors are listed in order by variable, the affected cases are identified, and the status of corrections noted. Also, the codebook section contains a warning and a reference to this appendix in the entry for each affected variable.

The second section contains a discussion of limitations on the comparison of the 1971, 1972, and 1973 data.

Some of this information was generated by the L. E. A. A. Data Archive during the process of archiving the data file. Other information was obtained from Ms. Jenny Eldreth, National Criminal Justice Information and Statistics Service, L. E. A. A., (202) 376-2622.

Errors By Variable And Case

The case identification variables for this file are:

- Ref. No. 2: STATE NUMBER
- Ref. No. 3: LEVEL OF GOVERNMENT
- Ref. No. 4: COUNTY NUMBER
- Ref. No. 5: CITY NUMBER
- Ref. No. 6: CHECK DIGIT
- Ref. No. 7: AGENCY TYPE
- Ref. No. 8: TYPE OF FACILITY
- Ref. No. 9: AGENCY ID NUMBER

Ref. No. 90: AGE OF OLDEST MALE

Ref. No.	2	3	4	5	6	7	8	9
Case 1	39	0	021	000	0	5	4	19

Problem: Value of 0052 (age 52 years) looks too high.

Status: This answer has been verified on the original questionnaire form. The institution held adults as well as juveniles.

Ref. Nos. 22-87: Movement and population variables.

Ref. No.	2	3	4	5	6	7	8	9
Case 1	31	0	101	000	1	5	4	13
Case 2	39	0	021	000	0	5	4	19
Case 3	05	0						

-17

Cases 3-17 include all California State facilities.

Problem: Population and movement data include adults or youthful offenders.

Population data for the New Jersey State training school (State 31) includes 219 male adults in the total of 624 males held.

Of the 596 males in the Pennsylvania State training school (State 39) on June 30, 1971 about 45% were adults.

On June 30, 1971 there was a total of 2,023 youthful offenders in the California State facilities (State 5). Of these, 1,872 were males and 151, females. By type of facility, there were 317 youthful offenders in reception or diagnostic centers, 1,468 in training schools, and 238 in ranchs, forestry camps, and farms.

The admissions and discharges data for these facilities also includes adults or youthful offenders.

Status: No adjustments have been made to the data.

Ref. Nos. 44-47: Movement variables.

Ref. No.	2	3	4	5	6	7	8	9
Case 1	05	3						

Problem: For the State of California, the following counts which cannot be attributed to specific facilities should be added to the State totals for reception or diagnostic centers:

Ref. No. 44: # ADMITTED TO CUSTODY-M	149
Ref. No. 45: # ADMITTED TO CUSTODY-F	2
Ref. No. 46: # DISCHARGED/REMANDED-M	169
Ref. No. 47: # DISCHARGED/REMANDED-F	2

Status: No information is available to allocate this data to specific facilities.

Use And Comparison Of 1971, 1972, And 1973 Data

Before comparing any of the three years for which data is available, the user should be aware of several general restrictions.

The 1972 data must be used with caution because they were collected in late 1973 as part of the combined 1972-73 census. This arrangement meant that facilities in existence in 1972 but not in late 1973 could not be represented in the data. In addition, some respondents could not provide actual data or reasonable estimates. L. E. A. A. considers the 1972 data to be minimum counts and chose not to compare it with any other years.

The categories of movement and population data for 1971 and 1973 are not exactly the same so that some judgment is necessary in comparing these years. For the final report of the 1972-73 census, an estimating procedure was used to inflate the 1973 movement data and make them comparable with the 1971 data.

The 1971 detention status category "adjudicated delinquent" includes persons in need of supervision and voluntary commitments. These categories are reported separately in the 1973 data and must be summed before comparing with the 1971 data.

The same kind of problem occurs in the staffing data. In 1973, payroll staff was reported separately from non-payroll staff and both terms were defined on the questionnaire form. In 1971, the questionnaire requested counts of "employees" but in fact the data includes both "employees" on the payroll and other staff not on the payroll. In 1973, non-payroll staff included community volunteers who were not counted in 1971.

In 1971, definitions of full-time and part-time were stated in the questionnaire; they were not stated in the 1973 questionnaire. Also, there is no certainty that the data were reported as requested in 1971. Because of these reporting discrepancies, L. E. A. A. has chosen to compare only full-time staff.

To compare 1971 full-time staff with the 1973 data, the 1973 payroll and non-payroll staff must be summed. Also, the 1971 data classified staff into specific job titles. The 1973 data includes more general categories. For these data, the 1971 data must be summed in order to make comparisons with the 1973.

APPENDIX 3: COUNTIES BY NAME

The list which follows contains the name of each county for which there is a record in the data file. The list includes and is ordered by the State number and the county number, Ref. Nos. 2 and 4 respectively.

- | | |
|--------------------------|-----------------------|
| <u>01 - Alabama</u> | 019 - Los Angeles |
| 037 - Jefferson | 020 - Madera |
| 045 - Madison | 021 - Marin |
| 049 - Mobile | 022 - Mariposa |
| 051 - Montgomery | 023 - Mendocino |
| 052 - Morgan | 024 - Merced |
| | 027 - Monterey |
| | 028 - Napa |
| <u>02 - Alaska</u> | 029 - Nevada |
| 026 - Ketchikan, Gateway | 030 - Orange |
| 027 - Greater Anchorage | 031 - Placer |
| 032 - Matanuska, Susitna | 033 - Riverside |
| | 034 - Sacramento |
| | 035 - San Benito |
| <u>03 - Arizona</u> | 036 - San Bernardino |
| 001 - Apache | 037 - San Diego |
| 002 - Cochise | 038 - San Francisco |
| 003 - Coconino | 039 - San Joaquin |
| 004 - Gila | 040 - San Luis Obispo |
| 007 - Maricopa | 041 - San Mateo |
| 008 - Mohave | 042 - Santa Barbara |
| 010 - Pima | 043 - Santa Clara |
| | 044 - Santa Cruz |
| | 045 - Shasta |
| <u>04 - Arkansas</u> | 047 - Siskiyou |
| 004 - Benton | 048 - Solano |
| 010 - Clark | 049 - Sonoma |
| 026 - Garland | 050 - Stanislaus |
| 035 - Jefferson | 052 - Tehama |
| 060 - Pulaski | 054 - Tulare |
| | 056 - Ventura |
| | 057 - Yolo |
| | 058 - Yuba |
| <u>05 - California</u> | |
| 001 - Alameda | <u>06 - Colorado</u> |
| 003 - Amador | 001 - Adams |
| 004 - Butte | 003 - Arapahoe |
| 007 - Contra Costa | 016 - Denver |
| 008 - Del Norte | 021 - El Paso |
| 010 - Fresno | 028 - Huerfano |
| 012 - Humboldt | 030 - Jefferson |
| 013 - Imperial | |
| 015 - Kern | |

- | | |
|----------------------------------|----------------------|
| <u>07 - Connecticut</u> | 031 - Clayton |
| 001 - Fairfield | 033 - Cobb |
| 002 - Hartford | 044 - De Kalb |
| 004 - Middlesex | 047 - Dougherty |
| 005 - New Haven | 057 - Floyd |
| 006 - New London | 060 - Fulton |
| | 069 - Hall |
| | 106 - Muscogee |
| | 121 - Richmond |
| | 148 - Ware |
| <u>08 - Delaware</u> | |
| 001 - Kent | <u>12 - Hawaii</u> |
| 002 - New Castle | 002 - Honolulu |
| 003 - Sussex | 004 - Maui |
| <u>09 - District of Columbia</u> | |
| 001 - District of Columbia | <u>13 - Idaho</u> |
| | 003 - Bannock |
| | 022 - Fremont |
| | 042 - Twin Falls |
| <u>10 - Florida</u> | |
| 001 - Alachua | <u>14 - Illinois</u> |
| 005 - Brevard | 001 - Adams |
| 006 - Broward | 008 - Carroll |
| 013 - Dade | 010 - Champaign |
| 016 - Duval | 016 - Cook |
| 017 - Escambia | 022 - Du Page |
| 021 - Gilchrist | 032 - Grundy |
| 025 - Hardee | 039 - Jackson |
| 028 - Highlands | 042 - Jersey |
| 029 - Hillsborough | 045 - Kane |
| 032 - Jackson | 046 - Kankakee |
| 035 - Lake | 048 - Knox |
| 036 - Lee | 049 - Lake |
| 037 - Leon | 050 - La Salle |
| 041 - Manatee | 060 - Madison |
| 042 - Marion | 064 - Massac |
| 045 - Nassau | 072 - Peoria |
| 047 - Okeechobee | 076 - Pope |
| 048 - Orange | 079 - Randolph |
| 050 - Palm Beach | 082 - St. Clair |
| 052 - Pinellas | 099 - Will |
| 053 - Polk | 101 - Winnebago |
| 056 - St. Lucie | |
| 058 - Sarasota | <u>15 - Indiana</u> |
| 064 - Volusia | 002 - Allen |
| | 010 - Clark |
| <u>11 - Georgia</u> | 027 - Grant |
| 005 - Baldwin | 032 - Hendricks |
| 011 - Bibb | 045 - Lake |
| 015 - Bryan | |
| 025 - Chatham | |

Juvenile Detention and Correctional
Facility Census of 1971

81

- 049 - Marion
 - 071 - St. Joseph
 - 084 - Vigo
- 16 - Iowa
- 042 - Hardin
 - 077 - Polk
 - 082 - Scott
 - 086 - Tama
 - 094 - Webster
 - 097 - Woodbury
- 17 - Kansas
- 046 - Johnson
 - 062 - Mitchell
 - 087 - Sedgwick
 - 089 - Shawnee
 - 105 - Wyandotte
- 18 - Kentucky
- 008 - Boone
 - 019 - Campbell
 - 034 - Fayette
 - 056 - Jefferson
 - 059 - Kenton
 - 079 - Marshall
 - 083 - Menifee
 - 088 - Morgan
 - 116 - Wayne
- 19 - Louisiana
- 009 - Caddo
 - 010 - Calcasieu
 - 017 - East Baton Rouge
 - 026 - Jefferson
 - 036 - Orleans
 - 037 - Ouachita
 - 040 - Rapides
- 20 - Maine
- 003 - Cumberland
 - 006 - Kennebec
- 21 - Maryland
- 001 - Allegany
 - 003 - Baltimore
 - 004 - Baltimore Independent City
 - 011 - Frederick
 - 012 - Garrett
 - 017 - Prince Georges
- 22 - Massachusetts
- 001 - Barnstable
 - 005 - Essex
 - 007 - Hampden
 - 009 - Middlesex
 - 013 - Suffolk
 - 014 - Worcester
- 23 - Michigan
- 003 - Allegan
 - 009 - Bay
 - 011 - Berrien
 - 013 - Calhoun
 - 019 - Clinton
 - 020 - Crawford
 - 025 - Genesee
 - 033 - Ingham
 - 038 - Jackson
 - 039 - Kalamazoo
 - 041 - Kent
 - 046 - Lenawee
 - 050 - Macomb
 - 052 - Marquette
 - 058 - Monroe
 - 061 - Muskegon
 - 063 - Oakland
 - 070 - Ottawa
 - 072 - Roscommon
 - 073 - Saginaw
 - 074 - St. Clair
 - 078 - Shiawassee
 - 081 - Washtenaw
 - 082 - Wayne
- 24 - Minnesota
- 002 - Anoka
 - 025 - Goodhue
 - 027 - Hennepin
 - 031 - Itasca
 - 058 - Pine

82

Juvenile Detention and Correctional
Facility Census of 1971

- 062 - Ramsey
 - 073 - Stearns
- 25 - Mississippi
- 024 - Harrison
 - 025 - Hinds
 - 046 - Marion
- 26 - Missouri
- 011 - Buchanan
 - 012 - Butler
 - 016 - Cape Girardeau
 - 027 - Cooper
 - 039 - Greene
 - 048 - Jackson
 - 057 - Lincoln
 - 059 - Livingston
 - 089 - Ray
 - 092 - St. Charles
 - 095 - St. Louis
 - 096 - St. Louis City Independent City
- 27 - Montana
- 007 - Cascade
 - 009 - Custer
 - 015 - Flathead
 - 025 - Lewis and Clark
- 28 - Nebraska
- 010 - Buffalo
 - 028 - Douglas
 - 030 - Fillmore
 - 055 - Lancaster
- 29 - Nevada
- 002 - Clark
 - 004 - Elko
 - 009 - Lincoln
 - 016 - Washoe
- 30 - New Hampshire
- 006 - Hillsborough
- 31 - New Jersey
- 001 - Atlantic
 - 002 - Bergen
 - 003 - Burlington
 - 004 - Camden
 - 007 - Essex
 - 008 - Gloucester
 - 009 - Hudson
 - 010 - Hunterdon
 - 011 - Mercer
 - 012 - Middlesex
 - 013 - Monmouth
 - 014 - Morris
 - 015 - Ocean
 - 016 - Passaic
 - 018 - Somerset
 - 019 - Sussex
 - 020 - Union
 - 021 - Warren
- 32 - New Mexico
- 001 - Bernalillo
 - 004 - Colfax
 - 026 - Santa Fe
- 33 - New York
- 001 - Albany
 - 004 - Broome
 - 005 - Cattaraugus
 - 006 - Cayuga
 - 011 - Columbia
 - 013 - Delaware
 - 014 - Dutchess
 - 015 - Erie
 - 018 - Fulton
 - 028 - Monroe
 - 030 - Nassau
 - 031 - New York City
 - 034 - Onondaga
 - 036 - Orange
 - 038 - Oswego
 - 052 - Suffolk
 - 055 - Tompkins
 - 056 - Ulster
 - 060 - Westchester

Juvenile Detention and Correctional
Facility Census of 1971

83

34 - North Carolina

011 - Buncombe
013 - Cabarrus
032 - Durham
033 - Edgecombe
034 - Forsyth
036 - Gaston
039 - Granville
041 - Guilford
047 - Hoke
054 - Lenoir
060 - Mecklenburg
063 - Moore
077 - Richmond
092 - Wake

35 - North Dakota

008 - Burleigh
009 - Cass
030 - Morton

36 - Ohio

003 - Ashland
004 - Ashtabula
009 - Butler
012 - Clark
018 - Cuyahoga
021 - Delaware
022 - Erie
023 - Fairfield
025 - Franklin
031 - Hamilton
035 - Henry
043 - Lake
047 - Lorain
048 - Lucas
050 - Mahoning
057 - Montgomery
060 - Muskingum
072 - Sandusky
074 - Seneca
076 - Stark
077 - Summit
078 - Trumbull
079 - Tuscarawas
082 - Vinton
083 - Warren

37 - Oklahoma

002 - Alfalfa
054 - Okfuskee
055 - Oklahoma
063 - Pottawatomie
072 - Tulsa

38 - Oregon

010 - Douglas
015 - Jackson
018 - Klamath
020 - Lane
024 - Marion
026 - Multnomah

39 - Pennsylvania

002 - Allegheny
004 - Beaver
006 - Berks
007 - Blair
009 - Bucks
011 - Cambria
015 - Chester
021 - Cumberland
022 - Dauphin
023 - Delaware
026 - Fayette
030 - Greene
031 - Huntingdon
035 - Lackawanna
036 - Lancaster
037 - Lawrence
039 - Lehigh
040 - Luzerne
041 - Lycoming
046 - Montgomery
048 - Northampton
050 - Perry
051 - Pike
063 - Washington
065 - Westmoreland
067 - York

40 - Rhode Island

004 - Providence

84

Juvenile Detention and Correctional
Facility Census of 1971

41 - South Carolina

010 - Charleston
021 - Florence
040 - Richland

42 - South Dakota

002 - Aurora
017 - Custer
050 - Minnehaha

43 - Tennessee

004 - Bledsoe
016 - Coffee
019 - Davidson
033 - Hamilton
047 - Knox
079 - Shelby

44 - Texas

015 - Bexar
025 - Brown
049 - Cooke
050 - Coryell
057 - Dallas
071 - El Paso
084 - Galveston
101 - Harris
113 - Houston
123 - Jefferson
155 - Mc Lennan
165 - Midland
178 - Nueces
188 - Potter
220 - Tarrant
227 - Travis
240 - Webb

45 - Utah

003 - Cache
004 - Carbon
018 - Salt Lake
025 - Utah
029 - Weber

46 - Vermont

001 - Addison

47 - Virginia

021 - Chesterfield
030 - Fairfax
043 - Hanover
044 - Henrico
073 - Powhatan
078 - Pulaski
082 - Rockbridge
084 - Russell
101 - Alexandria
105 - Chesapeake
119 - Lynchburg
121 - Newport News
122 - Norfolk
127 - Richmond
128 - Roanoke
130 - Staunton

48 - Washington

003 - Benton
004 - Chelan
005 - Clallam
006 - Clark
008 - Cowlitz
013 - Grant
017 - King
018 - Kitsap
021 - Lewis
023 - Mason
025 - Pacific
027 - Pierce
031 - Snohomish
032 - Spokane
033 - Stevens
034 - Thurston
036 - Walla Walla
037 - Whatcom
039 - Yakima

49 - West Virginia

006 - Cabell
013 - Greenbrier
017 - Harrison
020 - Kanawha
025 - Marion
026 - Marshall

Juvenile Detention and Correctional
Facility Census of 1971

85

046 - Taylor
047 - Tucker

50 - Wisconsin

013 - Dane
027 - Jackson
030 - Kenosha
035 - Lincoln
041 - Milwaukee
052 - Racine
055 - Rusk
060 - Sheboygan
068 - Waukesha

51 - Wyoming

017 - Sheridan

86

Juvenile Detention and Correctional
Facility Census of 1971

Juvenile Detention and Correctional
Facility Census of 1971

87

APPENDIX 4: QUESTIONNAIRE

A copy of the questionnaire used to collect the 1971
juvenile facilities data follows.

O.M.B. No. 41-571080; Approval Expires March 31, 1972

Name of agency reporting		FORM CJ-17 (7-27-71)	U.S. DEPARTMENT OF COMMERCE BUREAU OF THE CENSUS	
Date supplied by		JUVENILE DETENTION AND CORRECTION FACILITY CENSUS		
Official address (Number and street, city, state, ZIP code)		In correspondence pertaining to this report, please refer to this number		
Telephone		(Please correct any error in name and address including ZIP code)		
Area code	Number	Extension	RETURN THIS COPY TO	Bureau of the Census Governmental Division Washington, D.C. 20233

Dear Sir:

On behalf of the Law Enforcement Assistance Administration (LEAA), U.S. Department of Justice, the Bureau of the Census is conducting a national census of public juvenile detention and correction facilities. The census questionnaire supplants for this year the questionnaire usually collected by the Department of Health, Education, and Welfare "Report from Public Institutions for Delinquent Children." As there is an urgent need for information about these facilities to enable LEAA to meet its responsibilities in implementing programs in the criminal justice field, your cooperation in completing this questionnaire will be most helpful.

Please note that if there are any questions for which the answer cannot be obtained from available records, reasonable estimates will be useful for purposes of this survey. Simply indicate estimates with an asterisk.

The duplicate copy of the questionnaire is for your files. The addressed copy should be returned in the enclosed preaddressed, postage-paid envelope.

If we can be of assistance in completing this questionnaire, please call us collect at (301) 735-2000, extension 7282. Your cooperation in this project is very much appreciated.

Sincerely,

George H. Brown

GEORGE H. BROWN
Director
Bureau of the Census

Enclosures

Annual Period Covered by Report	FROM: (Month, Day, Year) TO: (Month, Day, Year)	ANNUAL INFORMATION - Indicate the annual period covered by the report. Data are requested, if possible on a fiscal year basis from July 1 through June 30.
Section I - IDENTIFICATION		

A. Please give name and address of the agency responsible for administering the institution or program.

NAME
STREET
CITY STATE ZIP CODE

Section II - TYPE OF INSTITUTION OR PROGRAM

- A. Is this facility or program primarily a -- (Mark one)
- 1 Detention center - Provides temporary care in a physically restricting facility for juveniles in custody pending court disposition, and often for juveniles who are adjudicated delinquent or are awaiting return to another jurisdiction.
 - 2 Shelter - Provides temporary care, similar to that of a detention center, in a physically unrestricting facility.
 - 3 Reception or diagnostic center - screens juvenile court commitments and assigns them to appropriate treatment facilities.
 - 4 Training school - a specialized institution serving delinquent juveniles committed directly to it by juvenile courts or placed in it by an agency having such authority.
 - 5 Ranch, forestry camp, farm - residential treatment facility for juveniles, whose behavior does not necessitate the strict confinement of a training school often allowing them greater contact with the community.
 - 6 Half-way house, group-home - facility where children live in the facility but are permitted extensive contact with the community such as jobs and schools.
 - 7 Non-residential community program - children live at home but are required to attend daily sessions at the facility that usually include educational and counseling services. (Completion of remainder of questionnaire is not required).
 - 8 Other - Specify

- B. Is this facility operated under the auspices of -- (Mark one)
- | | |
|---|--|
| 1 <input type="checkbox"/> State | 5 <input type="checkbox"/> Private - Completion of remainder of questionnaire is not required. |
| 2 <input type="checkbox"/> County | |
| 3 <input type="checkbox"/> City | |
| 4 <input type="checkbox"/> Multi-governmental - Specify | |

- C. Does the facility hold --
- | | |
|---|---|
| 1 <input type="checkbox"/> Males only | 3 <input type="checkbox"/> Both males and females |
| 2 <input type="checkbox"/> Females only | |

Section III - INSTITUTIONAL POPULATION

Items A and B to be completed for TRAINING SCHOOLS, FORESTRY CAMPS, RANCHES, and similar institutions. All other skip to C.

A. Movement into institution during the period covered by this report.

	Male	Female
1. Committed by court: First commitments (Where applicable include first placements received through reception and diagnostic centers)		
2. Committed by court: Recommittments (new offense) (Include juveniles under aftercare/parole who commit a new offense and are recommitted)		
3. Returned for violation of aftercare/parole regulations		
4. Returned from aftercare/parole for other reasons (Include those juveniles who have not violated aftercare/parole regulations and have not committed a new delinquent act)		
5. Transferred in from another institution for delinquent children (Include transfers in from another institution even though processed through reception and diagnostic centers)		
6. Other admissions - Specify <u> </u>		

B. Movement out of institution during the period covered by this report.

	Male	Female
1. Discharged with no further agency supervision		
2. Placed in aftercare/parole program operated by the institution		
3. Placed in aftercare/parole program operated by agency other than institution		
4. Transferred out to another institution for delinquent children (Where applicable include transfers out to reception and diagnostic centers)		
5. Other releases - Specify <u> </u>		

FORM CJ-17
 (7-27-71)
JUVENILE DETENTION AND CORRECTION FACILITY CENSUS

Name of agency reporting _____


Date supplied by _____

Telephone _____

Address (Number and street, city, state, ZIP code) _____

In correspondence pertaining to this report, please refer to this number _____

(Please correct any error in name and address including ZIP code)

RETURN THIS COPY TO  Bureau of the Census
 Governmental Division
 Washington, D.C. 20233

Dear Sir:

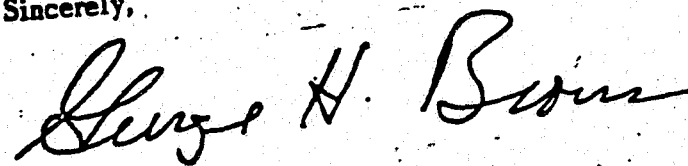
On behalf of the Law Enforcement Assistance Administration (LEAA), U.S. Department of Justice, the Bureau of the Census is conducting a national census of public juvenile detention and correction facilities. The census questionnaire supplants for this year the questionnaire usually collected by the Department of Health, Education, and Welfare "Report from Public Institutions for Delinquent Children." As there is an urgent need for information about these facilities to enable LEAA to meet its responsibilities in implementing programs in the criminal justice field, your cooperation in completing this questionnaire will be most helpful.

Please note that if there are any questions for which the answer cannot be obtained from available records, reasonable estimates will be useful for purposes of this survey. Simply indicate estimates with an asterisk.

The duplicate copy of the questionnaire is for your files. The addressed copy should be returned in the enclosed preaddressed, postage-paid envelope.

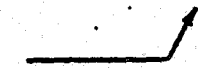
If we can be of assistance in completing this questionnaire, please call us collect at (301) 735-2000, extension 7282. Your cooperation in this project is very much appreciated.

Sincerely,



GEORGE H. BROWN
 Director
 Bureau of the Census

Enclosures

Section III - INSTITUTIONAL POPULATION - Continued								Section IV - INSTITUTIONAL POPULATION CHARACTERISTICS - Continued				
Item C to be completed for SHORT TERM institutions, such as DETENTION CENTERS and SHELTERS.								Male	Female			
C. Movement of institutional population during the period covered by this report.										Yes	No	Not applicable
1. Persons admitted to custody										1	2	3
2. Persons discharged or remanded to other court agencies or institutions										1	2	3
D. What was the population in the facility on the following dates? (Provide estimates when exact counts are not available from records. If a facility usually holds a category of residents, e.g., dependent children, but has not held any in a specific quarter answer with a "0" in the appropriate box. If a facility never holds a specific category of residents place "NA" in the appropriate box.)												
Date	Juvenciles adjudicated delinquent		Juvenciles held pending disposition by court		Dependent and neglected children		Juvenciles awaiting transfer to another jurisdiction					
	Male	Female	Male	Female	Male	Female	Male	Female	1	2	3	
2 4	1. 9/30/70											
	2. 12/31/70											
2 5	3. 3/31/71											
	4. 6/30/71											
E. Without overcrowding, how many juveniles is your facility designed to hold? (Overcrowding would include double decked bunks where facility was designed for single bunk, or temporary use of a room as sleeping quarters that would not ordinarily be used as such.)												
NUMBER OF MALES				NUMBER OF FEMALES								
Section IV - INSTITUTIONAL POPULATION CHARACTERISTICS												
A. Age limit								Male	Female			
1. Youngest age currently under supervision												
2. Oldest age currently under supervision												
								B. Population types held separately				
								1. Adults are held separately from juveniles				
								2. Juveniles adjudicated delinquent are held separately from juveniles held pending disposition by court				
								3. Adjudicated delinquents are held separately from dependent or neglected children				
								4. Juveniles held pending disposition by court are held separately from dependent or neglected children				
								5. Dependent or neglected children are held separately from alleged juvenile delinquents awaiting transfer to another jurisdiction				
								C. If your facility holds adjudicated delinquents, please enter in the following space the number of juveniles held on 6/30/71, by type of offense.				
								Type of offense		Juvenciles adjudicated delinquent		
										Male	Female	
								1. Felony (number of juveniles held on charges that would be felonies if committed by adults) except drug offenses				
								2. Misdemeanor (number of juveniles held on charges that would be misdemeanors if committed by adults) except drug offenses				
								3. Drug offenses				
								4. Juvenile offenses (number of juveniles held on charges that would not be crimes if committed by adults)				
								(Continue with Section V )				

Section V - INSTITUTIONAL PERSONNEL							Section V - INSTITUTIONAL PERSONNEL - Continued																																																																																																																																																																																	
A. Number of employees on 6/30/71. If an employee works regularly for 30 hours or more per week, then count him as a full-time employee. If an employee works regularly less than 30 hours per week, then count him as a part-time employee. Under the administrative personnel category, "other" includes positions such as business manager, purchasing agent, stenographer, bookkeeper, accountant, switchboard operator, clerk, typist. Operational and Maintenance personnel include positions such as gardener, janitor, watchman, chauffeur, carpenter, plumber, cook, baker, painter, printer, barber, laundress, maid, dairyman.							B. Staff turnover of full-time employees during the period covered by this report.																																																																																																																																																																																	
							Type of Personnel		Number																																																																																																																																																																															
									Additions	Separations																																																																																																																																																																														
							1. Administrative																																																																																																																																																																																	
							2. Treatment and Educational																																																																																																																																																																																	
							3. Operational and Maintenance																																																																																																																																																																																	
<table border="1"> <thead> <tr> <th rowspan="2">Type of personnel and title of position</th> <th colspan="2">On duty</th> <th colspan="2">Vacancies</th> <th colspan="2">Civil service</th> </tr> <tr> <th>Full-time</th> <th>Part-time</th> <th>Full-time</th> <th>Part-time</th> <th>Yes</th> <th>No</th> </tr> </thead> <tbody> <tr> <td>Administrative</td> <td></td> <td></td> <td></td> <td></td> <td>1</td> <td>2</td> </tr> <tr> <td> Superintendent</td> <td></td> <td></td> <td></td> <td></td> <td>1</td> <td>2</td> </tr> <tr> <td> Assistant Superintendent</td> <td></td> <td></td> <td></td> <td></td> <td>1</td> <td>2</td> </tr> <tr> <td> Other</td> <td></td> <td></td> <td></td> <td></td> <td>1</td> <td>2</td> </tr> <tr> <td>Treatment and Educational</td> <td></td> <td></td> <td></td> <td></td> <td>1</td> <td>2</td> </tr> <tr> <td> Psychiatrist</td> <td></td> <td></td> <td></td> <td></td> <td>1</td> <td>2</td> </tr> <tr> <td> Psychologist</td> <td></td> <td></td> <td></td> <td></td> <td>1</td> <td>2</td> </tr> <tr> <td> Chaplain</td> <td></td> <td></td> <td></td> <td></td> <td>1</td> <td>2</td> </tr> <tr> <td> Cottage personnel</td> <td></td> <td></td> <td></td> <td></td> <td>1</td> <td>2</td> </tr> <tr> <td> Academic principal, Director of vocational training</td> <td></td> <td></td> <td></td> <td></td> <td>1</td> <td>2</td> </tr> <tr> <td> Academic teacher</td> <td></td> <td></td> <td></td> <td></td> <td>1</td> <td>2</td> </tr> <tr> <td> Vocational teacher</td> <td></td> <td></td> <td></td> <td></td> <td>1</td> <td>2</td> </tr> <tr> <td> Social Worker</td> <td></td> <td></td> <td></td> <td></td> <td>1</td> <td>2</td> </tr> <tr> <td> Librarian</td> <td></td> <td></td> <td></td> <td></td> <td>1</td> <td>2</td> </tr> <tr> <td> Aftercare/parole worker</td> <td></td> <td></td> <td></td> <td></td> <td>1</td> <td>2</td> </tr> <tr> <td> Recreation worker</td> <td></td> <td></td> <td></td> <td></td> <td>1</td> <td>2</td> </tr> <tr> <td> Physician</td> <td></td> <td></td> <td></td> <td></td> <td>1</td> <td>2</td> </tr> <tr> <td> Registered nurse</td> <td></td> <td></td> <td></td> <td></td> <td>1</td> <td>2</td> </tr> <tr> <td> Dentist</td> <td></td> <td></td> <td></td> <td></td> <td>1</td> <td>2</td> </tr> <tr> <td> Medical aides</td> <td></td> <td></td> <td></td> <td></td> <td>1</td> <td>2</td> </tr> <tr> <td> Classification officer</td> <td></td> <td></td> <td></td> <td></td> <td>1</td> <td>2</td> </tr> <tr> <td> Other - Specify</td> <td></td> <td></td> <td></td> <td></td> <td>1</td> <td>2</td> </tr> <tr> <td>Operational and Maintenance</td> <td></td> <td></td> <td></td> <td></td> <td>1</td> <td>2</td> </tr> </tbody> </table>							Type of personnel and title of position	On duty		Vacancies		Civil service		Full-time	Part-time	Full-time	Part-time	Yes	No	Administrative					1	2	Superintendent					1	2	Assistant Superintendent					1	2	Other					1	2	Treatment and Educational					1	2	Psychiatrist					1	2	Psychologist					1	2	Chaplain					1	2	Cottage personnel					1	2	Academic principal, Director of vocational training					1	2	Academic teacher					1	2	Vocational teacher					1	2	Social Worker					1	2	Librarian					1	2	Aftercare/parole worker					1	2	Recreation worker					1	2	Physician					1	2	Registered nurse					1	2	Dentist					1	2	Medical aides					1	2	Classification officer					1	2	Other - Specify					1	2	Operational and Maintenance					1	2	C. Estimated average number of full-time employees on duty during the period covered by this report.			
Type of personnel and title of position	On duty		Vacancies		Civil service																																																																																																																																																																																			
	Full-time	Part-time	Full-time	Part-time	Yes	No																																																																																																																																																																																		
Administrative					1	2																																																																																																																																																																																		
Superintendent					1	2																																																																																																																																																																																		
Assistant Superintendent					1	2																																																																																																																																																																																		
Other					1	2																																																																																																																																																																																		
Treatment and Educational					1	2																																																																																																																																																																																		
Psychiatrist					1	2																																																																																																																																																																																		
Psychologist					1	2																																																																																																																																																																																		
Chaplain					1	2																																																																																																																																																																																		
Cottage personnel					1	2																																																																																																																																																																																		
Academic principal, Director of vocational training					1	2																																																																																																																																																																																		
Academic teacher					1	2																																																																																																																																																																																		
Vocational teacher					1	2																																																																																																																																																																																		
Social Worker					1	2																																																																																																																																																																																		
Librarian					1	2																																																																																																																																																																																		
Aftercare/parole worker					1	2																																																																																																																																																																																		
Recreation worker					1	2																																																																																																																																																																																		
Physician					1	2																																																																																																																																																																																		
Registered nurse					1	2																																																																																																																																																																																		
Dentist					1	2																																																																																																																																																																																		
Medical aides					1	2																																																																																																																																																																																		
Classification officer					1	2																																																																																																																																																																																		
Other - Specify					1	2																																																																																																																																																																																		
Operational and Maintenance					1	2																																																																																																																																																																																		
							Number																																																																																																																																																																																	
							Section VI - INSTITUTIONAL COST																																																																																																																																																																																	
							Annual Period Covered	BEGINNING: (Month, Year)	ENDING: (Month, Year)																																																																																																																																																																															
							A. Capital Expenditures (Includes new buildings, major repairs, or improvements, and new equipment for which the cost is \$100 or more.)																																																																																																																																																																																	
							B. Salaries, wages, and other compensation (Include the value of compensation such as meals, lodging, and uniforms.)																																																																																																																																																																																	
							1. Administrative personnel		\$																																																																																																																																																																															
							2. Treatment and Educational personnel		\$																																																																																																																																																																															
							3. Operational and Maintenance personnel		\$																																																																																																																																																																															
							C. All other (Include the fair market value of free commodities or services received from any public or charitable organization)																																																																																																																																																																																	
							Section VII - INSTITUTION FACILITY CHARACTERISTICS																																																																																																																																																																																	
							A. Age of institution		Year																																																																																																																																																																															
							1. What year was construction begun on your facility? An estimate will suffice if the facility is very old and the exact year is not known.																																																																																																																																																																																	
							2. What year did the latest construction or renovation of your facility costing more than \$50,000 take place?																																																																																																																																																																																	
							3. Is your institution undertaking or does it plan to undertake construction during calendar year 1971?																																																																																																																																																																																	
							1 <input type="checkbox"/> Yes 2 <input type="checkbox"/> No		\$																																																																																																																																																																															

Section VIII - TREATMENT PROGRAMS		Section VIII - TREATMENT PROGRAMS - Continued	
A. Medical facilities (Mark one) 1 <input type="checkbox"/> None 2 <input type="checkbox"/> Infirmary without beds for overnight stays 3 <input type="checkbox"/> Infirmary with beds for overnight stays 4 <input type="checkbox"/> Other - Specify		D. Treatment services 1. Which if any, of the following forms of counseling does the facility routinely provide. (Mark as many as applicable.) 1 <input type="checkbox"/> Individual counseling 2 <input type="checkbox"/> Group counseling 3 <input type="checkbox"/> Counseling involving the juvenile and his family 4 <input type="checkbox"/> None	
B. Recreational facilities and programs (Mark as many as applicable) 1 <input type="checkbox"/> Competitive or intramural sports 2 <input type="checkbox"/> Entertainment activities, such as record players, radio, motion pictures, television, and books 3 <input type="checkbox"/> Coeducational activities, such as socials etc. 4 <input type="checkbox"/> Sports facilities such as athletic field(s) or gymnasium 5 <input type="checkbox"/> Other - Specify 6 <input type="checkbox"/> None		<i>To be completed for training schools, forestry camps, ranches and similar institutions.</i> 2. Who operates the aftercare/parole program for children who are released from your institution? (Mark one or more) 1 <input type="checkbox"/> No program available 2 <input type="checkbox"/> Institution itself 3 <input type="checkbox"/> State parole authority 4 <input type="checkbox"/> Probation department of committing court 5 <input type="checkbox"/> State department of which institution is a unit 6 <input type="checkbox"/> Other - Specify	
C. Educational services (Mark where applicable) 1 <input type="checkbox"/> Academic - if such services are provided, are they located: In the community 1 <input type="checkbox"/> Yes 2 <input type="checkbox"/> No At the institution 1 <input type="checkbox"/> Yes 2 <input type="checkbox"/> No 2 <input type="checkbox"/> Vocational - if such services are provided, are they located: In the community 1 <input type="checkbox"/> Yes 2 <input type="checkbox"/> No At the institution 1 <input type="checkbox"/> Yes 2 <input type="checkbox"/> No XX <input type="checkbox"/> None		<i>To be completed for training schools, forestry camps, ranches, and similar institutions.</i> 3. Does the facility have a job placement program for juveniles who are released, and planning to enter the work force? 1 <input type="checkbox"/> Yes 2 <input type="checkbox"/> No	
Section IX - LENGTH OF STAY			
<i>To be completed for training schools, forestry camps, ranches, and similar institutions.</i>			
A. What is the average length of stay in your facility?		Months	
<i>To be completed for short term institutions such as detention centers and shelters.</i>			
B. What is the average length of stay in your facility?		Days	

SUPPLEMENT
Section IX - LENGTH OF STAY

Name of facility

C. During the period covered by this report, how many juveniles in each category were discharged from your facility after serving the indicated terms?
TO BE COMPLETED FOR TRAINING SCHOOLS, FORESTRY CAMPS, RANCHES AND SIMILIAR INSTITUTIONS
(If a facility never holds a specific category of residents check the "NA" box.)

	MALES							FEMALES							N/A
	Months							Months							
	0-3	4-6	7-9	10-12	13-18	19-24	25 or more	0-3	4-6	7-9	10-12	13-18	19-24	25 or more	
1. Juveniles adjudicated delinquent															
2. Juveniles held pending disposition by court on delinquency charges															
3. Dependent and neglected children															
4. Awaiting transfer to another jurisdiction															
5. Other - Specify 7															

Please estimate the amount of time that was required to answer this question →

TO BE COMPLETED FOR SHORT TERM INSTITUTIONS NOT COVERED IN 1, SUCH AS DETENTION CENTERS AND SHELTERS
(If a facility never holds a specific category or resident check the "NA" box.)

	MALES											FEMALES											N/A
	Days											Days											
	1-4	5-7	8-13	14-20	20-27	28-42	43-56	57-70	71-84	85 or more	1-4	5-7	8-13	14-20	20-27	28-42	43-56	57-70	71-84	85 or more			
1. Juveniles adjudicated delinquent																							
2. Juveniles held pending disposition by court on delinquency charges																							
3. Dependent and neglected children																							
4. Awaiting transfer to another jurisdiction.																							
5. Other - Specify 7																							

Please estimate the amount of time that was required to answer this question →

FORM CJ-17A (7-27-71)

U.S. DEPARTMENT OF COMMERCE - BUREAU OF THE CENSUS

APPENDIX 5: OSIRIS III TYPE 3 DICTIONARY DESCRIPTION

This description of an OSIRIS III Type 3 dictionary was taken from OSIRIS III, Volume 1: System and Program Description, Release 2 Edition, Appendix D published by Institute for Social Research, University of Michigan.

Dictionary-descriptor Record

Position	Content
1-3	Blanks
4	3: Type 3 dictionary
5-8	First variable number
9-12	Last variable number
13-16	1: Number of logical records per case
20	1: Format of variable location specification is starting location and field width
21-80	Blanks

Variable-descriptor Record

Position	Content
1	T: Variable descriptor record
2-5	Variable number
6	Blank
7-30	Variable name
31	Blank
32-35	Starting location of the variable within each data record
36-39	Field width of response 1-9: numeric variables 1-255: alphabetic variables
40	Number of decimal places 0-9: numeric variables 0: alphabetic variables
41	Character type and storage mode Blank: numeric, character mode 1: alphabetic, character mode
42	Variable type Blank: single response 1: multiple response

43-44

Number of responses
If the variable has more than one response, columns 5-35 describe the first response and the remaining responses are assumed to be in adjacent fields of the same description.

45-51

First missing data code or blanks

52-58

Second missing data code or blanks

59-72

Blanks

73-75

File ID

76-80

Sequence number or blanks

END

CONTINUED

2 OF 2