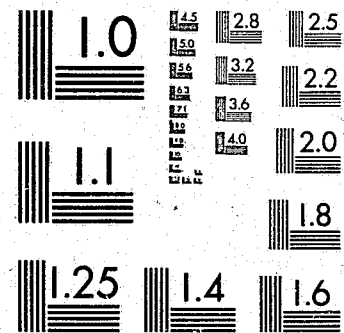


National Criminal Justice Reference Service



This microfiche was produced from documents received for inclusion in the NCJRS data base. Since NCJRS cannot exercise control over the physical condition of the documents submitted, the individual frame quality will vary. The resolution chart on this frame may be used to evaluate the document quality.



MICROCOPY RESOLUTION TEST CHART
NATIONAL BUREAU OF STANDARDS-1963-A

Microfilming procedures used to create this fiche comply with the standards set forth in 41CFR 101-11.504.

Points of view or opinions stated in this document are those of the author(s) and do not represent the official position or policies of the U. S. Department of Justice.

National Institute of Justice
United States Department of Justice
Washington, D.C. 20531

11/14/86

CR sent
8-22-86

ICPSR
Inter-university Consortium for
Political and Social Research

101627

**Juvenile Court Statistics,
1982: (United States)**

National Center for Juvenile Justice

ICPSR 8440

U.S. Department of Justice
National Institute of Justice

101627

This document has been reproduced exactly as received from the person or organization originating it. Points of view or opinions stated in this document are those of the authors and do not necessarily represent the official position or policies of the National Institute of Justice.

Permission to reproduce this copyrighted material in microfiche only has been granted by
Inter-university Consortium for
Political and Social Research

to the National Criminal Justice Reference Service (NCJRS).

Further reproduction outside of the NCJRS system requires permission of the copyright owner.

JUVENILE COURT STATISTICS, 1982:
[UNITED STATES]

(ICPSR 8440)

Principal Investigator
National Center for Juvenile Justice

NCJRS

SEP 15 1986

ACQUISITIONS

Inter-university Consortium for Political and Social Research
P.O. Box 1248
Ann Arbor, Michigan 48106

First ICPSR Edition, 1985

Acknowledgement of Assistance

All manuscripts utilizing data made available through the Consortium should acknowledge that fact as well as identify the original collector of the data. The ICPSR Council urges all users of the ICPSR Data facilities to follow some adaptation of this statement with the parentheses indicating items to be filled in appropriately or deleted by the individual user.

The data (and tabulations) utilized in this (publication) were made available (in part) by the Inter-university Consortium for Political and Social Research. The data for JUVENILE COURT STATISTICS, 1982: [UNITED STATES] was collected by the National Center for Juvenile Justice. Neither the collectors of the original data nor the Consortium bear any responsibility for the analyses or interpretations presented here.

In order to provide funding agencies with essential information about the use of archival resources and to facilitate the exchange of information about ICPSR participants' research activities, each user of the ICPSR data facilities is expected to send two copies of each completed manuscript or thesis abstract to the Consortium. Please indicate in the cover letter which data were used.

National Center for Juvenile Justice;

JUVENILE COURT STATISTICS, 1982: [UNITED STATES] (ICPSR 8440)

These data describe the volume of juvenile cases disposed by courts in the fifty states, the District of Columbia, and the territories of the Virgin Islands and Puerto Rico during calendar year 1982. The data contain all available summary information on children's cases disposed in courts having jurisdiction over juvenile matters, delinquency status, and dependency/neglect. The data are contained in one file and there are 3085 cases, one record for each case. The logical record length of the file is 144 characters. Class IV

Documentation of
JUVENILE COURT STATISTICS
1982
Data Base

National Center for Juvenile Justice
701 Forbes Avenue
Pittsburgh, Pennsylvania 15219
412-227-6950

Copyright June, 1985

This report was prepared by Ellen H. Nimick and Howard N. Snyder of the National Center for Juvenile Justice, the research division of the National Council of Juvenile and Family Court Judges, and was supported by grant number 78-JN-AX-0027 from the the National Institute for Juvenile Justice and Delinquency Prevention, Office of Juvenile Justice and Delinquency Prevention, U.S. Department of Justice.

TABLE OF CONTENTS

	Page
Introduction.....	1
Methods.....	2
Definitions.....	3
Record Layout.....	5
Data Documentation.....	6
Appendix.....	20

Introduction

This data file is the basis of Juvenile Court Statistics: 1982. This series of reports, the oldest continuous source of information on juvenile courts' processing of delinquent and dependent youth, was inaugurated in 1926 by the Children's Bureau of the United States Department of Labor and is now maintained in the National Juvenile Court Data Archive by the National Center for Juvenile Justice under contract to the Office of Juvenile Justice and Delinquency Prevention, U.S. Department of Justice. The report describes in quantitative terms the volume of juvenile cases disposed by courts during the calendar year 1982. The data base contains all available summary information on children's cases disposed in courts having jurisdiction over juvenile matters--delinquency, status, and dependency/neglect--in the fifty states, the District of Columbia, and the territories of the Virgin Islands and Puerto Rico.

During its history, the series has undergone modifications in objectives, reporting procedures, and content. In 1923, a committee of the National Probation Association outlined the early purposes of the Juvenile Court Statistics series, as follows:

1. To furnish an index of the general nature and extent of the problems brought before the juvenile courts;
2. To show the extent and nature of service given by courts in such a way that significant trends in methods of treatment and in scope and volume of juvenile court work would be brought out;
3. To point out significant factors contributing to the problems coming before the courts in order to throw light on possibilities of correction and prevention; and
4. To show the extent to which service given by courts has been effective in correcting social problems.

Initially, annual reports included information and analyzed trends on factors such as gender, race, home conditions, reason referred, place of detention care, and disposition. Beginning in 1952, the information requested from juvenile courts became limited to a summary count of delinquency, dependency/neglect, and special proceedings cases handled with or without the filing of a petition. These reports combined traffic cases with delinquency cases; not until 1958 were traffic cases identified separately. Later, variations in juvenile court jurisdiction over traffic cases and frequent changes in laws affecting this jurisdiction made it difficult to determine national trends. Therefore, beginning in 1970, the report excluded ordinary traffic cases and, for similar reasons, beginning in 1975, excluded special proceedings.

The aggregation of individual county caseload figures may encourage comparisons of the workloads of different jurisdictions for the reporting year and individual courts over time. However, for several reasons researchers are cautioned not to draw comparisons based on these summary figures alone. There are wide variations in the responsibilities

and problems faced by individual courts. For example, some courts have jurisdiction over all children below the age of 18, while in others some of these individuals may by law fall under the jurisdiction of the adult criminal justice system. In addition, individual jurisdictions because of their geographical, economic, sociological, and judicial characteristics may be faced with differing problems affecting the quantity and nature of cases coming to the juvenile courts' attention.

Another problem is the inconsistency in the units of count of the summary statistics. "Unit of count" is the standard of measurement by which summary data are reported. For this data base the preferred unit of count is the 'case disposed'. This represents a child referred to the juvenile court on a new referral for delinquency or dependency/neglect, regardless of the number of charges involved. A case is 'disposed' when, after assessing the situation, some definite action is taken or some treatment plan is decided upon or begun. It must be strongly emphasized that not all courts collect statistics using this unit of count. The National Juvenile Court Data Archive houses all juvenile court data regardless of the structure of the information and, therefore, not all figures contained in this data base represent a 'case disposed'. The data documentation for each data source specifies its unit(s) of count and should be consulted prior to any use of the data.

The following examples may help to clarify some of the distinctions captured by various units of count. Within a single referral a child can be charged with one or more offenses. For instance, a juvenile may be referred for trespassing, burglary and vandalism. The preferred unit of count would consider this as the beginning of a single case which would be tallied as a referral disposed when either the case is dismissed, handled informally without the filing of a petition, or, if petitioned, after the adjudicatory hearing or (if necessary) the disposition hearing is completed. However, in some jurisdictions, this example would be considered to be three cases because of the number of charges involved. Or it may be tallied at the time of referral and not at the time of disposition. In another situation a child may be referred to court more than once in a year. Assume a child is referred to juvenile court first for assault and again a week later for motor vehicle theft. Both incidents may be handled at one hearing, and the youth may be institutionalized. The preferred unit of count, the 'case disposed', would count this as two cases. This would not be considered a single case since two separate referrals were involved. However, some data collection procedures may count this as one case because there was only one dispositional hearing. Anyone using these data is urged to be familiar with the unit(s) of count (or any other qualifications) prior to analysis.

Methods

Most of the data in this base were originally compiled by state agencies responsible for the collection and dissemination of their state's juvenile court statistical information. Some individual jurisdictions which collected statistics on their juvenile court activity were contacted when the state level system was either less complete or non-

existent. With the exceptions of Alaska, Connecticut, Florida, Puerto Rico, and the Virgin Islands, all data were aggregated in county units. Alaska reported data aggregated at the superior court level. Connecticut, which has a statewide juvenile court system, reported data aggregated in juvenile venue districts. Florida's data were reported in the districts utilized by the Department of Health and Rehabilitative Services. Puerto Rico's data were aggregated at the district court level. The Virgin Islands reported the data in terms of the three major islands comprising the territory. Therefore, the level of data aggregation varied. For simplicity, the term 'county' will be used to identify the reporting unit, although users should be aware that in some instances this may be an imprecise designation.

To document the juvenile courts' volume of delinquency and dependency/neglect cases disposed, Juvenile Court Statistics data forms (JCS forms) and coding instructions were mailed to agencies in each of the 50 states (or individual jurisdictions), the District of Columbia, and the territories of Puerto Rico and the Virgin Islands. Information was requested on the number of male and female delinquency and dependency/neglect cases disposed with and without the filing of a petition in each county (or reporting unit). Since state juvenile codes do not contain uniform definitions of the terms "delinquent," "dependency/neglect," and "case" the coding instructions emphasized the need to provide statistics consistent with the definitions provided (see definition of terms below). In those instances where the data suppliers were not able to report their data using the preferred unit of count, they were asked to indicate what their figures actually represented. Along with the completed JCS forms, data were abstracted from annual reports and, in a large number of instances, from data tapes generated by automated reporting systems. If questions arose concerning the data, the data supplier was contacted for further clarification. All states and jurisdictions represented in this data set have verified their data for this file.

Definitions

Listed below are terms and their definitions needed to understand the figures contained in the file. Although the terms are not unique to this data base, their definitions may be and, therefore, users are cautioned not to assume they understand the terms before carefully reading each definition.

DELINQUENCY CASES are referrals to juvenile court for acts defined in state statutes as violations of a state law or municipal ordinance by children or youth within the age of juvenile court jurisdiction or for conduct so seriously antisocial as to interfere with the rights of others or to menace the welfare of the delinquent child or the community. The aforementioned definition of delinquency includes status offenses, conduct which violates the law only when committed by a child (i.e., truancy, ungovernable behavior, running away, curfew and liquor law violations). Excluded from this report are the following: (1) ordinary traffic cases handled by juvenile courts, except those which are handled as "juvenile delinquency" cases because of their serious

nature; (2) all adult cases in which the complaint is made against the adult, such as contributing to the delinquency of a minor, offenses against children, nonsupport, and the establishment of paternity; and (3) aid-to-families-with-dependent-children cases in which the court's administration of funds for and to dependent children is the only reason for court referral.

DEPENDENCY/NEGLECT CASES are referrals for neglect or inadequate care on the part of the parents or guardians. This includes incidents of lack of adequate care or support resulting from death, absence, or physical or mental incapacity of the parents; abandonment or desertion; abuse or cruel treatment; and improper or inadequate conditions in the home.

MANNER OF HANDLING classifies the processing of the case through the court system into one of two general categories. "Petitioned" cases are those placed on the official court calendar for adjudication by a judge or referee through the filing of a petition, affidavit, or other legal instrument used to initiate court action. "Nonpetitioned" cases are those cases which are not placed on the official court calendar through the filing of a petition or affidavit but which are adjusted by a judge, referee, probation officer, other officer of the court, or agency statutorily designated to conduct petition screening for the juvenile court. Also included are those cases which were handled by the probation officer or were dropped or withdrawn without being placed on the calendar for hearing by the judge although petitions were filed.

UNIT OF COUNT (preferred) is the case which is defined as a referral disposed. Each case represents a child referred to the juvenile court on a new referral for delinquency or dependency/neglect. A case is disposed when, after assessing the situation, some definite action is taken or some treatment plan is decided upon or begun. The date of disposition determines in what calendar year the case is counted, not the date of referral. Therefore, a case can be referred in one calendar year but not disposed (and counted) until the next. Each referral may contain one or more charges (offenses). One child may be involved in a number of cases within a calendar year. Each child in a group is counted as a separate case even though they may be referred to the court as a group. However, it cannot be too strongly emphasized that the unit(s) of count of the data from a specific source may vary from the preferred unit of count. These differences are identified for the user in the footnotes associated with each data source.

Record Layout

The data file contains one record for each of the 3085 counties or reporting units. The record layout is:

Field Label	Field Width	Begin	End
State Abbreviation	3	1	3
County Name	25	4	28
State Number*	3	29	31
County Number*	4	32	35
Year	3	36	38
Delinquency Case Count			
Male Petition	5	39	43
Female Petition	5	44	48
Male Nonpetition	5	49	53
Female Nonpetition	5	54	58
Total Petition	5	59	63
Total Nonpetition	5	64	68
Total	5	69	73
Dependency/Neglect Case Count			
Male Petition	5	74	78
Female Petition	5	79	83
Male Nonpetition	5	84	88
Female Nonpetition	5	89	93
Total Petition	5	94	98
Total Nonpetition	5	99	103
Total	5	104	108
Total Case Count			
Male Petition	5	109	113
Female Petition	5	114	118
Male Nonpetition	5	119	123
Female Nonpetition	5	124	128
Total Petition	5	129	133
Total Nonpetition	5	134	138
Total	5	139	143
Filler	1	144	144

* State Number and County Number (in all places except Alaska, Connecticut, Florida, Puerto Rico and the Virgin Islands) are FIPS codes designated by the U.S. Bureau of Census. For those jurisdictions which did not report in geographic units consistent with Census' boundaries, a County Number unique to this data base was assigned. See the Appendix for a complete list of reporting units and their FIPS Codes.

Data Documentation

This section lists by state (1) the agencies that transmitted their 1982 juvenile court statistics to the National Center for Juvenile Justice (NCJJ), (2) the mode of transmission, and (3) the type of data reported. The term "tape" will be found after the agency name when the data in the file were abstracted by NCJJ from an automated data base provided by the agency. The term "JCS form" after an agency name indicates that the agency completed a data survey form provided by NCJJ. The form and its accompanying instructions asked for the number of male and female delinquency and dependency/neglect cases disposed with and without the filing of a petition for each county within the agency's geographical responsibility. (At times an agency completed the form but was unable to provide statistics consistent with the requested definitions or detail. In such instances these variations are noted.) Information from some agencies was abstracted from their annual reports. The name of the report and the page on which the information is found are listed after the agency's name.

The notes following each data source describe the nature of the "delinquency," "dependency/neglect," and/or "total" data found in the data file. For example, one agency may report delinquency data which contain the number of male petition, female petition, male nonpetition, and female nonpetition cases; another may report the number of petition and the number of nonpetition cases without a gender breakdown; and another may only report the total number of cases handled by the juvenile court. While many states reported their data using the "case disposed" unit of count, there are several which reported offenses (charges) referred, filings, arraignment or dispositional hearings, or youth. Consequently, the unit of count varies across sources and, therefore, the data notes for each source must be reviewed before any attempt is made to combine data across sources.

Alabama

Source: Alabama Department of Youth Services: JCS form. (Similar figures can also be found on pages 35-37 of the 1982 Statistical Report prepared by the Department.)

- Note:**
1. Delinquency figures are male petition, female petition, male nonpetition and female nonpetition cases disposed. They include traffic and violation of probation/aftercare cases.
 2. Dependency/neglect figures are male petition, female petition, male nonpetition and female nonpetition cases disposed. They include special proceedings and are an undercount of the actual number of cases due to incomplete reporting. The Department of Pensions and Security handles dependency/neglect cases and transmits the statistical data to the Department of Youth Services.
 3. Total figures are not known because dependency/neglect data are incomplete.

Alaska

Source: Alaska Court System: 1982 Annual Report, page S-43.

- Note:**
1. Total figures are total petition cases disposed. They include delinquency, status, and dependency/neglect cases by superior court for fiscal year 1982.
 2. Juvenile court cases are processed at the superior court level.

Arizona

Source: Supreme Court of Arizona: JCS form.

- Note:**
1. Delinquency figures are total petition dispositions (meaning more than one case can be disposed in one hearing thus receiving only one disposition) and total nonpetition cases disposed. The number of total delinquency cases is not known because the petition and nonpetition units of counts are not the same.
 2. Dependency/neglect figures are total petition dispositions (meaning more than one case can be disposed in one hearing thus receiving only one disposition).
 3. Total figures are total petition dispositions (meaning that more than one case can be disposed in one hearing thus receiving only one disposition.) They are the sum of petition delinquency and dependency/neglect counts. Total nonpetition figures are not known because nonpetition dependency/neglect data were not reported.

Maricopa County, Arizona

Source: Maricopa County Juvenile Court Center (delinquency cases): tape. Supreme Court of Arizona (dependency/neglect cases): JCS form.

- Note:**
1. Delinquency figures are male petition, female petition, male nonpetition and female nonpetition cases disposed.
 2. Dependency/neglect figures are total petition dispositions. (This means that more than one case can be disposed in one hearing thus receiving only one disposition.)
 3. Total petition figures are not known because the delinquency and dependency/neglect units of count are not the same. Total nonpetition figures are not known because nonpetition dependency/neglect data were not reported.

Arkansas

Source: Arkansas Department of Human Services, Division of Youth Services: JCS form.

- Note:**
1. Delinquency figures are total cases disposed.
 2. Dependency/neglect figures are total cases disposed.
 3. Total figures are total cases disposed. They are the sum of delinquency and dependency/neglect counts.

California

Source: Bureau of Criminal Statistics and Special Services (delinquency cases): tape. Judicial Council of California (dependency/neglect cases): 1983 Annual Report, page 188.

- Note:**
1. Delinquency figures are male petition, female petition, male nonpetition and female nonpetition cases disposed.

There is an undercount of nonpetition delinquency cases in Alameda, San Diego and Santa Clara counties. These counties have an information system which does not capture the number of subsequent nonpetition cases of juveniles already active in the court system while the figures for the majority of the state include these data.

2. Dependency/neglect figures are total petition cases disposed for fiscal year 1982.
3. Total petition figures are not known because petition delinquency and dependency/neglect figures cover different time spans. (Delinquency figures are for calendar year 1982 while dependency/neglect figures are for the fiscal year.) Total nonpetition figures are not known because nonpetition dependency/neglect data were not reported.

Los Angeles County, California

Source: Superior Court, Los Angeles County (petition delinquency cases): Juvenile Court Coordinator's Yearly Workload Report. Los Angeles County Probation Department (nonpetition delinquency cases): 1982 Annual Report to Judges, page 3. Judicial Council of California (dependency/neglect cases): 1983 Annual Report, page 188.

- Note:
1. Delinquency figures are total petition and total nonpetition cases disposed. The number of petition cases was determined by adding the number of "Minors Found Unfit," "Preadjudication Dismissals," "Petitions Found Not True" and "Disposition Hearings" from the Juvenile Court Coordinator's Yearly Workload Report. The number of nonpetition cases was calculated using figures from the 1982 Annual Report to Judges. Figures for "Closed After Investigation," "Informal Supervision," "Abeyance" and "Other" were summed. Nine percent of the total number of "Recommended Petition Cases" (which represents those cases that were recommended for petition but refused and were actually handled informally) was added to the calculated nonpetition cases to derive the total number of nonpetition cases.
 2. Dependency/neglect figures are total petition cases disposed for fiscal year 1982.
 3. Total petition figures are not known because petition delinquency and dependency/neglect figures cover different time spans. (Delinquency figures are for calendar year 1982 while dependency/neglect figures are for the fiscal year.) Total nonpetition figures are not known because nonpetition dependency/neglect data were not reported.

Colorado

Source: Colorado Judicial Department: JCS form. (Similar figures can also be found in the Annual Report of the Colorado Judiciary, July 1, 1981 to June 30, 1982, page 113.)

- Note:
1. Delinquency figures are total petition cases terminated during fiscal year 1982.
 2. Dependency/neglect figures are total petition cases terminated during fiscal year 1982.

3. Total figures are total petition cases terminated during fiscal year 1982. They are the sum of delinquency and dependency/neglect counts.

Connecticut

Source: Chief Court Administrator's Office: tape.

- Note:
1. Delinquency figures are male petition, female petition, male nonpetition and female nonpetition cases disposed.
 2. Dependency/neglect figures were not reported.
 3. Total figures are not known because dependency/neglect data were not reported.
 4. Connecticut does not have counties, therefore the data are reported by juvenile venue districts established by the state.

Delaware

Source: Family Court of the State of Delaware: 1982 Fiscal Year Annual Report, page 10.

- Note:
1. Delinquency figures are total "felony" and "misdemeanor" delinquency cases filed (petitioned) during fiscal year 1982.
 2. Dependency/neglect figures were not reported.
 3. Total figures are not known because dependency/neglect data were not reported.

District of Columbia

Source: District of Columbia Courts: 1982 Annual Report, pages 69 and 73.

- Note:
1. Delinquency figures are total petition and total nonpetition cases disposed.
 2. Dependency/neglect figures are total petition and total nonpetition cases disposed.
 3. Total figures are total petition and total nonpetition cases disposed. They are the sum of delinquency and dependency/neglect counts.

Florida

Source: Department of Health and Rehabilitative Services; Children, Youth and Families Program Office: tape.

- Note:
1. Delinquency figures are male petition, female petition, male nonpetition and female nonpetition cases disposed.
 2. Dependency/neglect figures are male petition, female petition, male nonpetition and female nonpetition cases disposed.
 3. Total figures are male petition, female petition, male nonpetition and female nonpetition cases disposed. They are the sum of delinquency and dependency/neglect counts.
 4. The figures represent the number of cases closed by Intake during 1982 which captures only those disposed cases reported to the Department of Health and Rehabilitative Services by caseworkers correctly completing and submitting a "Client Information Form - Dependency/Delinquency Intake." The Department of Health and Rehabilitative Services Intake Department, having a broad range of

operations, reports information on other child care services not part of the typical juvenile court system. Therefore, the number of nonpetition cases may appear higher and fluctuate more than those reported by other information systems which report only juvenile court activity.

5. Florida reported its data by Department of Health and Rehabilitative Services (HRS) districts. Therefore, HRS districts were used as the reporting area. The following is a list of counties within HRS districts. District 1.: Escambia, Okaloosa, Santa Rosa, and Walton. District 2.: Bay, Calhoun, Franklin, Gadsden, Gulf, Holmes, Jackson, Jefferson, Leon, Liberty, Madison, Taylor, Wakulla, and Washington. District 3.: Alachua, Bradford, Citrus, Columbia, Dixie, Gilchrist, Hamilton, Hernando, Lafayette, Lake, Levy, Marion, Putnam, Sumter, Suwannee, and Union. District 4.: Baker, Clay, Duval, Flagler, Nassau, St. Johns, and Volusia. District 5.: Pasco and Pinellas. District 6.: Hardee, Highlands, Hillsborough, Manatee, and Polk. District 7.: Brevard, Orange, Osceola, and Seminole. District 8.: Charlotte, Collier, De Soto, Glades, Hendry, Lee, and Sarasota. District 9.: Indian River, Martin, Okeechobee, Palm Beach, and St. Lucie. District 10.: Broward. District 11.: Dade and Monroe.

Georgia

Source: Administrative Office of the Courts: JCS form (Similar figures can also be found in the Ninth Annual Report on the Work of the Georgia Courts, pages 22-24); and Council of Juvenile Court Judges: tape.

- Note:
1. Delinquency, dependency/neglect and total figures are cases disposed for those counties reporting male petition, female petition, male nonpetition and female nonpetition figures for the calendar year. The remaining counties reported either the total number of children formally disposed (petition) or the total number of children disposed (petition and nonpetition) for fiscal year 1982.
 2. Total figures are the sum of delinquency and dependency/neglect counts.

Fulton County, Georgia

Source: Fulton County Juvenile Court: 1982 Annual Report, page 22.

- Note:
1. Delinquency figures are total petition and total nonpetition cases disposed.
 2. Dependency/neglect figures are total petition and total nonpetition cases disposed.
 3. Total figures are total petition and total nonpetition cases disposed. They are the sum of delinquency and dependency/neglect counts.

Hawaii

Source: The Judiciary, Administrative Office of the Courts: tape.

- Note:
1. Delinquency figures are total petition and total nonpetition cases disposed.

2. Dependency/neglect figures are total petition and total nonpetition cases disposed.
3. Total figures are total petition and total nonpetition cases disposed. They are the sum of delinquency and dependency/neglect counts.

Idaho

Source: Idaho Department of Health and Welfare: JCS form.

- Note:
1. Delinquency figures are total petition and total nonpetition charges referred.
 2. Dependency/neglect figures are total petition and total nonpetition charges referred.
 3. Total figures are total petition and total nonpetition charges referred. They are the sum of delinquency and dependency/neglect counts.

Illinois

Source: Administrative Office of the Illinois Courts: JCS form.

- Note:
1. Delinquency figures are total petition cases disposed.
 2. Dependency/neglect figures are total petition cases disposed.
 3. Total figures are total petition cases disposed. They are the sum of delinquency and dependency/neglect counts.

Cook County, Illinois

Source: Cook County Juvenile Court: JCS form.

- Note:
1. Delinquency figures are male petition, female petition and total nonpetition cases disposed.
 2. Dependency/neglect figures are male petition, female petition and total nonpetition cases disposed.
 3. Total figures are male petition, female petition and total nonpetition cases disposed. They are the sum of delinquency and dependency/neglect counts.

Indiana

Source: Division of State Court Administration: 1982 Indiana Judicial Report pages 23, 63-72.

- Note:
1. Total figures are total petition cases disposed and include delinquency, dependency, neglect and paternity cases.

Iowa

Source: Iowa Department of Social Services: tape and Juvenile Court Cases Reported by the Juvenile Probation Officer, CY1982.

- Note:
1. Delinquency figures are male petition, female petition, male nonpetition and female nonpetition cases disposed. The following counties' figures were taken from the annual report which includes traffic cases in the delinquency counts: Boone, Calhoun (which includes Carroll and Sac), Crawford (which includes Ida and Monona), Greene, Hamilton and Hardin.
 2. Dependency/neglect figures are male petition, female petition, male nonpetition and female nonpetition cases disposed. The figures for dependency/neglect cases reflect only those filed by probation authorities. The greater

amount were initially filed with the Department of Human Services and were not reported here even though they may have come before the juvenile court briefly.

3. Total figures are not known because dependency/neglect data are incomplete.

Kansas

Source: Kansas Bureau of Investigation, Statistical Analysis Center: tape.

- Note:
1. Delinquency figures are male petition, female petition, male nonpetition and female nonpetition cases disposed.
 2. Dependency/neglect figures are male petition, female petition, male nonpetition and female nonpetition cases disposed.
 3. Total figures are male petition, female petition, male nonpetition and female nonpetition cases disposed. They are the sum of delinquency and dependency/neglect counts.

Kentucky

Source: Kentucky Administrative Office of the Courts: JCS form.

- Note:
1. Total figures are total petition hearings and are the total number of juvenile and adult hearings in juvenile court which include delinquency, status, dependency/neglect, needy, abuse, paternity and adult violations.

Louisiana

Source: The Judicial Council of the Supreme Court of Louisiana: 1982 Annual Report, pages 34-37.

- Note:
1. Total figures are total cases filed and include petition and nonpetition delinquency, dependency/neglect, status and special proceeding cases.

Maine

Source: Administrative Office of the Court: State of Maine Judicial Department 1982 Annual Report, pages 134-147.

- Note:
1. Delinquency figures are total petition cases disposed and include traffic cases. Status offenses are not handled in the juvenile court system and, therefore, are not included in the delinquency figures.
 2. Dependency/neglect figures were not reported.
 3. Total figures are not known because dependency/neglect data were not reported.
 4. The numbers for the district courts were summed to determine county figures. The following is a list of district courts within counties. Androscoggin: Lewiston and Livermore Falls. Aroostook: Caribou, Fort Kent, Houlton, Madawaska, Presque Isle and Van Buren. Cumberland: Bridgton, Brunswick and Portland. Franklin: Farmington. Hancock: Bar Harbor and Ellsworth. Kennebec: Augusta and Waterville. Knox: Rockland. Lincoln: Wiscasset. Oxford: Rumford and S. Paris. Penobscot: Bangor, Lincoln, Millinocket and Newport. Piscataquis: Dover-Foxcroft. Sagadahoc: Bath. Somerset: Skowhegan.

Waldo: Belfast. Washington: Calais and Machias. York: Biddeford, Kittery and Springvale.

Maryland

Source: Juvenile Services Administration, Department of Health and Mental Hygiene: tape.

- Note:
1. Delinquency figures are male petition, female petition, male nonpetition and female nonpetition cases disposed.
 2. Dependency/neglect figures are male petition, female petition, male nonpetition and female nonpetition cases disposed.
 3. Total figures are male petition, female petition, male nonpetition and female nonpetition cases disposed. They are the sum of delinquency and dependency/neglect counts.

Massachusetts

Source: Office of the Commission of Probation: Statistical pages provided to the National Center for Juvenile Justice.

- Note:
1. Delinquency figures are total juvenile arraignments. Status offense cases are not included because of incompatible units of count.
 2. Dependency/neglect figures are the total number of children making an initial court appearance.
 3. Total figures are not known because the delinquency and dependency/neglect units of count are not the same.

Michigan

Source: State Court Administrative Office: Probate Court Supplement to the 1981-82 Annual Report, pages 169-173.

- Note:
1. Delinquency figures are total new petitions authorized in fiscal year 1982.
 2. Dependency/neglect figures are total new petitions authorized in fiscal year 1982. They include supplemental petitions and petitions for rehearings for some courts. This accounts for the wide variation in the number of petitions authorized.
 3. Total figures are new petitions authorized in fiscal year 1982. They are the sum of delinquency and dependency/neglect counts.
 5. The figures for Kalamazoo County are incomplete.

Minnesota

Figures were not reported.

Mississippi

Source: Mississippi Department of Youth Services: tape.

- Note:
1. Delinquency figures are male petition, female petition, male nonpetition and female nonpetition cases disposed.
 2. Dependency/neglect figures are male petition, female petition, male nonpetition and female nonpetition cases disposed. Only those dependency/neglect cases which come to the attention of the Department of Youth Services via court processing are included here. The majority of cases

were handled through the Department of Public Welfare and did not come in contact with the juvenile court.

3. Total figures are male petition, female petition, male nonpetition and female nonpetition. They are the sum of delinquency and dependency/neglect counts.

Missouri

Source: Department of Social Services, Division of Planning and Budget: JCS form.

- Note:
1. Delinquency figures are male petition, female petition, male nonpetition and female nonpetition cases disposed.
 2. Dependency/neglect figures are male petition, female petition, male nonpetition and female nonpetition cases disposed.
 3. Total figures are male petition, female petition, male nonpetition and female nonpetition cases disposed. They are the sum of delinquency and dependency/neglect counts.

Montana

Source: Juvenile Justice Bureau, Board of Crime Control: JCS form.

- Note:
1. The data were reported at the state level; no county breakdown was available. The total number of delinquency cases disposed in 1982 was 6,339. This includes 4,565 male cases and 1,774 female cases. Approximately ten percent of the cases were petitioned.
 2. Dependency/neglect figures were not reported.

Nebraska

Source: Nebraska Crime Commission: tape. (Similar figures can also be found in the Nebraska Crime Commission 1982 Juvenile Court Report, pages 33-35.)

- Note:
1. Delinquency figures are male petition, female petition, male nonpetition and female nonpetition cases disposed.
 2. Dependency/neglect figures are male petition, female petition, male nonpetition and female nonpetition cases disposed. In Douglas County only those dependency/neglect cases which go to the county attorney's office (petition cases) are reported.
 3. Total figures are male petition, female petition, male nonpetition and female nonpetition cases disposed. They are the sum of delinquency and dependency/neglect counts.

Clark County, Nevada

Source: Clark County Juvenile Court Services: JCS form.

- Note:
1. Delinquency figures are male petition, female petition, male nonpetition and female nonpetition offenses referred.
 2. Dependency/neglect figures are male petition, female petition, male nonpetition and female nonpetition offenses referred.
 3. Total figures are male petition, female petition, male nonpetition and female nonpetition offenses referred. They are the sum of delinquency and dependency/neglect counts.

New Hampshire

Source: State of New Hampshire Judicial Council: JCS form.

- Note:
1. Delinquency figures are total petition case entries by juvenile courts for fiscal year 1982.
 2. Dependency/neglect figures are total petition case entries by juvenile courts for fiscal year 1982.
 3. Total figures are total petition case entries by juvenile courts for fiscal year 1982. They are the sum of delinquency and dependency/neglect counts.

New Jersey

Source: Administrative Office of the Courts; Statistical Services, Research and Evaluation: JCS form.

- Note:
1. Delinquency figures are total petition hearings and total nonpetition cases disposed. The total number of delinquency cases is not known because the petition and nonpetition units of count are not the same.
 2. Dependency/neglect are total petition hearings and total nonpetition cases disposed. They include status offense cases. The total number of dependency/neglect cases is not known because the petition and nonpetition units of count are not the same.
 3. Total figures are total petition hearings and total nonpetition cases disposed. They are the sum of delinquency and dependency/neglect counts. The total number of cases is not known because the petition and nonpetition units of count are not the same.

New Mexico

Source: Administrative Office of the Courts: JCS form.

- Note:
1. Delinquency figures are total petition and total nonpetition cases disposed for fiscal year 1982.
 2. Dependency/neglect figures were not reported.
 3. Total figures are not known because dependency/neglect data were not reported.

New York

Source: State of New York, Division of Probation (nonpetition delinquency cases): JCS form. Office of Management Support, Unified Court System (petition delinquency and dependency/neglect cases): tape.

- Note:
1. Delinquency figures are male petition, female petition and total nonpetition cases disposed.
 2. Dependency/neglect figures are male petition and female petition cases disposed.
 3. Total figures are male petition and female petition cases disposed. They are the sum of petition delinquency and dependency/neglect counts. Total nonpetition figures are not known because nonpetition dependency/neglect data were not reported.

North Carolina

Source: Administrative Office of the Courts: North Carolina Courts 1981-1982 Annual Report, pages 136-139.

- Note:**
1. Delinquency figures are "offenses and conditions alleged in juvenile petitions" during fiscal year 1982.
 2. Dependency/neglect figures are "offenses and conditions alleged in juvenile petitions" during fiscal year 1982.
 3. Total figures are "offenses and conditions alleged in juvenile petitions" during fiscal year 1982. They are the sum of delinquency and dependency/neglect counts.

North Dakota

Source: Supreme Court, Office of State Court Administrator: tape.

- Note:**
1. Delinquency figures are male petition, female petition, male nonpetition and female nonpetition cases disposed.
 2. Dependency/neglect figures are male petition, female petition, male nonpetition and female nonpetition cases disposed.
 3. Total figures are male petition, female petition, male nonpetition and female nonpetition cases disposed. They are the sum of delinquency and dependency/neglect counts.

Ohio

Source: Department of Youth Services: Ohio Juvenile Court Statistics 1982 Report, pages 6-9.

- Note:**
1. Delinquency figures are male petition and female petition and are a count of individual youth referred. (A youth is only counted once during a calendar year regardless of how many times he/she is referred in that year.)
 2. Dependency/neglect figures are total petition and total nonpetition charges referred.
 3. Total figures are not known because the delinquency and dependency/neglect units of count are not the same.

Cuyahoga County, Ohio

Source: Cuyahoga County Juvenile Court (delinquency cases): 1982 Annual Report, pages 20-21. Department of Youth Services (dependency/neglect cases): Ohio Juvenile Court Statistics 1982 Report, pages 6-9.

- Note:**
1. Delinquency figures are total petition and total nonpetition cases disposed. The number of unofficial delinquency cases disposed is the sum of "Total Unofficial Dispositions" and "Total Disposed of Without Official Court Action."
 2. Dependency/neglect figures are total petition and total nonpetition charges referred.
 3. Total figures are not known because the delinquency and dependency/neglect units of count are not the same.

Oklahoma

Source: Supreme Court of Oklahoma, Court Services Division: JCS form.

- Note:**
1. Delinquency figures are total petition cases disposed for fiscal year 1982.
 2. Dependency/neglect figures are total petition cases disposed for fiscal year 1982.

3. Total figures are total petition cases disposed for fiscal year 1982. They are the sum of delinquency and dependency/neglect counts.

Oregon

Source: Department of Human Resources, Children's Services Division: JCS form.

- Note:**
1. Delinquency figures are male petition, female petition, male nonpetition and female nonpetition offenses referred.
 2. Dependency/neglect figures are male petition, female petition, male nonpetition and female nonpetition offenses referred.
 3. Total figures are male petition, female petition, male nonpetition and female nonpetition offense referred. They are the sum of delinquency and dependency/neglect counts.

Pennsylvania

Source: Juvenile Court Judges' Commission: tape.

- Note:**
1. Delinquency figures are male petition, female petition, male nonpetition and female nonpetition cases disposed.
 2. Dependency/neglect figures were not reported.
 3. Total figures are not known because dependency/neglect data were not reported.
 4. Allegheny County delinquency figures are total petition and total nonpetition cases disposed.
 5. Status offenses are classified as dependency/neglect cases.

Philadelphia County, Pennsylvania

Source: Court of Common Pleas of Philadelphia: Family Court Division 1982 Report, page 31.

- Note:**
1. Delinquency figures are male petition, female petition, male nonpetition and female nonpetition cases disposed.
 2. Dependency/neglect figures were not reported.
 3. Total figures are not known because dependency/neglect data were not reported.
 4. Status offenses are classified as dependency/neglect cases.

Puerto Rico

Source: Office of Court Administration: JCS form.

- Note:**
1. Delinquency figures are total petition cases disposed aggregated at the district court level for fiscal year 1982. They include traffic cases.
 2. Dependency/neglect figures were not reported.
 3. Total figures are not known because dependency/neglect data were not reported.

Rhode Island

Figures were not reported.

South Carolina

Source: Department of Youth Services: JCS form.

- Note:**
1. Delinquency figures are total petition and total nonpetition dispositions.
 2. Dependency/neglect figures were not reported.

- Total figures are not known because dependency/neglect data were not reported.

South Dakota

Source: State Court Administrator's Office: tape.

- Note:
- Delinquency figures are male petition, female petition, male nonpetition and female nonpetition cases disposed.
 - Dependency/neglect figures were not reported.
 - Total figures are not known because dependency/neglect data were not reported.
 - Shannon County is an American Indian reservation and handles juvenile matters in the tribal court which is not part of the state's juvenile court system.

Shelby County, Tennessee

Source: Juvenile Court of Memphis and Shelby County: tape. (Similar figures can also be found in the 1982 Annual Report of Memphis and Shelby County, pages 34, 37 and 41.)

- Note:
- Delinquency figures are male petition, female petition, male nonpetition and female nonpetition cases disposed.
 - Dependency/neglect figures are male petition, female petition, male nonpetition and female nonpetition cases disposed.
 - Total figures are male petition, female petition, male nonpetition and female nonpetition cases disposed. They are the sum of delinquency and dependency/neglect counts.

Texas

Source: Texas Juvenile Probation Commission: Texas Juvenile Probation Statistical Report for Calendar Year 1982, pages 28-31 and 38-40.

- Note:
- Delinquency figures are total petition and total nonpetition cases disposed. Nonpetition case figures were determined by subtracting the number of petitions disposed from the number of referrals. This was done to capture the cases of "Unofficial Probation Under Supervision" which were not included in the report's "Unofficial Dispositions."
 - Dependency/neglect figures were not reported.
 - Total figures are not known because dependency/neglect data were not reported.

Utah

Source: Utah State Juvenile Court: Utah State Juvenile Court 1982 Annual Report, page 10.

- Note:
- Delinquency figures are total offenses reported.
 - Dependency/neglect figures are total offenses reported.
 - Total figures are total offenses reported. They are the sum of delinquency and dependency/neglect counts.

Vermont

Source: Supreme Court of Vermont, Office of the Court Administrator: JCS form.

- Note:
- Delinquency figures are total petition cases disposed.

- Dependency/neglect figures are total petition cases disposed. They include status offense cases.
- Total figures are total petition cases disposed. They are the sum of delinquency and dependency/neglect counts.
- Changes in the state juvenile code were implemented in July, 1981 and may have effected court workloads.

Virgin Islands

Source: Territorial Court of the Virgin Islands: JCS form.

- Note:
- Delinquency figures are male petition and female petition cases disposed for fiscal year 1982 and include traffic cases.
 - Dependency/neglect figures were not reported.
 - Total figures are not known because dependency/neglect data were not reported.
 - The data were reported in terms of the three major islands comprising the territory rather than by counties. In this instance however, figures for St. John and St. Thomas are combined.

Virginia

Source: Virginia Department of Corrections: tape.

- Note:
- Delinquency figures are male petition, female petition, male nonpetition and female nonpetition cases disposed.
 - Dependency/neglect figures are male petition, female petition, male nonpetition and female nonpetition cases disposed.
 - Total figures are male petition, female petition, male nonpetition and female nonpetition cases disposed. They are the sum of delinquency and dependency/neglect counts.

Washington

Figures were not reported.

West Virginia

Figures were not reported.

Wisconsin

Figures were not reported.

Wyoming

Source: Supreme Court of Wyoming, Court Coordinator's Office: District Court Statistics, 1982 Annual Report, Table 12.

- Note:
- Delinquency figures are total petitions filed.
 - Dependency/neglect figures were not reported.
 - Total figures are not known because dependency/neglect data were not reported.

APPENDIX

The following lists counties (reporting units) and their FIPS Codes as designated by the U.S. Bureau of Census (with the exceptions of Alaska, Connecticut, Florida, Puerto Rico and the Virgin Islands). For those jurisdictions which did not report in geographic units consistent with Census' boundaries, a County Number unique to this data base was assigned. Information is listed as follows:

Column 1: State Number
 Column 2: County Number
 Column 3: State Abbreviation
 Column 4: County Name

1	1	AL	AUTAUGA	1	101	AL	MONTGOMERY
1	3	AL	BALDWIN	1	103	AL	MORGAN
1	5	AL	BARBOUR	1	105	AL	PERRY
1	7	AL	BIBB	1	107	AL	PICKENS
1	9	AL	BLOUNT	1	109	AL	PIKE
1	11	AL	BULLOCK	1	111	AL	RANDOLPH
1	13	AL	BUTLER	1	113	AL	RUSSELL
1	15	AL	CALHOUN	1	117	AL	SHELBY
1	17	AL	CHAMBERS	1	115	AL	ST CLAIR
1	19	AL	CHEROKEE	1	119	AL	SUMTER
1	21	AL	CHILTON	1	121	AL	TALLADEGA
1	23	AL	CHOCTAW	1	123	AL	TALLAPOOSA
1	25	AL	CLARKE	1	125	AL	TUSCALOOSA
1	27	AL	CLAY	1	127	AL	WALKER
1	29	AL	CLEBURNE	1	129	AL	WASHINGTON
1	31	AL	COFFEE	1	131	AL	WILCOX
1	33	AL	COLBERT	1	133	AL	WINSTON
1	35	AL	CONECUH	2	501	AK	ANCHORAGE
1	37	AL	COOSA	2	503	AK	BARROW
1	39	AL	COVINGTON	2	505	AK	BETHEL
1	41	AL	CRENSHAW	2	507	AK	FAIRBANKS
1	43	AL	CULLMAN	2	509	AK	JUNEAU
1	45	AL	DALE	2	511	AK	KENAI
1	47	AL	DALLAS	2	513	AK	KETCHIKAN
1	49	AL	DE KALB	2	515	AK	KODIAK
1	51	AL	ELMORE	2	517	AK	KOTZEBUE
1	53	AL	ESCAMBIA	2	519	AK	NOME
1	55	AL	ETOWAH	2	521	AK	SITKA
1	57	AL	FAYETTE	4	1	AZ	APACHE
1	59	AL	FRANKLIN	4	3	AZ	COCHISE
1	61	AL	GENEVA	4	5	AZ	COCONINO
1	63	AL	GREENE	4	7	AZ	GILA
1	65	AL	HALE	4	9	AZ	GRAHAM
1	67	AL	HENRY	4	11	AZ	GREENLEE
1	69	AL	HOUSTON	4	13	AZ	MARICOPA
1	71	AL	JACKSON	4	15	AZ	MOHAVE
1	73	AL	JEFFERSON	4	17	AZ	NAVAJO
1	75	AL	LAMAR	4	19	AZ	PIMA
1	77	AL	LAUDERDALE	4	21	AZ	PINAL
1	79	AL	LAWRENCE	4	23	AZ	SANTA CRUZ
1	81	AL	LEF	4	25	AZ	YAVAPAI
1	83	AL	LIMESTONE	4	27	AZ	YUMA
1	85	AL	LOWNDES	5	1	AR	ARKANSAS
1	87	AL	MACON	5	3	AR	ASHLEY
1	89	AL	MADISON	5	5	AR	BAXTER
1	91	AL	MARENGO	5	7	AR	BENTON
1	93	AL	MARION	5	9	AR	BOONE
1	95	AL	MARSHALL	5	11	AR	BRADLEY
1	97	AL	MOBILE	5	13	AR	CALHOUN
1	99	AL	MONROE	5	15	AR	CARROLL

5 17 AR CHICOT
5 19 AR CLARK
5 21 AR CLAY
5 23 AR CLEBURNE
5 25 AR CLEVELAND
5 27 AR COLUMBIA
5 29 AR CONWAY
5 31 AR CRAIGHEAD
5 33 AR CRAWFORD
5 35 AR CRITTENDEN
5 37 AR CROSS
5 39 AR DALLAS
5 41 AR DESHA
5 43 AR DREW
5 45 AR FAULKNER
5 47 AR FRANKLIN
5 49 AR FULTON
5 51 AR GARLAND
5 53 AR GRANT
5 55 AR GREENE
5 57 AR HEMPSTEAD
5 59 AR HOT SPRING
5 61 AR HOWARD
5 63 AR INDEPENDENCE
5 65 AR IZARD
5 67 AR JACKSON
5 69 AR JEFFERSON
5 71 AR JOHNSON
5 73 AR LAFAYETTE
5 75 AR LAWRENCE
5 77 AR LEE
5 79 AR LINCOLN
5 81 AR LITTLE RIVER
5 83 AR LOGAN
5 85 AR LONOKE
5 87 AR MADISON
5 89 AR MARION
5 91 AR MILLER
5 93 AR MISSISSIPPI
5 95 AR MONROE
5 97 AR MONTGOMERY
5 99 AR NEVADA
5 101 AR NEWTON
5 103 AR OUACHITA
5 105 AR PERRY
5 107 AR PHILLIPS
5 109 AR PIKE
5 111 AR POINSETT
5 113 AR POLK
5 115 AR POPE

5 117 AR PRAIRIE
5 119 AR PULASKI
5 121 AR RANDOLPH
5 125 AR SALINE
5 127 AR SCOTT
5 129 AR SEARCY
5 131 AR SEBASTIAN
5 133 AR SEVIER
5 135 AR SHARP
5 123 AR ST FRANCIS
5 137 AR STONE
5 139 AR UNION
5 141 AR VAN BUREN
5 143 AR WASHINGTON
5 145 AR WHITE
5 147 AR WOODRUFF
5 149 AR YELL
6 1 CA ALAMEDA
6 3 CA ALPINE
6 5 CA AMADOR
6 7 CA BUTTE
6 9 CA CALAVERAS
6 11 CA COLUSA
6 13 CA CONTRA COSTA
6 15 CA DEL NORTE
6 17 CA EL DORADO
6 19 CA FRESNO
6 21 CA GLENN
6 23 CA HUMBOLDT
6 25 CA IMPERIAL
6 27 CA INYO
6 29 CA KERN
6 31 CA KINGS
6 33 CA LAKE
6 35 CA LASSEN
6 37 CA LOS ANGELES
6 39 CA MADERA
6 41 CA MARIN
6 43 CA MARIPOSA
6 45 CA MENDOCINO
6 47 CA MERCED
6 49 CA MODOC
6 51 CA MONO
6 53 CA MONTEREY
6 55 CA NAPA
6 57 CA NEVADA
6 59 CA ORANGE
6 61 CA PLACER
6 63 CA PLUMAS
6 65 CA RIVERSIDE

6 67 CA SACRAMENTO
6 69 CA SAN BENITO
6 71 CA SAN BERNARDINO
6 73 CA SAN DIEGO
6 75 CA SAN FRANCISCO
6 77 CA SAN JOAQUIN
6 79 CA SAN LUIS OBISPO
6 81 CA SAN MATEO
6 83 CA SANTA BARBARA
6 85 CA SANTA CLARA
6 87 CA SANTA CRUZ
6 89 CA SHASTA
6 91 CA SIERRA
6 93 CA SISKIYOU
6 95 CA SOLANO
6 97 CA SONOMA
6 99 CA STANISLAUS
6 101 CA SUTTER
6 103 CA TEHAMA
6 105 CA TRINITY
6 107 CA TULARE
6 109 CA TUOLUMNE
6 111 CA VENTURA
6 113 CA YOLO
6 115 CA YUBA
8 1 CO ADAMS
8 3 CO ALAMOSA
8 5 CO ARAPAHOE
8 7 CO ARCHULETA
8 9 CO BACA
8 11 CO BENT
8 13 CO BOULDER
8 15 CO CHAFFEE
8 17 CO CHEYENNE
8 19 CO CLEAR CREEK
8 21 CO CONEJOS
8 23 CO COSTILLA
8 25 CO CROWLEY
8 27 CO CUSTER
8 29 CO DELTA
8 31 CO DENVER
8 33 CO DOLORES
8 35 CO DOUGLAS
8 37 CO EAGLE
8 41 CO EL PASO
8 39 CO ELBERT
8 43 CO FREMONT
8 45 CO GARFIELD
8 47 CO GILPIN
8 49 CO GRAND

8 51 CO GUNNISON
8 53 CO HINSDALE
8 55 CO HUERFANO
8 57 CO JACKSON
8 59 CO JEFFERSON
8 61 CO KIOWA
8 63 CO KIT CARSON
8 67 CO LA PLATA
8 65 CO LAKE
8 69 CO LARIMER
8 71 CO LAS ANIMAS
8 73 CO LINCOLN
8 75 CO LOGAN
8 77 CO MESA
8 79 CO MINERAL
8 81 CO MOFFAT
8 83 CO MONTEZUMA
8 85 CO MONTROSE
8 87 CO MORGAN
8 89 CO OTERO
8 91 CO OURAY
8 93 CO PARK
8 95 CO PHILLIPS
8 97 CO PITKIN
8 99 CO PROWERS
8 101 CO PUEBLO
8 103 CO RIO BLANCO
8 105 CO RIO GRANDE
8 107 CO ROUTT
8 109 CO SAGUACHE
8 111 CO SAN JUAN
8 113 CO SAN MIGUEL
8 115 CO SEDGWICK
8 117 CO SUMMIT
8 119 CO TELLER
8 121 CO WASHINGTON
8 123 CO WELD
8 125 CO YUMA
9 501 CT DANBURY
9 503 CT FAIRFIELD
9 505 CT HARTFORD
9 507 CT LITCHFIELD
9 509 CT MIDDLESEX
9 511 CT NEW HAVEN
9 513 CT NEW LONDON
9 515 CT TOLLAND
9 517 CT WATERBURY
9 519 CT WINDHAM
10 1 DE KENT
10 3 DE NEW CASTLE

10 5 DE SUSSEX
11 1 DC DISTRICT OF COLUMBIA
12 501 FL DISTRICT 1
12 503 FL DISTRICT 2
12 505 FL DISTRICT 3
12 507 FL DISTRICT 4
12 509 FL DISTRICT 5
12 511 FL DISTRICT 6
12 513 FL DISTRICT 7
12 515 FL DISTRICT 8
12 517 FL DISTRICT 9
12 519 FL DISTRICT 10
12 521 FL DISTRICT 11
13 1 GA APPLING
13 3 GA ATKINSON
13 5 GA BACON
13 7 GA BAKER
13 9 GA BALDWIN
13 11 GA BANKS
13 13 GA BARROW
13 15 GA BARTOW
13 17 GA BEN HILL
13 19 GA BERRIEN
13 21 GA BIBB
13 23 GA BLECKLEY
13 25 GA BRANTLEY
13 27 GA BROOKS
13 29 GA BRYAN
13 31 GA BULLOCH
13 33 GA BURKE
13 35 GA BUTTS
13 37 GA CALHOUN
13 39 GA CAMDEN
13 43 GA CANDLER
13 45 GA CARROLL
13 47 GA CATOOSA
13 49 GA CHARLTON
13 51 GA CHATHAM
13 53 GA CHATTAHOOCHEE
13 55 GA CHATTOOGA
13 57 GA CHEROKEE
13 59 GA CLARKE
13 61 GA CLAY
13 63 GA CLAYTON
13 65 GA CLINCH
13 67 GA COBB
13 69 GA COFFEE
13 71 GA COLQUITT
13 73 GA COLUMBIA
13 75 GA COOK

13 77 GA COWETA
13 79 GA CRAWFORD
13 81 GA CRISP
13 83 GA DADE
13 85 GA DAWSON
13 89 GA DE KALB
13 87 GA DECATUR
13 91 GA DODGE
13 93 GA DOOLY
13 95 GA DOUGHERTY
13 97 GA DOUGLAS
13 99 GA EARLY
13 101 GA ECHOLS
13 103 GA EFFINGHAM
13 105 GA ELBERT
13 107 GA EMANUEL
13 109 GA EVANS
13 111 GA FANNIN
13 113 GA FAYETTE
13 115 GA FLOYD
13 117 GA FORSYTH
13 119 GA FRANKLIN
13 121 GA FULTON
13 123 GA GILMER
13 125 GA GLASCOCK
13 127 GA GLYNN
13 129 GA GORDON
13 131 GA GRADY
13 133 GA GREENE
13 135 GA GWINNETT
13 137 GA HABERSHAM
13 139 GA HALL
13 141 GA HANCOCK
13 143 GA HARALSON
13 145 GA HARRIS
13 147 GA HART
13 149 GA HEARD
13 151 GA HENRY
13 153 GA HOUSTON
13 155 GA IRWIN
13 157 GA JACKSON
13 159 GA JASPER
13 161 GA JEFF DAVIS
13 163 GA JEFFERSON
13 165 GA JENKINS
13 167 GA JOHNSON
13 169 GA JONES
13 171 GA LAMAR
13 173 GA LANIER
13 175 GA LAURENS

13 177 GA LEE
13 179 GA LIBERTY
13 181 GA LINCOLN
13 183 GA LONG
13 185 GA LOWNDES
13 187 GA LUMPKIN
13 193 GA MACON
13 195 GA MADISON
13 197 GA MARION
13 189 GA MCDUFFIE
13 191 GA MCINTOSH
13 199 GA MERIWETHER
13 201 GA MILLER
13 205 GA MITCHELL
13 207 GA MONROE
13 209 GA MONTGOMERY
13 211 GA MORGAN
13 213 GA MURRAY
13 215 GA MUSCOGEE
13 217 GA NEWTON
13 219 GA OCONEE
13 221 GA OGLETHORPE
13 223 GA PAULDING
13 225 GA PEACH
13 227 GA PICKENS
13 229 GA PIERCE
13 231 GA PIKE
13 233 GA POLK
13 235 GA PULASKI
13 237 GA PUTNAM
13 239 GA QUITMAN
13 241 GA RABUN
13 243 GA RANDOLPH
13 245 GA RICHMOND
13 247 GA ROCKDALE
13 249 GA SCHLEY
13 251 GA SCREVEN
13 253 GA SEMINOLE
13 255 GA SPALDING
13 257 GA STEPHENS
13 259 GA STEWART
13 261 GA SUMTER
13 263 GA TALBOT
13 265 GA TALIAFERRO
13 267 GA TATTNALL
13 269 GA TAYLOR
13 271 GA TELFAIR
13 273 GA TERRELL
13 275 GA THOMAS
13 277 GA TIFT

13 279 GA TOOMBS
13 281 GA TOWNS
13 283 GA TREUTLEN
13 285 GA TROUP
13 287 GA TURNER
13 289 GA TWIGGS
13 291 GA UNION
13 293 GA UPSON
13 295 GA WALKER
13 297 GA WALTON
13 299 GA WARE
13 301 GA WARREN
13 303 GA WASHINGTON
13 305 GA WAYNE
13 307 GA WEBSTER
13 309 GA WHEELER
13 311 GA WHITE
13 313 GA WHITFIELD
13 315 GA WILCOX
13 317 GA WILKES
13 319 GA WILKINSON
13 321 GA WORTH
15 1 HI HAWAII
15 3 HI HONOLULU
15 7 HI KAUAI
15 9 HI MAUI
16 1 ID ADA
16 3 ID ADAMS
16 5 ID RANNOCK
16 7 ID BEAR LAKE
16 9 ID BENEWAH
16 11 ID BINGHAM
16 13 ID BLAINE
16 15 ID BOISE
16 17 ID BONNER
16 19 ID BONNEVILLE
16 21 ID BOUNDARY
16 23 ID BUTTE
16 25 ID CAMAS
16 27 ID CANYON
16 29 ID CARIBOU
16 31 ID CASSIA
16 33 ID CLARK
16 35 ID CLEARWATER
16 37 ID CUSTER
16 39 ID ELMORE
16 41 ID FRANKLIN
16 43 ID FREMONT
16 45 ID GEM
16 47 ID GOODING

16 49 ID IDAHO
16 51 ID JEFFERSON
16 53 ID JEROME
16 55 ID KOOTENAI
16 57 ID LATAH
16 59 ID LEMHI
16 61 ID LEWIS
16 63 ID LINCOLN
16 65 ID MADISON
16 67 ID MINIDOKA
16 69 ID NEZ PERCE
16 71 ID ONEIDA
16 73 ID OWYHEE
16 75 ID PAYETTE
16 77 ID POWER
16 79 ID SHOSHONE
16 81 ID TETON
16 83 ID TWIN FALLS
16 85 ID VALLEY
16 87 ID WASHINGTON
17 1 IL ADAMS
17 3 IL ALEXANDER
17 5 IL BOND
17 7 IL BOONE
17 9 IL BROWN
17 11 IL BUREAU
17 13 IL CALHOUN
17 15 IL CARROLL
17 17 IL CASS
17 19 IL CHAMPAIGN
17 21 IL CHRISTIAN
17 23 IL CLARK
17 25 IL CLAY
17 27 IL CLINTON
17 29 IL COLES
17 31 IL COOK
17 33 IL CRAWFORD
17 35 IL CUMBERLAND
17 37 IL DE KALB
17 39 IL DE WITT
17 41 IL DOUGLAS
17 43 IL DU PAGE
17 45 IL EDGAR
17 47 IL EDWARDS
17 49 IL EFFINGHAM
17 51 IL FAYETTE
17 53 IL FORD
17 55 IL FRANKLIN
17 57 IL FULTON
17 59 IL GALLATIN

17 61 IL GREENE
17 63 IL GRUNDY
17 65 IL HAMILTON
17 67 IL HANCOCK
17 69 IL HARDIN
17 71 IL HENDERSON
17 73 IL HENRY
17 75 IL IROQUOIS
17 77 IL JACKSON
17 79 IL JASPER
17 81 IL JEFFERSON
17 83 IL JERSEY
17 85 IL JO DAVIESS
17 87 IL JOHNSON
17 89 IL KANE
17 91 IL KANKAKEE
17 93 IL KENDALL
17 95 IL KNOX
17 99 IL LA SALLE
17 97 IL LAKE
17 101 IL LAWRENCE
17 103 IL LEE
17 105 IL LIVINGSTON
17 107 IL LOGAN
17 115 IL MACON
17 117 IL MACOUPIN
17 119 IL MADISON
17 121 IL MARION
17 123 IL MARSHALL
17 125 IL MASON
17 127 IL MASSAC
17 109 IL MCDONOUGH
17 111 IL MCHENRY
17 113 IL MCLEAN
17 129 IL MENARD
17 131 IL MERCER
17 133 IL MONROE
17 135 IL MONTGOMERY
17 137 IL MORGAN
17 139 IL MOULTRIE
17 141 IL OGLE
17 143 IL PEORIA
17 145 IL PERRY
17 147 IL PIATT
17 149 IL PIKE
17 151 IL POPE
17 153 IL PULASKI
17 155 IL PUTNAM
17 157 IL RANDOLPH
17 159 IL RICHLAND

17 161 IL ROCK ISLAND
17 165 IL SALINE
17 167 IL SANGAMON
17 169 IL SCHUYLER
17 171 IL SCOTT
17 173 IL SHELBY
17 163 IL ST CLAIR
17 175 IL STARK
17 177 IL STEPHENSON
17 179 IL TAZEWELL
17 181 IL UNION
17 183 IL VERMILION
17 185 IL WABASH
17 187 IL WARREN
17 189 IL WASHINGTON
17 191 IL WAYNE
17 193 IL WHITE
17 195 IL WHITESIDE
17 197 IL WILL
17 199 IL WILLIAMSON
17 201 IL WINNEBAGO
17 203 IL WOODFORD
18 1 IN ADAMS
18 3 IN ALLEN
18 5 IN BARTHOLOMEW
18 7 IN BENTON
18 9 IN BLACKFORD
18 11 IN BOONE
18 13 IN BROWN
18 15 IN CARROLL
18 17 IN CASS
18 19 IN CLARK
18 21 IN CLAY
18 23 IN CLINTON
18 25 IN CRAWFORD
18 27 IN DAVIESS
18 33 IN DE KALB
18 29 IN DEARBORN
18 31 IN DECATUR
18 35 IN DELAWARE
18 37 IN DUBOIS
18 39 IN ELKHART
18 41 IN FAYETTE
18 43 IN FLOYD
18 45 IN FOUNTAIN
18 47 IN FRANKLIN
18 49 IN FULTON
18 51 IN GIBSON
18 53 IN GHANT
18 55 IN GREENE

18 57 IN HAMILTON
18 59 IN HANCOCK
18 61 IN HARRISON
18 63 IN HENDRICKS
18 65 IN HENRY
18 67 IN HOWARD
18 69 IN HUNTINGTON
18 71 IN JACKSON
18 73 IN JASPER
18 75 IN JAY
18 77 IN JEFFERSON
18 79 IN JENNINGS
18 81 IN JOHNSON
18 83 IN KNOX
18 85 IN KOSCIUSKO
18 91 IN LA PORTE
18 87 IN LAGRANGE
18 89 IN LAKE
18 93 IN LAWRENCE
18 95 IN MADISON
18 97 IN MARIO
18 99 IN MARSHALL
18 101 IN MARTIN
18 103 IN MIAMI
18 105 IN MONROE
18 107 IN MONTGOMERY
18 109 IN MORGAN
18 111 IN NEWTON
18 113 IN NOBLE
18 115 IN OHIO
18 117 IN ORANGE
18 119 IN OWEN
18 121 IN PARKE
18 123 IN PERRY
18 125 IN PIKE
18 127 IN PORTER
18 129 IN POSEY
18 131 IN PULASKI
18 133 IN PUTNAM
18 135 IN RANDOLPH
18 137 IN RIPLEY
18 139 IN RUSH
18 143 IN SCOTT
18 145 IN SHELBY
18 147 IN SPENCER
18 141 IN ST JOSEPH
18 149 IN STARKE
18 151 IN STEUBEN
18 153 IN SULLIVAN
18 155 IN SWITZERLAND

18 157 IN TIPPECANOE
18 159 IN TIPTON
18 161 IN UNION
18 163 IN VANDERBURGH
18 165 IN VERMILLION
18 167 IN VIGO
18 169 IN WABASH
18 171 IN WARREN
18 173 IN WARRICK
18 175 IN WASHINGTON
18 177 IN WAYNE
18 179 IN WELLS
18 181 IN WHITE
18 183 IN WHITLEY
19 1 IA ADAIR
19 3 IA ADAMS
19 5 IA ALLAMAKEE
19 7 IA APPANOOSE
19 9 IA AUDUBON
19 11 IA BENTON
19 13 IA BLACK HAWK
19 15 IA BOONE
19 17 IA BREMER
19 19 IA BUCHANAN
19 21 IA BUENA VISTA
19 23 IA BUTLER
19 25 IA CALHOUN
19 27 IA CARROLL
19 29 IA CASS
19 31 IA CEDAR
19 33 IA CERRO GORDO
19 35 IA CHEROKEE
19 37 IA CHICKASAW
19 39 IA CLARKE
19 41 IA CLAY
19 43 IA CLAYTON
19 45 IA CLINTON
19 47 IA CRAWFORD
19 49 IA DALLAS
19 51 IA DAVIS
19 53 IA DECATUR
19 55 IA DELAWARE
19 57 IA DES MOINES
19 59 IA DICKINSON
19 61 IA DUBUQUE
19 63 IA EMMET
19 65 IA FAYETTE
19 67 IA FLOYD
19 69 IA FRANKLIN
19 71 IA FREMONT

19 73 IA GREENE
19 75 IA GRUNDY
19 77 IA GUTHRIE
19 79 IA HAMILTON
19 81 IA HANCOCK
19 83 IA HARDIN
19 85 IA HARRISON
19 87 IA HENRY
19 89 IA HOWARD
19 91 IA HUMBOLDT
19 93 IA IDA
19 95 IA IOWA
19 97 IA JACKSON
19 99 IA JASPER
19 101 IA JEFFERSON
19 103 IA JOHNSON
19 105 IA JONES
19 107 IA KEOKUK
19 109 IA KOSSUTH
19 111 IA LEE
19 113 IA LINN
19 115 IA LOUISA
19 117 IA LUCAS
19 119 IA LYON
19 121 IA MADISON
19 123 IA MAHASKA
19 125 IA MARION
19 127 IA MARSHALL
19 129 IA MILLS
19 131 IA MITCHELL
19 133 IA MONONA
19 135 IA MONROE
19 137 IA MONTGOMERY
19 139 IA MUSCATINE
19 141 IA O'BRIEN
19 143 IA OSCEOLA
19 145 IA PAGE
19 147 IA PALO ALTO
19 149 IA PLYMOUTH
19 151 IA POCAHONTAS
19 153 IA POLK
19 155 IA POTTAWATTAMIE
19 157 IA POWESHIEK
19 159 IA RINGGOLD
19 161 IA SAC
19 163 IA SCOTT
19 165 IA SHELBY
19 167 IA SIOUX
19 169 IA STORY
19 171 IA TAMA

19 173 IA TAYLOR
19 175 IA UNION
19 177 IA VAN BUREN
19 179 IA WAPELLO
19 181 IA WARREN
19 183 IA WASHINGTON
19 185 IA WAYNE
19 187 IA WEBSTER
19 189 IA WINNEBAGO
19 191 IA WINNESHIEK
19 193 IA WOODBURY
19 195 IA WORTH
19 197 IA WRIGHT
20 1 KS ALLEN
20 3 KS ANDERSON
20 5 KS ATCHISON
20 7 KS BARBER
20 9 KS BARTON
20 11 KS BOURBON
20 13 KS BROWN
20 15 KS BUTLER
20 17 KS CHASE
20 19 KS CHAUTAUQUA
20 21 KS CHEROKEE
20 23 KS CHEYENNE
20 25 KS CLARK
20 27 KS CLAY
20 29 KS CLOUD
20 31 KS COFFEY
20 33 KS COMANCHE
20 35 KS COWLEY
20 37 KS CRAWFORD
20 39 KS DECATUR
20 41 KS DICKINSON
20 43 KS DONIPHAN
20 45 KS DOUGLAS
20 47 KS EDWARDS
20 49 KS ELK
20 51 KS ELLIS
20 53 KS ELLSWORTH
20 55 KS FINNEY
20 57 KS FORD
20 59 KS FRANKLIN
20 61 KS GEARY
20 63 KS GOVE
20 65 KS GRAHAM
20 67 KS GRANT
20 69 KS GRAY
20 71 KS GREELEY
20 73 KS GREENWOOD

20 75 KS HAMILTON
20 77 KS HARPER
20 79 KS HARVEY
20 81 KS HASKELL
20 83 KS HODGEMAN
20 85 KS JACKSON
20 87 KS JEFFERSON
20 89 KS JEWELL
20 91 KS JOHNSON
20 93 KS KEARNY
20 95 KS KINGMAN
20 97 KS KIOWA
20 99 KS LABETTE
20 101 KS LANE
20 103 KS LEAVENWORTH
20 105 KS LINCOLN
20 107 KS LINN
20 109 KS LOGAN
20 111 KS LYON
20 115 KS MARION
20 117 KS MARSHALL
20 113 KS MCPHERSON
20 119 KS MEADE
20 121 KS MIAMI
20 123 KS MITCHELL
20 125 KS MONTGOMERY
20 127 KS MORRIS
20 129 KS MORTON
20 131 KS NEMAHA
20 133 KS NEOSHO
20 135 KS NESS
20 137 KS NORTON
20 139 KS OSAGE
20 141 KS OSBORNE
20 143 KS OTTAWA
20 145 KS PAWNEE
20 147 KS PHILLIPS
20 149 KS POTTAWATOMIE
20 151 KS PRATT
20 153 KS RAWLINS
20 155 KS RENO
20 157 KS REPUBLIC
20 159 KS RICE
20 161 KS RILEY
20 163 KS ROOKS
20 165 KS RUSH
20 167 KS RUSSELL
20 169 KS SALINE
20 171 KS SCOTT
20 173 KS SEDGWICK

20 175 KS SEWARD
20 177 KS SHAWNEE
20 179 KS SHERIDAN
20 181 KS SHERMAN
20 183 KS SMITH
20 185 KS STAFFORD
20 187 KS STANTON
20 189 KS STEVENS
20 191 KS SUMNER
20 193 KS THOMAS
20 195 KS TREGO
20 197 KS WABAUNSEE
20 199 KS WALLACE
20 201 KS WASHINGTON
20 203 KS WICHITA
20 205 KS WILSON
20 207 KS WOODSON
20 209 KS WYANDOTTE
21 1 KY ADAIR
21 3 KY ALLEN
21 5 KY ANDERSON
21 7 KY BALLARD
21 9 KY BARREN
21 11 KY BATH
21 13 KY BELL
21 15 KY BOONE
21 17 KY BOURBON
21 19 KY BOYD
21 21 KY BOYLE
21 23 KY BRACKEN
21 25 KY BREATHITT
21 27 KY BRECKINRIDGE
21 29 KY BULLITT
21 31 KY BUTLER
21 33 KY CALDWELL
21 35 KY CALLOWAY
21 37 KY CAMPBELL
21 39 KY CARLISLE
21 41 KY CARROLL
21 43 KY CARTER
21 45 KY CASEY
21 47 KY CHRISTIAN
21 49 KY CLARK
21 51 KY CLAY
21 53 KY CLINTON
21 55 KY CRITTENDEN
21 57 KY CUMBERLAND
21 59 KY DAVIESS
21 61 KY EDMONSON
21 63 KY ELLIOTT

21 65 KY ESTILL
21 67 KY FAYETTE
21 69 KY FLEMING
21 71 KY FLOYD
21 73 KY FRANKLIN
21 75 KY FULTON
21 77 KY GALLATIN
21 79 KY GARRARD
21 81 KY GRANT
21 83 KY GRAVES
21 85 KY GRAYSON
21 87 KY GREEN
21 89 KY GREENUP
21 91 KY HANCOCK
21 93 KY HARDIN
21 95 KY HARLAN
21 97 KY HARRISON
21 99 KY HART
21 101 KY HENDERSON
21 103 KY HENRY
21 105 KY HICKMAN
21 107 KY HOPKINS
21 109 KY JACKSON
21 111 KY JEFFERSON
21 113 KY JESSAMINE
21 115 KY JOHNSON
21 117 KY KENTON
21 119 KY KNOTT
21 121 KY KNOX
21 123 KY LARUE
21 125 KY LAUREL
21 127 KY LAWRENCE
21 129 KY LEE
21 131 KY LESLIE
21 133 KY LETCHER
21 135 KY LEWIS
21 137 KY LINCOLN
21 139 KY LIVINGSTON
21 141 KY LOGAN
21 143 KY LYON
21 151 KY MADISON
21 153 KY MAGOFFIN
21 155 KY MARION
21 157 KY MARSHALL
21 159 KY MARTIN
21 161 KY MASON
21 145 KY MCCrackEN
21 147 KY MCCREARY
21 149 KY MCLEAN
21 163 KY MEADE

21 165 KY MENIFEE
21 167 KY MERCER
21 169 KY METCALFE
21 171 KY MONROE
21 173 KY MONTGOMERY
21 175 KY MORGAN
21 177 KY MUHLENBERG
21 179 KY NELSON
21 181 KY NICHOLAS
21 183 KY OHIO
21 185 KY OLDHAM
21 187 KY OWEN
21 189 KY OWSLEY
21 191 KY PENDLETON
21 193 KY PERRY
21 195 KY PIKE
21 197 KY POWELL
21 199 KY PULASKI
21 201 KY ROBERTSON
21 203 KY ROCKCASTLE
21 205 KY ROWAN
21 207 KY RUSSELL
21 209 KY SCOTT
21 211 KY SHELBY
21 213 KY SIMPSON
21 215 KY SPENCER
21 217 KY TAYLOR
21 219 KY TODD
21 221 KY TRIGG
21 223 KY TRIMBLE
21 225 KY UNION
21 227 KY WARREN
21 229 KY WASHINGTON
21 231 KY WAYNE
21 233 KY WEBSTER
21 235 KY WHITLEY
21 237 KY WOLFE
21 239 KY WOODFORD
22 1 LA ACADIA
22 3 LA ALLEN
22 5 LA ASCENSION
22 7 LA ASSUMPTION
22 9 LA AVOUELLES
22 11 LA BEAUREGARD
22 13 LA BIENVILLE
22 15 LA BOSSIER
22 17 LA CADDO
22 19 LA CALCASIEU
22 21 LA CALDWELL
22 23 LA CAMERON

22 25 LA CATAHOULA
22 27 LA CLAIBORNE
22 29 LA CONCORDIA
22 31 LA DE SOTO
22 33 LA EAST BATON ROUGE
22 35 LA EAST CARROLL
22 37 LA EAST FELICIANA
22 39 LA EVANGELINE
22 41 LA FRANKLIN
22 43 LA GRANT
22 45 LA IBERIA
22 47 LA IBERVILLE
22 49 LA JACKSON
22 51 LA JEFFERSON
22 53 LA JEFFERSON DAVIS
22 55 LA LA SALLE
22 57 LA LAFAYETTE
22 61 LA LINCOLN
22 63 LA LIVINGSTON
22 65 LA MADISON
22 67 LA MOREHOUSE
22 69 LA NATCHITOCHE
22 71 LA ORLEANS
22 73 LA OUACHITA
22 75 LA PLAQUEMINES
22 77 LA POINTE COUPEE
22 79 LA RAPIDES
22 81 LA RED RIVER
22 83 LA RICHLAND
22 85 LA SABINE
22 87 LA ST BERNARD
22 89 LA ST CHARLES
22 91 LA ST HELENA
22 93 LA ST JAMES
22 95 LA ST JOHN THE BAPTIST
22 97 LA ST LANDRY
22 99 LA ST MARTIN
22 101 LA ST MARY
22 103 LA ST TAMMANY
22 105 LA TANGIPAHOA
22 107 LA TENSAS
22 109 LA TERREBONNE
22 111 LA UNION
22 113 LA VERMILION
22 115 LA VERNON
22 117 LA WASHINGTON
22 119 LA WEBSTER
22 121 LA WEST BATON ROUGE
22 123 LA WEST CARROLL

22 125 LA WEST FELICIANA
22 127 LA WINN
23 1 ME ANDROSCOGGIN
23 3 ME AROOSTOOK
23 5 ME CUMBERLAND
23 7 ME FRANKLIN
23 9 ME HANCOCK
23 11 ME KENNEBEC
23 13 ME KNOX
23 15 ME LINCOLN
23 17 ME OXFORD
23 19 ME PENOBSCOT
23 21 ME PISCATAQUIS
23 23 ME SAGADAHOC
23 25 ME SOMERSET
23 27 ME WALDO
23 29 ME WASHINGTON
23 31 ME YORK
24 1 MD ALLEGANY
24 3 MD ANNE ARUNDEL
24 5 MD BALTIMORE
24 510 MD BALTIMORE CITY
24 9 MD CALVERT
24 11 MD CAROLINE
24 13 MD CARROLL
24 15 MD CECIL
24 17 MD CHARLES
24 19 MD DORCHESTER
24 21 MD FREDERICK
24 23 MD GARRETT
24 25 MD HARFORD
24 27 MD HOWARD
24 29 MD KENT
24 31 MD MONTGOMERY
24 33 MD PRINCE GEORGES
24 35 MD QUEEN ANNES
24 39 MD SOMERSET
24 37 MD ST MARYS
24 41 MD TALBOT
24 43 MD WASHINGTON
24 45 MD WICOMICO
24 47 MD WORCESTER
25 1 MA BARNSTABLE
25 3 MA BERKSHIRE
25 5 MA BRISTOL
25 7 MA DUKES
25 9 MA ESSEX
25 11 MA FRANKLIN
25 13 MA HAMPDEN
25 15 MA HAMPSHIRE

25 17 MA MIDDLESEX
25 19 MA NANTUCKET
25 21 MA NORFOLK
25 23 MA PLYMOUTH
25 25 MA SUFFOLK
25 27 MA WORCESTER
26 1 MI ALCONA
26 3 MI ALGER
26 5 MI ALLEGAN
26 7 MI ALPENA
26 9 MI ANTRIM
26 11 MI ARENAC
26 13 MI BARAGA
26 15 MI BARRY
26 17 MI BAY
26 19 MI BENZIE
26 21 MI BERRIEN
26 23 MI BRANCH
26 25 MI CALHOUN
26 27 MI CASS
26 29 MI CHARLEVOIX
26 31 MI CHEBOYGAN
26 33 MI CHIPPEWA
26 35 MI CLARE
26 37 MI CLINTON
26 39 MI CRAWFORD
26 41 MI DELTA
26 43 MI DICKINSON
26 45 MI EATON
26 47 MI EMMET
26 49 MI GENESEE
26 51 MI GLADWIN
26 53 MI GOGEBIC
26 55 MI GRAND TRAVERSE
26 57 MI GRATIOT
26 59 MI HILLSDALE
26 61 MI HOUGHTON
26 63 MI HURON
26 65 MI INGHAM
26 67 MI IONIA
26 69 MI IOSCO
26 71 MI IRON
26 73 MI ISABELLA
26 75 MI JACKSON
26 77 MI KALAMAZOO
26 79 MI KALKASKA
26 81 MI KENT
26 83 MI KEWEENAW
26 85 MI LAKE
26 87 MI LAPEER

26 89 MI LEELANAU
26 91 MI LENAWEE
26 93 MI LIVINGSTON
26 95 MI LUCE
26 97 MI MACKINAC
26 99 MI MACOMB
26 101 MI MANISTEE
26 103 MI MARQUETTE
26 105 MI MASON
26 107 MI MECOSTA
26 109 MI MENOMINEE
26 111 MI MIDLAND
26 113 MI MISSAUKEE
26 115 MI MONROE
26 117 MI MONTCALM
26 119 MI MONTMORENCY
26 121 MI MUSKEGON
26 123 MI NEWAYGO
26 125 MI OAKLAND
26 127 MI OCEANA
26 129 MI OGEMAW
26 131 MI ONTONAGON
26 133 MI OSCEOLA
26 135 MI OSCODA
26 137 MI OTSEGO
26 139 MI OTTAWA
26 141 MI PRESQUE ISLE
26 143 MI ROSCOMMON
26 145 MI SAGINAW
26 151 MI SANILAC
26 153 MI SCHOOLCRAFT
26 155 MI SHIAWASSEE
26 147 MI ST CLAIR
26 149 MI ST JOSEPH
26 157 MI TUSCOLA
26 159 MI VAN BUREN
26 161 MI WASHTENAW
26 163 MI WAYNE
26 165 MI WEXFORD
27 1 MN AITKIN
27 3 MN ANOKA
27 5 MN BECKER
27 7 MN BELTRAMI
27 9 MN BENTON
27 11 MN BIG STONE
27 13 MN BLUE EARTH
27 15 MN BROWN
27 17 MN CARLTON
27 19 MN CARVER
27 21 MN CASS

27 23 MN CHIPPEWA
27 25 MN CHISAGO
27 27 MN CLAY
27 29 MN CLEARWATER
27 31 MN COOK
27 33 MN COTTONWOOD
27 35 MN CROW WING
27 37 MN DAKOTA
27 39 MN DODGE
27 41 MN DOUGLAS
27 43 MN FARIBAULT
27 45 MN FILLMORE
27 47 MN FREEBORN
27 49 MN GOODHUE
27 51 MN GRANT
27 53 MN HENNEPIN
27 55 MN HOUSTON
27 57 MN HUBBARD
27 59 MN ISANTI
27 61 MN ITASCA
27 63 MN JACKSON
27 65 MN KANABEC
27 67 MN KANDIYOHI
27 69 MN KITTSON
27 71 MN KOOCHICHING
27 73 MN LAC QUI PARLE
27 75 MN LAKE
27 77 MN LAKE OF THE WOODS
27 79 MN LE SUEUR
27 81 MN LINCOLN
27 83 MN LYON
27 87 MN MAHNOMEN
27 89 MN MARSHALL
27 91 MN MARTIN
27 85 MN MCLEOD
27 93 MN MEEKER
27 95 MN MILLE LACS
27 97 MN MORRISON
27 99 MN MOWER
27 101 MN MURRAY
27 103 MN NICOLLET
27 105 MN NOBLES
27 107 MN NORMAN
27 109 MN OLMSTED
27 111 MN OTTER TAIL
27 113 MN PENNINGTON
27 115 MN PINE
27 117 MN PIPESTONE
27 119 MN POLK
27 121 MN POPE

27 123 MN RAMSEY
27 125 MN RED LAKE
27 127 MN REDWOOD
27 129 MN RENVILLE
27 131 MN RICE
27 133 MN ROCK
27 135 MN ROSEAU
27 139 MN SCOTT
27 141 MN SHERBURNE
27 143 MN SIBLEY
27 137 MN ST LOUIS
27 145 MN STEARNS
27 147 MN STEELE
27 149 MN STEVENS
27 151 MN SWIFT
27 153 MN TODD
27 155 MN TRAVERSE
27 157 MN WABASHA
27 159 MN WADENA
27 161 MN WASECA
27 163 MN WASHINGTON
27 165 MN WATONWAN
27 167 MN WILKIN
27 169 MN WINONA
27 171 MN WRIGHT
27 173 MN YELLOW MEDICINE
28 1 MS ADAMS
28 3 MS ALCORN
28 5 MS AMITE
28 7 MS ATTALA
28 9 MS BENTON
28 11 MS BOLIVAR
28 13 MS CALHOUN
28 15 MS CARROLL
28 17 MS CHICKASAW
28 19 MS CHOCTAW
28 21 MS CLAIBORNE
28 23 MS CLARKE
28 25 MS CLAY
28 27 MS COAHOMA
28 29 MS COPIAH
28 31 MS COVINGTON
28 33 MS DE SOTO
28 35 MS FORREST
28 37 MS FRANKLIN
28 39 MS GEORGE
28 41 MS GREENE
28 43 MS GRENADA
28 45 MS HANCOCK
28 47 MS HARRISON

28 49 MS HINDS
28 51 MS HOLMES
28 53 MS HUMPHREYS
28 55 MS ISSAQUENA
28 57 MS ITAWAMBA
28 59 MS JACKSON
28 61 MS JASPER
28 63 MS JEFFERSON
28 65 MS JEFFERSON DAVIS
28 67 MS JONES
28 69 MS KEMPER
28 71 MS LAFAYETTE
28 73 MS LAMAR
28 75 MS LAUDERDALE
28 77 MS LAWRENCE
28 79 MS LEAKE
28 81 MS LEE
28 83 MS LEFLORE
28 85 MS LINCOLN
28 87 MS LOWNDES
28 89 MS MADISON
28 91 MS MARION
28 93 MS MARSHALL
28 95 MS MONROE
28 97 MS MONTGOMERY
28 99 MS NESHOBA
28 101 MS NEWTON
28 103 MS NOXUBEE
28 105 MS OKTIBBEHA
28 107 MS PANOLA
28 109 MS PEARL RIVER
28 111 MS PERRY
28 113 MS PIKE
28 115 MS PONTOTOC
28 117 MS PRENTISS
28 119 MS QUITMAN
28 121 MS RANKIN
28 123 MS SCOTT
28 125 MS SHARKEY
28 127 MS SIMPSON
28 129 MS SMITH
28 131 MS STONE
28 133 MS SUNFLOWER
28 135 MS TALLAHATCHIE
28 137 MS TATE
28 139 MS TIPPAH
28 141 MS TISHOMINGO
28 143 MS TUNICA
28 145 MS UNION
28 147 MS WALTHALL

28 149 MS WARREN
28 151 MS WASHINGTON
28 153 MS WAYNE
28 155 MS WEBSTER
28 157 MS WILKINSON
28 159 MS WINSTON
28 161 MS YALOBUSHA
28 163 MS YAZOO
29 1 MO ADAIR
29 3 MO ANDREW
29 5 MO ATCHISON
29 7 MO AUDRAIN
29 9 MO BARRY
29 11 MO BARTON
29 13 MO BATES
29 15 MO BENTON
29 17 MO BOLLINGER
29 19 MO BOONE
29 21 MO BUCHANAN
29 23 MO BUTLER
29 25 MO CALDWELL
29 27 MO CALLAWAY
29 29 MO CAMDEN
29 31 MO CAPE GIRARDEAU
29 33 MO CARROLL
29 35 MO CARTER
29 37 MO CASS
29 39 MO CEDAR
29 41 MO CHARITON
29 43 MO CHRISTIAN
29 45 MO CLARK
29 47 MO CLAY
29 49 MO CLINTON
29 51 MO COLE
29 53 MO COOPER
29 55 MO CRAWFORD
29 57 MO DADE
29 59 MO DALLAS
29 61 MO DAVIESS
29 63 MO DE KALB
29 65 MO DENT
29 67 MO DOUGLAS
29 69 MO DUNKLIN
29 71 MO FRANKLIN
29 73 MO GASCONADE
29 75 MO GENTRY
29 77 MO GREENE
29 79 MO GRUNDY
29 81 MO HARRISON
29 83 MO HENRY

29 85 MO HICKORY
29 87 MO HOLT
29 89 MO HOWARD
29 91 MO HOWELL
29 93 MO IRON
29 95 MO JACKSON
29 97 MO JASPER
29 99 MO JEFFERSON
29 101 MO JOHNSON
29 103 MO KNOX
29 105 MO LACLEDE
29 107 MO LAFAYETTE
29 109 MO LAWRENCE
29 111 MO LEWIS
29 113 MO LINCOLN
29 115 MO LINN
29 117 MO LIVINGSTON
29 121 MO MACON
29 123 MO MADISON
29 125 MO MARIES
29 127 MO MARION
29 119 MO MCDONALD
29 129 MO MERCER
29 131 MO MILLER
29 133 MO MISSISSIPPI
29 135 MO MONITEAU
29 137 MO MONROE
29 139 MO MONTGOMERY
29 141 MO MORGAN
29 143 MO NEW MADRID
29 145 MO NEWTON
29 147 MO NODAWAY
29 149 MO OREGON
29 151 MO OSAGE
29 153 MO OZARK
29 155 MO PEMISCOT
29 157 MO PERRY
29 159 MO PETTIS
29 161 MO PHELPS
29 163 MO PIKE
29 165 MO PLATTE
29 167 MO POLK
29 169 MO PULASKI
29 171 MO PUTNAM
29 173 MO RALLS
29 175 MO RANDOLPH
29 177 MO RAY
29 179 MO REYNOLDS
29 181 MO RIPLEY
29 195 MO SALINE

29 197 MO SCHUYLER
29 199 MO SCOTLAND
29 201 MO SCOTT
29 203 MO SHANNON
29 205 MO SHELBY
29 183 MO ST CHARLES
29 185 MO ST CLAIR
29 187 MO ST FRANCOIS
29 189 MO ST LOUIS
29 510 MO ST LOUIS CITY
29 186 MO STE GENEVIEVE
29 207 MO STODDARD
29 209 MO STONE
29 211 MO SULLIVAN
29 213 MO TANEY
29 215 MO TEXAS
29 217 MO VERNON
29 219 MO WARREN
29 221 MO WASHINGTON
29 223 MO WAYNE
29 225 MO WEBSTER
29 227 MO WORTH
29 229 MO WRIGHT
30 1 MT BEAVERHEAD
30 3 MT BIG HORN
30 5 MT BLAINE
30 7 MT BROADWATER
30 9 MT CARBON
30 11 MT CARTER
30 13 MT CASCADE
30 15 MT CHOUTEAU
30 17 MT CUSTER
30 19 MT DANIELS
30 21 MT DAWSON
30 23 MT DEER LODGE
30 25 MT FALLON
30 27 MT FERGUS
30 29 MT FLATHEAD
30 31 MT GALLATIN
30 33 MT GARFIELD
30 35 MT GLACIER
30 37 MT GOLDEN VALLEY
30 39 MT GRANITE
30 41 MT HILL
30 43 MT JEFFERSON
30 45 MT JUDITH BASIN
30 47 MT LAKE
30 49 MT LEWIS AND CLARK
30 51 MT LIBERTY
30 53 MT LINCOLN

30 57 MT MADISON
30 55 MT MCCONE
30 59 MT MEAGHER
30 61 MT MINERAL
30 63 MT MISSOULA
30 65 MT MUSSELSHELL
30 67 MT PARK
30 69 MT PETROLEUM
30 71 MT PHILLIPS
30 73 MT PONDERA
30 75 MT POWDER RIVER
30 77 MT POWELL
30 79 MT PRAIRIE
30 81 MT RAVALLI
30 83 MT RICHLAND
30 85 MT ROOSEVELT
30 87 MT ROSEBUD
30 89 MT SANDERS
30 91 MT SHERIDAN
30 93 MT SILVER BOW
30 95 MT STILLWATER
30 97 MT SWEET GRASS
30 99 MT TETON
30 101 MT TOOLE
30 103 MT TREASURE
30 105 MT VALLEY
30 107 MT WHEATLAND
30 109 MT WIBAUX
30 111 MT YELLOWSTONE
30 113 MT YELLOWSTONE NATIONAL PAR
31 1 NE ADAMS
31 3 NE ANTELOPE
31 5 NE ARTHUR
31 7 NE BANNER
31 9 NE BLAINE
31 11 NE BOONE
31 13 NE BOX BUTTE
31 15 NE BOYD
31 17 NE BROWN
31 19 NE BUFFALO
31 21 NE BURT
31 23 NE BUTLER
31 25 NE CASS
31 27 NE CEDAR
31 29 NE CHASE
31 31 NE CHERRY
31 33 NE CHEYENNE
31 35 NE CLAY
31 37 NE COLFAX
31 39 NE CUMING

31 41 NE CUSTER
31 43 NE DAKOTA
31 45 NE DAWES
31 47 NE DAWSON
31 49 NE DEUEL
31 51 NE DIXON
31 53 NE DODGE
31 55 NE DOUGLAS
31 57 NE DUNDY
31 59 NE FILLMORE
31 61 NE FRANKLIN
31 63 NE FRONTIER
31 65 NE FURNAS
31 67 NE GAGE
31 69 NE GARDEN
31 71 NE GARFIELD
31 73 NE GOSPER
31 75 NE GRANT
31 77 NE GREELEY
31 79 NE HALL
31 81 NE HAMILTON
31 83 NE HARLAN
31 85 NE HAYES
31 87 NE HITCHCOCK
31 89 NE HOLT
31 91 NE HOOKER
31 93 NE HOWARD
31 95 NE JEFFERSON
31 97 NE JOHNSON
31 99 NE KEARNEY
31 101 NE KEITH
31 103 NE KEYA PAHA
31 105 NE KIMBALL
31 107 NE KNOX
31 109 NE LANCASTER
31 111 NE LINCOLN
31 113 NE LOGAN
31 115 NE LOUP
31 119 NE MADISON
31 117 NE MCPHERSON
31 121 NE MERRICK
31 123 NE MORRILL
31 125 NE NANCE
31 127 NE NEMAHA
31 129 NE NUCKOLLS
31 131 NE OTOE
31 133 NE PAWNEE
31 135 NE PERKINS
31 137 NE PHELPS
31 139 NE PIERCE

31 141 NE PLATTE
31 143 NE POLK
31 145 NE RED WILLOW
31 147 NE RICHARDSON
31 149 NE ROCK
31 151 NE SALINE
31 153 NE SARPY
31 155 NE SAUNDERS
31 157 NE SCOTTS BLUFF
31 159 NE SEWARD
31 161 NE SHERIDAN
31 163 NE SHERMAN
31 165 NE SIOUX
31 167 NE STANTON
31 169 NE THAYER
31 171 NE THOMAS
31 173 NE THURSTON
31 175 NE VALLEY
31 177 NE WASHINGTON
31 179 NE WAYNE
31 181 NE WEBSTER
31 183 NE WHEELER
31 185 NE YORK
32 510 NV CARSON CITY
32 1 NV CHURCHILL
32 3 NV CLARK
32 5 NV DOUGLAS
32 7 NV ELKO
32 9 NV ESMERALDA
32 11 NV EUREKA
32 13 NV HUMBOLDT
32 15 NV LANDER
32 17 NV LINCOLN
32 19 NV LYON
32 21 NV MINERAL
32 23 NV NYE
32 27 NV PERSHING
32 29 NV STOREY
32 31 NV WASHOE
32 33 NV WHITE PINE
33 1 NH BELKNAP
33 3 NH CARROLL
33 5 NH CHESHIRE
33 7 NH COOS
33 9 NH GRAFTON
33 11 NH HILLS
33 13 NH MERRIMACK
33 15 NH ROCKINGHAM
33 17 NH STRAFFORD
33 19 NH SULLIVAN

34 1 NJ ATLANTIC
34 3 NJ BERGEN
34 5 NJ BURLINGTON
34 7 NJ CAMDEN
34 9 NJ CAPE MAY
34 11 NJ CUMBERLAND
34 13 NJ ESSEX
34 15 NJ GLOUCESTER
34 17 NJ HUDSON
34 19 NJ HUNTERDON
34 21 NJ MERCER
34 23 NJ MIDDLESEX
34 25 NJ MONMOUTH
34 27 NJ MORRIS
34 29 NJ OCEAN
34 31 NJ PASSAIC
34 33 NJ SALEM
34 35 NJ SOMERSET
34 37 NJ SUSSEX
34 39 NJ UNION
34 41 NJ WARREN
35 1 NM BERNALILLO
35 3 NM CATRON
35 5 NM CHAVES
35 7 NM COLFAX
35 9 NM CURRY
35 11 NM DE BACA
35 13 NM DONA ANA
35 15 NM EDDY
35 17 NM GRANT
35 19 NM GUADALUPE
35 21 NM HARDING
35 23 NM HIDALGO
35 25 NM LEA
35 27 NM LINCOLN
35 28 NM LOS ALAMOS
35 29 NM LUNA
35 31 NM MCKINLEY
35 33 NM MORA
35 35 NM OTERO
35 37 NM QUAY
35 39 NM RIO ARRIBA
35 41 NM ROOSEVELT
35 45 NM SAN JUAN
35 47 NM SAN MIGUEL
35 43 NM SANDOVAL
35 49 NM SANTA FE
35 51 NM SIERRA
35 53 NM SOCORRO
35 55 NM TAOS

35 57 NM TORRANCE
35 59 NM UNION
35 61 NM VALENCIA
36 1 NY ALBANY
36 3 NY ALLEGANY
36 5 NY BRONX
36 7 NY BROOME
36 9 NY CATTARAUGUS
36 11 NY CAYUGA
36 13 NY CHAUTAUGUA
36 15 NY CHEMUNG
36 17 NY CHENANGO
36 19 NY CLINTON
36 21 NY COLUMBIA
36 23 NY CORTLAND
36 25 NY DELAWARE
36 27 NY DUTCHESS
36 29 NY ERIE
36 31 NY ESSEX
36 33 NY FRANKLIN
36 35 NY FULTON
36 37 NY GENESEE
36 39 NY GREENE
36 41 NY HAMILTON
36 43 NY HERKIMER
36 45 NY JEFFERSON
36 47 NY KINGS
36 49 NY LEWIS
36 51 NY LIVINGSTON
36 53 NY MADISON
36 55 NY MONROE
36 57 NY MONTGOMERY
36 59 NY NASSAU
36 61 NY NEW YORK
36 63 NY NIAGARA
36 65 NY ONEIDA
36 67 NY ONONDAGA
36 69 NY ONTARIO
36 71 NY ORANGE
36 73 NY ORLEANS
36 75 NY OSWEGO
36 77 NY OTSEGO
36 79 NY PUTNAM
36 81 NY QUEENS
36 83 NY RENSSELAER
36 85 NY RICHMOND
36 87 NY ROCKLAND
36 91 NY SARATOGA
36 93 NY SCHENECTADY
36 95 NY SCHOHARIE

36 97 NY SCHUYLER
36 99 NY SENECA
36 89 NY ST LAWRENCE
36 101 NY STEUBEN
36 103 NY SUFFOLK
36 105 NY SULLIVAN
36 107 NY TIOGA
36 109 NY TOMPKINS
36 111 NY ULSTER
36 113 NY WARREN
36 115 NY WASHINGTON
36 117 NY WAYNE
36 119 NY WESTCHESTER
36 121 NY WYOMING
36 123 NY YATES
37 1 NC ALAMANCE
37 3 NC ALEXANDER
37 5 NC ALLEGHANY
37 7 NC ANSON
37 9 NC ASHE
37 11 NC AVERY
37 13 NC BEAUFORT
37 15 NC BERTIE
37 17 NC BLADEN
37 19 NC BRUNSWICK
37 21 NC BUNCOMBE
37 23 NC BURKE
37 25 NC CABARRUS
37 27 NC CALDWELL
37 29 NC CAMDEN
37 31 NC CARTERET
37 33 NC CASWELL
37 35 NC CATAWBA
37 37 NC CHATHAM
37 39 NC CHEROKEE
37 41 NC CHOWAN
37 43 NC CLAY
37 45 NC CLEVELAND
37 47 NC COLUMBUS
37 49 NC CRAVEN
37 51 NC CUMBERLAND
37 53 NC CURRITUCK
37 55 NC DARE
37 57 NC DAVIDSON
37 59 NC DAVIE
37 61 NC DUPLIN
37 63 NC DURHAM
37 65 NC EDGECOMBE
37 67 NC FORSYTH
37 69 NC FRANKLIN

37 71 NC GASTON
37 73 NC GATES
37 75 NC GRAHAM
37 77 NC GRANVILLE
37 79 NC GREENE
37 81 NC GUILFORD
37 83 NC HALIFAX
37 85 NC HARNETT
37 87 NC HAYWOOD
37 89 NC HENDERSON
37 91 NC HERTFORD
37 93 NC HOKE
37 95 NC HYDE
37 97 NC IREDELL
37 99 NC JACKSON
37 101 NC JOHNSTON
37 103 NC JONES
37 105 NC LEE
37 107 NC LENOIR
37 109 NC LINCOLN
37 113 NC MACON
37 115 NC MADISON
37 117 NC MARTIN
37 119 NC MCDOWELL
37 119 NC MECKLENBURG
37 121 NC MITCHELL
37 123 NC MONTGOMERY
37 125 NC MOORE
37 127 NC NASH
37 129 NC NEW HANOVER
37 131 NC NORTHAMPTON
37 133 NC ONSLOW
37 135 NC ORANGE
37 137 NC PAMLICO
37 139 NC PASQUOTANK
37 141 NC PENDER
37 143 NC PERQUIMANS
37 145 NC PERSON
37 147 NC PITT
37 149 NC POLK
37 151 NC RANDOLPH
37 153 NC RICHMOND
37 155 NC ROBESON
37 157 NC ROCKINGHAM
37 159 NC ROWAN
37 161 NC RUTHERFORD
37 163 NC SAMPSON
37 165 NC SCOTLAND
37 167 NC STANLY
37 169 NC STOKES

37 171 NC SURRY
37 173 NC SWAIN
37 175 NC TRANSYLVANIA
37 177 NC TYRRELL
37 179 NC UNION
37 181 NC VANCE
37 183 NC WAKE
37 185 NC WARREN
37 187 NC WASHINGTON
37 189 NC WATAUGA
37 191 NC WAYNE
37 193 NC WILKES
37 195 NC WILSON
37 197 NC YADKIN
37 199 NC YANCEY
38 1 ND ADAMS
38 3 ND BARNES
38 5 ND BENSON
38 7 ND BILLINGS
38 9 ND BOTTINEAU
38 11 ND BOWMAN
38 13 ND BURKE
38 15 ND BURLEIGH
38 17 ND CASS
38 19 ND CAVALIER
38 21 ND DICKEY
38 23 ND DIVIDE
38 25 ND DUNN
38 27 ND EDDY
38 29 ND EMMONS
38 31 ND FOSTER
38 33 ND GOLDEN VALLEY
38 35 ND GRAND FORKS
38 37 ND GRANT
38 39 ND GRIGGS
38 41 ND HETTINGER
38 43 ND KIDDER
38 45 ND LA MOURE
38 47 ND LOGAN
38 49 ND MCHENRY
38 51 ND MCINTOSH
38 53 ND MCKENZIE
38 55 ND MCLEAN
38 57 ND MERCER
38 59 ND MORTON
38 61 ND MOUNTRAIL
38 63 ND NELSON
38 65 ND OLIVER
38 67 ND PEMBINA
38 69 ND PIERCE

38 71 ND RAMSEY
38 73 ND RANSOM
38 75 ND RENVILLE
38 77 ND RICHLAND
38 79 ND ROLETTE
38 81 ND SARGENT
38 83 ND SHERIDAN
38 85 ND SIOUX
38 87 ND SLOPE
38 89 ND STARK
38 91 ND STEELE
38 93 ND STUTSMAN
38 95 ND TOWNER
38 97 ND TRAILL
38 99 ND WALSH
38 101 ND WARD
38 103 ND WELLS
38 105 ND WILLIAMS
39 1 OH ADAMS
39 3 OH ALLEN
39 5 OH ASHLAND
39 7 OH ASHTABULA
39 9 OH ATHENS
39 11 OH AUGLAIZE
39 13 OH BELMONT
39 15 OH BROWN
39 17 OH BUTLER
39 19 OH CARROLL
39 21 OH CHAMPAIGN
39 23 OH CLARK
39 25 OH CLERMONT
39 27 OH CLINTON
39 29 OH COLUMBIANA
39 31 OH COSHOCTON
39 33 OH CRAWFORD
39 35 OH CUYAHOGA
39 37 OH DARKE
39 39 OH DEFIANCE
39 41 OH DELAWARE
39 43 OH ERIE
39 45 OH FAIRFIELD
39 47 OH FAYETTE
39 49 OH FRANKLIN
39 51 OH FULTON
39 53 OH GALLIA
39 55 OH GEAUGA
39 57 OH GREENE
39 59 OH GUERNSEY
39 61 OH HAMILTON
39 63 OH HANCOCK

39 65 OH HARDIN
39 67 OH HARRISON
39 69 OH HENRY
39 71 OH HIGHLAND
39 73 OH HOCKING
39 75 OH HOLMES
39 77 OH HURON
39 79 OH JACKSON
39 81 OH JEFFERSON
39 83 OH KNOX
39 85 OH LAKE
39 87 OH LAWRENCE
39 89 OH LICKING
39 91 OH LOGAN
39 93 OH LORAIN
39 95 OH LUCAS
39 97 OH MADISON
39 99 OH MAHONING
39 101 OH MARION
39 103 OH MEDINA
39 105 OH MEIGS
39 107 OH MERCER
39 109 OH MIAMI
39 111 OH MONROE
39 113 OH MONTGOMERY
39 115 OH MORGAN
39 117 OH MORROW
39 119 OH MUSKINGUM
39 121 OH NORLE
39 123 OH OTTAWA
39 125 OH PAULDING
39 127 OH PERRY
39 129 OH PICKAWAY
39 131 OH PIKE
39 133 OH PORTAGE
39 135 OH PREBLE
39 137 OH PUTNAM
39 139 OH RICHLAND
39 141 OH ROSS
39 143 OH SANDUSKY
39 145 OH SCIOTO
39 147 OH SENECA
39 149 OH SHELBY
39 151 OH STARK
39 153 OH SUMMIT
39 155 OH TRUMBULL
39 157 OH TUSCARAWAS
39 159 OH UNION
39 161 OH VAN WERT
39 163 OH VINTON

39 165 OH WARREN
39 167 OH WASHINGTON
39 169 OH WAYNE
39 171 OH WILLIAMS
39 173 OH WOOD
39 175 OH WYANDOT
40 1 OK ADAIR
40 3 OK ALFALFA
40 5 OK ATOKA
40 7 OK BEAVER
40 9 OK BECKHAM
40 11 OK BLAINE
40 13 OK BRYAN
40 15 OK CADDO
40 17 OK CANADIAN
40 19 OK CARTER
40 21 OK CHEROKEE
40 23 OK CHOCTAW
40 25 OK CIMARRON
40 27 OK CLEVELAND
40 29 OK COAL
40 31 OK COMANCHE
40 33 OK COTTON
40 35 OK CRAIG
40 37 OK CREEK
40 39 OK CUSTER
40 41 OK DELAWARE
40 43 OK DEWEY
40 45 OK ELLIS
40 47 OK GARFIELD
40 49 OK GARVIN
40 51 OK GRADY
40 53 OK GRANT
40 55 OK GREER
40 57 OK HARMON
40 59 OK HARPER
40 61 OK HASKELL
40 63 OK HUGHES
40 65 OK JACKSON
40 67 OK JEFFERSON
40 69 OK JOHNSTON
40 71 OK KAY
40 73 OK KINGFISHER
40 75 OK KIOWA
40 77 OK LATIMER
40 79 OK LE FLORE
40 81 OK LINCOLN
40 83 OK LOGAN
40 85 OK LOVE
40 93 OK MAJOR

40 95 OK MARSHALL
40 97 OK MAYES
40 87 OK MCCLAIN
40 89 OK MCCURTAIN
40 91 OK MCINTOSH
40 99 OK MURRAY
40 101 OK MUSKOGEE
40 103 OK NOBLE
40 105 OK NOWATA
40 107 OK OKFUSKEE
40 109 OK OKLAHOMA
40 111 OK OKMULGEE
40 113 OK OSAGE
40 115 OK OTTAWA
40 117 OK PAWNEE
40 119 OK PAYNE
40 121 OK PITTSBURG
40 123 OK PONTOTOC
40 125 OK POTTAWATOMIE
40 127 OK PUSHMATAHA
40 129 OK ROGER MILLS
40 131 OK ROGERS
40 133 OK SEMINOLE
40 135 OK SEQUOYAH
40 137 OK STEPHENS
40 139 OK TEXAS
40 141 OK TILLMAN
40 143 OK TULSA
40 145 OK WAGONER
40 147 OK WASHINGTON
40 149 OK WASHITA
40 151 OK WOODS
40 153 OK WOODWARD
41 1 OR BAKER
41 3 OR BENTON
41 5 OR CLACKAMAS
41 7 OR CLATSOP
41 9 OR COLUMBIA
41 11 OR COOS
41 13 OR CROOK
41 15 OR CURRY
41 17 OR DESCHUTES
41 19 OR DOUGLAS
41 21 OR GILLIAM
41 23 OR GRANT
41 25 OR HARNEY
41 27 OR HOOD RIVER
41 29 OR JACKSON
41 31 OR JEFFERSON
41 33 OR JOSEPHINE

41 35 OR KLAMATH
41 37 OR LAKE
41 39 OR LANE
41 41 OR LINCOLN
41 43 OR LINN
41 45 OR MALHEUR
41 47 OR MARION
41 49 OR MORROW
41 51 OR MULTNOMAH
41 53 OR POLK
41 55 OR SHERMAN
41 57 OR TILLAMOOK
41 59 OR UMATILLA
41 61 OR UNION
41 63 OR WALLOWA
41 65 OR WASCO
41 67 OR WASHINGTON
41 69 OR WHEELER
41 71 OR YAMHILL
42 1 PA ADAMS
42 3 PA ALLEGHENY
42 5 PA ARMSTRONG
42 7 PA BEAVER
42 9 PA BEDFORD
42 11 PA BERKS
42 13 PA BLAIR
42 15 PA BRADFORD
42 17 PA BUCKS
42 19 PA BUTLER
42 21 PA CAMBRIA
42 23 PA CAMERON
42 25 PA CARBON
42 27 PA CENTRE
42 29 PA CHESTER
42 31 PA CLARION
42 33 PA CLEARFIELD
42 35 PA CLINTON
42 37 PA COLUMBIA
42 39 PA CRAWFORD
42 41 PA CUMBERLAND
42 43 PA DAUPHIN
42 45 PA DELAWARE
42 47 PA ELK
42 49 PA ERIE
42 51 PA FAYETTE
42 53 PA FOREST
42 55 PA FRANKLIN
42 57 PA FULTON
42 59 PA GREENE
42 61 PA HUNTINGDON

42 63 PA INDIANA
42 65 PA JEFFERSON
42 67 PA JUNIATA
42 69 PA LACKAWANNA
42 71 PA LANCASTER
42 73 PA LAWRENCE
42 75 PA LEBANON
42 77 PA LEHIGH
42 79 PA LUZERNE
42 81 PA LYCOMING
42 83 PA MCKEAN
42 85 PA MERCER
42 87 PA MIFFLIN
42 89 PA MONROE
42 91 PA MONTGOMERY
42 93 PA MONTOUR
42 95 PA NORTHAMPTON
42 97 PA NORTHUMBERLAND
42 99 PA PERRY
42 101 PA PHILADELPHIA
42 103 PA PIKE
42 105 PA POTTER
42 107 PA SCHUYLKILL
42 109 PA SNYDER
42 111 PA SOMERSET
42 113 PA SULLIVAN
42 115 PA SUSQUEHANNA
42 117 PA TIOGA
42 119 PA UNION
42 121 PA VENANGO
42 123 PA WARREN
42 125 PA WASHINGTON
42 127 PA WAYNE
42 129 PA WESTMORELAND
42 131 PA WYOMING
42 133 PA YORK
43 501 PR AGUADILLA
43 503 PR AIBONITA
43 505 PR ARECIBO
43 507 PR BAYAMON
43 509 PR CAGUAS
43 511 PR CAROLINA
43 513 PR GUAYAMA
43 515 PR HUMACAO
43 517 PR MAYAGUEZ
43 519 PR PONCE
43 521 PR SAN JUAN
43 523 PR UTUADO
44 1 RI BRISTOL
44 3 RI KENT

44 5 RI NEWPORT
44 7 RI PROVIDENCE
44 9 RI WASHINGTON
45 1 SC ABBEVILLE
45 3 SC AIKEN
45 5 SC ALLENDALE
45 7 SC ANDERSON
45 9 SC BAMBERG
45 11 SC BARNWELL
45 13 SC BEAUFORT
45 15 SC BERKELEY
45 17 SC CALHOUN
45 19 SC CHARLESTON
45 21 SC CHEROKEE
45 23 SC CHESTER
45 25 SC CHESTERFIELD
45 27 SC CLARENDON
45 29 SC COLLETON
45 31 SC DARLINGTON
45 33 SC DILLON
45 35 SC DORCHESTER
45 37 SC EDGEFIELD
45 39 SC FAIRFIELD
45 41 SC FLORENCE
45 43 SC GEORGETOWN
45 45 SC GREENVILLE
45 47 SC GREENWOOD
45 49 SC HAMPTON
45 51 SC HORRY
45 53 SC JASPER
45 55 SC KERSHAW
45 57 SC LANCASTER
45 59 SC LAURENS
45 61 SC LEE
45 63 SC LEXINGTON
45 67 SC MARION
45 69 SC MARLBORO
45 65 SC MCCORMICK
45 71 SC NEWBERRY
45 73 SC OCONEE
45 75 SC ORANGEBURG
45 77 SC PICKENS
45 79 SC RICHLAND
45 81 SC SALUDA
45 83 SC SPARTANBURG
45 85 SC SUMTER
45 87 SC UNION
45 89 SC WILLIAMSBURG
45 91 SC YORK
46 3 SD AURORA

46 5 SD BEADLE
46 7 SD BENNETT
46 9 SD RON HOMME
46 11 SD BROOKINGS
46 13 SD BROWN
46 15 SD BRULE
46 17 SD BUFFALO
46 19 SD BUTTE
46 21 SD CAMPBELL
46 23 SD CHARLES MIX
46 25 SD CLARK
46 27 SD CLAY
46 29 SD CODINGTON
46 31 SD CORSON
46 33 SD CUSTER
46 35 SD DAVISON
46 37 SD DAY
46 39 SD DEUEL
46 41 SD DEWEY
46 43 SD DOUGLAS
46 45 SD EDMUNDS
46 47 SD FALL RIVER
46 49 SD FAULK
46 51 SD GRANT
46 53 SD GREGORY
46 55 SD HAAKON
46 57 SD HAMLIN
46 59 SD HAND
46 61 SD HANSON
46 63 SD HARDING
46 65 SD HUGHES
46 67 SD HUTCHINSON
46 69 SD HYDE
46 71 SD JACKSON
46 73 SD JERHAULD
46 75 SD JONES
46 77 SD KINGSBURY
46 79 SD LAKE
46 81 SD LAWRENCE
46 83 SD LINCOLN
46 85 SD LYMAN
46 91 SD MARSHALL
46 87 SD MCCOOK
46 89 SD MCPHERSON
46 93 SD MEADE
46 95 SD MELLETTE
46 97 SD MINER
46 99 SD MINNEHAHA
46 101 SD MOODY
46 103 SD PENNINGTON

46 105 SD PERKINS
46 107 SD POTTER
46 109 SD ROBERTS
46 111 SD SANBORN
46 113 SD SHANNON
46 115 SD SPINK
46 117 SD STANLEY
46 119 SD SULLY
46 121 SD TODD
46 123 SD TRIPP
46 125 SD TURNER
46 127 SD UNION
46 129 SD WALWORTH
46 135 SD YANKTON
46 137 SD ZIEBACH
47 1 TN ANDERSON
47 3 TN BEDFORD
47 5 TN BENTON
47 7 TN BLEDSOE
47 9 TN BLOUNT
47 11 TN BRADLEY
47 13 TN CAMPBELL
47 15 TN CANNON
47 17 TN CARROLL
47 19 TN CARTER
47 21 TN CHEATHAM
47 23 TN CHESTER
47 25 TN CLAIBORNE
47 27 TN CLAY
47 29 TN COCKE
47 31 TN COFFEE
47 33 TN CROCKETT
47 35 TN CUMBERLAND
47 37 TN DAVIDSON
47 41 TN DE KALB
47 39 TN DECATUR
47 43 TN DICKSON
47 45 TN DYER
47 47 TN FAYETTE
47 49 TN FENTRESS
47 51 TN FRANKLIN
47 53 TN GIBSON
47 55 TN GILES
47 57 TN GRAINGER
47 59 TN GREENE
47 61 TN GRUNDY
47 63 TN HAMBLEN
47 65 TN HAMILTON
47 67 TN HANCOCK
47 69 TN HARDEMAN

47 71 TN HARDIN
47 73 TN HAWKINS
47 75 TN HAYWOOD
47 77 TN HENDERSON
47 79 TN HENRY
47 81 TN HICKMAN
47 83 TN HOUSTON
47 85 TN HUMPHREYS
47 87 TN JACKSON
47 89 TN JEFFERSON
47 91 TN JOHNSON
47 93 TN KNOX
47 95 TN LAKE
47 97 TN LAUDERDALE
47 99 TN LAWRENCE
47 101 TN LEWIS
47 103 TN LINCOLN
47 105 TN LOUDON
47 111 TN MACON
47 113 TN MADISON
47 115 TN MARION
47 117 TN MARSHALL
47 119 TN MAURY
47 107 TN MCMINN
47 109 TN MCNAIRY
47 121 TN MEIGS
47 123 TN MONROE
47 125 TN MONTGOMERY
47 127 TN MOORE
47 129 TN MORGAN
47 131 TN OBION
47 133 TN OVERTON
47 135 TN PERRY
47 137 TN PICKETT
47 139 TN POLK
47 141 TN PUTNAM
47 143 TN RHEA
47 145 TN ROANE
47 147 TN ROBERTSON
47 149 TN RUTHERFORD
47 151 TN SCOTT
47 153 TN SEQUATCHIE
47 155 TN SEVIER
47 157 TN SHELBY
47 159 TN SMITH
47 161 TN STEWART
47 163 TN SULLIVAN
47 165 TN SUMNER
47 167 TN TIPTON
47 169 TN TROUSDALE

47 171 TN UNICOI
47 173 TN UNION
47 175 TN VAN BUREN
47 177 TN WARREN
47 179 TN WASHINGTON
47 181 TN WAYNE
47 183 TN WEAKLEY
47 185 TN WHITE
47 187 TN WILLIAMSON
47 189 TN WILSON
48 1 TX ANDERSON
48 3 TX ANDREWS
48 5 TX ANGELINA
48 7 TX ARANSAS
48 9 TX ARCHER
48 11 TX ARMSTRONG
48 13 TX ATASCOSA
48 15 TX AUSTIN
48 17 TX BAILEY
48 19 TX BANDERA
48 21 TX RASTROP
48 23 TX BAYLOR
48 25 TX BEE
48 27 TX BELL
48 29 TX BEXAR
48 31 TX BLANCO
48 33 TX BORDEN
48 35 TX BOSQUE
48 37 TX BOWIE
48 39 TX BRAZORIA
48 41 TX BRAZOS
48 43 TX BREWSTER
48 45 TX BRISCOE
48 47 TX BROOKS
48 49 TX BROWN
48 51 TX BURLESON
48 53 TX BURNET
48 55 TX CALDWELL
48 57 TX CALHOUN
48 59 TX CALLAHAN
48 61 TX CAMERON
48 63 TX CAMP
48 65 TX CARSON
48 67 TX CASS
48 69 TX CASTRO
48 71 TX CHAMBERS
48 73 TX CHEROKEE
48 75 TX CHILDRESS
48 77 TX CLAY
48 79 TX COCHRAN

48 81 TX COKE
48 83 TX COLEMAN
48 85 TX COLLIN
48 87 TX COLLINGSWORTH
48 89 TX COLORADO
48 91 TX COMAL
48 93 TX COMANCHE
48 95 TX CONCHO
48 97 TX COOKE
48 99 TX CORYELL
48 101 TX COTTLE
48 103 TX CRANE
48 105 TX CROCKETT
48 107 TX CROSBY
48 109 TX CULBERSON
48 111 TX DALLAM
48 113 TX DALLAS
48 115 TX DAWSON
48 123 TX DE WITT
48 117 TX DEAF SMITH
48 119 TX DELTA
48 121 TX DENTON
48 125 TX DICKENS
48 127 TX DIMMIT
48 129 TX DONLEY
48 131 TX DUVAL
48 133 TX EASTLAND
48 135 TX ECTOR
48 137 TX EDWARDS
48 141 TX EL PASO
48 139 TX ELLIS
48 143 TX ERATH
48 145 TX FALLS
48 147 TX FANNIN
48 149 TX FAYETTE
48 151 TX FISHER
48 153 TX FLOYD
48 155 TX FOARD
48 157 TX FORT BEND
48 159 TX FRANKLIN
48 161 TX FREESTONE
48 163 TX FRIO
48 165 TX GAINES
48 167 TX GALVESTON
48 169 TX GARZA
48 171 TX GILLESPIE
48 173 TX GLASSCOCK
48 175 TX GOLIAD
48 177 TX GONZALES
48 179 TX GRAY

48 181 TX GRAYSON
48 183 TX GREGG
48 185 TX GRIMES
48 187 TX GUADALUPE
48 189 TX HALE
48 191 TX HALL
48 193 TX HAMILTON
48 195 TX HANSFORD
48 197 TX HARDEMAN
48 199 TX HARDIN
48 201 TX HARRIS
48 203 TX HARRISON
48 205 TX HARTLEY
48 207 TX HASKELL
48 209 TX HAYS
48 211 TX HEMPHILL
48 213 TX HENDERSON
48 215 TX HIDALGO
48 217 TX HILL
48 219 TX HOCKLEY
48 221 TX HOOD
48 223 TX HOPKINS
48 225 TX HOUSTON
48 227 TX HOWARD
48 229 TX HUDSPETH
48 231 TX HUNT
48 233 TX HUTCHINSON
48 235 TX IRION
48 237 TX JACK
48 239 TX JACKSON
48 241 TX JASPER
48 243 TX JEFF DAVIS
48 245 TX JEFFERSON
48 247 TX JIM HOGG
48 249 TX JIM WELLS
48 251 TX JOHNSON
48 253 TX JONES
48 255 TX KARNES
48 257 TX KAUFMAN
48 259 TX KENDALL
48 261 TX KENEDY
48 263 TX KENT
48 265 TX KERR
48 267 TX KIMBLE
48 269 TX KING
48 271 TX KINNEY
48 273 TX KLEBERG
48 275 TX KNOX
48 283 TX LA SALLE
48 277 TX LAMAR

48 279 TX LAMB
48 281 TX LAMPASAS
48 285 TX LAVACA
48 287 TX LEE
48 289 TX LEON
48 291 TX LIBERTY
48 293 TX LIMESTONE
48 295 TX LIPSCOMB
48 297 TX LIVE OAK
48 299 TX LLANO
48 301 TX LOVING
48 303 TX LUBBOCK
48 305 TX LYNN
48 313 TX MADISON
48 315 TX MARION
48 317 TX MARTIN
48 319 TX MASON
48 321 TX MATAGORDA
48 323 TX MAVERICK
48 307 TX MCCULLOCH
48 309 TX MCLENNAN
48 311 TX MCMULLEN
48 325 TX MEDINA
48 327 TX MENARD
48 329 TX MIDLAND
48 331 TX MILAM
48 333 TX MILLS
48 335 TX MITCHELL
48 337 TX MONTAGUE
48 339 TX MONTGOMERY
48 341 TX MOORE
48 343 TX MORRIS
48 345 TX MOTLEY
48 347 TX NACOGDOCHES
48 349 TX NAVARRO
48 351 TX NEWTON
48 353 TX NOLAN
48 355 TX NUECES
48 357 TX OCHILTREE
48 359 TX OLDHAM
48 361 TX ORANGE
48 363 TX PALO PINTO
48 365 TX PANOLA
48 367 TX PARKER
48 369 TX PARMER
48 371 TX PECOS
48 373 TX POLK
48 375 TX POTTER
48 377 TX PRESIDIO
48 379 TX RAINS

48 381 TX RANDALL
48 383 TX REAGAN
48 385 TX REAL
48 387 TX RED RIVER
48 389 TX REEVES
48 391 TX REFUGIO
48 393 TX ROBERTS
48 395 TX ROBERTSON
48 397 TX ROCKWALL
48 399 TX RUNNELS
48 401 TX RUSK
48 403 TX SABINE
48 405 TX SAN AUGUSTINE
48 407 TX SAN JACINTO
48 409 TX SAN PATRICIO
48 411 TX SAN SABA
48 413 TX SCHLEICHER
48 415 TX SCURRY
48 417 TX SHACKELFORD
48 419 TX SHELBY
48 421 TX SHERMAN
48 423 TX SMITH
48 425 TX SOMERVELL
48 427 TX STARR
48 429 TX STEPHENS
48 431 TX STERLING
48 433 TX STONEWALL
48 435 TX SUTTON
48 437 TX SWISHER
48 439 TX TARRANT
48 441 TX TAYLOR
48 443 TX TERRELL
48 445 TX TERRY
48 447 TX THROCKMORTON
48 449 TX TITUS
48 451 TX TOM GREEN
48 453 TX TRAVIS
48 455 TX TRINITY
48 457 TX TYLER
48 459 TX UPSHUR
48 461 TX UPTON
48 463 TX UVALDE
48 465 TX VAL VERDE
48 467 TX VAN ZANDT
48 469 TX VICTORIA
48 471 TX WALKER
48 473 TX WALLER
48 475 TX WARD
48 477 TX WASHINGTON
48 479 TX WEBB

48 481 TX WHARTON
48 483 TX WHEELER
48 485 TX WICHITA
48 487 TX WILBARGER
48 489 TX WILLACY
48 491 TX WILLIAMSON
48 493 TX WILSON
48 495 TX WINKLER
48 497 TX WISE
48 499 TX WOOD
48 501 TX YOAKUM
48 503 TX YOUNG
48 505 TX ZAPATA
48 507 TX ZAVALA
49 1 UT BEAVER
49 3 UT BOX ELDER
49 5 UT CACHE
49 7 UT CARBON
49 9 UT DAGGETT
49 11 UT DAVIS
49 13 UT DUCHESNE
49 15 UT EMERY
49 17 UT GARFIELD
49 19 UT GRAND
49 21 UT IRON
49 23 UT JUAB
49 25 UT KANE
49 27 UT MILLARD
49 29 UT MORGAN
49 31 UT PIUTE
49 33 UT RICH
49 35 UT SALT LAKE
49 37 UT SAN JUAN
49 39 UT SANPETE
49 41 UT SEVIER
49 43 UT SUMMIT
49 45 UT TOOELE
49 47 UT Uintah
49 49 UT UTAH
49 51 UT WASATCH
49 53 UT WASHINGTON
49 55 UT WAYNE
49 57 UT WEBER
50 1 VT ADDISON
50 3 VT BENNINGTON
50 5 VT CALEDONIA
50 7 VT CHITTENDEN
50 9 VT ESSEX
50 11 VT FRANKLIN
50 13 VT GRAND ISLE

50 15 VT LAMOILLE
50 17 VT ORANGE
50 19 VT ORLEANS
50 21 VT RUTLAND
50 23 VT WASHINGTON
50 25 VT WINDHAM
50 27 VT WINDSOR
52 501 VI ST CROIX
52 503 VI ST JOHN
52 505 VI ST THOMAS
51 1 VA ACCOMACK
51 3 VA ALBEMARLE
51 510 VA ALEXANDRIA CITY
51 5 VA ALLEGHANY
51 7 VA AMELIA
51 9 VA AMHERST
51 11 VA APPOMATTOX
51 13 VA ARLINGTON
51 15 VA AUGUSTA
51 17 VA BATH
51 19 VA BEDFORD
51 515 VA BEDFORD CITY
51 21 VA BLAND
51 23 VA BOTETOURT
51 520 VA BRISTOL CITY
51 25 VA BRUNSWICK
51 27 VA BUCHANAN
51 29 VA BUCKINGHAM
51 530 VA BUENA VISTA CITY
51 31 VA CAMPBELL
51 33 VA CAROLINE
51 35 VA CARROLL
51 36 VA CHARLES CITY
51 37 VA CHARLOTTE
51 540 VA CHARLOTTESVILLE CITY
51 550 VA CHESAPEAKE CITY
51 41 VA CHESTERFIELD
51 43 VA CLARKE
51 560 VA CLIFTON FORGE CITY
51 570 VA COLONIAL HEIGHTS CITY
51 580 VA COVINGTON CITY
51 45 VA CRAIG
51 47 VA CULPEPER
51 49 VA CUMBERLAND
51 590 VA DANVILLE CITY
51 51 VA DICKENSON
51 53 VA DINWIDDIE
51 595 VA EMPORIA CITY
51 57 VA ESSEX
51 59 VA FAIRFAX

51 600 VA FAIRFAX CITY
51 610 VA FALLS CHURCH CITY
51 61 VA FAUQUIEH
51 63 VA FLOYD
51 65 VA FLUVANNA
51 67 VA FRANKLIN
51 620 VA FRANKLIN CITY
51 69 VA FREDERICK
51 630 VA FREDERICKSBURG CITY
51 640 VA GALAX CITY
51 71 VA GILES
51 73 VA GLOUCESTER
51 75 VA GOOCHLAND
51 77 VA GRAYSON
51 79 VA GREENE
51 81 VA GREENSVILLE
51 83 VA HALIFAX
51 650 VA HAMPTON CITY
51 85 VA HANOVER
51 660 VA HARRISONBURG CITY
51 87 VA HENRICO
51 89 VA HENRY
51 91 VA HIGHLAND
51 670 VA HOPEWELL CITY
51 93 VA ISLE OF WIGHT
51 95 VA JAMES CITY
51 97 VA KING AND QUEEN
51 99 VA KING GEORGE
51 101 VA KING WILLIAM
51 103 VA LANCASTER
51 105 VA LEE
51 678 VA LEXINGTON CITY
51 107 VA LOUDOUN
51 109 VA LOUISA
51 111 VA LUNENBURG
51 680 VA LYNCHBURG CITY
51 113 VA MADISON
51 683 VA MANASSAS CITY
51 685 VA MANASSAS PARK CITY
51 690 VA MARTINSVILLE CITY
51 115 VA MATHEWS
51 117 VA MECKLENBURG
51 119 VA MIDDLESEX
51 121 VA MONTGOMERY
51 125 VA NELSON
51 127 VA NEW KENT
51 700 VA NEWPORT NEWS CITY
51 710 VA NORFOLK CITY
51 131 VA NORTHAMPTON
51 133 VA NORTHUMBERLAND

51 720 VA NORTON CITY
51 135 VA NOTTOWAY
51 137 VA ORANGE
51 139 VA PAGE
51 141 VA PATRICK
51 730 VA PETERSBURG CITY
51 143 VA PITTSYLVANIA
51 735 VA POQUOSON CITY
51 740 VA PORTSMOUTH CITY
51 145 VA POWHATAN
51 147 VA PRINCE EDWARD
51 149 VA PRINCE GEORGE
51 153 VA PRINCE WILLIAM
51 155 VA PULASKI
51 750 VA RADFORD CITY
51 157 VA RAPPAHANNOCK
51 159 VA RICHMOND
51 760 VA RICHMOND CITY
51 161 VA ROANOKE
51 770 VA ROANOKE CITY
51 163 VA ROCKBRIDGE
51 165 VA ROCKINGHAM
51 167 VA RUSSELL
51 775 VA SALEM CITY
51 169 VA SCOTT
51 171 VA SHENANDOAH
51 173 VA SMYTH
51 780 VA SOUTH BOSTON CITY
51 175 VA SOUTHAMPTON
51 177 VA SPOTSYLVANIA
51 179 VA STAFFORD
51 790 VA STAUNTON CITY
51 800 VA SUFFOLK CITY
51 181 VA SURRY
51 183 VA SUSSEX
51 185 VA TAZEWELL
51 810 VA VIRGINIA BEACH CITY
51 187 VA WARREN
51 191 VA WASHINGTON
51 820 VA WAYNESBORO CITY
51 193 VA WESTMORELAND
51 830 VA WILLIAMSBURG CITY
51 840 VA WINCHESTER CITY
51 195 VA WISE
51 197 VA WYTHE
51 199 VA YORK
53 1 WA ADAMS
53 3 WA ASOTIN
53 5 WA BENTON
53 7 WA CHELAN

53 9 WA CLALLAM
53 11 WA CLARK
53 13 WA COLUMBIA
53 15 WA COWLITZ
53 17 WA DOUGLAS
53 19 WA FERRY
53 21 WA FRANKLIN
53 23 WA GARFIELD
53 25 WA GRANT
53 27 WA GRAYS HARBOR
53 29 WA ISLAND
53 31 WA JEFFERSON
53 33 WA KING
53 35 WA KITSAP
53 37 WA KITITAS
53 39 WA KLUCKITAT
53 41 WA LEWIS
53 43 WA LINCOLN
53 45 WA MASON
53 47 WA OKANOGAN
53 49 WA PACIFIC
53 51 WA PEND OREILLE
53 53 WA PIERCE
53 55 WA SAN JUAN
53 57 WA SKAGIT
53 59 WA SKAMANIA
53 61 WA SNOHOMISH
53 63 WA SPOKANE
53 65 WA STEVENS
53 67 WA THURSTON
53 69 WA WAHIAKUM
53 71 WA WALLA WALLA
53 73 WA WHATCOM
53 75 WA WHITMAN
53 77 WA YAKIMA
54 1 WV BARBOUR
54 3 WV BERKELEY
54 5 WV BOONE
54 7 WV BRAXTON
54 9 WV BROOKE
54 11 WV CABELL
54 13 WV CALHOUN
54 15 WV CLAY
54 17 WV DODDRIDGE
54 19 WV FAYETTE
54 21 WV GILMER
54 23 WV GRANT
54 25 WV GREENBRIER
54 27 WV HAMPSHIRE
54 29 WV HANCOCK

54 31 WV HARDY
54 33 WV HARRISON
54 35 WV JACKSON
54 37 WV JEFFERSON
54 39 WV KANAWHA
54 41 WV LEWIS
54 43 WV LINCOLN
54 45 WV LOGAN
54 49 WV MARION
54 51 WV MARSHALL
54 53 WV MASON
54 47 WV MCDOWELL
54 55 WV MERCER
54 57 WV MINERAL
54 59 WV MINGO
54 61 WV MONONGALIA
54 63 WV MONROE
54 65 WV MORGAN
54 67 WV NICHOLAS
54 69 WV OHIO
54 71 WV PENDLETON
54 73 WV PLEASANTS
54 75 WV POCAHONTAS
54 77 WV PRESTON
54 79 WV PUTNAM
54 81 WV RALEIGH
54 83 WV RANDOLPH
54 85 WV RITCHIE
54 87 WV ROANE
54 89 WV SUMMERS
54 91 WV TAYLOR
54 93 WV TUCKER
54 95 WV TYLER
54 97 WV UPSHUR
54 99 WV WAYNE
54 101 WV WEBSTER
54 103 WV WETZEL
54 105 WV WIRT
54 107 WV WOOD
54 109 WV WYOMING
55 1 WI ADAMS
55 3 WI ASHLAND
55 5 WI BARRON
55 7 WI BAYFIELD
55 9 WI BROWN
55 11 WI BUFFALO
55 13 WI BURNETT
55 15 WI CALUMET
55 17 WI CHIPPEWA
55 19 WI CLARK

55 21 WI COLUMBIA
55 23 WI CRAWFORD
55 25 WI DANE
55 27 WI DODGE
55 29 WI DOOR
55 31 WI DOUGLAS
55 33 WI DUNN
55 35 WI EAU CLAIRE
55 37 WI FLORENCE
55 39 WI FOND DU LAC
55 41 WI FOREST
55 43 WI GRANT
55 45 WI GREEN
55 47 WI GREEN LAKE
55 49 WI IOWA
55 51 WI IRON
55 53 WI JACKSON
55 55 WI JEFFERSON
55 57 WI JUNEAU
55 59 WI KENOSHA
55 61 WI KEWAUNEE
55 63 WI LA CROSSE
55 65 WI LAFAYETTE
55 67 WI LANGLADE
55 69 WI LINCOLN
55 71 WI MANITOWOC
55 73 WI MARATHON
55 75 WI MARINETTE
55 77 WI MARQUETTE
55 78 WI MENOMINEE
55 79 WI MILWAUKEE
55 81 WI MONROE
55 83 WI OCONTO
55 85 WI ONEIDA
55 87 WI OUTAGAMIE
55 89 WI OZAUKEE
55 93 WI PIERCE
55 97 WI PORTAGE
55 101 WI RACINE
55 105 WI ROCK
55 111 WI SAUK
55 115 WI SHAWANO

55 119 WI TAYLOR
55 121 WI TREMPLEAU
55 123 WI VERNON
55 125 WI VILAS
55 127 WI WALWORTH
55 129 WI WASHBURN
55 131 WI WASHINGTON
55 133 WI WAUKESHA
55 135 WI WAUPACA
55 137 WI WAUSHARA
55 139 WI WINNEBAGO
55 141 WI WOOD
56 1 WY ALBANY
56 3 WY BIG HORN
56 5 WY CAMPBELL
56 7 WY CARBON
56 9 WY CONVERSE
56 11 WY CROOK
56 13 WY FREMONT
56 15 WY GOSHEN
56 17 WY HOT SPRINGS
56 19 WY JOHNSON
56 21 WY LARAMIE
56 23 WY LINCOLN
56 25 WY NATRONA
56 27 WY NIOBRARA
56 29 WY PARK
56 31 WY PLATTE
56 33 WY SHERIDAN
56 35 WY SUBLETTE
56 37 WY SWEETWATER
56 39 WY TETON
56 41 WY UINTA
56 43 WY WASHAKIE
56 45 WY WESTON
55 91 WI PEPIN
55 95 WI POLK
55 99 WI PRICE
55 103 WI RICHLAND
55 107 WI RUSK
55 113 WI SAWYER
55 117 WI SHEBOYGAN

END